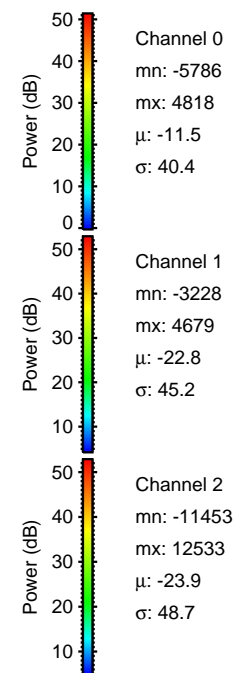
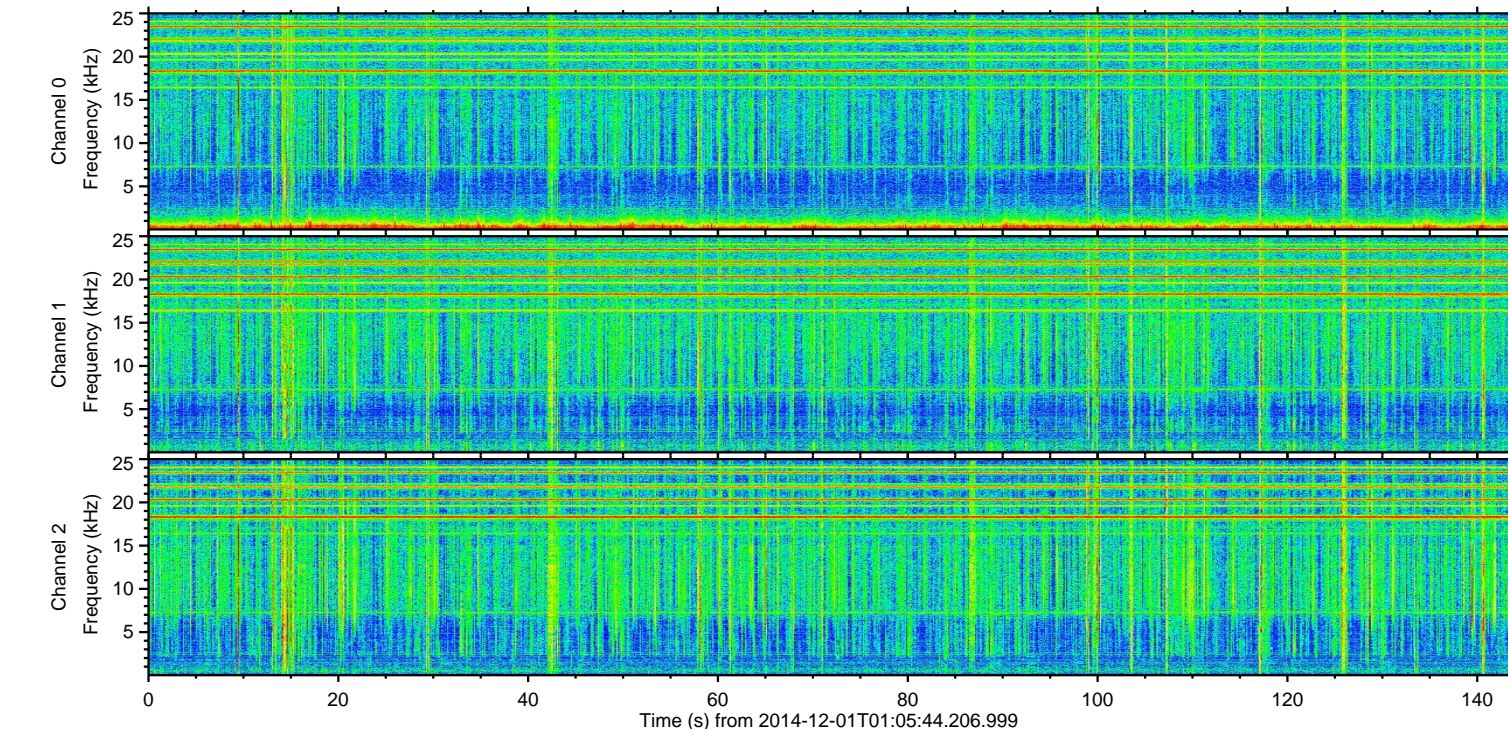
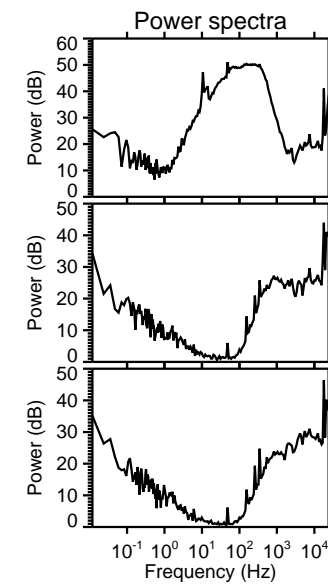
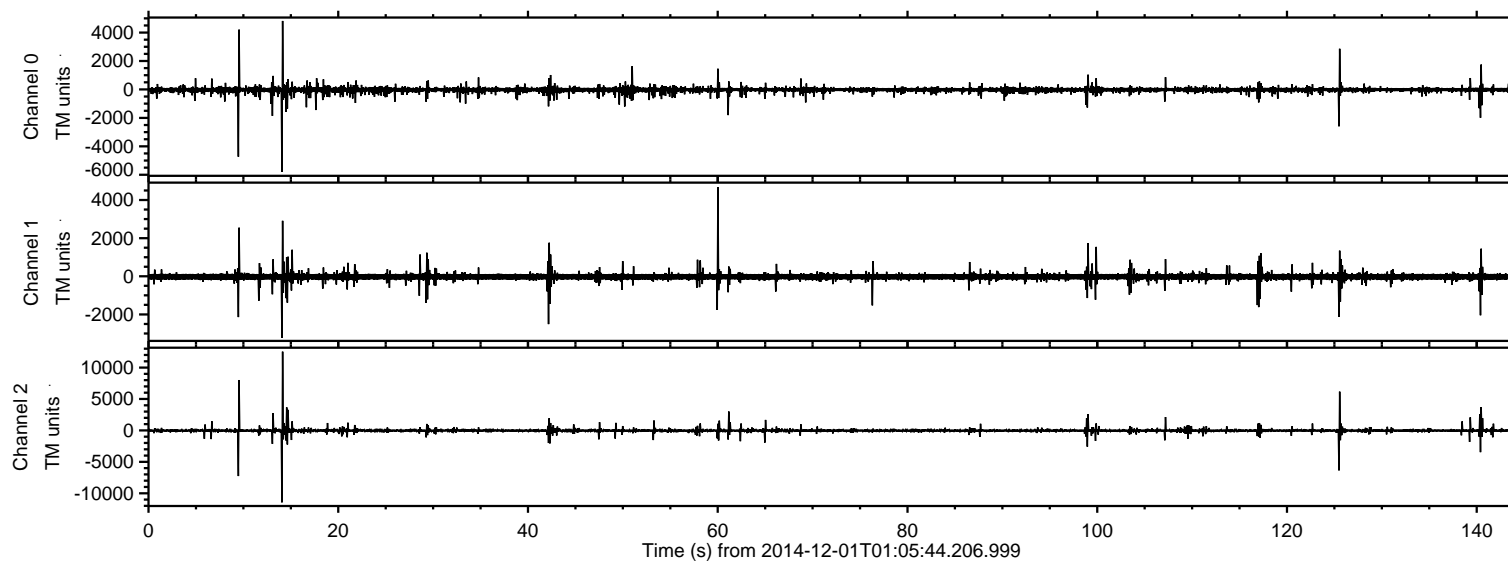


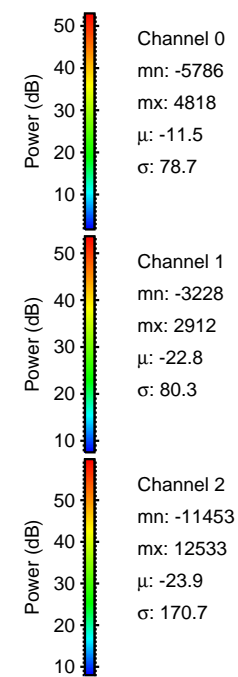
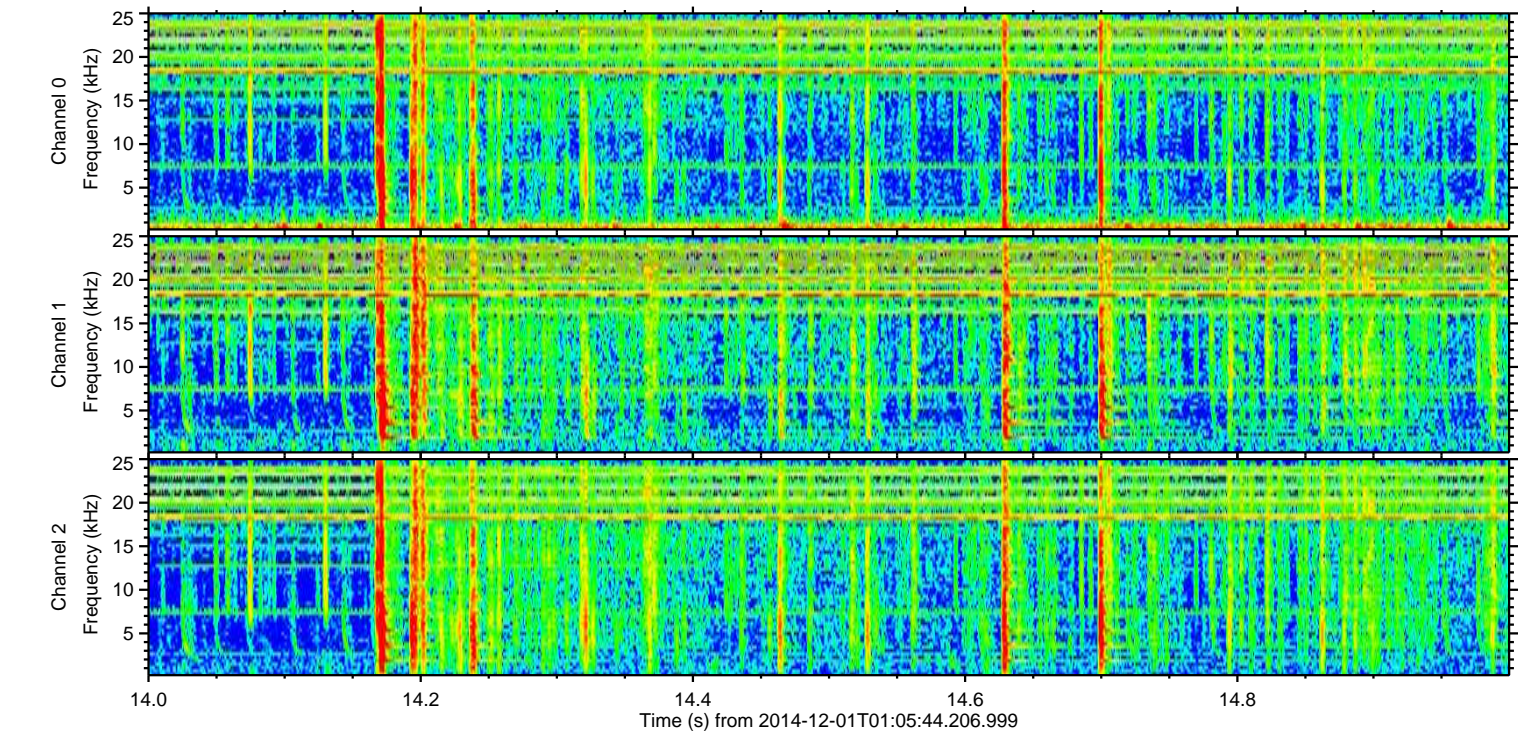
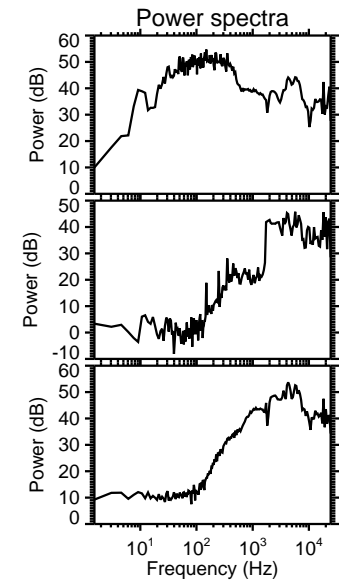
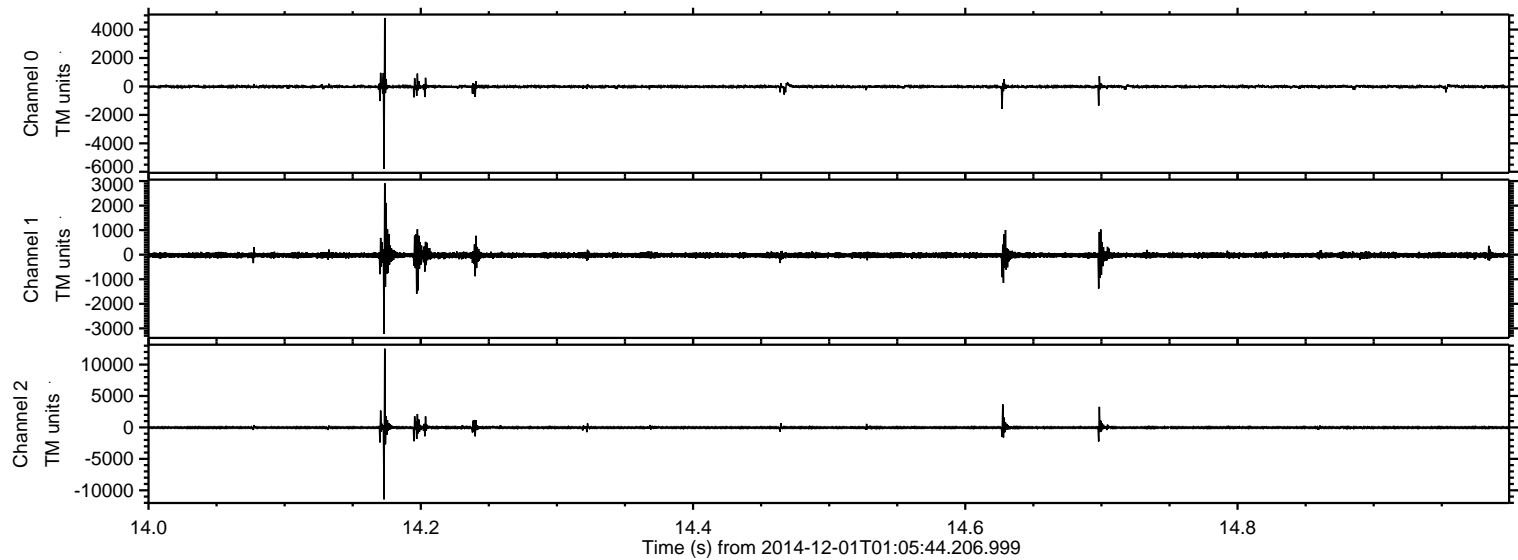
ELMAVAN 3D WAVEFORMS (Measured data sampled at 50 kHz) 49798 packets of 144 samples from 2014-12-01T01:05:44.206.999.

Processed Mon Dec 1 02:13:26 2014 by ELM ver.2012-10-06 from 001__elm20141201_010543__dat00.bin



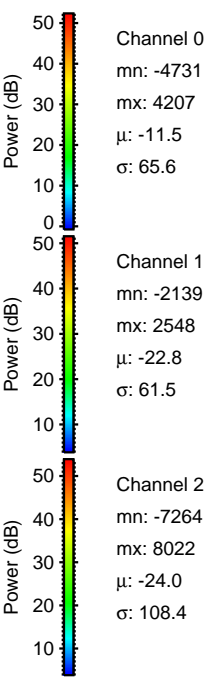
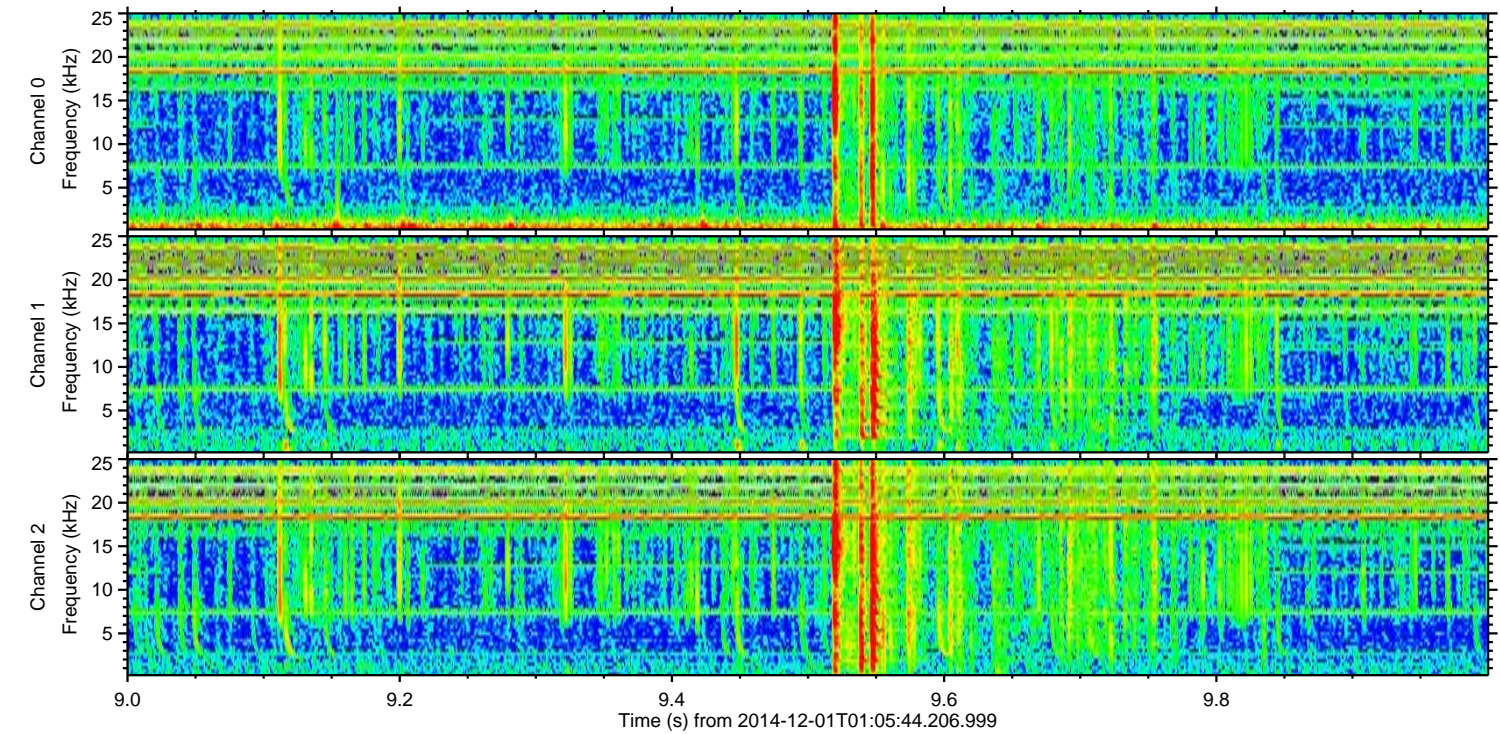
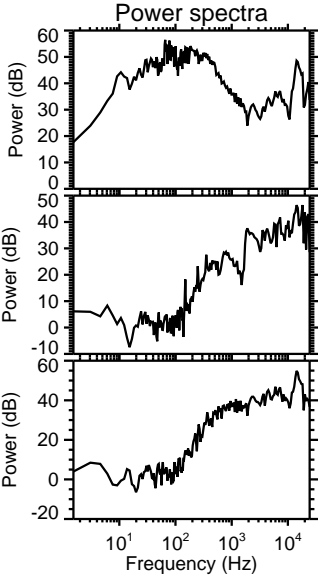
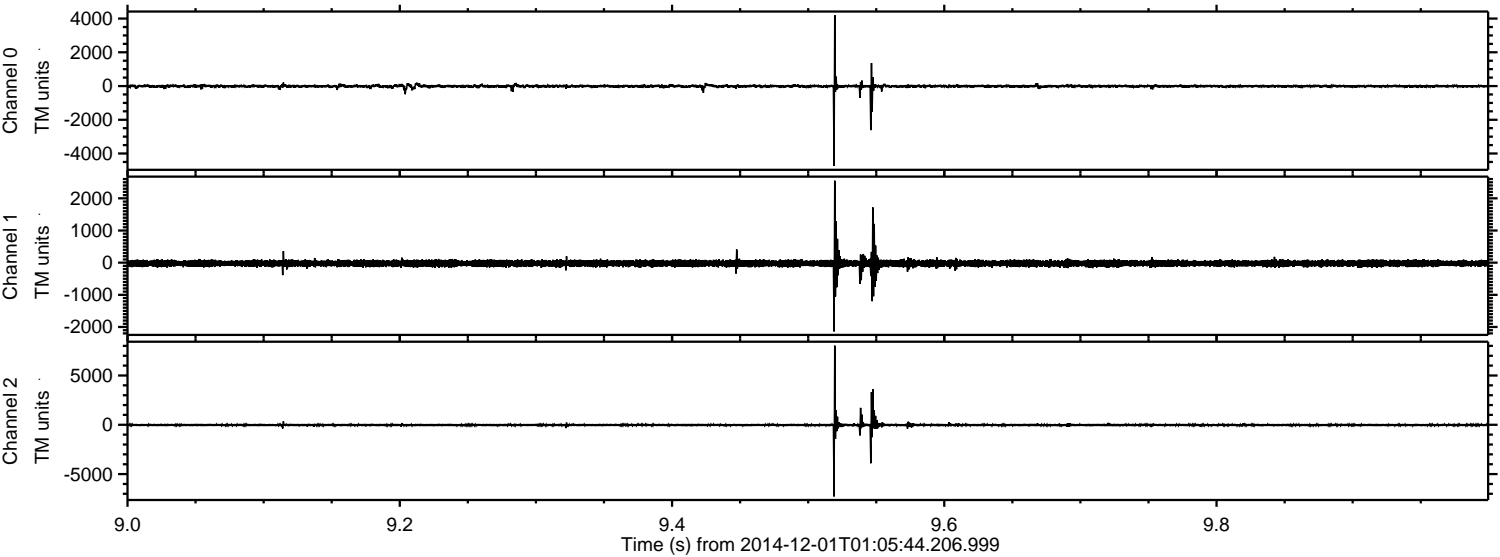
ELMAVAN 3D WAVEFORMS (Measured data sampled at 50 kHz) 49798 packets of 144 samples from 2014-12-01T01:05:44.206.999. Part 15/144

Processed Mon Dec 1 02:13:41 2014 by ELM ver.2012-10-06 from 001__elm20141201_010543__dat00.bin



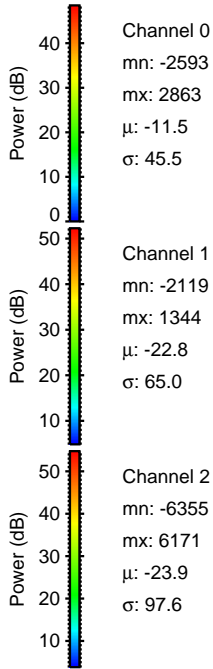
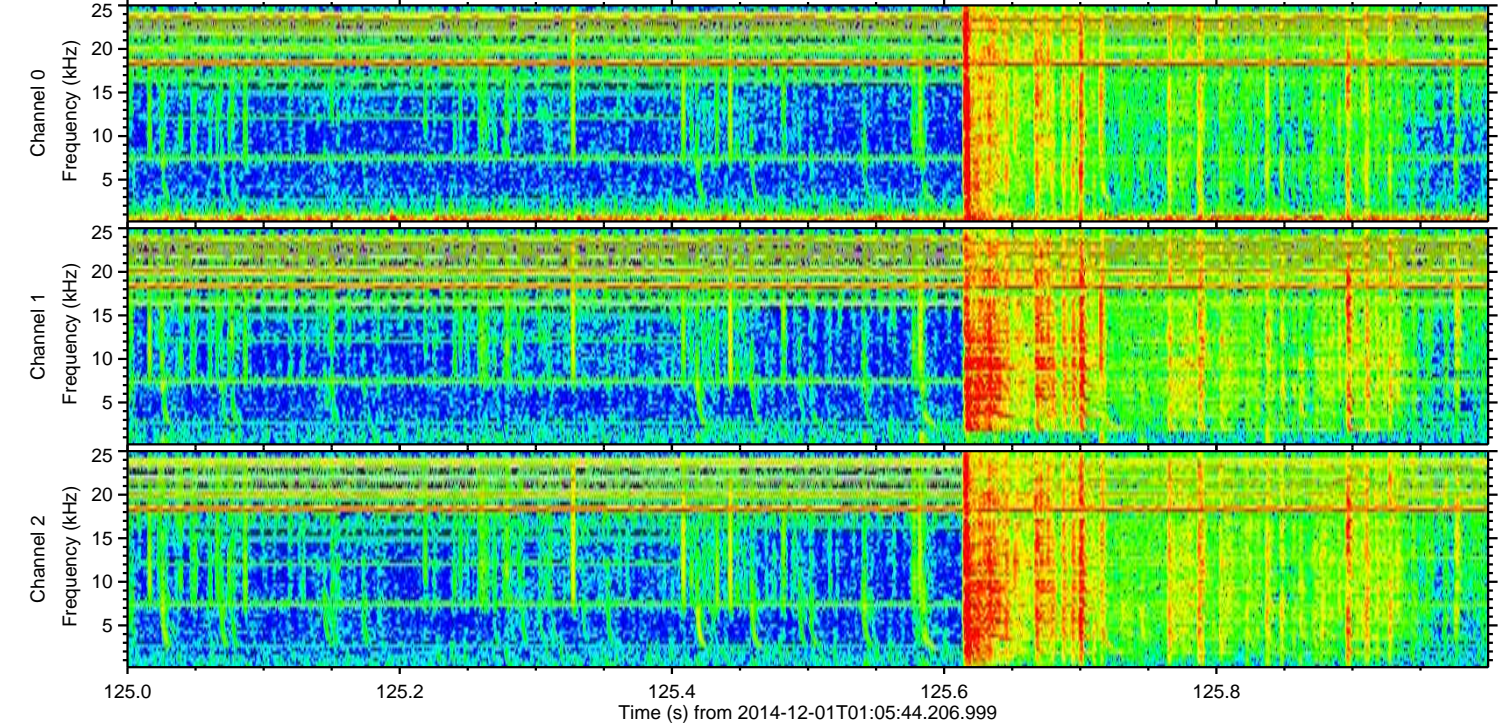
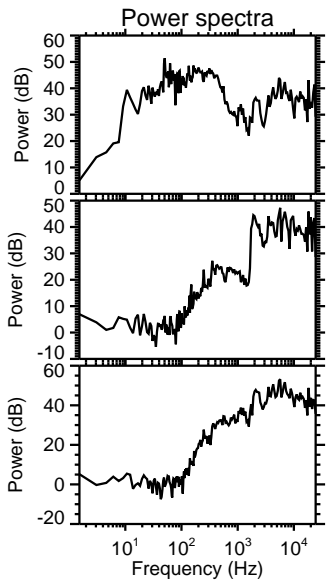
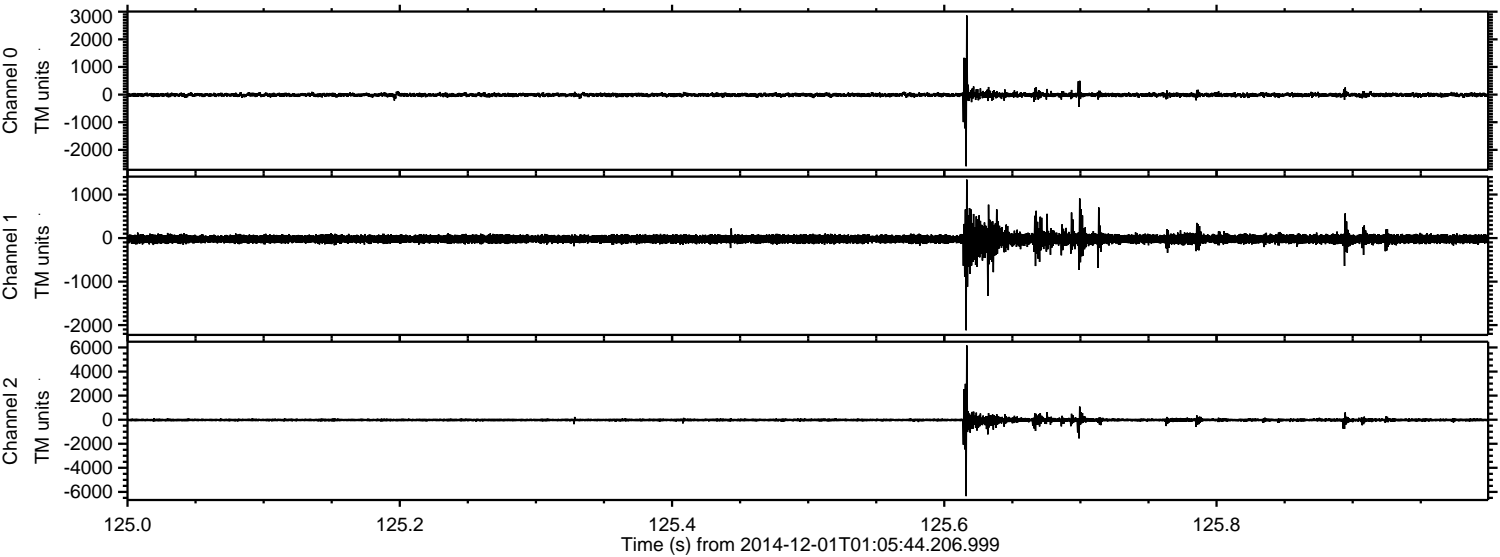
ELMAVAN 3D WAVEFORMS (Measured data sampled at 50 kHz) 49798 packets of 144 samples from 2014-12-01T01:05:44.206.999. Part 10/144

Processed Mon Dec 1 02:13:42 2014 by ELM ver.2012-10-06 from 001__elm20141201_010543__dat00.bin

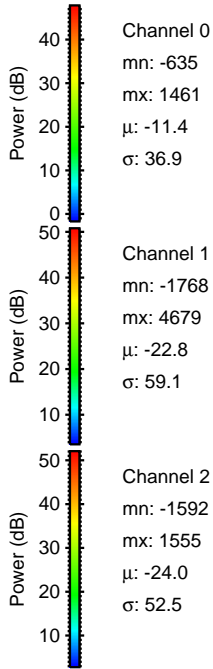
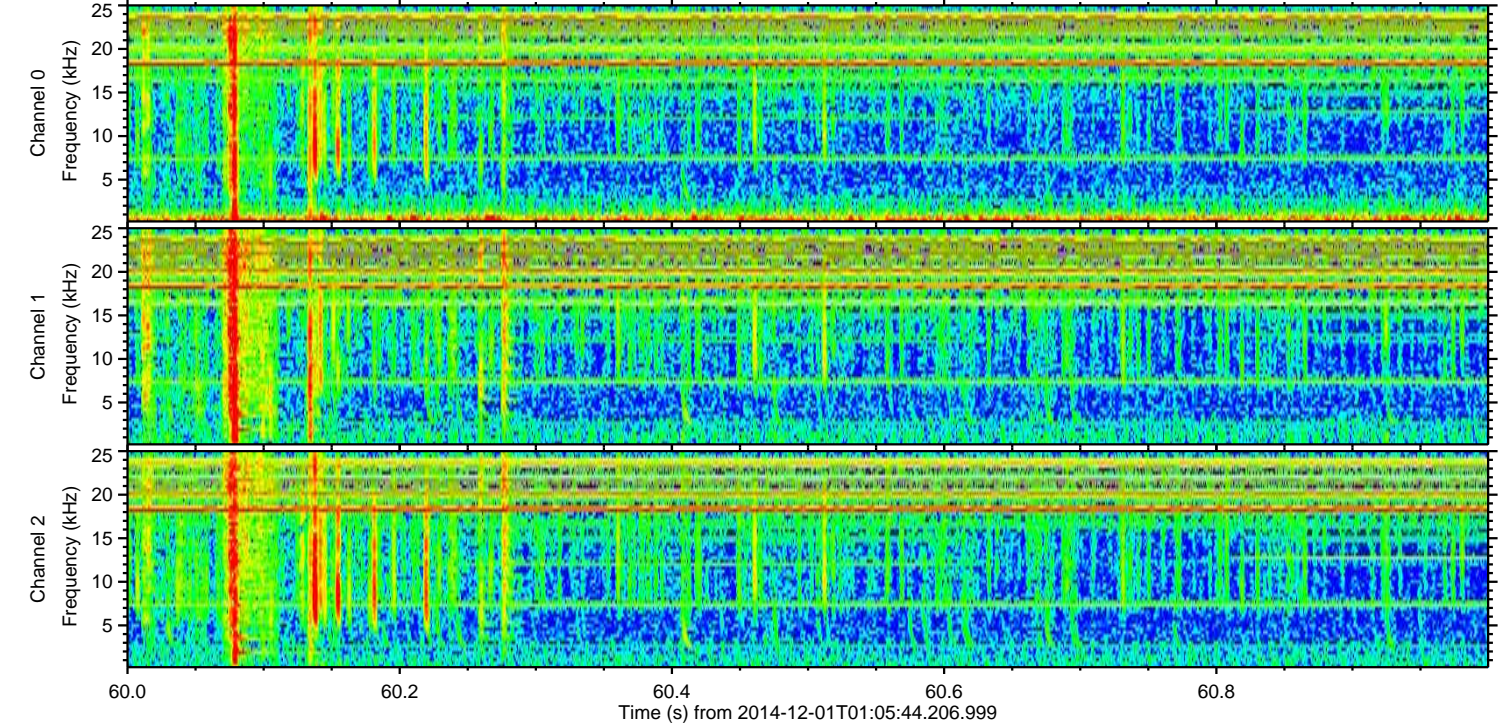
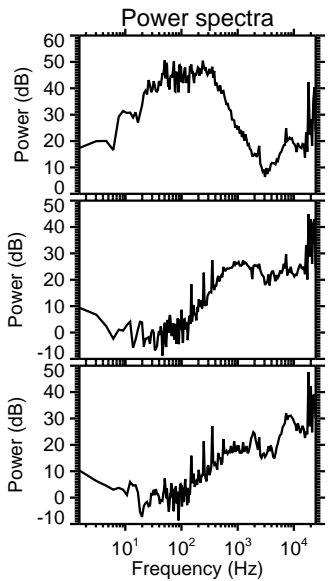
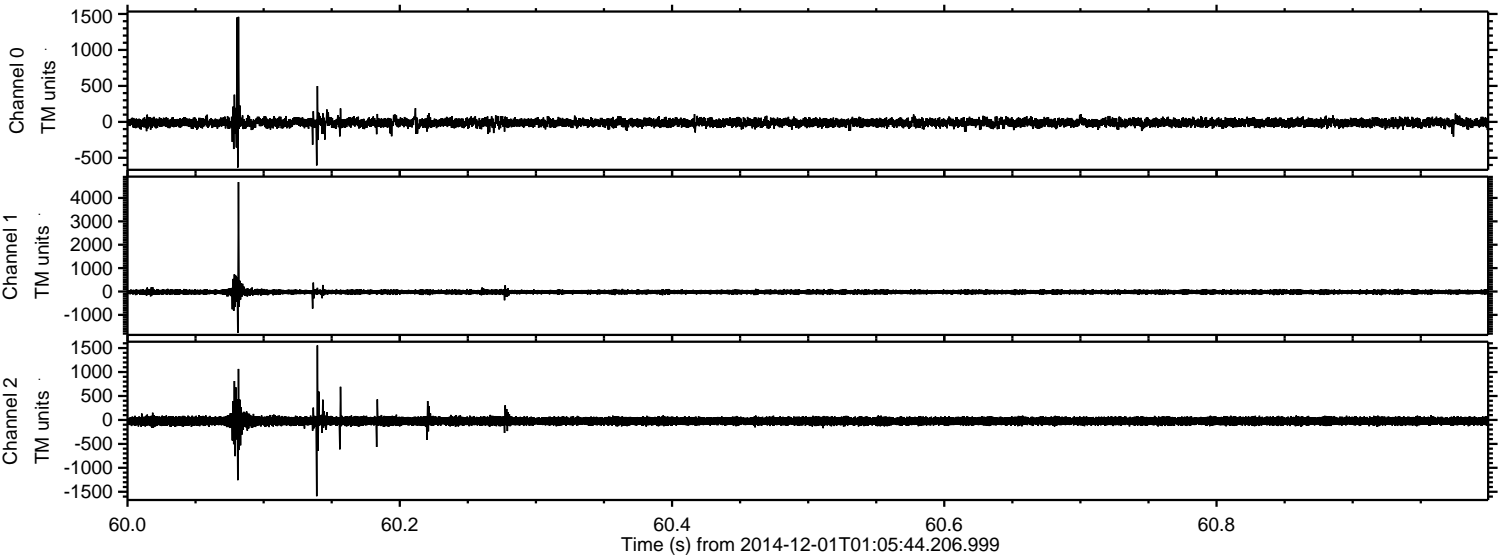


ELMAVAN 3D WAVEFORMS (Measured data sampled at 50 kHz) 49798 packets of 144 samples from 2014-12-01T01:05:44.206.999. Part 126/144

Processed Mon Dec 1 02:13:43 2014 by ELM ver.2012-10-06 from 001__elm20141201_010543__dat00.bin



Processed Mon Dec 1 02:13:44 2014 by ELM ver.2012-10-06 from 001__elm20141201_010543__dat00.bin



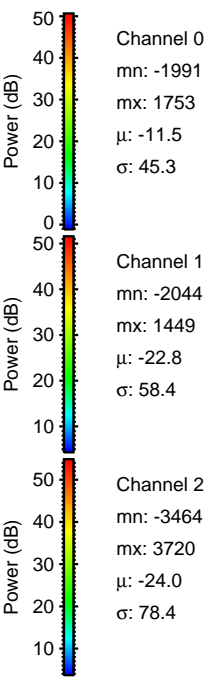
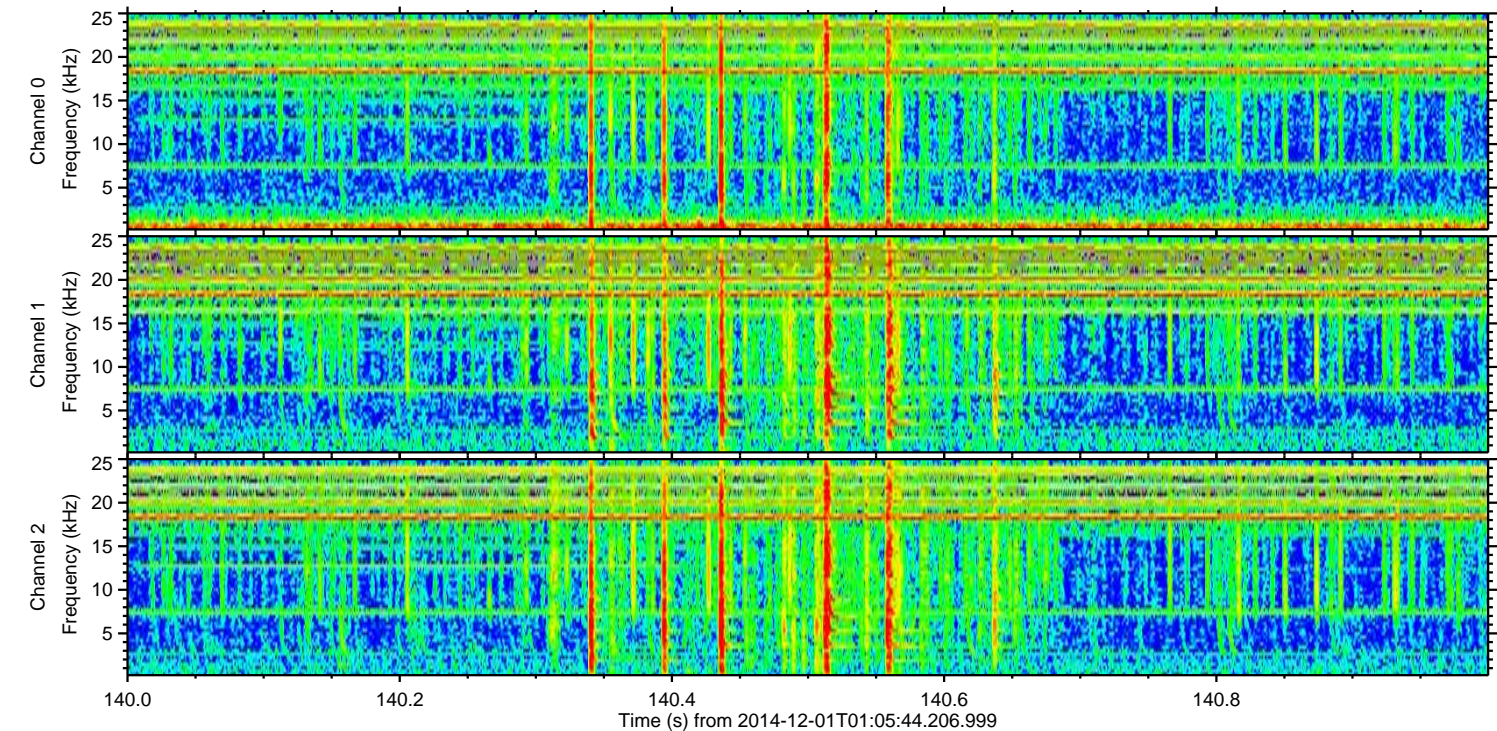
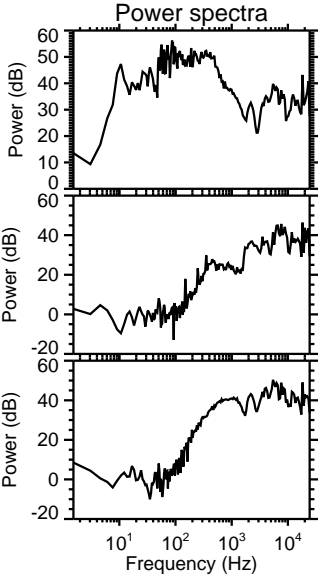
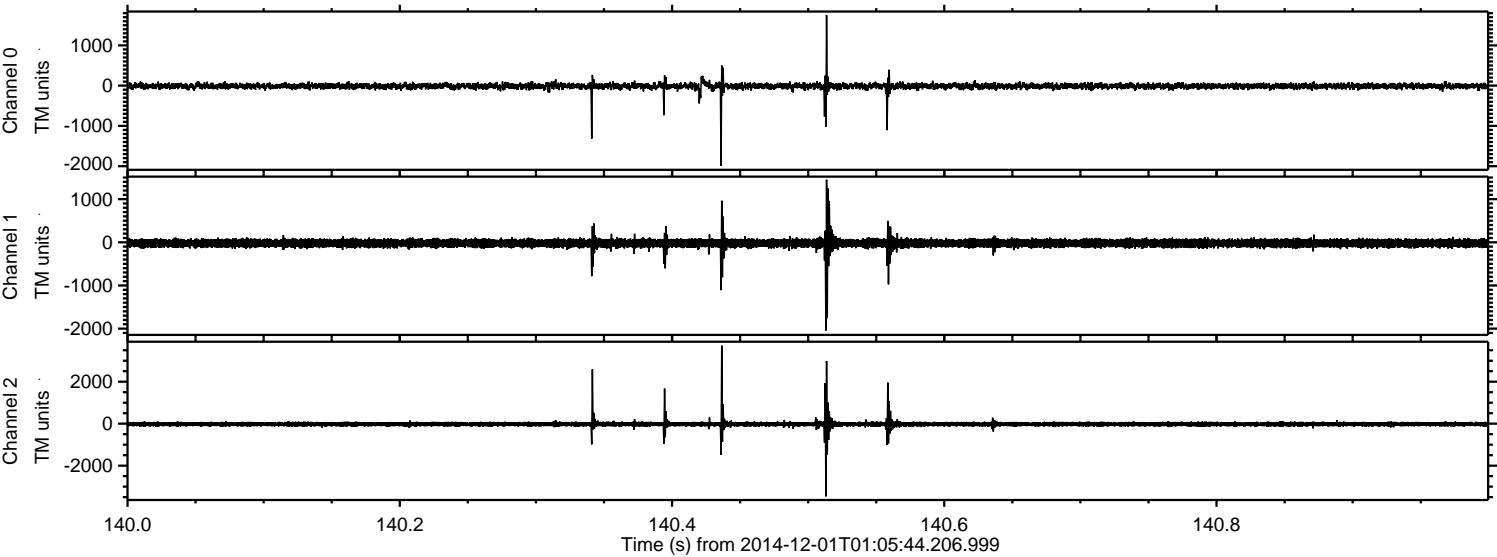
Channel 0
mn: -635
mx: 1461
 μ : -11.4
 σ : 36.9

Channel 1
mn: -1768
mx: 4679
 μ : -22.8
 σ : 59.1

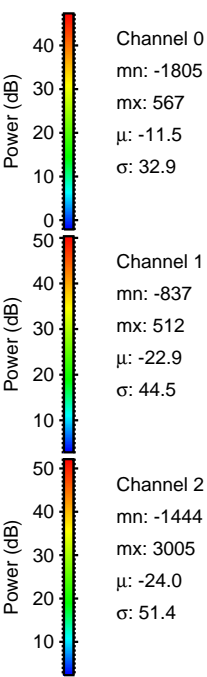
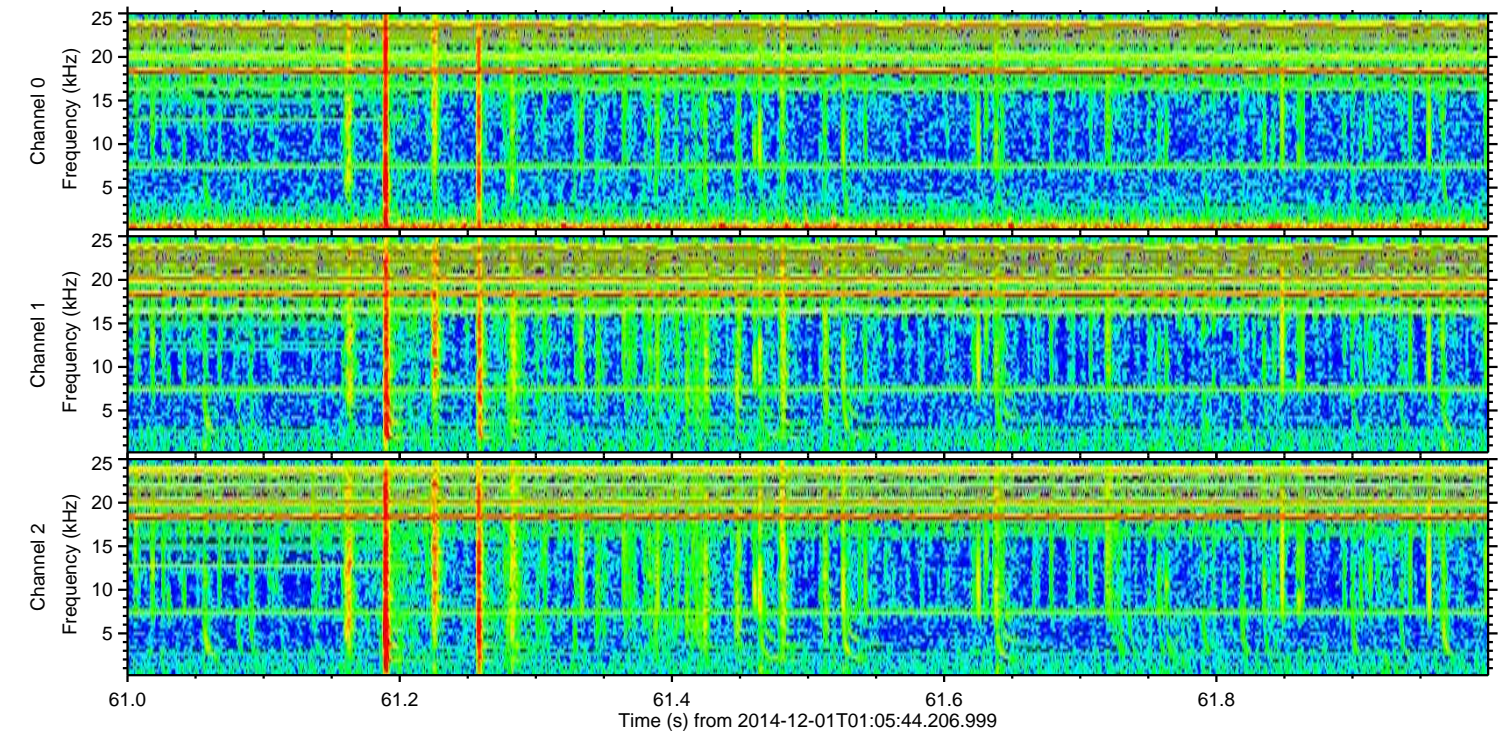
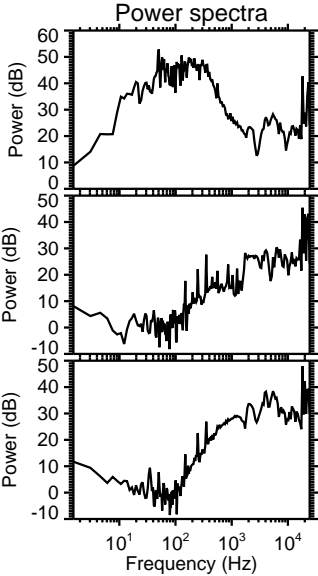
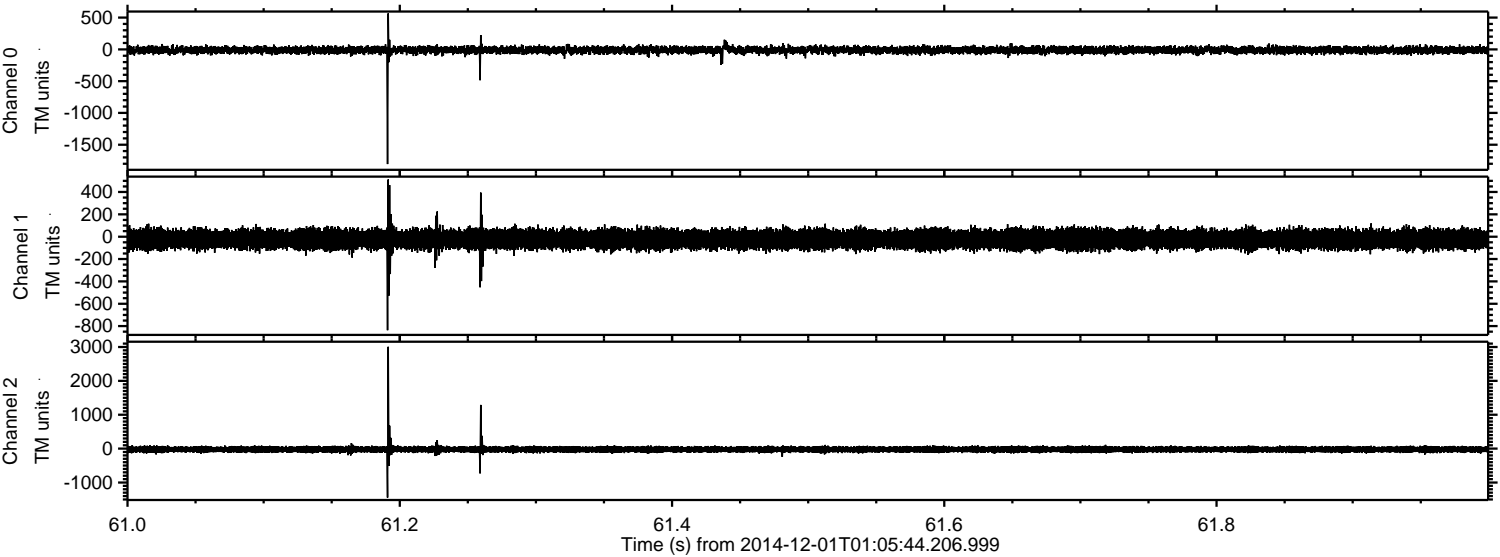
Channel 2
mn: -1592
mx: 1555
 μ : -24.0
 σ : 52.5

ELMAVAN 3D WAVEFORMS (Measured data sampled at 50 kHz) 49798 packets of 144 samples from 2014-12-01T01:05:44.206.999. Part 141/144

Processed Mon Dec 1 02:13:45 2014 by ELM ver.2012-10-06 from 001__elm20141201_010543__dat00.bin



Processed Mon Dec 1 02:13:46 2014 by ELM ver.2012-10-06 from 001__elm20141201_010543__dat00.bin



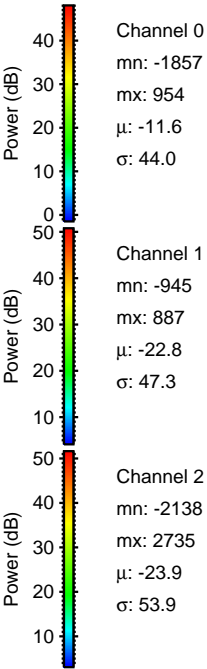
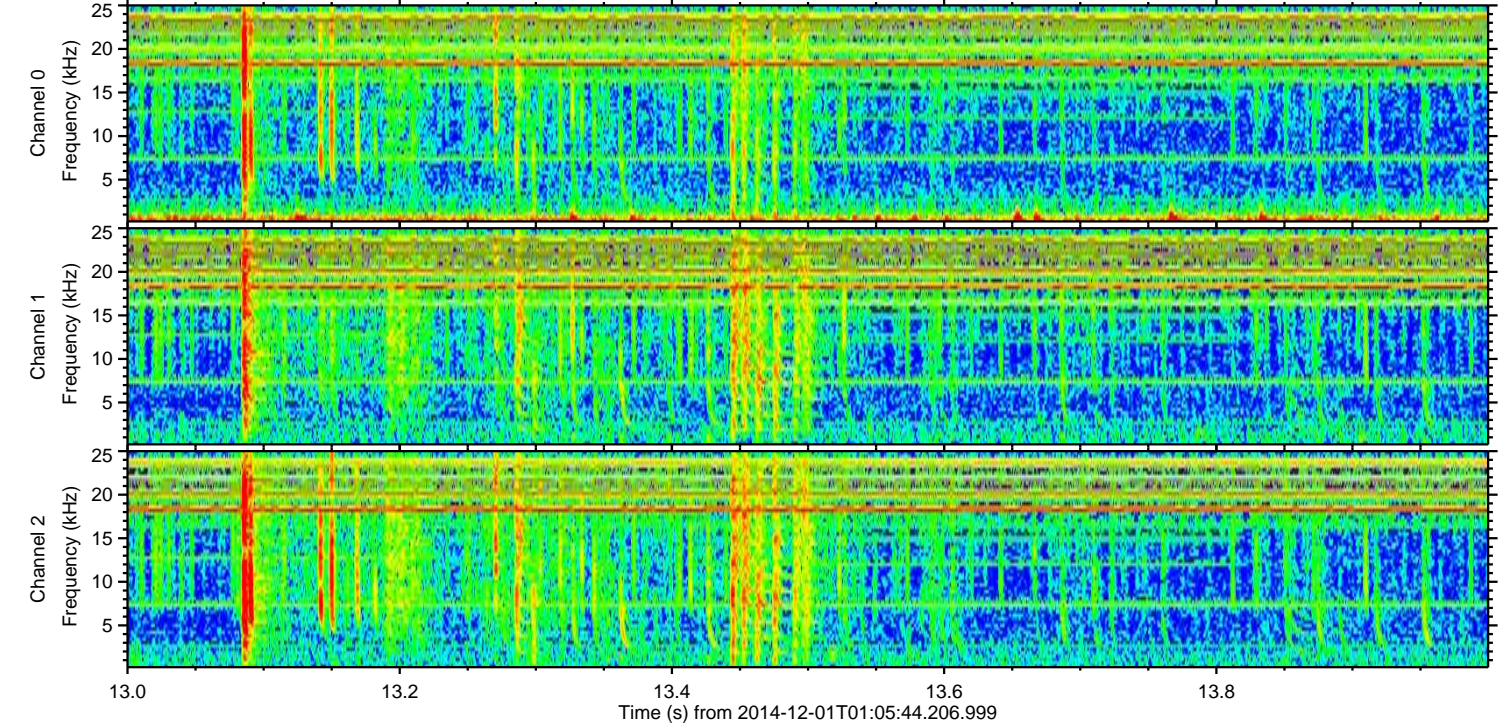
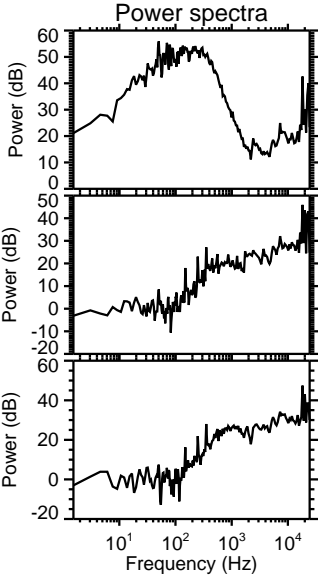
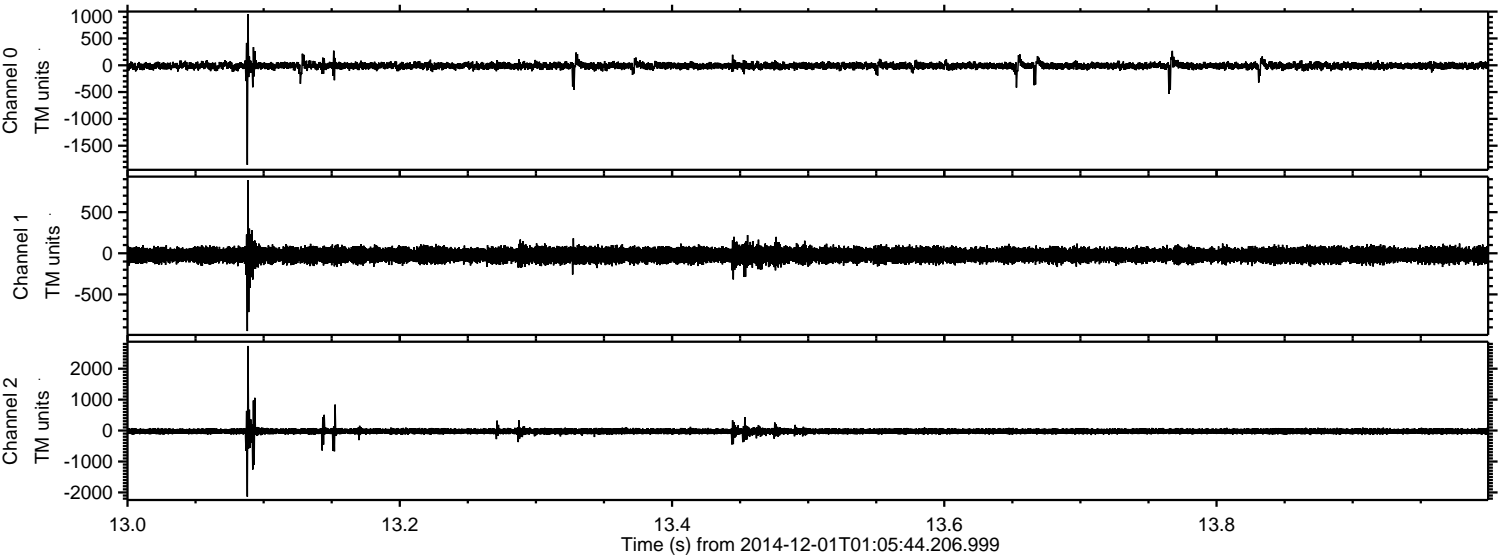
Channel 0
mn: -1805
mx: 567
 μ : -11.5
 σ : 32.9

Channel 1
mn: -837
mx: 512
 μ : -22.9
 σ : 44.5

Channel 2
mn: -1444
mx: 3005
 μ : -24.0
 σ : 51.4

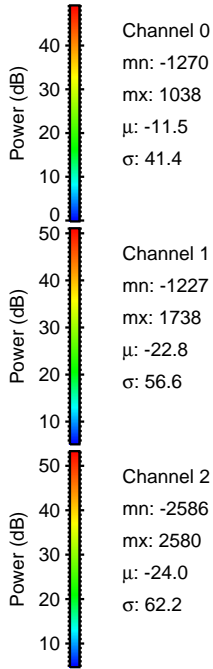
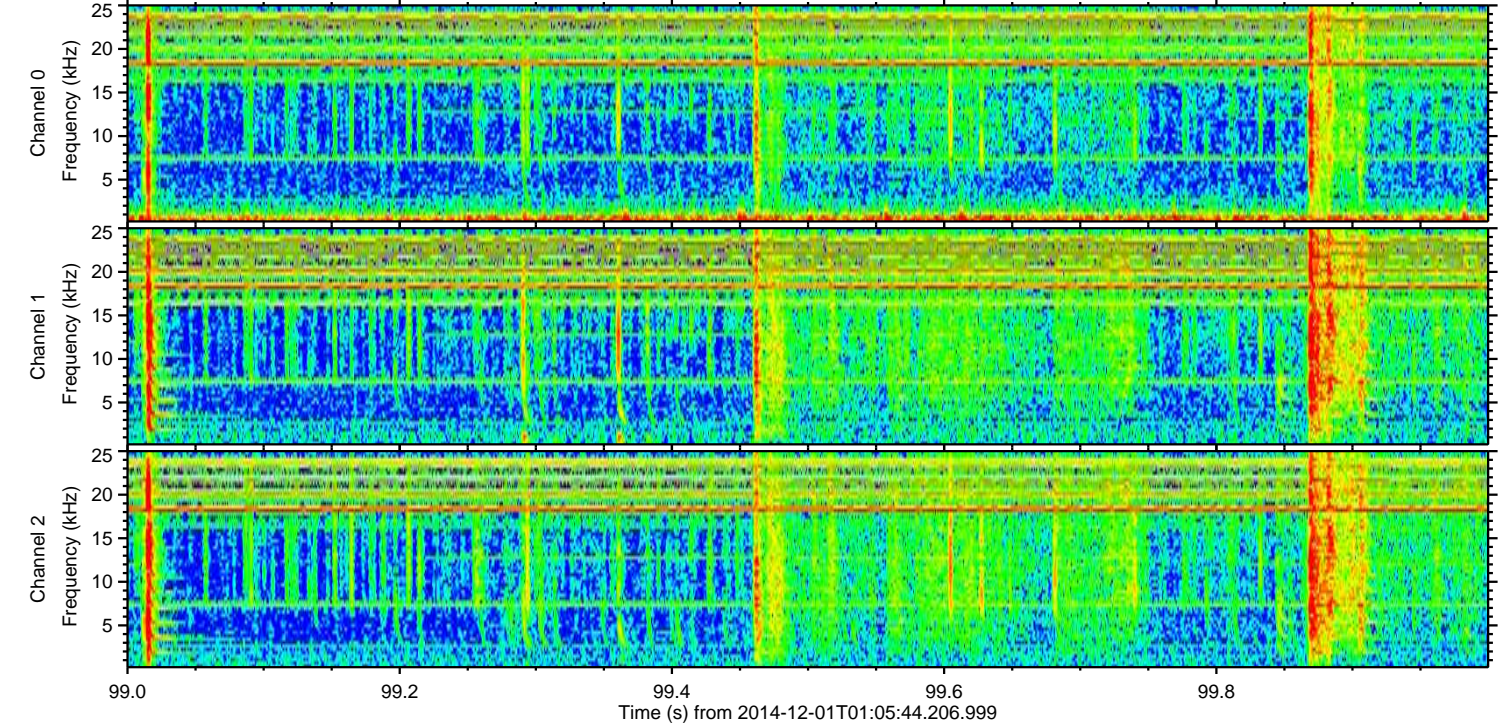
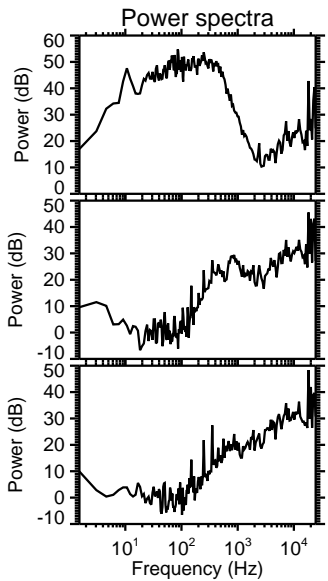
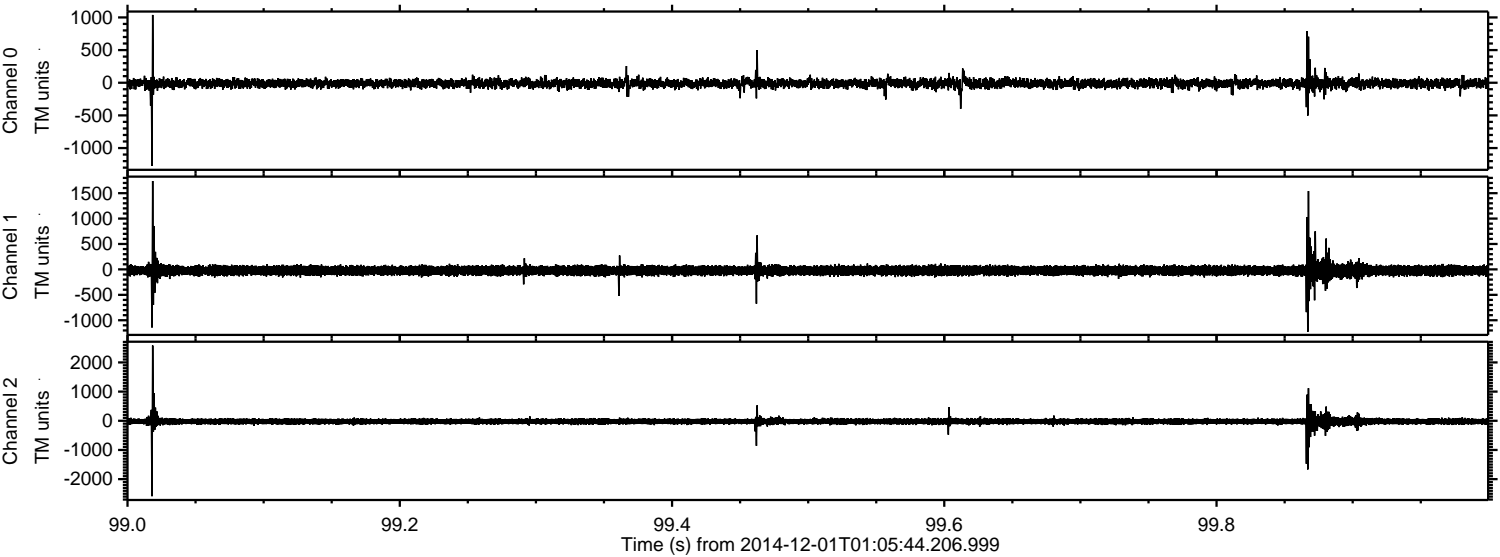
ELMAVAN 3D WAVEFORMS (Measured data sampled at 50 kHz) 49798 packets of 144 samples from 2014-12-01T01:05:44.206.999. Part 14/144

Processed Mon Dec 1 02:13:47 2014 by ELM ver.2012-10-06 from 001__elm20141201_010543__dat00.bin



ELMAVAN 3D WAVEFORMS (Measured data sampled at 50 kHz) 49798 packets of 144 samples from 2014-12-01T01:05:44.206.999. Part 100/144

Processed Mon Dec 1 02:13:48 2014 by ELM ver.2012-10-06 from 001__elm20141201_010543__dat00.bin



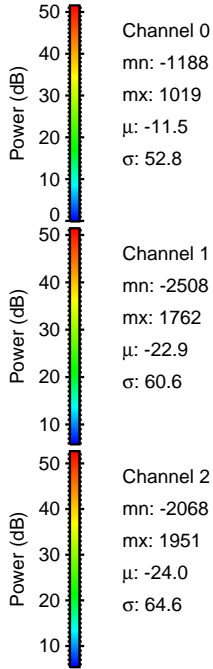
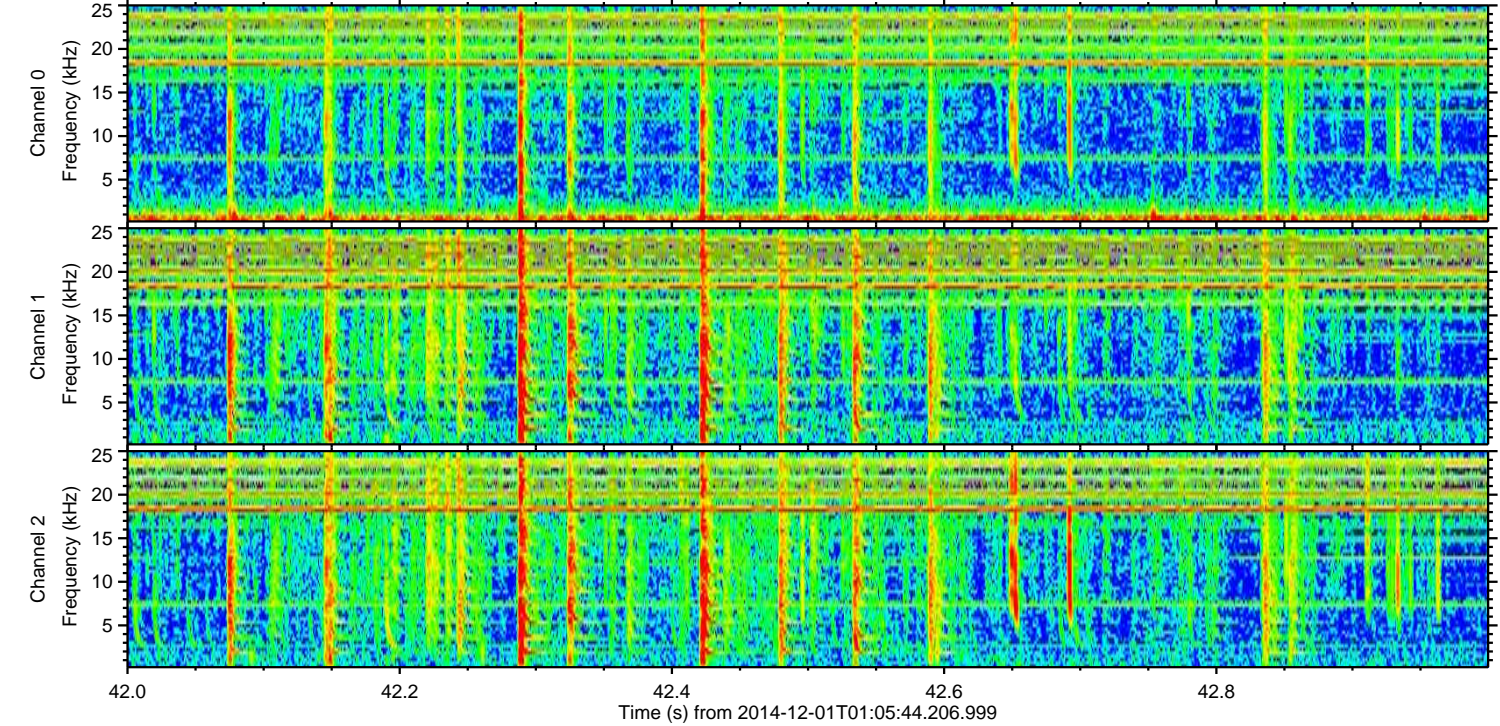
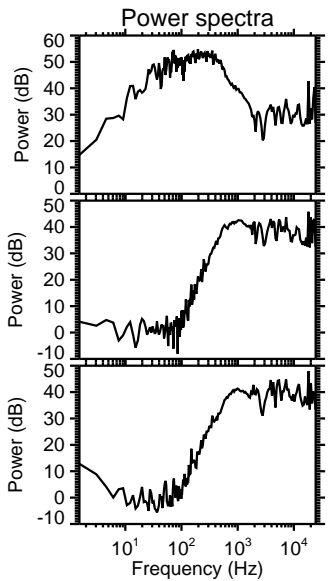
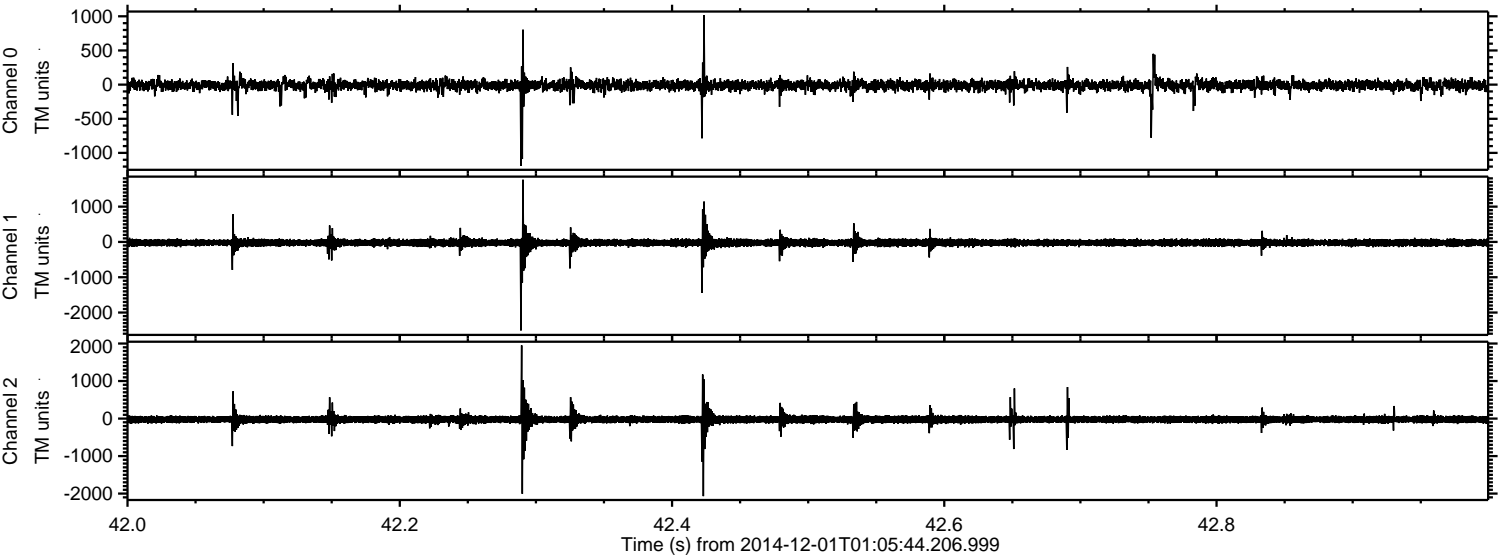
Channel 0
mn: -1270
mx: 1038
 μ : -11.5
 σ : 41.4

Channel 1
mn: -1227
mx: 1738
 μ : -22.8
 σ : 56.6

Channel 2
mn: -2586
mx: 2580
 μ : -24.0
 σ : 62.2

ELMAVAN 3D WAVEFORMS (Measured data sampled at 50 kHz) 49798 packets of 144 samples from 2014-12-01T01:05:44.206.999. Part 43/144

Processed Mon Dec 1 02:13:50 2014 by ELM ver.2012-10-06 from 001__elm20141201_010543__dat00.bin



ELMAVAN 3D WAVEFORMS (Measured data sampled at 50 kHz) 49798 packets of 144 samples from 2014-12-01T01:05:44.206.999. Part 74/144

Processed Mon Dec 1 02:13:51 2014 by ELM ver.2012-10-06 from 001__elm20141201_010543__dat00.bin

