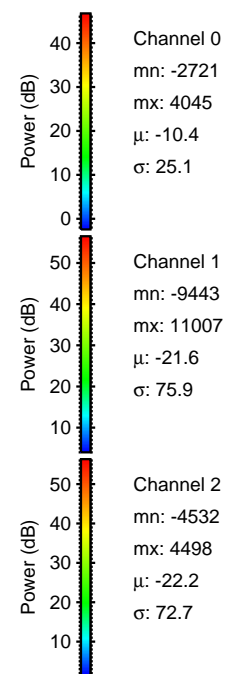
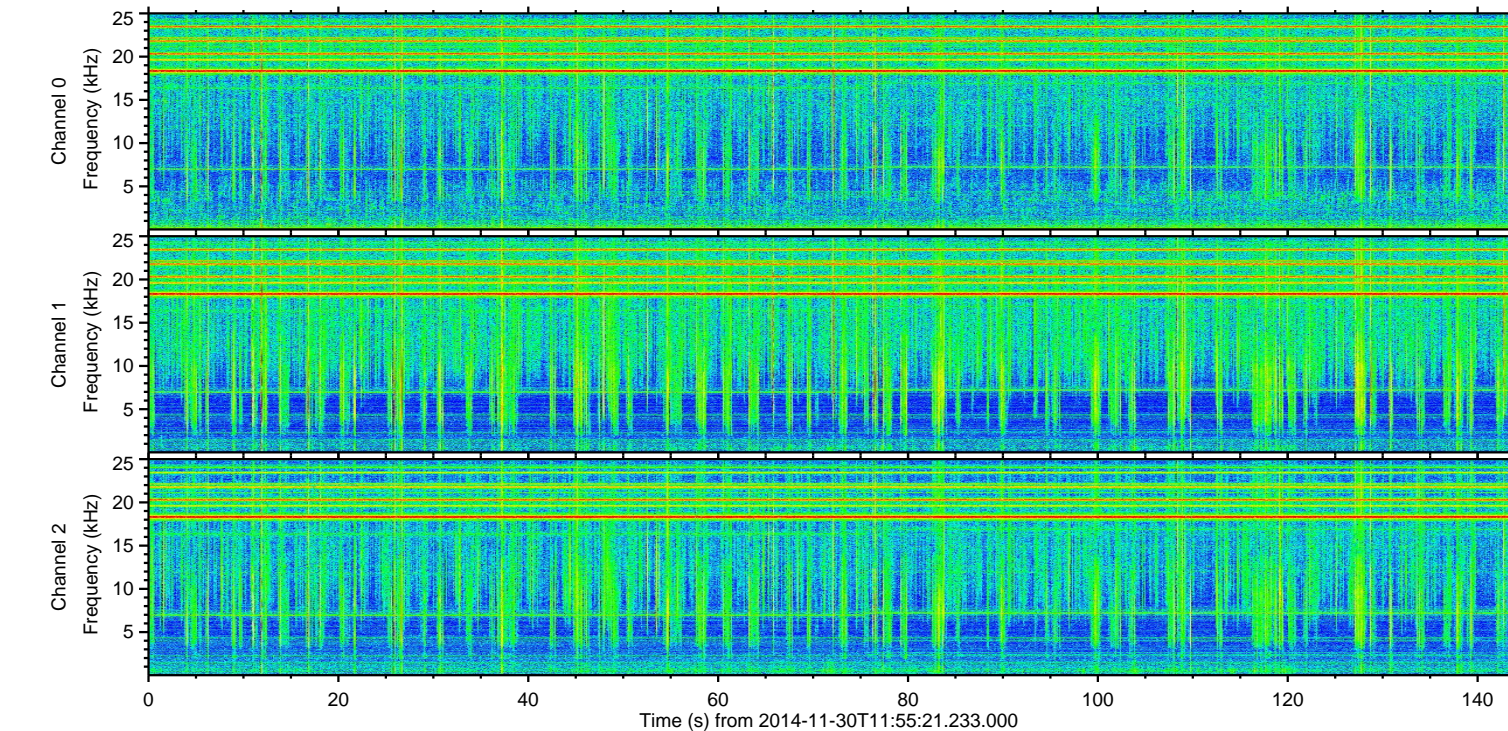
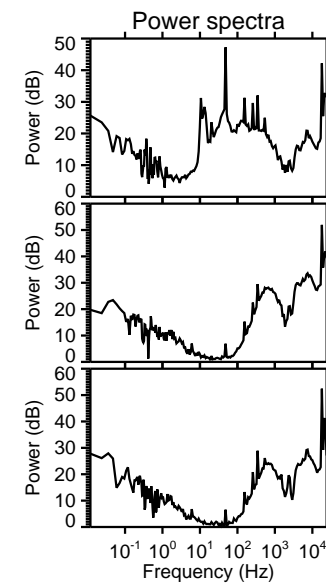
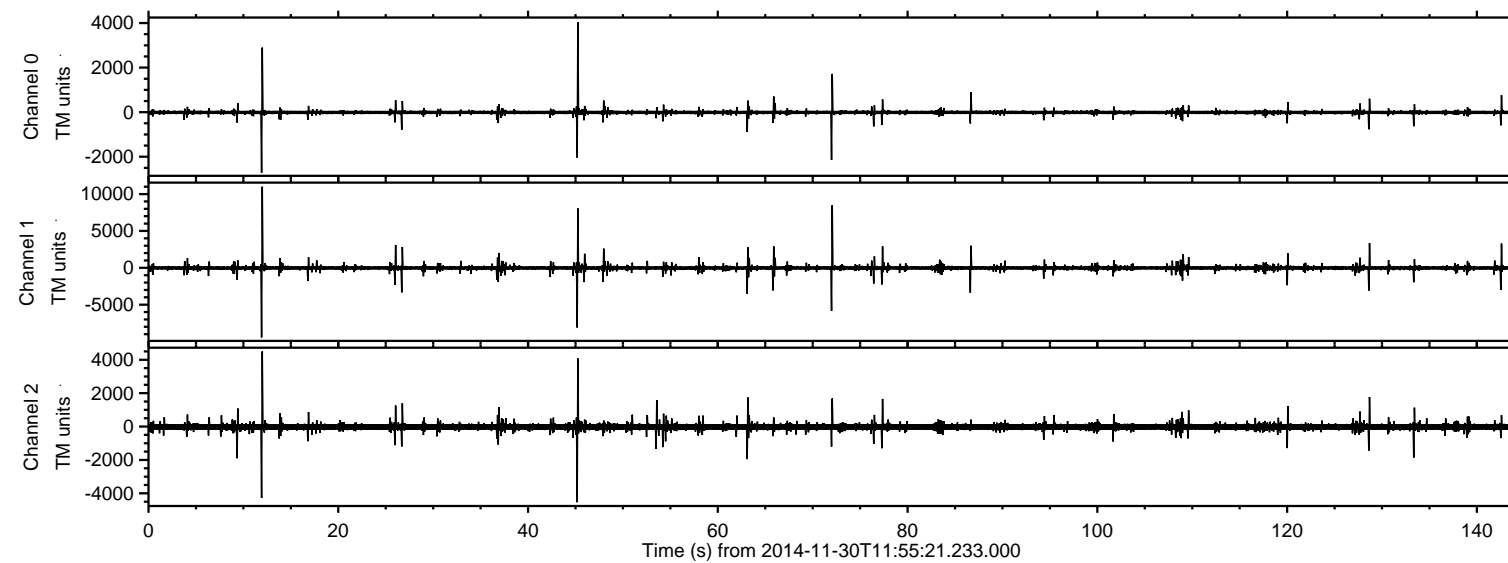
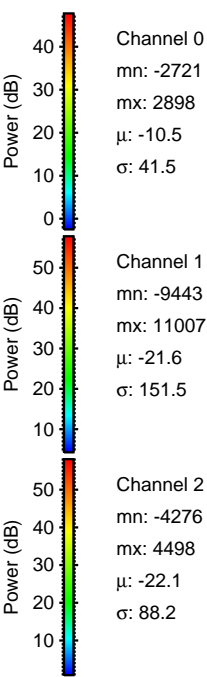
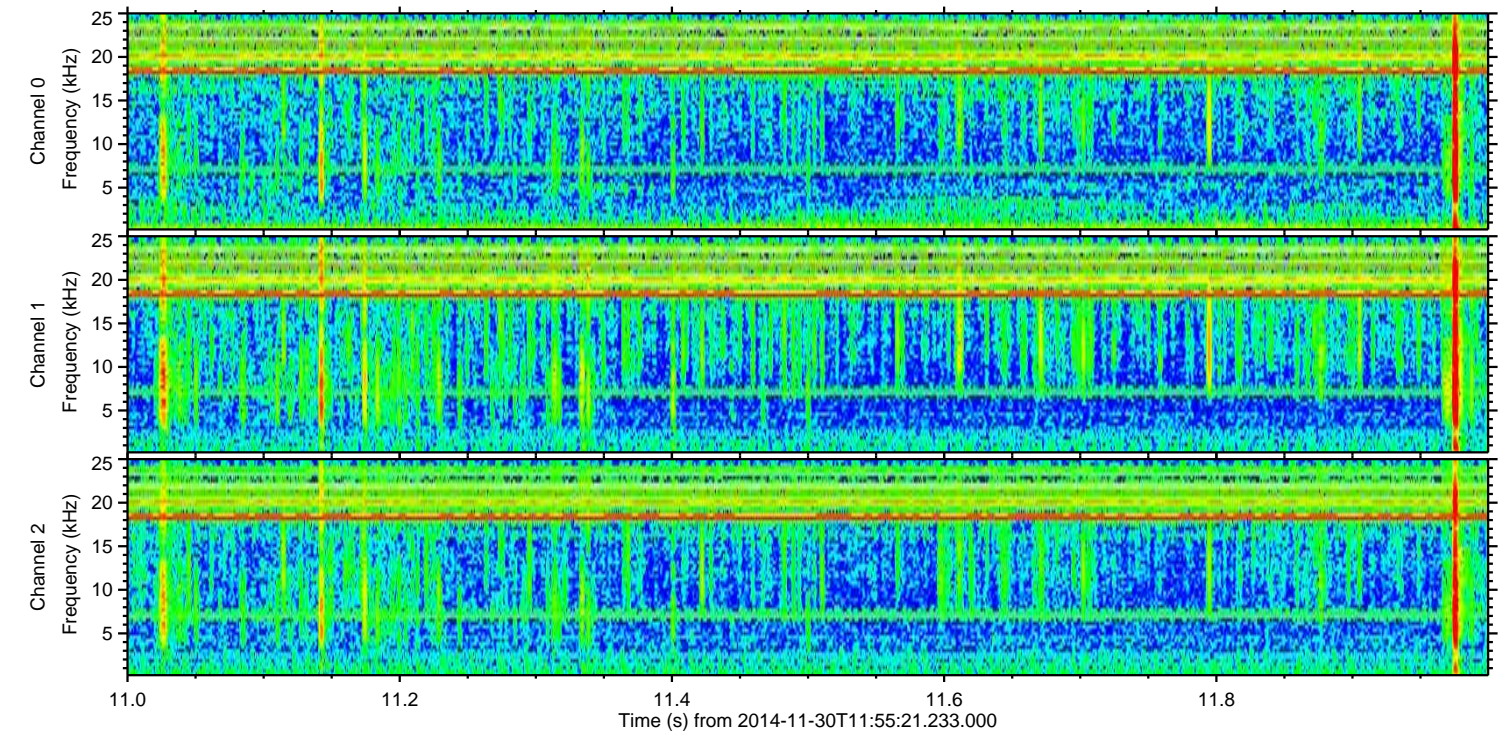
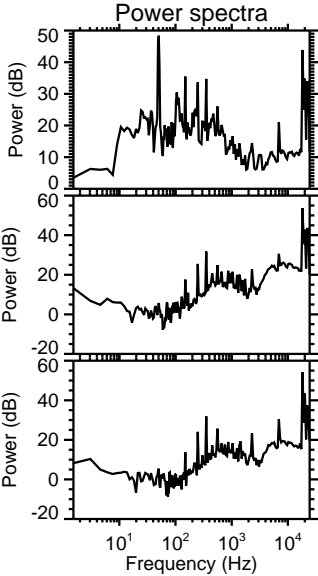
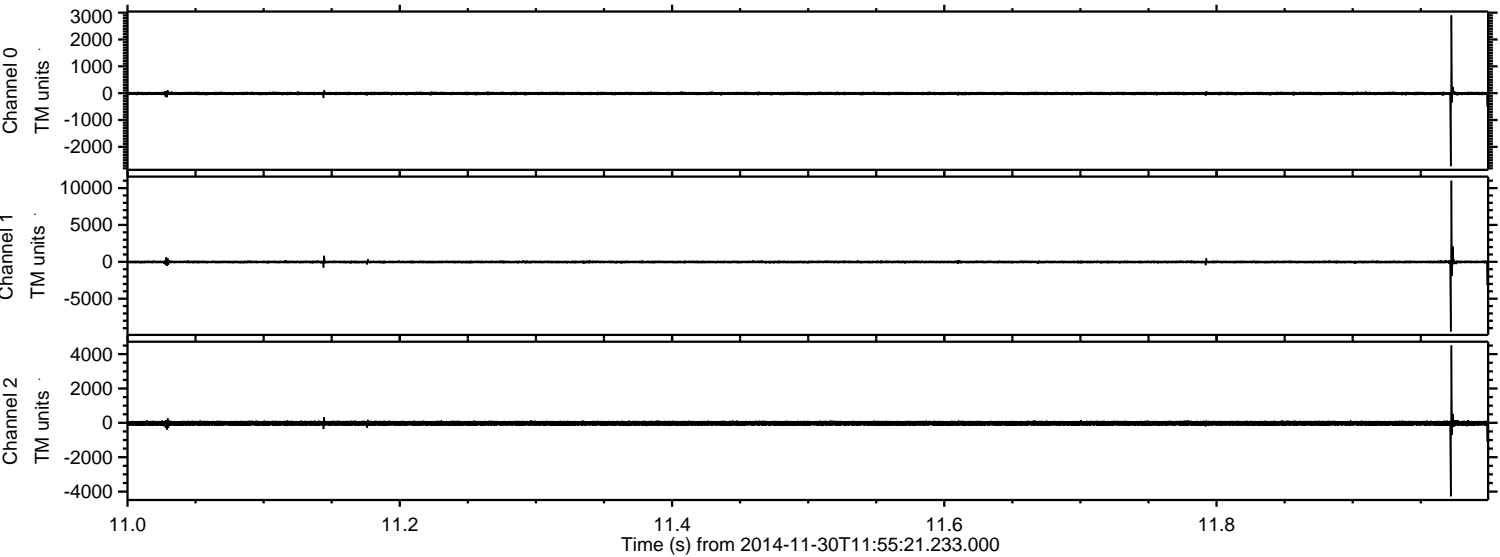


ELMAVAN 3D WAVEFORMS (Measured data sampled at 50 kHz) 49791 packets of 144 samples from 2014-11-30T11:55:21.233.000.

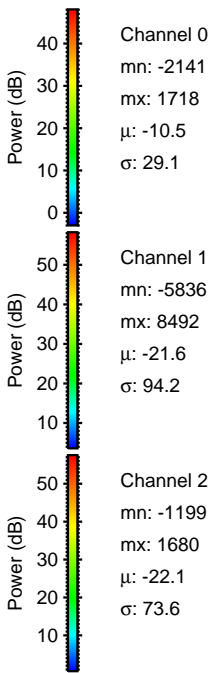
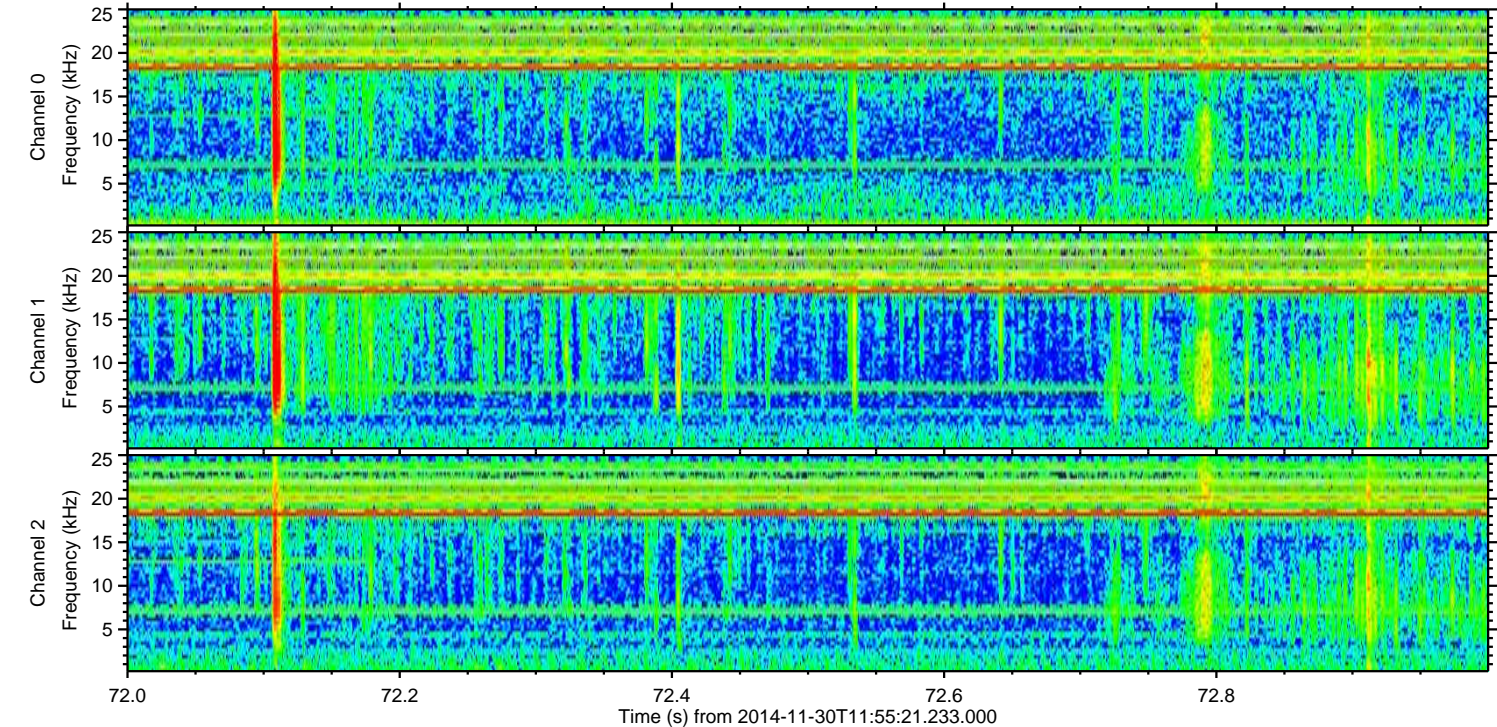
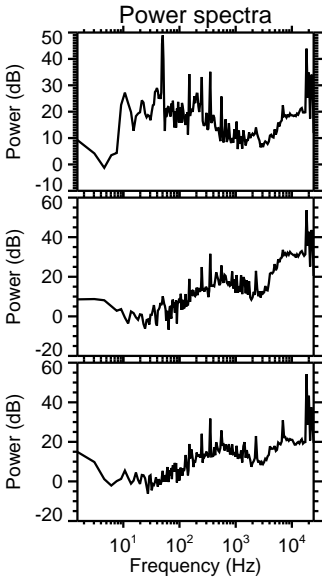
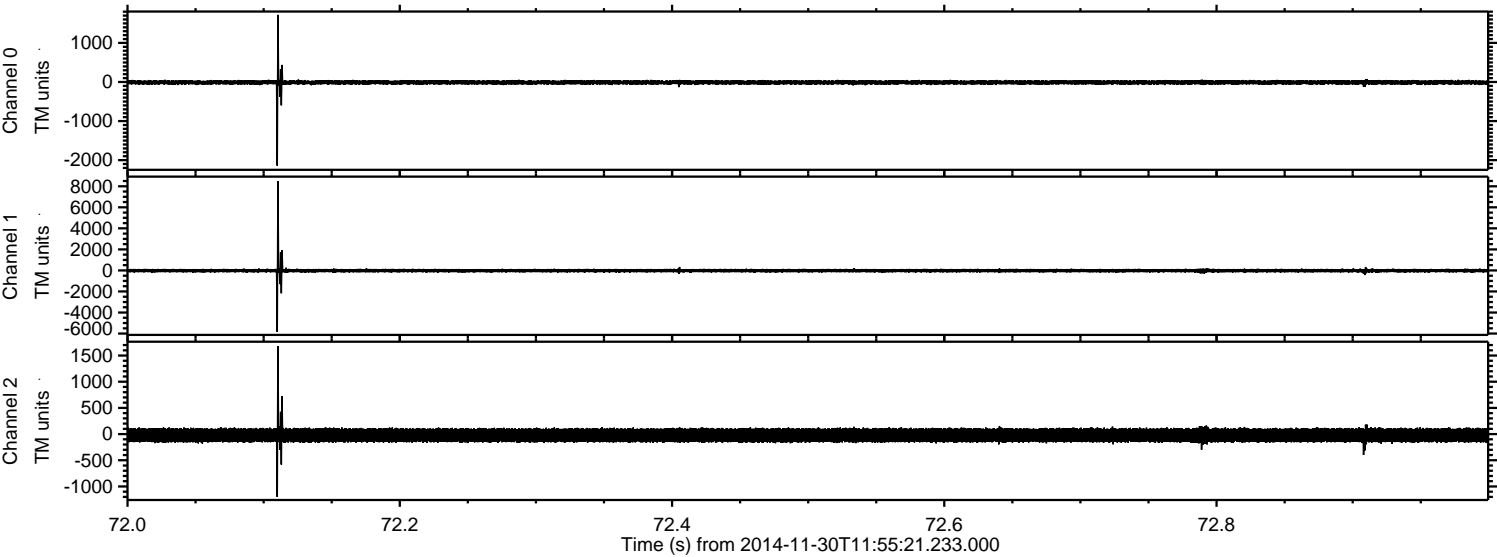
Processed Sun Nov 30 13:02:50 2014 by ELM ver.2012-10-06 from 001__elm20141130_115520__dat00.bin



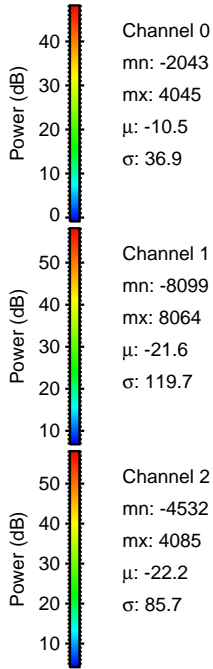
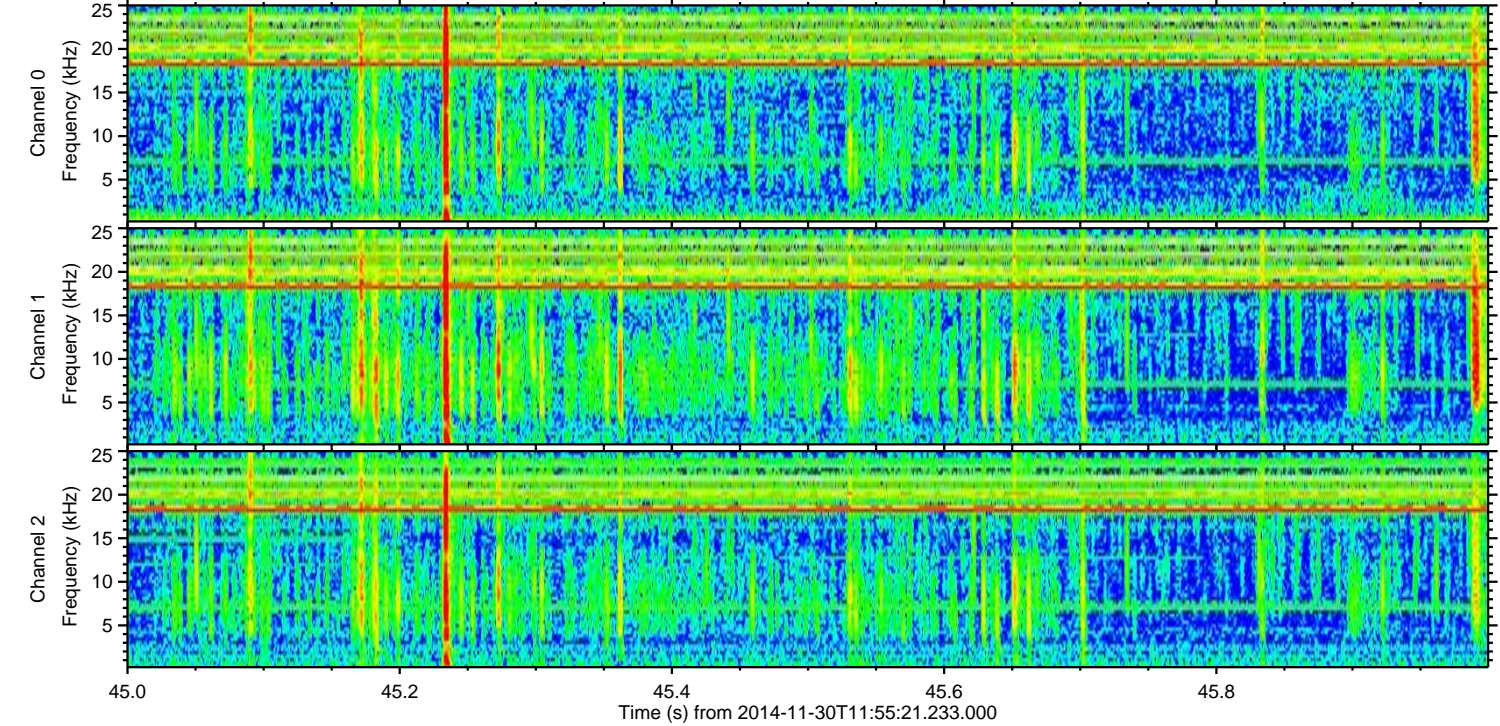
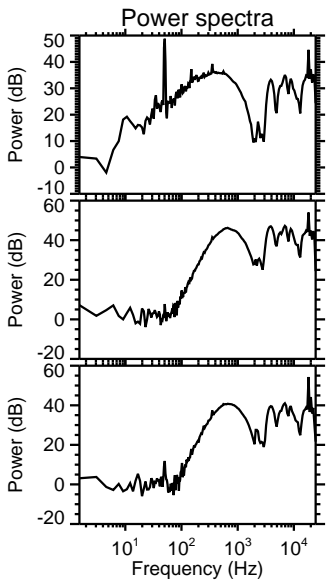
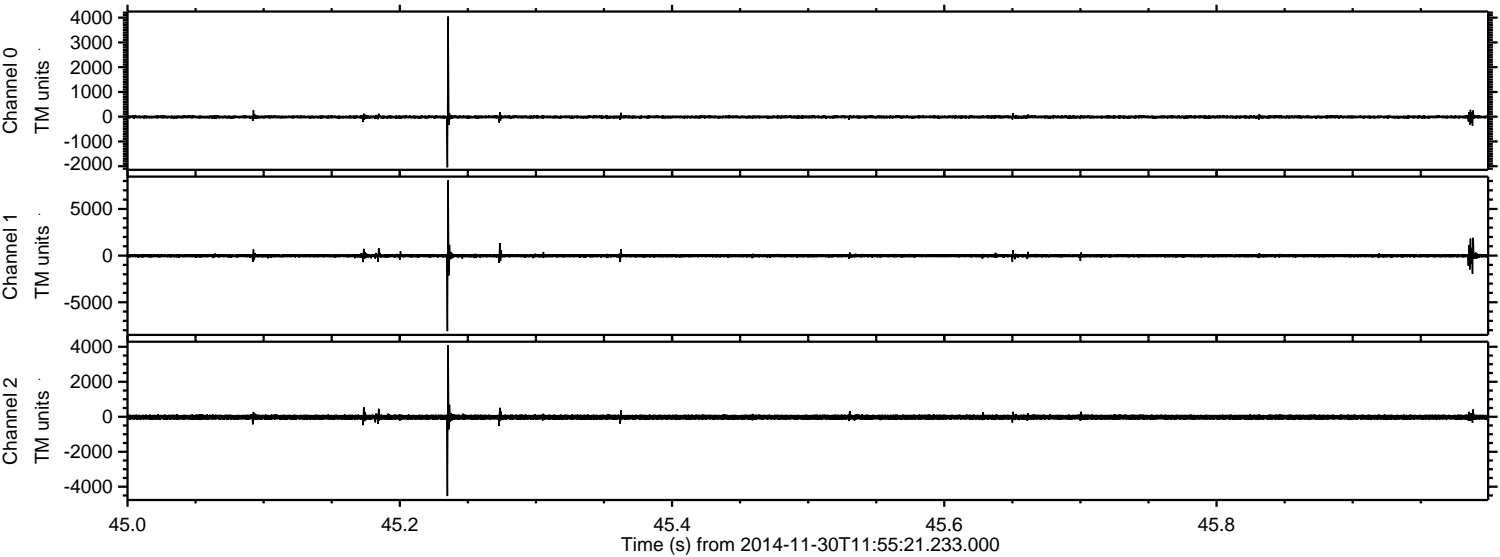
Processed Sun Nov 30 13:03:06 2014 by ELM ver.2012-10-06 from 001__elm20141130_115520__dat00.bin



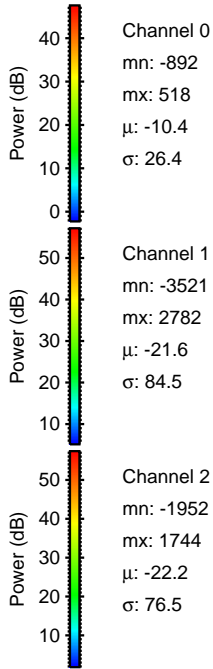
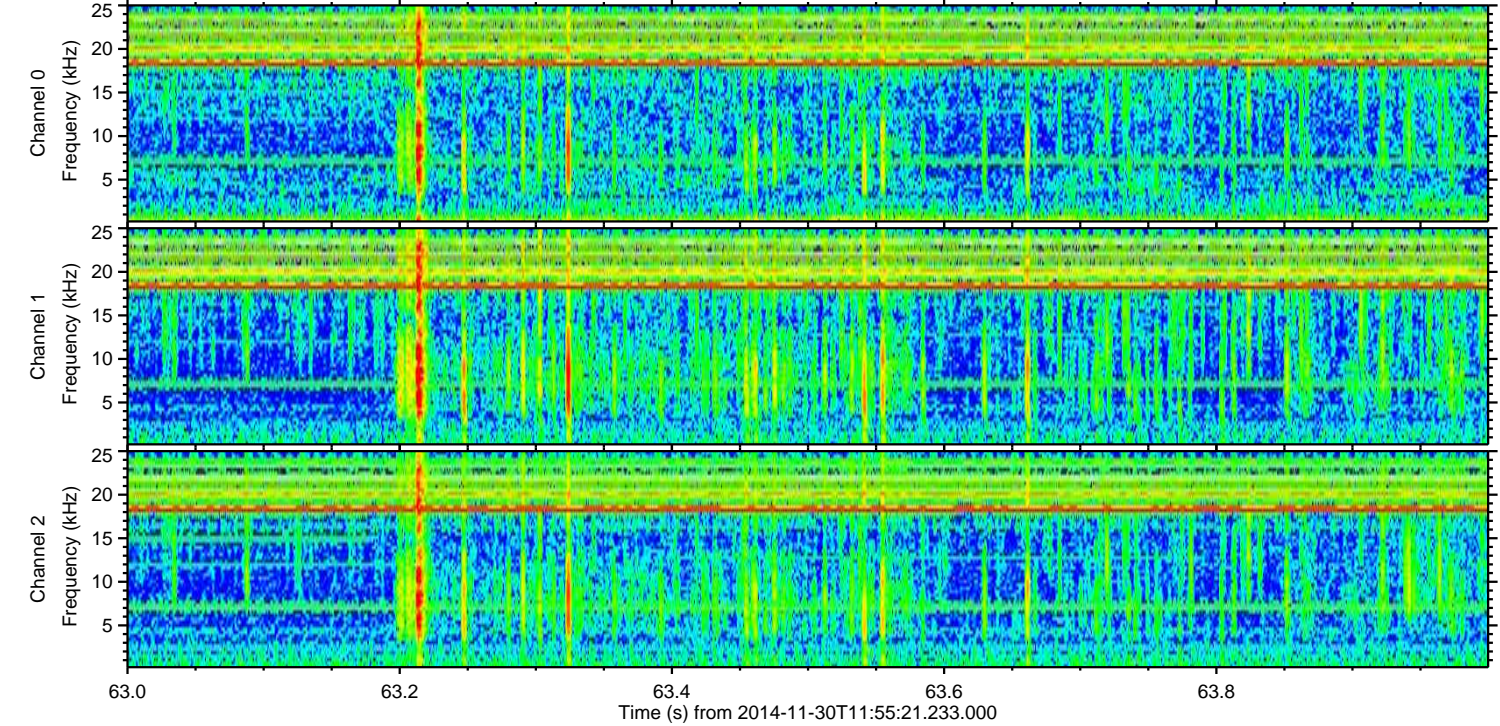
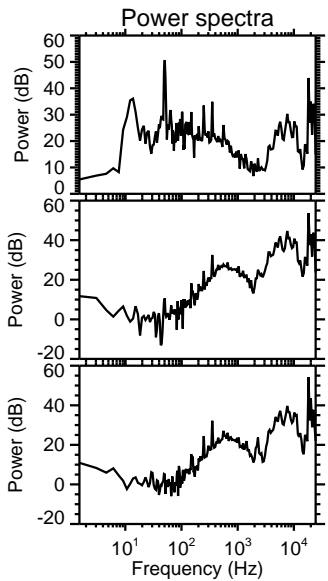
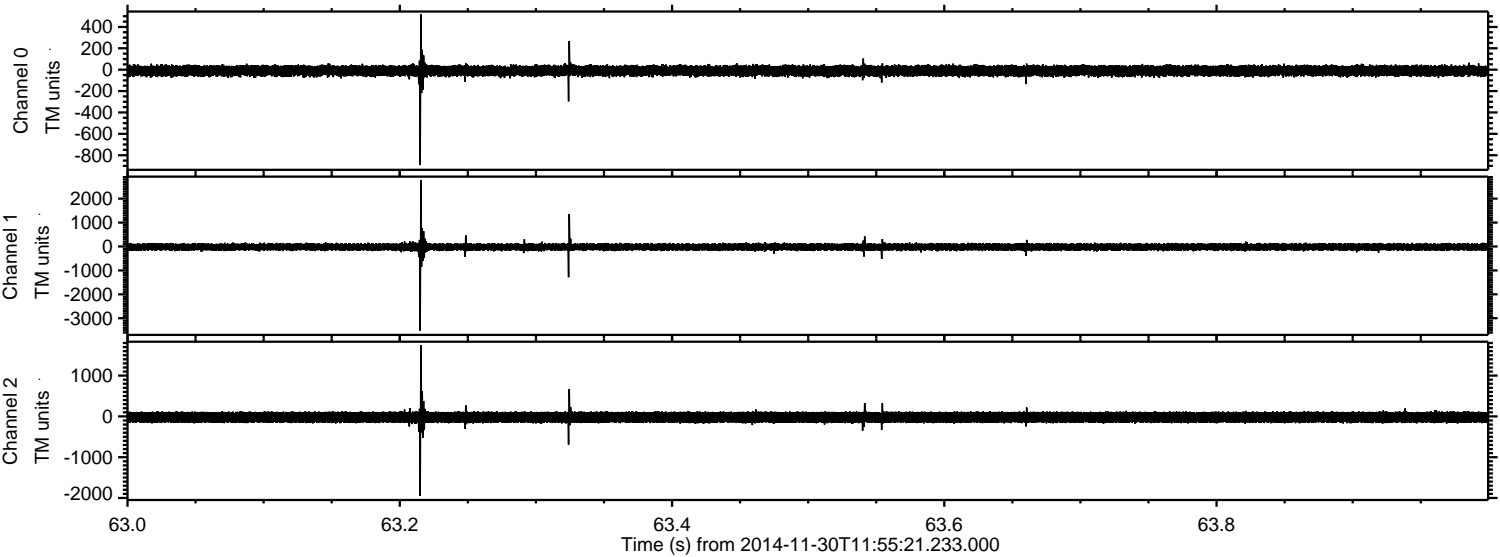
Processed Sun Nov 30 13:03:07 2014 by ELM ver.2012-10-06 from 001__elm20141130_115520__dat00.bin



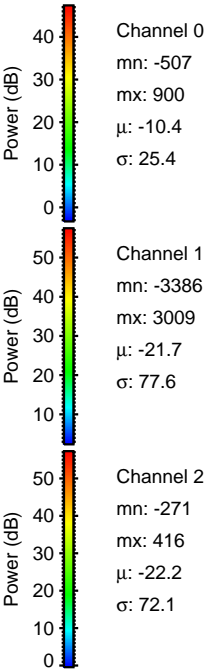
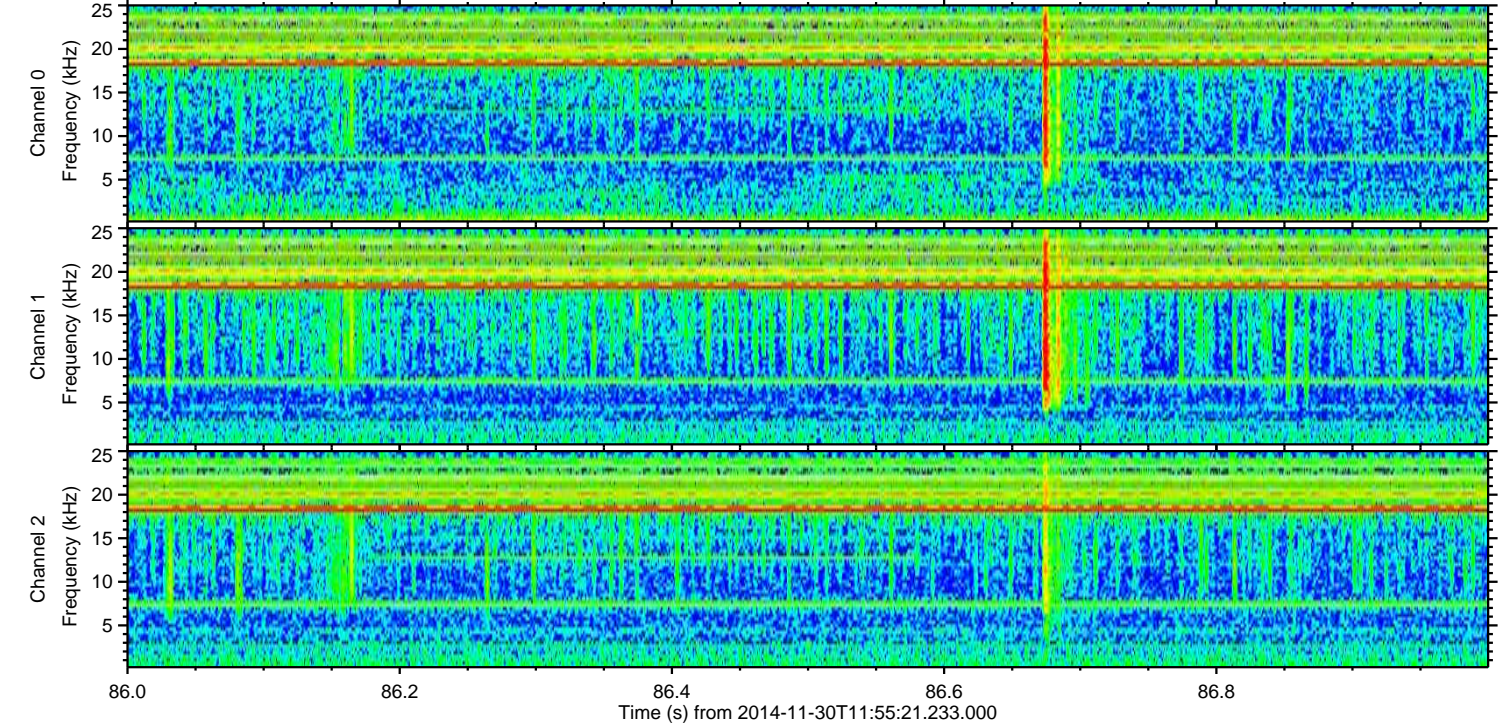
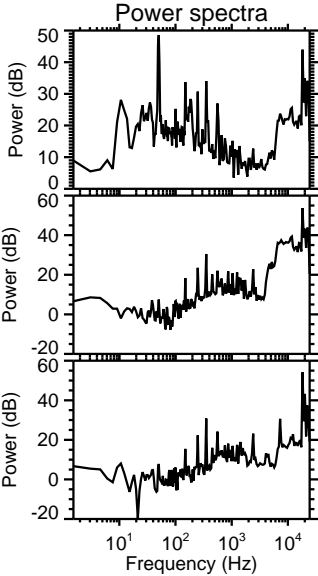
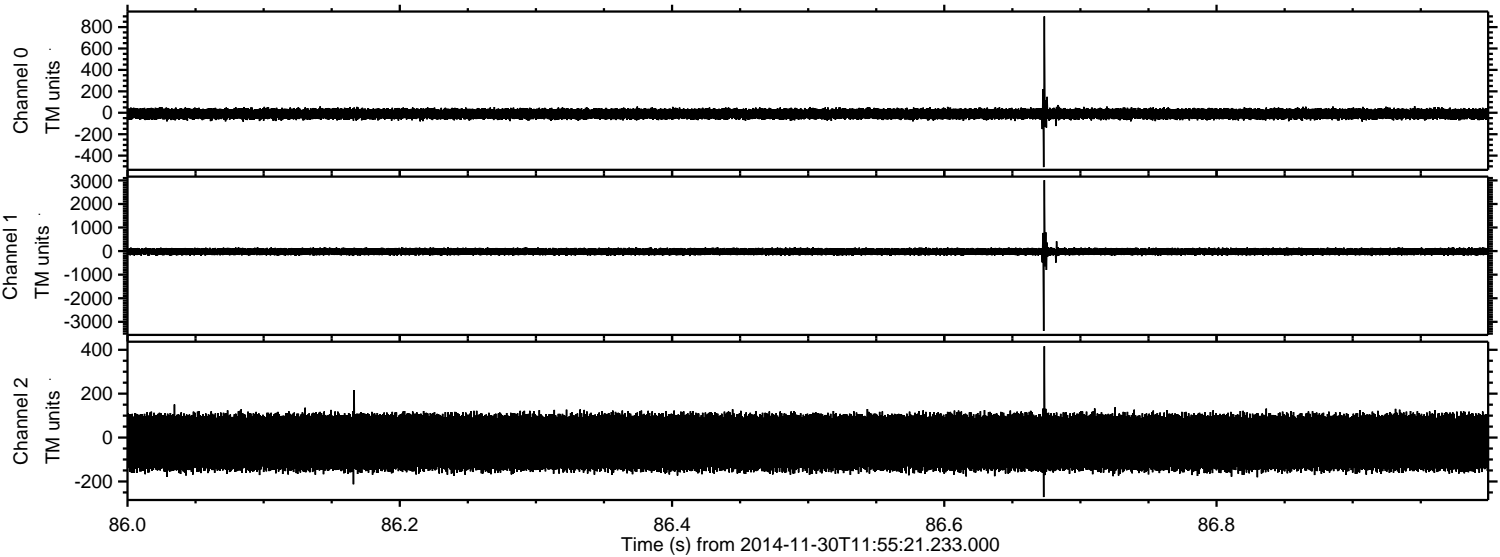
Processed Sun Nov 30 13:03:08 2014 by ELM ver.2012-10-06 from 001__elm20141130_115520__dat00.bin



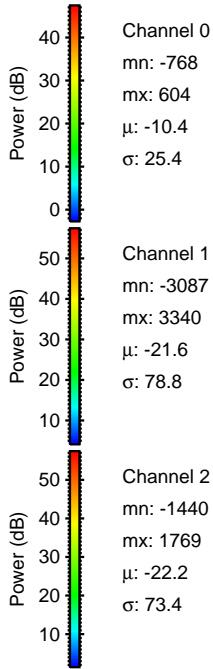
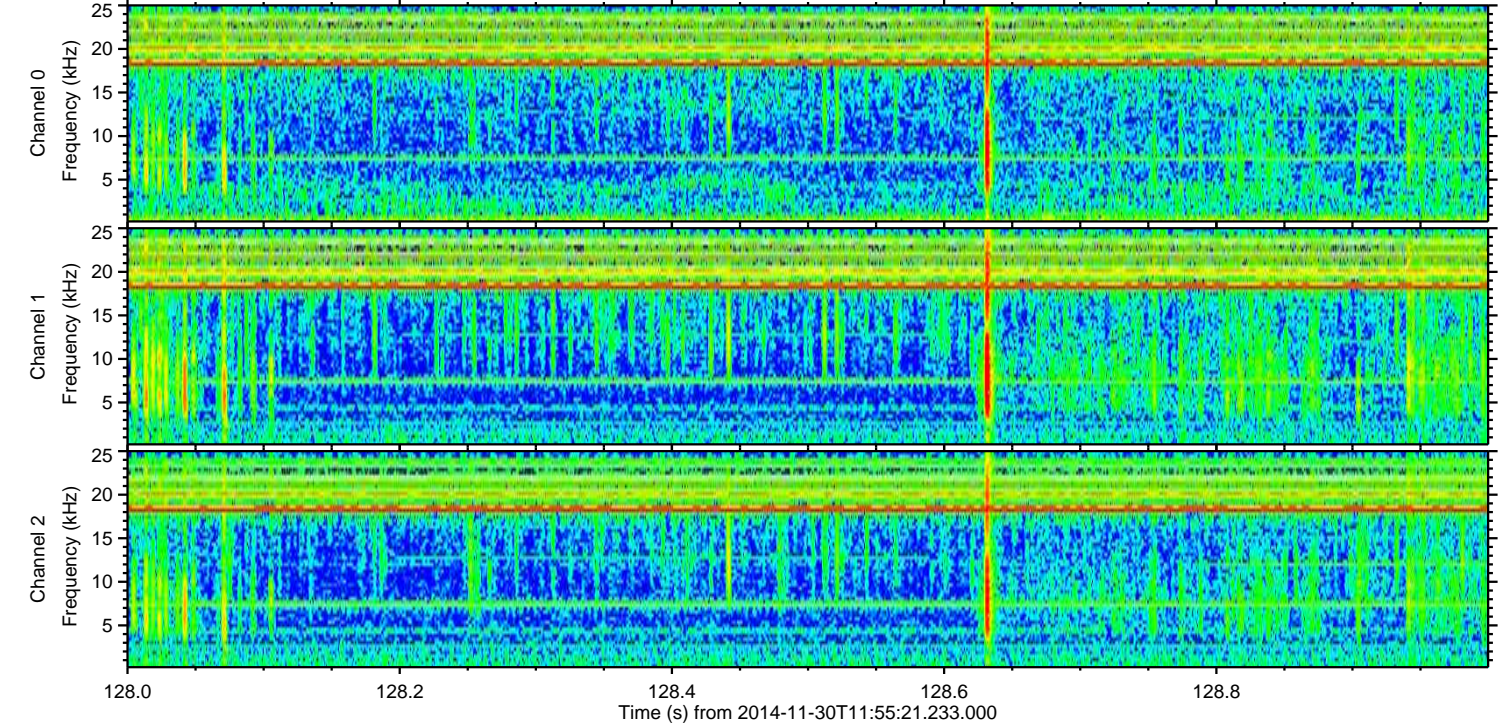
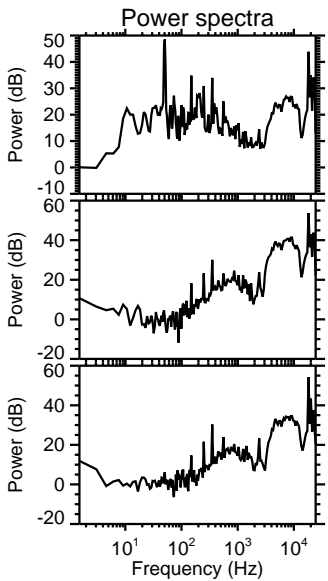
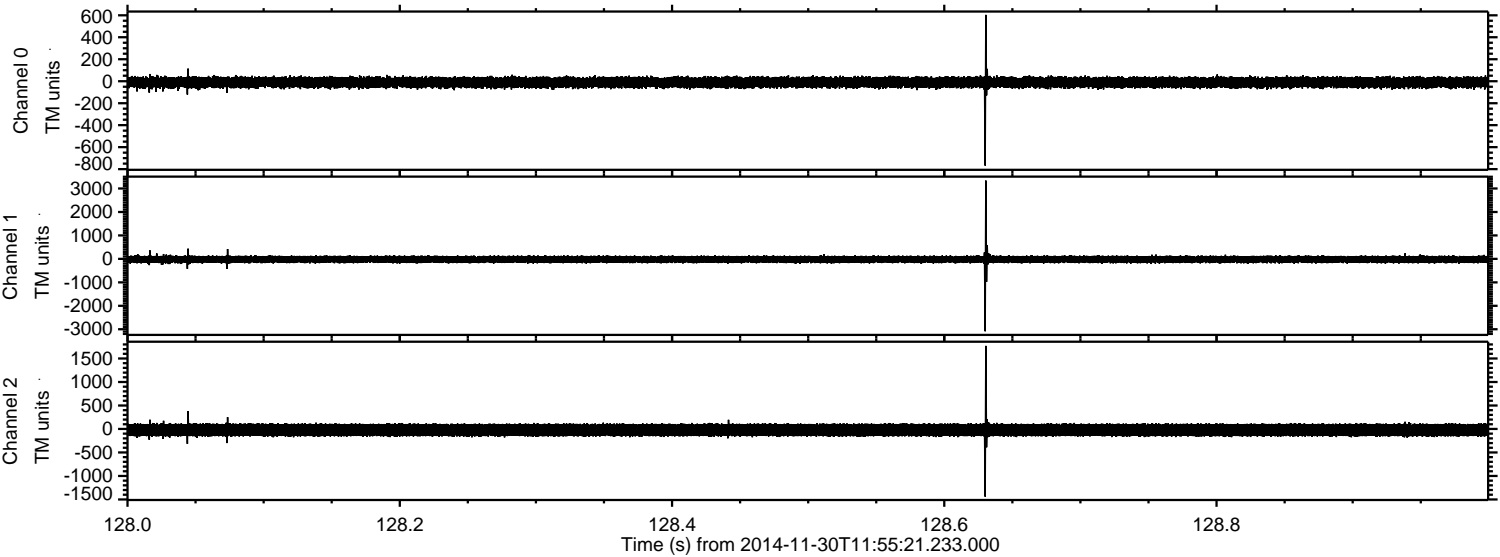
Processed Sun Nov 30 13:03:09 2014 by ELM ver.2012-10-06 from 001__elm20141130_115520__dat00.bin



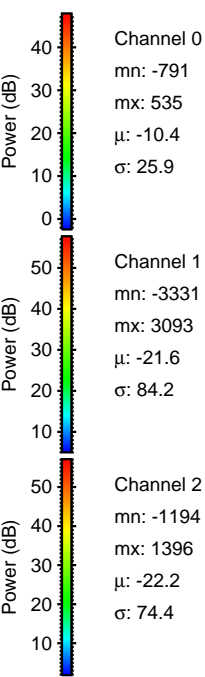
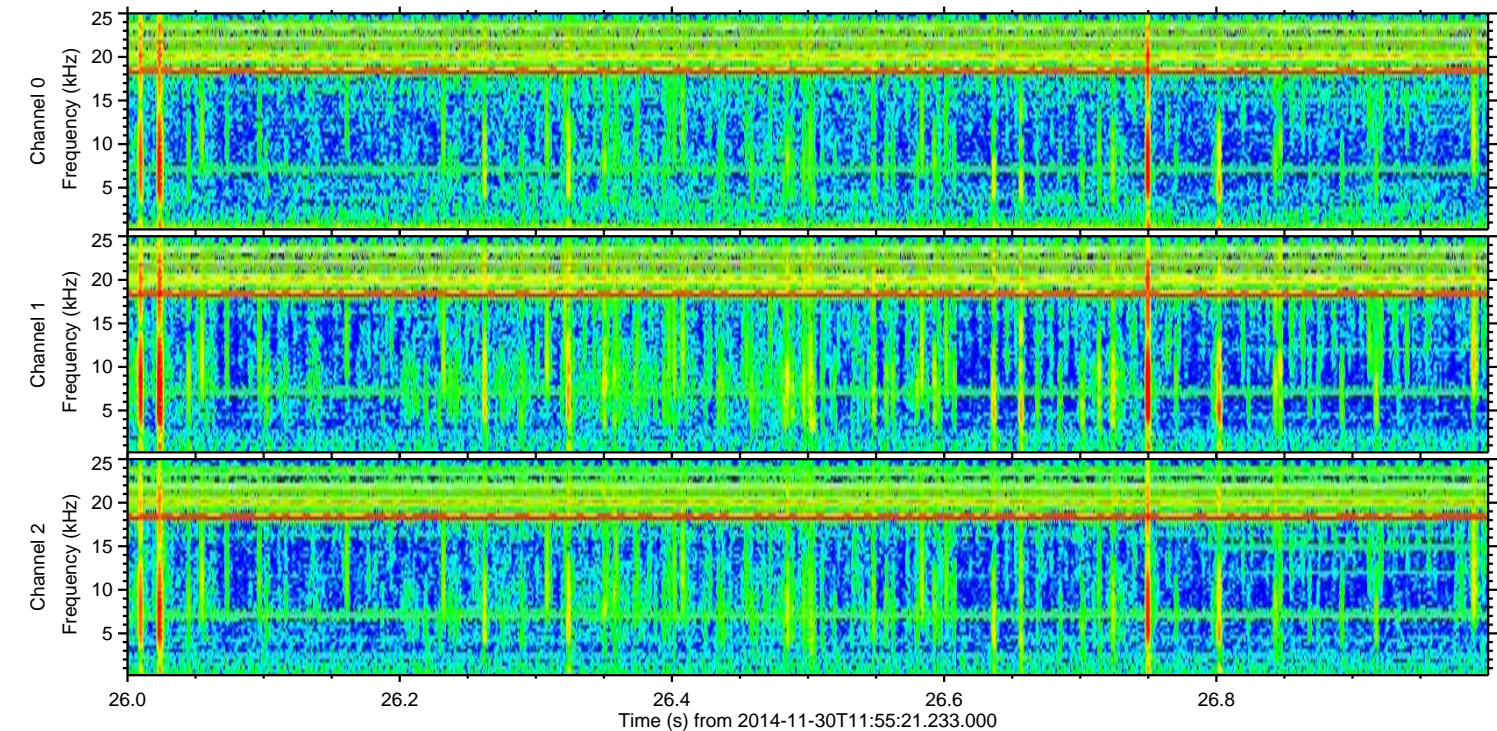
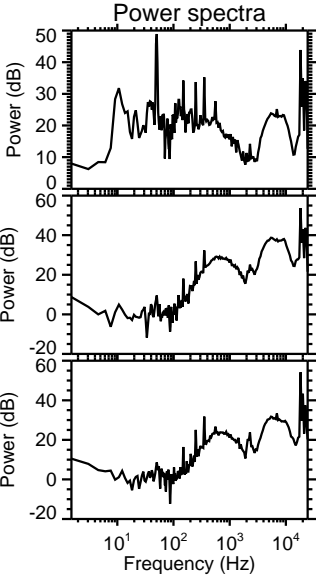
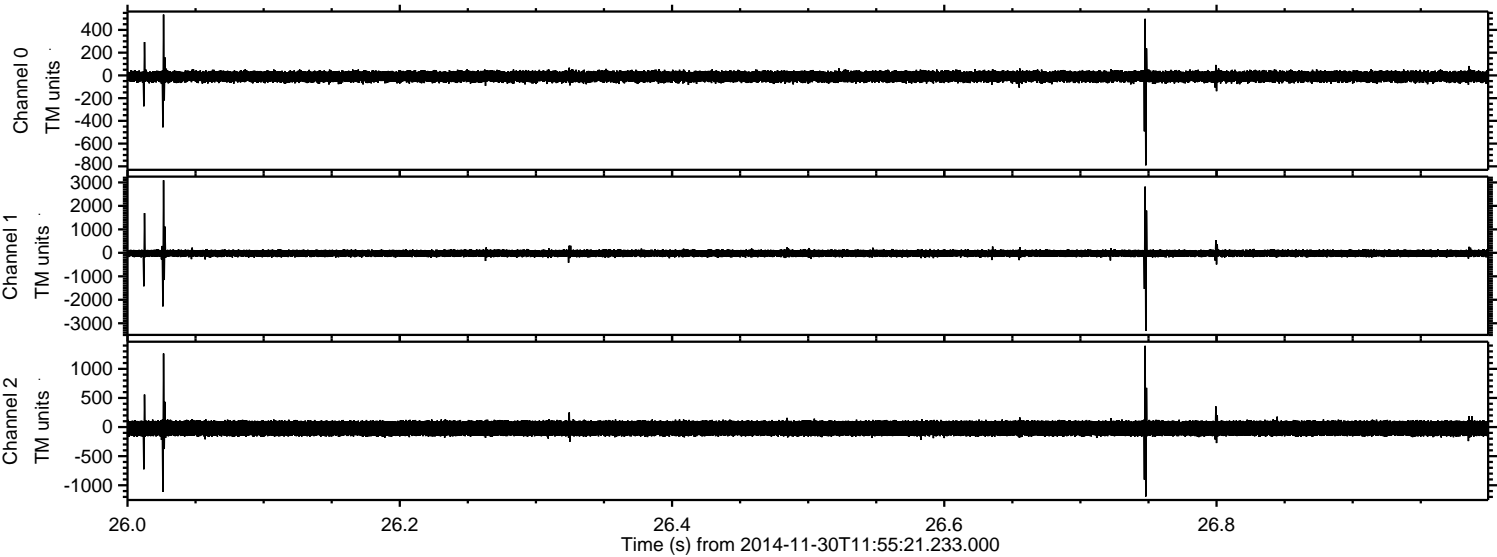
Processed Sun Nov 30 13:03:10 2014 by ELM ver.2012-10-06 from 001__elm20141130_115520__dat00.bin



Processed Sun Nov 30 13:03:11 2014 by ELM ver.2012-10-06 from 001_elm20141130_115520__dat00.bin

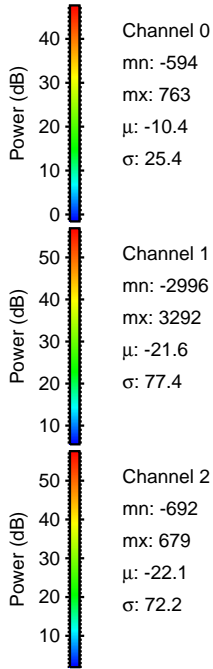
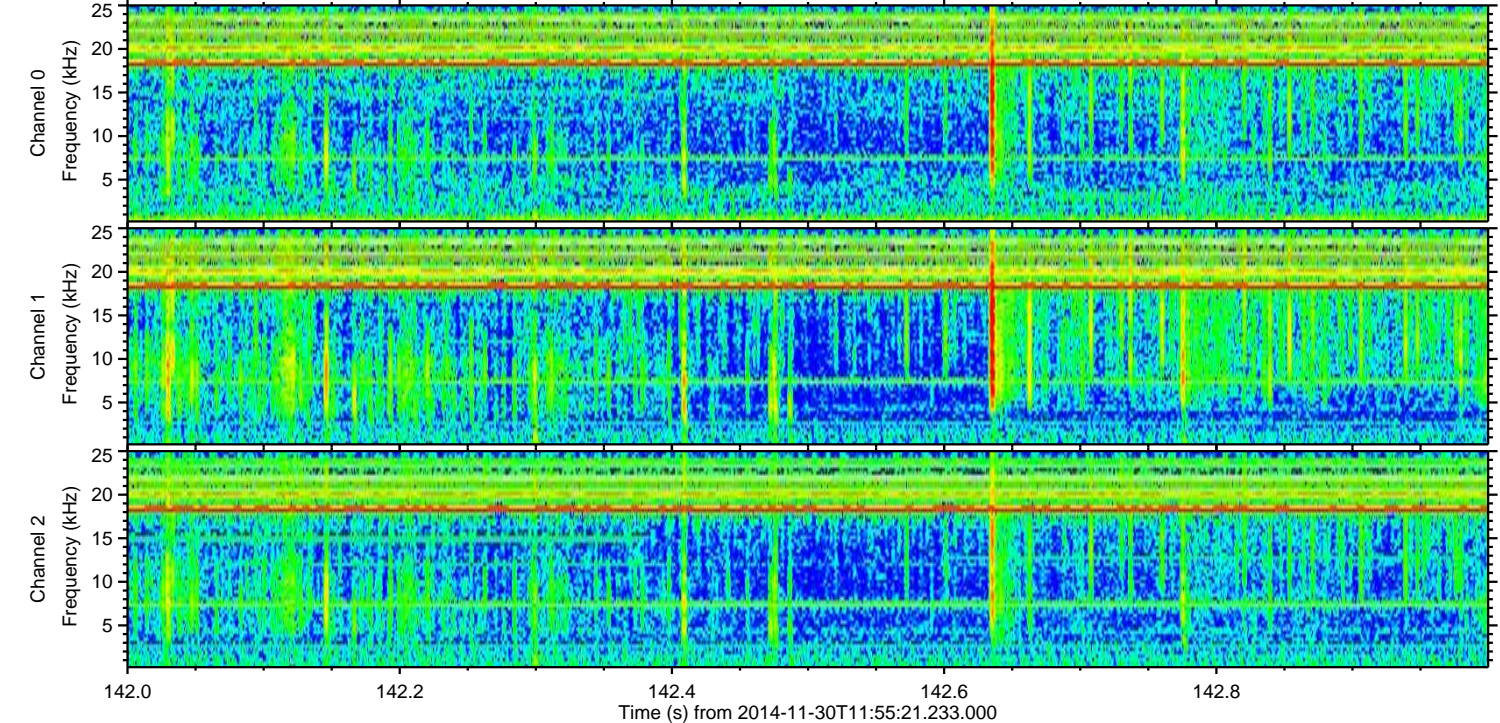
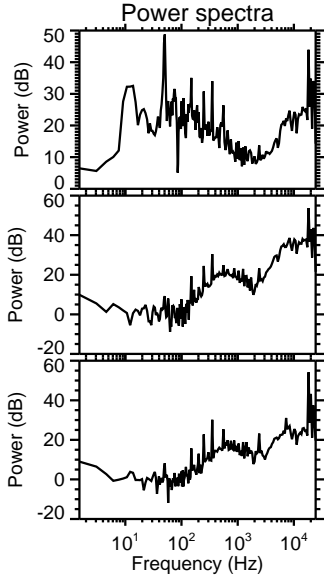
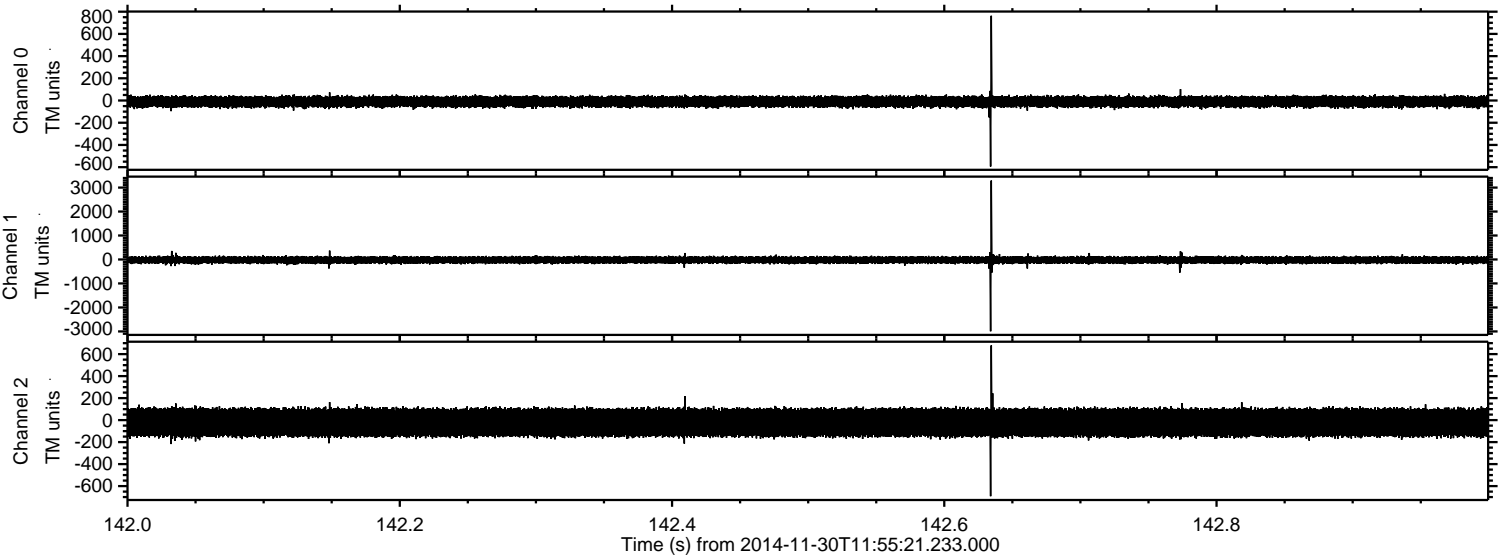


Processed Sun Nov 30 13:03:12 2014 by ELM ver.2012-10-06 from 001_elm20141130_115520__dat00.bin

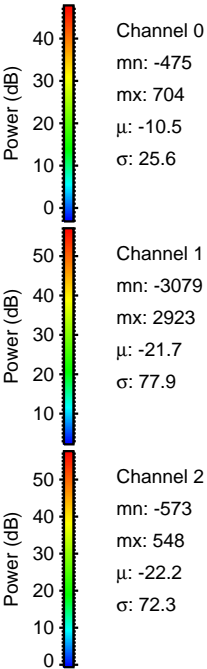
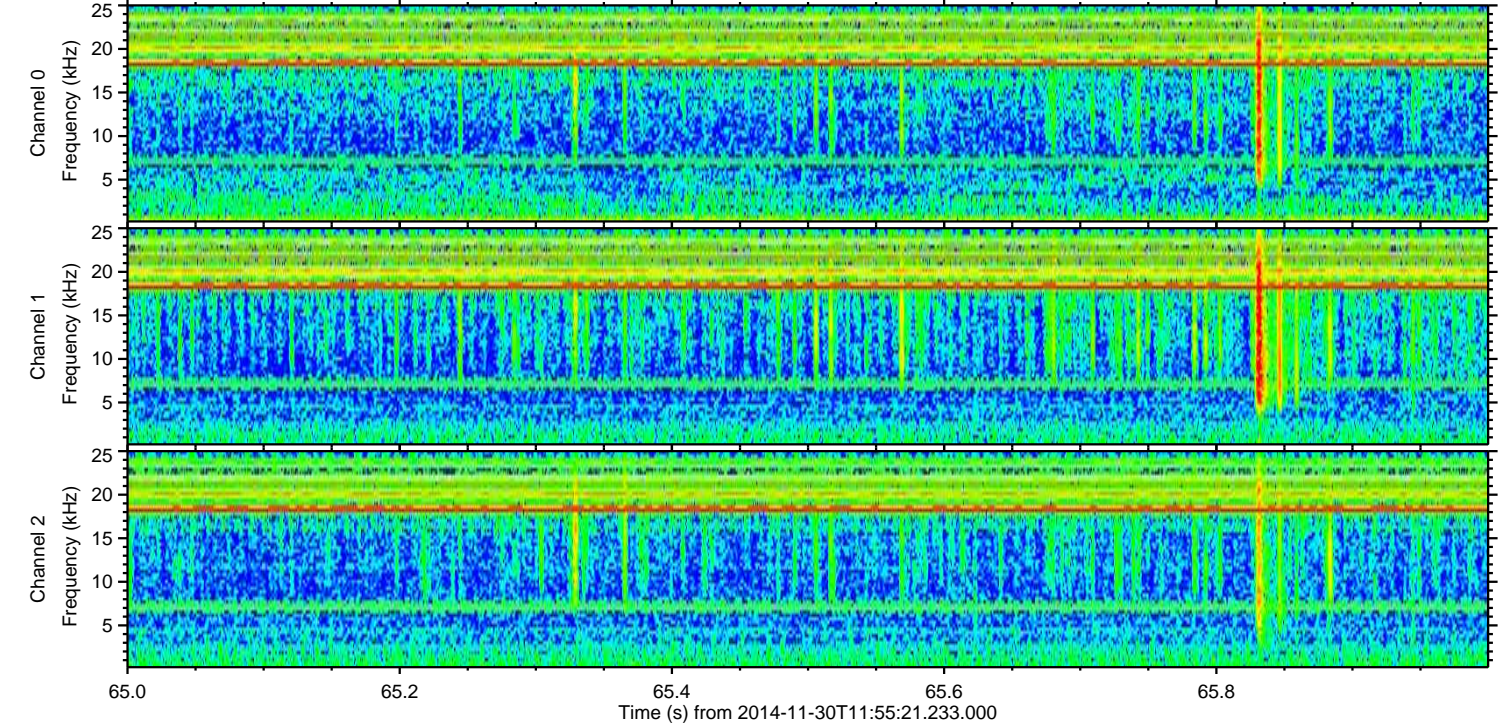
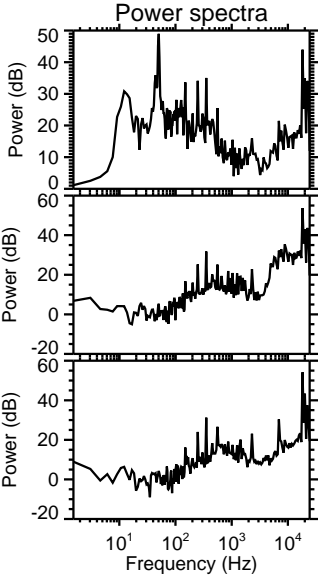
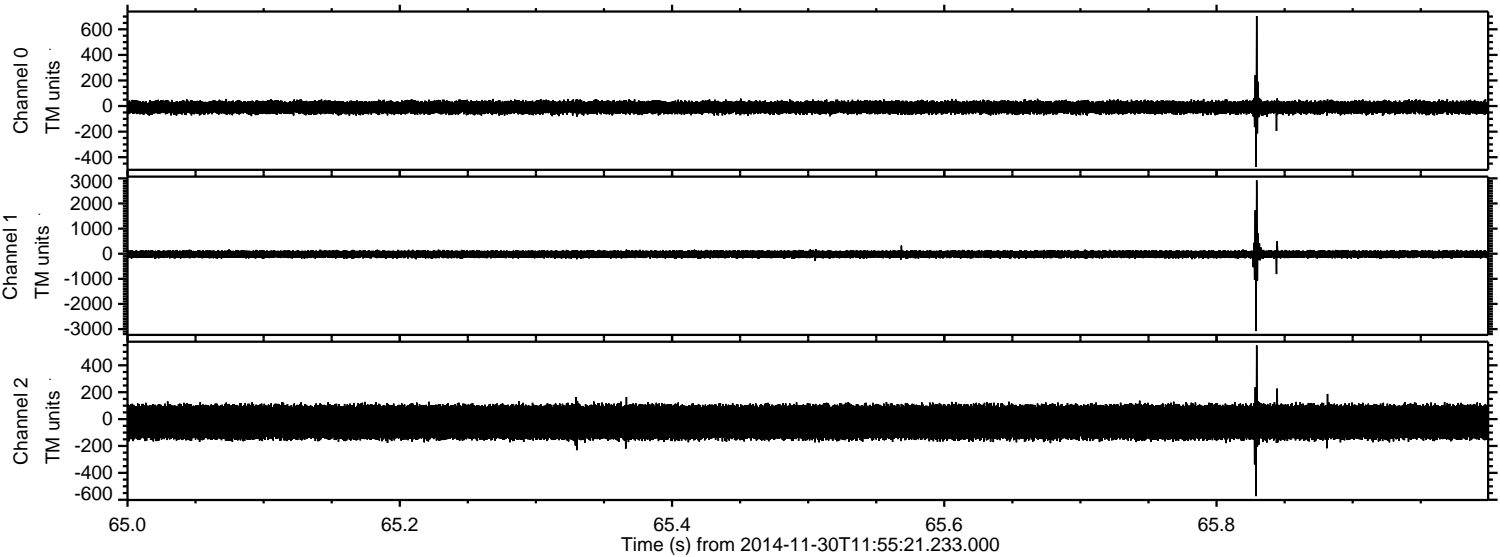


ELMAVAN 3D WAVEFORMS (Measured data sampled at 50 kHz) 49791 packets of 144 samples from 2014-11-30T11:55:21.233.000. Part 143/144

Processed Sun Nov 30 13:03:13 2014 by ELM ver.2012-10-06 from 001__elm20141130_115520__dat00.bin



Processed Sun Nov 30 13:03:14 2014 by ELM ver.2012-10-06 from 001_elm20141130_115520__dat00.bin



ELMAVAN 3D WAVEFORMS (Measured data sampled at 50 kHz) 49791 packets of 144 samples from 2014-11-30T11:55:21.233.000. Part 106/144

