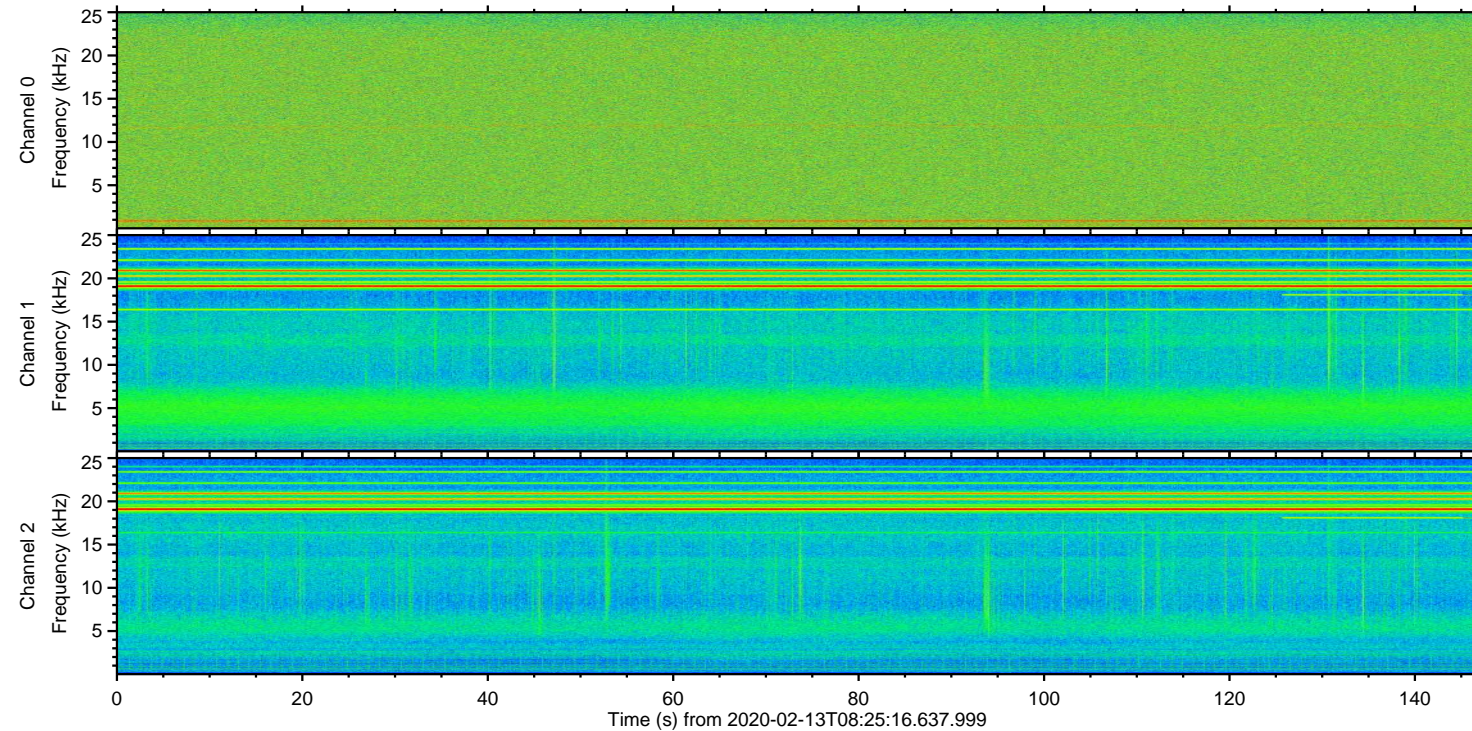
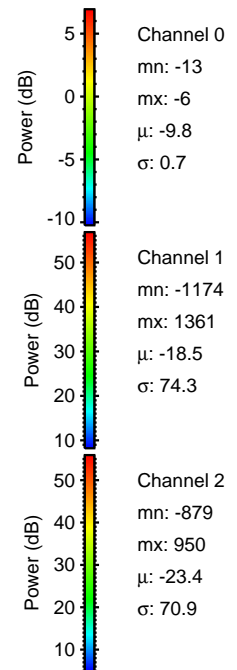
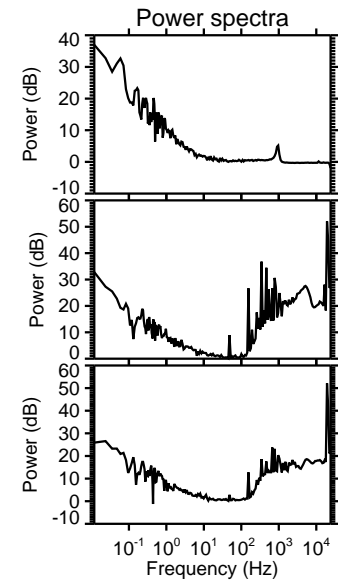
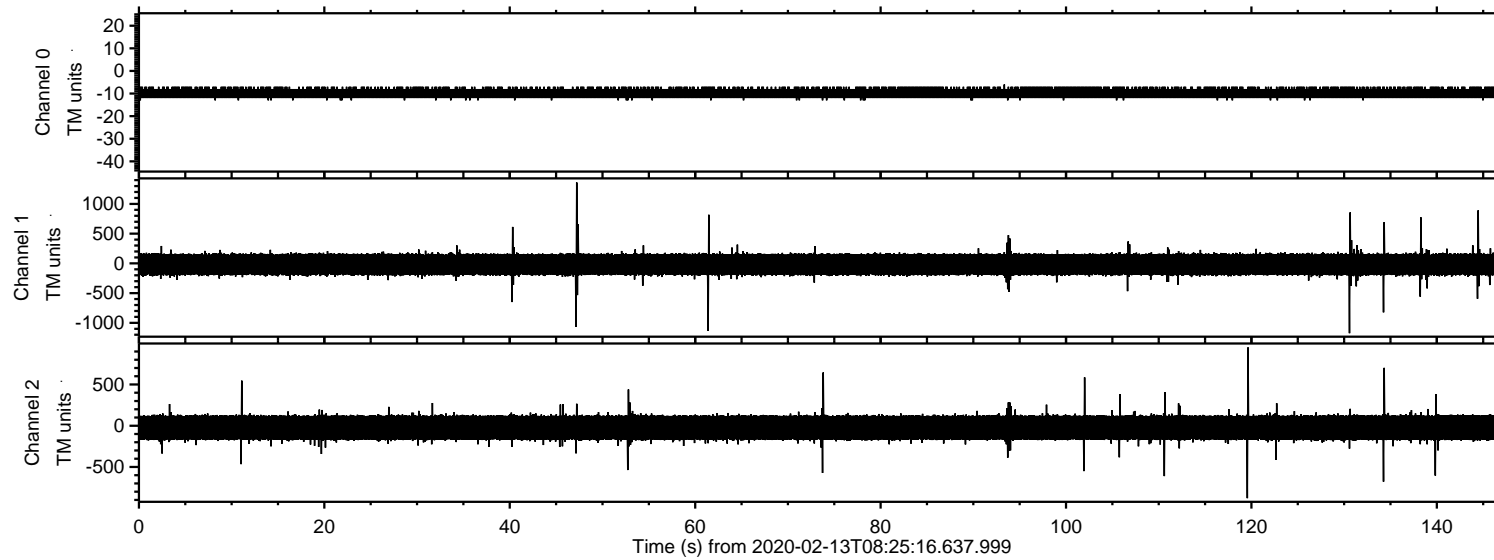


# ELMAVAN 3D WAVEFORMS (Measured data sampled at 50 kHz) 51000 packets of 144 samples from 2020-02-13T08:25:16.637.999.

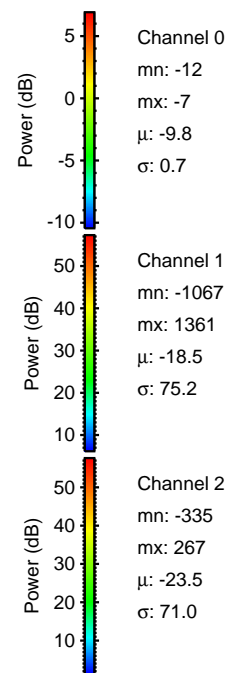
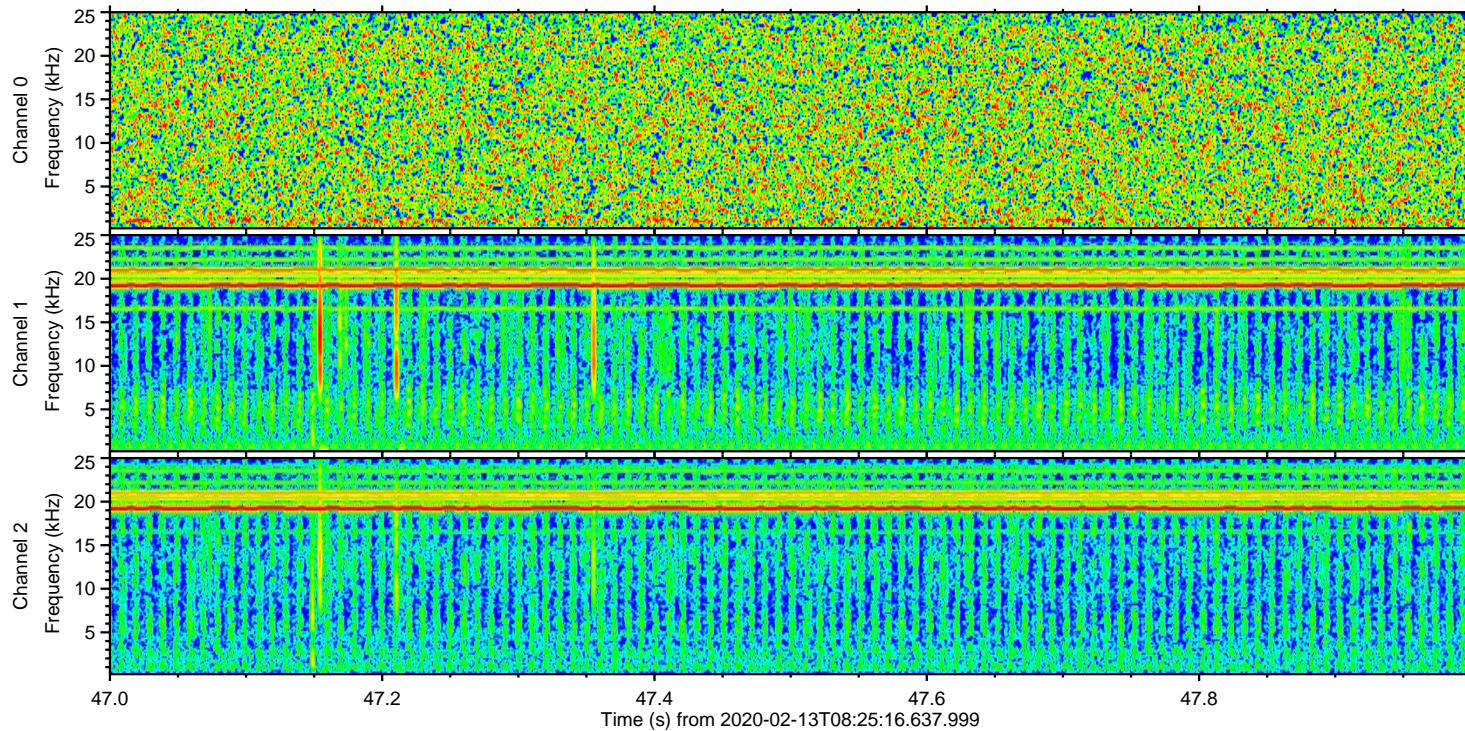
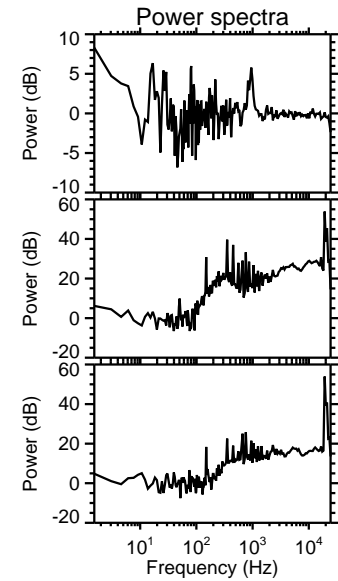
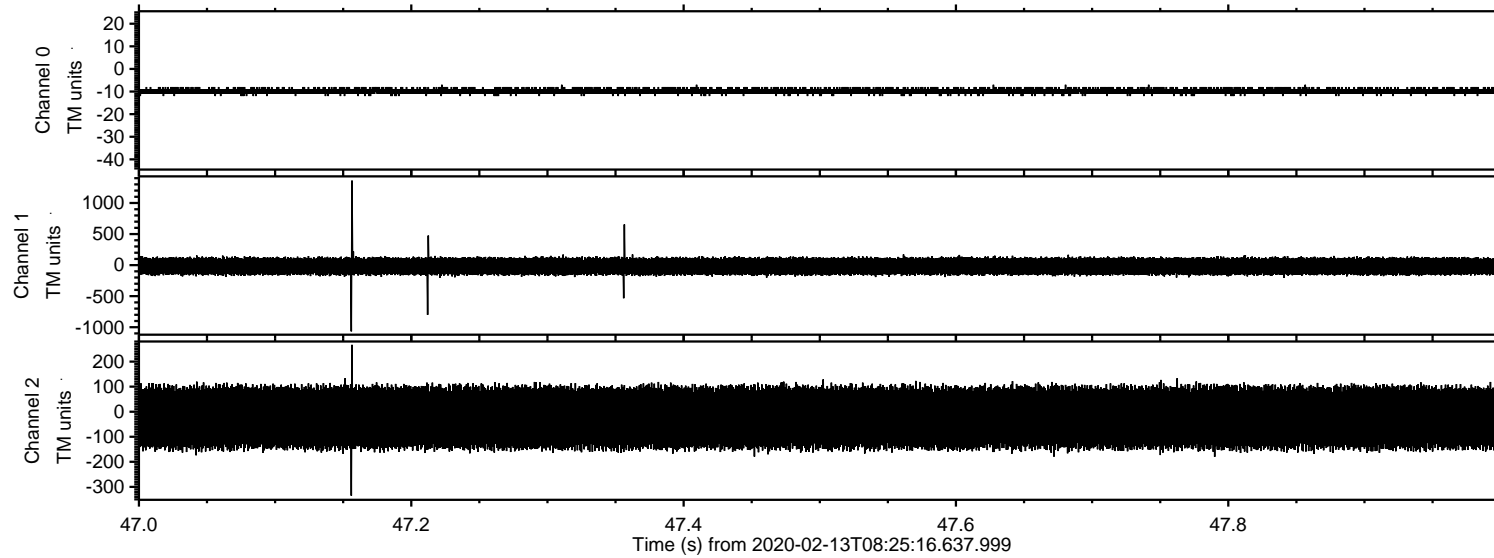
Processed Thu Feb 13 09:33:25 2020 by ELM ver.2012-10-06 from 001\_\_elm20200213\_082515\_\_dat00.bin





# ELMAVAN 3D WAVEFORMS (Measured data sampled at 50 kHz) 51000 packets of 144 samples from 2020-02-13T08:25:16.637.999. Part 48/147

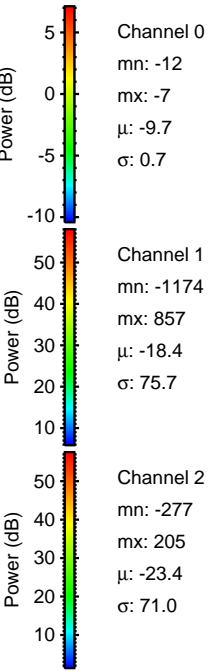
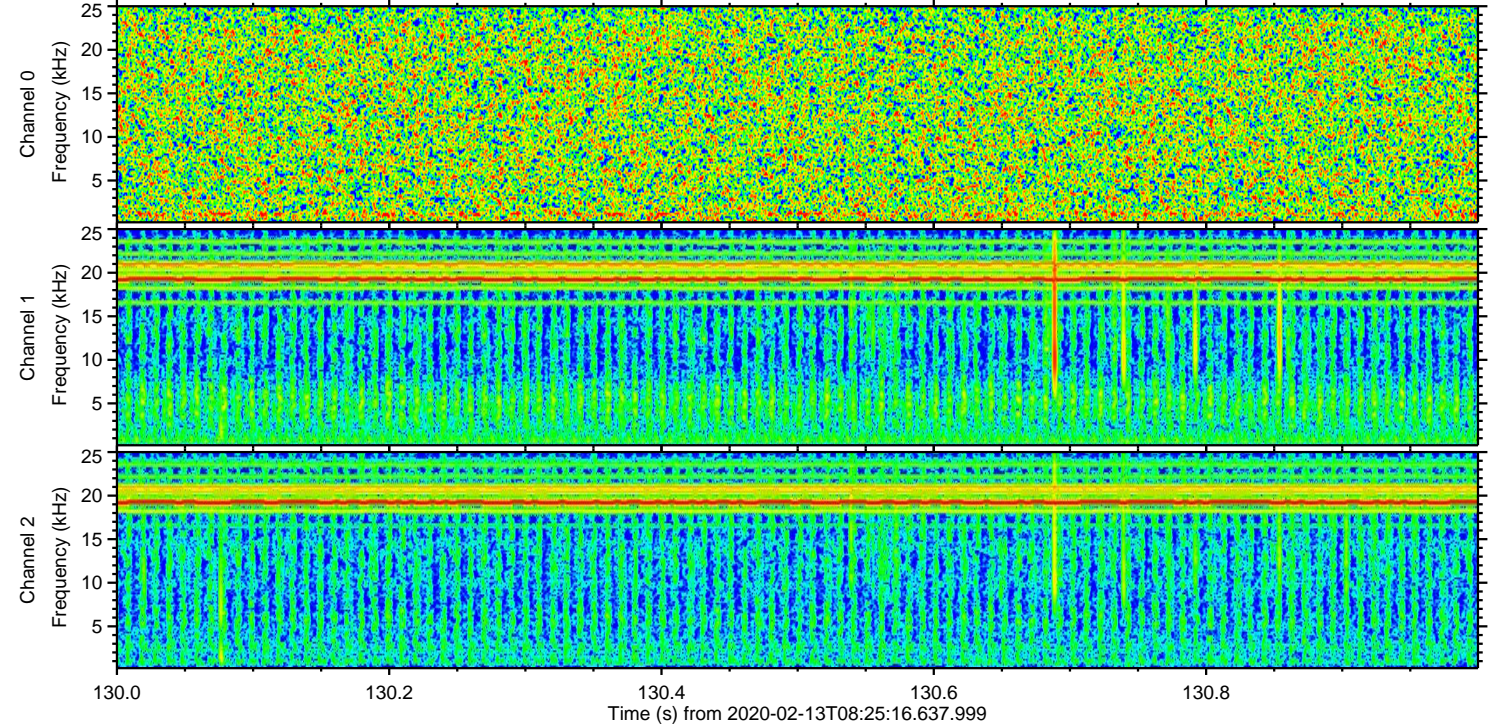
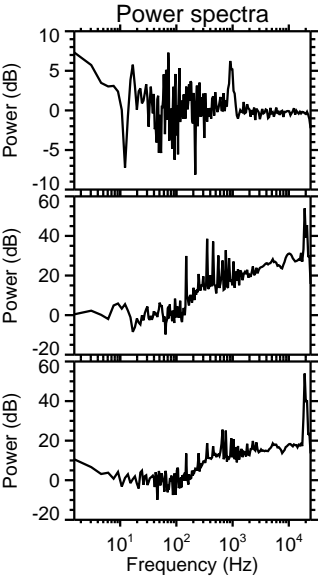
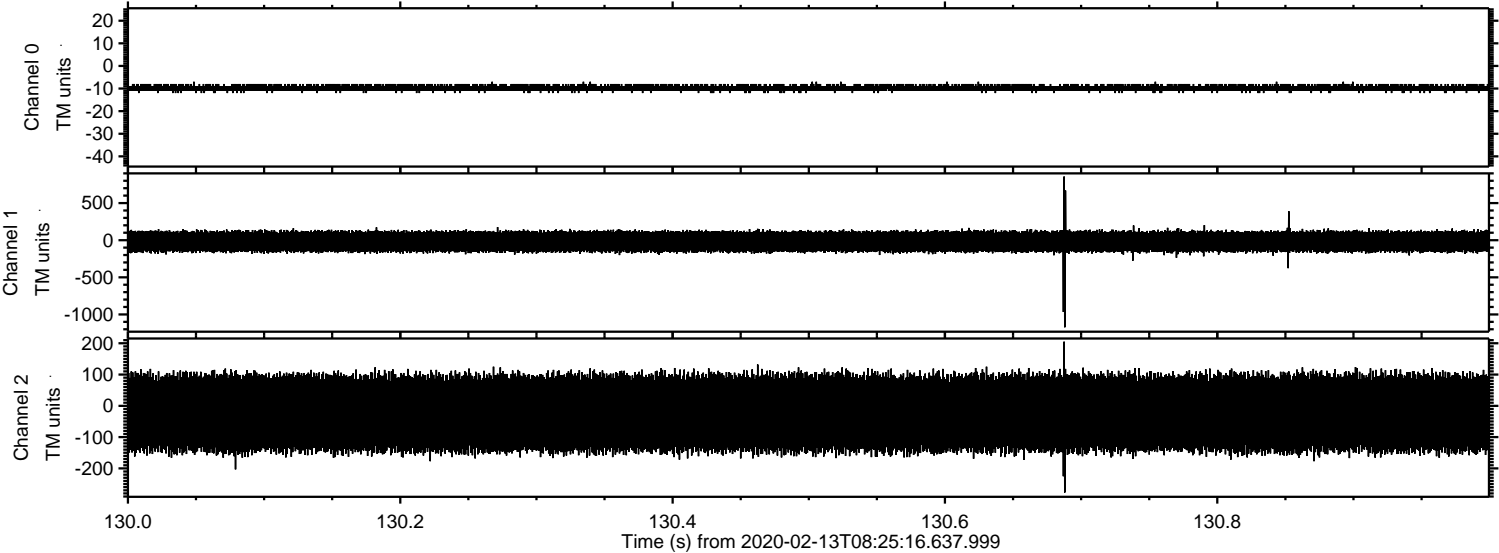
Processed Thu Feb 13 09:33:32 2020 by ELM ver.2012-10-06 from 001\_\_elm20200213\_082515\_\_dat00.bin





ELMAVAN 3D WAVEFORMS (Measured data sampled at 50 kHz) 51000 packets of 144 samples from 2020-02-13T08:25:16.637.999. Part 131/147

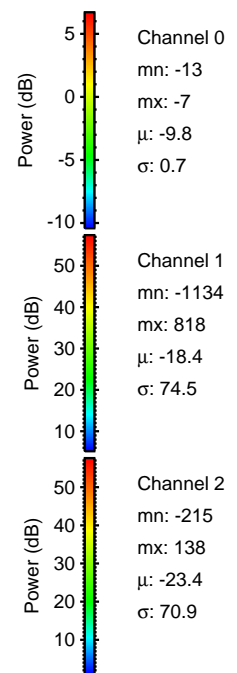
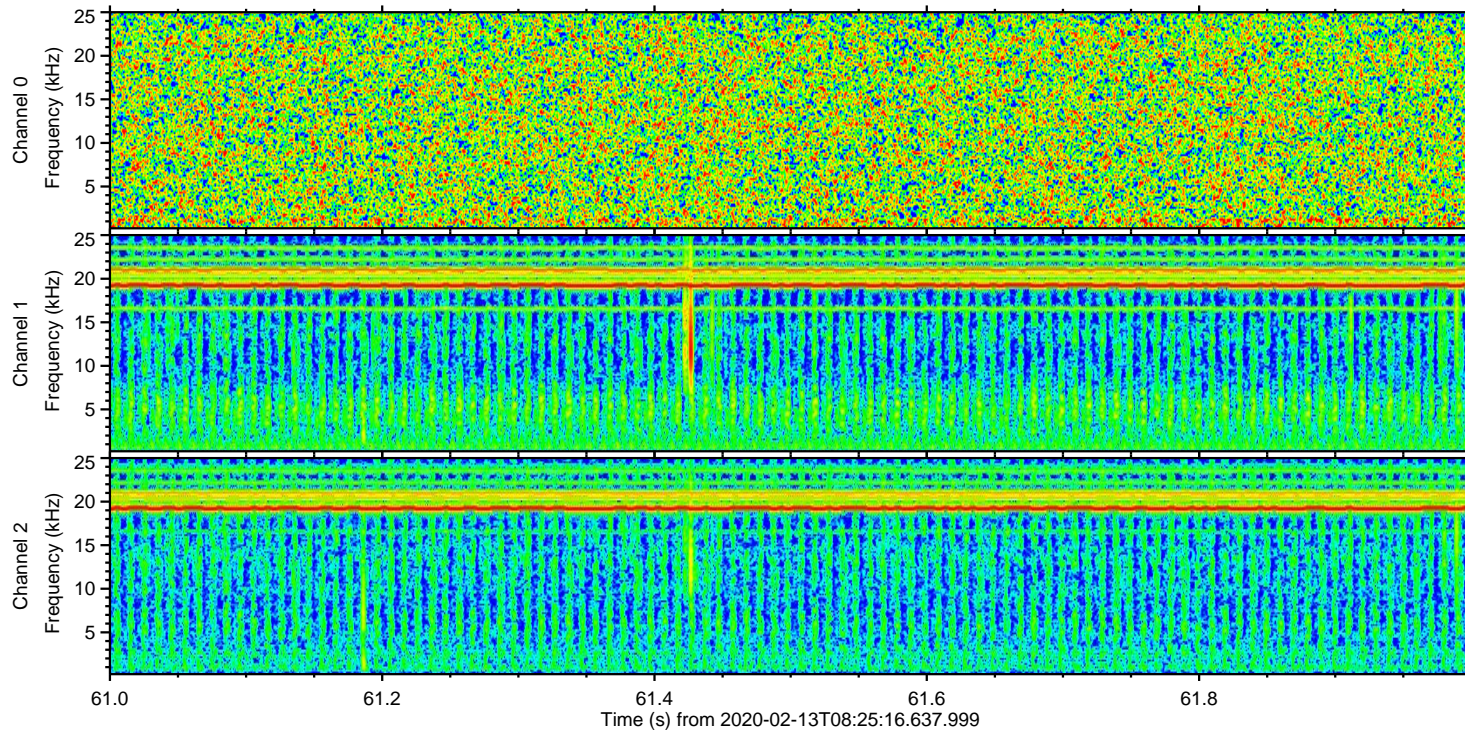
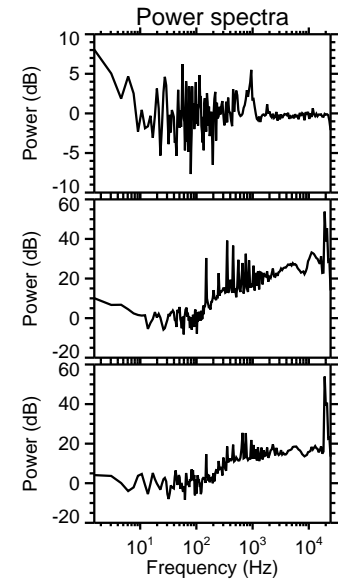
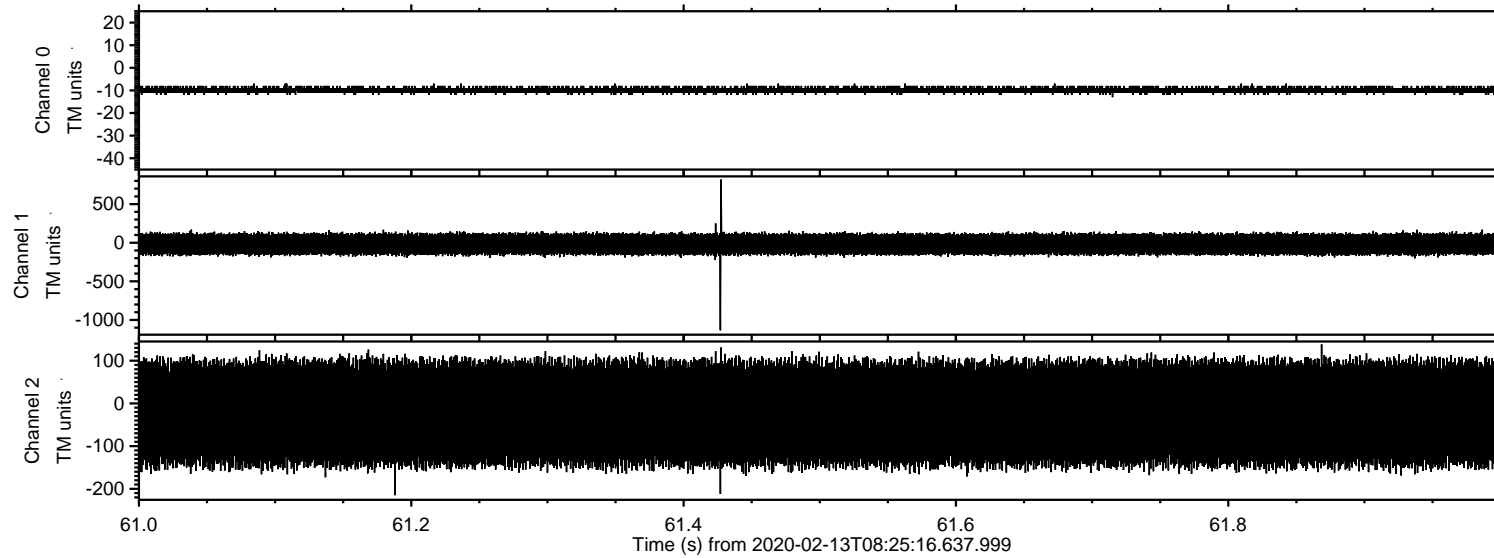
Processed Thu Feb 13 09:33:33 2020 by ELM ver.2012-10-06 from 001\_\_elm20200213\_082515\_\_dat00.bin





# ELMAVAN 3D WAVEFORMS (Measured data sampled at 50 kHz) 51000 packets of 144 samples from 2020-02-13T08:25:16.637.999. Part 62/147

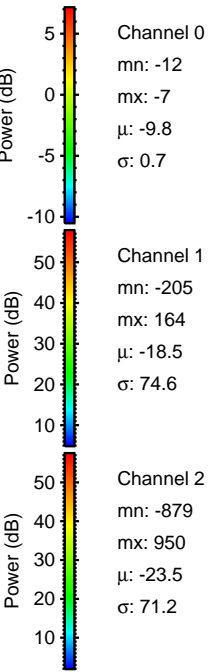
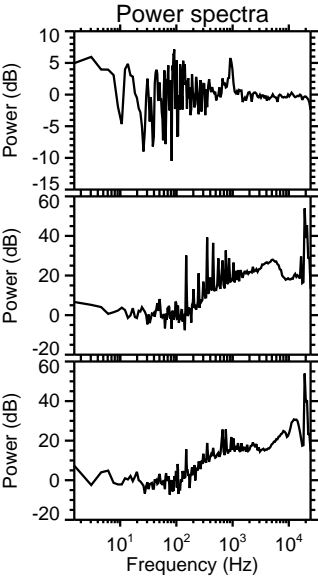
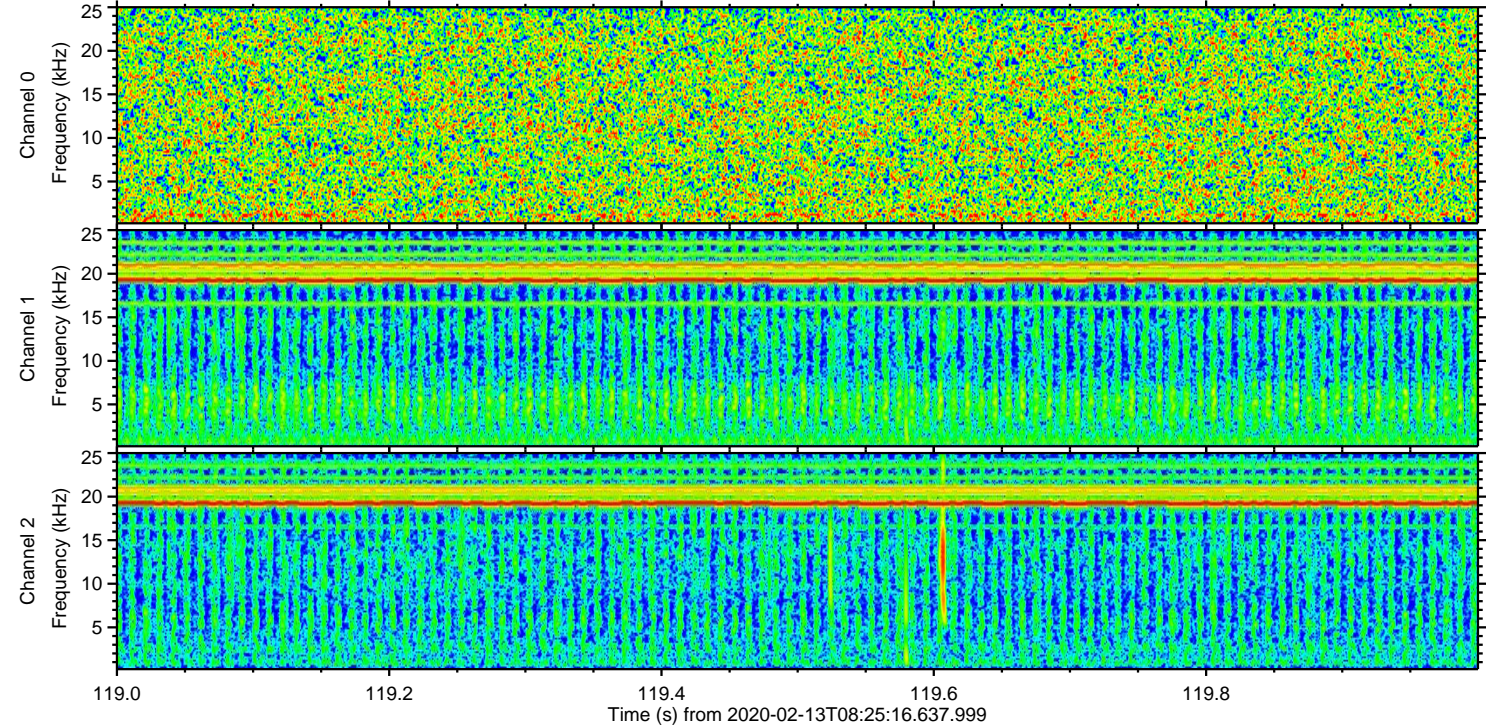
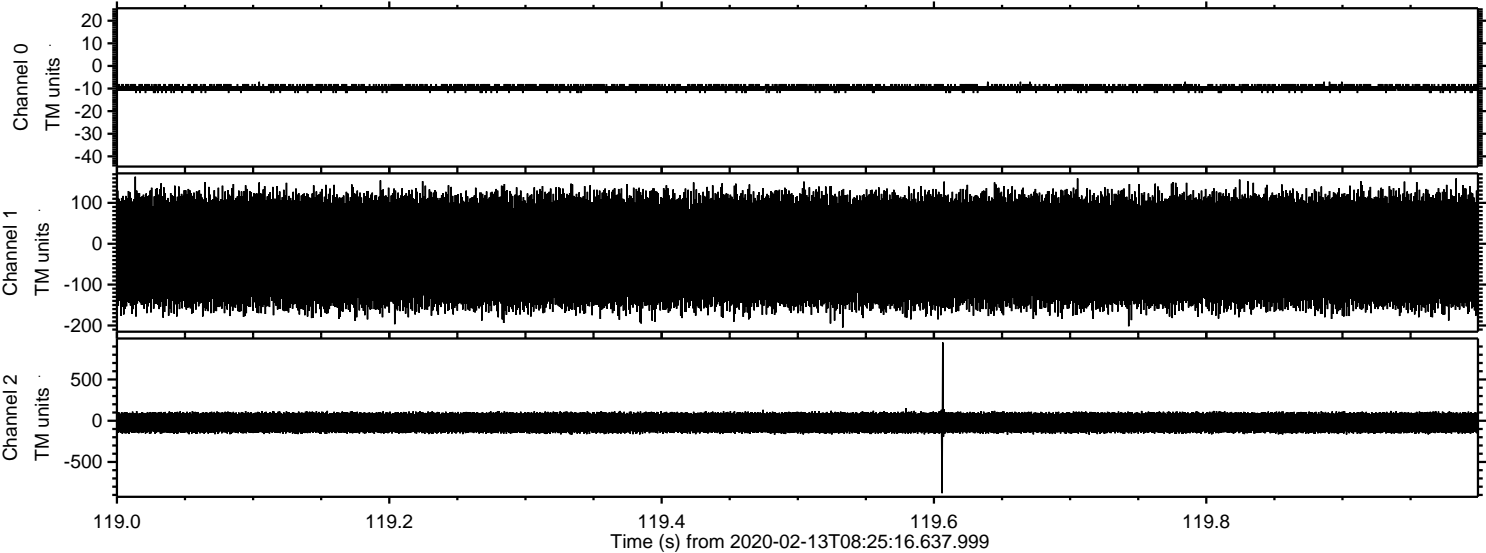
Processed Thu Feb 13 09:33:33 2020 by ELM ver.2012-10-06 from 001\_\_elm20200213\_082515\_\_dat00.bin





ELMAVAN 3D WAVEFORMS (Measured data sampled at 50 kHz) 51000 packets of 144 samples from 2020-02-13T08:25:16.637.999. Part 120/147

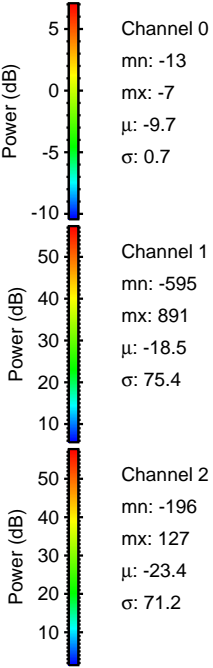
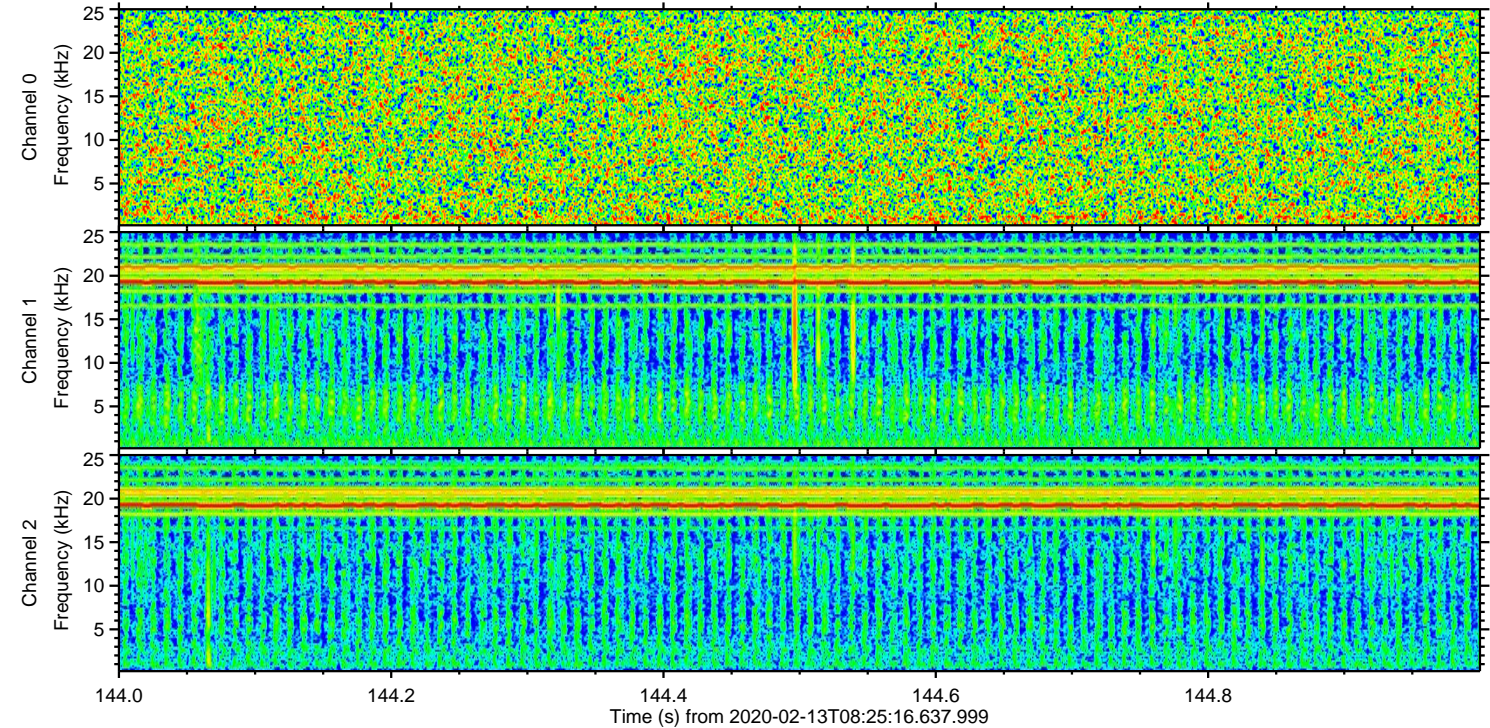
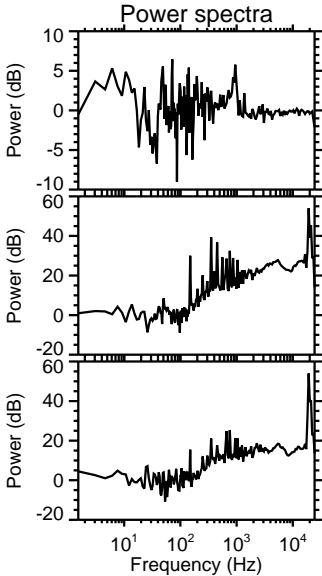
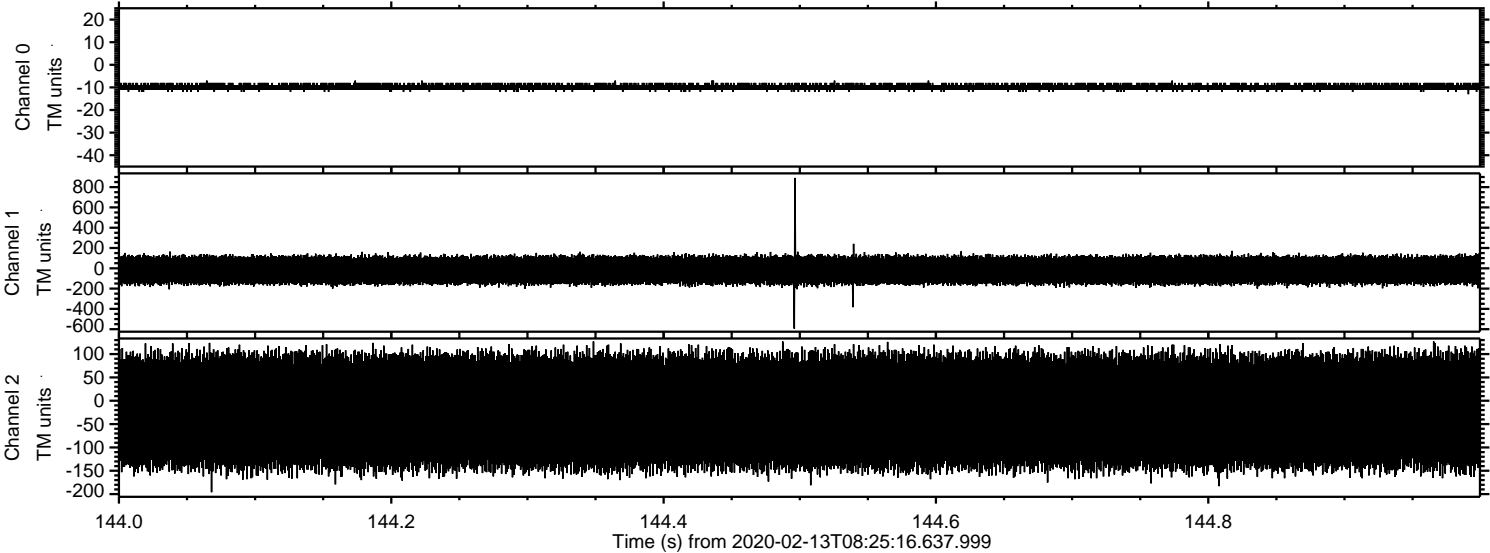
Processed Thu Feb 13 09:33:34 2020 by ELM ver.2012-10-06 from 001\_\_elm20200213\_082515\_\_dat00.bin





ELMAVAN 3D WAVEFORMS (Measured data sampled at 50 kHz) 51000 packets of 144 samples from 2020-02-13T08:25:16.637.999. Part 145/147

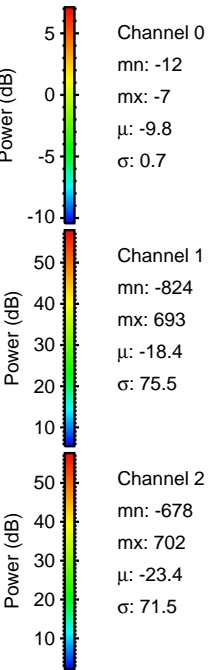
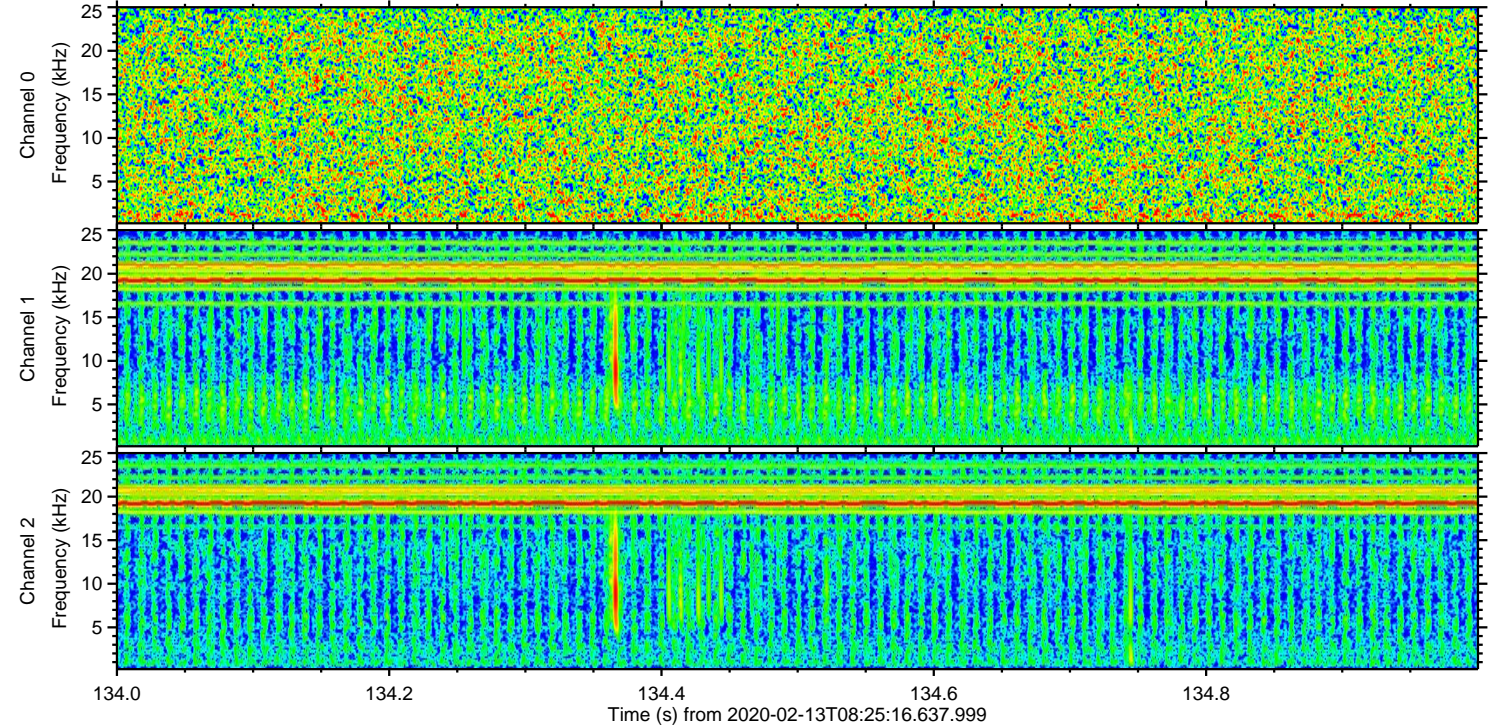
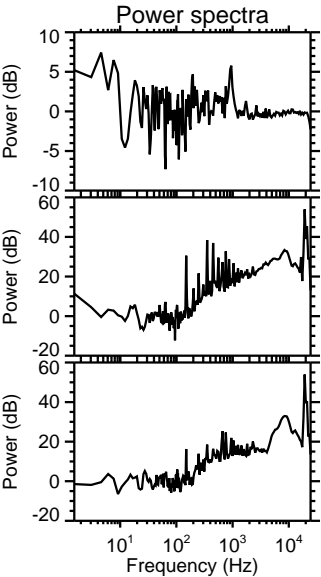
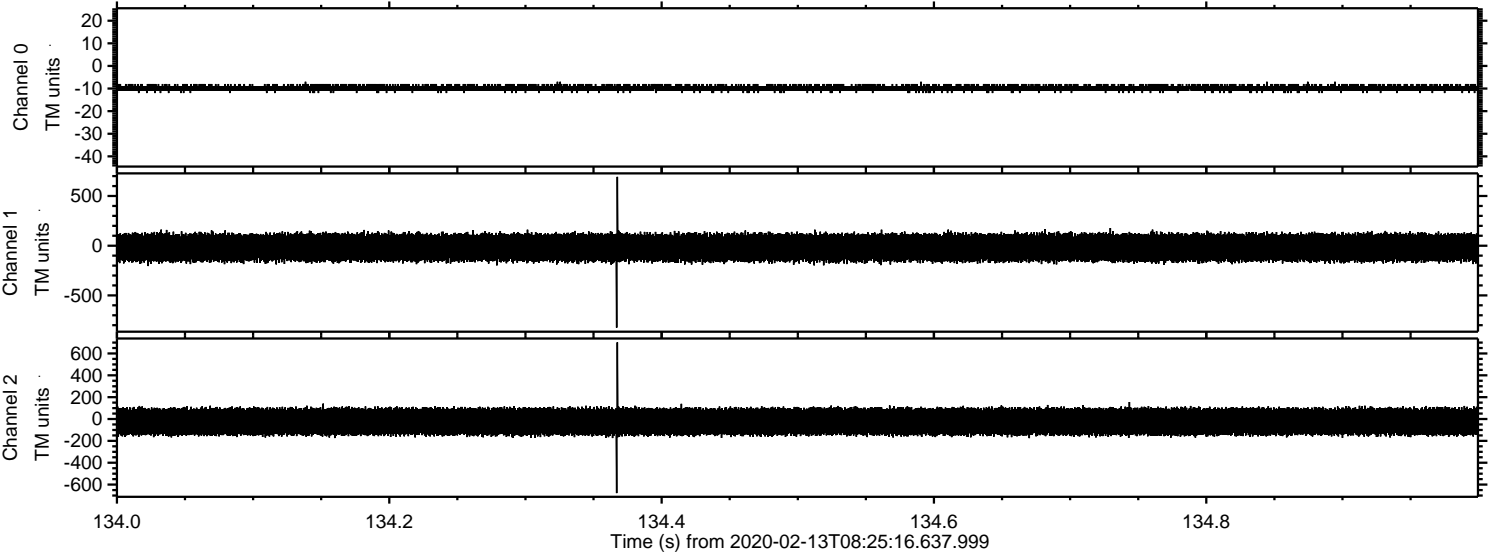
Processed Thu Feb 13 09:33:35 2020 by ELM ver.2012-10-06 from 001\_\_elm20200213\_082515\_\_dat00.bin





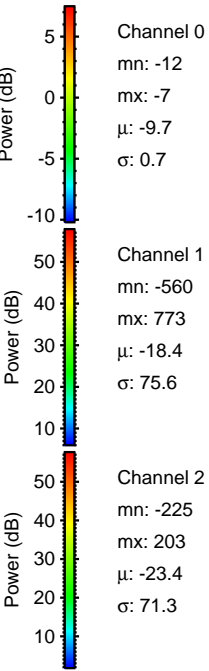
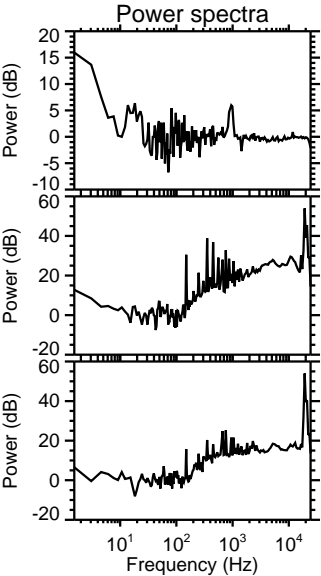
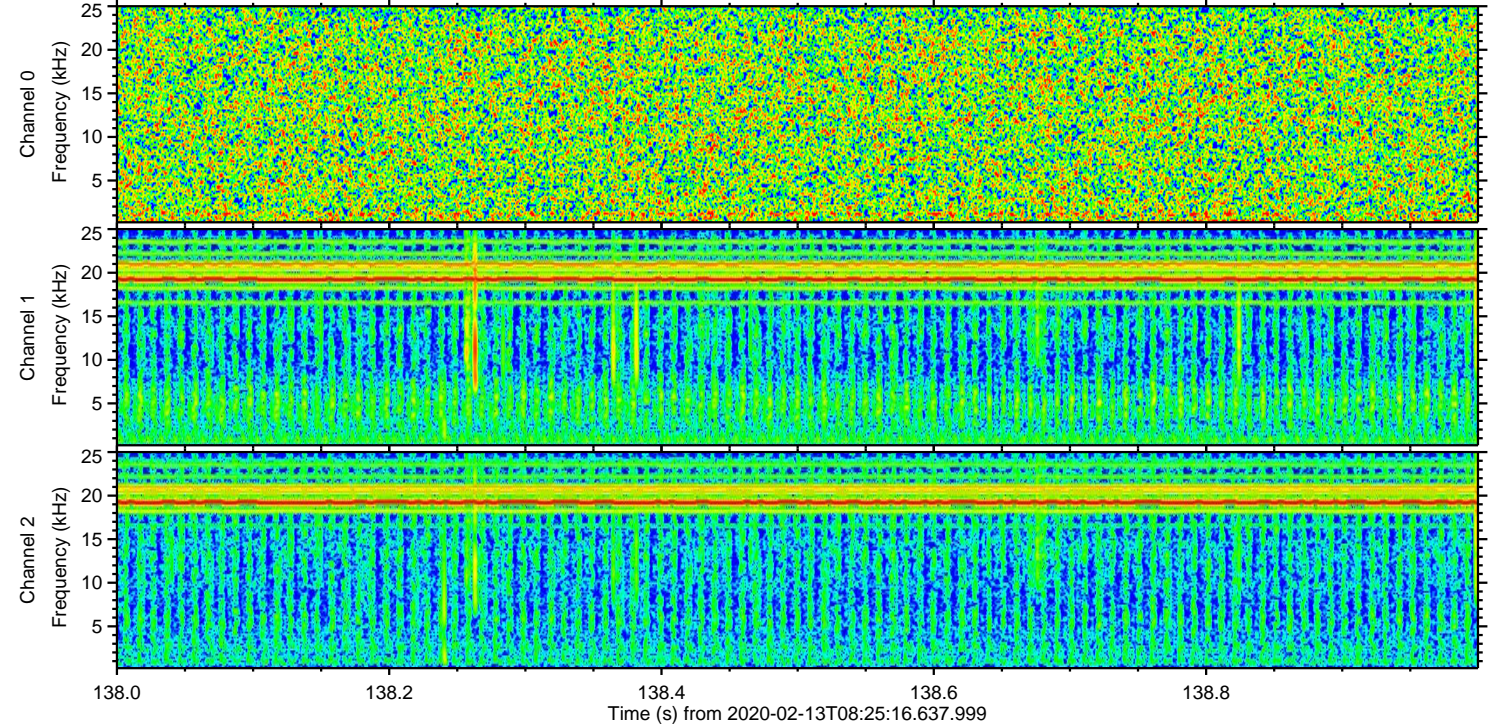
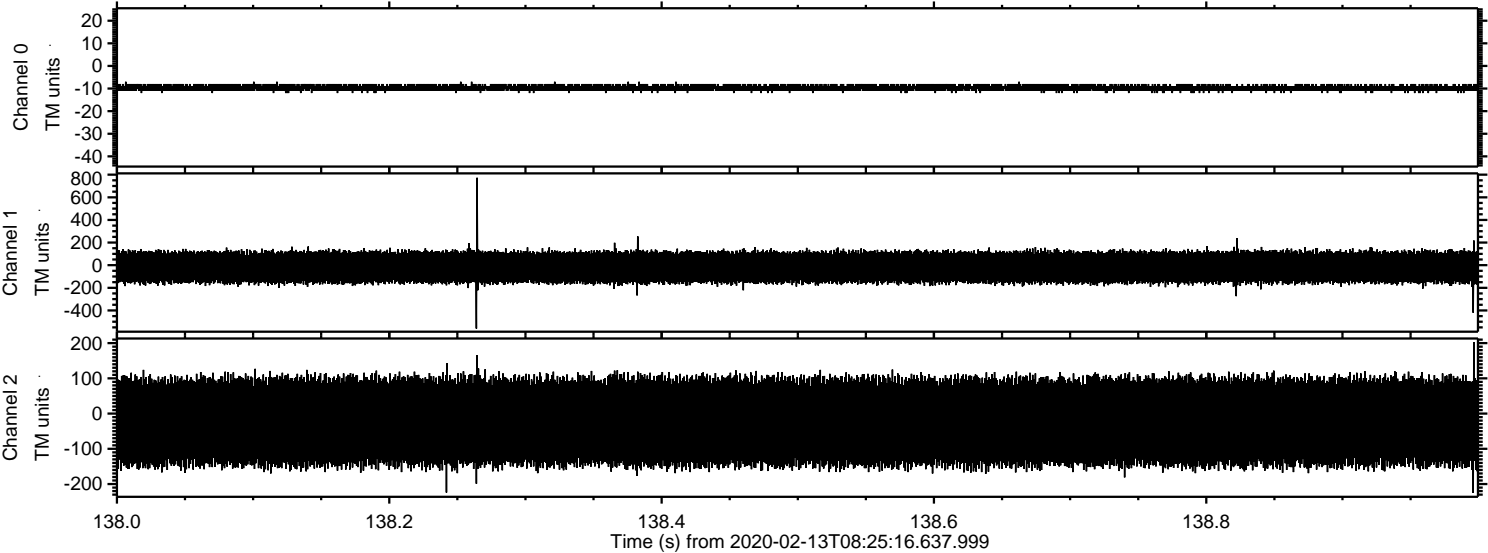
ELMAVAN 3D WAVEFORMS (Measured data sampled at 50 kHz) 51000 packets of 144 samples from 2020-02-13T08:25:16.637.999. Part 135/147

Processed Thu Feb 13 09:33:35 2020 by ELM ver.2012-10-06 from 001\_\_elm20200213\_082515\_\_dat00.bin





Processed Thu Feb 13 09:33:36 2020 by ELM ver.2012-10-06 from 001\_\_elm20200213\_082515\_\_dat00.bin



Channel 0  
mn: -12  
mx: -7  
 $\mu$ : -9.7  
 $\sigma$ : 0.7

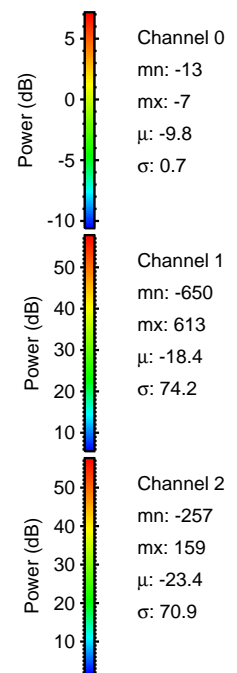
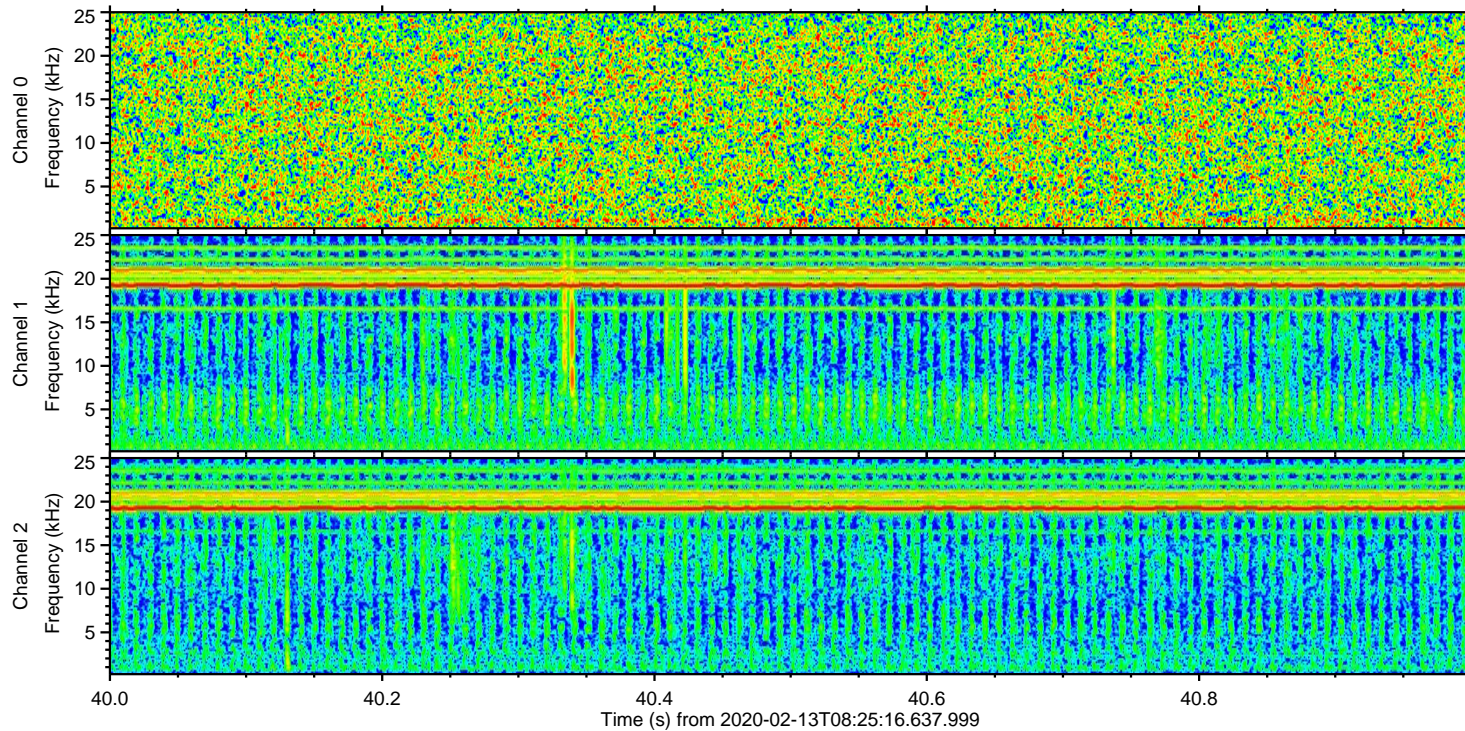
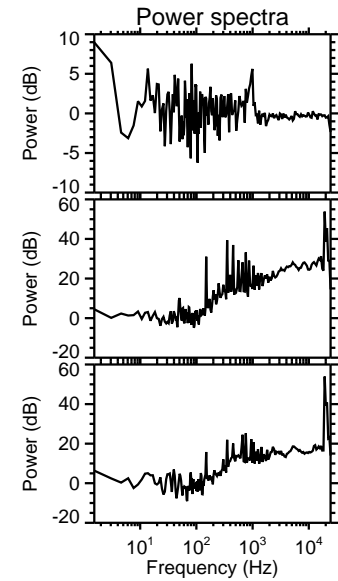
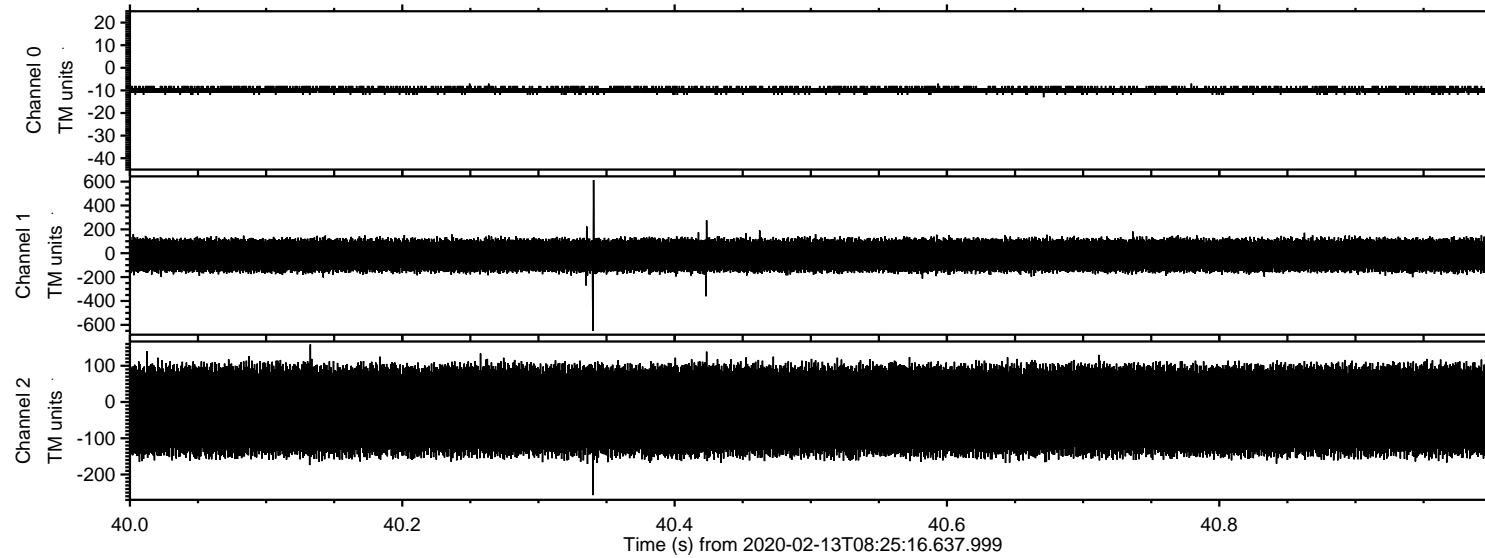
Channel 1  
mn: -560  
mx: 773  
 $\mu$ : -18.4  
 $\sigma$ : 75.6

Channel 2  
mn: -225  
mx: 203  
 $\mu$ : -23.4  
 $\sigma$ : 71.3



# ELMAVAN 3D WAVEFORMS (Measured data sampled at 50 kHz) 51000 packets of 144 samples from 2020-02-13T08:25:16.637.999. Part 41/147

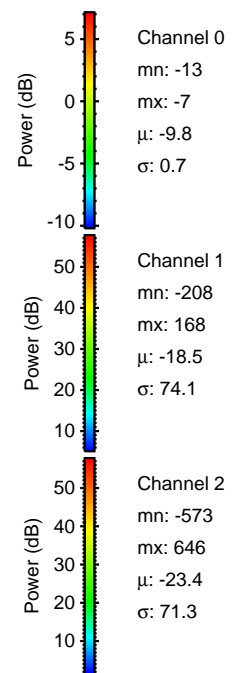
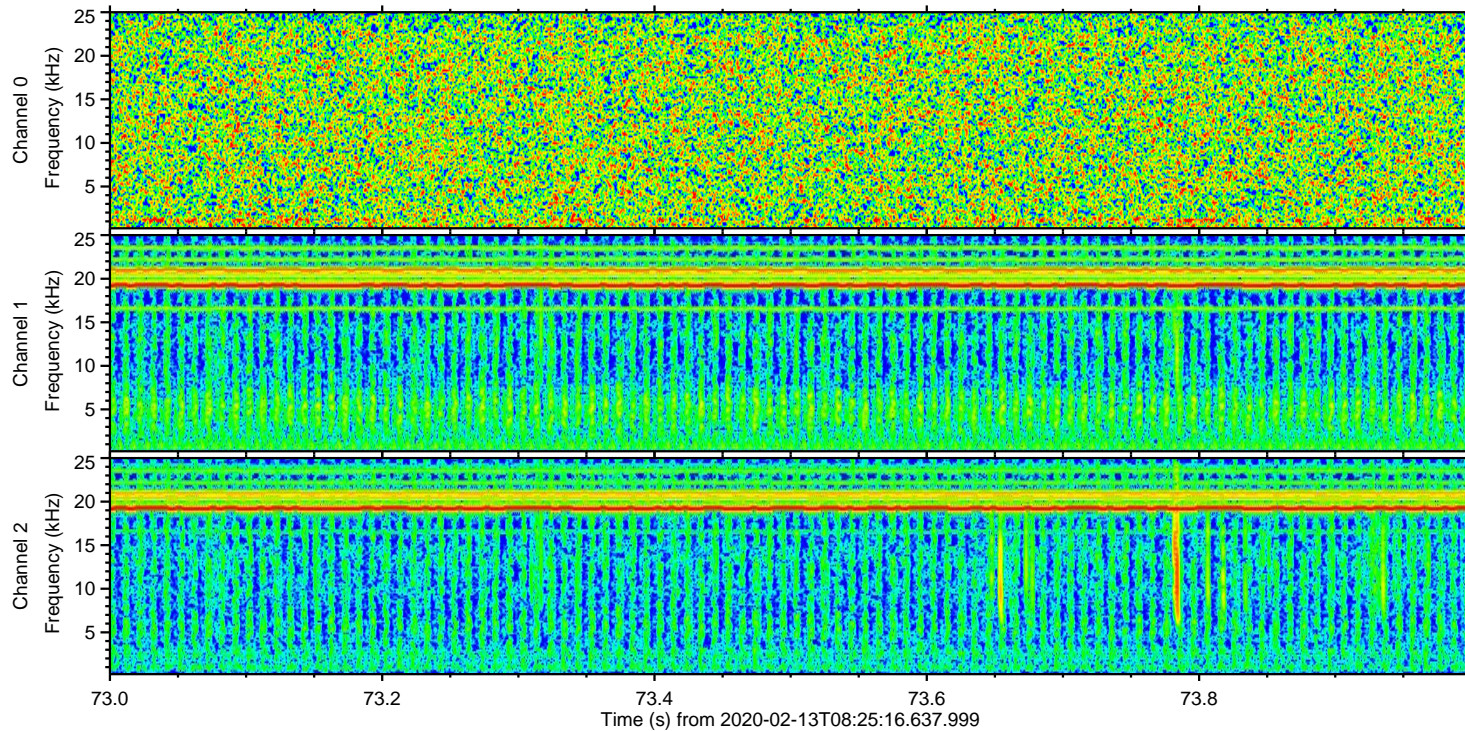
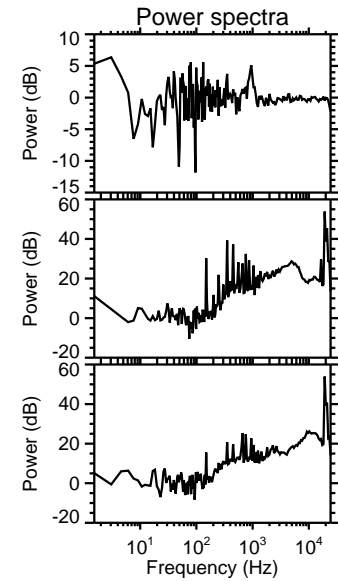
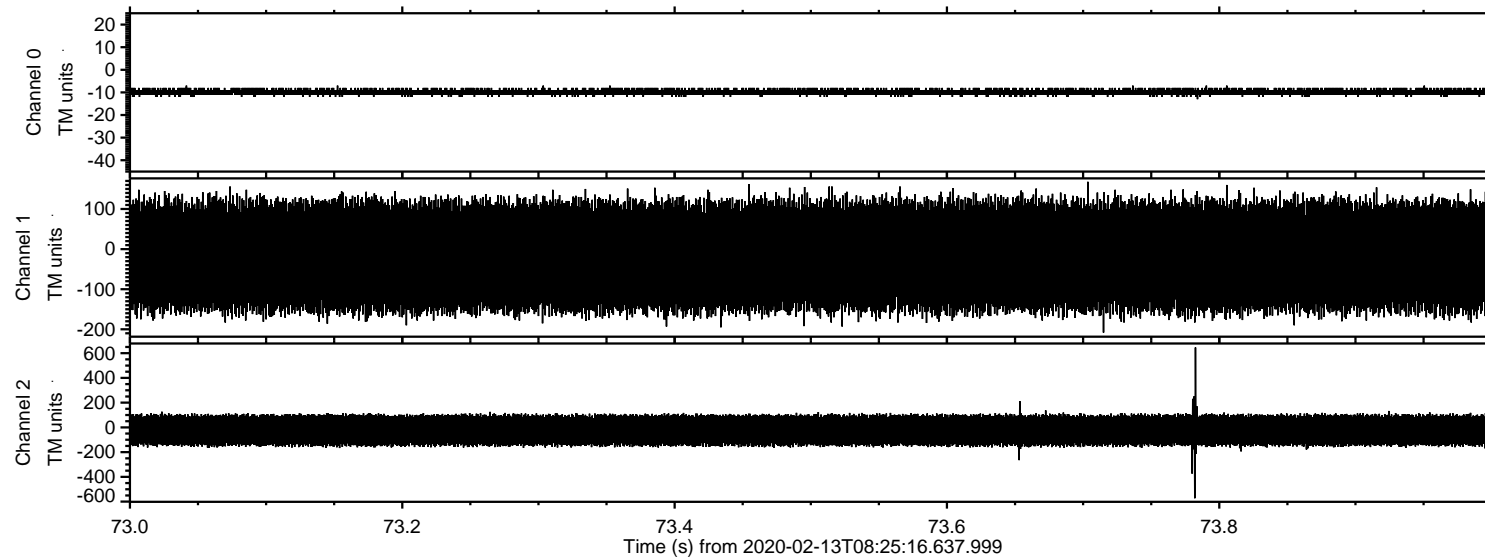
Processed Thu Feb 13 09:33:37 2020 by ELM ver.2012-10-06 from 001\_\_elm20200213\_082515\_\_dat00.bin





# ELMAVAN 3D WAVEFORMS (Measured data sampled at 50 kHz) 51000 packets of 144 samples from 2020-02-13T08:25:16.637.999. Part 74/147

Processed Thu Feb 13 09:33:38 2020 by ELM ver.2012-10-06 from 001\_\_elm20200213\_082515\_\_dat00.bin





# ELMAVAN 3D WAVEFORMS (Measured data sampled at 50 kHz) 51000 packets of 144 samples from 2020-02-13T08:25:16.637.999. Part 34/147

Processed Thu Feb 13 09:33:38 2020 by ELM ver.2012-10-06 from 001\_\_elm20200213\_082515\_\_dat00.bin

