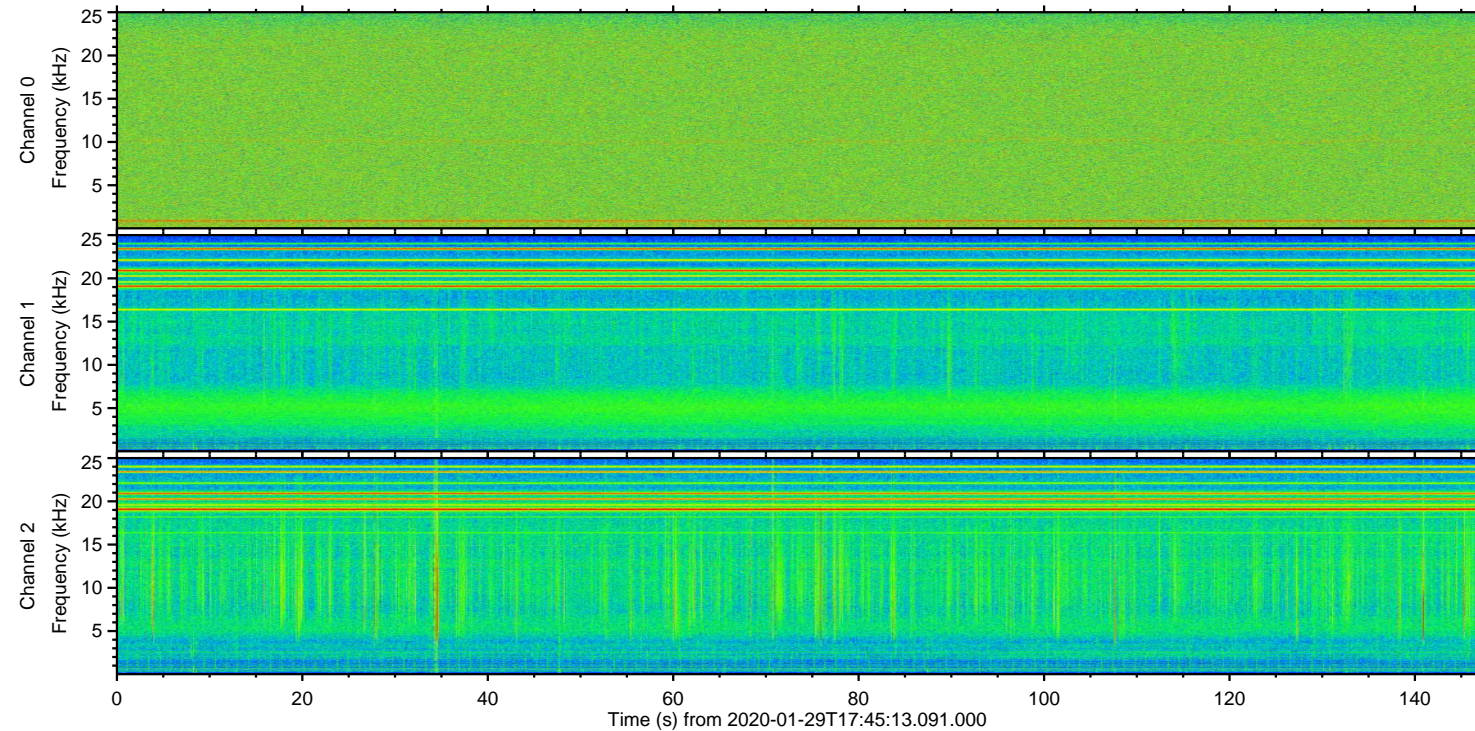
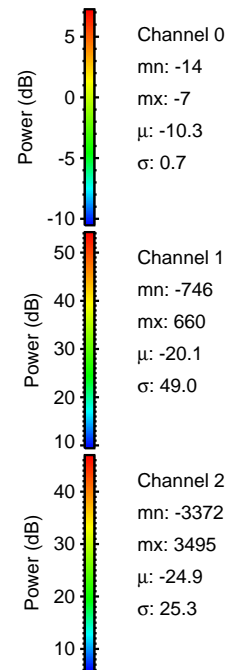
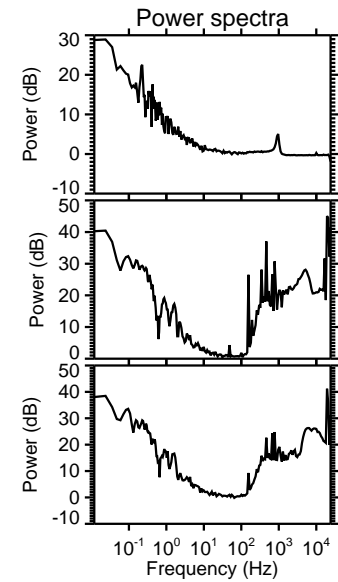
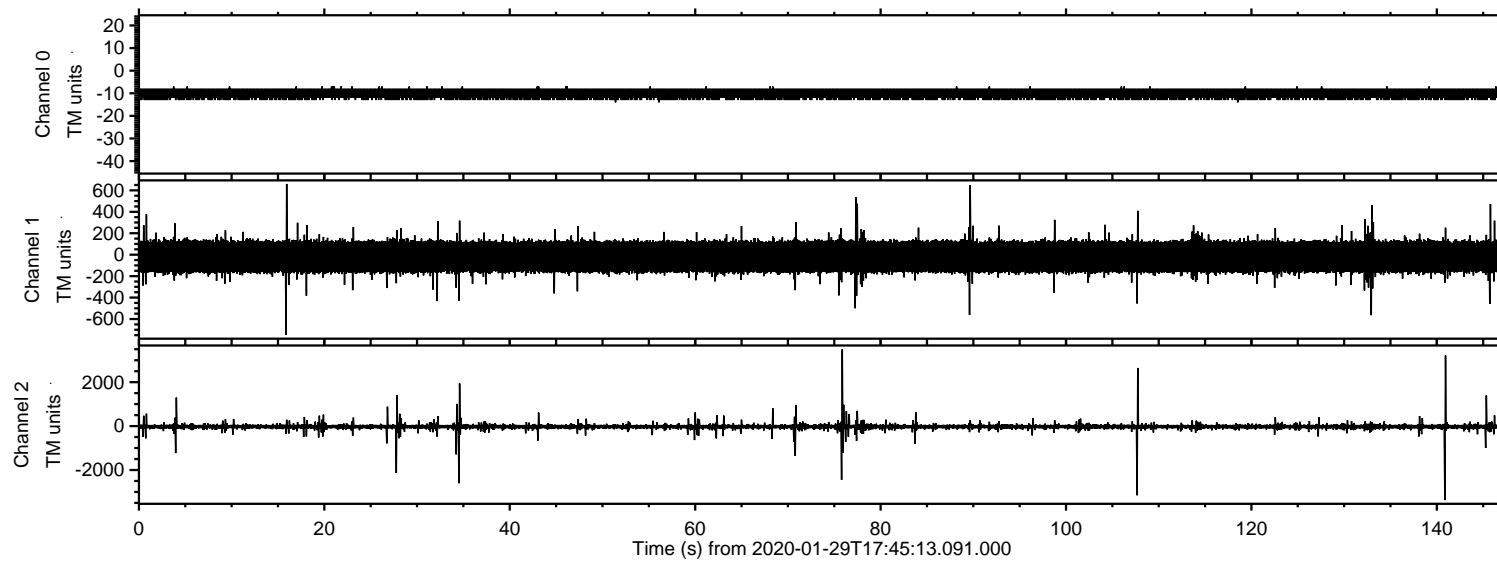


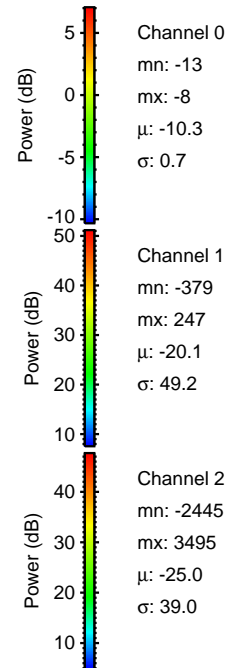
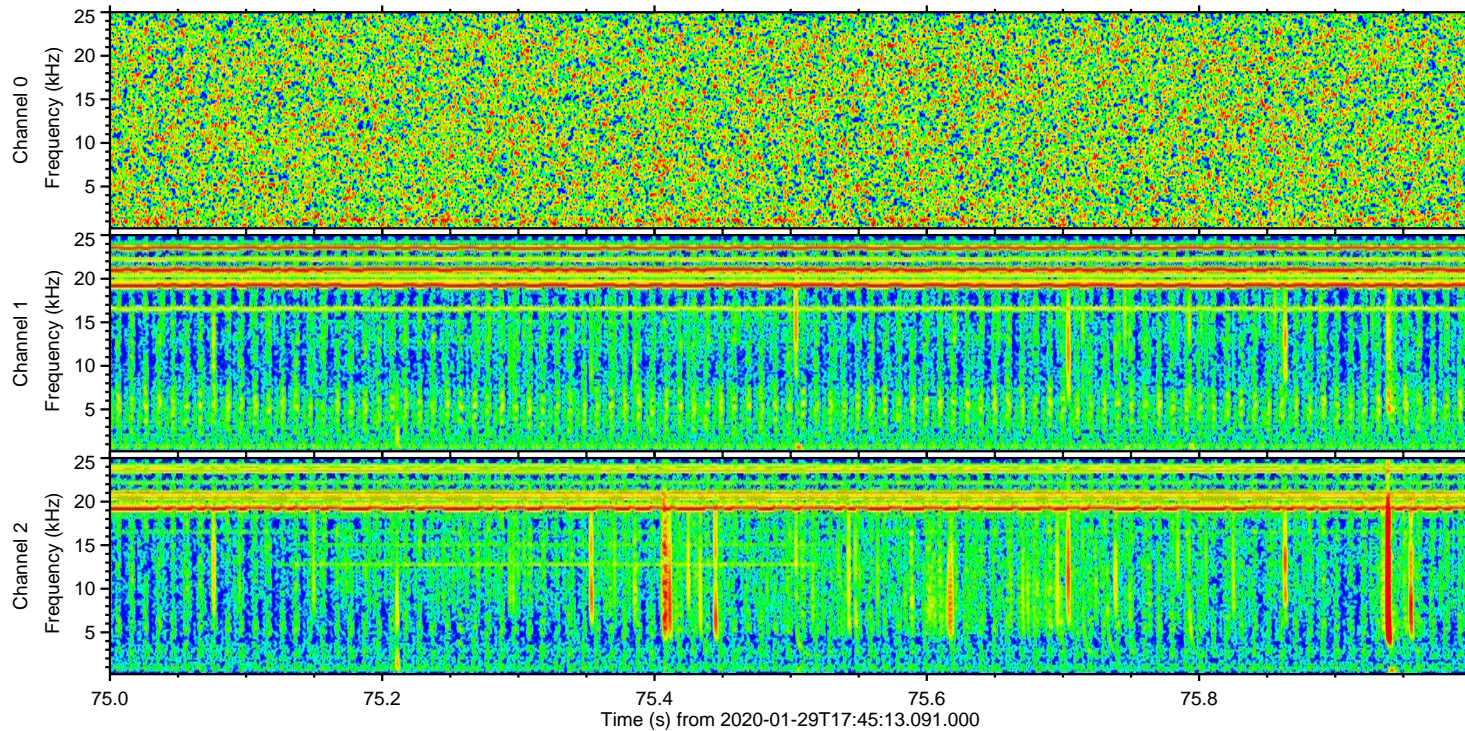
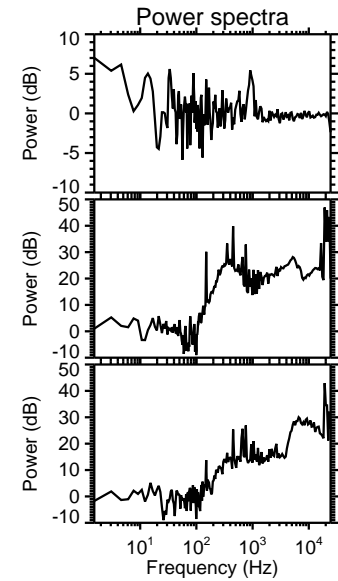
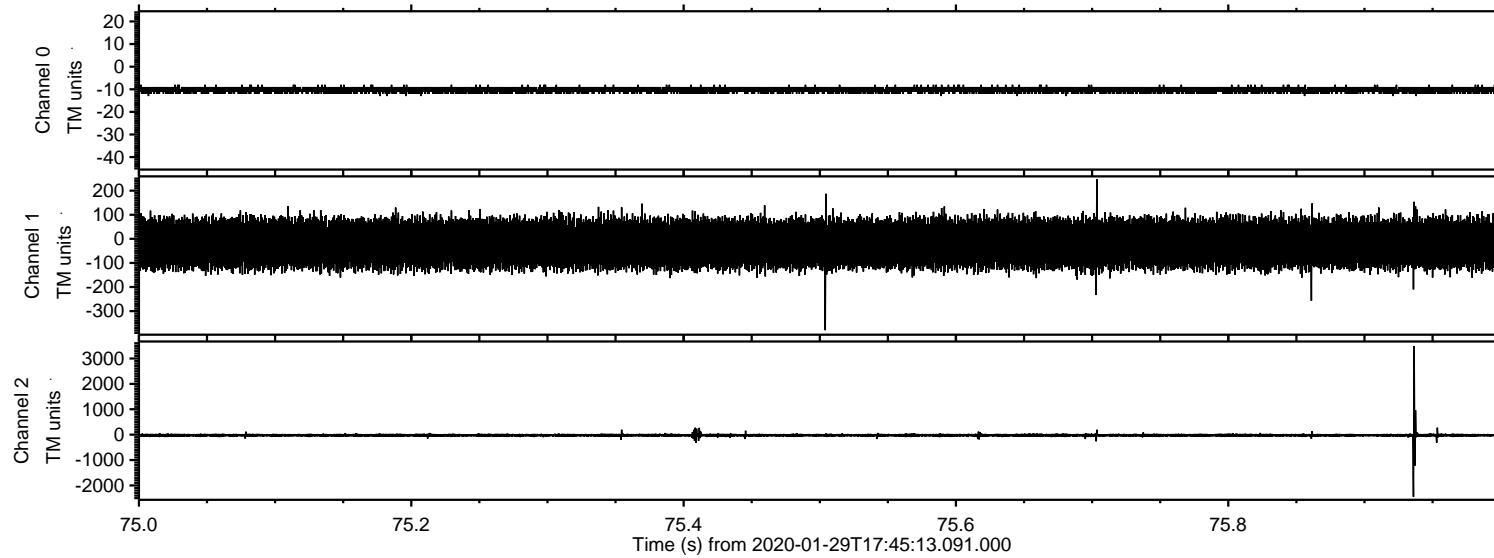
ELMAVAN 3D WAVEFORMS (Measured data sampled at 50 kHz) 51000 packets of 144 samples from 2020-01-29T17:45:13.091.000.

Processed Wed Jan 29 18:52:42 2020 by ELM ver.2012-10-06 from 001__elm20200129_174512__dat00.bin



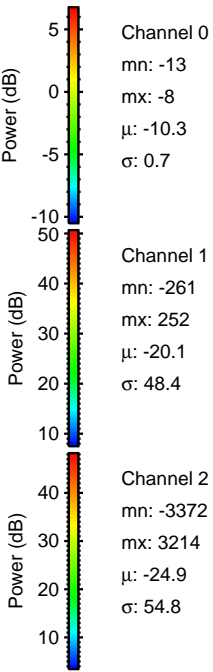
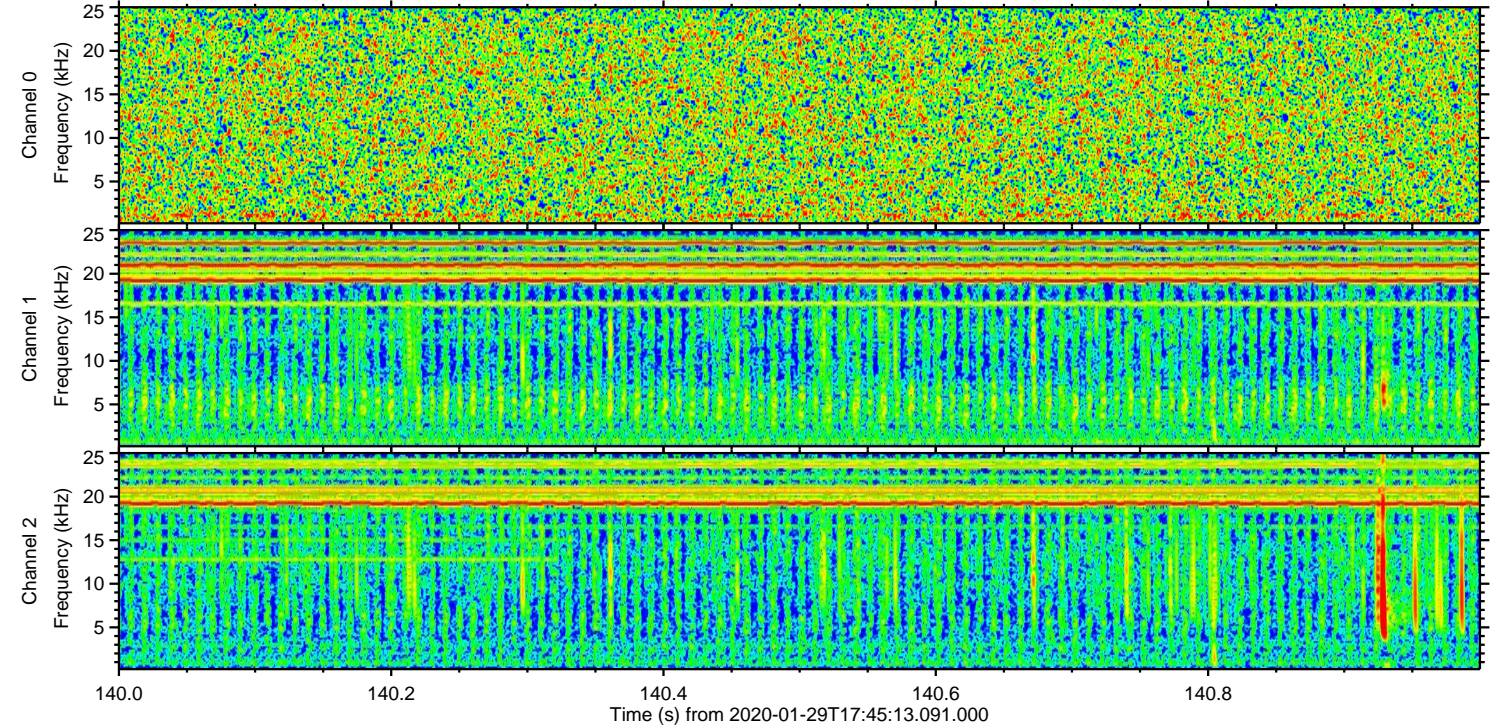
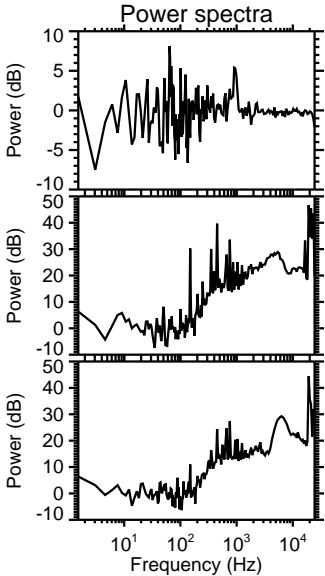
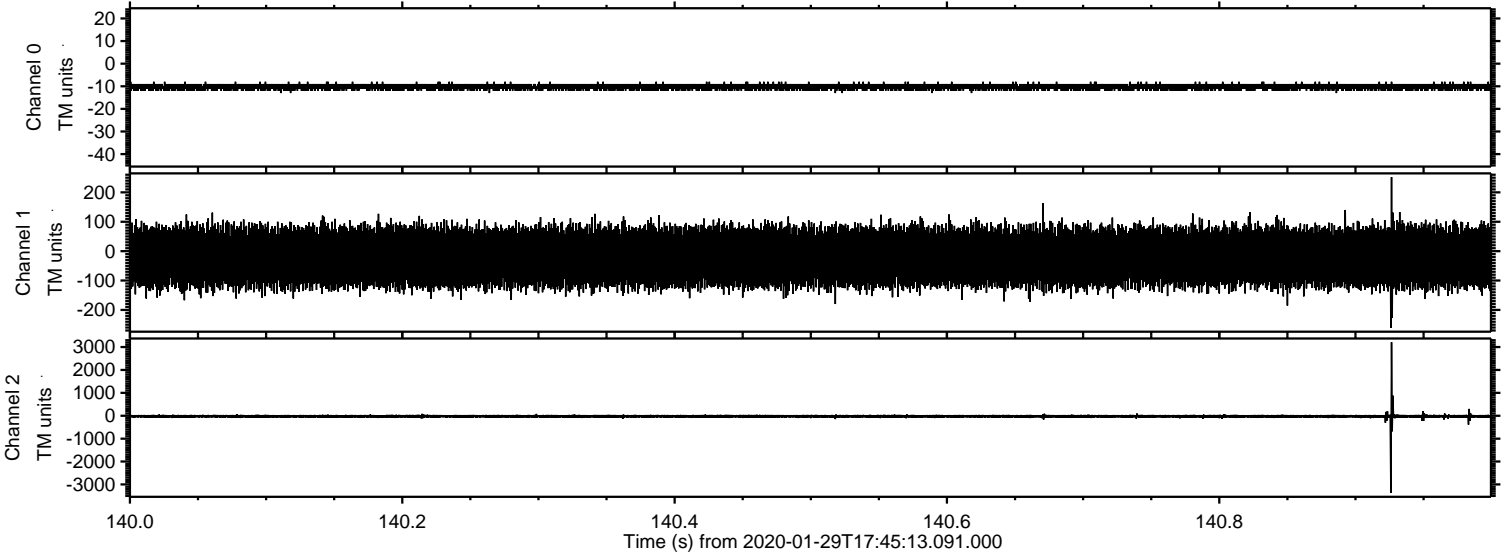
ELMAVAN 3D WAVEFORMS (Measured data sampled at 50 kHz) 51000 packets of 144 samples from 2020-01-29T17:45:13.091.000. Part 76/147

Processed Wed Jan 29 18:52:49 2020 by ELM ver.2012-10-06 from 001__elm20200129_174512__dat00.bin



ELMAVAN 3D WAVEFORMS (Measured data sampled at 50 kHz) 51000 packets of 144 samples from 2020-01-29T17:45:13.091.000. Part 141/147

Processed Wed Jan 29 18:52:50 2020 by ELM ver.2012-10-06 from 001__elm20200129_174512__dat00.bin



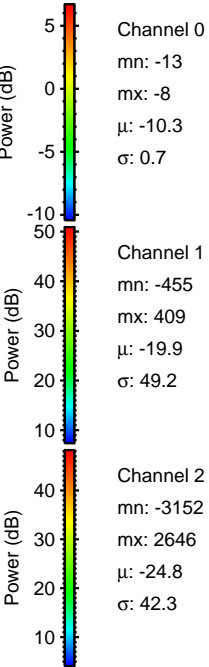
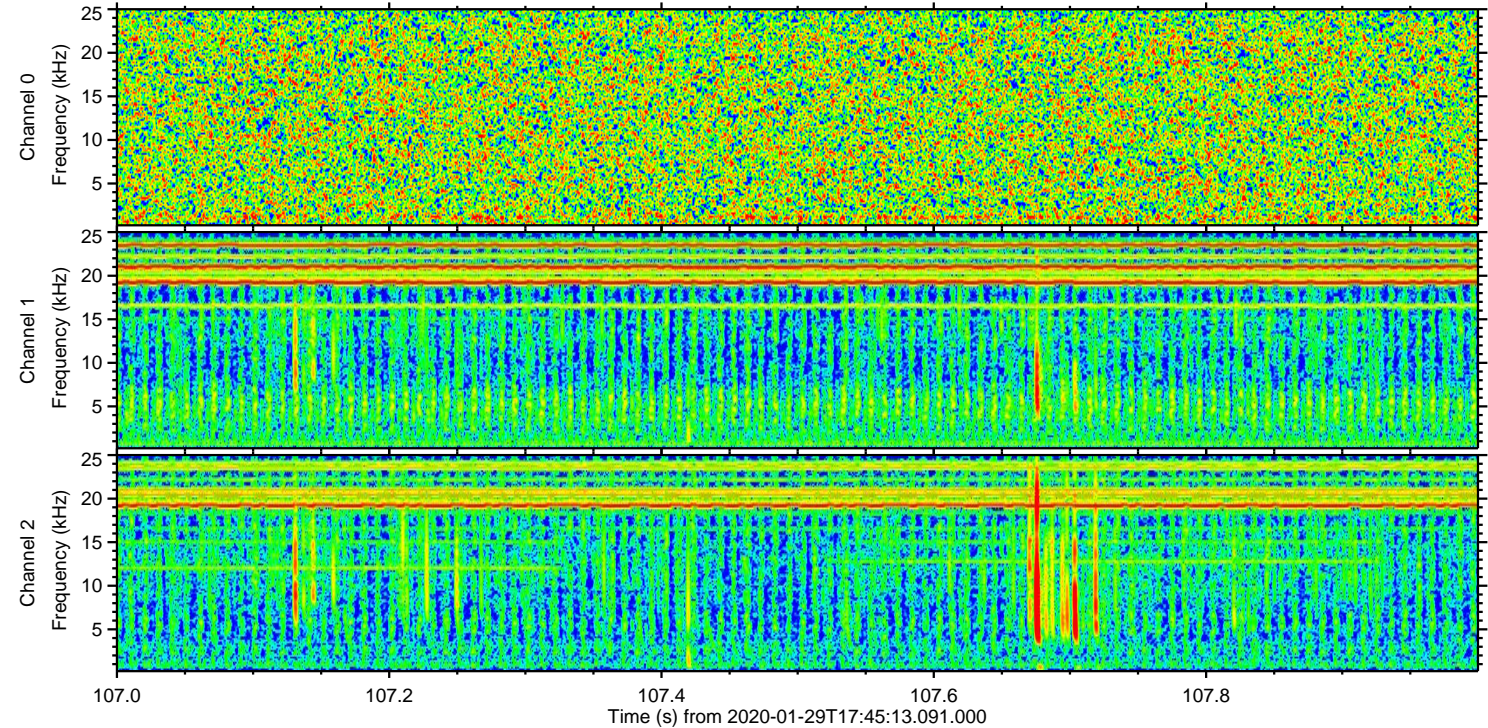
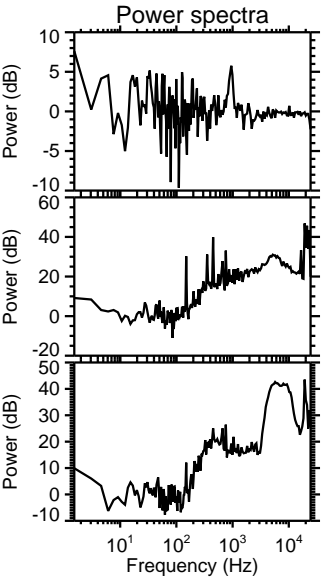
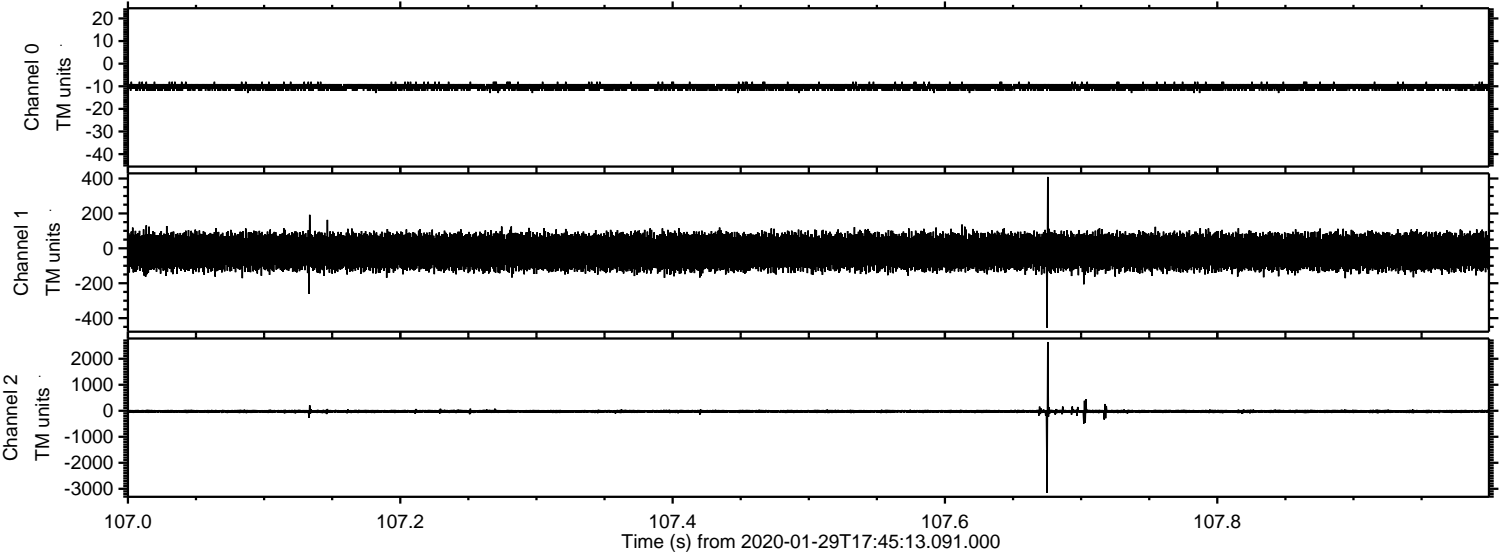
Channel 0
mn: -13
mx: -8
 μ : -10.3
 σ : 0.7

Channel 1
mn: -261
mx: 252
 μ : -20.1
 σ : 48.4

Channel 2
mn: -3372
mx: 3214
 μ : -24.9
 σ : 54.8

ELMAVAN 3D WAVEFORMS (Measured data sampled at 50 kHz) 51000 packets of 144 samples from 2020-01-29T17:45:13.091.000. Part 108/147

Processed Wed Jan 29 18:52:50 2020 by ELM ver.2012-10-06 from 001__elm20200129_174512__dat00.bin



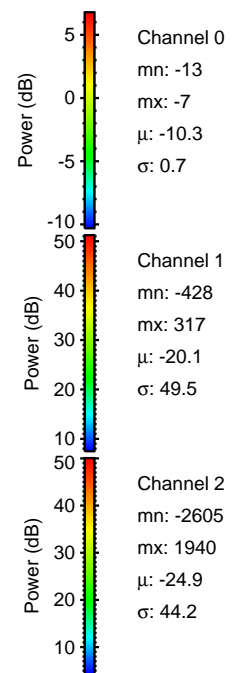
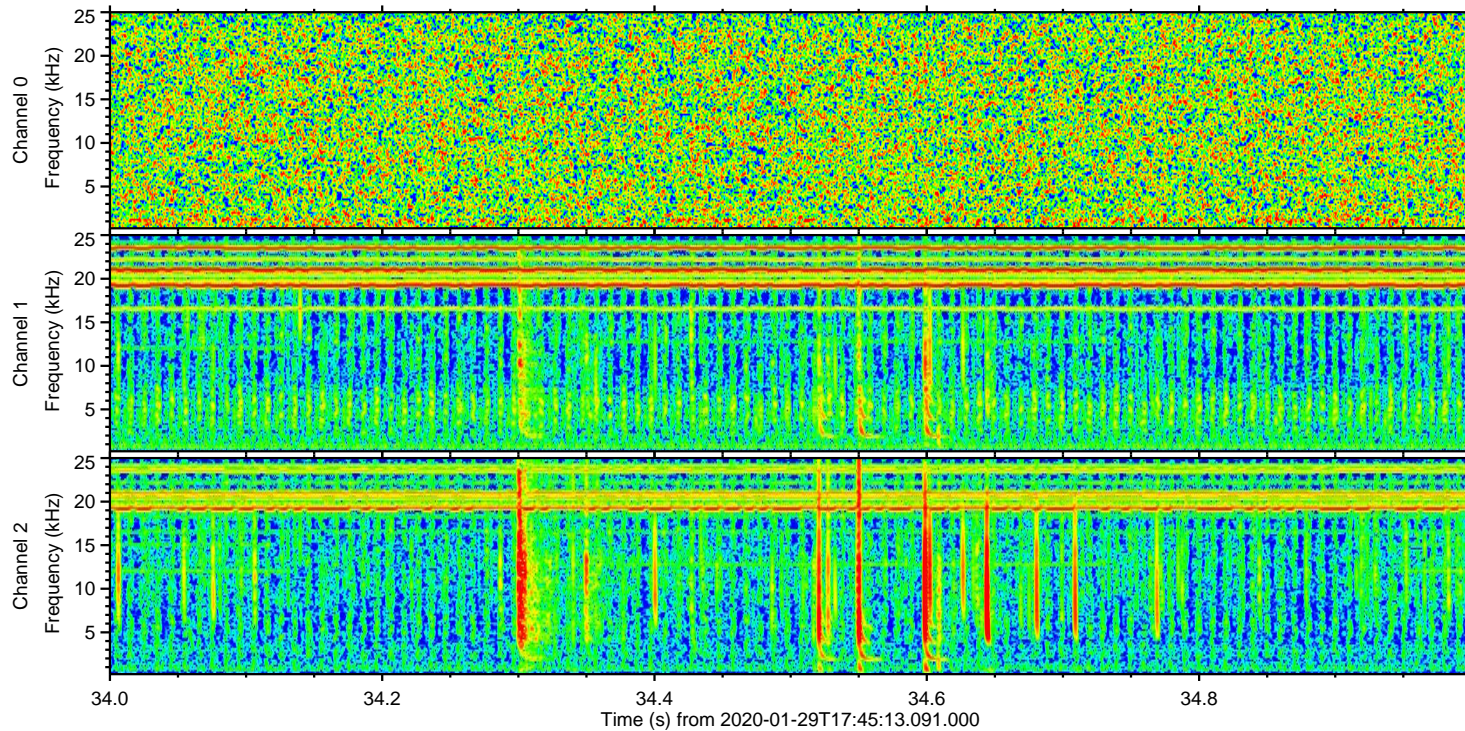
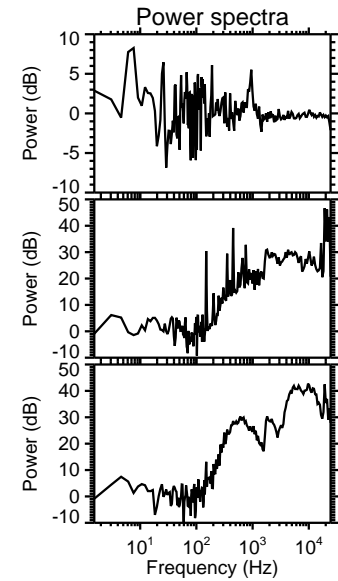
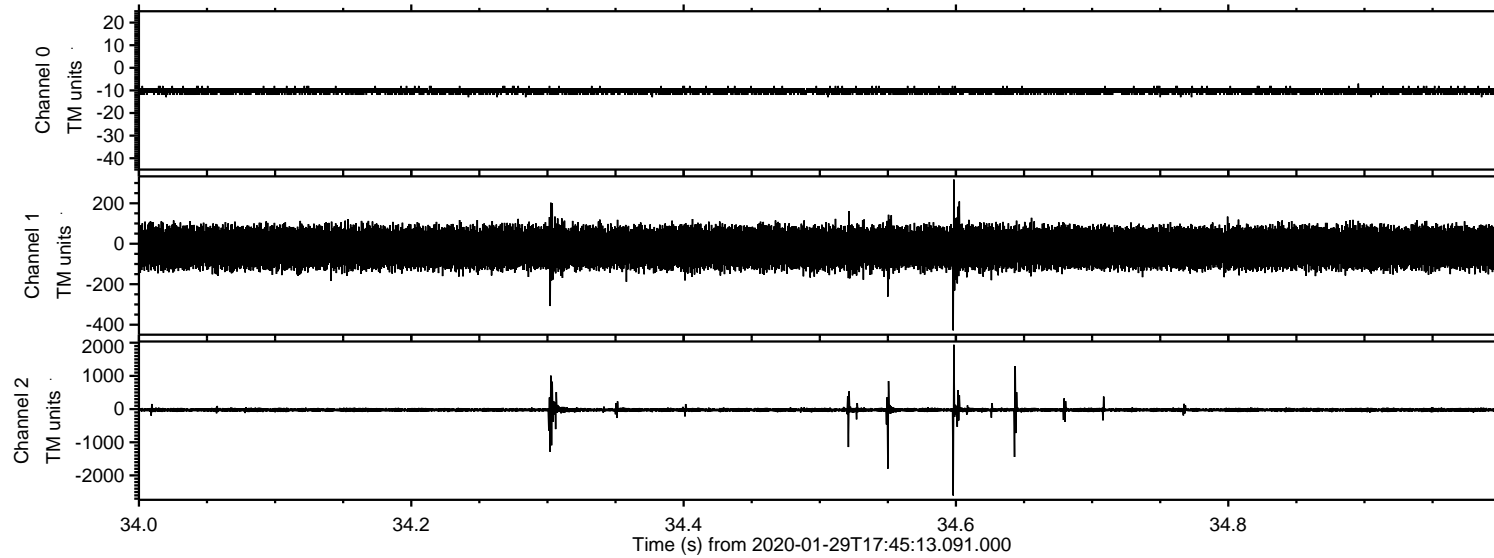
Channel 0
mn: -13
mx: -8
 μ : -10.3
 σ : 0.7

Channel 1
mn: -455
mx: 409
 μ : -19.9
 σ : 49.2

Channel 2
mn: -3152
mx: 2646
 μ : -24.8
 σ : 42.3

ELMAVAN 3D WAVEFORMS (Measured data sampled at 50 kHz) 51000 packets of 144 samples from 2020-01-29T17:45:13.091.000. Part 35/147

Processed Wed Jan 29 18:52:51 2020 by ELM ver.2012-10-06 from 001__elm20200129_174512__dat00.bin



Power spectra

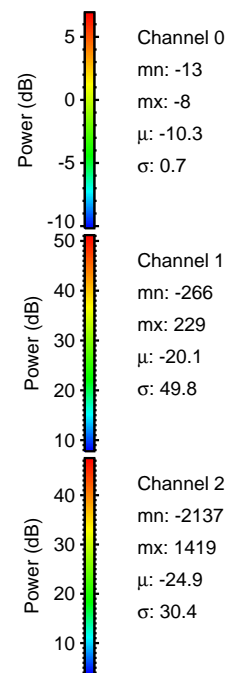
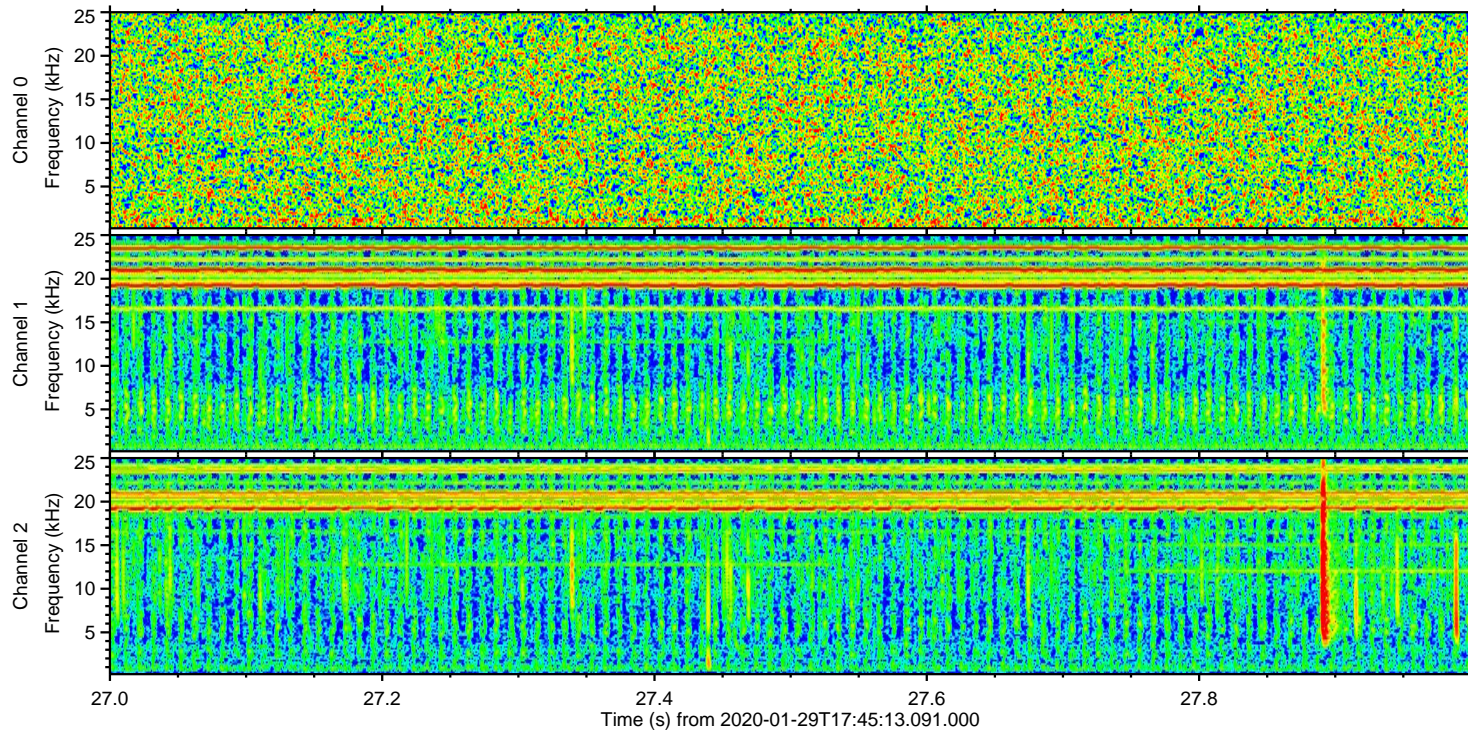
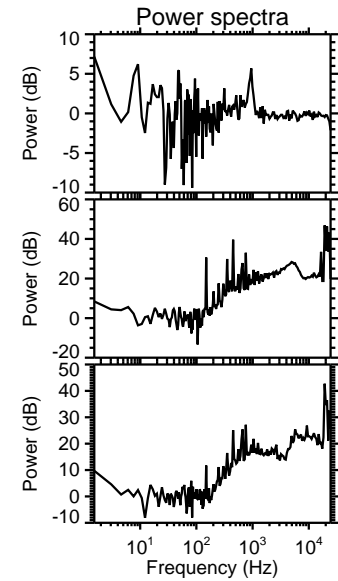
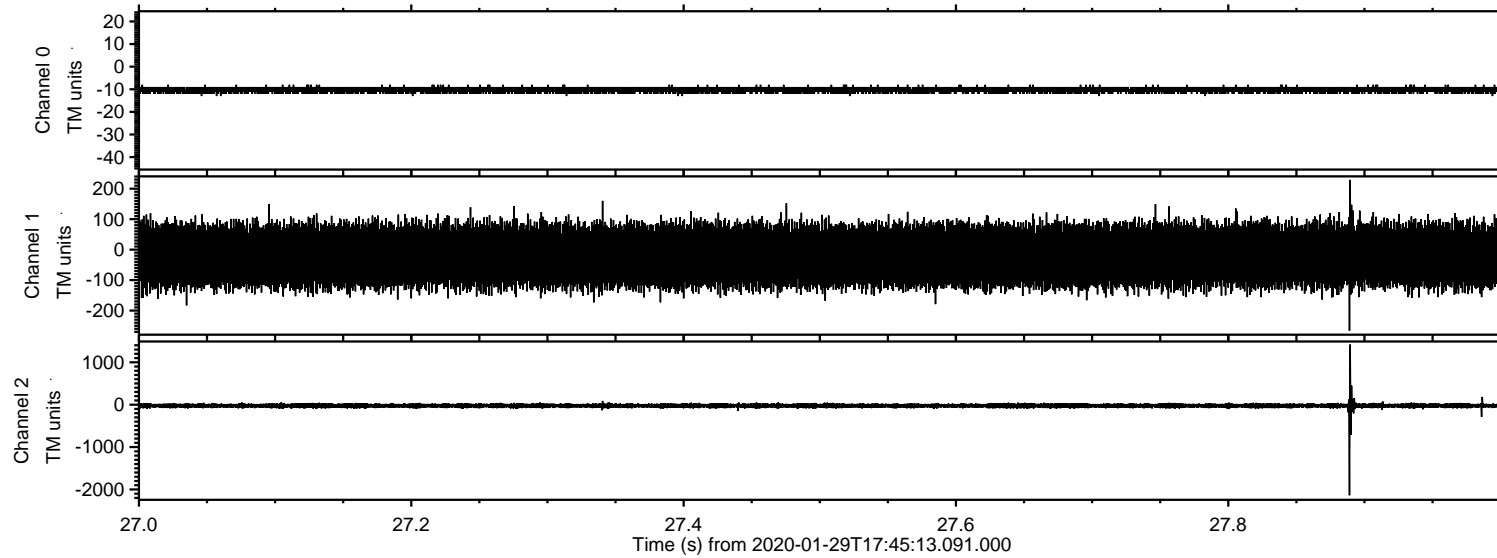
Channel 0
mn: -13
mx: -7
 μ : -10.3
 σ : 0.7

Channel 1
mn: -428
mx: 317
 μ : -20.1
 σ : 49.5

Channel 2
mn: -2605
mx: 1940
 μ : -24.9
 σ : 44.2

ELMAVAN 3D WAVEFORMS (Measured data sampled at 50 kHz) 51000 packets of 144 samples from 2020-01-29T17:45:13.091.000. Part 28/147

Processed Wed Jan 29 18:52:52 2020 by ELM ver.2012-10-06 from 001__elm20200129_174512__dat00.bin

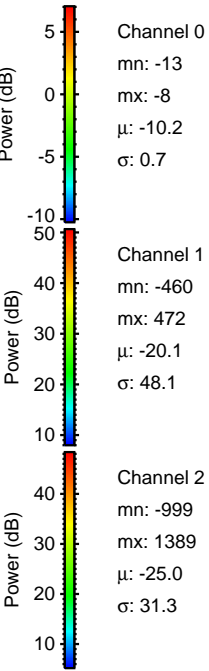
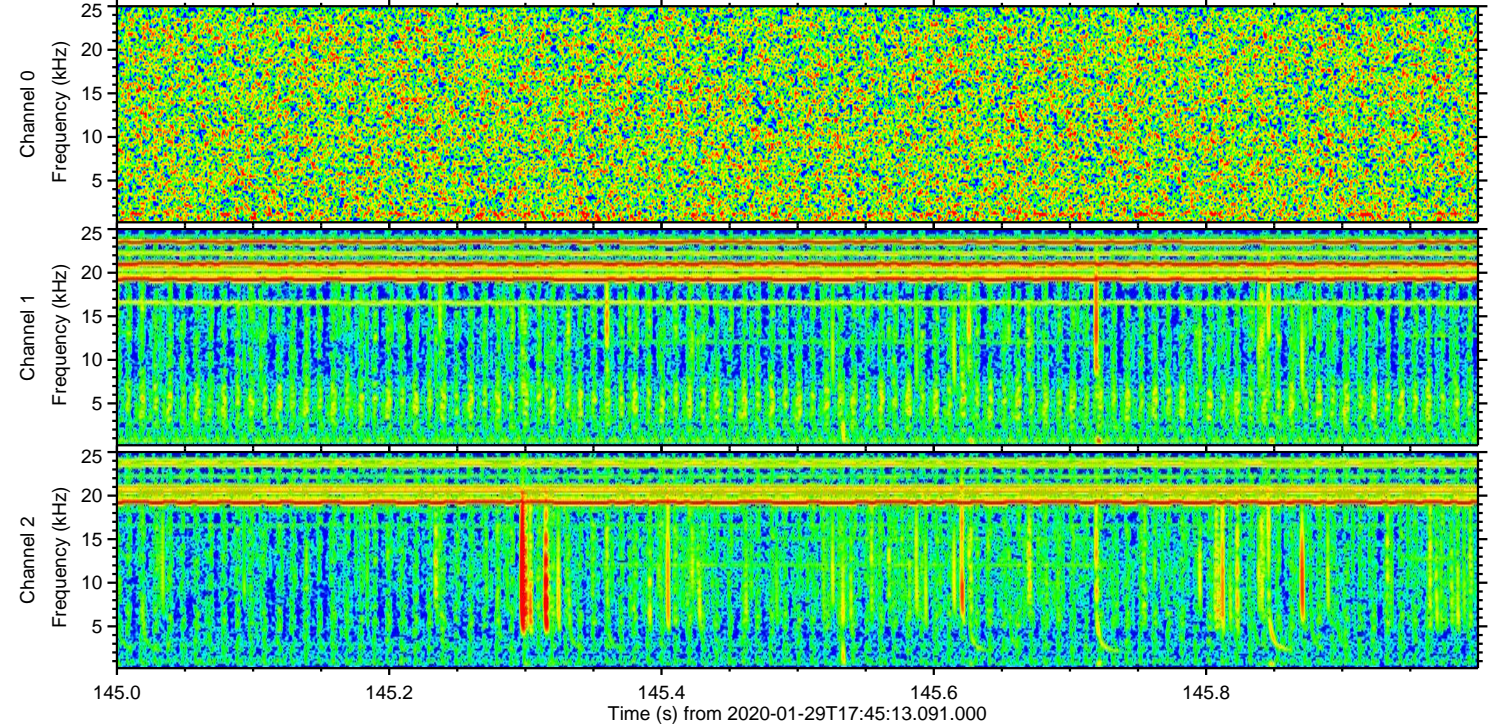
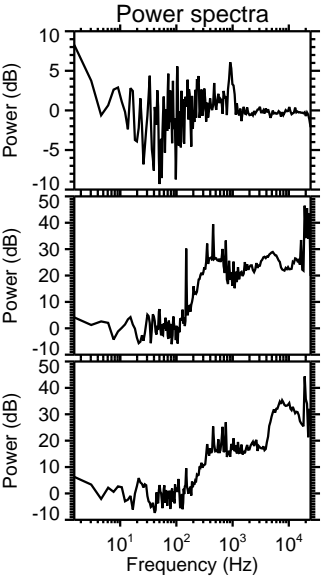
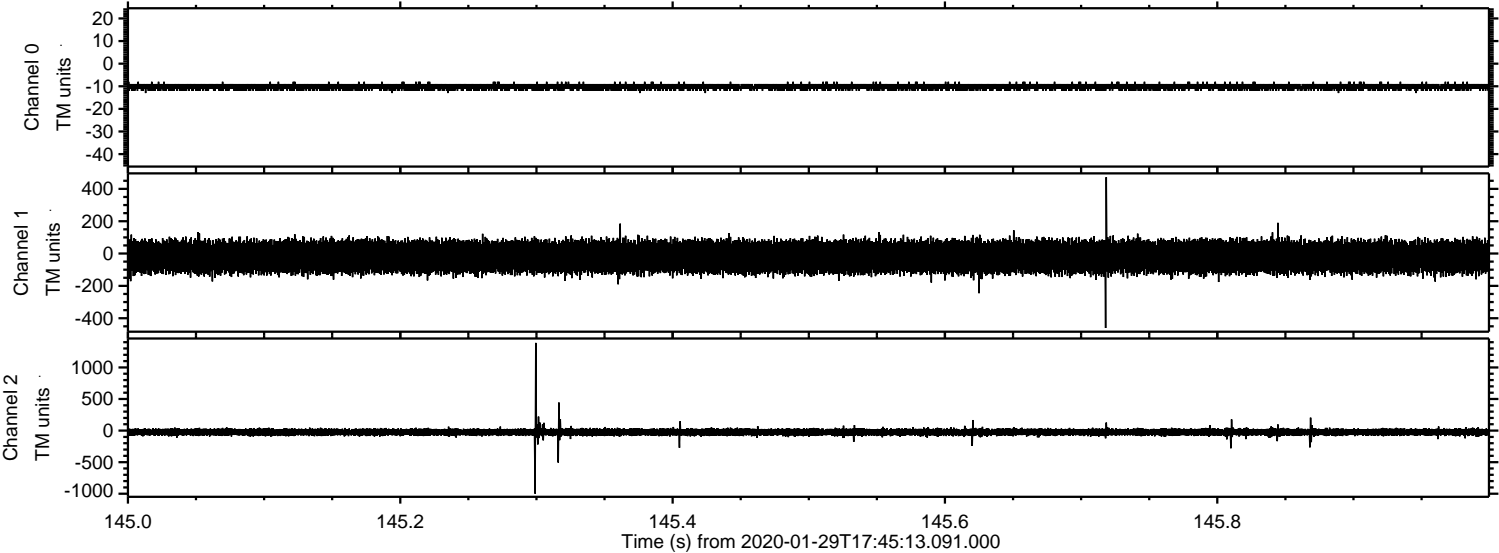


Channel 0
mn: -13
mx: -8
 μ : -10.3
 σ : 0.7

Channel 1
mn: -266
mx: 229
 μ : -20.1
 σ : 49.8

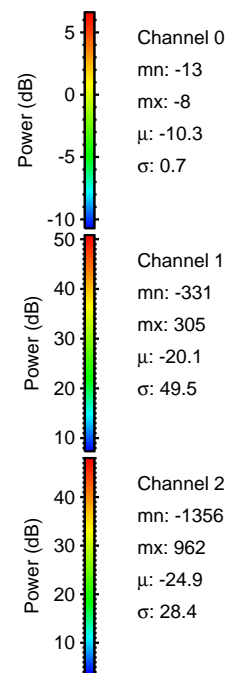
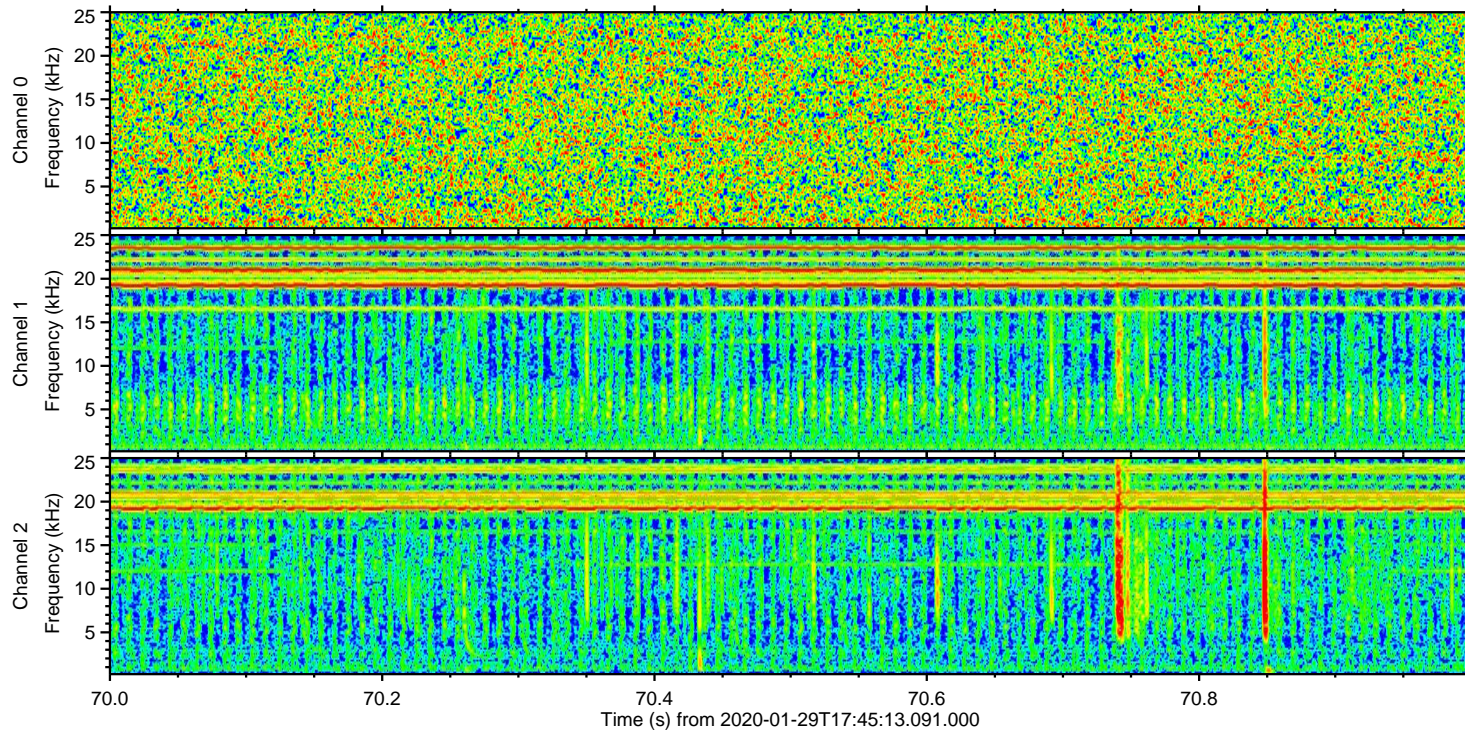
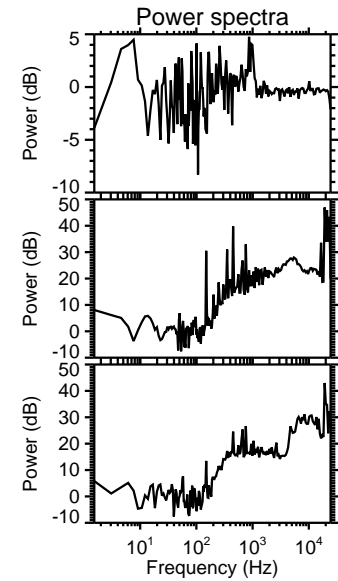
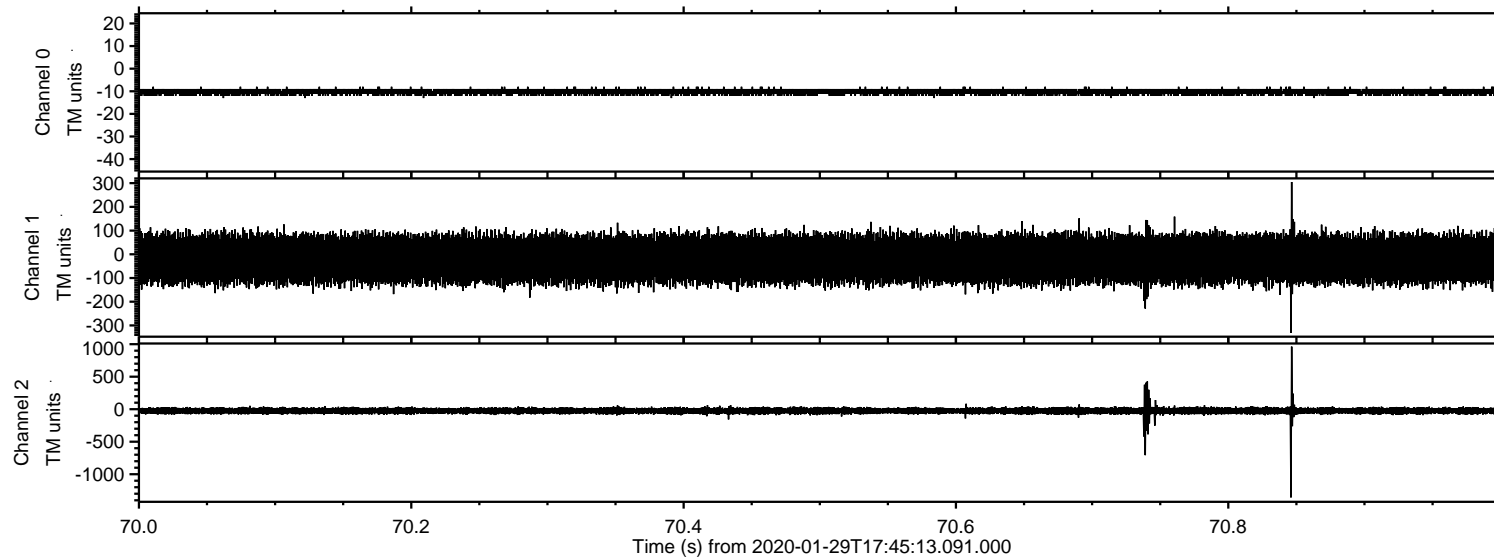
Channel 2
mn: -2137
mx: 1419
 μ : -24.9
 σ : 30.4

Processed Wed Jan 29 18:52:52 2020 by ELM ver.2012-10-06 from 001__elm20200129_174512__dat00.bin



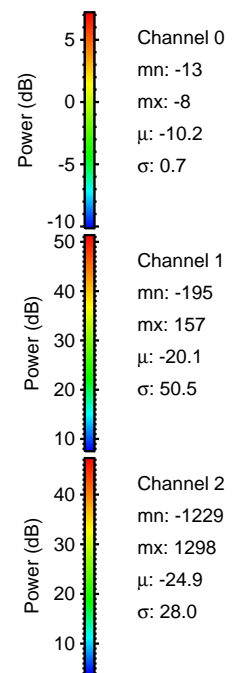
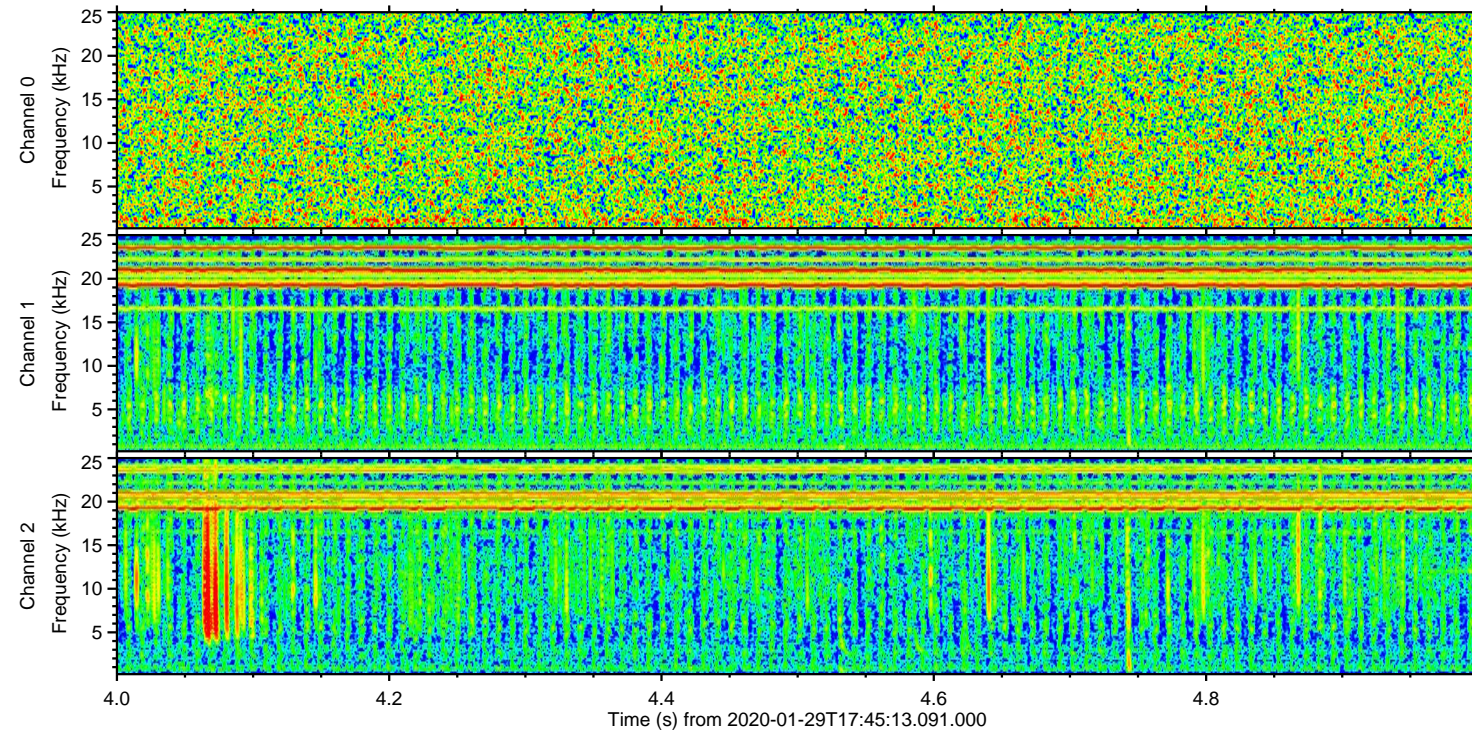
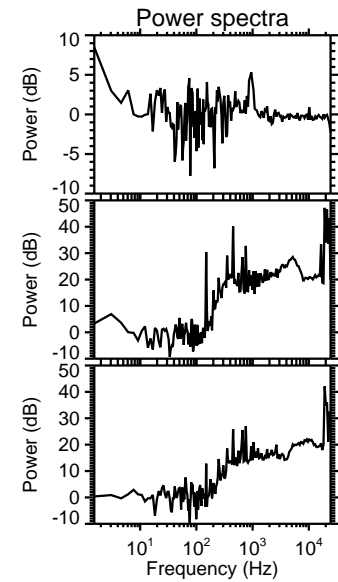
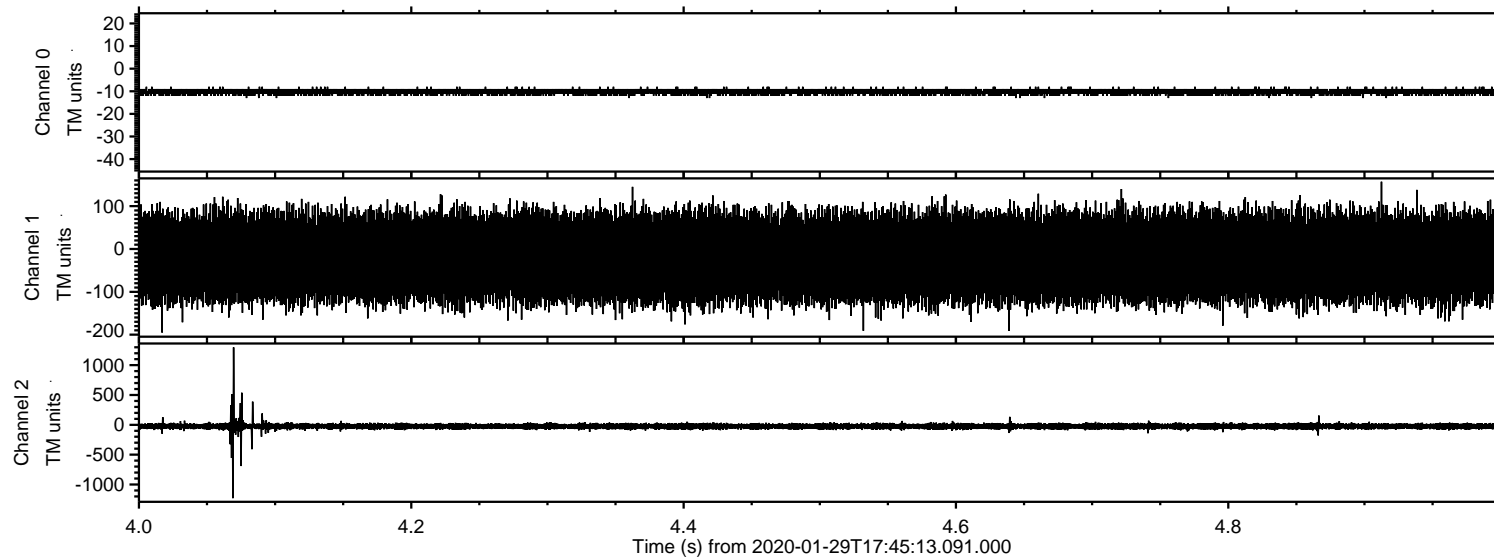
ELMAVAN 3D WAVEFORMS (Measured data sampled at 50 kHz) 51000 packets of 144 samples from 2020-01-29T17:45:13.091.000. Part 71/147

Processed Wed Jan 29 18:52:53 2020 by ELM ver.2012-10-06 from 001__elm20200129_174512__dat00.bin



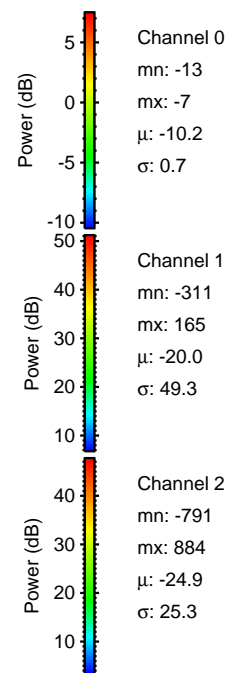
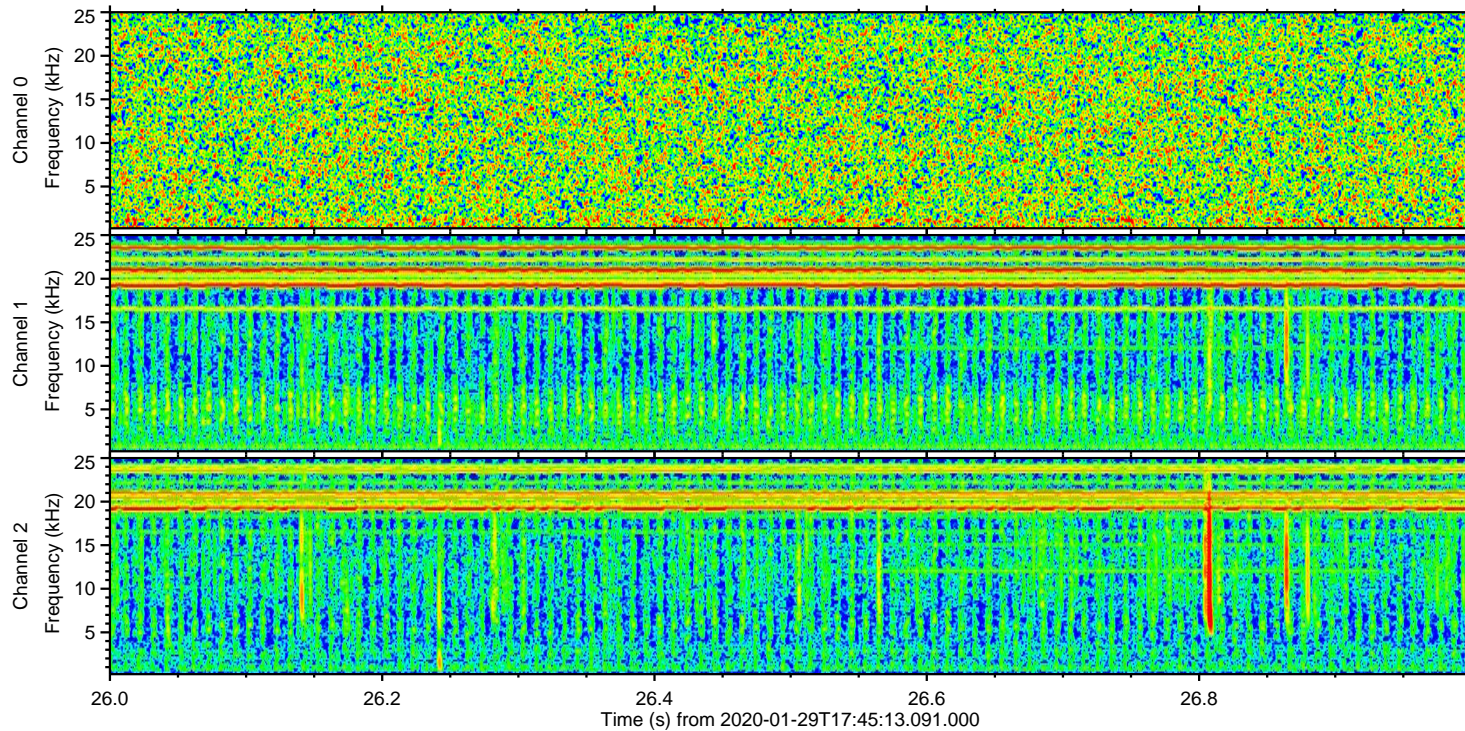
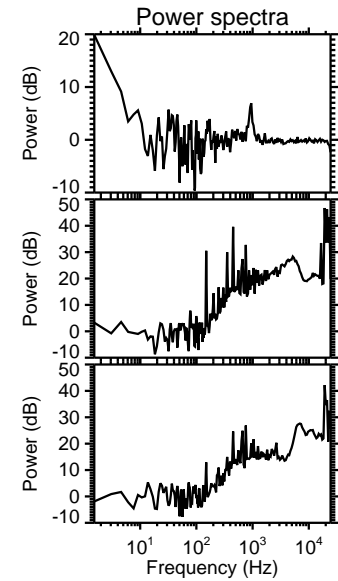
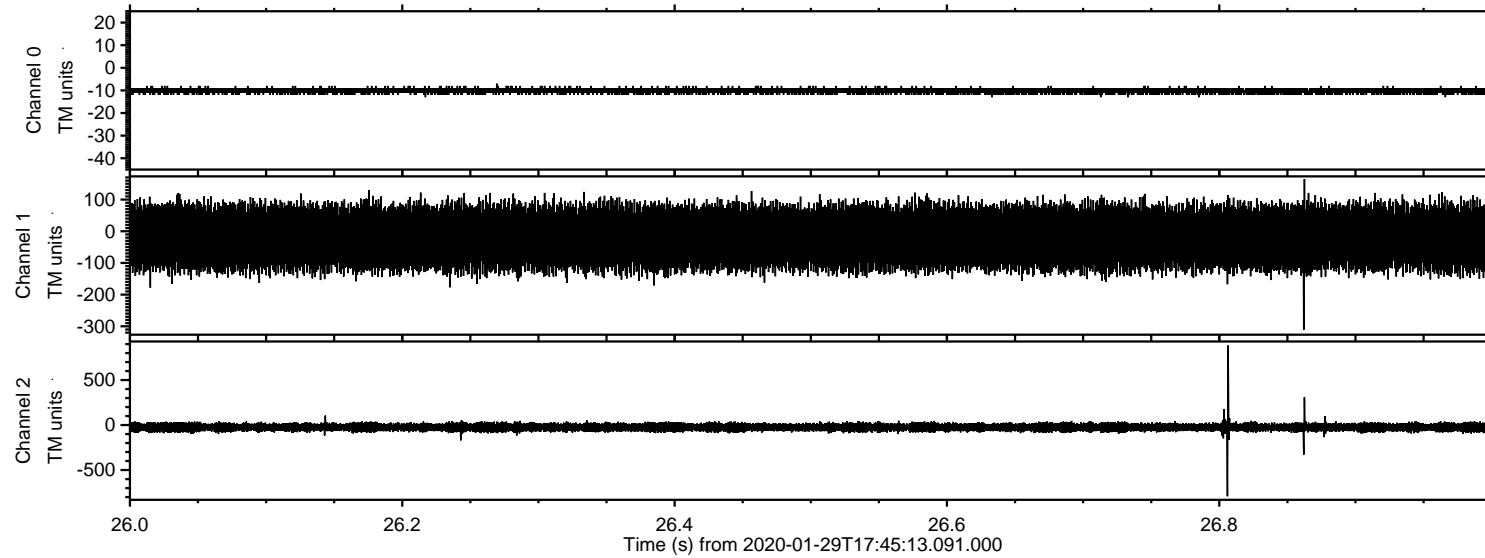
ELMAVAN 3D WAVEFORMS (Measured data sampled at 50 kHz) 51000 packets of 144 samples from 2020-01-29T17:45:13.091.000. Part 5/147

Processed Wed Jan 29 18:52:54 2020 by ELM ver.2012-10-06 from 001__elm20200129_174512__dat00.bin



ELMAVAN 3D WAVEFORMS (Measured data sampled at 50 kHz) 51000 packets of 144 samples from 2020-01-29T17:45:13.091.000. Part 27/147

Processed Wed Jan 29 18:52:54 2020 by ELM ver.2012-10-06 from 001__elm20200129_174512__dat00.bin



ELMAVAN 3D WAVEFORMS (Measured data sampled at 50 kHz) 51000 packets of 144 samples from 2020-01-29T17:45:13.091.000. Part 67/147

Processed Wed Jan 29 18:52:55 2020 by ELM ver.2012-10-06 from 001__elm20200129_174512__dat00.bin

