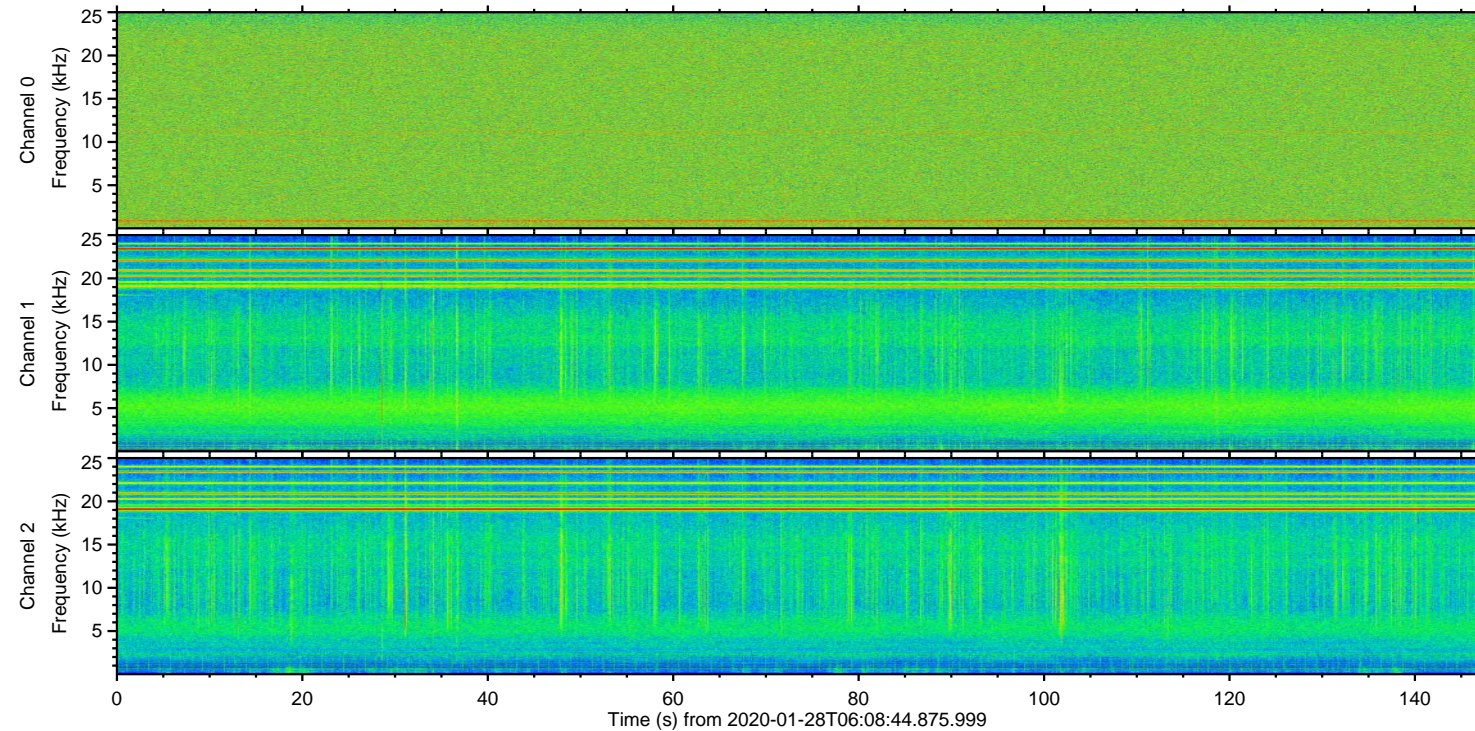
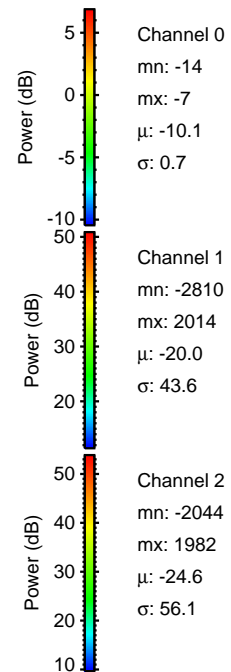
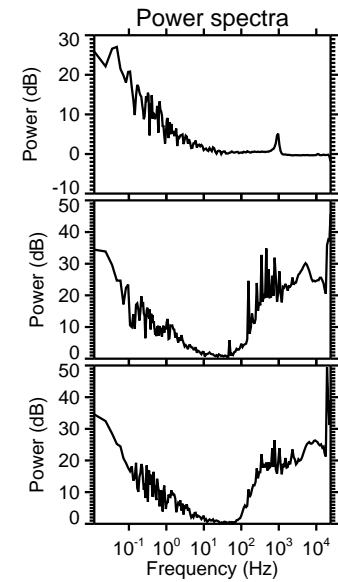
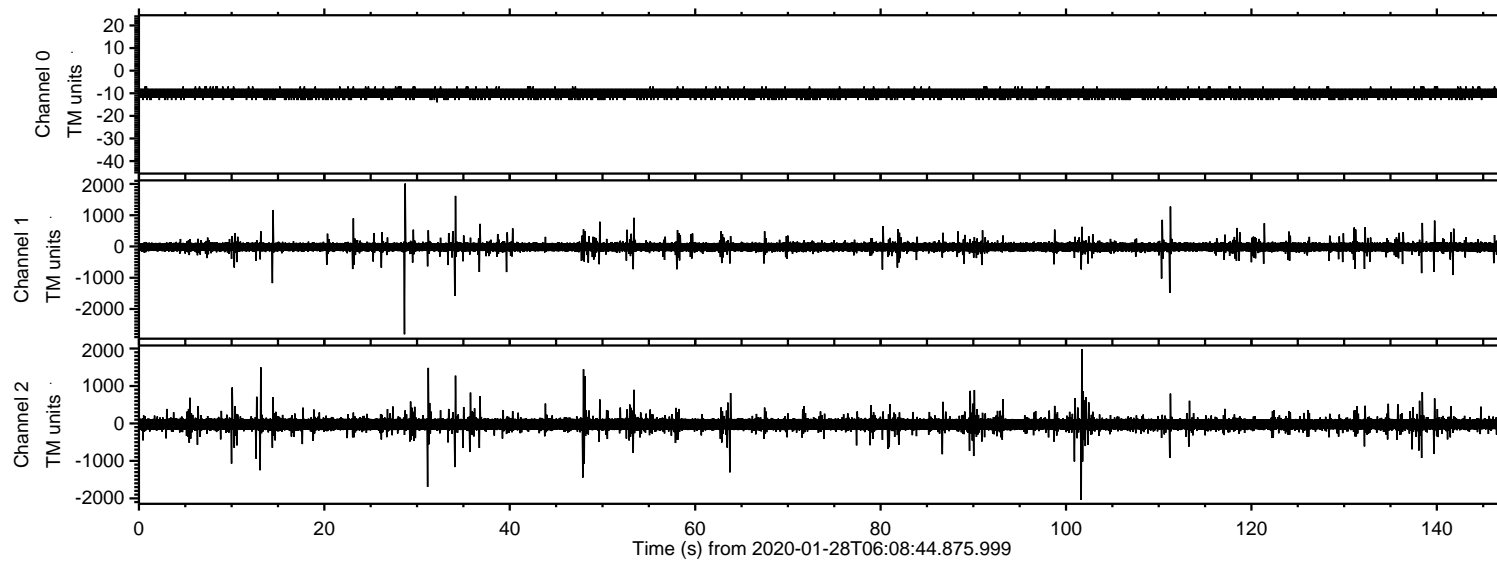


# ELMAVAN 3D WAVEFORMS (Measured data sampled at 50 kHz) 51000 packets of 144 samples from 2020-01-28T06:08:44.875.999.

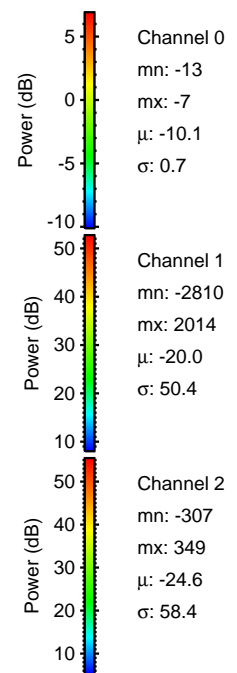
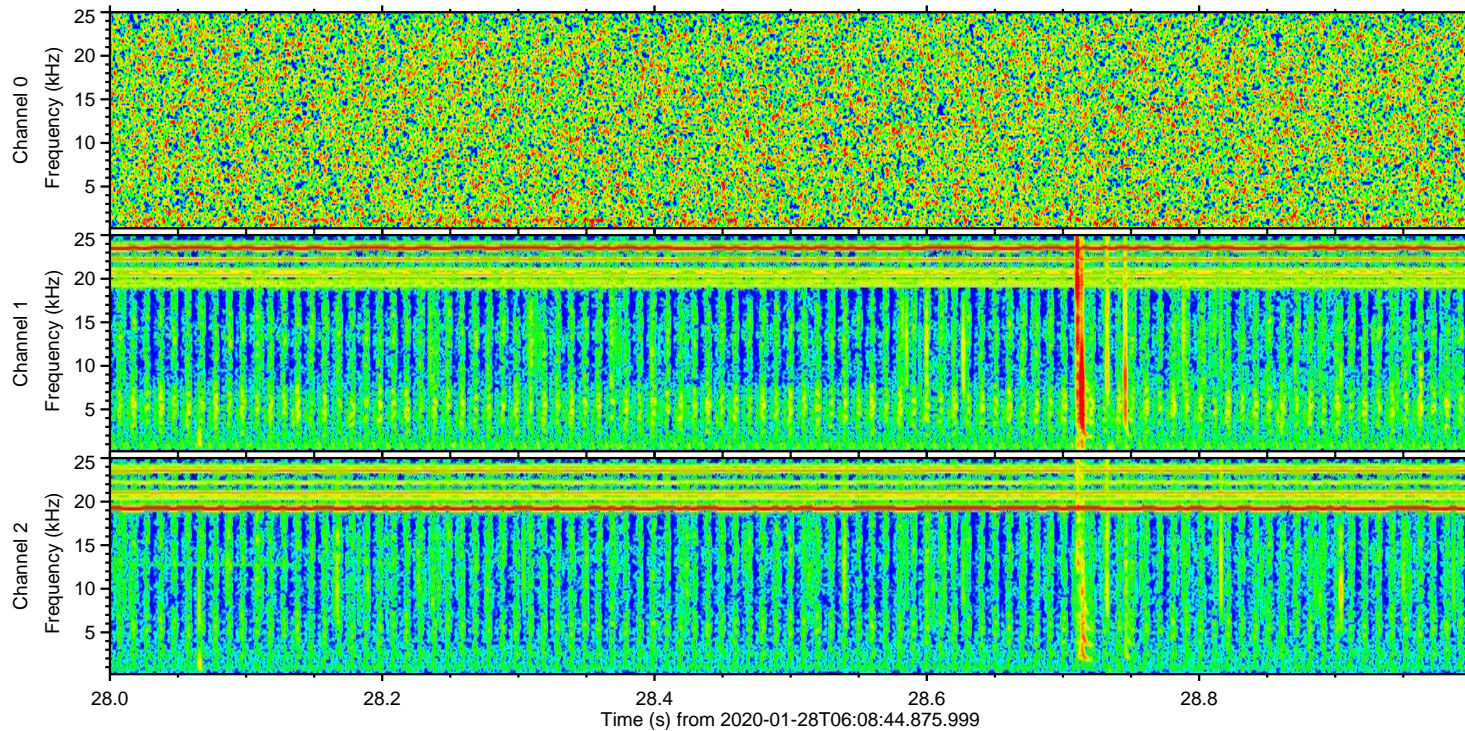
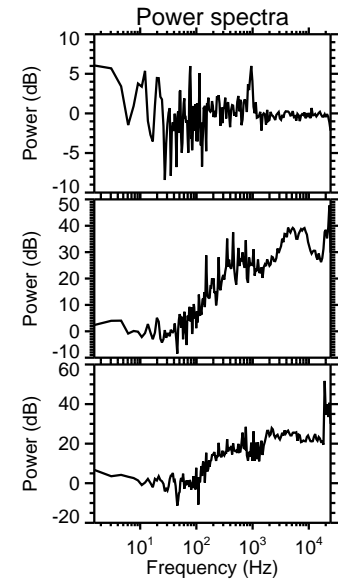
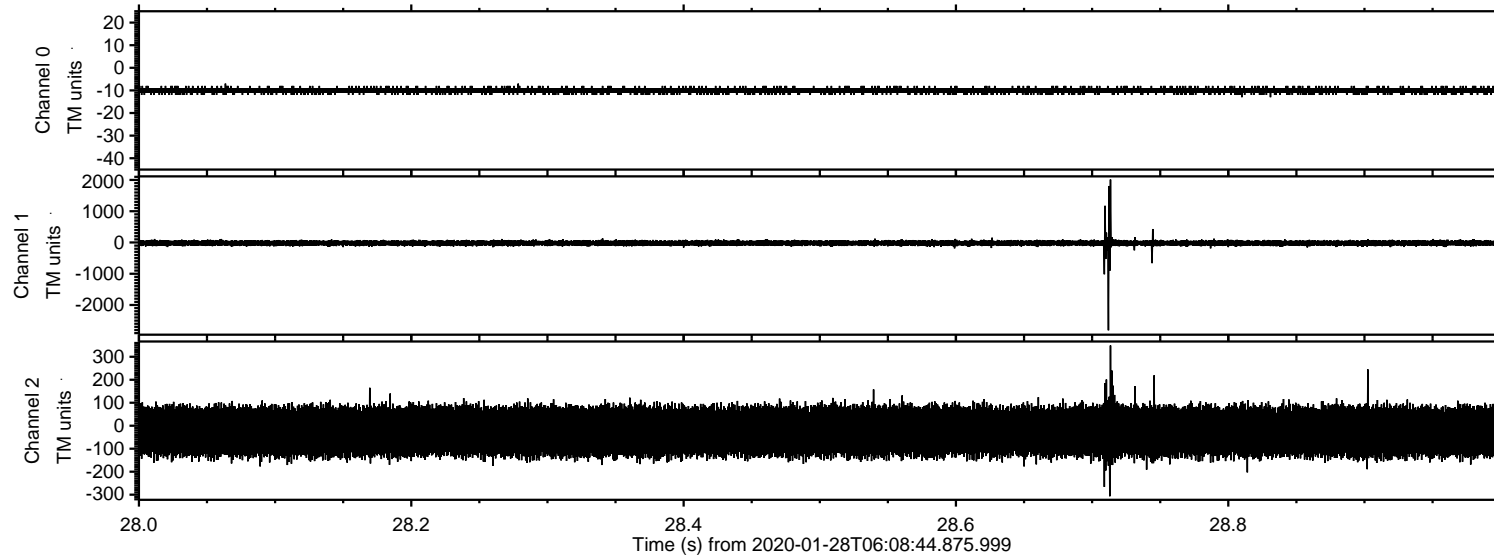
Processed Tue Jan 28 07:16:24 2020 by ELM ver.2012-10-06 from 001\_\_elm20200128\_060843\_\_dat00.bin





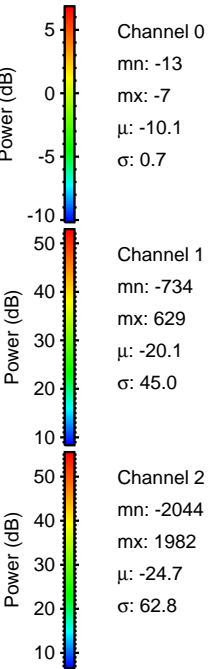
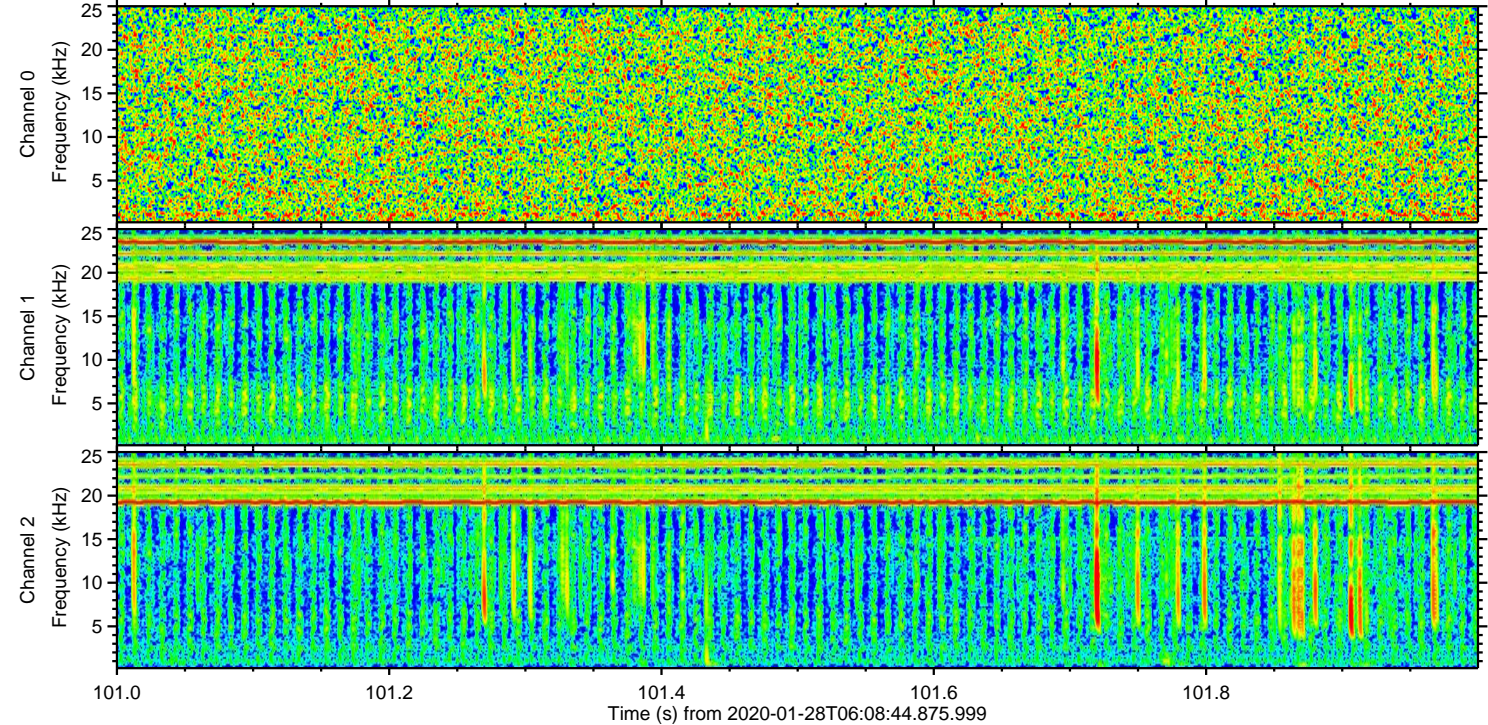
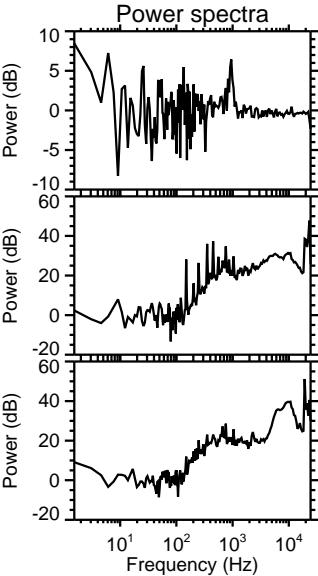
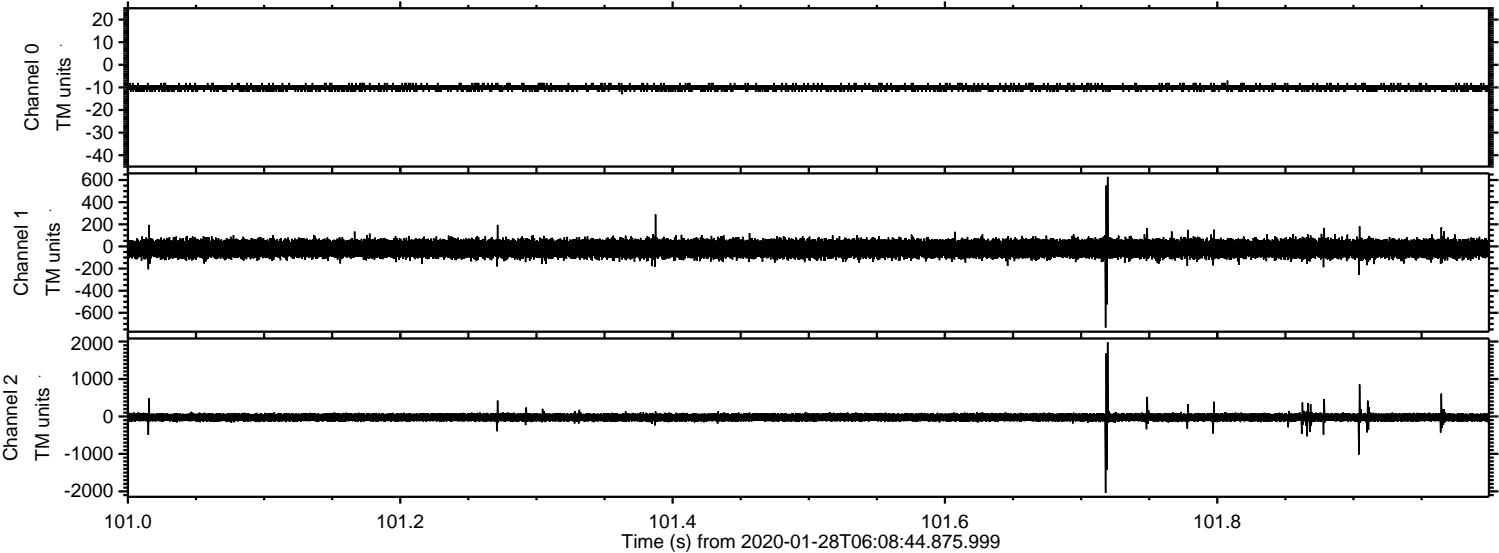
# ELMAVAN 3D WAVEFORMS (Measured data sampled at 50 kHz) 51000 packets of 144 samples from 2020-01-28T06:08:44.875.999. Part 29/147

Processed Tue Jan 28 07:16:29 2020 by ELM ver.2012-10-06 from 001\_\_elm20200128\_060843\_\_dat00.bin





Processed Tue Jan 28 07:16:30 2020 by ELM ver.2012-10-06 from 001\_\_elm20200128\_060843\_\_dat00.bin



Channel 0  
mn: -13  
mx: -7  
 $\mu$ : -10.1  
 $\sigma$ : 0.7

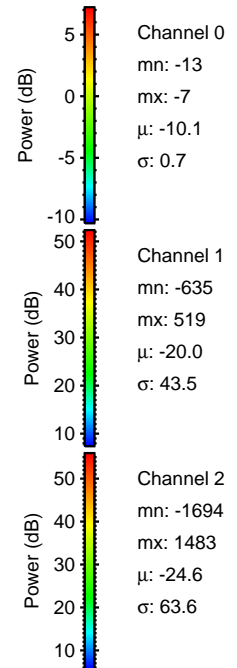
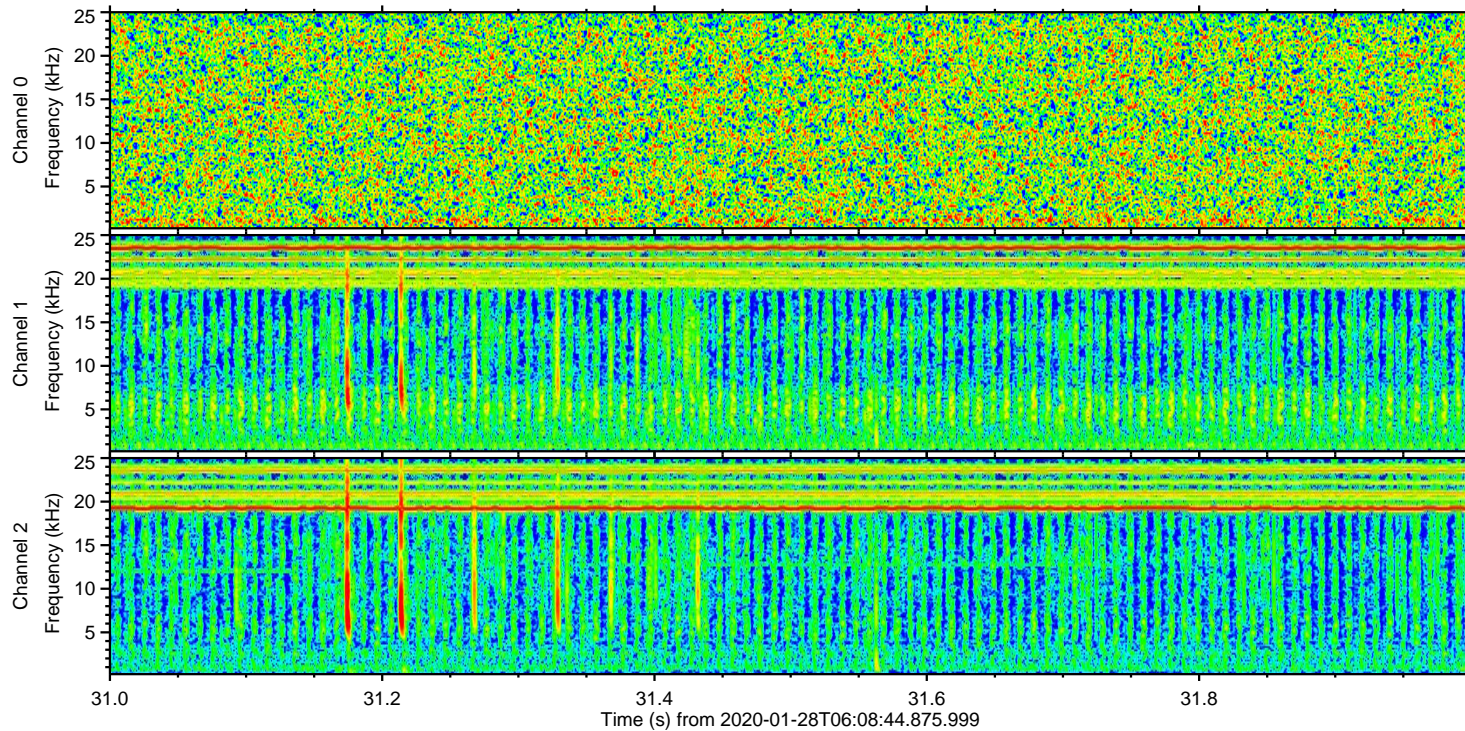
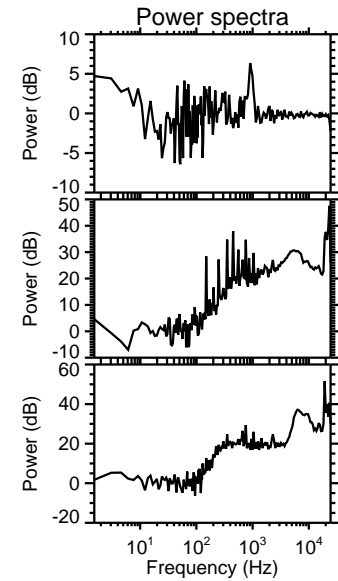
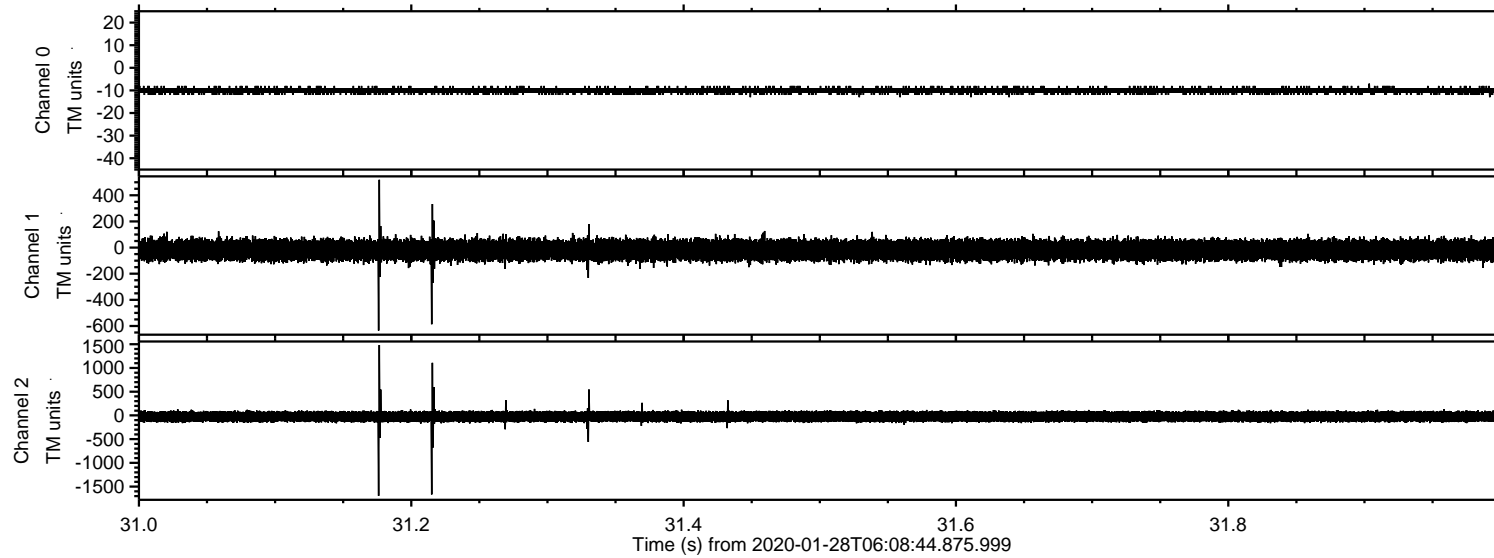
Channel 1  
mn: -734  
mx: 629  
 $\mu$ : -20.1  
 $\sigma$ : 45.0

Channel 2  
mn: -2044  
mx: 1982  
 $\mu$ : -24.7  
 $\sigma$ : 62.8



# ELMAVAN 3D WAVEFORMS (Measured data sampled at 50 kHz) 51000 packets of 144 samples from 2020-01-28T06:08:44.875.999. Part 32/147

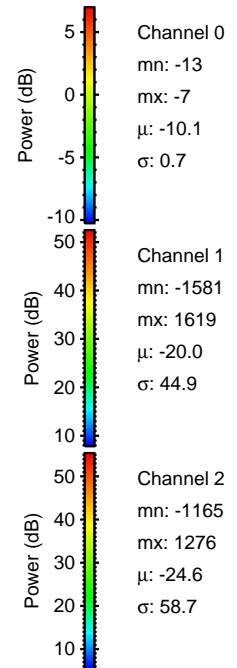
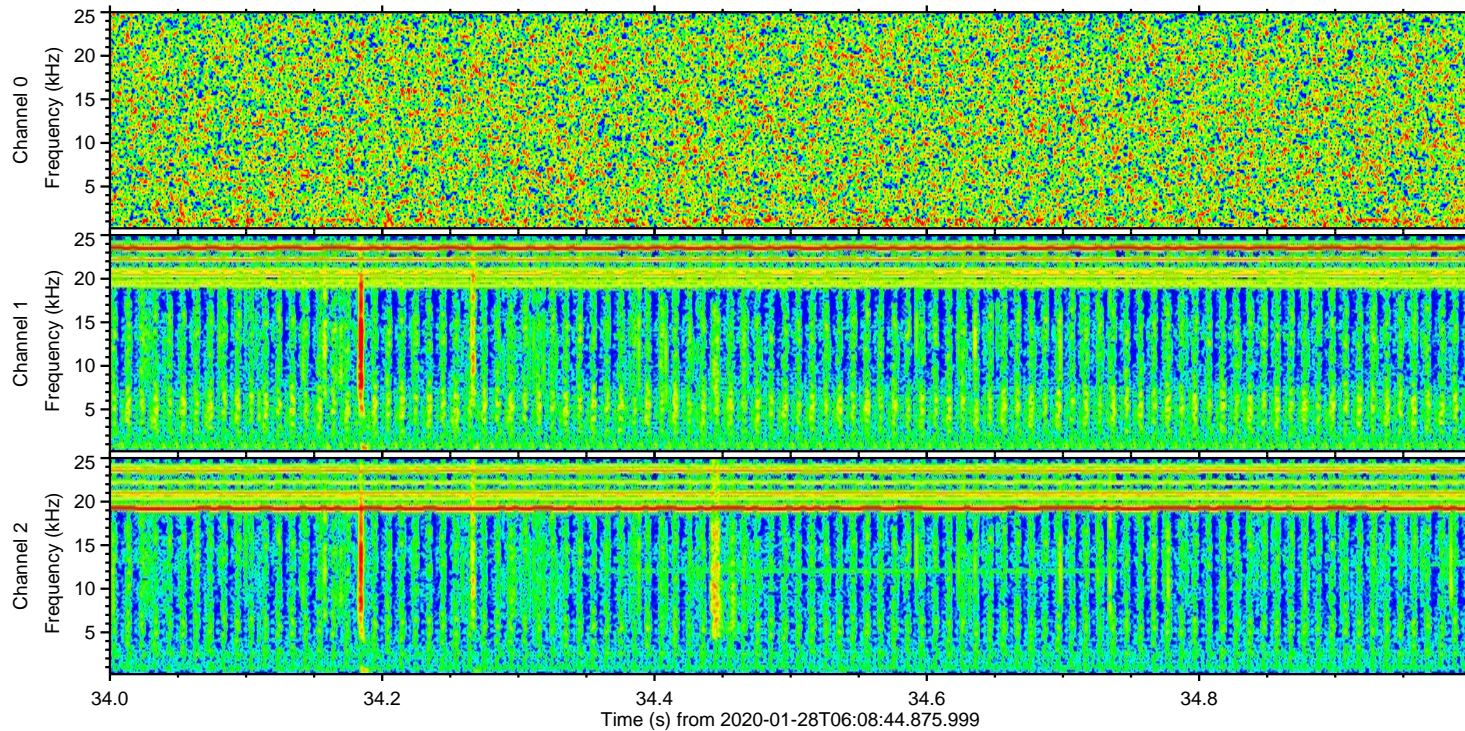
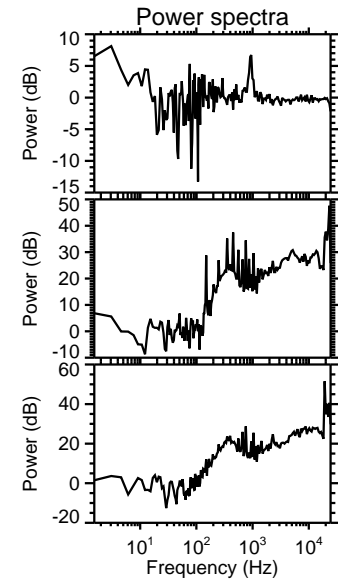
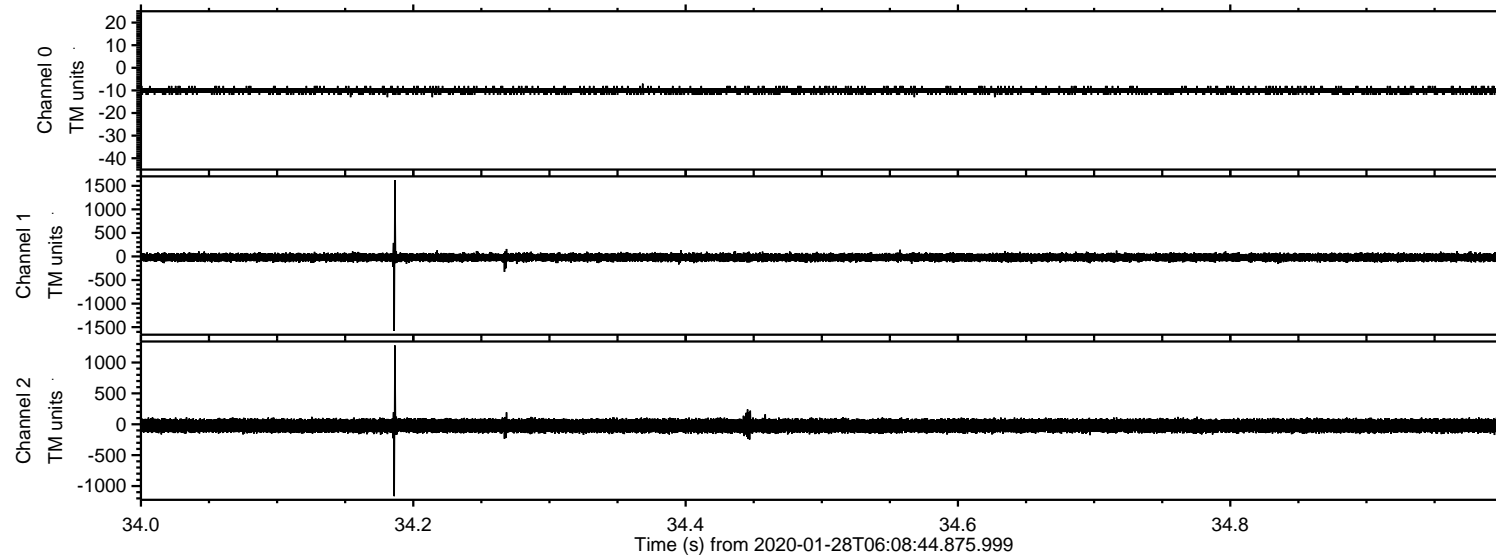
Processed Tue Jan 28 07:16:31 2020 by ELM ver.2012-10-06 from 001\_\_elm20200128\_060843\_\_dat00.bin





# ELMAVAN 3D WAVEFORMS (Measured data sampled at 50 kHz) 51000 packets of 144 samples from 2020-01-28T06:08:44.875.999. Part 35/147

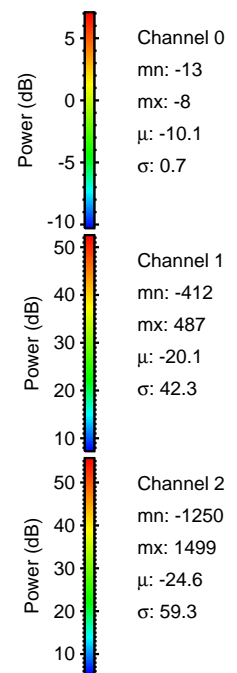
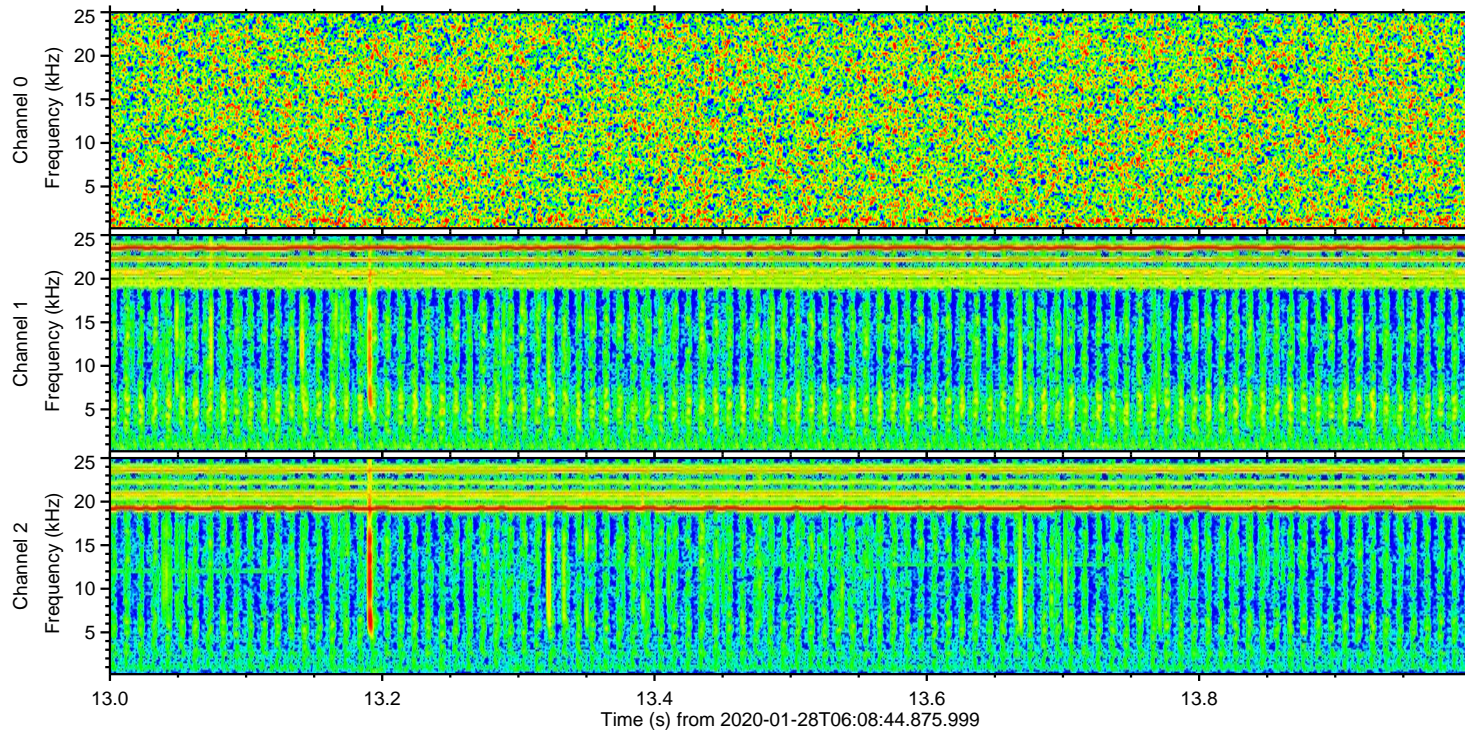
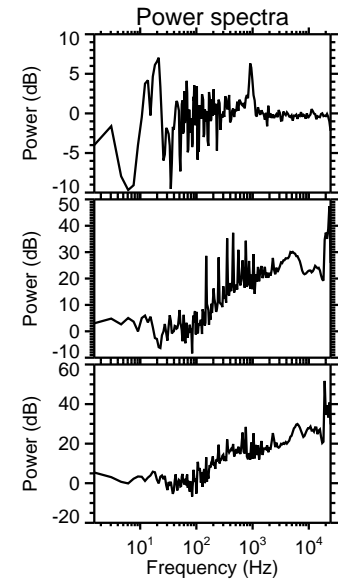
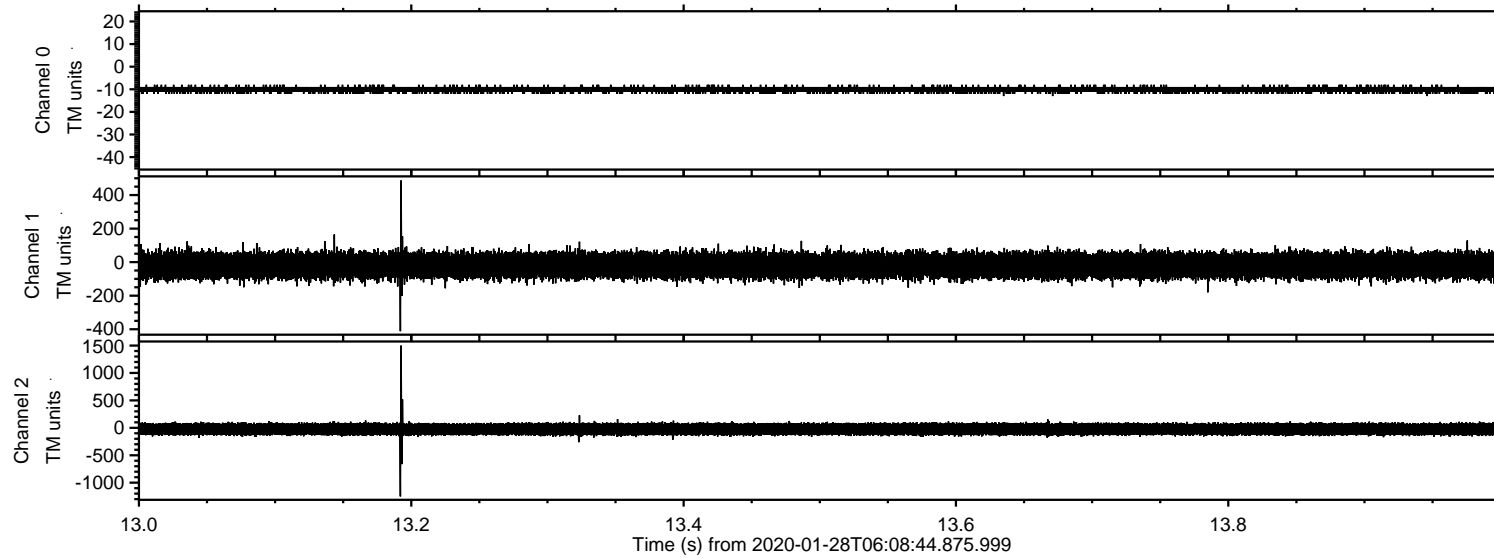
Processed Tue Jan 28 07:16:32 2020 by ELM ver.2012-10-06 from 001\_\_elm20200128\_060843\_\_dat00.bin





# ELMAVAN 3D WAVEFORMS (Measured data sampled at 50 kHz) 51000 packets of 144 samples from 2020-01-28T06:08:44.875.999. Part 14/147

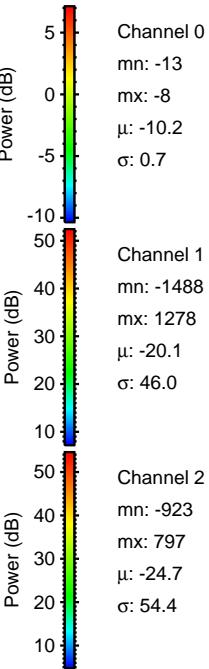
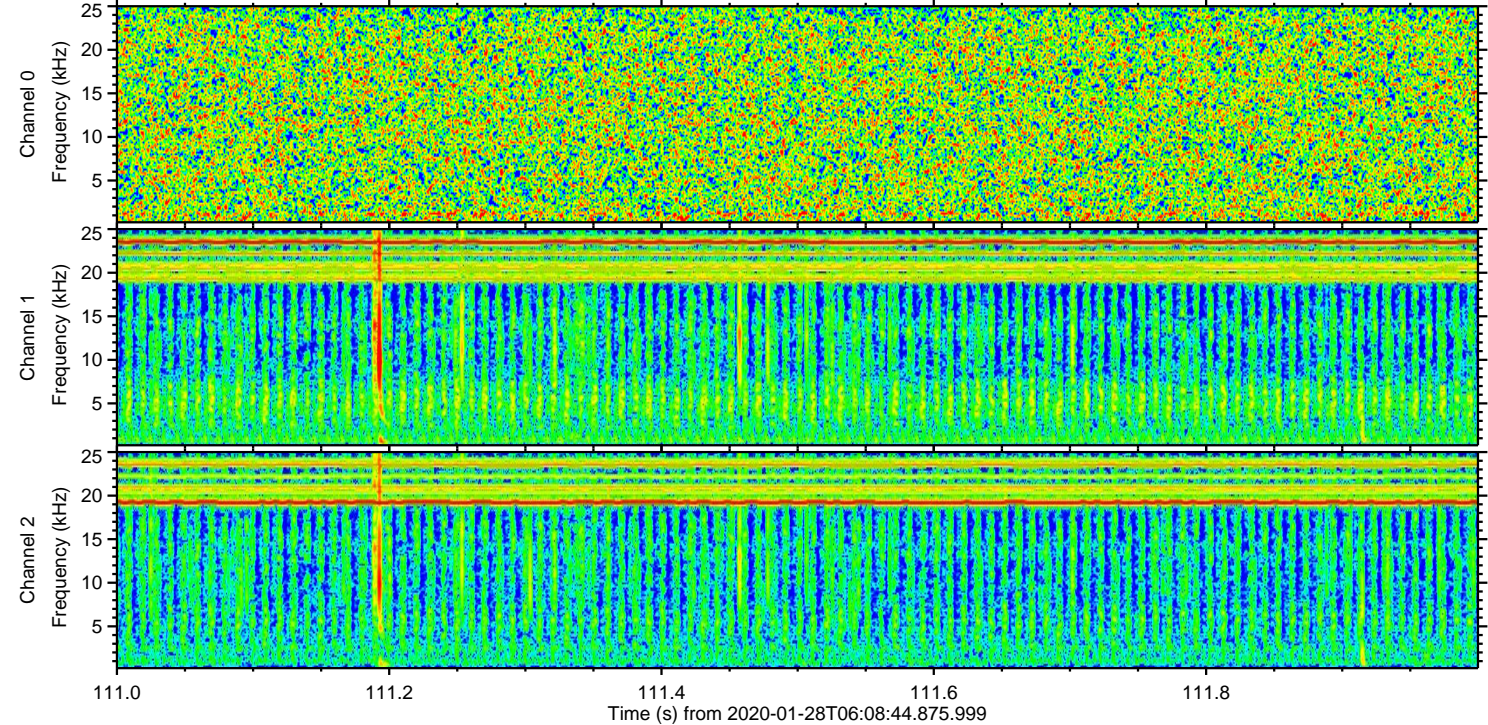
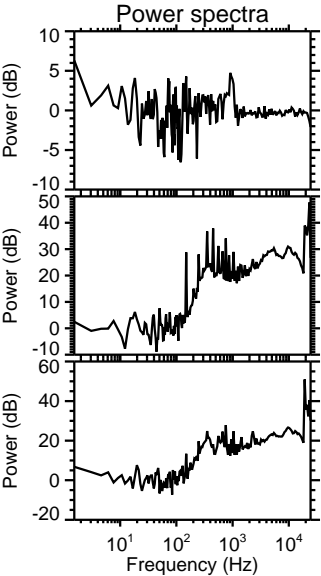
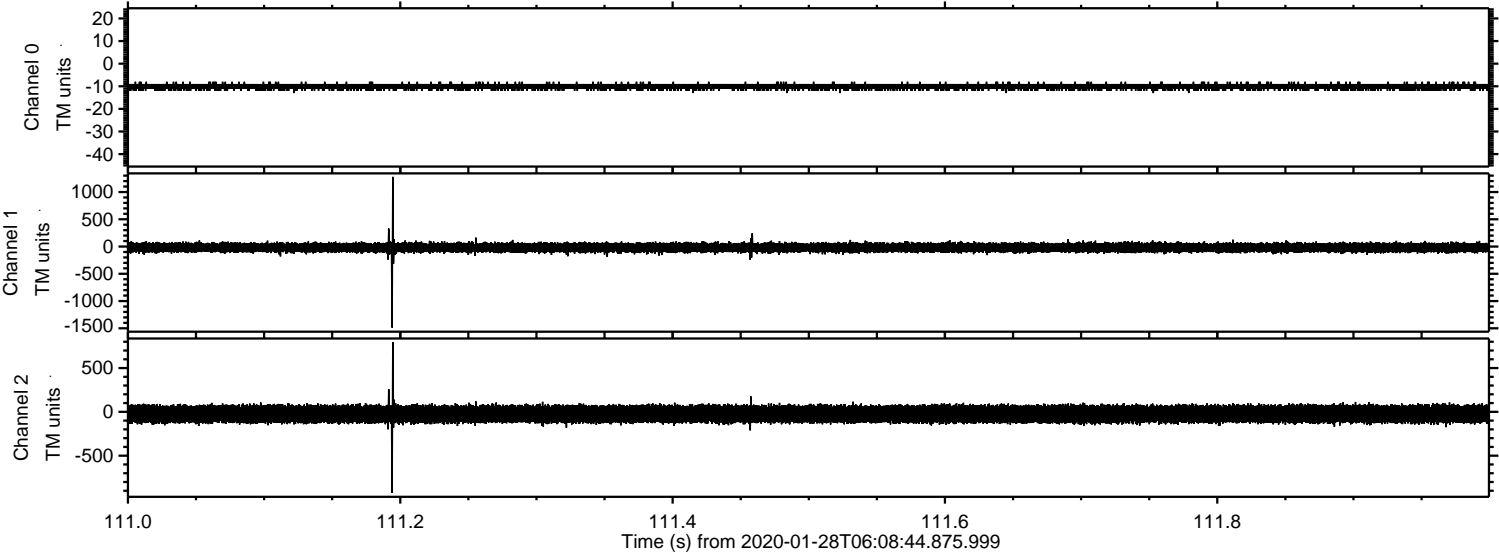
Processed Tue Jan 28 07:16:33 2020 by ELM ver.2012-10-06 from 001\_\_elm20200128\_060843\_\_dat00.bin





ELMAVAN 3D WAVEFORMS (Measured data sampled at 50 kHz) 51000 packets of 144 samples from 2020-01-28T06:08:44.875.999. Part 112/147

Processed Tue Jan 28 07:16:33 2020 by ELM ver.2012-10-06 from 001\_\_elm20200128\_060843\_\_dat00.bin



Channel 0  
mn: -13  
mx: -8  
 $\mu$ : -10.2  
 $\sigma$ : 0.7

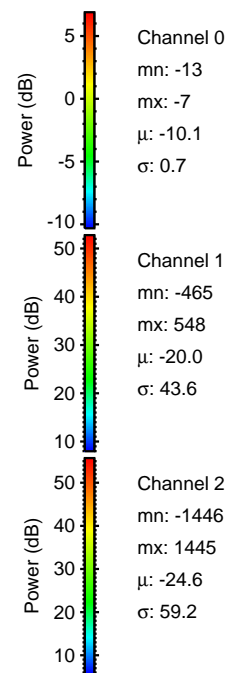
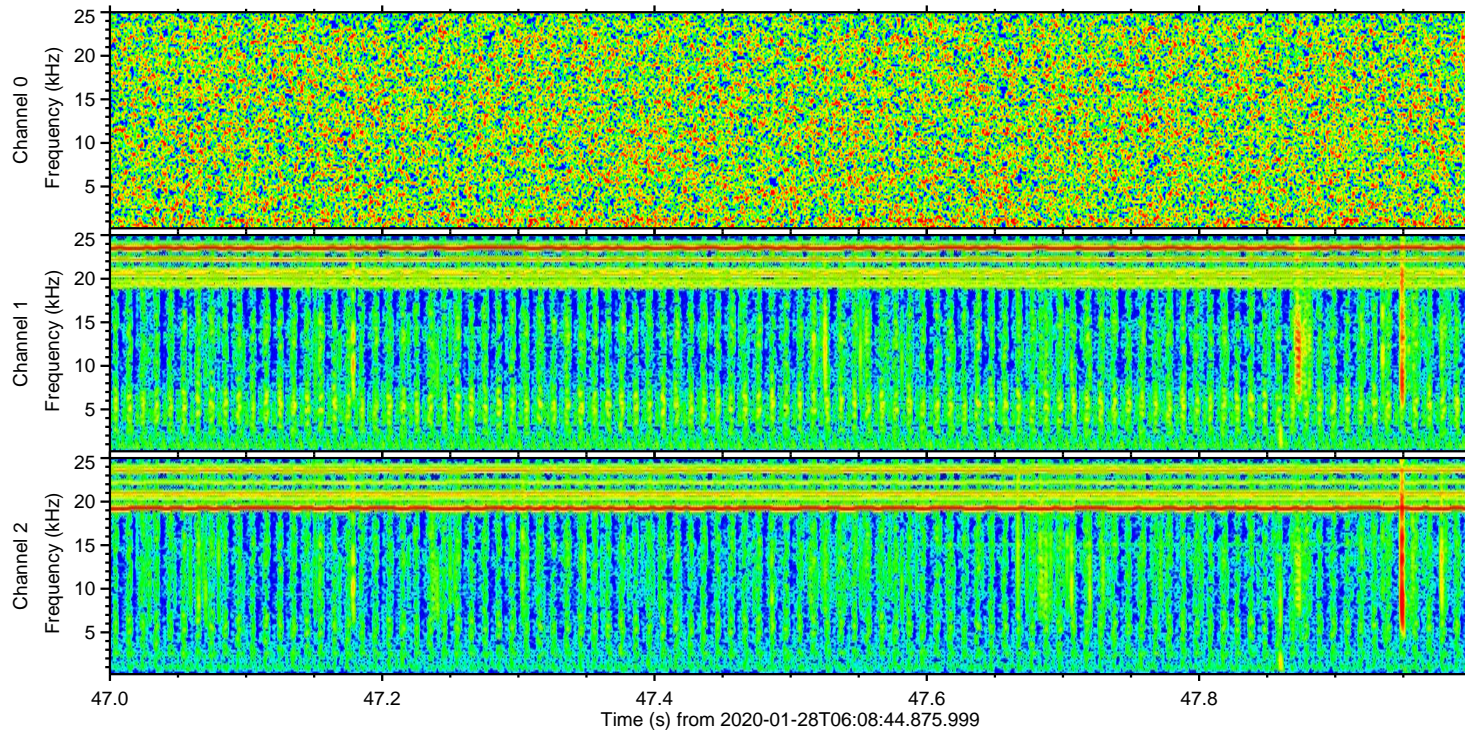
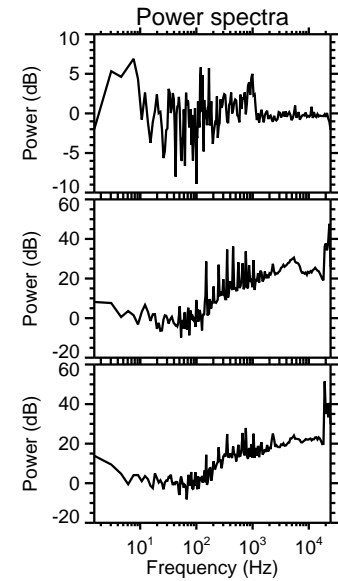
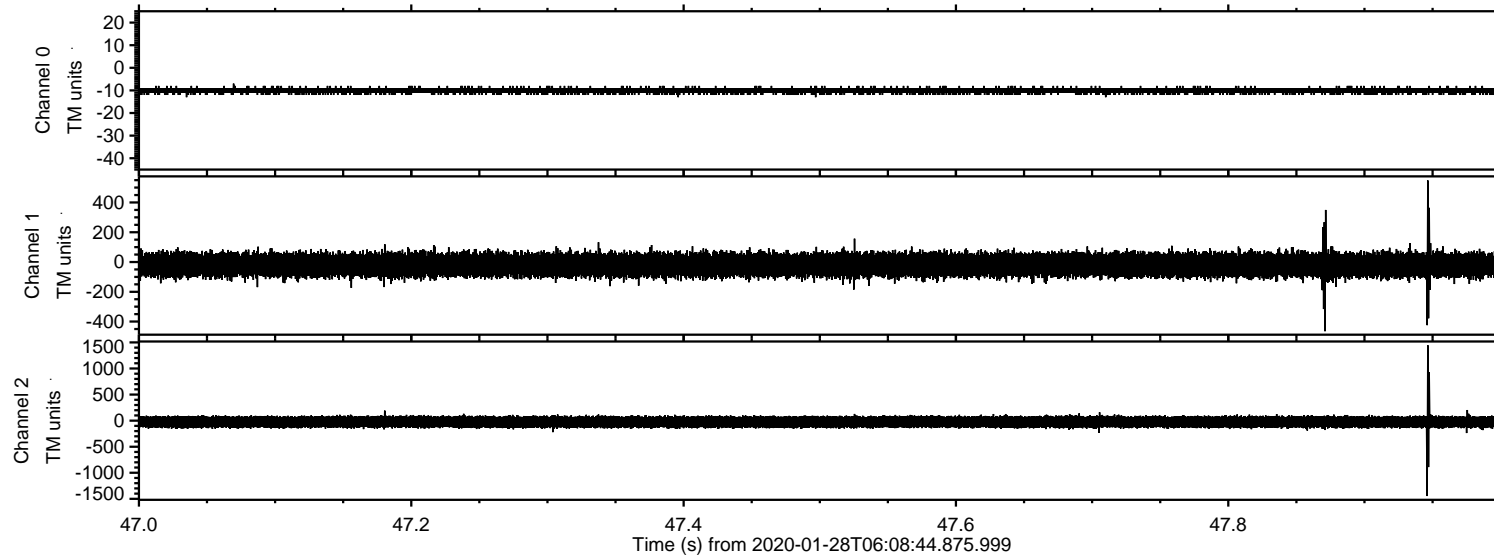
Channel 1  
mn: -1488  
mx: 1278  
 $\mu$ : -20.1  
 $\sigma$ : 46.0

Channel 2  
mn: -923  
mx: 797  
 $\mu$ : -24.7  
 $\sigma$ : 54.4



# ELMAVAN 3D WAVEFORMS (Measured data sampled at 50 kHz) 51000 packets of 144 samples from 2020-01-28T06:08:44.875.999. Part 48/147

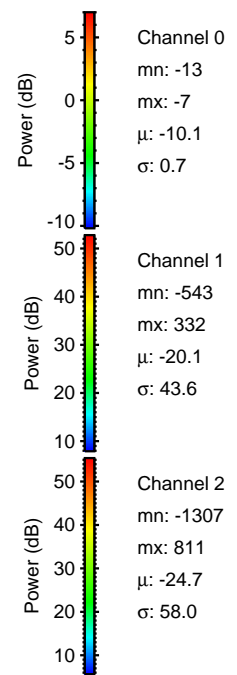
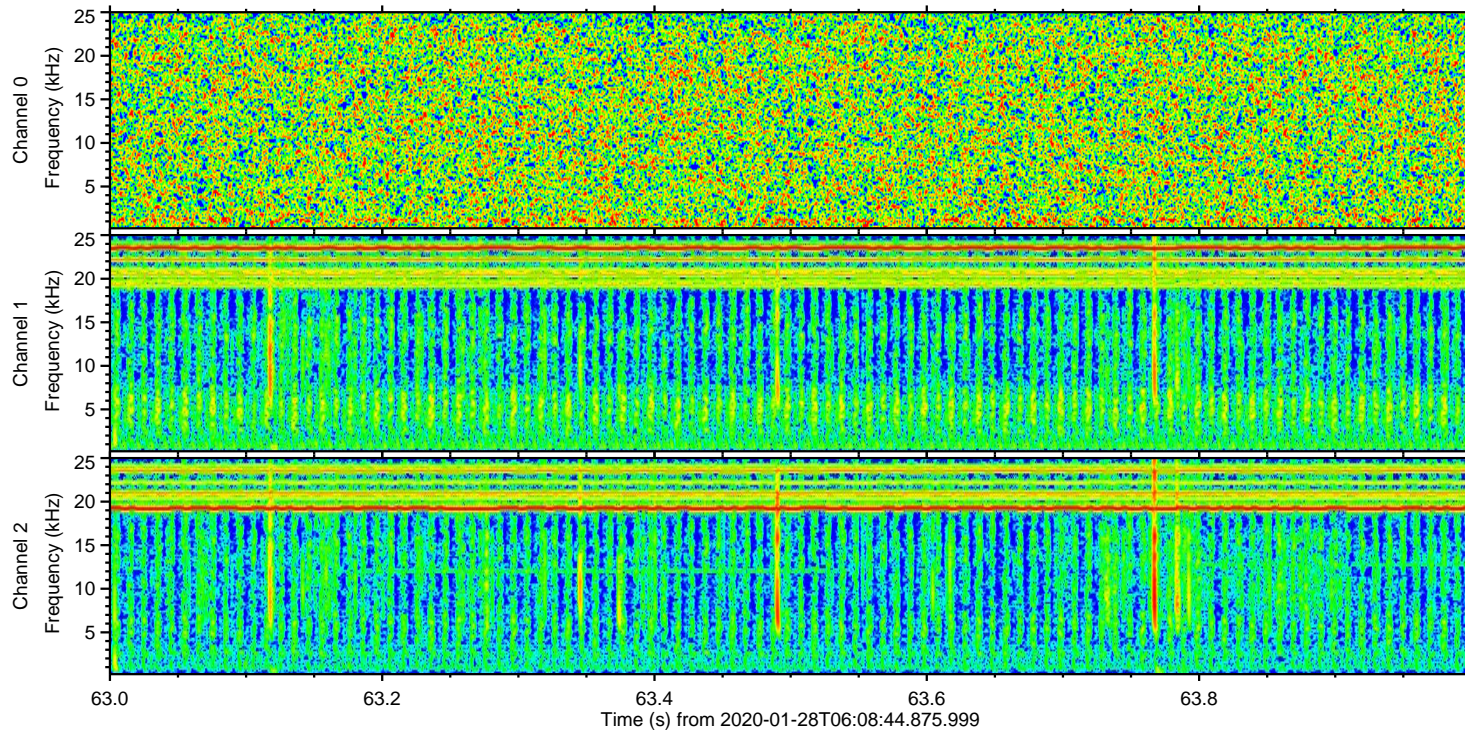
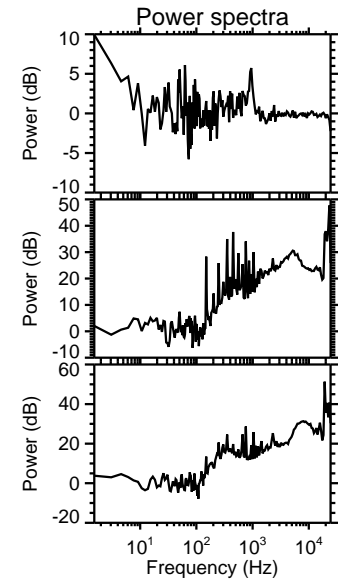
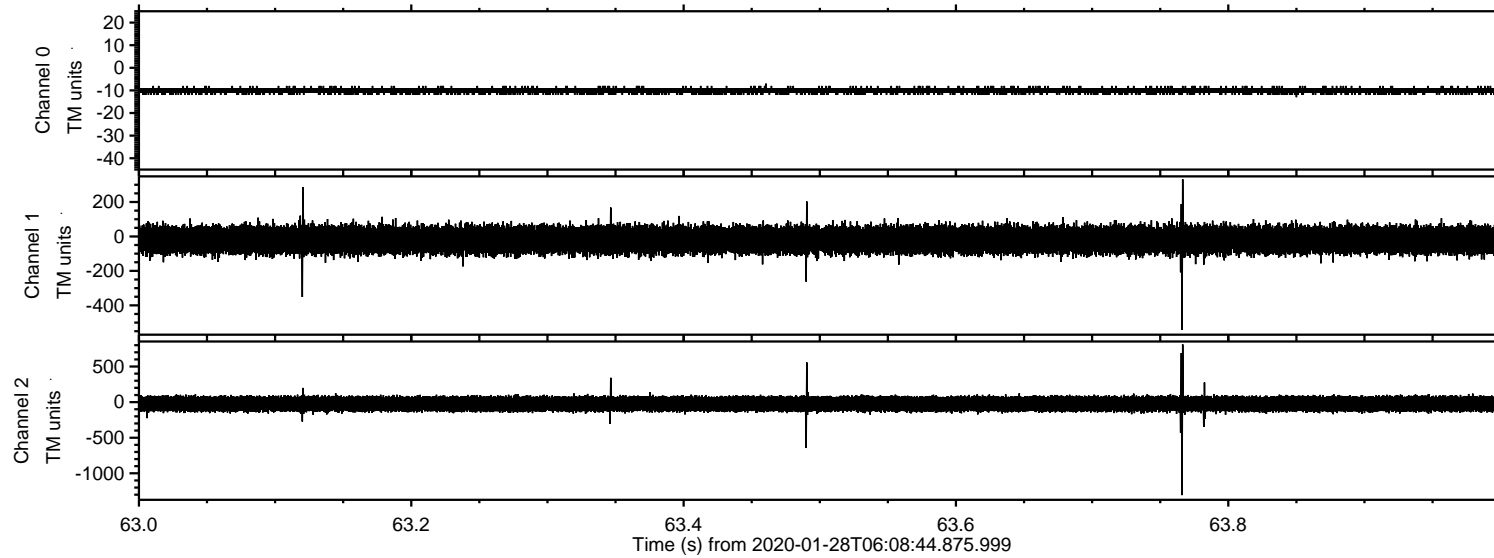
Processed Tue Jan 28 07:16:34 2020 by ELM ver.2012-10-06 from 001\_\_elm20200128\_060843\_\_dat00.bin





# ELMAVAN 3D WAVEFORMS (Measured data sampled at 50 kHz) 51000 packets of 144 samples from 2020-01-28T06:08:44.875.999. Part 64/147

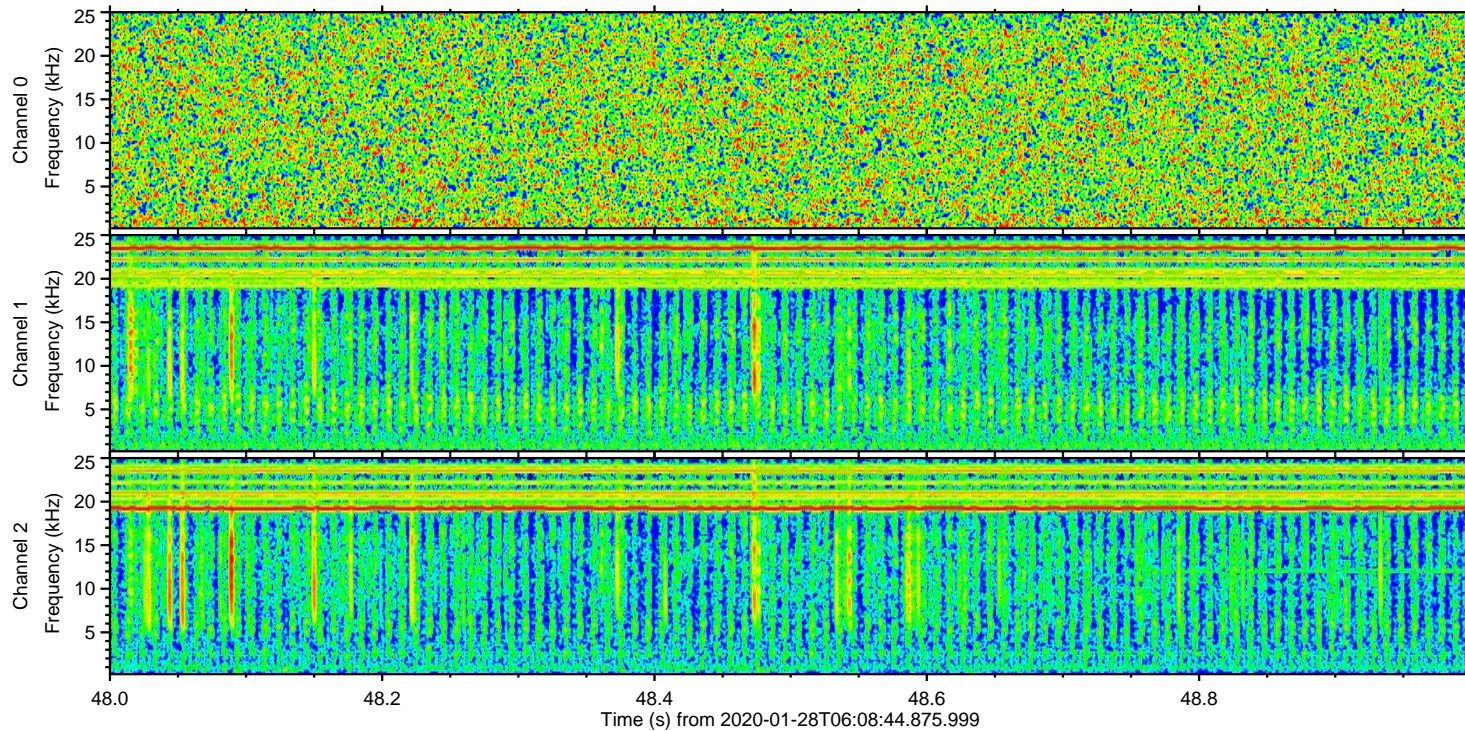
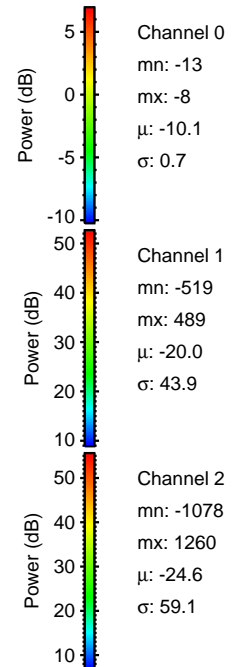
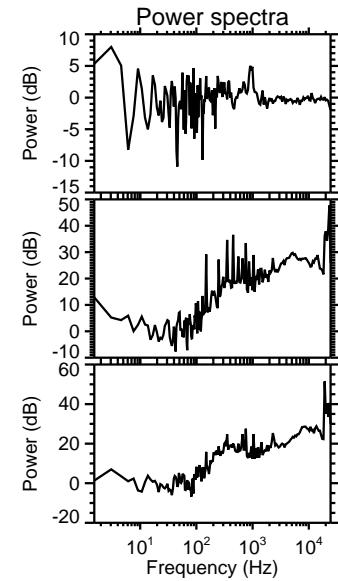
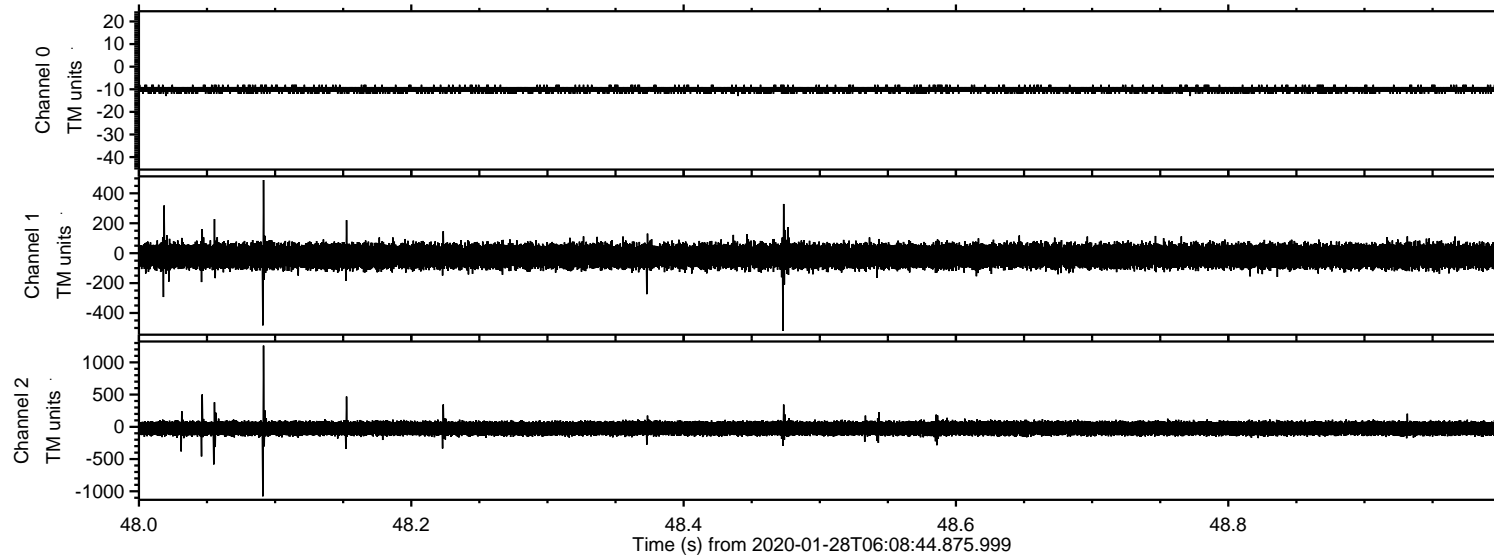
Processed Tue Jan 28 07:16:34 2020 by ELM ver.2012-10-06 from 001\_\_elm20200128\_060843\_\_dat00.bin





# ELMAVAN 3D WAVEFORMS (Measured data sampled at 50 kHz) 51000 packets of 144 samples from 2020-01-28T06:08:44.875.999. Part 49/147

Processed Tue Jan 28 07:16:35 2020 by ELM ver.2012-10-06 from 001\_\_elm20200128\_060843\_\_dat00.bin





# ELMAVAN 3D WAVEFORMS (Measured data sampled at 50 kHz) 51000 packets of 144 samples from 2020-01-28T06:08:44.875.999. Part 85/147

Processed Tue Jan 28 07:16:36 2020 by ELM ver.2012-10-06 from 001\_\_elm20200128\_060843\_\_dat00.bin

