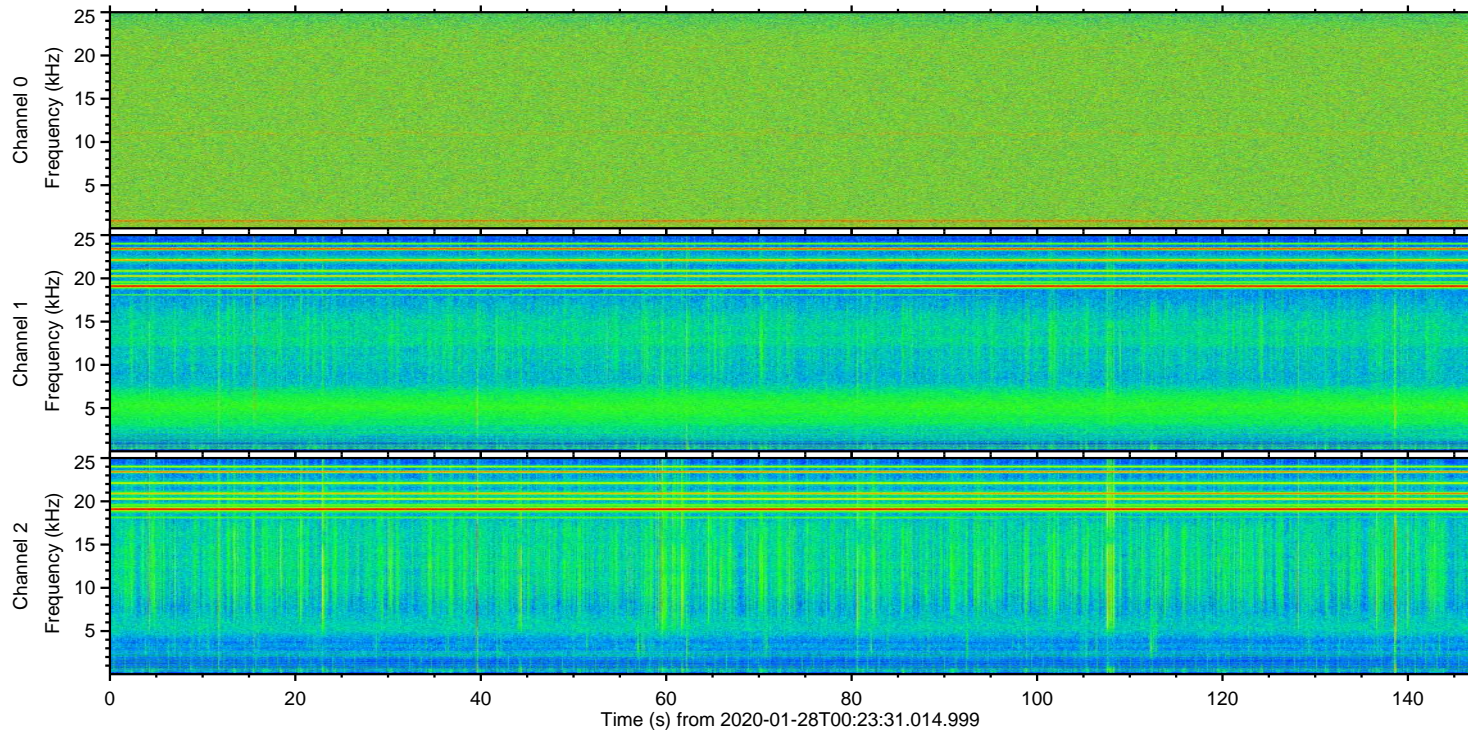
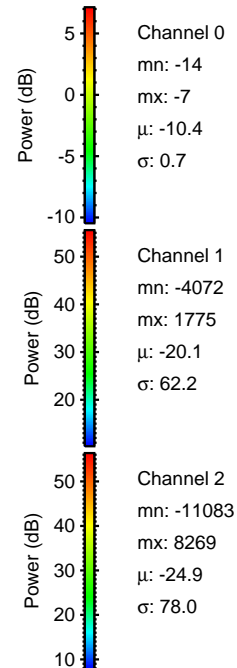
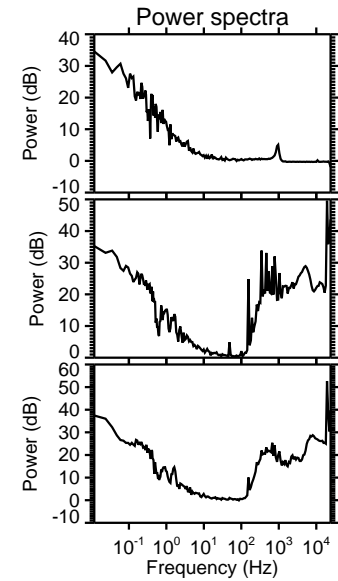
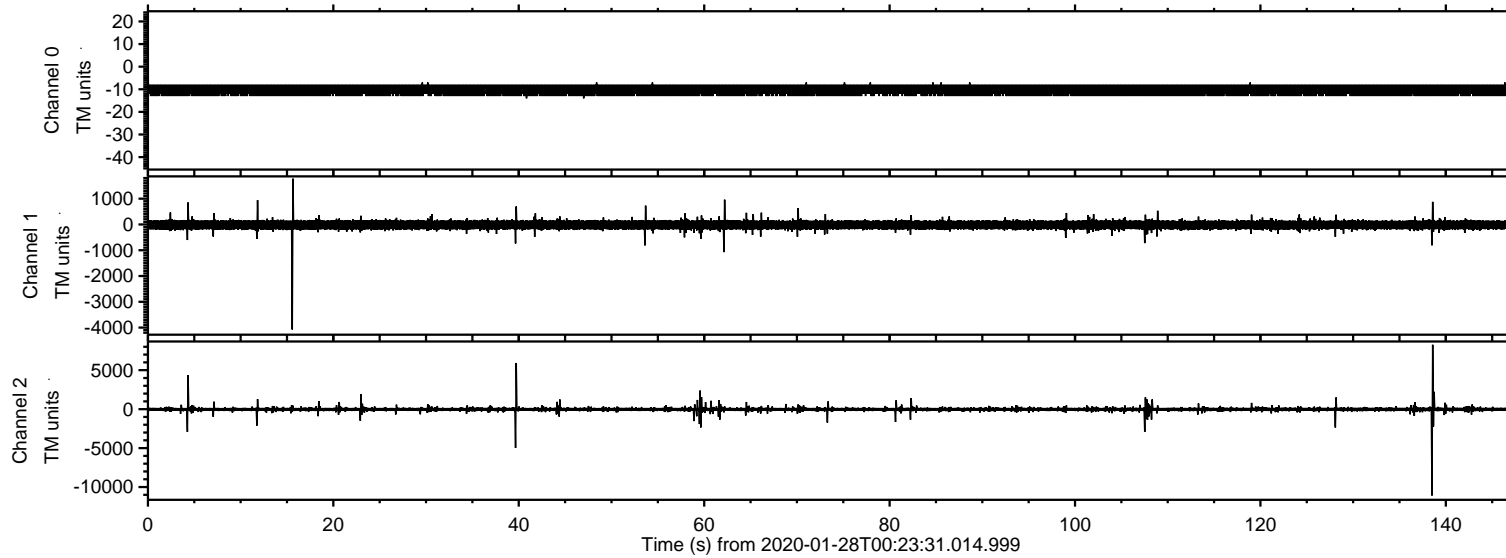


# ELMAVAN 3D WAVEFORMS (Measured data sampled at 50 kHz) 51000 packets of 144 samples from 2020-01-28T00:23:31.014.999.

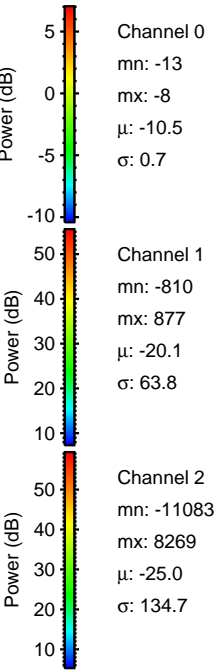
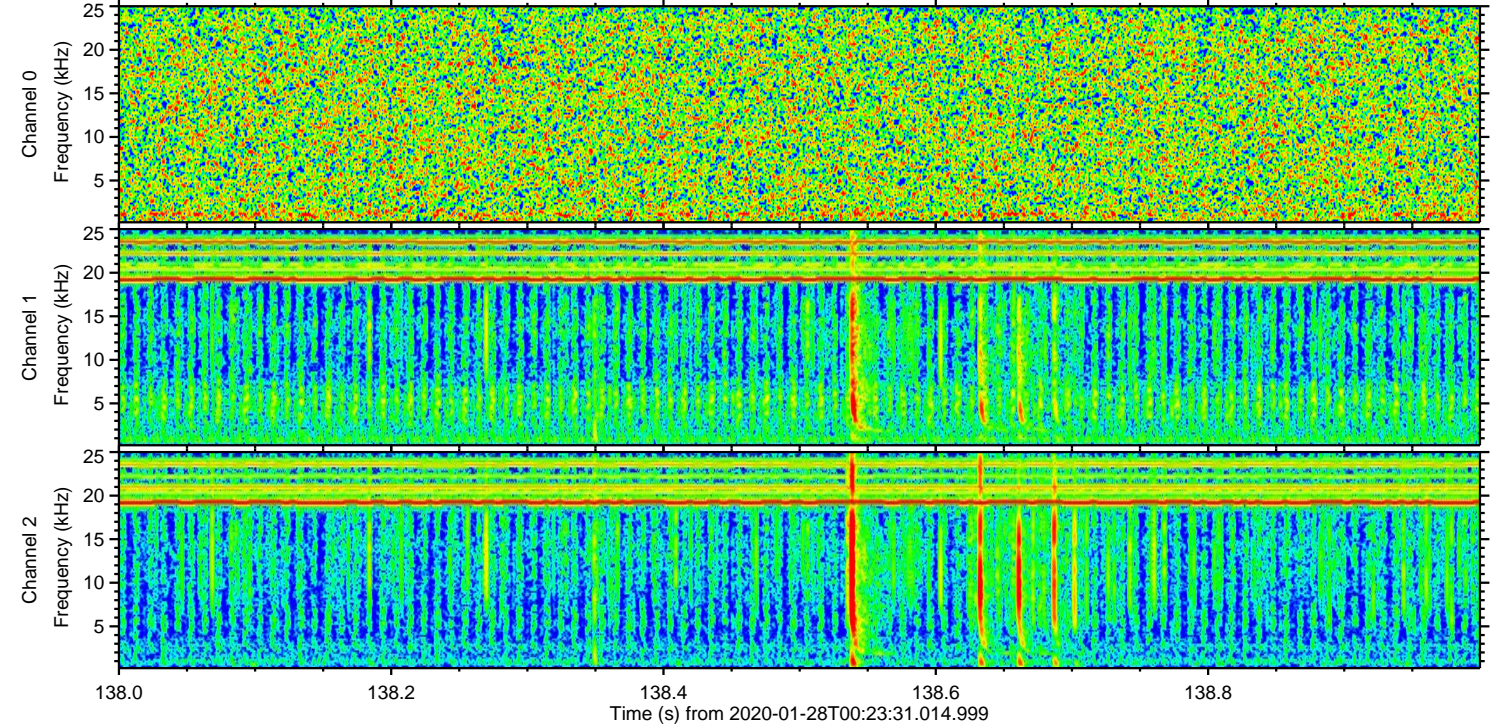
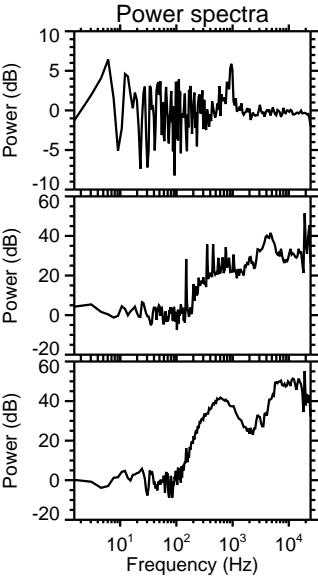
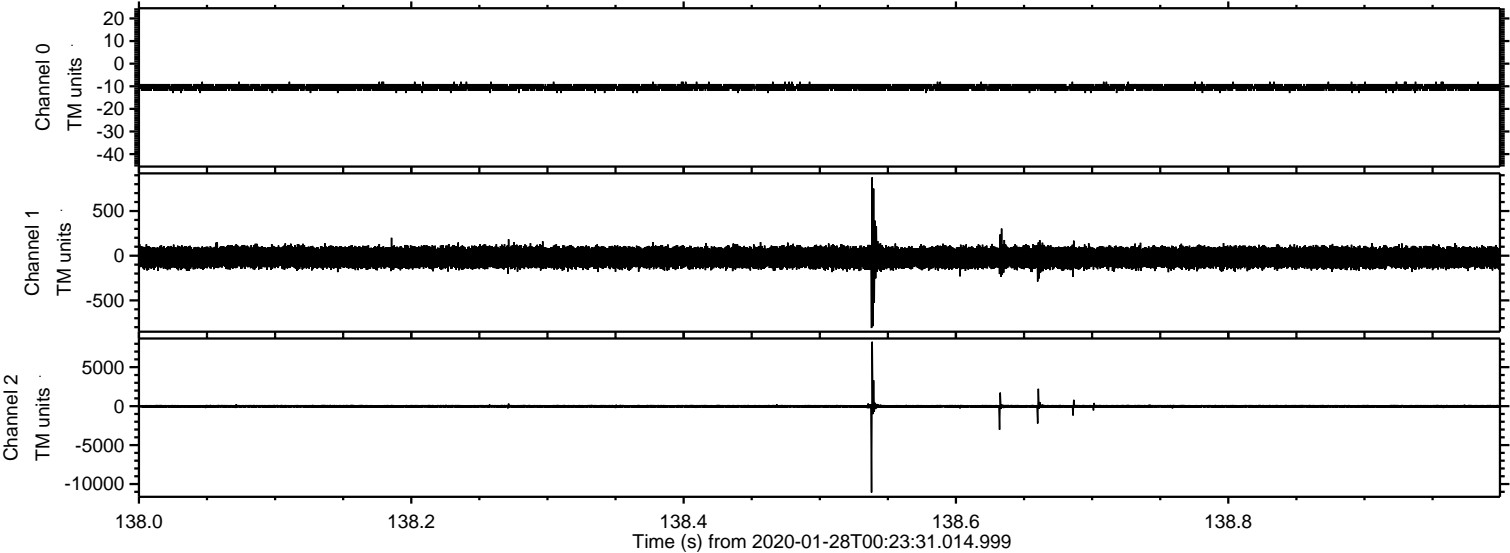
Processed Tue Jan 28 01:31:15 2020 by ELM ver.2012-10-06 from 001\_\_elm20200128\_002330\_\_dat00.bin





ELMAVAN 3D WAVEFORMS (Measured data sampled at 50 kHz) 51000 packets of 144 samples from 2020-01-28T00:23:31.014.999. Part 139/147

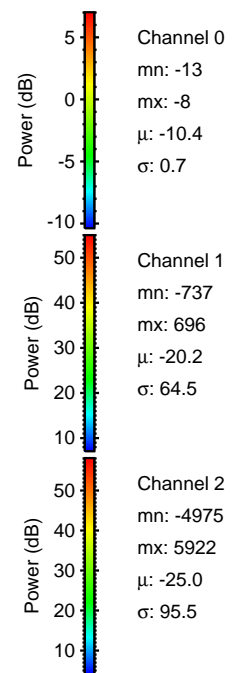
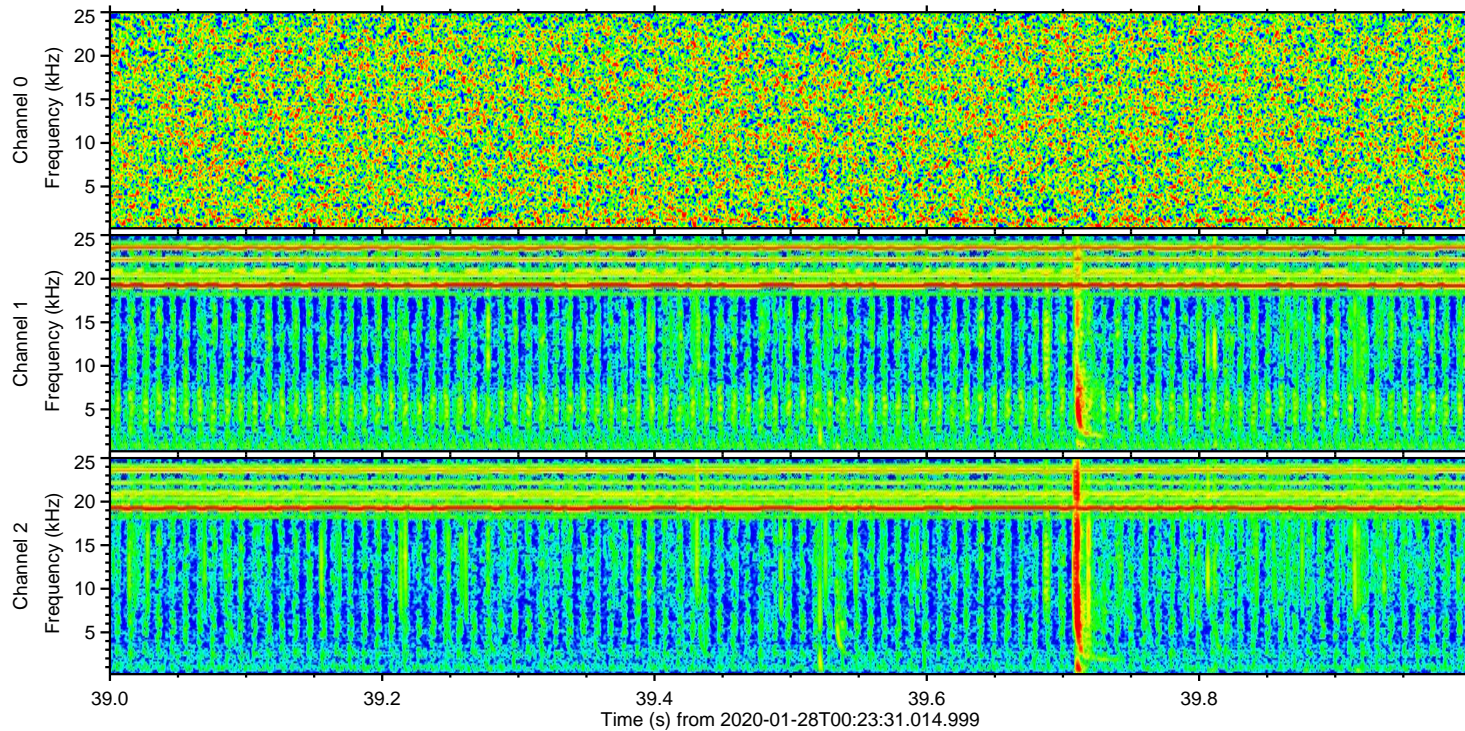
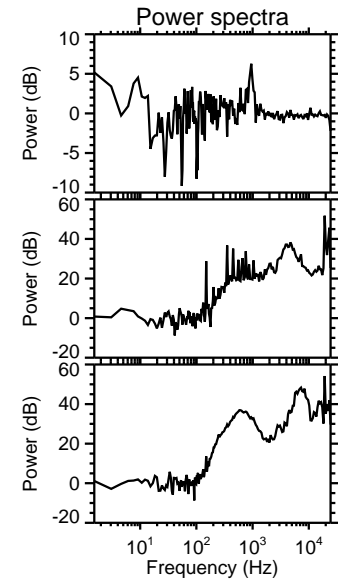
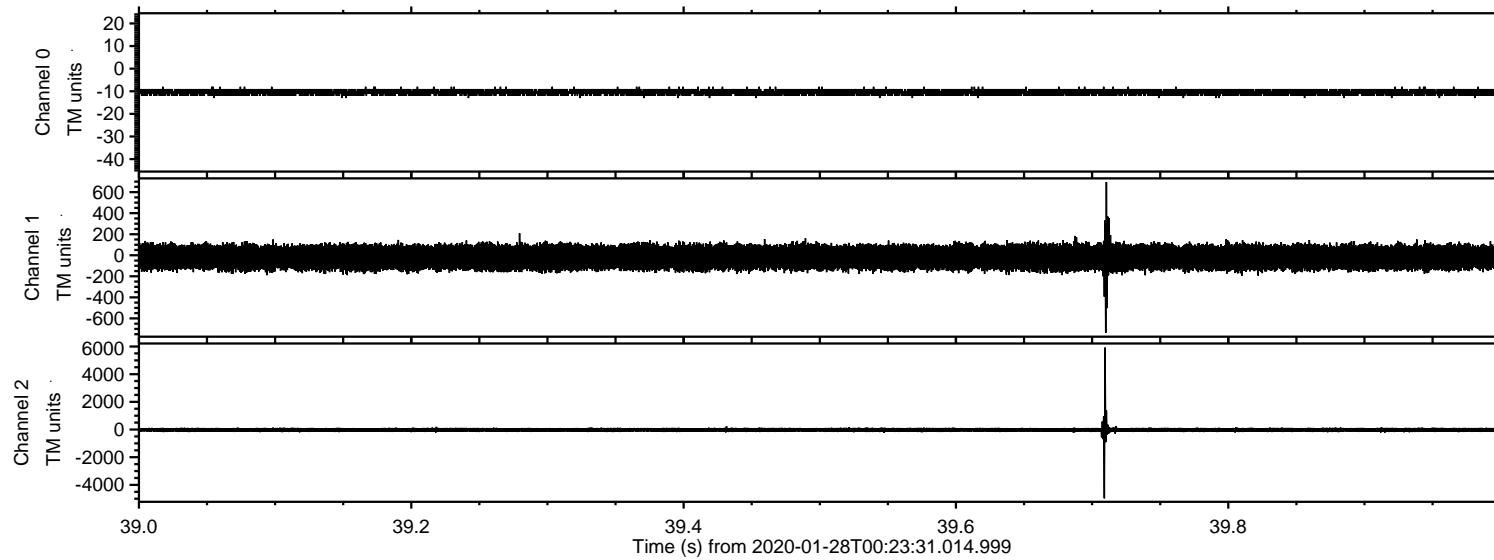
Processed Tue Jan 28 01:31:22 2020 by ELM ver.2012-10-06 from 001\_\_elm20200128\_002330\_\_dat00.bin





# ELMAVAN 3D WAVEFORMS (Measured data sampled at 50 kHz) 51000 packets of 144 samples from 2020-01-28T00:23:31.014.999. Part 40/147

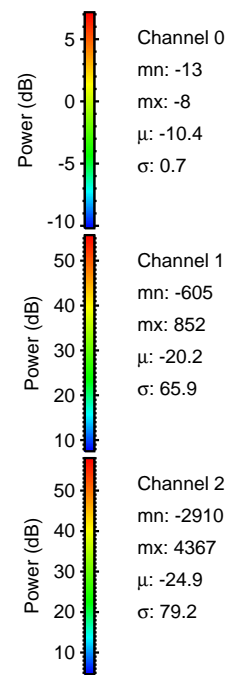
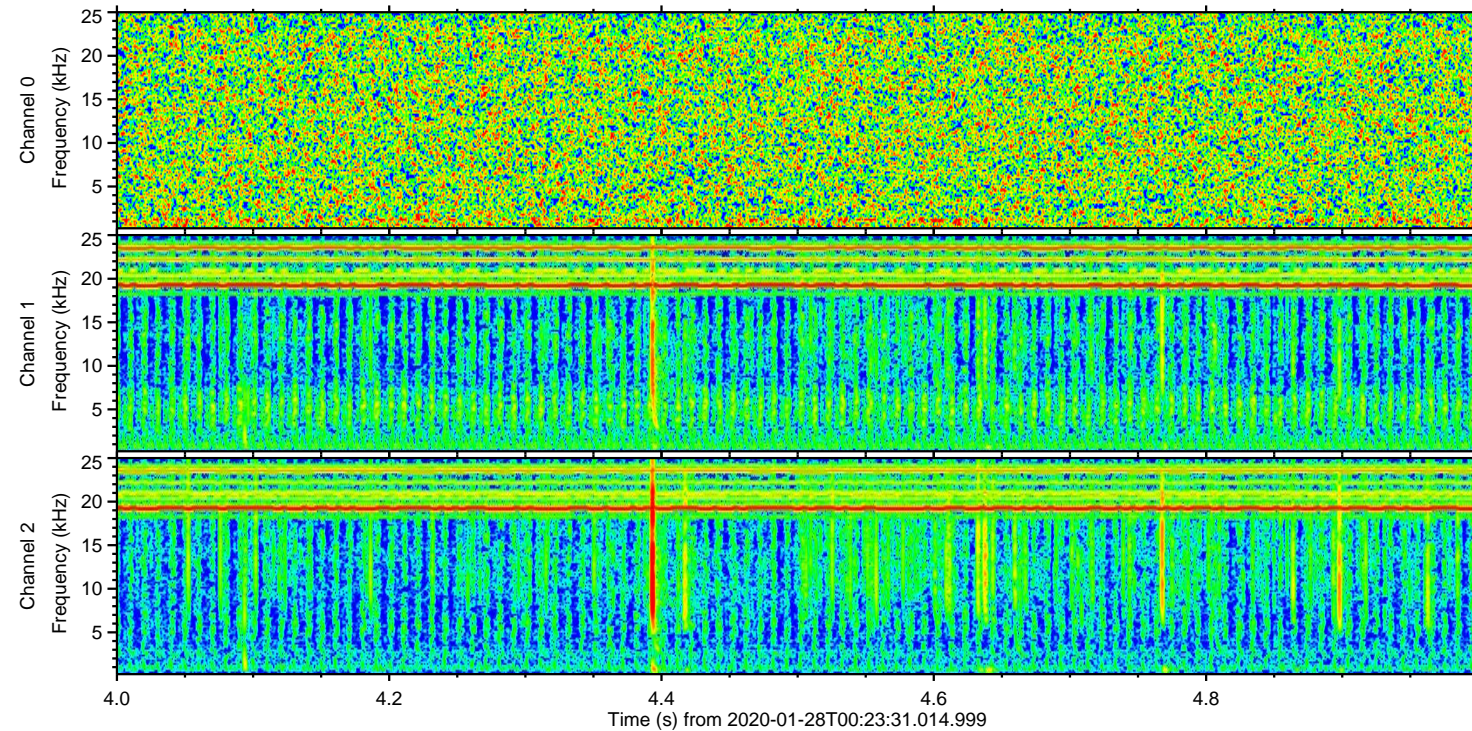
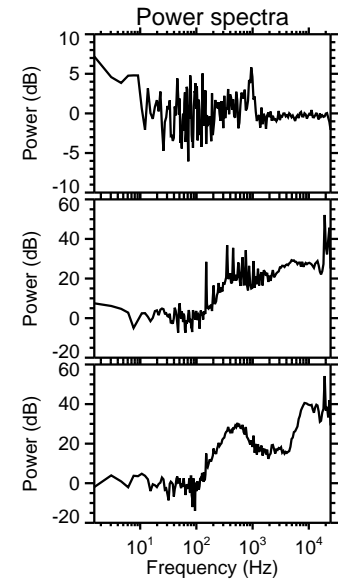
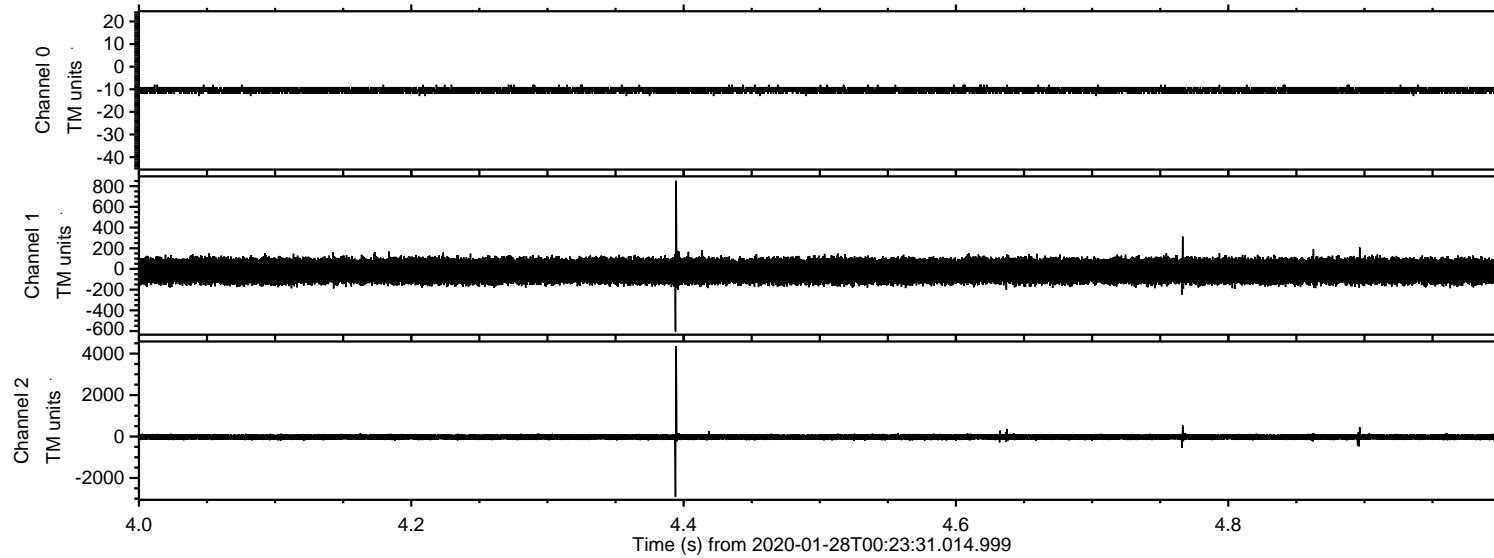
Processed Tue Jan 28 01:31:22 2020 by ELM ver.2012-10-06 from 001\_\_elm20200128\_002330\_\_dat00.bin





# ELMAVAN 3D WAVEFORMS (Measured data sampled at 50 kHz) 51000 packets of 144 samples from 2020-01-28T00:23:31.014.999. Part 5/147

Processed Tue Jan 28 01:31:23 2020 by ELM ver.2012-10-06 from 001\_\_elm20200128\_002330\_\_dat00.bin



Channel 0  
mn: -13  
mx: -8  
 $\mu$ : -10.4  
 $\sigma$ : 0.7

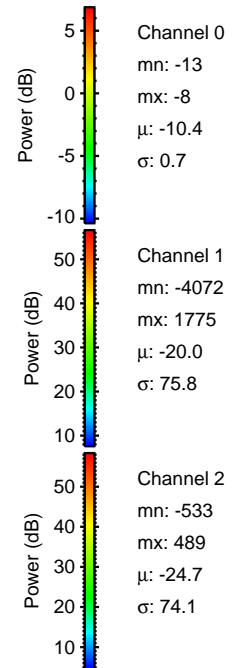
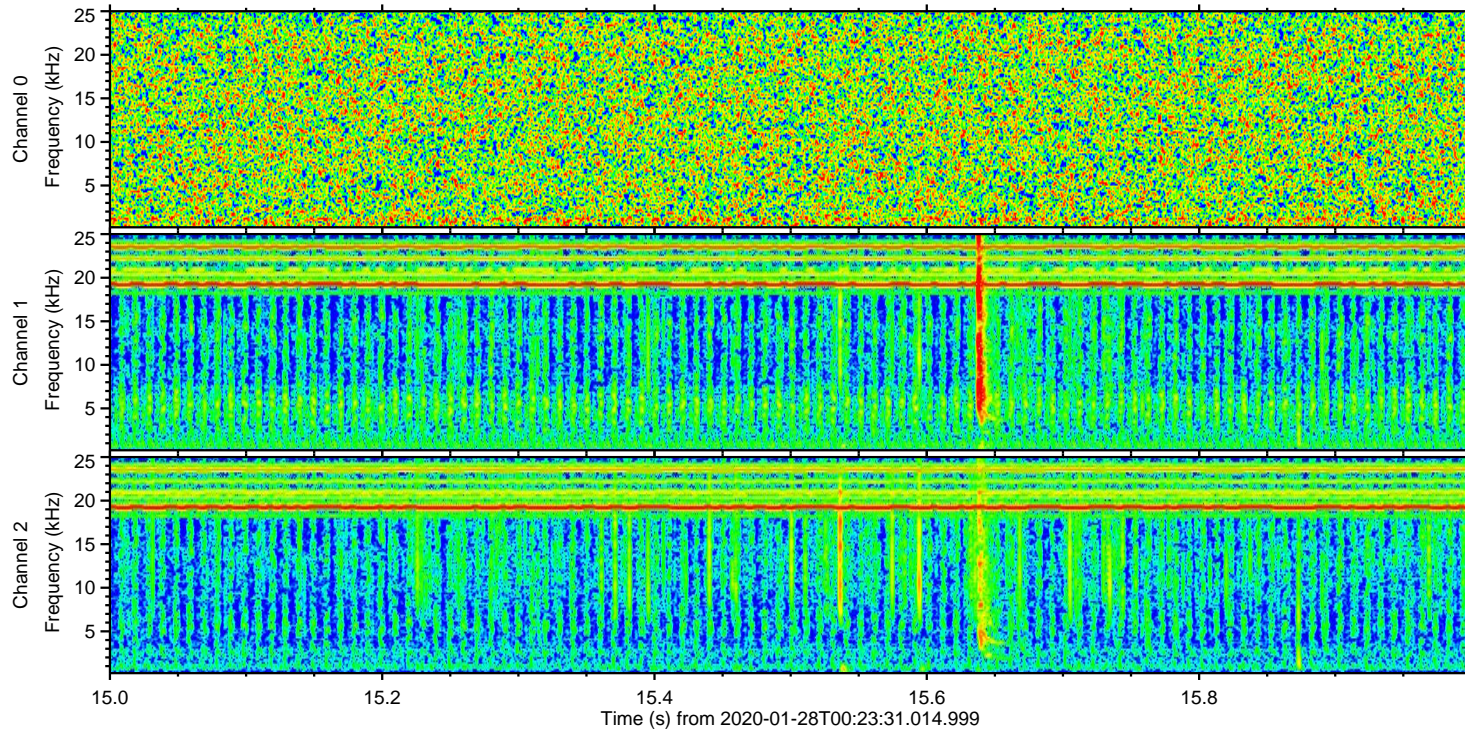
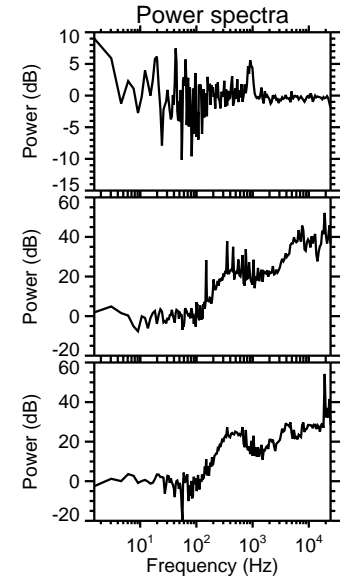
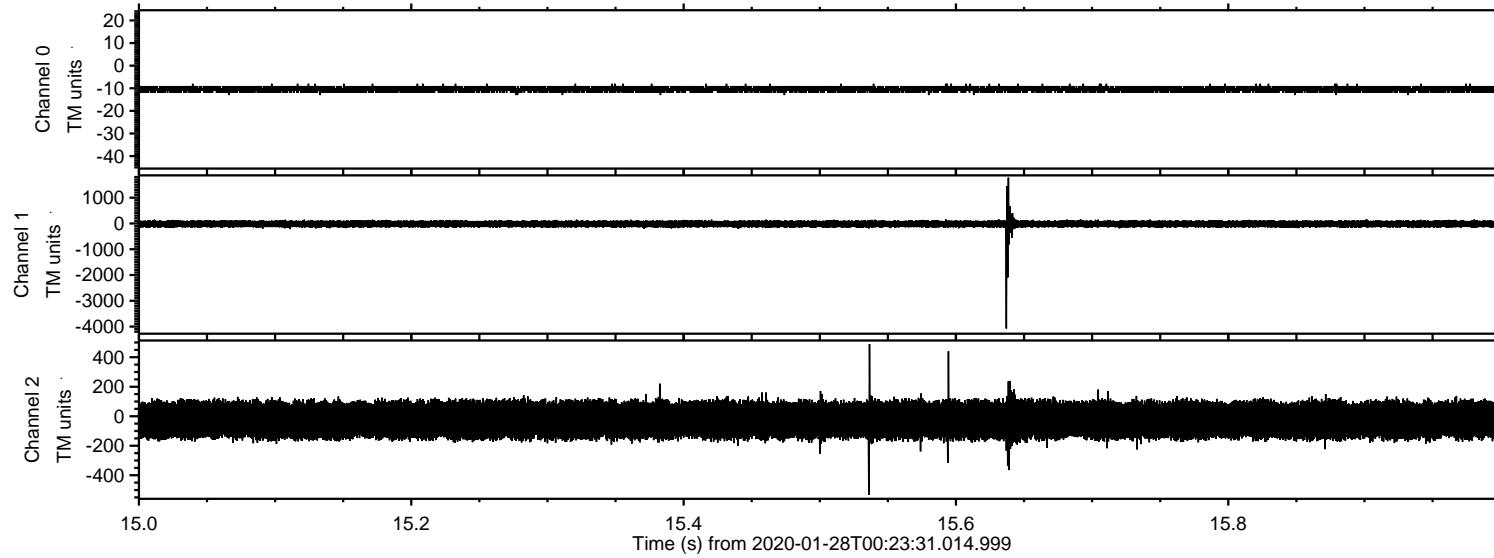
Channel 1  
mn: -605  
mx: 852  
 $\mu$ : -20.2  
 $\sigma$ : 65.9

Channel 2  
mn: -2910  
mx: 4367  
 $\mu$ : -24.9  
 $\sigma$ : 79.2



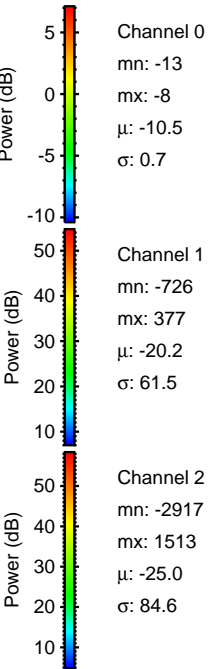
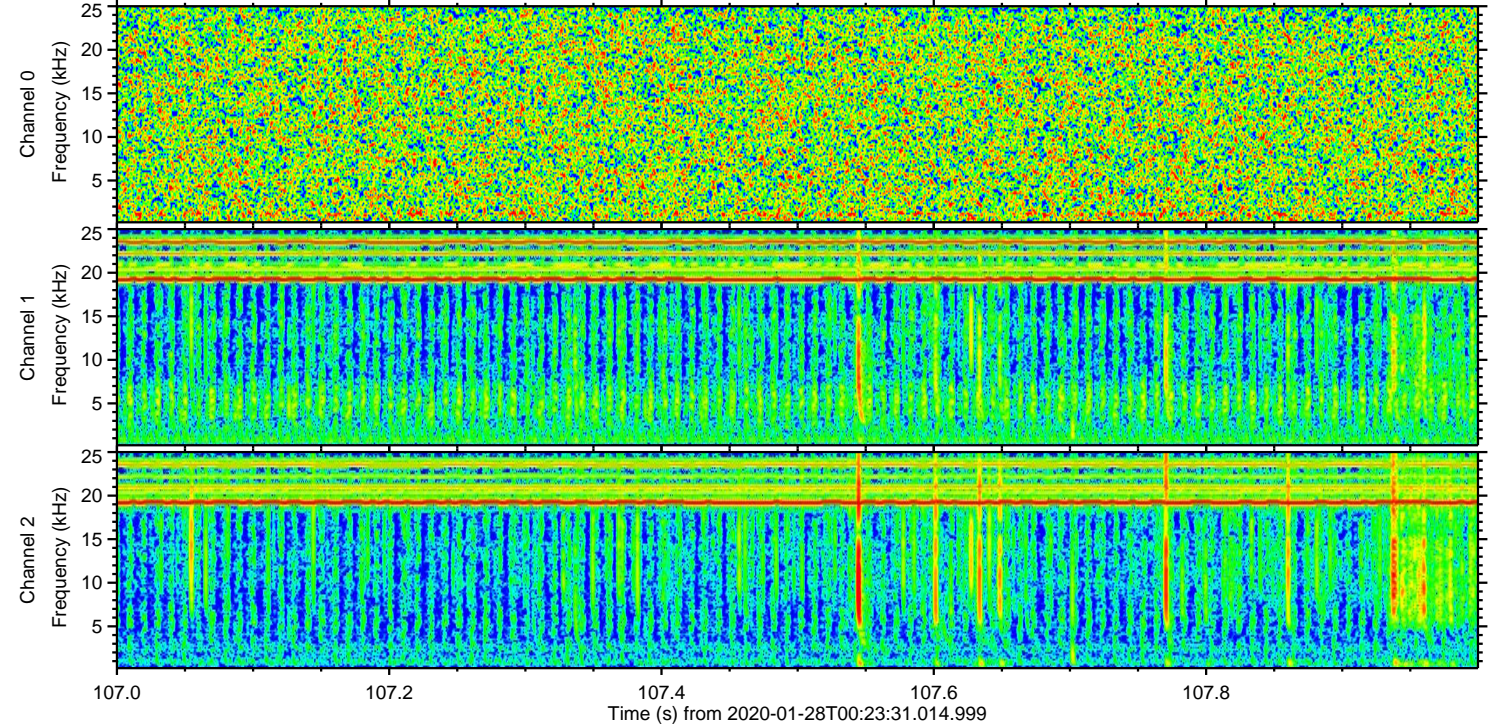
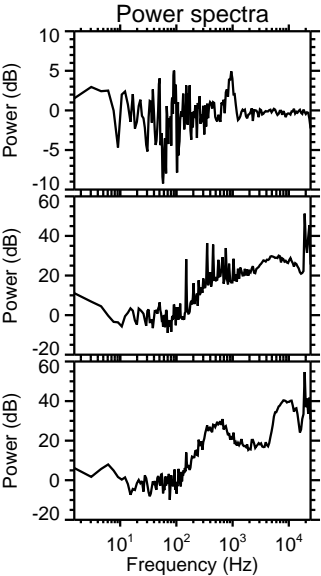
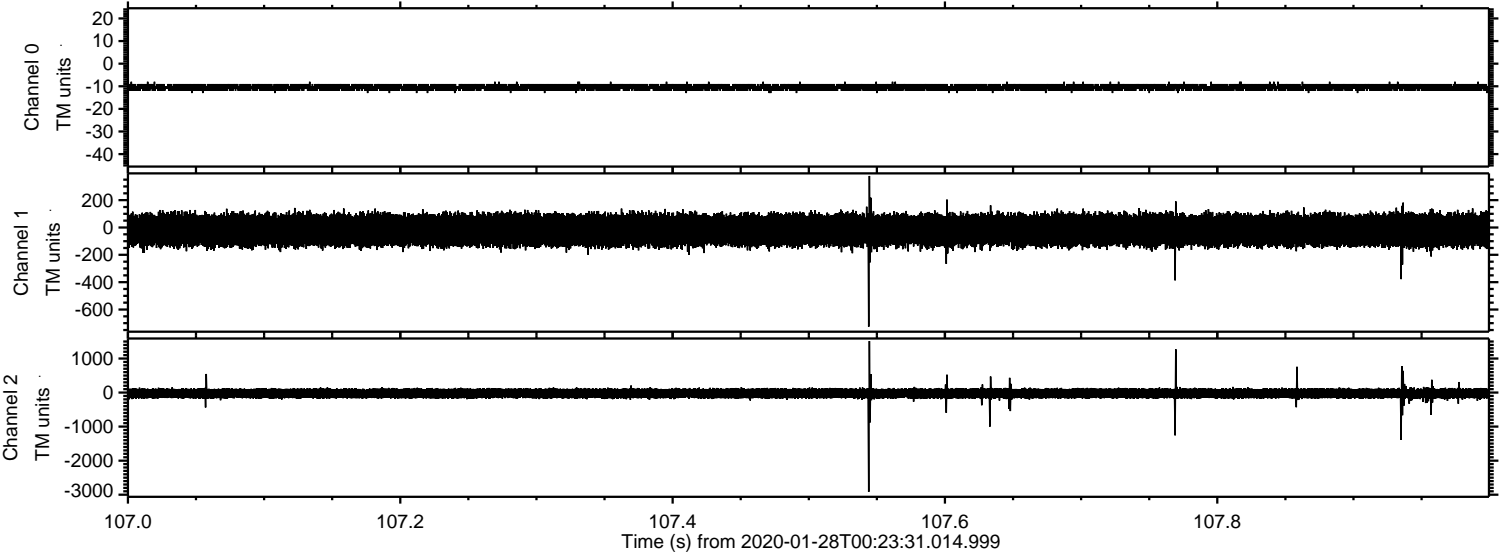
# ELMAVAN 3D WAVEFORMS (Measured data sampled at 50 kHz) 51000 packets of 144 samples from 2020-01-28T00:23:31.014.999. Part 16/147

Processed Tue Jan 28 01:31:24 2020 by ELM ver.2012-10-06 from 001\_\_elm20200128\_002330\_\_dat00.bin





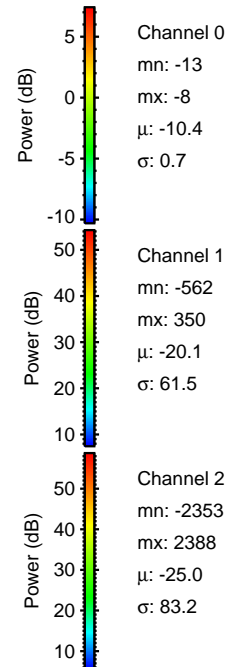
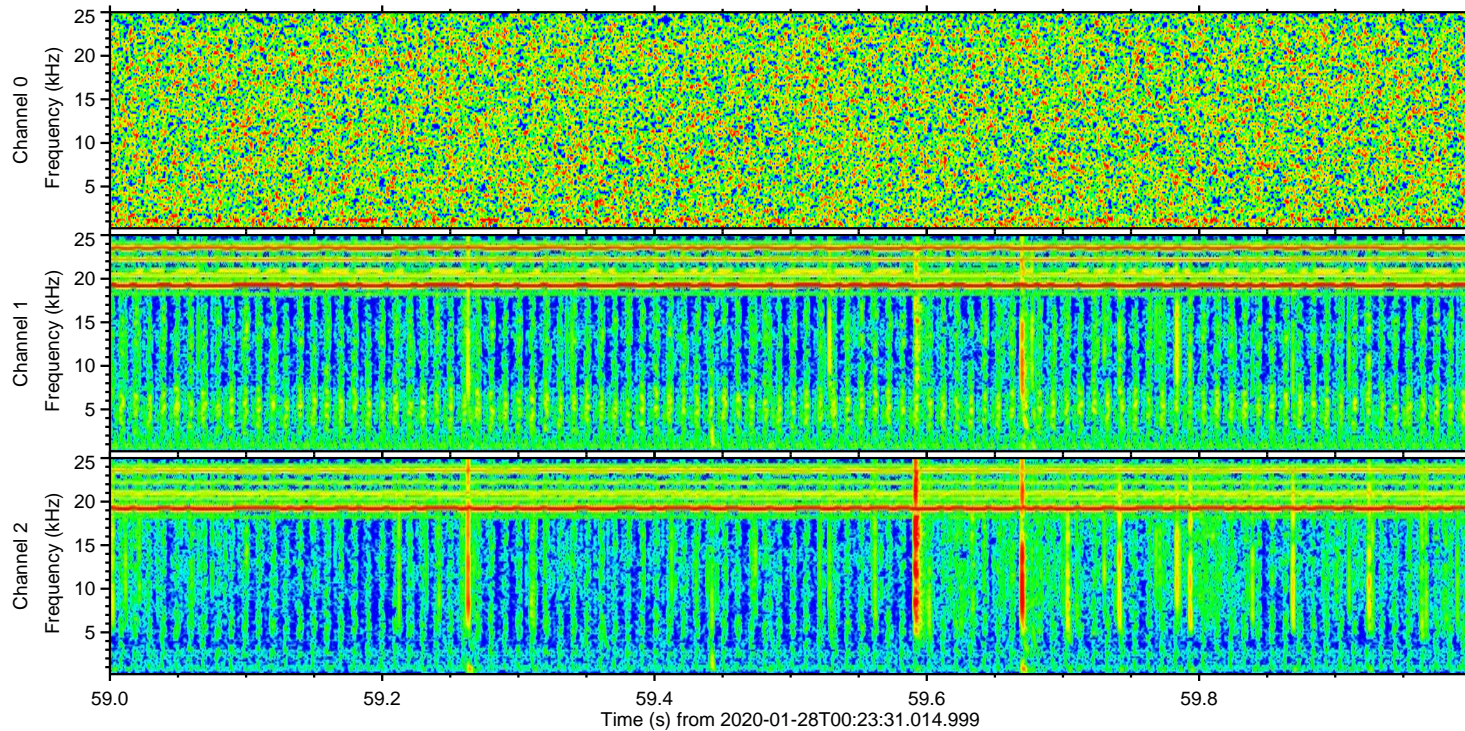
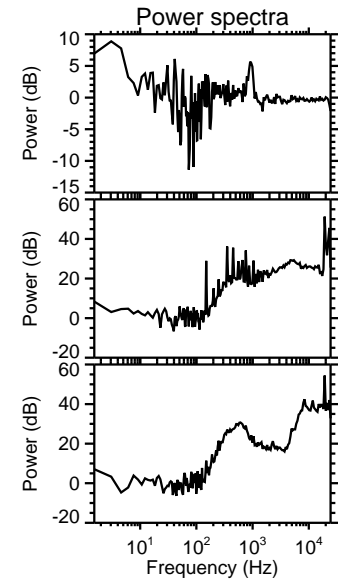
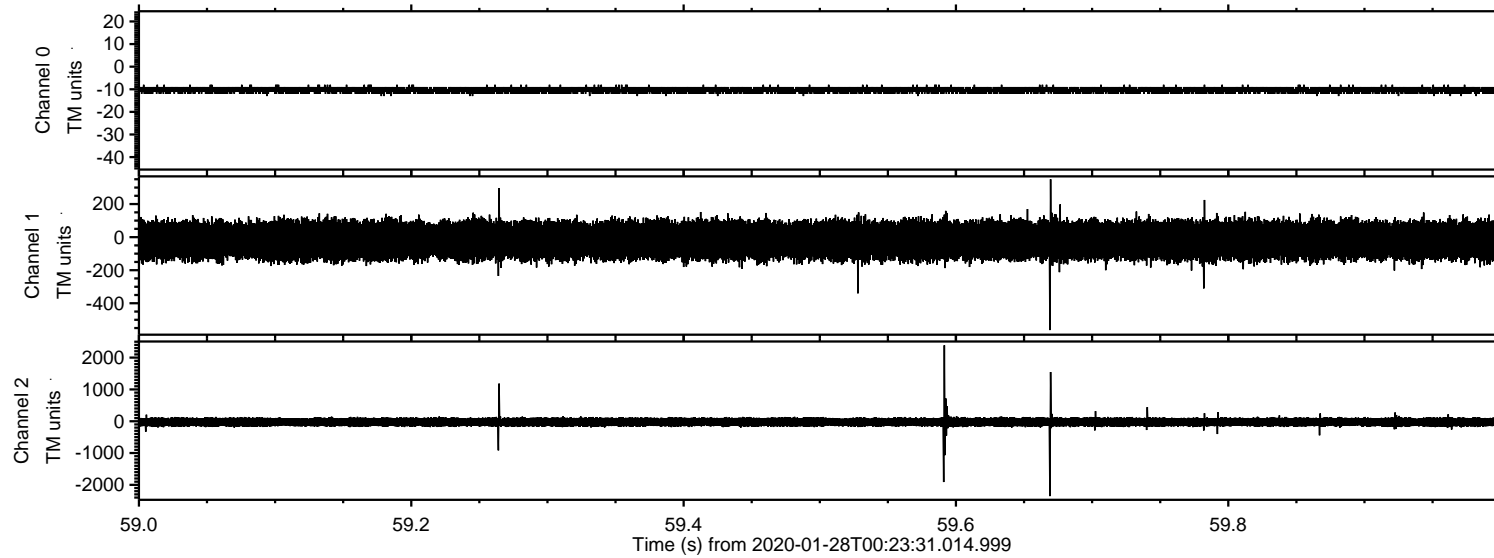
Processed Tue Jan 28 01:31:25 2020 by ELM ver.2012-10-06 from 001\_\_elm20200128\_002330\_\_dat00.bin





# ELMAVAN 3D WAVEFORMS (Measured data sampled at 50 kHz) 51000 packets of 144 samples from 2020-01-28T00:23:31.014.999. Part 60/147

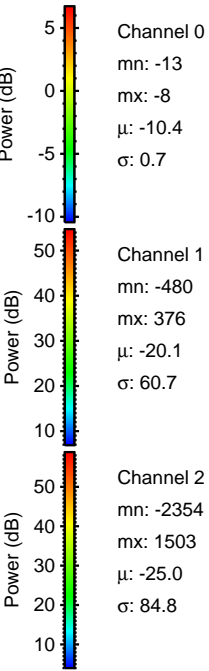
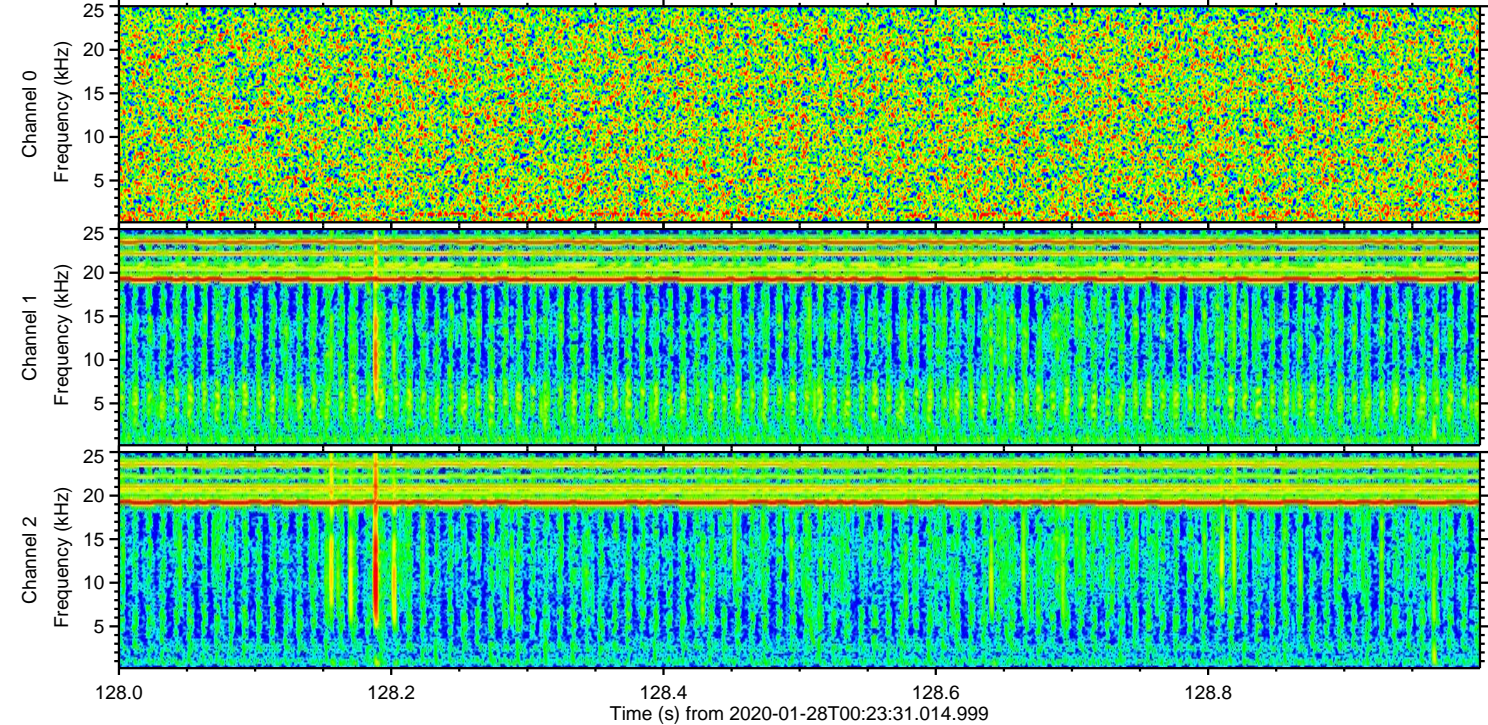
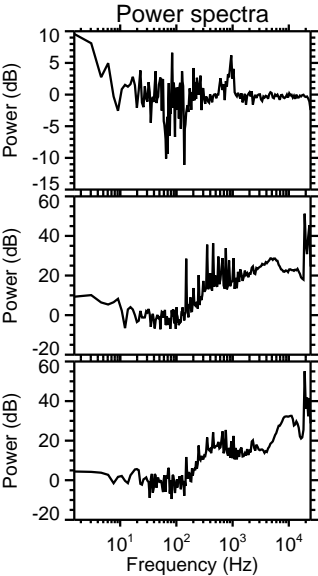
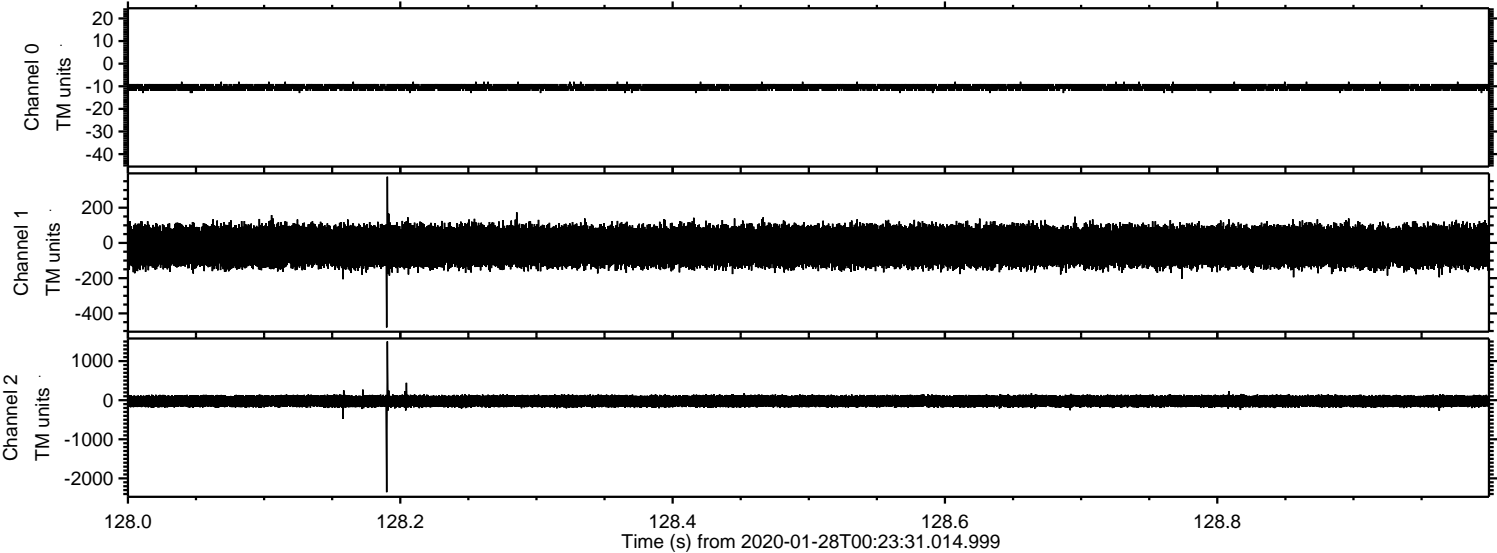
Processed Tue Jan 28 01:31:25 2020 by ELM ver.2012-10-06 from 001\_\_elm20200128\_002330\_\_dat00.bin





ELMAVAN 3D WAVEFORMS (Measured data sampled at 50 kHz) 51000 packets of 144 samples from 2020-01-28T00:23:31.014.999. Part 129/147

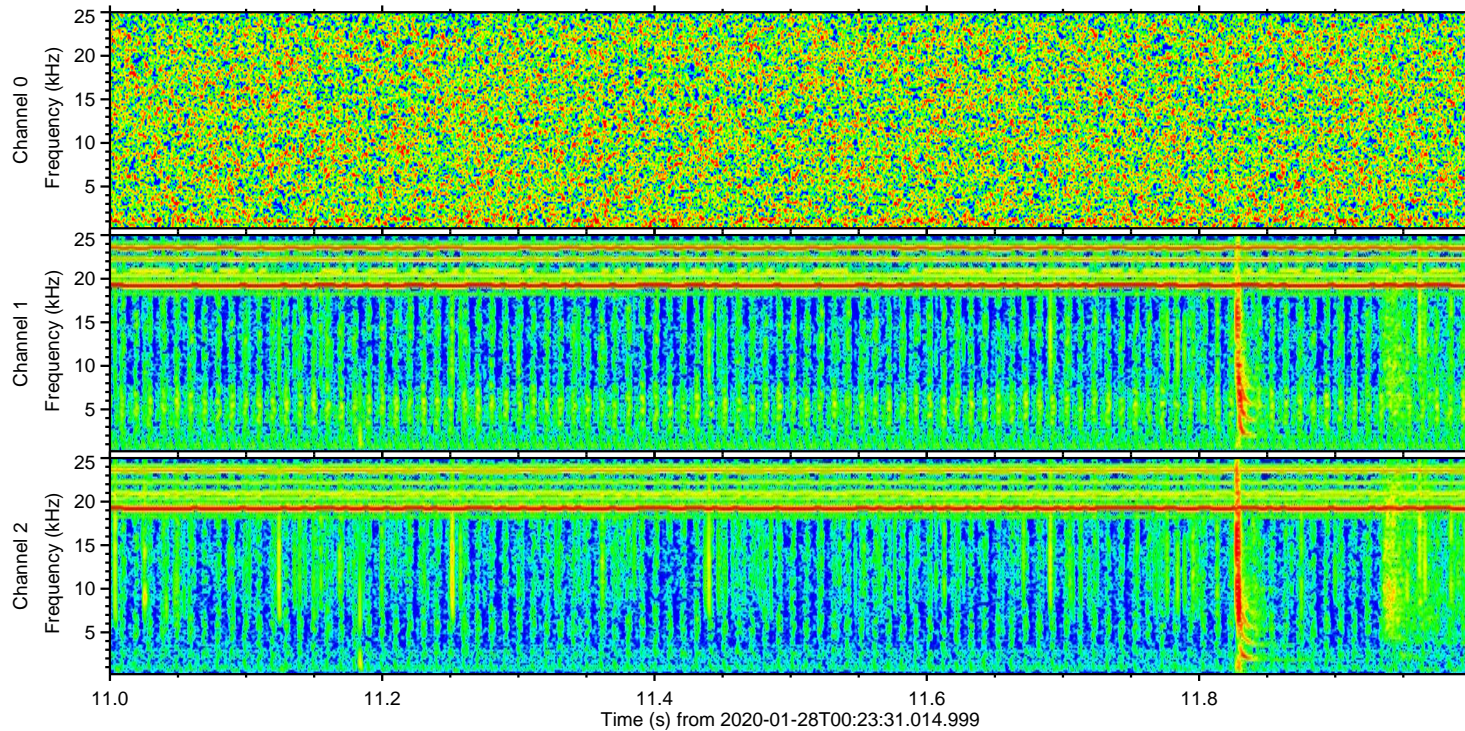
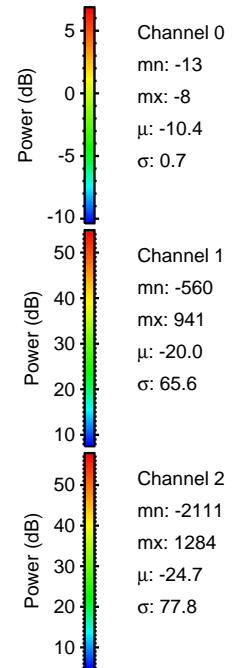
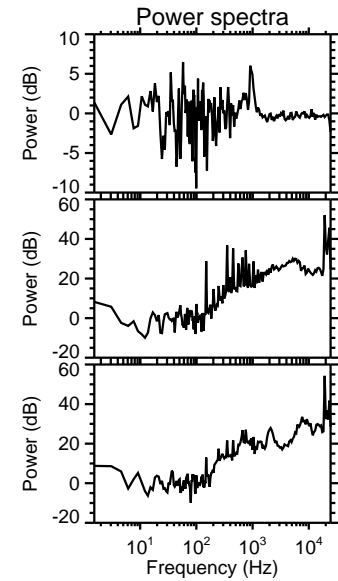
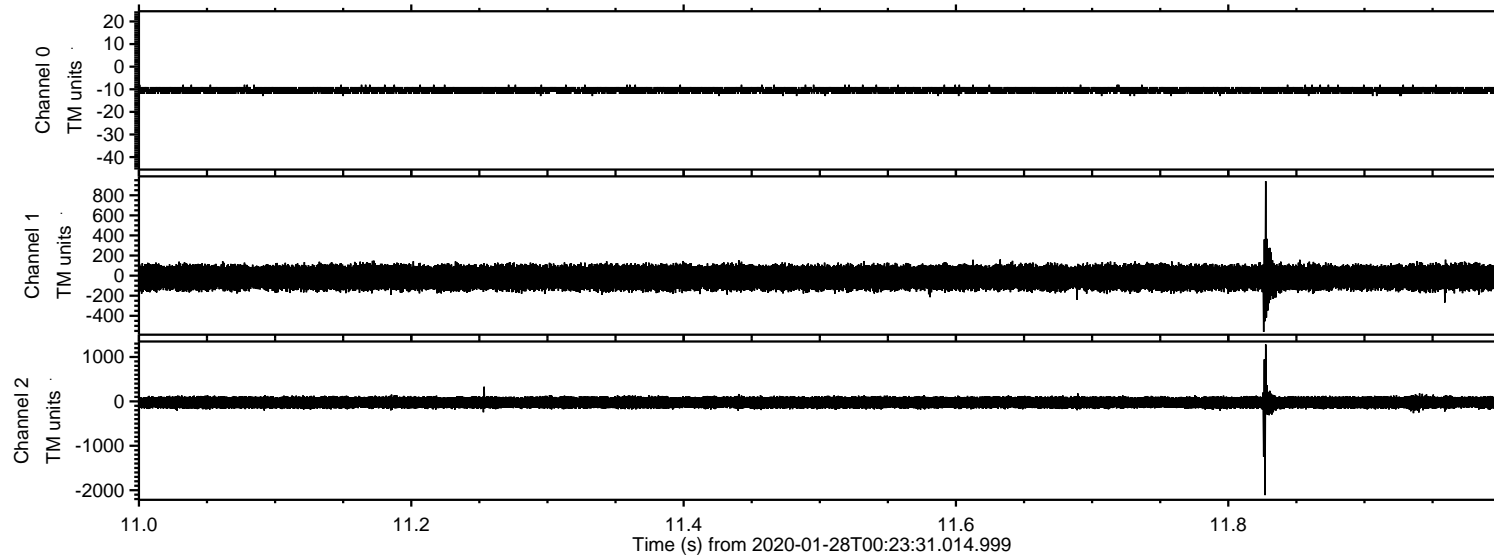
Processed Tue Jan 28 01:31:26 2020 by ELM ver.2012-10-06 from 001\_\_elm20200128\_002330\_\_dat00.bin





# ELMAVAN 3D WAVEFORMS (Measured data sampled at 50 kHz) 51000 packets of 144 samples from 2020-01-28T00:23:31.014.999. Part 12/147

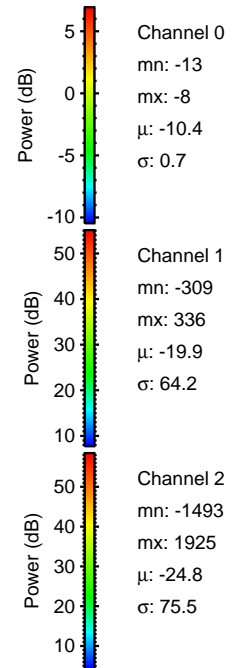
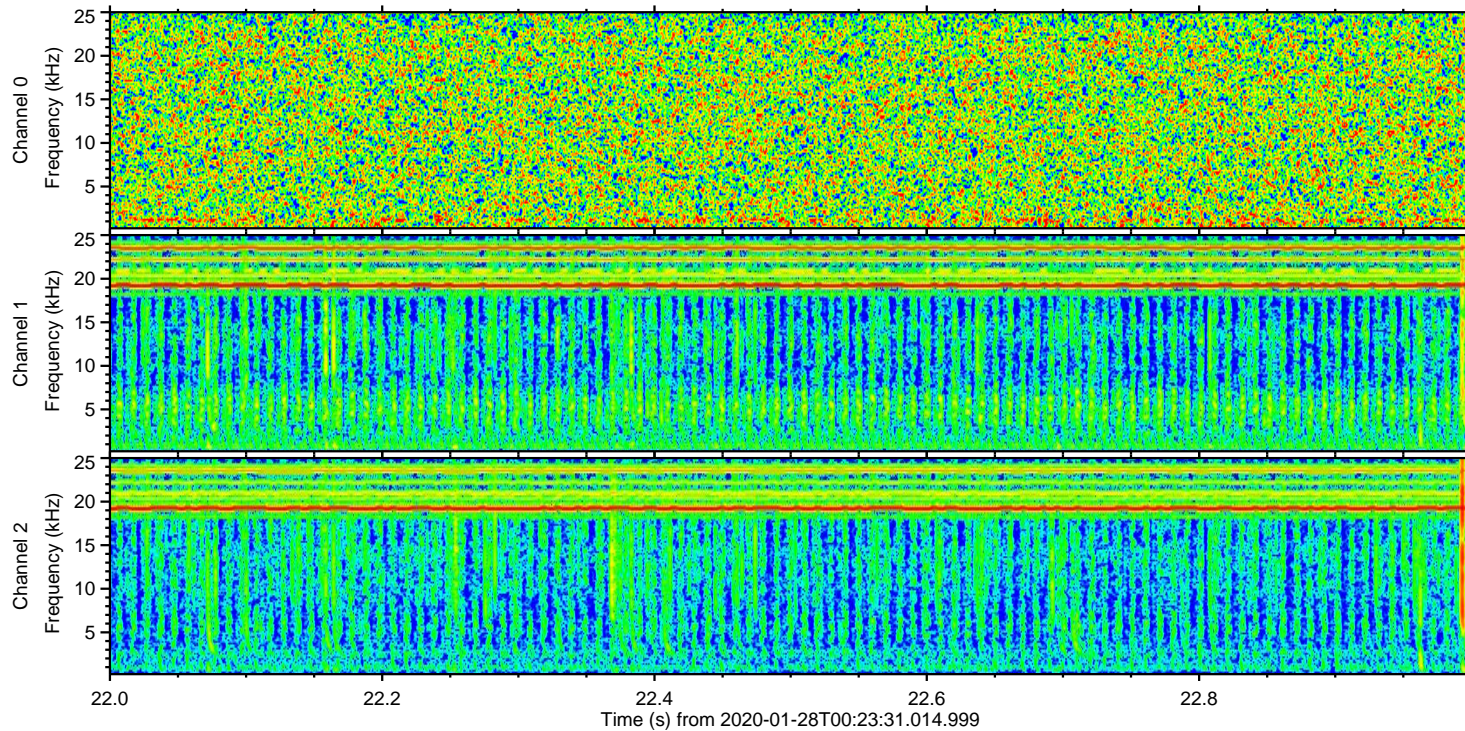
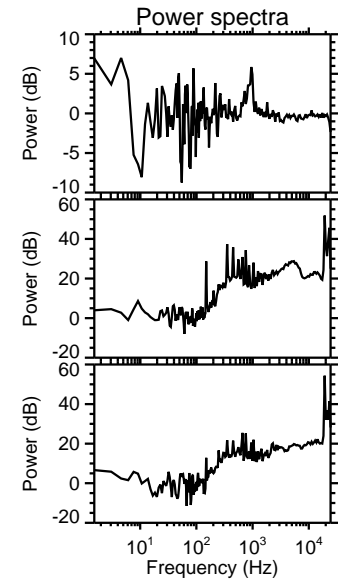
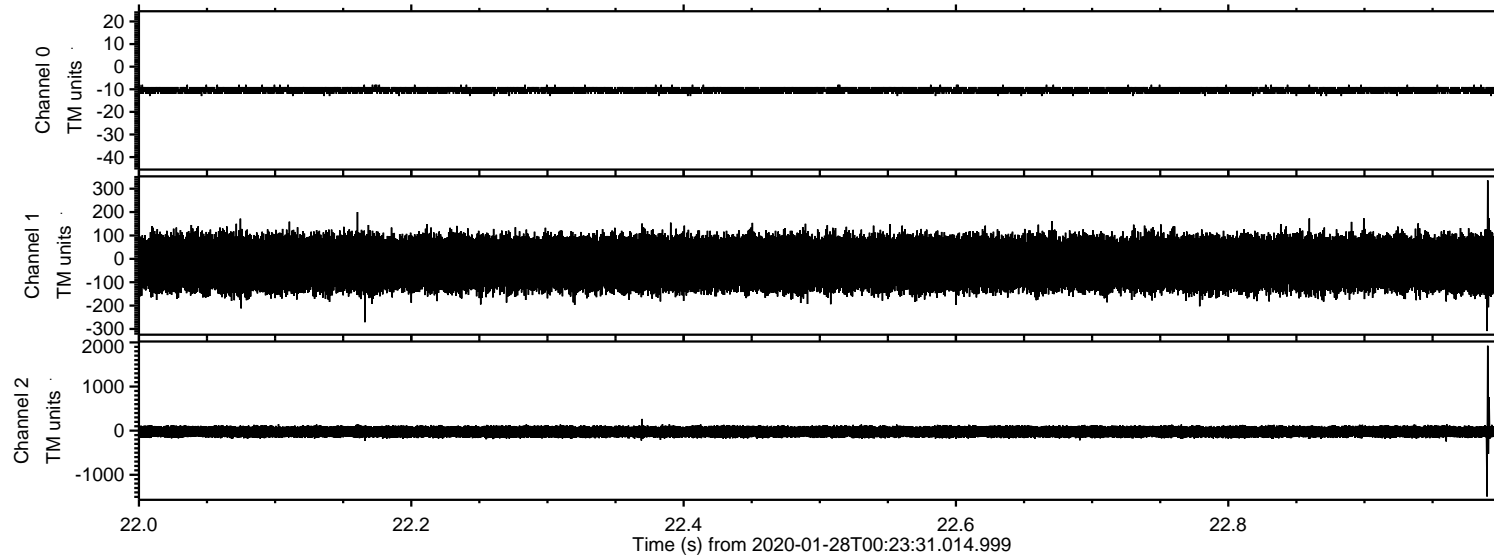
Processed Tue Jan 28 01:31:26 2020 by ELM ver.2012-10-06 from 001\_\_elm20200128\_002330\_\_dat00.bin





# ELMAVAN 3D WAVEFORMS (Measured data sampled at 50 kHz) 51000 packets of 144 samples from 2020-01-28T00:23:31.014.999. Part 23/147

Processed Tue Jan 28 01:31:27 2020 by ELM ver.2012-10-06 from 001\_\_elm20200128\_002330\_\_dat00.bin





# ELMAVAN 3D WAVEFORMS (Measured data sampled at 50 kHz) 51000 packets of 144 samples from 2020-01-28T00:23:31.014.999. Part 75/147

Processed Tue Jan 28 01:31:28 2020 by ELM ver.2012-10-06 from 001\_\_elm20200128\_002330\_\_dat00.bin

