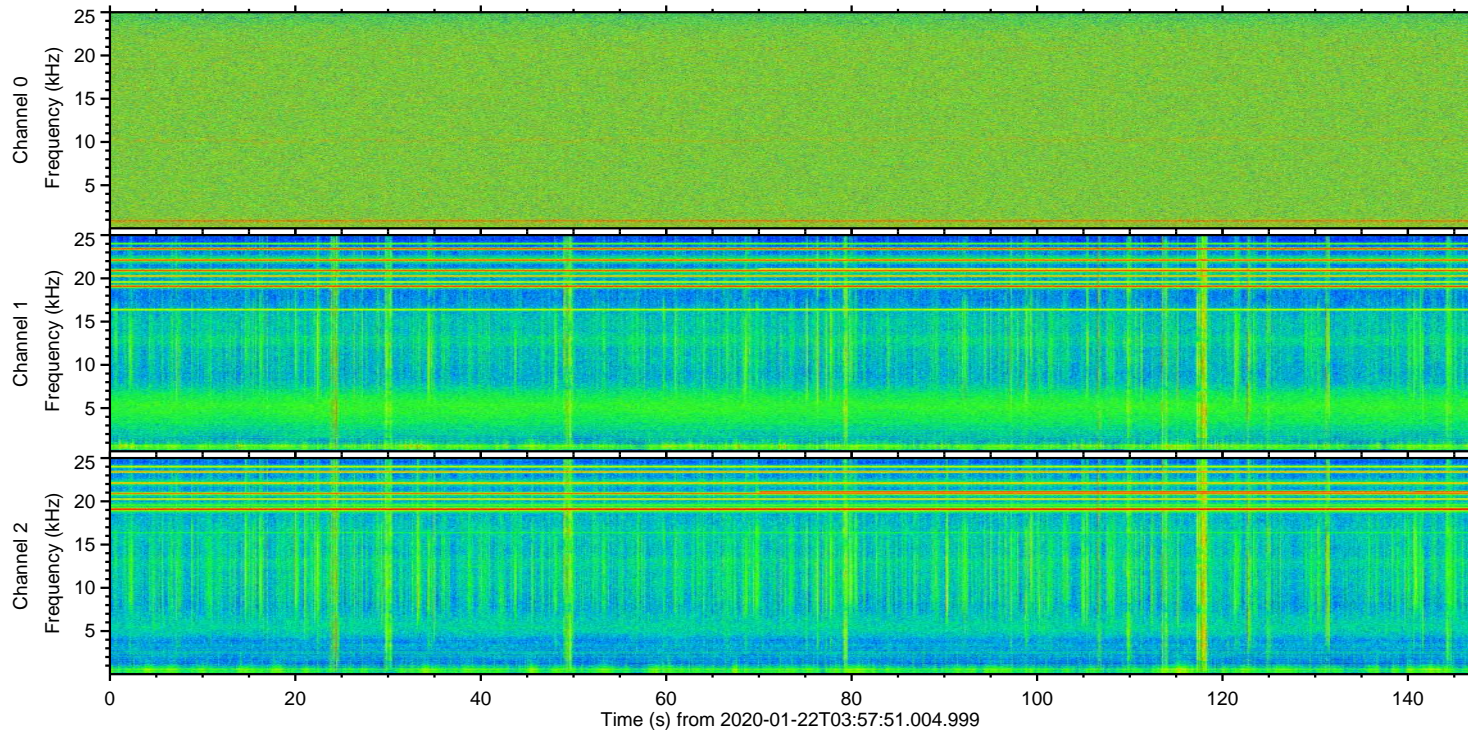
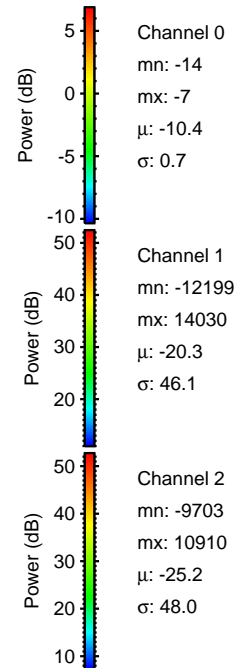
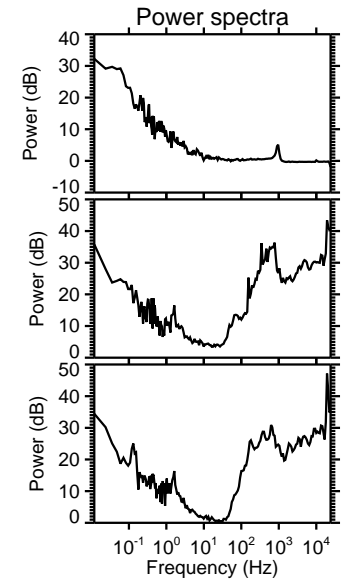
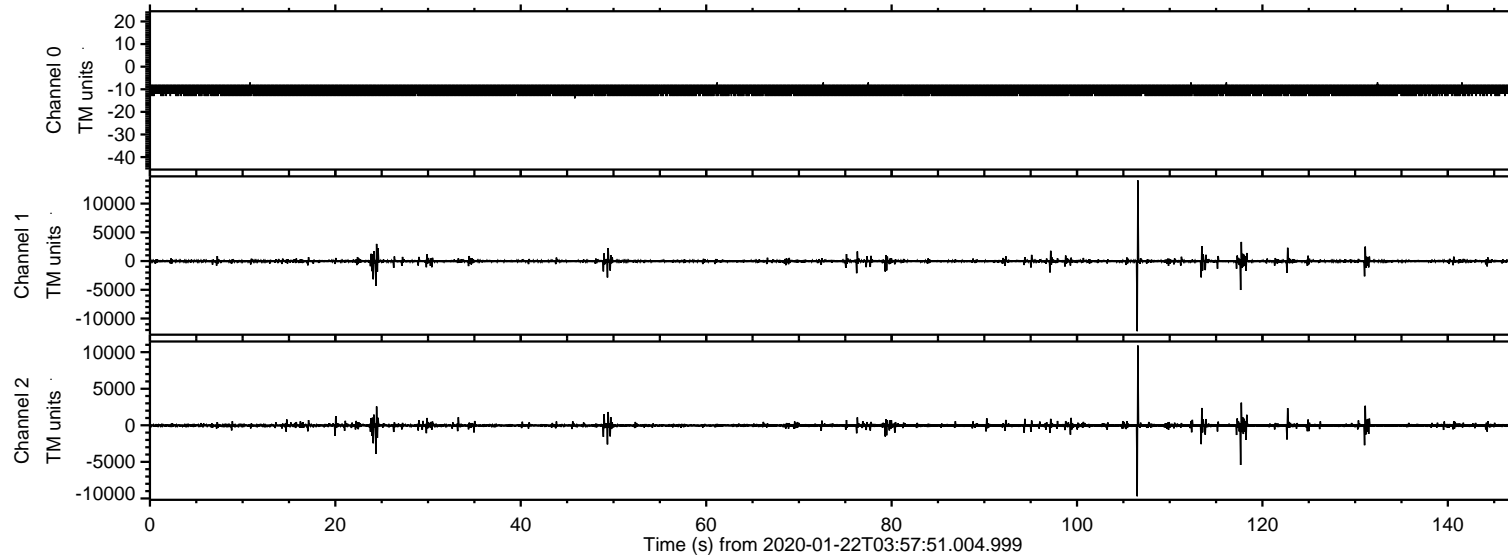


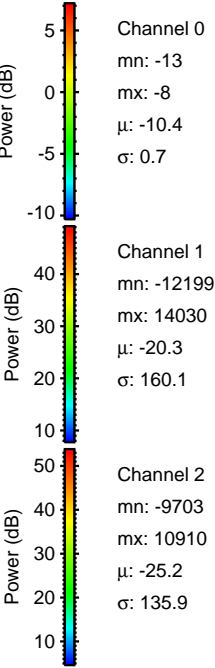
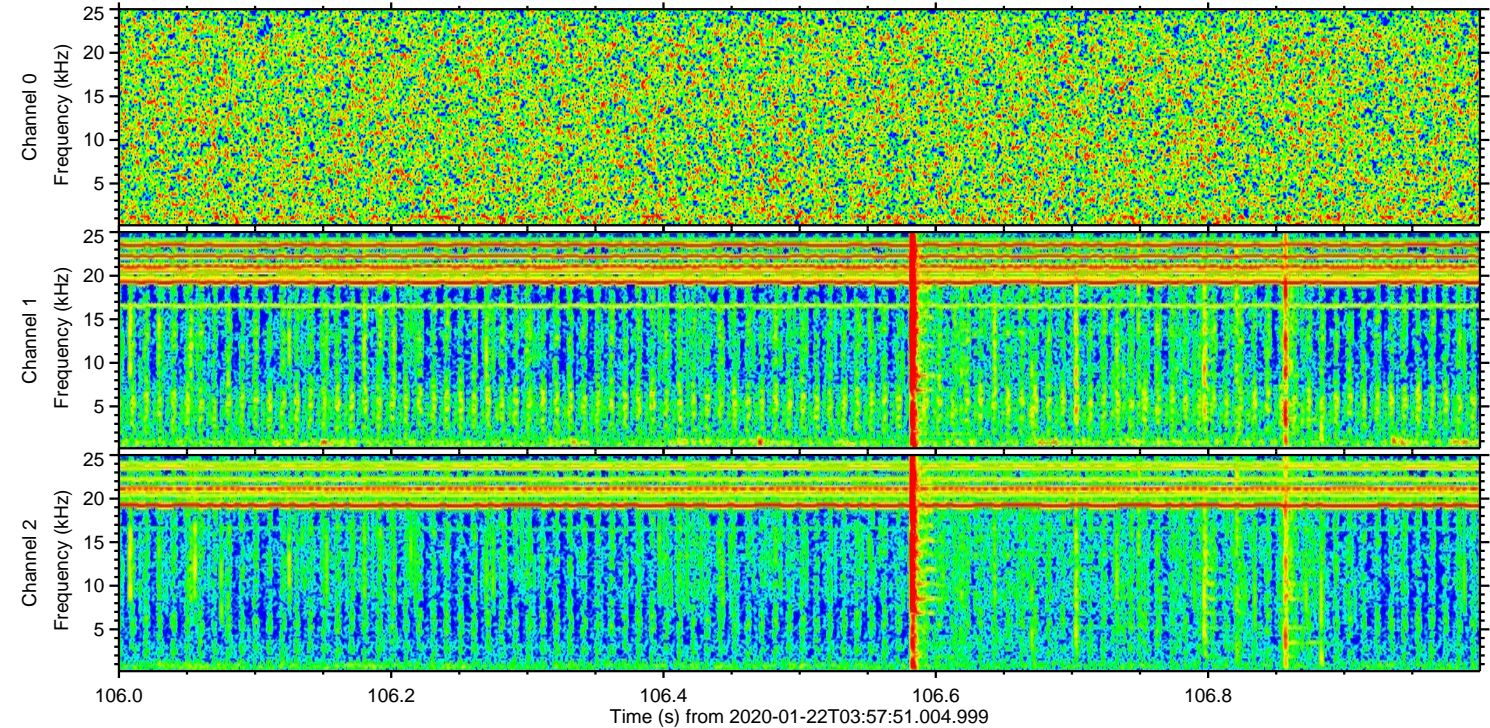
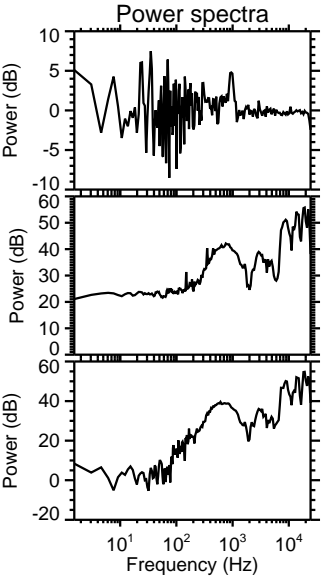
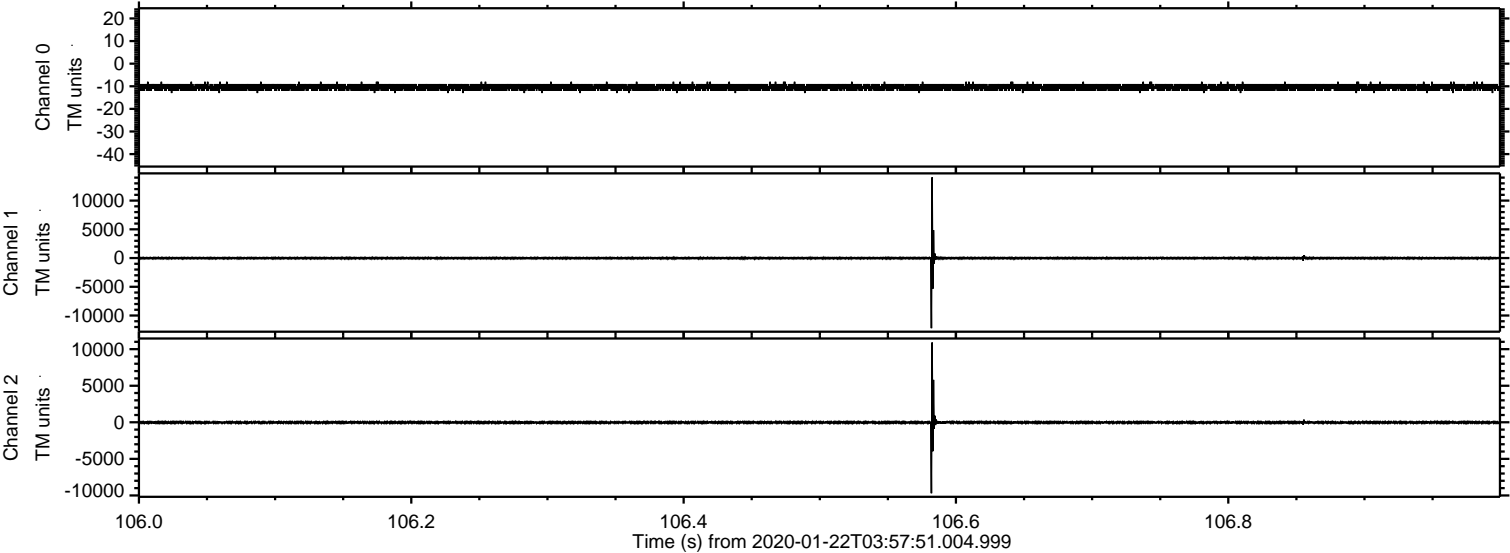
ELMAVAN 3D WAVEFORMS (Measured data sampled at 50 kHz) 51000 packets of 144 samples from 2020-01-22T03:57:51.004.999.

Processed Wed Jan 22 05:05:13 2020 by ELM ver.2012-10-06 from 001__elm20200122_035750__dat00.bin



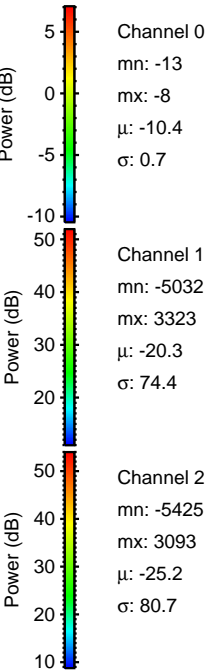
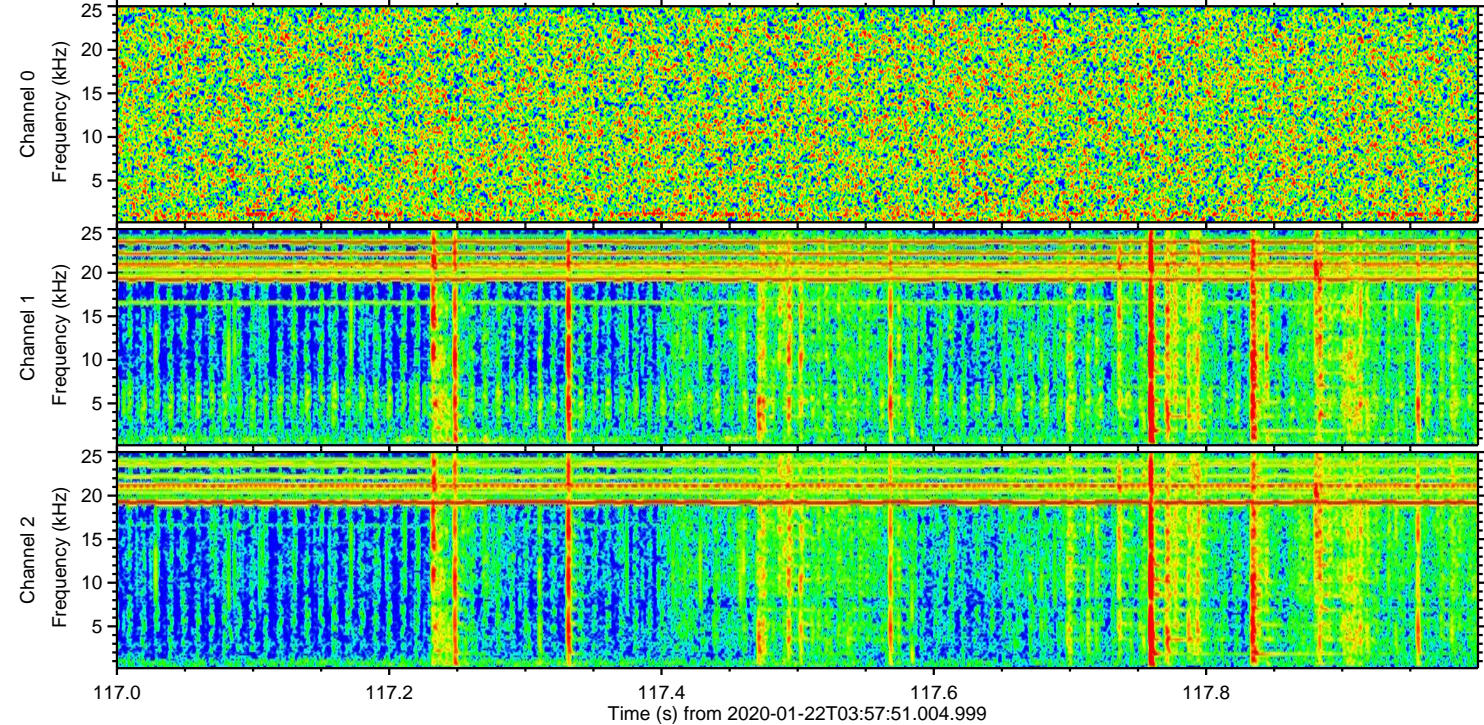
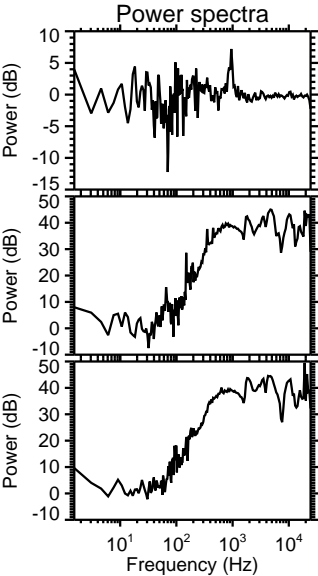
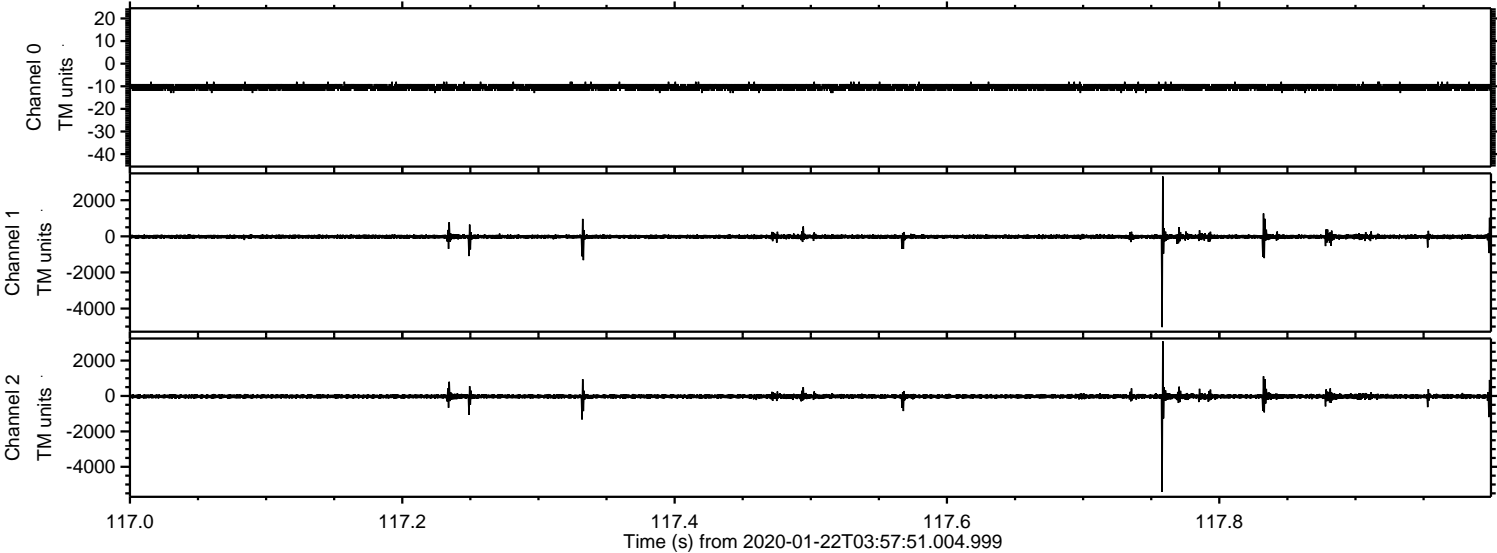
ELMAVAN 3D WAVEFORMS (Measured data sampled at 50 kHz) 51000 packets of 144 samples from 2020-01-22T03:57:51.004.999. Part 107/147

Processed Wed Jan 22 05:05:23 2020 by ELM ver.2012-10-06 from 001__elm20200122_035750__dat00.bin



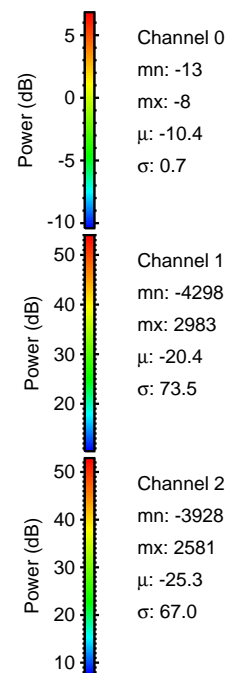
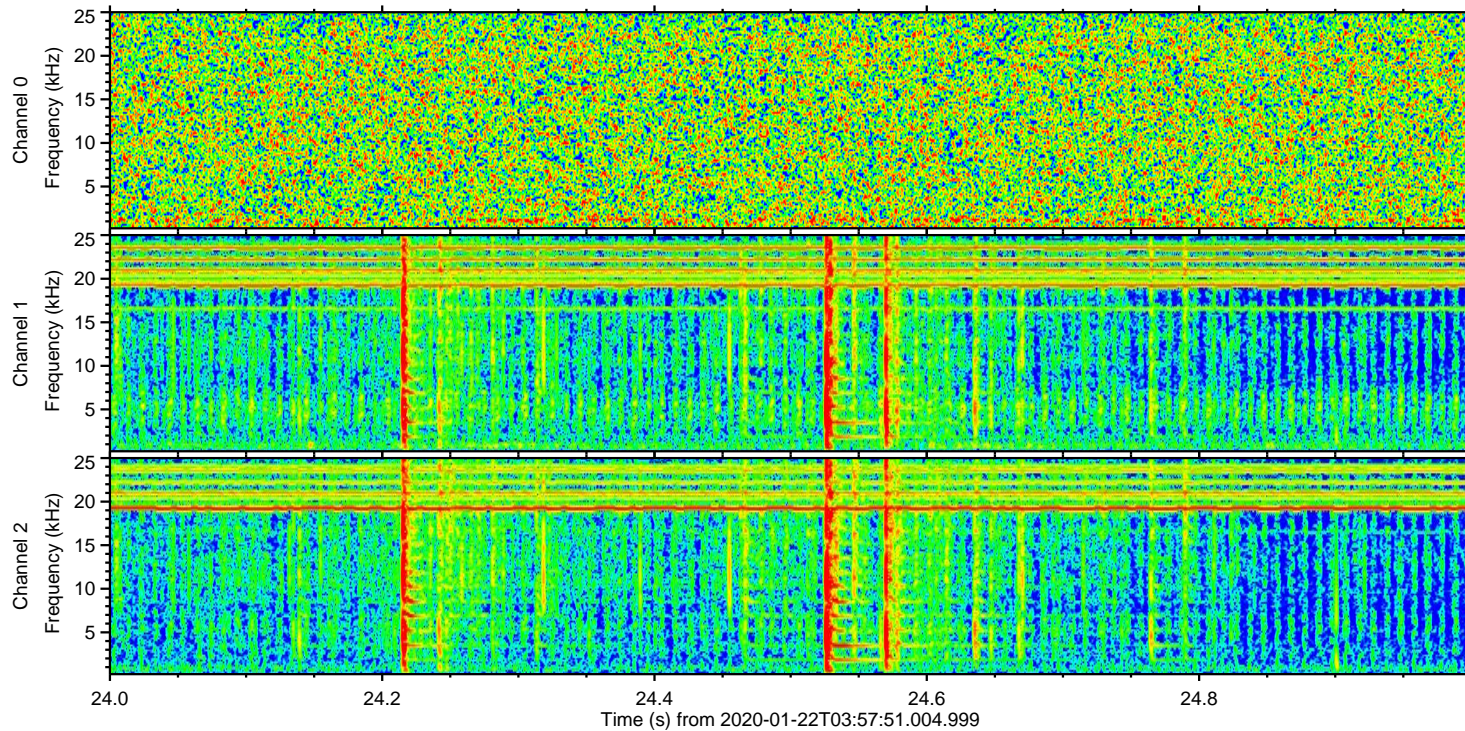
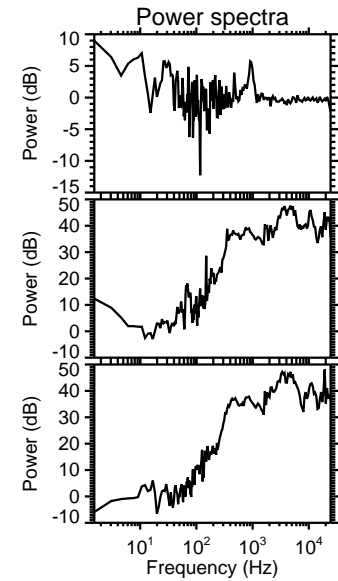
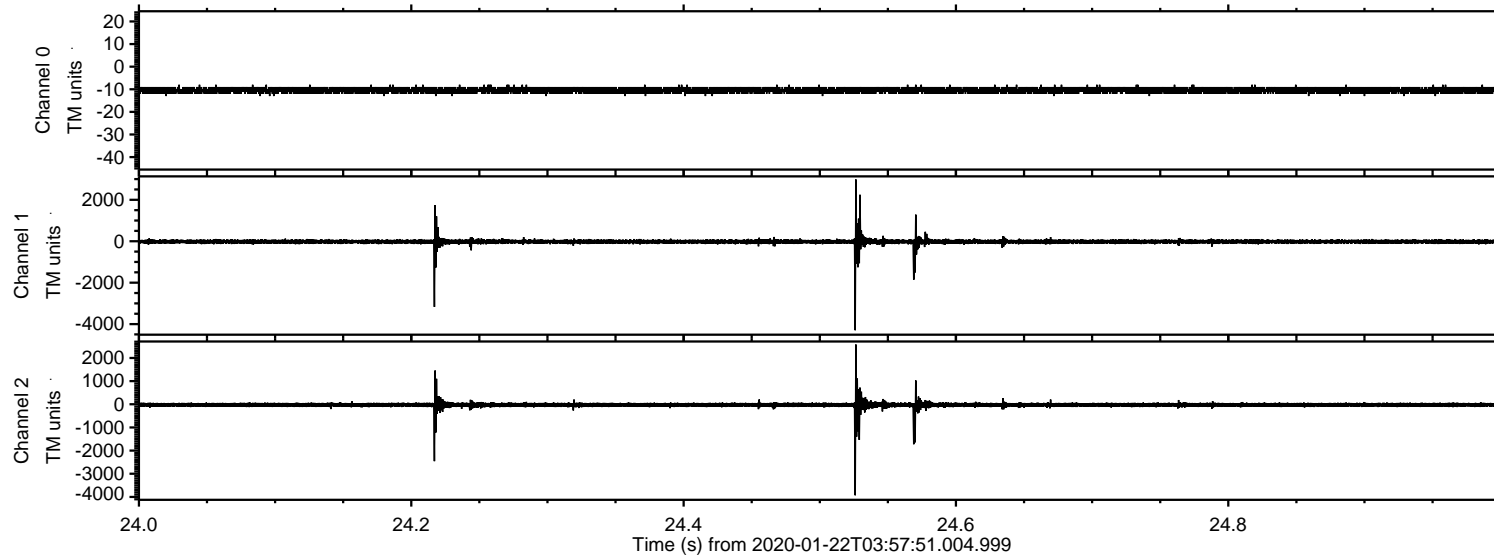
ELMAVAN 3D WAVEFORMS (Measured data sampled at 50 kHz) 51000 packets of 144 samples from 2020-01-22T03:57:51.004.999. Part 118/147

Processed Wed Jan 22 05:05:24 2020 by ELM ver.2012-10-06 from 001__elm20200122_035750__dat00.bin



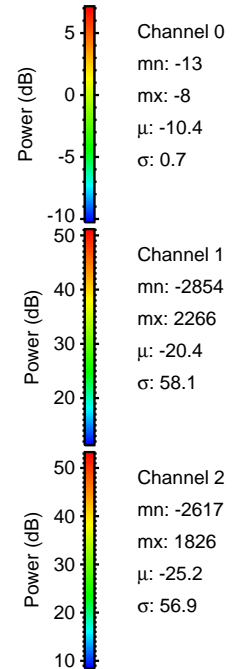
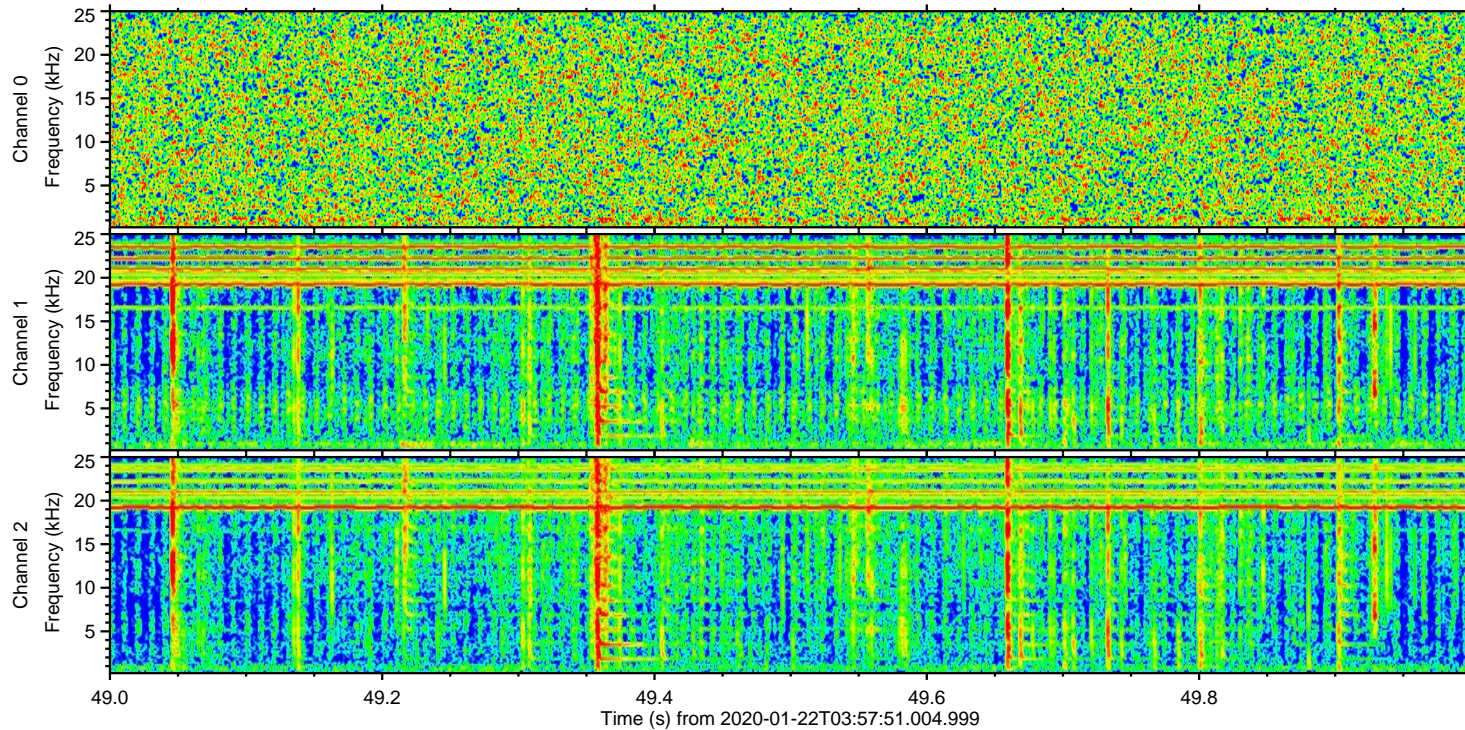
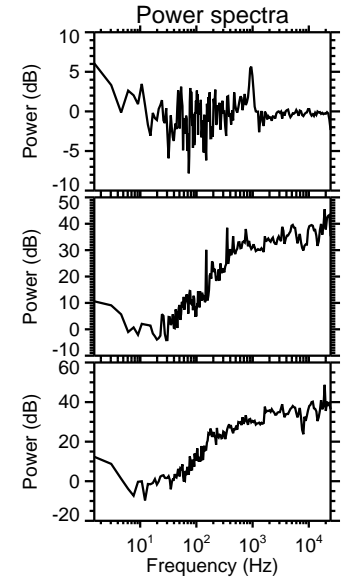
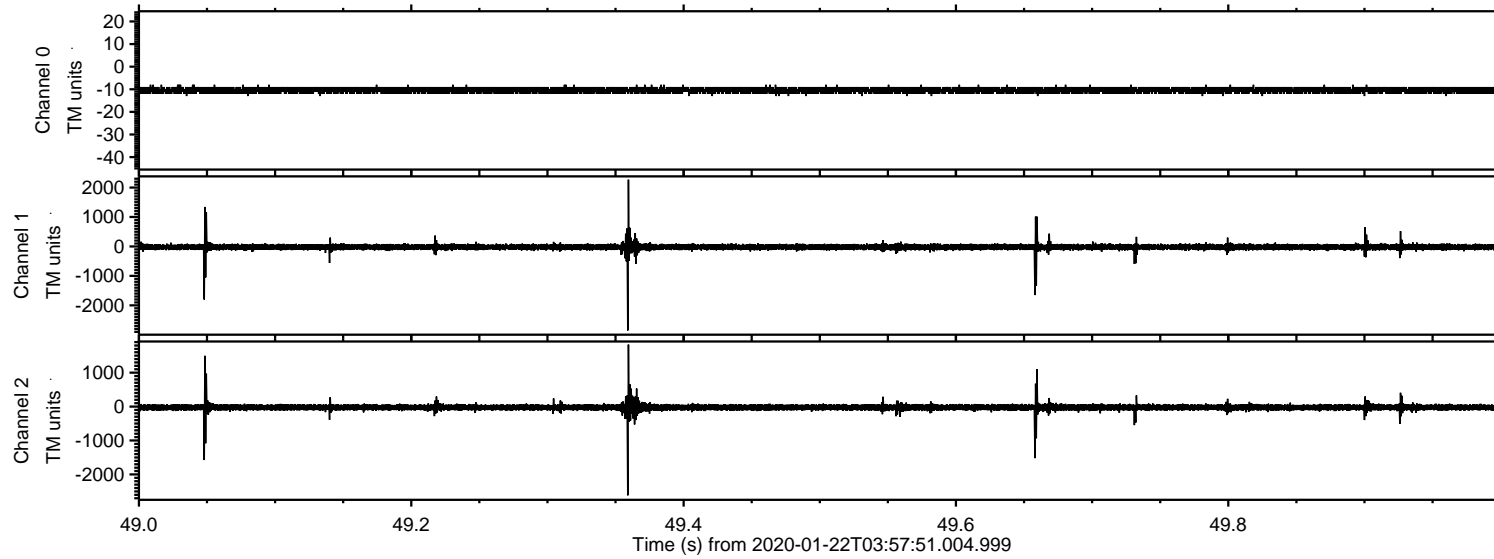
ELMAVAN 3D WAVEFORMS (Measured data sampled at 50 kHz) 51000 packets of 144 samples from 2020-01-22T03:57:51.004.999. Part 25/147

Processed Wed Jan 22 05:05:25 2020 by ELM ver.2012-10-06 from 001__elm20200122_035750__dat00.bin



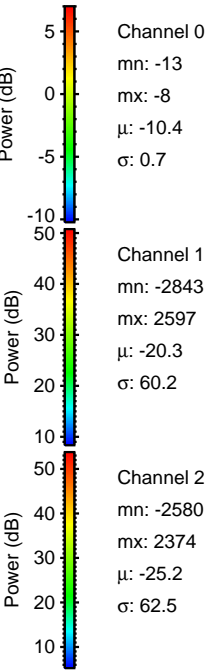
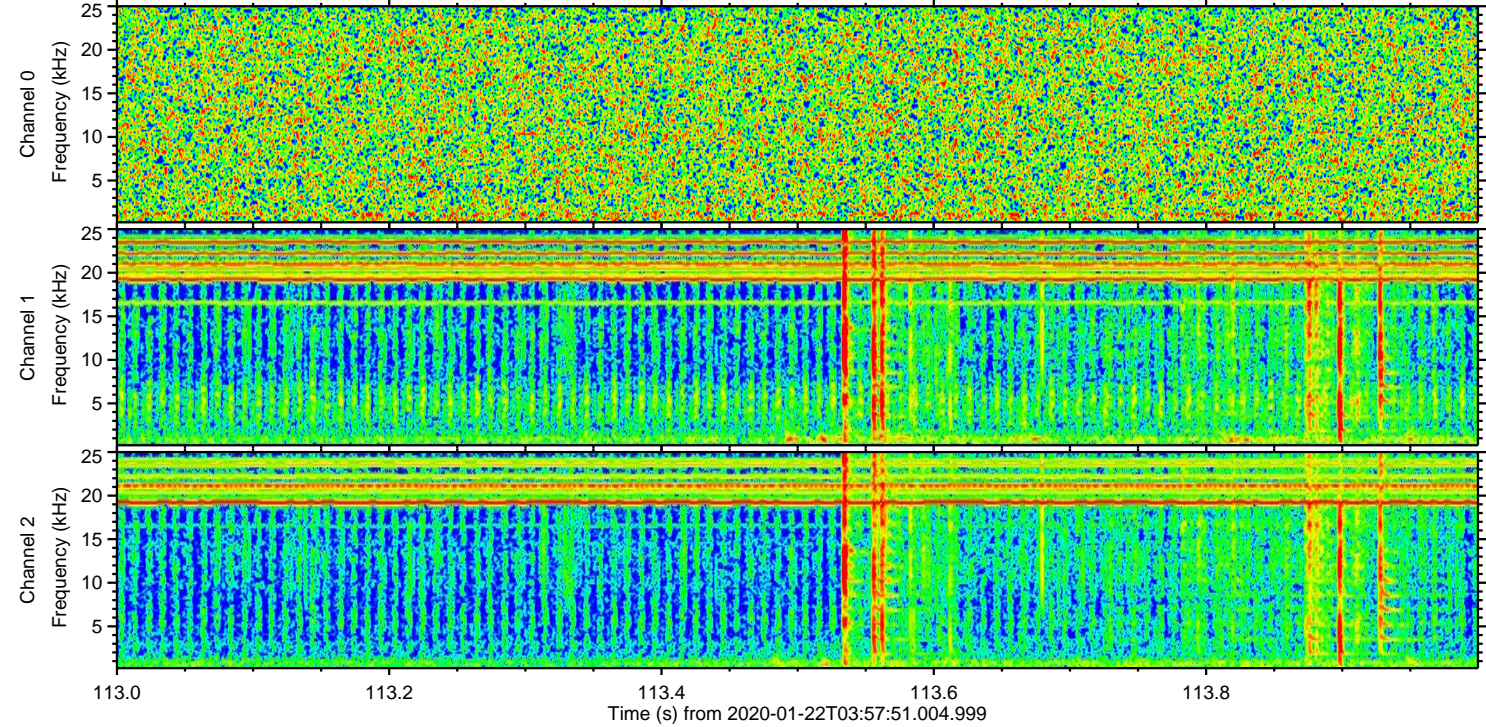
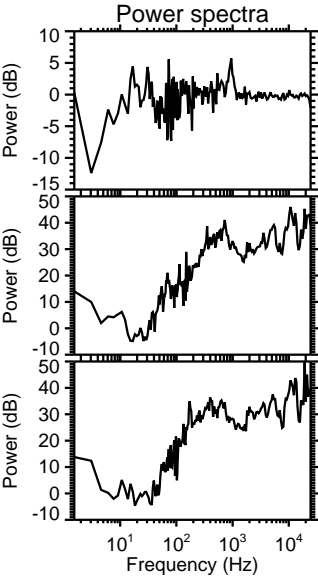
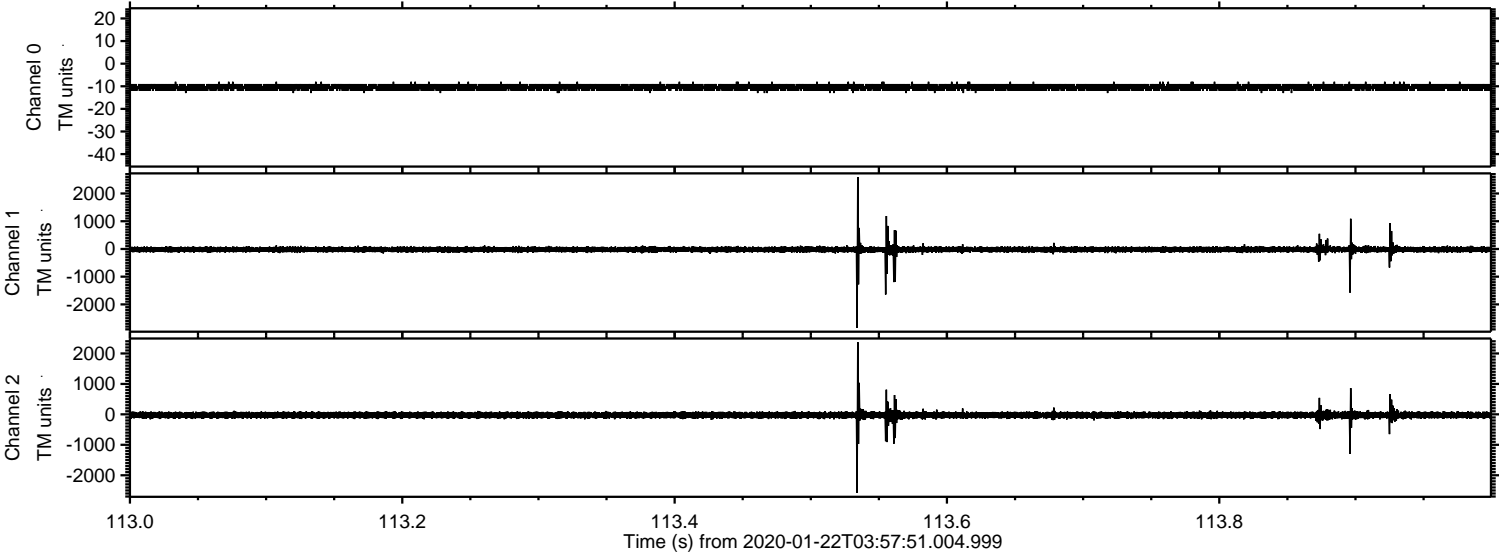
ELMAVAN 3D WAVEFORMS (Measured data sampled at 50 kHz) 51000 packets of 144 samples from 2020-01-22T03:57:51.004.999. Part 50/147

Processed Wed Jan 22 05:05:26 2020 by ELM ver.2012-10-06 from 001__elm20200122_035750__dat00.bin



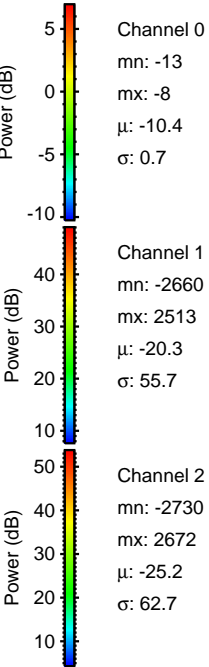
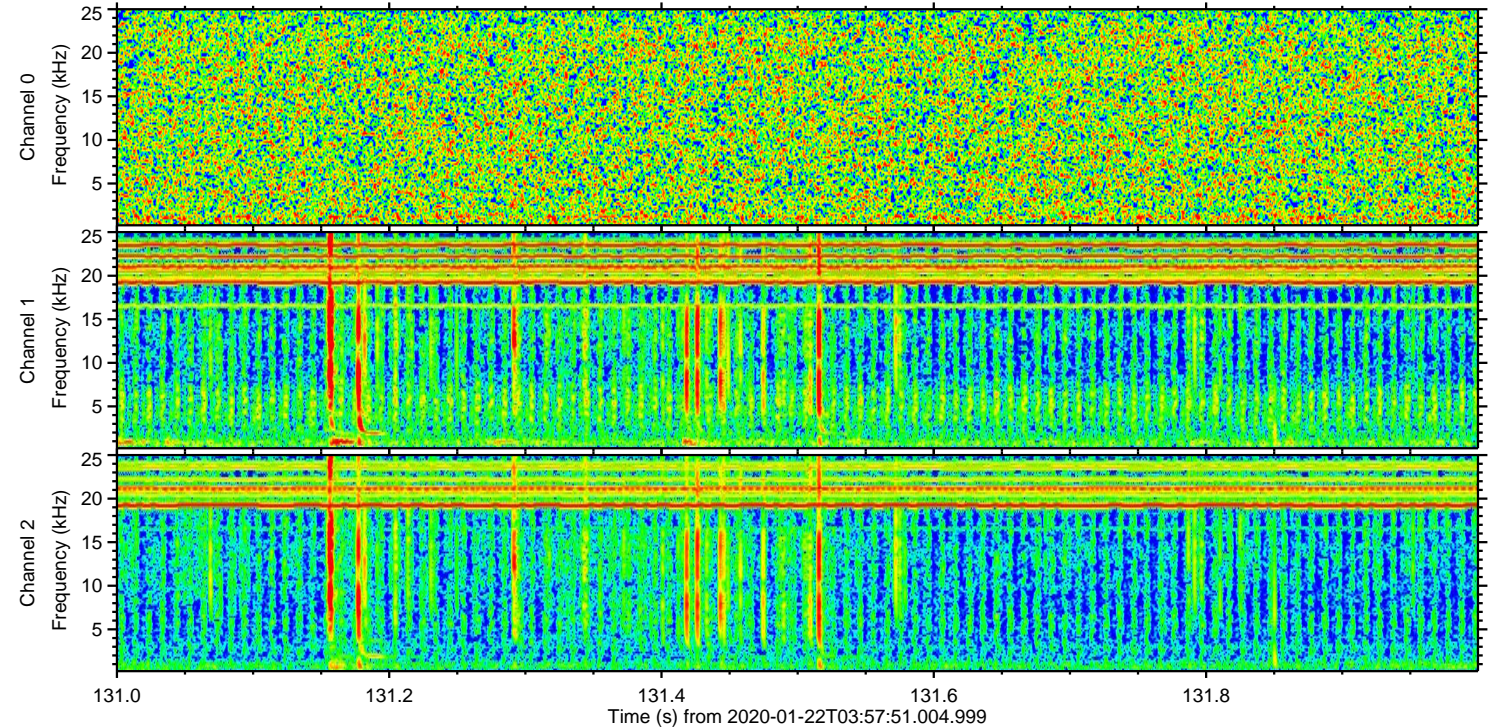
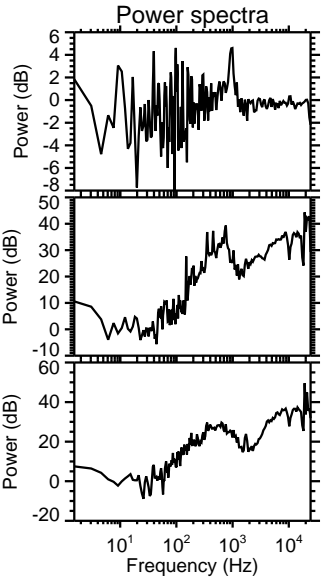
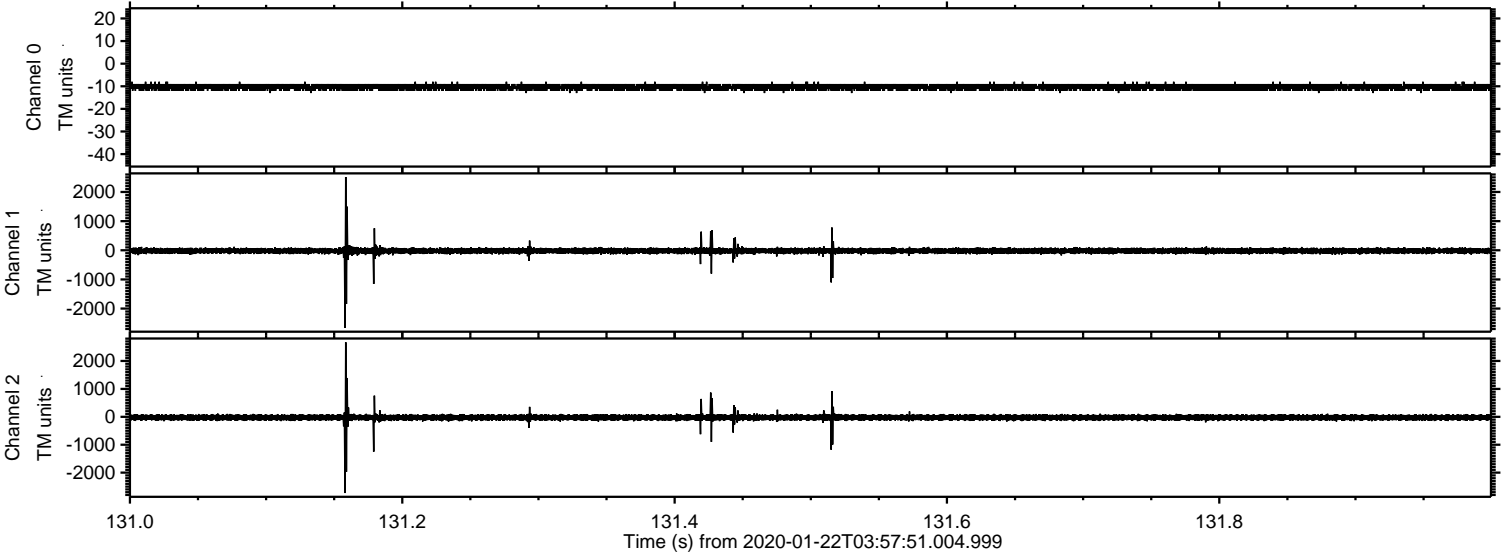
ELMAVAN 3D WAVEFORMS (Measured data sampled at 50 kHz) 51000 packets of 144 samples from 2020-01-22T03:57:51.004.999. Part 114/147

Processed Wed Jan 22 05:05:27 2020 by ELM ver.2012-10-06 from 001__elm20200122_035750__dat00.bin



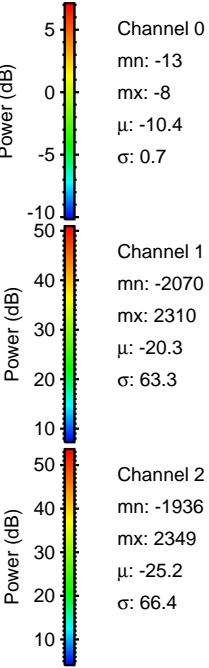
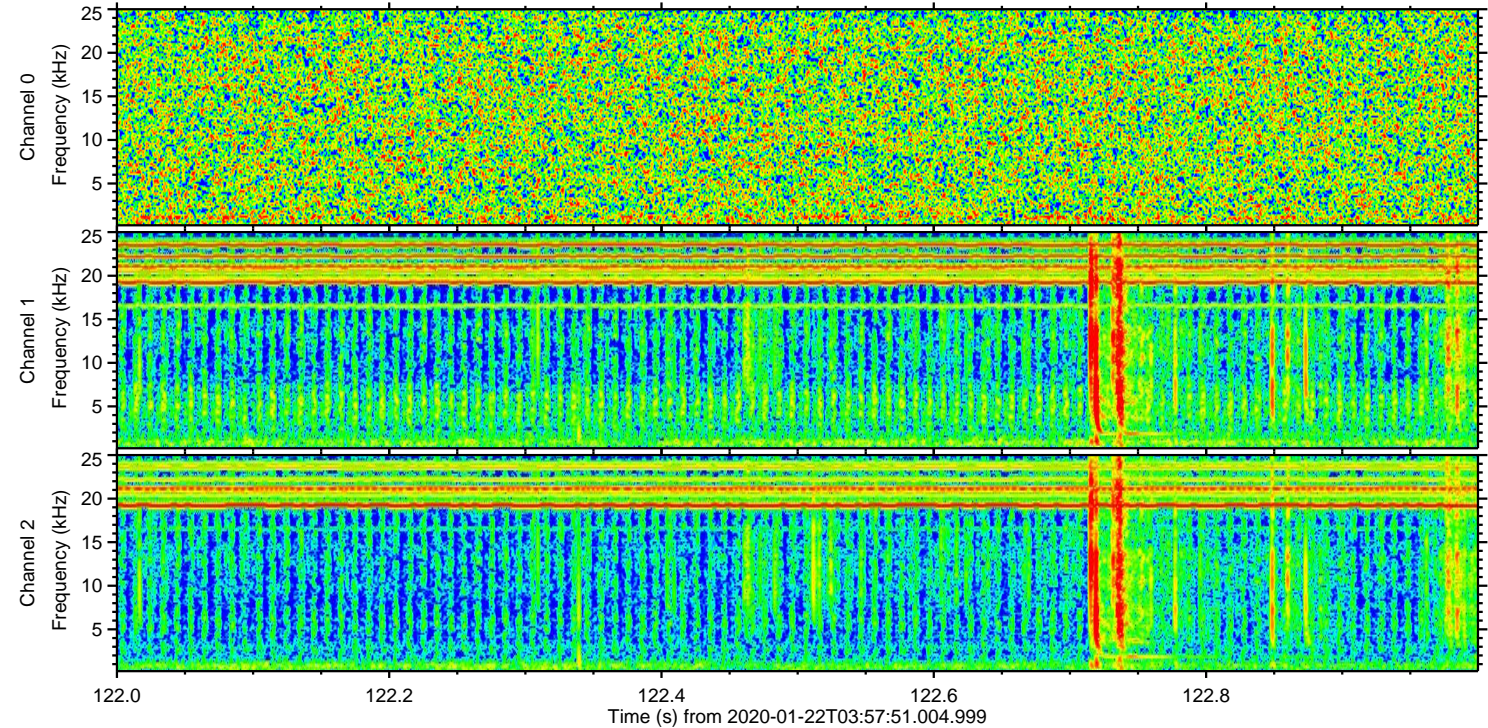
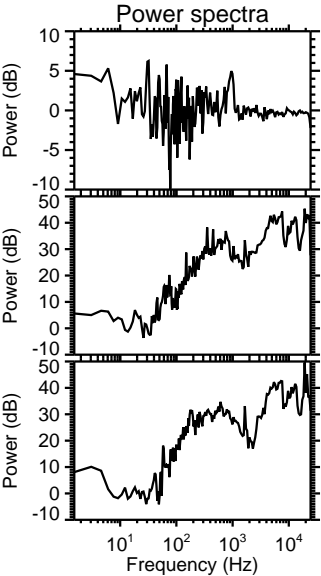
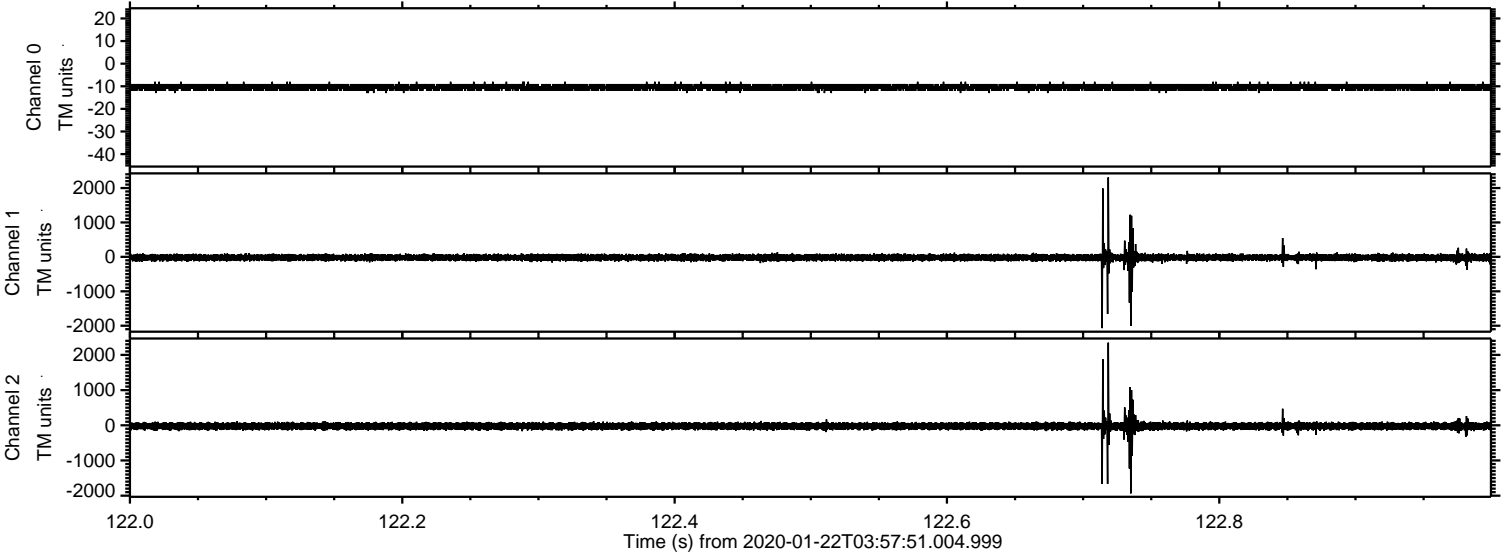
ELMAVAN 3D WAVEFORMS (Measured data sampled at 50 kHz) 51000 packets of 144 samples from 2020-01-22T03:57:51.004.999. Part 132/147

Processed Wed Jan 22 05:05:28 2020 by ELM ver.2012-10-06 from 001__elm20200122_035750__dat00.bin



ELMAVAN 3D WAVEFORMS (Measured data sampled at 50 kHz) 51000 packets of 144 samples from 2020-01-22T03:57:51.004.999. Part 123/147

Processed Wed Jan 22 05:05:28 2020 by ELM ver.2012-10-06 from 001__elm20200122_035750__dat00.bin



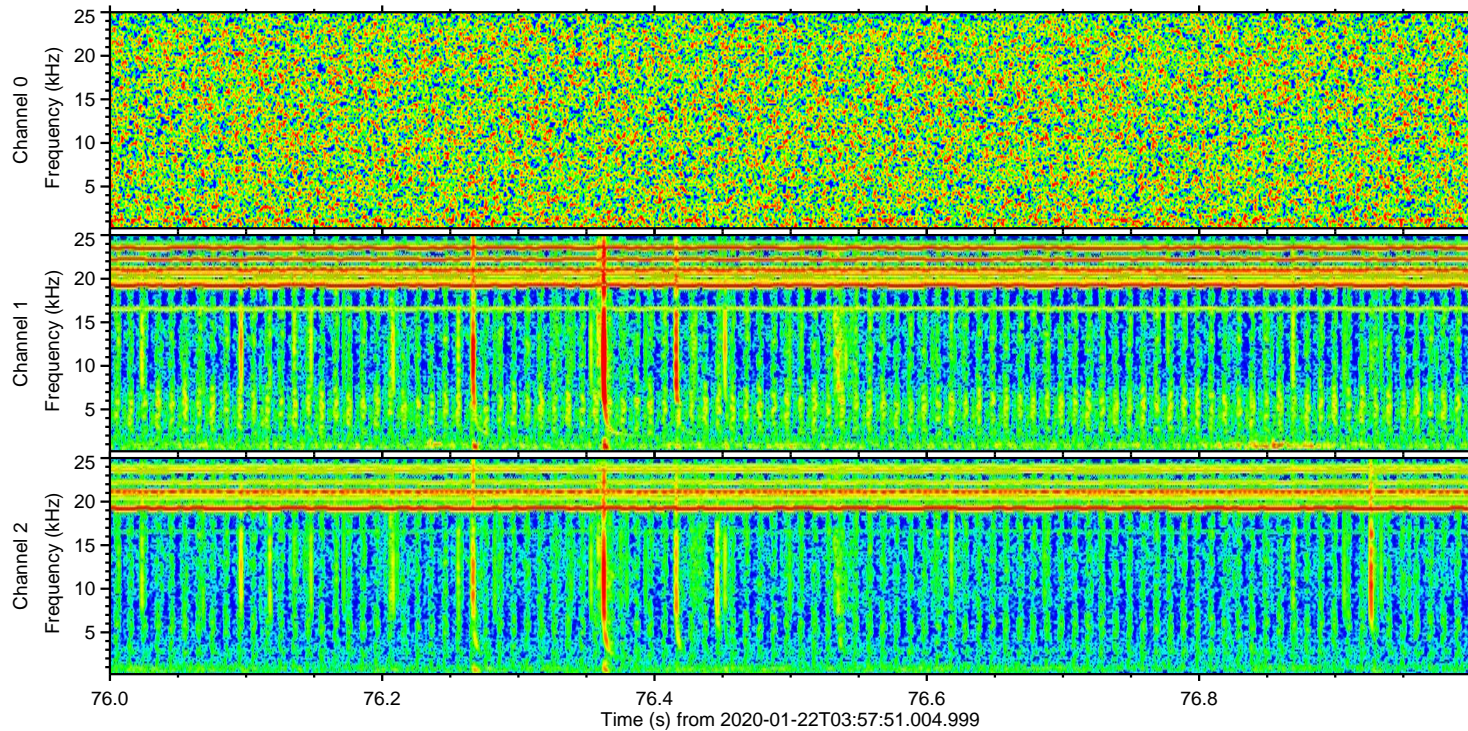
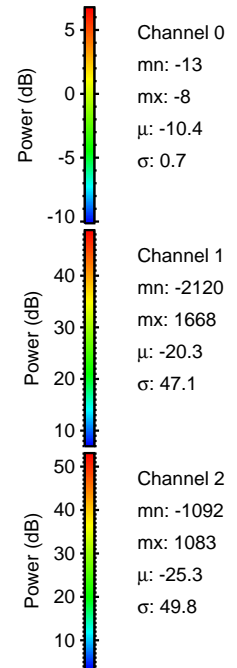
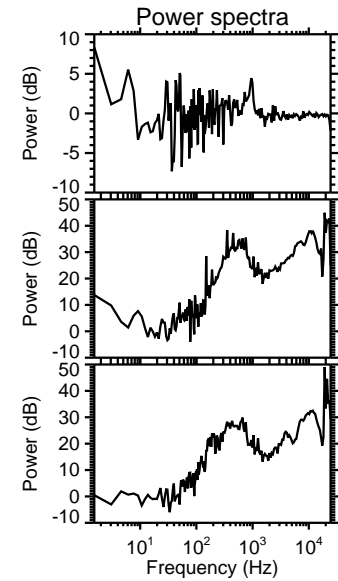
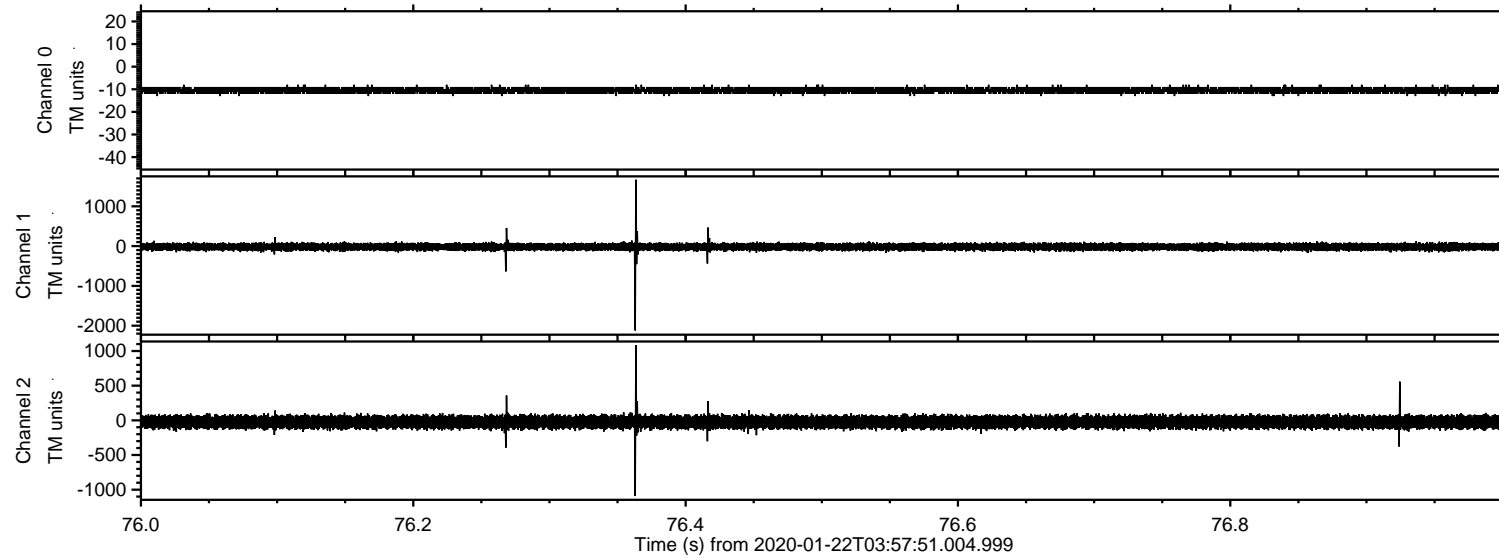
Channel 0
mn: -13
mx: -8
 μ : -10.4
 σ : 0.7

Channel 1
mn: -2070
mx: 2310
 μ : -20.3
 σ : 63.3

Channel 2
mn: -1936
mx: 2349
 μ : -25.2
 σ : 66.4

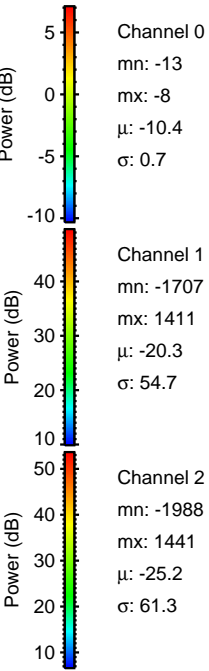
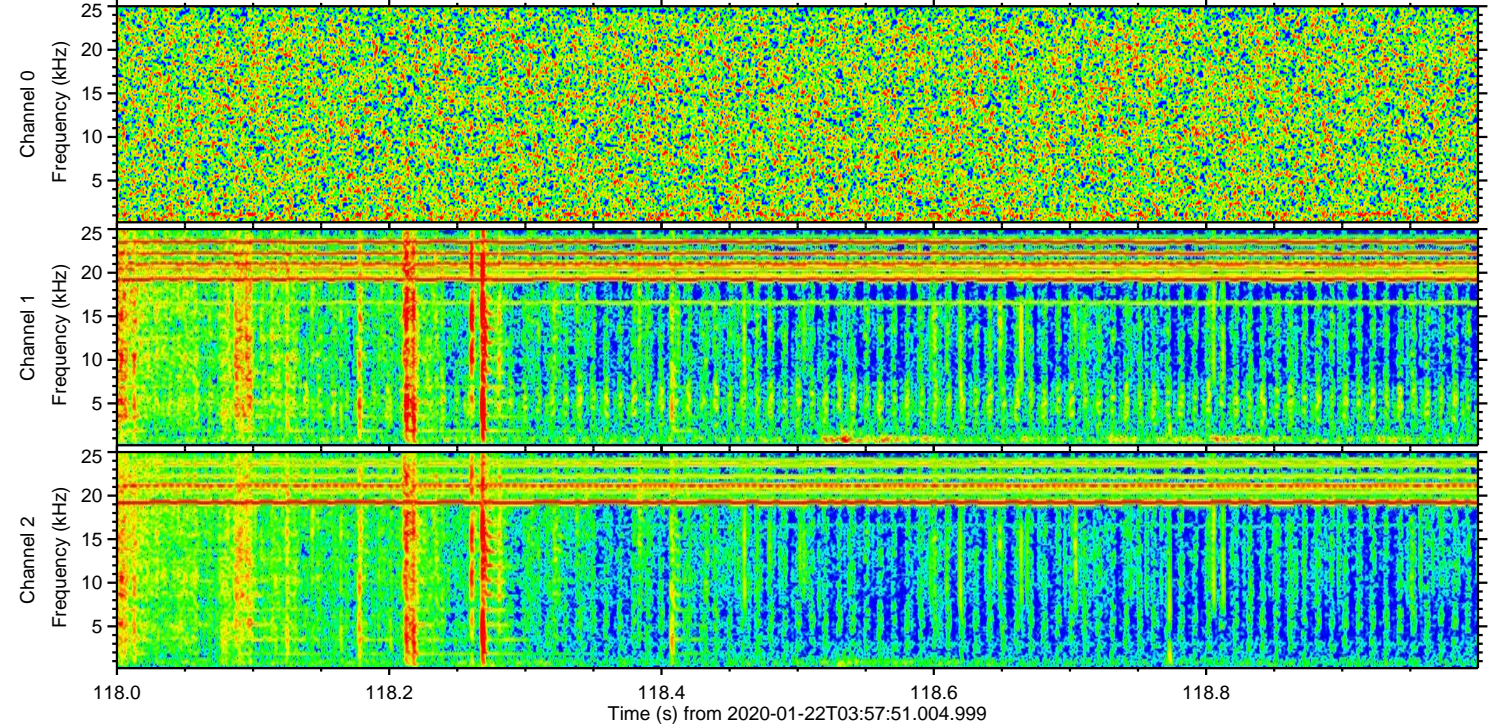
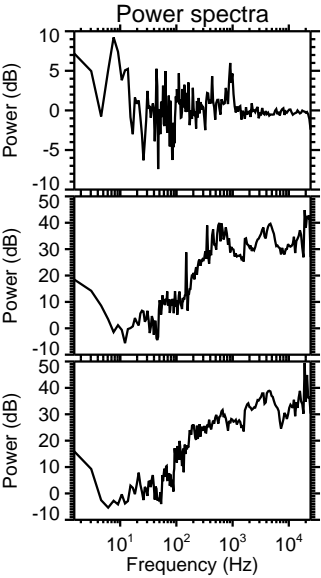
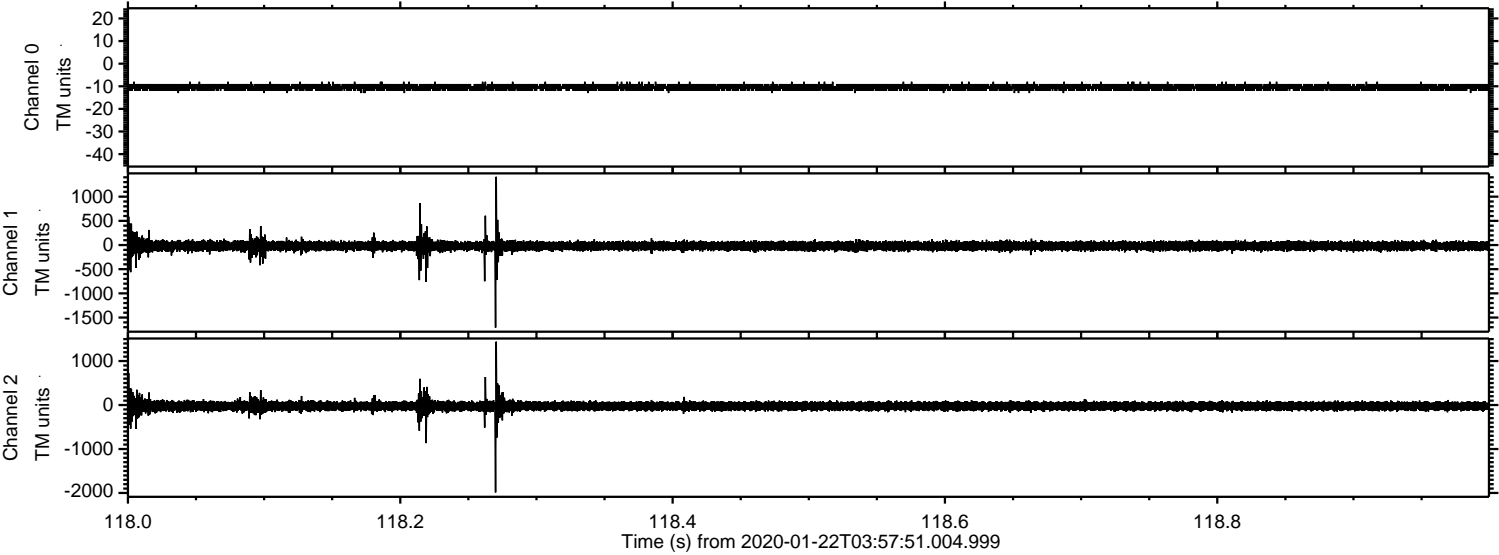
ELMAVAN 3D WAVEFORMS (Measured data sampled at 50 kHz) 51000 packets of 144 samples from 2020-01-22T03:57:51.004.999. Part 77/147

Processed Wed Jan 22 05:05:29 2020 by ELM ver.2012-10-06 from 001__elm20200122_035750__dat00.bin



ELMAVAN 3D WAVEFORMS (Measured data sampled at 50 kHz) 51000 packets of 144 samples from 2020-01-22T03:57:51.004.999. Part 119/147

Processed Wed Jan 22 05:05:30 2020 by ELM ver.2012-10-06 from 001__elm20200122_035750__dat00.bin



Channel 0
mn: -13
mx: -8
 μ : -10.4
 σ : 0.7

Channel 1
mn: -1707
mx: 1411
 μ : -20.3
 σ : 54.7

Channel 2
mn: -1988
mx: 1441
 μ : -25.2
 σ : 61.3

ELMAVAN 3D WAVEFORMS (Measured data sampled at 50 kHz) 51000 packets of 144 samples from 2020-01-22T03:57:51.004.999. Part 38/147

Processed Wed Jan 22 05:05:31 2020 by ELM ver.2012-10-06 from 001__elm20200122_035750__dat00.bin

