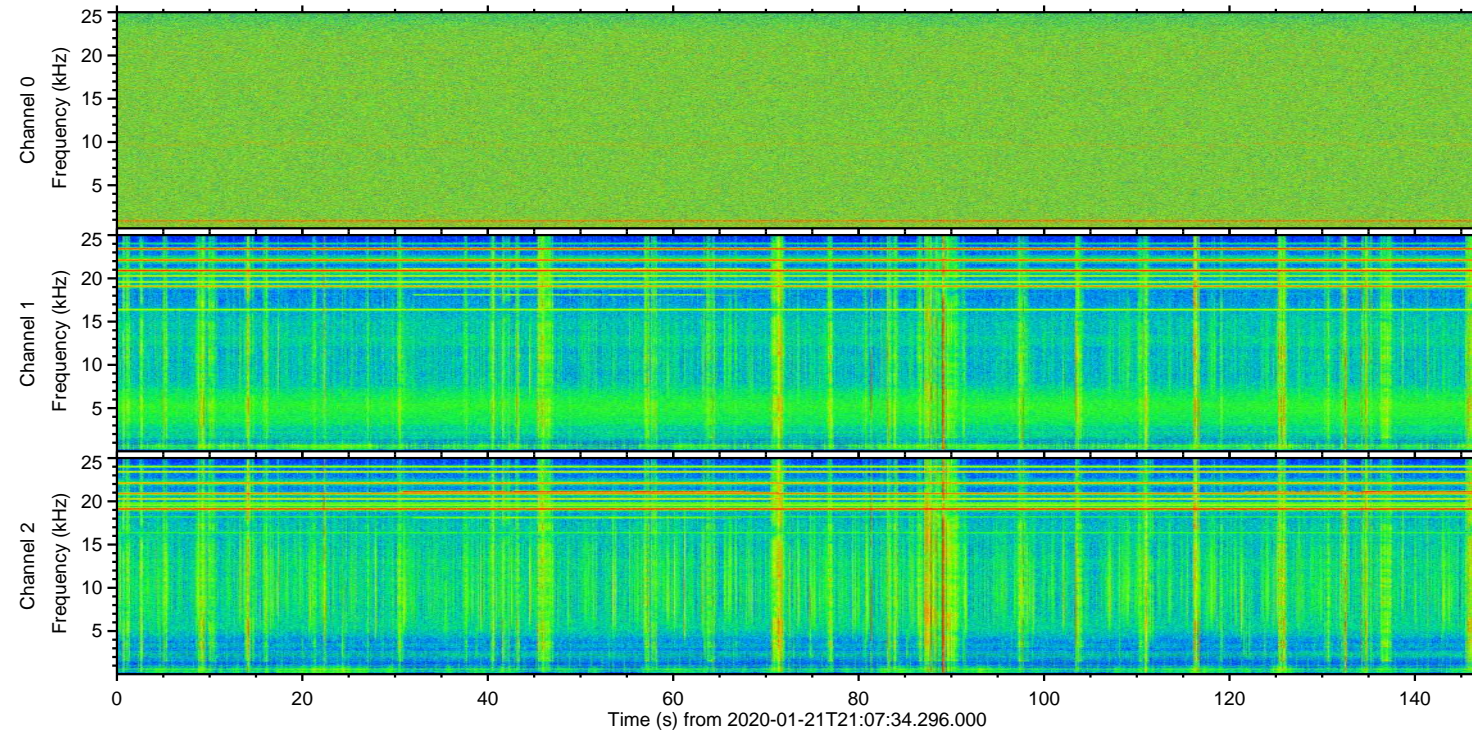
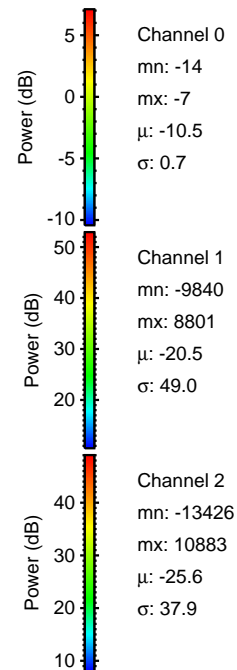
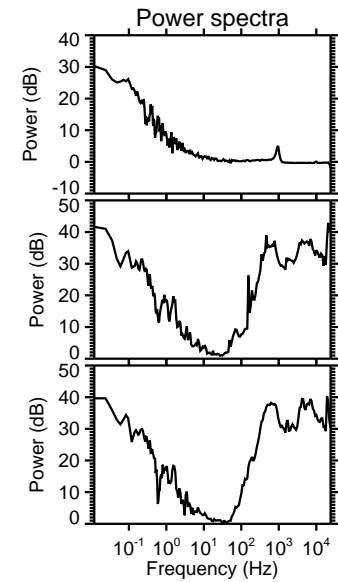
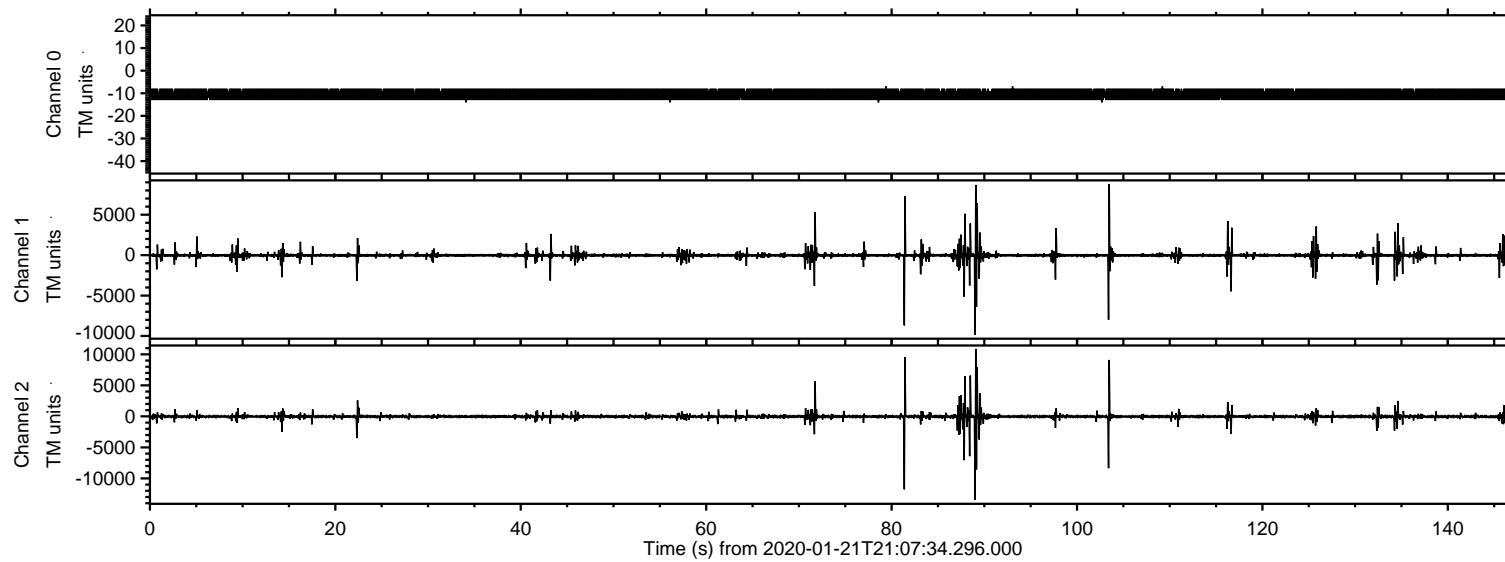


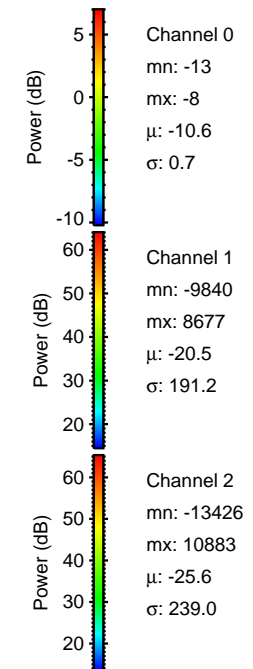
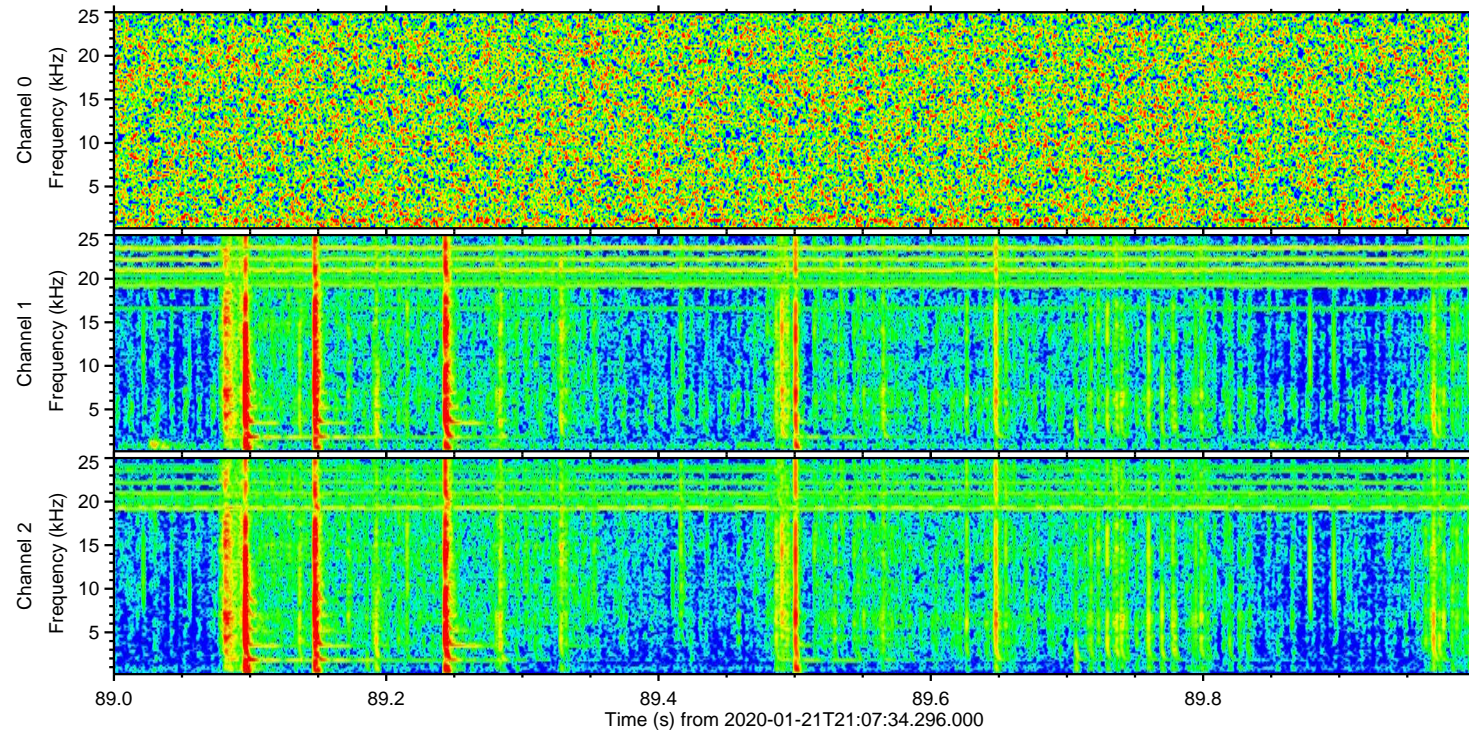
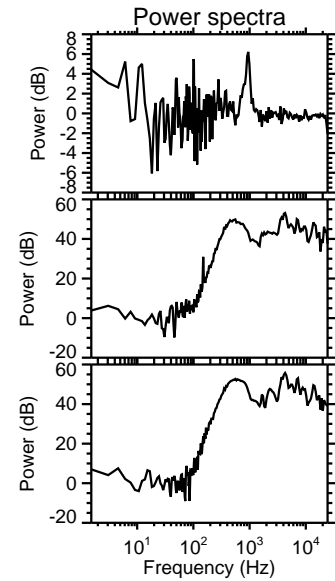
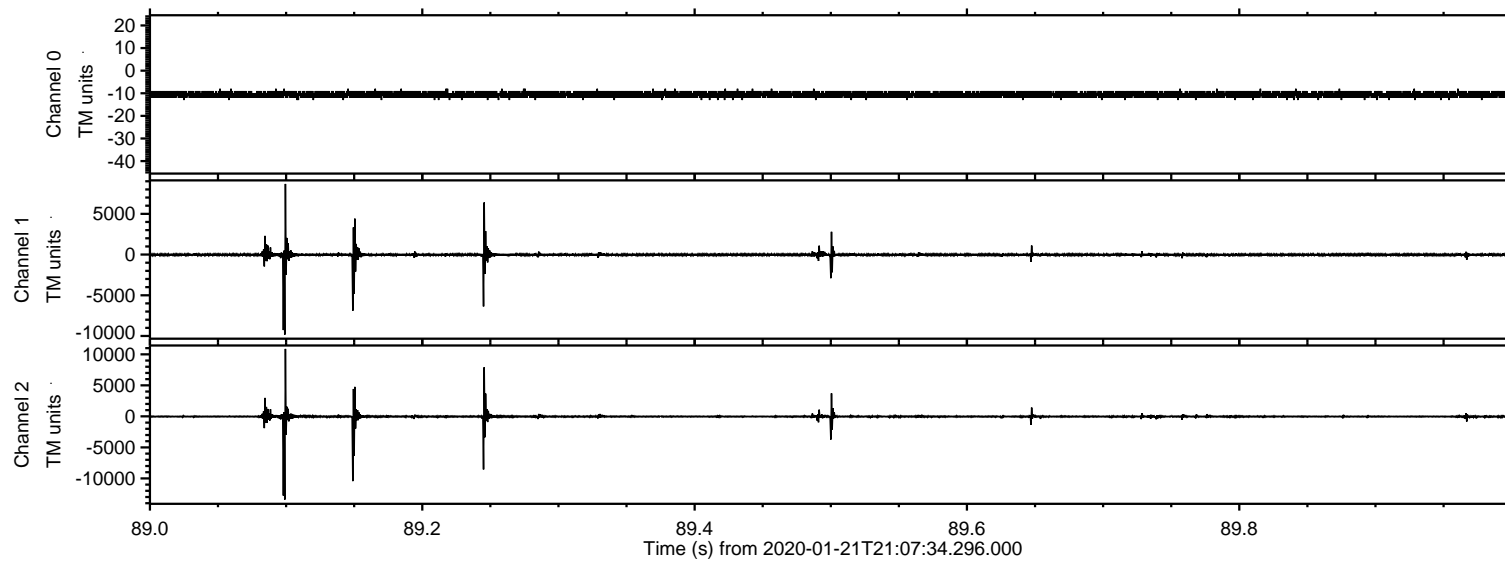
ELMAVAN 3D WAVEFORMS (Measured data sampled at 50 kHz) 51000 packets of 144 samples from 2020-01-21T21:07:34.296.000.

Processed Tue Jan 21 22:14:50 2020 by ELM ver.2012-10-06 from 001__elm20200121_210733__dat00.bin



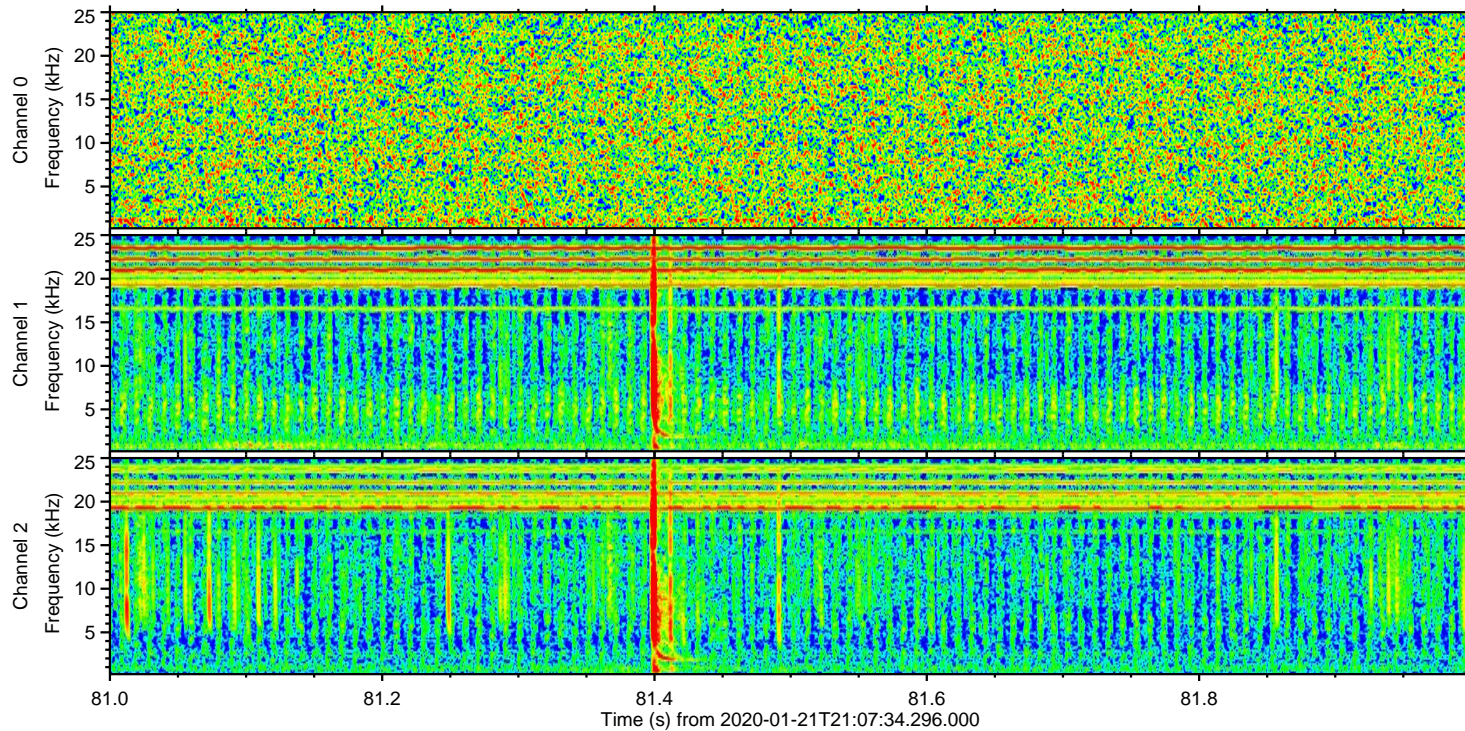
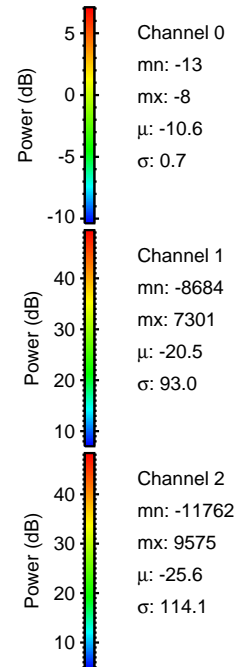
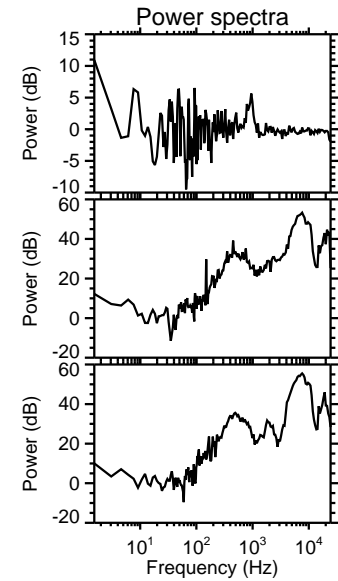
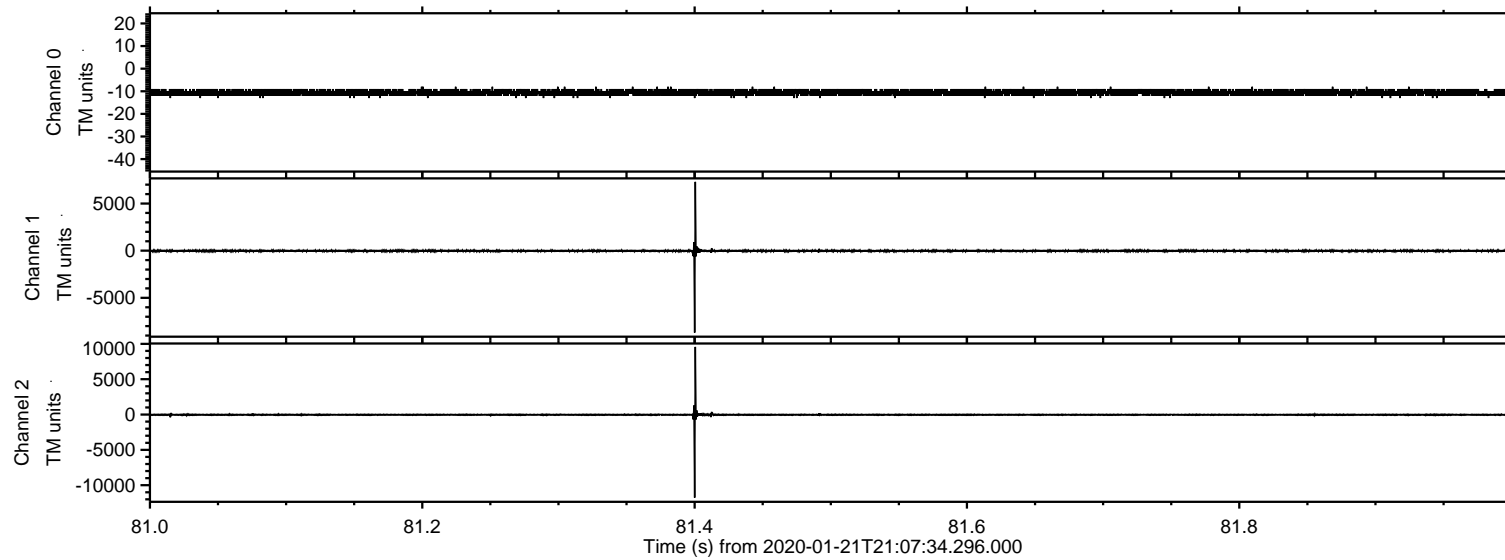
ELMAVAN 3D WAVEFORMS (Measured data sampled at 50 kHz) 51000 packets of 144 samples from 2020-01-21T21:07:34.296.000. Part 90/147

Processed Tue Jan 21 22:14:57 2020 by ELM ver.2012-10-06 from 001__elm20200121_210733__dat00.bin

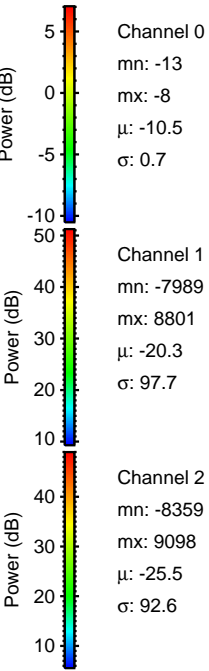
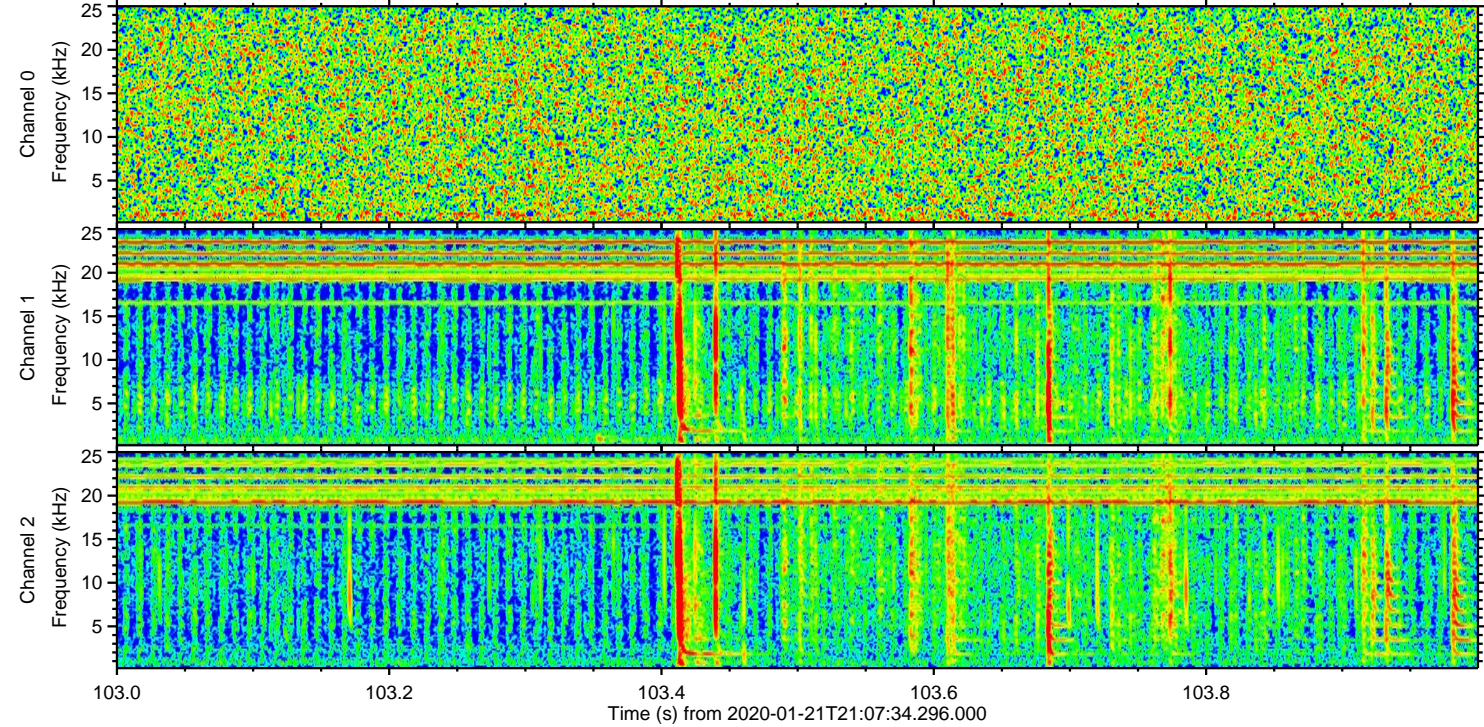
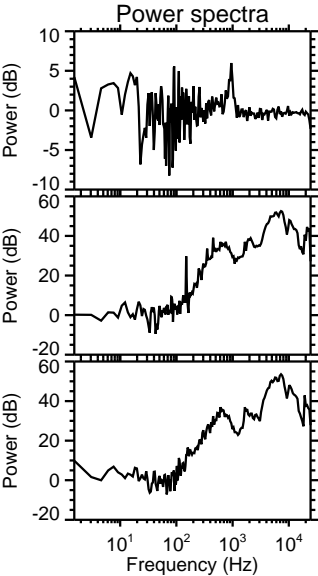
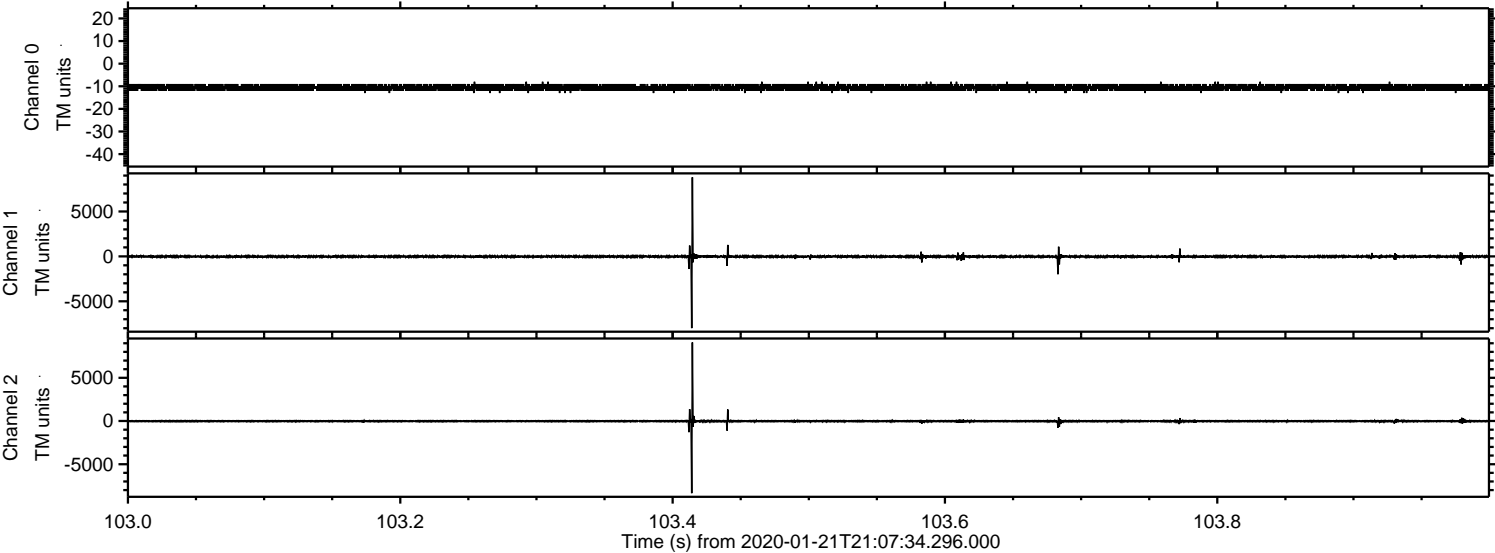


ELMAVAN 3D WAVEFORMS (Measured data sampled at 50 kHz) 51000 packets of 144 samples from 2020-01-21T21:07:34.296.000. Part 82/147

Processed Tue Jan 21 22:14:58 2020 by ELM ver.2012-10-06 from 001__elm20200121_210733__dat00.bin



Processed Tue Jan 21 22:14:59 2020 by ELM ver.2012-10-06 from 001__elm20200121_210733__dat00.bin



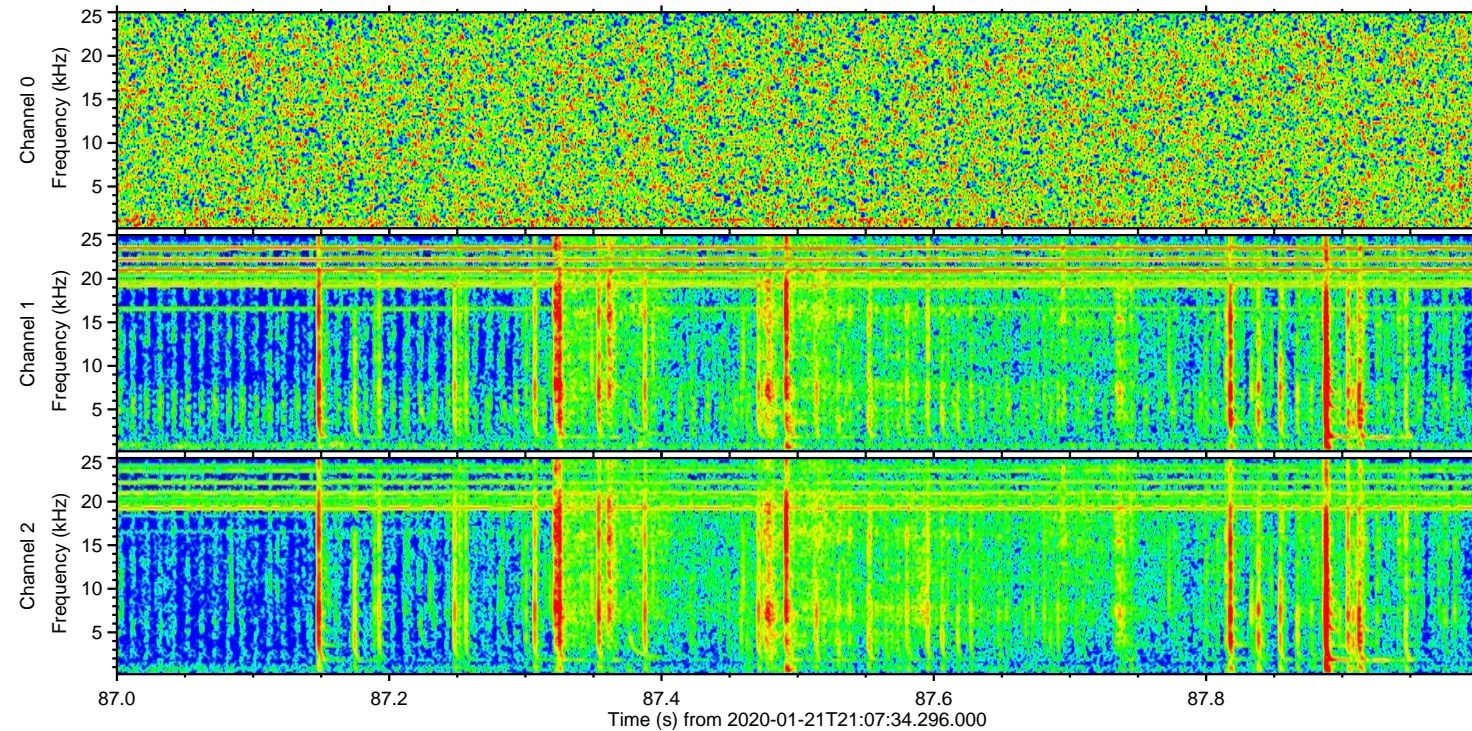
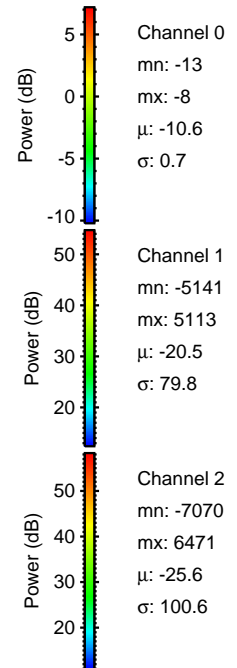
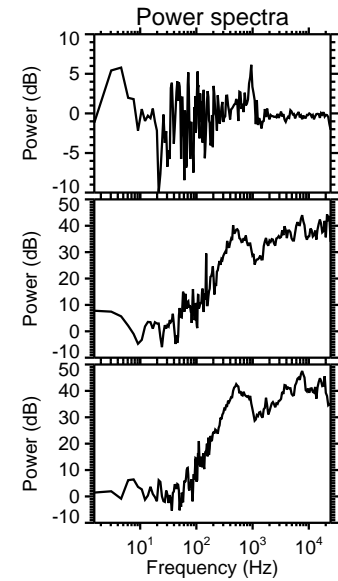
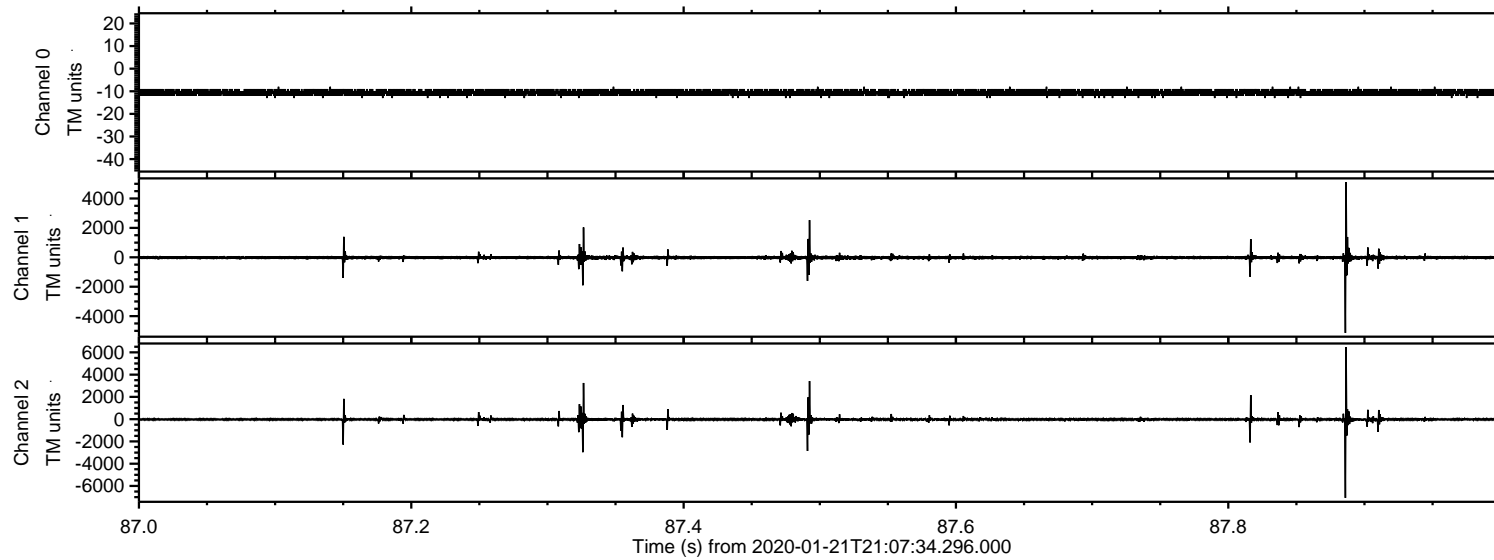
Channel 0
mn: -13
mx: -8
 μ : -10.5
 σ : 0.7

Channel 1
mn: -7989
mx: 8801
 μ : -20.3
 σ : 97.7

Channel 2
mn: -8359
mx: 9098
 μ : -25.5
 σ : 92.6

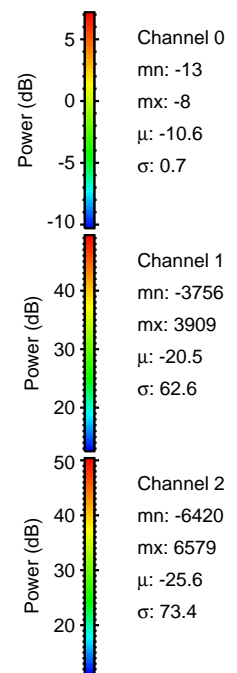
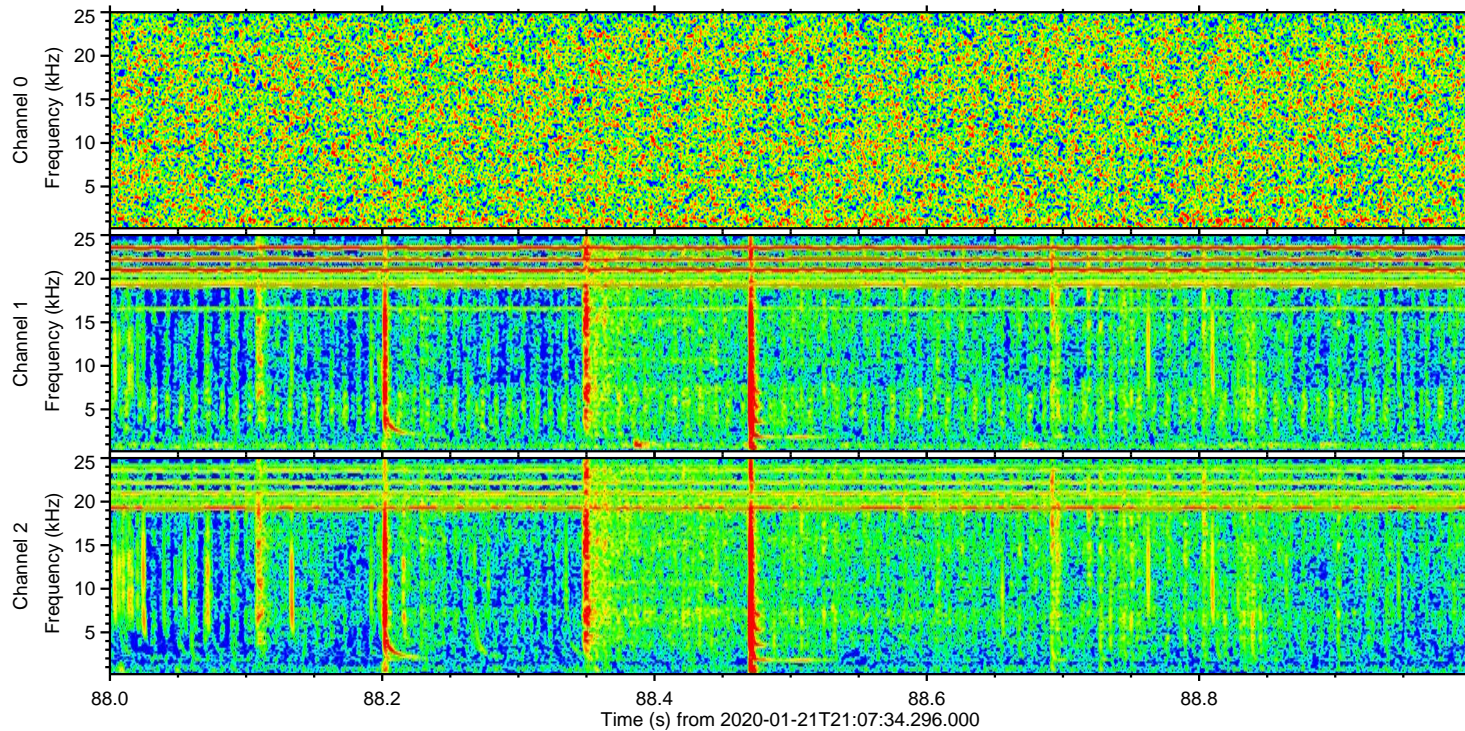
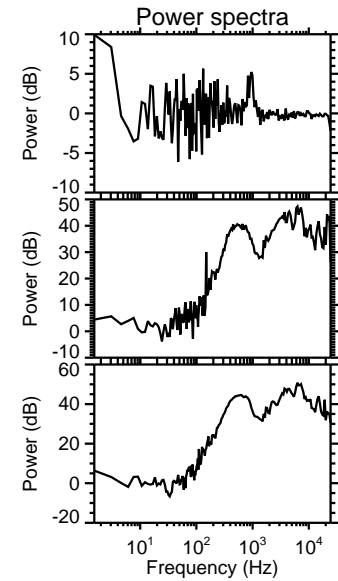
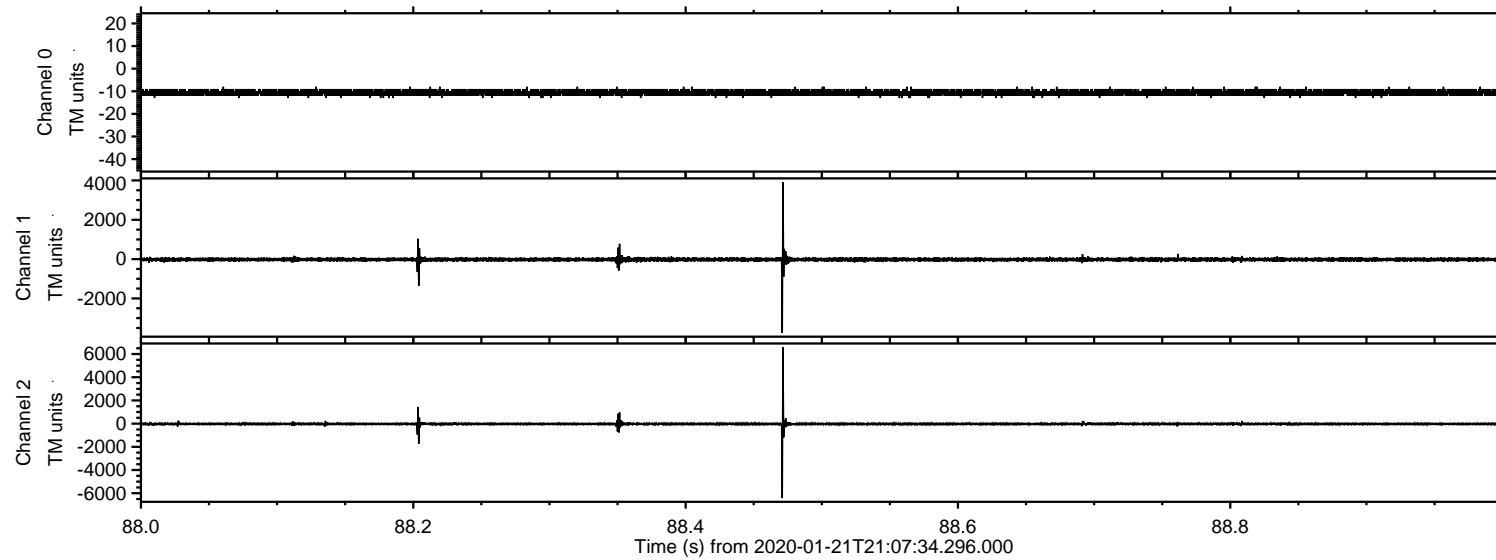
ELMAVAN 3D WAVEFORMS (Measured data sampled at 50 kHz) 51000 packets of 144 samples from 2020-01-21T21:07:34.296.000. Part 88/147

Processed Tue Jan 21 22:14:59 2020 by ELM ver.2012-10-06 from 001__elm20200121_210733__dat00.bin



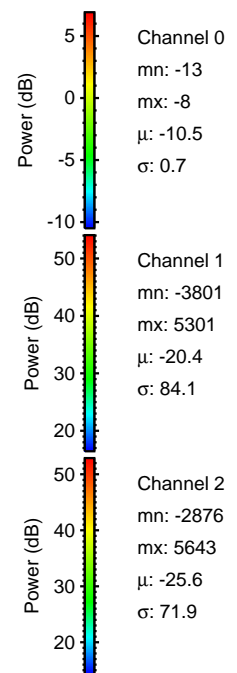
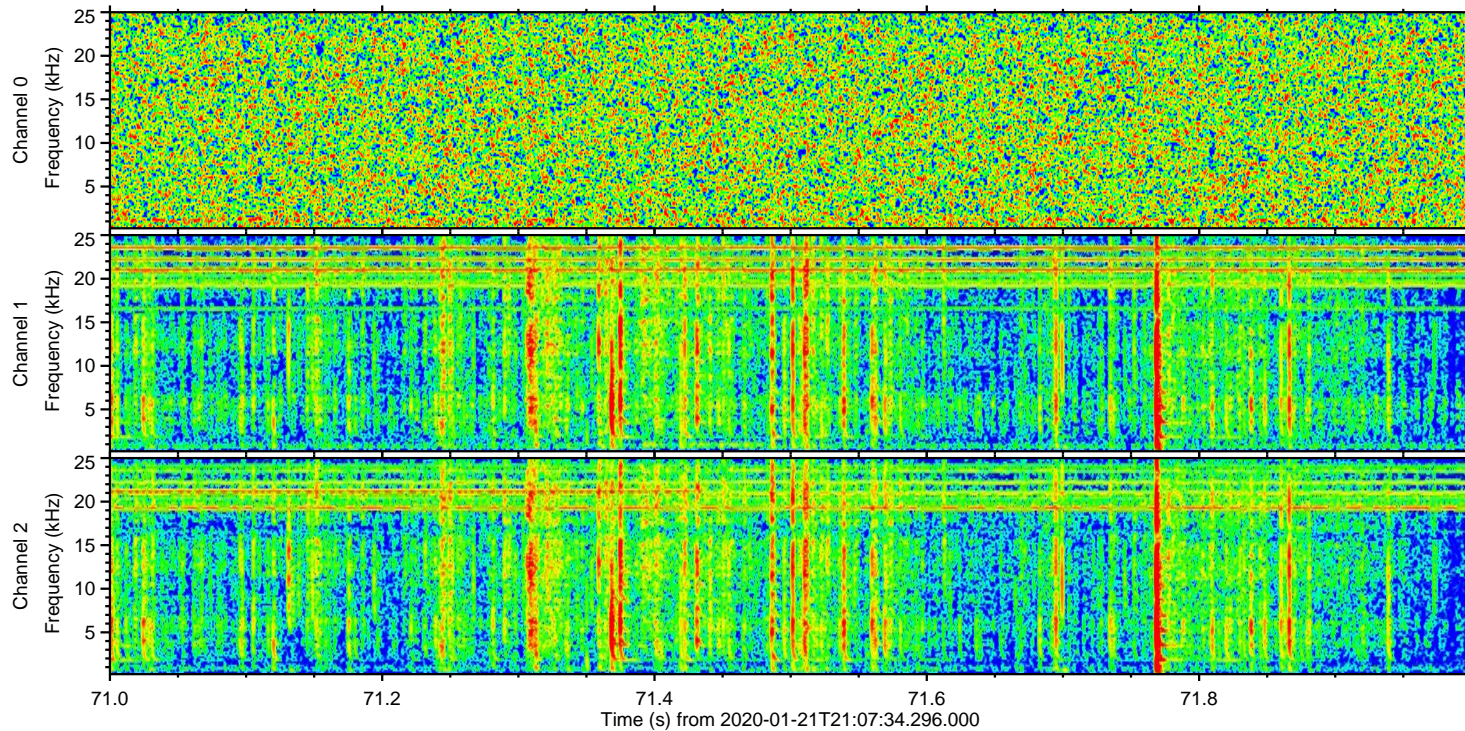
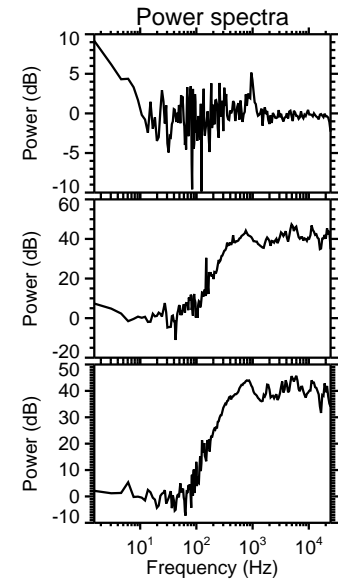
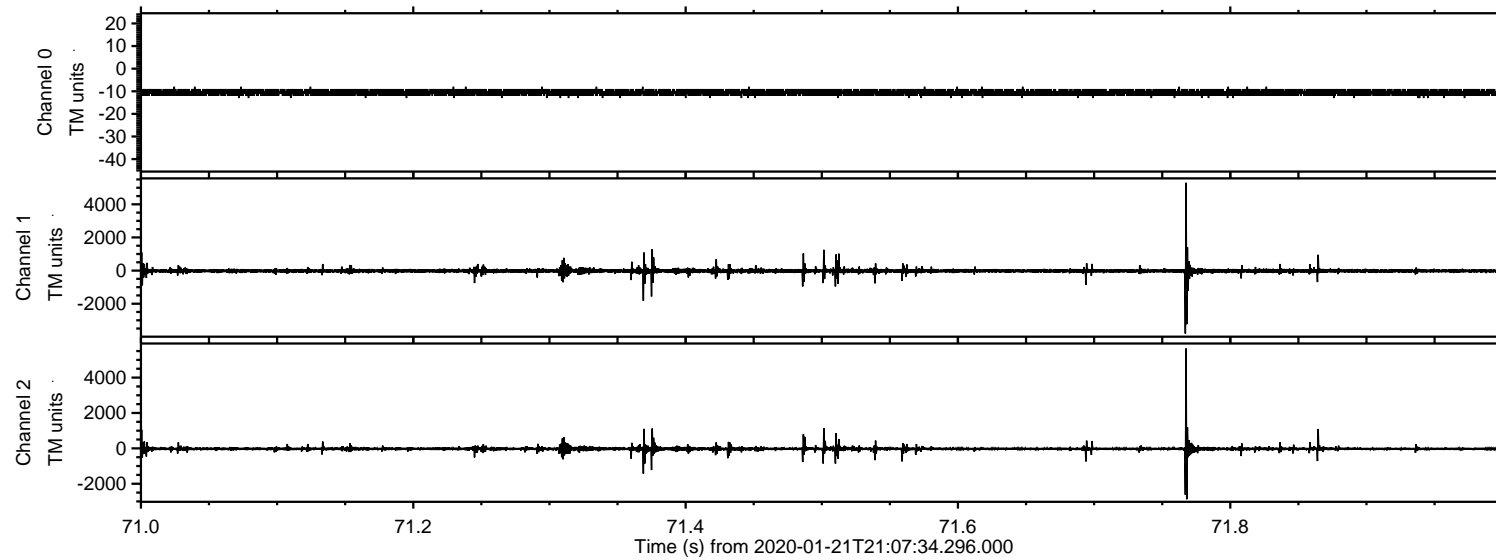
ELMAVAN 3D WAVEFORMS (Measured data sampled at 50 kHz) 51000 packets of 144 samples from 2020-01-21T21:07:34.296.000. Part 89/147

Processed Tue Jan 21 22:15:00 2020 by ELM ver.2012-10-06 from 001__elm20200121_210733__dat00.bin



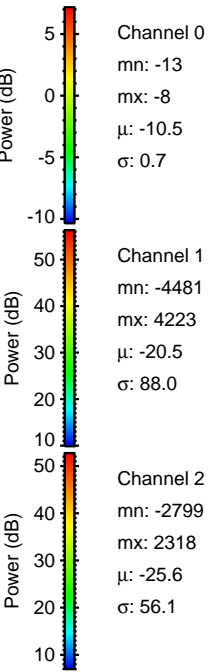
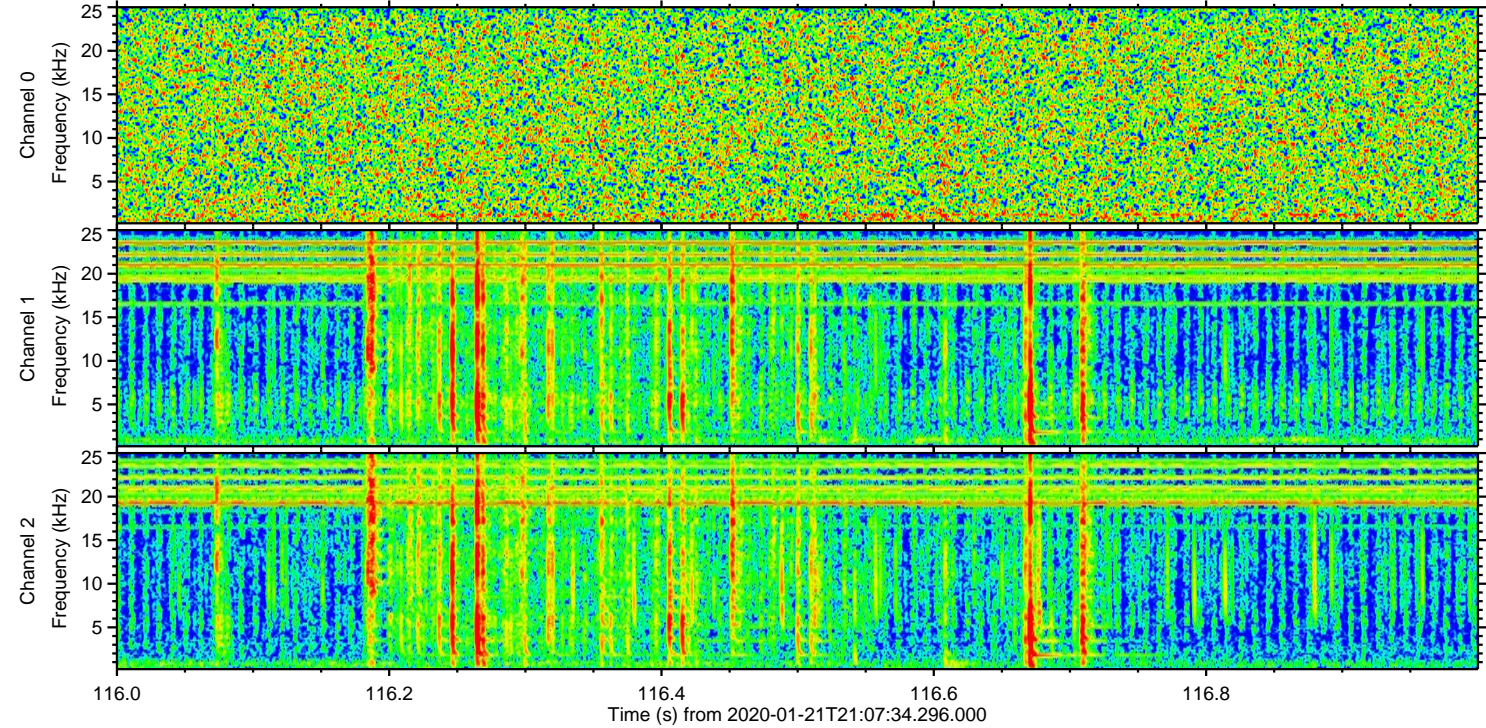
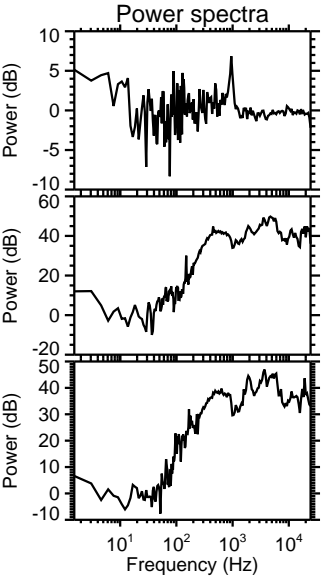
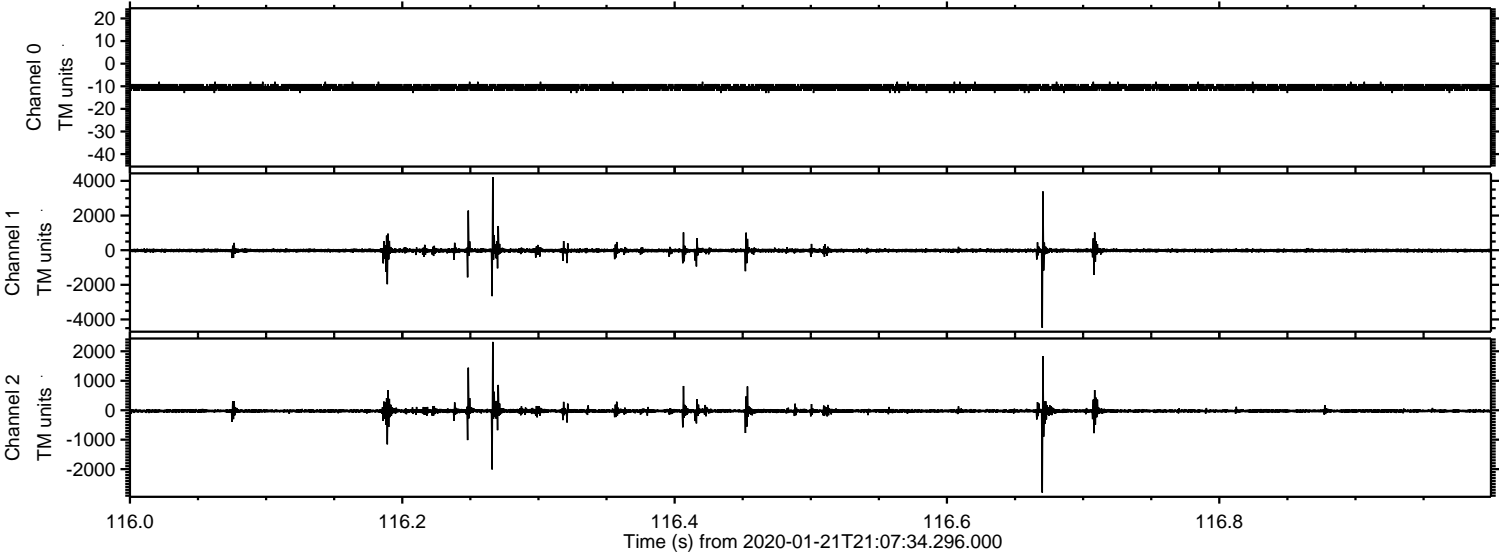
ELMAVAN 3D WAVEFORMS (Measured data sampled at 50 kHz) 51000 packets of 144 samples from 2020-01-21T21:07:34.296.000. Part 72/147

Processed Tue Jan 21 22:15:01 2020 by ELM ver.2012-10-06 from 001__elm20200121_210733__dat00.bin



ELMAVAN 3D WAVEFORMS (Measured data sampled at 50 kHz) 51000 packets of 144 samples from 2020-01-21T21:07:34.296.000. Part 117/147

Processed Tue Jan 21 22:15:01 2020 by ELM ver.2012-10-06 from 001__elm20200121_210733__dat00.bin



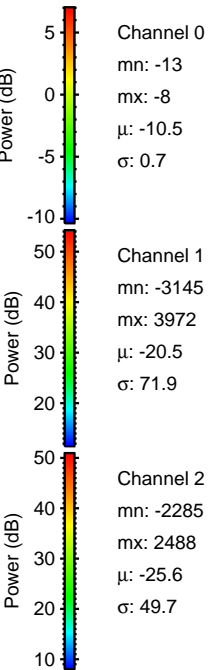
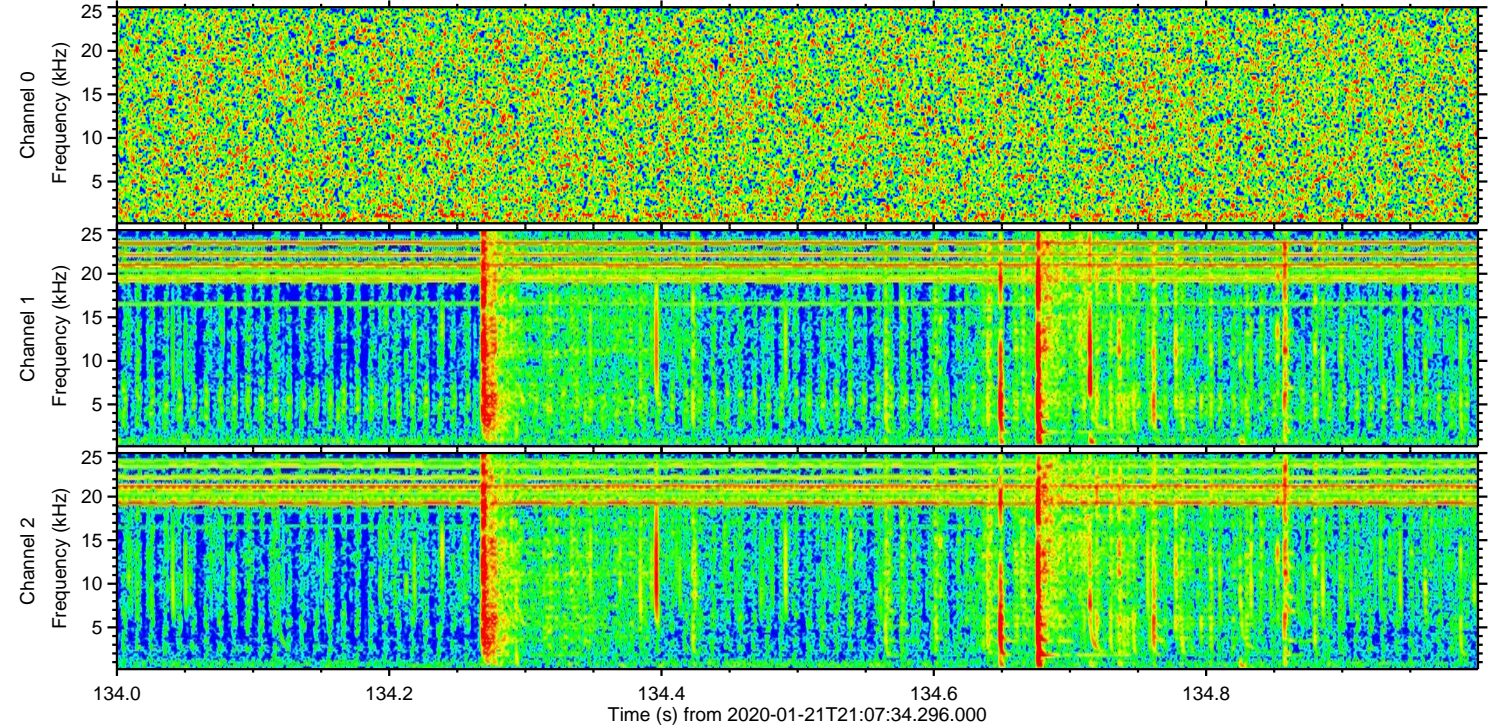
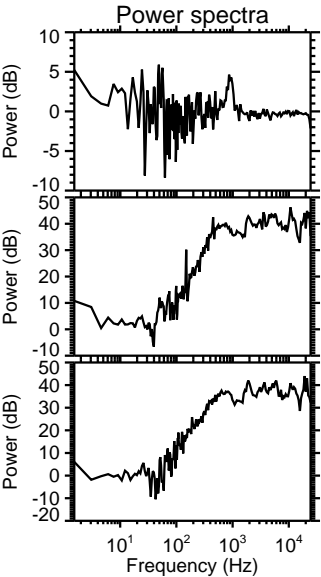
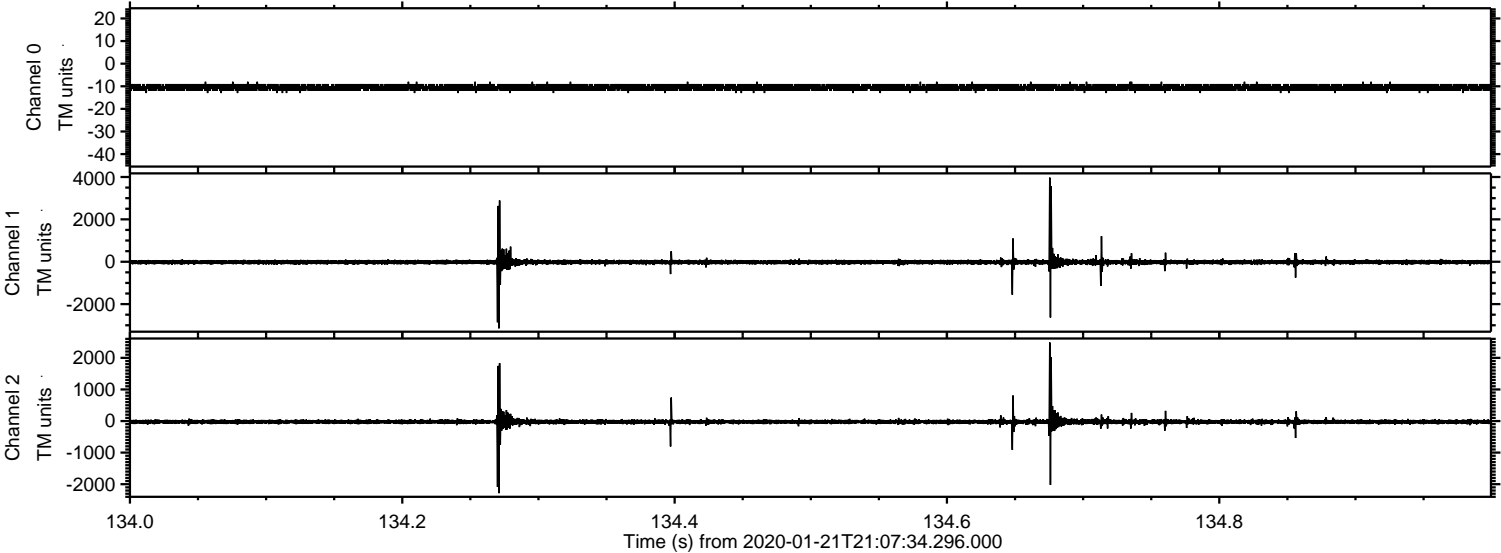
Channel 0
mn: -13
mx: -8
 μ : -10.5
 σ : 0.7

Channel 1
mn: -4481
mx: 4223
 μ : -20.5
 σ : 88.0

Channel 2
mn: -2799
mx: 2318
 μ : -25.6
 σ : 56.1

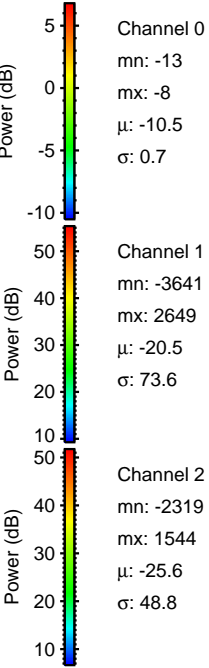
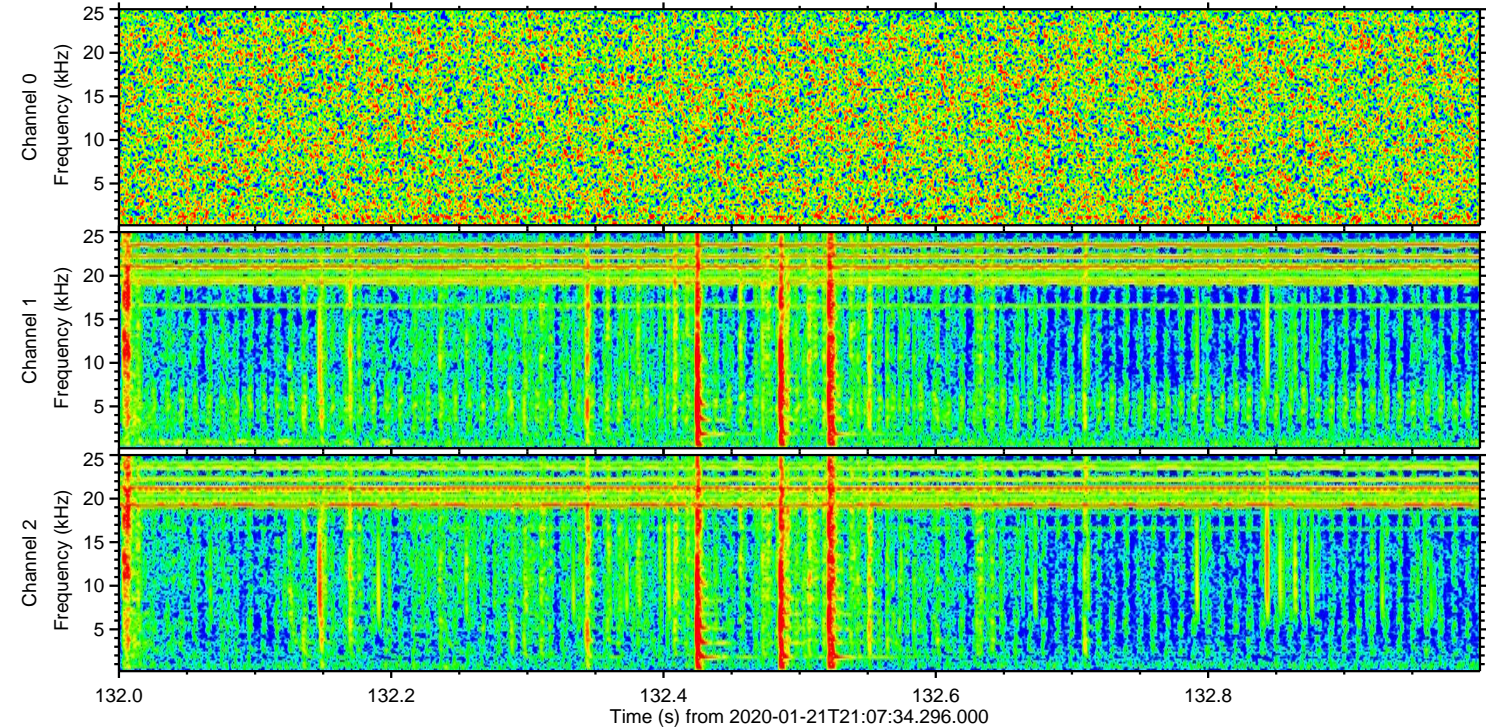
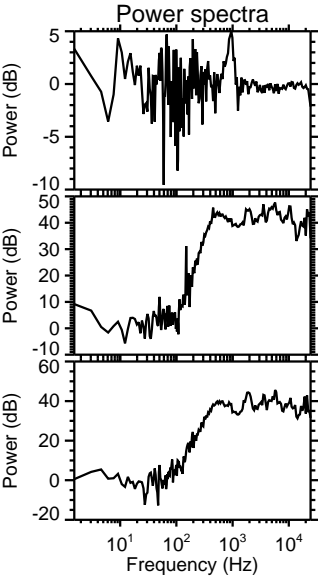
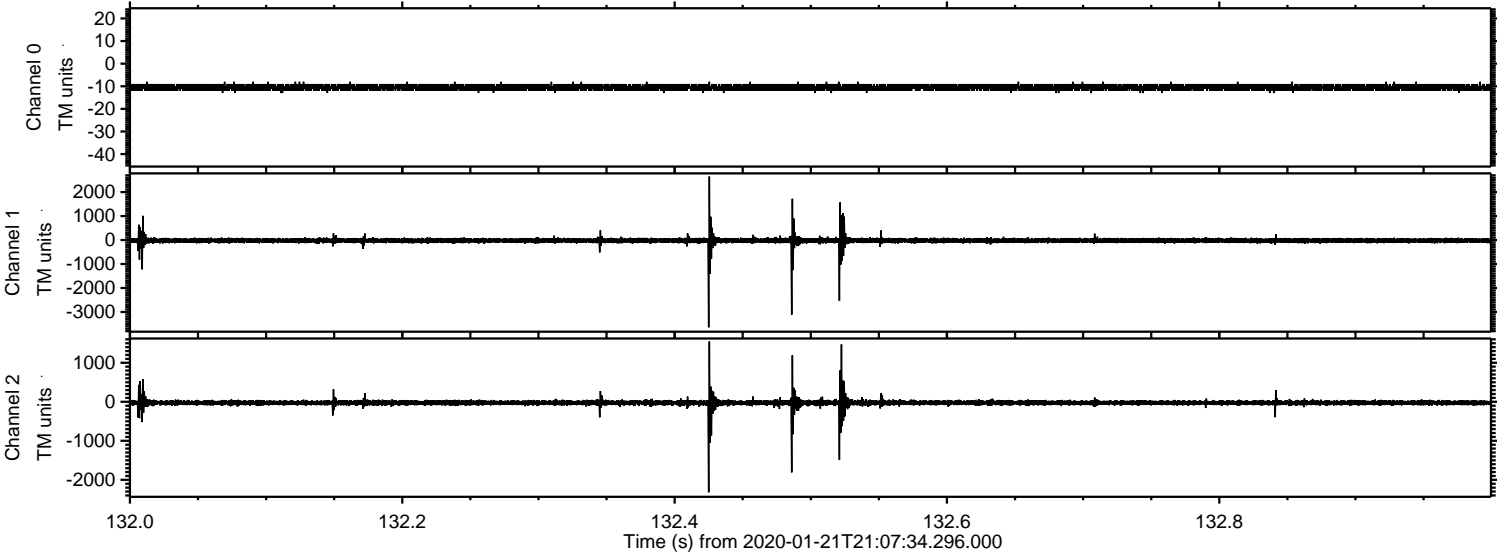
ELMAVAN 3D WAVEFORMS (Measured data sampled at 50 kHz) 51000 packets of 144 samples from 2020-01-21T21:07:34.296.000. Part 135/147

Processed Tue Jan 21 22:15:02 2020 by ELM ver.2012-10-06 from 001__elm20200121_210733__dat00.bin



ELMAVAN 3D WAVEFORMS (Measured data sampled at 50 kHz) 51000 packets of 144 samples from 2020-01-21T21:07:34.296.000. Part 133/147

Processed Tue Jan 21 22:15:03 2020 by ELM ver.2012-10-06 from 001__elm20200121_210733__dat00.bin



ELMAVAN 3D WAVEFORMS (Measured data sampled at 50 kHz) 51000 packets of 144 samples from 2020-01-21T21:07:34.296.000. Part 93/147

Processed Tue Jan 21 22:15:03 2020 by ELM ver.2012-10-06 from 001__elm20200121_210733__dat00.bin

