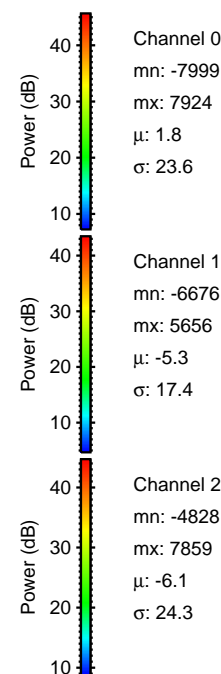
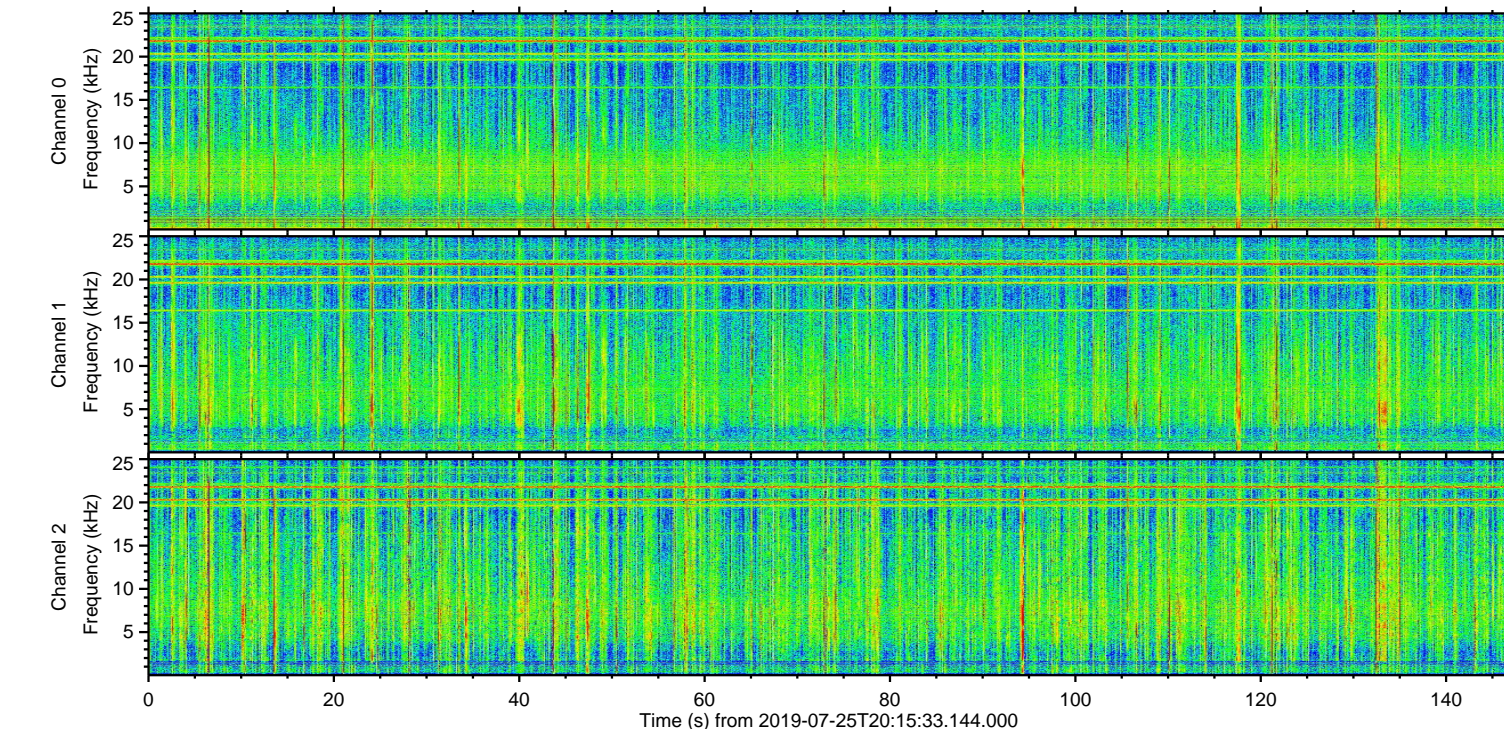
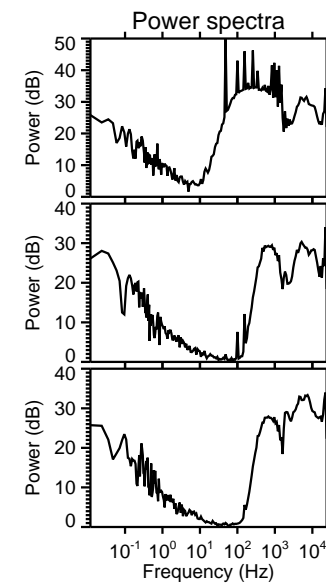
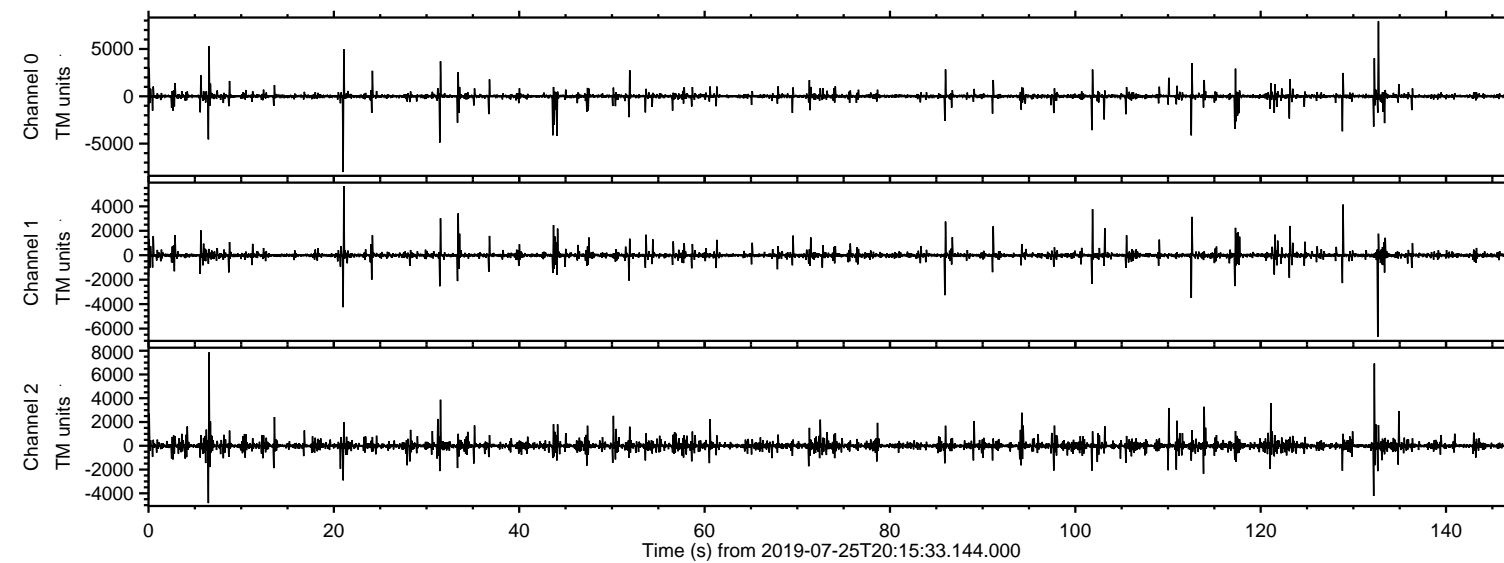
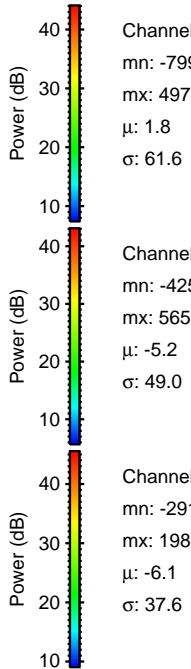
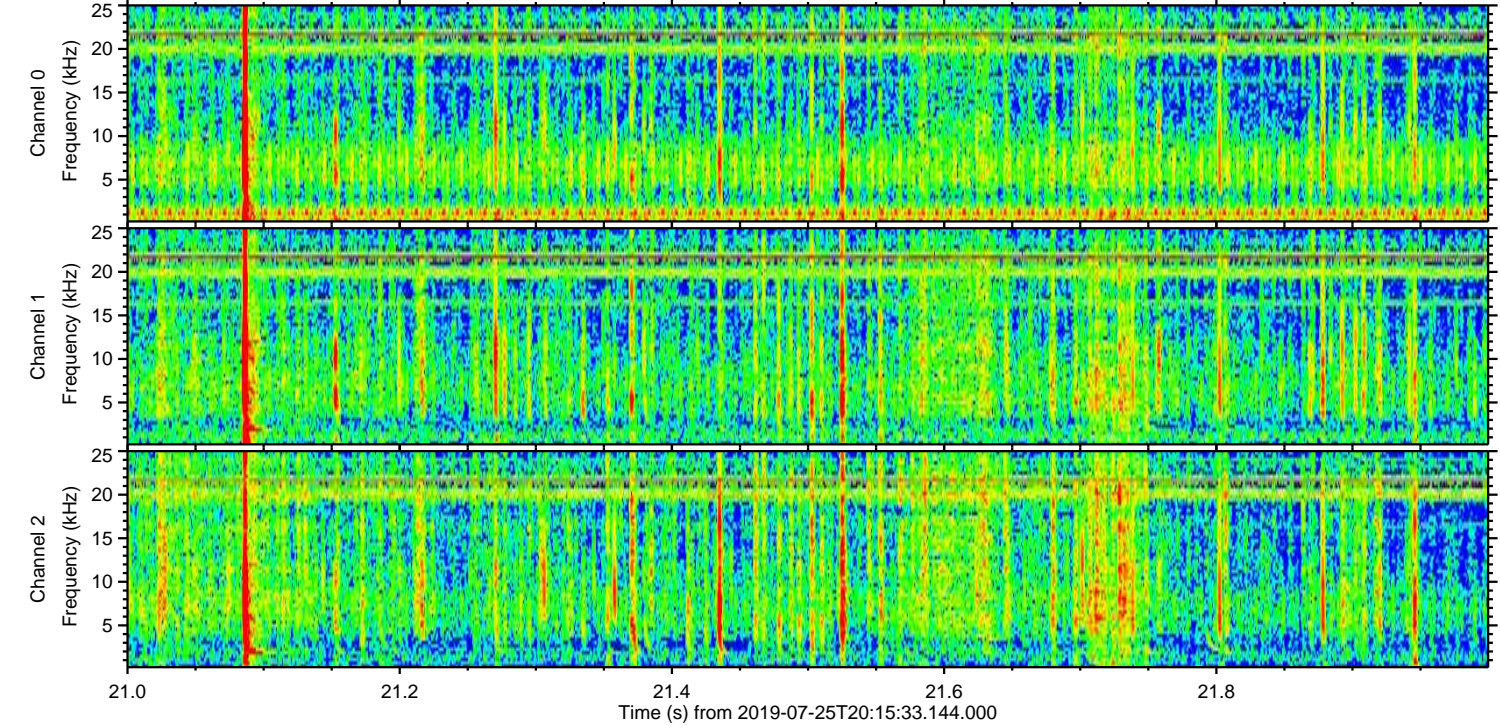
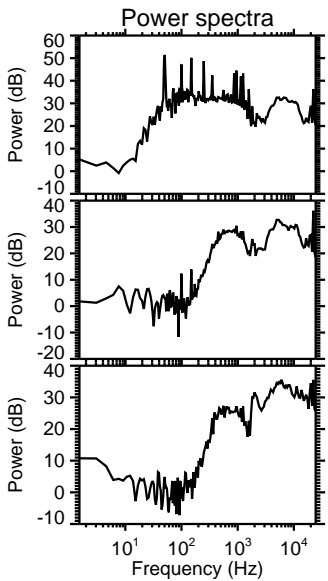
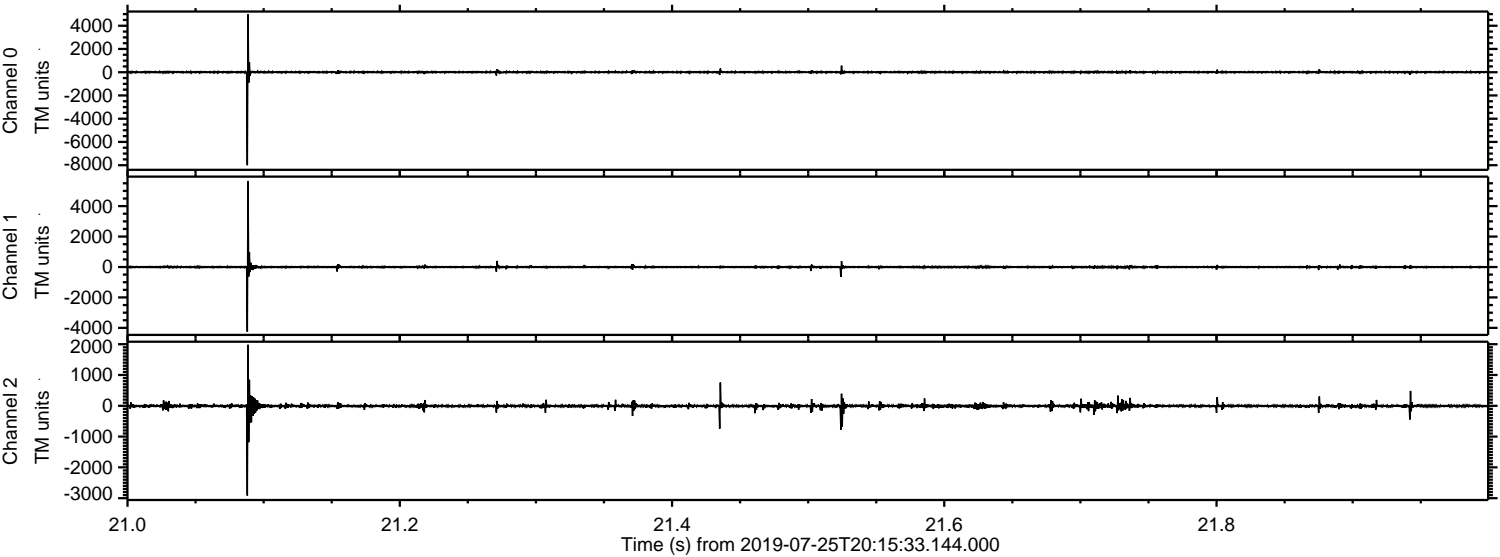


ELMAVAN 3D WAVEFORMS (Measured data sampled at 50 kHz) 51000 packets of 144 samples from 2019-07-25T20:15:33.144.000.

Processed Thu Jul 25 22:23:21 2019 by ELM ver.2012-10-06 from 001__elm20190725_201532__dat00.bin

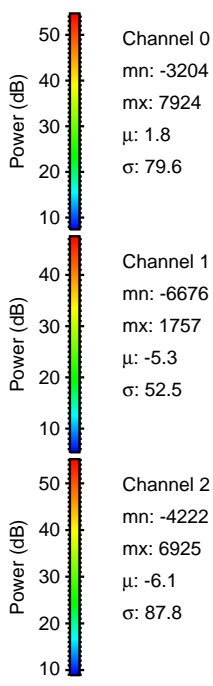
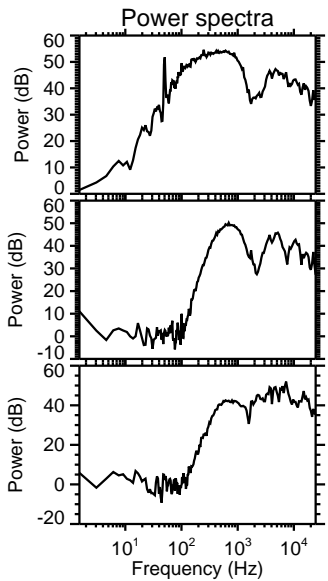
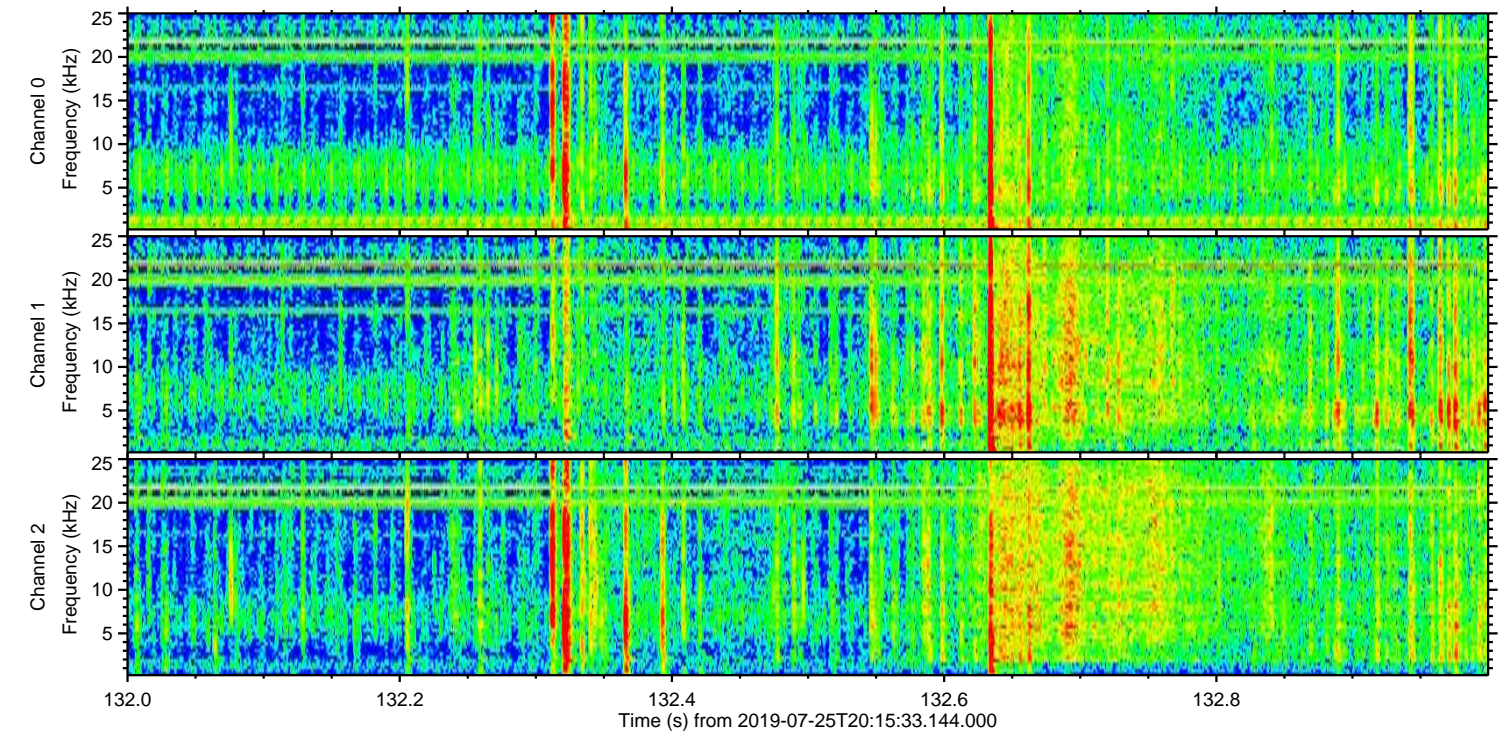
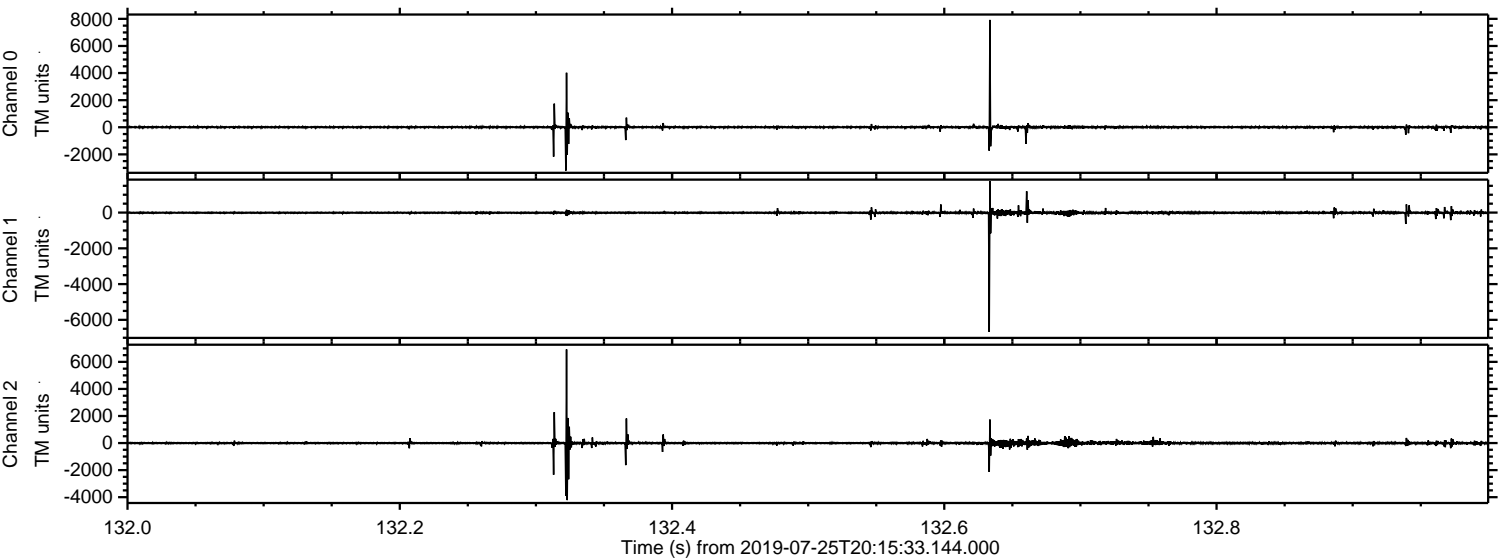


Processed Thu Jul 25 22:23:27 2019 by ELM ver.2012-10-06 from 001__elm20190725_201532__dat00.bin

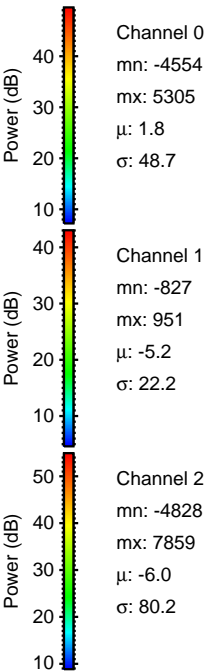
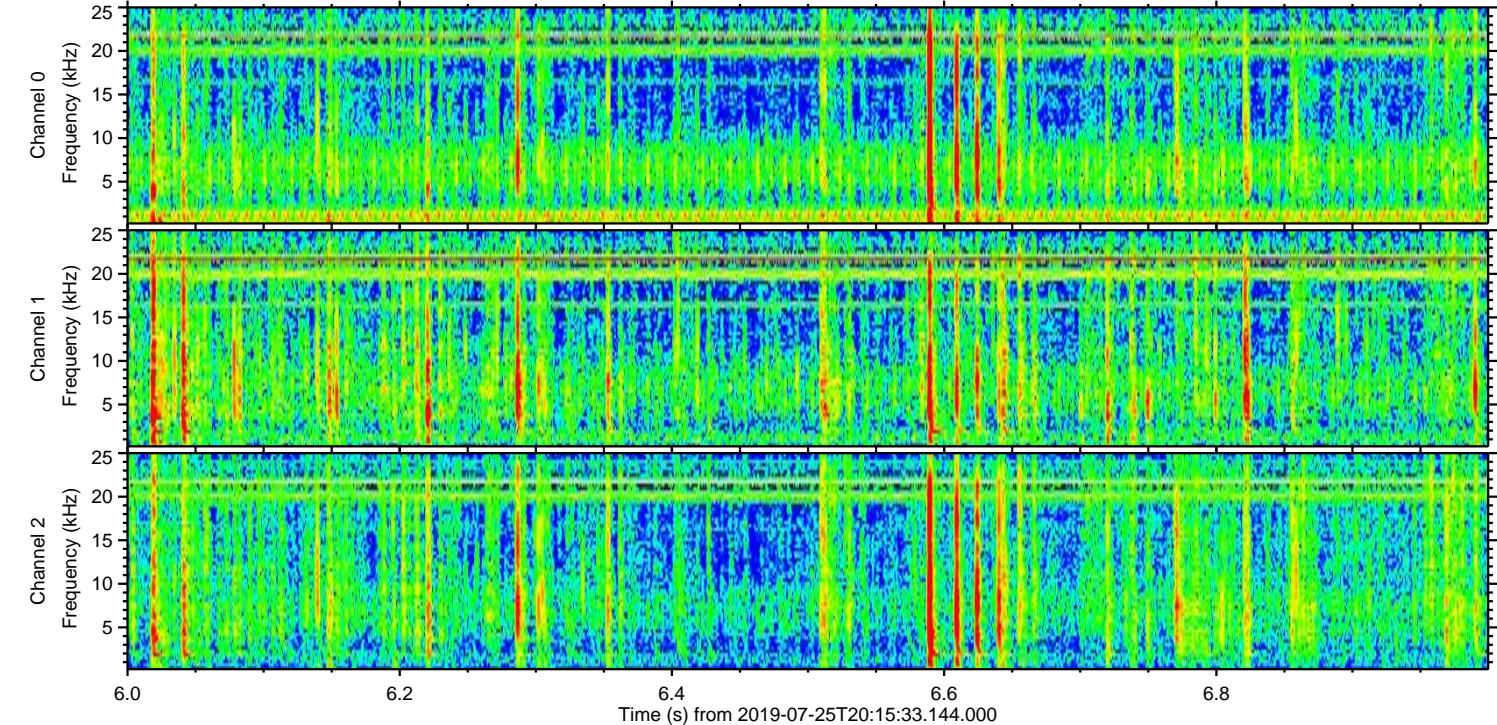
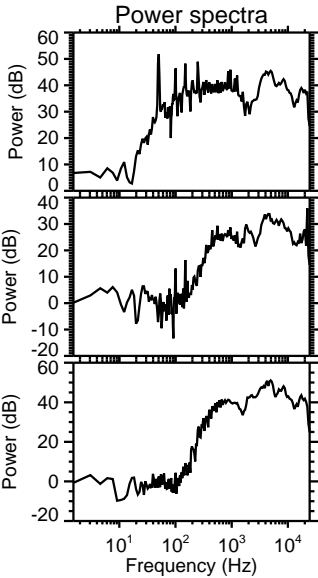
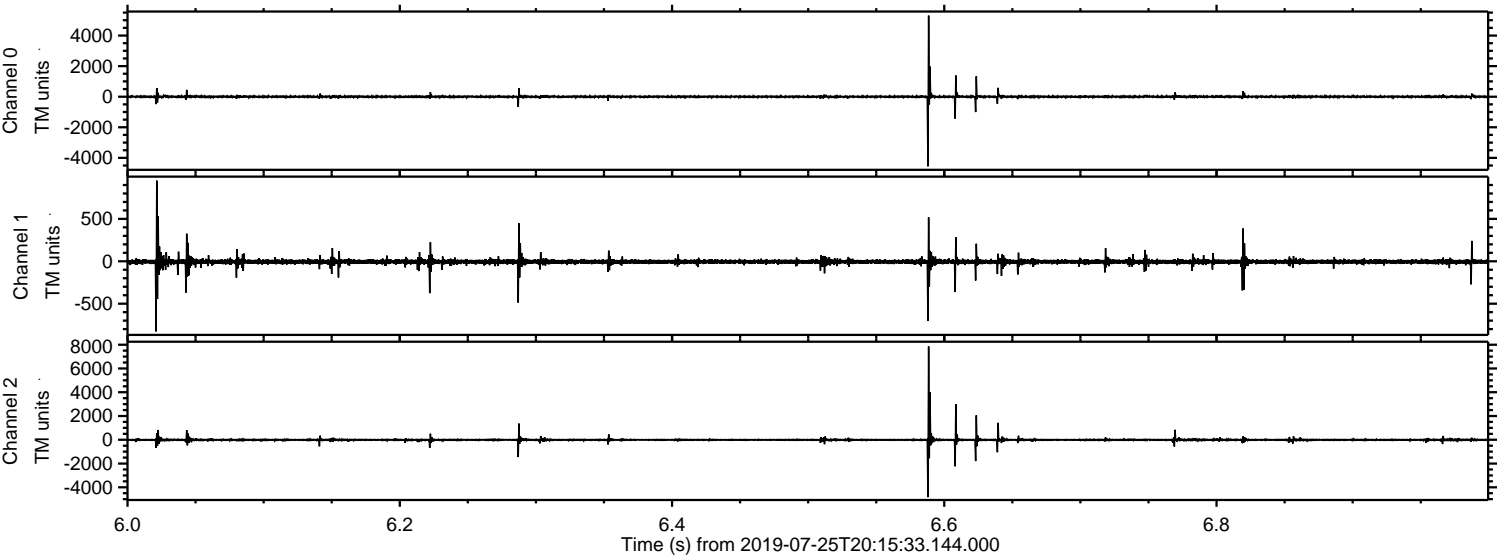


ELMAVAN 3D WAVEFORMS (Measured data sampled at 50 kHz) 51000 packets of 144 samples from 2019-07-25T20:15:33.144.000. Part 133/147

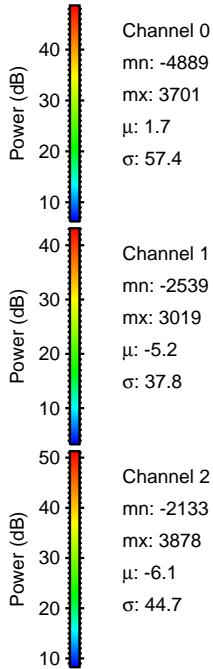
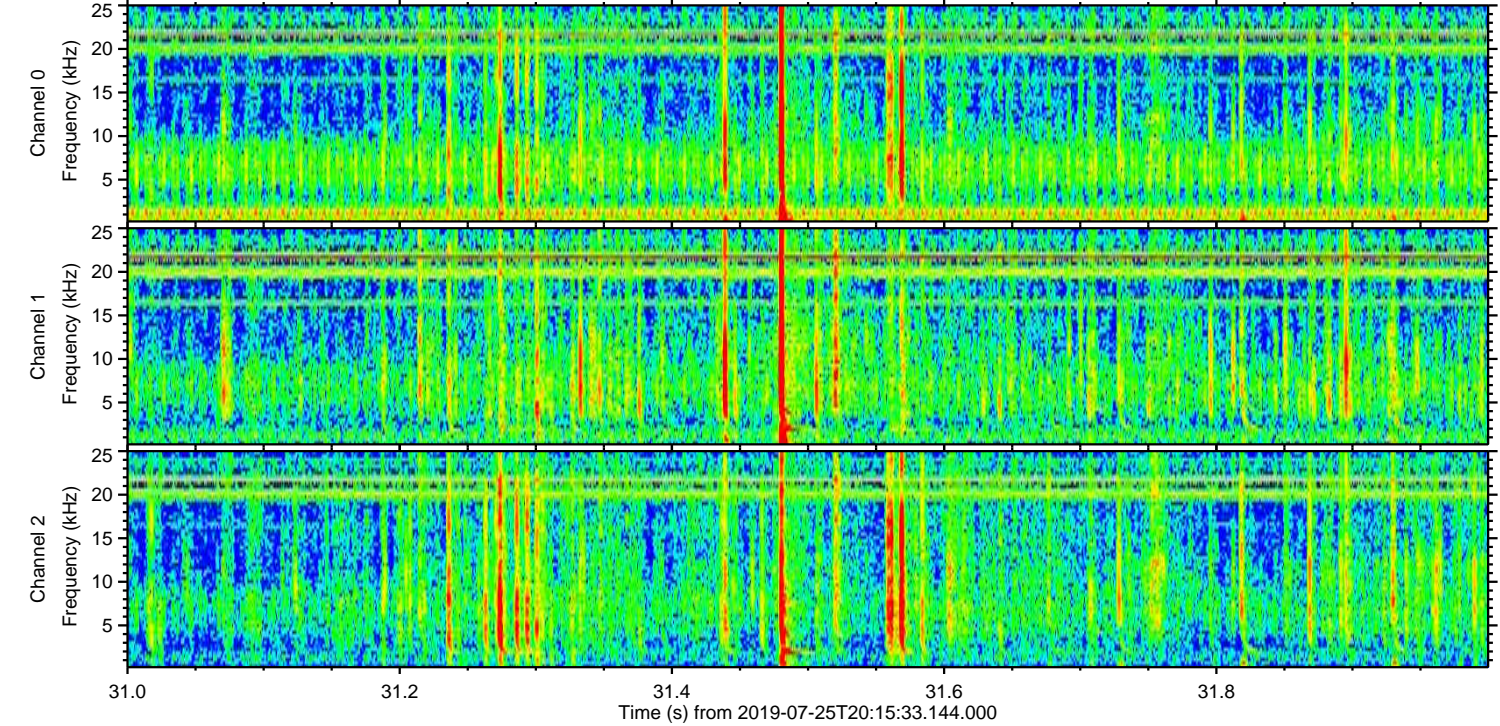
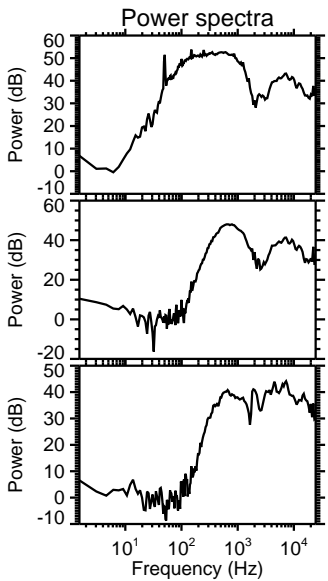
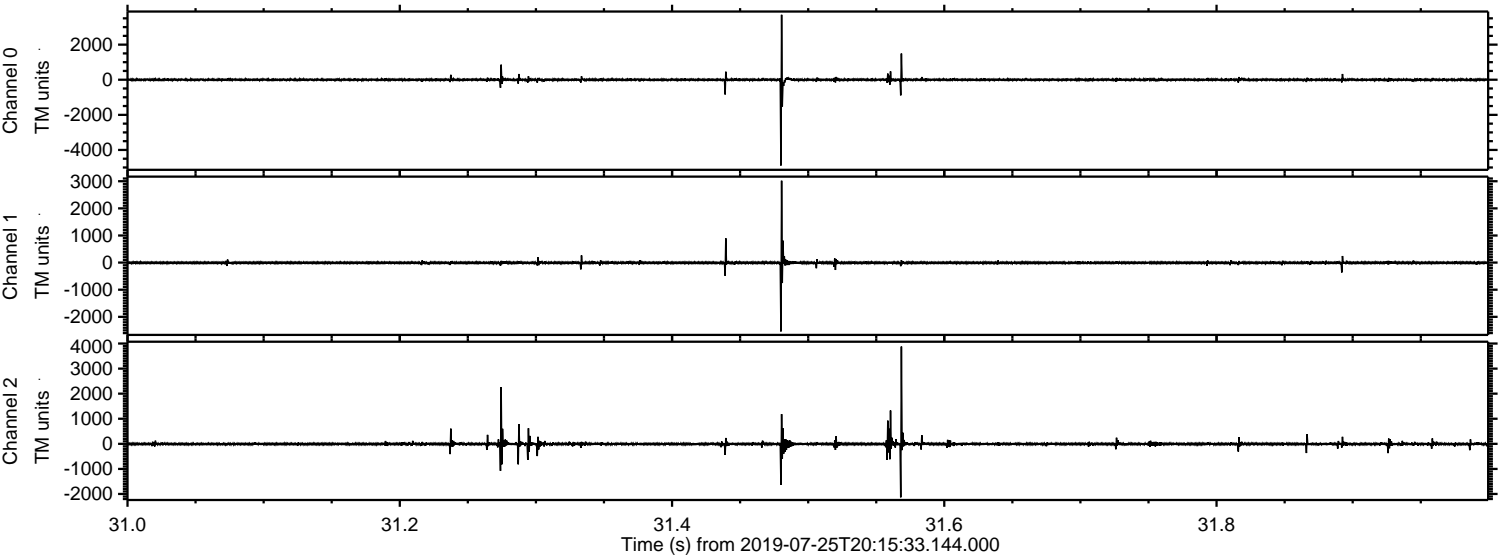
Processed Thu Jul 25 22:23:28 2019 by ELM ver.2012-10-06 from 001__elm20190725_201532__dat00.bin



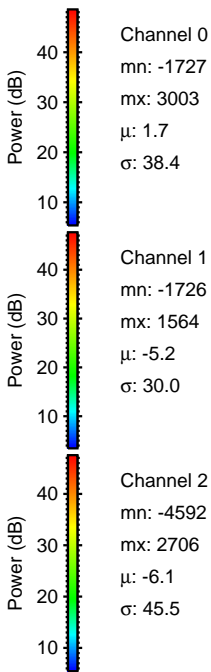
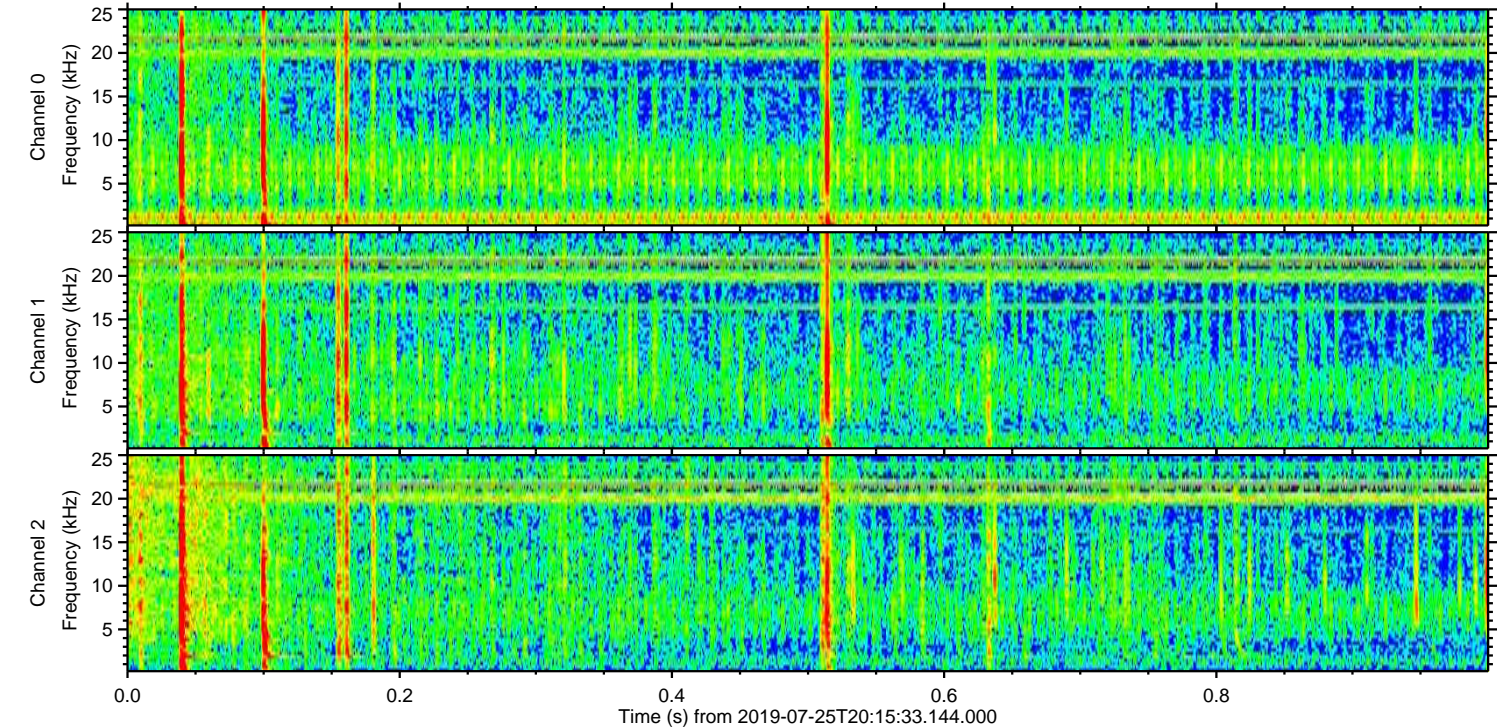
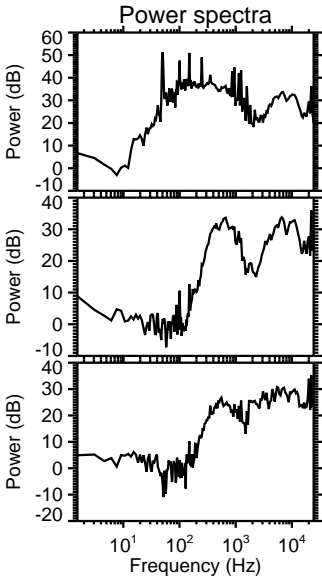
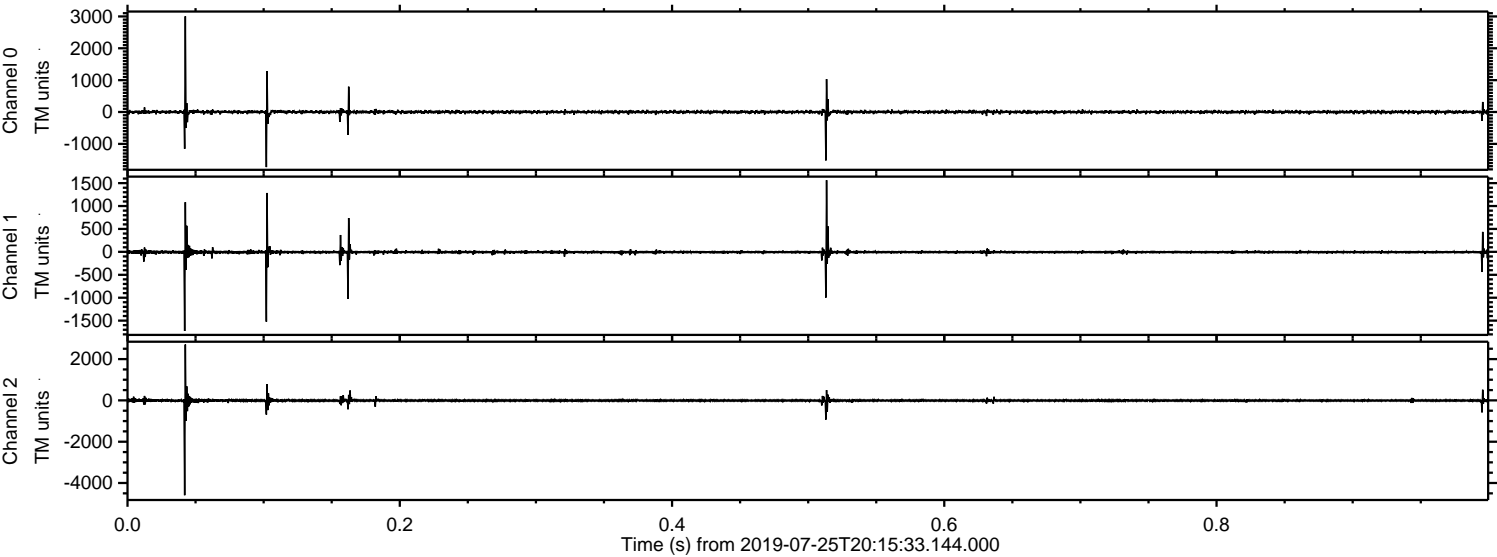
Processed Thu Jul 25 22:23:29 2019 by ELM ver.2012-10-06 from 001__elm20190725_201532__dat00.bin



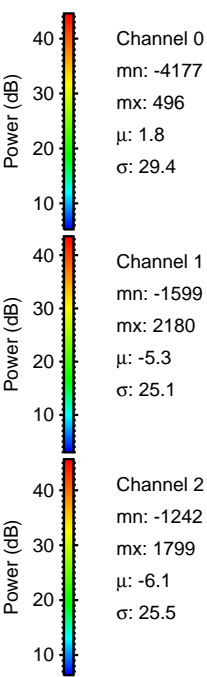
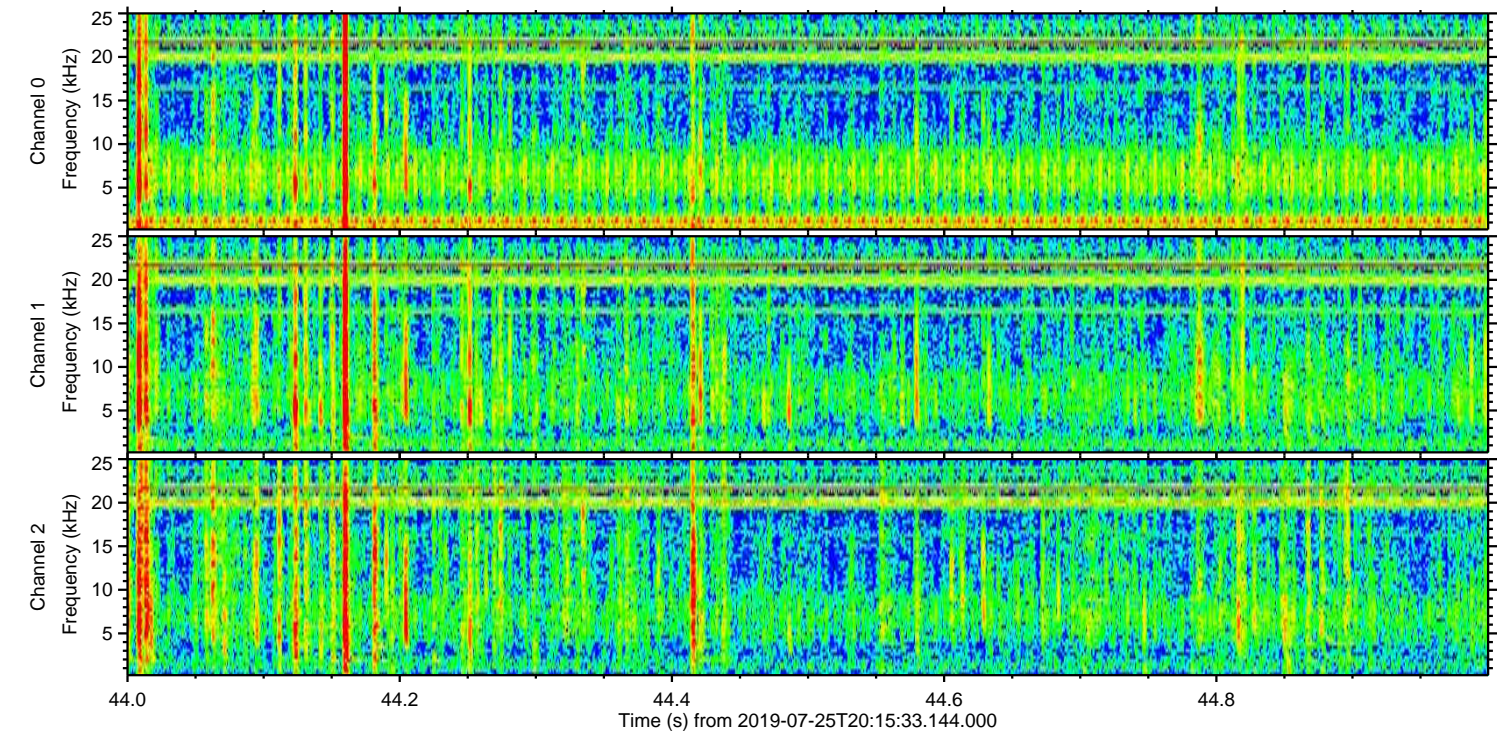
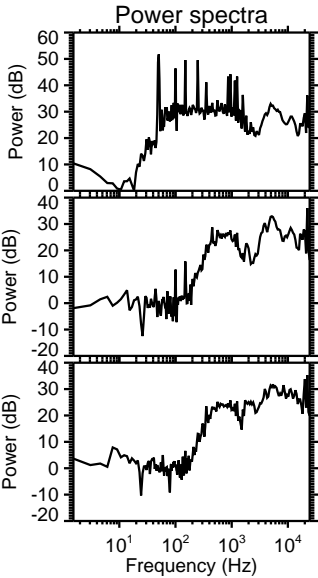
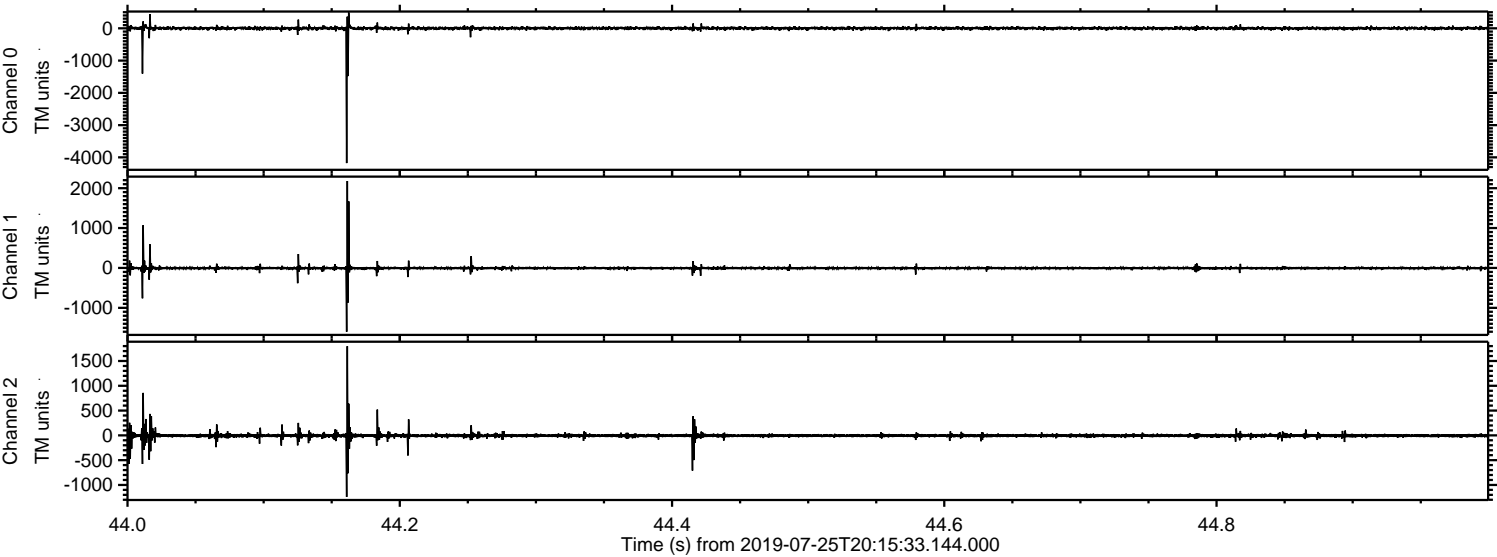
Processed Thu Jul 25 22:23:29 2019 by ELM ver.2012-10-06 from 001__elm20190725_201532__dat00.bin



Processed Thu Jul 25 22:23:30 2019 by ELM ver.2012-10-06 from 001__elm20190725_201532__dat00.bin

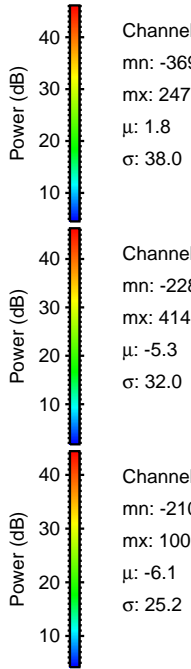
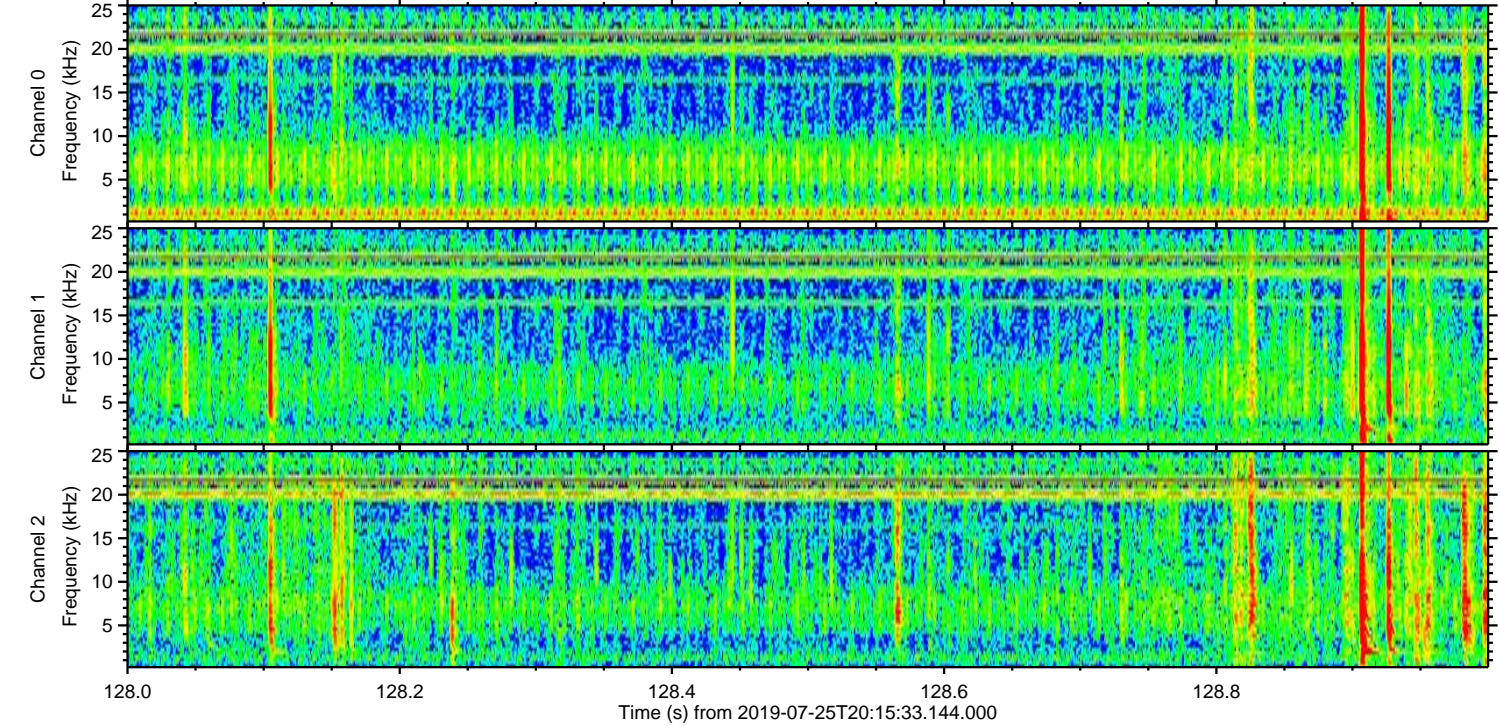
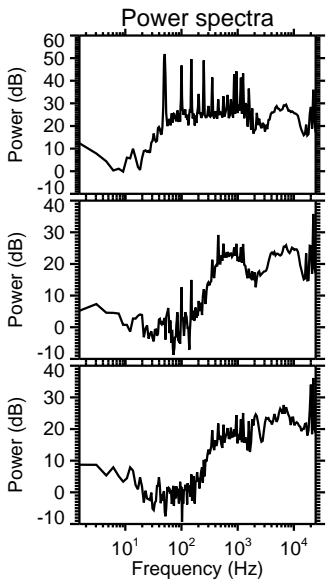
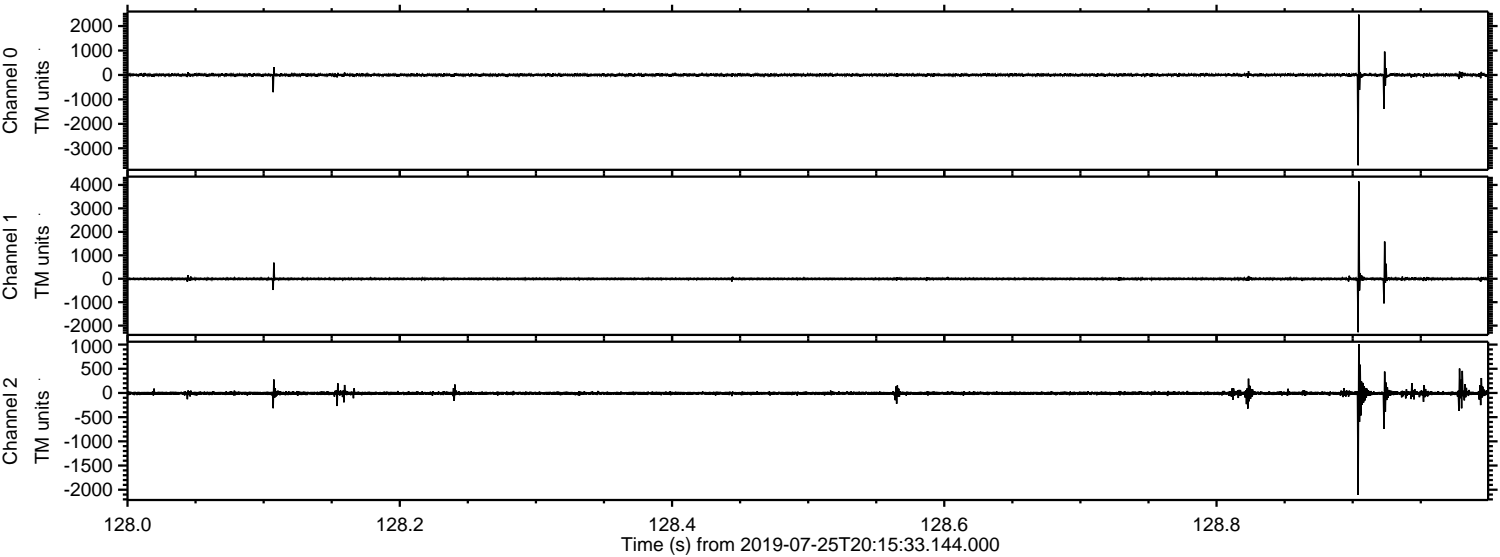


Processed Thu Jul 25 22:23:31 2019 by ELM ver.2012-10-06 from 001__elm20190725_201532__dat00.bin



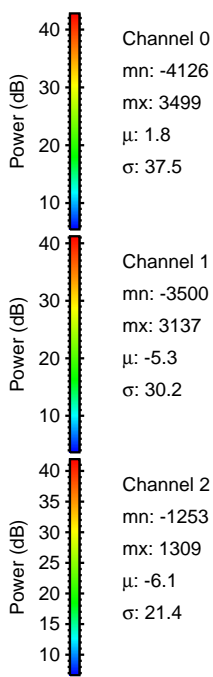
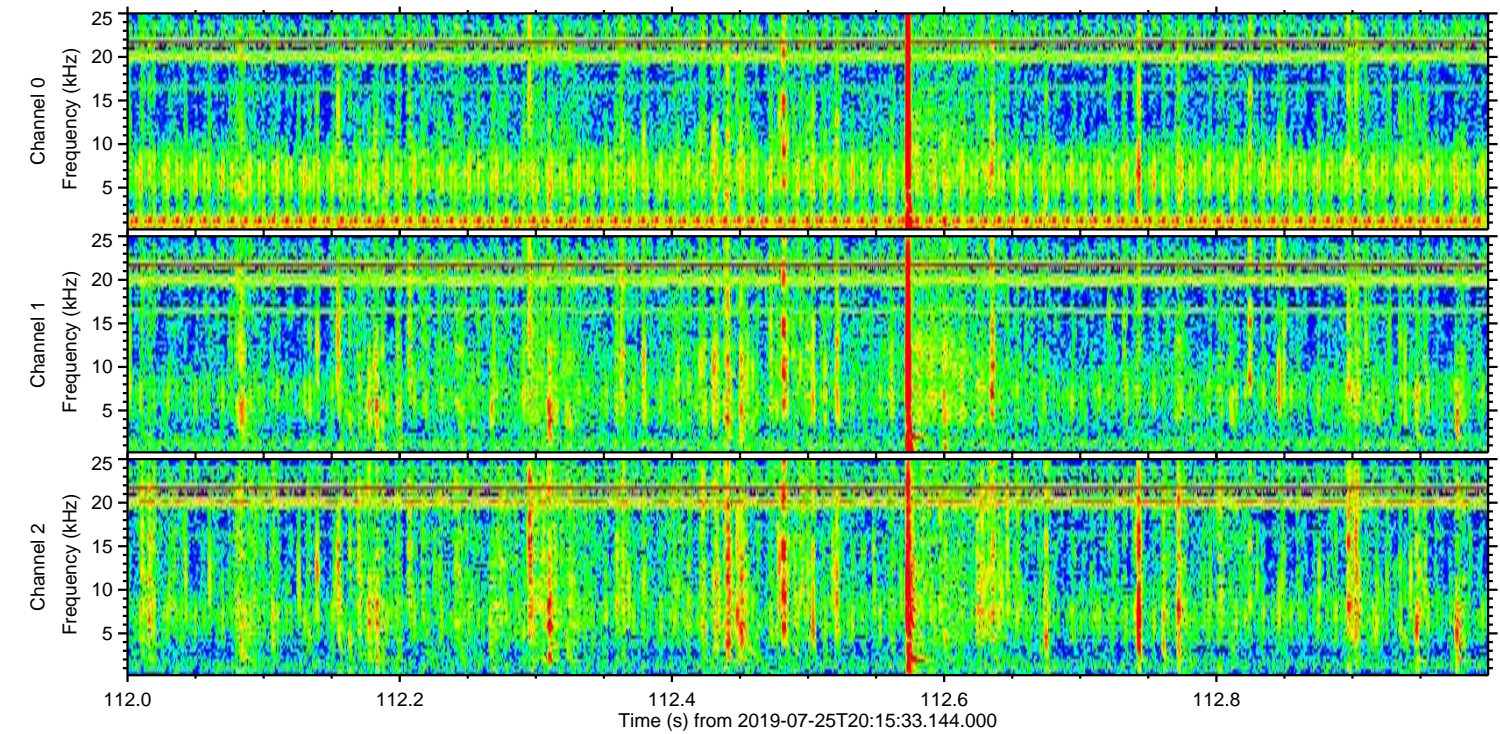
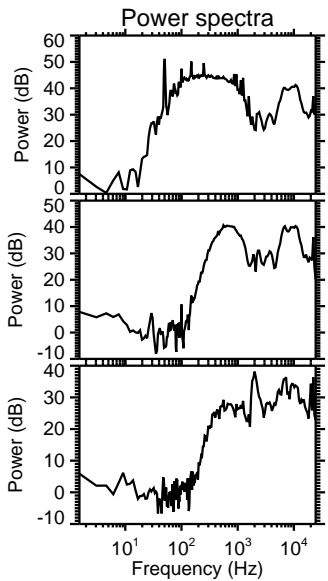
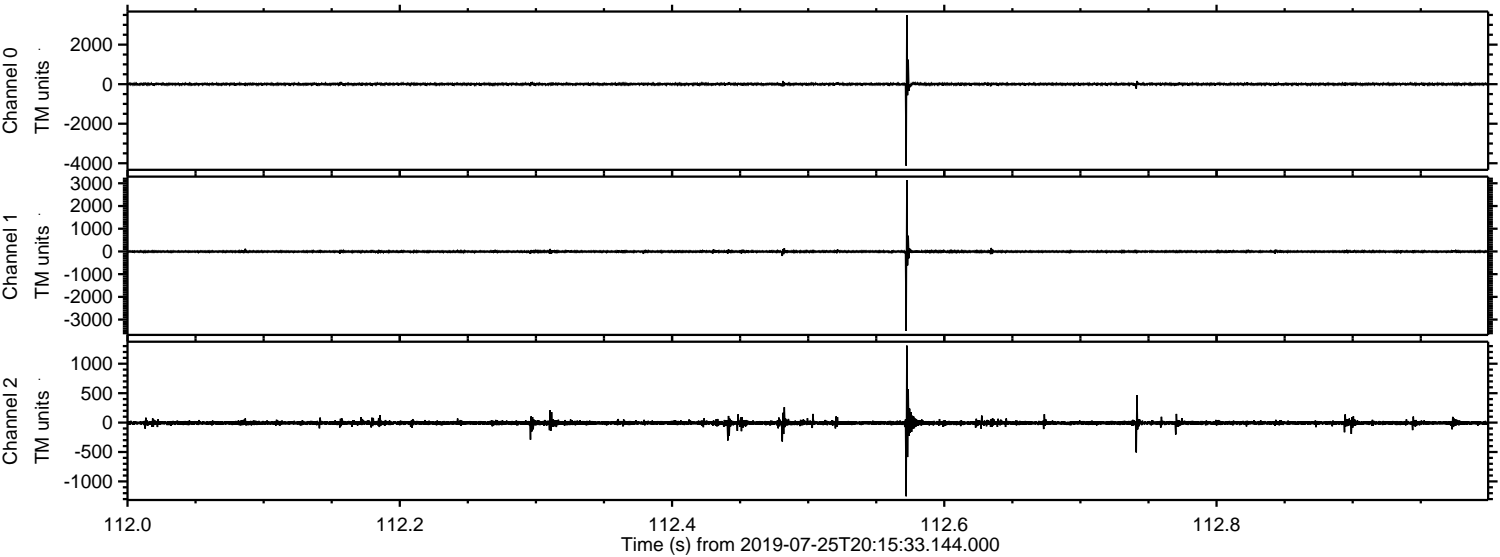
ELMAVAN 3D WAVEFORMS (Measured data sampled at 50 kHz) 51000 packets of 144 samples from 2019-07-25T20:15:33.144.000. Part 129/147

Processed Thu Jul 25 22:23:31 2019 by ELM ver.2012-10-06 from 001__elm20190725_201532__dat00.bin

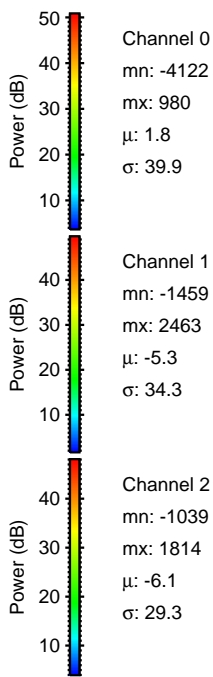
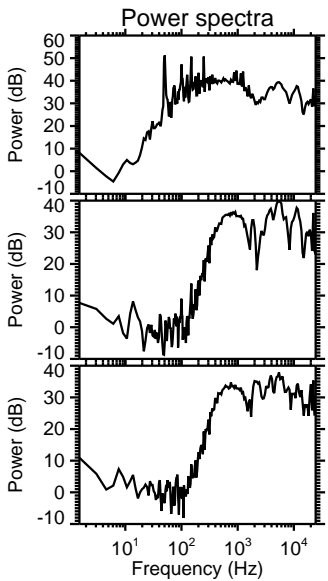
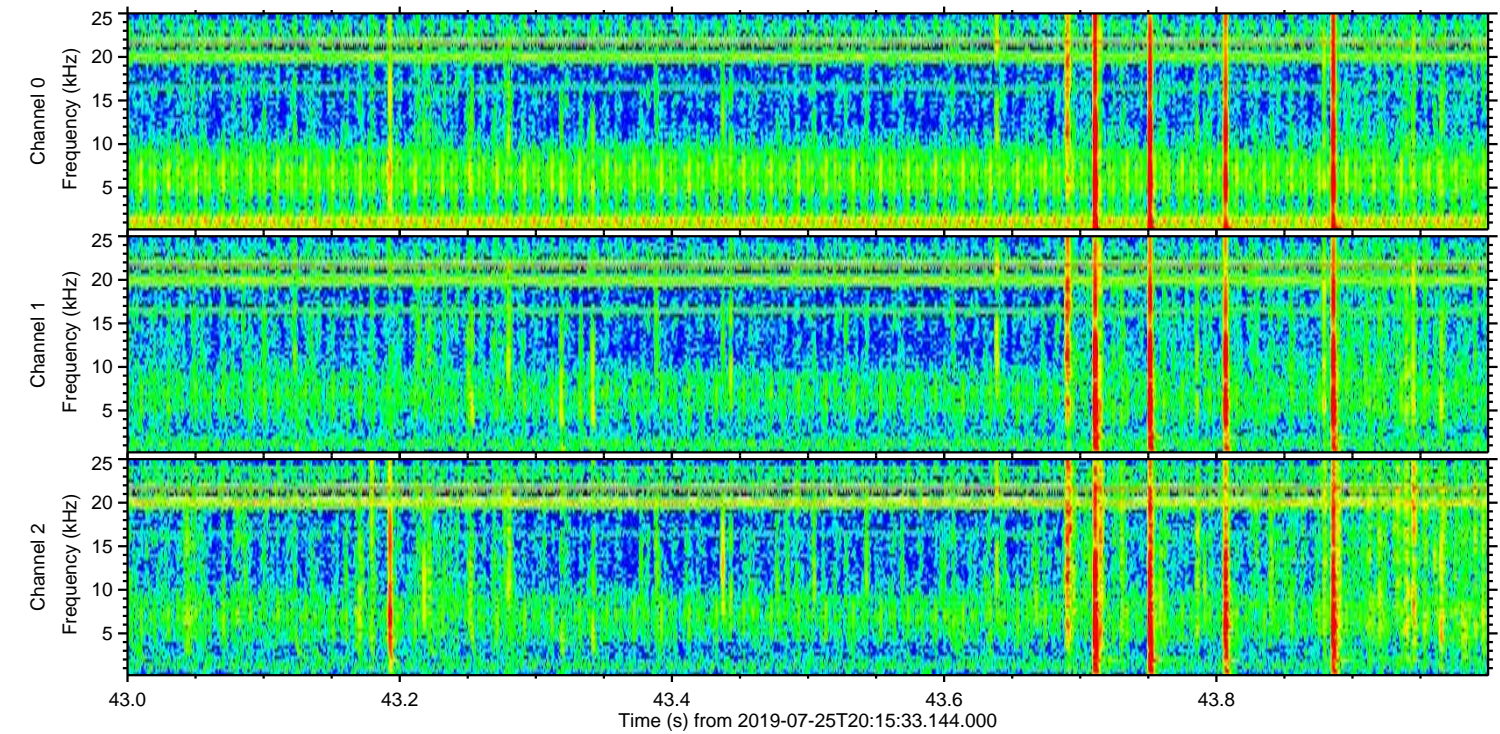
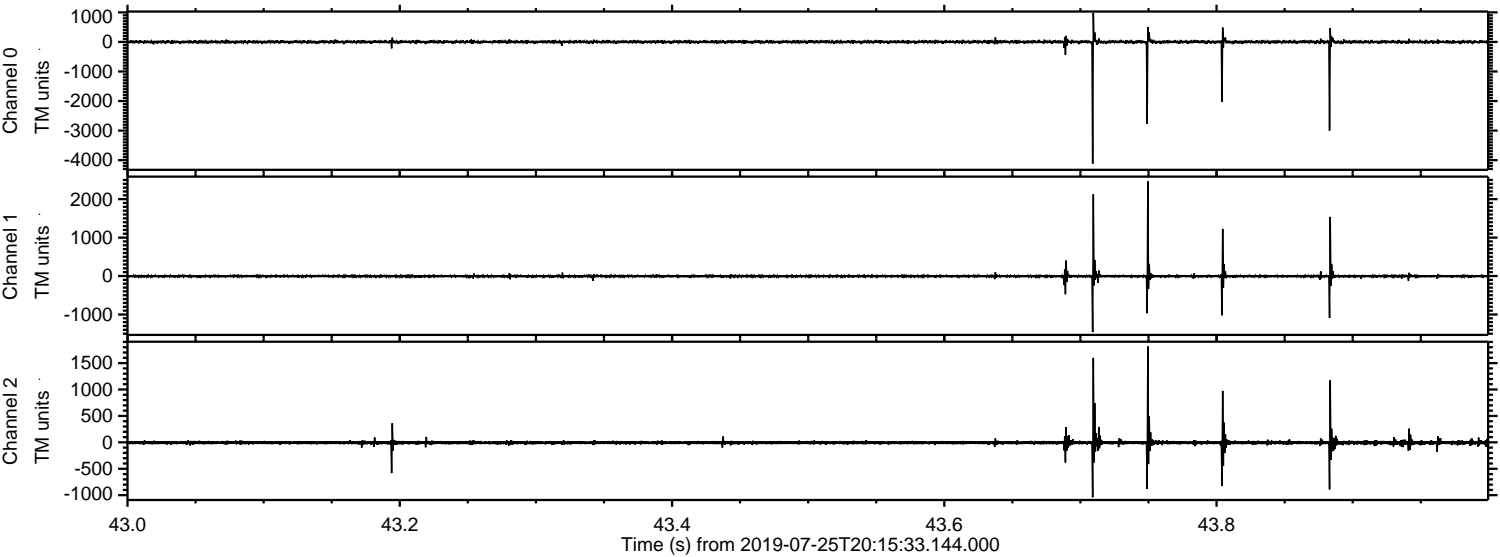


ELMAVAN 3D WAVEFORMS (Measured data sampled at 50 kHz) 51000 packets of 144 samples from 2019-07-25T20:15:33.144.000. Part 113/147

Processed Thu Jul 25 22:23:32 2019 by ELM ver.2012-10-06 from 001__elm20190725_201532__dat00.bin



Processed Thu Jul 25 22:23:32 2019 by ELM ver.2012-10-06 from 001__elm20190725_201532__dat00.bin



Channel 0
mn: -4122
mx: 980
 μ : 1.8
 σ : 39.9

Channel 1
mn: -1459
mx: 2463
 μ : -5.3
 σ : 34.3

Channel 2
mn: -1039
mx: 1814
 μ : -6.1
 σ : 29.3

Processed Thu Jul 25 22:23:33 2019 by ELM ver.2012-10-06 from 001__elm20190725_201532__dat00.bin

