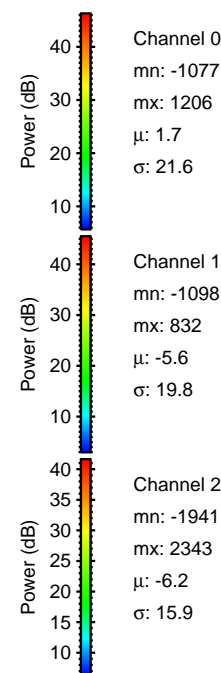
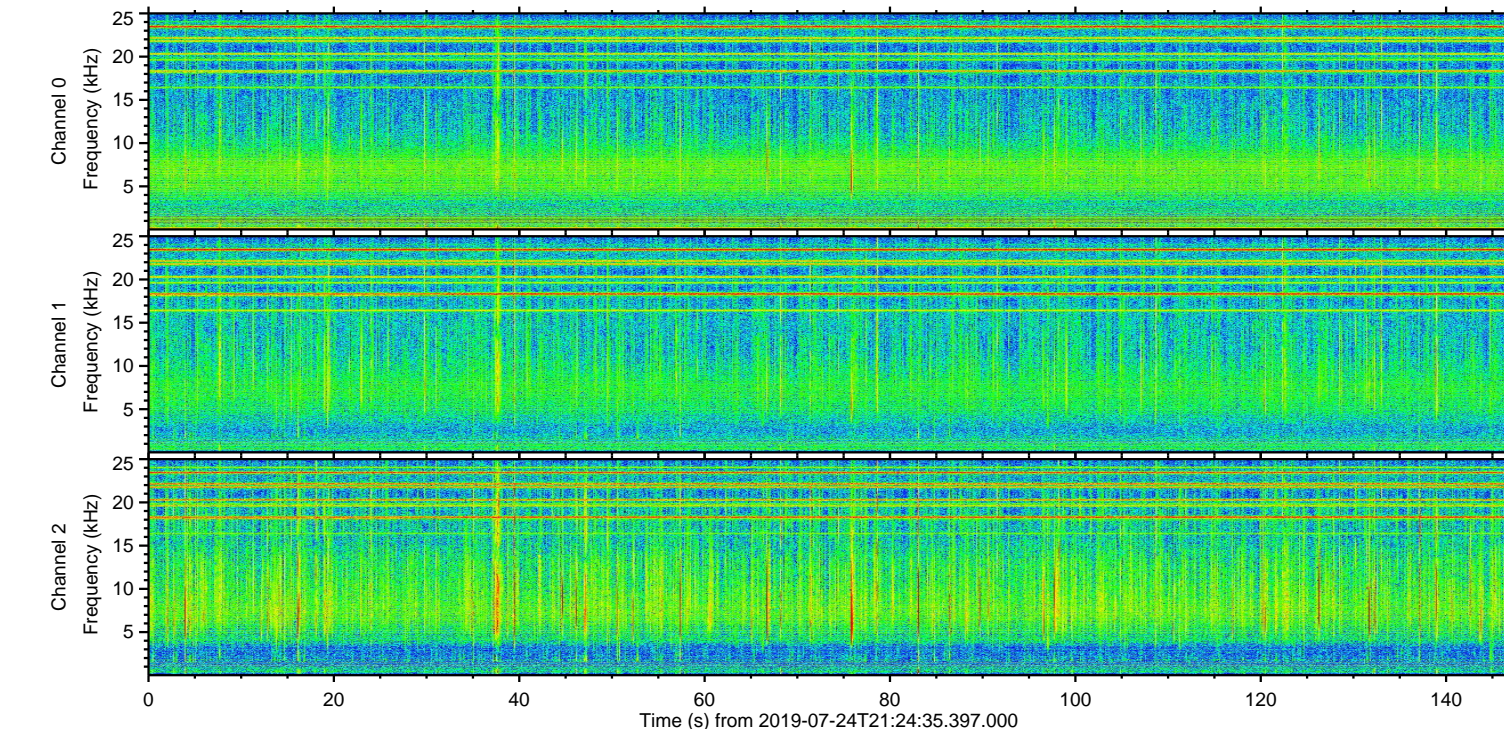
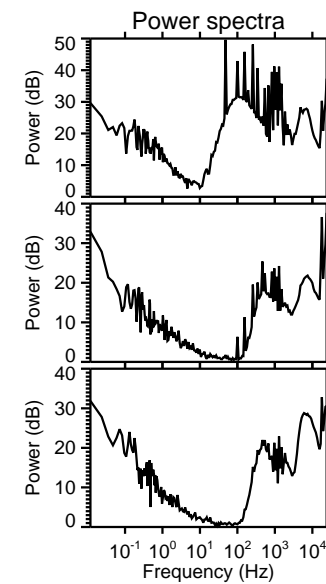
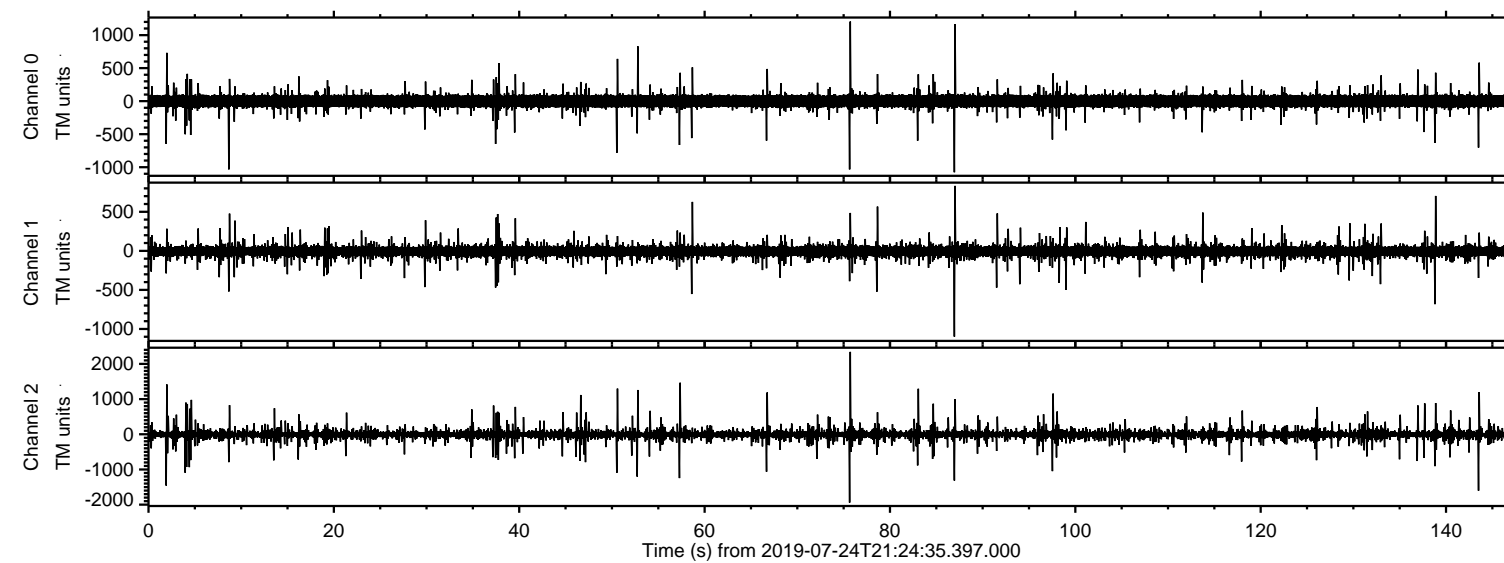


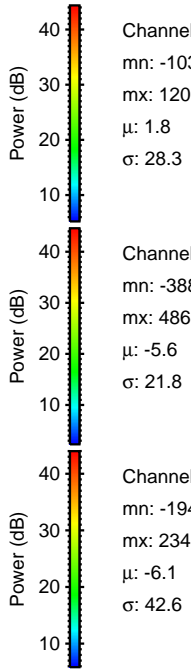
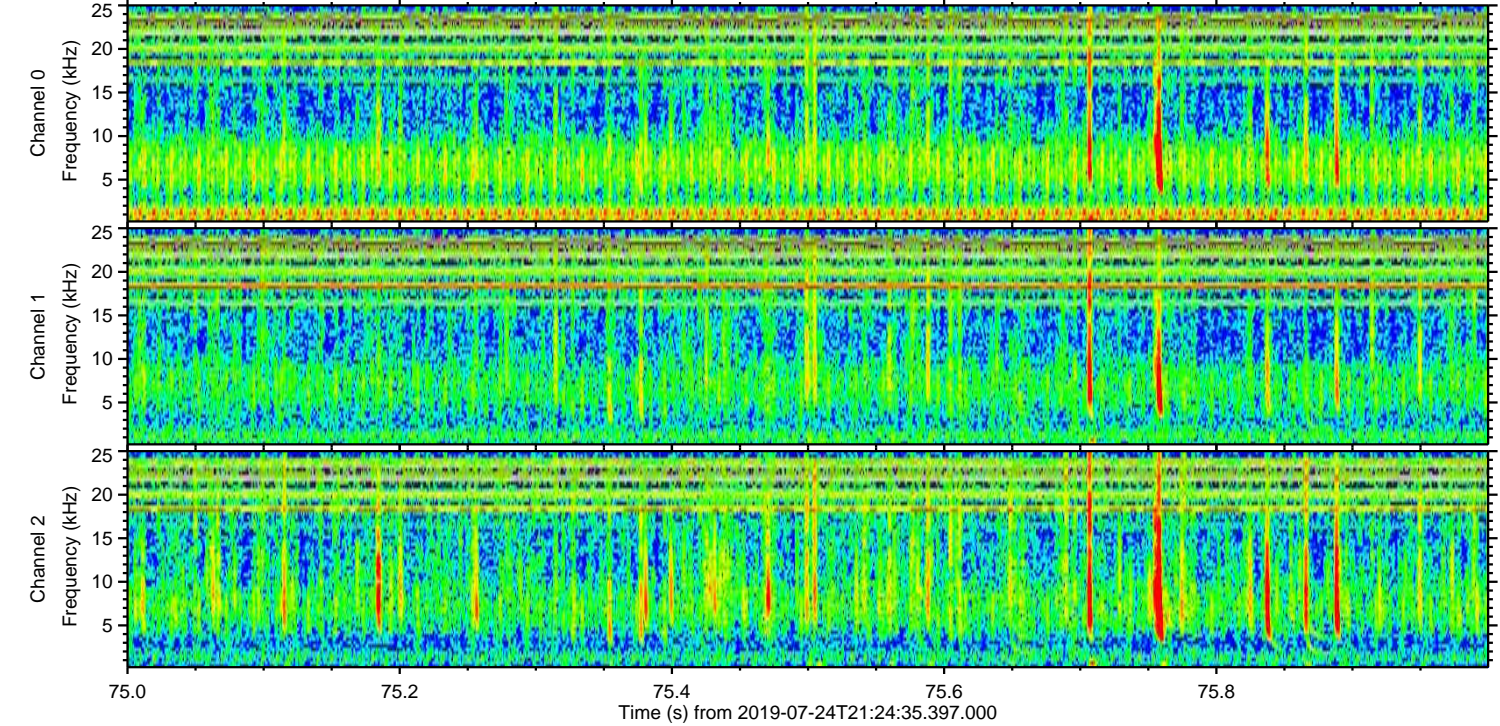
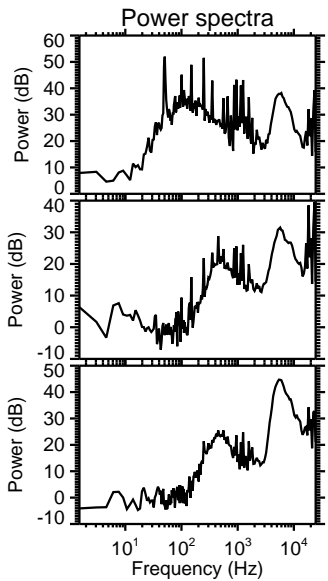
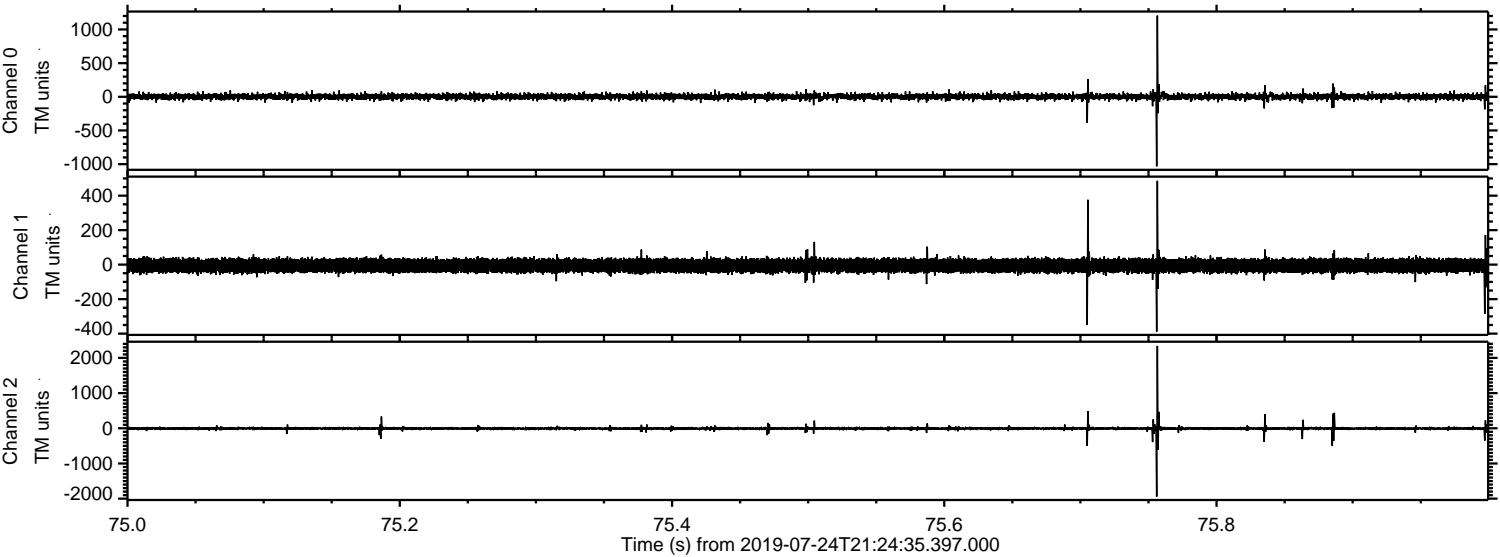
# ELMAVAN 3D WAVEFORMS (Measured data sampled at 50 kHz) 51000 packets of 144 samples from 2019-07-24T21:24:35.397.000.

Processed Wed Jul 24 23:32:29 2019 by ELM ver.2012-10-06 from 001\_\_elm20190724\_212434\_\_dat00.bin





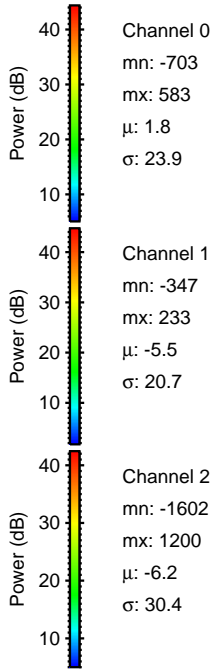
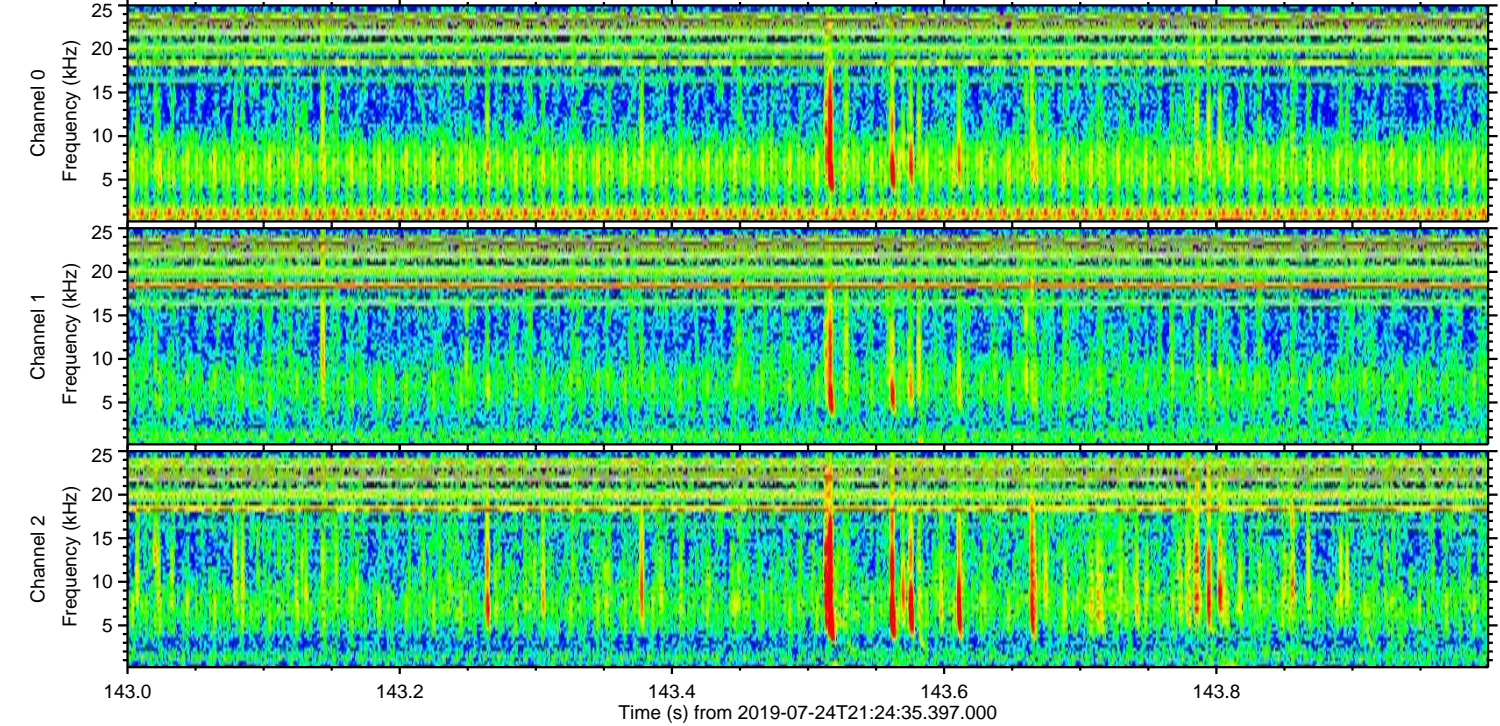
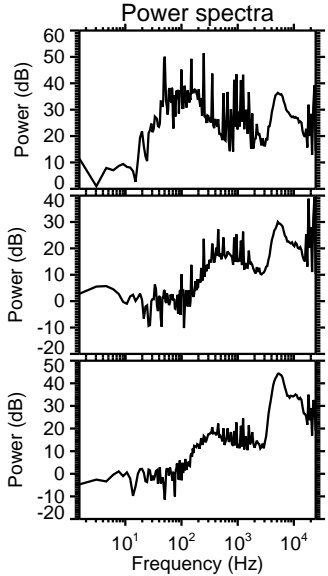
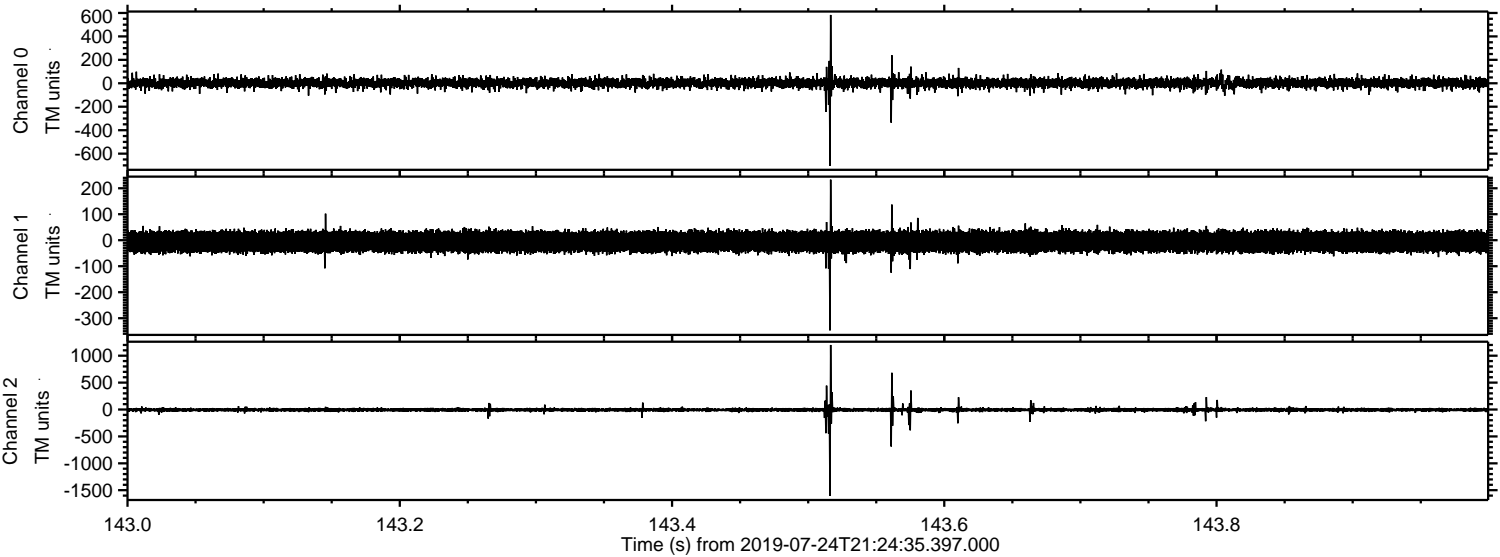
Processed Wed Jul 24 23:32:39 2019 by ELM ver.2012-10-06 from 001\_\_elm20190724\_212434\_\_dat00.bin





ELMAVAN 3D WAVEFORMS (Measured data sampled at 50 kHz) 51000 packets of 144 samples from 2019-07-24T21:24:35.397.000. Part 144/147

Processed Wed Jul 24 23:32:40 2019 by ELM ver.2012-10-06 from 001\_\_elm20190724\_212434\_\_dat00.bin



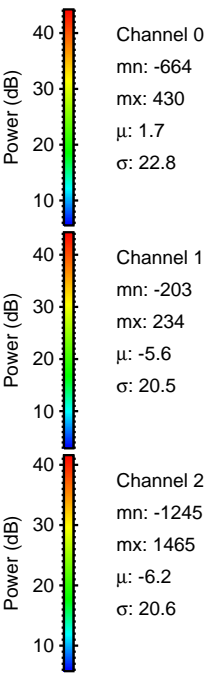
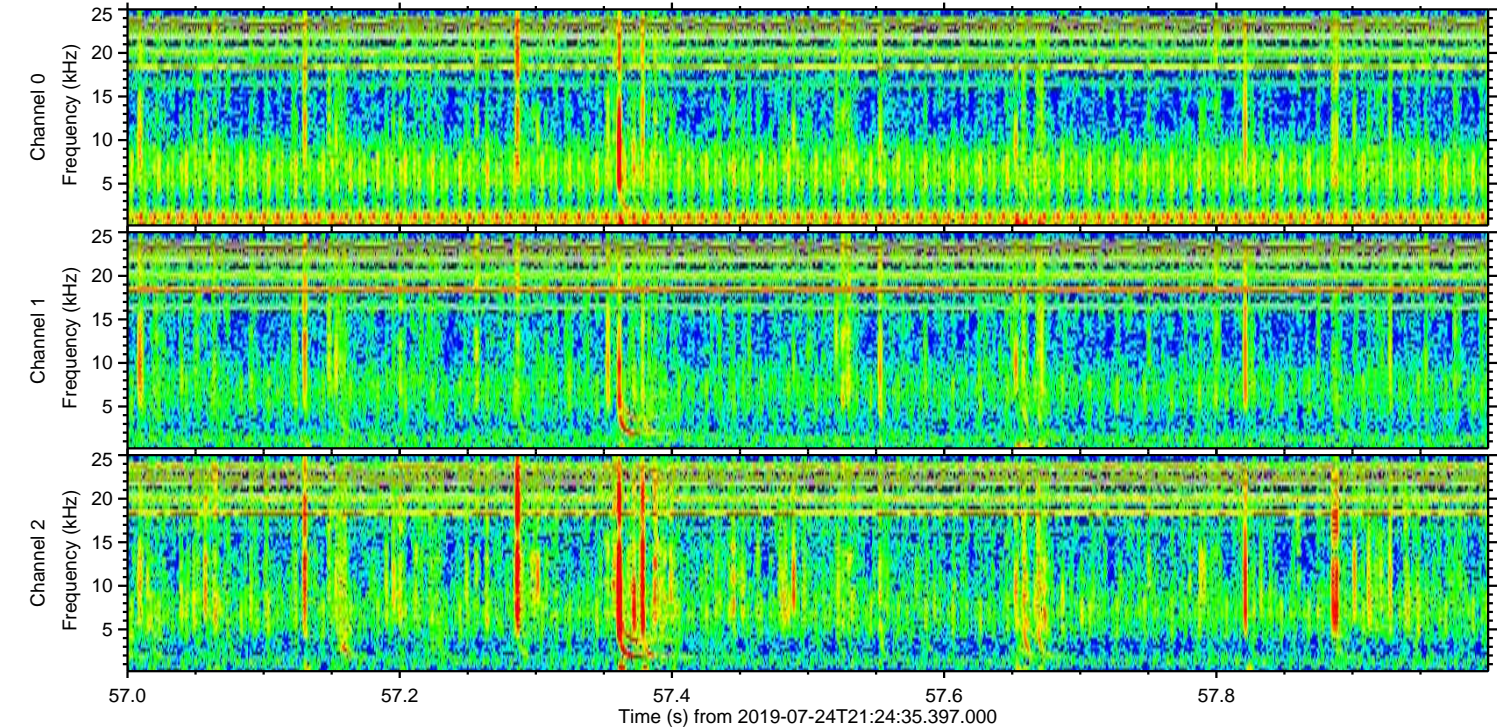
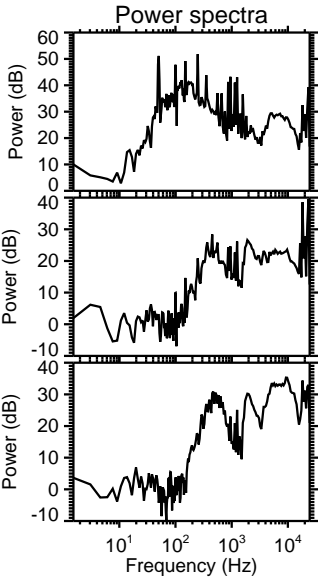
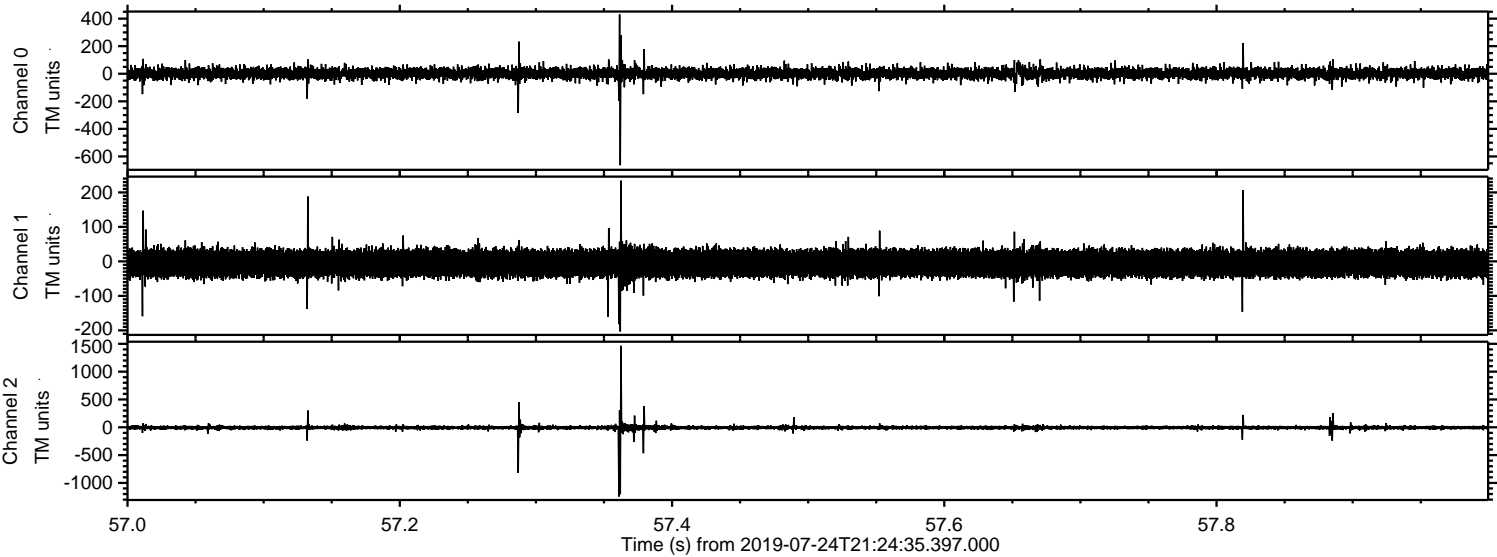
Channel 0  
mn: -703  
mx: 583  
 $\mu$ : 1.8  
 $\sigma$ : 23.9

Channel 1  
mn: -347  
mx: 233  
 $\mu$ : -5.5  
 $\sigma$ : 20.7

Channel 2  
mn: -1602  
mx: 1200  
 $\mu$ : -6.2  
 $\sigma$ : 30.4



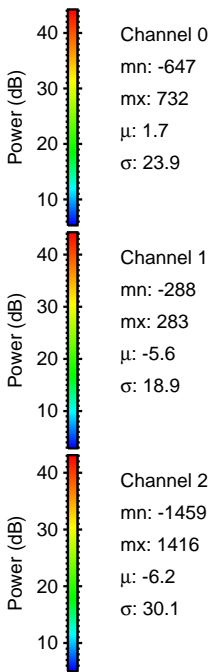
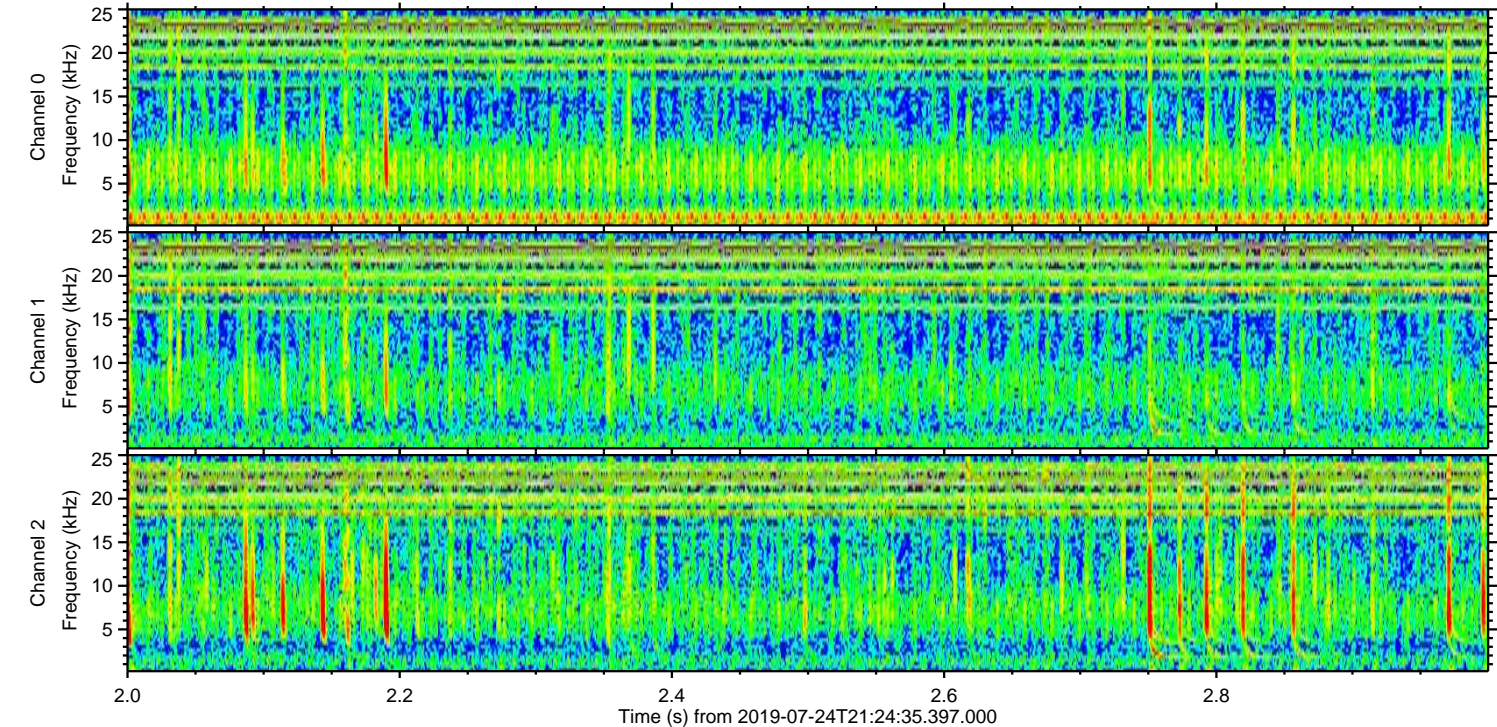
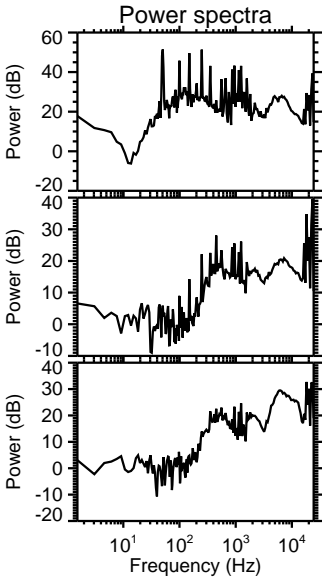
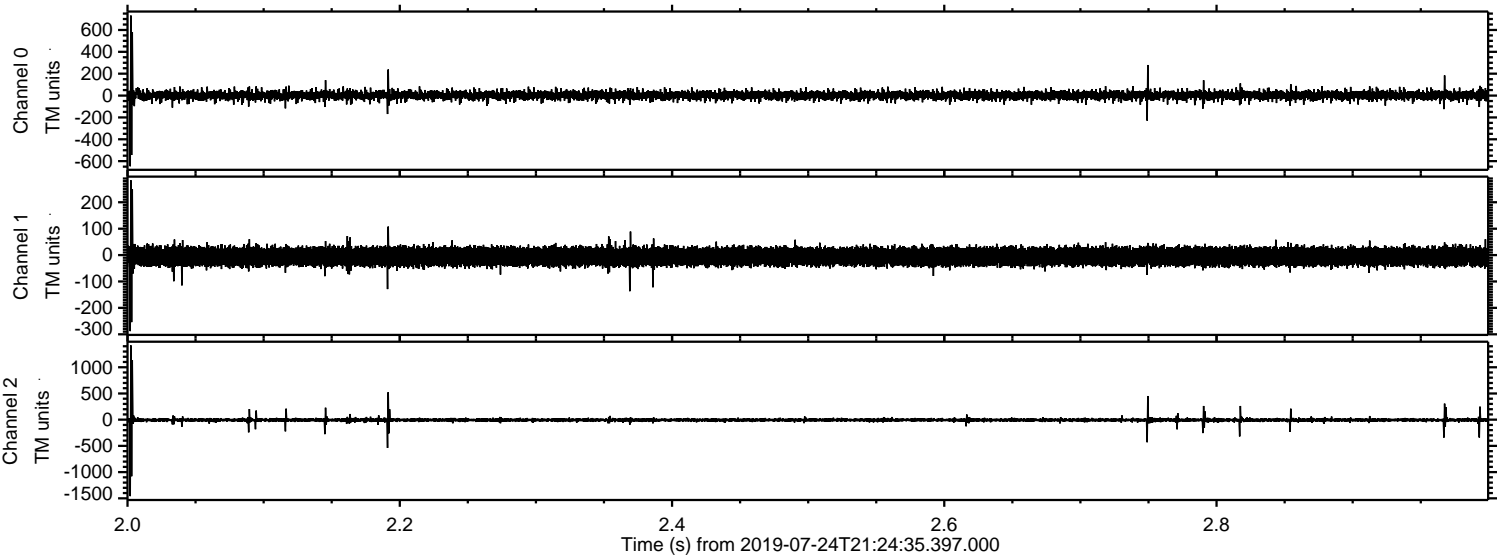
Processed Wed Jul 24 23:32:40 2019 by ELM ver.2012-10-06 from 001\_\_elm20190724\_212434\_\_dat00.bin





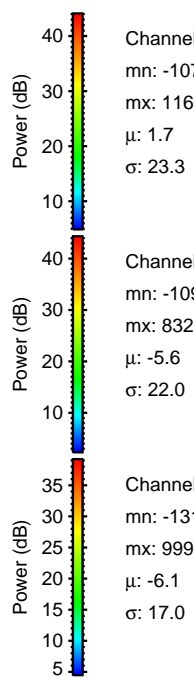
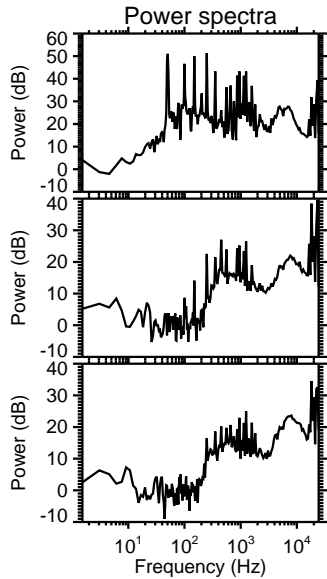
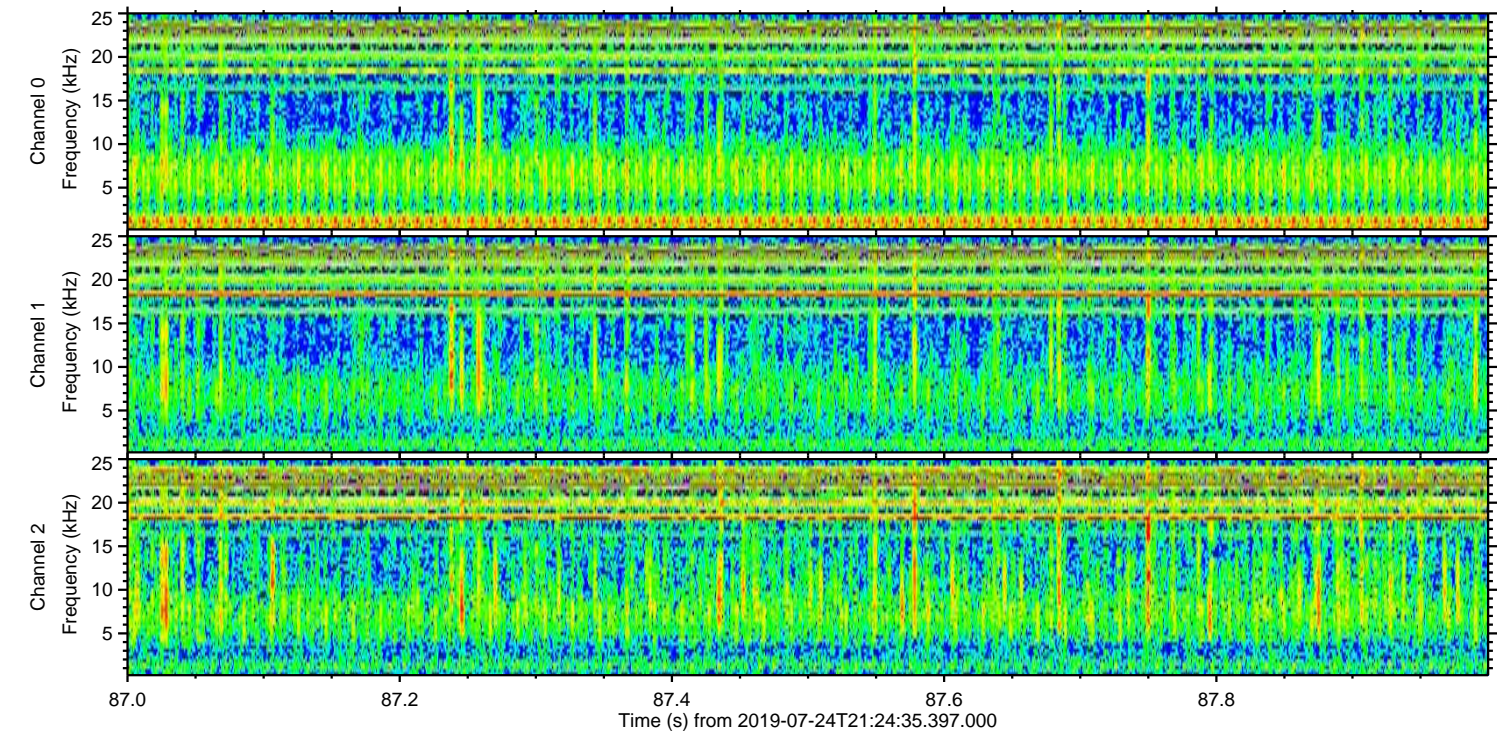
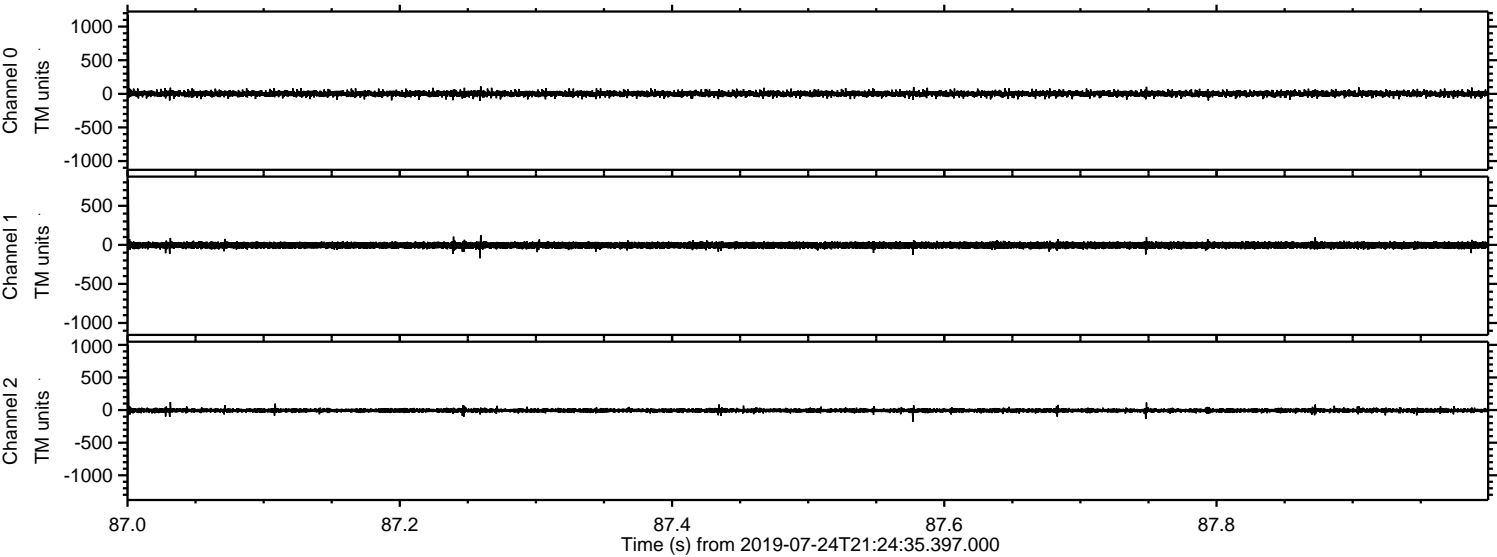
ELMAVAN 3D WAVEFORMS (Measured data sampled at 50 kHz) 51000 packets of 144 samples from 2019-07-24T21:24:35.397.000. Part 3/147

Processed Wed Jul 24 23:32:41 2019 by ELM ver.2012-10-06 from 001\_\_elm20190724\_212434\_\_dat00.bin



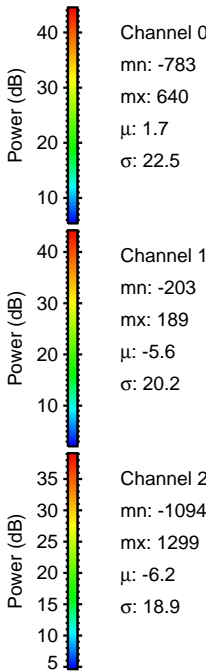
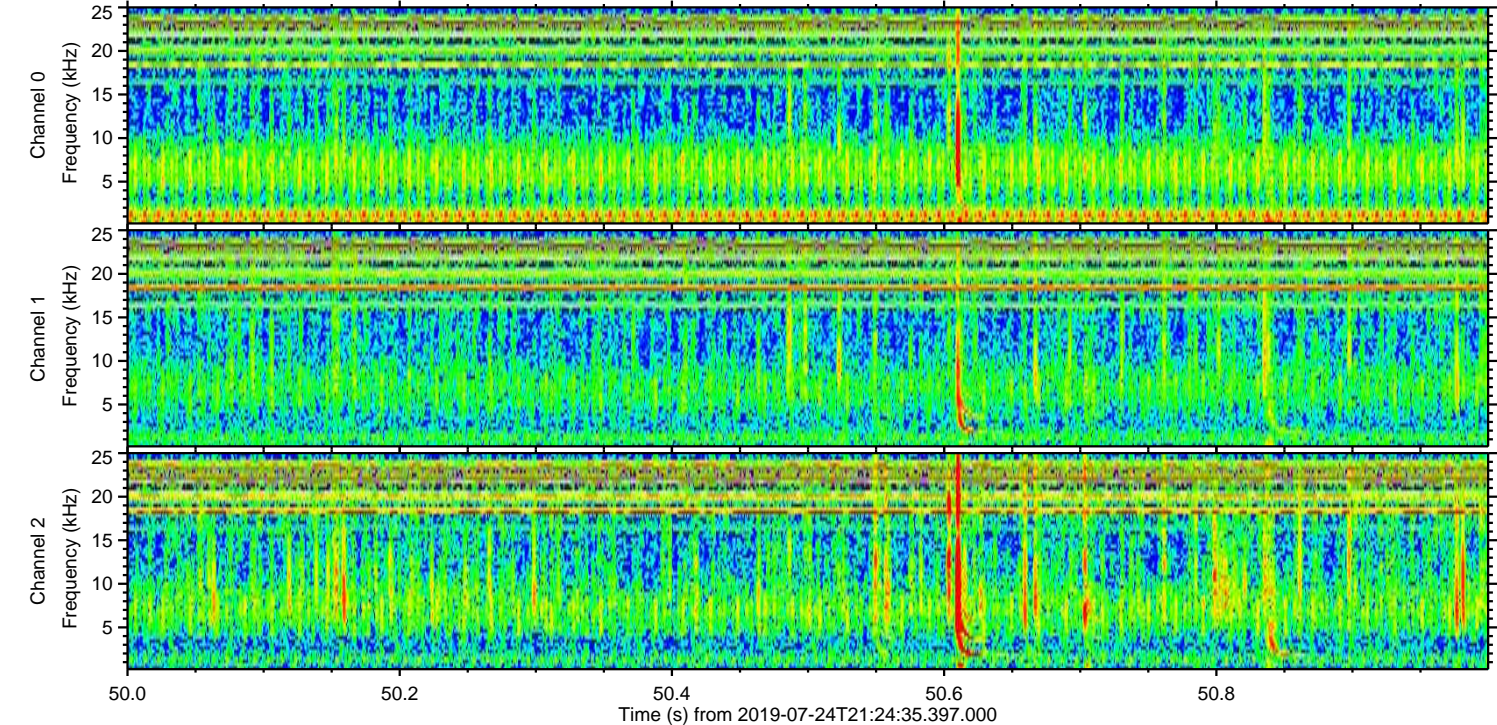
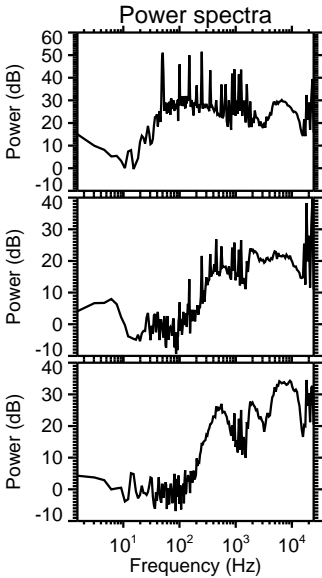
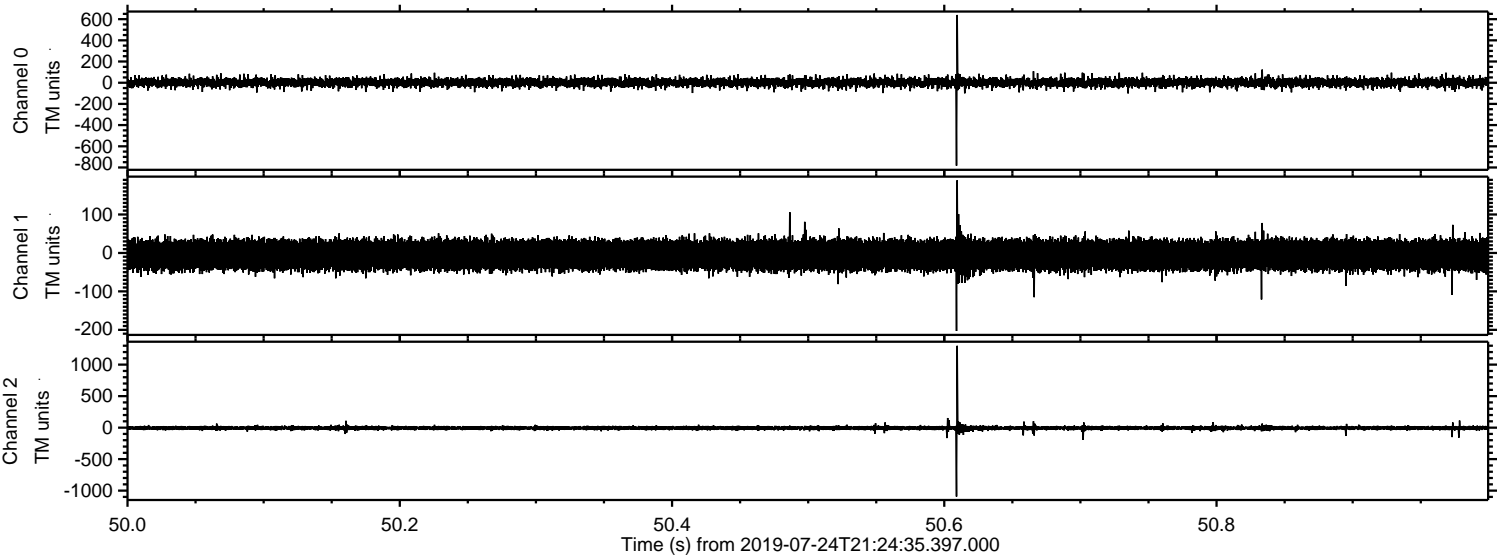


Processed Wed Jul 24 23:32:42 2019 by ELM ver.2012-10-06 from 001\_\_elm20190724\_212434\_\_dat00.bin



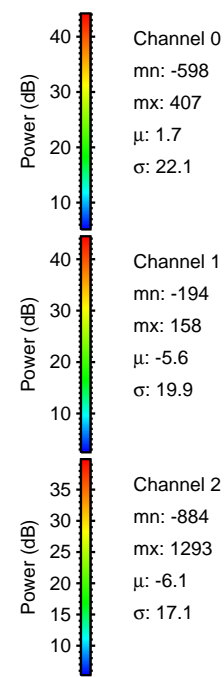
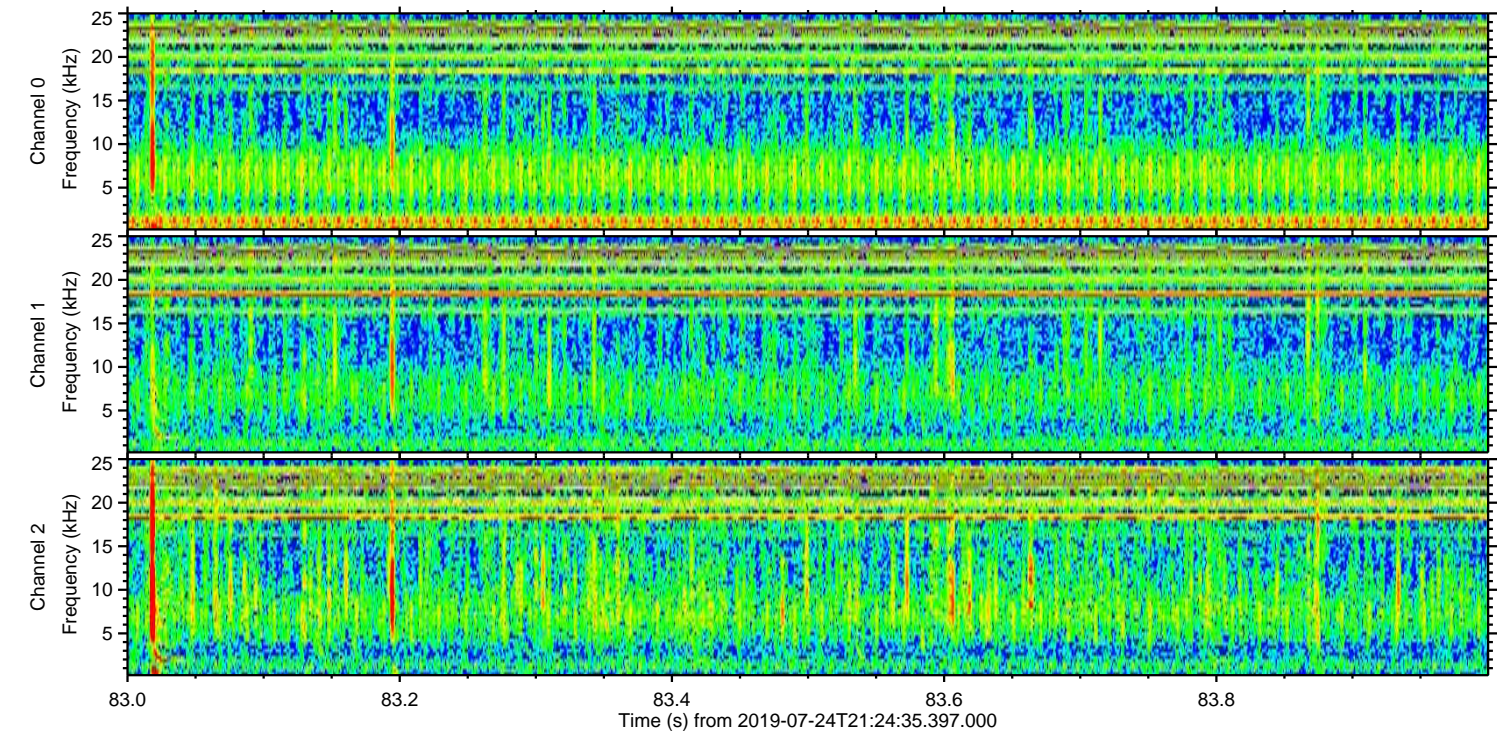
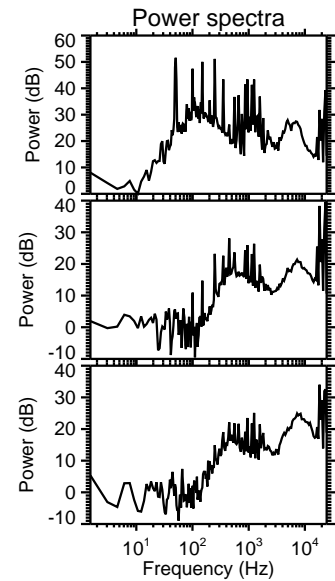
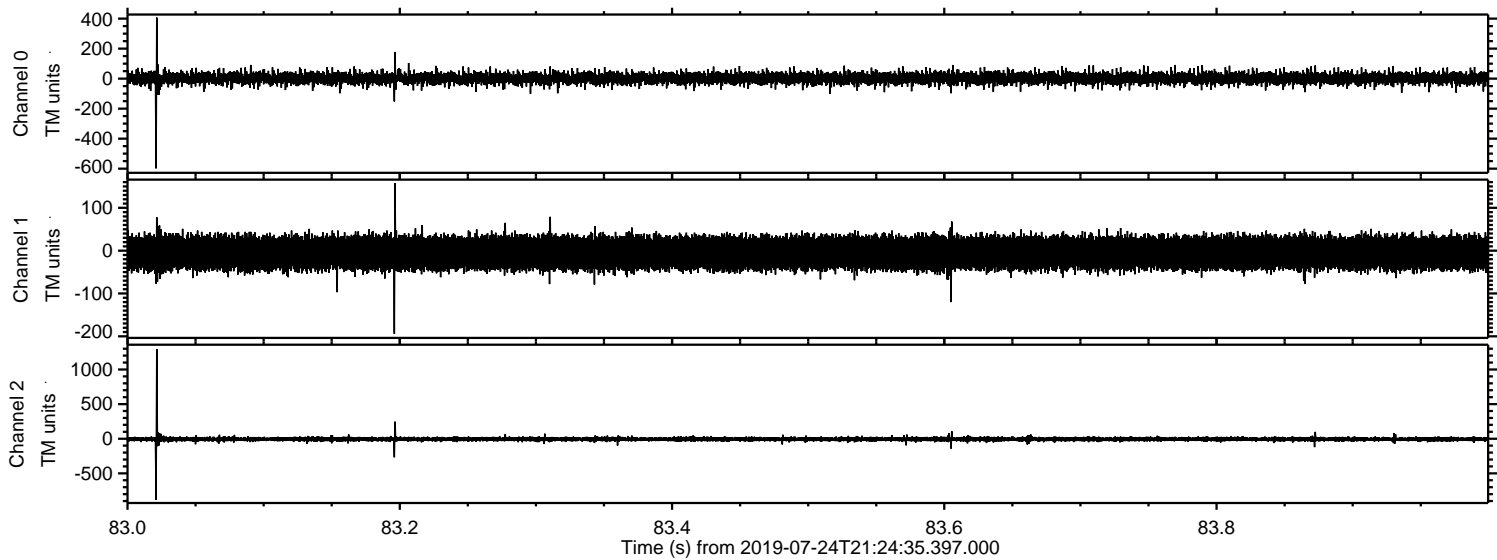


Processed Wed Jul 24 23:32:43 2019 by ELM ver.2012-10-06 from 001\_\_elm20190724\_212434\_\_dat00.bin



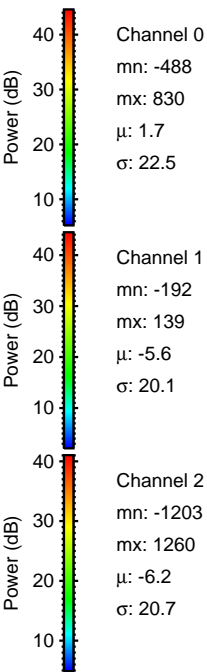
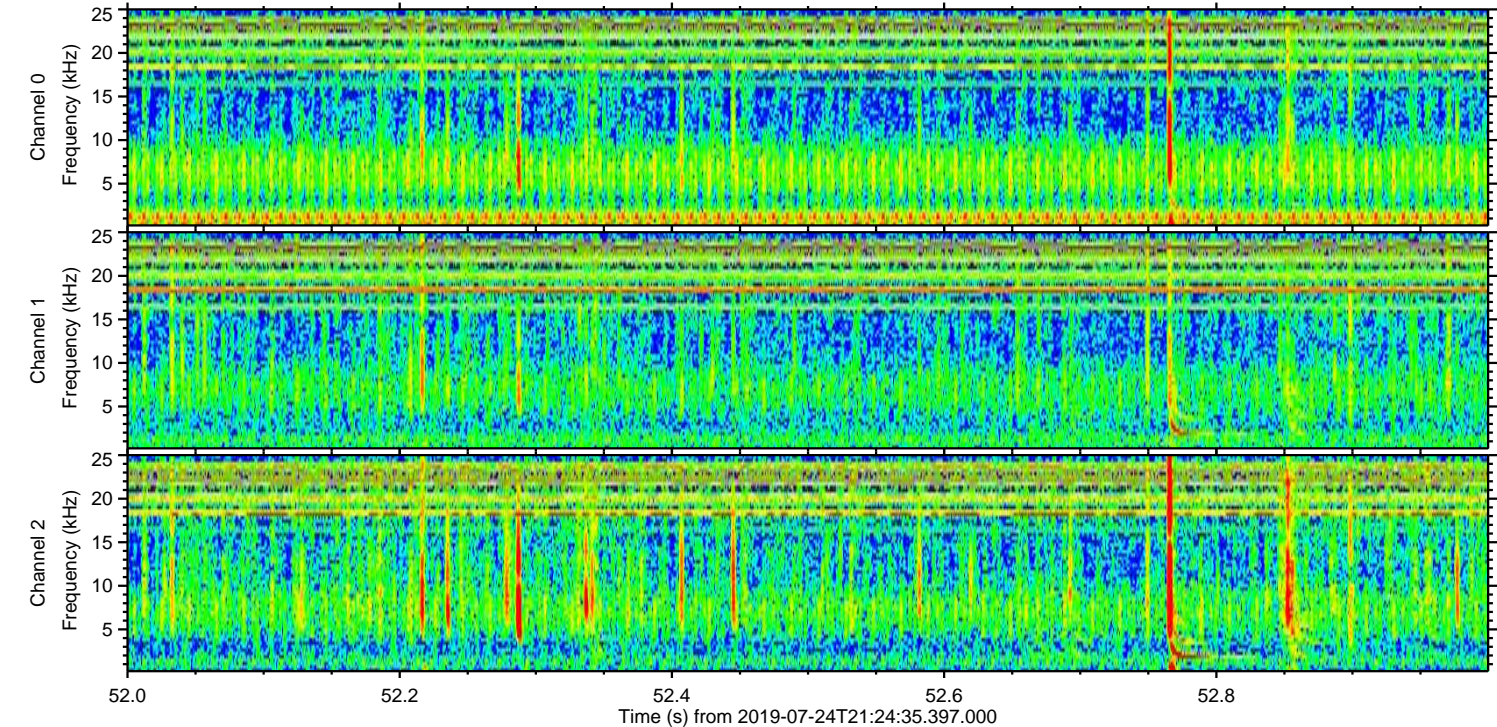
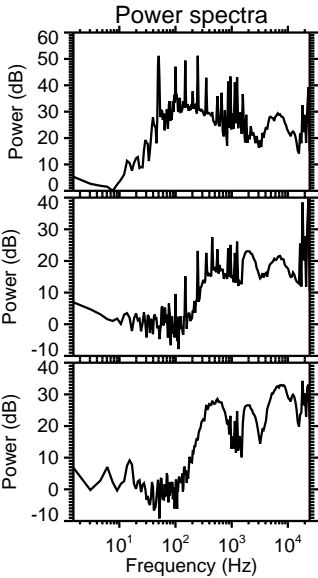
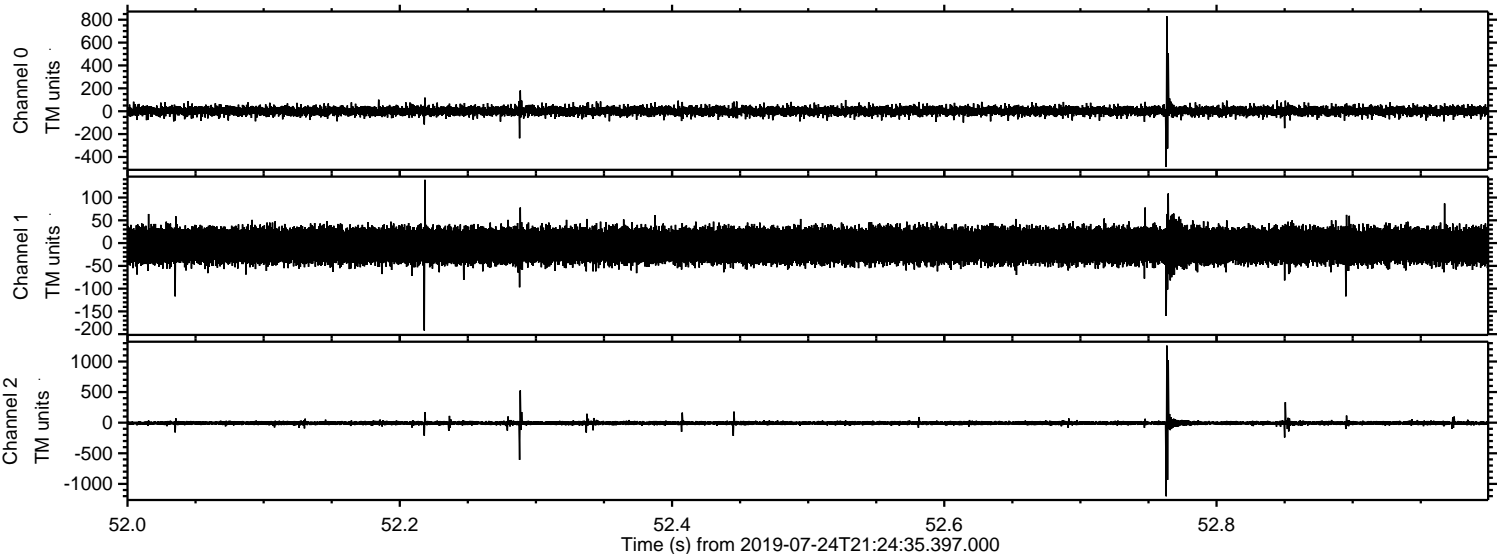


Processed Wed Jul 24 23:32:43 2019 by ELM ver.2012-10-06 from 001\_\_elm20190724\_212434\_\_dat00.bin



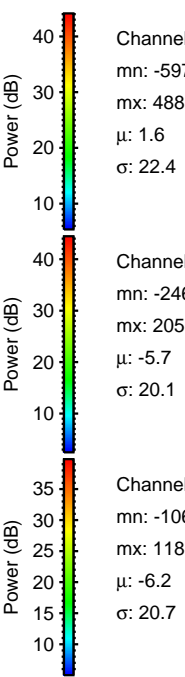
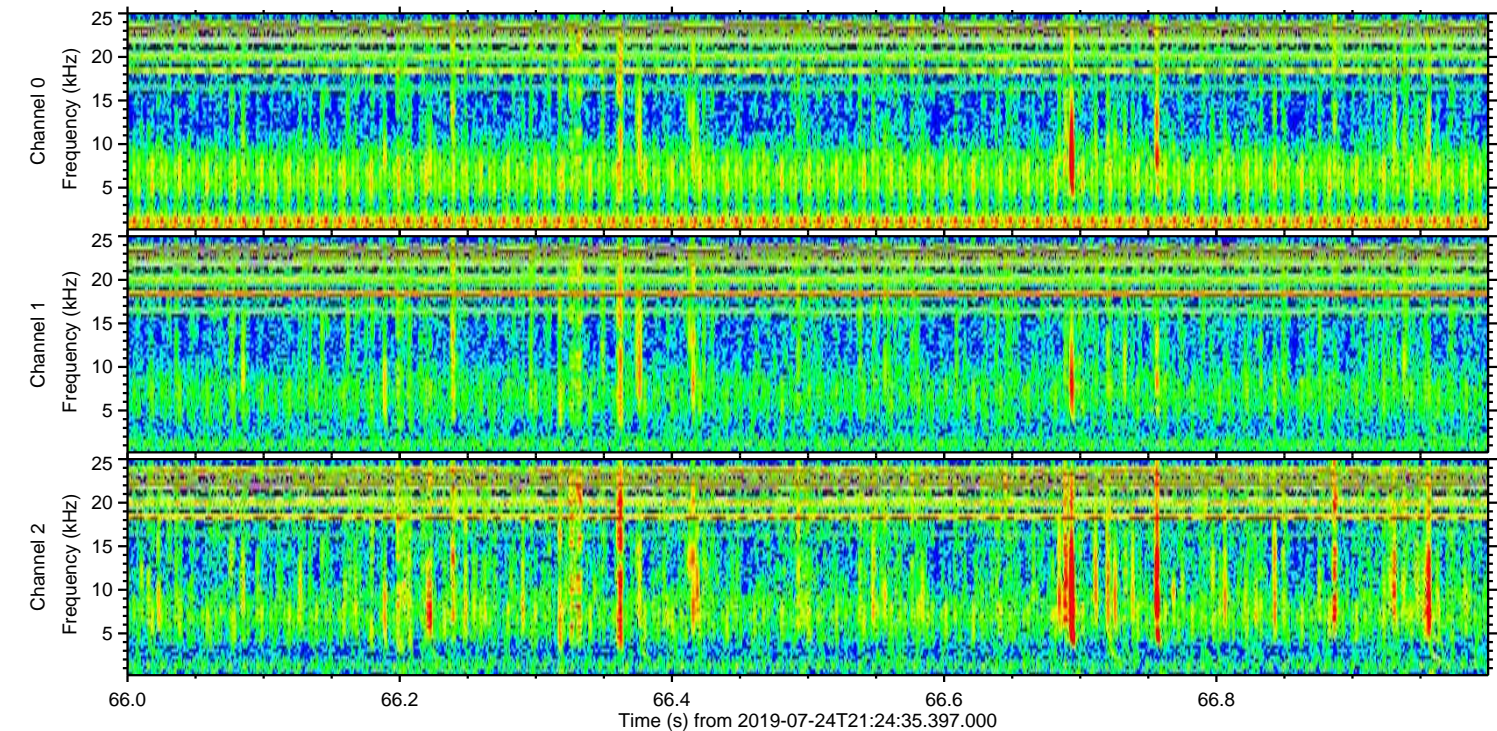
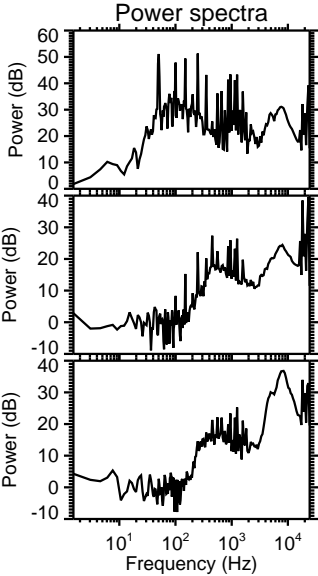
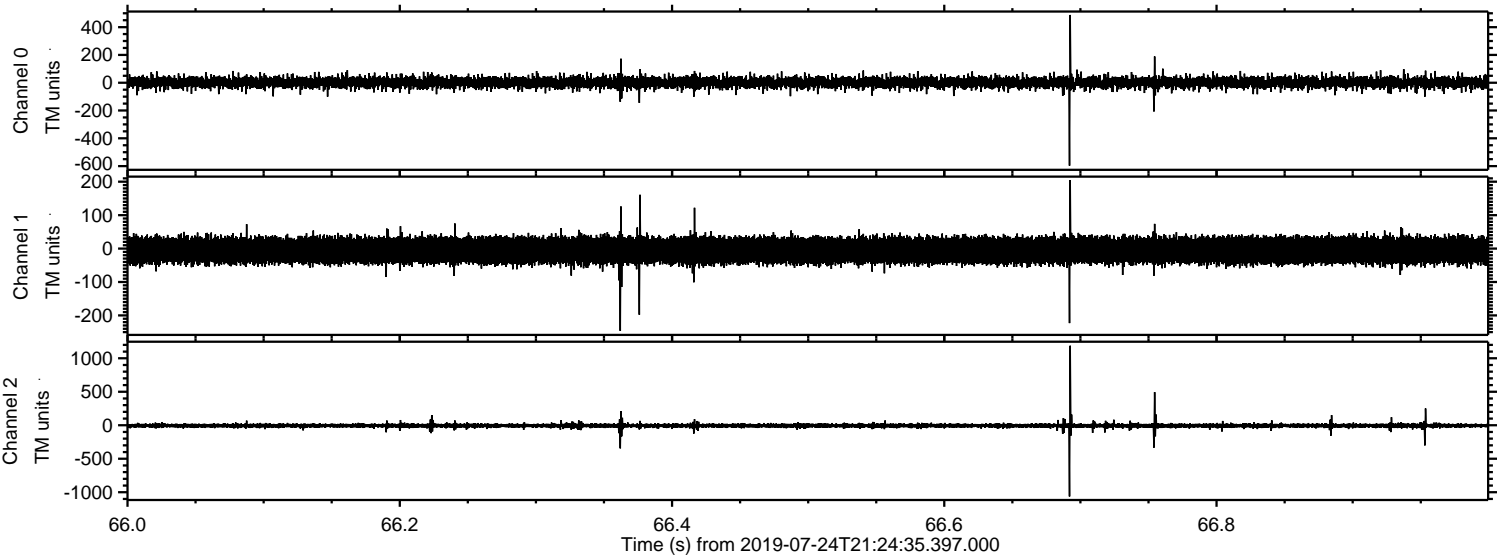


Processed Wed Jul 24 23:32:44 2019 by ELM ver.2012-10-06 from 001\_\_elm20190724\_212434\_\_dat00.bin





Processed Wed Jul 24 23:32:45 2019 by ELM ver.2012-10-06 from 001\_\_elm20190724\_212434\_\_dat00.bin





Processed Wed Jul 24 23:32:46 2019 by ELM ver.2012-10-06 from 001\_\_elm20190724\_212434\_\_dat00.bin

