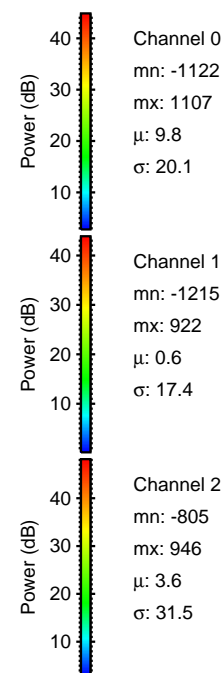
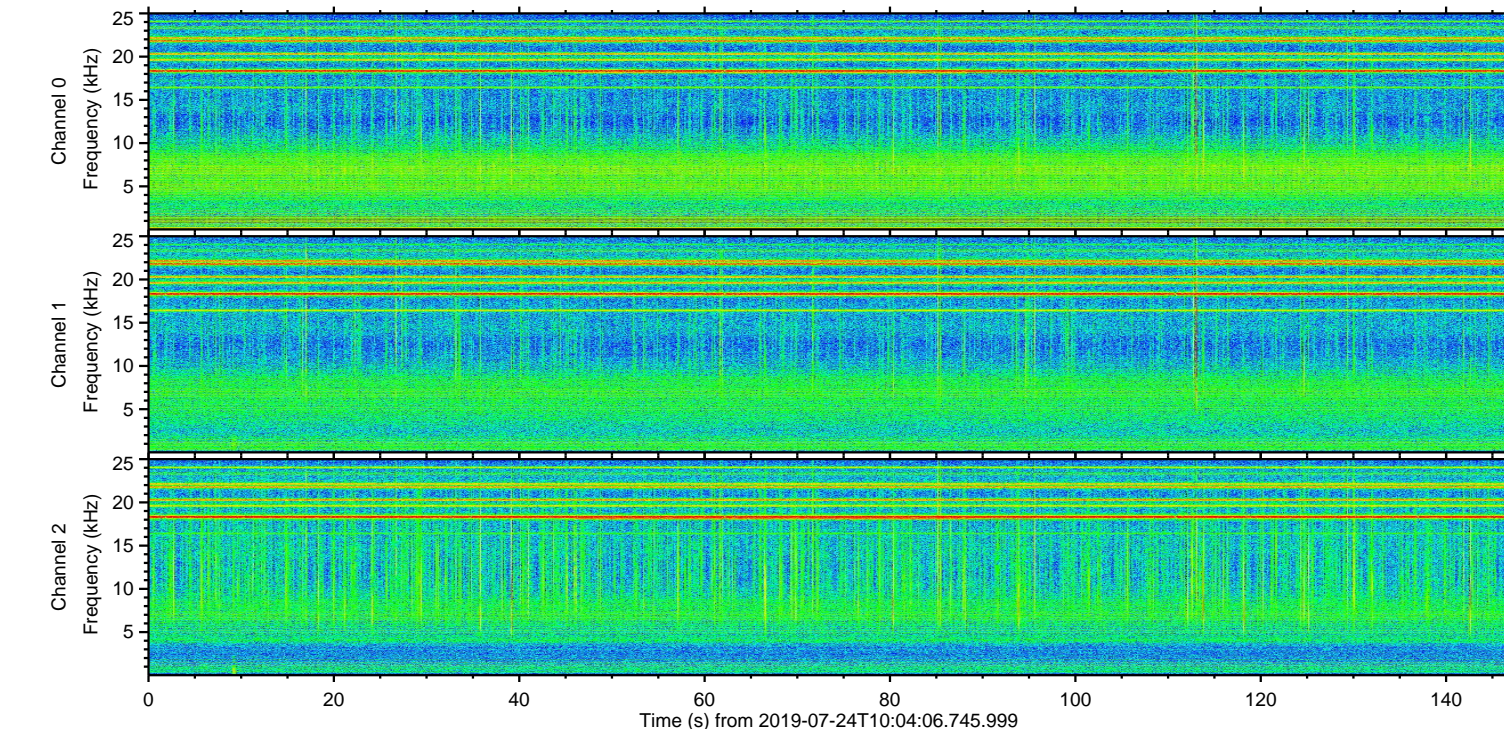
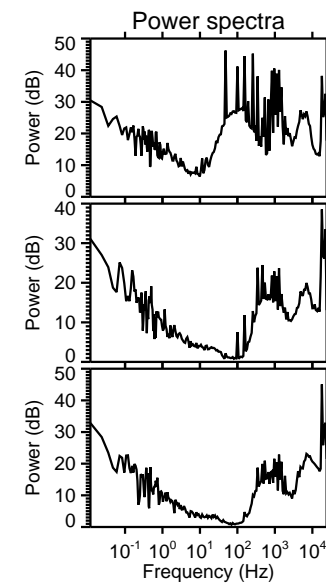
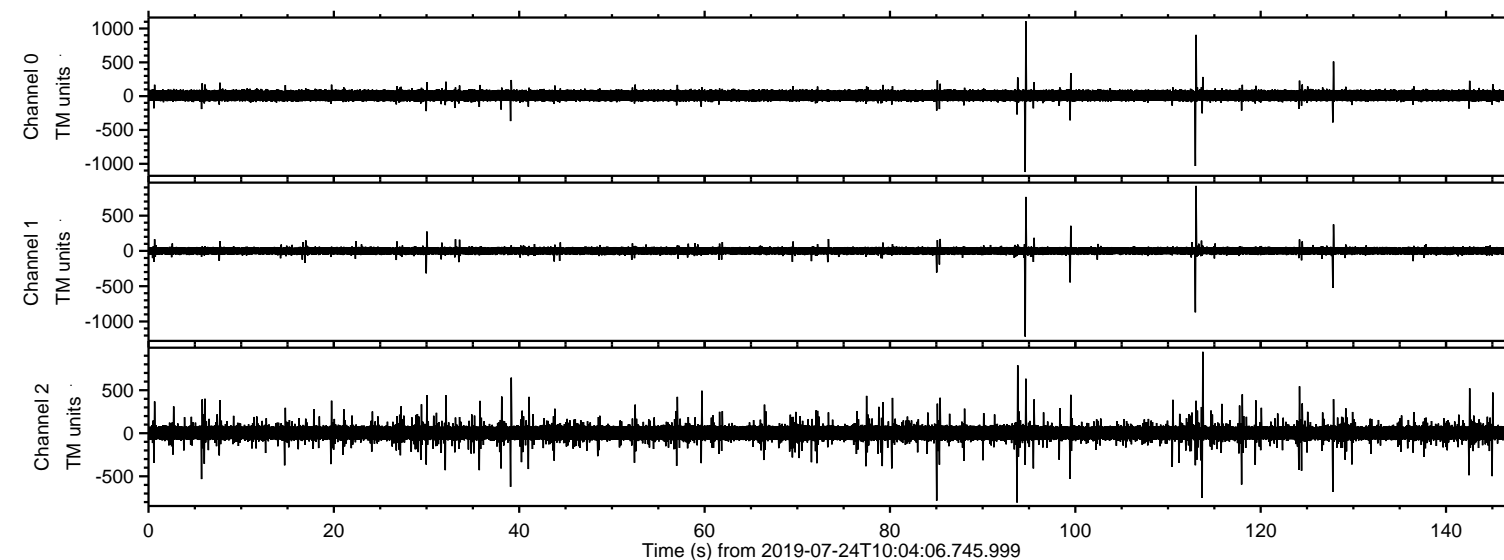
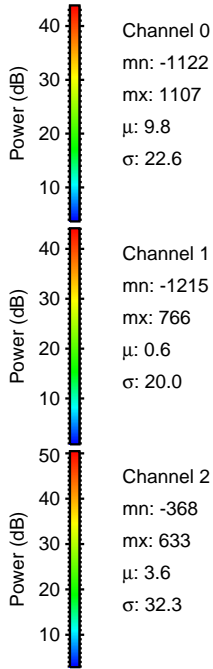
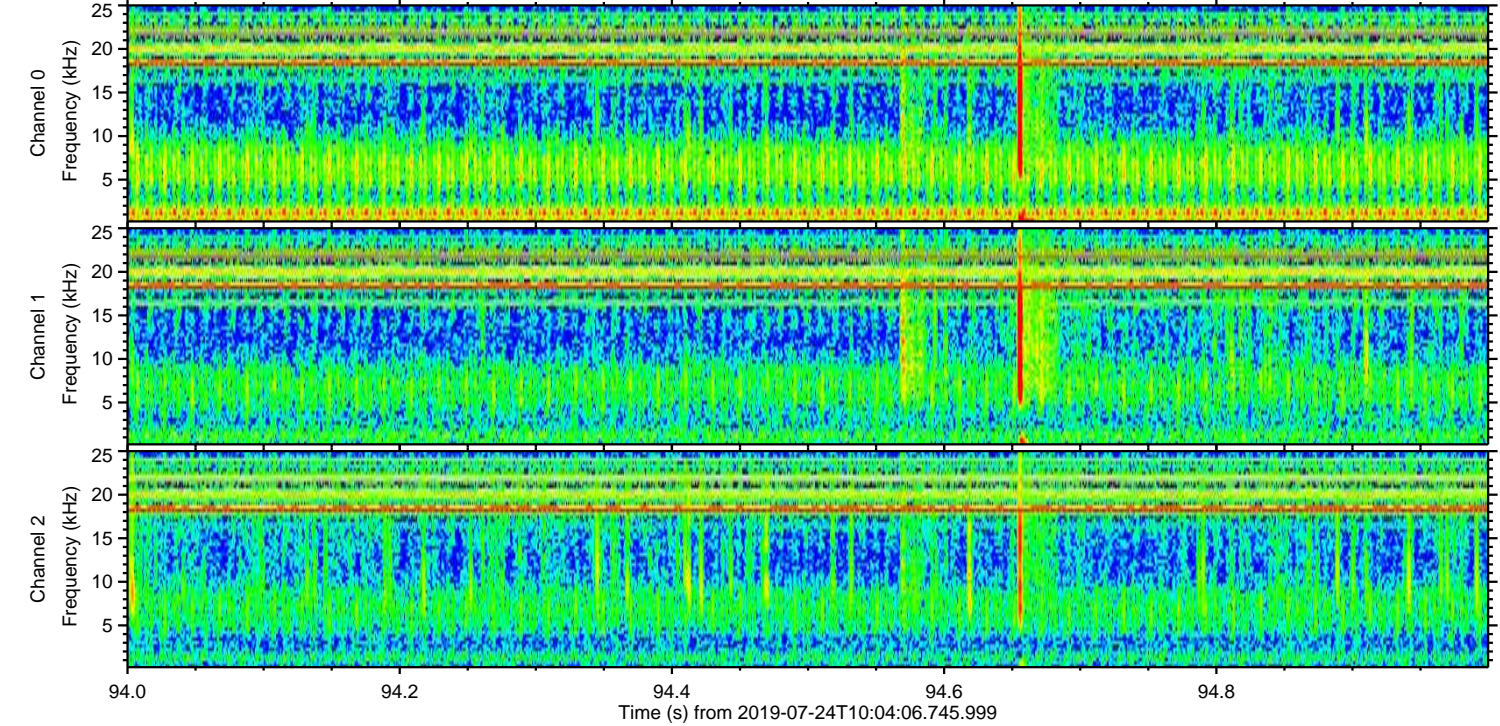
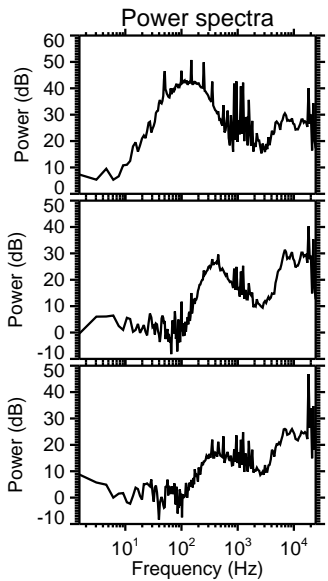
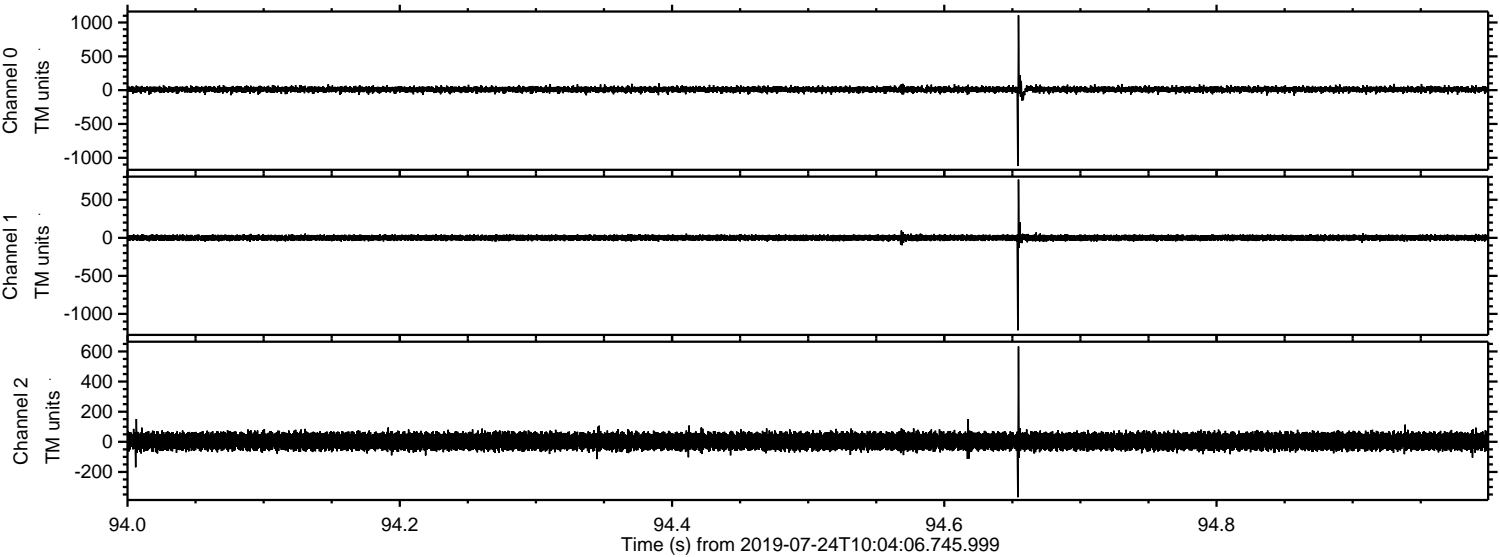


ELMAVAN 3D WAVEFORMS (Measured data sampled at 50 kHz) 51000 packets of 144 samples from 2019-07-24T10:04:06.745.999.

Processed Wed Jul 24 12:11:58 2019 by ELM ver.2012-10-06 from 001__elm20190724_100405__dat00.bin

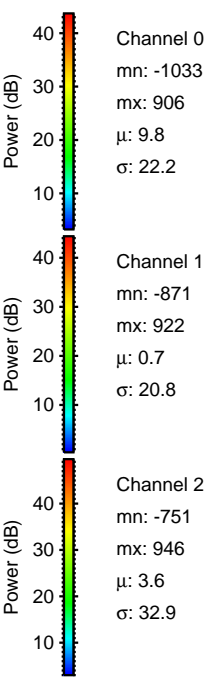
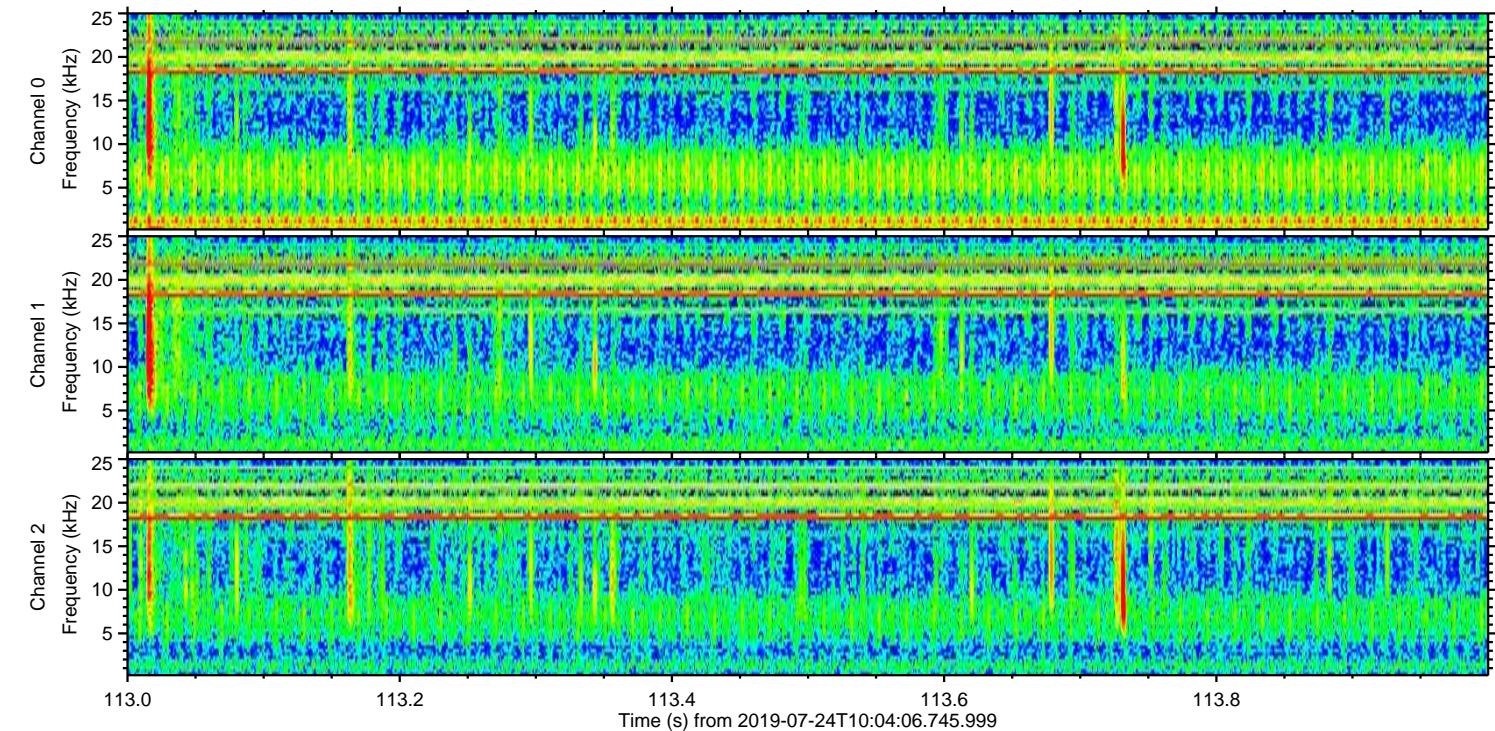
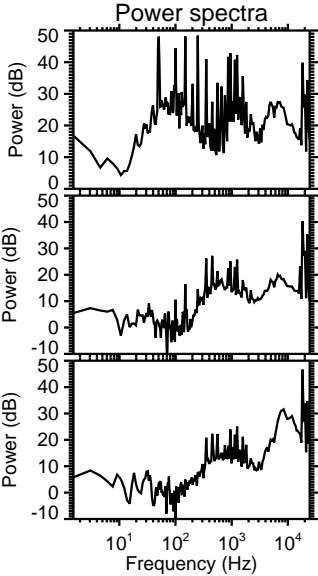
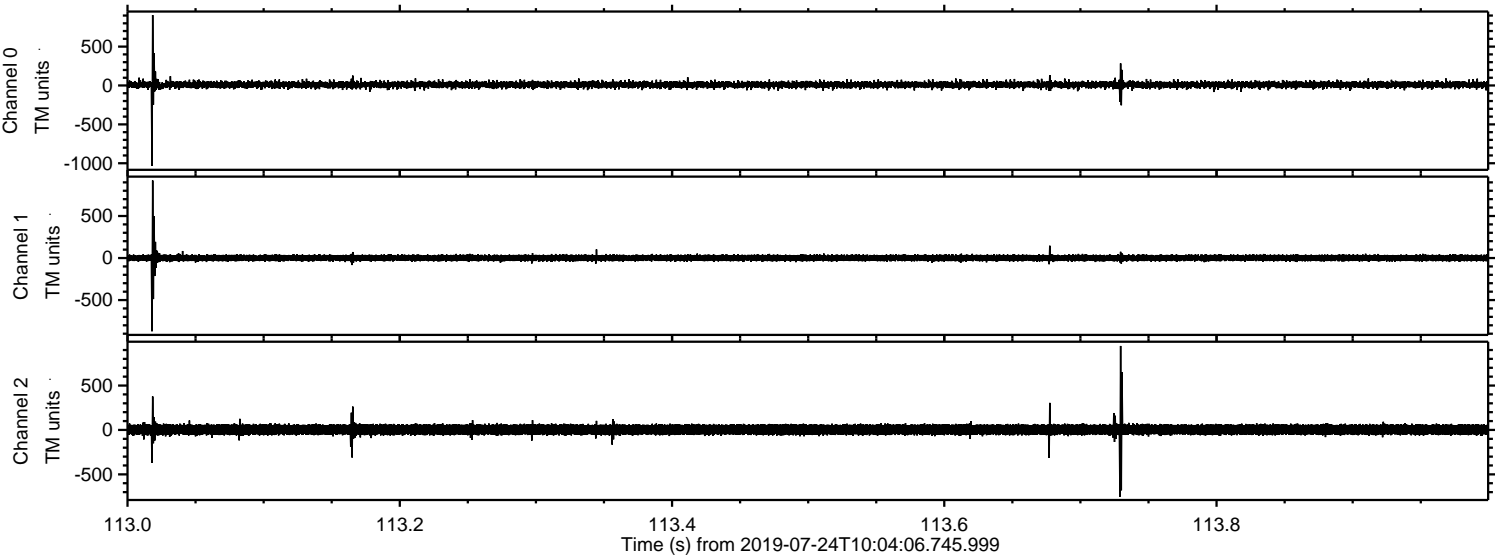


Processed Wed Jul 24 12:12:07 2019 by ELM ver.2012-10-06 from 001__elm20190724_100405__dat00.bin

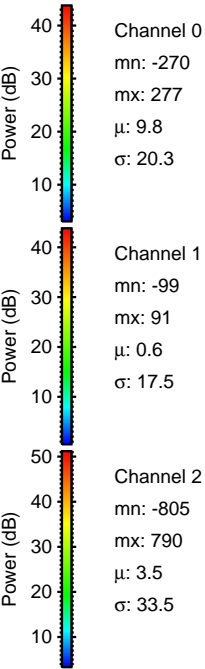
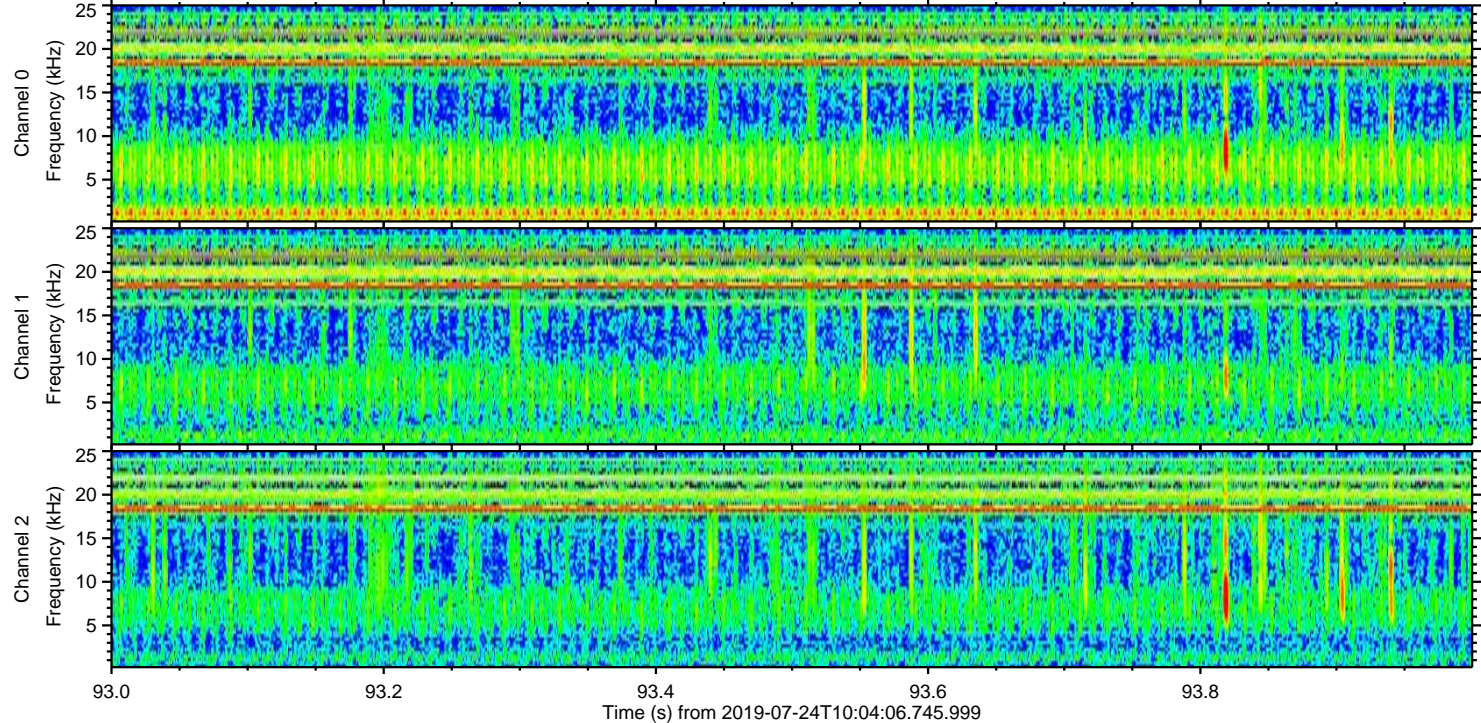
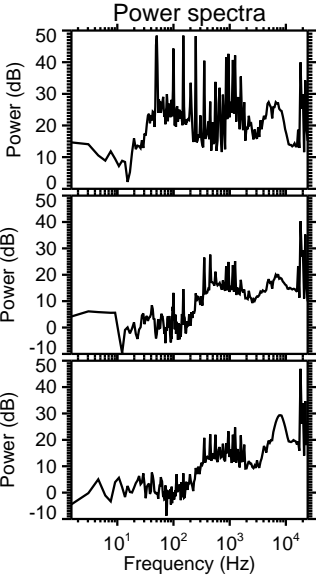
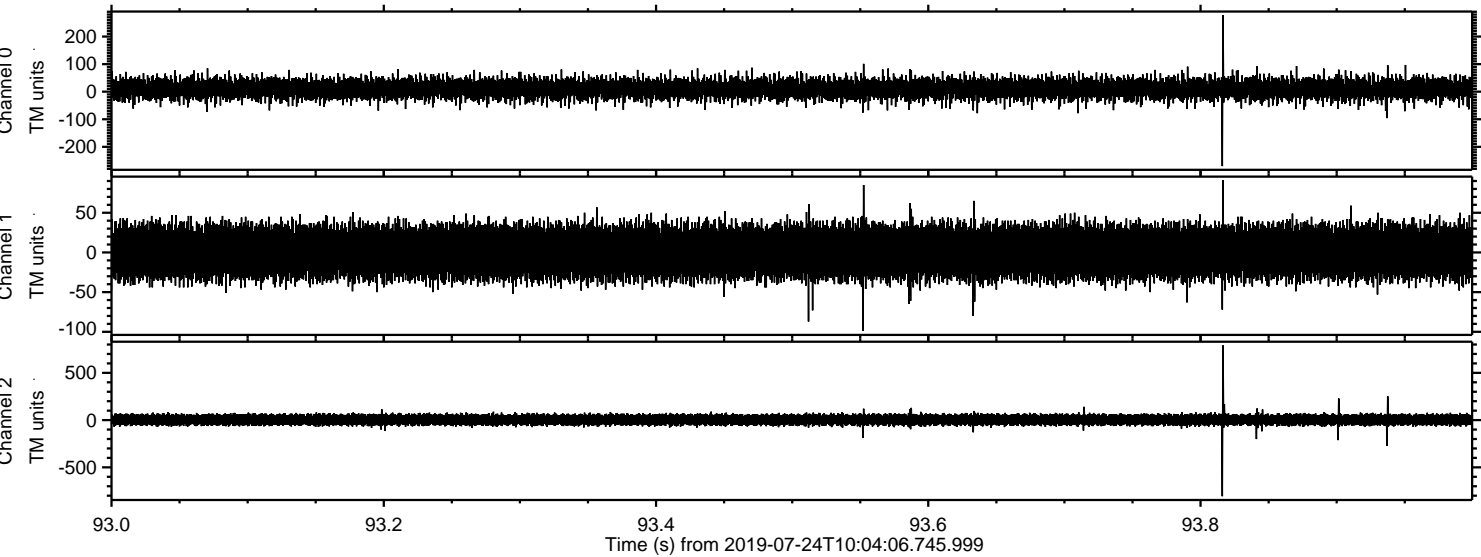


ELMAVAN 3D WAVEFORMS (Measured data sampled at 50 kHz) 51000 packets of 144 samples from 2019-07-24T10:04:06.745.999. Part 114/147

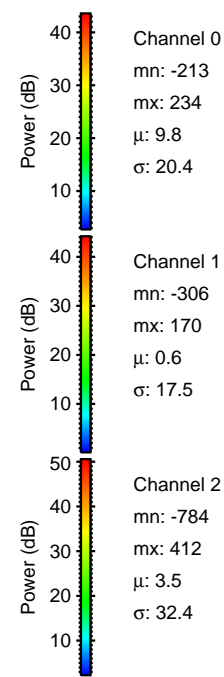
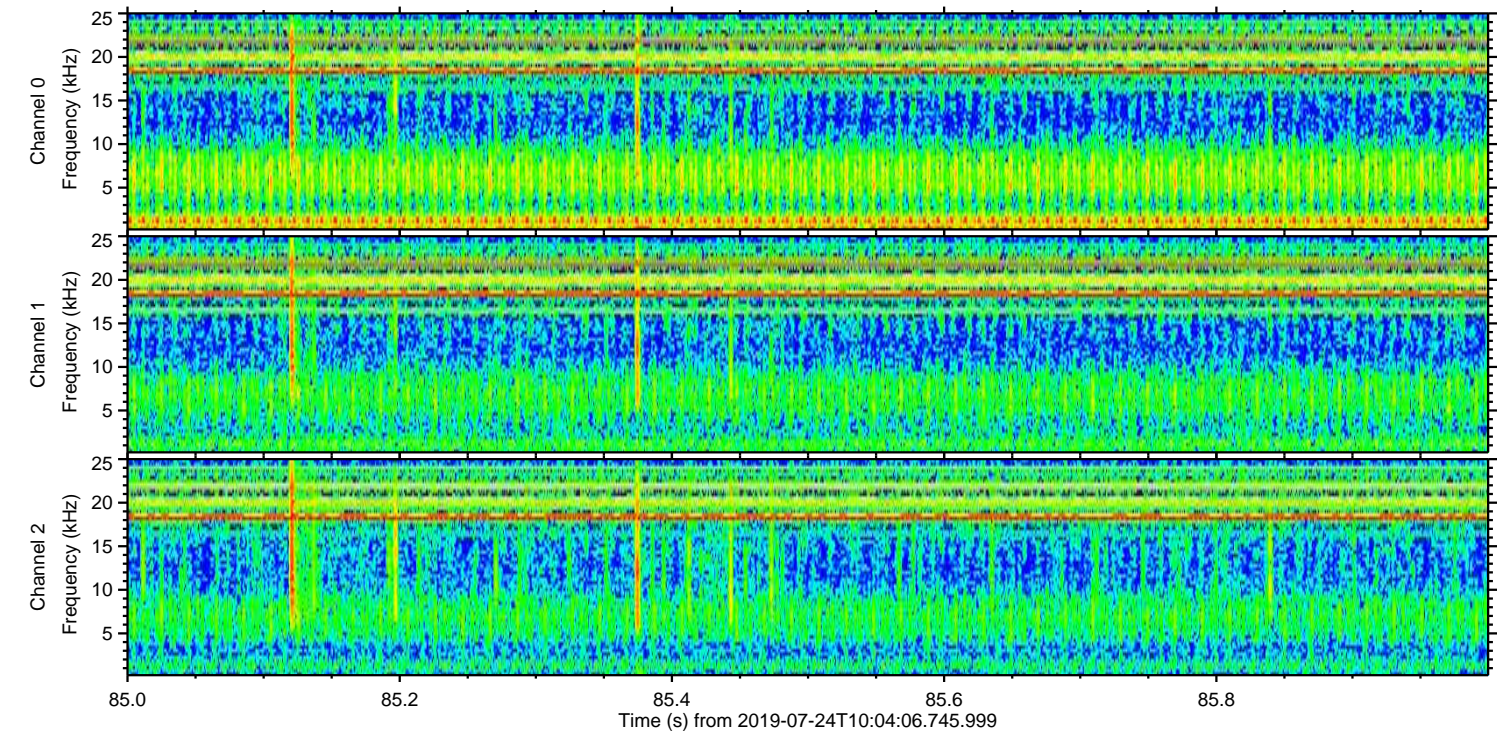
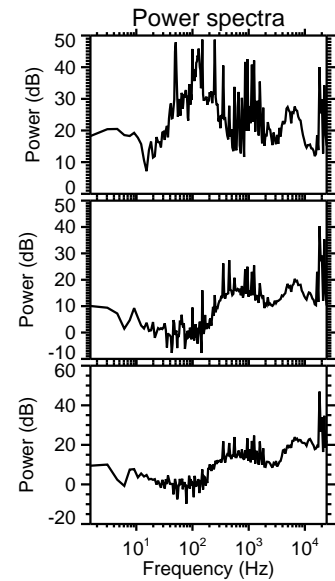
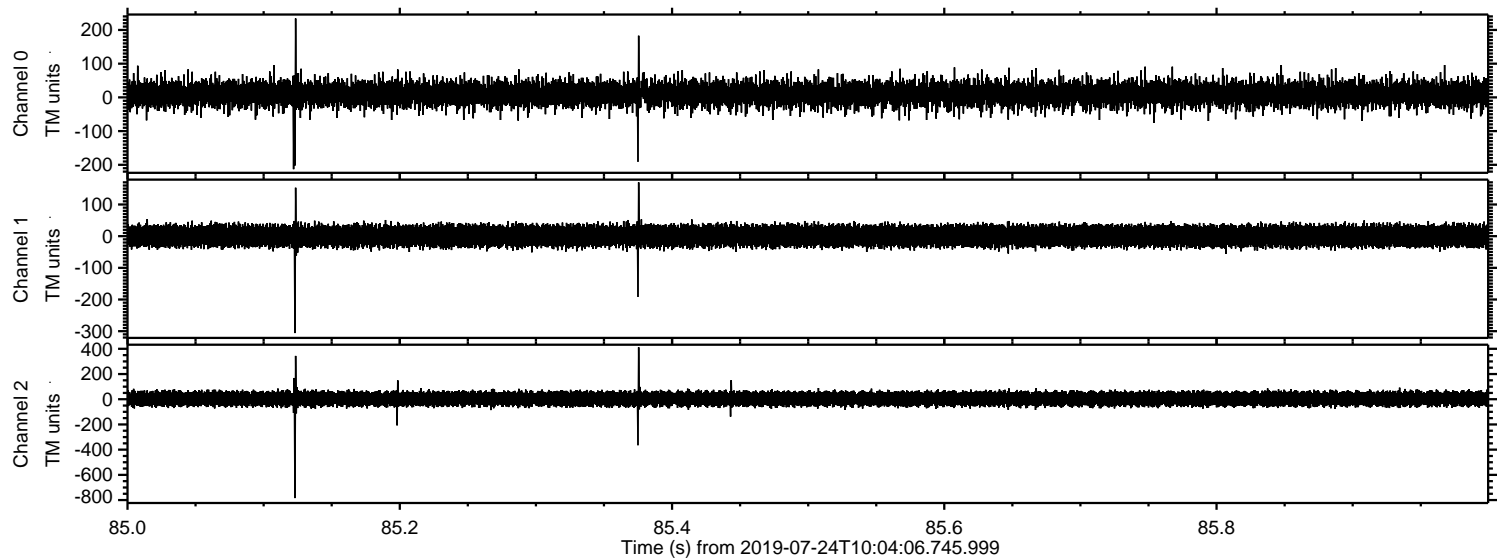
Processed Wed Jul 24 12:12:07 2019 by ELM ver.2012-10-06 from 001__elm20190724_100405__dat00.bin



Processed Wed Jul 24 12:12:08 2019 by ELM ver.2012-10-06 from 001__elm20190724_100405__dat00.bin

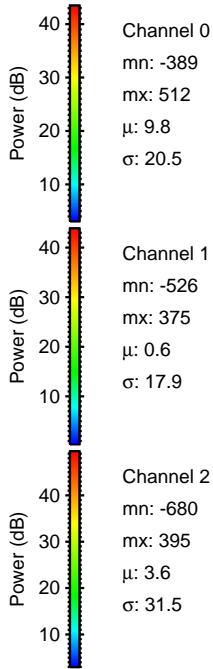
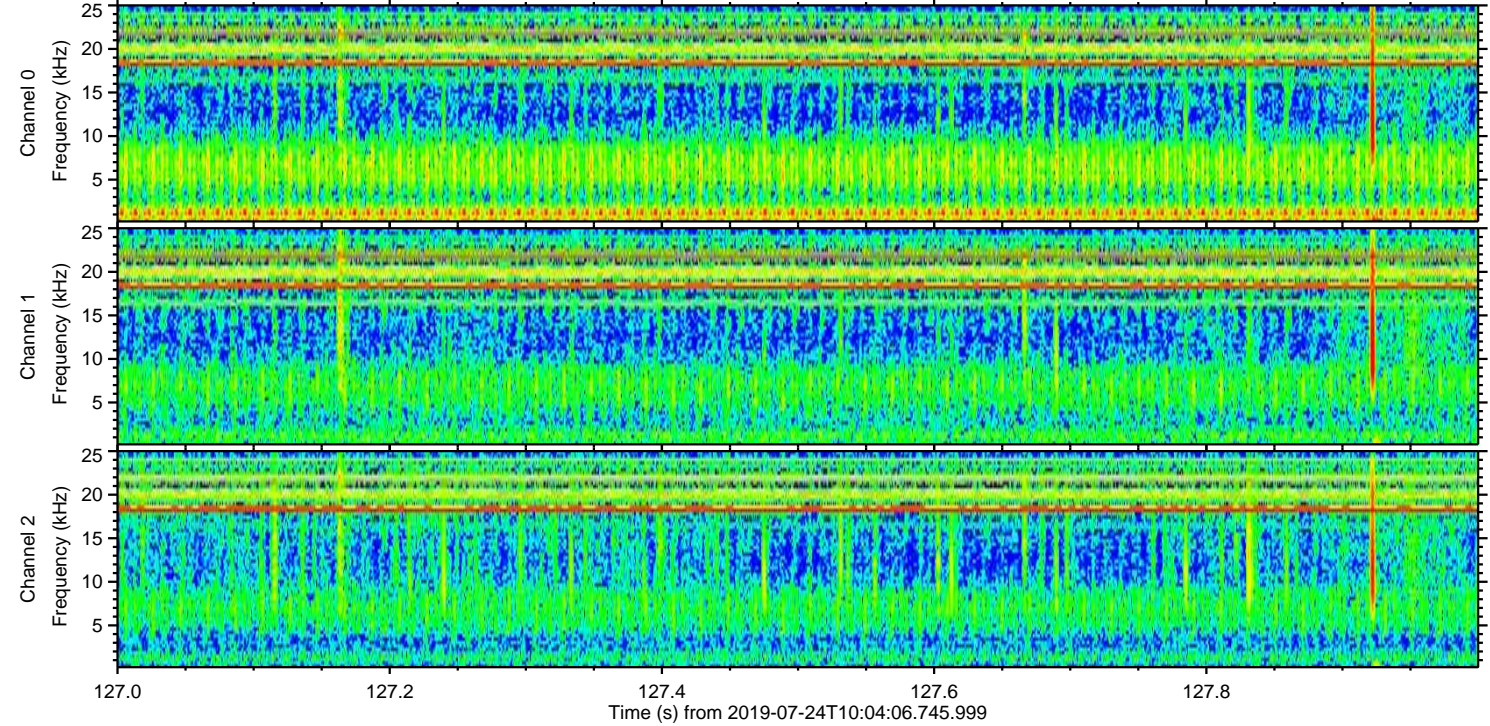
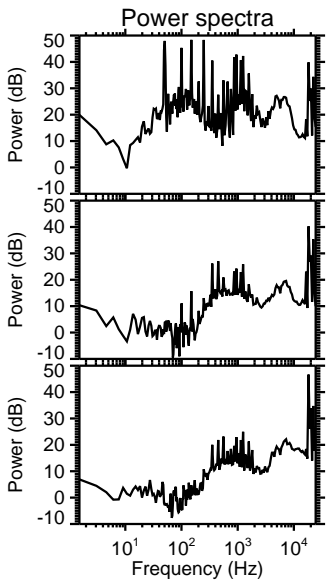
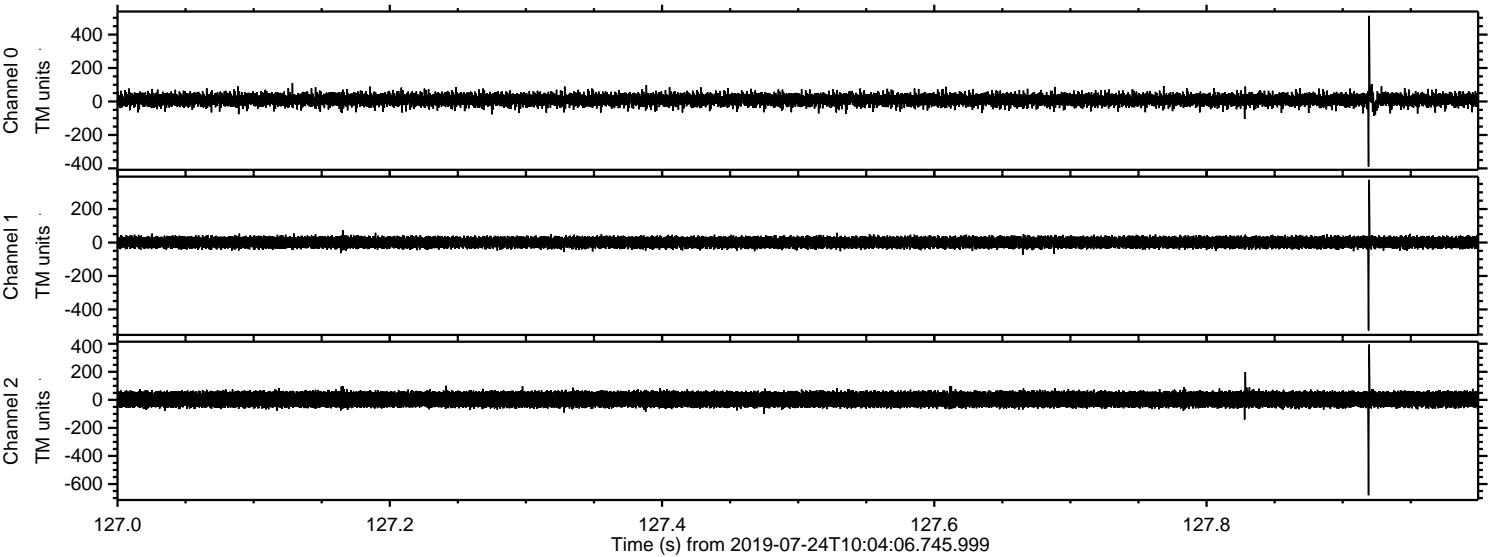


Processed Wed Jul 24 12:12:09 2019 by ELM ver.2012-10-06 from 001__elm20190724_100405__dat00.bin

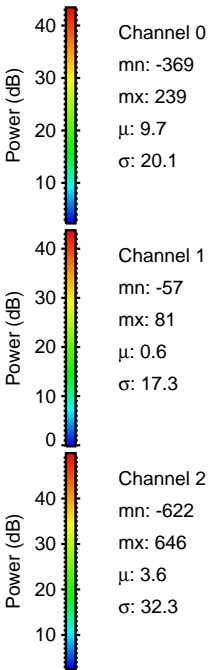
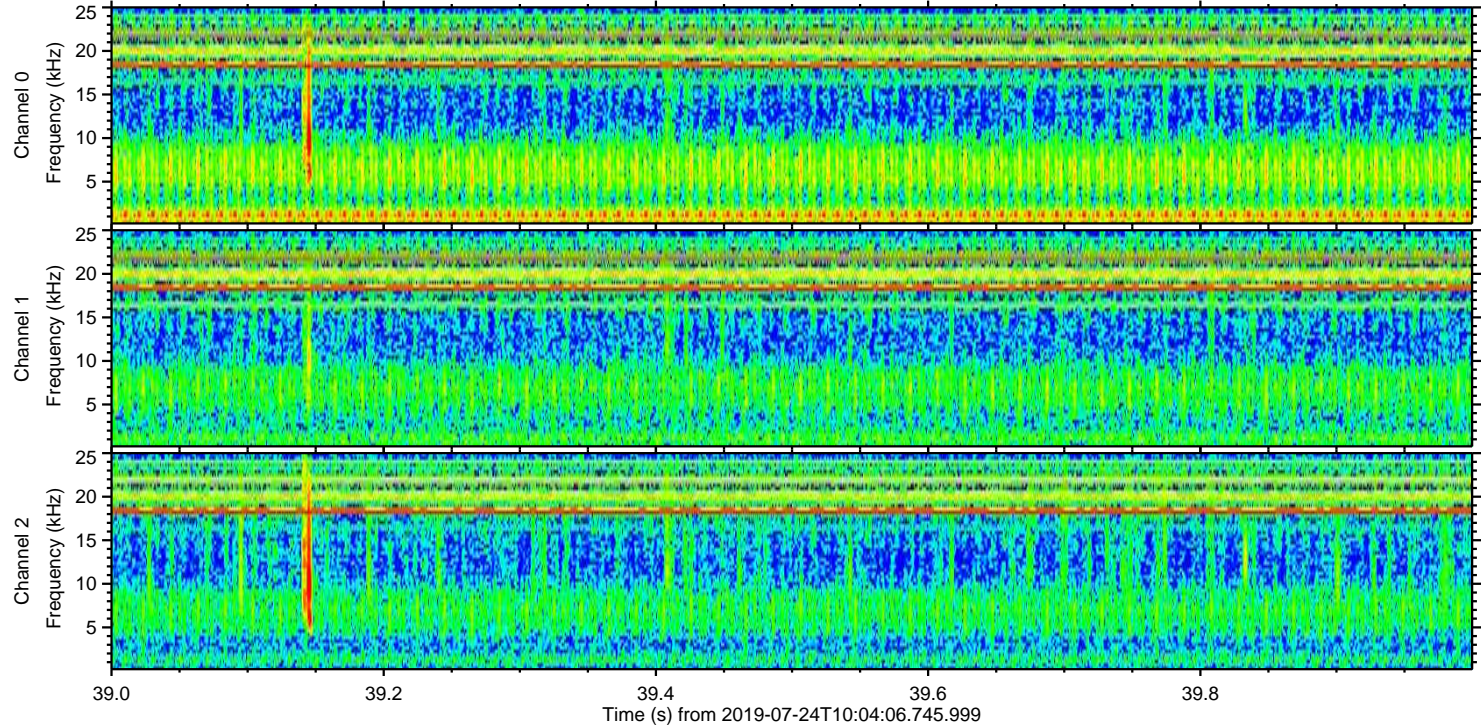
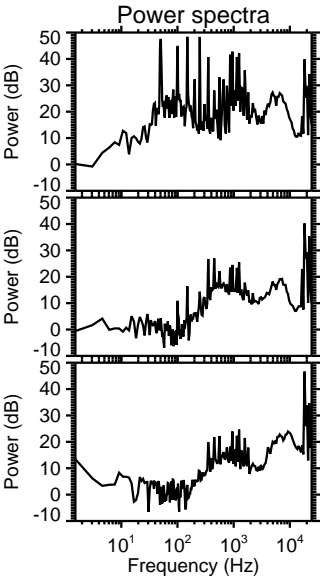
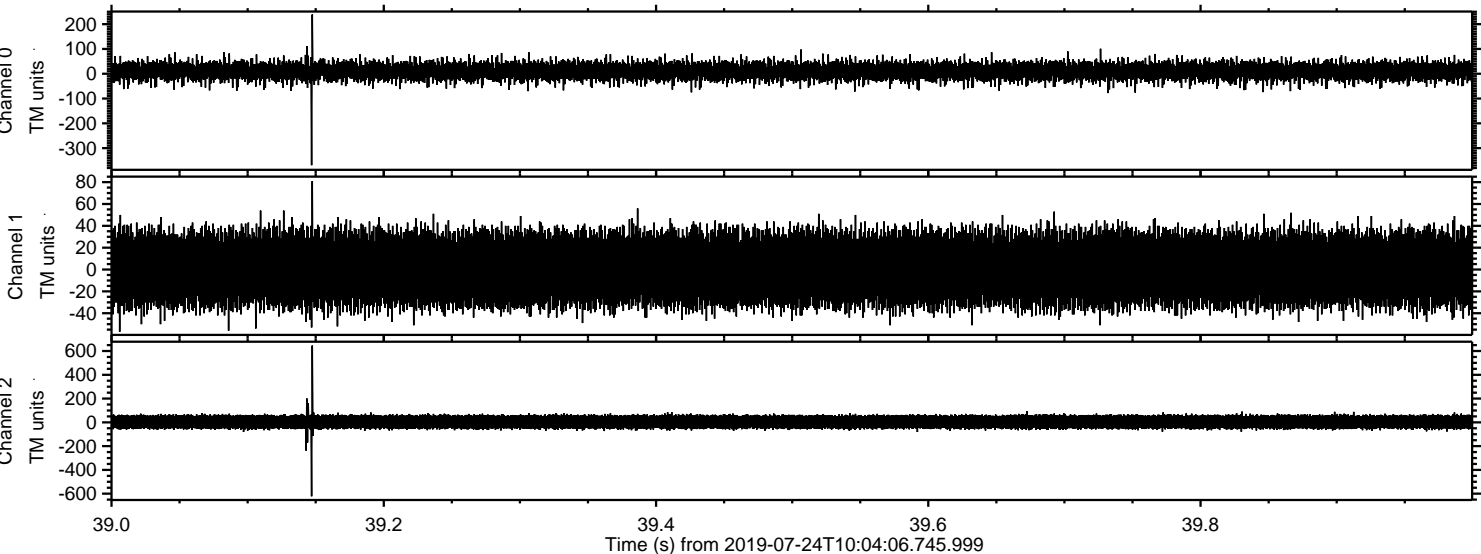


ELMAVAN 3D WAVEFORMS (Measured data sampled at 50 kHz) 51000 packets of 144 samples from 2019-07-24T10:04:06.745.999. Part 128/147

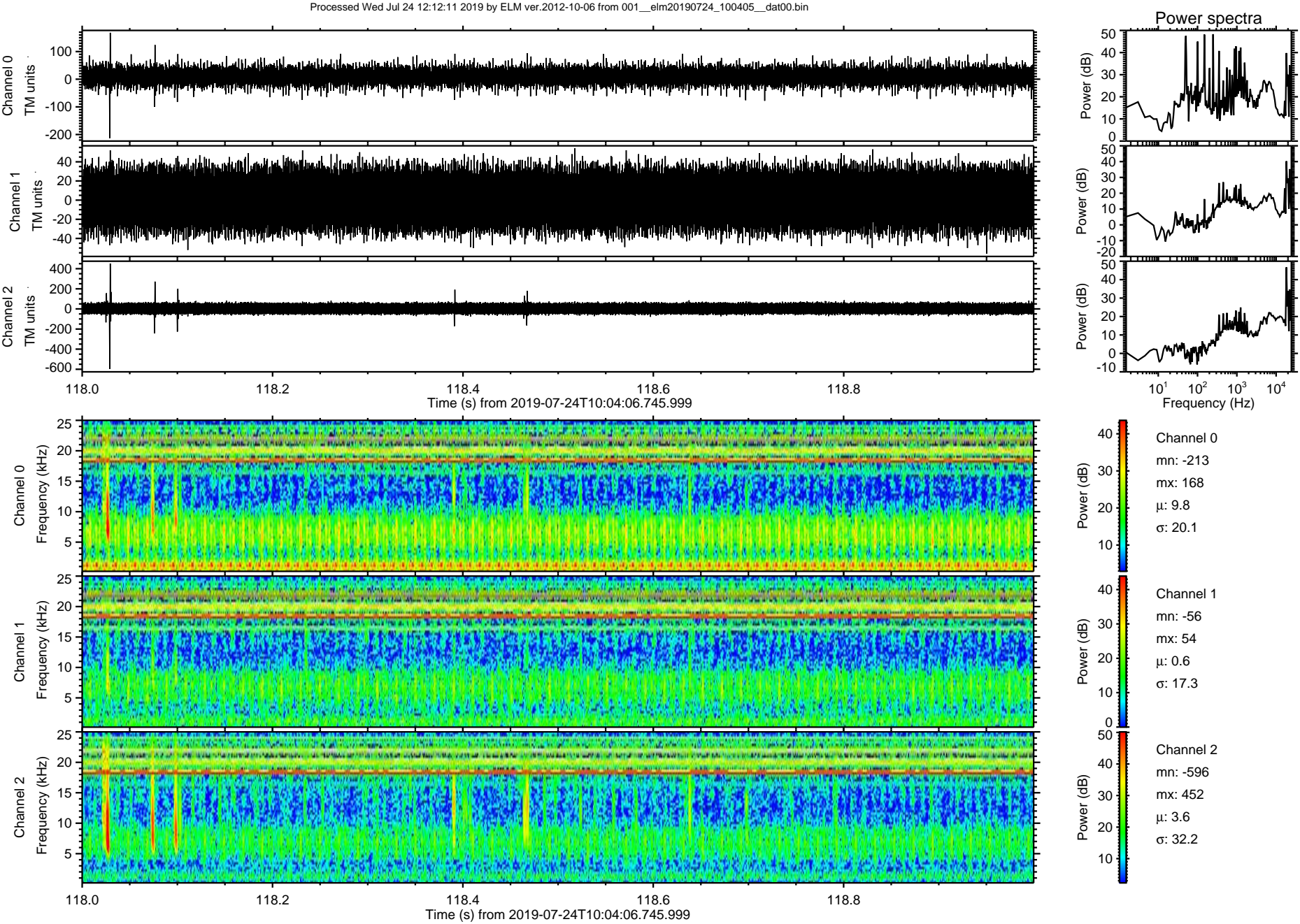
Processed Wed Jul 24 12:12:09 2019 by ELM ver.2012-10-06 from 001__elm20190724_100405__dat00.bin



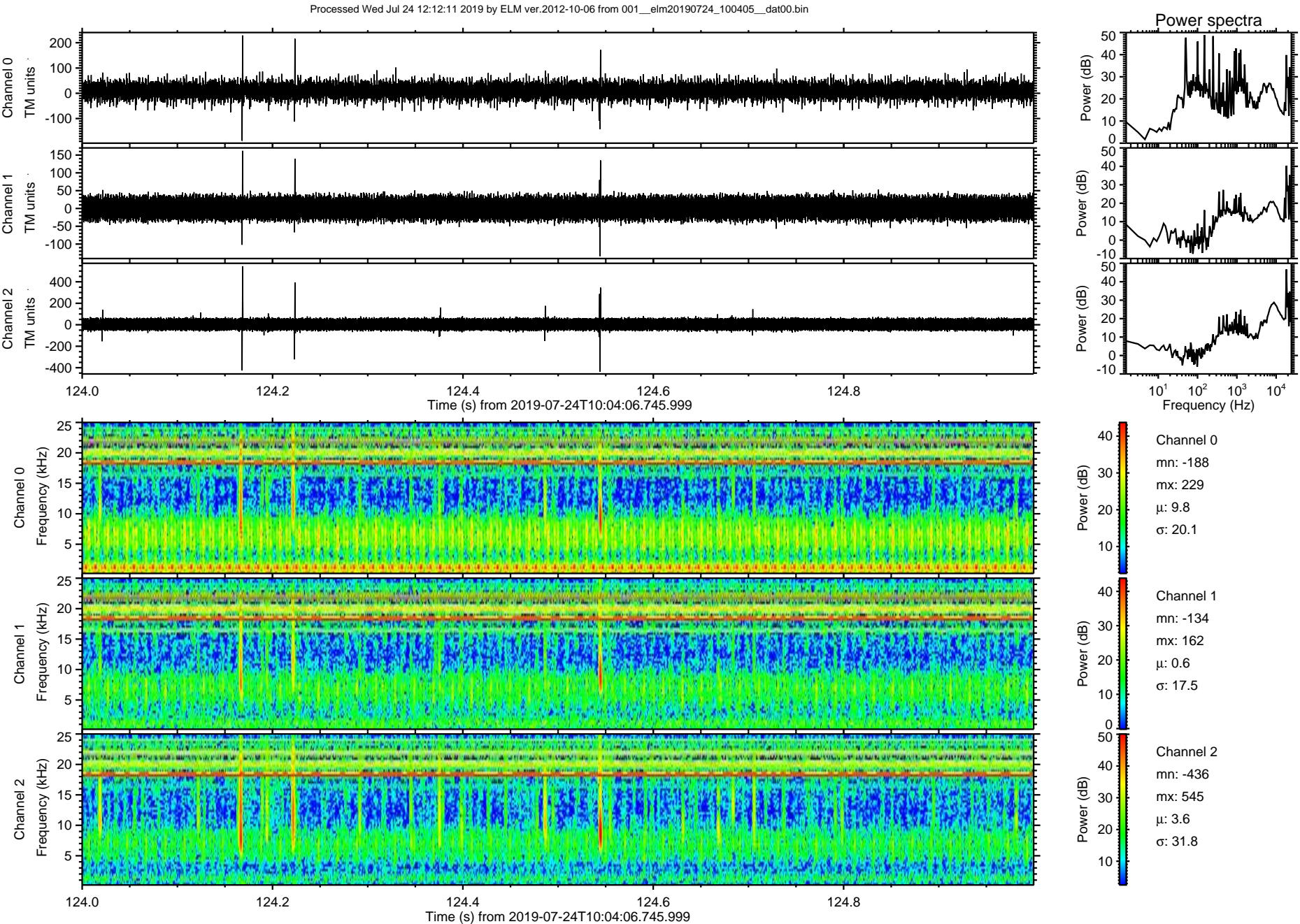
Processed Wed Jul 24 12:12:10 2019 by ELM ver.2012-10-06 from 001__elm20190724_100405__dat00.bin



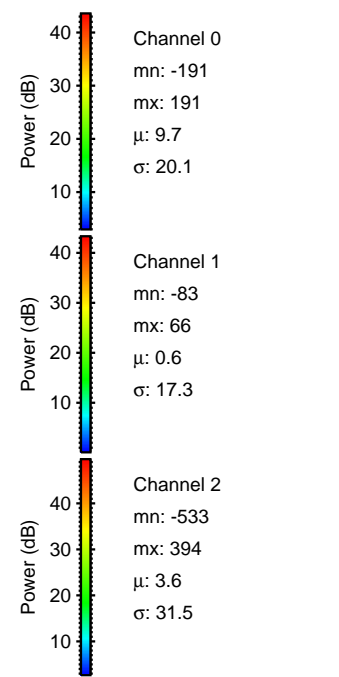
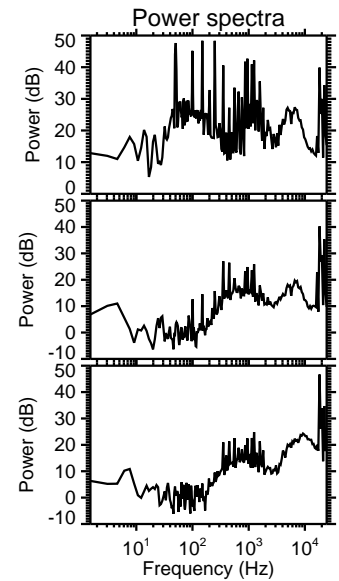
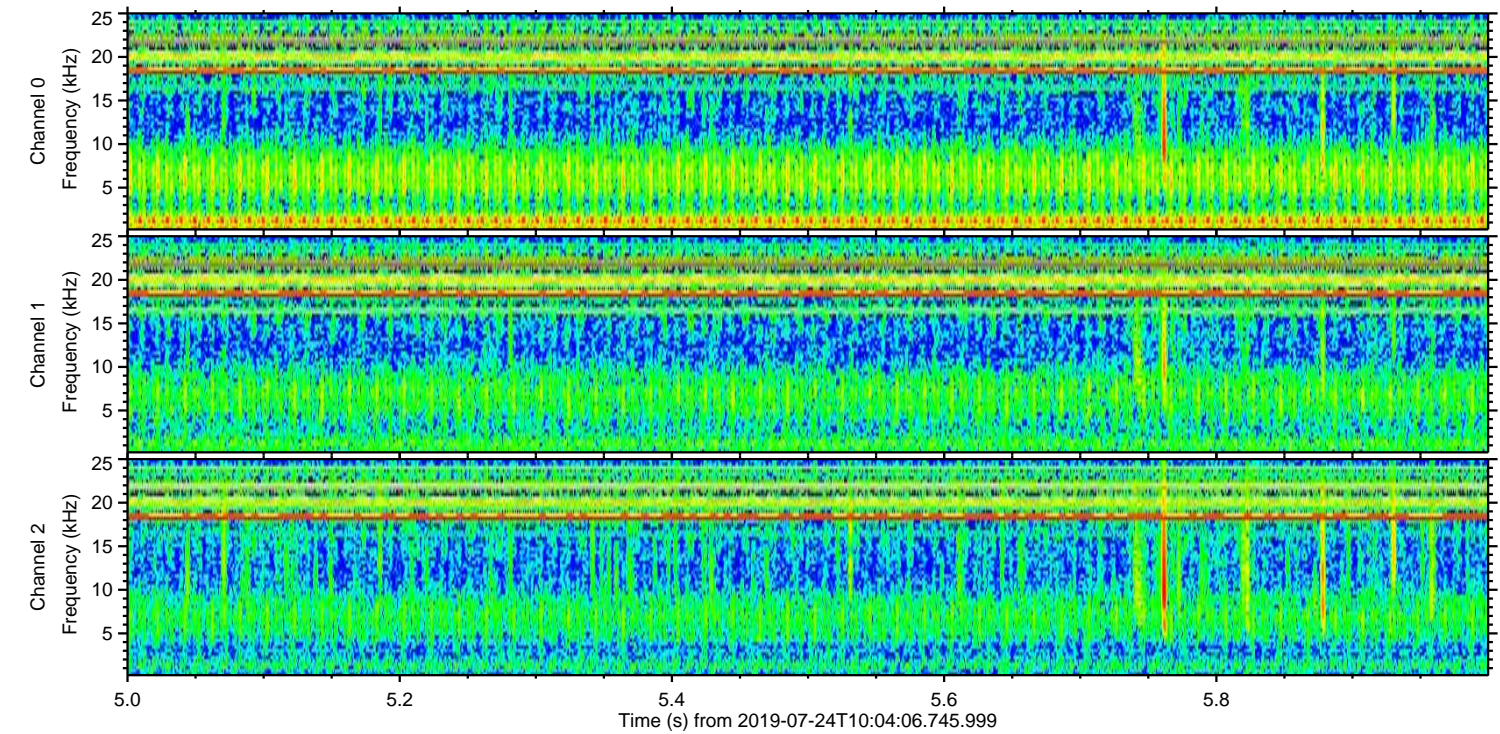
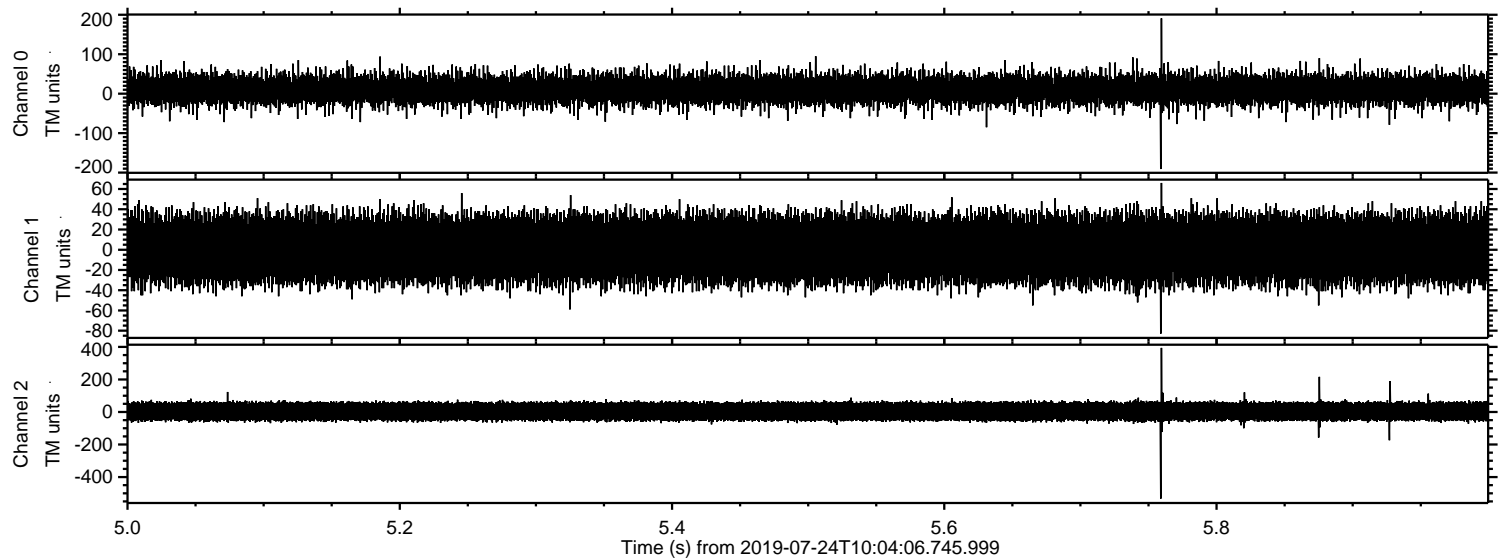
ELMAVAN 3D WAVEFORMS (Measured data sampled at 50 kHz) 51000 packets of 144 samples from 2019-07-24T10:04:06.745.999. Part 119/147



ELMAVAN 3D WAVEFORMS (Measured data sampled at 50 kHz) 51000 packets of 144 samples from 2019-07-24T10:04:06.745.999. Part 125/147



Processed Wed Jul 24 12:12:12 2019 by ELM ver.2012-10-06 from 001__elm20190724_100405__dat00.bin



Power spectra

Channel 0

mn: -191
mx: 191
 μ : 9.7
 σ : 20.1

Channel 1

mn: -83
mx: 66
 μ : 0.6
 σ : 17.3

Channel 2

mn: -533
mx: 394
 μ : 3.6
 σ : 31.5

Processed Wed Jul 24 12:12:13 2019 by ELM ver.2012-10-06 from 001__elm20190724_100405__dat00.bin

