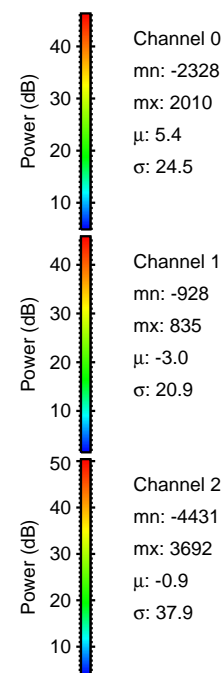
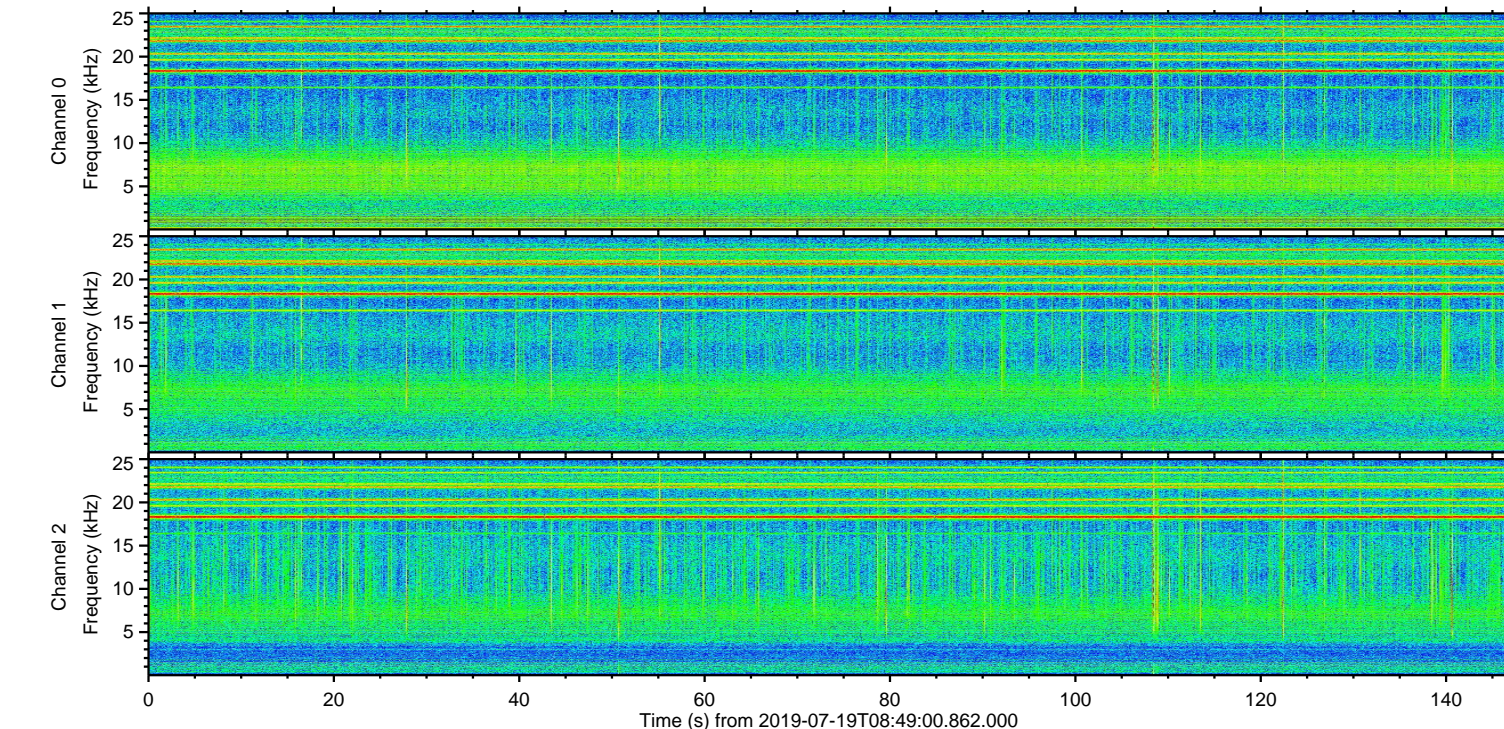
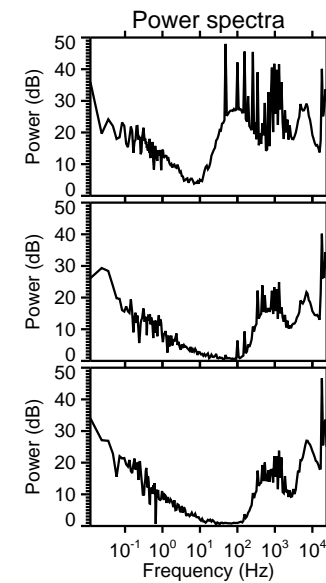
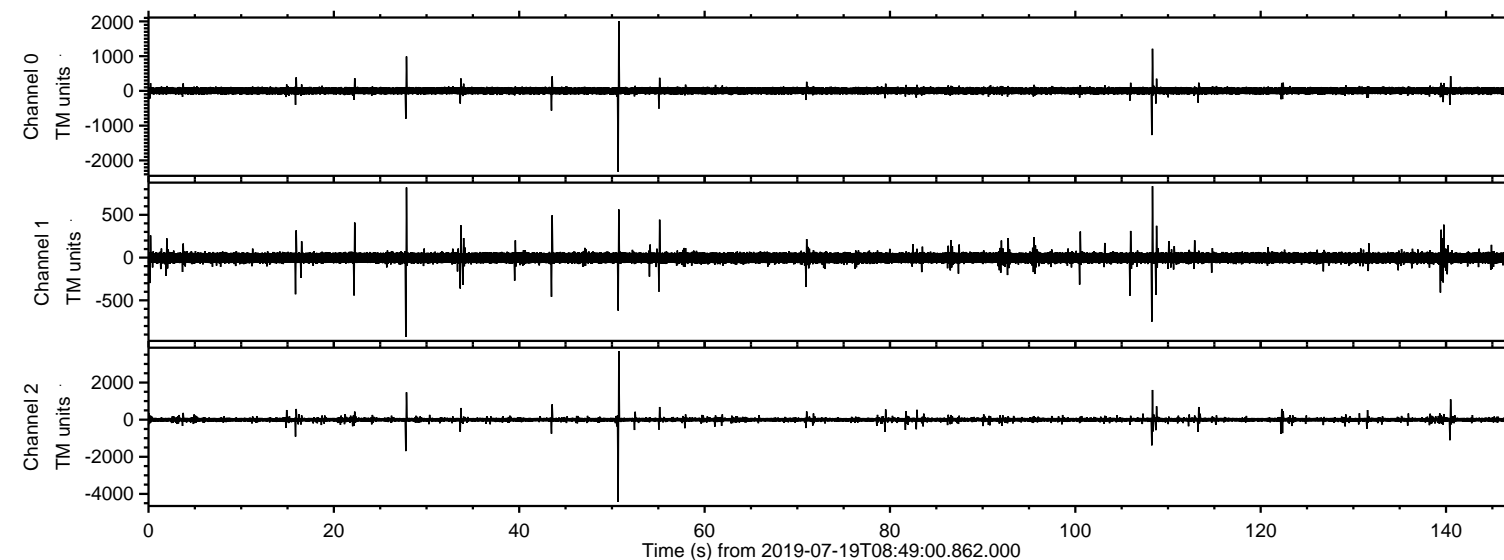


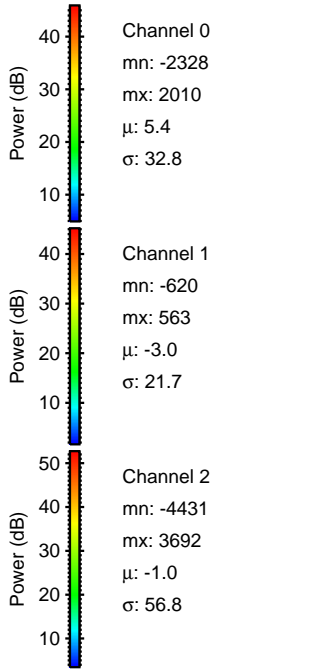
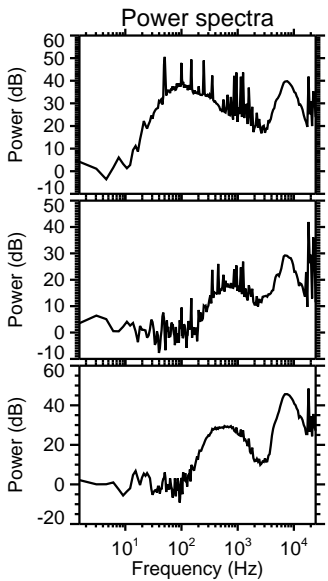
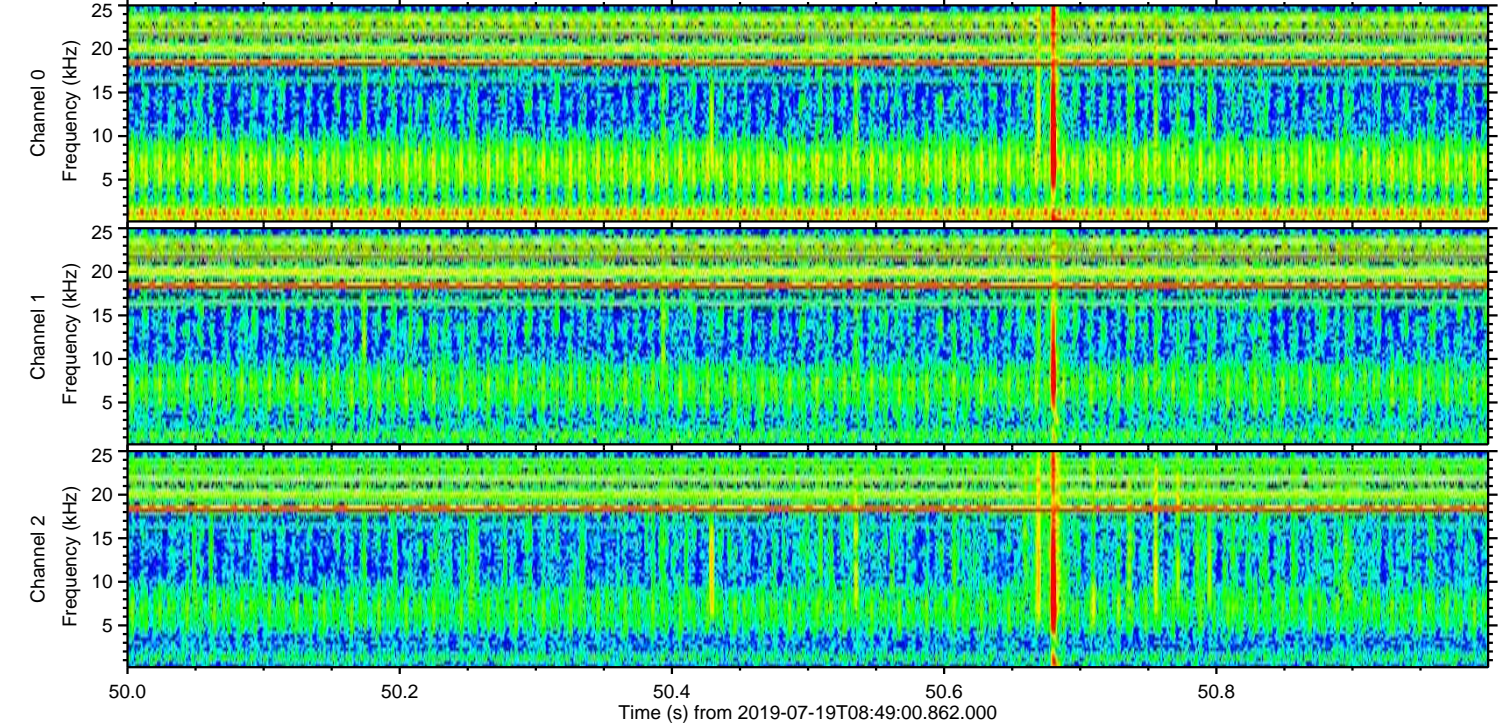
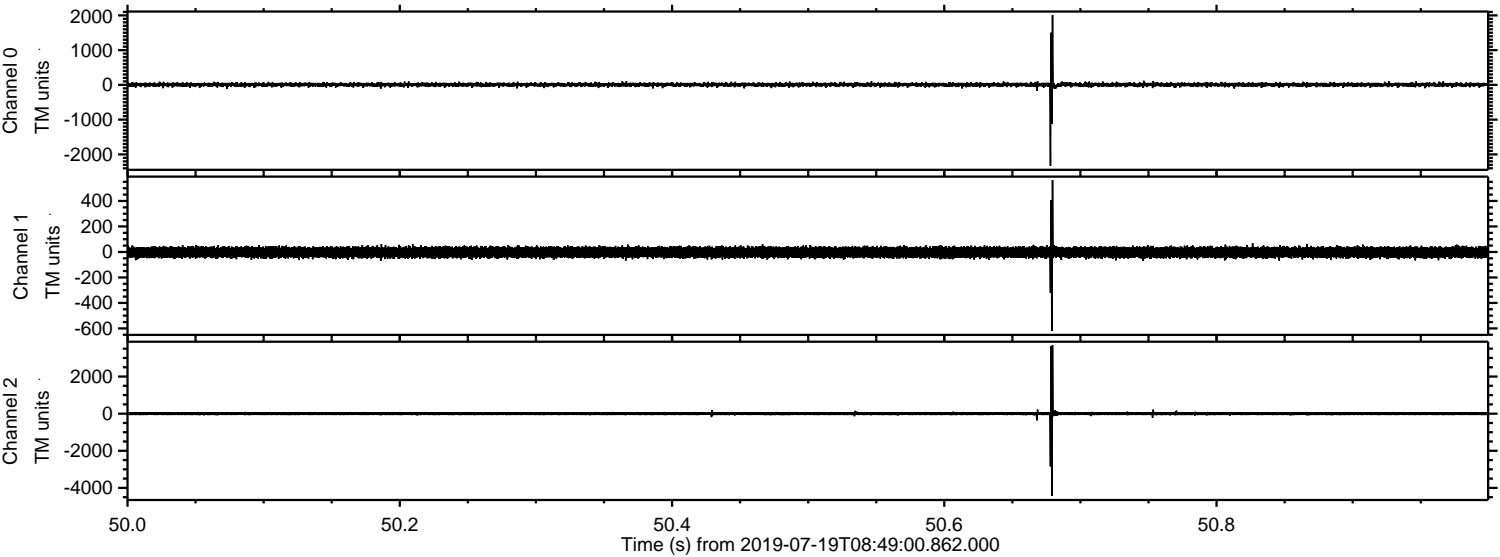
# ELMAVAN 3D WAVEFORMS (Measured data sampled at 50 kHz) 51000 packets of 144 samples from 2019-07-19T08:49:00.862.000.

Processed Fri Jul 19 10:56:56 2019 by ELM ver.2012-10-06 from 001\_\_elm20190719\_084859\_\_dat00.bin



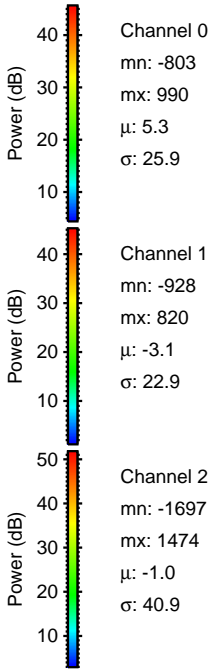
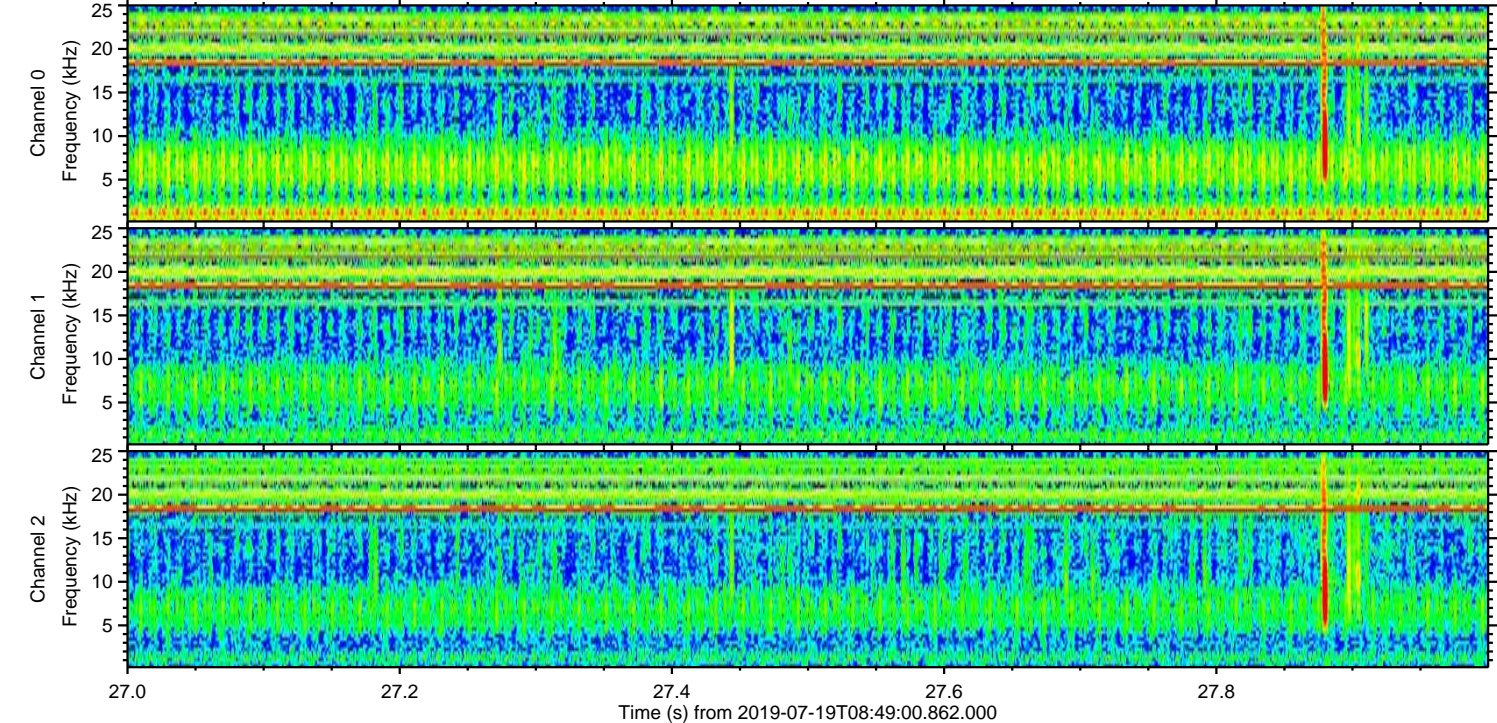
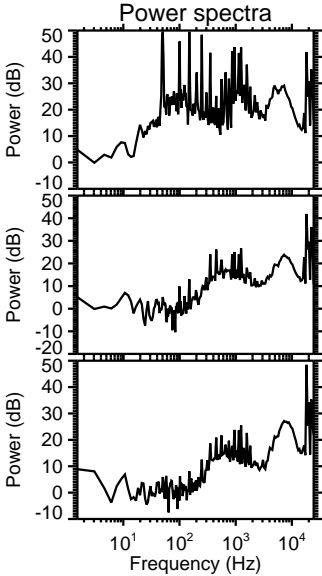
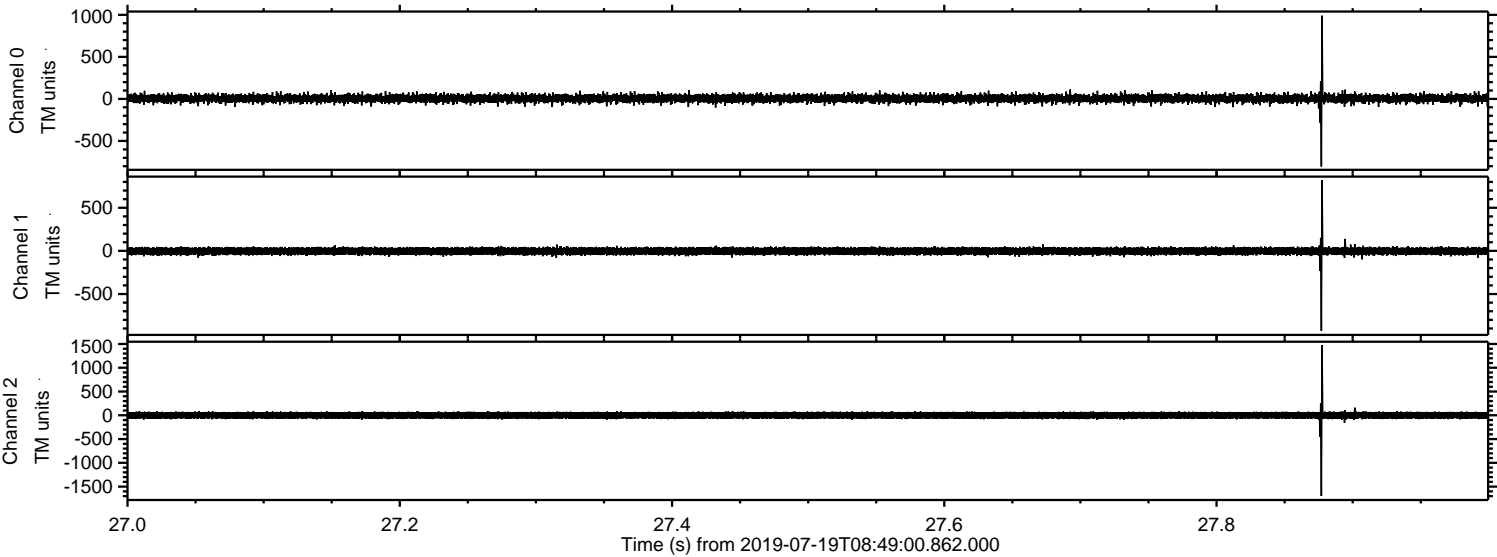


Processed Fri Jul 19 10:57:05 2019 by ELM ver.2012-10-06 from 001\_\_elm20190719\_084859\_\_dat00.bin





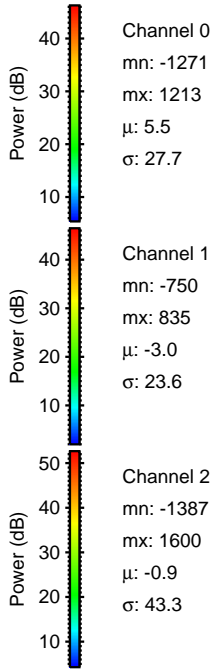
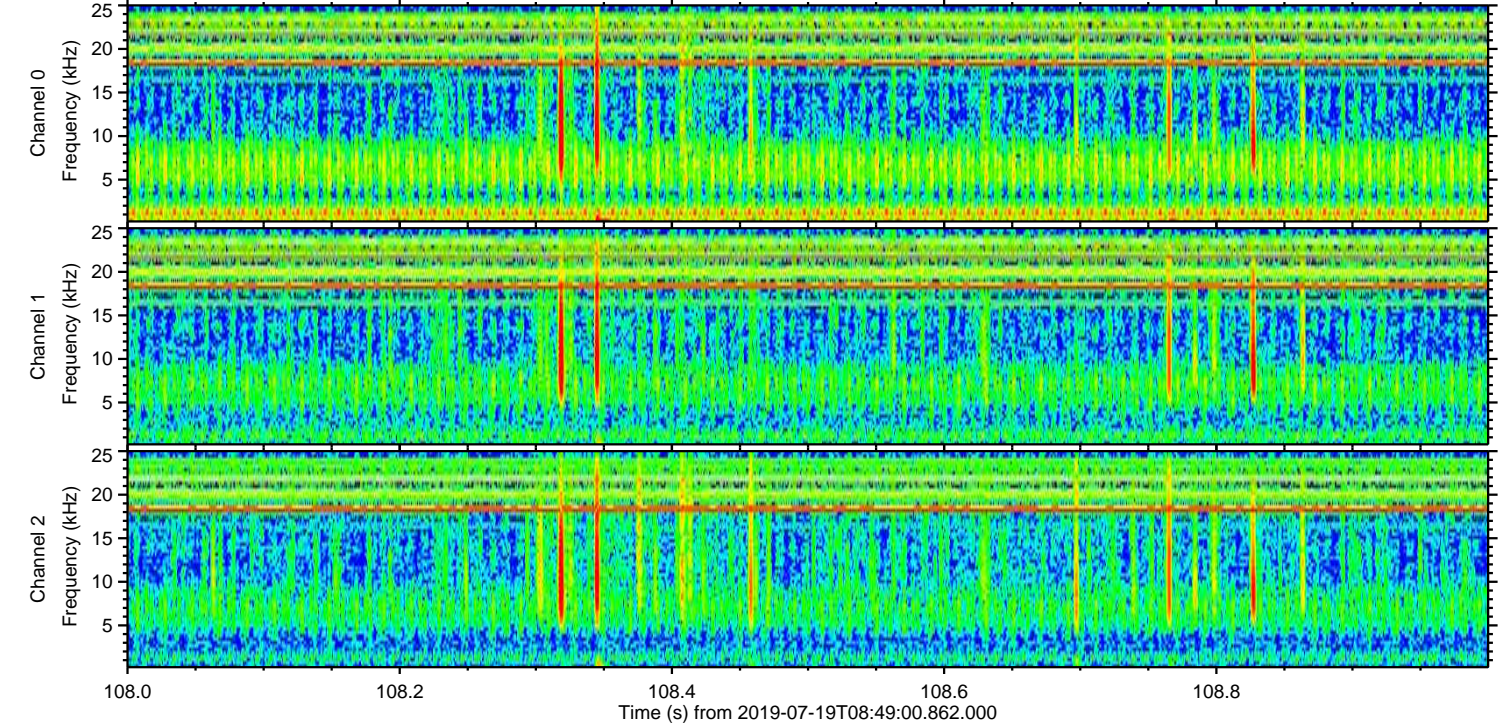
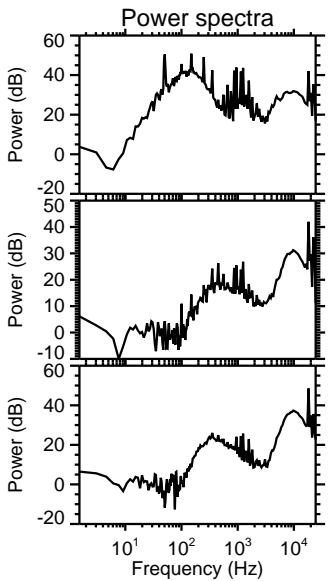
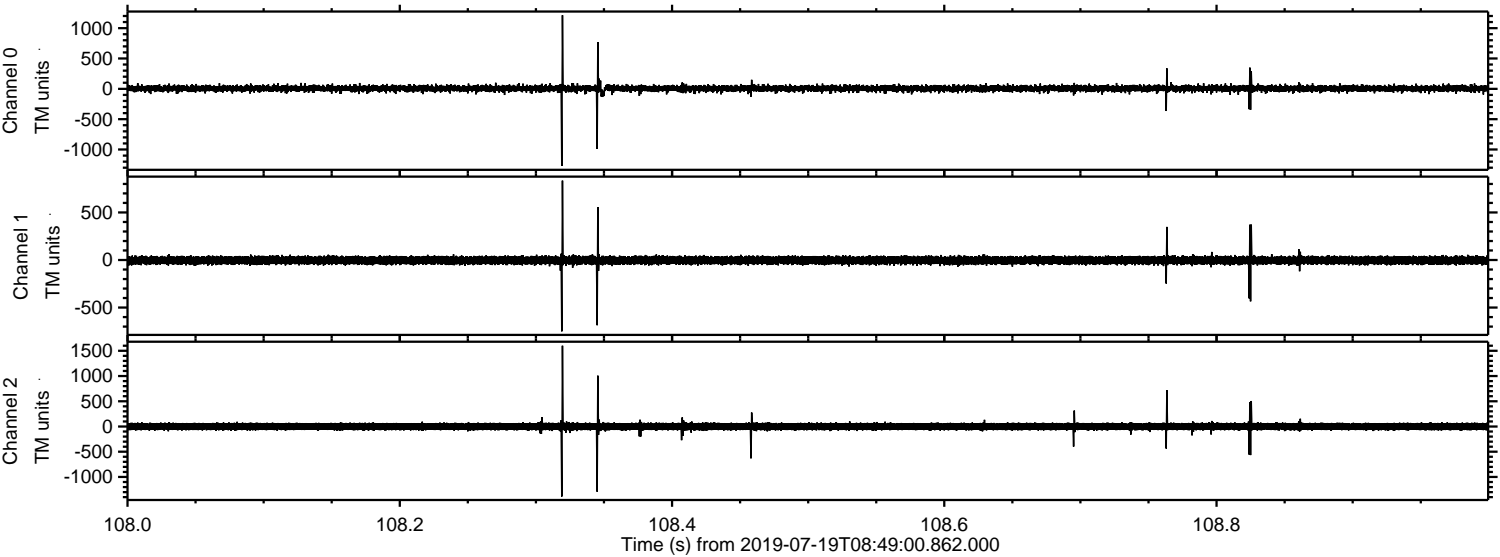
Processed Fri Jul 19 10:57:06 2019 by ELM ver.2012-10-06 from 001\_\_elm20190719\_084859\_\_dat00.bin





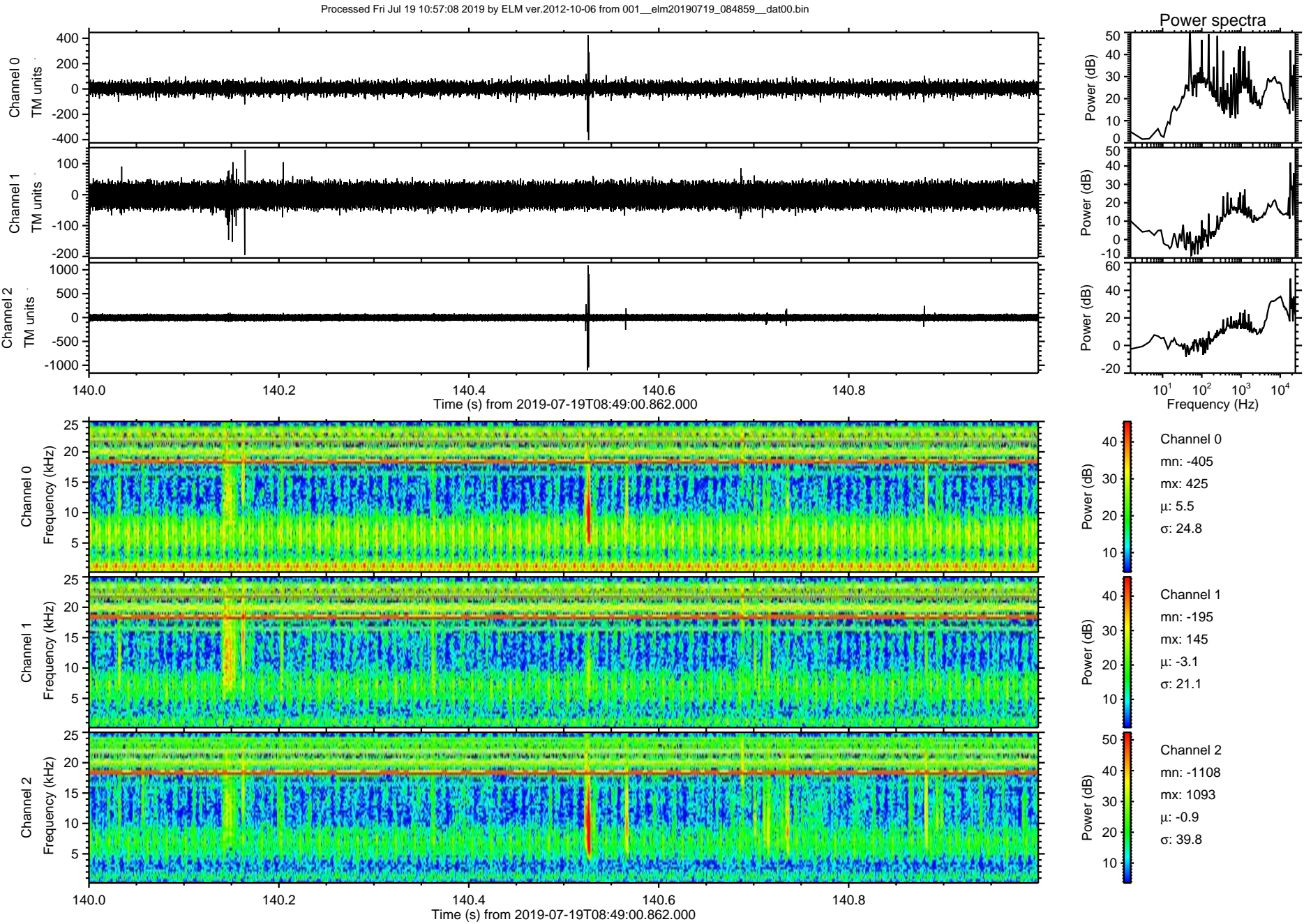
ELMAVAN 3D WAVEFORMS (Measured data sampled at 50 kHz) 51000 packets of 144 samples from 2019-07-19T08:49:00.862.000. Part 109/147

Processed Fri Jul 19 10:57:07 2019 by ELM ver.2012-10-06 from 001\_\_elm20190719\_084859\_\_dat00.bin



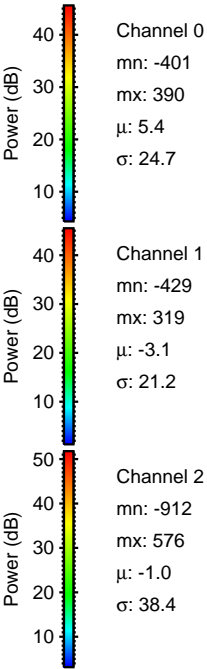
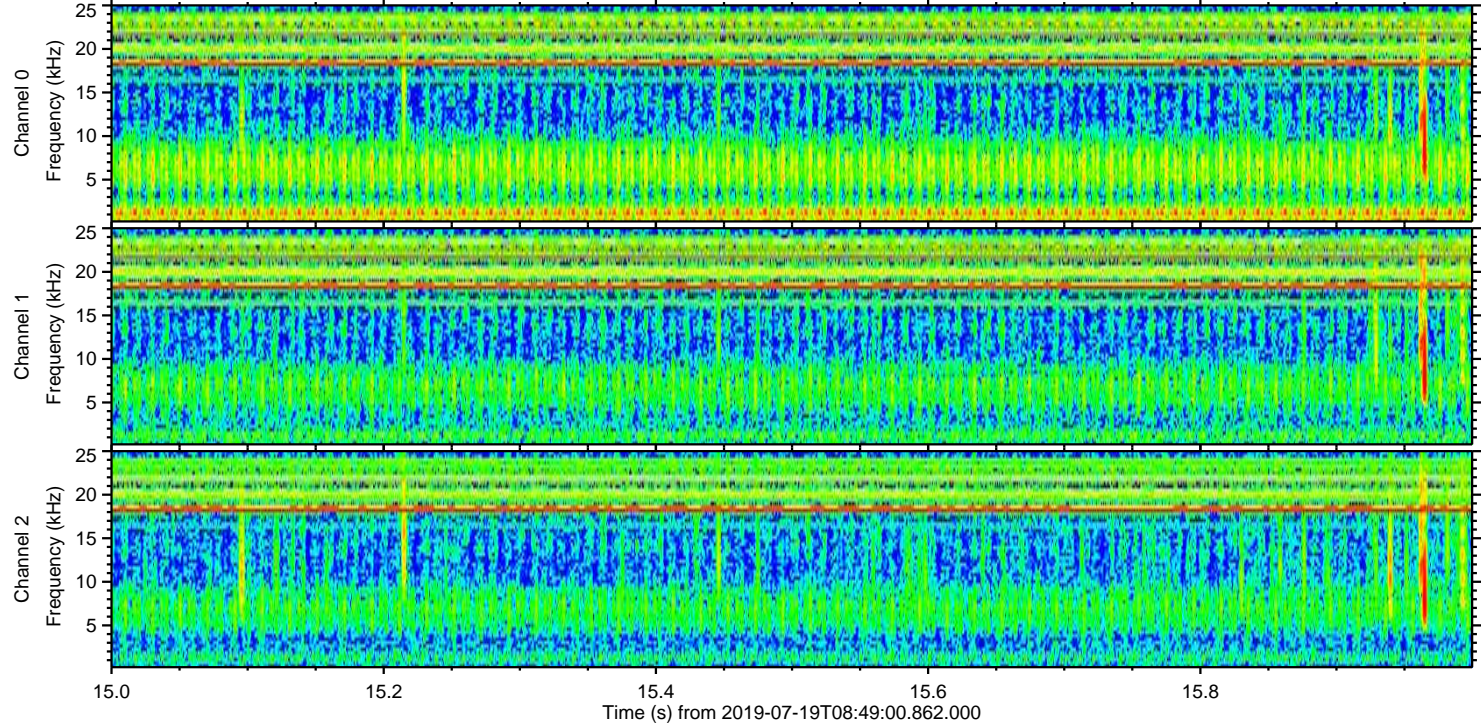
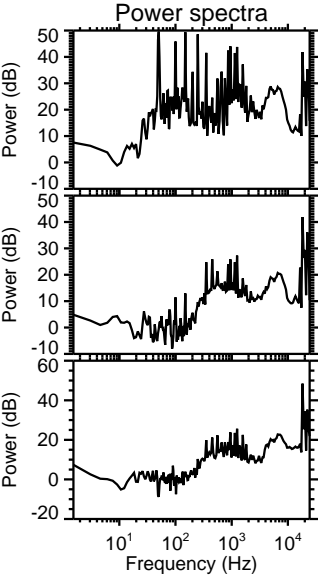
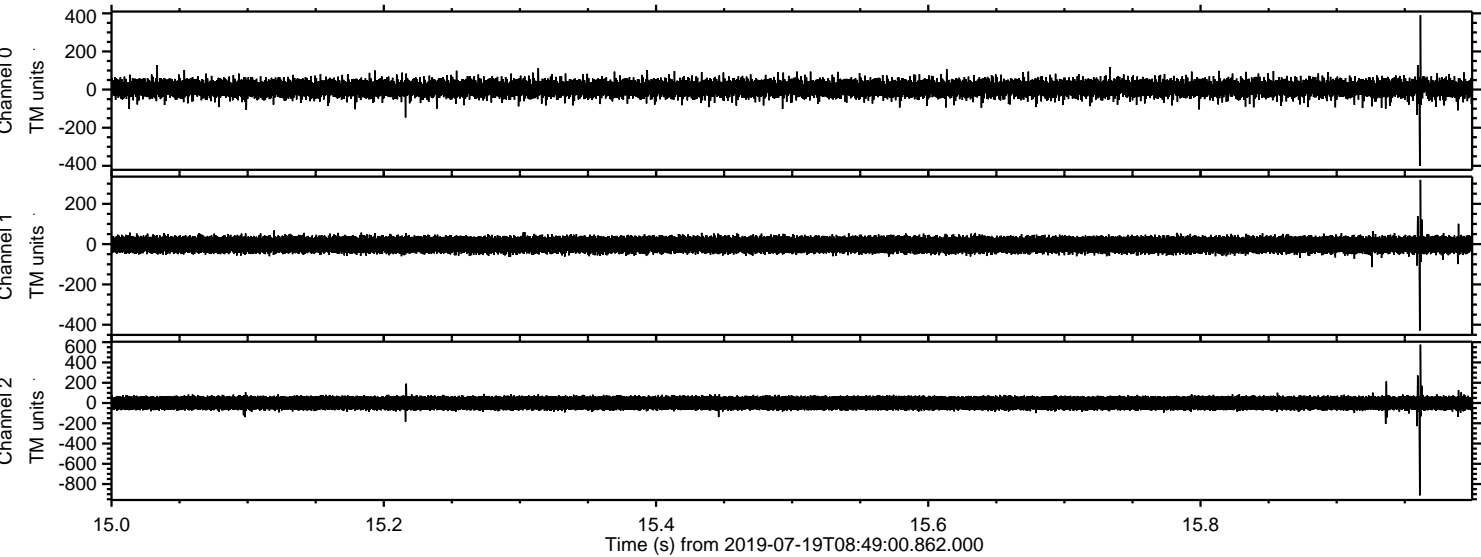


ELMAVAN 3D WAVEFORMS (Measured data sampled at 50 kHz) 51000 packets of 144 samples from 2019-07-19T08:49:00.862.000. Part 141/147



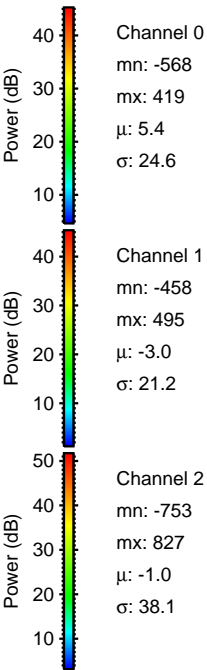
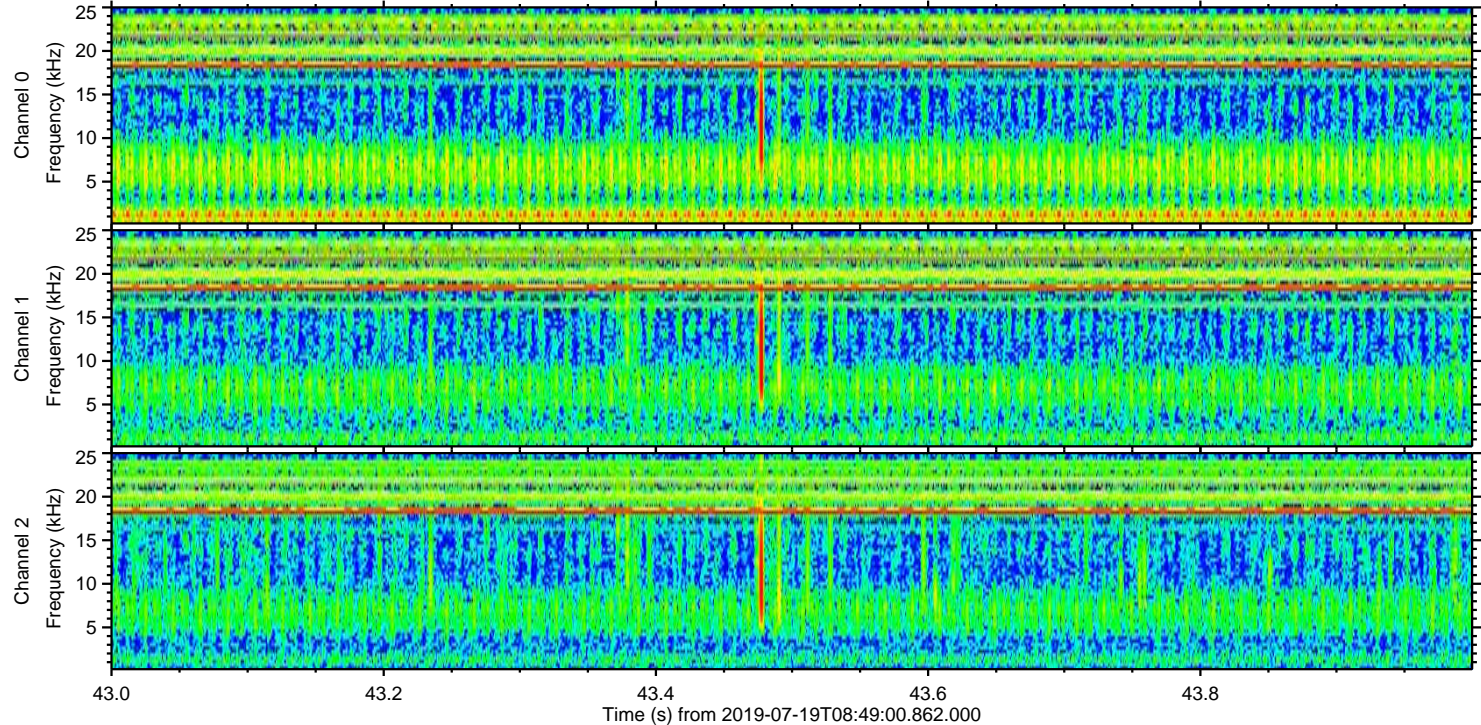
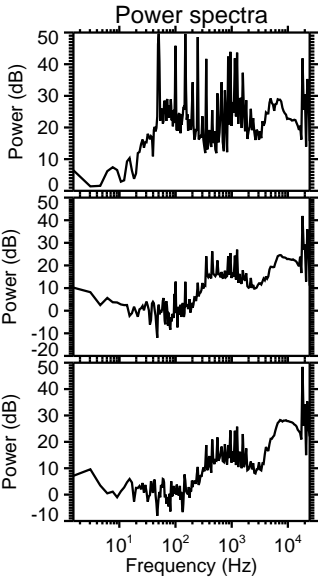
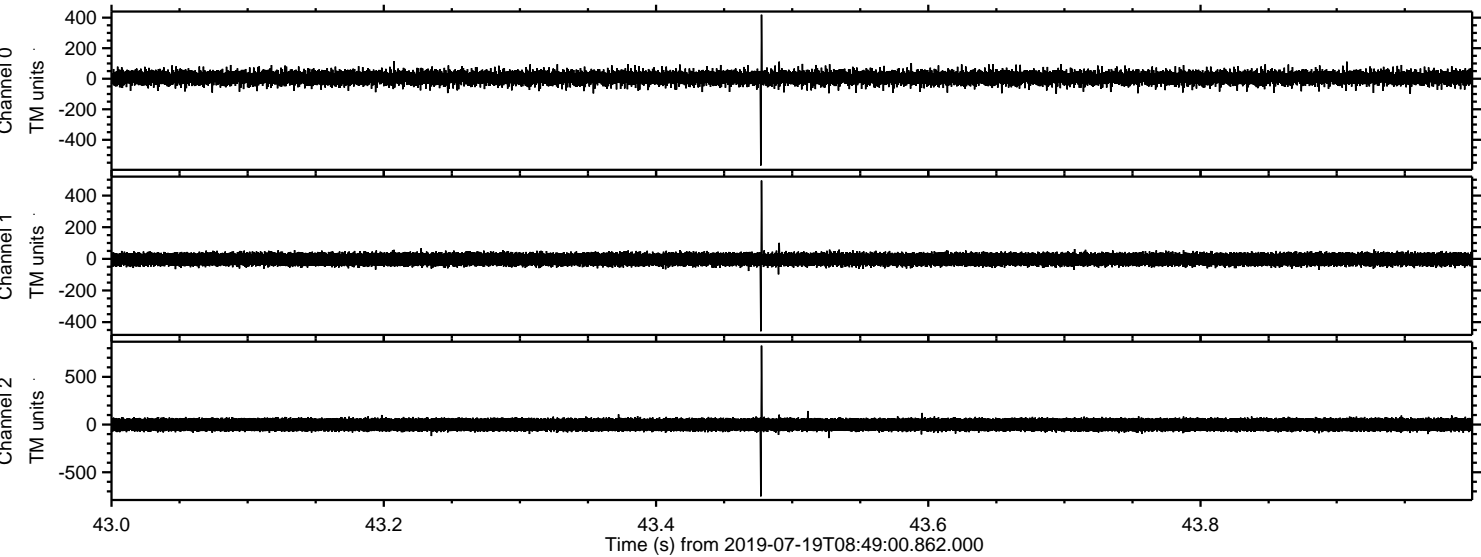


Processed Fri Jul 19 10:57:08 2019 by ELM ver.2012-10-06 from 001\_\_elm20190719\_084859\_\_dat00.bin





Processed Fri Jul 19 10:57:09 2019 by ELM ver.2012-10-06 from 001\_\_elm20190719\_084859\_\_dat00.bin



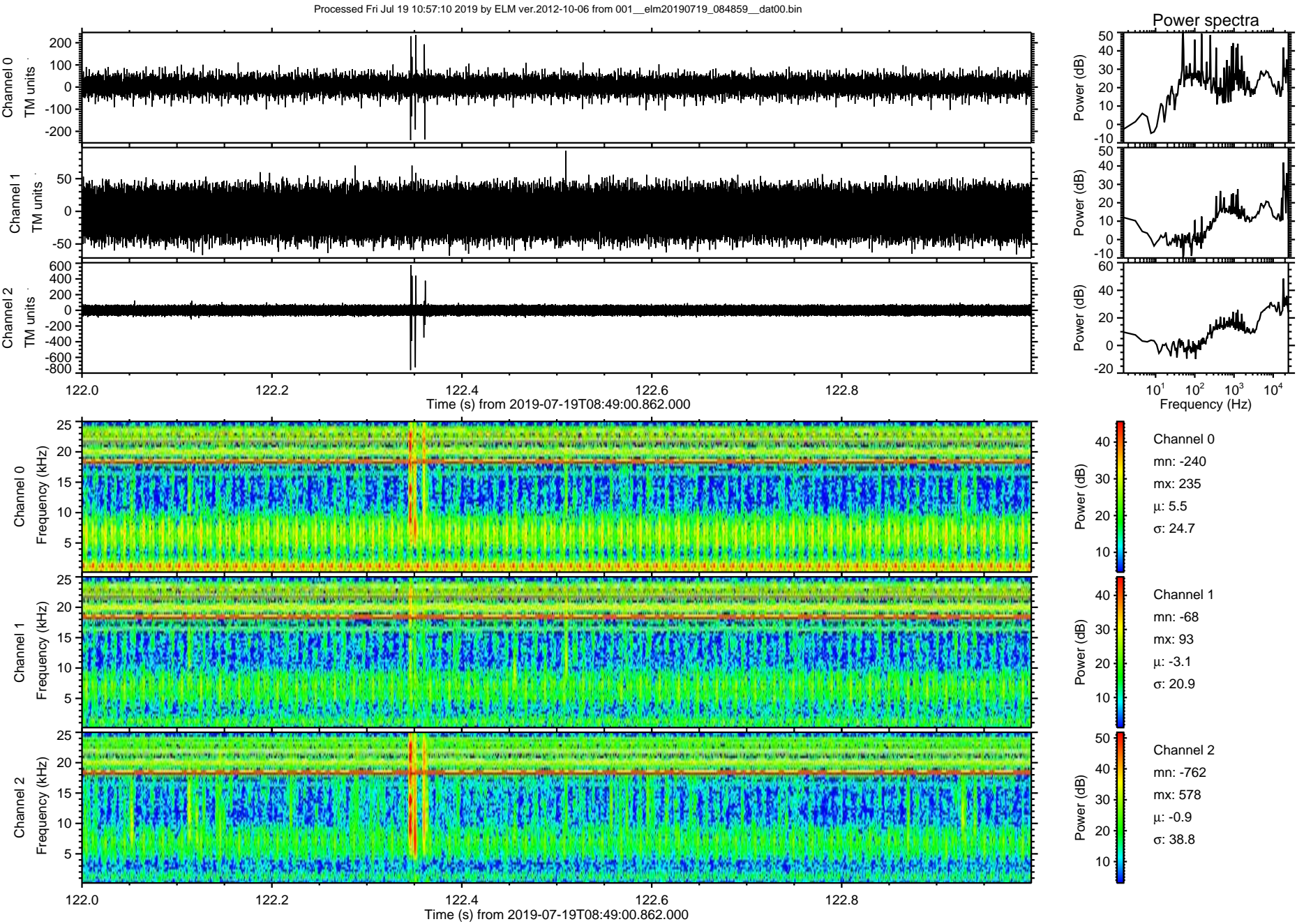
Channel 0  
mn: -568  
mx: 419  
 $\mu$ : 5.4  
 $\sigma$ : 24.6

Channel 1  
mn: -458  
mx: 495  
 $\mu$ : -3.0  
 $\sigma$ : 21.2

Channel 2  
mn: -753  
mx: 827  
 $\mu$ : -1.0  
 $\sigma$ : 38.1

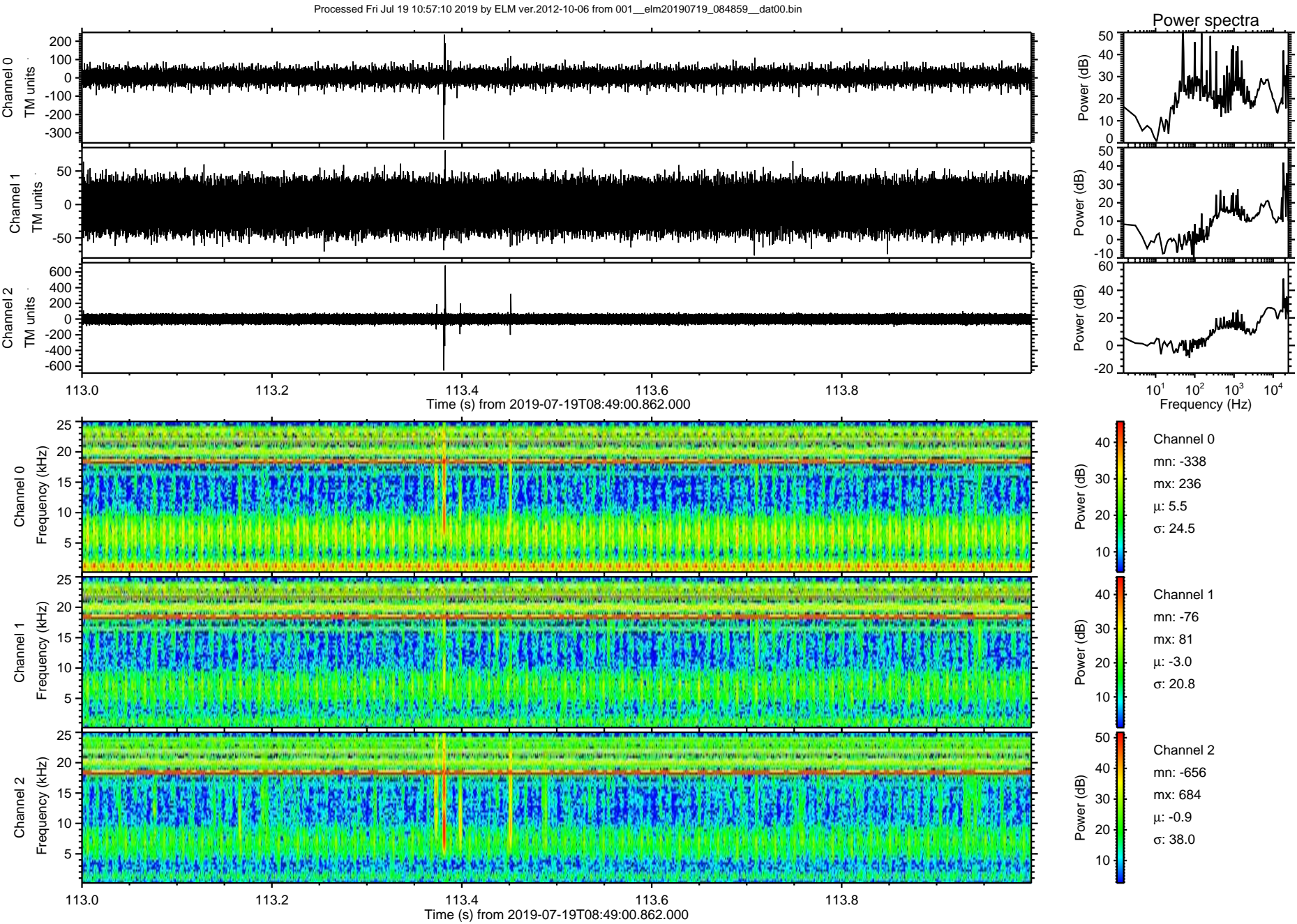


ELMAVAN 3D WAVEFORMS (Measured data sampled at 50 kHz) 51000 packets of 144 samples from 2019-07-19T08:49:00.862.000. Part 123/147



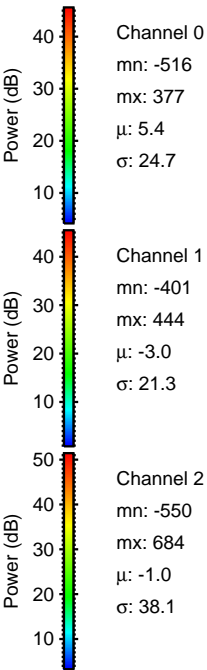
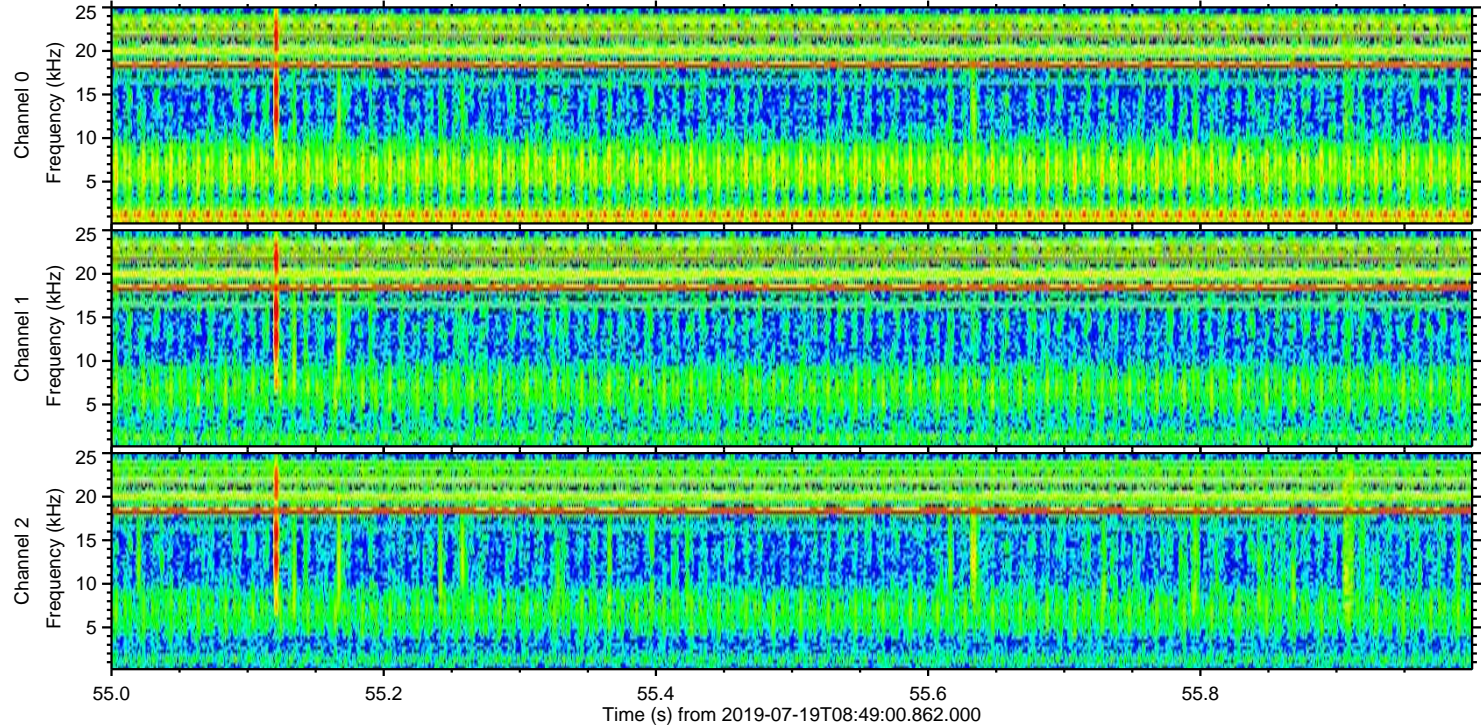
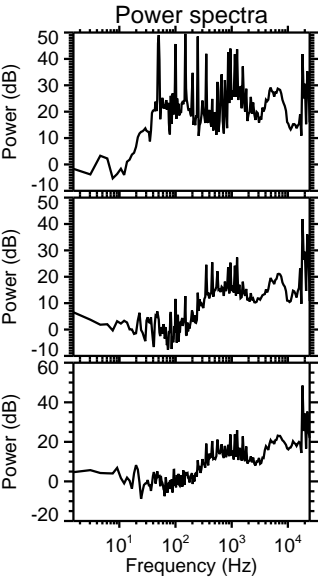
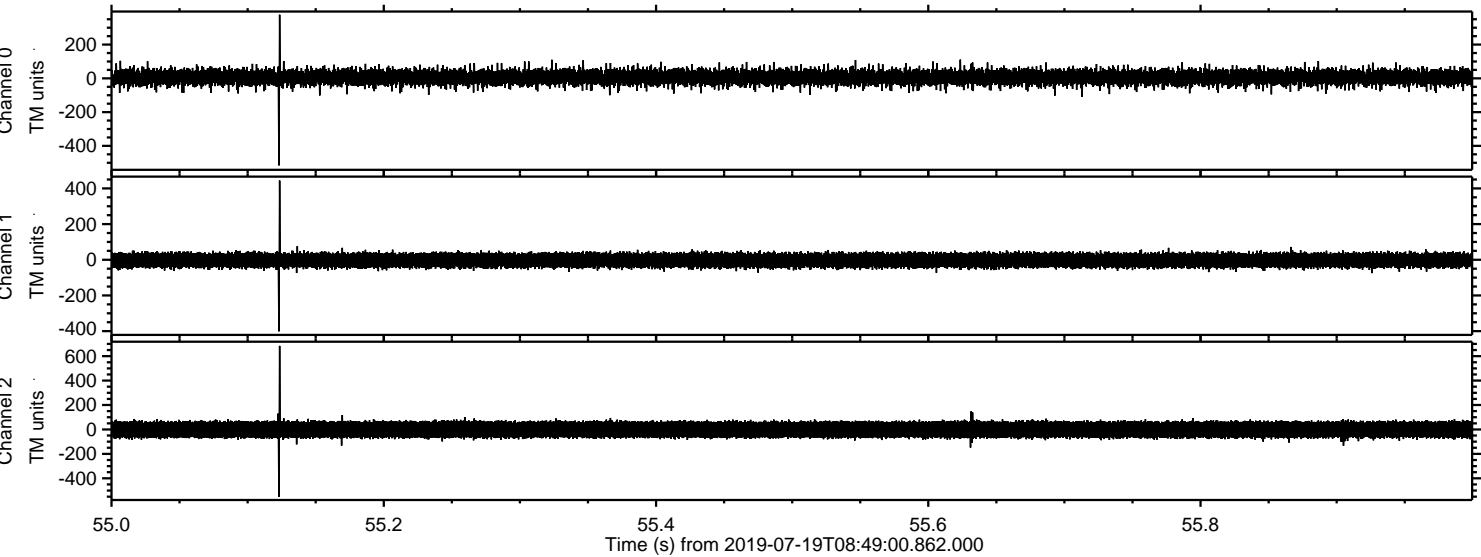


ELMAVAN 3D WAVEFORMS (Measured data sampled at 50 kHz) 51000 packets of 144 samples from 2019-07-19T08:49:00.862.000. Part 114/147





Processed Fri Jul 19 10:57:11 2019 by ELM ver.2012-10-06 from 001\_\_elm20190719\_084859\_\_dat00.bin



Channel 0  
mn: -516  
mx: 377  
 $\mu$ : 5.4  
 $\sigma$ : 24.7

Channel 1  
mn: -401  
mx: 444  
 $\mu$ : -3.0  
 $\sigma$ : 21.3

Channel 2  
mn: -550  
mx: 684  
 $\mu$ : -1.0  
 $\sigma$ : 38.1



