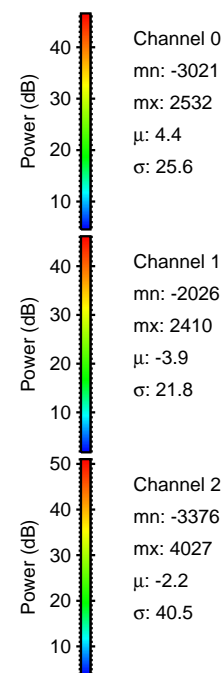
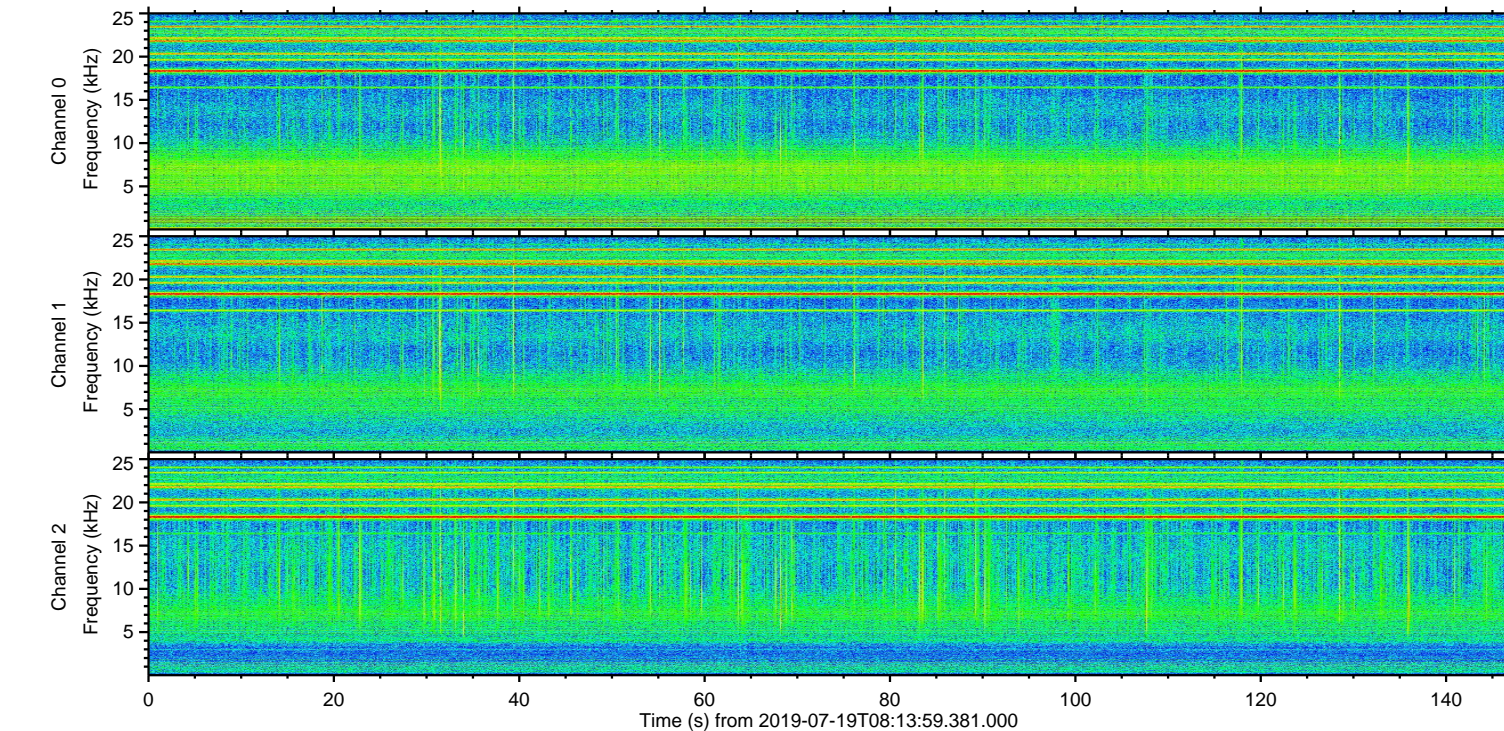
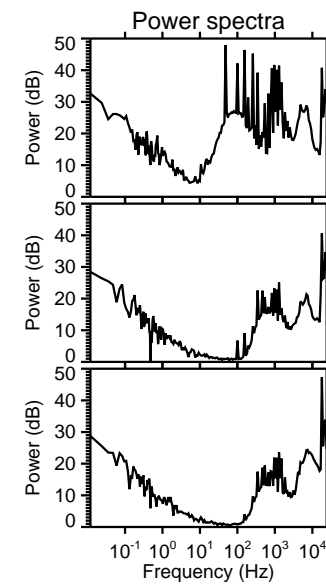
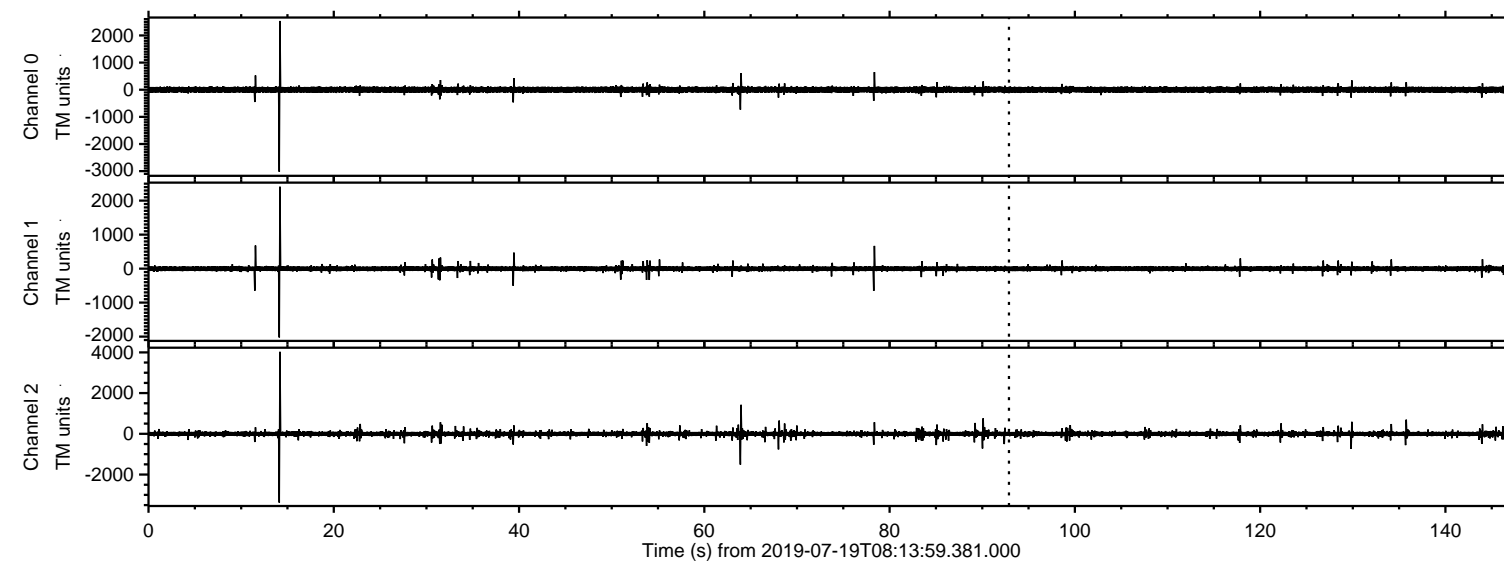
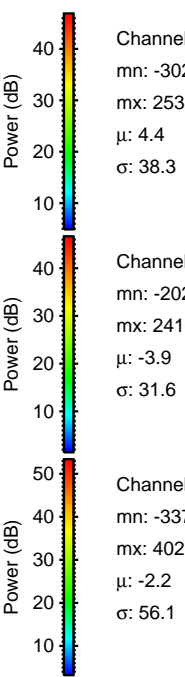
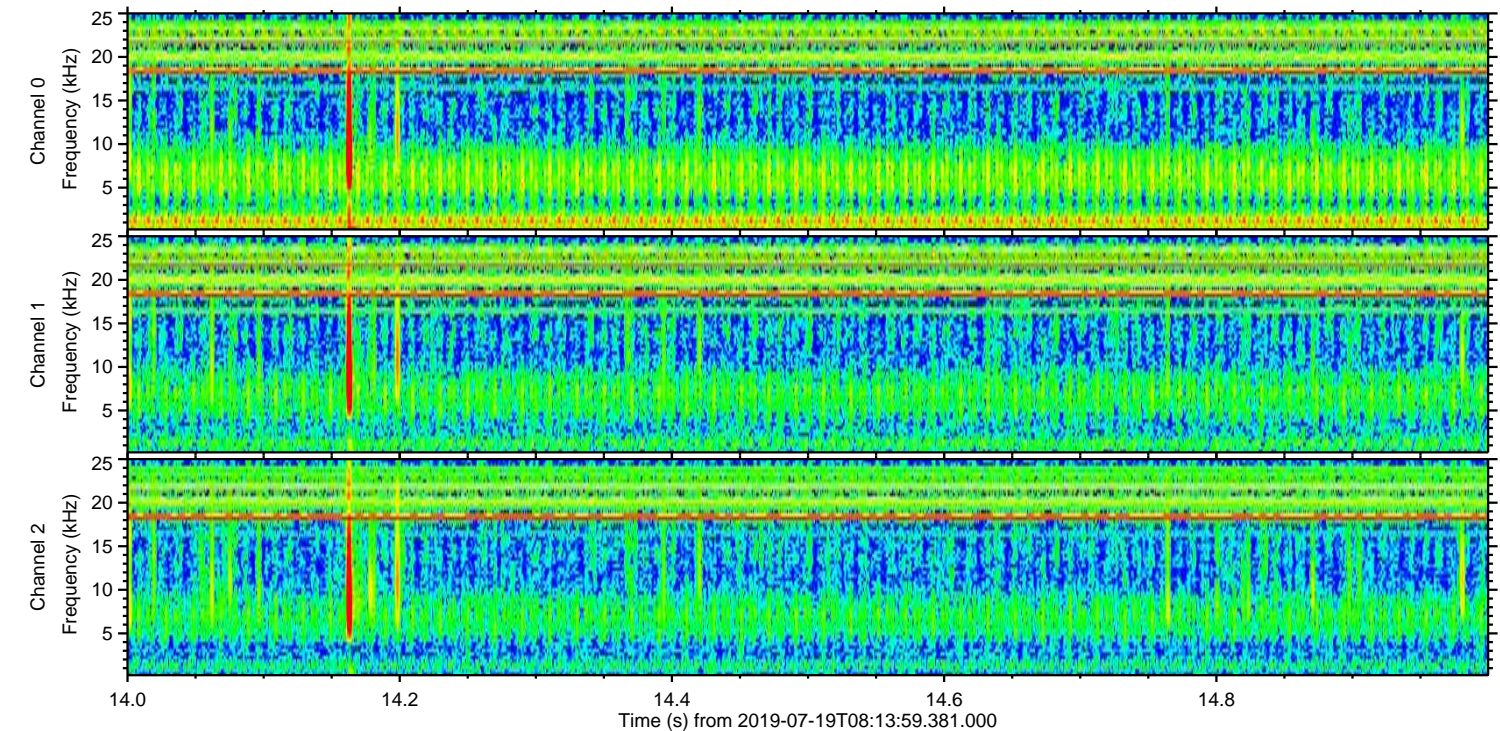
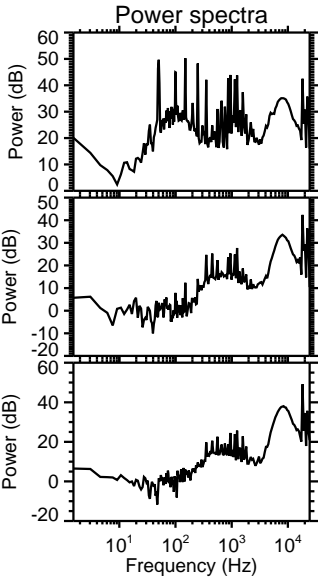
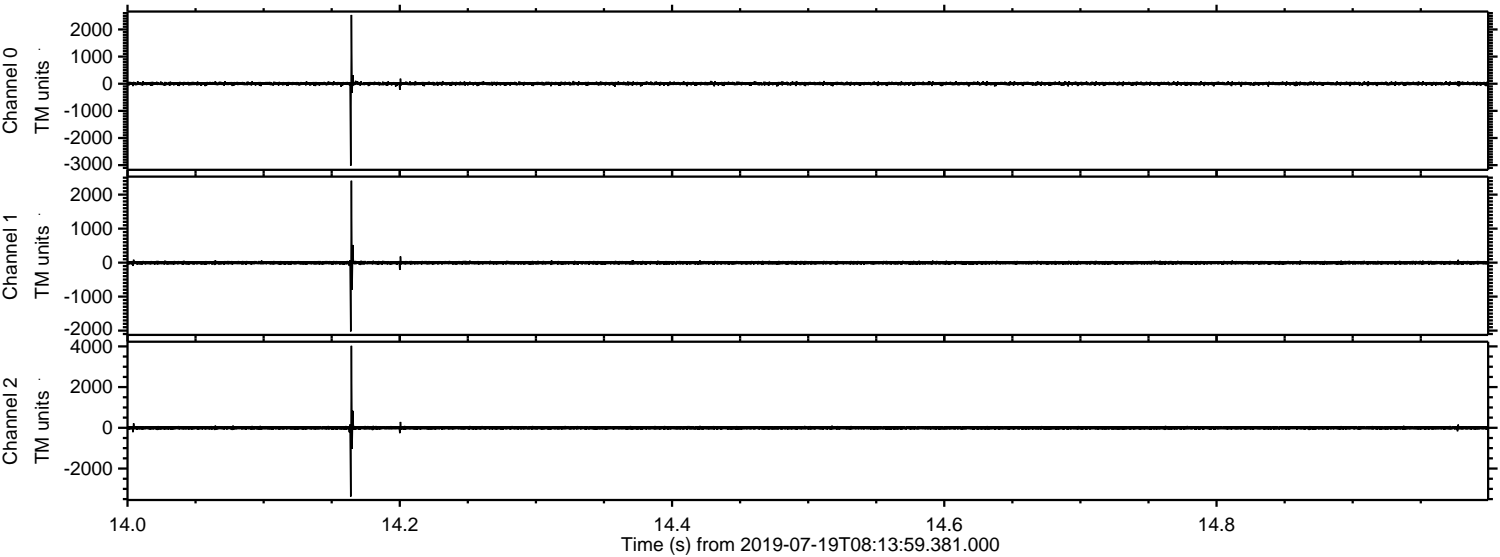


ELMAVAN 3D WAVEFORMS (Measured data sampled at 50 kHz) 50999 packets of 144 samples from 2019-07-19T08:13:59.381.000.

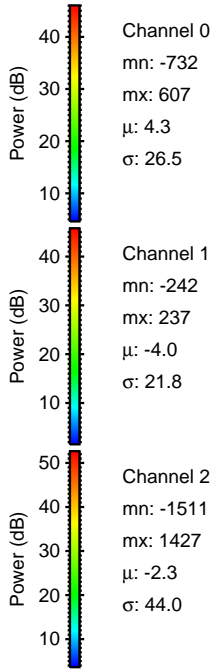
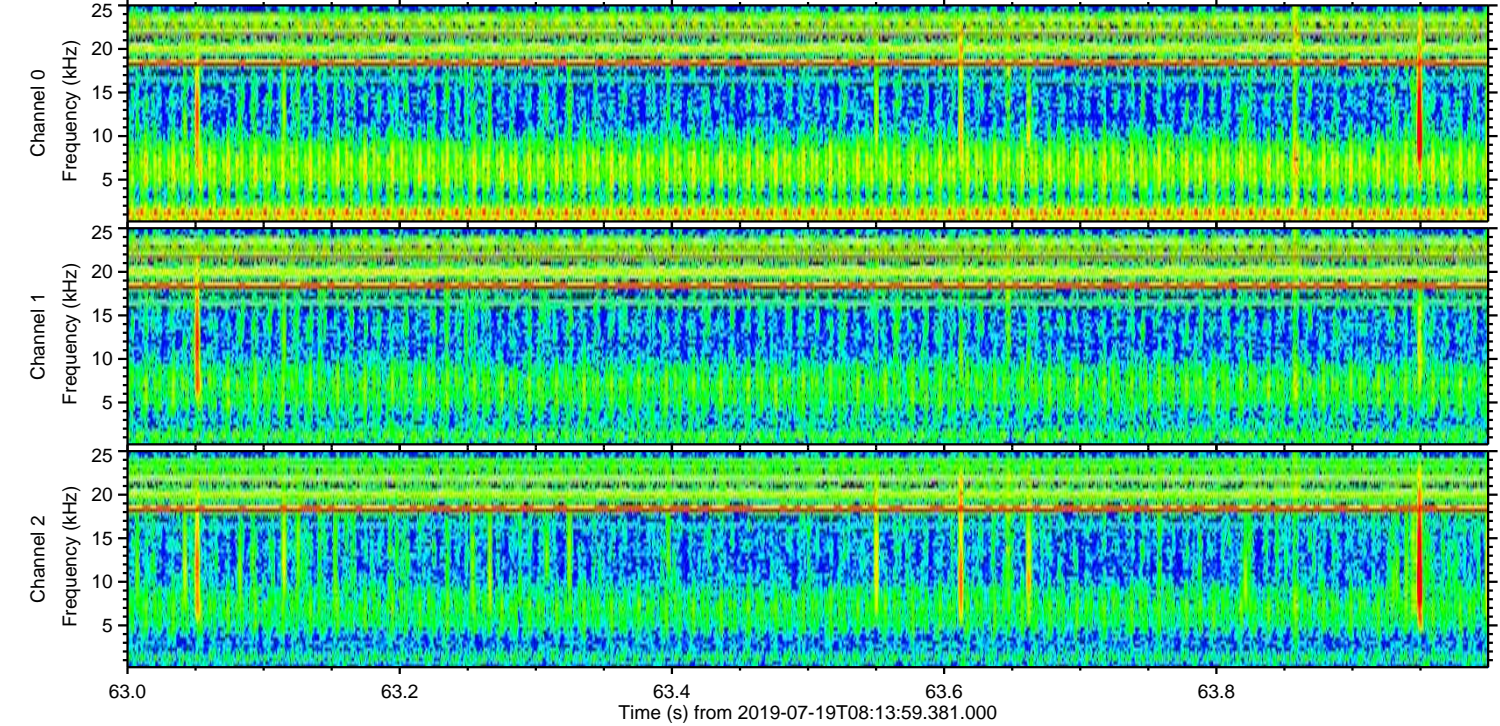
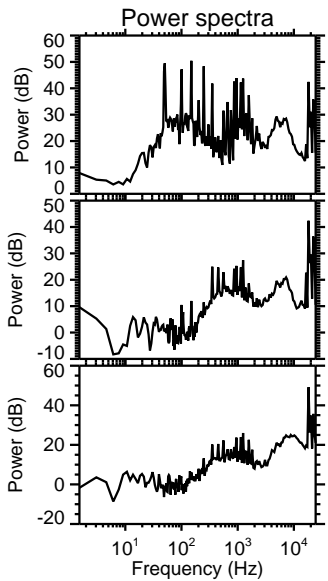
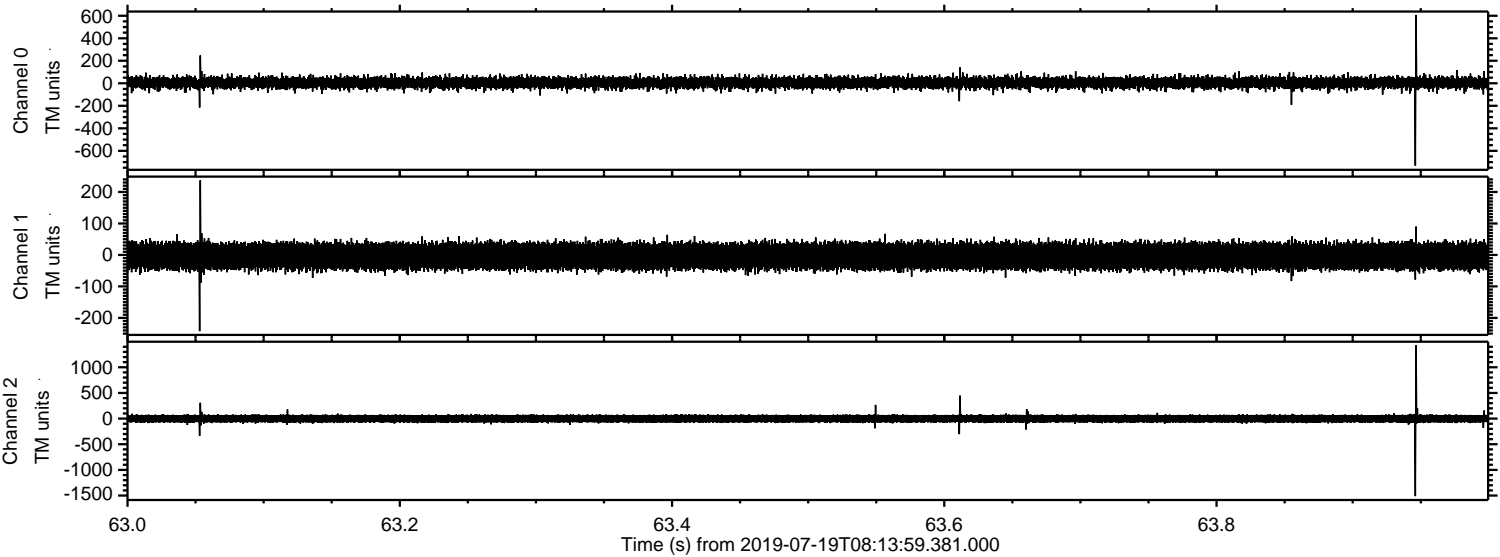
Processed Fri Jul 19 10:22:01 2019 by ELM ver.2012-10-06 from 001__elm20190719_081358__dat00.bin



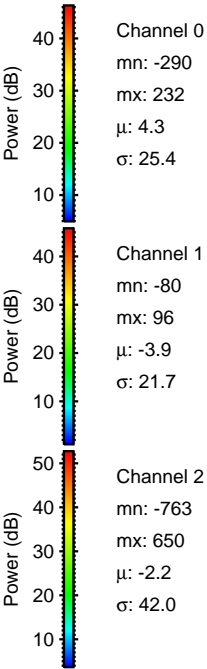
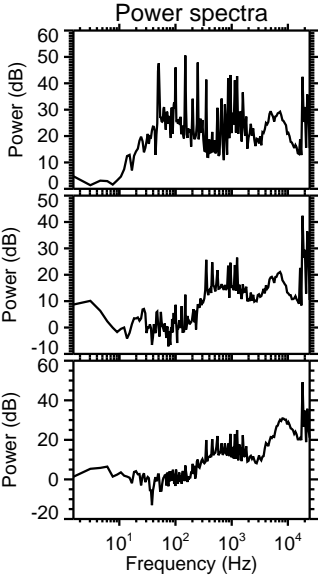
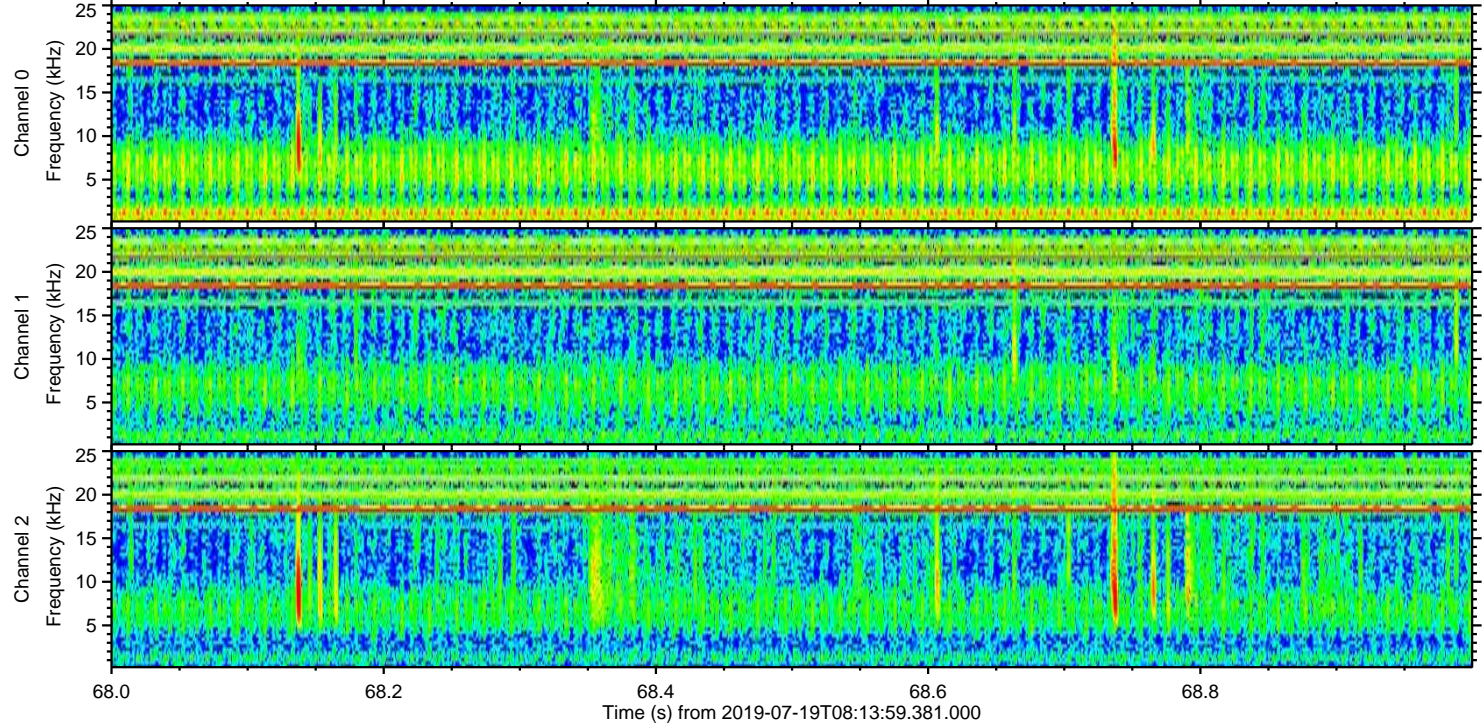
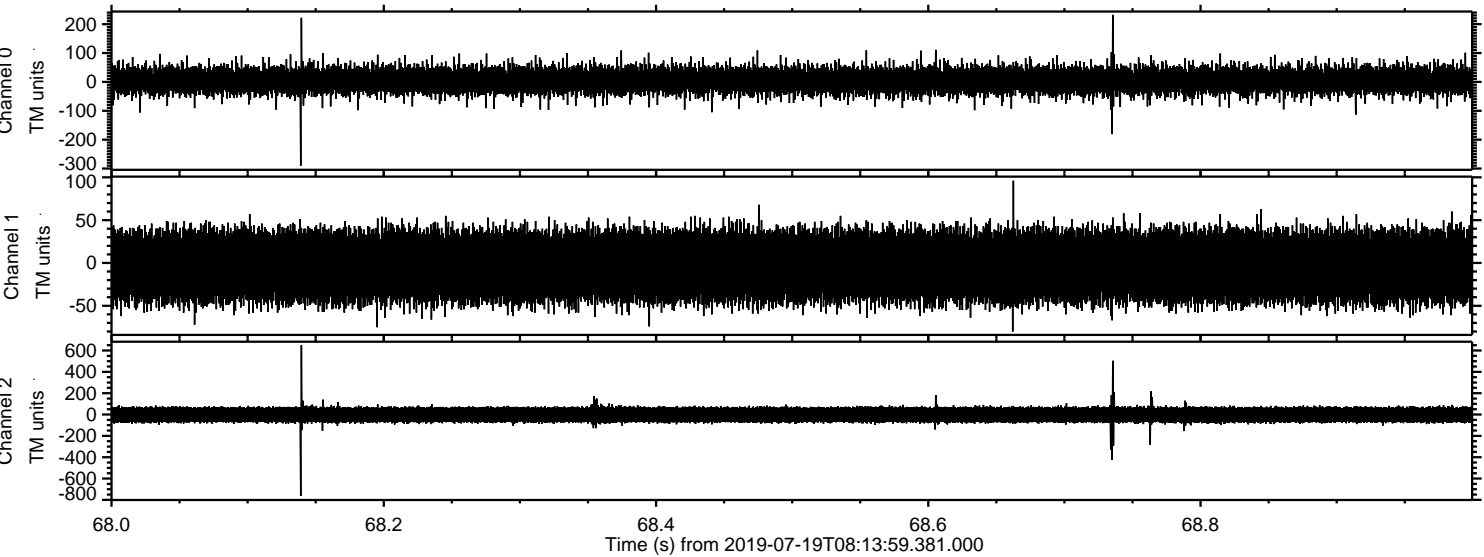
Processed Fri Jul 19 10:22:10 2019 by ELM ver.2012-10-06 from 001__elm20190719_081358__dat00.bin



Processed Fri Jul 19 10:22:10 2019 by ELM ver.2012-10-06 from 001__elm20190719_081358__dat00.bin



Processed Fri Jul 19 10:22:11 2019 by ELM ver.2012-10-06 from 001__elm20190719_081358__dat00.bin

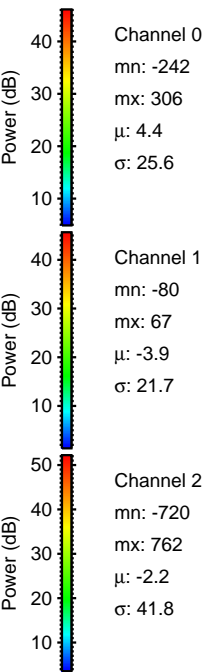
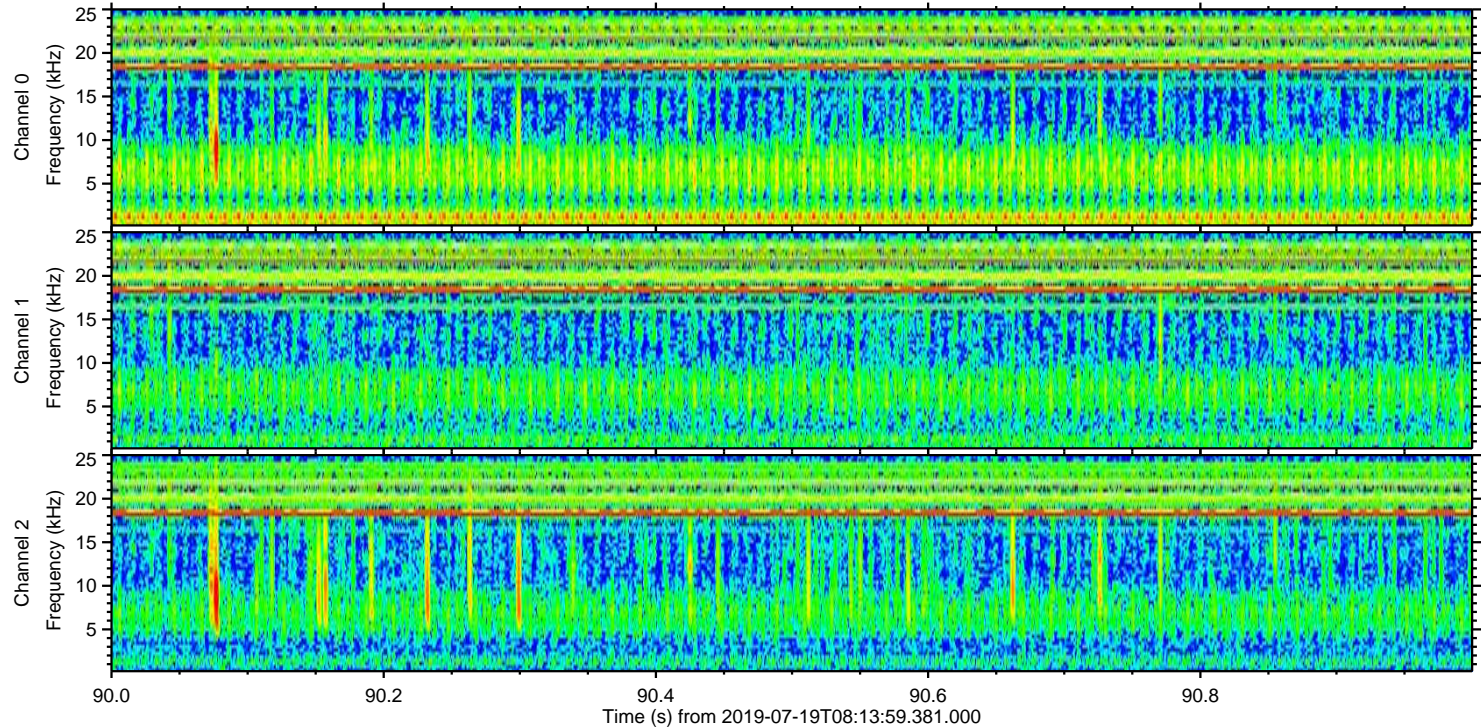
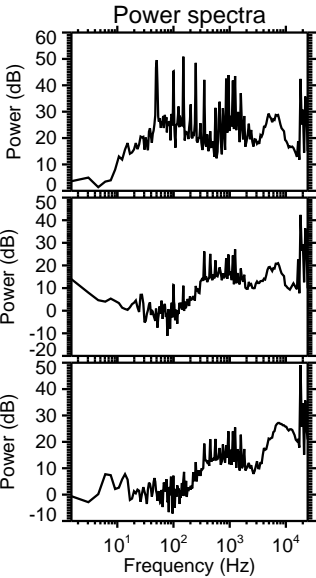
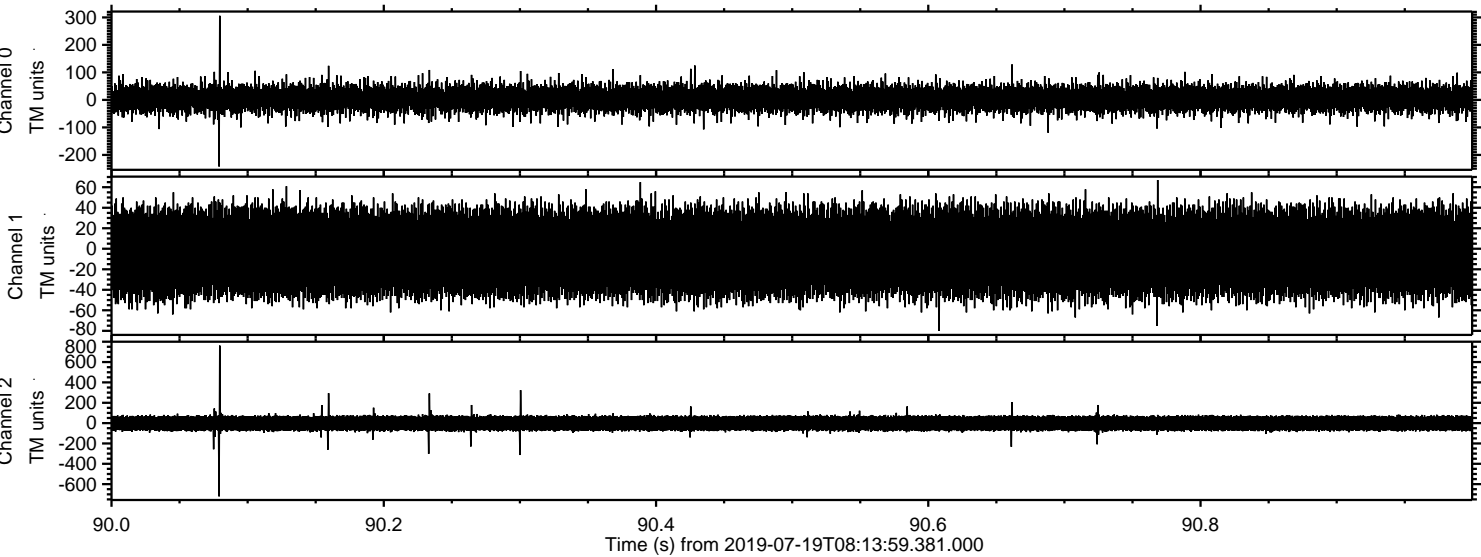


Channel 0
mn: -290
mx: 232
 μ : 4.3
 σ : 25.4

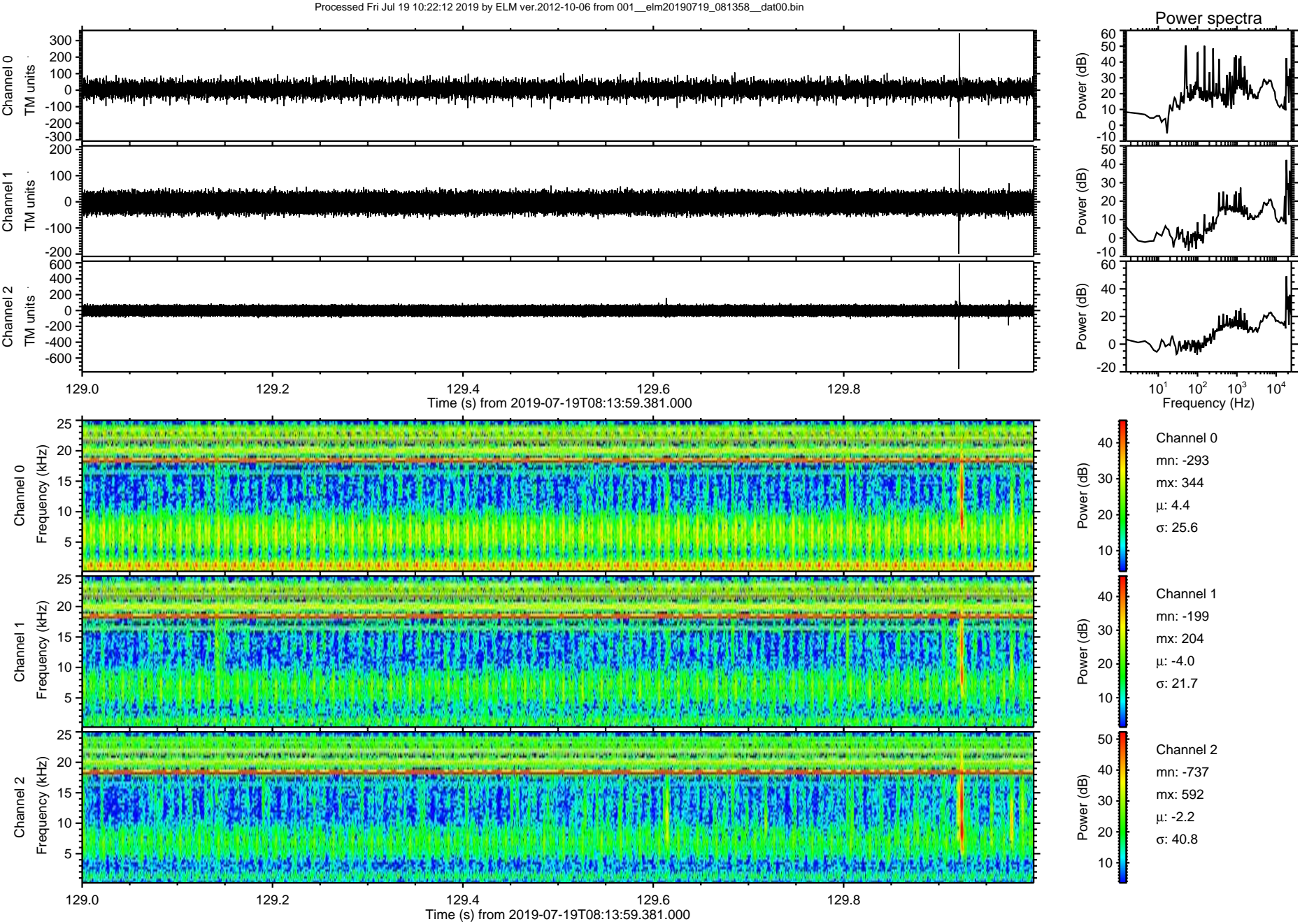
Channel 1
mn: -80
mx: 96
 μ : -3.9
 σ : 21.7

Channel 2
mn: -763
mx: 650
 μ : -2.2
 σ : 42.0

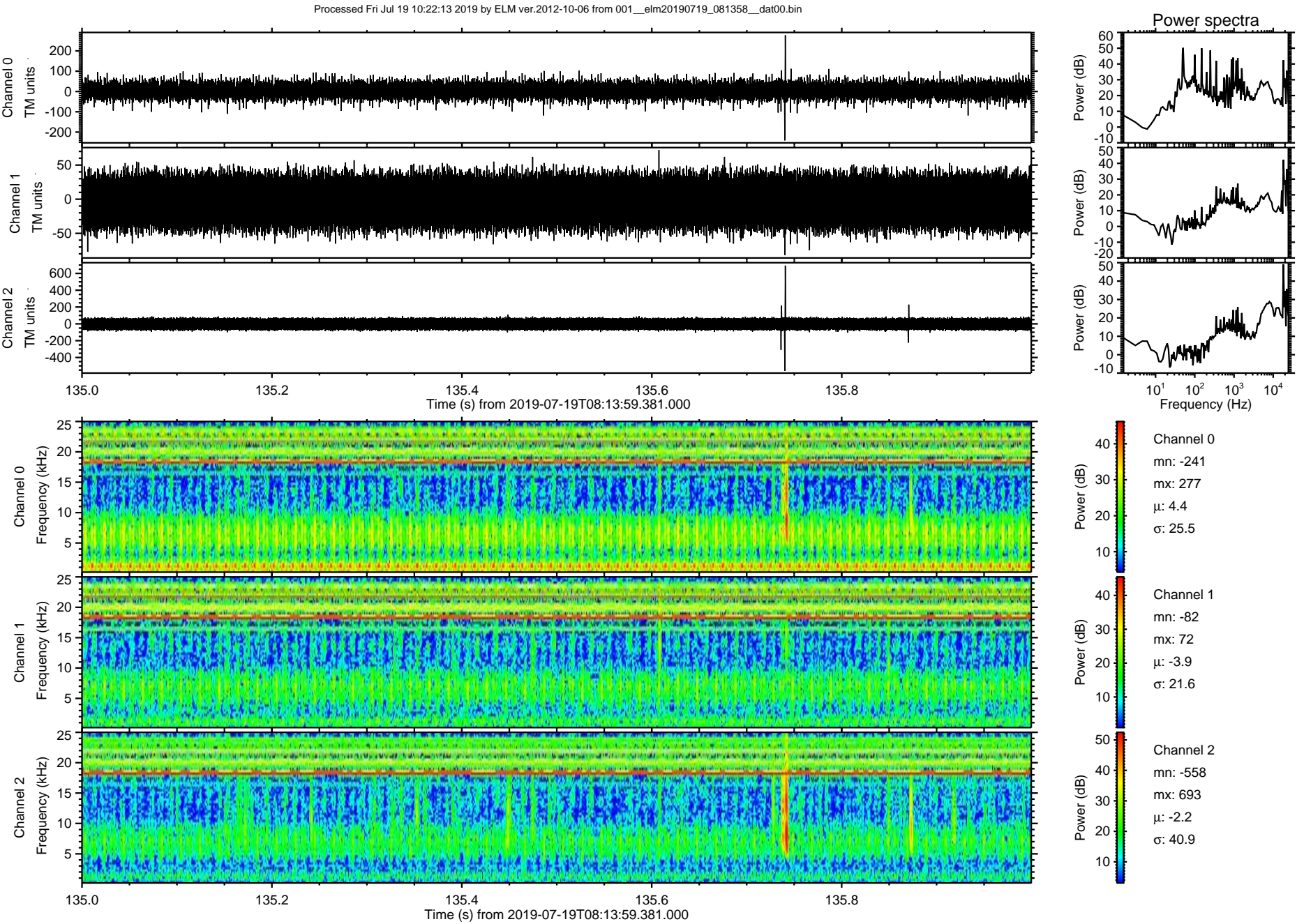
Processed Fri Jul 19 10:22:12 2019 by ELM ver.2012-10-06 from 001__elm20190719_081358__dat00.bin



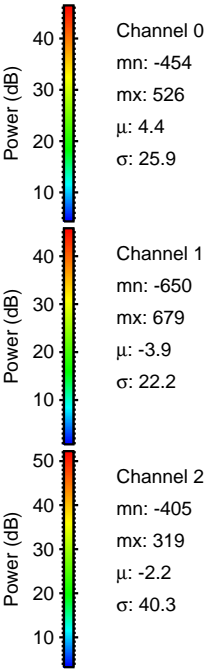
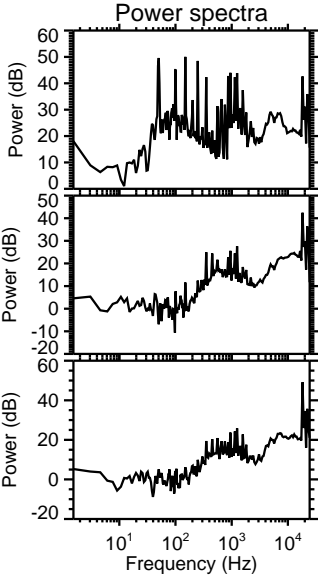
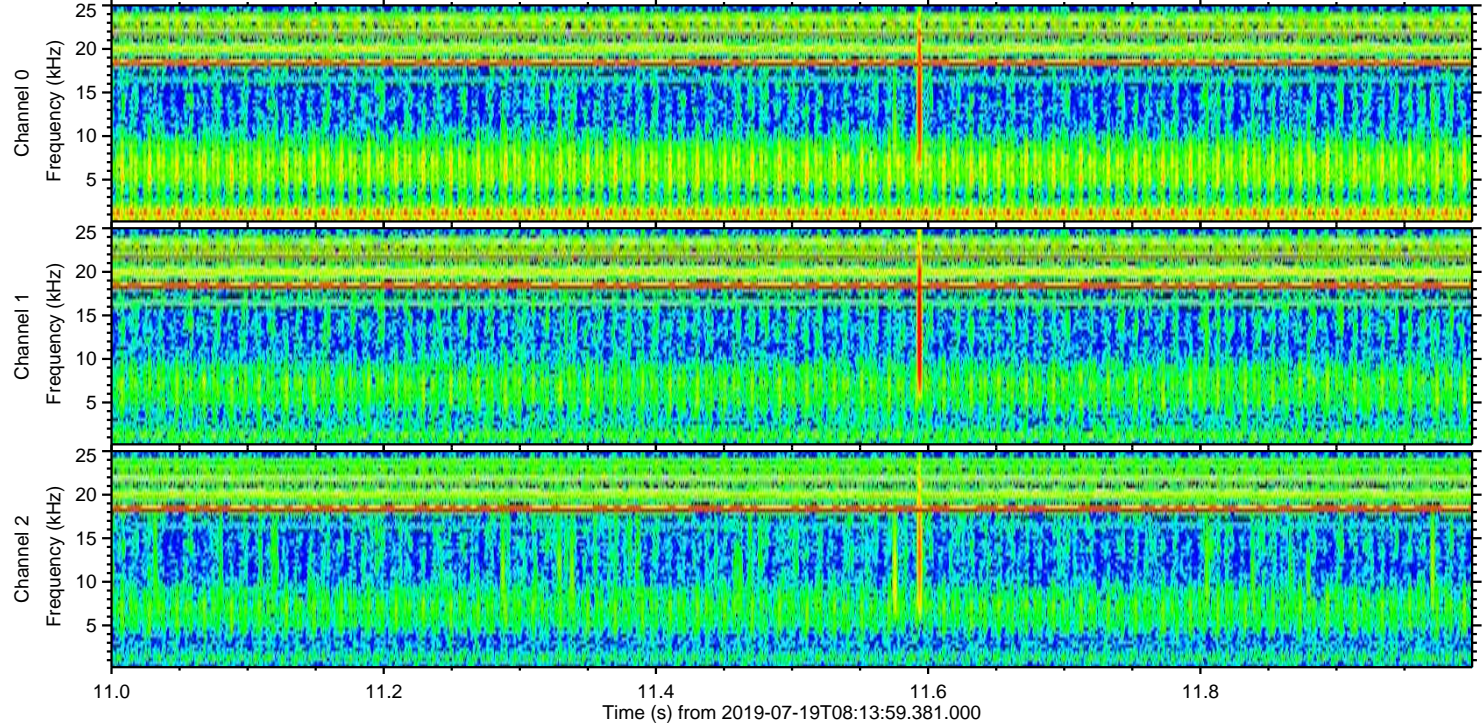
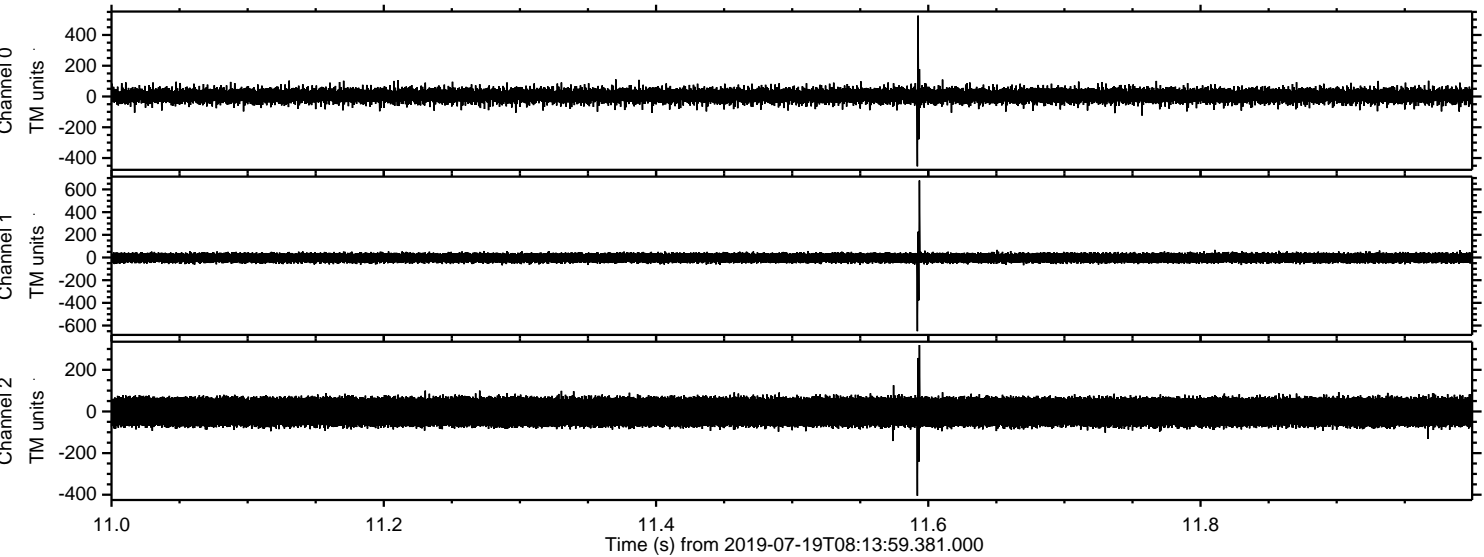
ELMAVAN 3D WAVEFORMS (Measured data sampled at 50 kHz) 50999 packets of 144 samples from 2019-07-19T08:13:59.381.000. Part 130/147



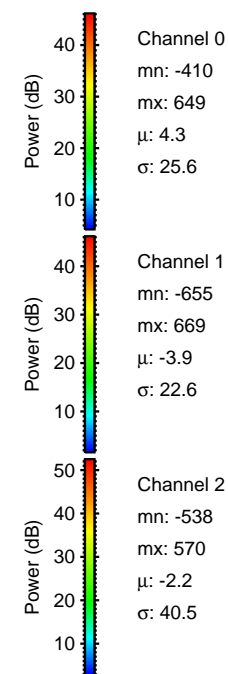
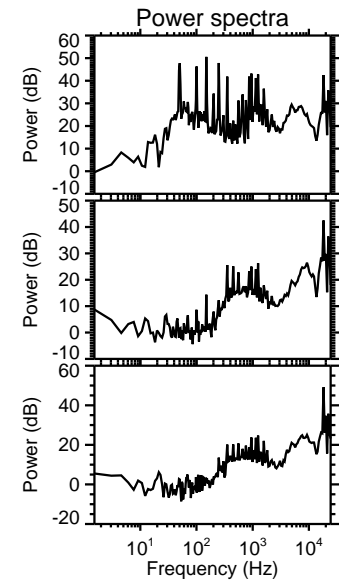
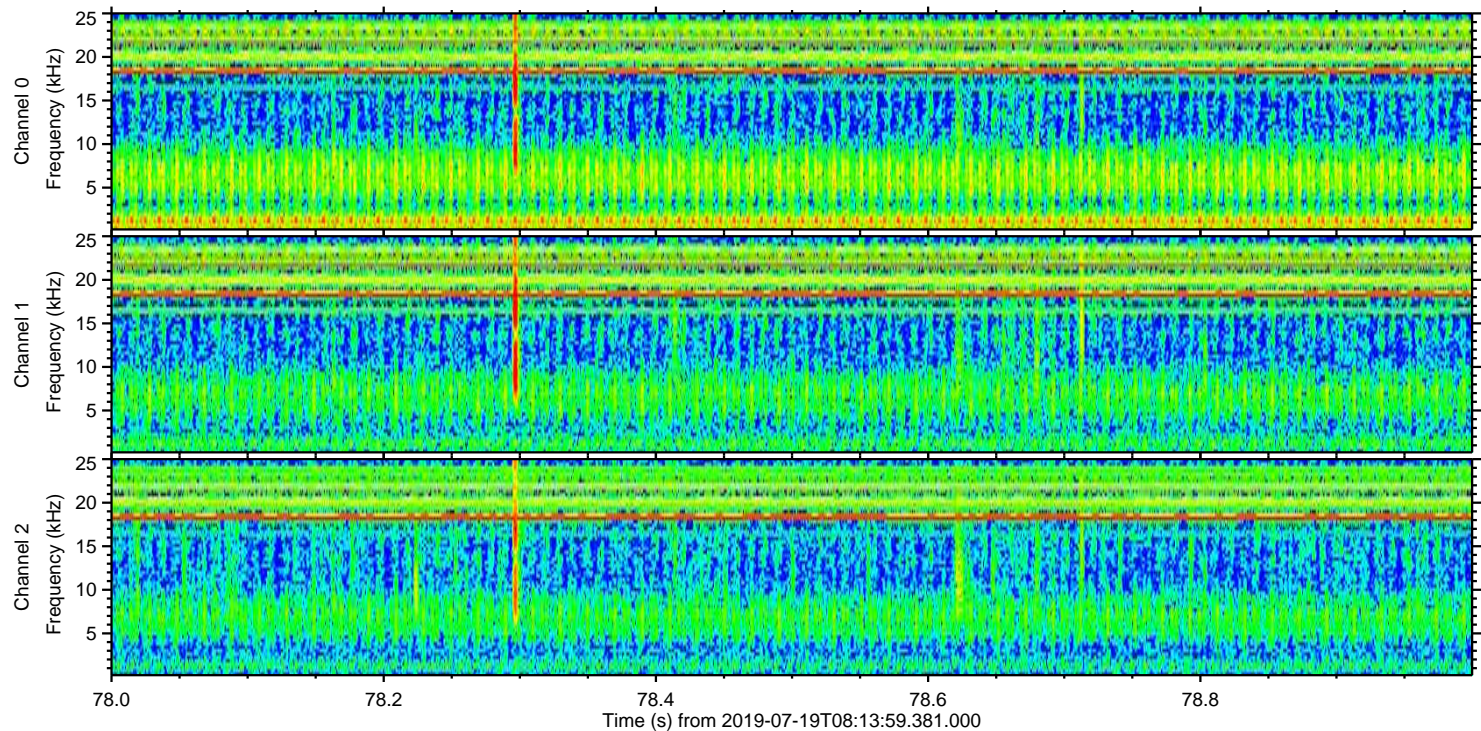
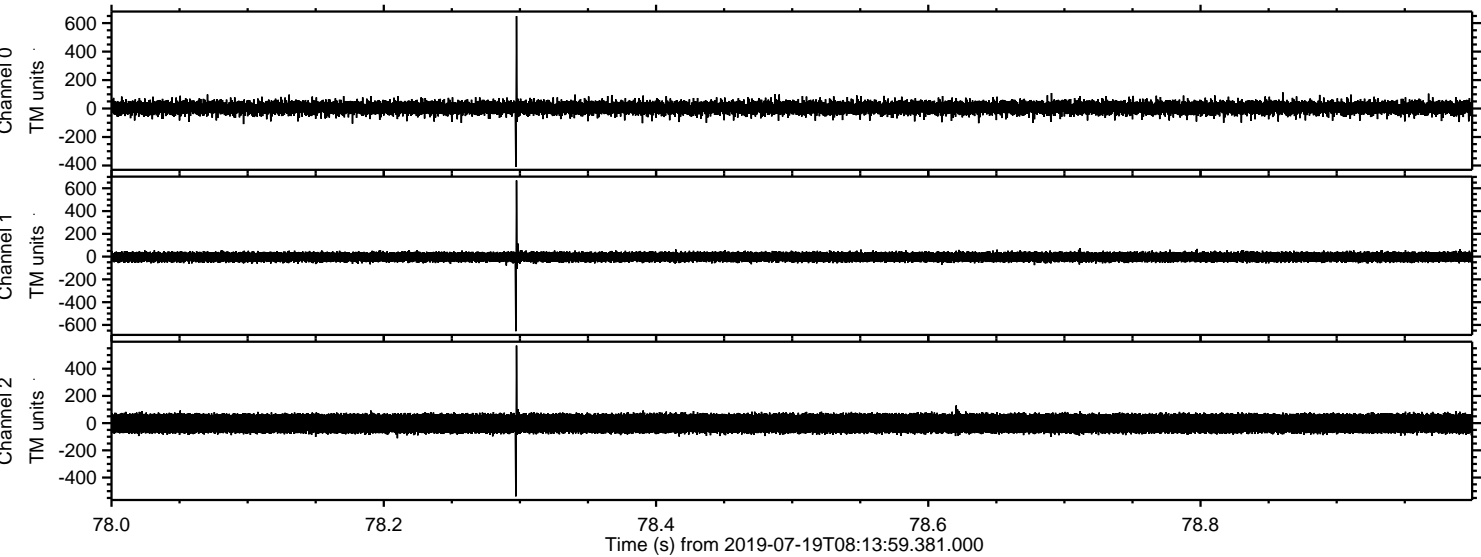
ELMAVAN 3D WAVEFORMS (Measured data sampled at 50 kHz) 50999 packets of 144 samples from 2019-07-19T08:13:59.381.000. Part 136/147



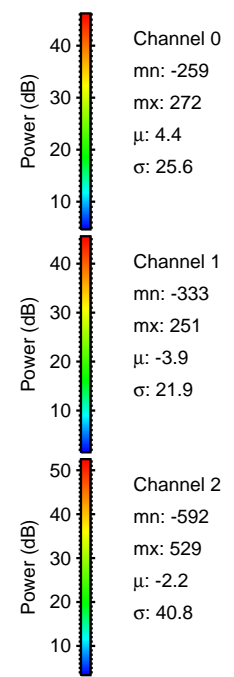
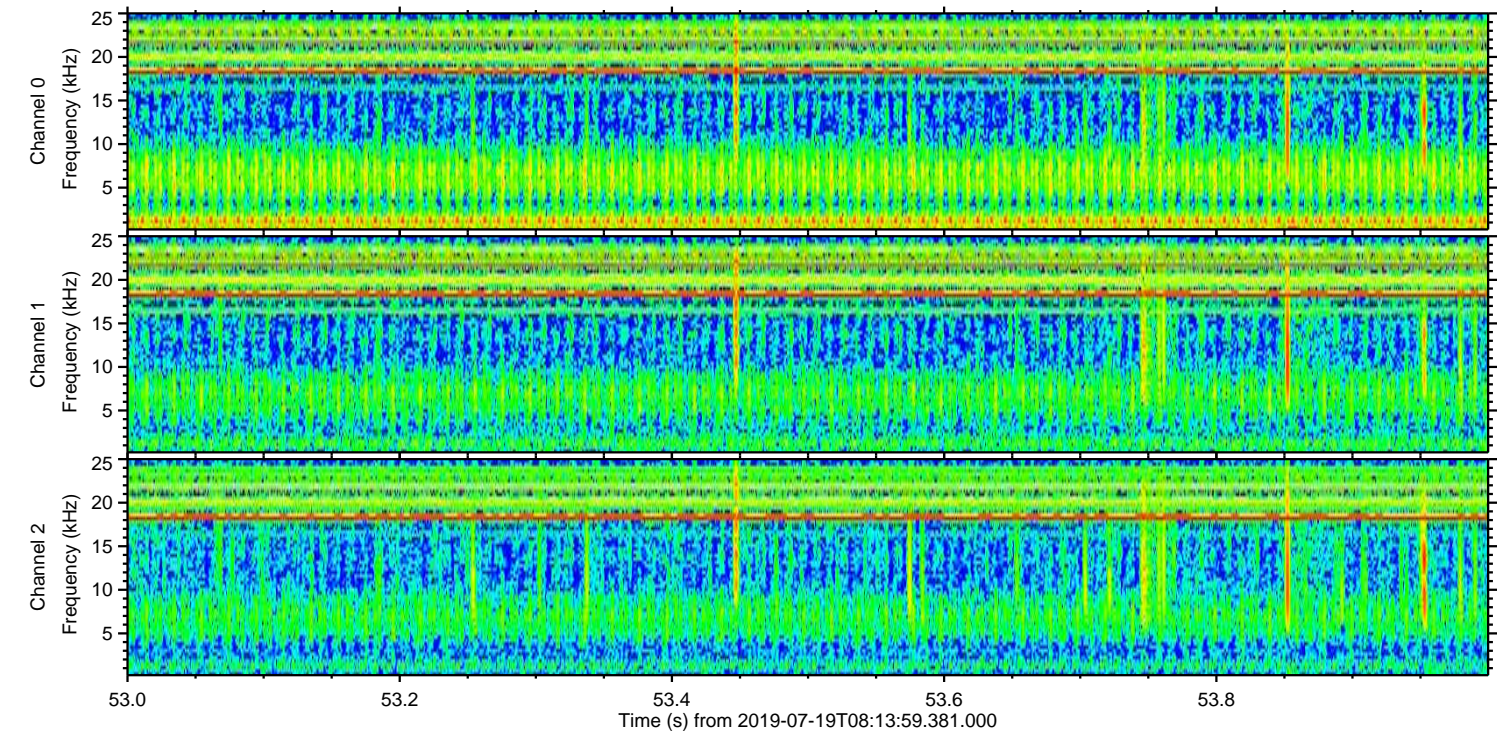
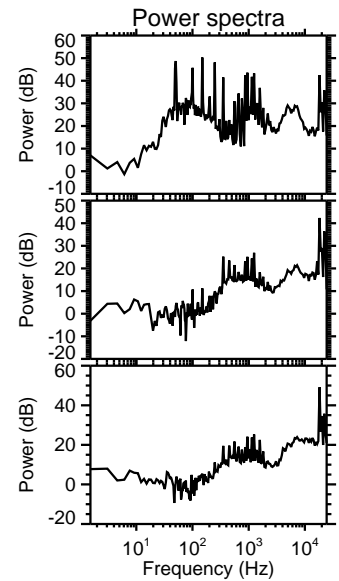
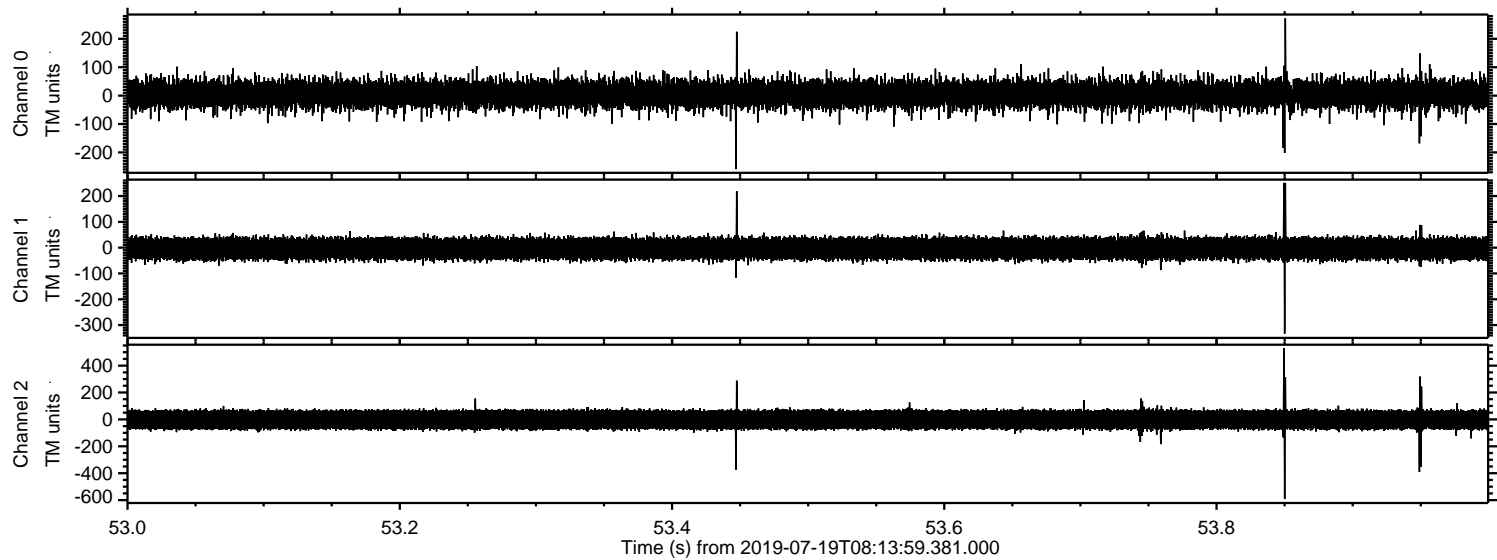
Processed Fri Jul 19 10:22:13 2019 by ELM ver.2012-10-06 from 001__elm20190719_081358__dat00.bin



Processed Fri Jul 19 10:22:14 2019 by ELM ver.2012-10-06 from 001__elm20190719_081358__dat00.bin



Processed Fri Jul 19 10:22:15 2019 by ELM ver.2012-10-06 from 001__elm20190719_081358__dat00.bin



ELMAVAN 3D WAVEFORMS (Measured data sampled at 50 kHz) 50999 packets of 144 samples from 2019-07-19T08:13:59.381.000. Part 114/147

