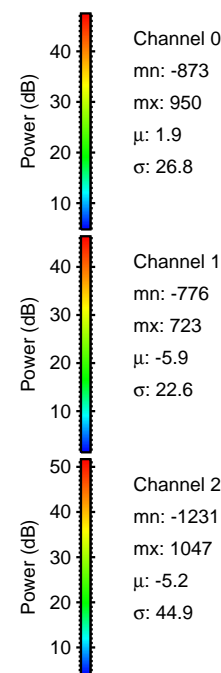
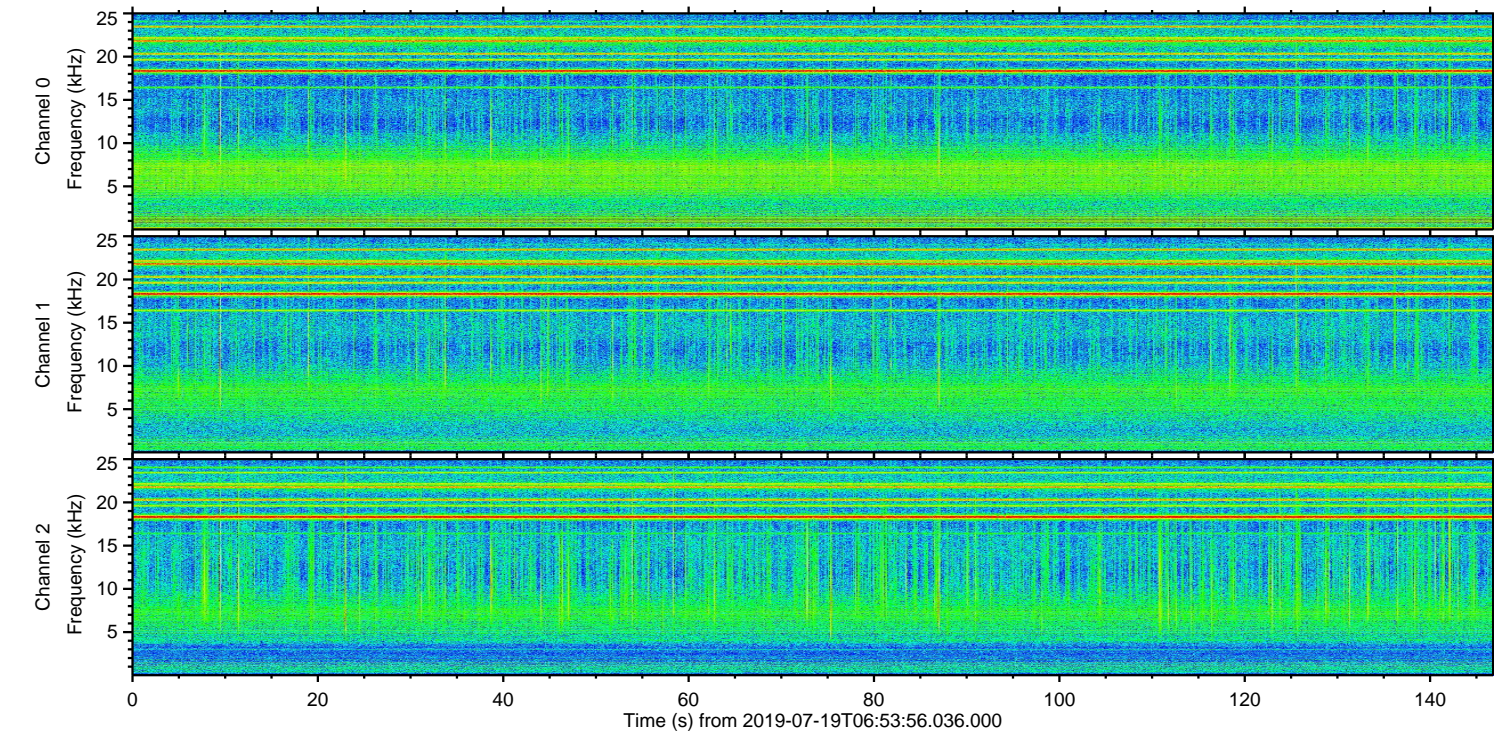
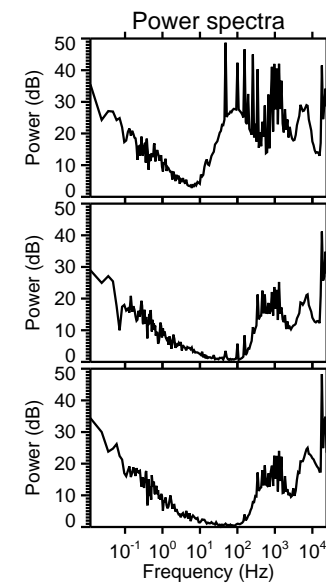
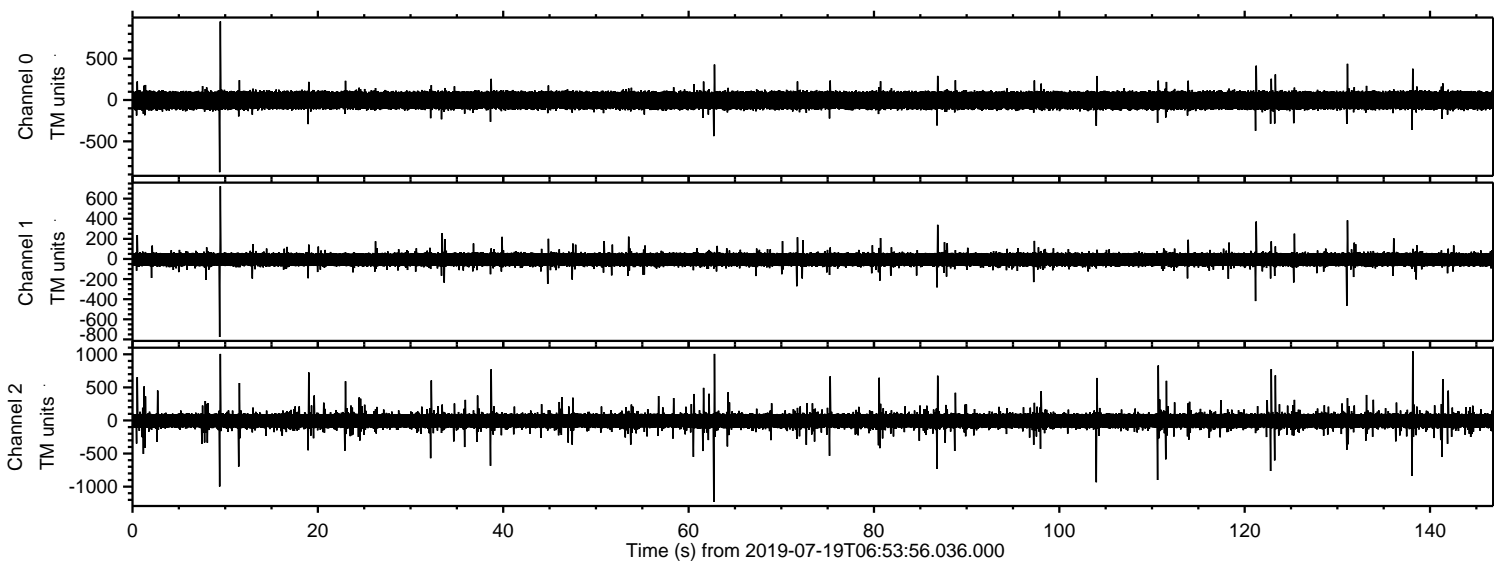
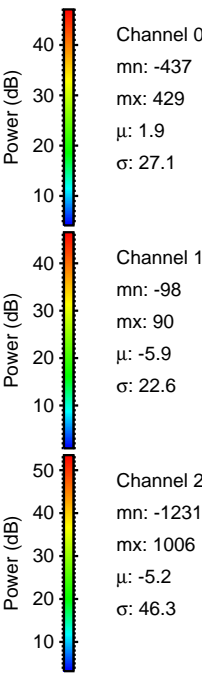
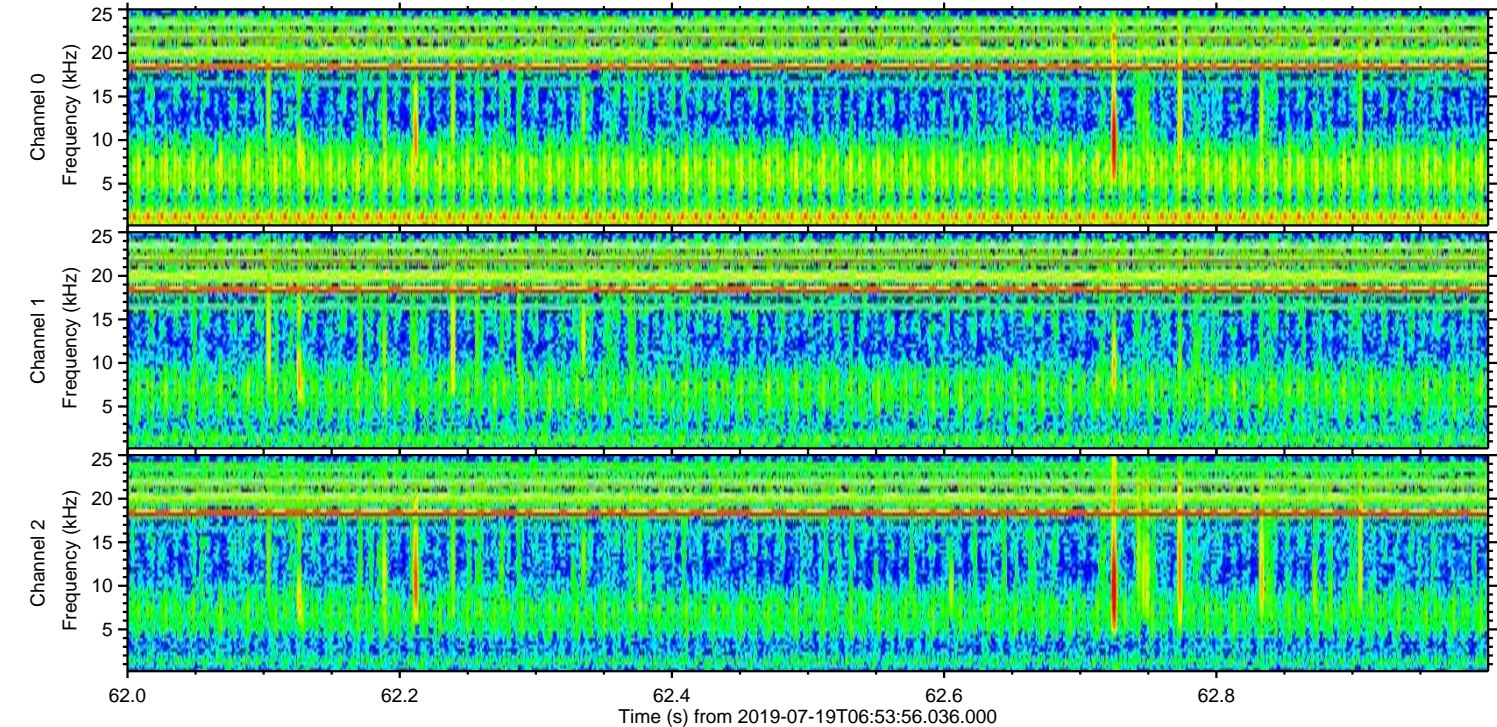
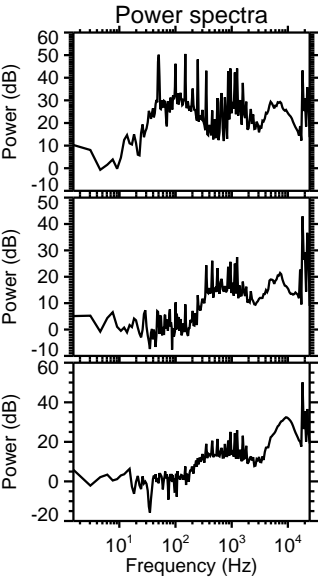
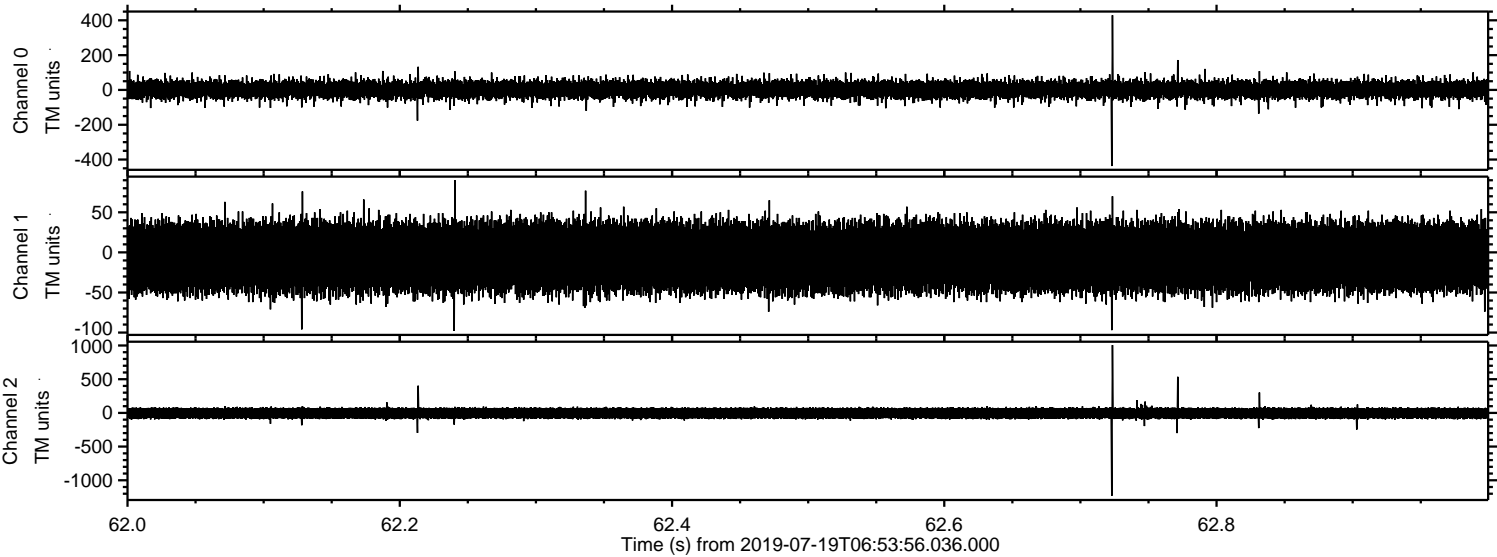


ELMAVAN 3D WAVEFORMS (Measured data sampled at 50 kHz) 51000 packets of 144 samples from 2019-07-19T06:53:56.036.000.

Processed Fri Jul 19 09:02:09 2019 by ELM ver.2012-10-06 from 001__elm20190719_065355__dat00.bin

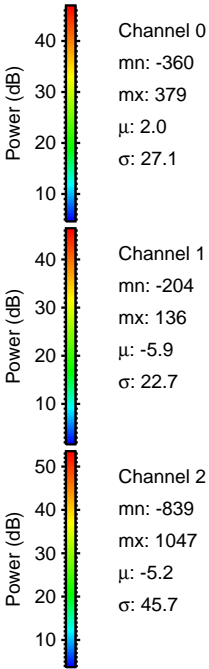
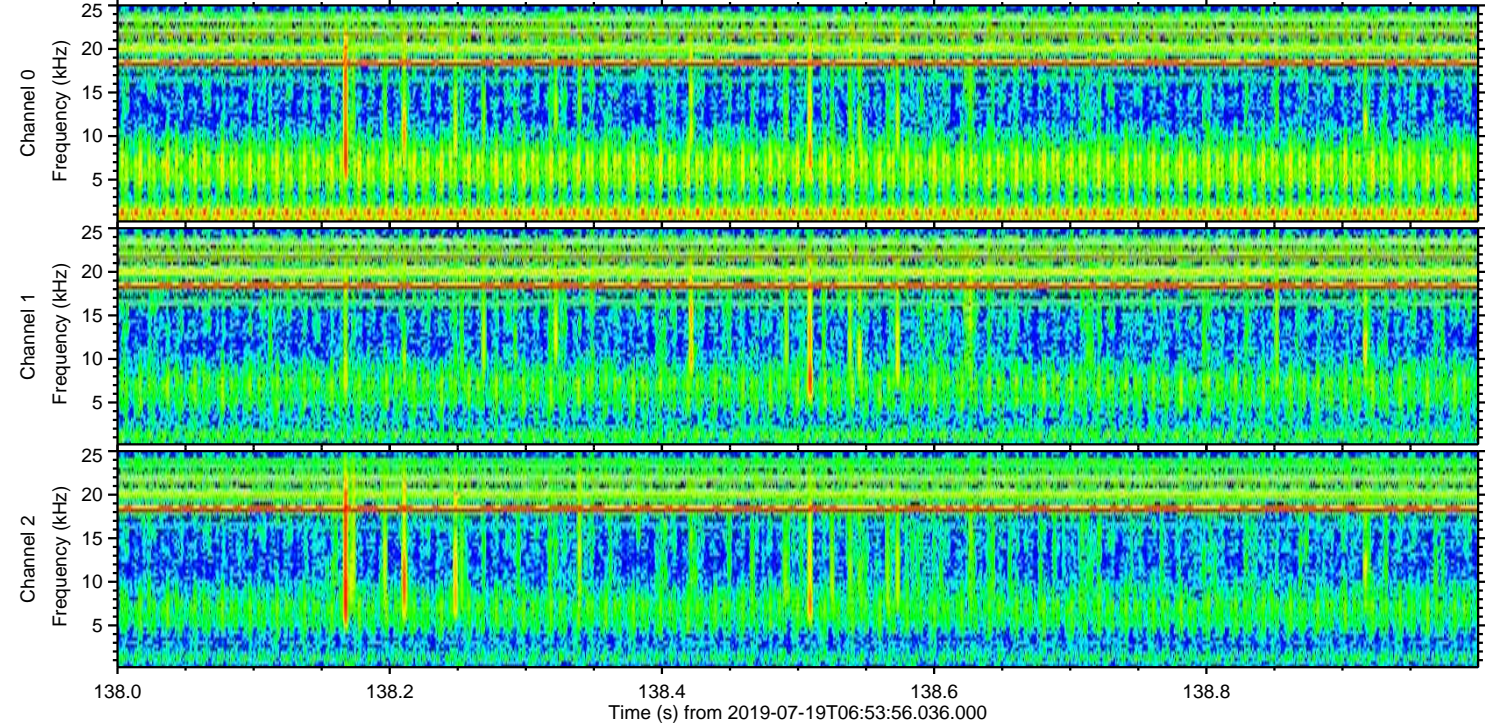
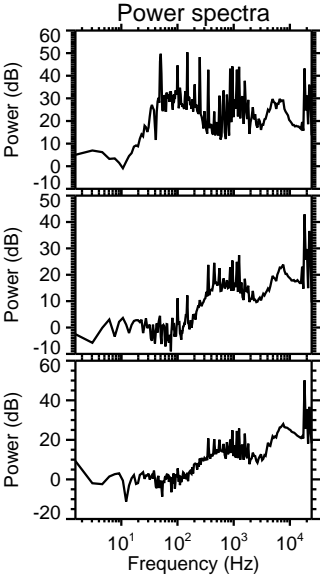
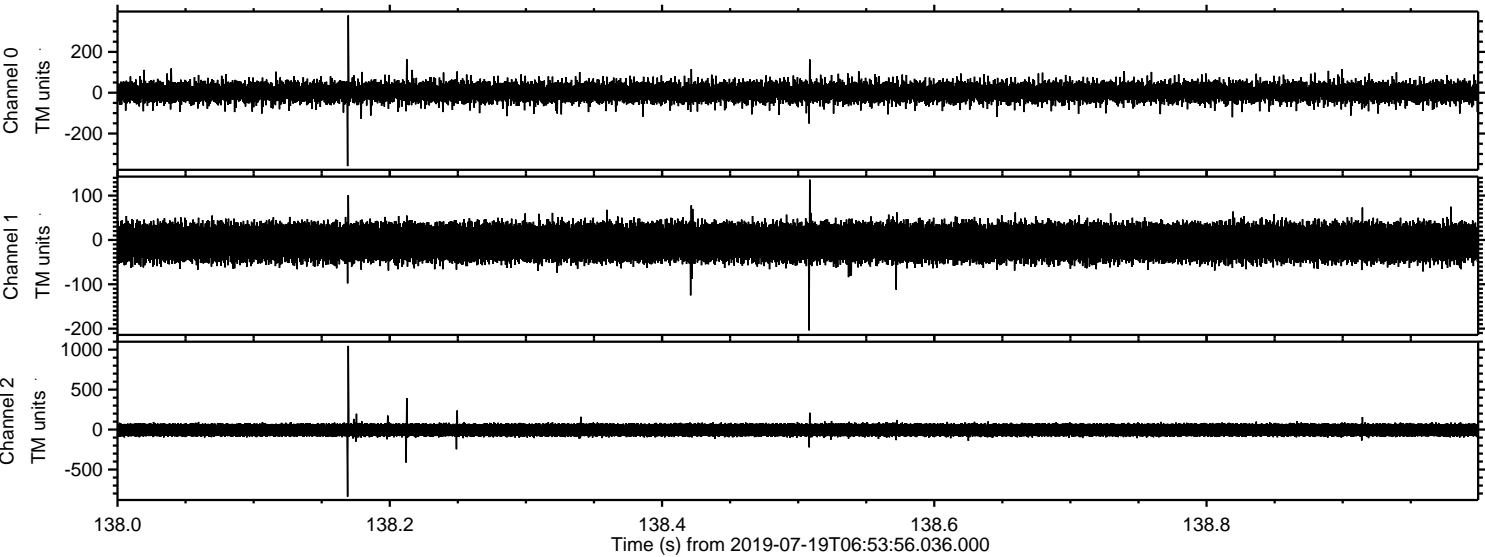


Processed Fri Jul 19 09:02:14 2019 by ELM ver.2012-10-06 from 001__elm20190719_065355__dat00.bin

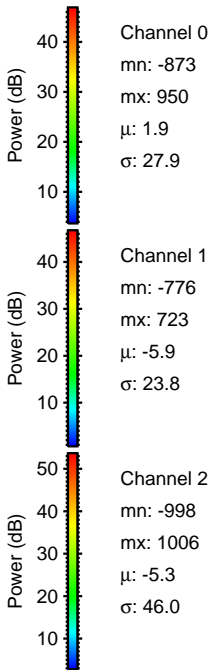
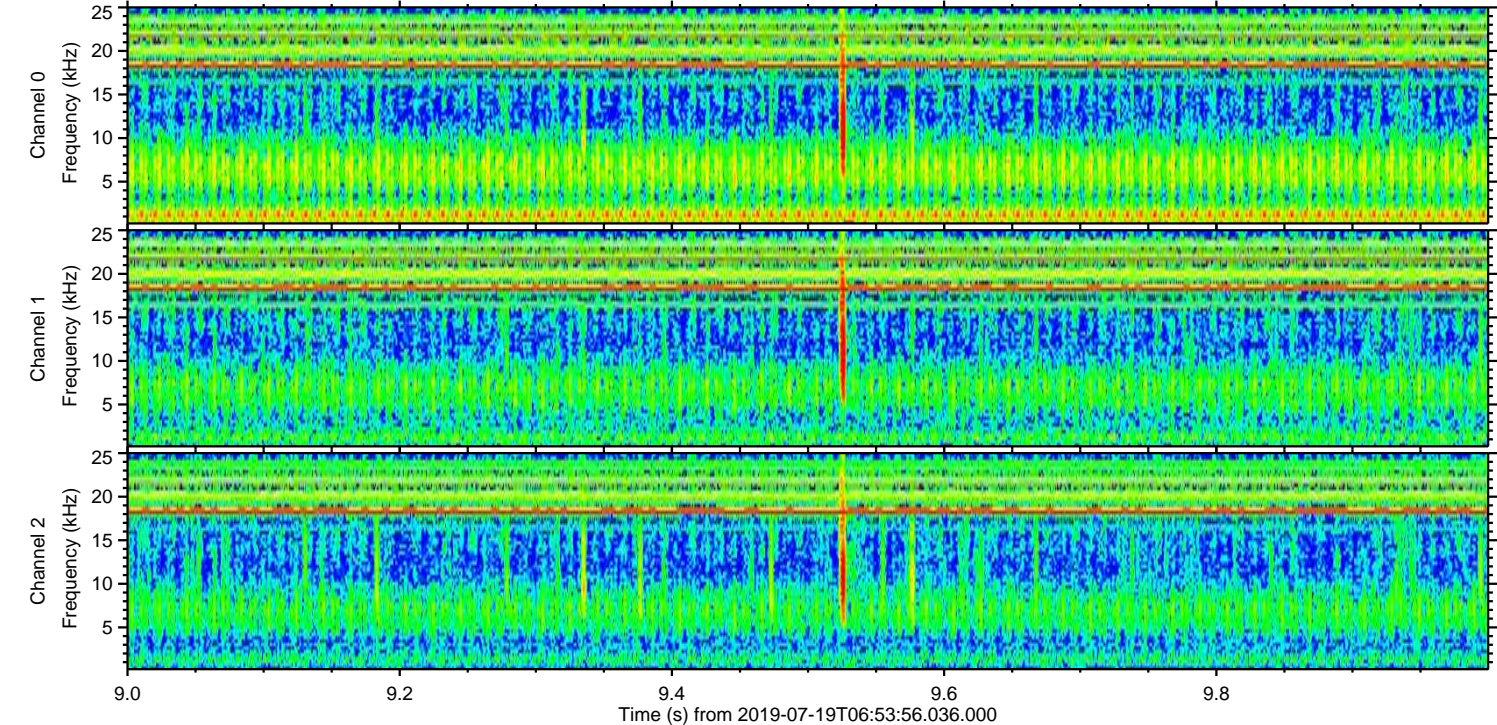
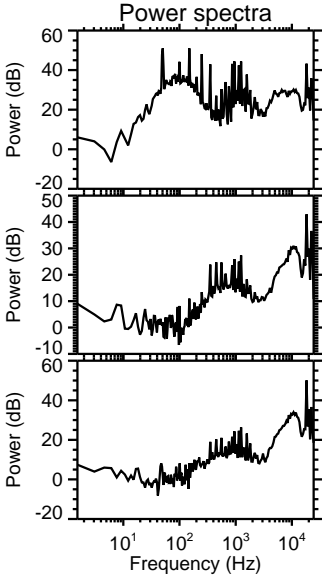
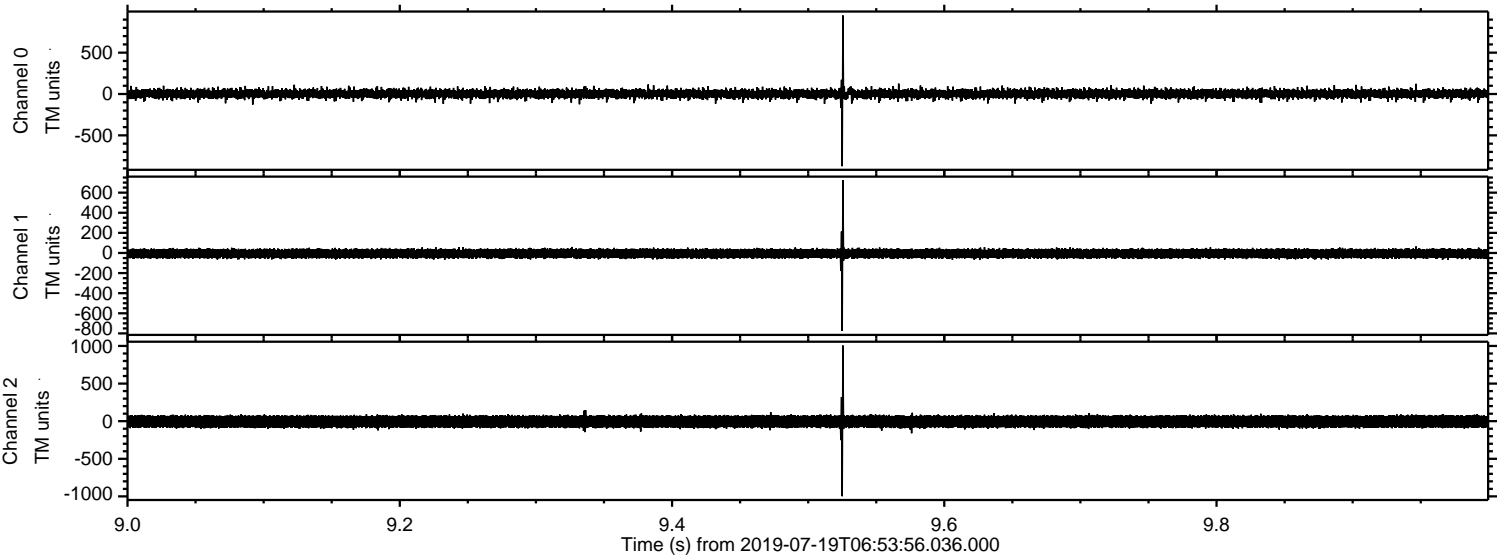


ELMAVAN 3D WAVEFORMS (Measured data sampled at 50 kHz) 51000 packets of 144 samples from 2019-07-19T06:53:56.036.000. Part 139/147

Processed Fri Jul 19 09:02:15 2019 by ELM ver.2012-10-06 from 001__elm20190719_065355__dat00.bin

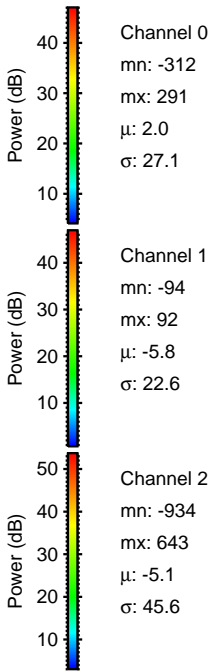
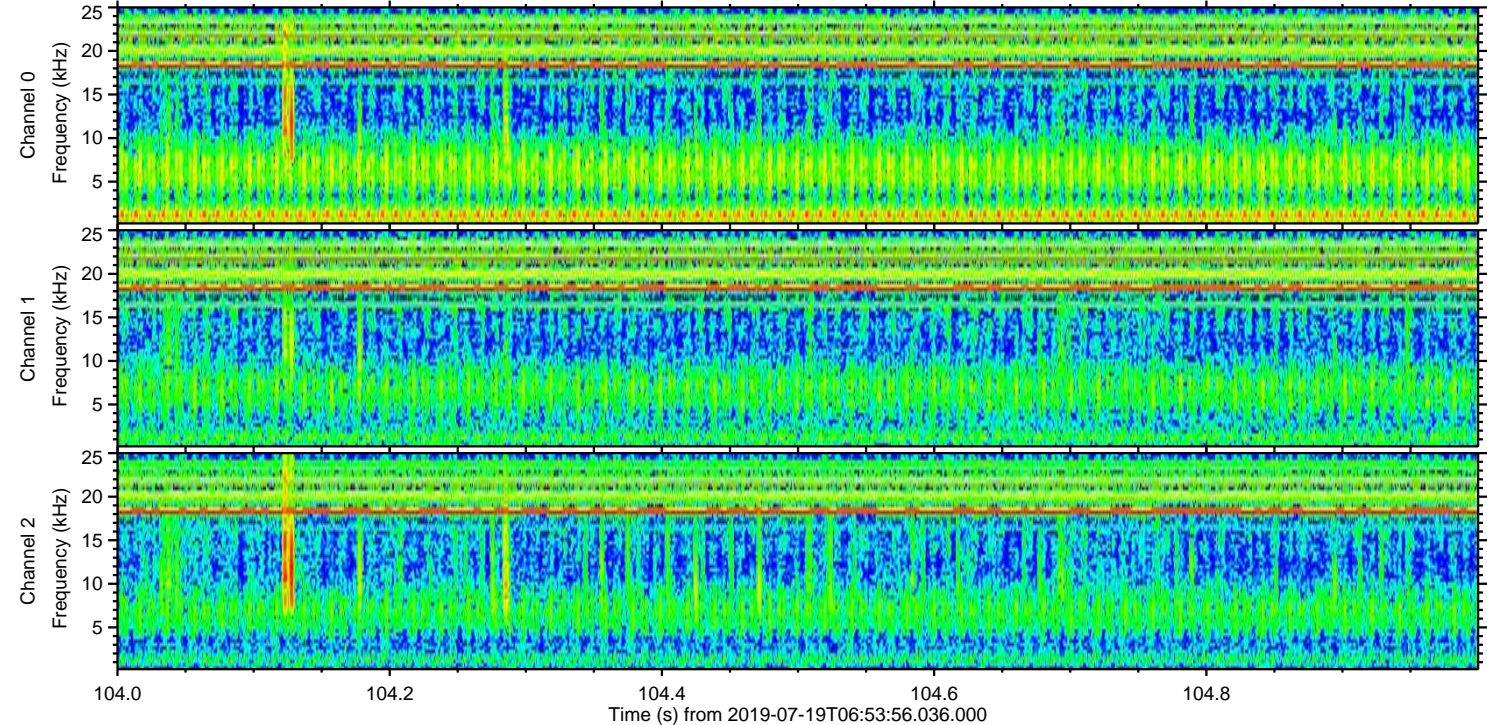
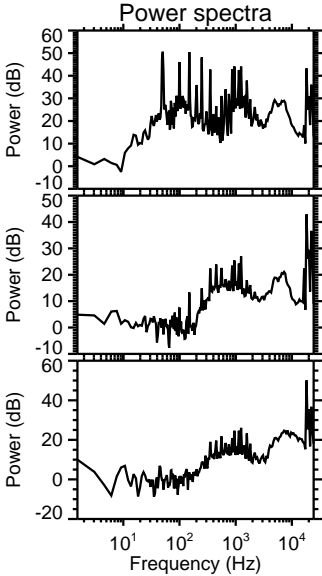
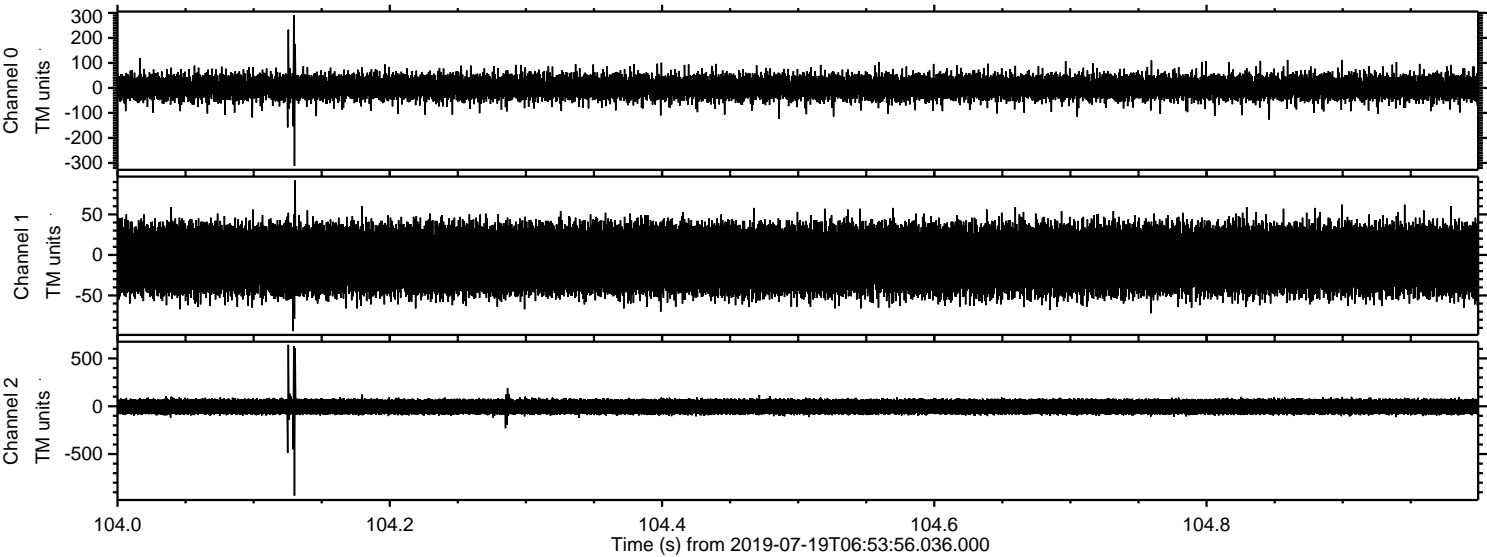


Processed Fri Jul 19 09:02:16 2019 by ELM ver.2012-10-06 from 001__elm20190719_065355__dat00.bin

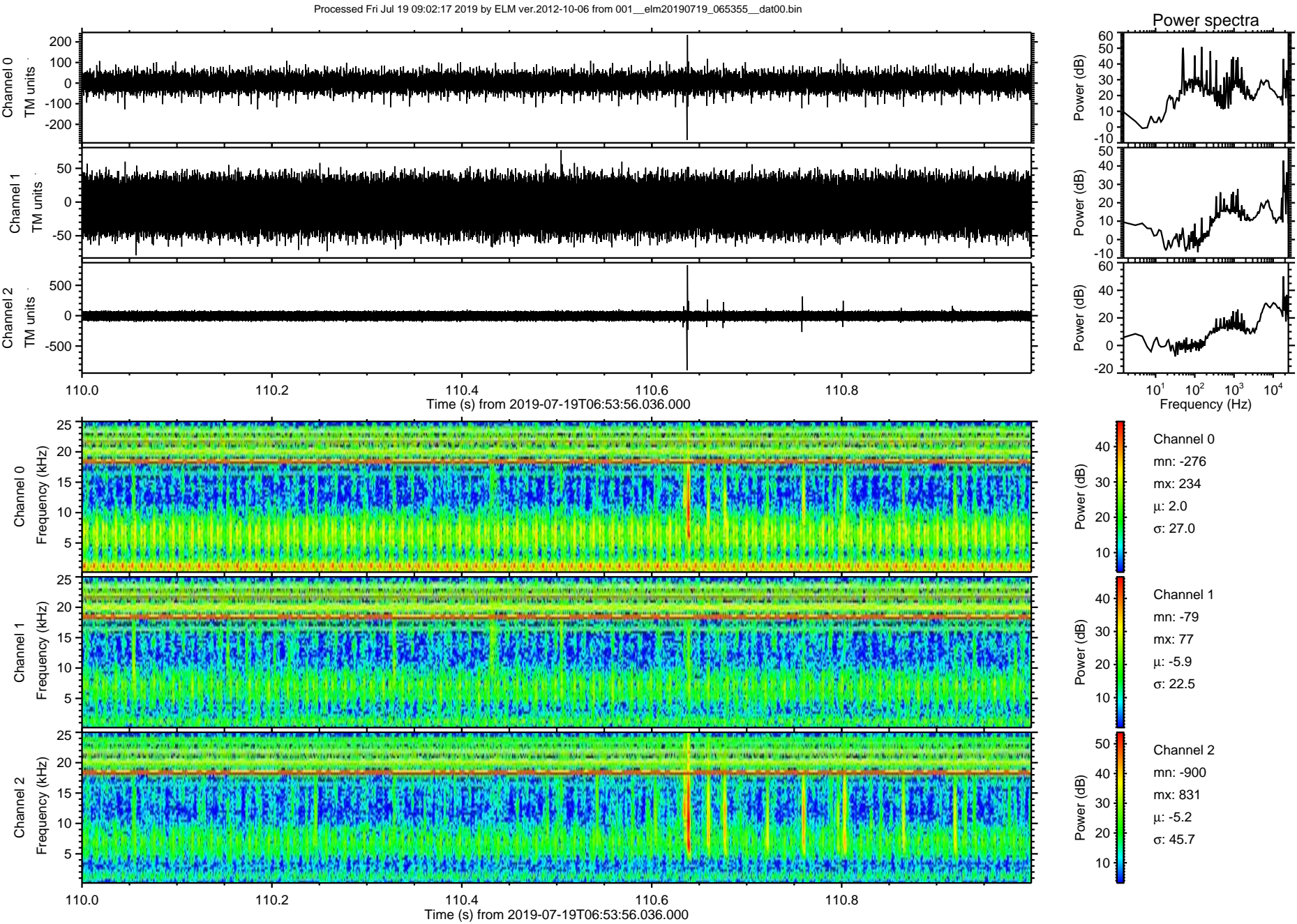


ELMAVAN 3D WAVEFORMS (Measured data sampled at 50 kHz) 51000 packets of 144 samples from 2019-07-19T06:53:56.036.000. Part 105/147

Processed Fri Jul 19 09:02:17 2019 by ELM ver.2012-10-06 from 001__elm20190719_065355__dat00.bin

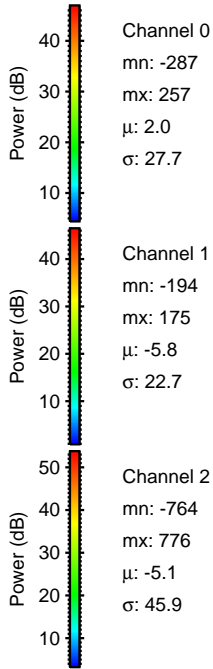
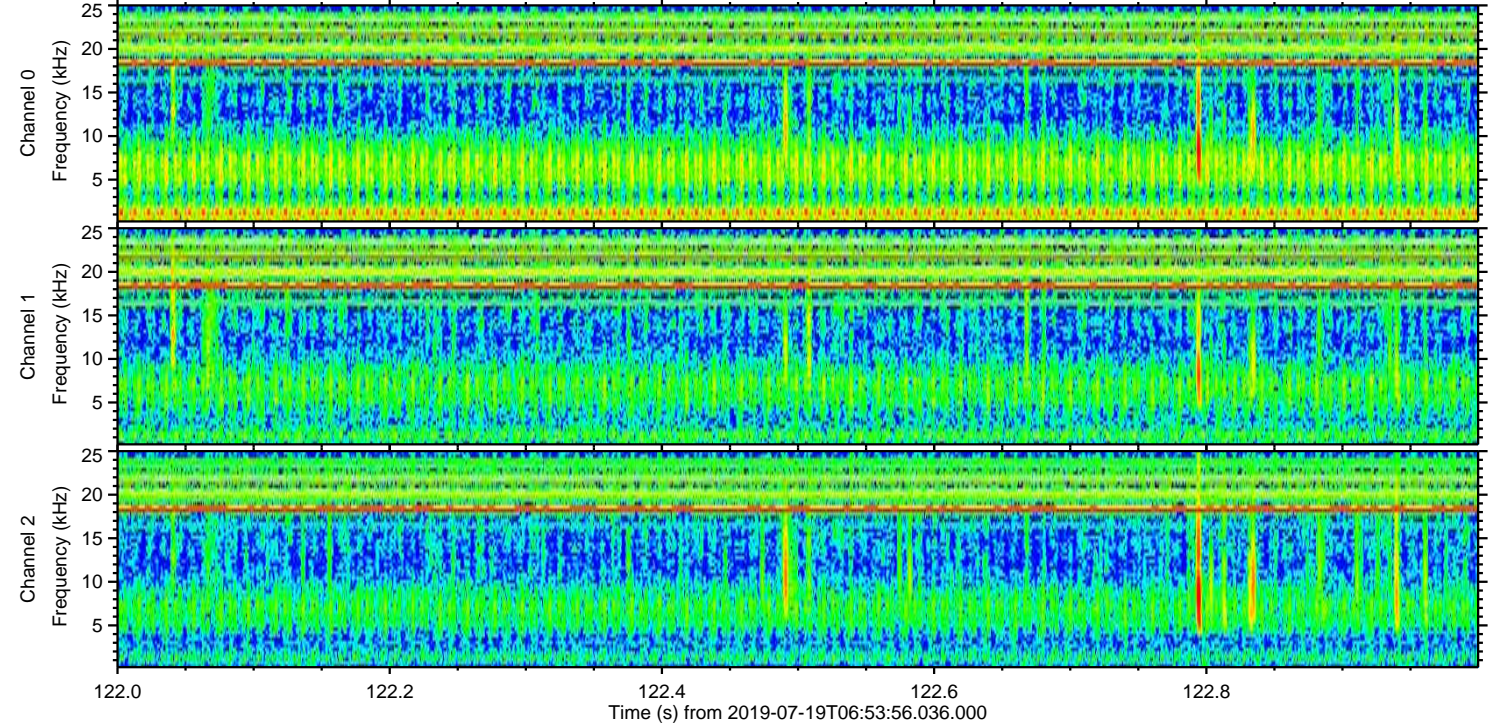
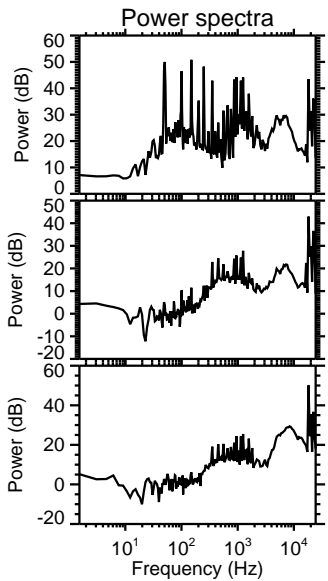
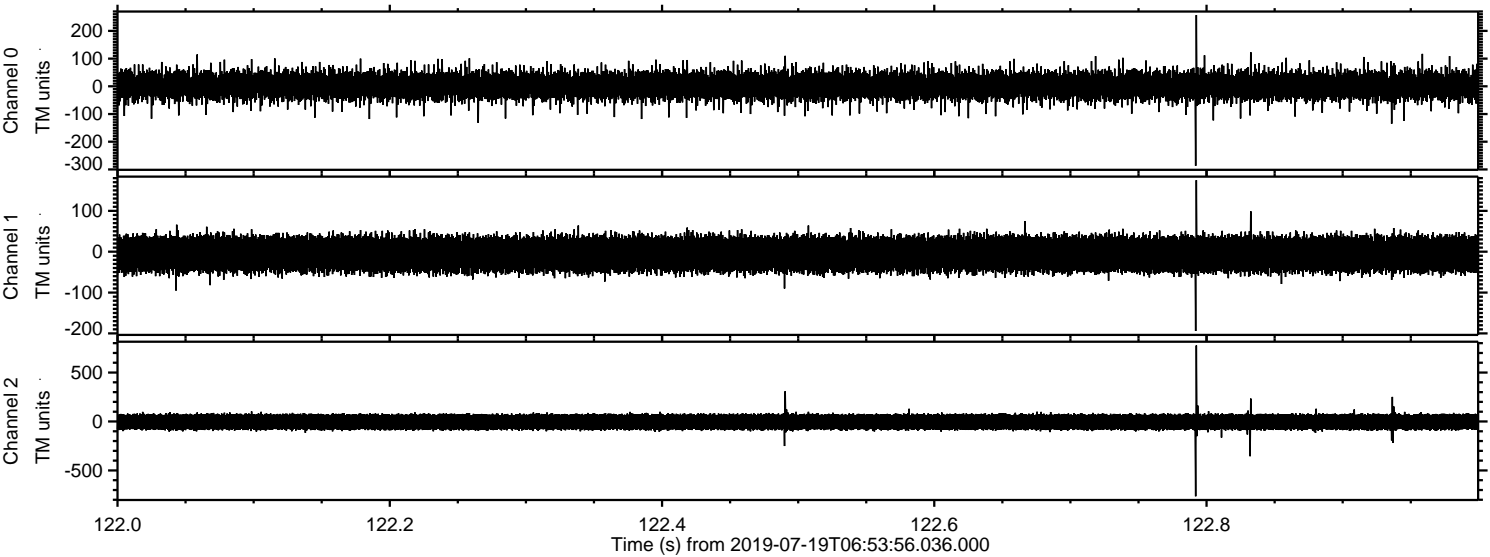


ELMAVAN 3D WAVEFORMS (Measured data sampled at 50 kHz) 51000 packets of 144 samples from 2019-07-19T06:53:56.036.000. Part 111/147

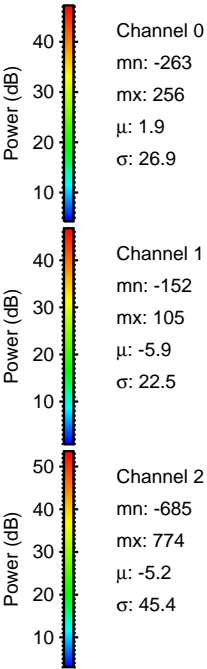
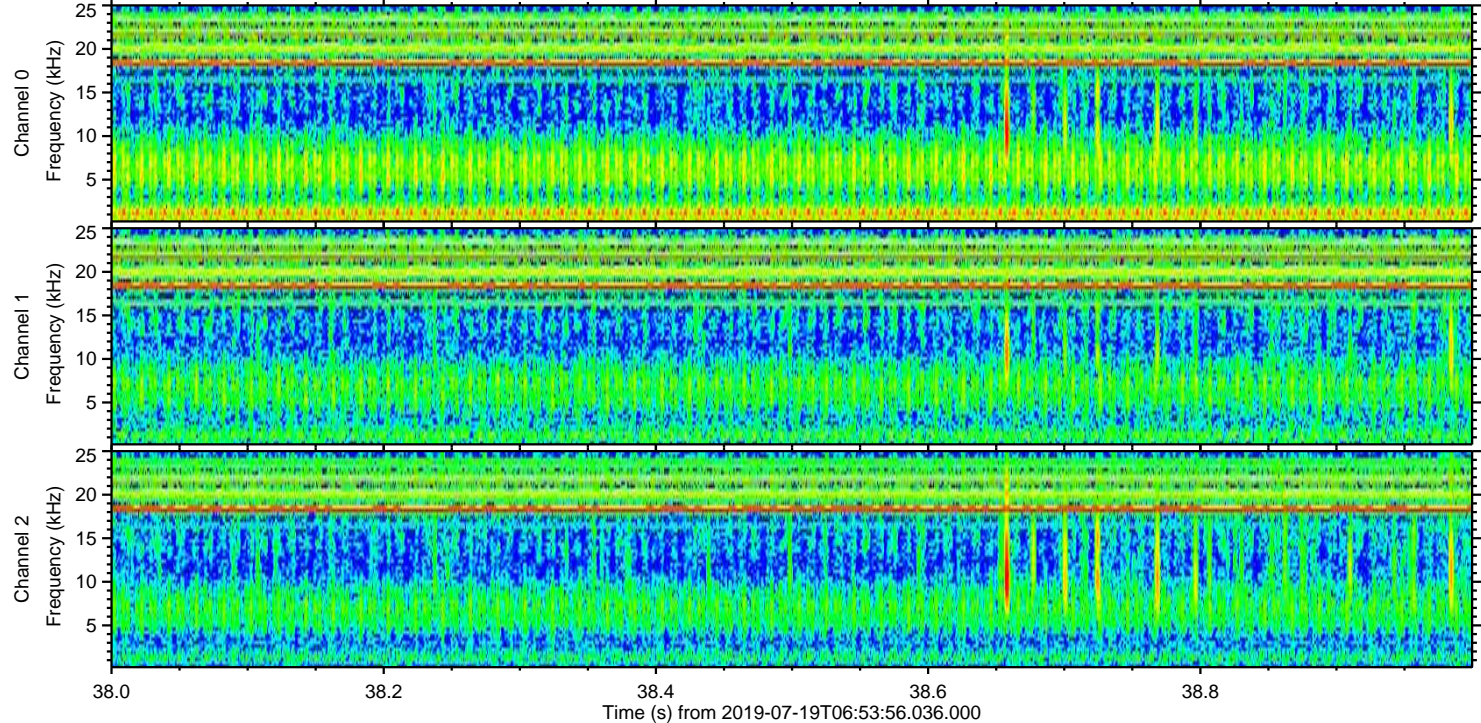
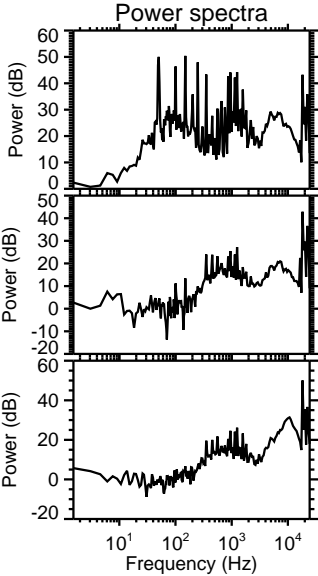
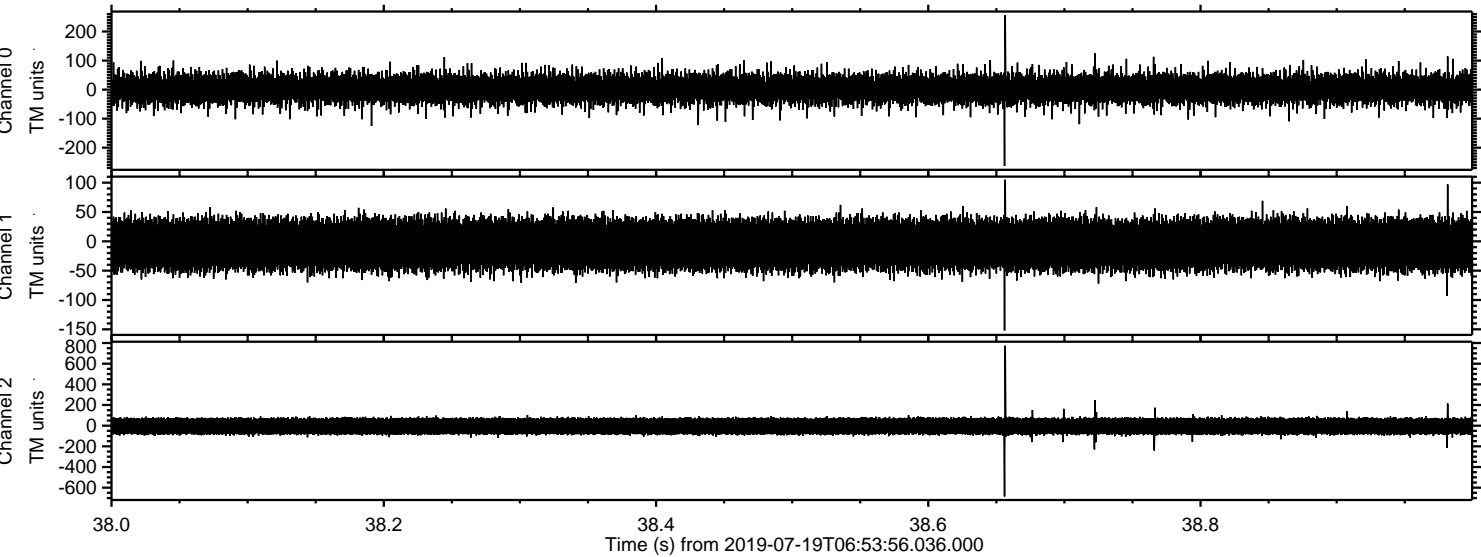


ELMAVAN 3D WAVEFORMS (Measured data sampled at 50 kHz) 51000 packets of 144 samples from 2019-07-19T06:53:56.036.000. Part 123/147

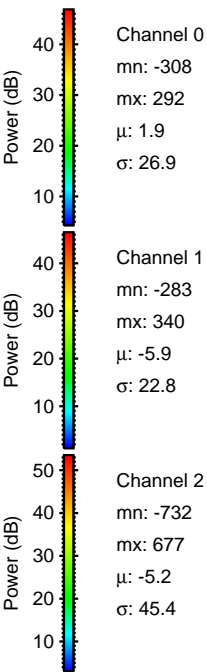
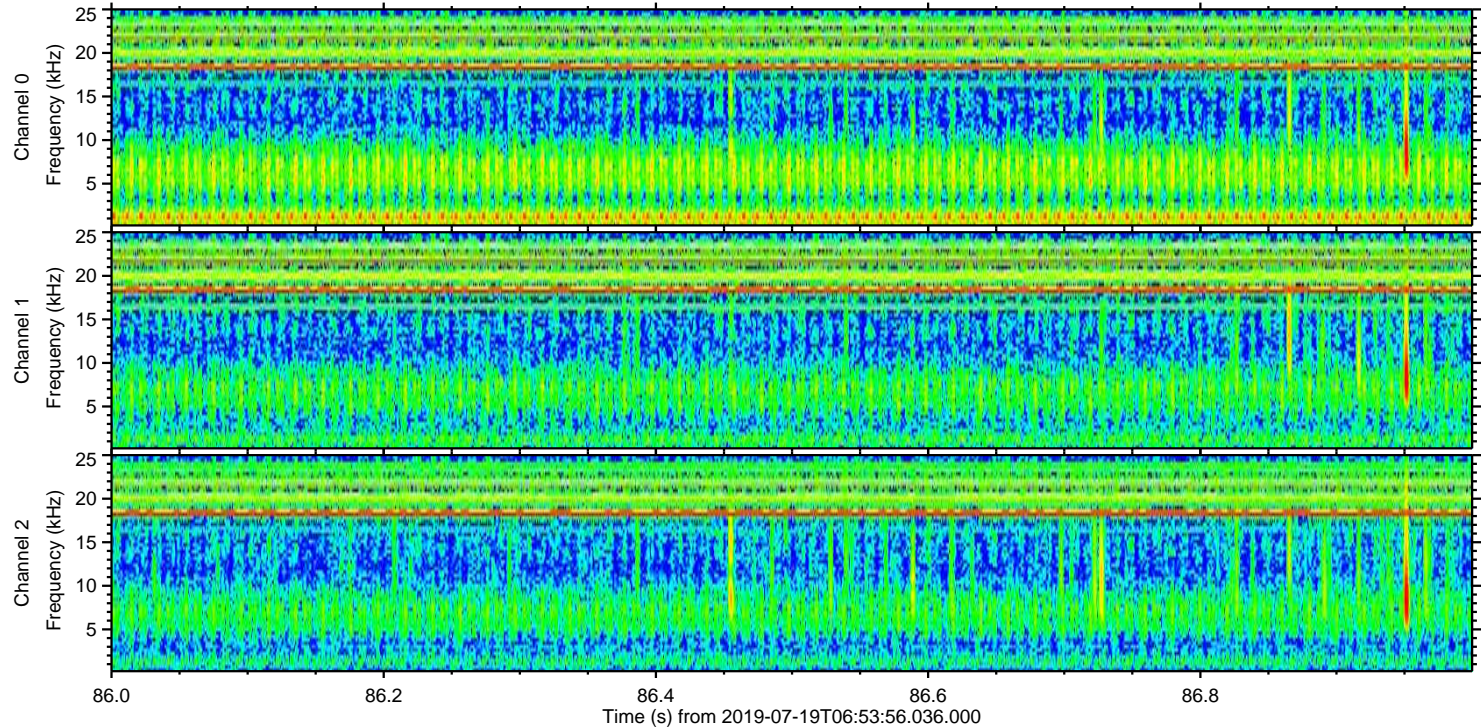
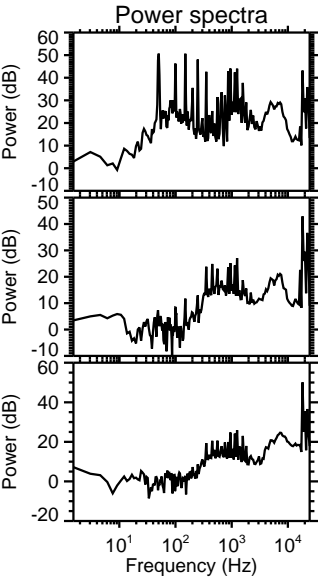
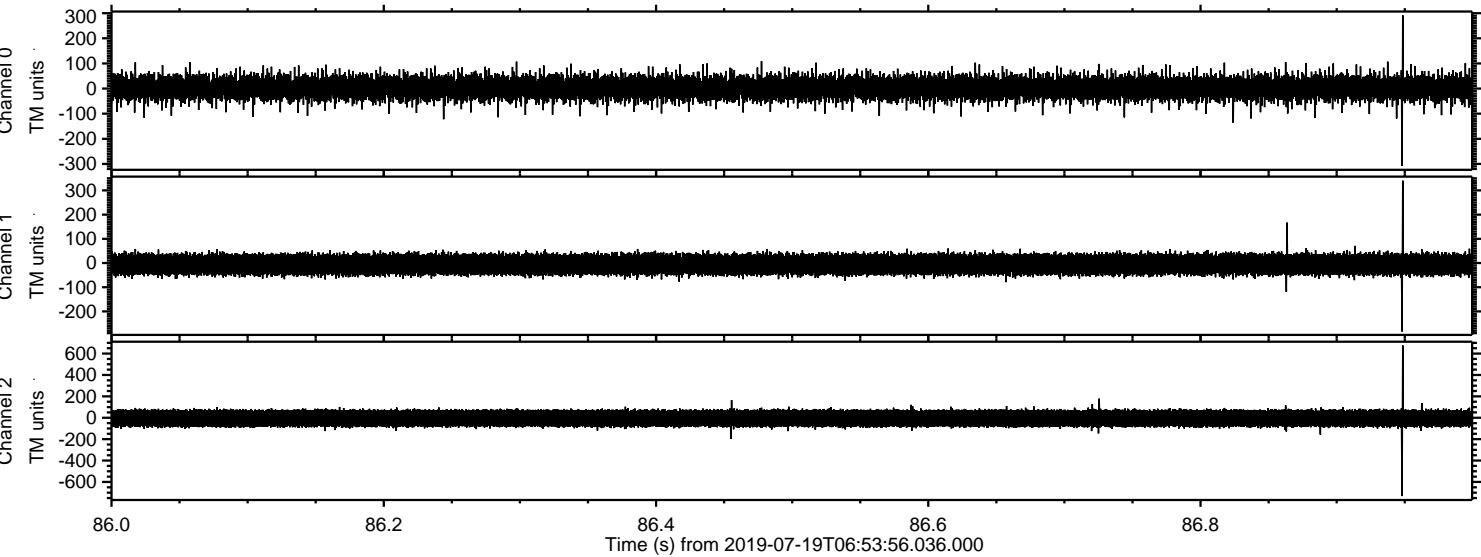
Processed Fri Jul 19 09:02:18 2019 by ELM ver.2012-10-06 from 001__elm20190719_065355__dat00.bin



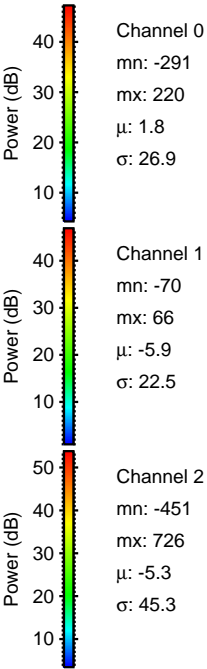
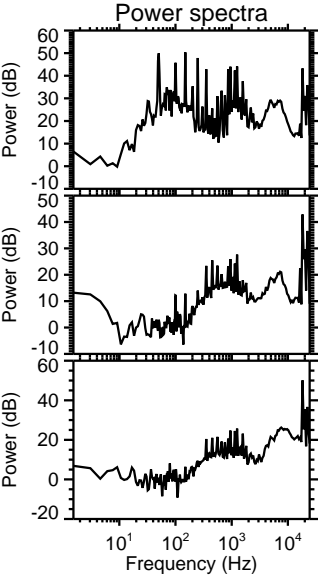
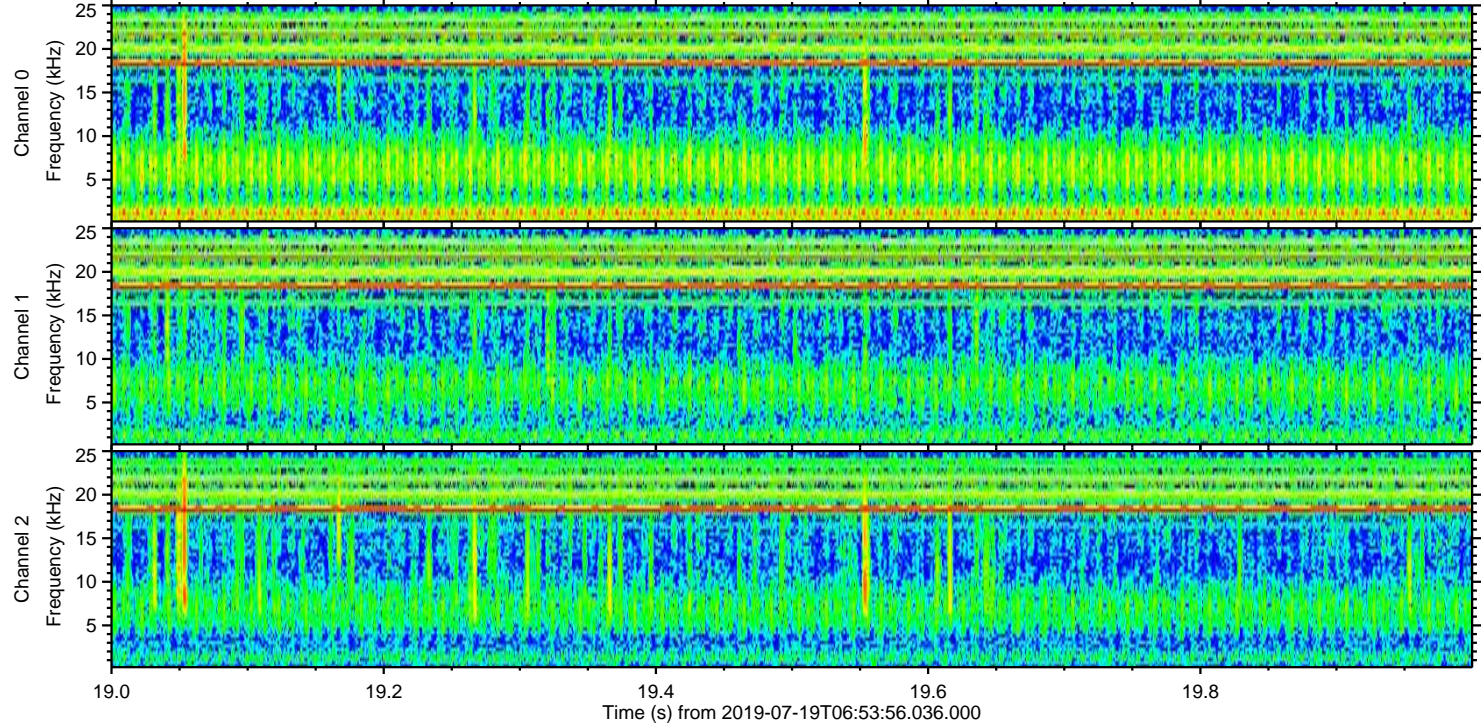
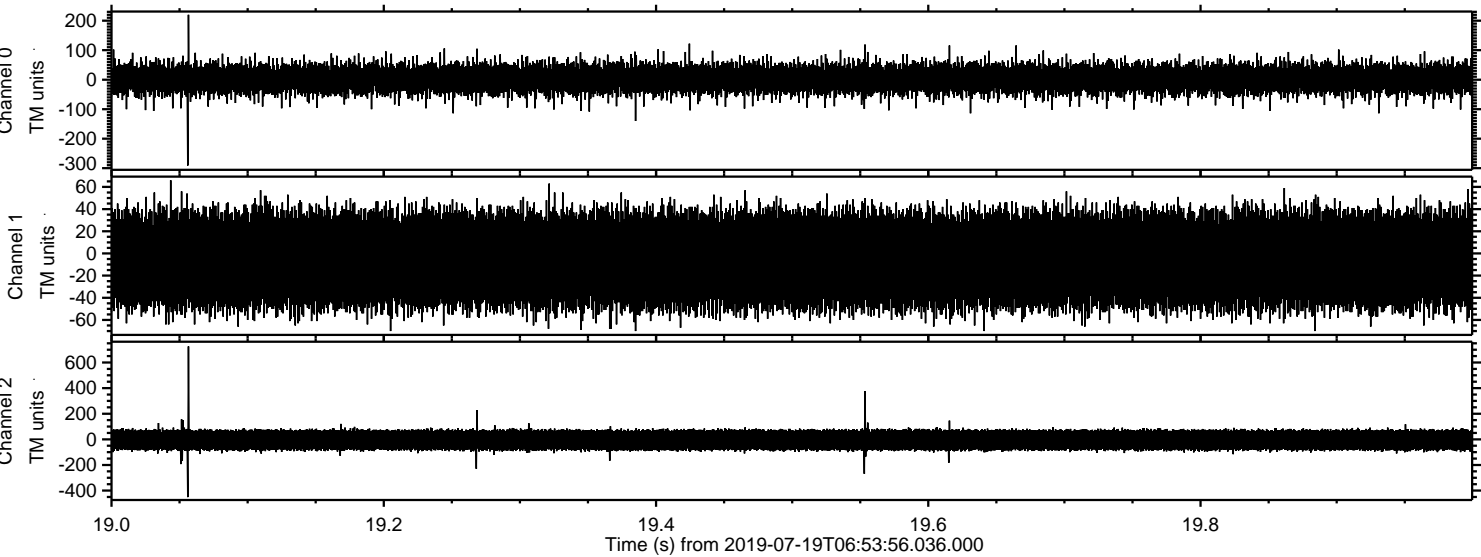
Processed Fri Jul 19 09:02:18 2019 by ELM ver.2012-10-06 from 001__elm20190719_065355__dat00.bin



Processed Fri Jul 19 09:02:19 2019 by ELM ver.2012-10-06 from 001__elm20190719_065355__dat00.bin



Processed Fri Jul 19 09:02:20 2019 by ELM ver.2012-10-06 from 001__elm20190719_065355__dat00.bin



Channel 0
mn: -291
mx: 220
 μ : 1.8
 σ : 26.9

Channel 1
mn: -70
mx: 66
 μ : -5.9
 σ : 22.5

Channel 2
mn: -451
mx: 726
 μ : -5.3
 σ : 45.3

Processed Fri Jul 19 09:02:20 2019 by ELM ver.2012-10-06 from 001__elm20190719_065355__dat00.bin

