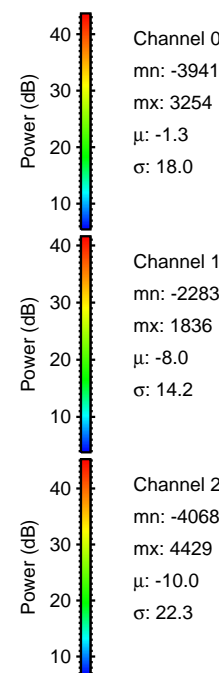
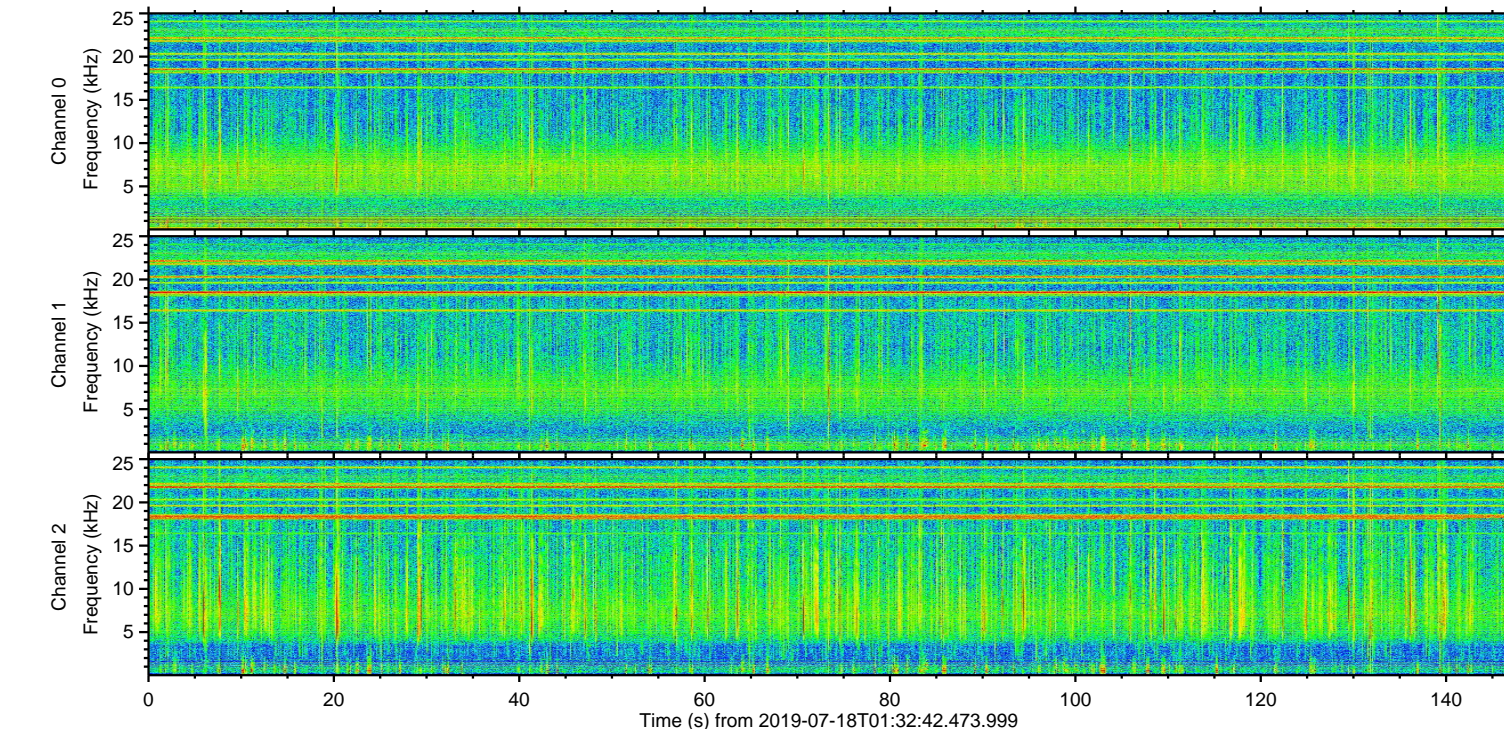
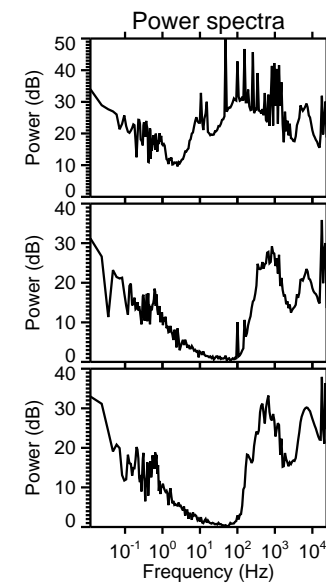
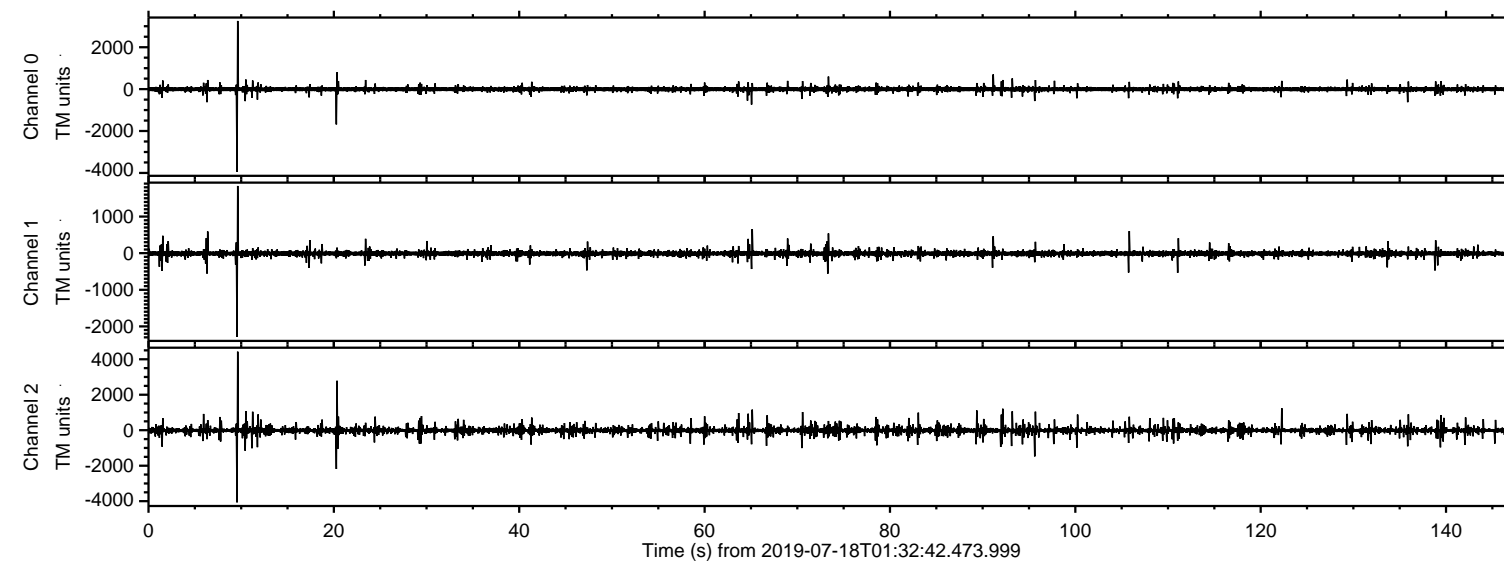


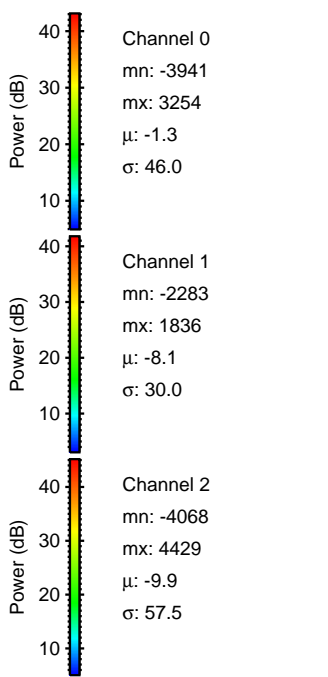
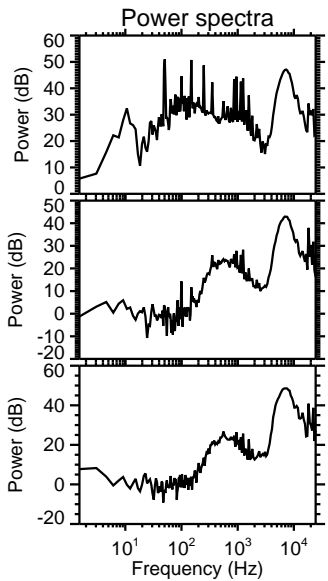
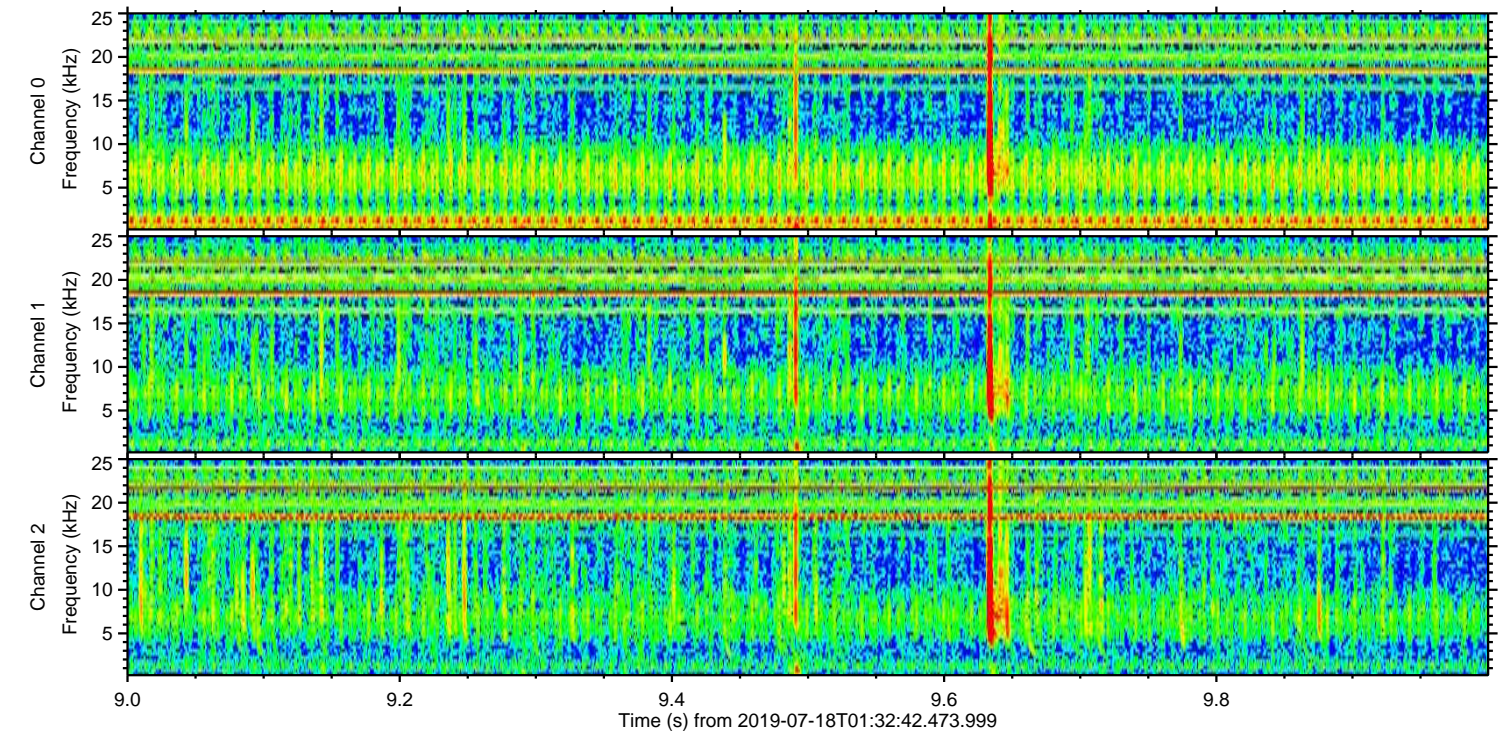
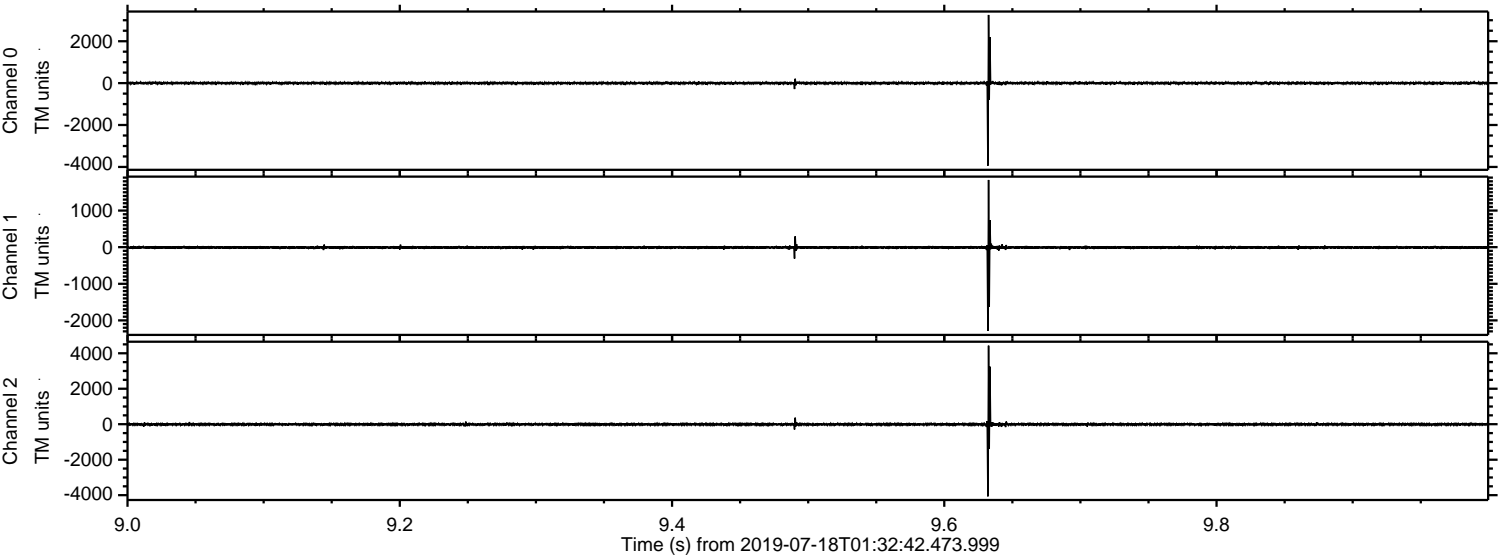
# ELMAVAN 3D WAVEFORMS (Measured data sampled at 50 kHz) 51000 packets of 144 samples from 2019-07-18T01:32:42.473.999.

Processed Thu Jul 18 03:40:36 2019 by ELM ver.2012-10-06 from 001\_\_elm20190718\_013241\_\_dat00.bin





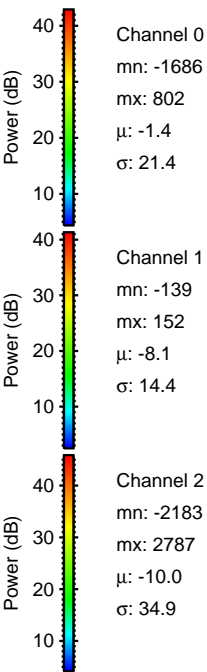
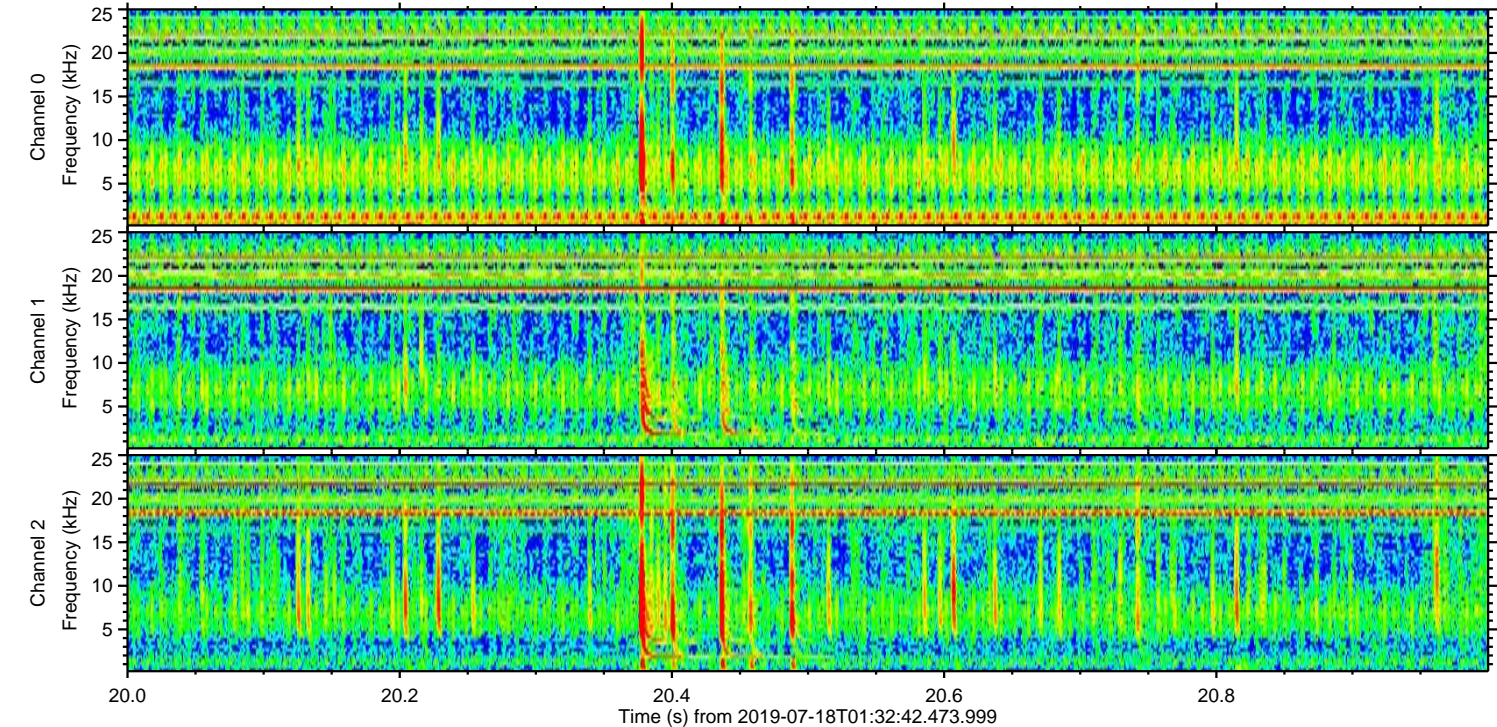
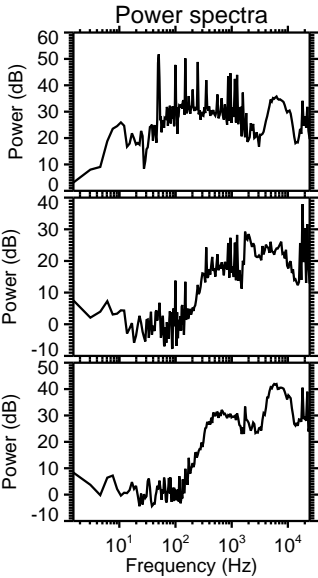
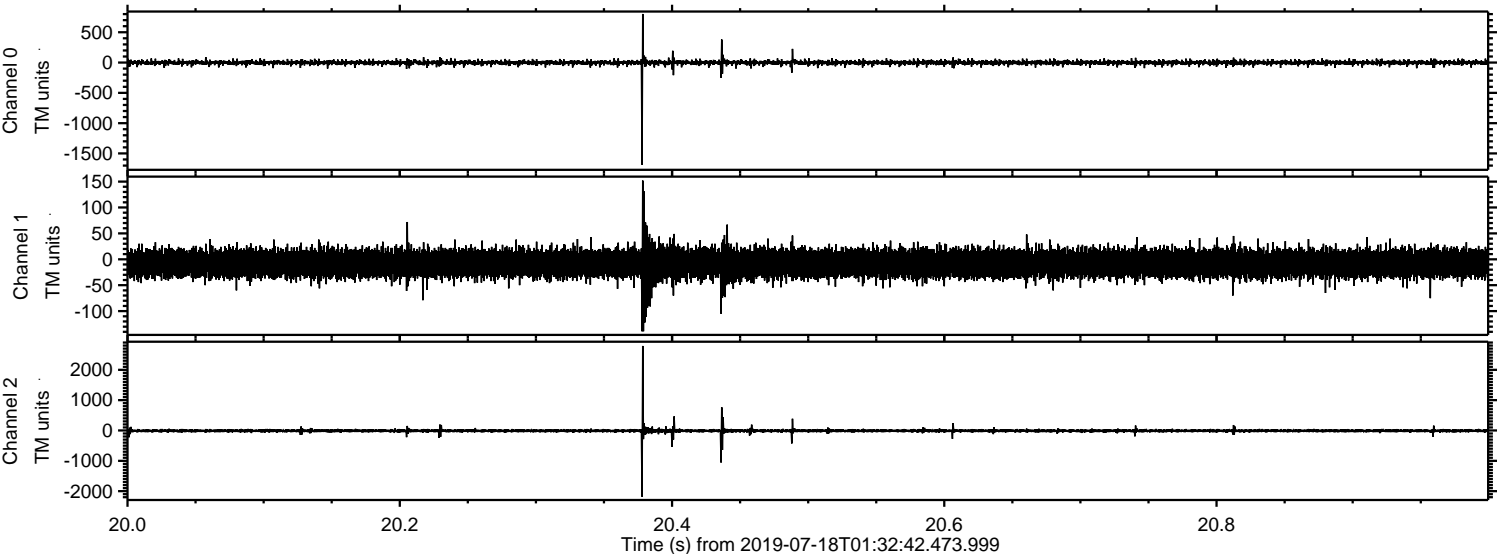
Processed Thu Jul 18 03:40:41 2019 by ELM ver.2012-10-06 from 001\_\_elm20190718\_013241\_\_dat00.bin





ELMAVAN 3D WAVEFORMS (Measured data sampled at 50 kHz) 51000 packets of 144 samples from 2019-07-18T01:32:42.473.999. Part 21/147

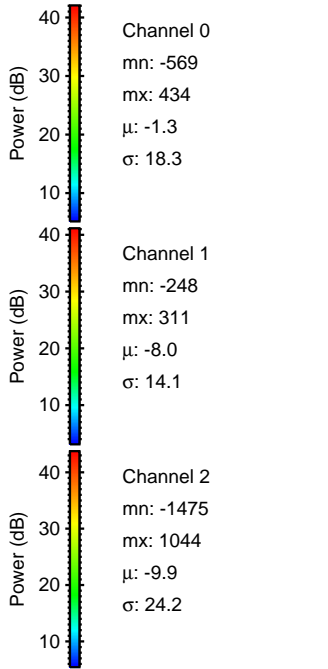
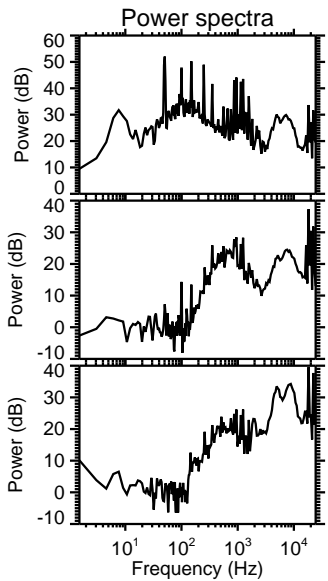
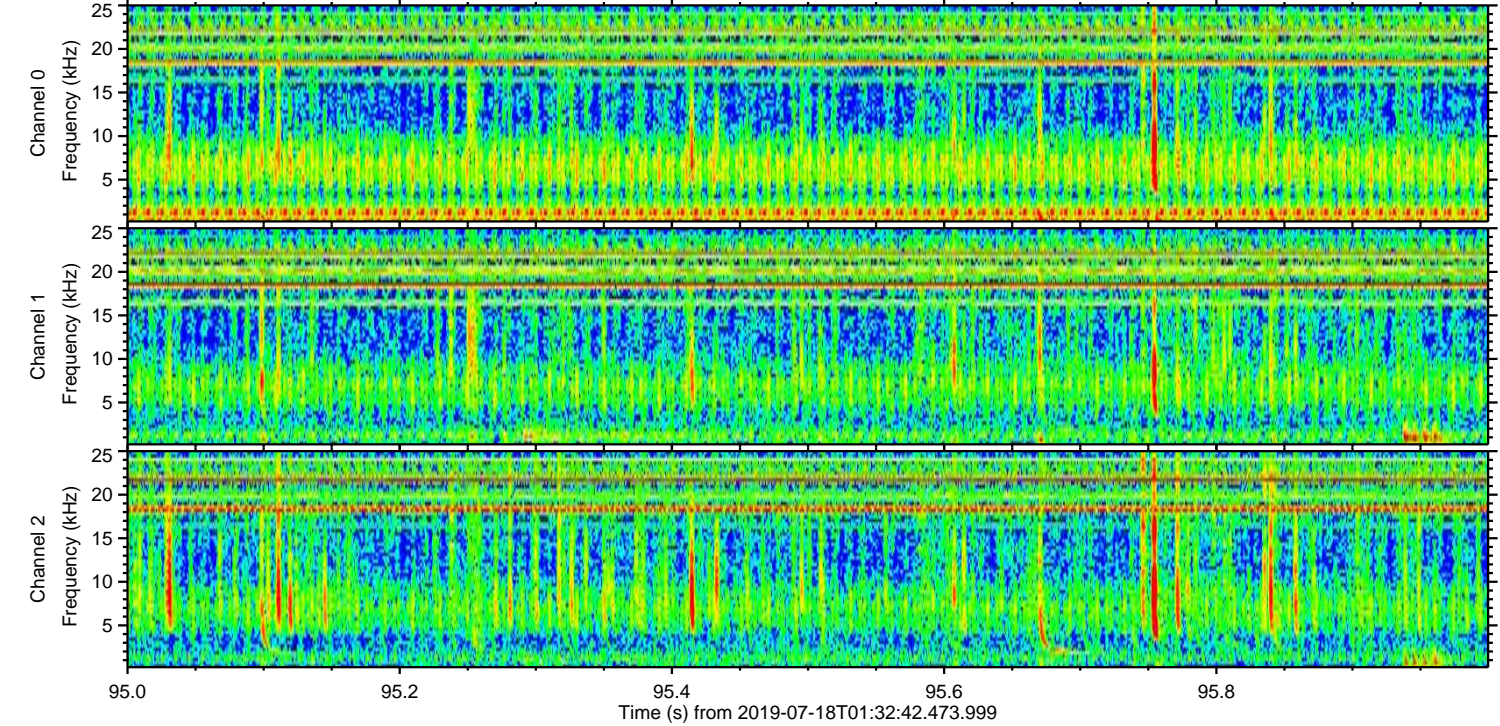
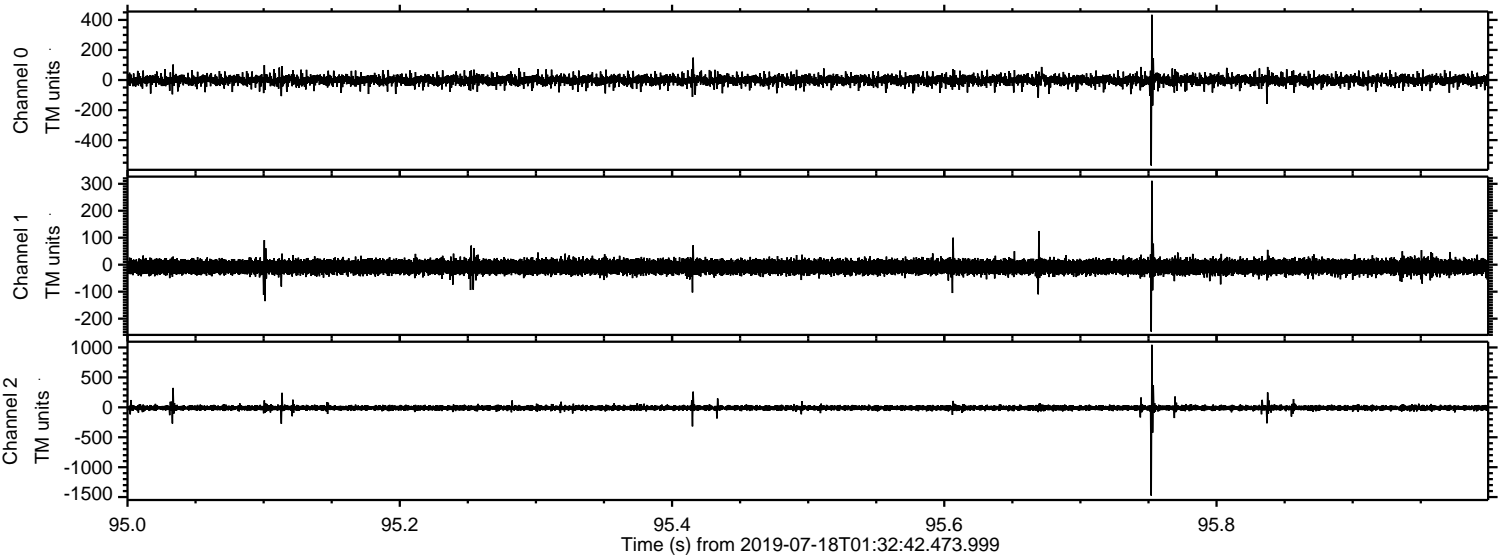
Processed Thu Jul 18 03:40:42 2019 by ELM ver.2012-10-06 from 001\_\_elm20190718\_013241\_\_dat00.bin





ELMAVAN 3D WAVEFORMS (Measured data sampled at 50 kHz) 51000 packets of 144 samples from 2019-07-18T01:32:42.473.999. Part 96/147

Processed Thu Jul 18 03:40:43 2019 by ELM ver.2012-10-06 from 001\_\_elm20190718\_013241\_\_dat00.bin



Power spectra

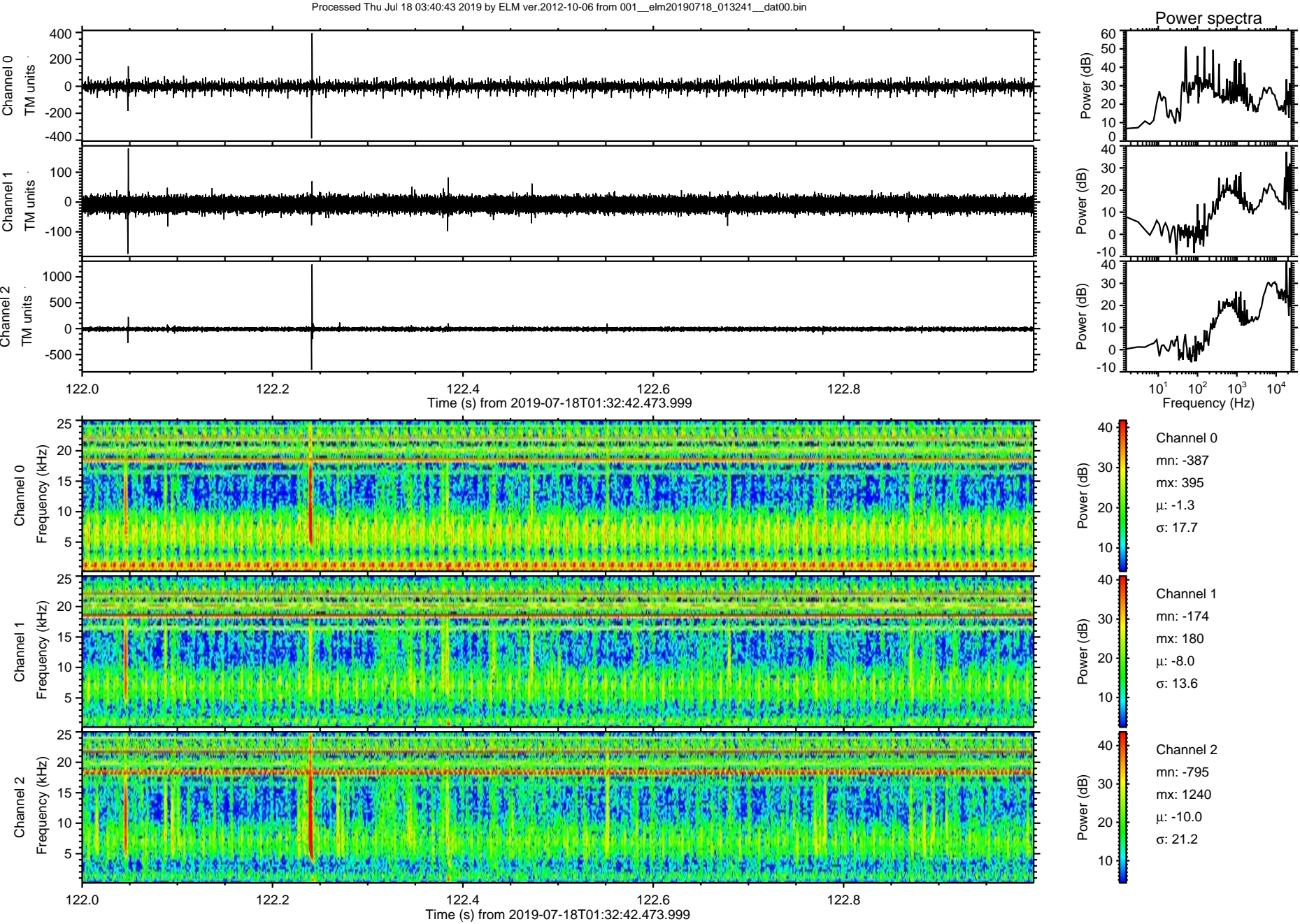
Channel 0  
mn: -569  
mx: 434  
 $\mu$ : -1.3  
 $\sigma$ : 18.3

Channel 1  
mn: -248  
mx: 311  
 $\mu$ : -8.0  
 $\sigma$ : 14.1

Channel 2  
mn: -1475  
mx: 1044  
 $\mu$ : -9.9  
 $\sigma$ : 24.2

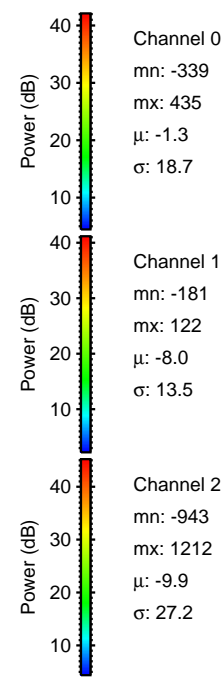
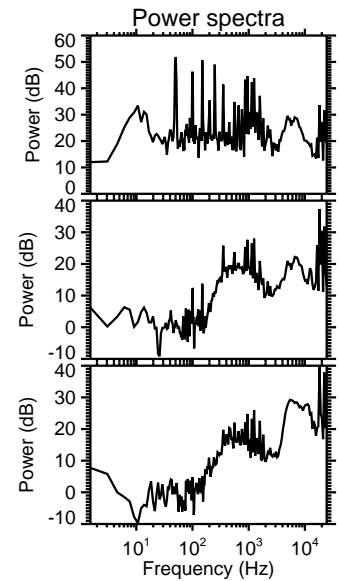
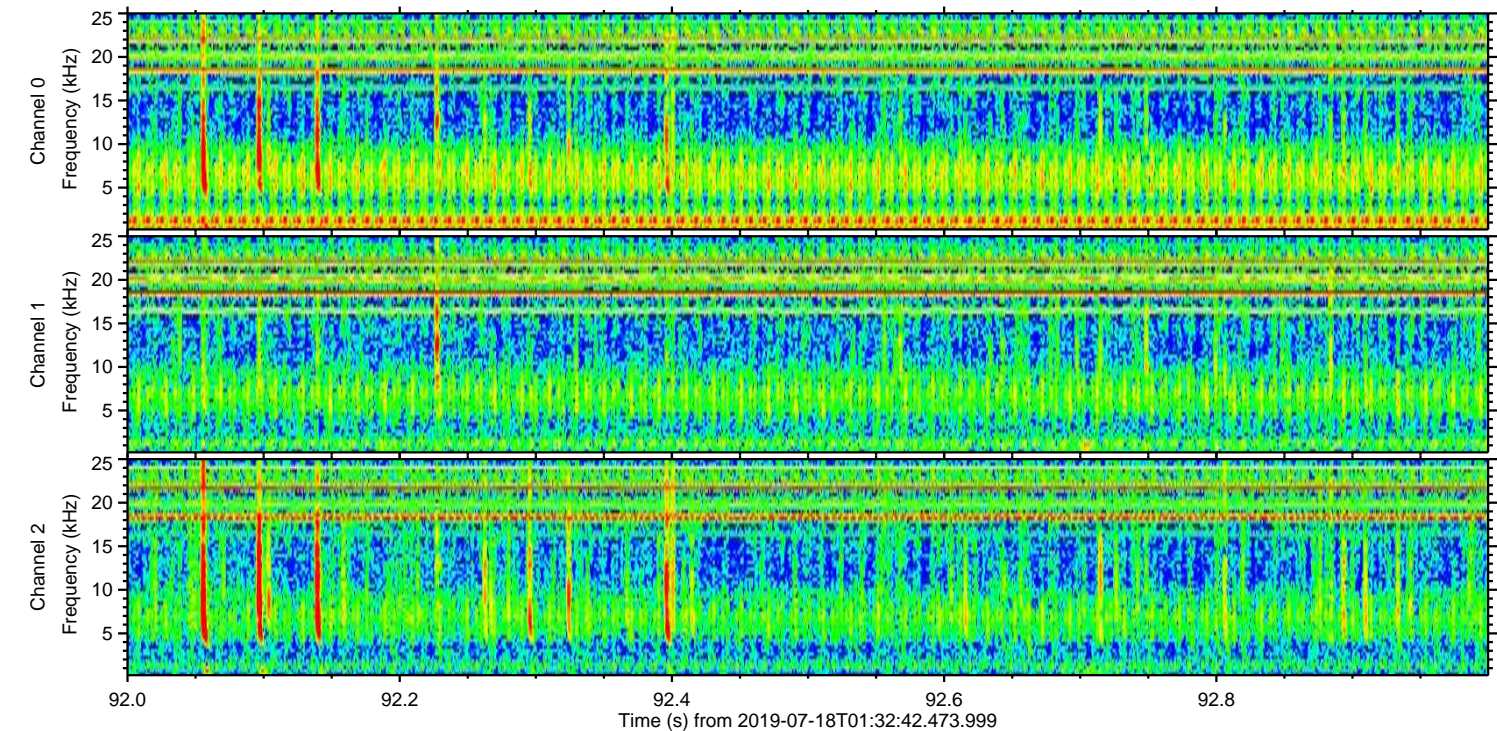
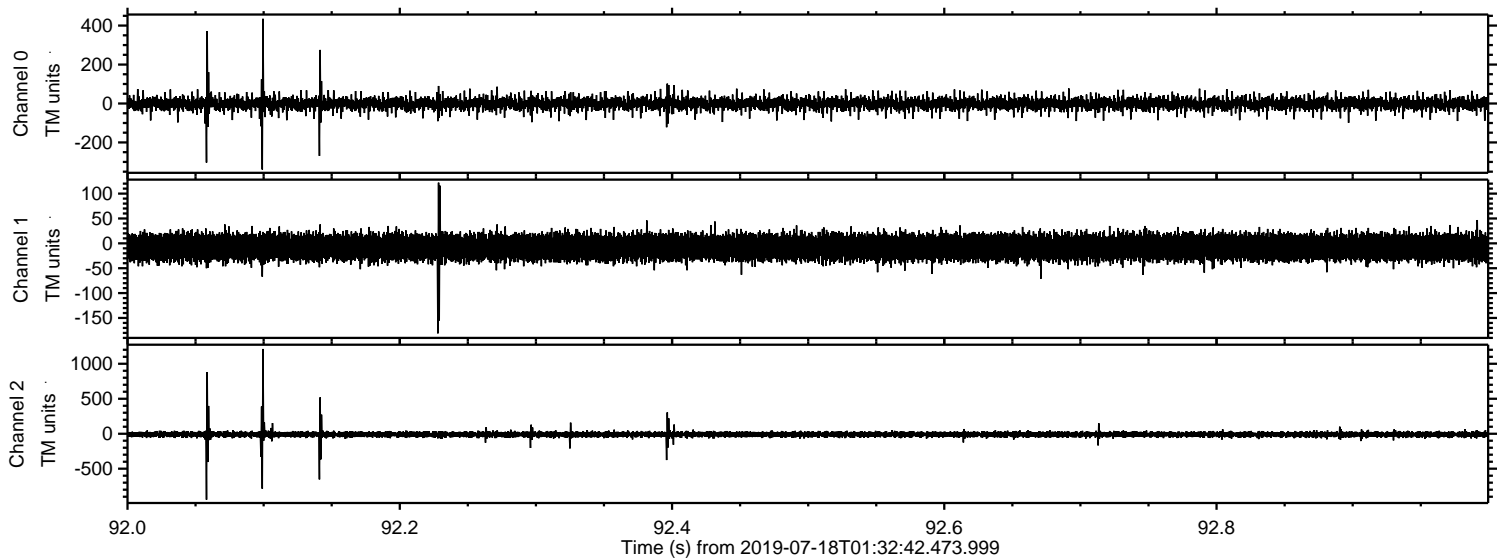


ELMAVAN 3D WAVEFORMS (Measured data sampled at 50 kHz) 51000 packets of 144 samples from 2019-07-18T01:32:42.473.999. Part 123/147



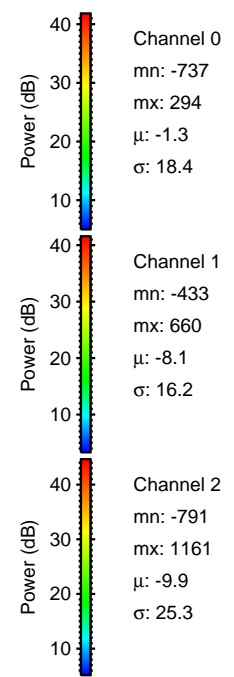
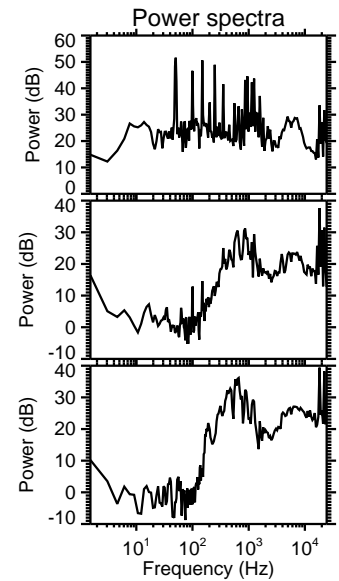
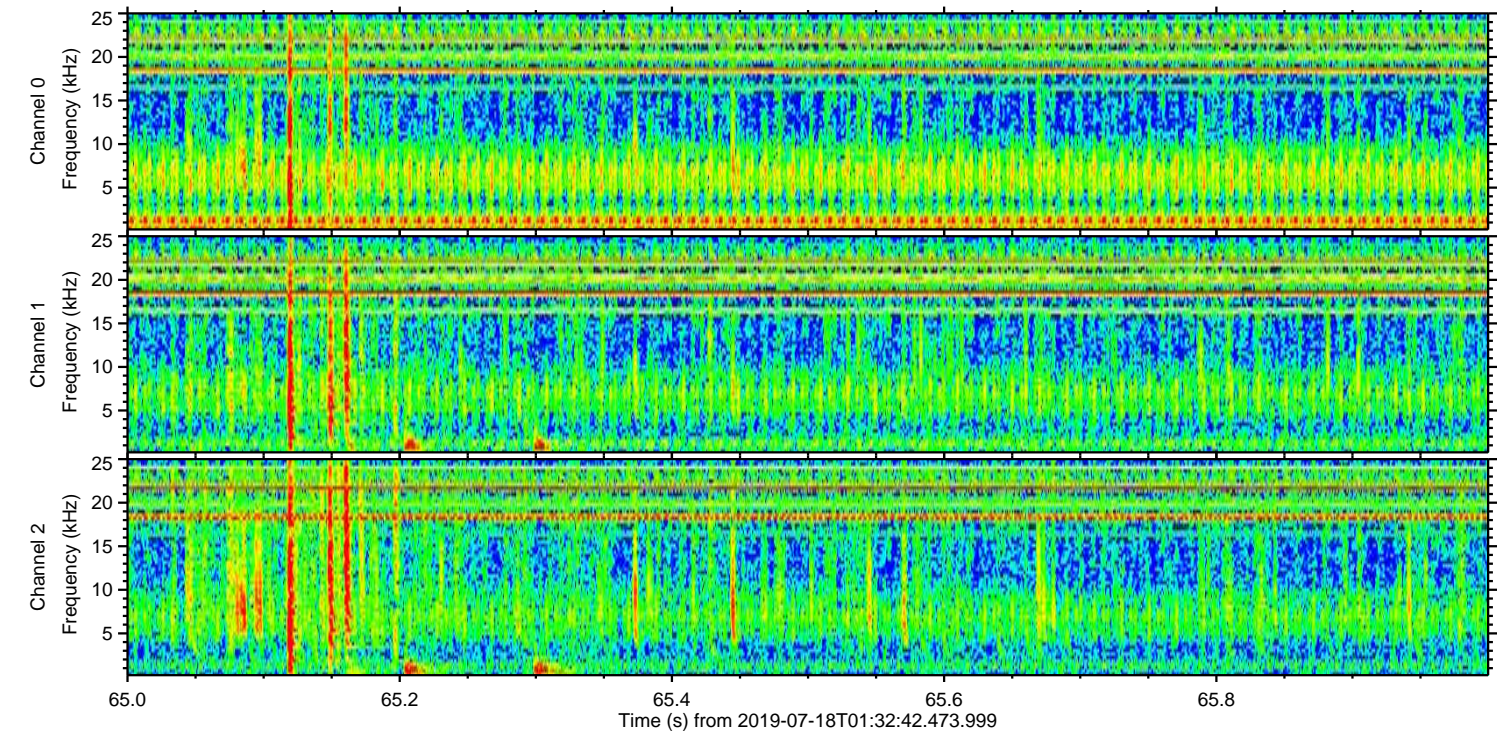
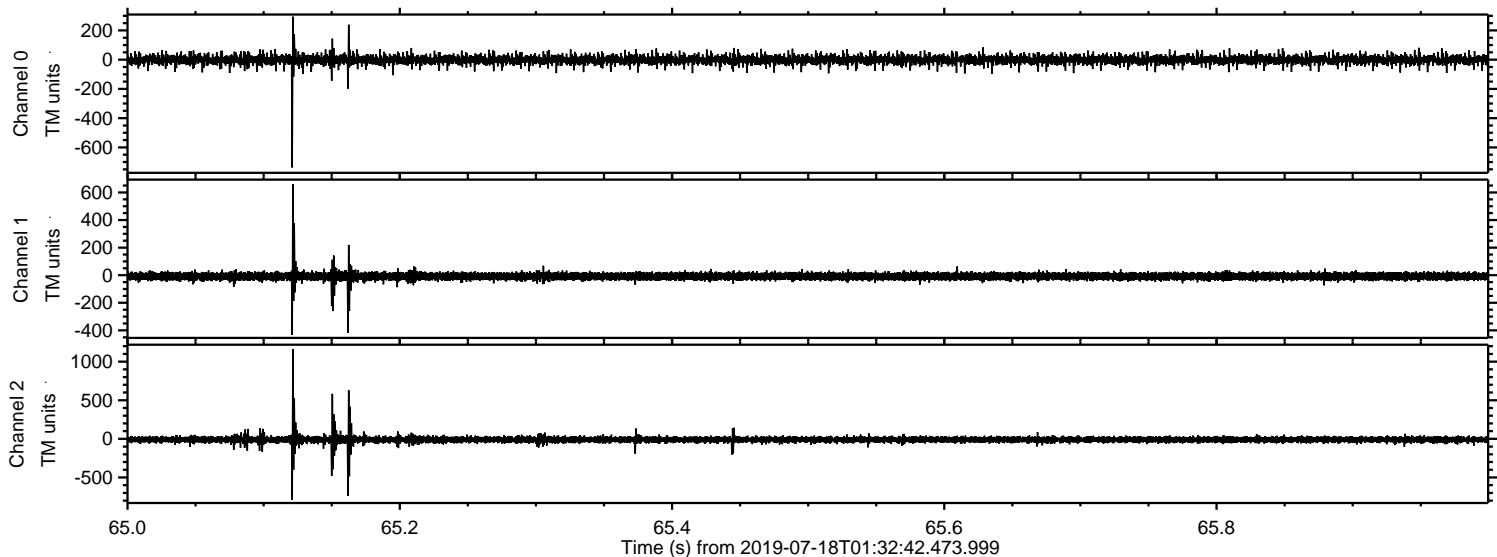


Processed Thu Jul 18 03:40:44 2019 by ELM ver.2012-10-06 from 001\_\_elm20190718\_013241\_\_dat00.bin



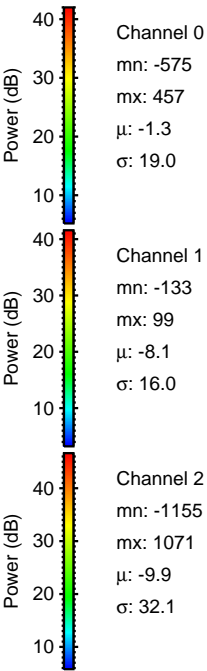
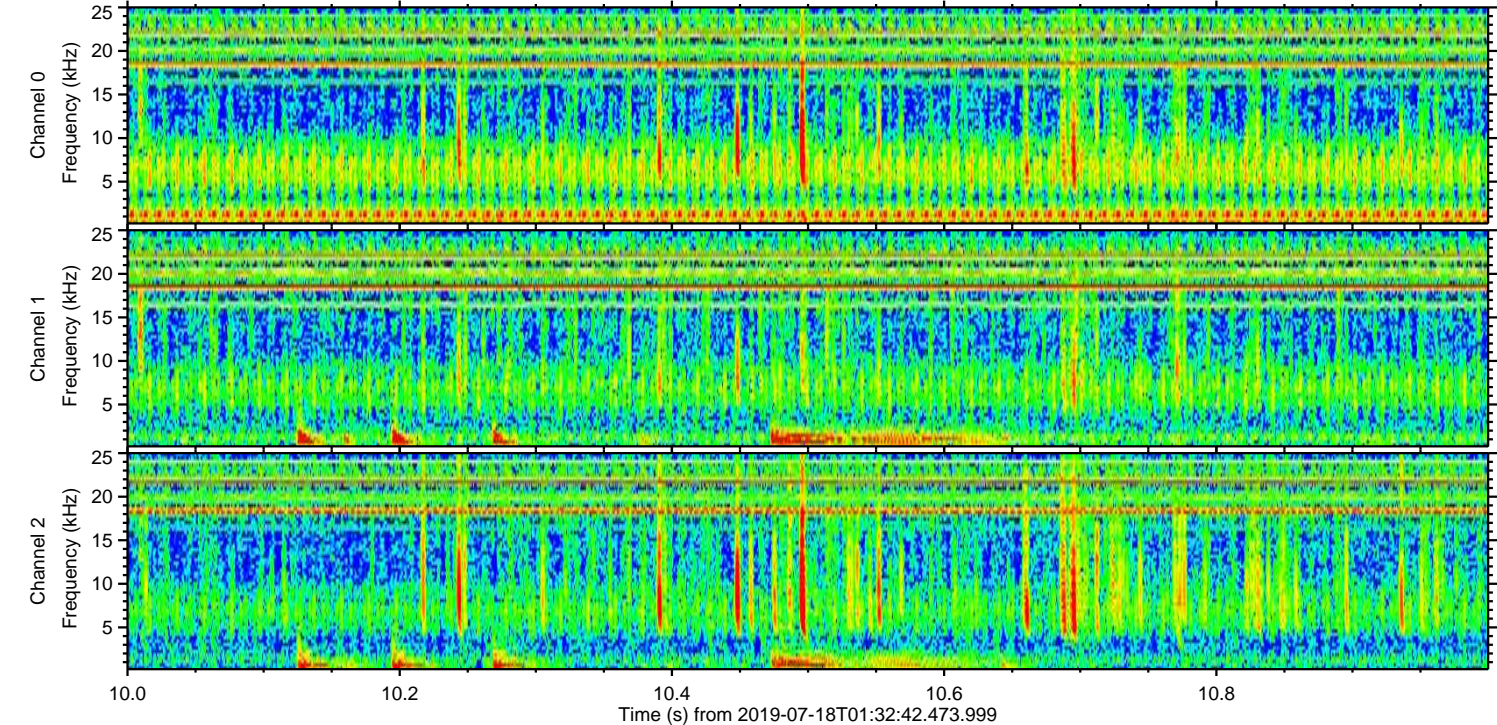
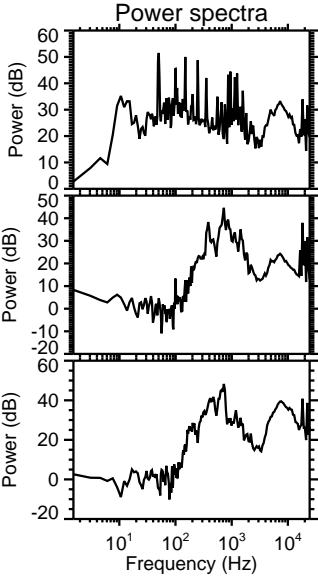
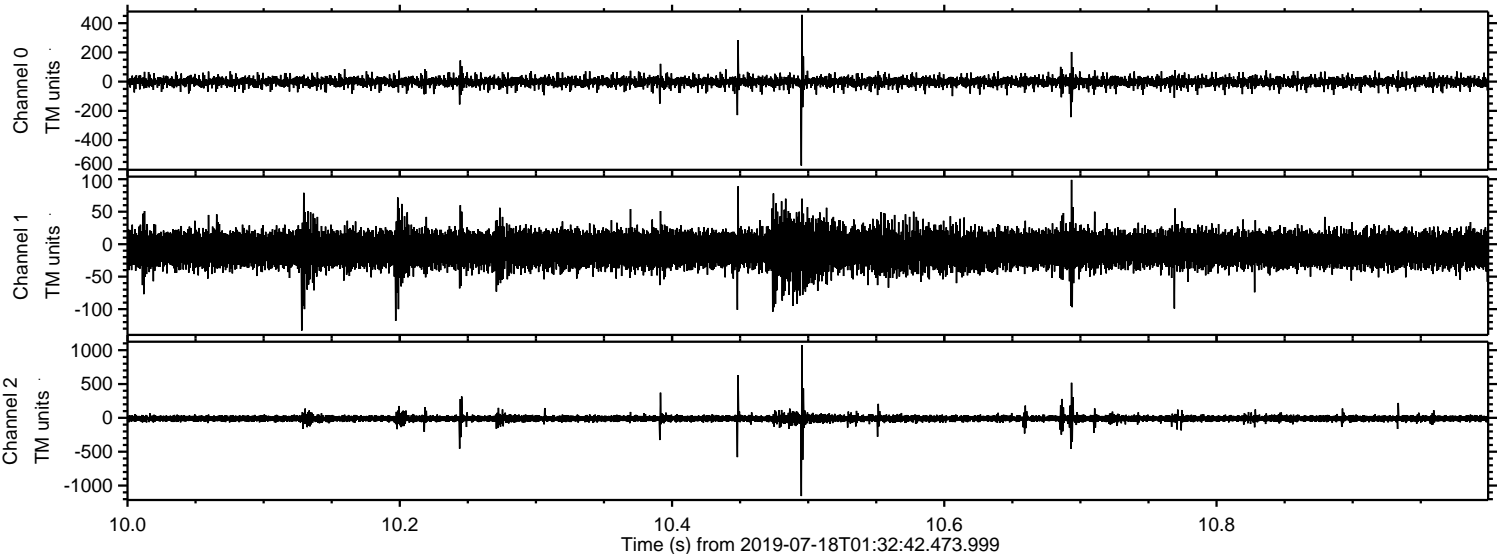


Processed Thu Jul 18 03:40:45 2019 by ELM ver.2012-10-06 from 001\_\_elm20190718\_013241\_\_dat00.bin



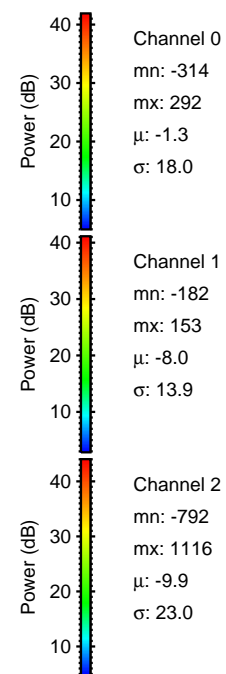
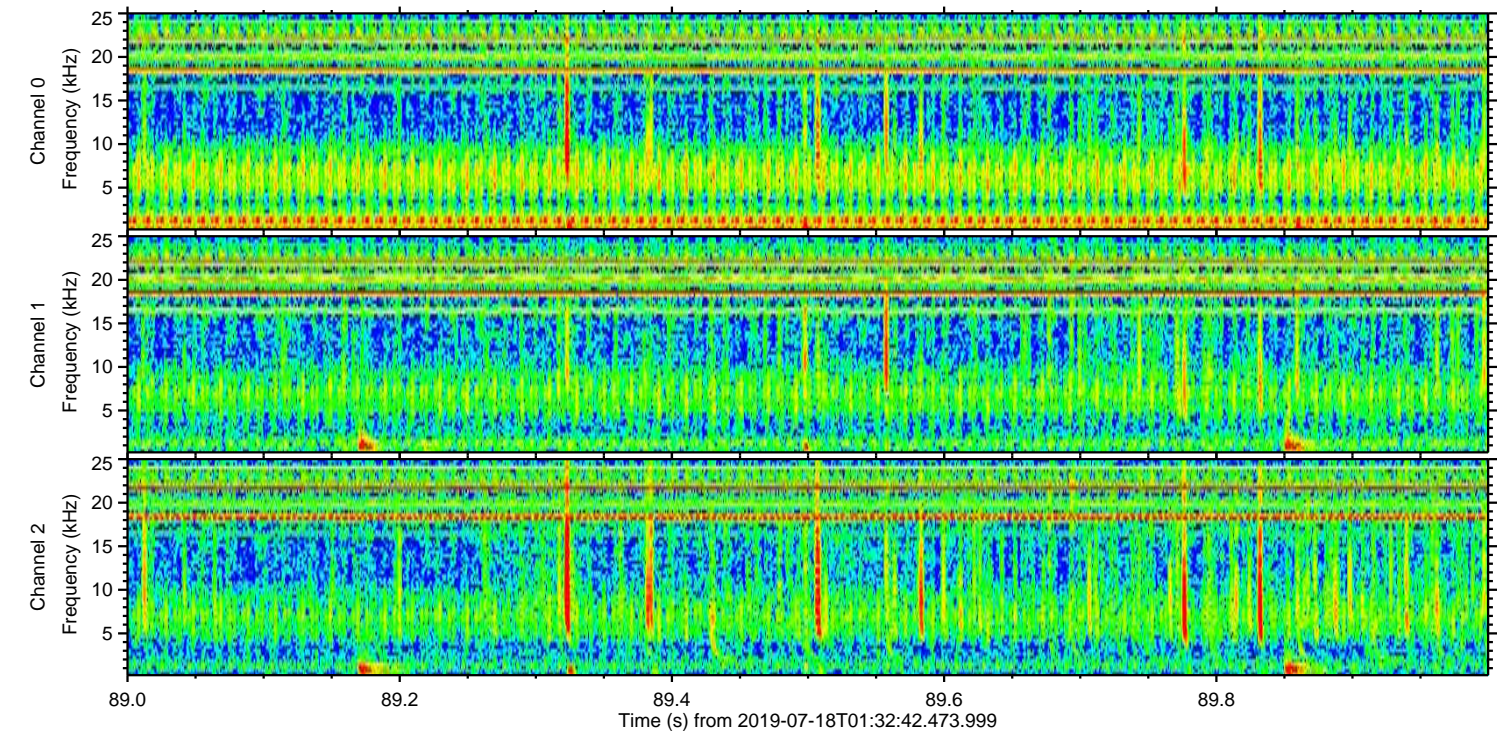
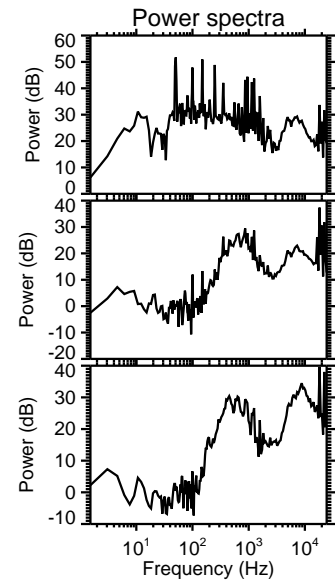
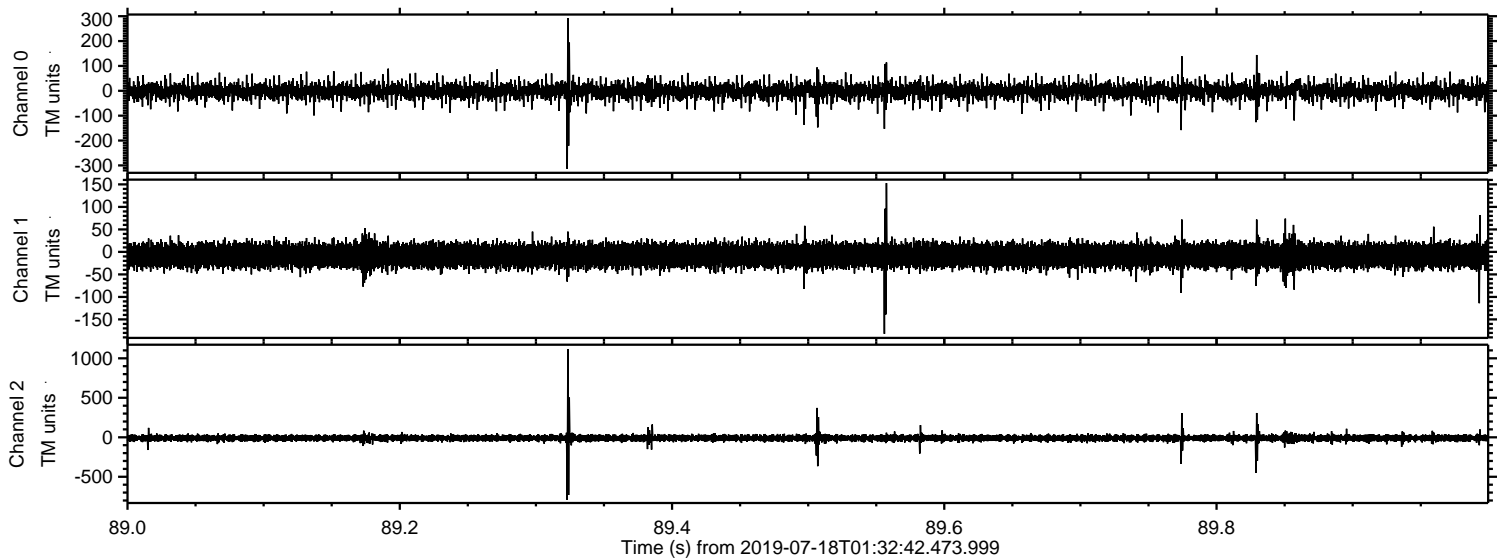


Processed Thu Jul 18 03:40:45 2019 by ELM ver.2012-10-06 from 001\_\_elm20190718\_013241\_\_dat00.bin



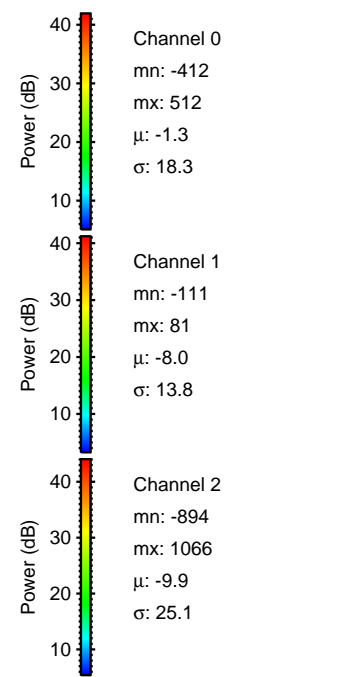
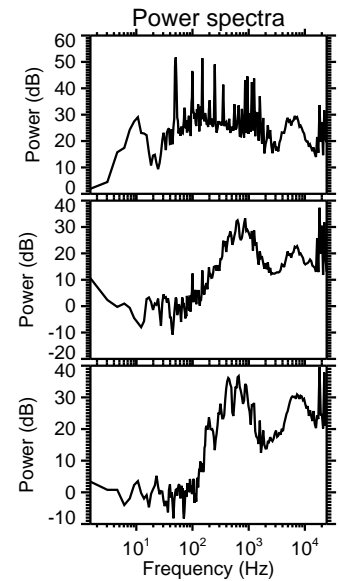
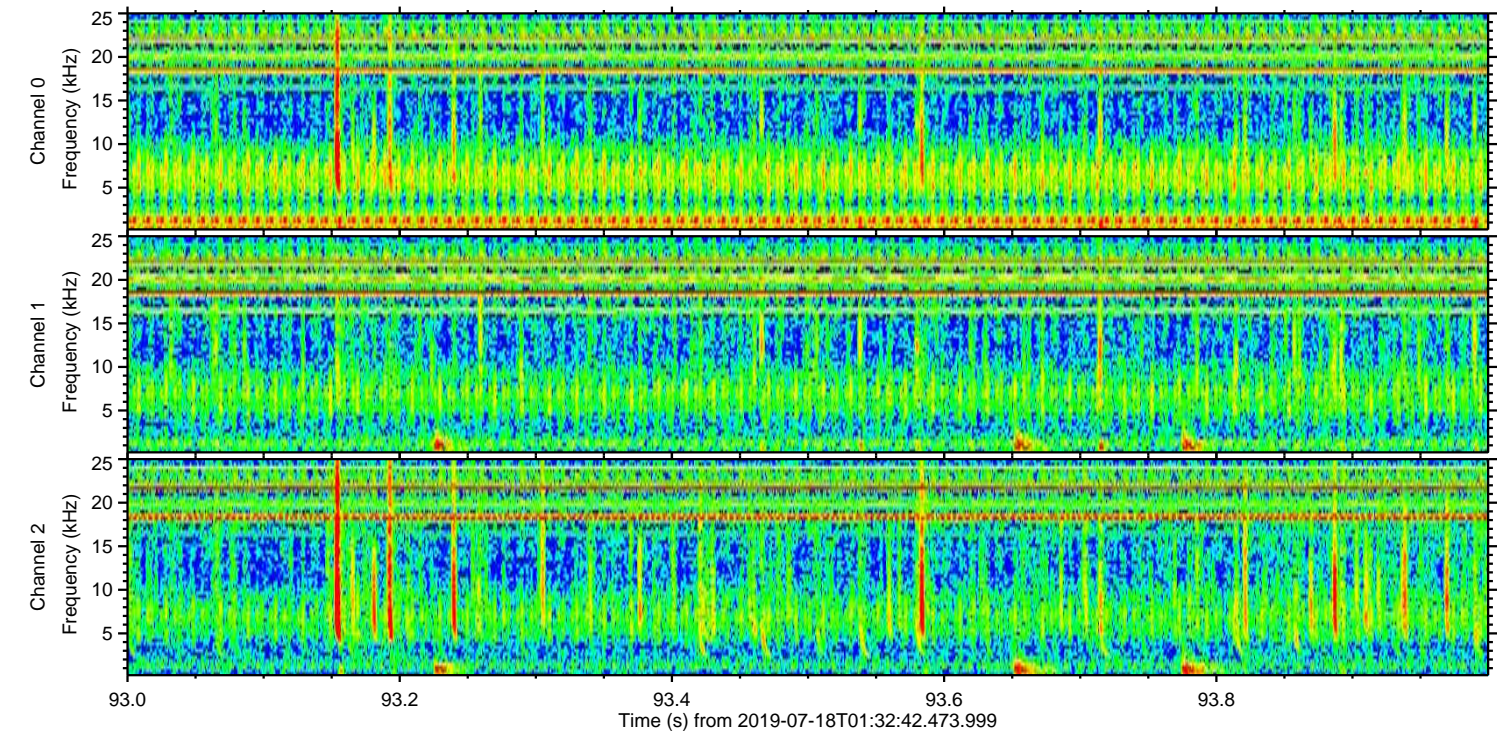
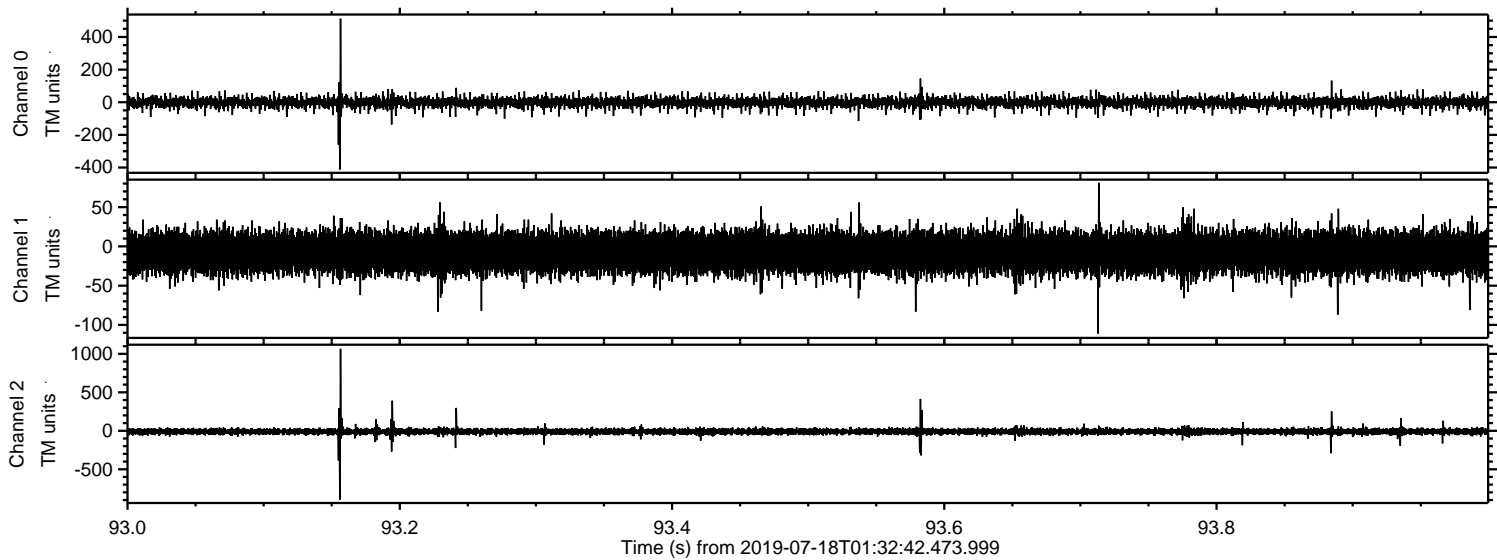


Processed Thu Jul 18 03:40:46 2019 by ELM ver.2012-10-06 from 001\_\_elm20190718\_013241\_\_dat00.bin





Processed Thu Jul 18 03:40:47 2019 by ELM ver.2012-10-06 from 001\_\_elm20190718\_013241\_\_dat00.bin





Processed Thu Jul 18 03:40:47 2019 by ELM ver.2012-10-06 from 001\_\_elm20190718\_013241\_\_dat00.bin

