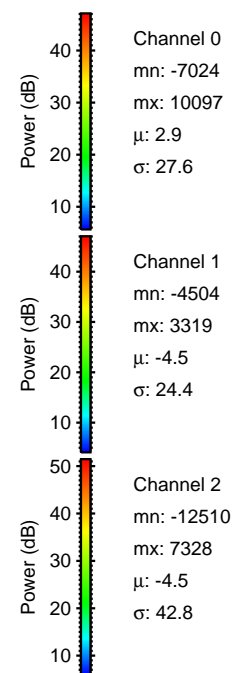
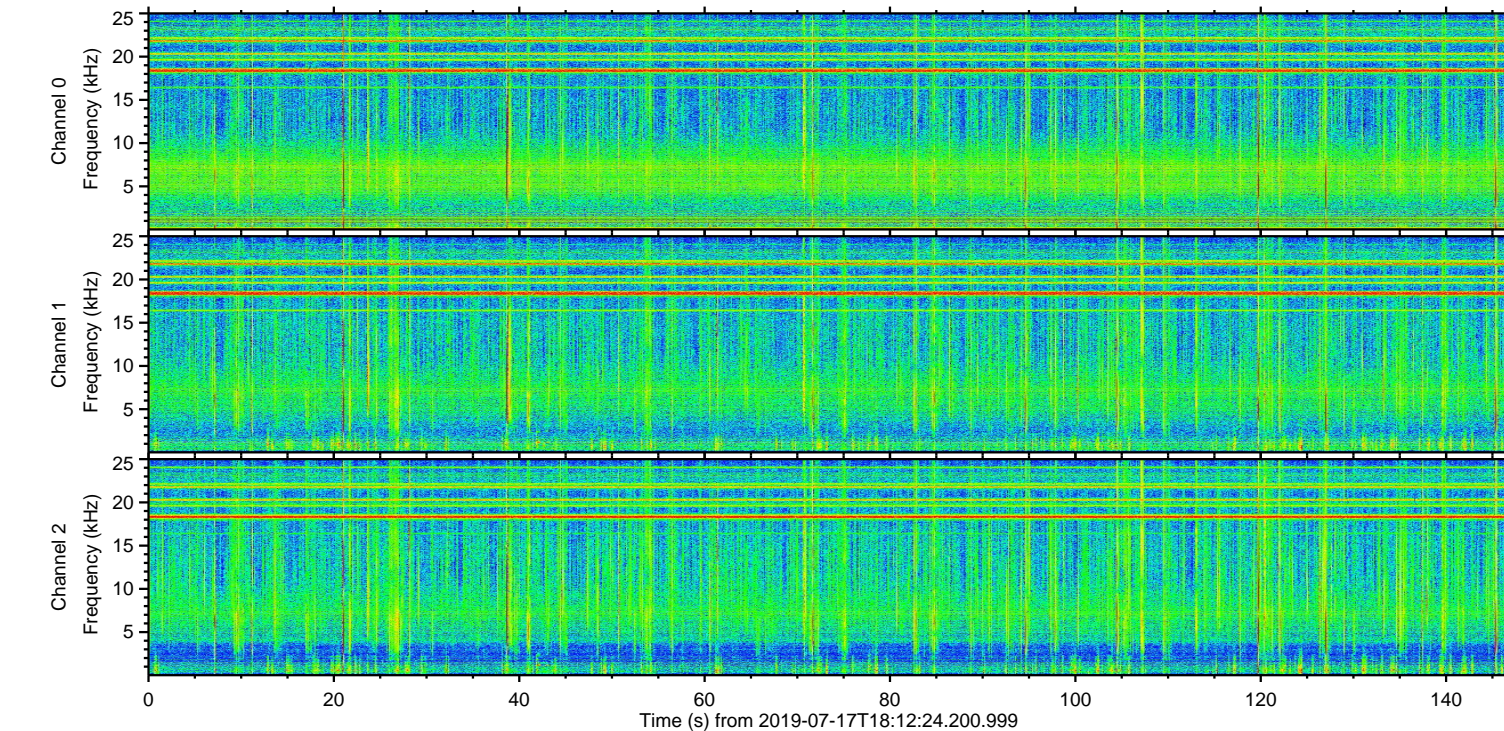
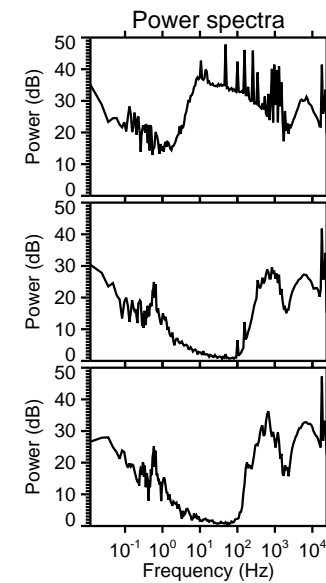
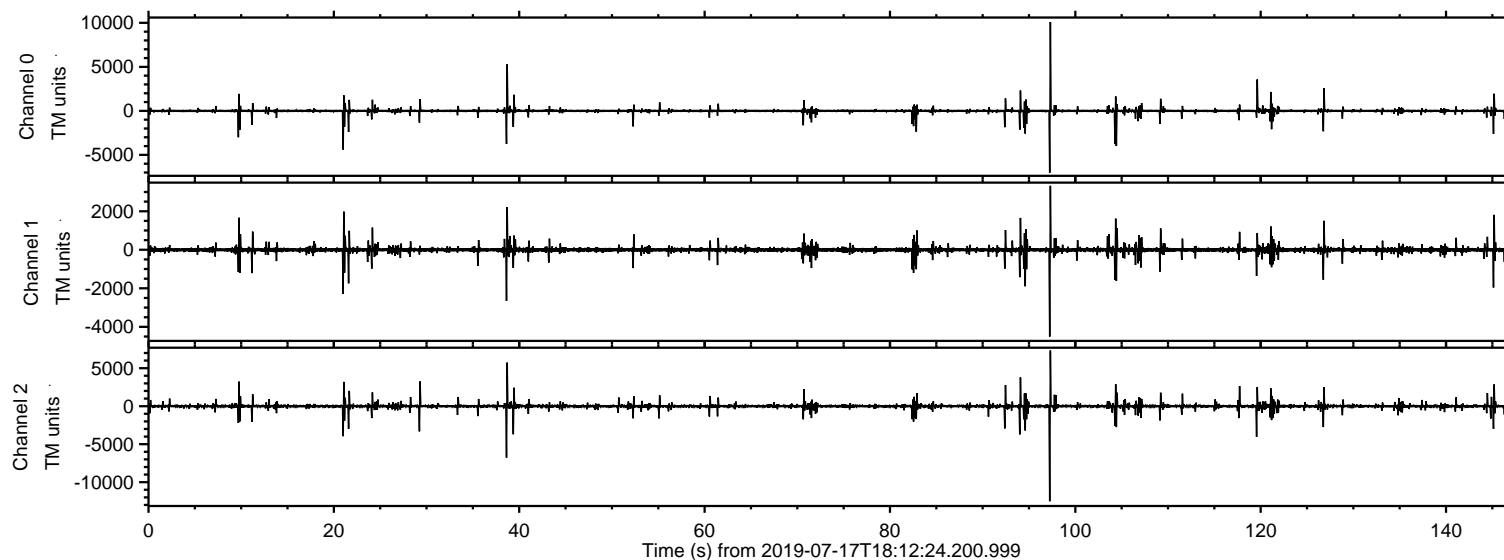
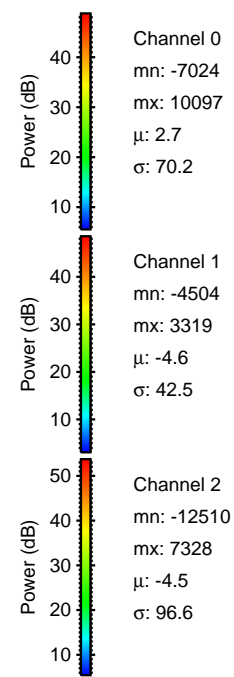
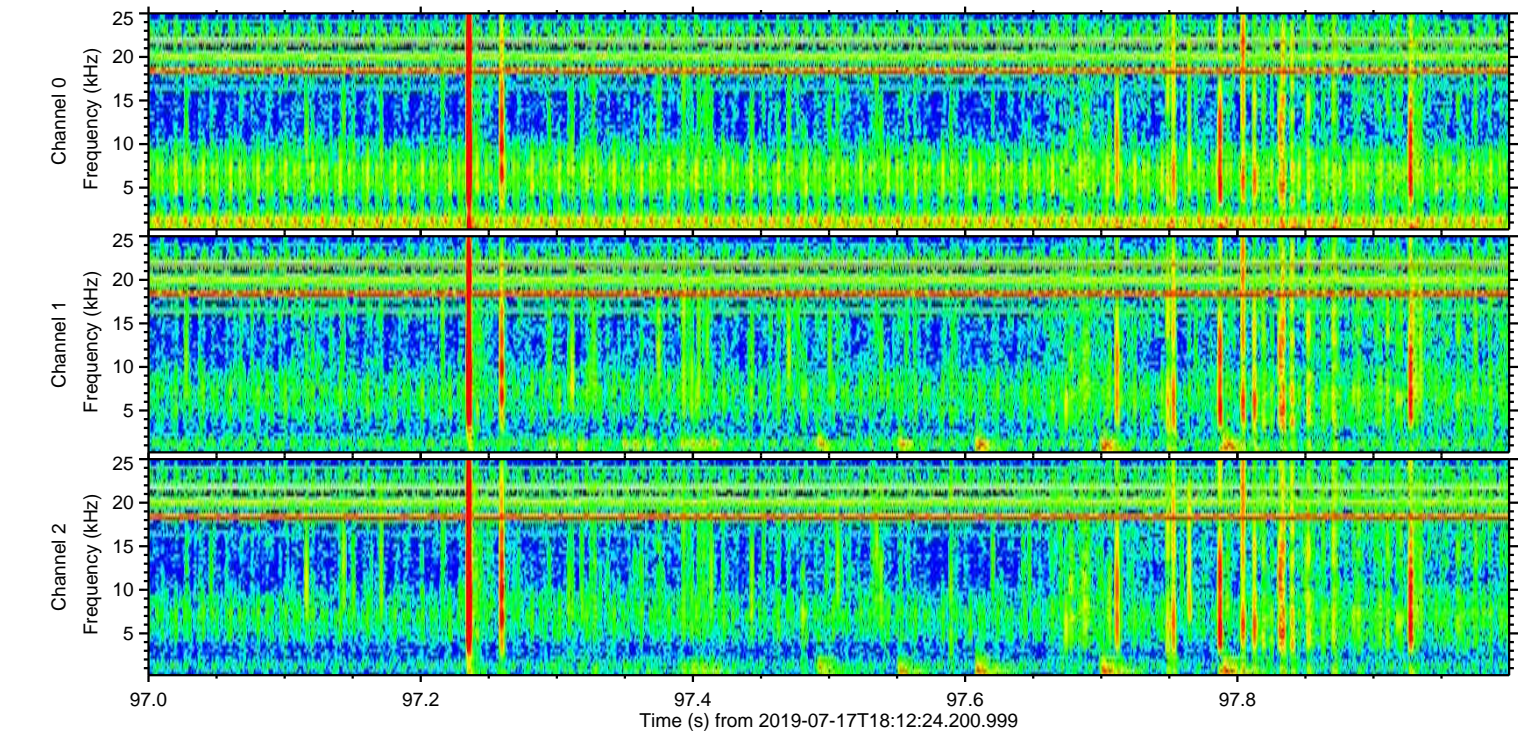
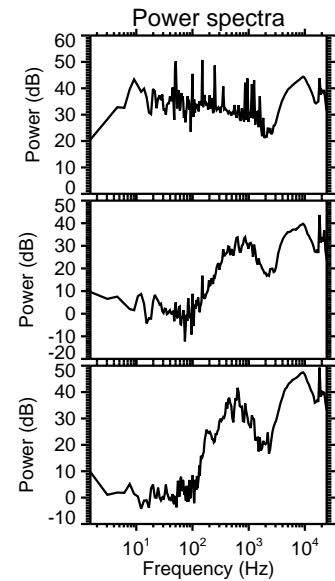
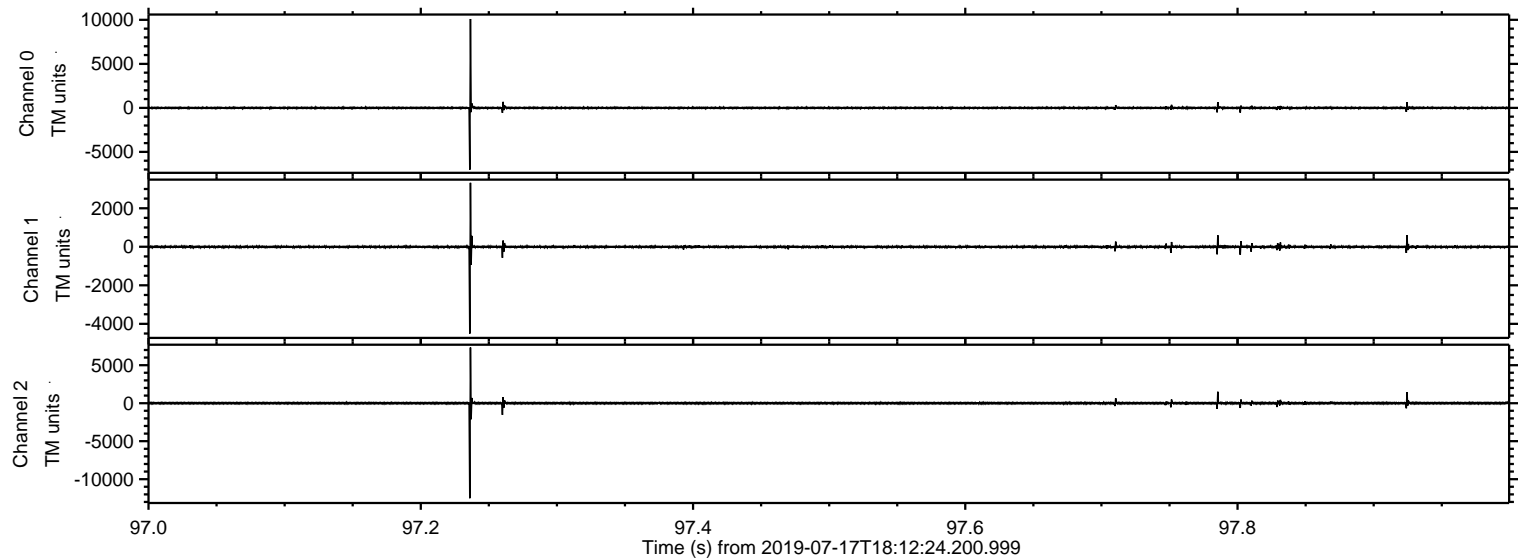


ELMAVAN 3D WAVEFORMS (Measured data sampled at 50 kHz) 51000 packets of 144 samples from 2019-07-17T18:12:24.200.999.

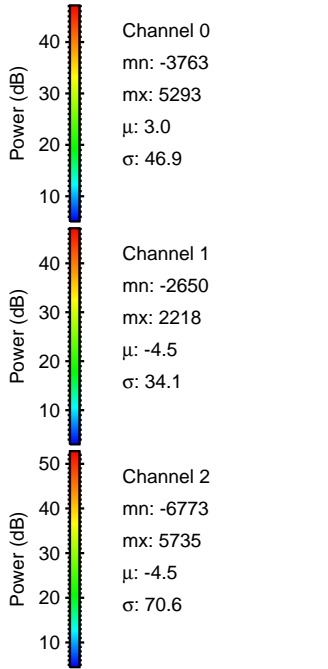
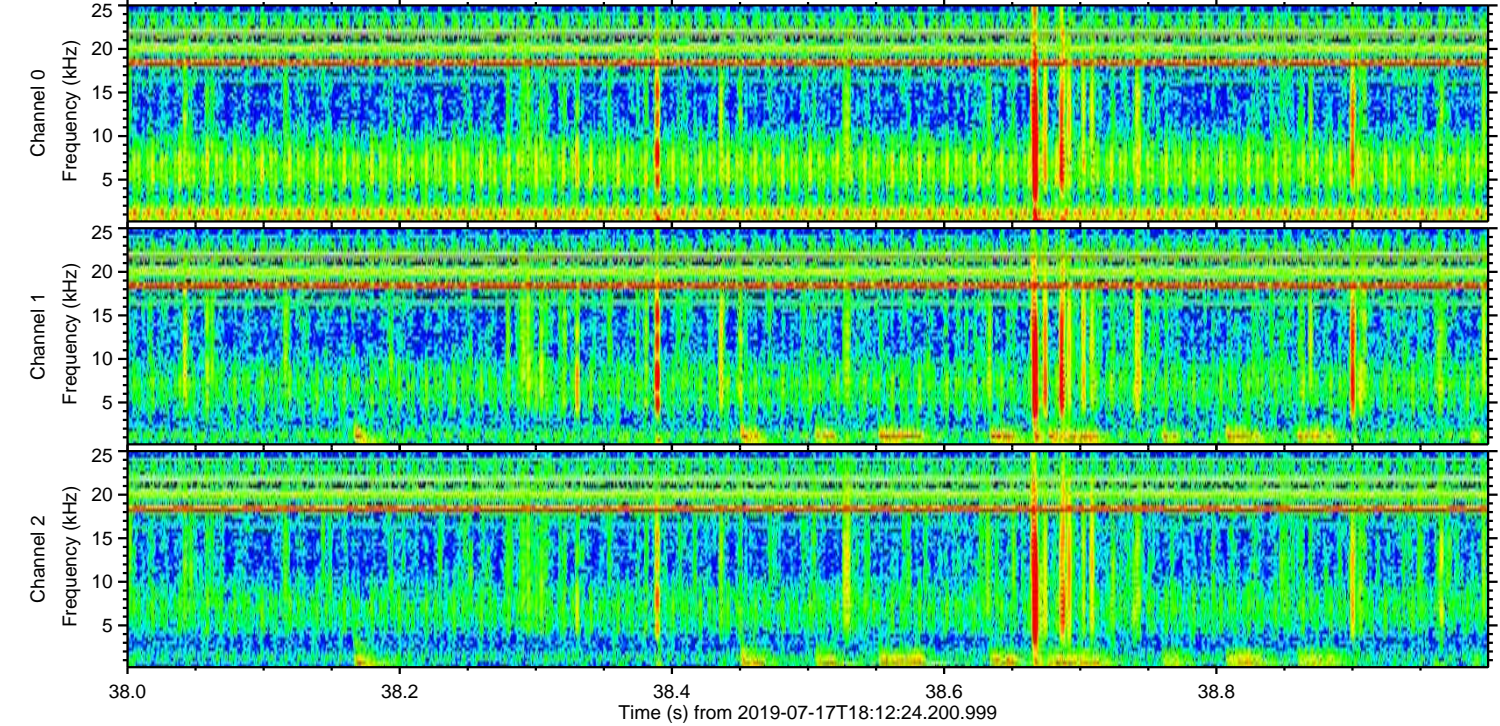
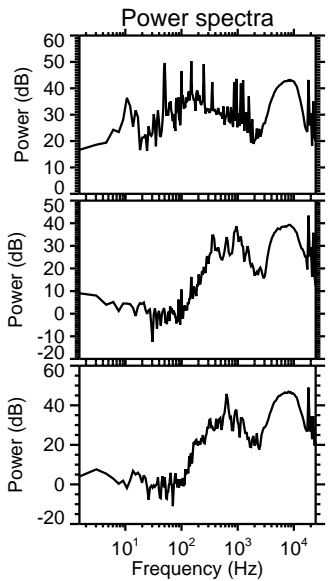
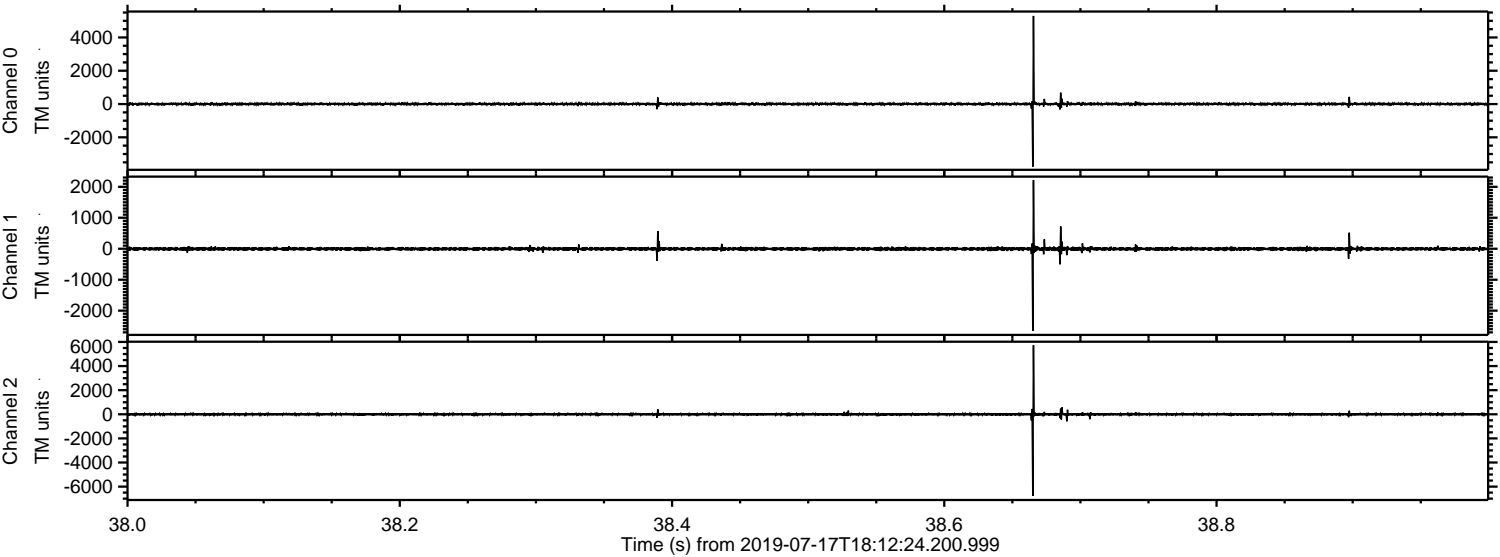
Processed Wed Jul 17 20:19:53 2019 by ELM ver.2012-10-06 from 001__elm20190717_181223__dat00.bin



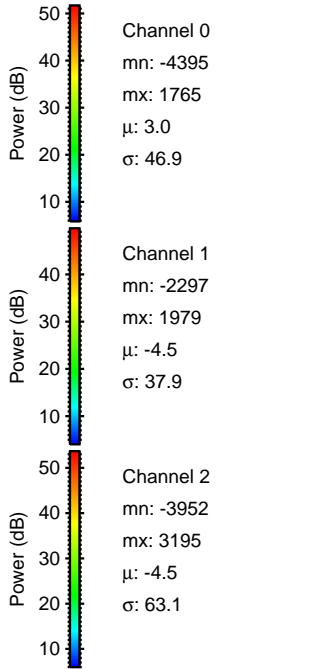
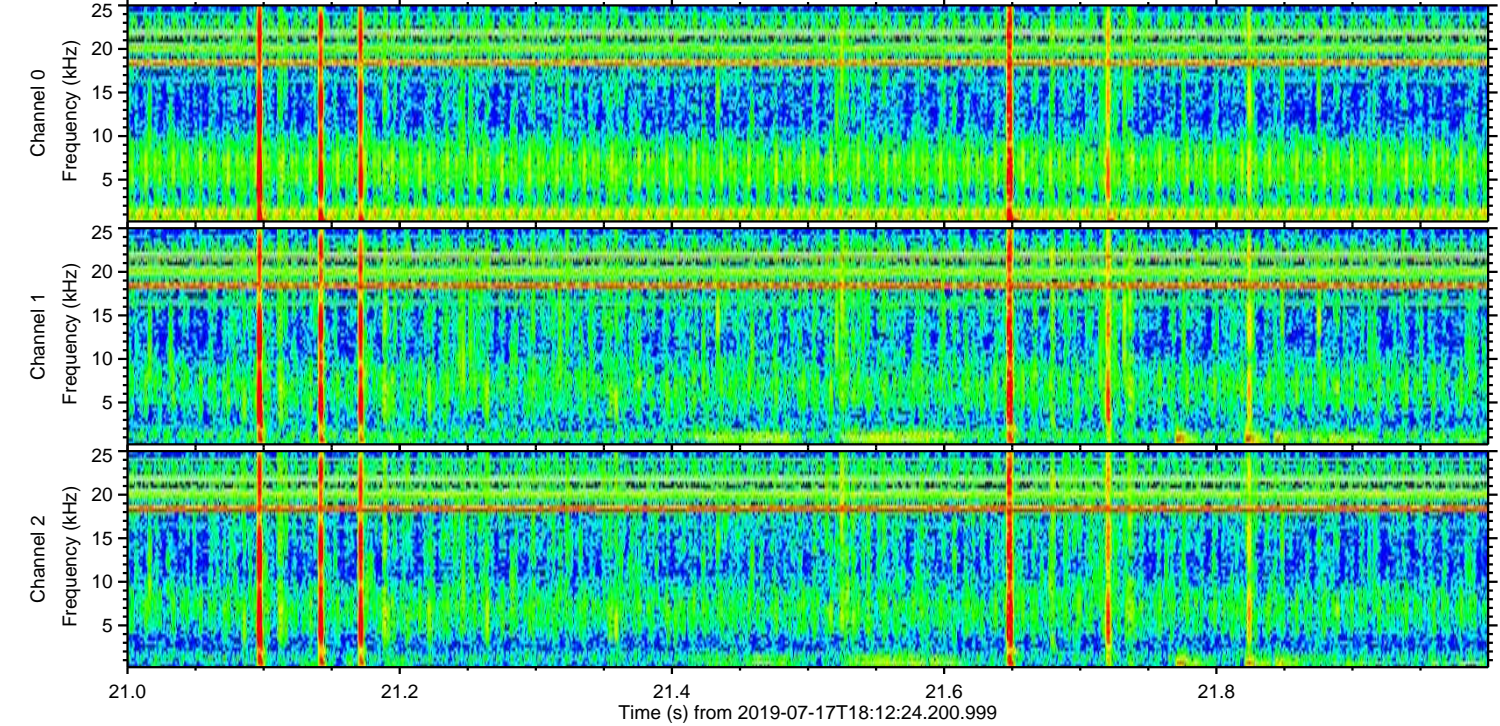
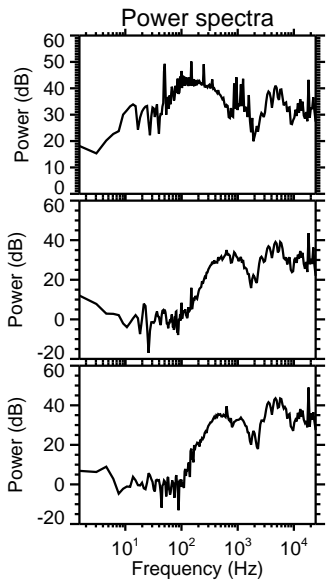
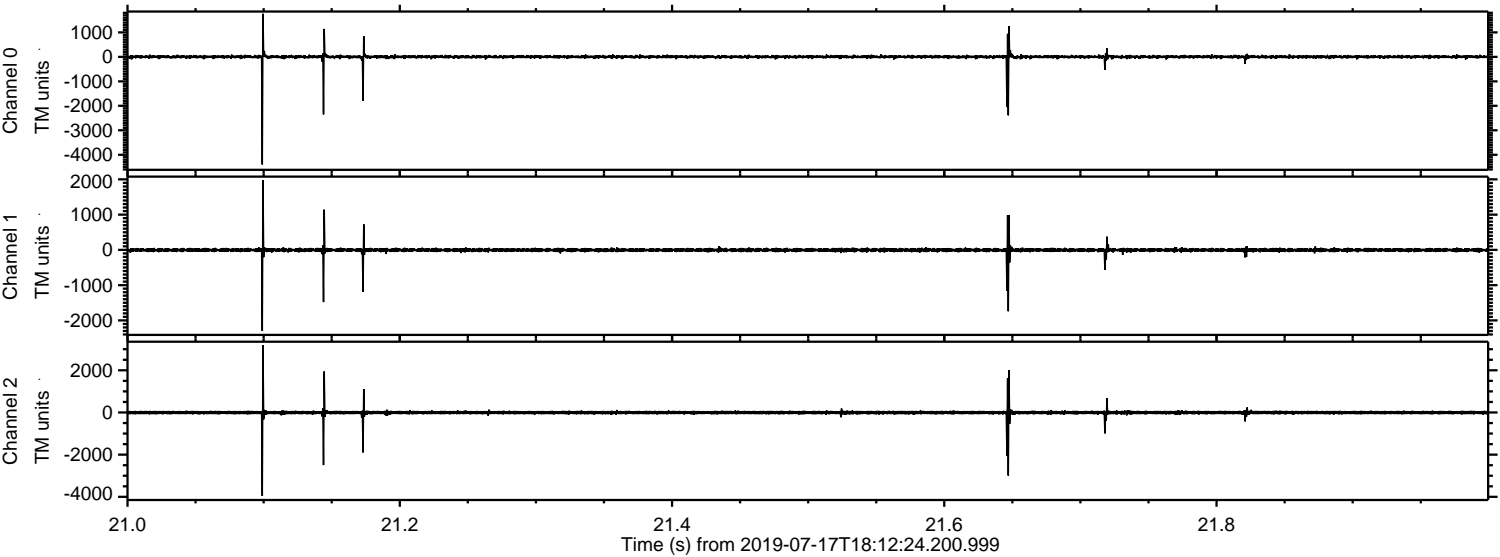
Processed Wed Jul 17 20:19:59 2019 by ELM ver.2012-10-06 from 001__elm20190717_181223__dat00.bin



Processed Wed Jul 17 20:19:59 2019 by ELM ver.2012-10-06 from 001__elm20190717_181223__dat00.bin

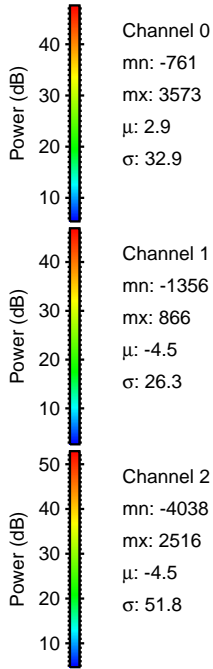
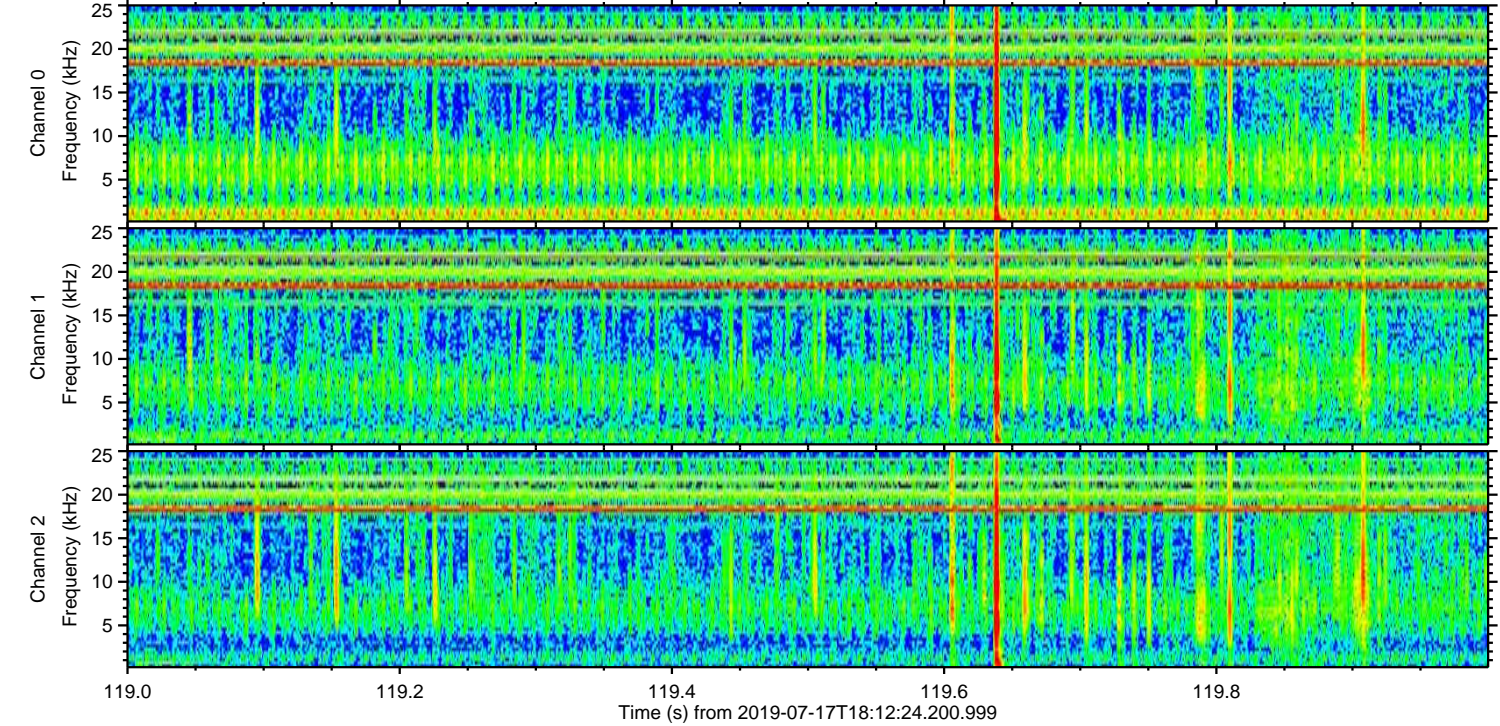
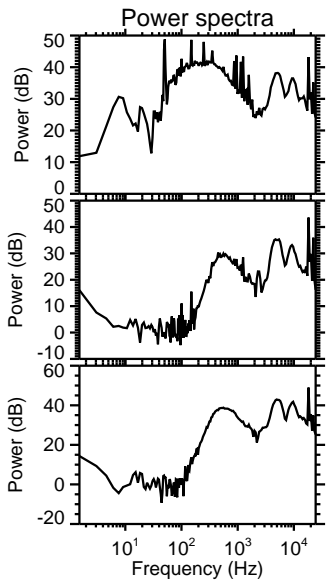
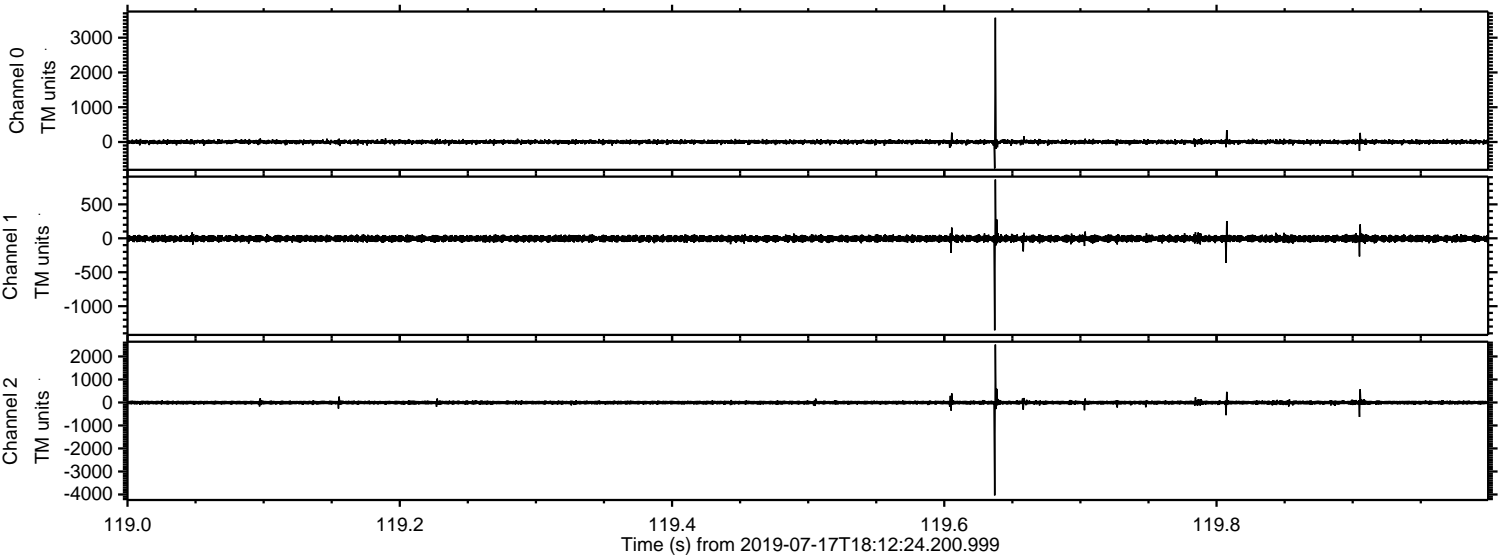


Processed Wed Jul 17 20:20:00 2019 by ELM ver.2012-10-06 from 001__elm20190717_181223__dat00.bin



ELMAVAN 3D WAVEFORMS (Measured data sampled at 50 kHz) 51000 packets of 144 samples from 2019-07-17T18:12:24.200.999. Part 120/147

Processed Wed Jul 17 20:20:00 2019 by ELM ver.2012-10-06 from 001__elm20190717_181223__dat00.bin



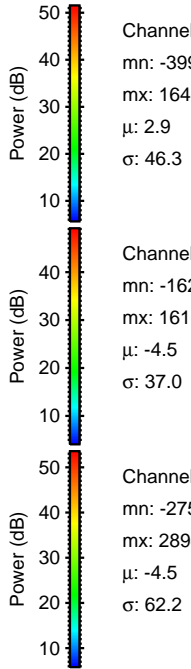
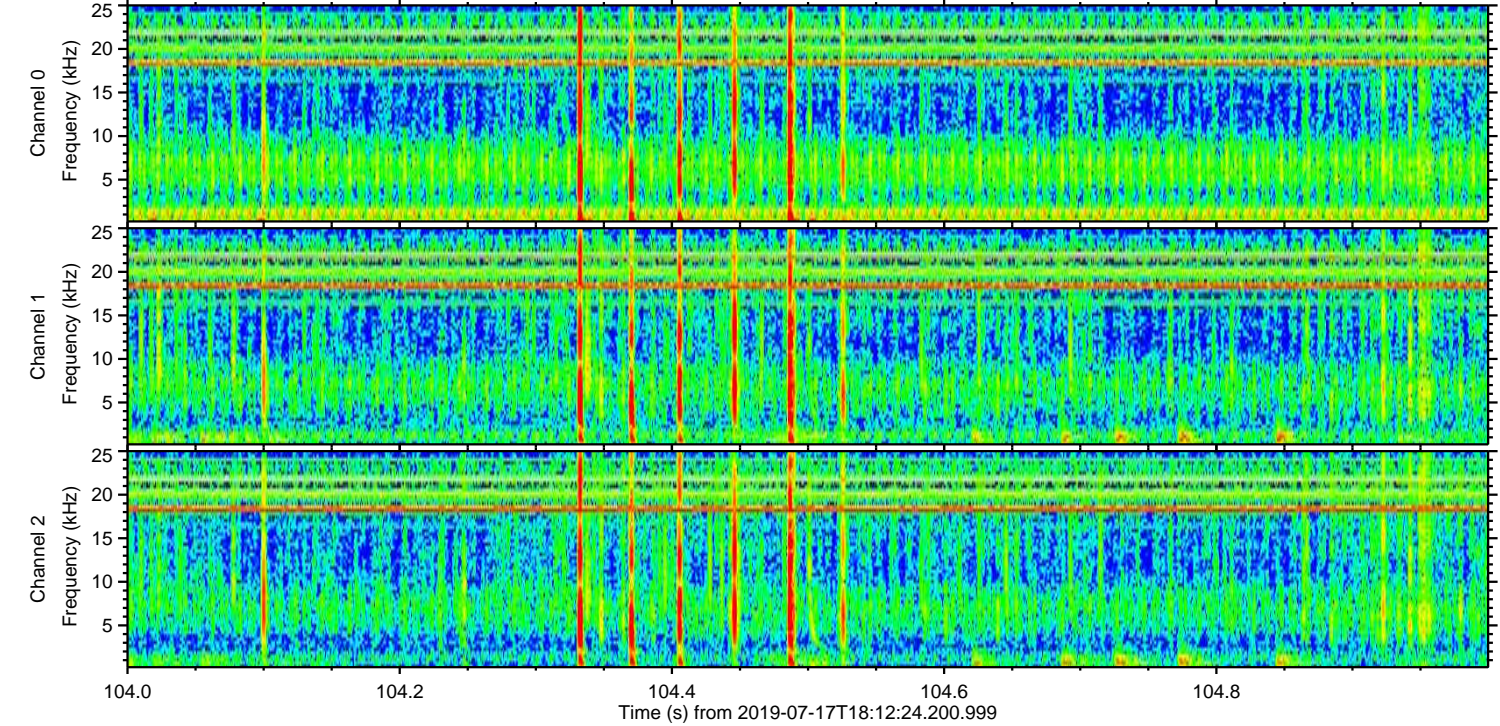
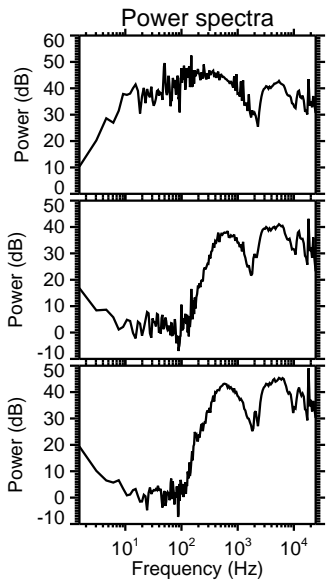
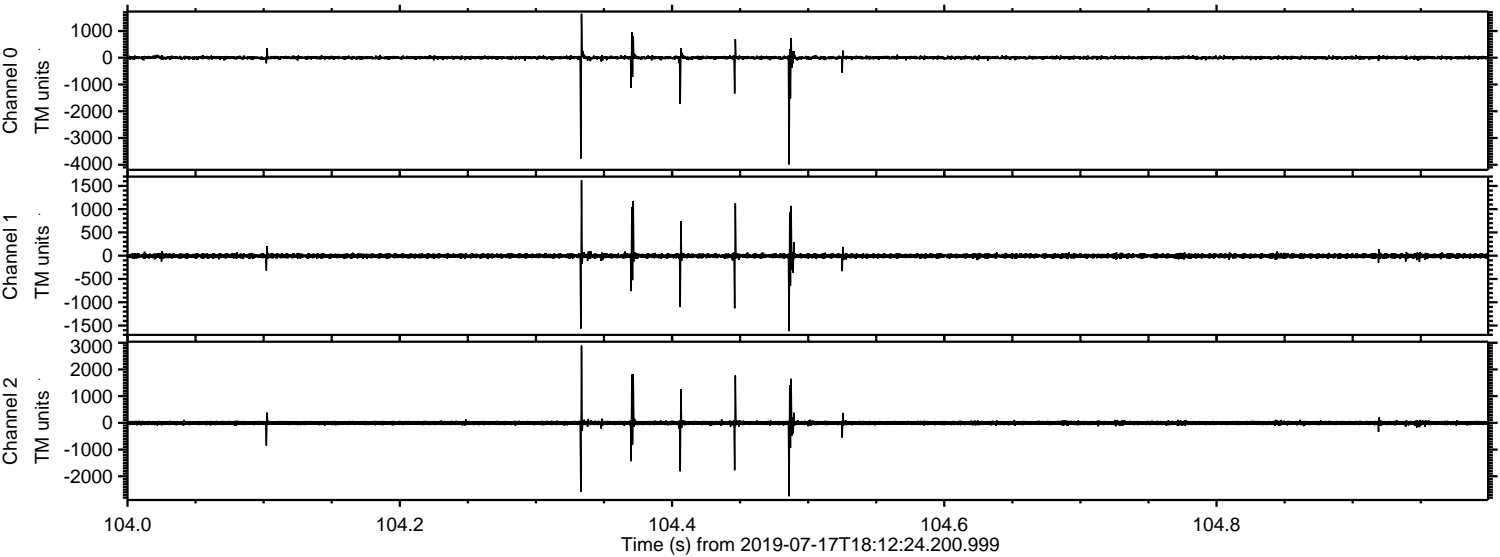
Channel 0
mn: -761
mx: 3573
 μ : 2.9
 σ : 32.9

Channel 1
mn: -1356
mx: 866
 μ : -4.5
 σ : 26.3

Channel 2
mn: -4038
mx: 2516
 μ : -4.5
 σ : 51.8

ELMAVAN 3D WAVEFORMS (Measured data sampled at 50 kHz) 51000 packets of 144 samples from 2019-07-17T18:12:24.200.999. Part 105/147

Processed Wed Jul 17 20:20:01 2019 by ELM ver.2012-10-06 from 001__elm20190717_181223__dat00.bin

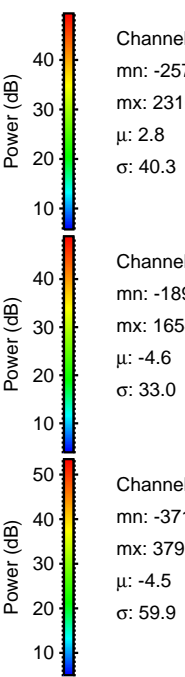
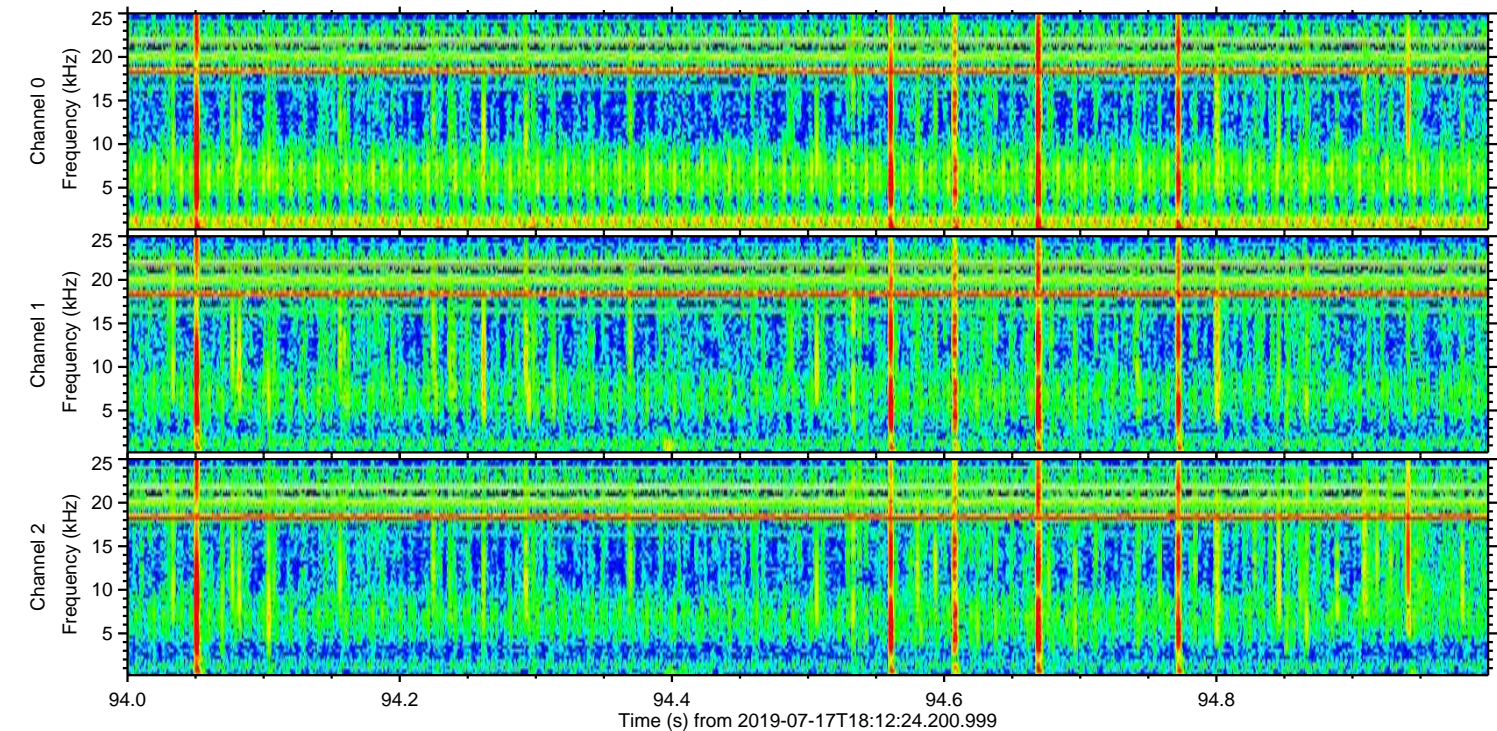
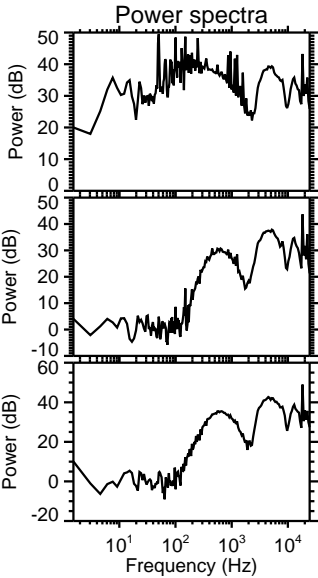
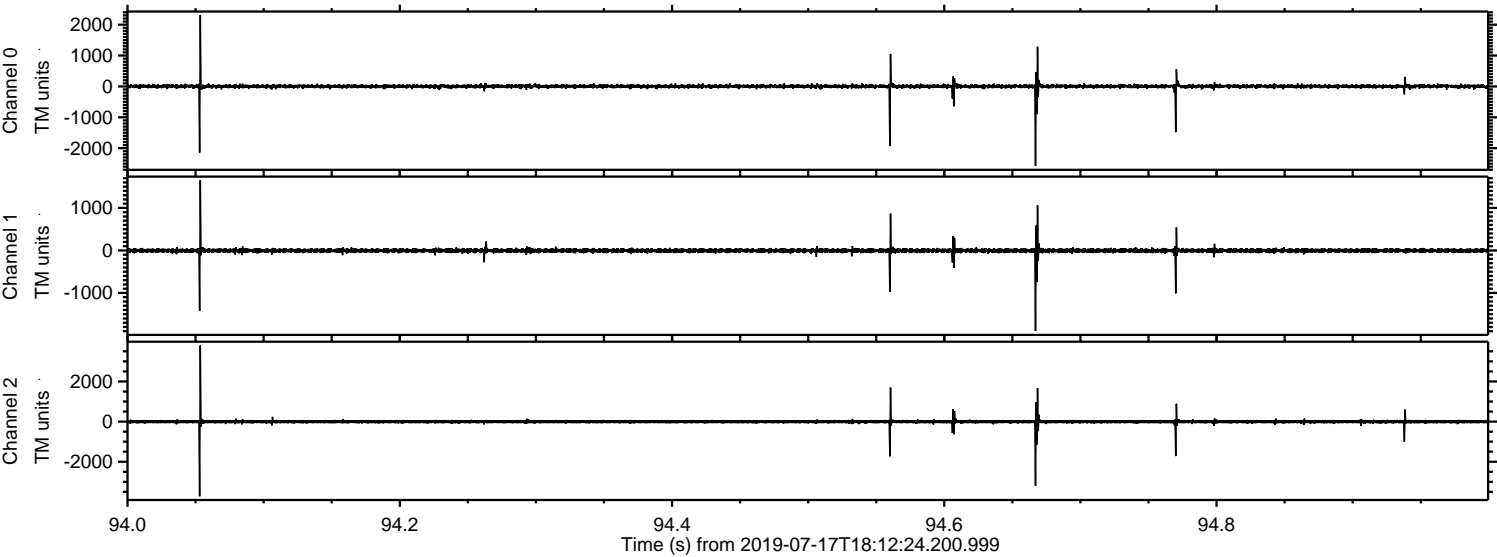


Channel 0
mn: -3991
mx: 1646
 μ : 2.9
 σ : 46.3

Channel 1
mn: -1620
mx: 1618
 μ : -4.5
 σ : 37.0

Channel 2
mn: -2750
mx: 2894
 μ : -4.5
 σ : 62.2

Processed Wed Jul 17 20:20:02 2019 by ELM ver.2012-10-06 from 001__elm20190717_181223__dat00.bin

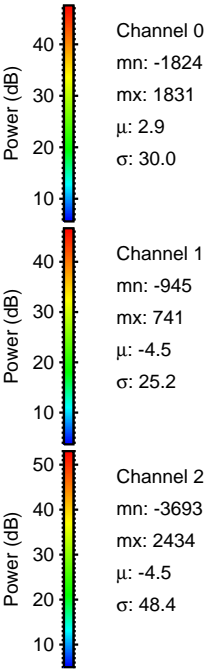
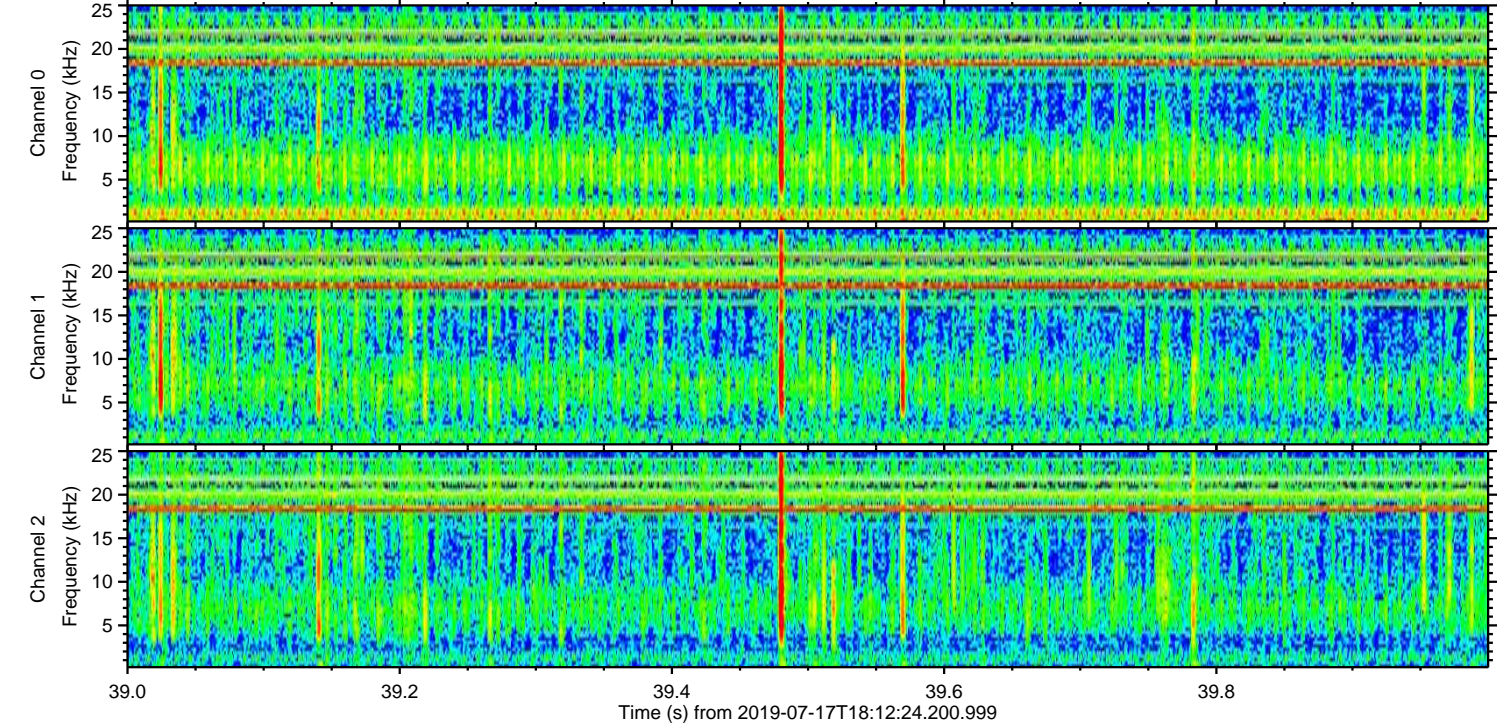
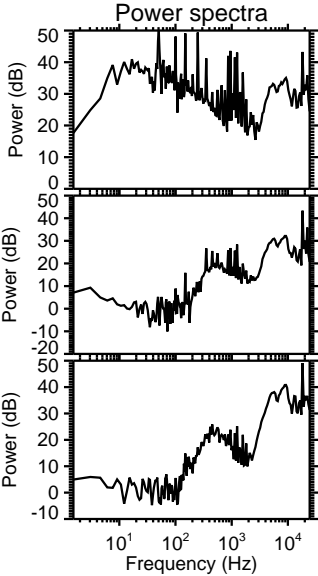
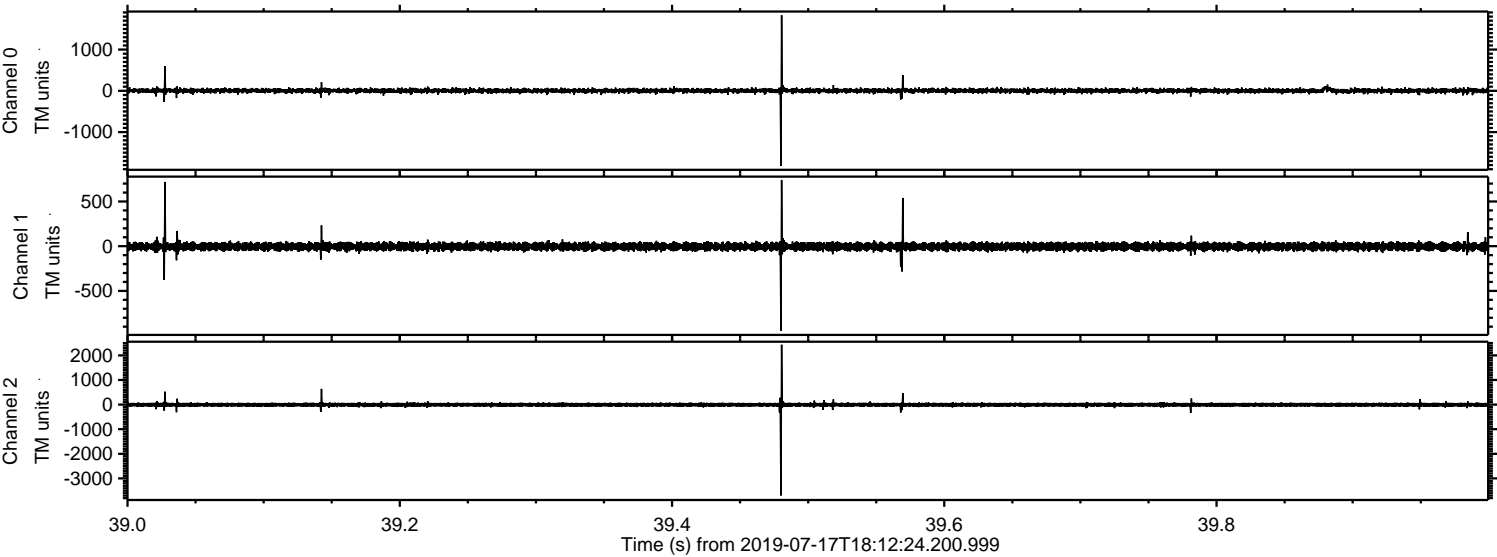


Channel 0
mn: -2573
mx: 2310
 μ : 2.8
 σ : 40.3

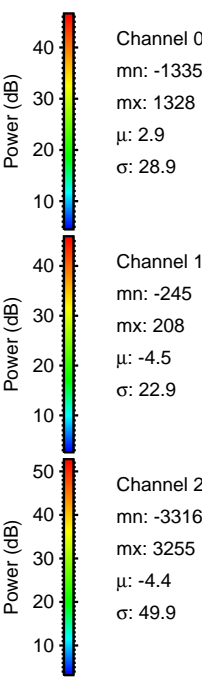
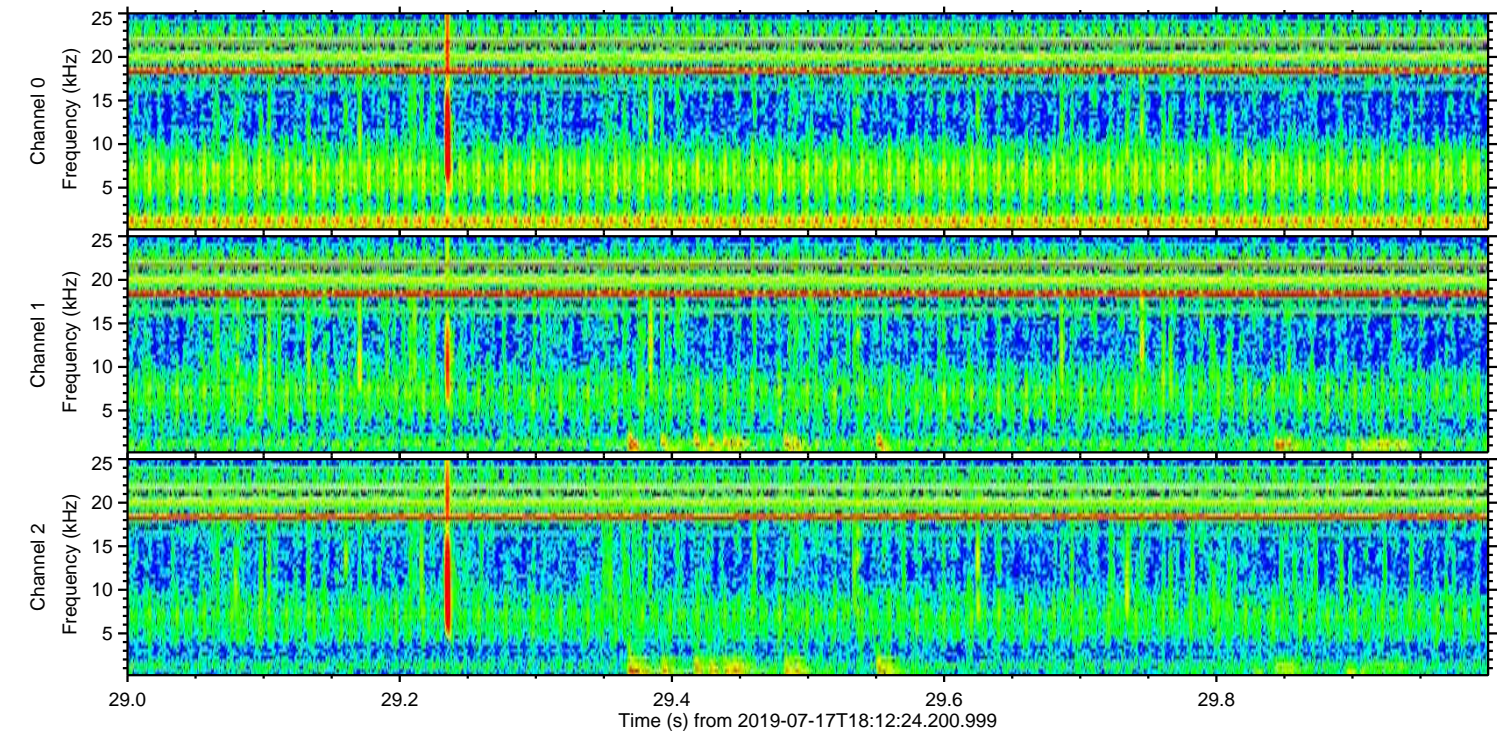
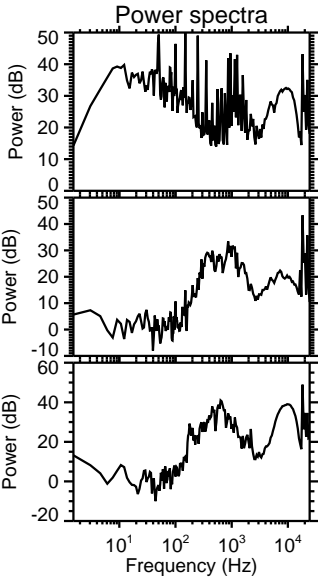
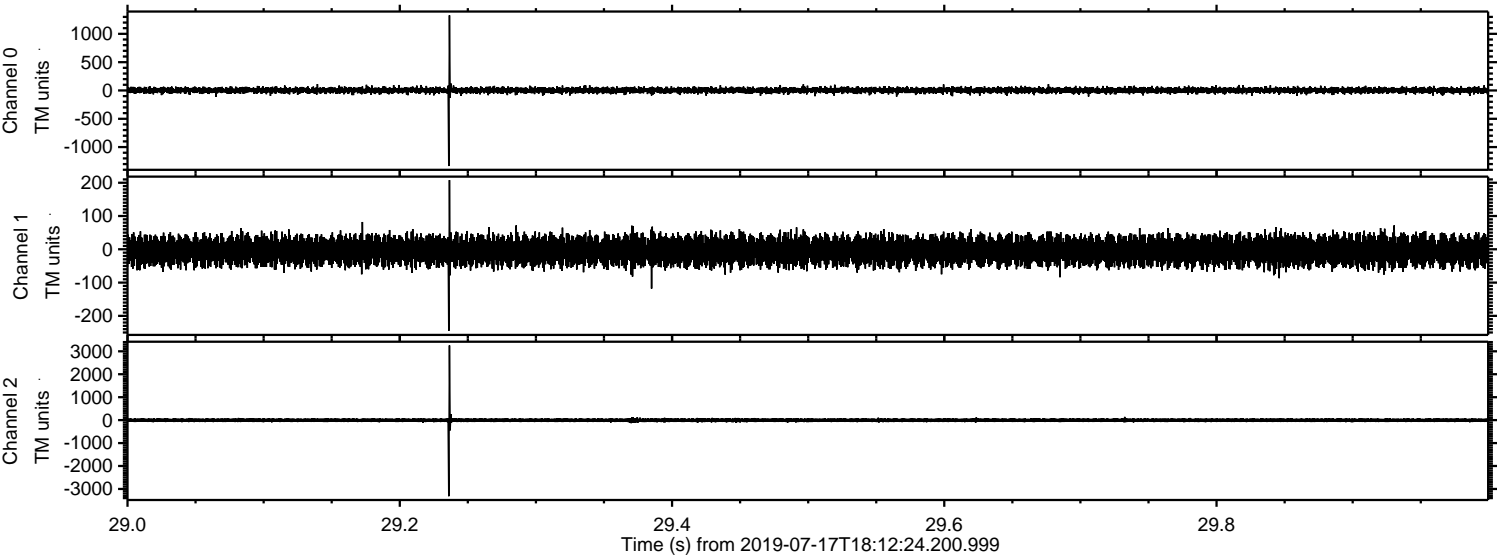
Channel 1
mn: -1892
mx: 1654
 μ : -4.6
 σ : 33.0

Channel 2
mn: -3719
mx: 3790
 μ : -4.5
 σ : 59.9

Processed Wed Jul 17 20:20:02 2019 by ELM ver.2012-10-06 from 001__elm20190717_181223__dat00.bin



Processed Wed Jul 17 20:20:03 2019 by ELM ver.2012-10-06 from 001__elm20190717_181223__dat00.bin



Processed Wed Jul 17 20:20:04 2019 by ELM ver.2012-10-06 from 001__elm20190717_181223__dat00.bin

