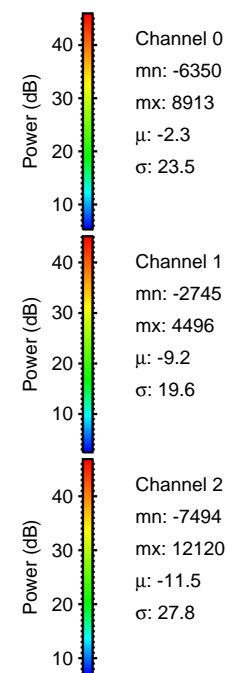
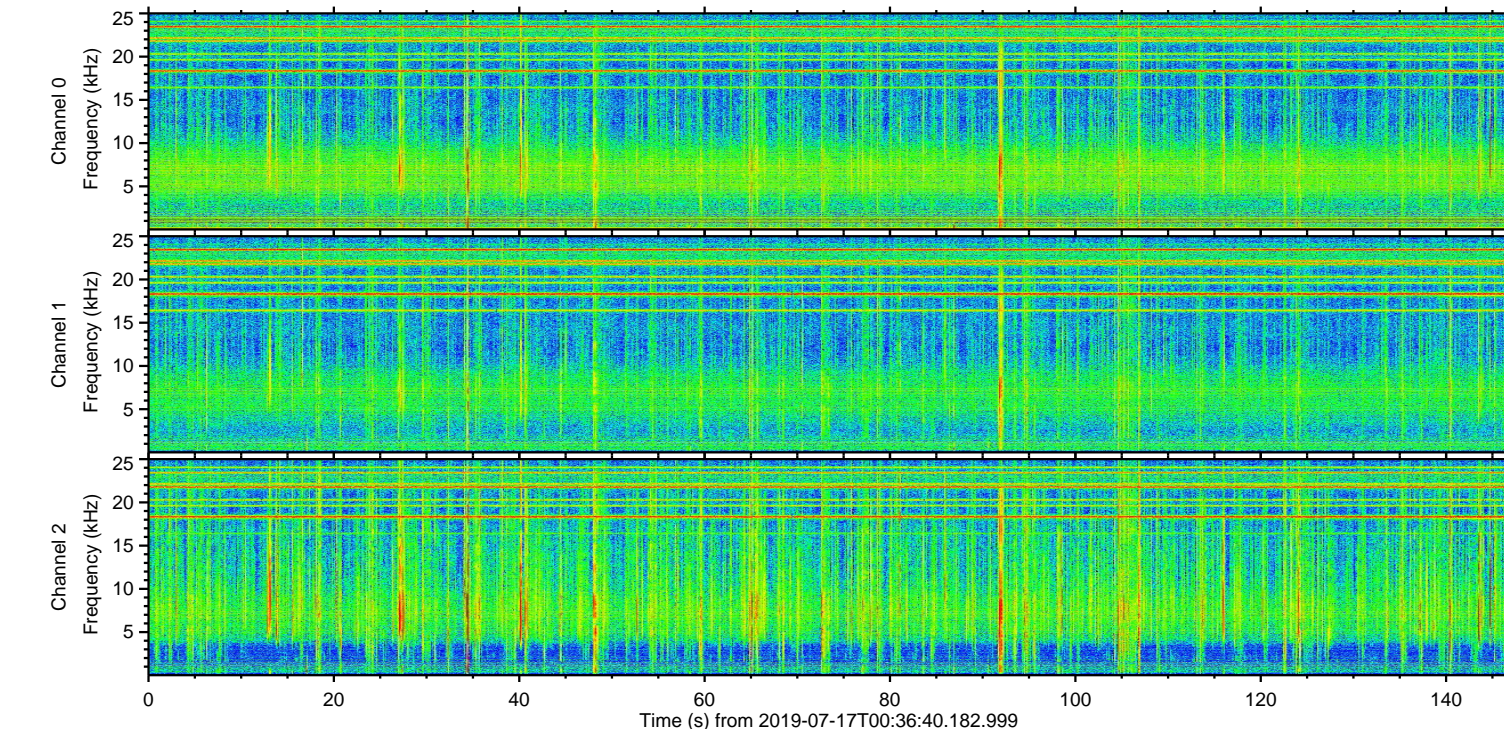
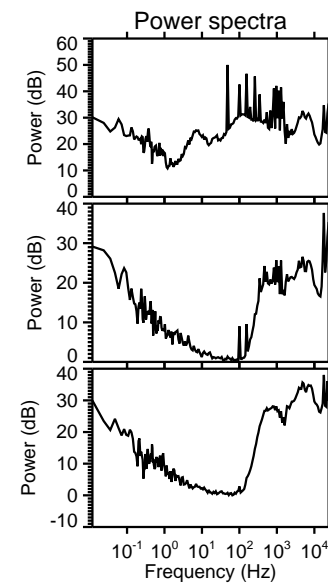
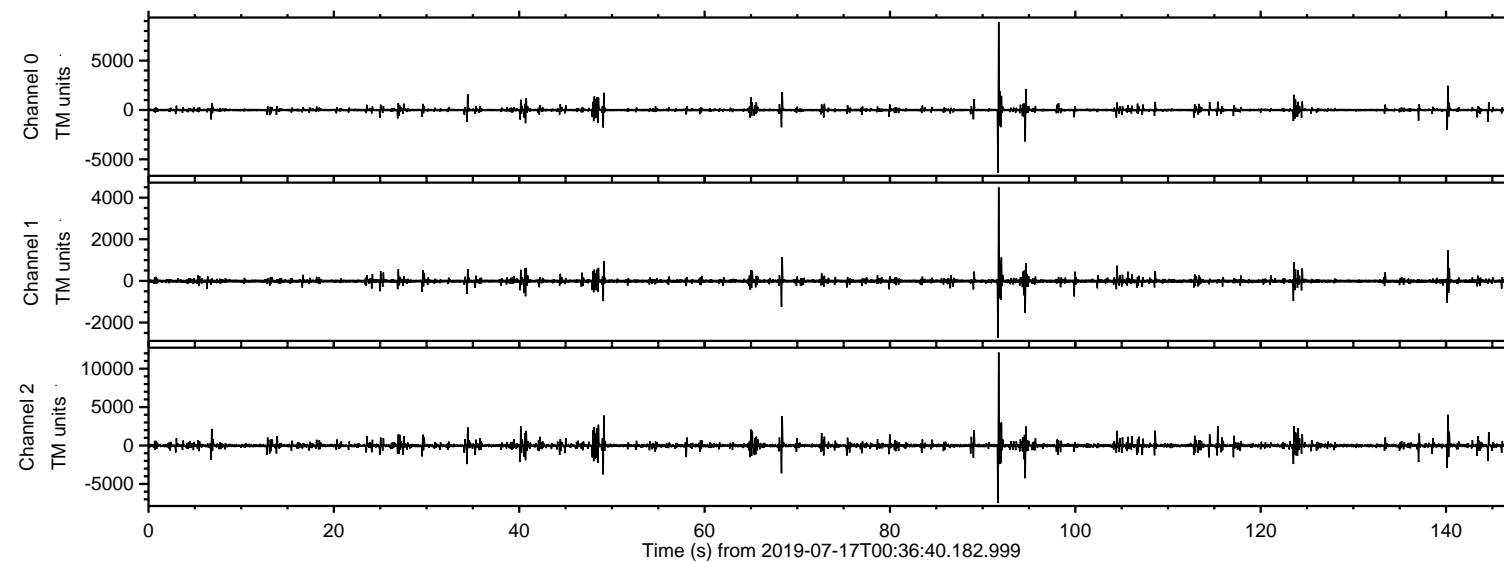
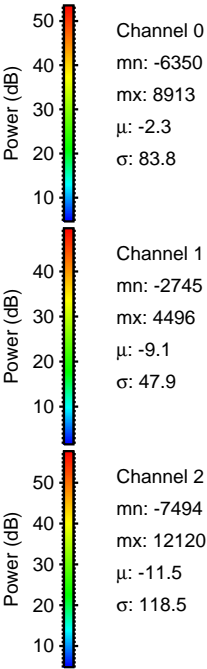
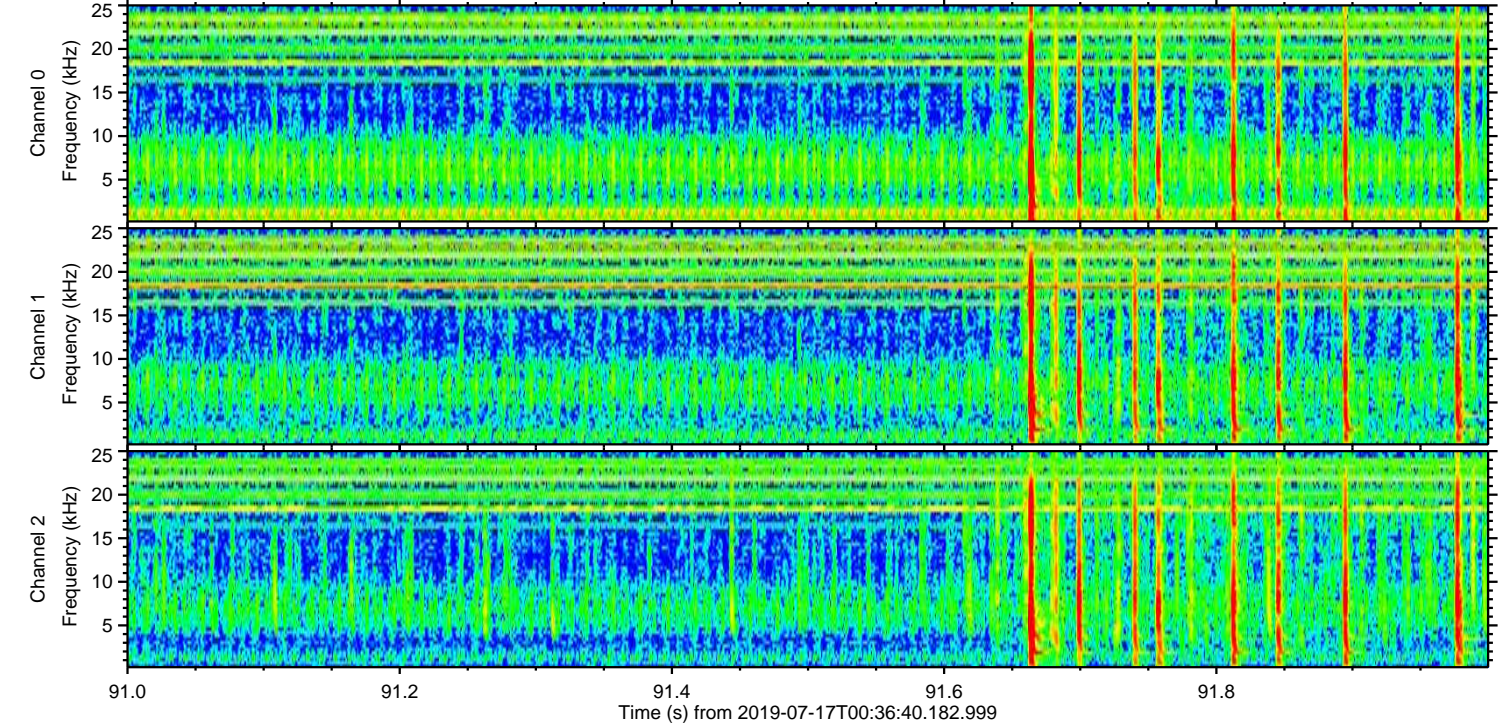
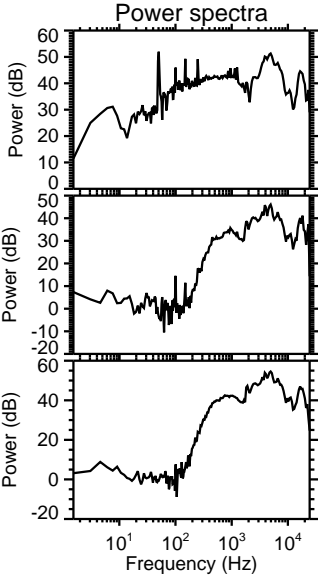
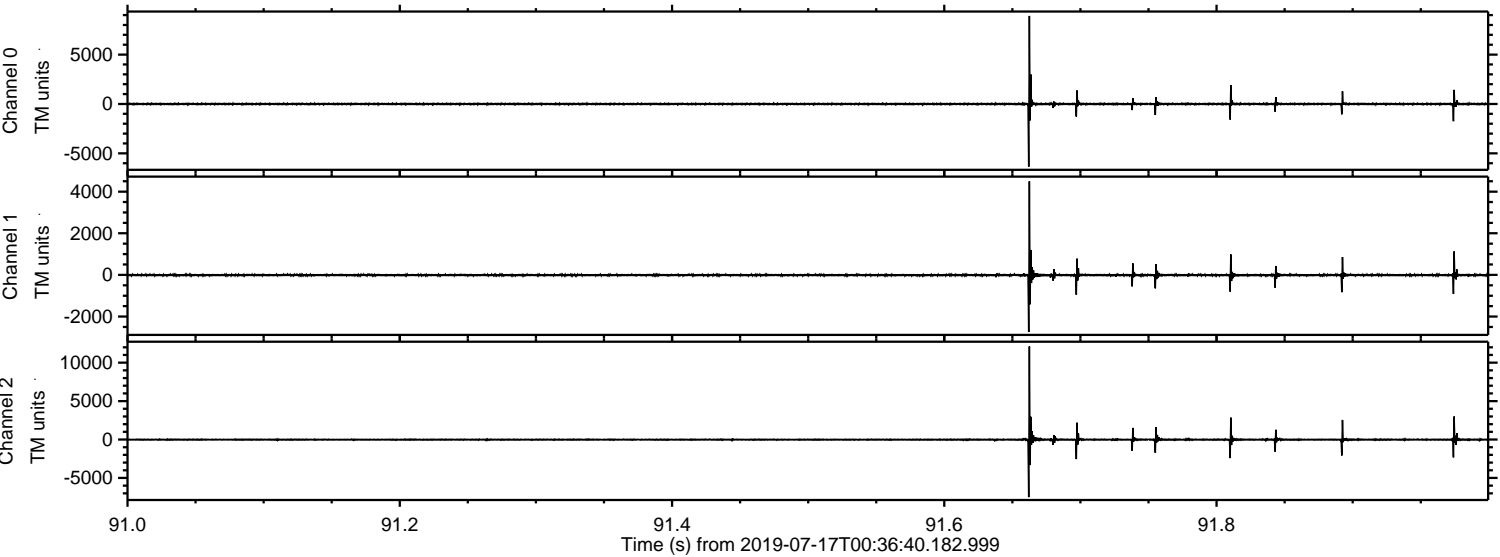


ELMAVAN 3D WAVEFORMS (Measured data sampled at 50 kHz) 51000 packets of 144 samples from 2019-07-17T00:36:40.182.999.

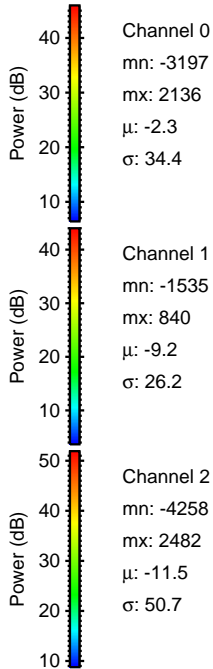
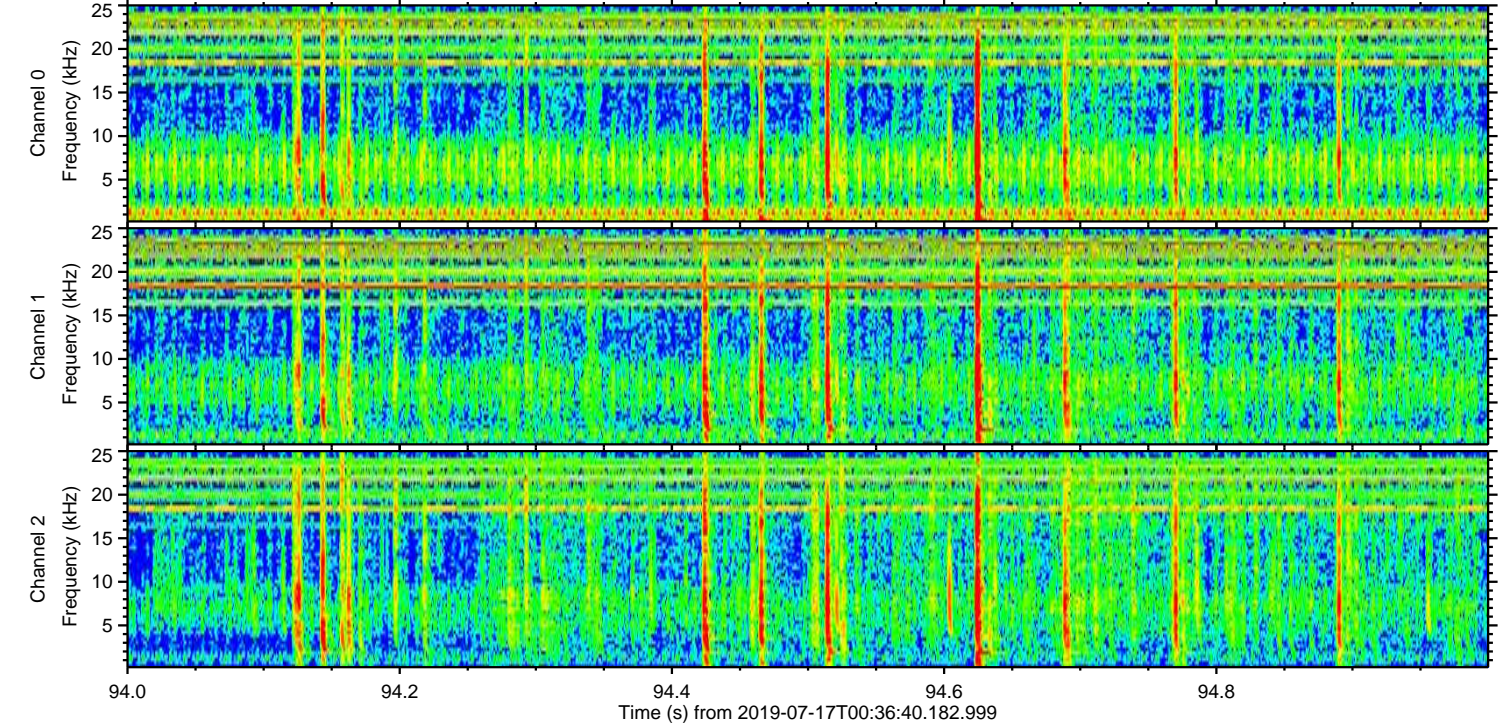
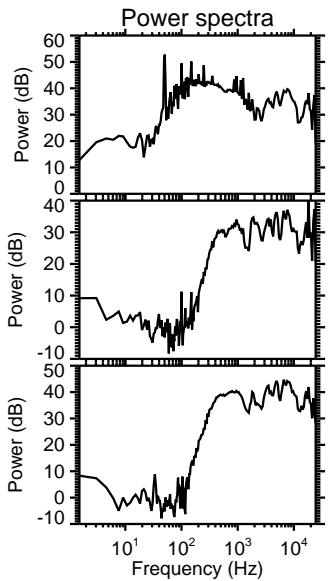
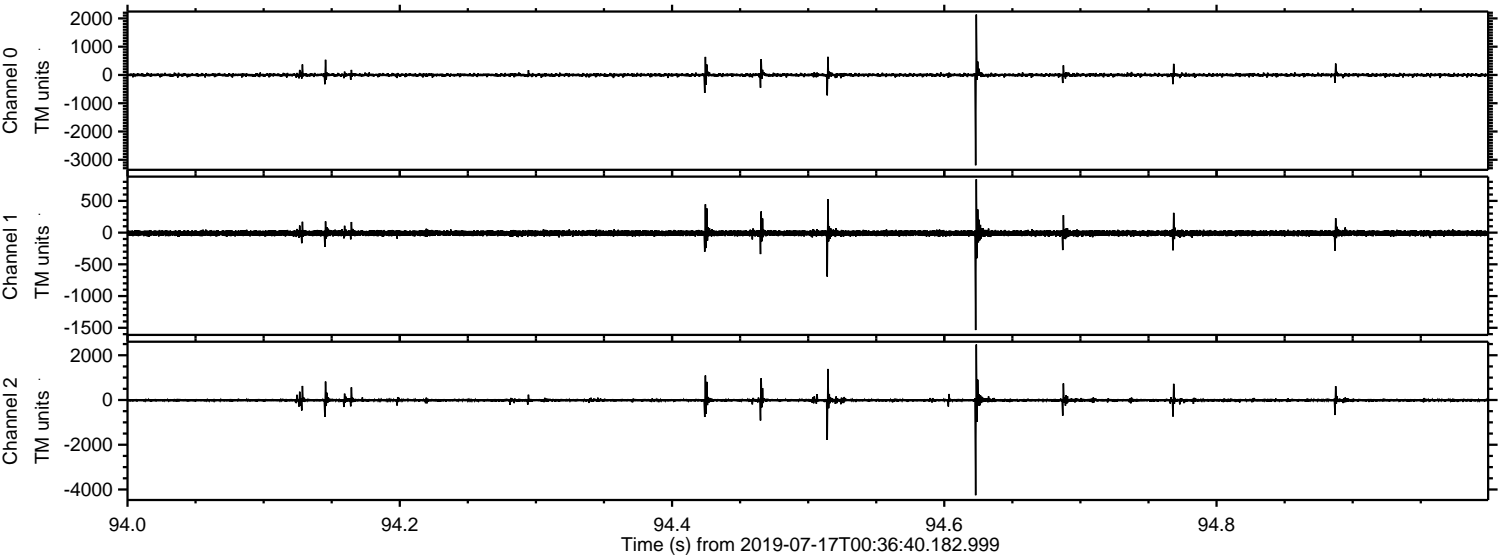
Processed Wed Jul 17 02:44:55 2019 by ELM ver.2012-10-06 from 001__elm20190717_003639__dat00.bin



Processed Wed Jul 17 02:45:03 2019 by ELM ver.2012-10-06 from 001__elm20190717_003639__dat00.bin

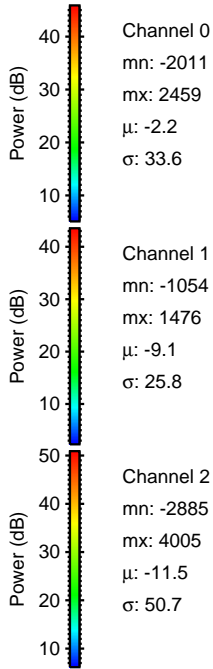
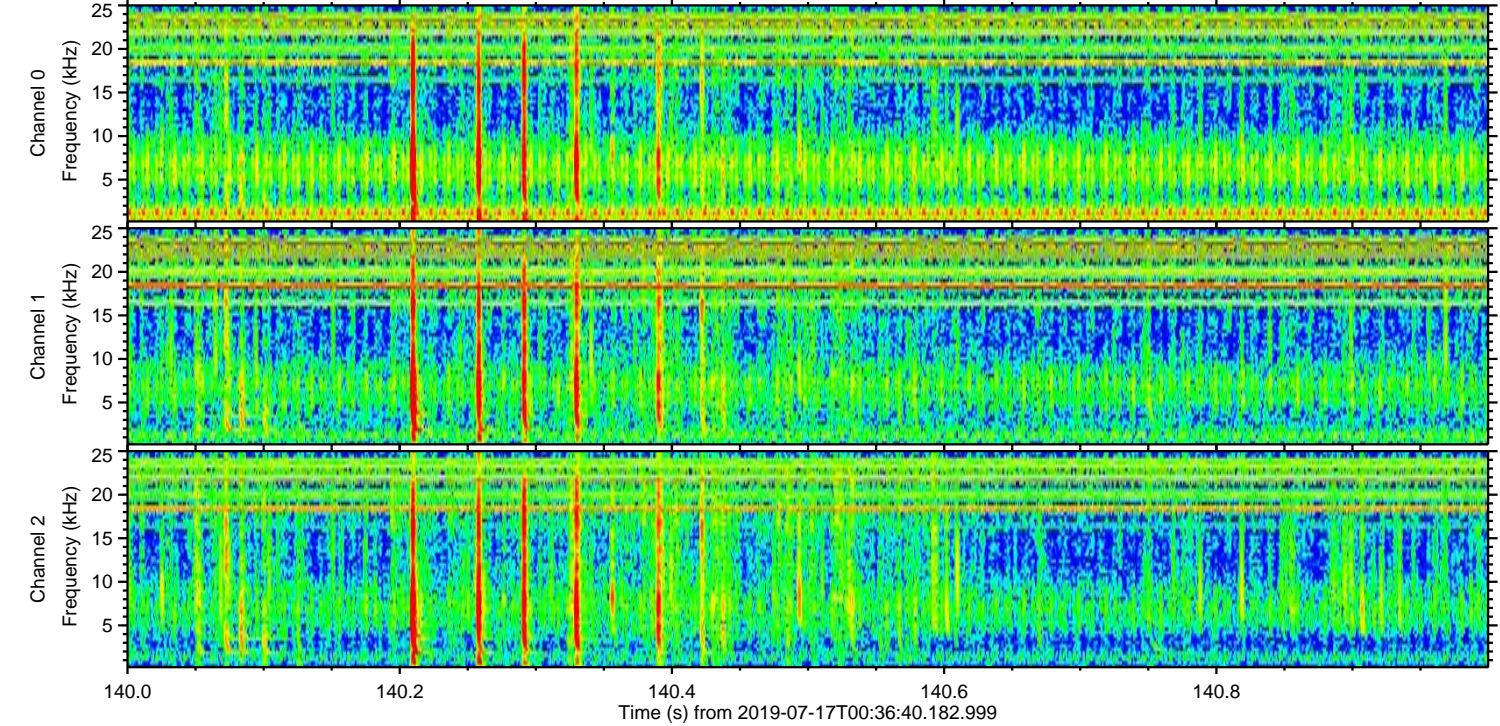
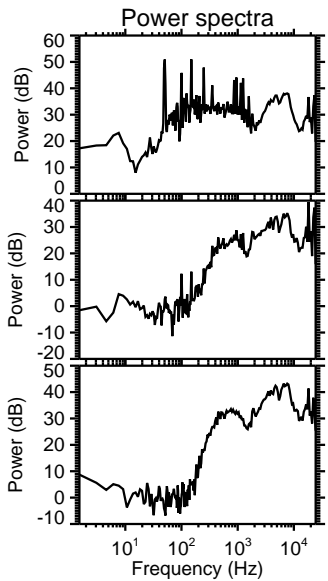
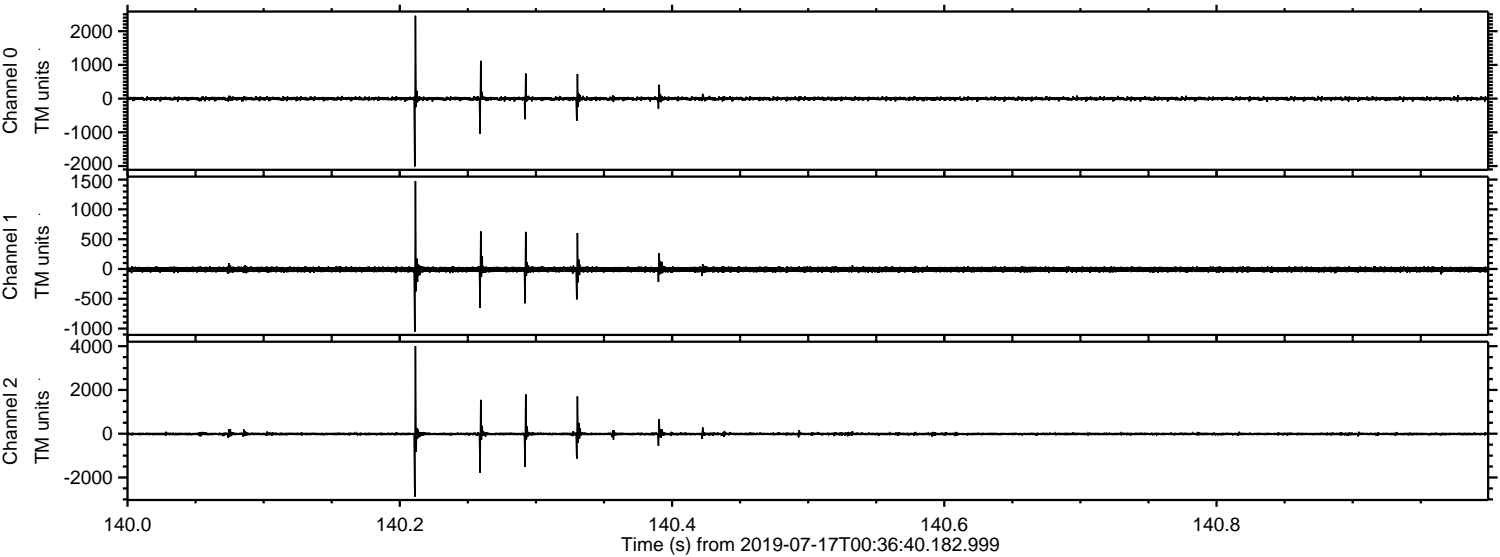


Processed Wed Jul 17 02:45:04 2019 by ELM ver.2012-10-06 from 001__elm20190717_003639__dat00.bin

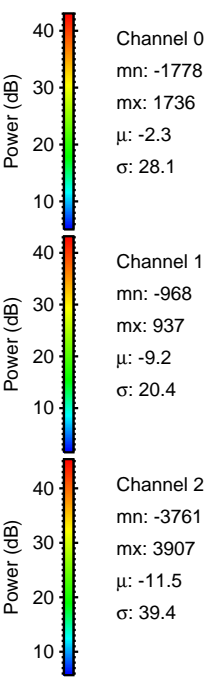
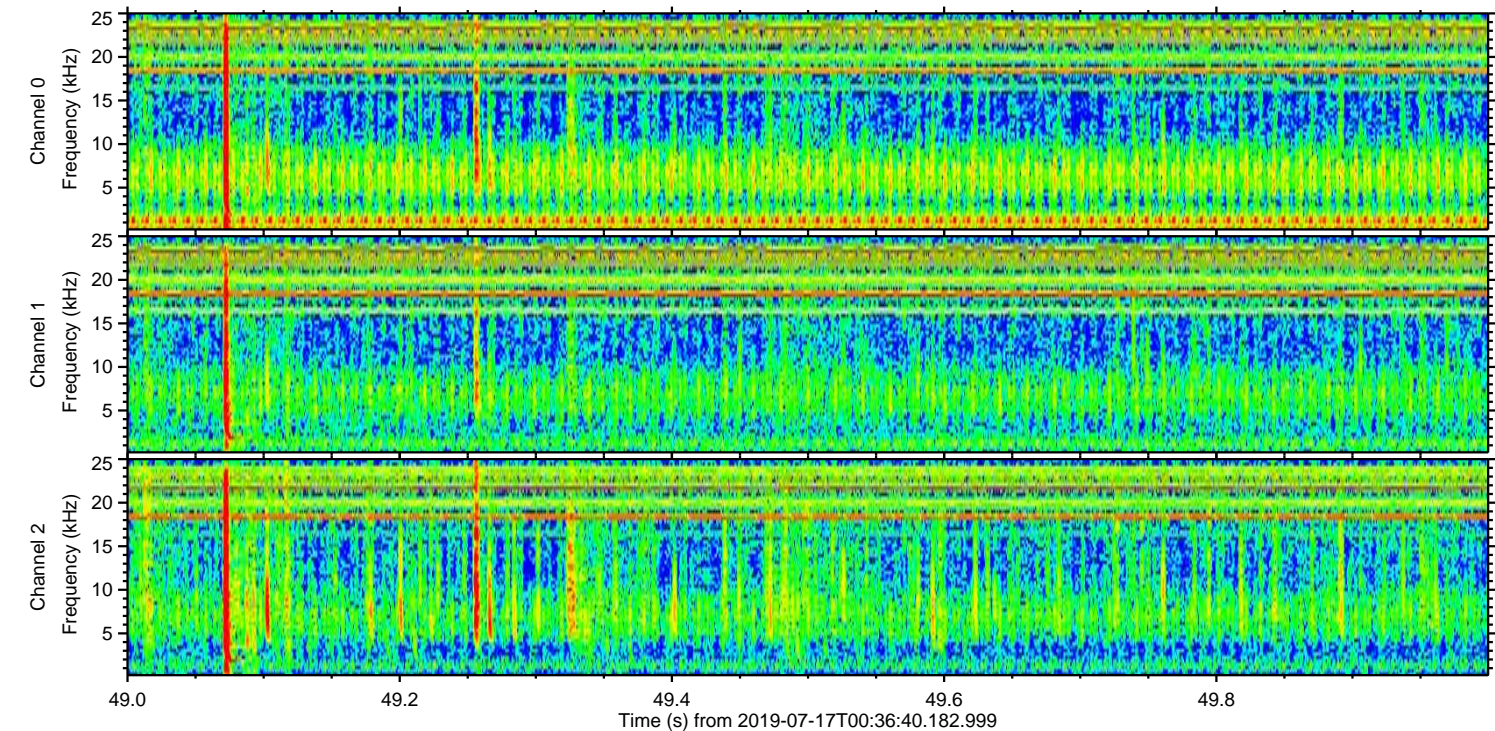
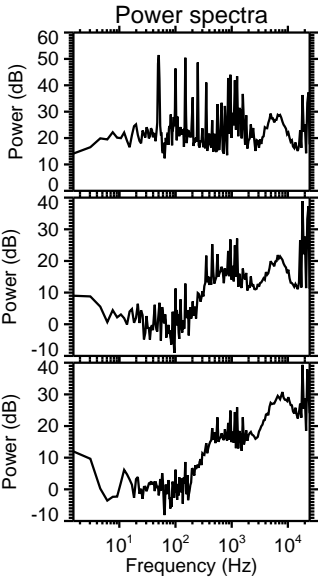
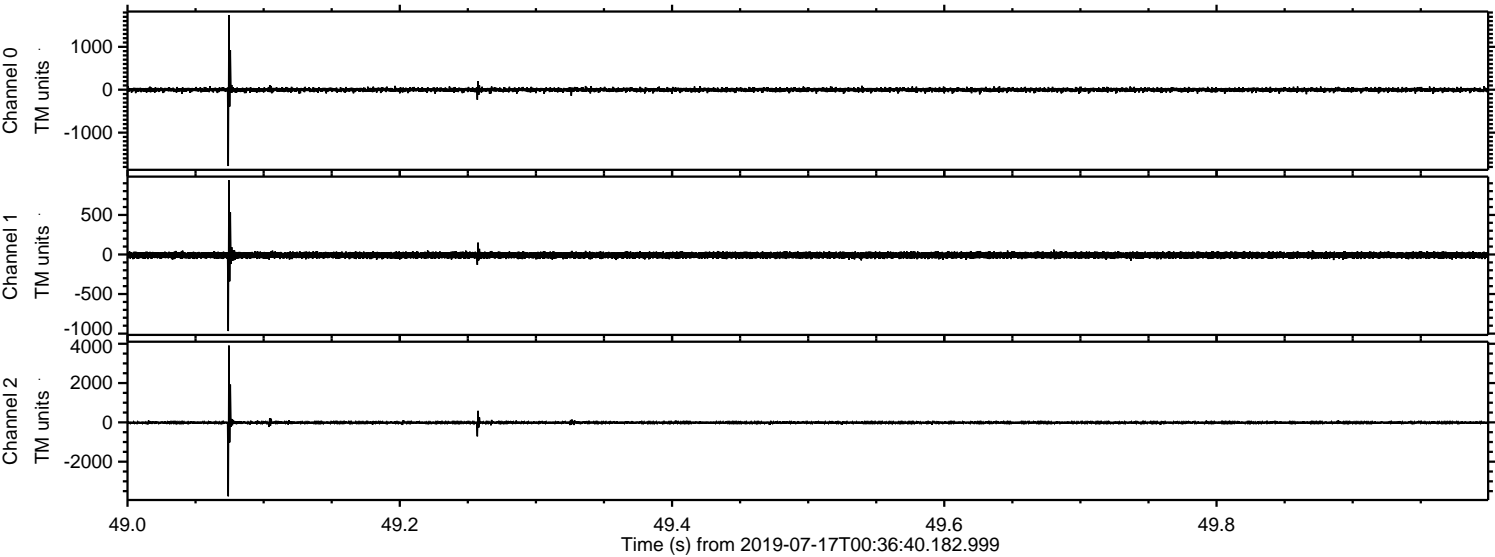


ELMAVAN 3D WAVEFORMS (Measured data sampled at 50 kHz) 51000 packets of 144 samples from 2019-07-17T00:36:40.182.999. Part 141/147

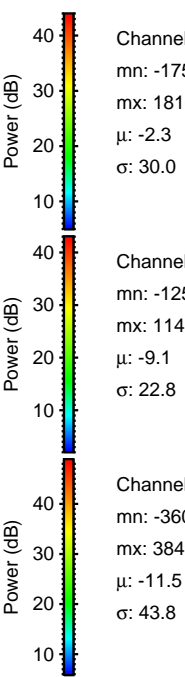
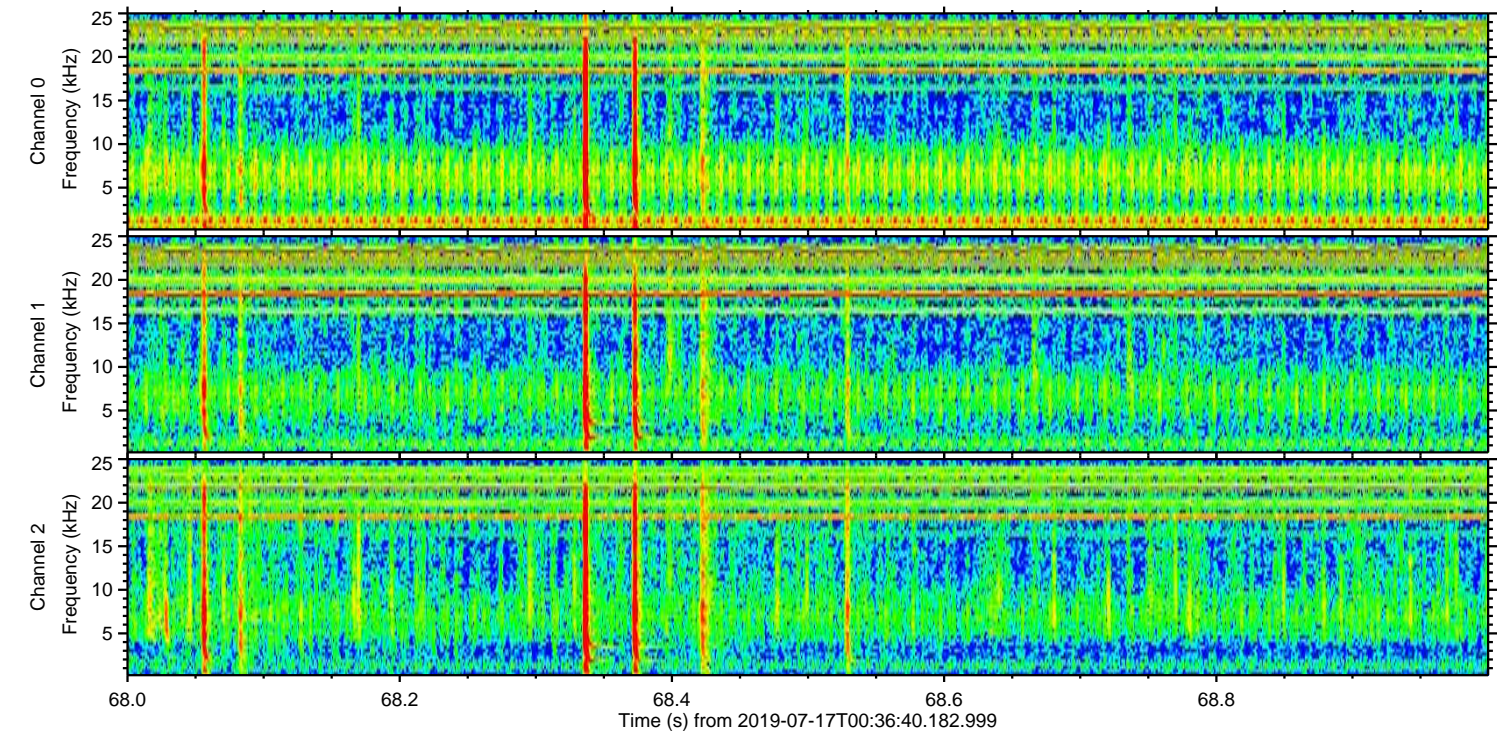
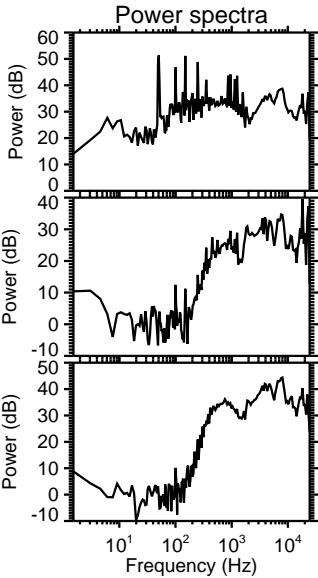
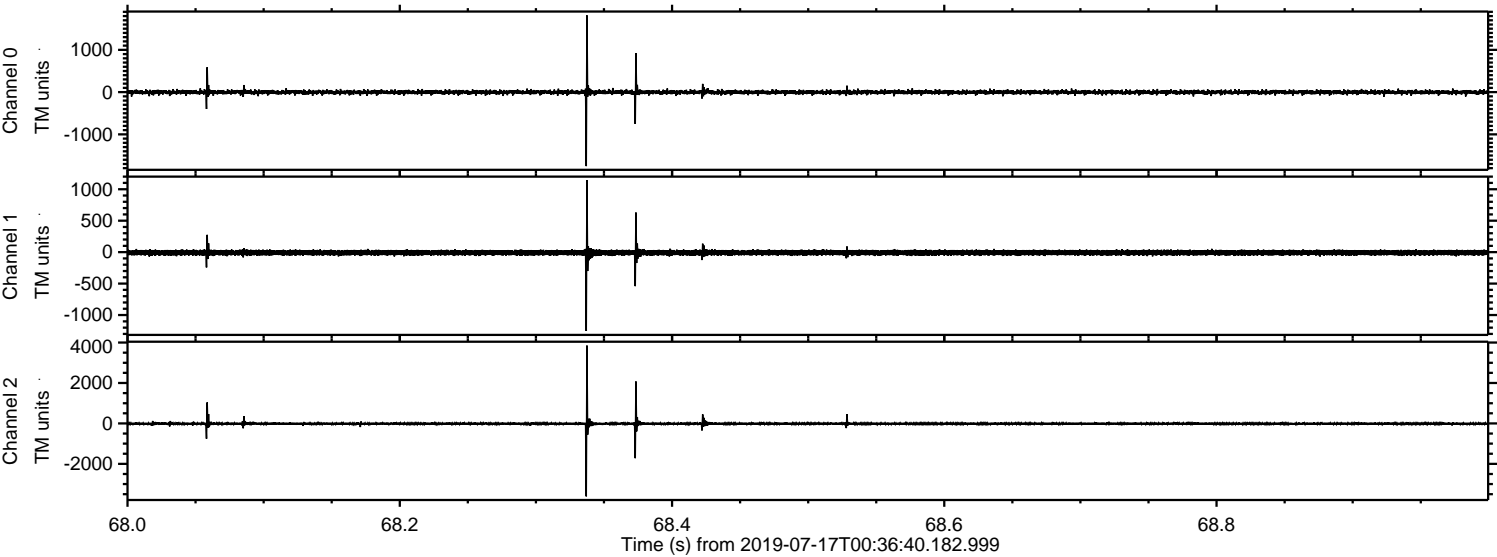
Processed Wed Jul 17 02:45:04 2019 by ELM ver.2012-10-06 from 001__elm20190717_003639__dat00.bin



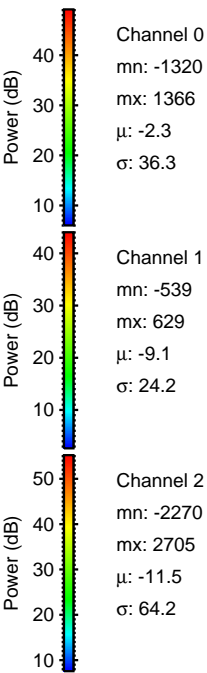
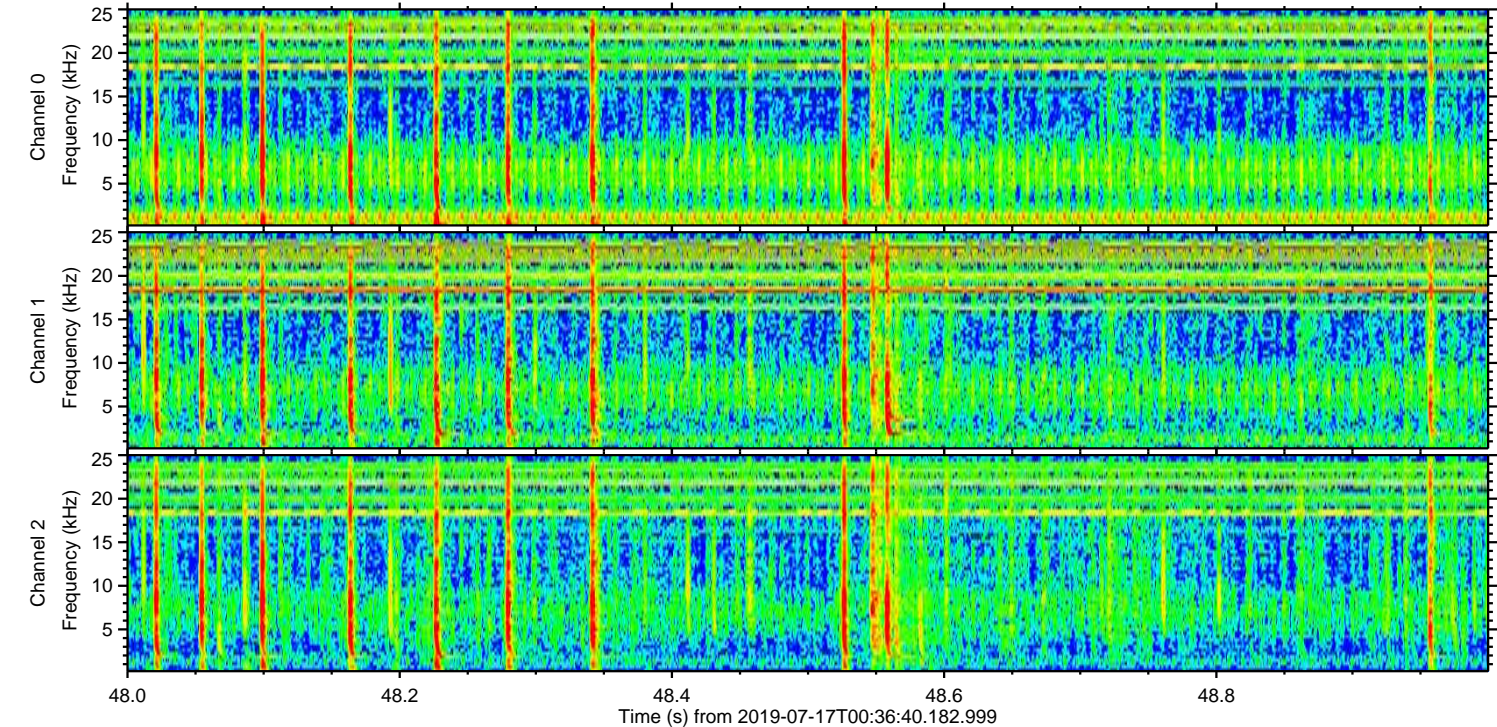
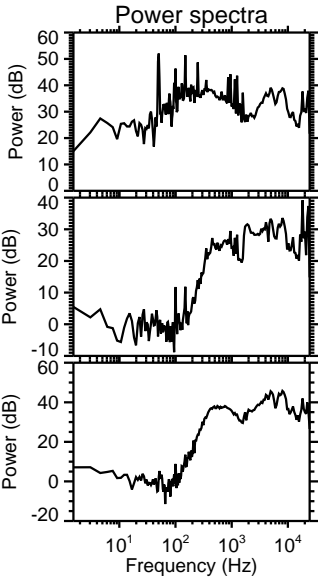
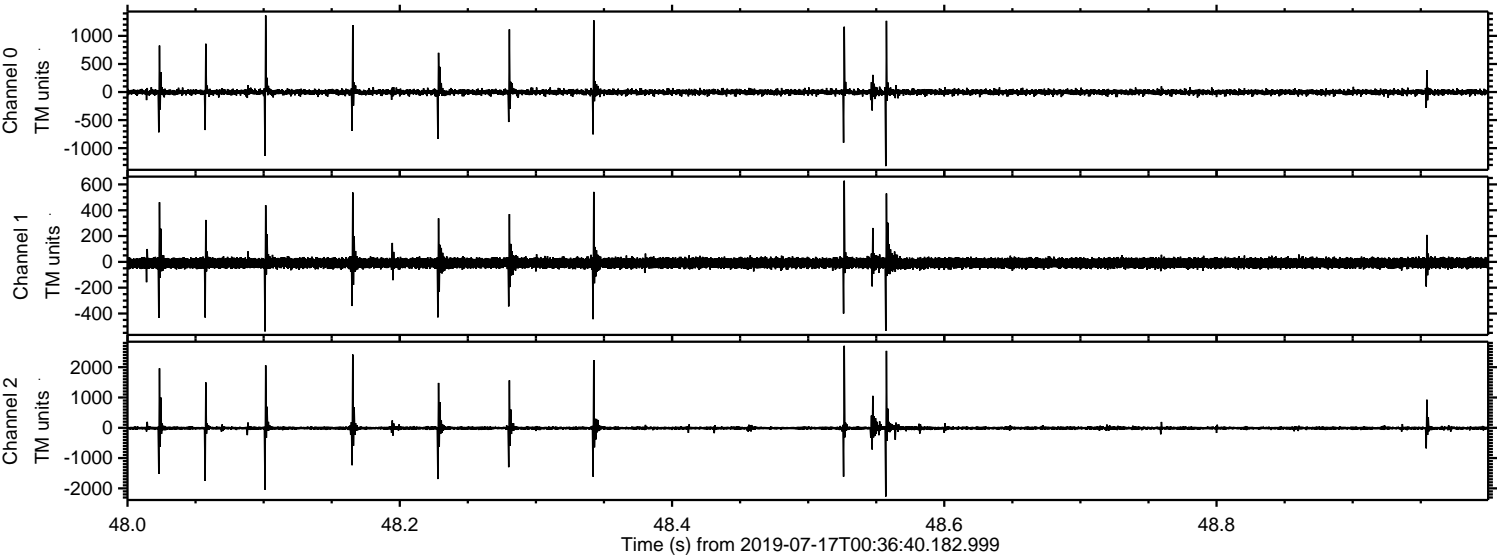
Processed Wed Jul 17 02:45:05 2019 by ELM ver.2012-10-06 from 001__elm20190717_003639__dat00.bin



Processed Wed Jul 17 02:45:06 2019 by ELM ver.2012-10-06 from 001__elm20190717_003639__dat00.bin

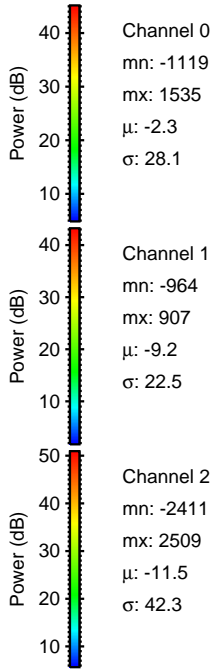
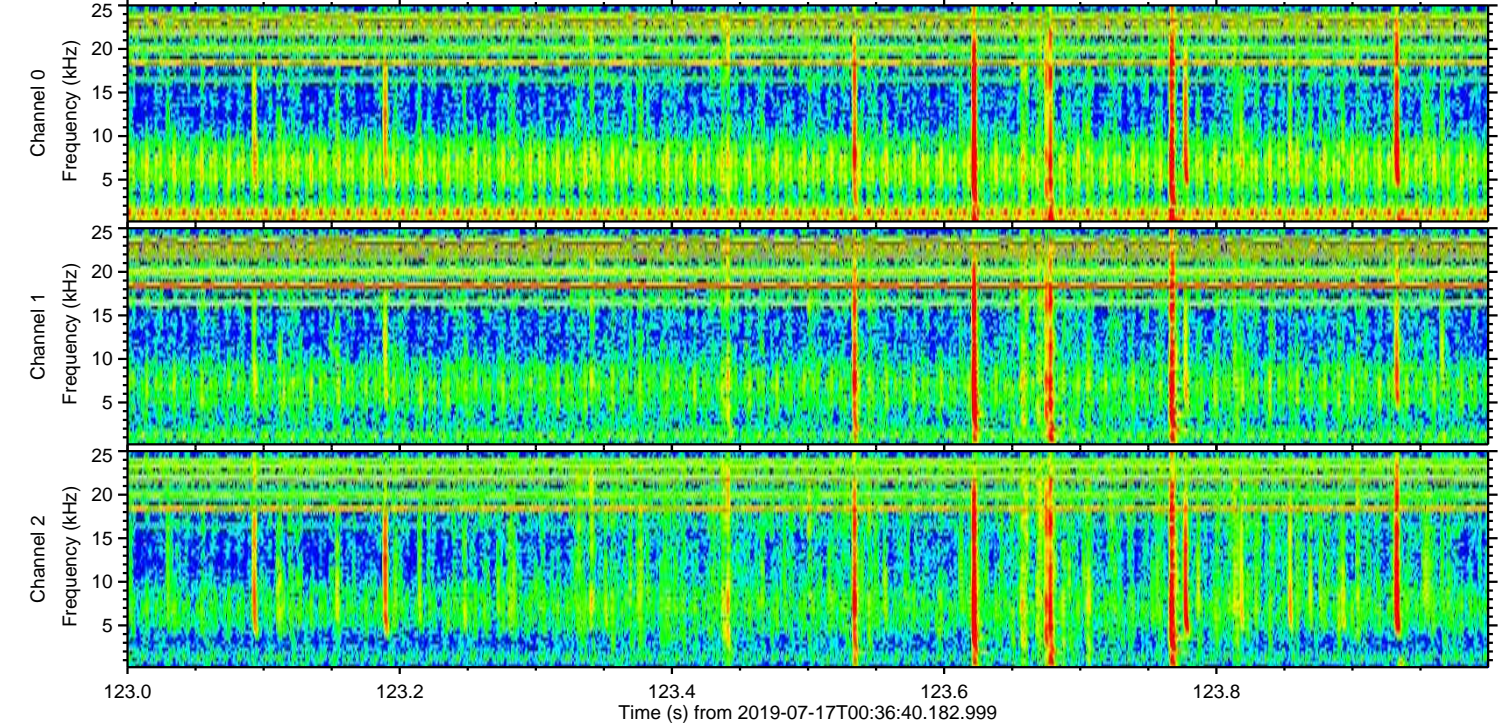
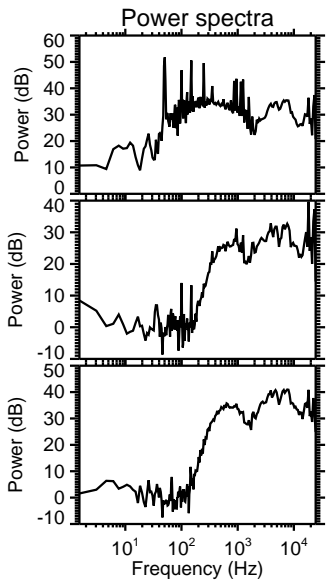
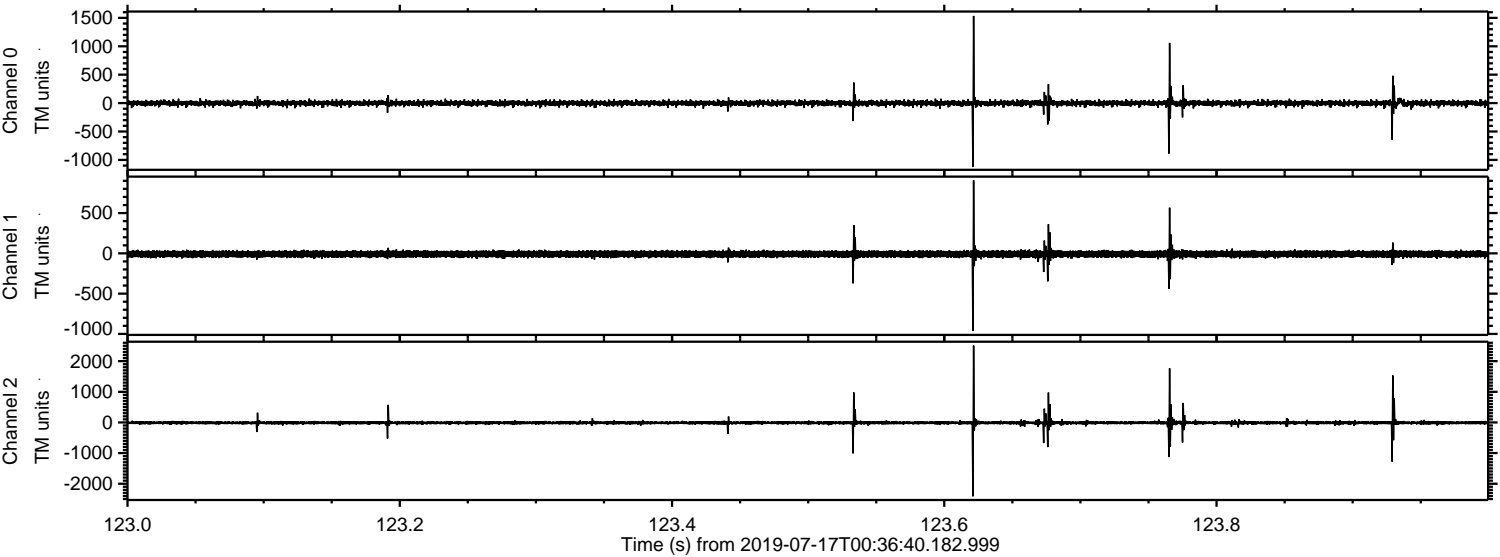


Processed Wed Jul 17 02:45:06 2019 by ELM ver.2012-10-06 from 001__elm20190717_003639__dat00.bin



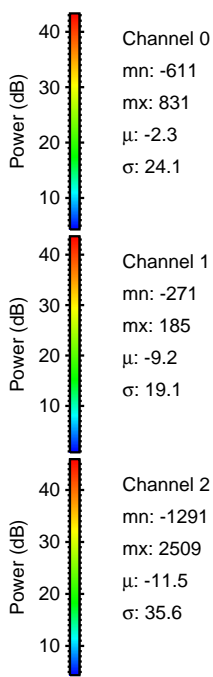
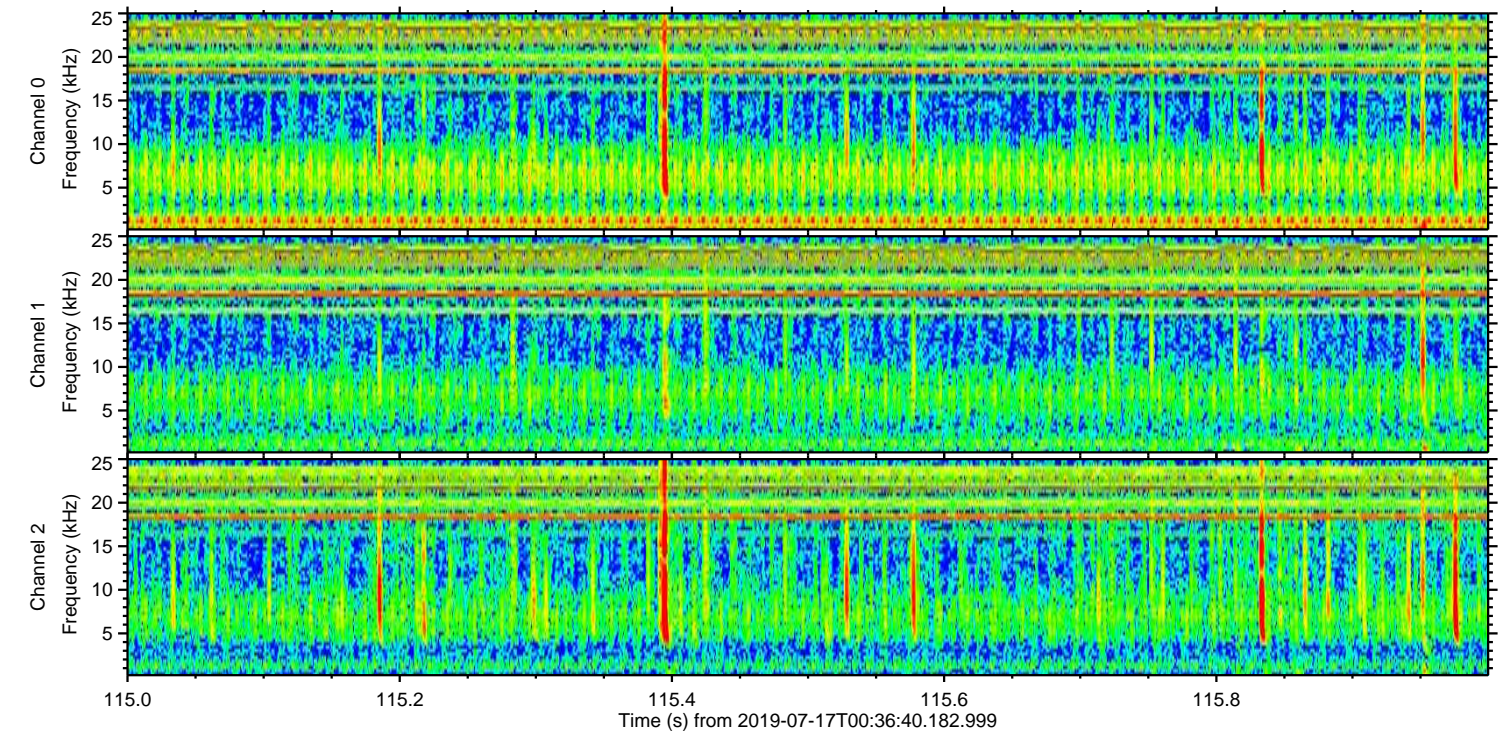
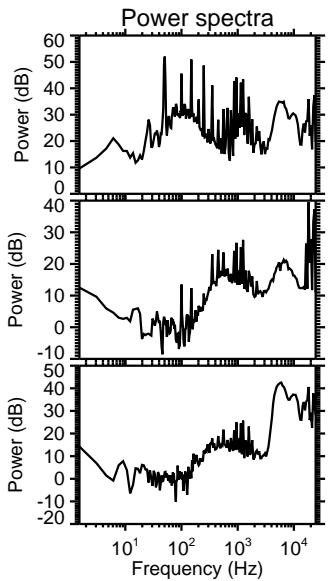
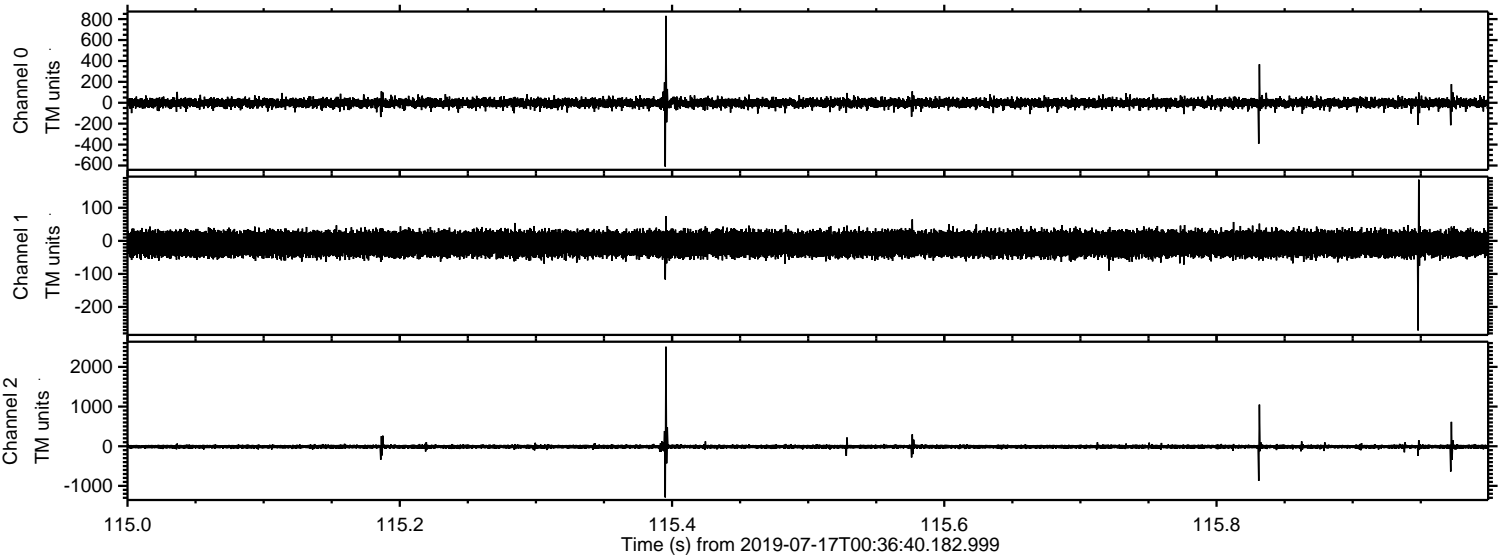
ELMAVAN 3D WAVEFORMS (Measured data sampled at 50 kHz) 51000 packets of 144 samples from 2019-07-17T00:36:40.182.999. Part 124/147

Processed Wed Jul 17 02:45:07 2019 by ELM ver.2012-10-06 from 001__elm20190717_003639__dat00.bin



ELMAVAN 3D WAVEFORMS (Measured data sampled at 50 kHz) 51000 packets of 144 samples from 2019-07-17T00:36:40.182.999. Part 116/147

Processed Wed Jul 17 02:45:08 2019 by ELM ver.2012-10-06 from 001__elm20190717_003639__dat00.bin

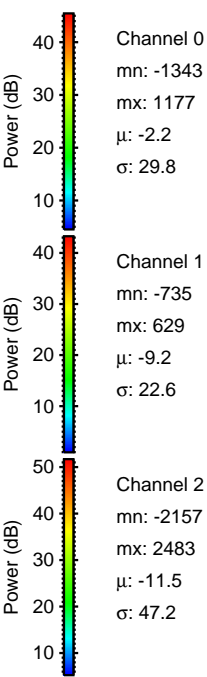
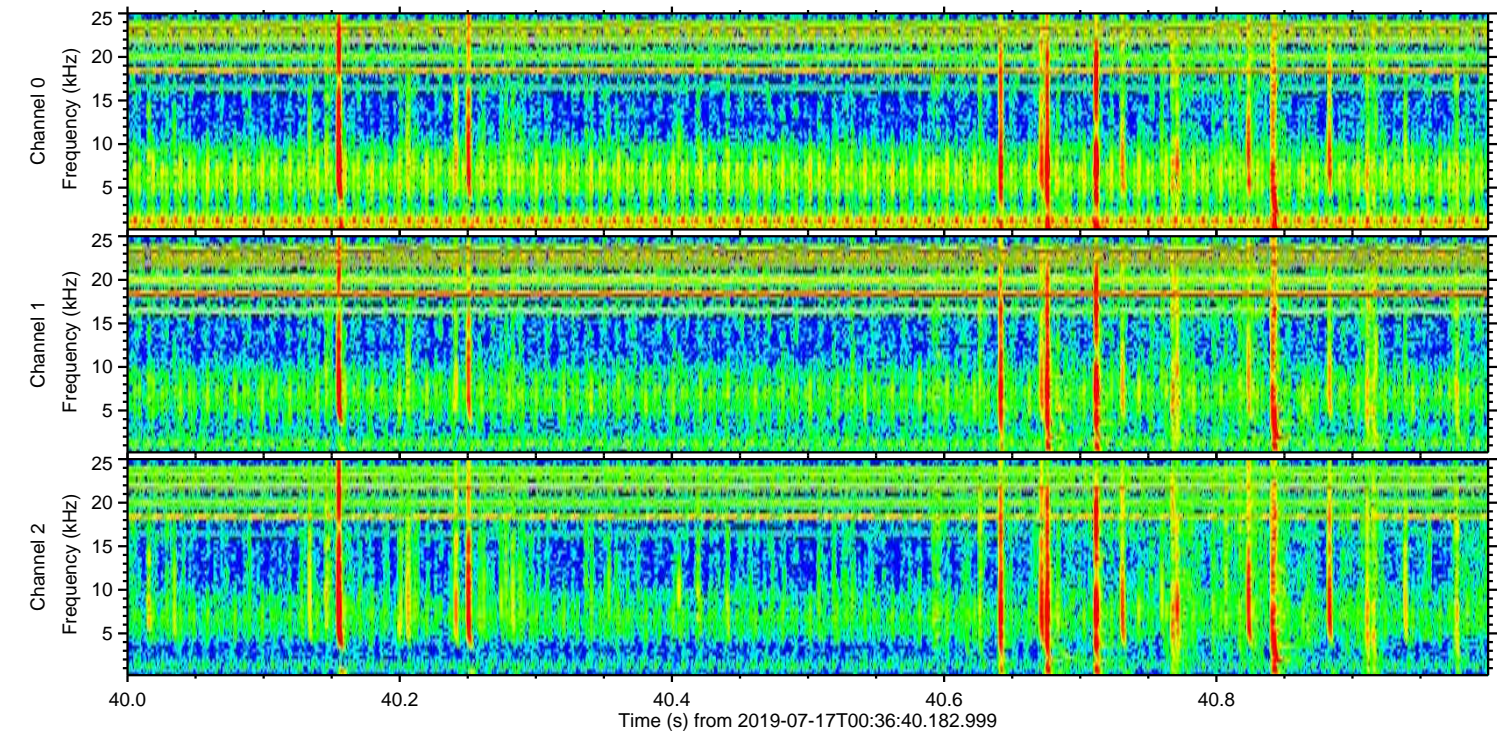
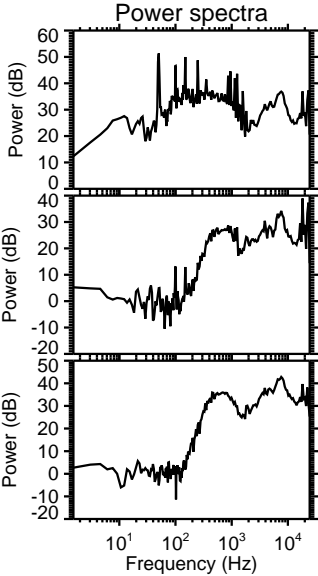
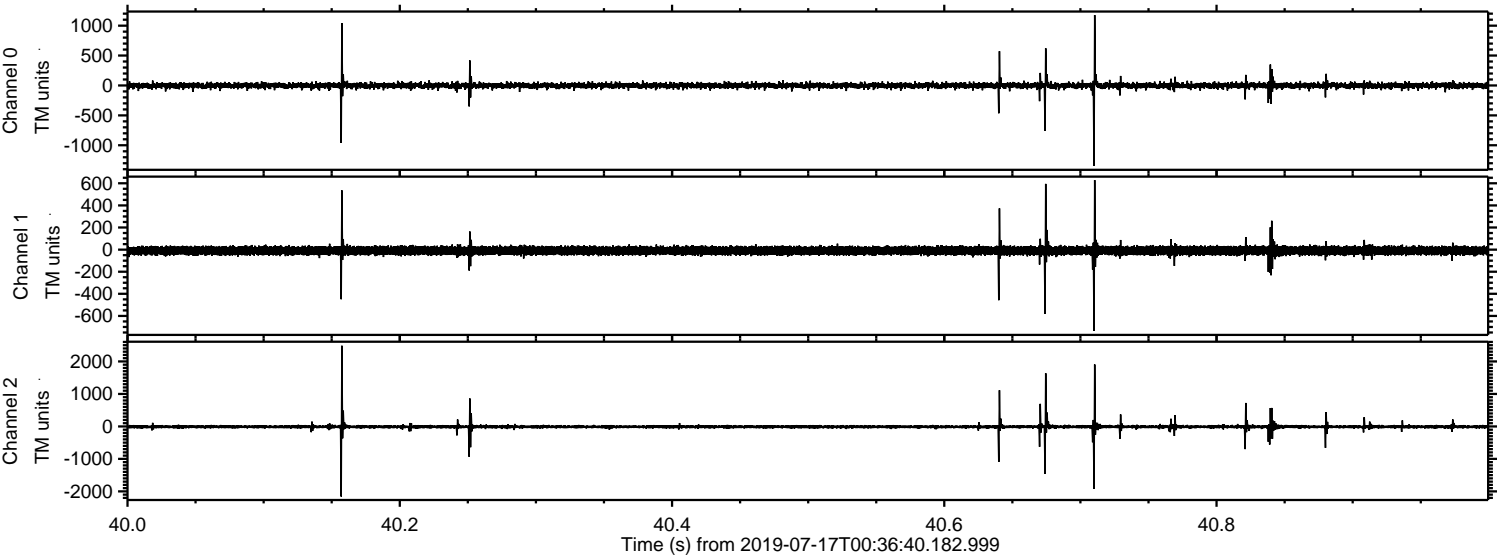


Channel 0
mn: -611
mx: 831
 μ : -2.3
 σ : 24.1

Channel 1
mn: -271
mx: 185
 μ : -9.2
 σ : 19.1

Channel 2
mn: -1291
mx: 2509
 μ : -11.5
 σ : 35.6

Processed Wed Jul 17 02:45:08 2019 by ELM ver.2012-10-06 from 001__elm20190717_003639__dat00.bin



Channel 0
mn: -1343
mx: 1177
 μ : -2.2
 σ : 29.8

Channel 1
mn: -735
mx: 629
 μ : -9.2
 σ : 22.6

Channel 2
mn: -2157
mx: 2483
 μ : -11.5
 σ : 47.2

Processed Wed Jul 17 02:45:09 2019 by ELM ver.2012-10-06 from 001__elm20190717_003639__dat00.bin

