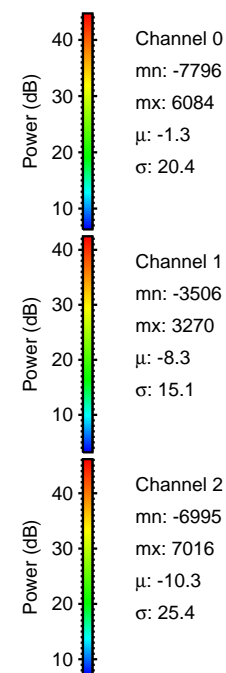
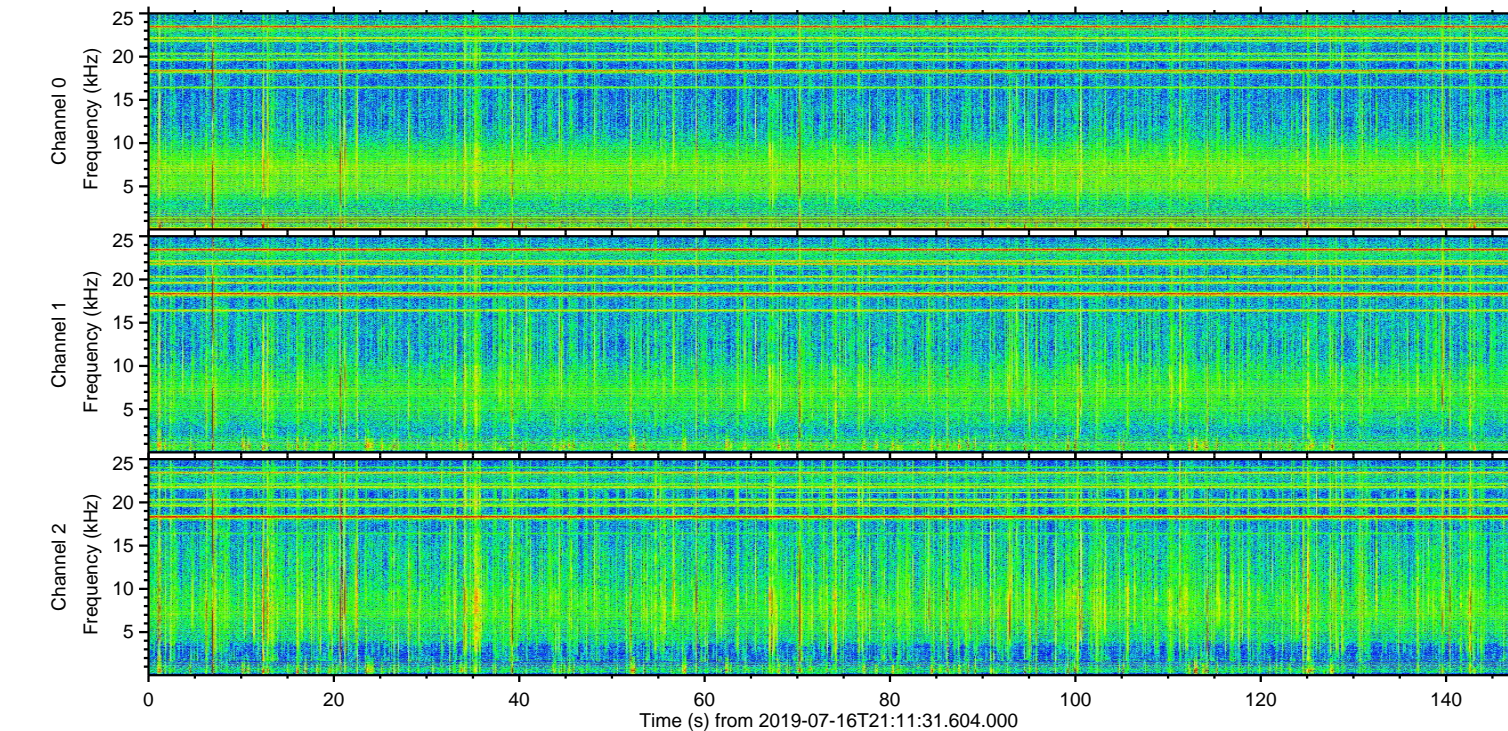
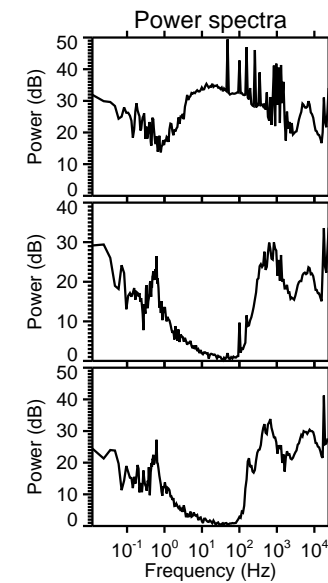
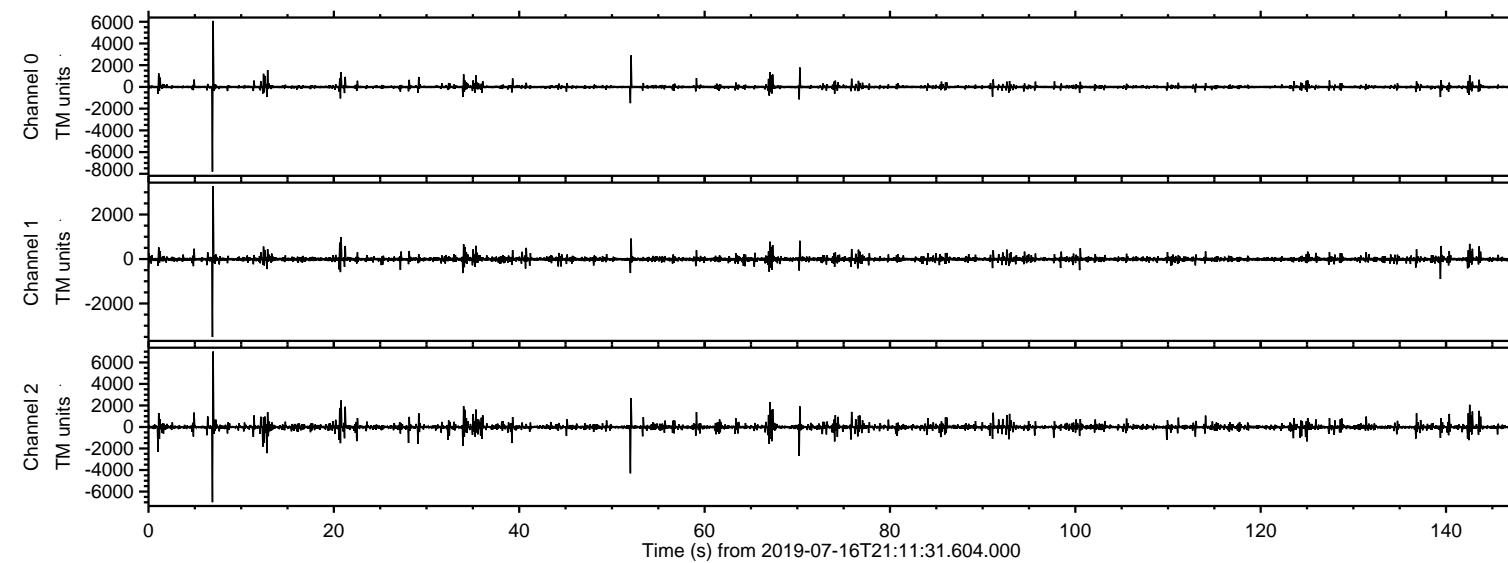
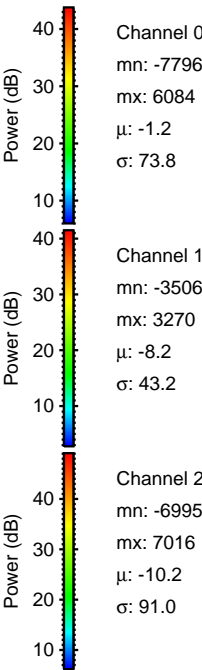
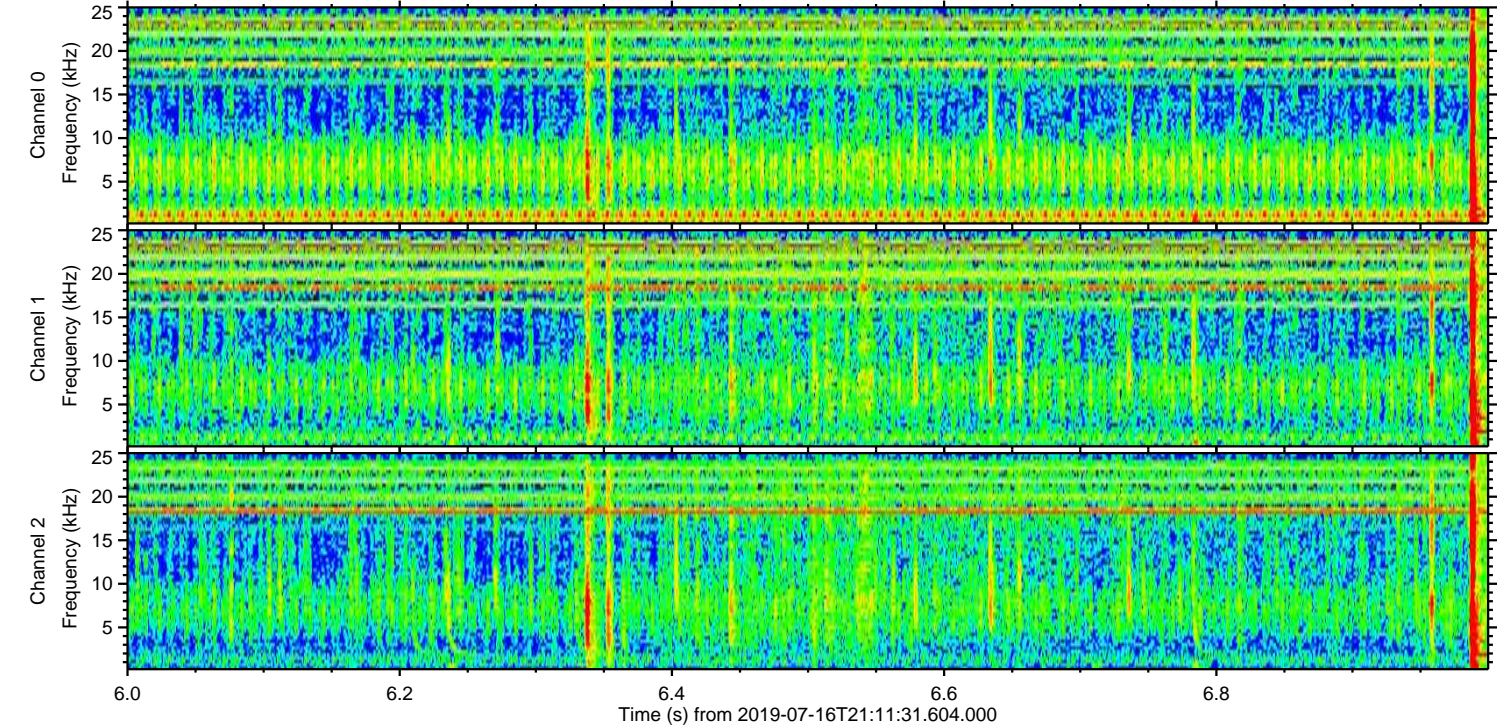
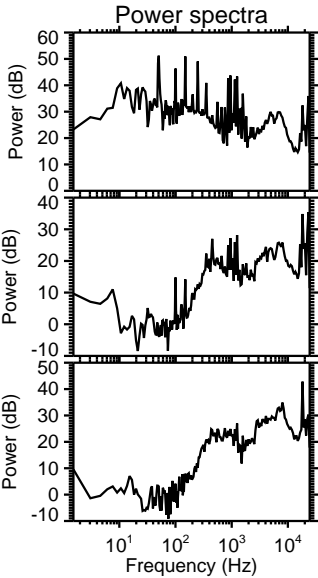
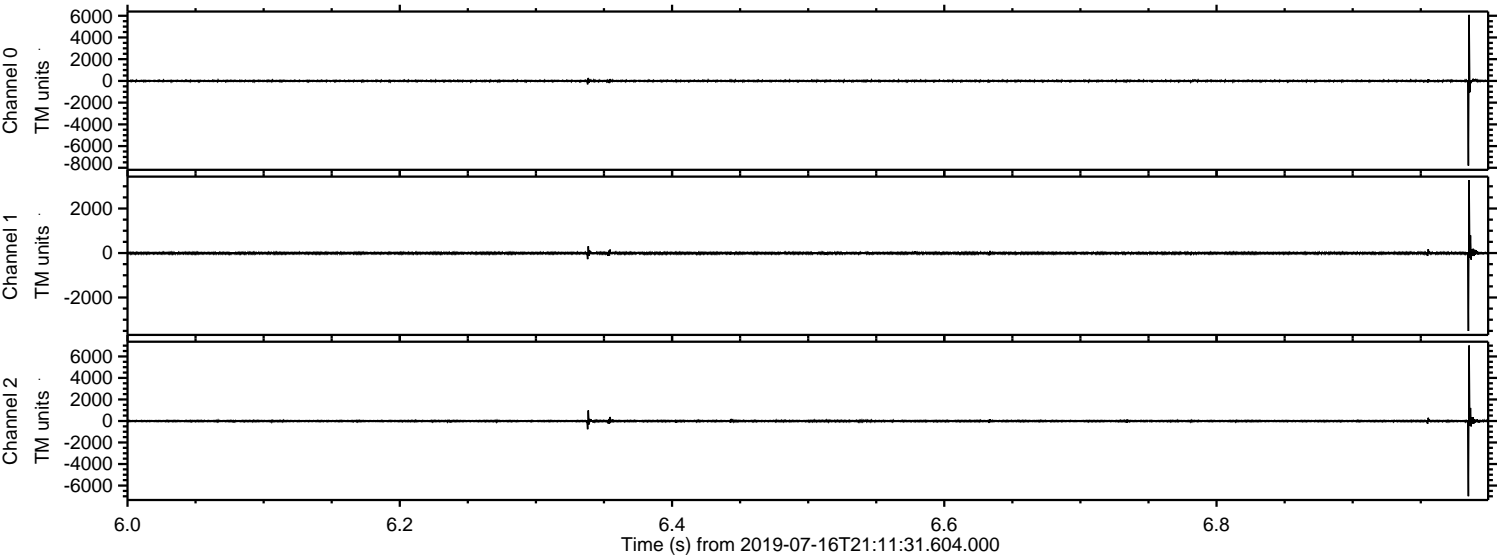


ELMAVAN 3D WAVEFORMS (Measured data sampled at 50 kHz) 51000 packets of 144 samples from 2019-07-16T21:11:31.604.000.

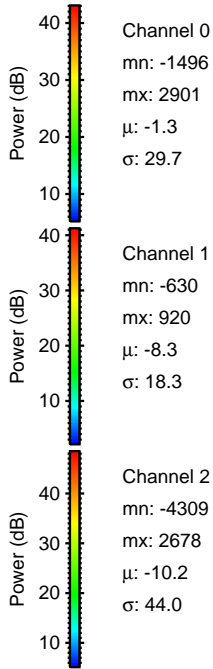
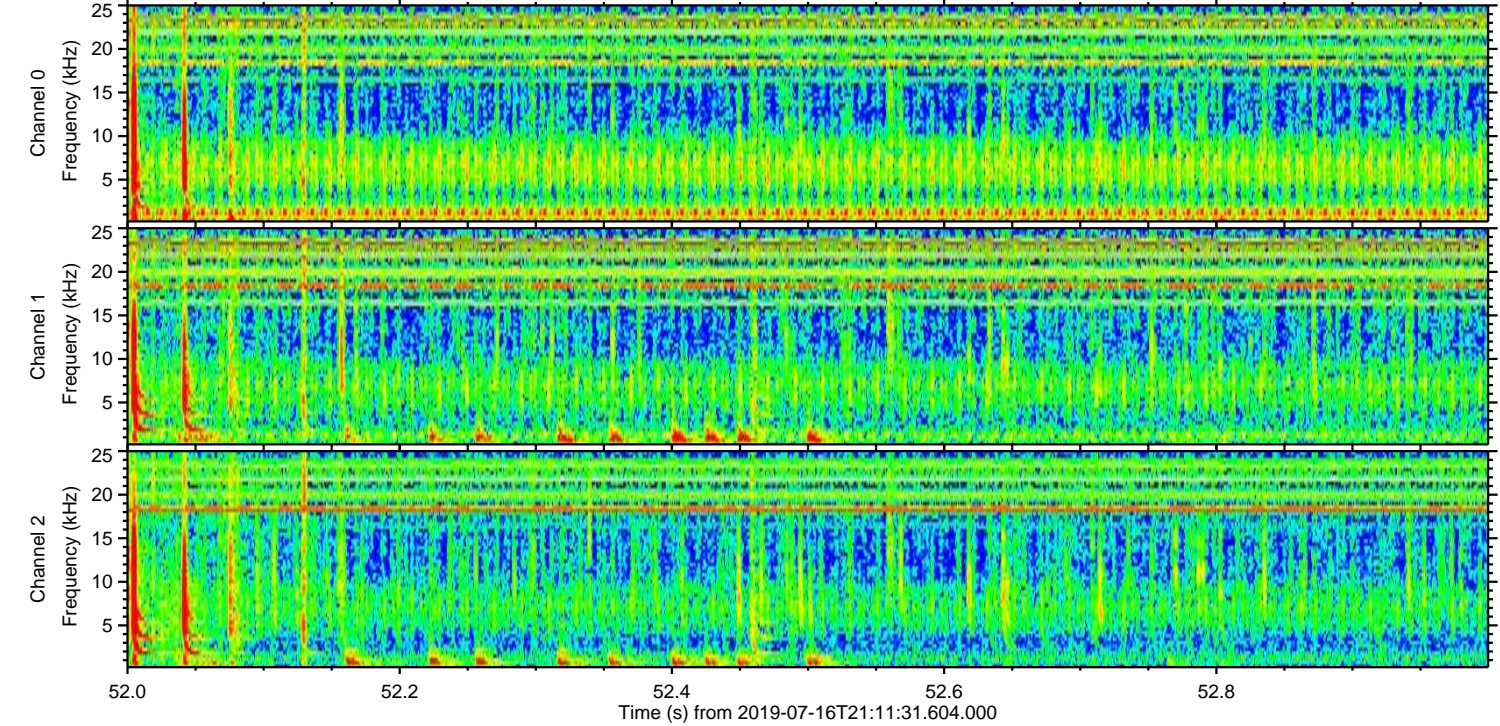
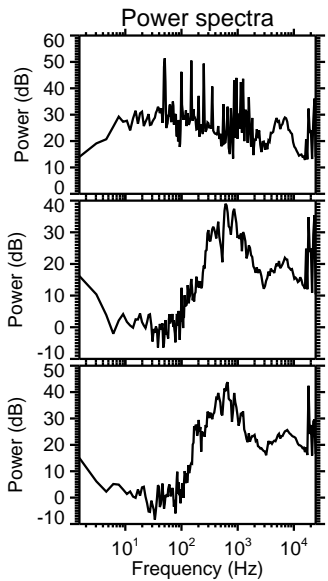
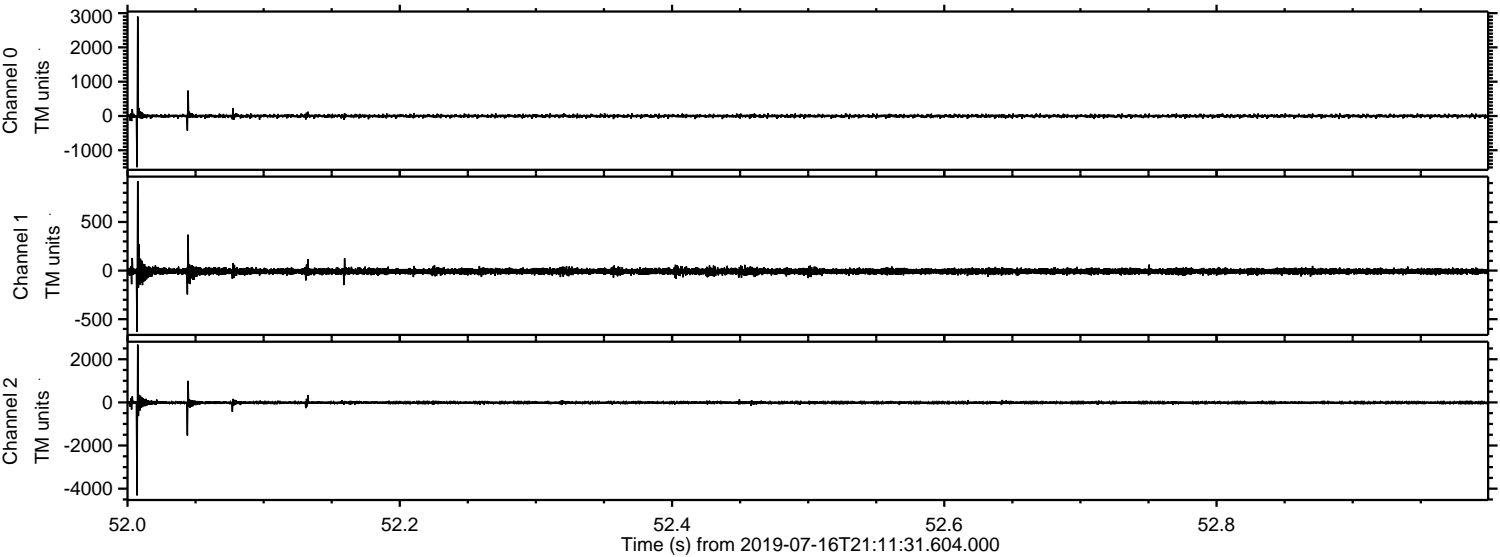
Processed Tue Jul 16 23:19:53 2019 by ELM ver.2012-10-06 from 001__elm20190716_211130__dat00.bin



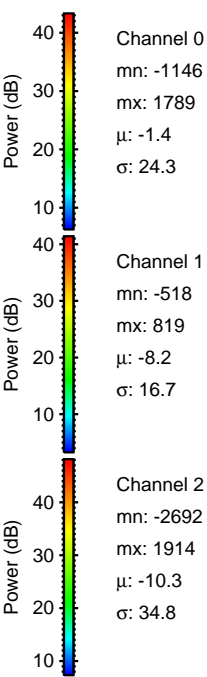
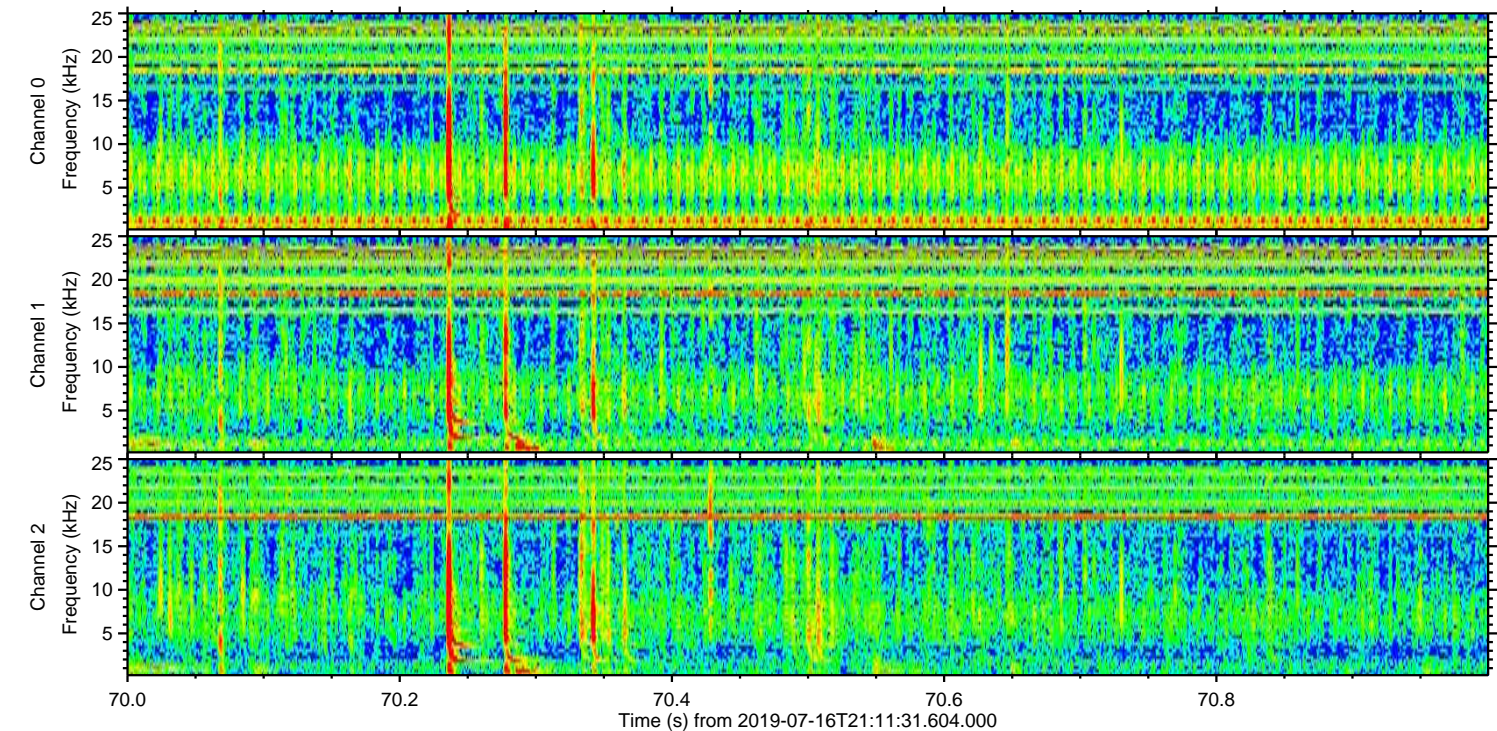
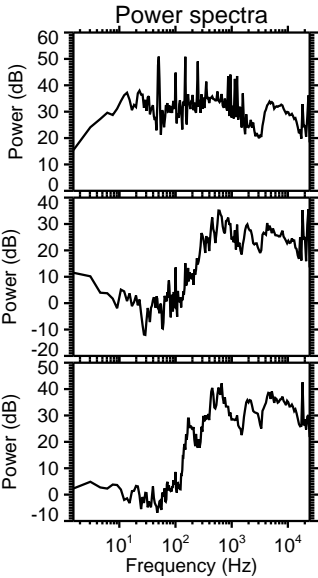
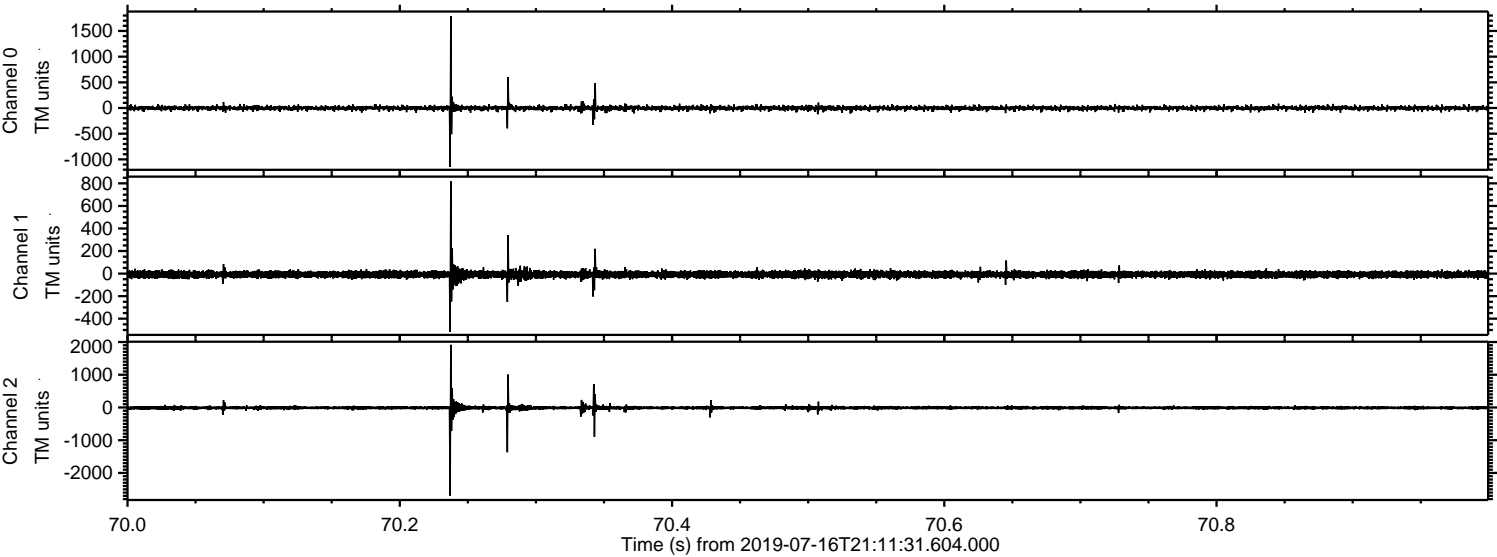
Processed Tue Jul 16 23:19:59 2019 by ELM ver.2012-10-06 from 001__elm20190716_211130__dat00.bin



Processed Tue Jul 16 23:20:00 2019 by ELM ver.2012-10-06 from 001__elm20190716_211130__dat00.bin

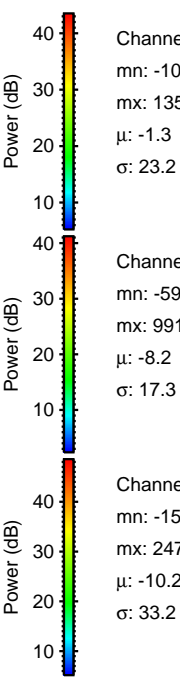
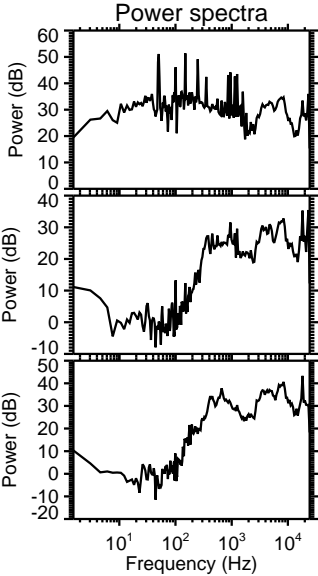
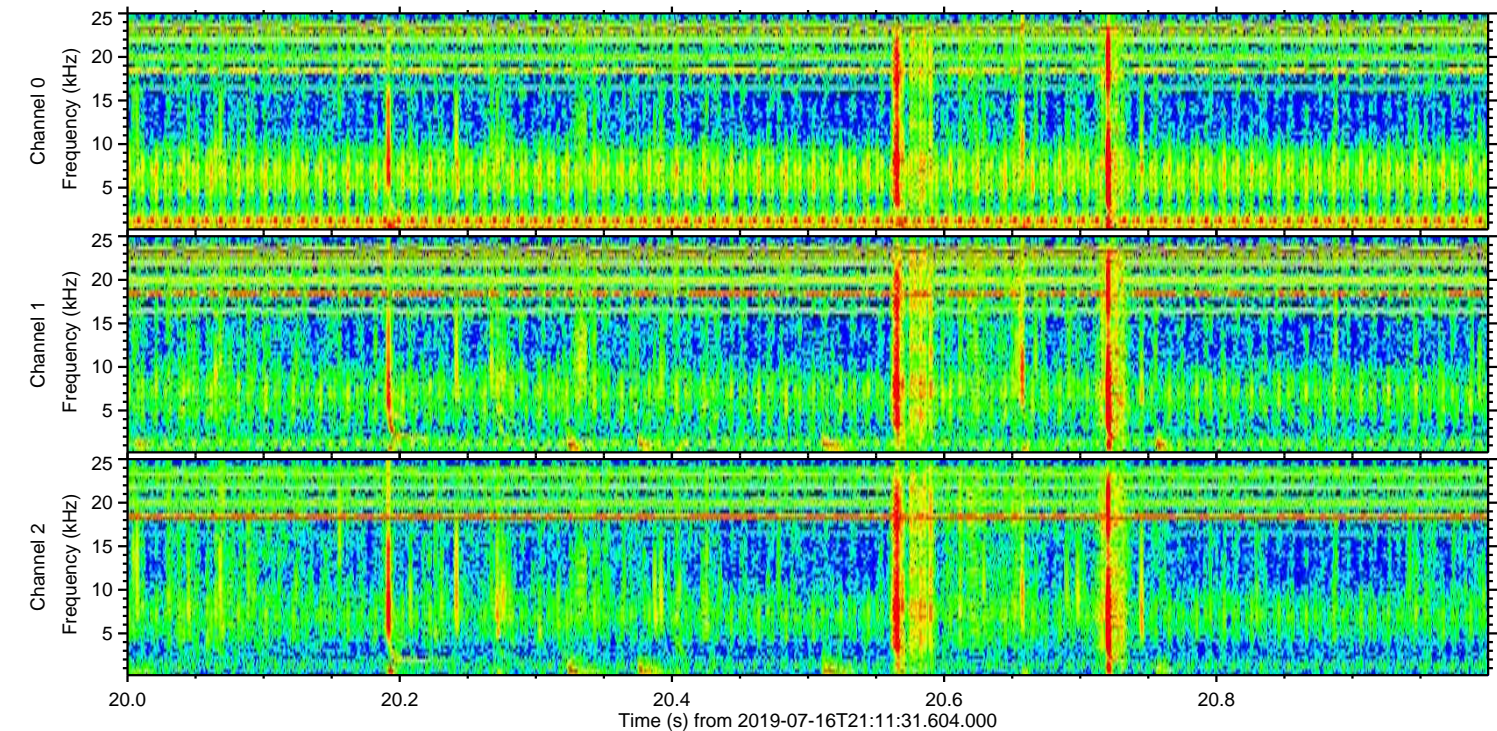
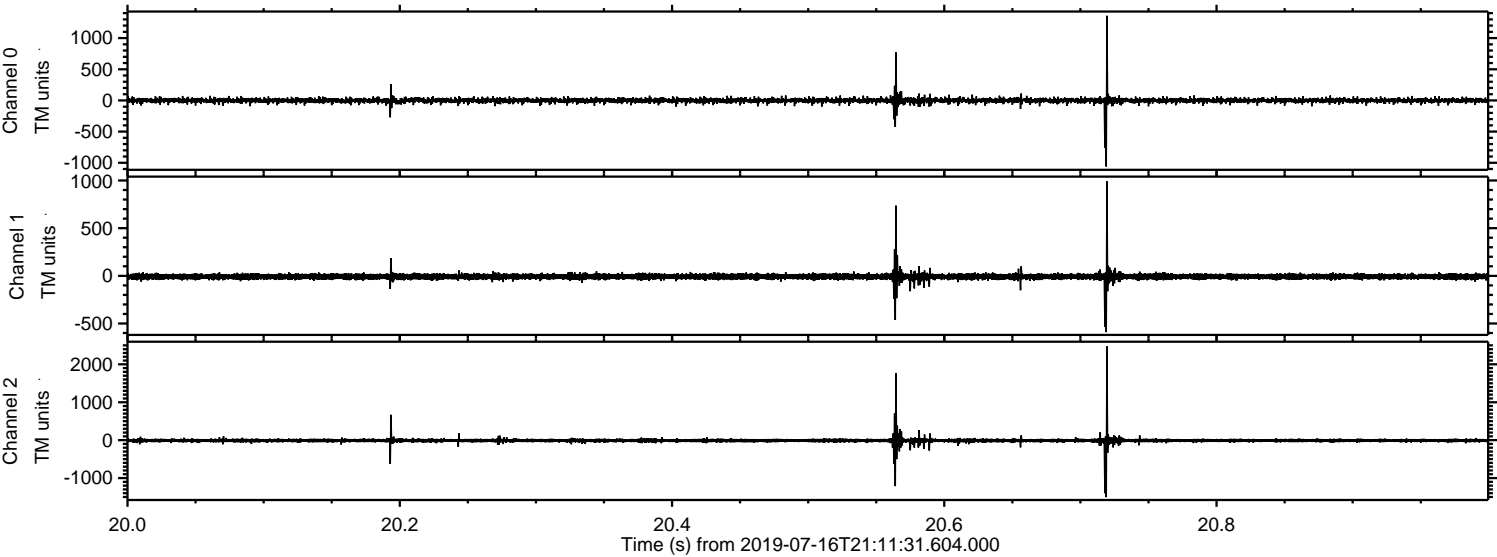


Processed Tue Jul 16 23:20:00 2019 by ELM ver.2012-10-06 from 001__elm20190716_211130__dat00.bin

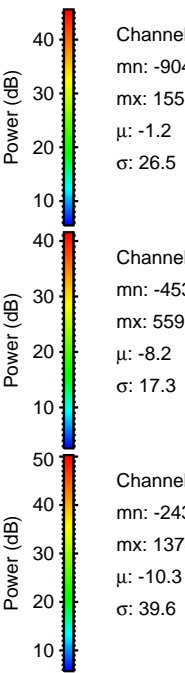
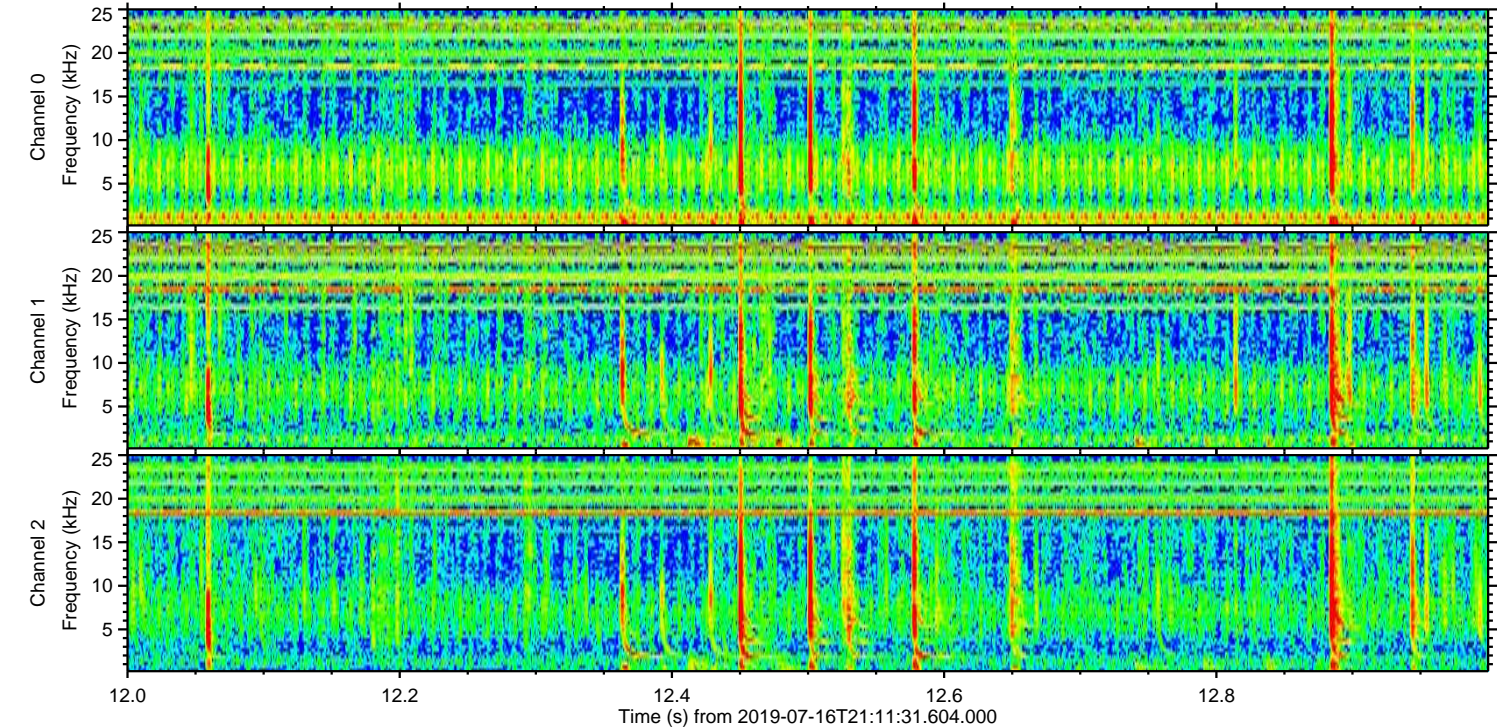
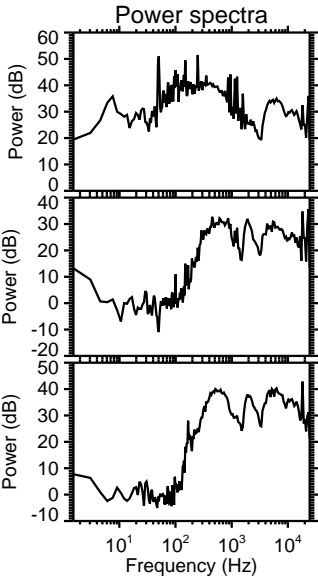
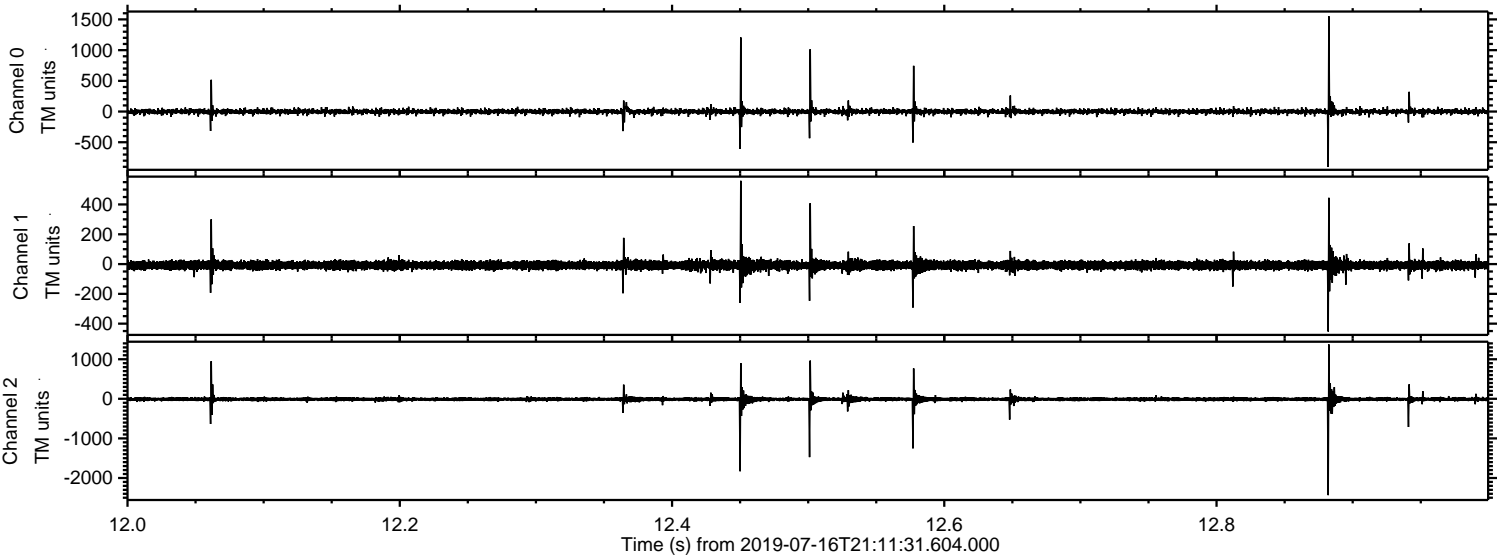


ELMAVAN 3D WAVEFORMS (Measured data sampled at 50 kHz) 51000 packets of 144 samples from 2019-07-16T21:11:31.604.000. Part 21/147

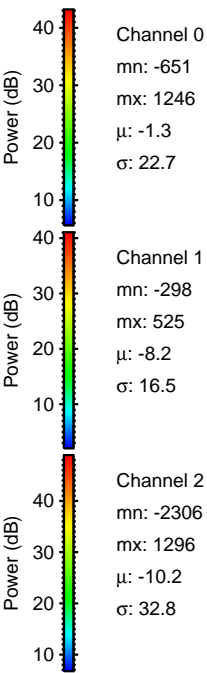
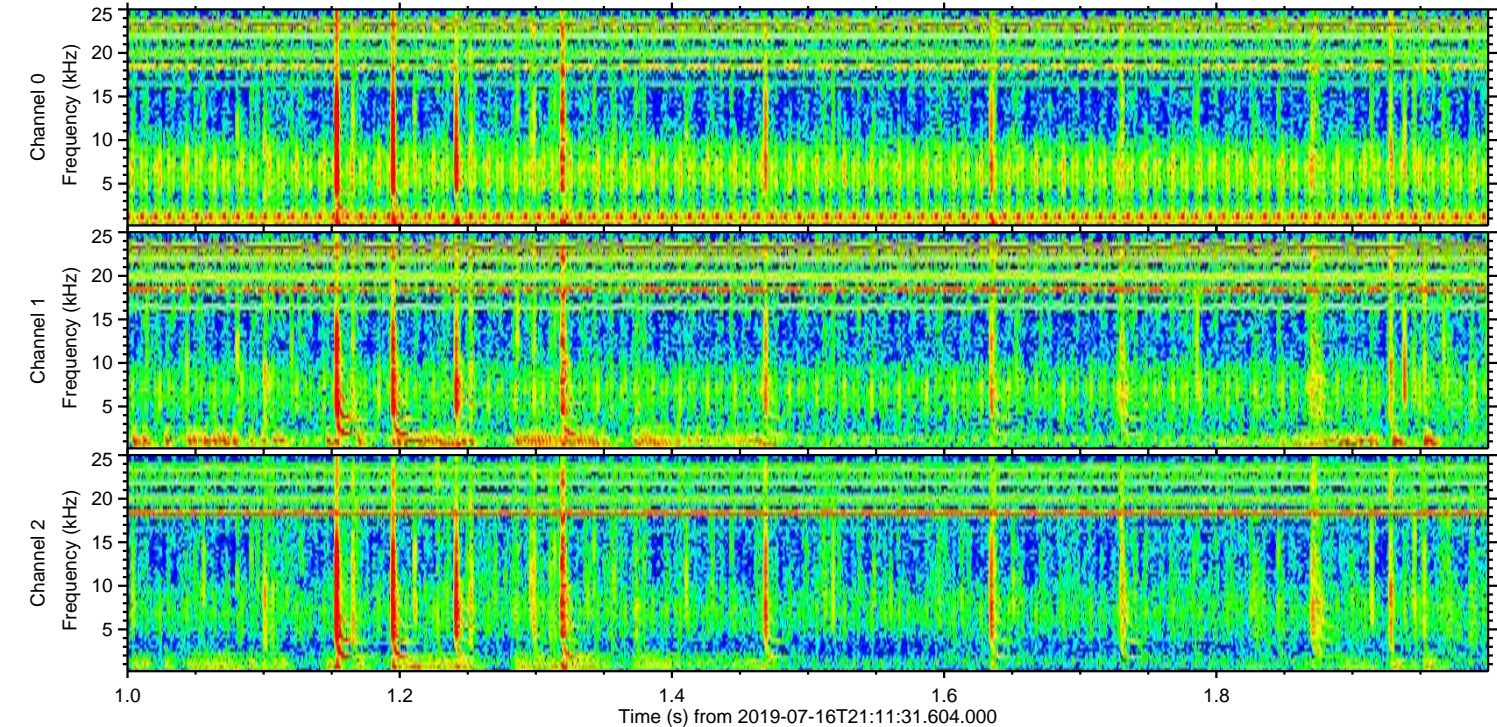
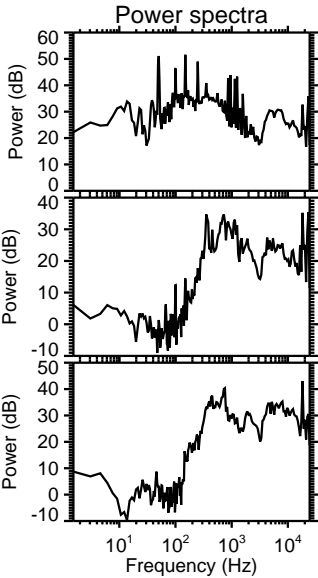
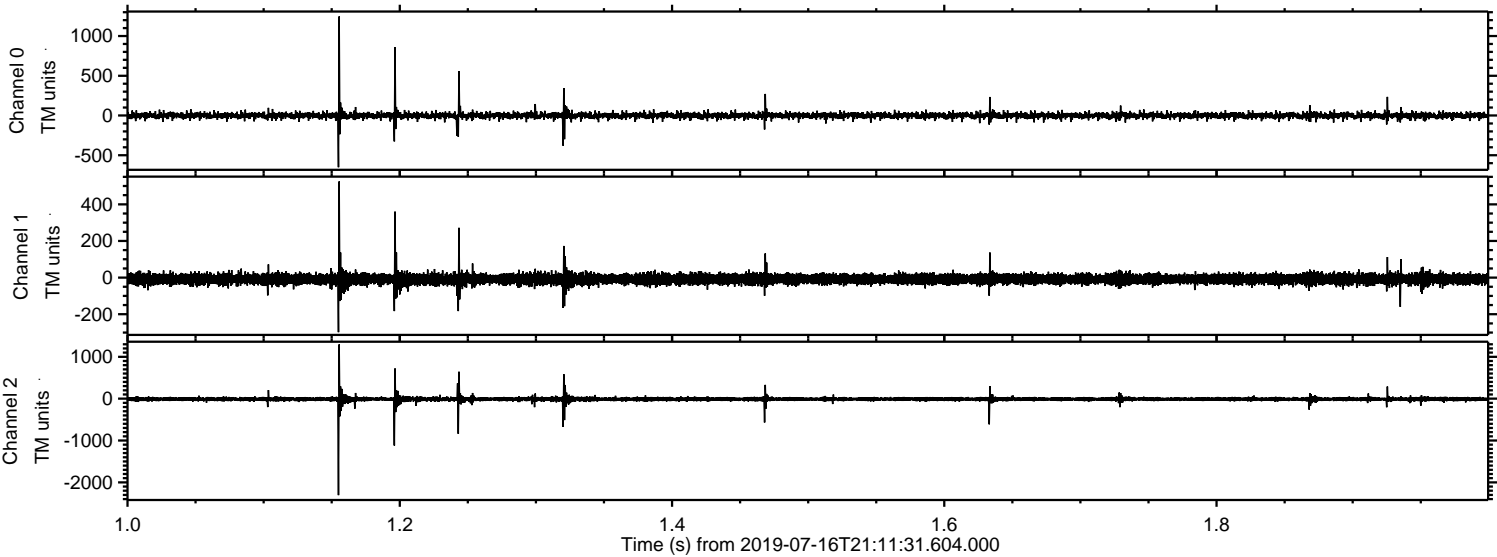
Processed Tue Jul 16 23:20:01 2019 by ELM ver.2012-10-06 from 001__elm20190716_211130__dat00.bin



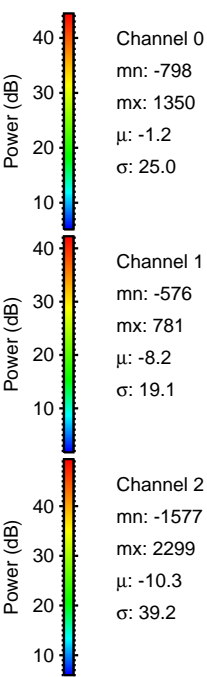
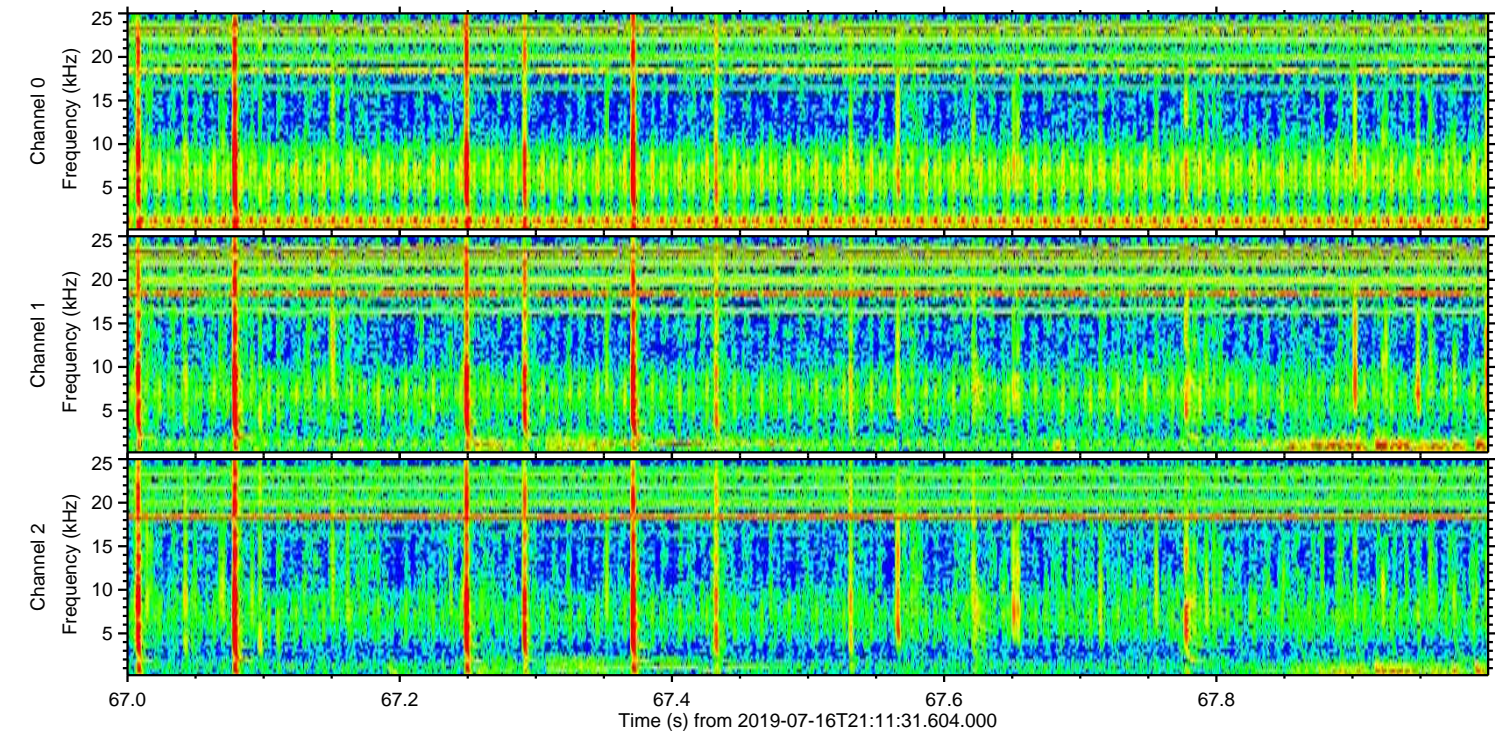
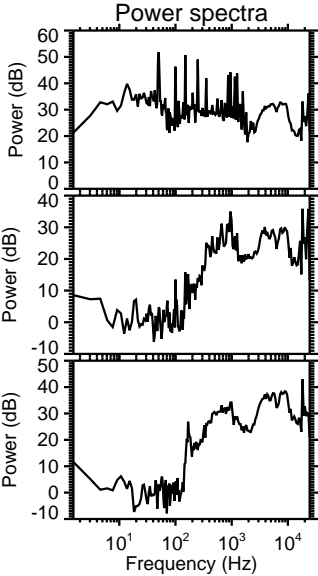
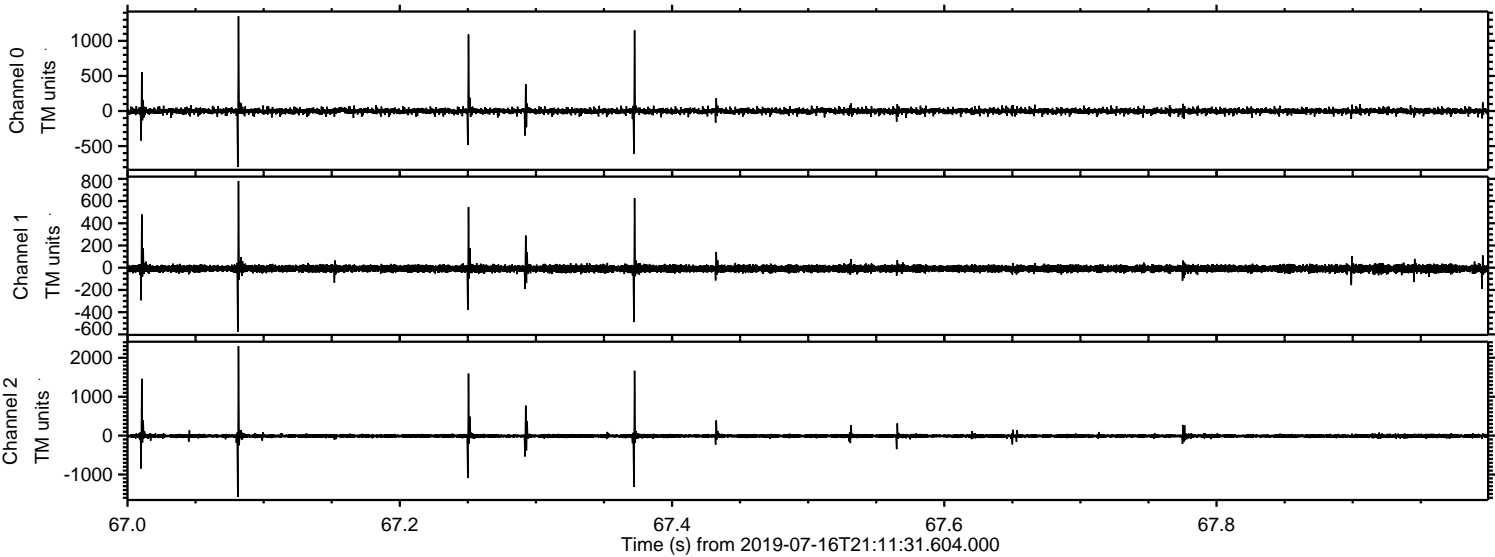
Processed Tue Jul 16 23:20:01 2019 by ELM ver.2012-10-06 from 001__elm20190716_211130__dat00.bin



Processed Tue Jul 16 23:20:02 2019 by ELM ver.2012-10-06 from 001__elm20190716_211130__dat00.bin

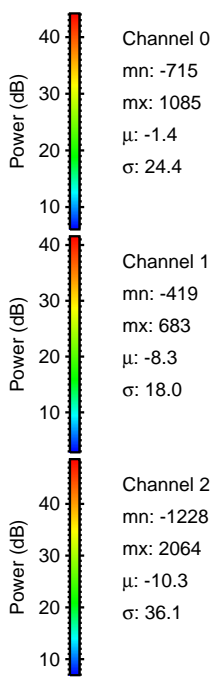
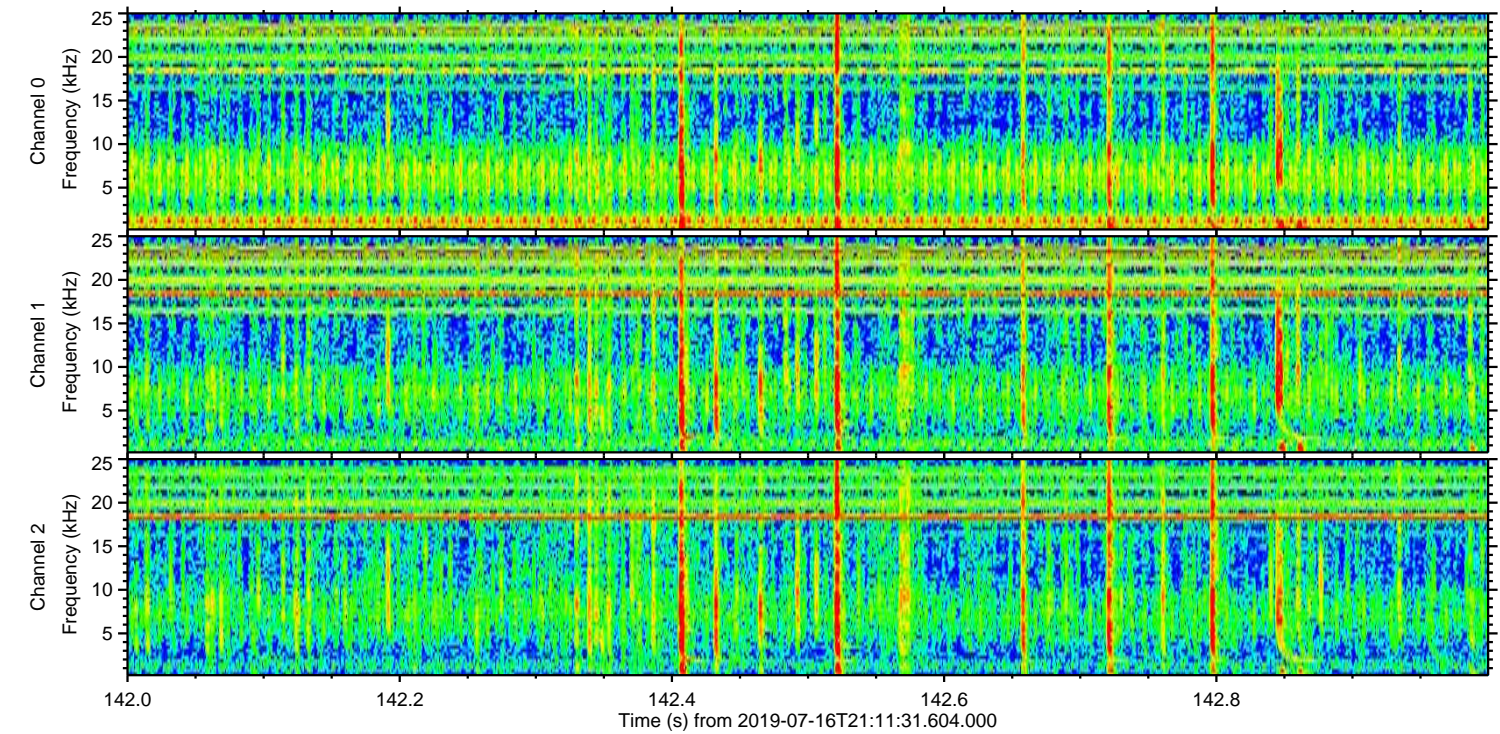
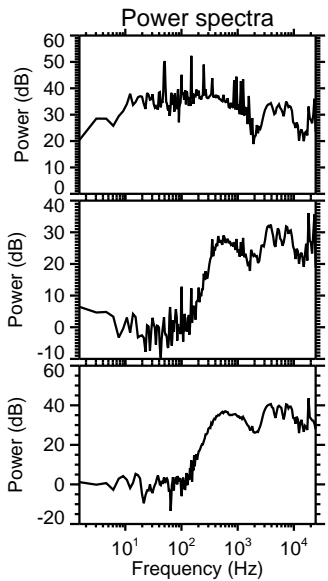
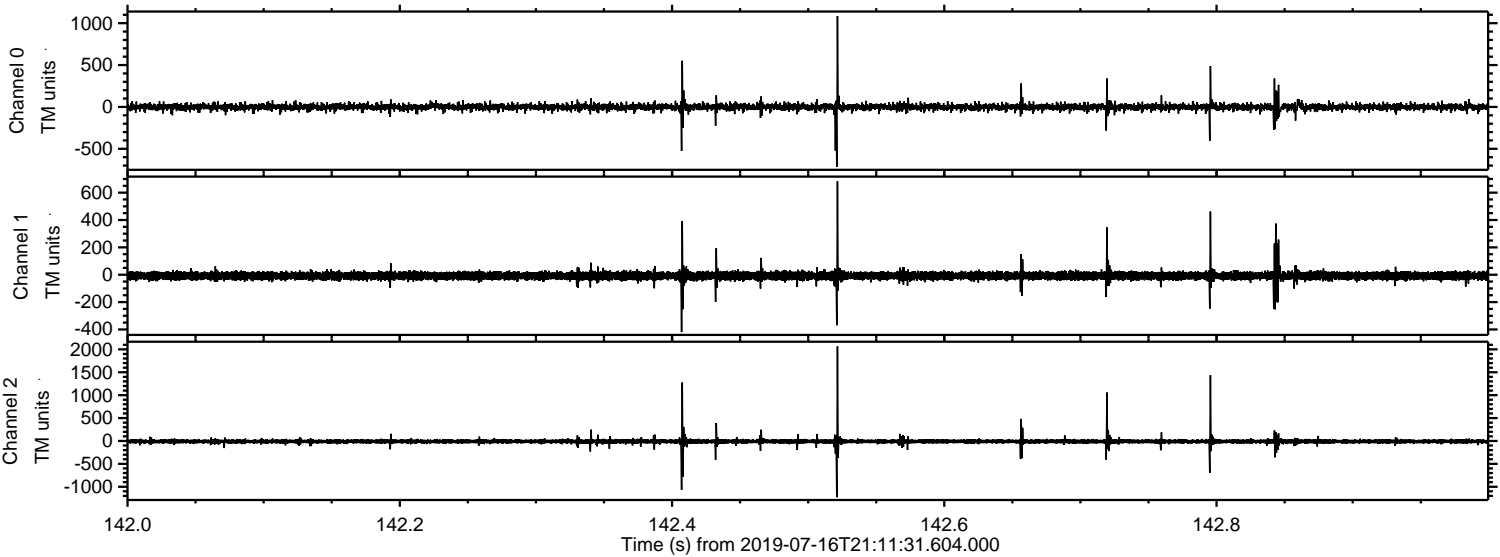


Processed Tue Jul 16 23:20:03 2019 by ELM ver.2012-10-06 from 001__elm20190716_211130__dat00.bin



ELMAVAN 3D WAVEFORMS (Measured data sampled at 50 kHz) 51000 packets of 144 samples from 2019-07-16T21:11:31.604.000. Part 143/147

Processed Tue Jul 16 23:20:03 2019 by ELM ver.2012-10-06 from 001__elm20190716_211130__dat00.bin

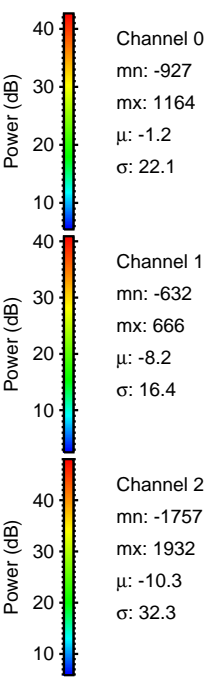
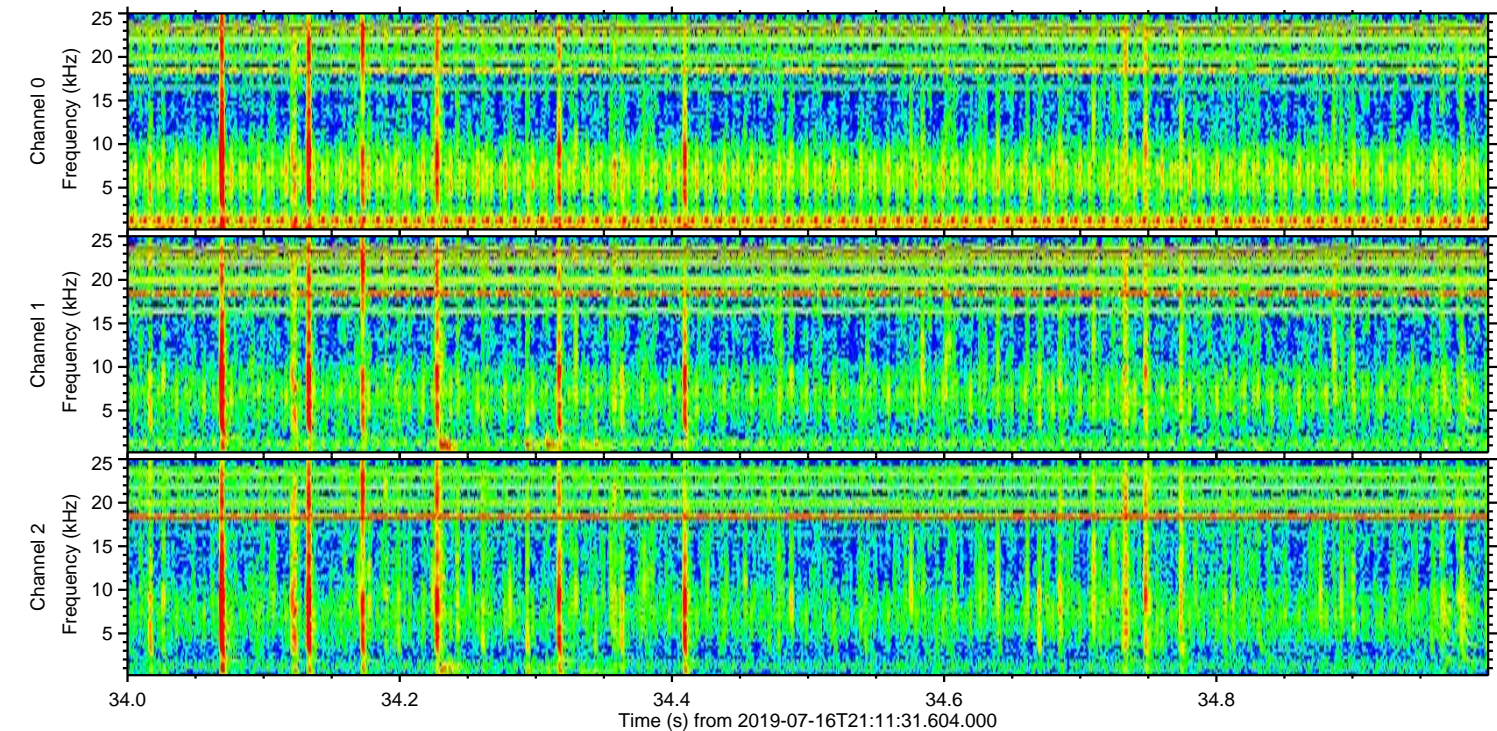
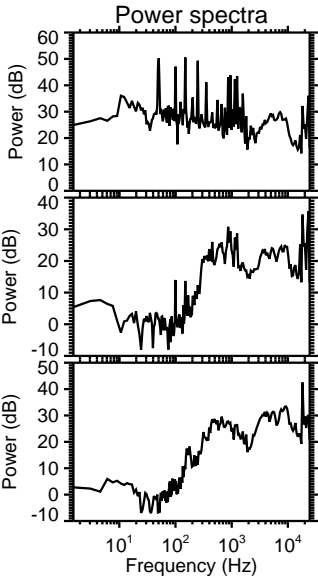
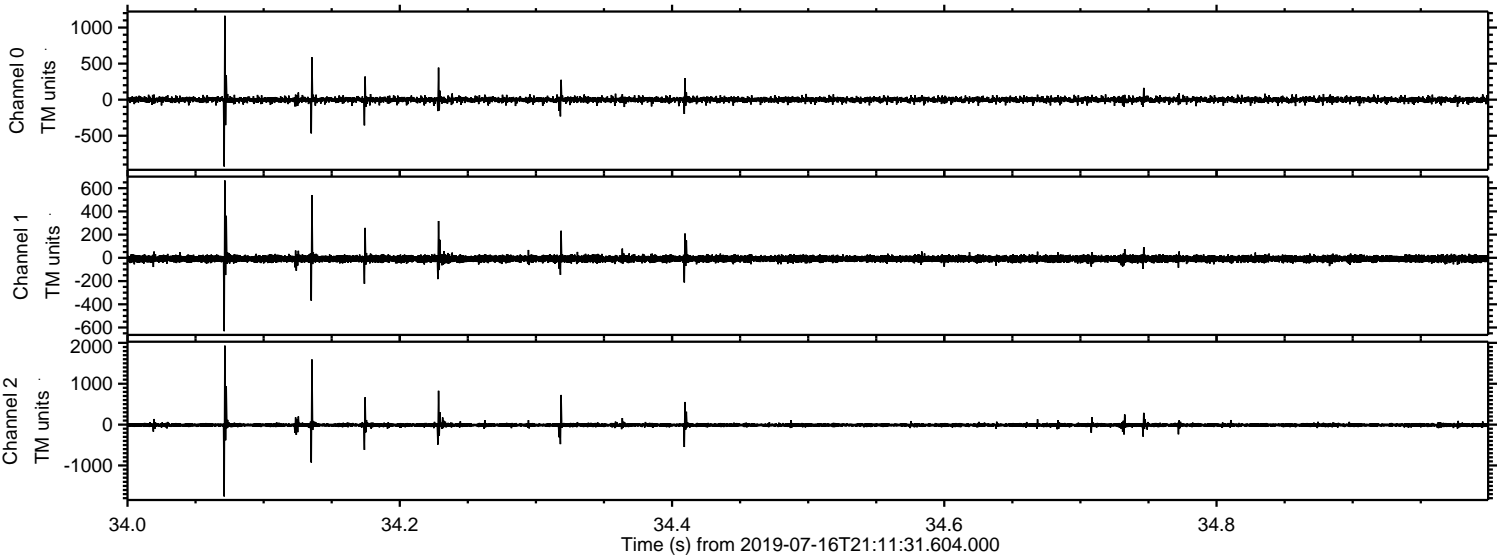


Channel 0
mn: -715
mx: 1085
 μ : -1.4
 σ : 24.4

Channel 1
mn: -419
mx: 683
 μ : -8.3
 σ : 18.0

Channel 2
mn: -1228
mx: 2064
 μ : -10.3
 σ : 36.1

Processed Tue Jul 16 23:20:04 2019 by ELM ver.2012-10-06 from 001__elm20190716_211130__dat00.bin

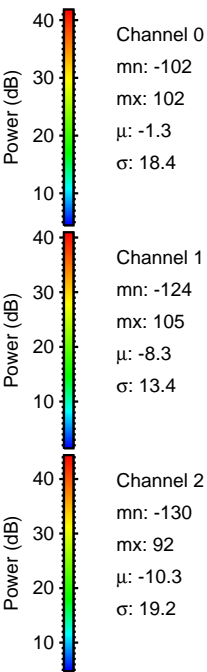
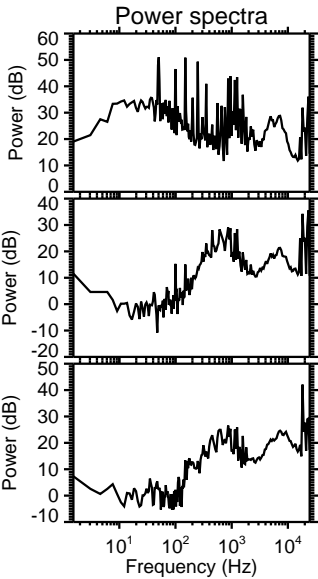
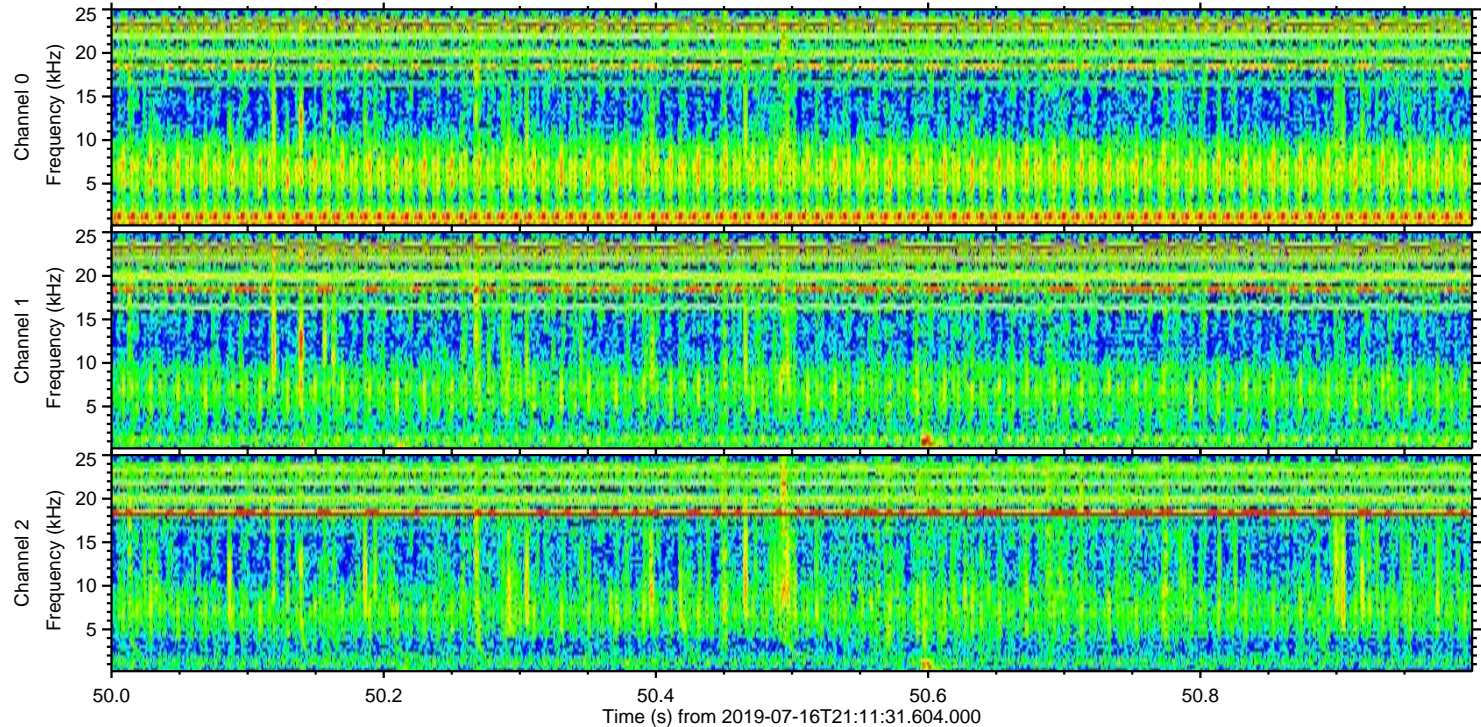
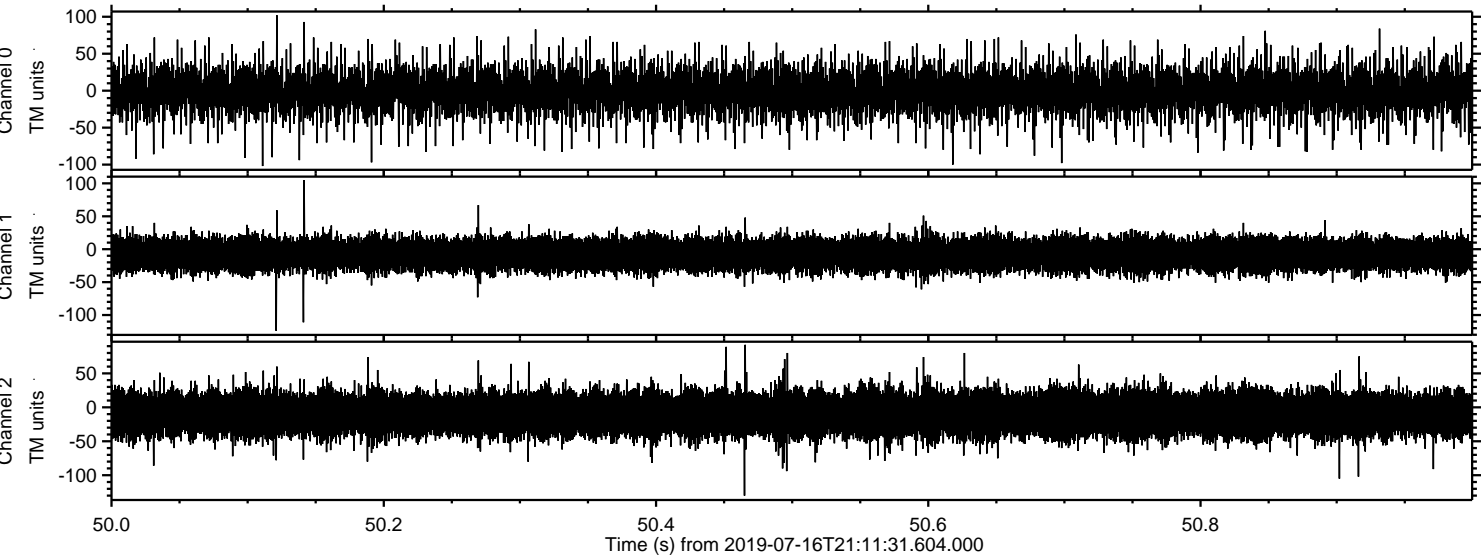


Channel 0
mn: -927
mx: 1164
 μ : -1.2
 σ : 22.1

Channel 1
mn: -632
mx: 666
 μ : -8.2
 σ : 16.4

Channel 2
mn: -1757
mx: 1932
 μ : -10.3
 σ : 32.3

Processed Tue Jul 16 23:20:05 2019 by ELM ver.2012-10-06 from 001__elm20190716_211130__dat00.bin



Channel 0
mn: -102
mx: 102
 μ : -1.3
 σ : 18.4

Channel 1
mn: -124
mx: 105
 μ : -8.3
 σ : 13.4

Channel 2
mn: -130
mx: 92
 μ : -10.3
 σ : 19.2