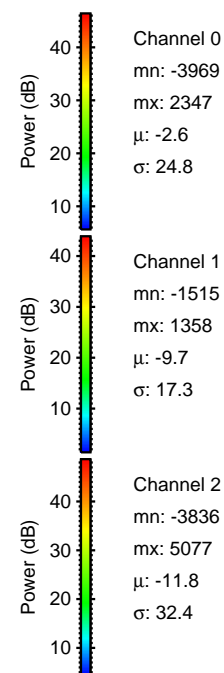
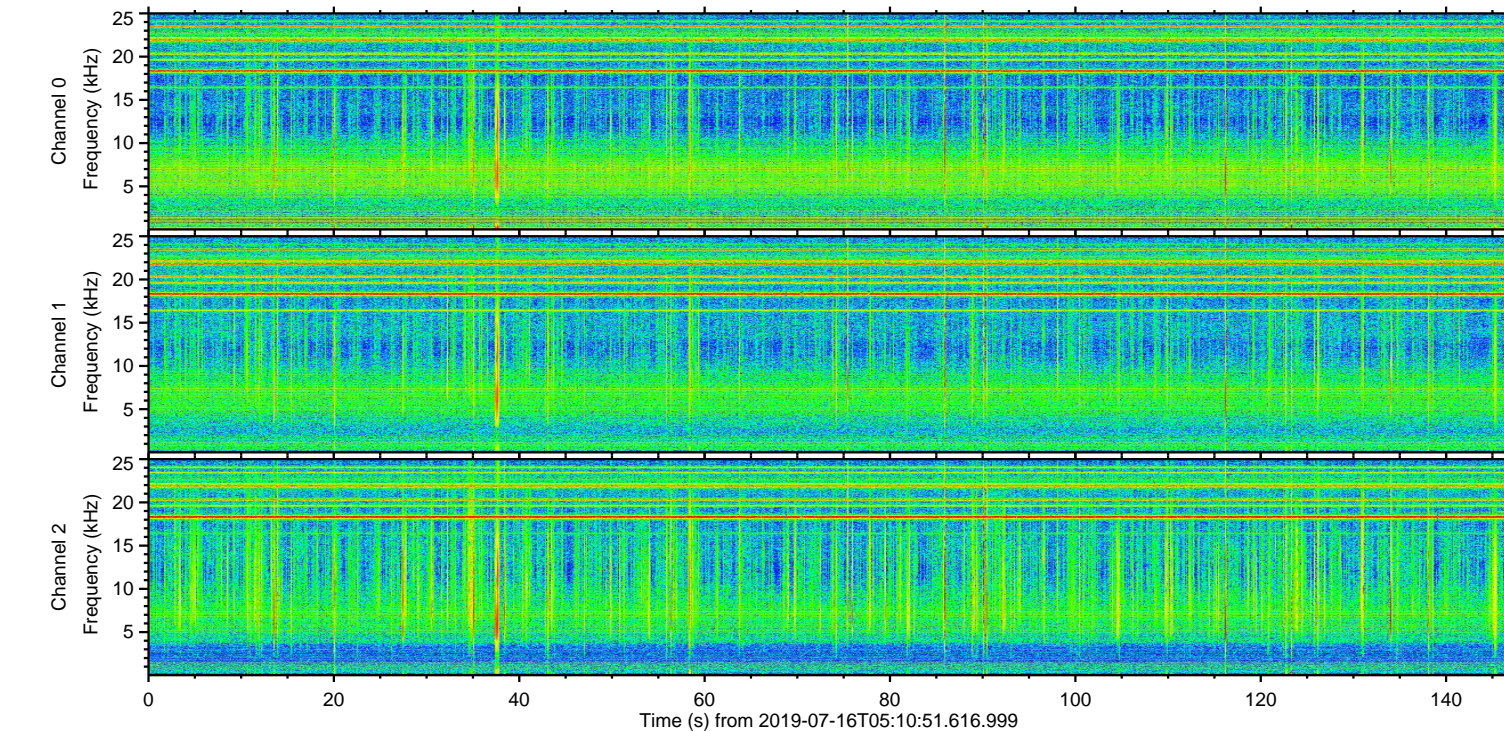
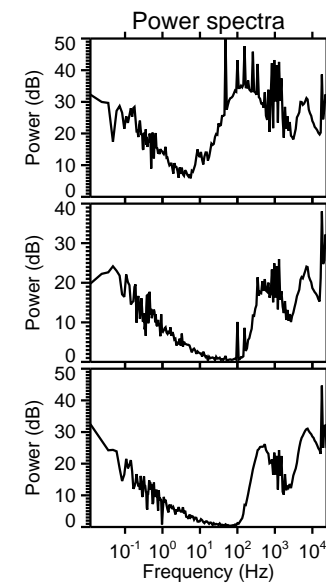
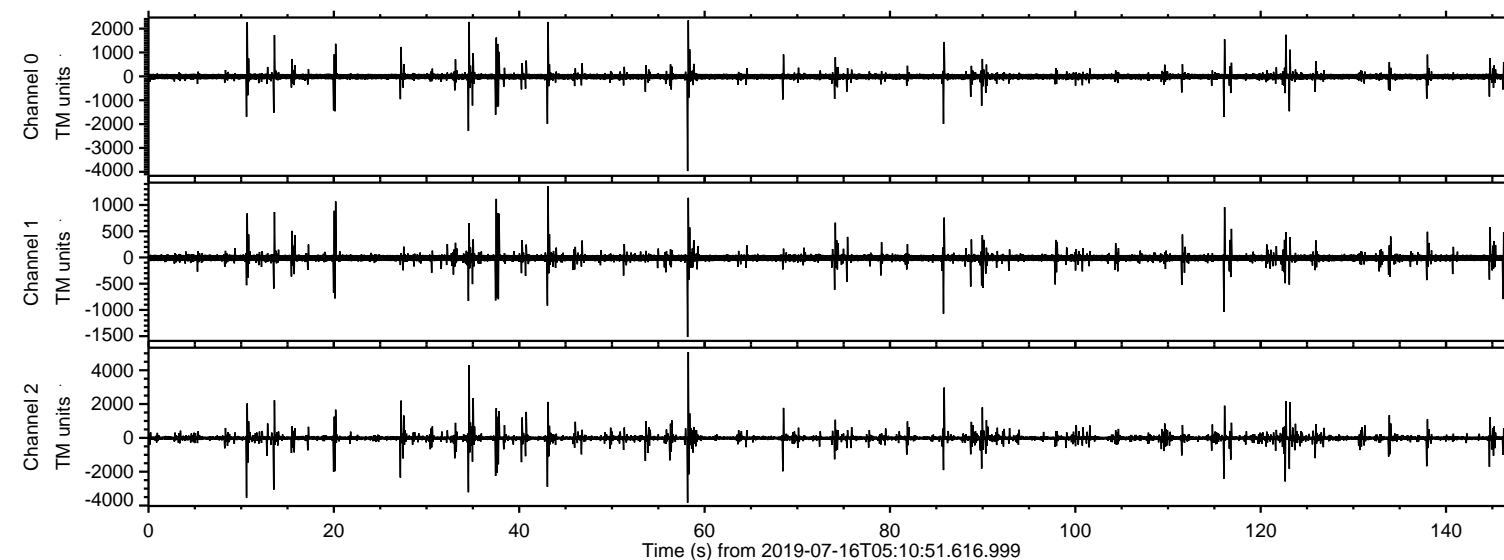
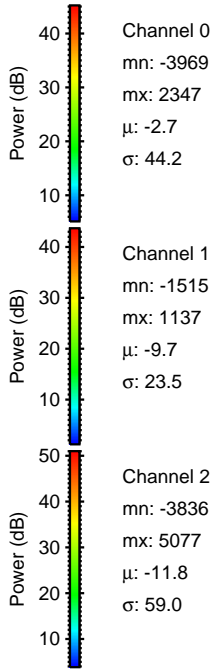
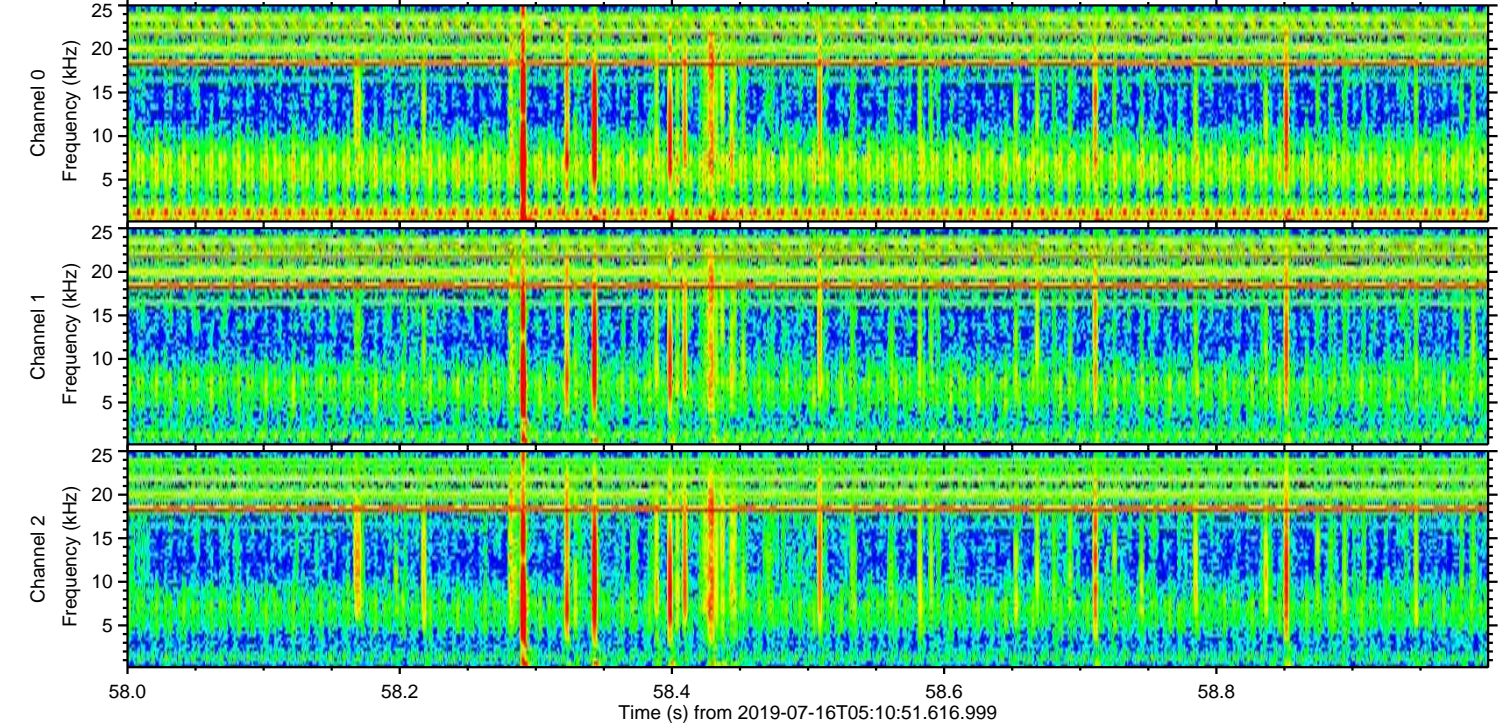
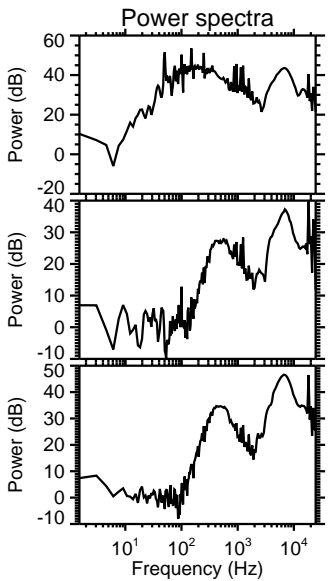
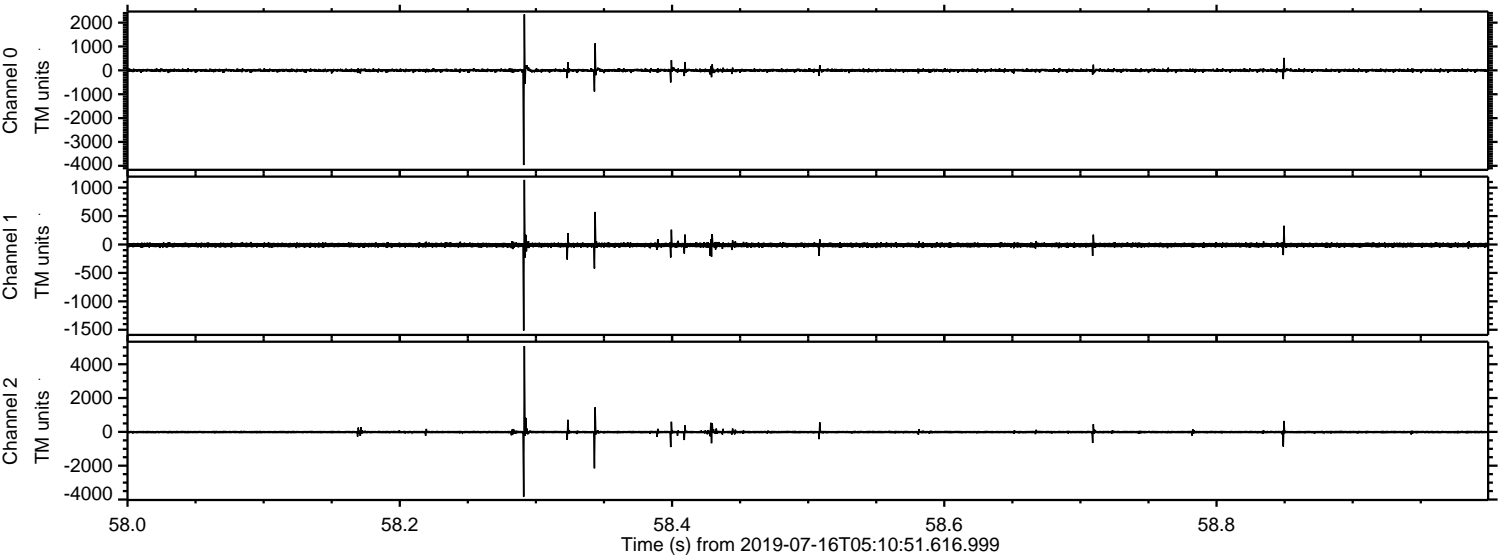


ELMAVAN 3D WAVEFORMS (Measured data sampled at 50 kHz) 51000 packets of 144 samples from 2019-07-16T05:10:51.616.999.

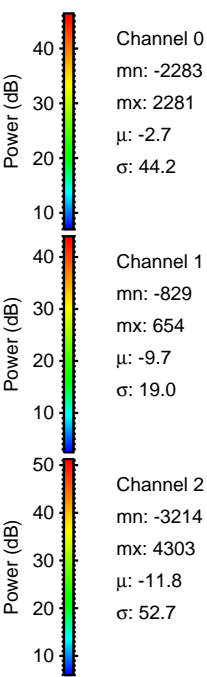
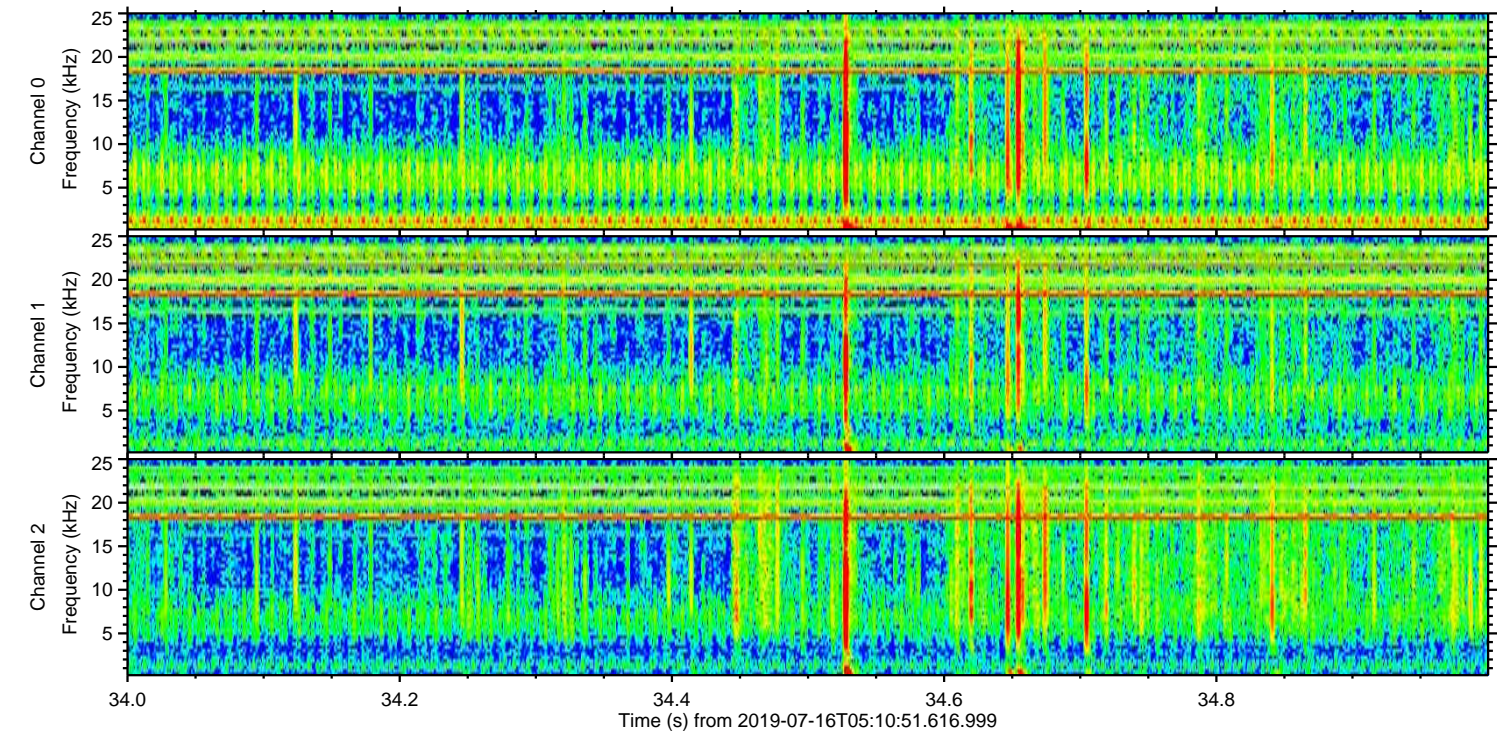
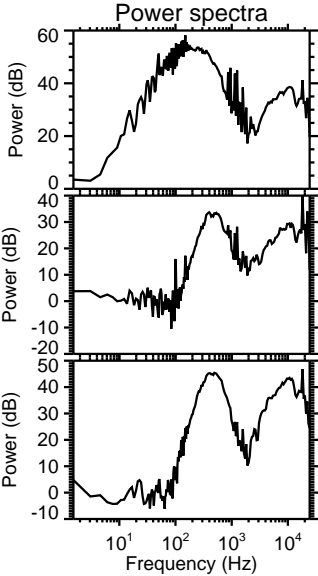
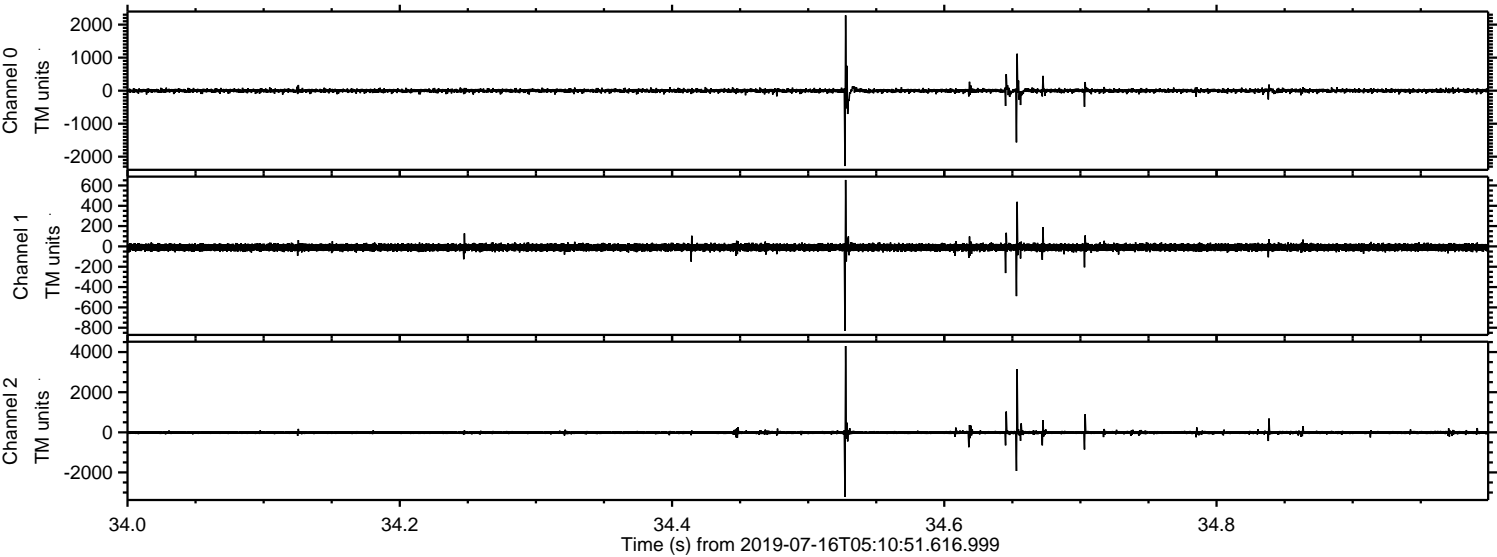
Processed Tue Jul 16 07:18:45 2019 by ELM ver.2012-10-06 from 001__elm20190716_051050__dat00.bin



Processed Tue Jul 16 07:18:51 2019 by ELM ver.2012-10-06 from 001__elm20190716_051050__dat00.bin

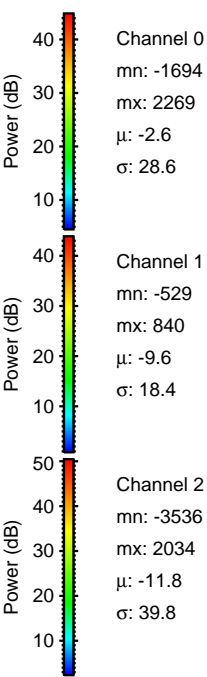
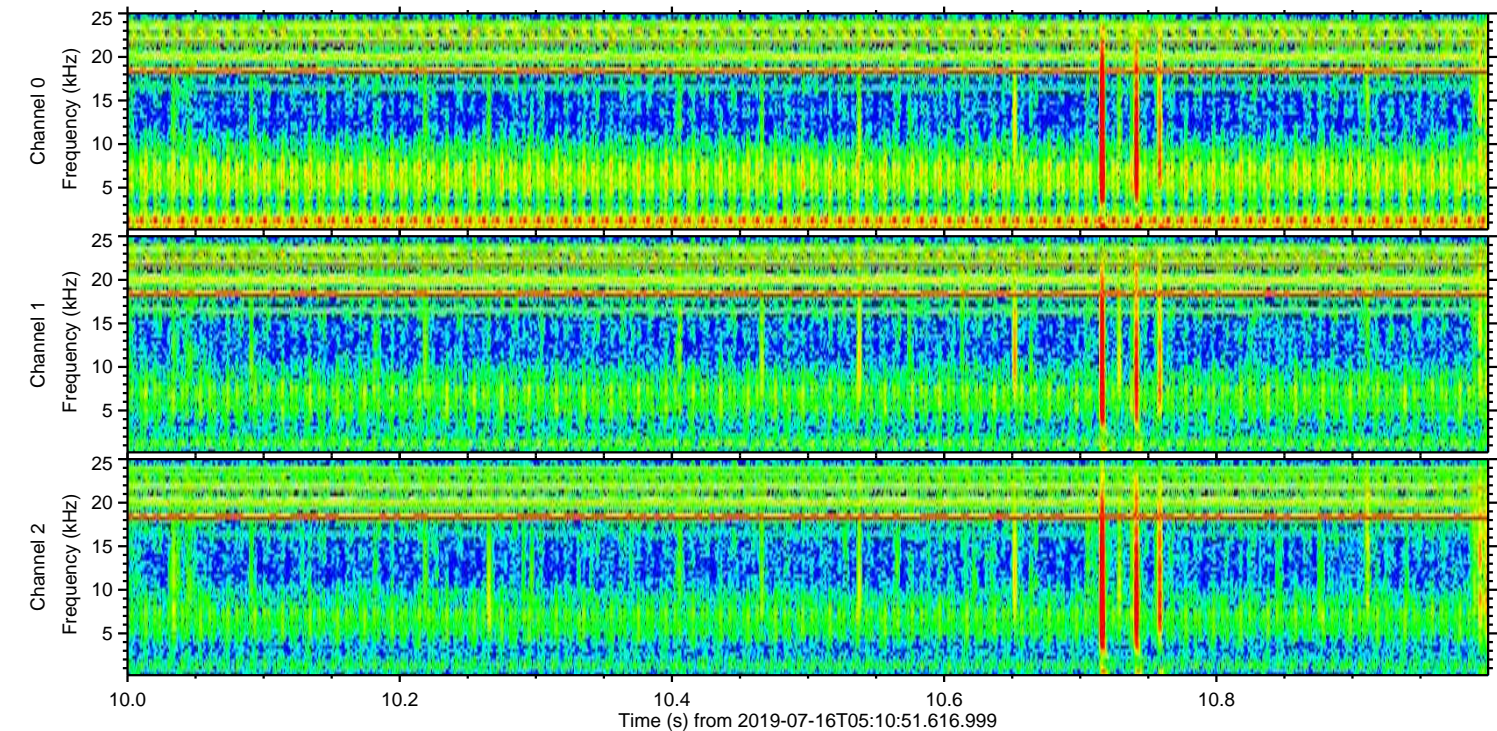
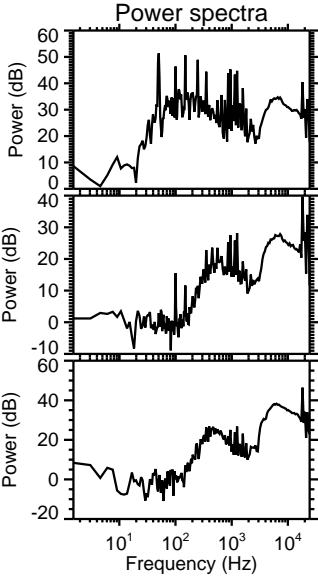
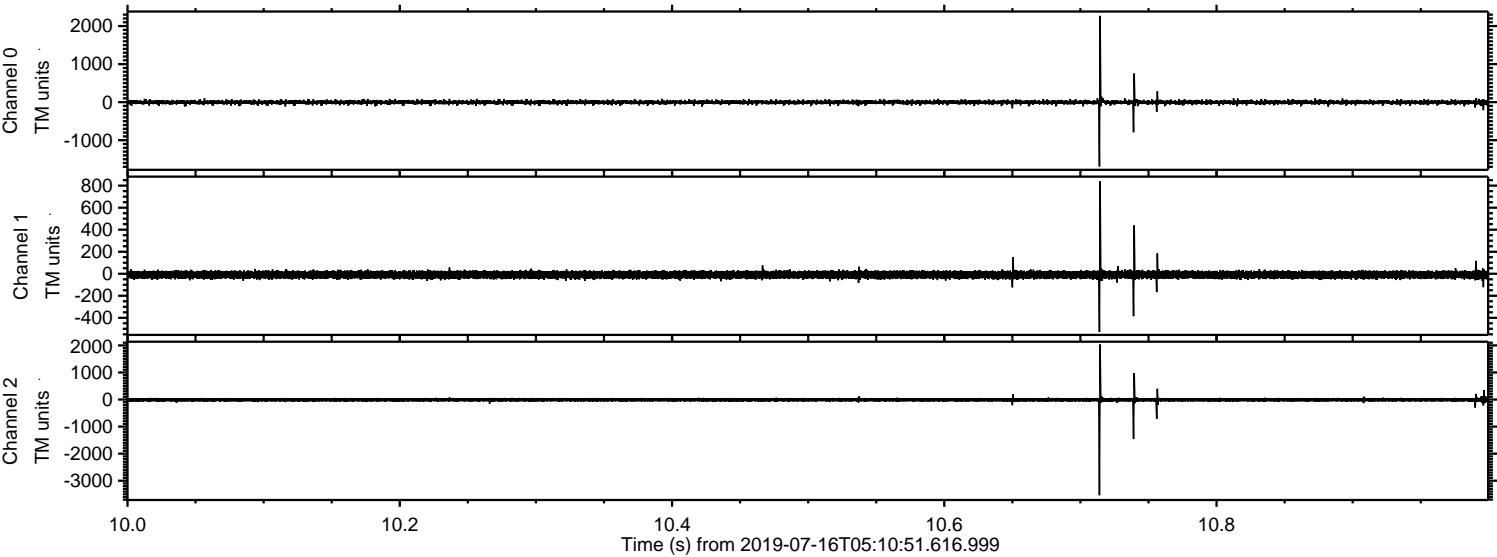


Processed Tue Jul 16 07:18:52 2019 by ELM ver.2012-10-06 from 001__elm20190716_051050__dat00.bin

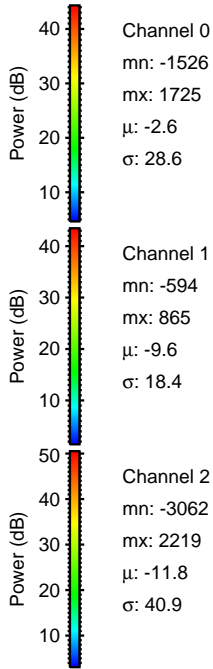
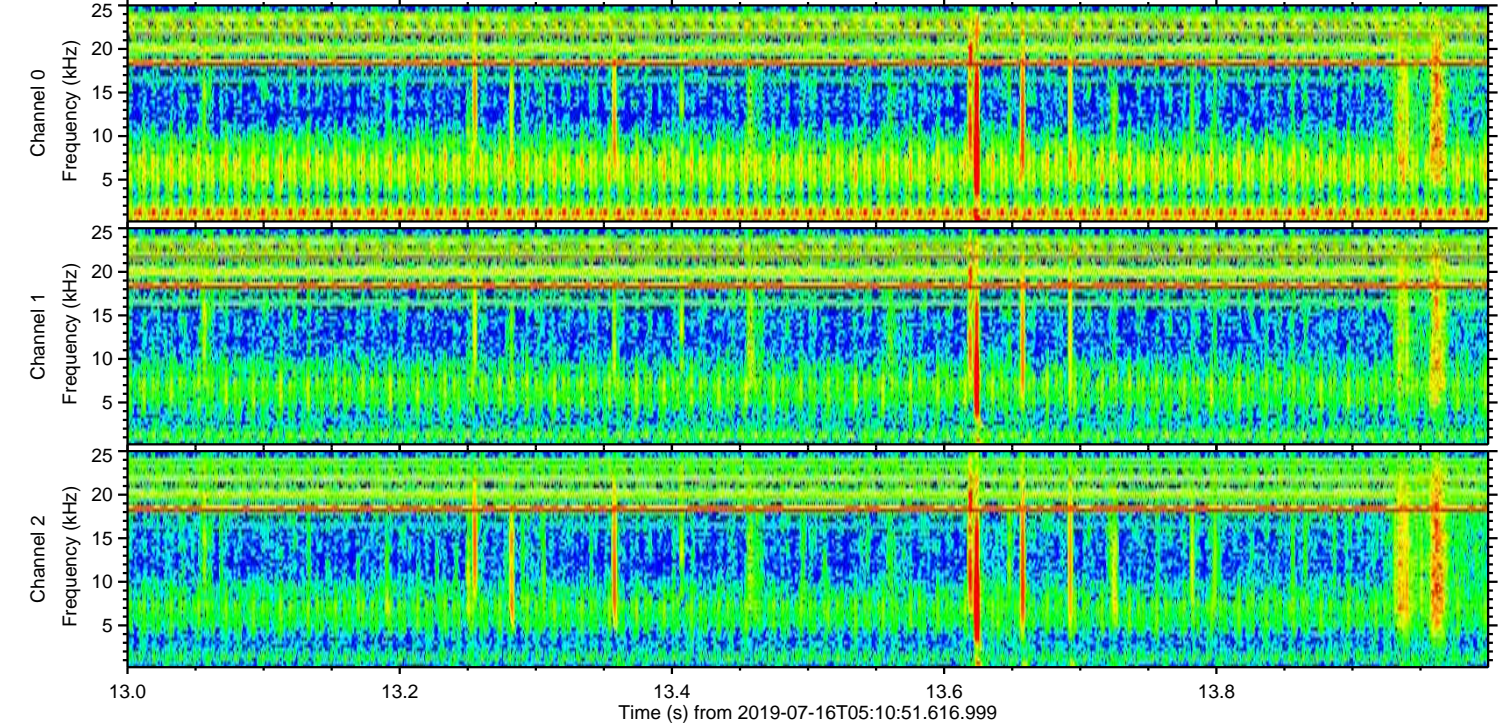
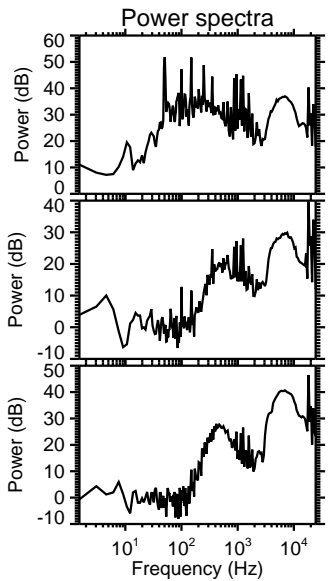
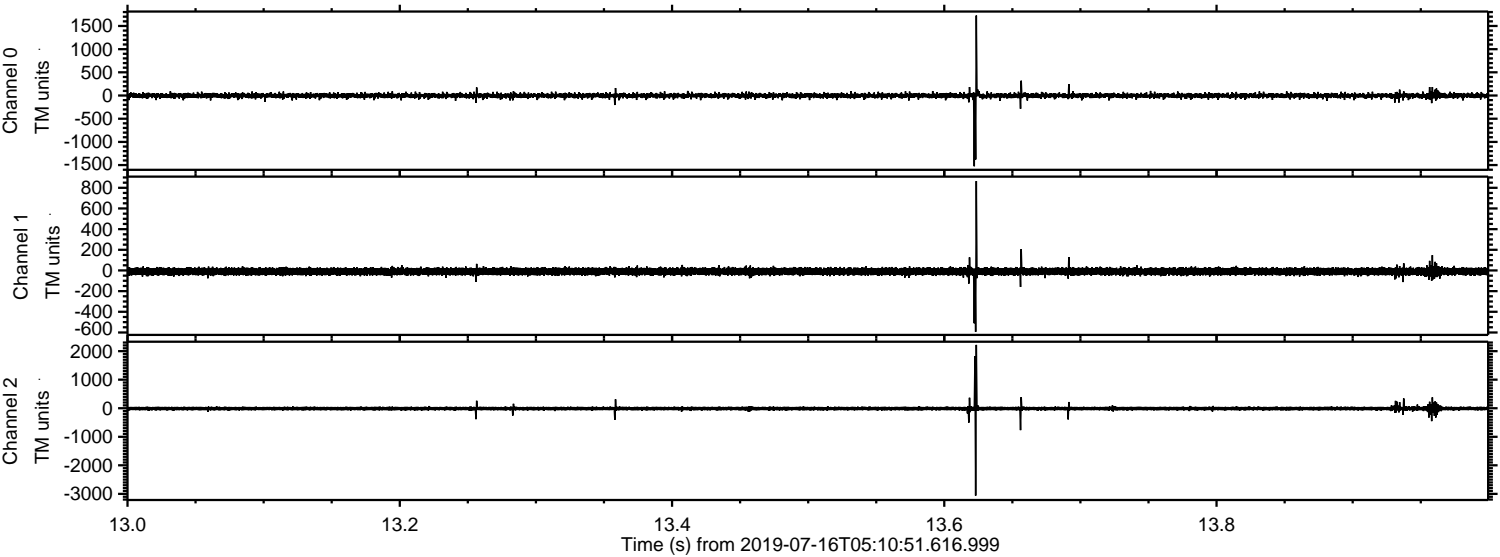


ELMAVAN 3D WAVEFORMS (Measured data sampled at 50 kHz) 51000 packets of 144 samples from 2019-07-16T05:10:51.616.999. Part 11/147

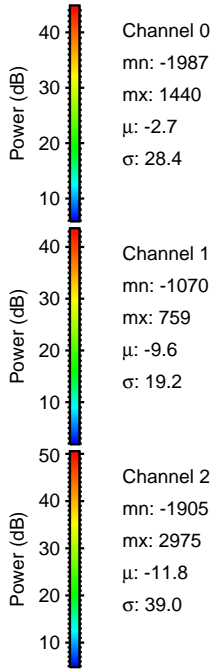
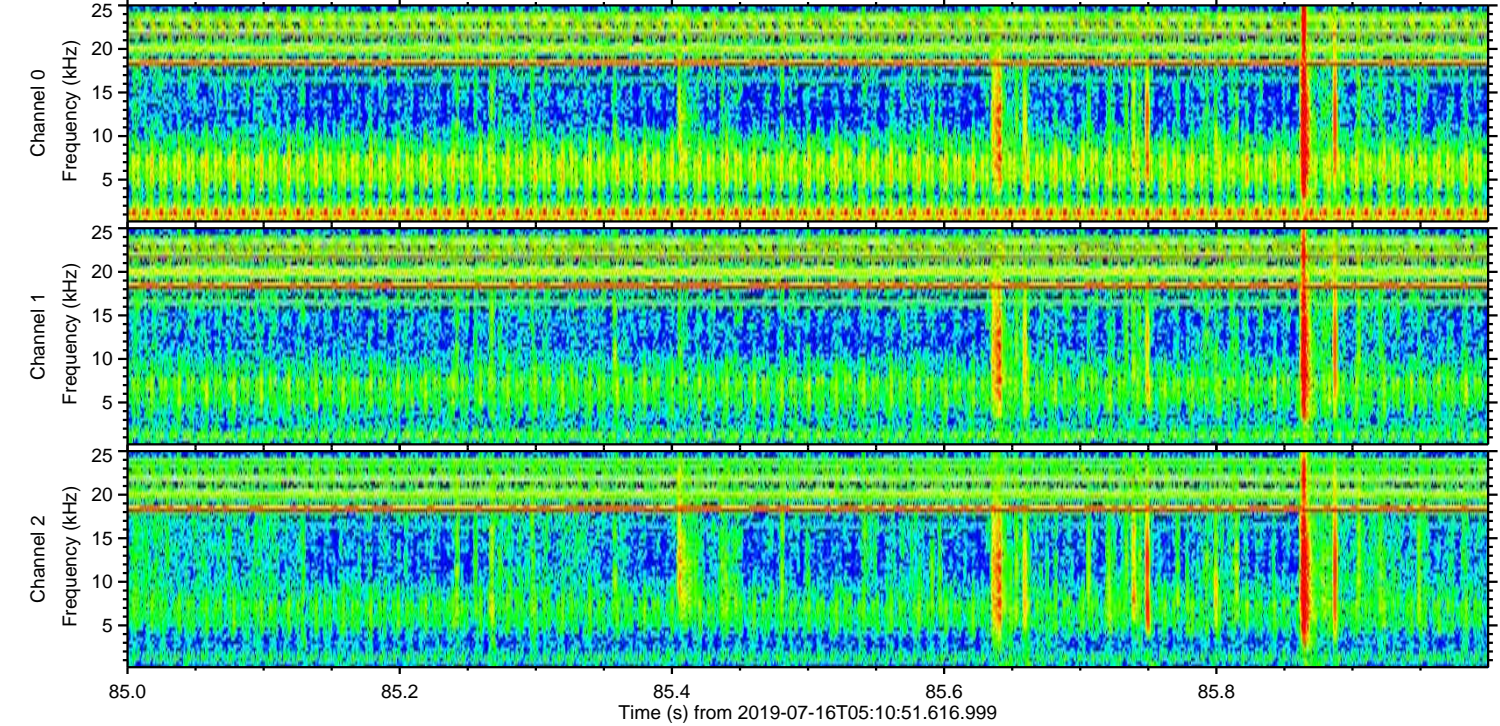
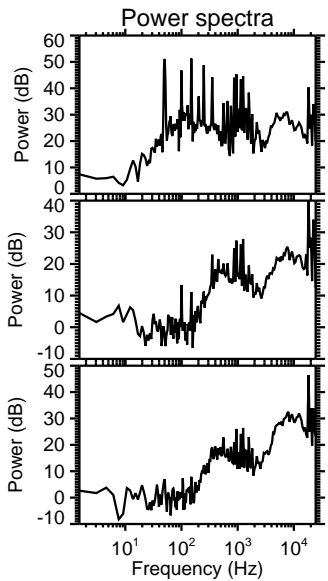
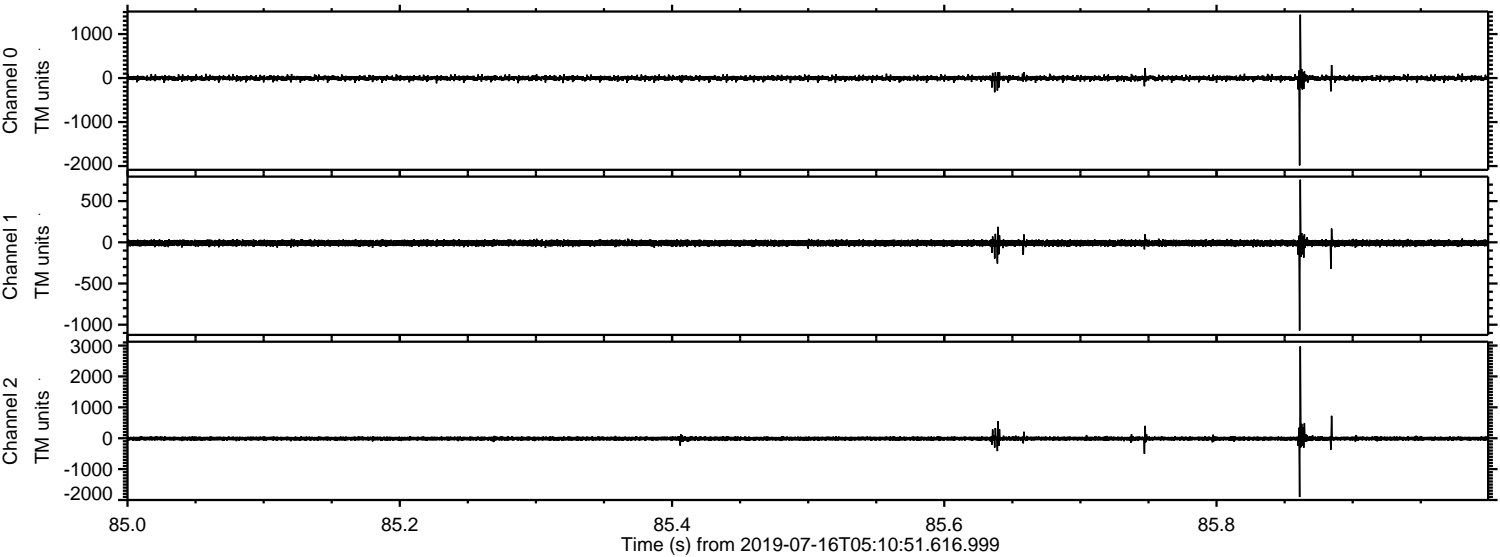
Processed Tue Jul 16 07:18:52 2019 by ELM ver.2012-10-06 from 001__elm20190716_051050__dat00.bin



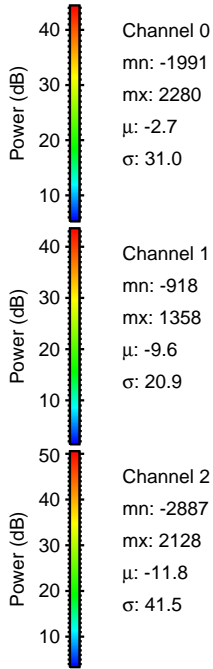
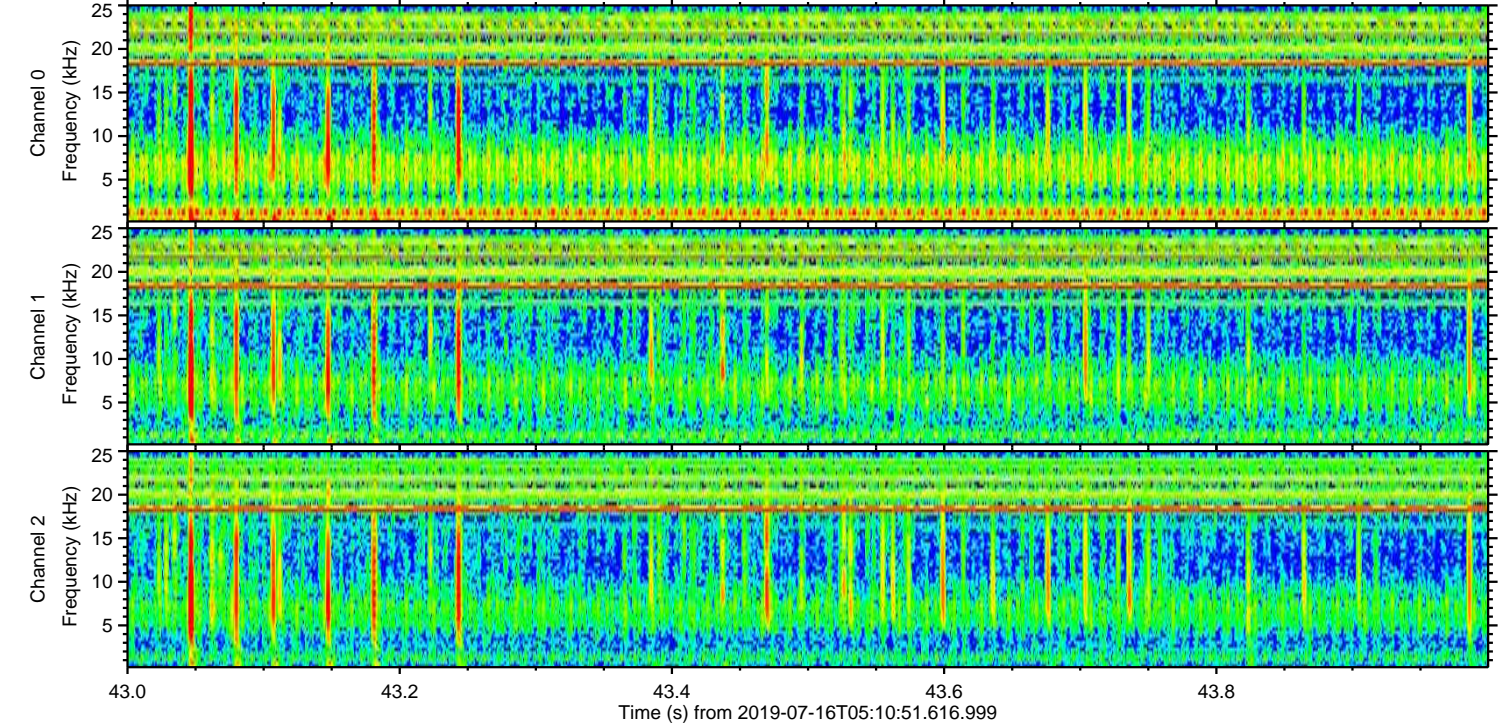
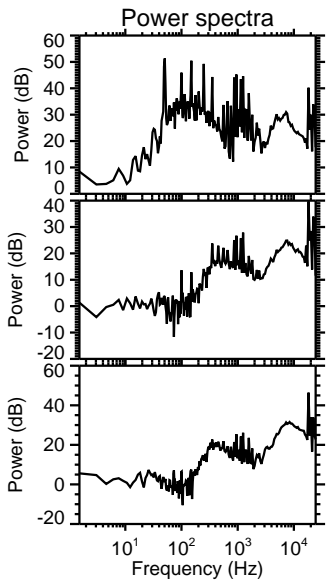
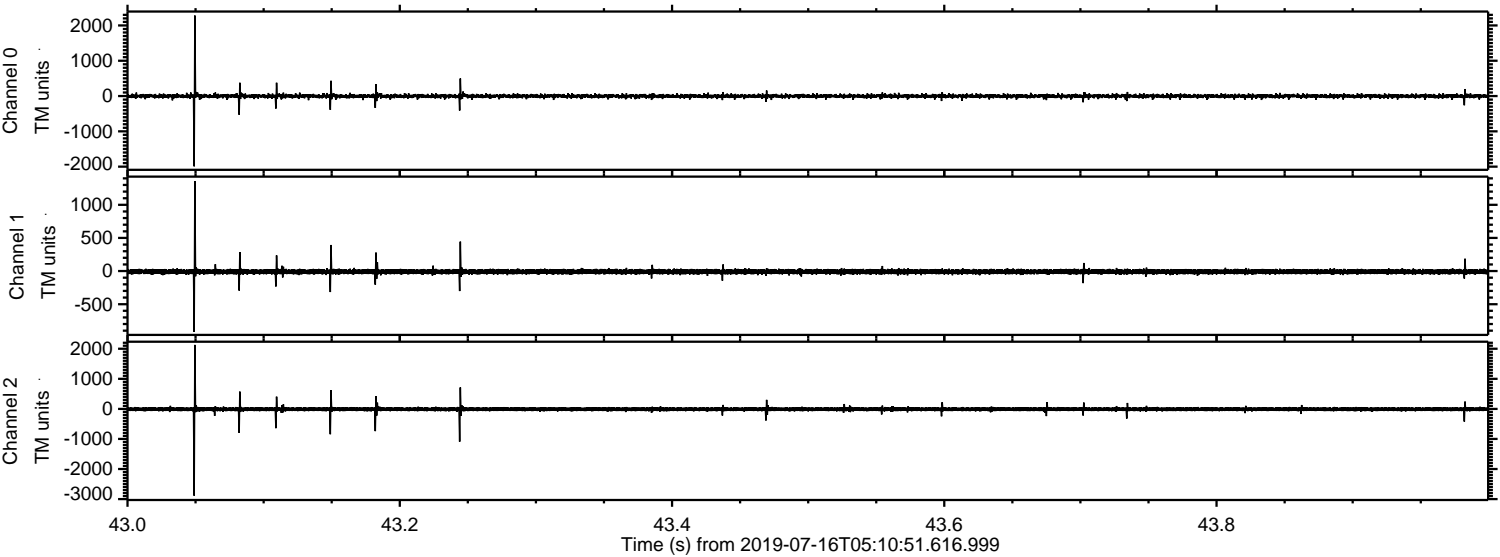
Processed Tue Jul 16 07:18:53 2019 by ELM ver.2012-10-06 from 001__elm20190716_051050__dat00.bin



Processed Tue Jul 16 07:18:53 2019 by ELM ver.2012-10-06 from 001__elm20190716_051050__dat00.bin

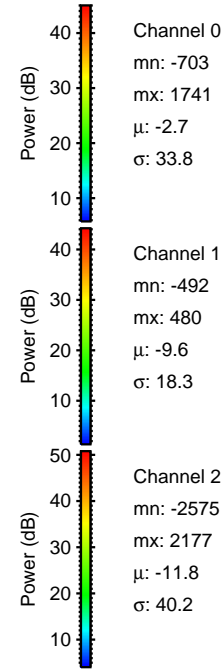
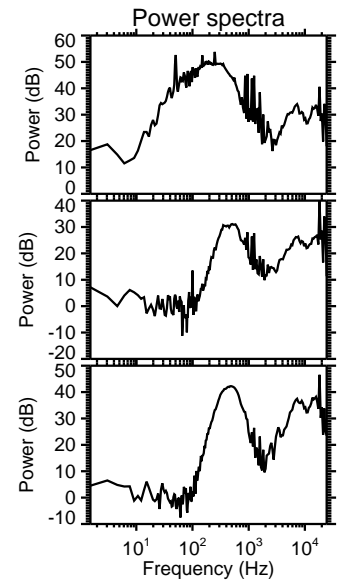
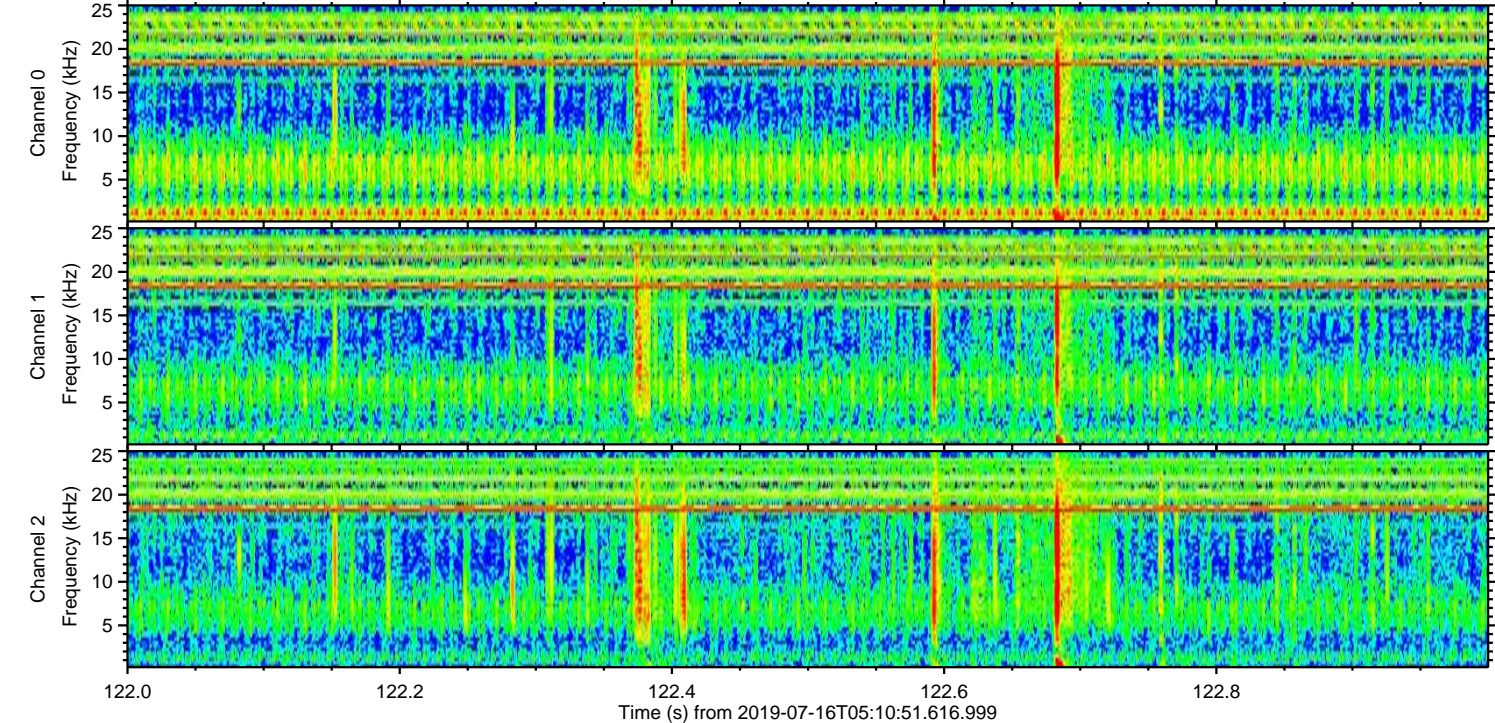
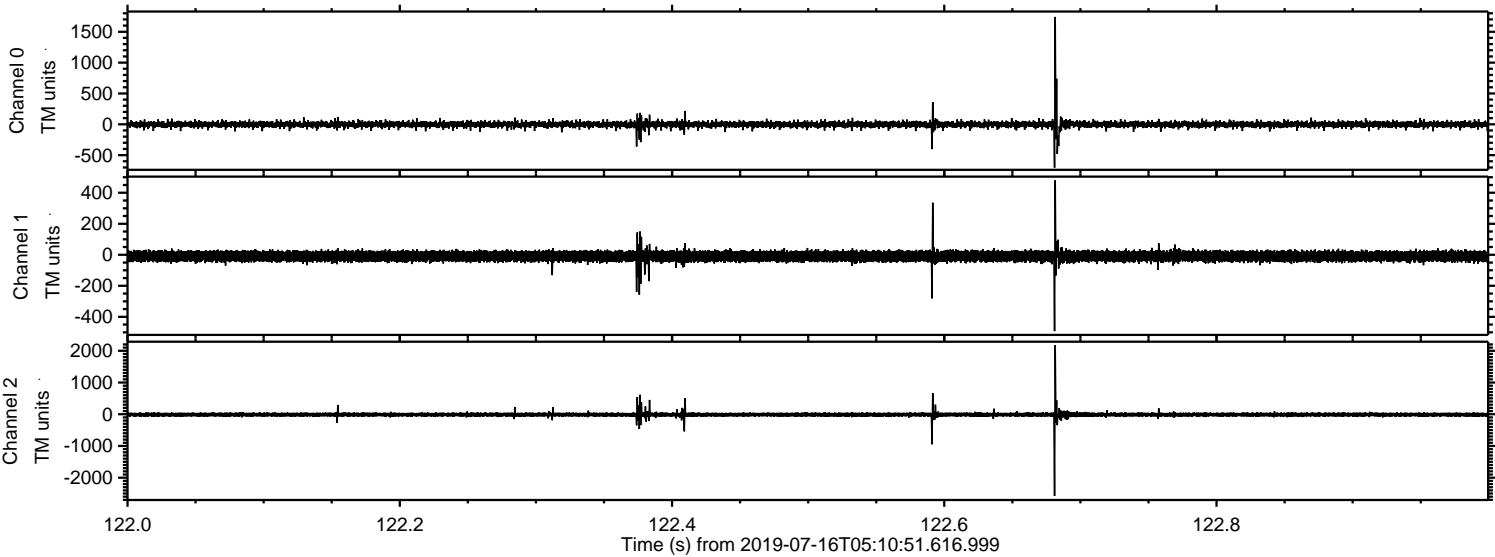


Processed Tue Jul 16 07:18:54 2019 by ELM ver.2012-10-06 from 001__elm20190716_051050__dat00.bin



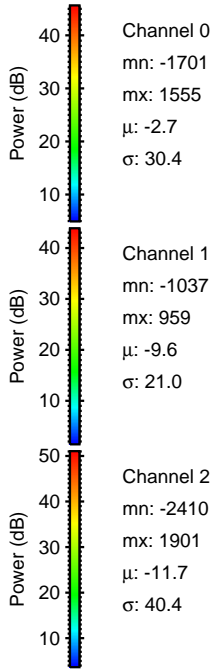
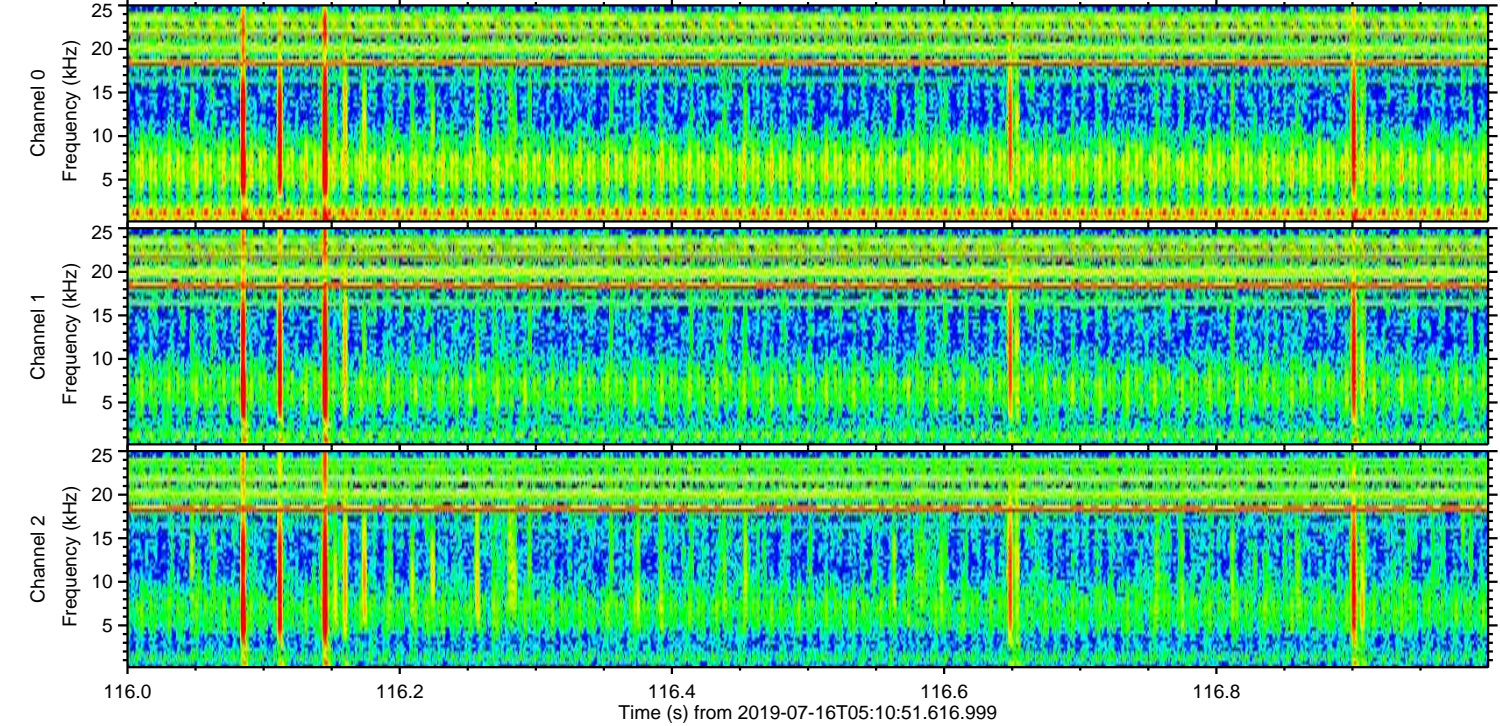
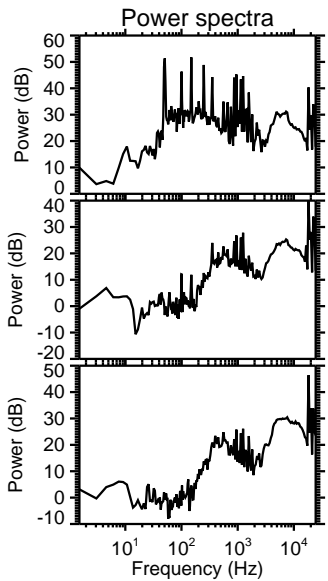
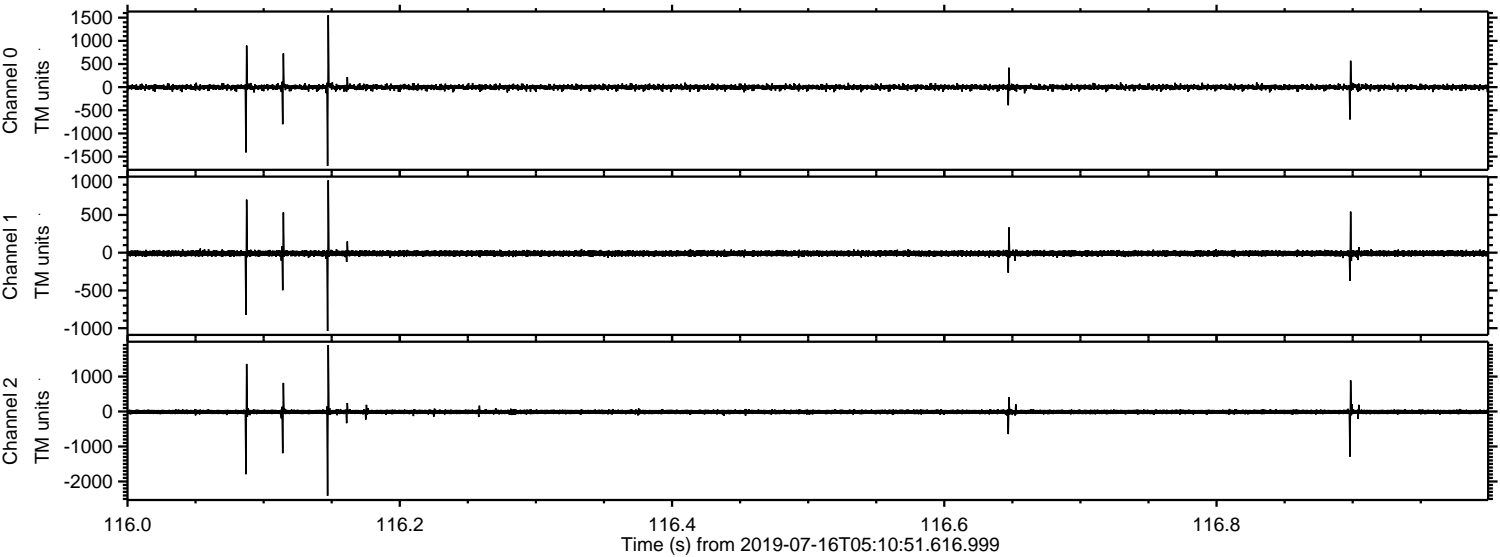
ELMAVAN 3D WAVEFORMS (Measured data sampled at 50 kHz) 51000 packets of 144 samples from 2019-07-16T05:10:51.616.999. Part 123/147

Processed Tue Jul 16 07:18:55 2019 by ELM ver.2012-10-06 from 001__elm20190716_051050__dat00.bin



ELMAVAN 3D WAVEFORMS (Measured data sampled at 50 kHz) 51000 packets of 144 samples from 2019-07-16T05:10:51.616.999. Part 117/147

Processed Tue Jul 16 07:18:55 2019 by ELM ver.2012-10-06 from 001__elm20190716_051050__dat00.bin

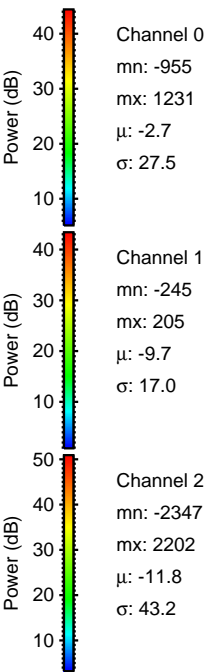
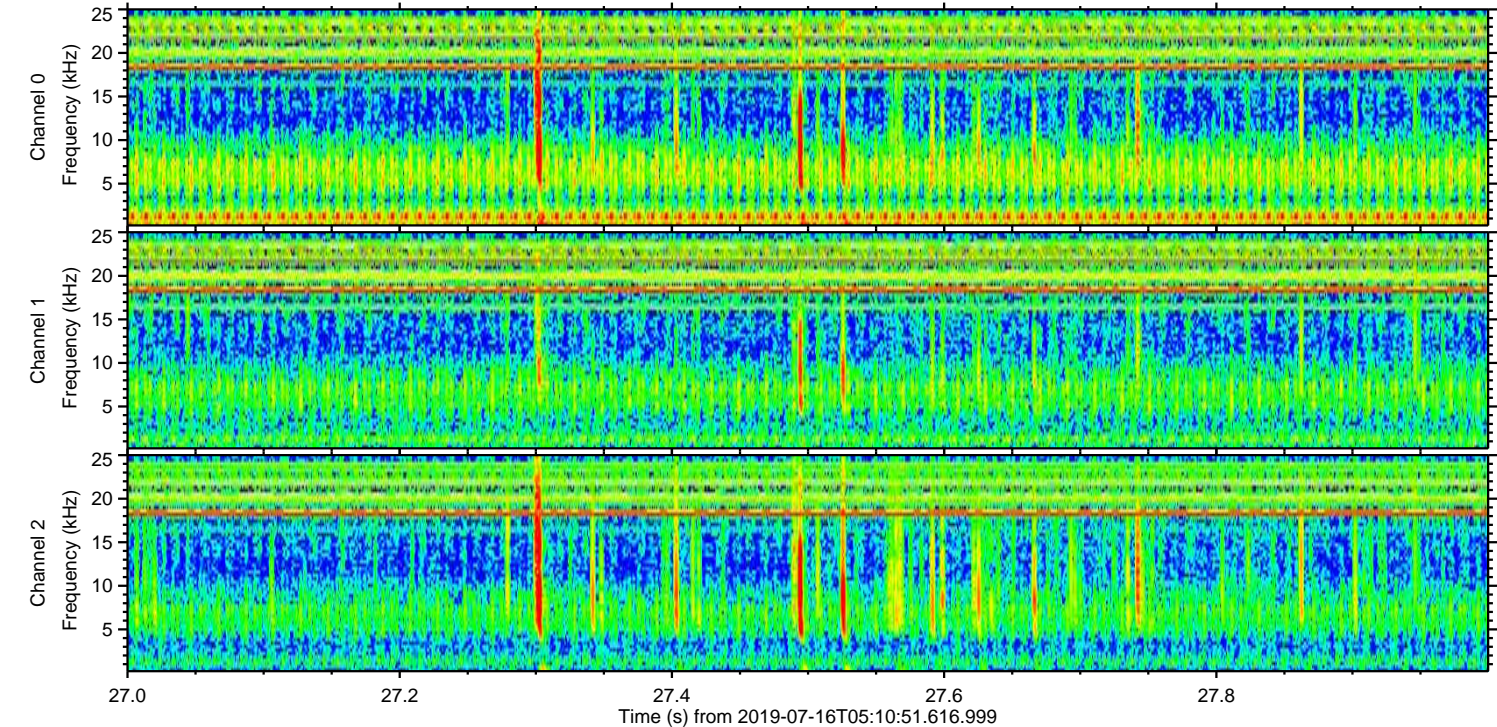
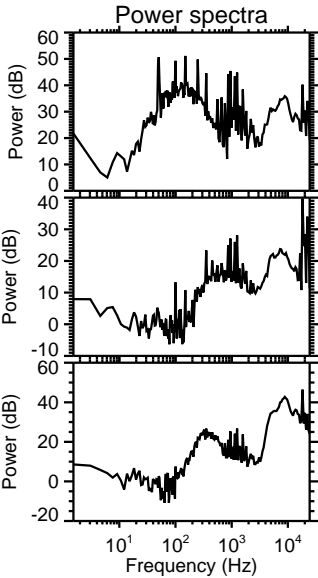
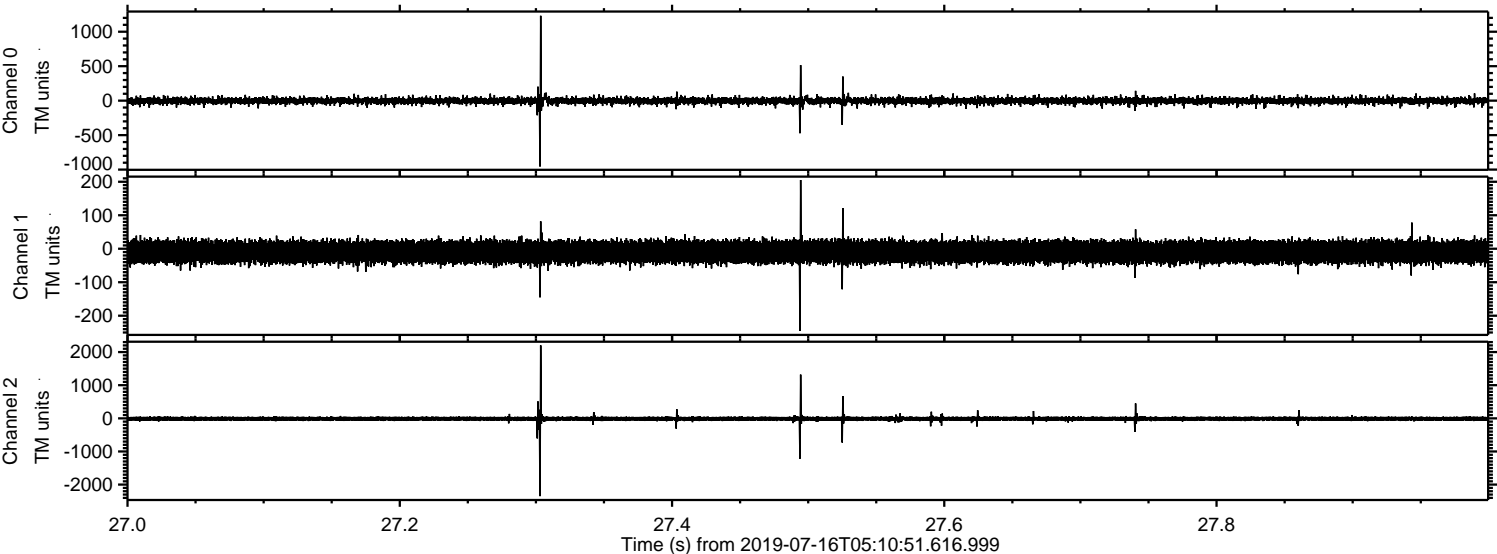


Channel 0
mn: -1701
mx: 1555
 μ : -2.7
 σ : 30.4

Channel 1
mn: -1037
mx: 959
 μ : -9.6
 σ : 21.0

Channel 2
mn: -2410
mx: 1901
 μ : -11.7
 σ : 40.4

Processed Tue Jul 16 07:18:56 2019 by ELM ver.2012-10-06 from 001__elm20190716_051050__dat00.bin



Processed Tue Jul 16 07:18:57 2019 by ELM ver.2012-10-06 from 001__elm20190716_051050__dat00.bin

