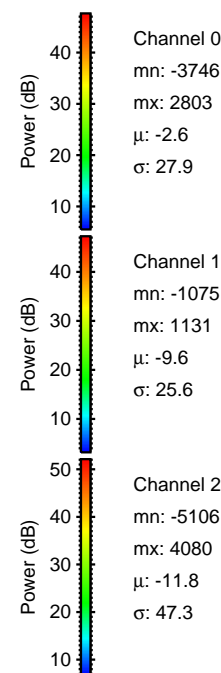
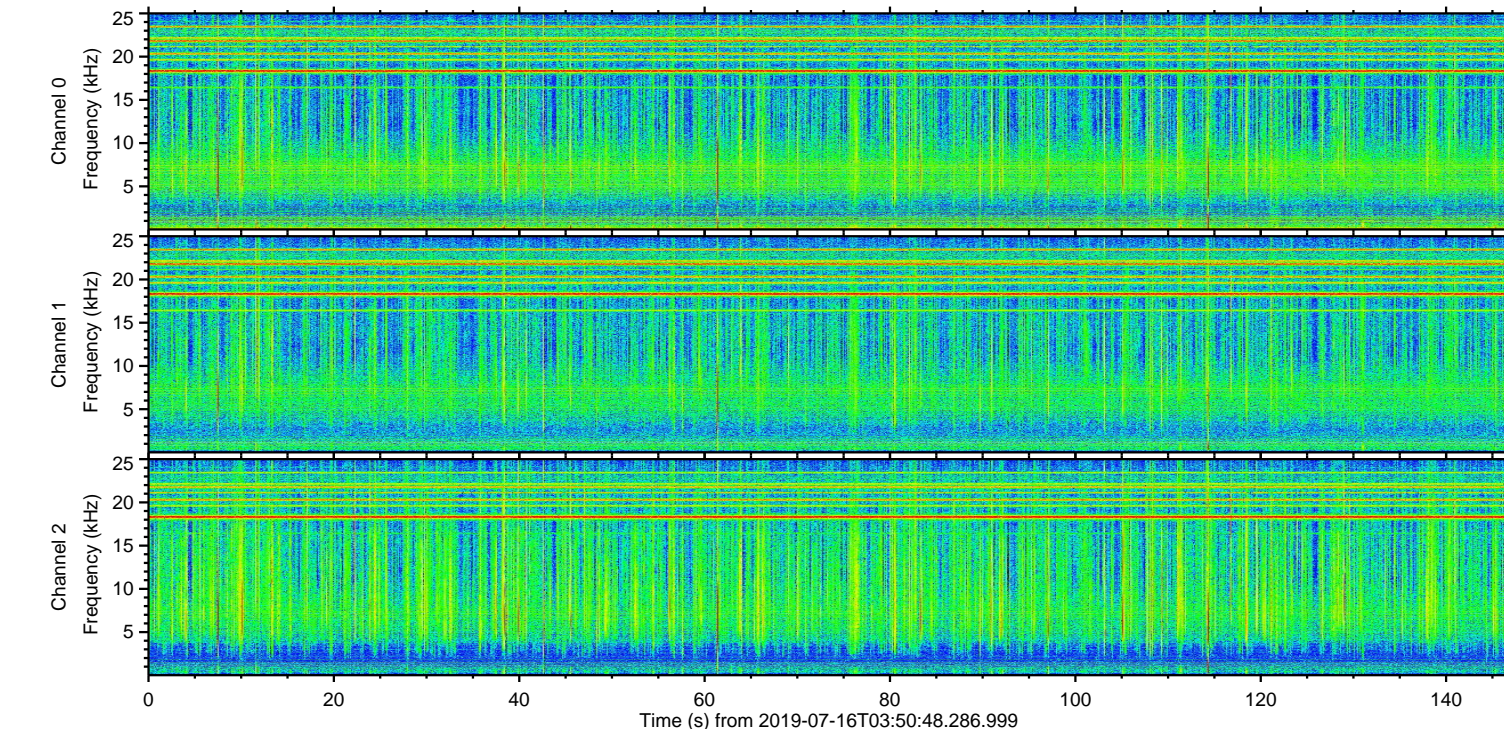
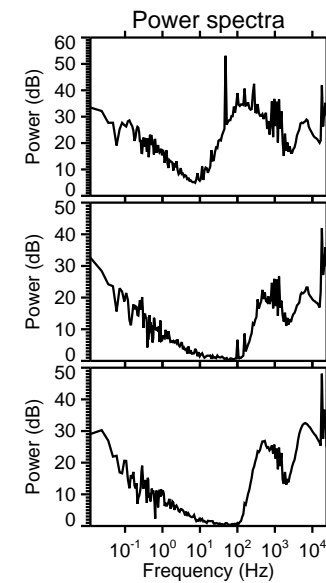
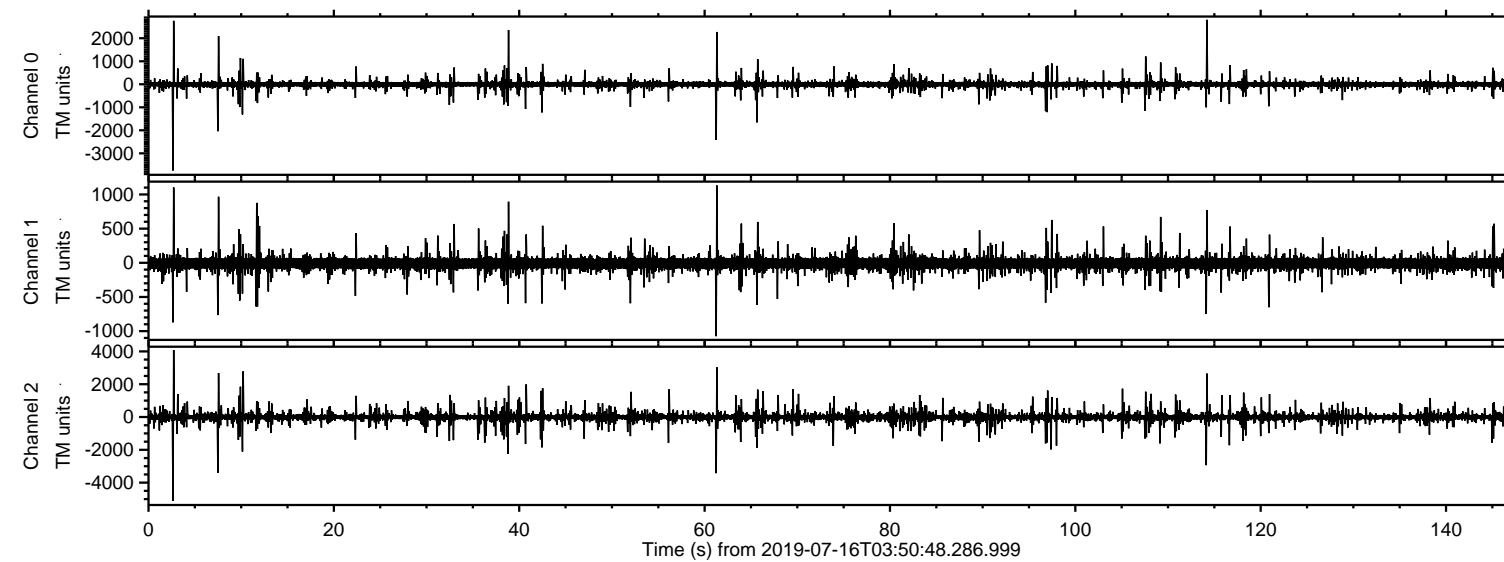


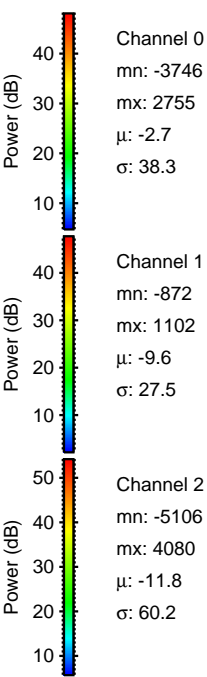
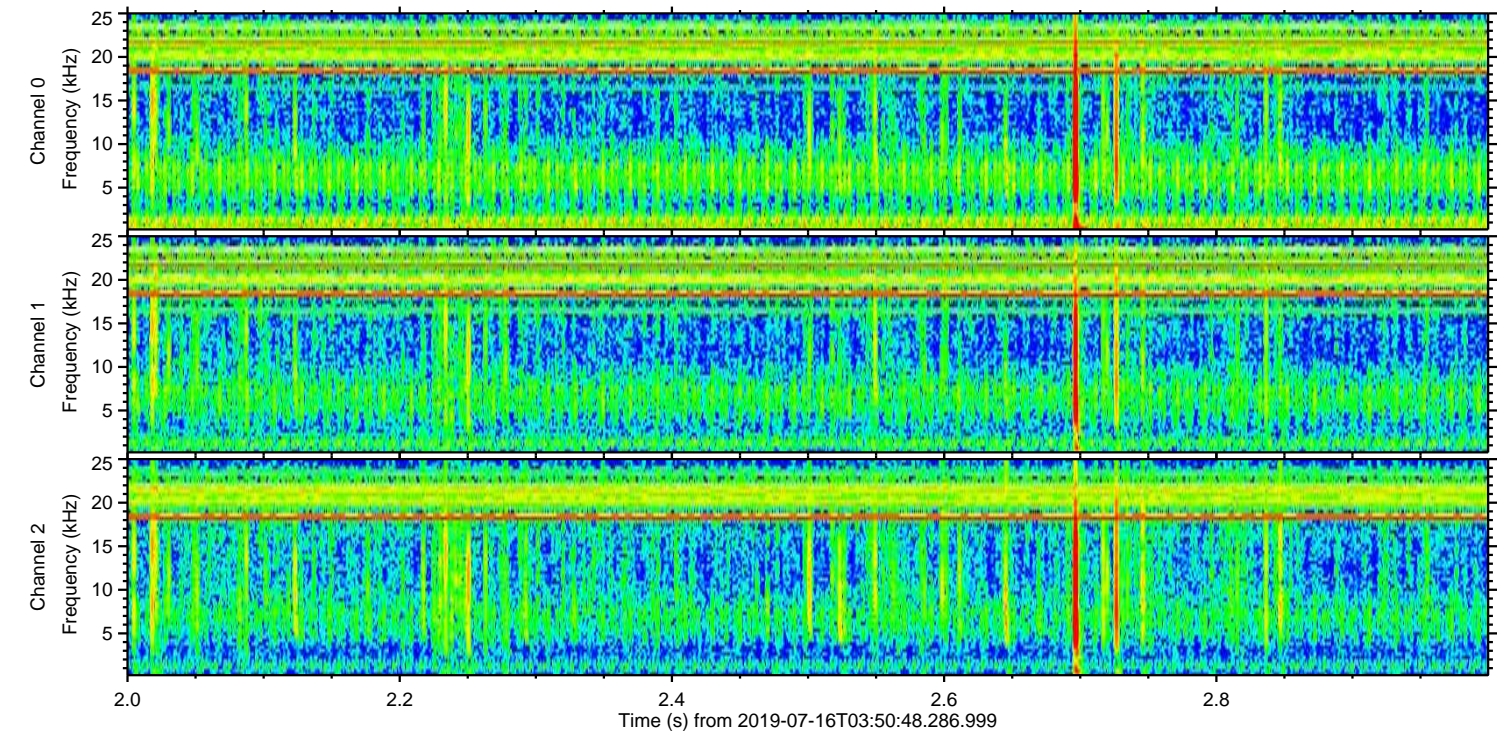
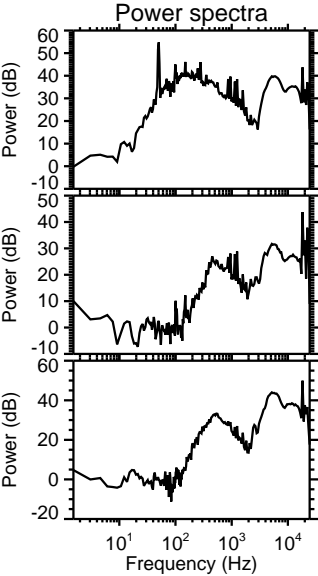
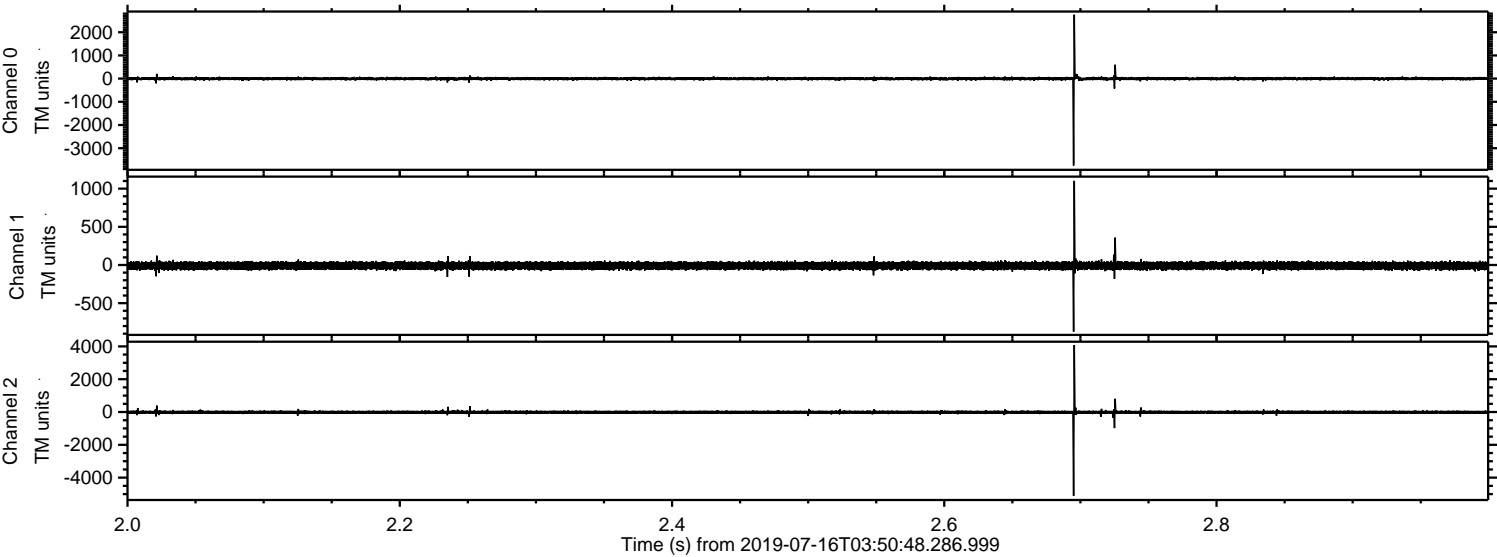
ELMAVAN 3D WAVEFORMS (Measured data sampled at 50 kHz) 51000 packets of 144 samples from 2019-07-16T03:50:48.286.999.

Processed Tue Jul 16 05:58:19 2019 by ELM ver.2012-10-06 from 001\_\_elm20190716\_035047\_\_dat00.bin



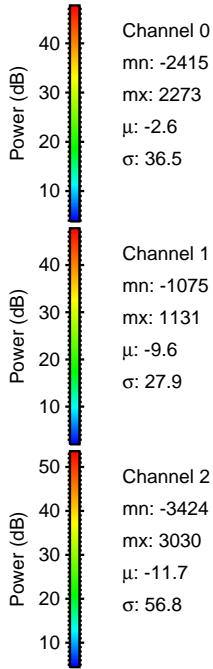
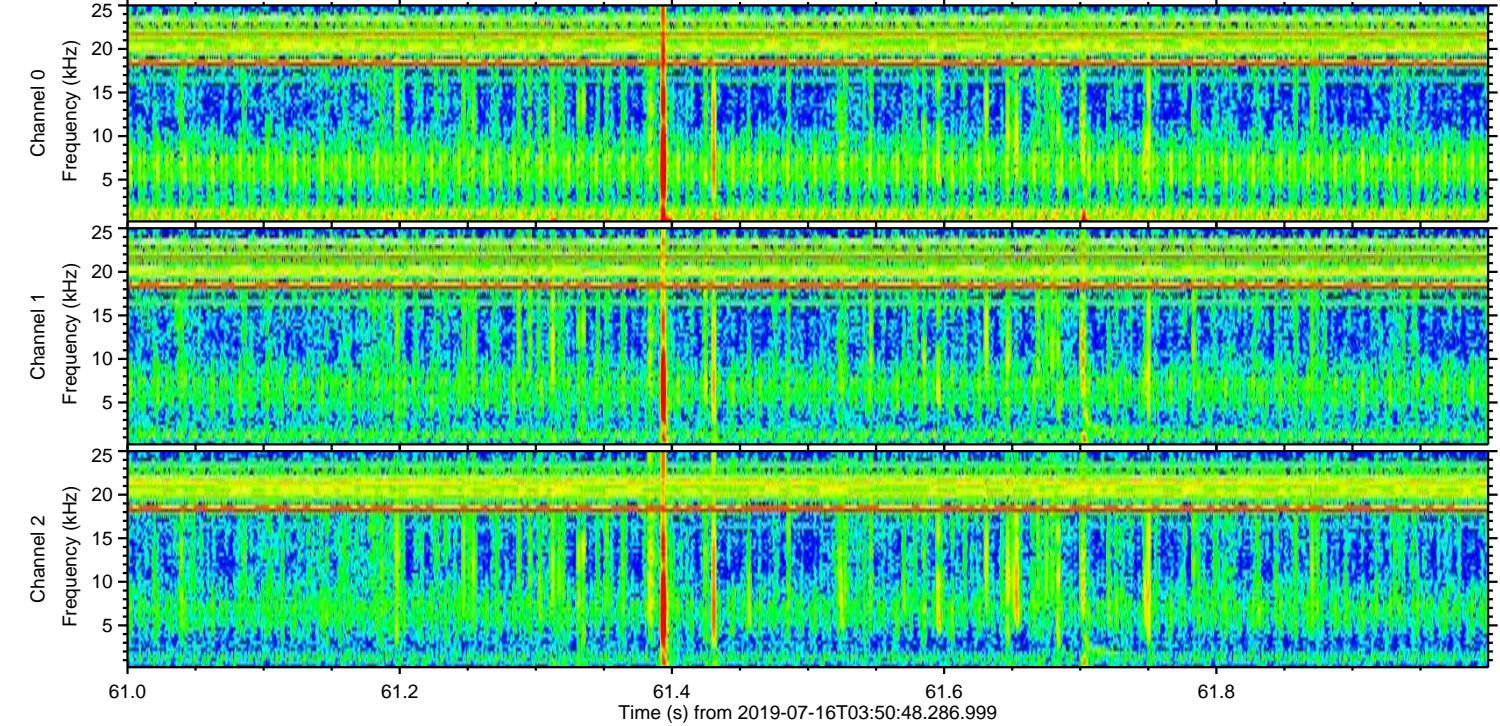
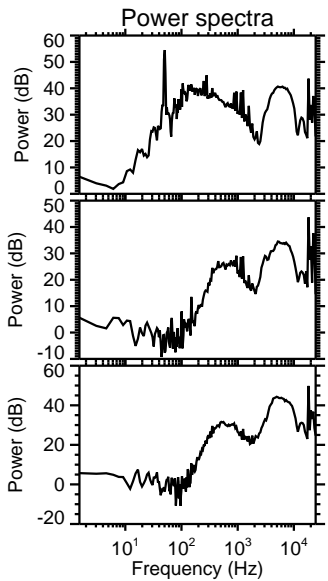
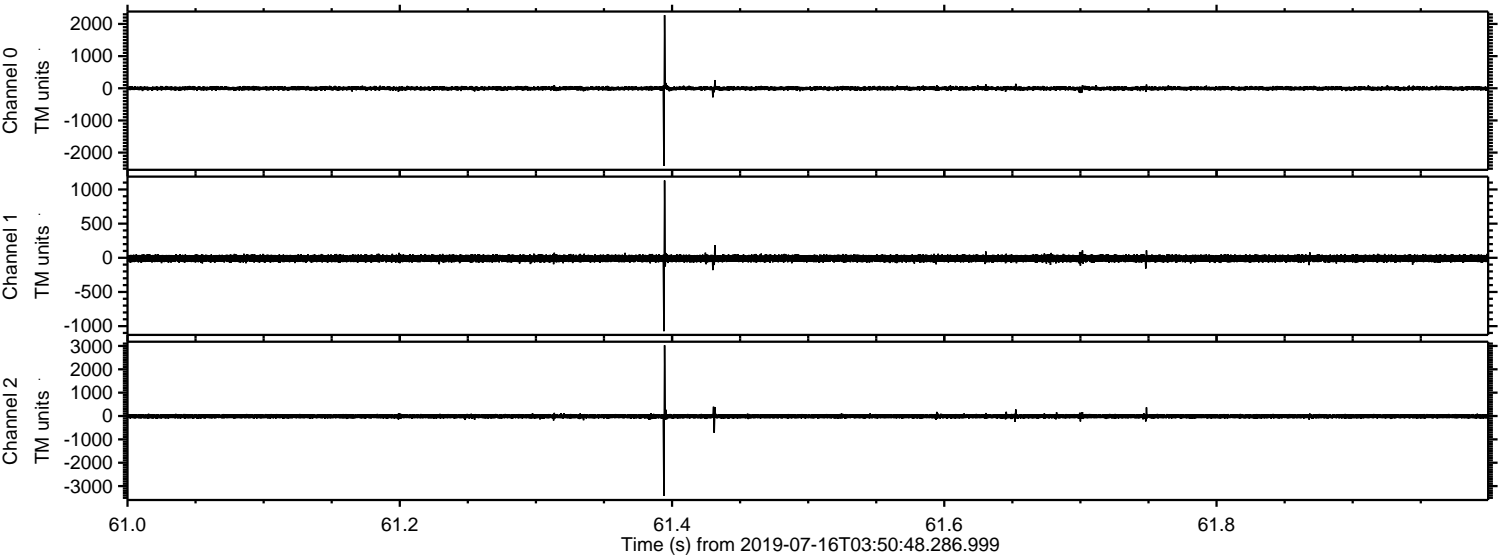


Processed Tue Jul 16 05:58:28 2019 by ELM ver.2012-10-06 from 001\_\_elm20190716\_035047\_\_dat00.bin



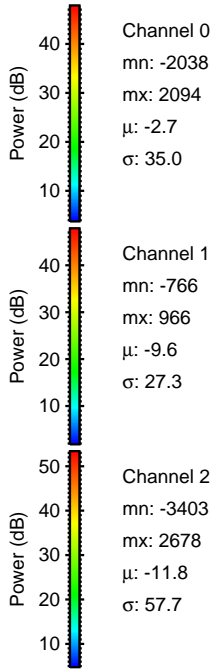
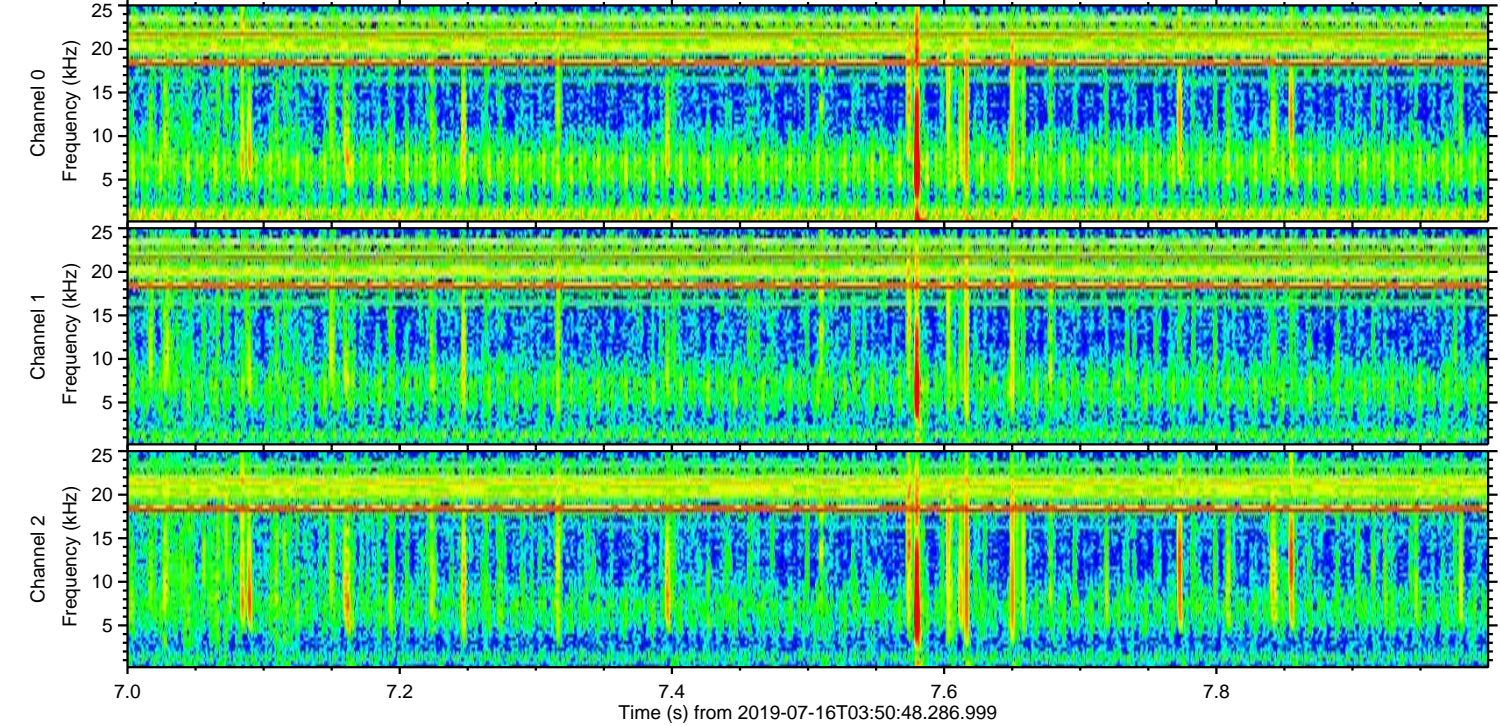
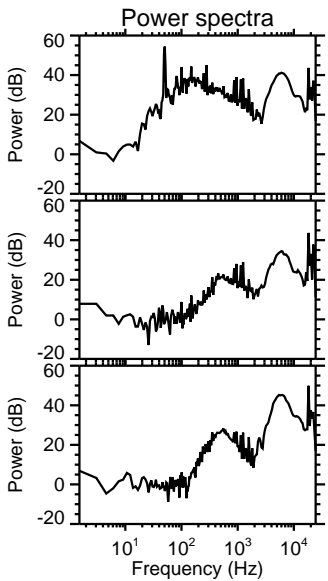
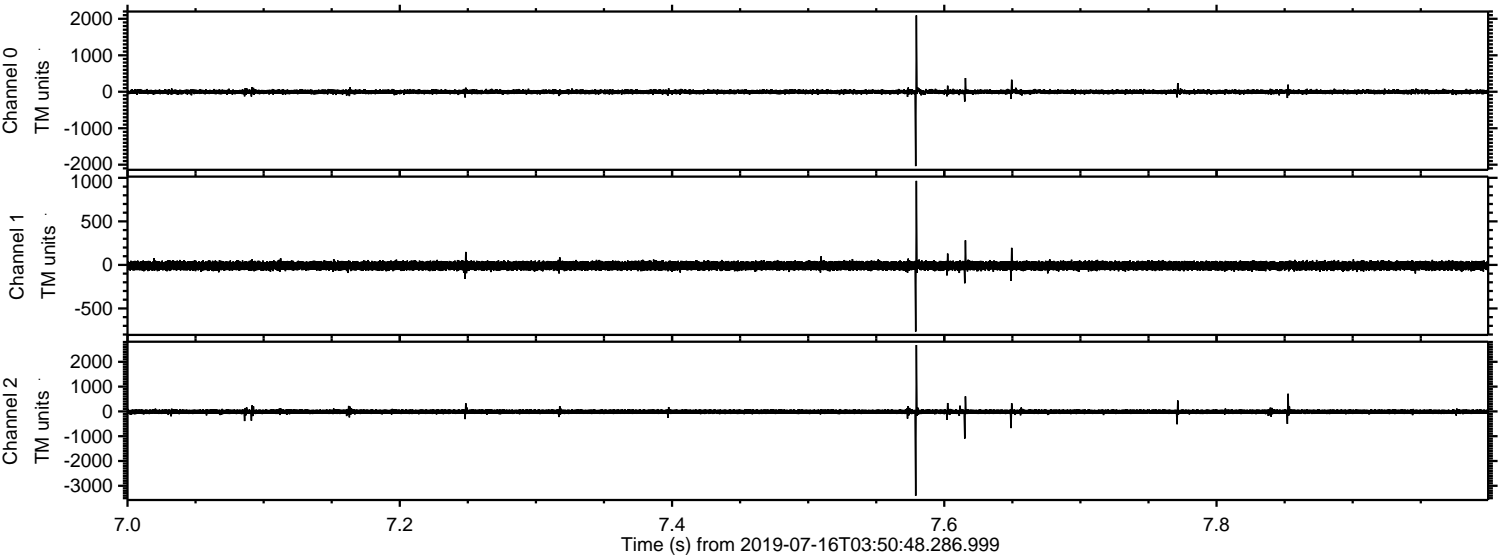


Processed Tue Jul 16 05:58:29 2019 by ELM ver.2012-10-06 from 001\_\_elm20190716\_035047\_\_dat00.bin





Processed Tue Jul 16 05:58:30 2019 by ELM ver.2012-10-06 from 001\_\_elm20190716\_035047\_\_dat00.bin



Channel 0  
mn: -2038  
mx: 2094  
 $\mu$ : -2.7  
 $\sigma$ : 35.0

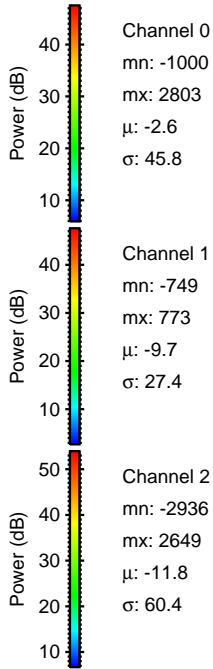
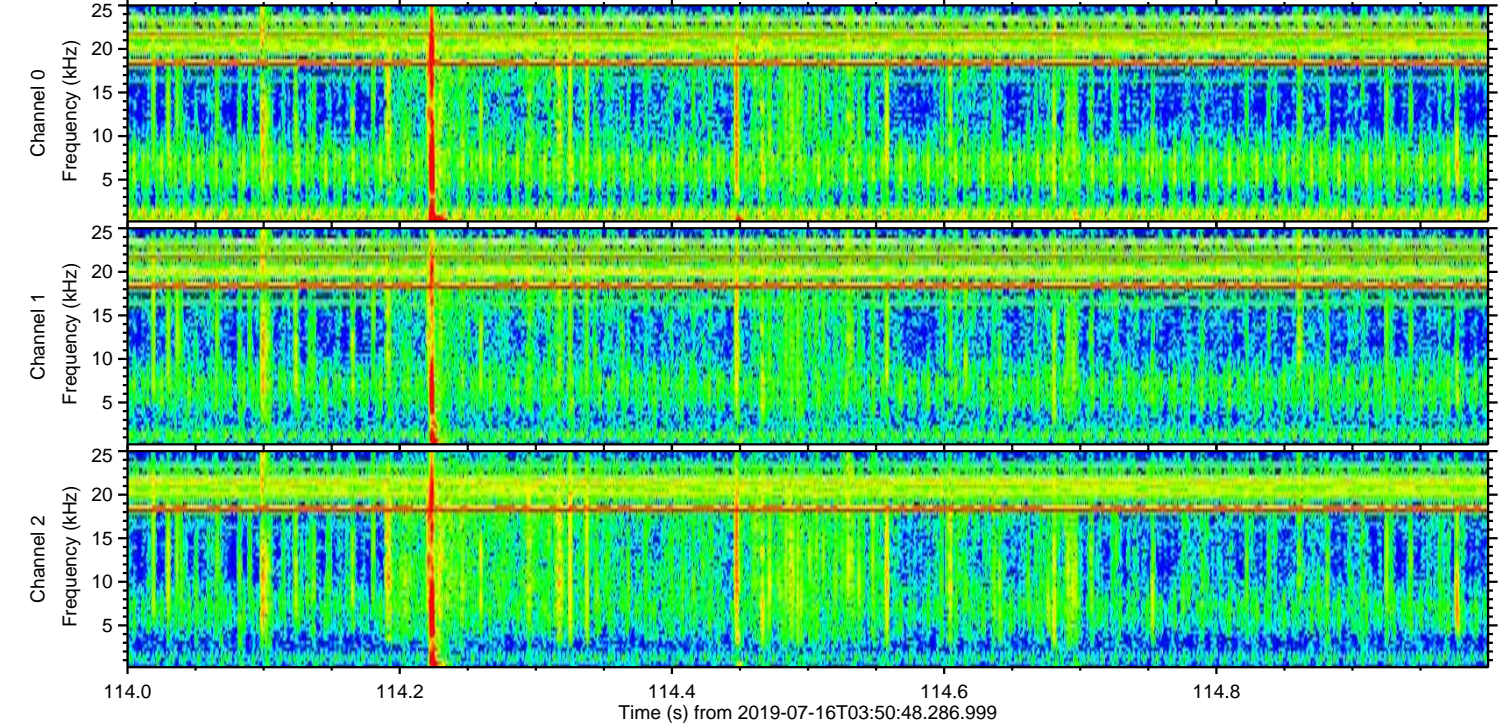
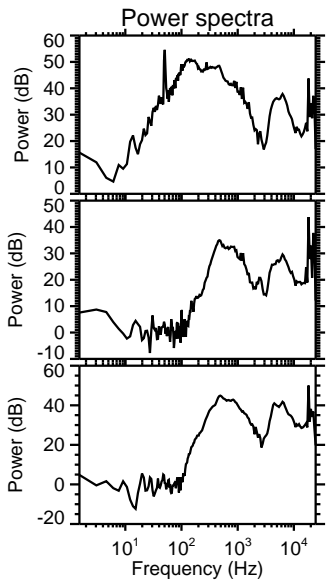
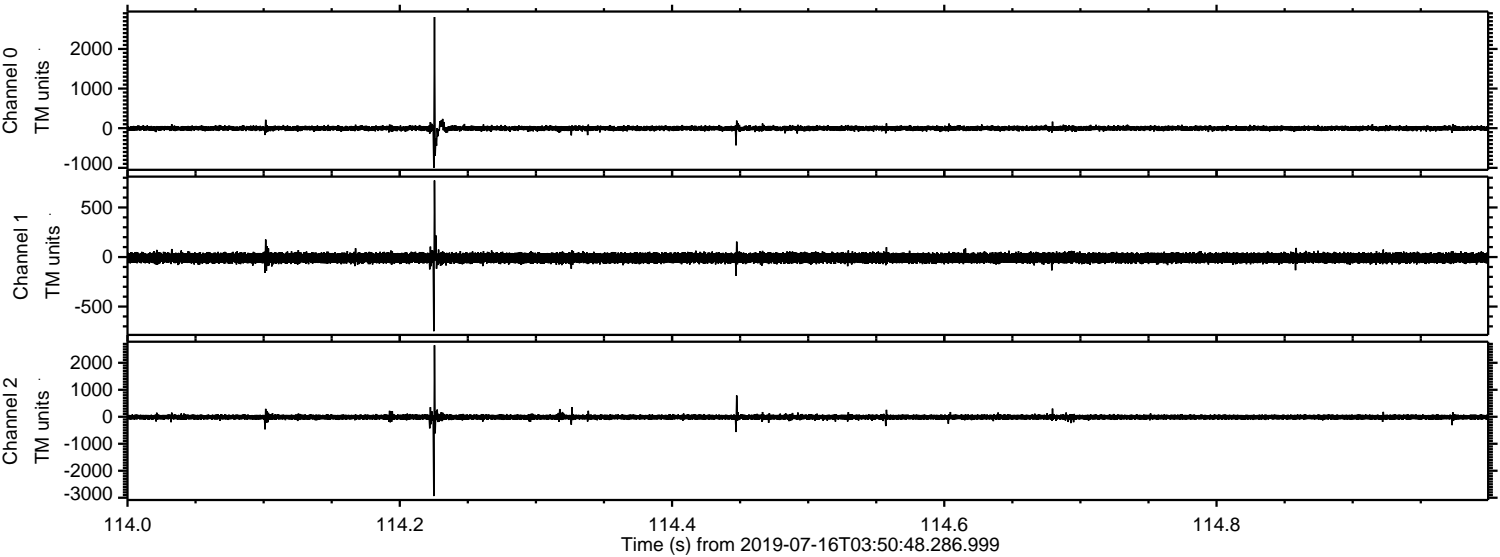
Channel 1  
mn: -766  
mx: 966  
 $\mu$ : -9.6  
 $\sigma$ : 27.3

Channel 2  
mn: -3403  
mx: 2678  
 $\mu$ : -11.8  
 $\sigma$ : 57.7



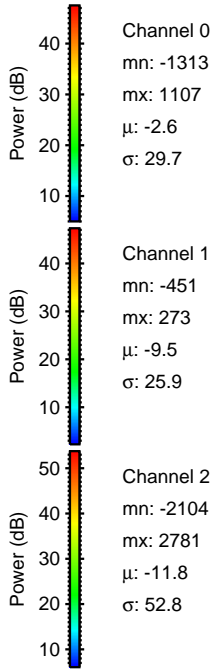
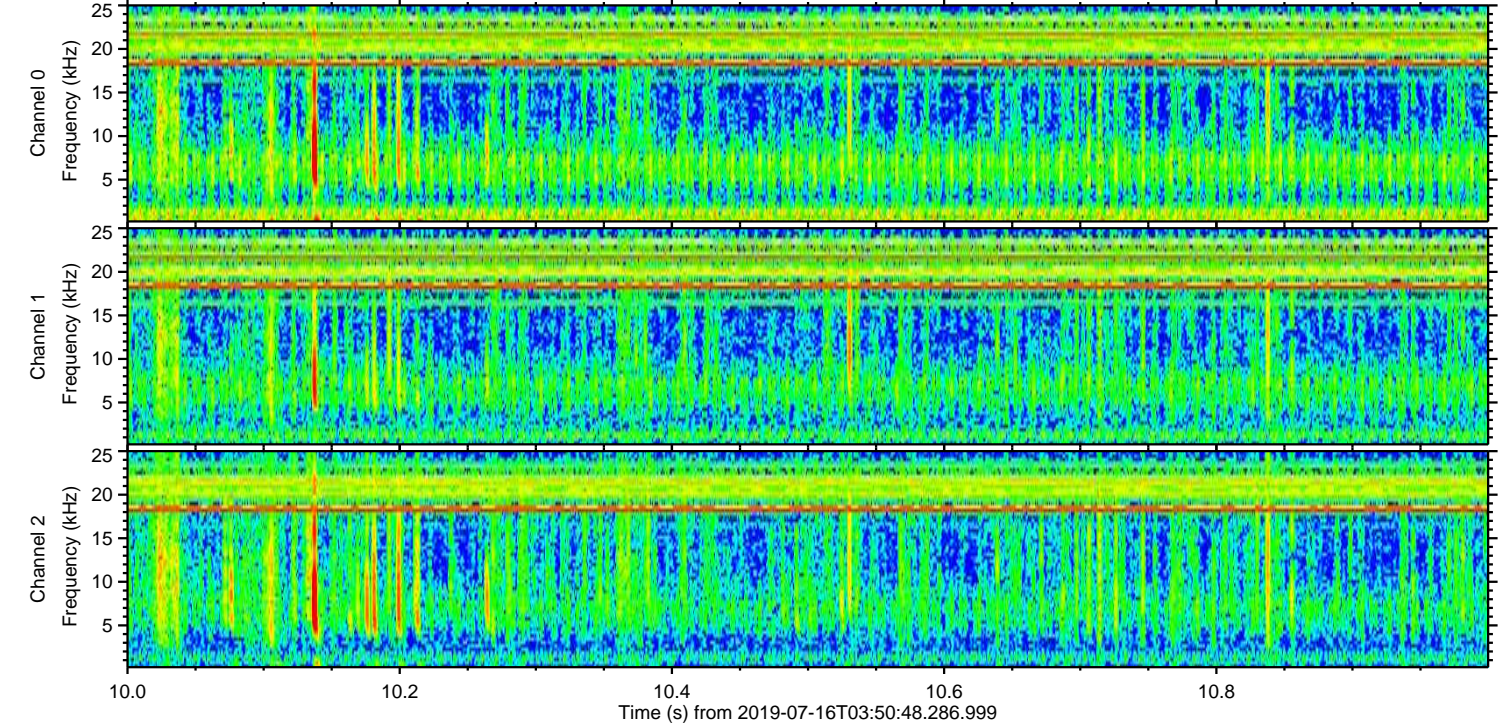
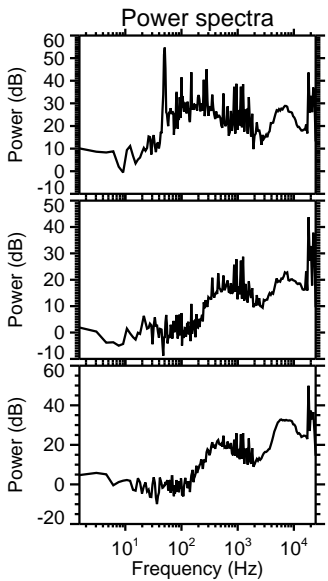
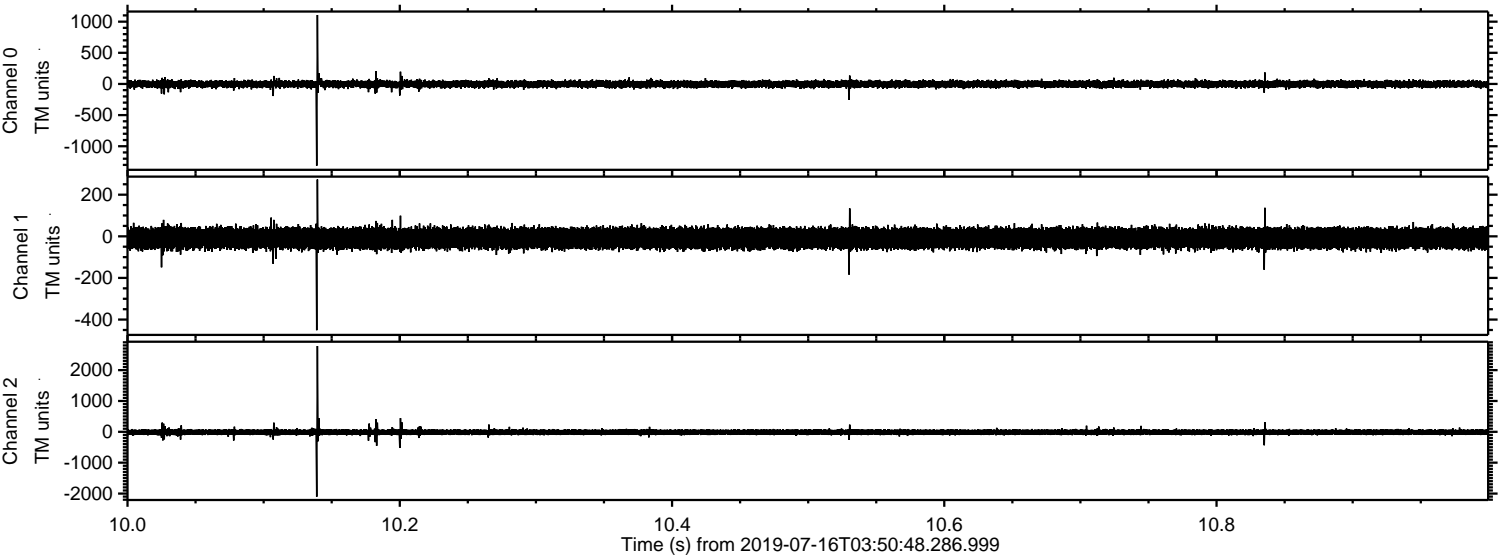
ELMAVAN 3D WAVEFORMS (Measured data sampled at 50 kHz) 51000 packets of 144 samples from 2019-07-16T03:50:48.286.999. Part 115/147

Processed Tue Jul 16 05:58:30 2019 by ELM ver.2012-10-06 from 001\_\_elm20190716\_035047\_\_dat00.bin





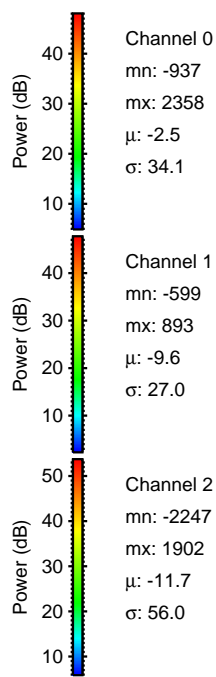
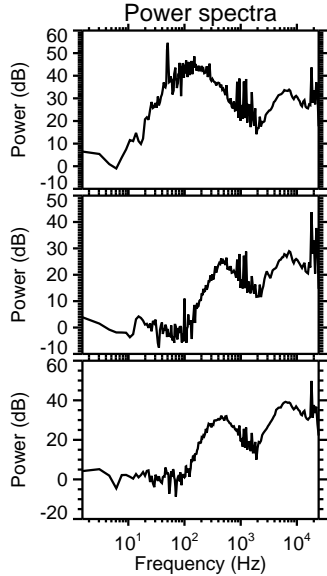
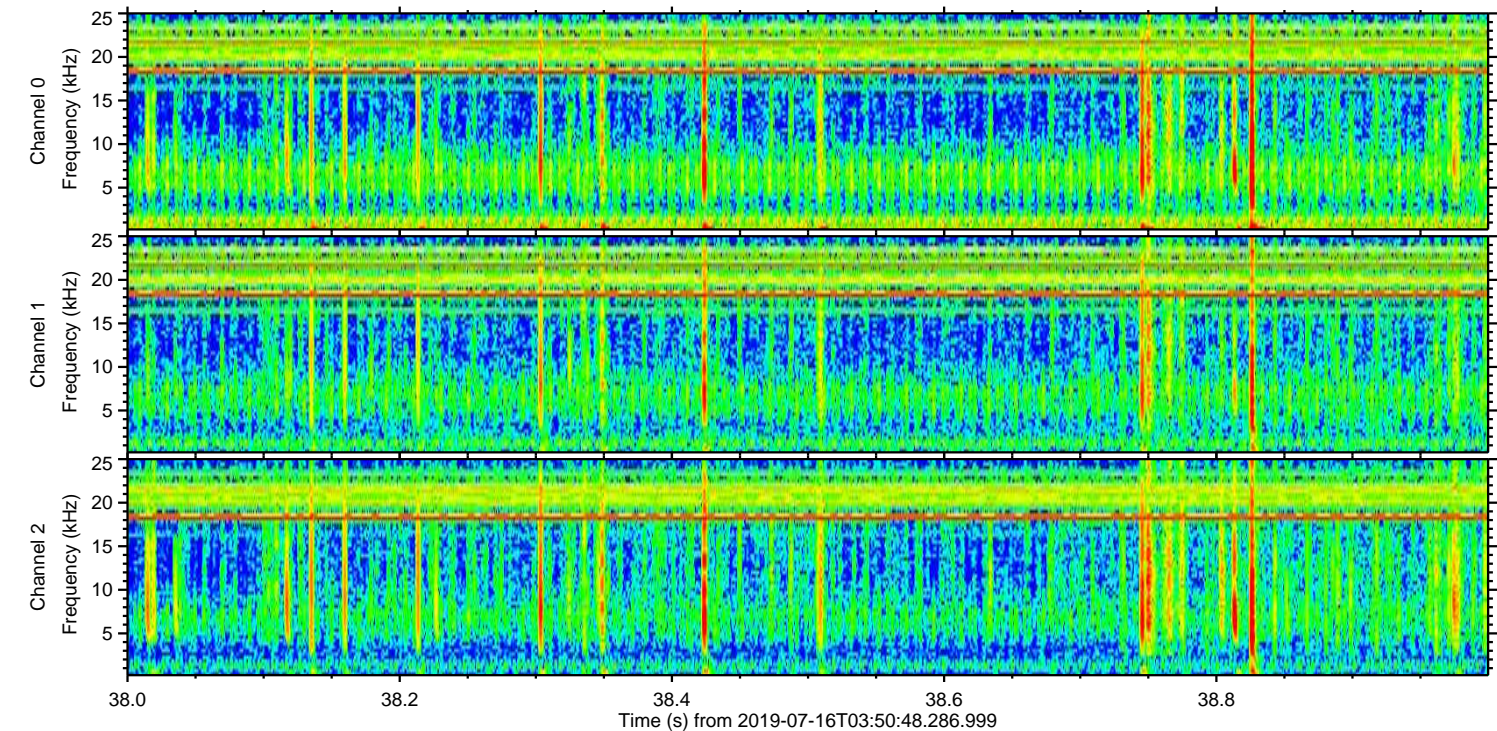
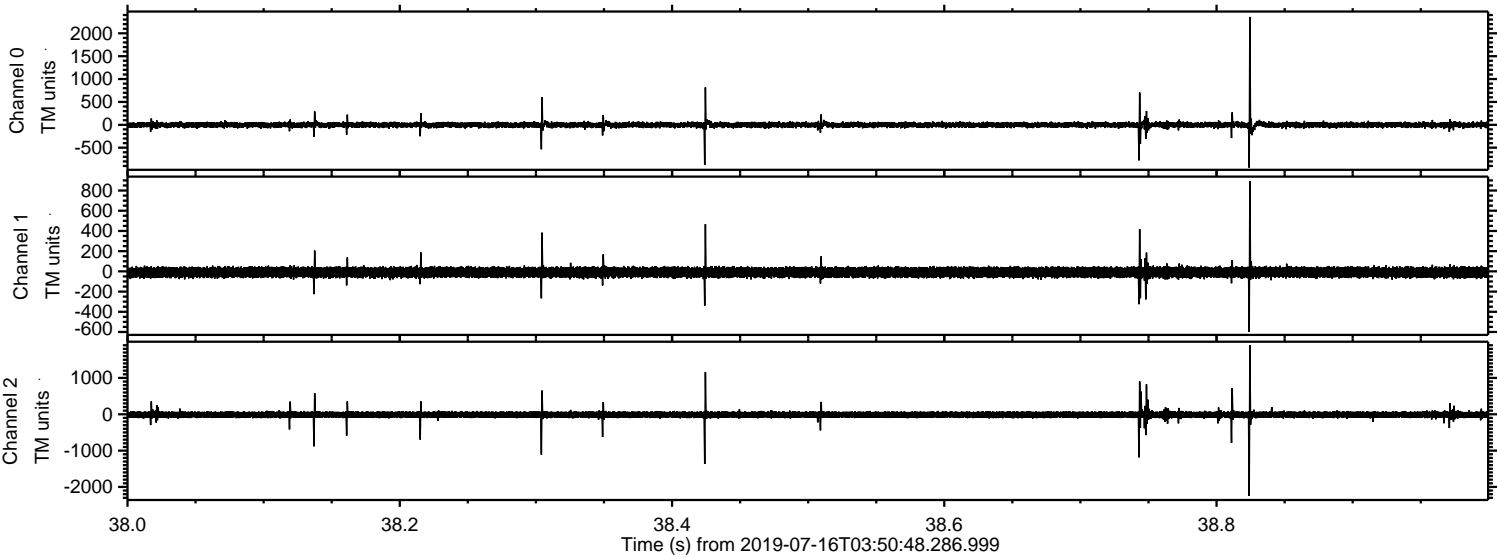
Processed Tue Jul 16 05:58:31 2019 by ELM ver.2012-10-06 from 001\_\_elm20190716\_035047\_\_dat00.bin





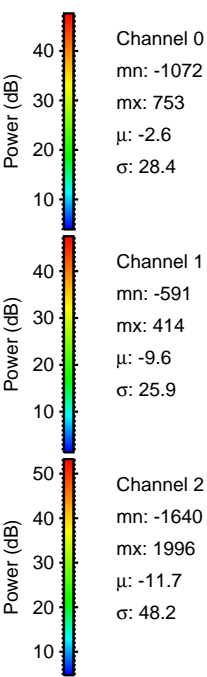
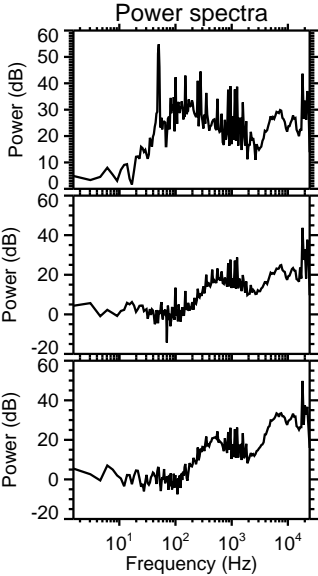
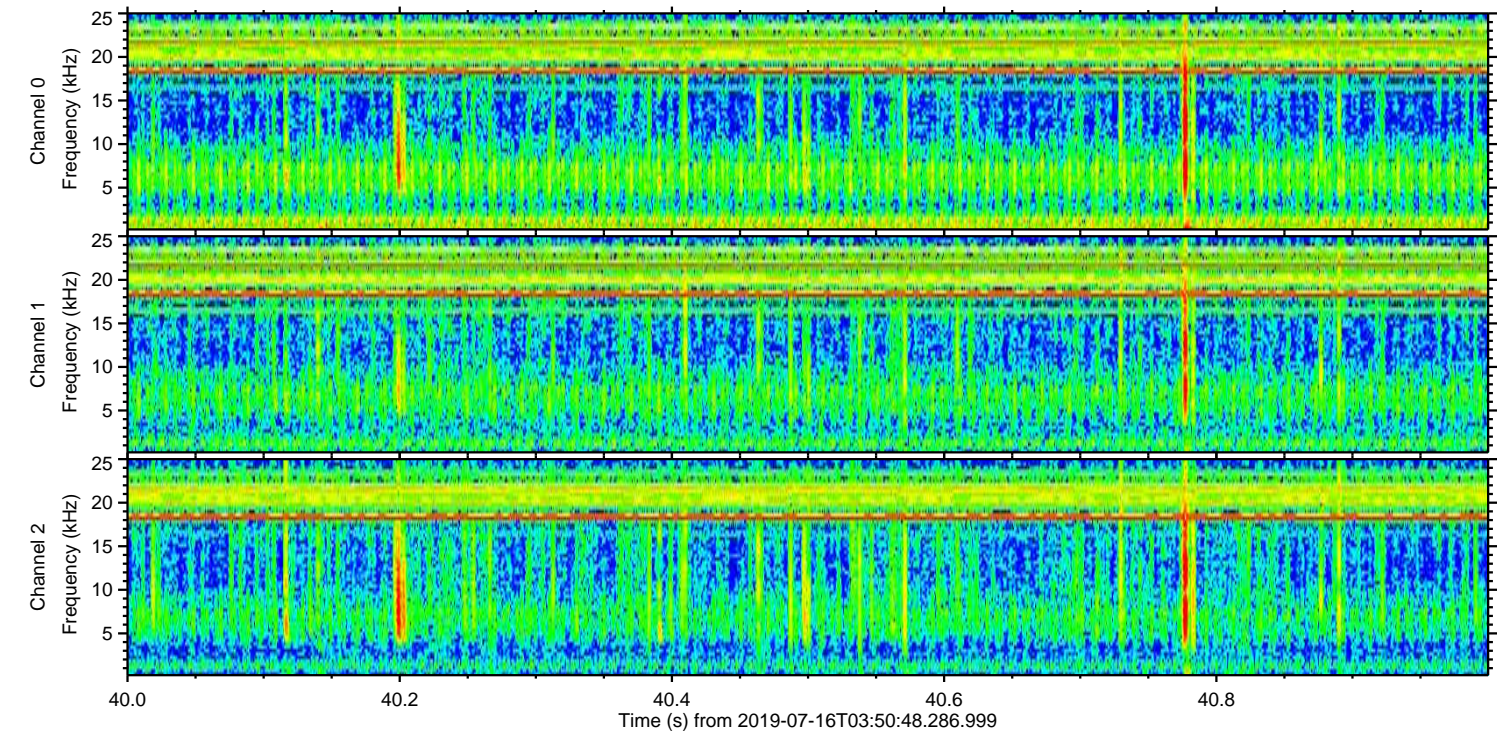
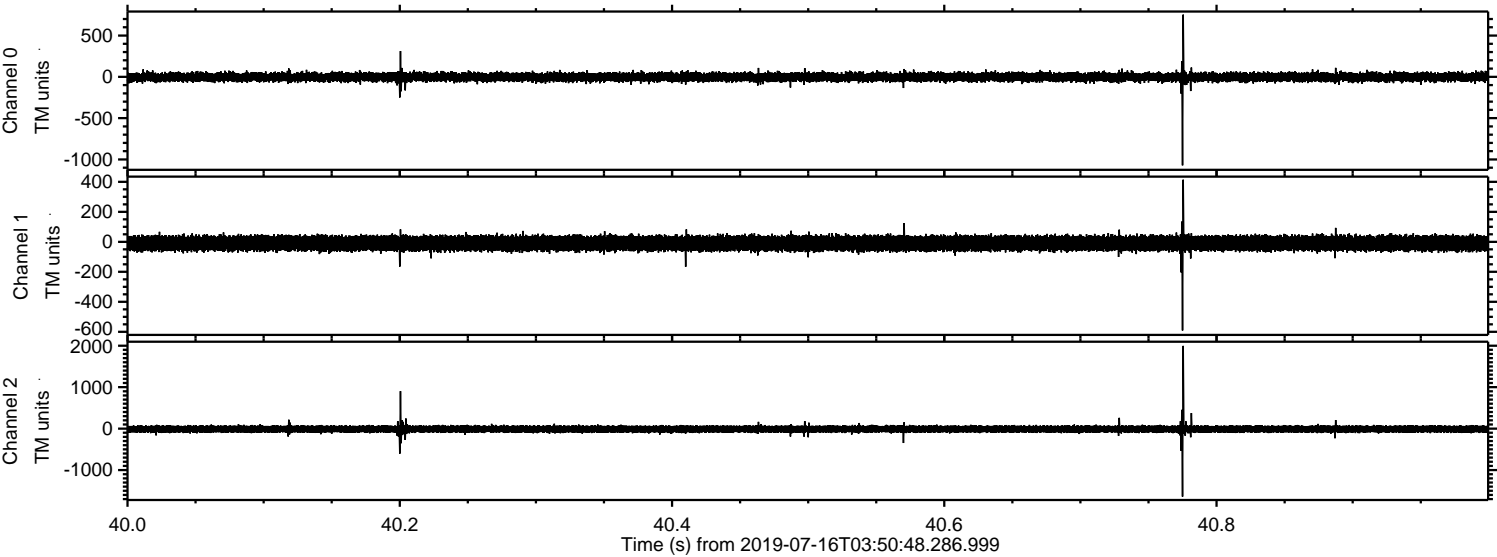
ELMAVAN 3D WAVEFORMS (Measured data sampled at 50 kHz) 51000 packets of 144 samples from 2019-07-16T03:50:48.286.999. Part 39/147

Processed Tue Jul 16 05:58:32 2019 by ELM ver.2012-10-06 from 001\_\_elm20190716\_035047\_\_dat00.bin



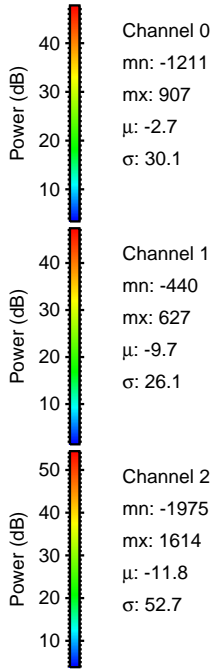
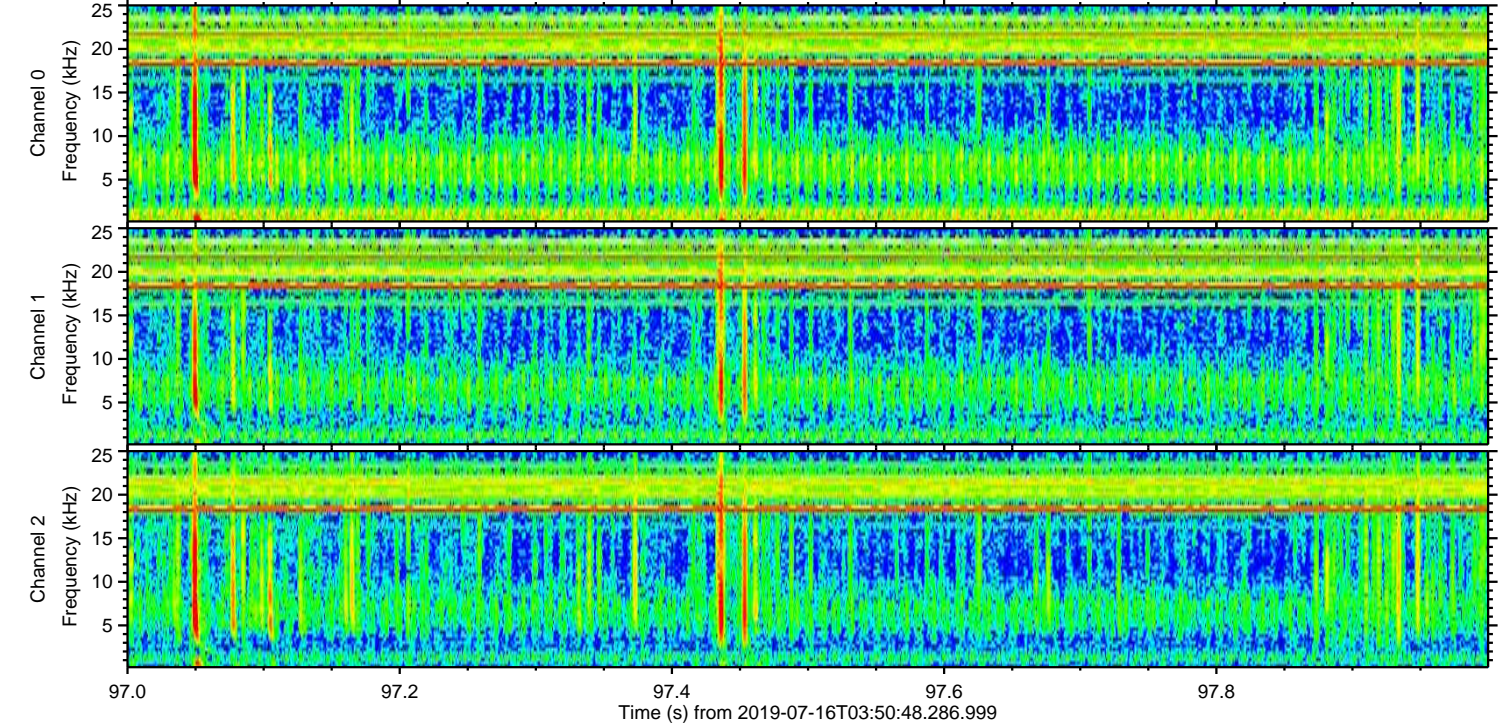
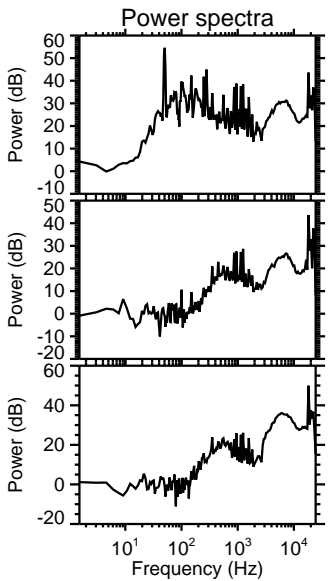
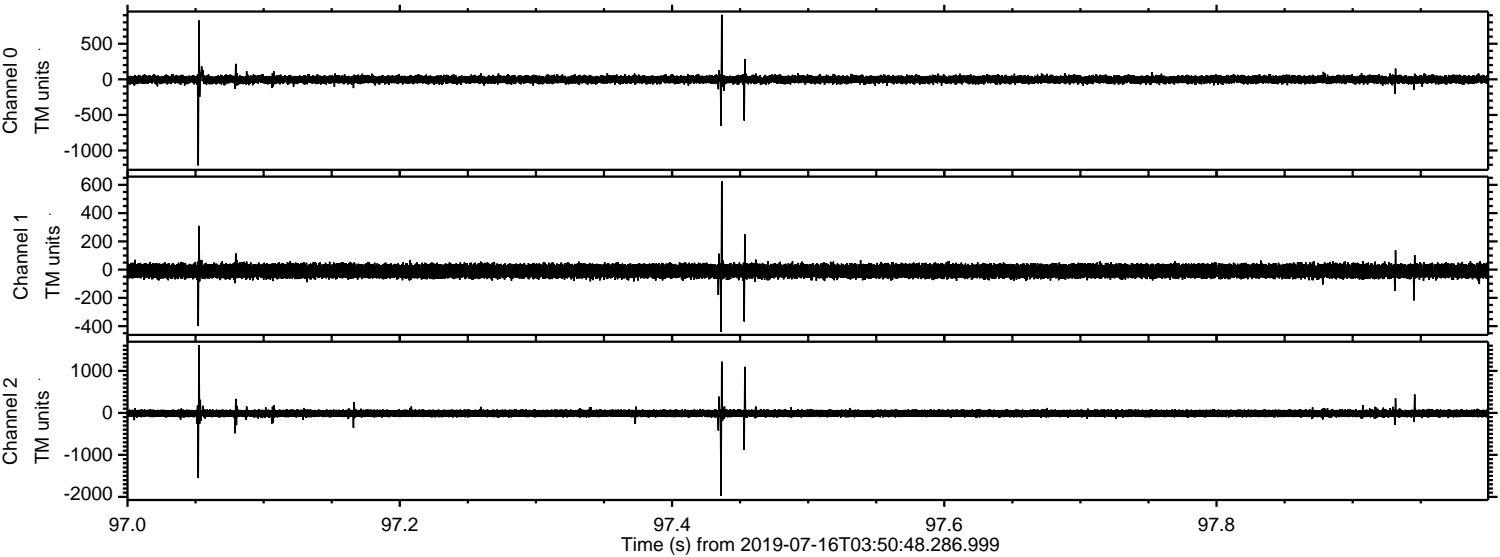


Processed Tue Jul 16 05:58:33 2019 by ELM ver.2012-10-06 from 001\_\_elm20190716\_035047\_\_dat00.bin



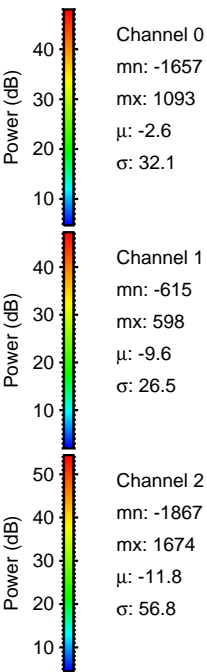
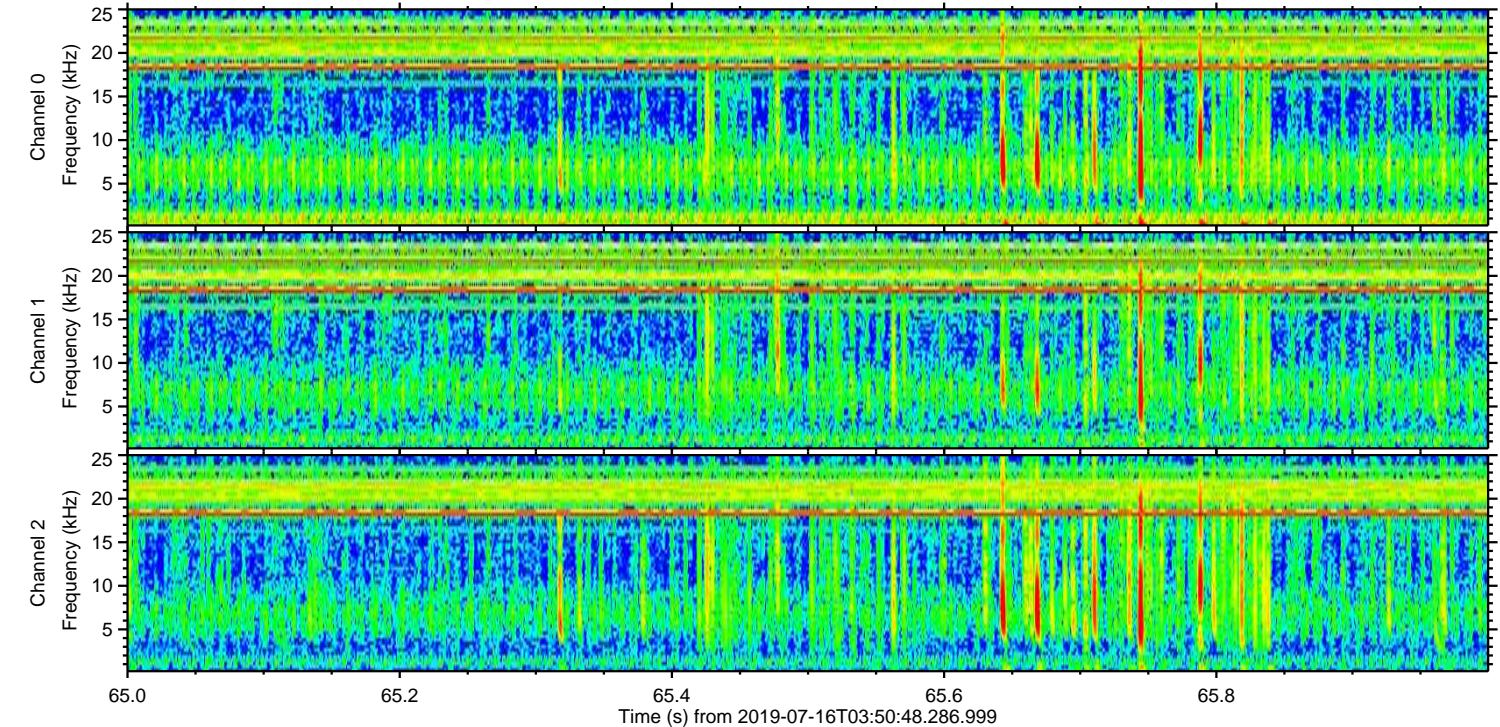
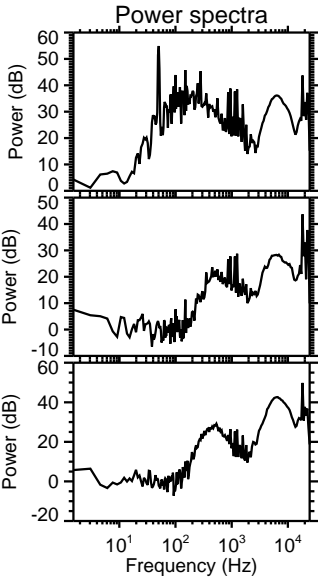
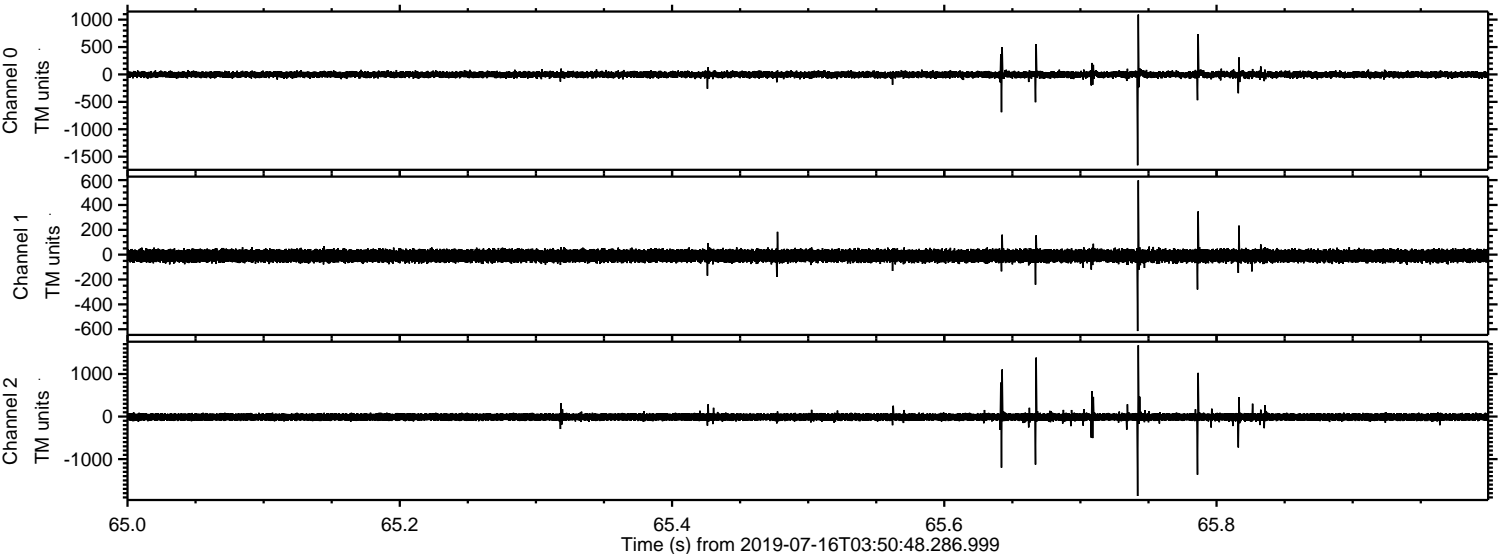


Processed Tue Jul 16 05:58:34 2019 by ELM ver.2012-10-06 from 001\_\_elm20190716\_035047\_\_dat00.bin





Processed Tue Jul 16 05:58:35 2019 by ELM ver.2012-10-06 from 001\_\_elm20190716\_035047\_\_dat00.bin





Processed Tue Jul 16 05:58:35 2019 by ELM ver.2012-10-06 from 001\_\_elm20190716\_035047\_\_dat00.bin

