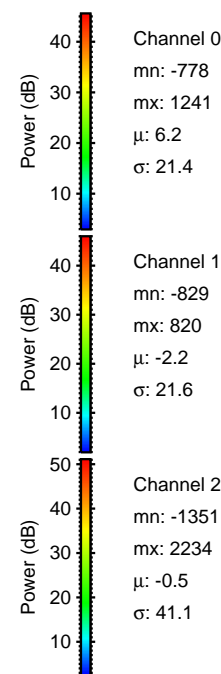
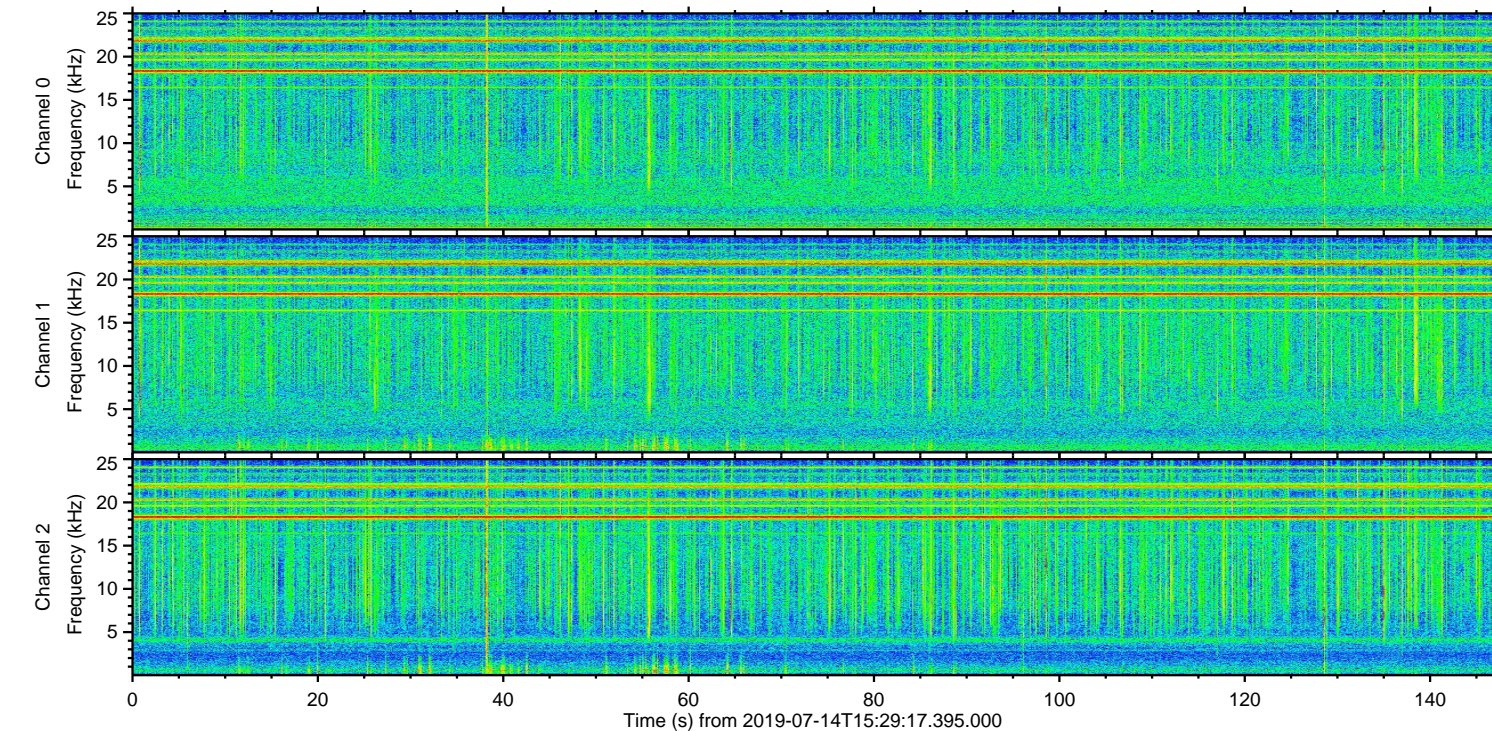
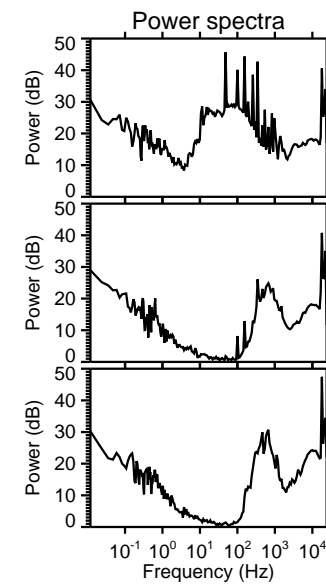
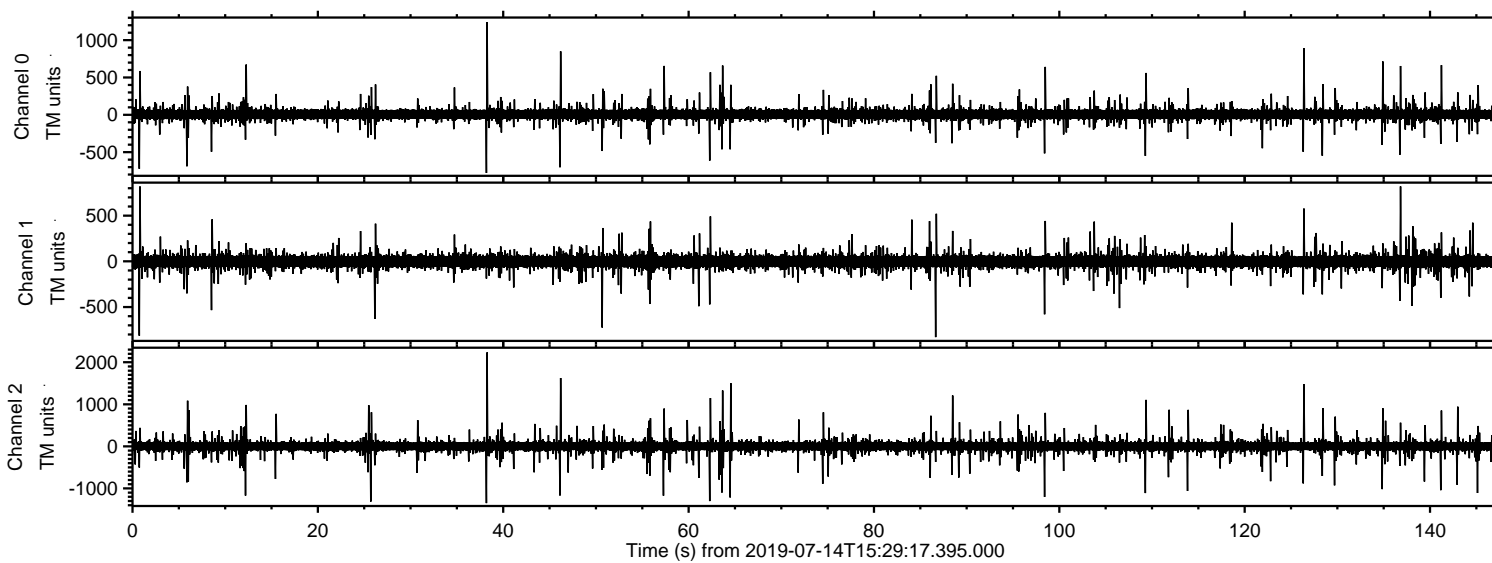


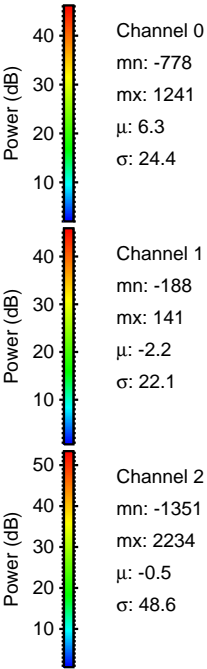
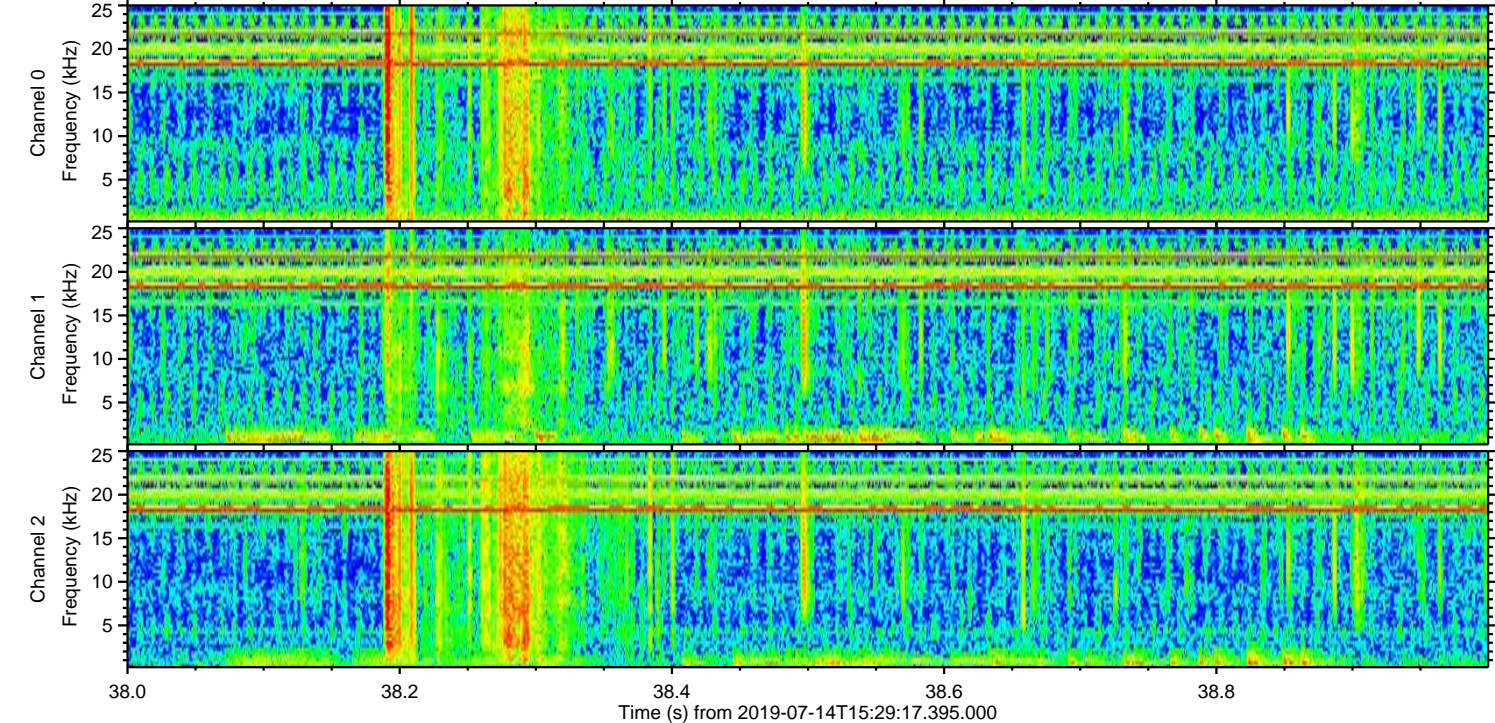
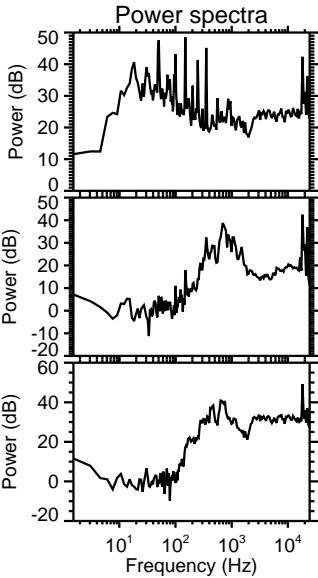
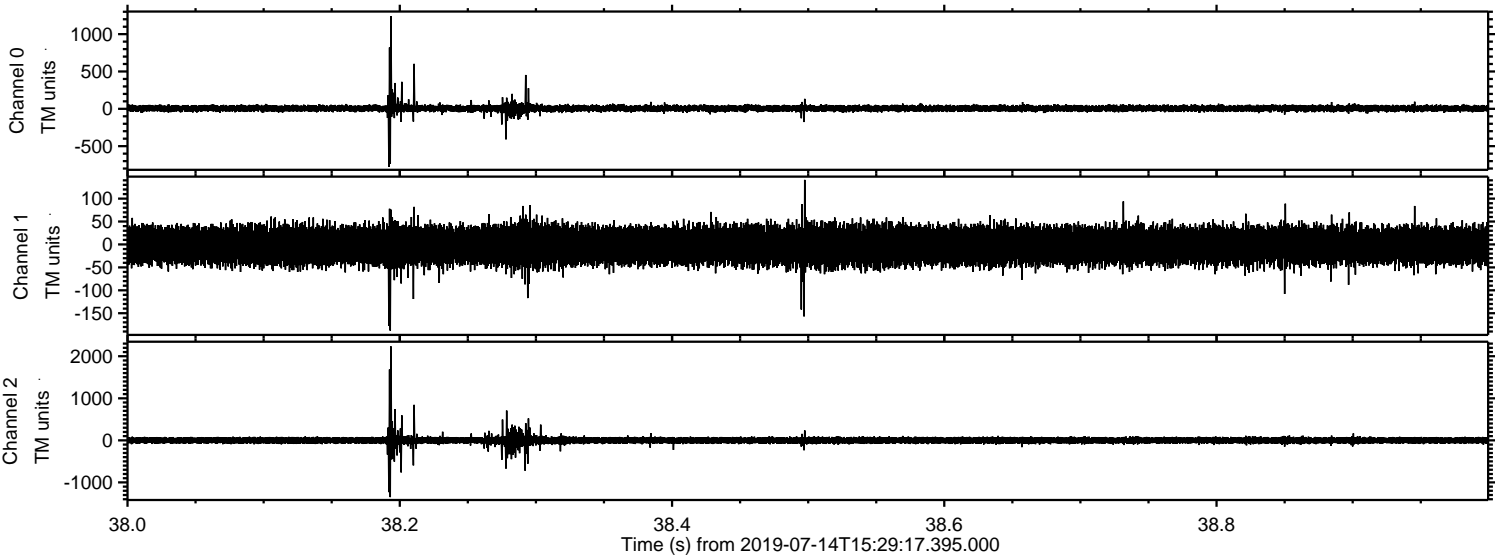
# ELMAVAN 3D WAVEFORMS (Measured data sampled at 50 kHz) 51000 packets of 144 samples from 2019-07-14T15:29:17.395.000.

Processed Sun Jul 14 17:37:01 2019 by ELM ver.2012-10-06 from 001\_\_elm20190714\_152916\_\_dat00.bin





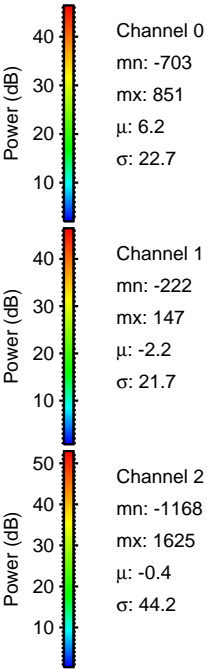
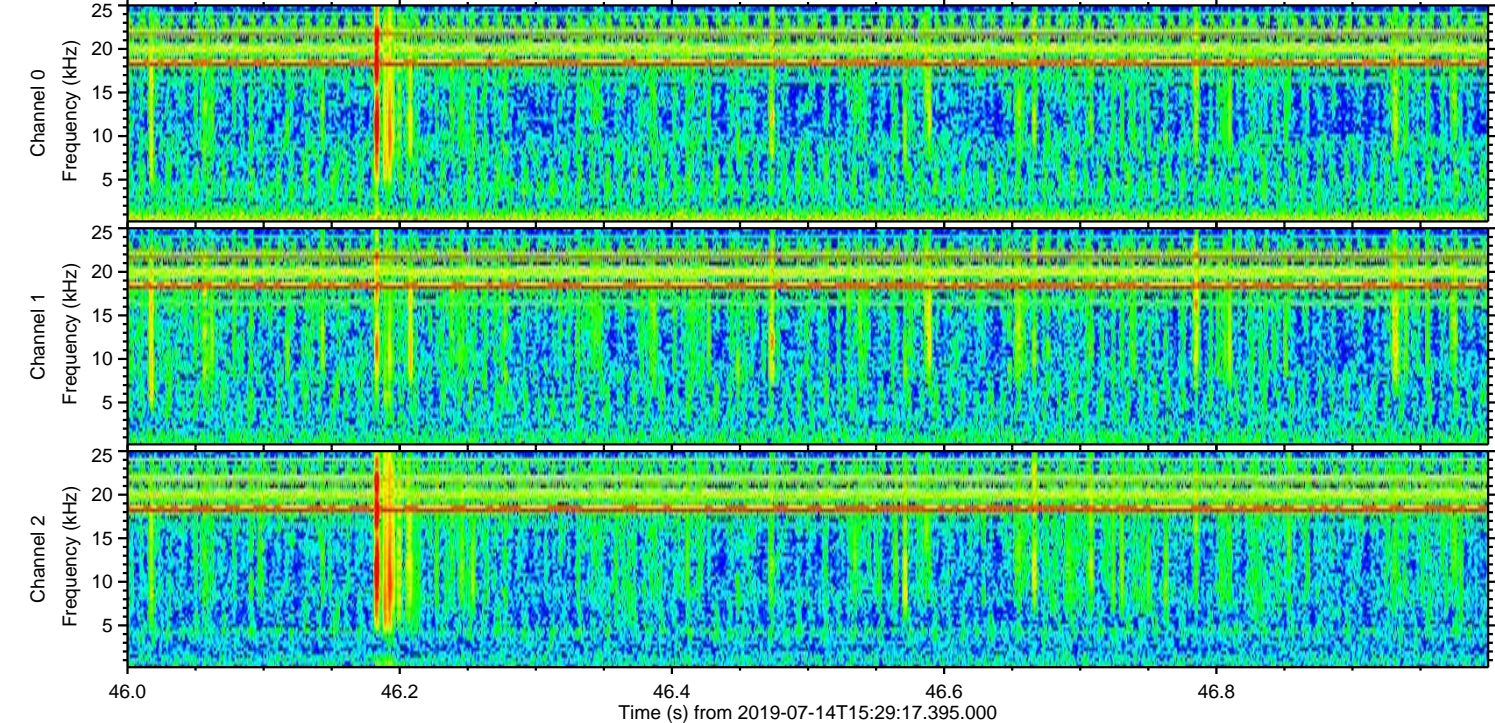
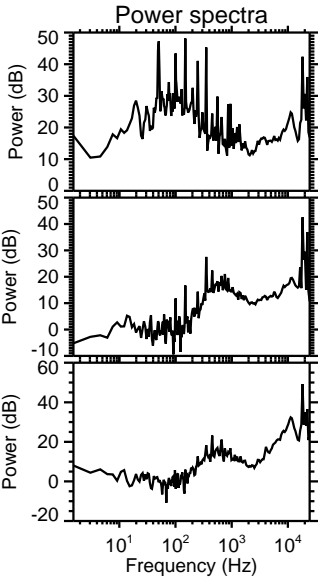
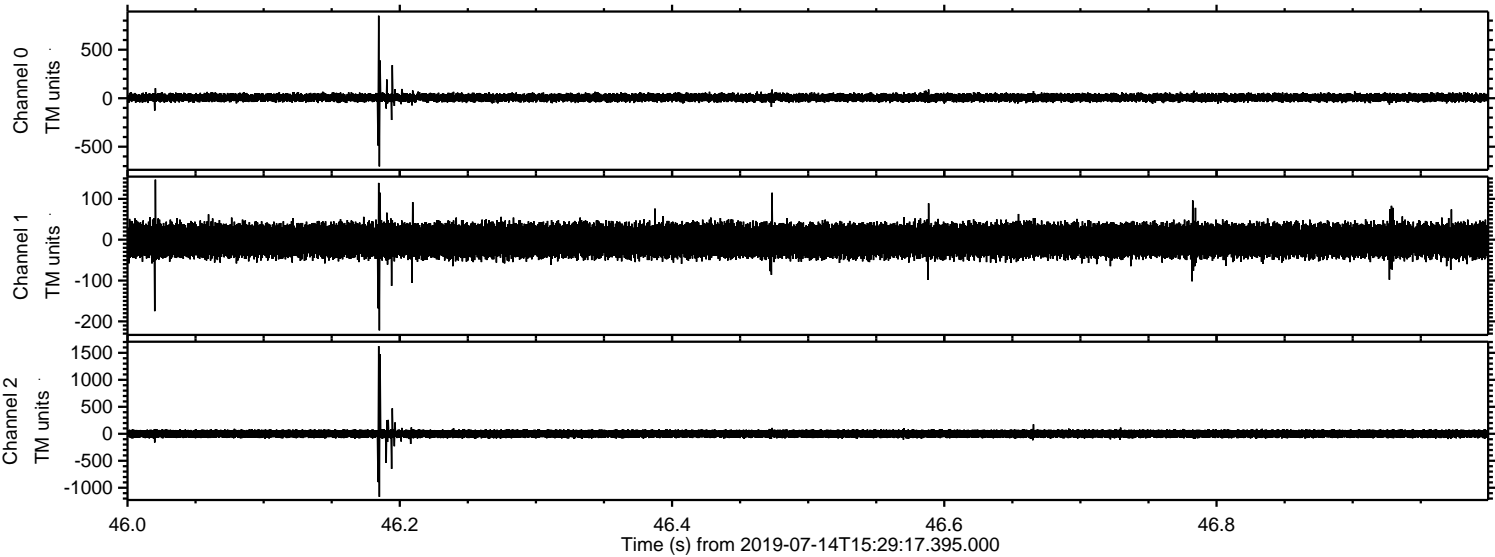
Processed Sun Jul 14 17:37:08 2019 by ELM ver.2012-10-06 from 001\_\_elm20190714\_152916\_\_dat00.bin





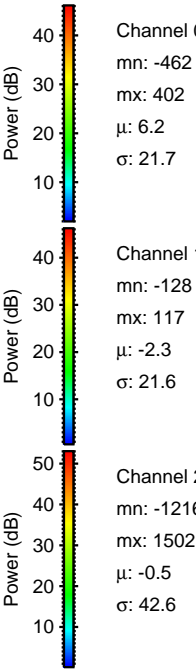
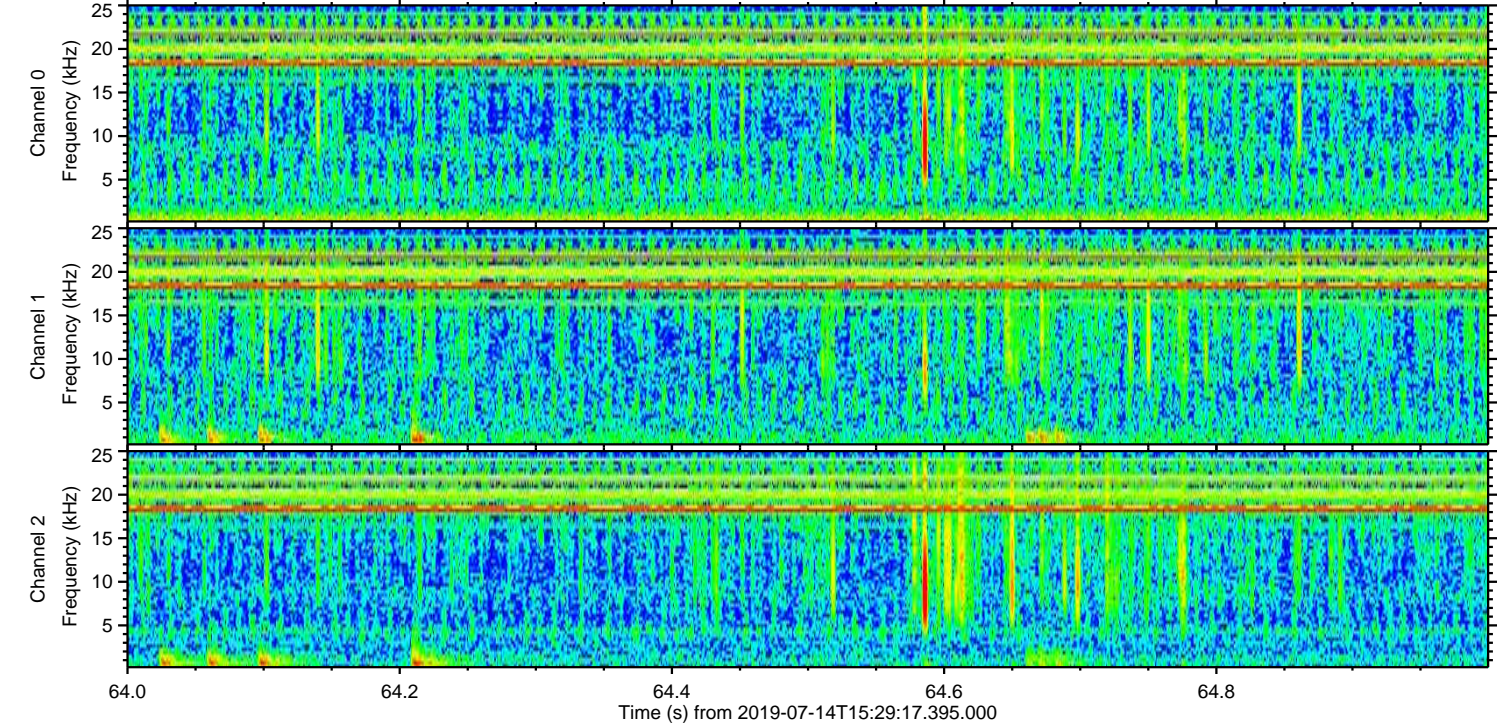
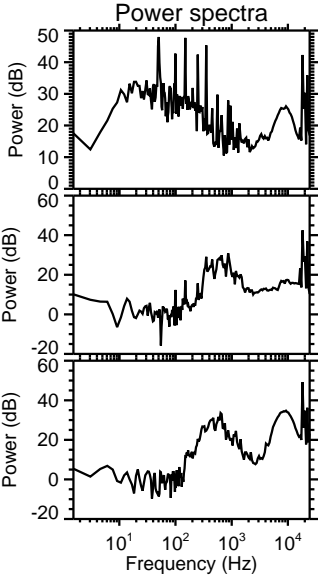
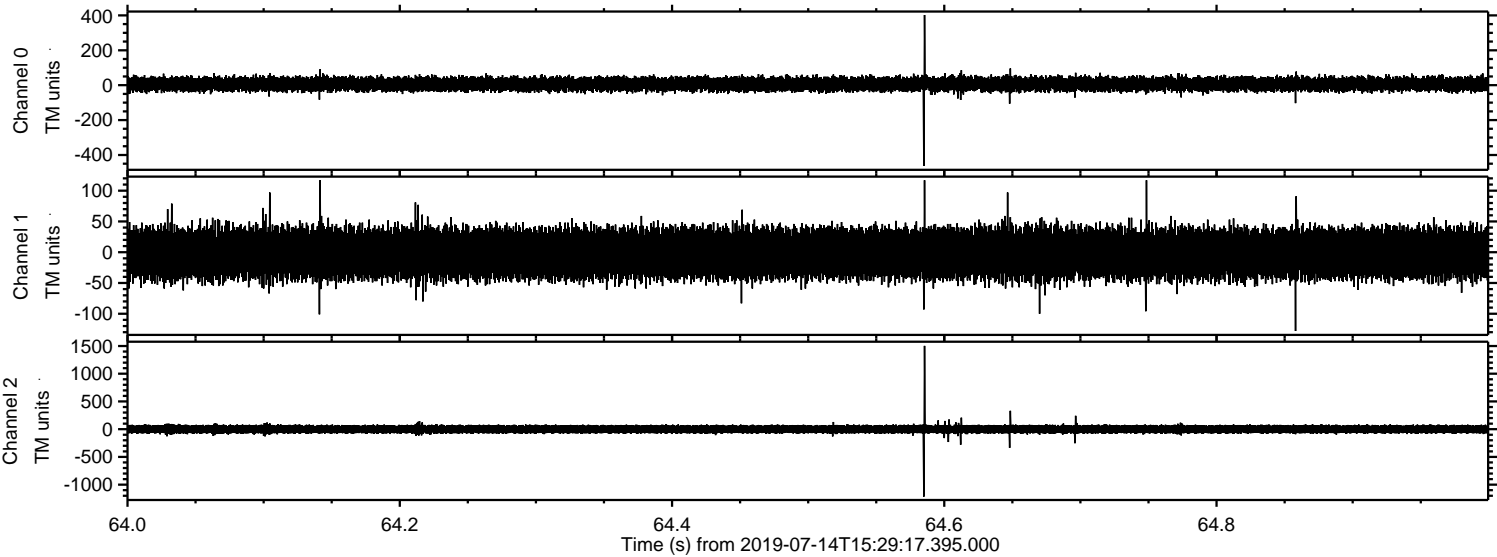
ELMAVAN 3D WAVEFORMS (Measured data sampled at 50 kHz) 51000 packets of 144 samples from 2019-07-14T15:29:17.395.000. Part 47/147

Processed Sun Jul 14 17:37:09 2019 by ELM ver.2012-10-06 from 001\_\_elm20190714\_152916\_\_dat00.bin



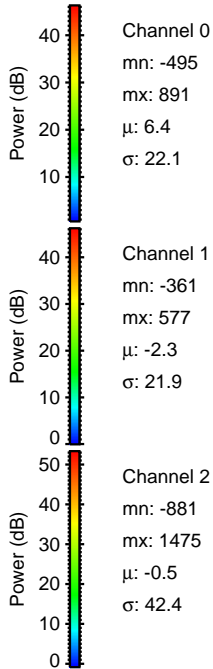
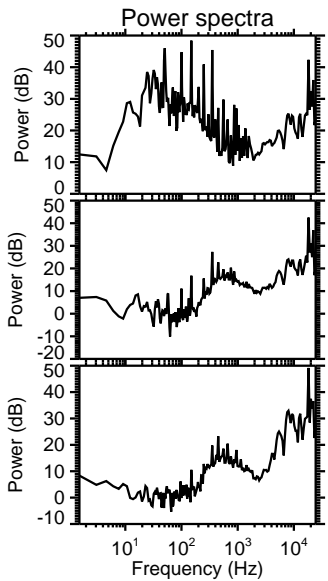
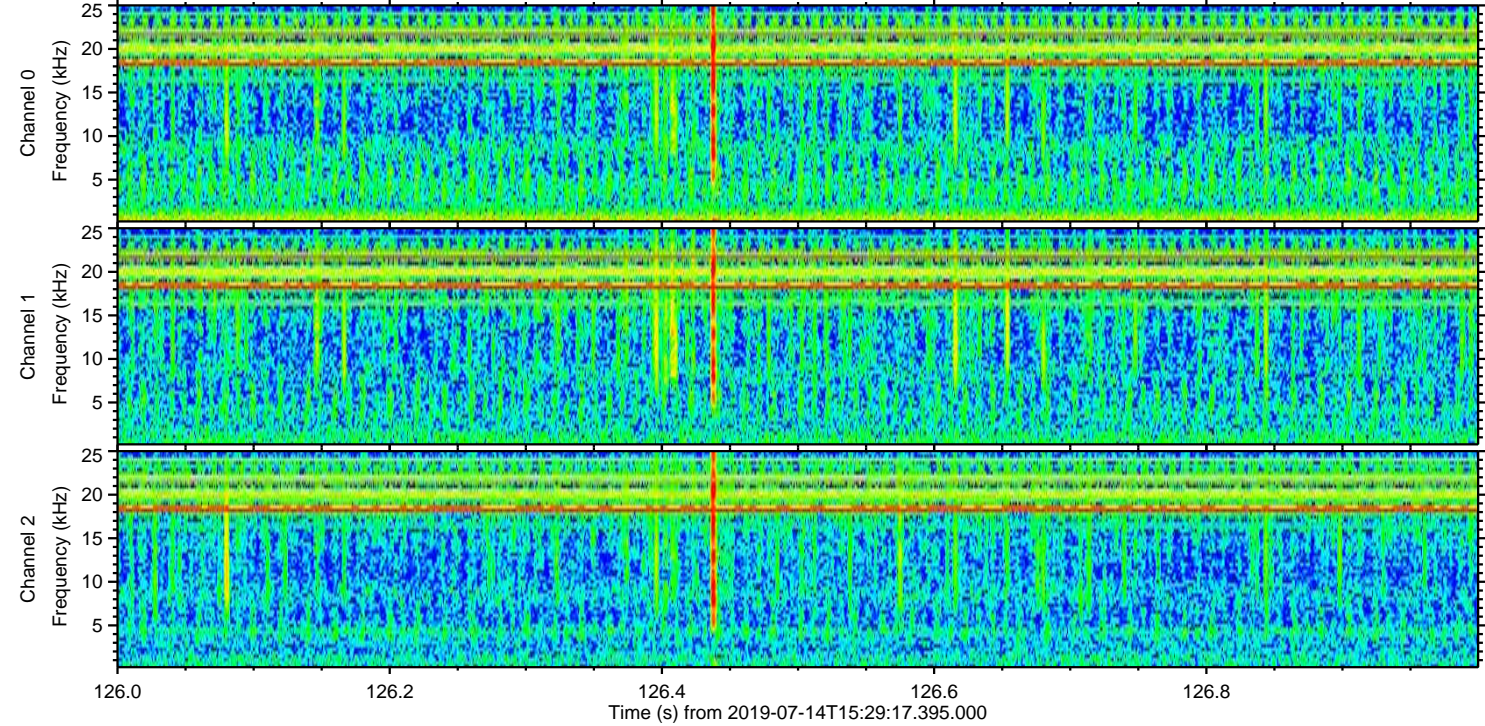
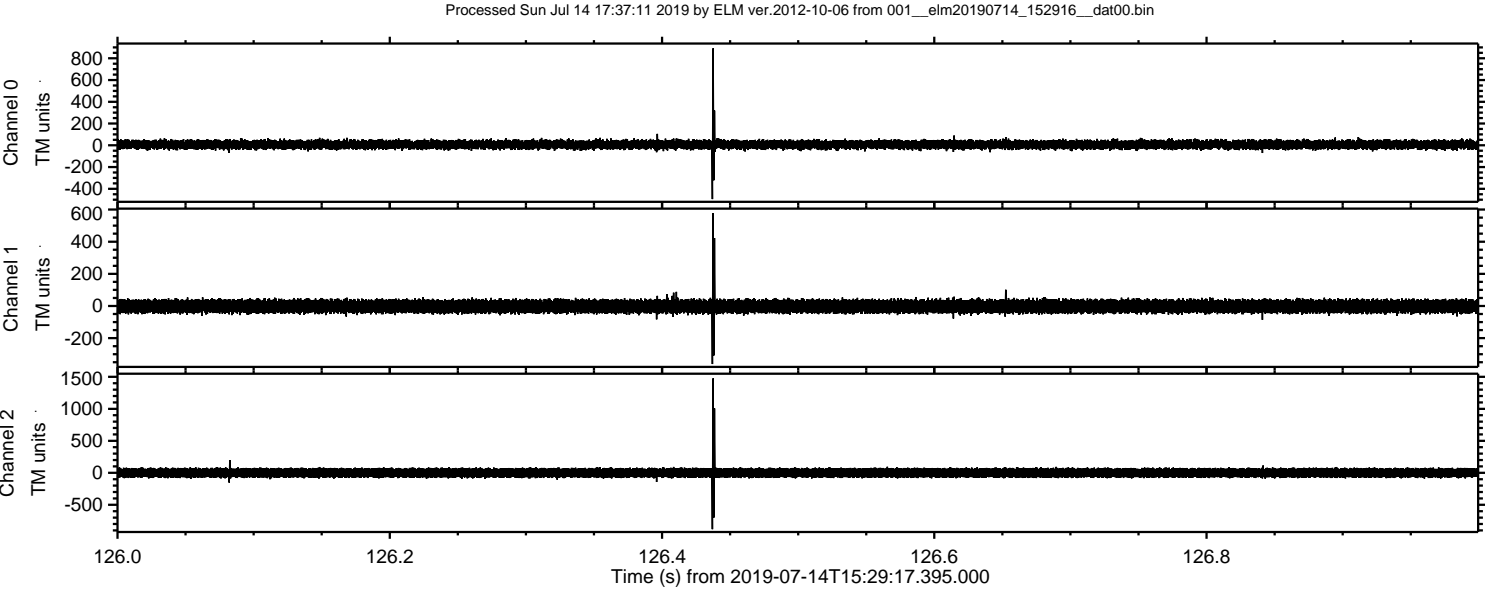


Processed Sun Jul 14 17:37:10 2019 by ELM ver.2012-10-06 from 001\_\_elm20190714\_152916\_\_dat00.bin



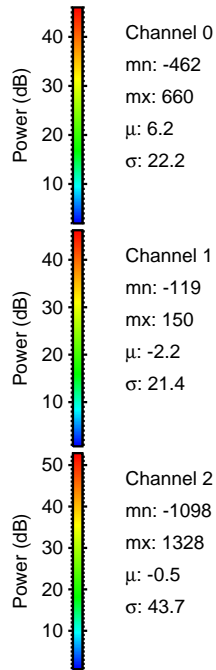
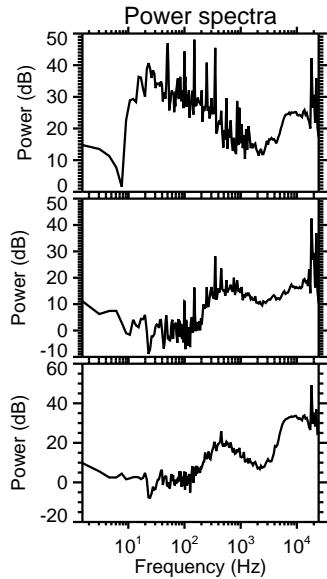
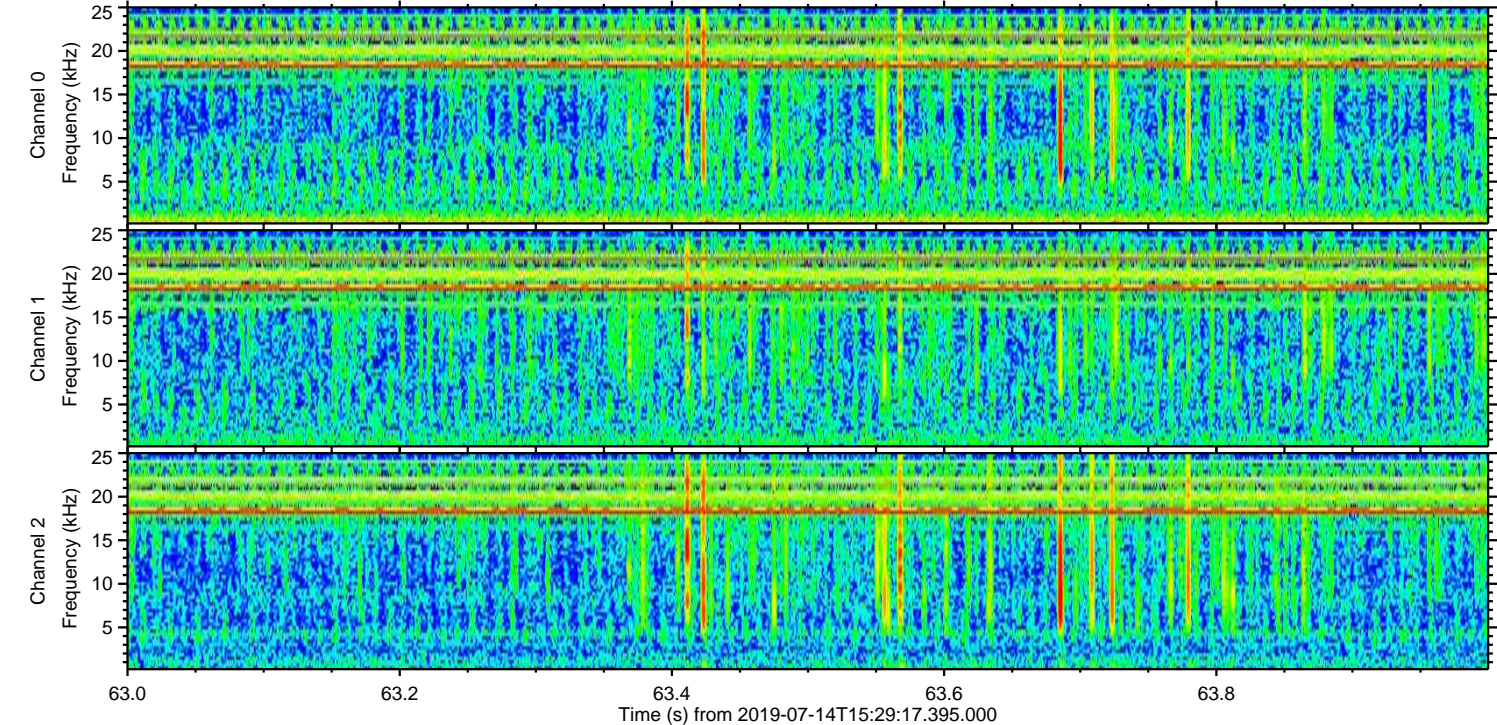
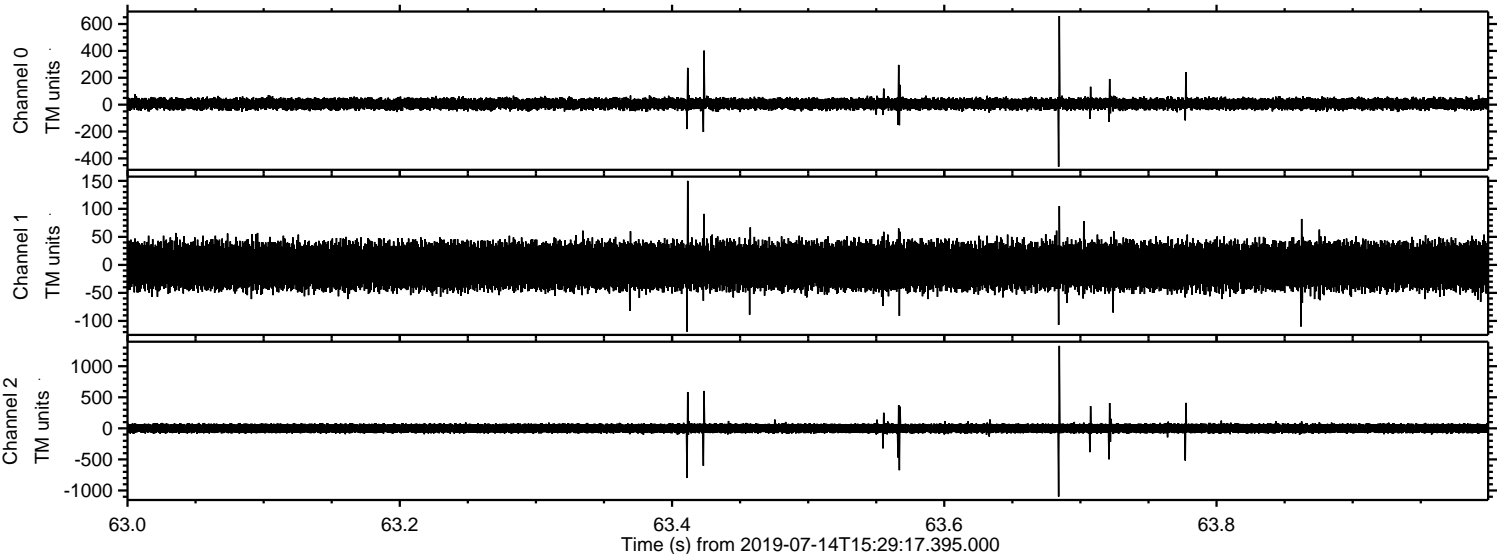


ELMAVAN 3D WAVEFORMS (Measured data sampled at 50 kHz) 51000 packets of 144 samples from 2019-07-14T15:29:17.395.000. Part 127/147





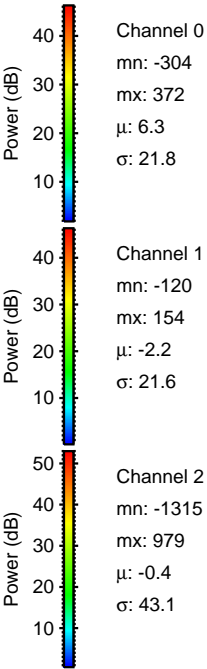
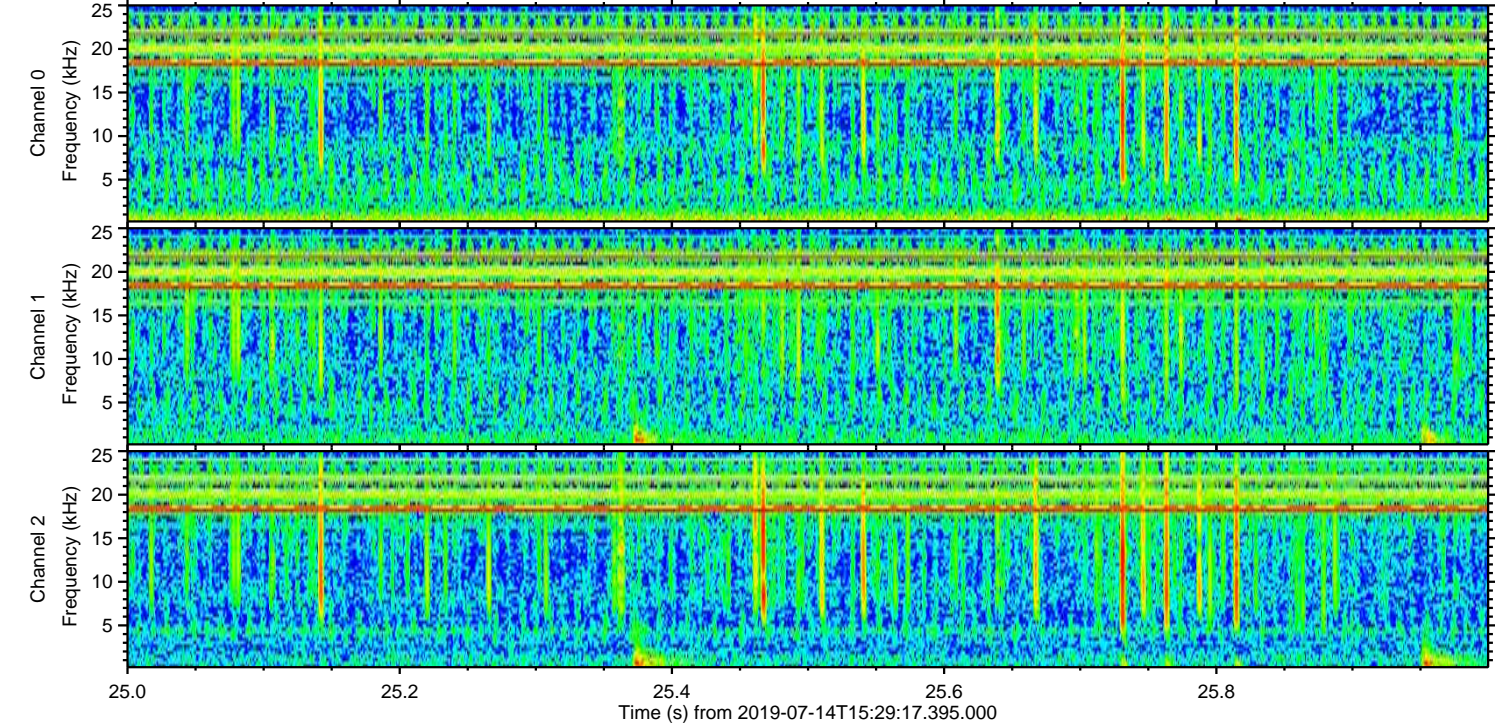
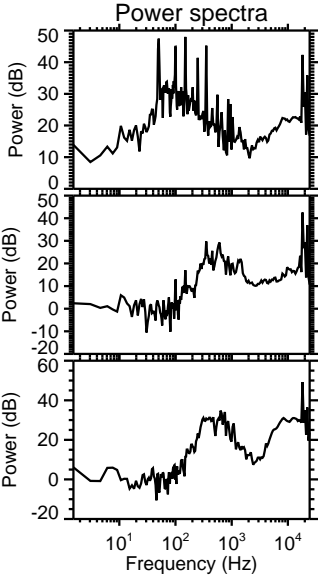
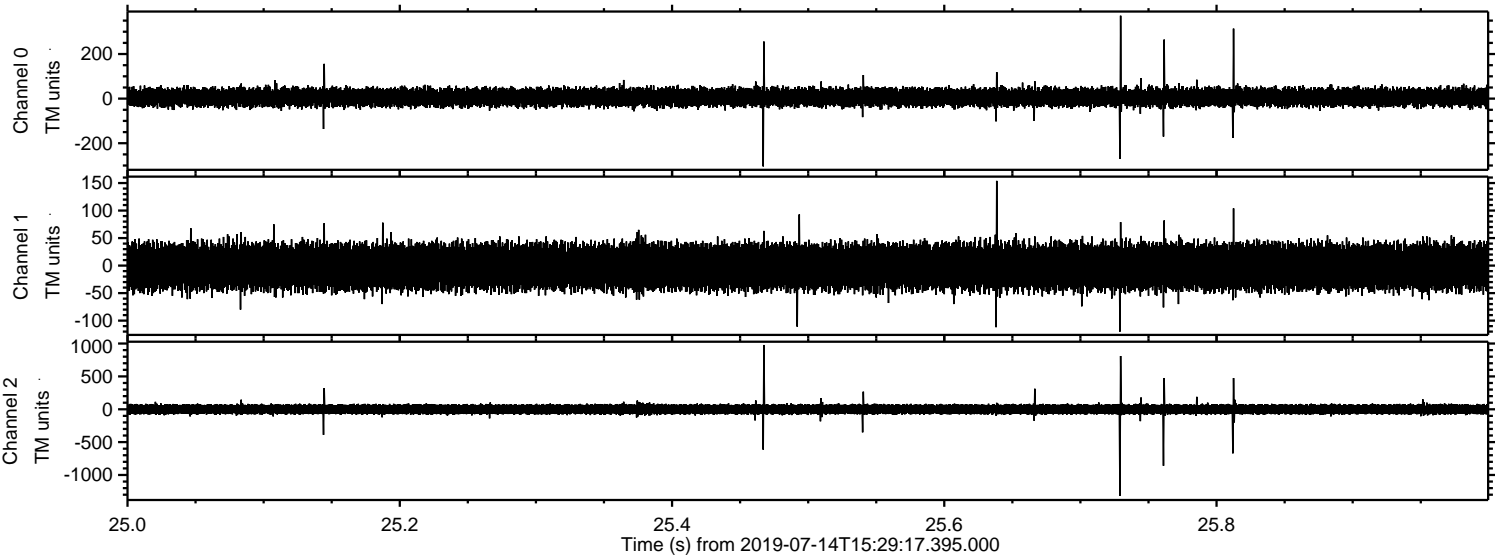
Processed Sun Jul 14 17:37:11 2019 by ELM ver.2012-10-06 from 001\_\_elm20190714\_152916\_\_dat00.bin





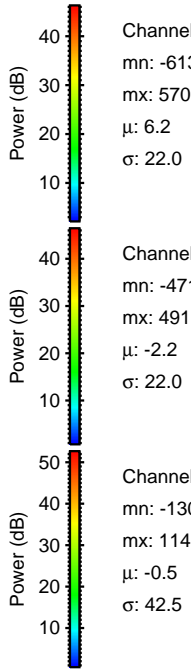
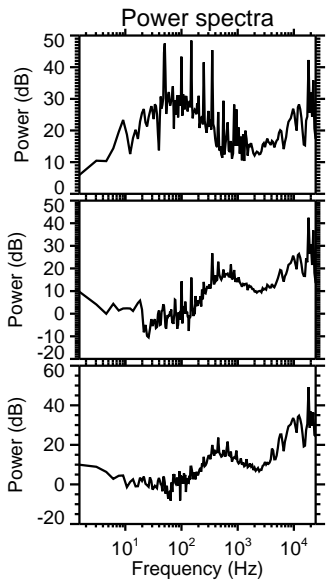
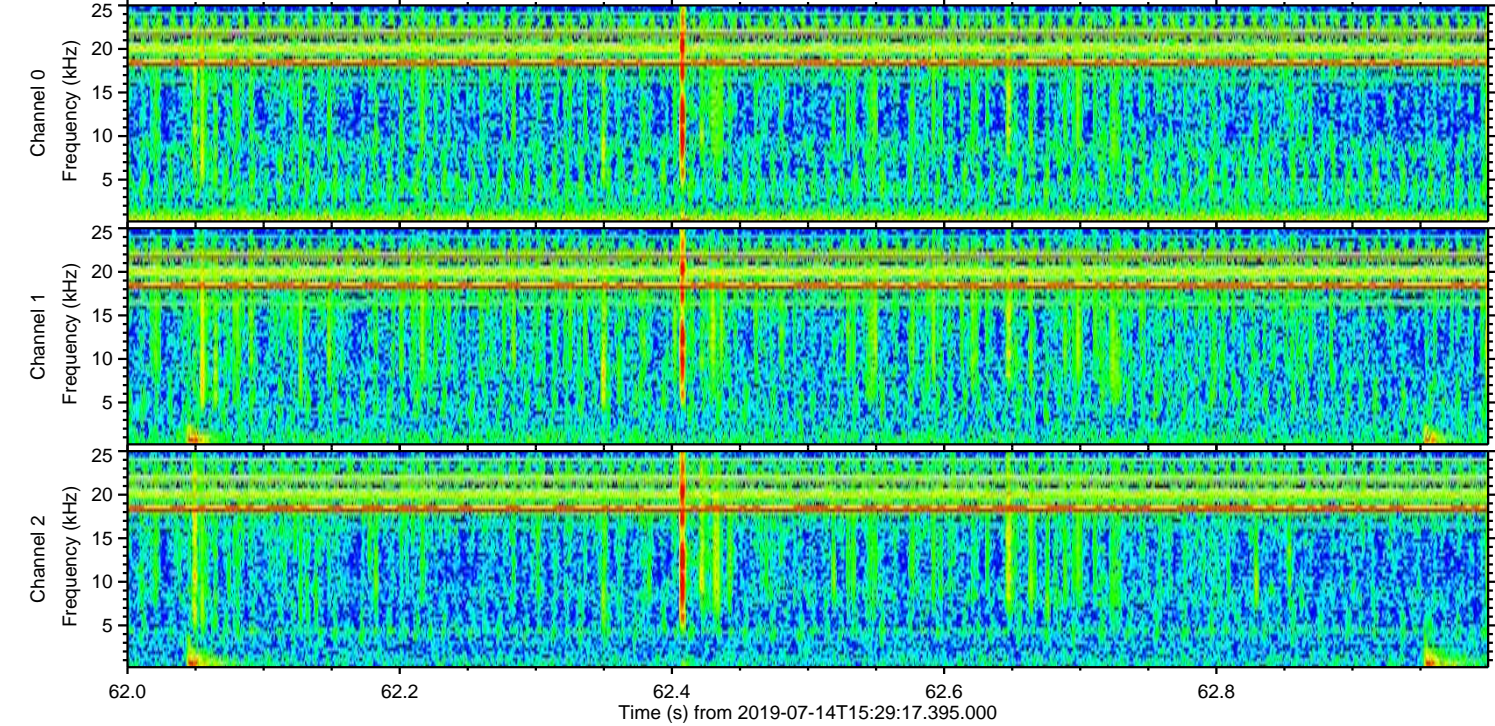
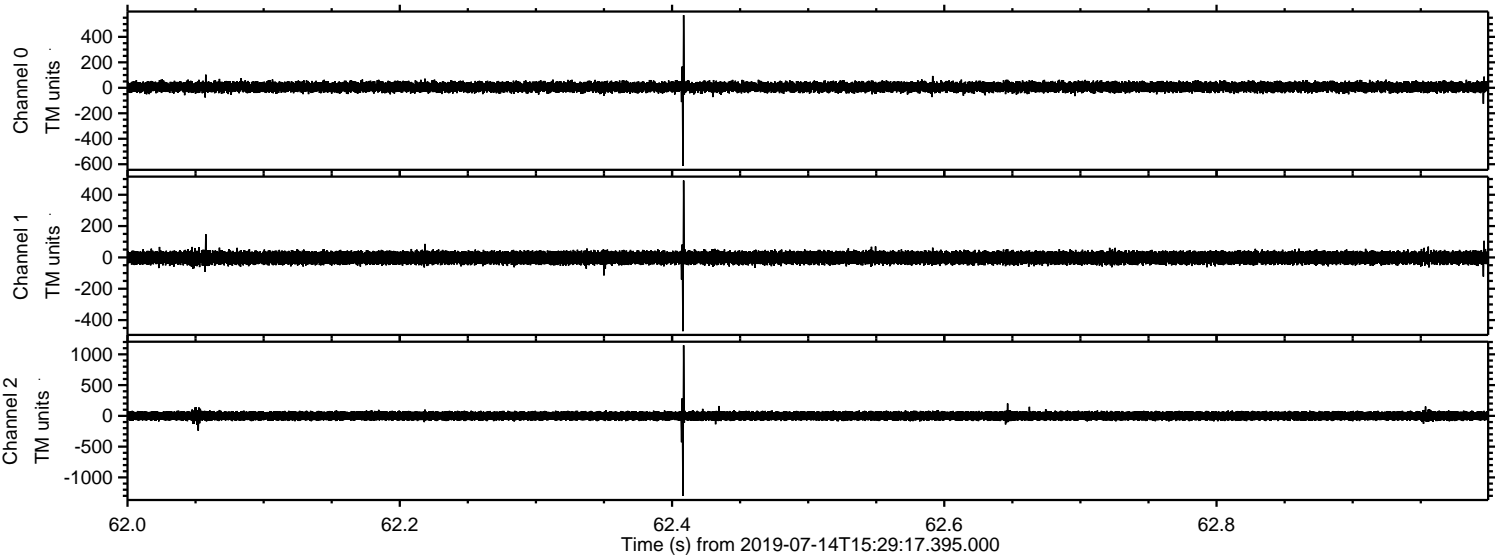
ELMAVAN 3D WAVEFORMS (Measured data sampled at 50 kHz) 51000 packets of 144 samples from 2019-07-14T15:29:17.395.000. Part 26/147

Processed Sun Jul 14 17:37:12 2019 by ELM ver.2012-10-06 from 001\_\_elm20190714\_152916\_\_dat00.bin



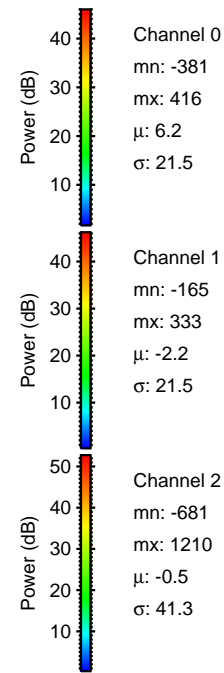
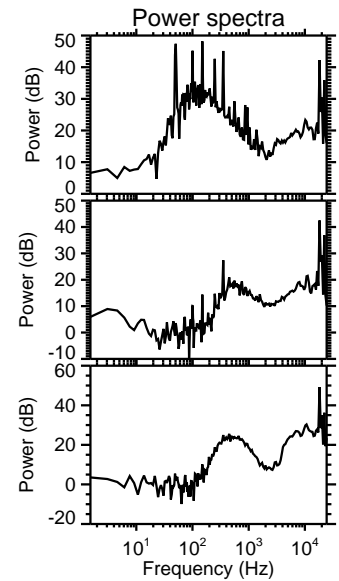
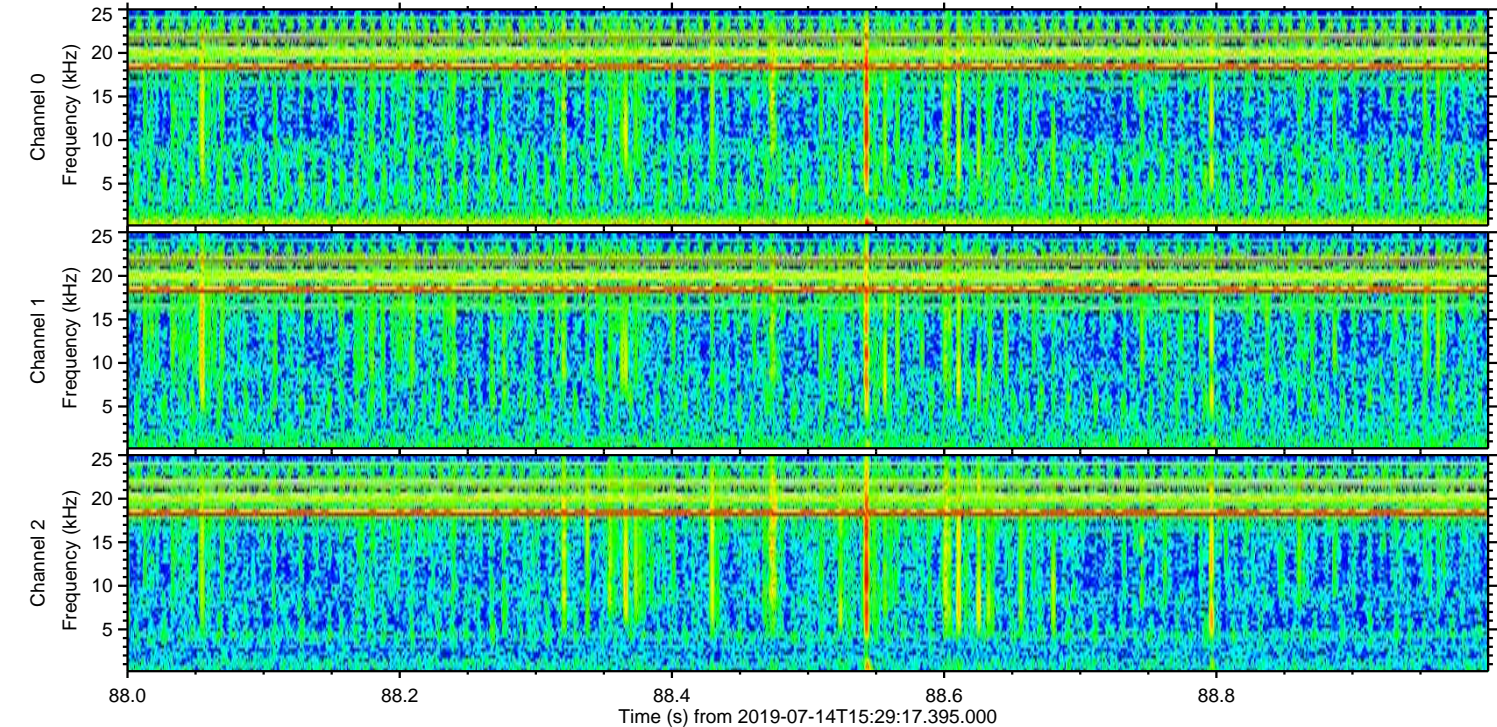
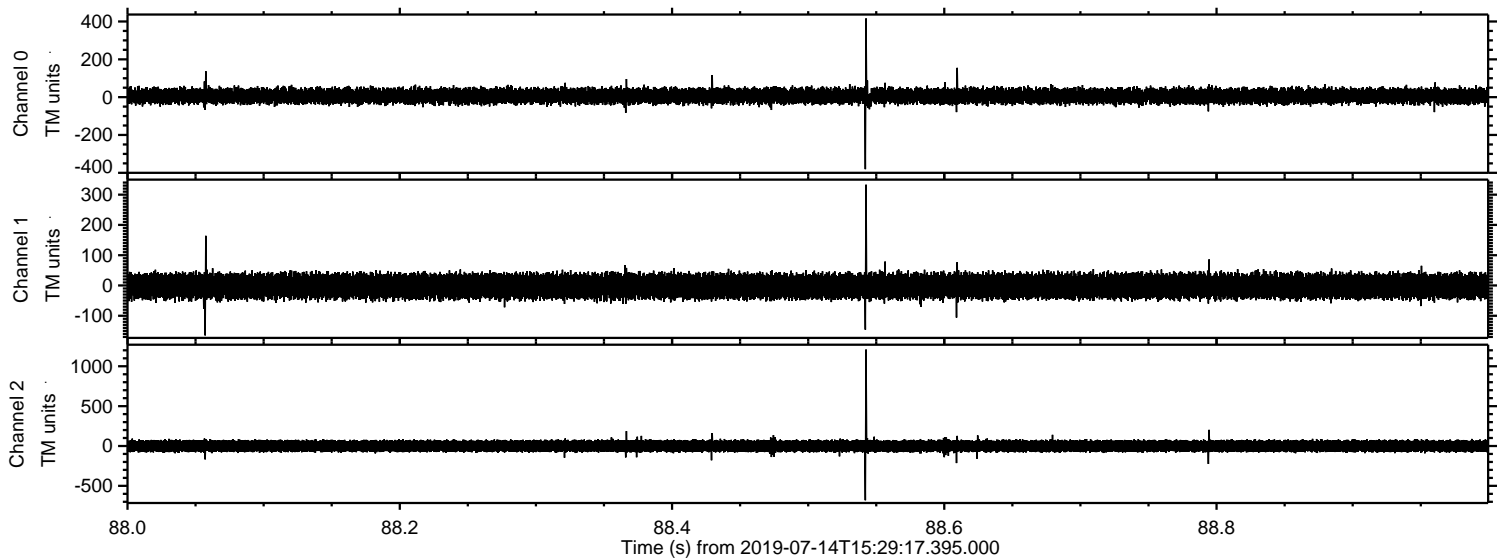


Processed Sun Jul 14 17:37:13 2019 by ELM ver.2012-10-06 from 001\_\_elm20190714\_152916\_\_dat00.bin





Processed Sun Jul 14 17:37:14 2019 by ELM ver.2012-10-06 from 001\_\_elm20190714\_152916\_\_dat00.bin



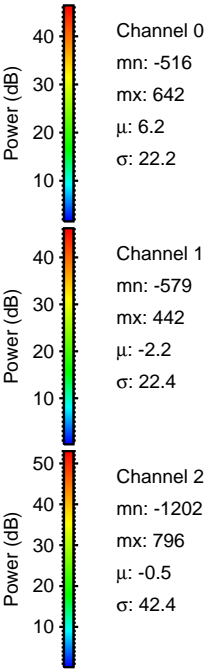
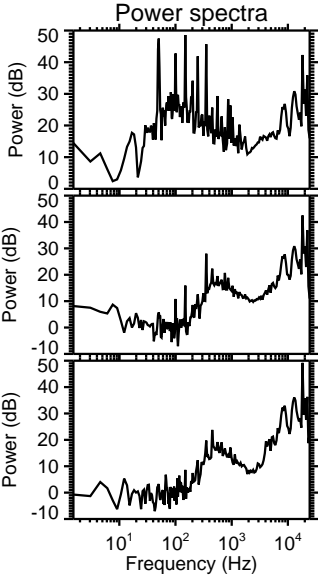
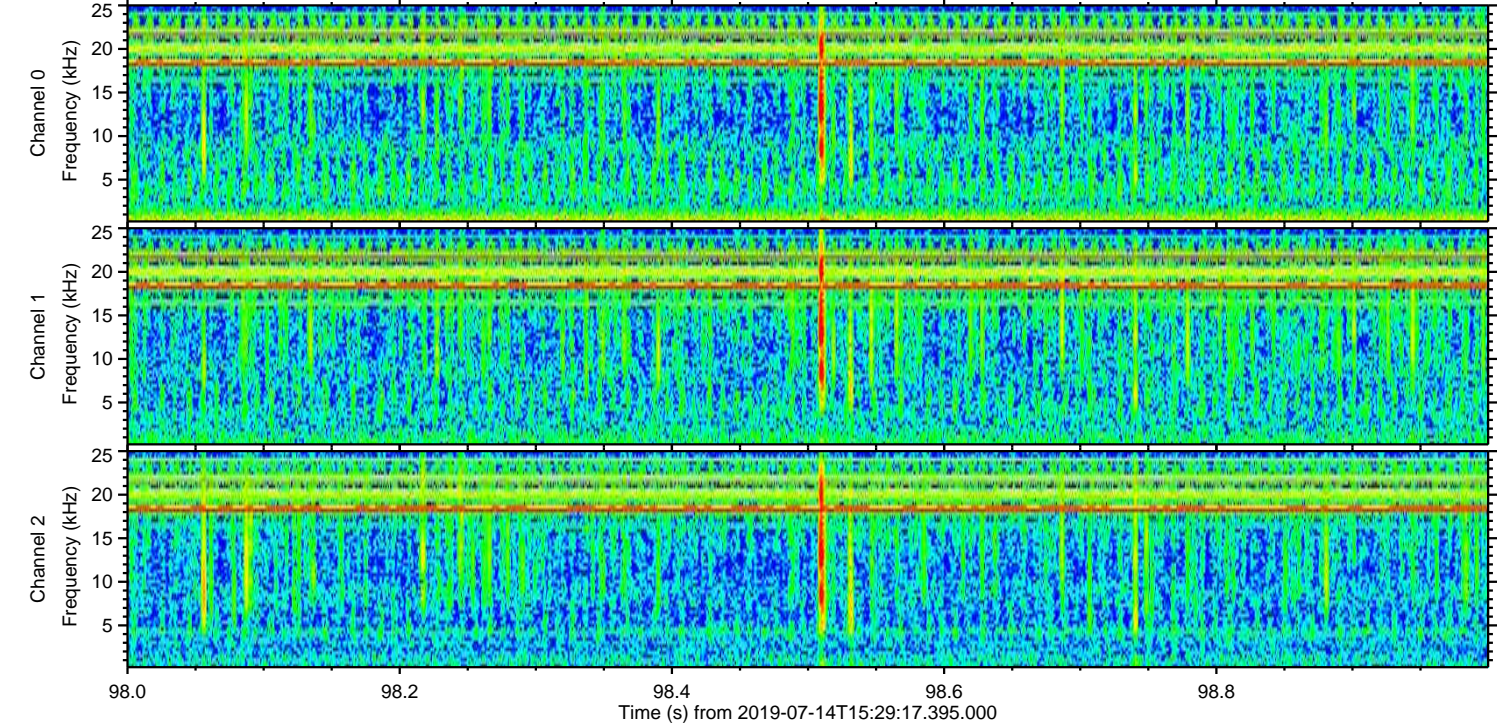
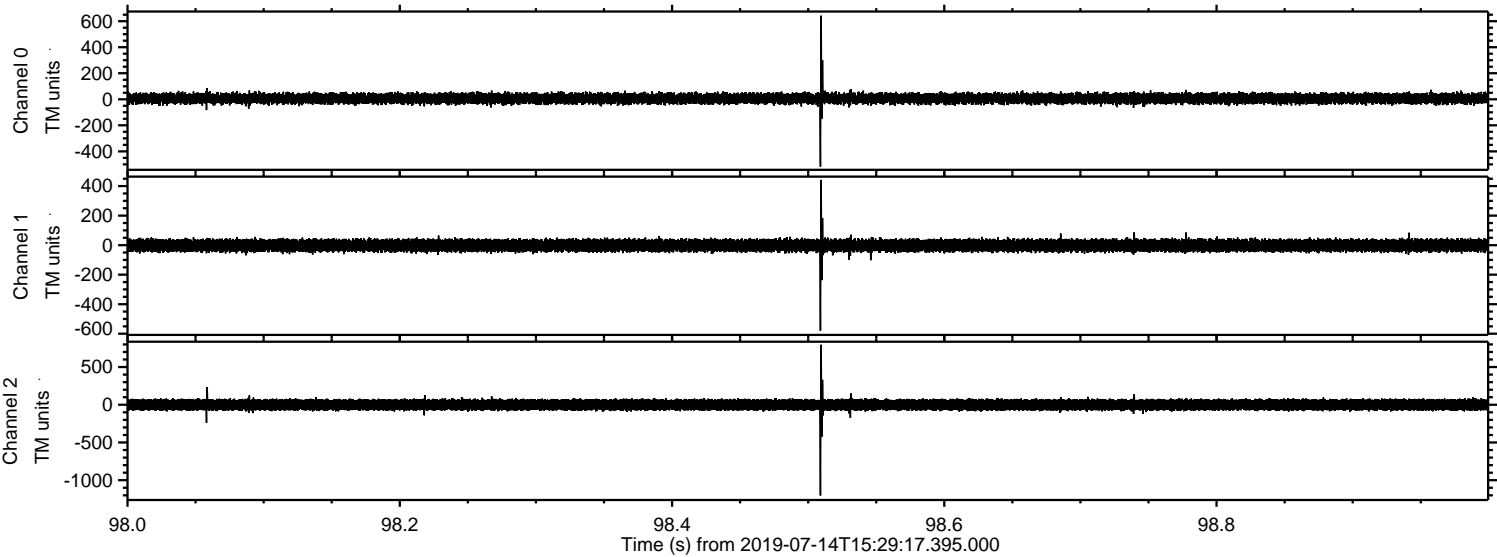
Channel 0  
mn: -381  
mx: 416  
 $\mu$ : 6.2  
 $\sigma$ : 21.5

Channel 1  
mn: -165  
mx: 333  
 $\mu$ : -2.2  
 $\sigma$ : 21.5

Channel 2  
mn: -681  
mx: 1210  
 $\mu$ : -0.5  
 $\sigma$ : 41.3



Processed Sun Jul 14 17:37:14 2019 by ELM ver.2012-10-06 from 001\_\_elm20190714\_152916\_\_dat00.bin





Processed Sun Jul 14 17:37:15 2019 by ELM ver.2012-10-06 from 001\_\_elm20190714\_152916\_\_dat00.bin

