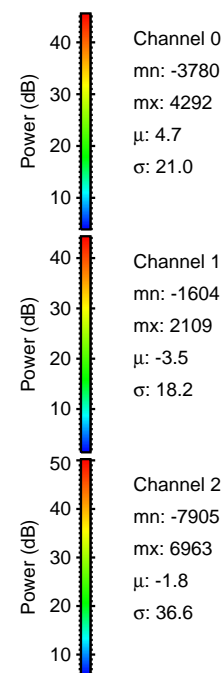
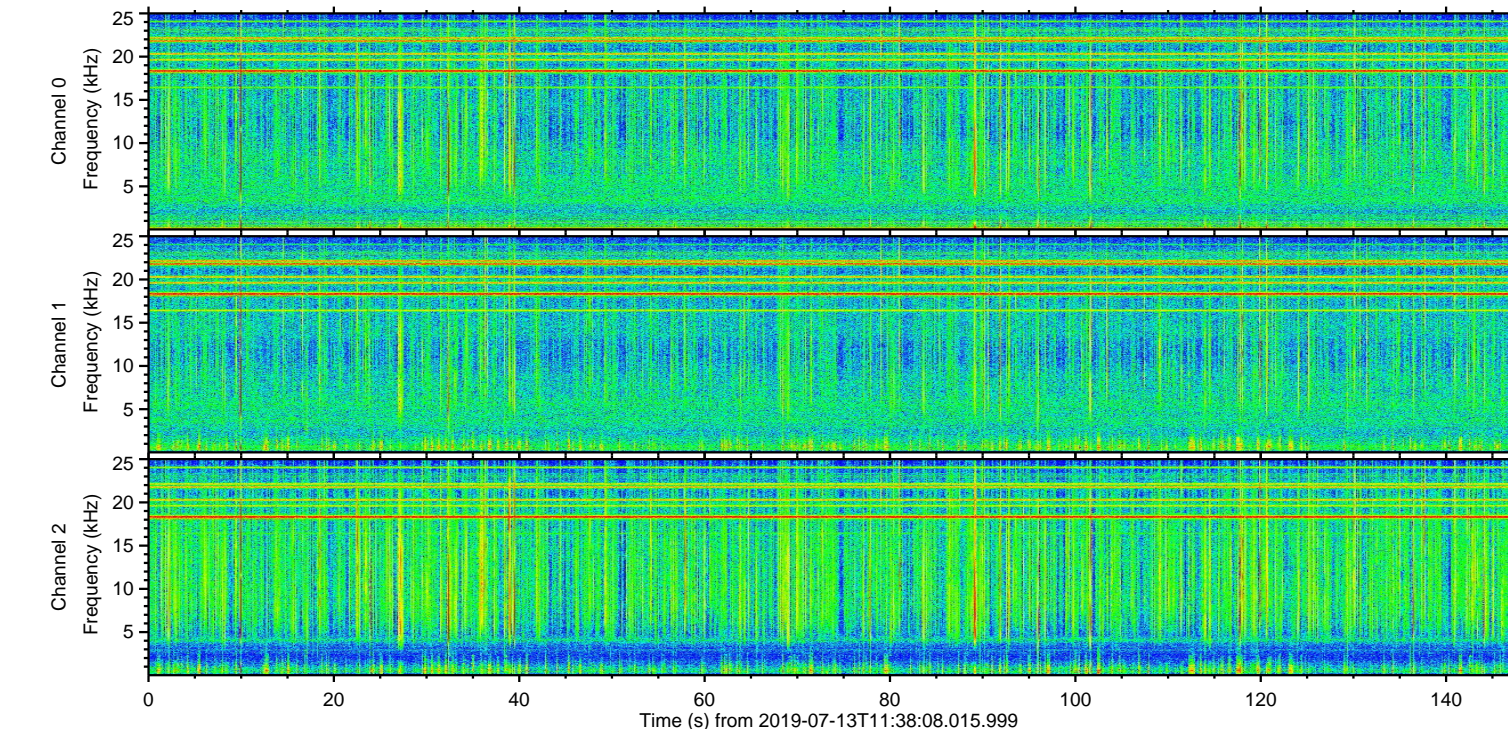
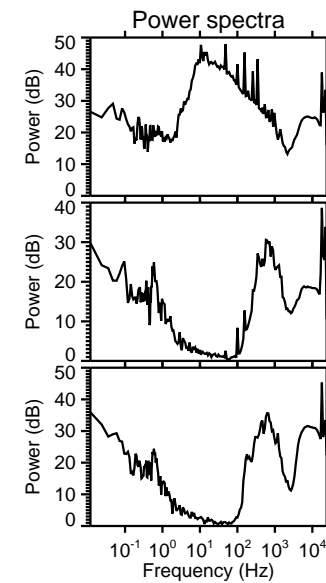
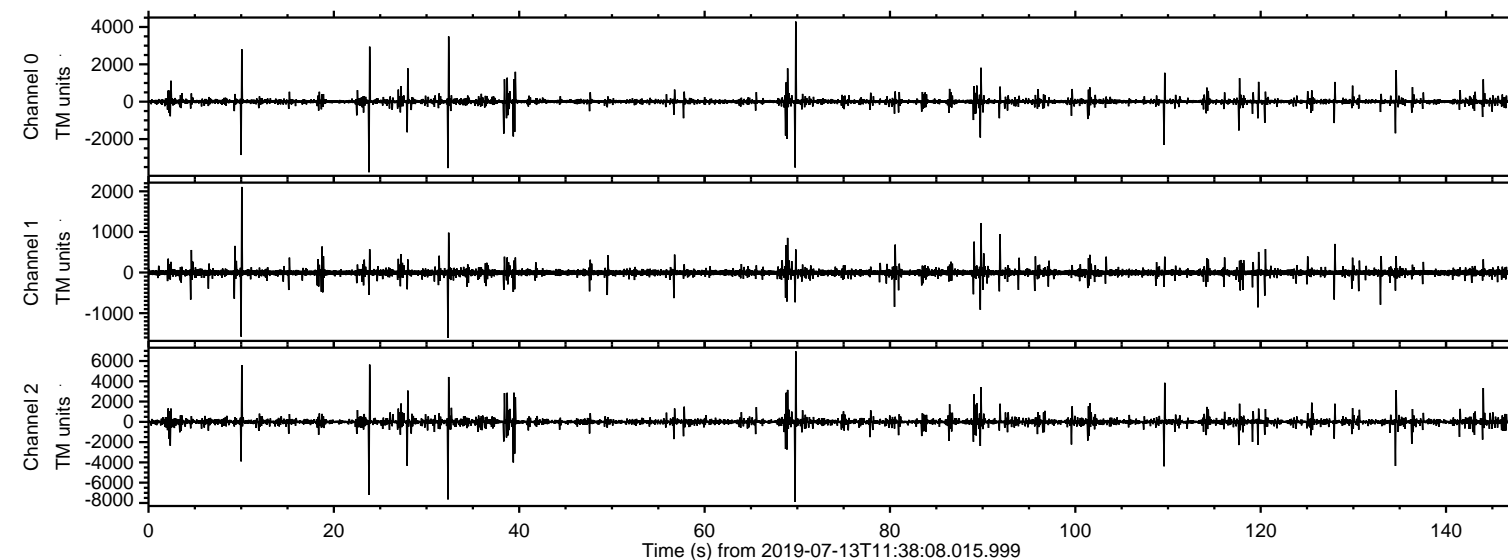


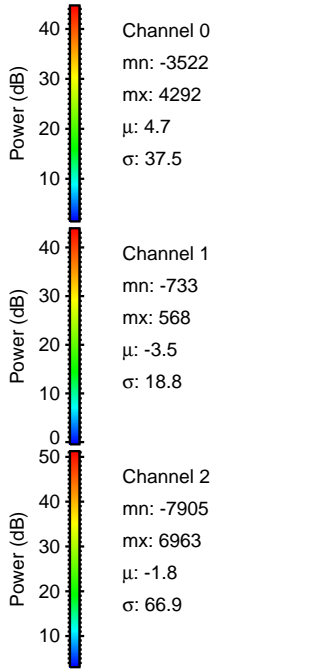
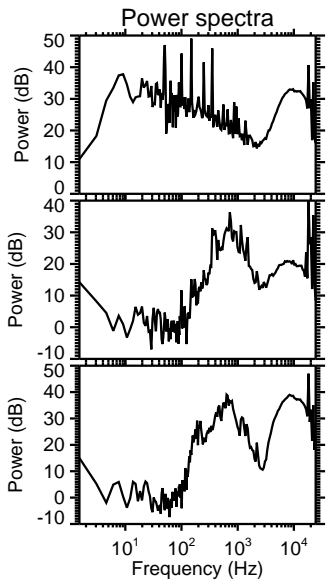
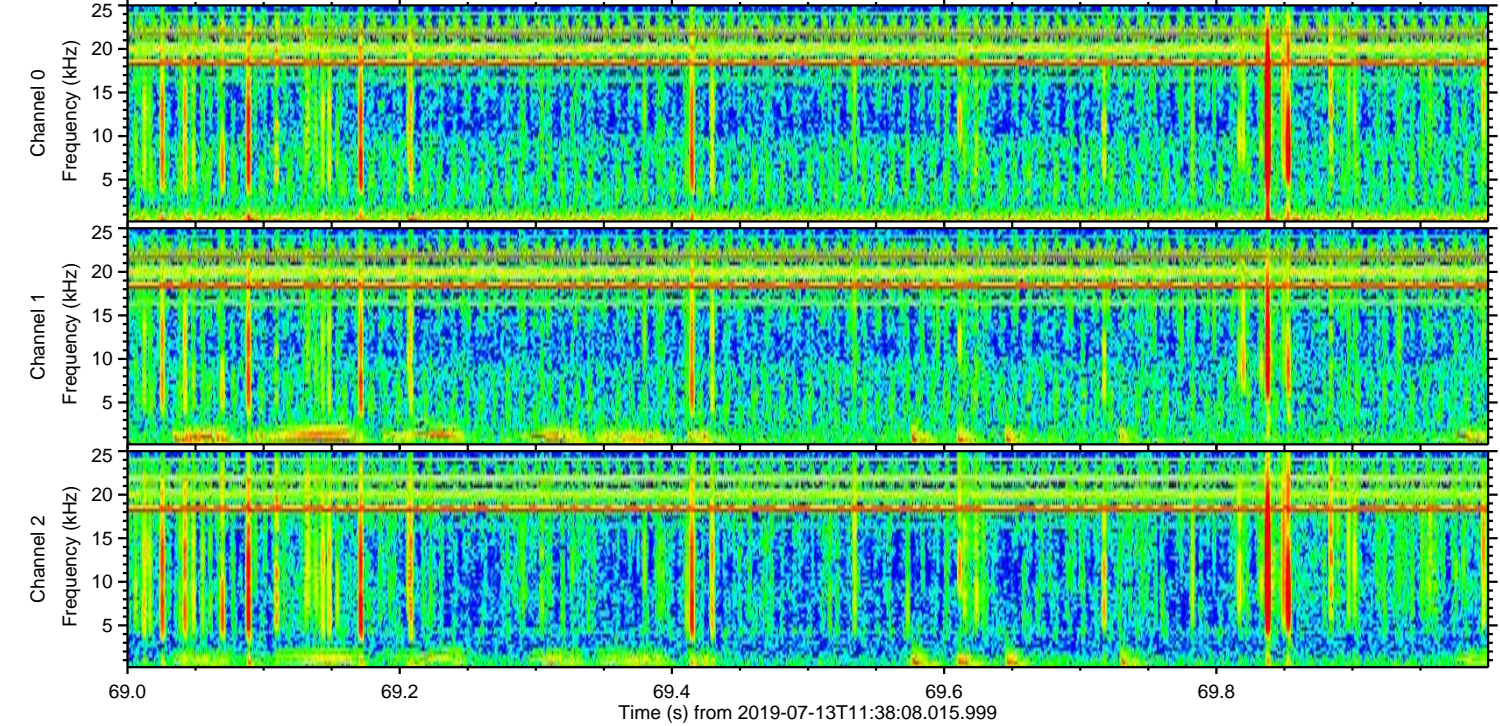
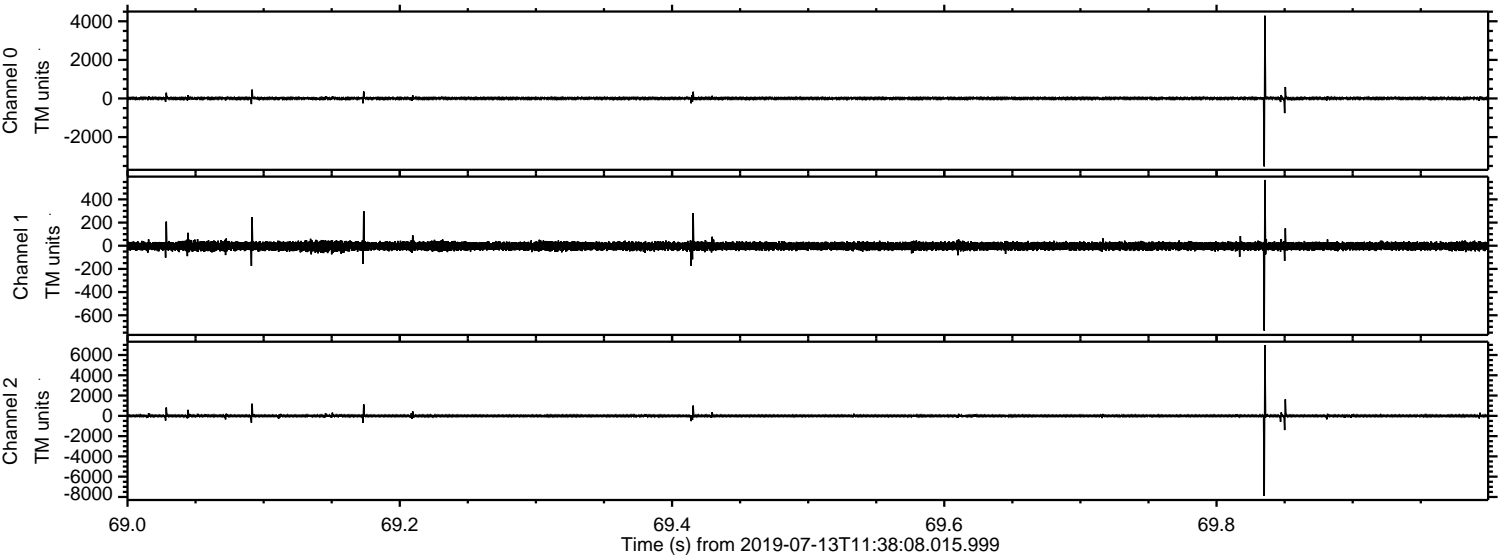
# ELMAVAN 3D WAVEFORMS (Measured data sampled at 50 kHz) 51000 packets of 144 samples from 2019-07-13T11:38:08.015.999.

Processed Sat Jul 13 13:46:16 2019 by ELM ver.2012-10-06 from 001\_\_elm20190713\_113807\_\_dat00.bin





Processed Sat Jul 13 13:46:25 2019 by ELM ver.2012-10-06 from 001\_\_elm20190713\_113807\_\_dat00.bin



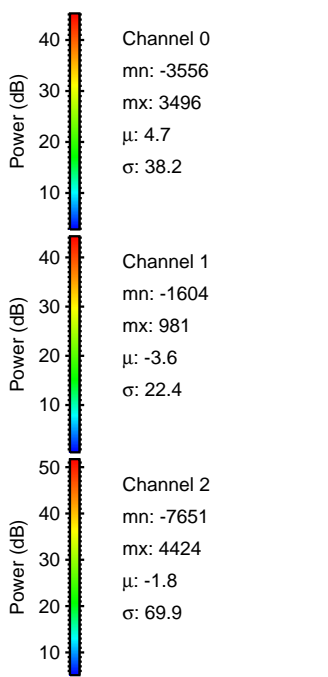
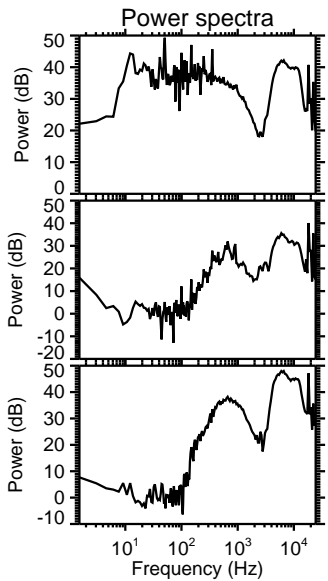
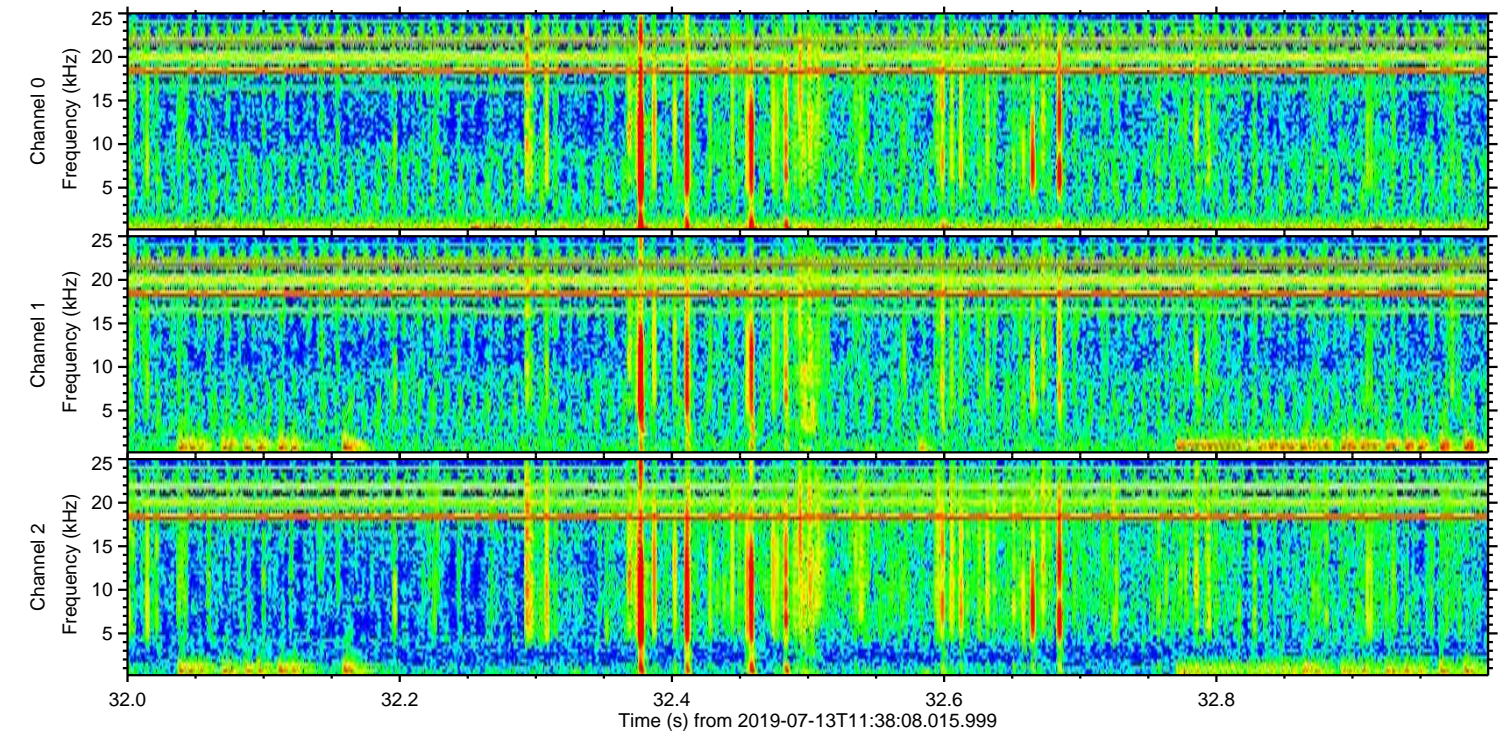
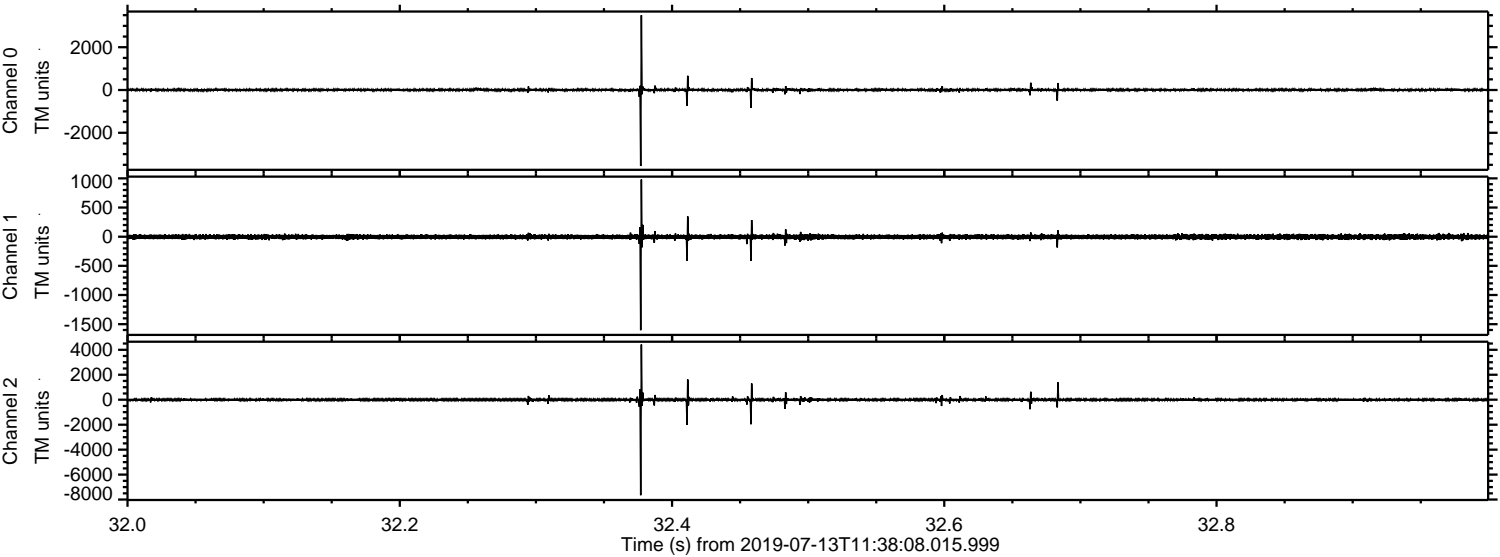
Channel 0  
mn: -3522  
mx: 4292  
 $\mu$ : 4.7  
 $\sigma$ : 37.5

Channel 1  
mn: -733  
mx: 568  
 $\mu$ : -3.5  
 $\sigma$ : 18.8

Channel 2  
mn: -7905  
mx: 6963  
 $\mu$ : -1.8  
 $\sigma$ : 66.9



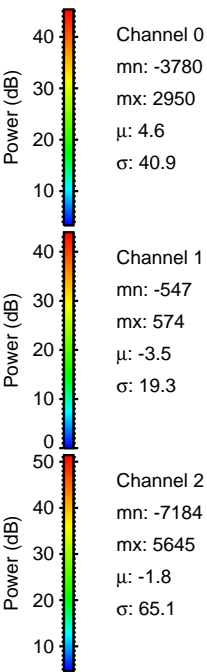
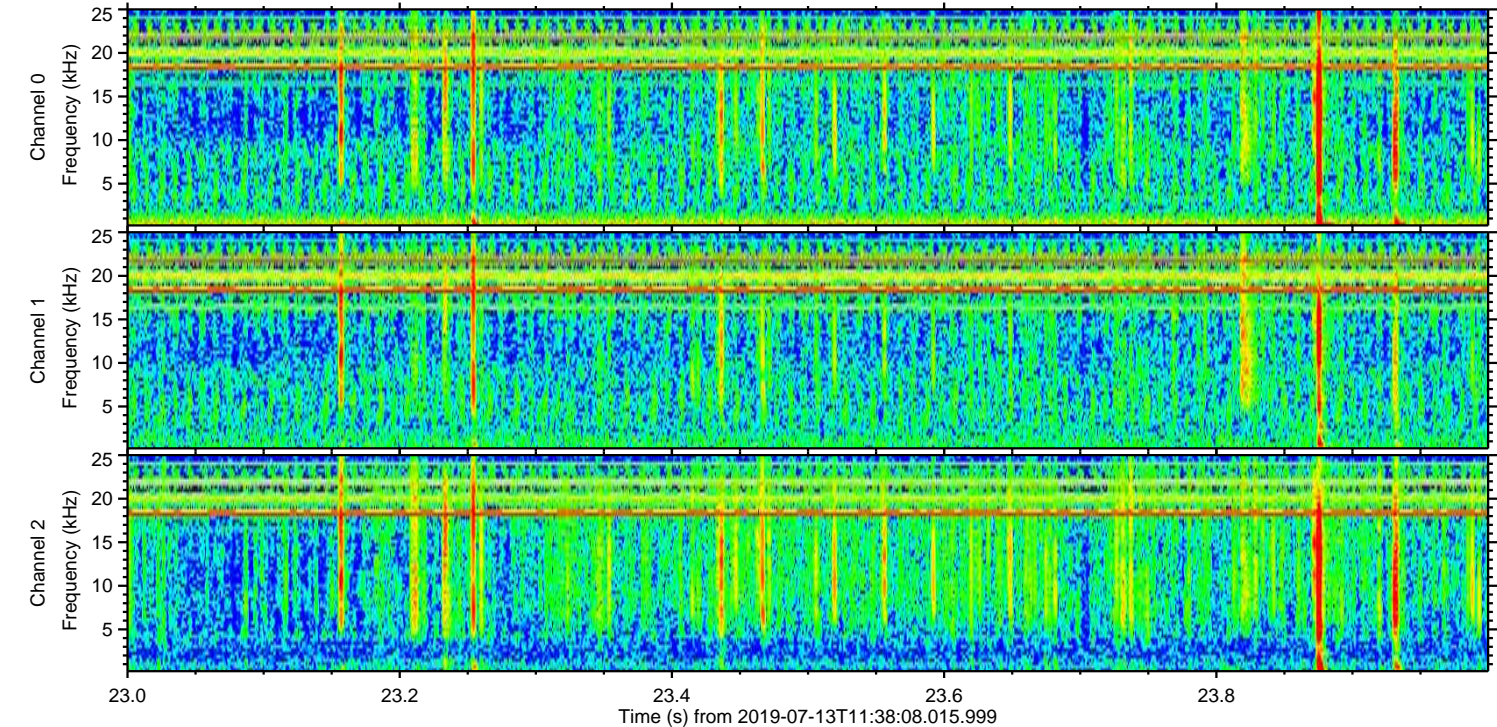
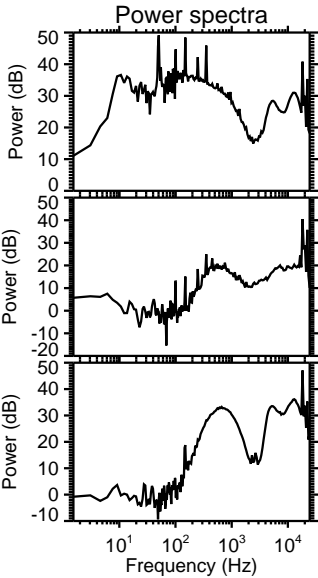
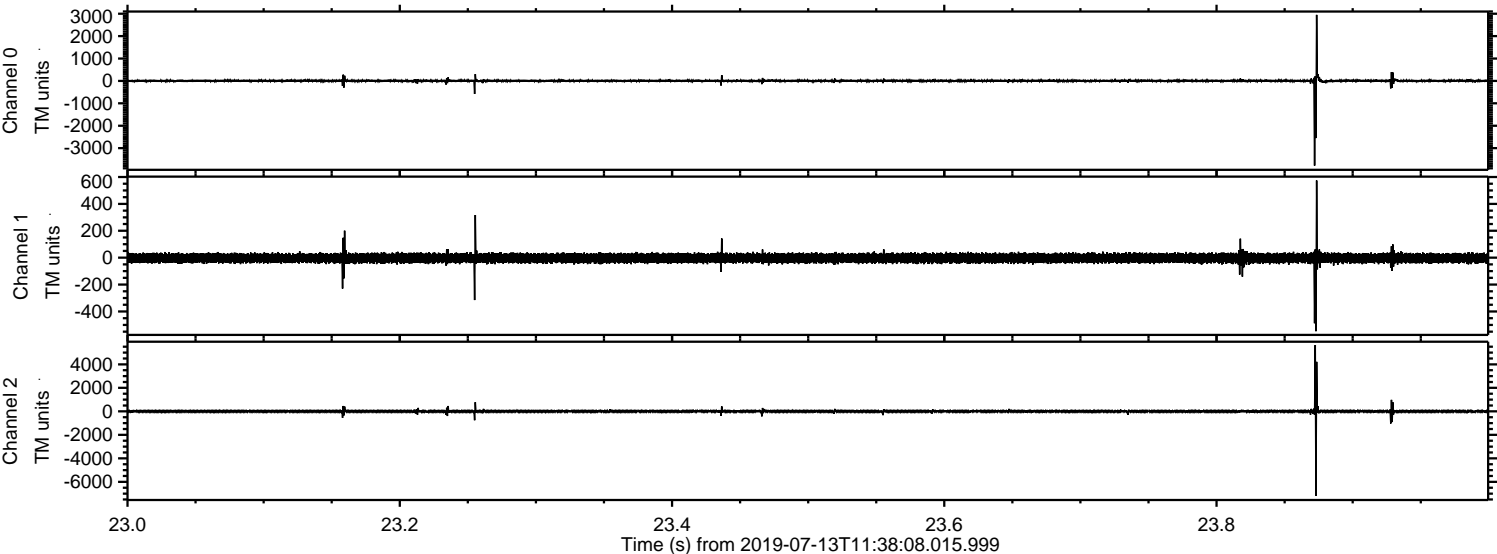
Processed Sat Jul 13 13:46:26 2019 by ELM ver.2012-10-06 from 001\_\_elm20190713\_113807\_\_dat00.bin





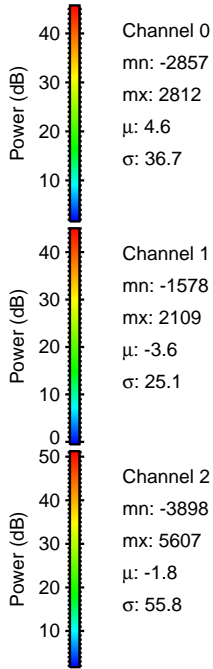
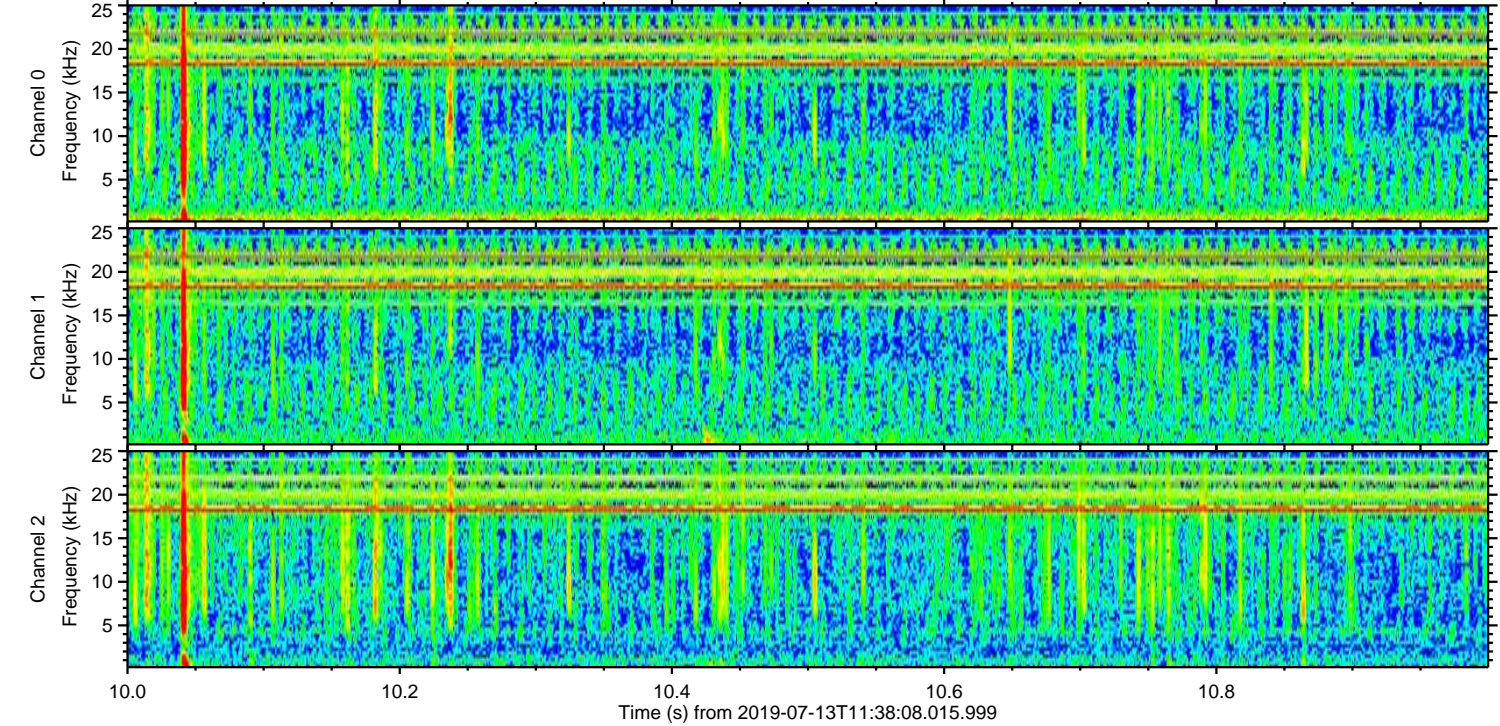
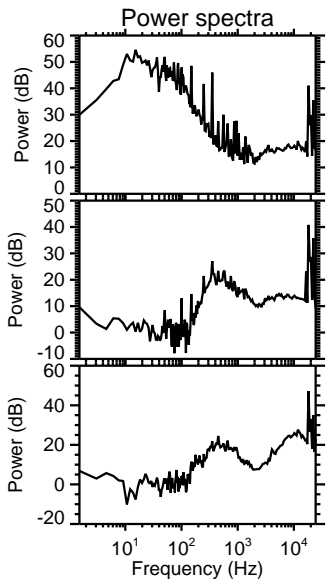
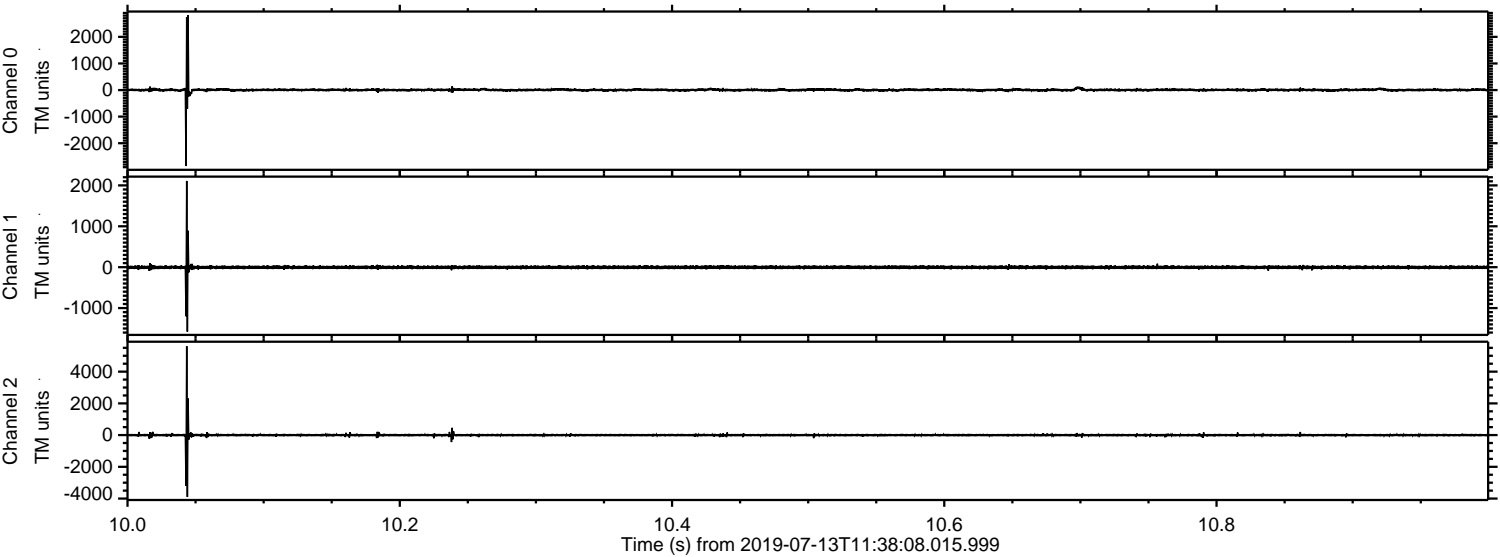
ELMAVAN 3D WAVEFORMS (Measured data sampled at 50 kHz) 51000 packets of 144 samples from 2019-07-13T11:38:08.015.999. Part 24/147

Processed Sat Jul 13 13:46:26 2019 by ELM ver.2012-10-06 from 001\_\_elm20190713\_113807\_\_dat00.bin





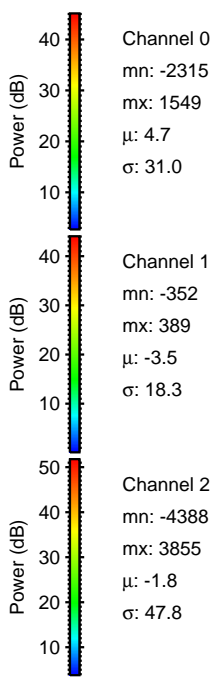
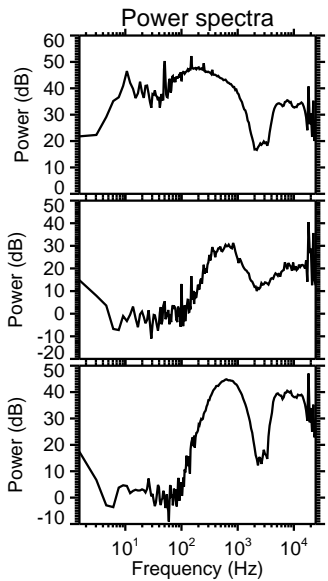
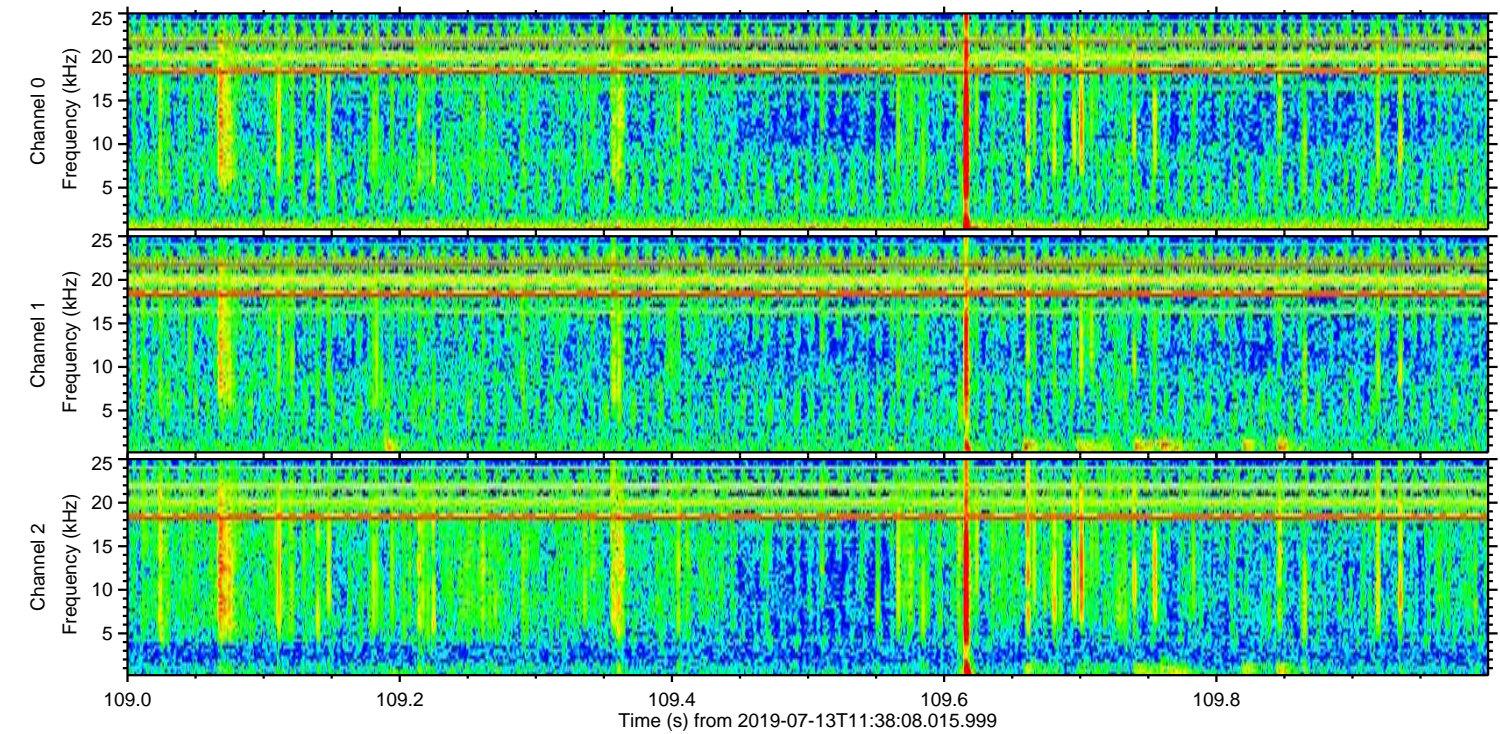
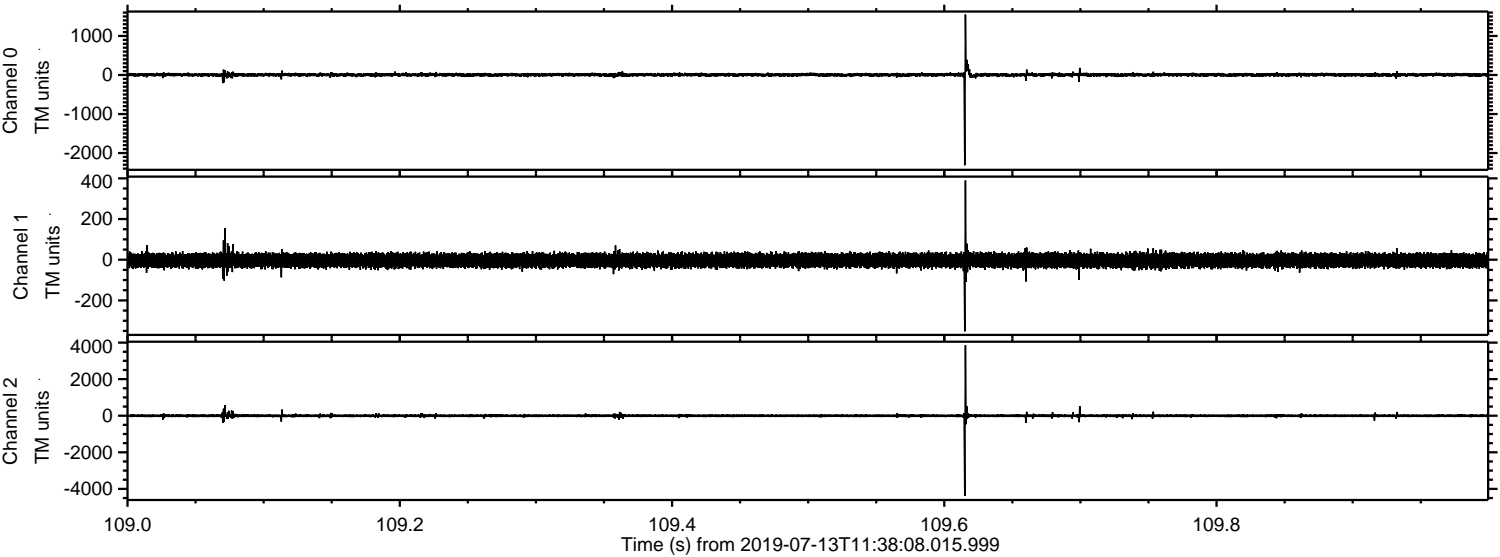
Processed Sat Jul 13 13:46:27 2019 by ELM ver.2012-10-06 from 001\_\_elm20190713\_113807\_\_dat00.bin





ELMAVAN 3D WAVEFORMS (Measured data sampled at 50 kHz) 51000 packets of 144 samples from 2019-07-13T11:38:08.015.999. Part 110/147

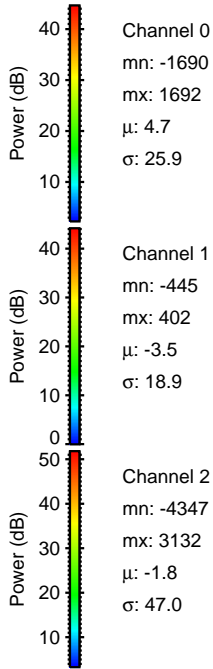
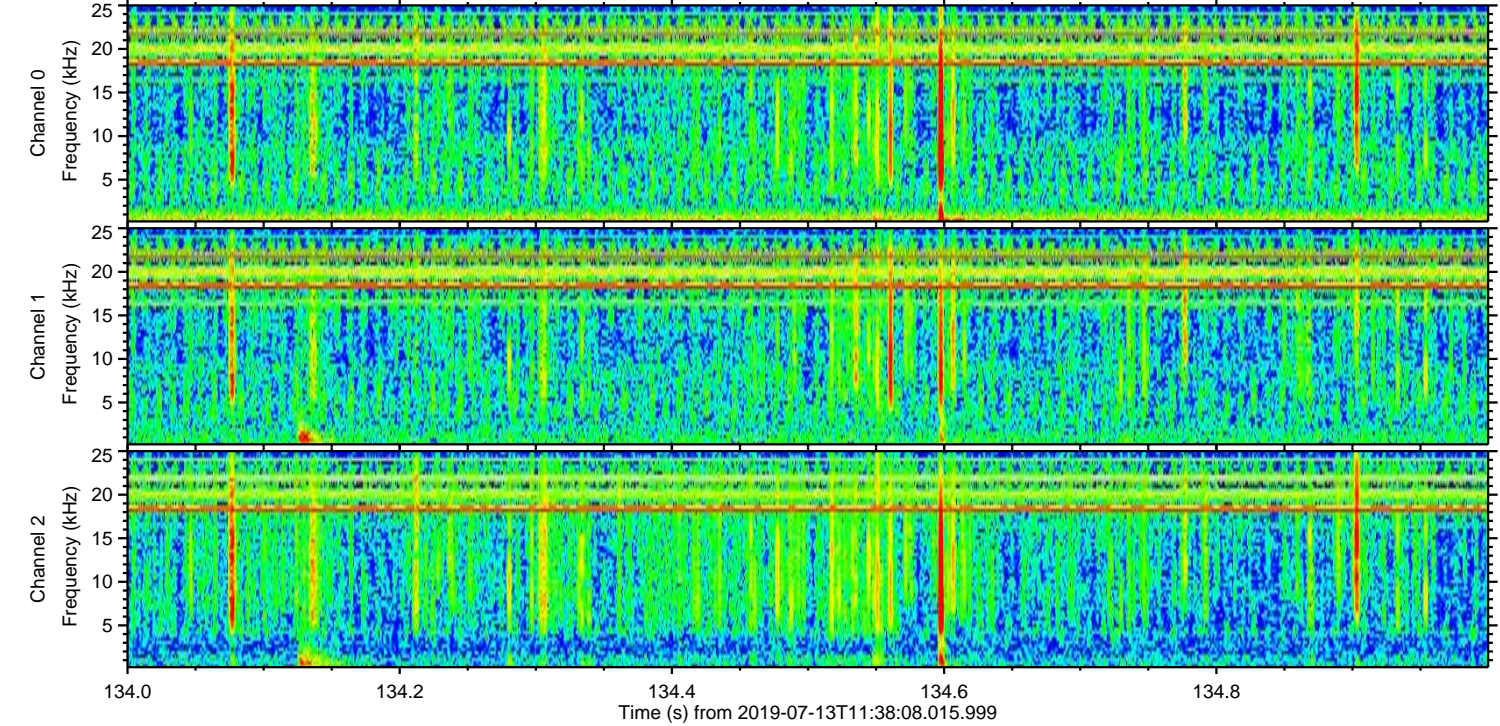
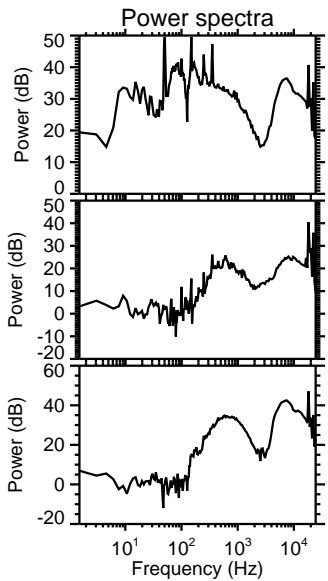
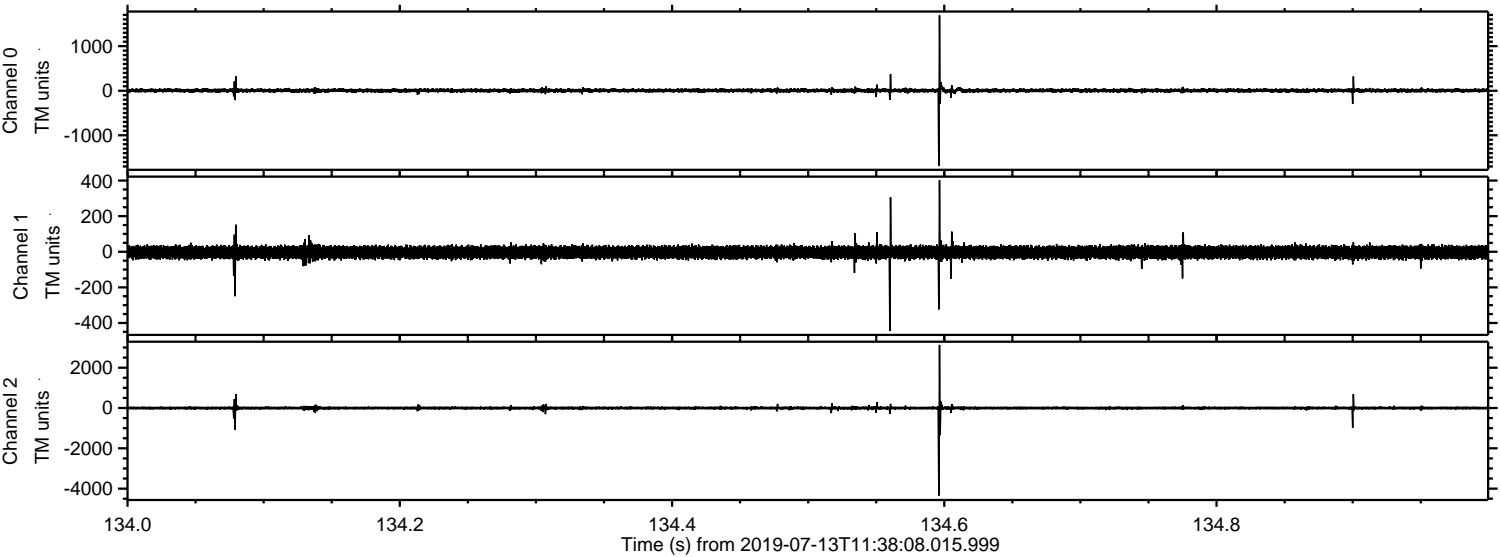
Processed Sat Jul 13 13:46:28 2019 by ELM ver.2012-10-06 from 001\_\_elm20190713\_113807\_\_dat00.bin





ELMAVAN 3D WAVEFORMS (Measured data sampled at 50 kHz) 51000 packets of 144 samples from 2019-07-13T11:38:08.015.999. Part 135/147

Processed Sat Jul 13 13:46:28 2019 by ELM ver.2012-10-06 from 001\_\_elm20190713\_113807\_\_dat00.bin



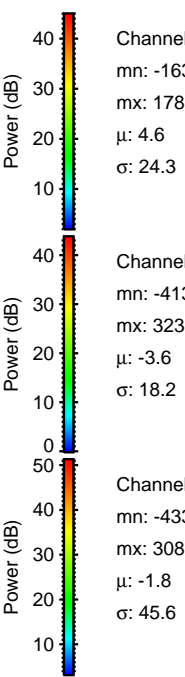
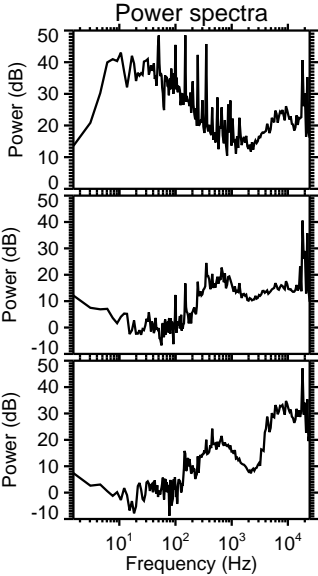
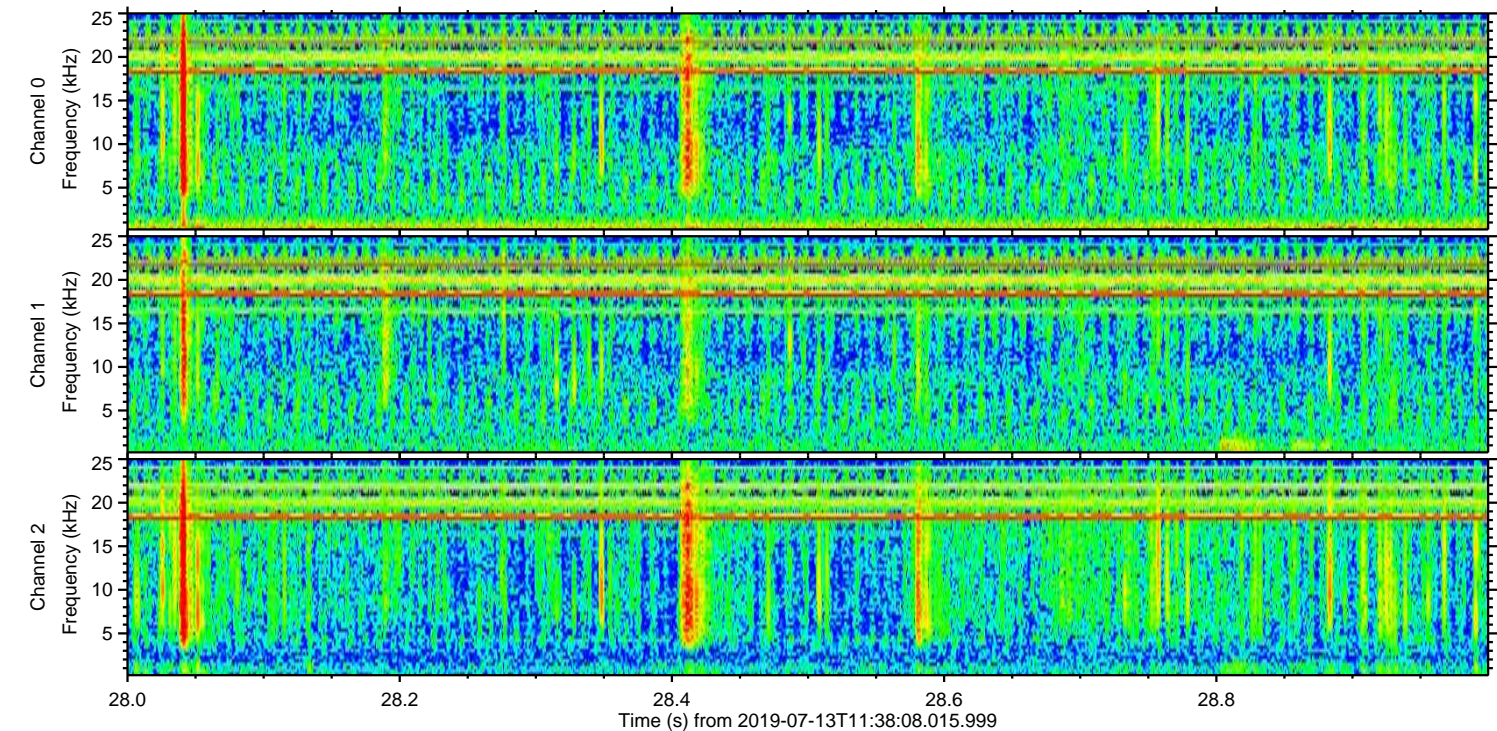
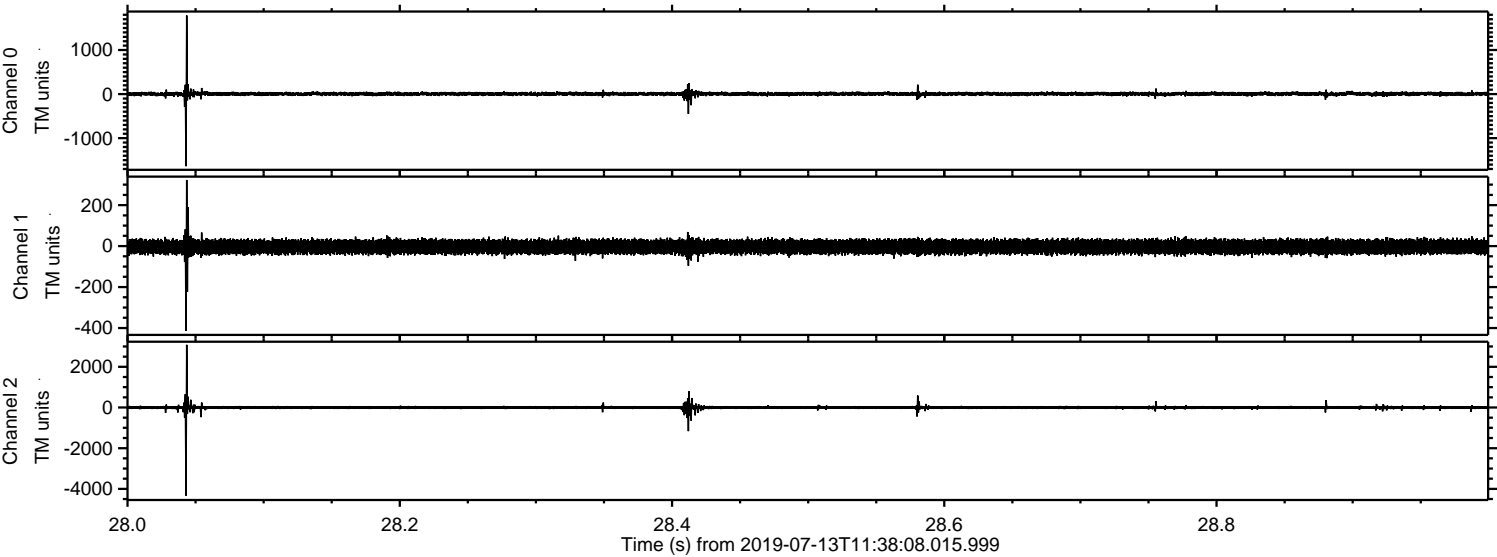
Channel 0  
mn: -1690  
mx: 1692  
 $\mu$ : 4.7  
 $\sigma$ : 25.9

Channel 1  
mn: -445  
mx: 402  
 $\mu$ : -3.5  
 $\sigma$ : 18.9

Channel 2  
mn: -4347  
mx: 3132  
 $\mu$ : -1.8  
 $\sigma$ : 47.0

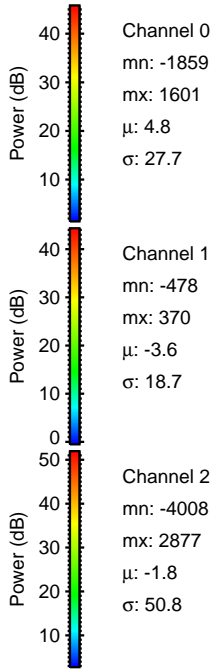
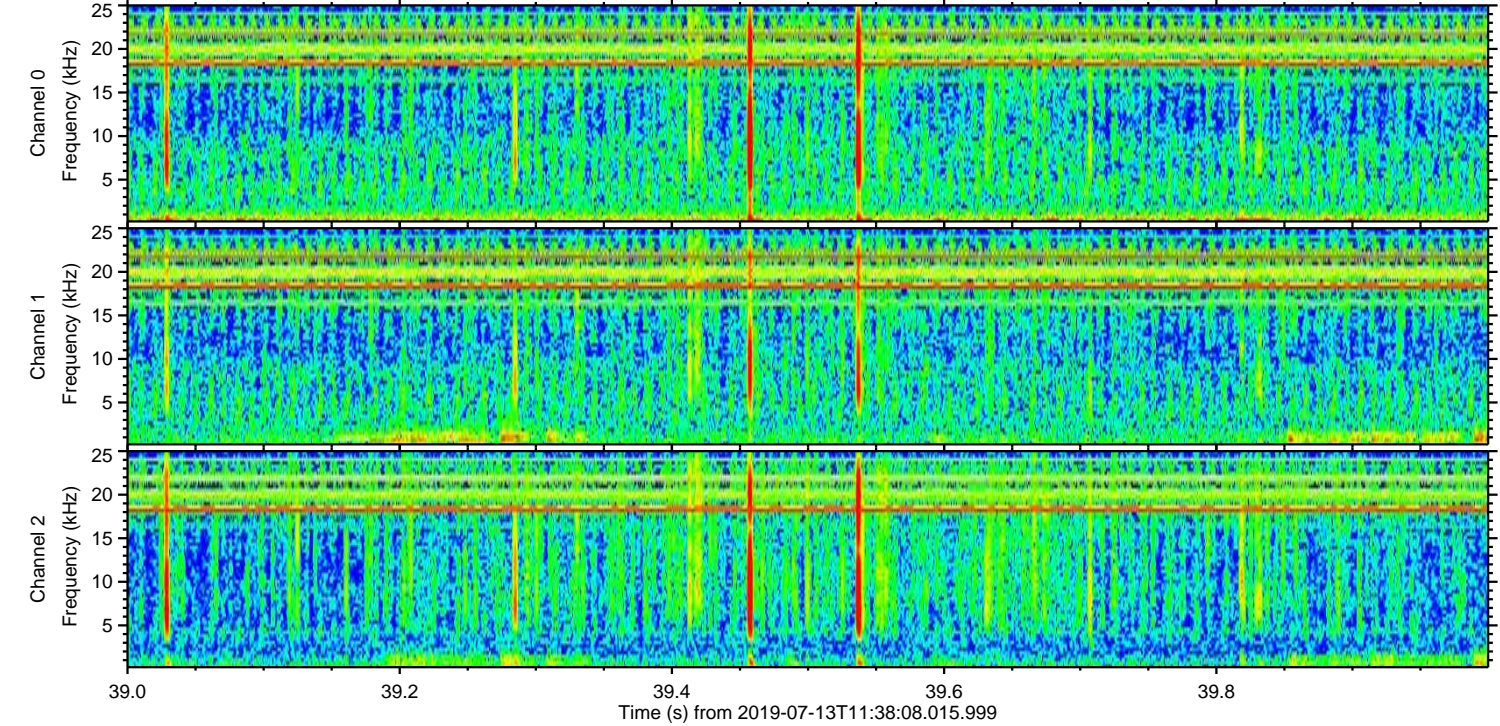
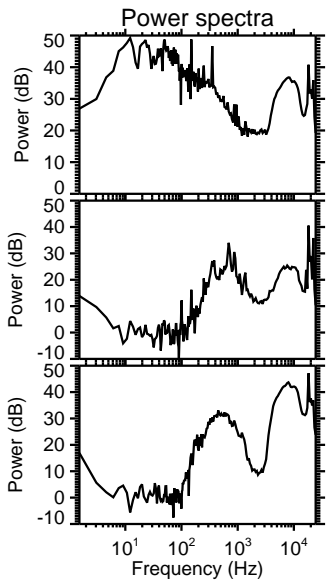
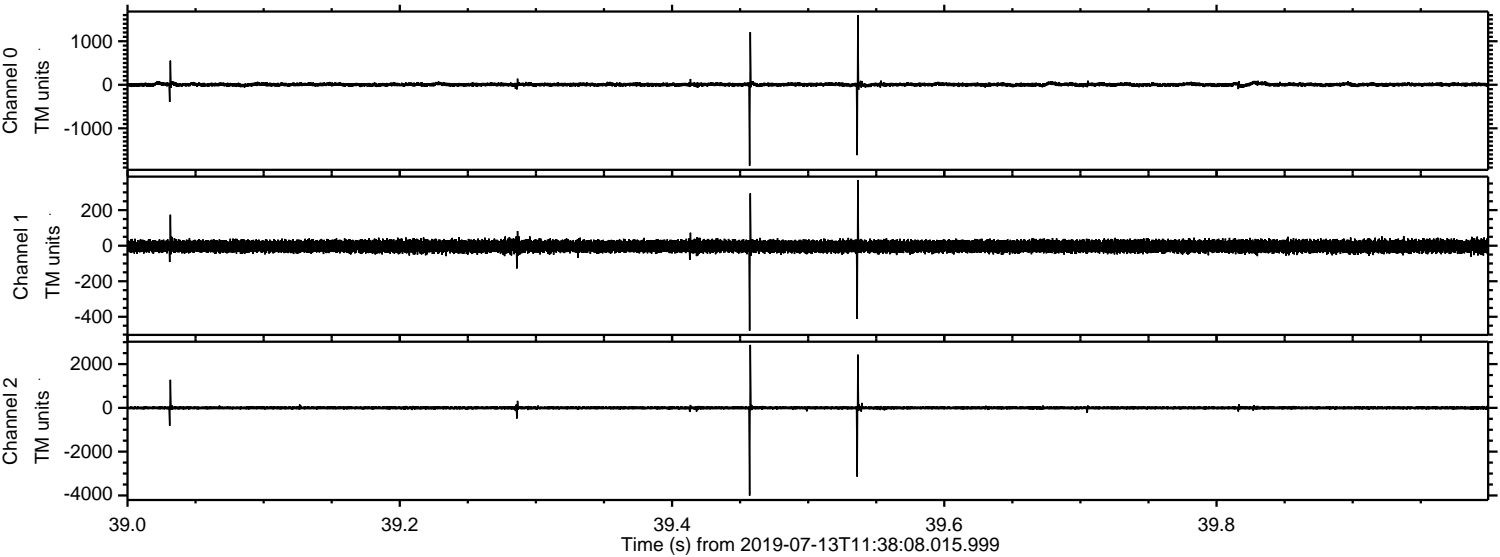


Processed Sat Jul 13 13:46:29 2019 by ELM ver.2012-10-06 from 001\_\_elm20190713\_113807\_\_dat00.bin



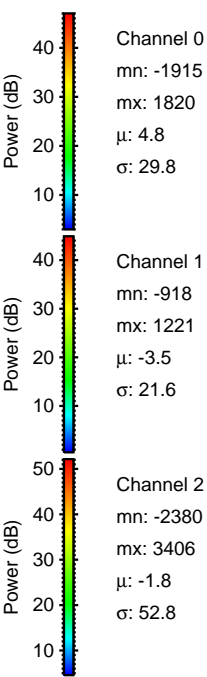
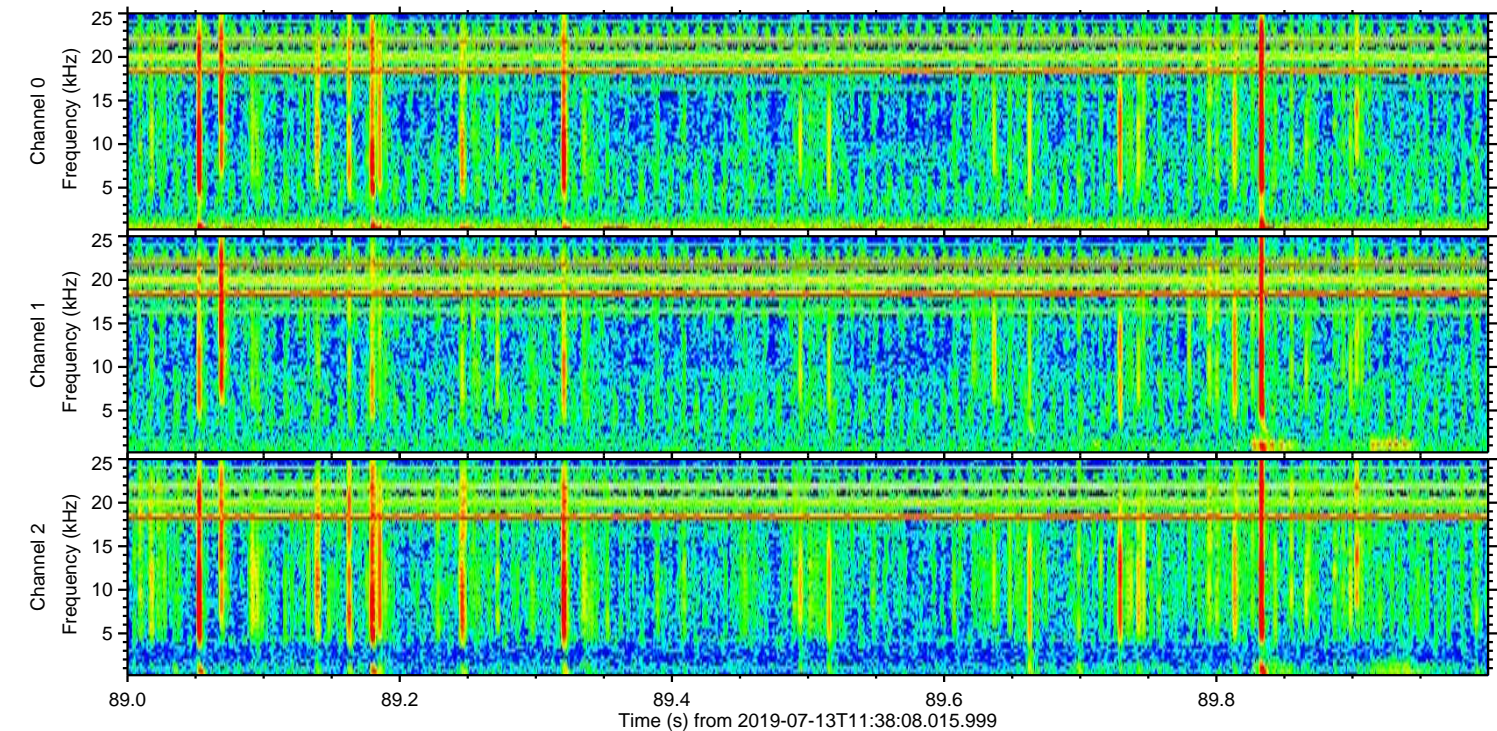
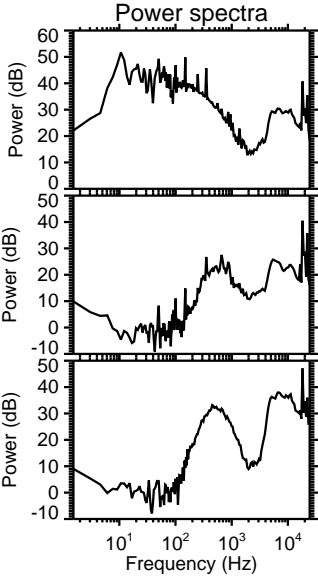
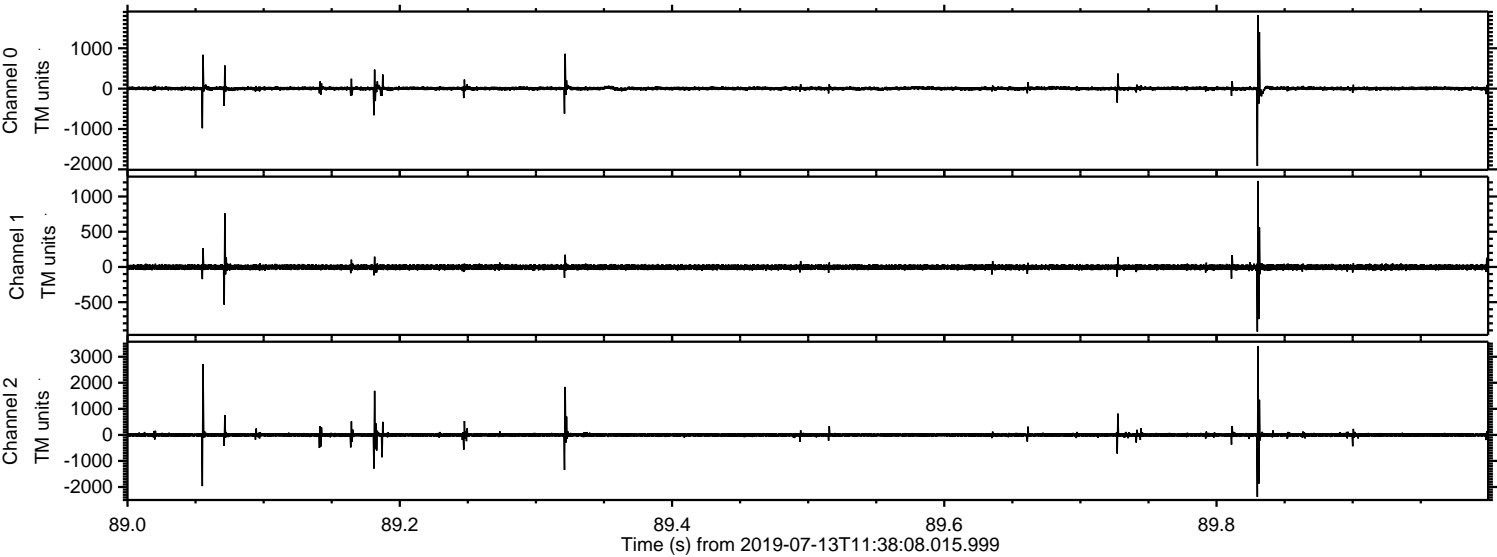


Processed Sat Jul 13 13:46:30 2019 by ELM ver.2012-10-06 from 001\_\_elm20190713\_113807\_\_dat00.bin





Processed Sat Jul 13 13:46:30 2019 by ELM ver.2012-10-06 from 001\_\_elm20190713\_113807\_\_dat00.bin





Processed Sat Jul 13 13:46:31 2019 by ELM ver.2012-10-06 from 001\_\_elm20190713\_113807\_\_dat00.bin

