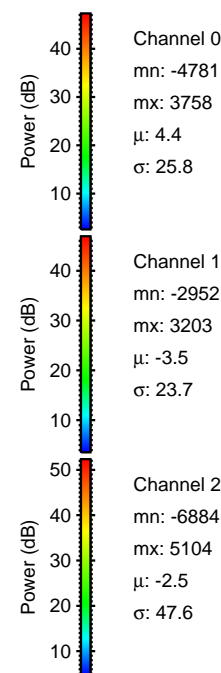
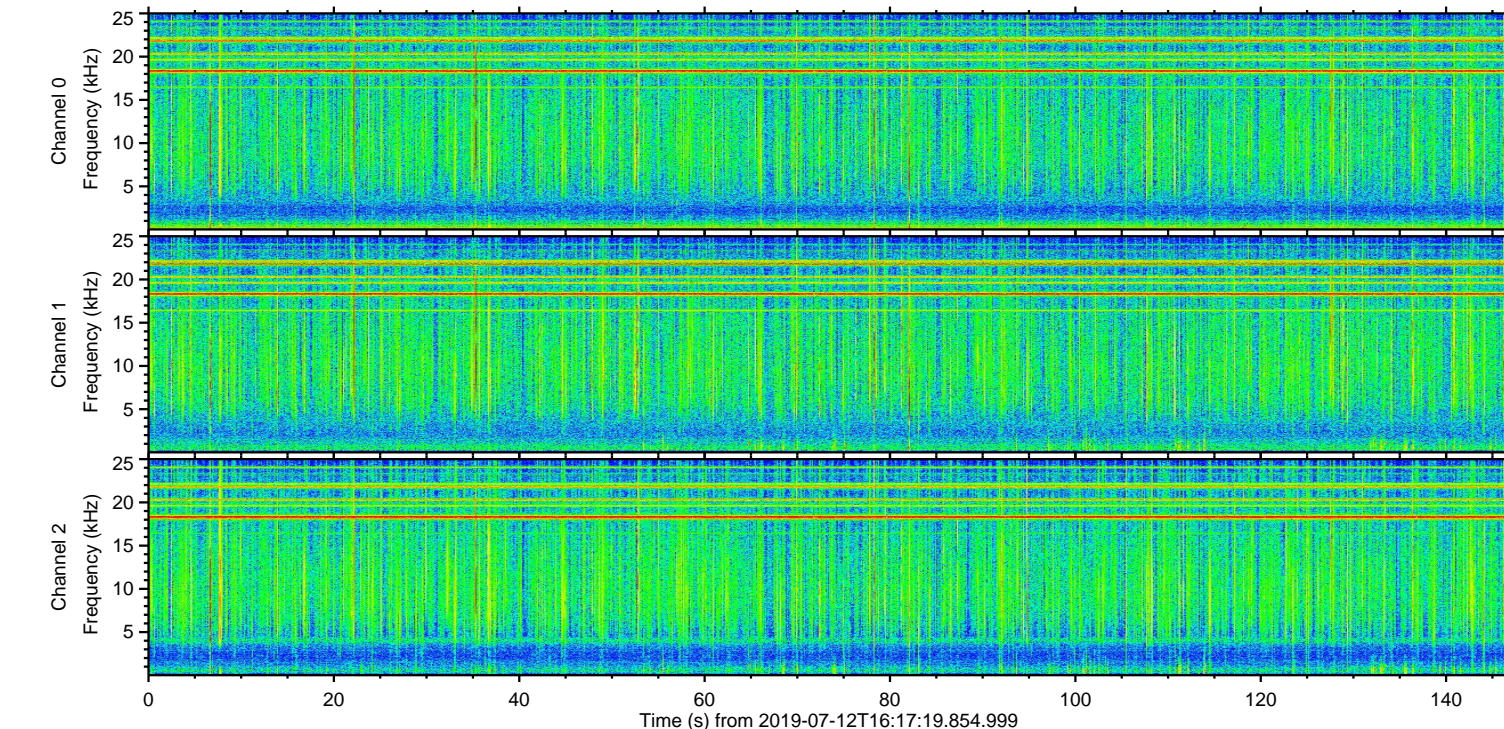
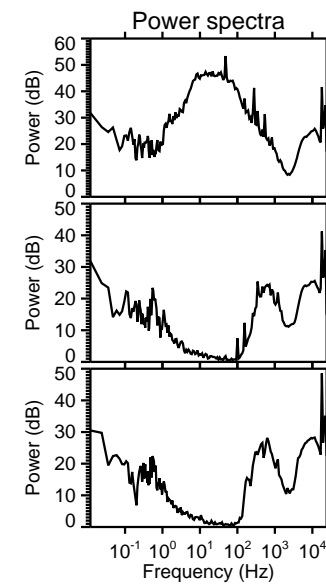
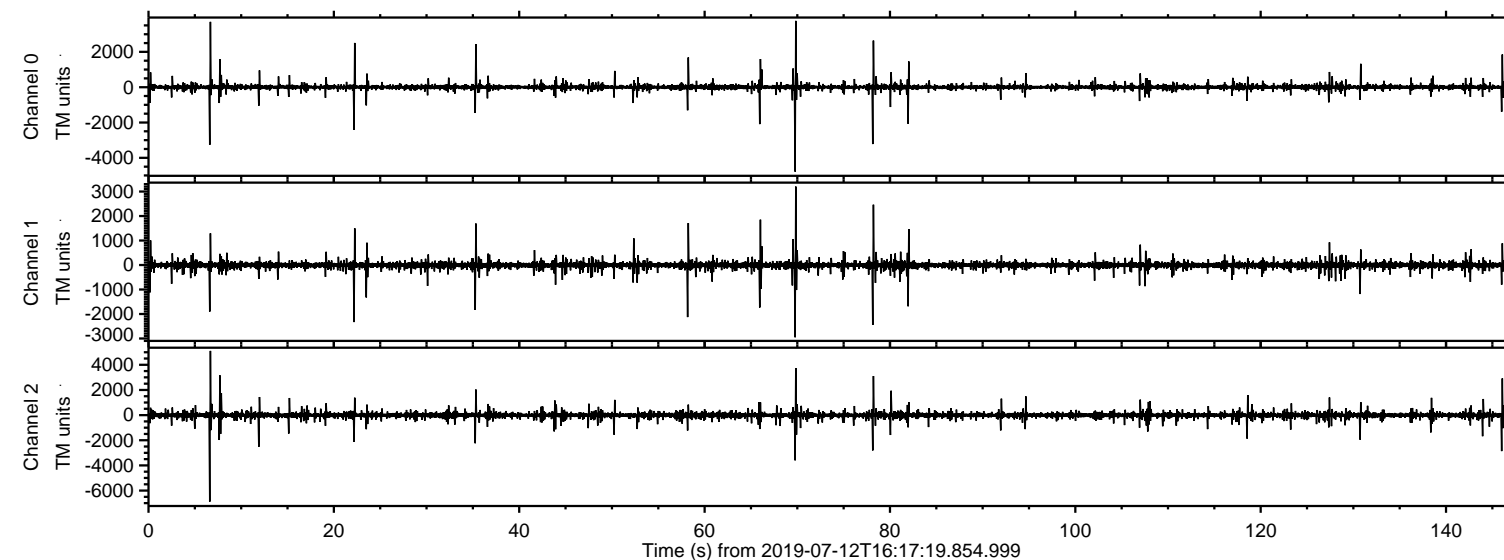
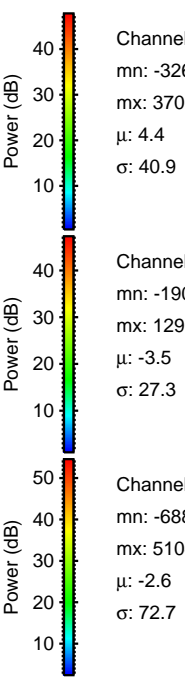
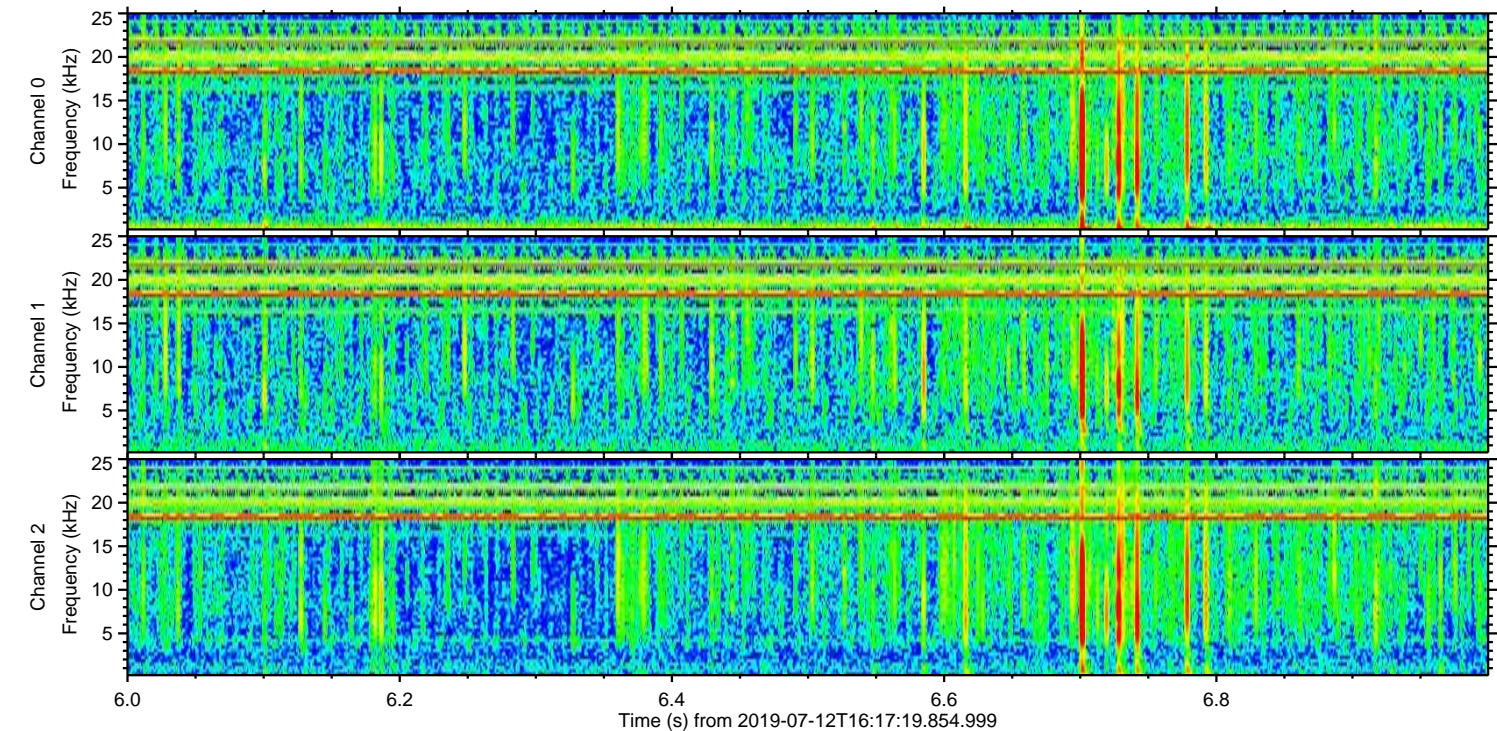
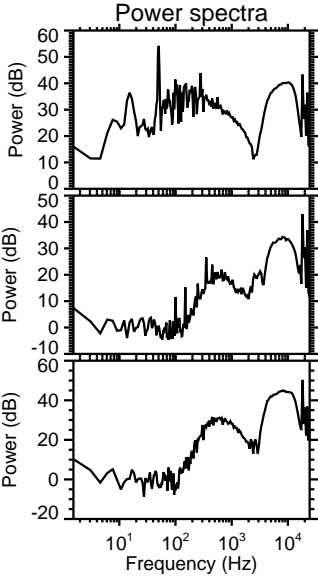
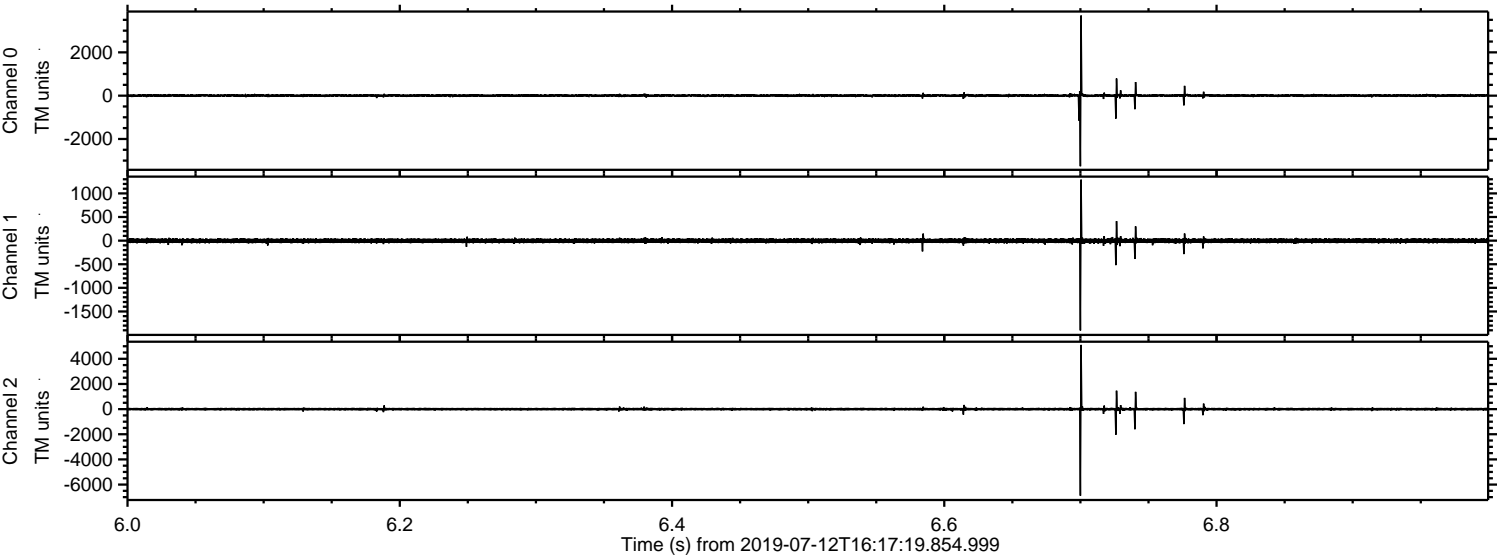


ELMAVAN 3D WAVEFORMS (Measured data sampled at 50 kHz) 51000 packets of 144 samples from 2019-07-12T16:17:19.854.999.

Processed Fri Jul 12 18:25:39 2019 by ELM ver.2012-10-06 from 001__elm20190712_161718__dat00.bin

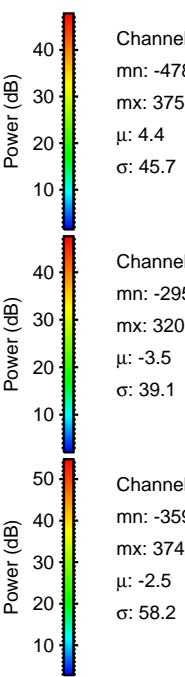
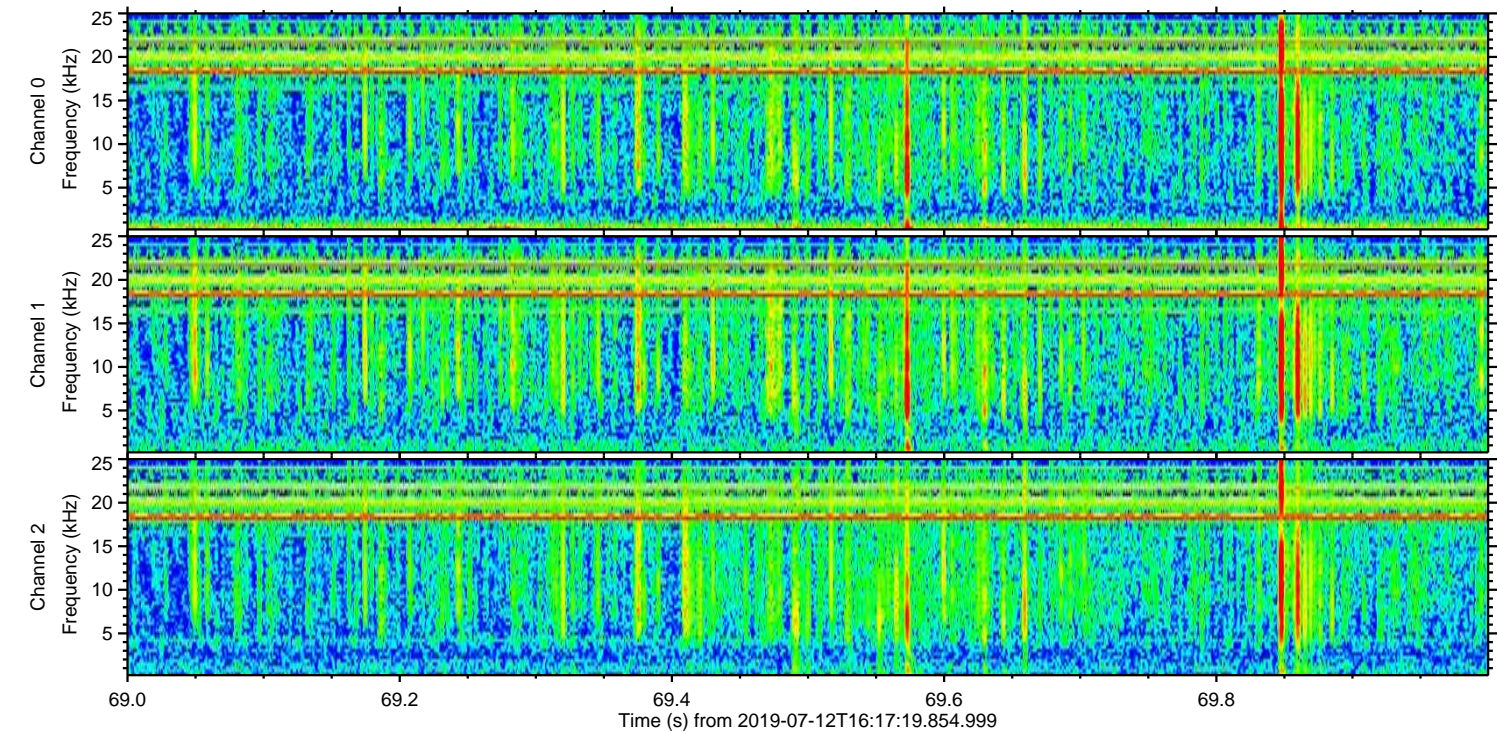
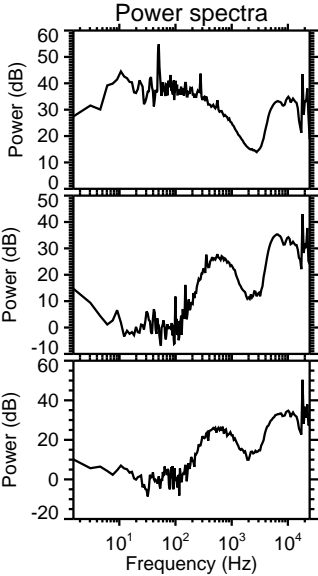
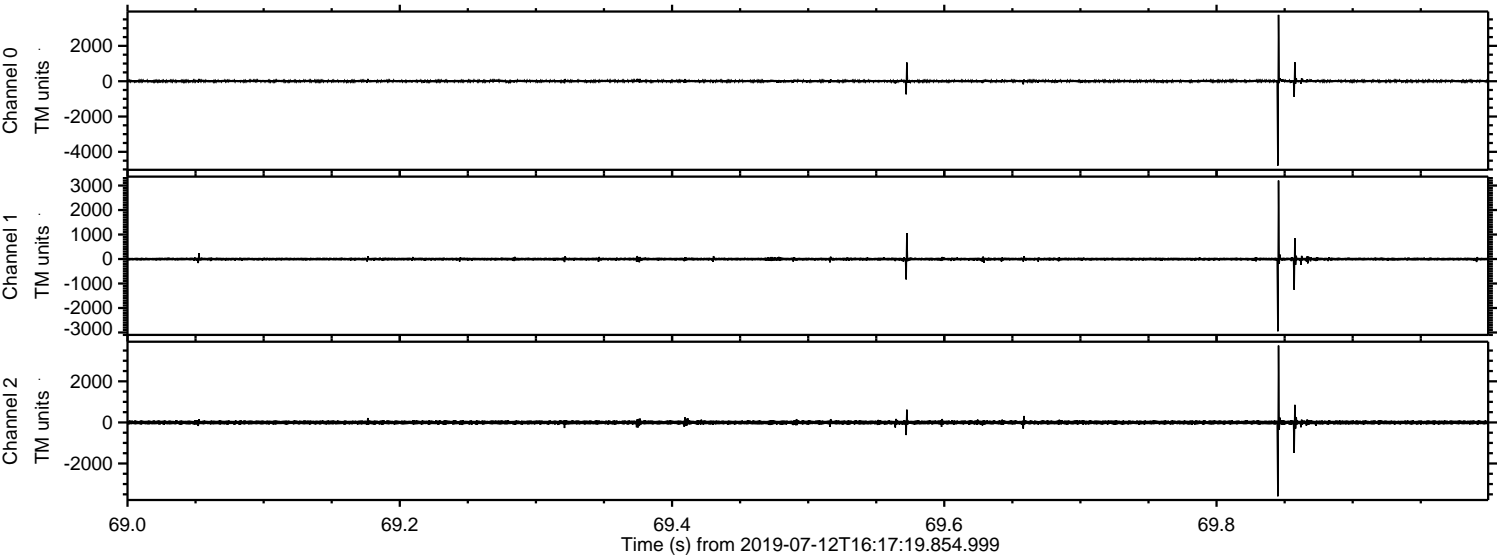


Processed Fri Jul 12 18:25:50 2019 by ELM ver.2012-10-06 from 001__elm20190712_161718__dat00.bin



ELMAVAN 3D WAVEFORMS (Measured data sampled at 50 kHz) 51000 packets of 144 samples from 2019-07-12T16:17:19.854.999. Part 70/147

Processed Fri Jul 12 18:25:51 2019 by ELM ver.2012-10-06 from 001__elm20190712_161718__dat00.bin

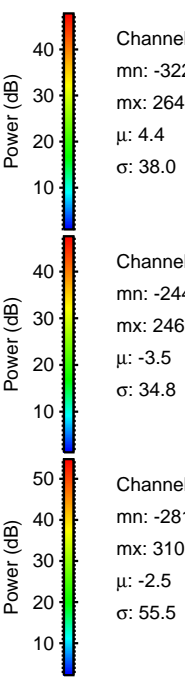
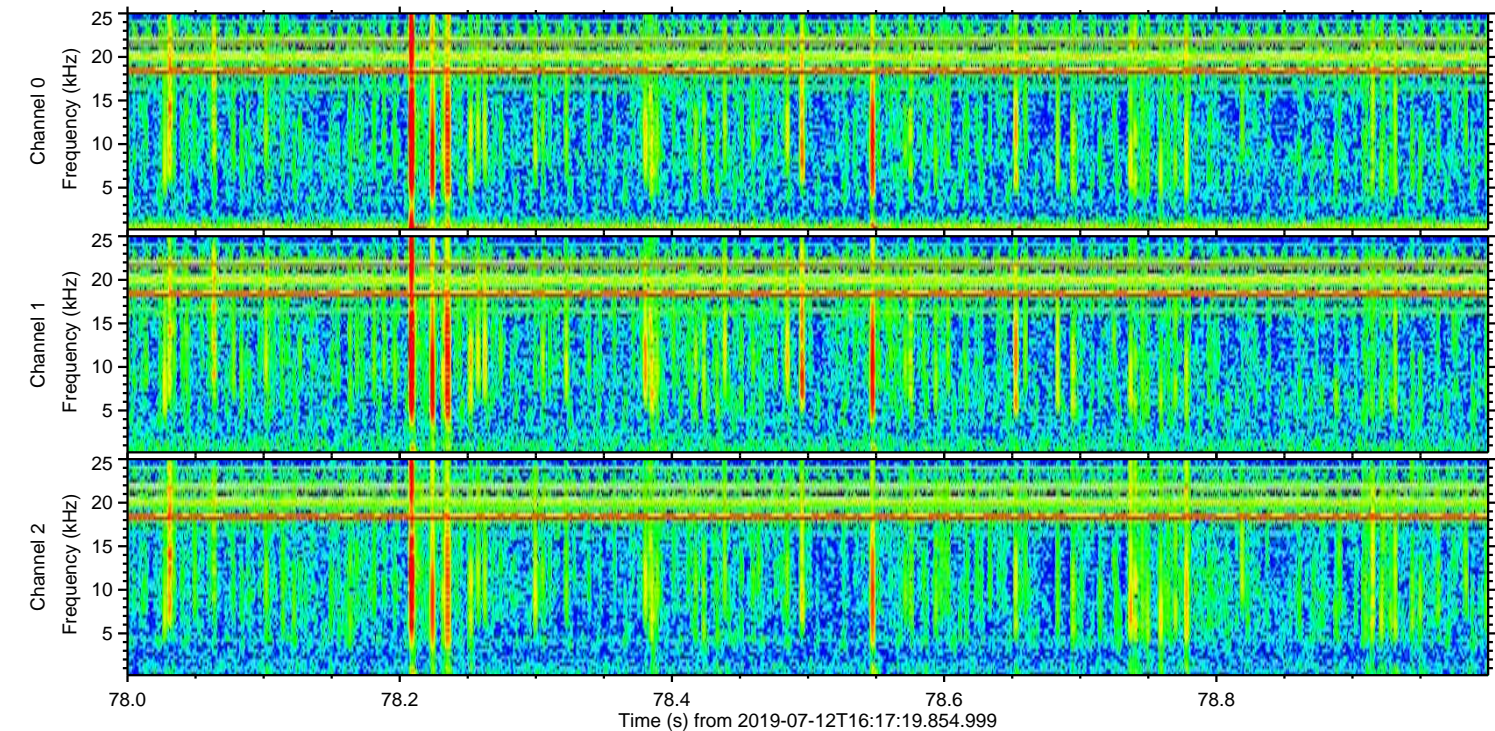
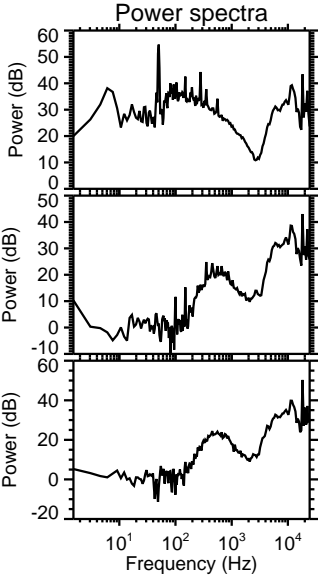
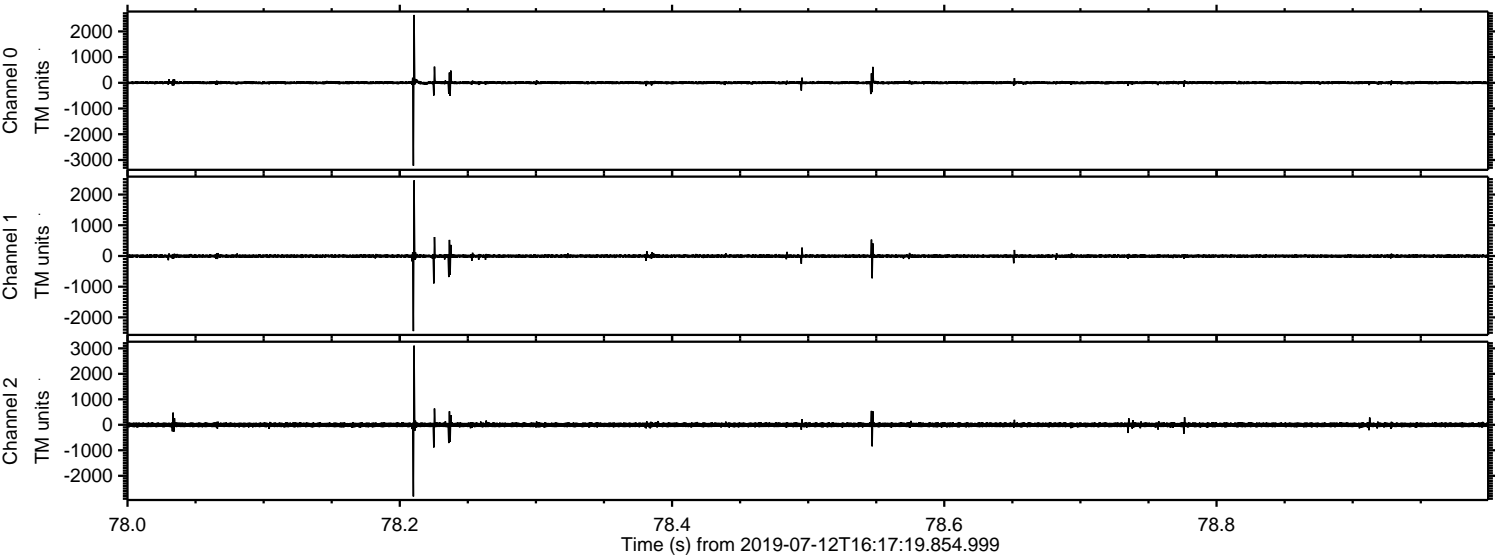


Channel 0
mn: -4781
mx: 3758
 μ : 4.4
 σ : 45.7

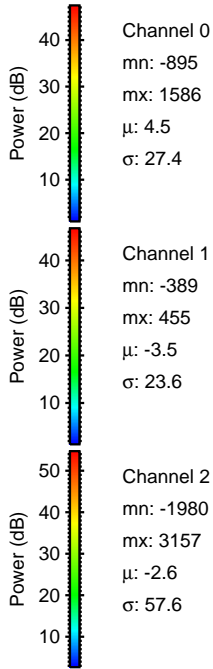
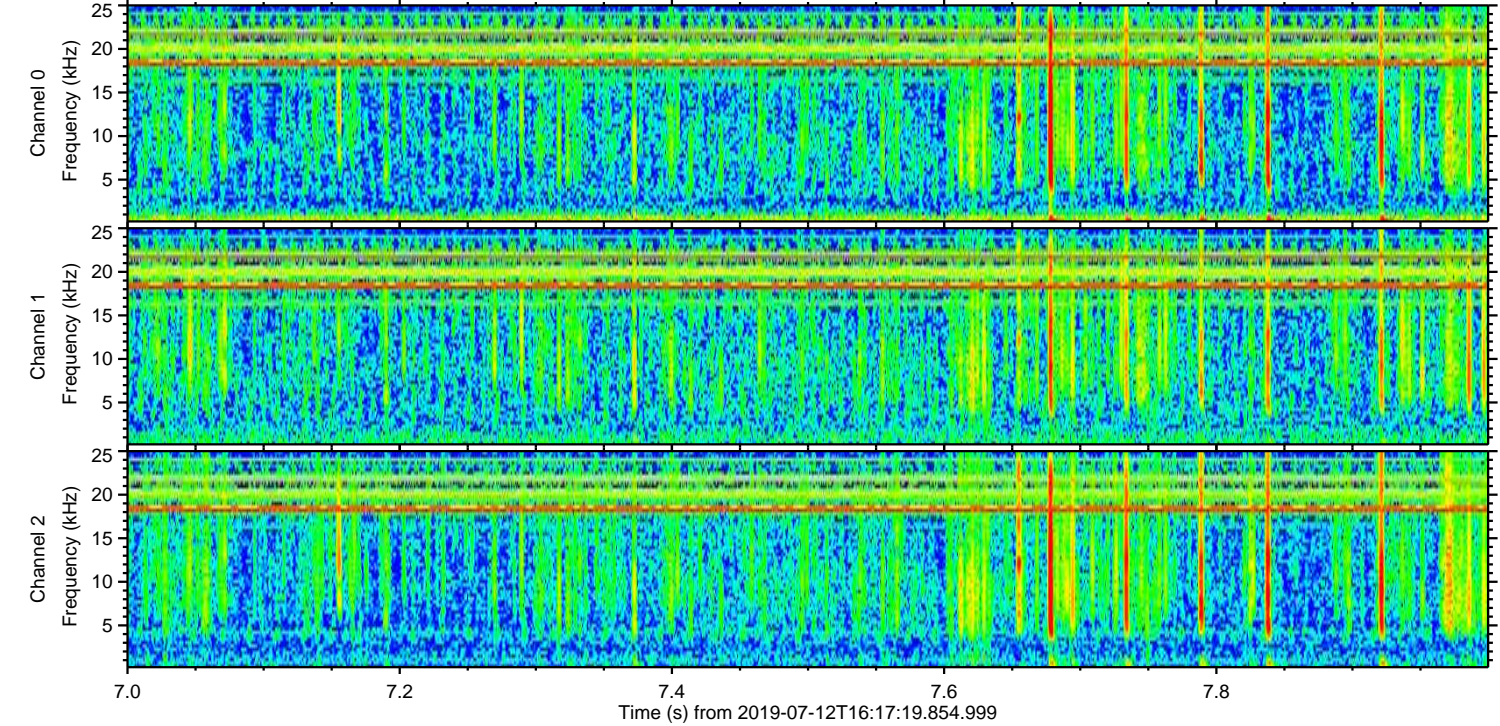
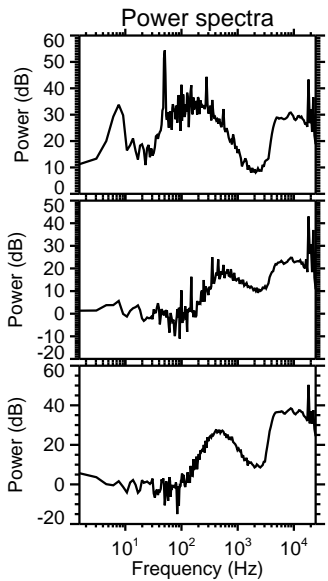
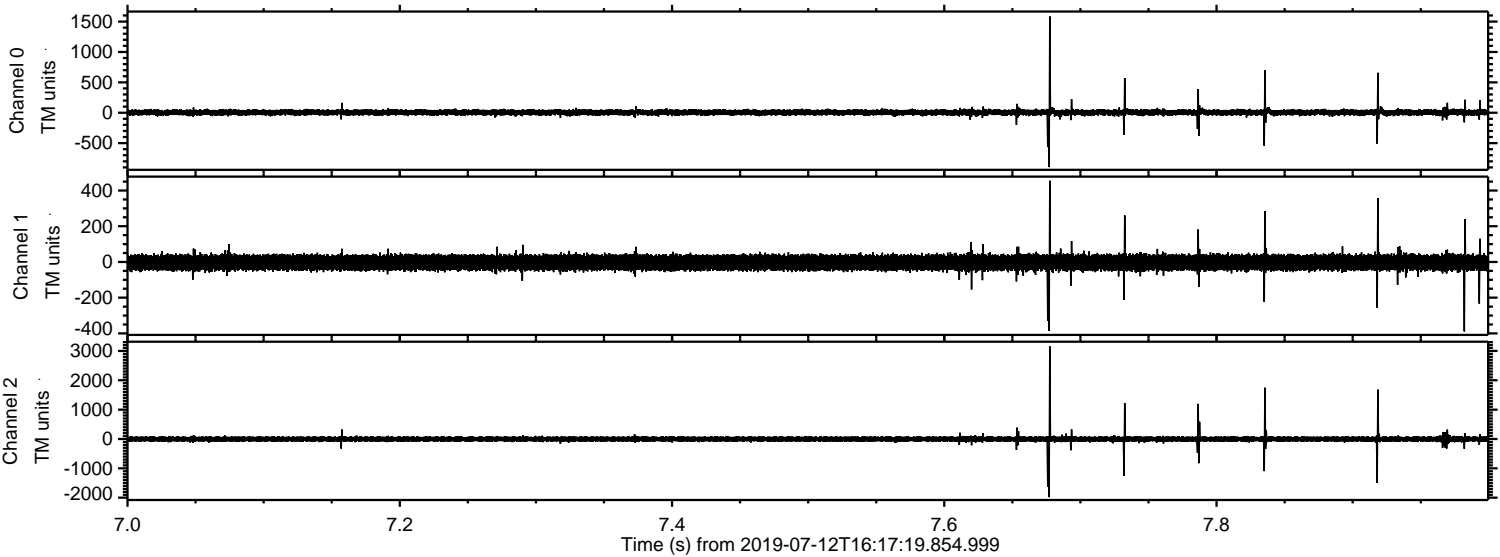
Channel 1
mn: -2952
mx: 3203
 μ : -3.5
 σ : 39.1

Channel 2
mn: -3597
mx: 3742
 μ : -2.5
 σ : 58.2

Processed Fri Jul 12 18:25:52 2019 by ELM ver.2012-10-06 from 001__elm20190712_161718__dat00.bin

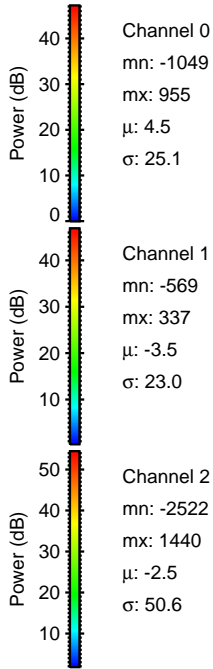
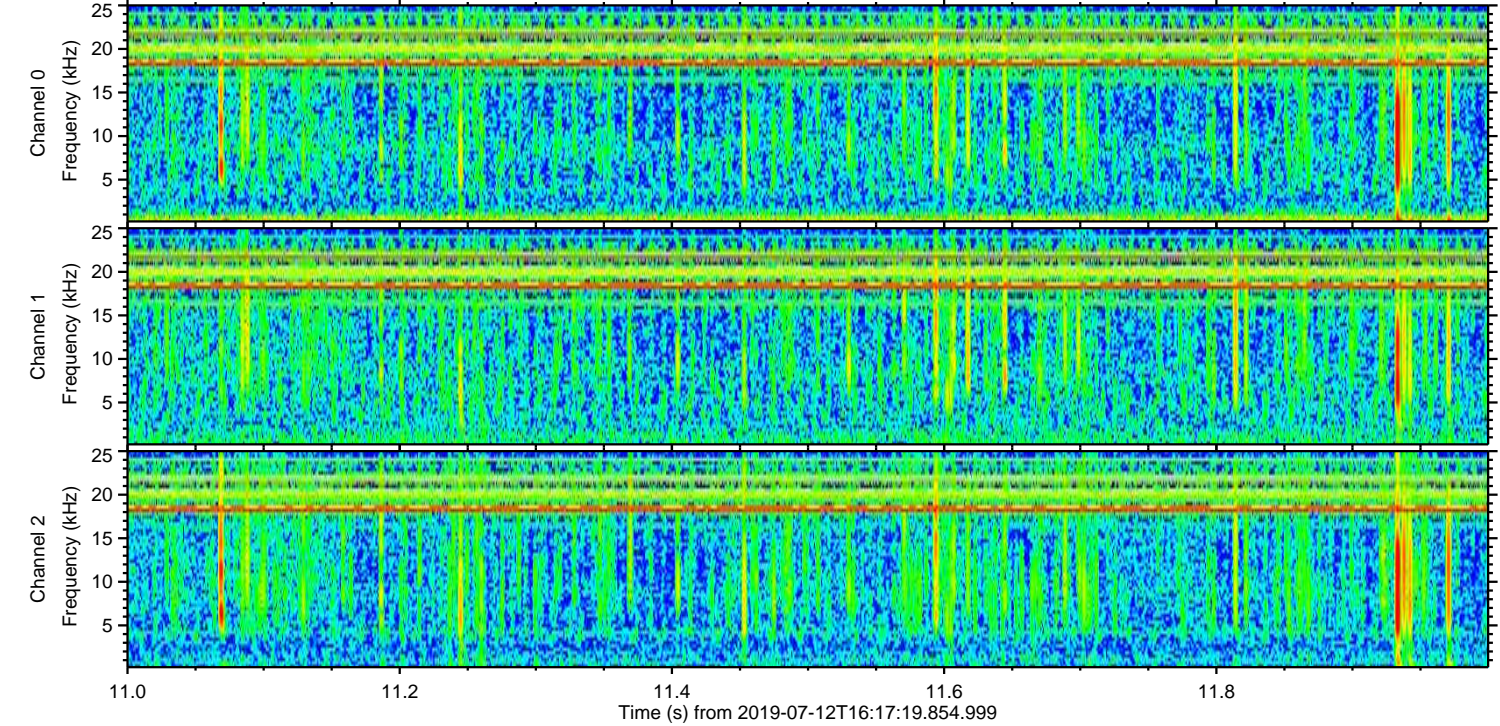
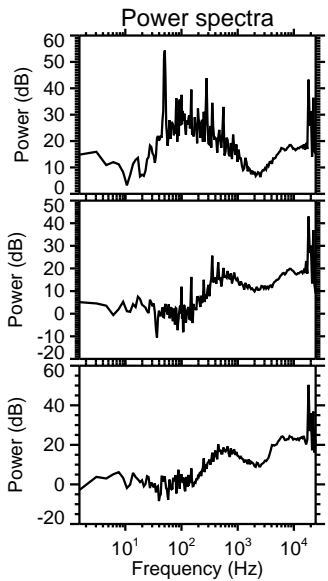
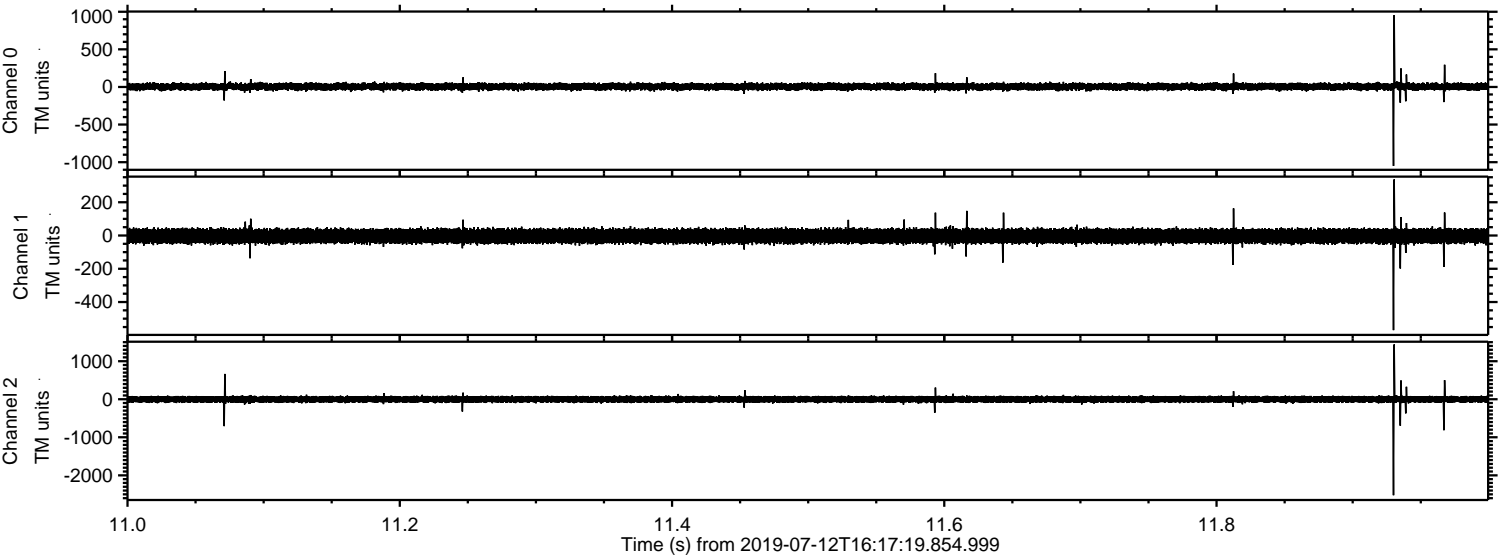


Processed Fri Jul 12 18:25:53 2019 by ELM ver.2012-10-06 from 001__elm20190712_161718__dat00.bin



ELMAVAN 3D WAVEFORMS (Measured data sampled at 50 kHz) 51000 packets of 144 samples from 2019-07-12T16:17:19.854.999. Part 12/147

Processed Fri Jul 12 18:25:53 2019 by ELM ver.2012-10-06 from 001__elm20190712_161718__dat00.bin

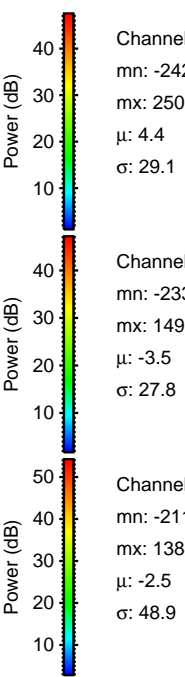
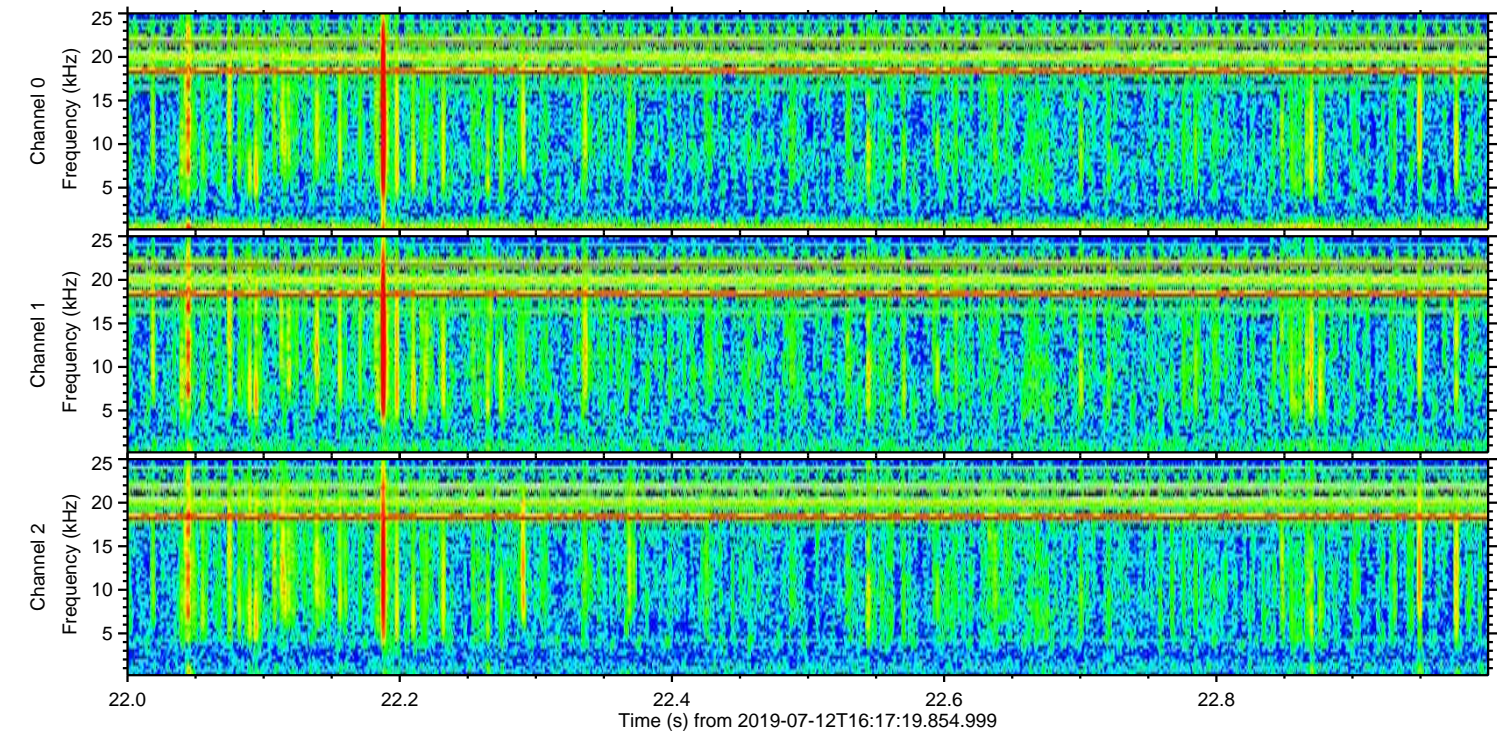
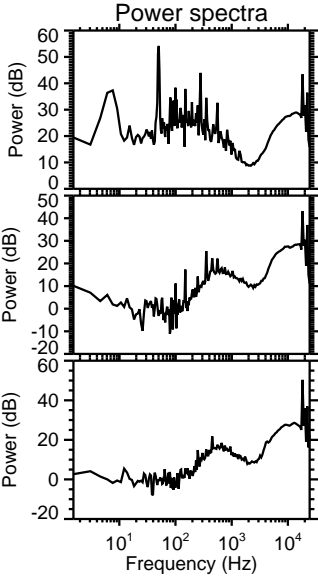
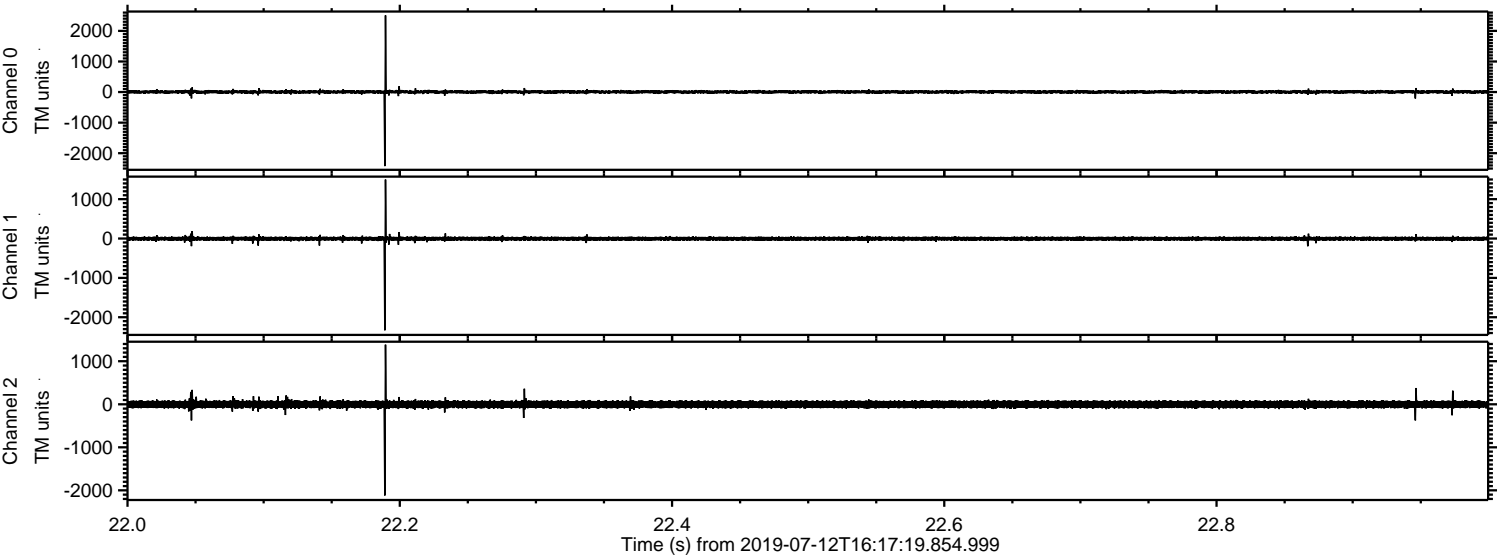


Channel 0
mn: -1049
mx: 955
 μ : 4.5
 σ : 25.1

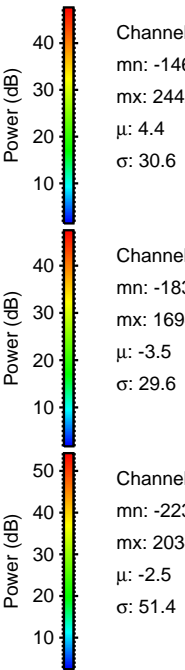
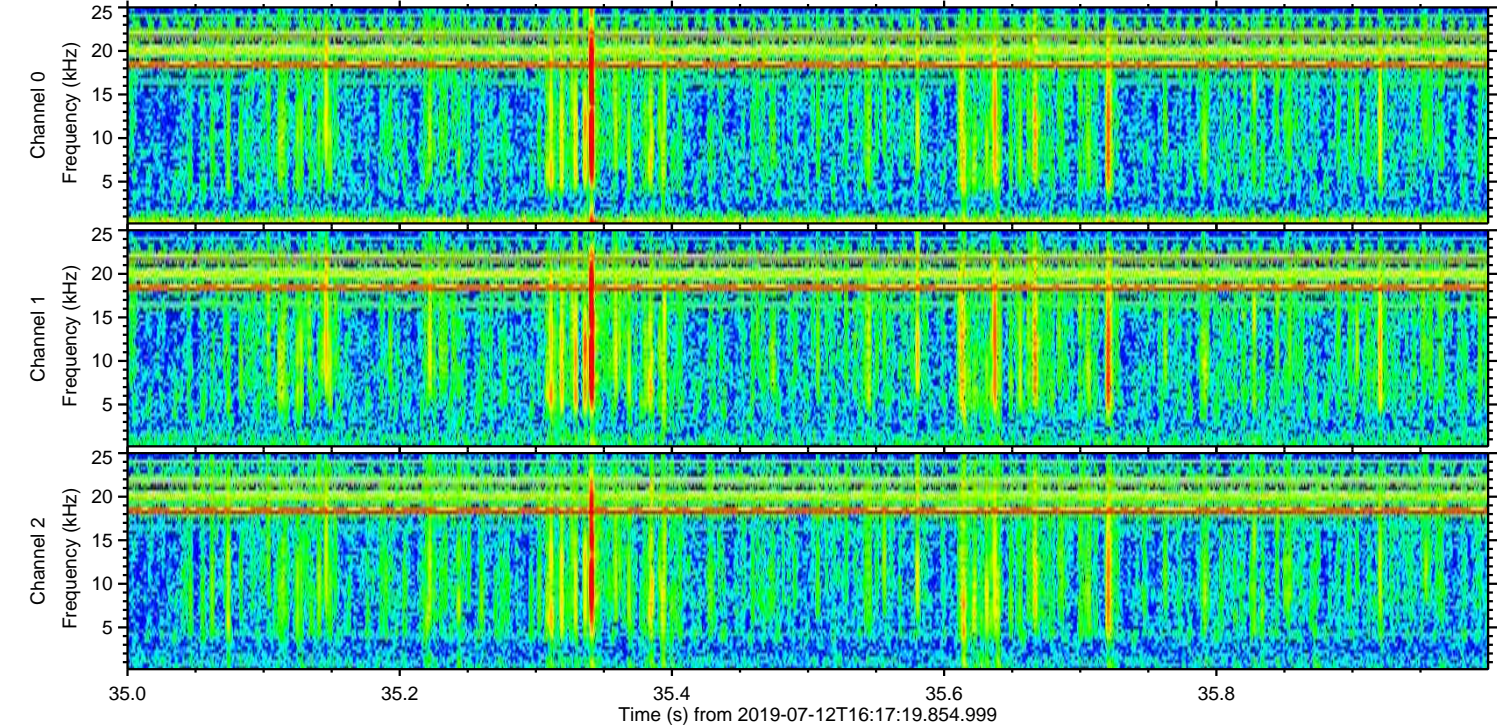
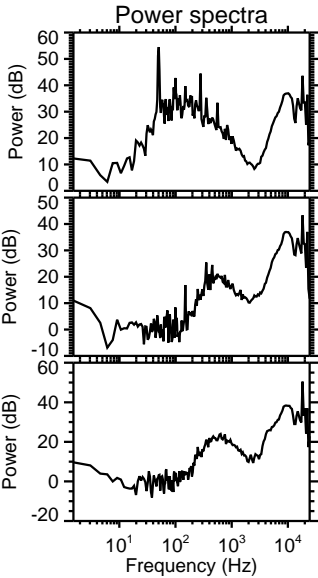
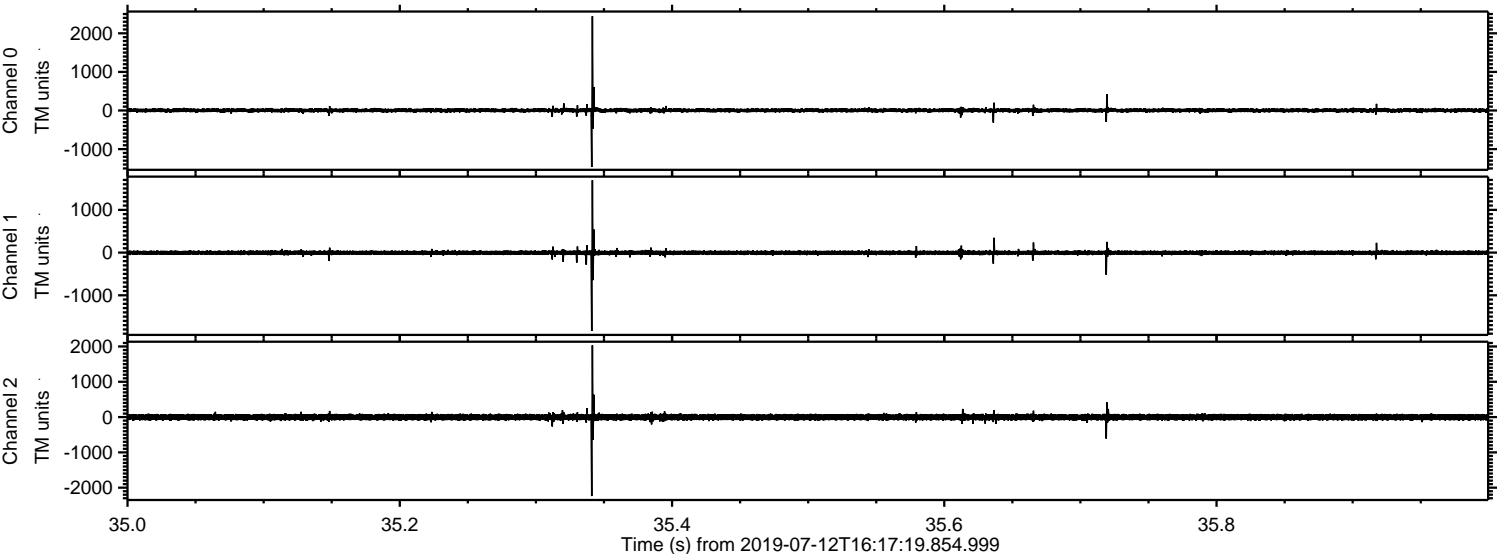
Channel 1
mn: -569
mx: 337
 μ : -3.5
 σ : 23.0

Channel 2
mn: -2522
mx: 1440
 μ : -2.5
 σ : 50.6

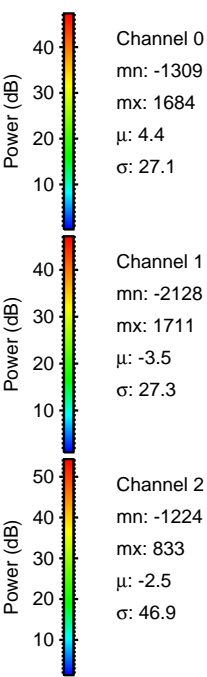
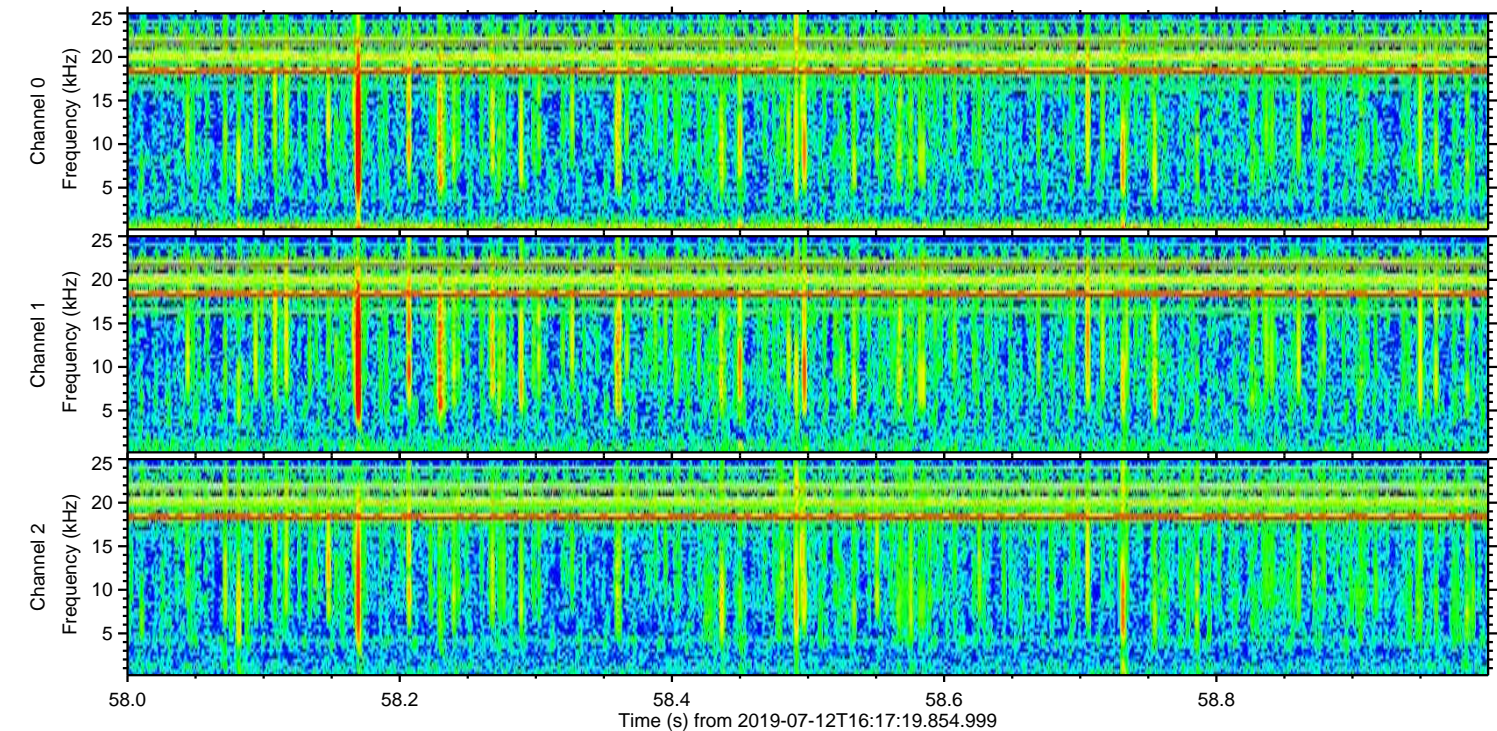
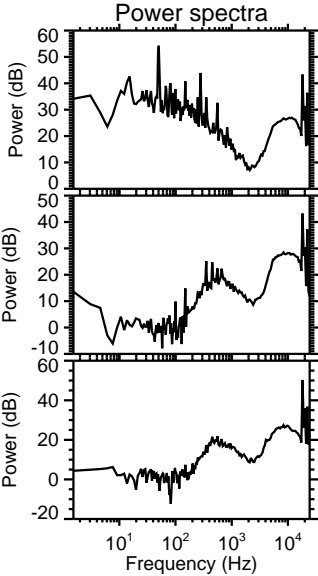
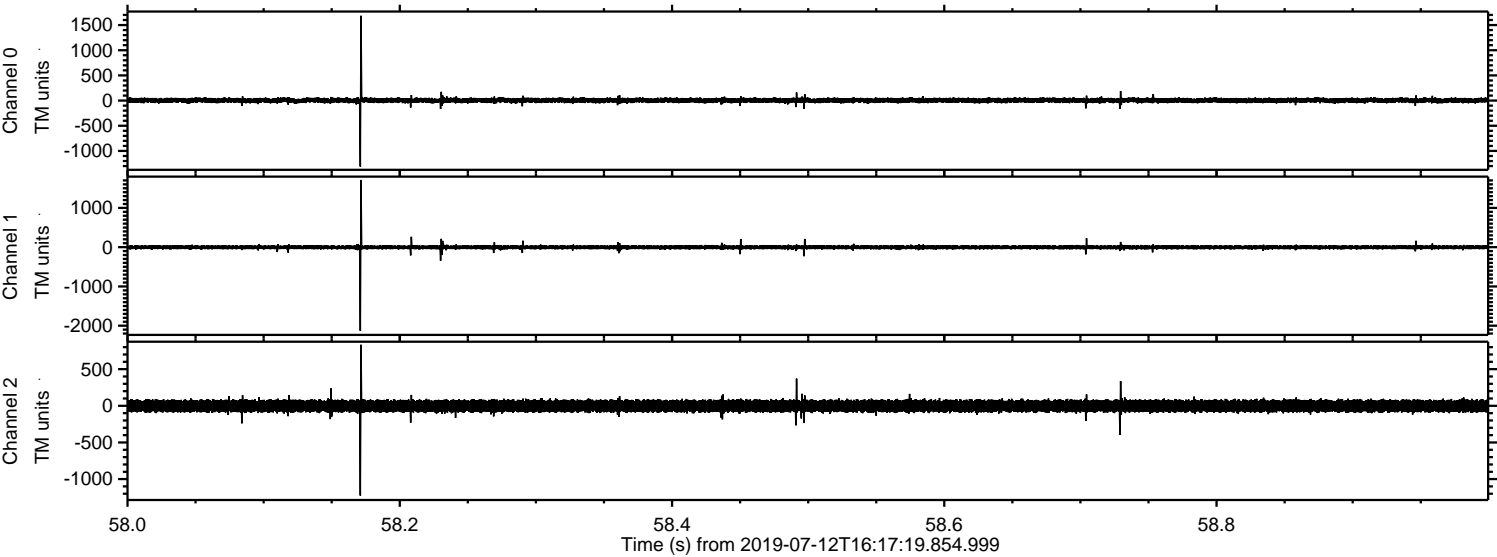
Processed Fri Jul 12 18:25:54 2019 by ELM ver.2012-10-06 from 001__elm20190712_161718__dat00.bin



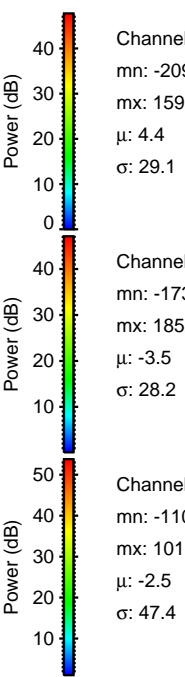
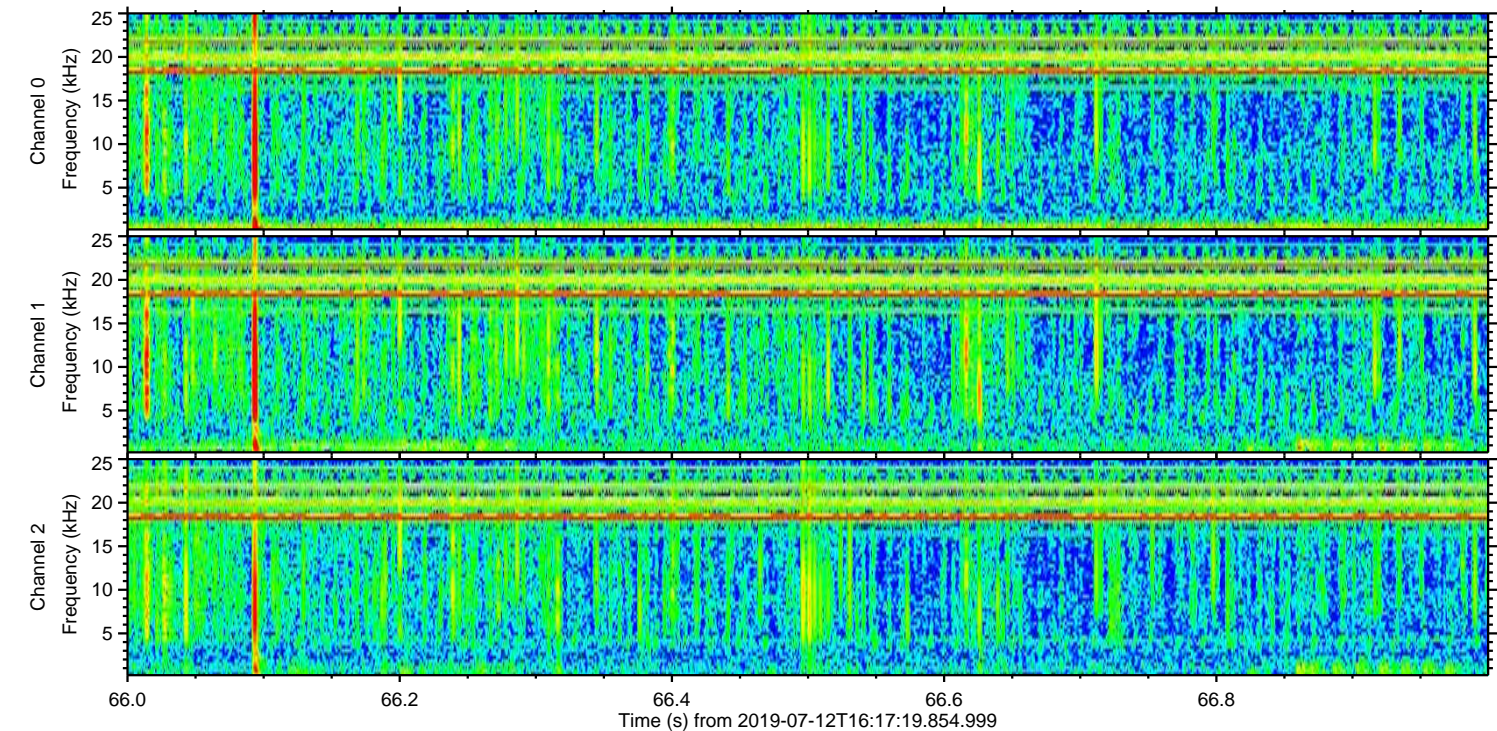
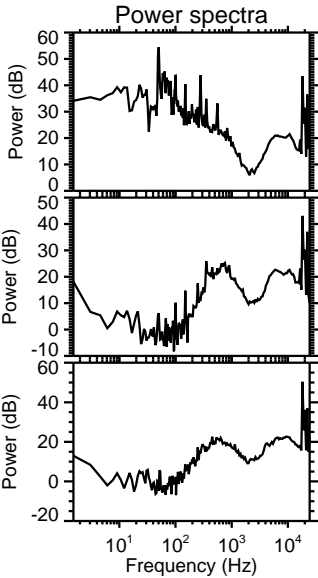
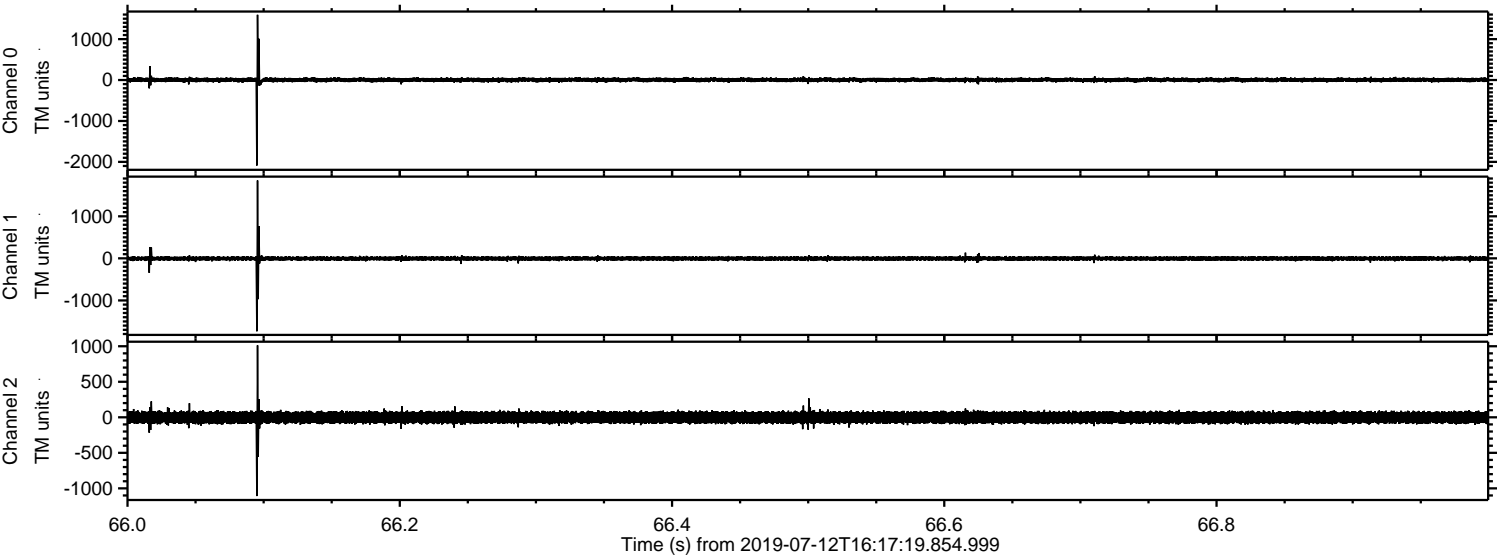
Processed Fri Jul 12 18:25:55 2019 by ELM ver.2012-10-06 from 001__elm20190712_161718__dat00.bin



Processed Fri Jul 12 18:25:56 2019 by ELM ver.2012-10-06 from 001__elm20190712_161718__dat00.bin



Processed Fri Jul 12 18:25:56 2019 by ELM ver.2012-10-06 from 001__elm20190712_161718__dat00.bin



Channel 0
mn: -2090
mx: 1595
 μ : 4.4
 σ : 29.1

Channel 1
mn: -1734
mx: 1852
 μ : -3.5
 σ : 28.2

Channel 2
mn: -1108
mx: 1013
 μ : -2.5
 σ : 47.4

