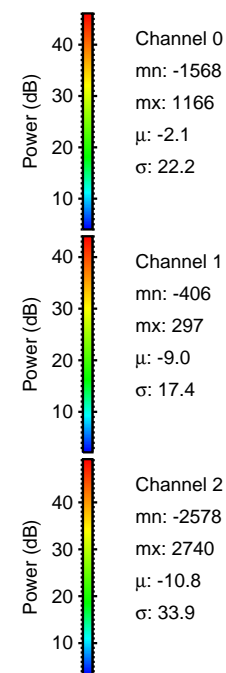
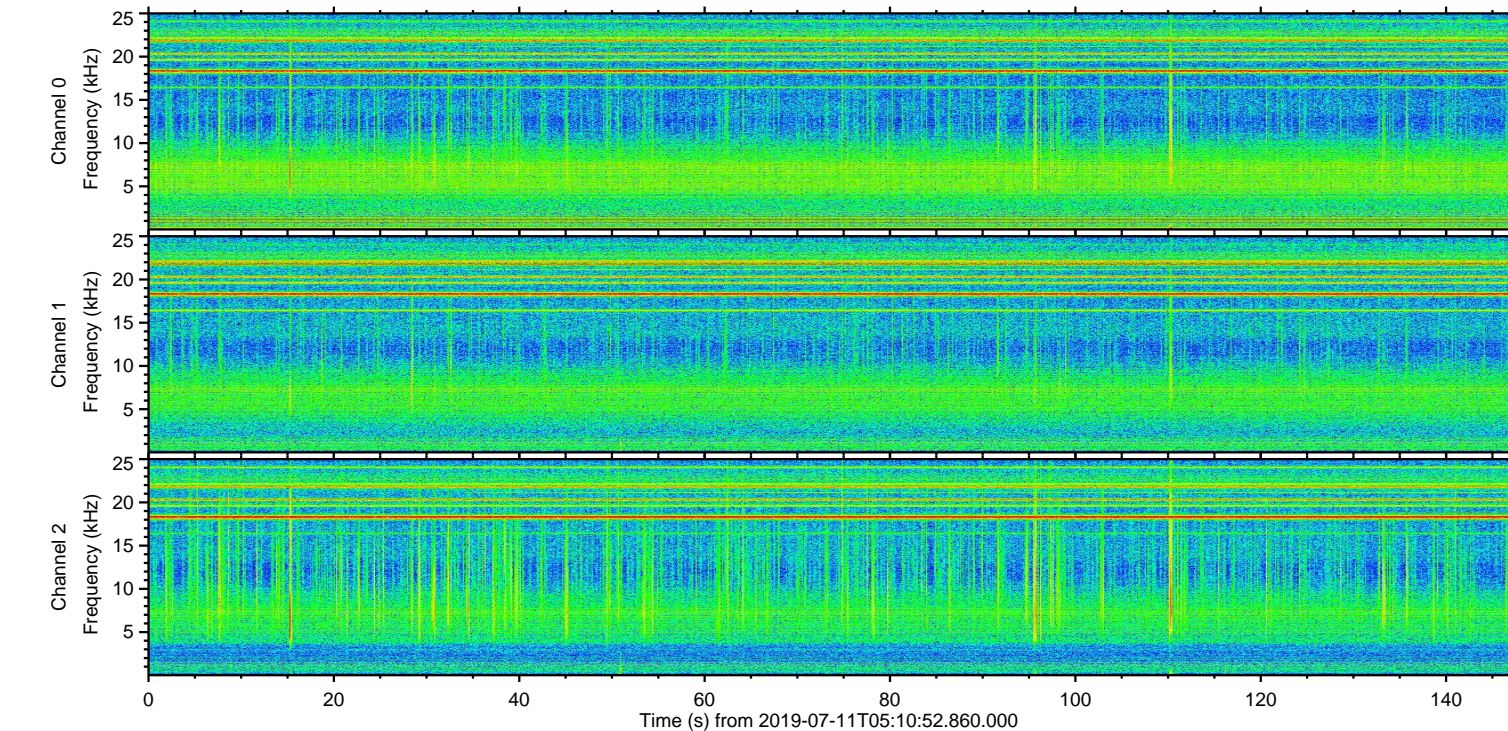
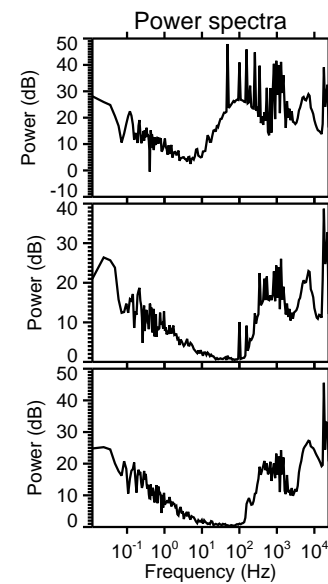
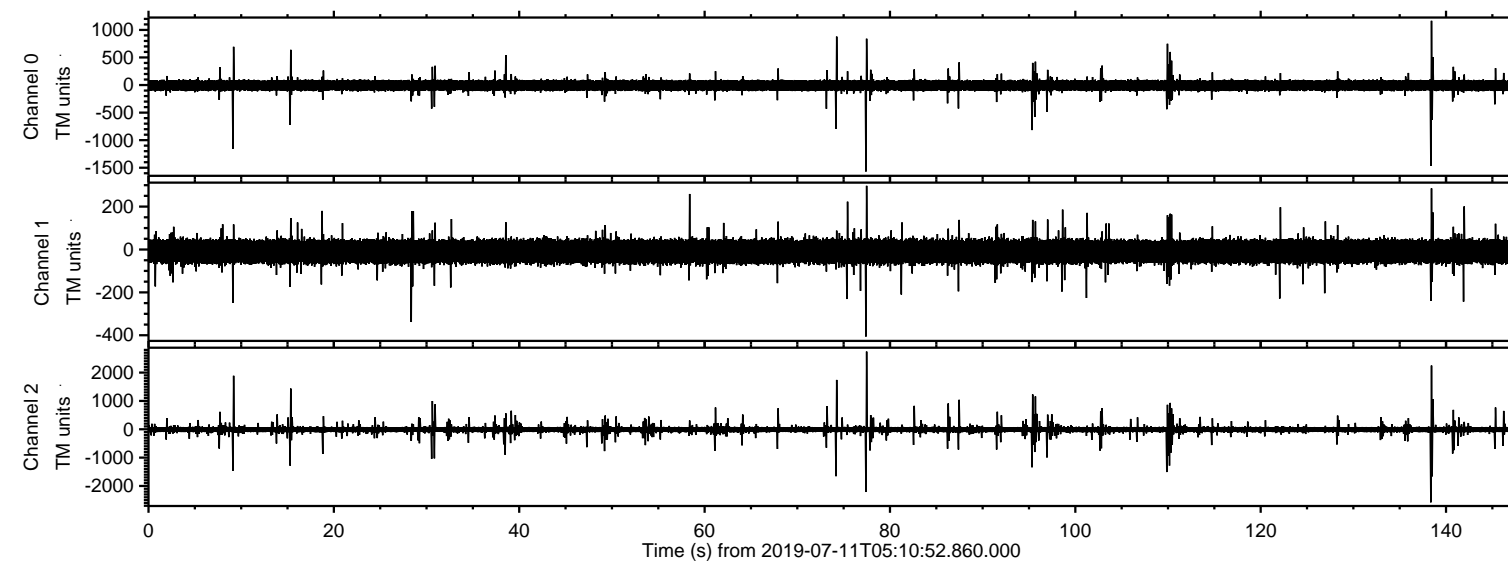
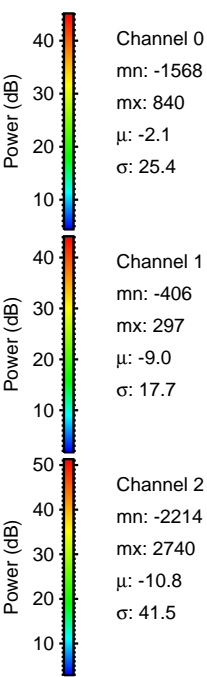
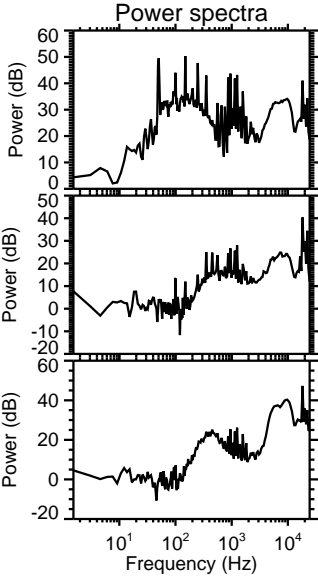
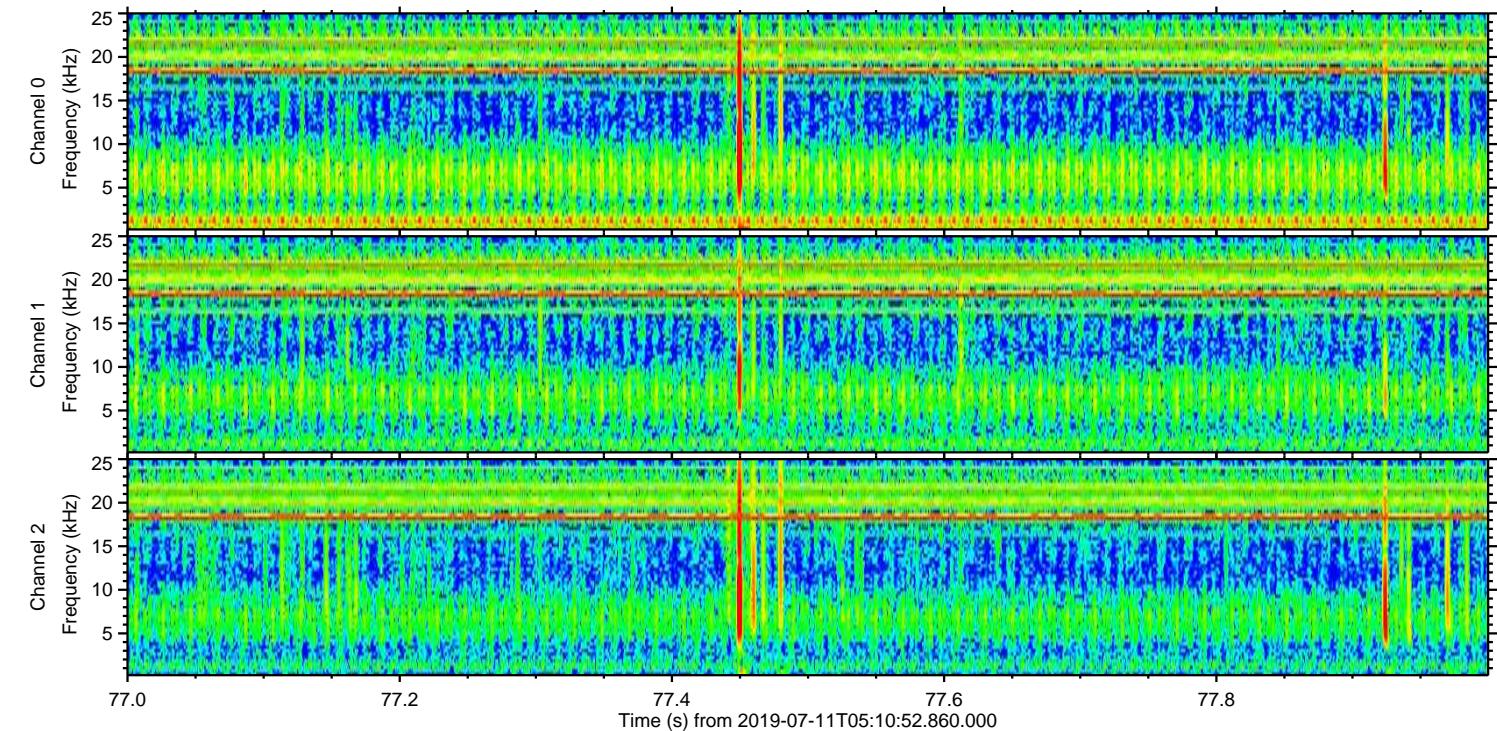
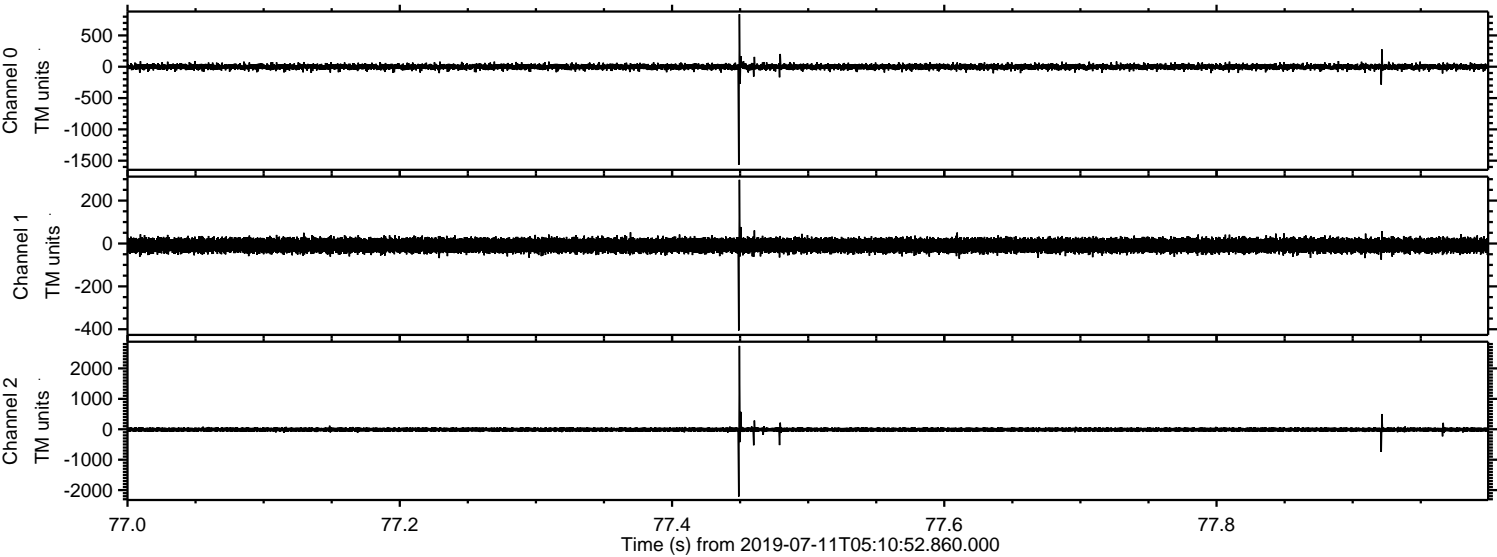


ELMAVAN 3D WAVEFORMS (Measured data sampled at 50 kHz) 51000 packets of 144 samples from 2019-07-11T05:10:52.860.000.

Processed Thu Jul 11 07:18:58 2019 by ELM ver.2012-10-06 from 001__elm20190711_051051__dat00.bin

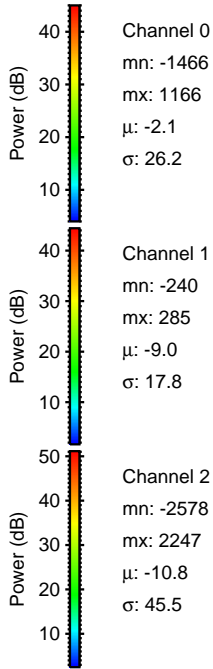
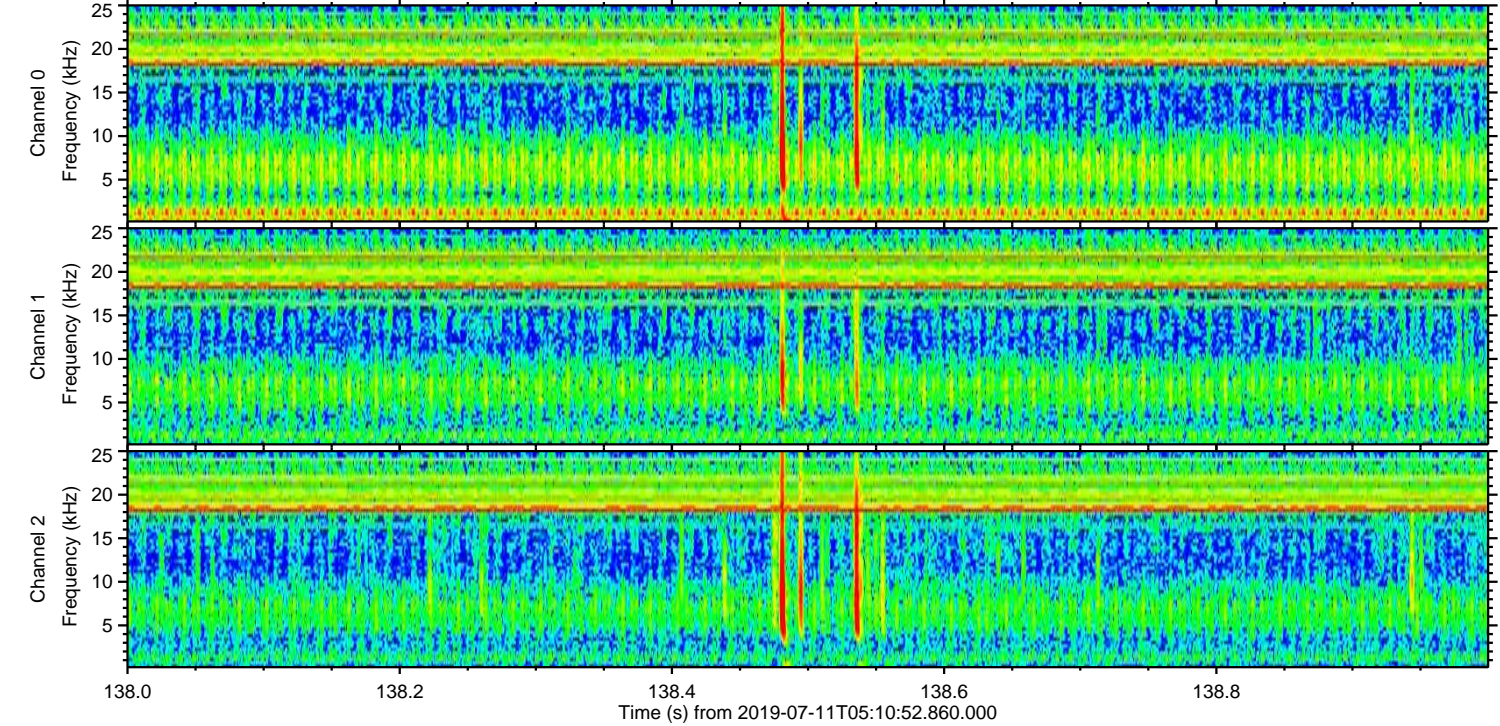
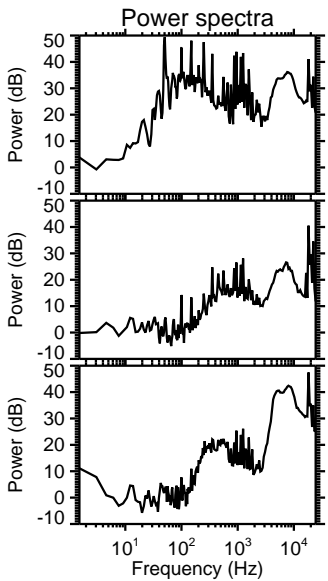
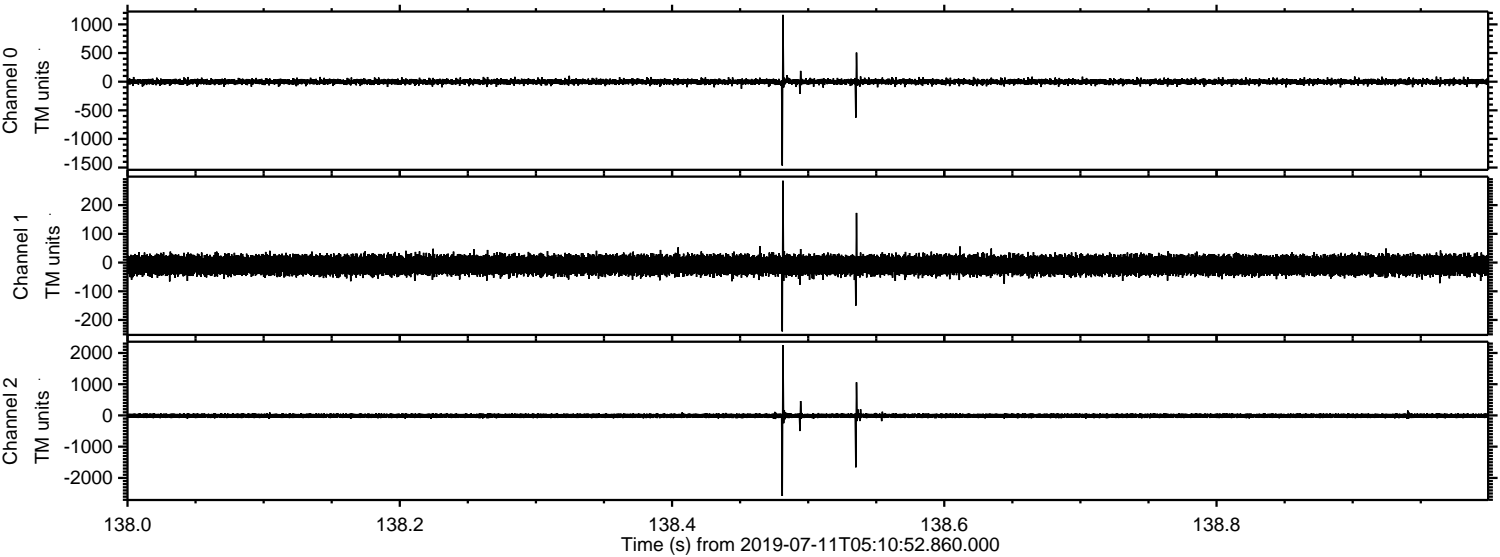


Processed Thu Jul 11 07:19:04 2019 by ELM ver.2012-10-06 from 001__elm20190711_051051__dat00.bin

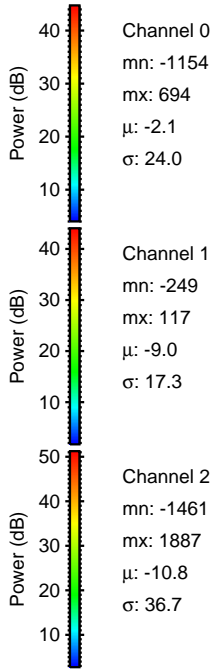
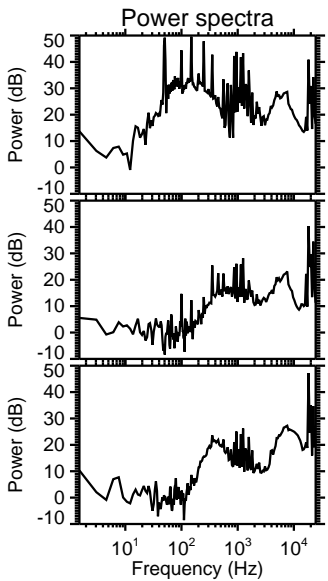
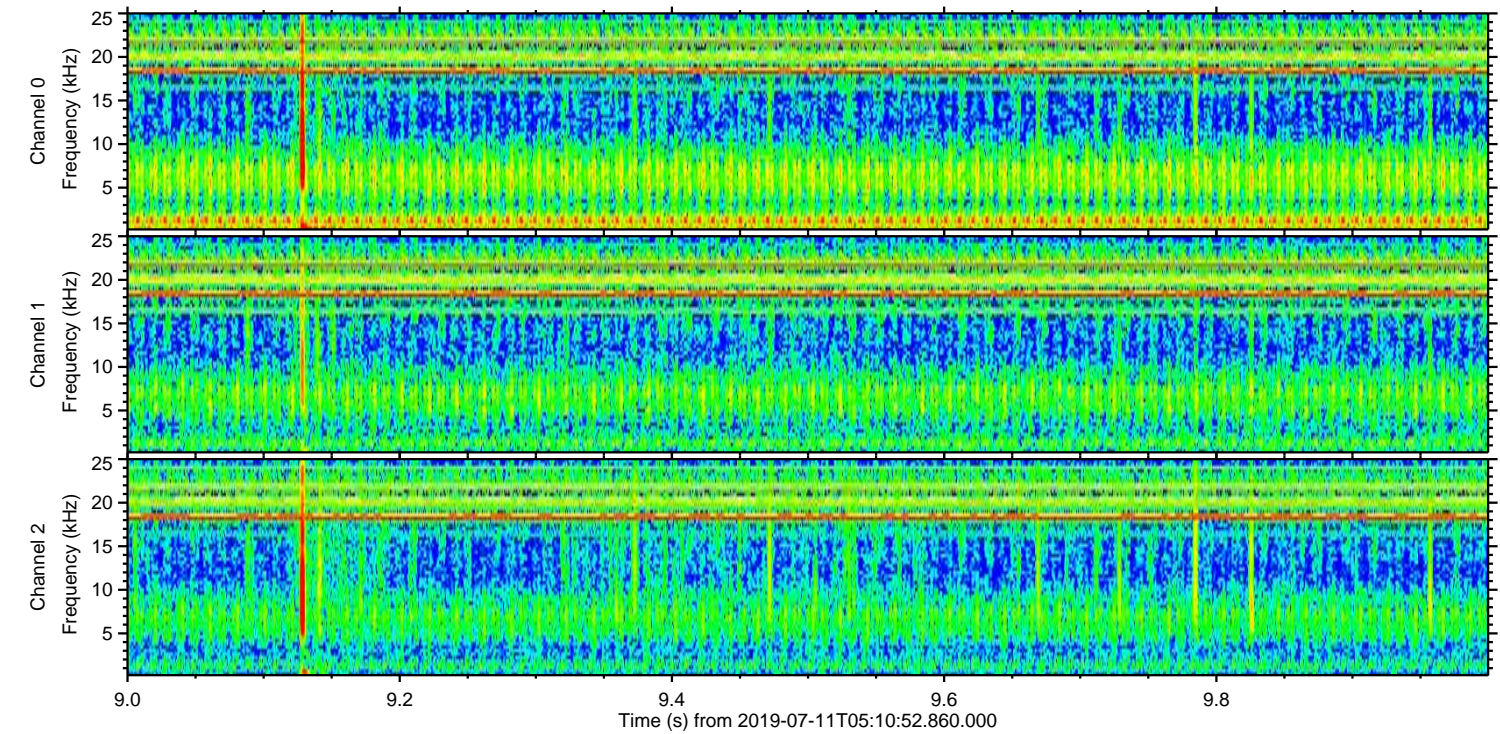
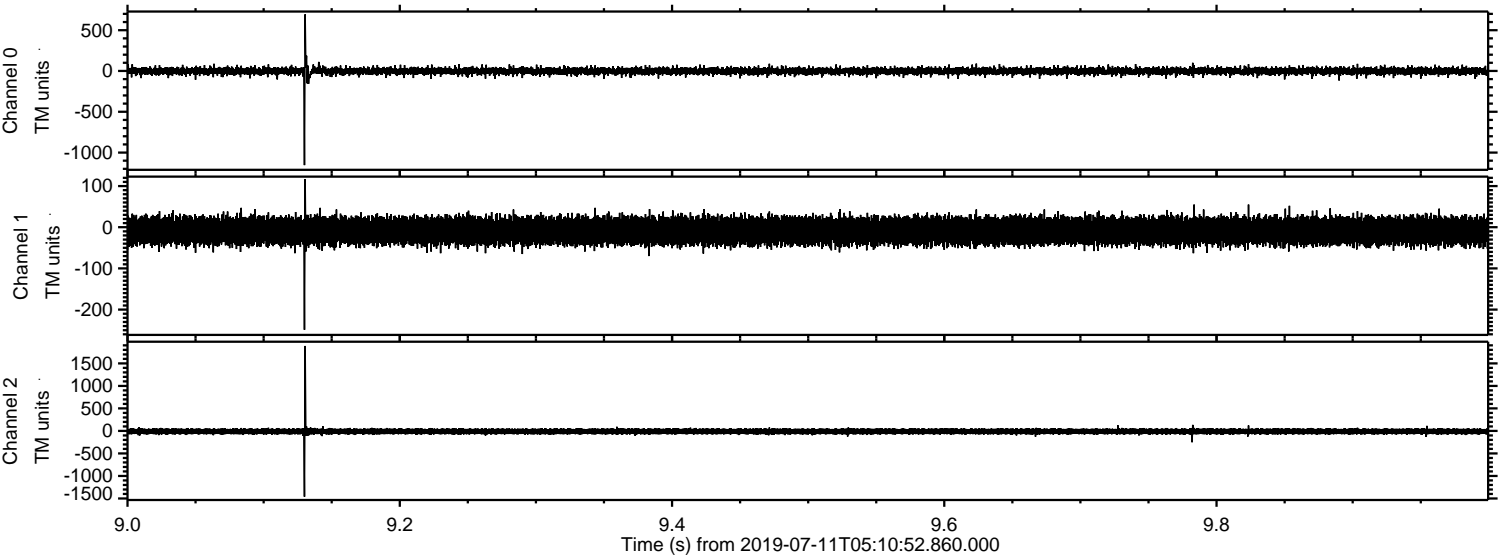


ELMAVAN 3D WAVEFORMS (Measured data sampled at 50 kHz) 51000 packets of 144 samples from 2019-07-11T05:10:52.860.000. Part 139/147

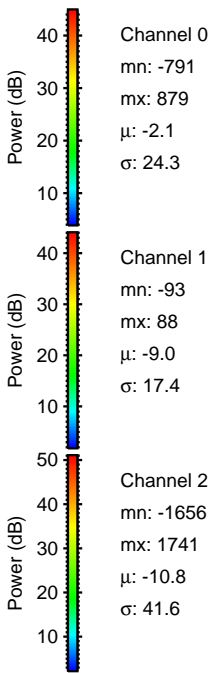
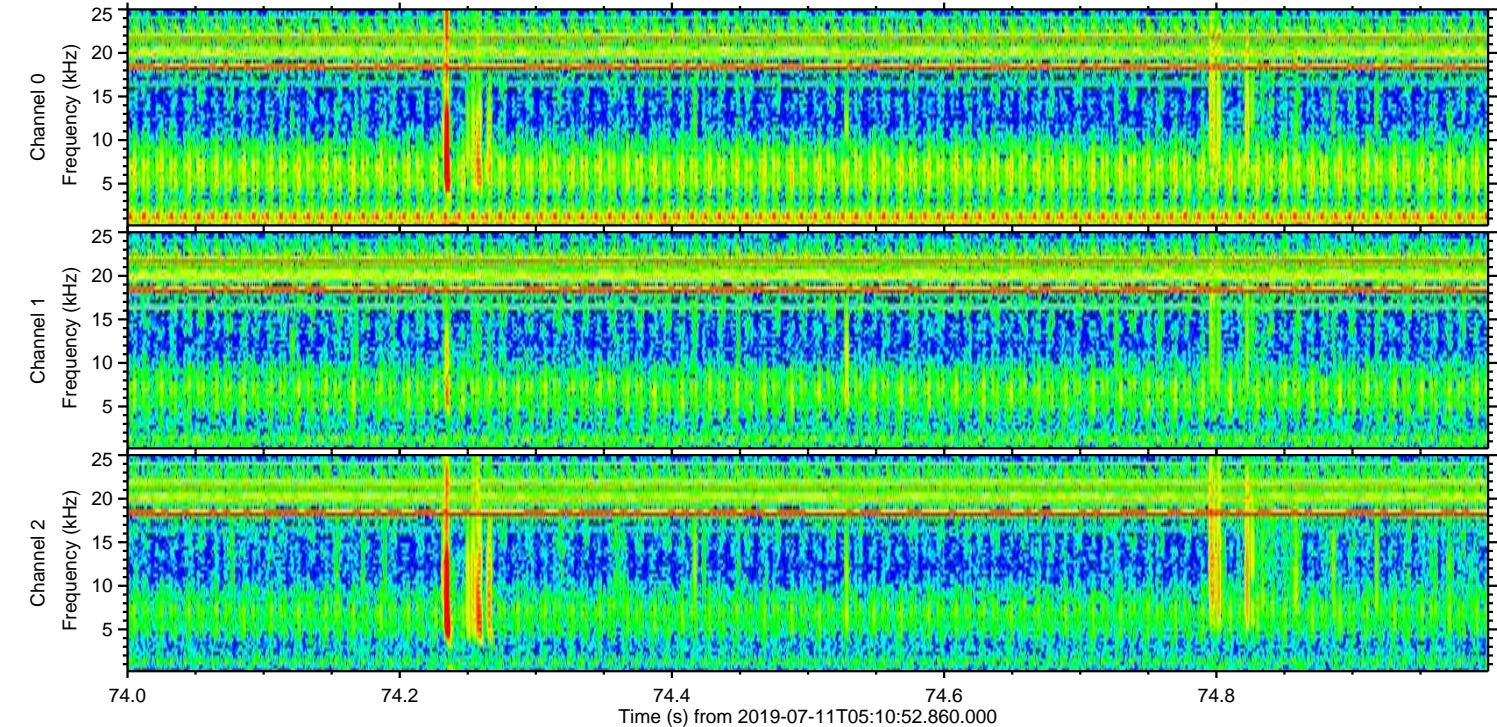
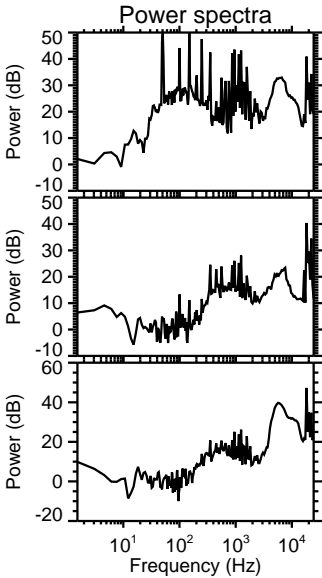
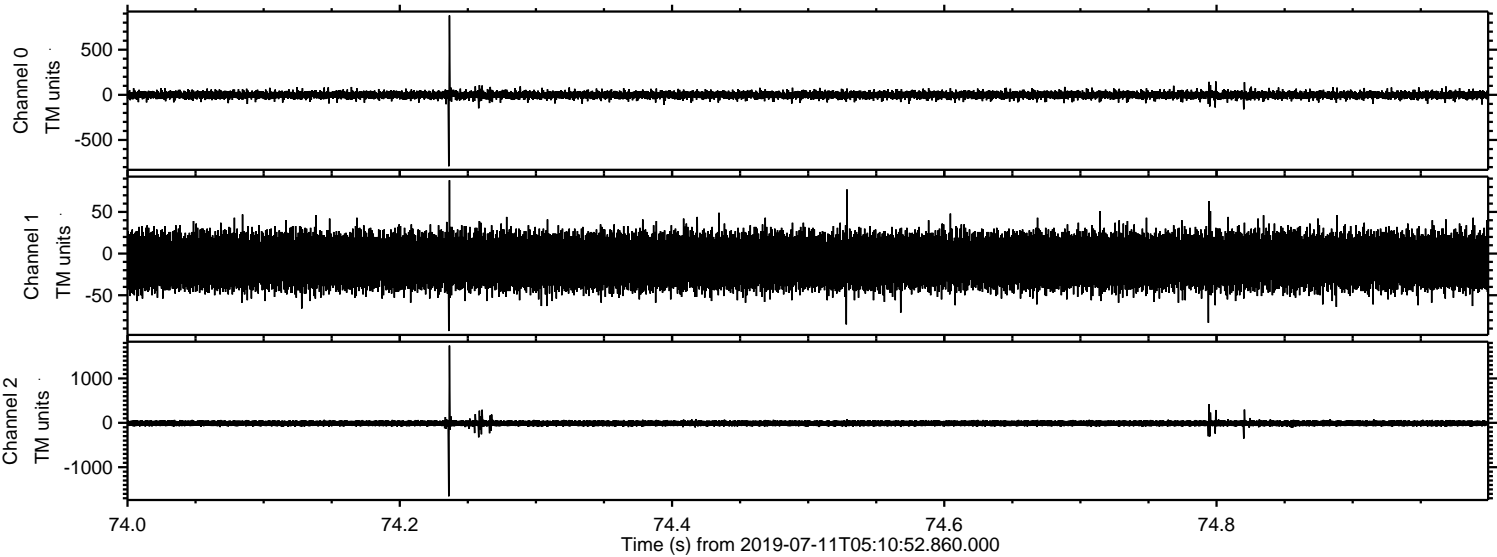
Processed Thu Jul 11 07:19:05 2019 by ELM ver.2012-10-06 from 001__elm20190711_051051__dat00.bin



Processed Thu Jul 11 07:19:06 2019 by ELM ver.2012-10-06 from 001__elm20190711_051051__dat00.bin

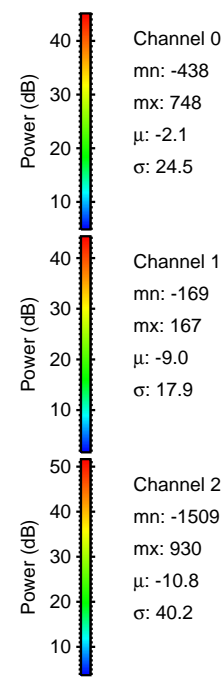
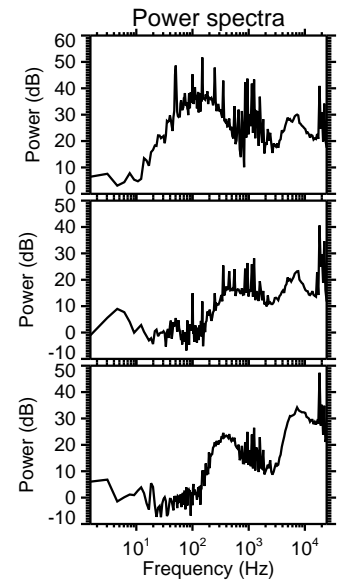
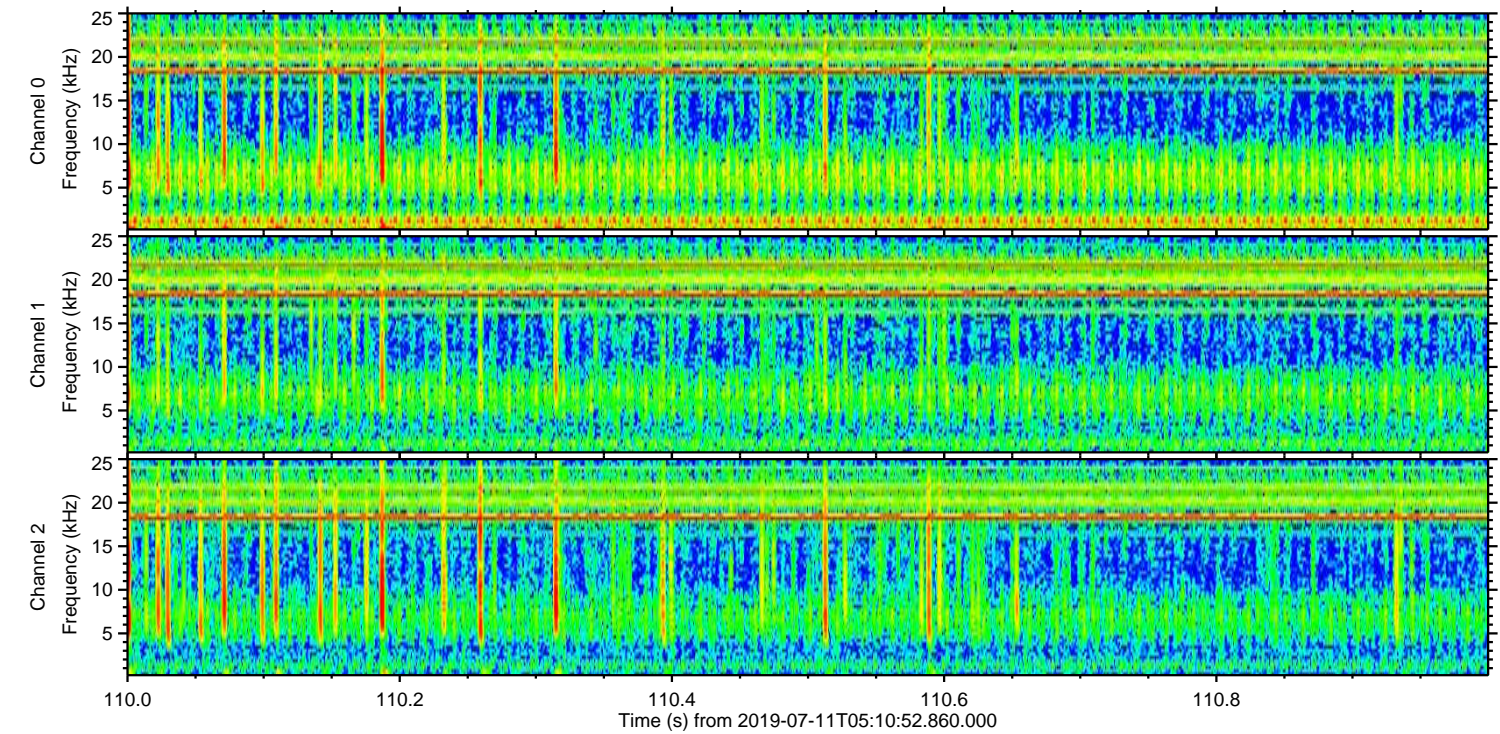
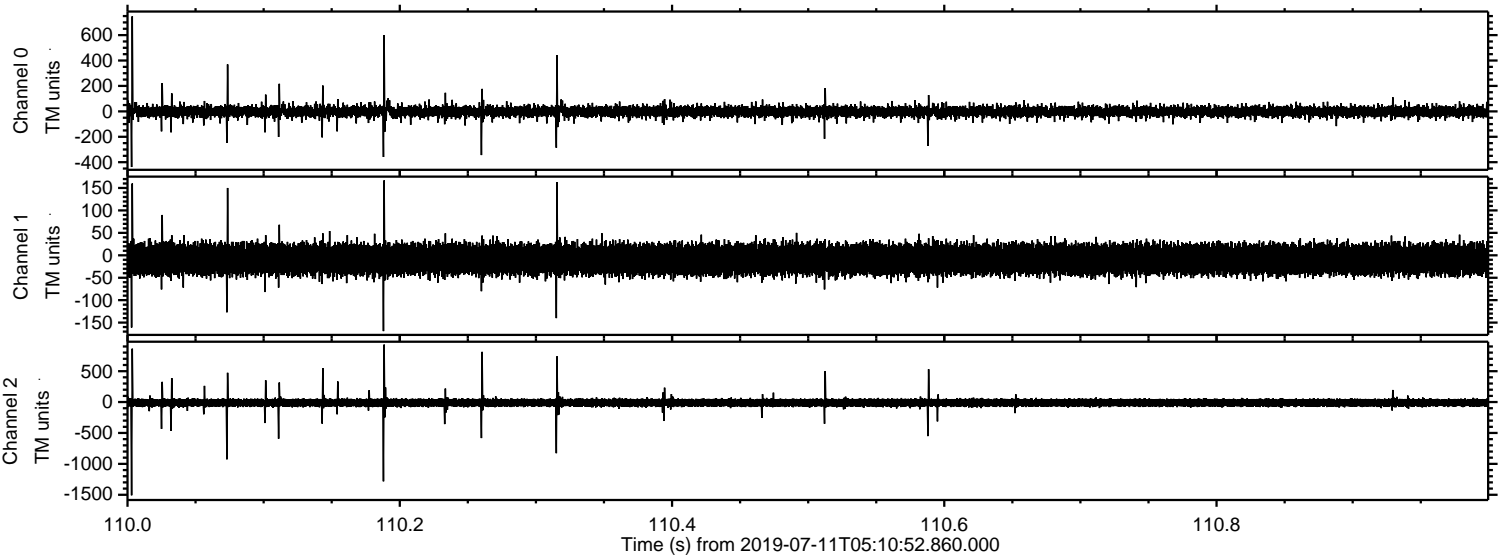


Processed Thu Jul 11 07:19:06 2019 by ELM ver.2012-10-06 from 001__elm20190711_051051__dat00.bin



ELMAVAN 3D WAVEFORMS (Measured data sampled at 50 kHz) 51000 packets of 144 samples from 2019-07-11T05:10:52.860.000. Part 111/147

Processed Thu Jul 11 07:19:07 2019 by ELM ver.2012-10-06 from 001__elm20190711_051051__dat00.bin

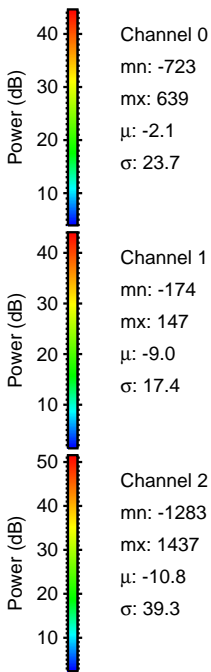
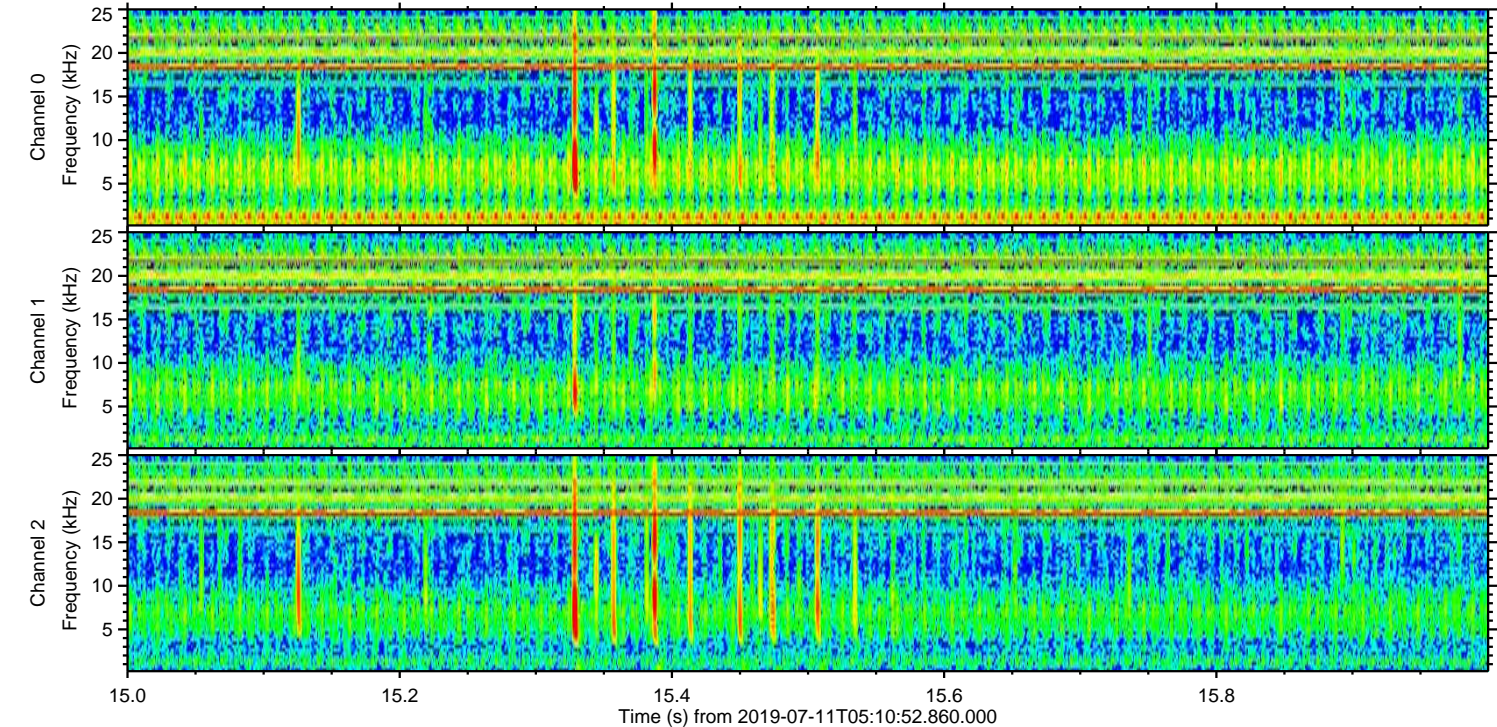
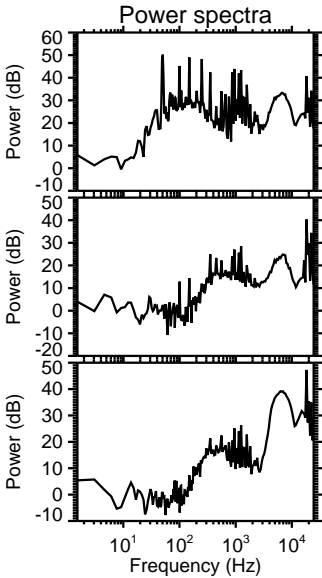
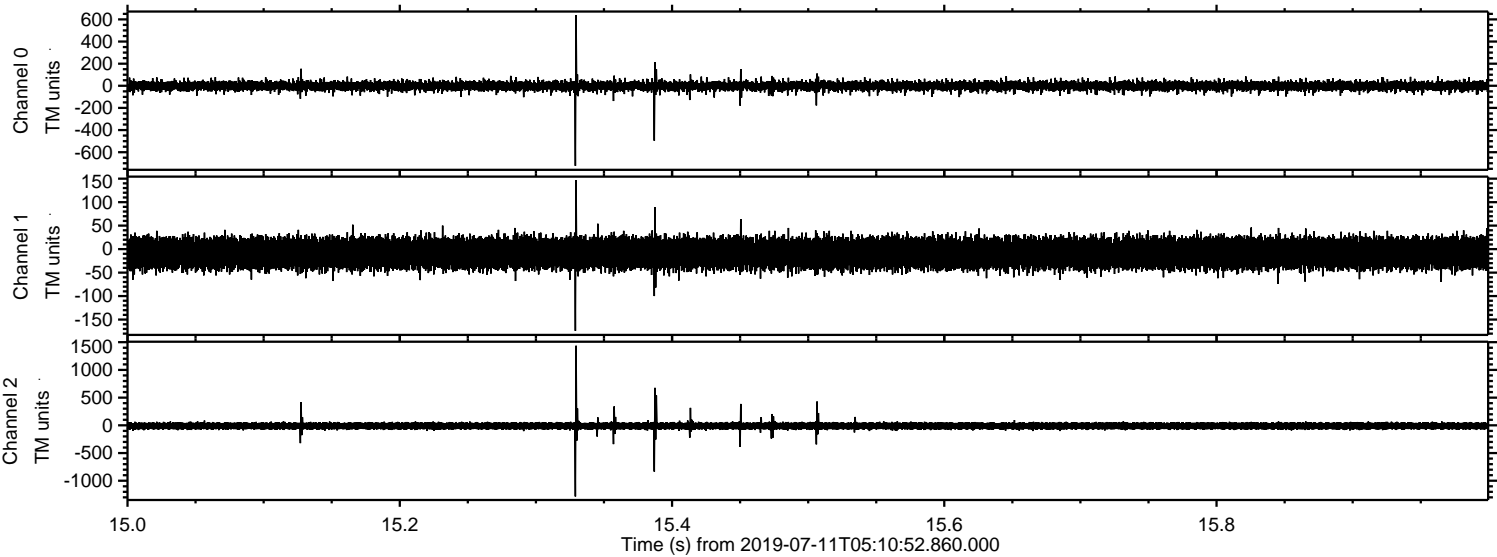


Channel 0
mn: -438
mx: 748
 μ : -2.1
 σ : 24.5

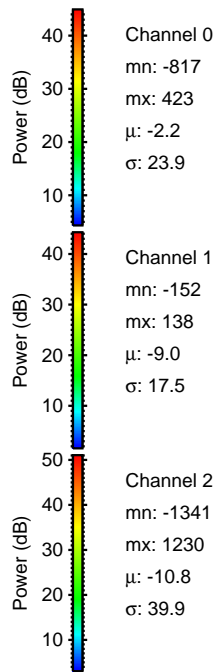
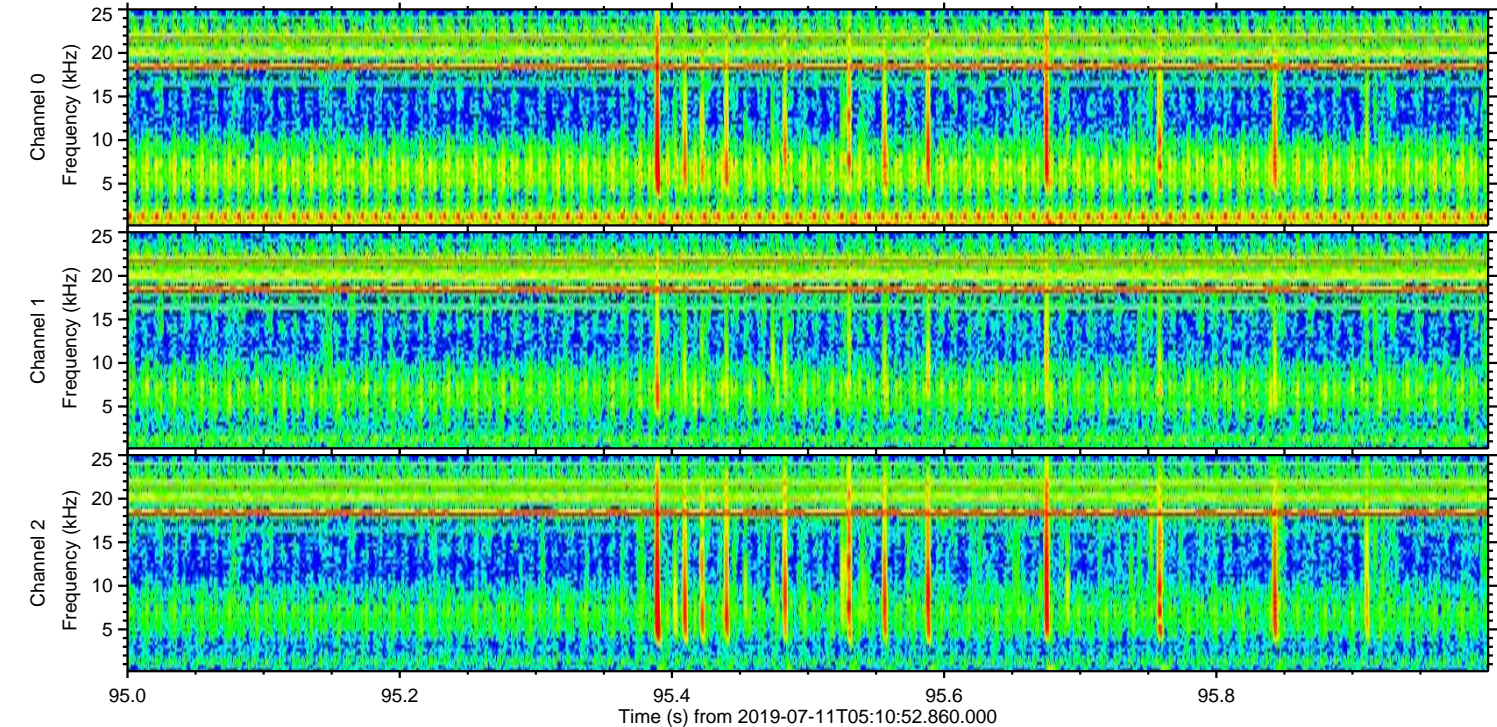
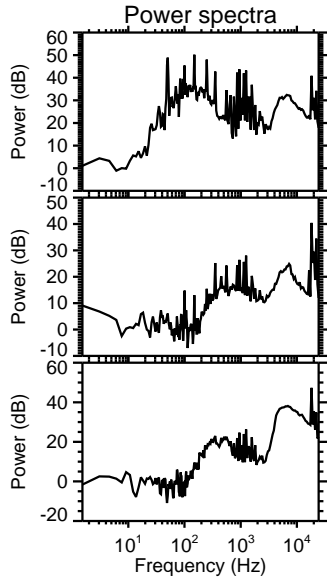
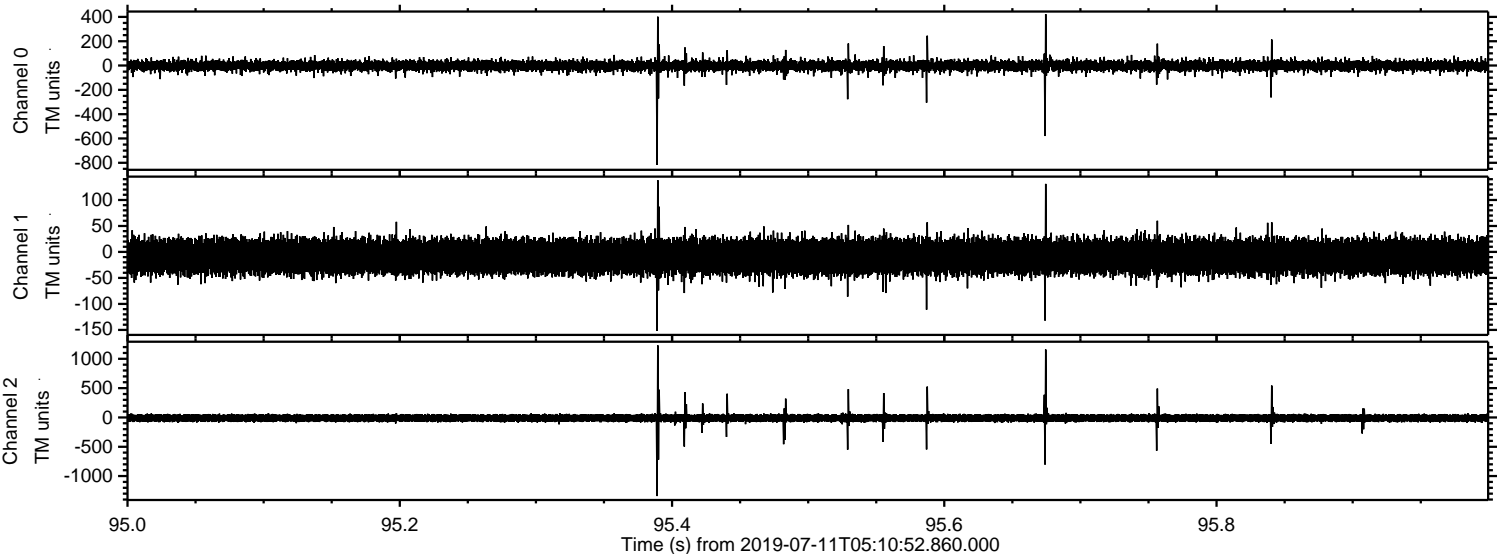
Channel 1
mn: -169
mx: 167
 μ : -9.0
 σ : 17.9

Channel 2
mn: -1509
mx: 930
 μ : -10.8
 σ : 40.2

Processed Thu Jul 11 07:19:08 2019 by ELM ver.2012-10-06 from 001__elm20190711_051051__dat00.bin

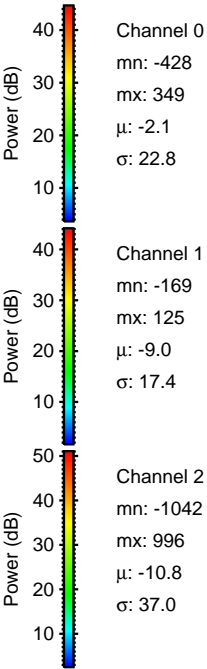
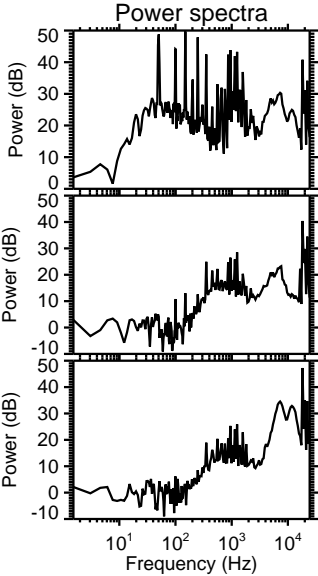
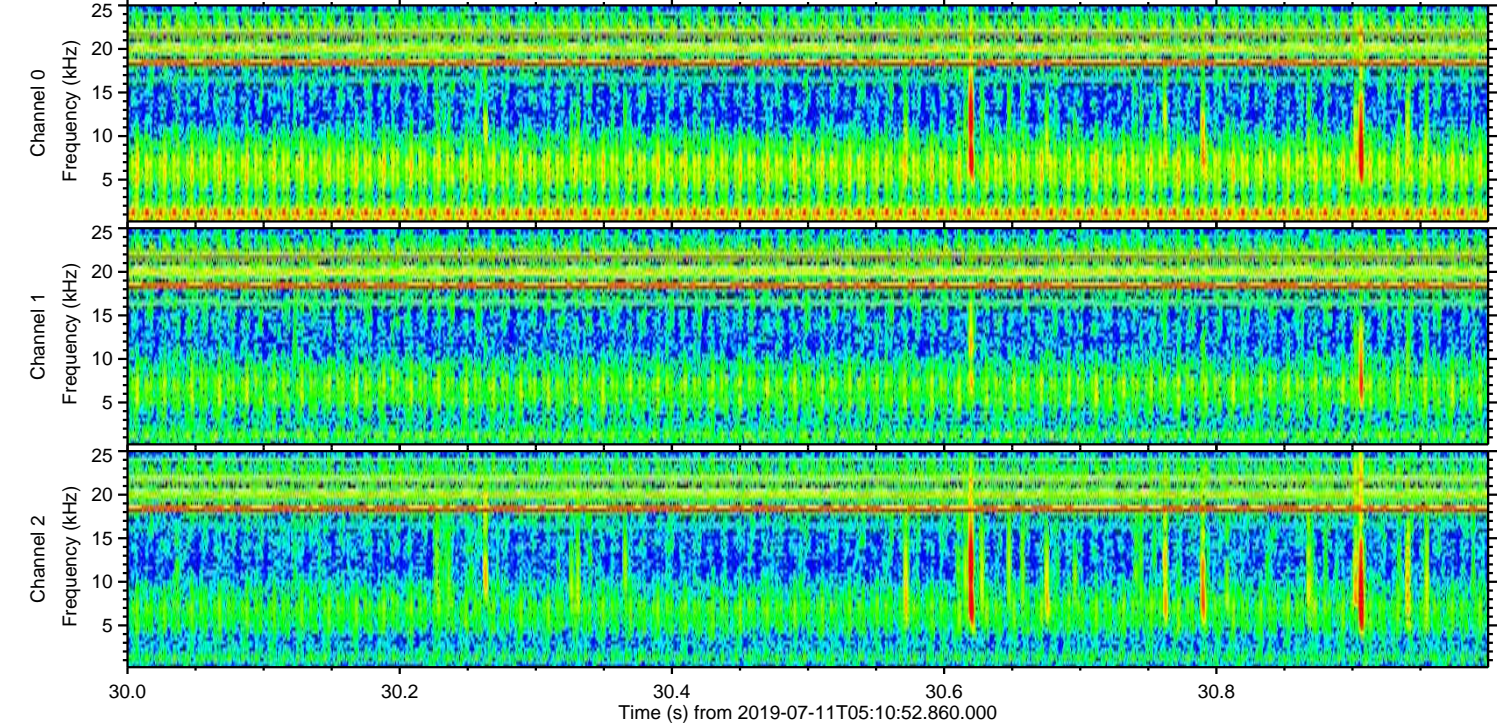
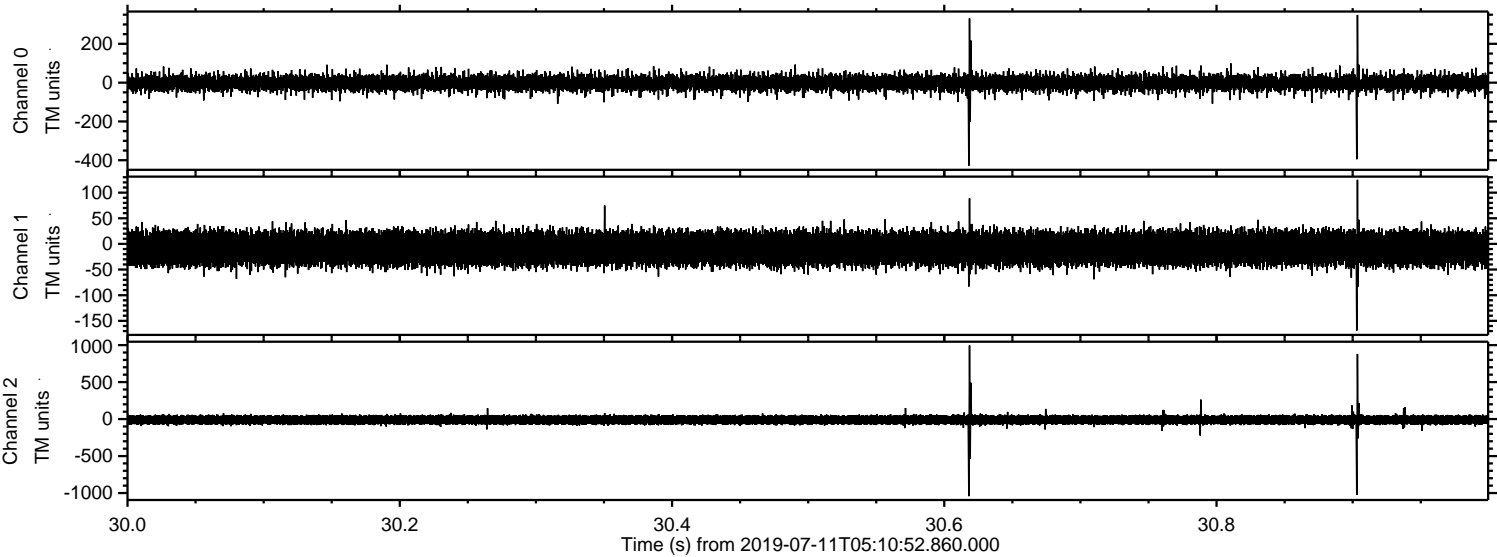


Processed Thu Jul 11 07:19:08 2019 by ELM ver.2012-10-06 from 001__elm20190711_051051__dat00.bin

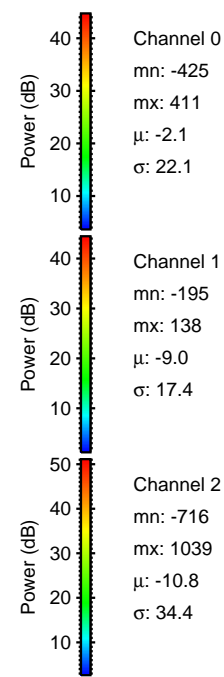
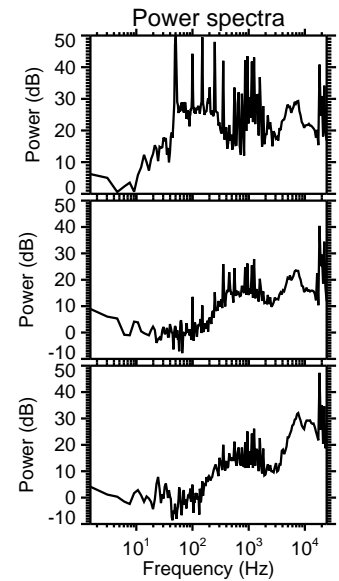
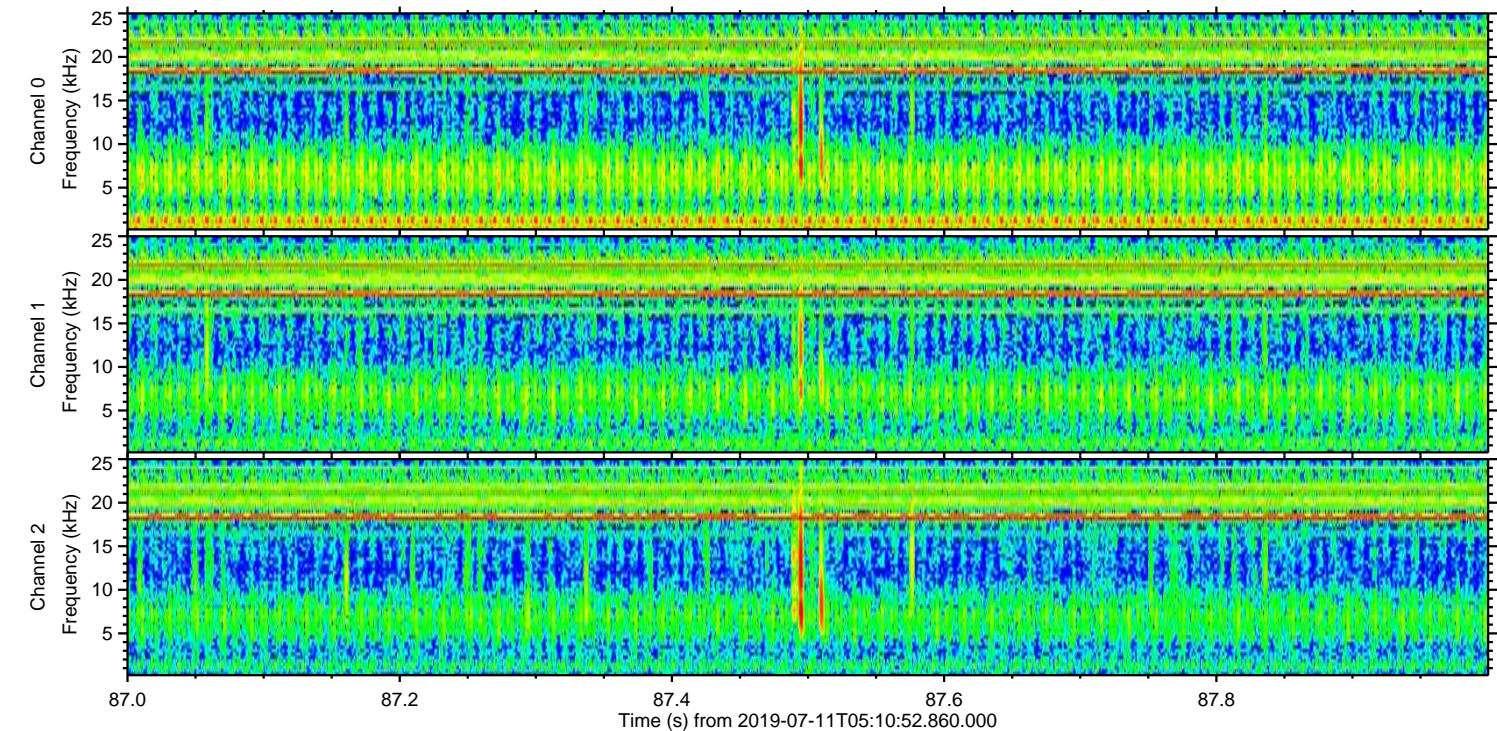
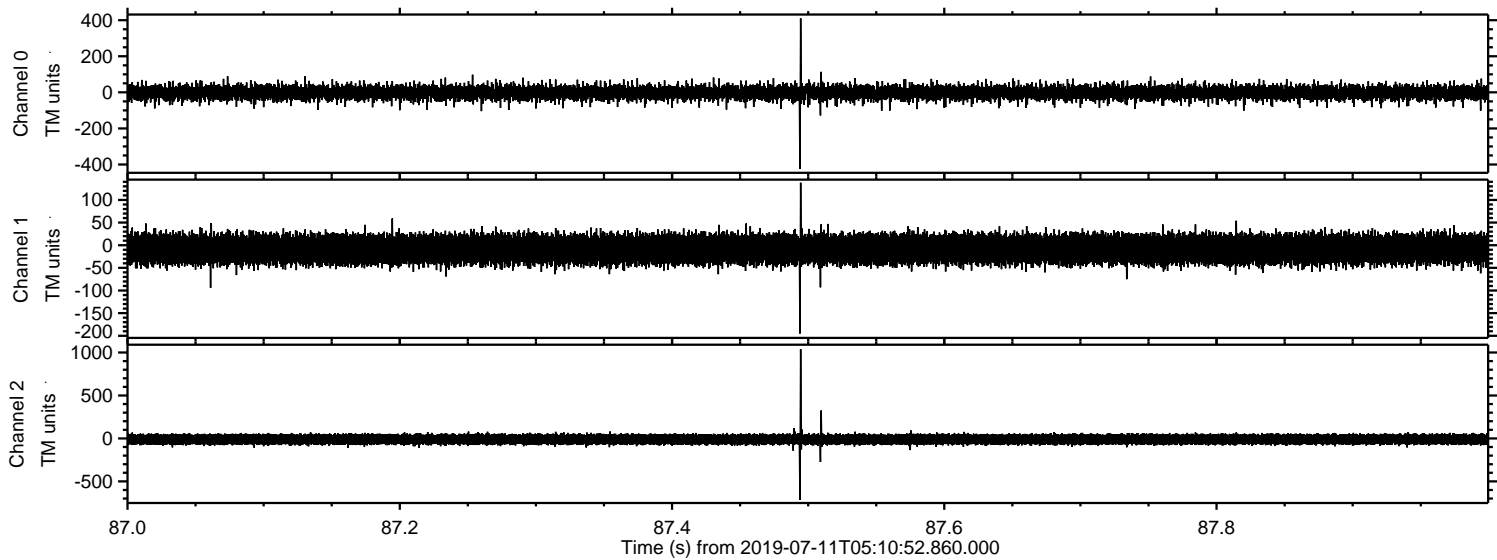


ELMAVAN 3D WAVEFORMS (Measured data sampled at 50 kHz) 51000 packets of 144 samples from 2019-07-11T05:10:52.860.000. Part 31/147

Processed Thu Jul 11 07:19:09 2019 by ELM ver.2012-10-06 from 001__elm20190711_051051__dat00.bin



Processed Thu Jul 11 07:19:10 2019 by ELM ver.2012-10-06 from 001__elm20190711_051051__dat00.bin

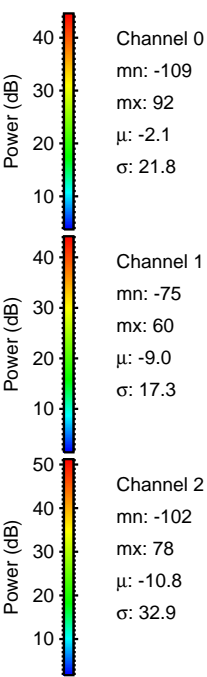
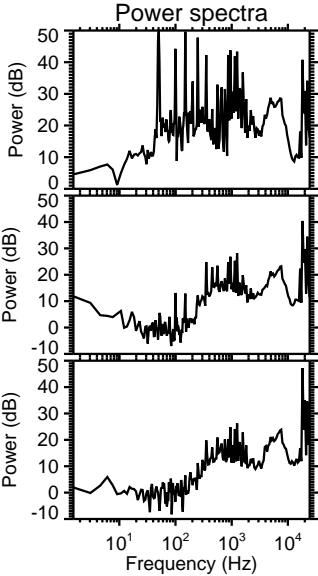
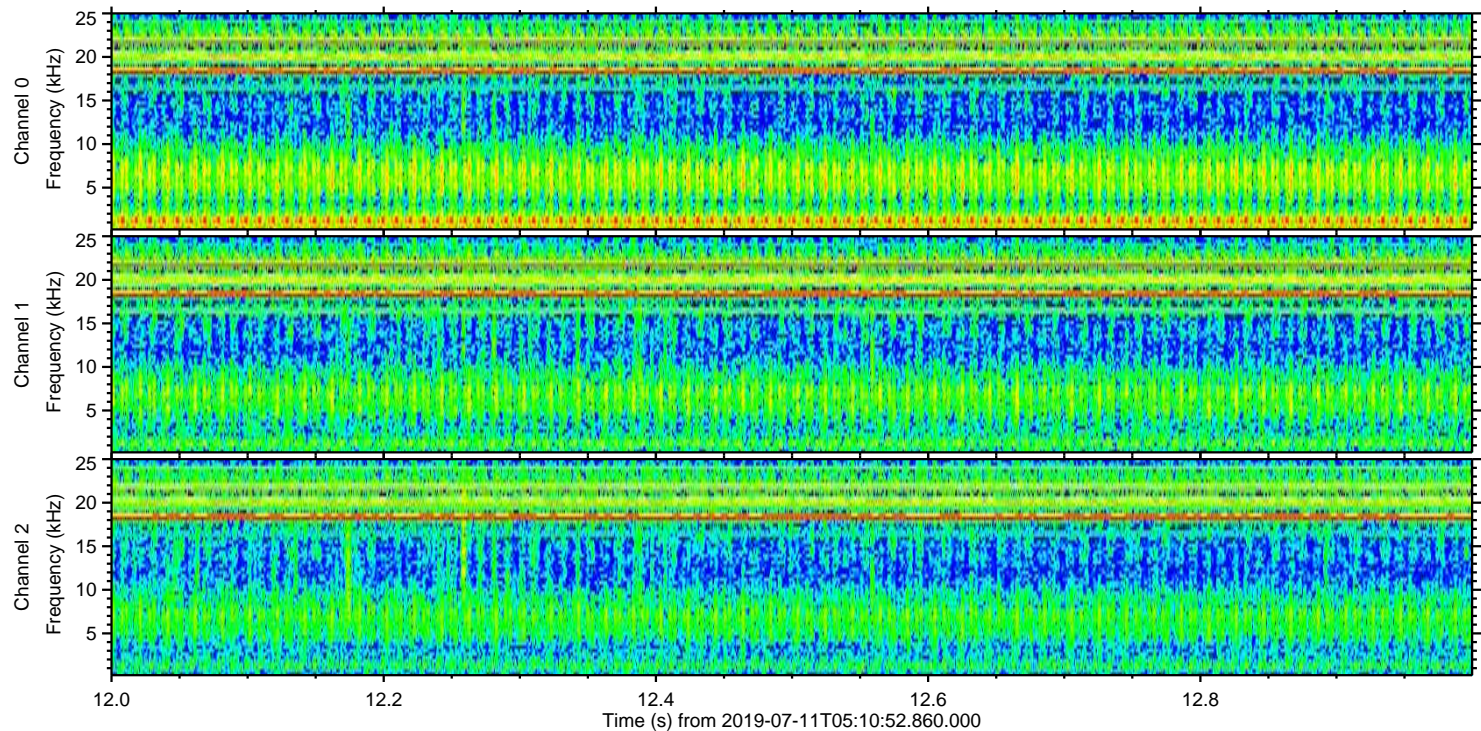
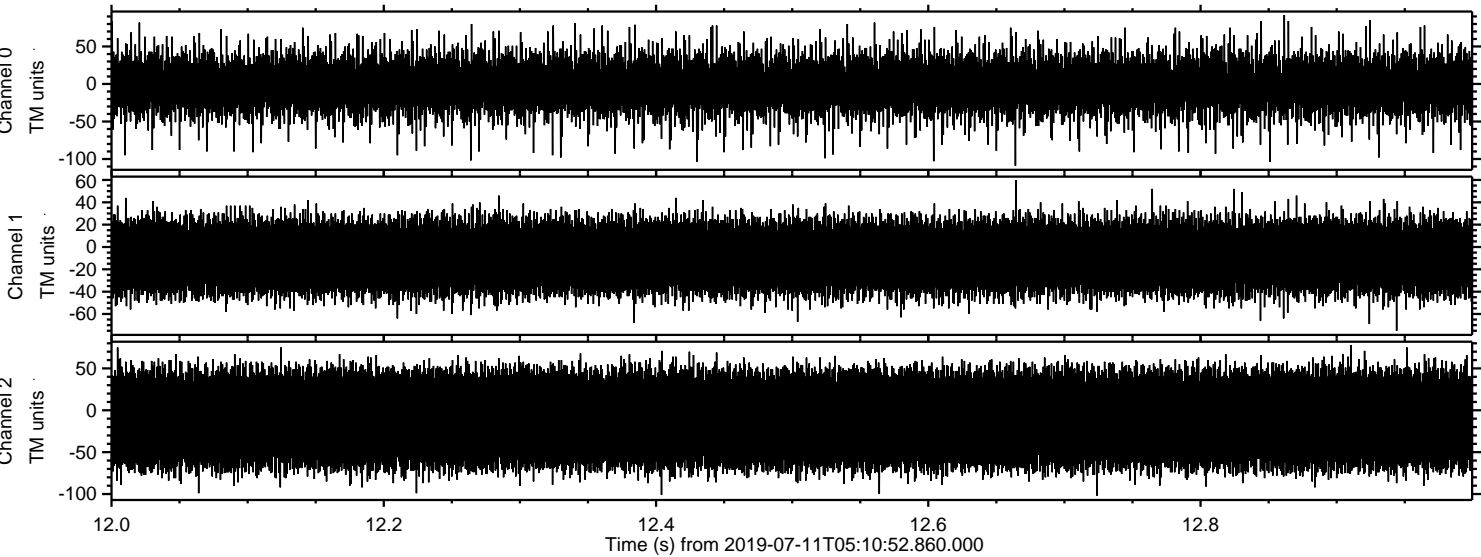


Channel 0
mn: -425
mx: 411
 μ : -2.1
 σ : 22.1

Channel 1
mn: -195
mx: 138
 μ : -9.0
 σ : 17.4

Channel 2
mn: -716
mx: 1039
 μ : -10.8
 σ : 34.4

Processed Thu Jul 11 07:19:10 2019 by ELM ver.2012-10-06 from 001__elm20190711_051051__dat00.bin



Channel 0
mn: -109
mx: 92
 μ : -2.1
 σ : 21.8

Channel 1
mn: -75
mx: 60
 μ : -9.0
 σ : 17.3

Channel 2
mn: -102
mx: 78
 μ : -10.8
 σ : 32.9