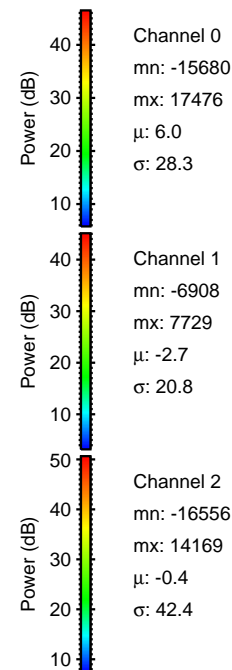
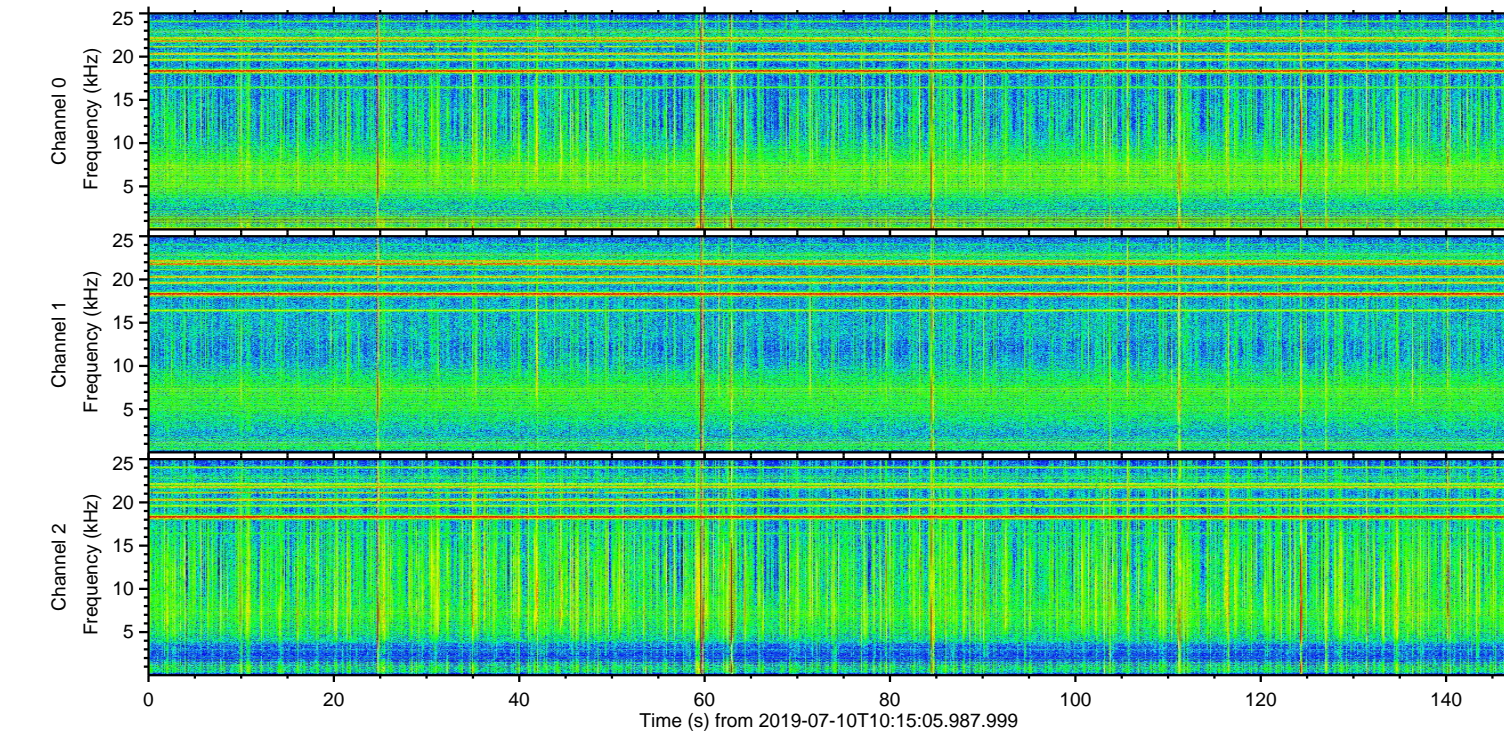
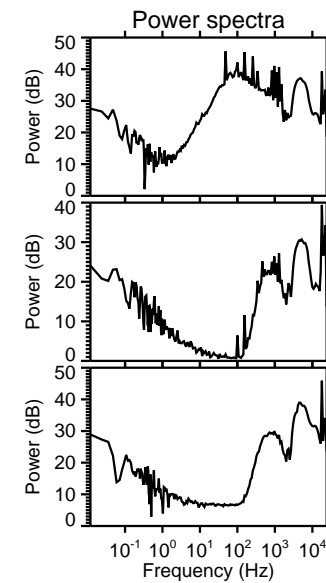
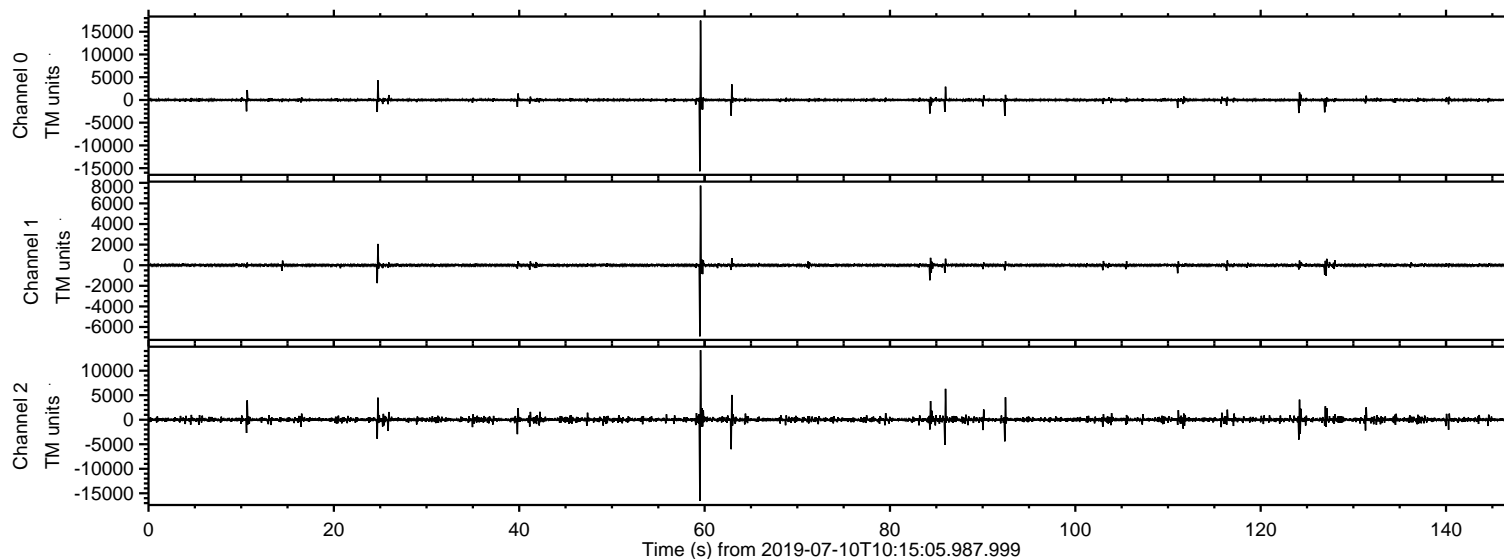
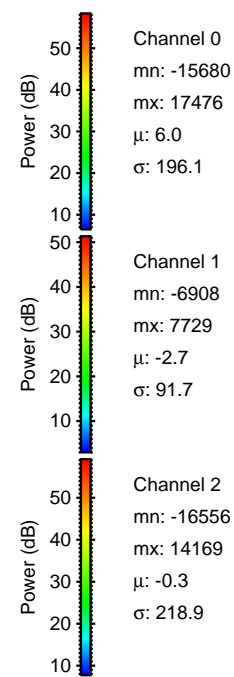
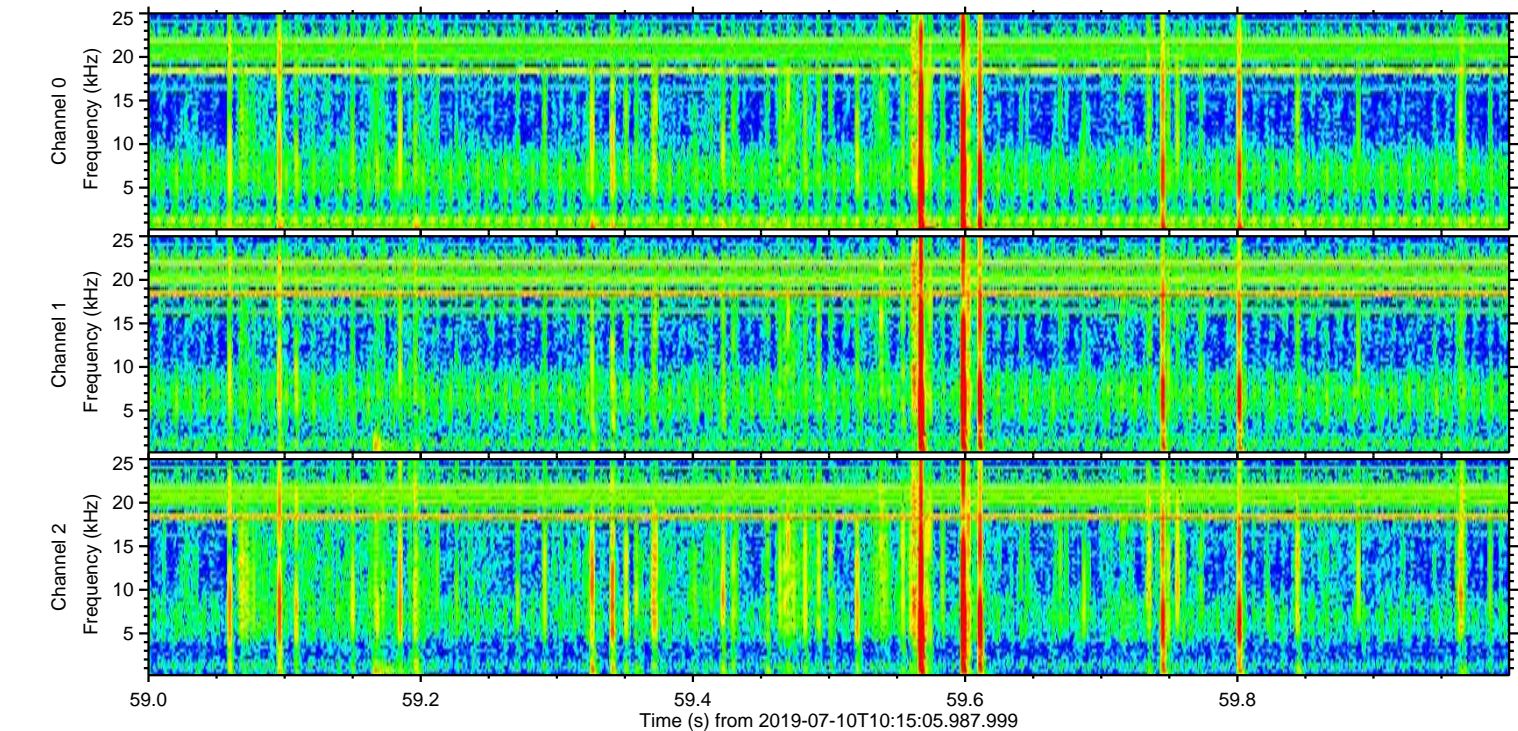
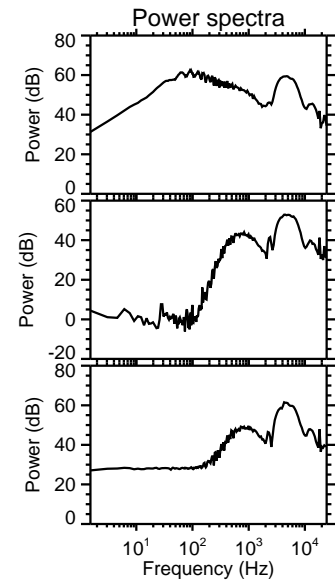
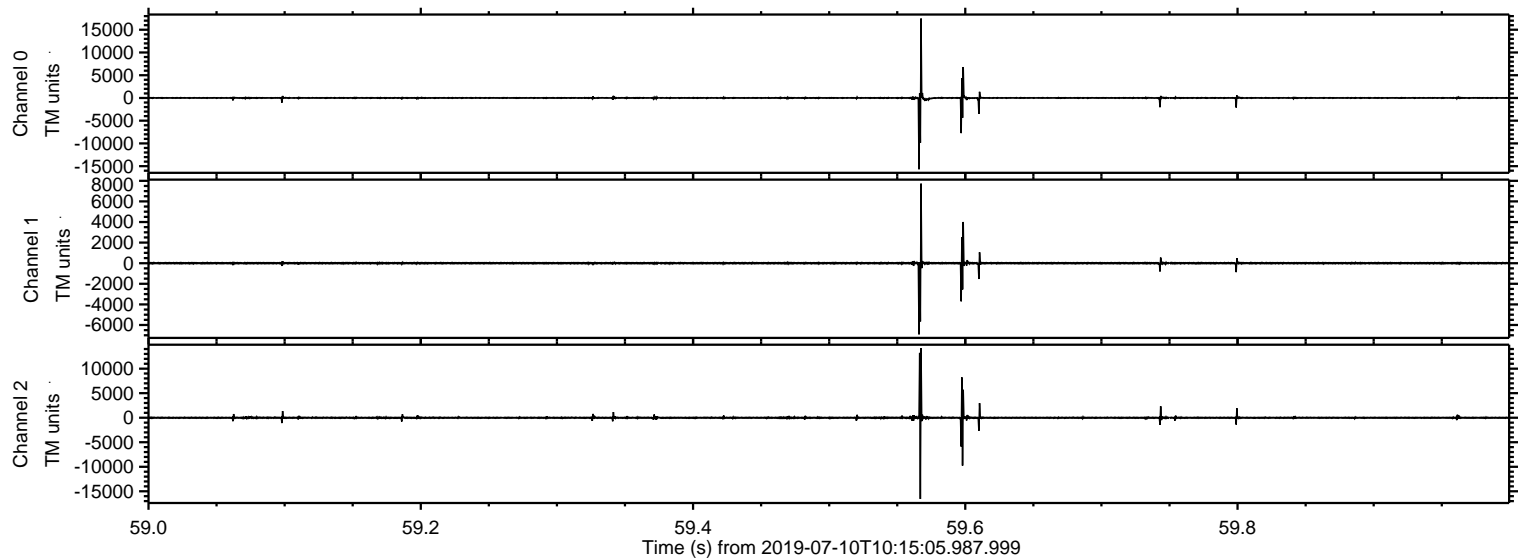


ELMAVAN 3D WAVEFORMS (Measured data sampled at 50 kHz) 51000 packets of 144 samples from 2019-07-10T10:15:05.987.999.

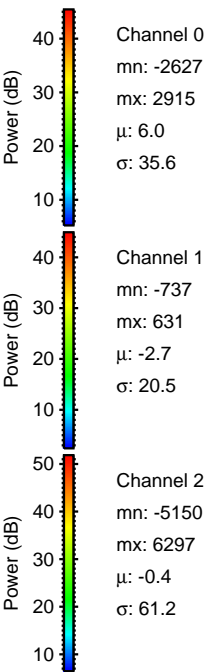
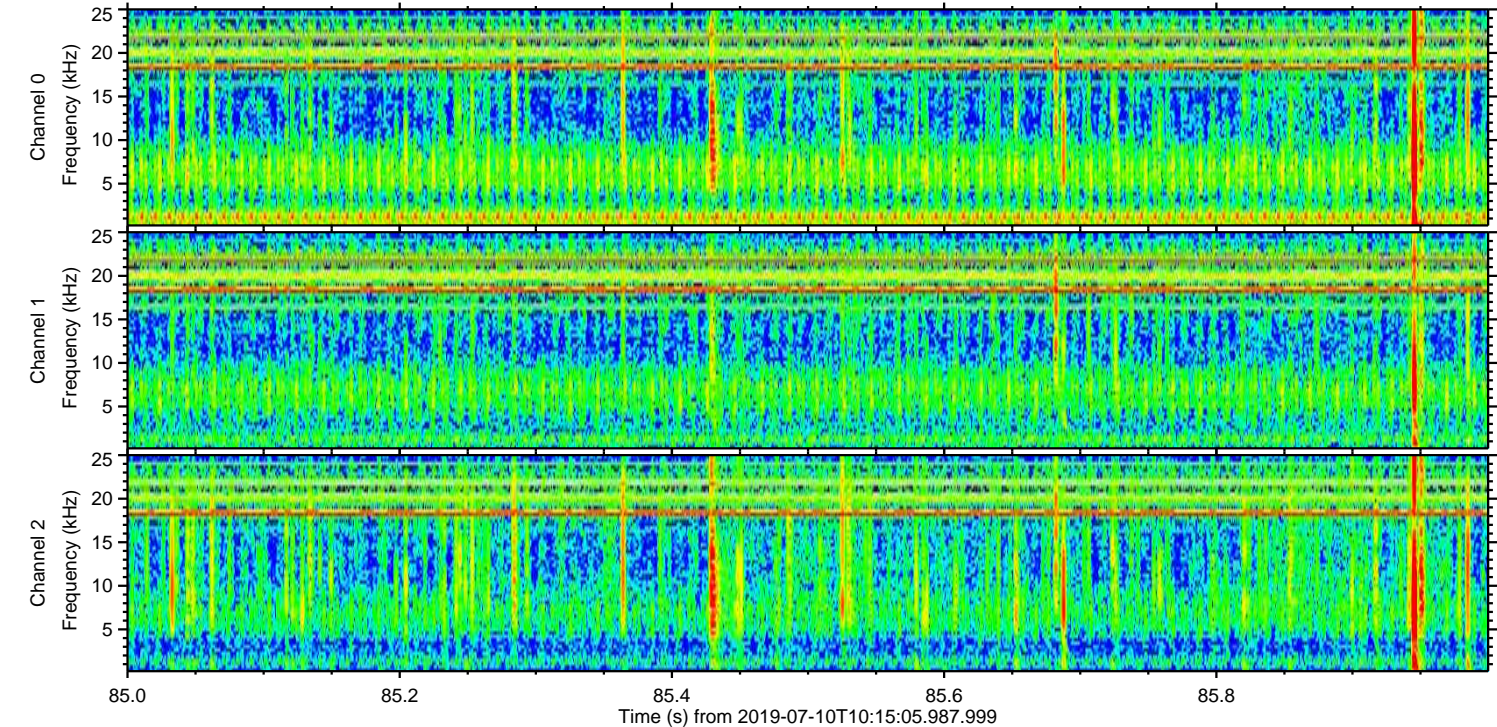
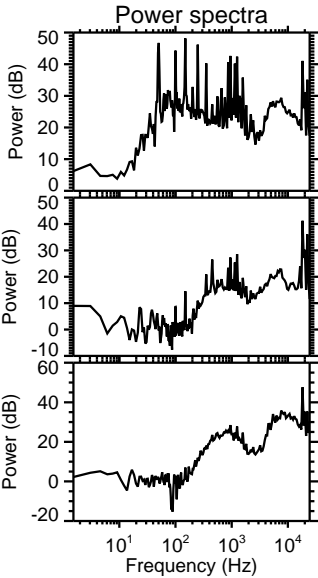
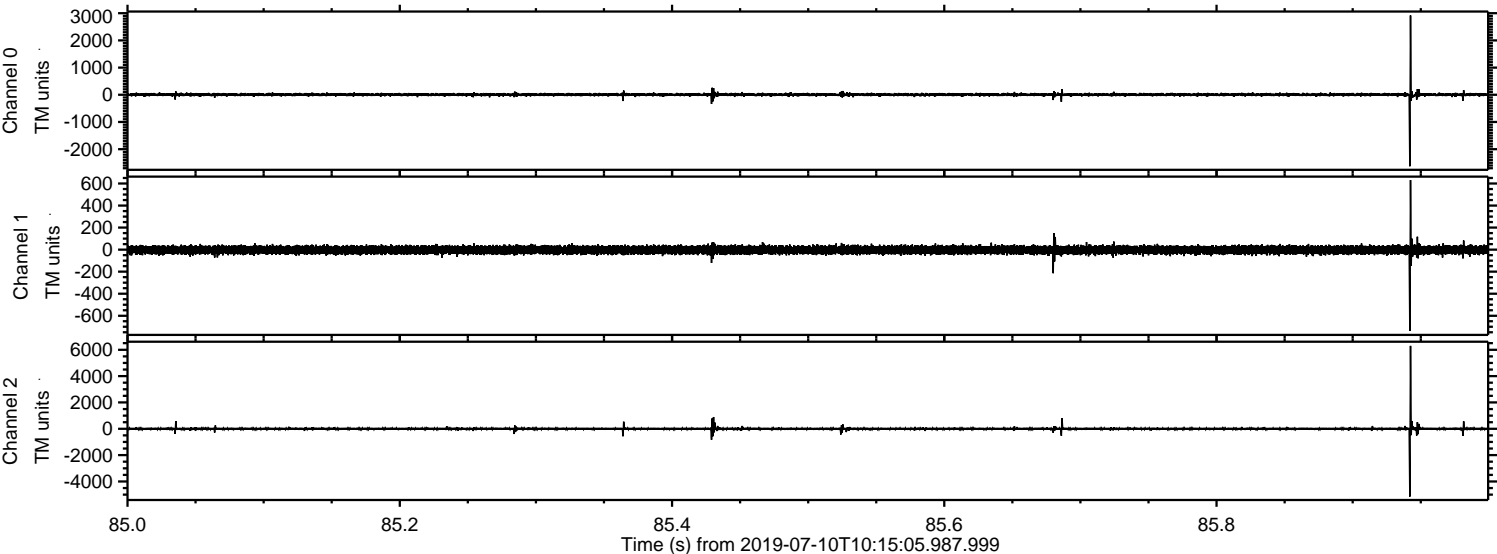
Processed Wed Jul 10 12:22:58 2019 by ELM ver.2012-10-06 from 001__elm20190710_101504__dat00.bin



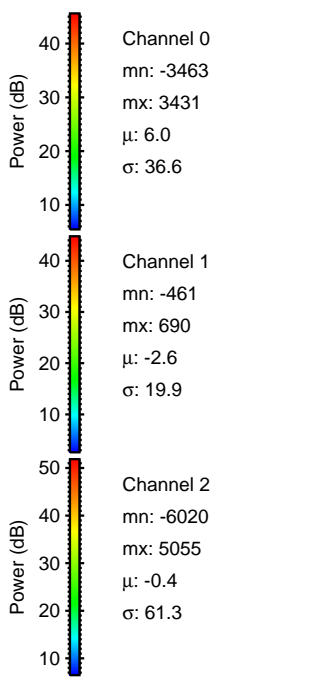
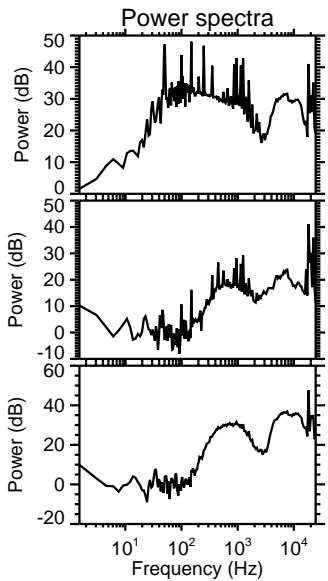
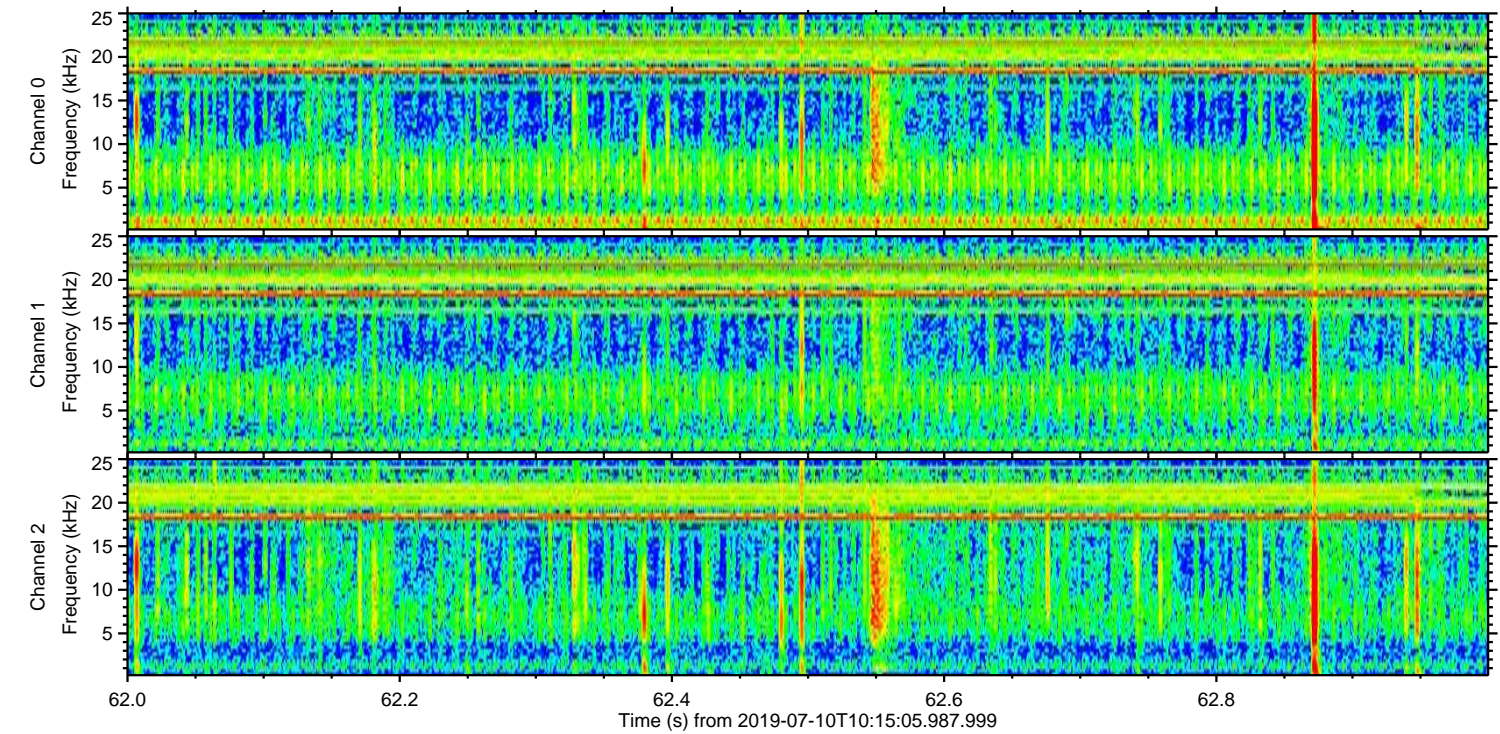
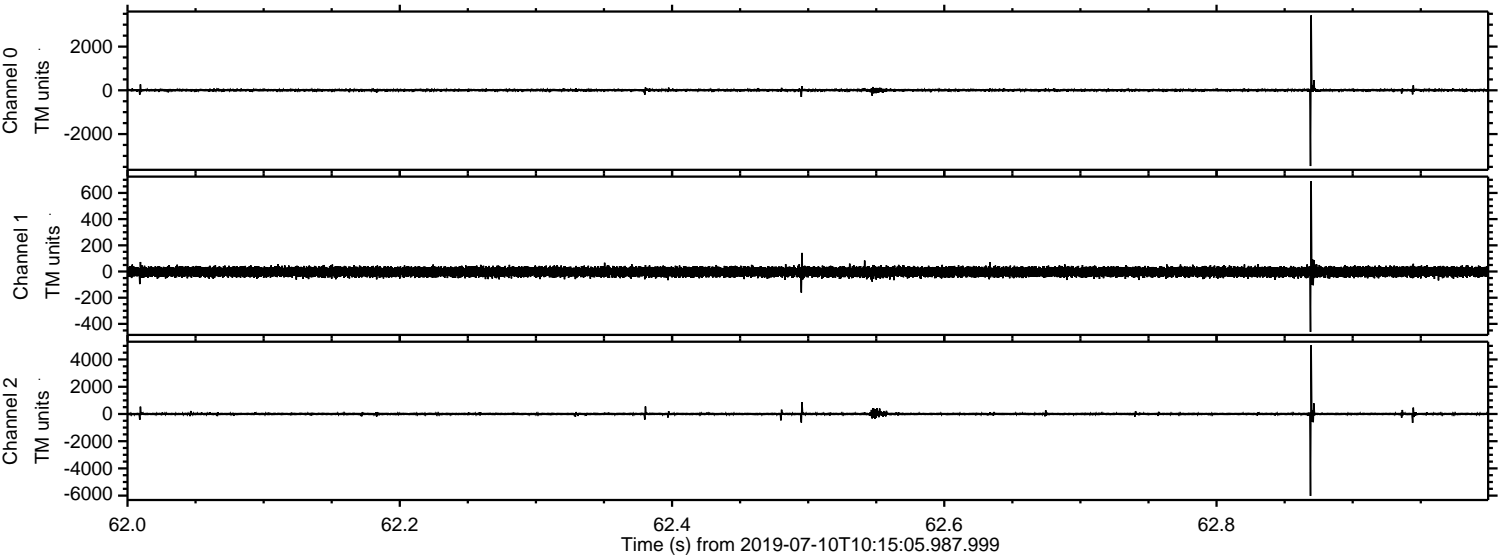
Processed Wed Jul 10 12:23:04 2019 by ELM ver.2012-10-06 from 001__elm20190710_101504__dat00.bin



Processed Wed Jul 10 12:23:05 2019 by ELM ver.2012-10-06 from 001__elm20190710_101504__dat00.bin



Processed Wed Jul 10 12:23:06 2019 by ELM ver.2012-10-06 from 001__elm20190710_101504__dat00.bin

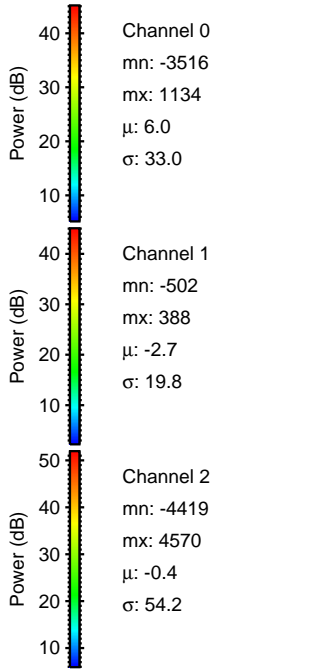
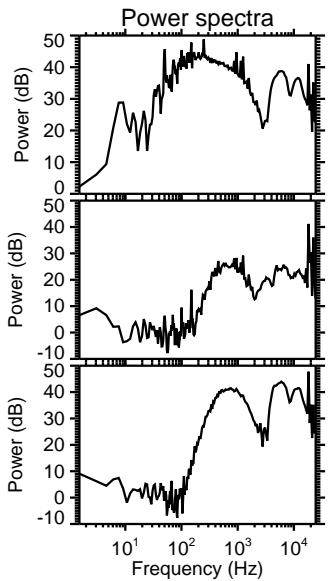
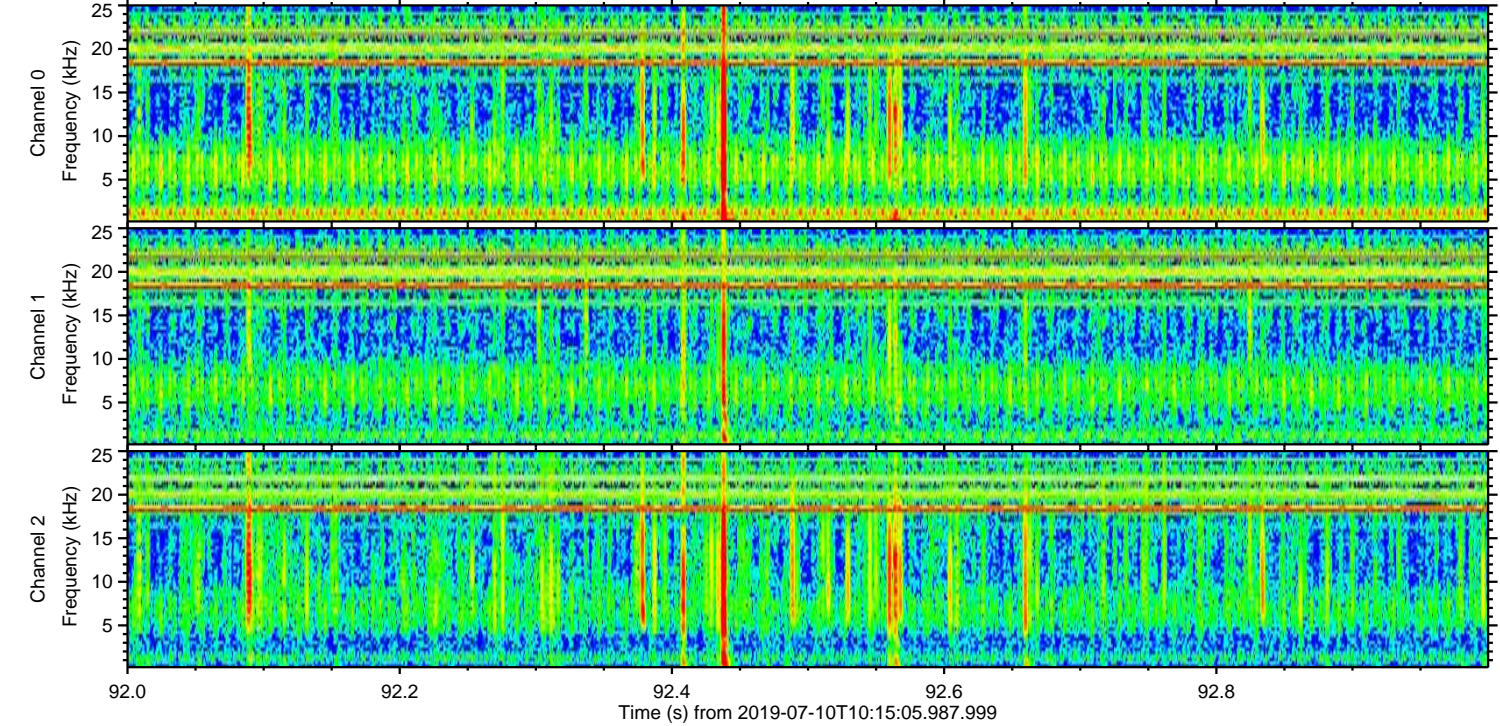
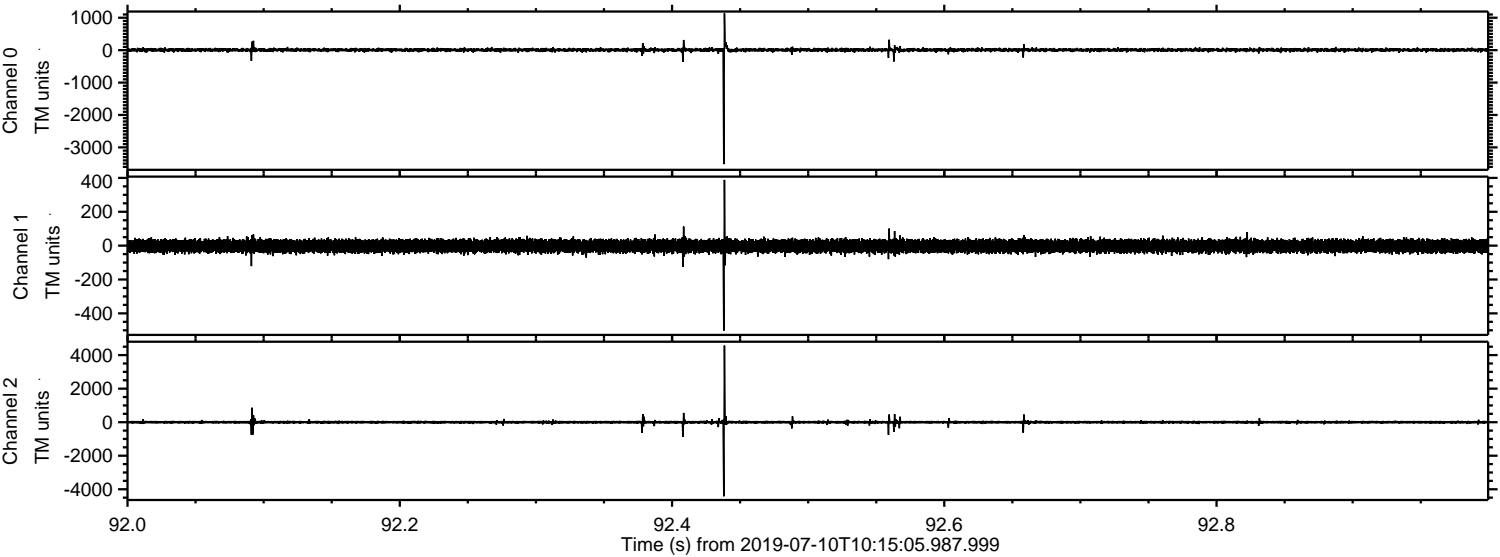


Channel 0
mn: -3463
mx: 3431
 μ : 6.0
 σ : 36.6

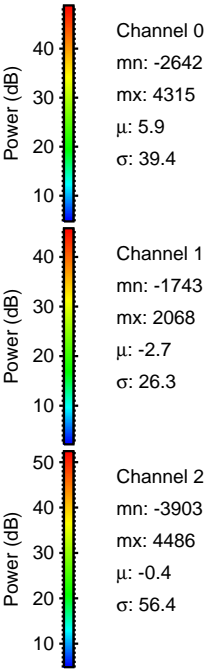
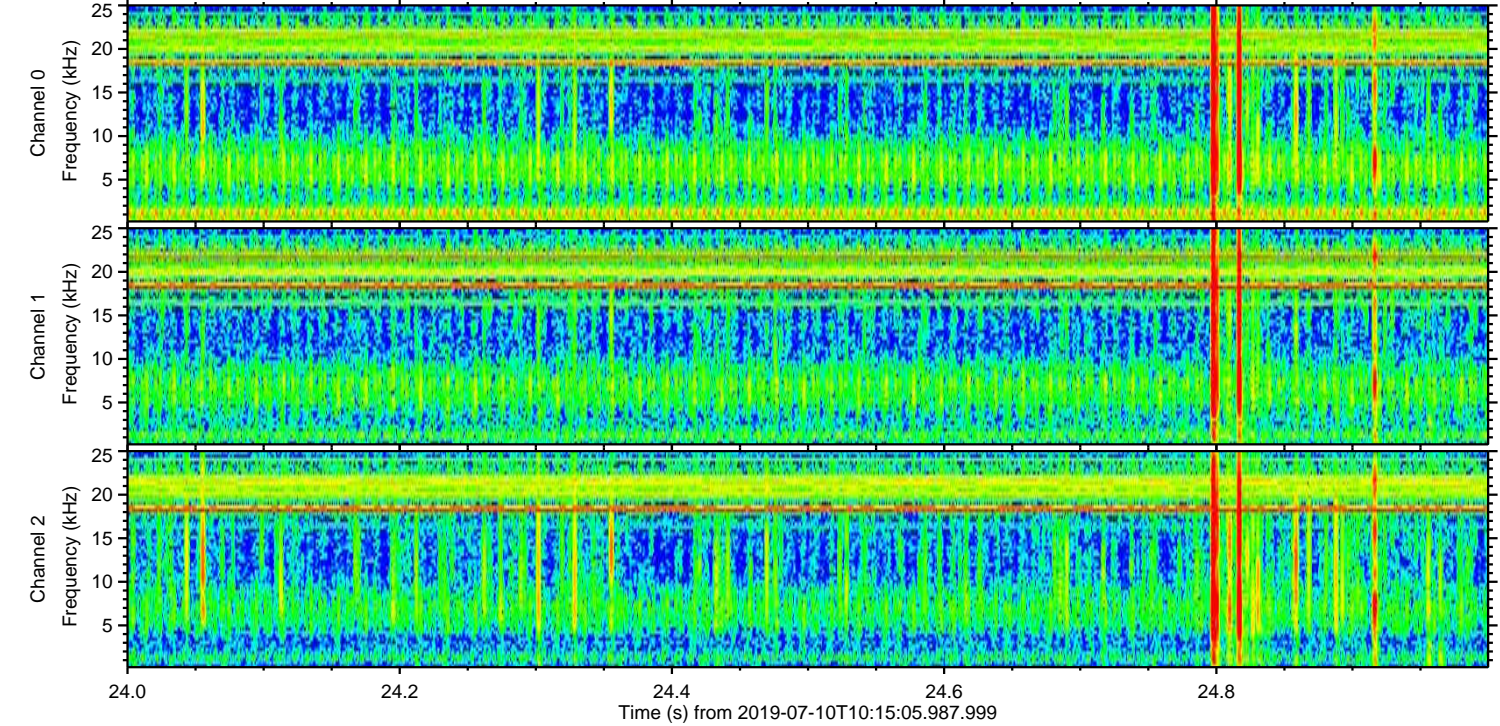
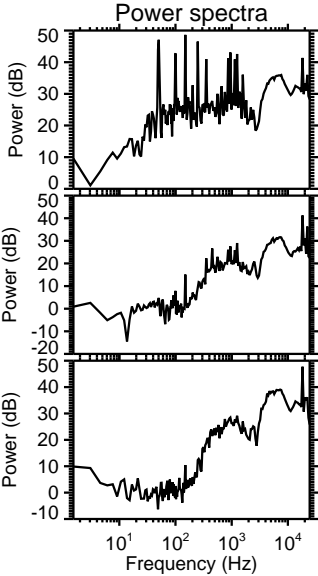
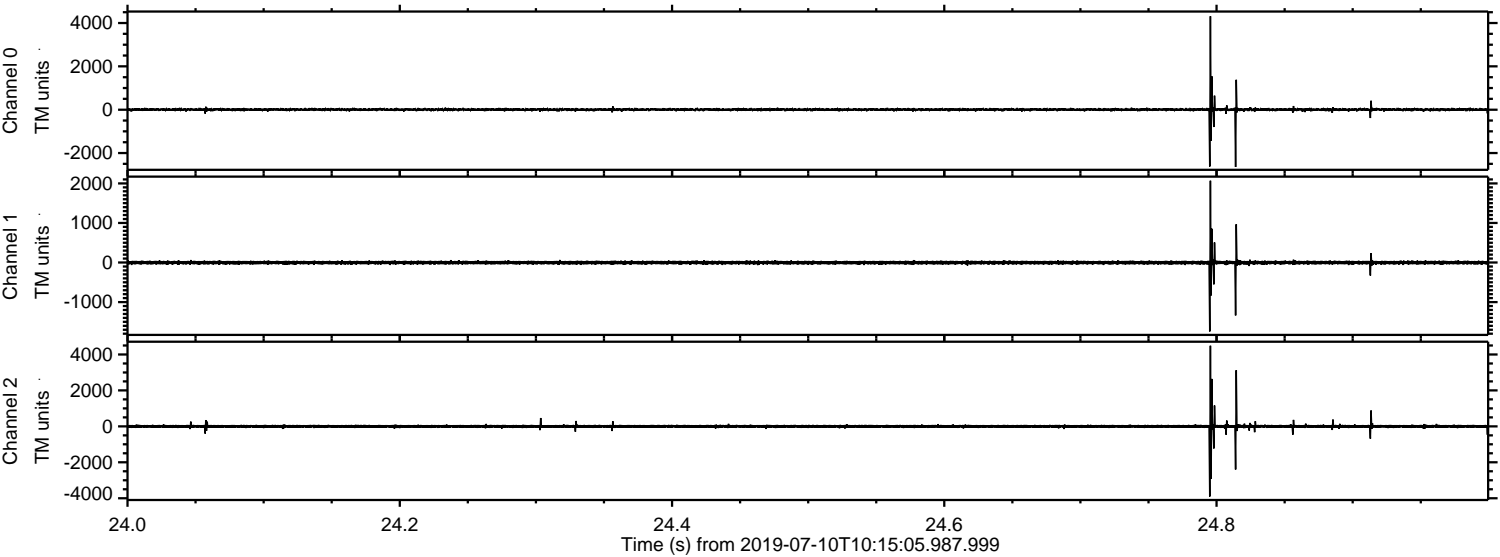
Channel 1
mn: -461
mx: 690
 μ : -2.6
 σ : 19.9

Channel 2
mn: -6020
mx: 5055
 μ : -0.4
 σ : 61.3

Processed Wed Jul 10 12:23:07 2019 by ELM ver.2012-10-06 from 001__elm20190710_101504__dat00.bin

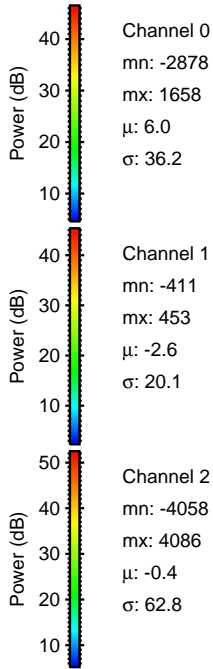
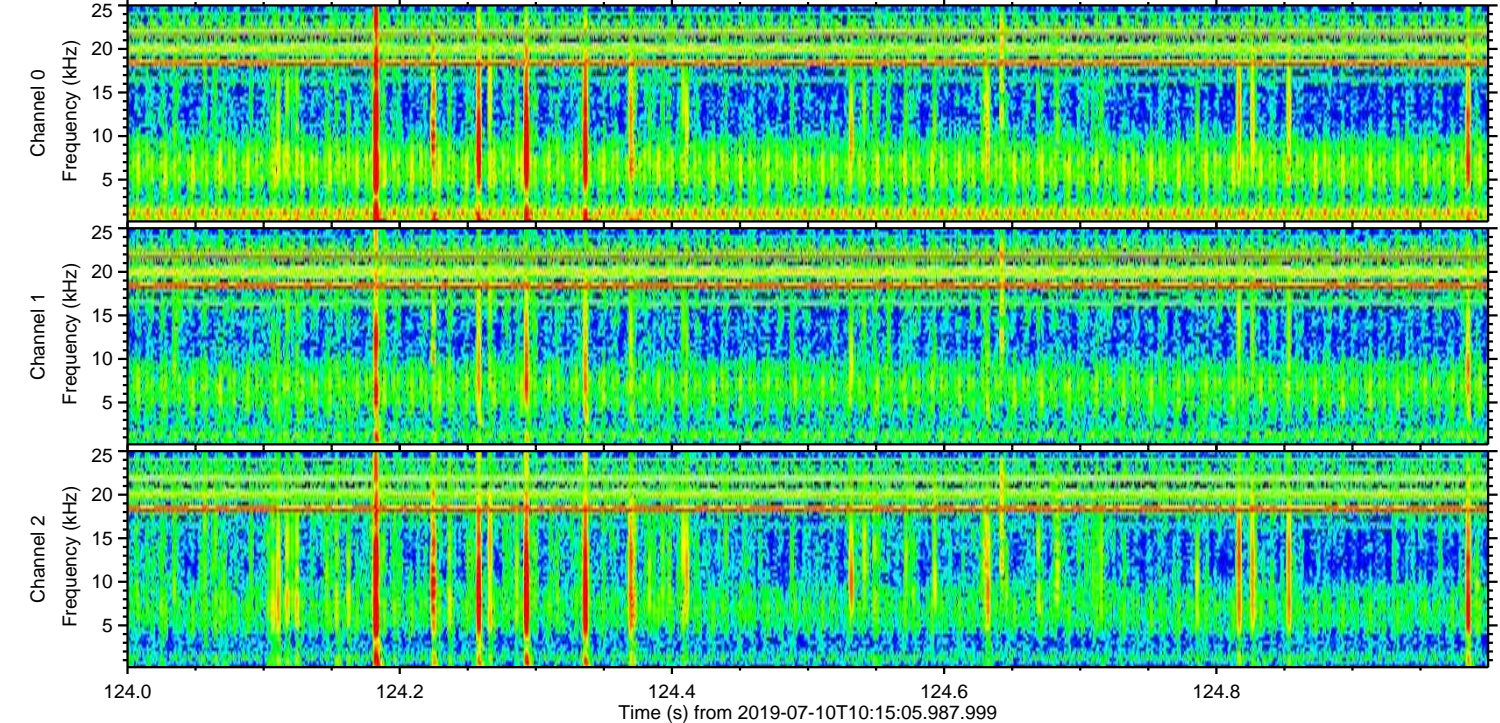
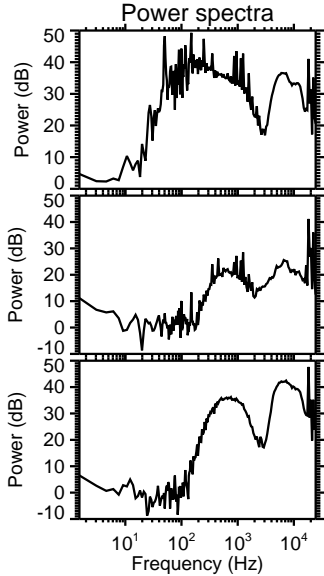
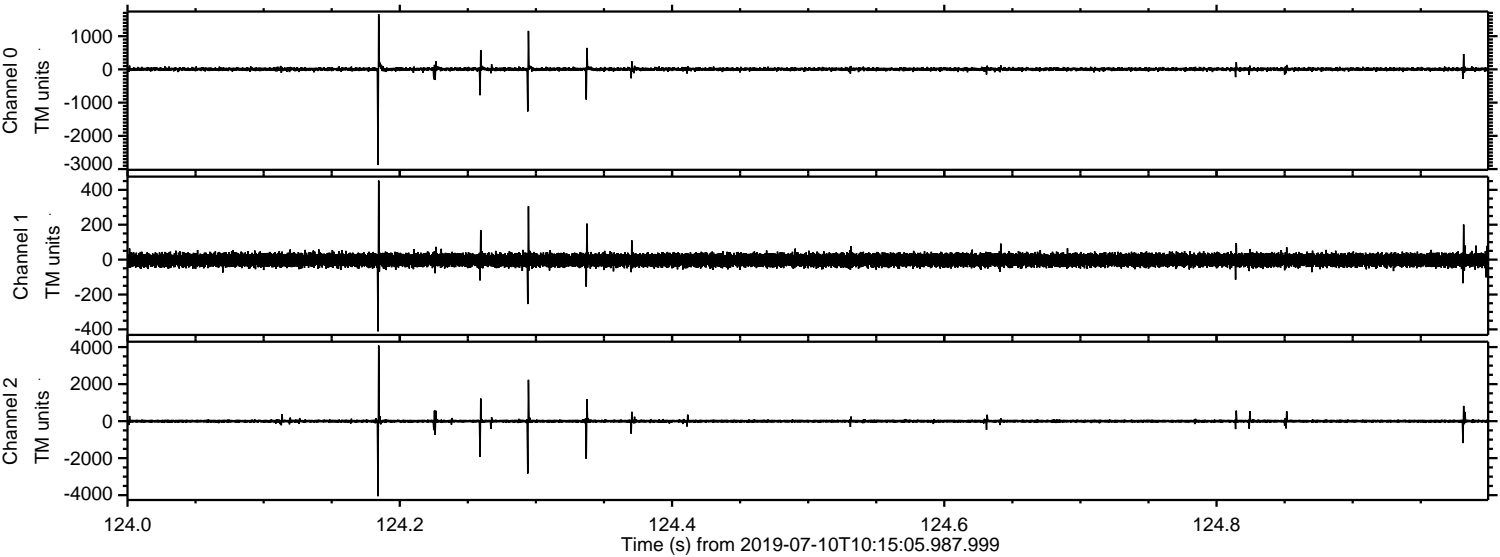


Processed Wed Jul 10 12:23:07 2019 by ELM ver.2012-10-06 from 001__elm20190710_101504__dat00.bin

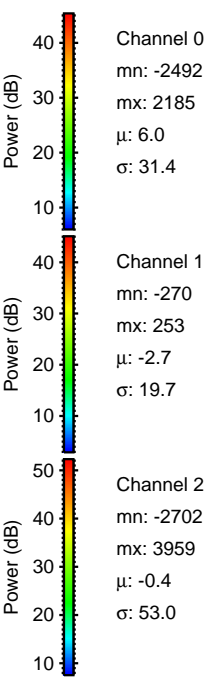
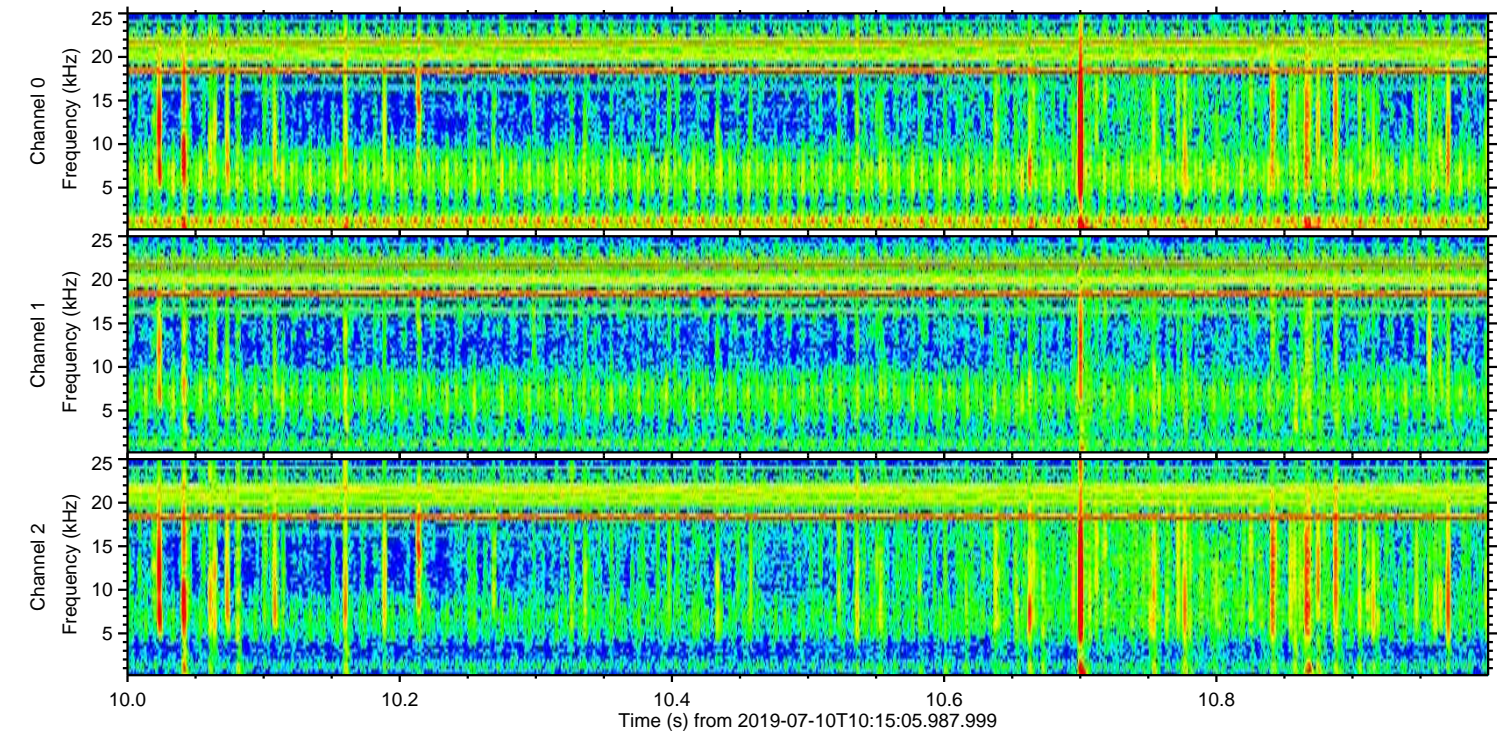
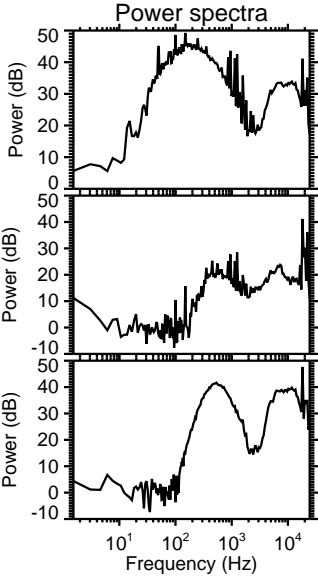
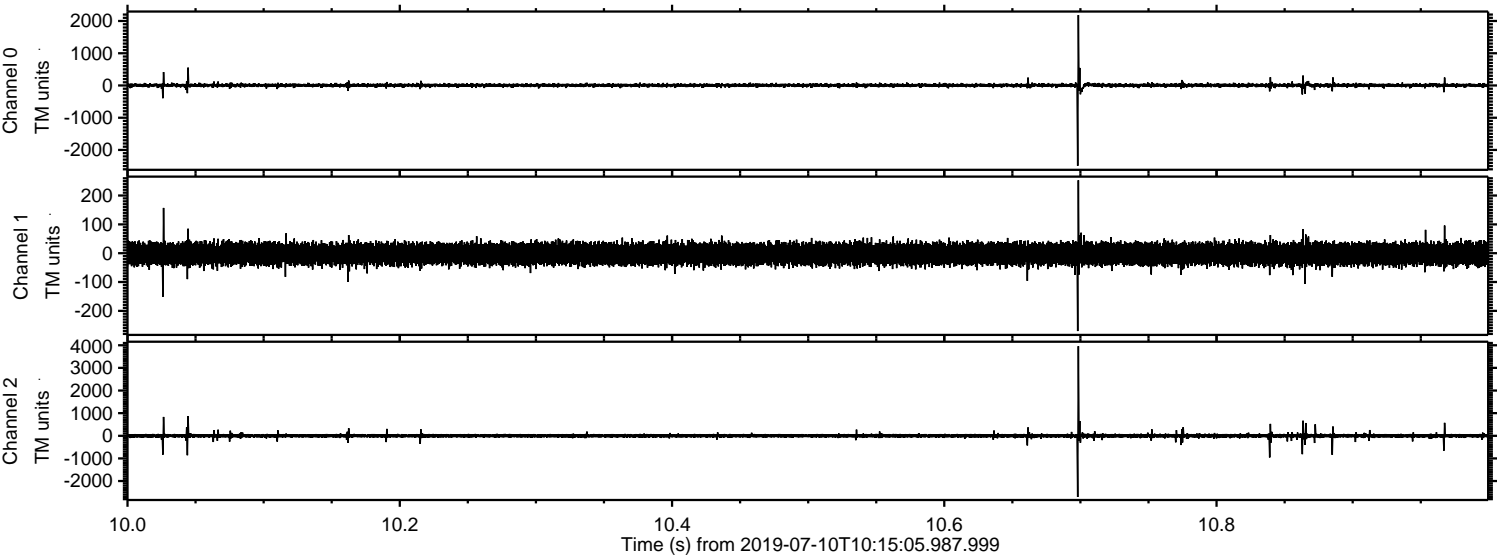


ELMAVAN 3D WAVEFORMS (Measured data sampled at 50 kHz) 51000 packets of 144 samples from 2019-07-10T10:15:05.987.999. Part 125/147

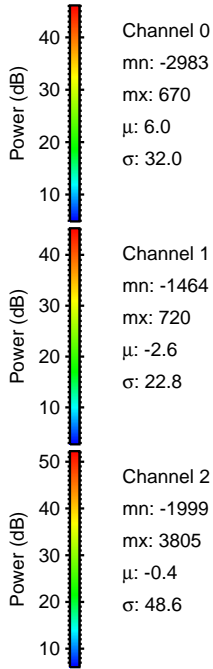
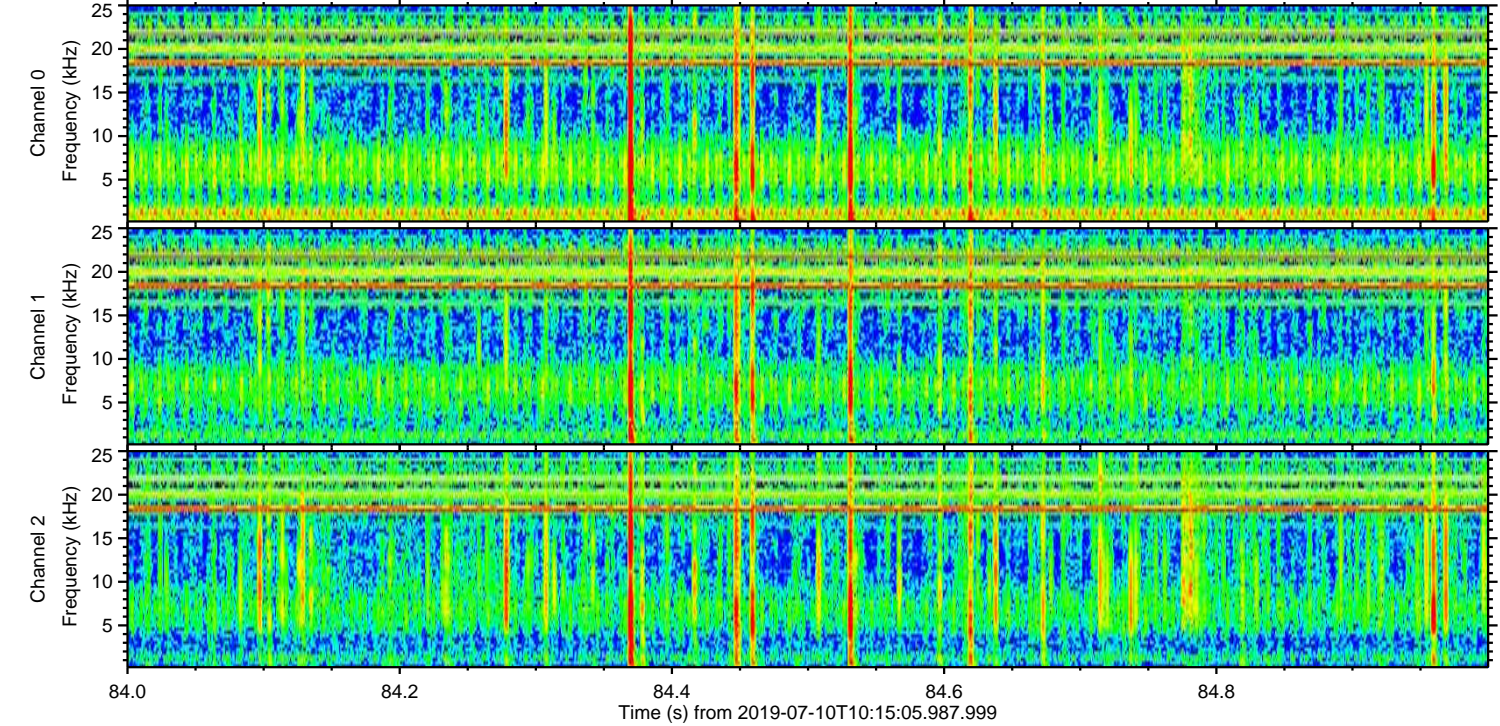
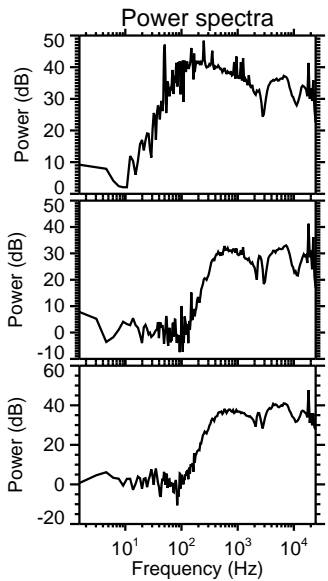
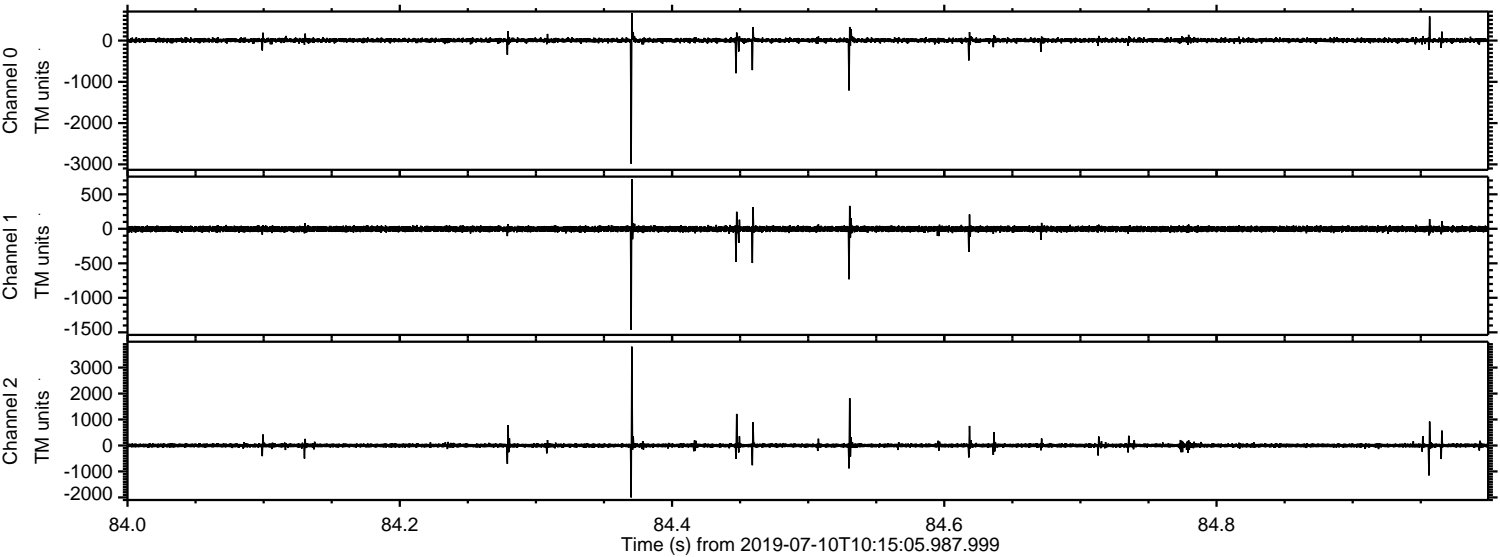
Processed Wed Jul 10 12:23:08 2019 by ELM ver.2012-10-06 from 001__elm20190710_101504__dat00.bin



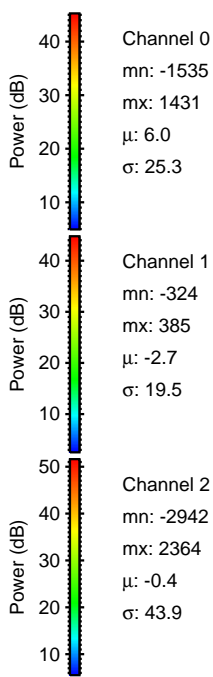
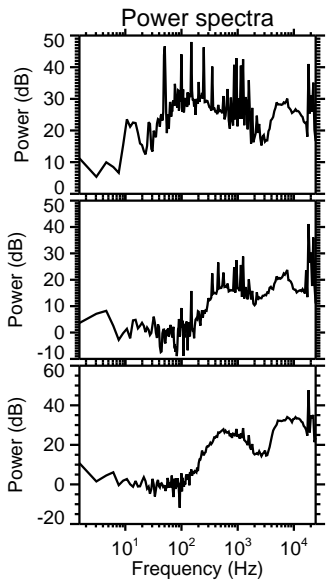
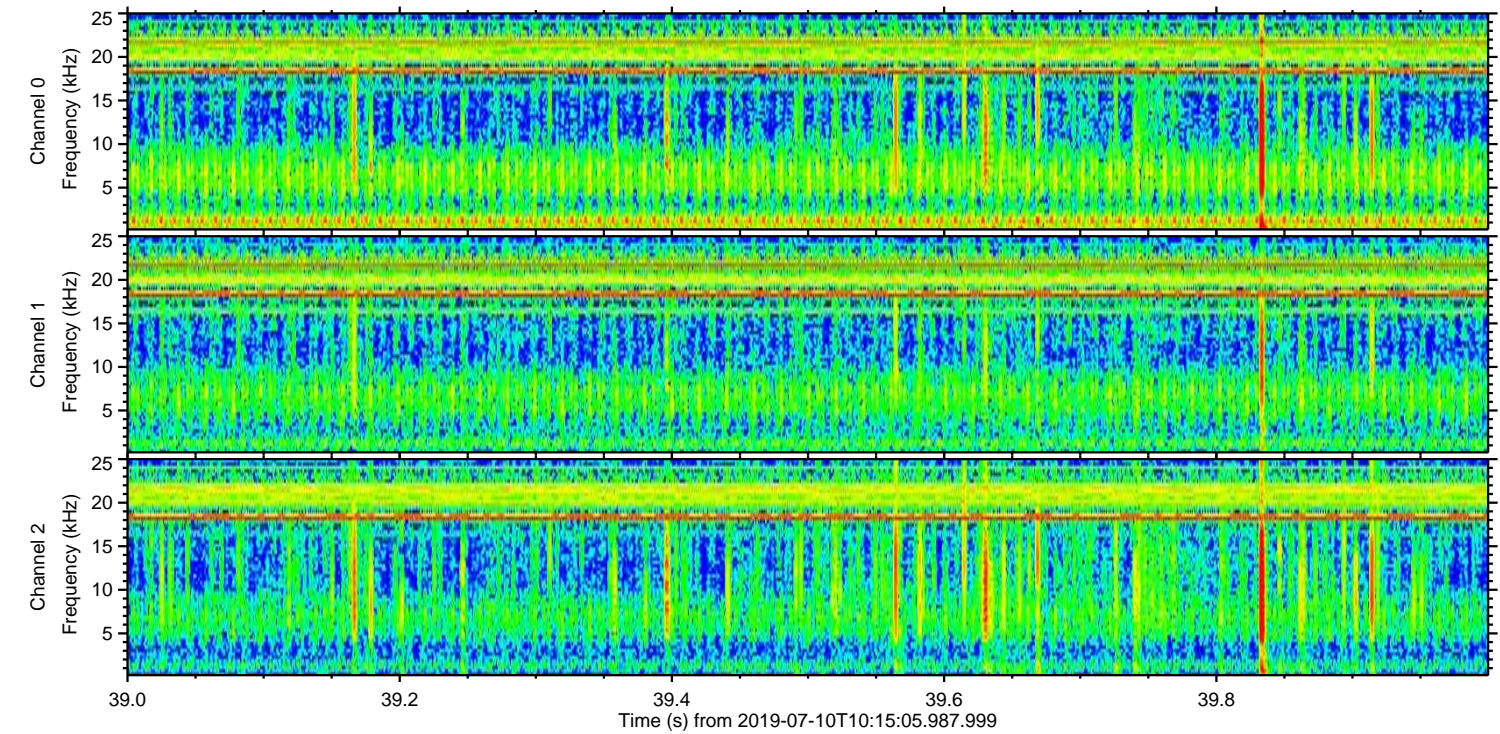
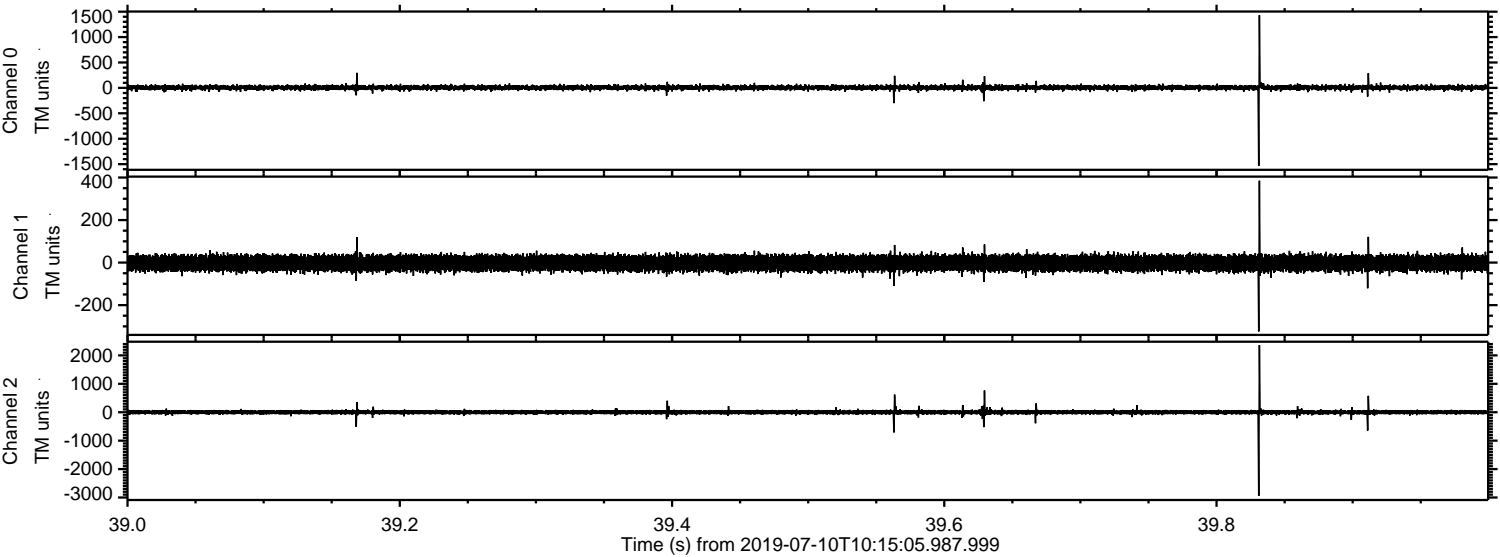
Processed Wed Jul 10 12:23:09 2019 by ELM ver.2012-10-06 from 001__elm20190710_101504__dat00.bin



Processed Wed Jul 10 12:23:09 2019 by ELM ver.2012-10-06 from 001__elm20190710_101504__dat00.bin



Processed Wed Jul 10 12:23:10 2019 by ELM ver.2012-10-06 from 001__elm20190710_101504__dat00.bin



Channel 0

mn: -1535

mx: 1431

μ : 6.0

σ : 25.3

Channel 1

mn: -324

mx: 385

μ : -2.7

σ : 19.5

Channel 2

mn: -2942

mx: 2364

μ : -0.4

σ : 43.9

Processed Wed Jul 10 12:23:10 2019 by ELM ver.2012-10-06 from 001__elm20190710_101504__dat00.bin

