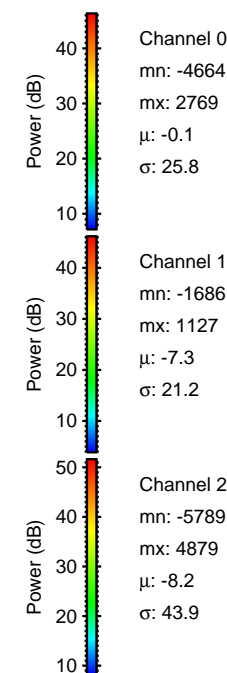
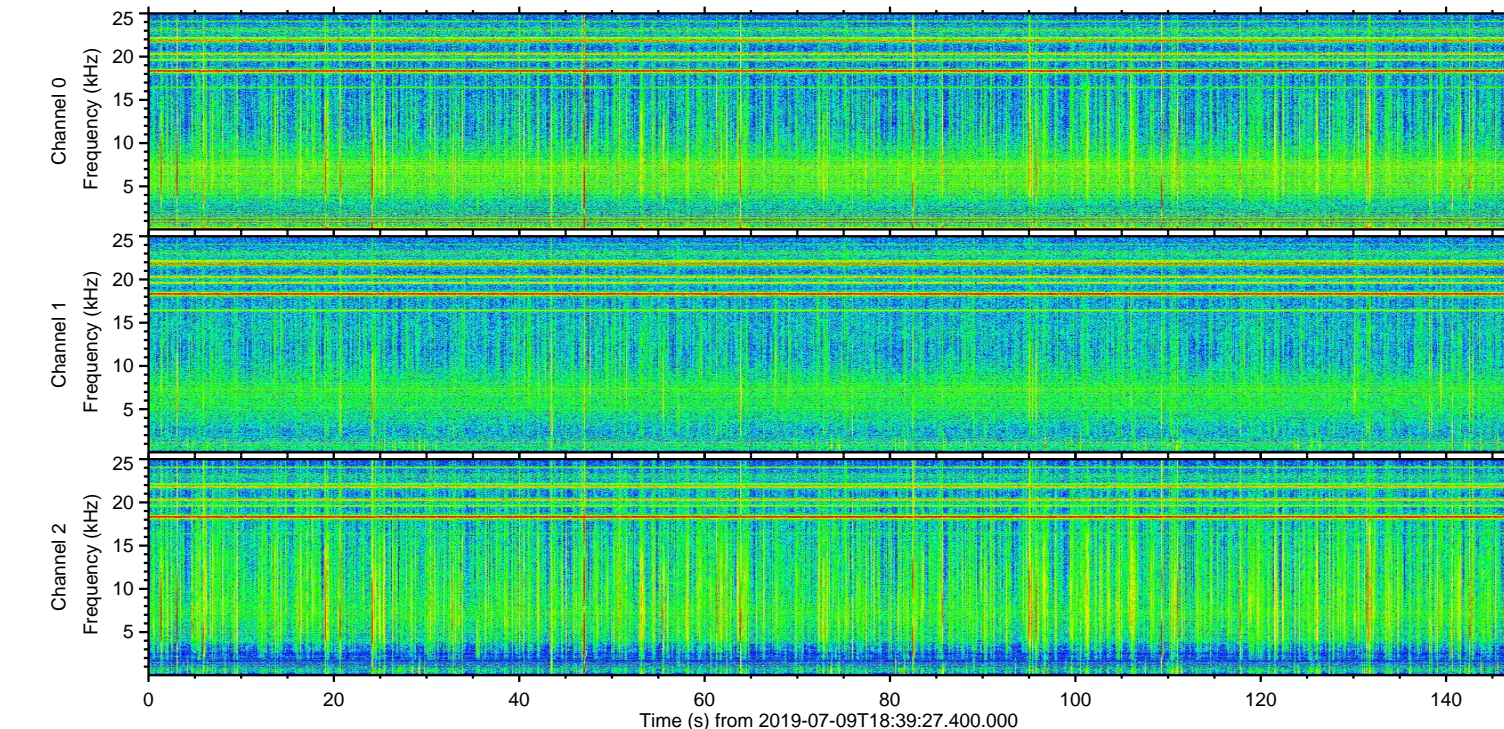
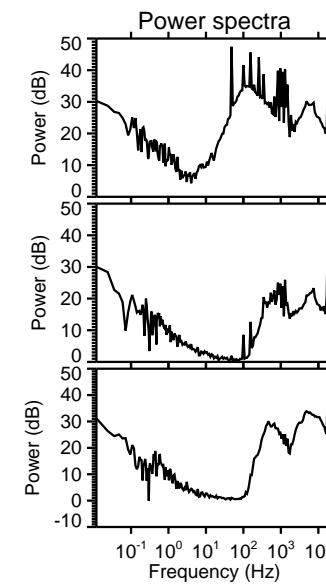
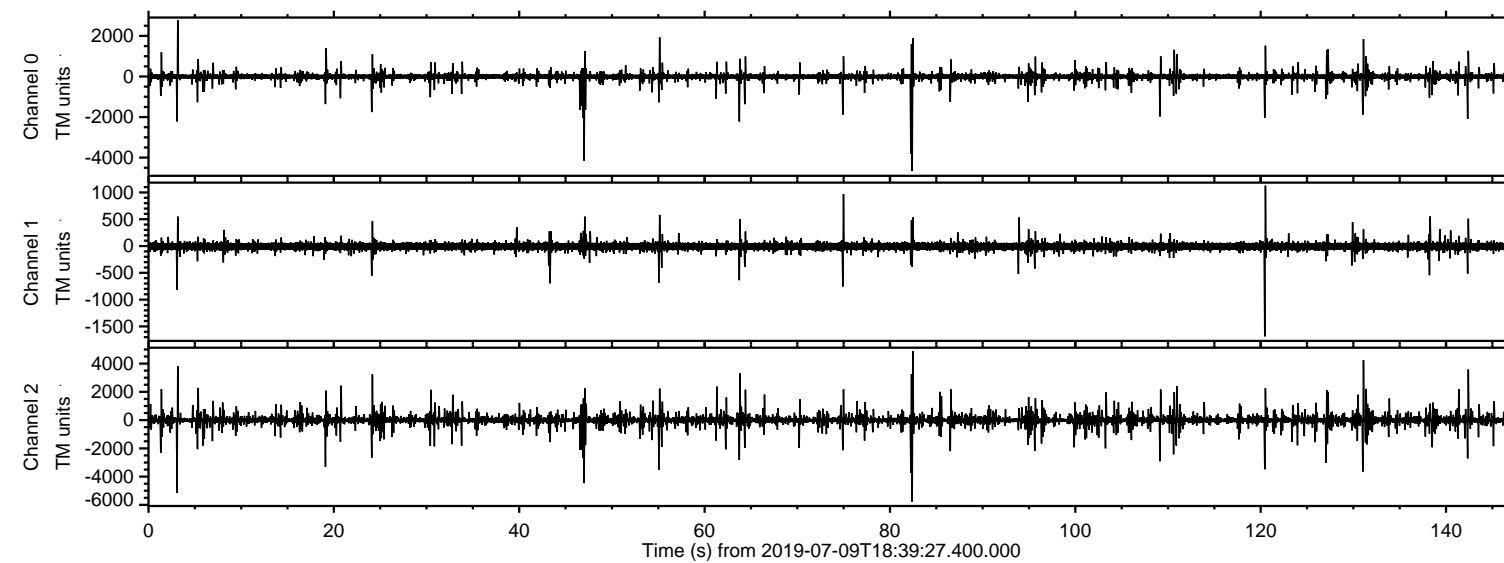
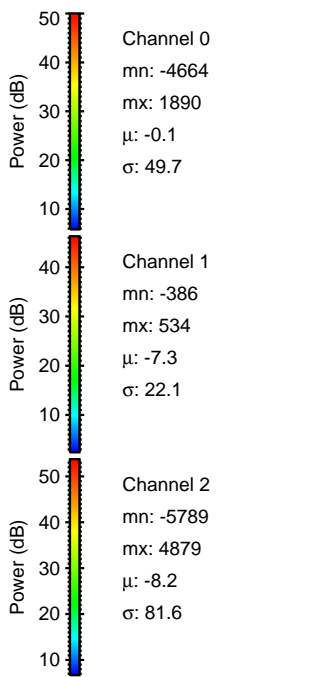
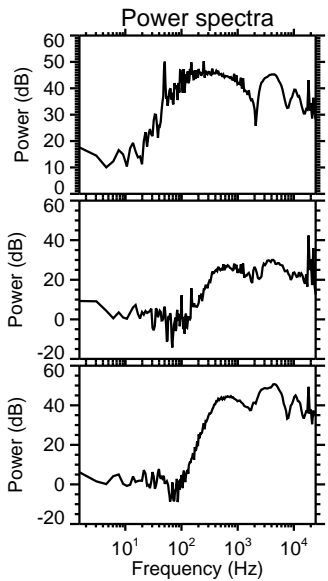
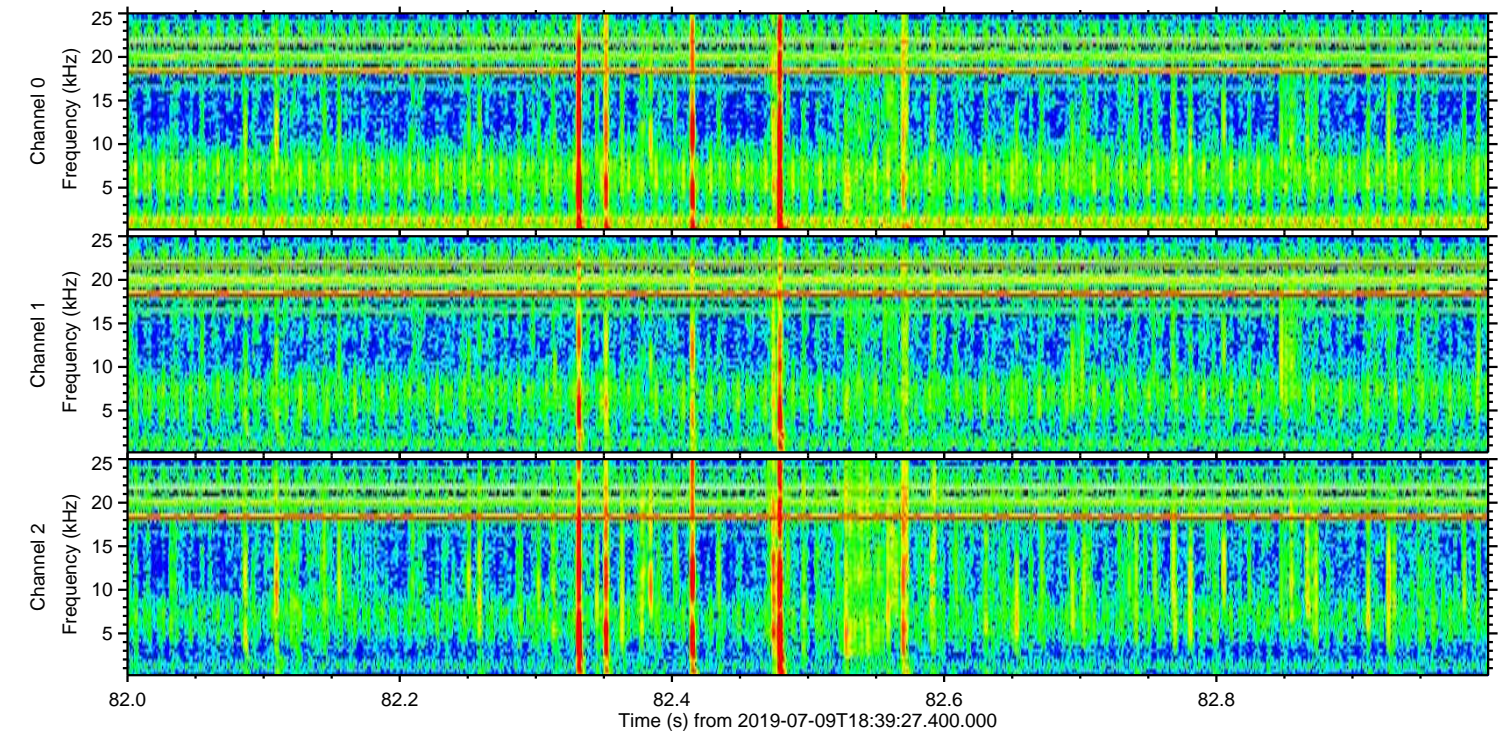
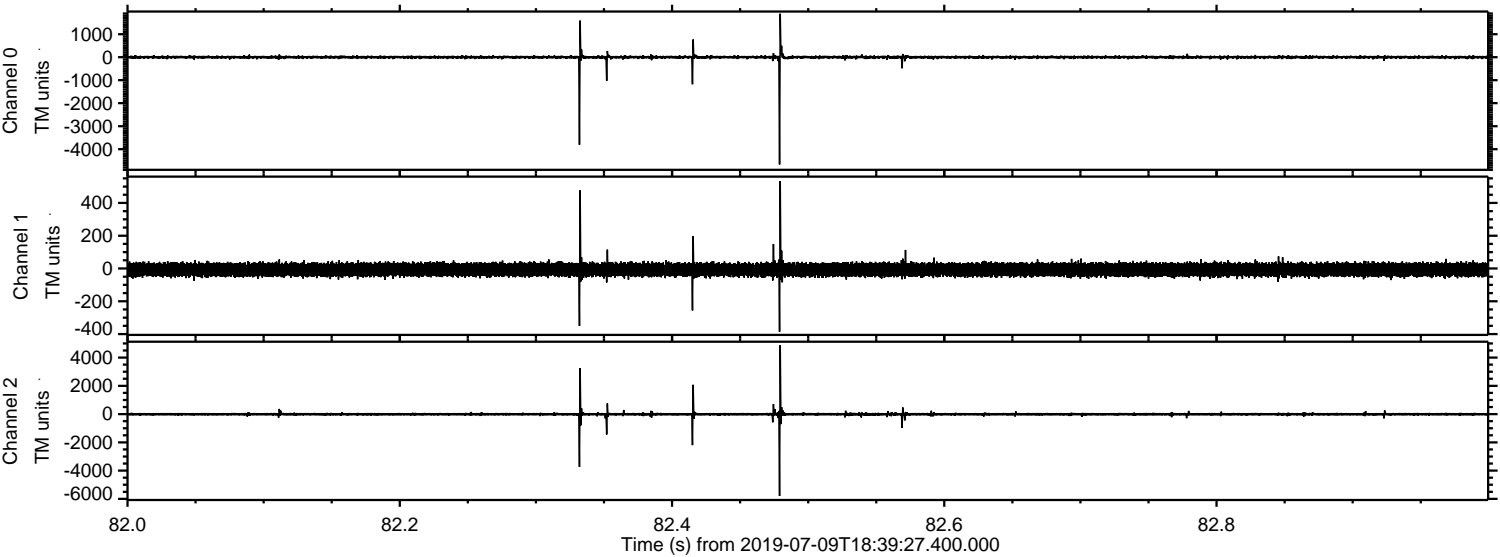


ELMAVAN 3D WAVEFORMS (Measured data sampled at 50 kHz) 51000 packets of 144 samples from 2019-07-09T18:39:27.400.000.

Processed Tue Jul 9 20:46:59 2019 by ELM ver.2012-10-06 from 001__elm20190709_183926__dat00.bin

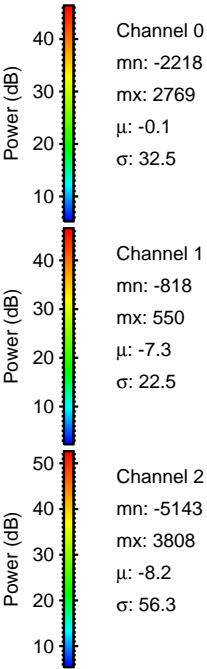
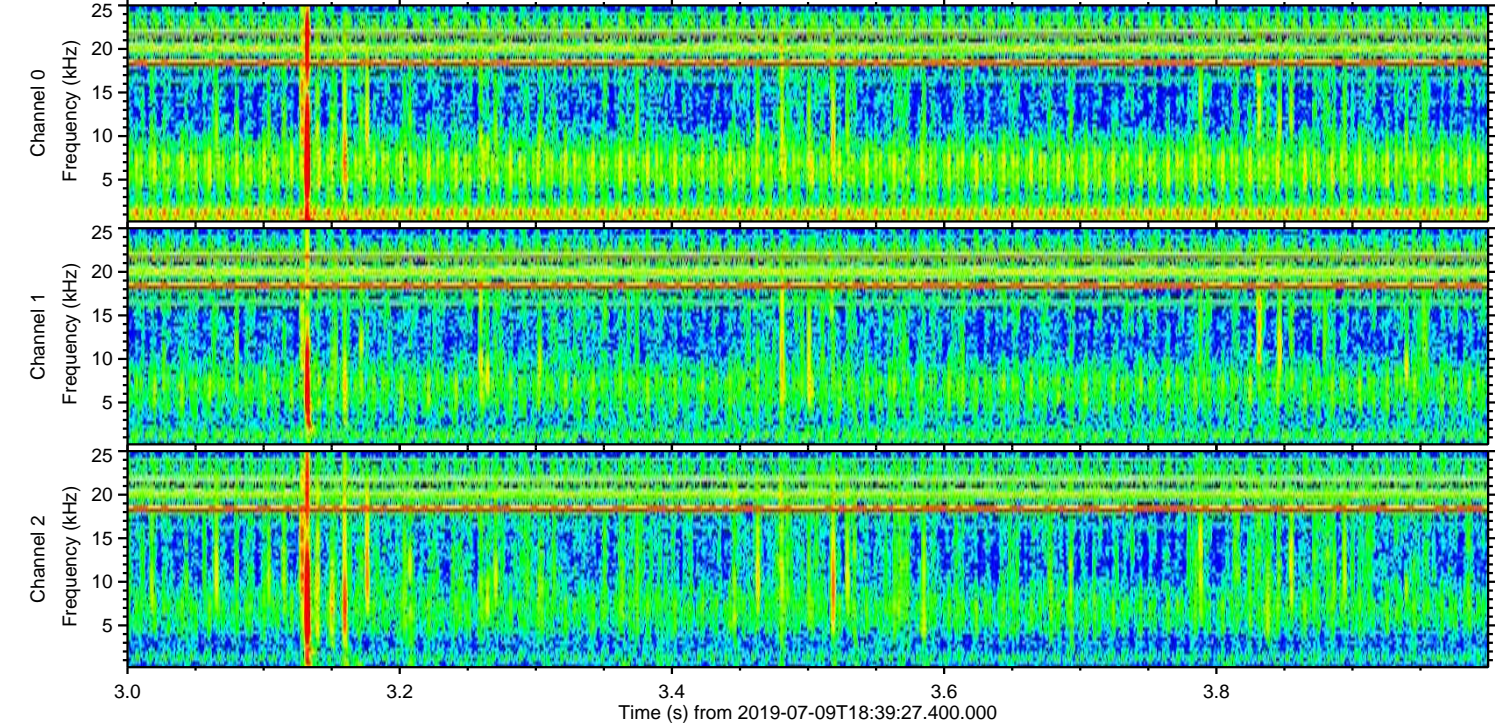
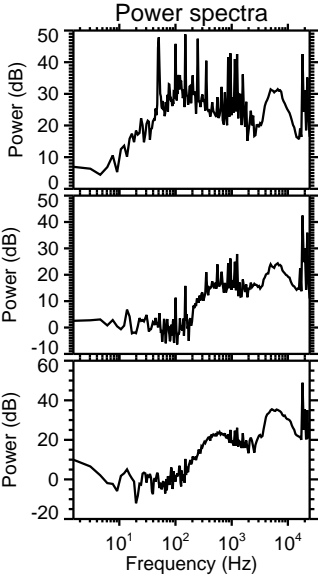
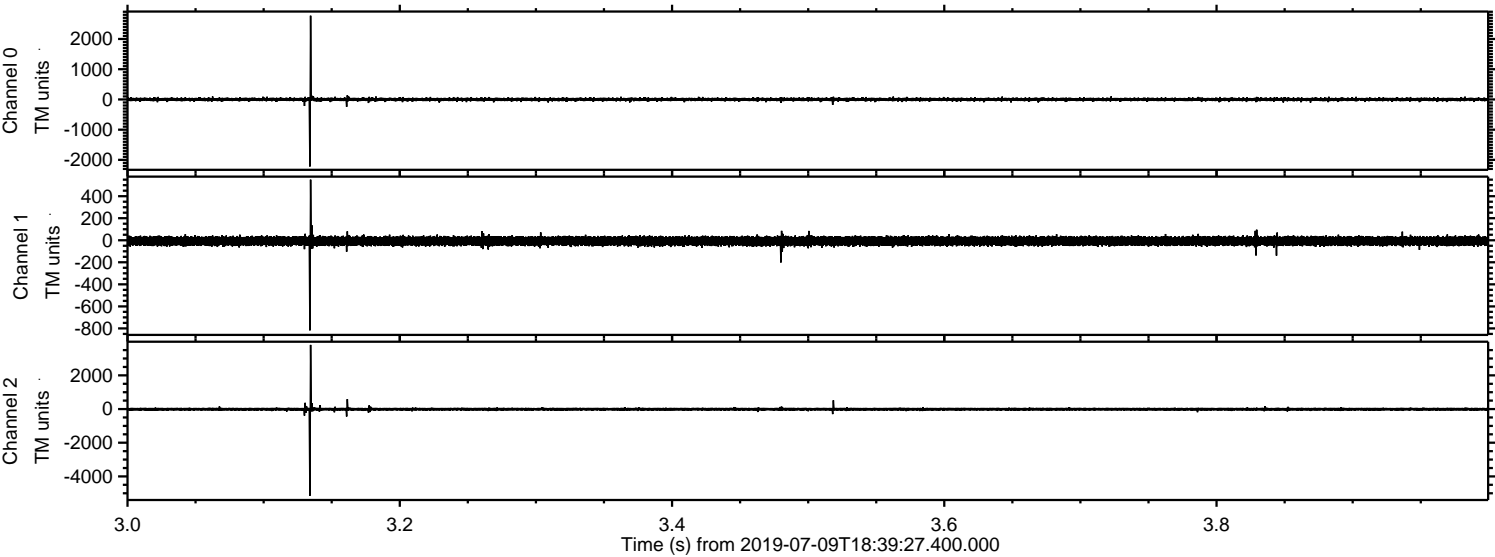


Processed Tue Jul 9 20:47:05 2019 by ELM ver.2012-10-06 from 001__elm20190709_183926__dat00.bin

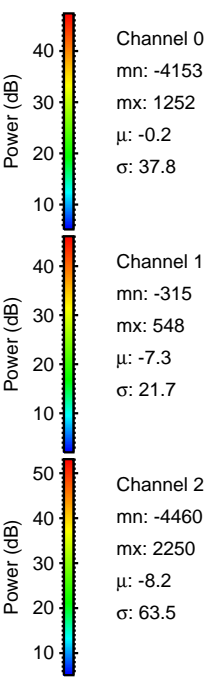
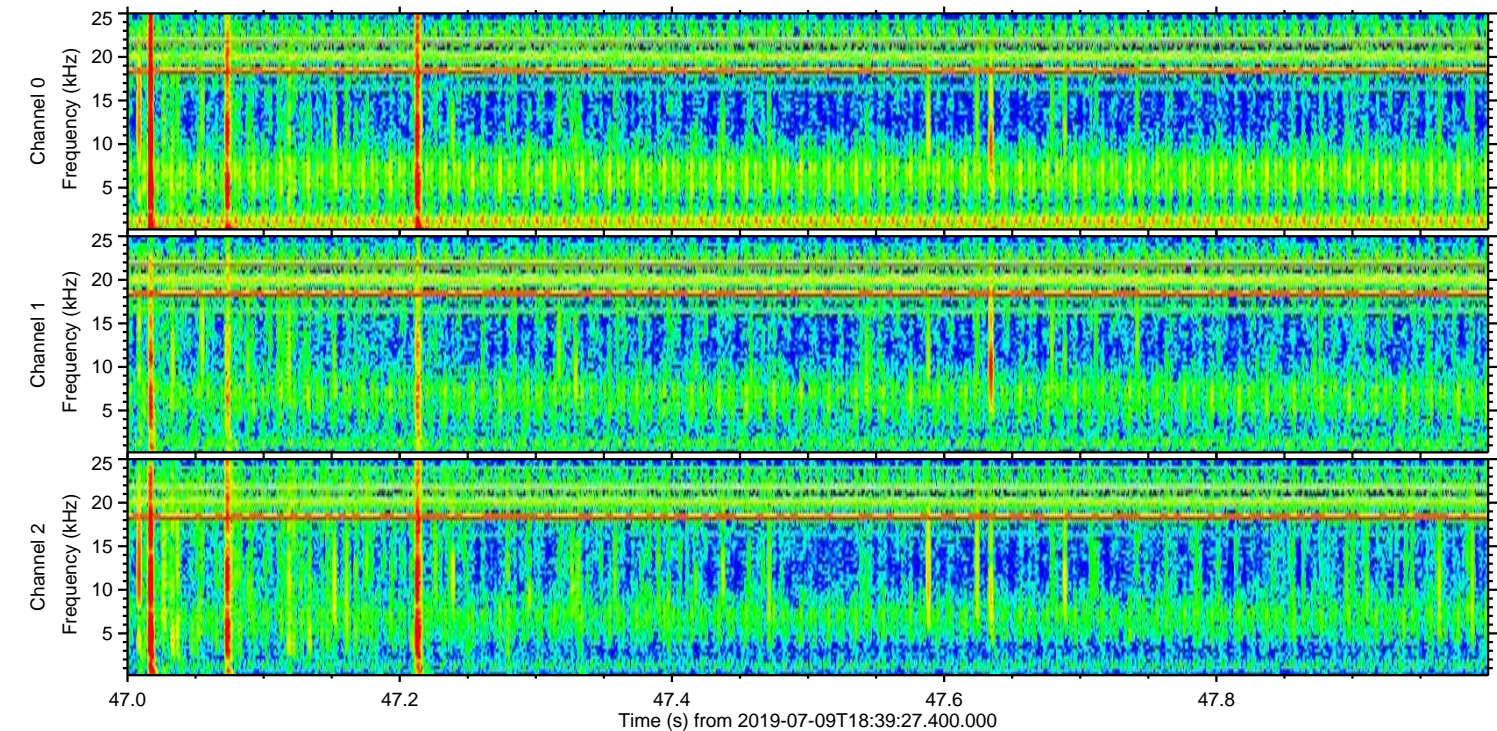
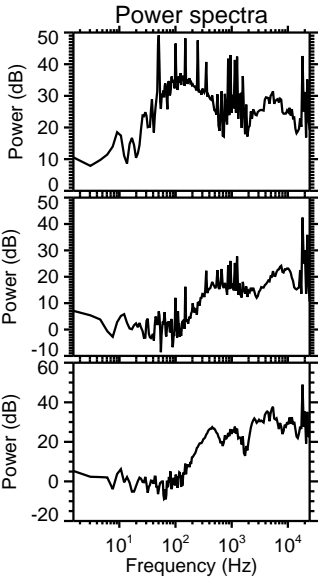
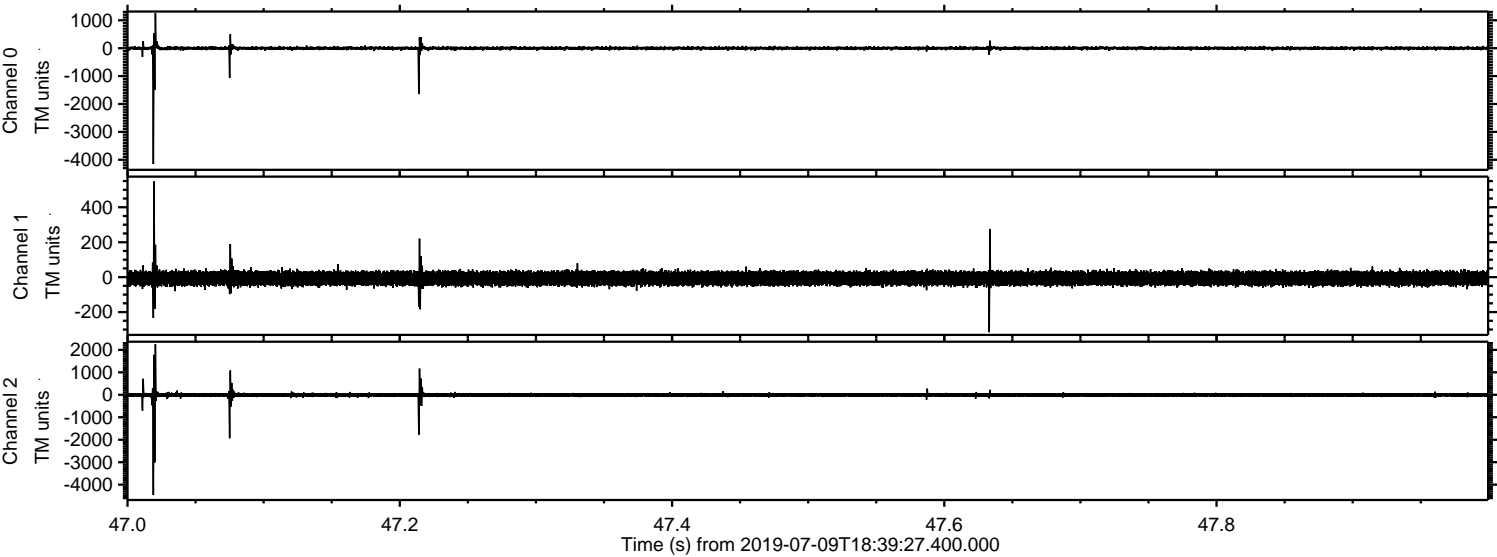


ELMAVAN 3D WAVEFORMS (Measured data sampled at 50 kHz) 51000 packets of 144 samples from 2019-07-09T18:39:27.400.000. Part 4/147

Processed Tue Jul 9 20:47:06 2019 by ELM ver.2012-10-06 from 001__elm20190709_183926__dat00.bin

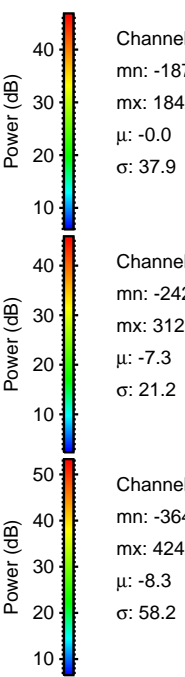
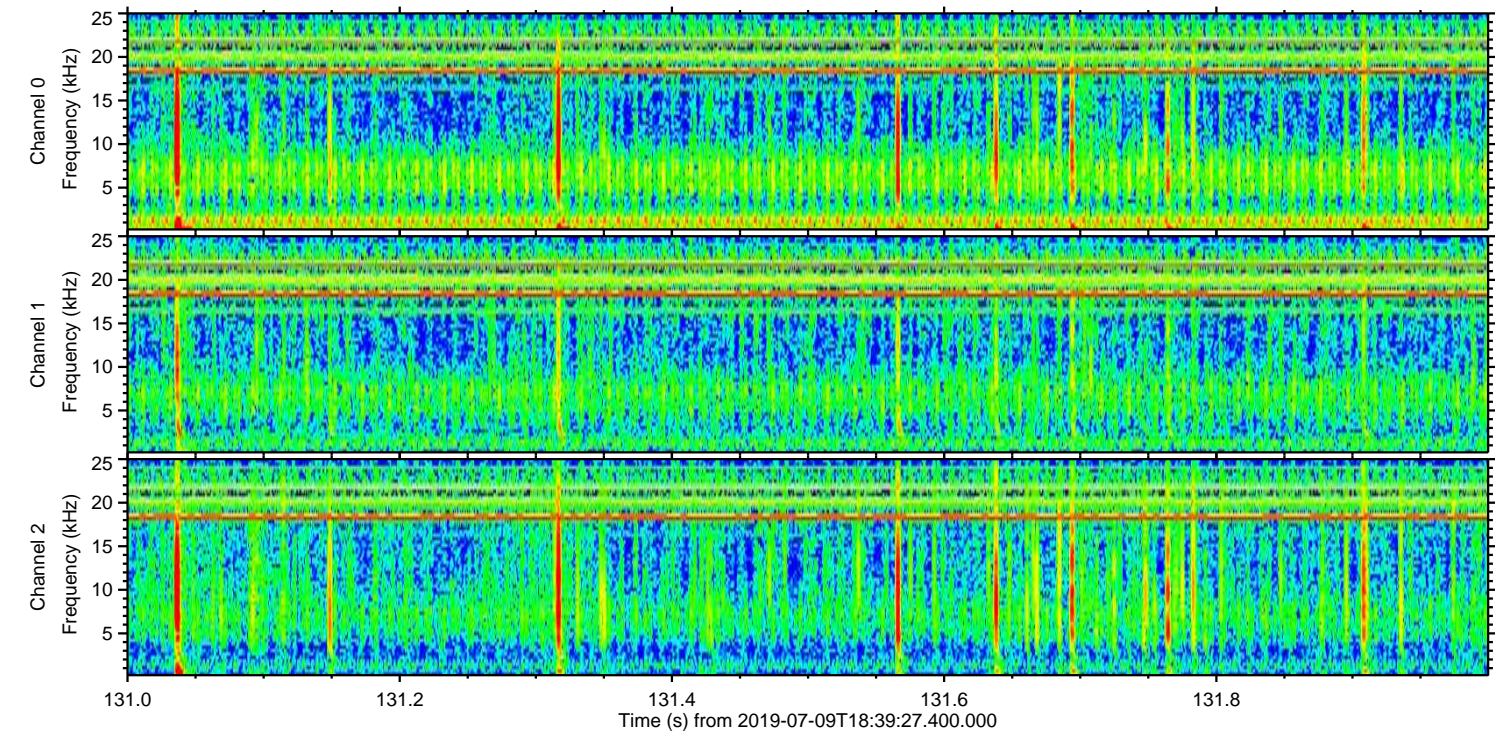
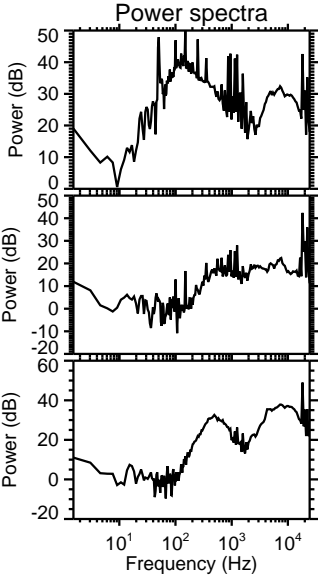
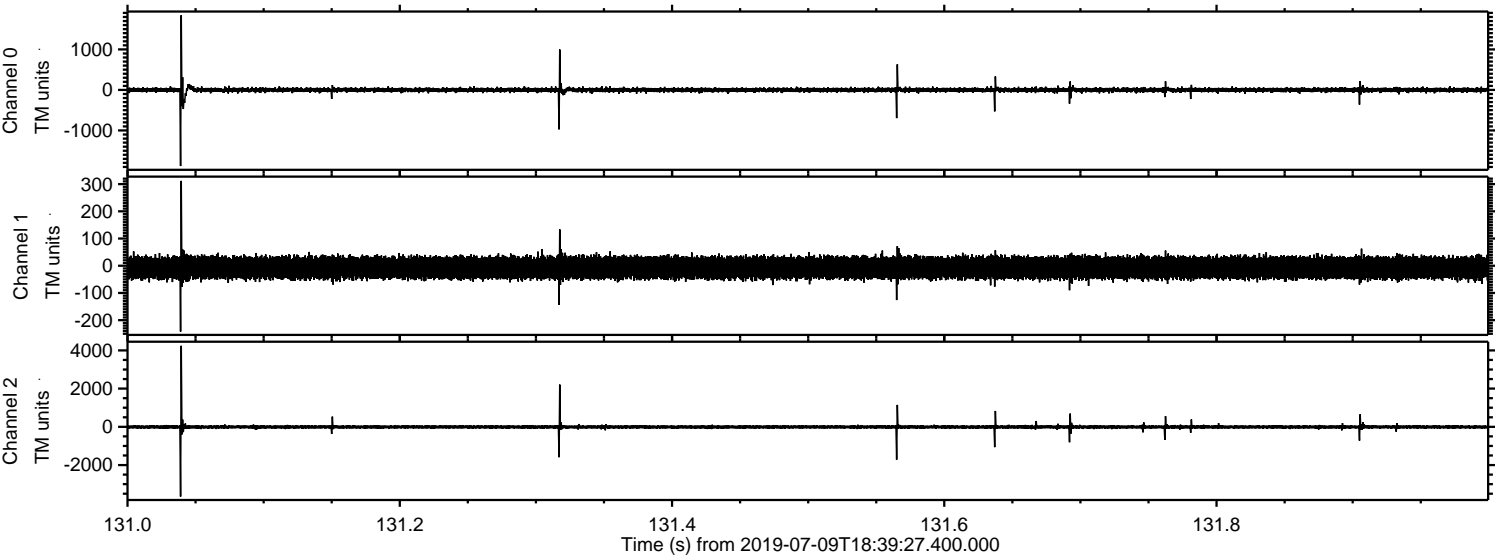


Processed Tue Jul 9 20:47:06 2019 by ELM ver.2012-10-06 from 001__elm20190709_183926__dat00.bin



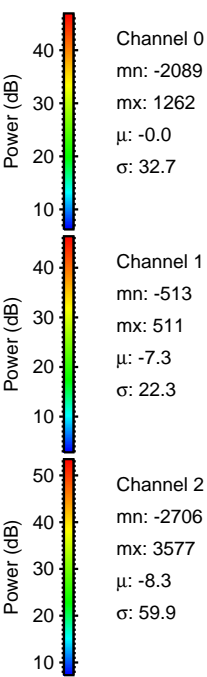
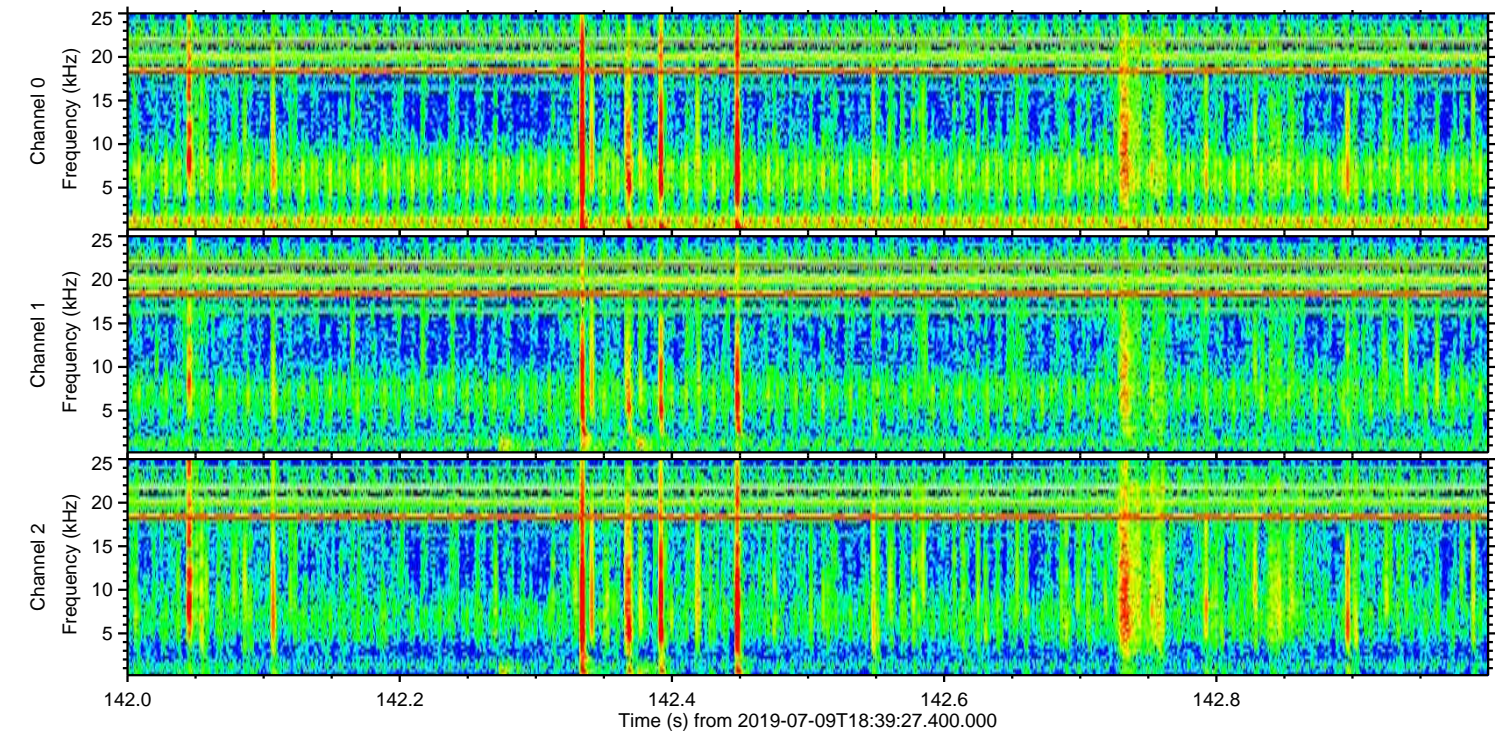
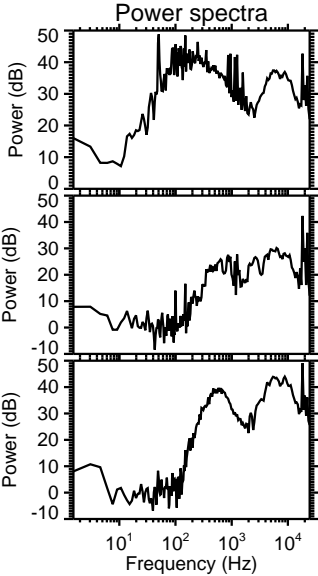
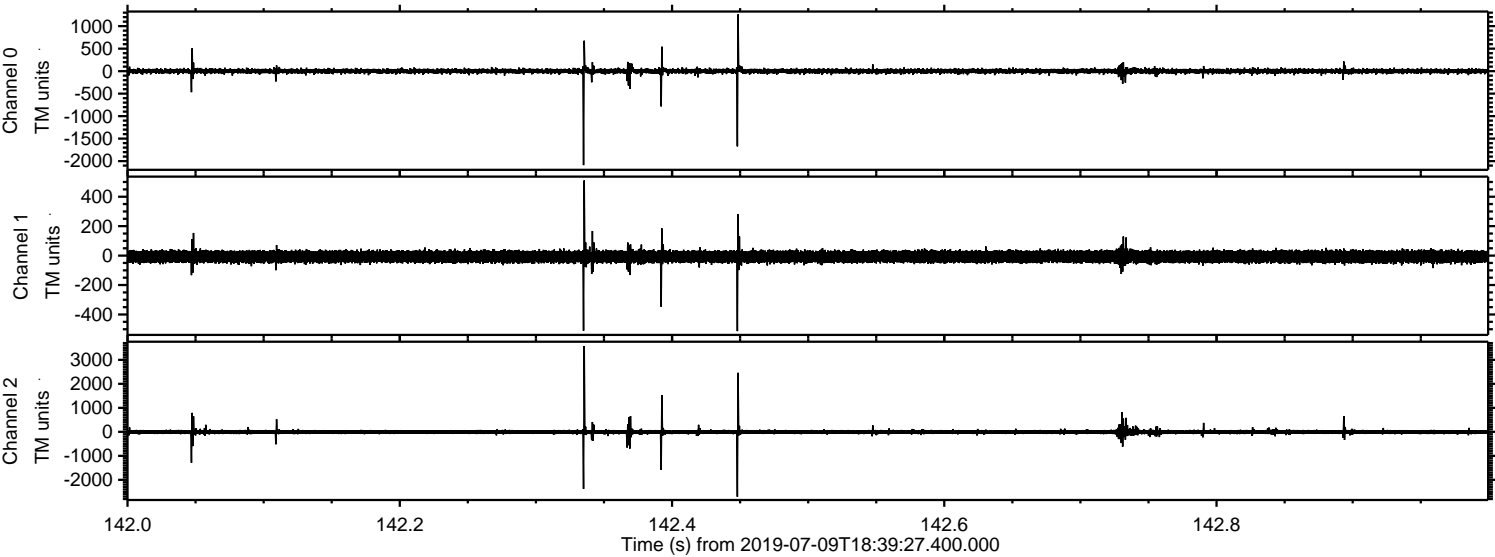
ELMAVAN 3D WAVEFORMS (Measured data sampled at 50 kHz) 51000 packets of 144 samples from 2019-07-09T18:39:27.400.000. Part 132/147

Processed Tue Jul 9 20:47:07 2019 by ELM ver.2012-10-06 from 001__elm20190709_183926__dat00.bin

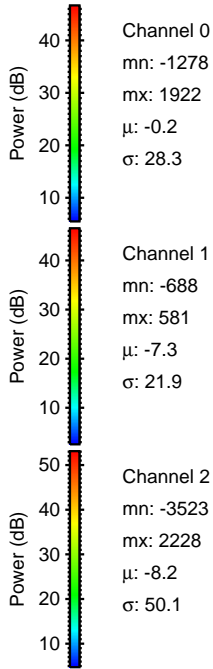
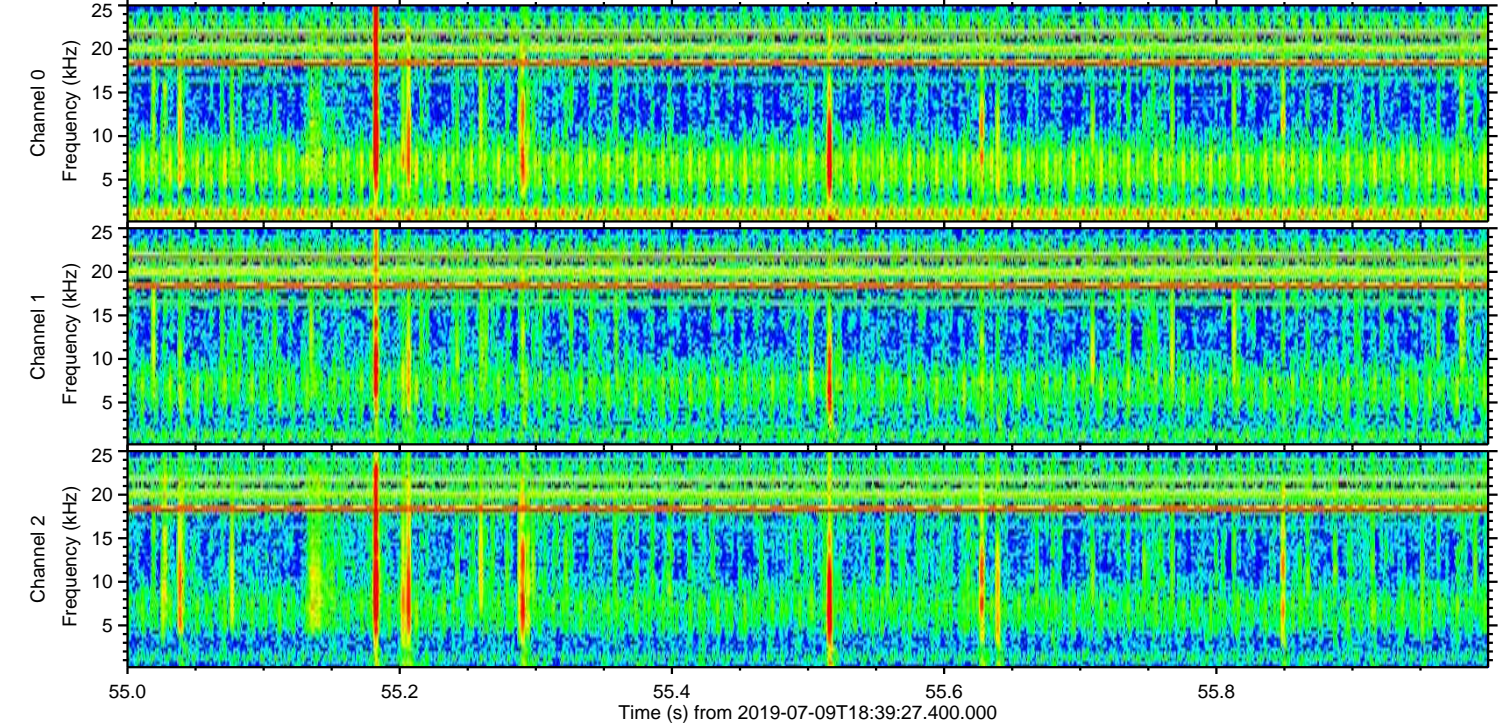
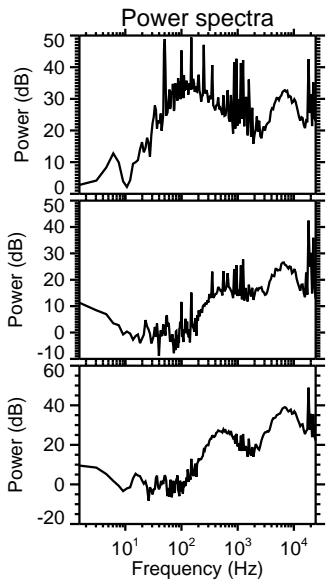
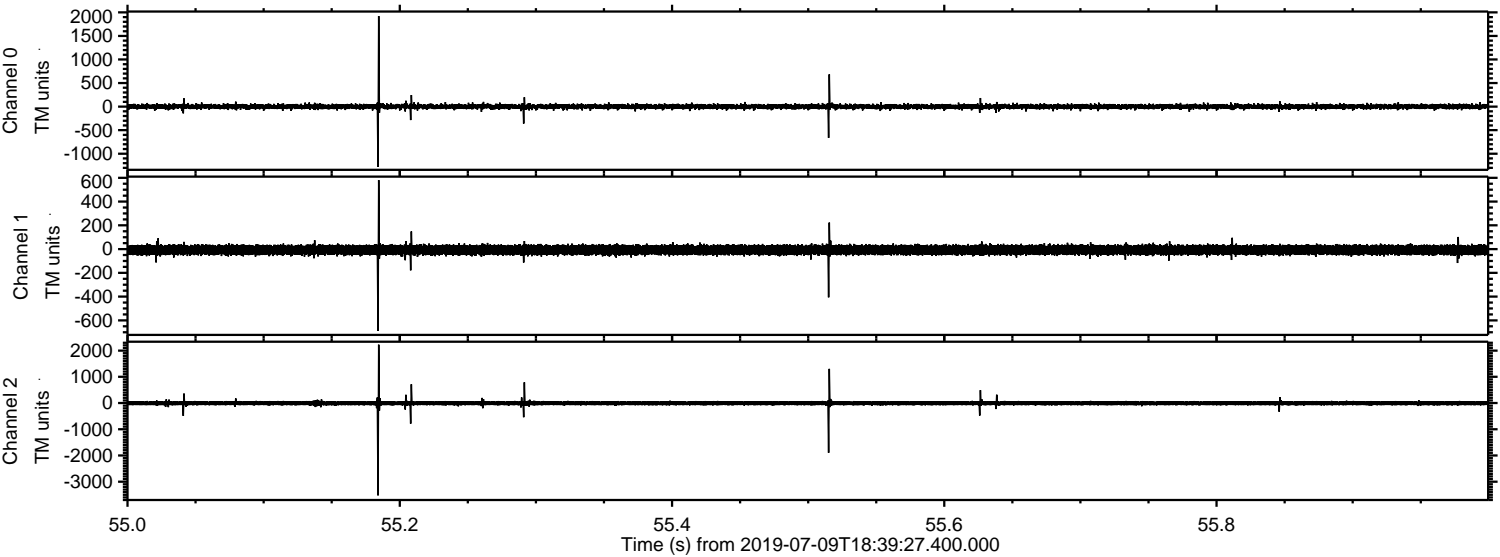


ELMAVAN 3D WAVEFORMS (Measured data sampled at 50 kHz) 51000 packets of 144 samples from 2019-07-09T18:39:27.400.000. Part 143/147

Processed Tue Jul 9 20:47:07 2019 by ELM ver.2012-10-06 from 001__elm20190709_183926__dat00.bin

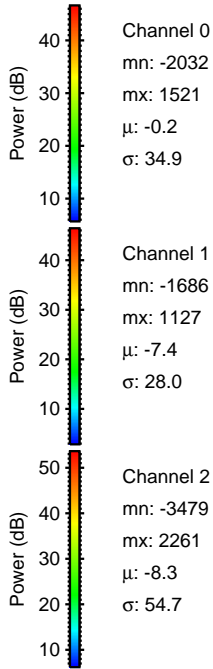
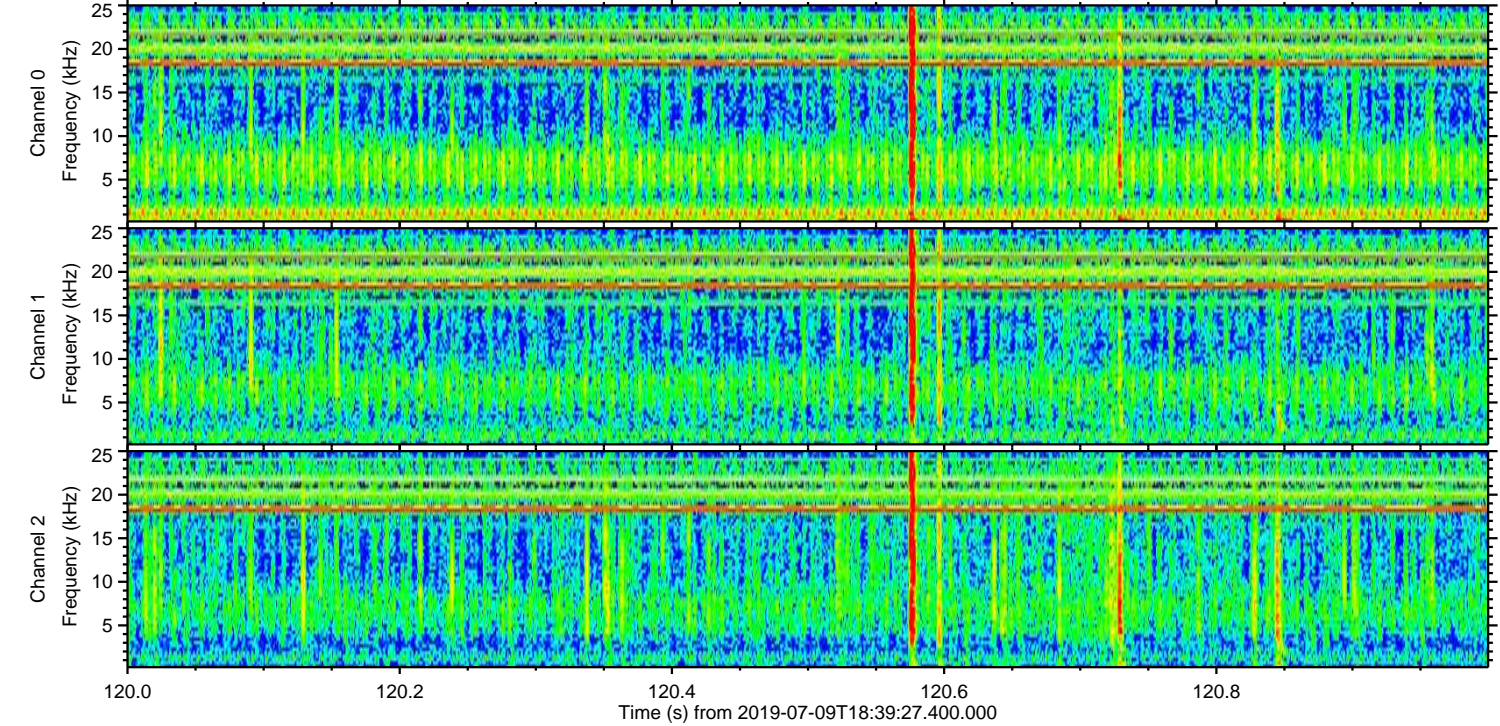
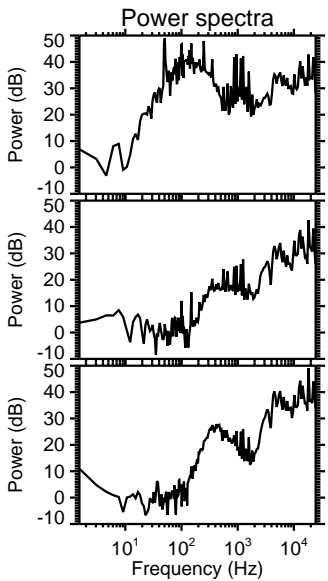
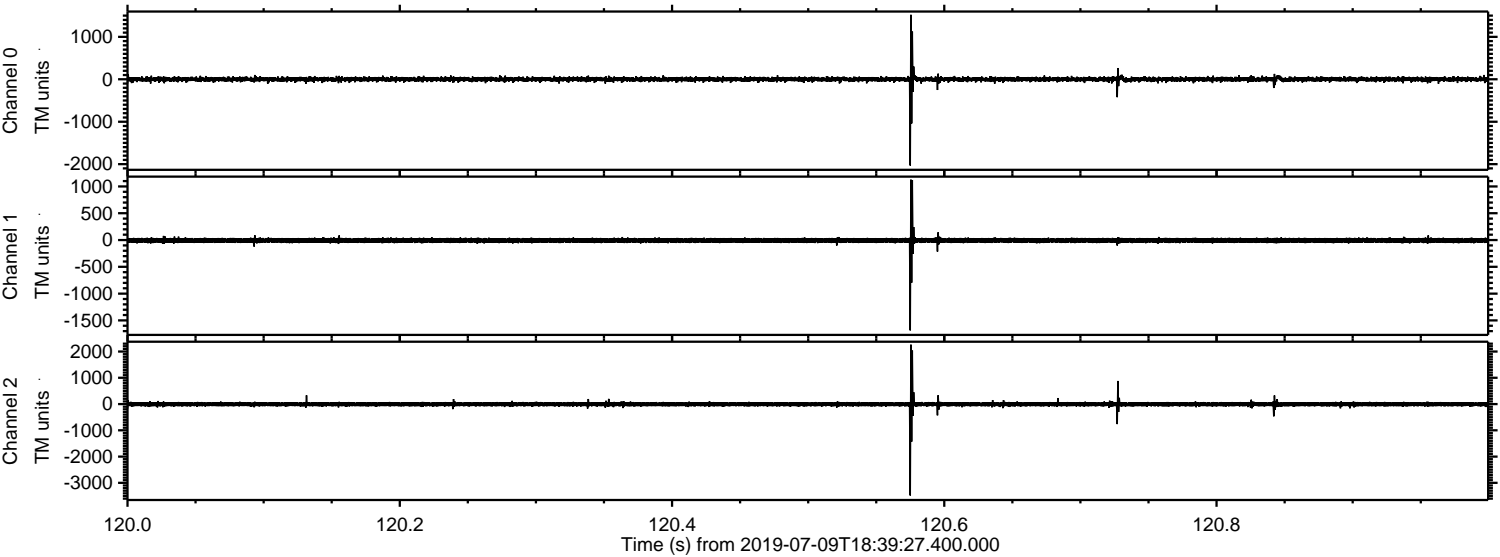


Processed Tue Jul 9 20:47:08 2019 by ELM ver.2012-10-06 from 001__elm20190709_183926__dat00.bin



ELMAVAN 3D WAVEFORMS (Measured data sampled at 50 kHz) 51000 packets of 144 samples from 2019-07-09T18:39:27.400.000. Part 121/147

Processed Tue Jul 9 20:47:09 2019 by ELM ver.2012-10-06 from 001__elm20190709_183926__dat00.bin

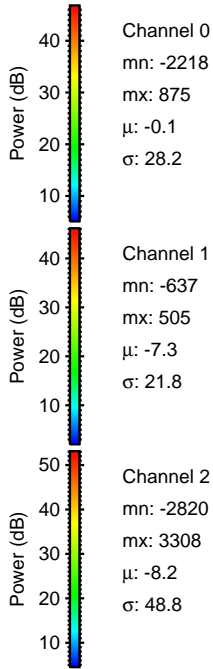
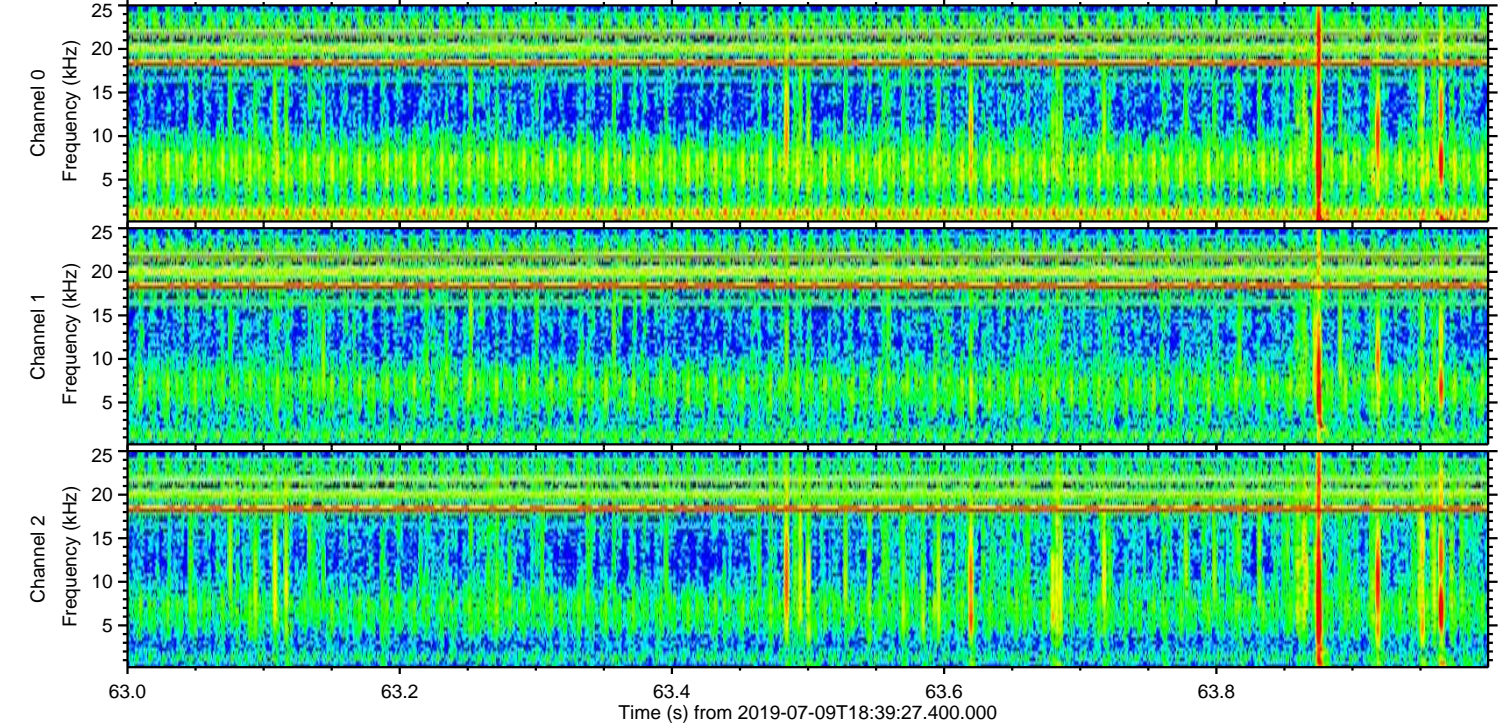
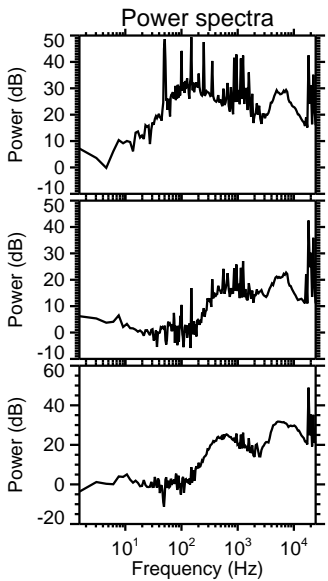
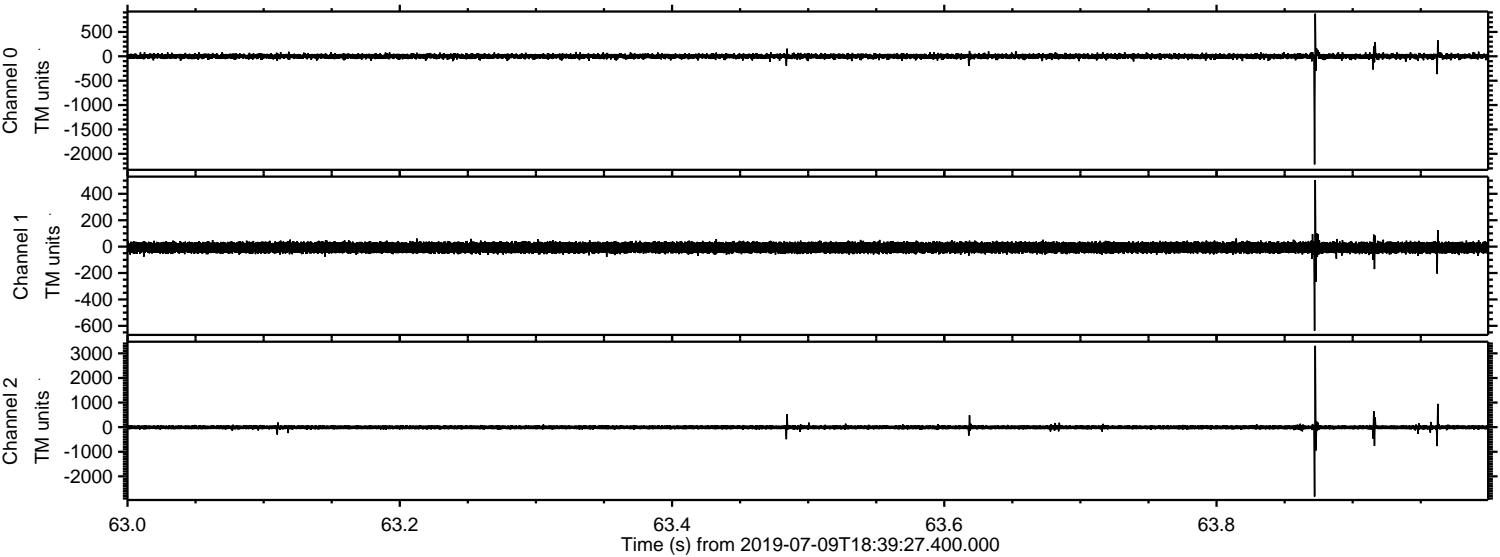


Channel 0
mn: -2032
mx: 1521
 μ : -0.2
 σ : 34.9

Channel 1
mn: -1686
mx: 1127
 μ : -7.4
 σ : 28.0

Channel 2
mn: -3479
mx: 2261
 μ : -8.3
 σ : 54.7

Processed Tue Jul 9 20:47:09 2019 by ELM ver.2012-10-06 from 001__elm20190709_183926__dat00.bin



Processed Tue Jul 9 20:47:10 2019 by ELM ver.2012-10-06 from 001__elm20190709_183926__dat00.bin

