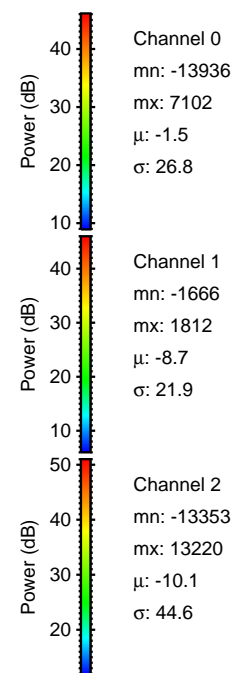
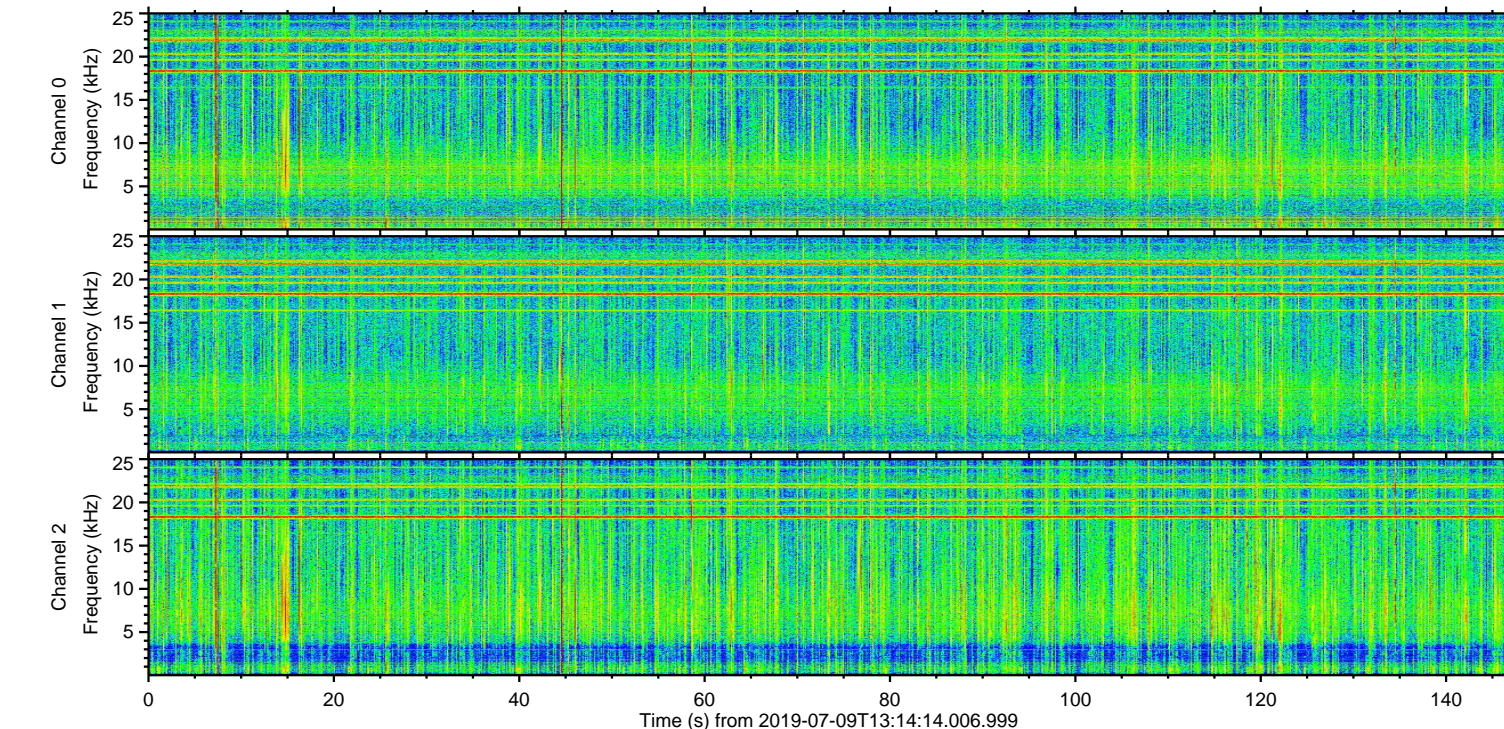
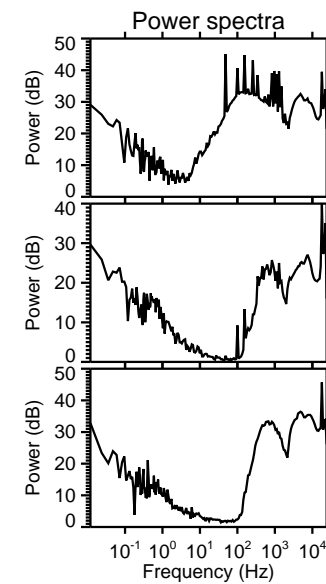
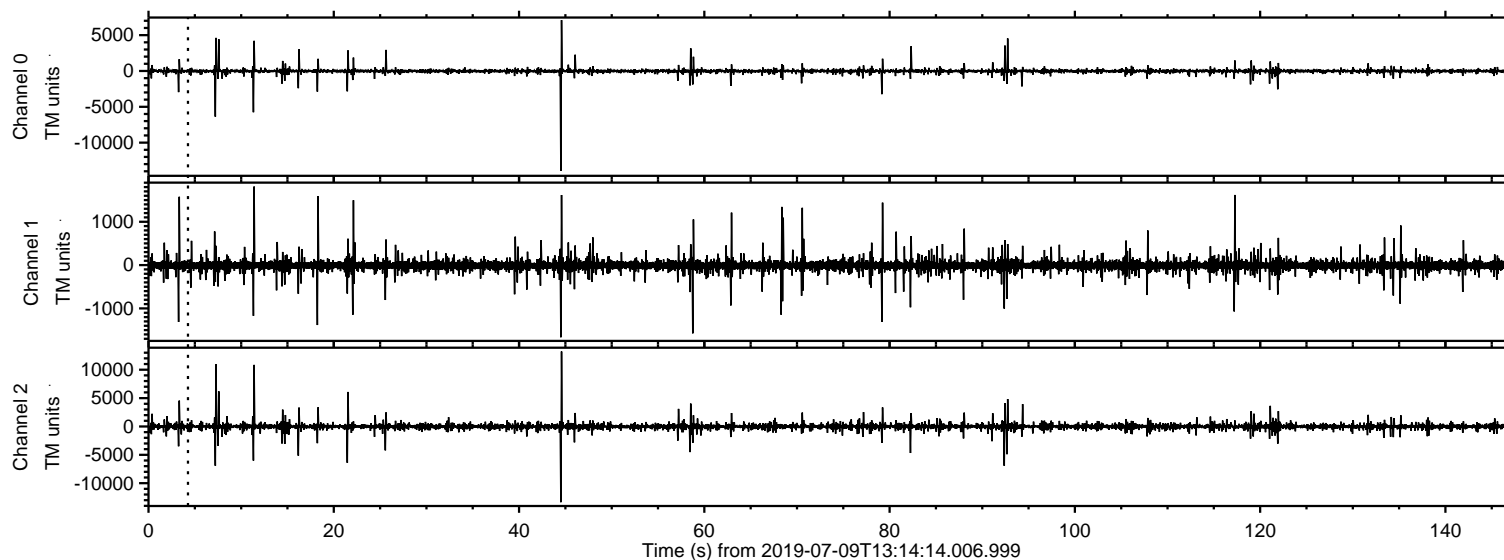
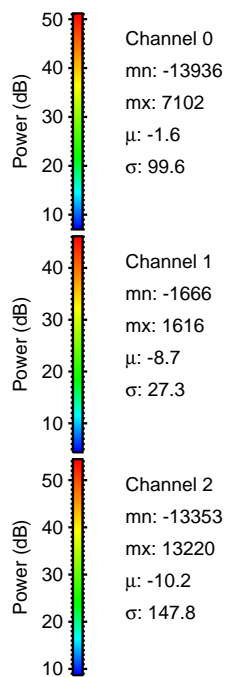
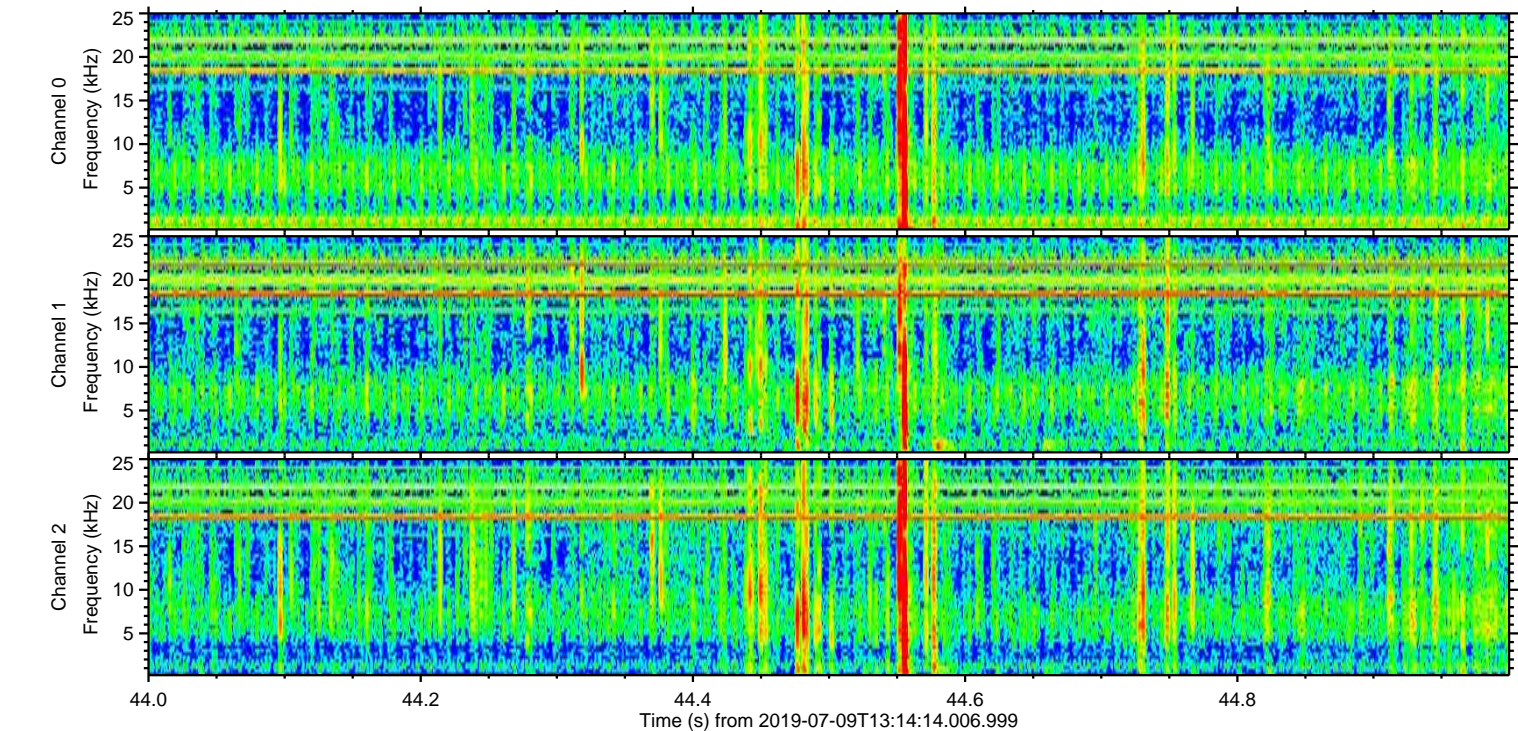
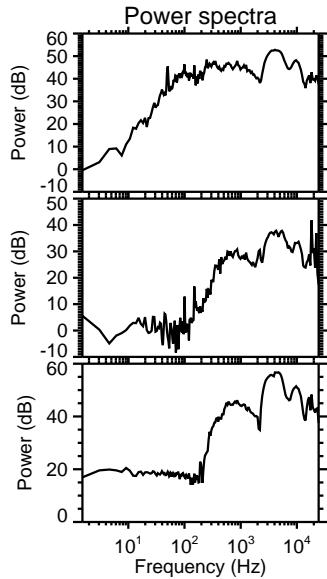
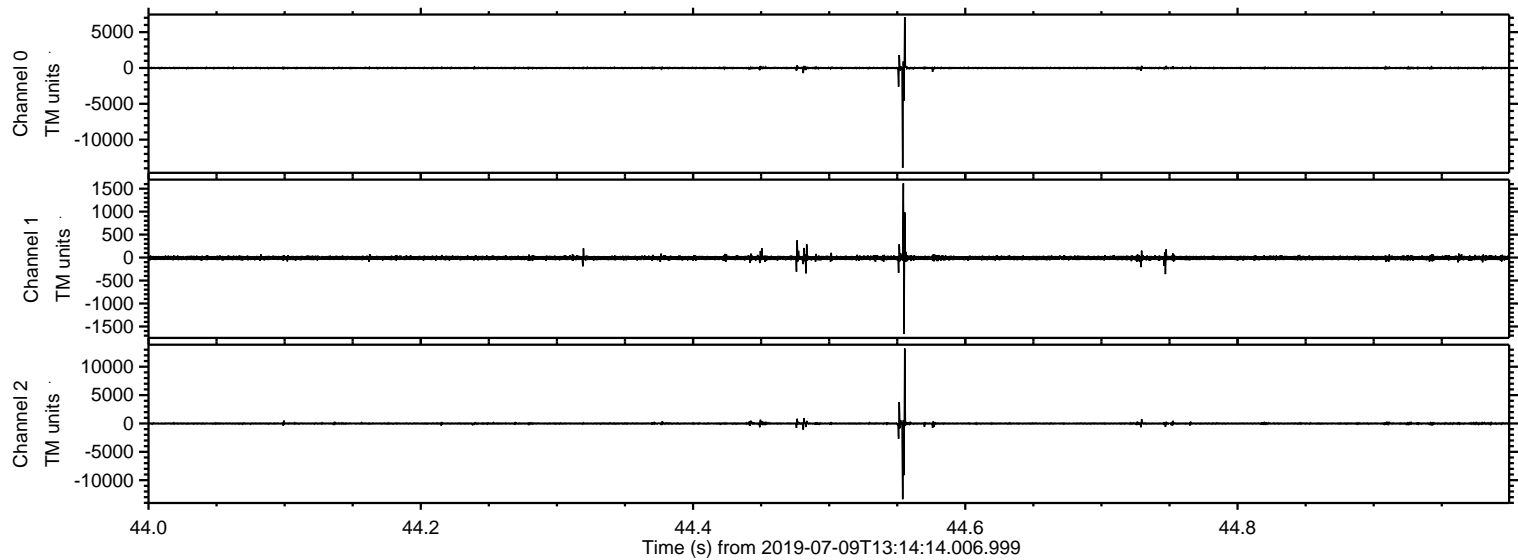


ELMAVAN 3D WAVEFORMS (Measured data sampled at 50 kHz) 50999 packets of 144 samples from 2019-07-09T13:14:14.006.999.

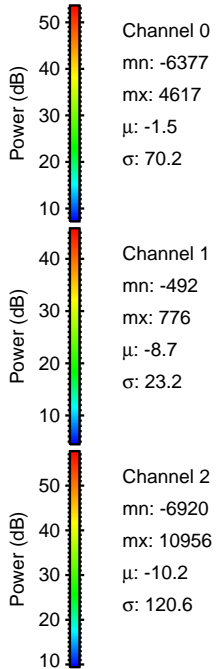
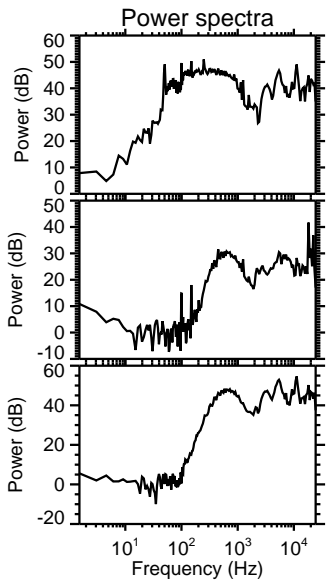
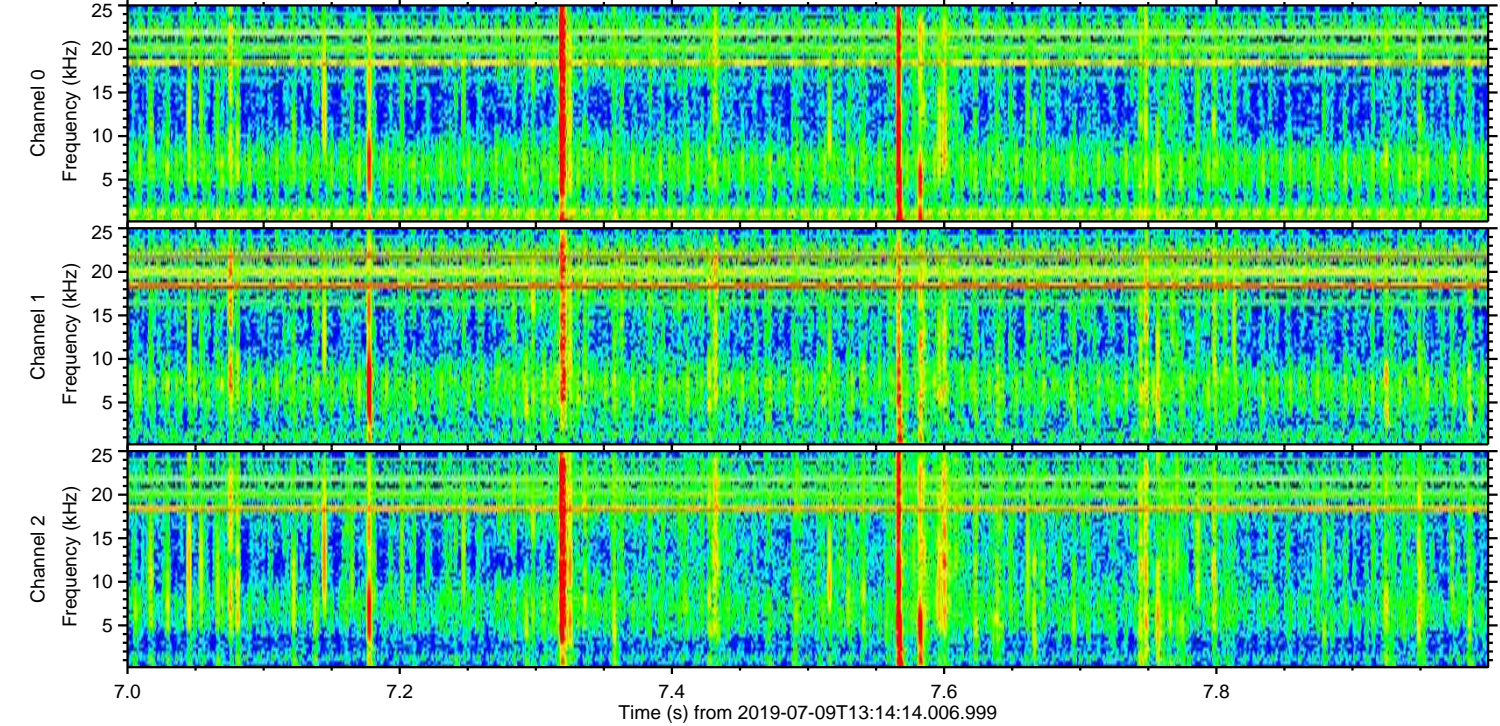
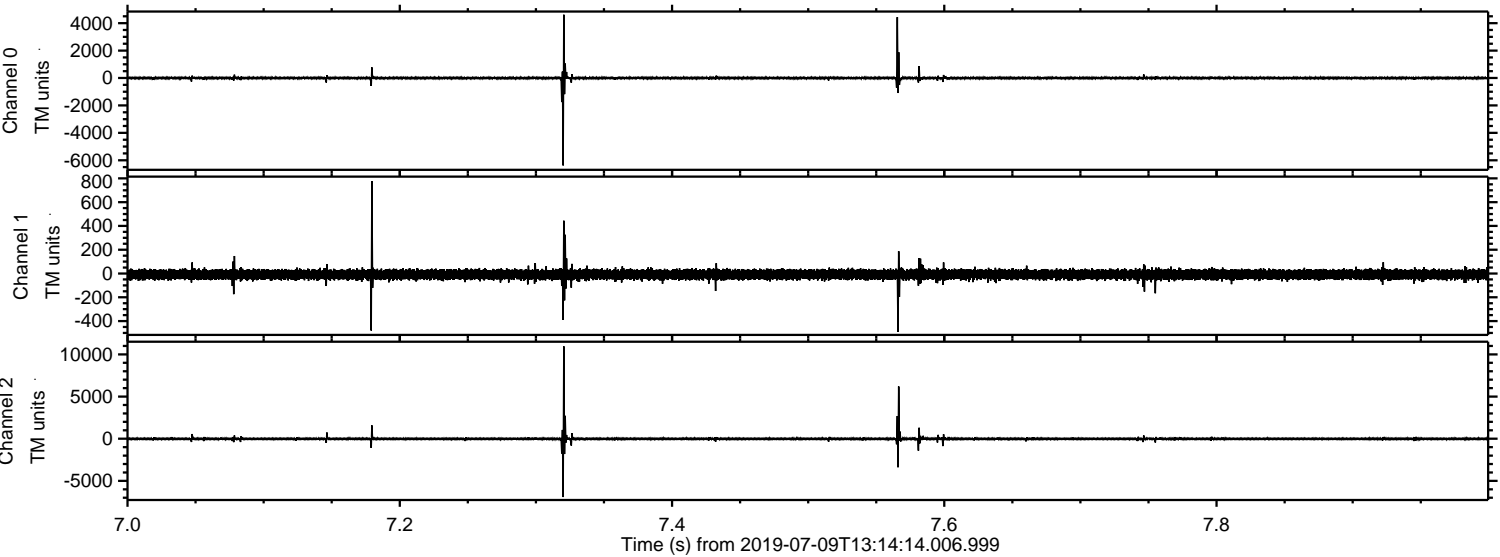
Processed Tue Jul 9 15:22:02 2019 by ELM ver.2012-10-06 from 001__elm20190709_131413__dat00.bin



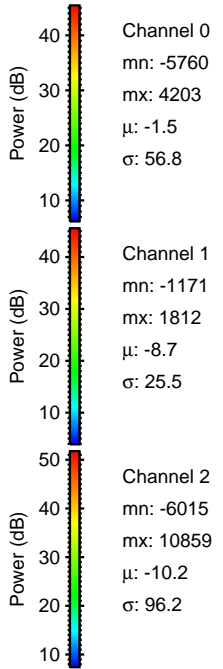
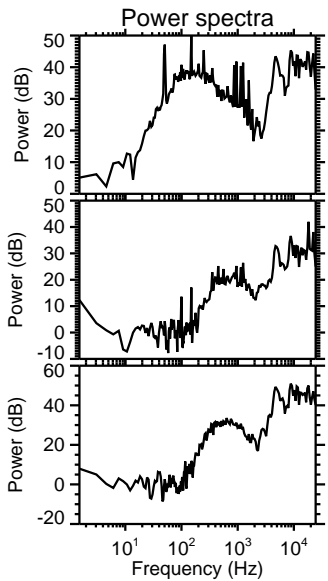
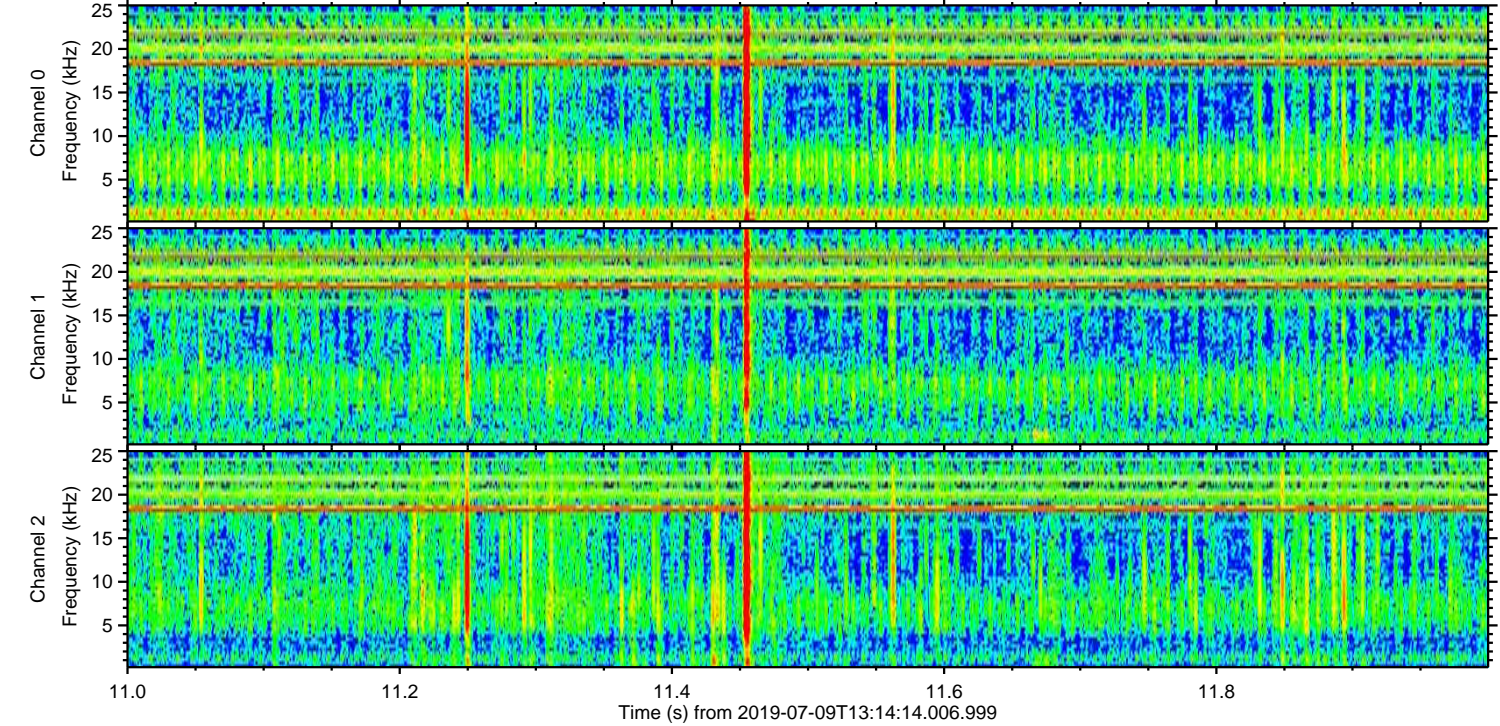
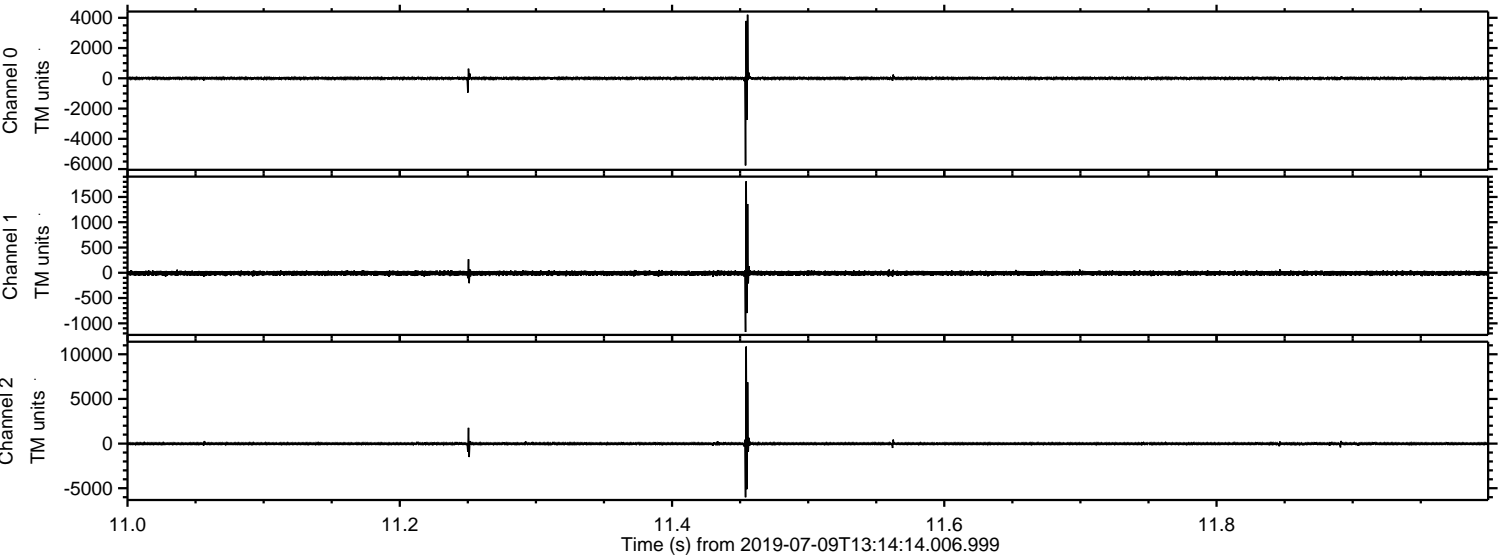
Processed Tue Jul 9 15:22:11 2019 by ELM ver.2012-10-06 from 001__elm20190709_131413__dat00.bin



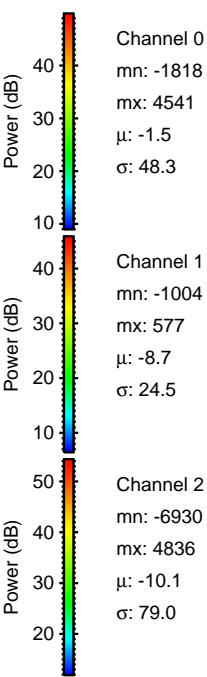
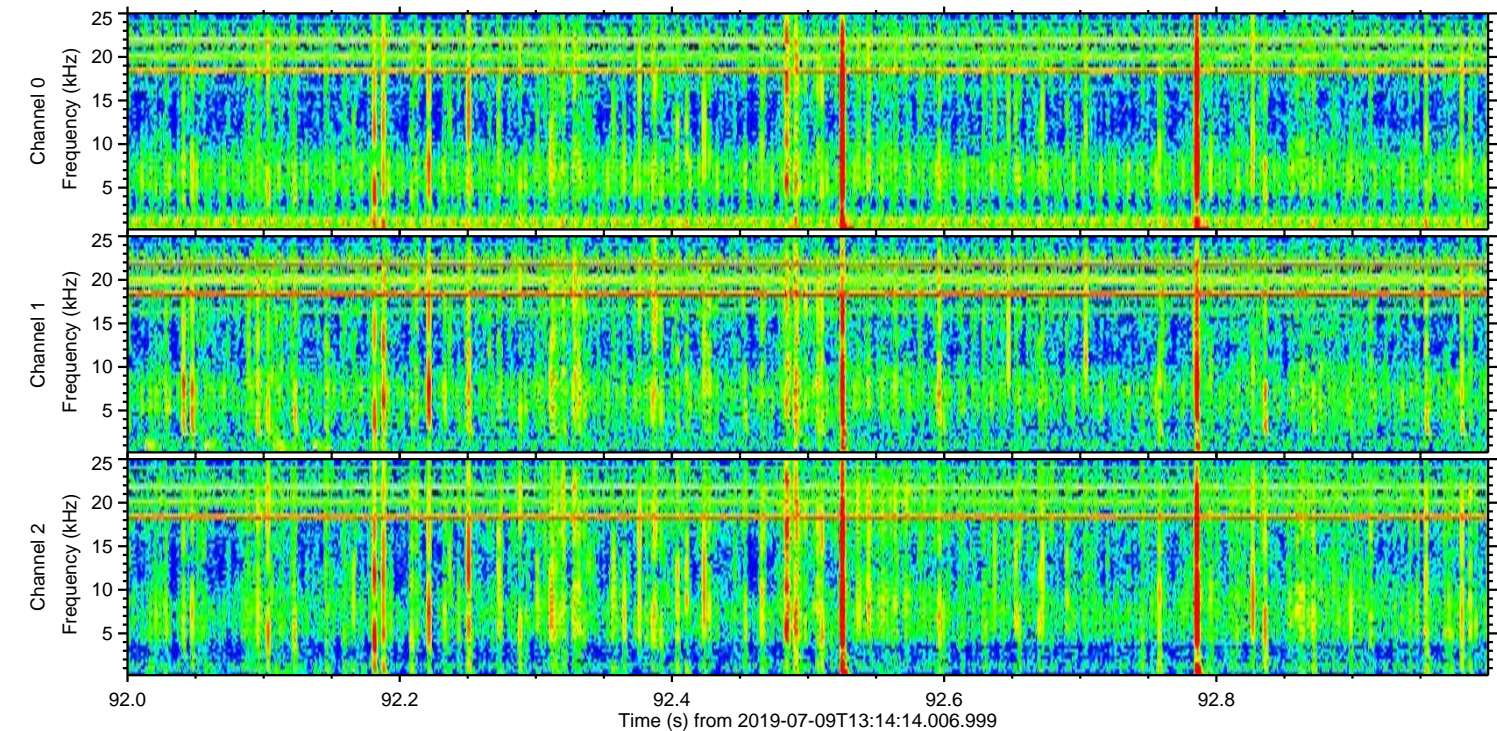
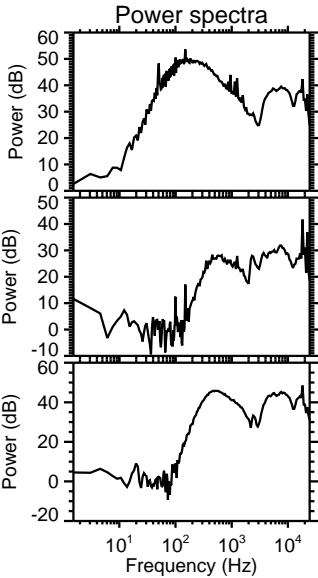
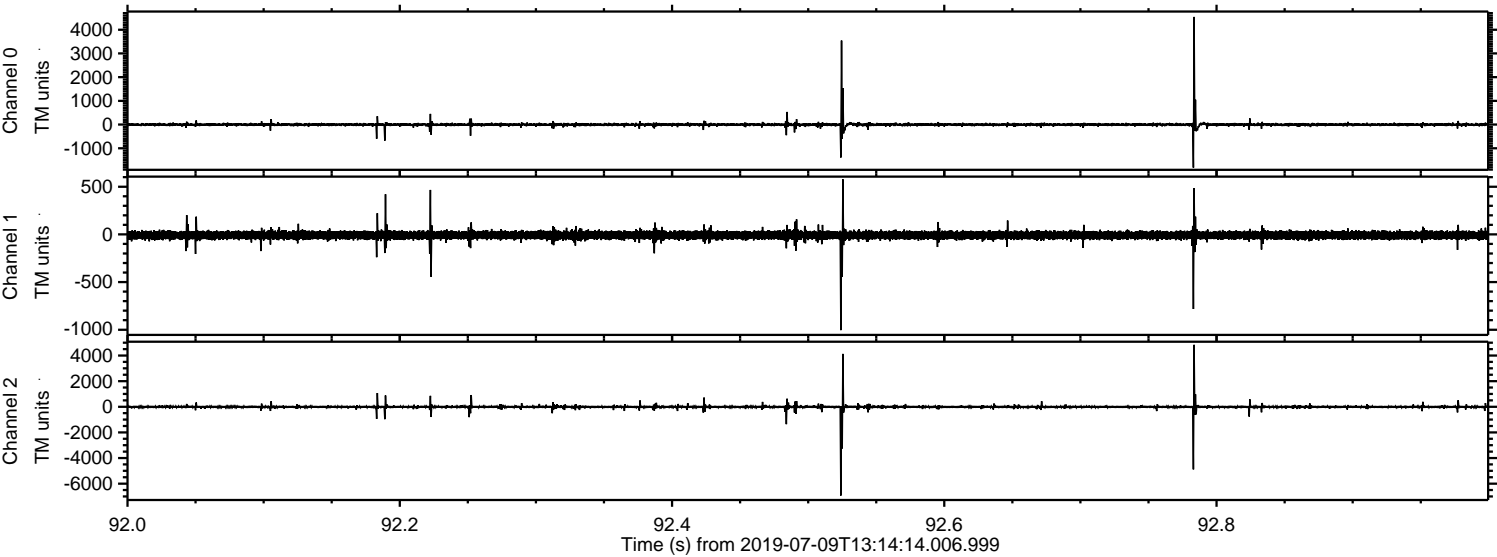
Processed Tue Jul 9 15:22:11 2019 by ELM ver.2012-10-06 from 001__elm20190709_131413__dat00.bin



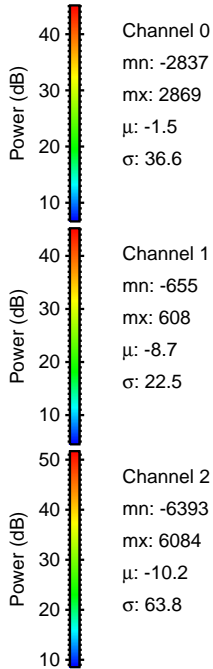
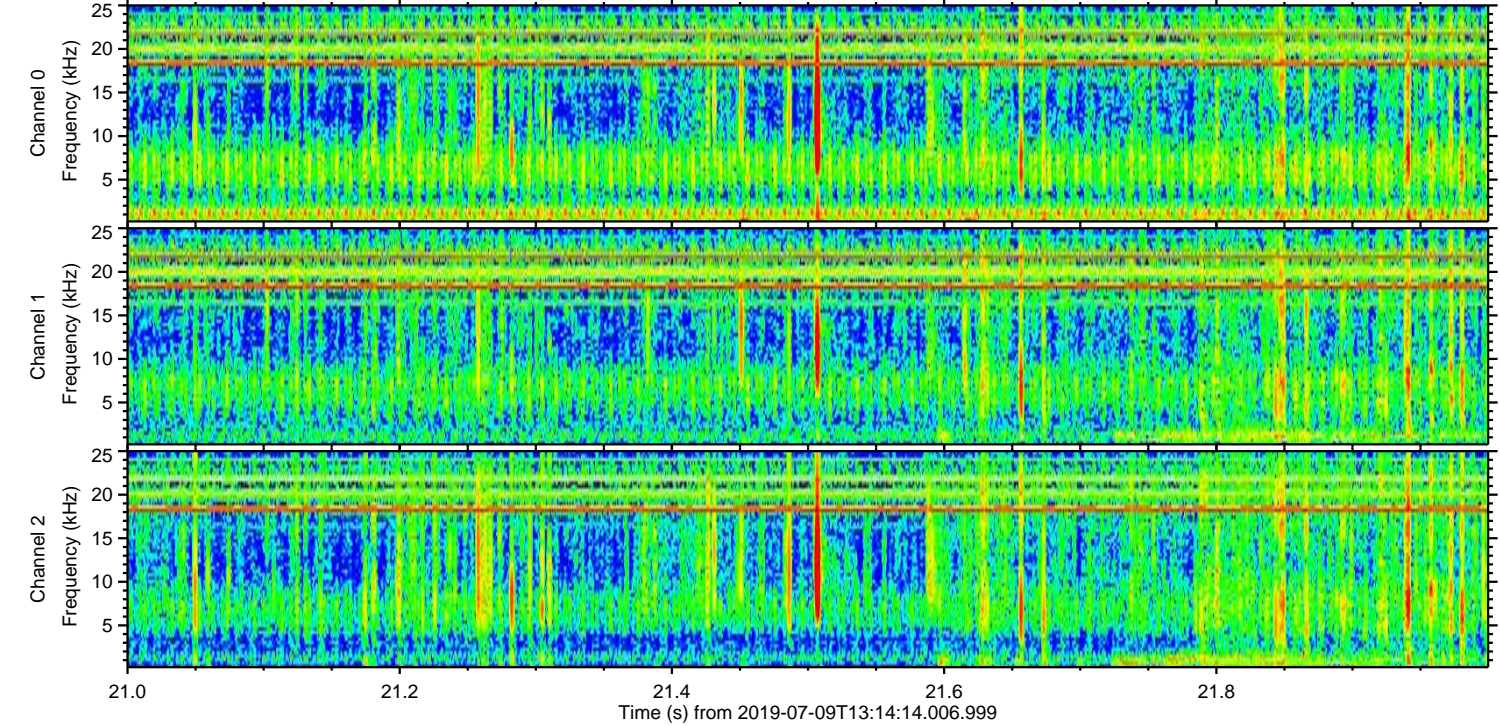
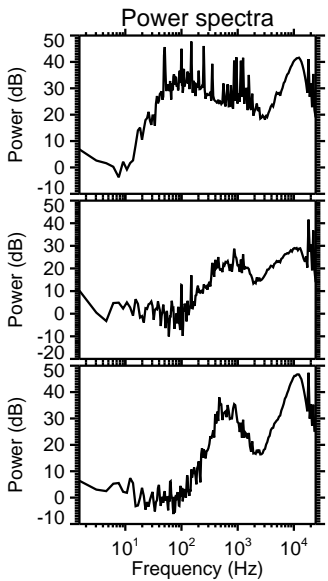
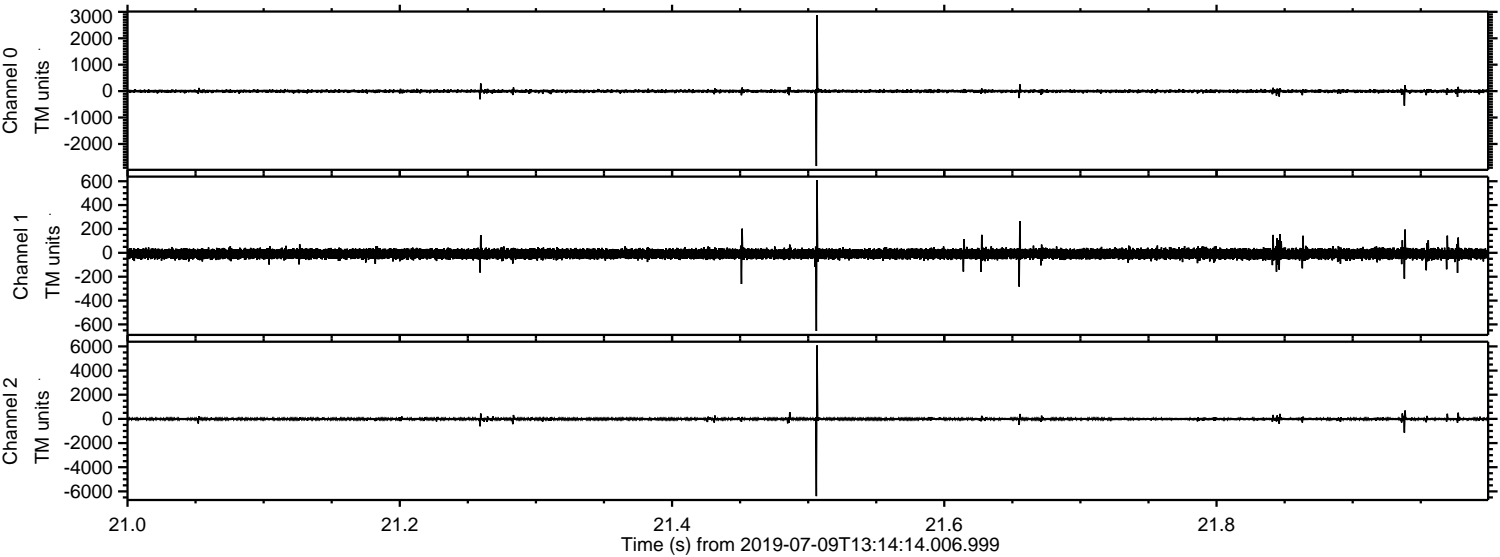
Processed Tue Jul 9 15:22:12 2019 by ELM ver.2012-10-06 from 001__elm20190709_131413__dat00.bin



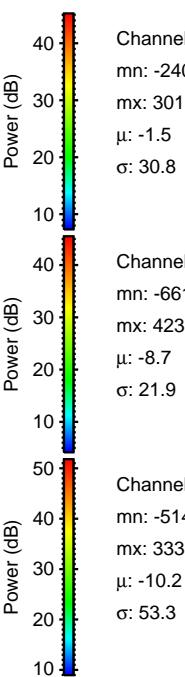
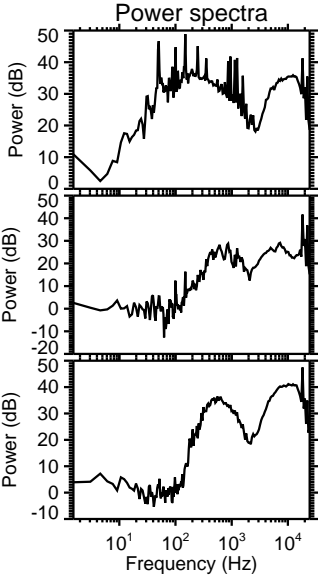
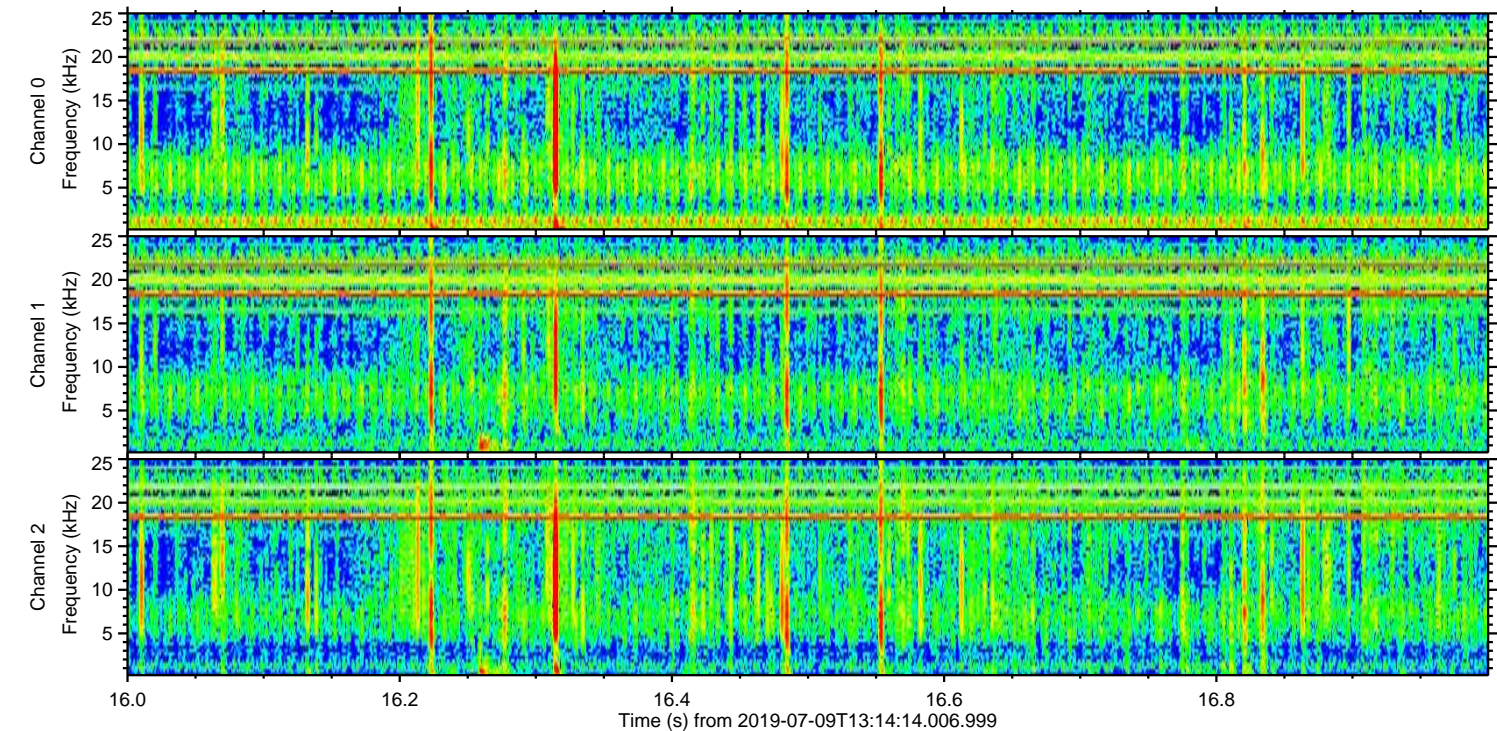
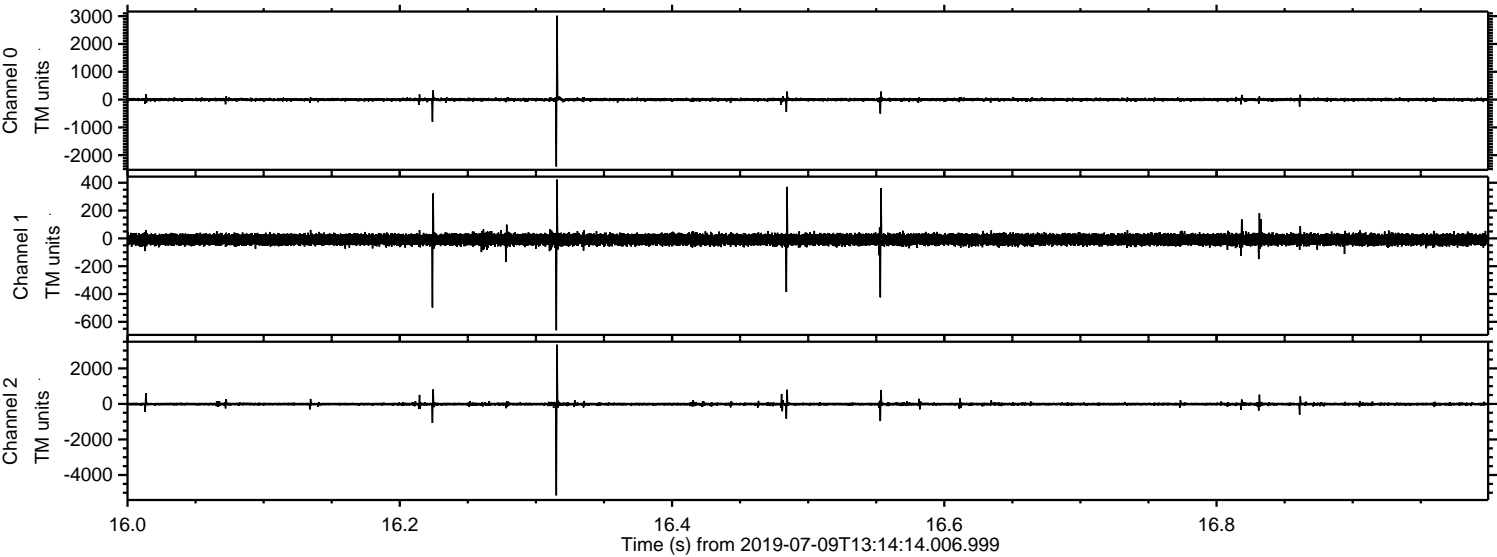
Processed Tue Jul 9 15:22:13 2019 by ELM ver.2012-10-06 from 001__elm20190709_131413__dat00.bin



Processed Tue Jul 9 15:22:14 2019 by ELM ver.2012-10-06 from 001__elm20190709_131413__dat00.bin



Processed Tue Jul 9 15:22:14 2019 by ELM ver.2012-10-06 from 001__elm20190709_131413__dat00.bin

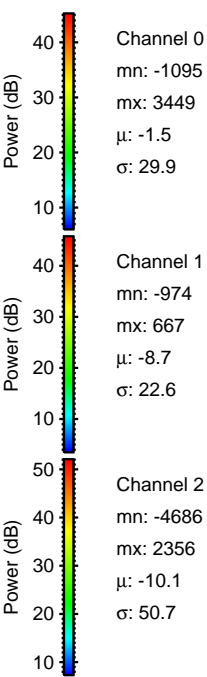
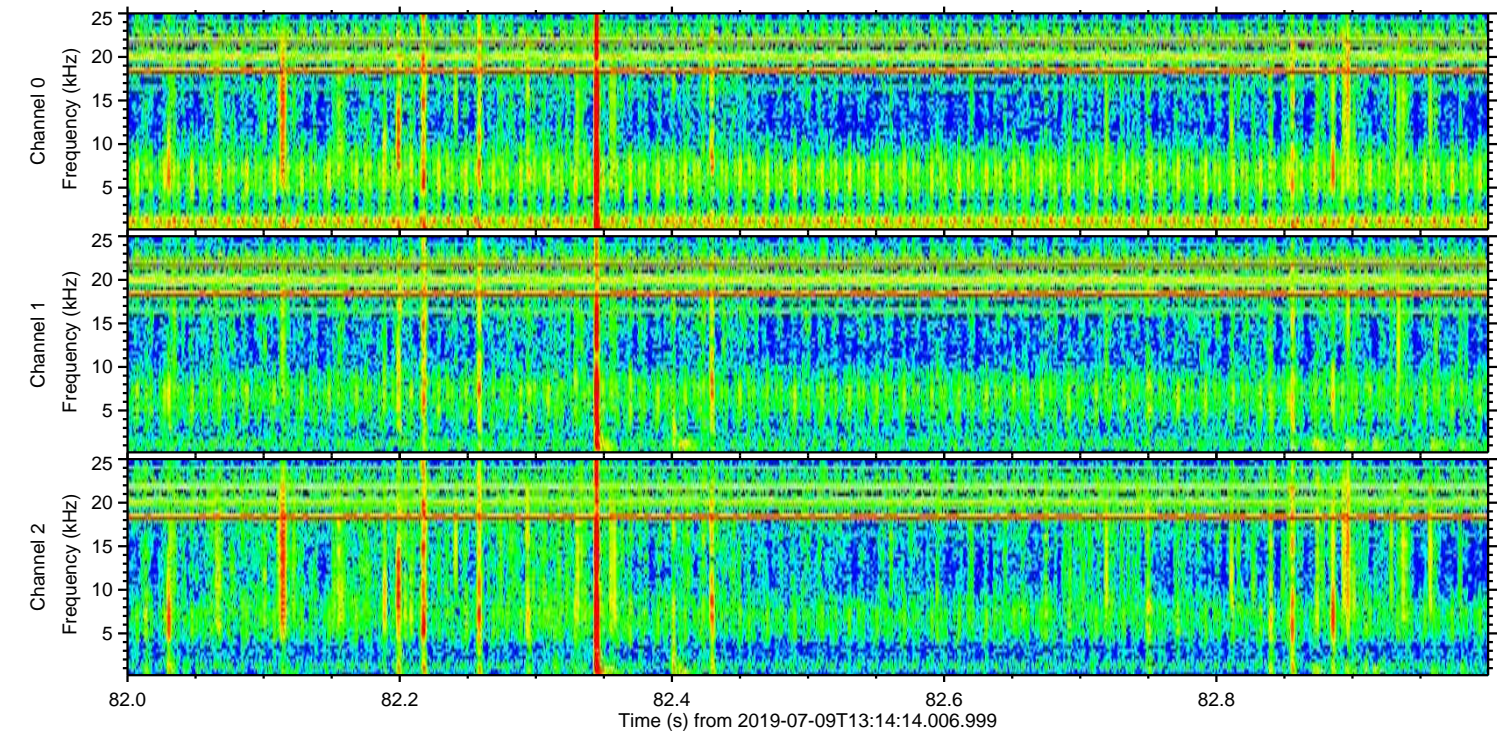
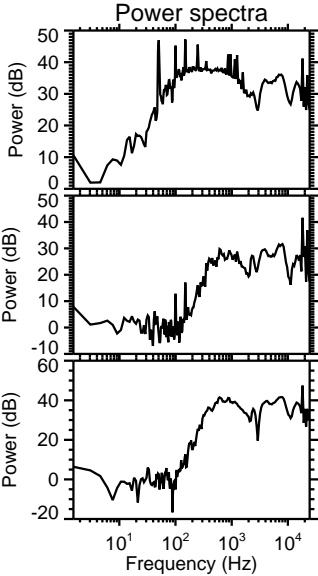
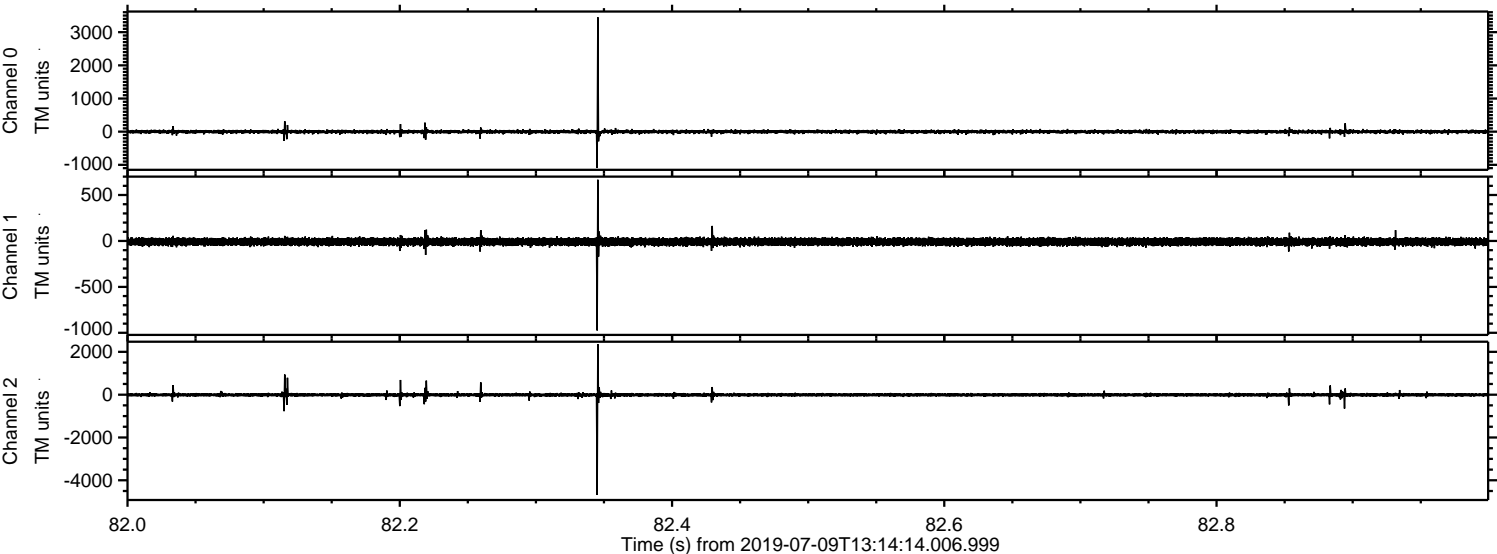


Channel 0
mn: -2406
mx: 3015
 μ : -1.5
 σ : 30.8

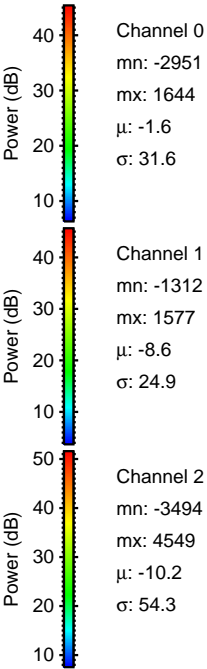
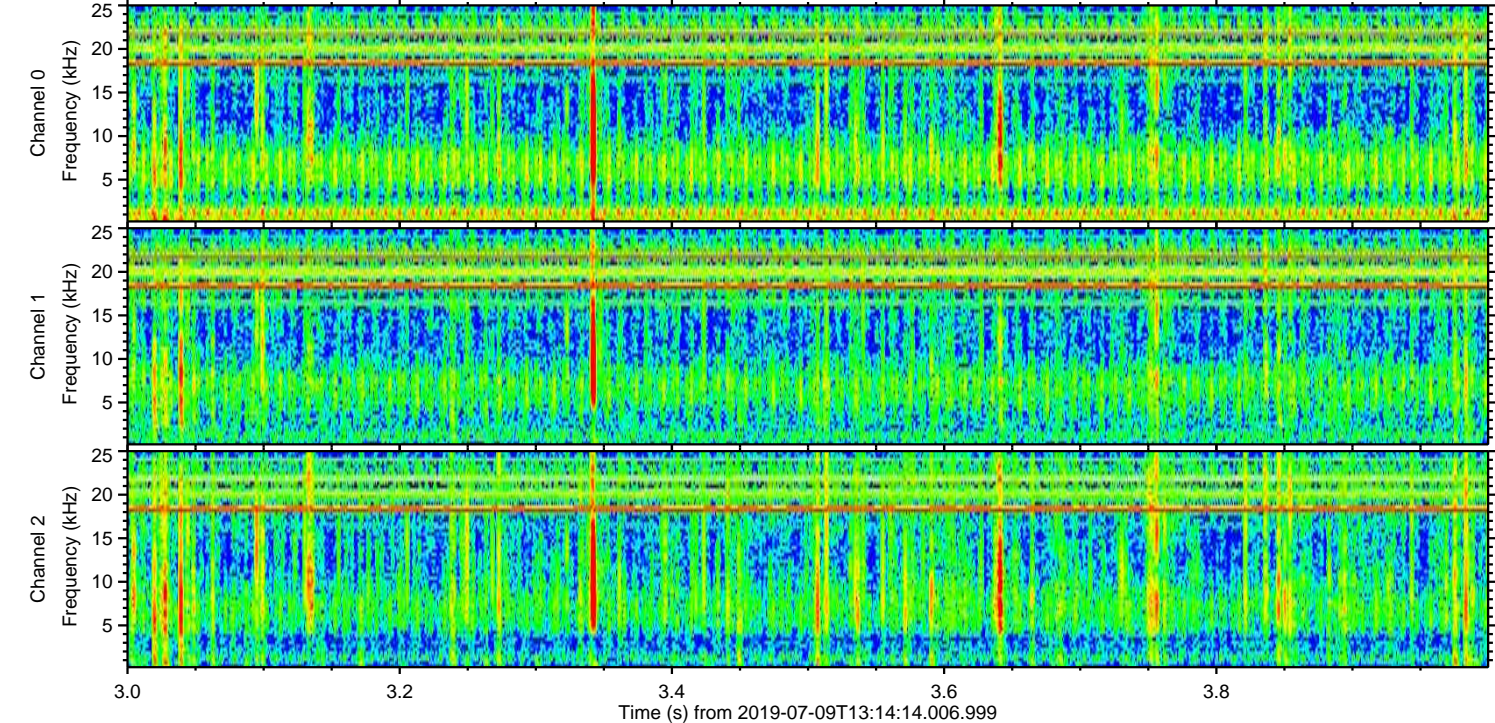
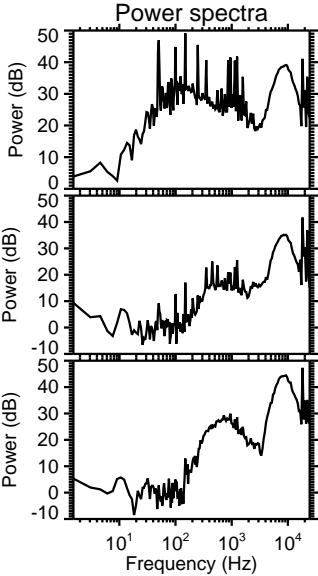
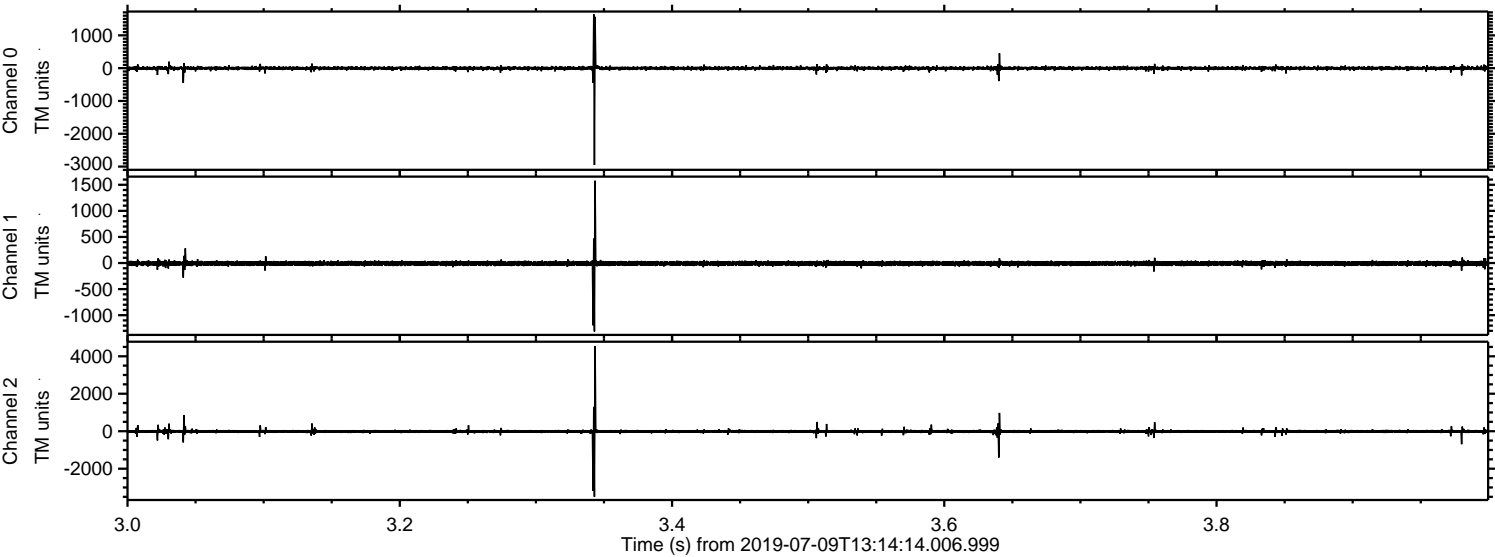
Channel 1
mn: -661
mx: 423
 μ : -8.7
 σ : 21.9

Channel 2
mn: -5149
mx: 3333
 μ : -10.2
 σ : 53.3

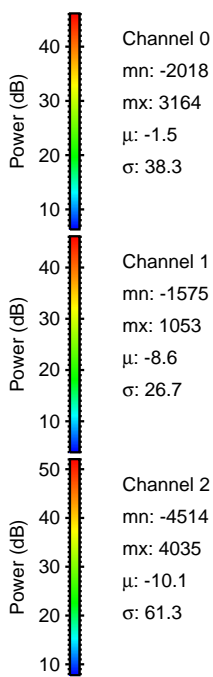
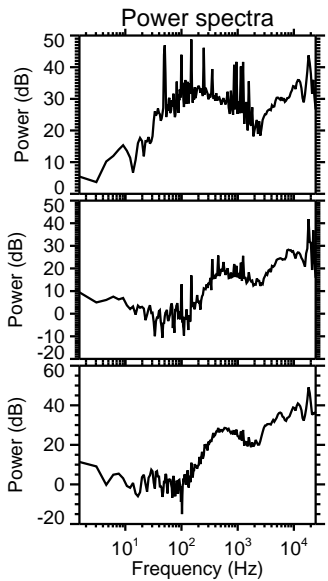
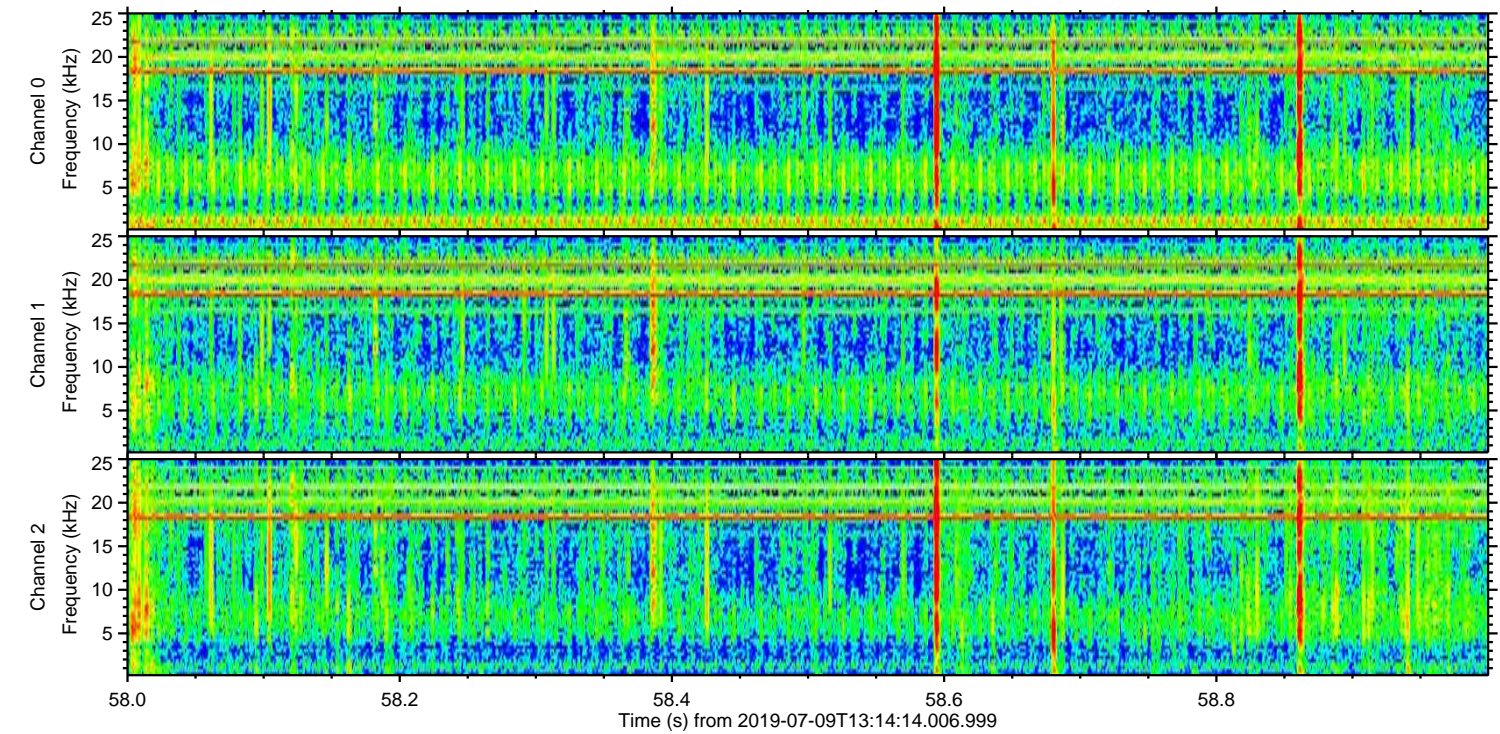
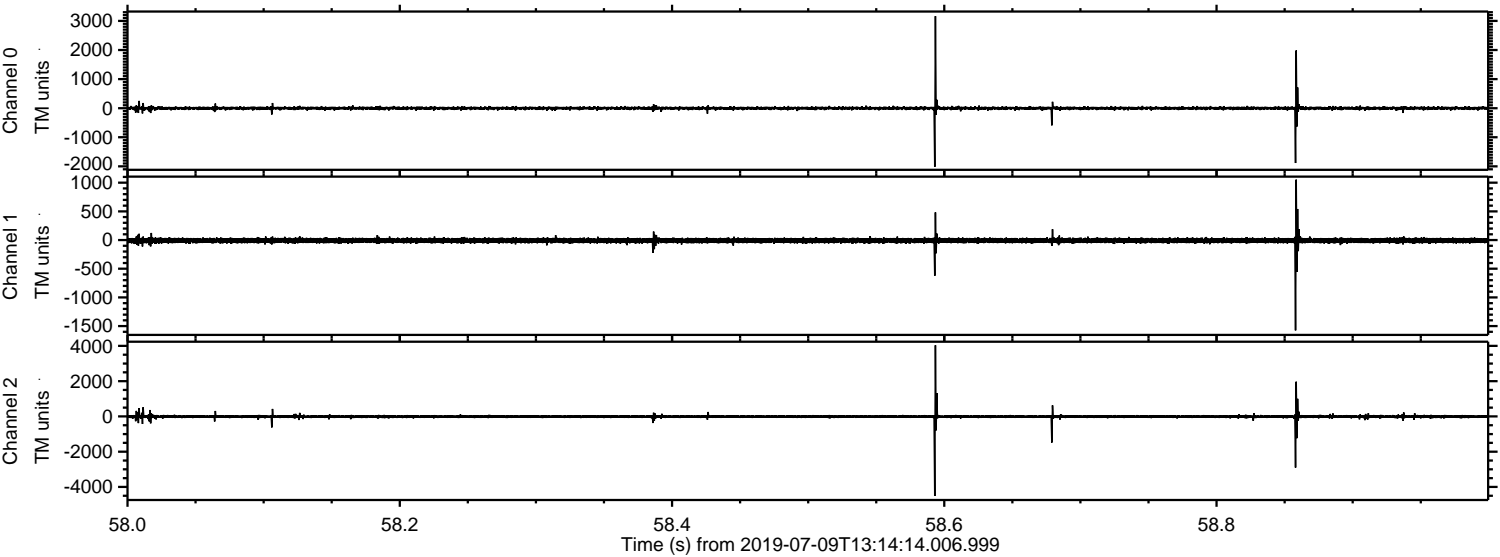
Processed Tue Jul 9 15:22:15 2019 by ELM ver.2012-10-06 from 001__elm20190709_131413__dat00.bin



Processed Tue Jul 9 15:22:16 2019 by ELM ver.2012-10-06 from 001__elm20190709_131413__dat00.bin



Processed Tue Jul 9 15:22:16 2019 by ELM ver.2012-10-06 from 001__elm20190709_131413__dat00.bin



ELMAVAN 3D WAVEFORMS (Measured data sampled at 50 kHz) 50999 packets of 144 samples from 2019-07-09T13:14:14.006.999. Part 125/147

