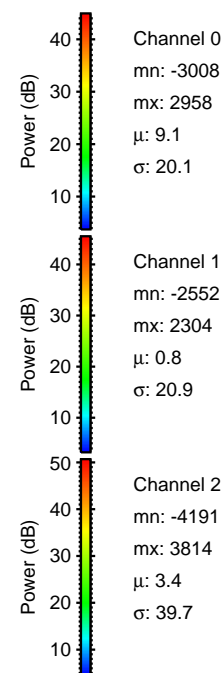
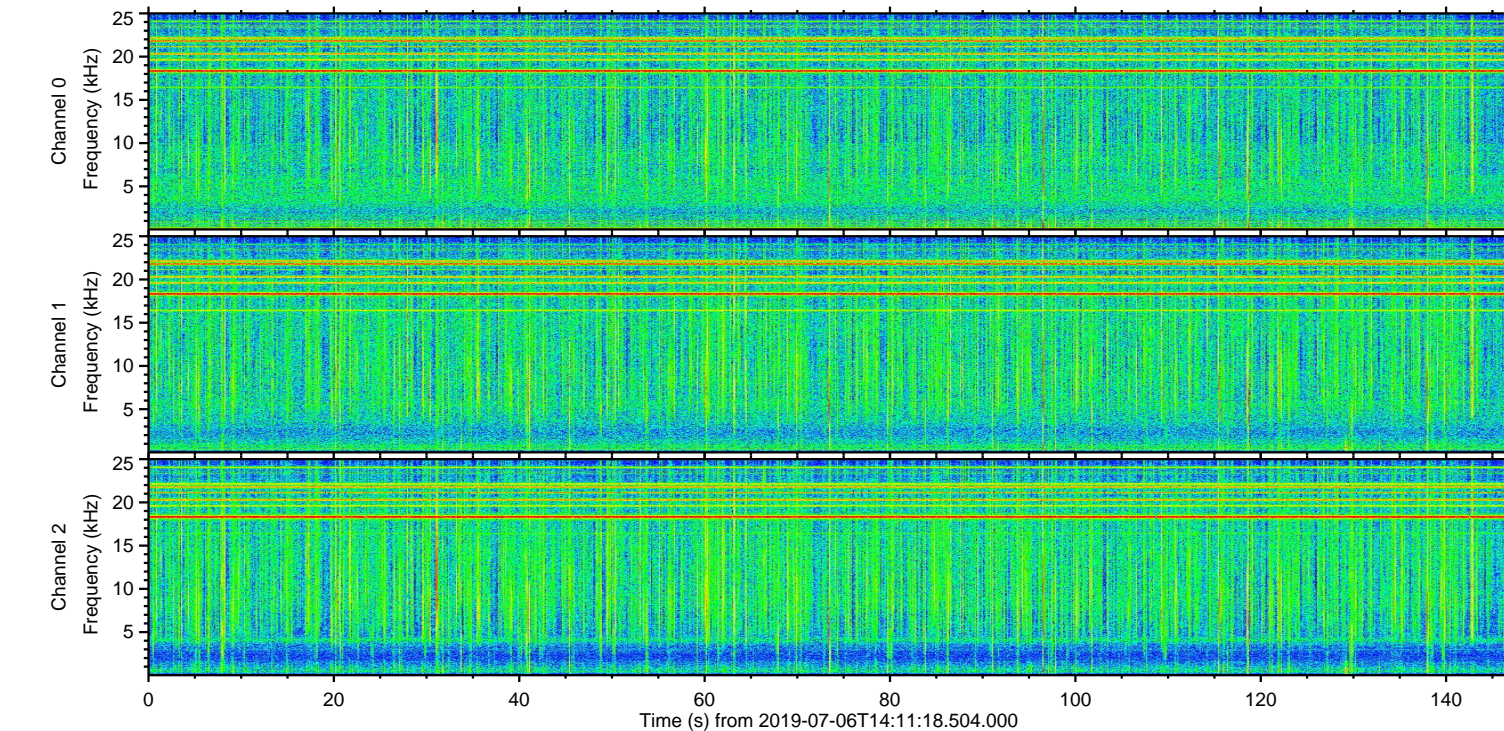
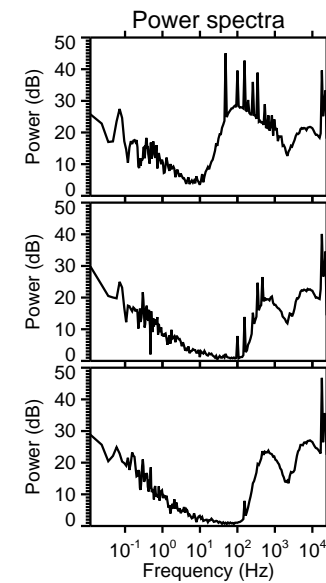
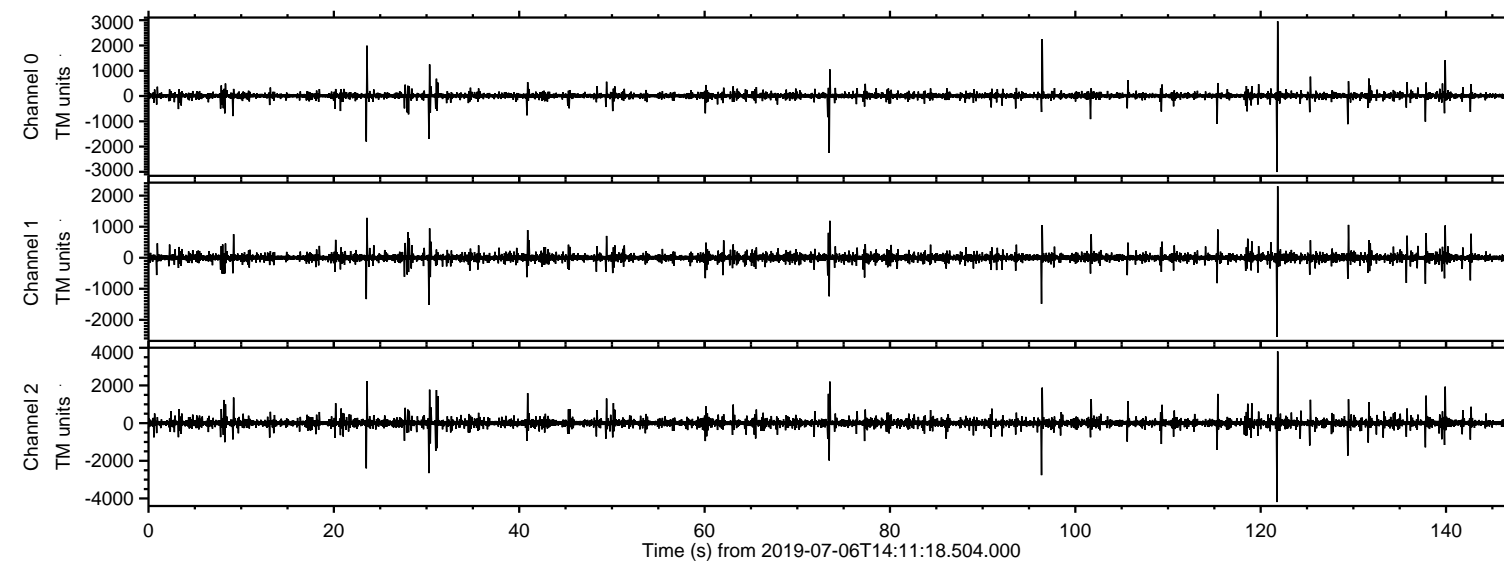


# ELMAVAN 3D WAVEFORMS (Measured data sampled at 50 kHz) 51000 packets of 144 samples from 2019-07-06T14:11:18.504.000.

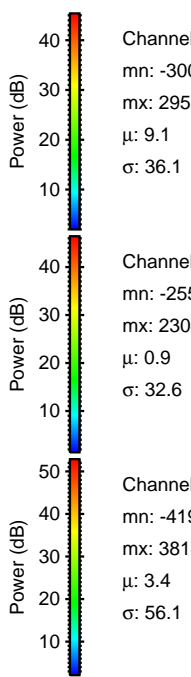
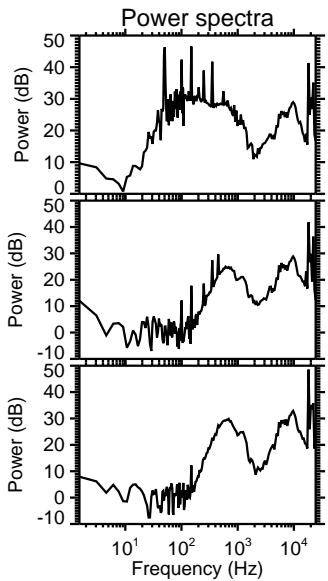
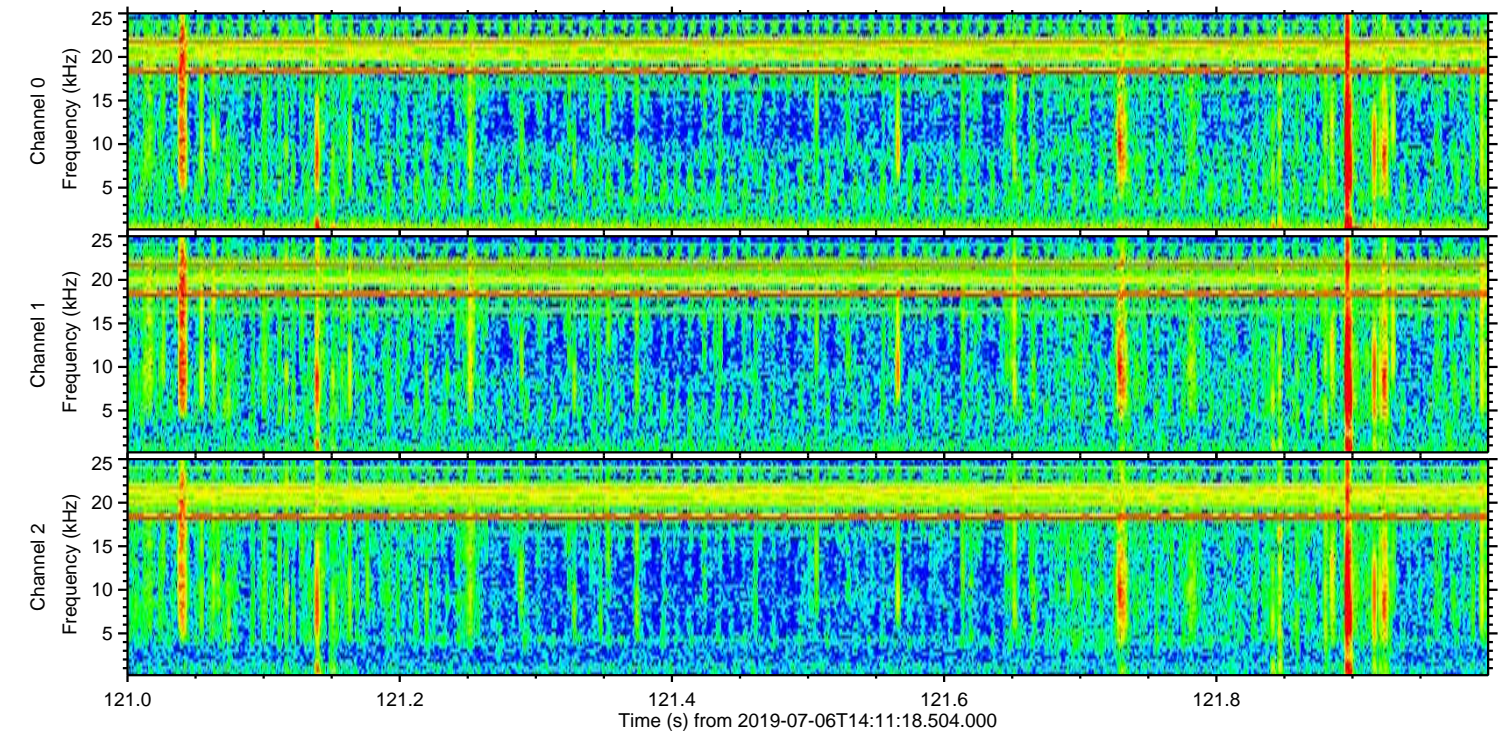
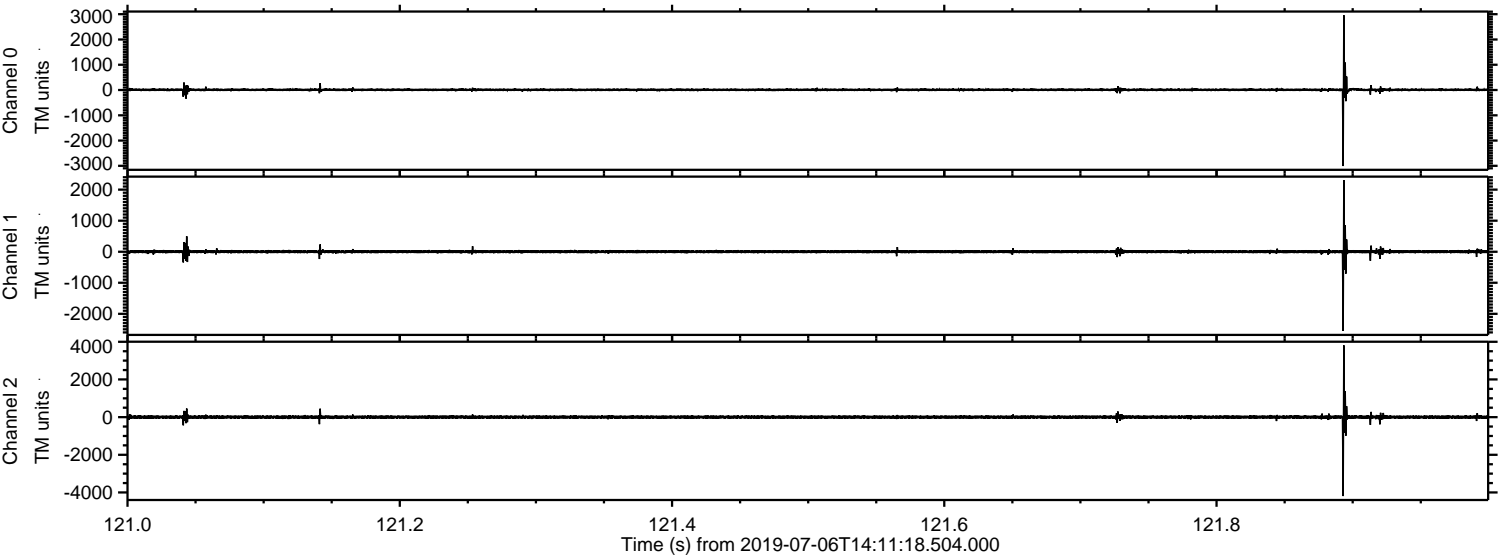
Processed Sat Jul 6 16:18:49 2019 by ELM ver.2012-10-06 from 001\_\_elm20190706\_141117\_\_dat00.bin





ELMAVAN 3D WAVEFORMS (Measured data sampled at 50 kHz) 51000 packets of 144 samples from 2019-07-06T14:11:18.504.000. Part 122/147

Processed Sat Jul 6 16:18:58 2019 by ELM ver.2012-10-06 from 001\_\_elm20190706\_141117\_\_dat00.bin



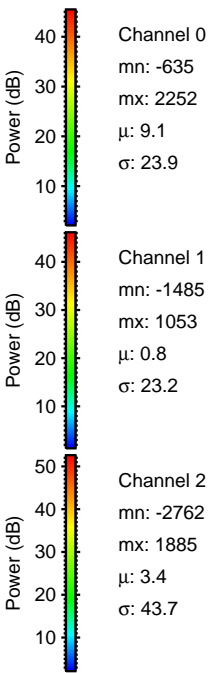
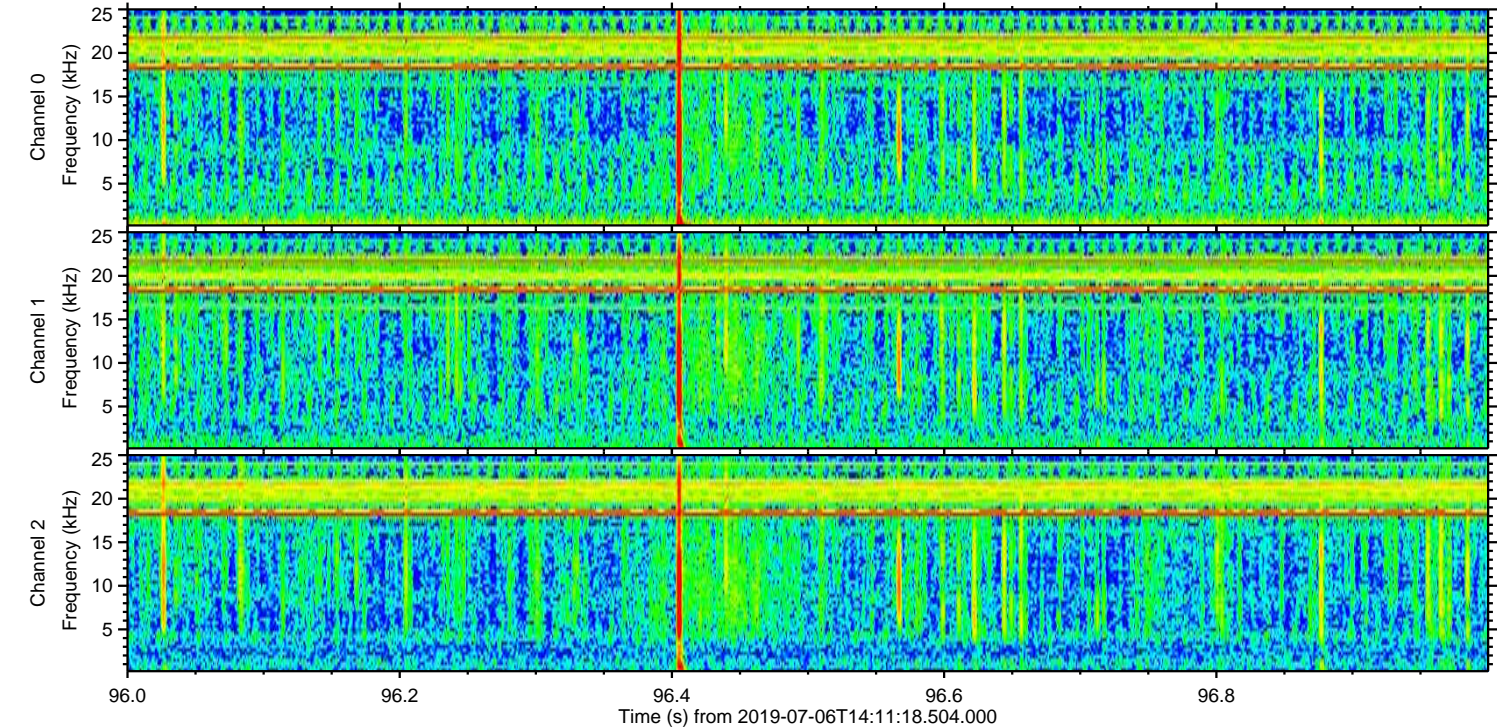
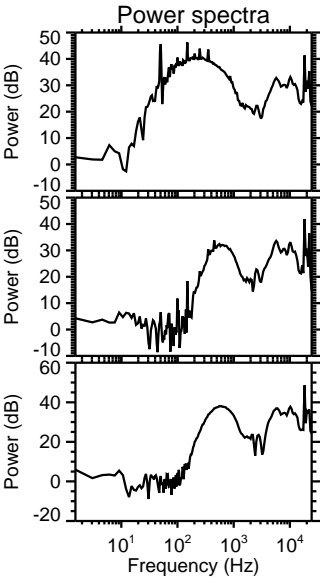
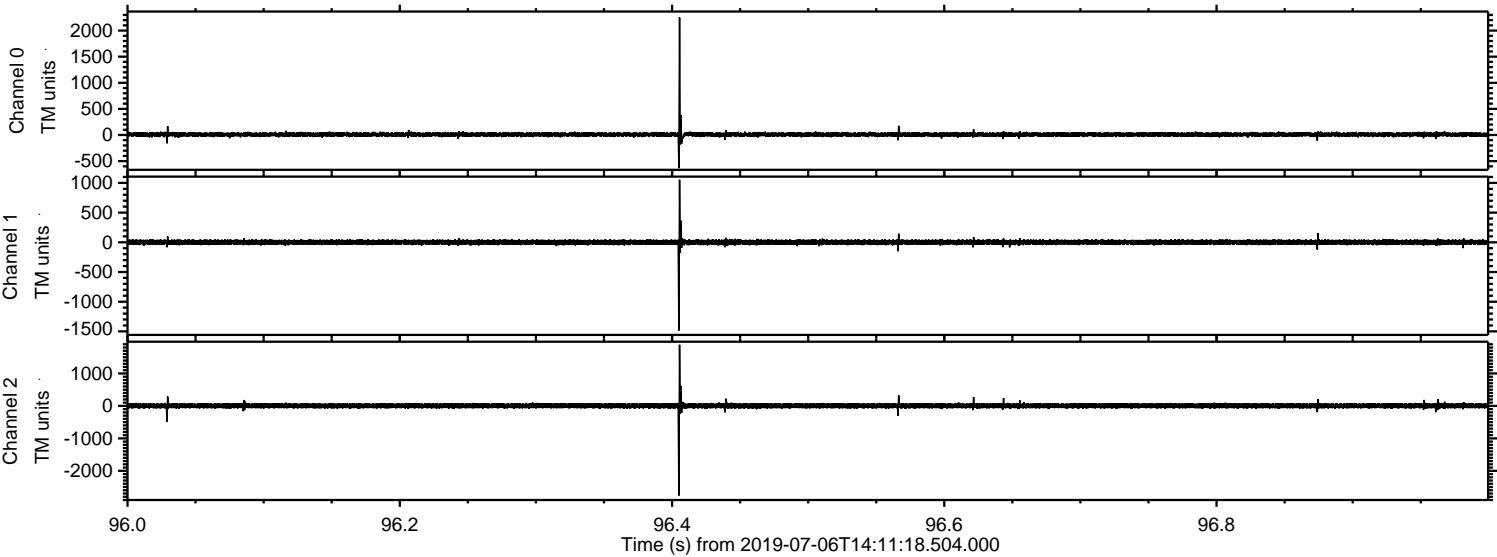
Channel 0  
mn: -3008  
mx: 2958  
 $\mu$ : 9.1  
 $\sigma$ : 36.1

Channel 1  
mn: -2552  
mx: 2304  
 $\mu$ : 0.9  
 $\sigma$ : 32.6

Channel 2  
mn: -4191  
mx: 3814  
 $\mu$ : 3.4  
 $\sigma$ : 56.1

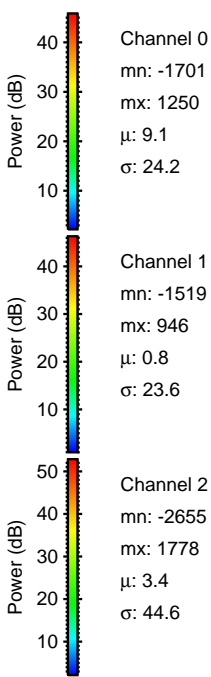
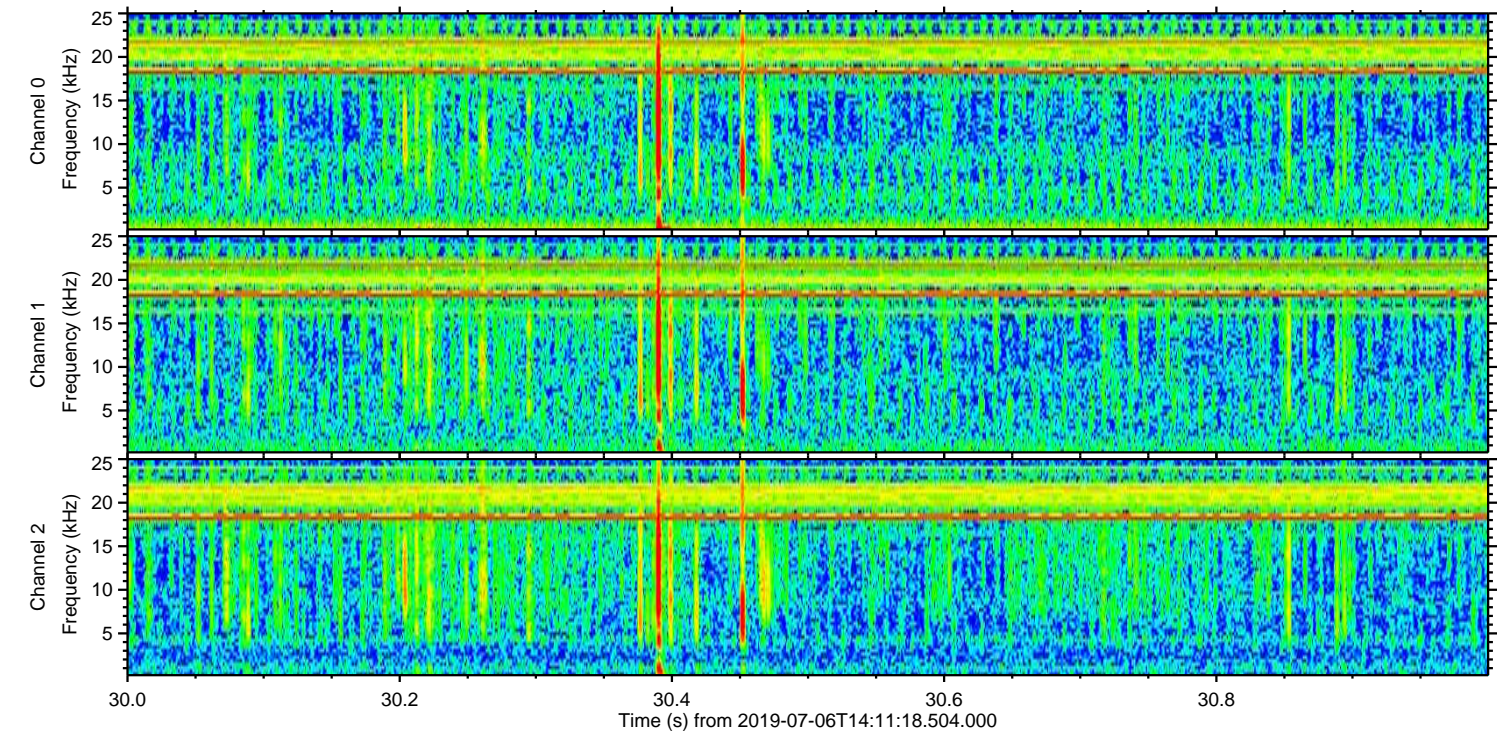
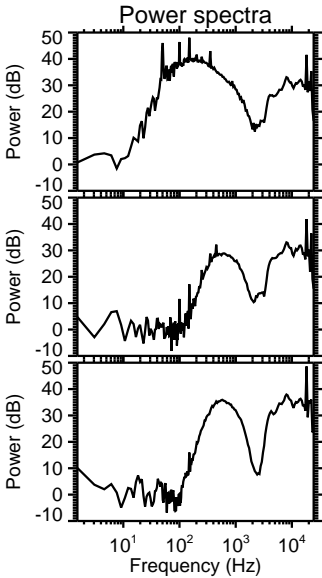
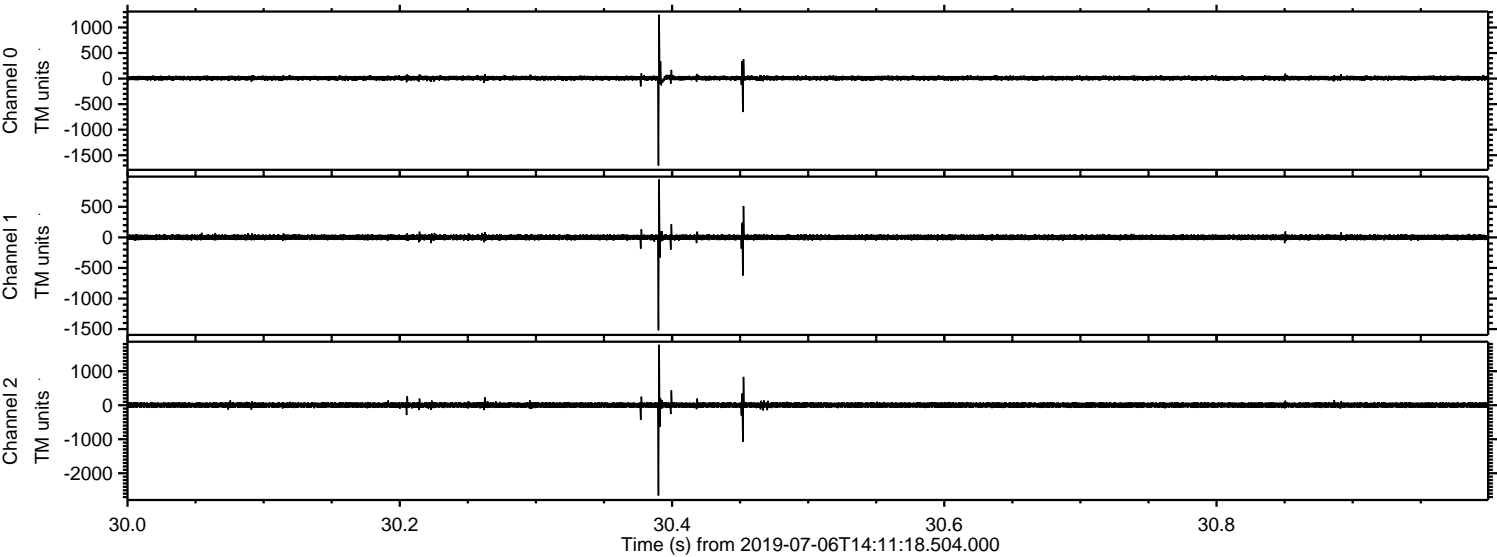


Processed Sat Jul 6 16:18:59 2019 by ELM ver.2012-10-06 from 001\_\_elm20190706\_141117\_\_dat00.bin



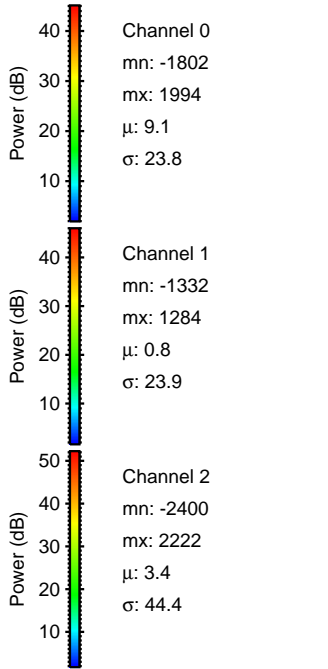
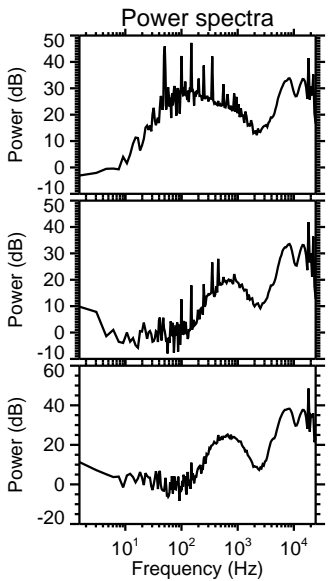
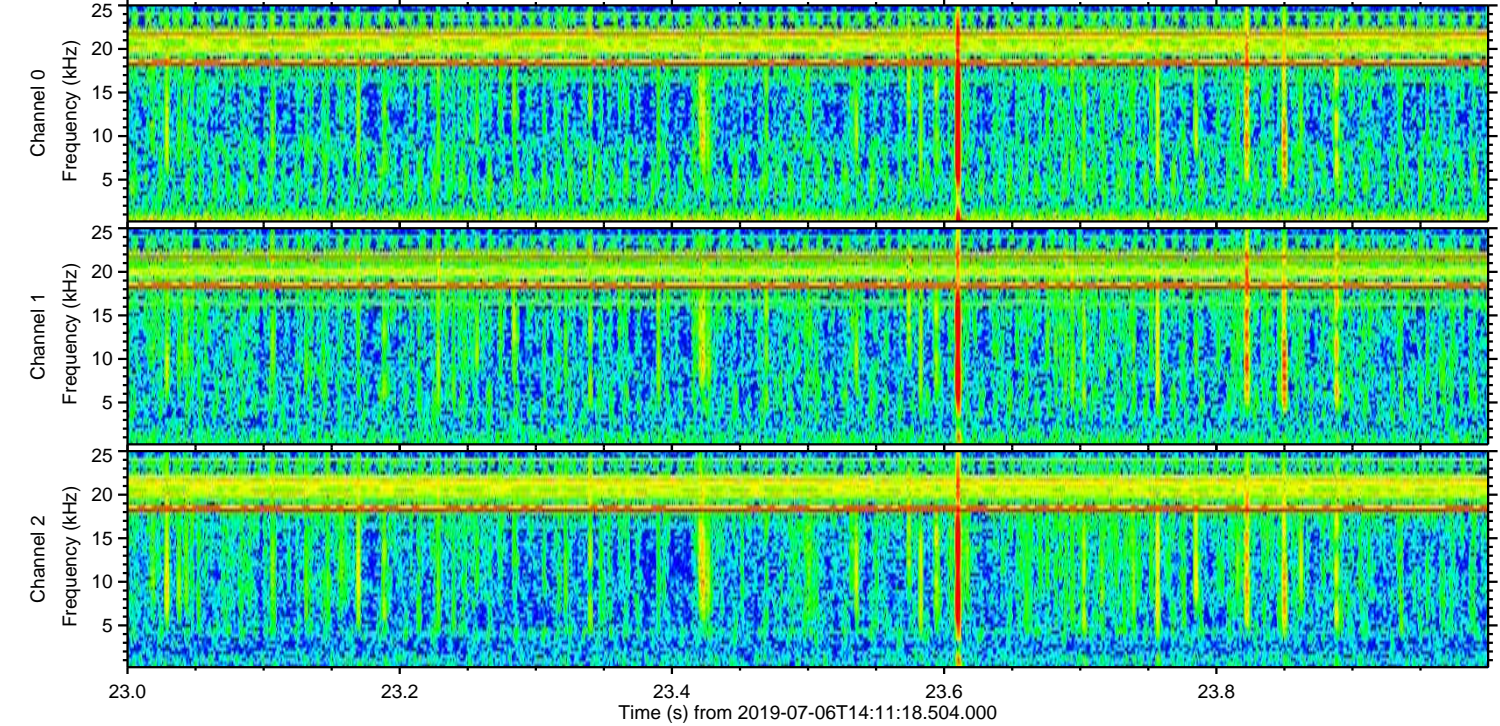
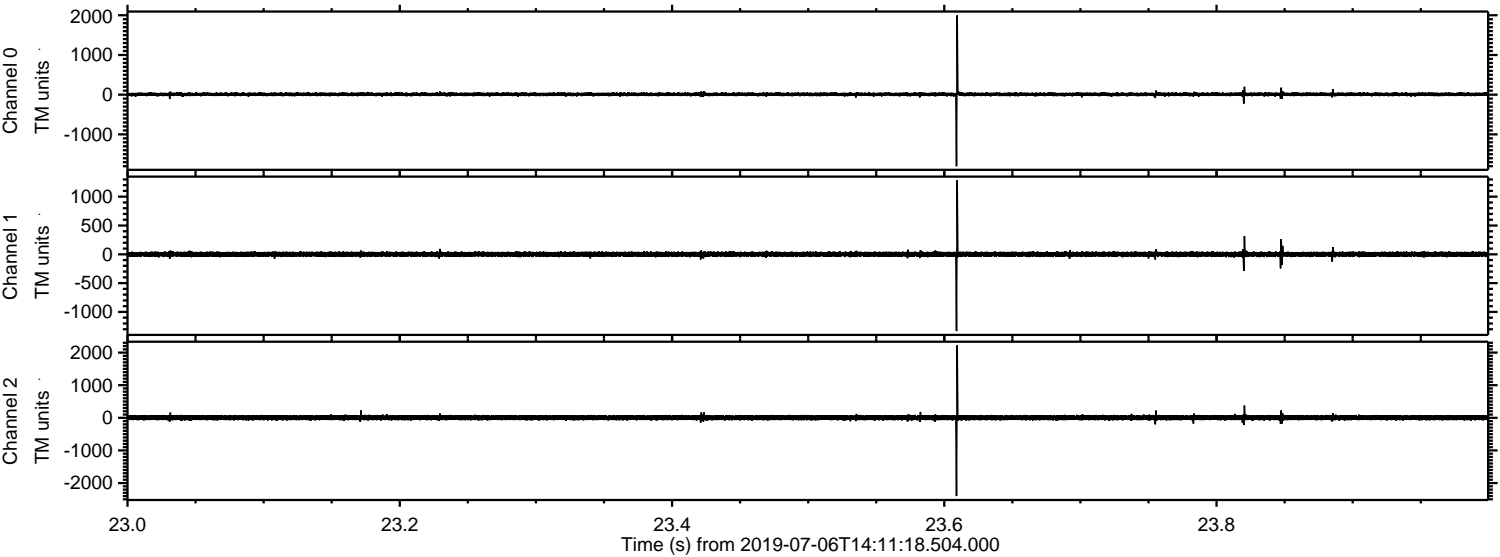


Processed Sat Jul 6 16:19:00 2019 by ELM ver.2012-10-06 from 001\_\_elm20190706\_141117\_\_dat00.bin



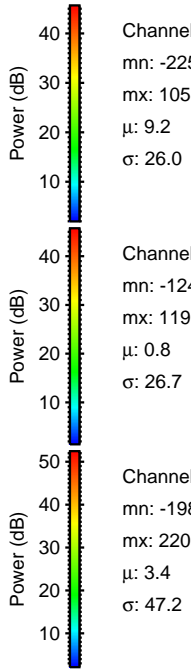
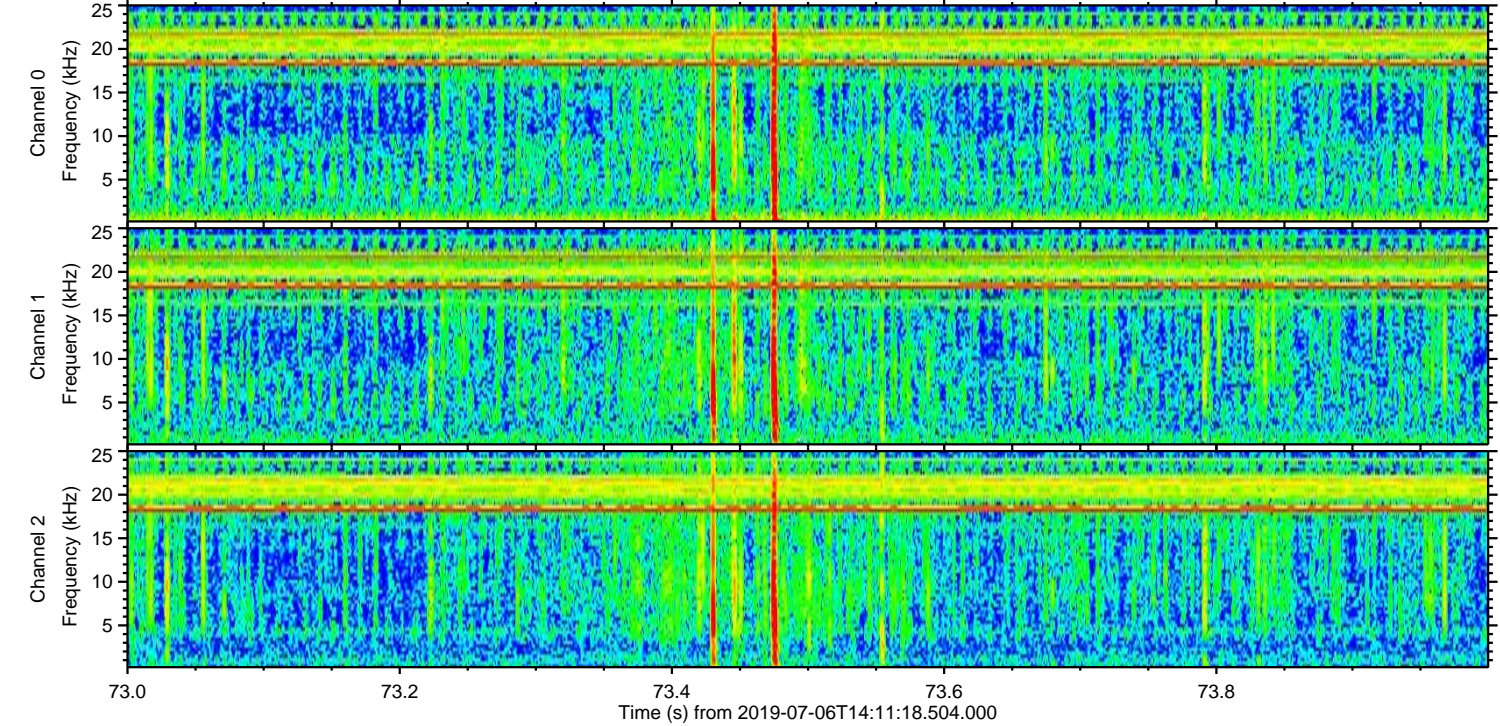
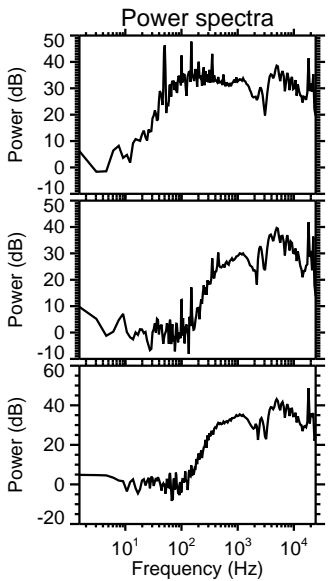
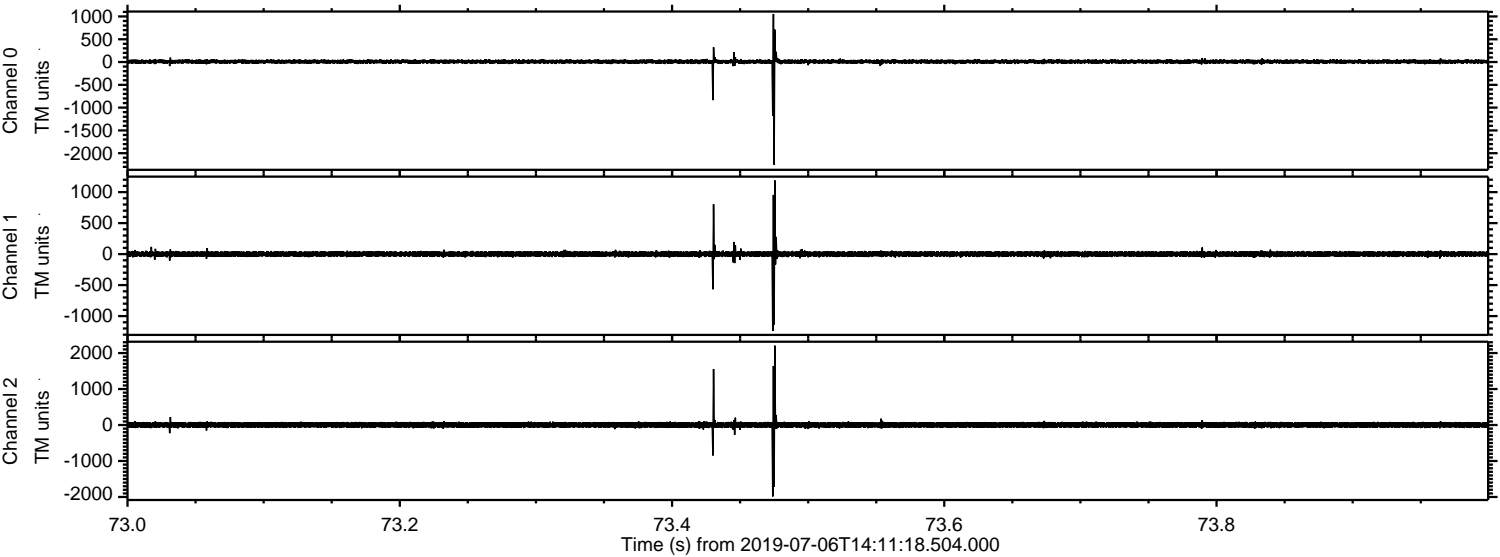


Processed Sat Jul 6 16:19:00 2019 by ELM ver.2012-10-06 from 001\_\_elm20190706\_141117\_\_dat00.bin



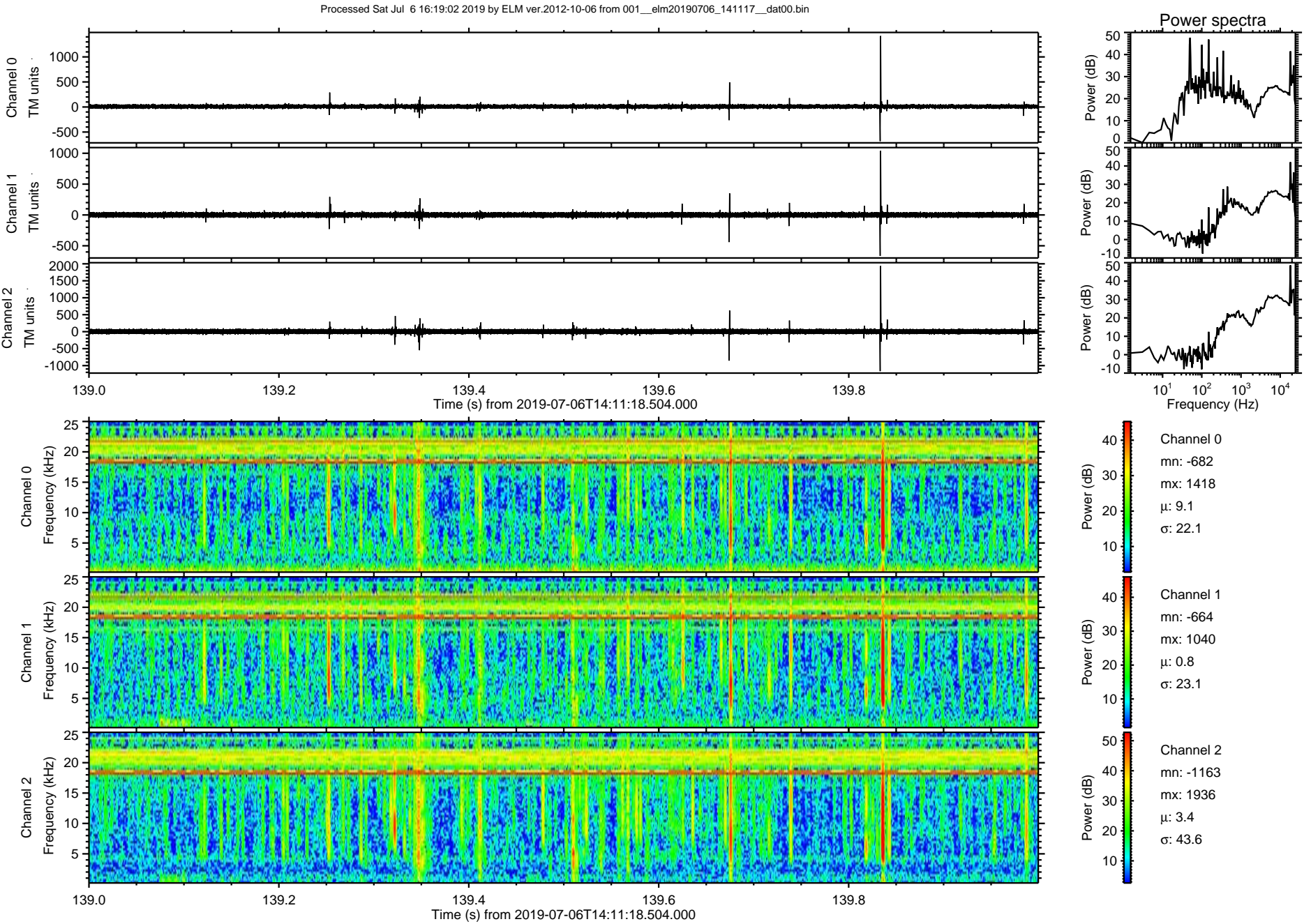


Processed Sat Jul 6 16:19:01 2019 by ELM ver.2012-10-06 from 001\_\_elm20190706\_141117\_\_dat00.bin

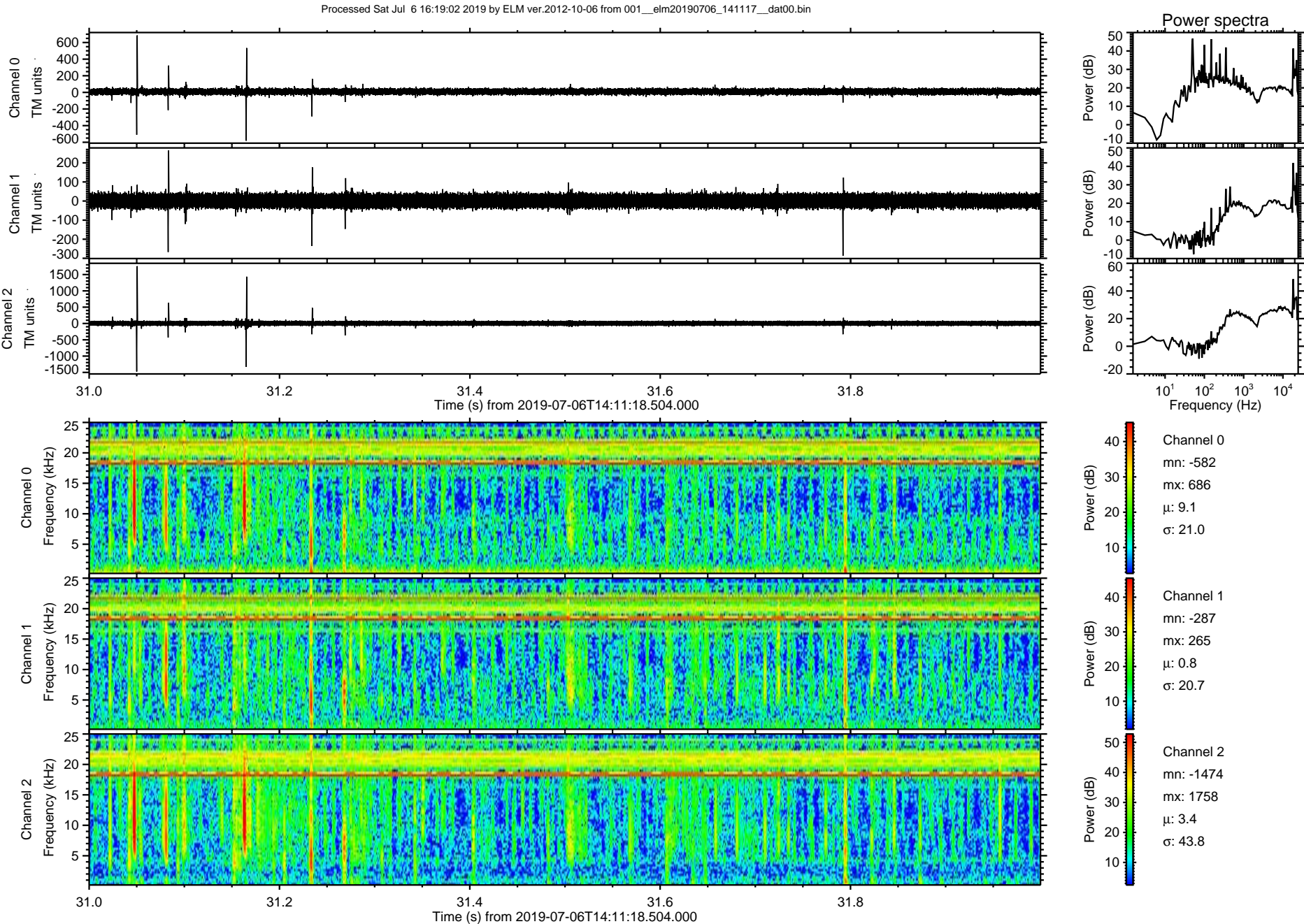




ELMAVAN 3D WAVEFORMS (Measured data sampled at 50 kHz) 51000 packets of 144 samples from 2019-07-06T14:11:18.504.000. Part 140/147



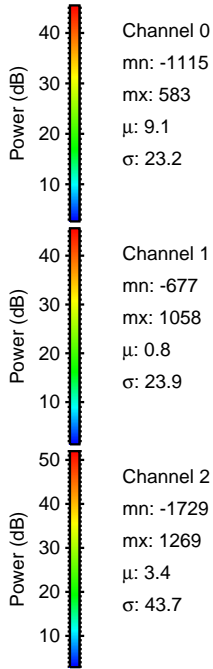
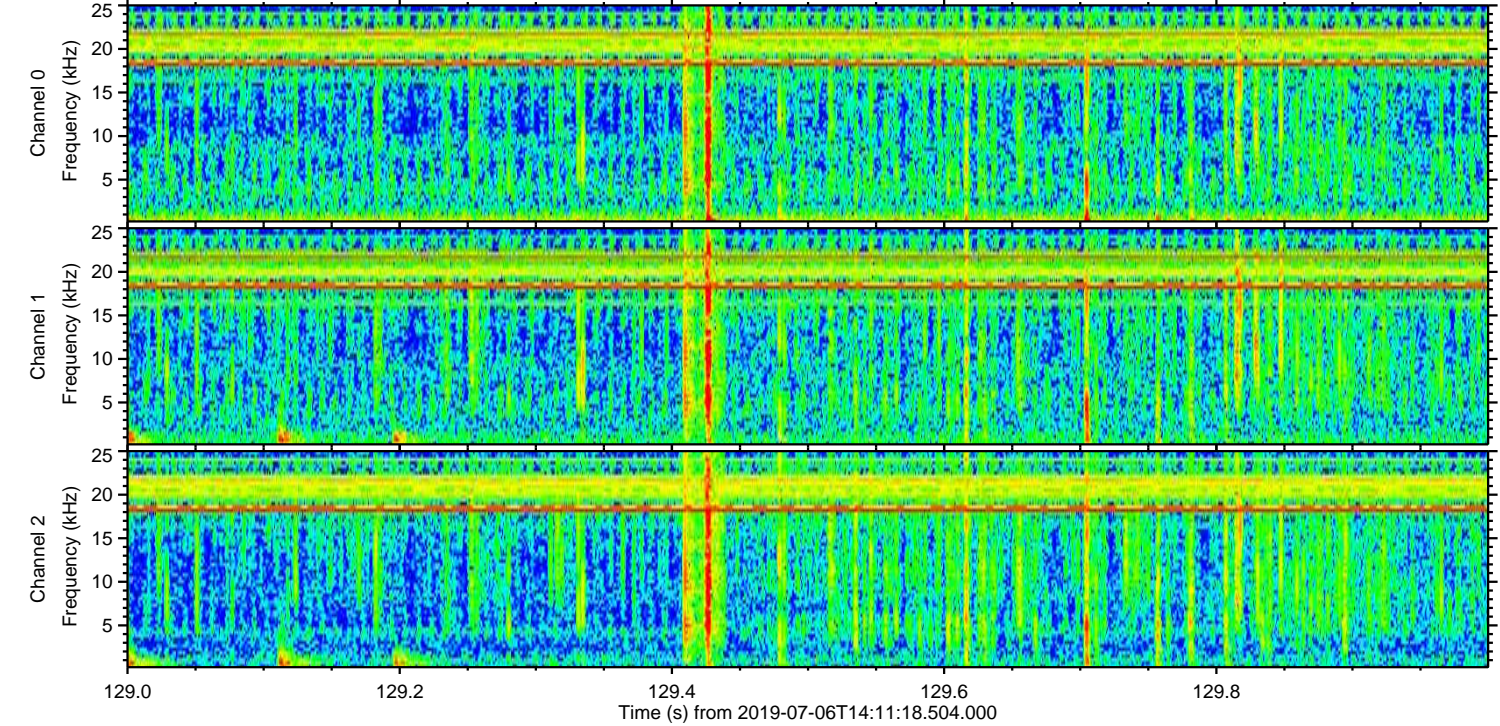
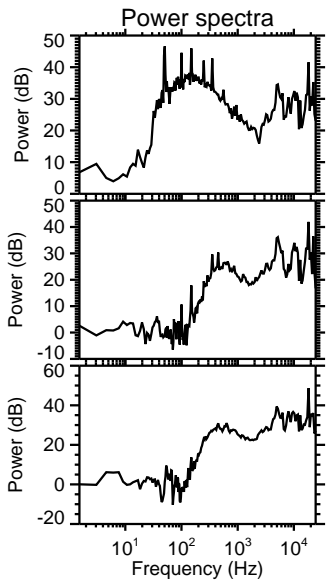
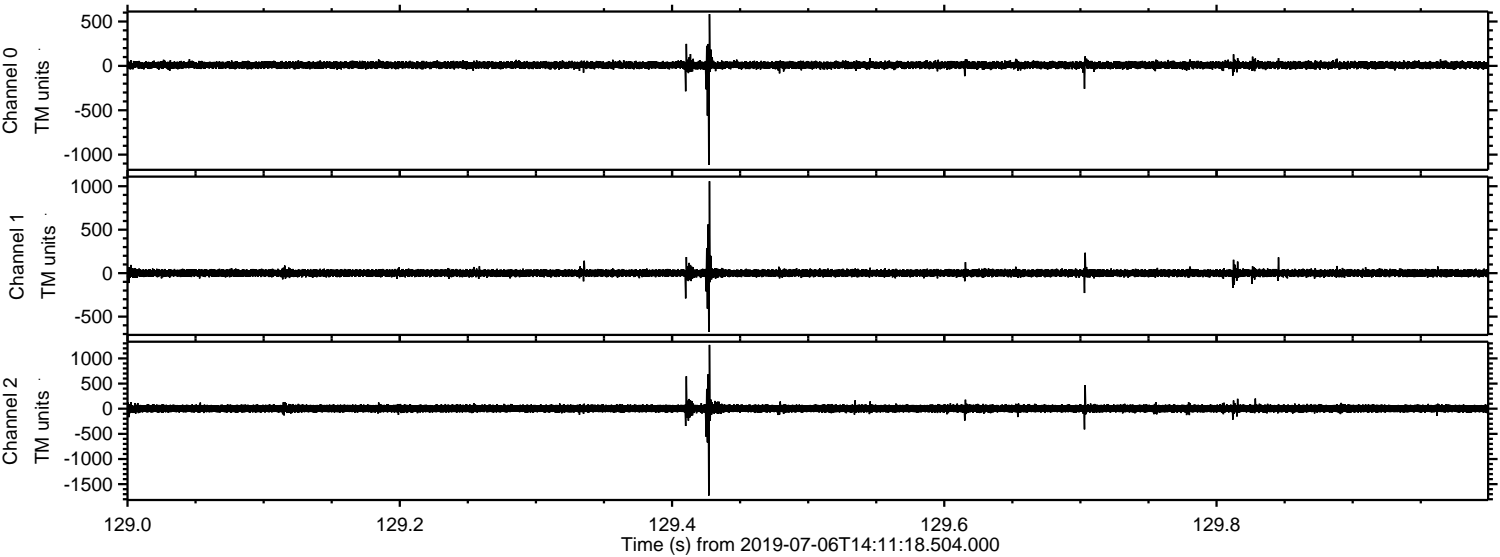






ELMAVAN 3D WAVEFORMS (Measured data sampled at 50 kHz) 51000 packets of 144 samples from 2019-07-06T14:11:18.504.000. Part 130/147

Processed Sat Jul 6 16:19:03 2019 by ELM ver.2012-10-06 from 001\_\_elm20190706\_141117\_\_dat00.bin



Channel 0  
mn: -1115  
mx: 583  
 $\mu$ : 9.1  
 $\sigma$ : 23.2

Channel 1  
mn: -677  
mx: 1058  
 $\mu$ : 0.8  
 $\sigma$ : 23.9

Channel 2  
mn: -1729  
mx: 1269  
 $\mu$ : 3.4  
 $\sigma$ : 43.7



