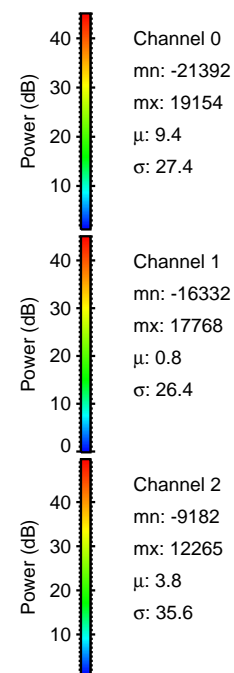
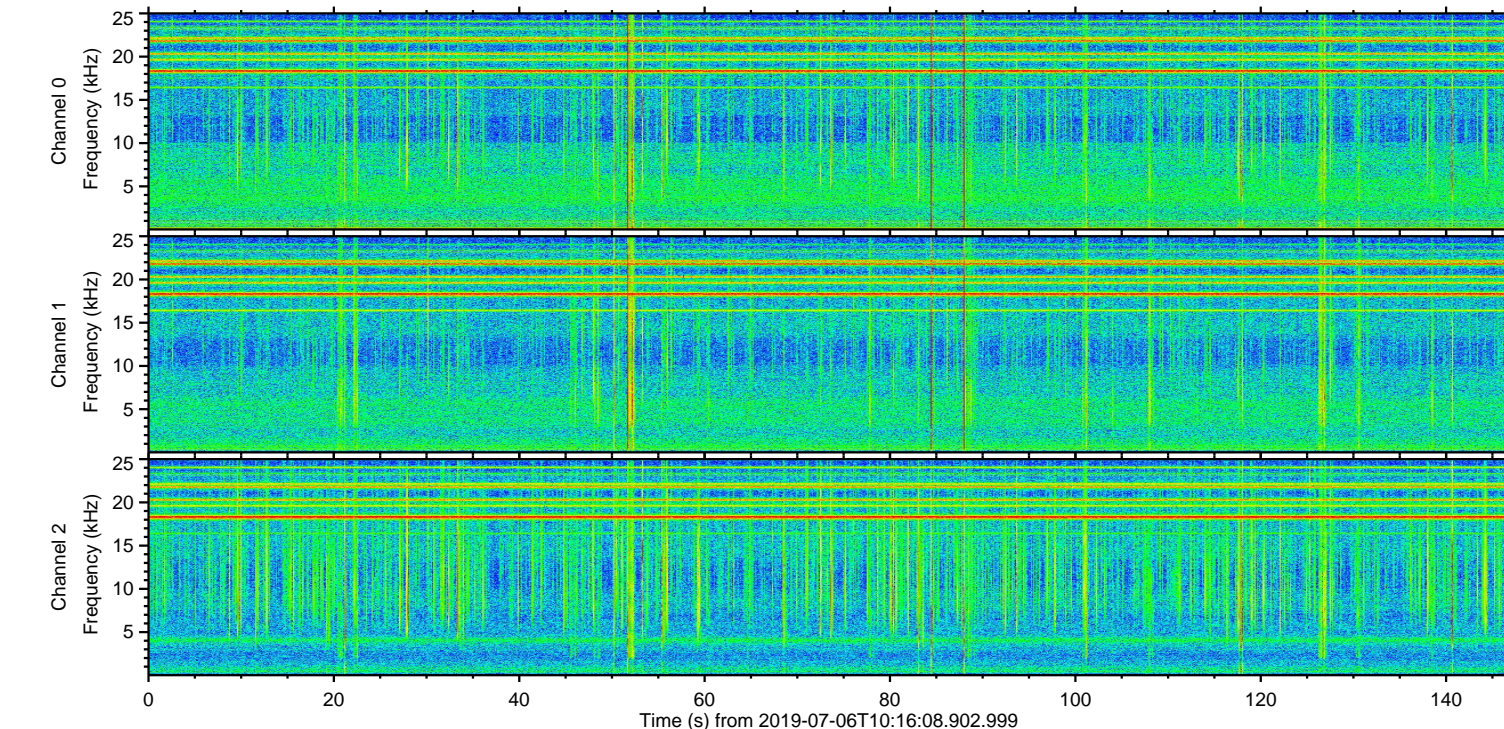
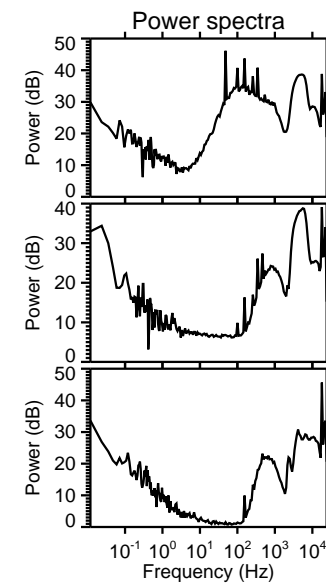
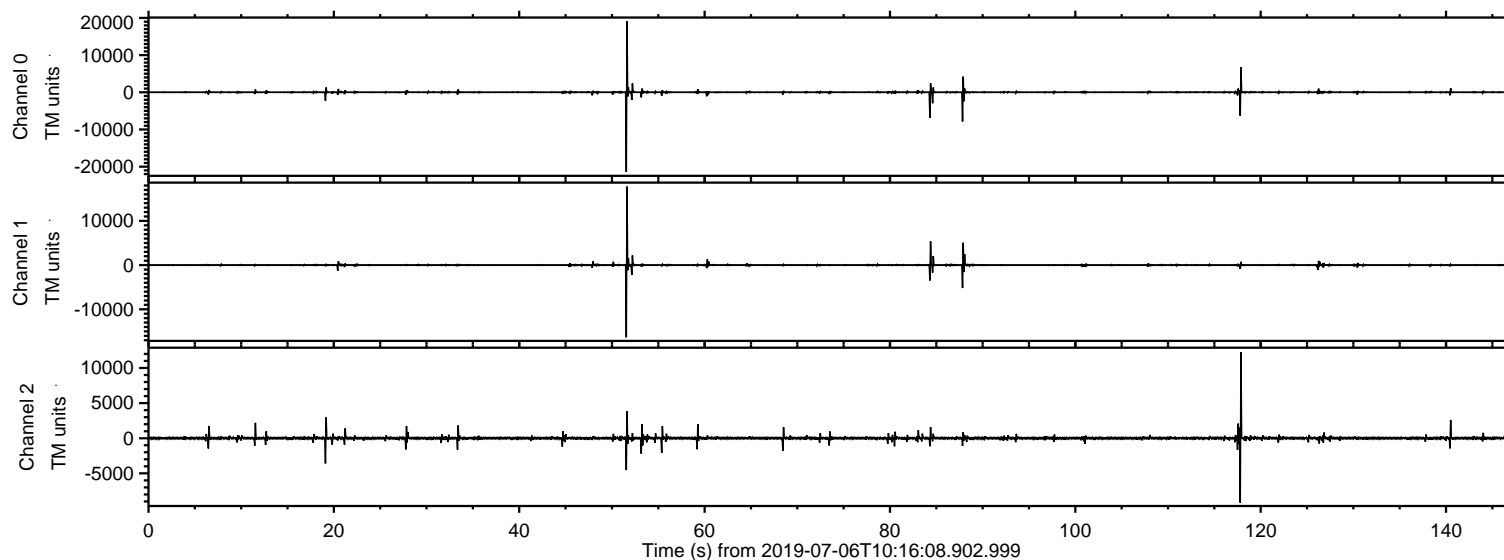


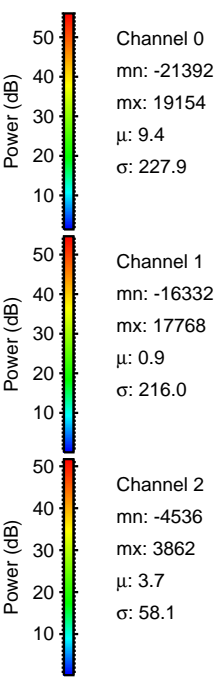
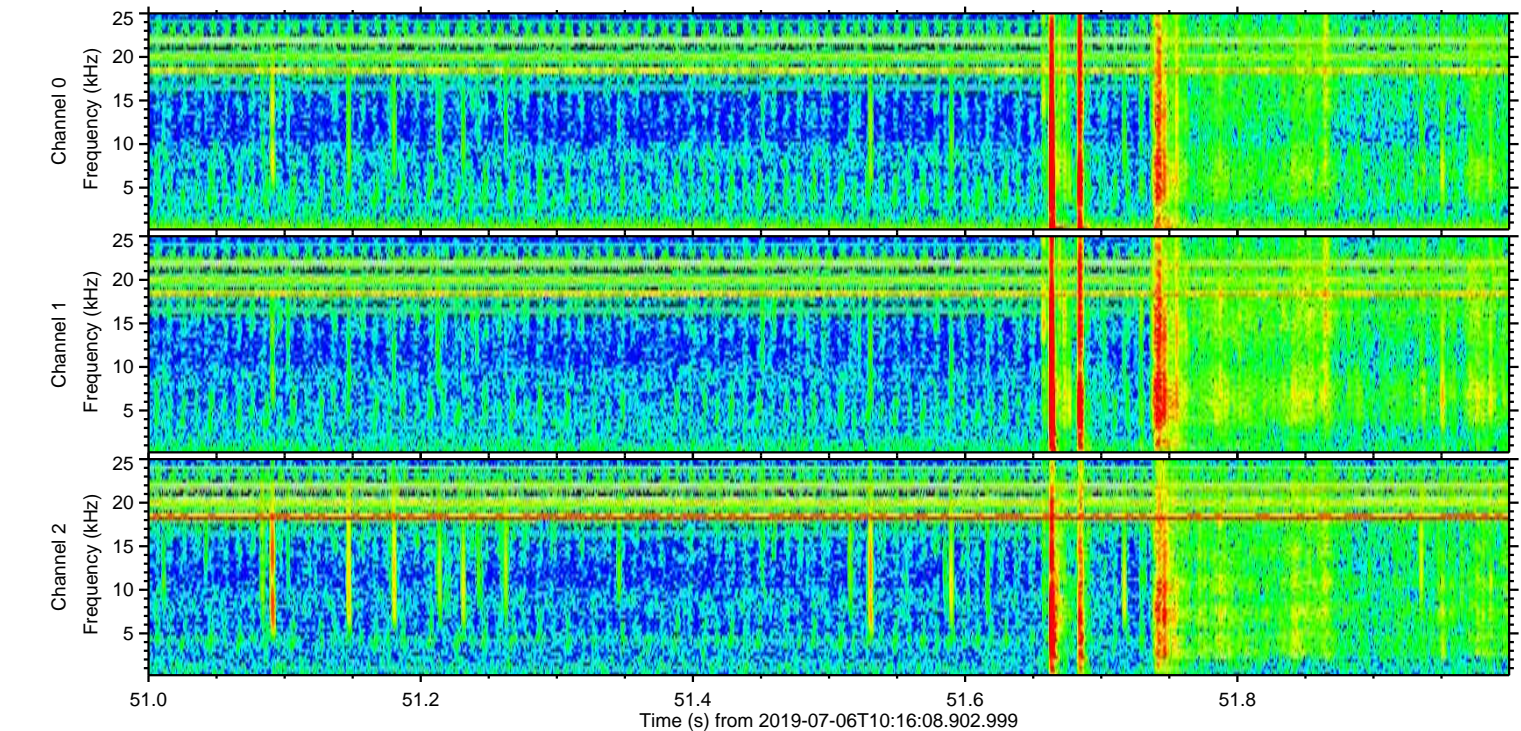
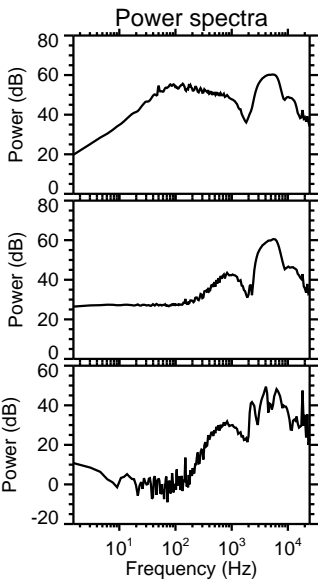
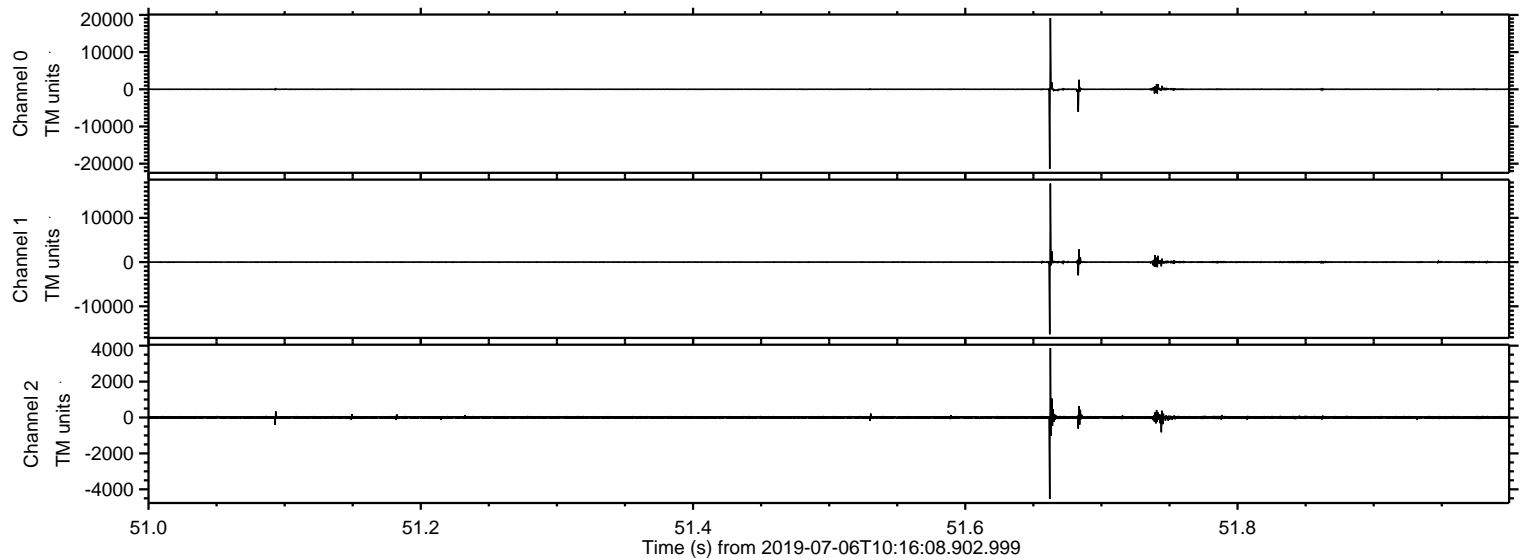
# ELMAVAN 3D WAVEFORMS (Measured data sampled at 50 kHz) 51000 packets of 144 samples from 2019-07-06T10:16:08.902.999.

Processed Sat Jul 6 12:23:53 2019 by ELM ver.2012-10-06 from 001\_\_elm20190706\_101607\_\_dat00.bin



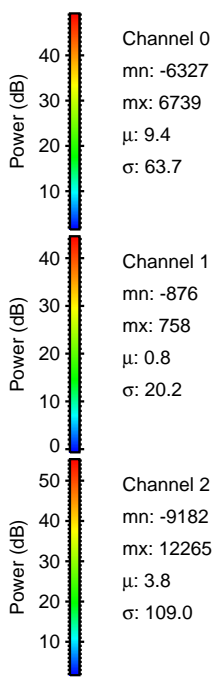
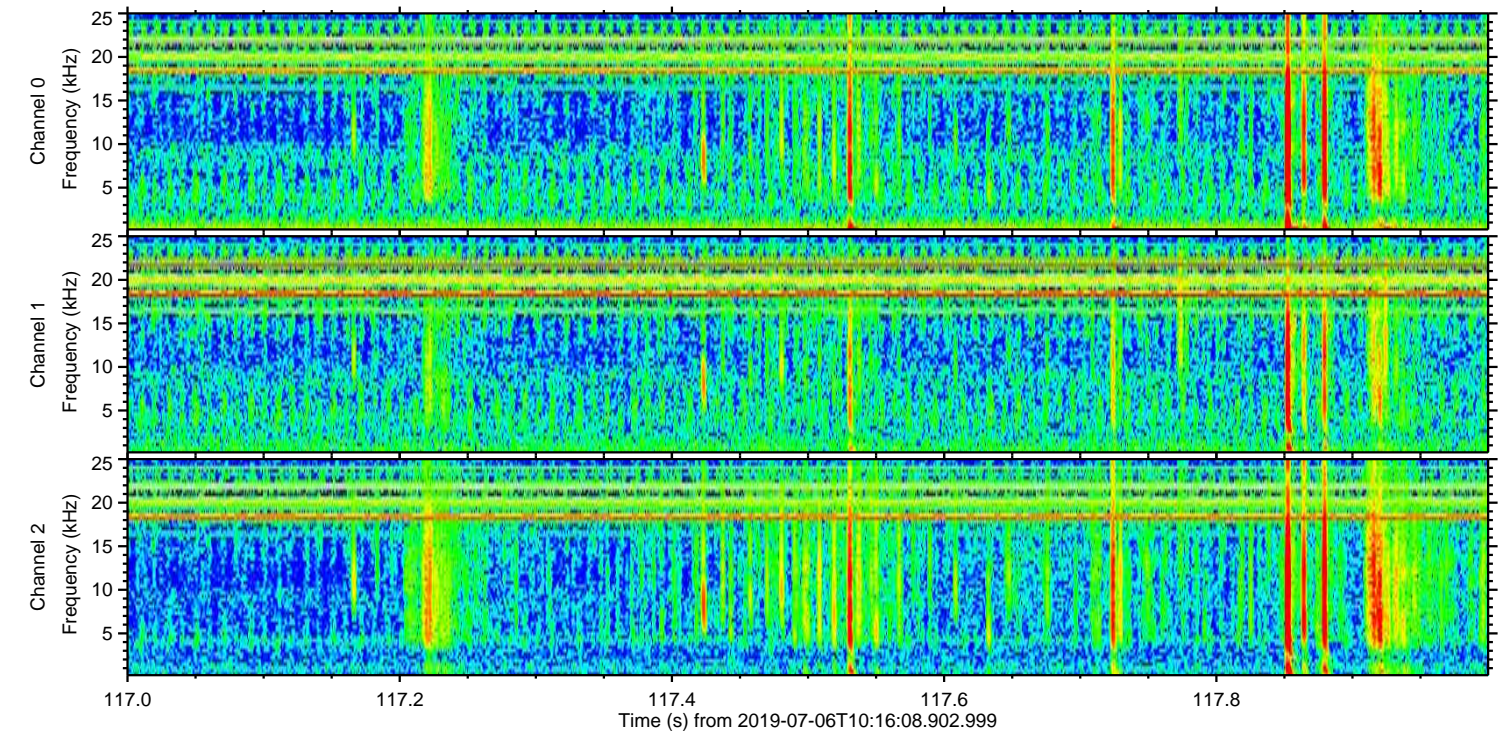
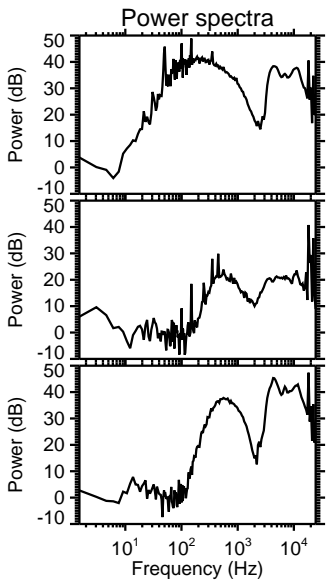
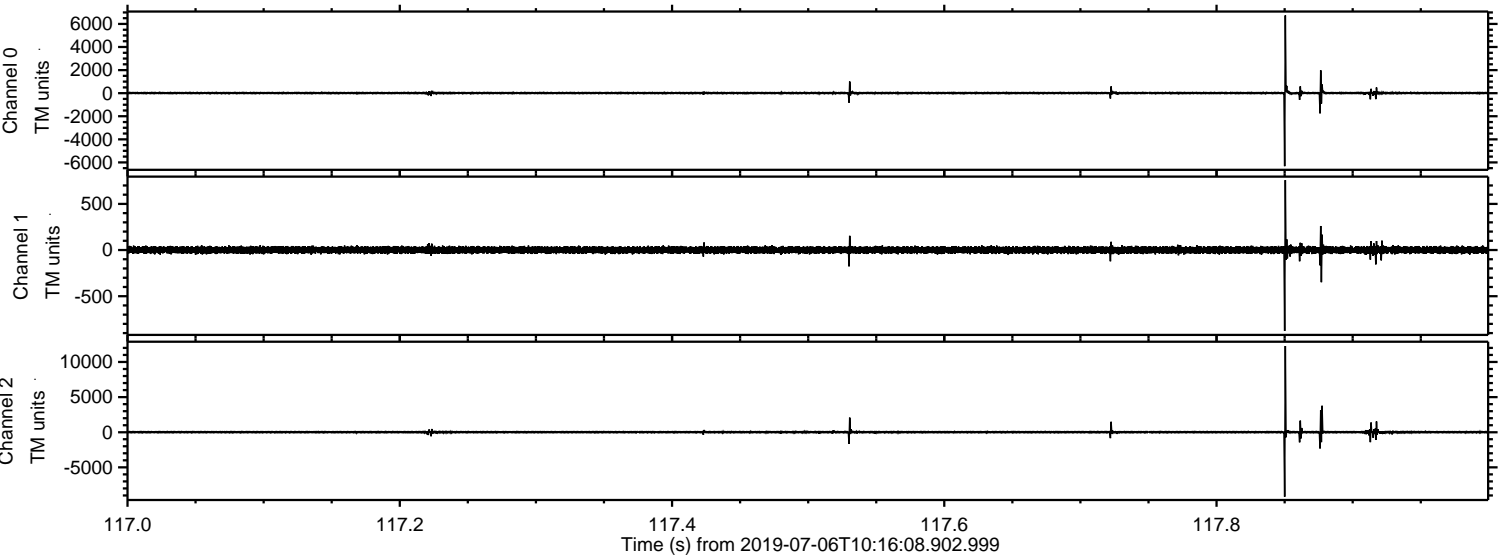
ELMAVAN 3D WAVEFORMS (Measured data sampled at 50 kHz) 51000 packets of 144 samples from 2019-07-06T10:16:08.902.999. Part 52/147

Processed Sat Jul 6 12:24:04 2019 by ELM ver.2012-10-06 from 001\_\_elm20190706\_101607\_\_dat00.bin



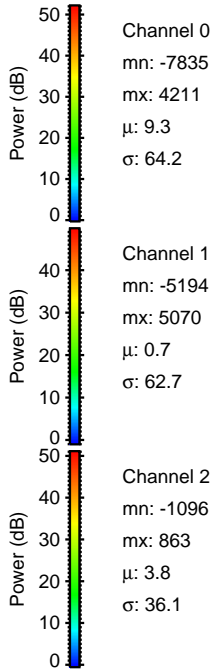
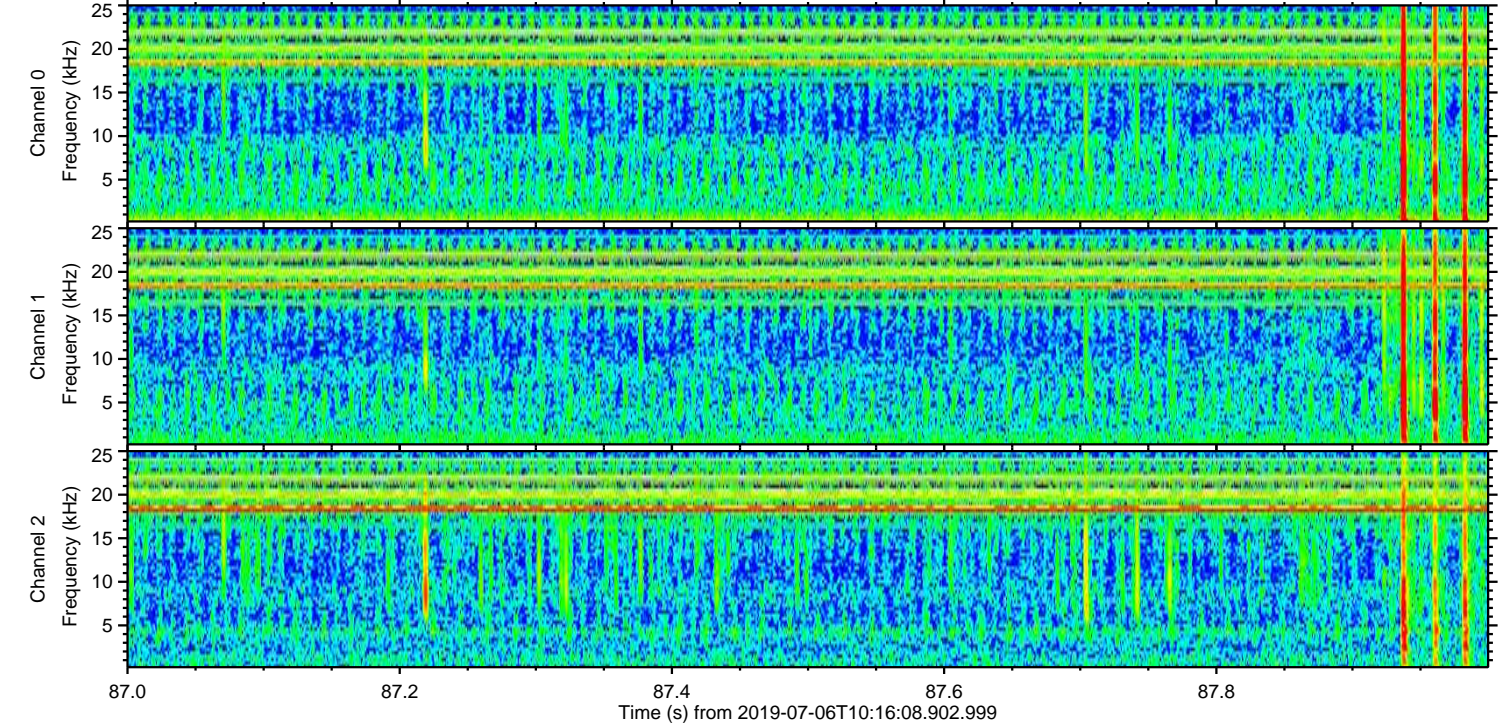
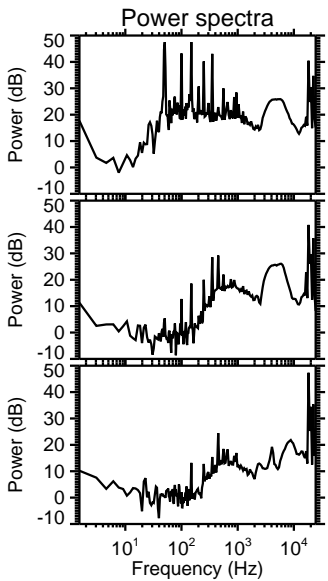
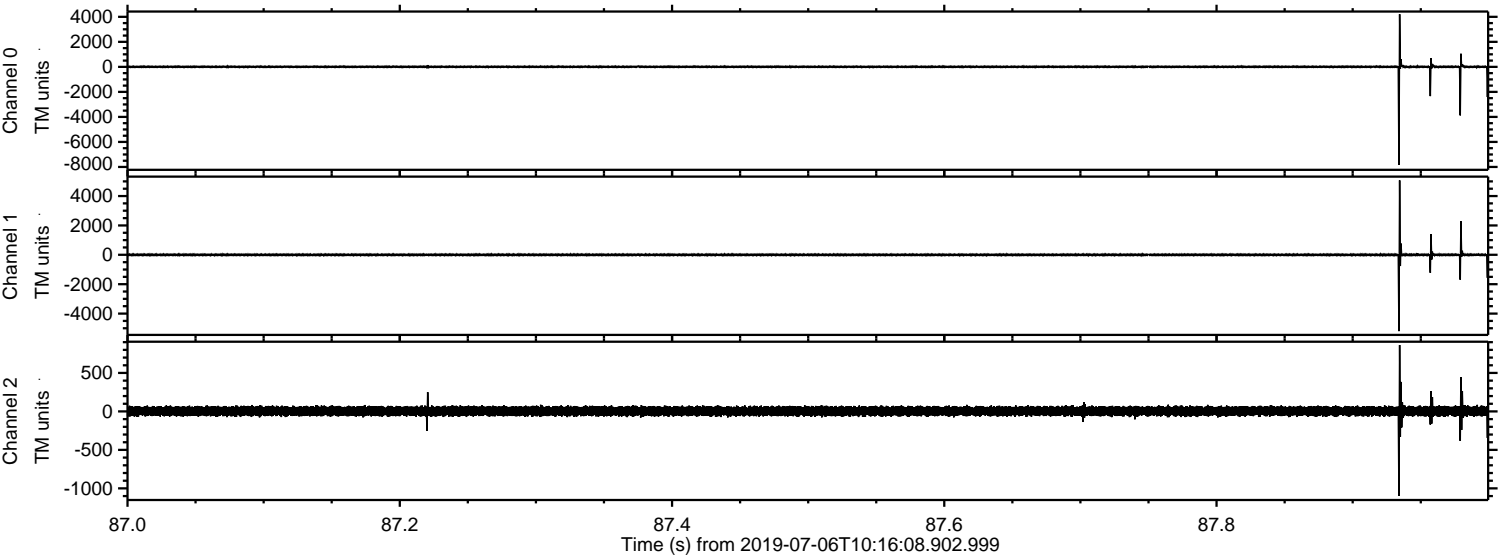
ELMAVAN 3D WAVEFORMS (Measured data sampled at 50 kHz) 51000 packets of 144 samples from 2019-07-06T10:16:08.902.999. Part 118/147

Processed Sat Jul 6 12:24:05 2019 by ELM ver.2012-10-06 from 001\_\_elm20190706\_101607\_\_dat00.bin

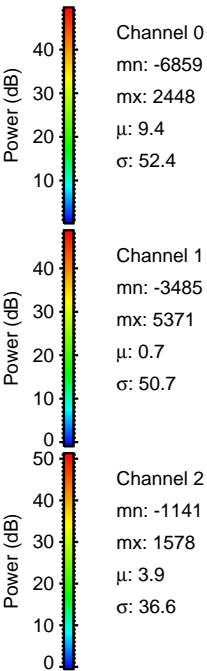
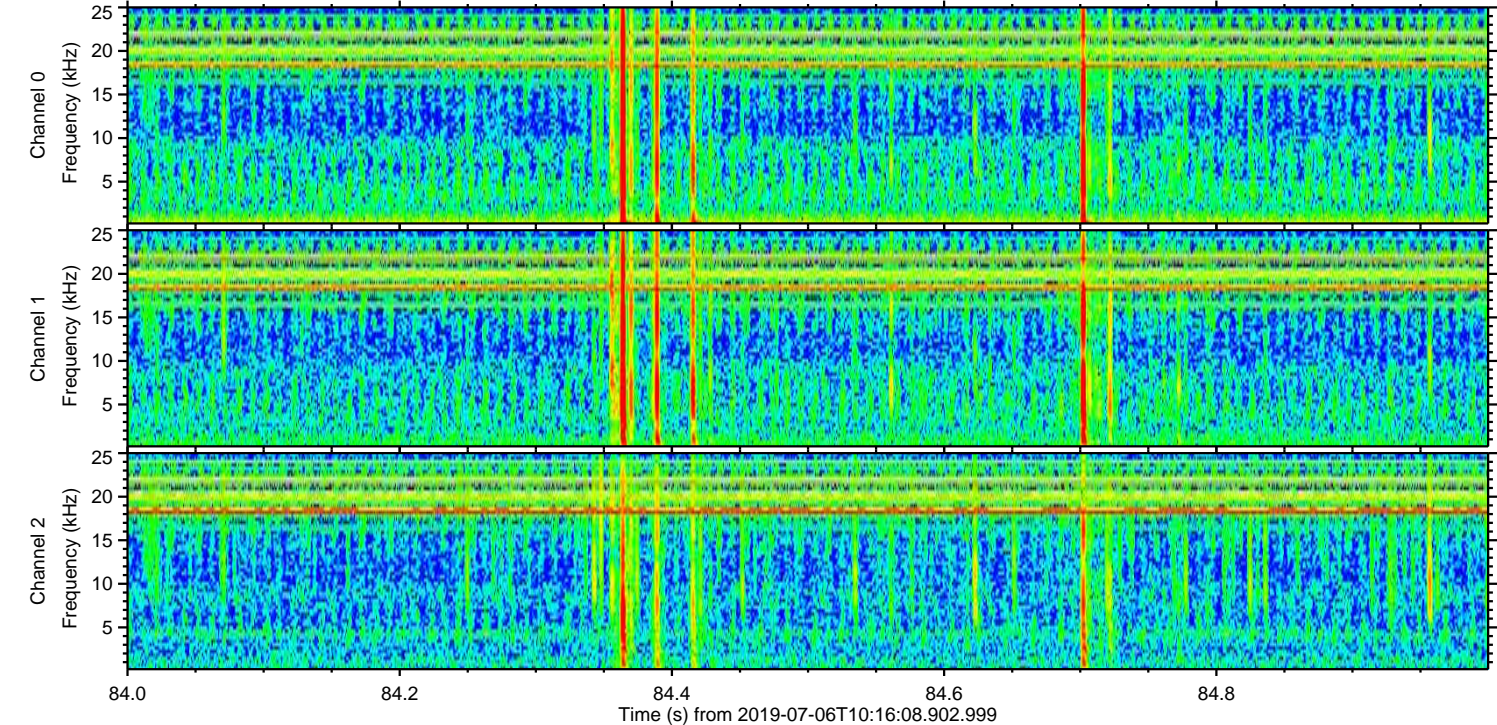
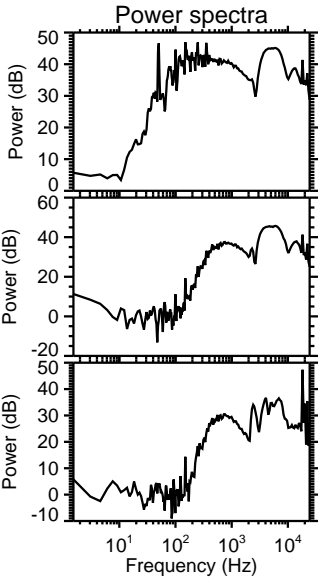
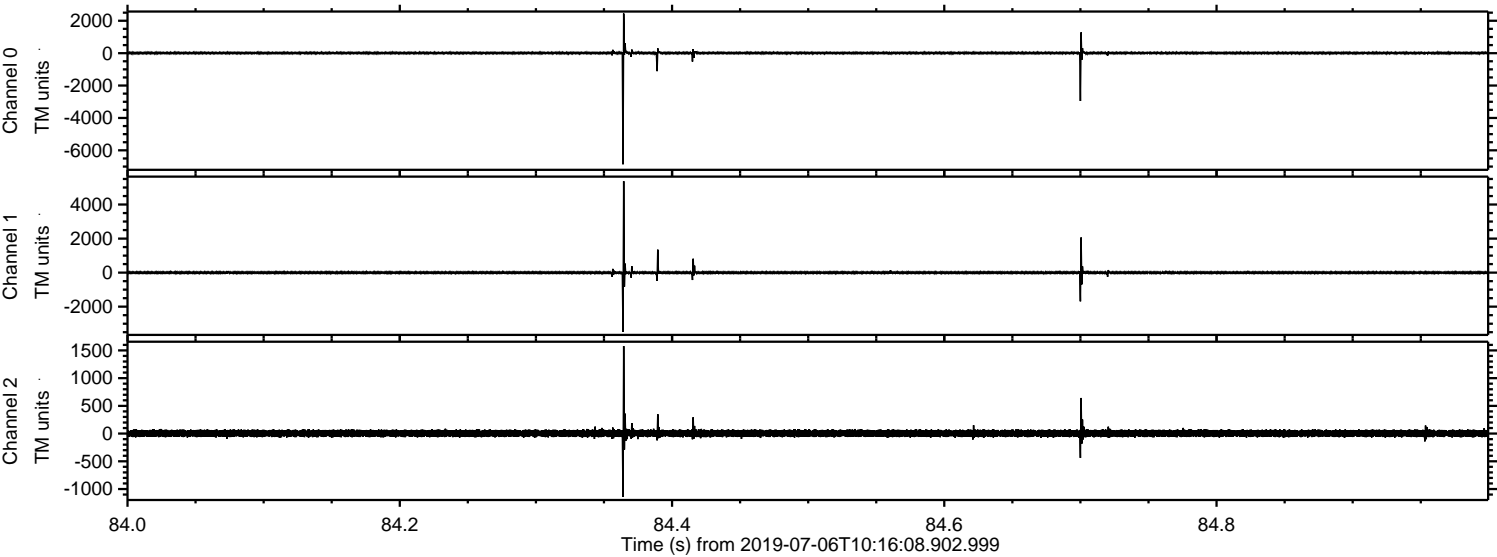


ELMAVAN 3D WAVEFORMS (Measured data sampled at 50 kHz) 51000 packets of 144 samples from 2019-07-06T10:16:08.902.999. Part 88/147

Processed Sat Jul 6 12:24:06 2019 by ELM ver.2012-10-06 from 001\_\_elm20190706\_101607\_\_dat00.bin

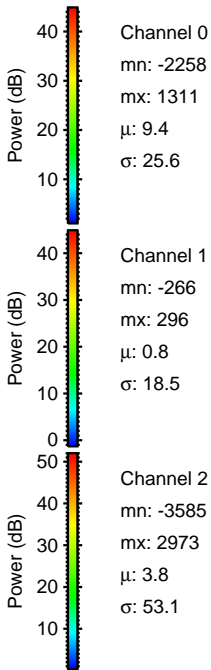
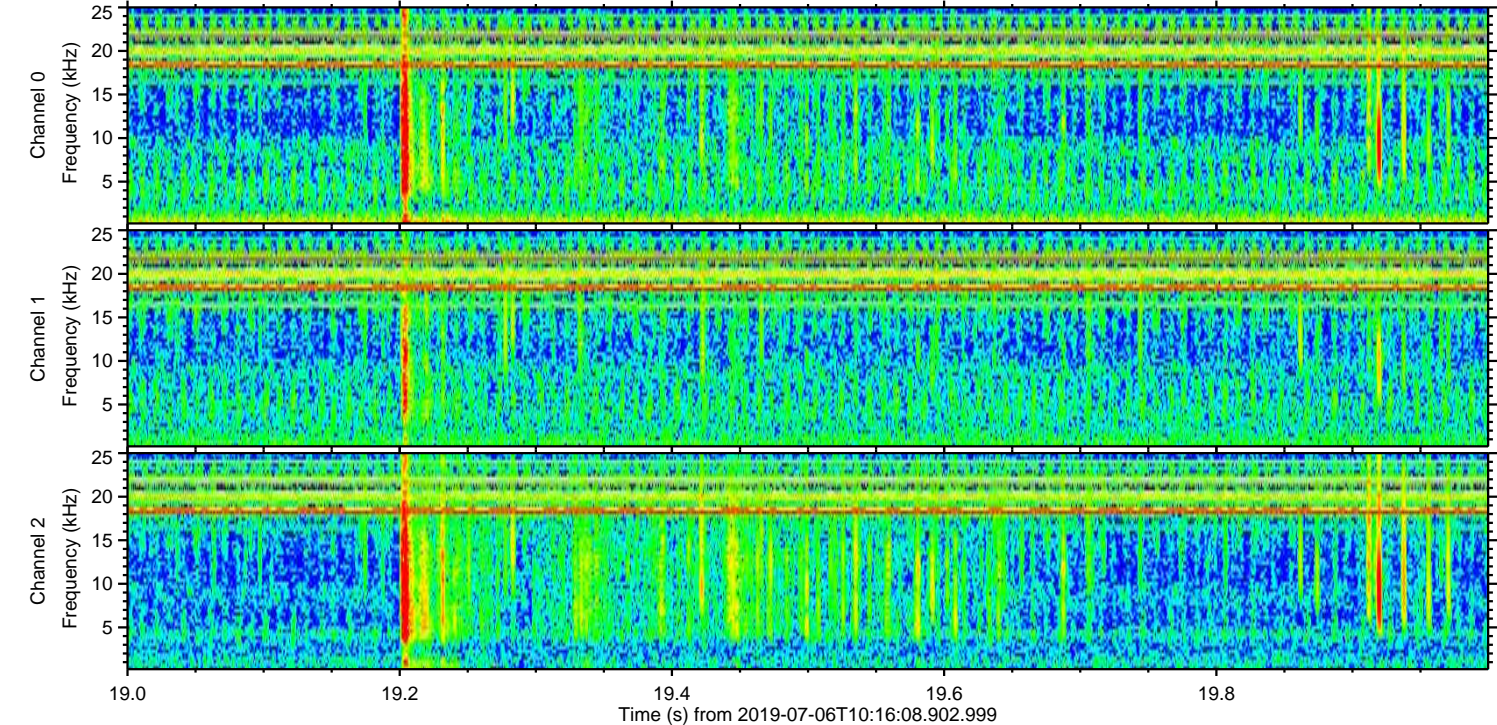
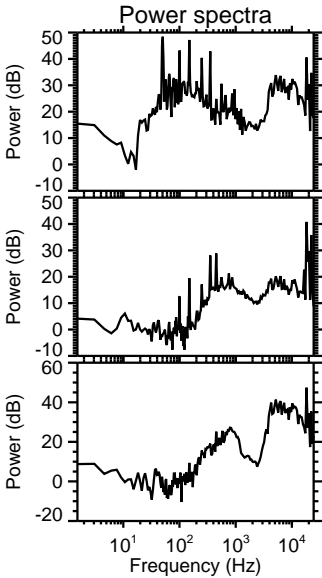
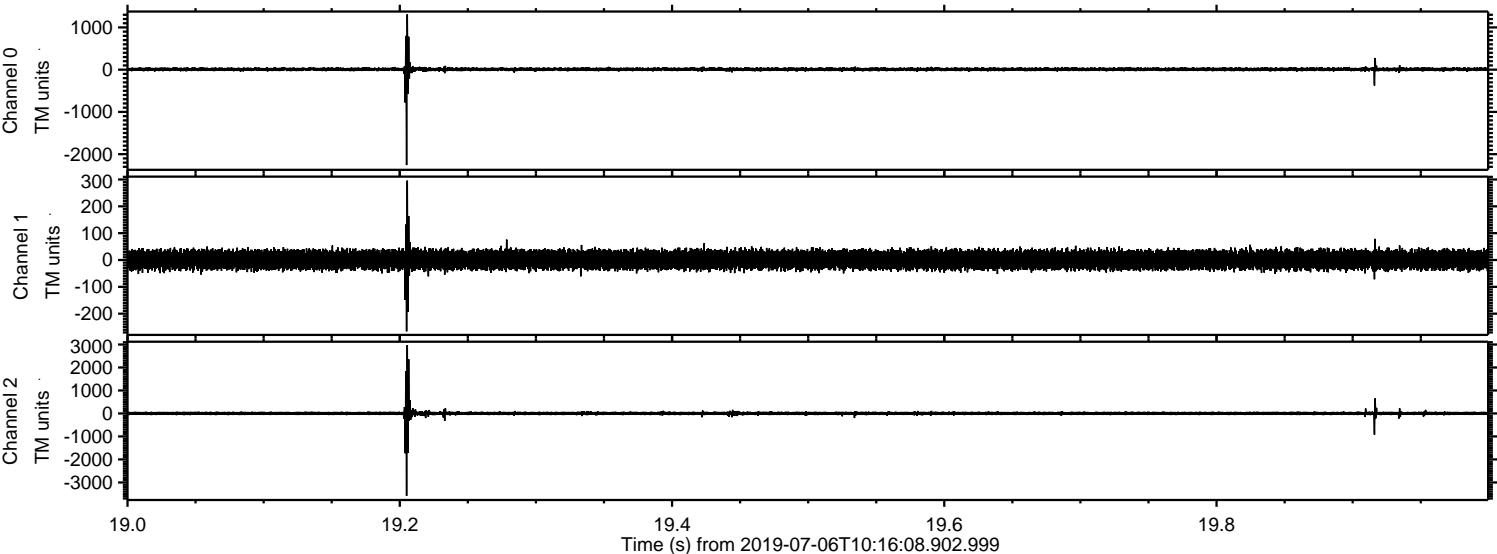


Processed Sat Jul 6 12:24:07 2019 by ELM ver.2012-10-06 from 001\_\_elm20190706\_101607\_\_dat00.bin



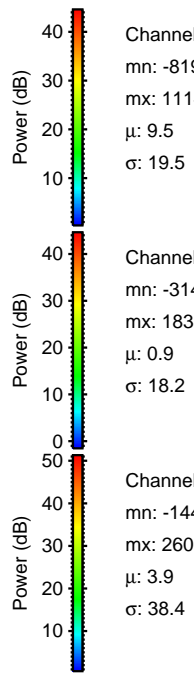
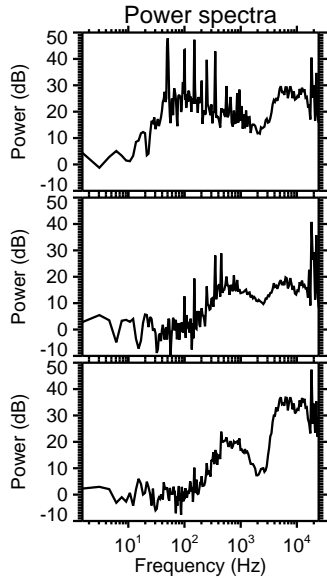
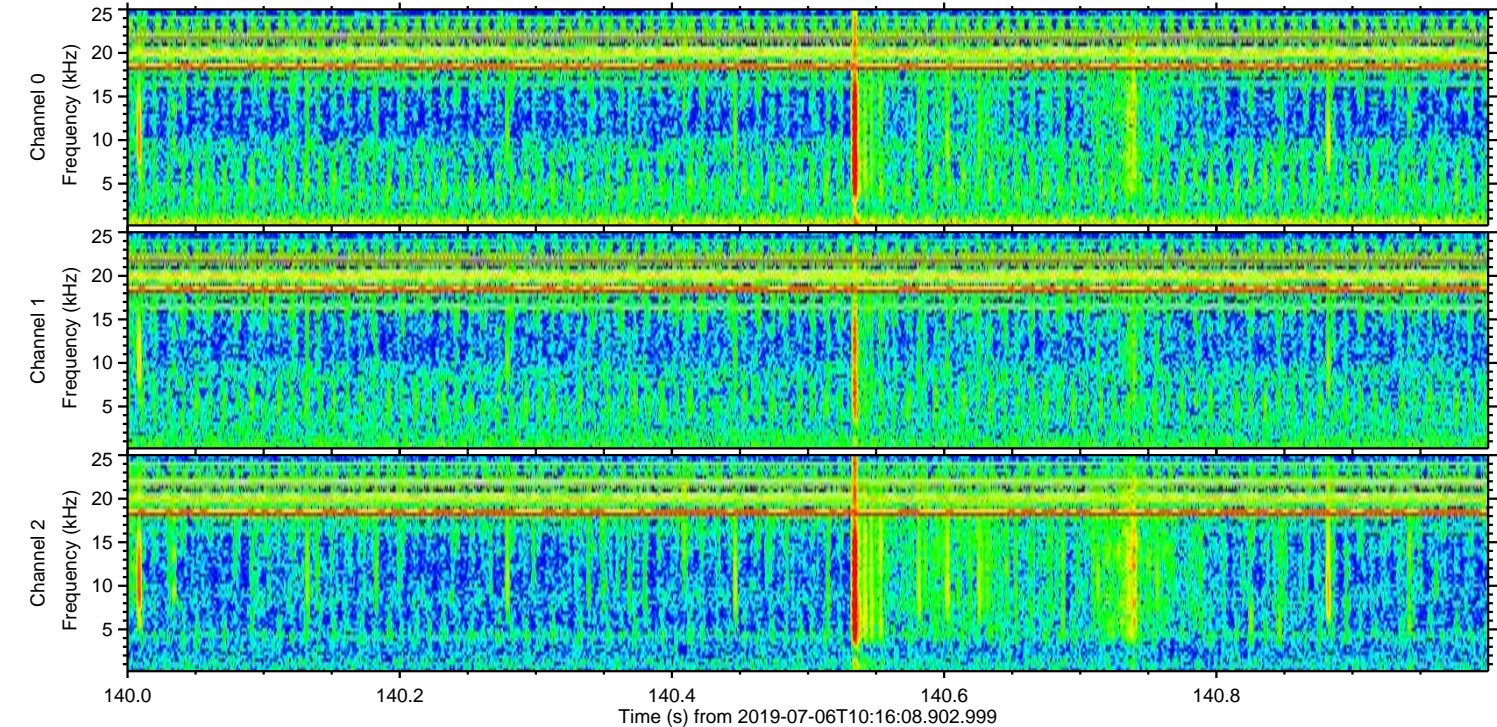
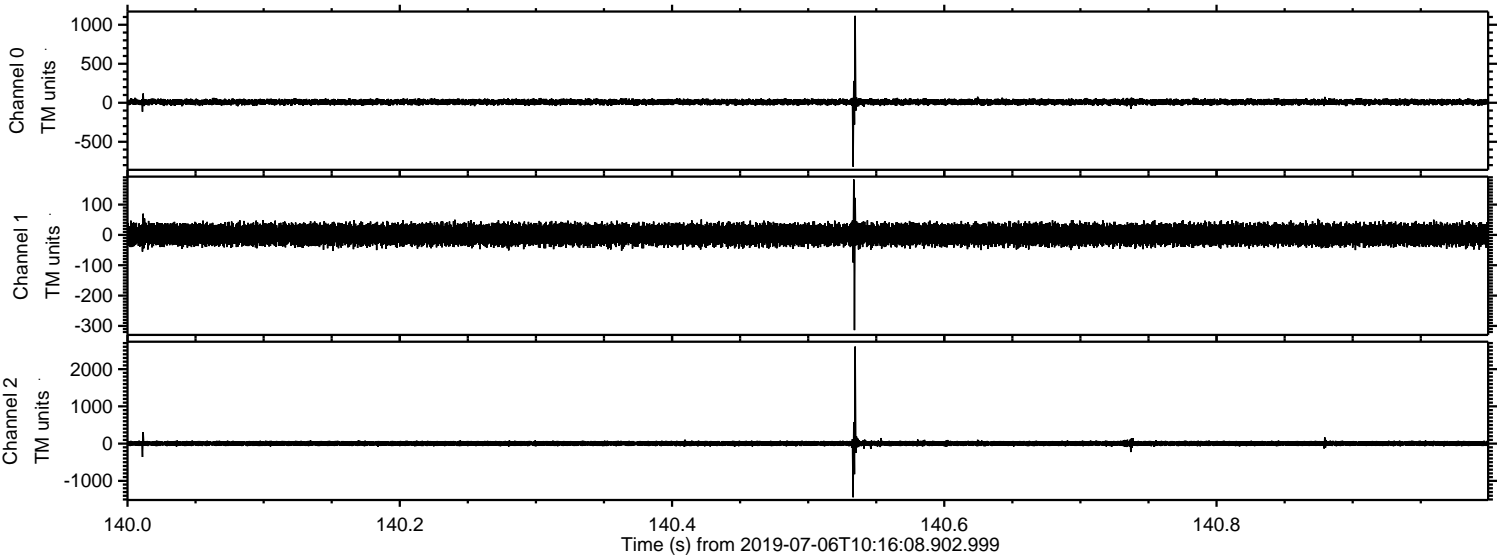
ELMAVAN 3D WAVEFORMS (Measured data sampled at 50 kHz) 51000 packets of 144 samples from 2019-07-06T10:16:08.902.999. Part 20/147

Processed Sat Jul 6 12:24:07 2019 by ELM ver.2012-10-06 from 001\_\_elm20190706\_101607\_\_dat00.bin

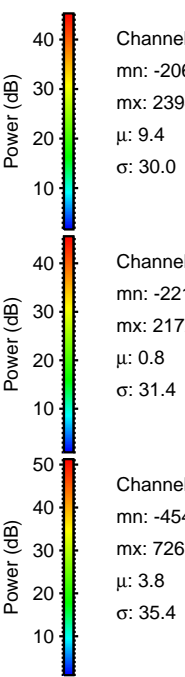
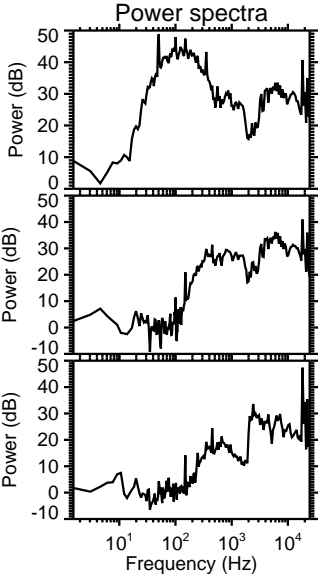
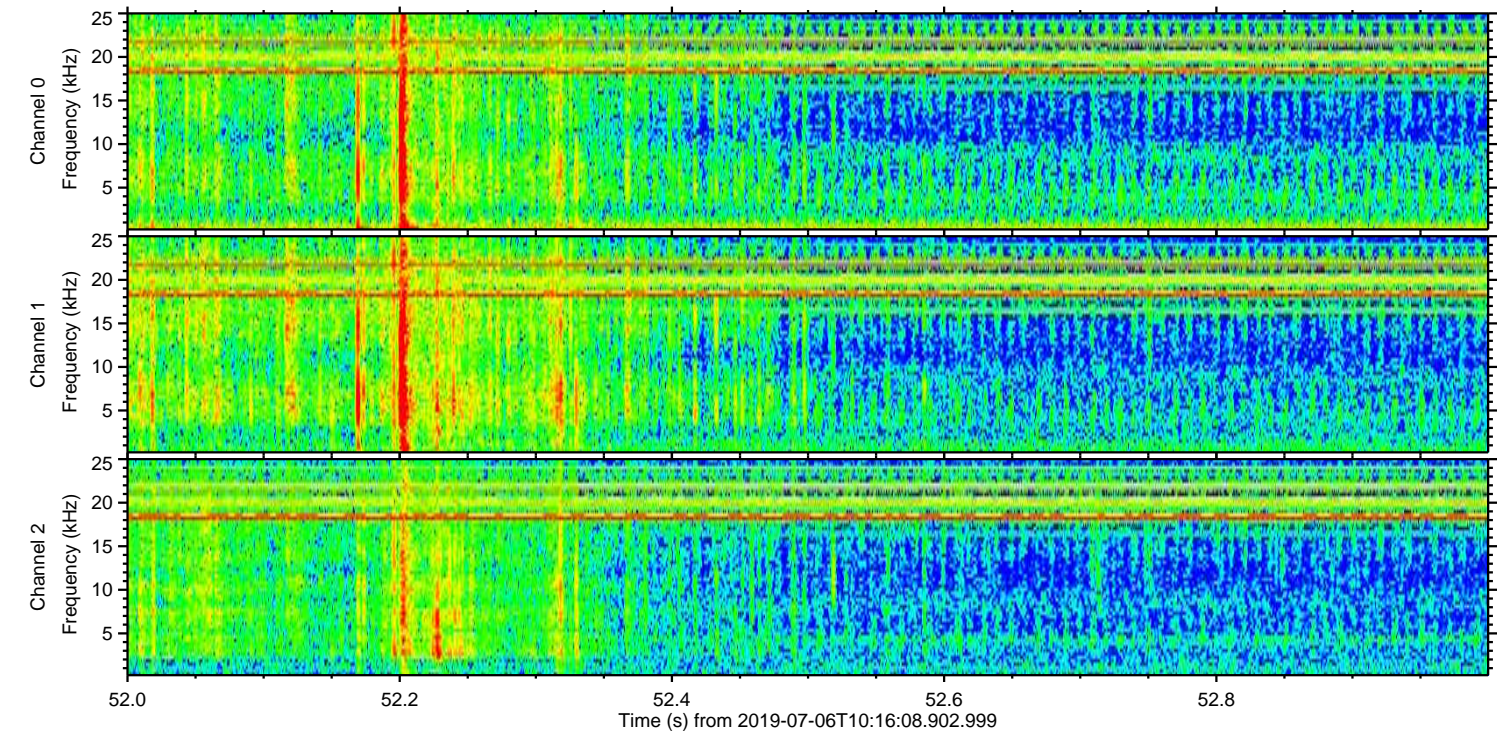
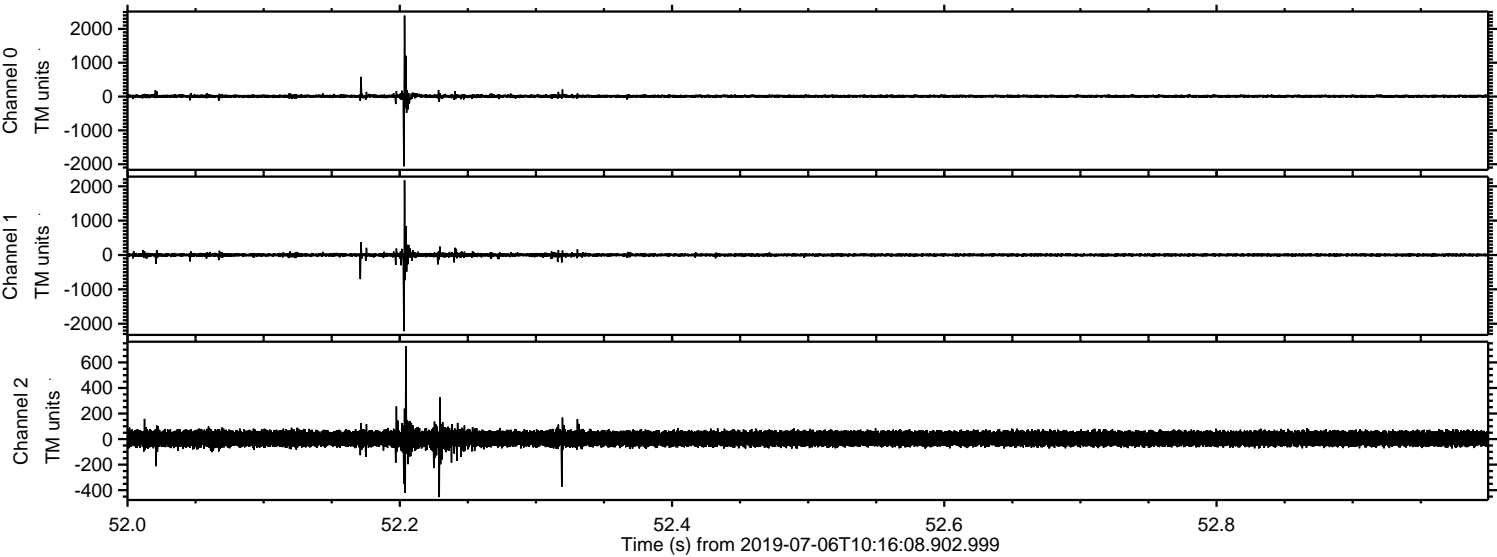


ELMAVAN 3D WAVEFORMS (Measured data sampled at 50 kHz) 51000 packets of 144 samples from 2019-07-06T10:16:08.902.999. Part 141/147

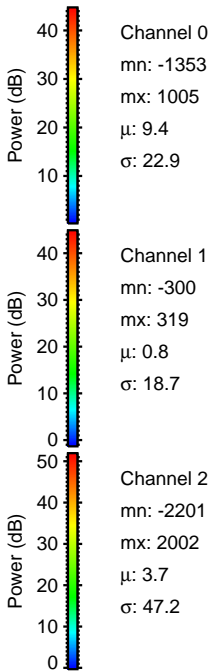
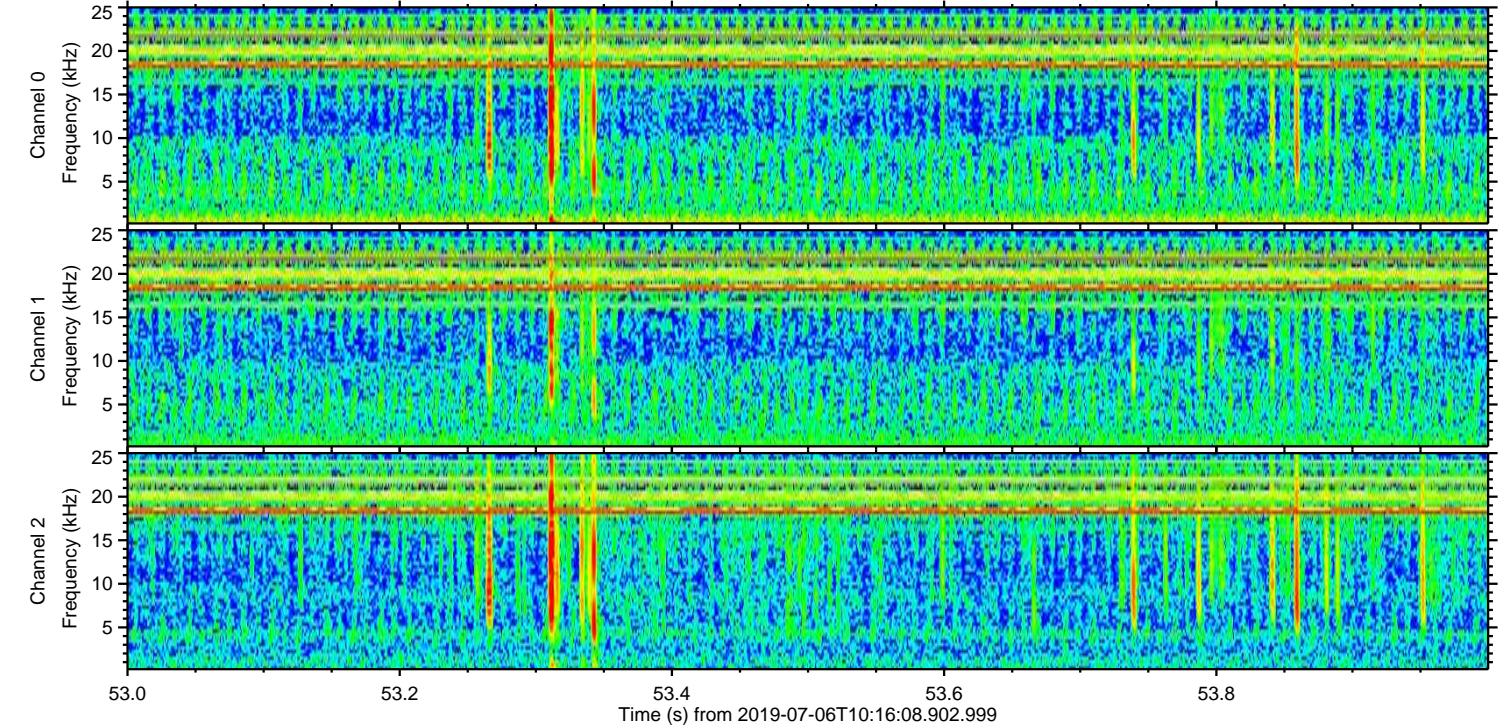
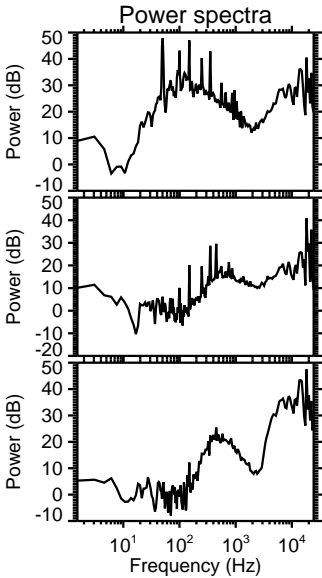
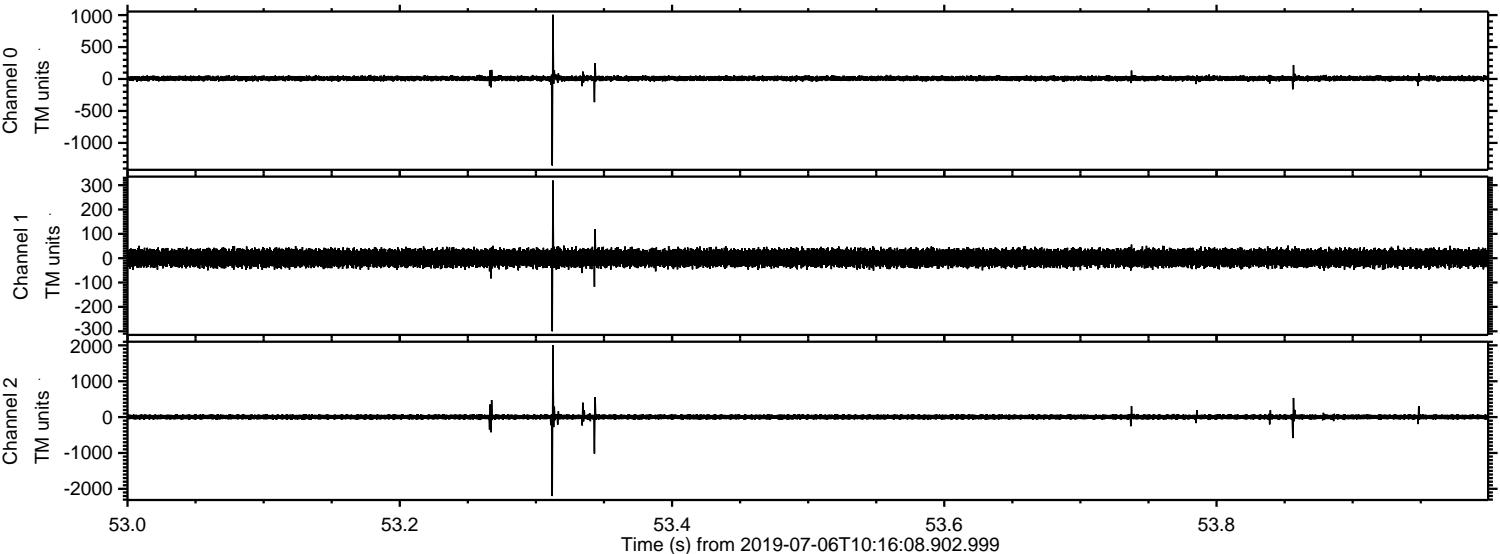
Processed Sat Jul 6 12:24:08 2019 by ELM ver.2012-10-06 from 001\_\_elm20190706\_101607\_\_dat00.bin



Processed Sat Jul 6 12:24:09 2019 by ELM ver.2012-10-06 from 001\_\_elm20190706\_101607\_\_dat00.bin



Processed Sat Jul 6 12:24:10 2019 by ELM ver.2012-10-06 from 001\_\_elm20190706\_101607\_\_dat00.bin



Processed Sat Jul 6 12:24:11 2019 by ELM ver.2012-10-06 from 001\_\_elm20190706\_101607\_\_dat00.bin

