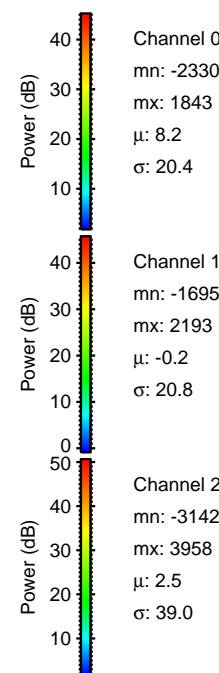
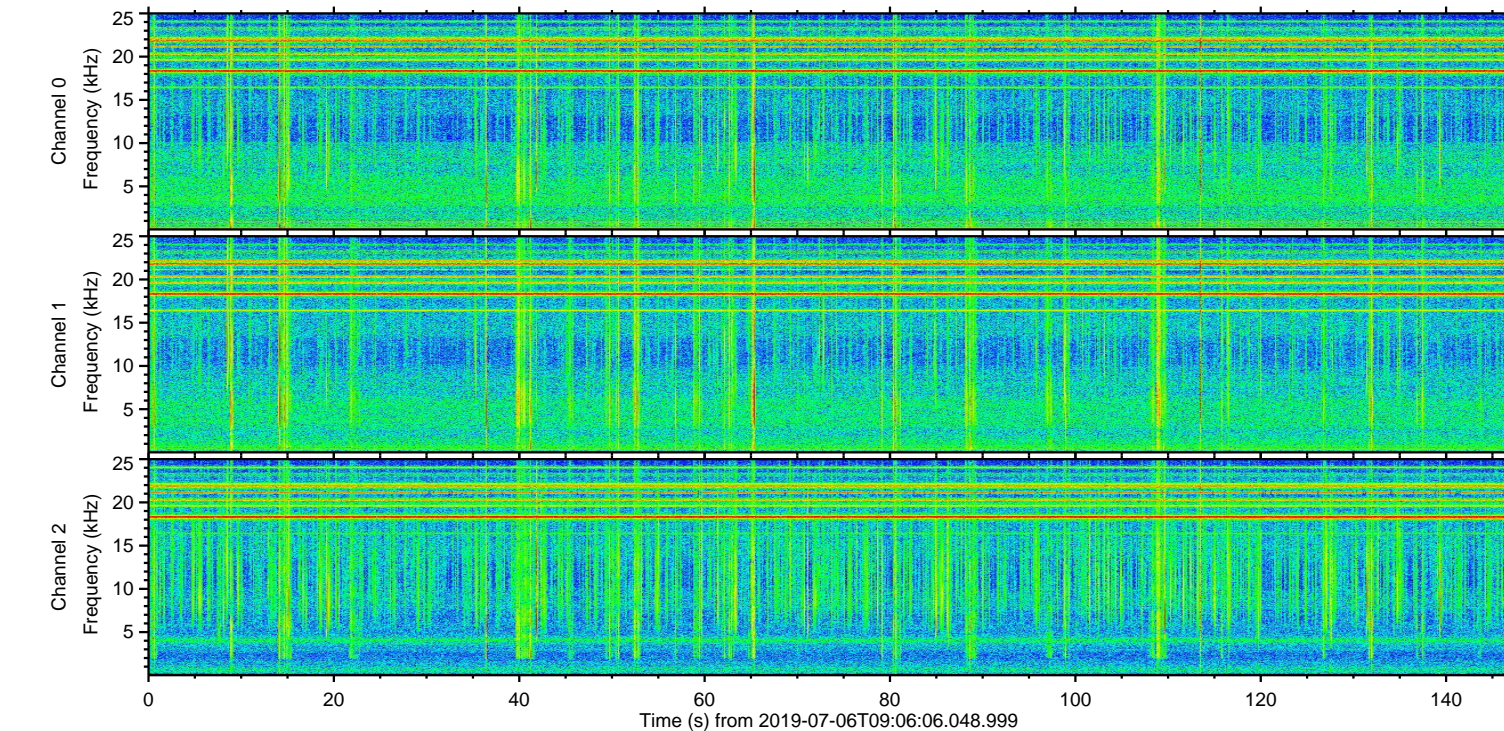
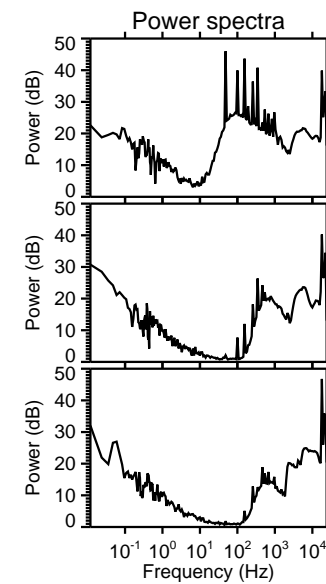
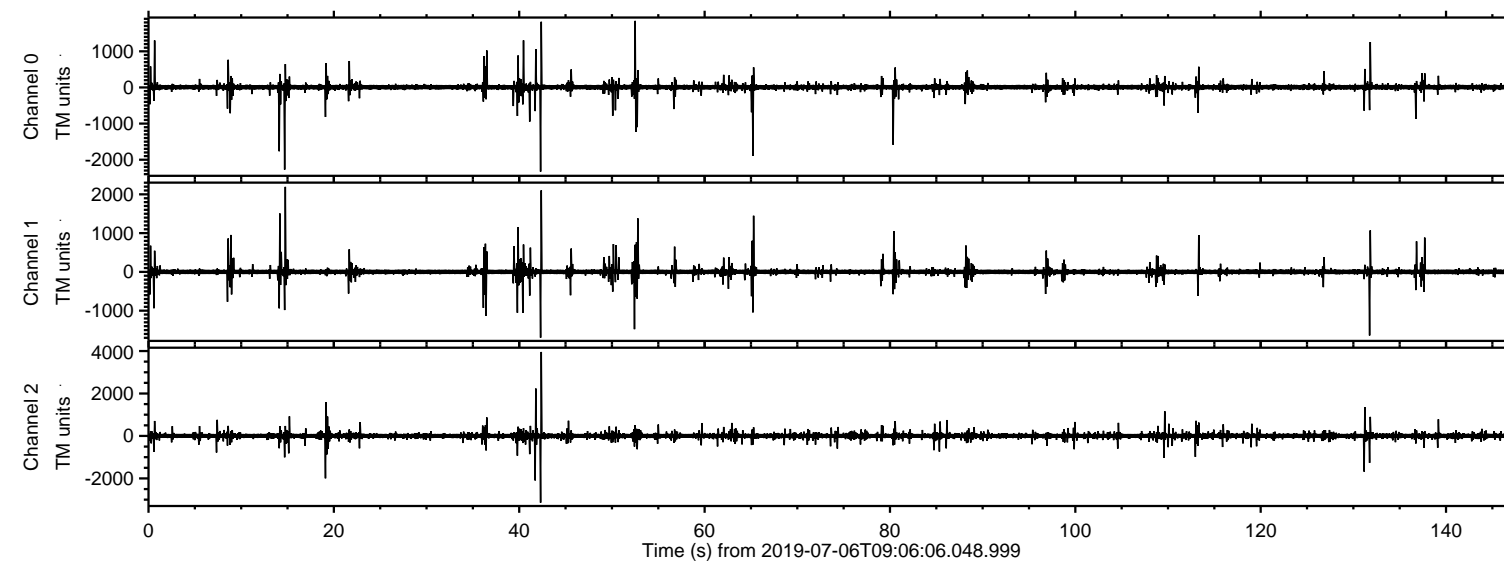


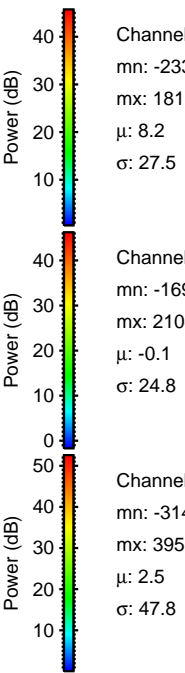
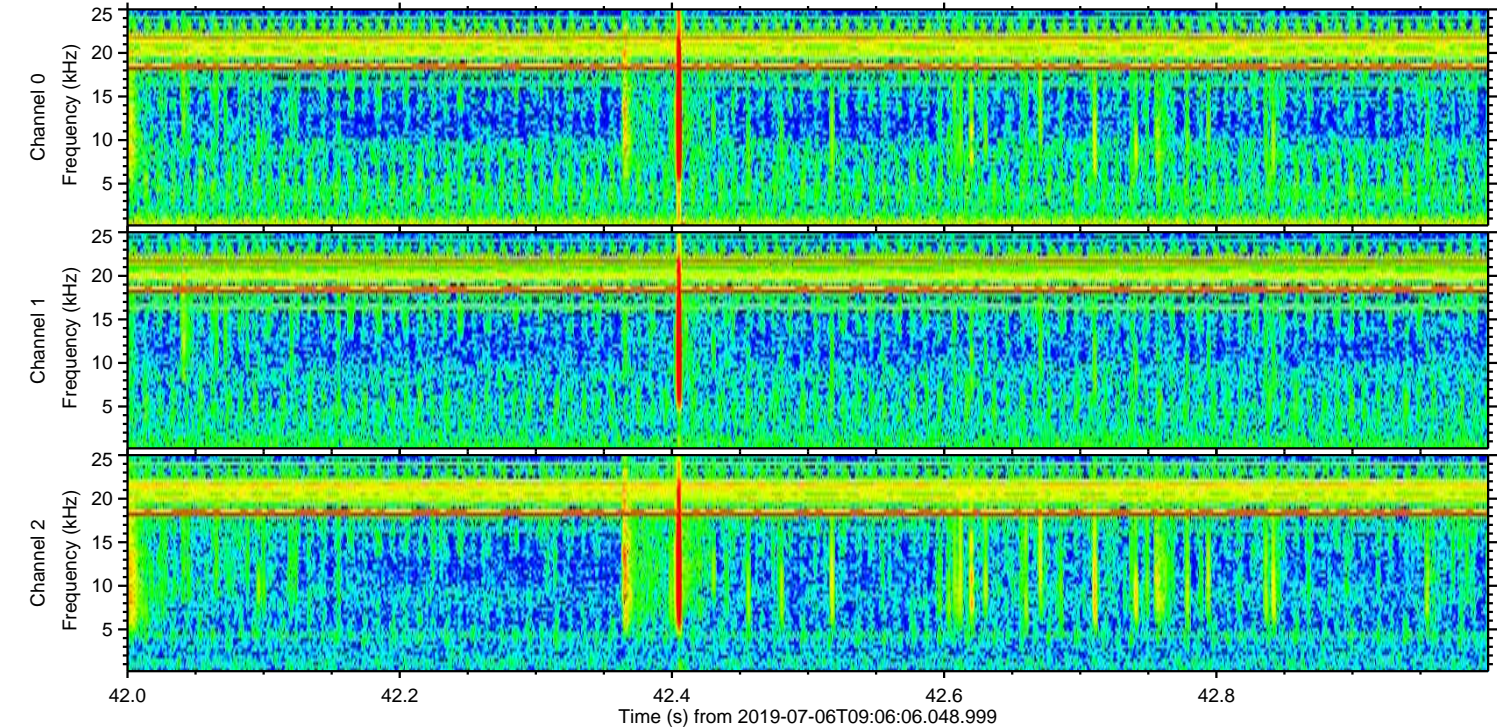
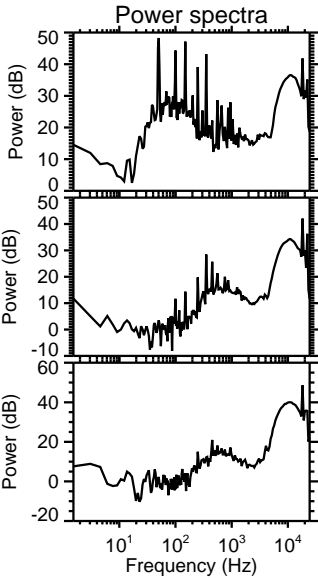
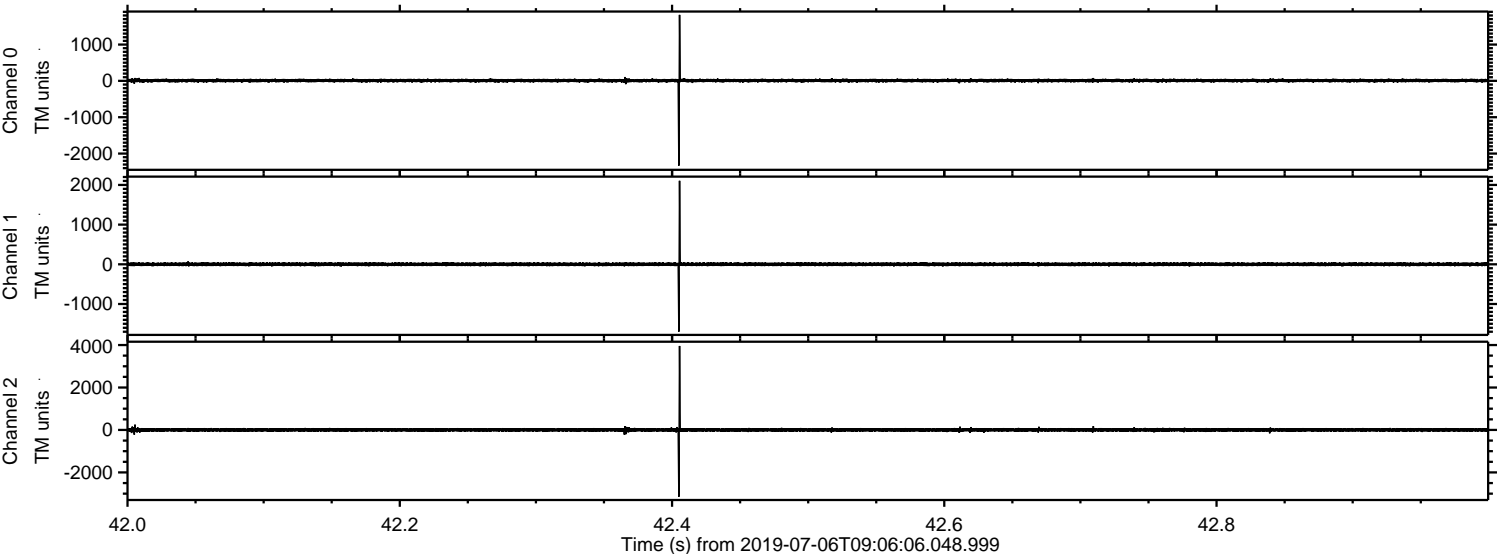
ELMAVAN 3D WAVEFORMS (Measured data sampled at 50 kHz) 51000 packets of 144 samples from 2019-07-06T09:06:06.048.999.

Processed Sat Jul 6 11:14:10 2019 by ELM ver.2012-10-06 from 001\_\_elm20190706\_090605\_\_dat00.bin



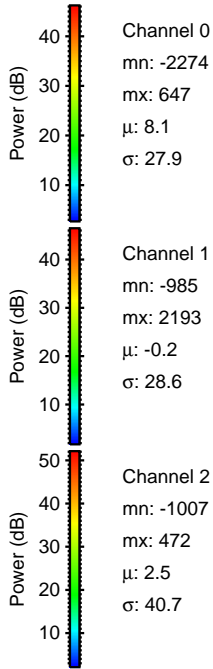
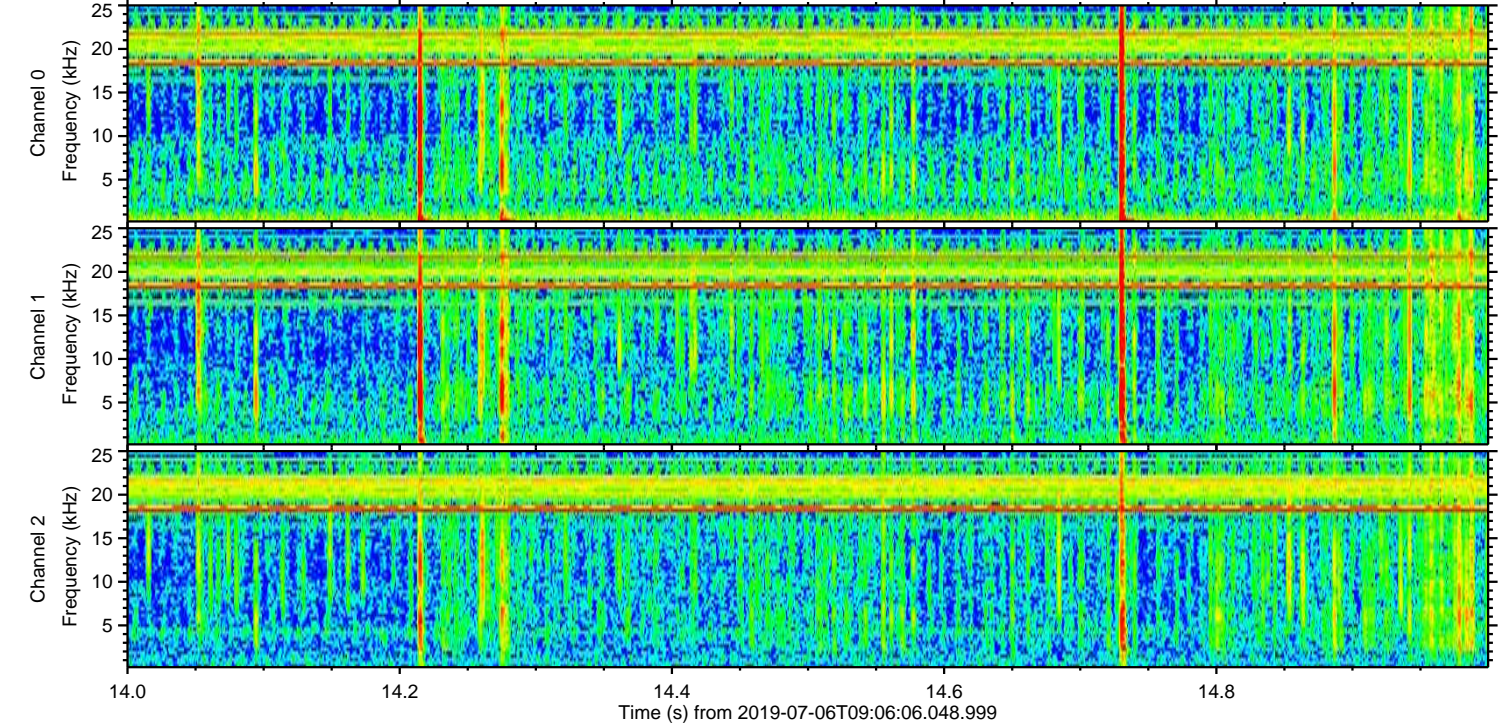
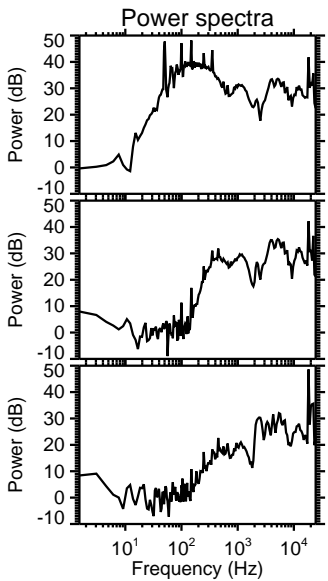
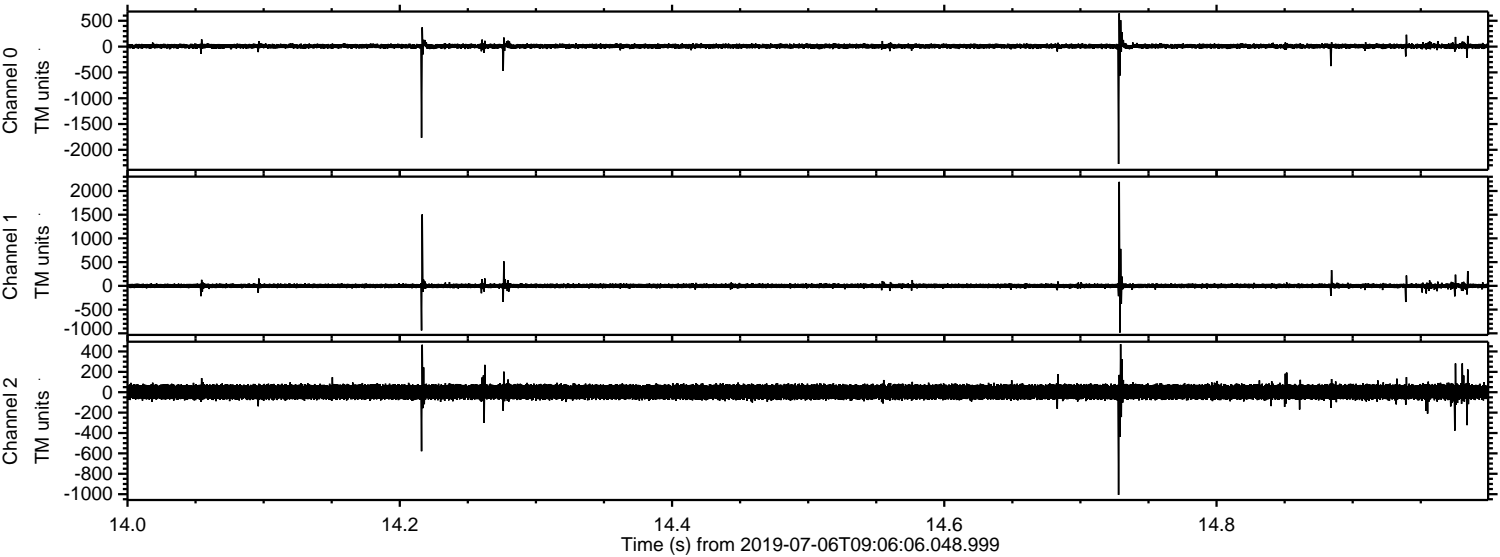


Processed Sat Jul 6 11:14:19 2019 by ELM ver.2012-10-06 from 001\_\_elm20190706\_090605\_\_dat00.bin



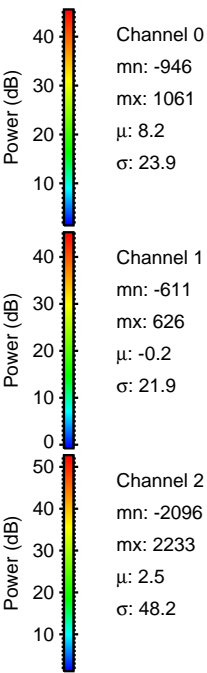
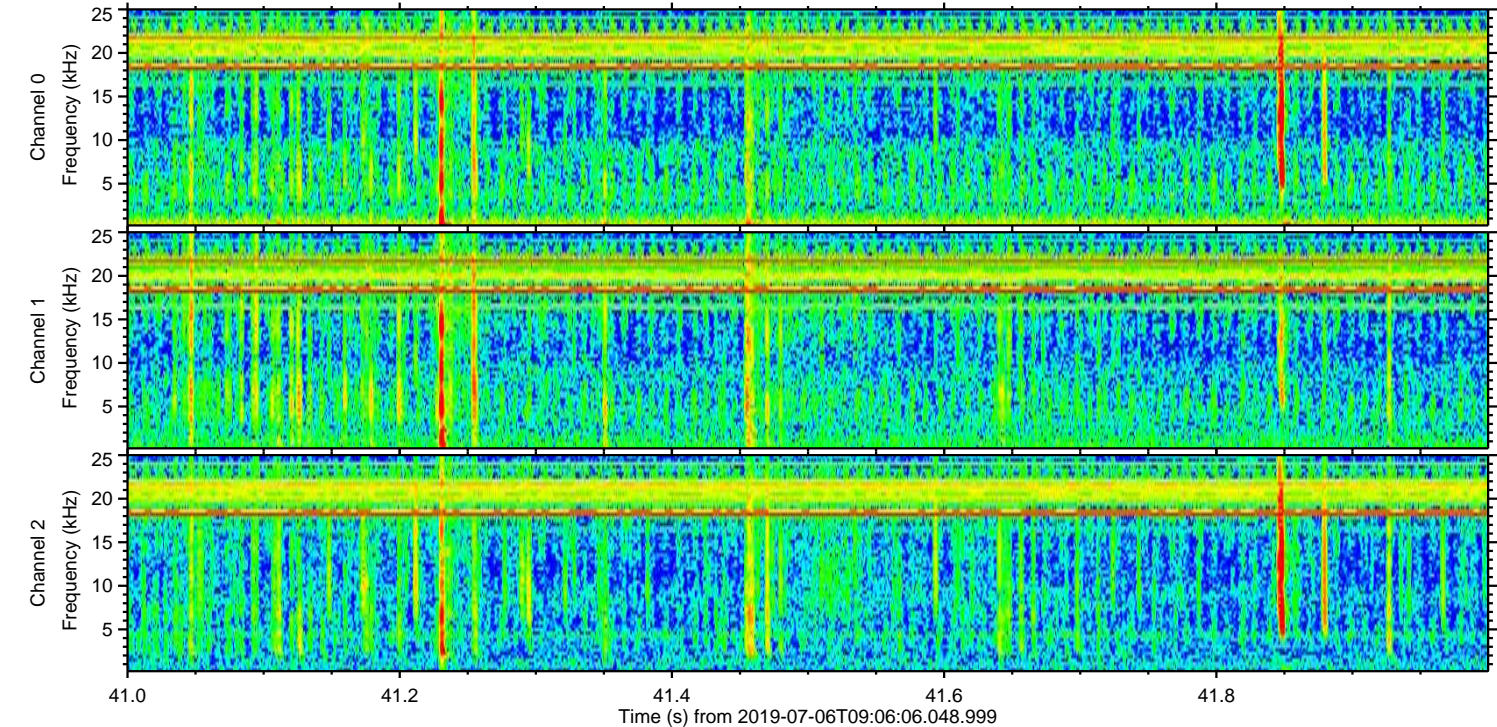
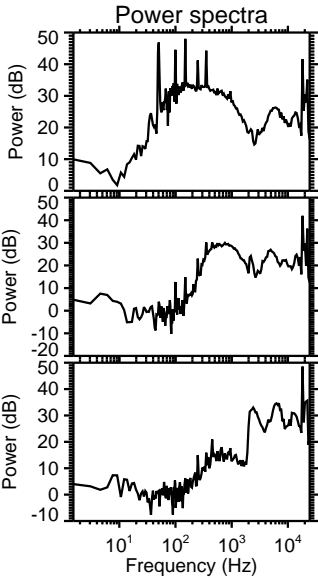
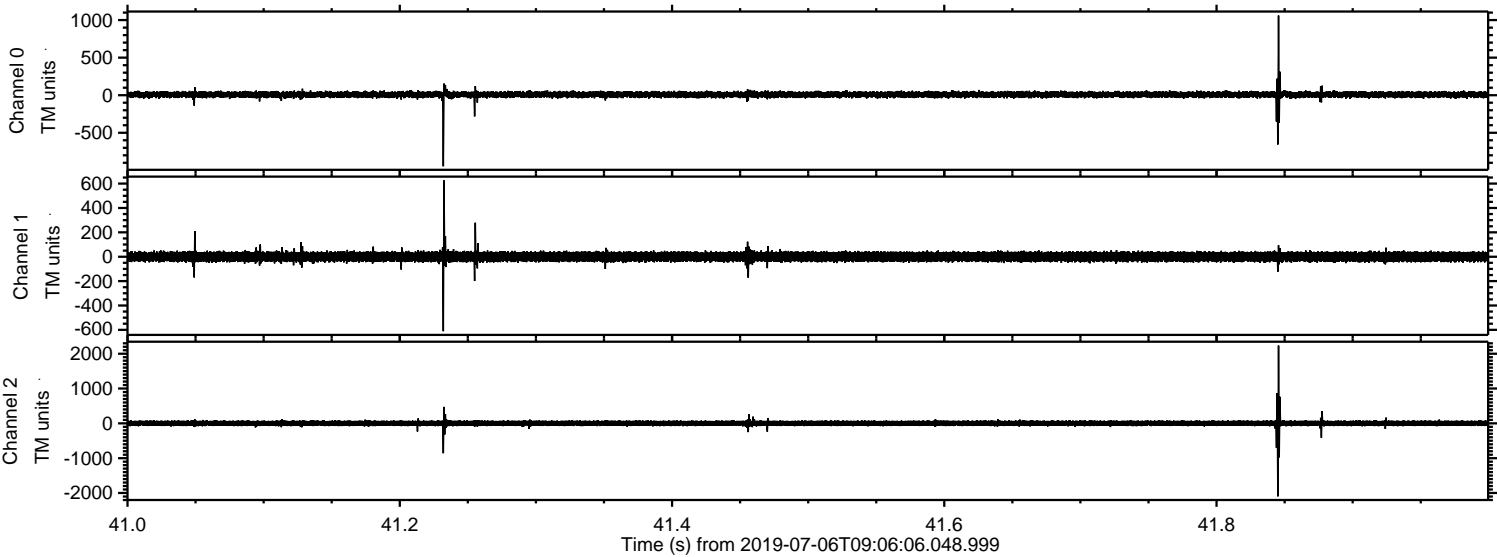


Processed Sat Jul 6 11:14:20 2019 by ELM ver.2012-10-06 from 001\_\_elm20190706\_090605\_\_dat00.bin

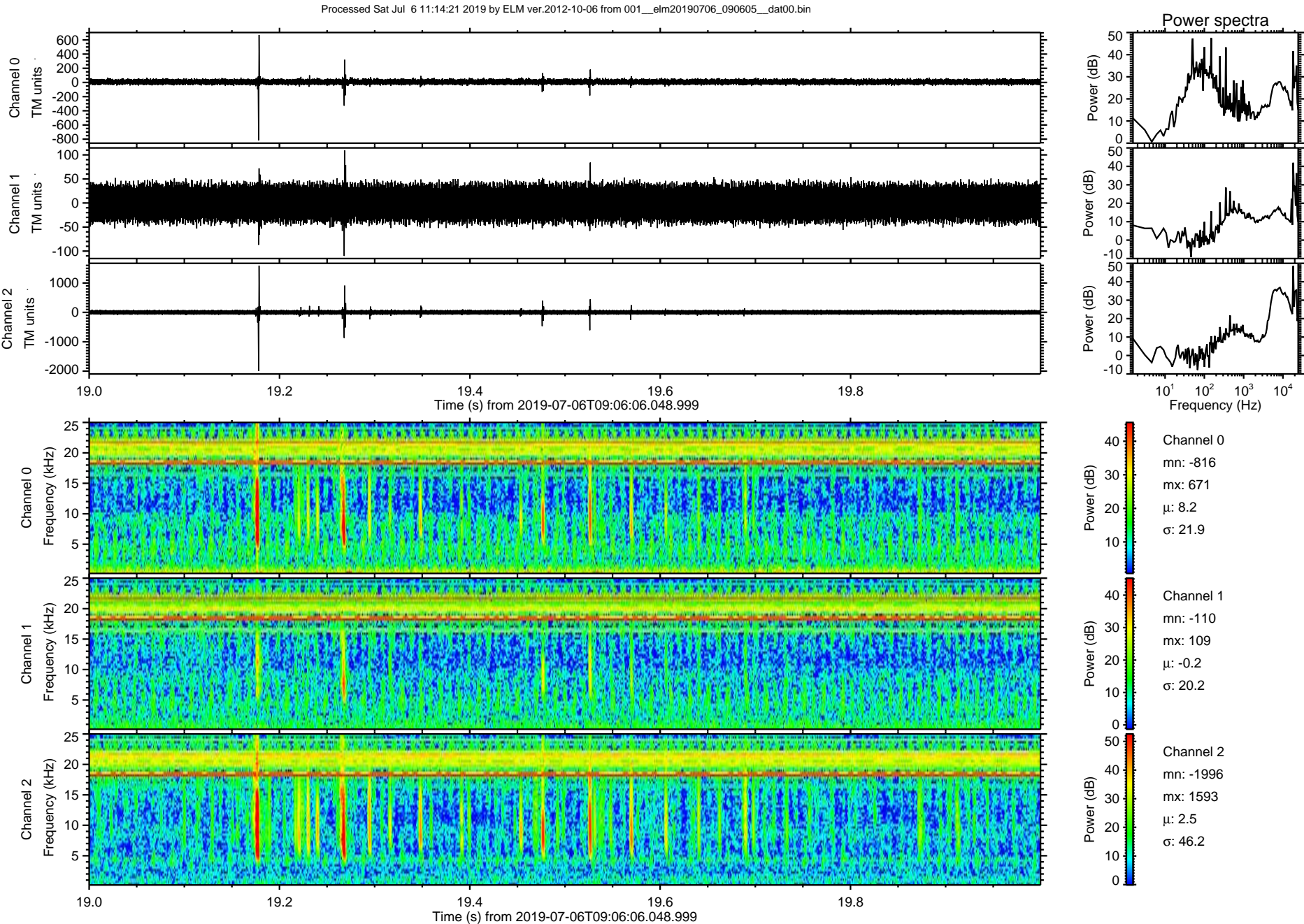




Processed Sat Jul 6 11:14:20 2019 by ELM ver.2012-10-06 from 001\_\_elm20190706\_090605\_\_dat00.bin

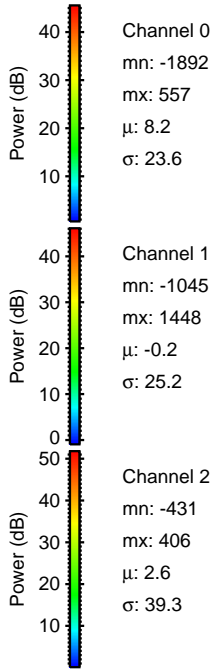
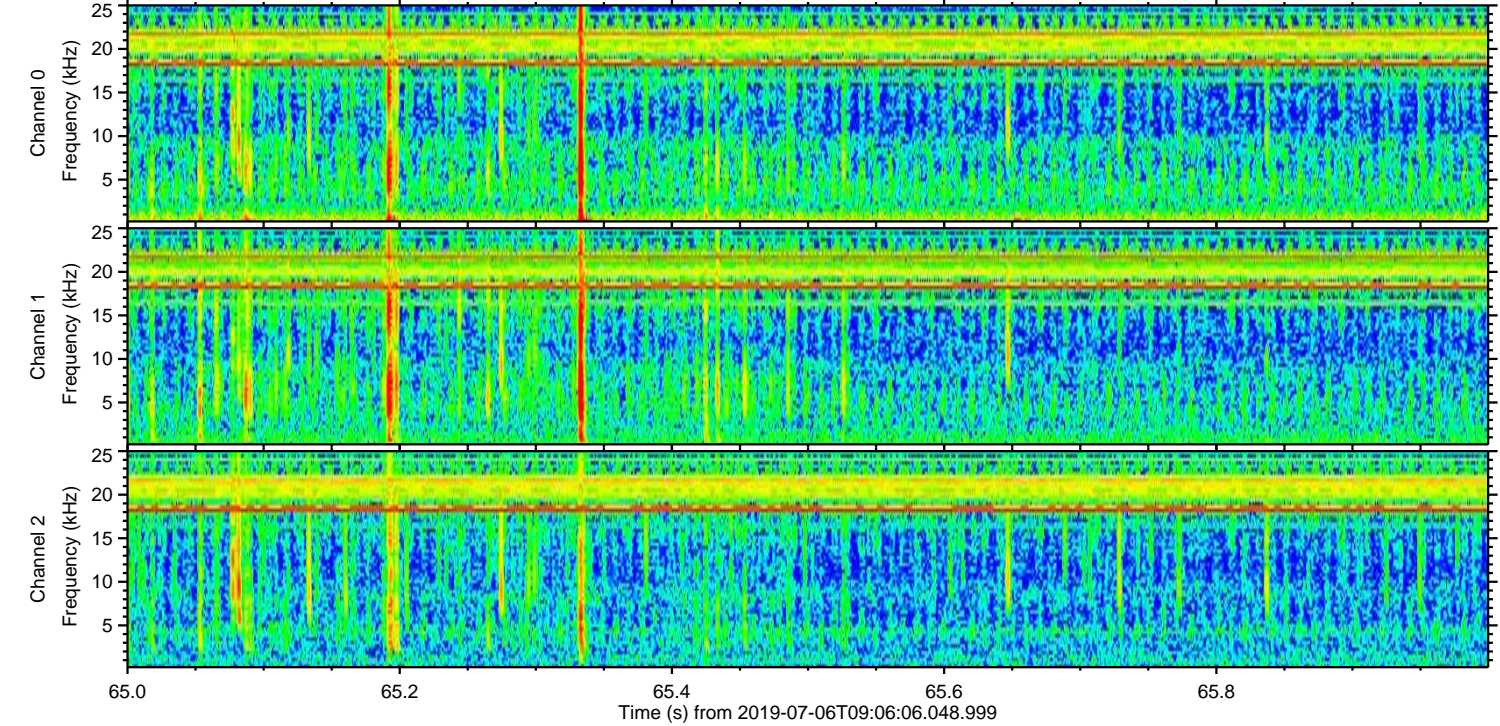
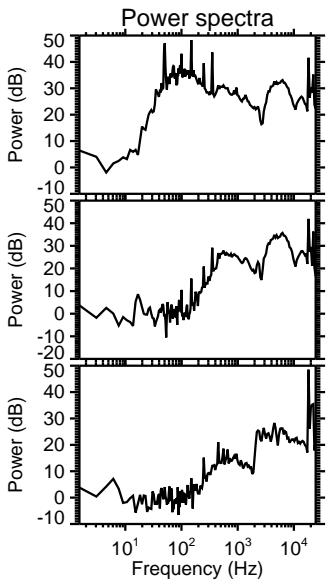
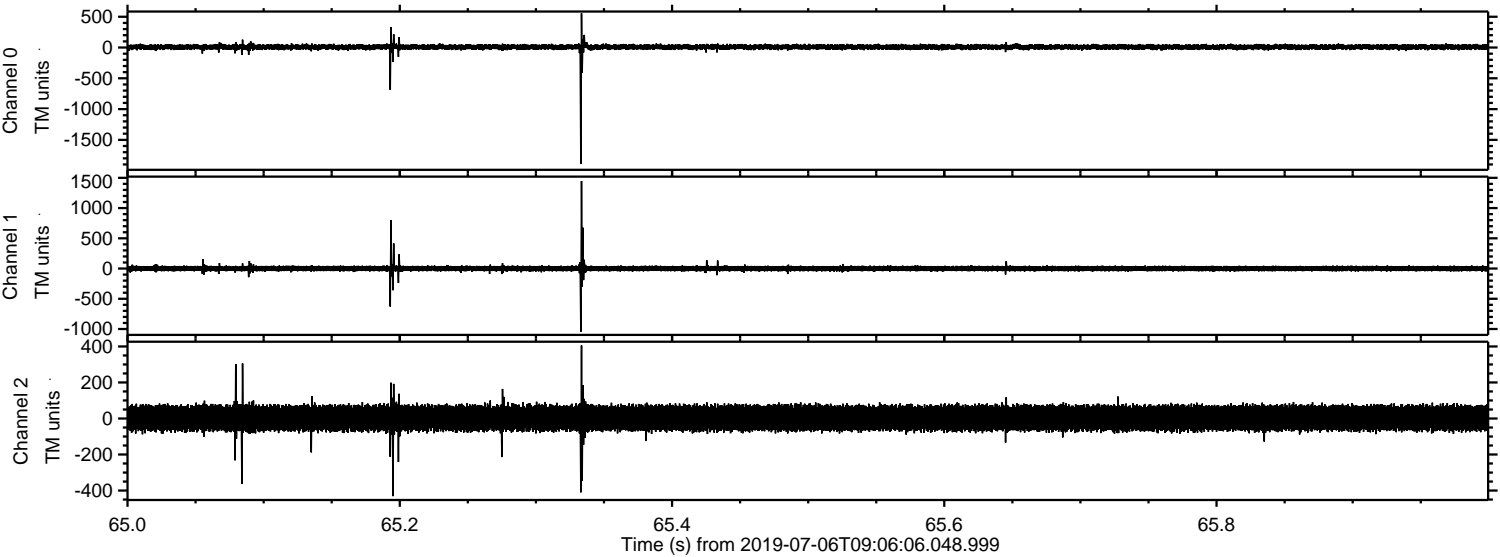






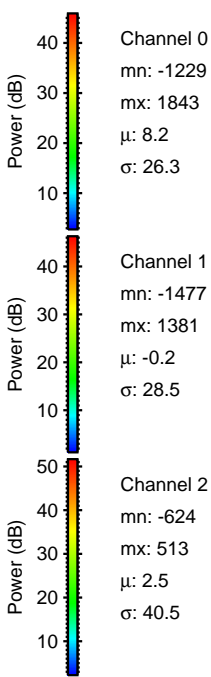
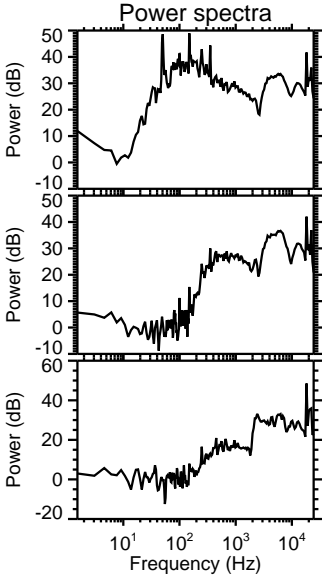
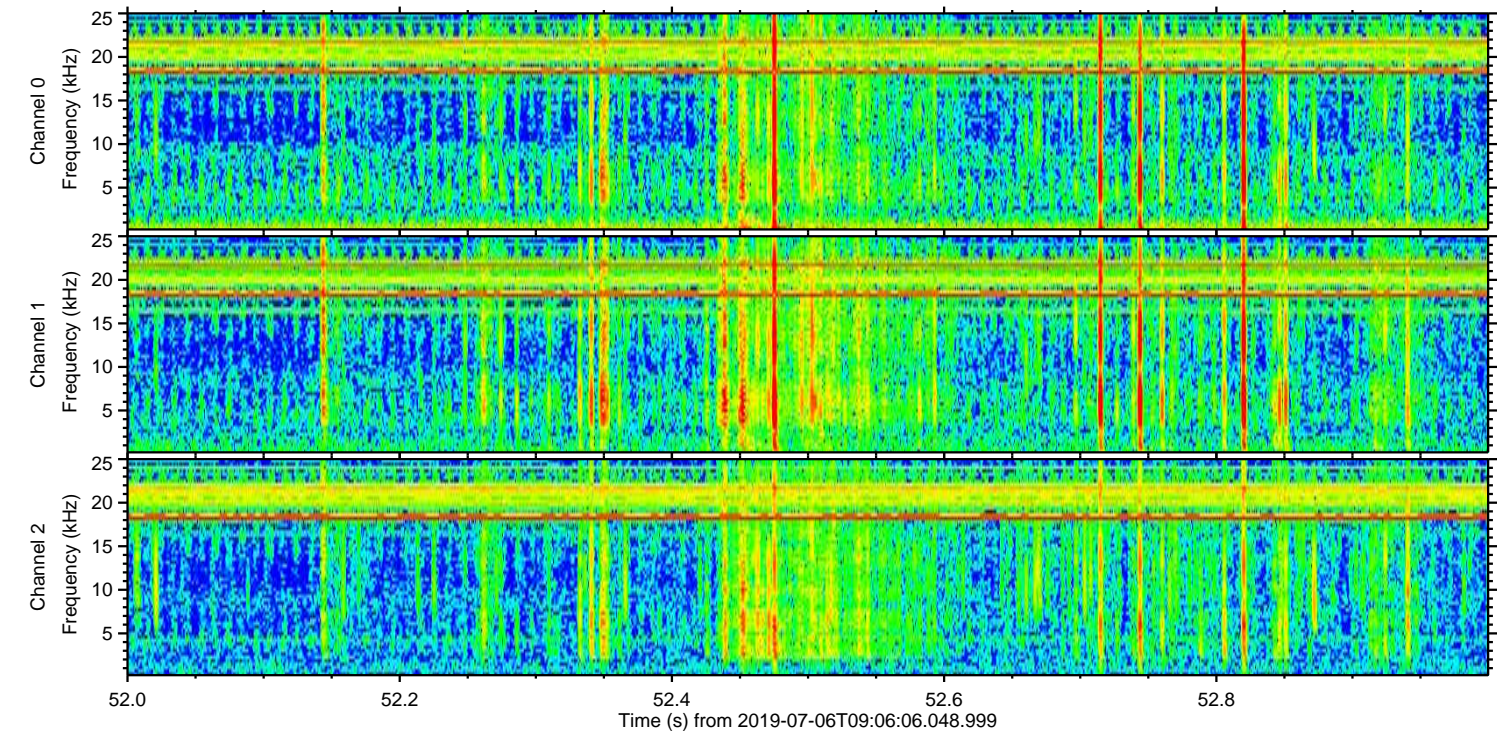
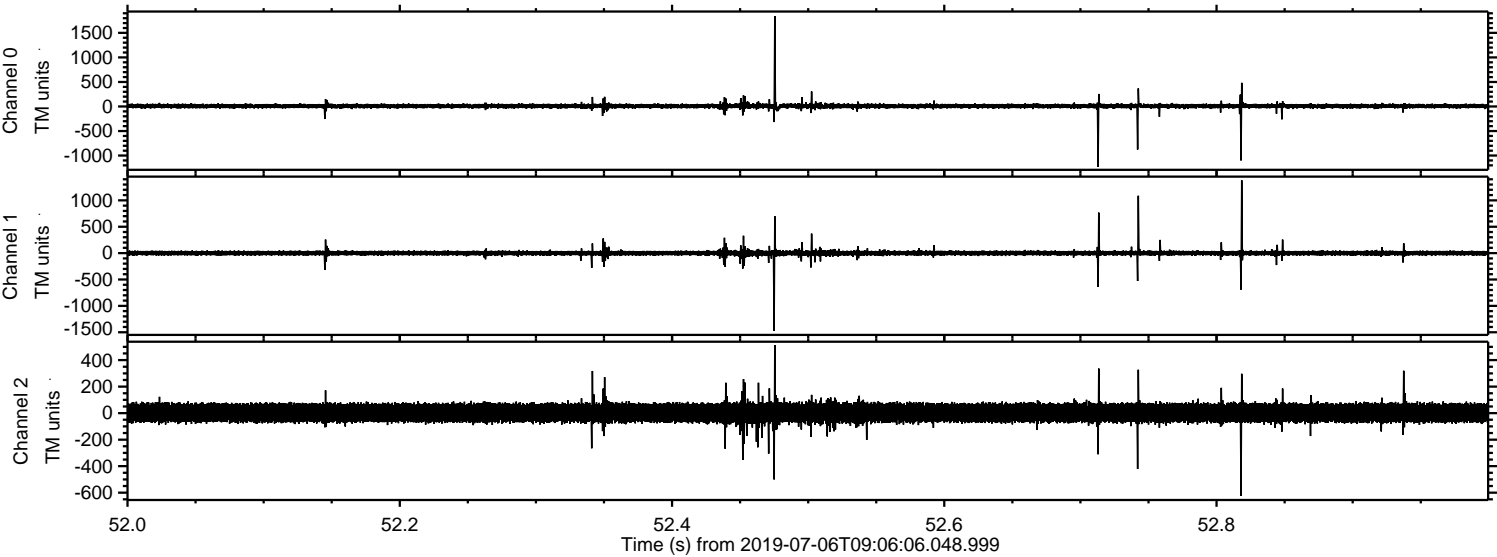


Processed Sat Jul 6 11:14:22 2019 by ELM ver.2012-10-06 from 001\_\_elm20190706\_090605\_\_dat00.bin





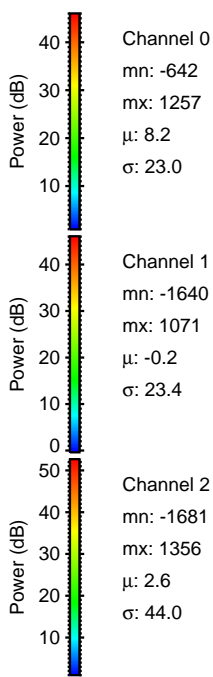
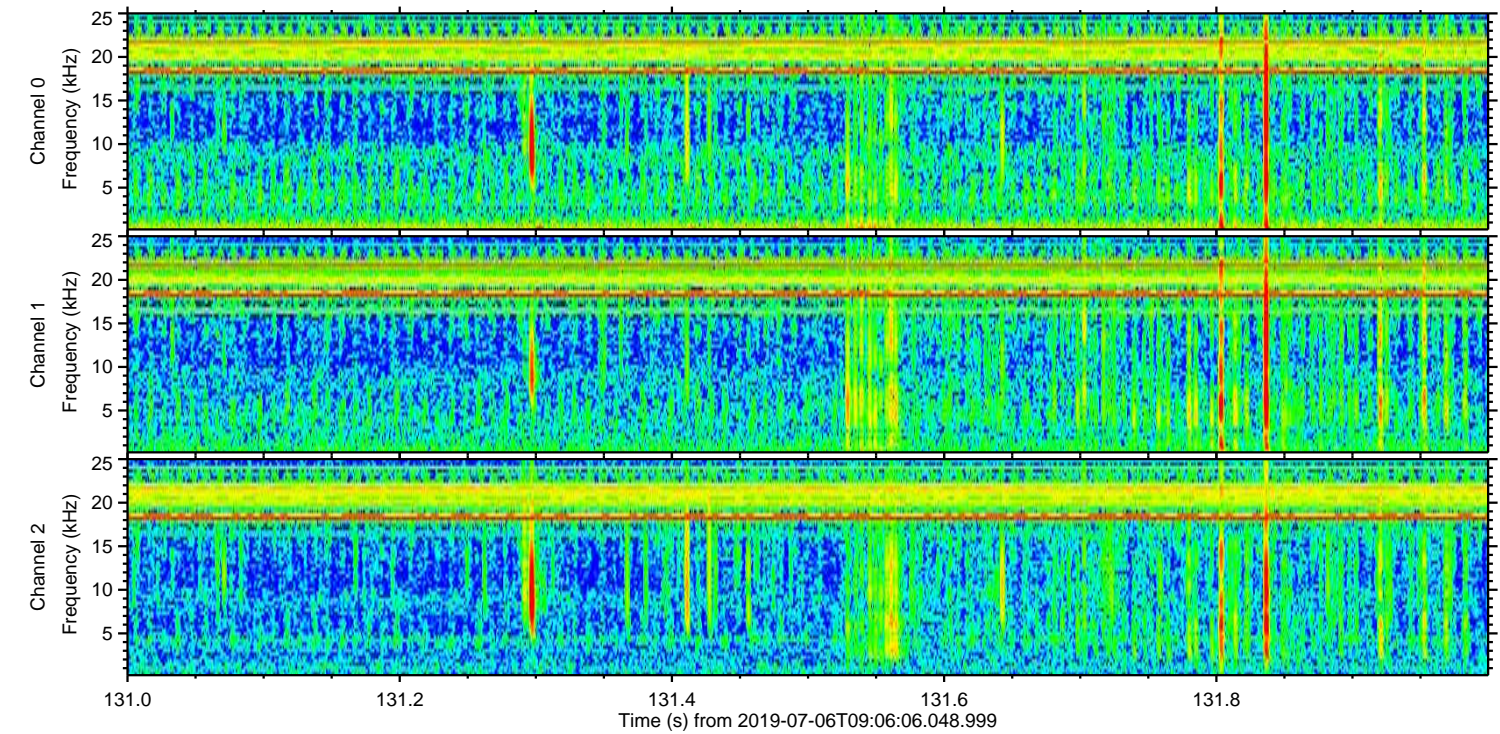
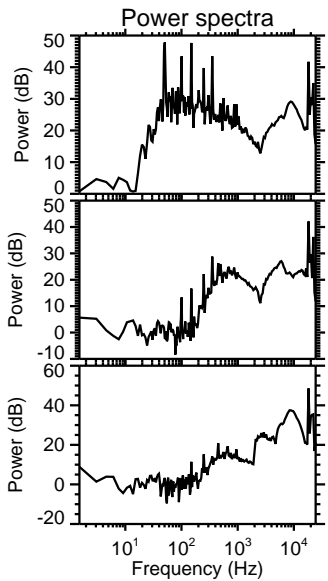
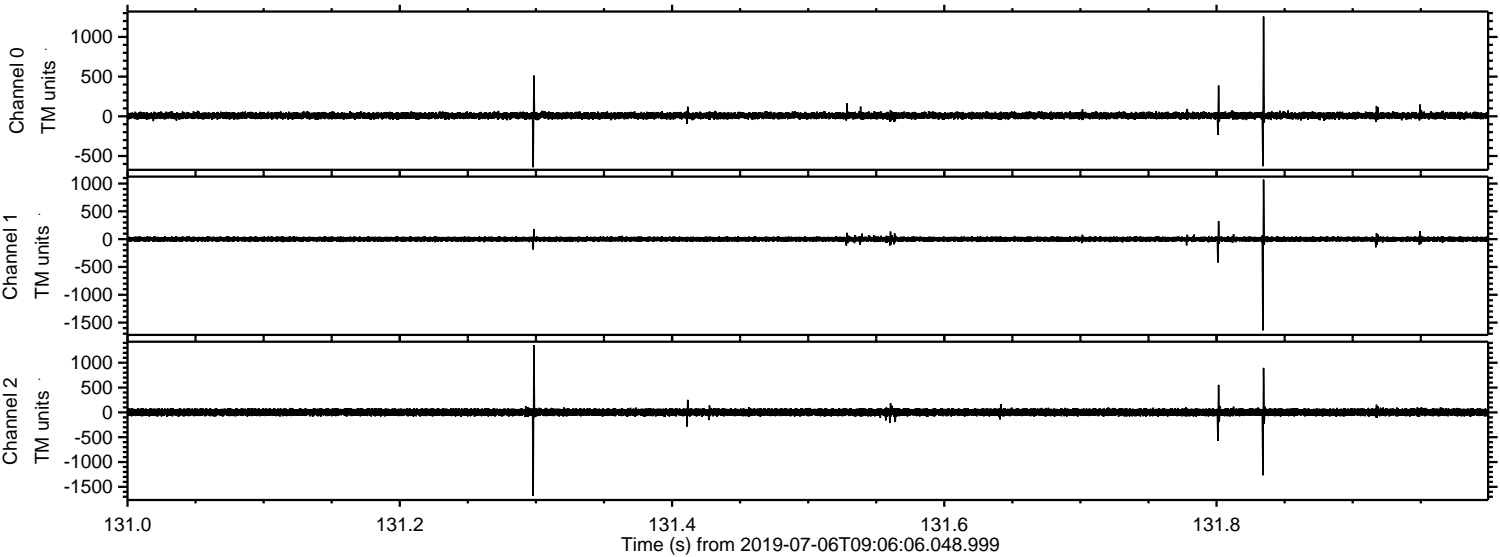
Processed Sat Jul 6 11:14:23 2019 by ELM ver.2012-10-06 from 001\_\_elm20190706\_090605\_\_dat00.bin





ELMAVAN 3D WAVEFORMS (Measured data sampled at 50 kHz) 51000 packets of 144 samples from 2019-07-06T09:06:06.048.999. Part 132/147

Processed Sat Jul 6 11:14:23 2019 by ELM ver.2012-10-06 from 001\_\_elm20190706\_090605\_\_dat00.bin



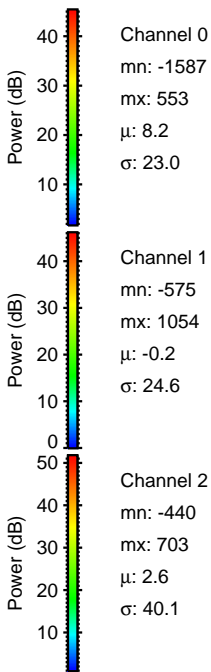
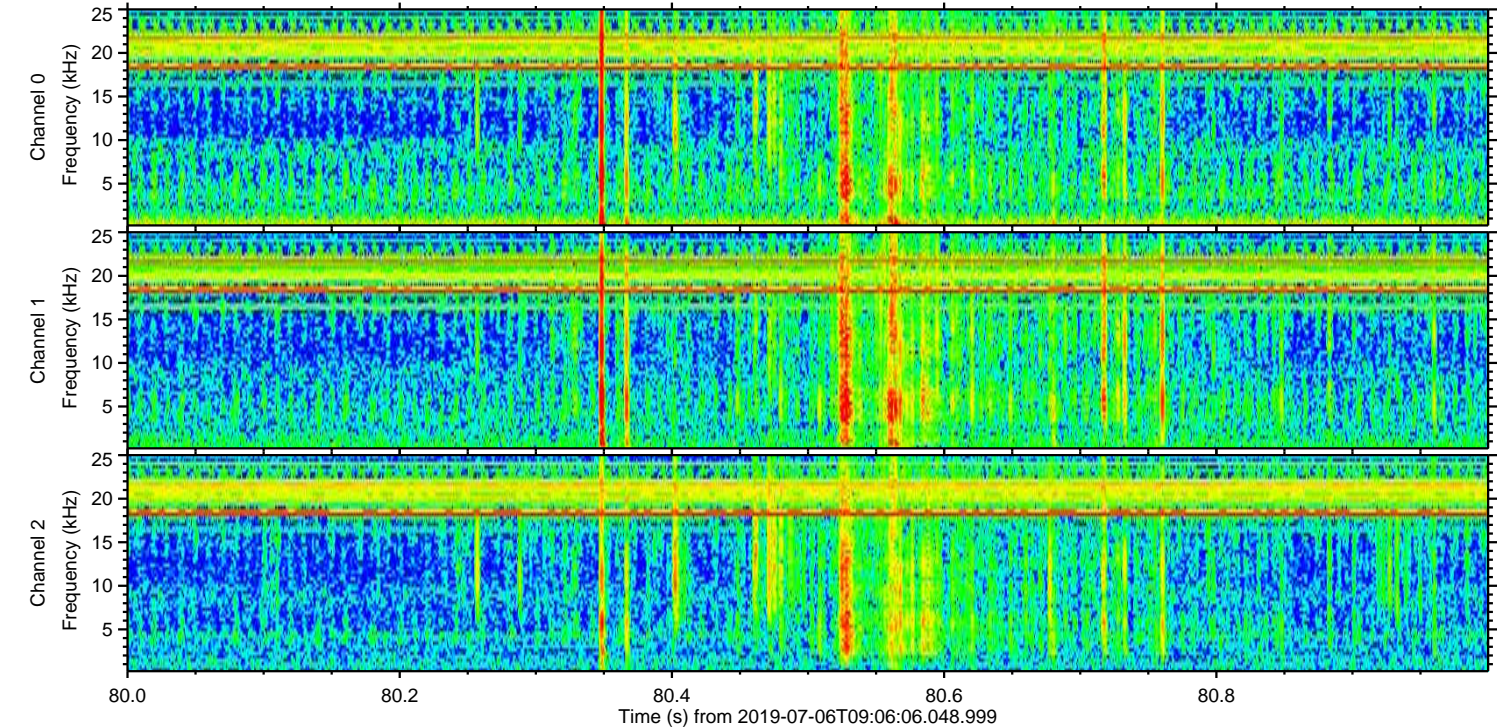
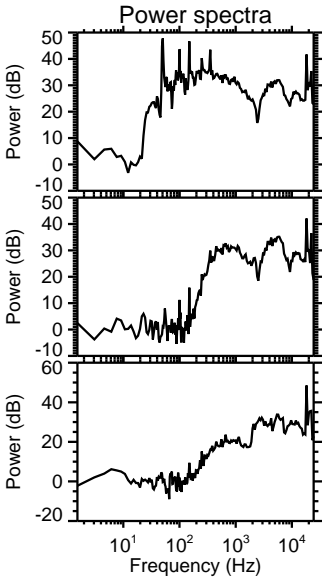
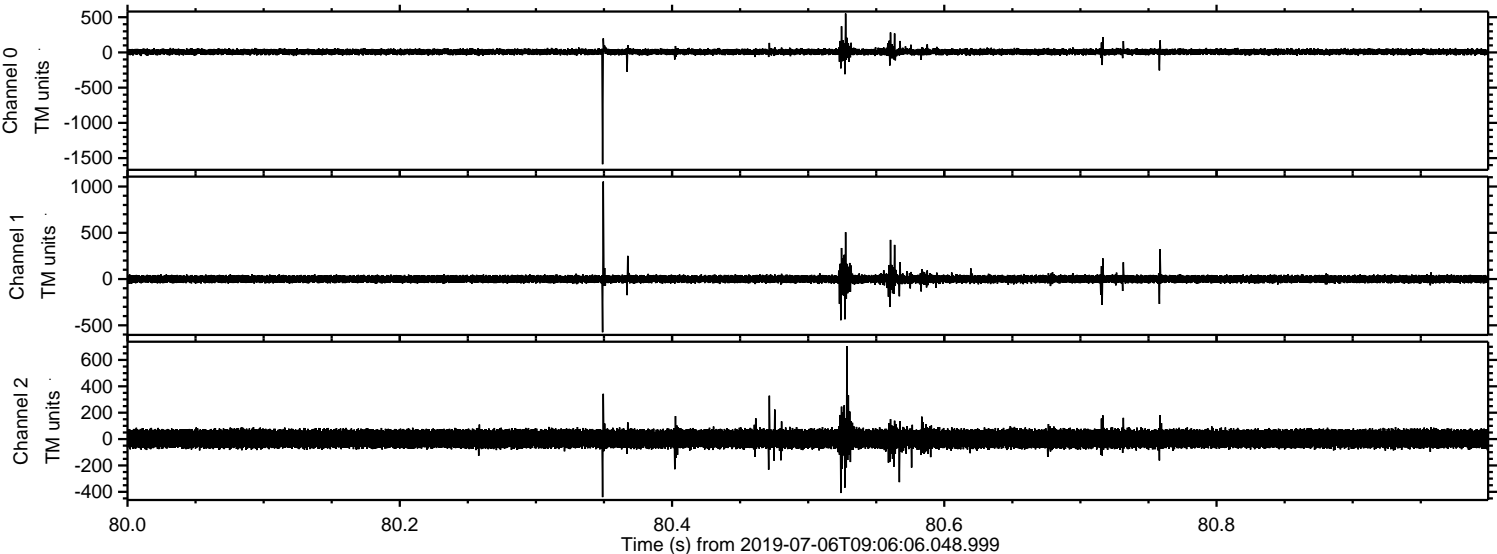
Channel 0  
mn: -642  
mx: 1257  
 $\mu$ : 8.2  
 $\sigma$ : 23.0

Channel 1  
mn: -1640  
mx: 1071  
 $\mu$ : -0.2  
 $\sigma$ : 23.4

Channel 2  
mn: -1681  
mx: 1356  
 $\mu$ : 2.6  
 $\sigma$ : 44.0

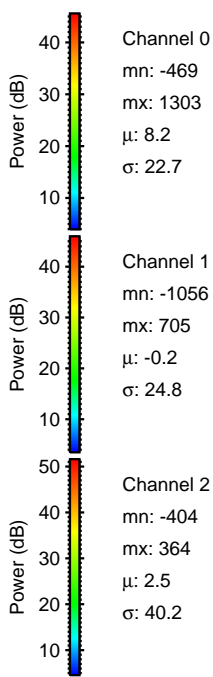
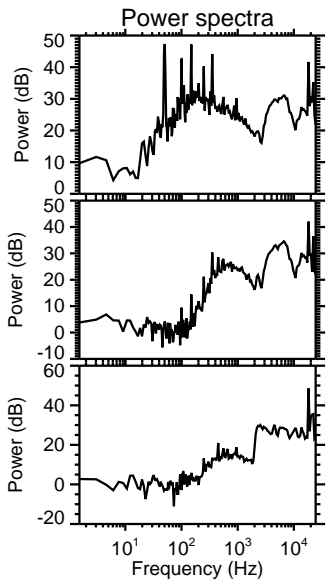
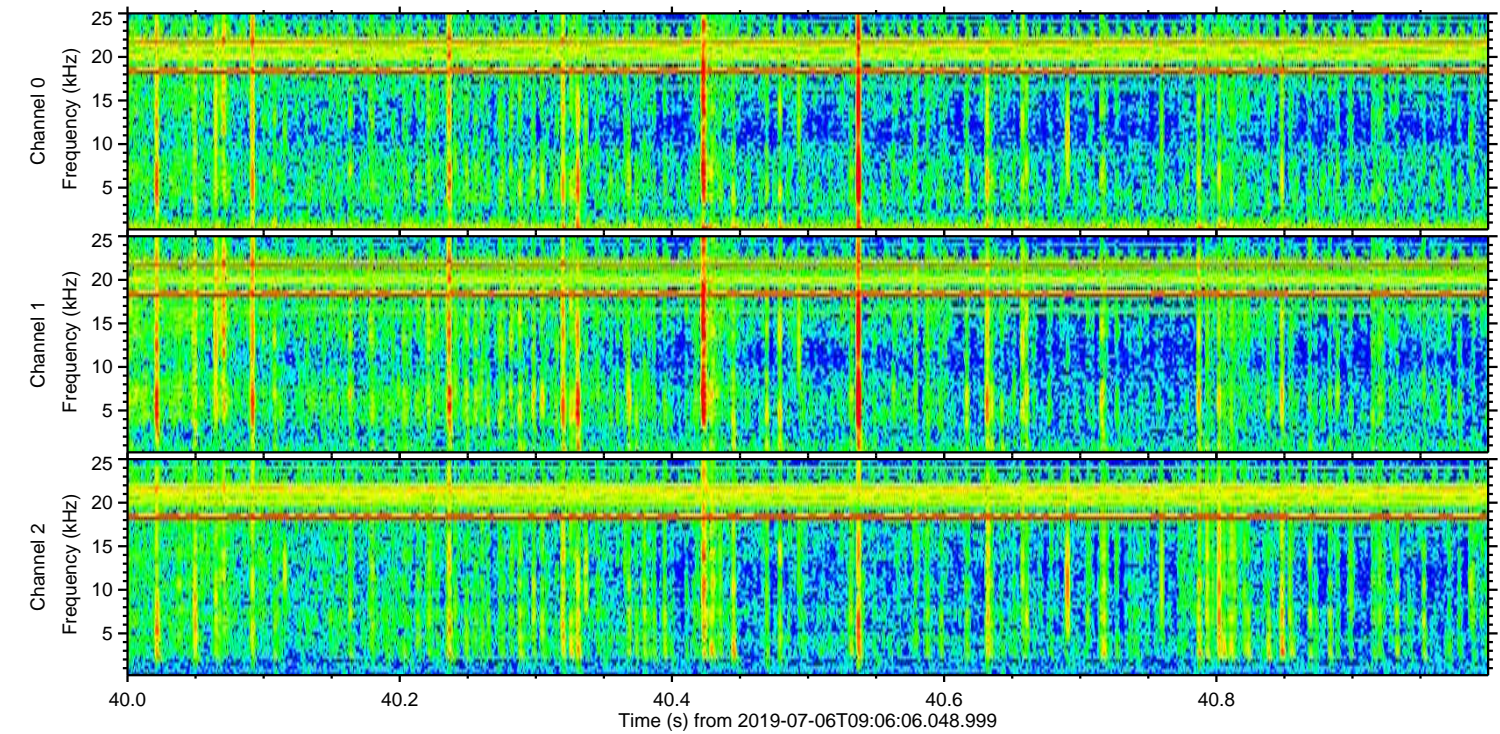
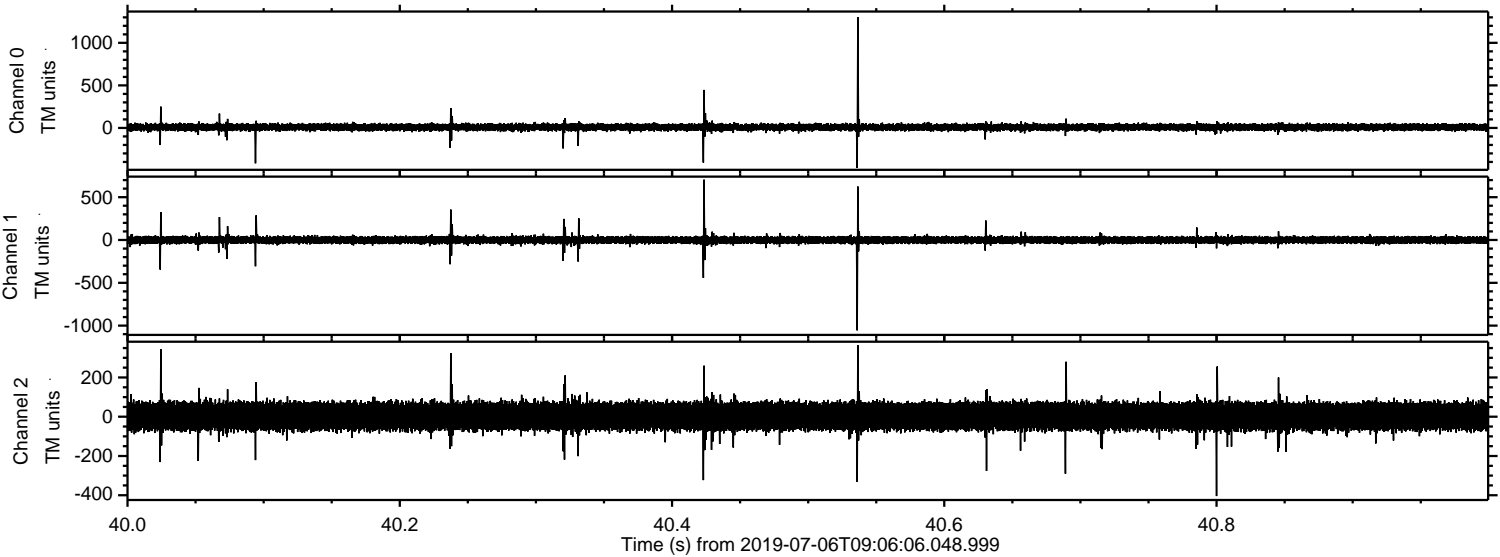


Processed Sat Jul 6 11:14:24 2019 by ELM ver.2012-10-06 from 001\_\_elm20190706\_090605\_\_dat00.bin





Processed Sat Jul 6 11:14:25 2019 by ELM ver.2012-10-06 from 001\_\_elm20190706\_090605\_\_dat00.bin



Channel 0  
mn: -469  
mx: 1303  
 $\mu$ : 8.2  
 $\sigma$ : 22.7

Channel 1  
mn: -1056  
mx: 705  
 $\mu$ : -0.2  
 $\sigma$ : 24.8

Channel 2  
mn: -404  
mx: 364  
 $\mu$ : 2.5  
 $\sigma$ : 40.2



