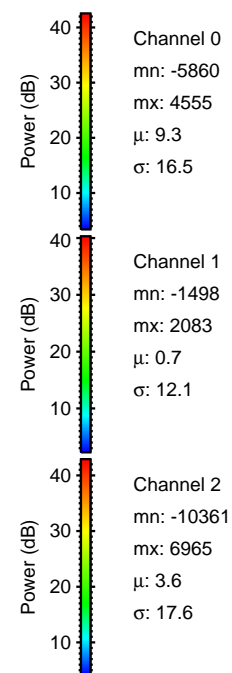
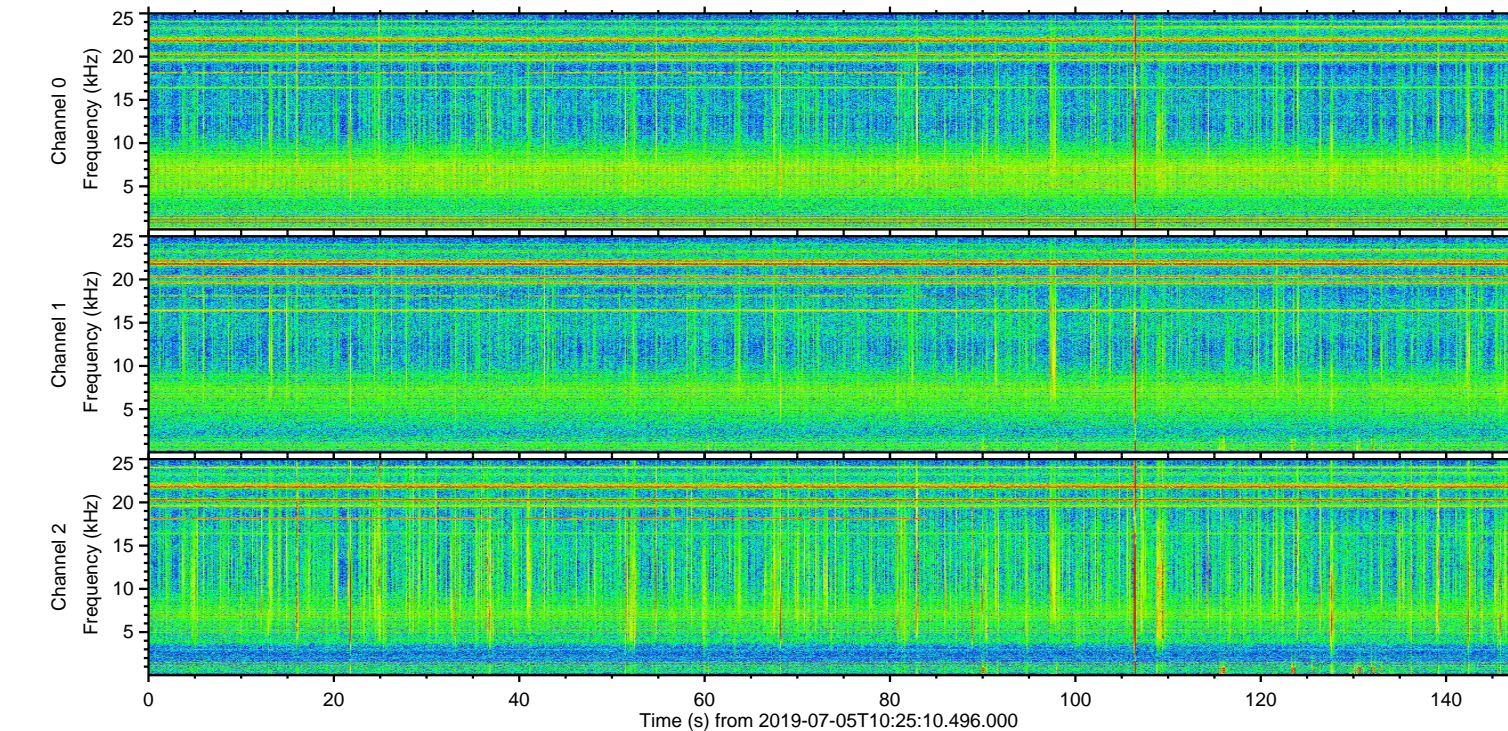
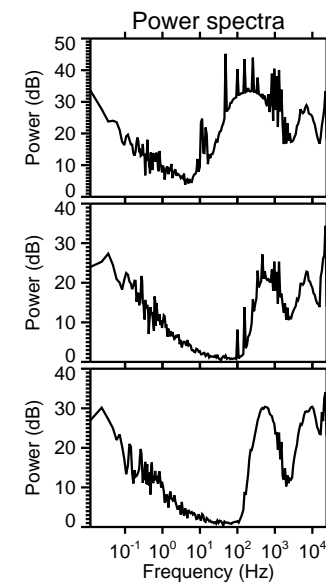
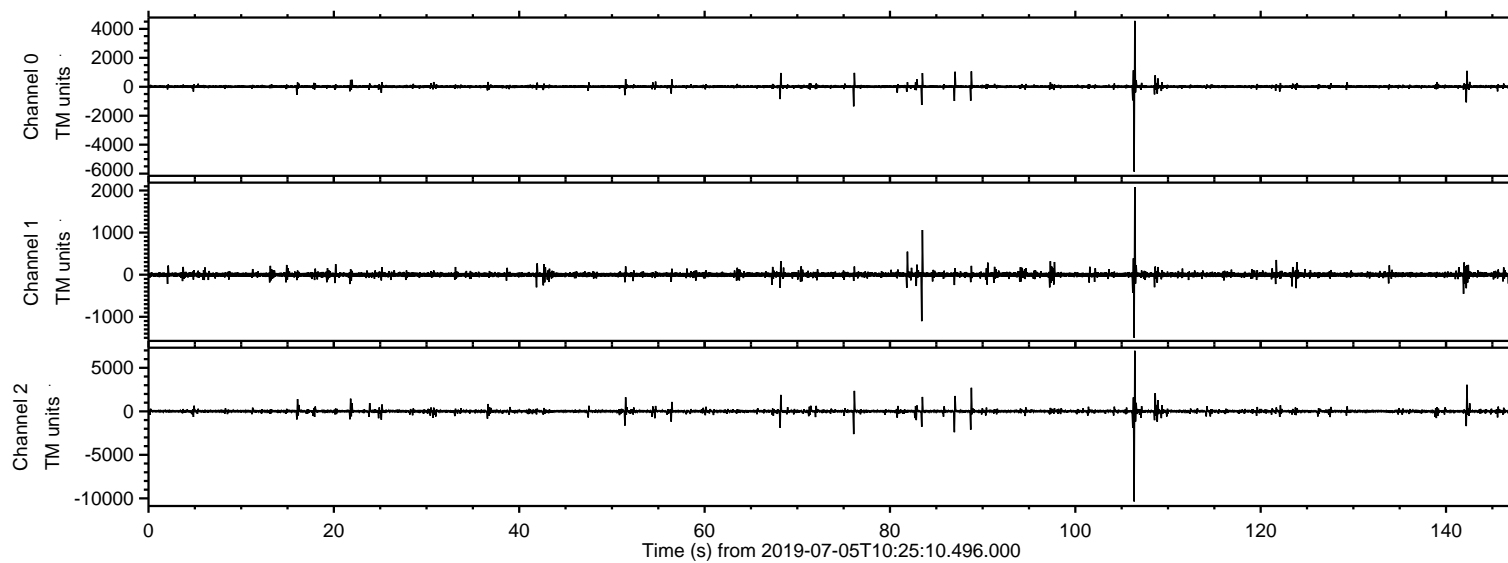


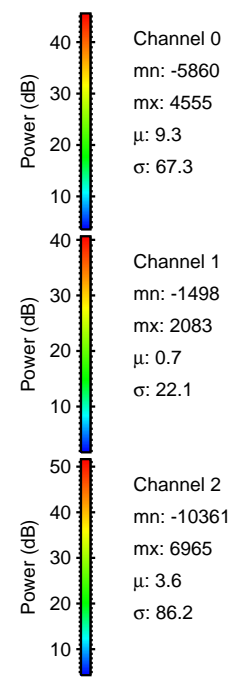
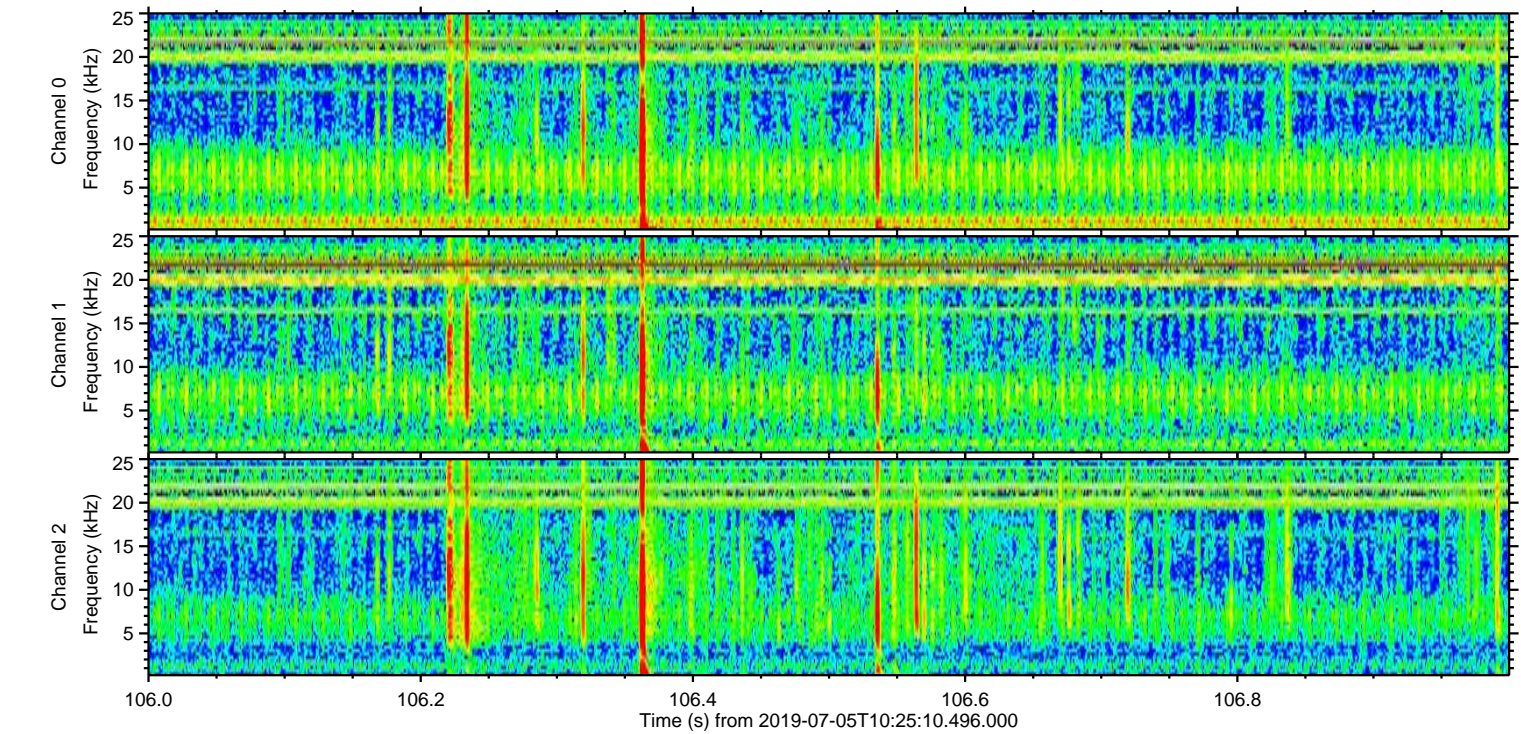
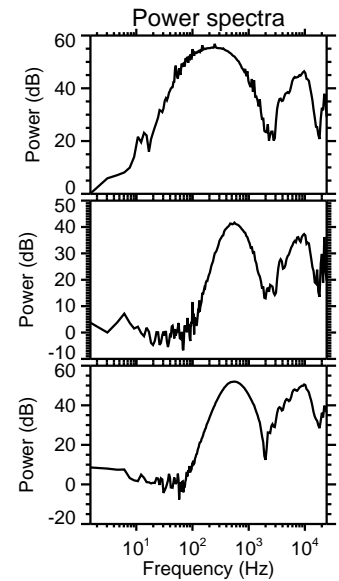
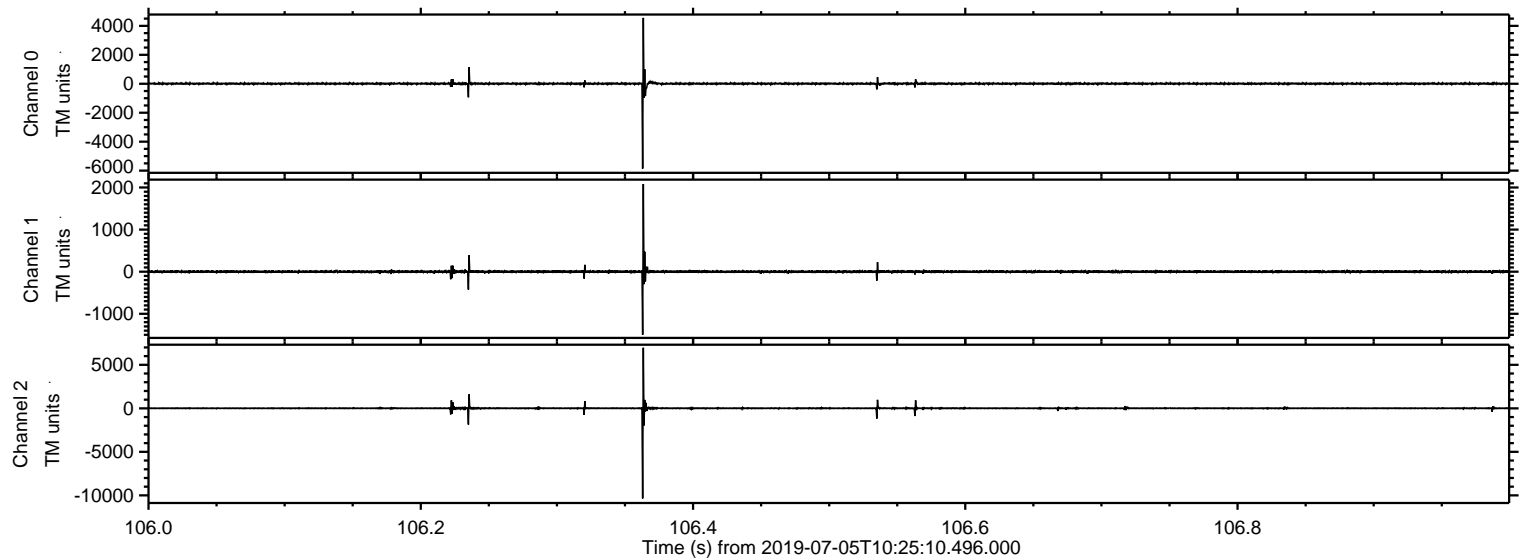
ELMAVAN 3D WAVEFORMS (Measured data sampled at 50 kHz) 51000 packets of 144 samples from 2019-07-05T10:25:10.496.000.

Processed Fri Jul 5 12:33:19 2019 by ELM ver.2012-10-06 from 001__elm20190705_102509__dat00.bin



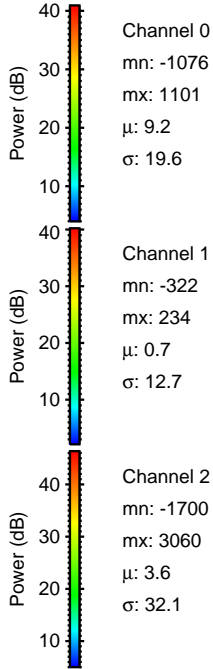
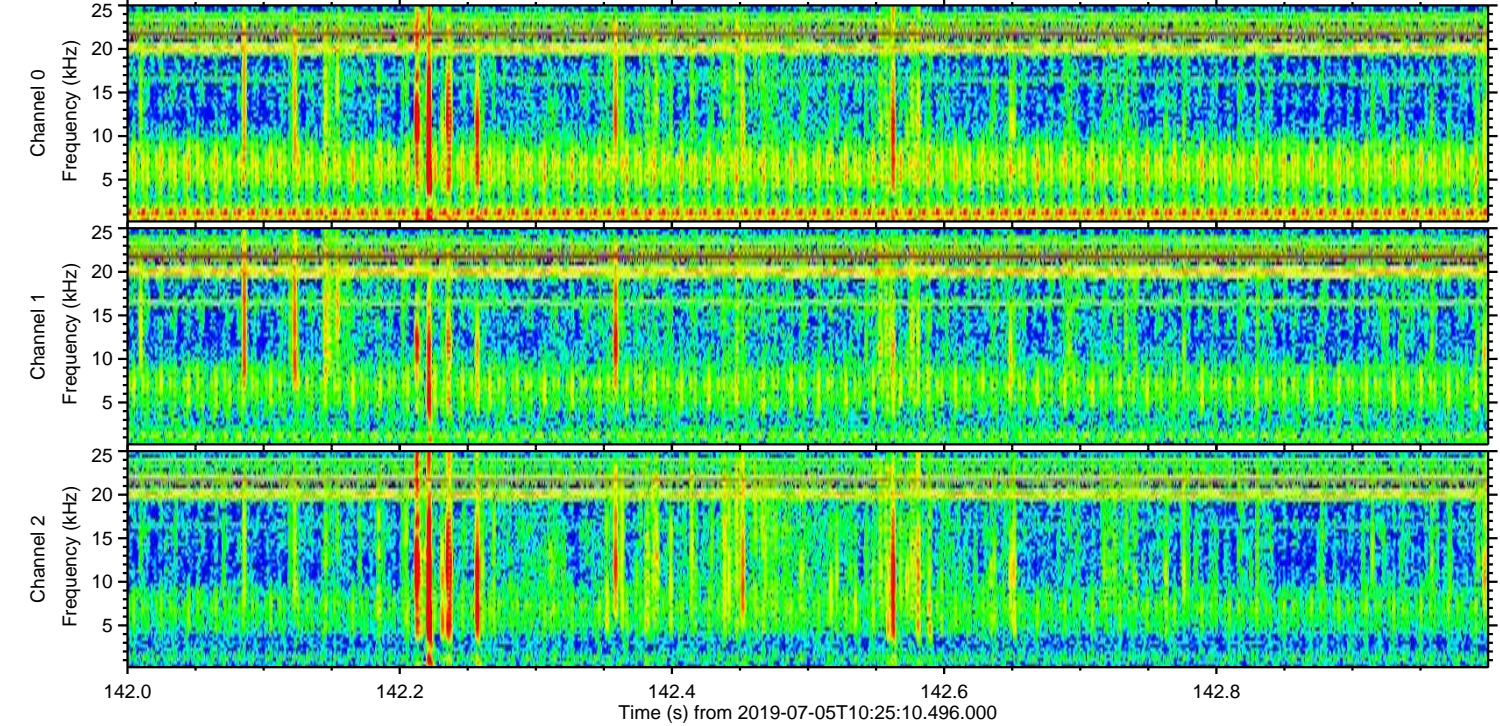
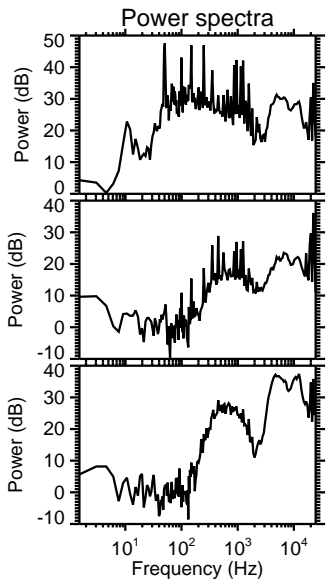
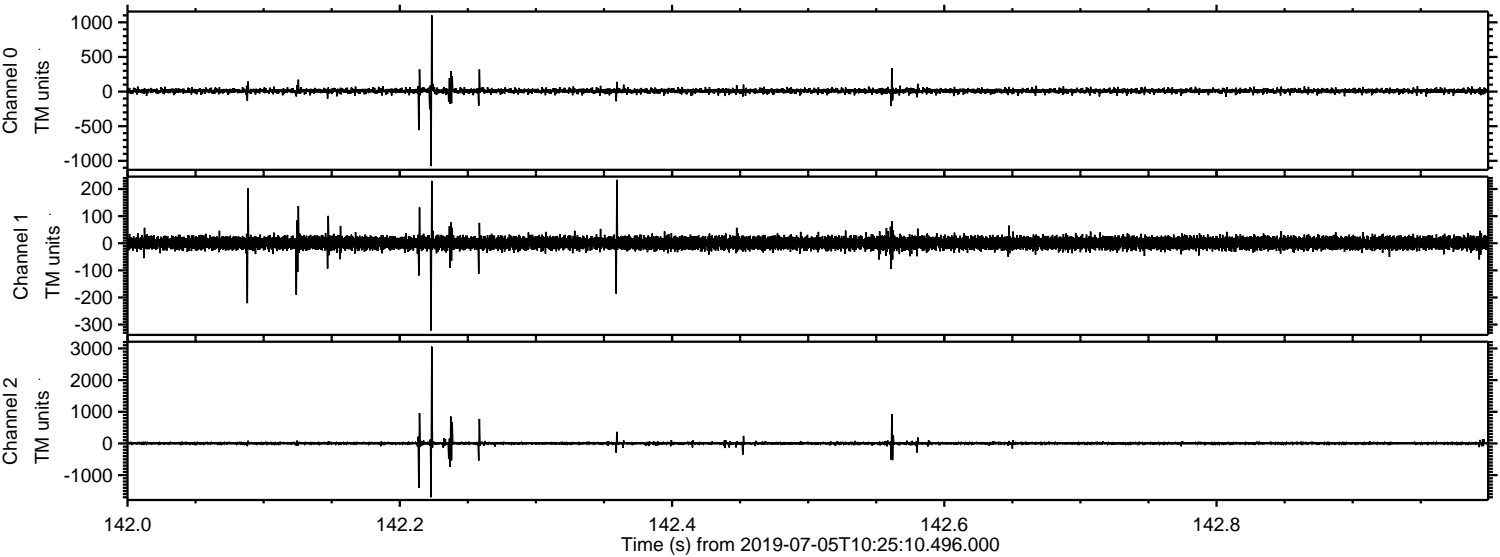
ELMAVAN 3D WAVEFORMS (Measured data sampled at 50 kHz) 51000 packets of 144 samples from 2019-07-05T10:25:10.496.000. Part 107/147

Processed Fri Jul 5 12:33:25 2019 by ELM ver.2012-10-06 from 001__elm20190705_102509__dat00.bin



ELMAVAN 3D WAVEFORMS (Measured data sampled at 50 kHz) 51000 packets of 144 samples from 2019-07-05T10:25:10.496.000. Part 143/147

Processed Fri Jul 5 12:33:26 2019 by ELM ver.2012-10-06 from 001__elm20190705_102509__dat00.bin

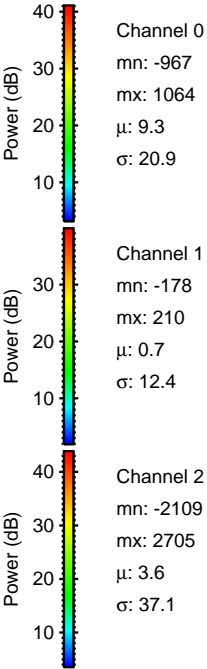
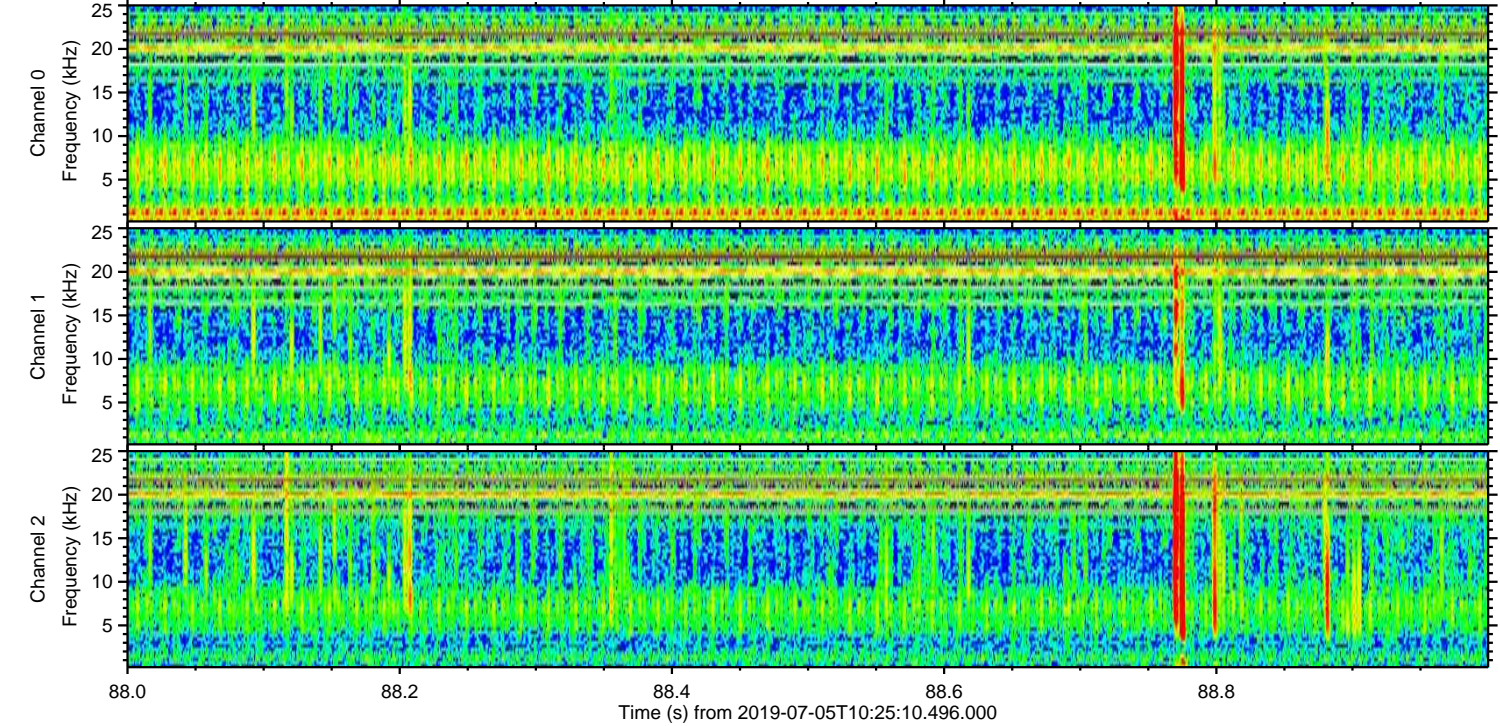
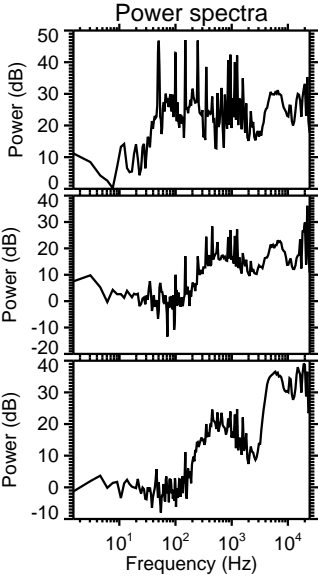
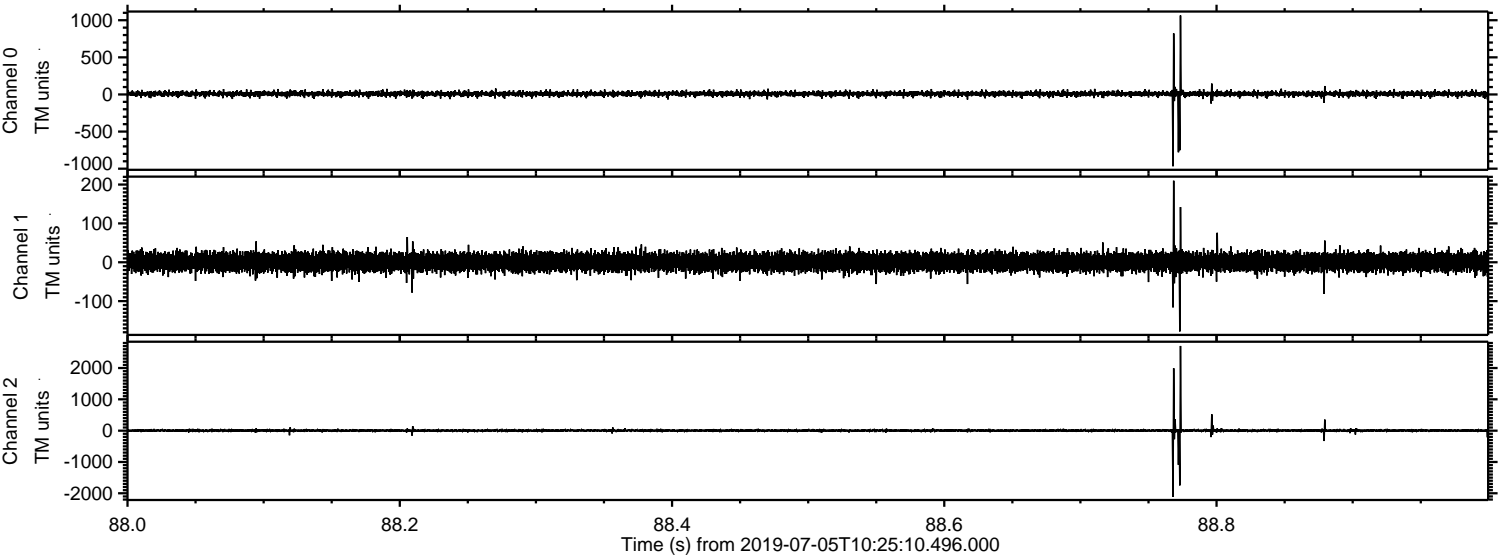


Channel 0
mn: -1076
mx: 1101
 μ : 9.2
 σ : 19.6

Channel 1
mn: -322
mx: 234
 μ : 0.7
 σ : 12.7

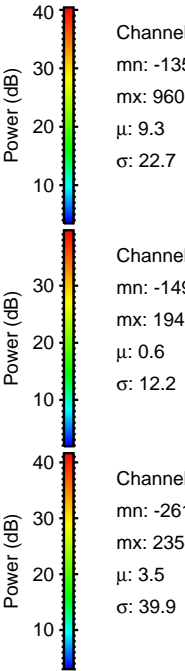
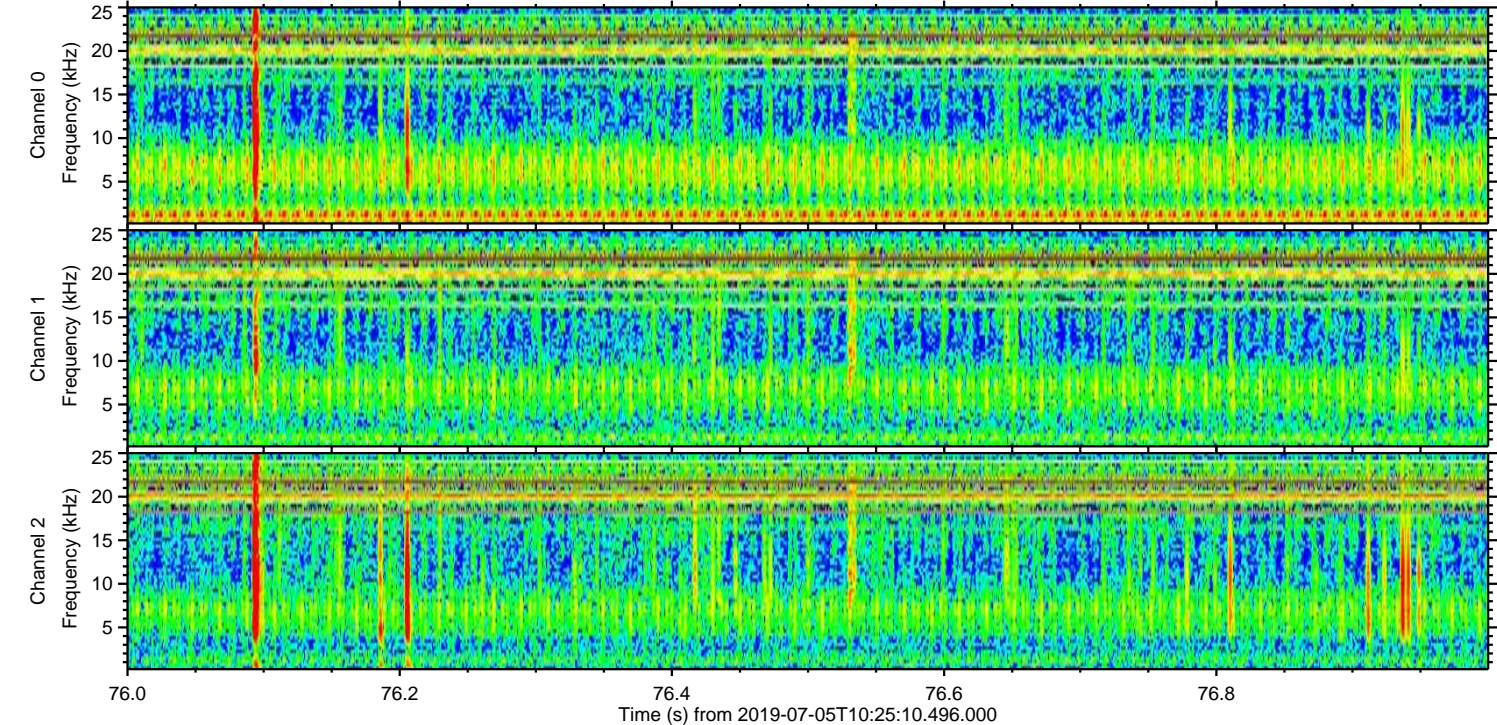
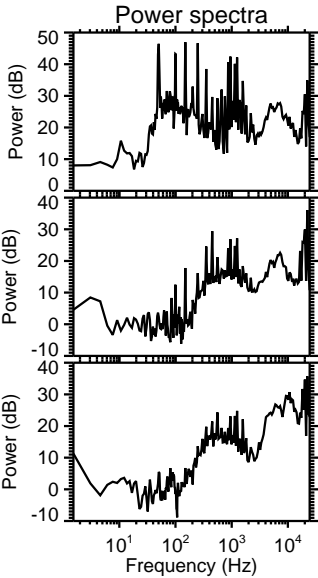
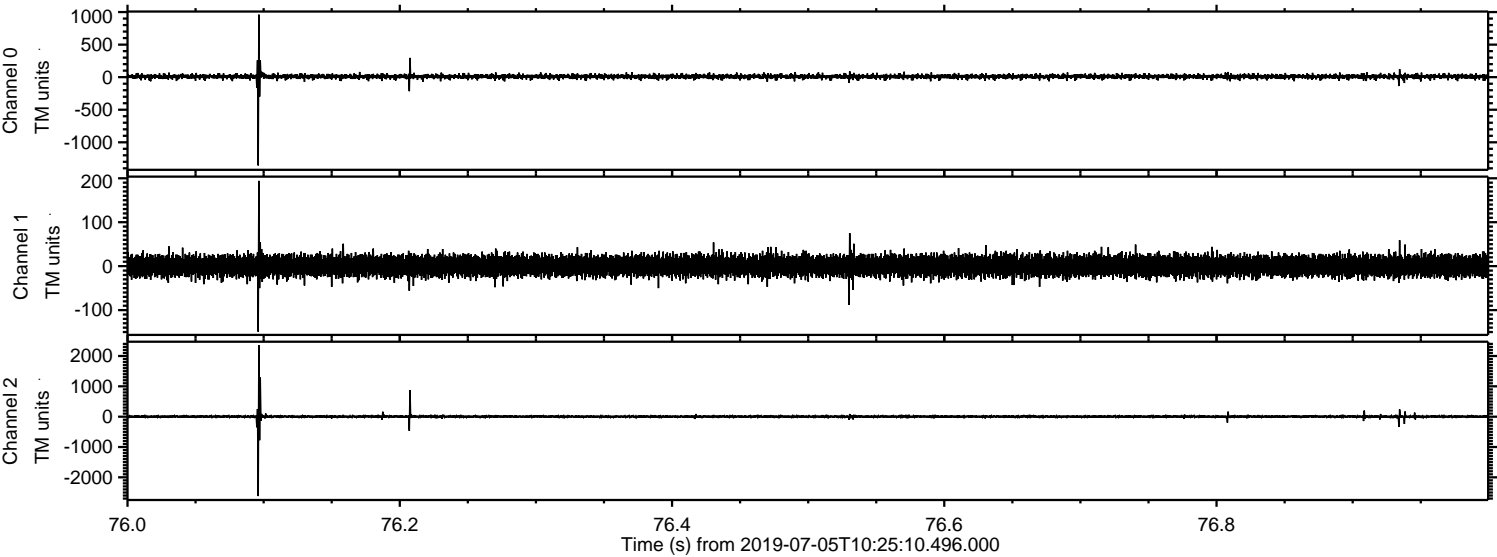
Channel 2
mn: -1700
mx: 3060
 μ : 3.6
 σ : 32.1

Processed Fri Jul 5 12:33:27 2019 by ELM ver.2012-10-06 from 001__elm20190705_102509__dat00.bin

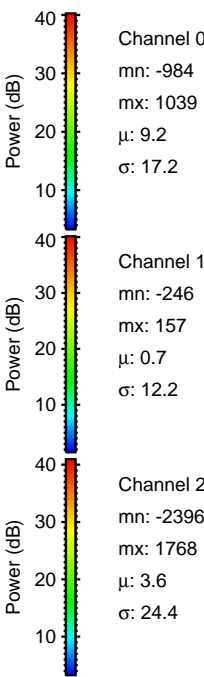
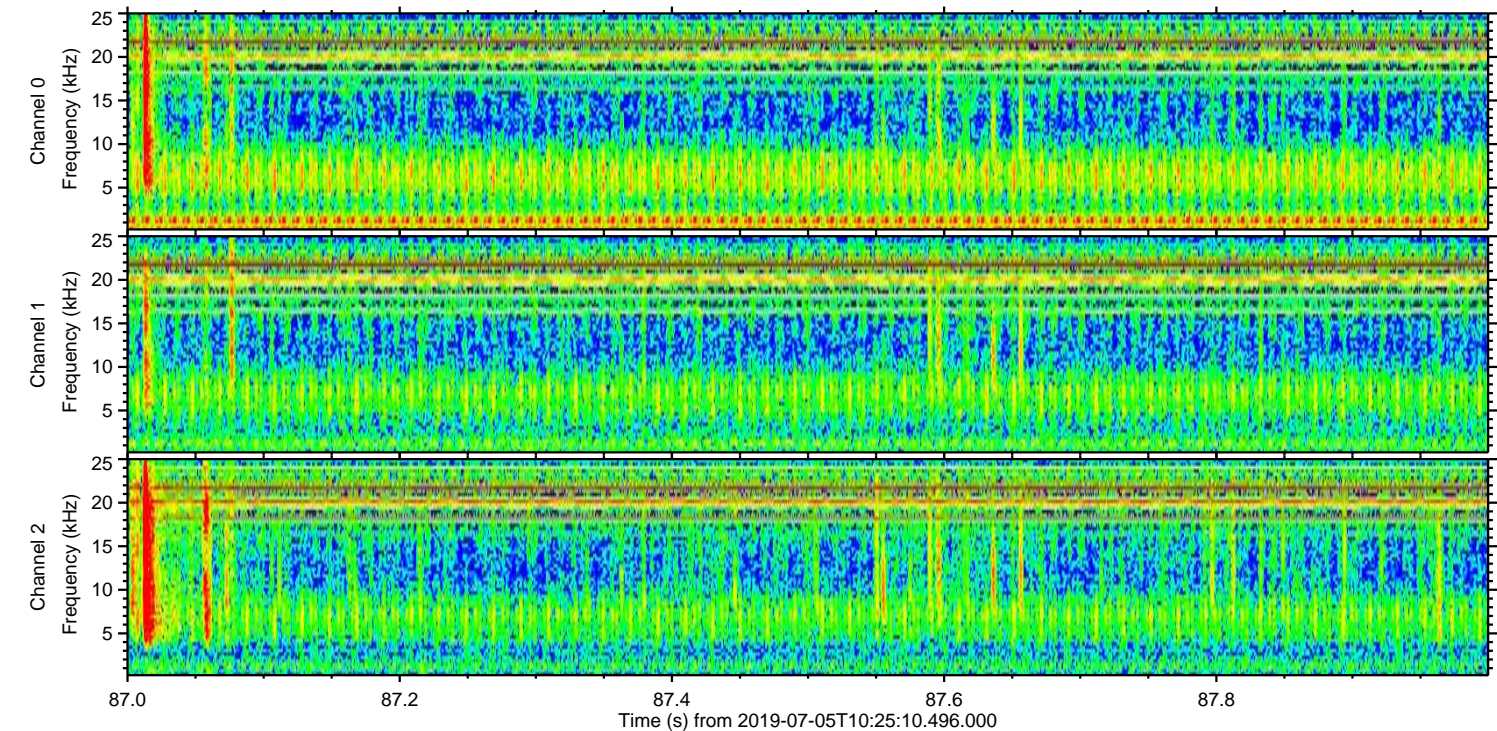
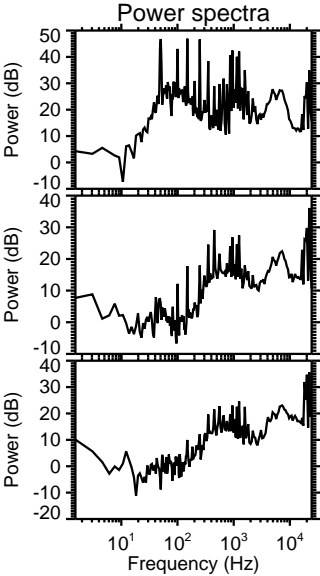
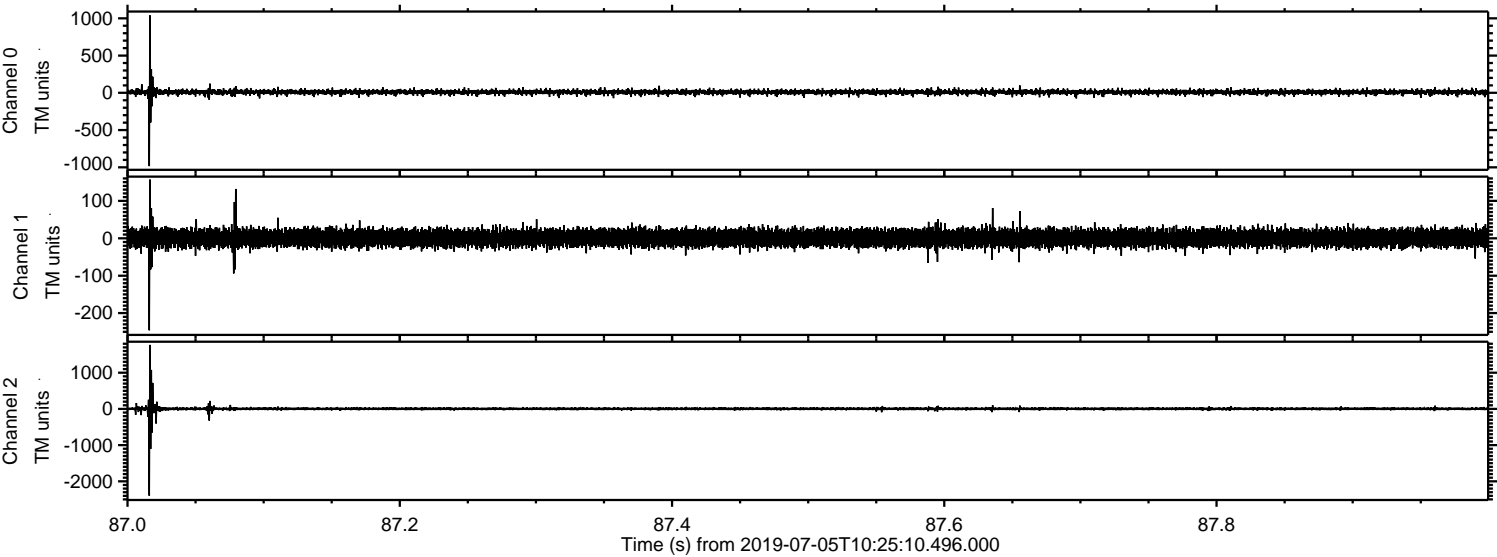


ELMAVAN 3D WAVEFORMS (Measured data sampled at 50 kHz) 51000 packets of 144 samples from 2019-07-05T10:25:10.496.000. Part 77/147

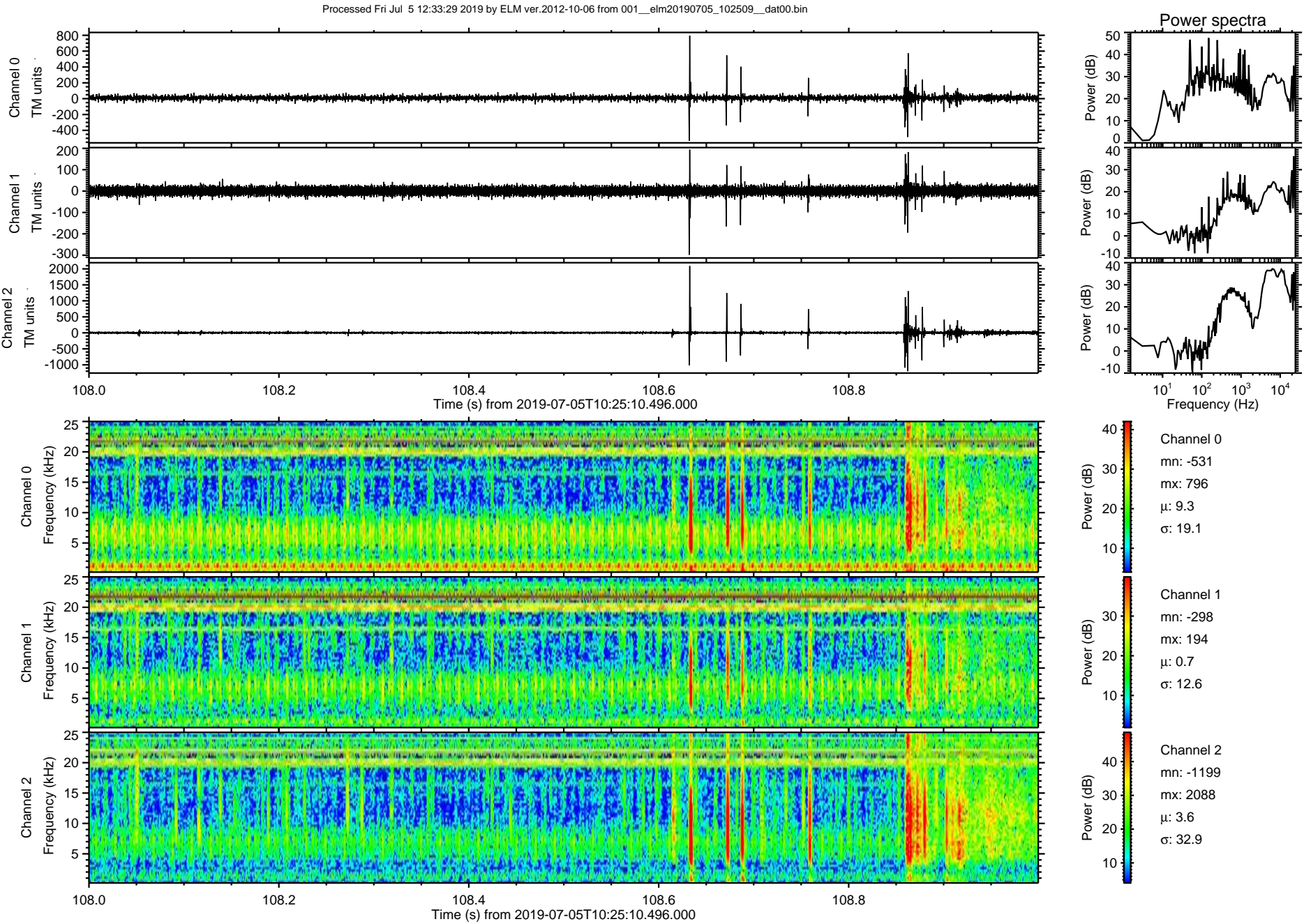
Processed Fri Jul 5 12:33:27 2019 by ELM ver.2012-10-06 from 001__elm20190705_102509__dat00.bin



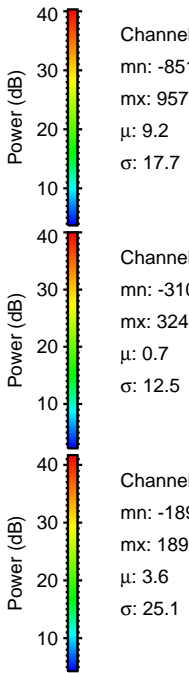
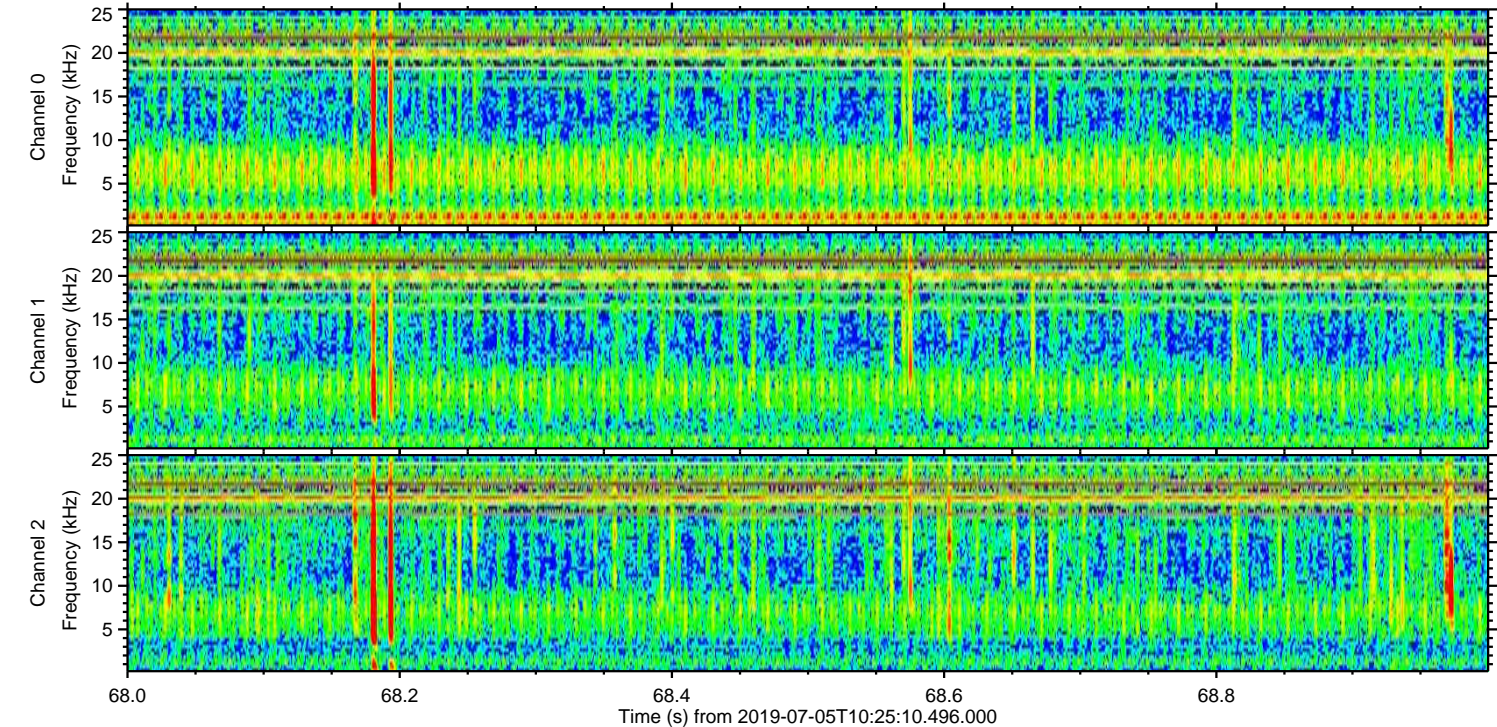
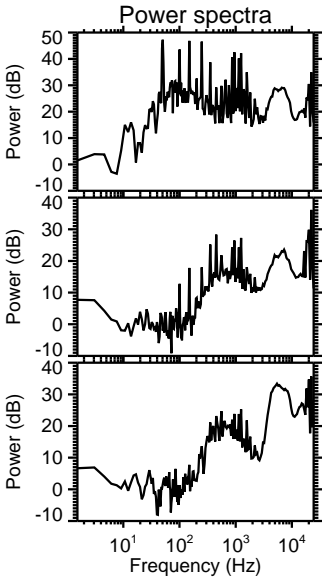
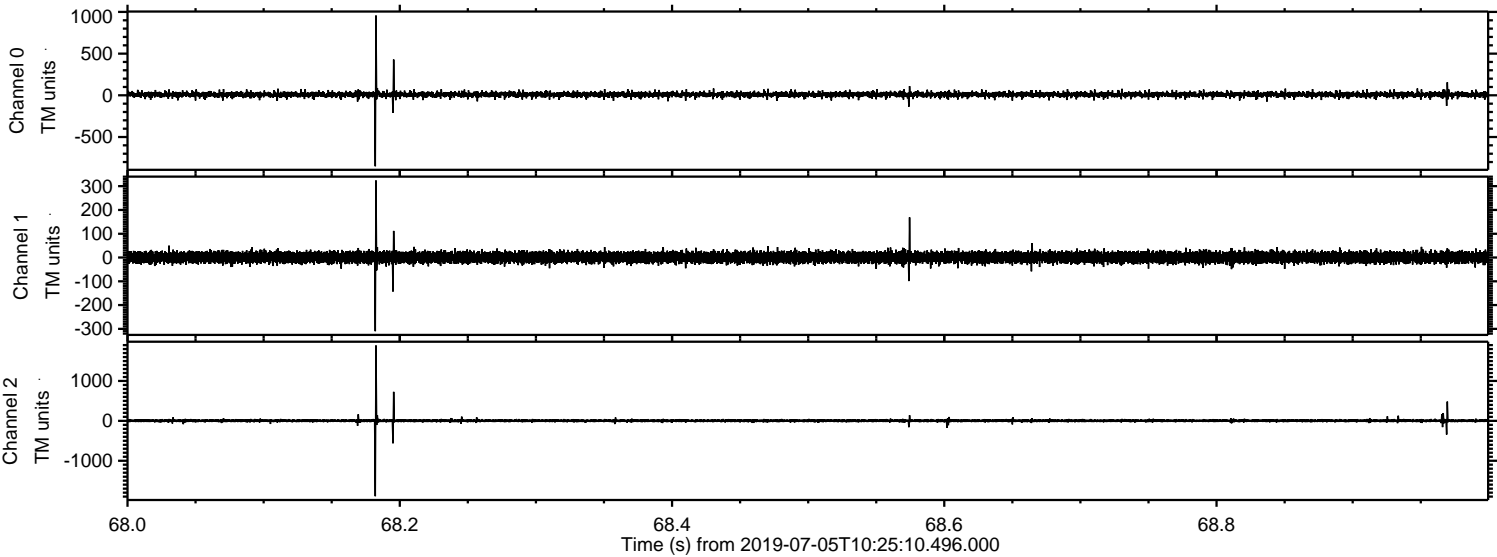
Processed Fri Jul 5 12:33:28 2019 by ELM ver.2012-10-06 from 001__elm20190705_102509__dat00.bin



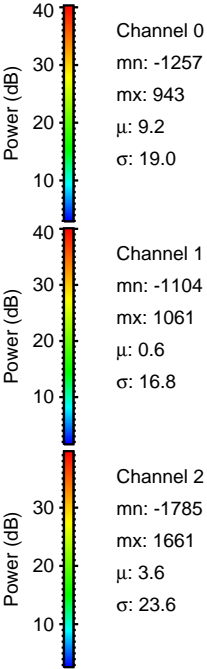
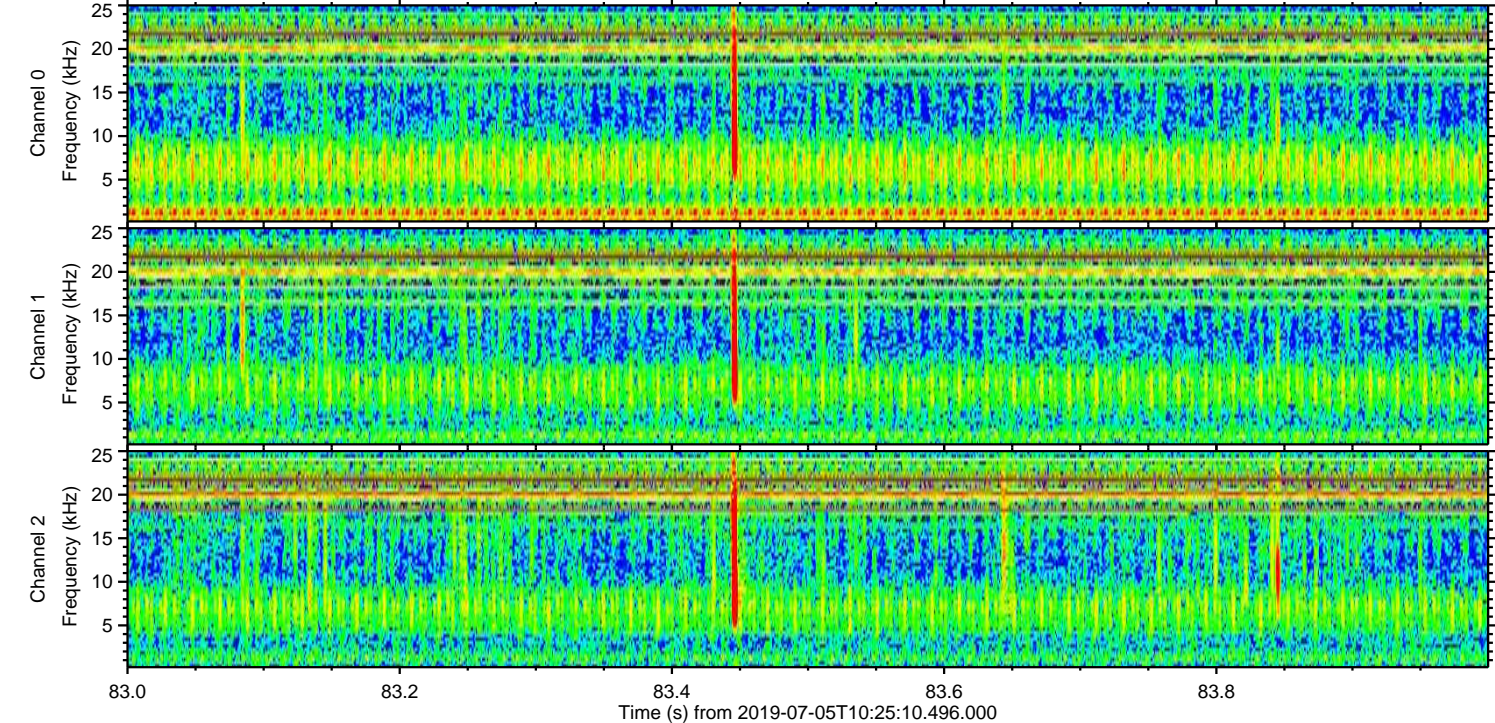
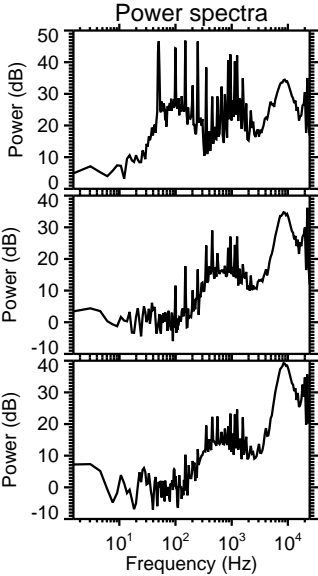
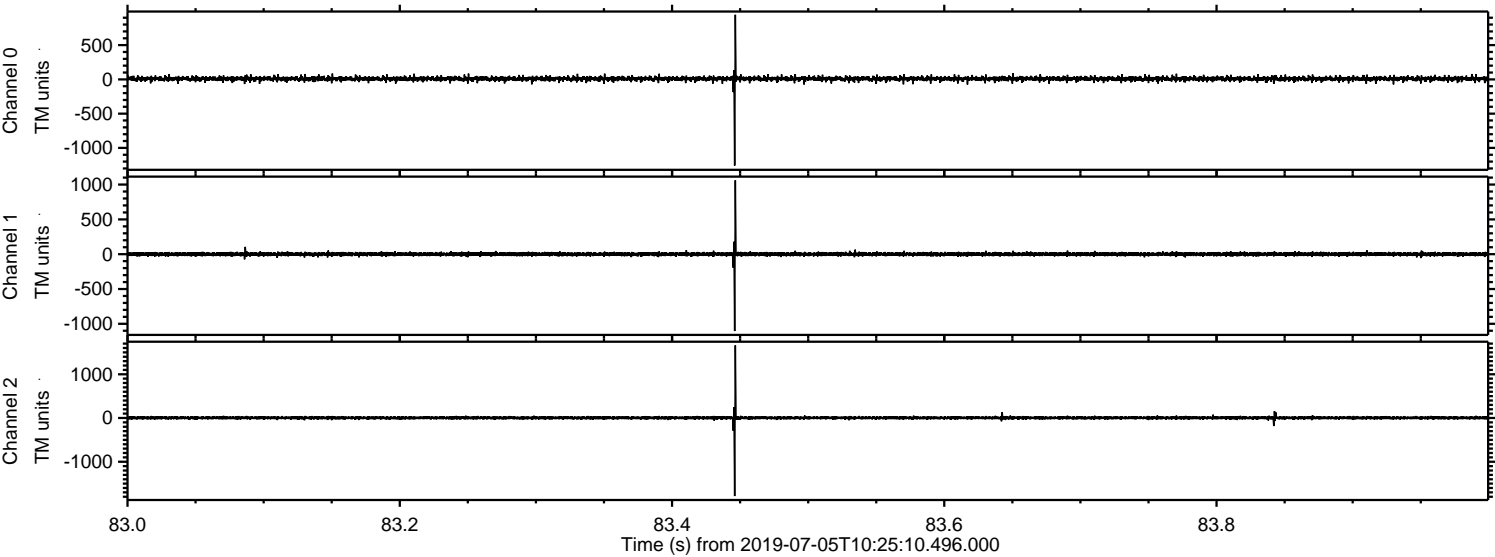
ELMAVAN 3D WAVEFORMS (Measured data sampled at 50 kHz) 51000 packets of 144 samples from 2019-07-05T10:25:10.496.000. Part 109/147



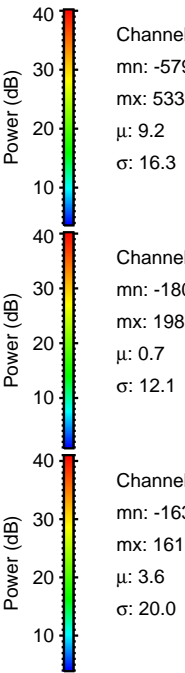
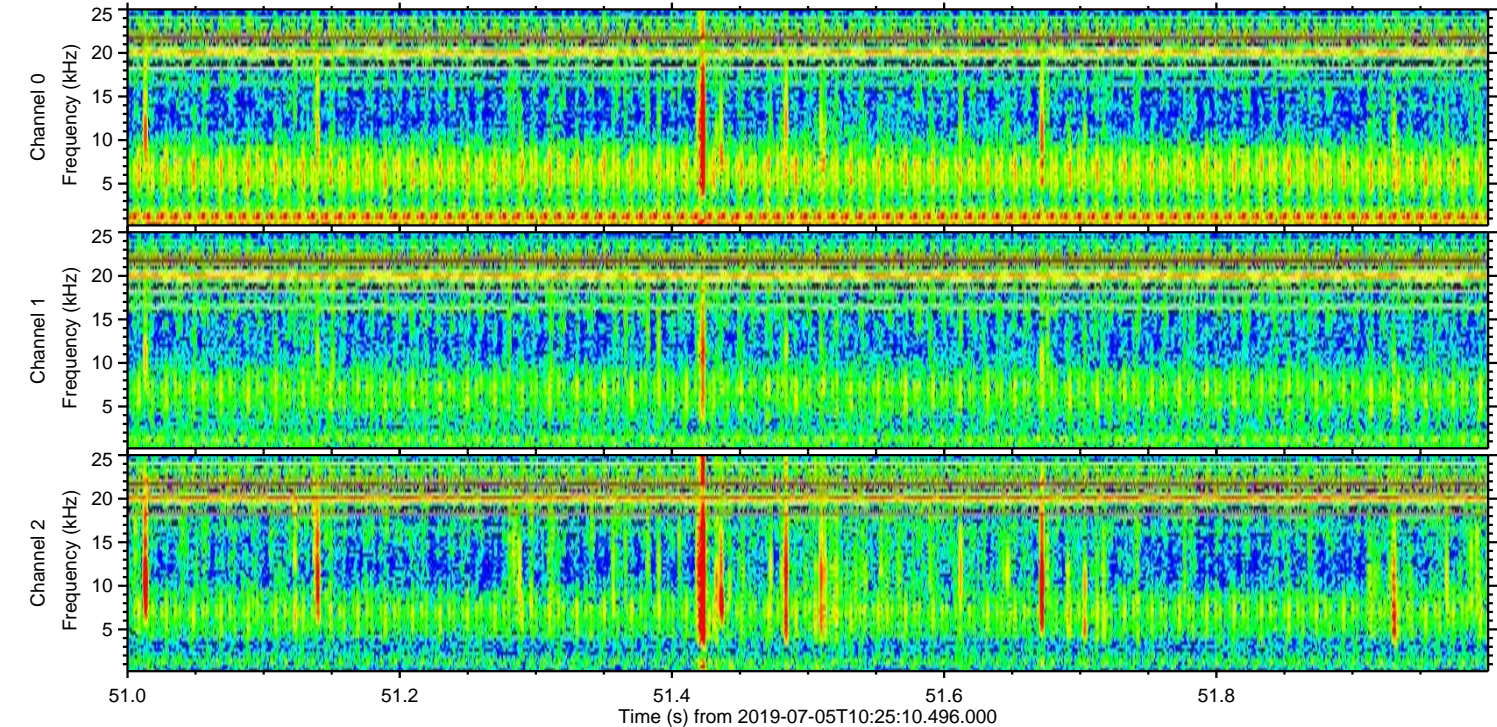
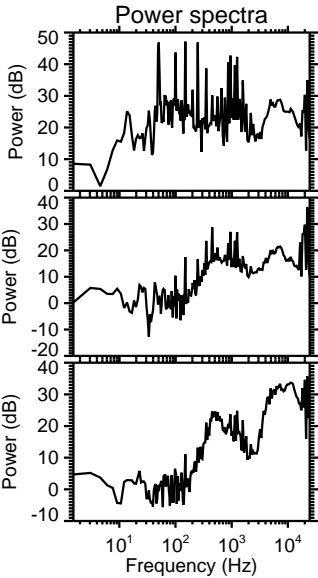
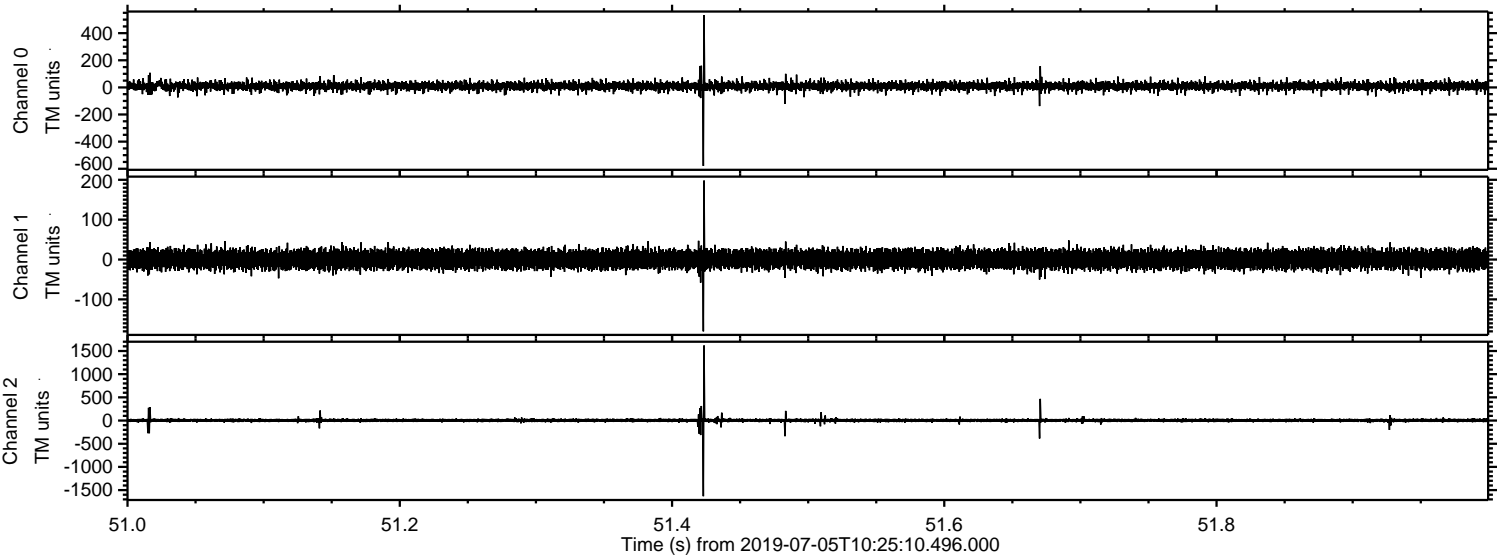
Processed Fri Jul 5 12:33:29 2019 by ELM ver.2012-10-06 from 001__elm20190705_102509__dat00.bin



Processed Fri Jul 5 12:33:30 2019 by ELM ver.2012-10-06 from 001__elm20190705_102509__dat00.bin



Processed Fri Jul 5 12:33:31 2019 by ELM ver.2012-10-06 from 001__elm20190705_102509__dat00.bin



Processed Fri Jul 5 12:33:31 2019 by ELM ver.2012-10-06 from 001__elm20190705_102509__dat00.bin

