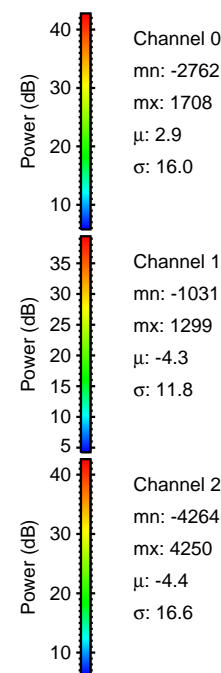
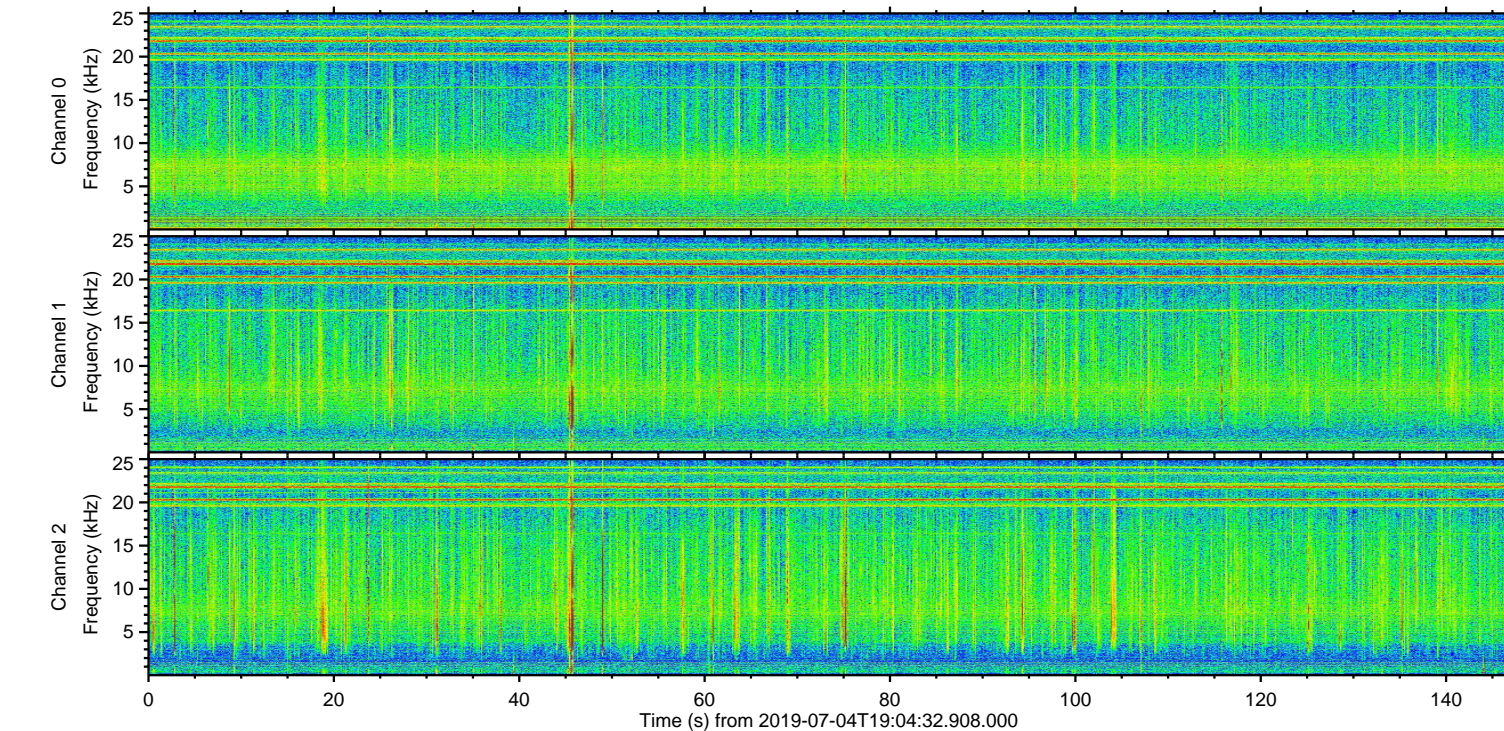
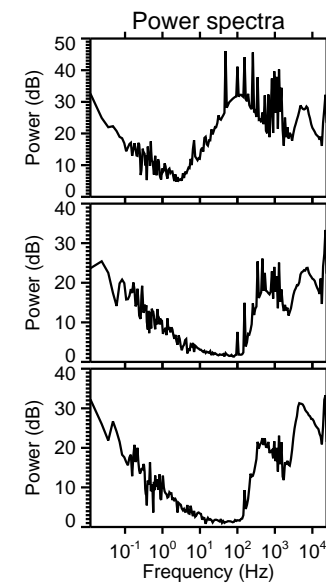
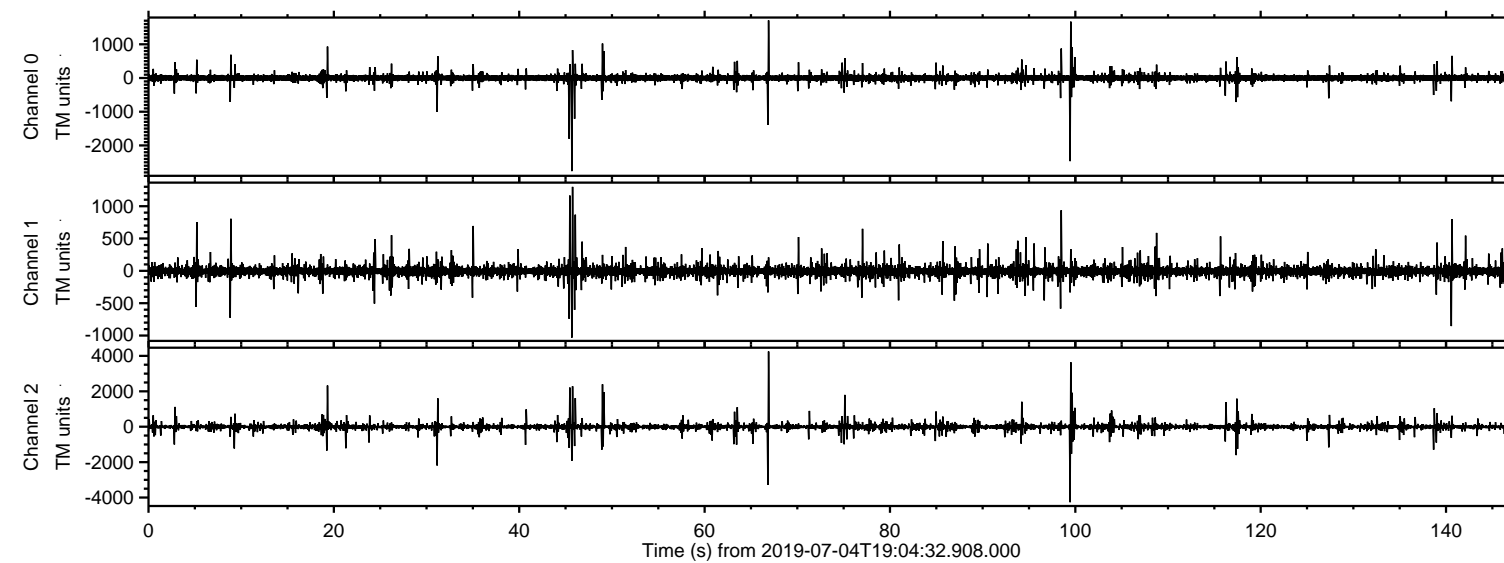


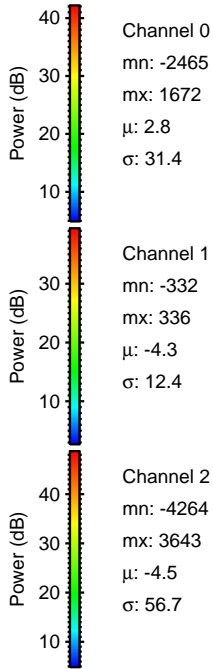
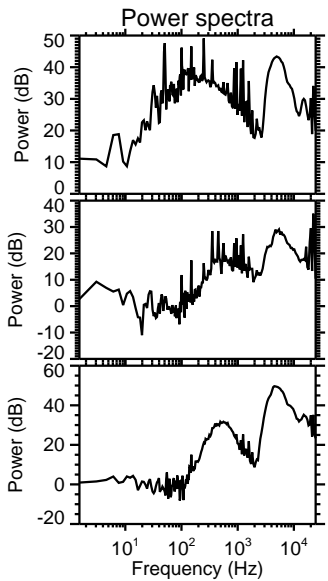
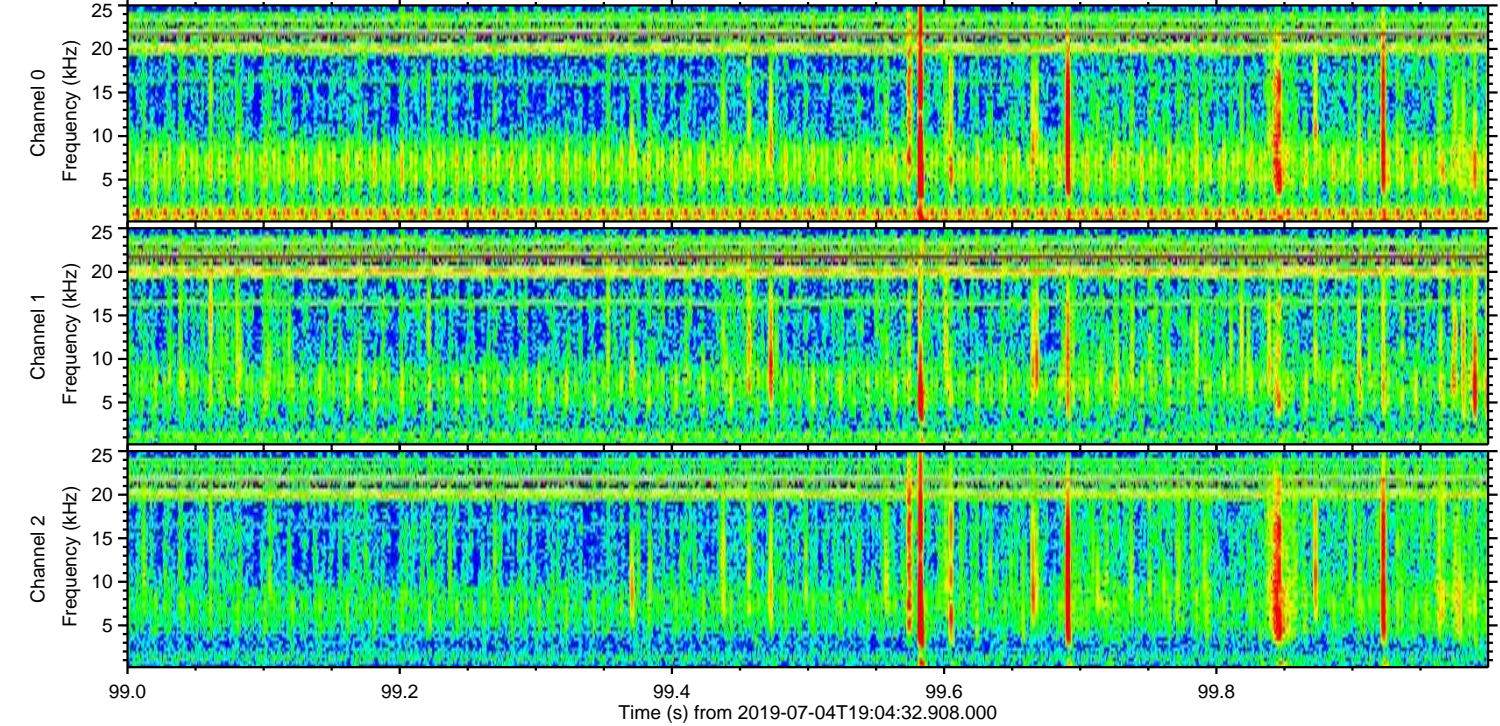
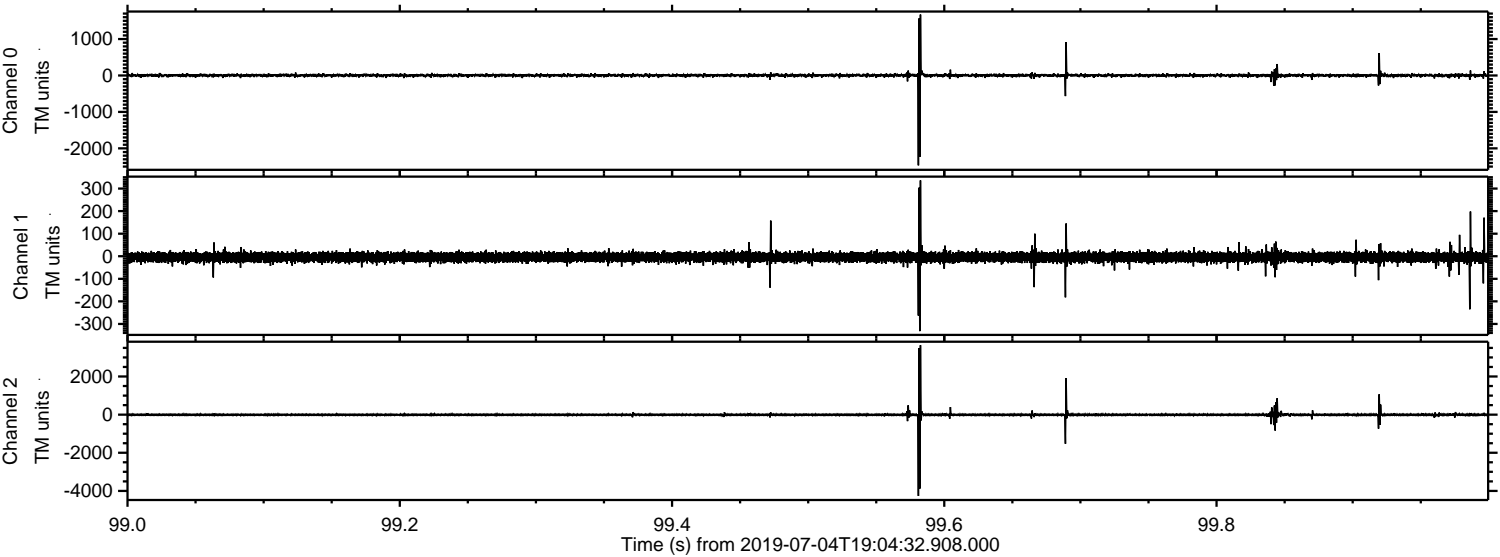
ELMAVAN 3D WAVEFORMS (Measured data sampled at 50 kHz) 51000 packets of 144 samples from 2019-07-04T19:04:32.908.000.

Processed Thu Jul 4 21:12:25 2019 by ELM ver.2012-10-06 from 001__elm20190704_190431__dat00.bin

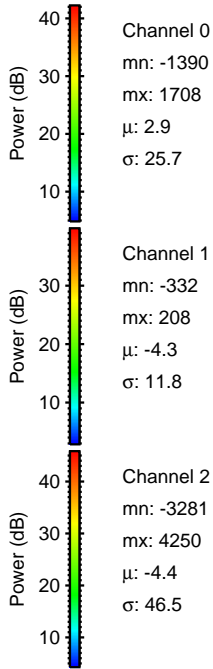
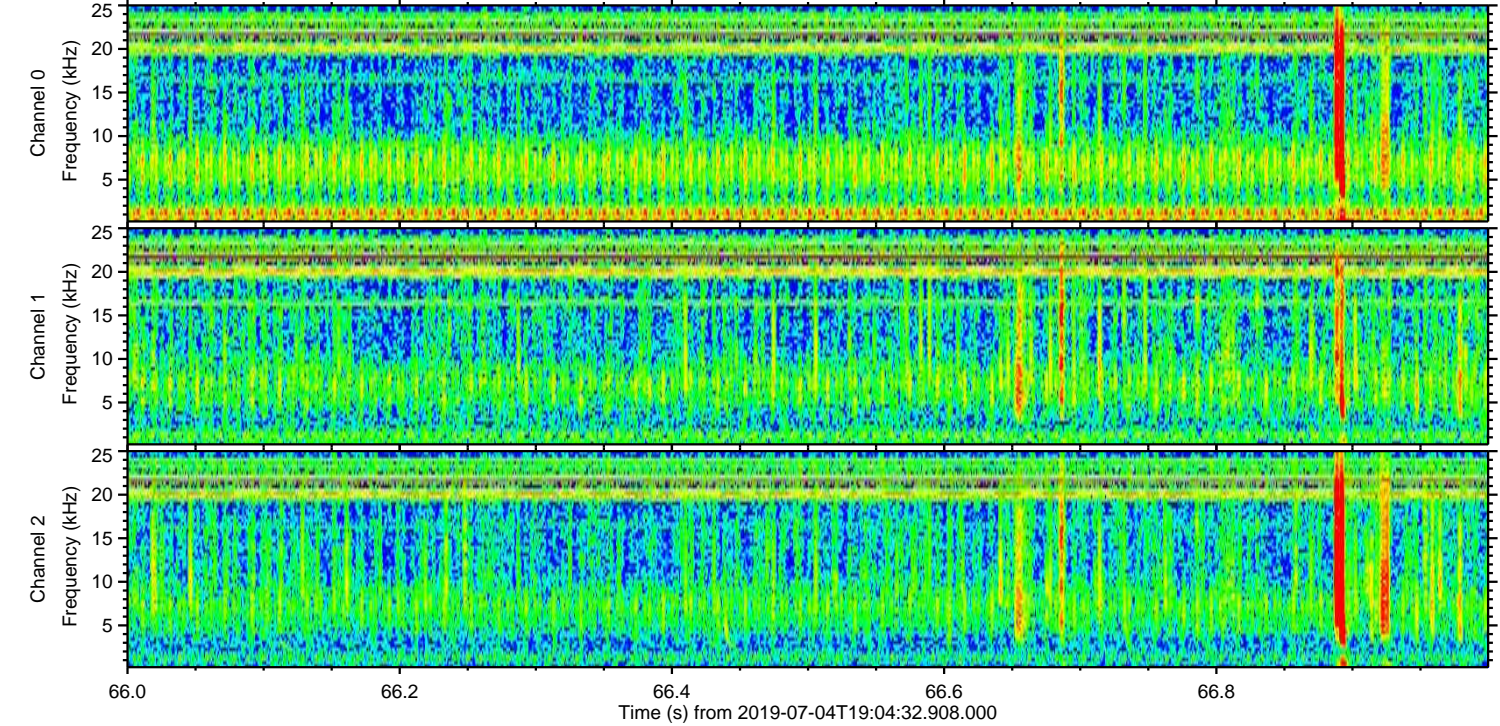
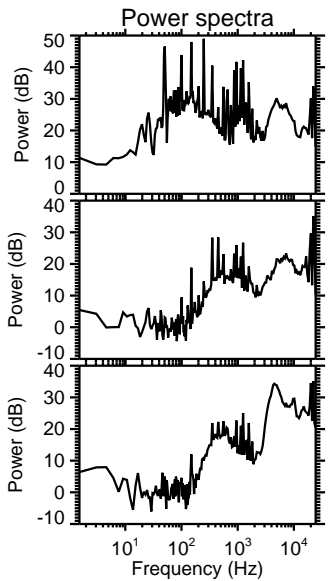
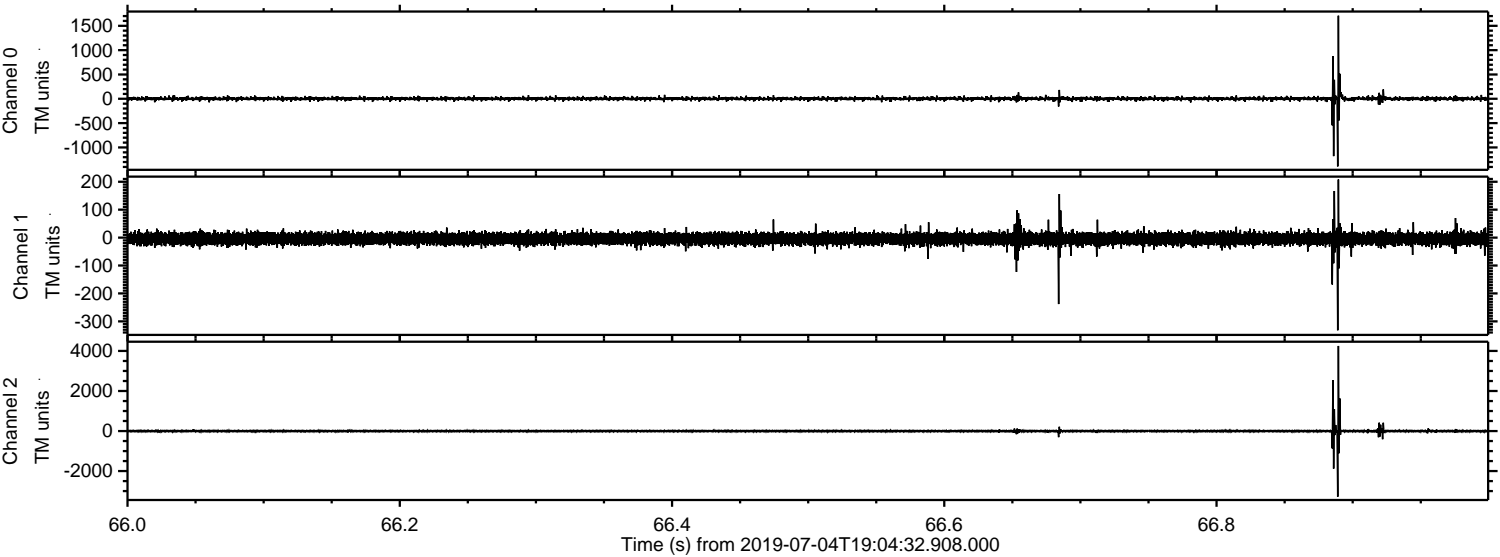


ELMAVAN 3D WAVEFORMS (Measured data sampled at 50 kHz) 51000 packets of 144 samples from 2019-07-04T19:04:32.908.000. Part 100/147

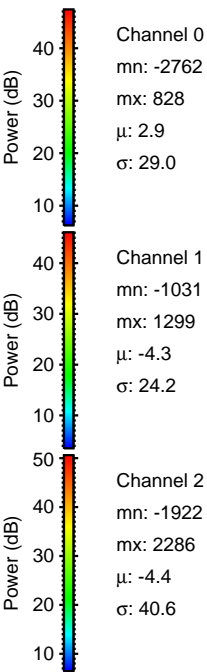
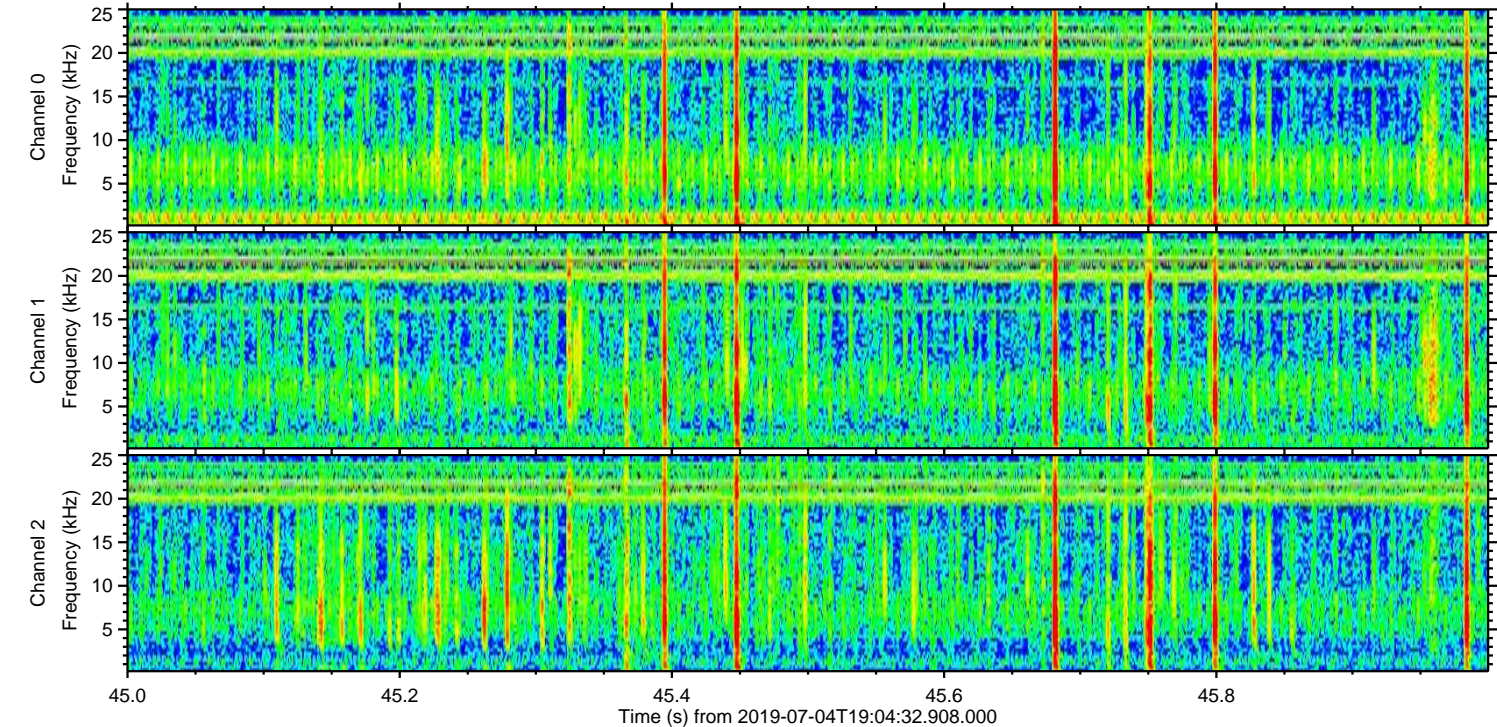
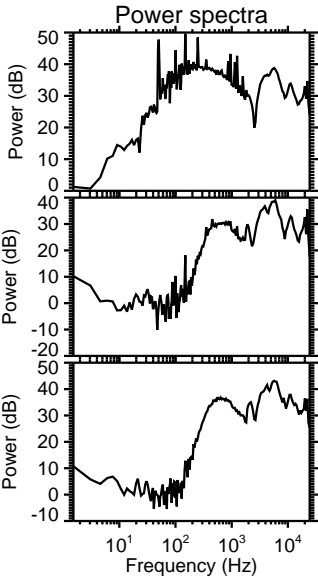
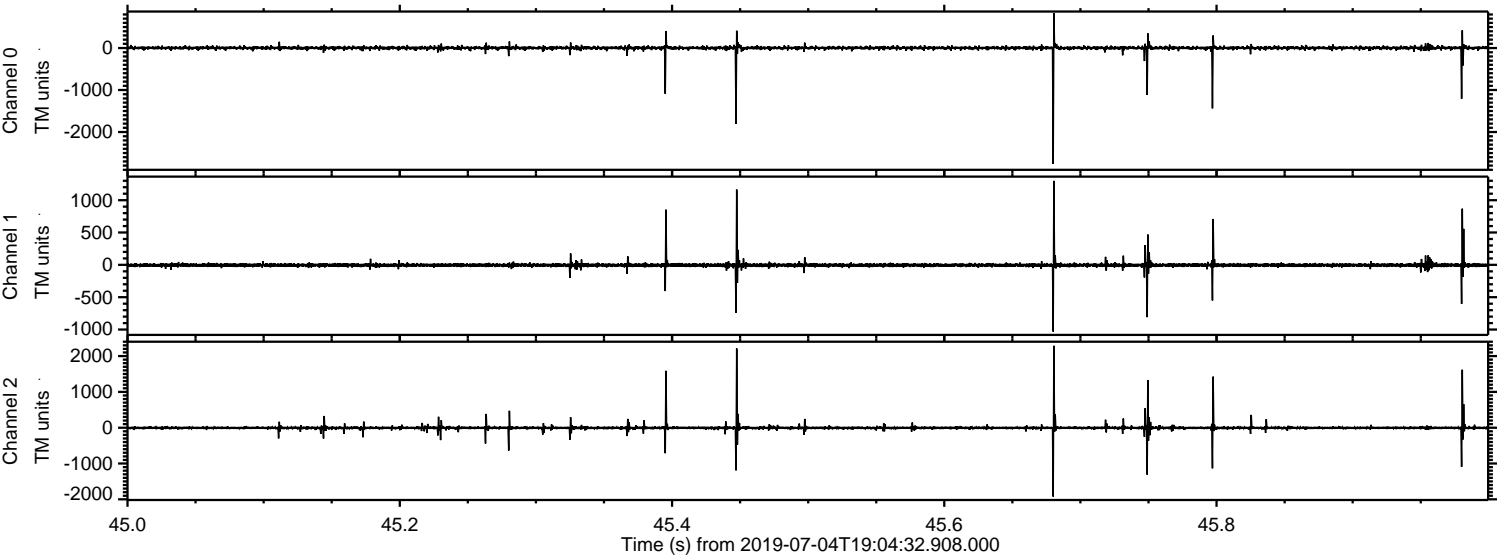
Processed Thu Jul 4 21:12:30 2019 by ELM ver.2012-10-06 from 001__elm20190704_190431__dat00.bin



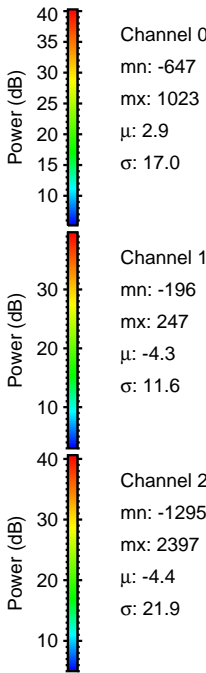
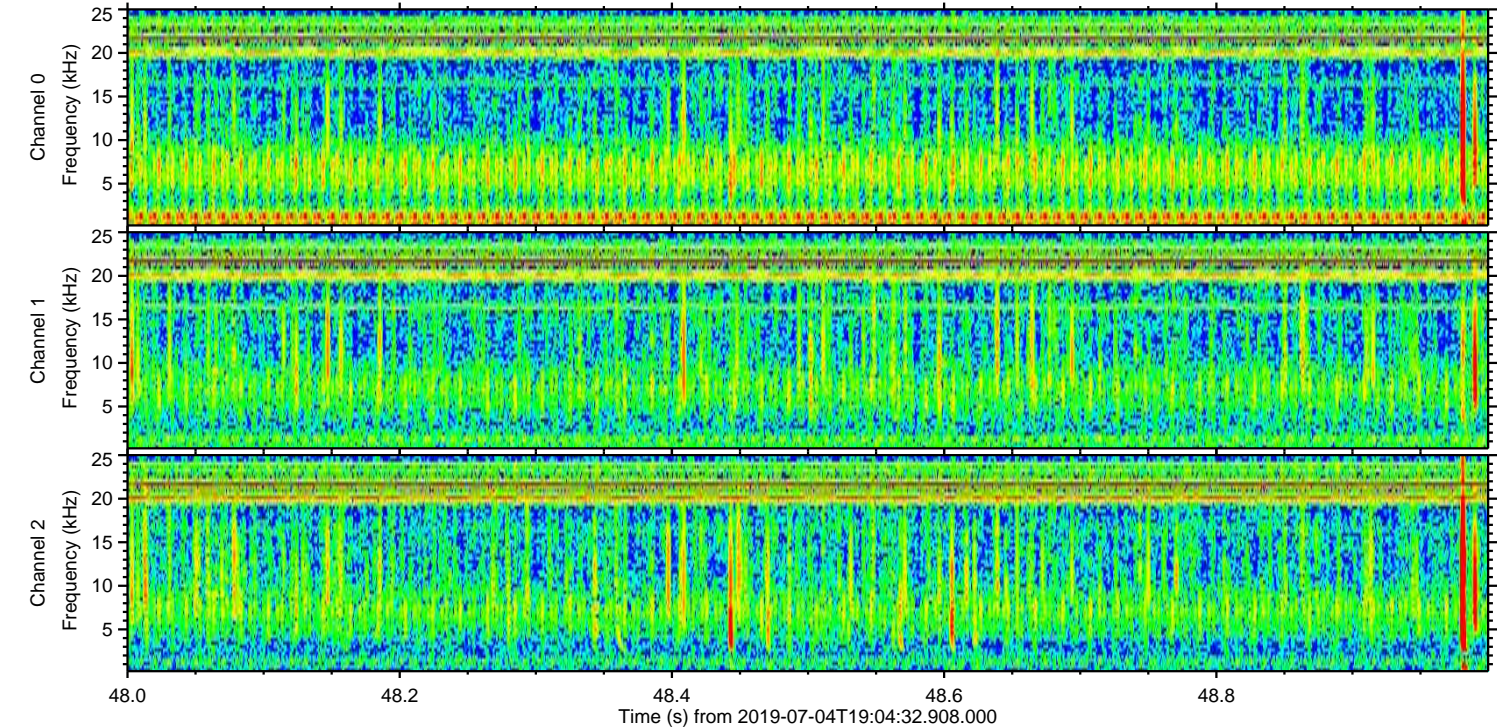
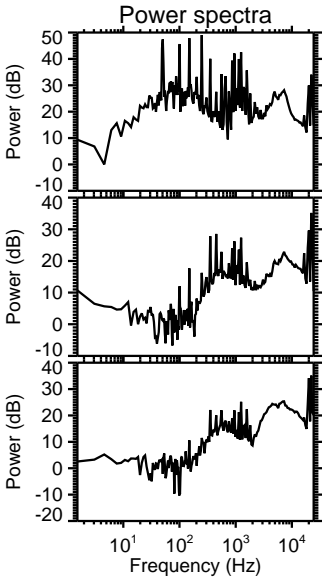
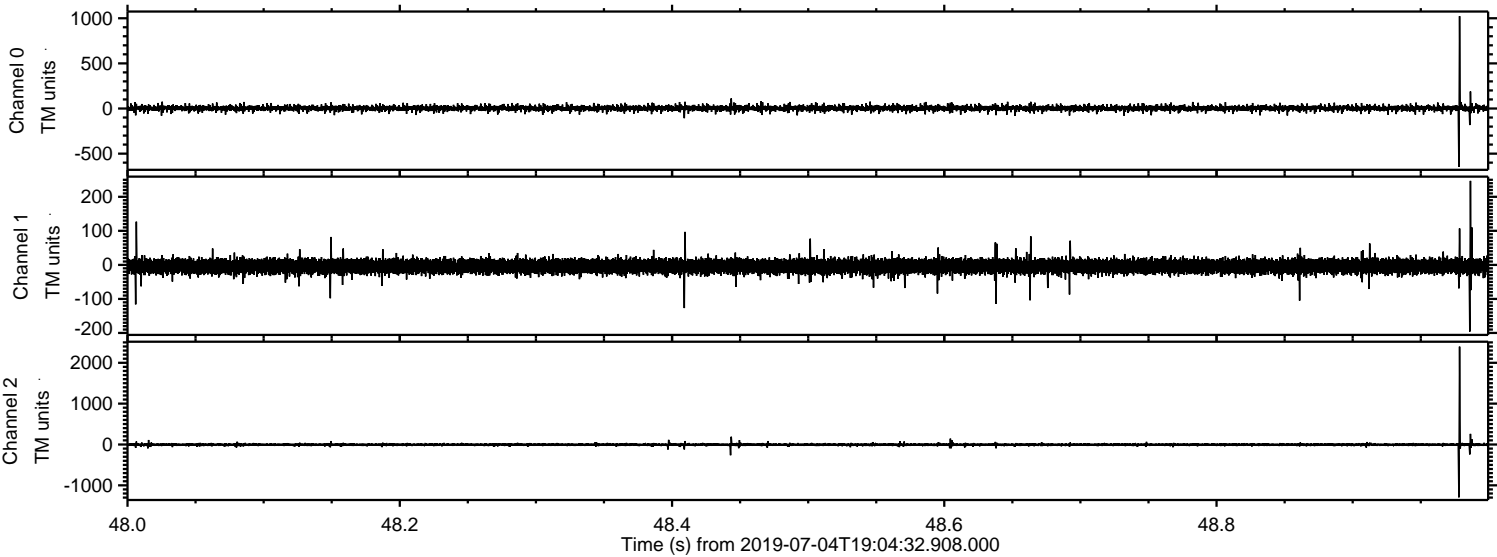
Processed Thu Jul 4 21:12:31 2019 by ELM ver.2012-10-06 from 001__elm20190704_190431__dat00.bin



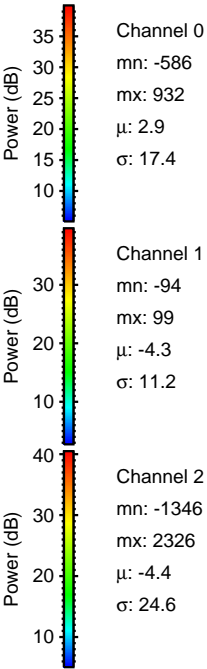
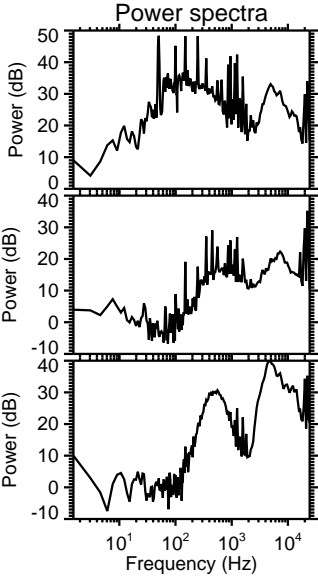
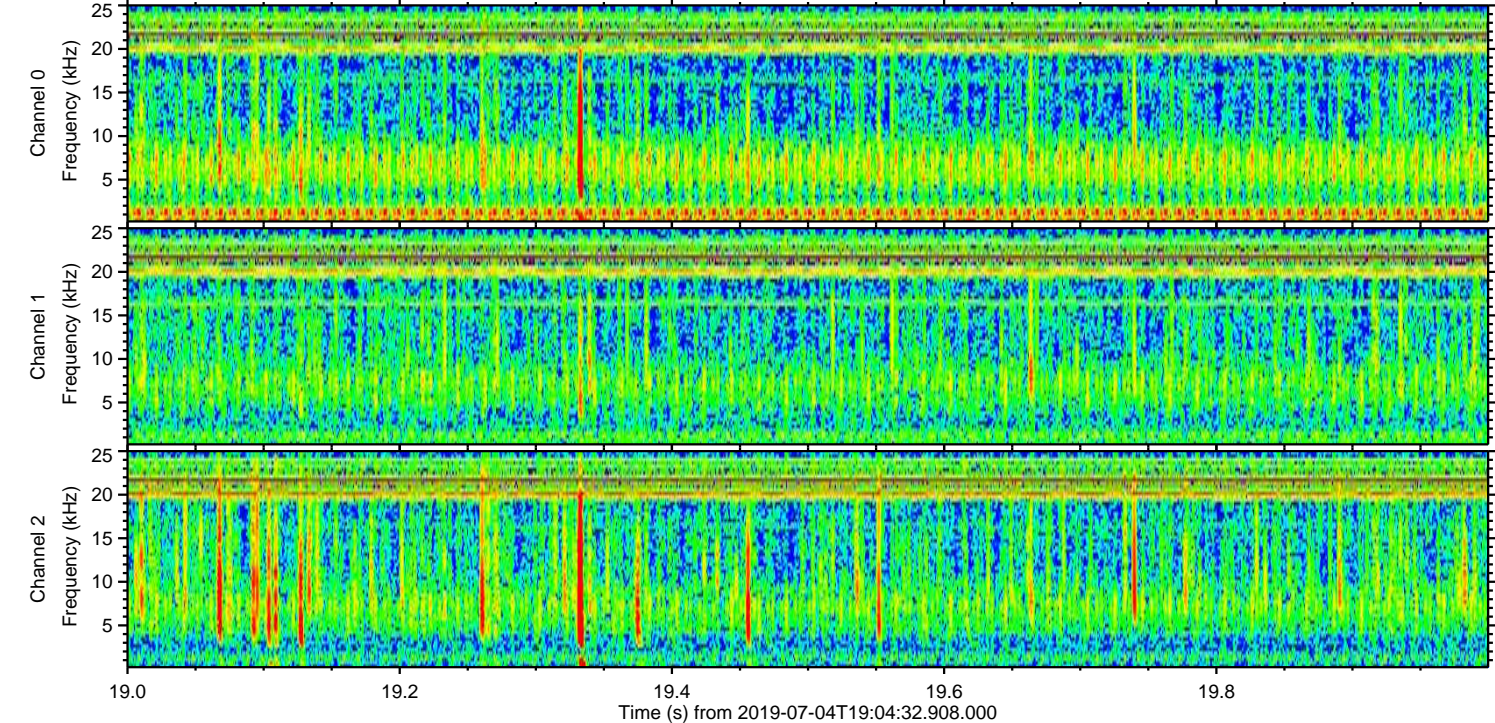
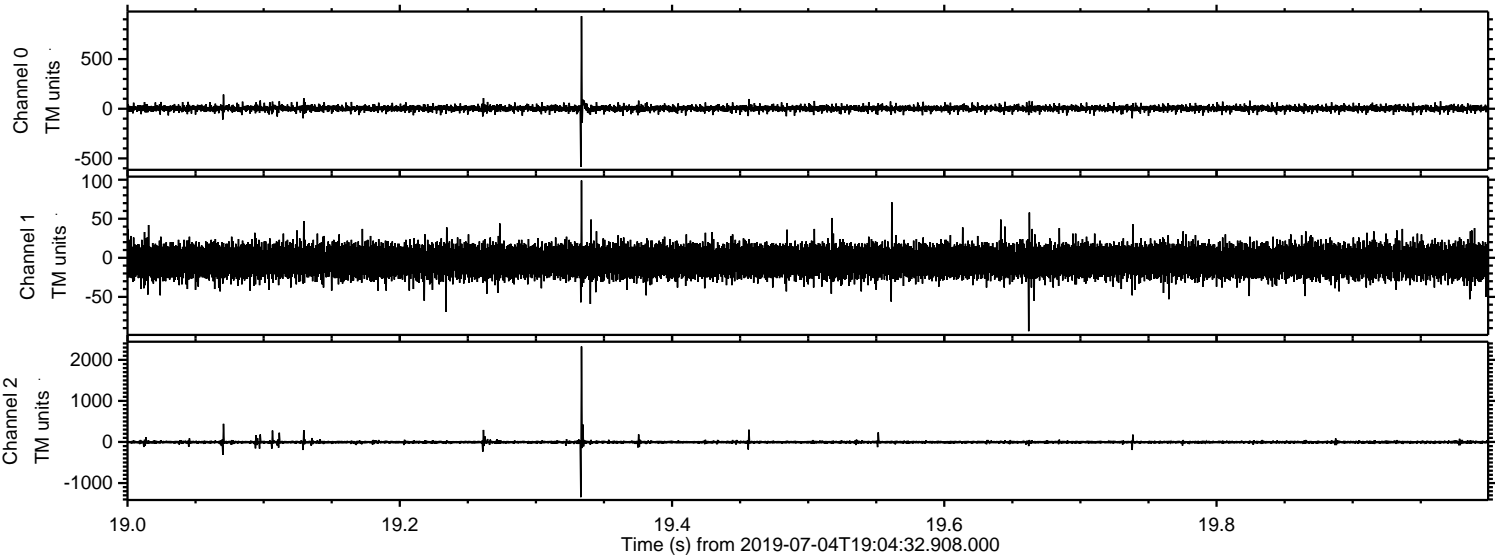
Processed Thu Jul 4 21:12:32 2019 by ELM ver.2012-10-06 from 001__elm20190704_190431__dat00.bin



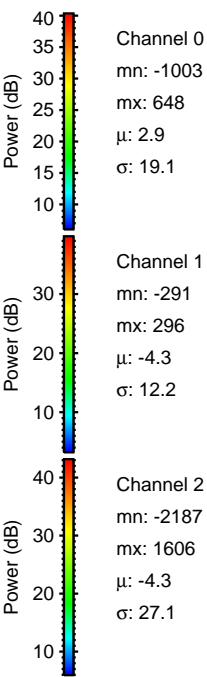
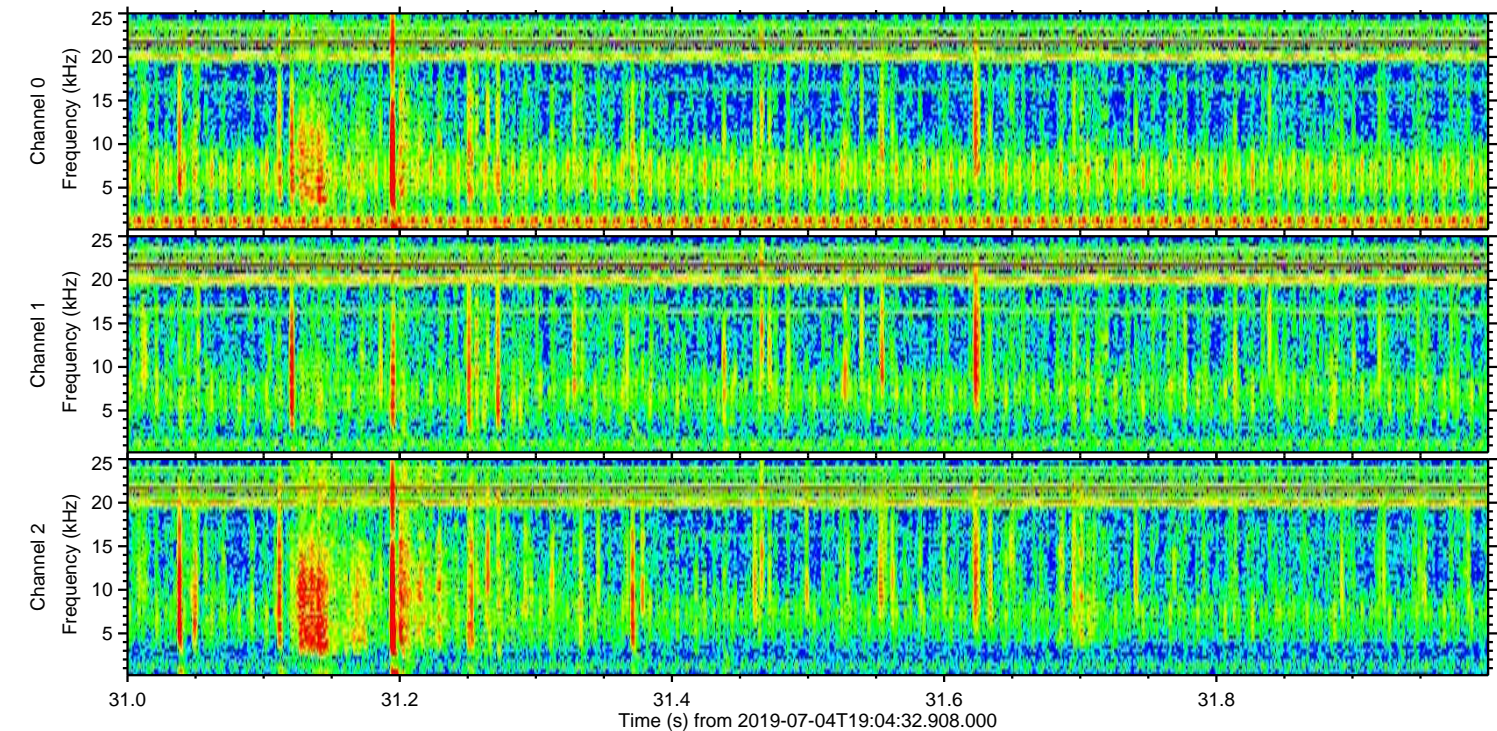
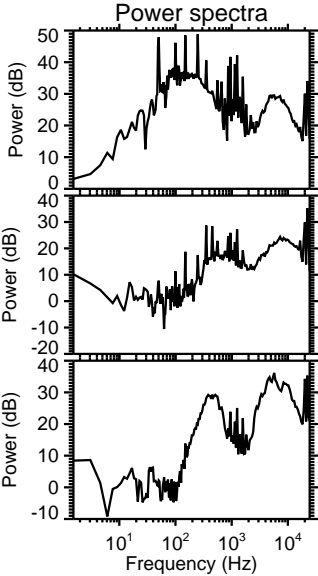
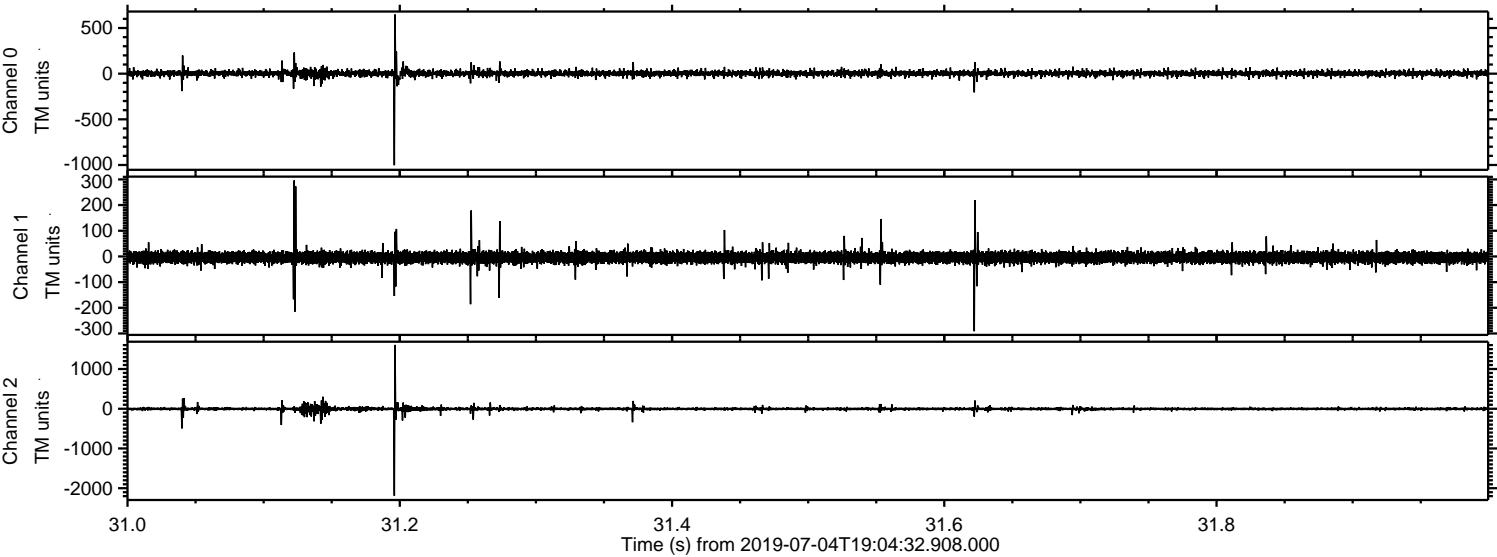
Processed Thu Jul 4 21:12:32 2019 by ELM ver.2012-10-06 from 001__elm20190704_190431__dat00.bin



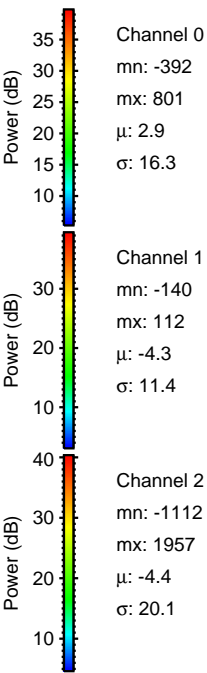
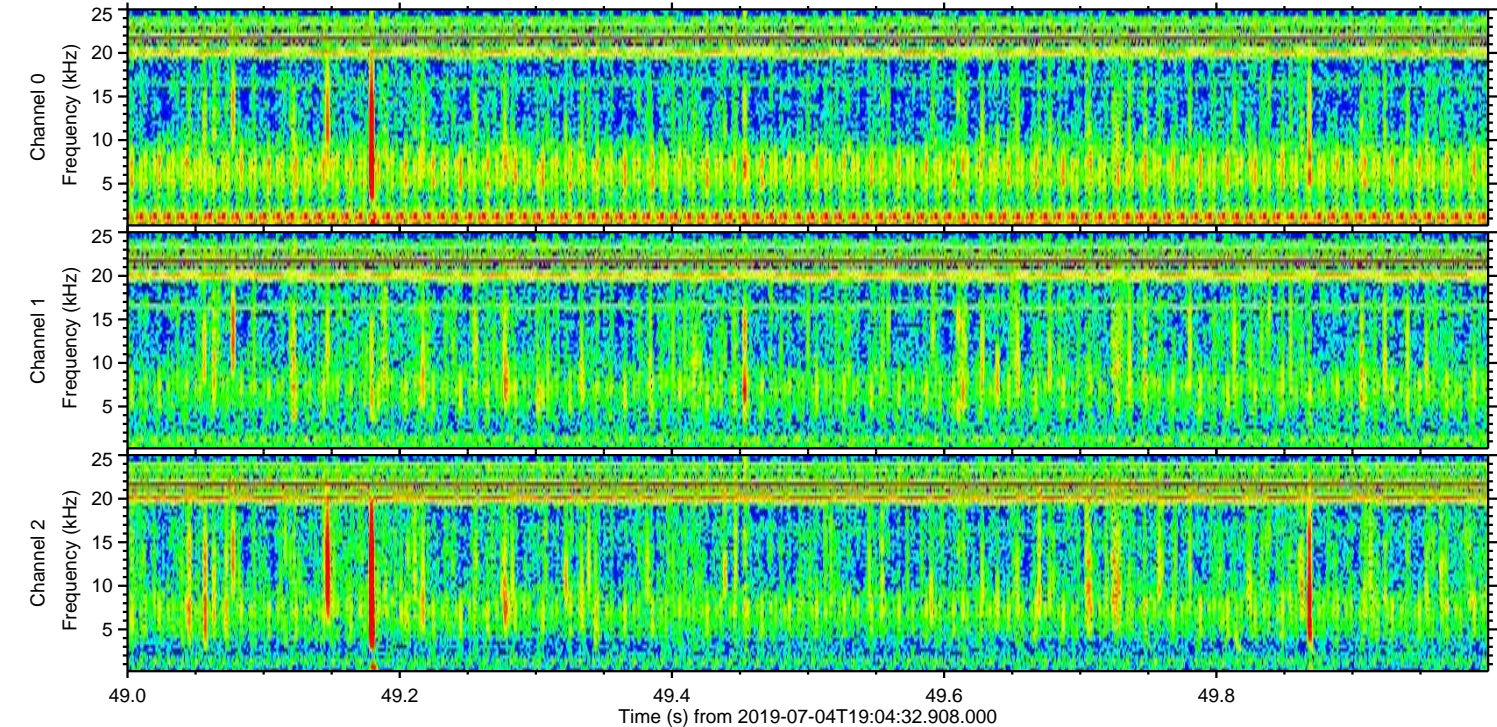
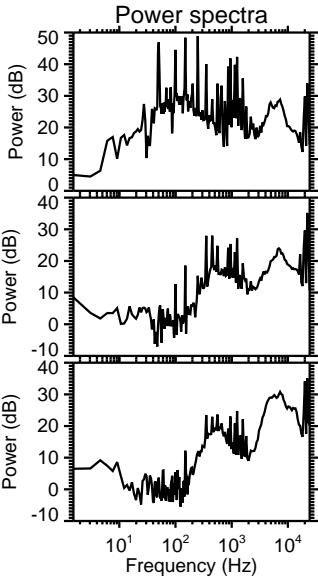
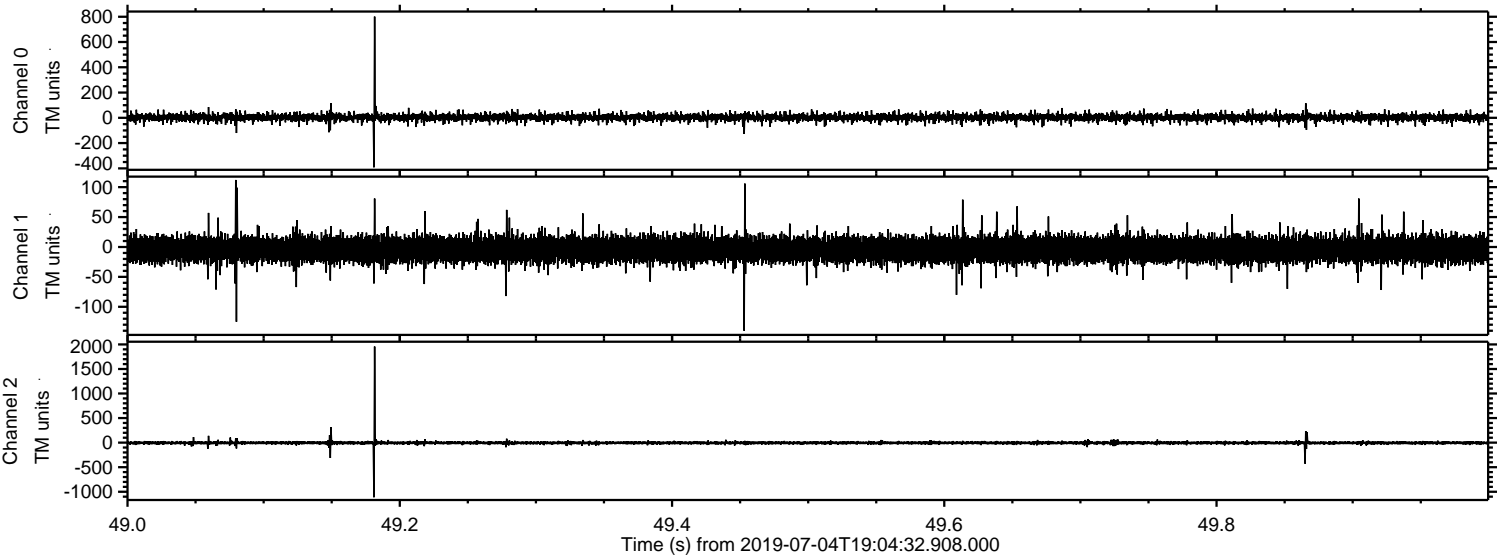
Processed Thu Jul 4 21:12:33 2019 by ELM ver.2012-10-06 from 001__elm20190704_190431__dat00.bin



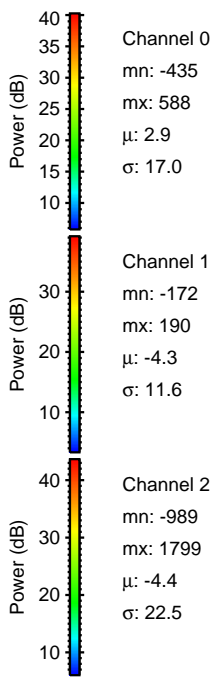
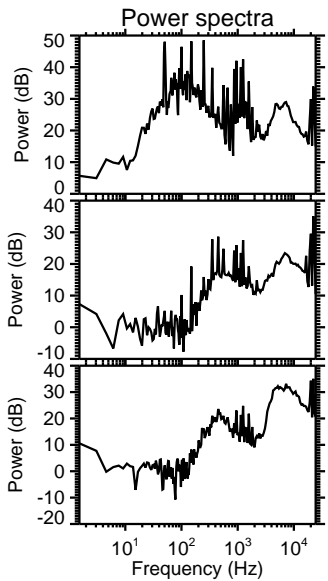
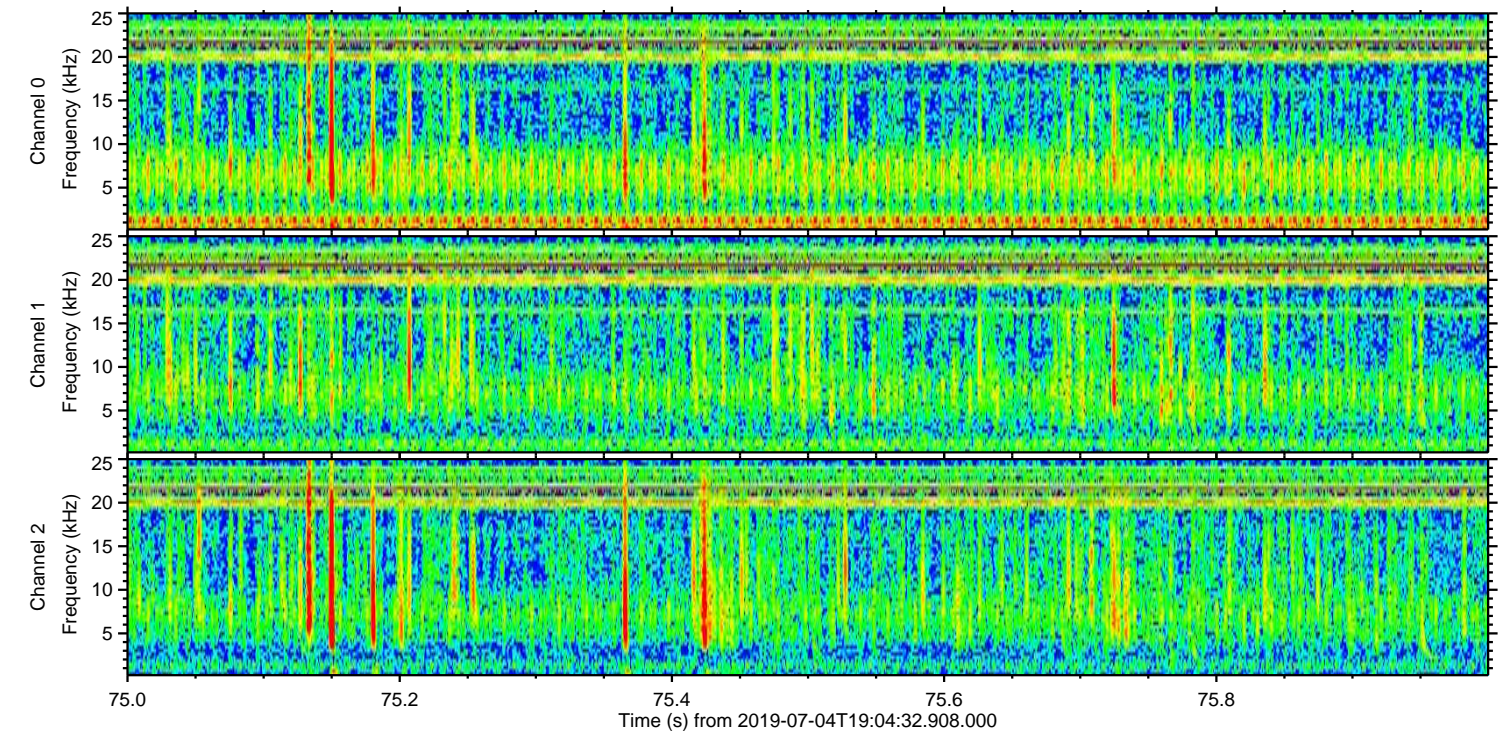
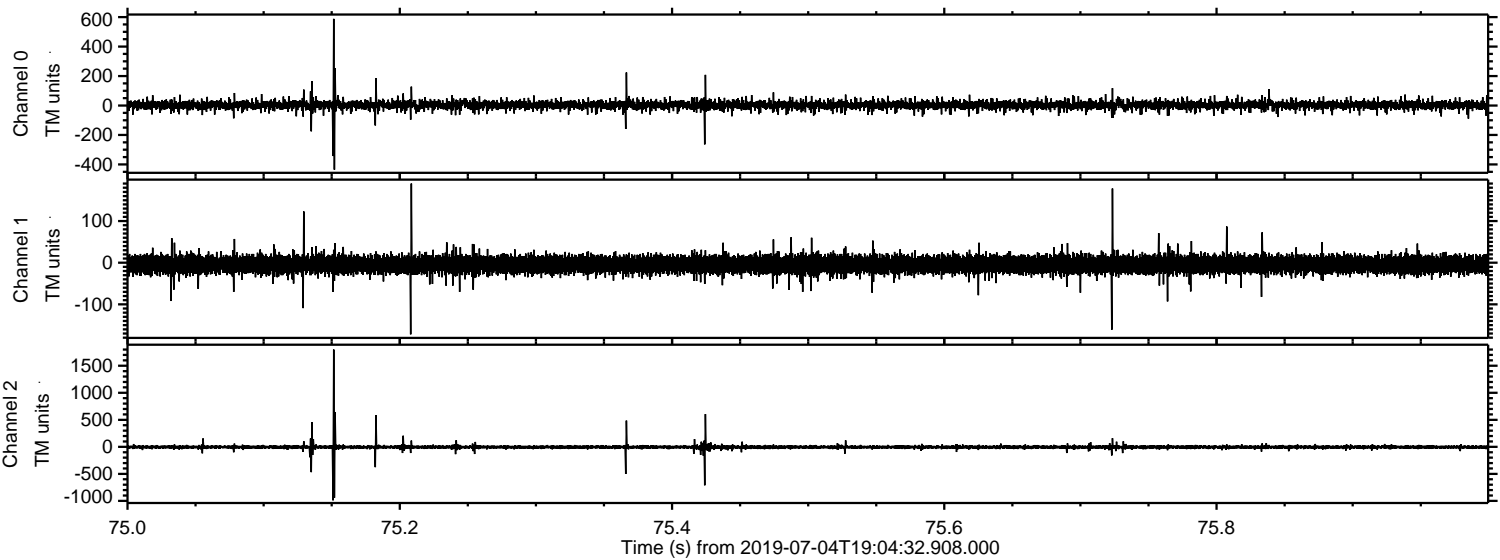
Processed Thu Jul 4 21:12:34 2019 by ELM ver.2012-10-06 from 001__elm20190704_190431__dat00.bin



Processed Thu Jul 4 21:12:34 2019 by ELM ver.2012-10-06 from 001__elm20190704_190431__dat00.bin

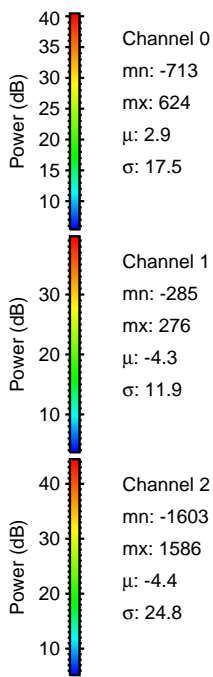
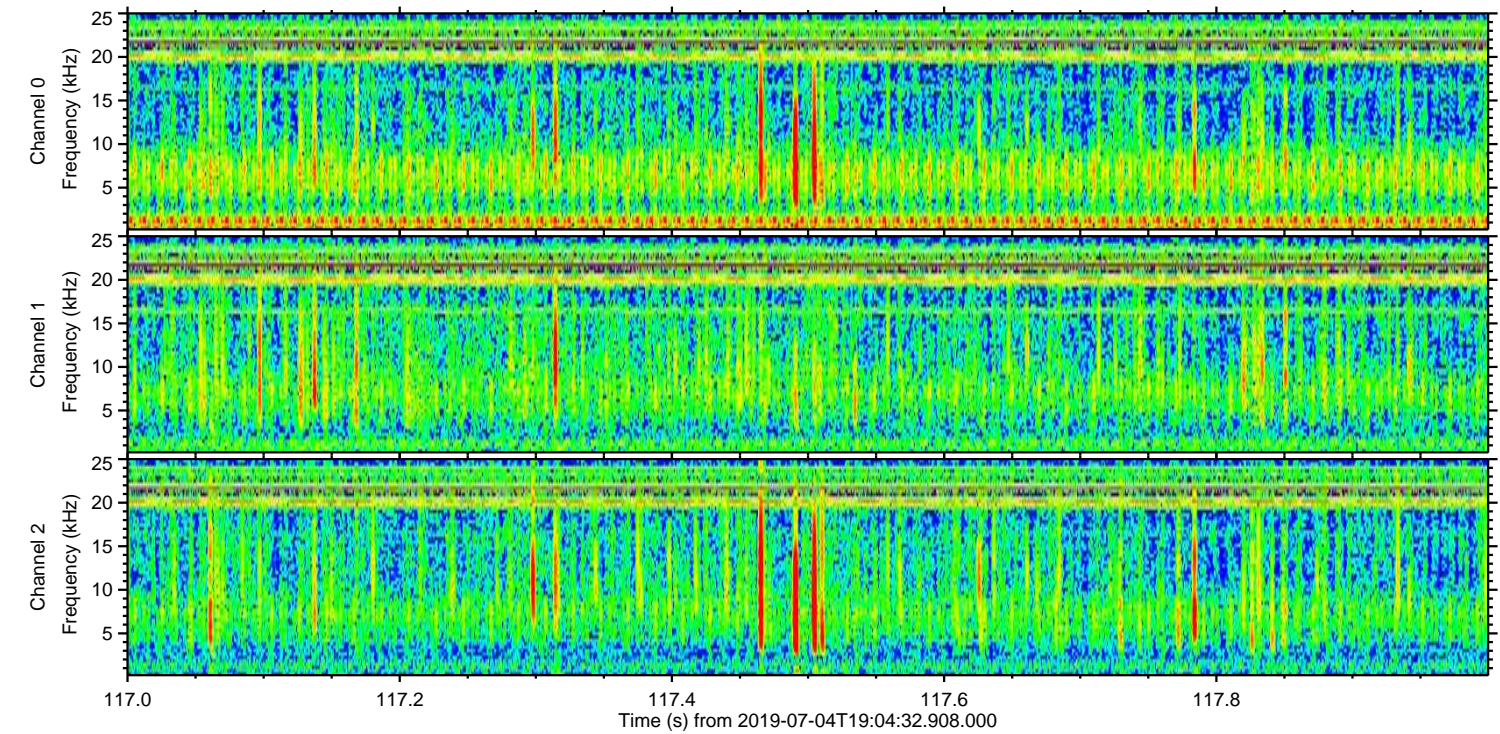
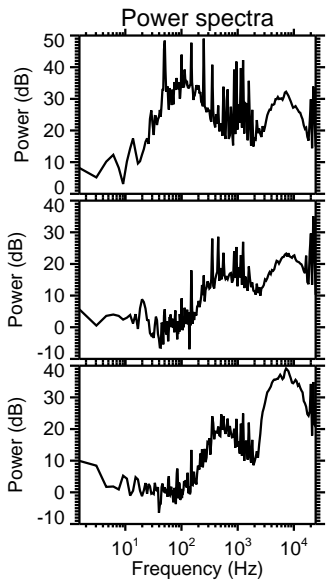
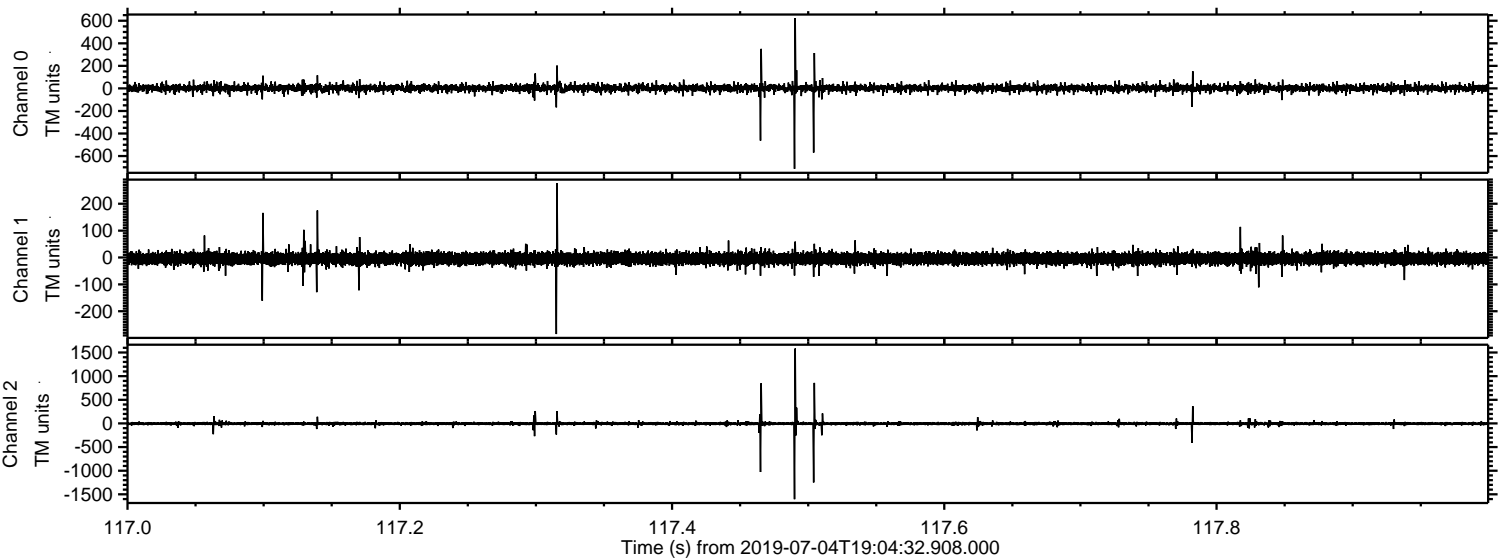


Processed Thu Jul 4 21:12:35 2019 by ELM ver.2012-10-06 from 001__elm20190704_190431__dat00.bin



ELMAVAN 3D WAVEFORMS (Measured data sampled at 50 kHz) 51000 packets of 144 samples from 2019-07-04T19:04:32.908.000. Part 118/147

Processed Thu Jul 4 21:12:36 2019 by ELM ver.2012-10-06 from 001__elm20190704_190431__dat00.bin



Channel 0
mn: -713
mx: 624
 μ : 2.9
 σ : 17.5

Channel 1
mn: -285
mx: 276
 μ : -4.3
 σ : 11.9

Channel 2
mn: -1603
mx: 1586
 μ : -4.4
 σ : 24.8

