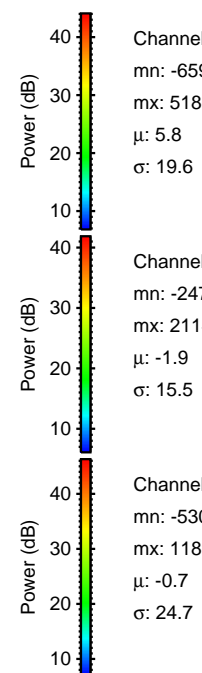
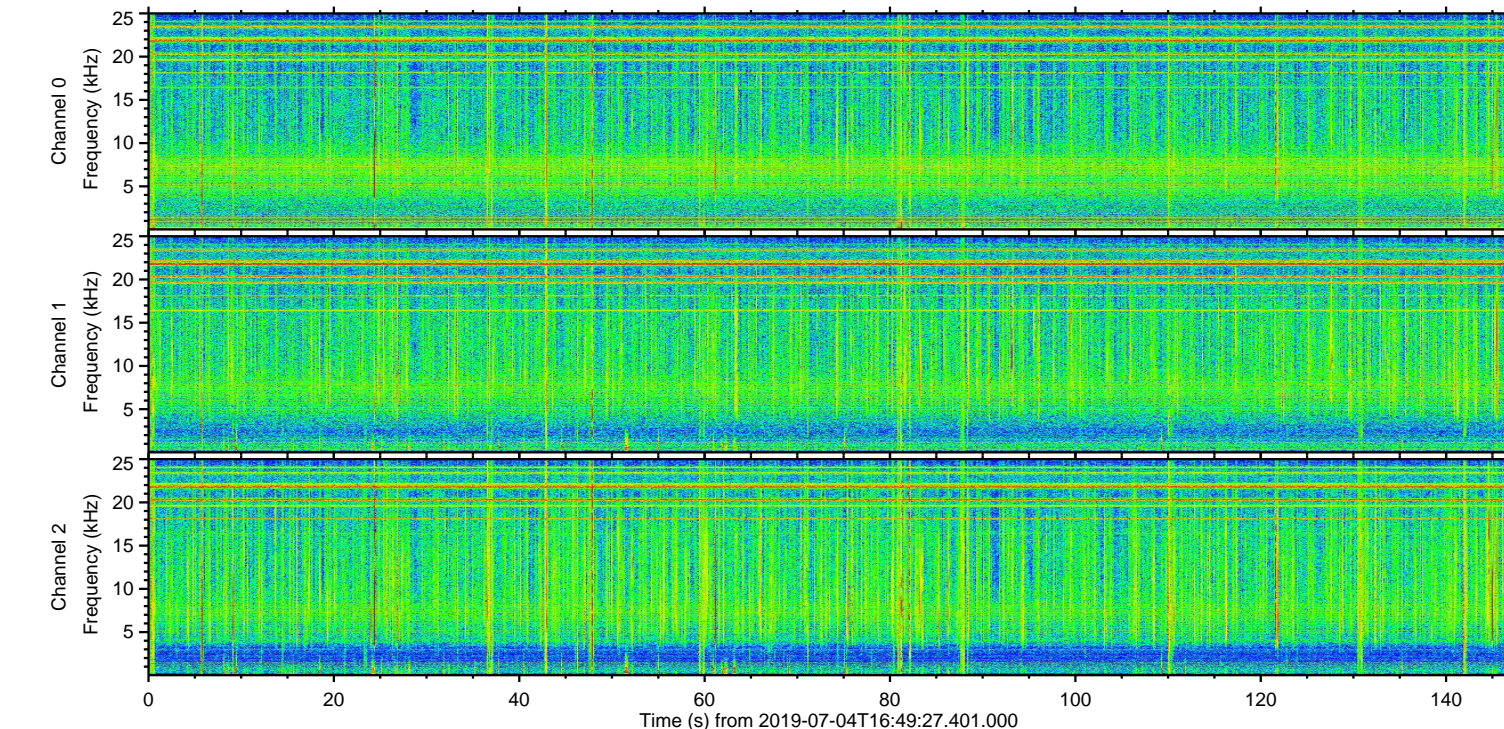
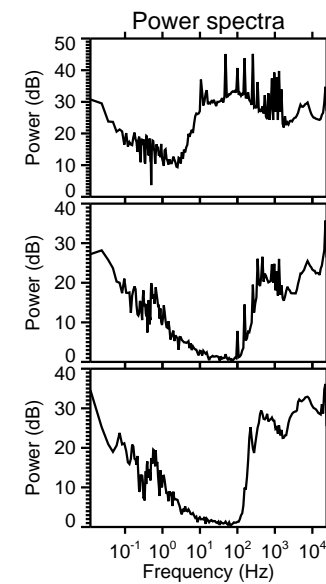
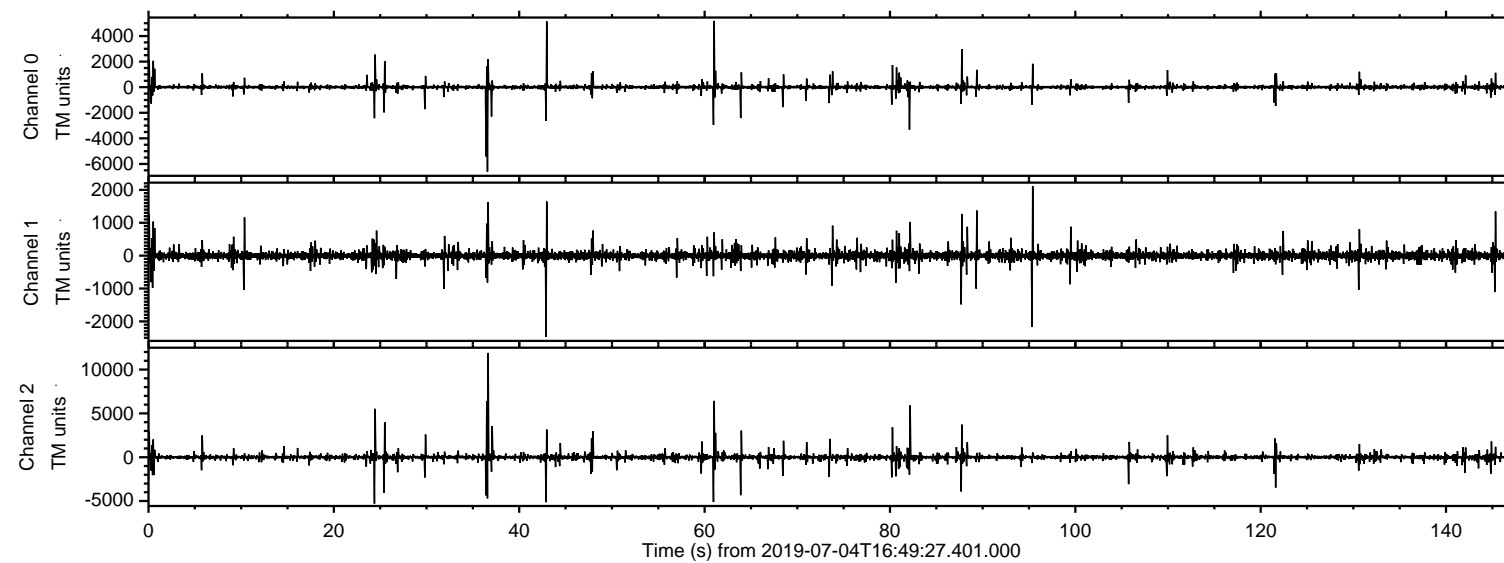


ELMAVAN 3D WAVEFORMS (Measured data sampled at 50 kHz) 51000 packets of 144 samples from 2019-07-04T16:49:27.401.000.

Processed Thu Jul 4 18:57:23 2019 by ELM ver.2012-10-06 from 001__elm20190704_164926__dat00.bin

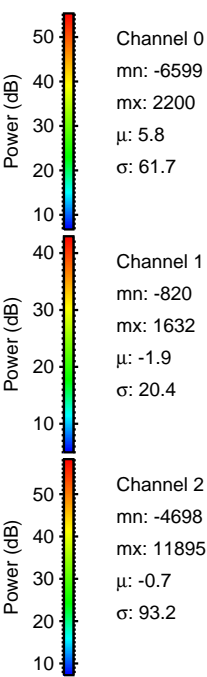
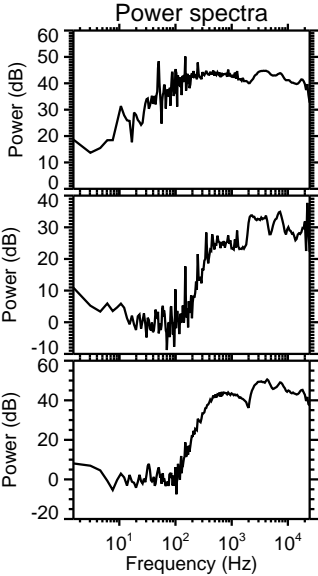
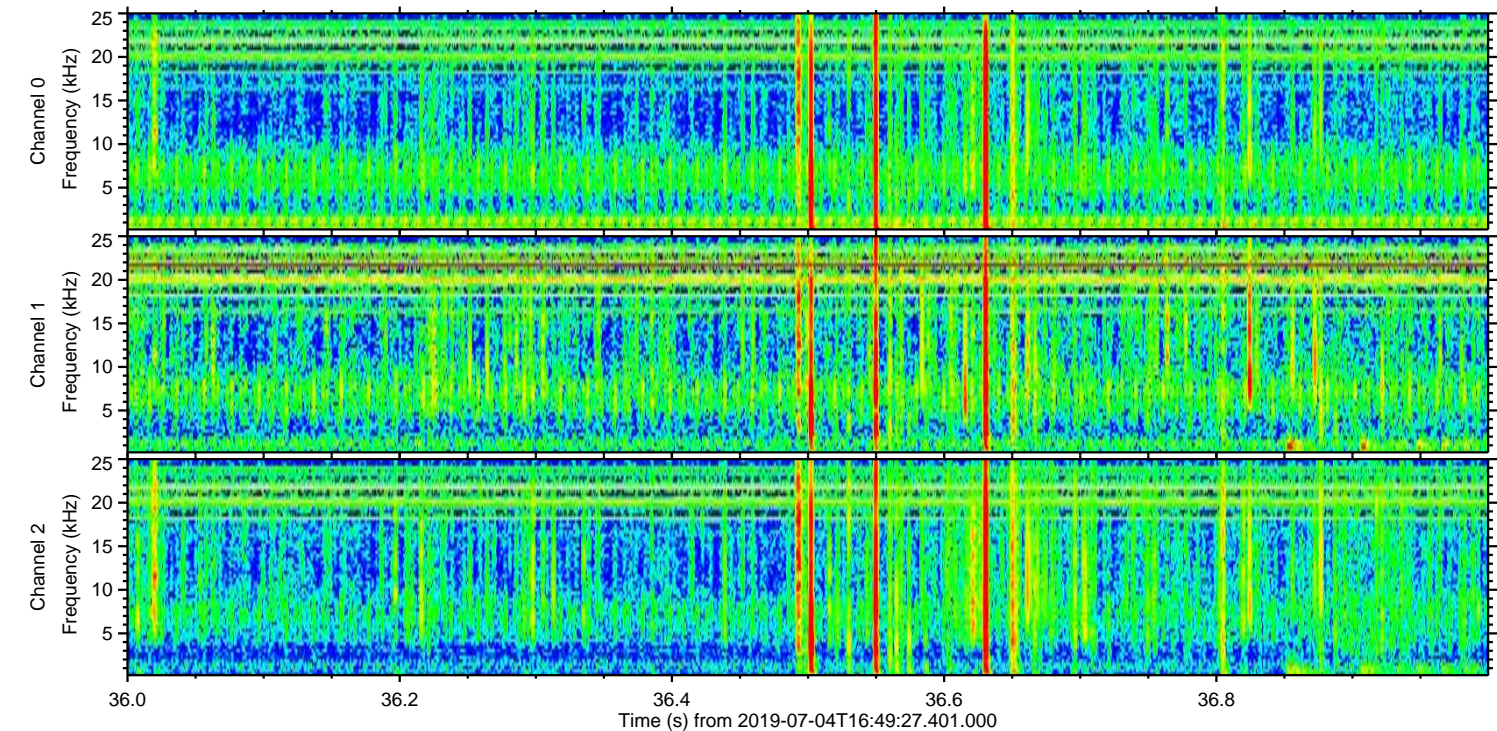
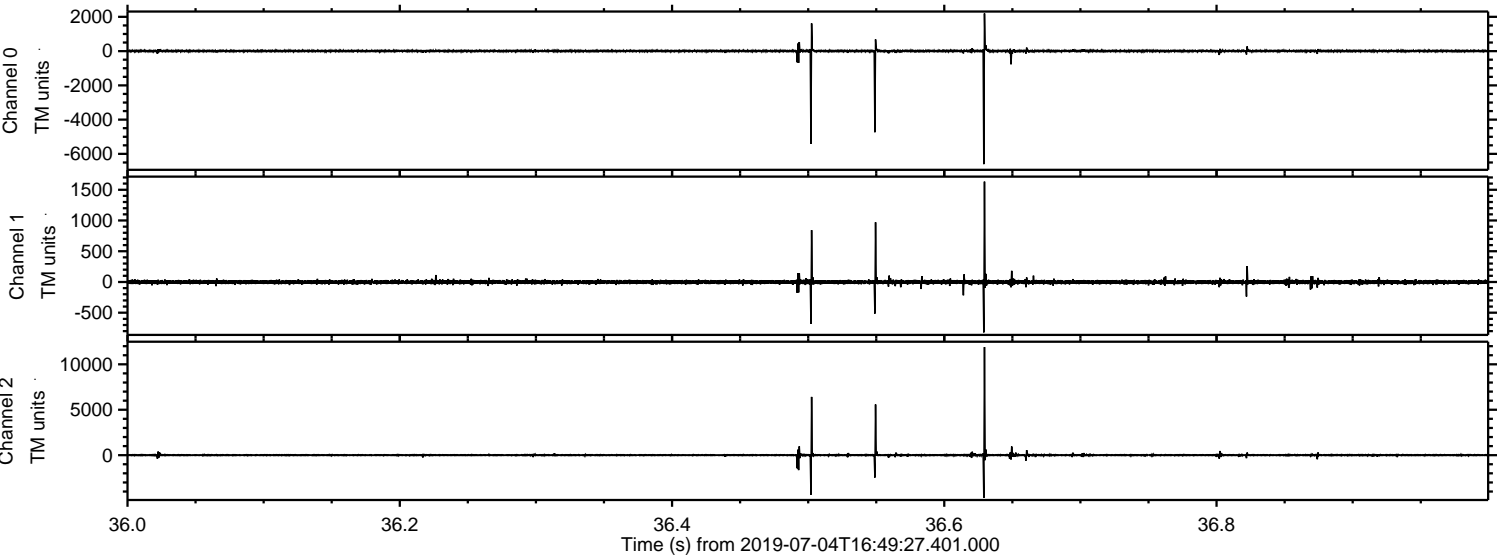


Channel 0
mn: -6599
mx: 5186
 μ : 5.8
 σ : 19.6

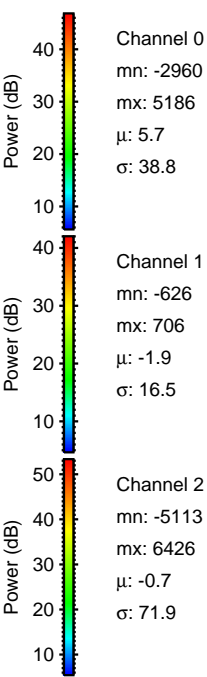
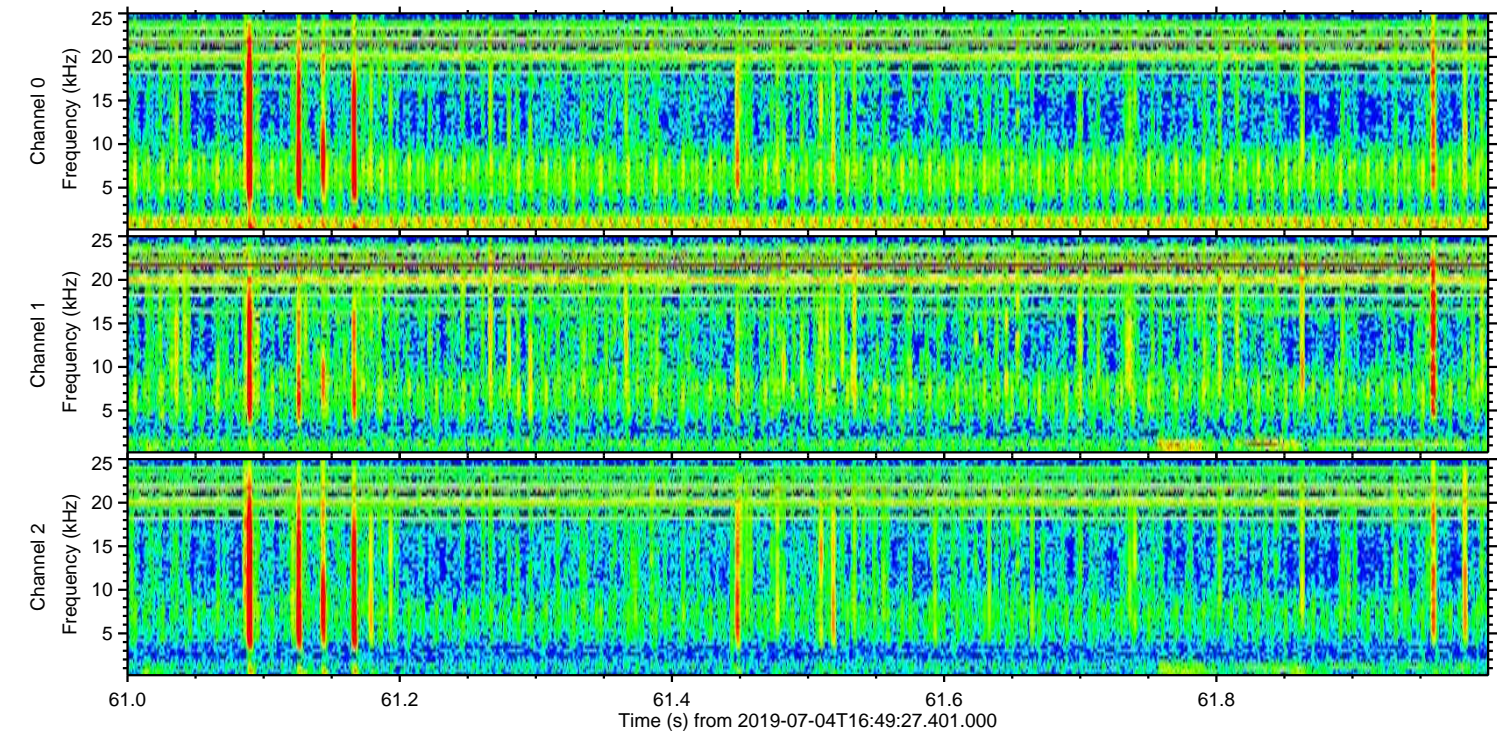
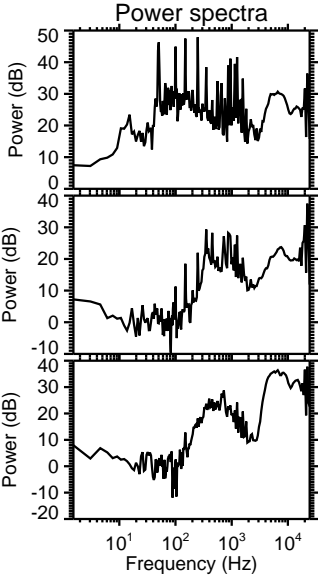
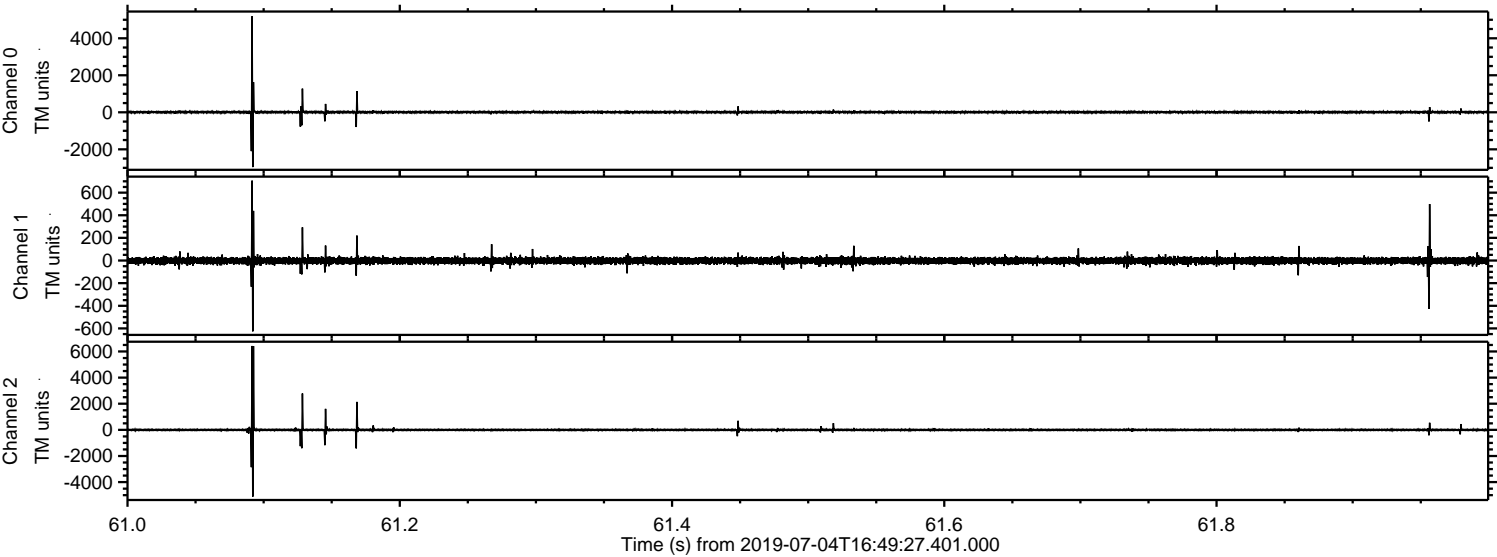
Channel 1
mn: -2470
mx: 2114
 μ : -1.9
 σ : 15.5

Channel 2
mn: -5300
mx: 11895
 μ : -0.7
 σ : 24.7

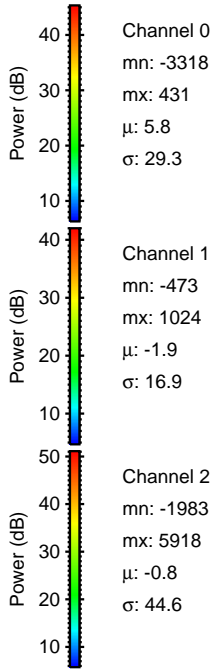
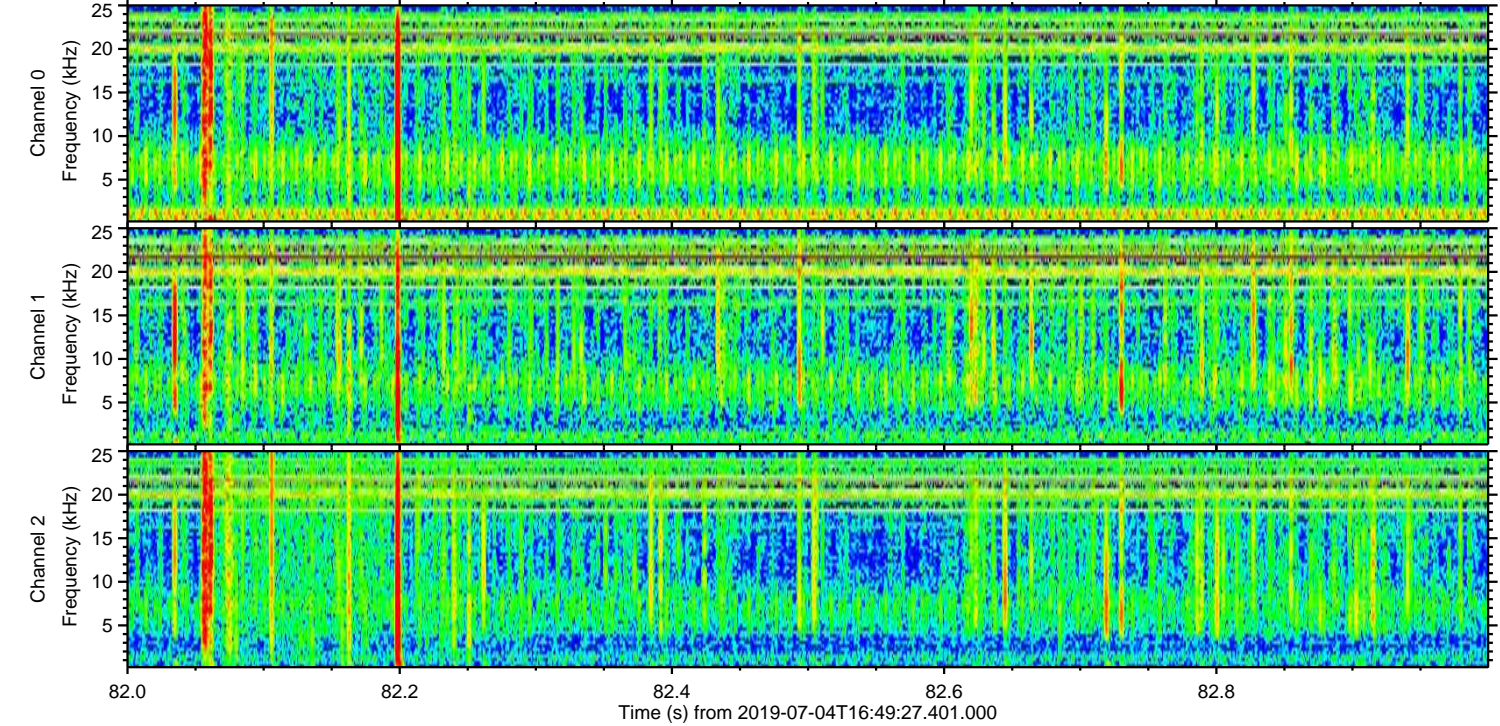
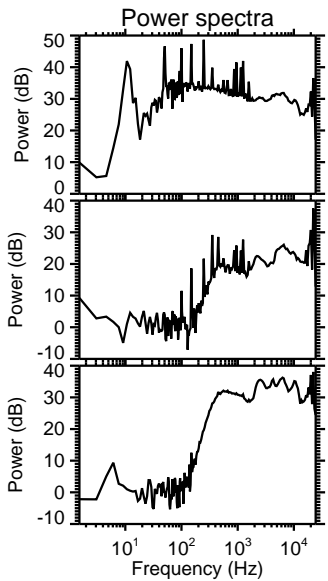
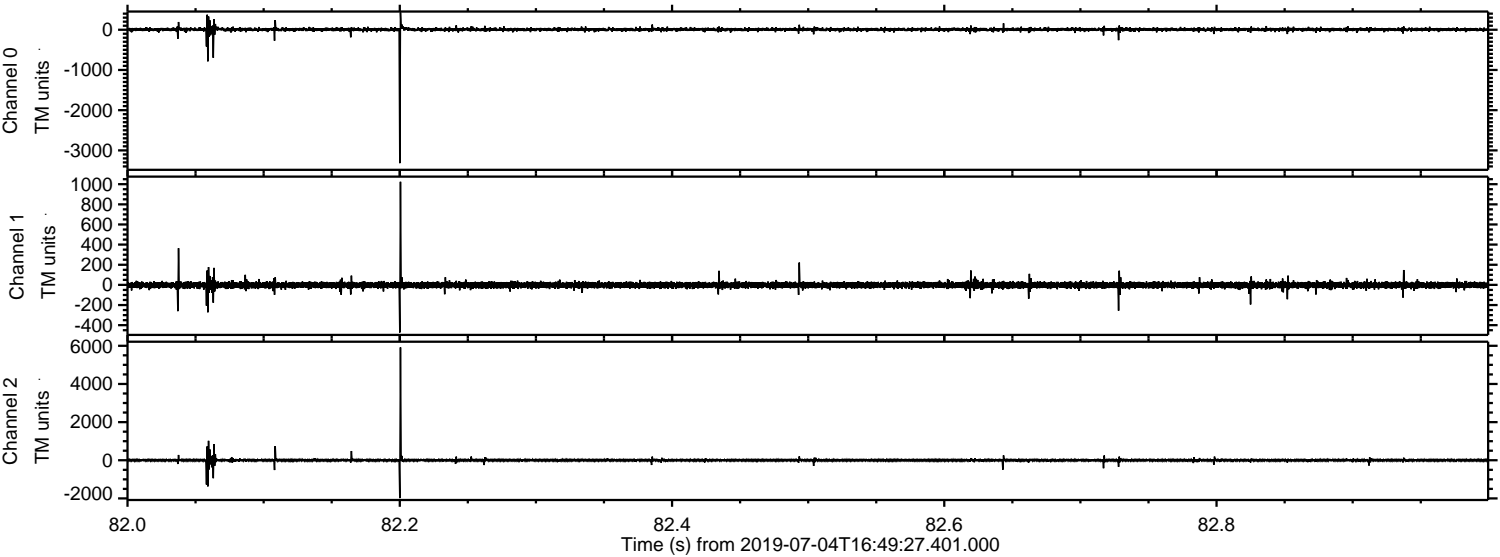
Processed Thu Jul 4 18:57:29 2019 by ELM ver.2012-10-06 from 001__elm20190704_164926__dat00.bin



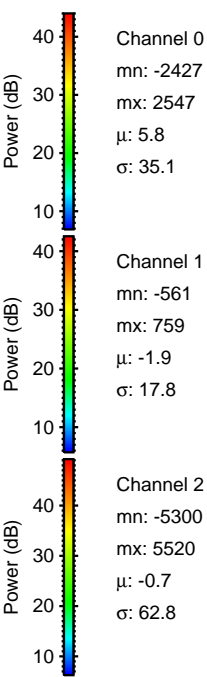
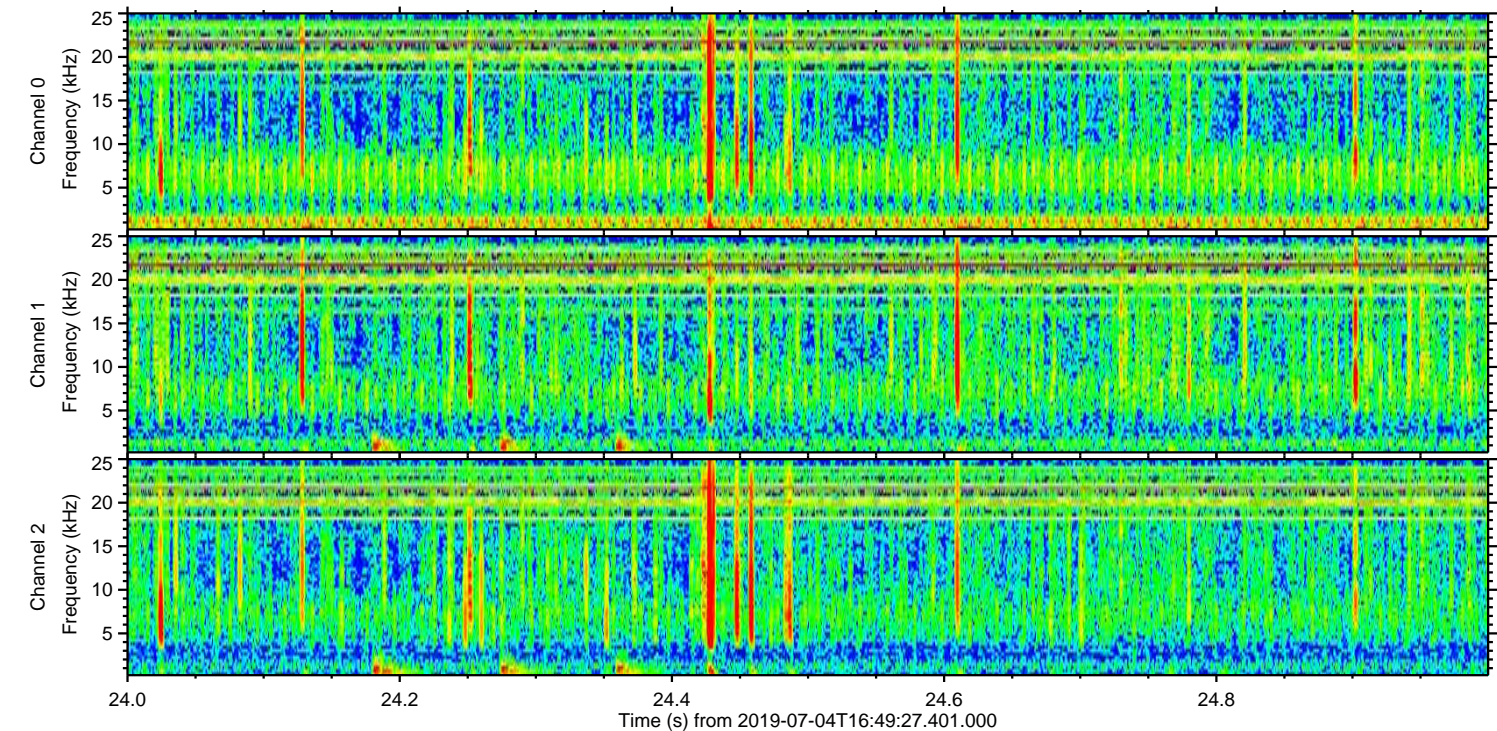
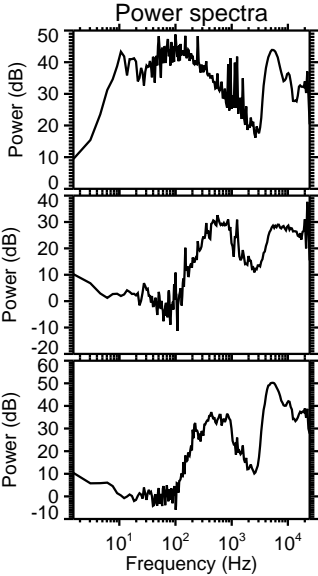
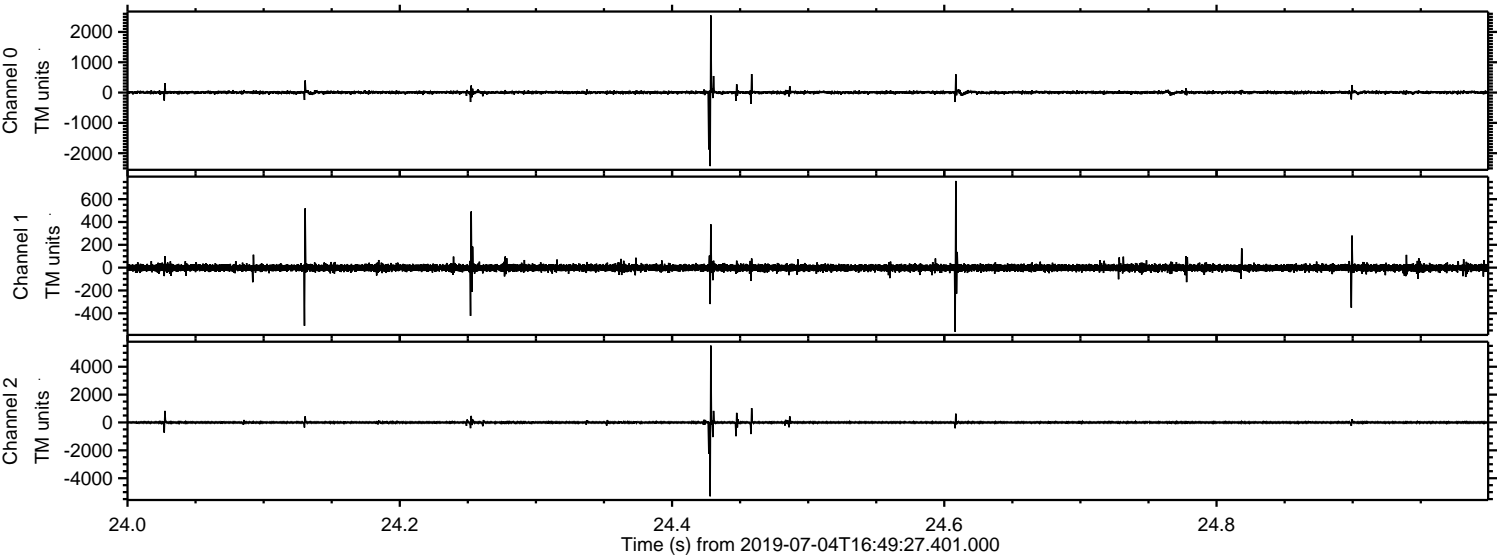
Processed Thu Jul 4 18:57:30 2019 by ELM ver.2012-10-06 from 001__elm20190704_164926__dat00.bin



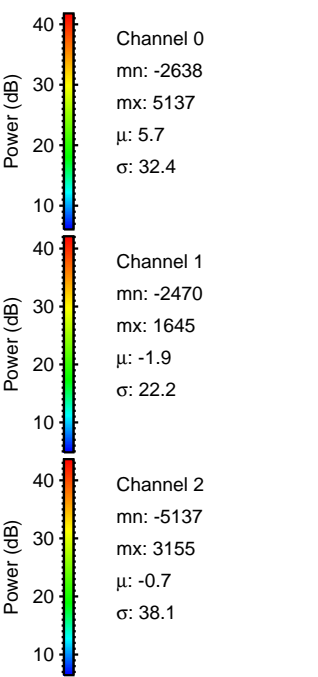
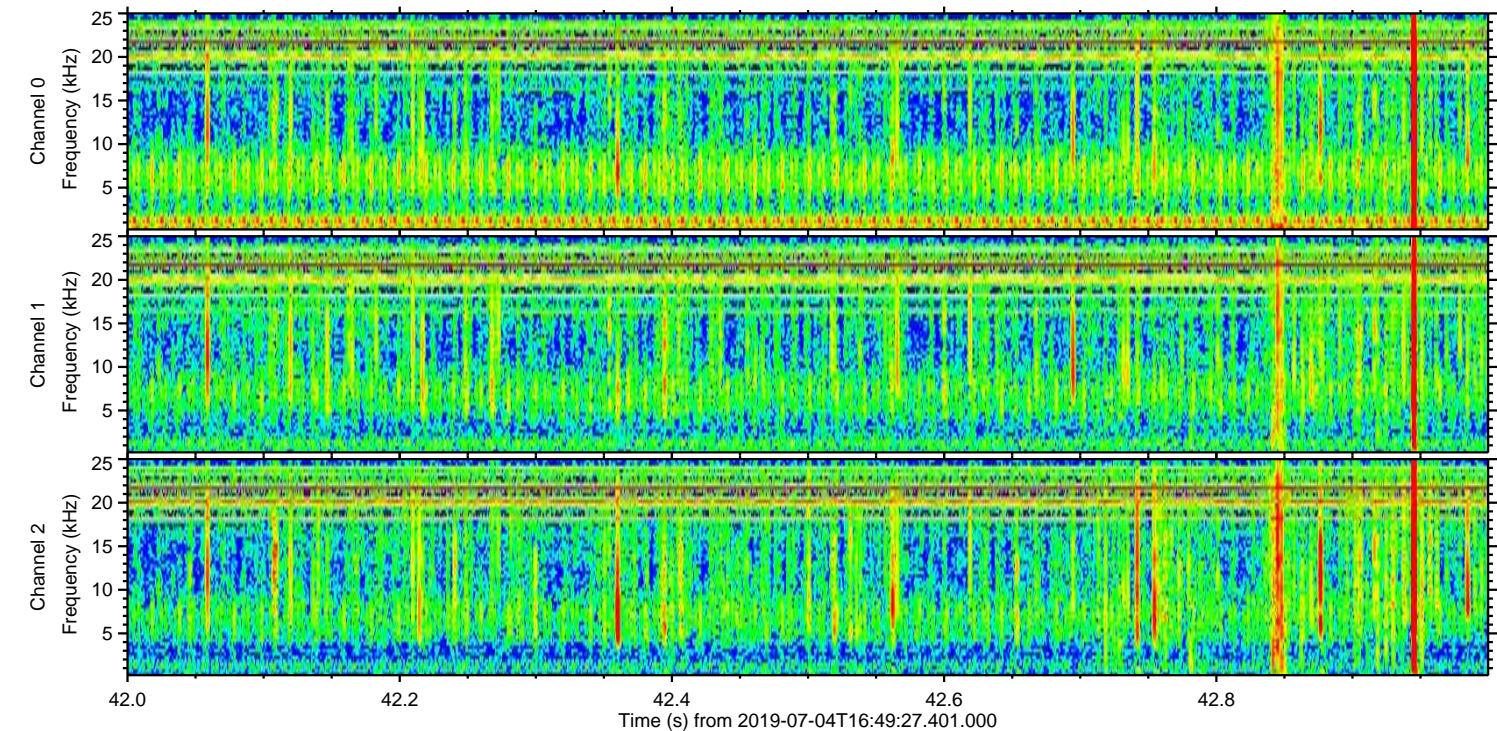
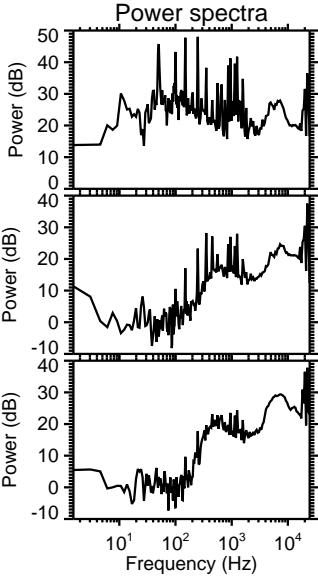
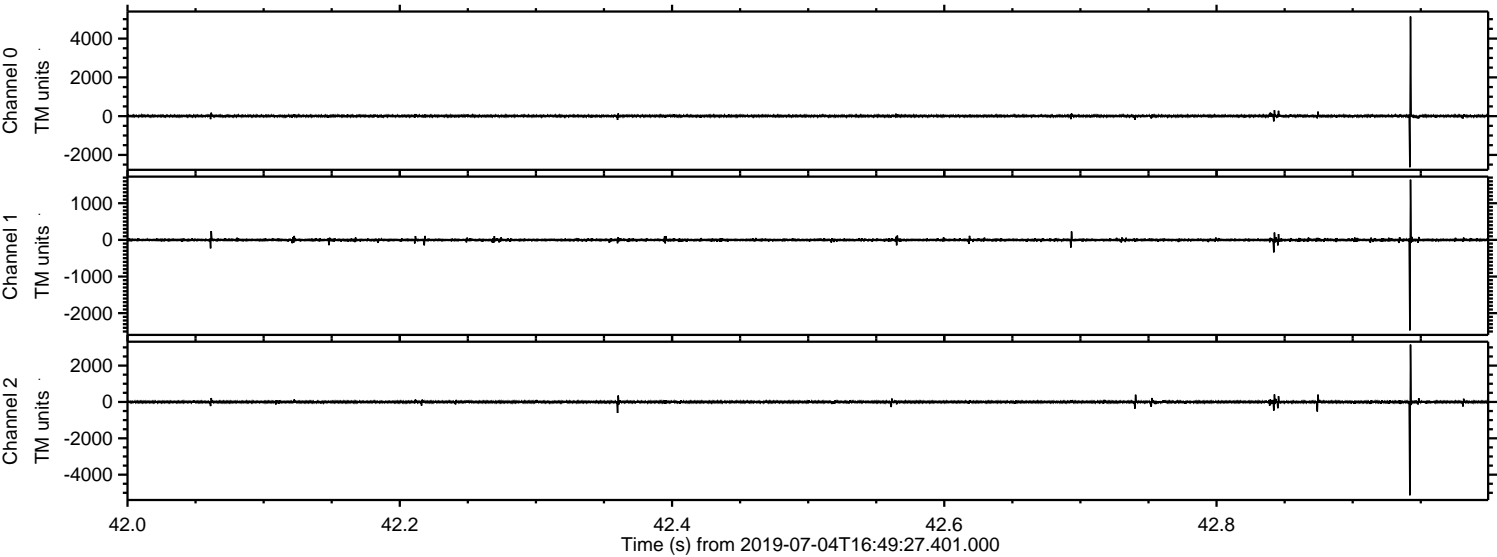
Processed Thu Jul 4 18:57:30 2019 by ELM ver.2012-10-06 from 001__elm20190704_164926__dat00.bin



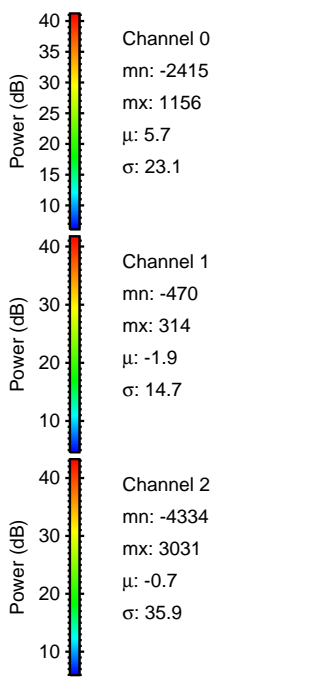
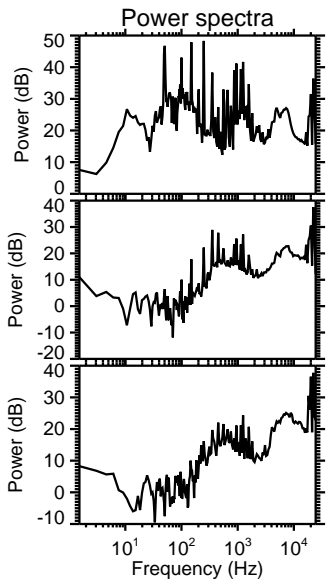
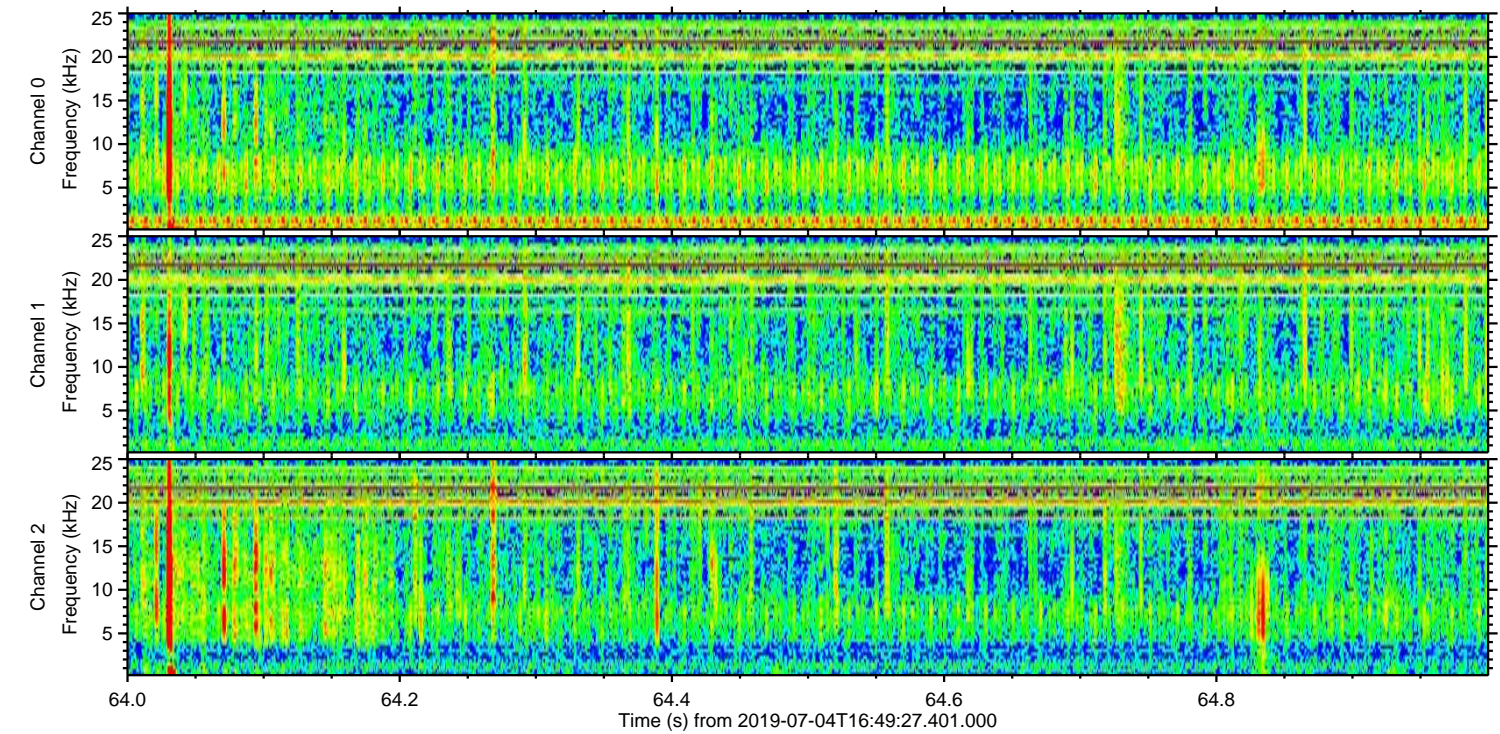
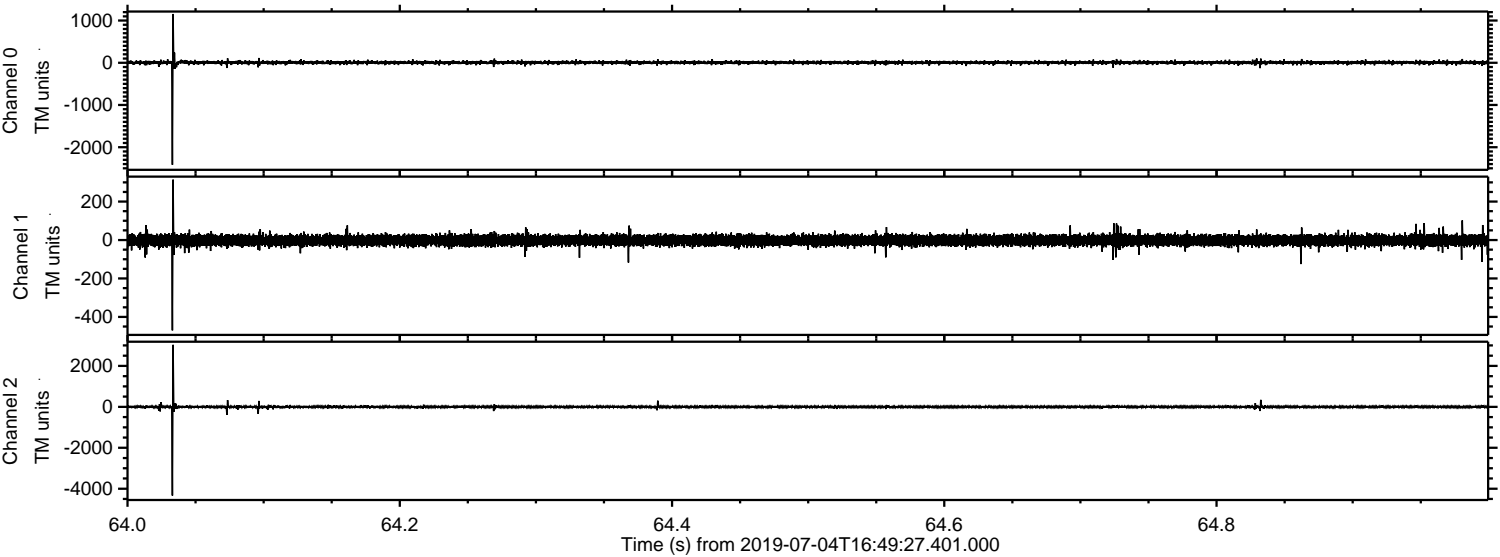
Processed Thu Jul 4 18:57:31 2019 by ELM ver.2012-10-06 from 001__elm20190704_164926__dat00.bin



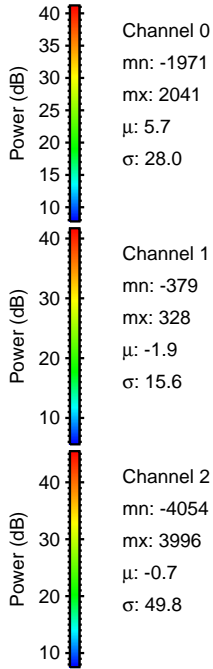
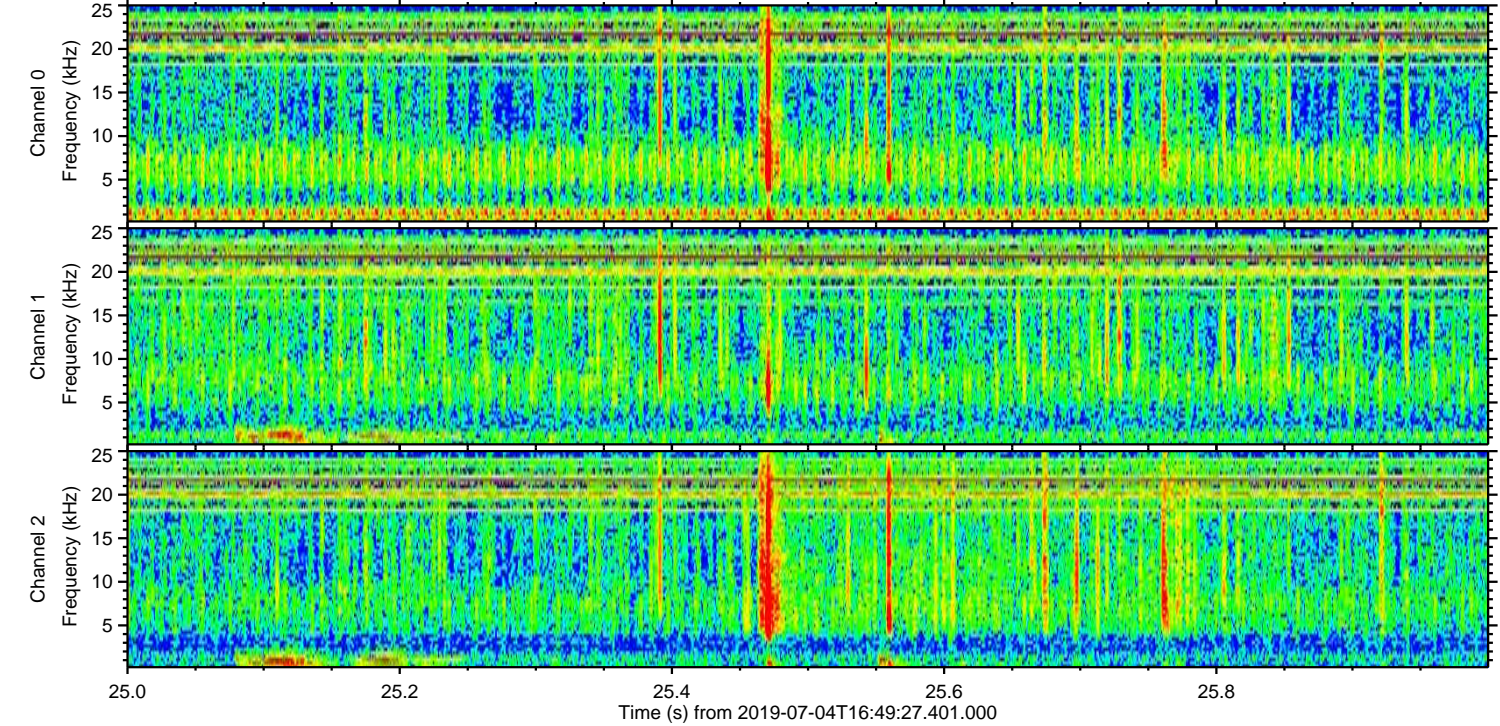
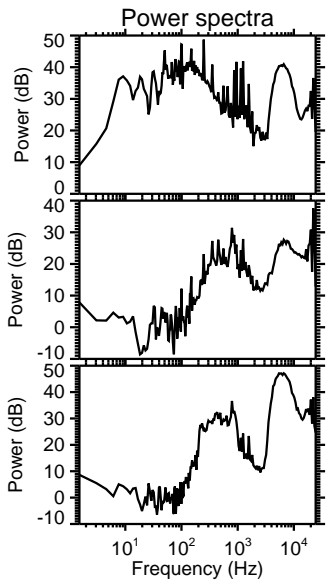
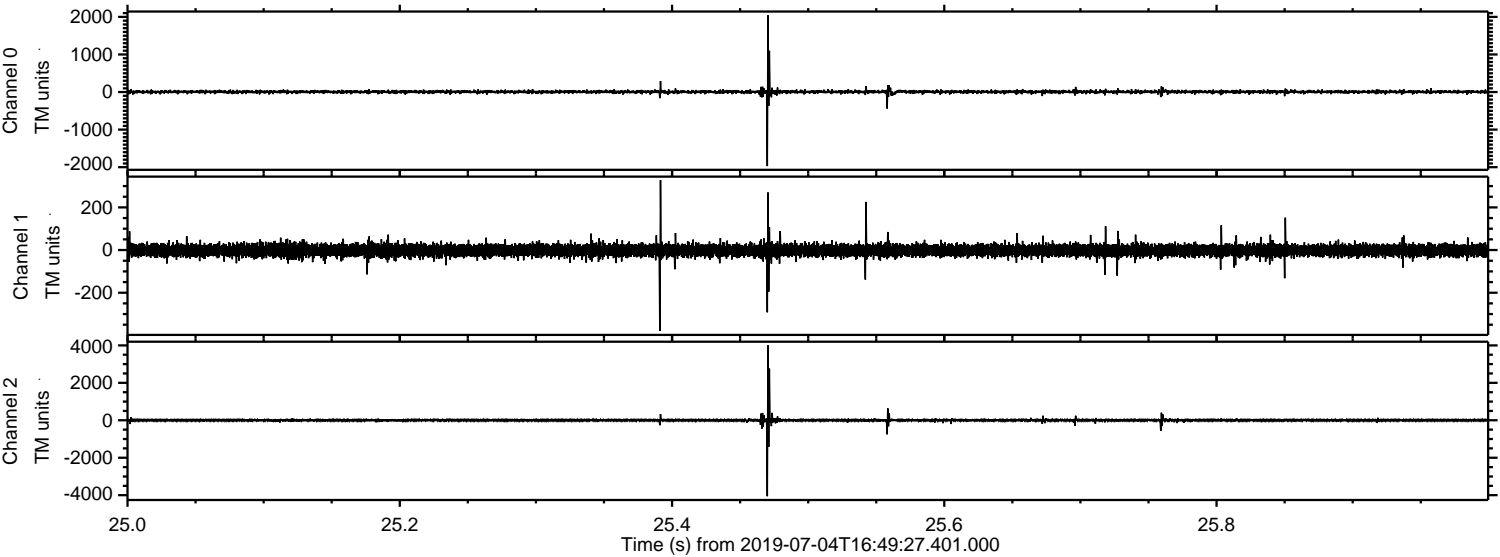
Processed Thu Jul 4 18:57:32 2019 by ELM ver.2012-10-06 from 001__elm20190704_164926__dat00.bin



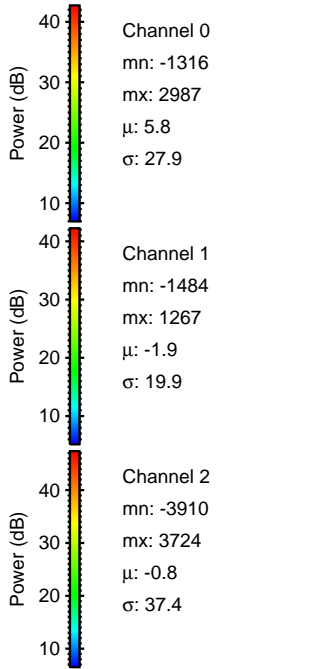
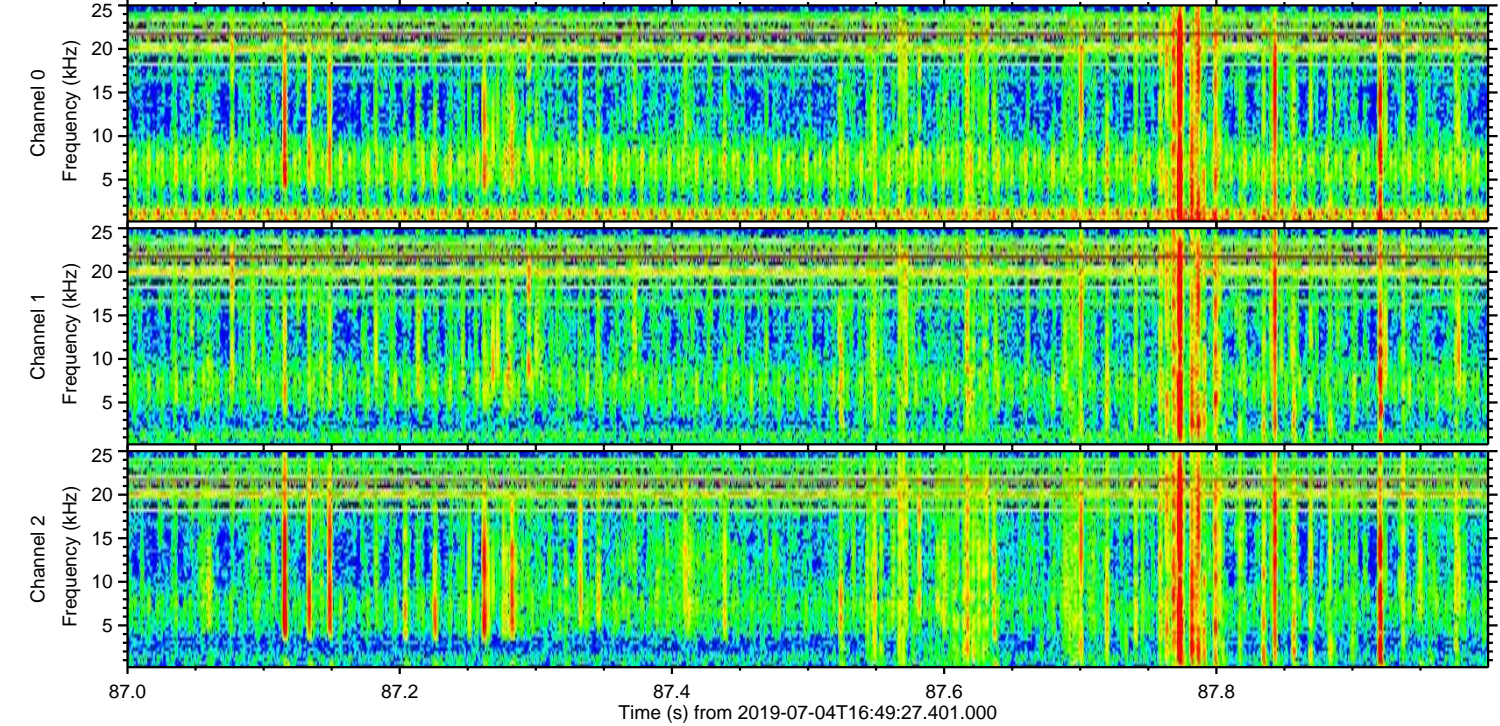
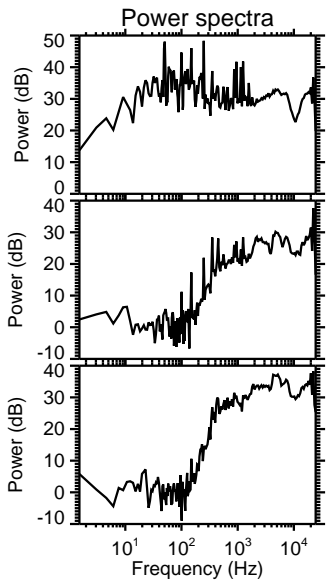
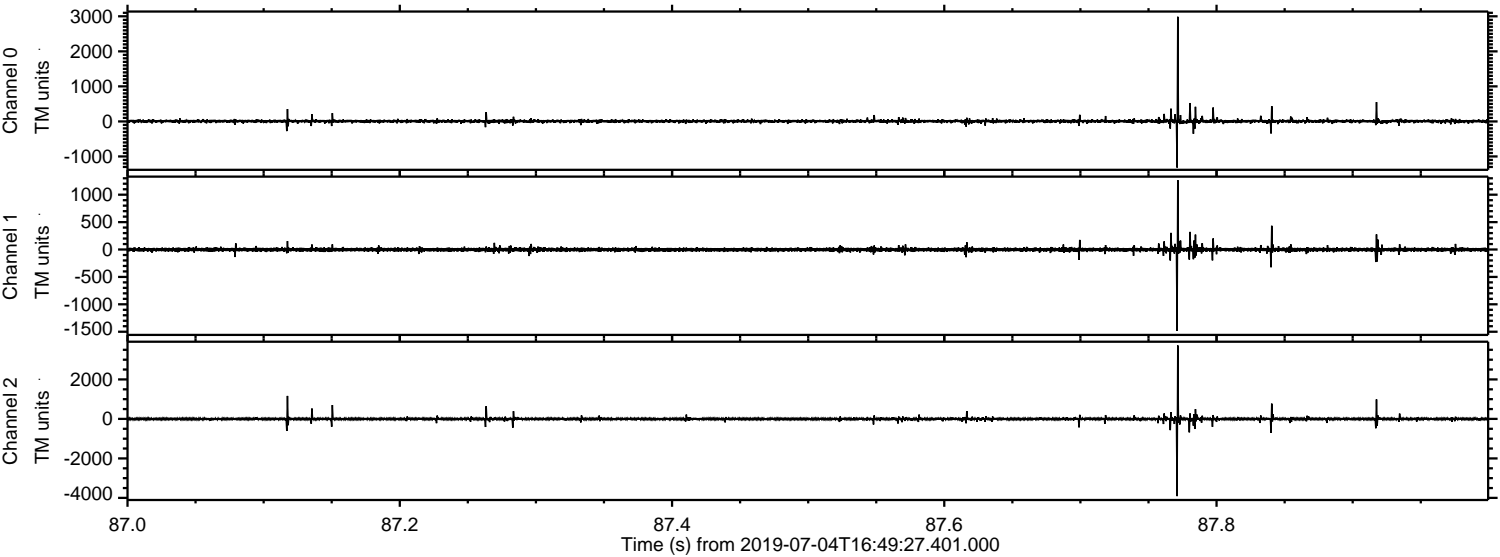
Processed Thu Jul 4 18:57:32 2019 by ELM ver.2012-10-06 from 001__elm20190704_164926__dat00.bin



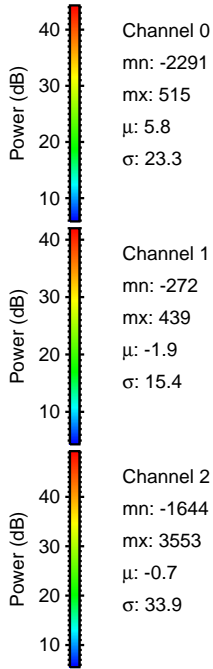
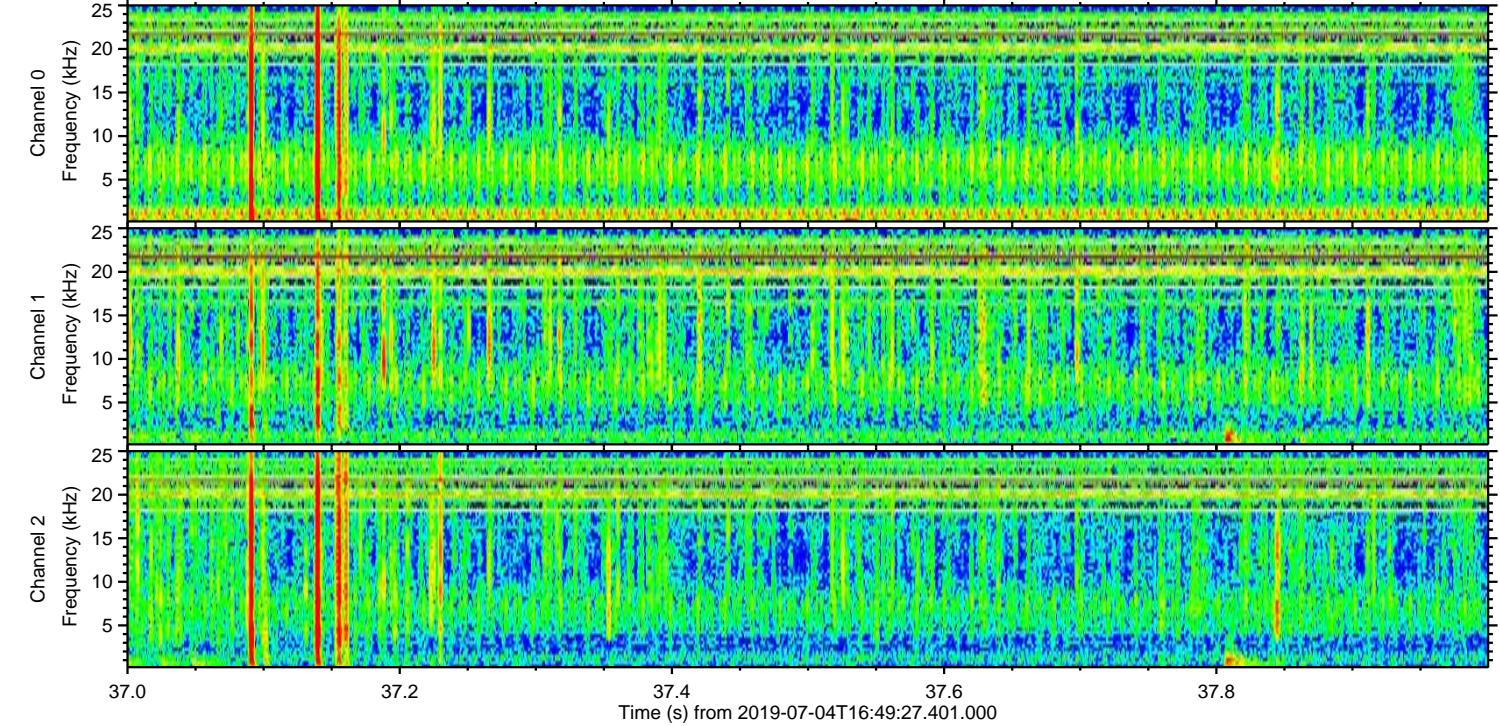
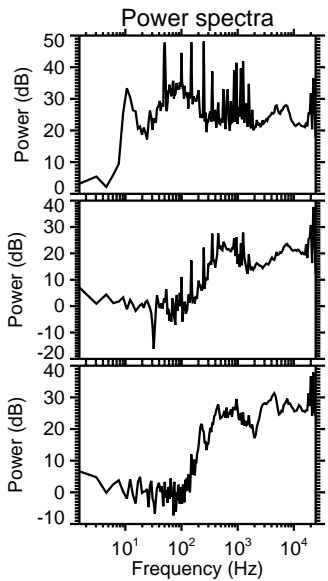
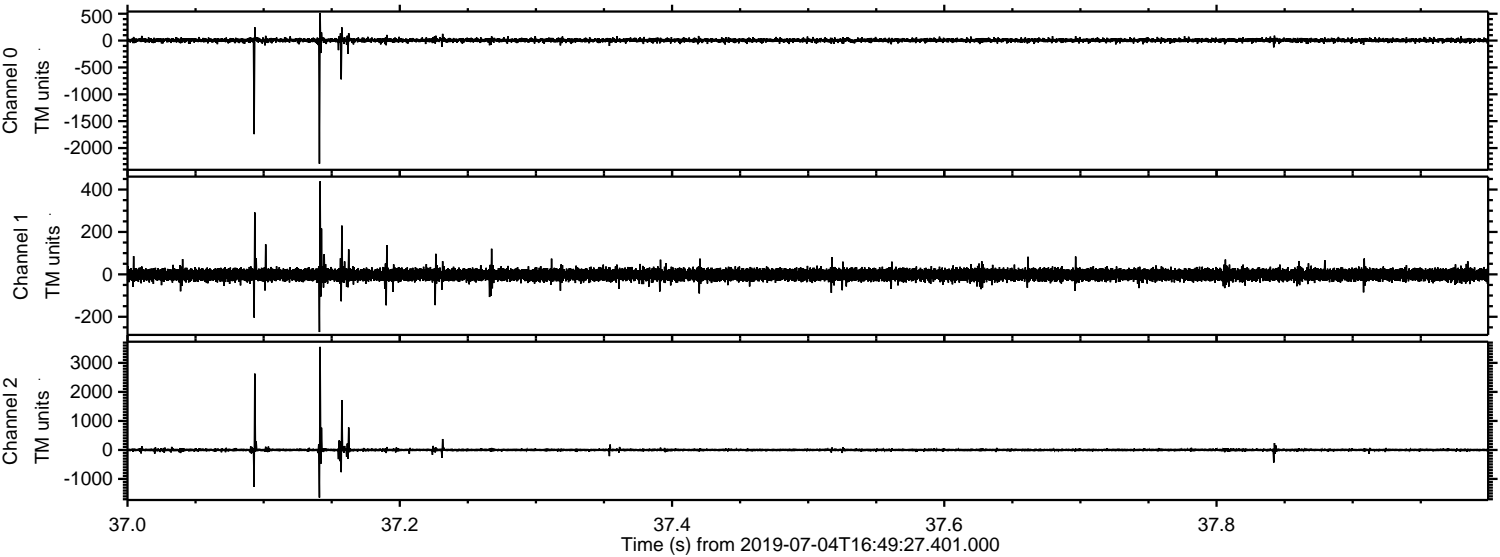
Processed Thu Jul 4 18:57:33 2019 by ELM ver.2012-10-06 from 001__elm20190704_164926__dat00.bin



Processed Thu Jul 4 18:57:34 2019 by ELM ver.2012-10-06 from 001__elm20190704_164926__dat00.bin



Processed Thu Jul 4 18:57:34 2019 by ELM ver.2012-10-06 from 001__elm20190704_164926__dat00.bin



ELMAVAN 3D WAVEFORMS (Measured data sampled at 50 kHz) 51000 packets of 144 samples from 2019-07-04T16:49:27.401.000. Part 127/147

