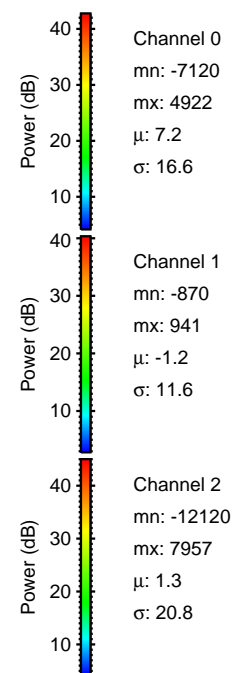
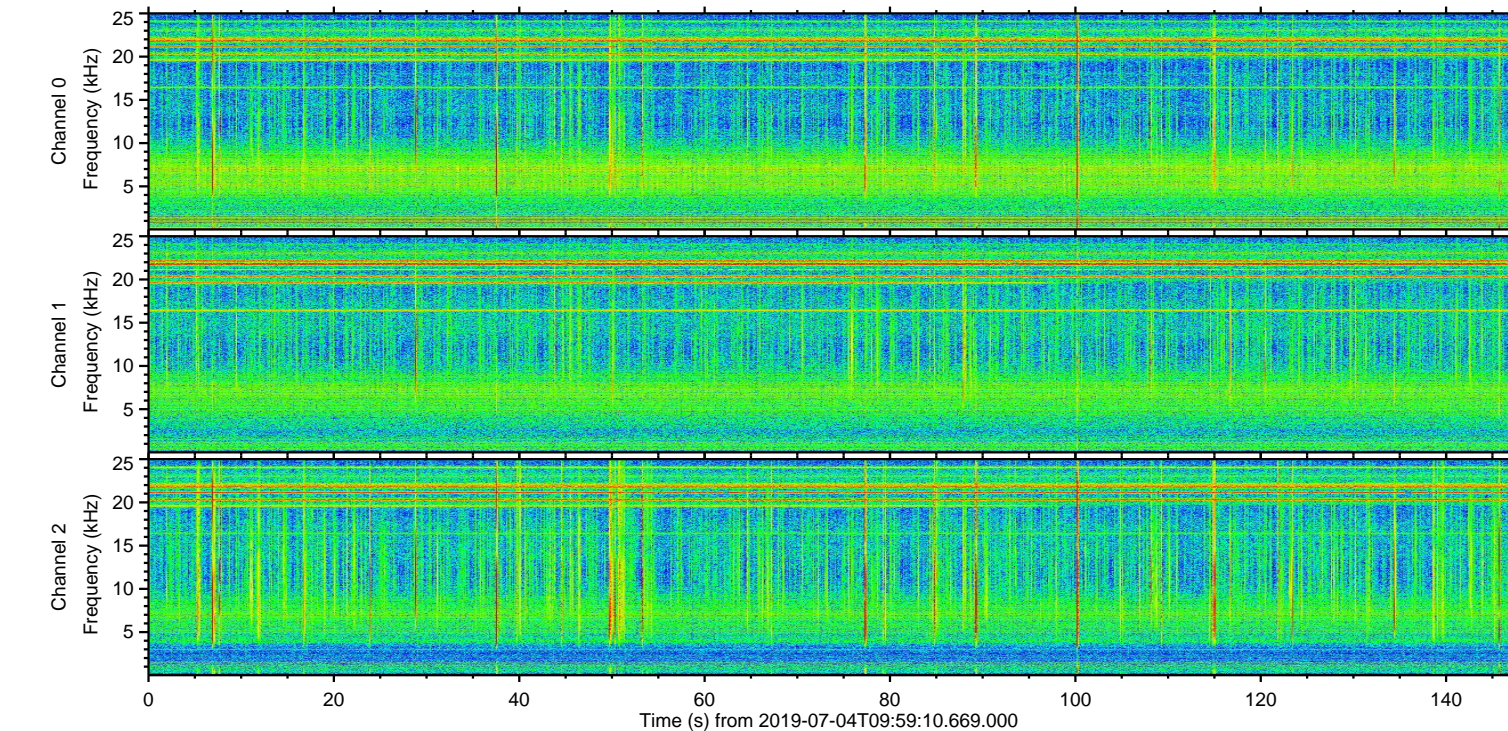
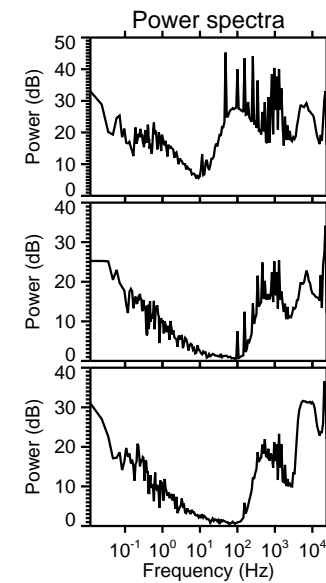
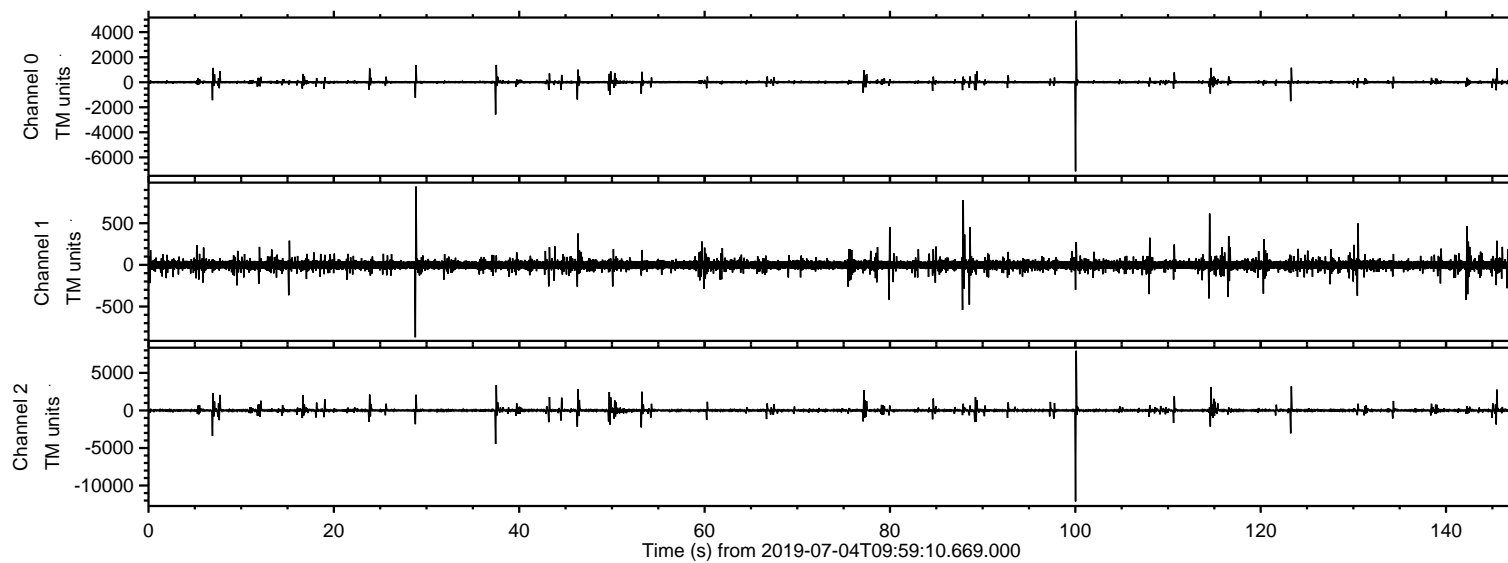
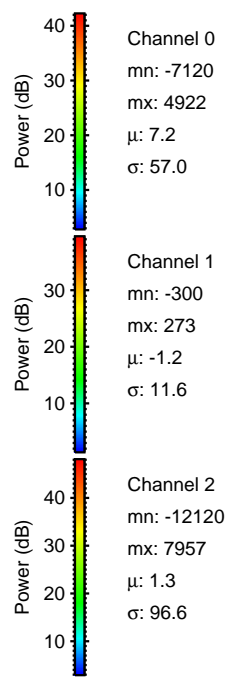
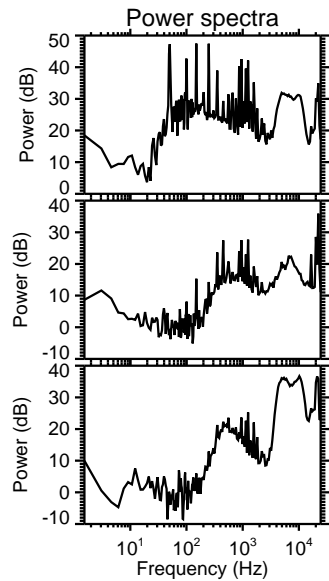
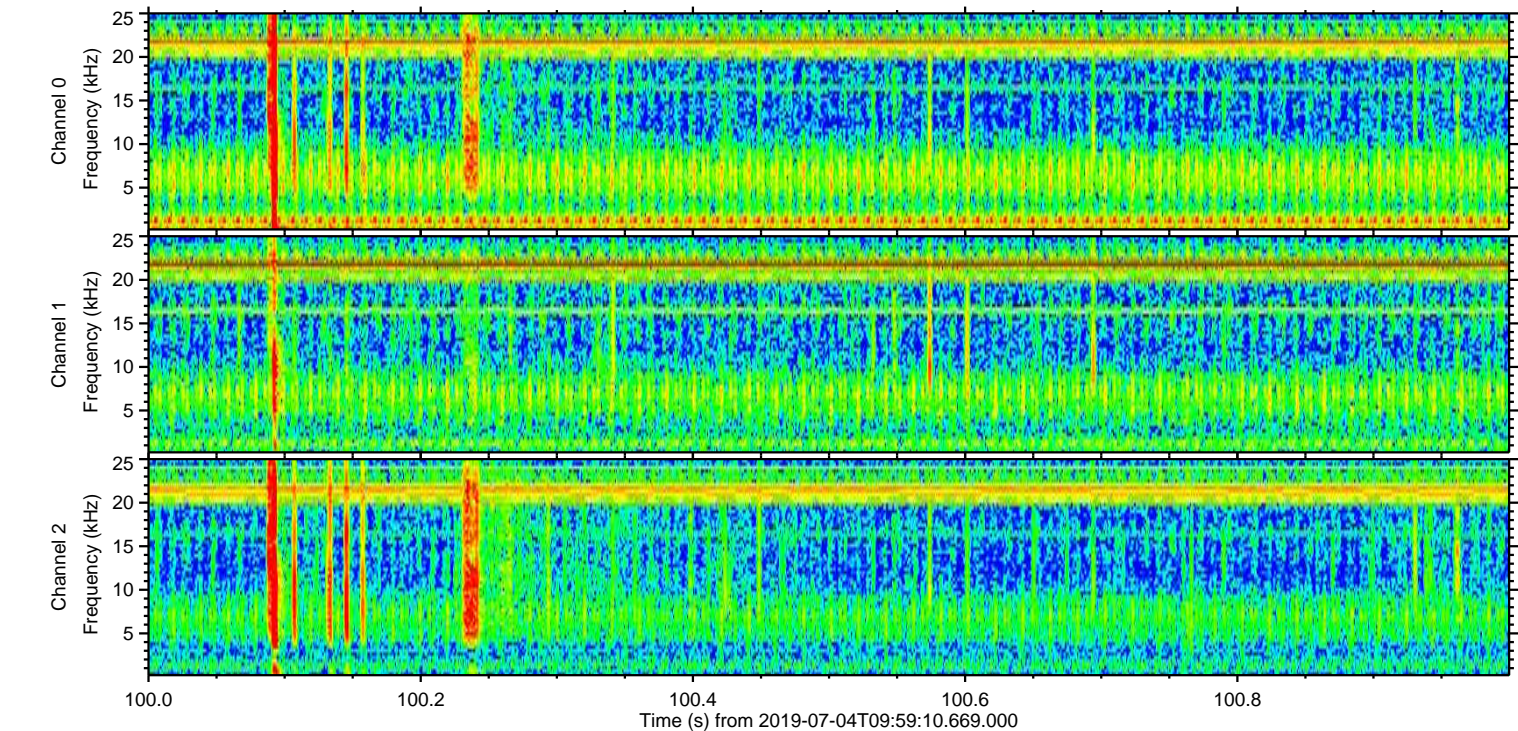
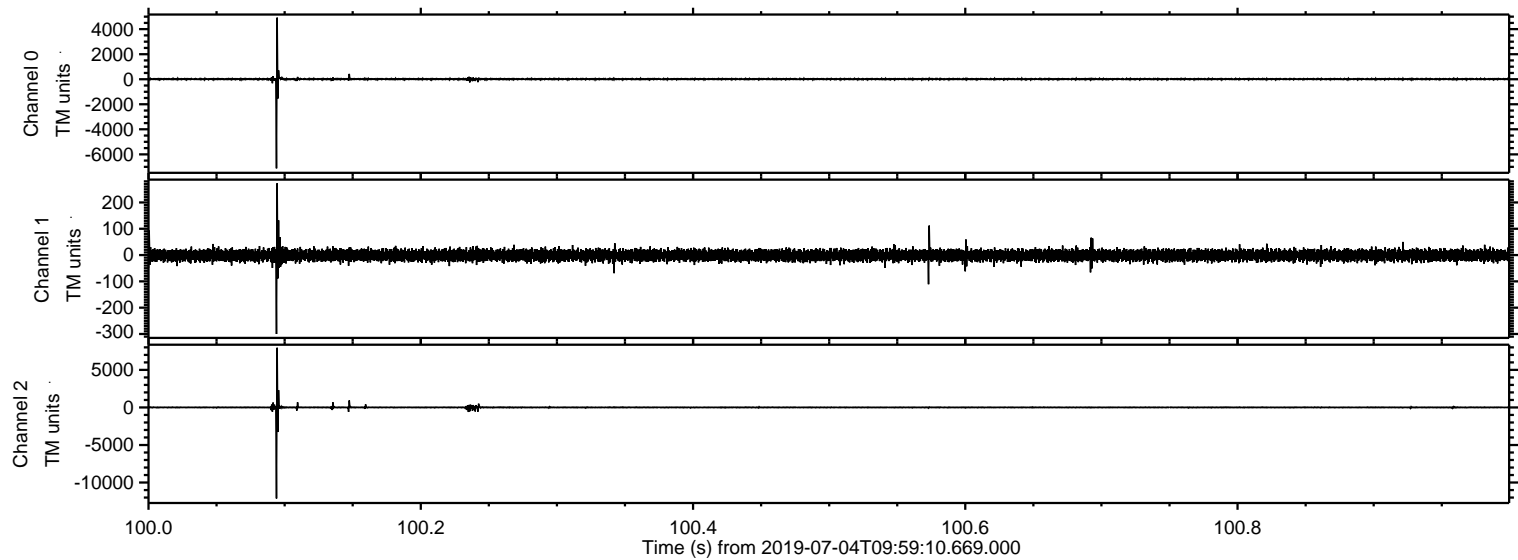


ELMAVAN 3D WAVEFORMS (Measured data sampled at 50 kHz) 51000 packets of 144 samples from 2019-07-04T09:59:10.669.000.

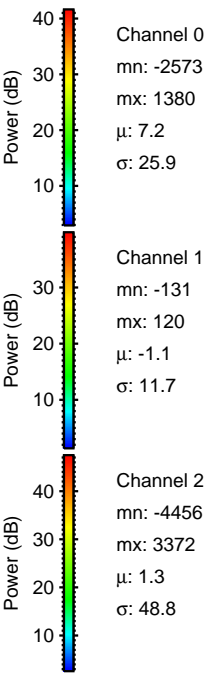
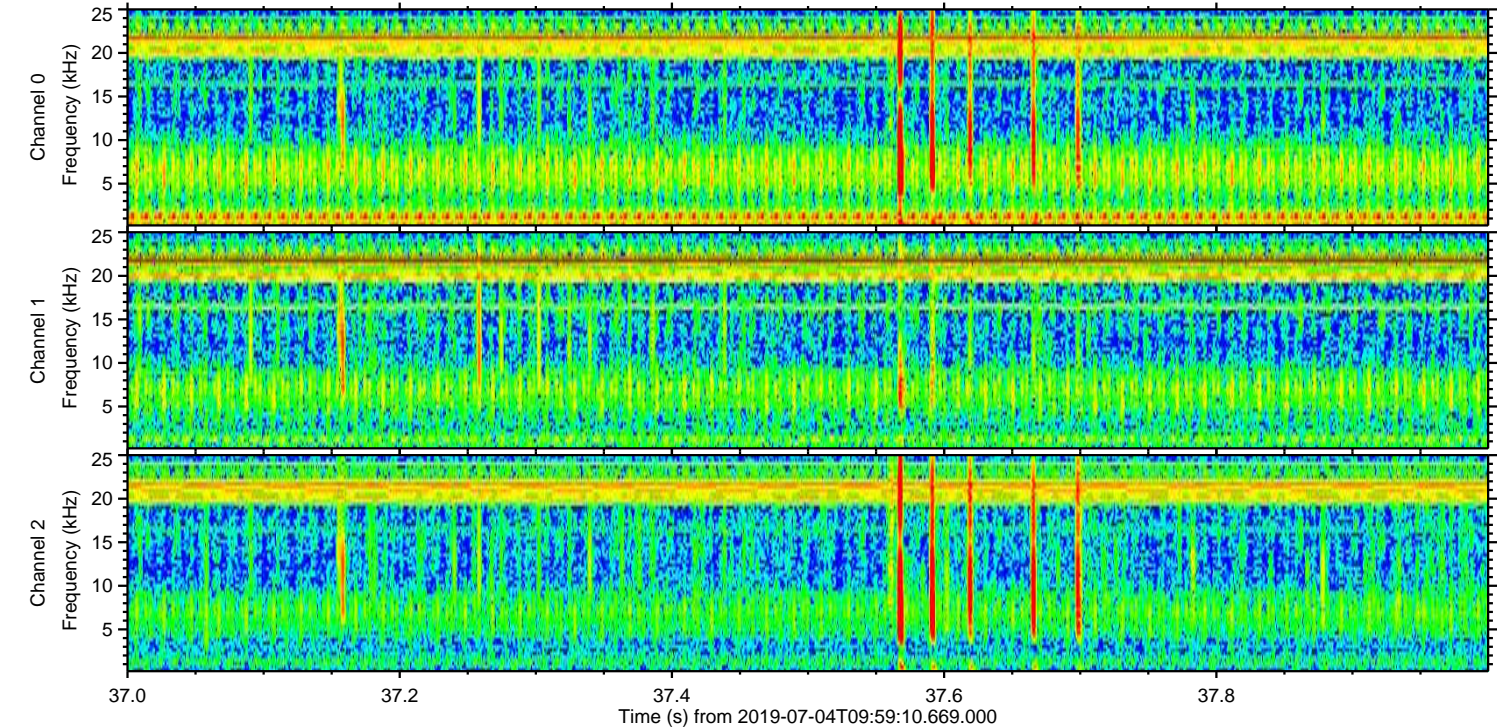
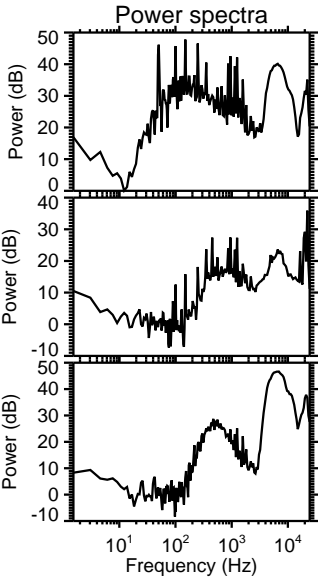
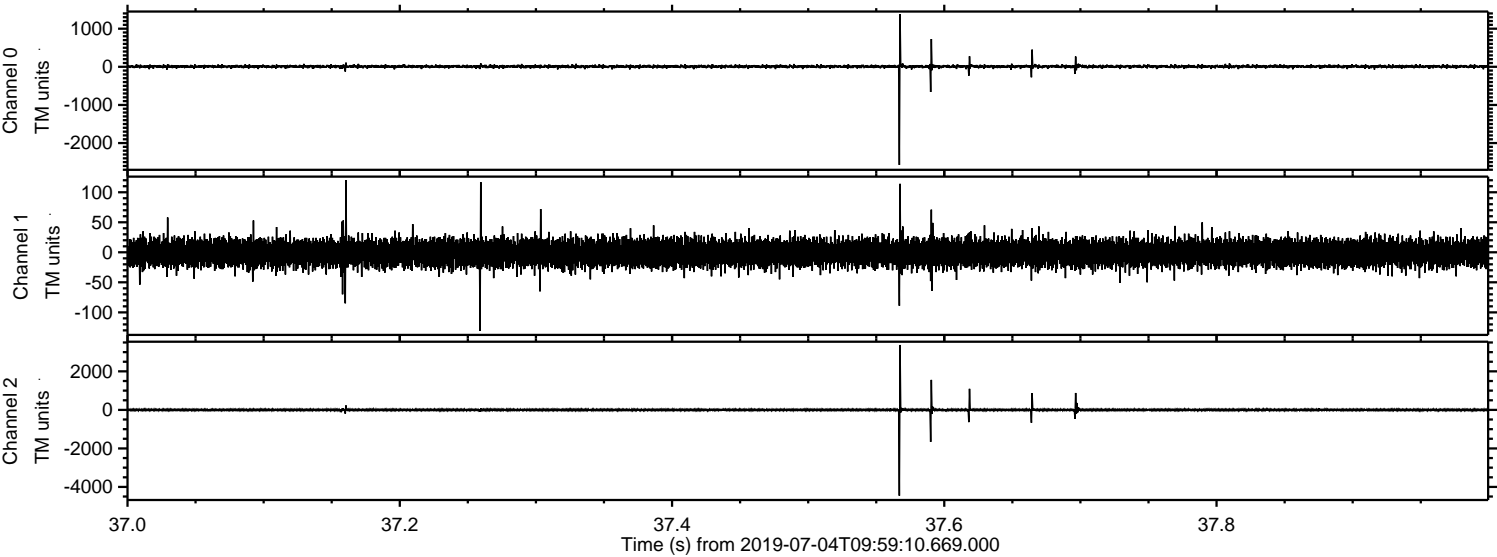
Processed Thu Jul 4 12:07:01 2019 by ELM ver.2012-10-06 from 001__elm20190704_095909__dat00.bin



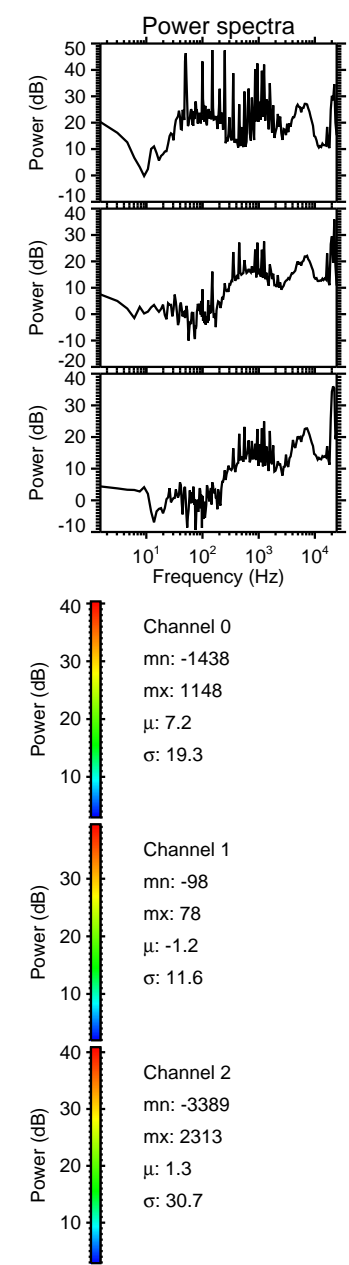
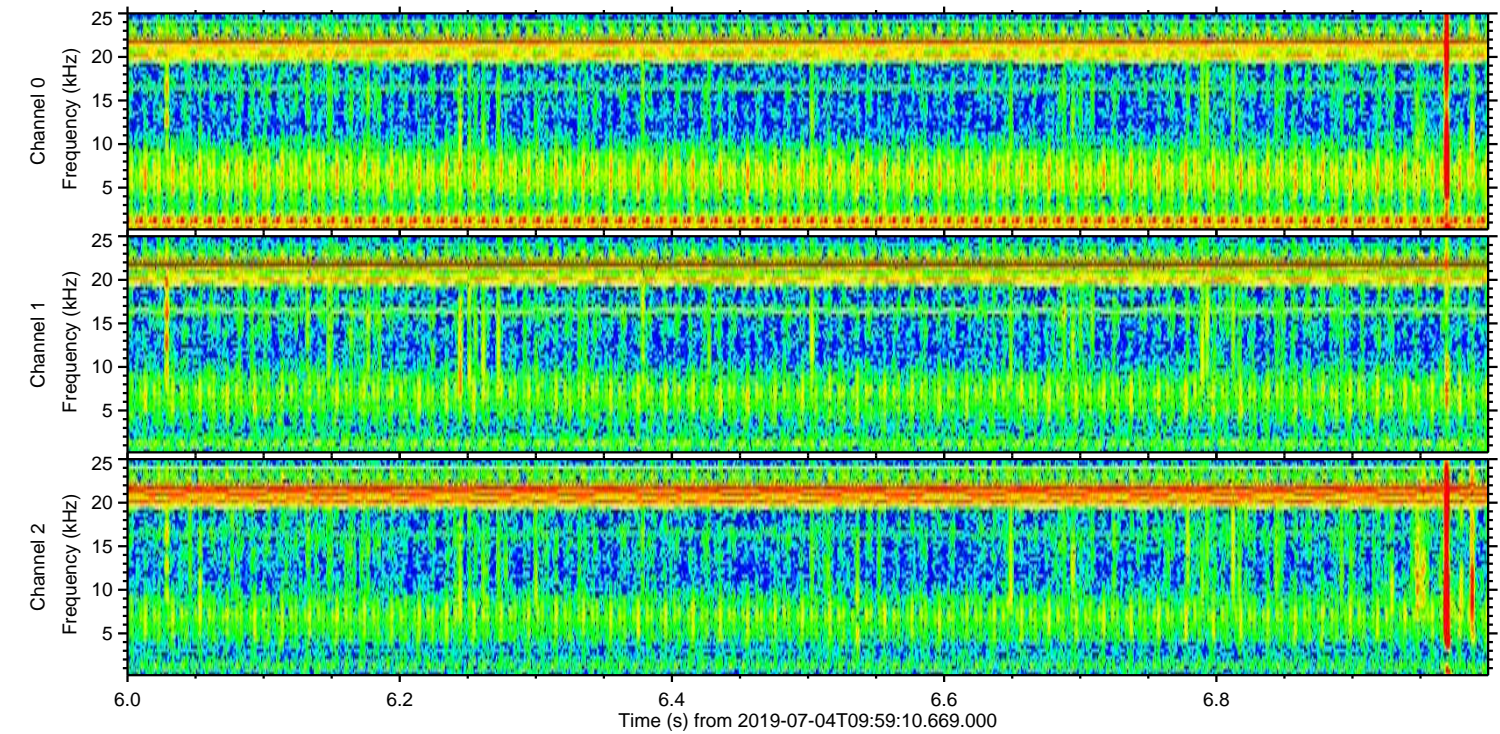
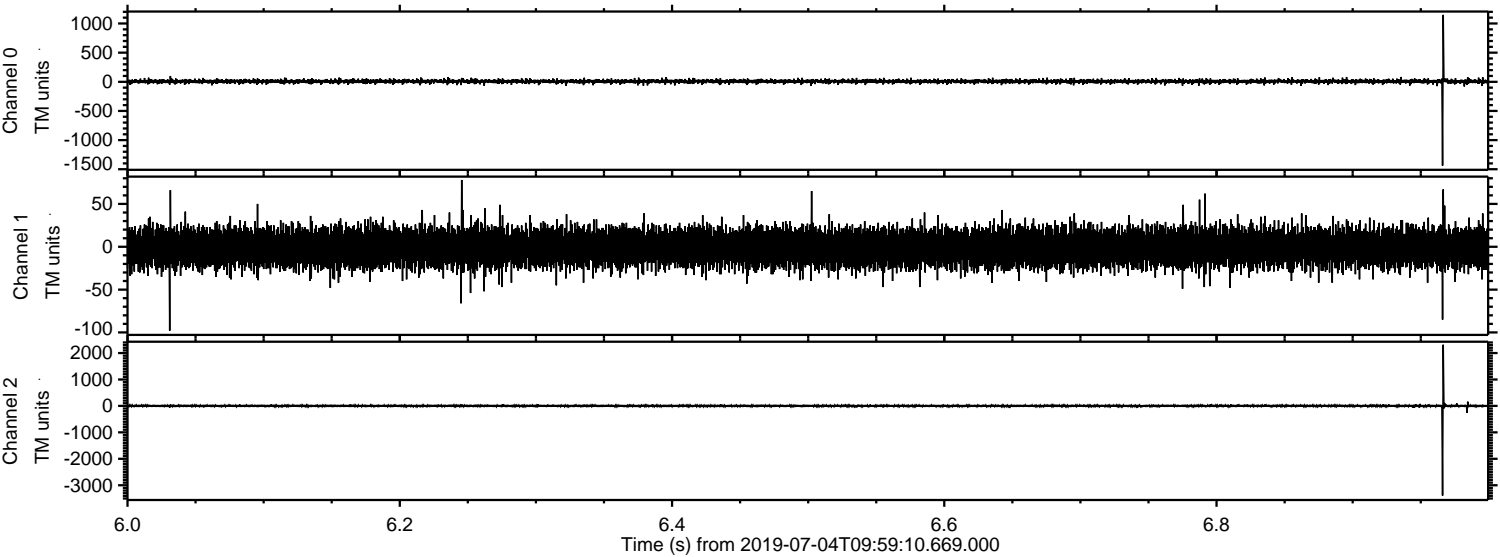
Processed Thu Jul 4 12:07:09 2019 by ELM ver.2012-10-06 from 001__elm20190704_095909__dat00.bin



Processed Thu Jul 4 12:07:10 2019 by ELM ver.2012-10-06 from 001__elm20190704_095909__dat00.bin

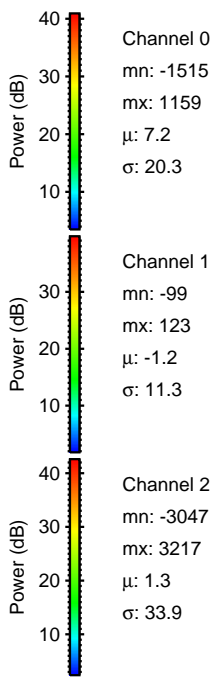
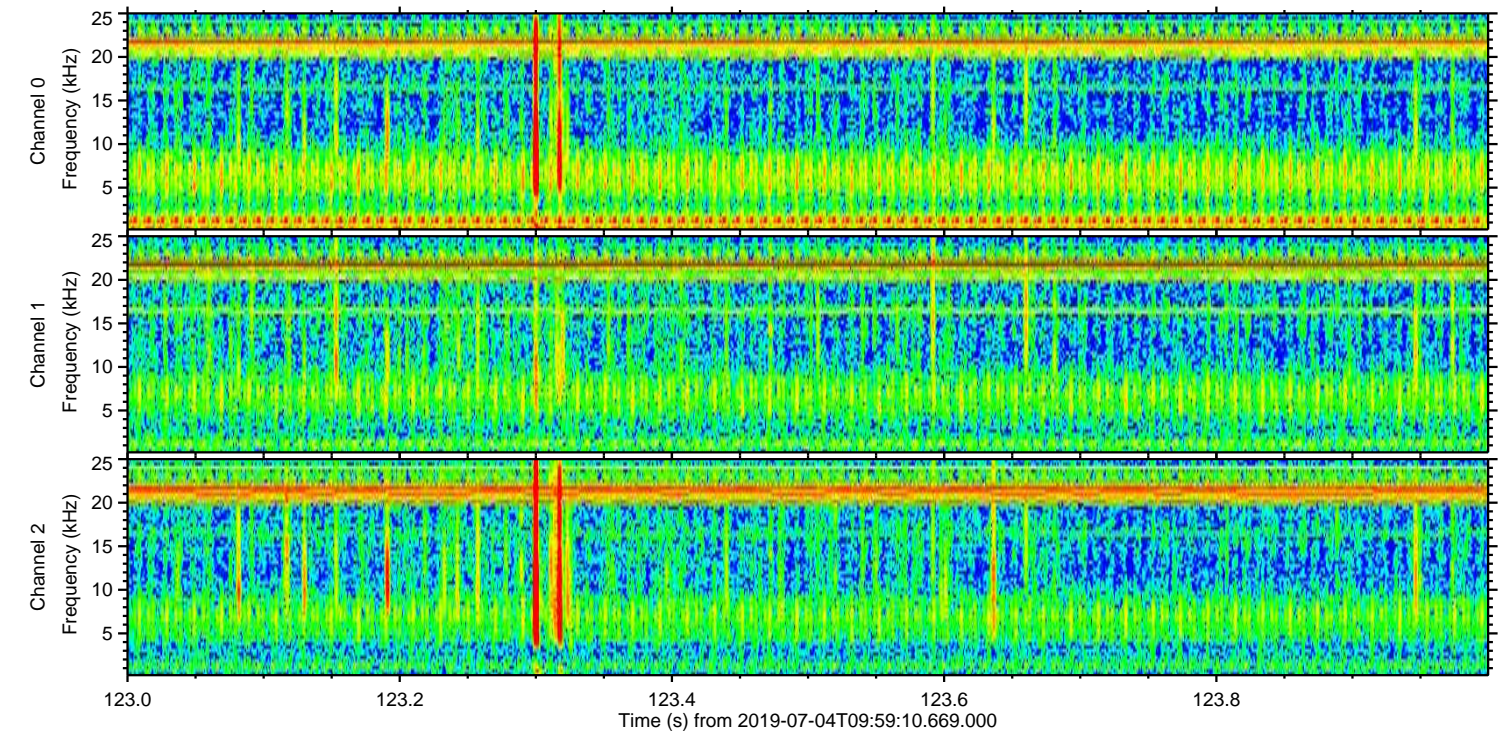
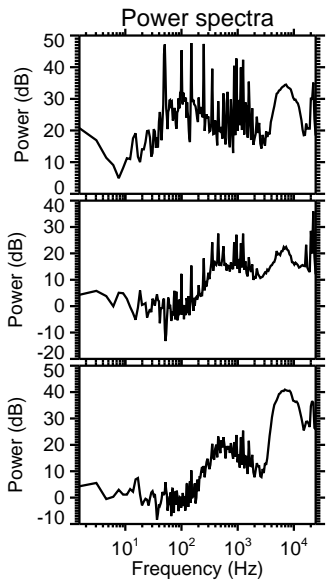
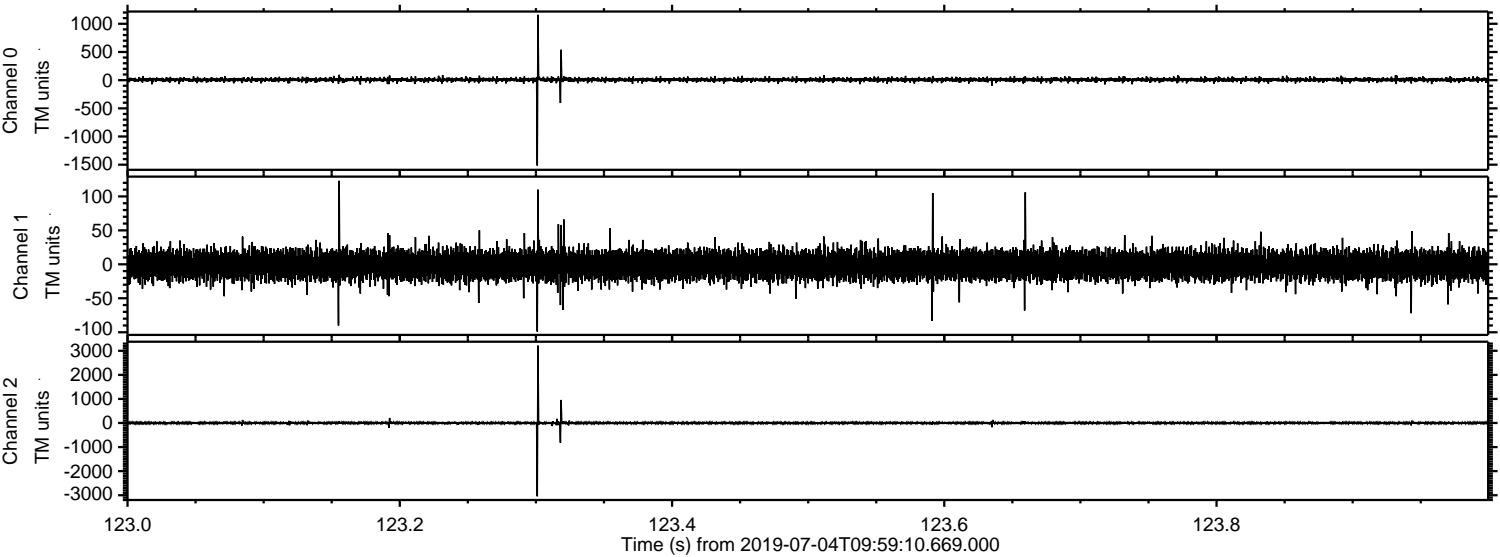


Processed Thu Jul 4 12:07:11 2019 by ELM ver.2012-10-06 from 001__elm20190704_095909__dat00.bin



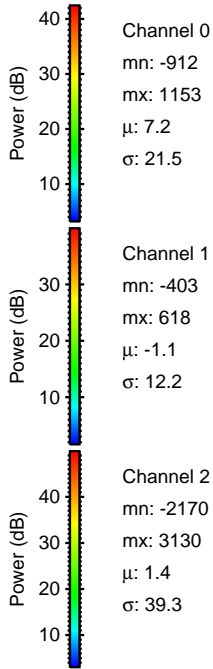
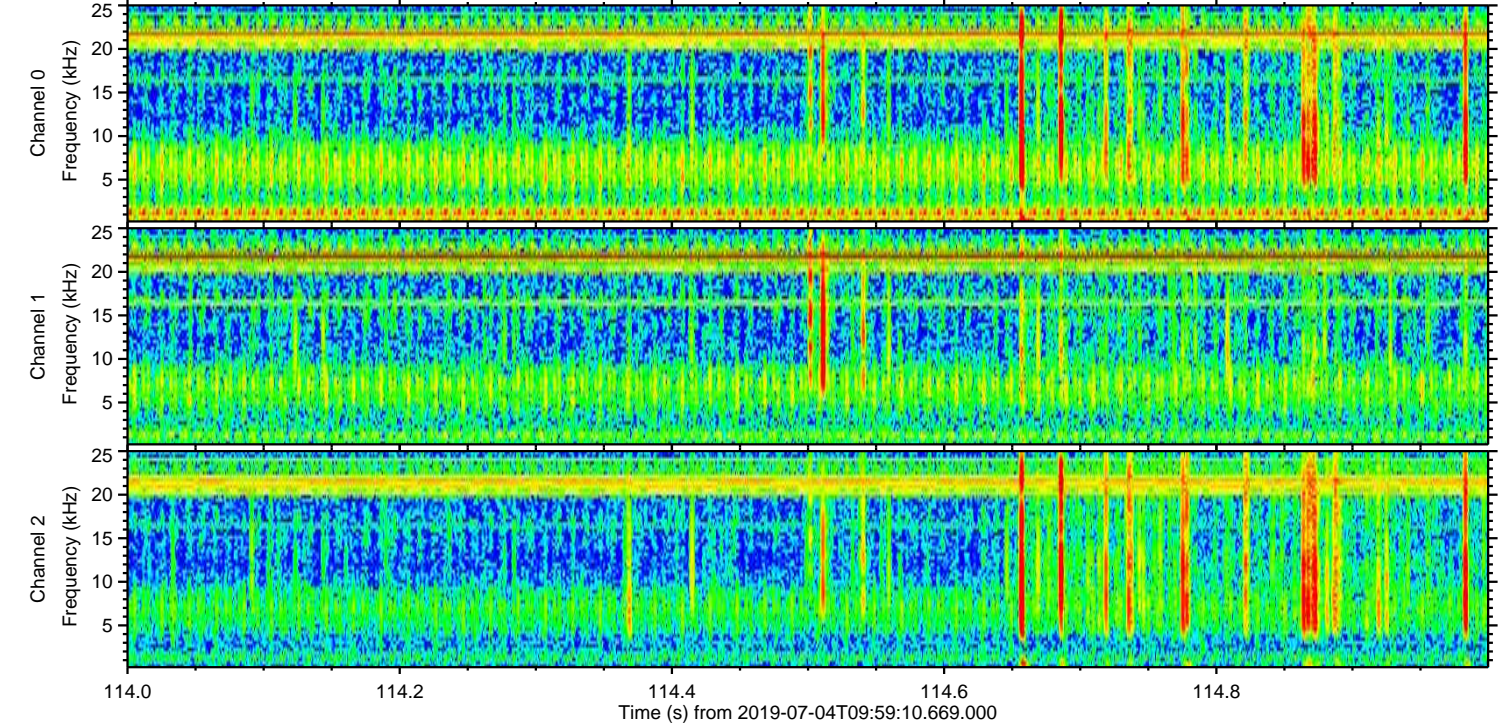
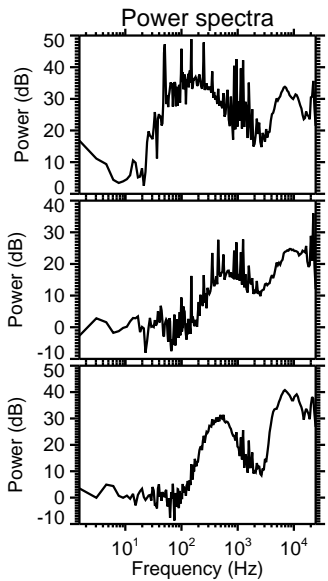
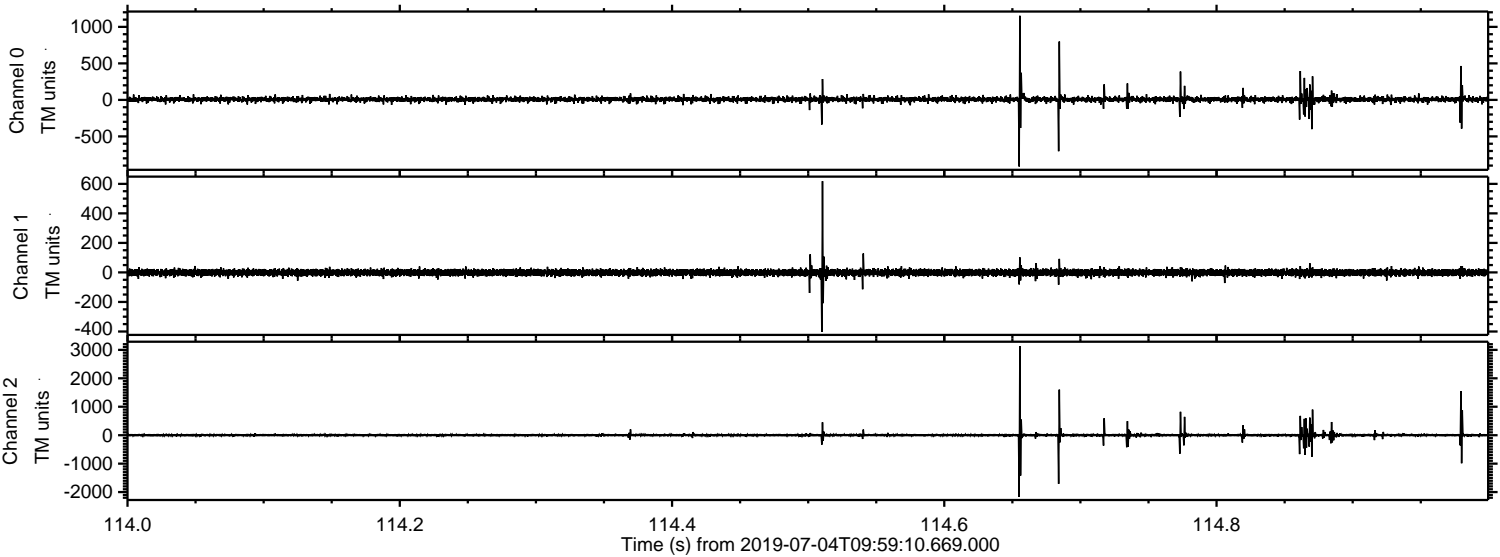
ELMAVAN 3D WAVEFORMS (Measured data sampled at 50 kHz) 51000 packets of 144 samples from 2019-07-04T09:59:10.669.000. Part 124/147

Processed Thu Jul 4 12:07:12 2019 by ELM ver.2012-10-06 from 001__elm20190704_095909__dat00.bin



ELMAVAN 3D WAVEFORMS (Measured data sampled at 50 kHz) 51000 packets of 144 samples from 2019-07-04T09:59:10.669.000. Part 115/147

Processed Thu Jul 4 12:07:12 2019 by ELM ver.2012-10-06 from 001__elm20190704_095909__dat00.bin

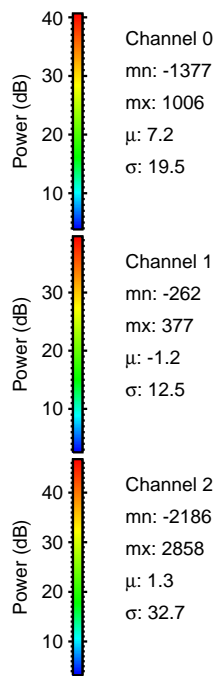
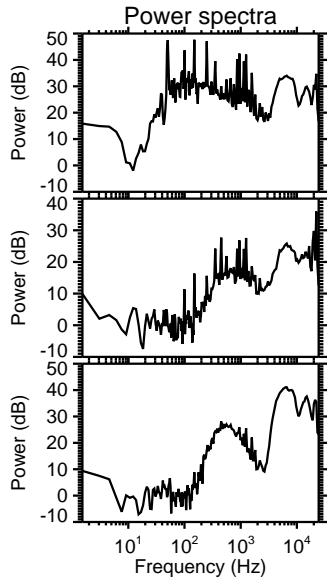
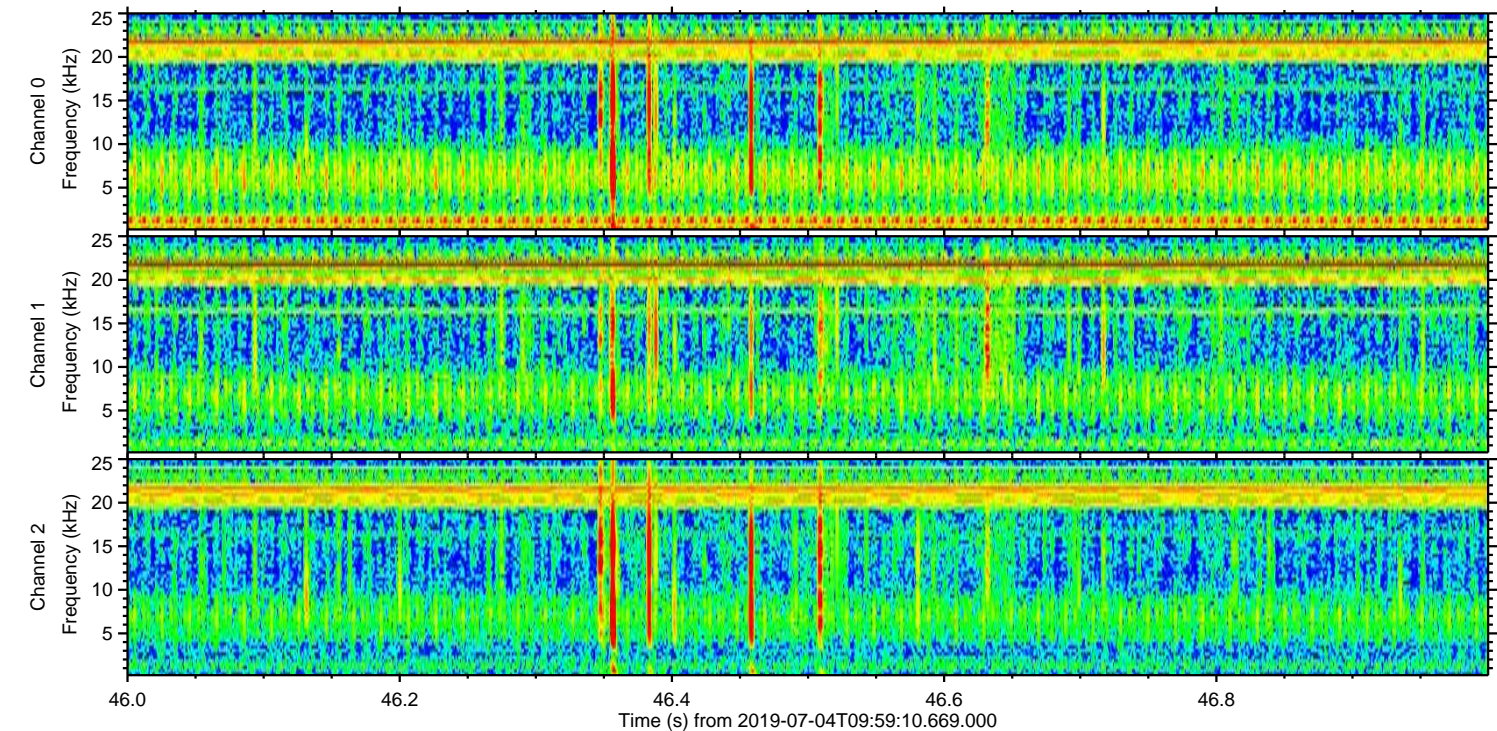
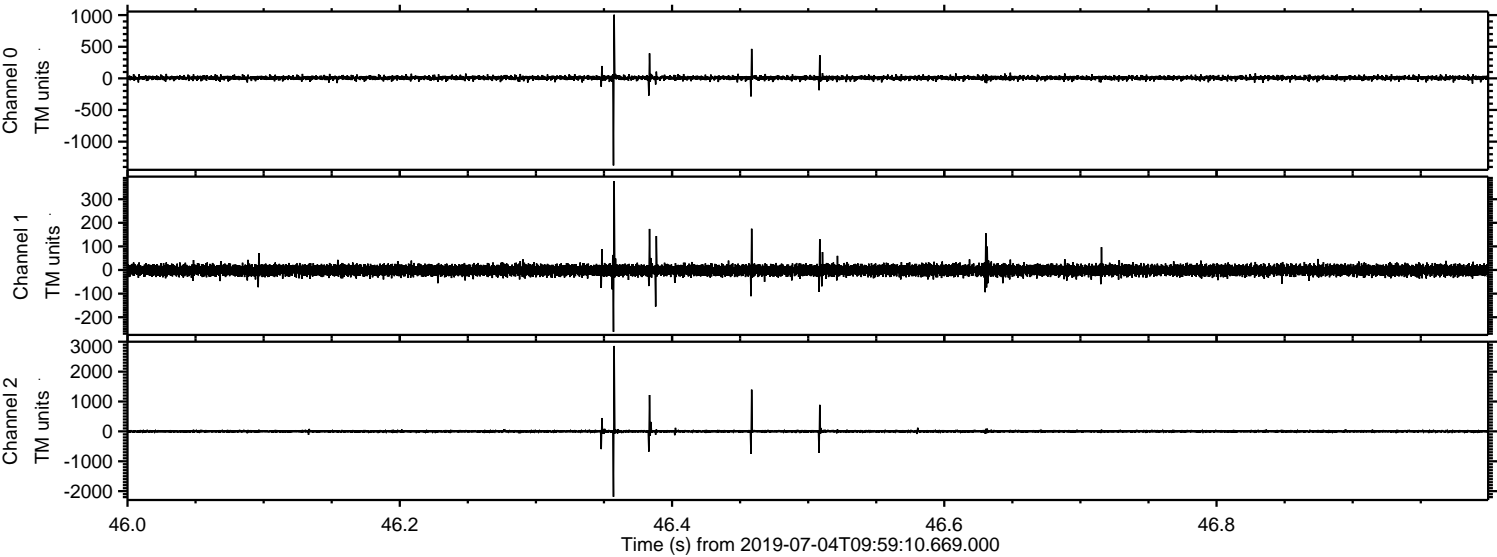


Channel 0
mn: -912
mx: 1153
 μ : 7.2
 σ : 21.5

Channel 1
mn: -403
mx: 618
 μ : -1.1
 σ : 12.2

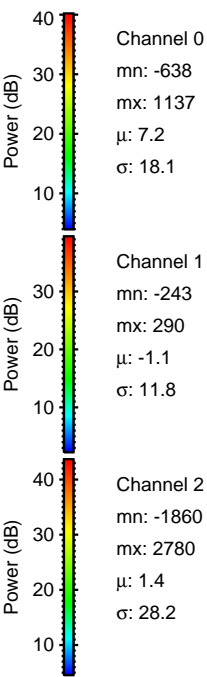
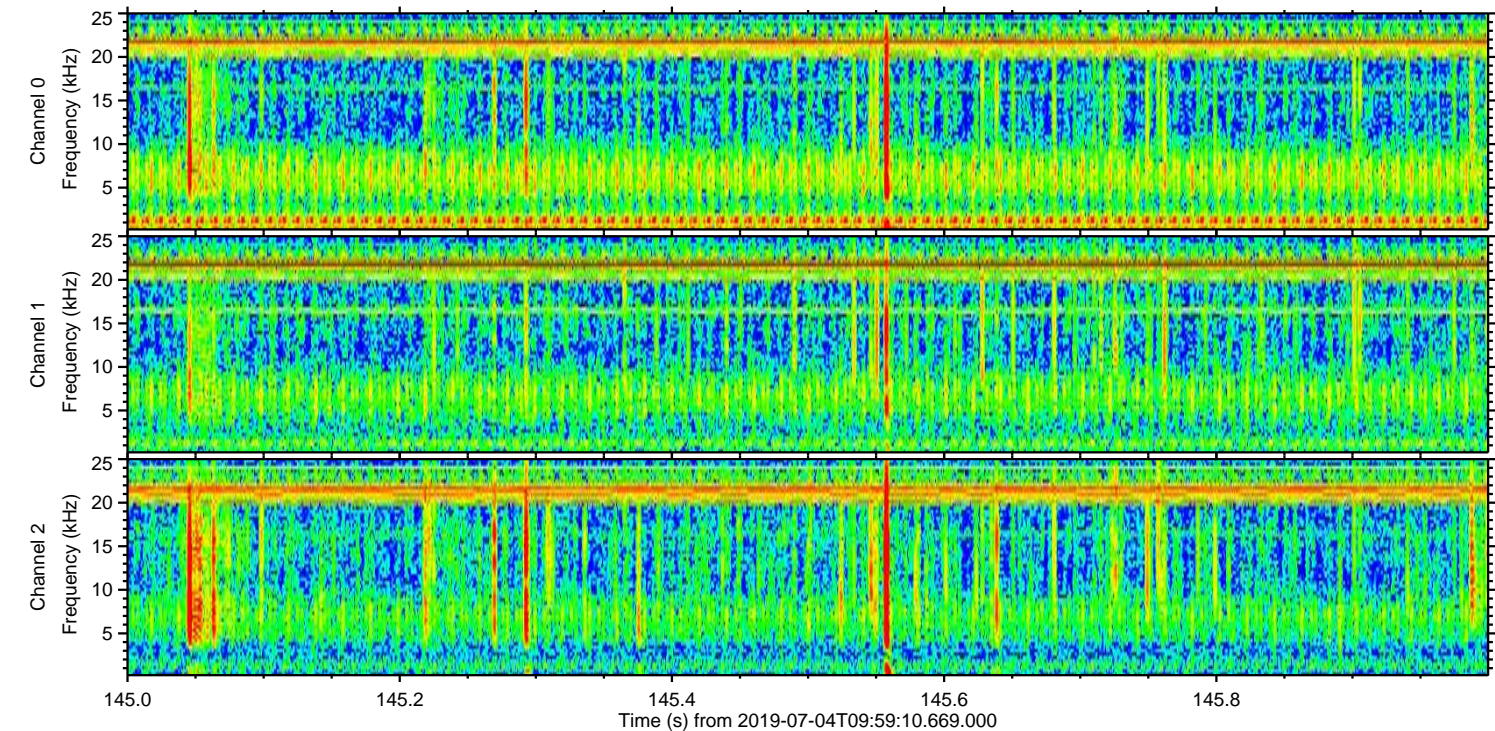
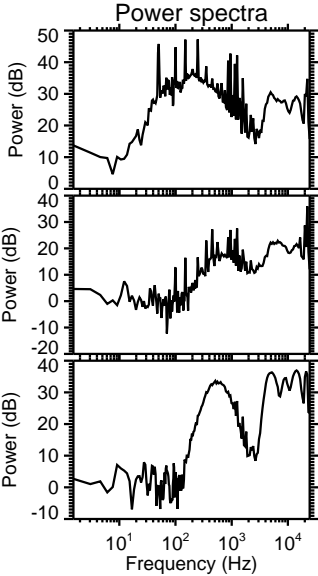
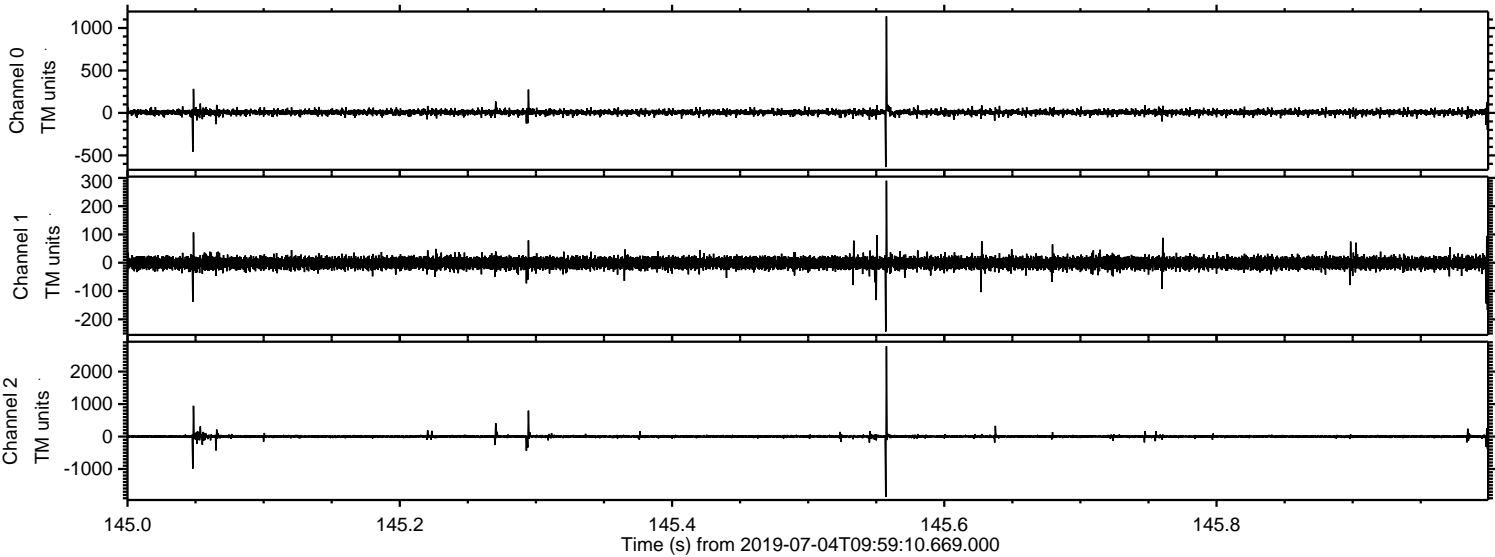
Channel 2
mn: -2170
mx: 3130
 μ : 1.4
 σ : 39.3

Processed Thu Jul 4 12:07:13 2019 by ELM ver.2012-10-06 from 001__elm20190704_095909__dat00.bin

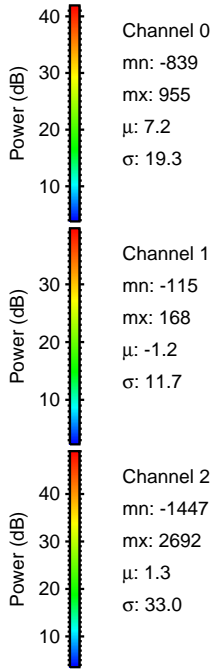
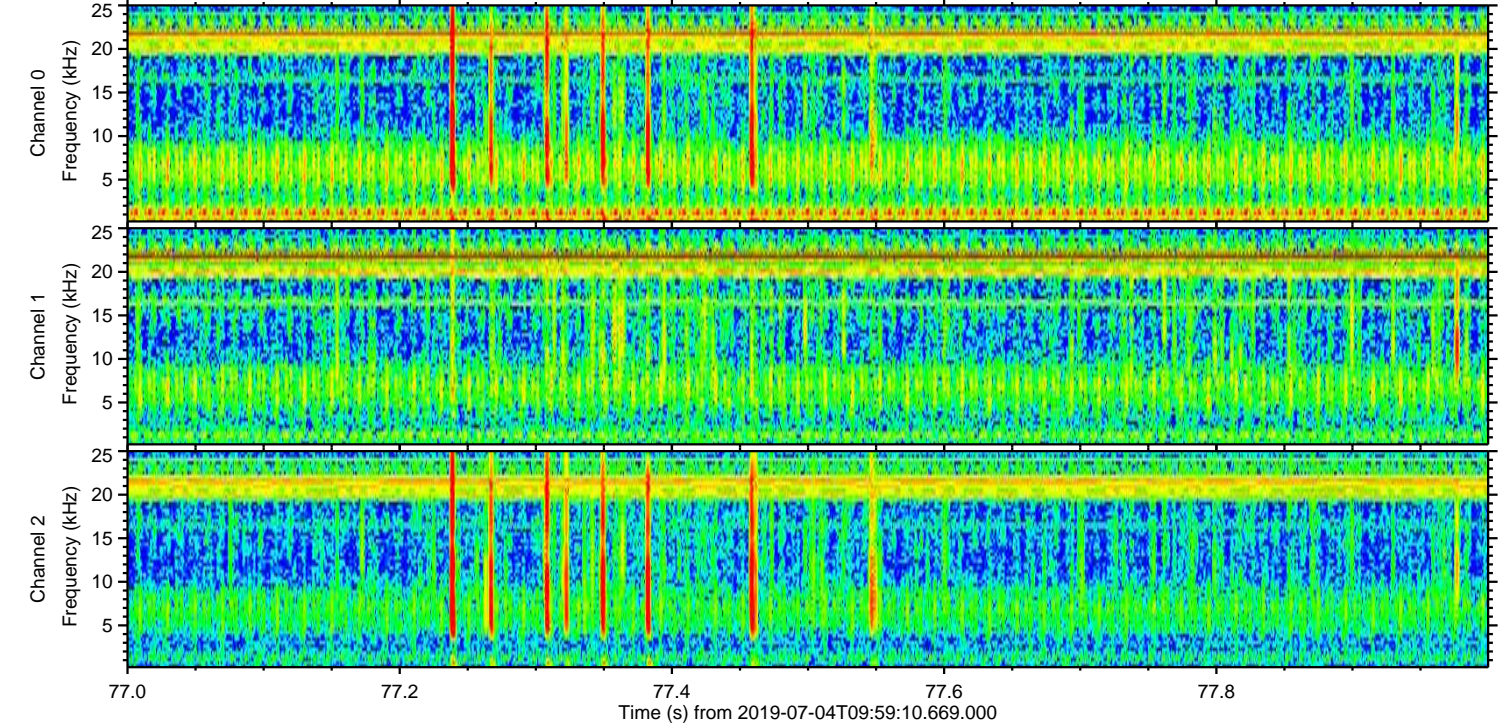
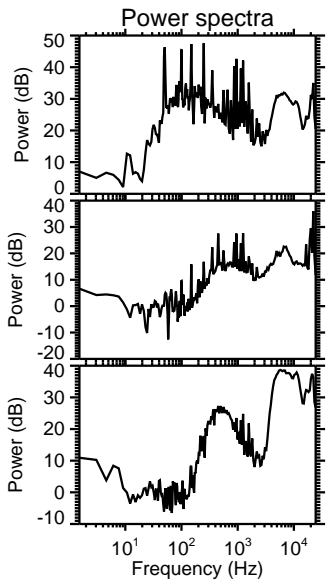
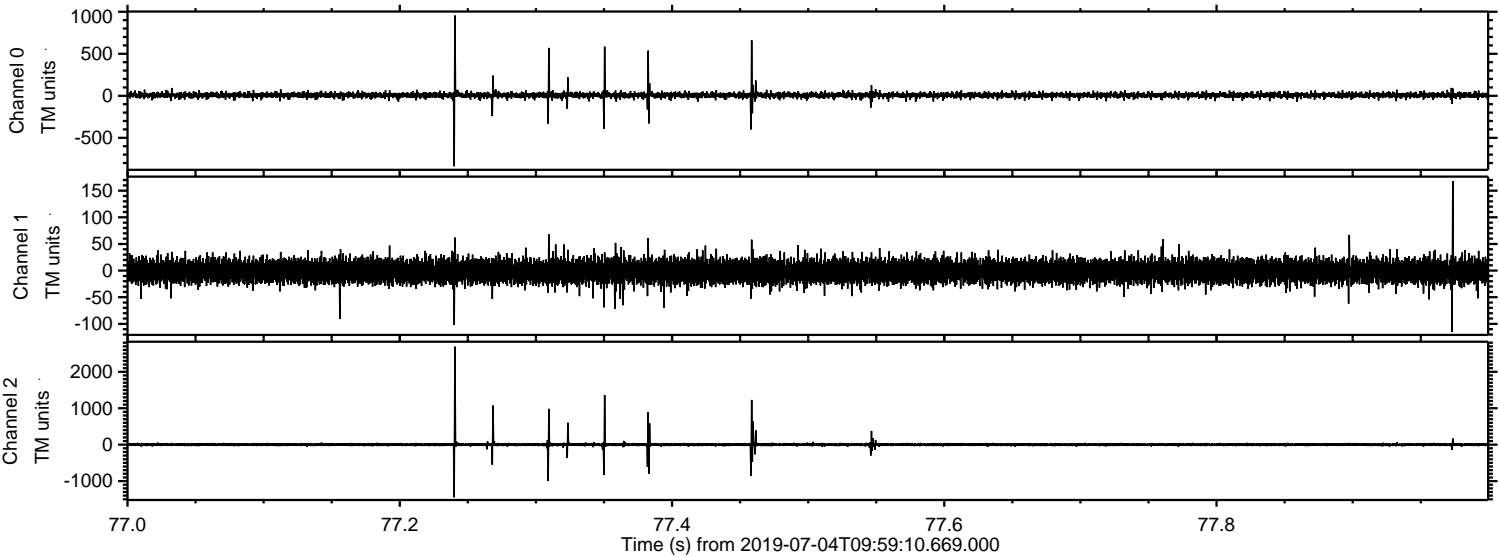


ELMAVAN 3D WAVEFORMS (Measured data sampled at 50 kHz) 51000 packets of 144 samples from 2019-07-04T09:59:10.669.000. Part 146/147

Processed Thu Jul 4 12:07:14 2019 by ELM ver.2012-10-06 from 001__elm20190704_095909__dat00.bin



Processed Thu Jul 4 12:07:15 2019 by ELM ver.2012-10-06 from 001__elm20190704_095909__dat00.bin



Power spectra

Channel 0
mn: -839
mx: 955
 μ : 7.2
 σ : 19.3

Channel 1
mn: -115
mx: 168
 μ : -1.2
 σ : 11.7

Channel 2
mn: -1447
mx: 2692
 μ : 1.3
 σ : 33.0

Processed Thu Jul 4 12:07:16 2019 by ELM ver.2012-10-06 from 001__elm20190704_095909__dat00.bin

