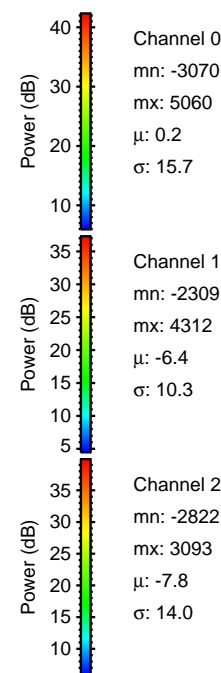
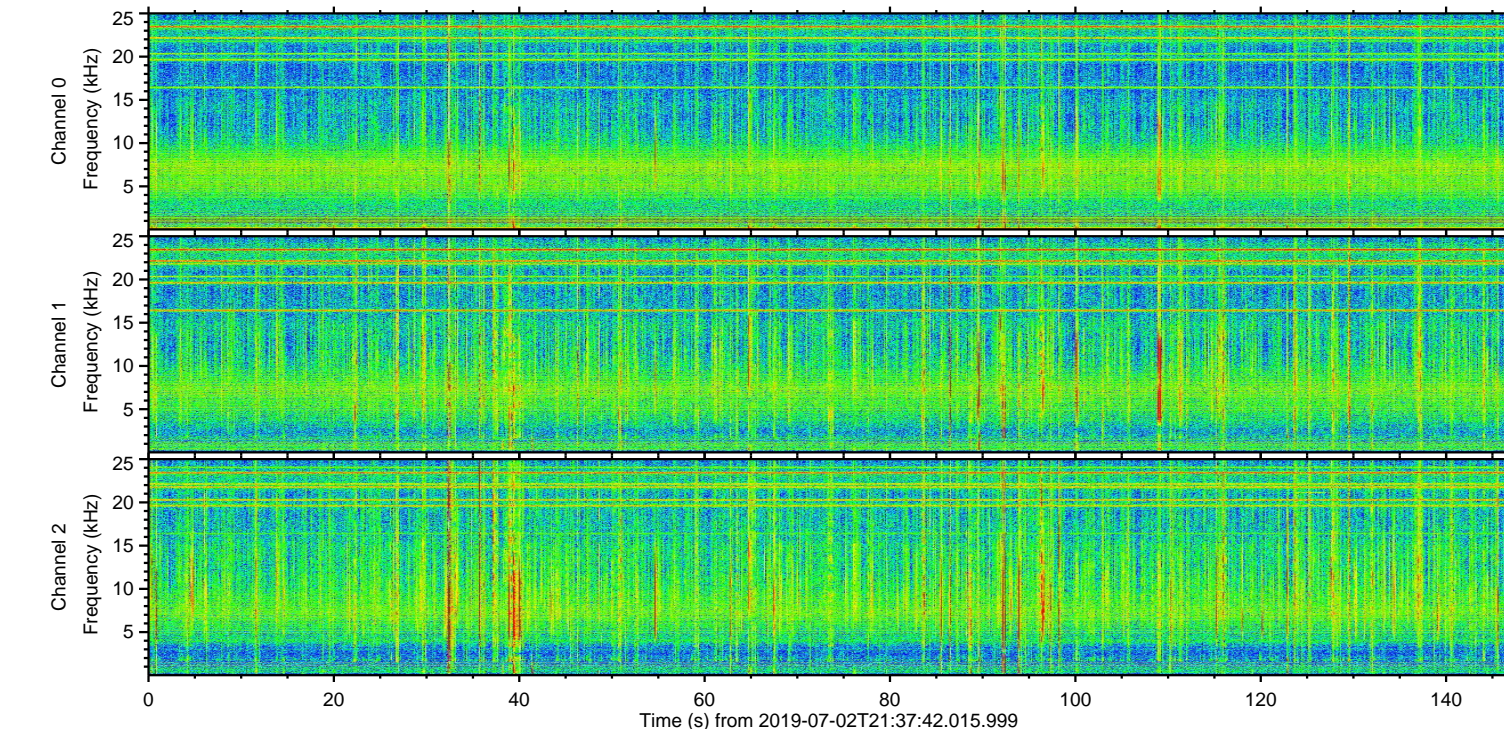
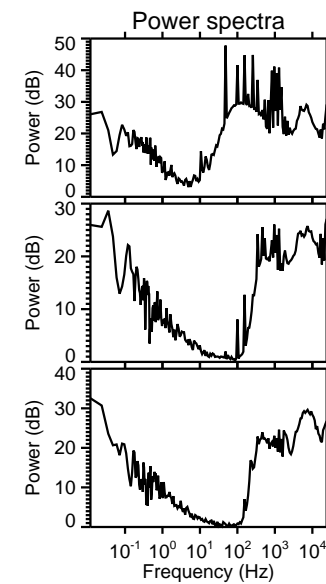
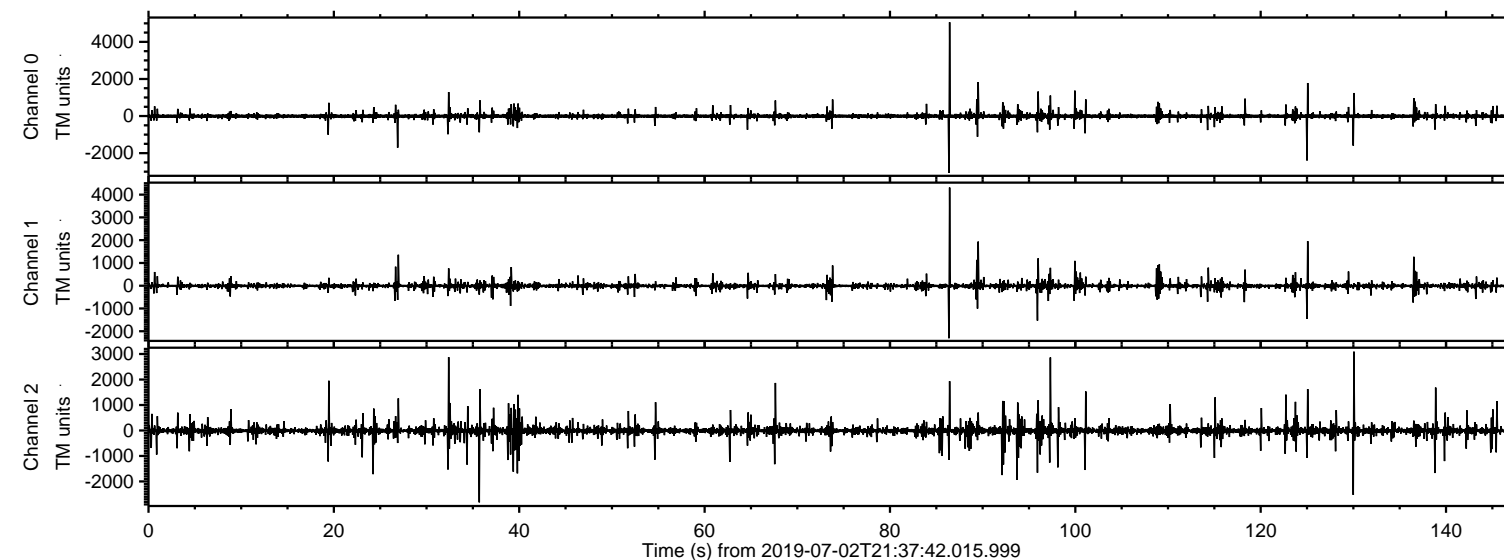
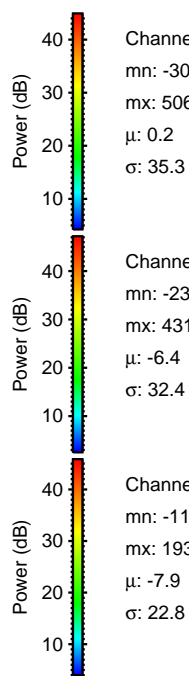
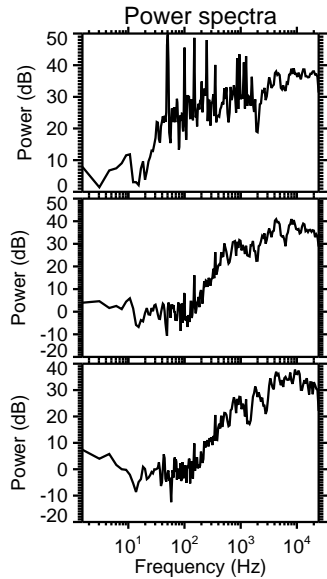
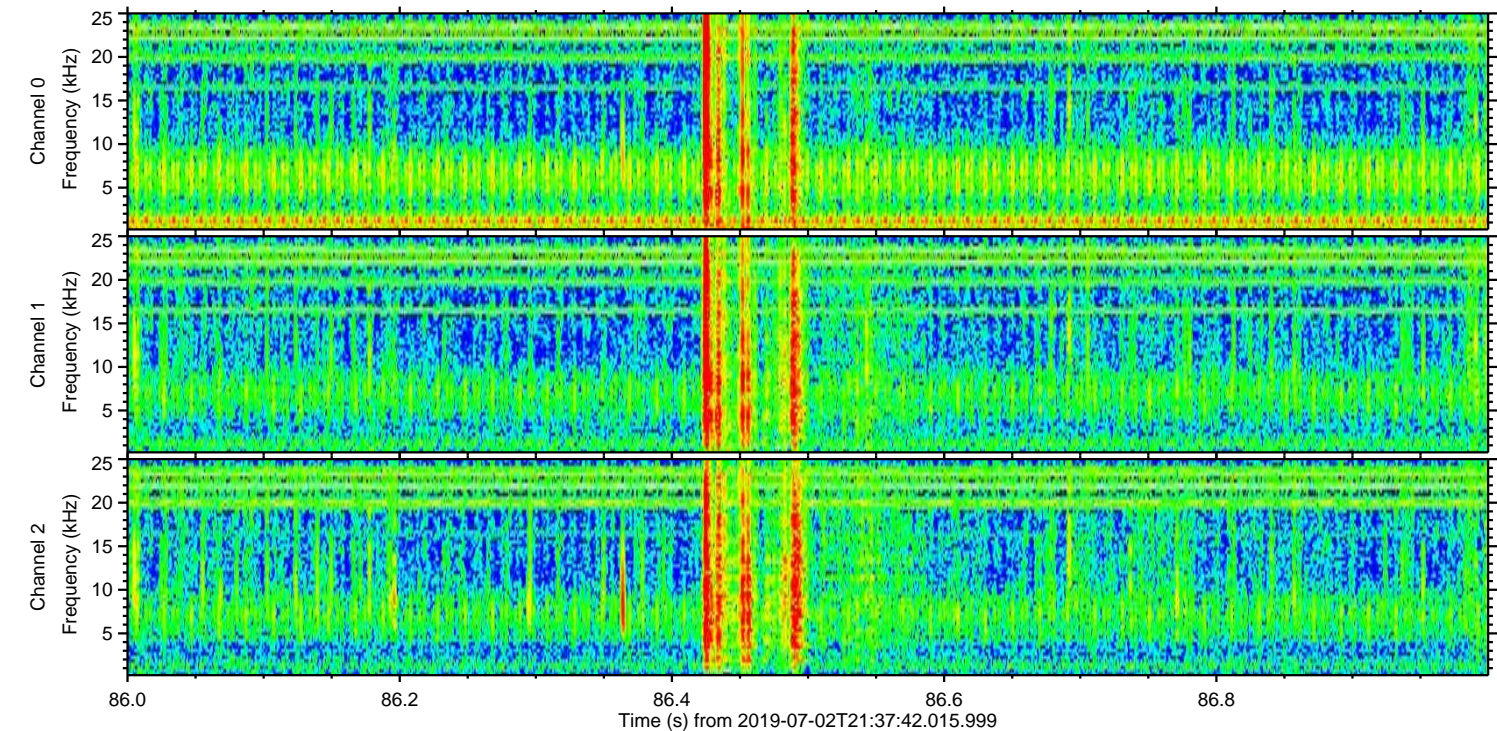
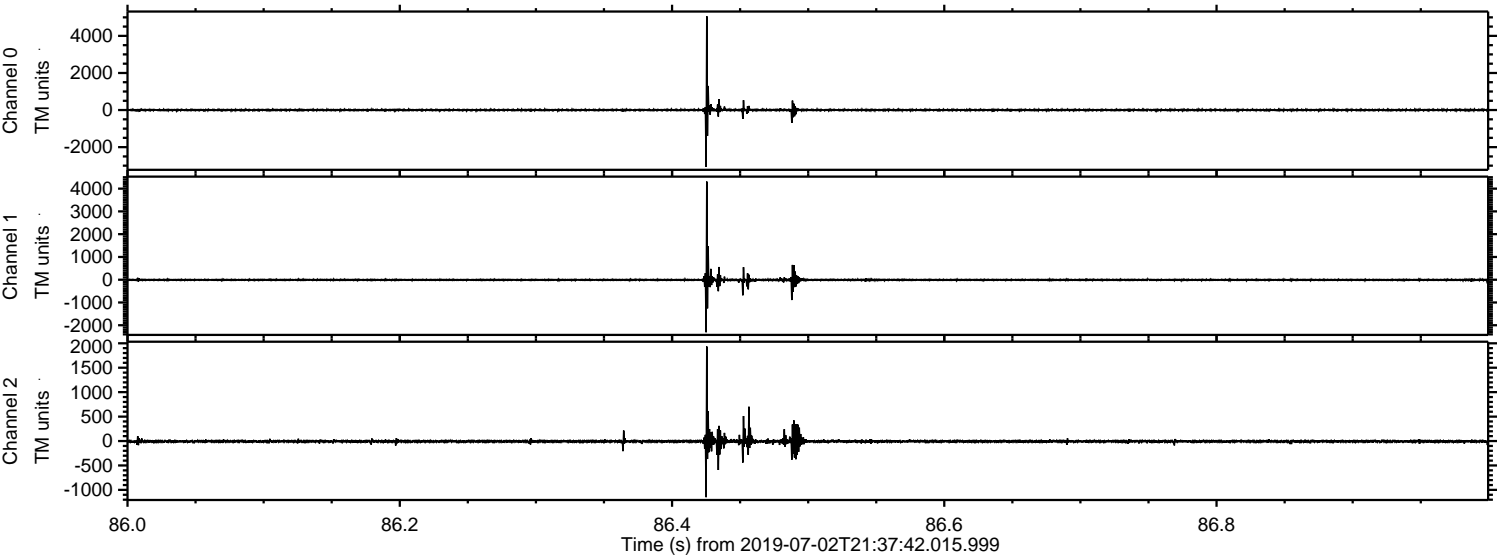


ELMAVAN 3D WAVEFORMS (Measured data sampled at 50 kHz) 51000 packets of 144 samples from 2019-07-02T21:37:42.015.999.

Processed Tue Jul 2 23:45:23 2019 by ELM ver.2012-10-06 from 001__elm20190702_213741__dat00.bin



Processed Tue Jul 2 23:45:33 2019 by ELM ver.2012-10-06 from 001__elm20190702_213741__dat00.bin



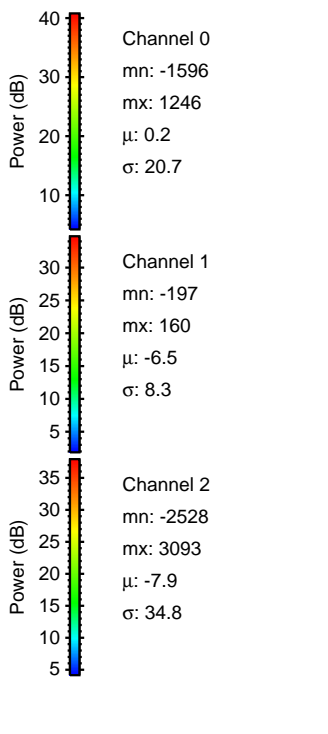
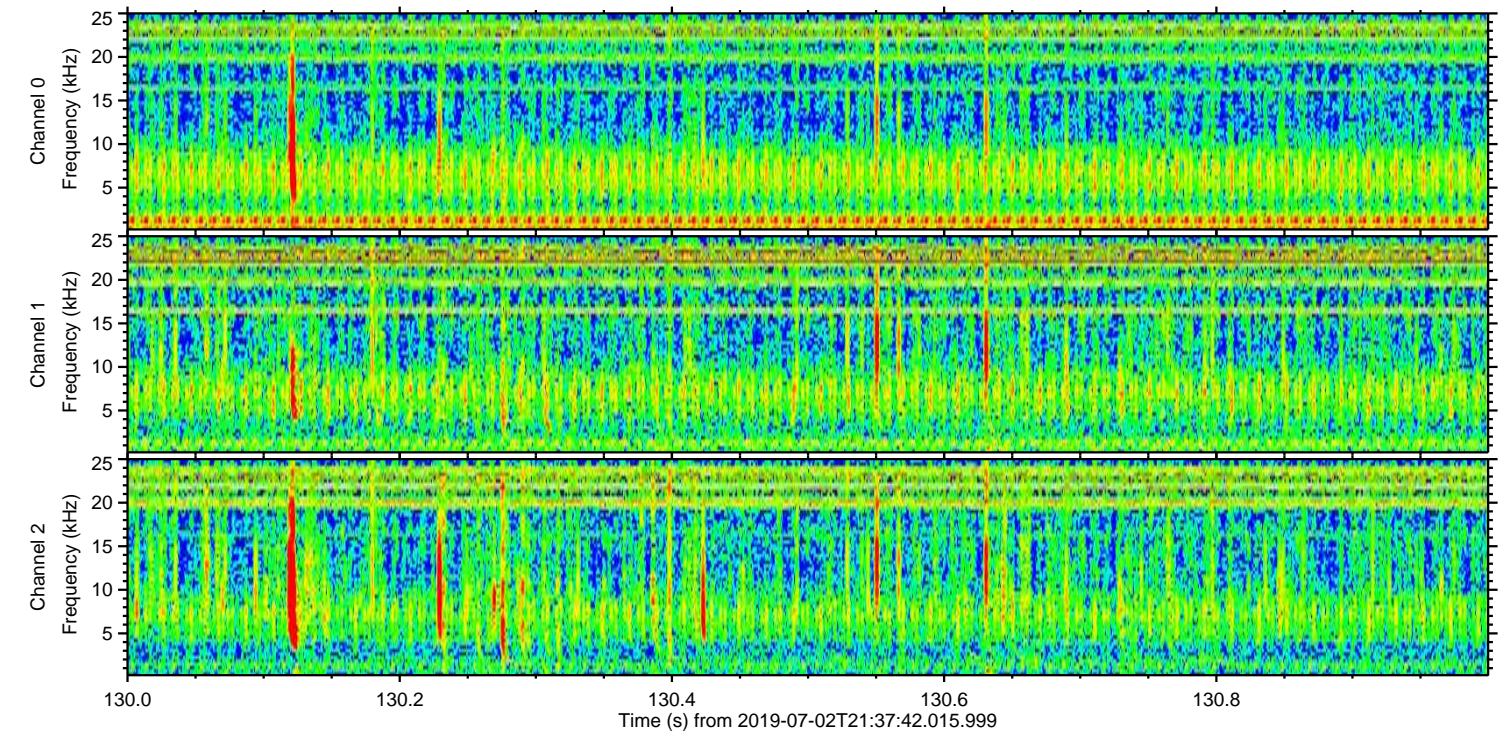
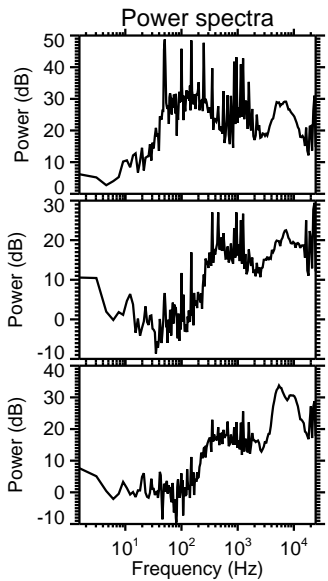
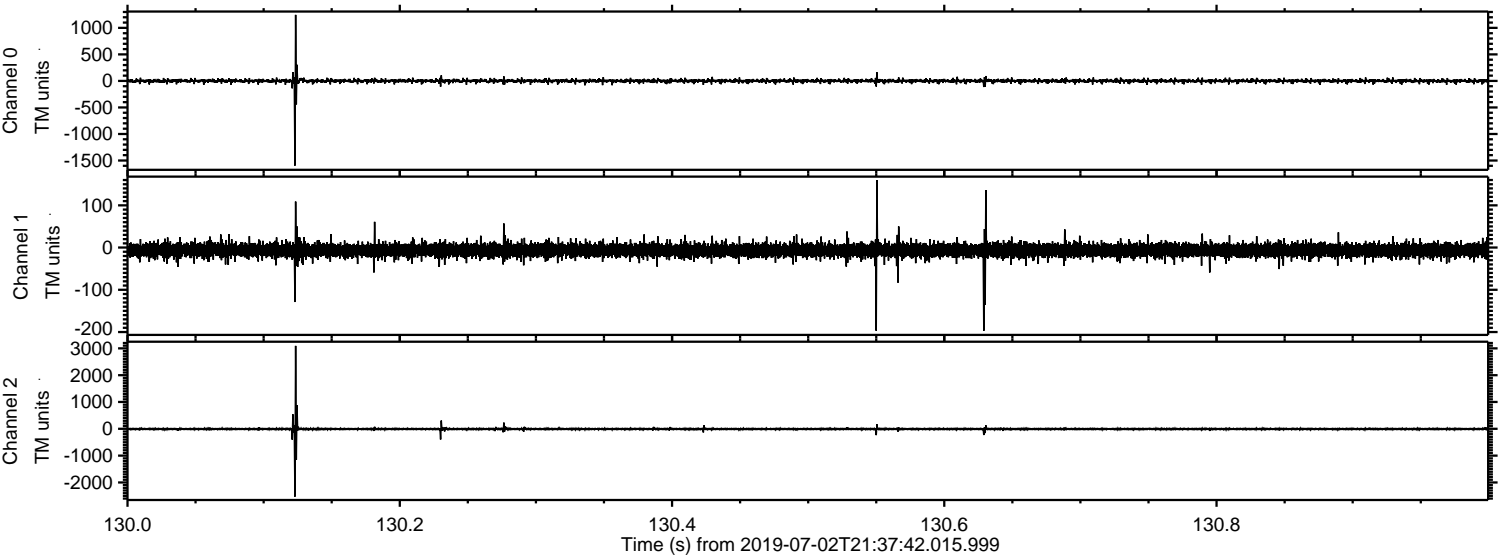
Channel 0
mn: -3070
mx: 5060
 μ : 0.2
 σ : 35.3

Channel 1
mn: -2309
mx: 4312
 μ : -6.4
 σ : 32.4

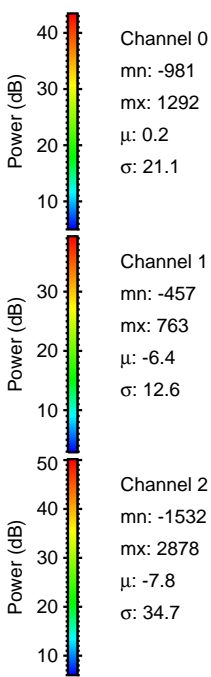
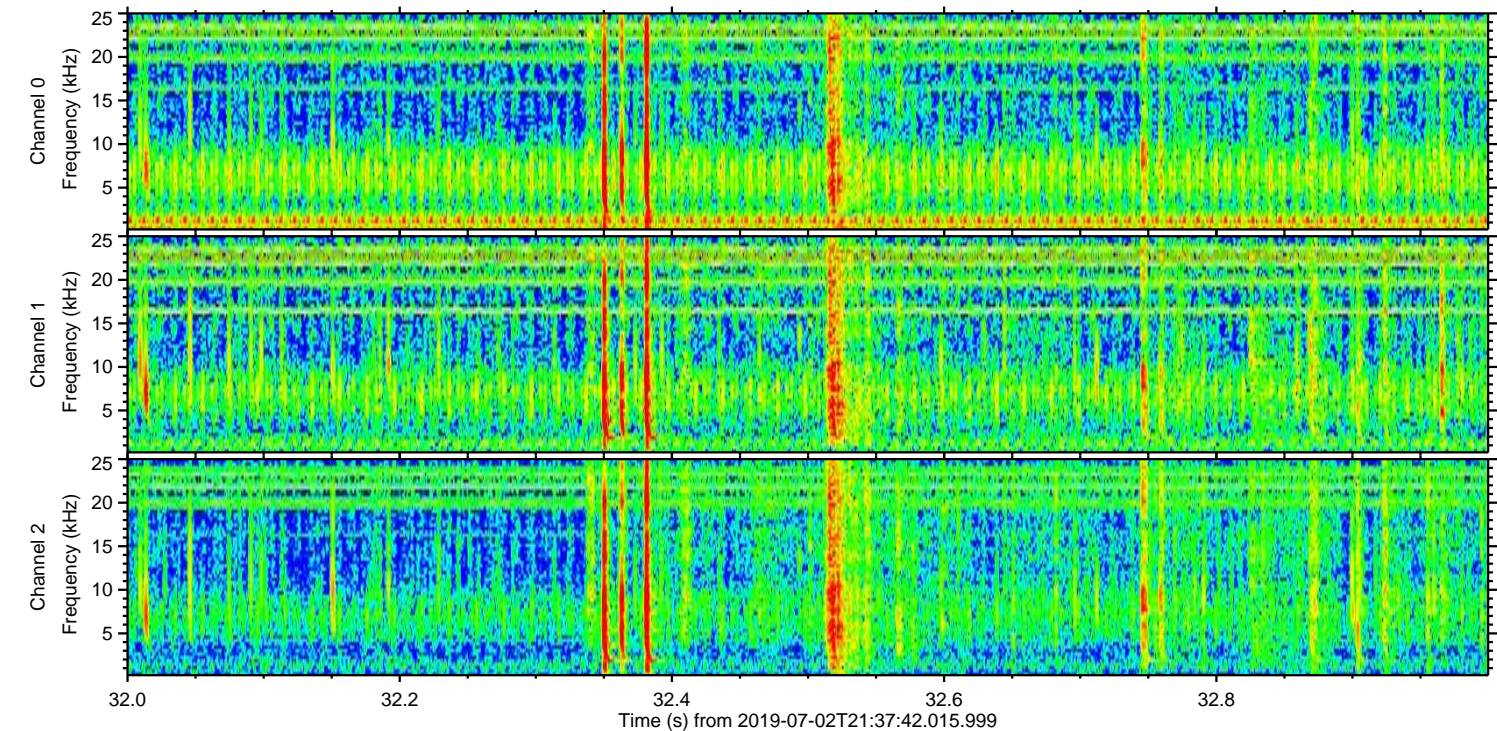
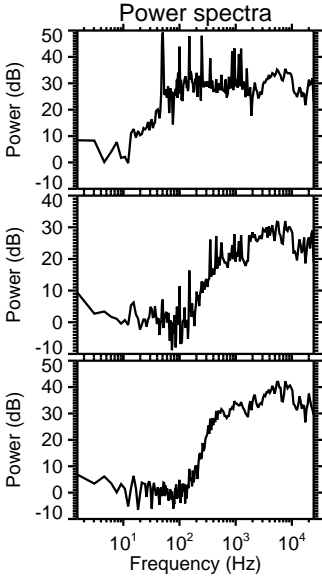
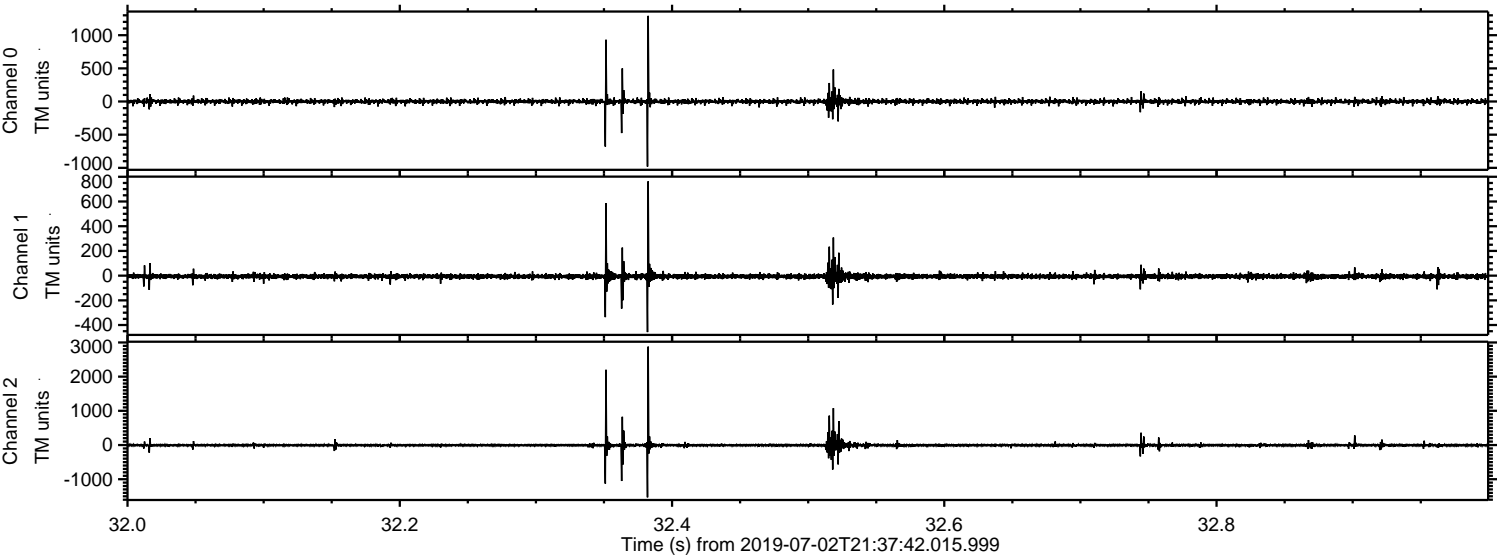
Channel 2
mn: -1149
mx: 1935
 μ : -7.9
 σ : 22.8

ELMAVAN 3D WAVEFORMS (Measured data sampled at 50 kHz) 51000 packets of 144 samples from 2019-07-02T21:37:42.015.999. Part 131/147

Processed Tue Jul 2 23:45:33 2019 by ELM ver.2012-10-06 from 001__elm20190702_213741__dat00.bin



Processed Tue Jul 2 23:45:34 2019 by ELM ver.2012-10-06 from 001__elm20190702_213741__dat00.bin

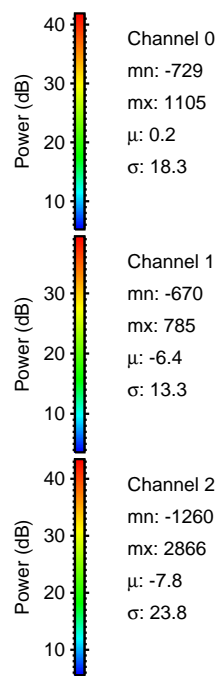
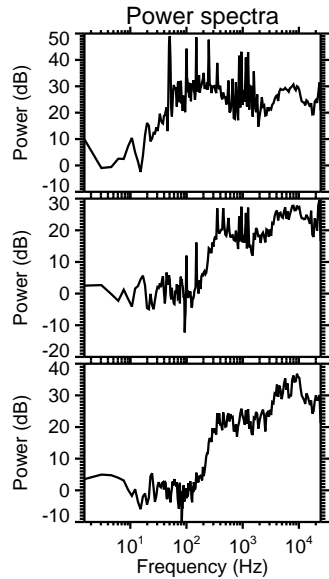
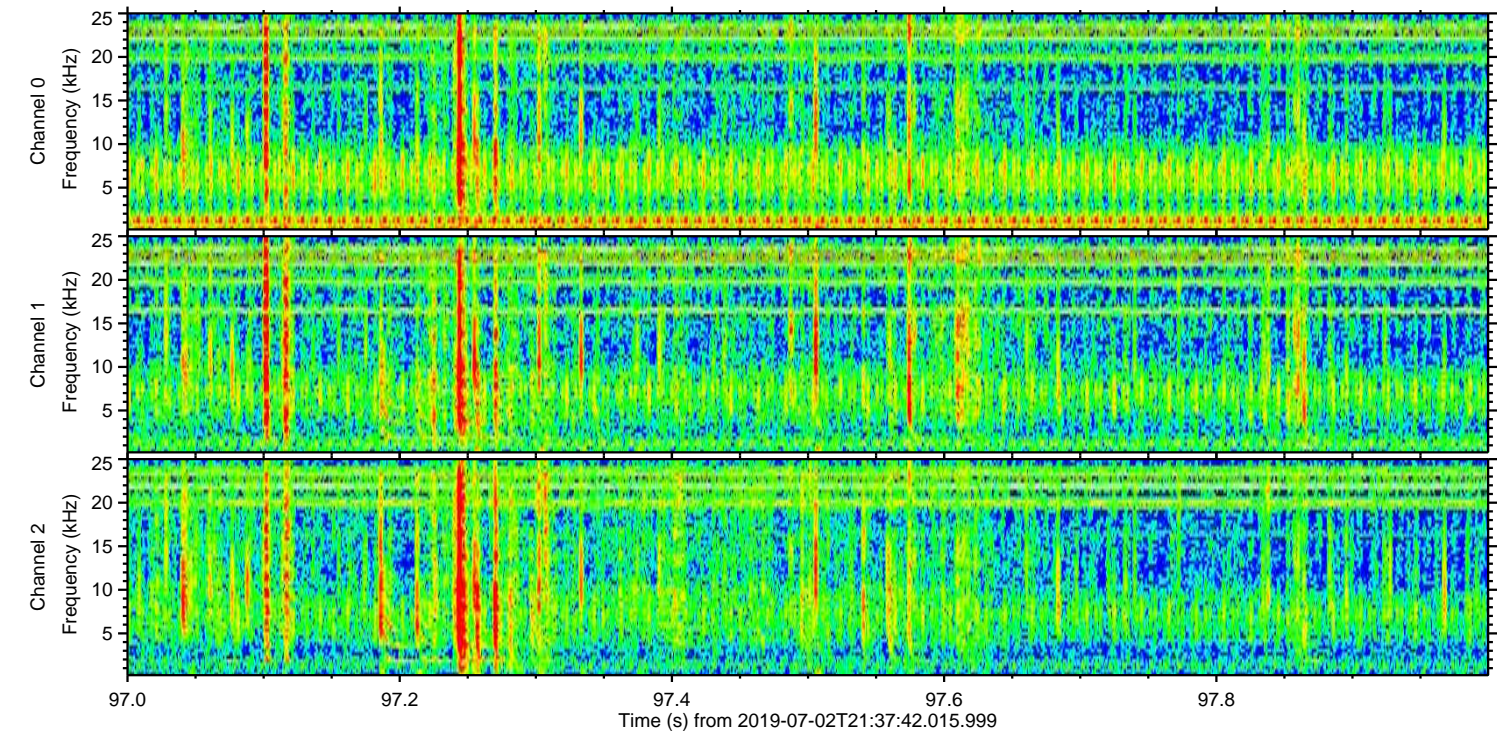
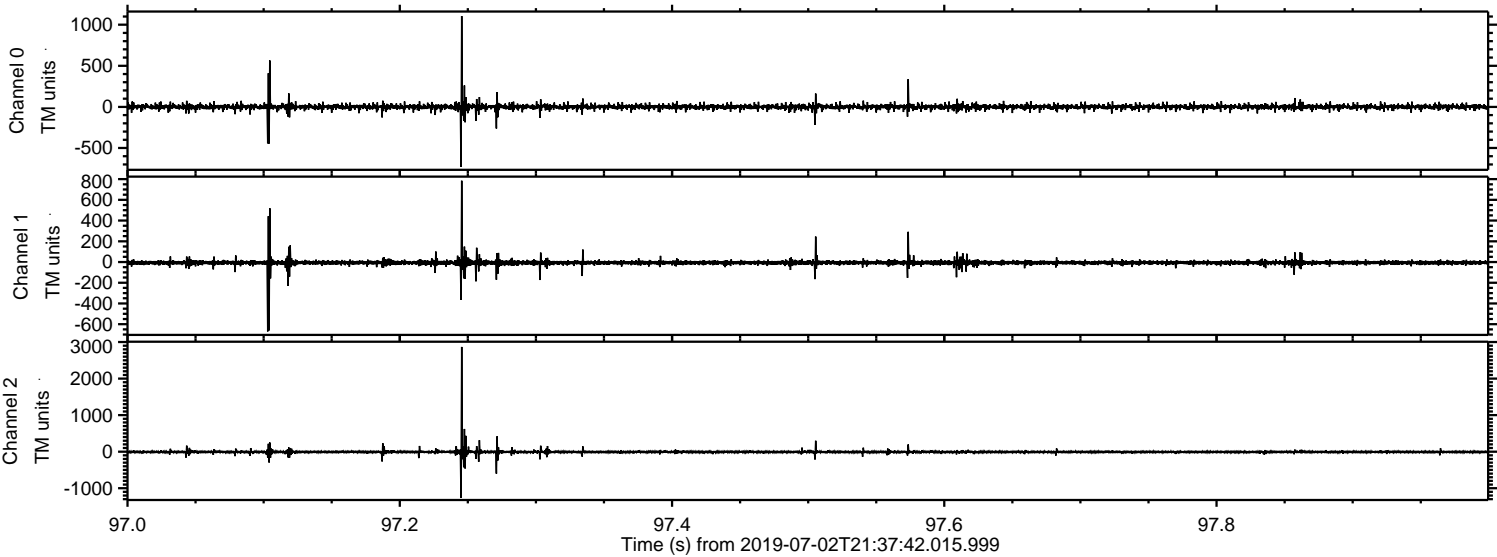


Channel 0
mn: -981
mx: 1292
 μ : 0.2
 σ : 21.1

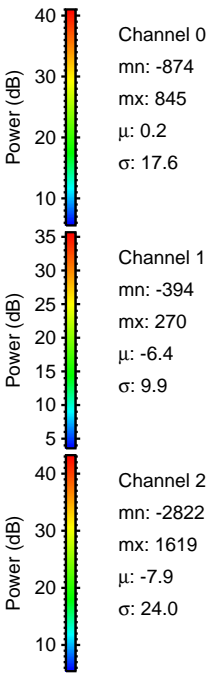
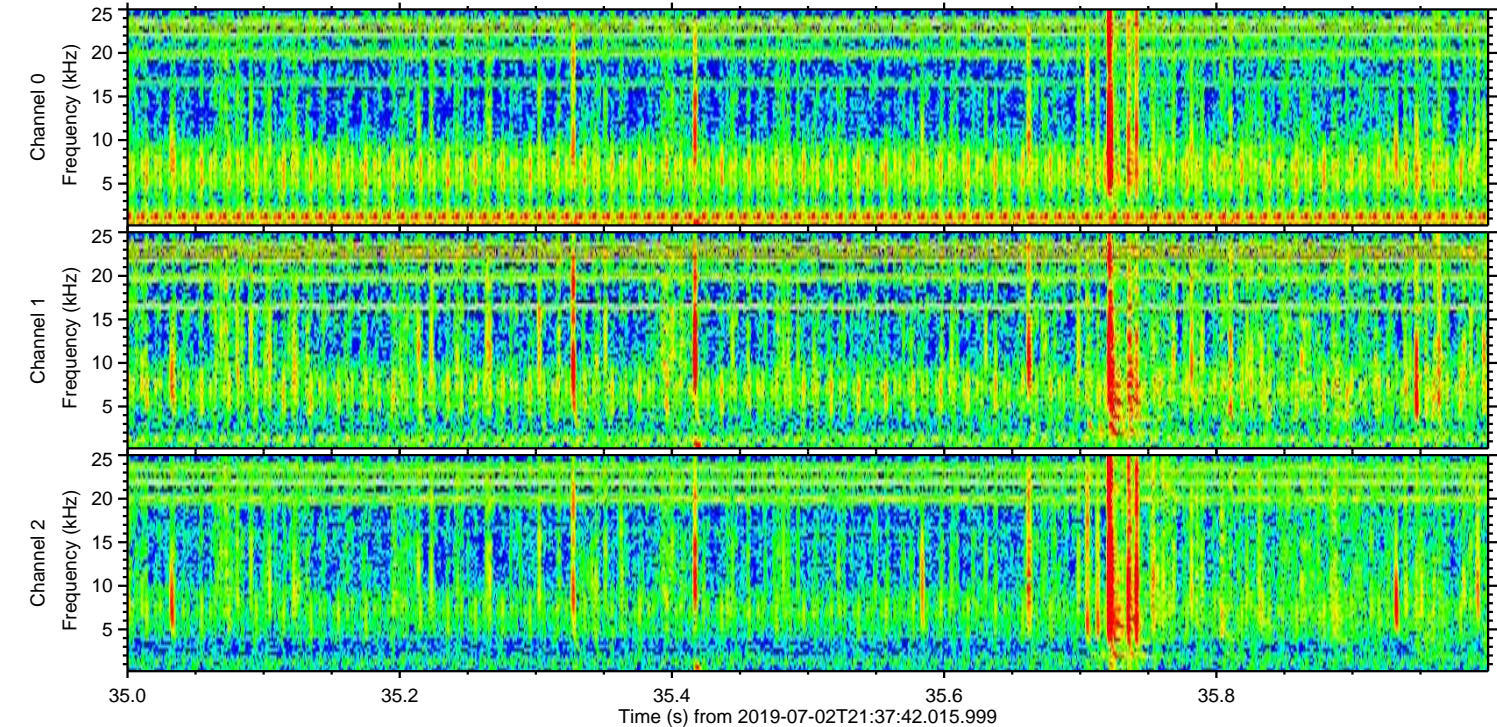
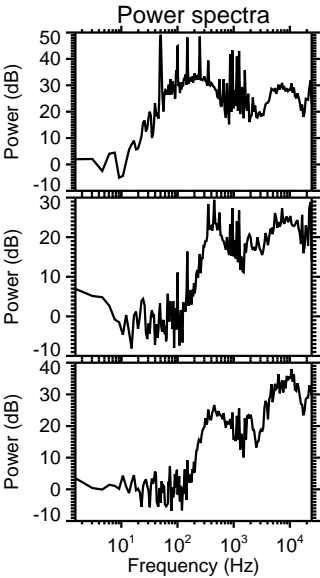
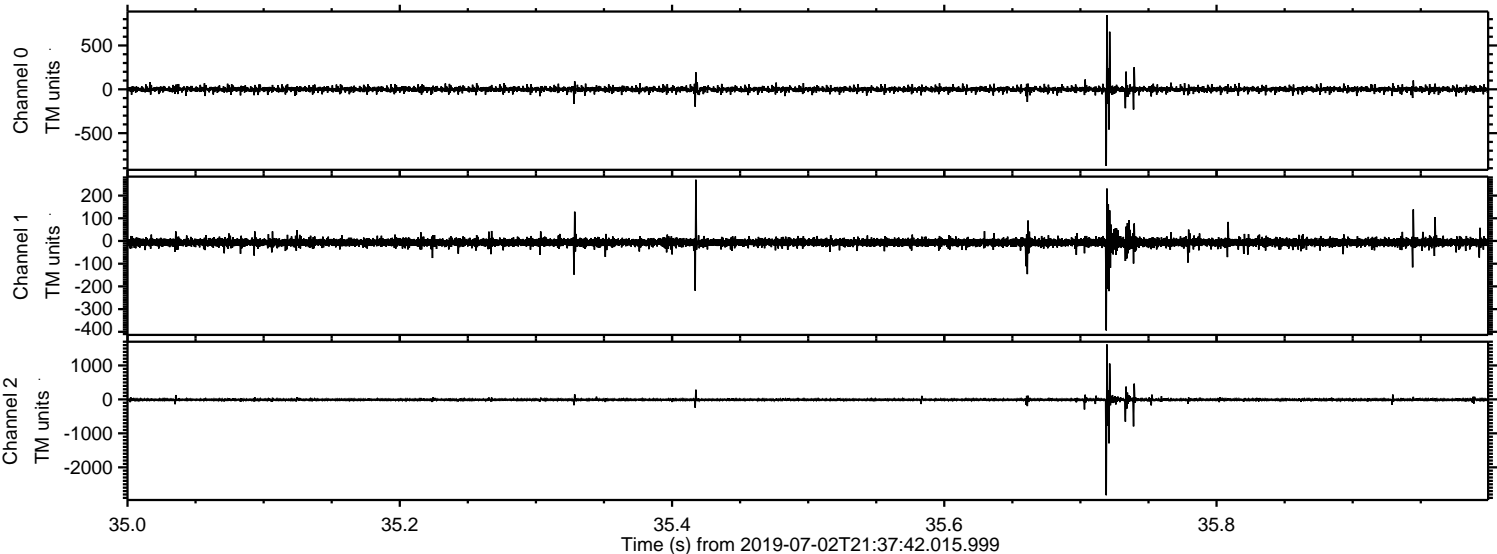
Channel 1
mn: -457
mx: 763
 μ : -6.4
 σ : 12.6

Channel 2
mn: -1532
mx: 2878
 μ : -7.8
 σ : 34.7

Processed Tue Jul 2 23:45:35 2019 by ELM ver.2012-10-06 from 001__elm20190702_213741__dat00.bin

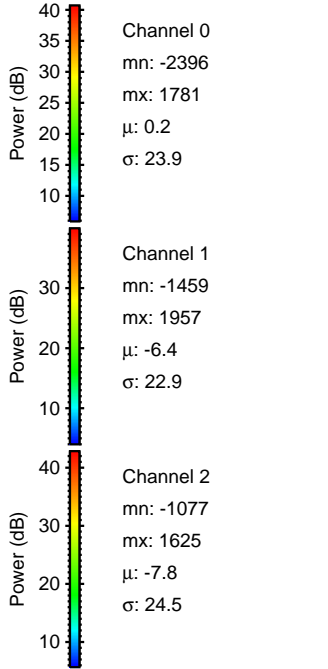
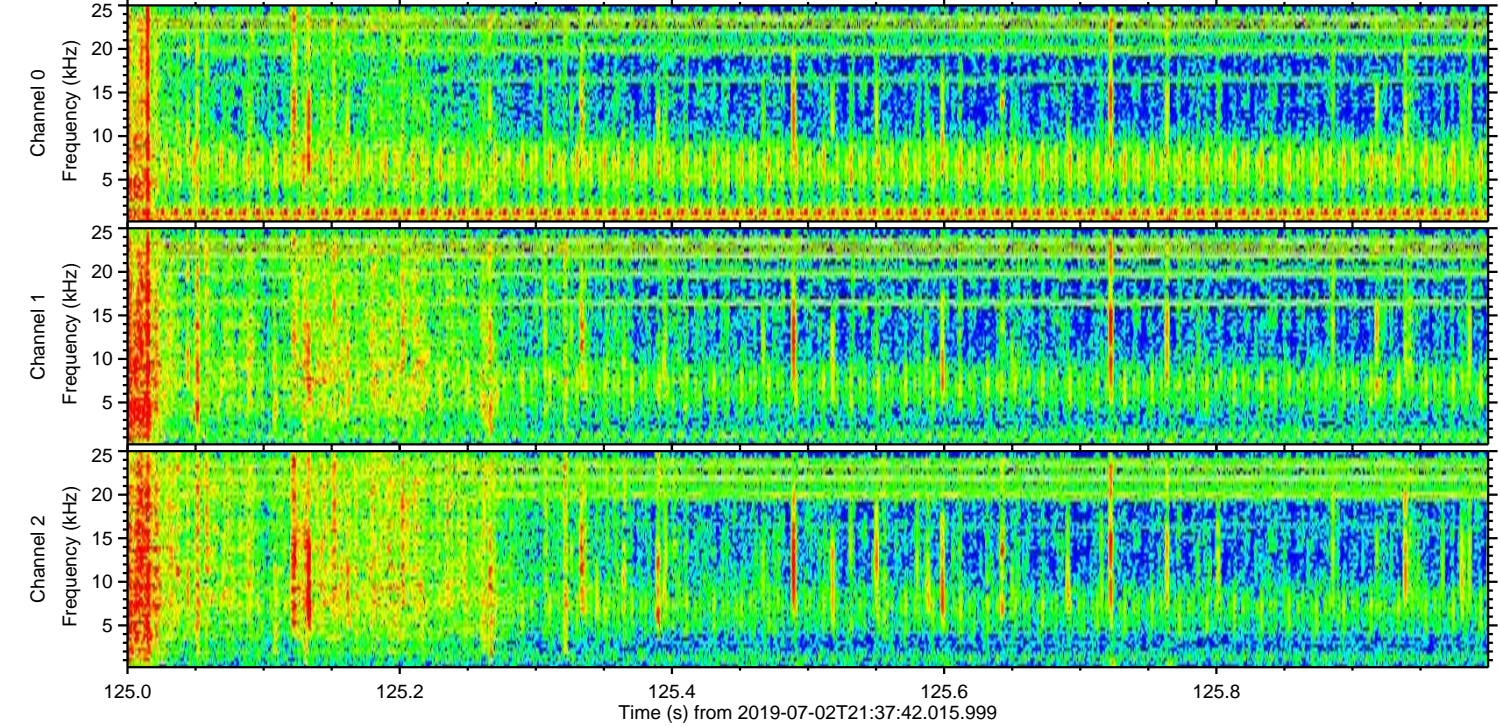
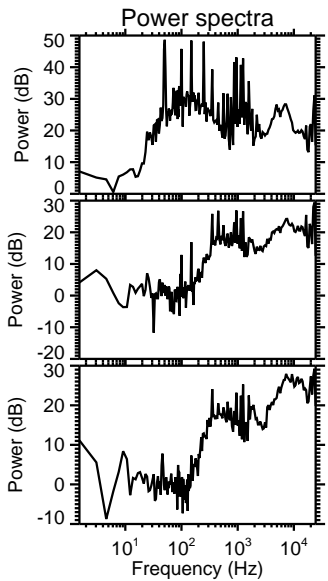
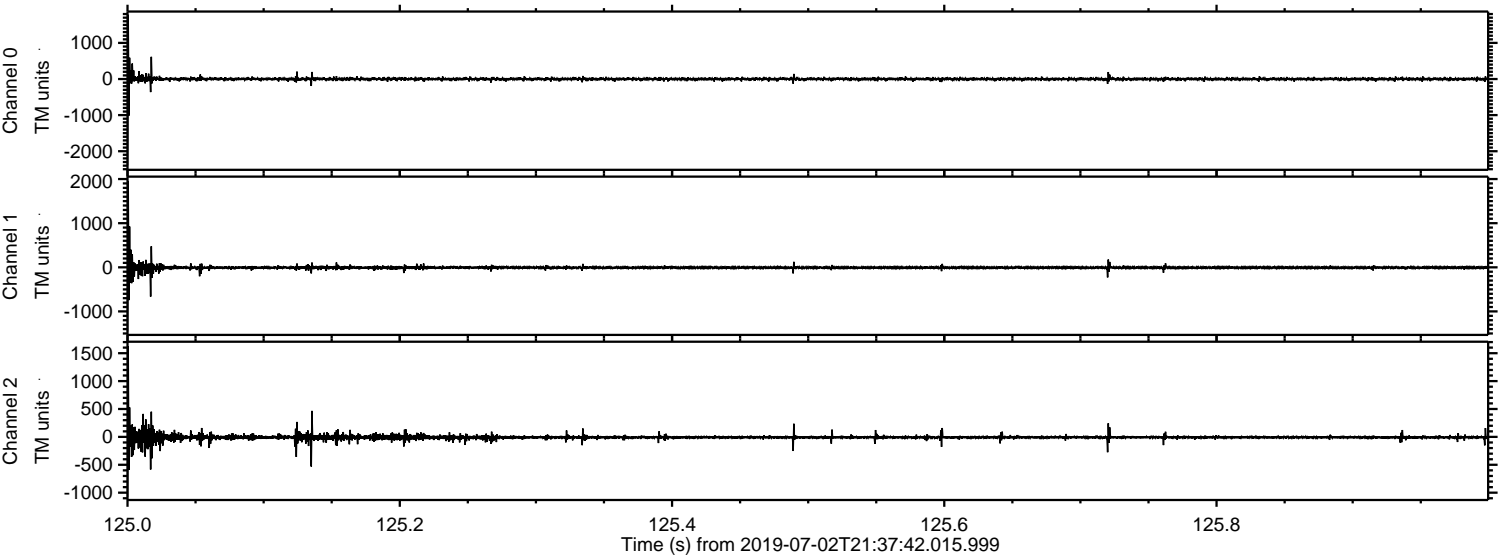


Processed Tue Jul 2 23:45:35 2019 by ELM ver.2012-10-06 from 001__elm20190702_213741__dat00.bin

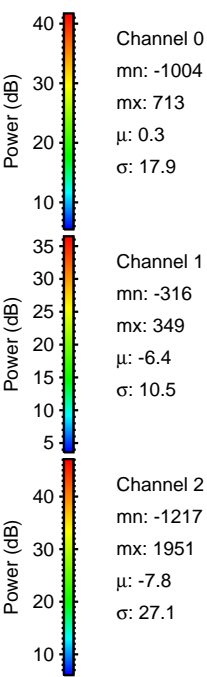
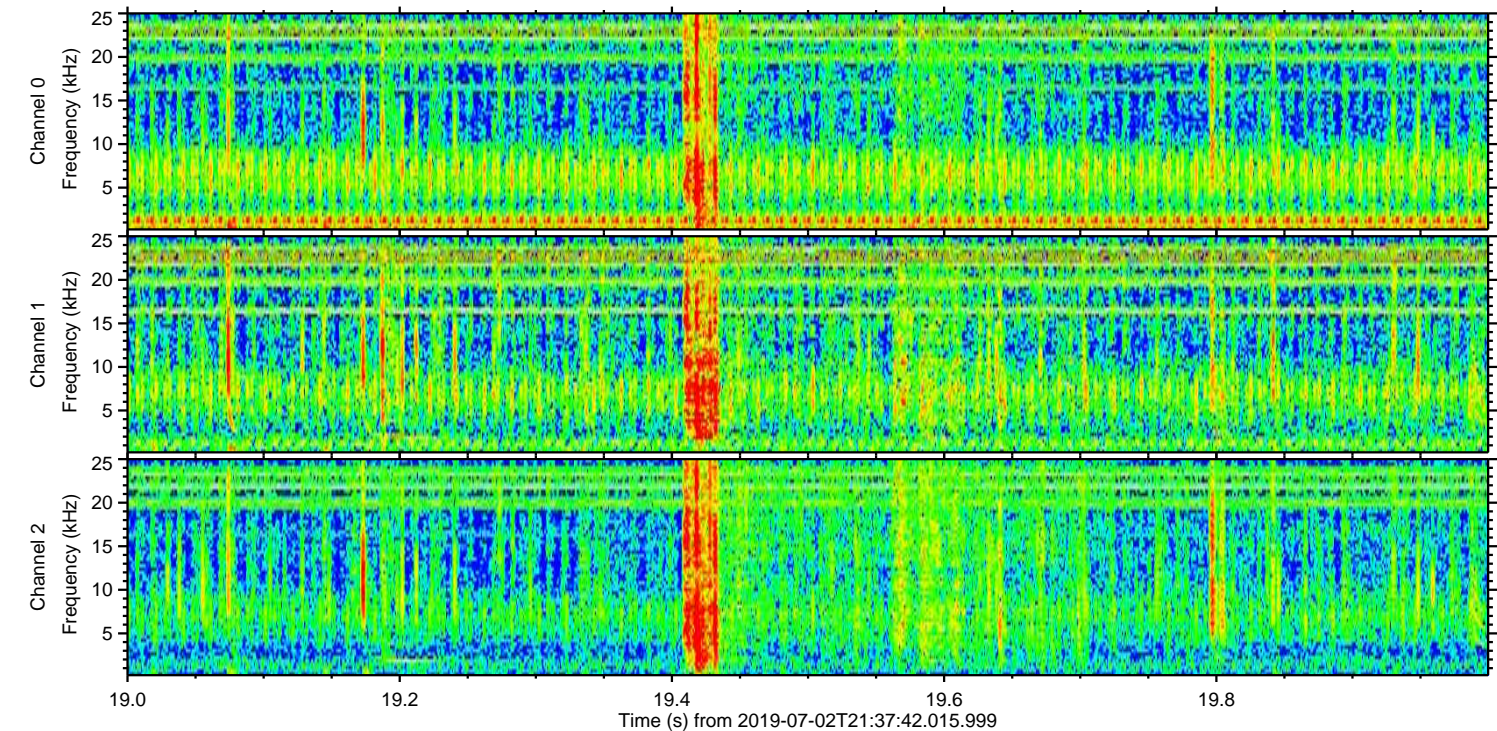
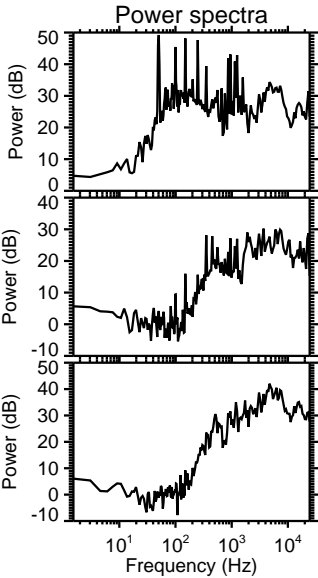
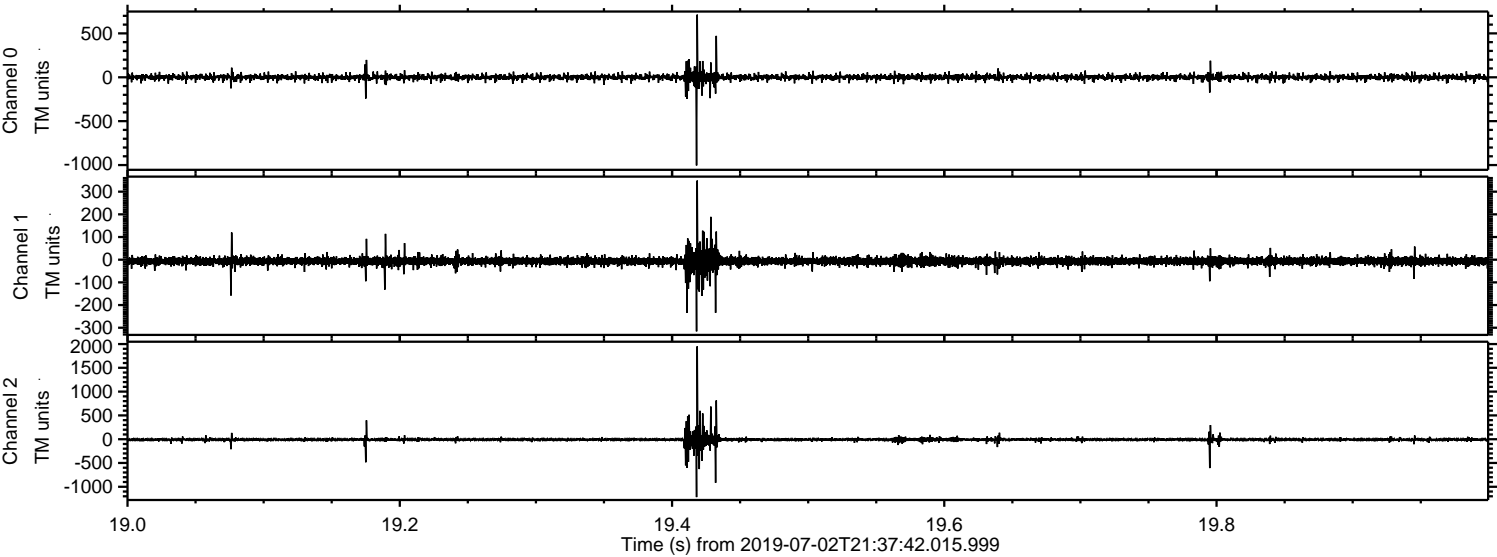


ELMAVAN 3D WAVEFORMS (Measured data sampled at 50 kHz) 51000 packets of 144 samples from 2019-07-02T21:37:42.015.999. Part 126/147

Processed Tue Jul 2 23:45:36 2019 by ELM ver.2012-10-06 from 001__elm20190702_213741__dat00.bin



Processed Tue Jul 2 23:45:37 2019 by ELM ver.2012-10-06 from 001__elm20190702_213741__dat00.bin

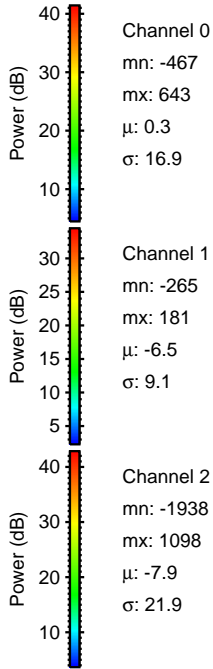
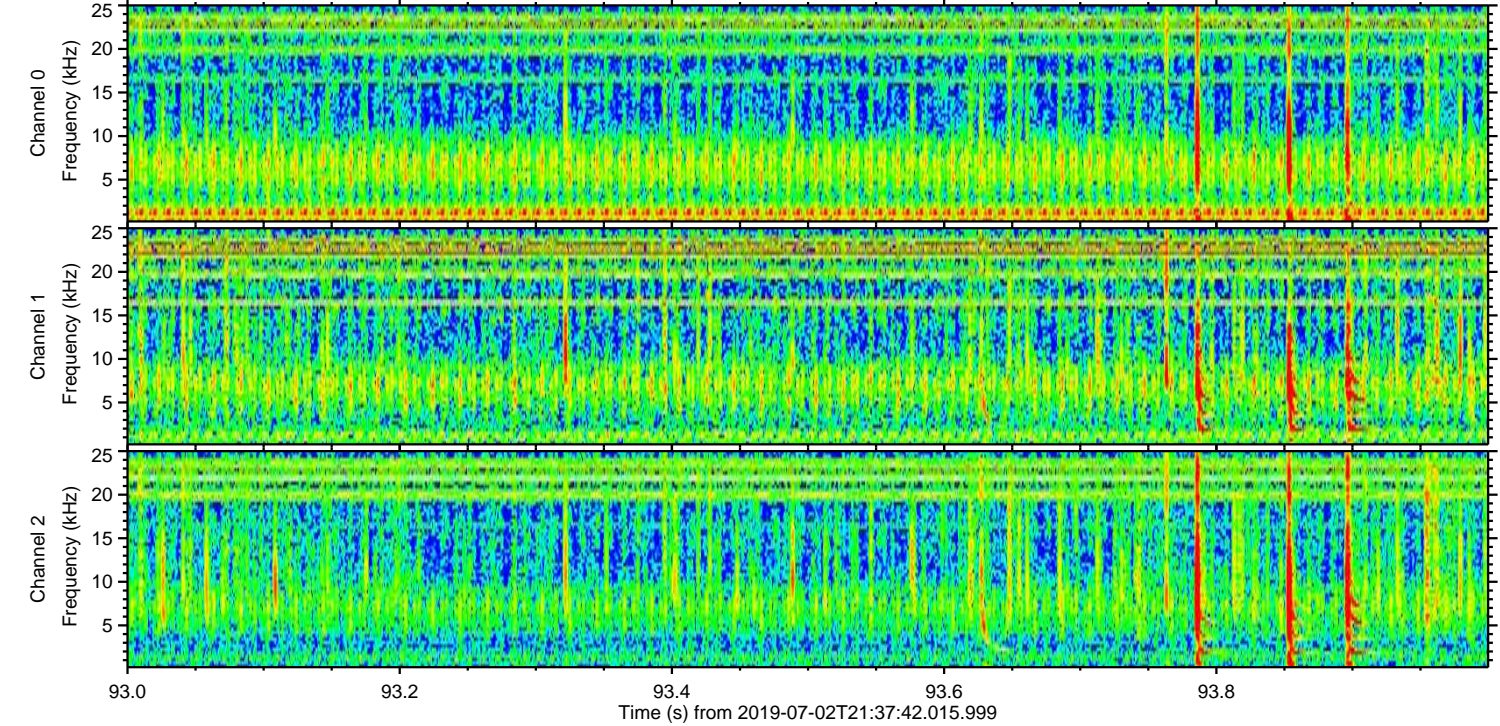
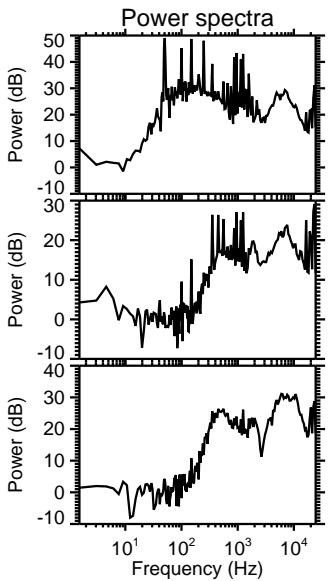
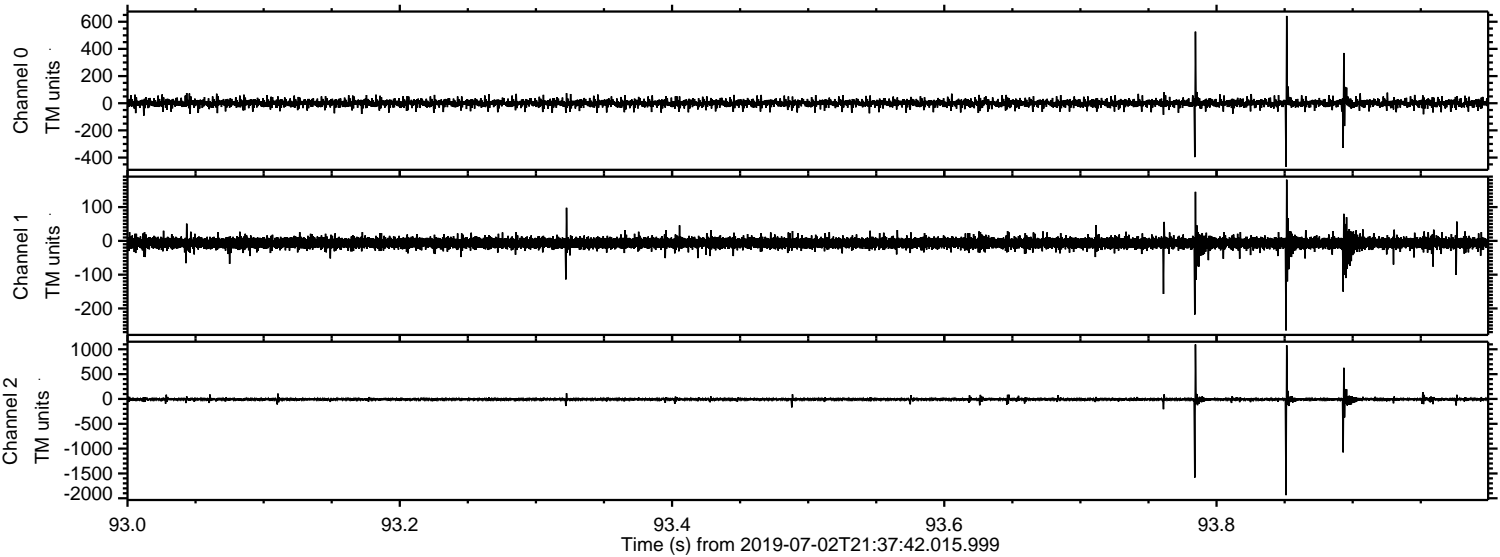


Channel 0
mn: -1004
mx: 713
 μ : 0.3
 σ : 17.9

Channel 1
mn: -316
mx: 349
 μ : -6.4
 σ : 10.5

Channel 2
mn: -1217
mx: 1951
 μ : -7.8
 σ : 27.1

Processed Tue Jul 2 23:45:37 2019 by ELM ver.2012-10-06 from 001__elm20190702_213741__dat00.bin

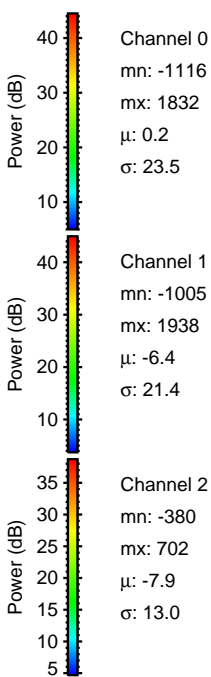
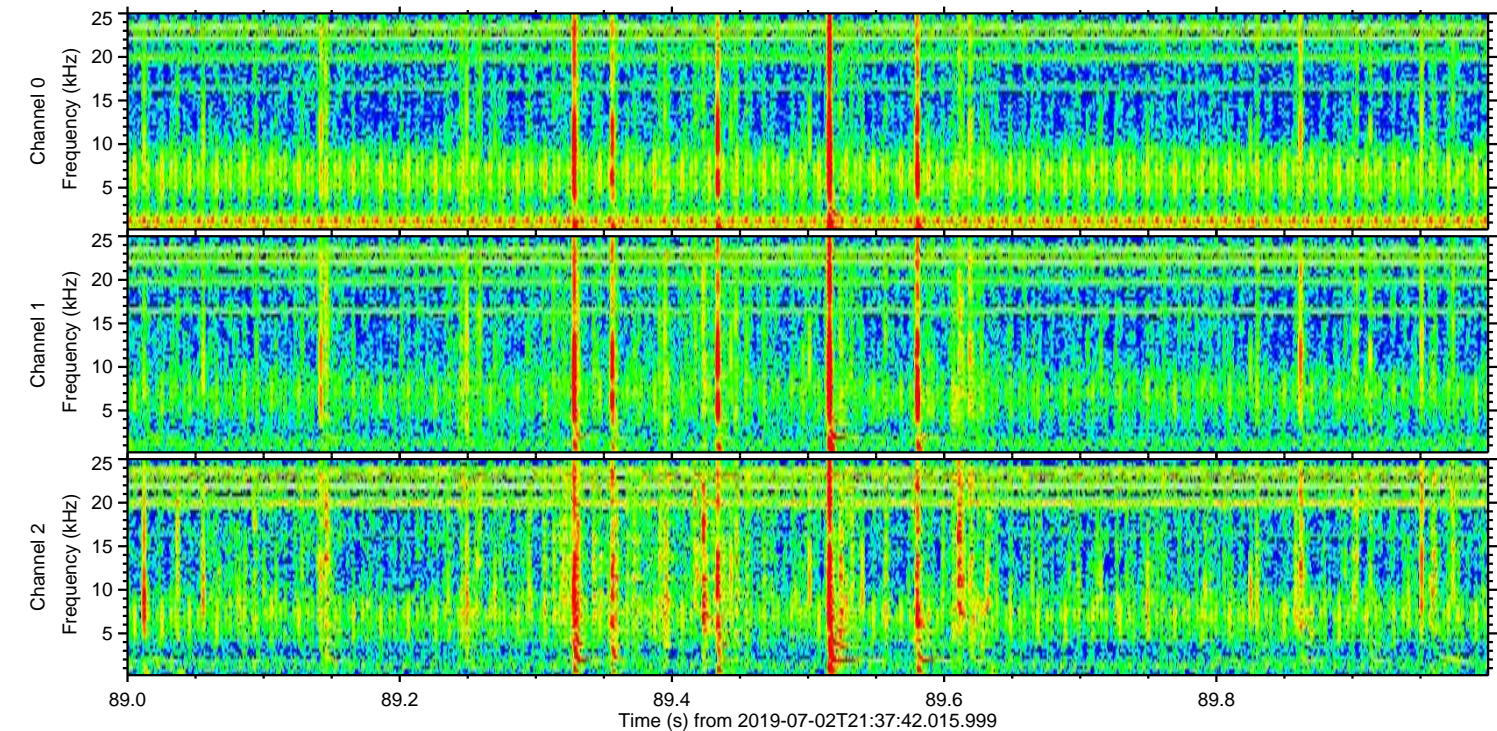
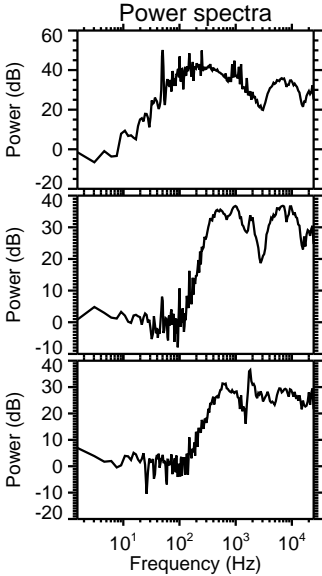
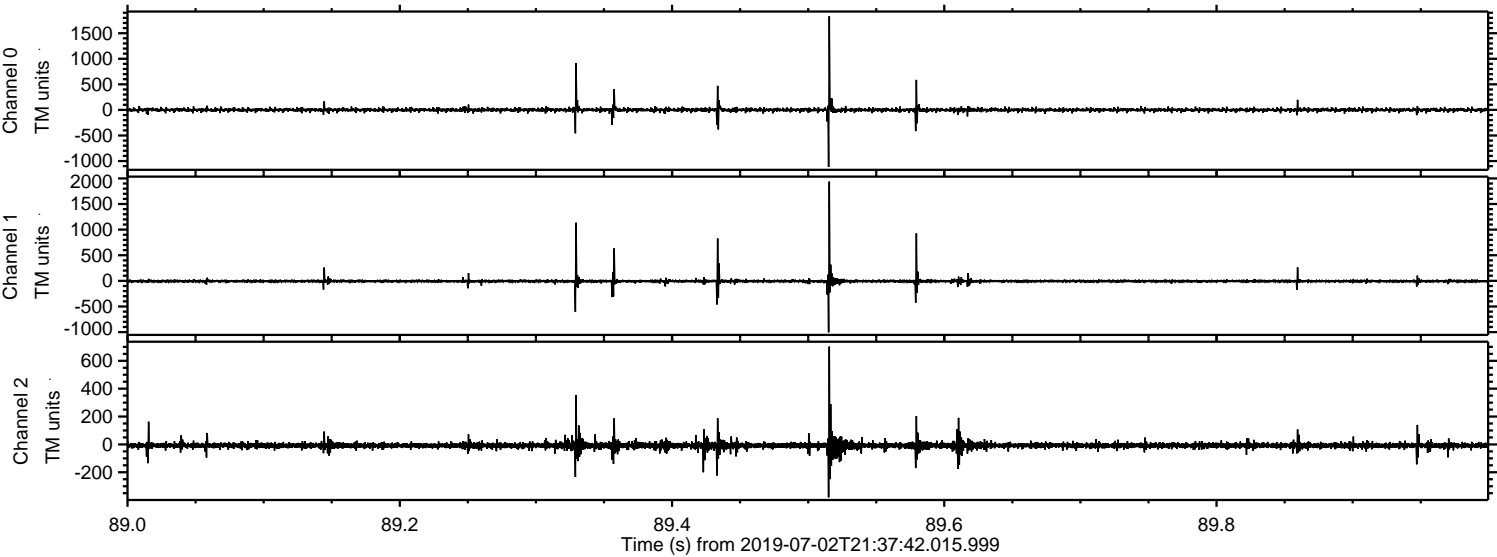


Channel 0
mn: -467
mx: 643
 μ : 0.3
 σ : 16.9

Channel 1
mn: -265
mx: 181
 μ : -6.5
 σ : 9.1

Channel 2
mn: -1938
mx: 1098
 μ : -7.9
 σ : 21.9

Processed Tue Jul 2 23:45:38 2019 by ELM ver.2012-10-06 from 001__elm20190702_213741__dat00.bin



Processed Tue Jul 2 23:45:39 2019 by ELM ver.2012-10-06 from 001__elm20190702_213741__dat00.bin

