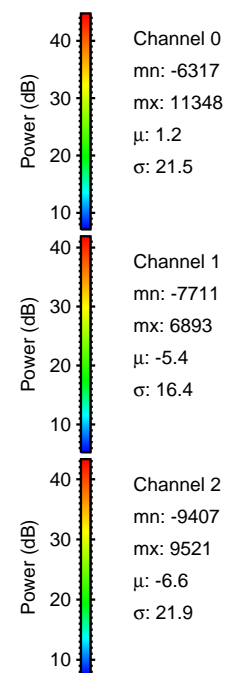
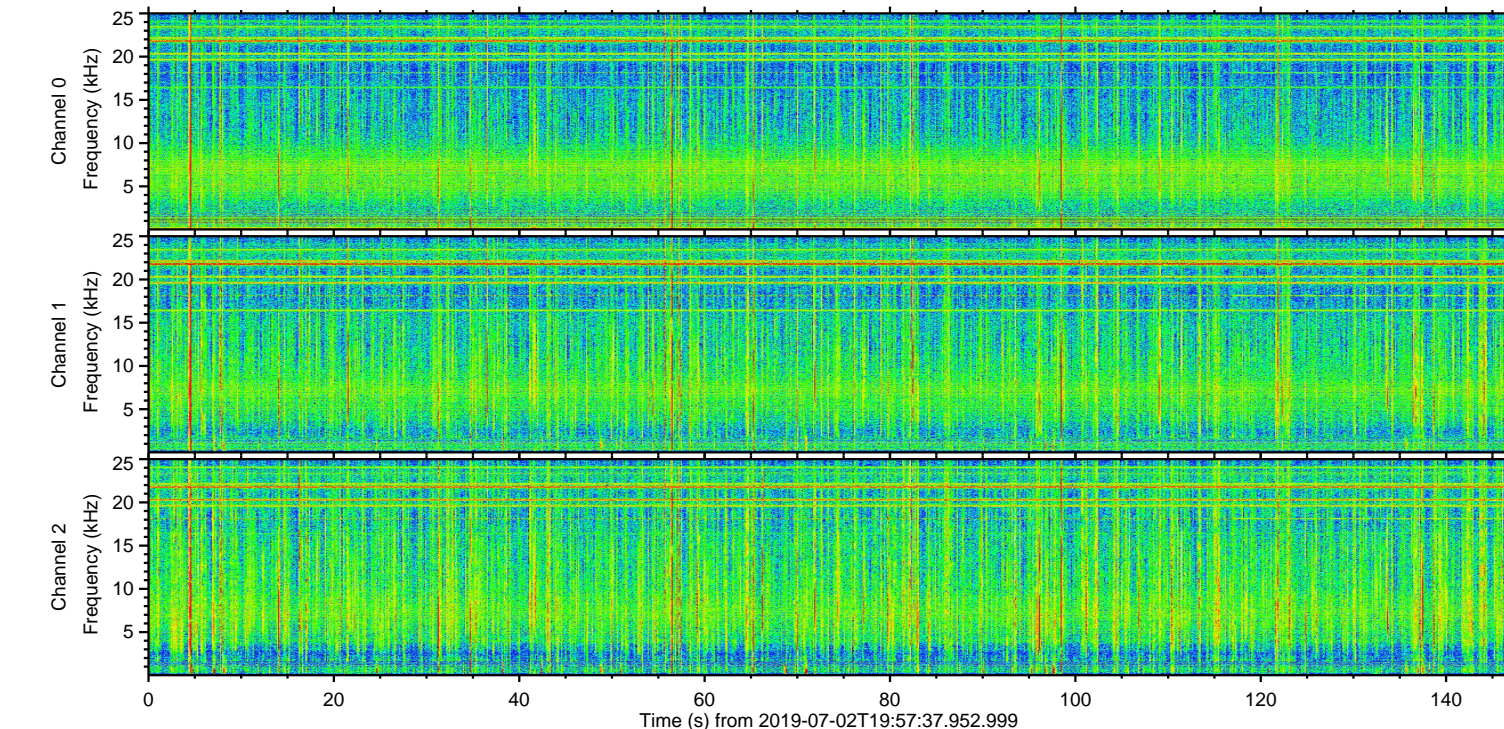
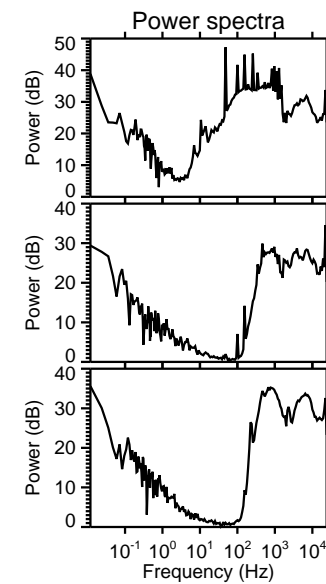
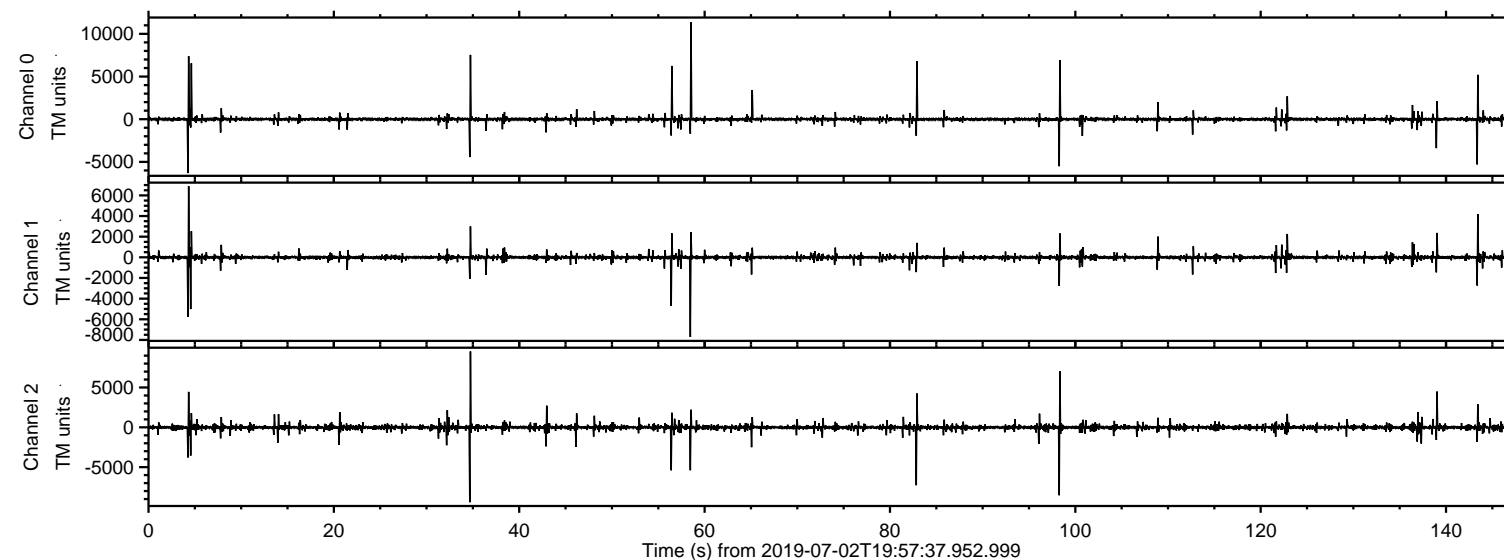
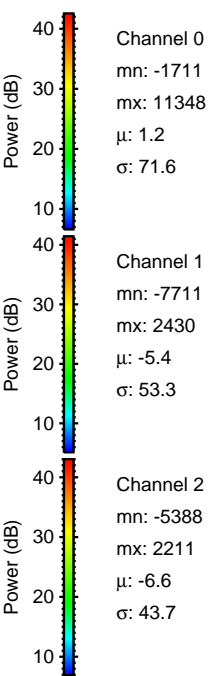
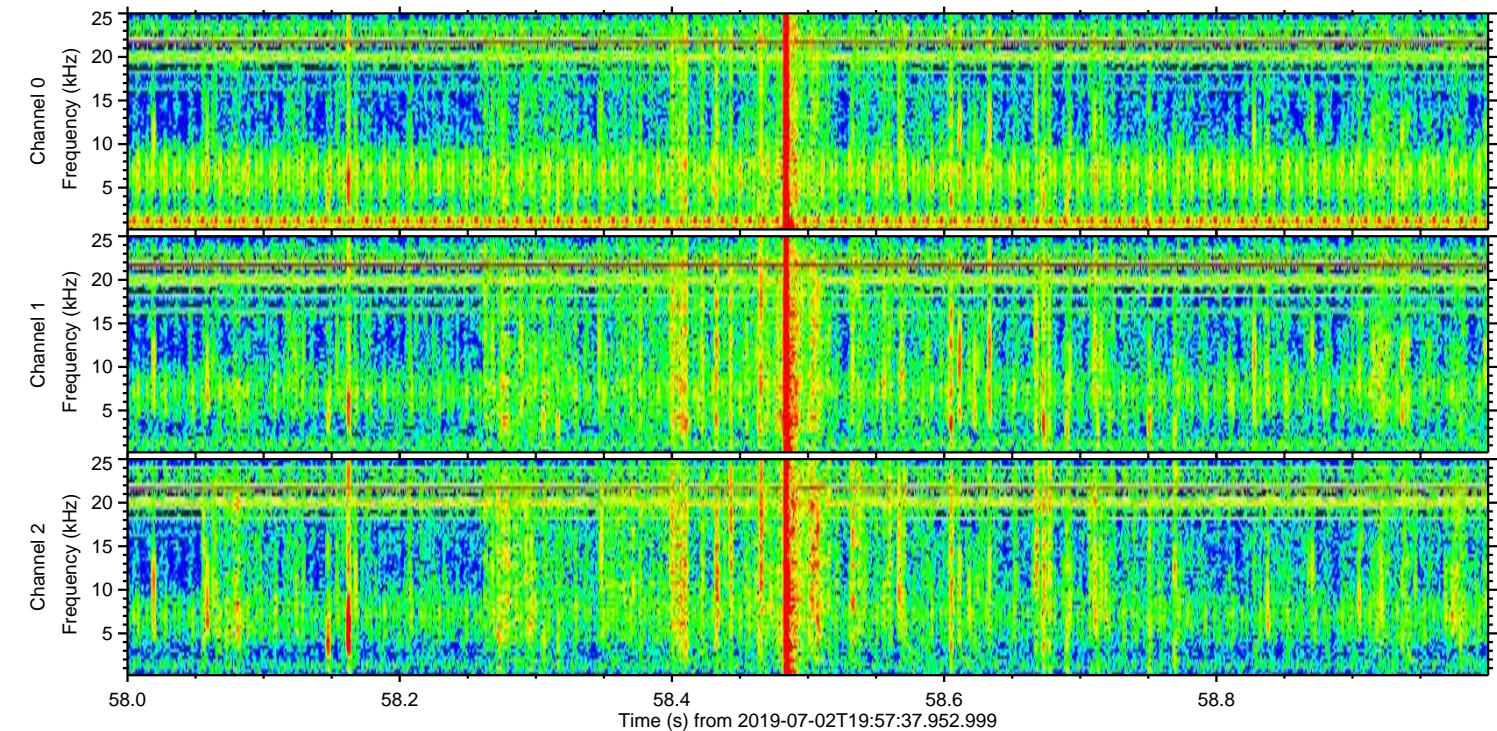
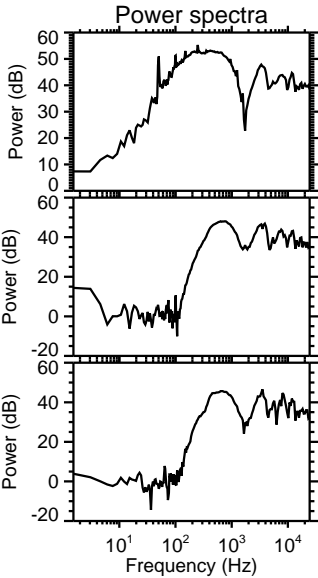
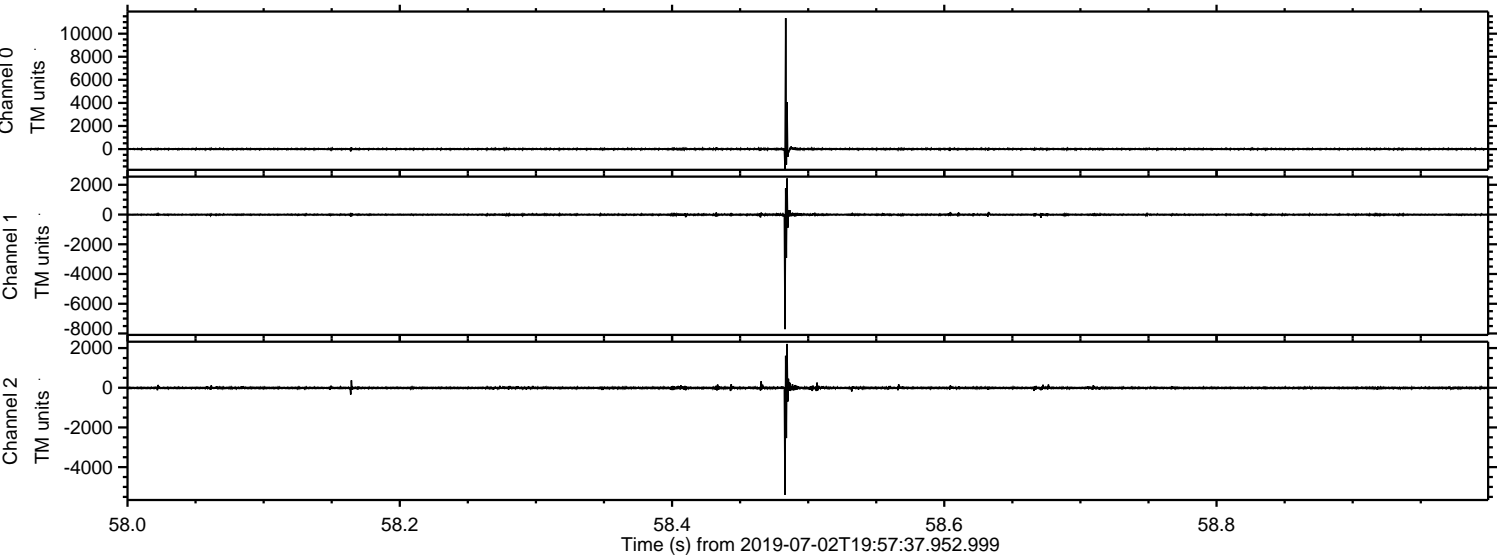


ELMAVAN 3D WAVEFORMS (Measured data sampled at 50 kHz) 51000 packets of 144 samples from 2019-07-02T19:57:37.952.999.

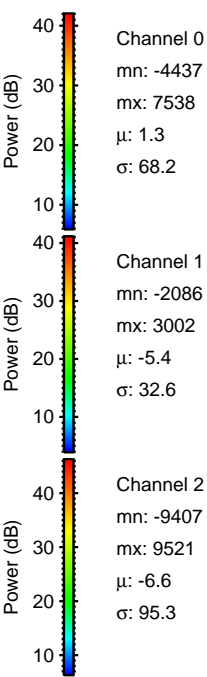
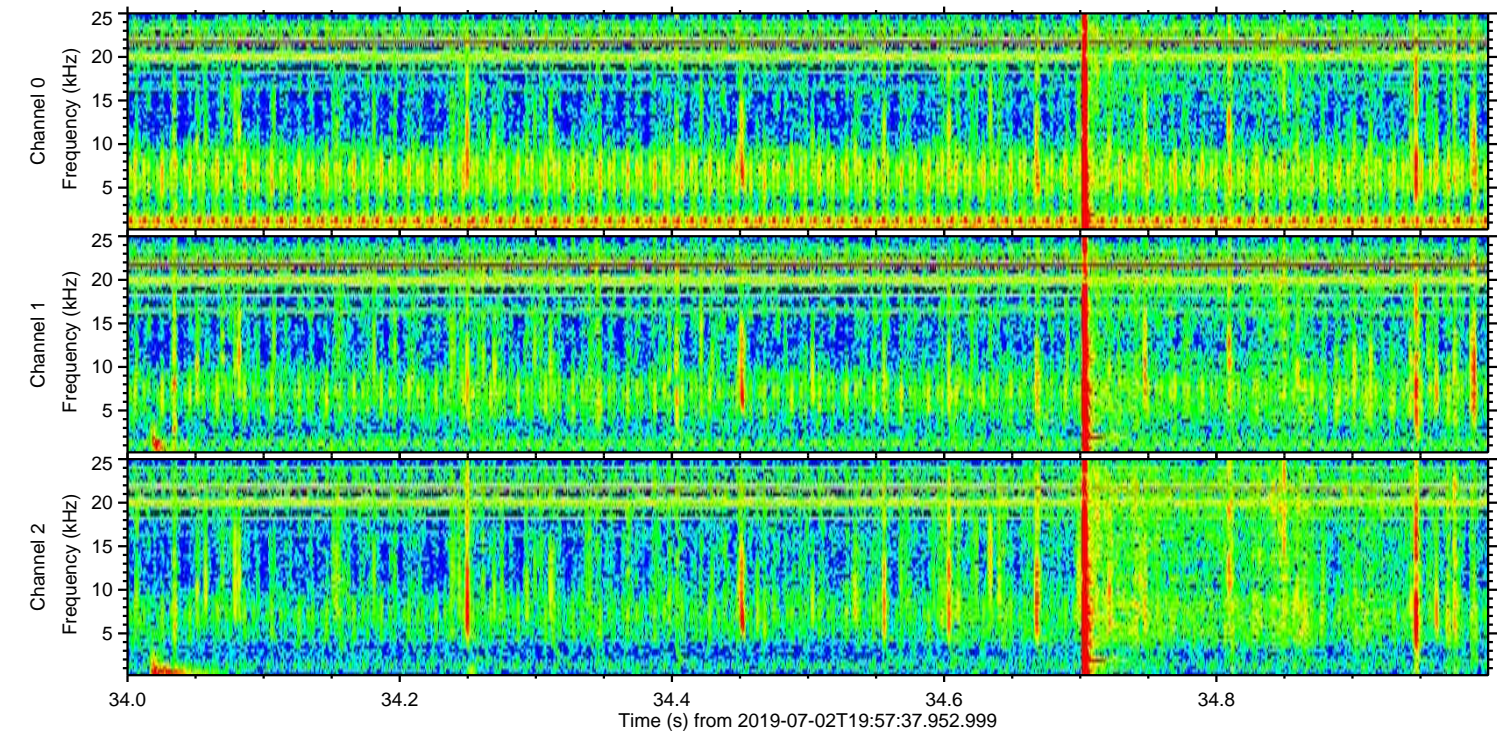
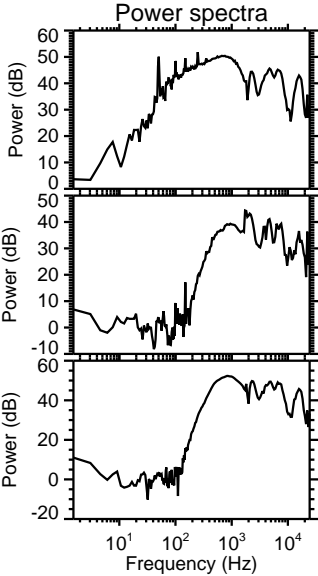
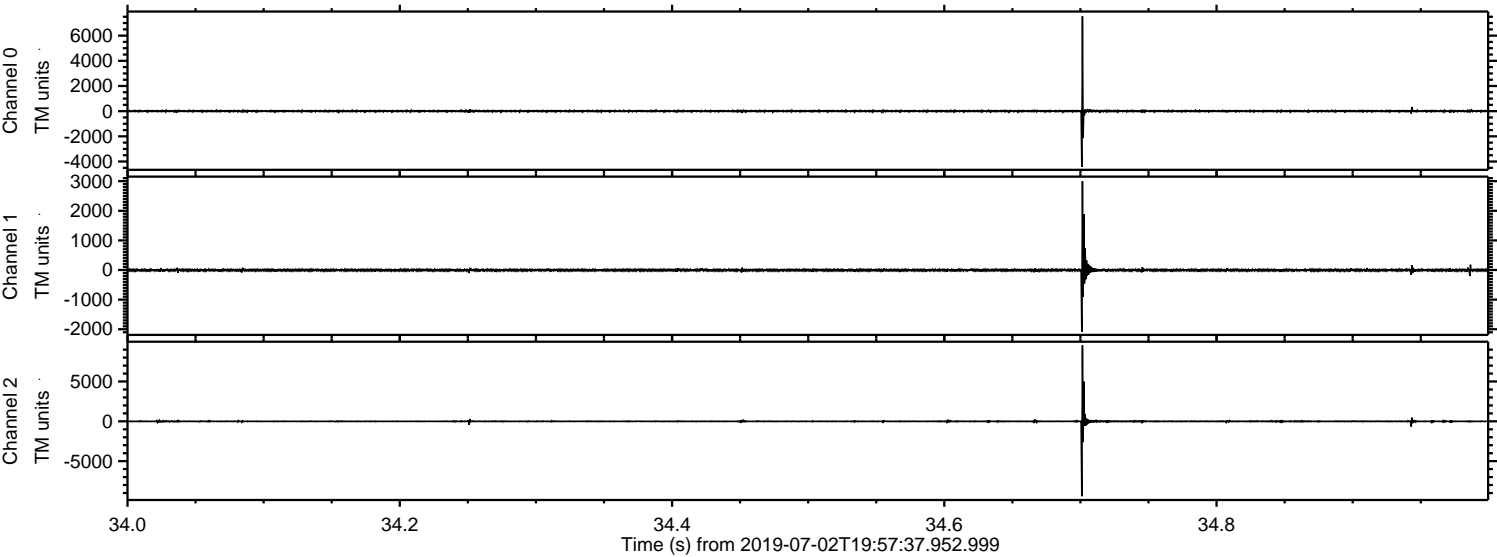
Processed Tue Jul 2 22:05:51 2019 by ELM ver.2012-10-06 from 001__elm20190702_195736__dat00.bin



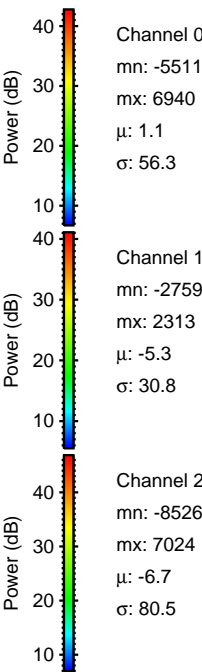
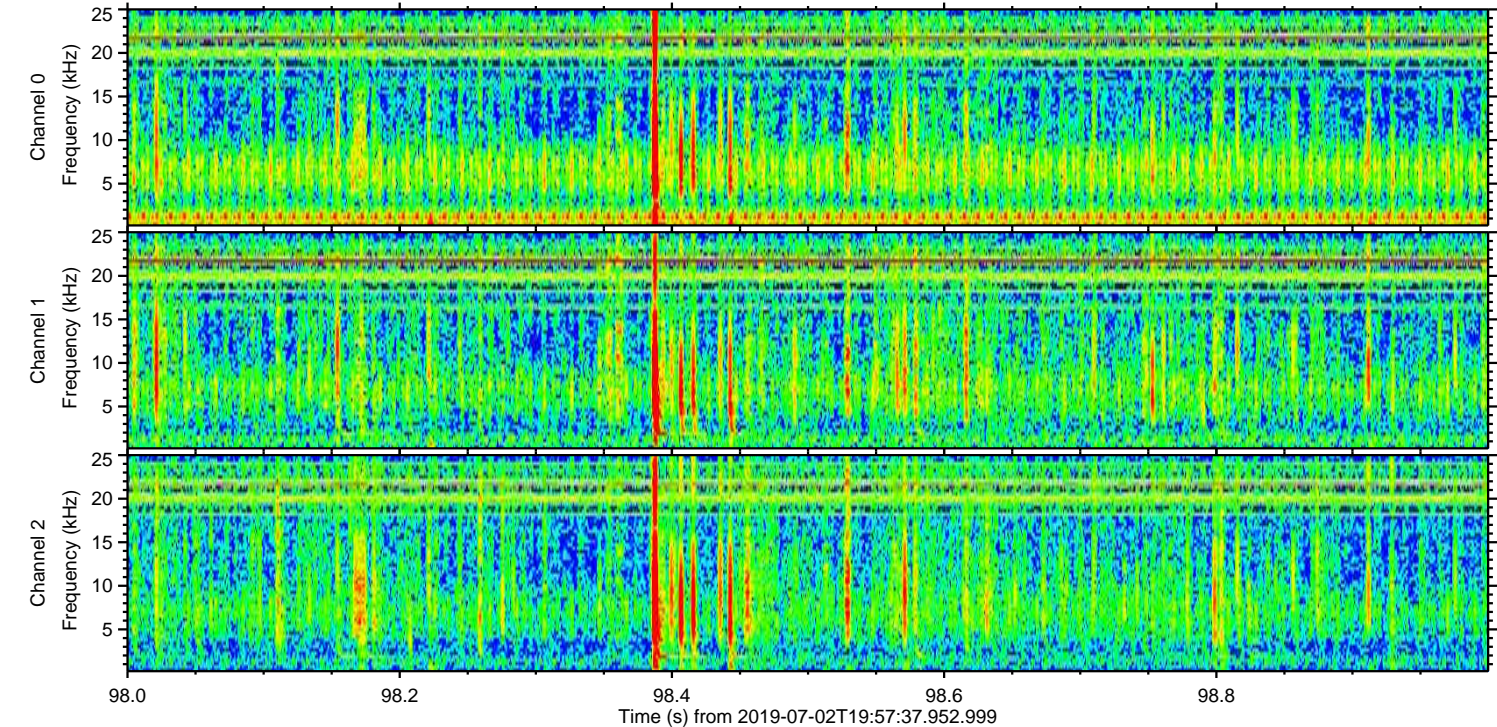
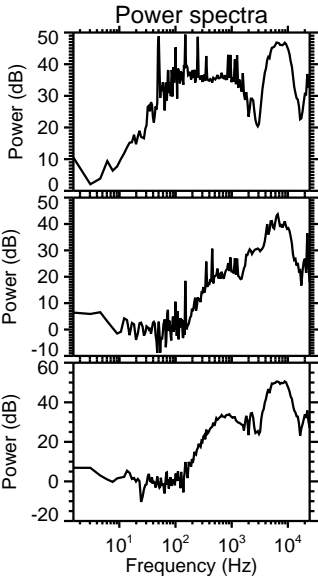
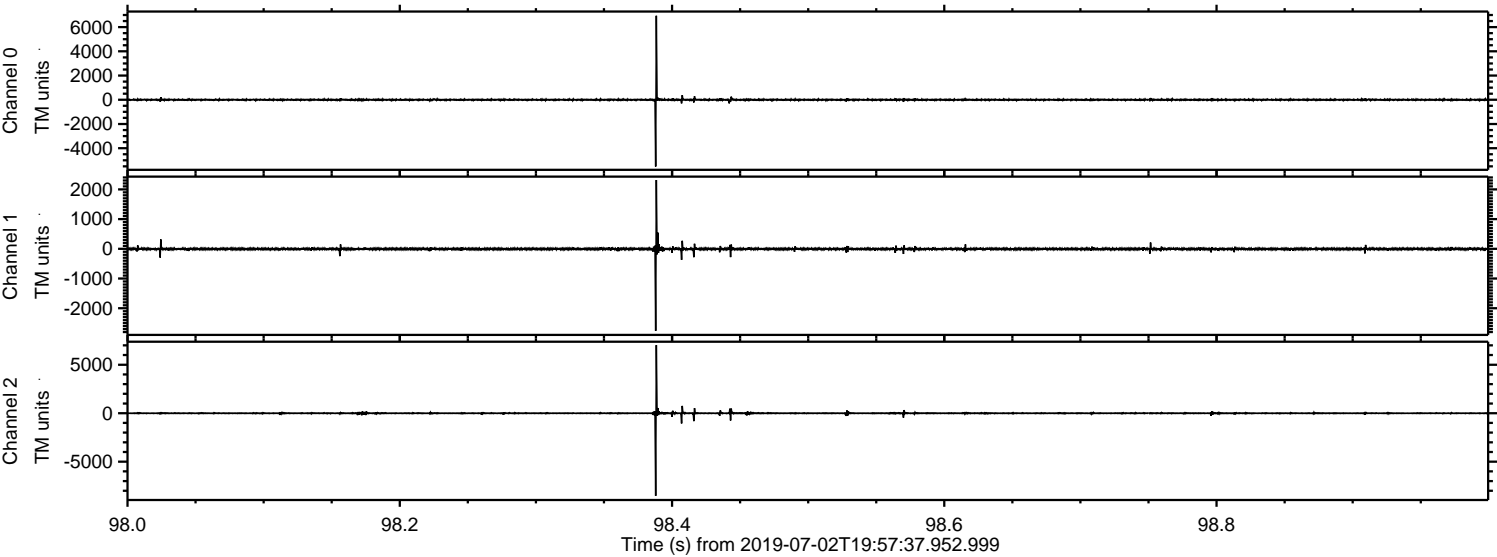
Processed Tue Jul 2 22:06:01 2019 by ELM ver.2012-10-06 from 001__elm20190702_195736__dat00.bin



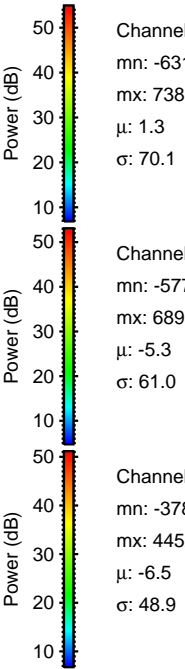
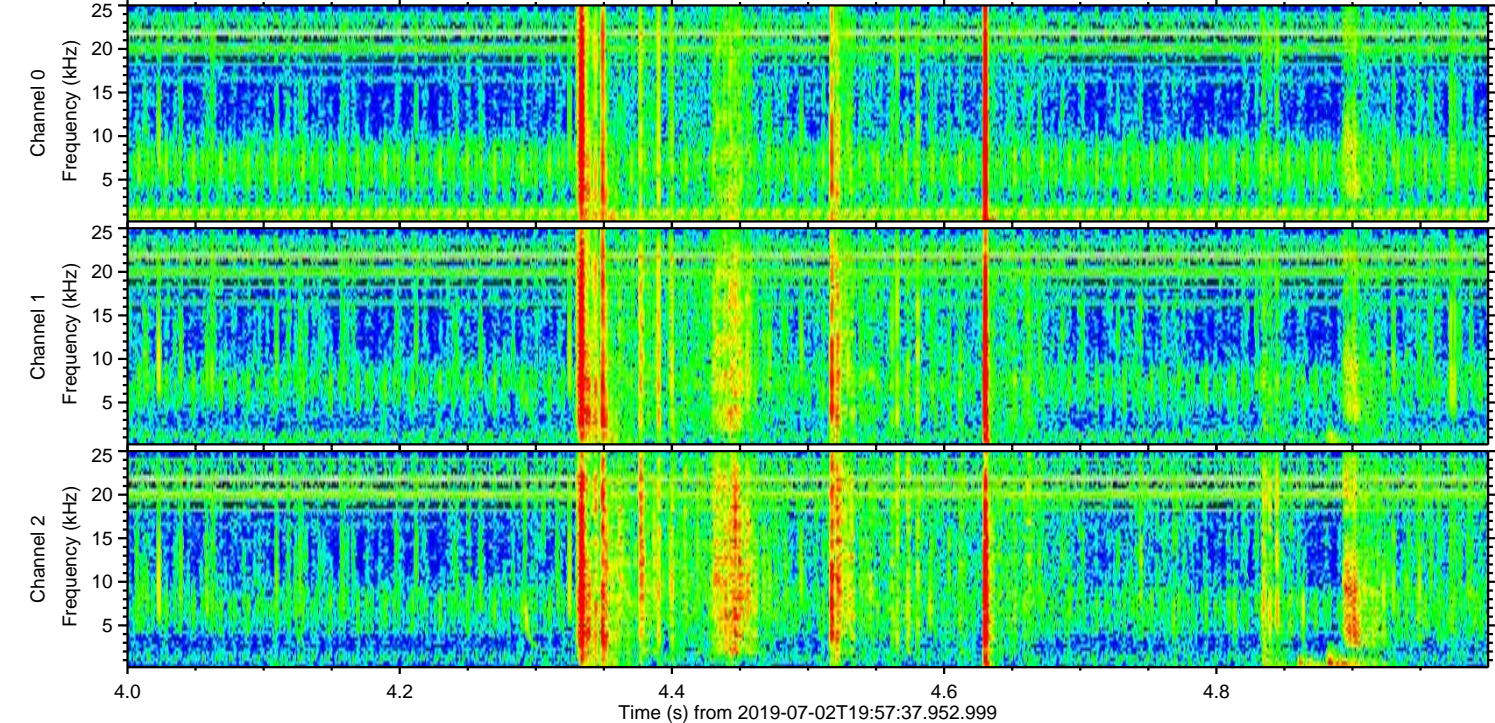
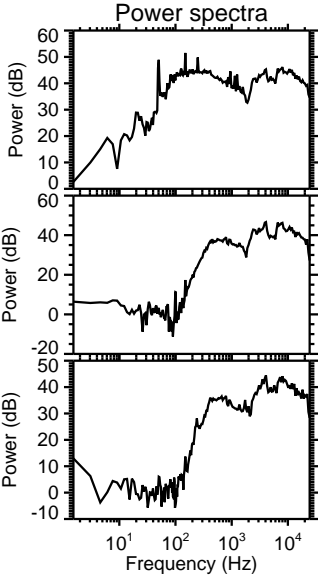
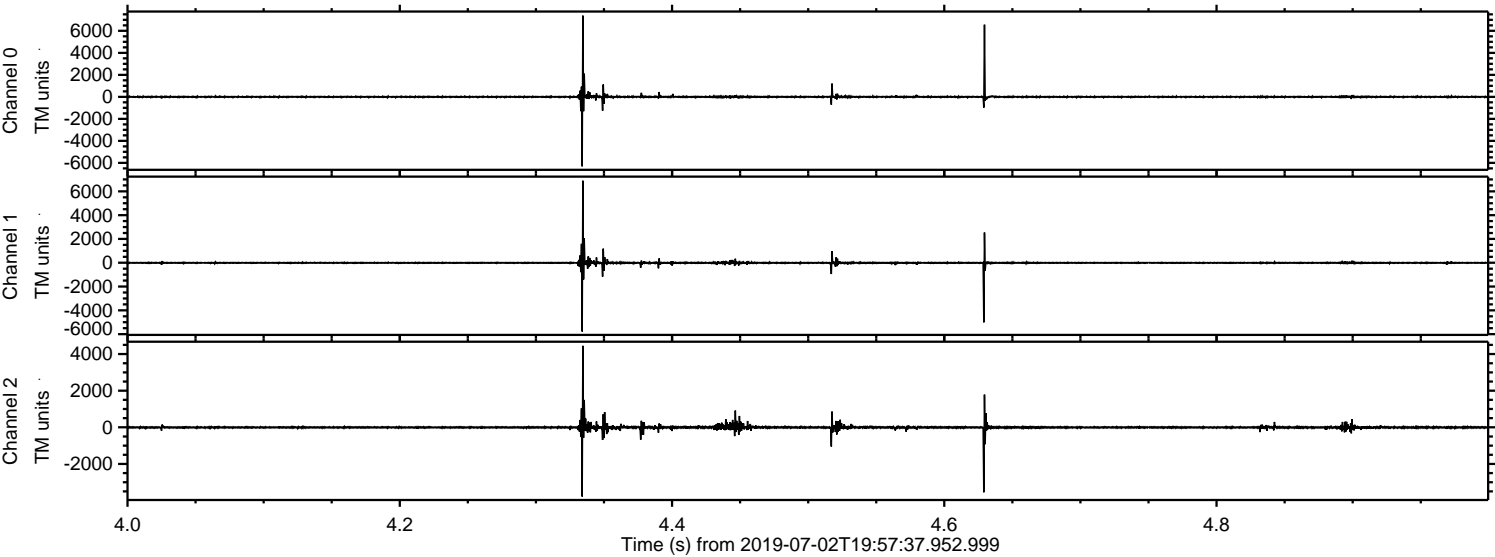
Processed Tue Jul 2 22:06:02 2019 by ELM ver.2012-10-06 from 001__elm20190702_195736__dat00.bin



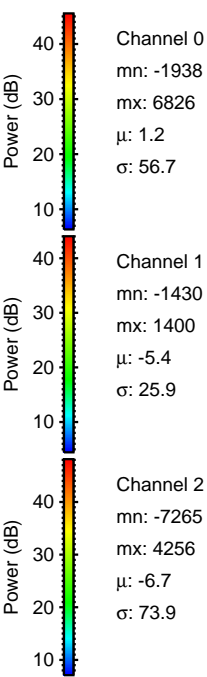
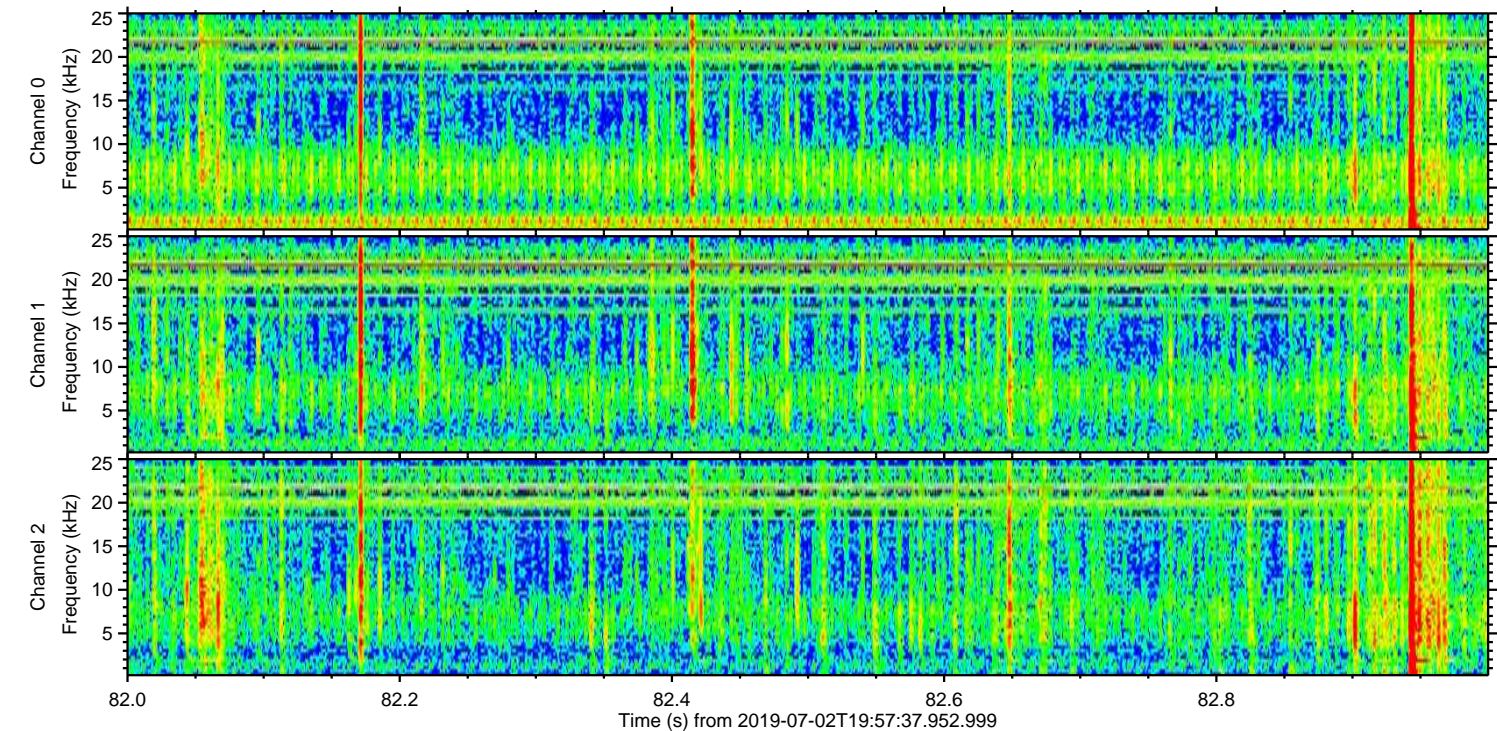
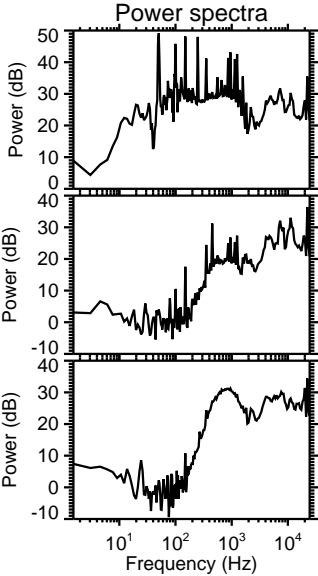
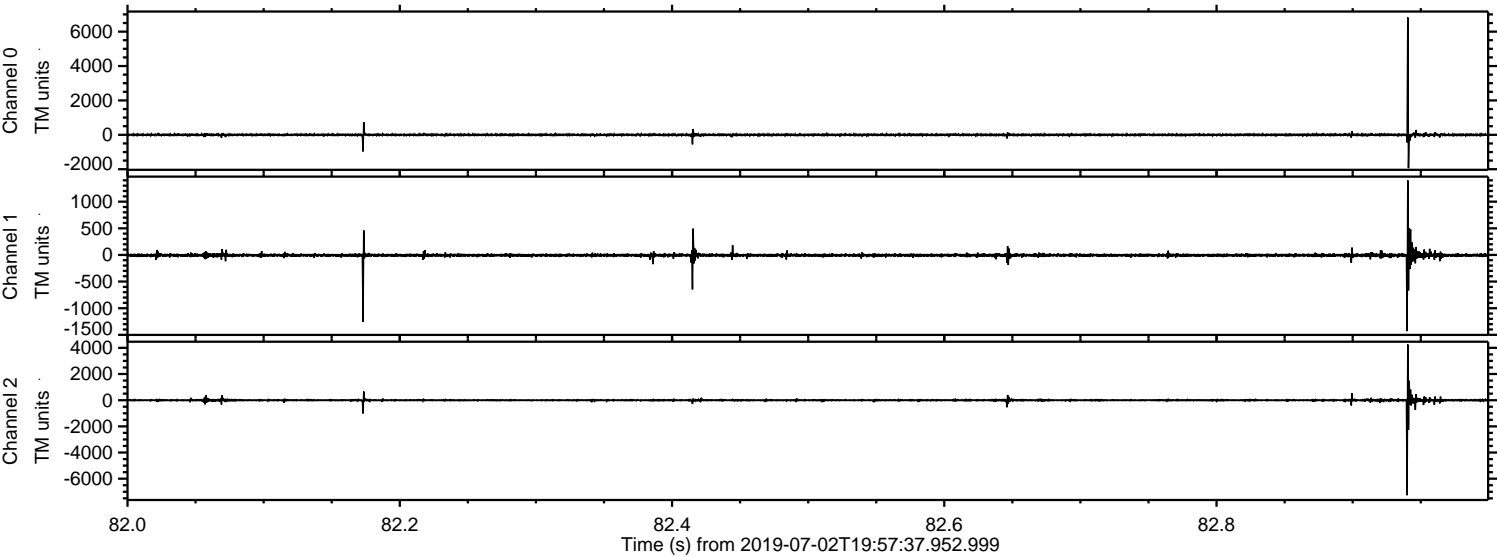
Processed Tue Jul 2 22:06:03 2019 by ELM ver.2012-10-06 from 001__elm20190702_195736__dat00.bin



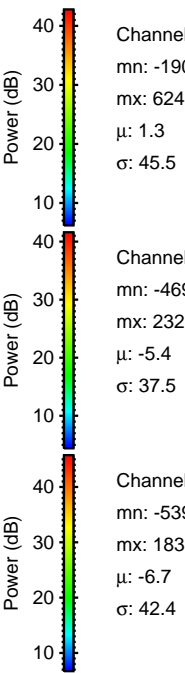
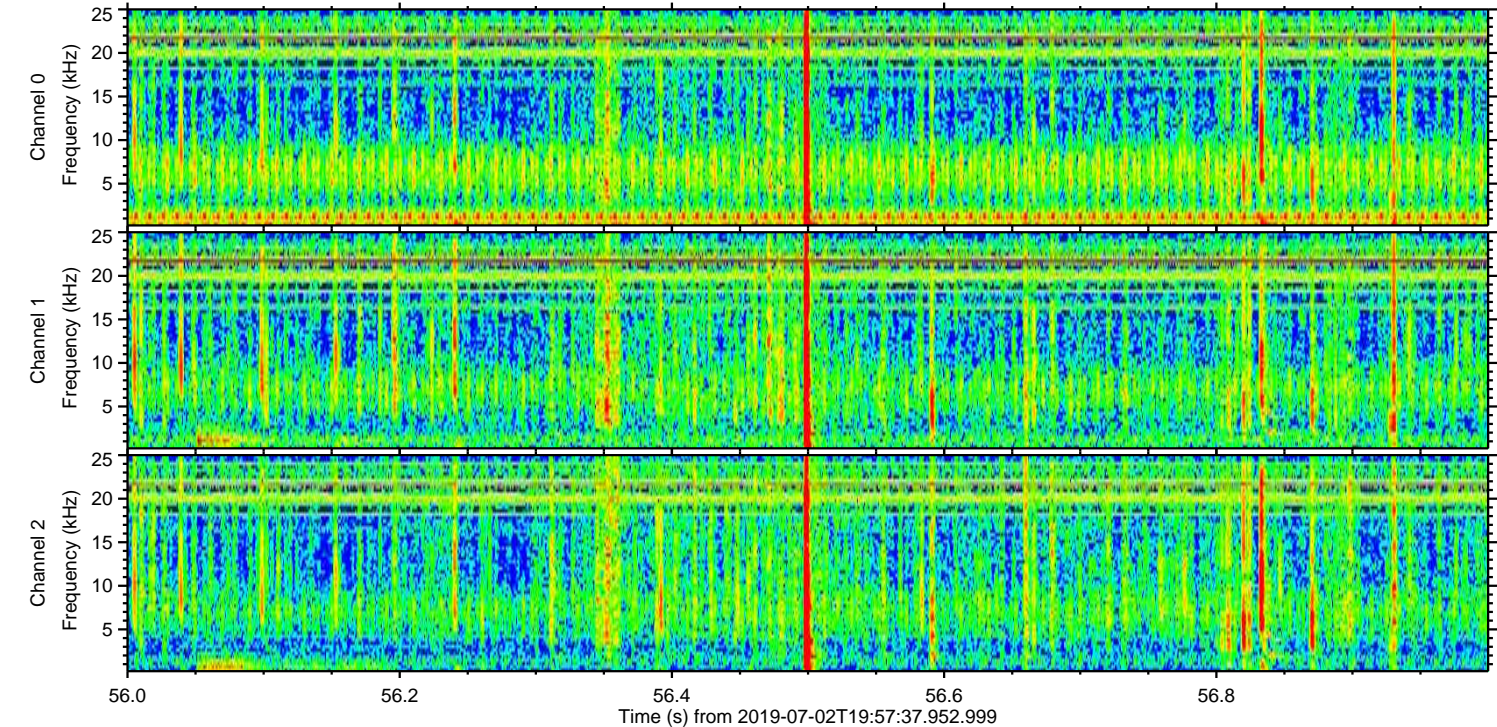
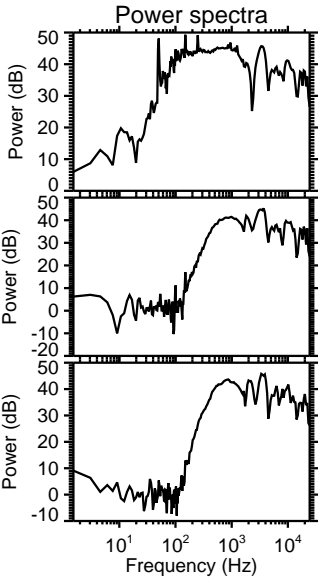
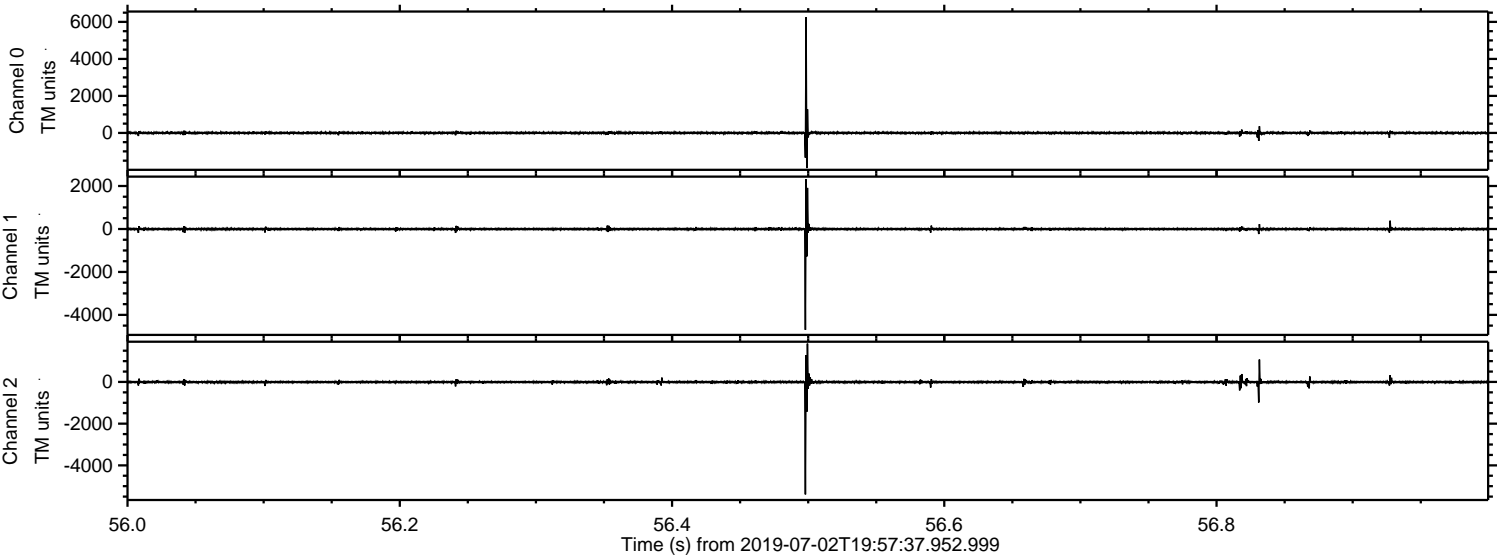
Processed Tue Jul 2 22:06:03 2019 by ELM ver.2012-10-06 from 001__elm20190702_195736__dat00.bin



Processed Tue Jul 2 22:06:04 2019 by ELM ver.2012-10-06 from 001__elm20190702_195736__dat00.bin

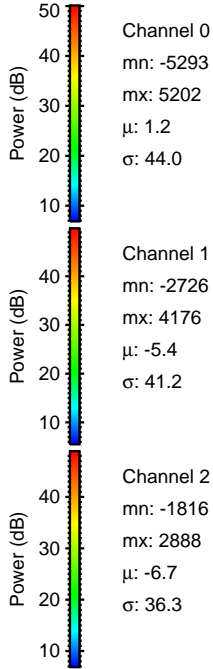
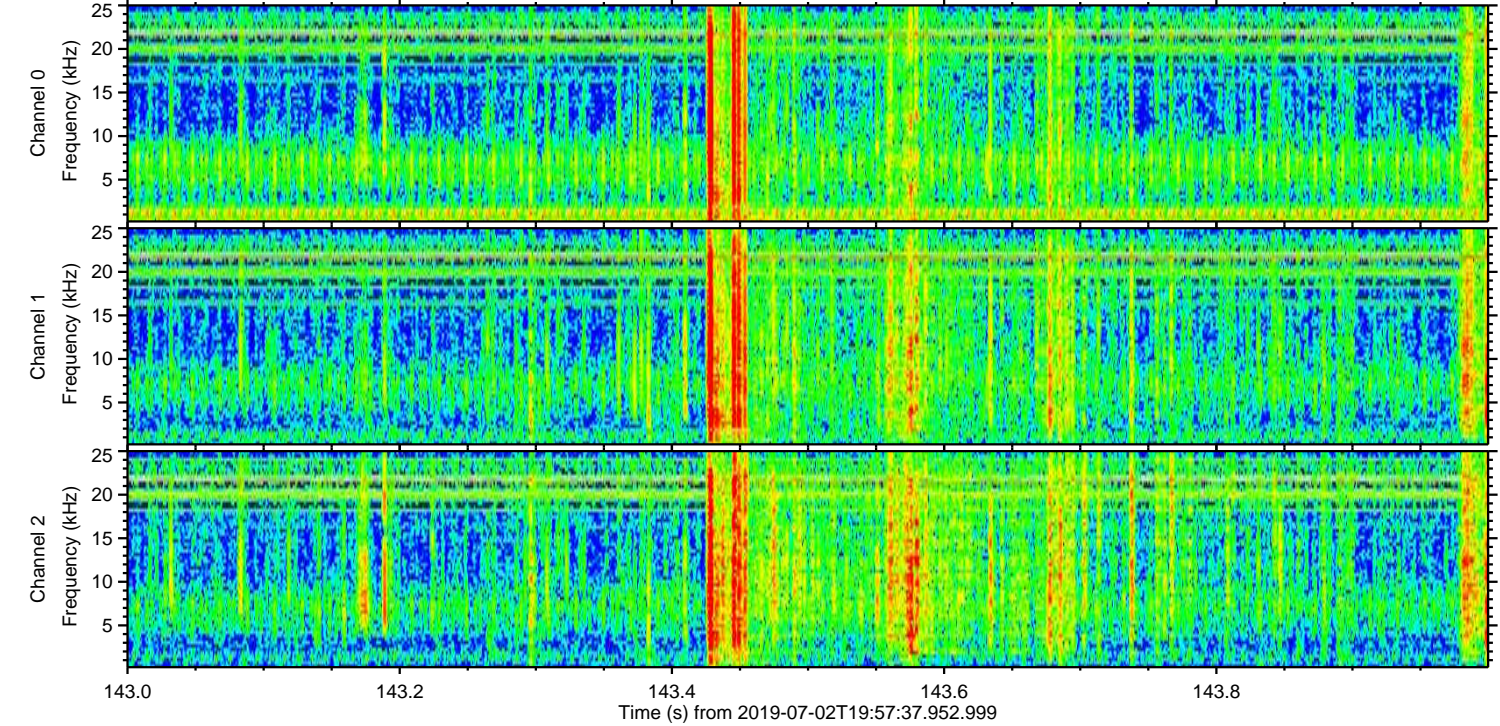
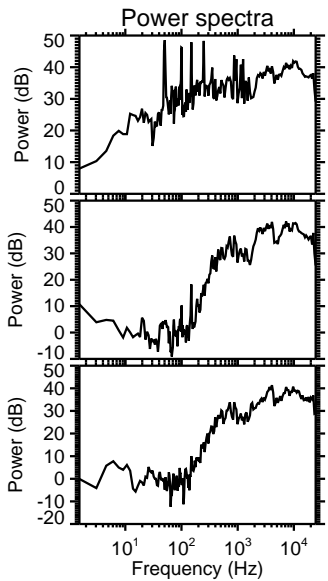
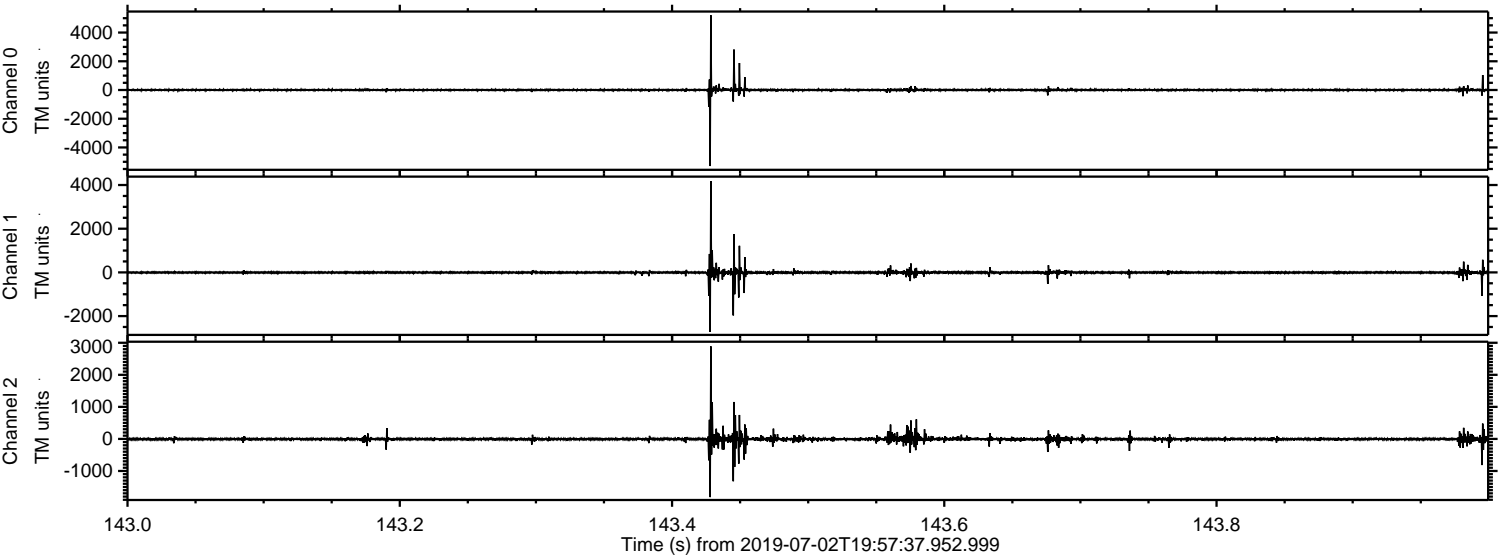


Processed Tue Jul 2 22:06:05 2019 by ELM ver.2012-10-06 from 001__elm20190702_195736__dat00.bin



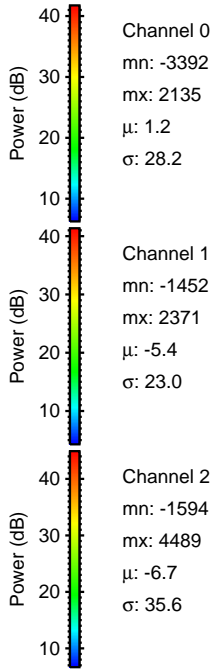
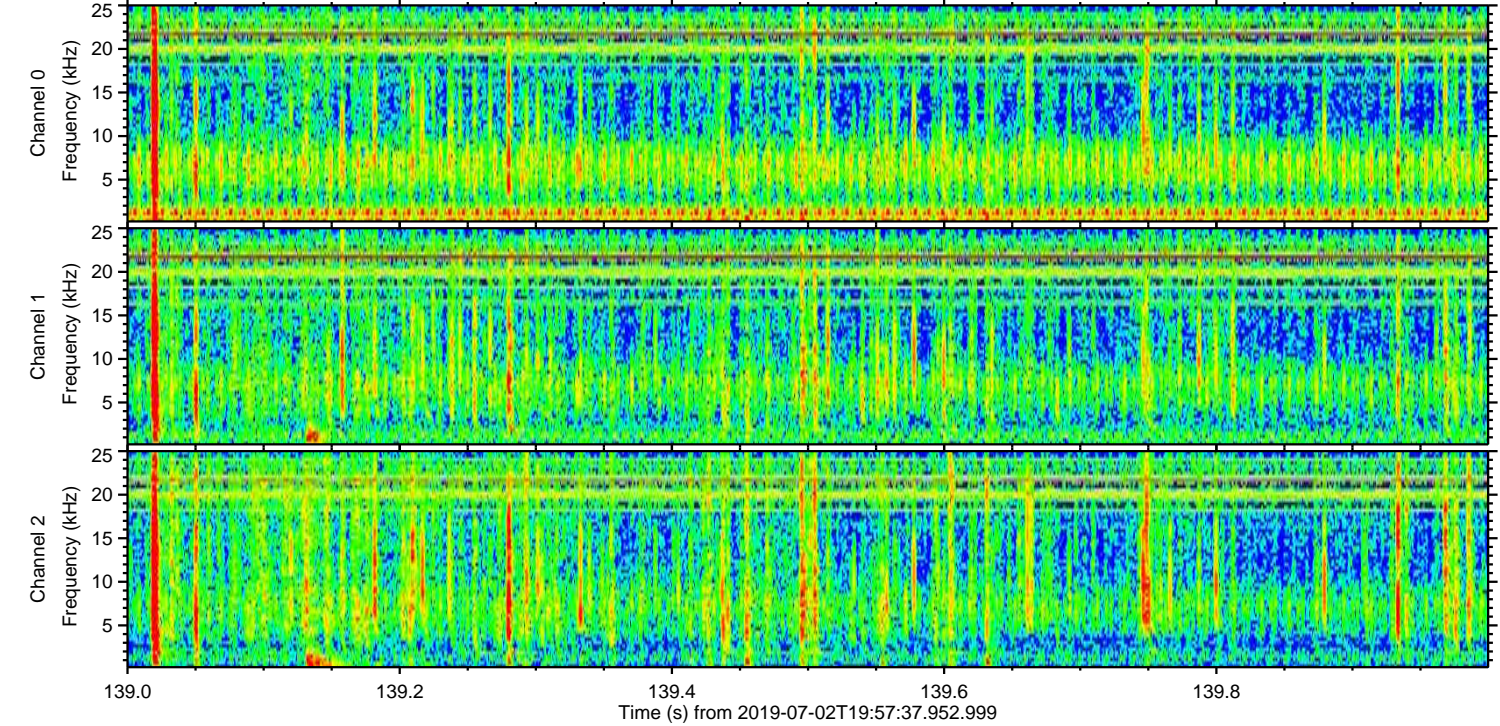
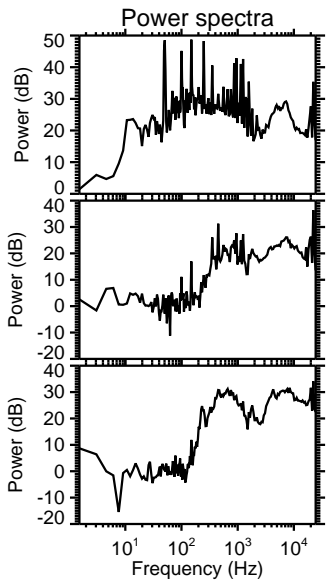
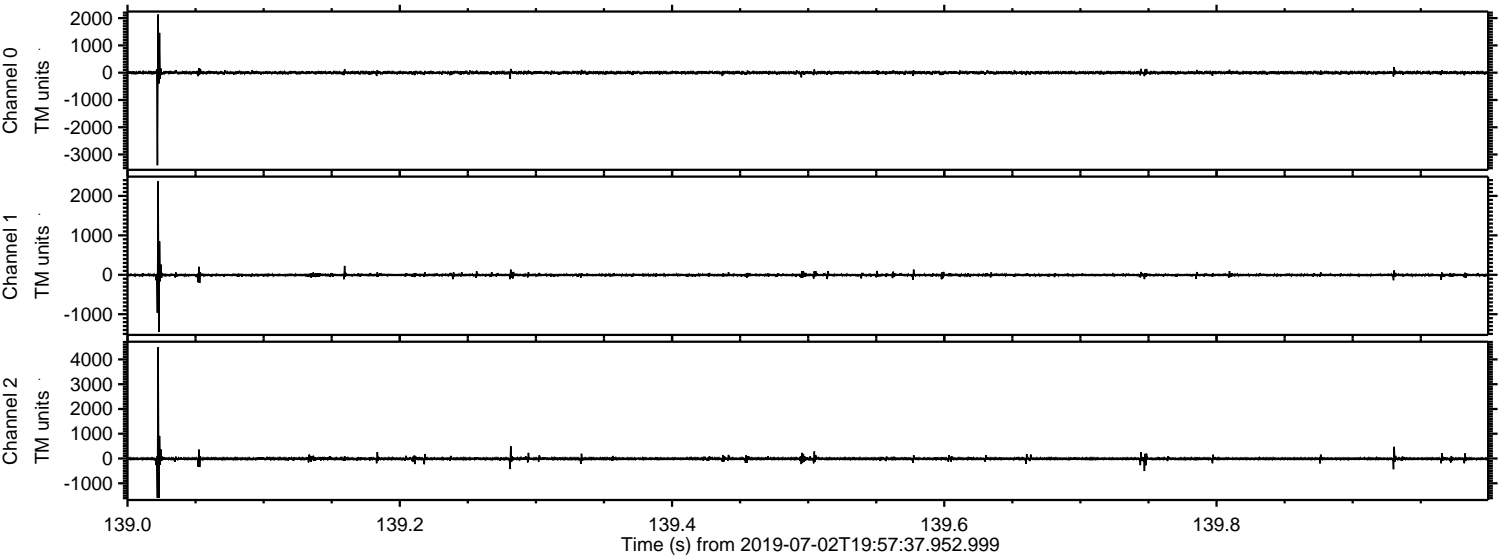
ELMAVAN 3D WAVEFORMS (Measured data sampled at 50 kHz) 51000 packets of 144 samples from 2019-07-02T19:57:37.952.999. Part 144/147

Processed Tue Jul 2 22:06:06 2019 by ELM ver.2012-10-06 from 001__elm20190702_195736__dat00.bin

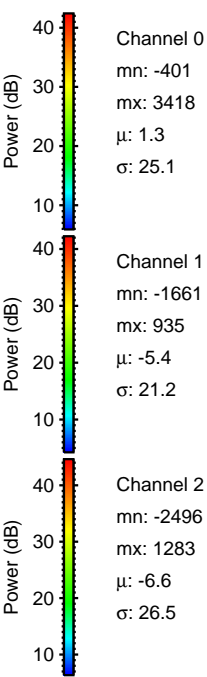
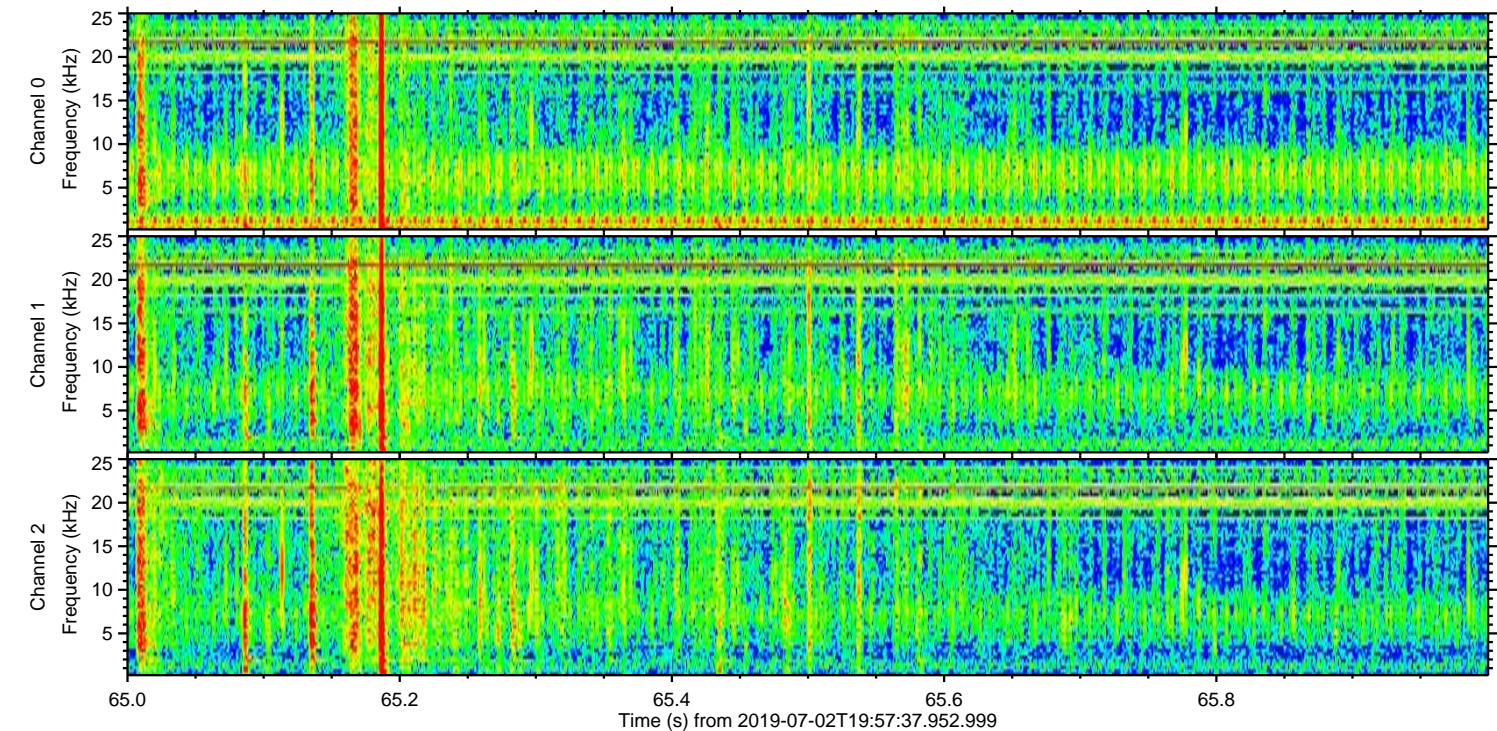
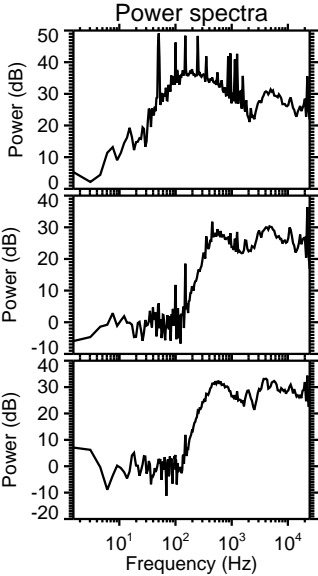
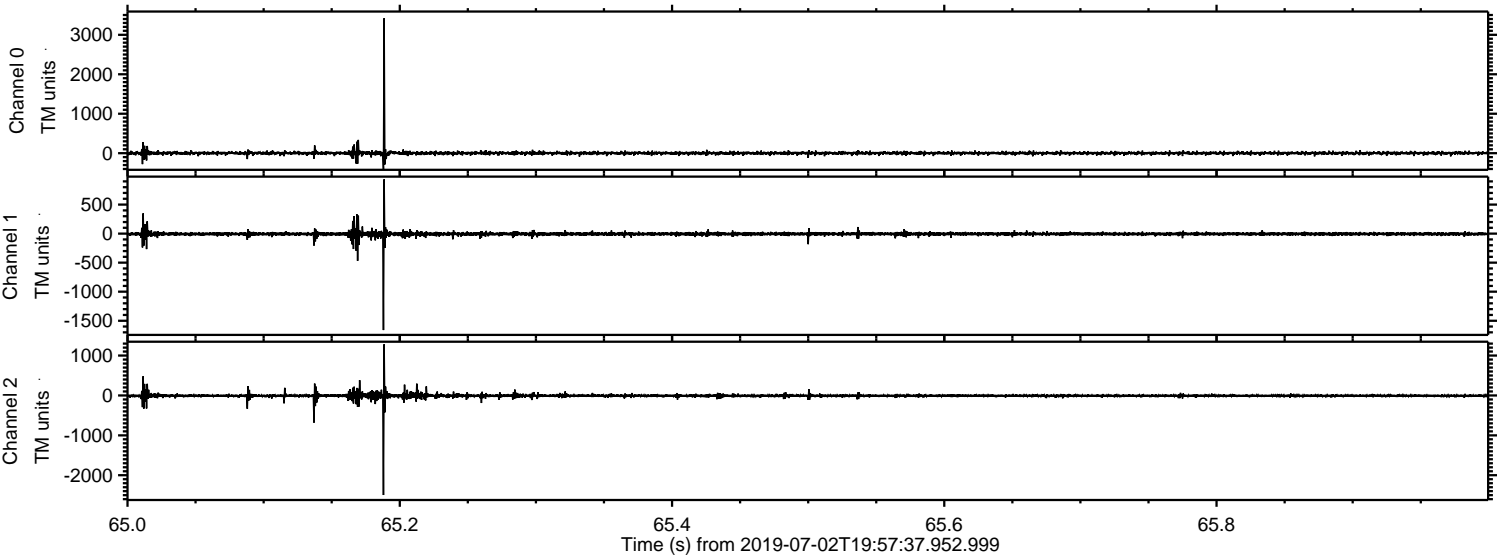


ELMAVAN 3D WAVEFORMS (Measured data sampled at 50 kHz) 51000 packets of 144 samples from 2019-07-02T19:57:37.952.999. Part 140/147

Processed Tue Jul 2 22:06:06 2019 by ELM ver.2012-10-06 from 001__elm20190702_195736__dat00.bin



Processed Tue Jul 2 22:06:07 2019 by ELM ver.2012-10-06 from 001__elm20190702_195736__dat00.bin



Channel 0
mn: -401
mx: 3418
 μ : 1.3
 σ : 25.1

Channel 1
mn: -1661
mx: 935
 μ : -5.4
 σ : 21.2

Channel 2
mn: -2496
mx: 1283
 μ : -6.6
 σ : 26.5

