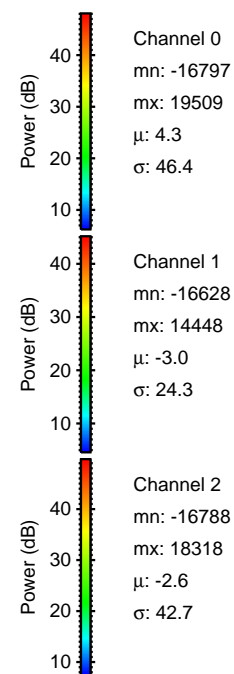
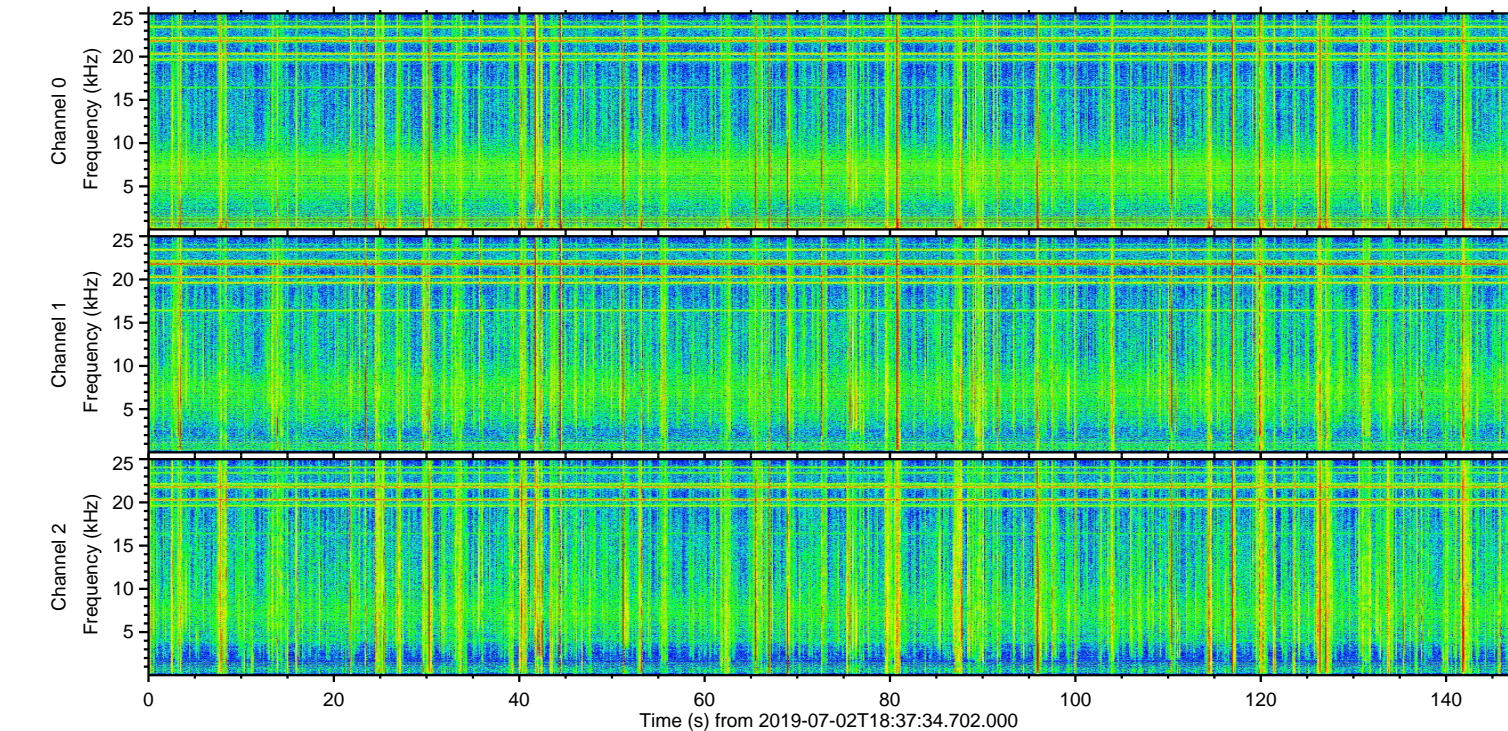
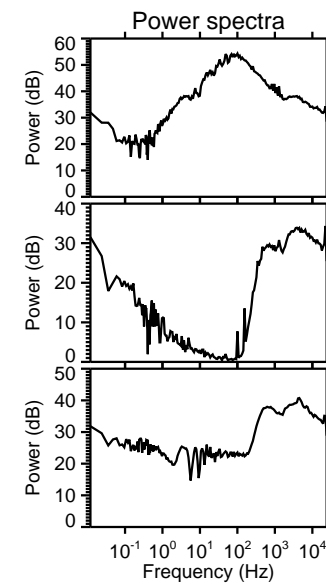
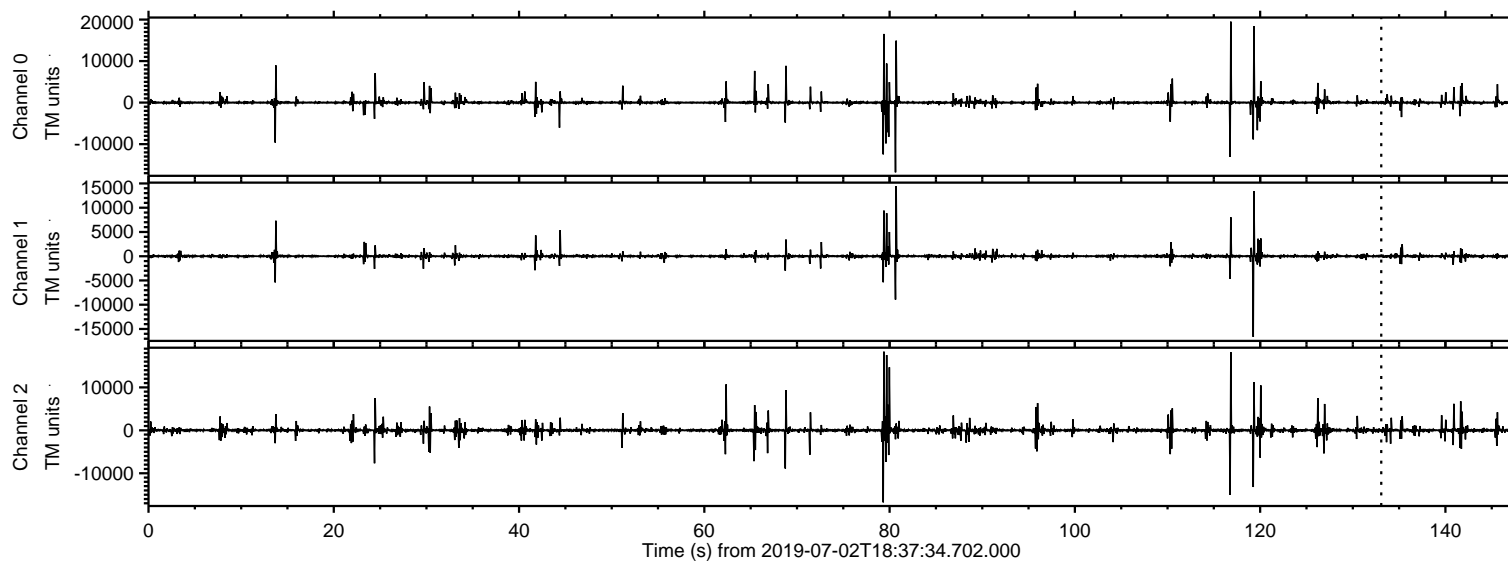


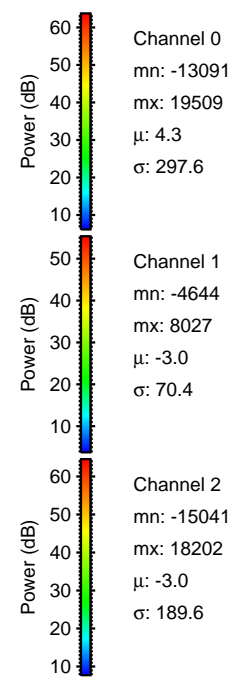
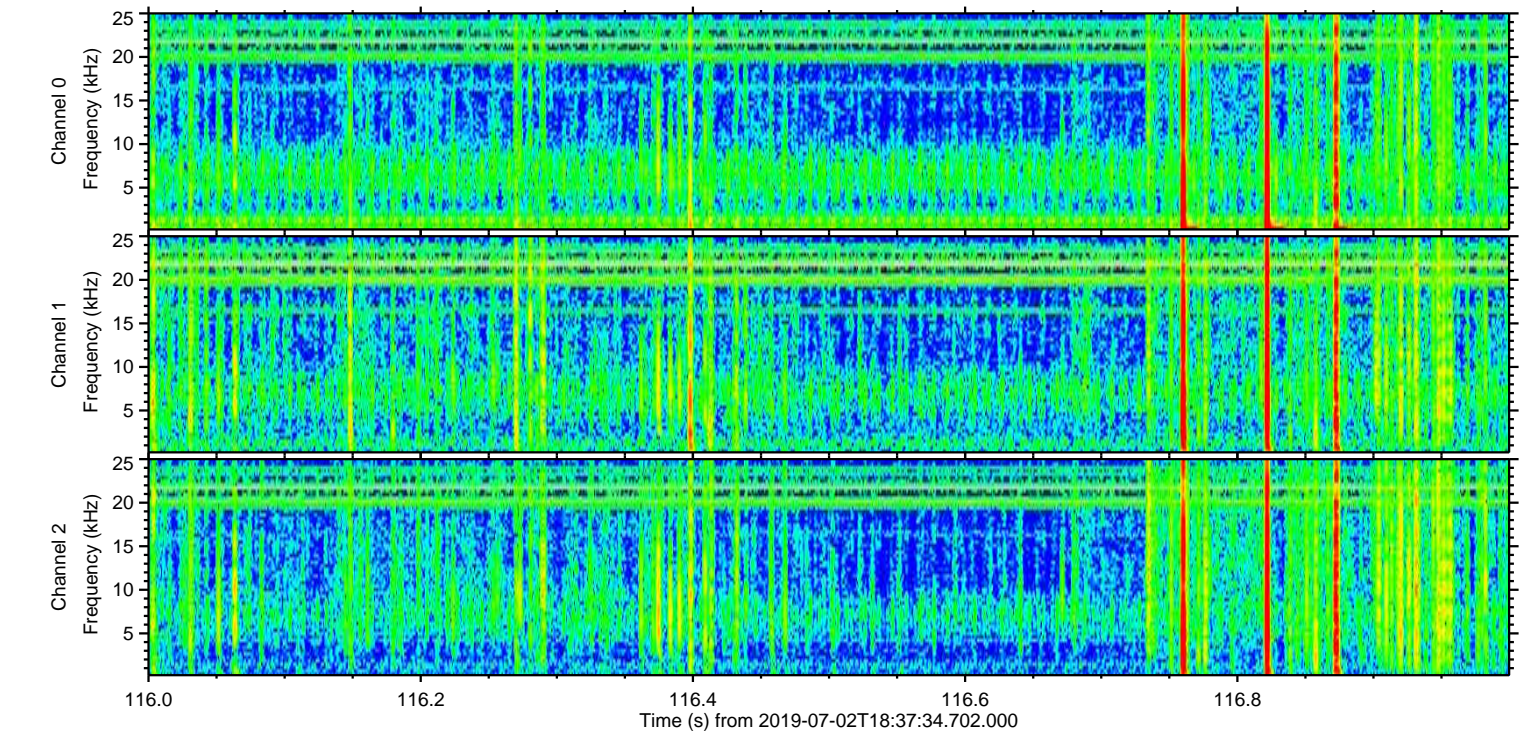
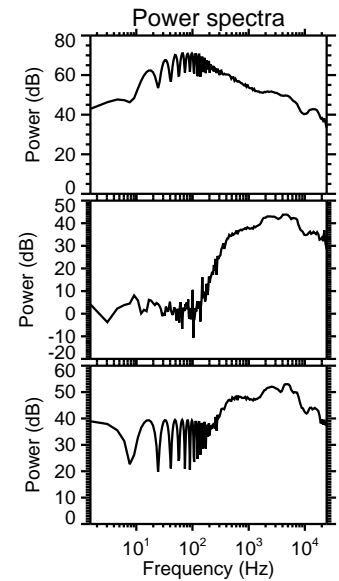
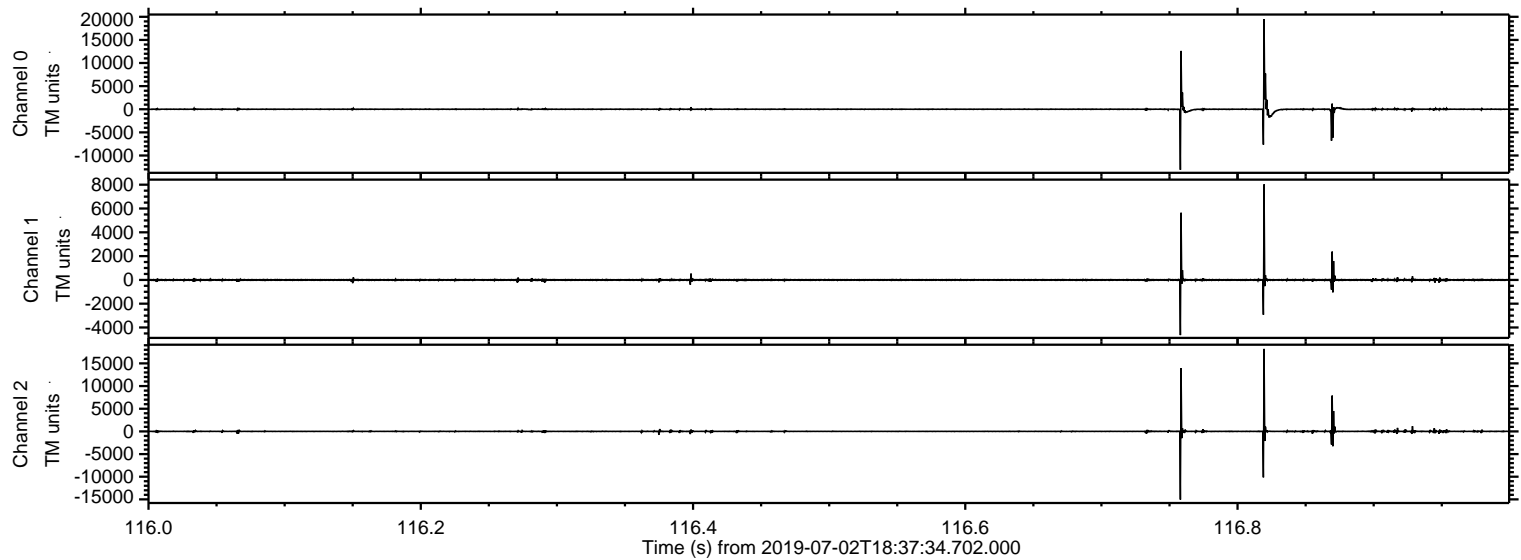
ELMAVAN 3D WAVEFORMS (Measured data sampled at 50 kHz) 50999 packets of 144 samples from 2019-07-02T18:37:34.702.000.

Processed Tue Jul 2 20:45:00 2019 by ELM ver.2012-10-06 from 001__elm20190702_183733__dat00.bin



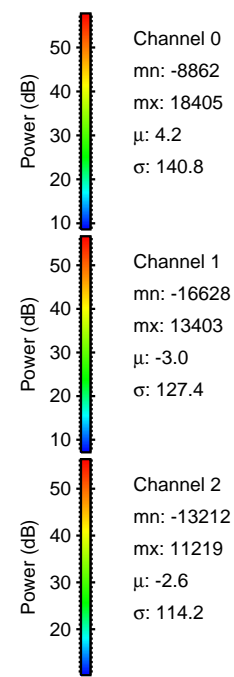
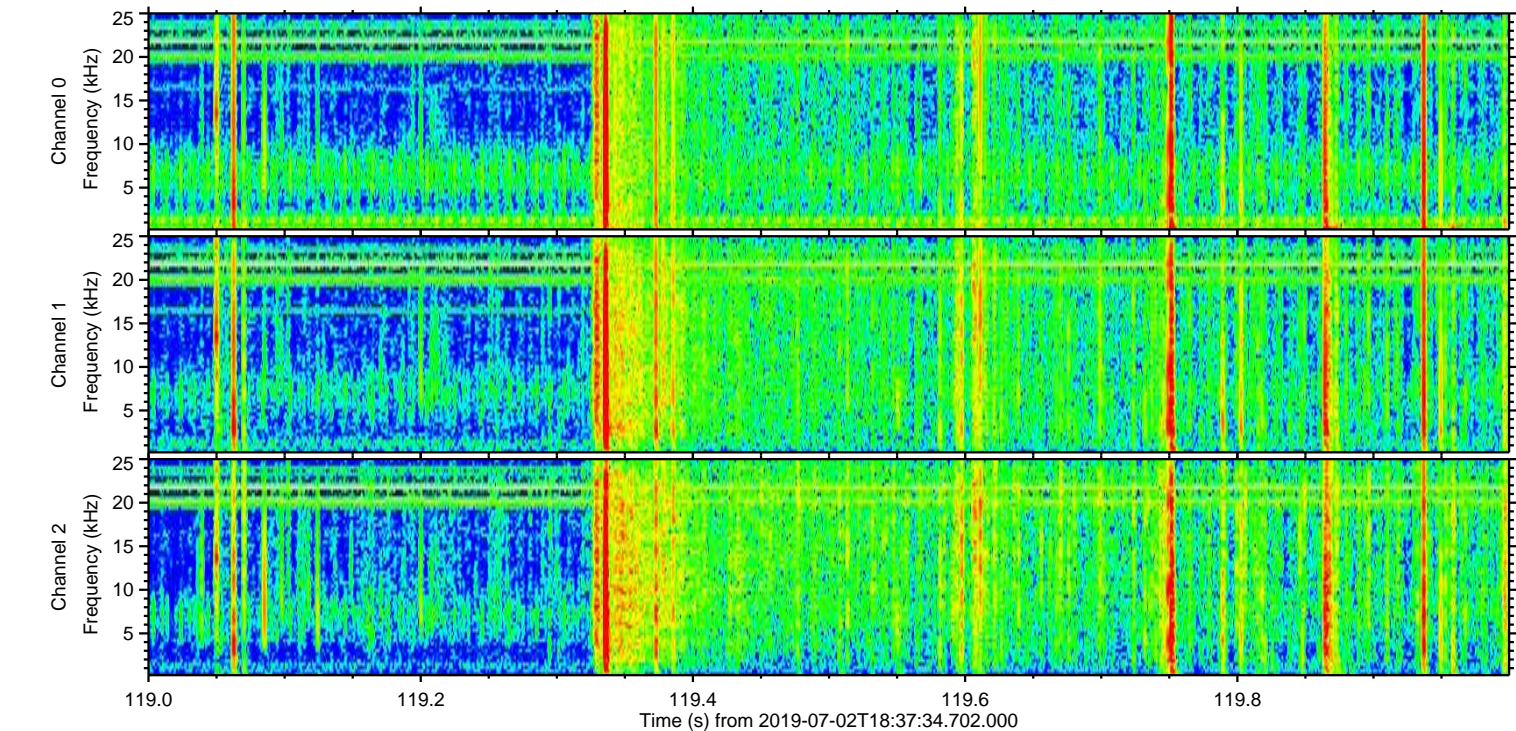
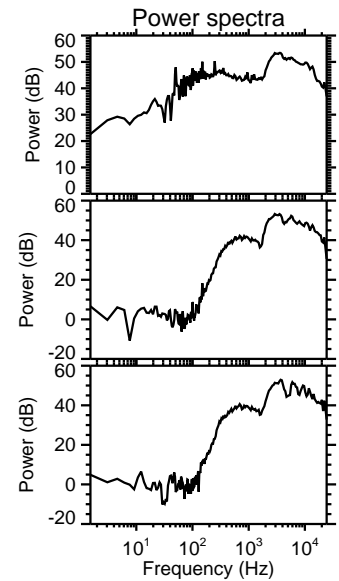
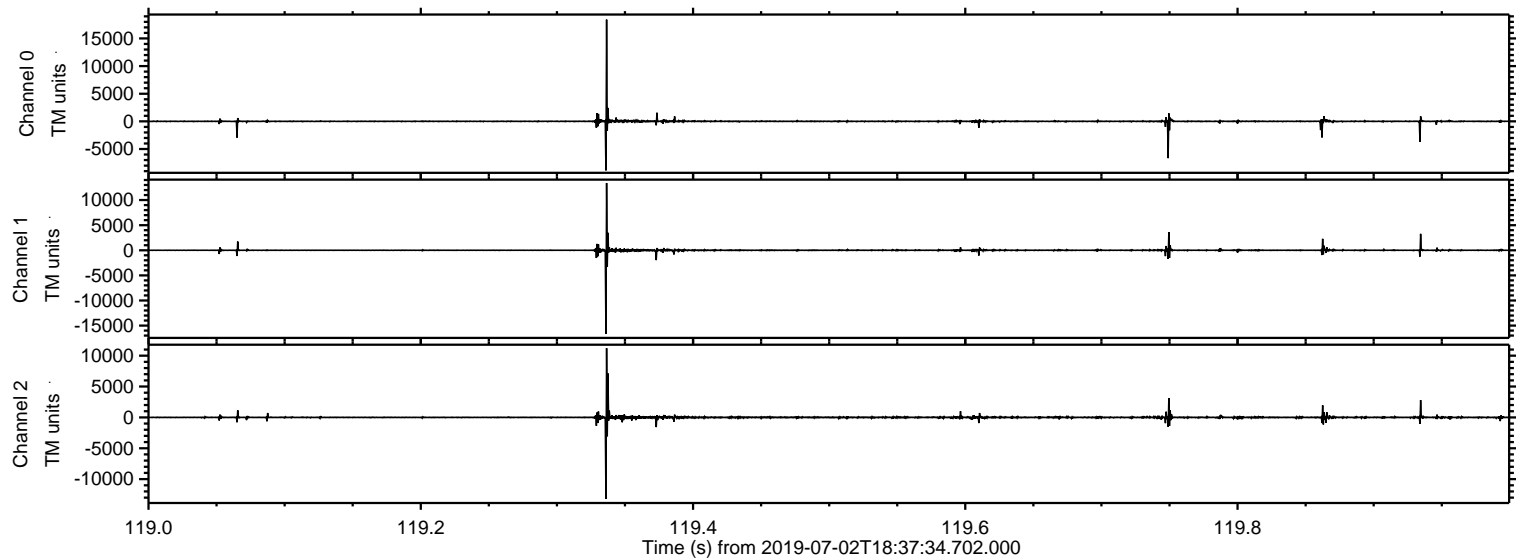
ELMAVAN 3D WAVEFORMS (Measured data sampled at 50 kHz) 50999 packets of 144 samples from 2019-07-02T18:37:34.702.000. Part 117/147

Processed Tue Jul 2 20:45:06 2019 by ELM ver.2012-10-06 from 001__elm20190702_183733__dat00.bin

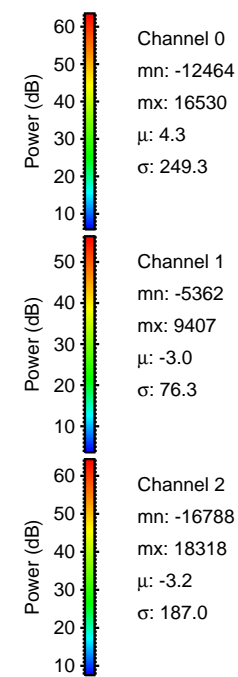
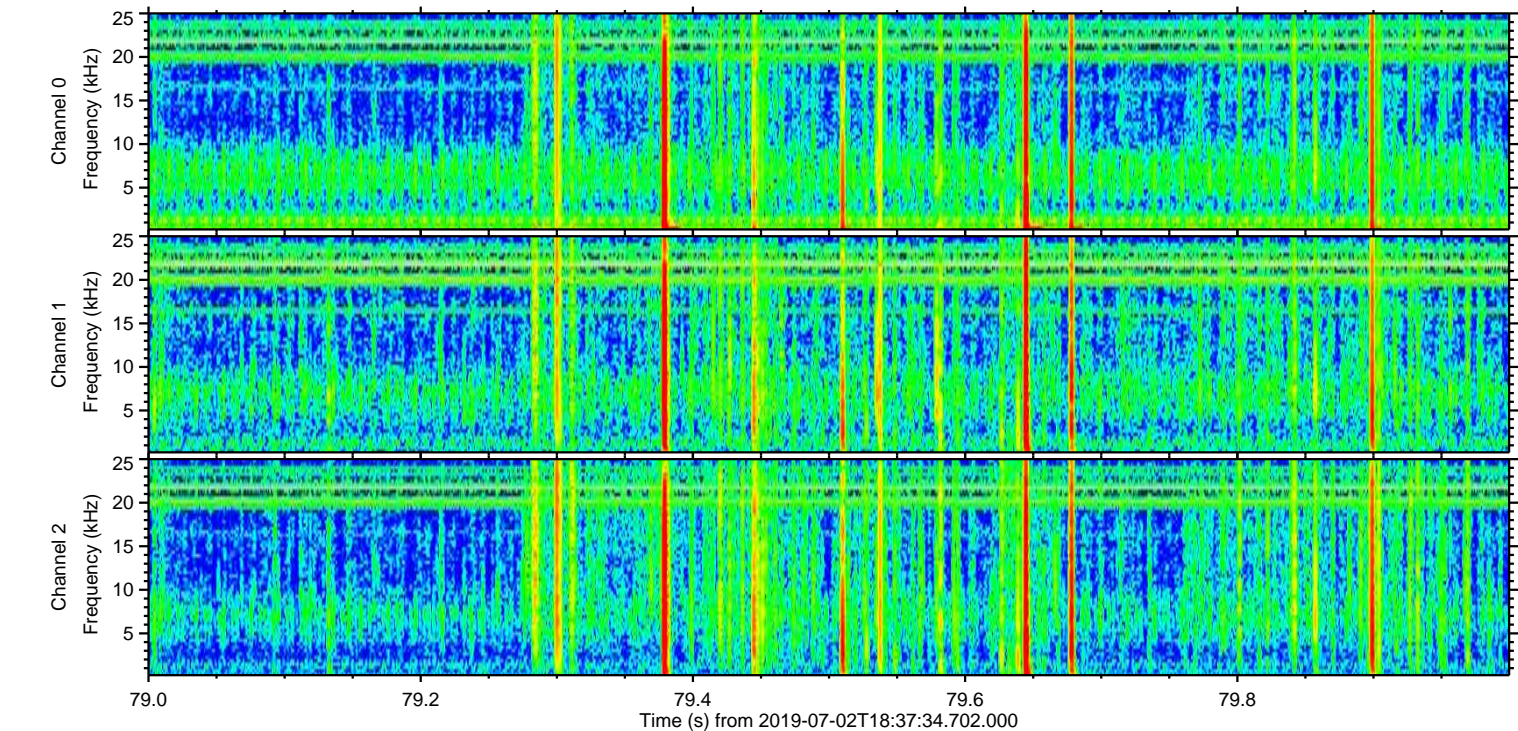
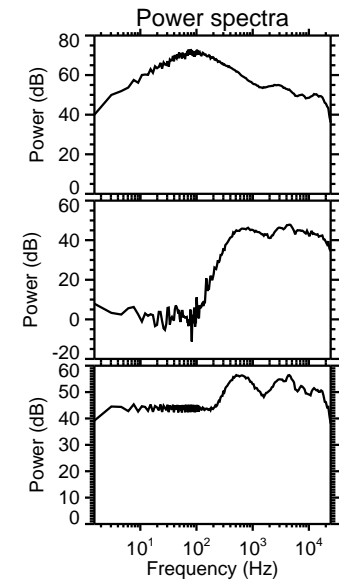
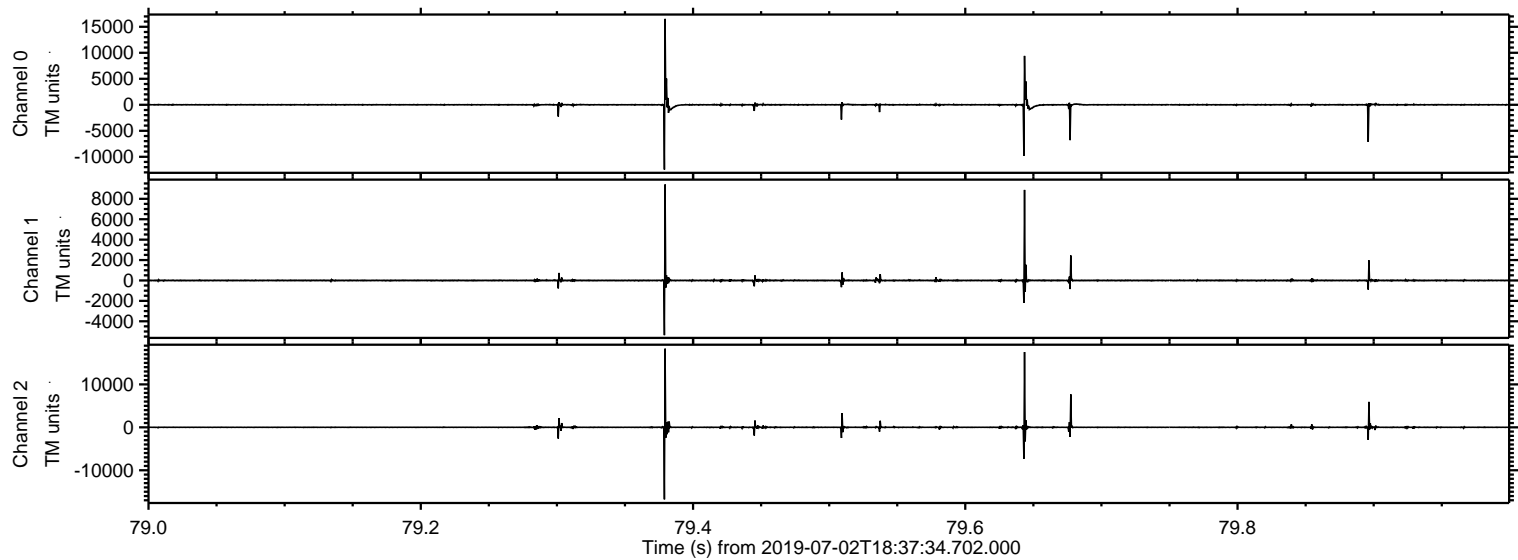


ELMAVAN 3D WAVEFORMS (Measured data sampled at 50 kHz) 50999 packets of 144 samples from 2019-07-02T18:37:34.702.000. Part 120/147

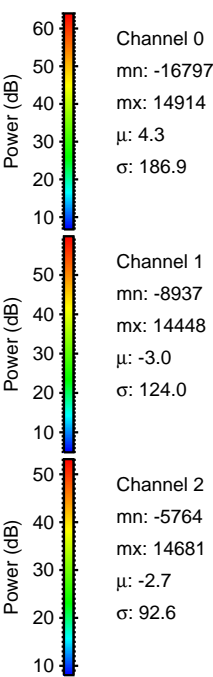
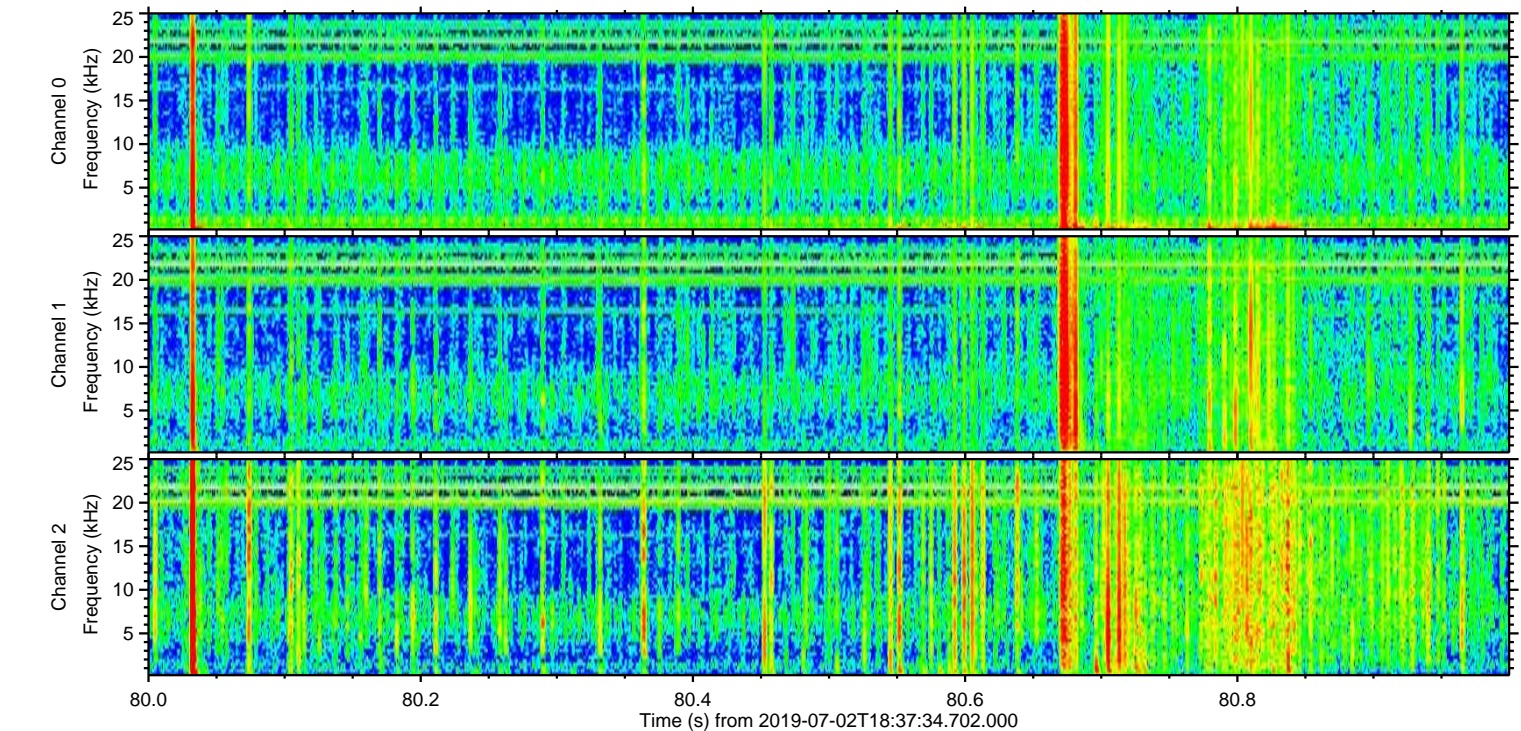
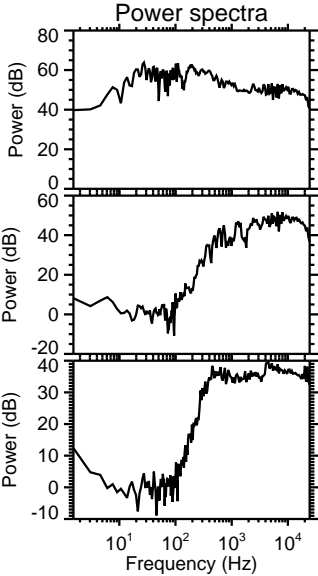
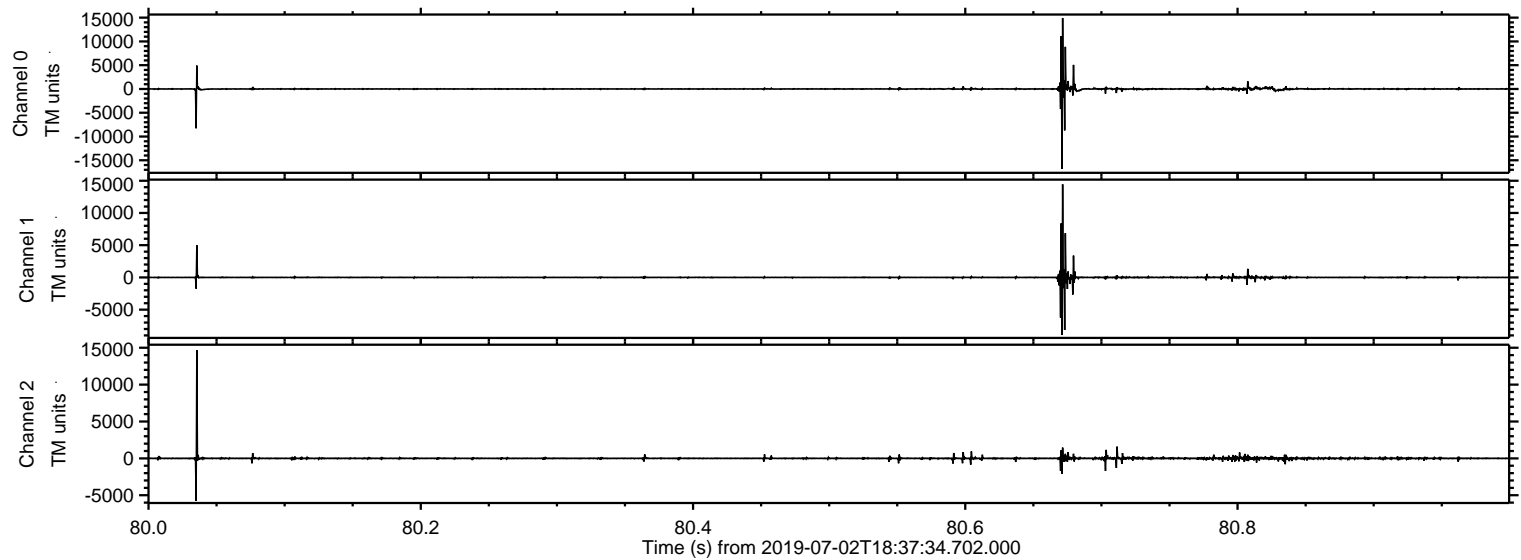
Processed Tue Jul 2 20:45:07 2019 by ELM ver.2012-10-06 from 001__elm20190702_183733__dat00.bin



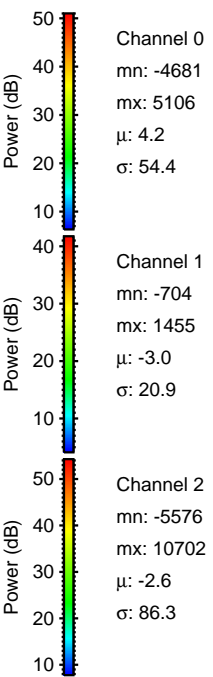
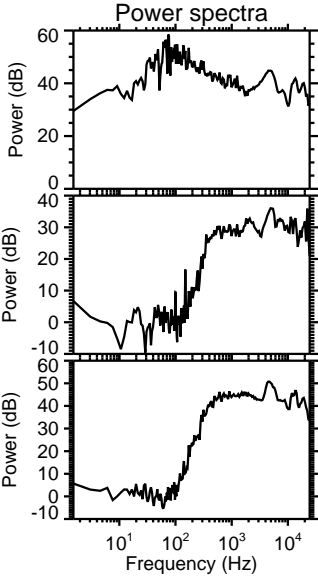
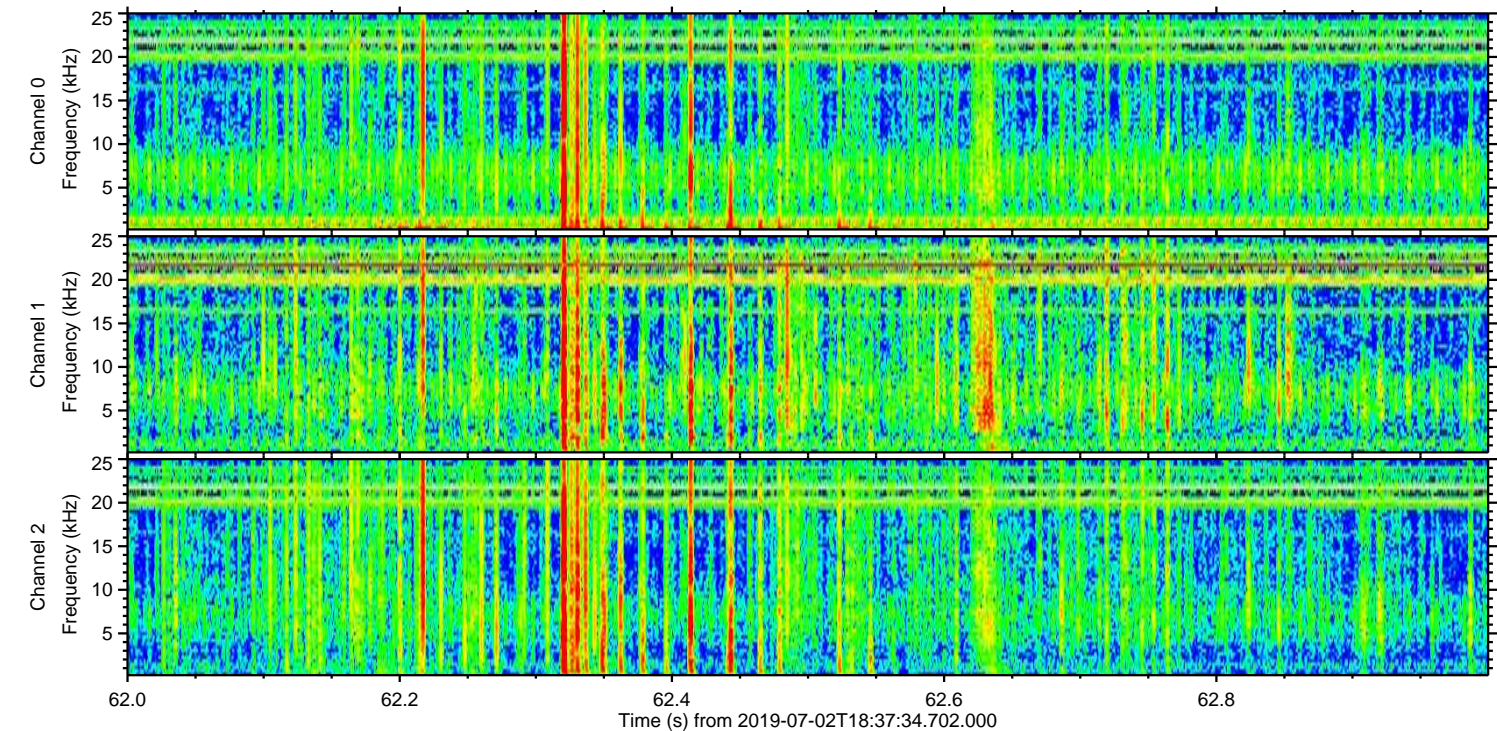
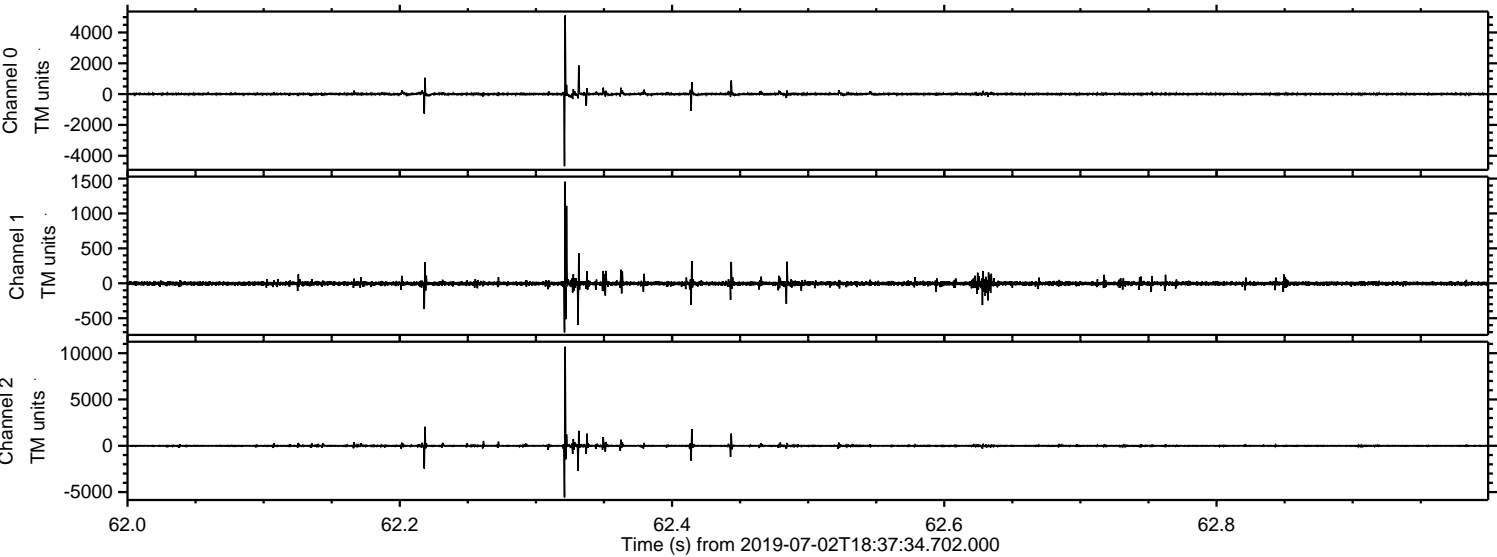
Processed Tue Jul 2 20:45:08 2019 by ELM ver.2012-10-06 from 001__elm20190702_183733__dat00.bin



Processed Tue Jul 2 20:45:08 2019 by ELM ver.2012-10-06 from 001__elm20190702_183733__dat00.bin

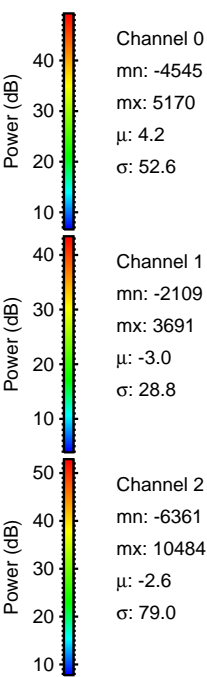
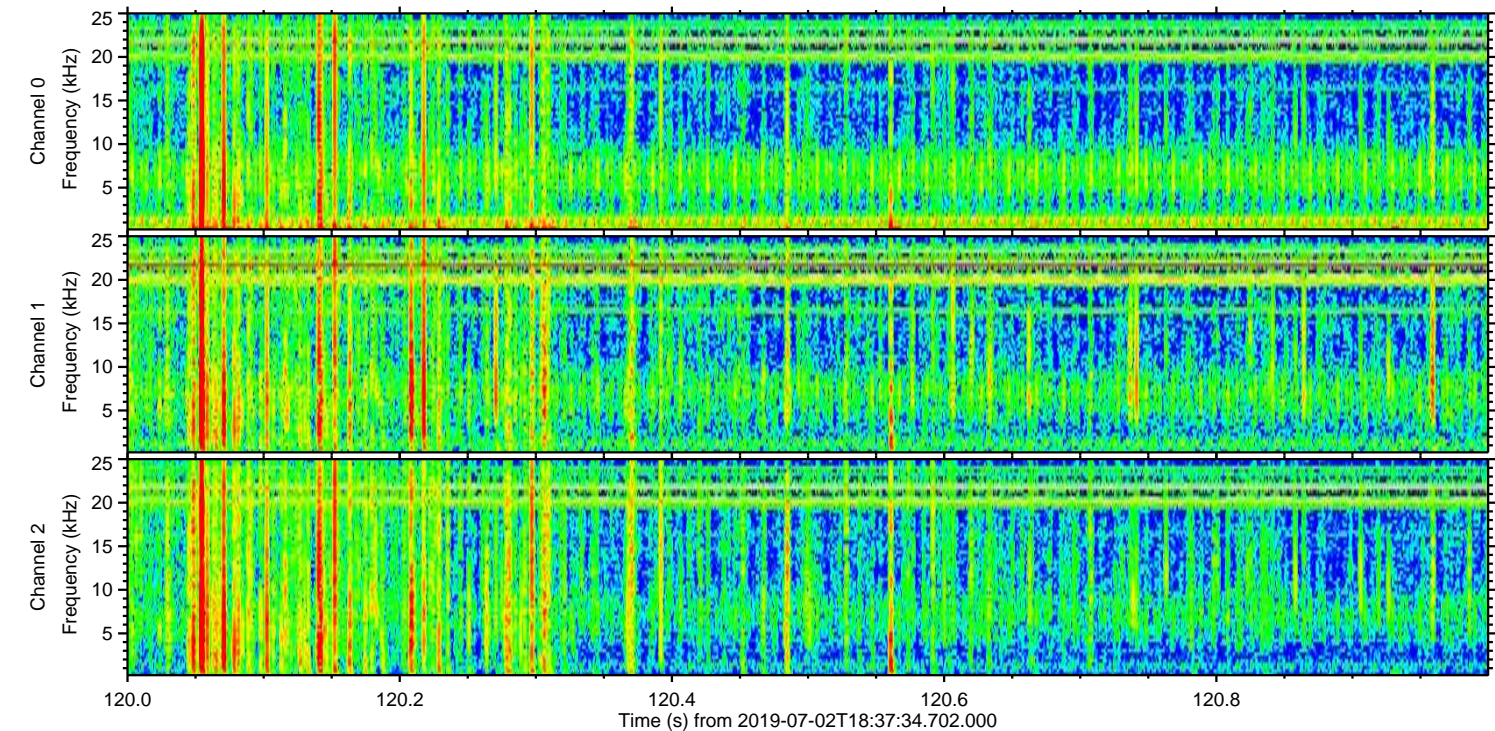
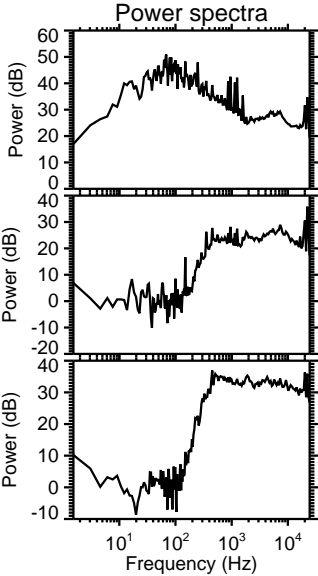
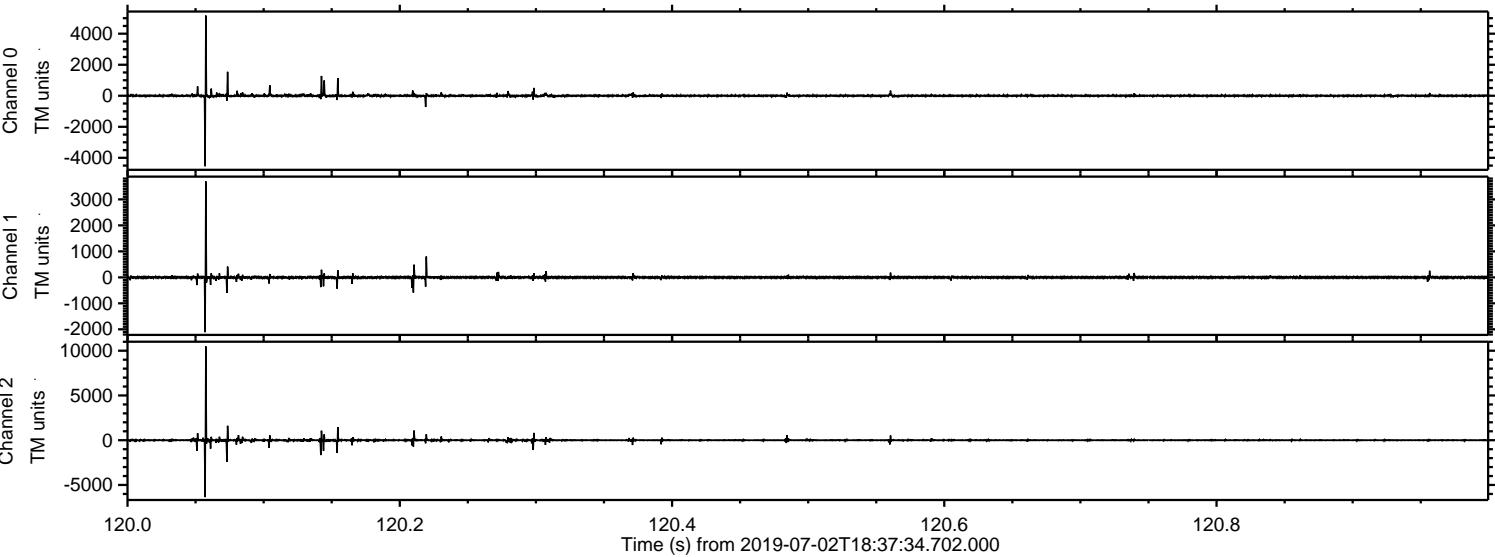


Processed Tue Jul 2 20:45:09 2019 by ELM ver.2012-10-06 from 001__elm20190702_183733__dat00.bin

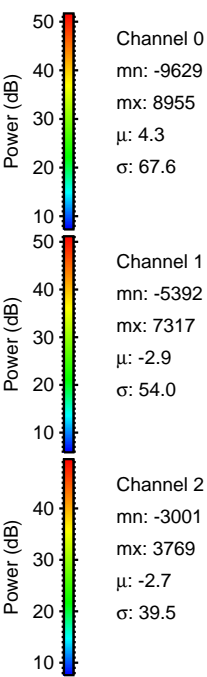
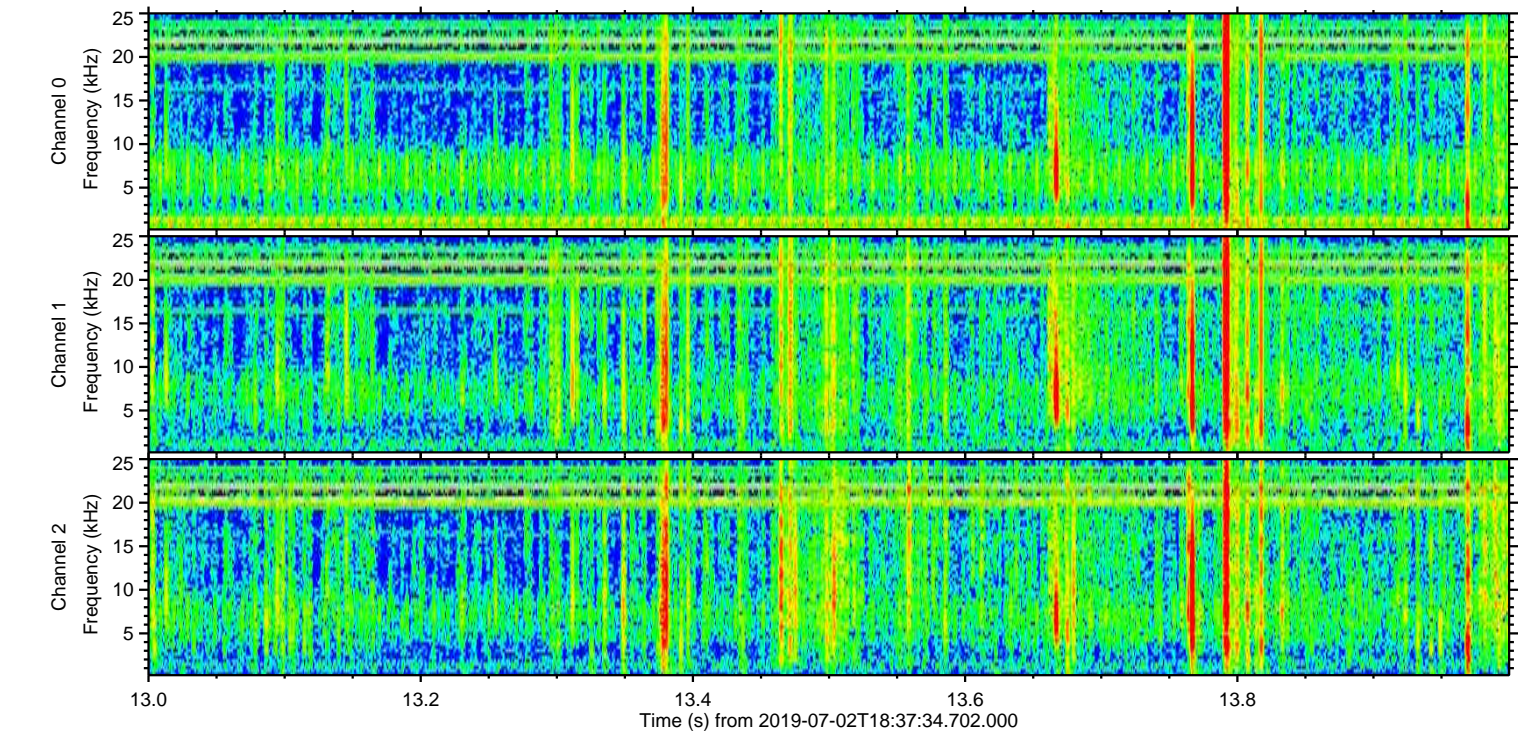
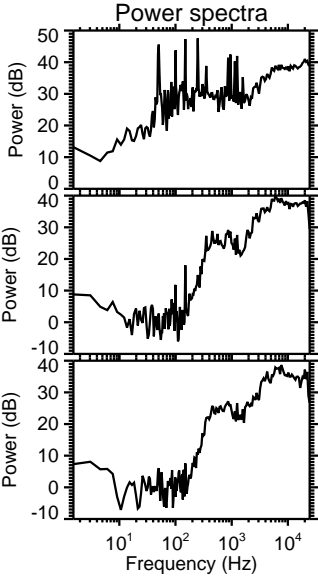
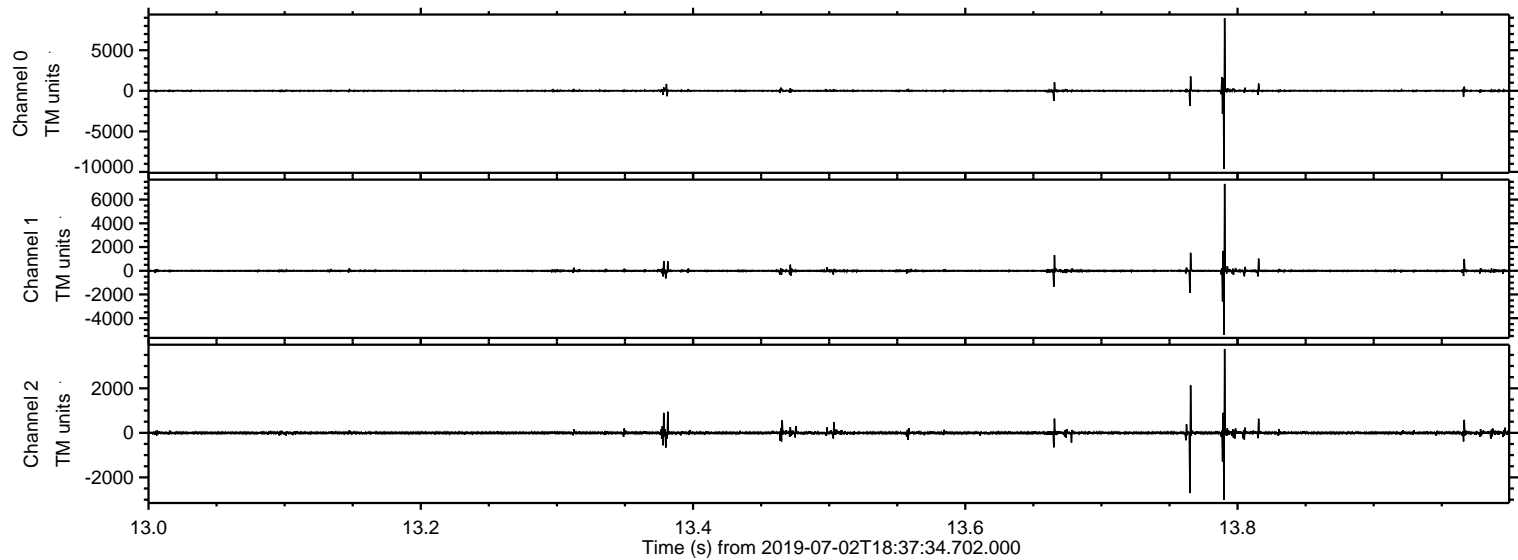


ELMAVAN 3D WAVEFORMS (Measured data sampled at 50 kHz) 50999 packets of 144 samples from 2019-07-02T18:37:34.702.000. Part 121/147

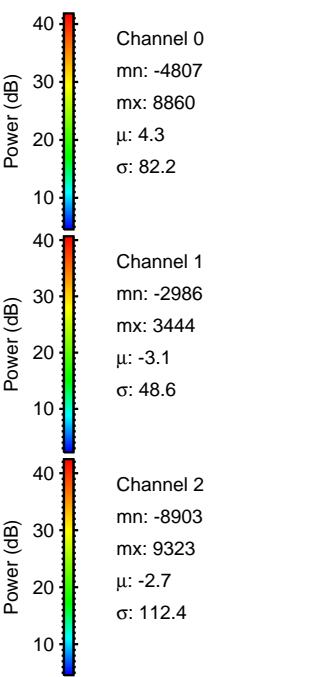
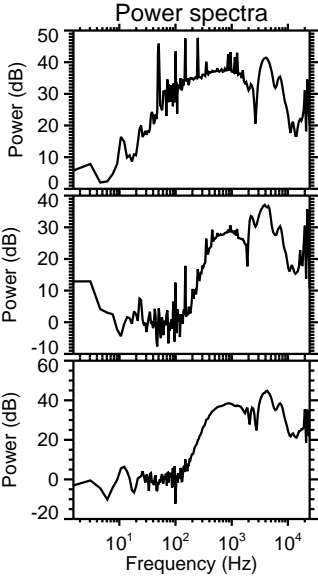
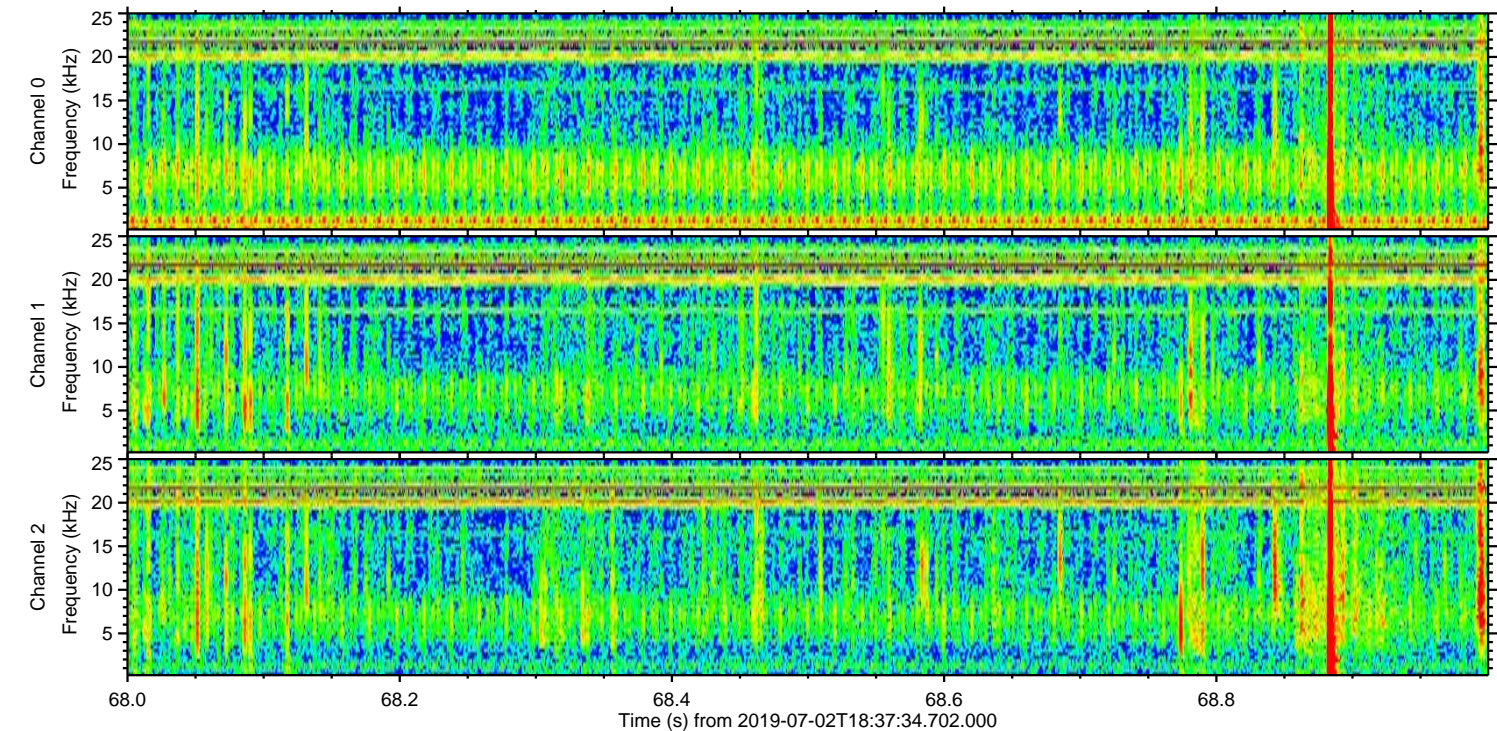
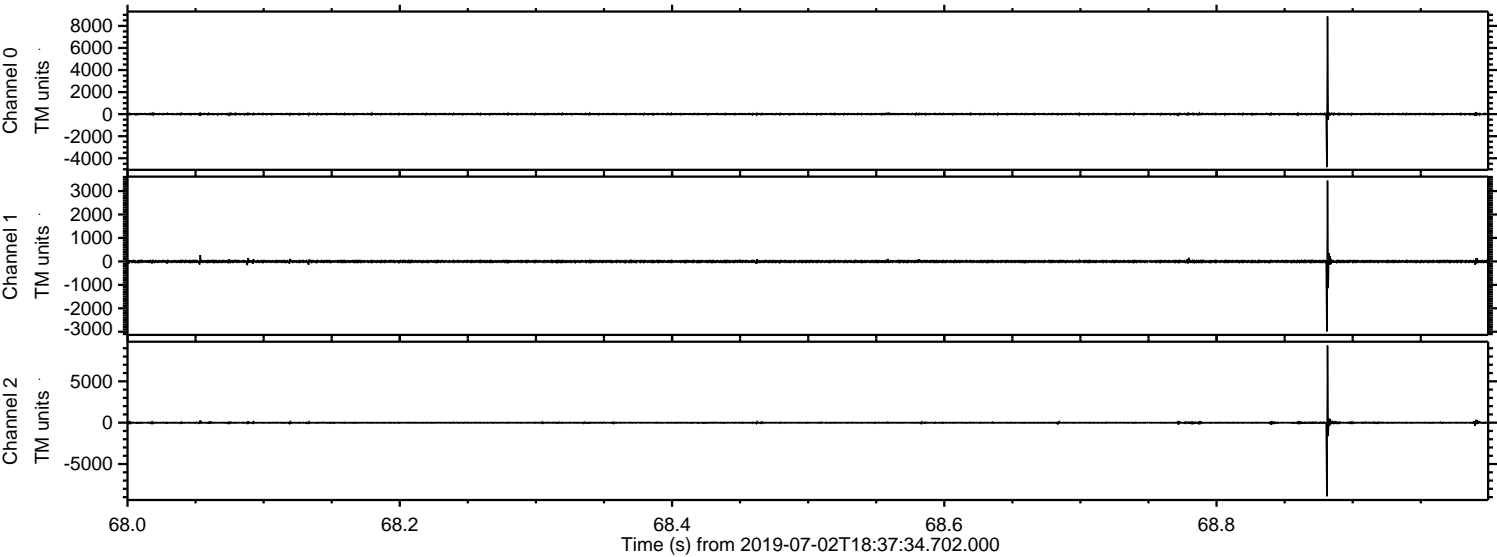
Processed Tue Jul 2 20:45:10 2019 by ELM ver.2012-10-06 from 001__elm20190702_183733__dat00.bin



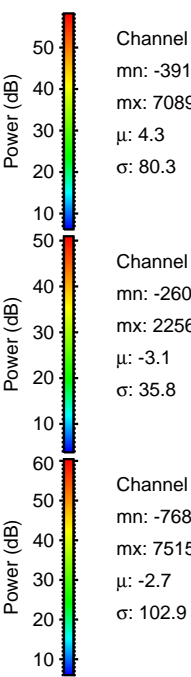
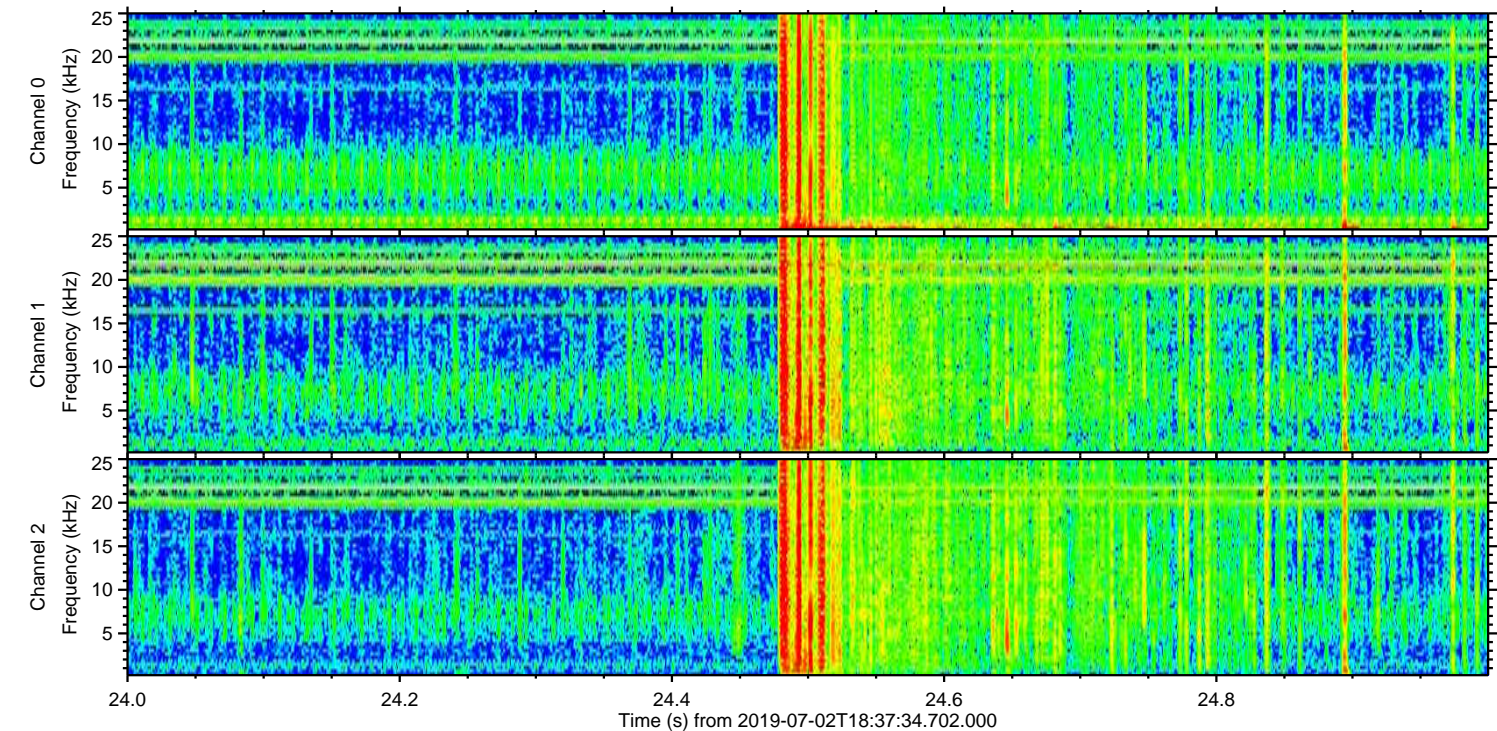
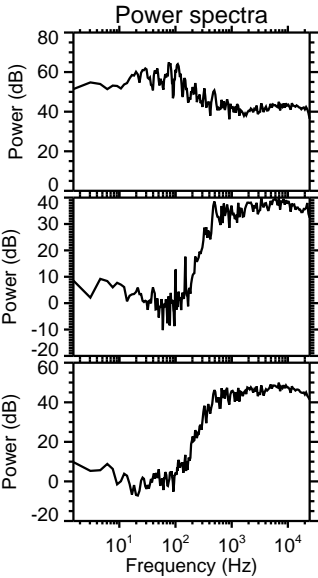
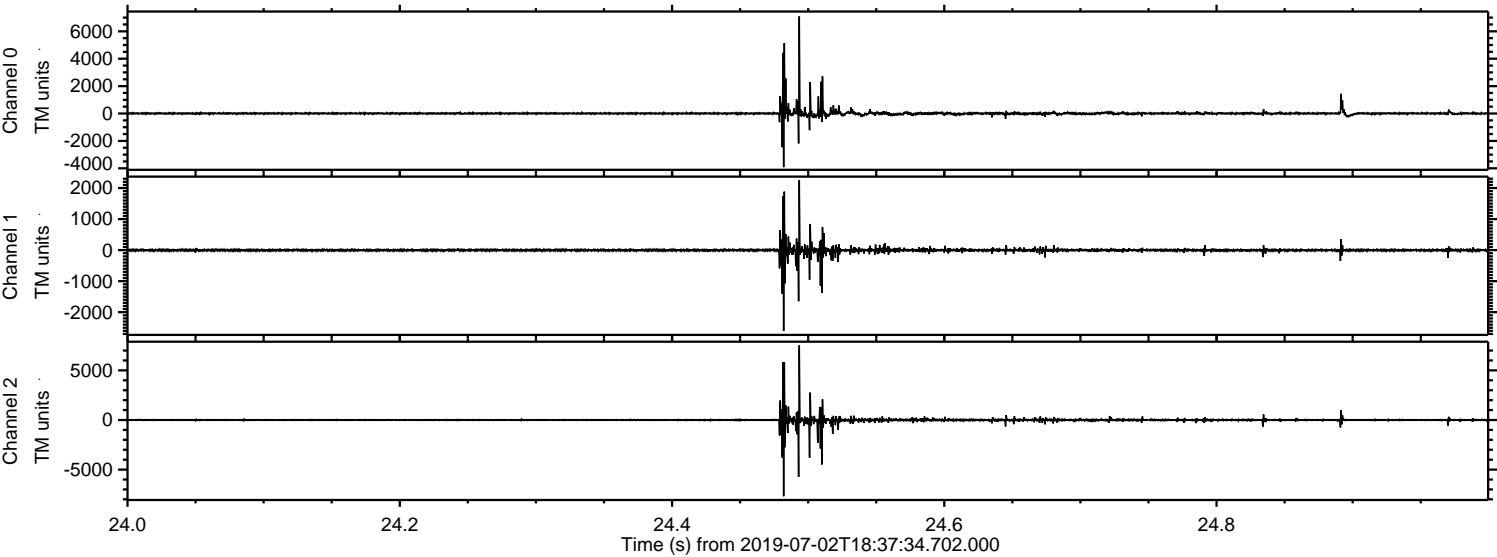
Processed Tue Jul 2 20:45:10 2019 by ELM ver.2012-10-06 from 001__elm20190702_183733__dat00.bin



Processed Tue Jul 2 20:45:11 2019 by ELM ver.2012-10-06 from 001__elm20190702_183733__dat00.bin



Processed Tue Jul 2 20:45:12 2019 by ELM ver.2012-10-06 from 001__elm20190702_183733__dat00.bin



Channel 0
mn: -3914
mx: 7089
 μ : 4.3
 σ : 80.3

Channel 1
mn: -2602
mx: 2256
 μ : -3.1
 σ : 35.8

Channel 2
mn: -7681
mx: 7515
 μ : -2.7
 σ : 102.9

Processed Tue Jul 2 20:45:12 2019 by ELM ver.2012-10-06 from 001__elm20190702_183733__dat00.bin

