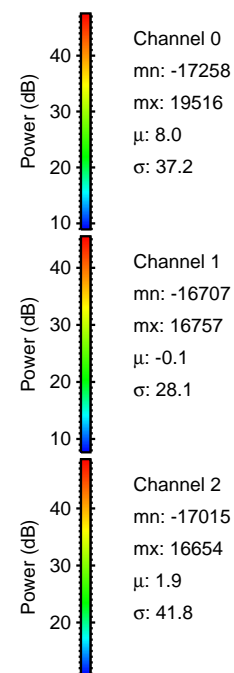
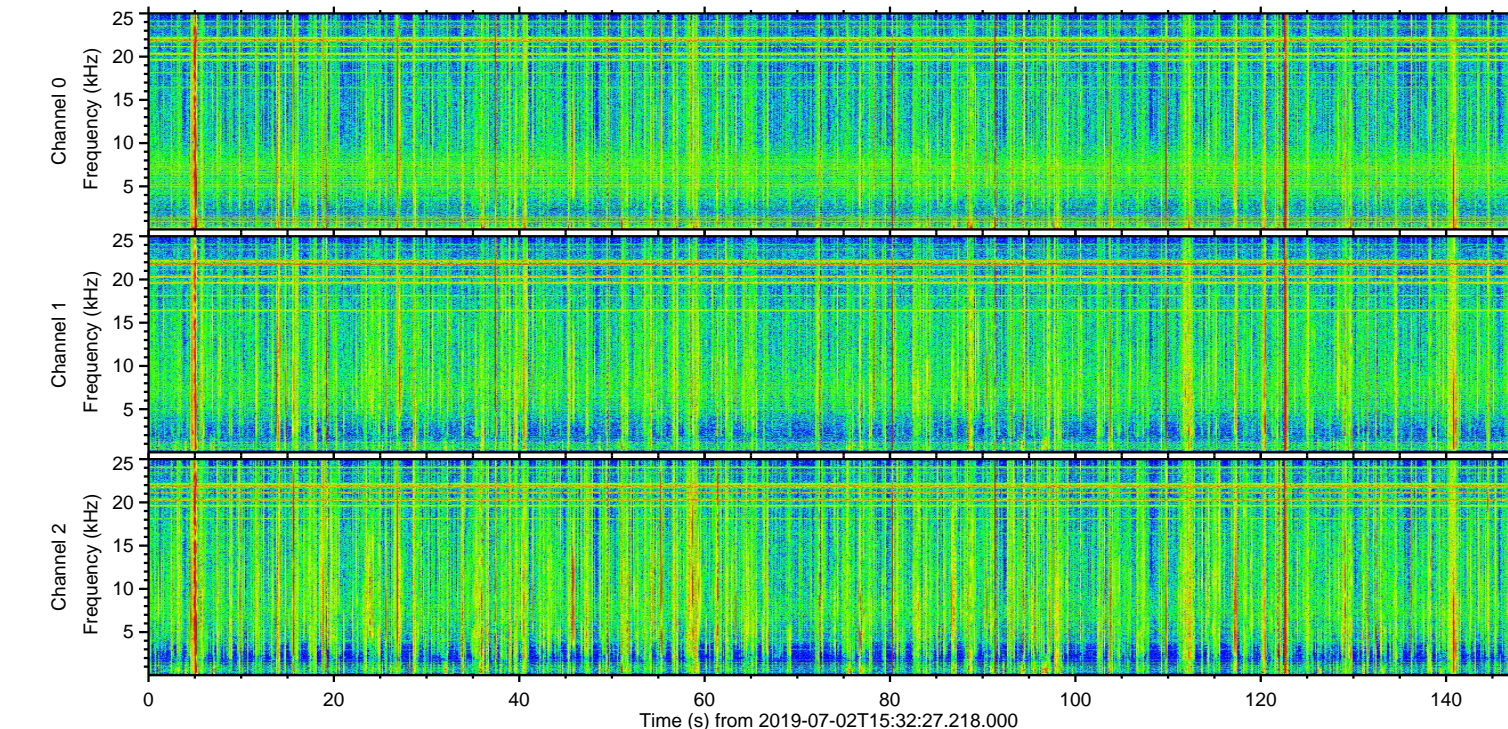
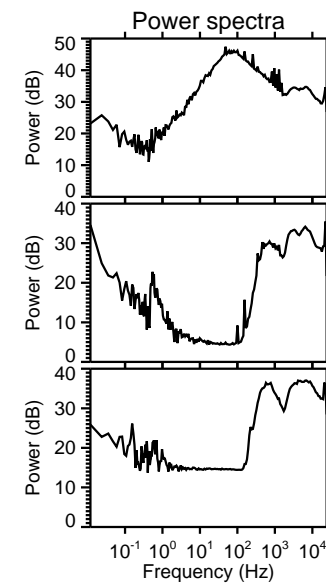
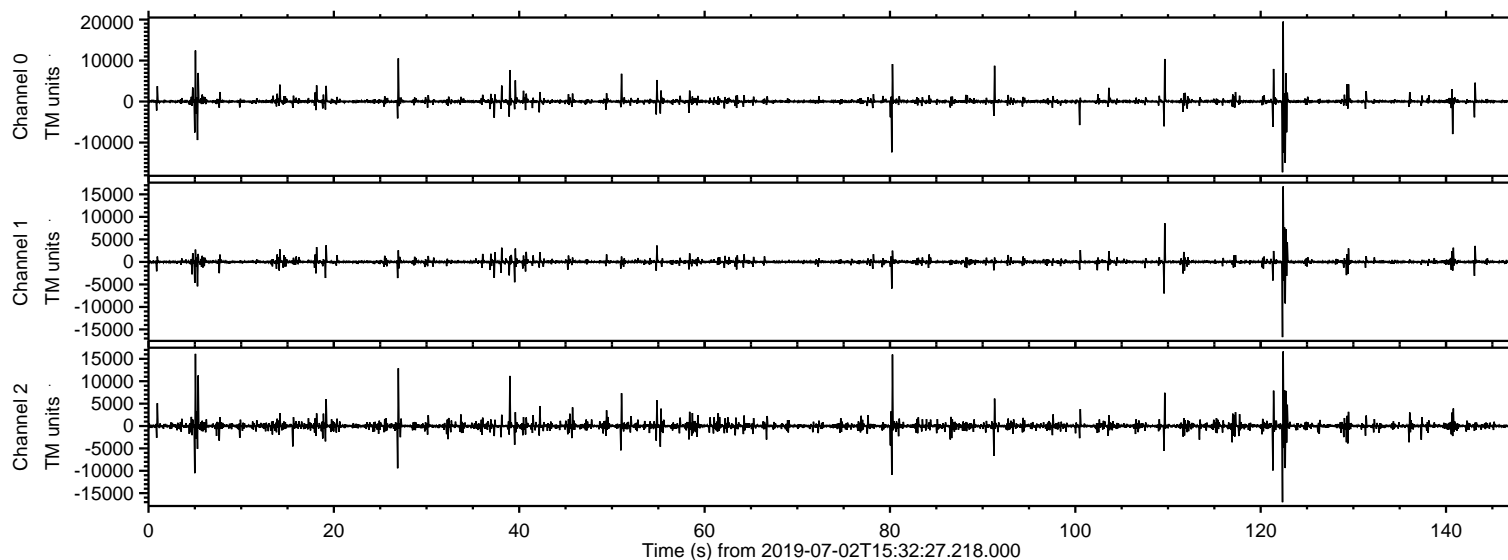


# ELMAVAN 3D WAVEFORMS (Measured data sampled at 50 kHz) 51000 packets of 144 samples from 2019-07-02T15:32:27.218.000.

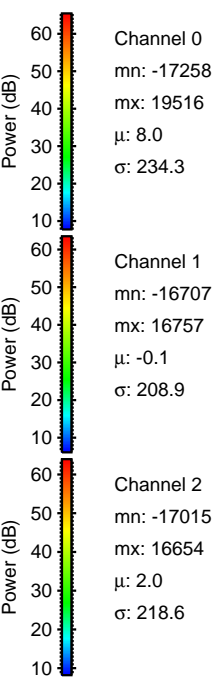
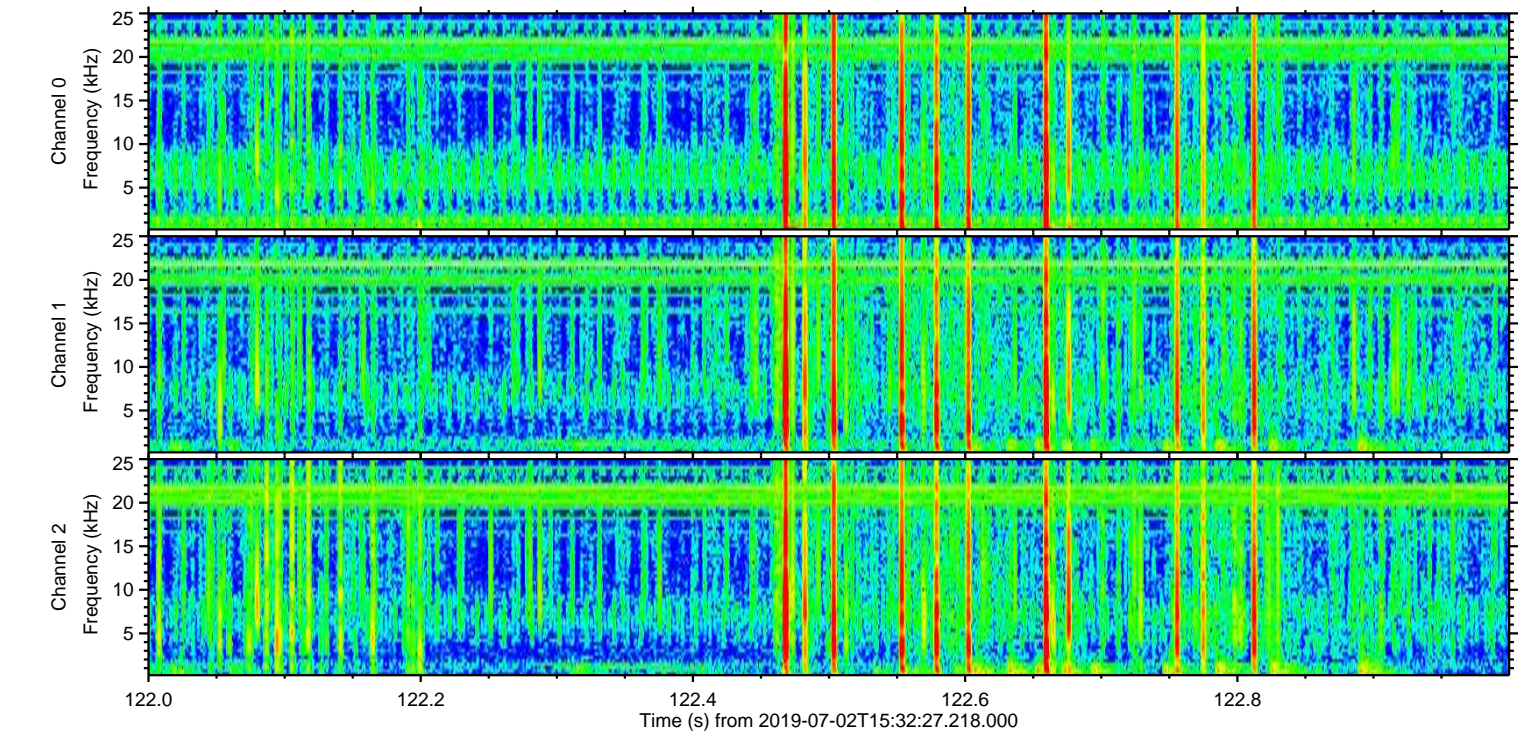
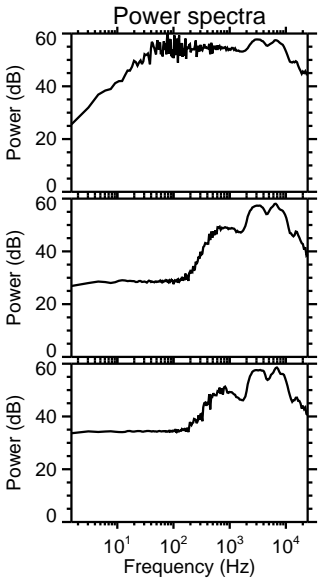
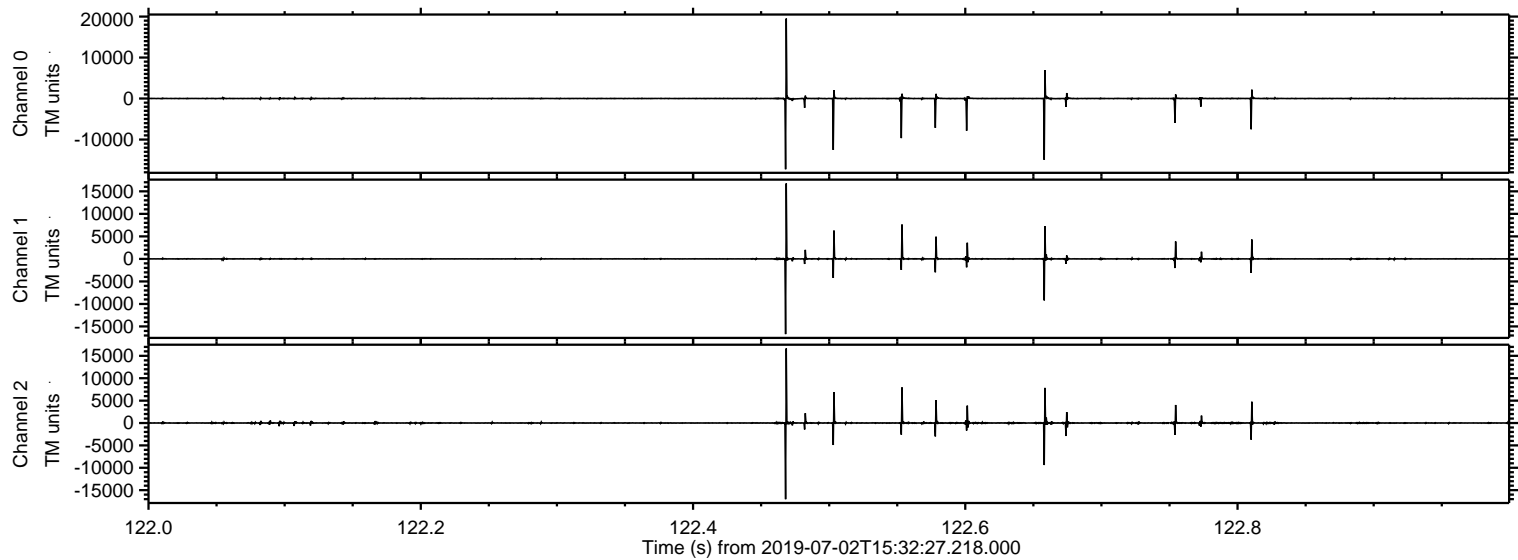
Processed Tue Jul 2 17:40:24 2019 by ELM ver.2012-10-06 from 001\_\_elm20190702\_153226\_\_dat00.bin



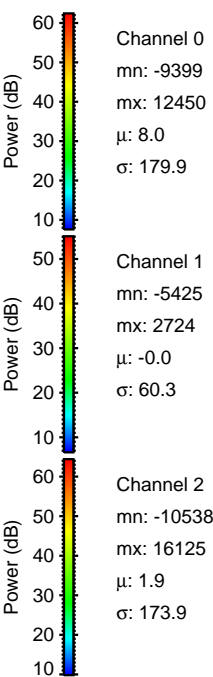
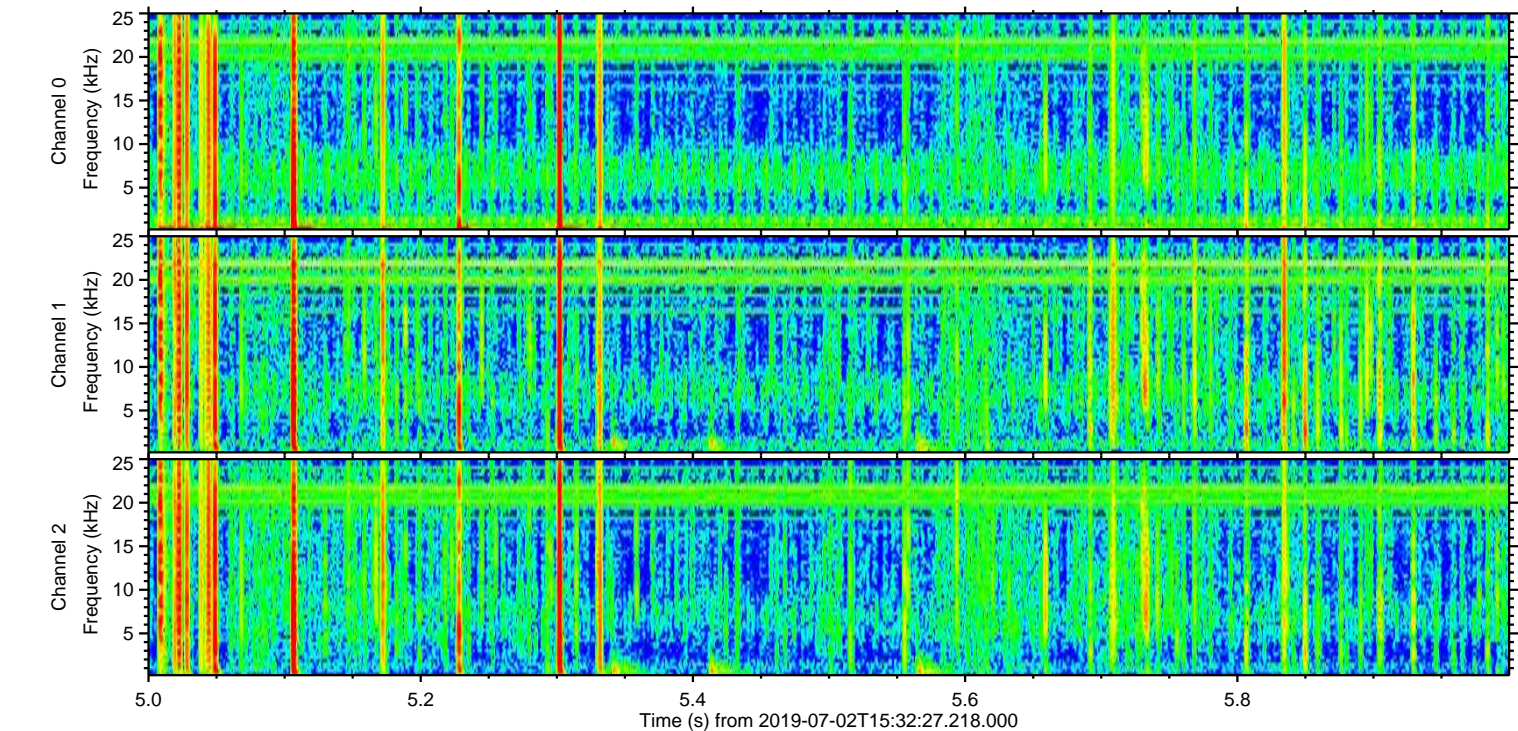
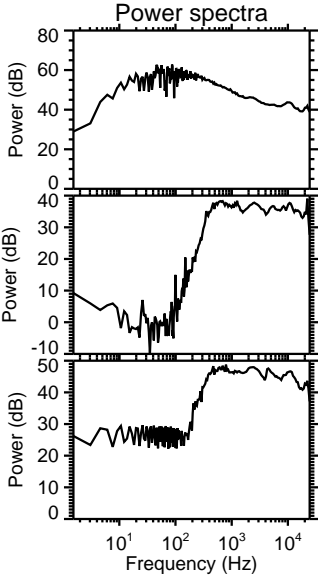
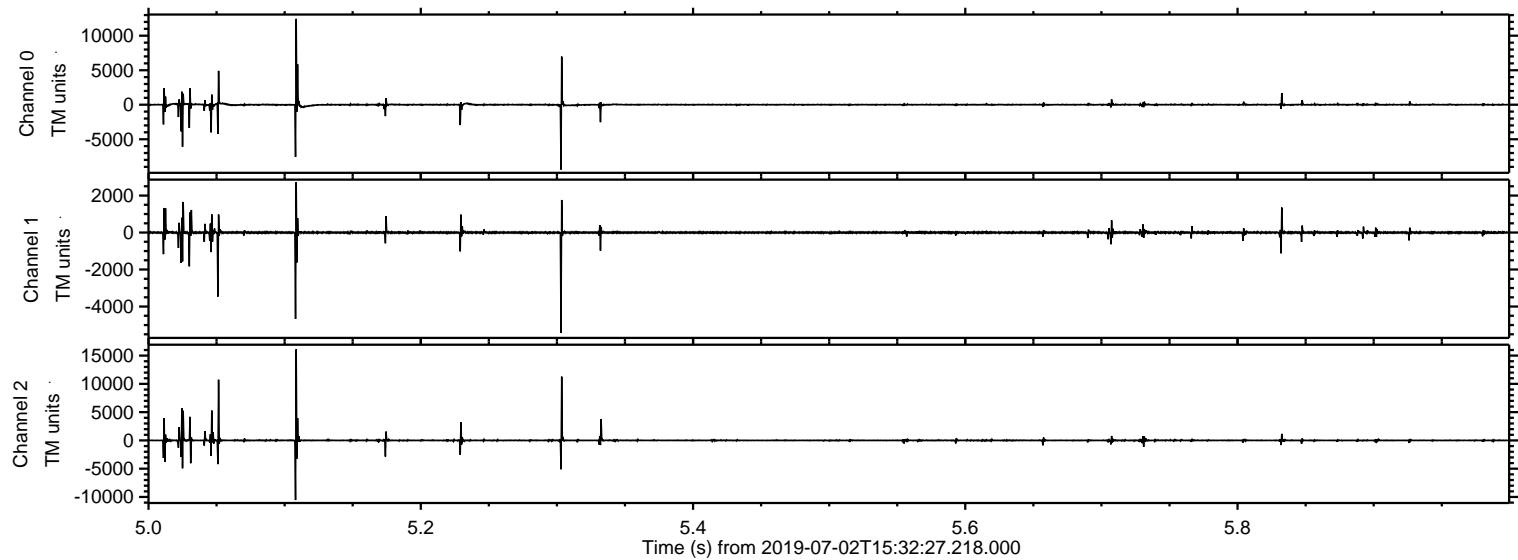


ELMAVAN 3D WAVEFORMS (Measured data sampled at 50 kHz) 51000 packets of 144 samples from 2019-07-02T15:32:27.218.000. Part 123/147

Processed Tue Jul 2 17:40:33 2019 by ELM ver.2012-10-06 from 001\_\_elm20190702\_153226\_\_dat00.bin

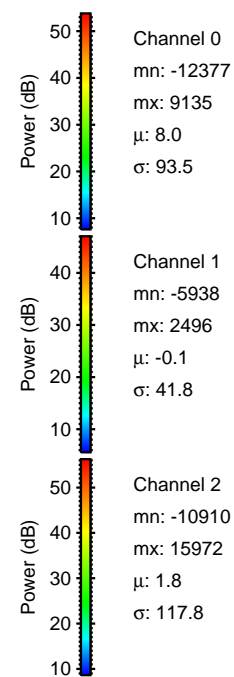
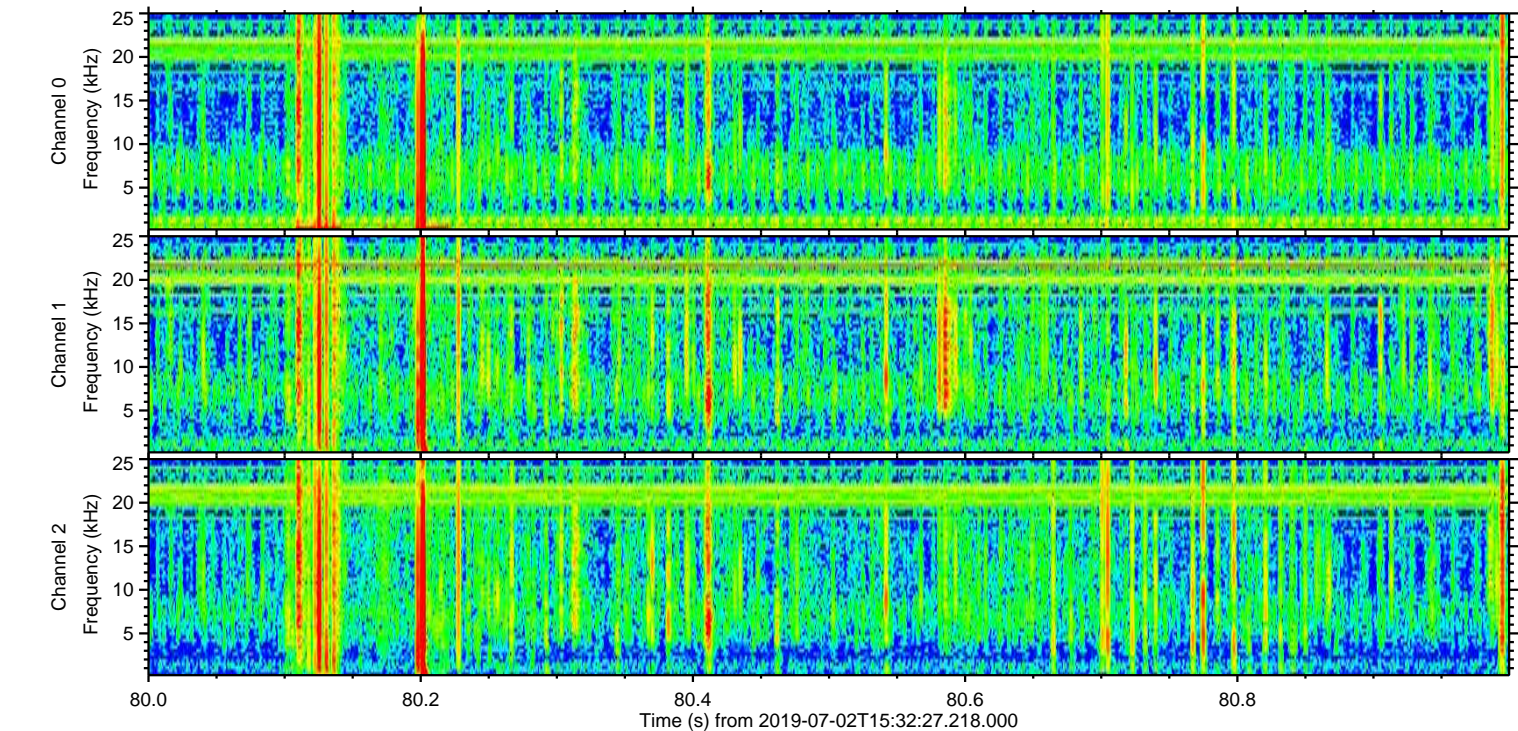
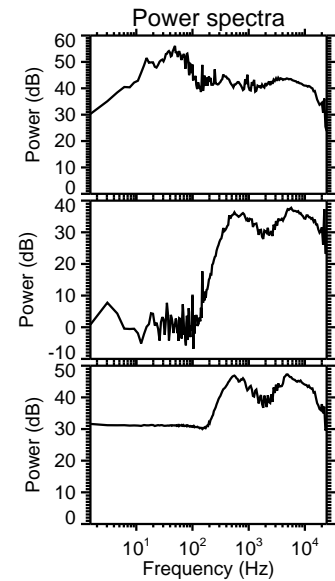
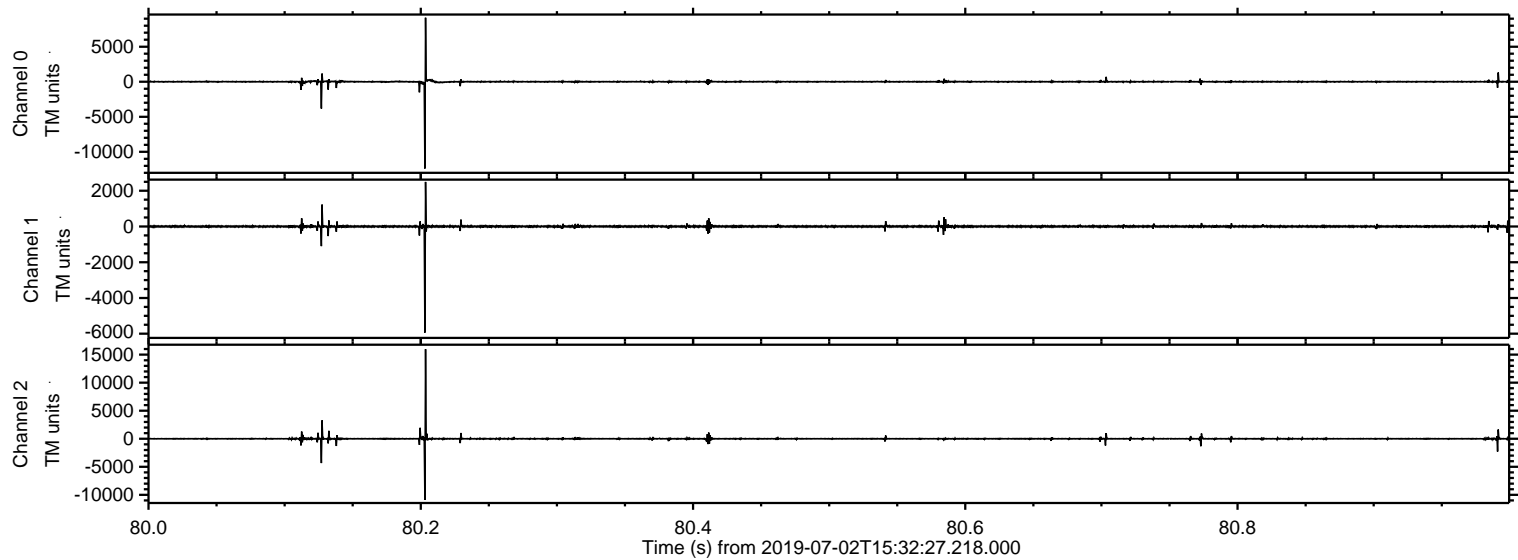


Processed Tue Jul 2 17:40:34 2019 by ELM ver.2012-10-06 from 001\_\_elm20190702\_153226\_\_dat00.bin



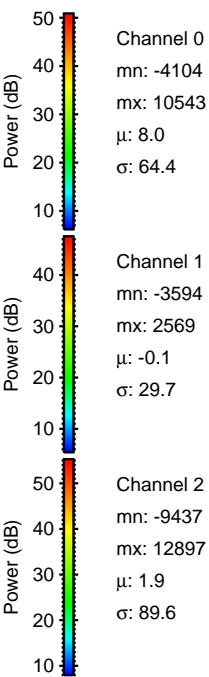
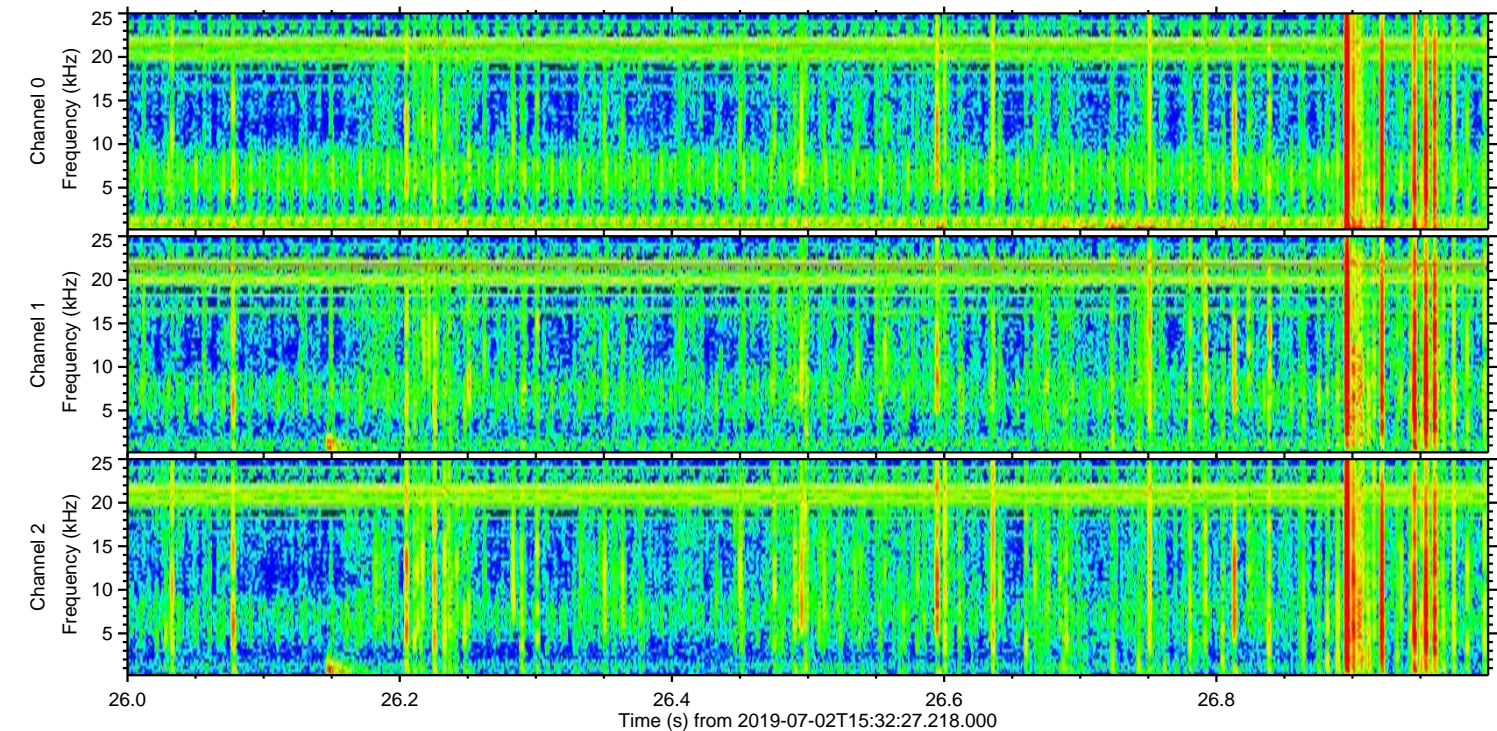
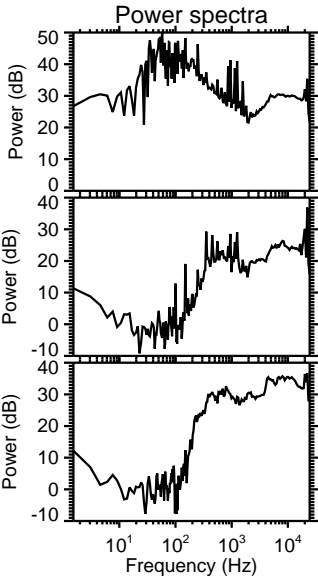
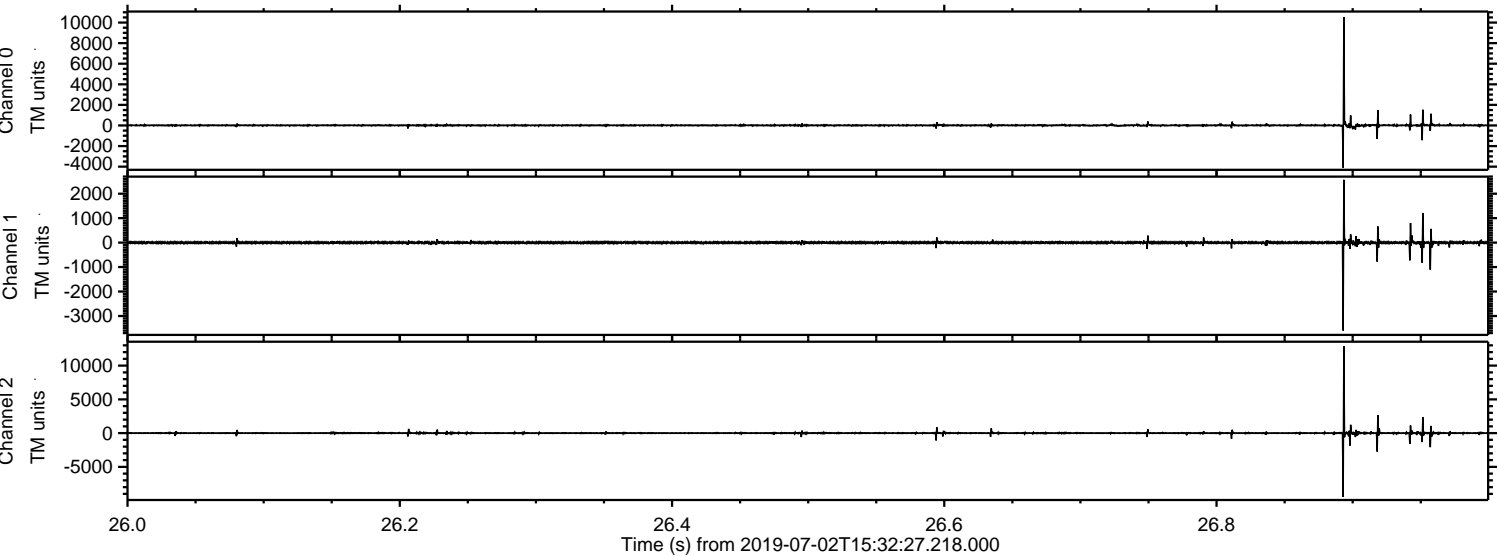


Processed Tue Jul 2 17:40:35 2019 by ELM ver.2012-10-06 from 001\_\_elm20190702\_153226\_\_dat00.bin



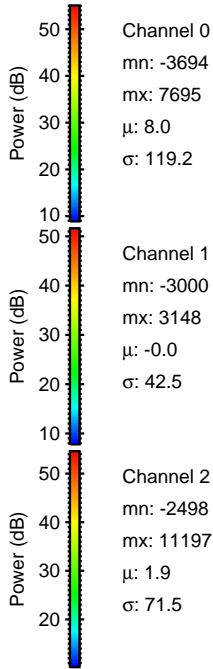
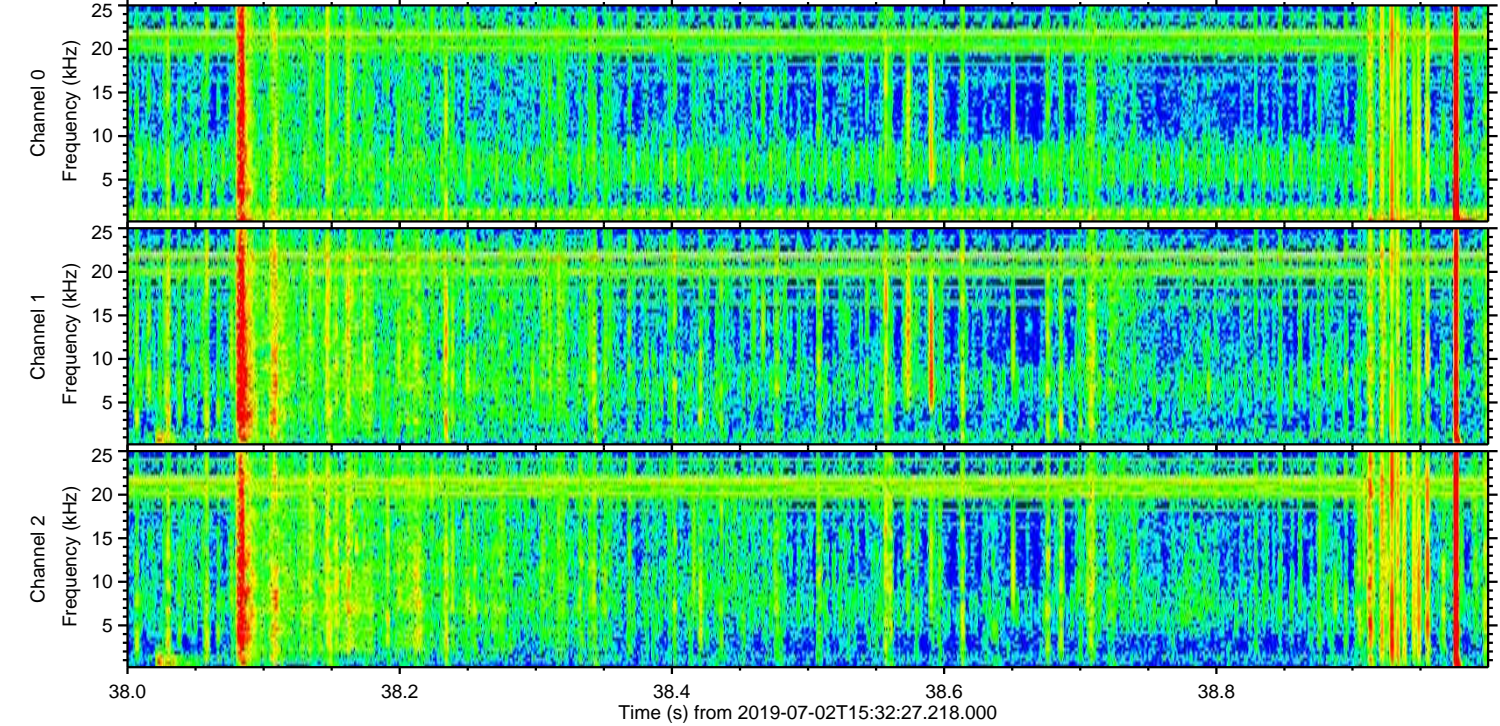
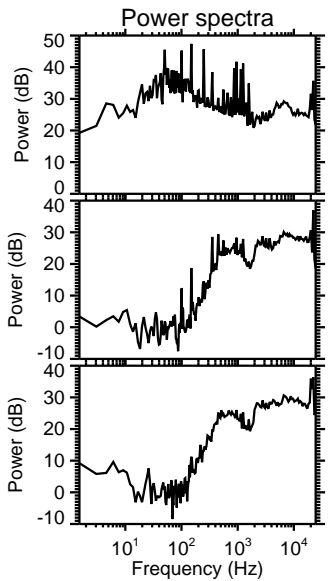
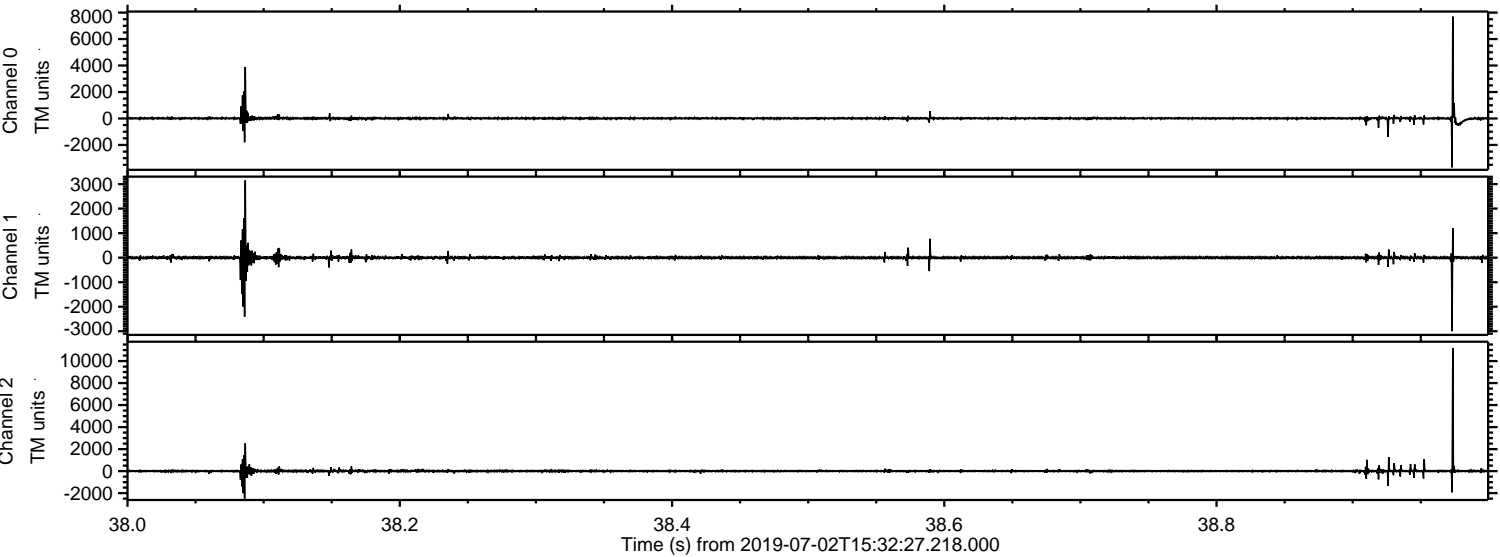


Processed Tue Jul 2 17:40:35 2019 by ELM ver.2012-10-06 from 001\_\_elm20190702\_153226\_\_dat00.bin





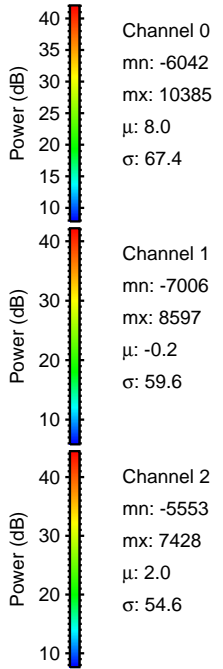
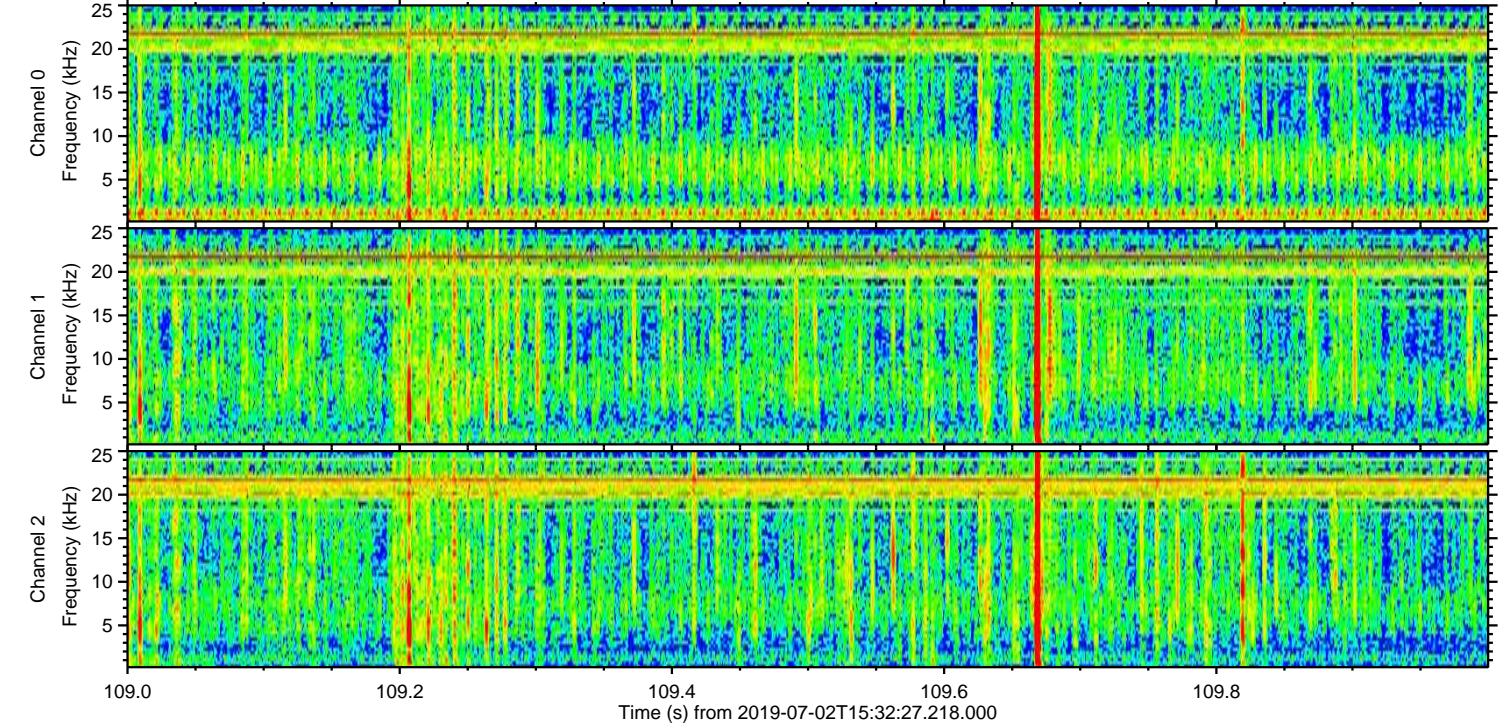
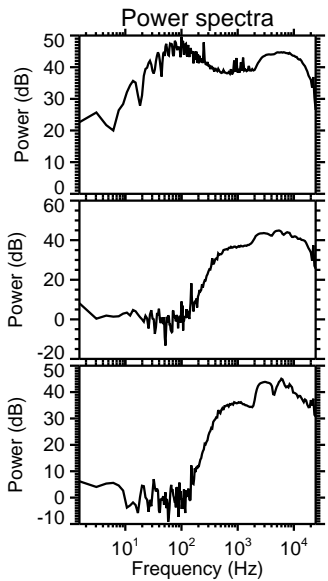
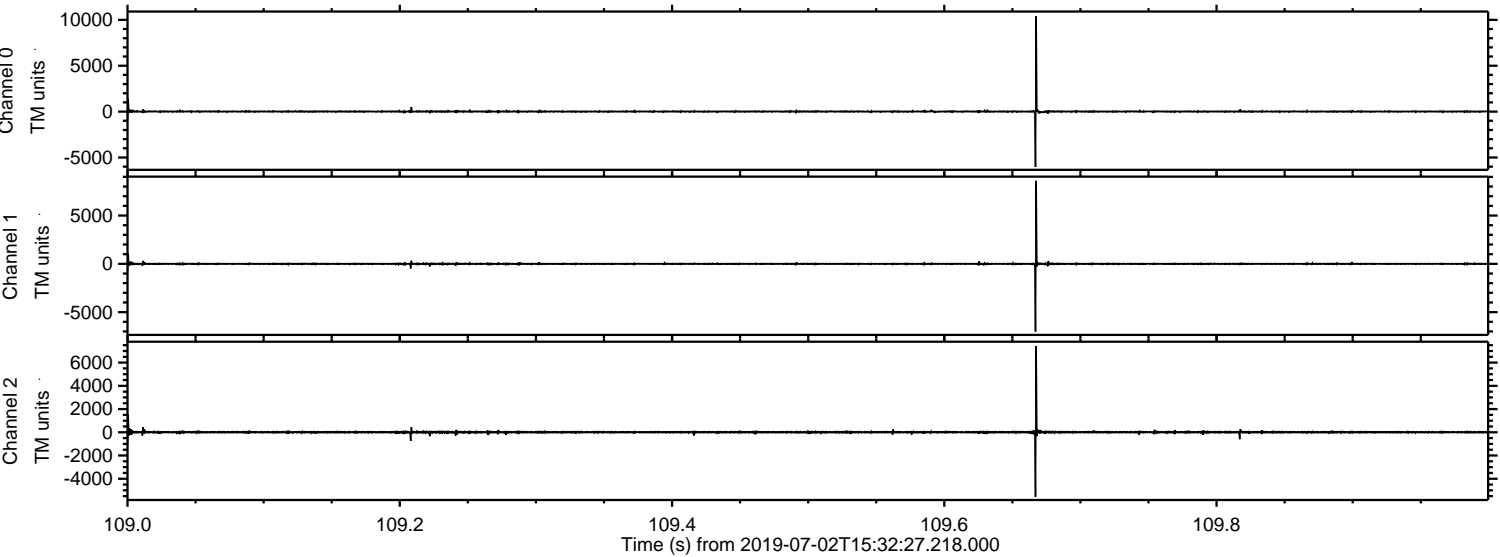
Processed Tue Jul 2 17:40:36 2019 by ELM ver.2012-10-06 from 001\_\_elm20190702\_153226\_\_dat00.bin





ELMAVAN 3D WAVEFORMS (Measured data sampled at 50 kHz) 51000 packets of 144 samples from 2019-07-02T15:32:27.218.000. Part 110/147

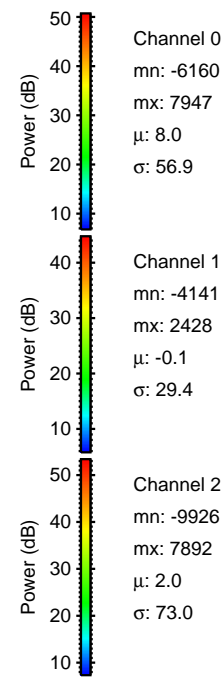
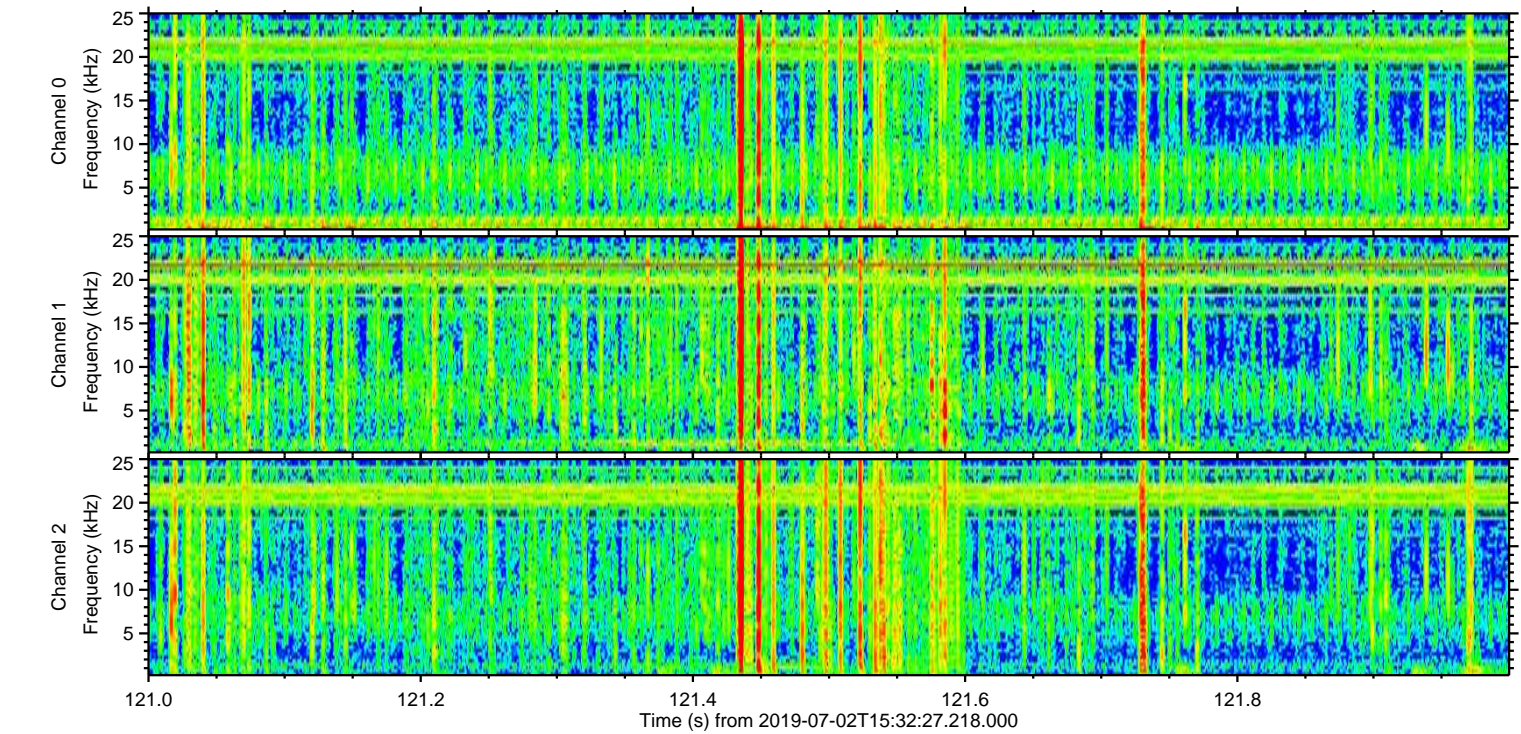
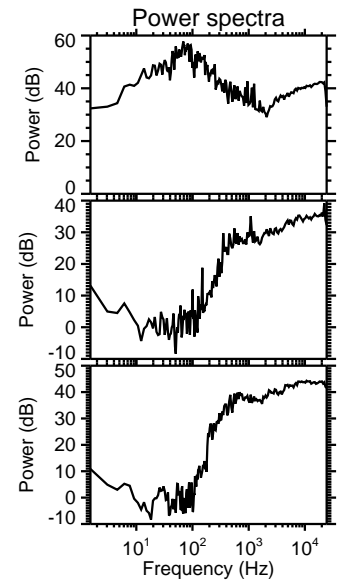
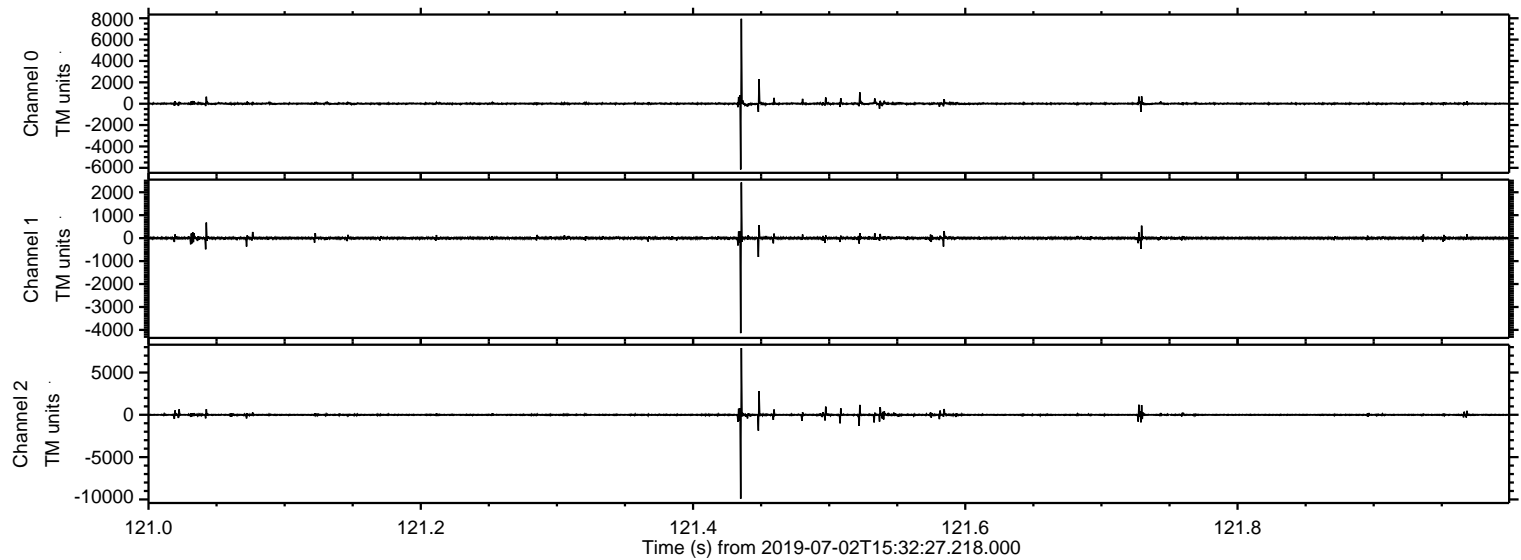
Processed Tue Jul 2 17:40:37 2019 by ELM ver.2012-10-06 from 001\_\_elm20190702\_153226\_\_dat00.bin





ELMAVAN 3D WAVEFORMS (Measured data sampled at 50 kHz) 51000 packets of 144 samples from 2019-07-02T15:32:27.218.000. Part 122/147

Processed Tue Jul 2 17:40:38 2019 by ELM ver.2012-10-06 from 001\_\_elm20190702\_153226\_\_dat00.bin



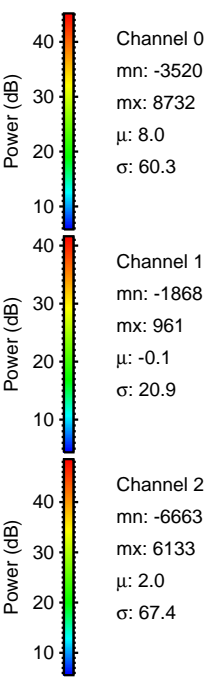
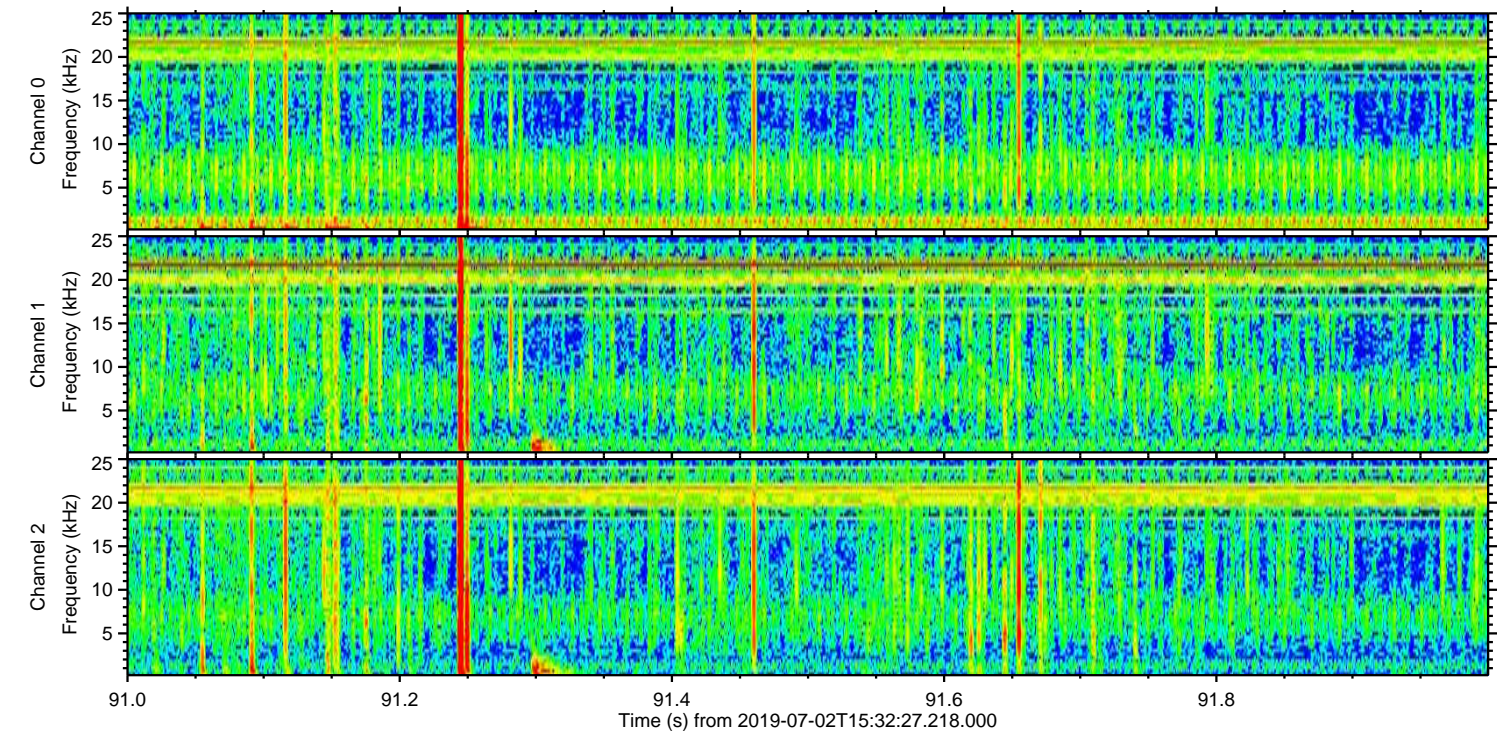
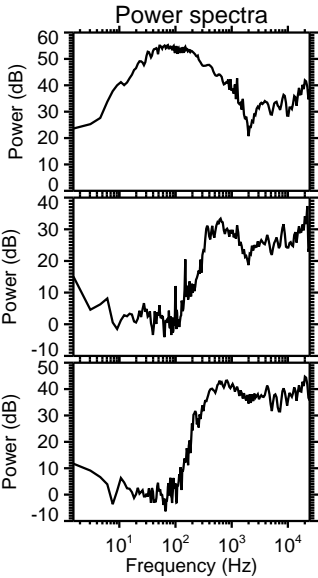
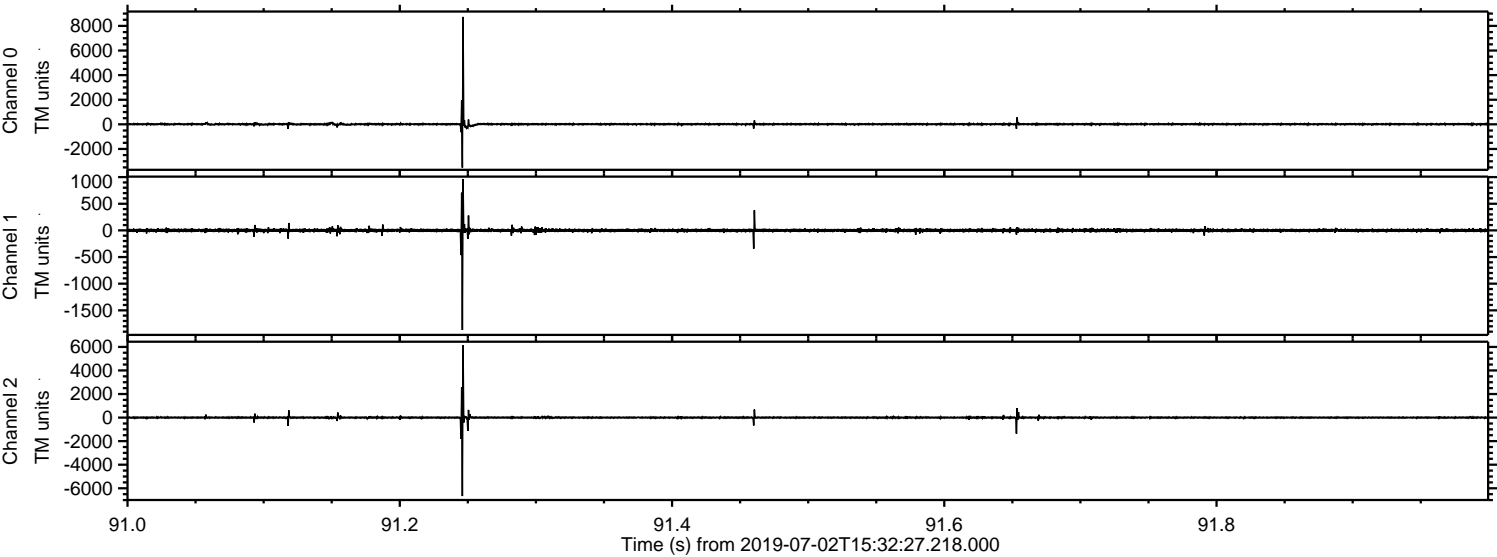
Channel 0  
mn: -6160  
mx: 7947  
 $\mu$ : 8.0  
 $\sigma$ : 56.9

Channel 1  
mn: -4141  
mx: 2428  
 $\mu$ : -0.1  
 $\sigma$ : 29.4

Channel 2  
mn: -9926  
mx: 7892  
 $\mu$ : 2.0  
 $\sigma$ : 73.0



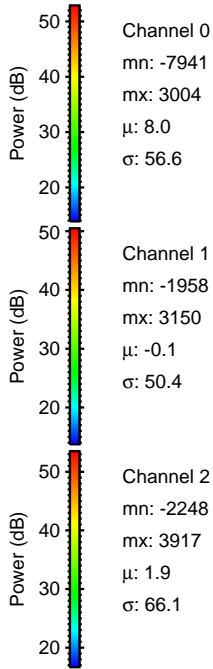
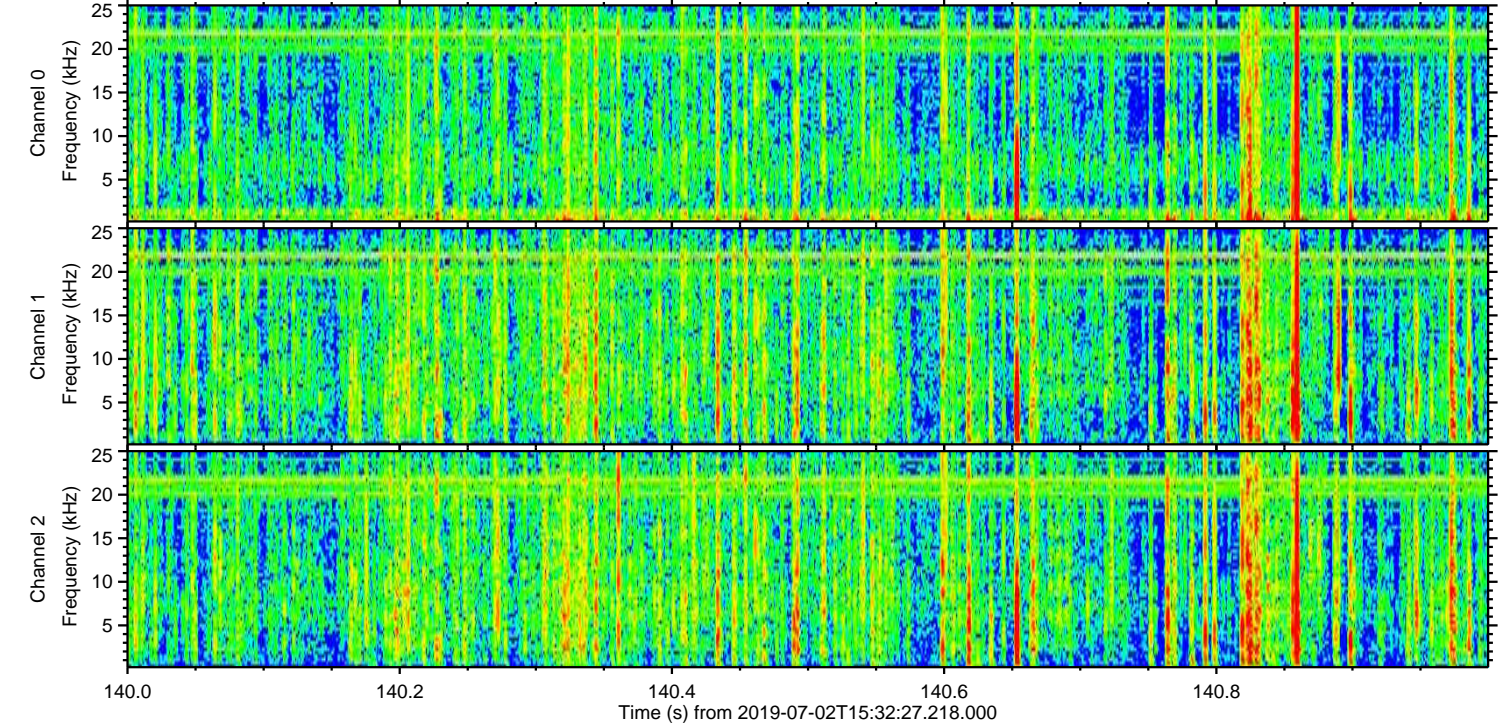
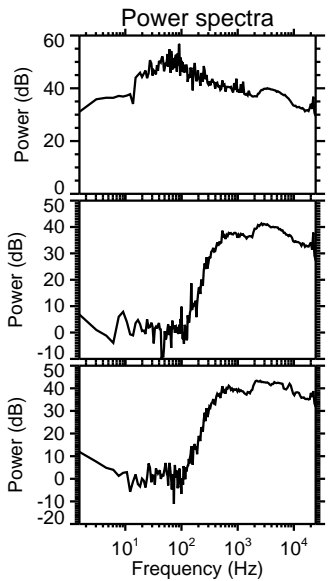
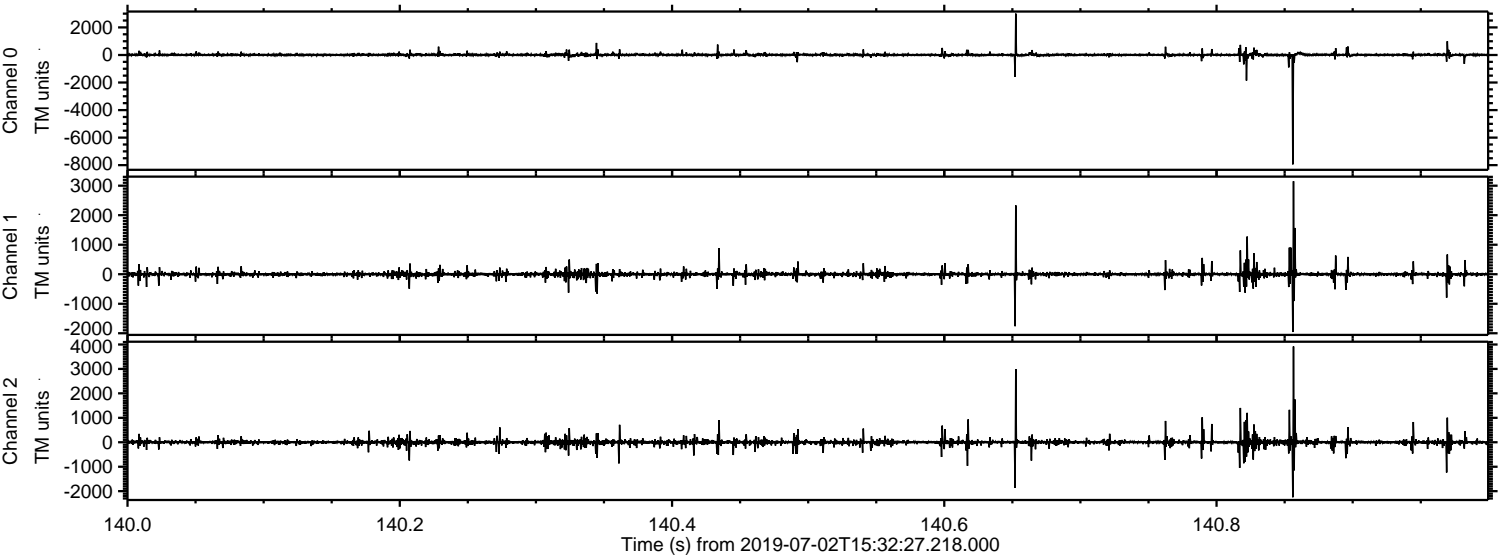
Processed Tue Jul 2 17:40:39 2019 by ELM ver.2012-10-06 from 001\_\_elm20190702\_153226\_\_dat00.bin





ELMAVAN 3D WAVEFORMS (Measured data sampled at 50 kHz) 51000 packets of 144 samples from 2019-07-02T15:32:27.218.000. Part 141/147

Processed Tue Jul 2 17:40:39 2019 by ELM ver.2012-10-06 from 001\_\_elm20190702\_153226\_\_dat00.bin



Channel 0  
mn: -7941  
mx: 3004  
 $\mu$ : 8.0  
 $\sigma$ : 56.6

Channel 1  
mn: -1958  
mx: 3150  
 $\mu$ : -0.1  
 $\sigma$ : 50.4

Channel 2  
mn: -2248  
mx: 3917  
 $\mu$ : 1.9  
 $\sigma$ : 66.1



ELMAVAN 3D WAVEFORMS (Measured data sampled at 50 kHz) 51000 packets of 144 samples from 2019-07-02T15:32:27.218.000. Part 102/147

