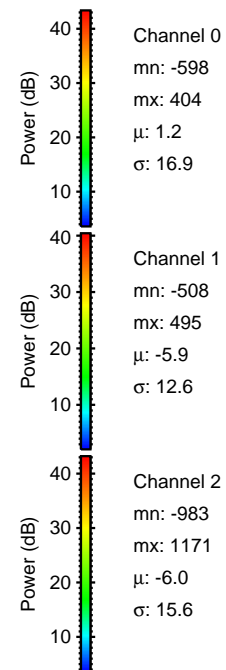
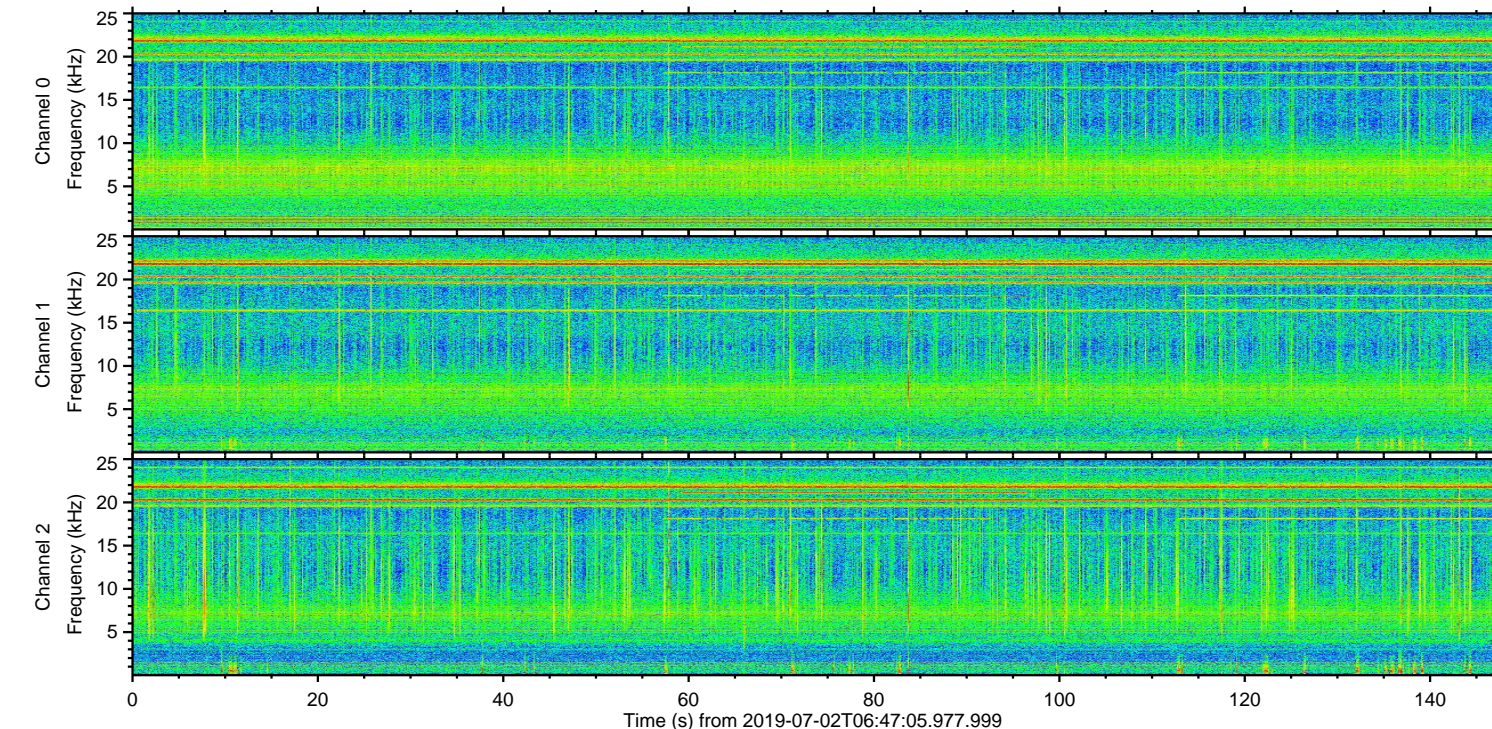
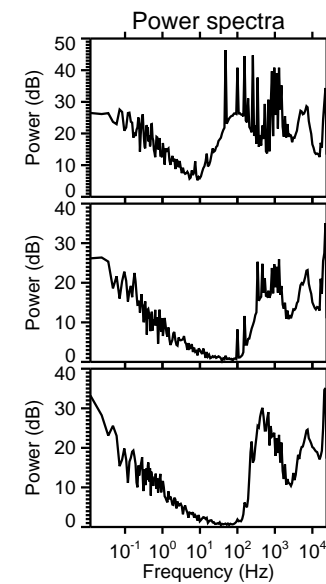
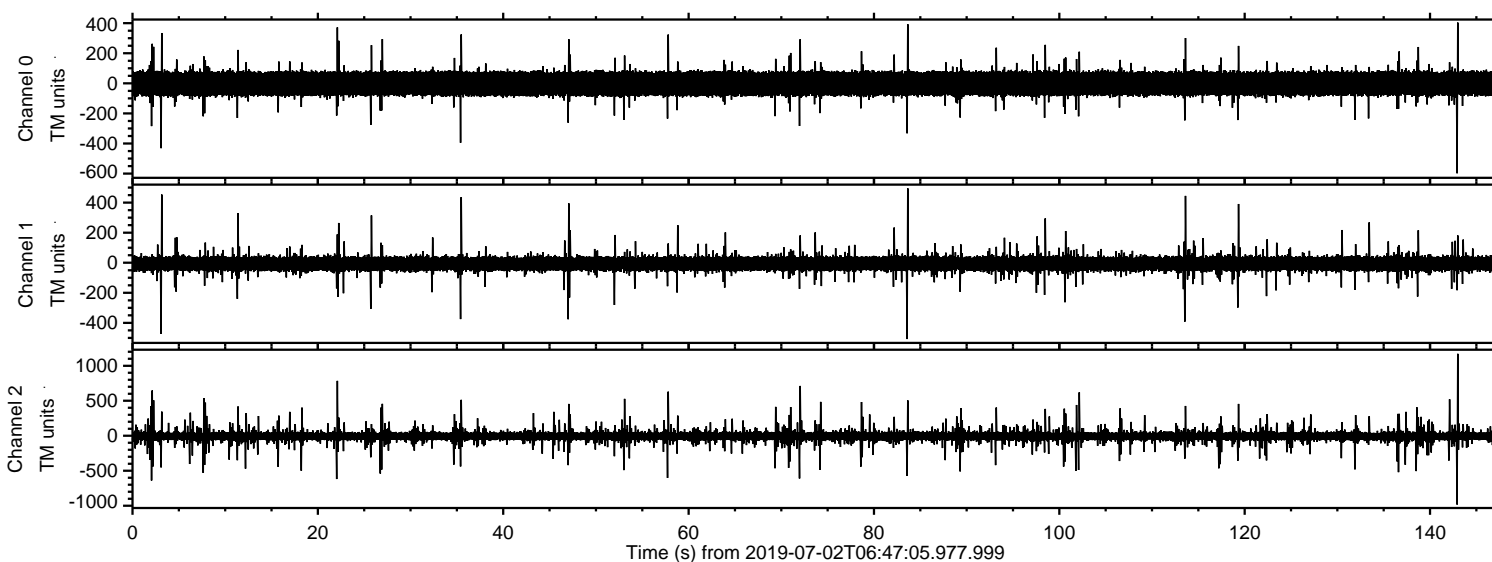


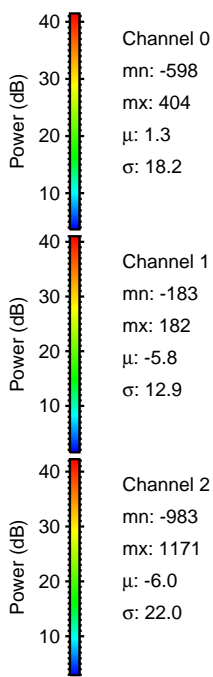
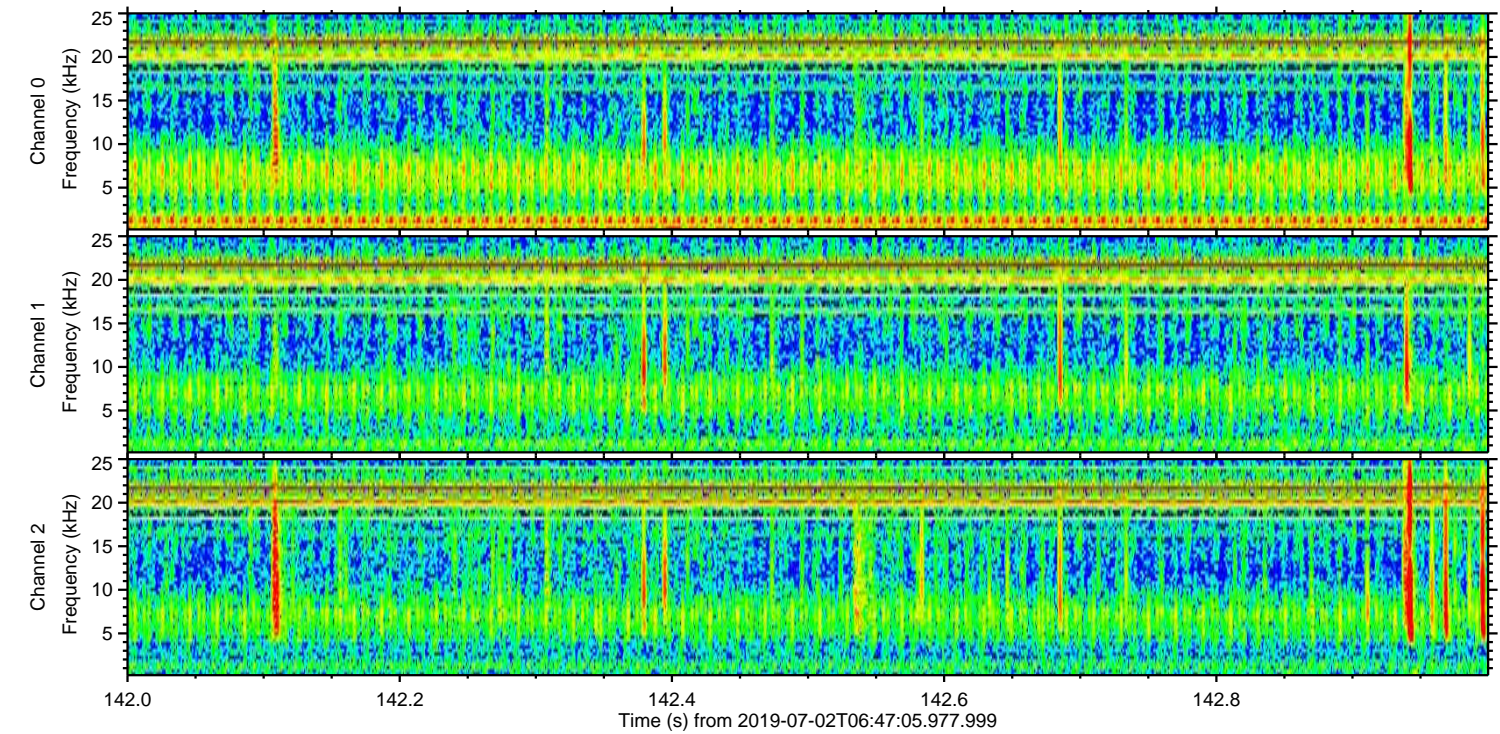
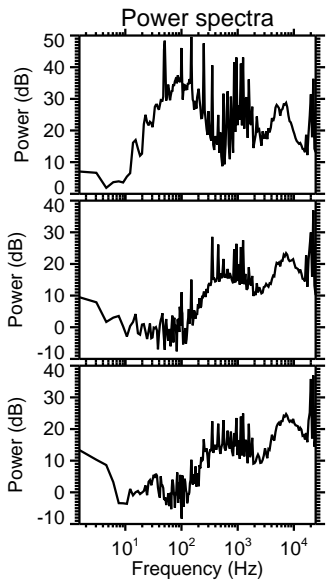
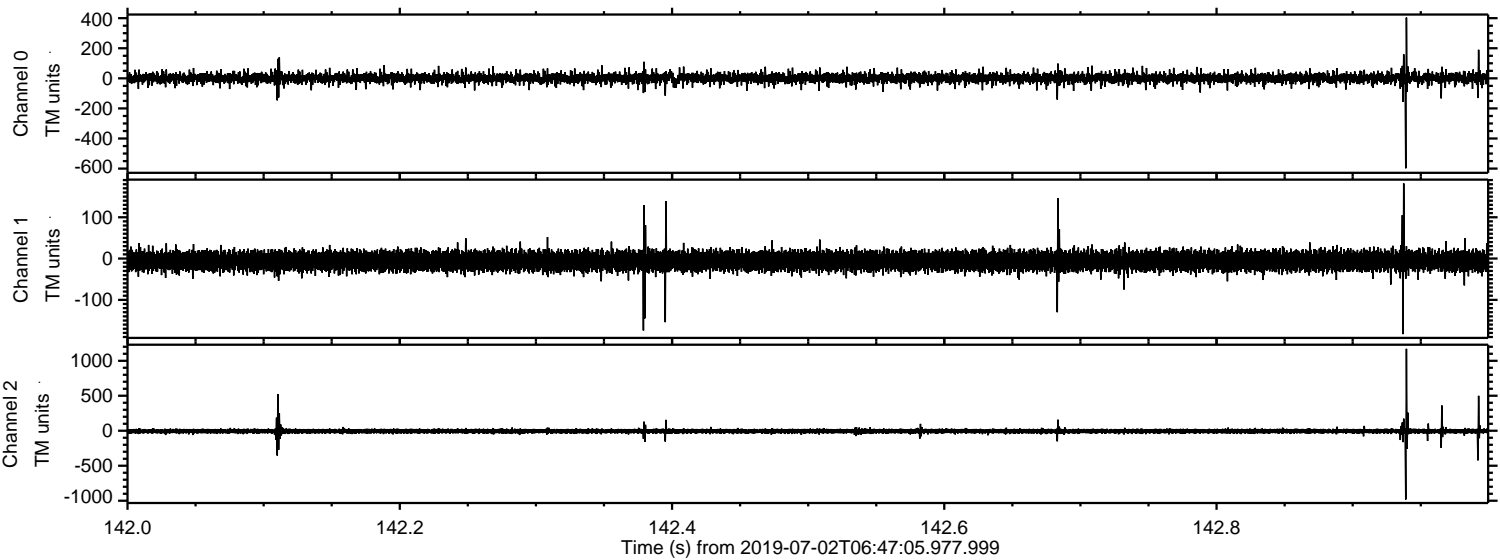
ELMAVAN 3D WAVEFORMS (Measured data sampled at 50 kHz) 51000 packets of 144 samples from 2019-07-02T06:47:05.977.999.

Processed Tue Jul 2 08:54:59 2019 by ELM ver.2012-10-06 from 001__elm20190702_064704__dat00.bin

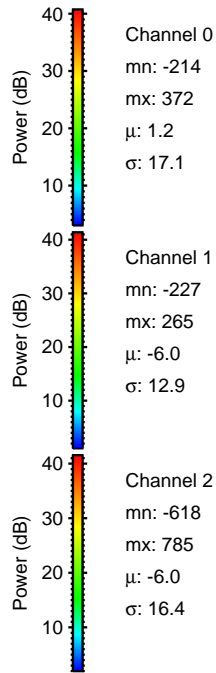
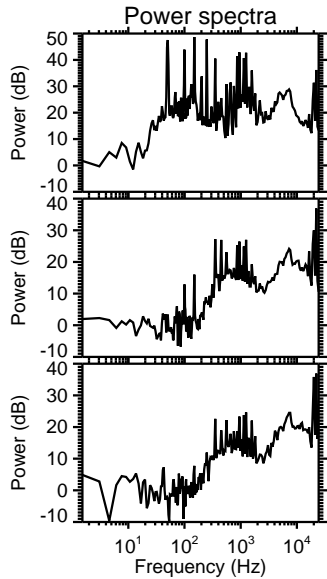
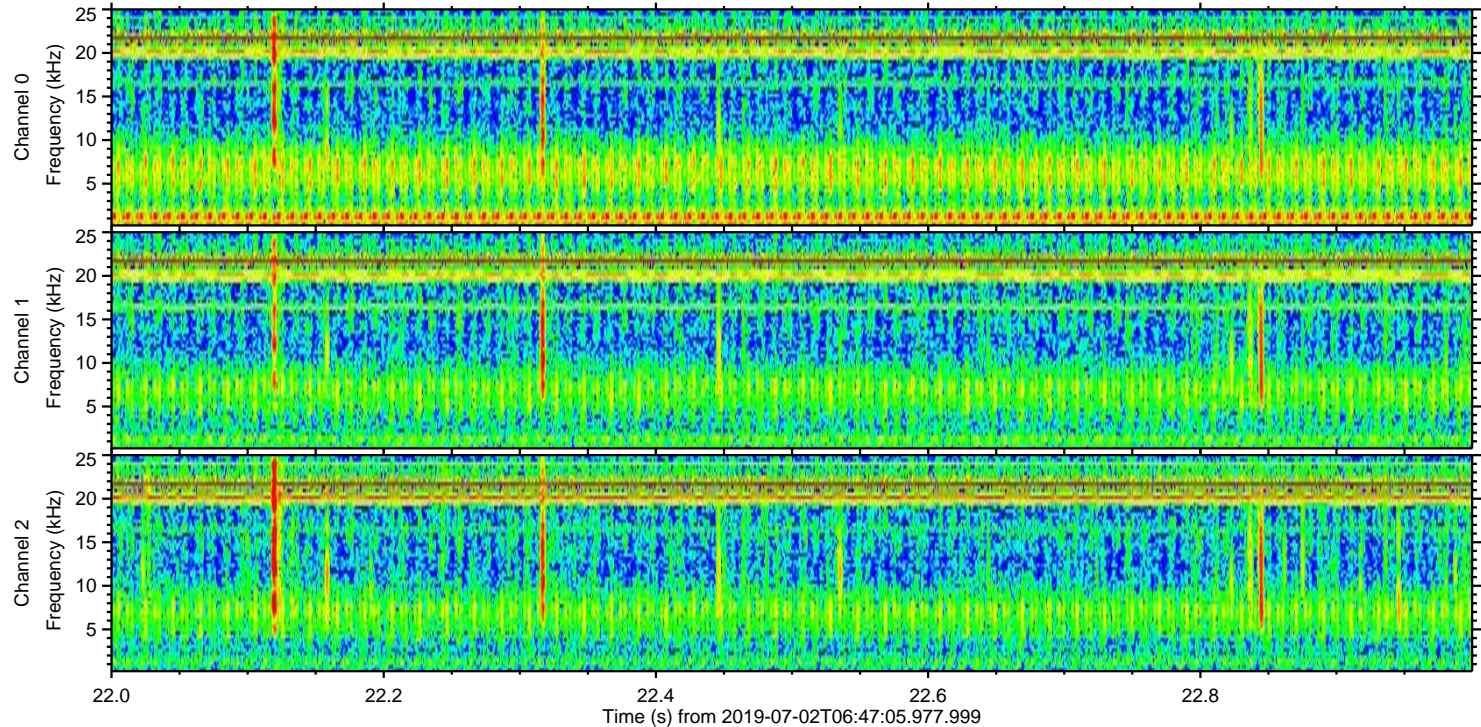
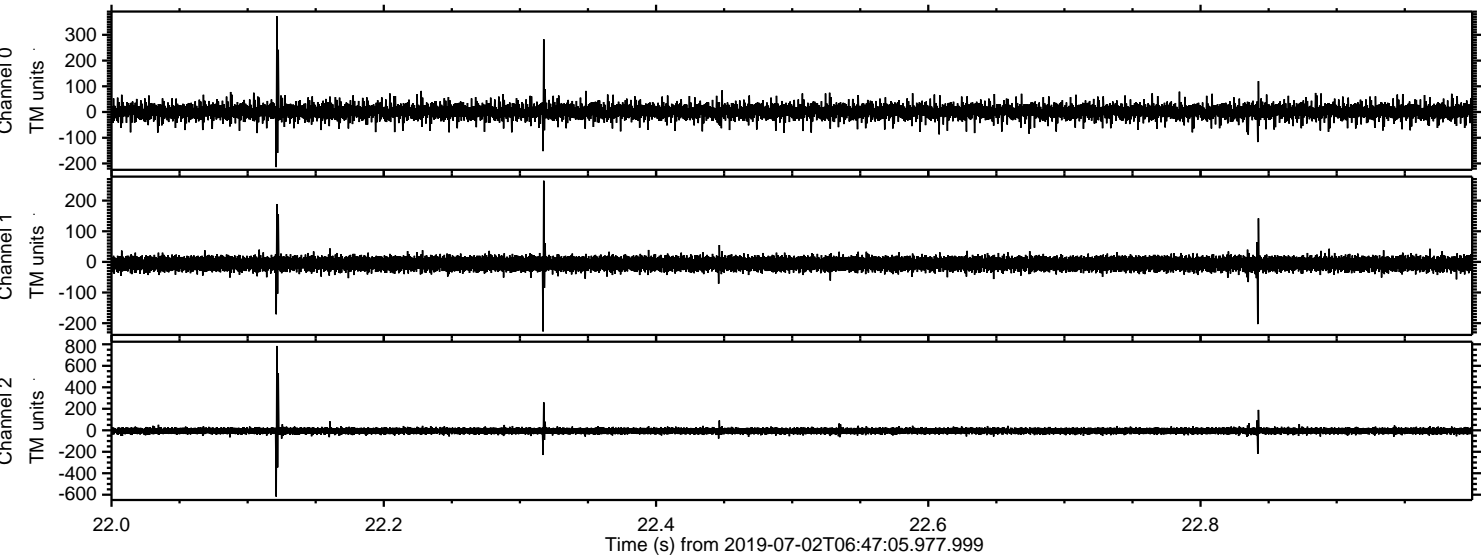


ELMAVAN 3D WAVEFORMS (Measured data sampled at 50 kHz) 51000 packets of 144 samples from 2019-07-02T06:47:05.977.999. Part 143/147

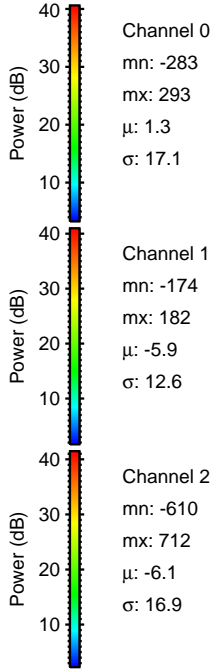
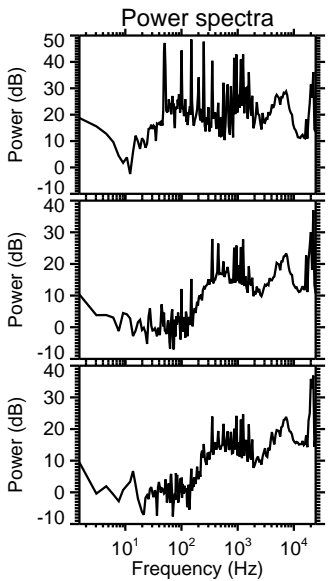
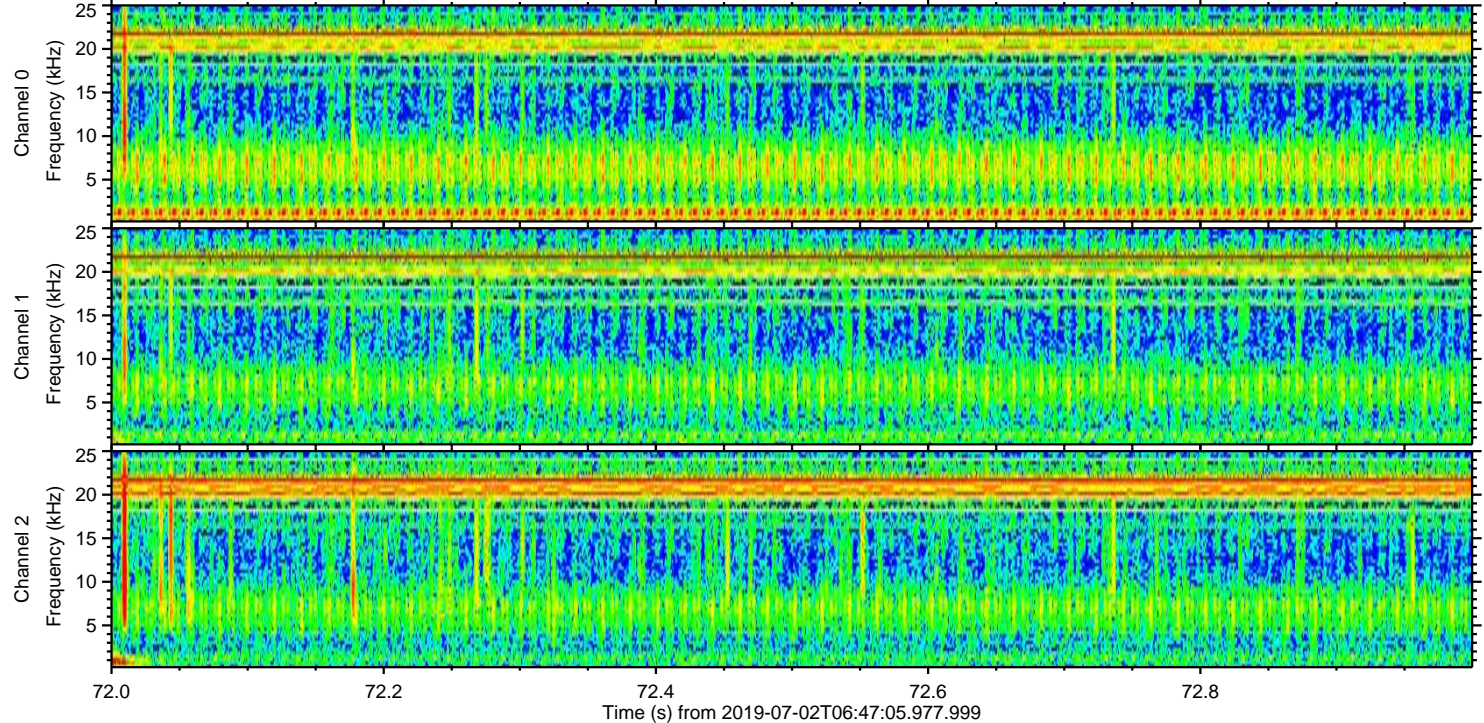
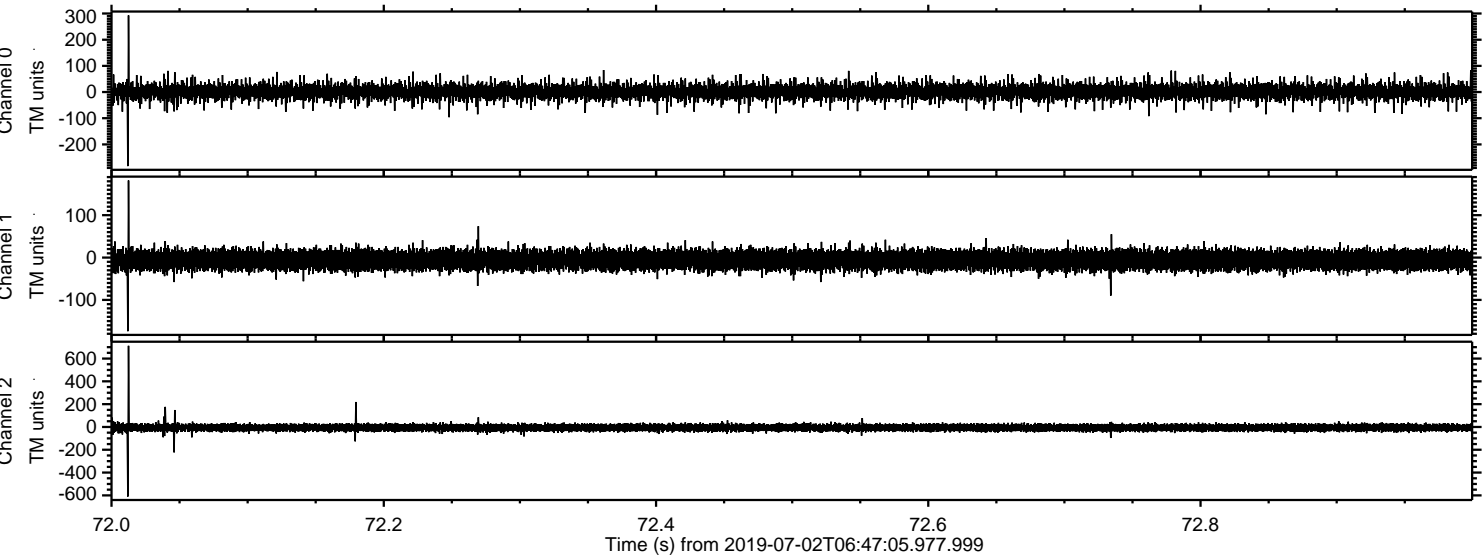
Processed Tue Jul 2 08:55:09 2019 by ELM ver.2012-10-06 from 001__elm20190702_064704__dat00.bin



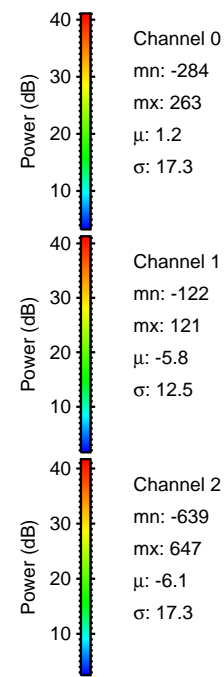
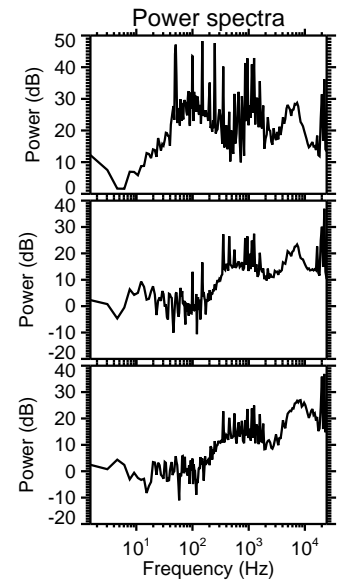
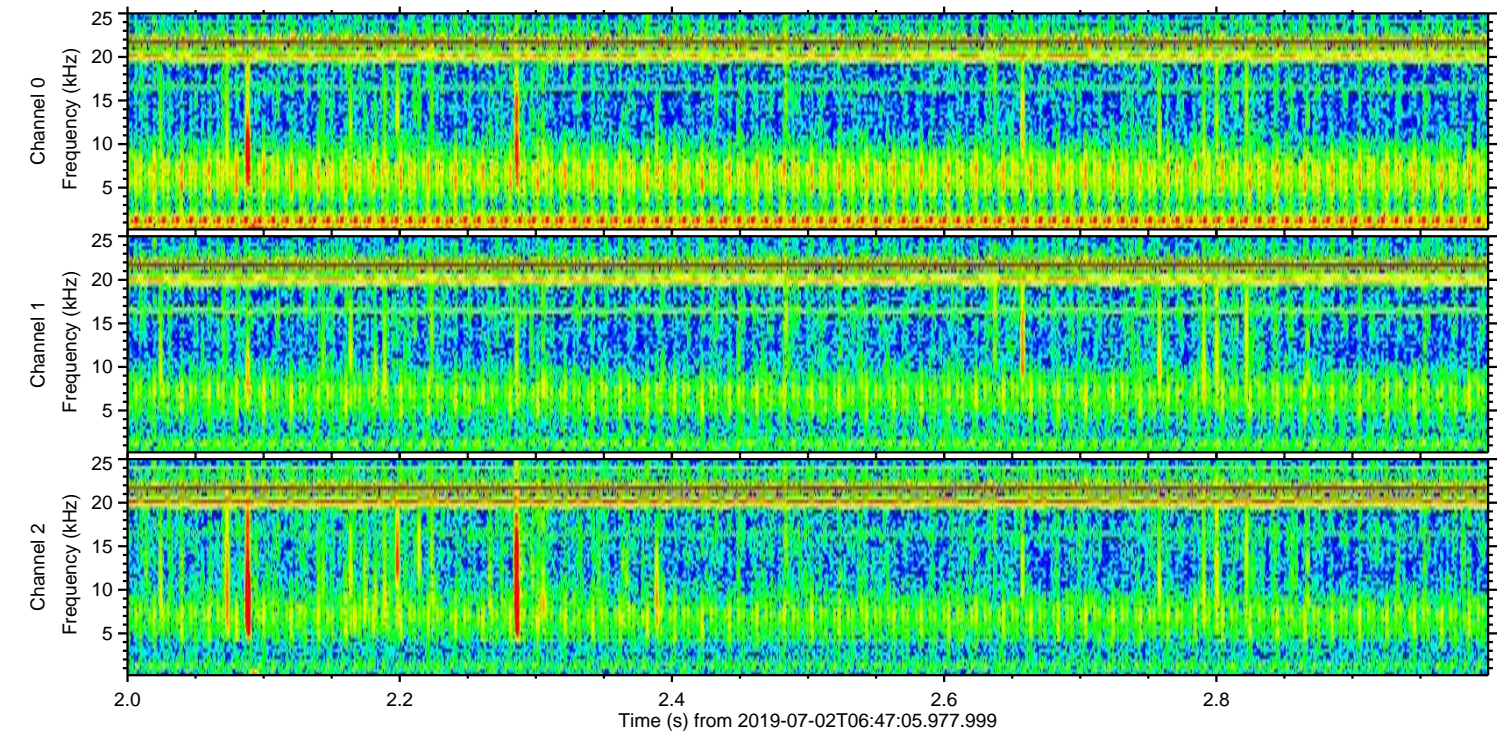
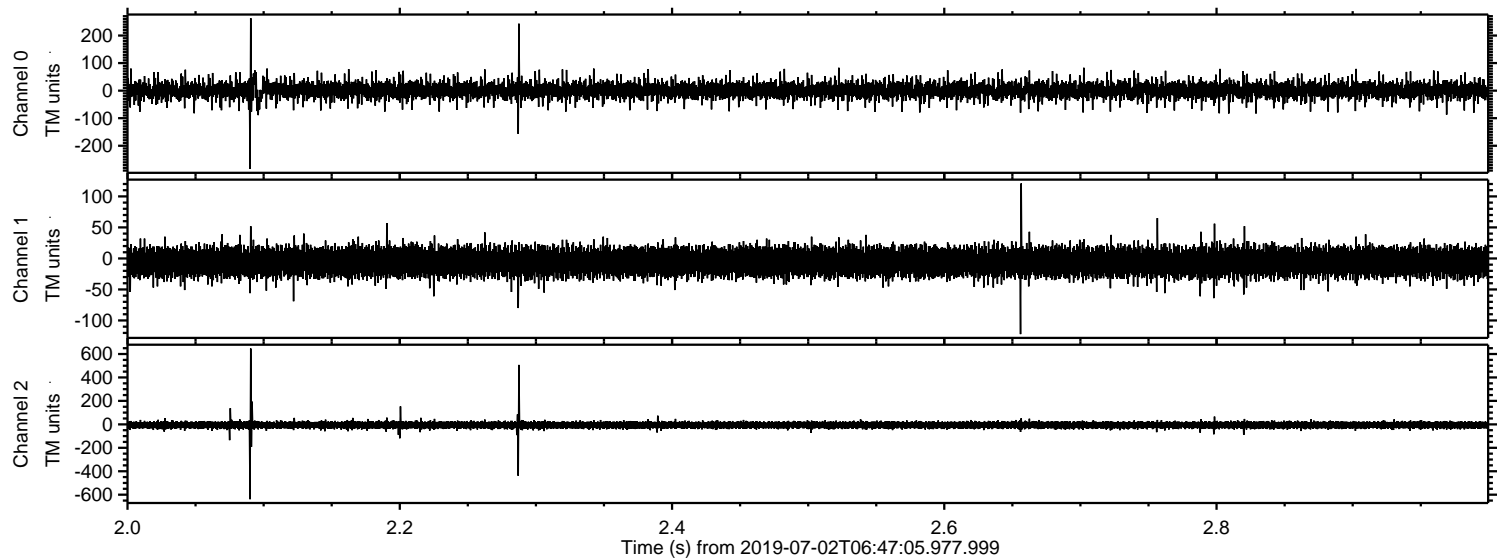
Processed Tue Jul 2 08:55:10 2019 by ELM ver.2012-10-06 from 001__elm20190702_064704__dat00.bin



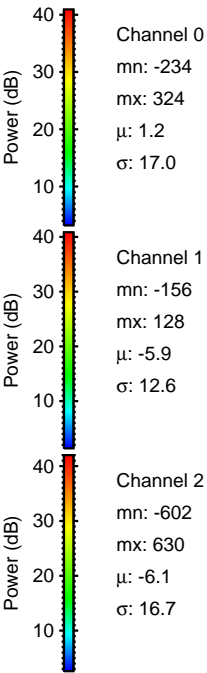
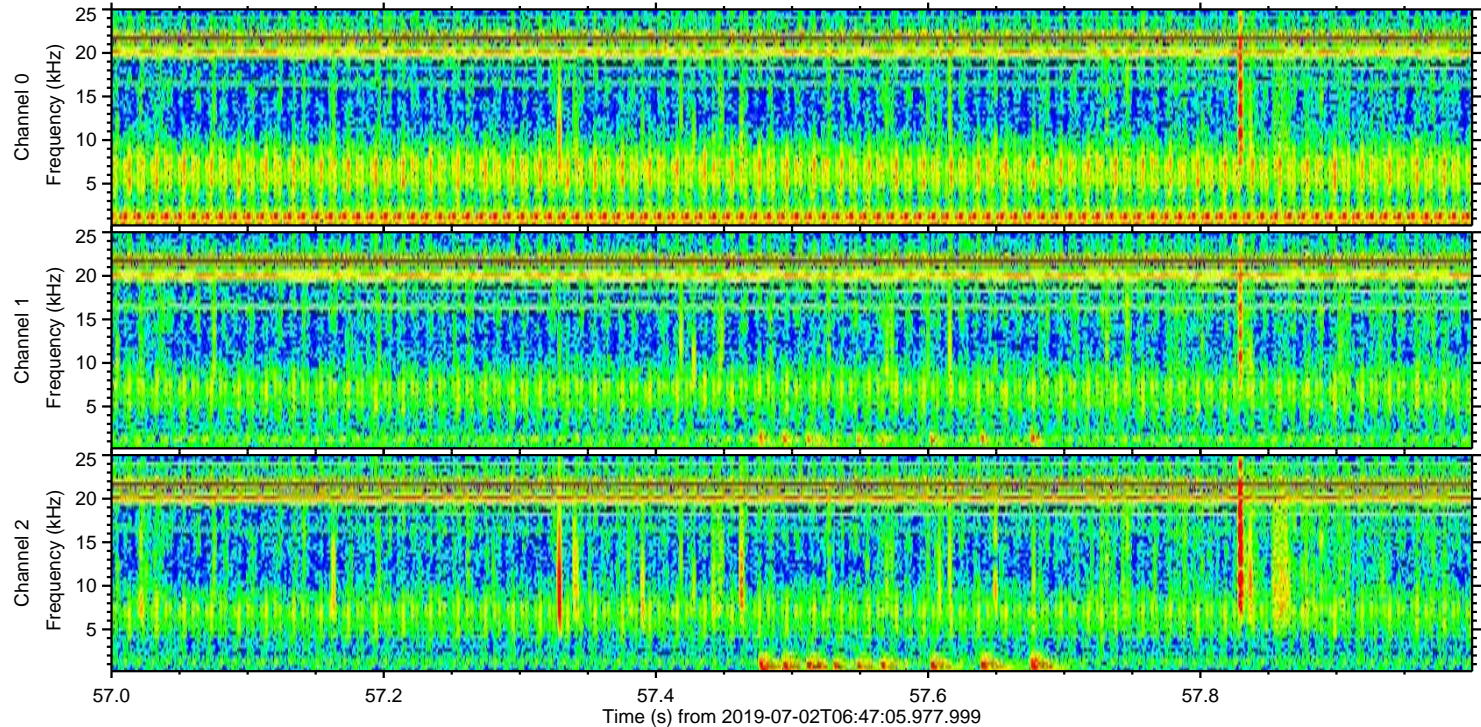
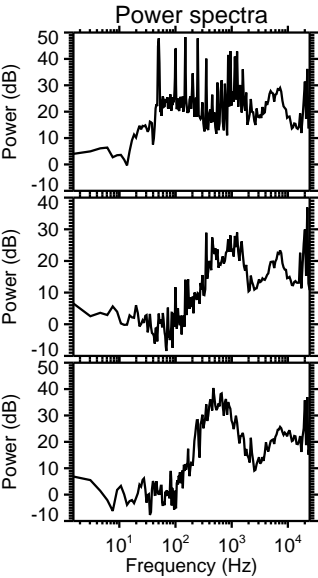
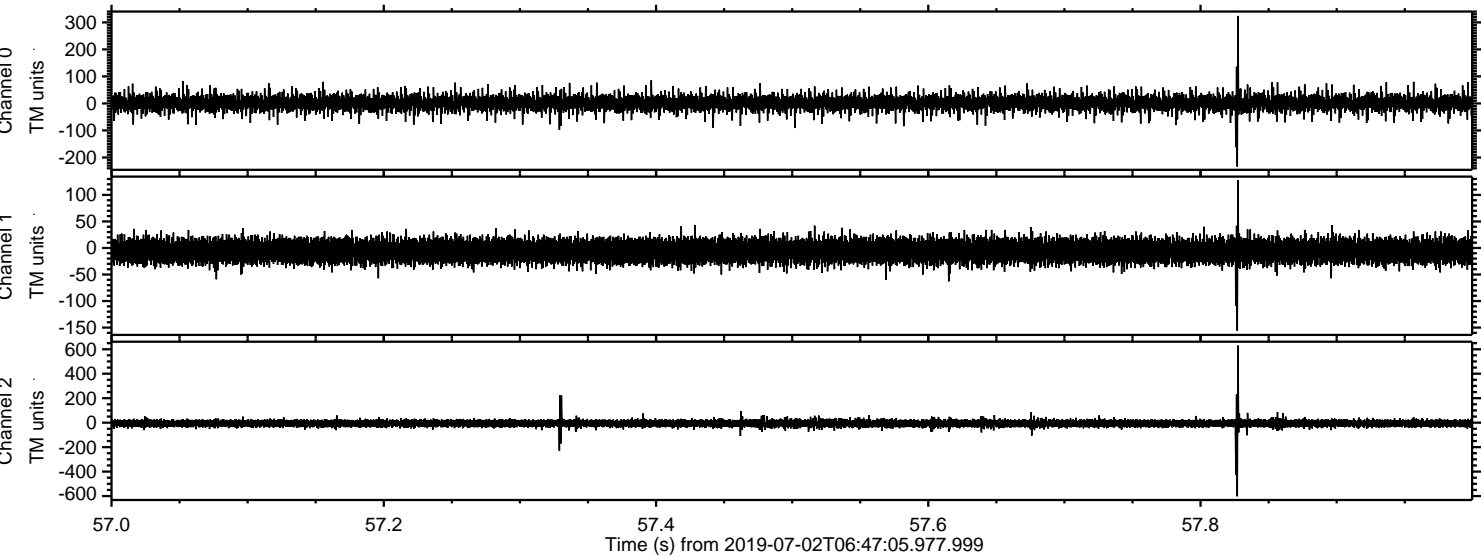
Processed Tue Jul 2 08:55:10 2019 by ELM ver.2012-10-06 from 001__elm20190702_064704__dat00.bin

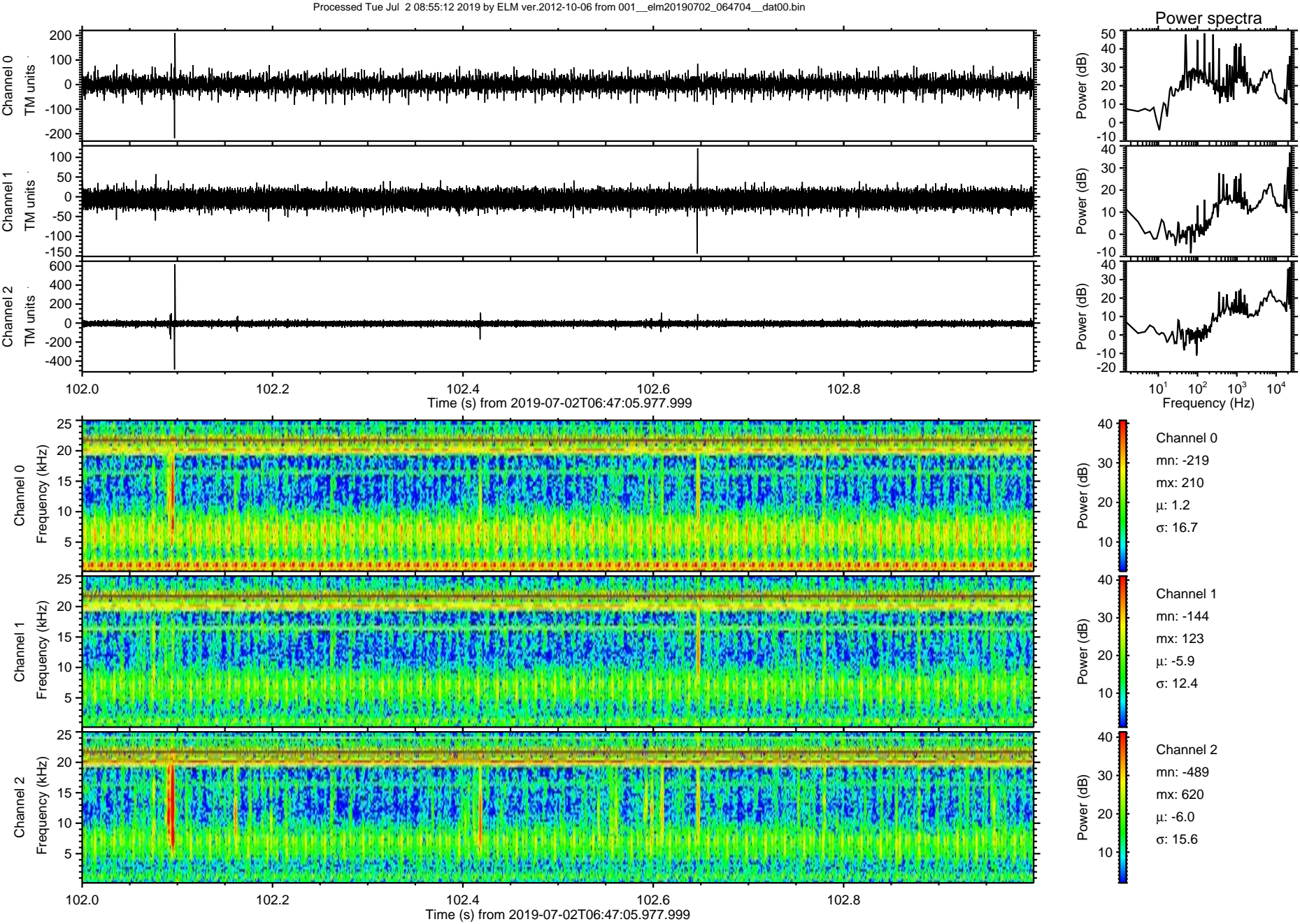


Processed Tue Jul 2 08:55:11 2019 by ELM ver.2012-10-06 from 001__elm20190702_064704__dat00.bin

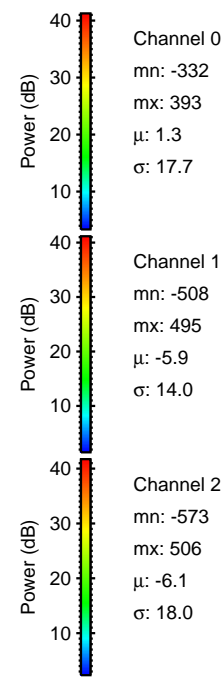
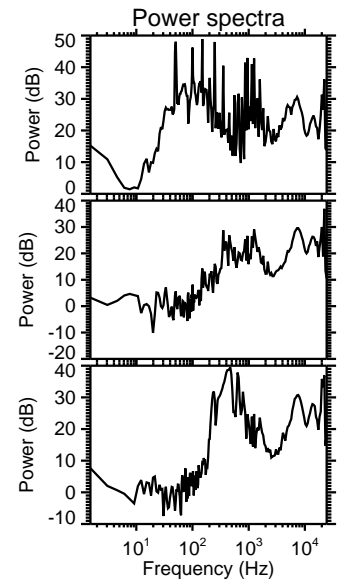
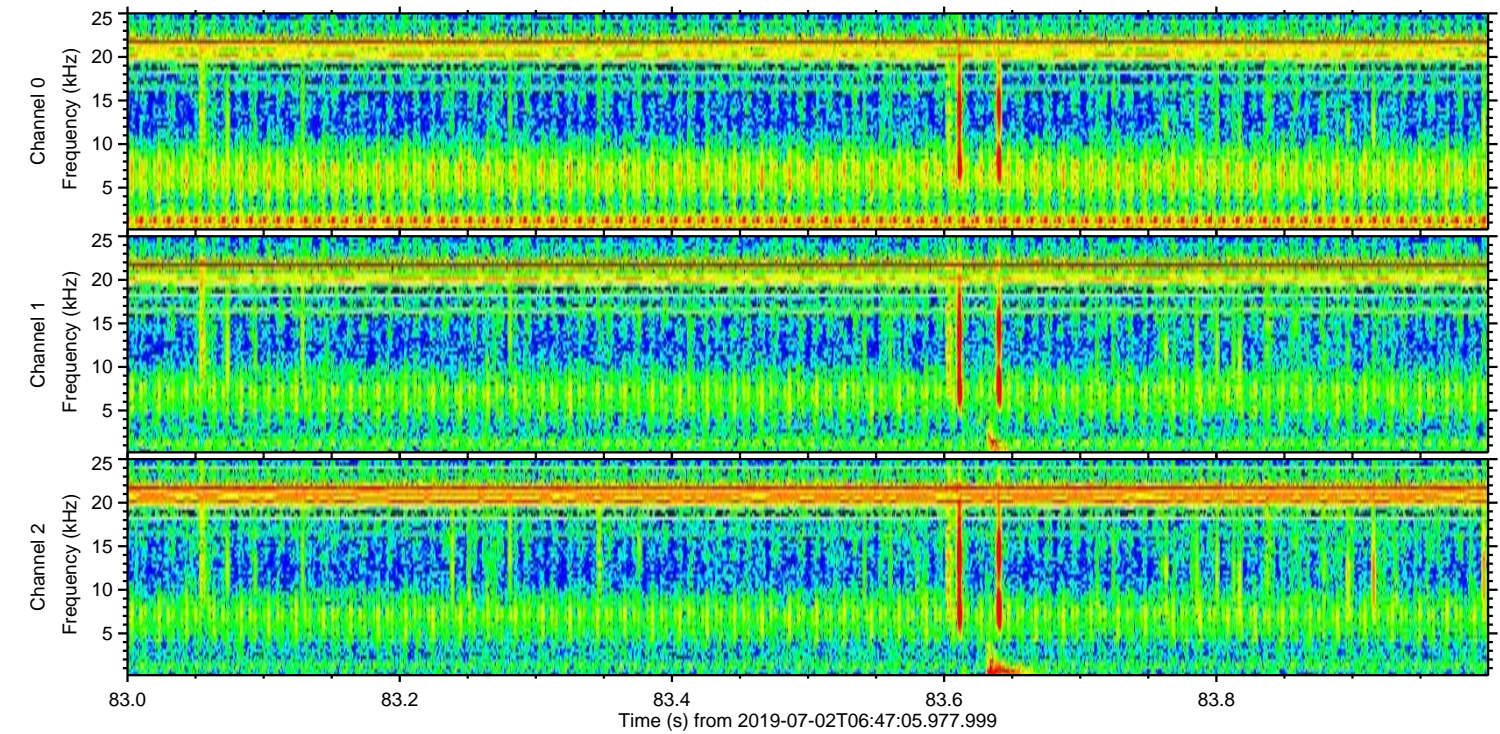
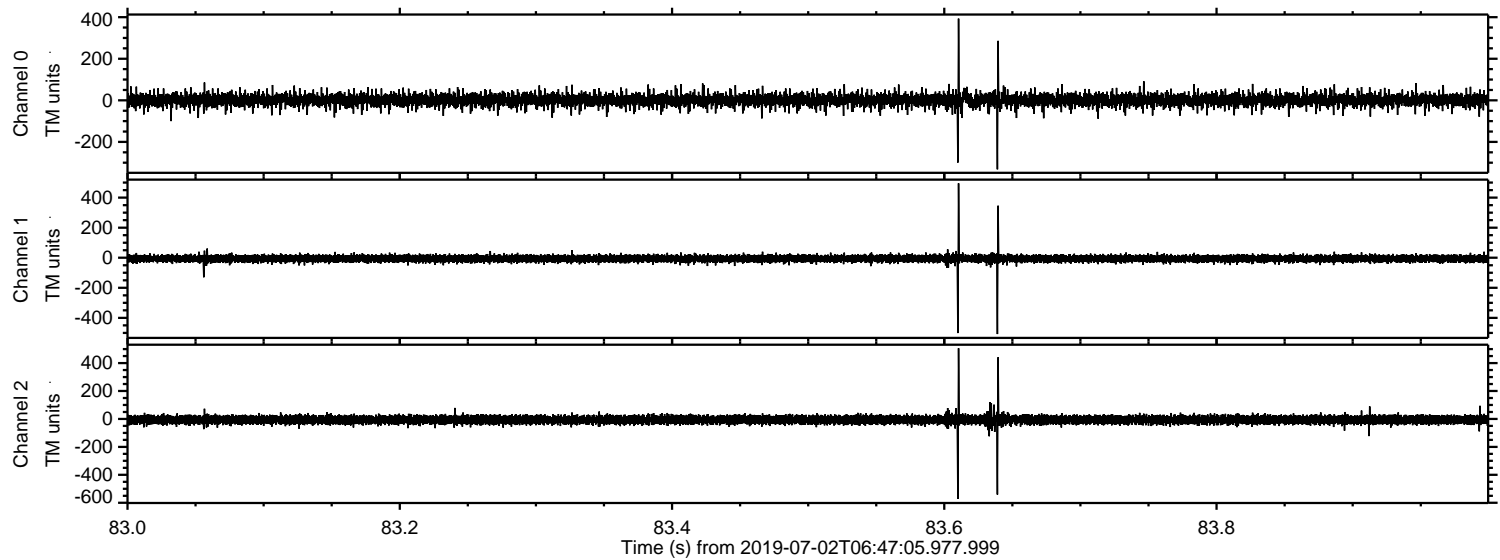


Processed Tue Jul 2 08:55:12 2019 by ELM ver.2012-10-06 from 001__elm20190702_064704__dat00.bin





Processed Tue Jul 2 08:55:13 2019 by ELM ver.2012-10-06 from 001__elm20190702_064704__dat00.bin



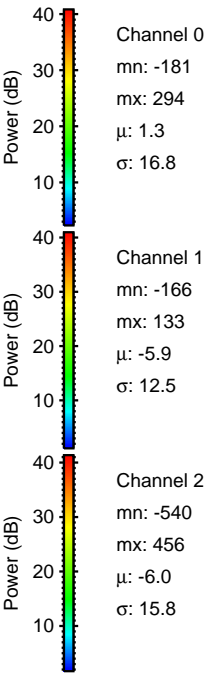
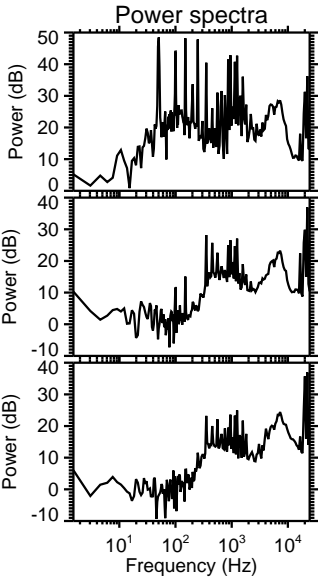
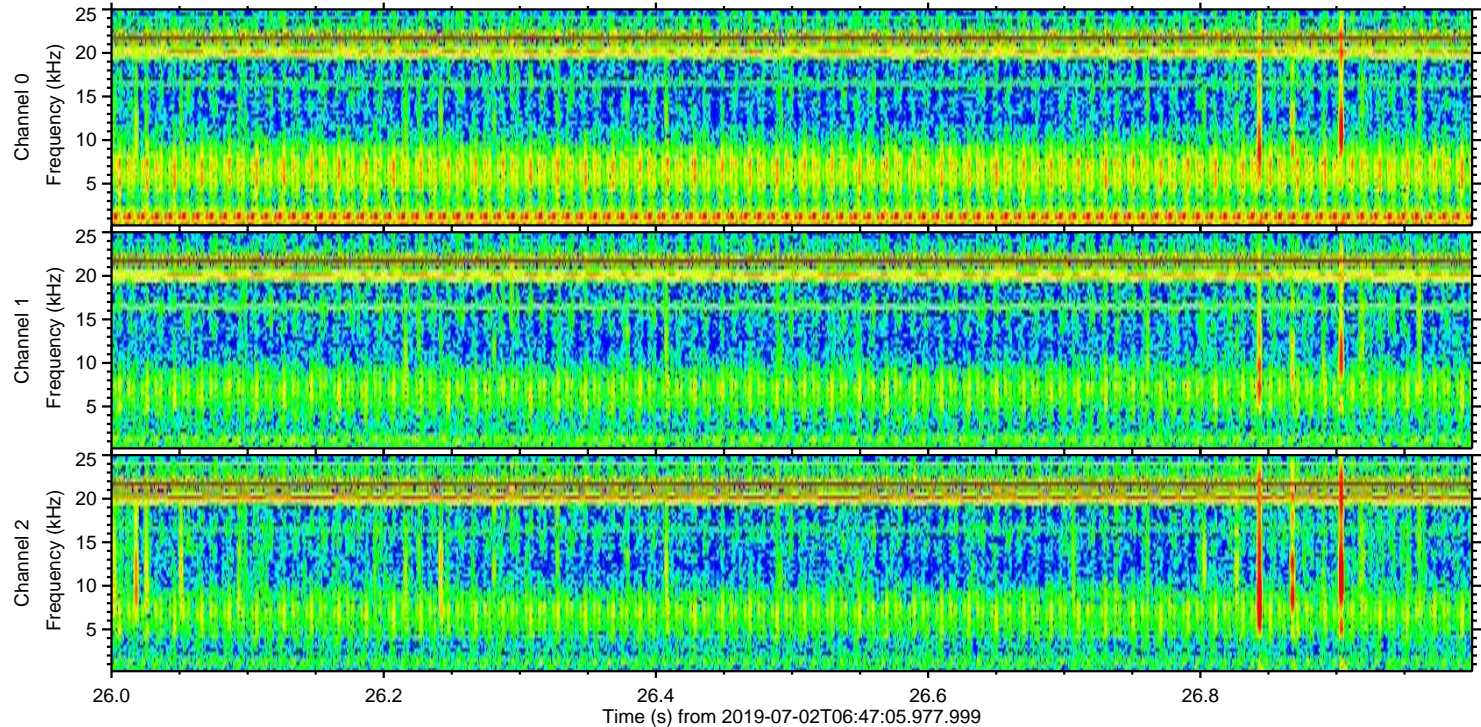
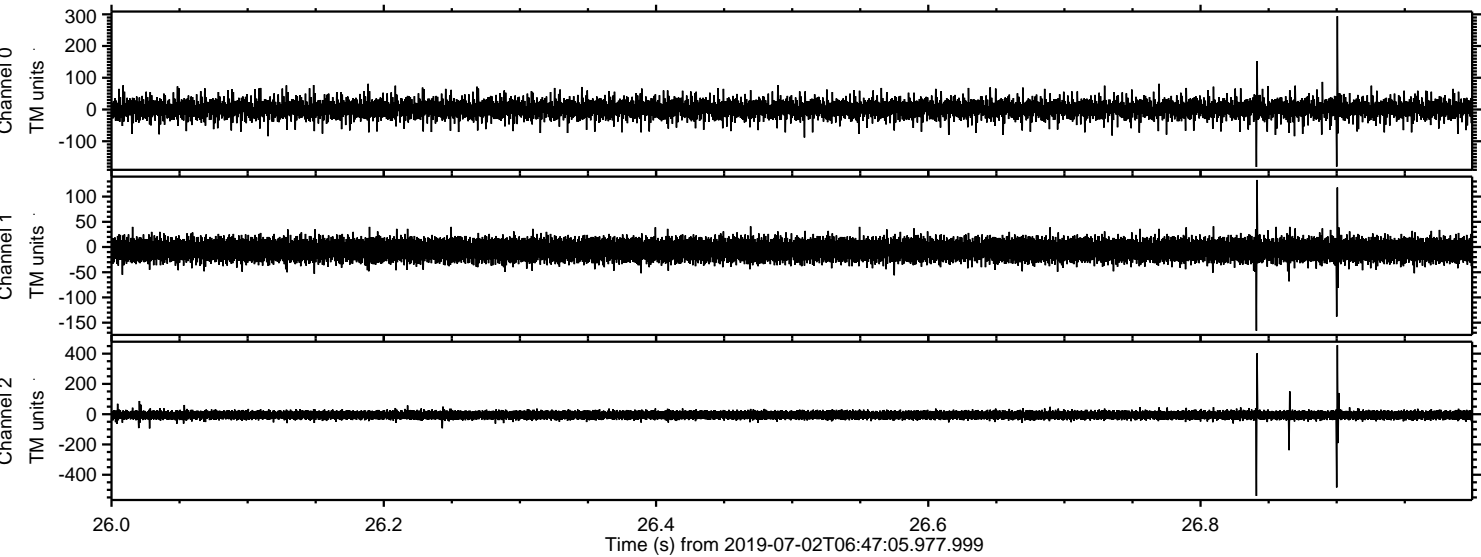
Power spectra

Channel 0
mn: -332
mx: 393
 μ : 1.3
 σ : 17.7

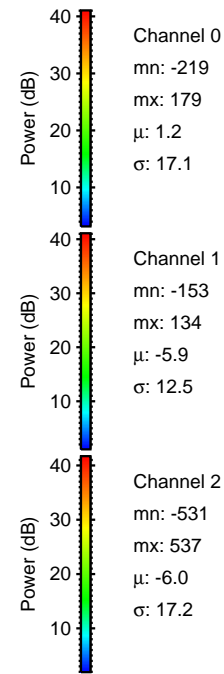
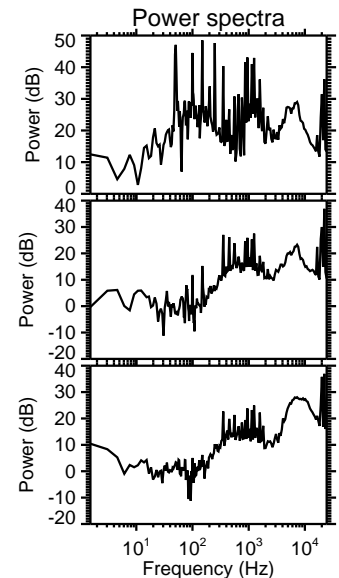
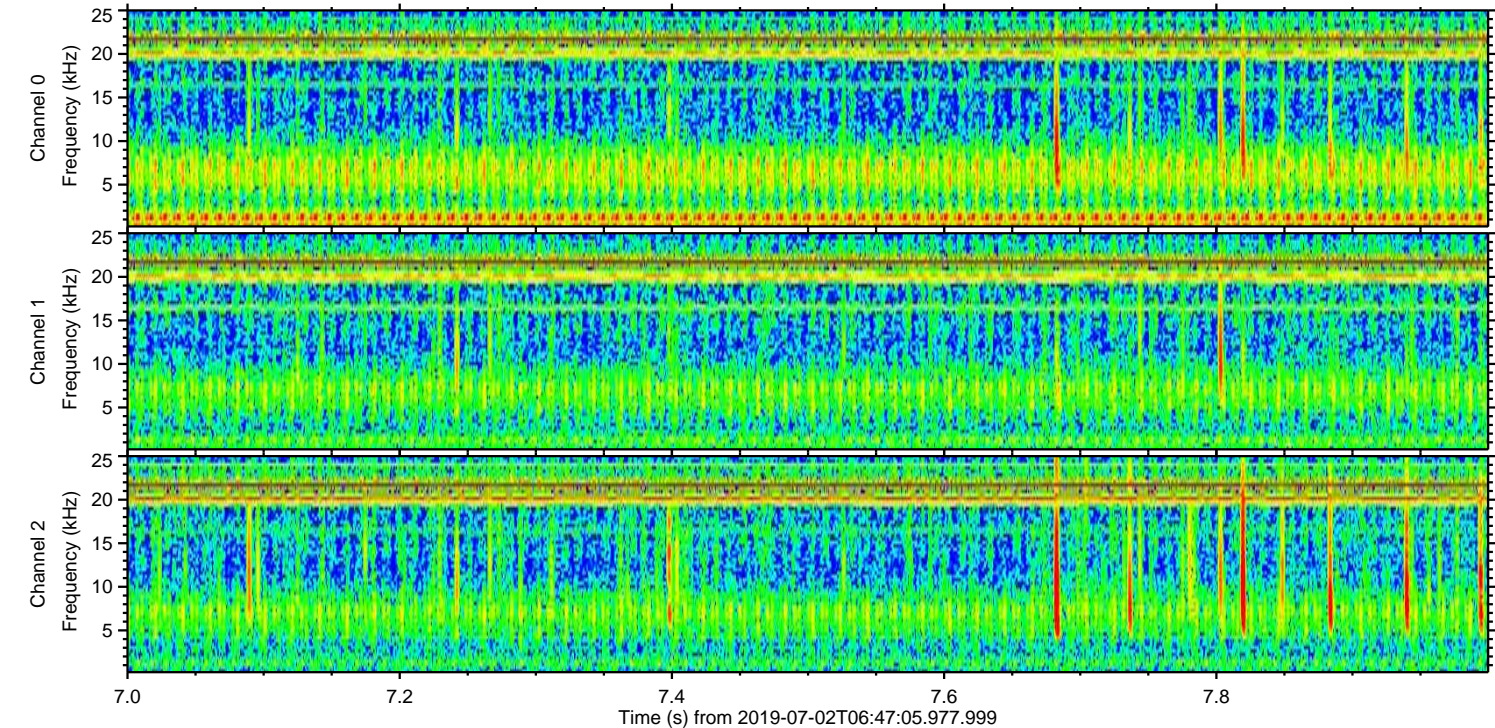
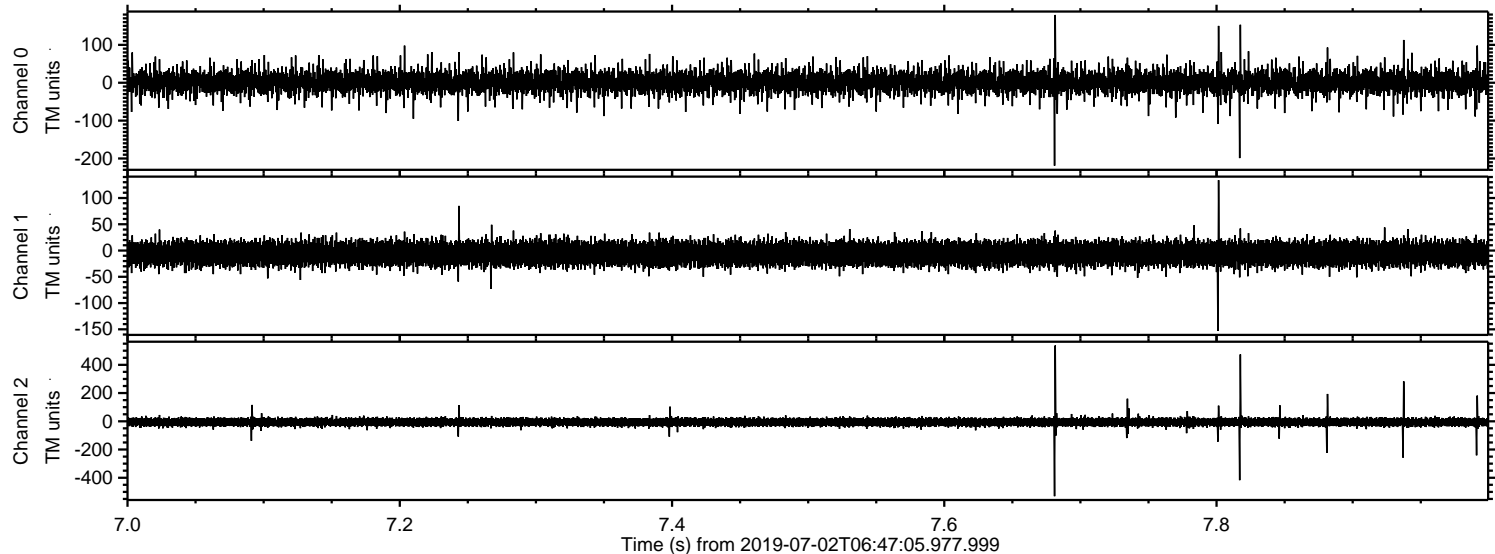
Channel 1
mn: -508
mx: 495
 μ : -5.9
 σ : 14.0

Channel 2
mn: -573
mx: 506
 μ : -6.1
 σ : 18.0

Processed Tue Jul 2 08:55:14 2019 by ELM ver.2012-10-06 from 001__elm20190702_064704__dat00.bin



Processed Tue Jul 2 08:55:15 2019 by ELM ver.2012-10-06 from 001__elm20190702_064704__dat00.bin



ELMAVAN 3D WAVEFORMS (Measured data sampled at 50 kHz) 51000 packets of 144 samples from 2019-07-02T06:47:05.977.999. Part 142/147

