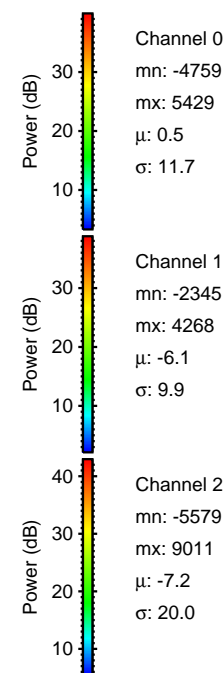
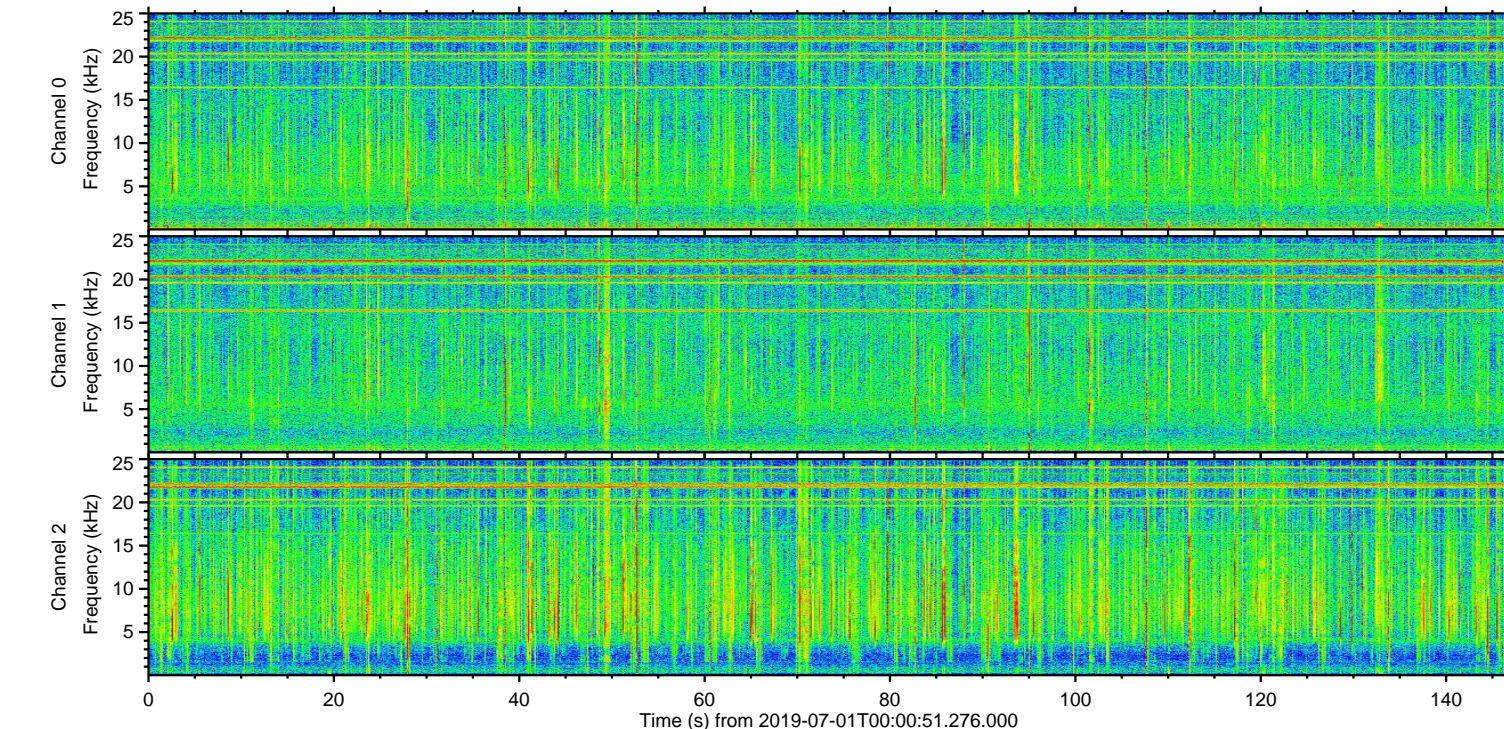
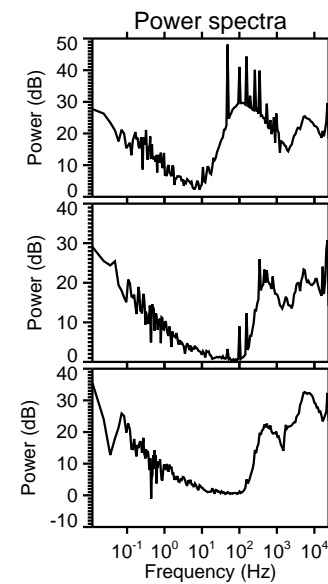
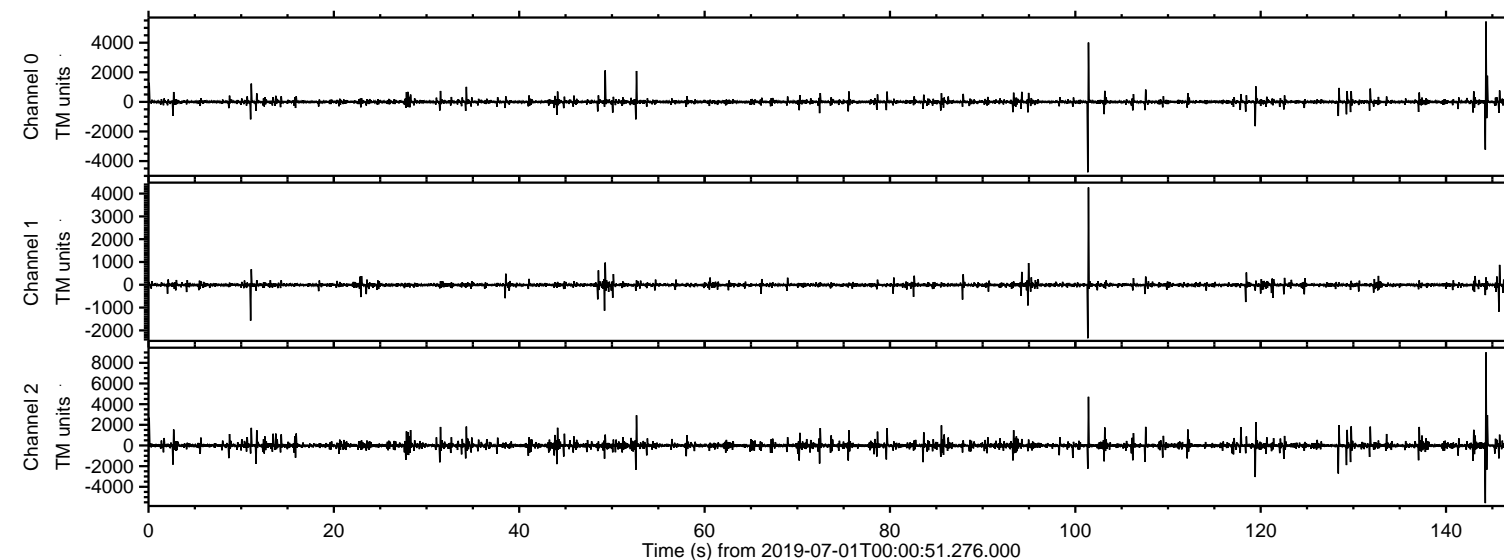


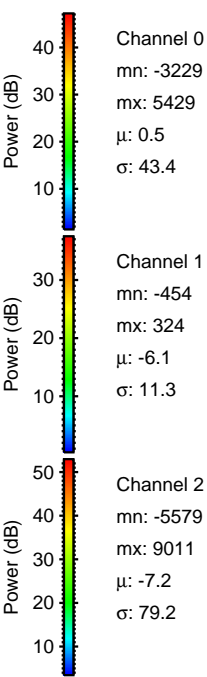
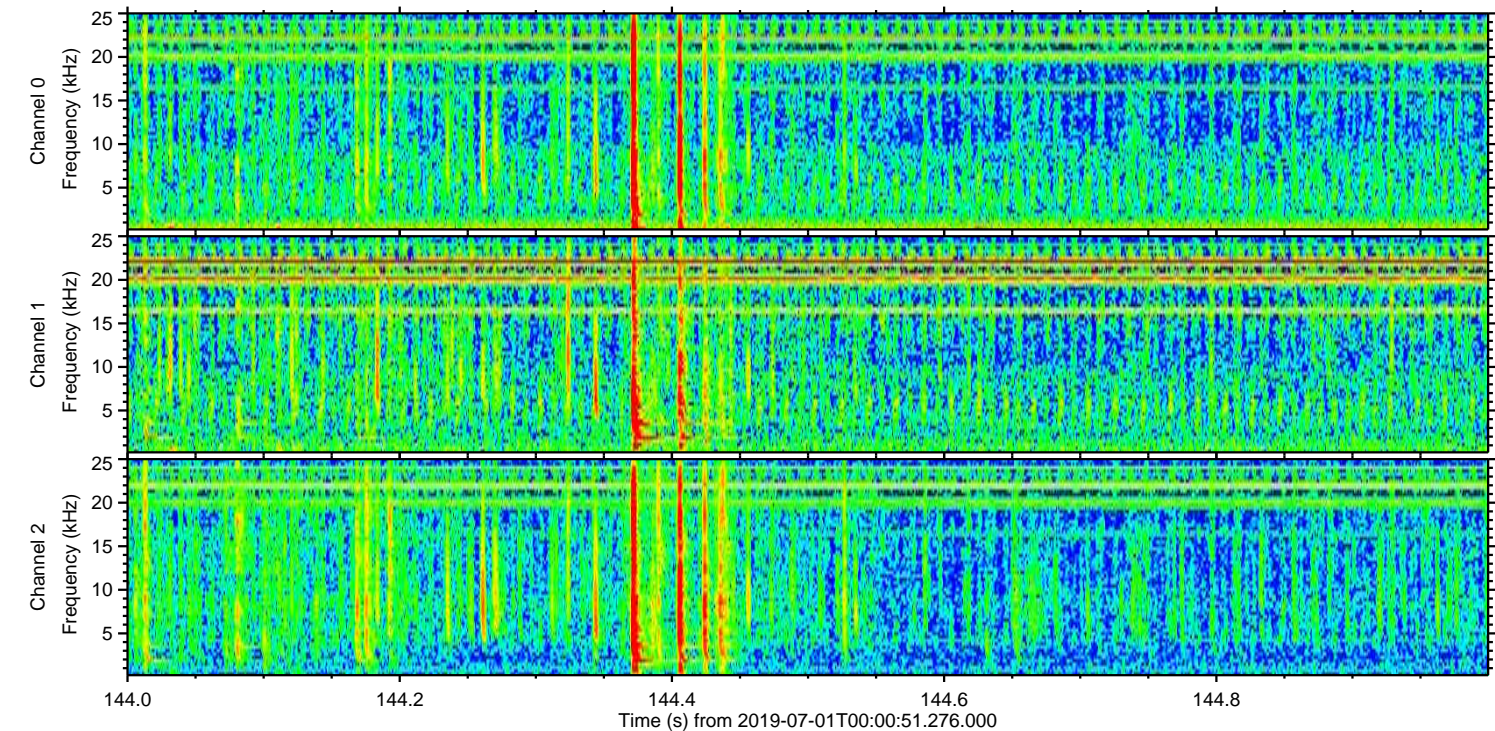
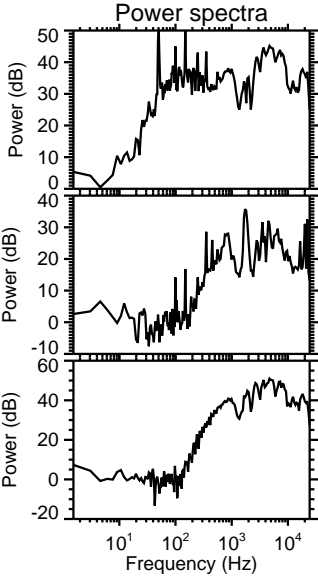
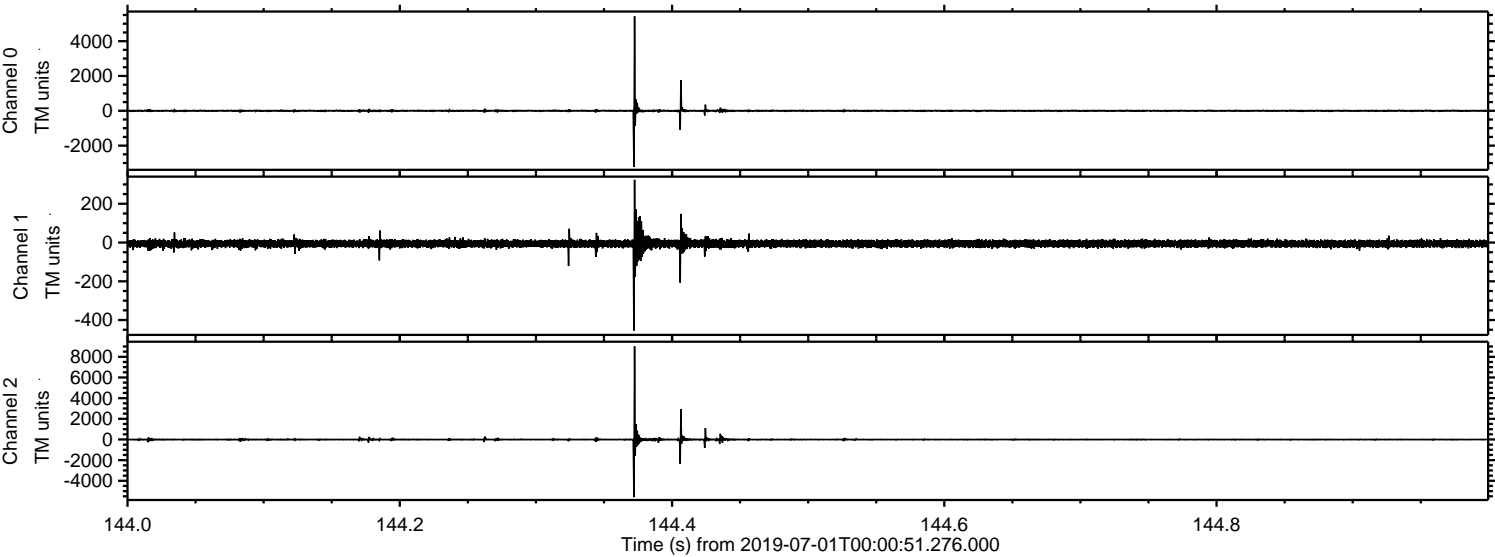
ELMAVAN 3D WAVEFORMS (Measured data sampled at 50 kHz) 51000 packets of 144 samples from 2019-07-01T00:00:51.276.000.

Processed Mon Jul 1 02:08:37 2019 by ELM ver.2012-10-06 from 001__elm20190701_000050__dat00.bin



ELMAVAN 3D WAVEFORMS (Measured data sampled at 50 kHz) 51000 packets of 144 samples from 2019-07-01T00:00:51.276.000. Part 145/147

Processed Mon Jul 1 02:08:46 2019 by ELM ver.2012-10-06 from 001__elm20190701_000050__dat00.bin



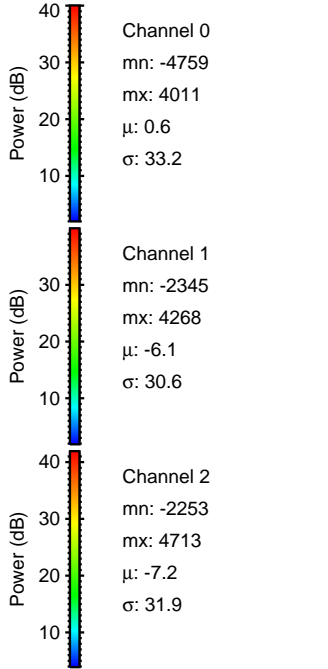
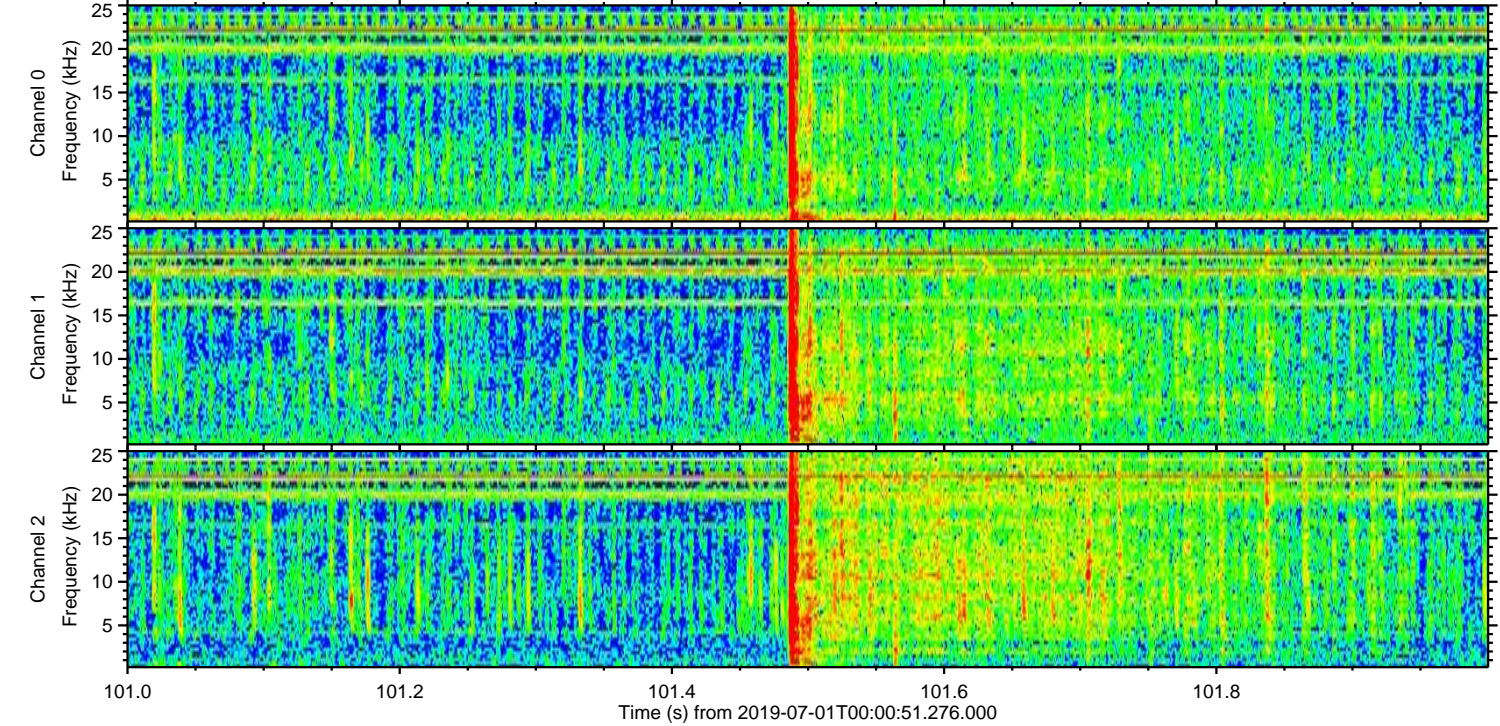
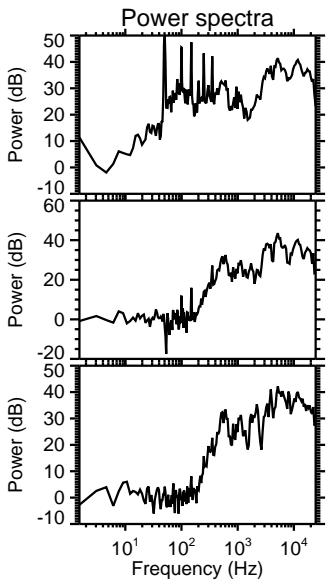
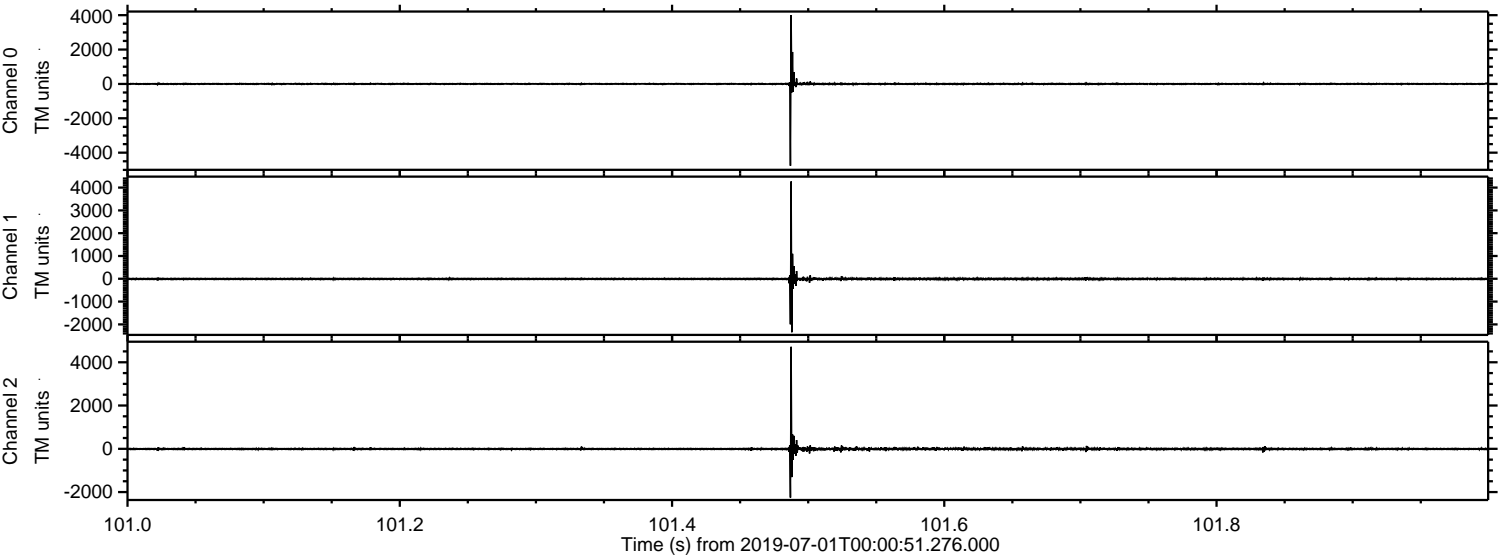
Channel 0
mn: -3229
mx: 5429
 μ : 0.5
 σ : 43.4

Channel 1
mn: -454
mx: 324
 μ : -6.1
 σ : 11.3

Channel 2
mn: -5579
mx: 9011
 μ : -7.2
 σ : 79.2

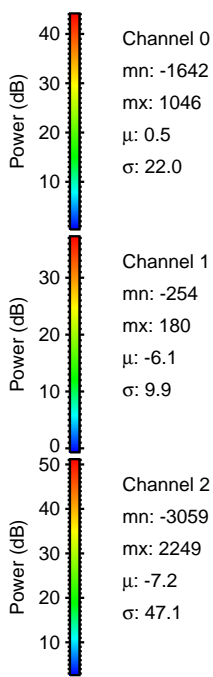
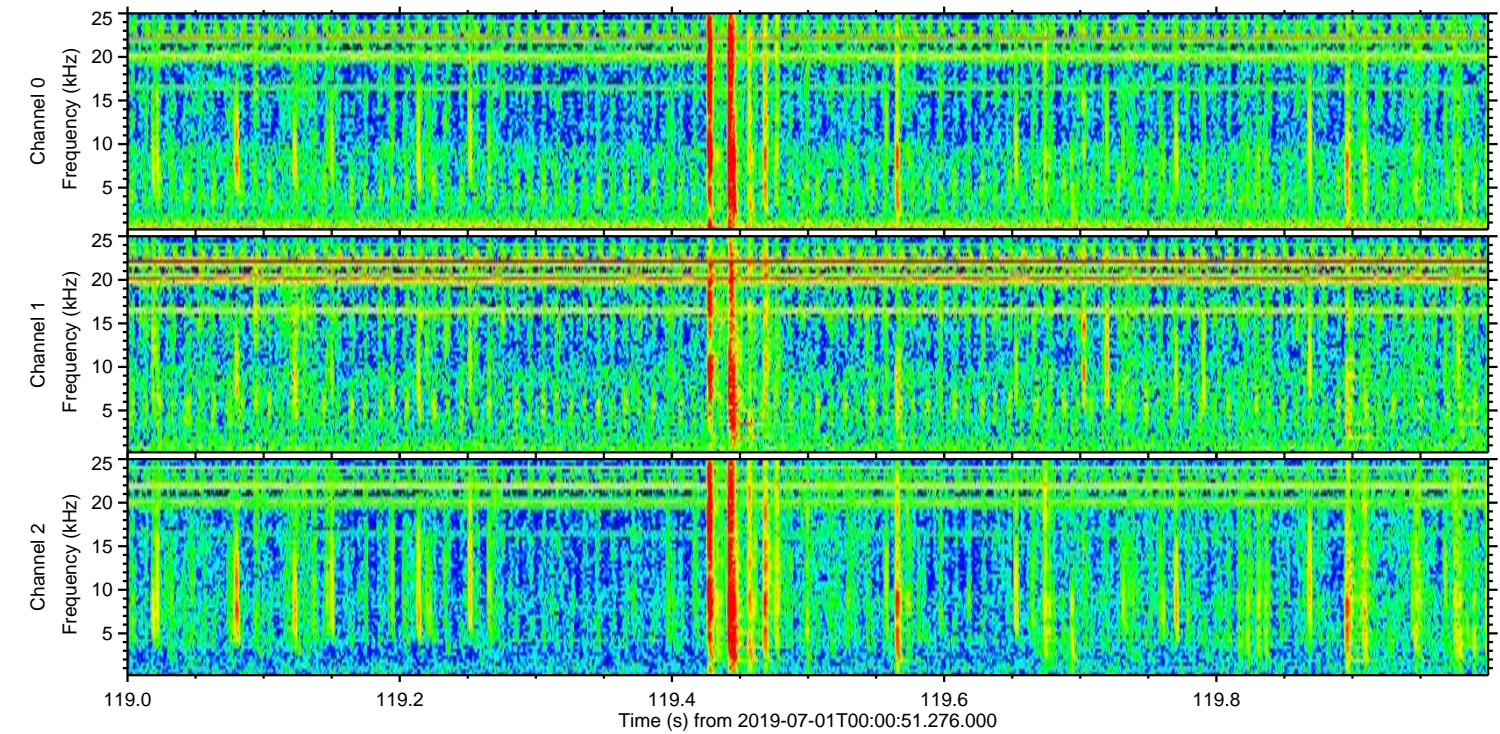
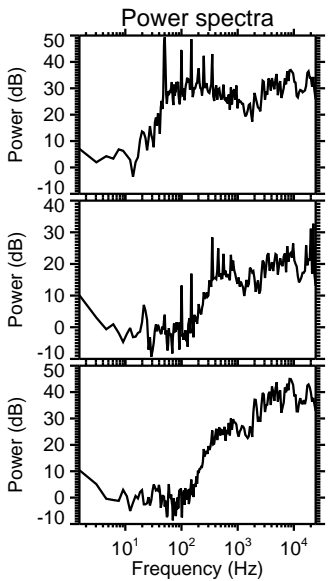
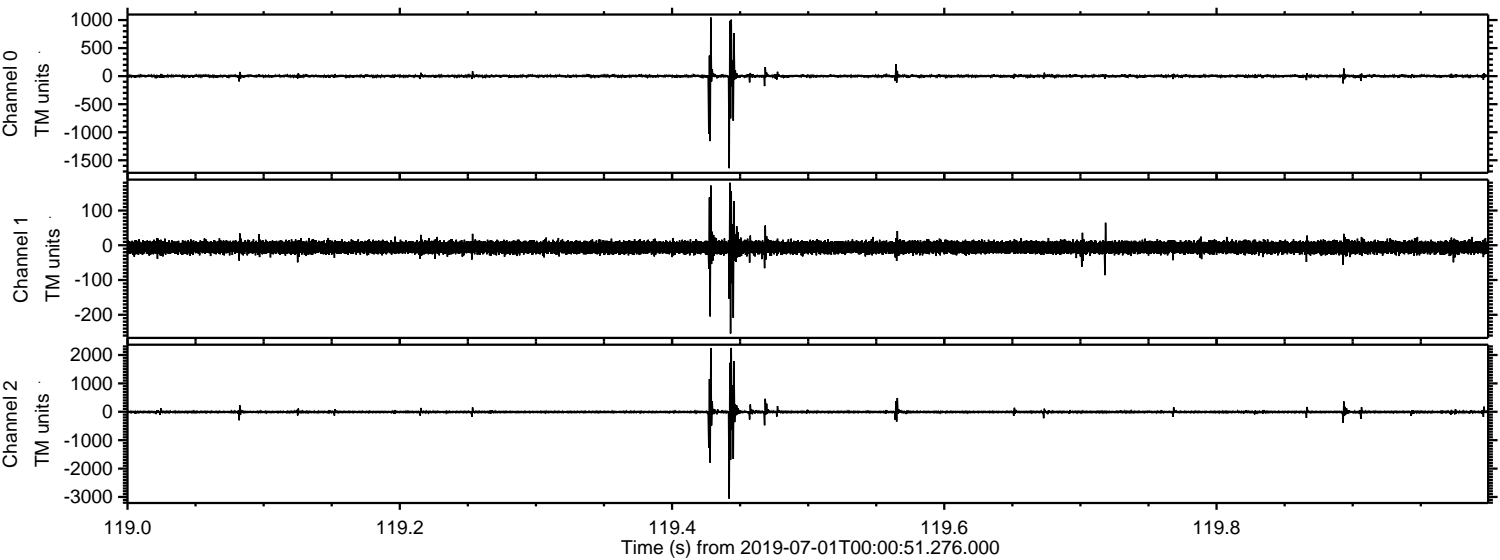
ELMAVAN 3D WAVEFORMS (Measured data sampled at 50 kHz) 51000 packets of 144 samples from 2019-07-01T00:00:51.276.000. Part 102/147

Processed Mon Jul 1 02:08:47 2019 by ELM ver.2012-10-06 from 001__elm20190701_000050__dat00.bin

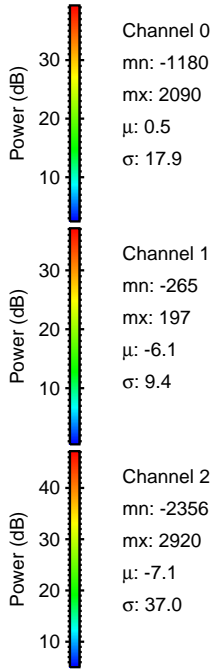
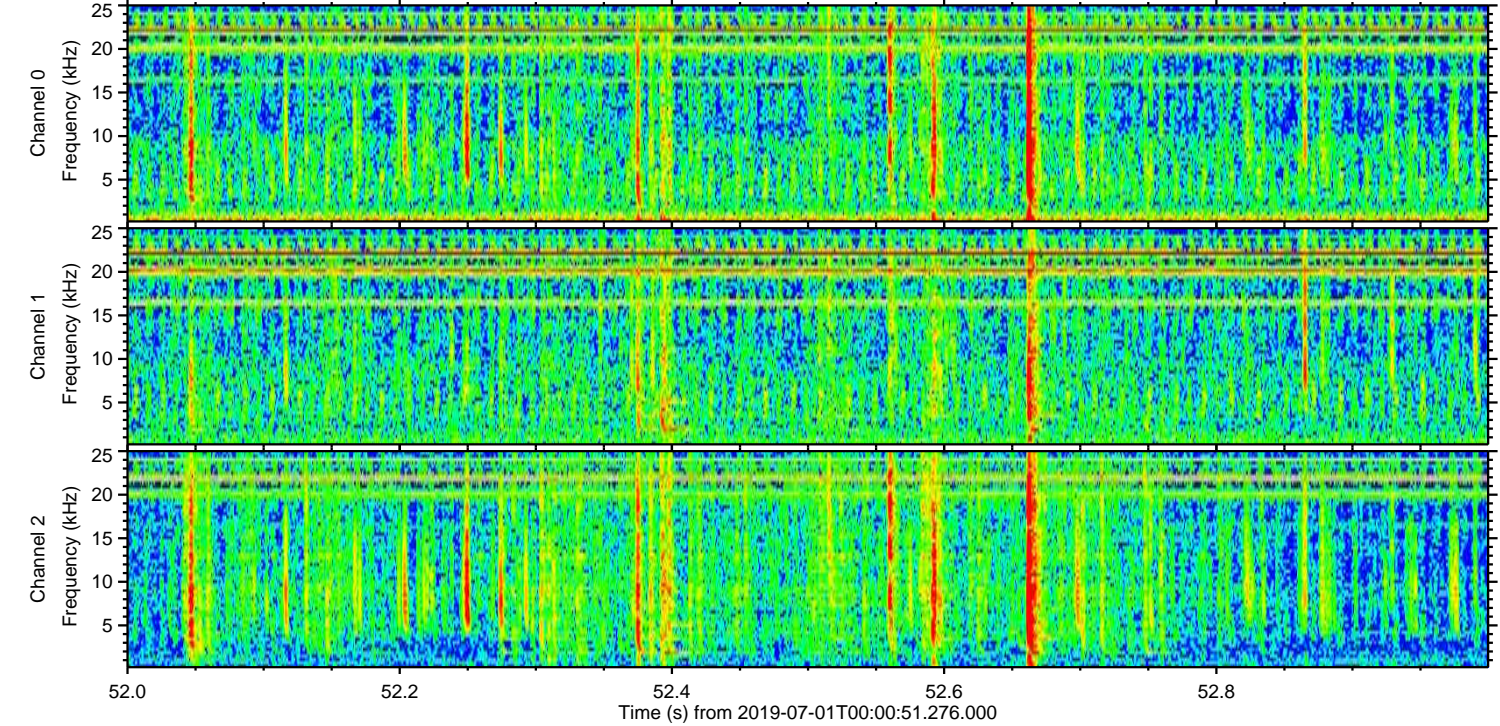
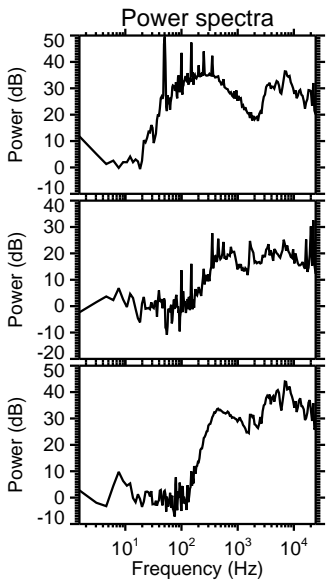
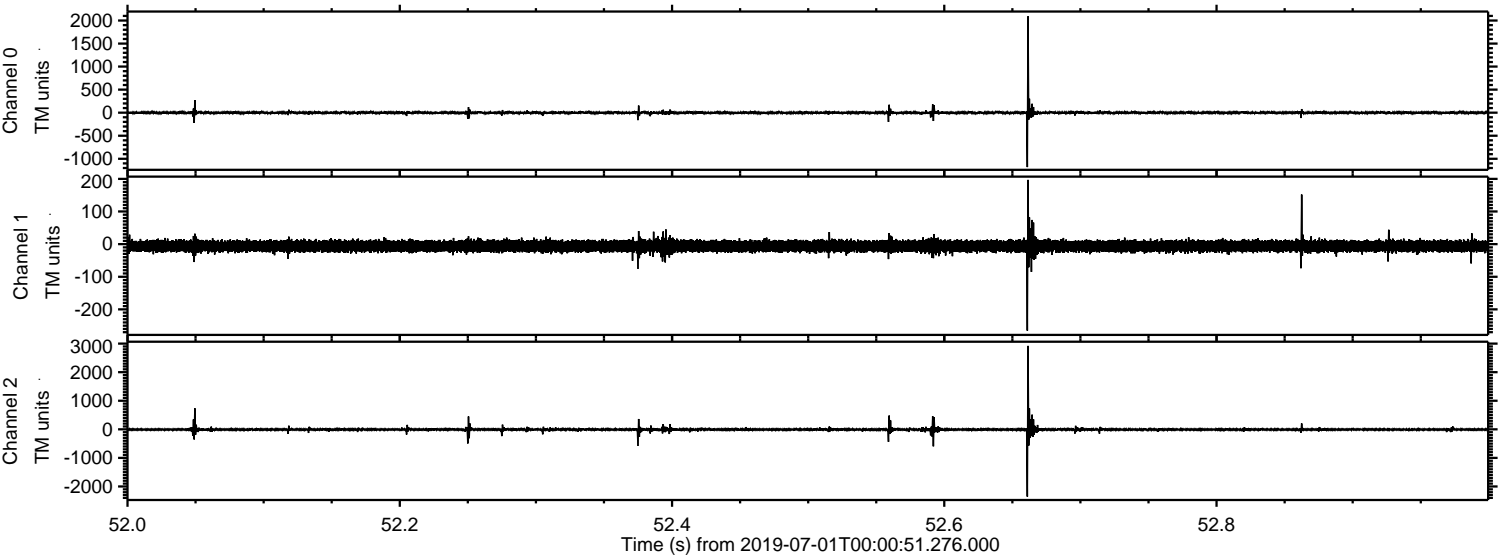


ELMAVAN 3D WAVEFORMS (Measured data sampled at 50 kHz) 51000 packets of 144 samples from 2019-07-01T00:00:51.276.000. Part 120/147

Processed Mon Jul 1 02:08:48 2019 by ELM ver.2012-10-06 from 001__elm20190701_000050__dat00.bin

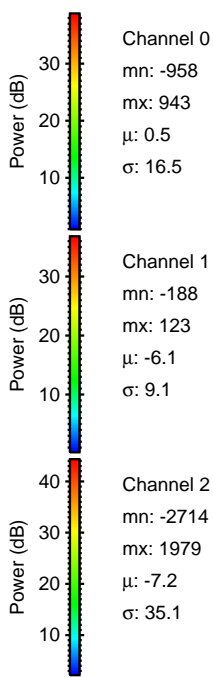
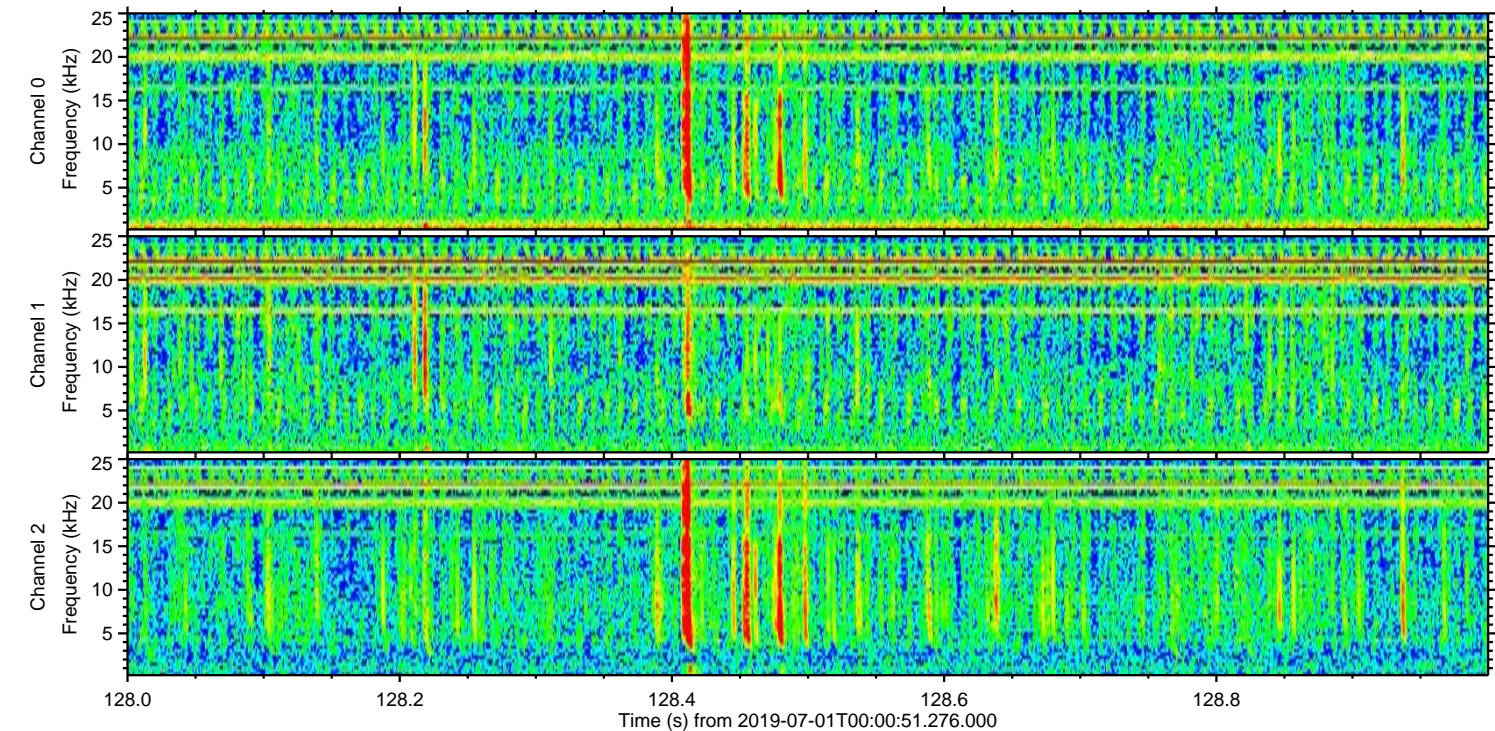
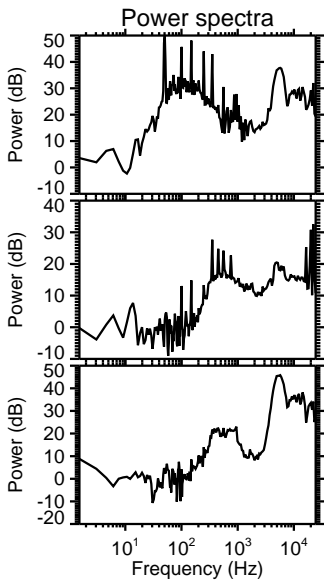
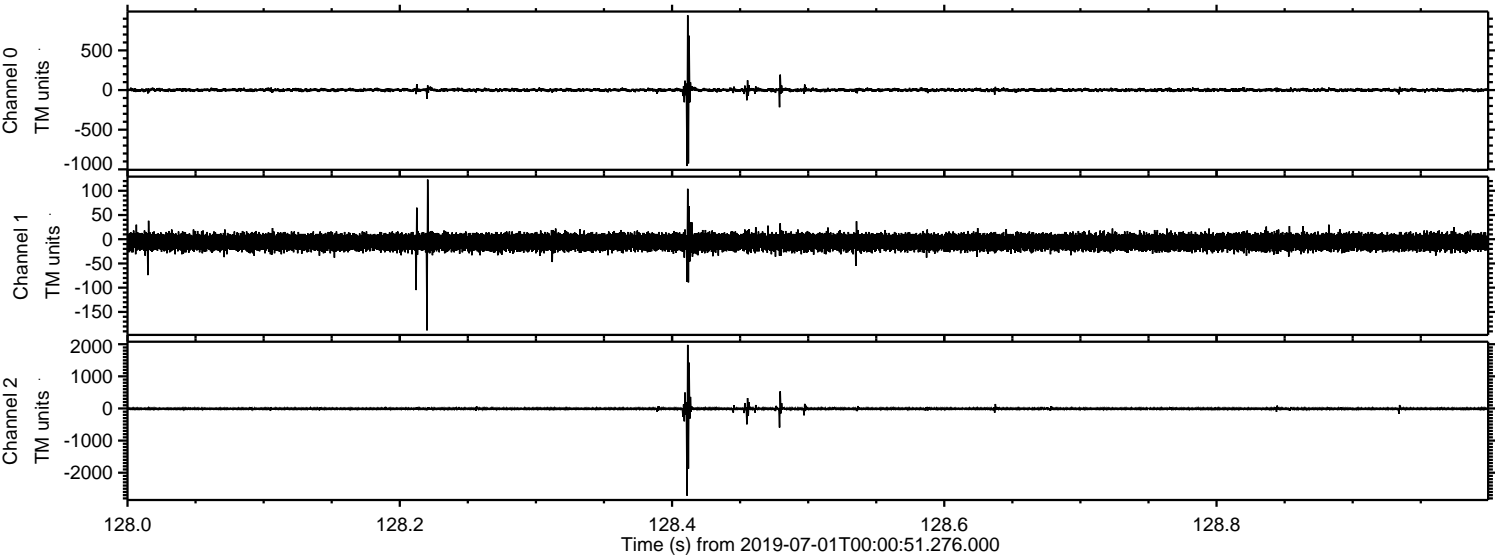


Processed Mon Jul 1 02:08:49 2019 by ELM ver.2012-10-06 from 001__elm20190701_000050__dat00.bin

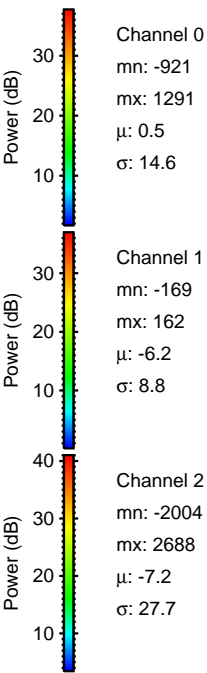
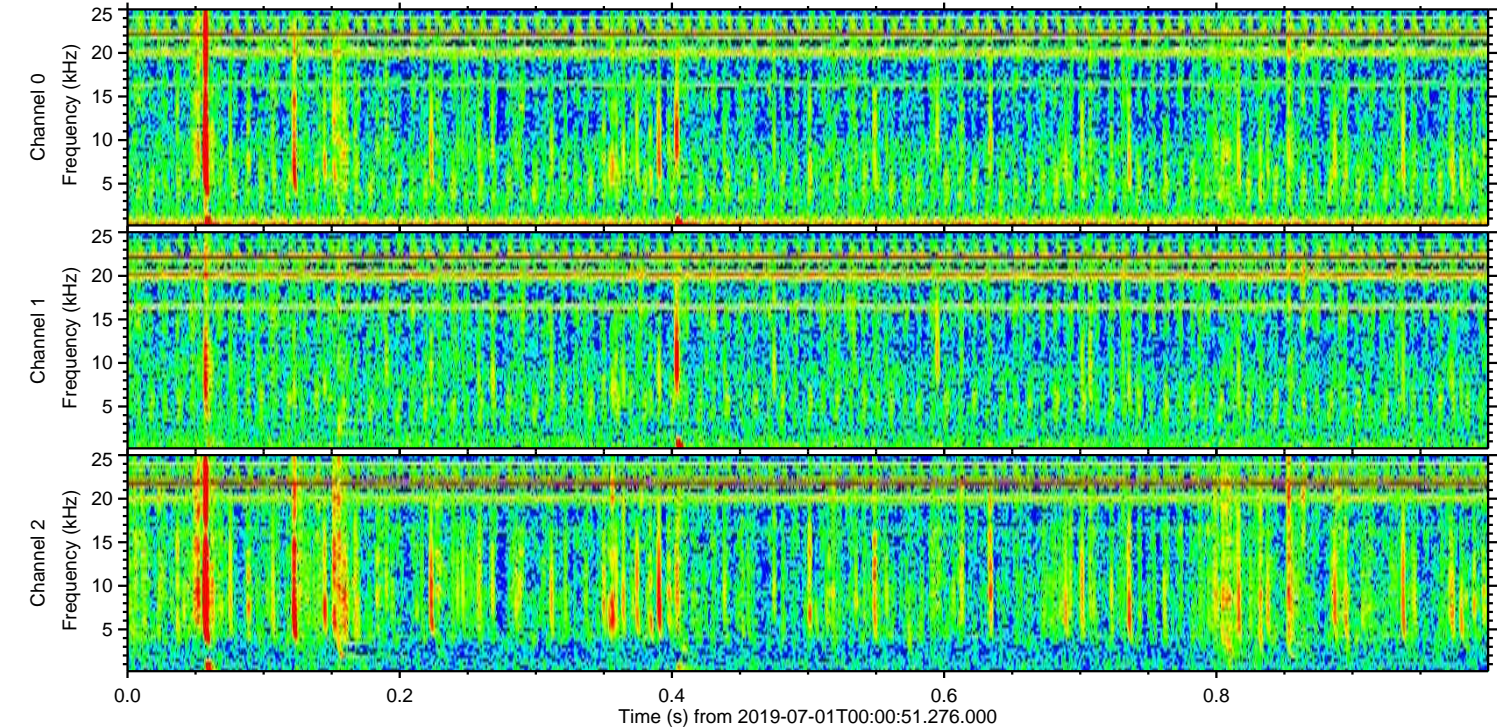
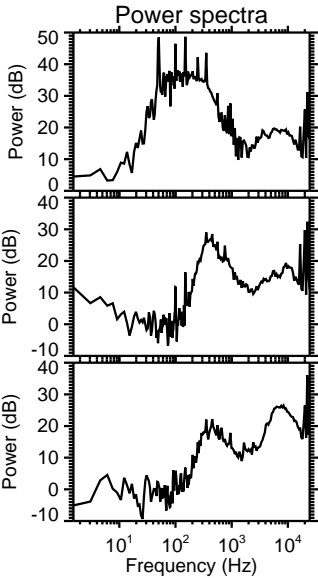
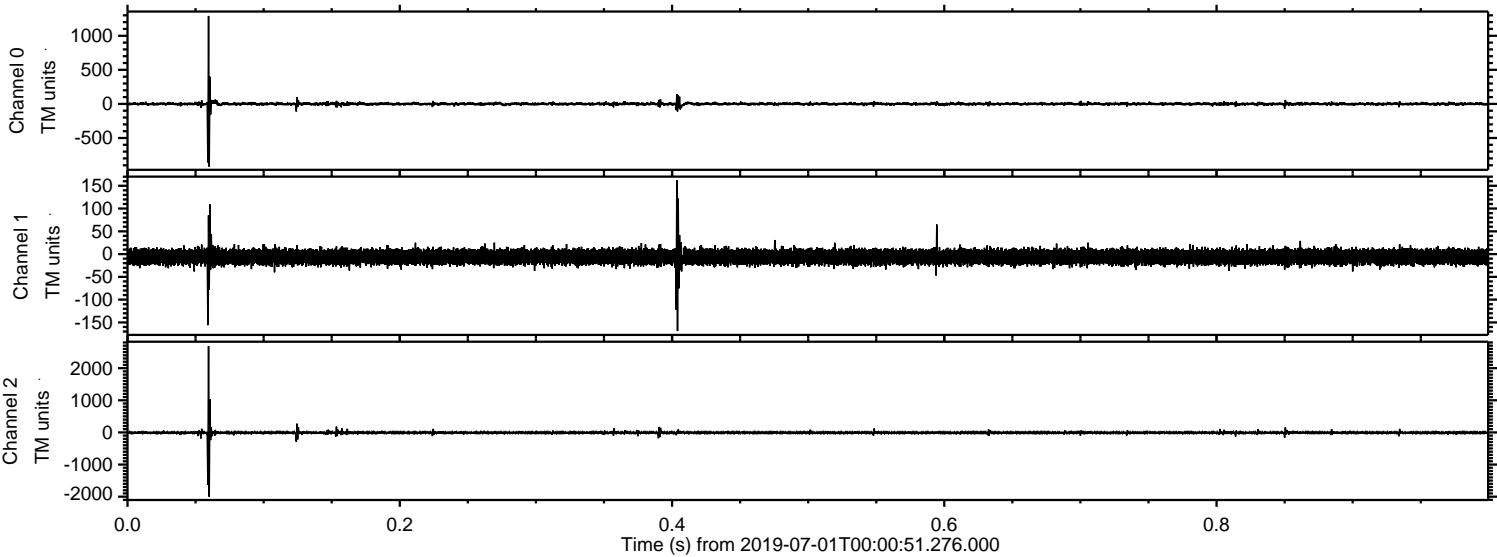


ELMAVAN 3D WAVEFORMS (Measured data sampled at 50 kHz) 51000 packets of 144 samples from 2019-07-01T00:00:51.276.000. Part 129/147

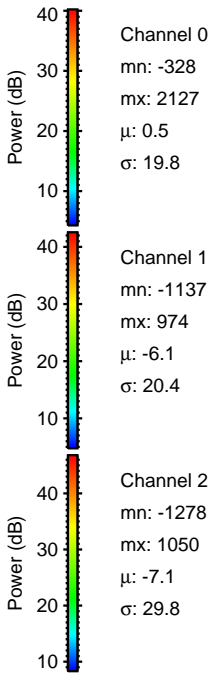
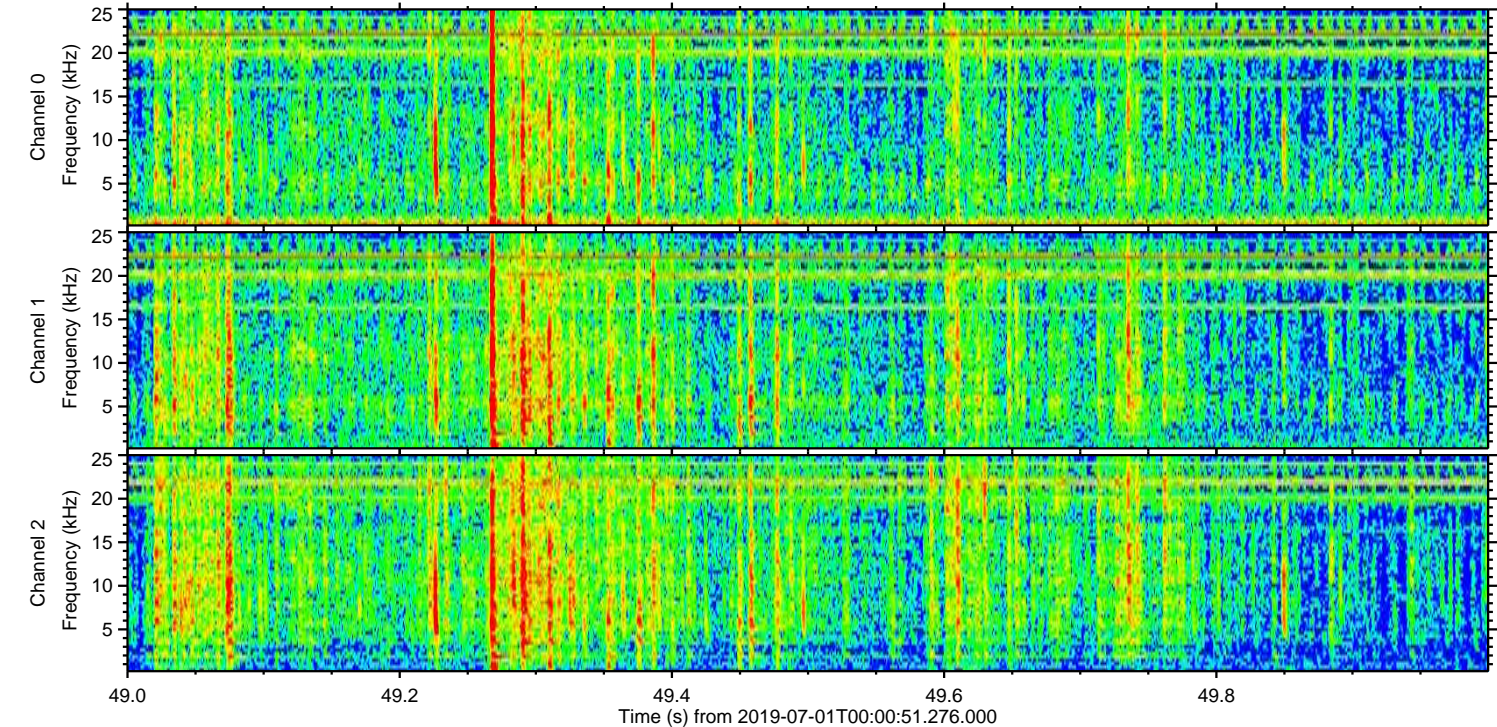
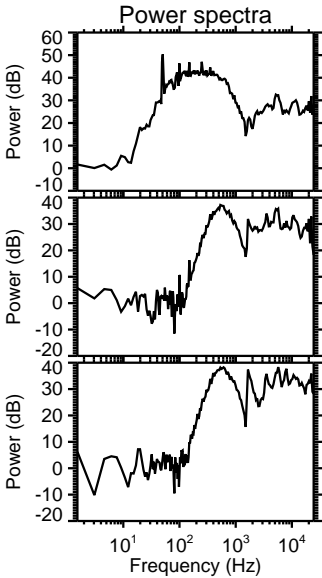
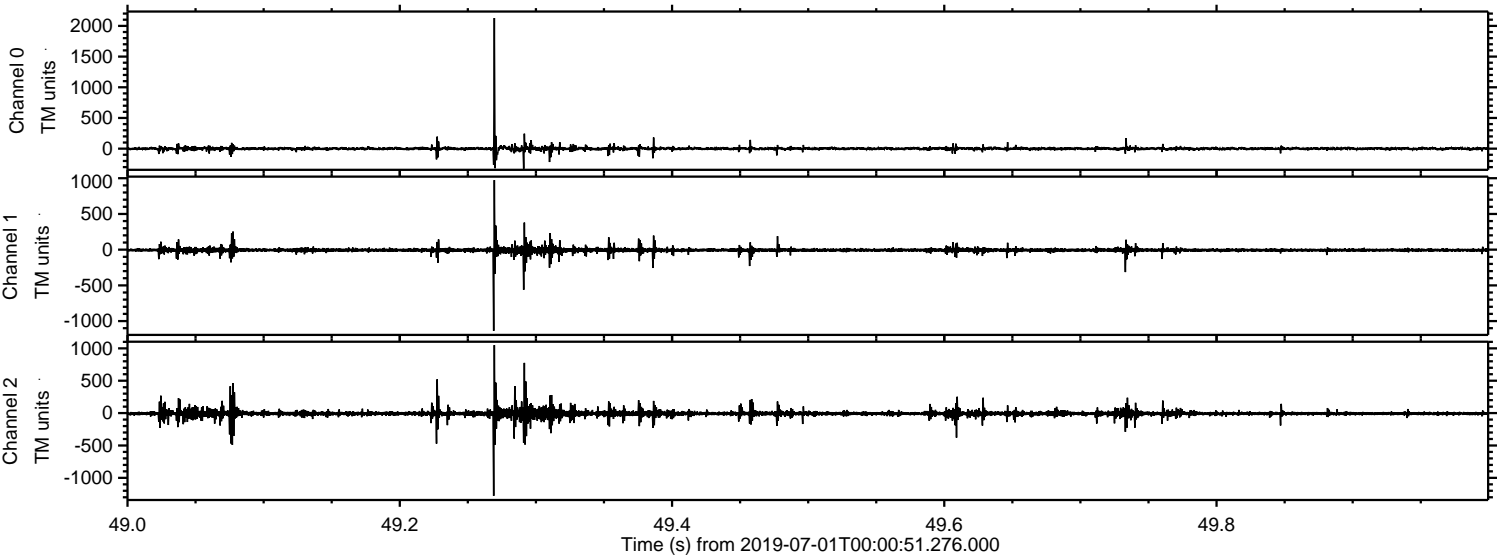
Processed Mon Jul 1 02:08:49 2019 by ELM ver.2012-10-06 from 001__elm20190701_000050__dat00.bin



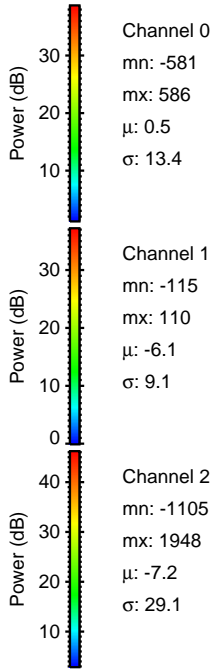
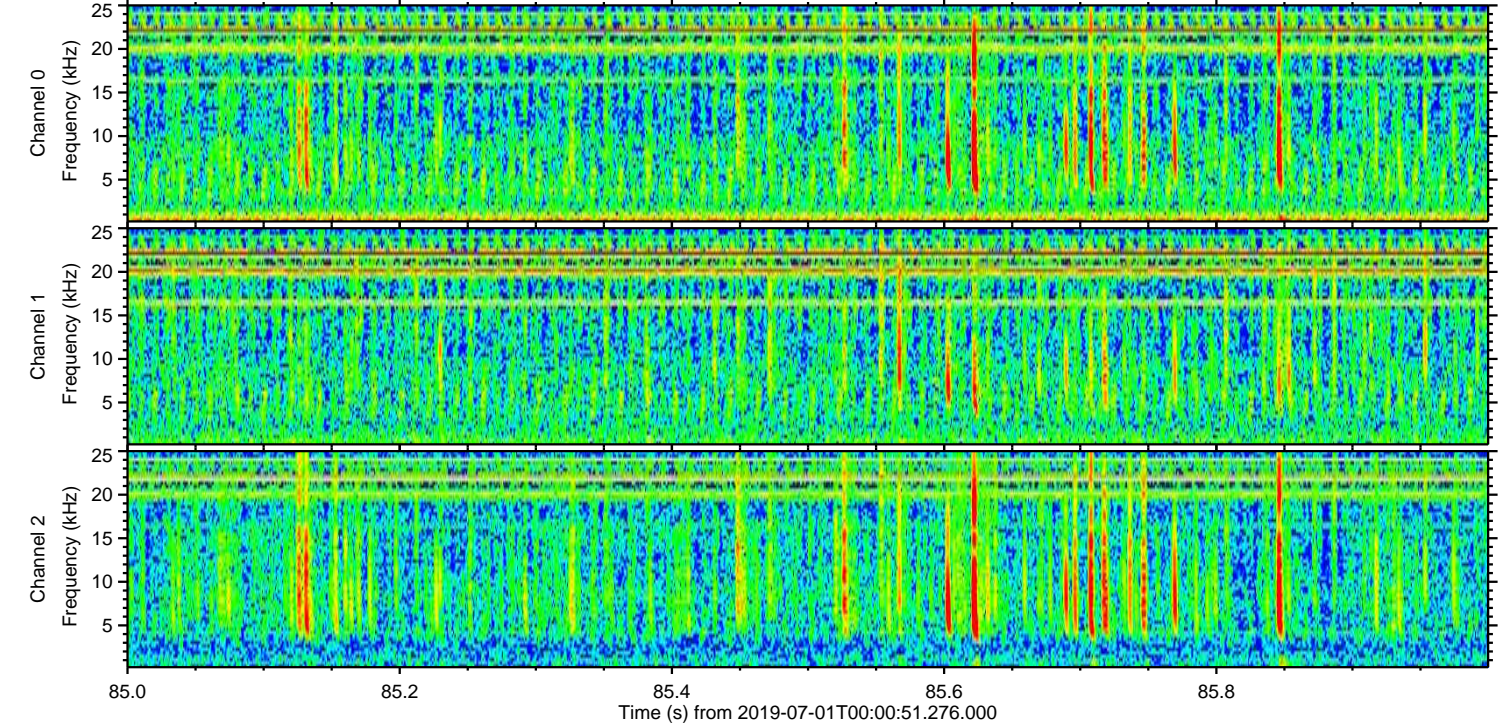
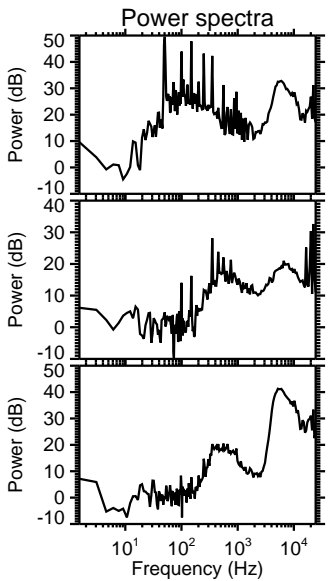
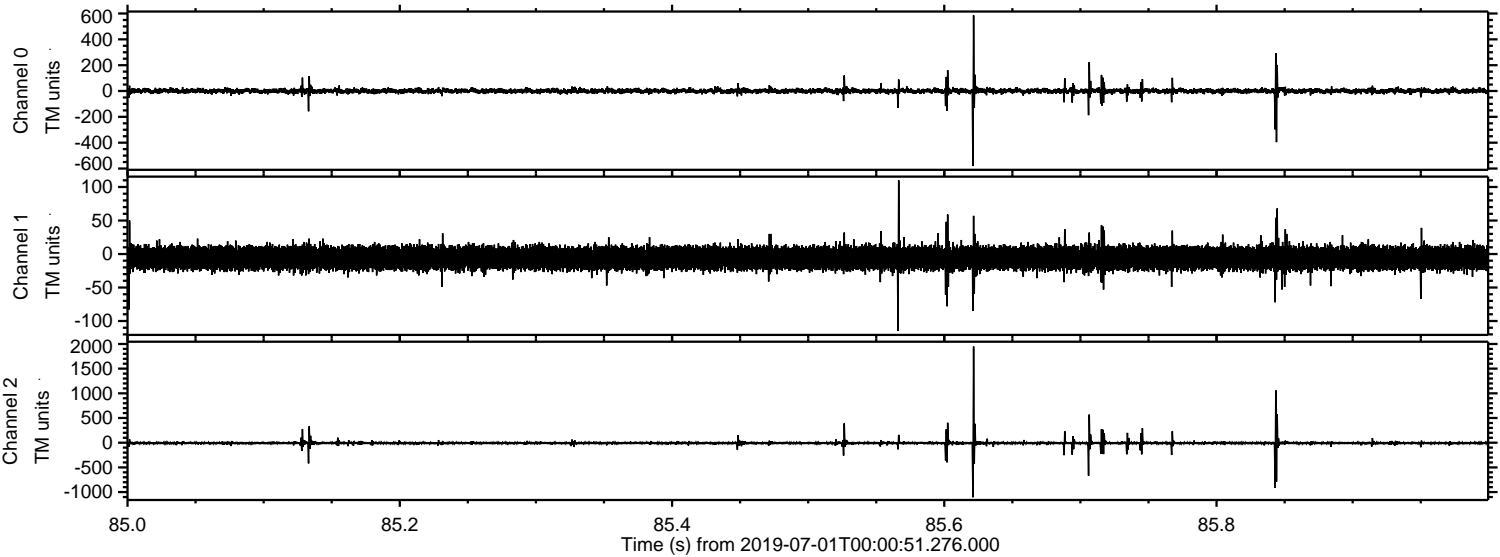
Processed Mon Jul 1 02:08:50 2019 by ELM ver.2012-10-06 from 001__elm20190701_000050__dat00.bin



Processed Mon Jul 1 02:08:51 2019 by ELM ver.2012-10-06 from 001__elm20190701_000050__dat00.bin



Processed Mon Jul 1 02:08:51 2019 by ELM ver.2012-10-06 from 001__elm20190701_000050__dat00.bin



Processed Mon Jul 1 02:08:52 2019 by ELM ver.2012-10-06 from 001__elm20190701_000050__dat00.bin

