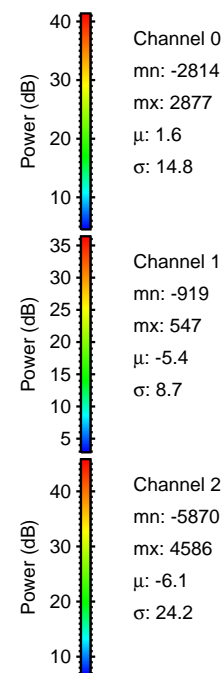
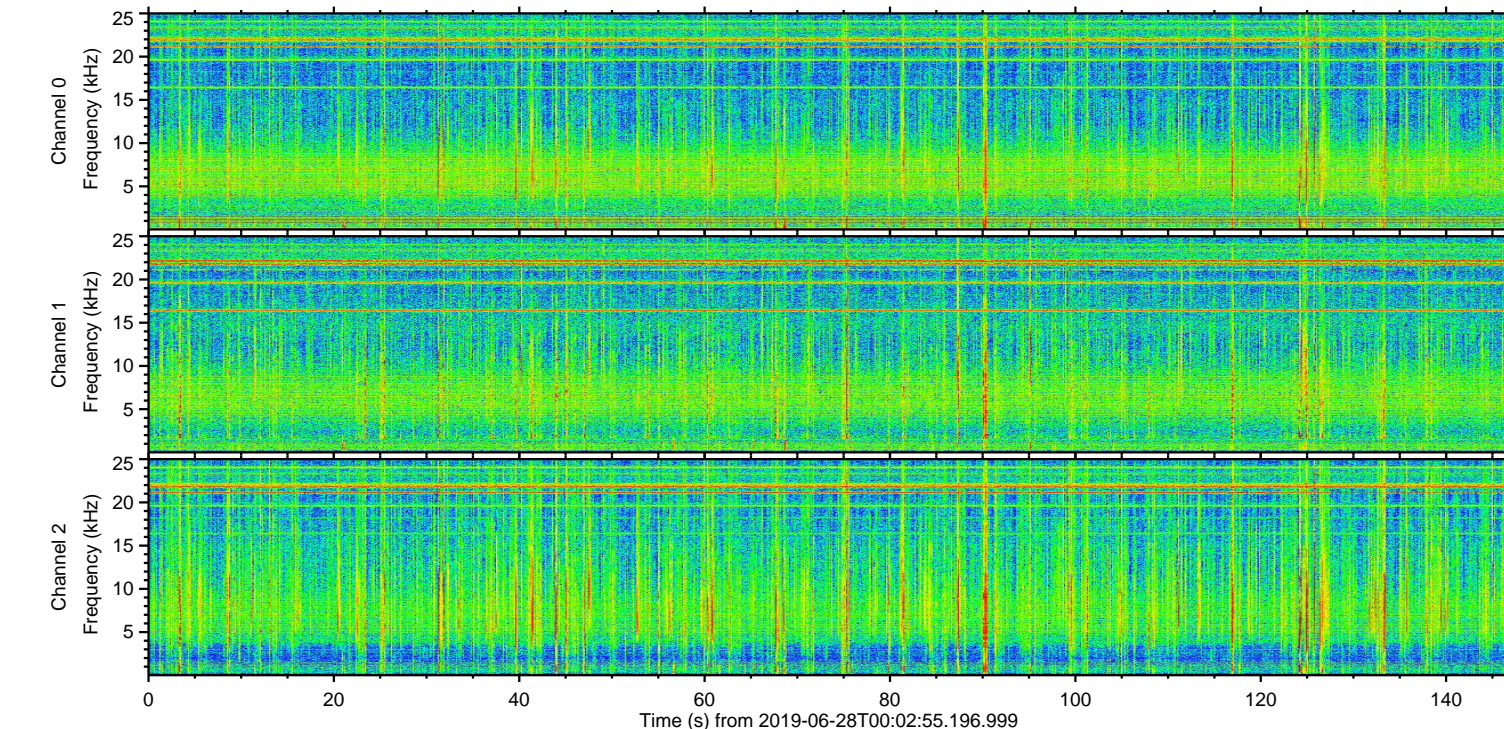
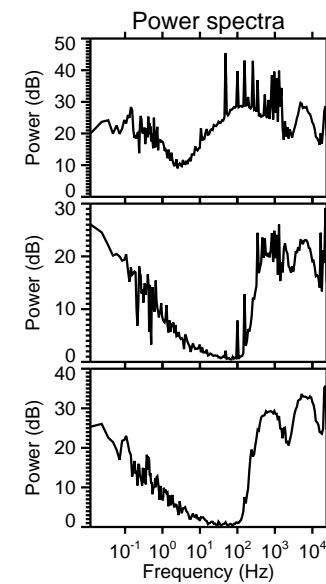
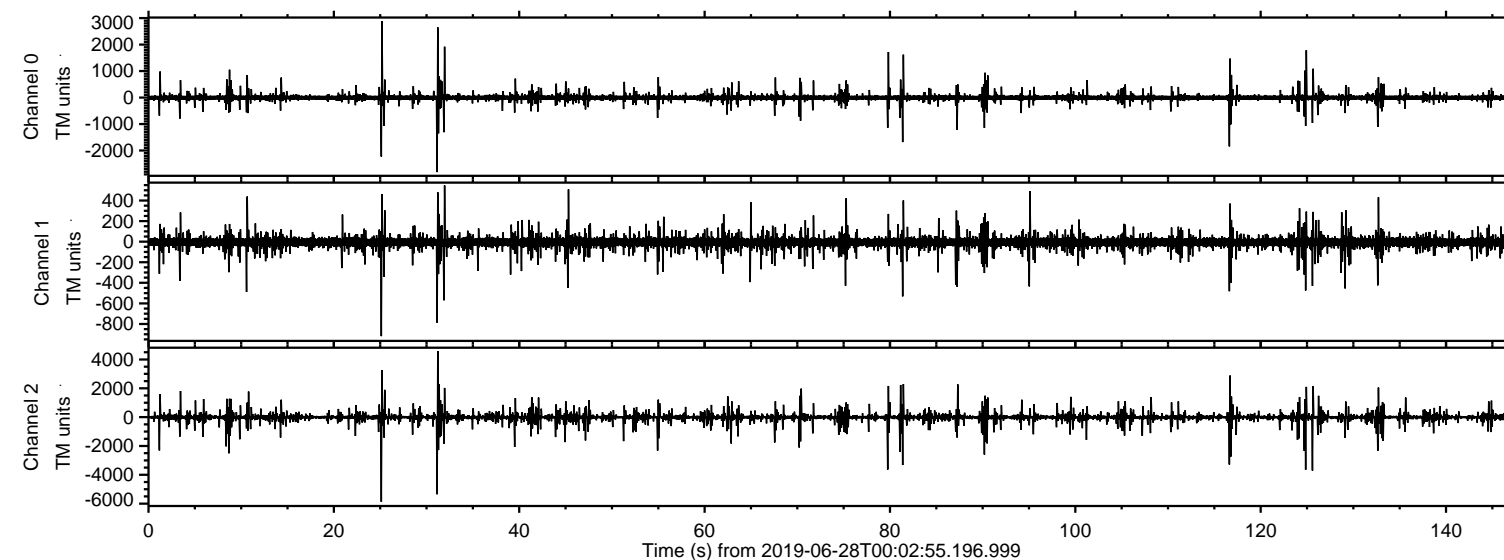


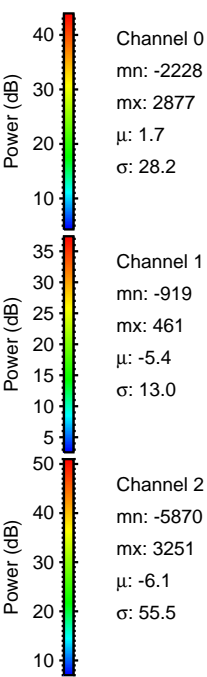
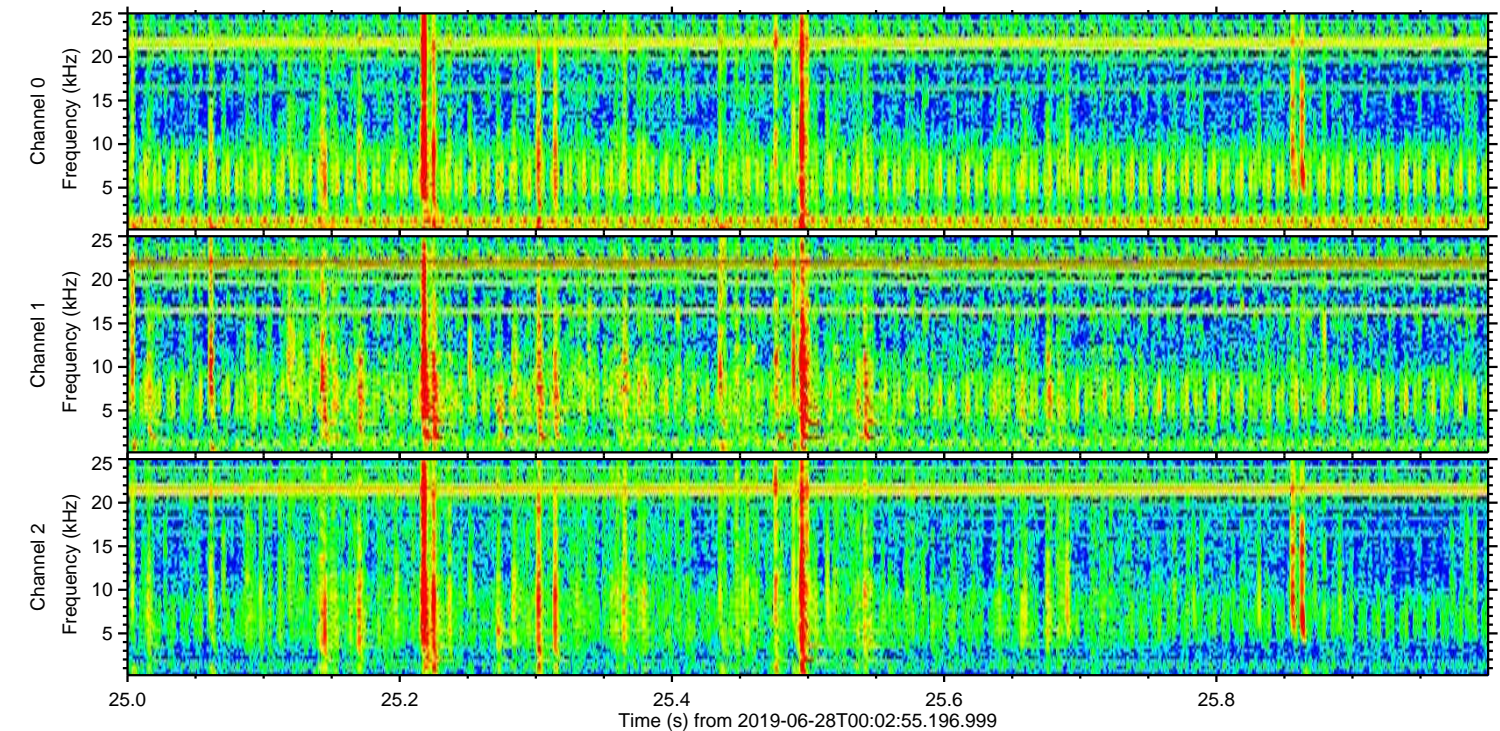
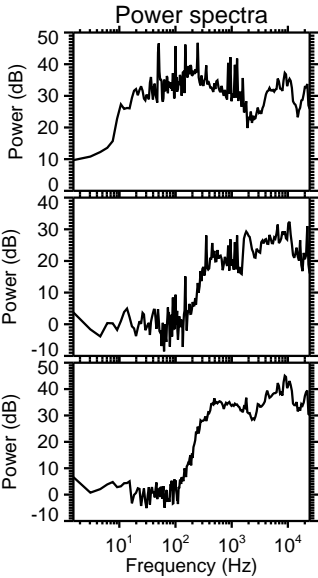
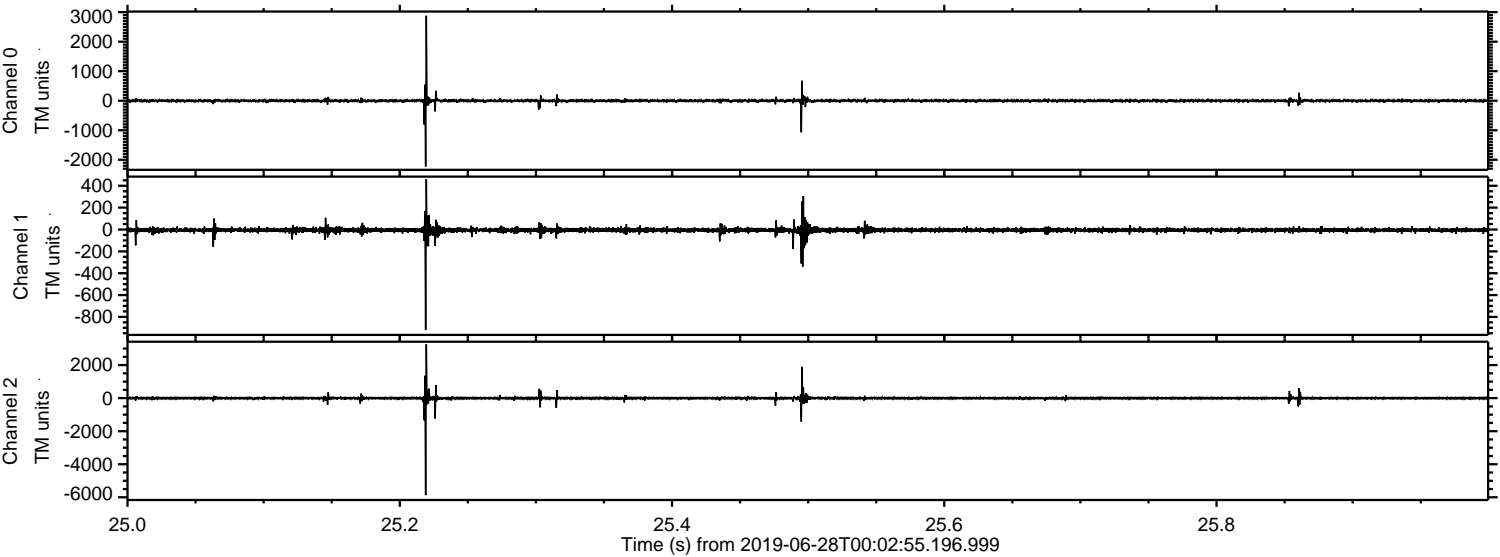
# ELMAVAN 3D WAVEFORMS (Measured data sampled at 50 kHz) 51000 packets of 144 samples from 2019-06-28T00:02:55.196.999.

Processed Fri Jun 28 02:10:50 2019 by ELM ver.2012-10-06 from 001\_\_elm20190628\_000254\_\_dat00.bin



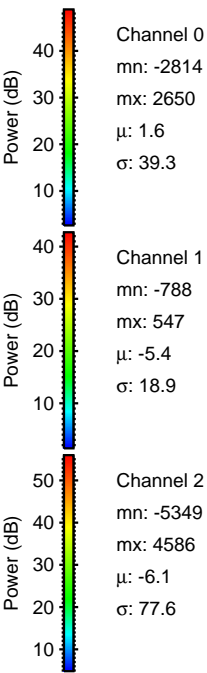
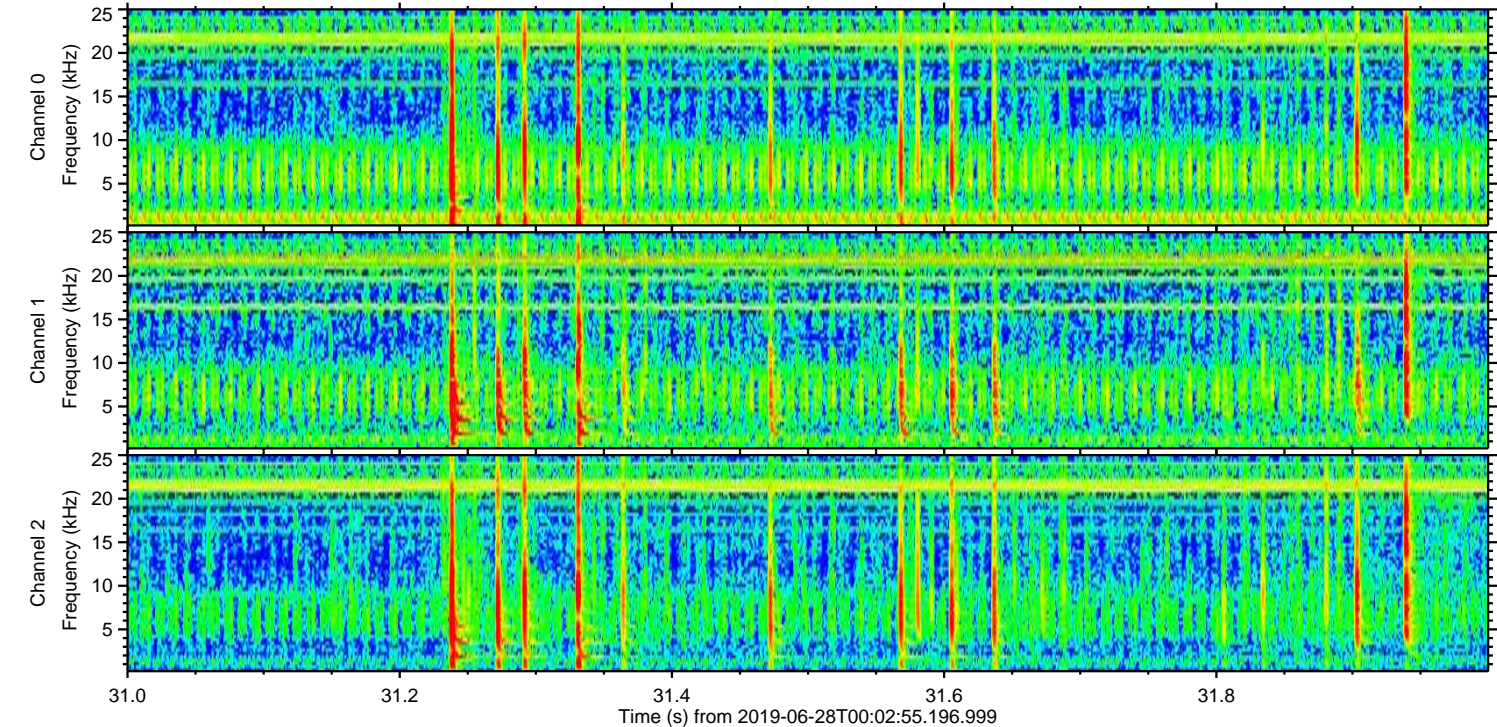
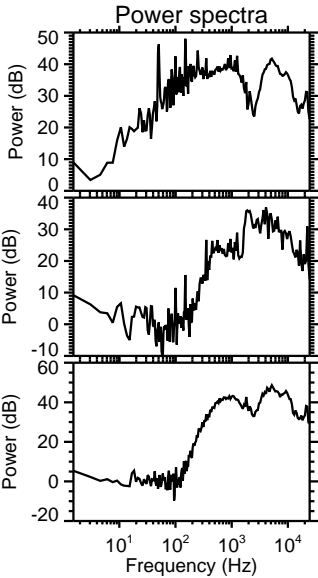
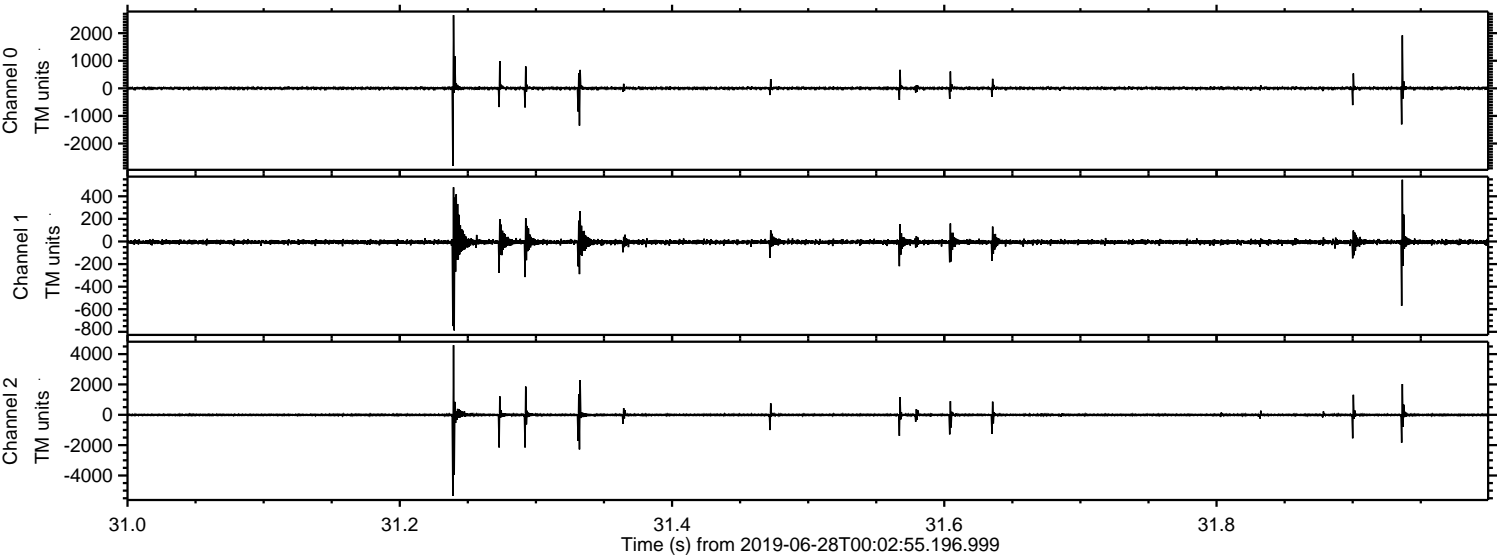


Processed Fri Jun 28 02:11:01 2019 by ELM ver.2012-10-06 from 001\_\_elm20190628\_000254\_\_dat00.bin





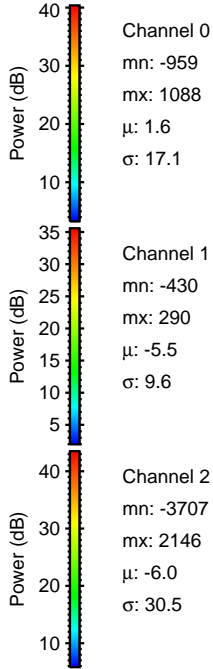
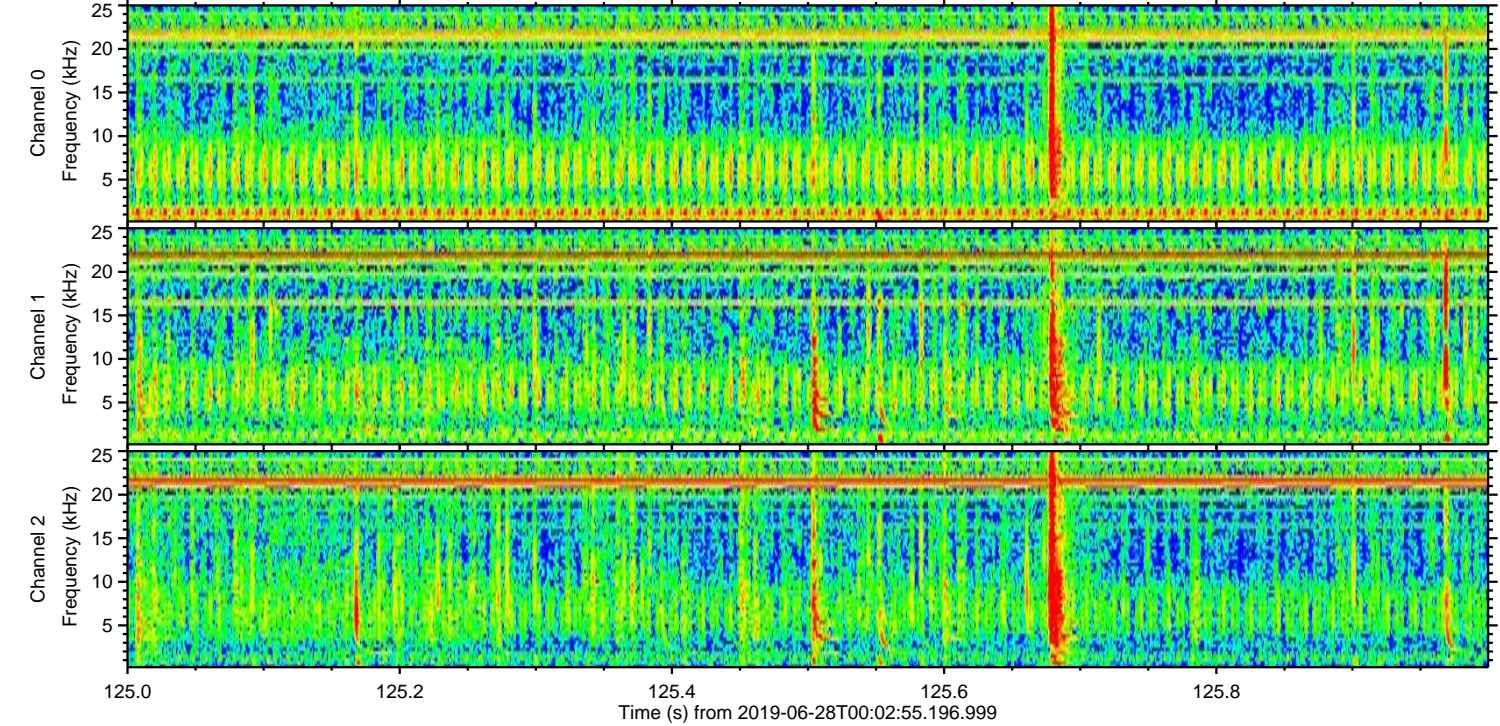
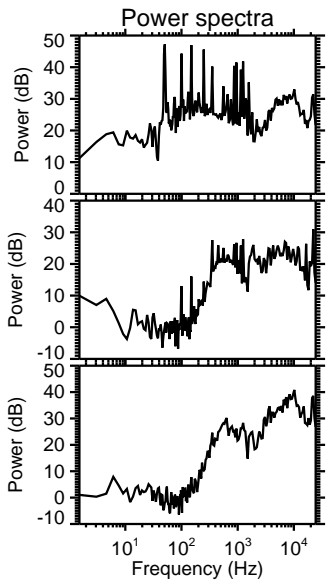
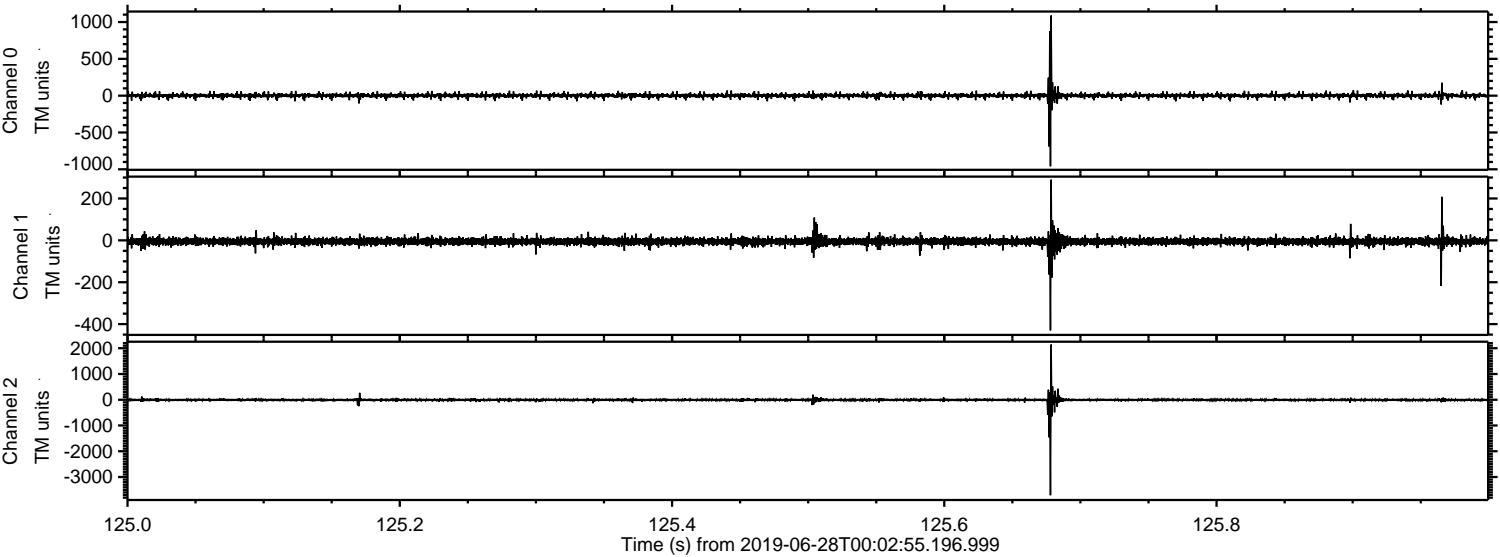
Processed Fri Jun 28 02:11:02 2019 by ELM ver.2012-10-06 from 001\_\_elm20190628\_000254\_\_dat00.bin





ELMAVAN 3D WAVEFORMS (Measured data sampled at 50 kHz) 51000 packets of 144 samples from 2019-06-28T00:02:55.196.999. Part 126/147

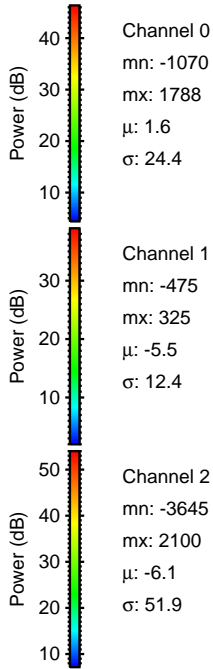
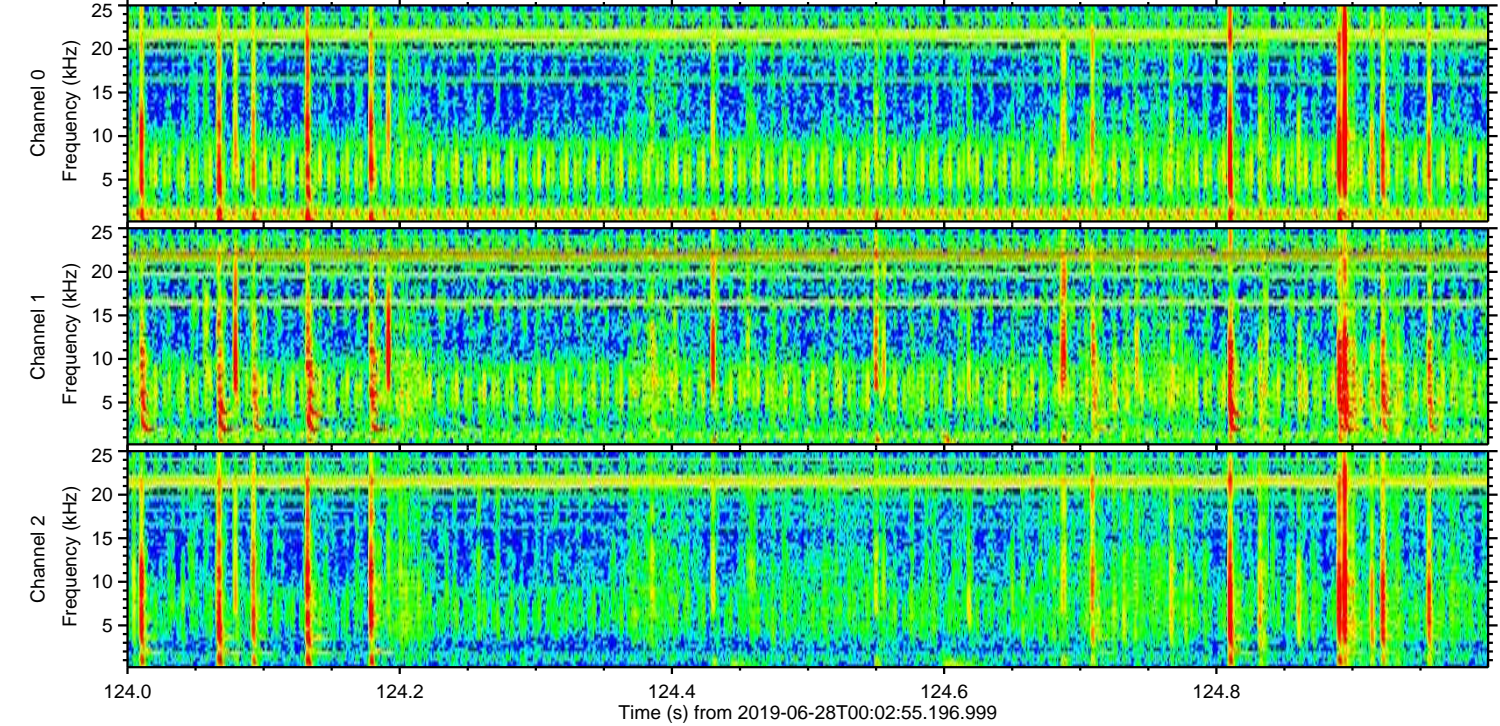
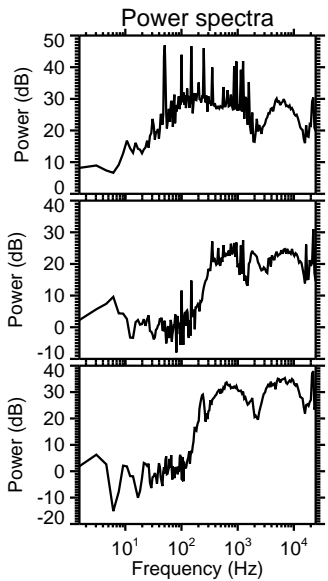
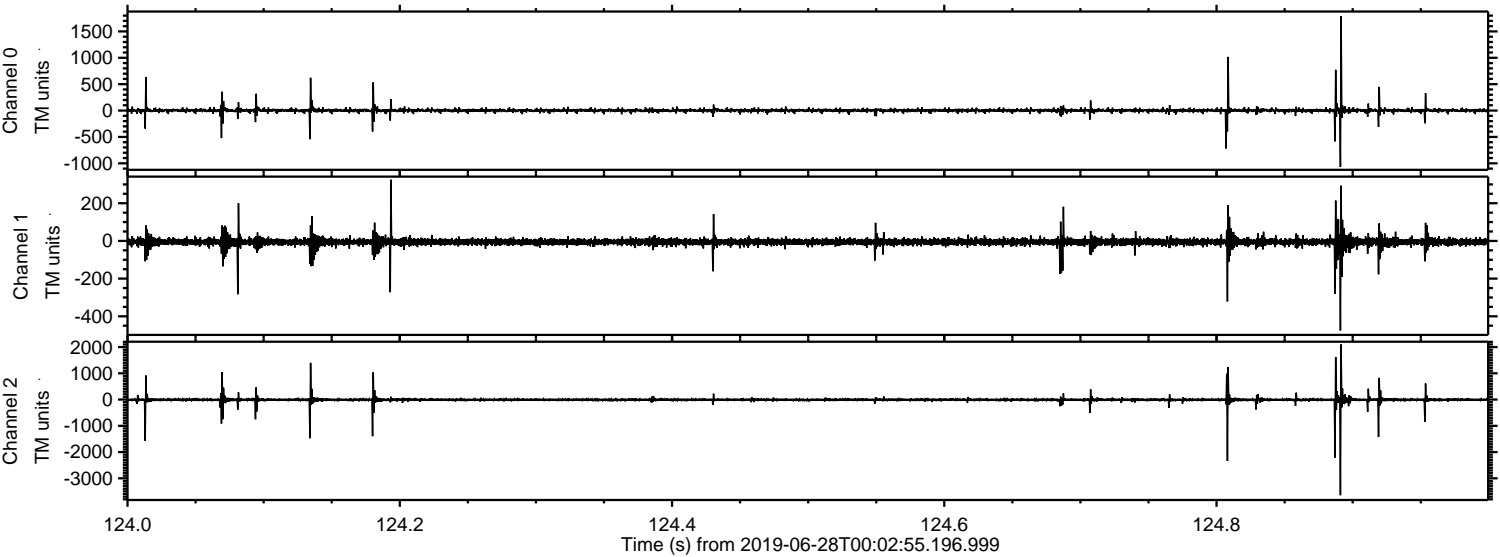
Processed Fri Jun 28 02:11:03 2019 by ELM ver.2012-10-06 from 001\_\_elm20190628\_000254\_\_dat00.bin





ELMAVAN 3D WAVEFORMS (Measured data sampled at 50 kHz) 51000 packets of 144 samples from 2019-06-28T00:02:55.196.999. Part 125/147

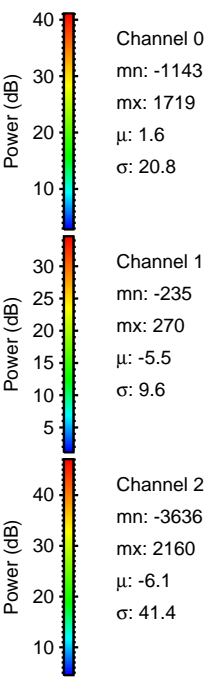
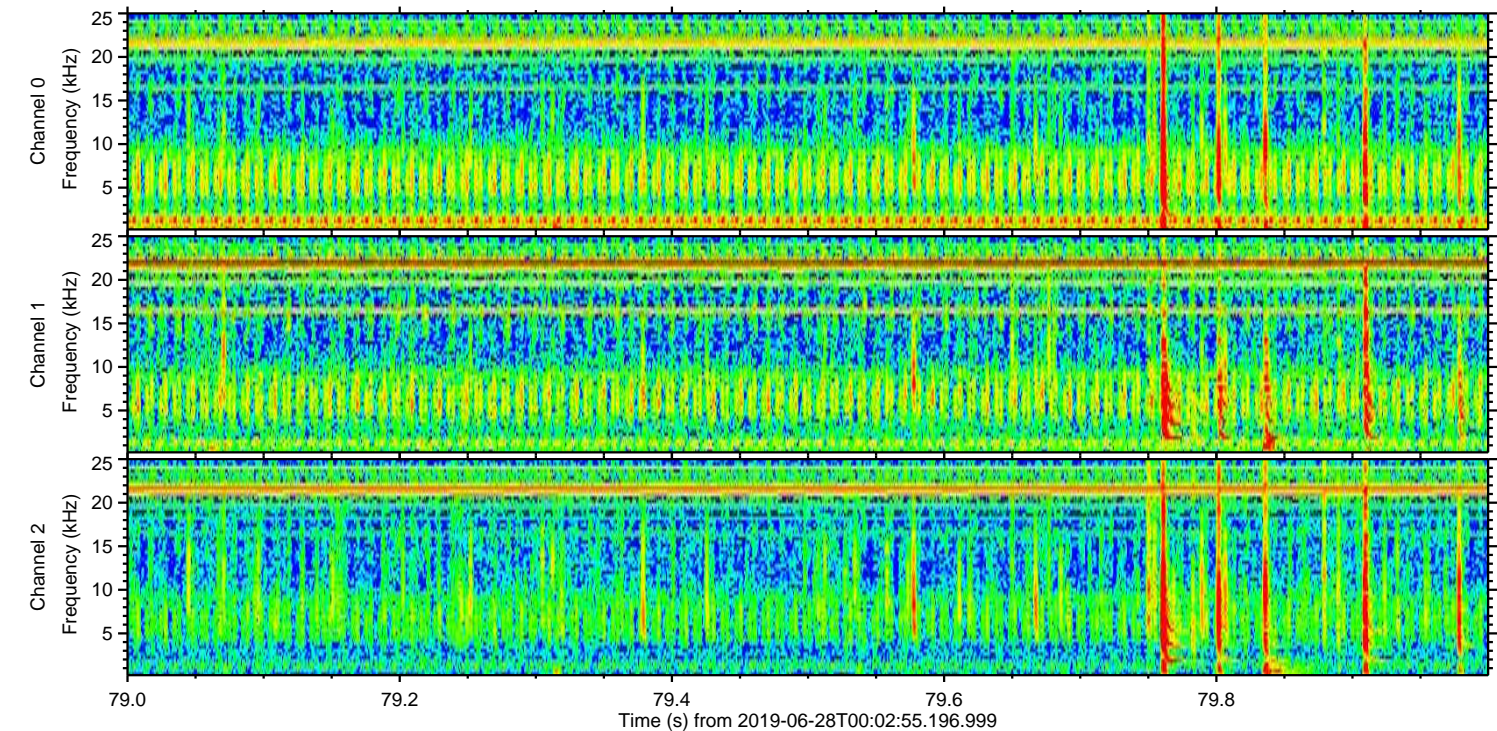
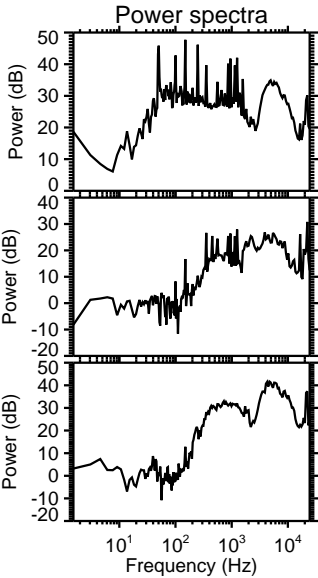
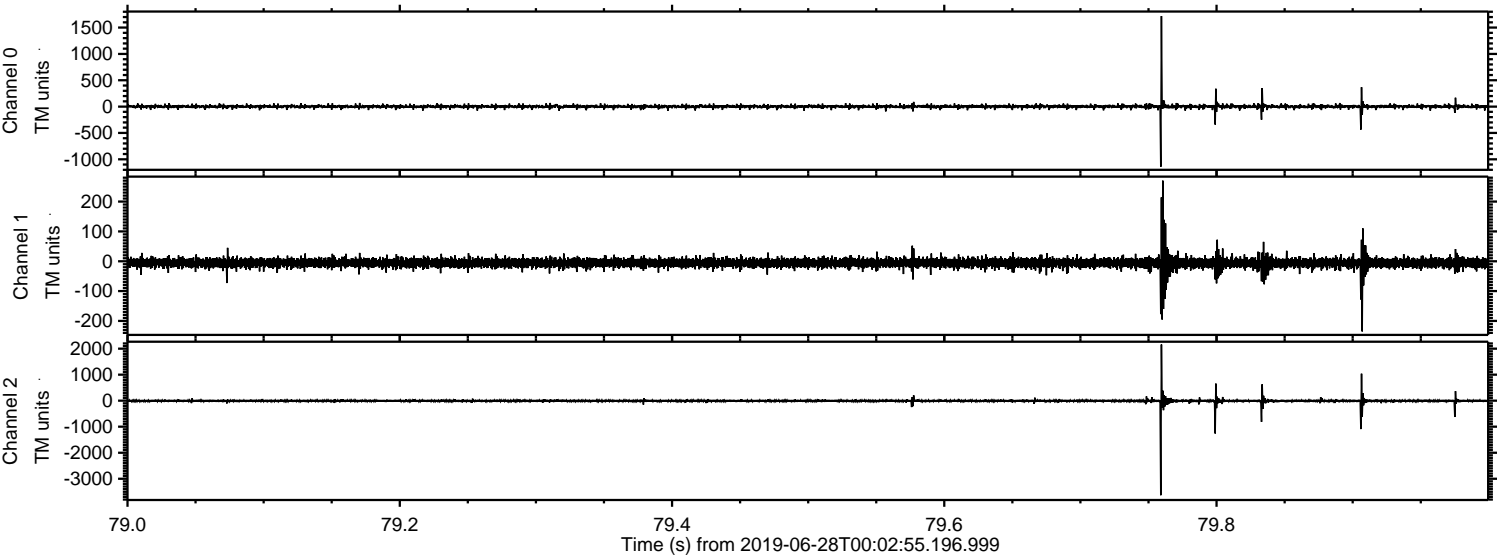
Processed Fri Jun 28 02:11:04 2019 by ELM ver.2012-10-06 from 001\_\_elm20190628\_000254\_\_dat00.bin





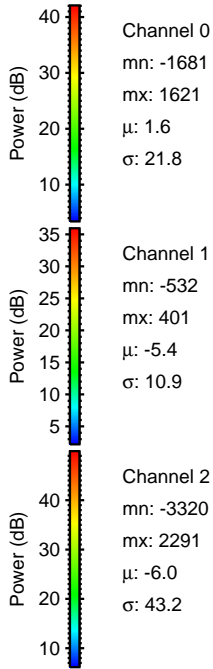
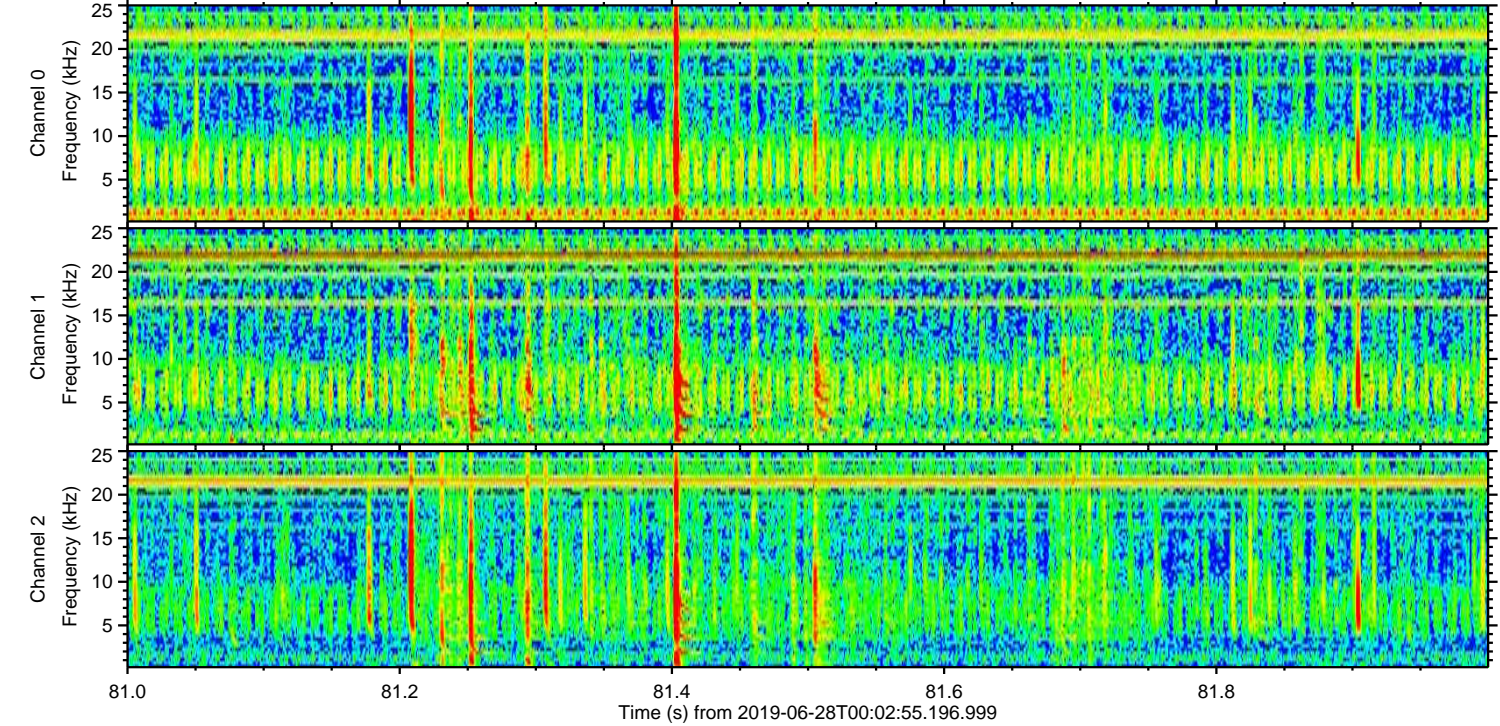
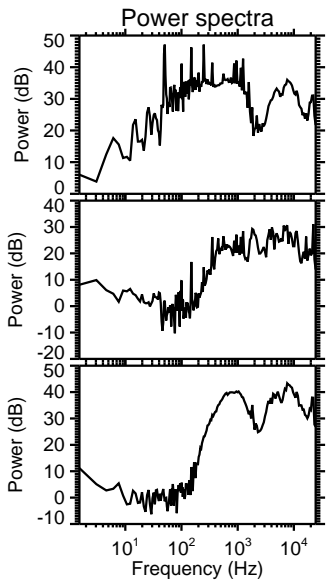
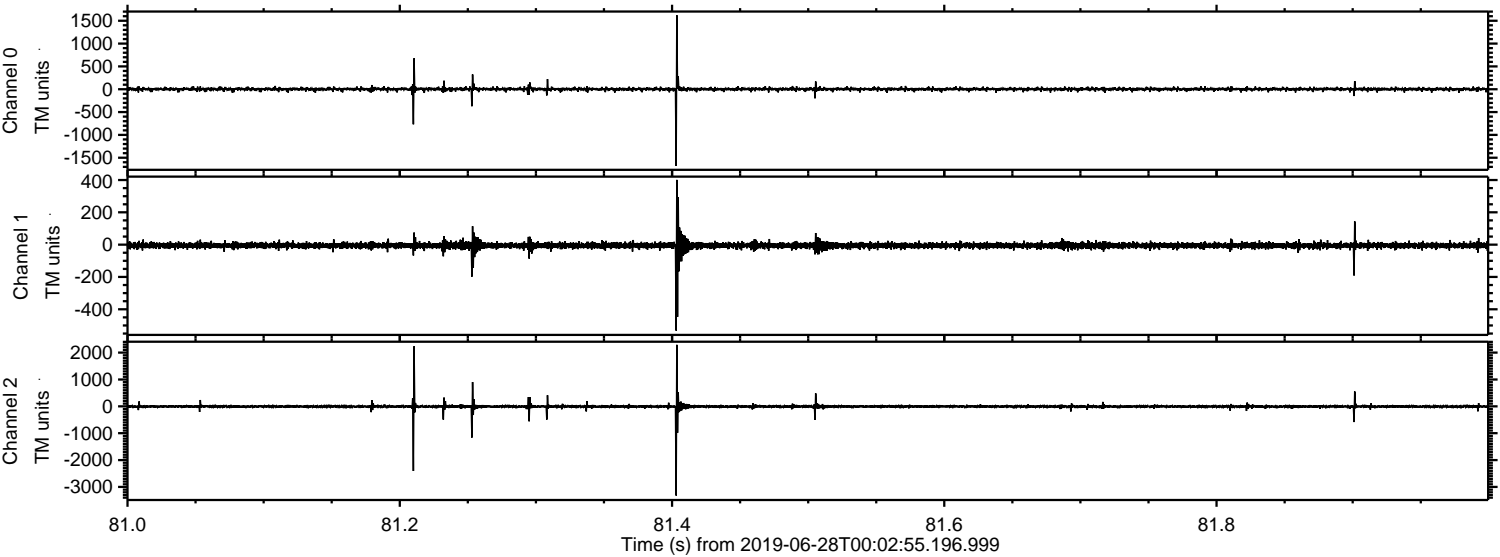
ELMAVAN 3D WAVEFORMS (Measured data sampled at 50 kHz) 51000 packets of 144 samples from 2019-06-28T00:02:55.196.999. Part 80/147

Processed Fri Jun 28 02:11:05 2019 by ELM ver.2012-10-06 from 001\_\_elm20190628\_000254\_\_dat00.bin





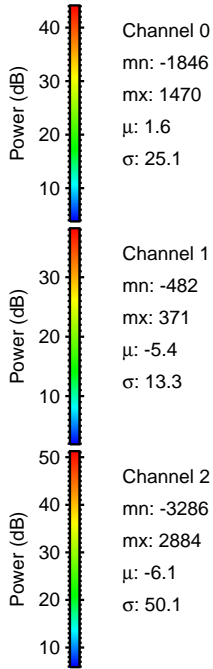
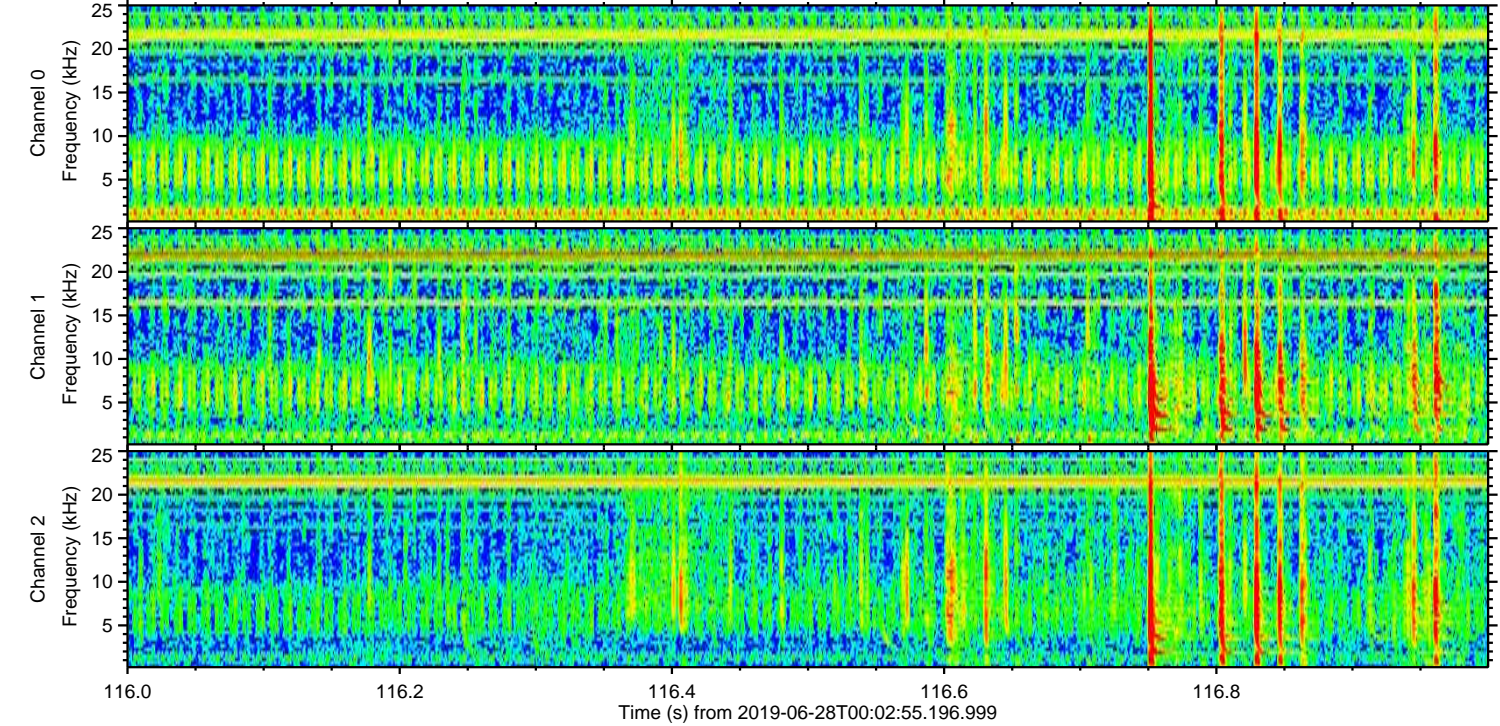
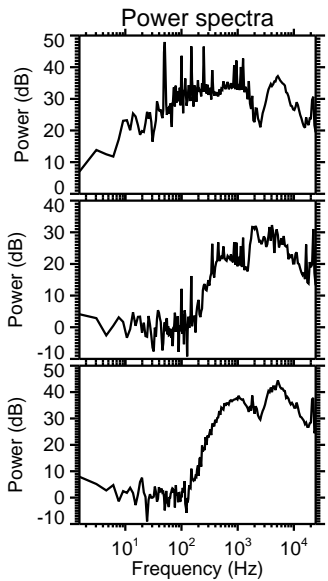
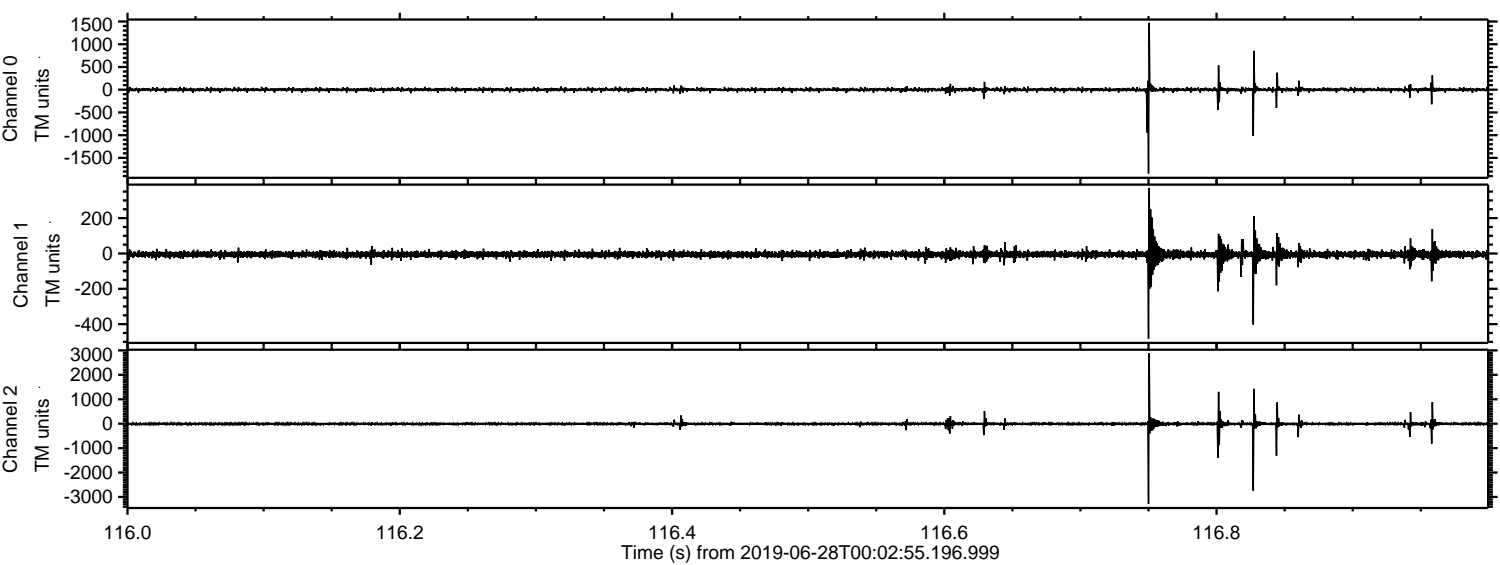
Processed Fri Jun 28 02:11:06 2019 by ELM ver.2012-10-06 from 001\_\_elm20190628\_000254\_\_dat00.bin





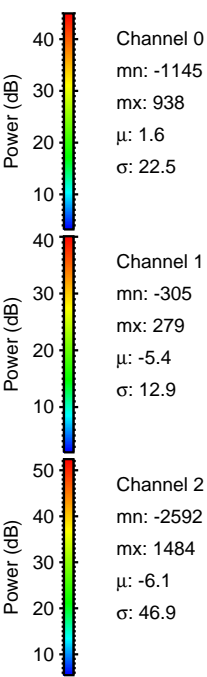
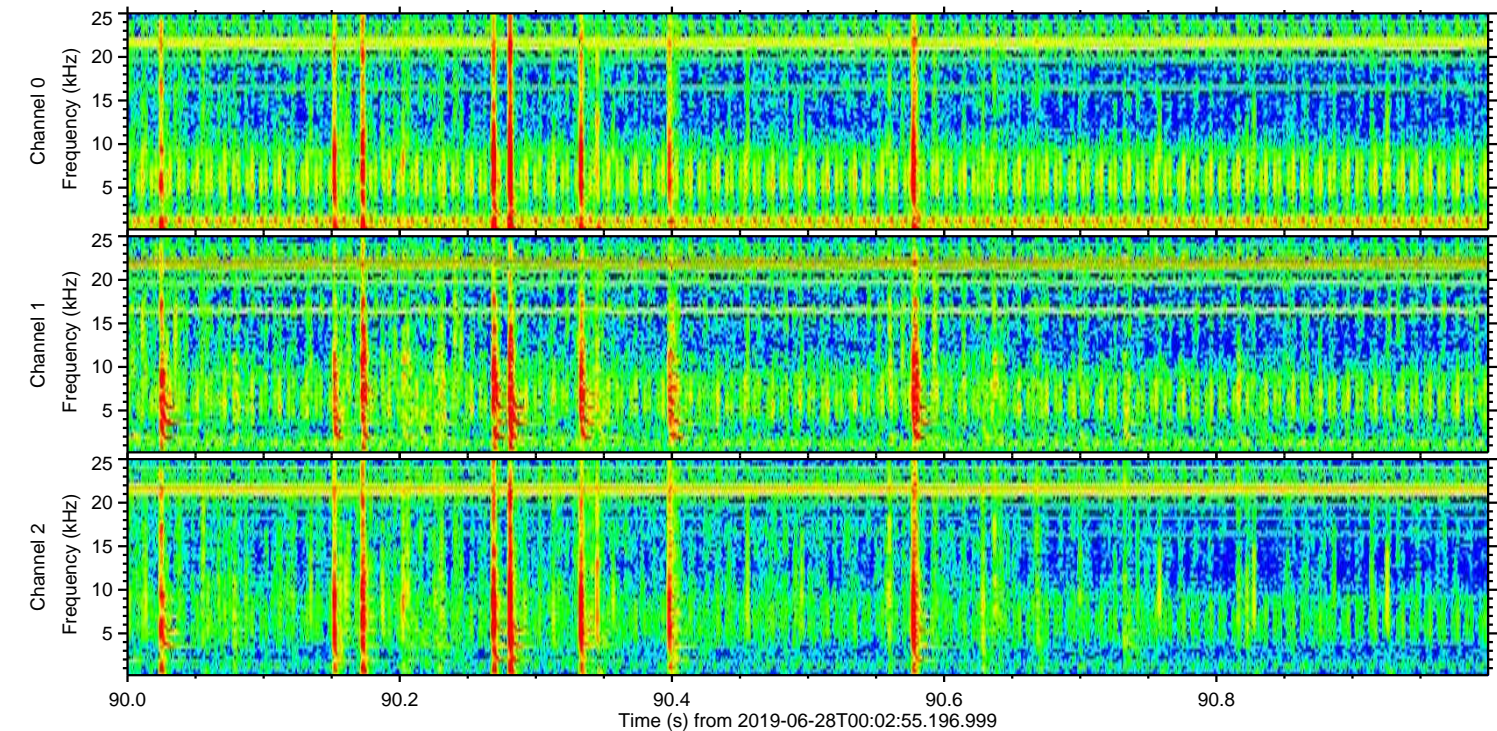
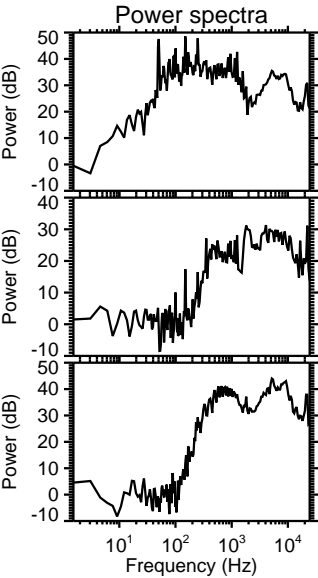
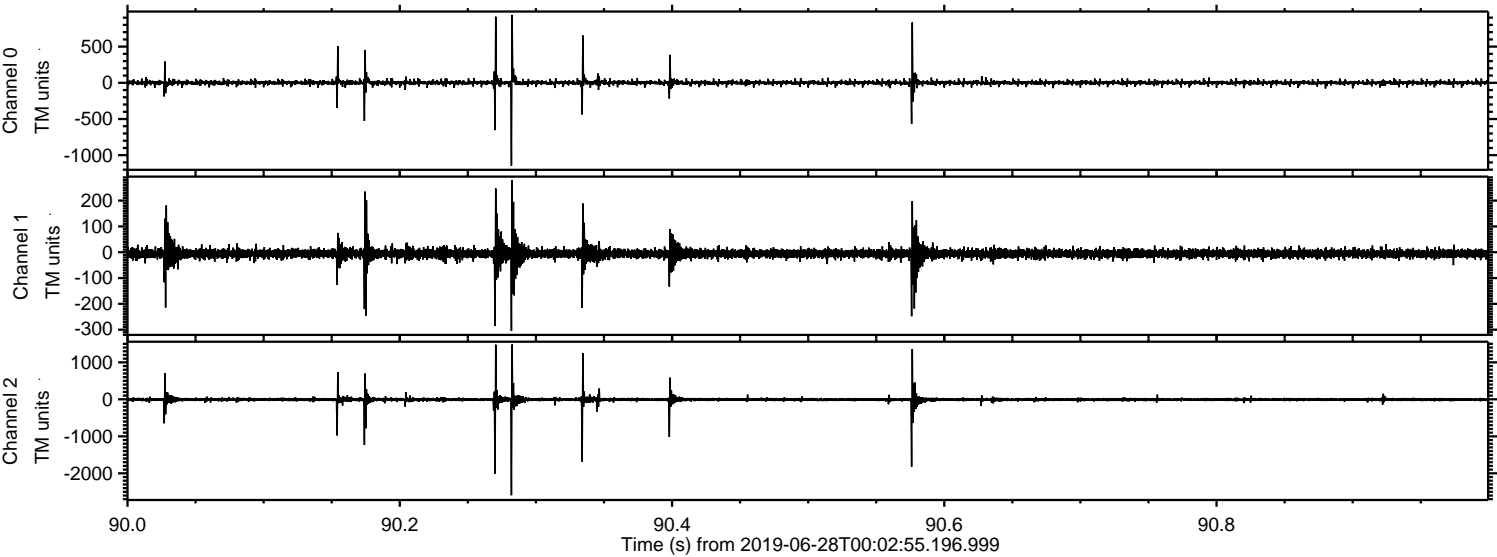
ELMAVAN 3D WAVEFORMS (Measured data sampled at 50 kHz) 51000 packets of 144 samples from 2019-06-28T00:02:55.196.999. Part 117/147

Processed Fri Jun 28 02:11:07 2019 by ELM ver.2012-10-06 from 001\_\_elm20190628\_000254\_\_dat00.bin





Processed Fri Jun 28 02:11:08 2019 by ELM ver.2012-10-06 from 001\_\_elm20190628\_000254\_\_dat00.bin



Channel 0  
mn: -1145  
mx: 938  
 $\mu$ : 1.6  
 $\sigma$ : 22.5

Channel 1  
mn: -305  
mx: 279  
 $\mu$ : -5.4  
 $\sigma$ : 12.9

Channel 2  
mn: -2592  
mx: 1484  
 $\mu$ : -6.1  
 $\sigma$ : 46.9



Processed Fri Jun 28 02:11:09 2019 by ELM ver.2012-10-06 from 001\_\_elm20190628\_000254\_\_dat00.bin

