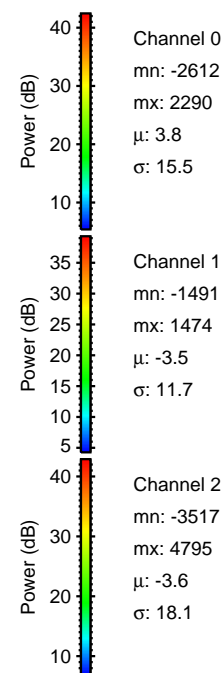
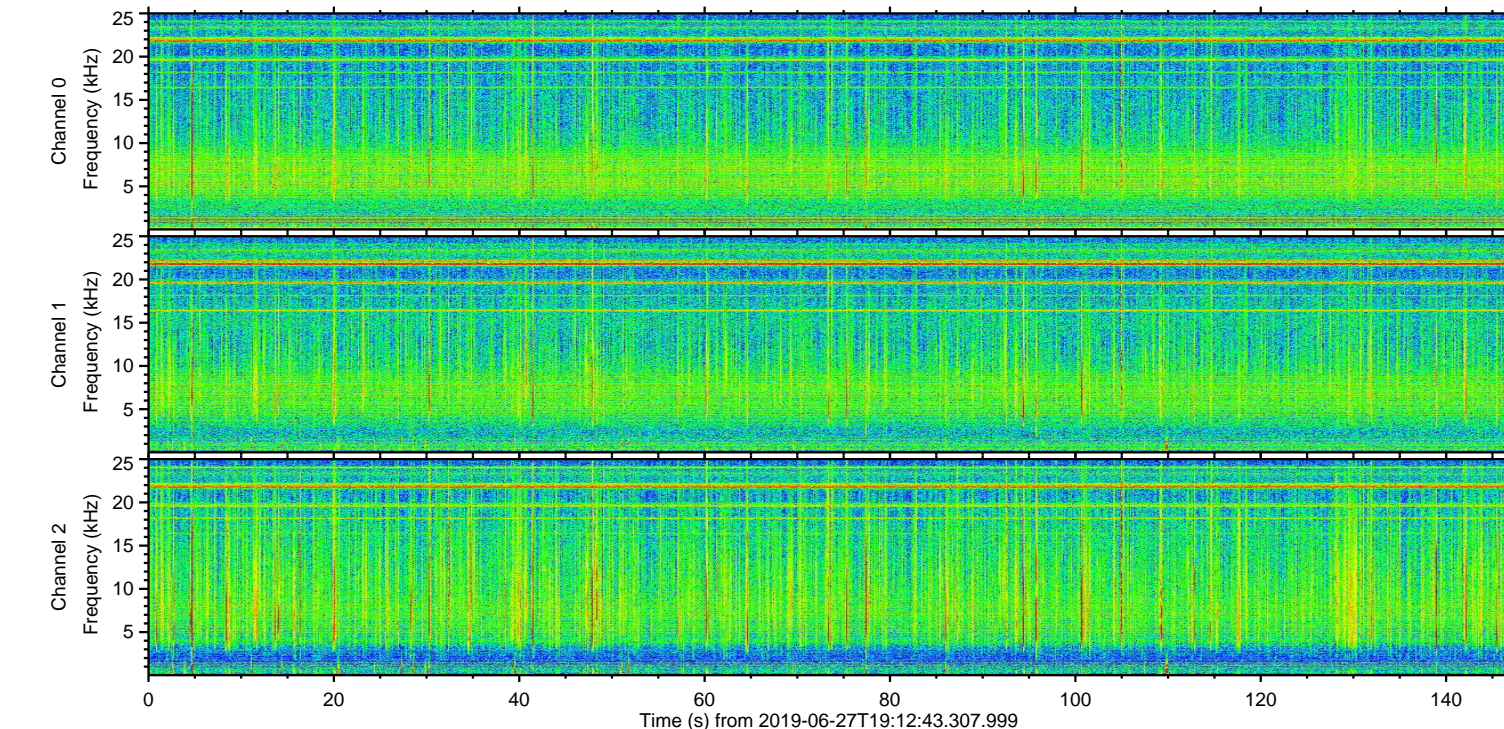
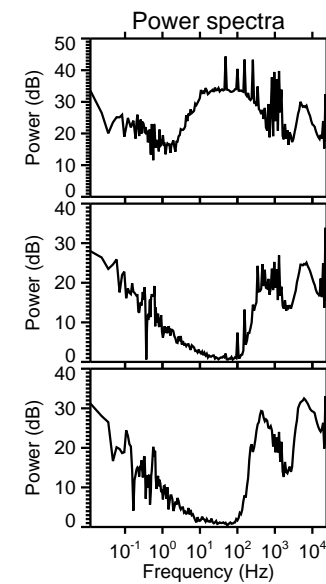
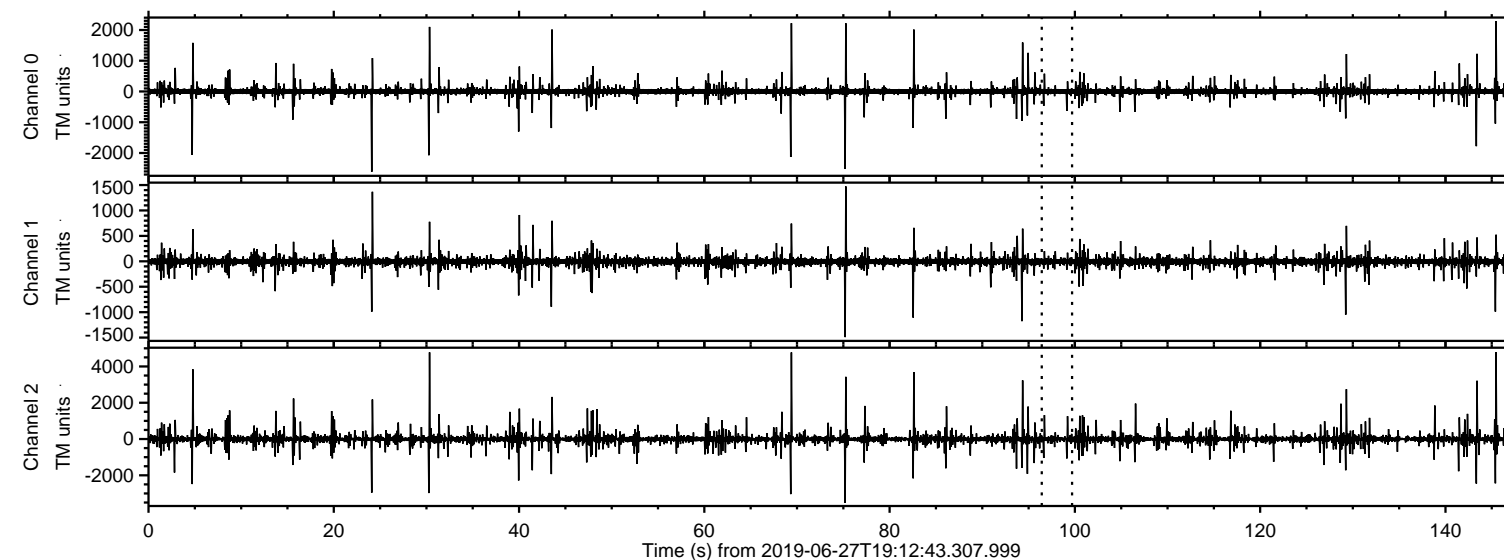


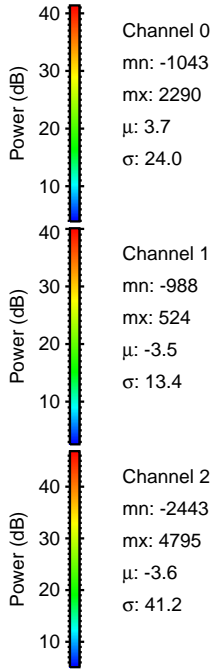
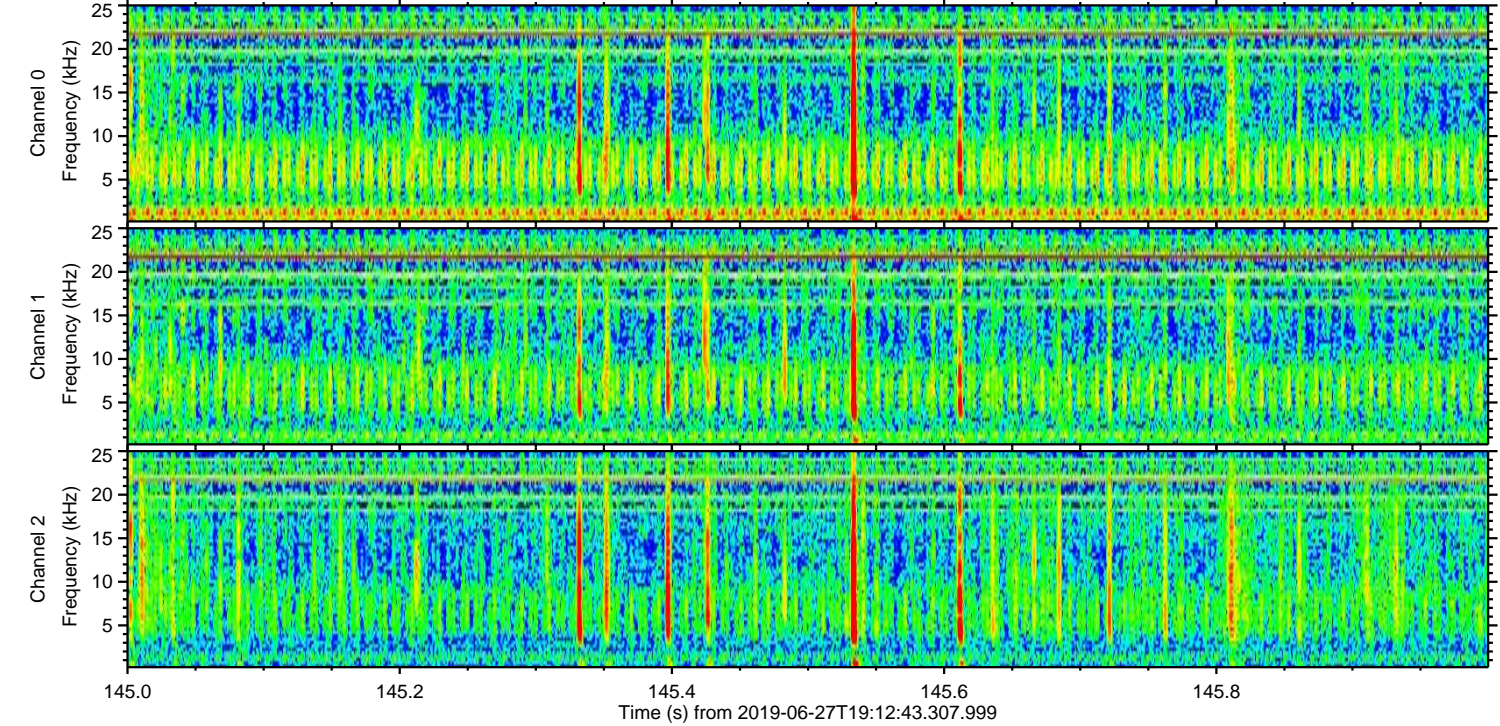
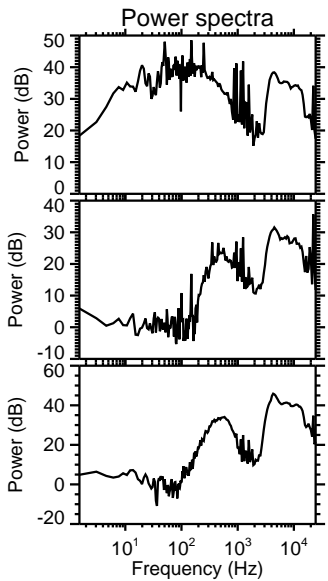
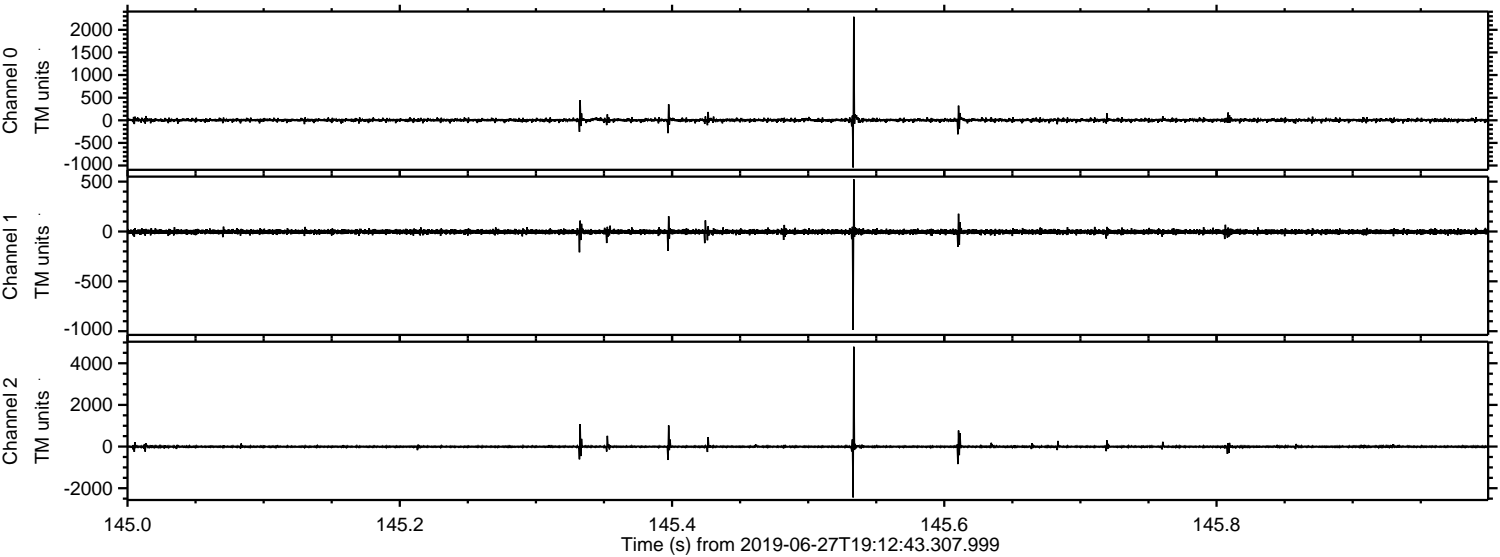
ELMAVAN 3D WAVEFORMS (Measured data sampled at 50 kHz) 50998 packets of 144 samples from 2019-06-27T19:12:43.307.999.

Processed Thu Jun 27 21:20:57 2019 by ELM ver.2012-10-06 from 001__elm20190627_191242__dat00.bin

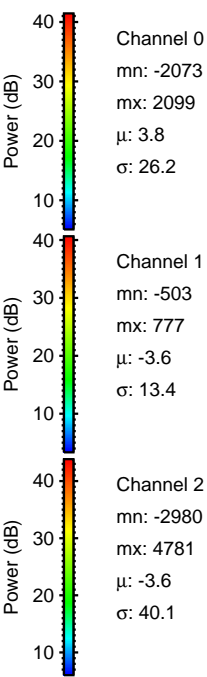
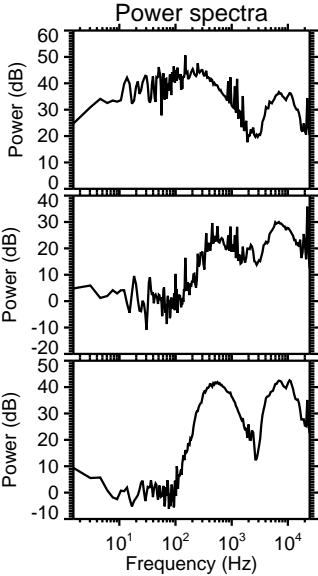
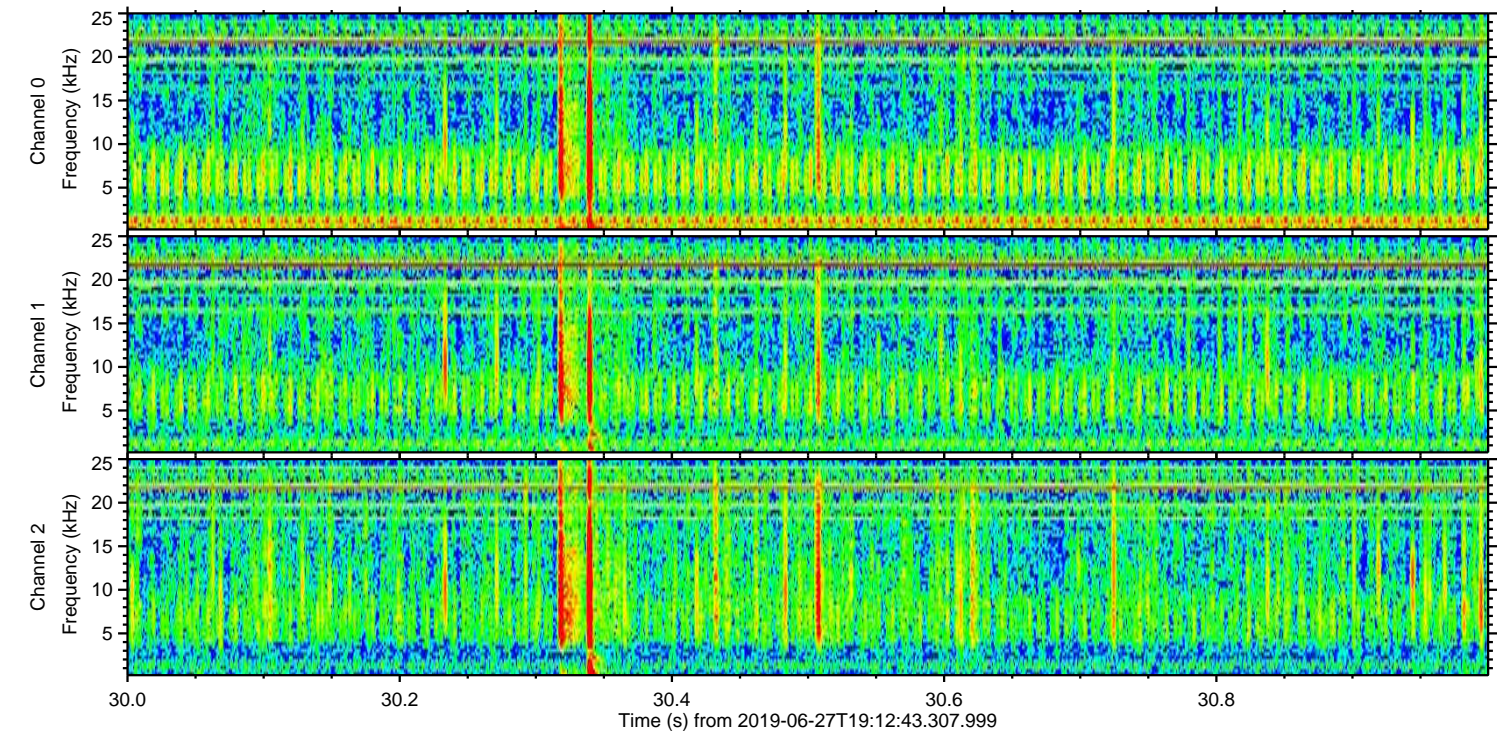
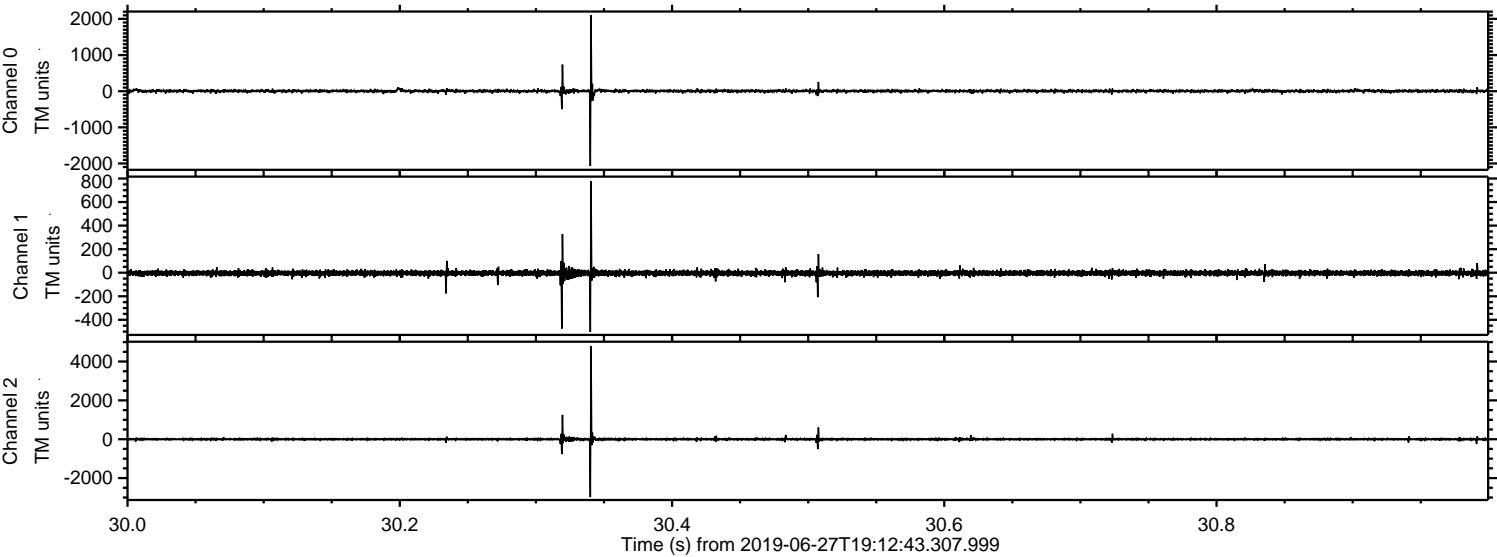


ELMAVAN 3D WAVEFORMS (Measured data sampled at 50 kHz) 50998 packets of 144 samples from 2019-06-27T19:12:43.307.999. Part 146/147

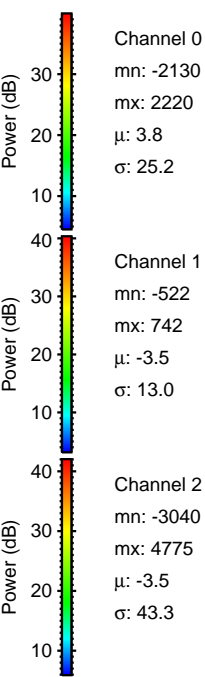
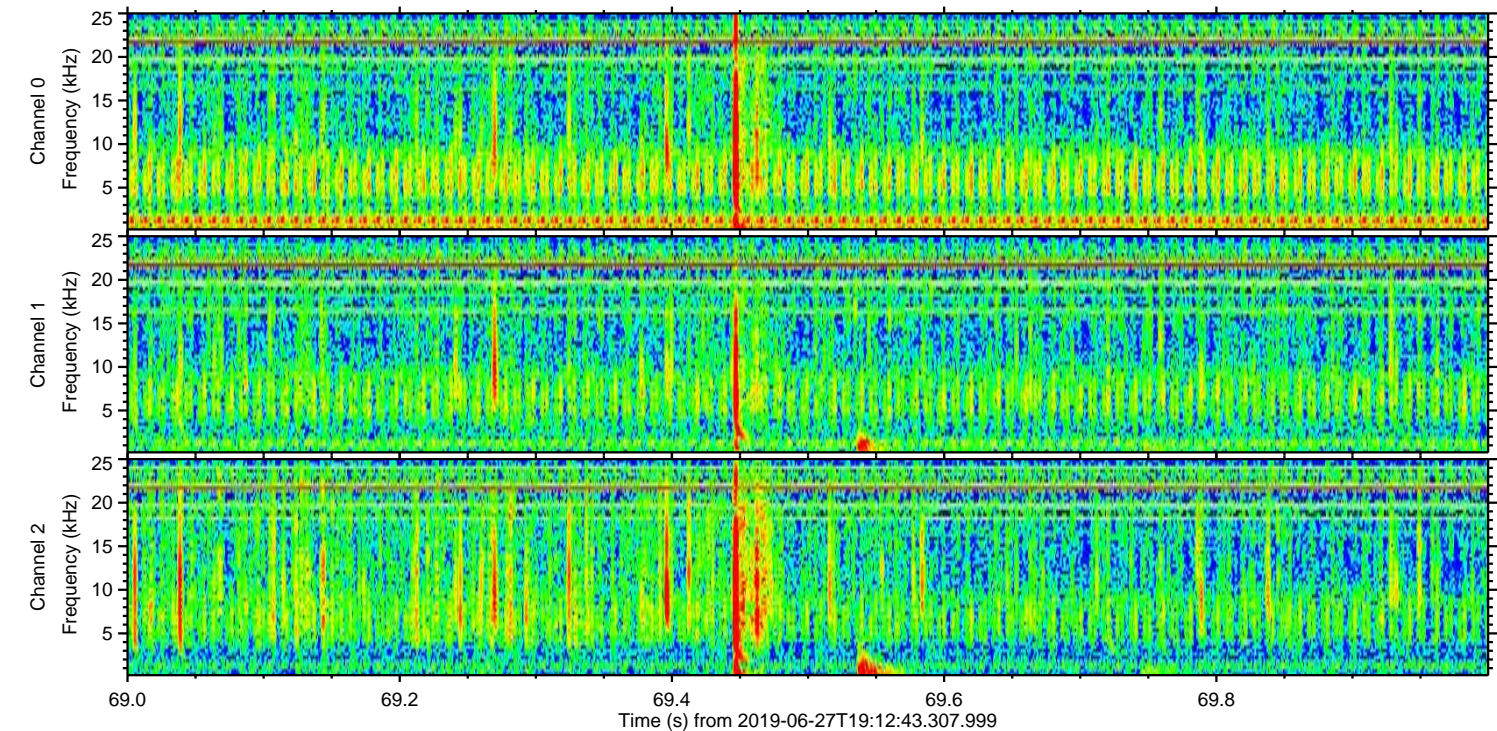
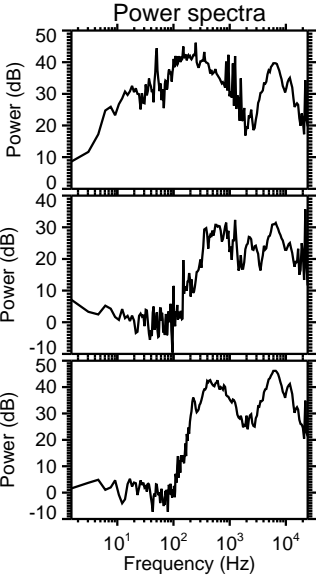
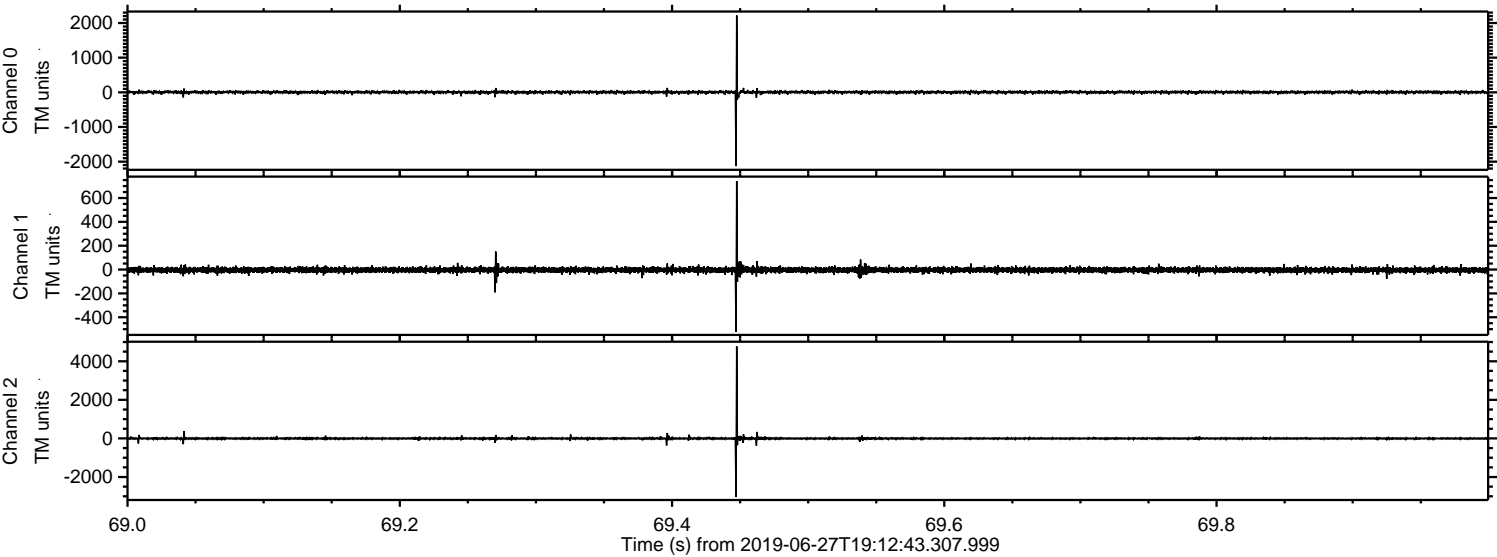
Processed Thu Jun 27 21:21:08 2019 by ELM ver.2012-10-06 from 001__elm20190627_191242__dat00.bin



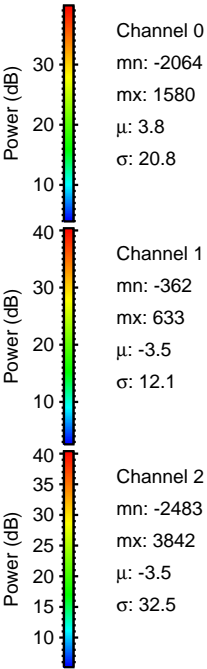
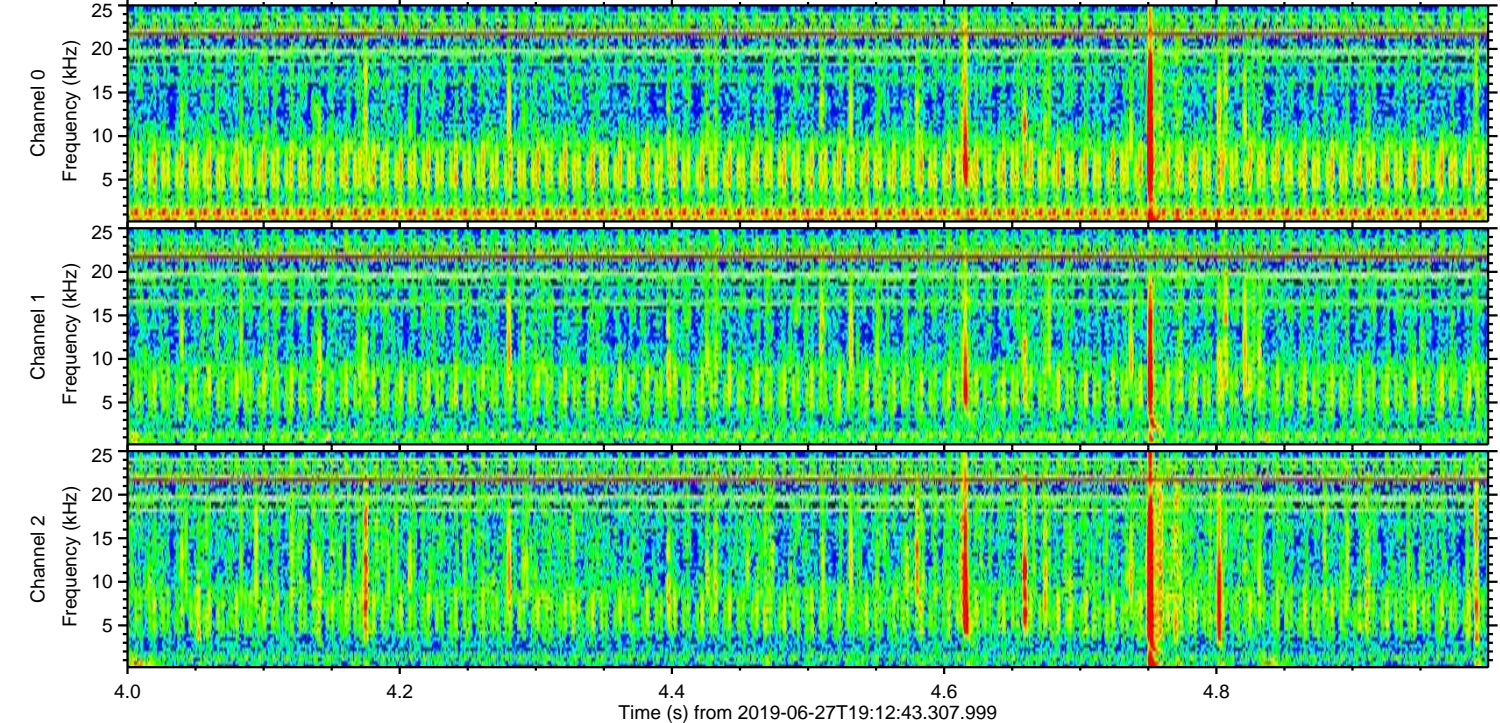
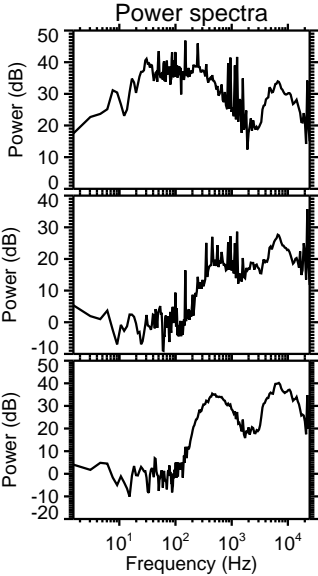
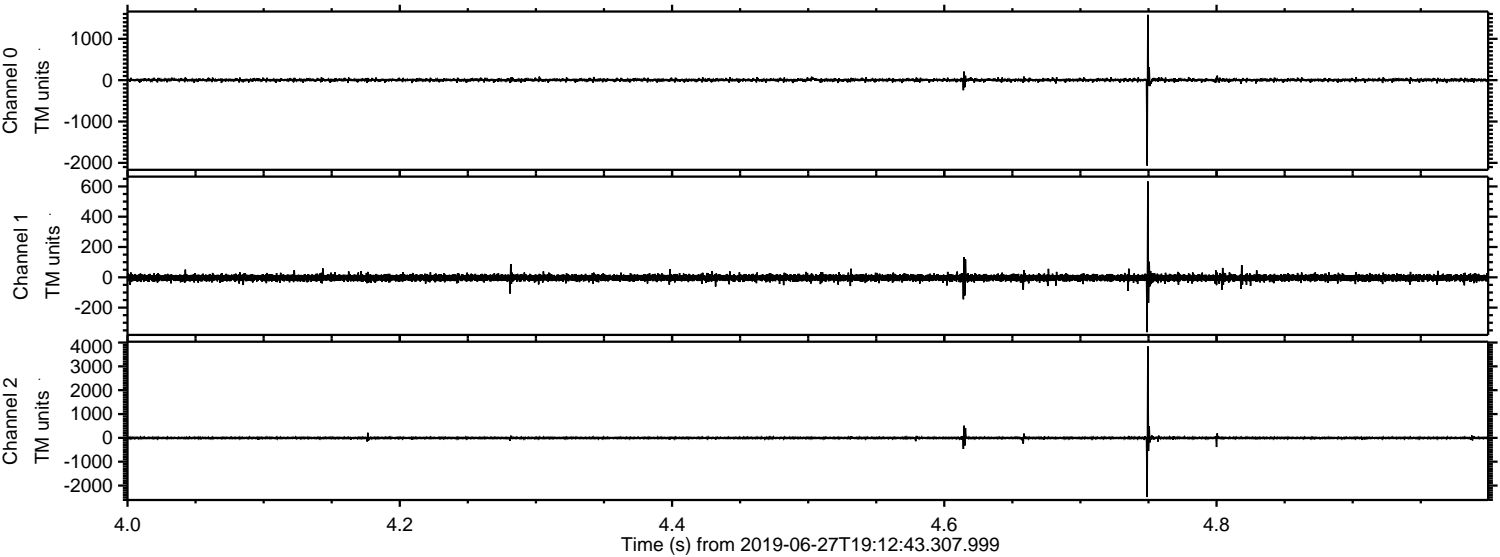
Processed Thu Jun 27 21:21:09 2019 by ELM ver.2012-10-06 from 001__elm20190627_191242__dat00.bin



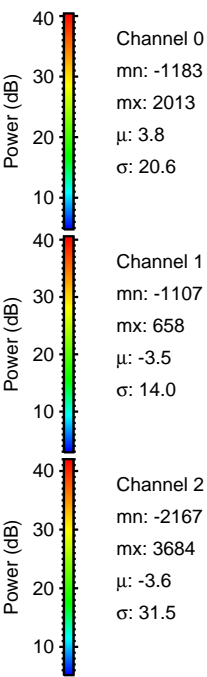
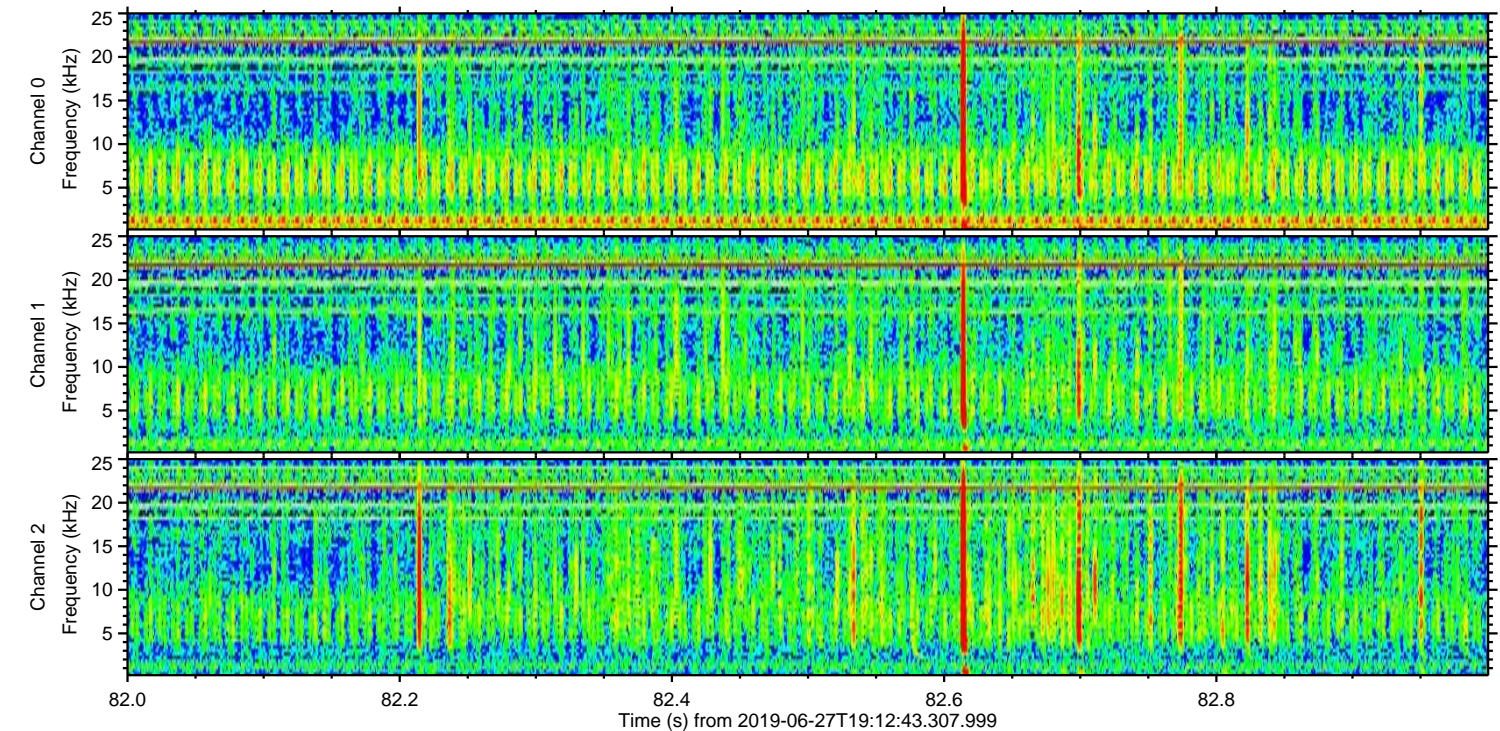
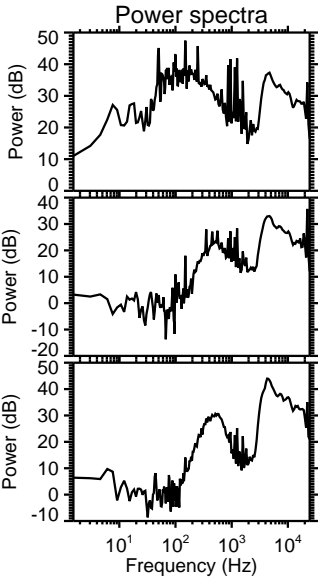
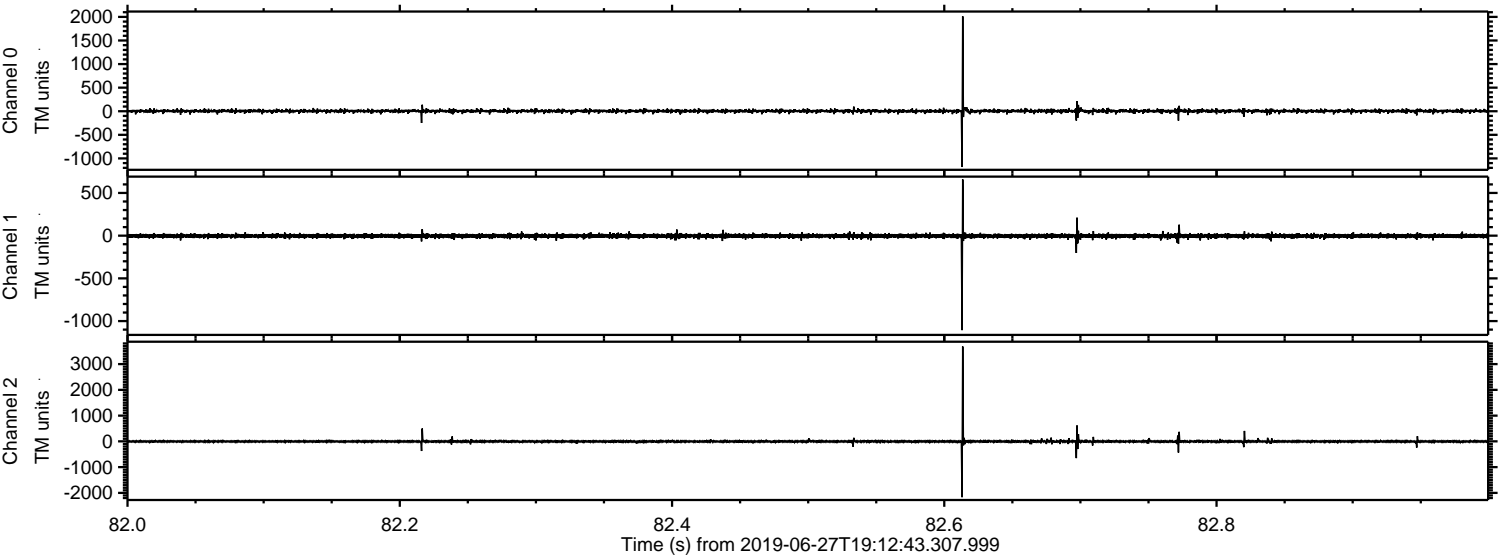
Processed Thu Jun 27 21:21:09 2019 by ELM ver.2012-10-06 from 001__elm20190627_191242__dat00.bin



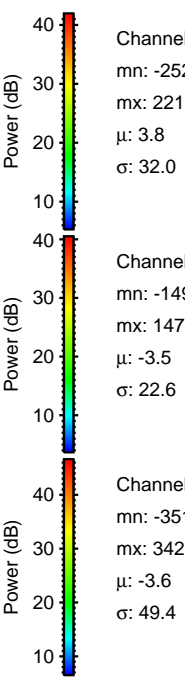
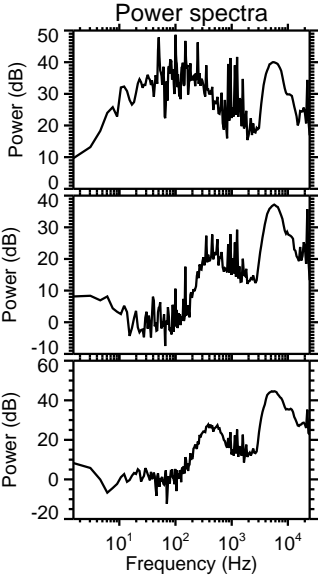
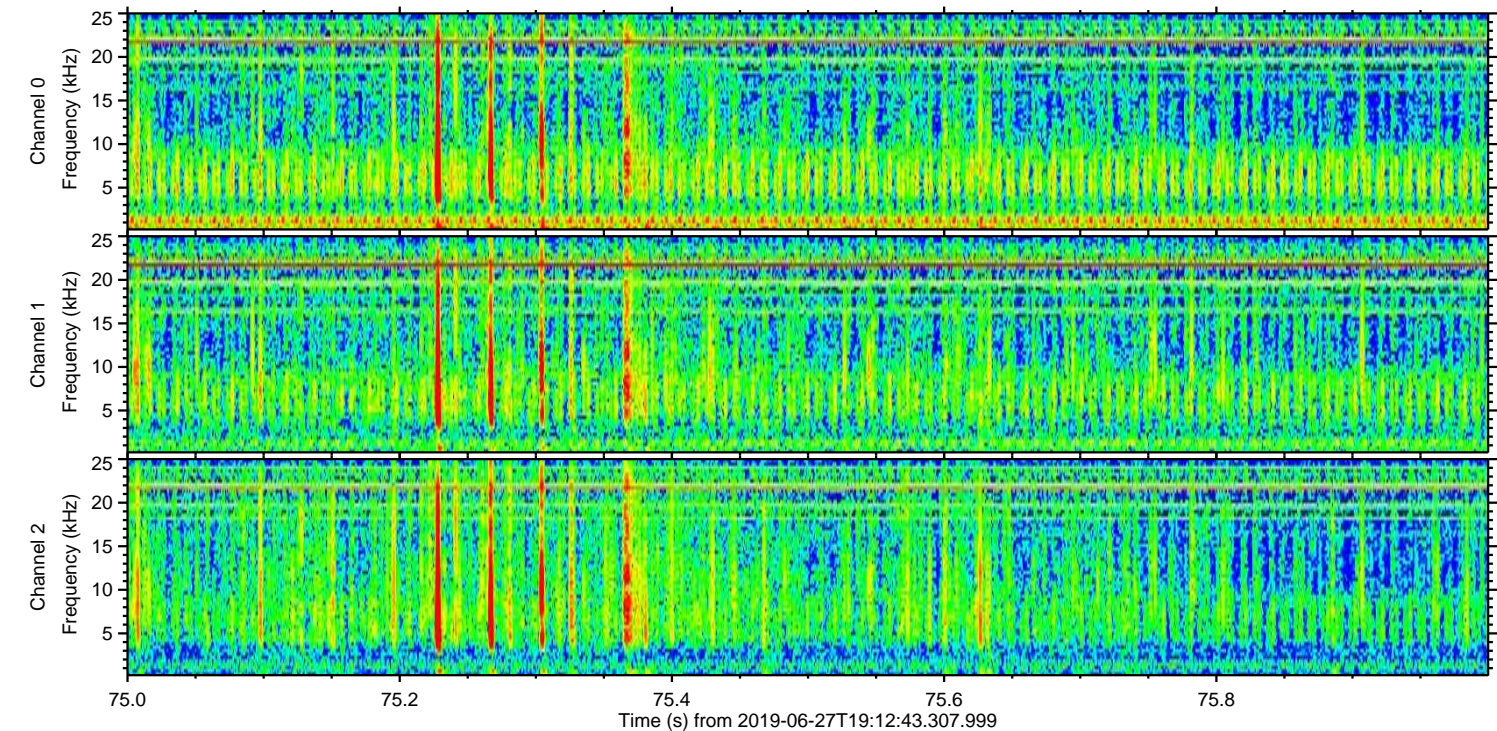
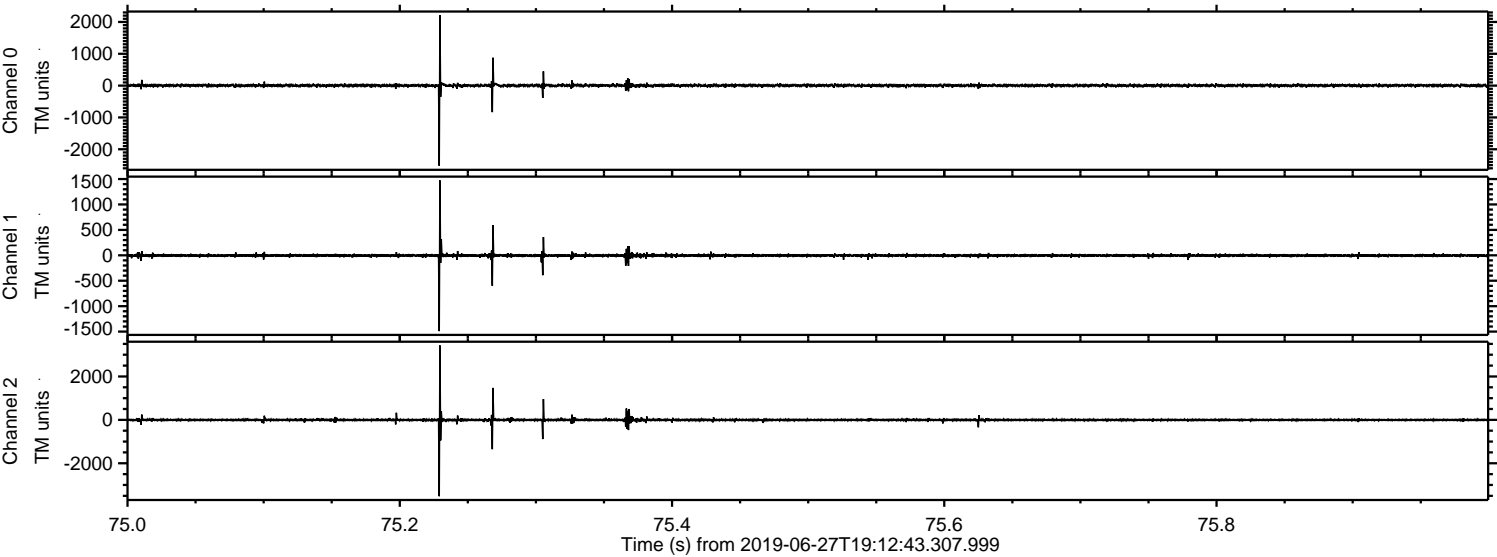
Processed Thu Jun 27 21:21:10 2019 by ELM ver.2012-10-06 from 001__elm20190627_191242__dat00.bin



Processed Thu Jun 27 21:21:11 2019 by ELM ver.2012-10-06 from 001__elm20190627_191242__dat00.bin



Processed Thu Jun 27 21:21:12 2019 by ELM ver.2012-10-06 from 001__elm20190627_191242__dat00.bin

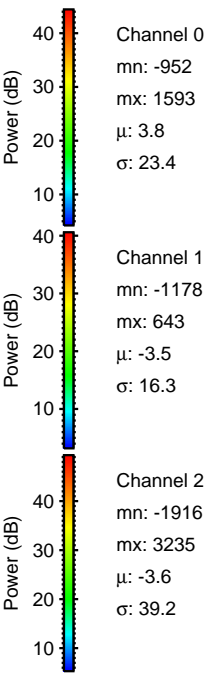
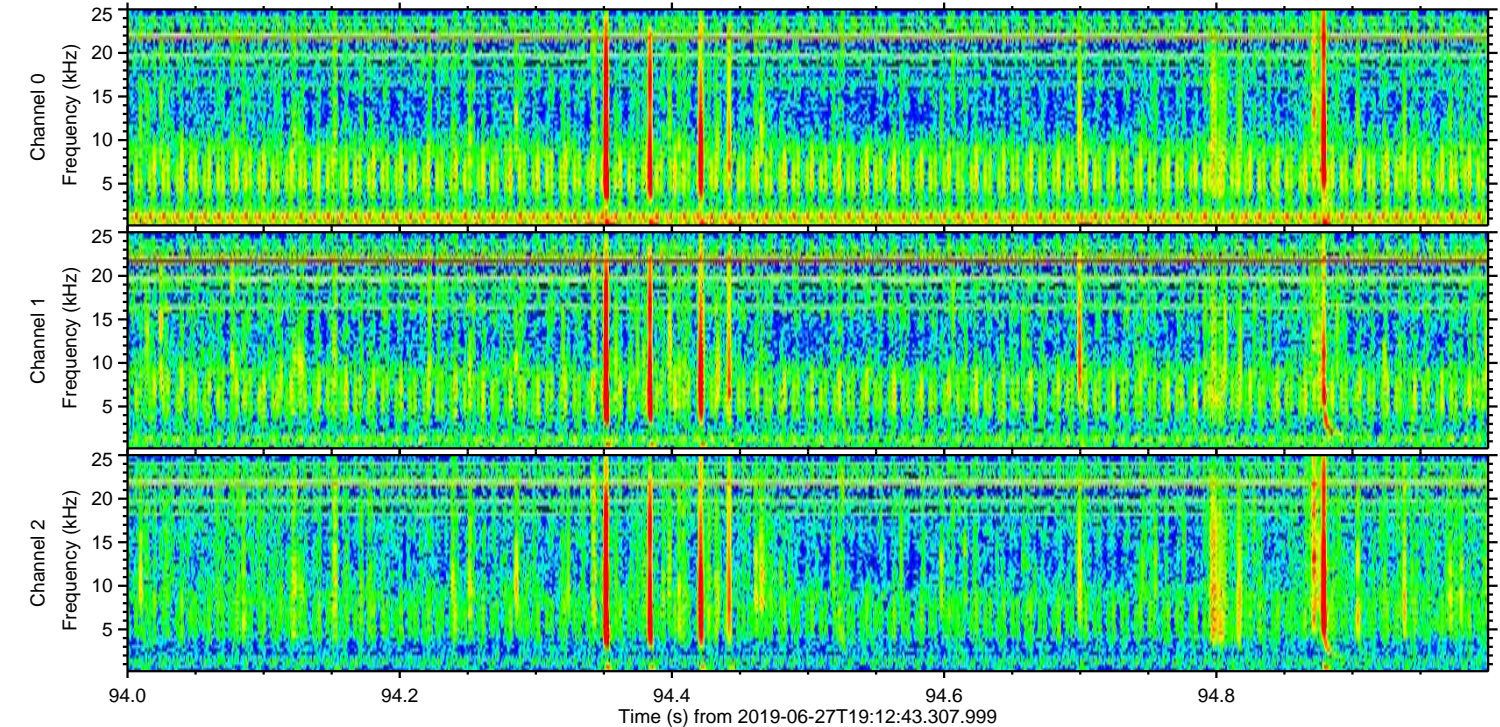
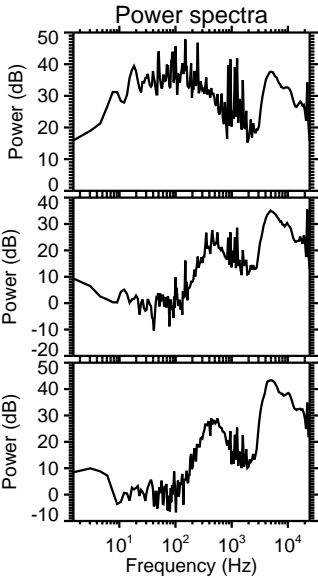
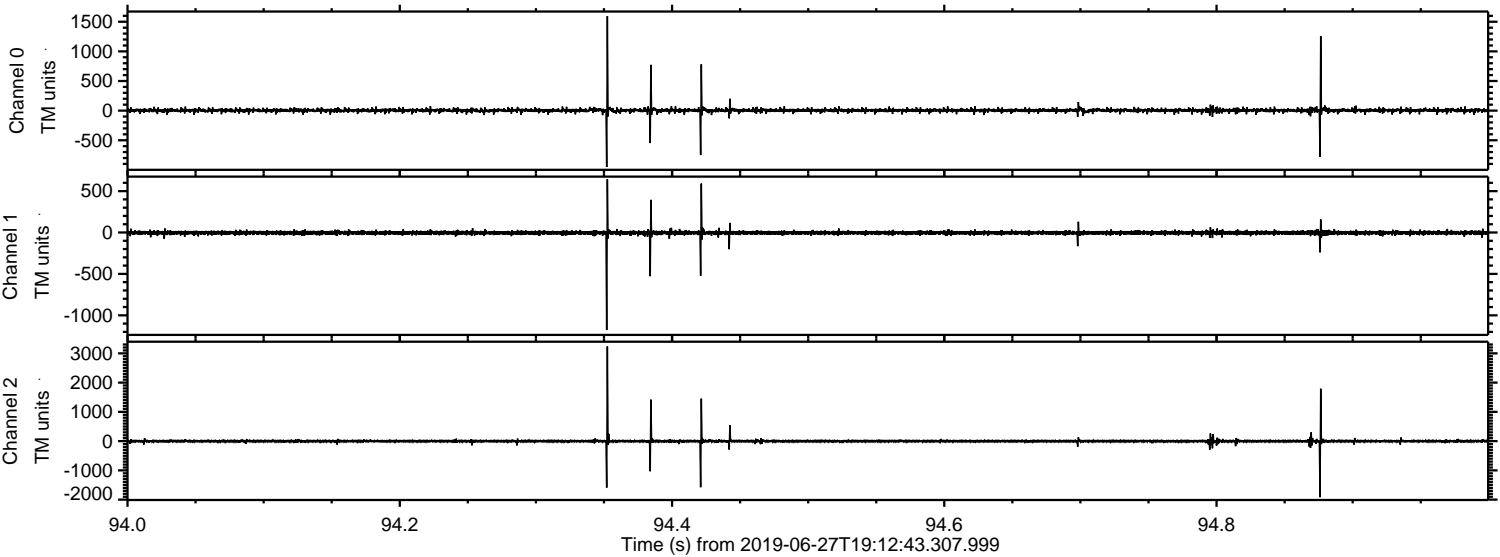


Channel 0
mn: -2521
mx: 2218
 μ : 3.8
 σ : 32.0

Channel 1
mn: -1491
mx: 1474
 μ : -3.5
 σ : 22.6

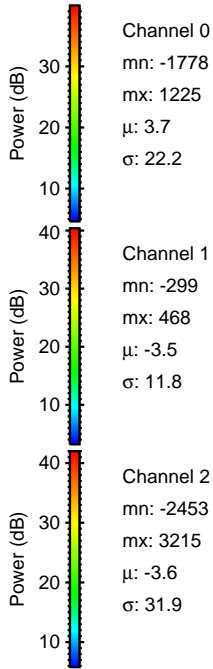
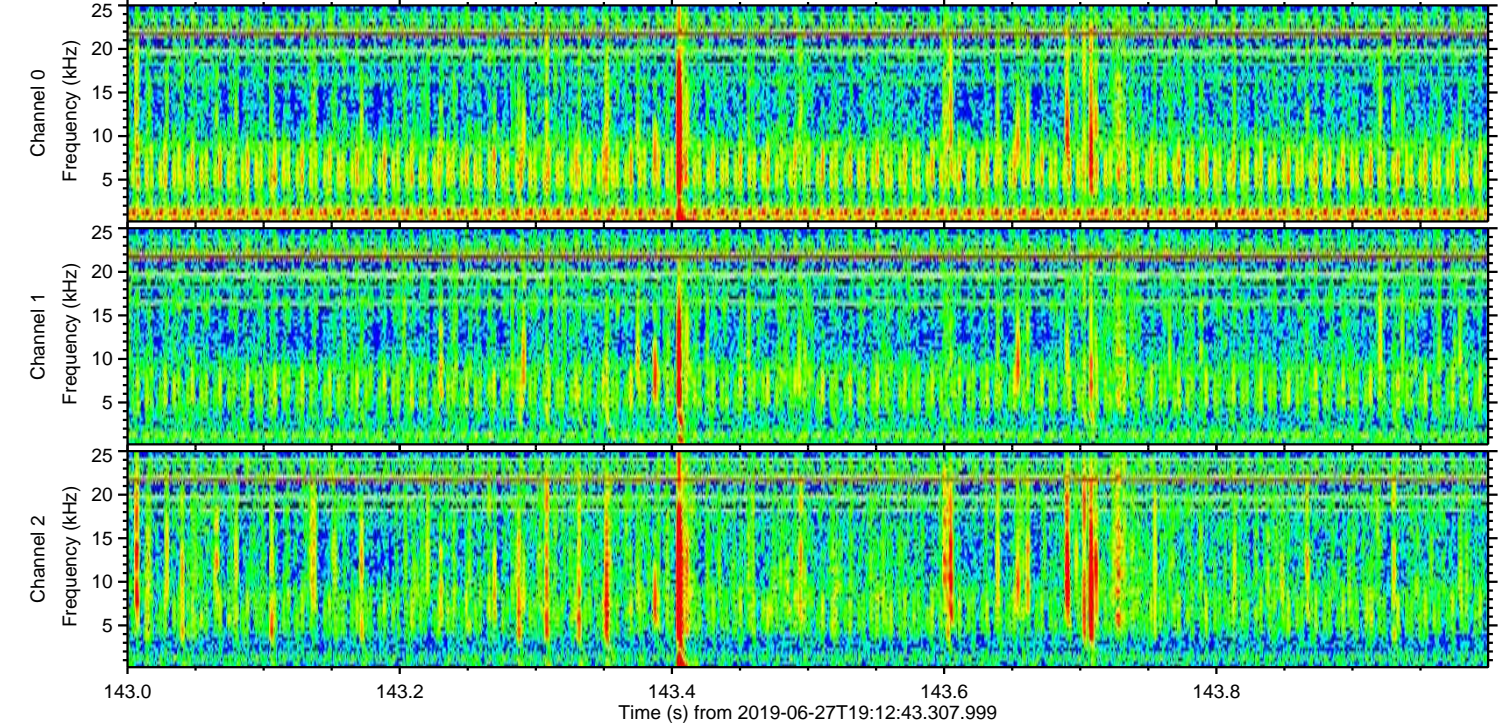
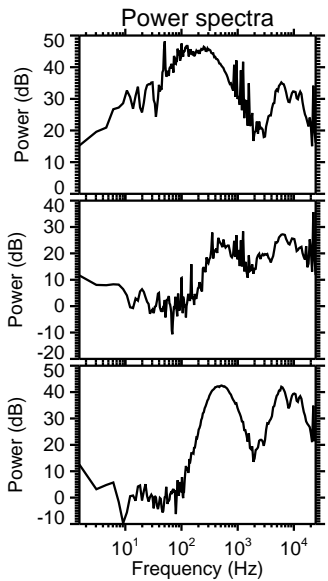
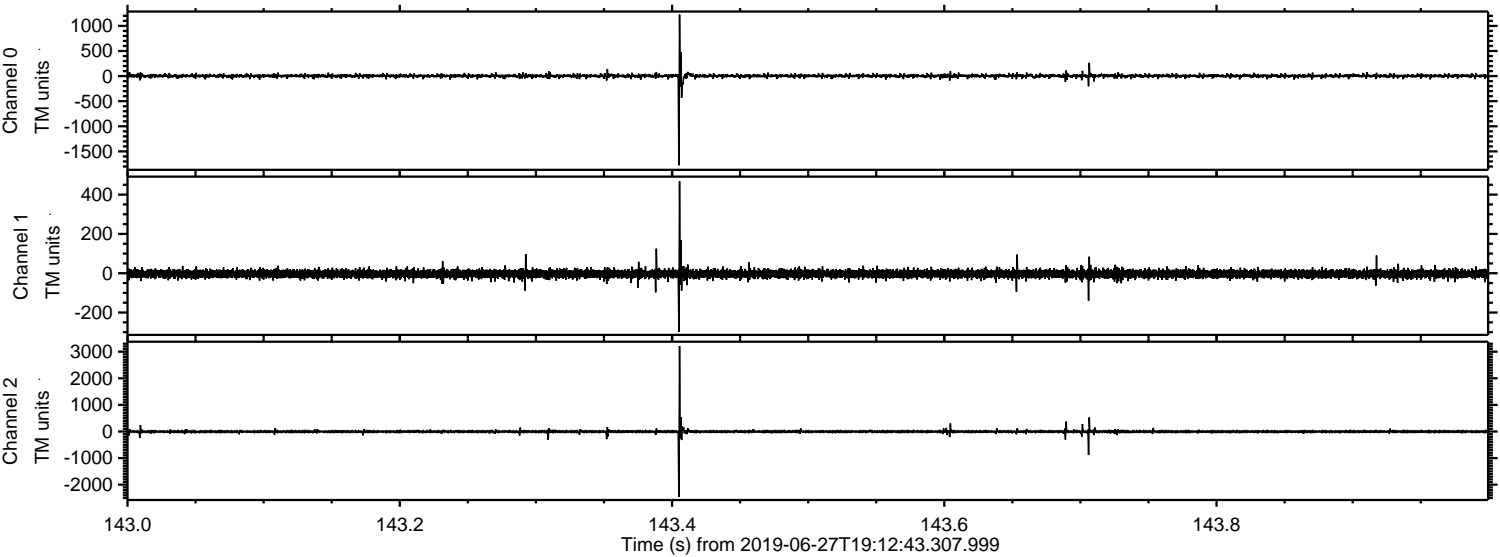
Channel 2
mn: -3517
mx: 3429
 μ : -3.6
 σ : 49.4

Processed Thu Jun 27 21:21:12 2019 by ELM ver.2012-10-06 from 001__elm20190627_191242__dat00.bin

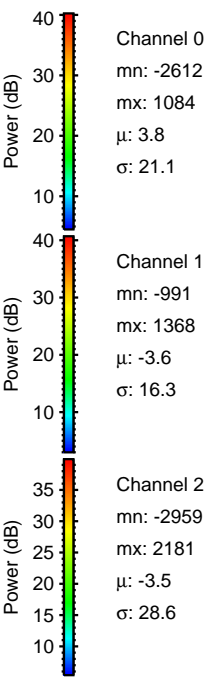
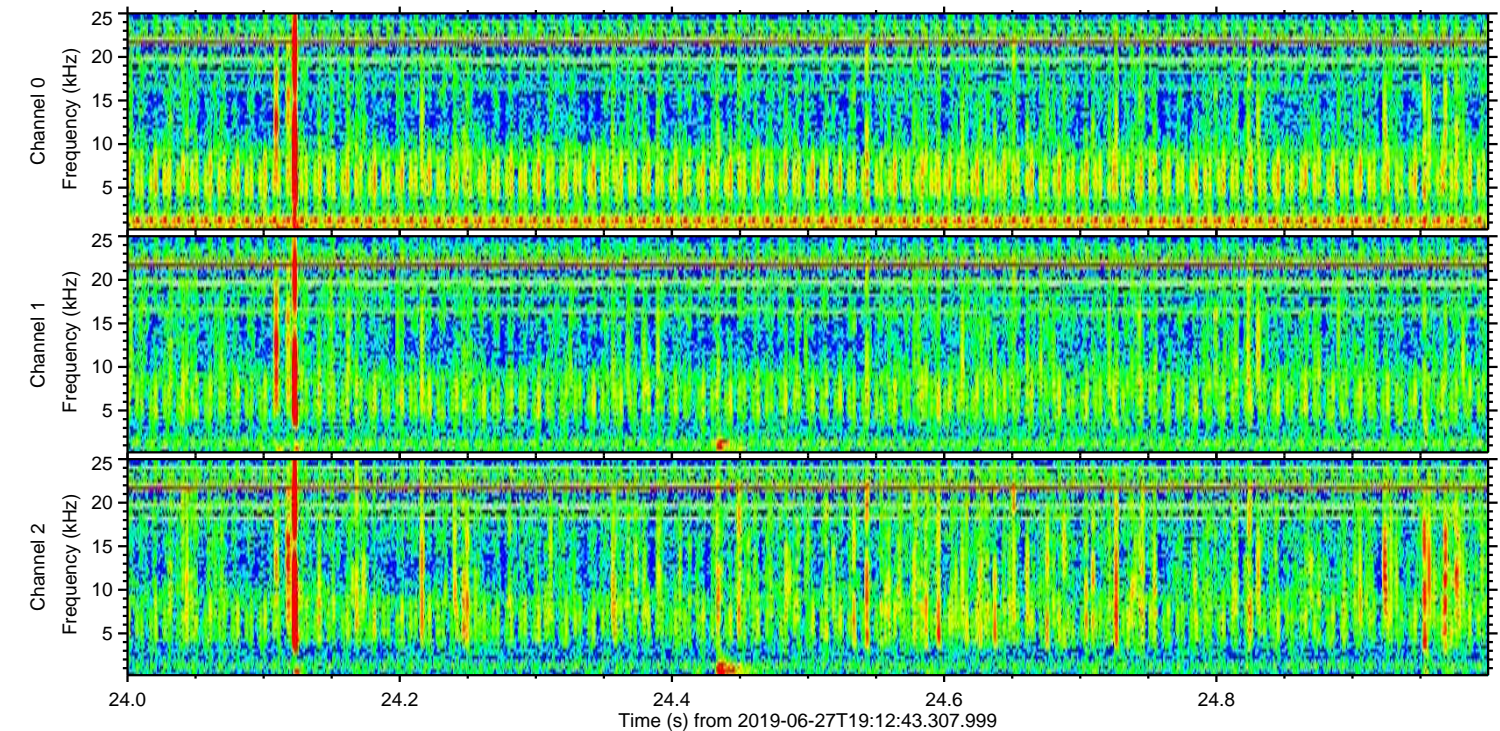
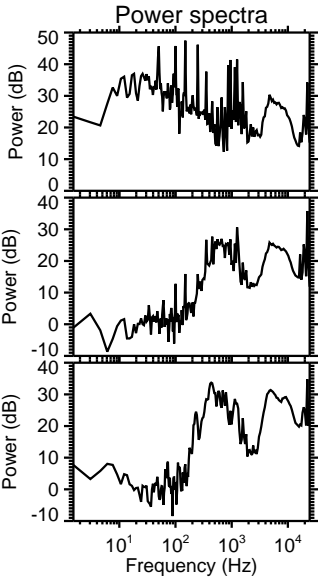
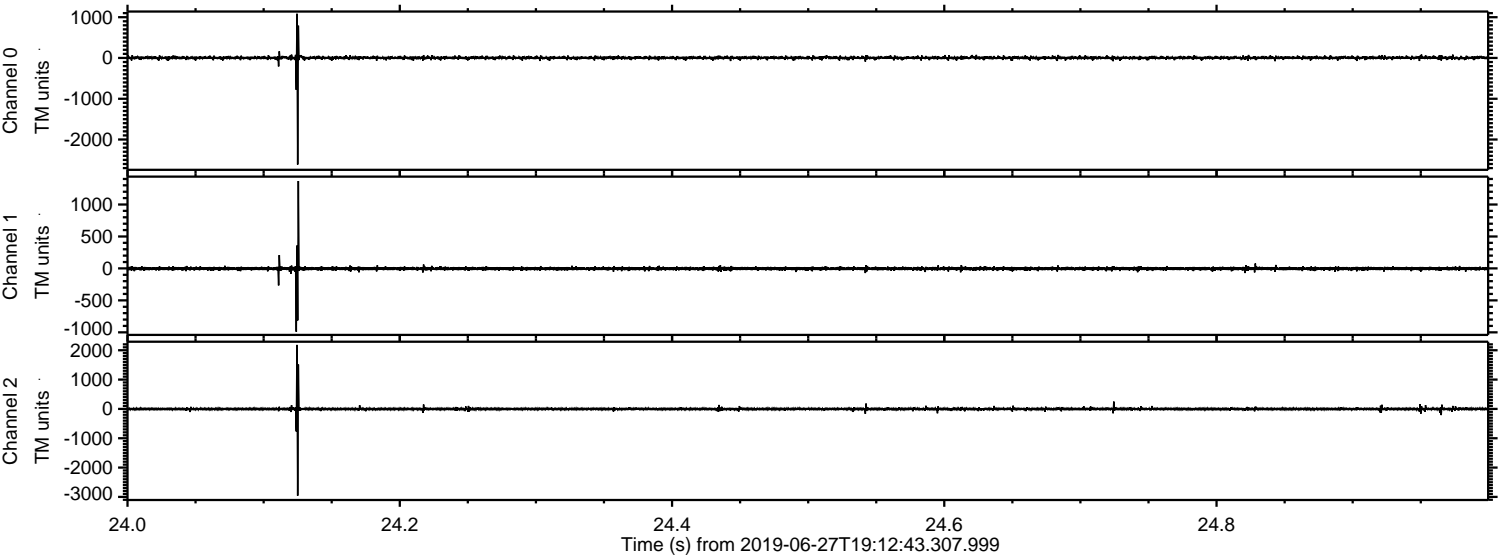


ELMAVAN 3D WAVEFORMS (Measured data sampled at 50 kHz) 50998 packets of 144 samples from 2019-06-27T19:12:43.307.999. Part 144/147

Processed Thu Jun 27 21:21:13 2019 by ELM ver.2012-10-06 from 001__elm20190627_191242__dat00.bin



Processed Thu Jun 27 21:21:14 2019 by ELM ver.2012-10-06 from 001__elm20190627_191242__dat00.bin



Channel 0
mn: -2612
mx: 1084
 μ : 3.8
 σ : 21.1

Channel 1
mn: -991
mx: 1368
 μ : -3.6
 σ : 16.3

Channel 2
mn: -2959
mx: 2181
 μ : -3.5
 σ : 28.6

Processed Thu Jun 27 21:21:15 2019 by ELM ver.2012-10-06 from 001__elm20190627_191242__dat00.bin

