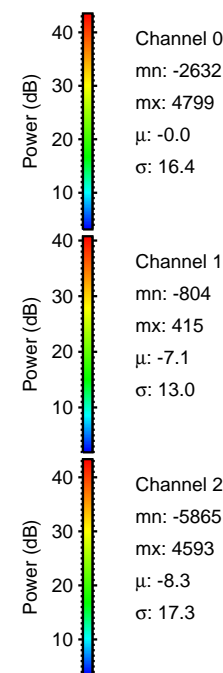
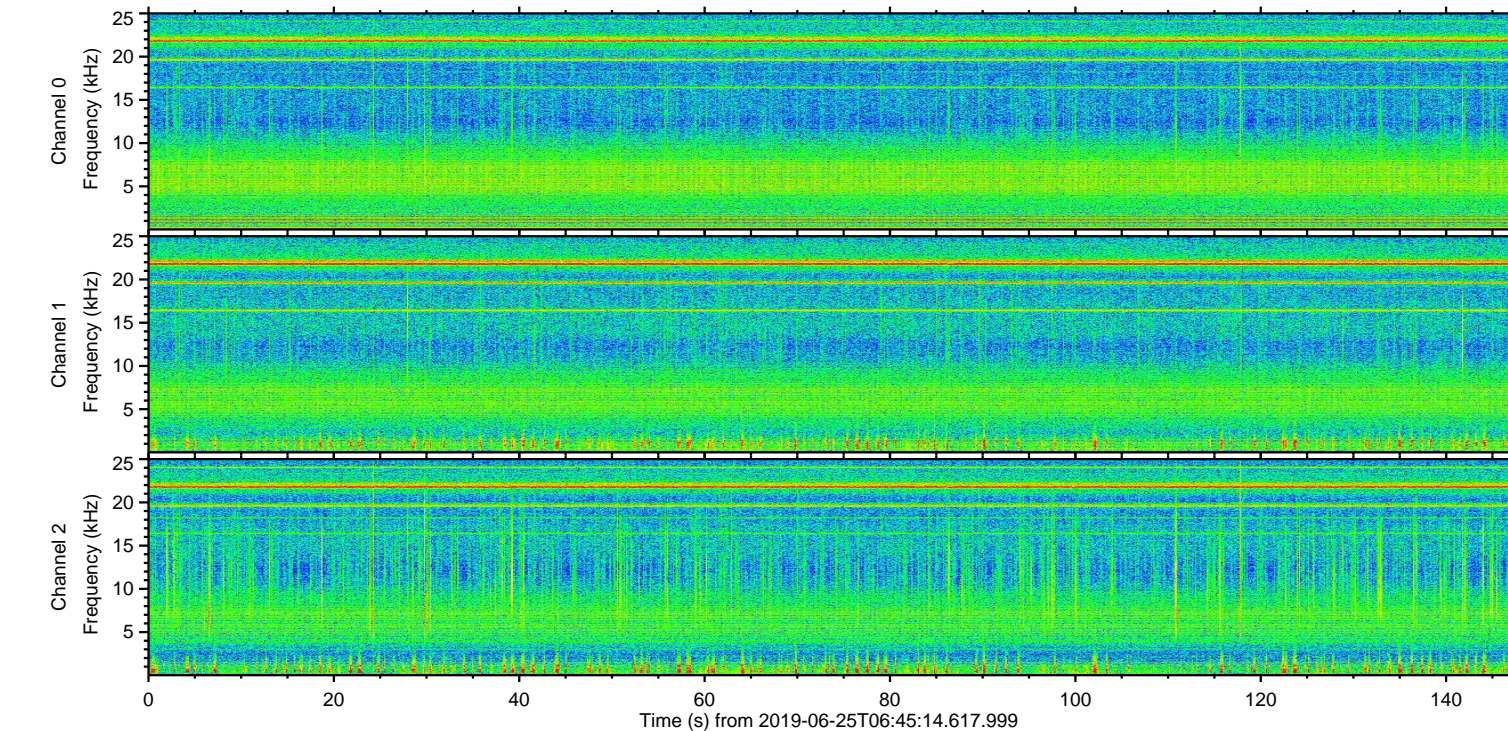
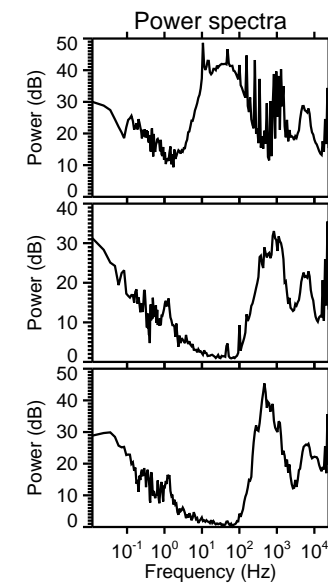
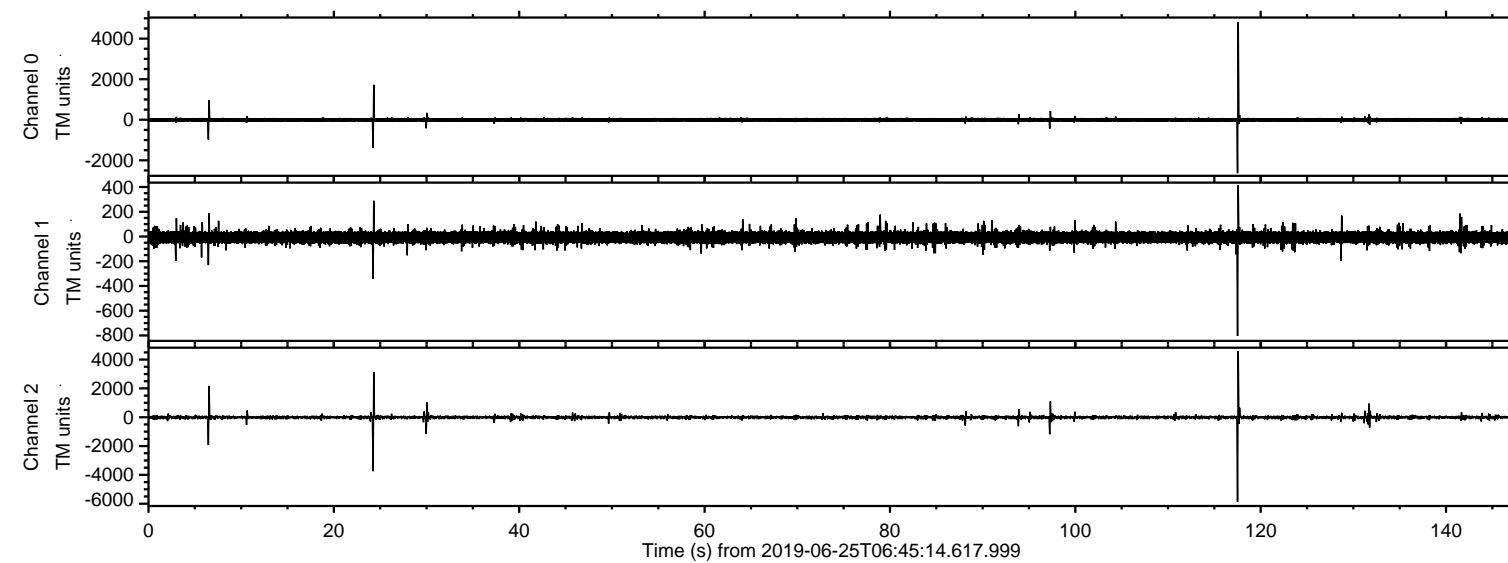


# ELMAVAN 3D WAVEFORMS (Measured data sampled at 50 kHz) 51000 packets of 144 samples from 2019-06-25T06:45:14.617.999.

Processed Tue Jun 25 08:53:29 2019 by ELM ver.2012-10-06 from 001\_\_elm20190625\_064513\_\_dat00.bin



Channel 0  
mn: -2632  
mx: 4799  
 $\mu$ : -0.0  
 $\sigma$ : 16.4

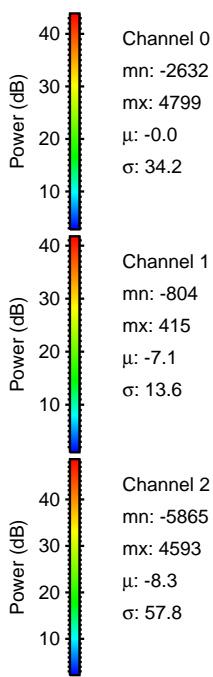
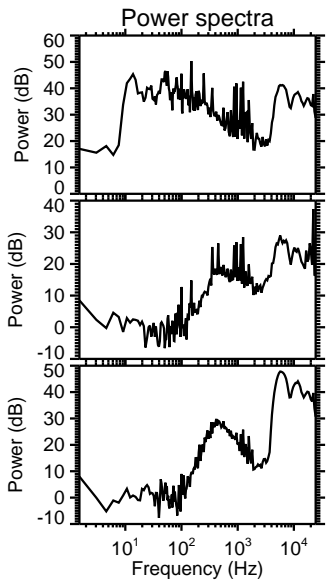
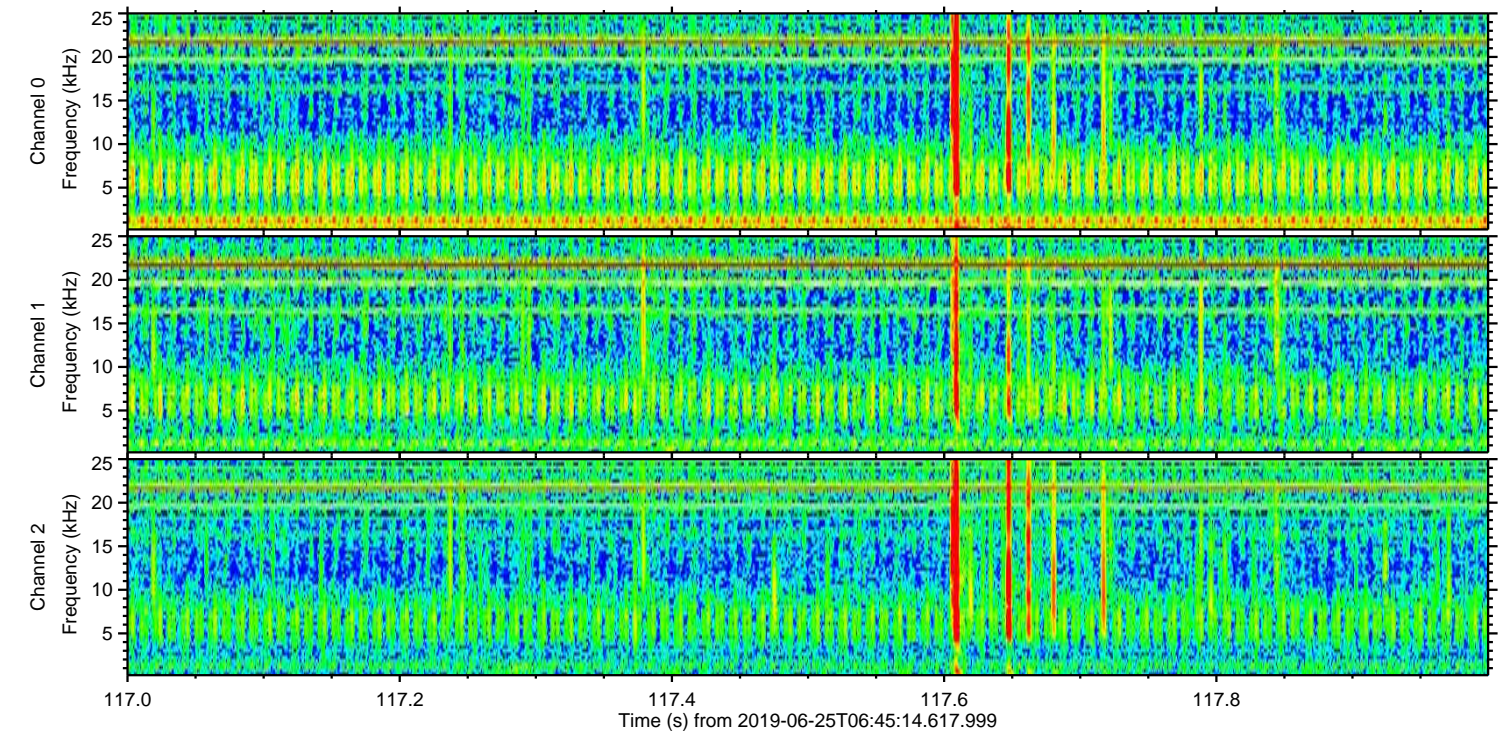
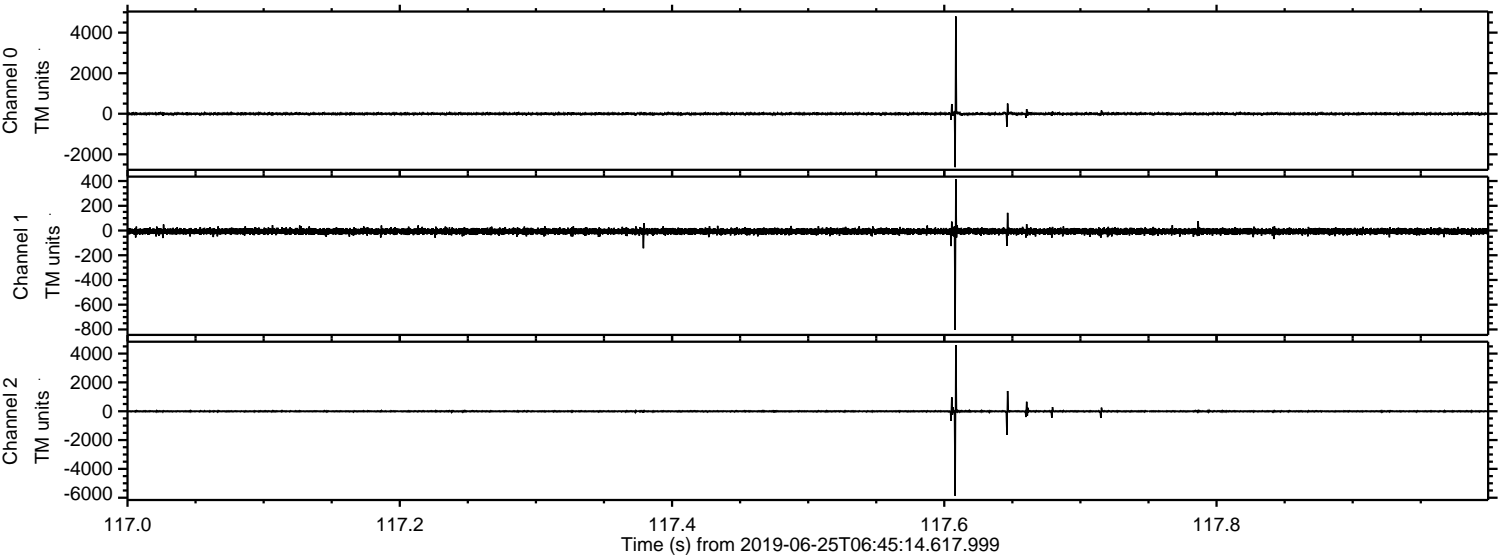
Channel 1  
mn: -804  
mx: 415  
 $\mu$ : -7.1  
 $\sigma$ : 13.0

Channel 2  
mn: -5865  
mx: 4593  
 $\mu$ : -8.3  
 $\sigma$ : 17.3



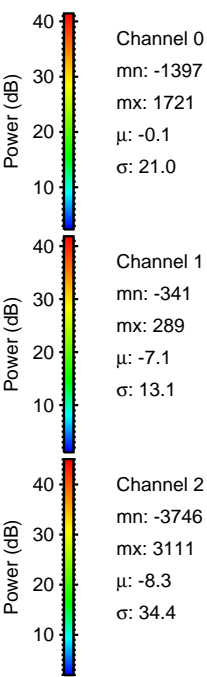
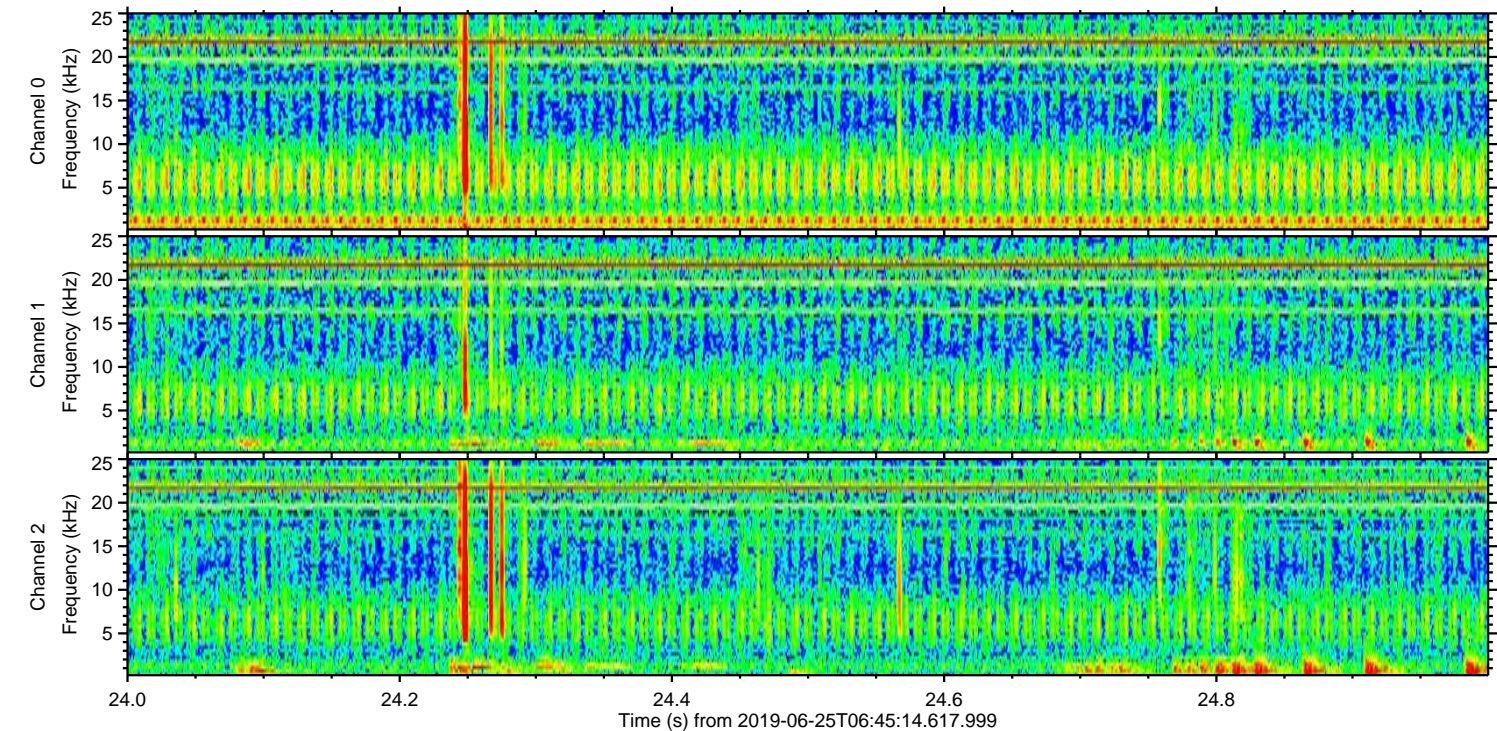
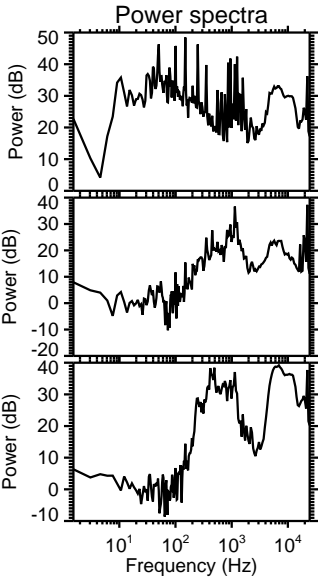
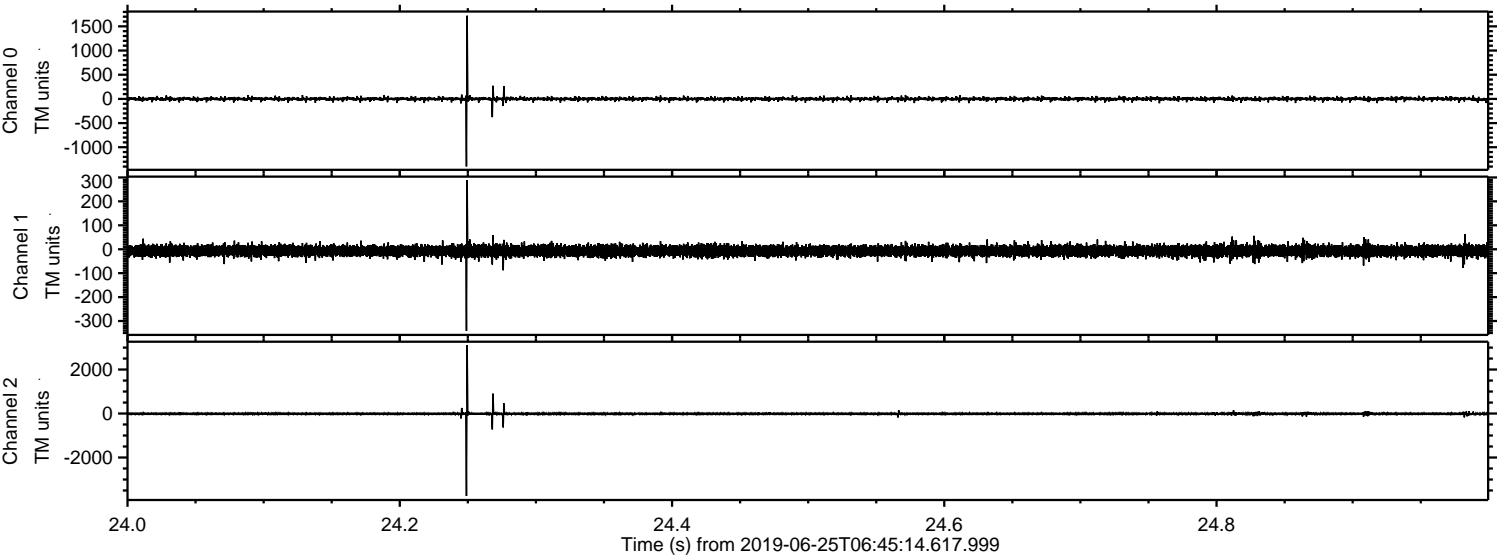
ELMAVAN 3D WAVEFORMS (Measured data sampled at 50 kHz) 51000 packets of 144 samples from 2019-06-25T06:45:14.617.999. Part 118/147

Processed Tue Jun 25 08:53:36 2019 by ELM ver.2012-10-06 from 001\_\_elm20190625\_064513\_\_dat00.bin





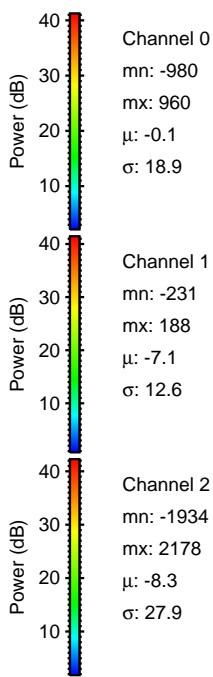
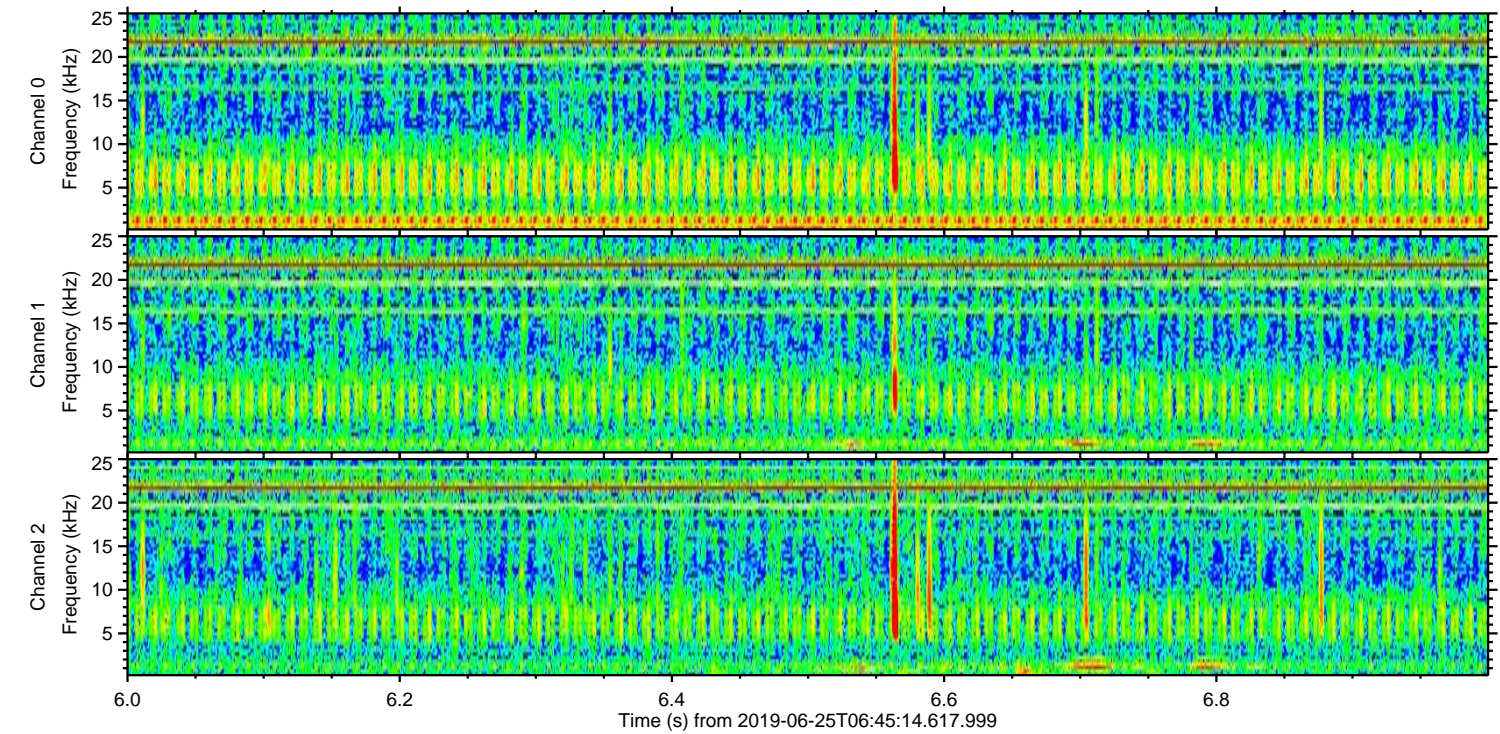
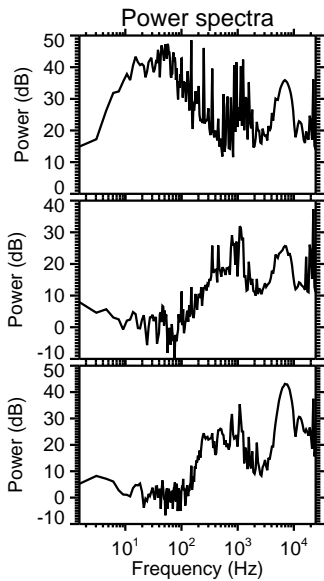
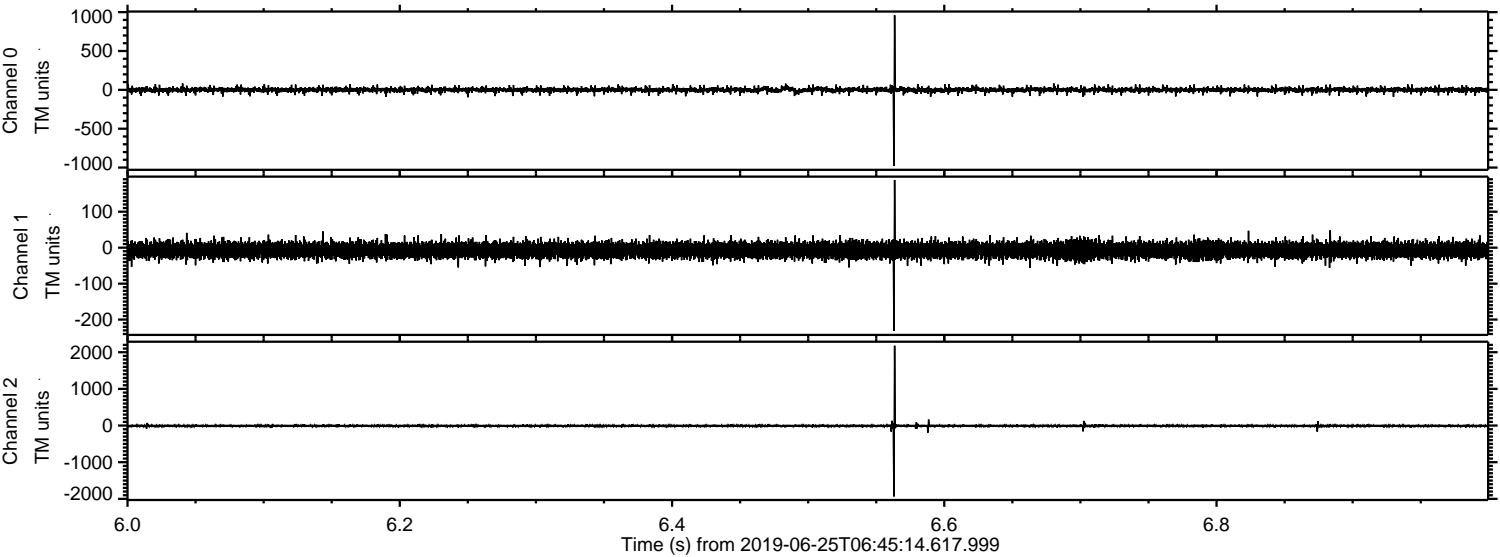
Processed Tue Jun 25 08:53:36 2019 by ELM ver.2012-10-06 from 001\_\_elm20190625\_064513\_\_dat00.bin





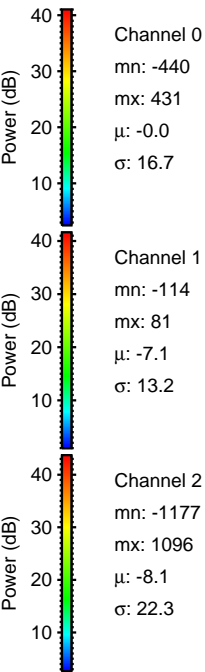
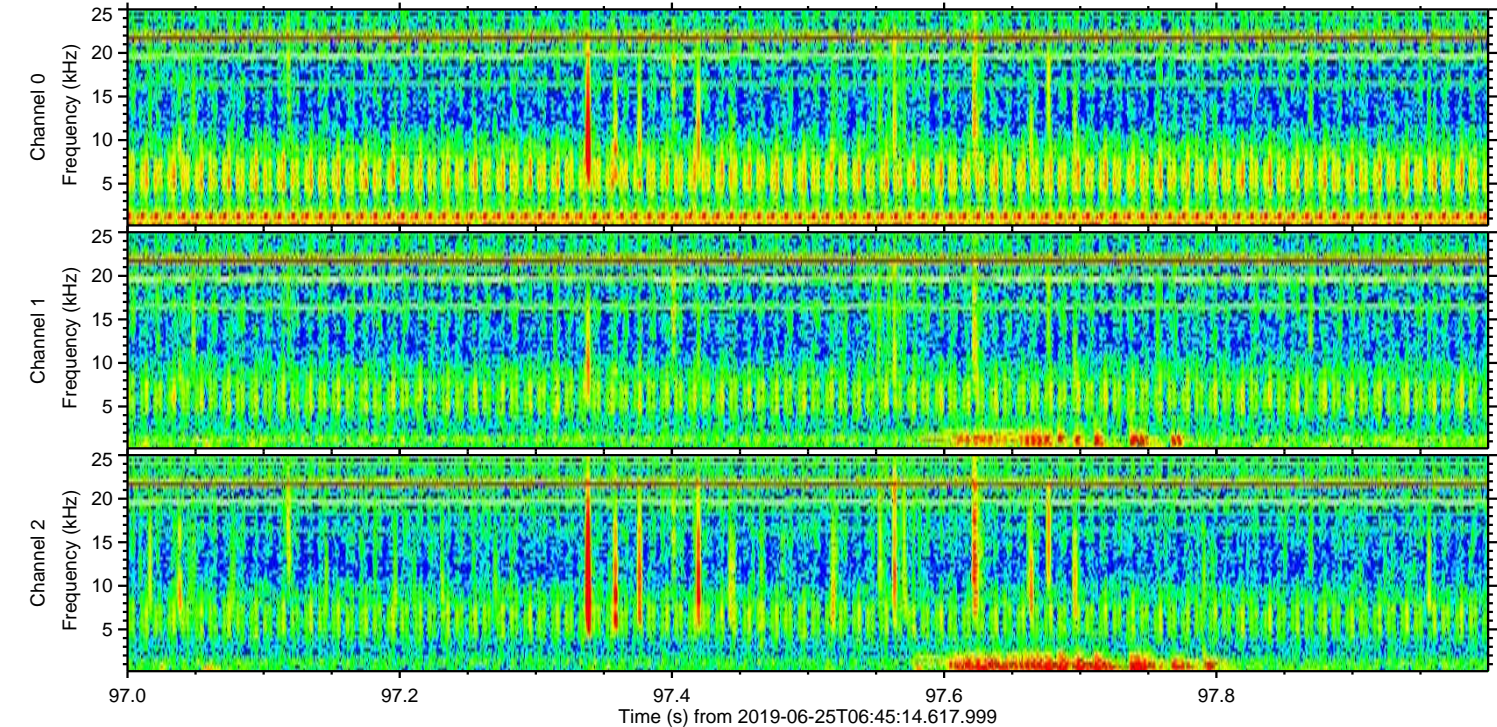
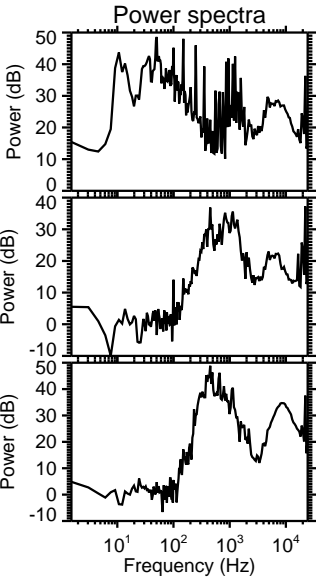
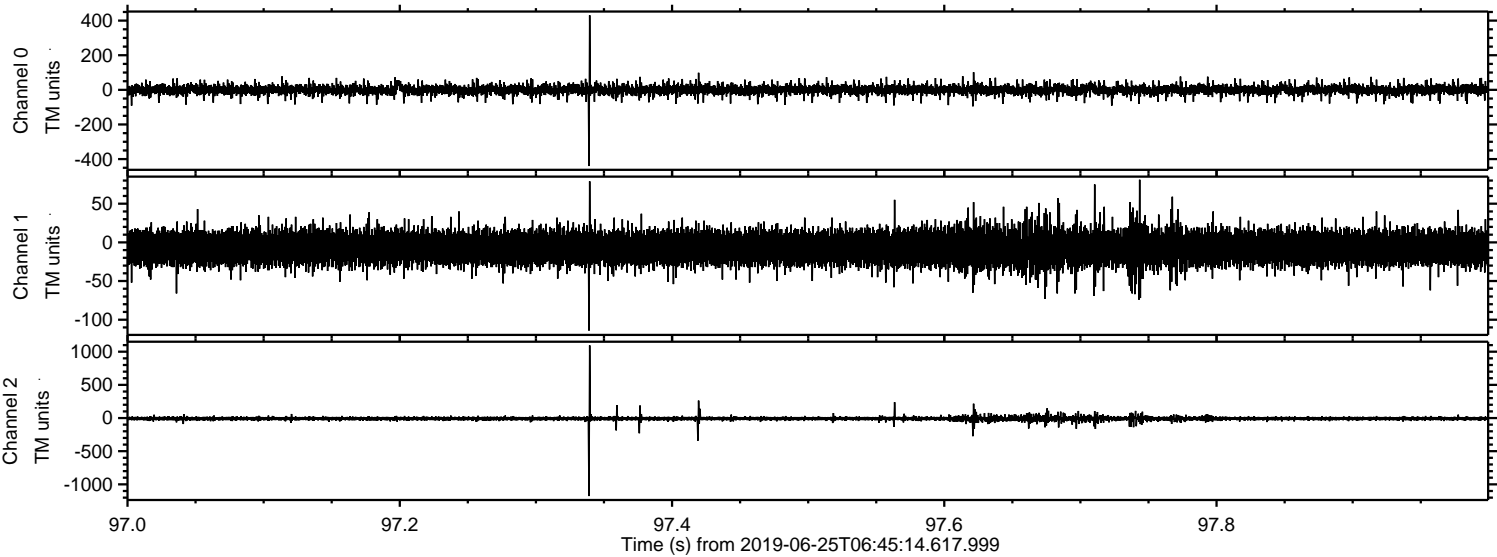
ELMAVAN 3D WAVEFORMS (Measured data sampled at 50 kHz) 51000 packets of 144 samples from 2019-06-25T06:45:14.617.999. Part 7/147

Processed Tue Jun 25 08:53:37 2019 by ELM ver.2012-10-06 from 001\_\_elm20190625\_064513\_\_dat00.bin



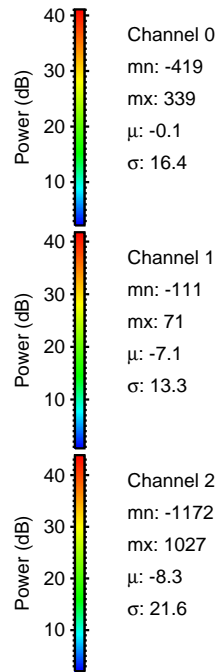
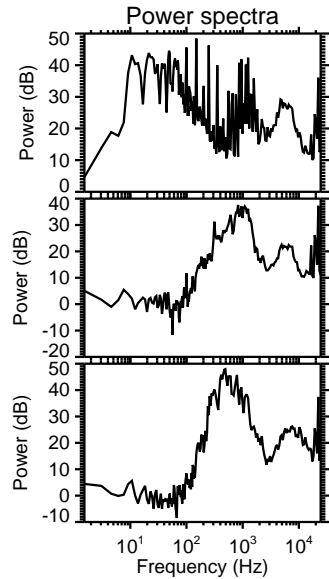
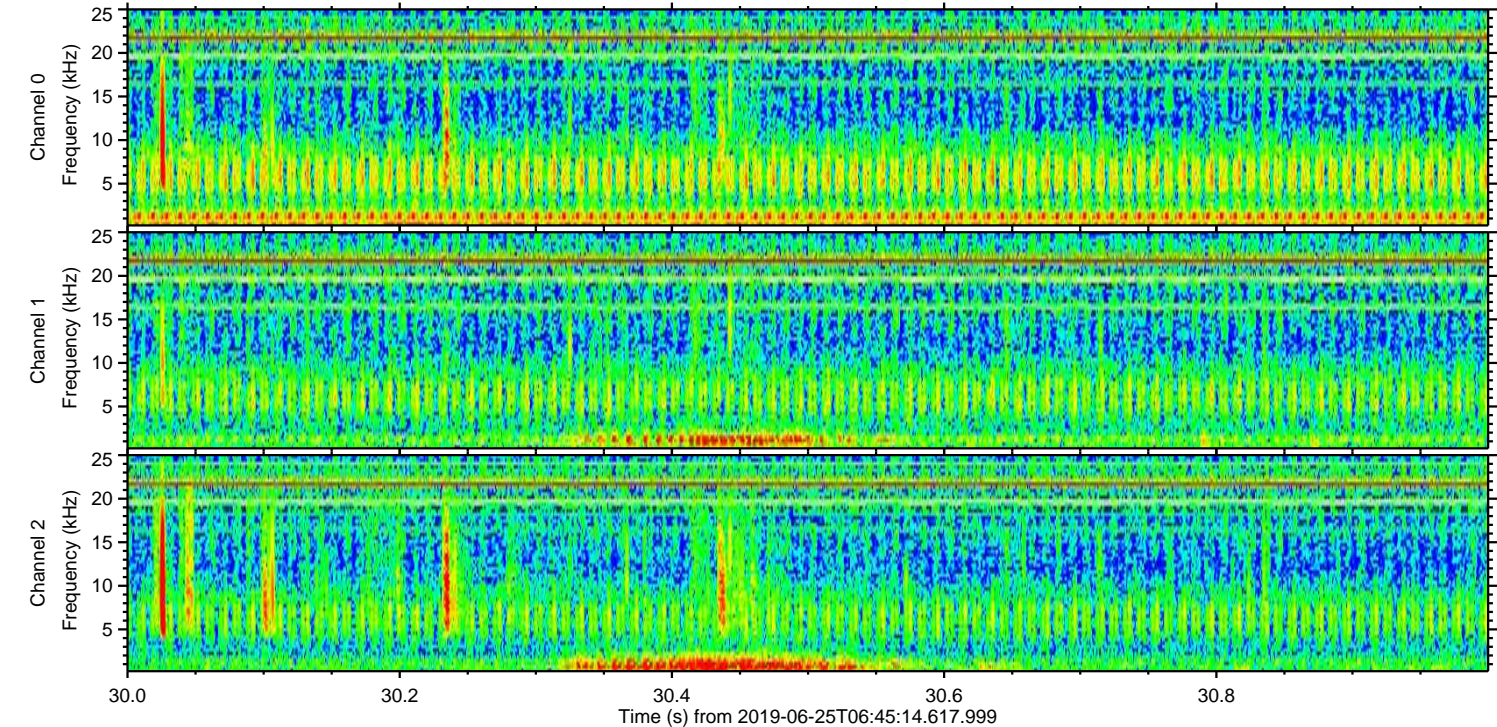
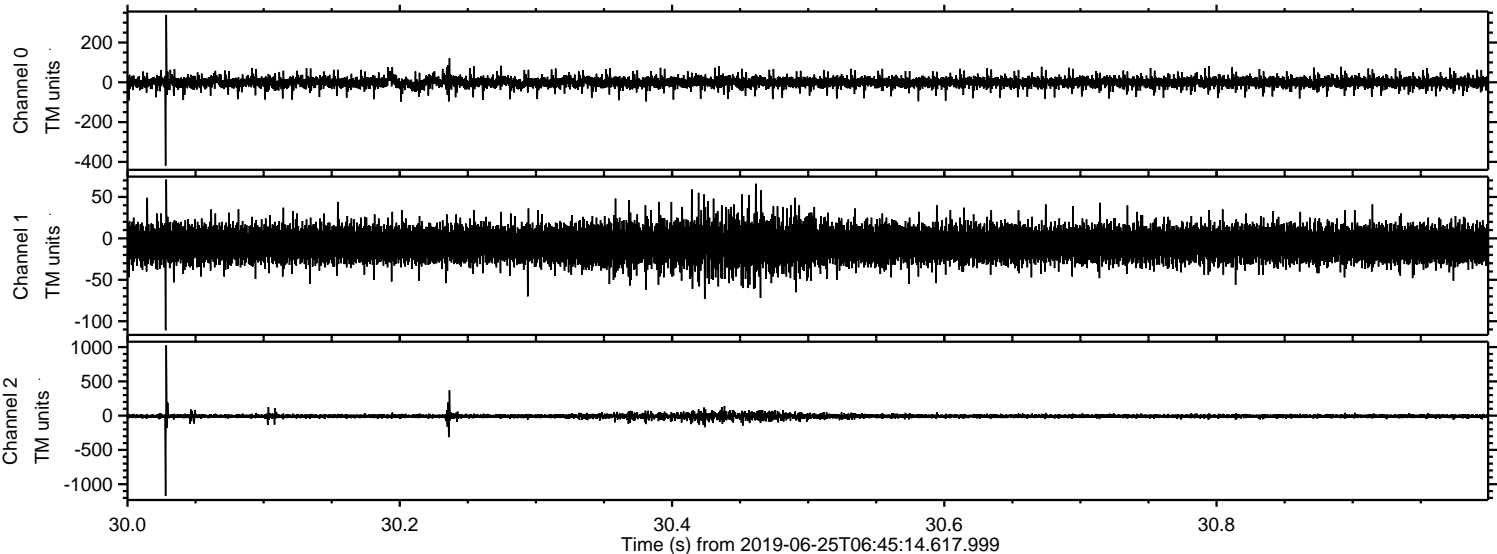


Processed Tue Jun 25 08:53:38 2019 by ELM ver.2012-10-06 from 001\_\_elm20190625\_064513\_\_dat00.bin



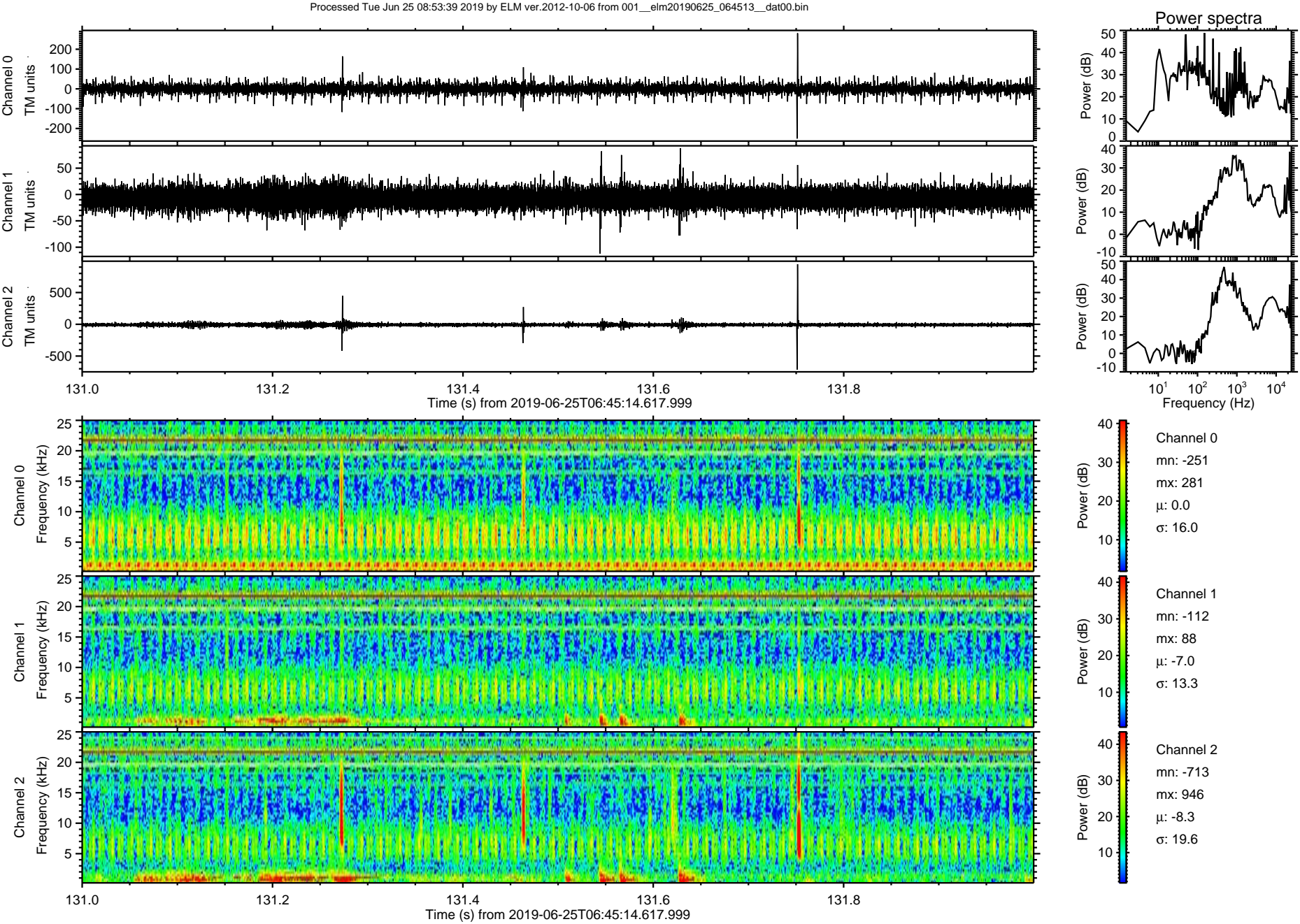


Processed Tue Jun 25 08:53:38 2019 by ELM ver.2012-10-06 from 001\_\_elm20190625\_064513\_\_dat00.bin



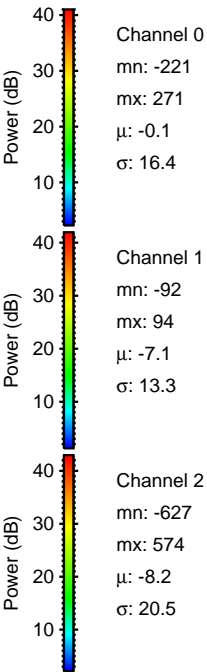
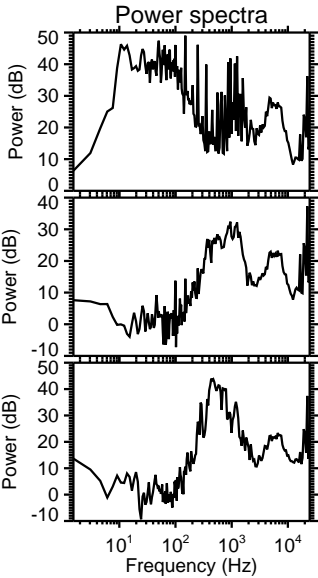
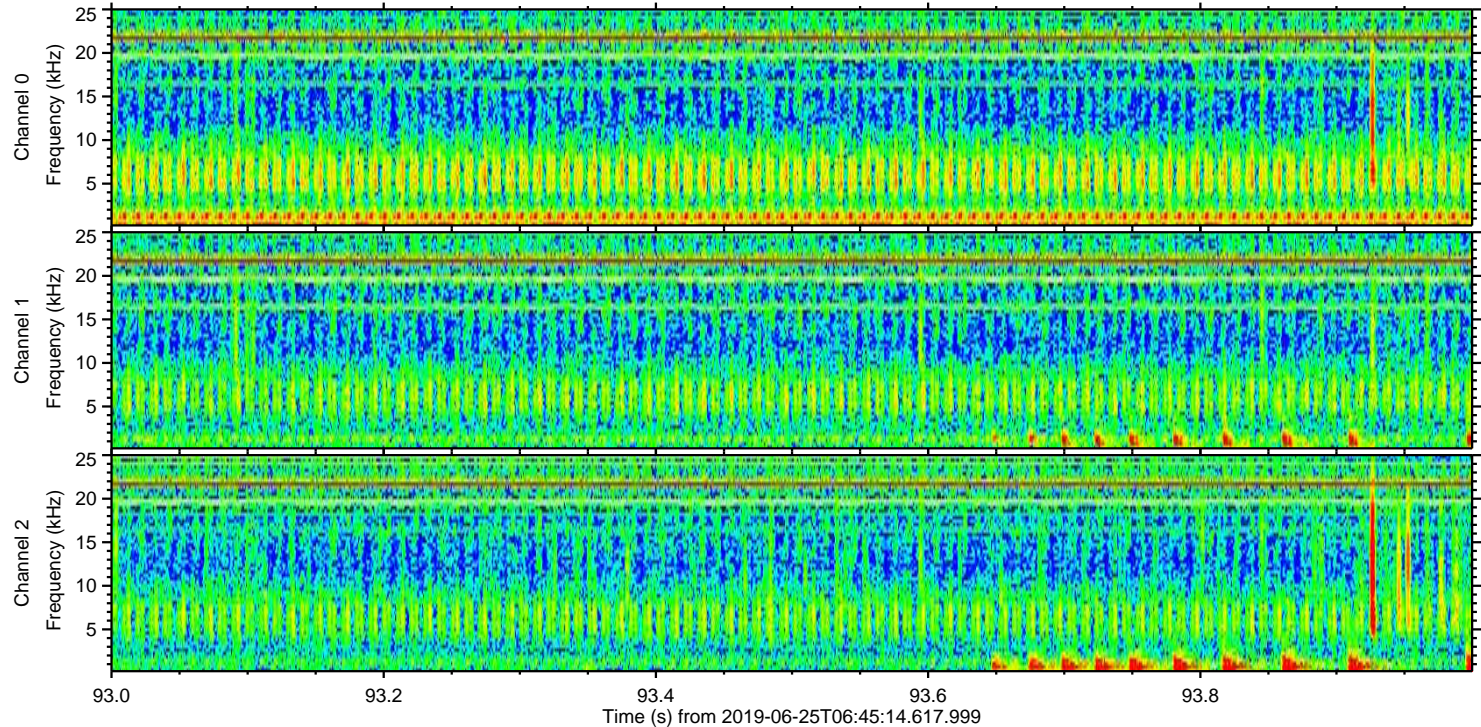
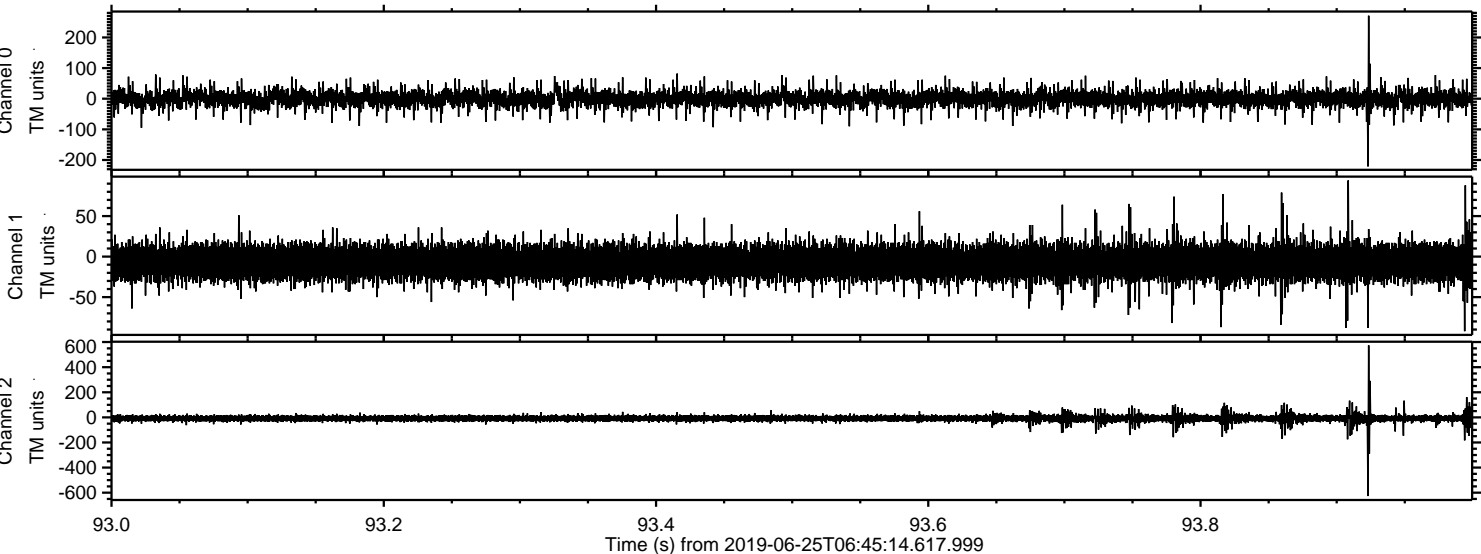


ELMAVAN 3D WAVEFORMS (Measured data sampled at 50 kHz) 51000 packets of 144 samples from 2019-06-25T06:45:14.617.999. Part 132/147



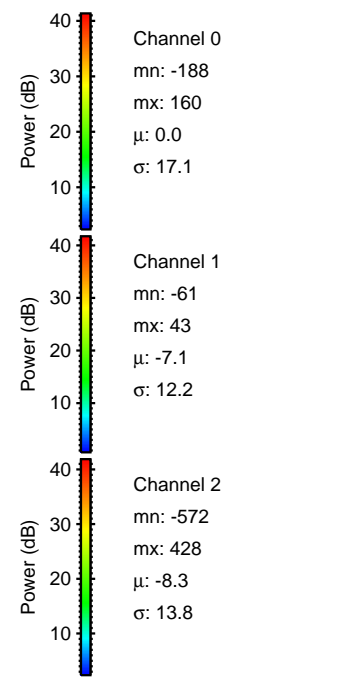
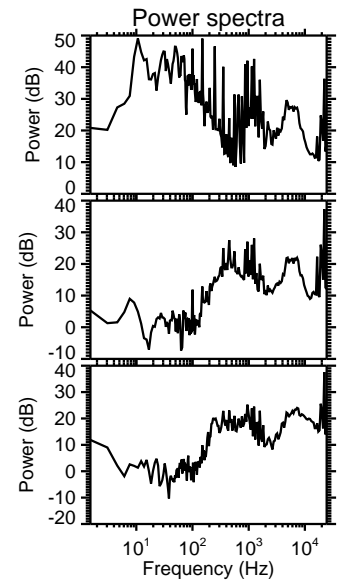
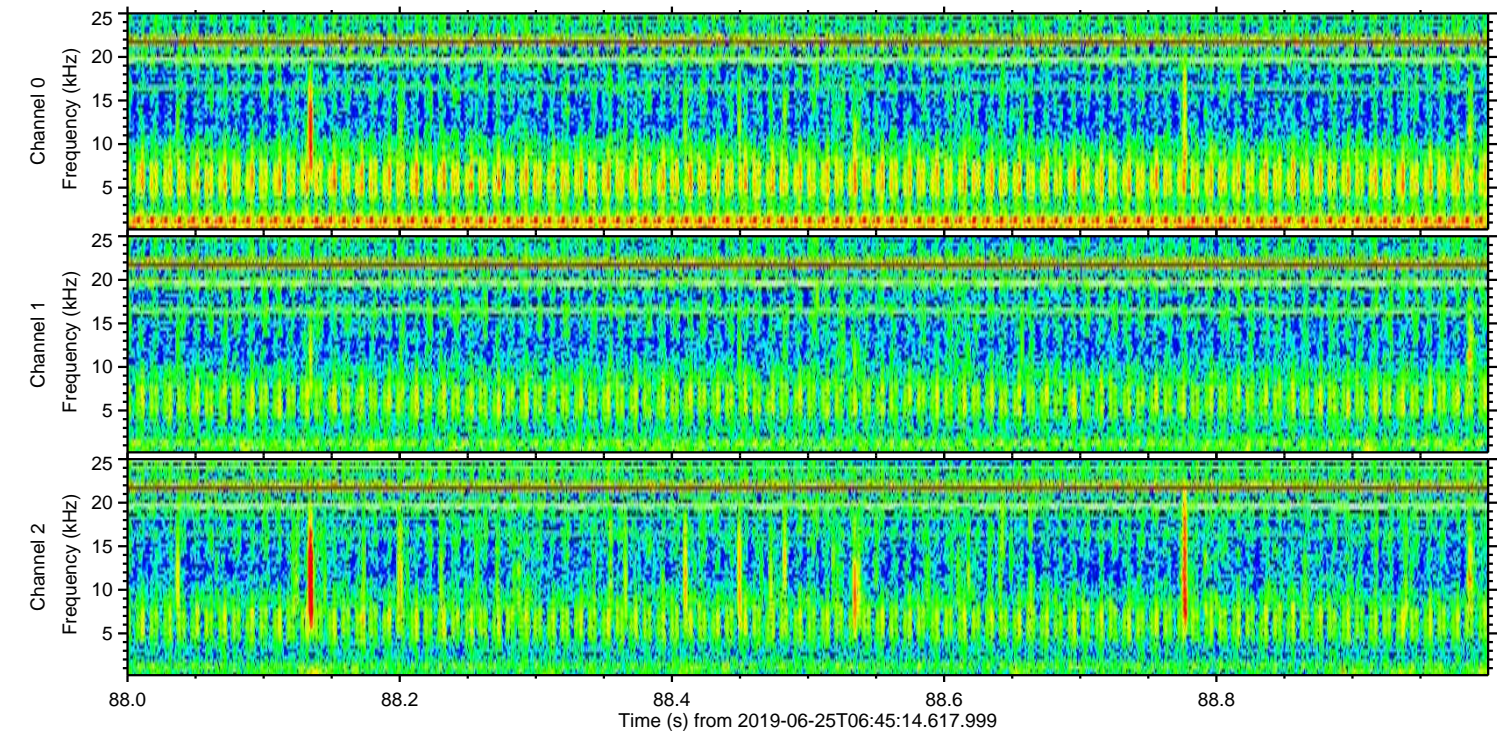
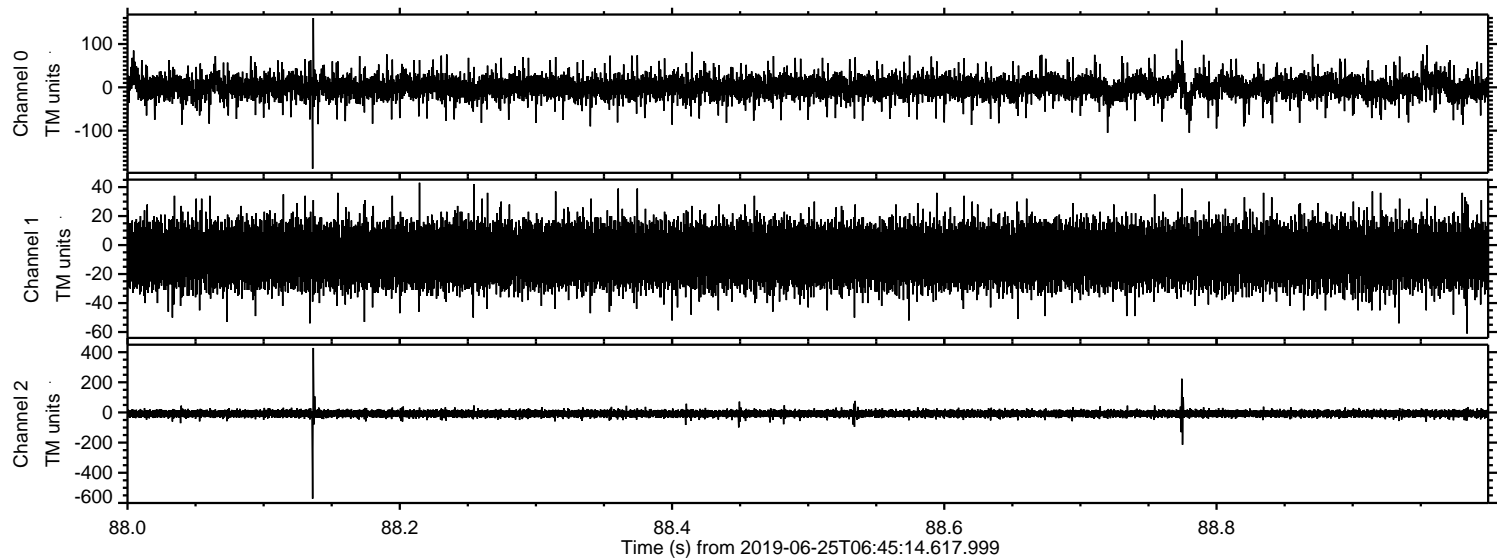


Processed Tue Jun 25 08:53:40 2019 by ELM ver.2012-10-06 from 001\_\_elm20190625\_064513\_\_dat00.bin



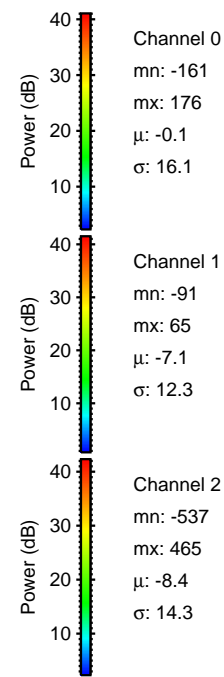
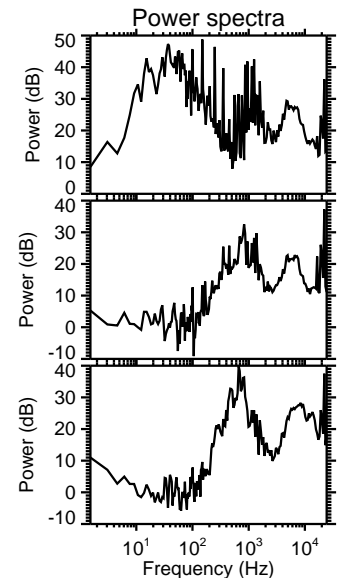
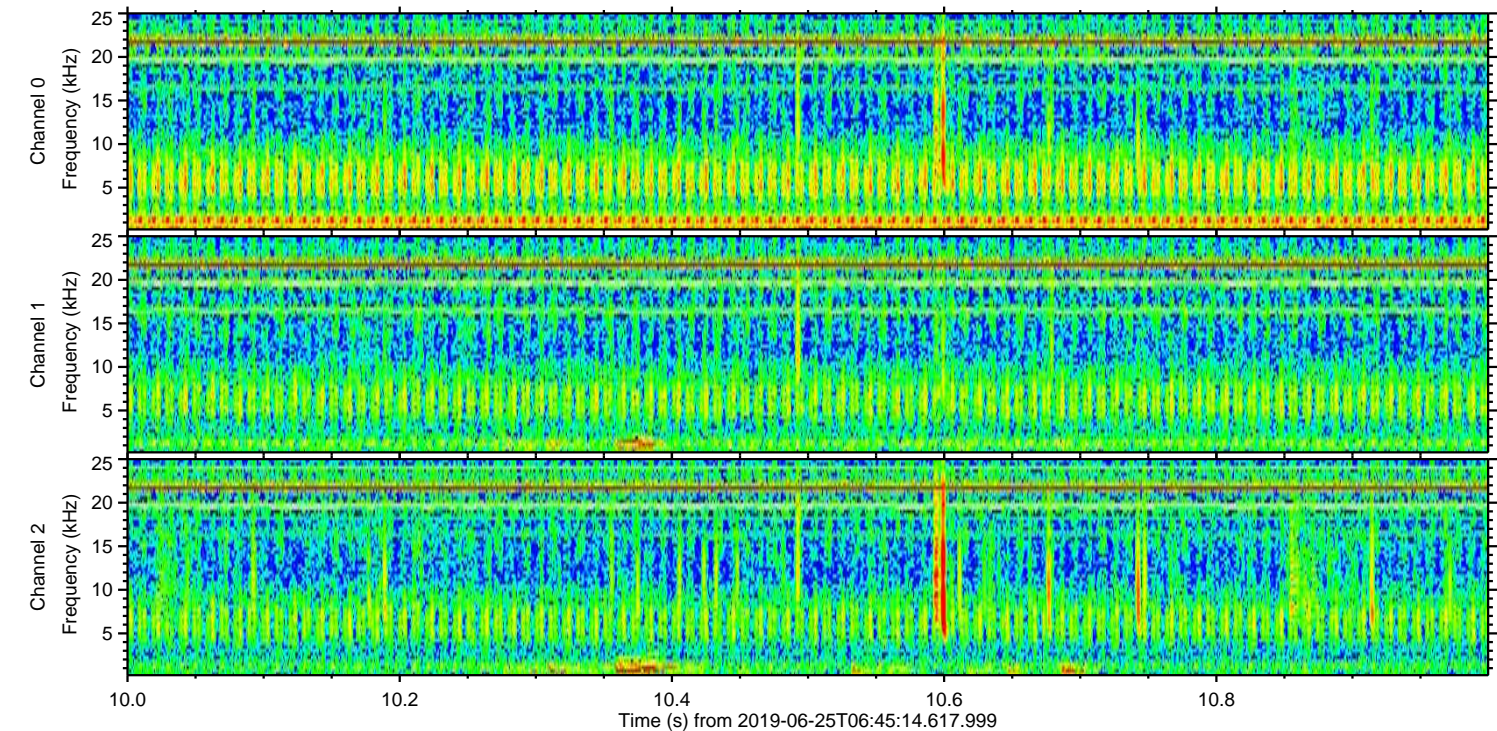
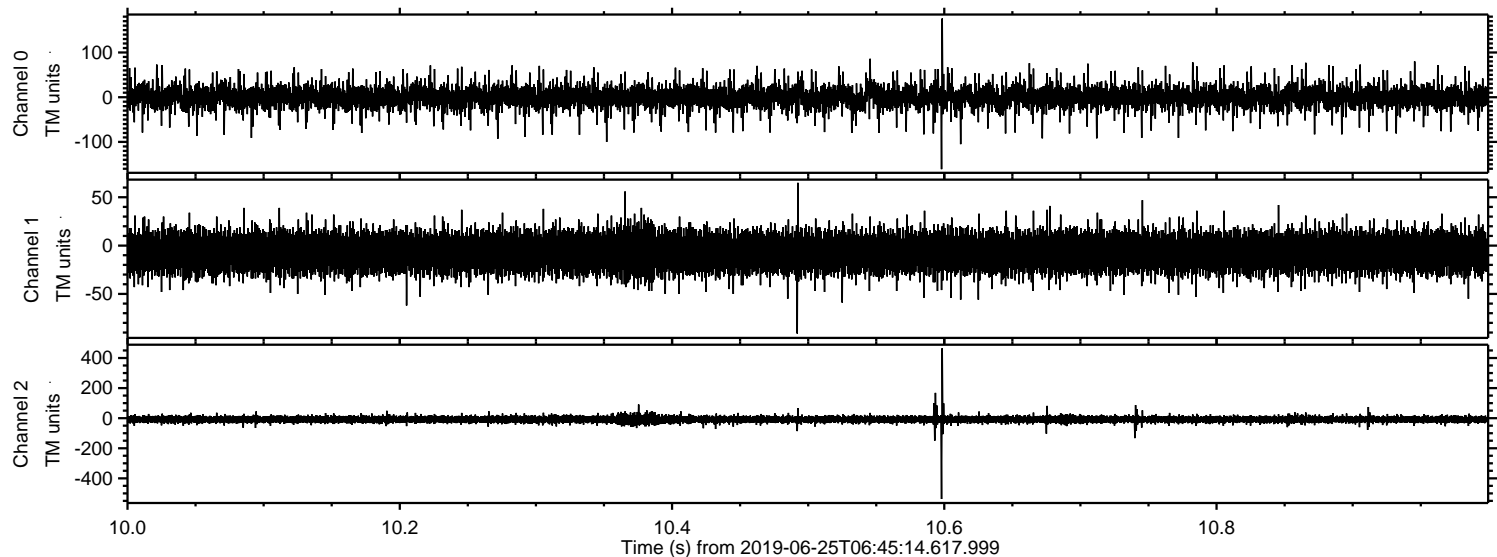


Processed Tue Jun 25 08:53:40 2019 by ELM ver.2012-10-06 from 001\_\_elm20190625\_064513\_\_dat00.bin





Processed Tue Jun 25 08:53:41 2019 by ELM ver.2012-10-06 from 001\_\_elm20190625\_064513\_\_dat00.bin





Processed Tue Jun 25 08:53:41 2019 by ELM ver.2012-10-06 from 001\_\_elm20190625\_064513\_\_dat00.bin

