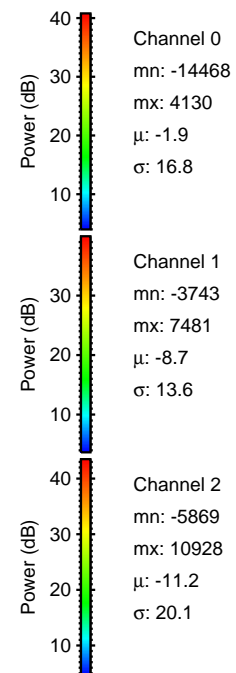
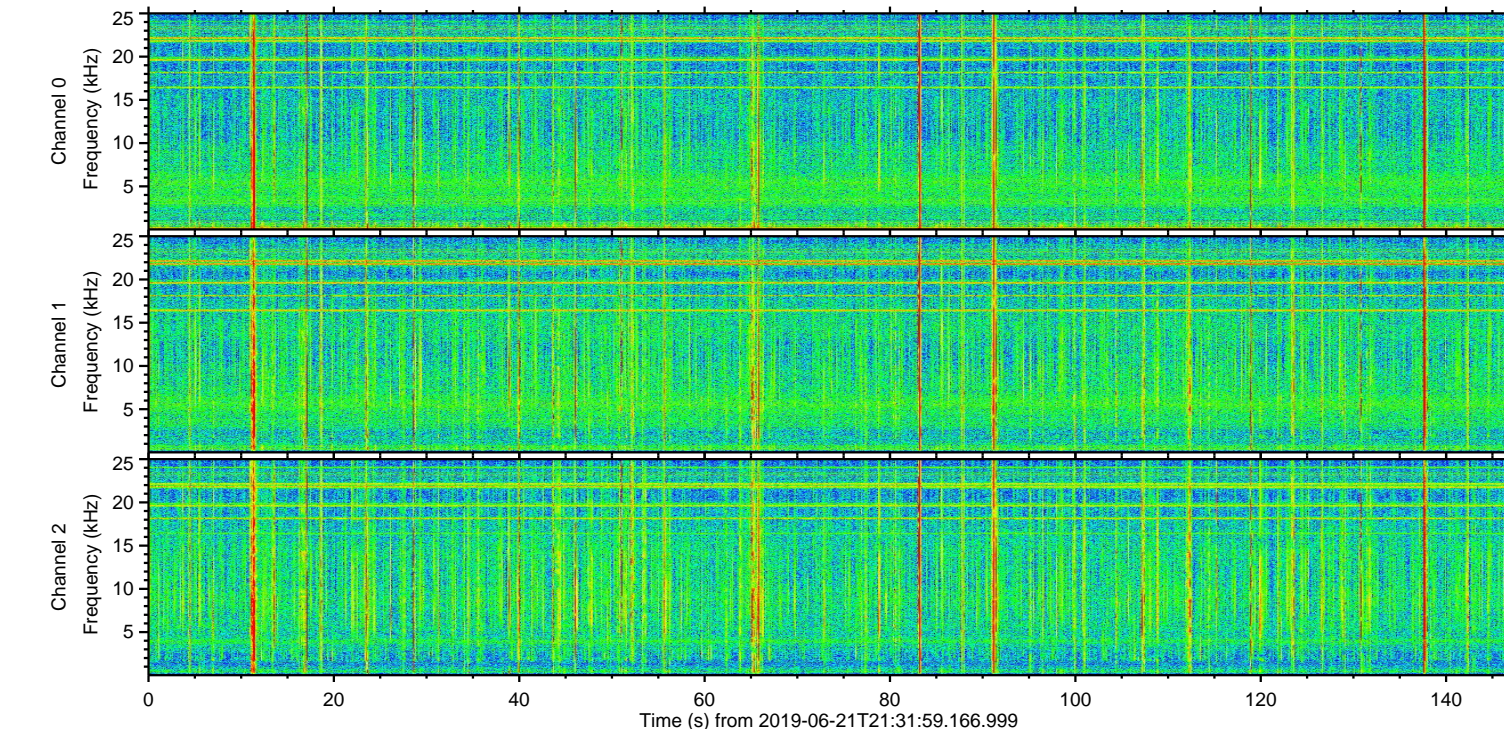
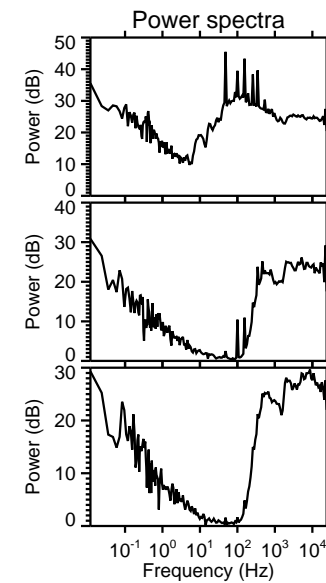
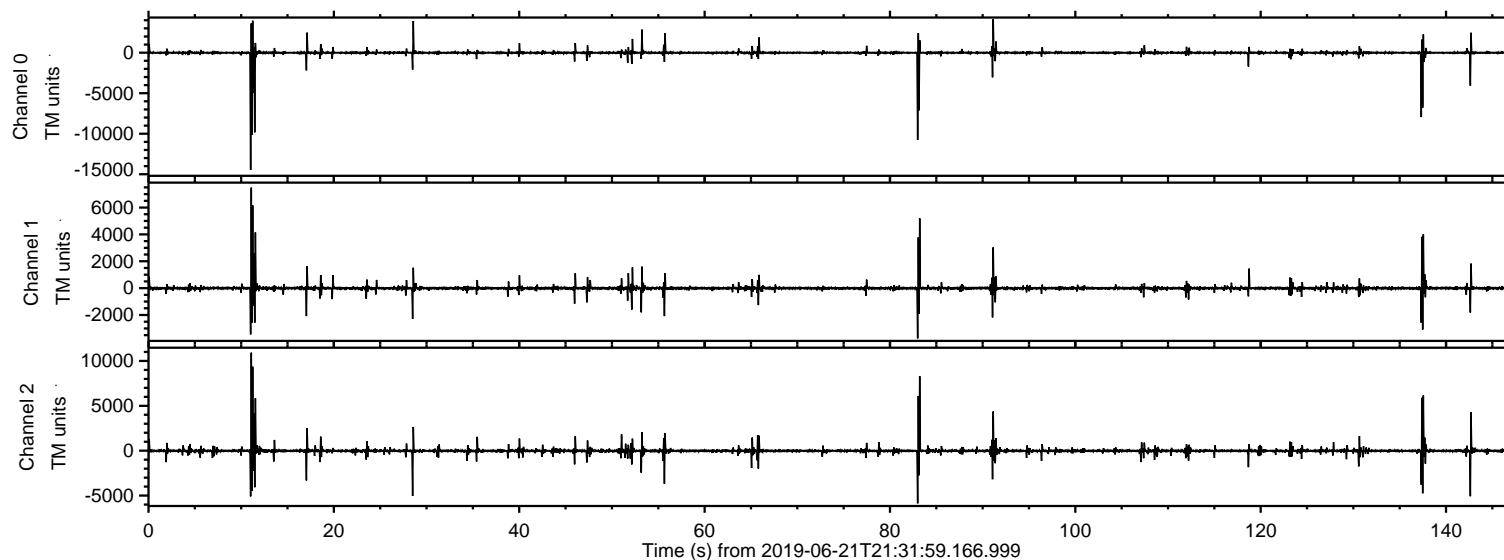


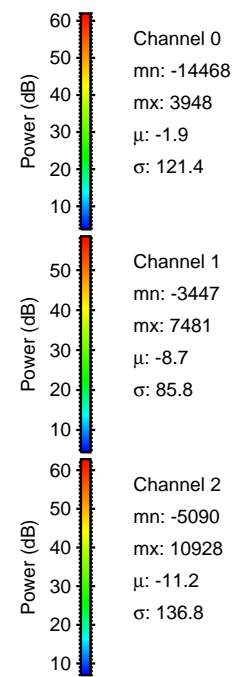
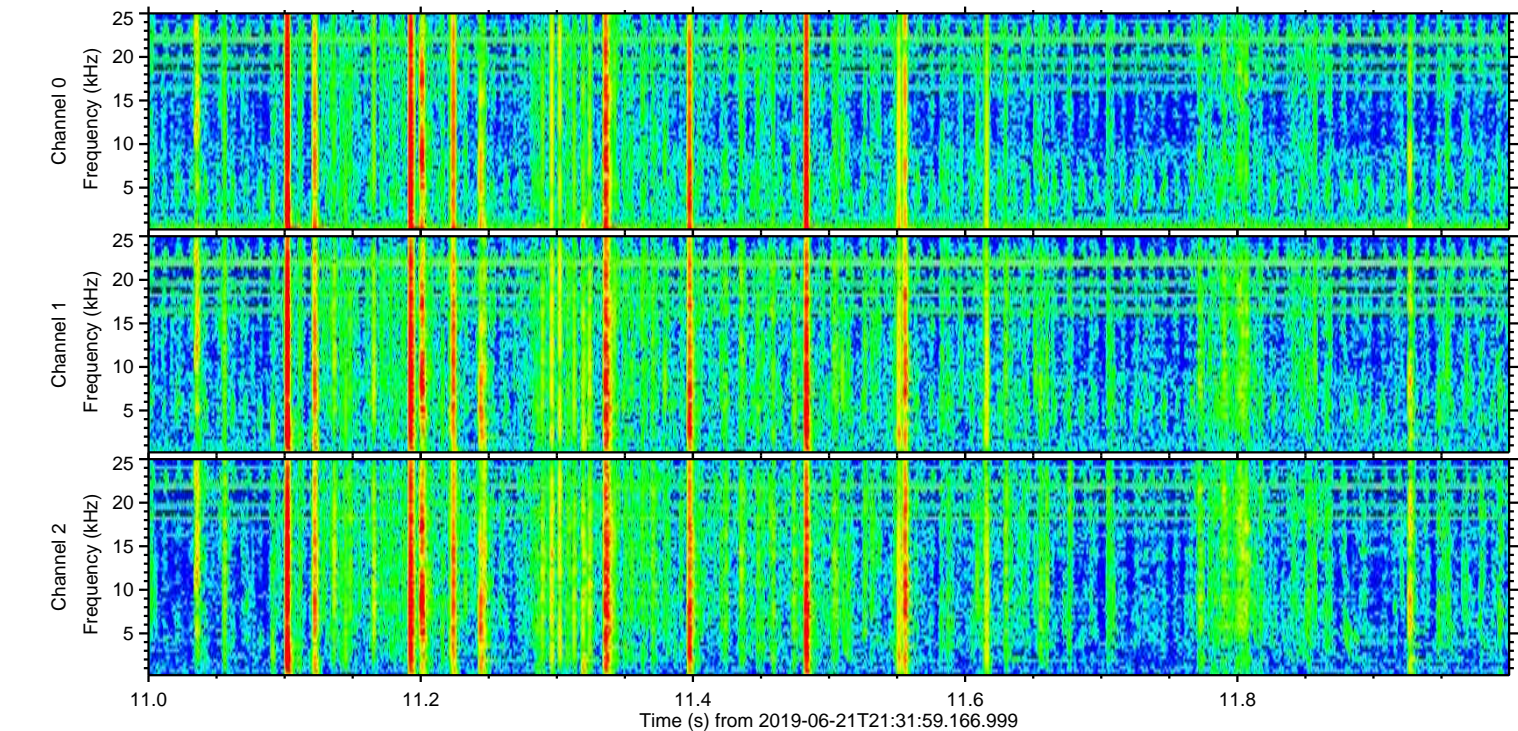
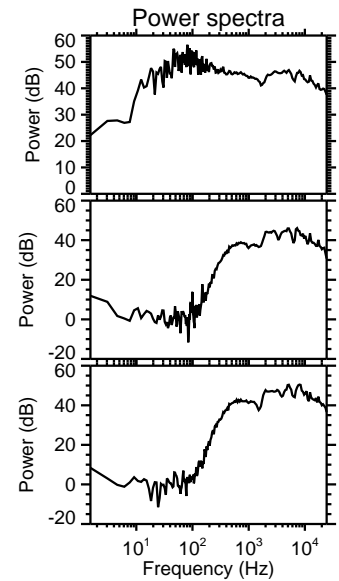
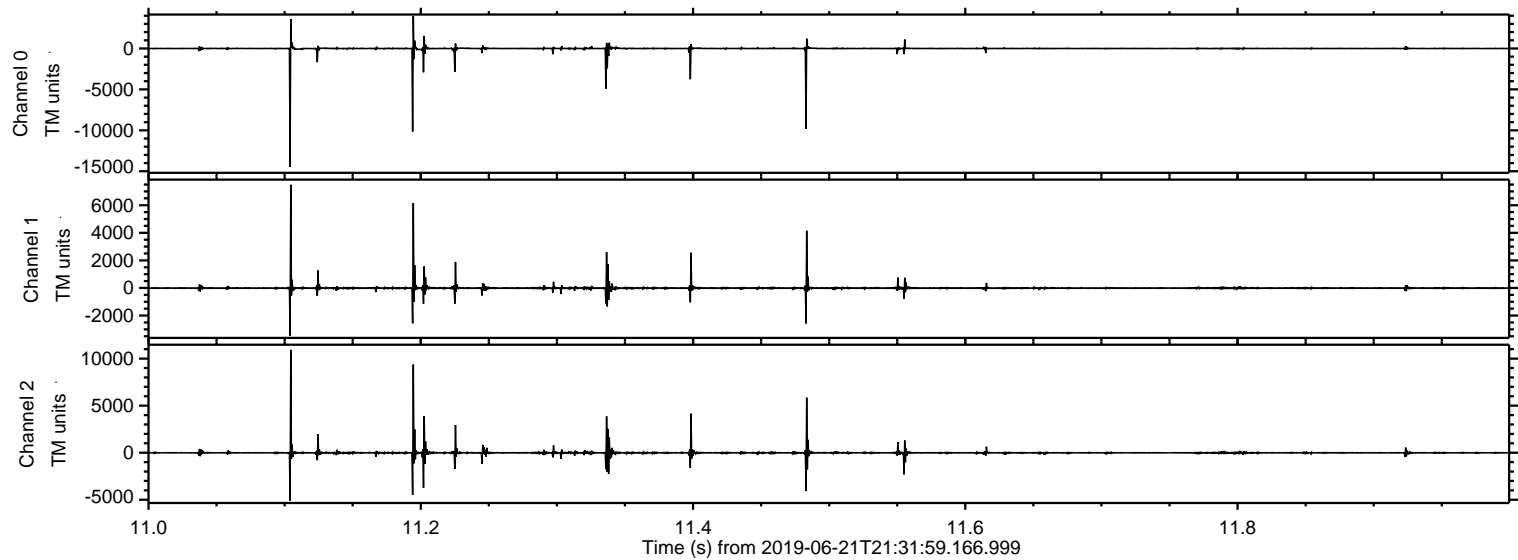
# ELMAVAN 3D WAVEFORMS (Measured data sampled at 50 kHz) 51000 packets of 144 samples from 2019-06-21T21:31:59.166.999.

Processed Fri Jun 21 23:40:09 2019 by ELM ver.2012-10-06 from 001\_\_elm20190621\_213158\_\_dat00.bin





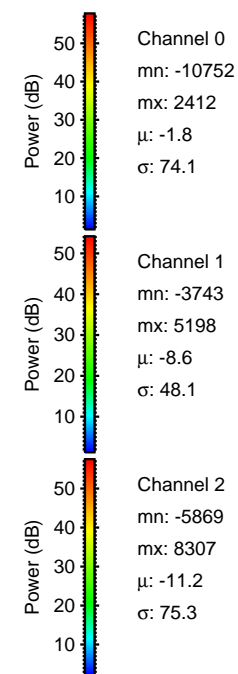
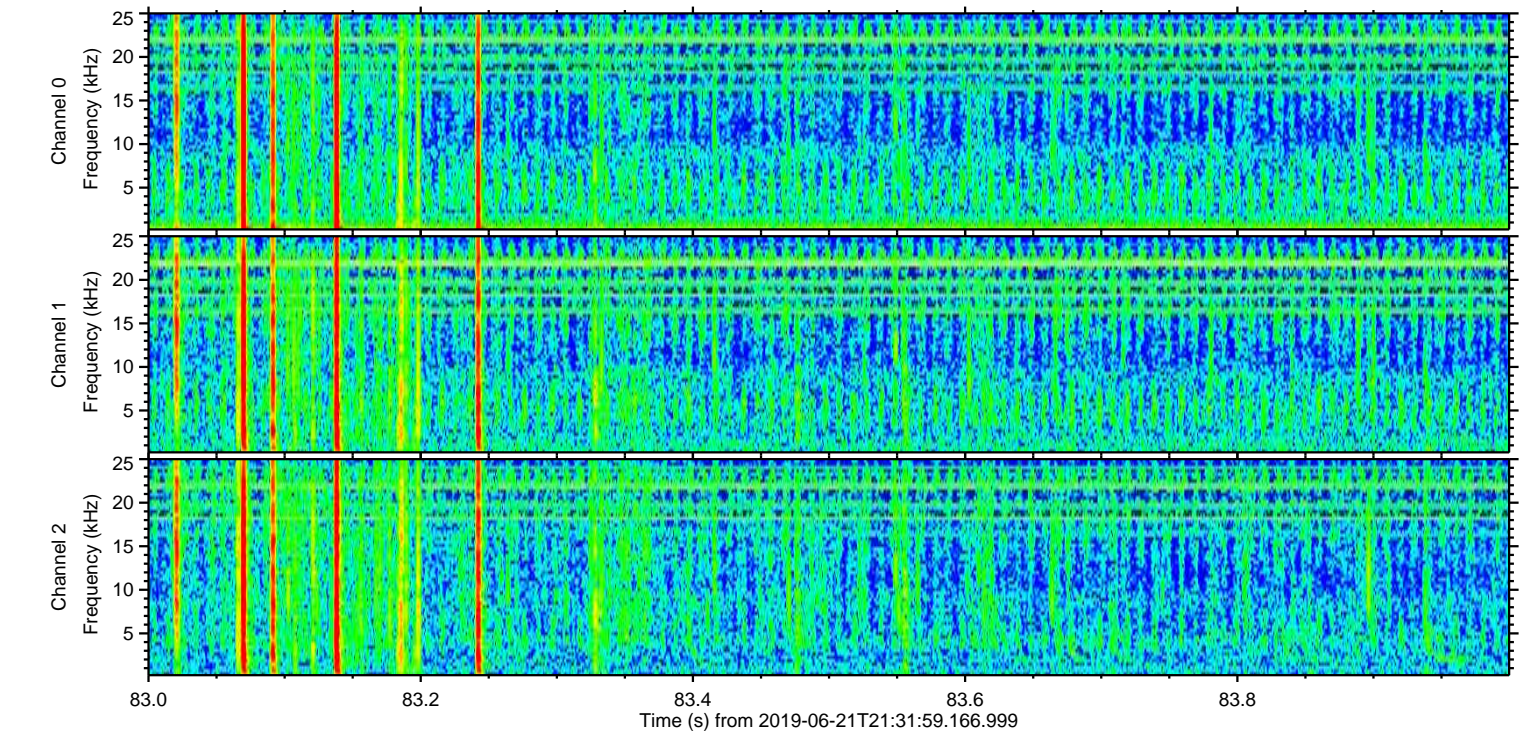
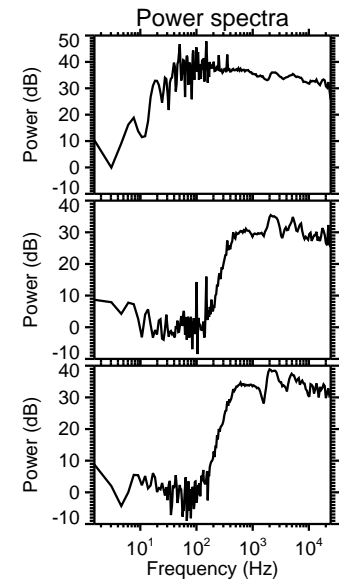
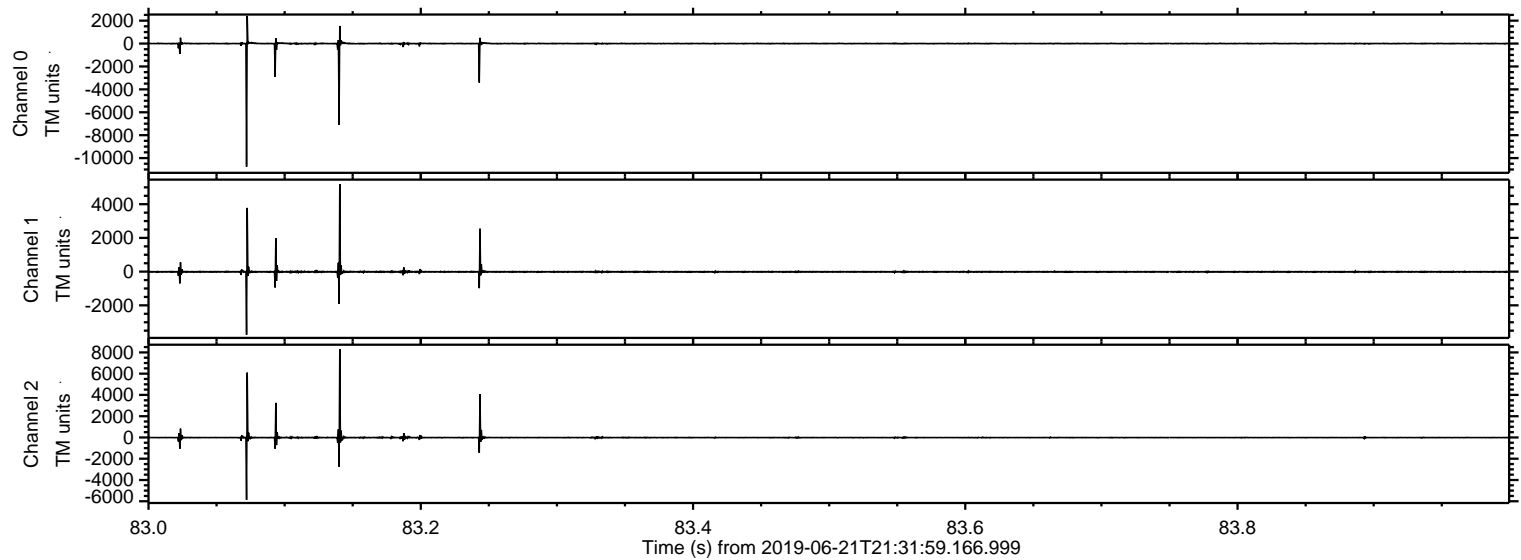
Processed Fri Jun 21 23:40:15 2019 by ELM ver.2012-10-06 from 001\_\_elm20190621\_213158\_\_dat00.bin





ELMAVAN 3D WAVEFORMS (Measured data sampled at 50 kHz) 51000 packets of 144 samples from 2019-06-21T21:31:59.166.999. Part 84/147

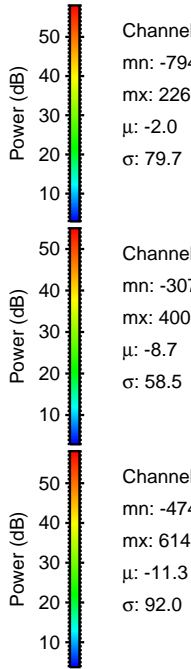
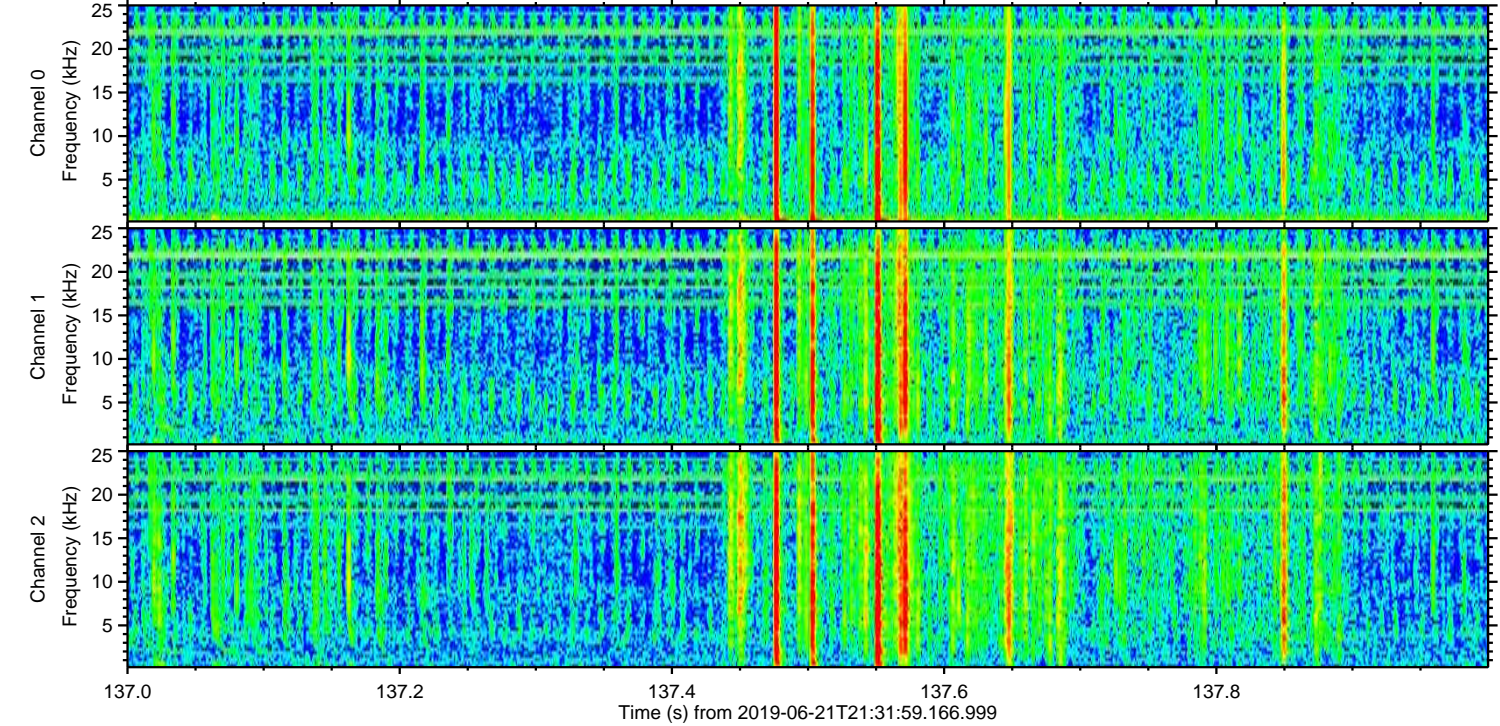
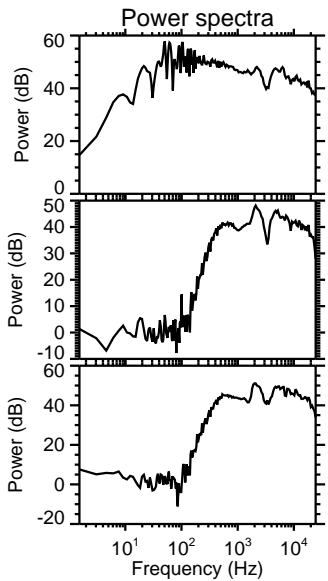
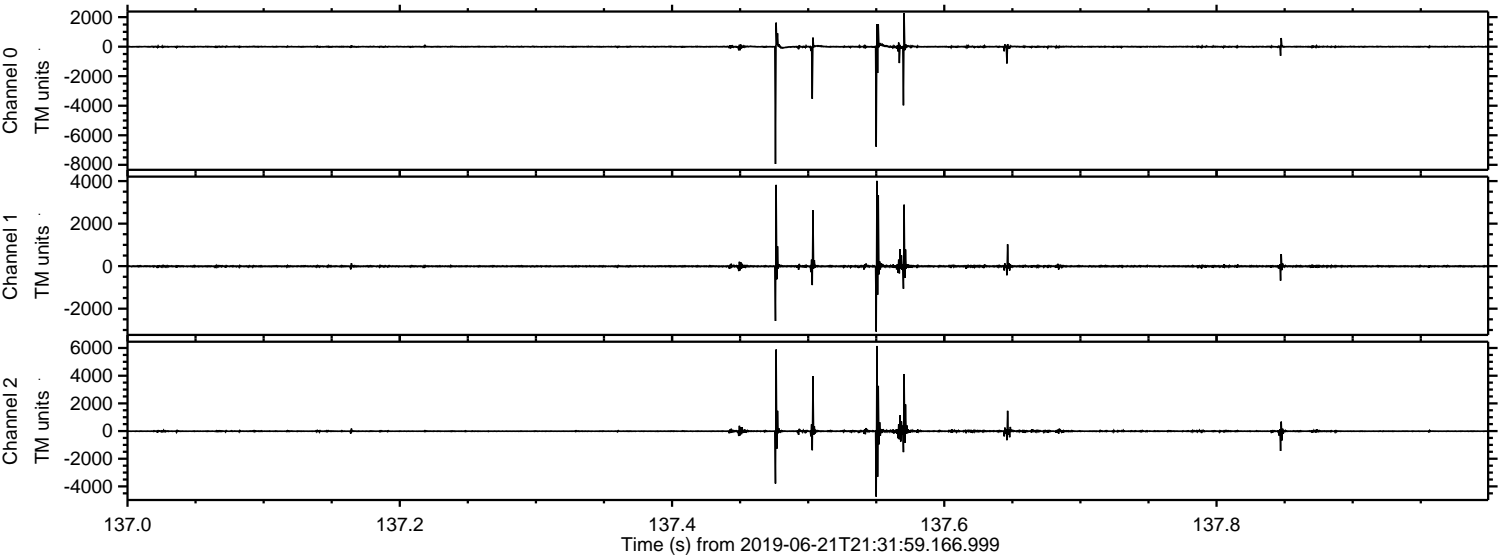
Processed Fri Jun 21 23:40:16 2019 by ELM ver.2012-10-06 from 001\_\_elm20190621\_213158\_\_dat00.bin





ELMAVAN 3D WAVEFORMS (Measured data sampled at 50 kHz) 51000 packets of 144 samples from 2019-06-21T21:31:59.166.999. Part 138/147

Processed Fri Jun 21 23:40:16 2019 by ELM ver.2012-10-06 from 001\_\_elm20190621\_213158\_\_dat00.bin



Channel 0  
mn: -7943  
mx: 2266  
 $\mu$ : -2.0  
 $\sigma$ : 79.7

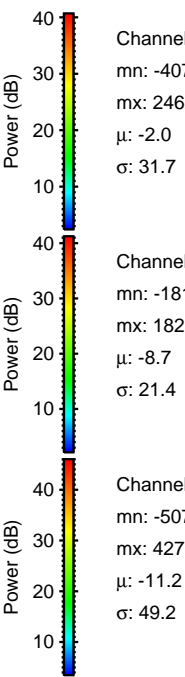
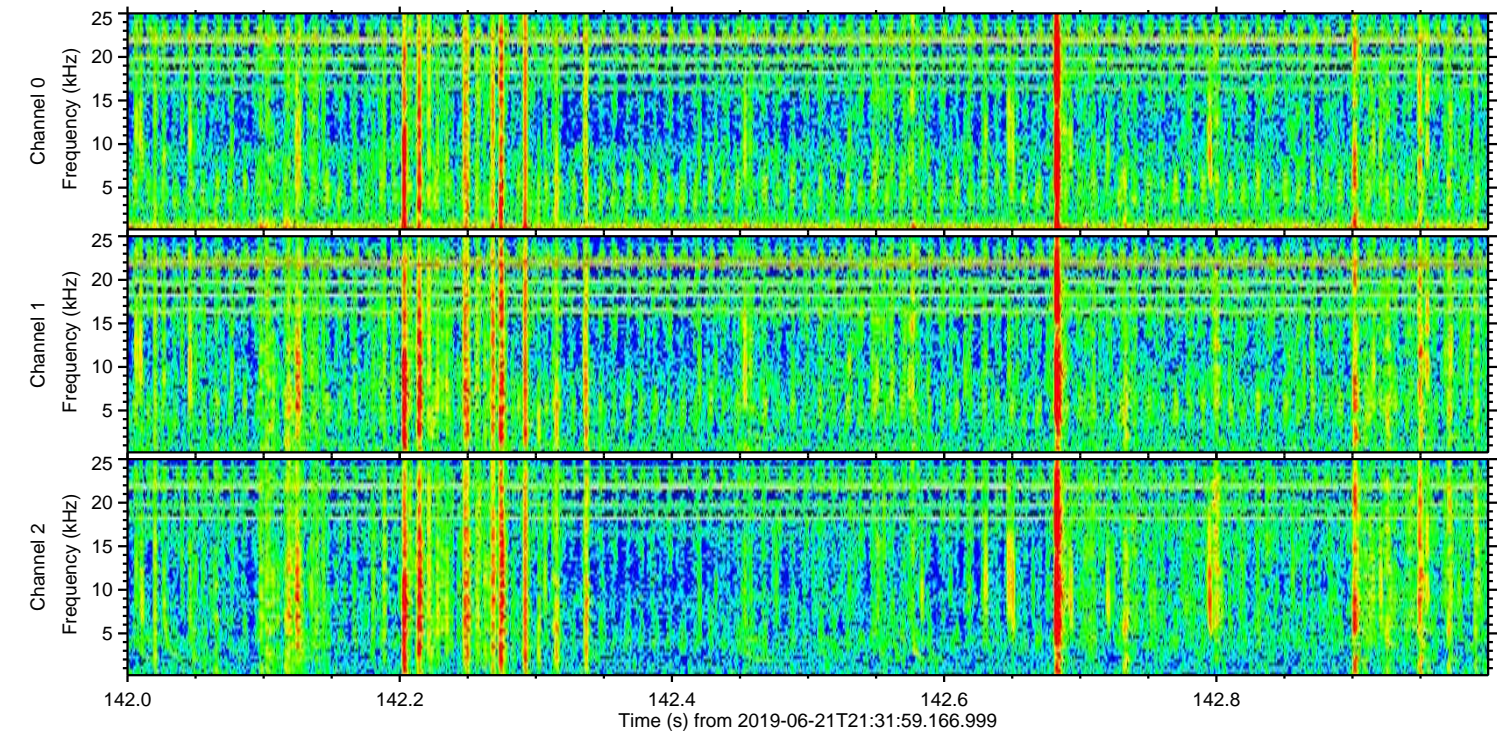
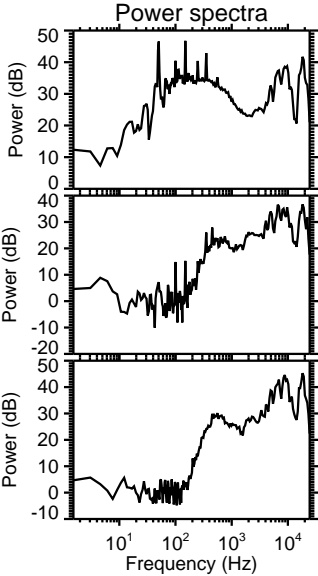
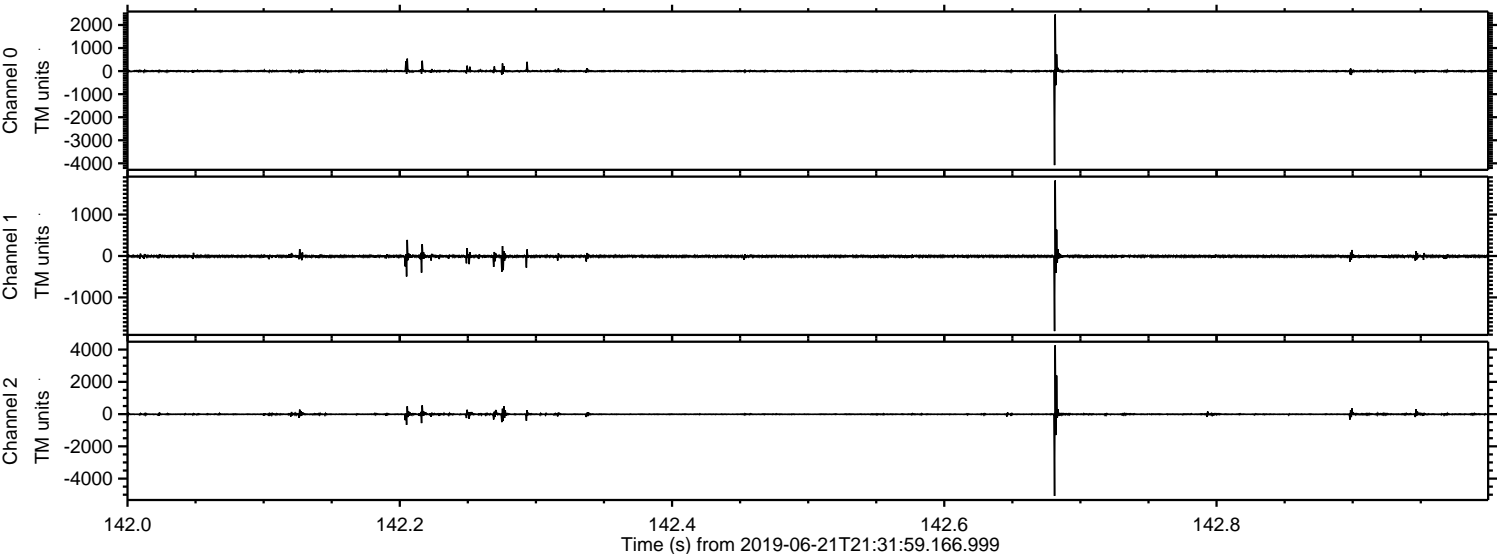
Channel 1  
mn: -3078  
mx: 4008  
 $\mu$ : -8.7  
 $\sigma$ : 58.5

Channel 2  
mn: -4745  
mx: 6148  
 $\mu$ : -11.3  
 $\sigma$ : 92.0



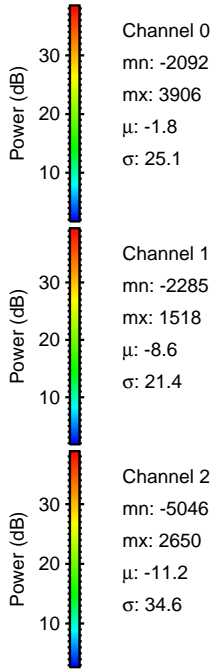
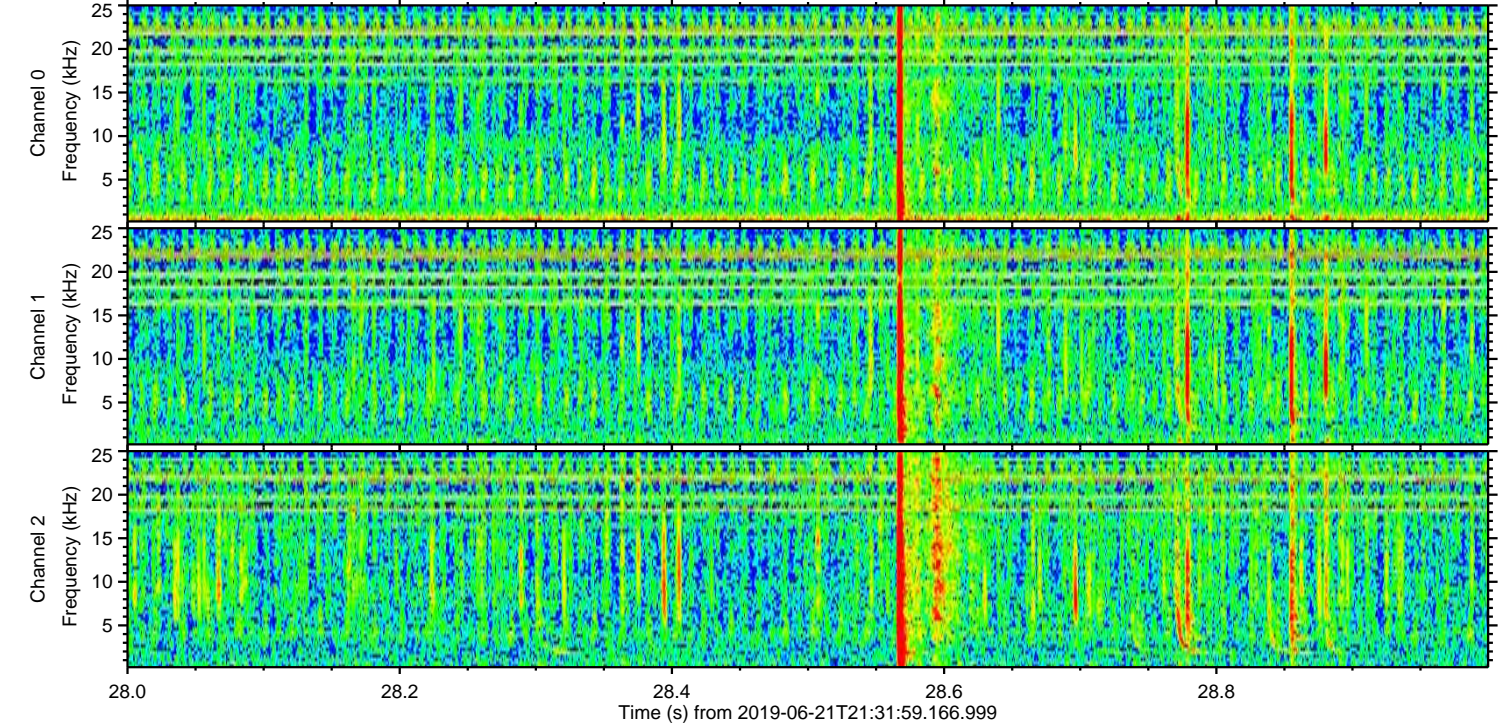
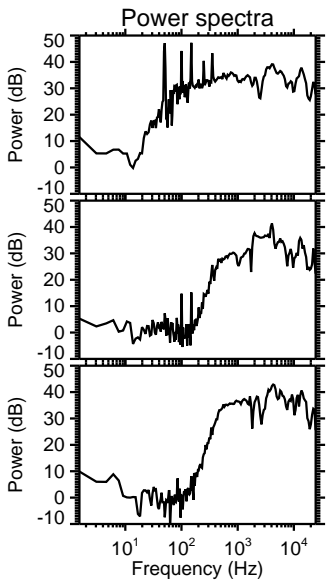
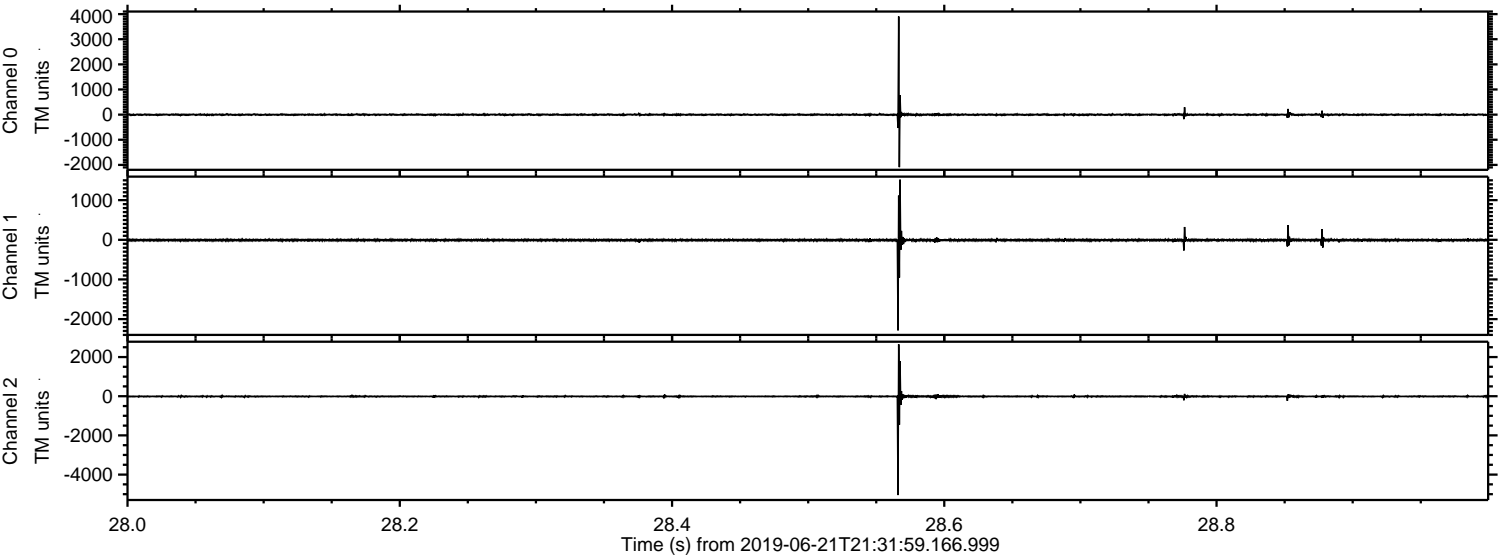
ELMAVAN 3D WAVEFORMS (Measured data sampled at 50 kHz) 51000 packets of 144 samples from 2019-06-21T21:31:59.166.999. Part 143/147

Processed Fri Jun 21 23:40:17 2019 by ELM ver.2012-10-06 from 001\_\_elm20190621\_213158\_\_dat00.bin



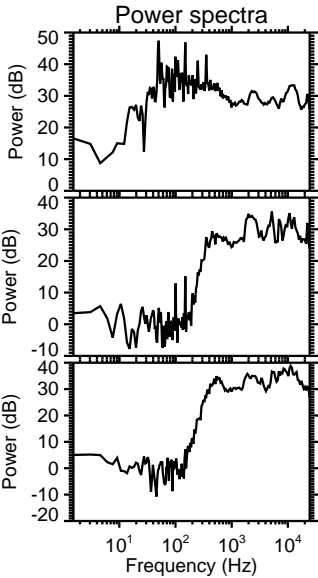
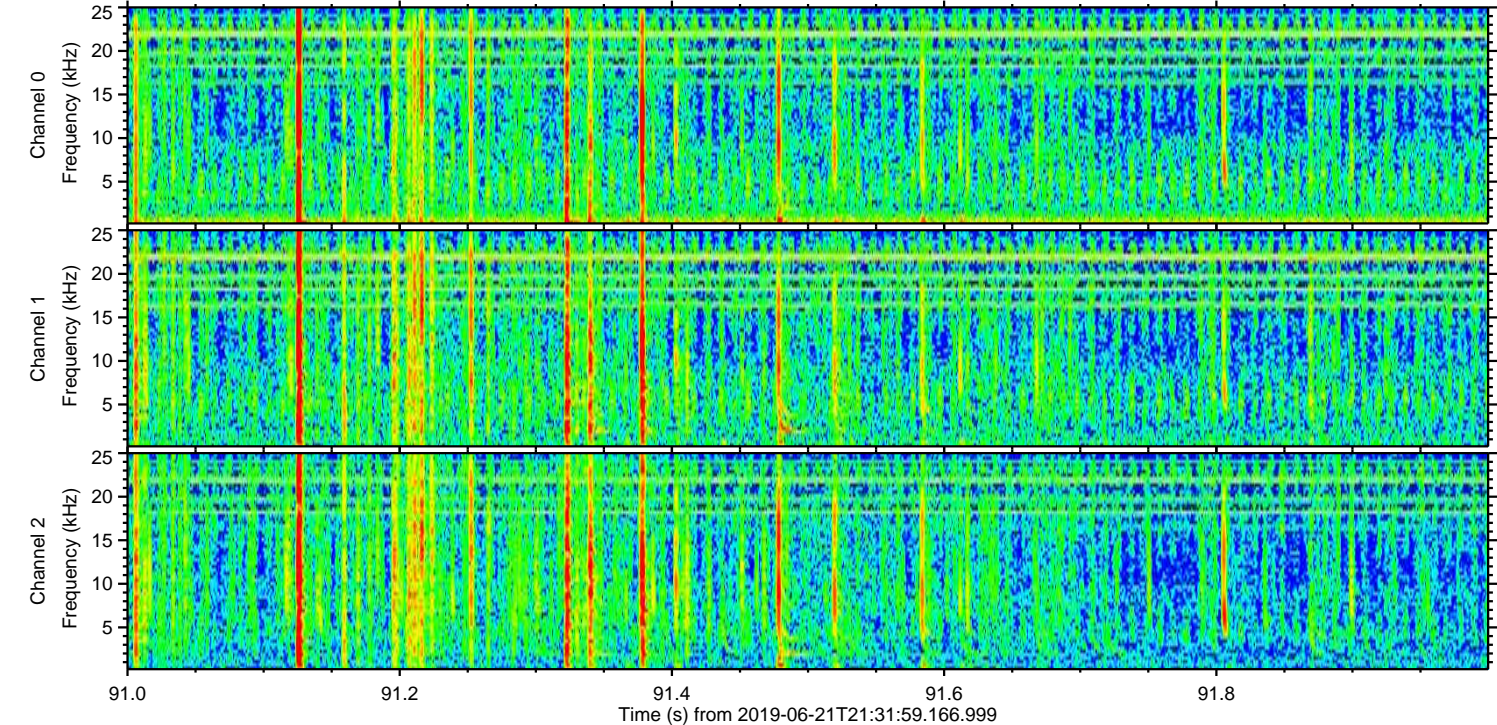
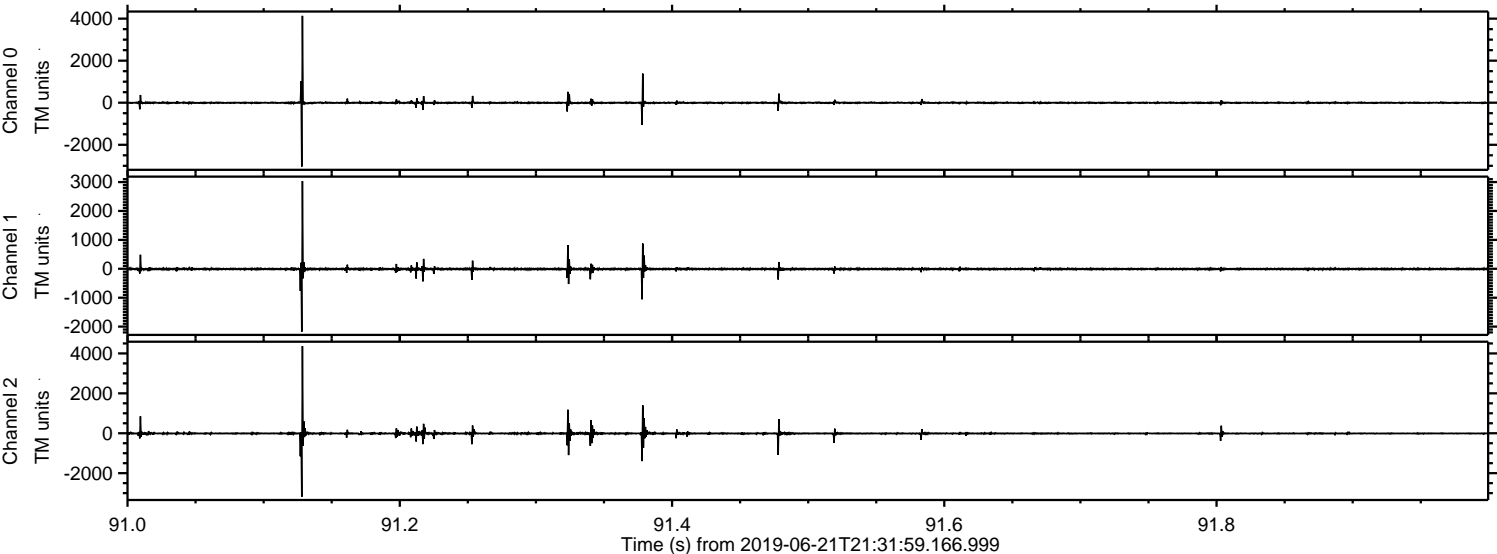


Processed Fri Jun 21 23:40:18 2019 by ELM ver.2012-10-06 from 001\_\_elm20190621\_213158\_\_dat00.bin





Processed Fri Jun 21 23:40:18 2019 by ELM ver.2012-10-06 from 001\_\_elm20190621\_213158\_\_dat00.bin



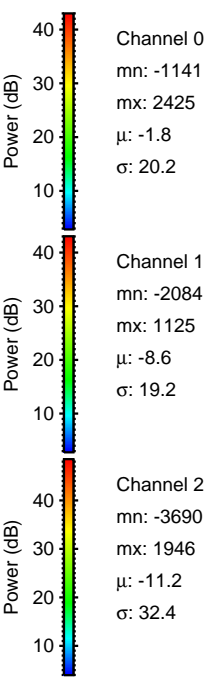
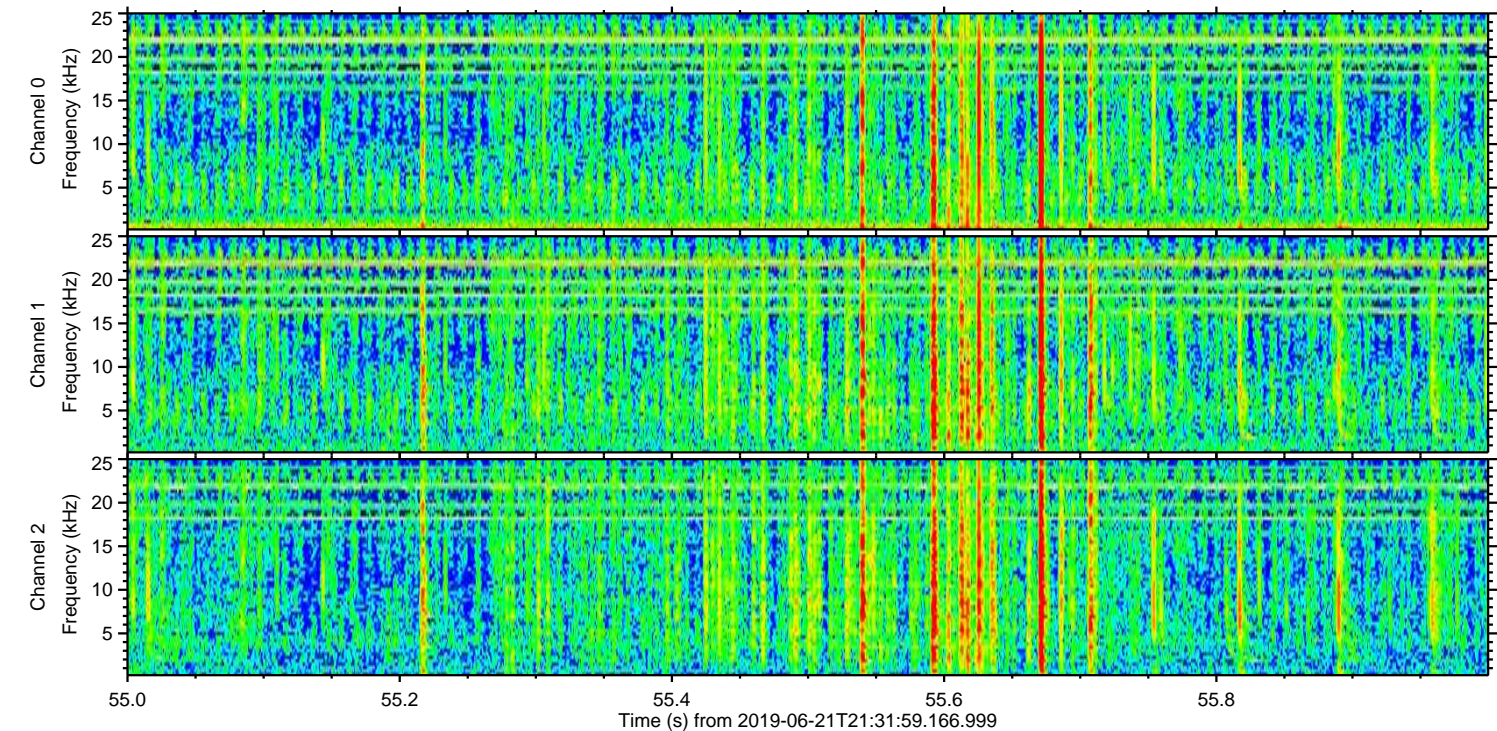
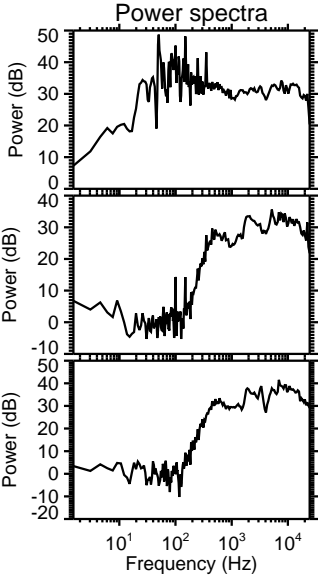
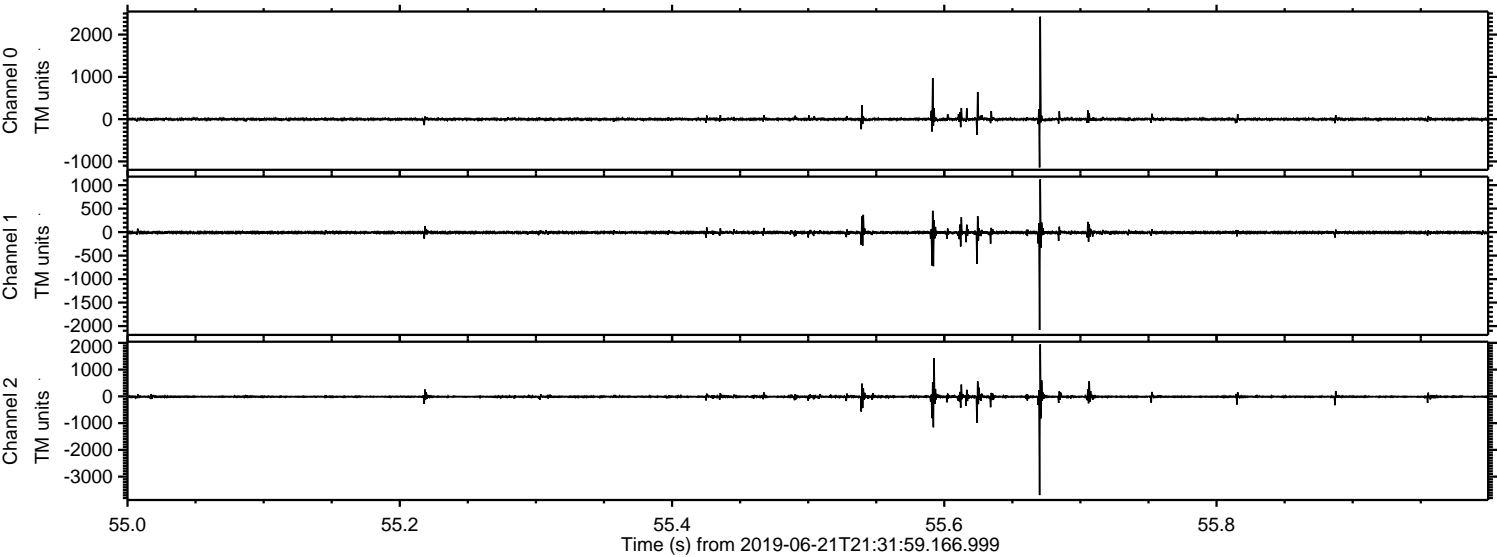
Channel 0  
mn: -3039  
mx: 4130  
 $\mu$ : -1.9  
 $\sigma$ : 34.8

Channel 1  
mn: -2178  
mx: 3036  
 $\mu$ : -8.6  
 $\sigma$ : 29.8

Channel 2  
mn: -3185  
mx: 4367  
 $\mu$ : -11.3  
 $\sigma$ : 45.0

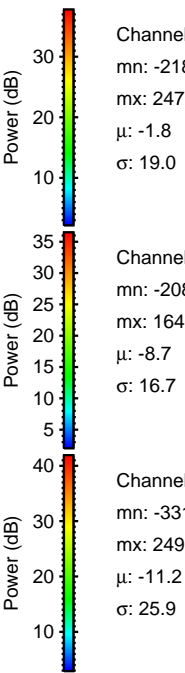
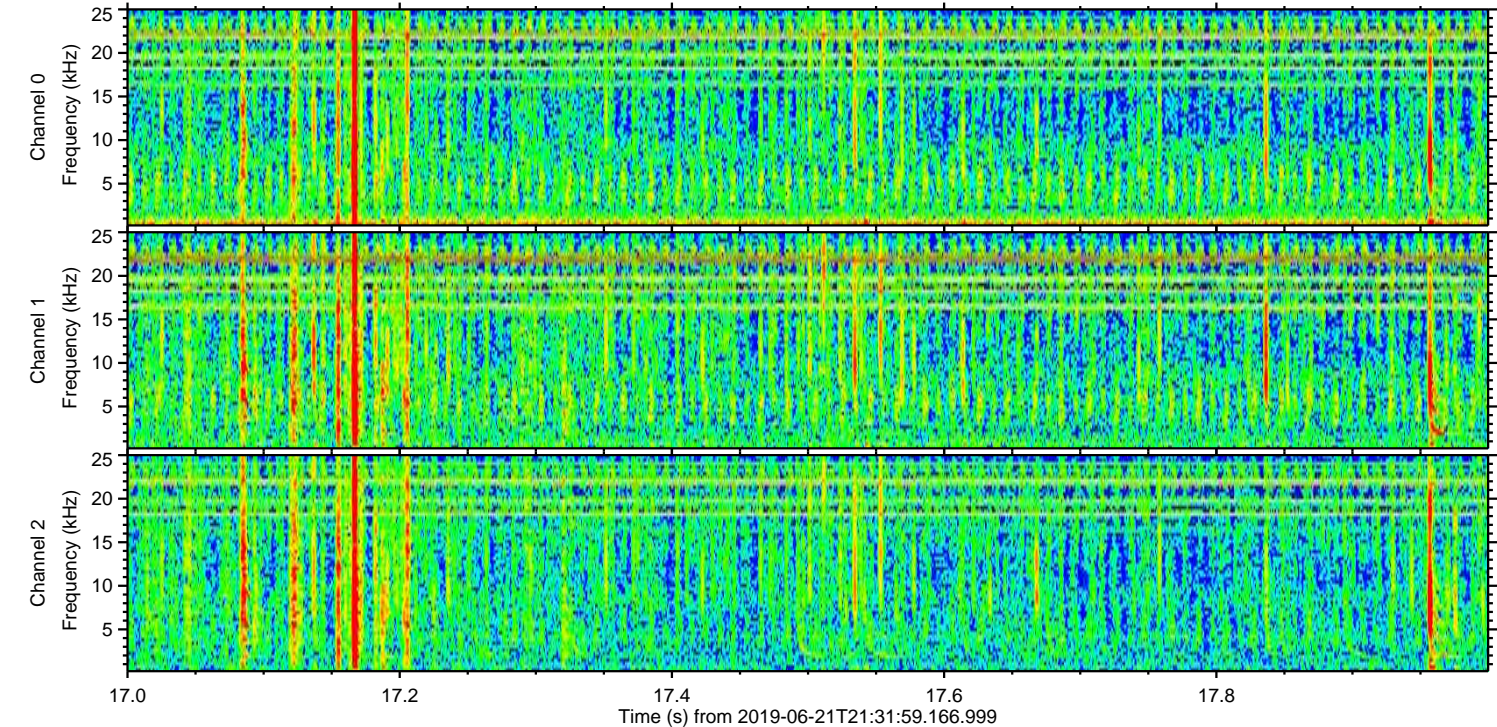
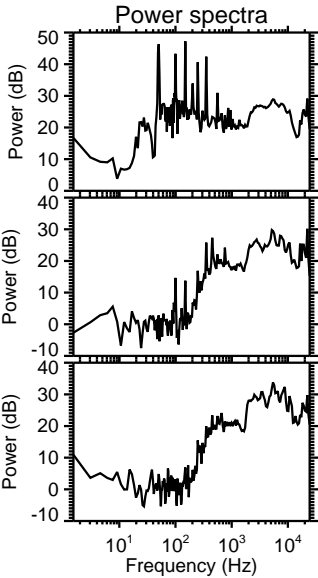
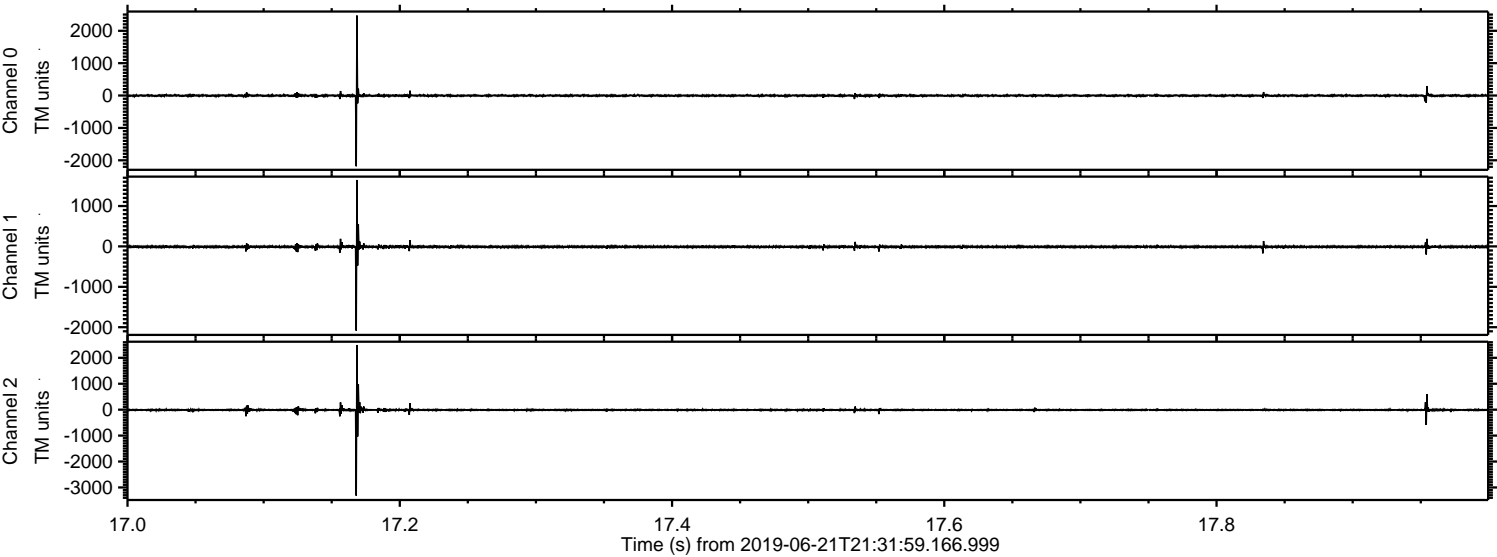


Processed Fri Jun 21 23:40:19 2019 by ELM ver.2012-10-06 from 001\_\_elm20190621\_213158\_\_dat00.bin





Processed Fri Jun 21 23:40:20 2019 by ELM ver.2012-10-06 from 001\_\_elm20190621\_213158\_\_dat00.bin





Processed Fri Jun 21 23:40:20 2019 by ELM ver.2012-10-06 from 001\_\_elm20190621\_213158\_\_dat00.bin

