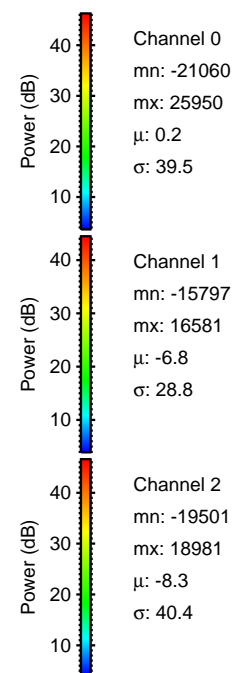
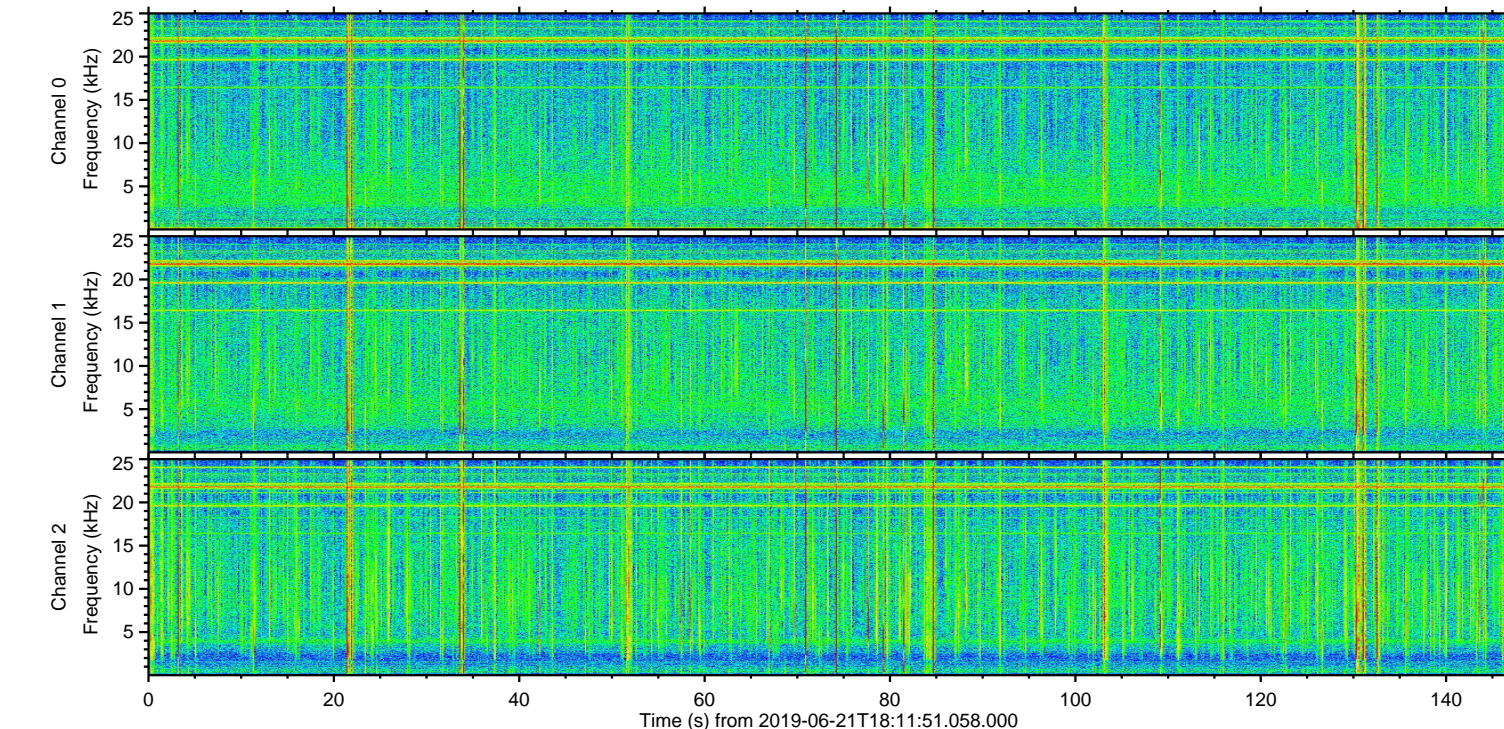
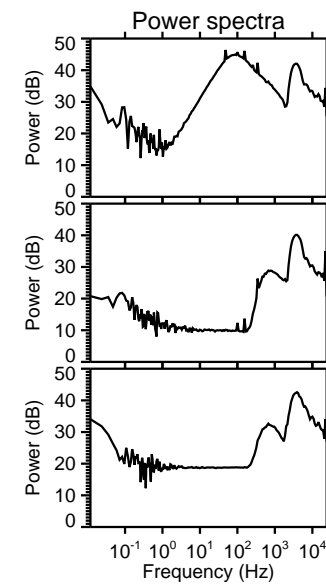
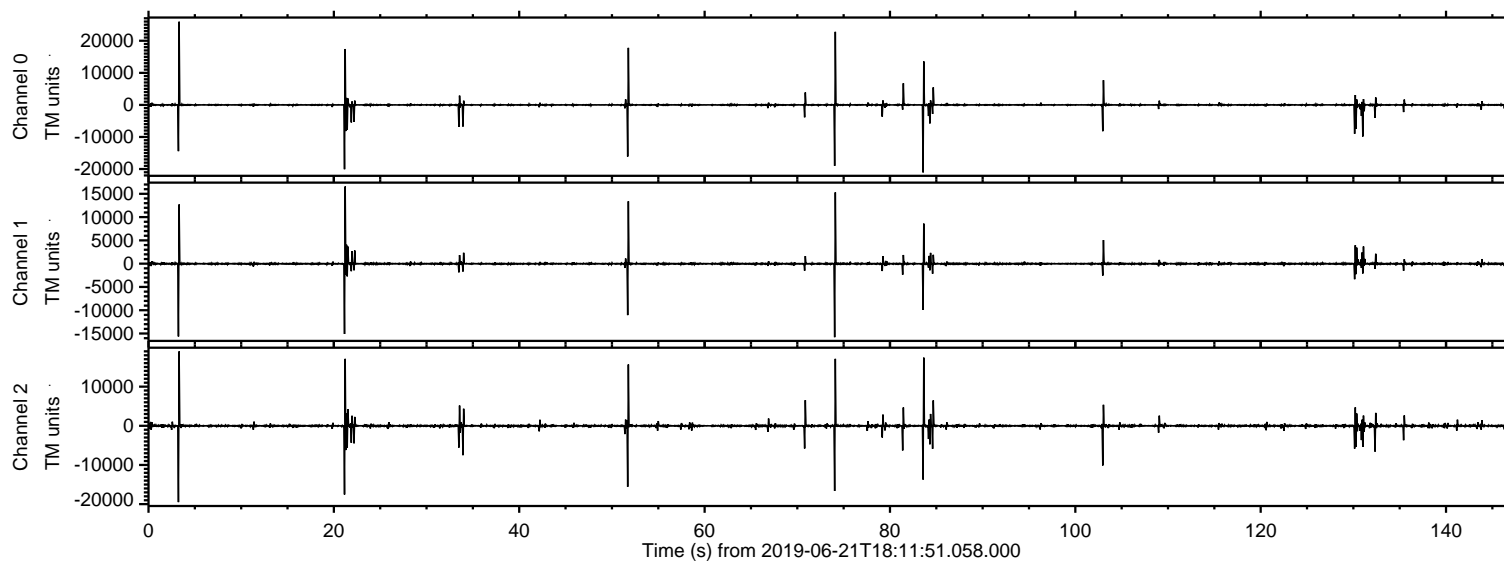
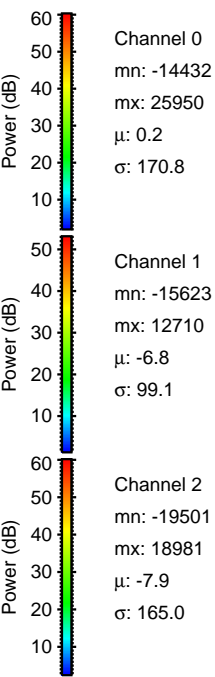
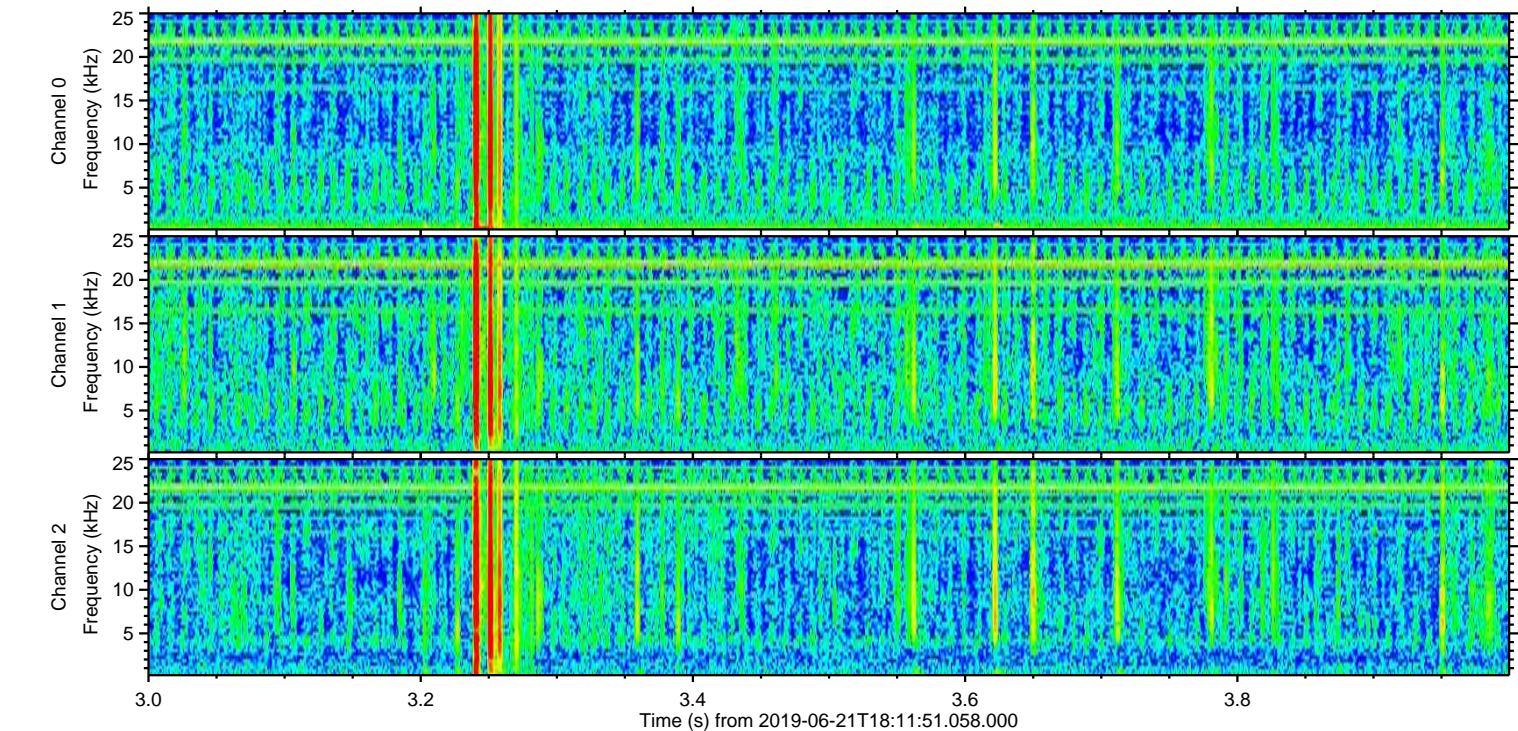
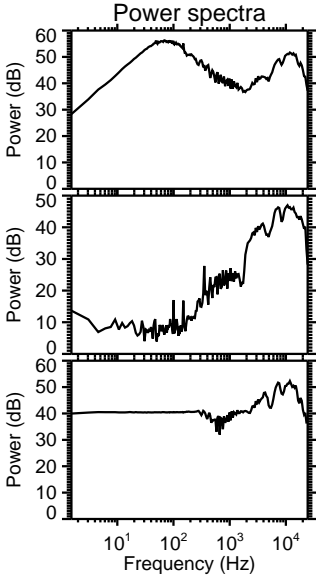
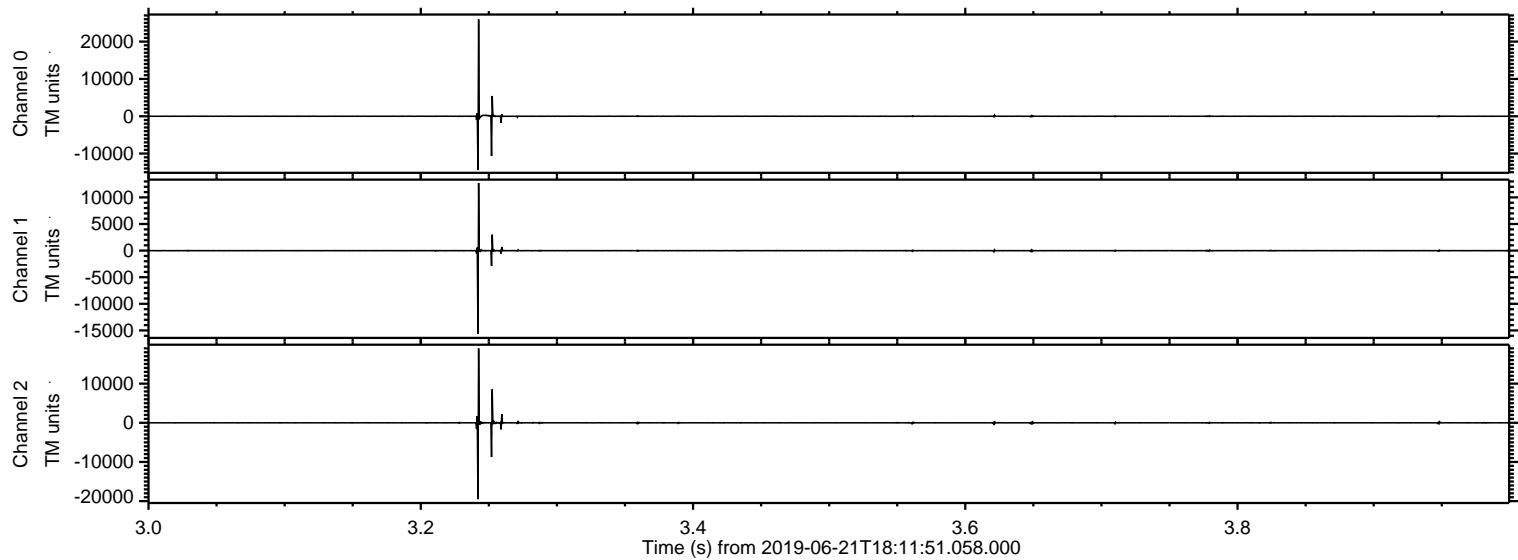


ELMAVAN 3D WAVEFORMS (Measured data sampled at 50 kHz) 51000 packets of 144 samples from 2019-06-21T18:11:51.058.000.

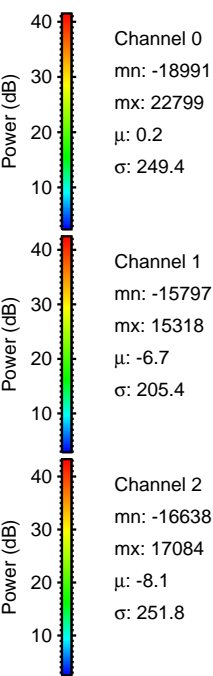
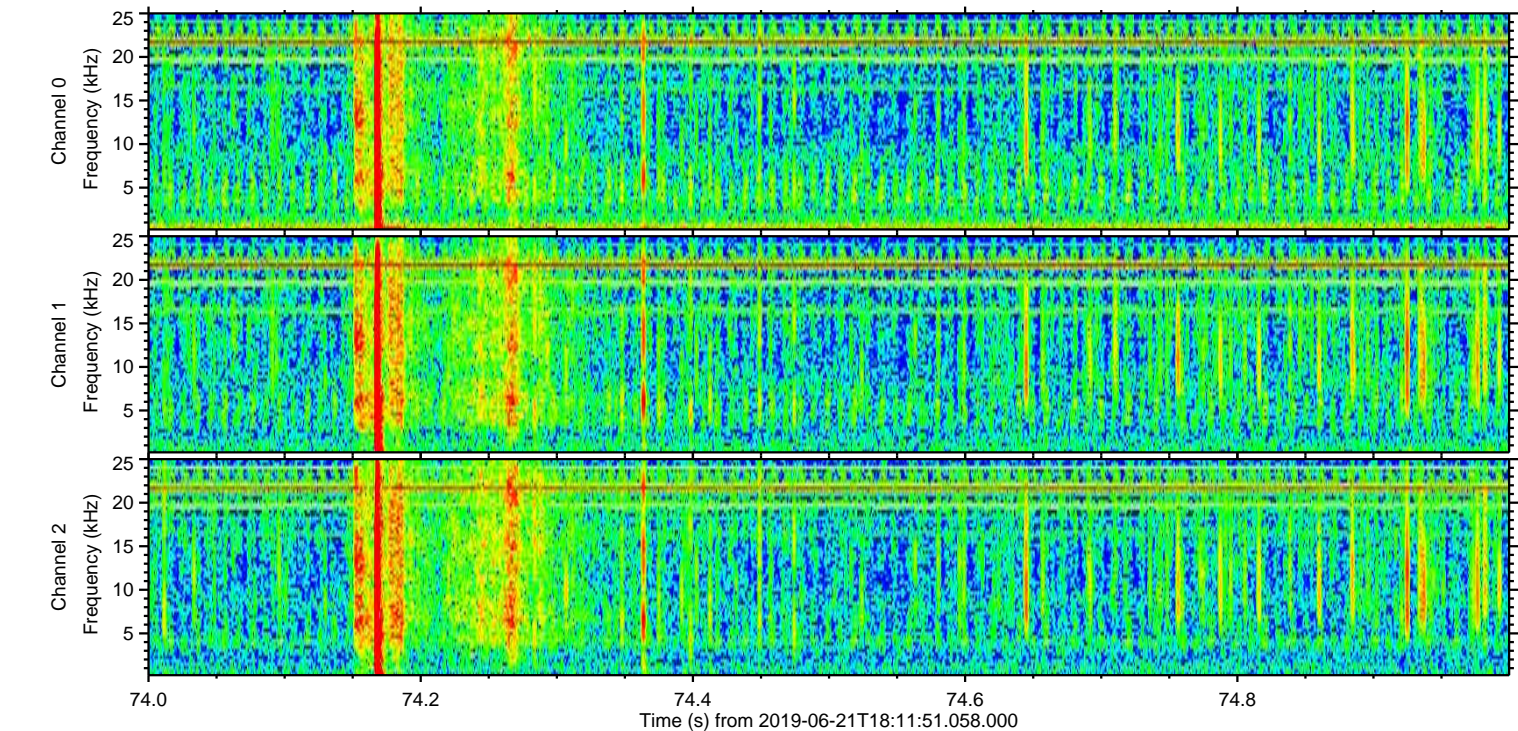
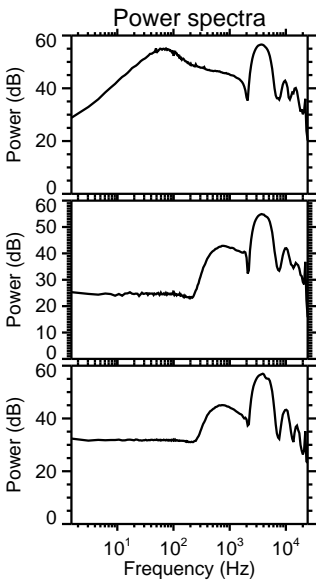
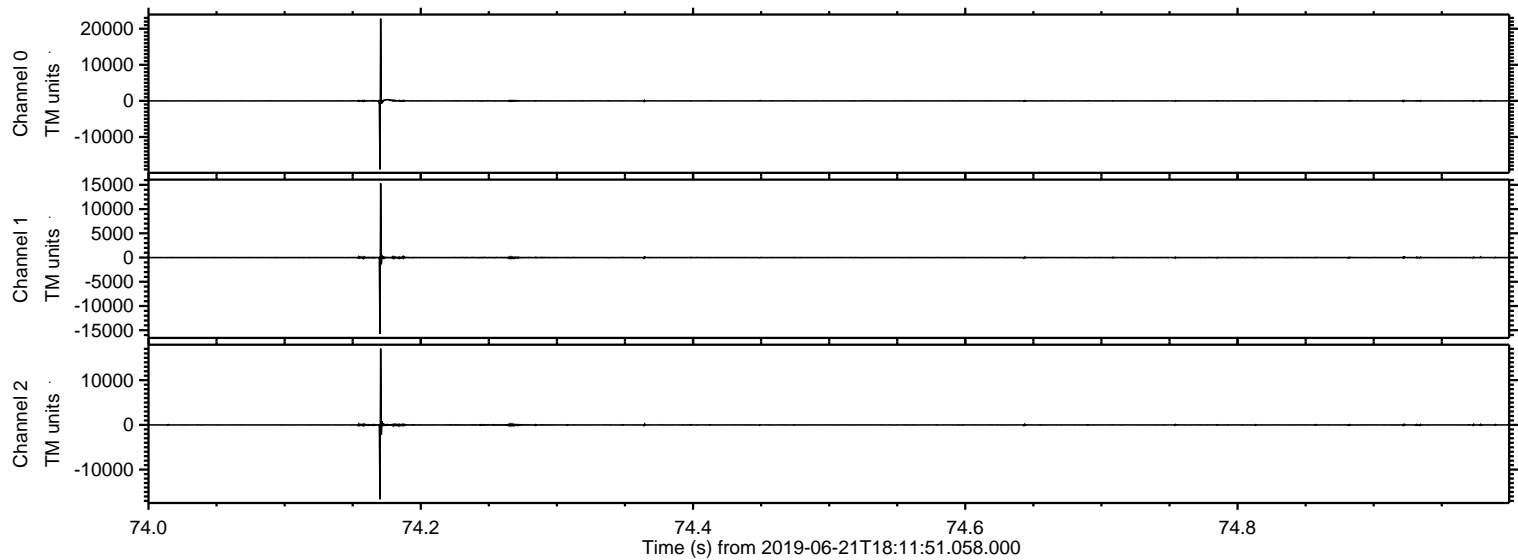
Processed Fri Jun 21 20:20:10 2019 by ELM ver.2012-10-06 from 001__elm20190621_181150__dat00.bin



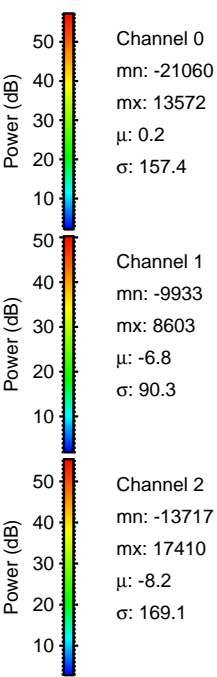
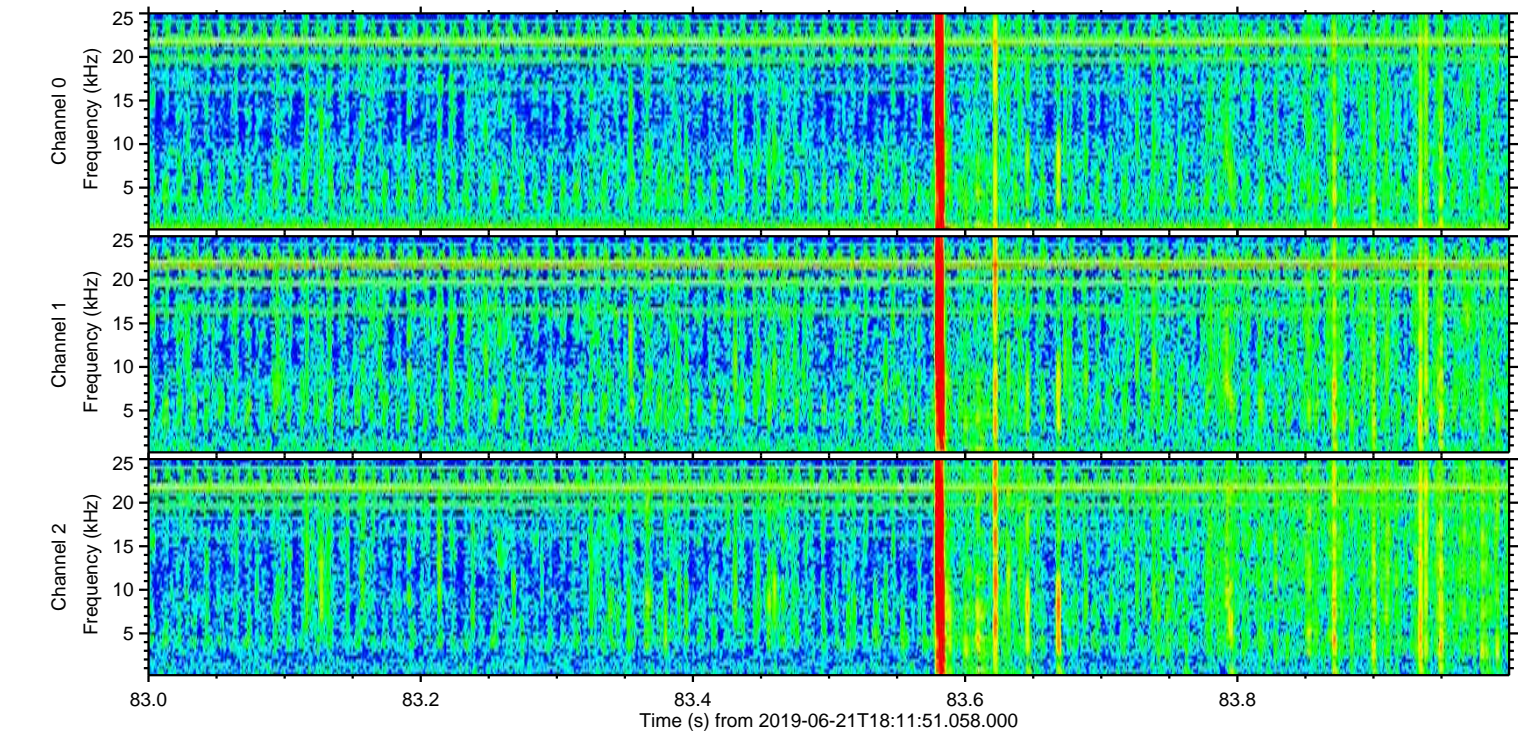
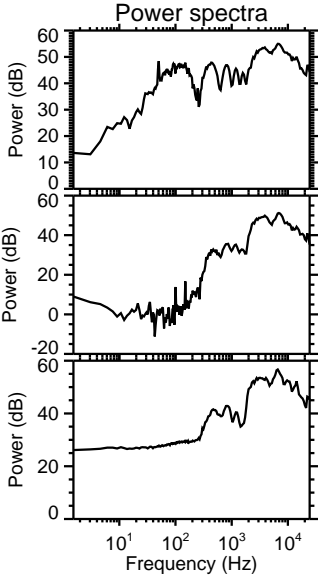
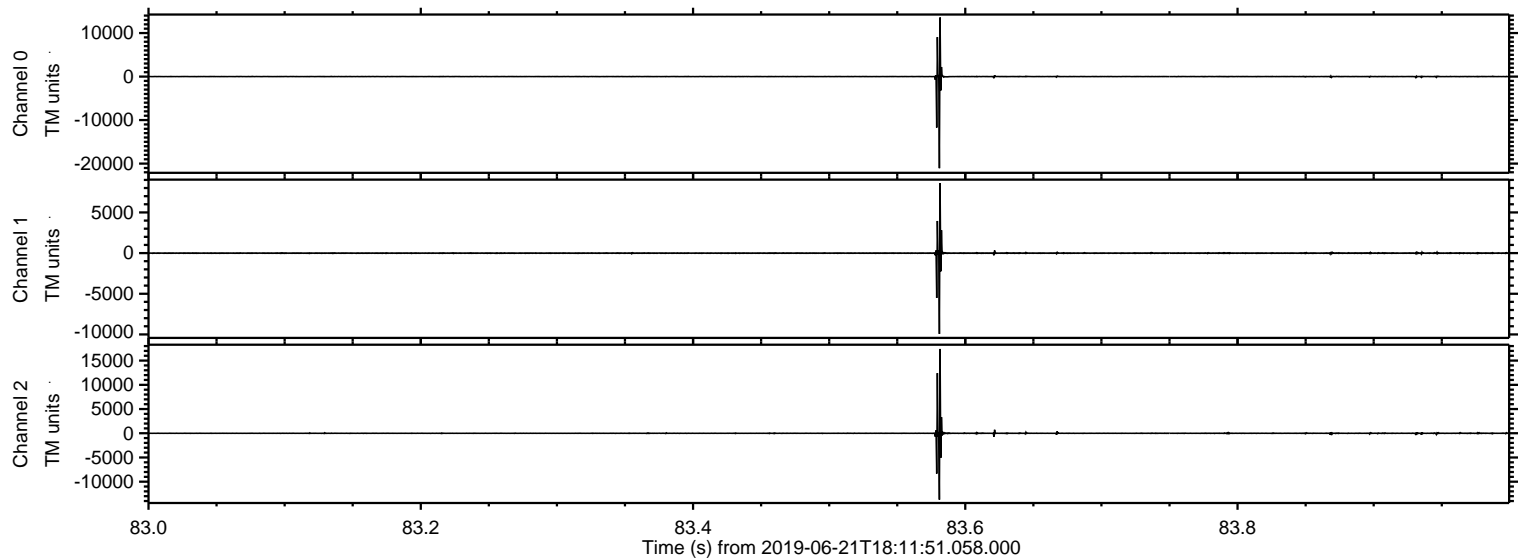
Processed Fri Jun 21 20:20:18 2019 by ELM ver.2012-10-06 from 001__elm20190621_181150__dat00.bin



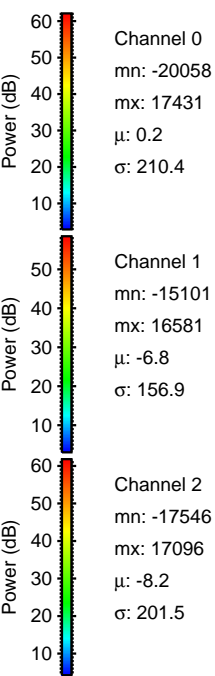
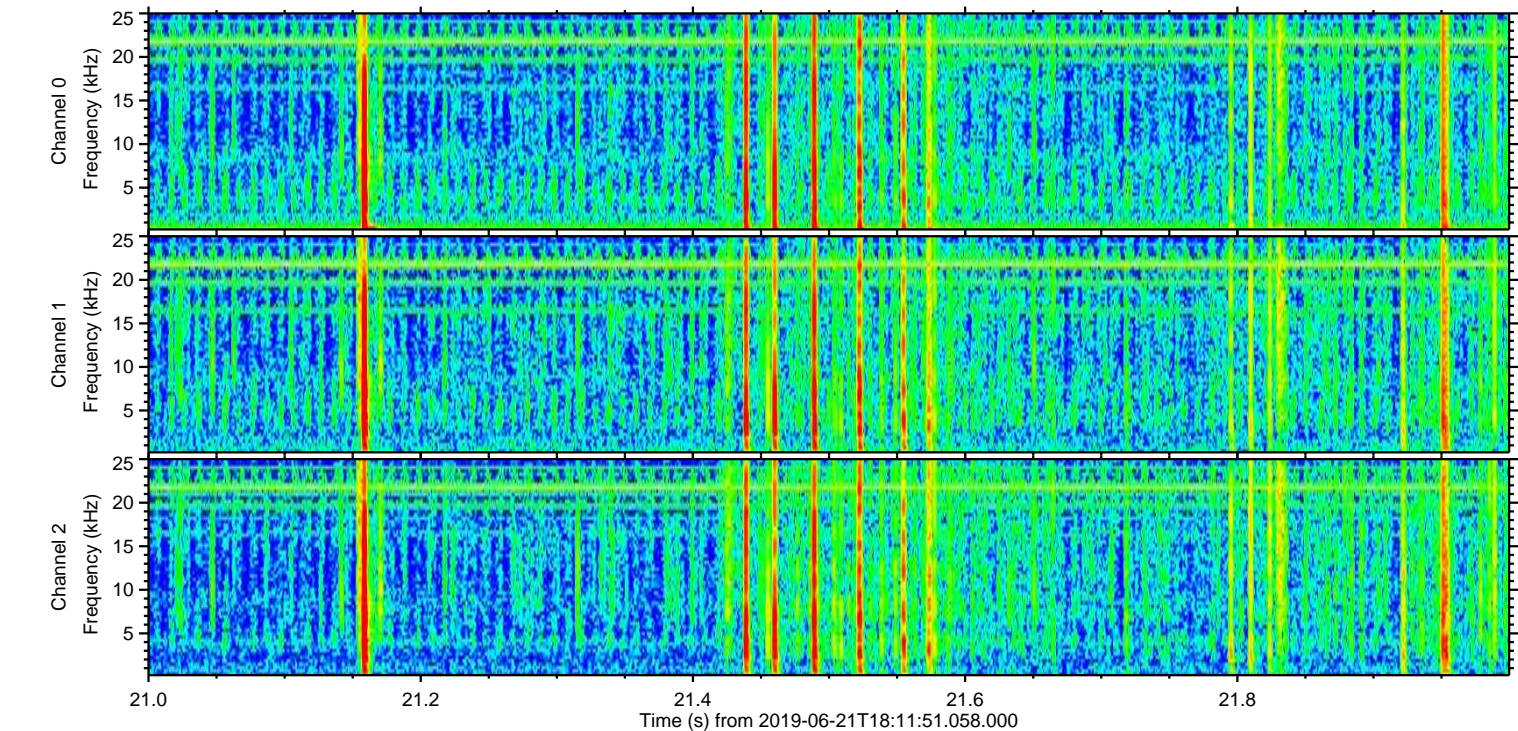
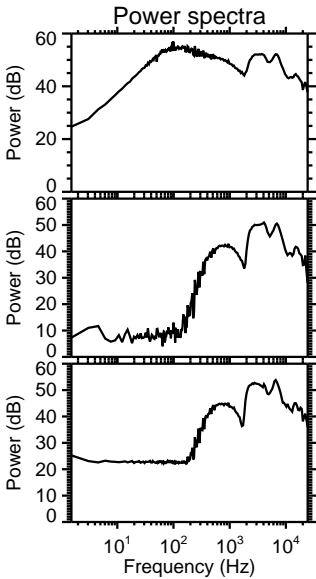
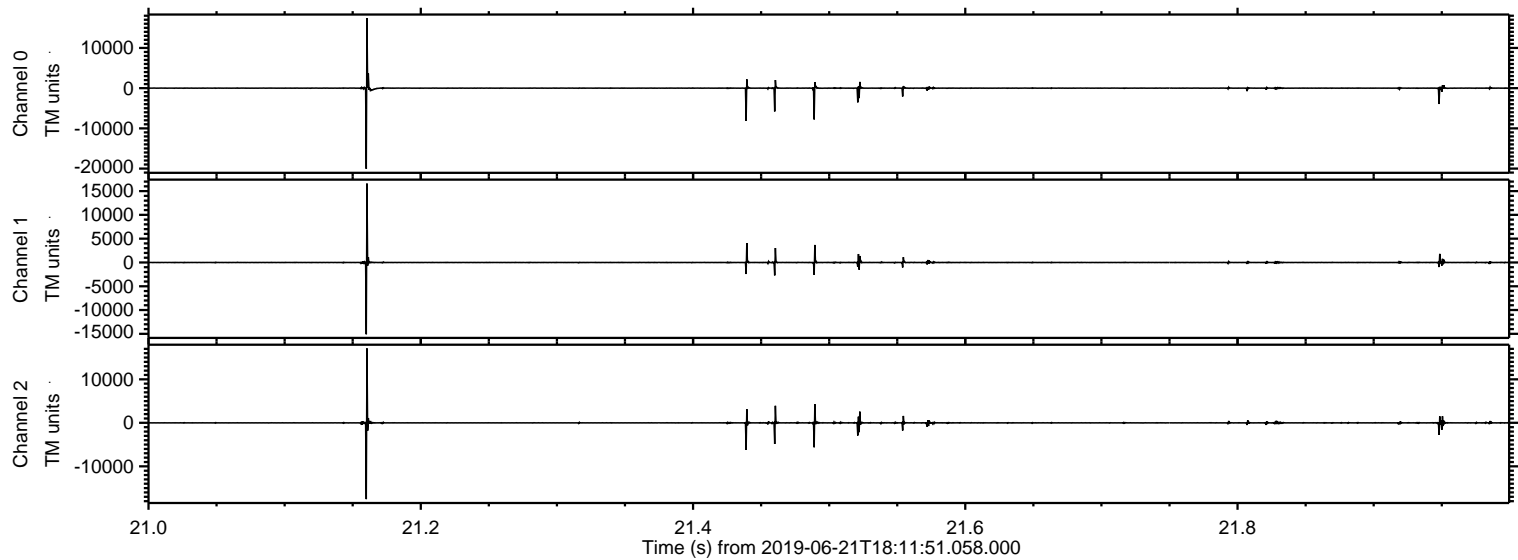
Processed Fri Jun 21 20:20:19 2019 by ELM ver.2012-10-06 from 001__elm20190621_181150__dat00.bin



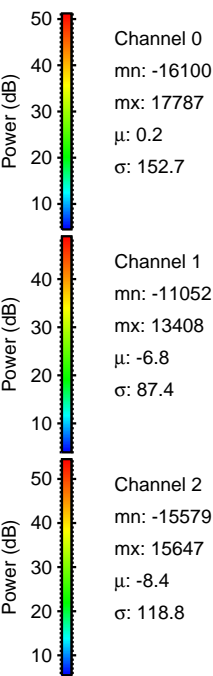
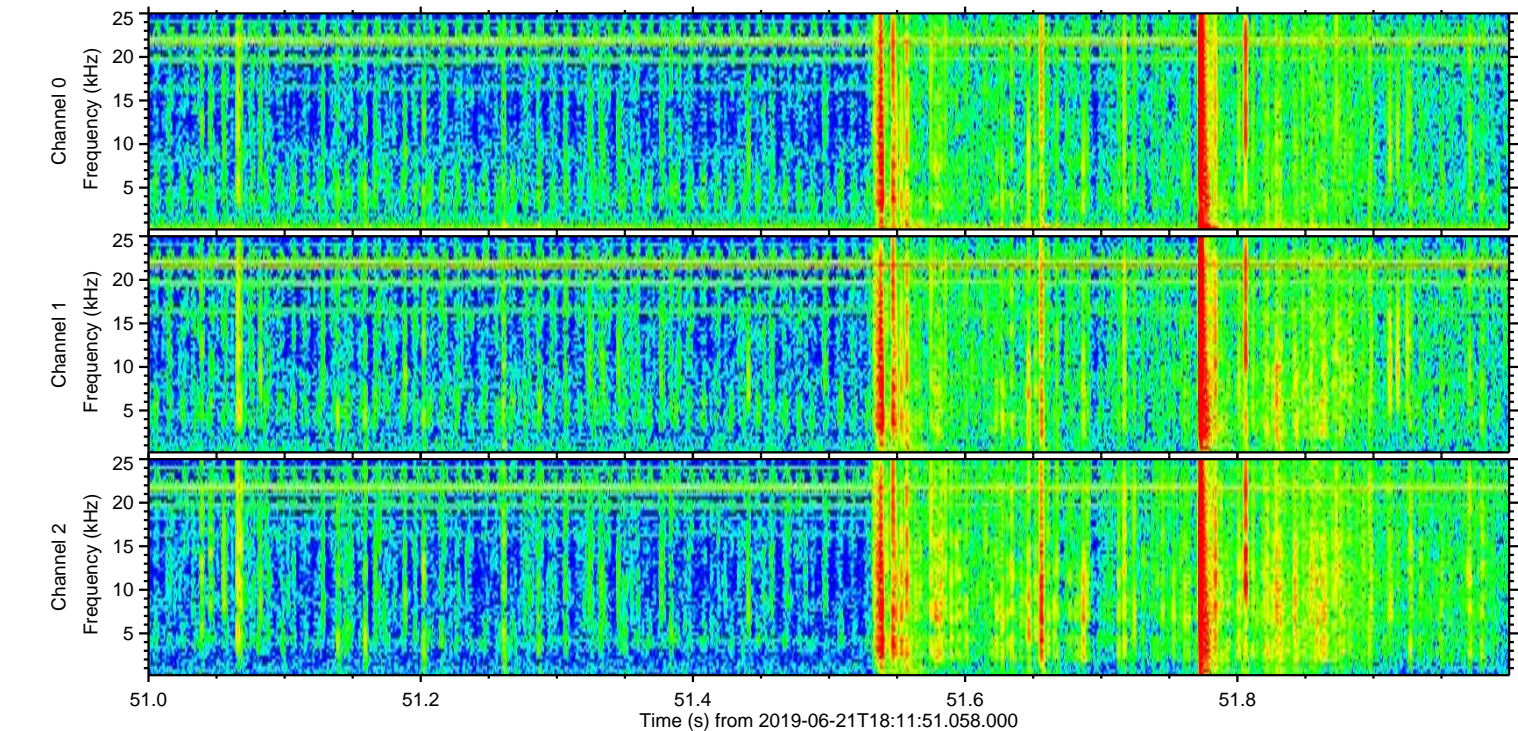
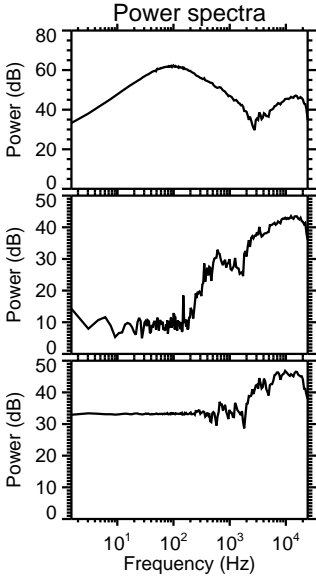
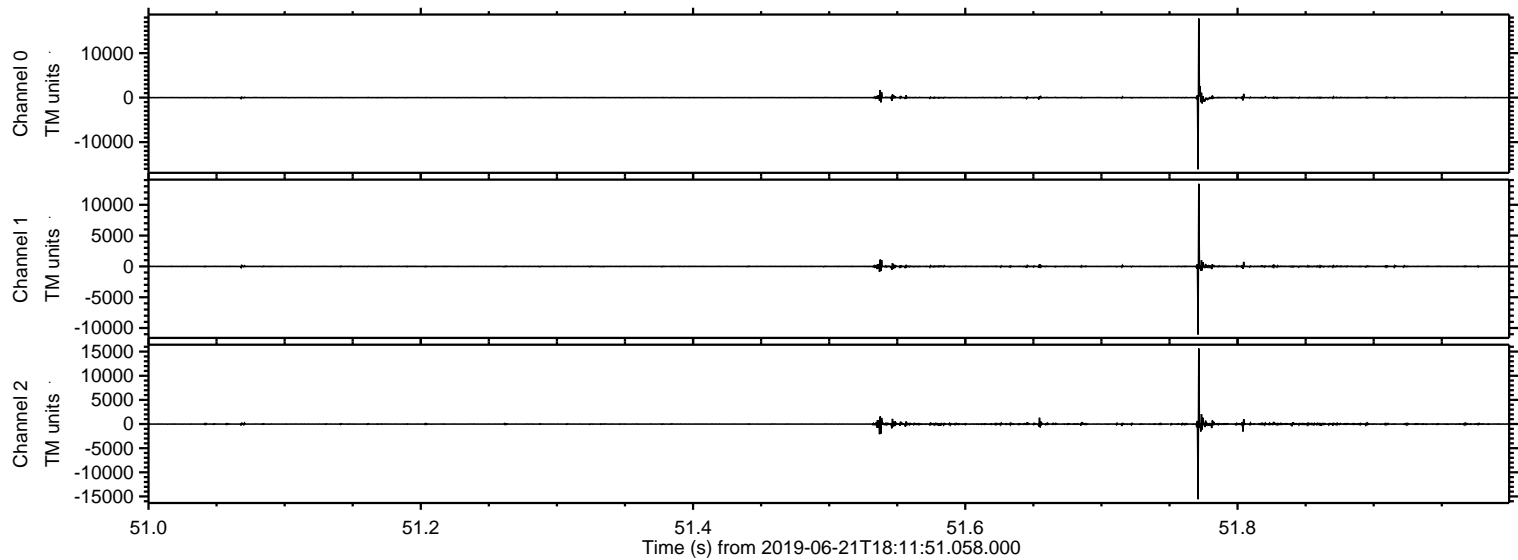
Processed Fri Jun 21 20:20:20 2019 by ELM ver.2012-10-06 from 001__elm20190621_181150__dat00.bin



Processed Fri Jun 21 20:20:21 2019 by ELM ver.2012-10-06 from 001__elm20190621_181150__dat00.bin

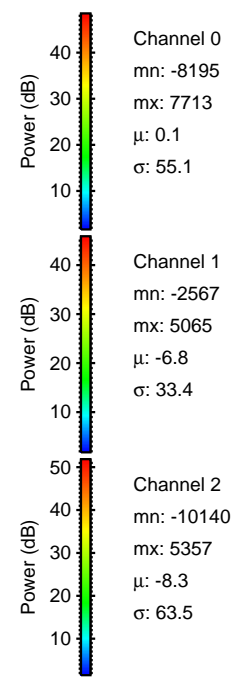
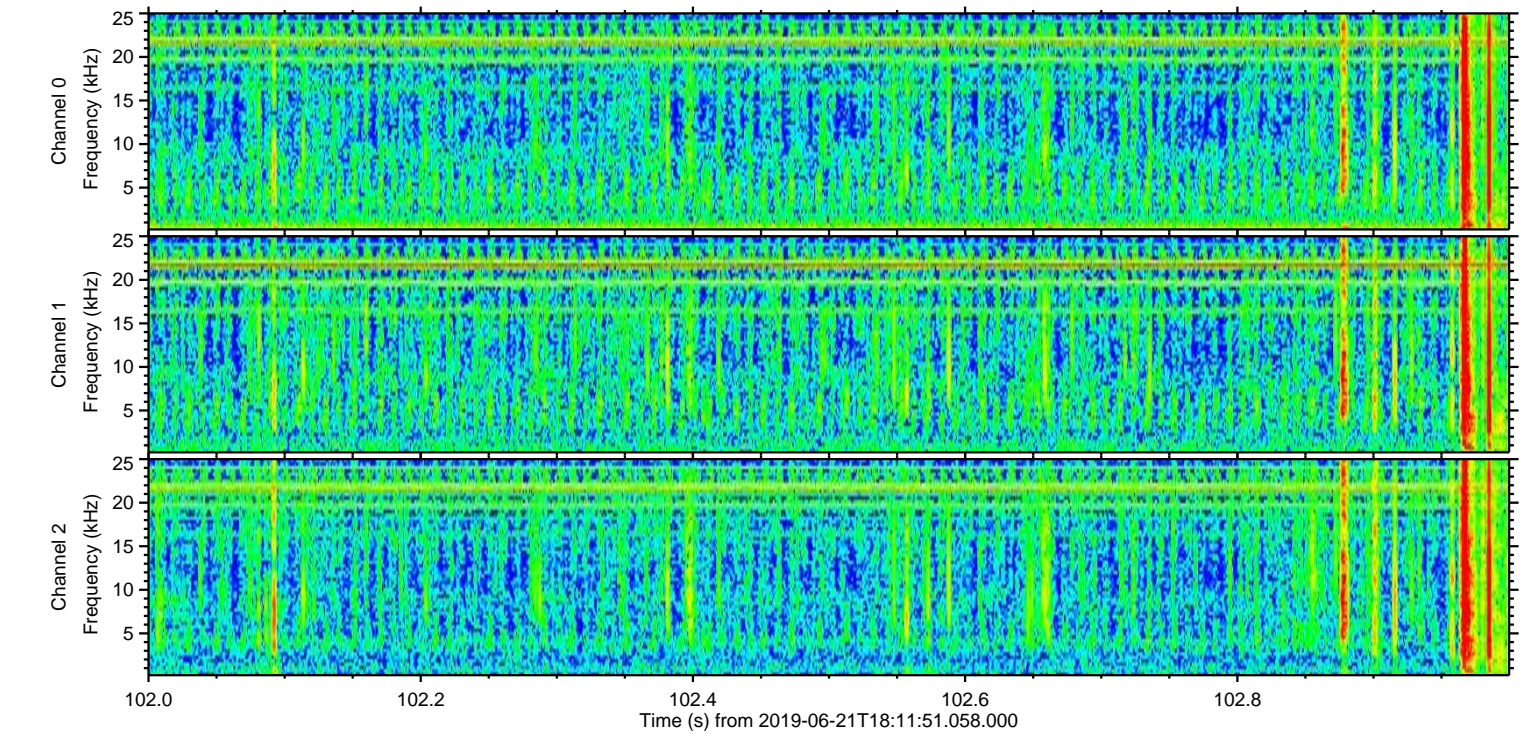
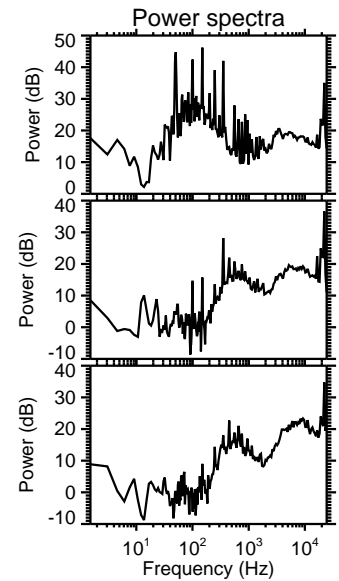
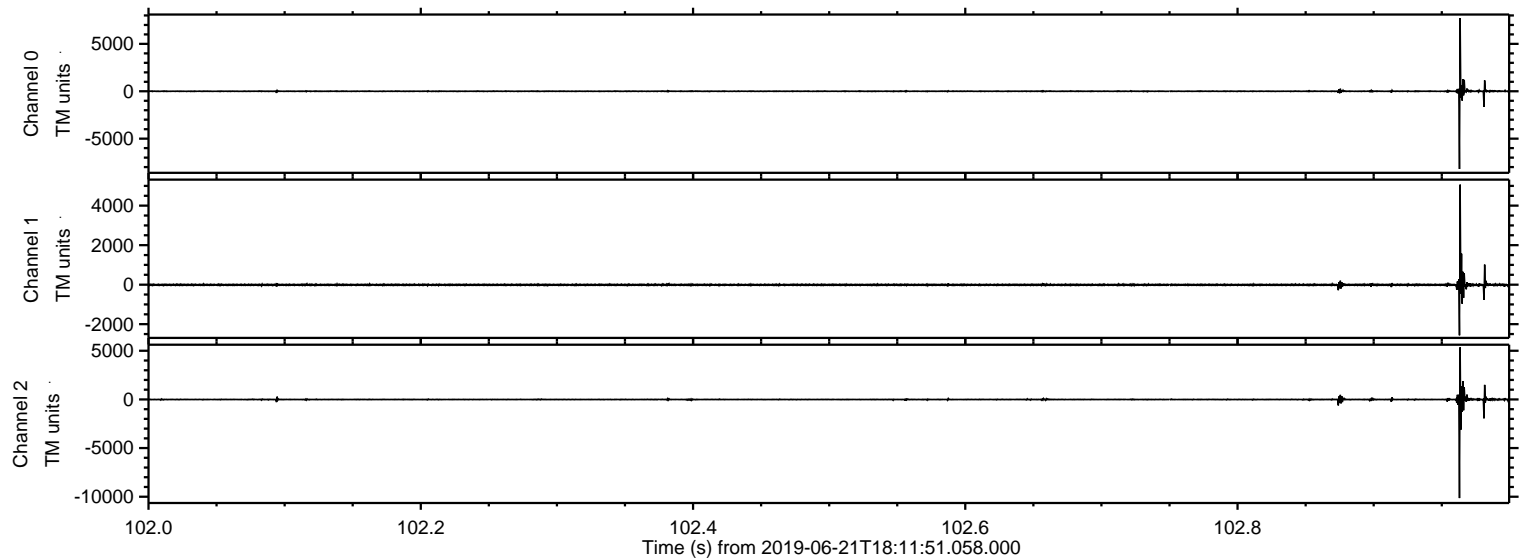


Processed Fri Jun 21 20:20:21 2019 by ELM ver.2012-10-06 from 001__elm20190621_181150__dat00.bin



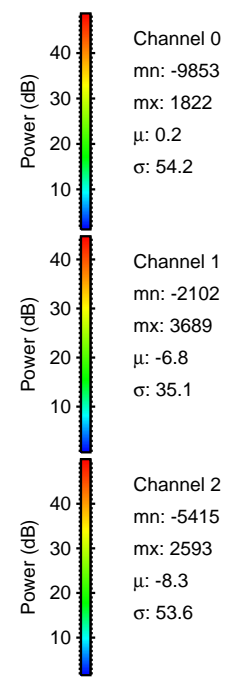
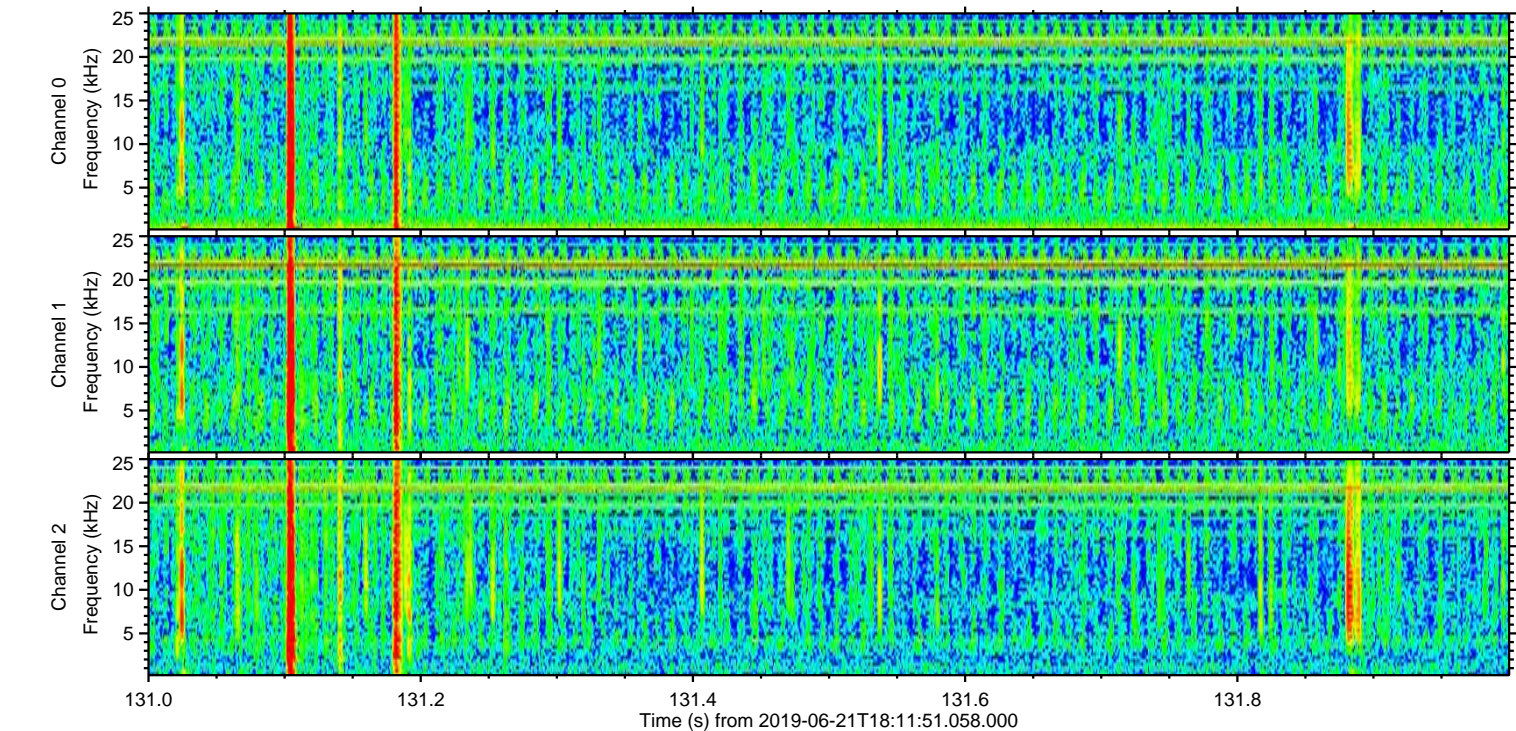
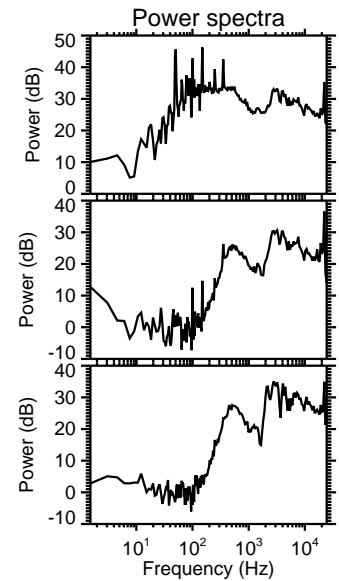
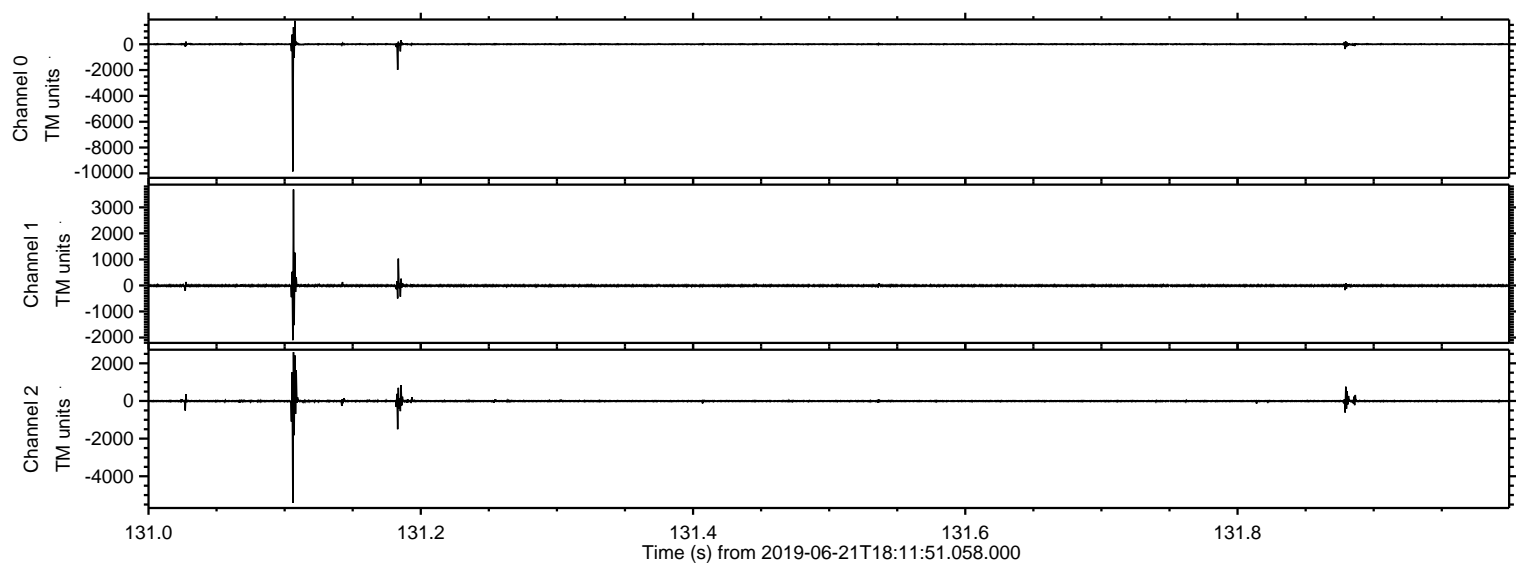
ELMAVAN 3D WAVEFORMS (Measured data sampled at 50 kHz) 51000 packets of 144 samples from 2019-06-21T18:11:51.058.000. Part 103/147

Processed Fri Jun 21 20:20:22 2019 by ELM ver.2012-10-06 from 001__elm20190621_181150__dat00.bin



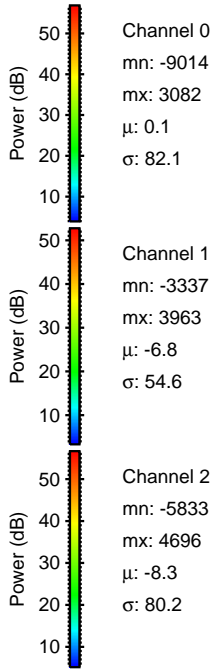
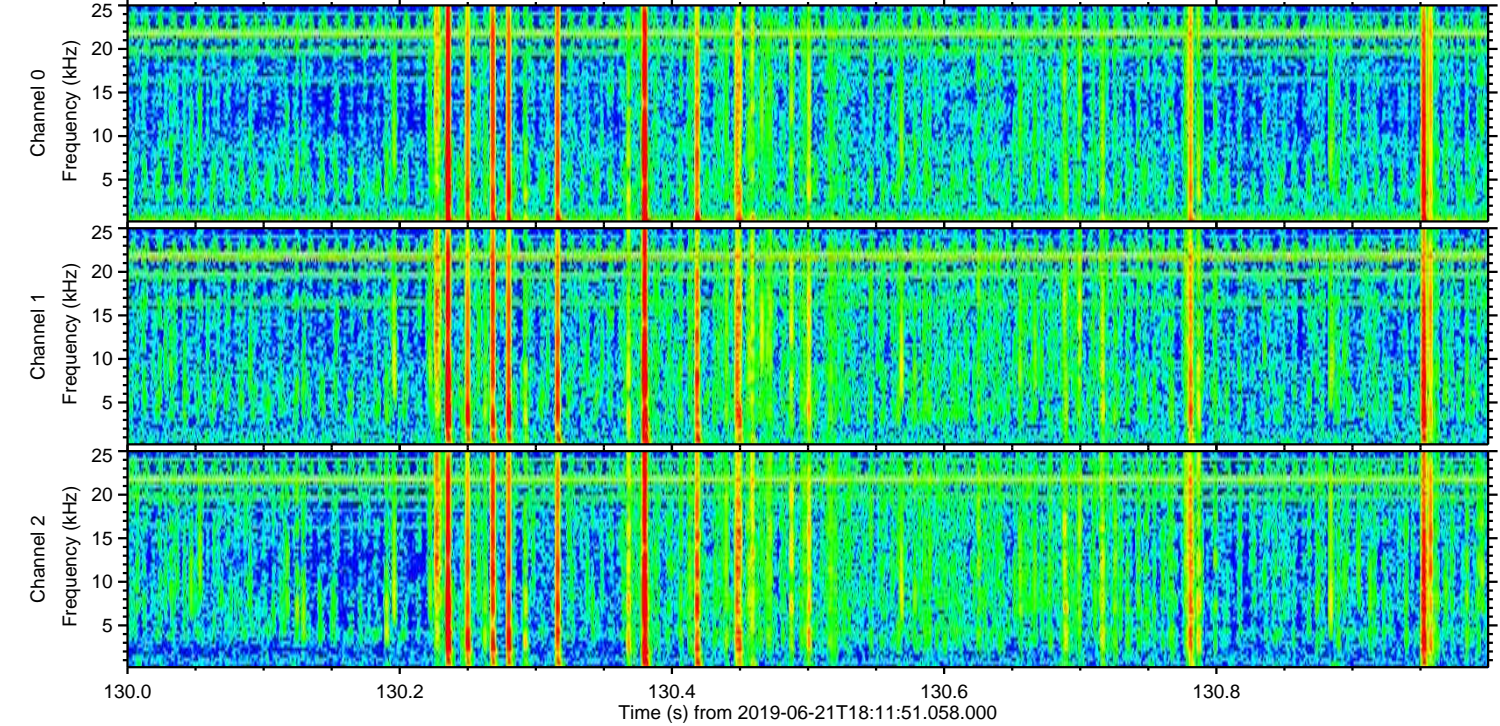
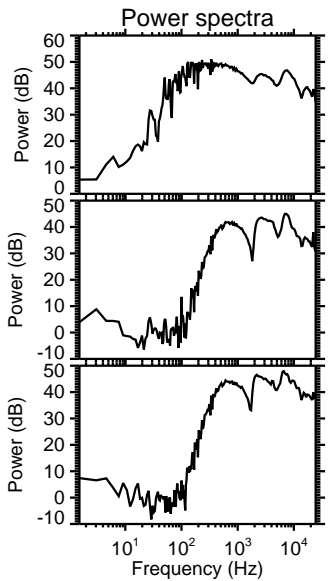
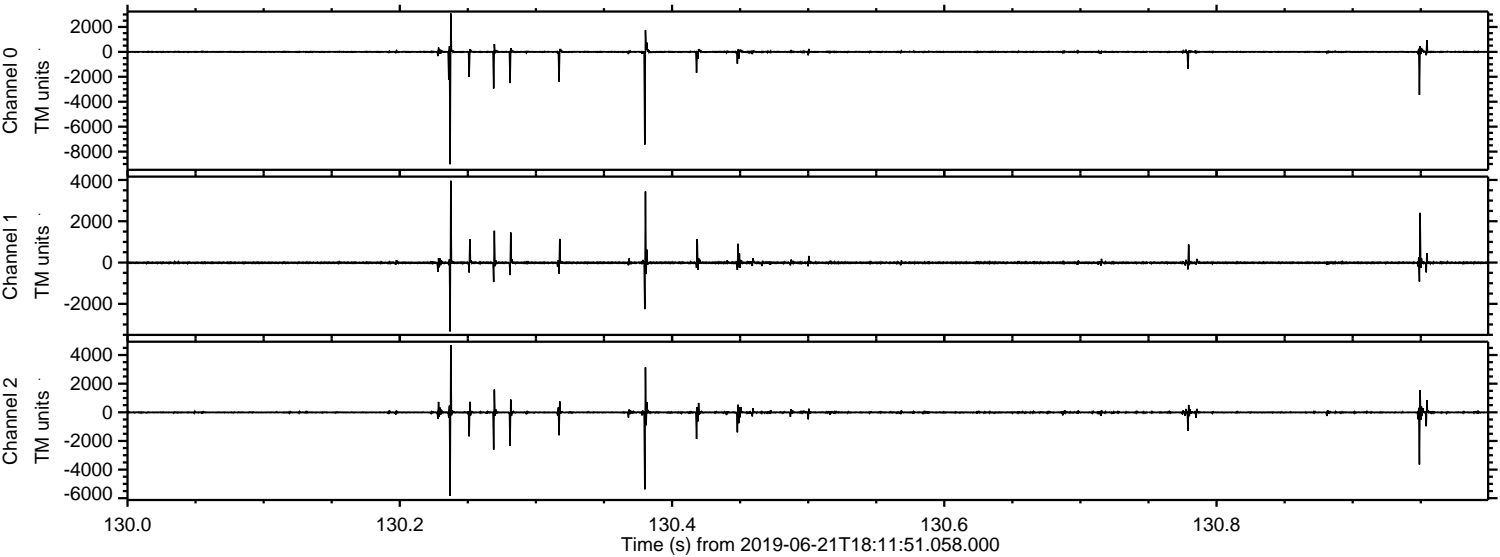
ELMAVAN 3D WAVEFORMS (Measured data sampled at 50 kHz) 51000 packets of 144 samples from 2019-06-21T18:11:51.058.000. Part 132/147

Processed Fri Jun 21 20:20:22 2019 by ELM ver.2012-10-06 from 001__elm20190621_181150__dat00.bin



ELMAVAN 3D WAVEFORMS (Measured data sampled at 50 kHz) 51000 packets of 144 samples from 2019-06-21T18:11:51.058.000. Part 131/147

Processed Fri Jun 21 20:20:23 2019 by ELM ver.2012-10-06 from 001__elm20190621_181150__dat00.bin



Channel 0
mn: -9014
mx: 3082
 μ : 0.1
 σ : 82.1

Channel 1
mn: -3337
mx: 3963
 μ : -6.8
 σ : 54.6

Channel 2
mn: -5833
mx: 4696
 μ : -8.3
 σ : 80.2

Processed Fri Jun 21 20:20:24 2019 by ELM ver.2012-10-06 from 001__elm20190621_181150__dat00.bin

