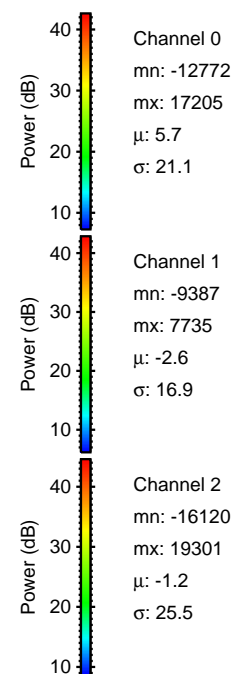
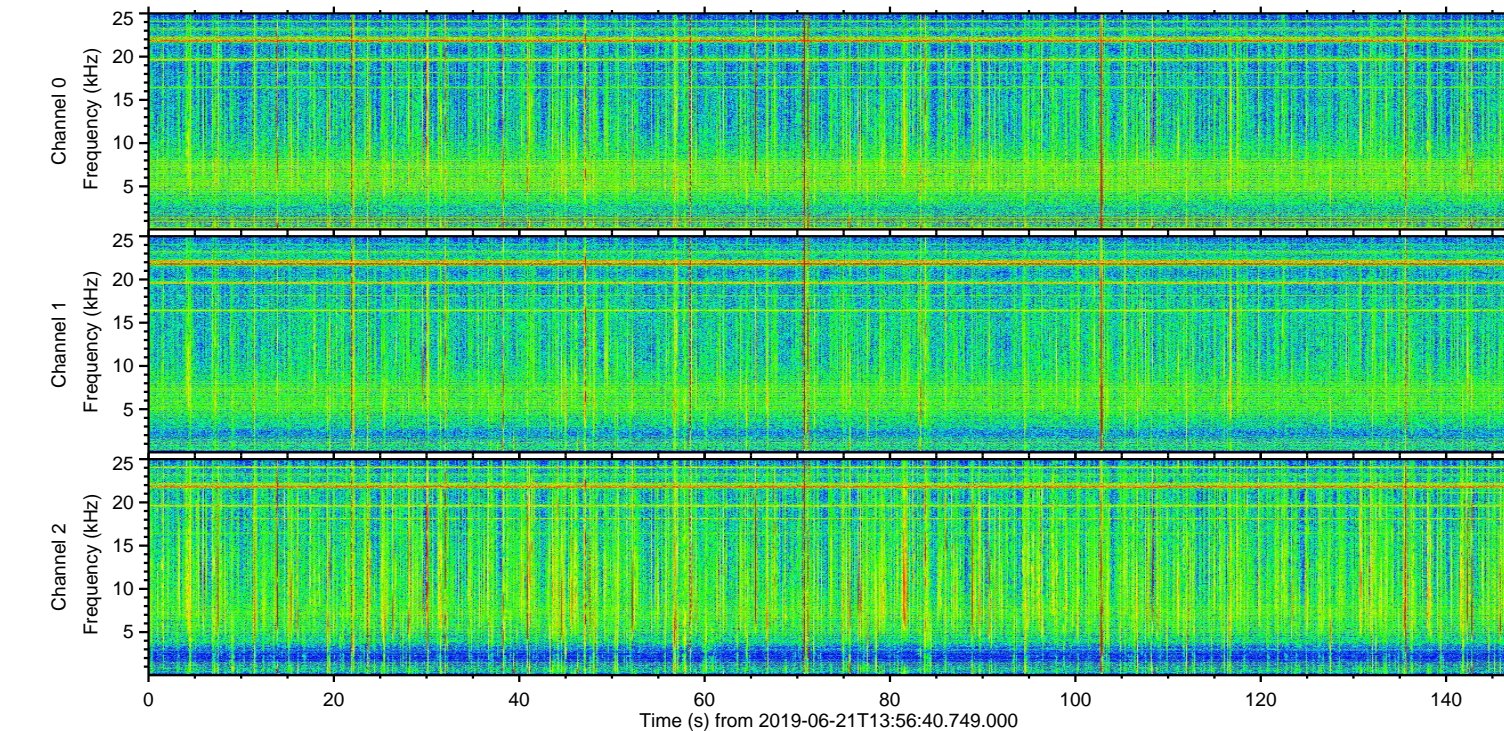
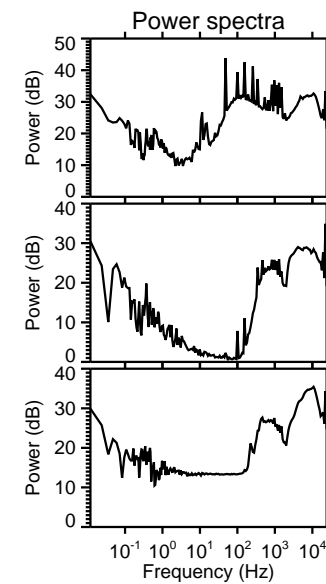
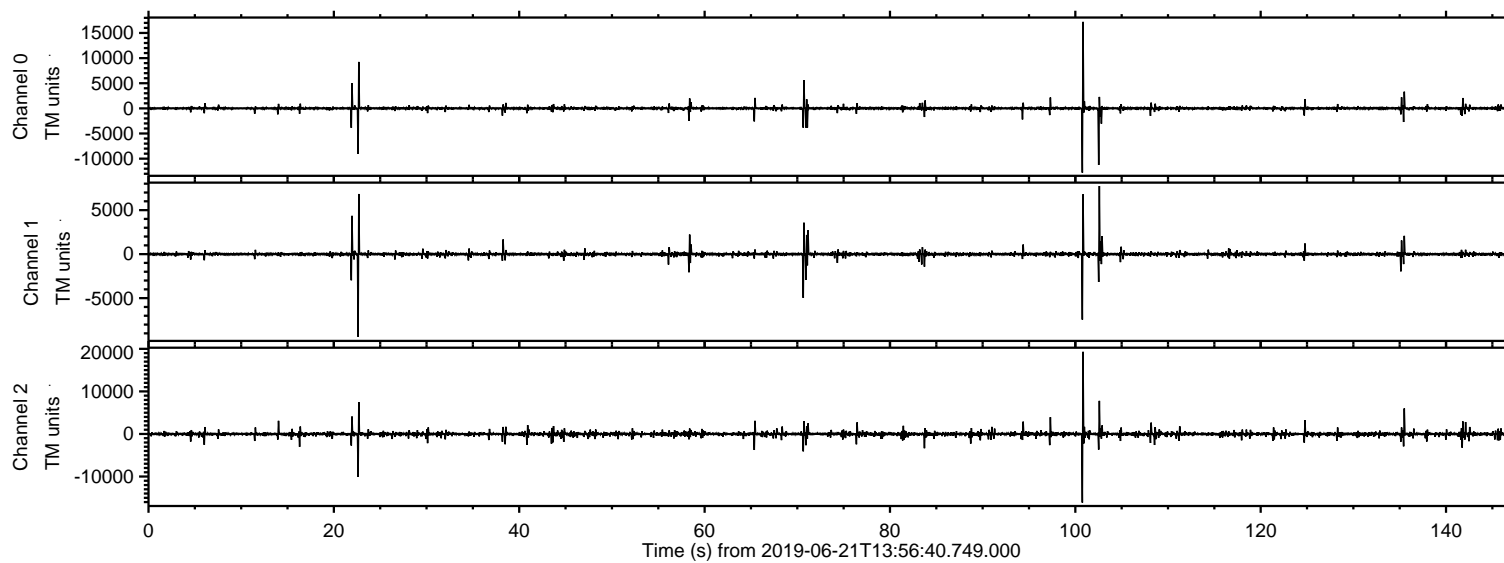


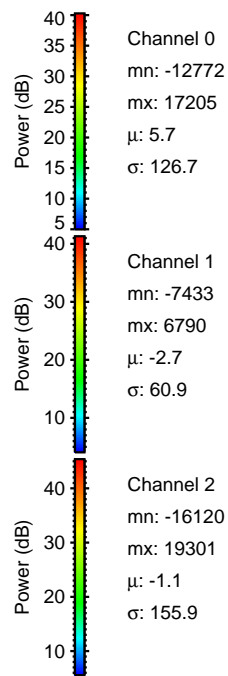
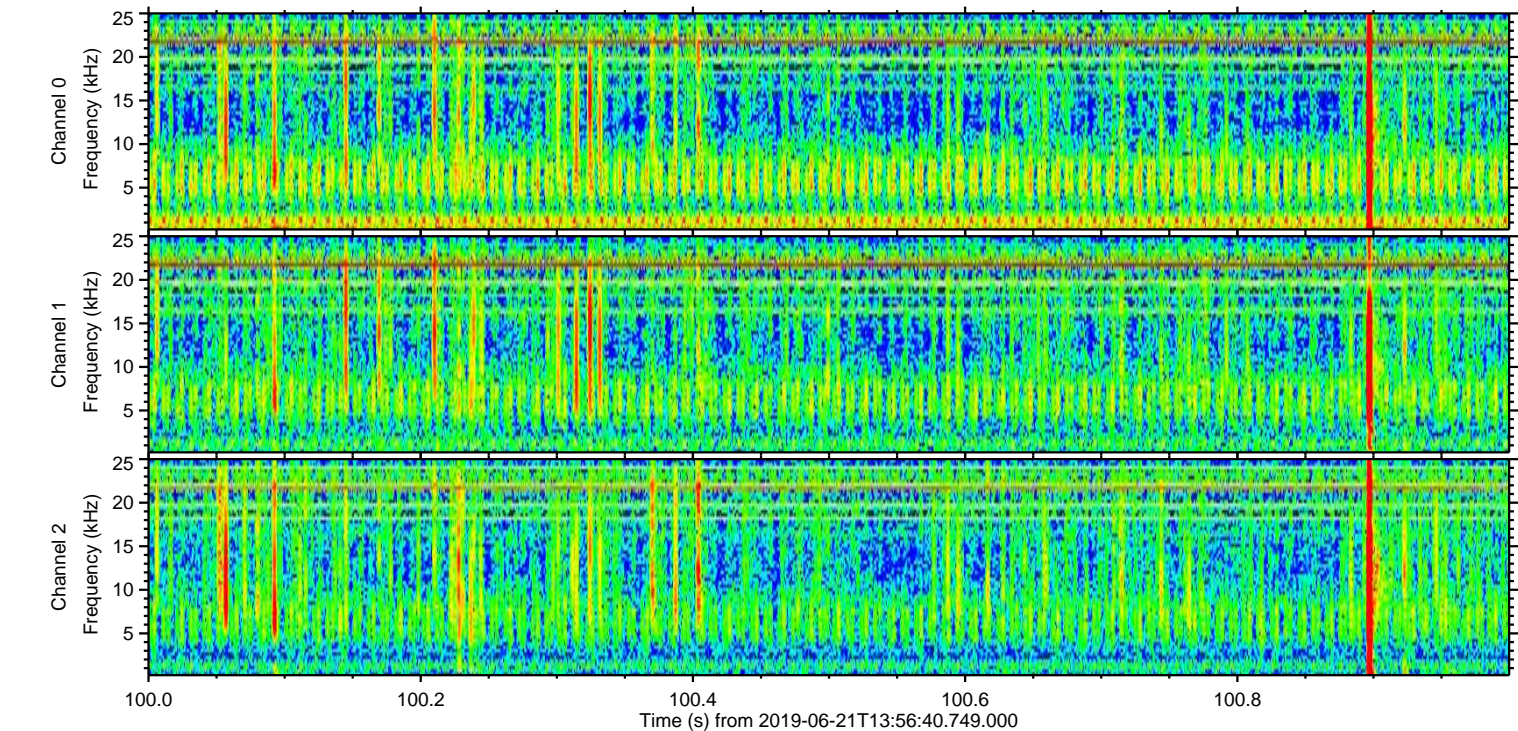
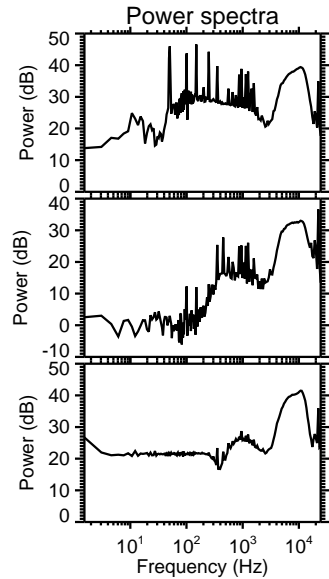
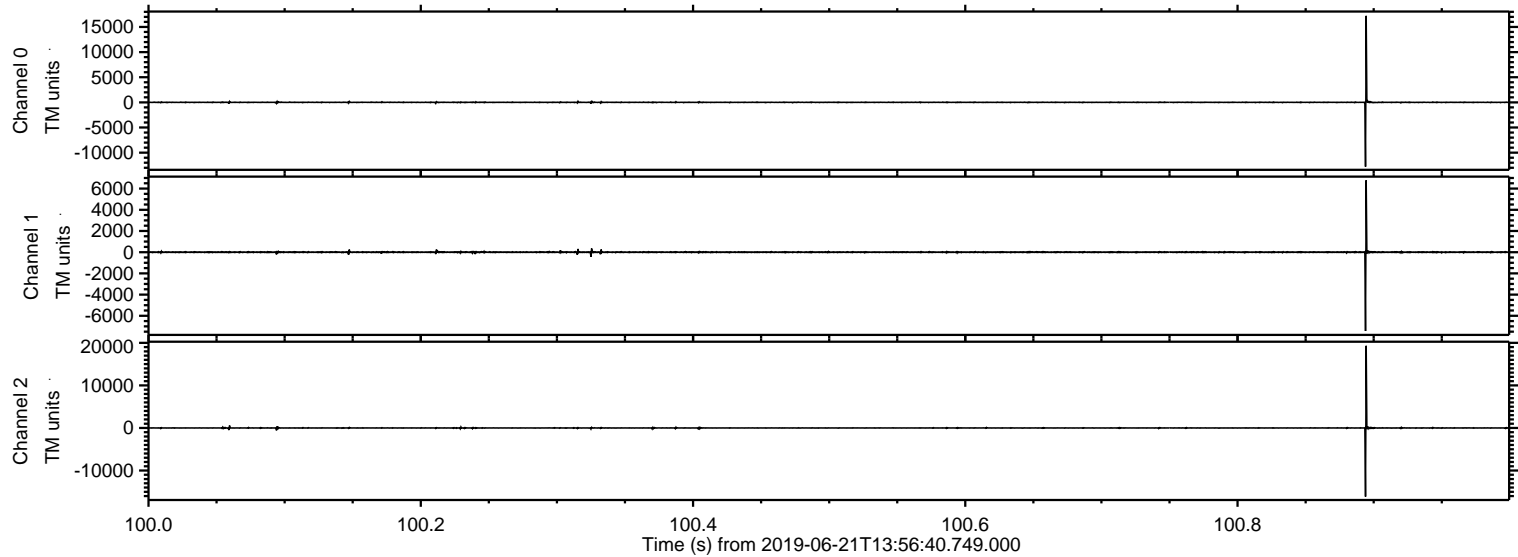
ELMAVAN 3D WAVEFORMS (Measured data sampled at 50 kHz) 51000 packets of 144 samples from 2019-06-21T13:56:40.749.000.

Processed Fri Jun 21 16:04:09 2019 by ELM ver.2012-10-06 from 001__elm20190621_135639__dat00.bin



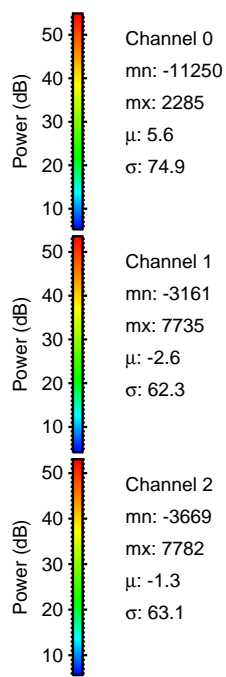
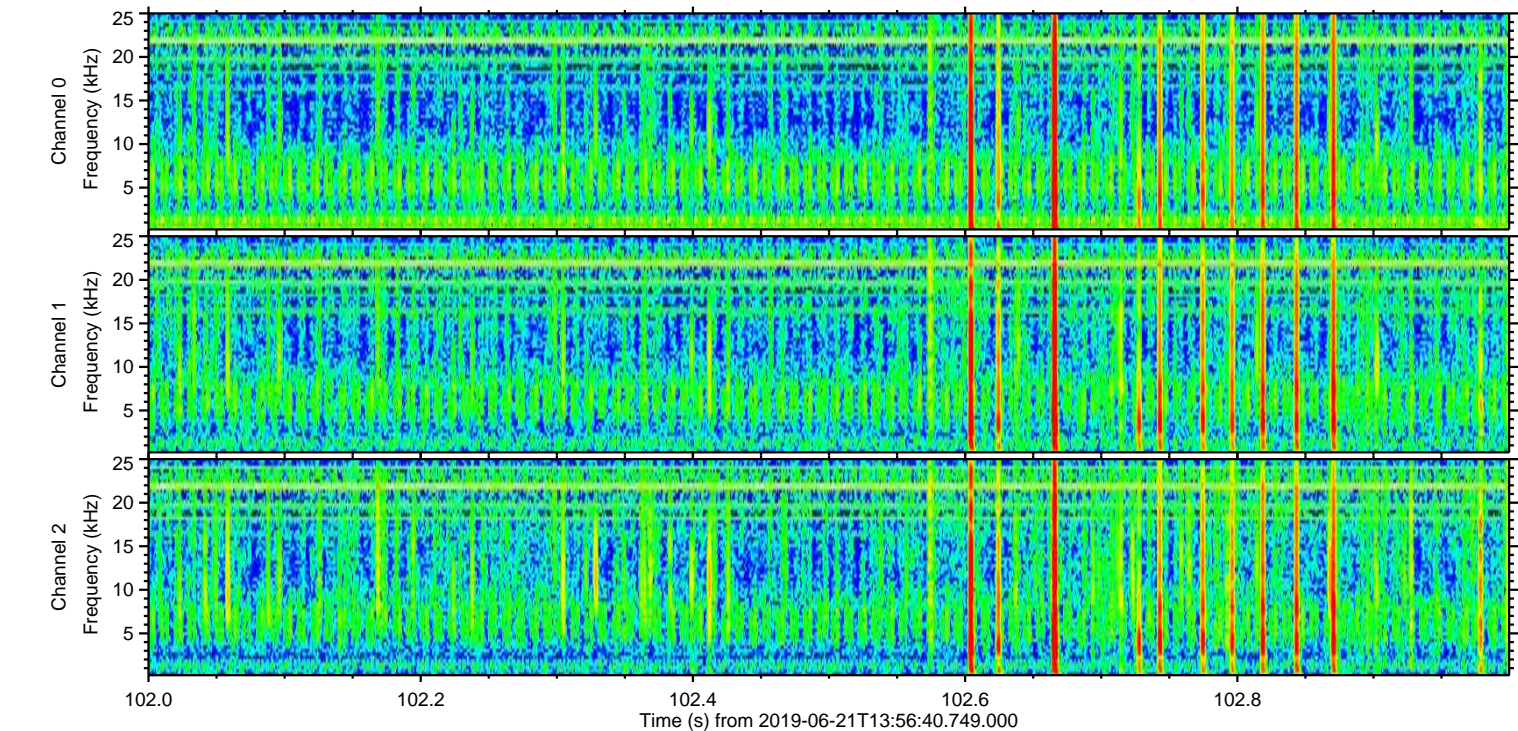
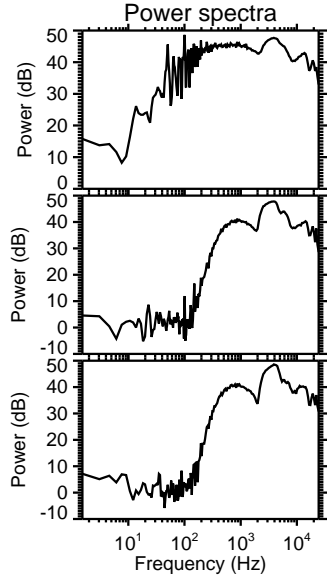
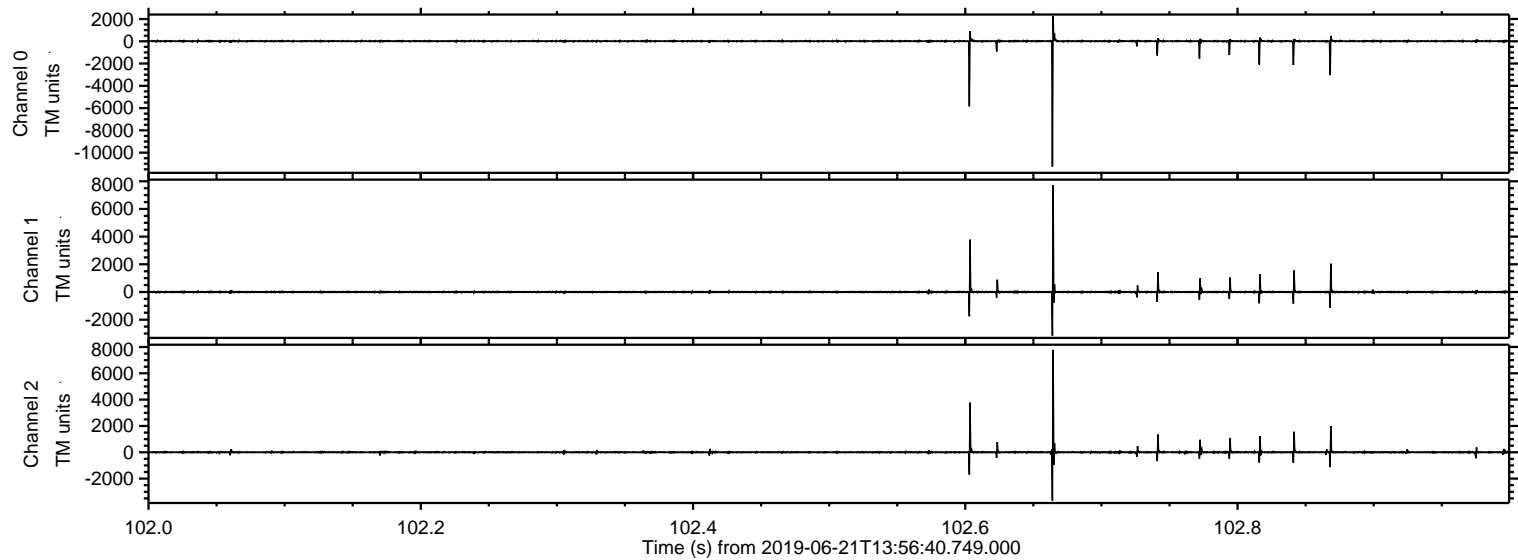
ELMAVAN 3D WAVEFORMS (Measured data sampled at 50 kHz) 51000 packets of 144 samples from 2019-06-21T13:56:40.749.000. Part 101/147

Processed Fri Jun 21 16:04:17 2019 by ELM ver.2012-10-06 from 001__elm20190621_135639__dat00.bin

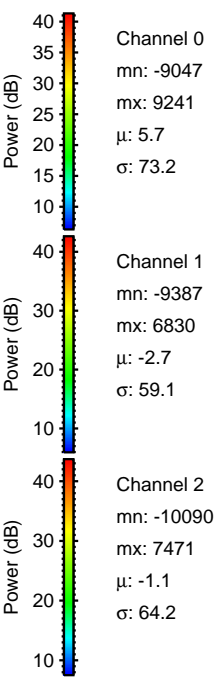
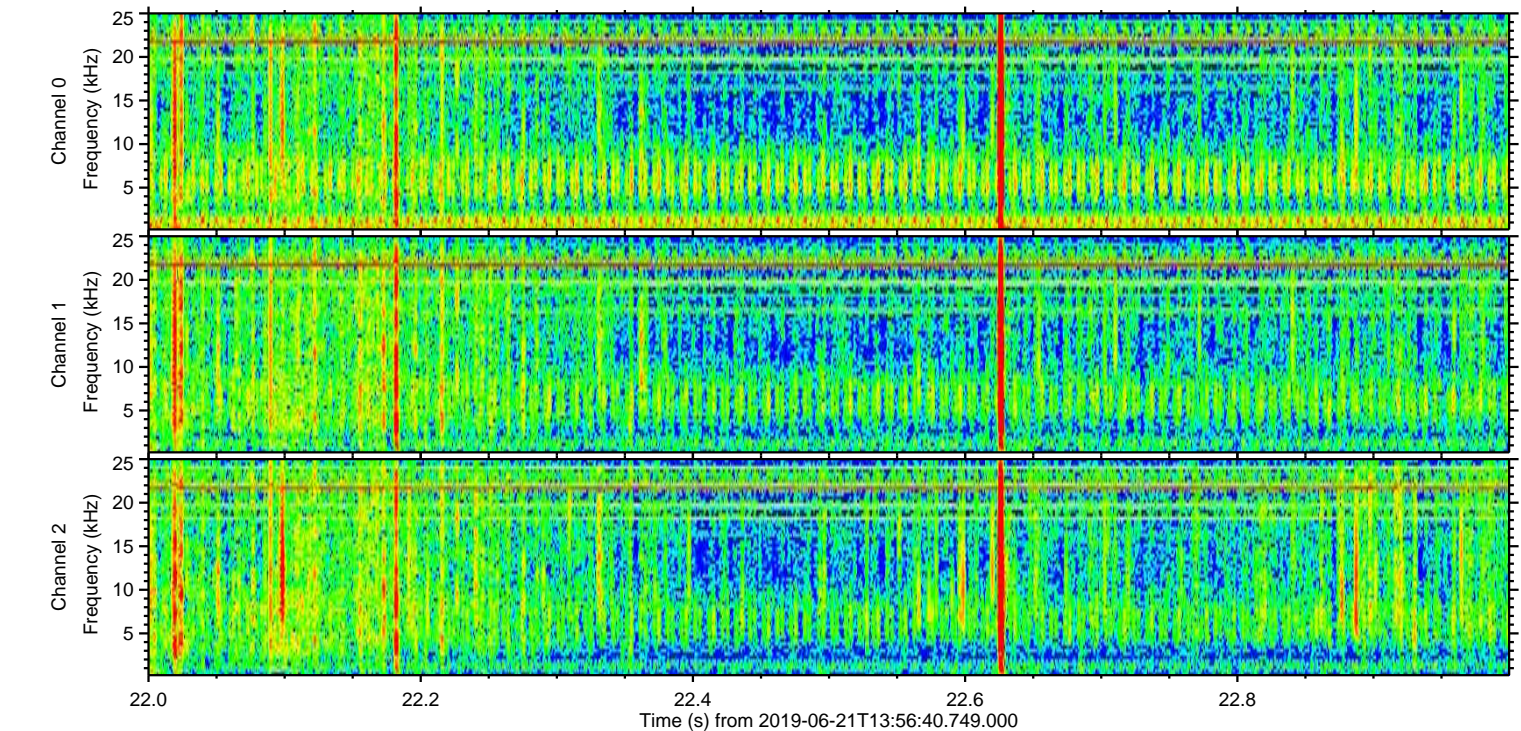
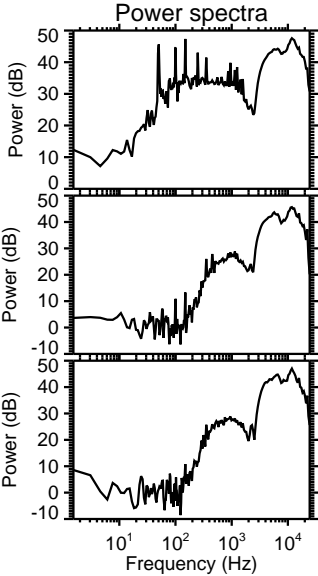
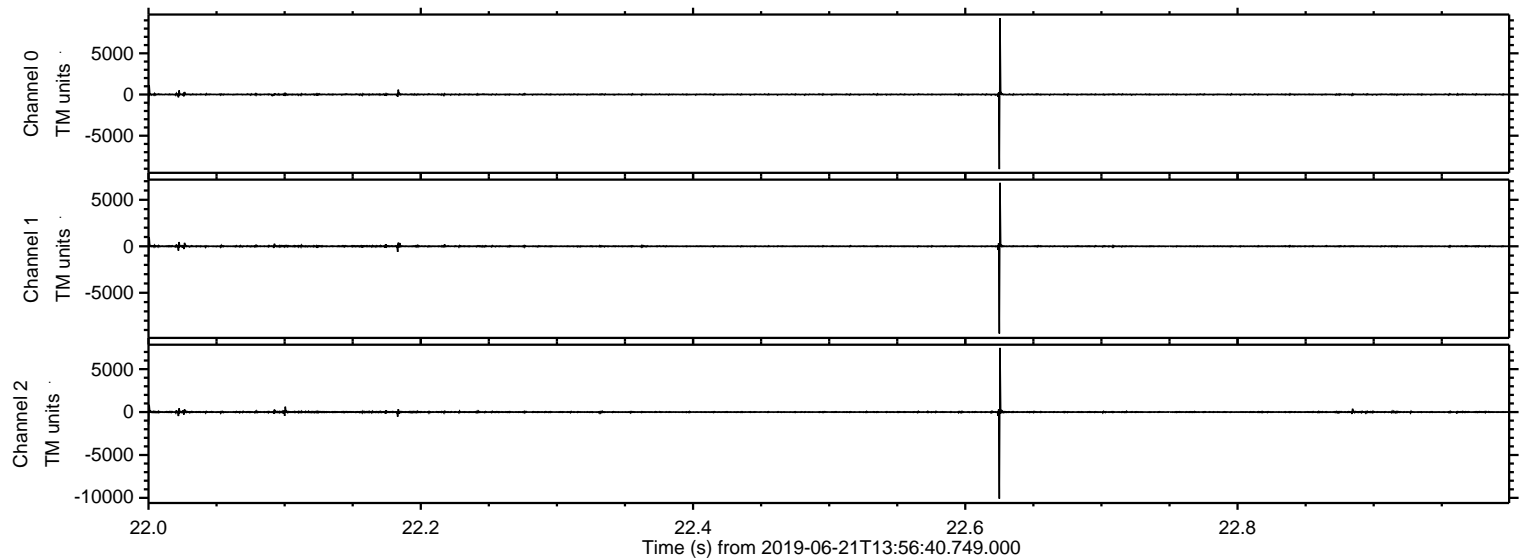


ELMAVAN 3D WAVEFORMS (Measured data sampled at 50 kHz) 51000 packets of 144 samples from 2019-06-21T13:56:40.749.000. Part 103/147

Processed Fri Jun 21 16:04:18 2019 by ELM ver.2012-10-06 from 001__elm20190621_135639__dat00.bin

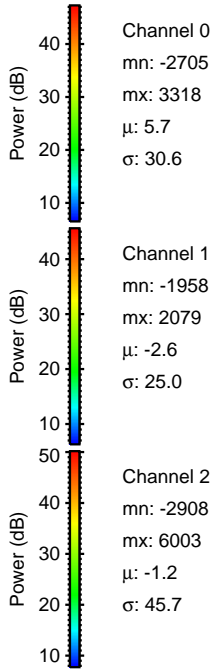
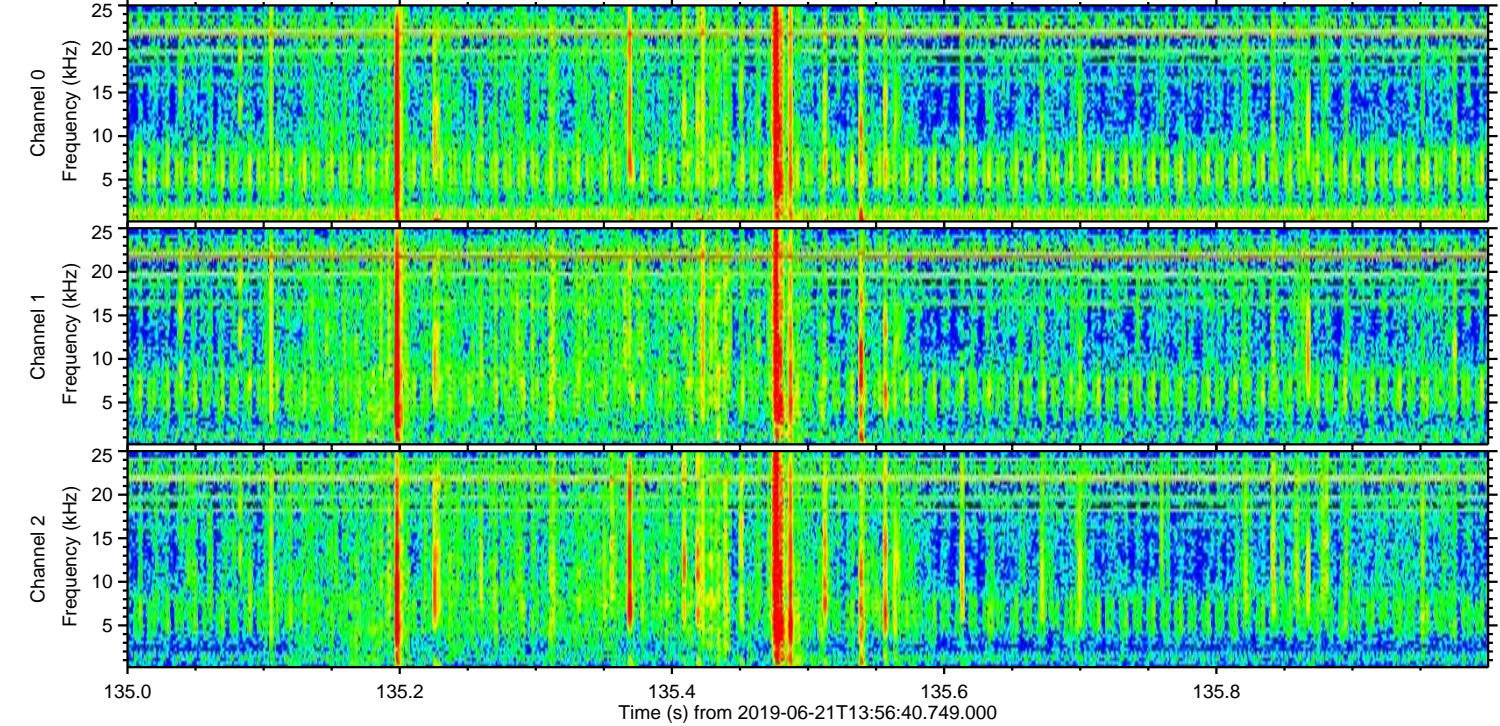
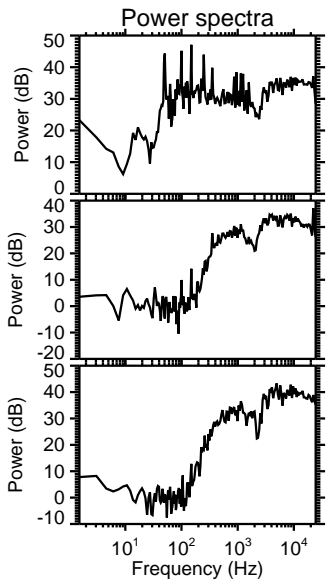
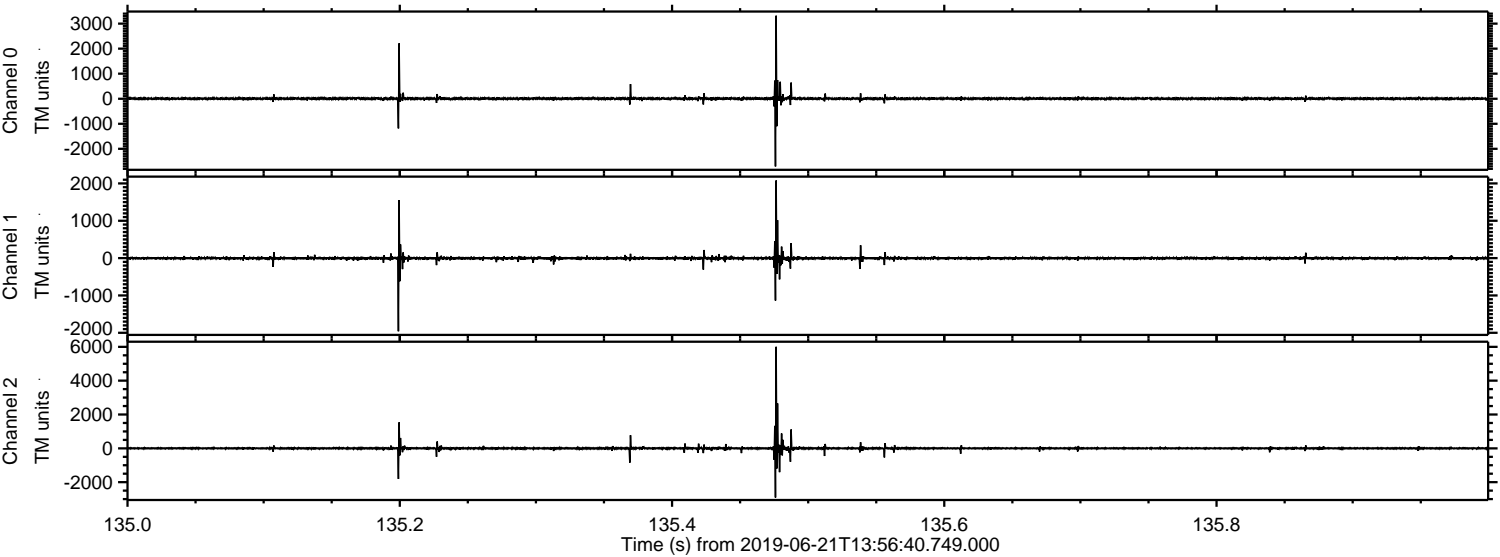


Processed Fri Jun 21 16:04:18 2019 by ELM ver.2012-10-06 from 001__elm20190621_135639__dat00.bin

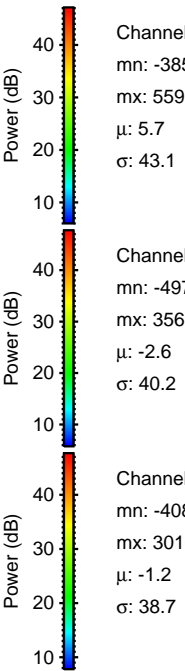
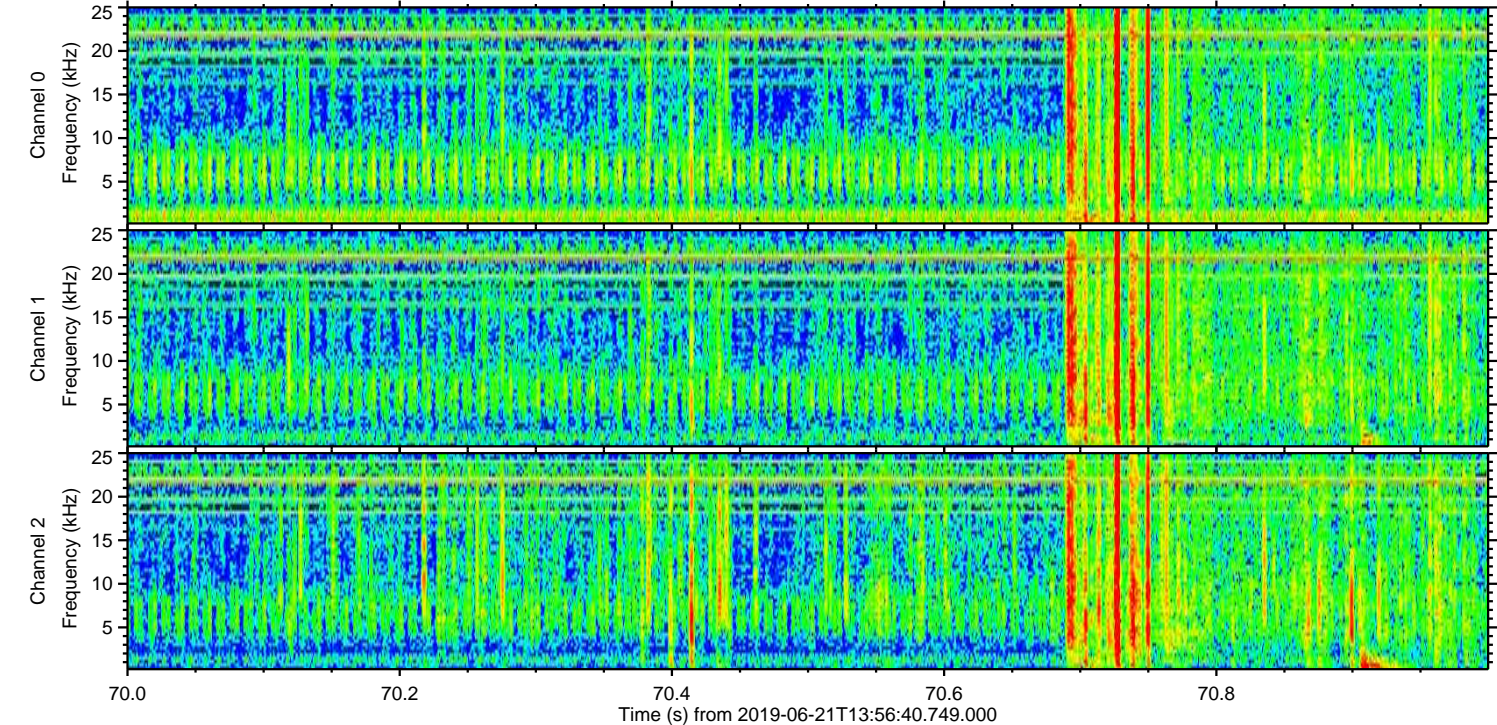
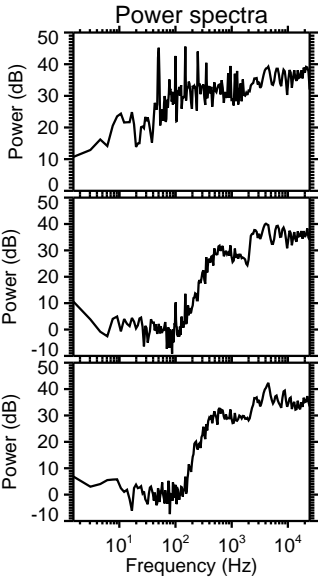
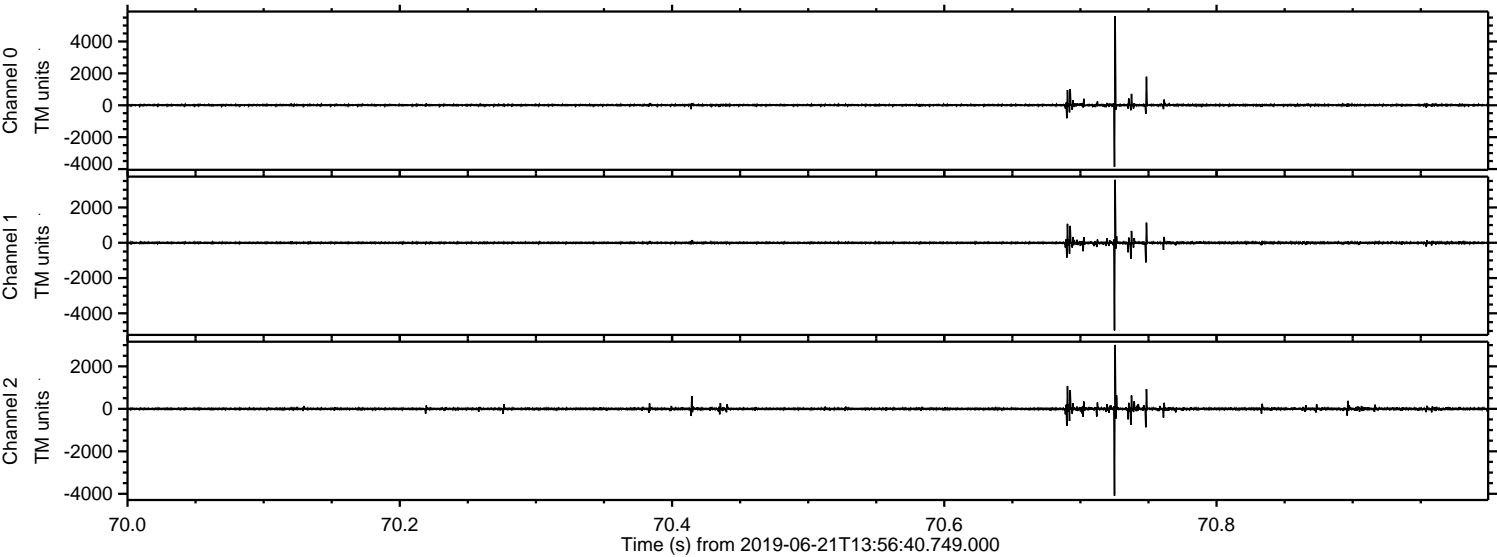


ELMAVAN 3D WAVEFORMS (Measured data sampled at 50 kHz) 51000 packets of 144 samples from 2019-06-21T13:56:40.749.000. Part 136/147

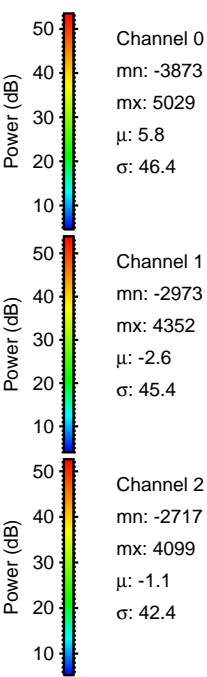
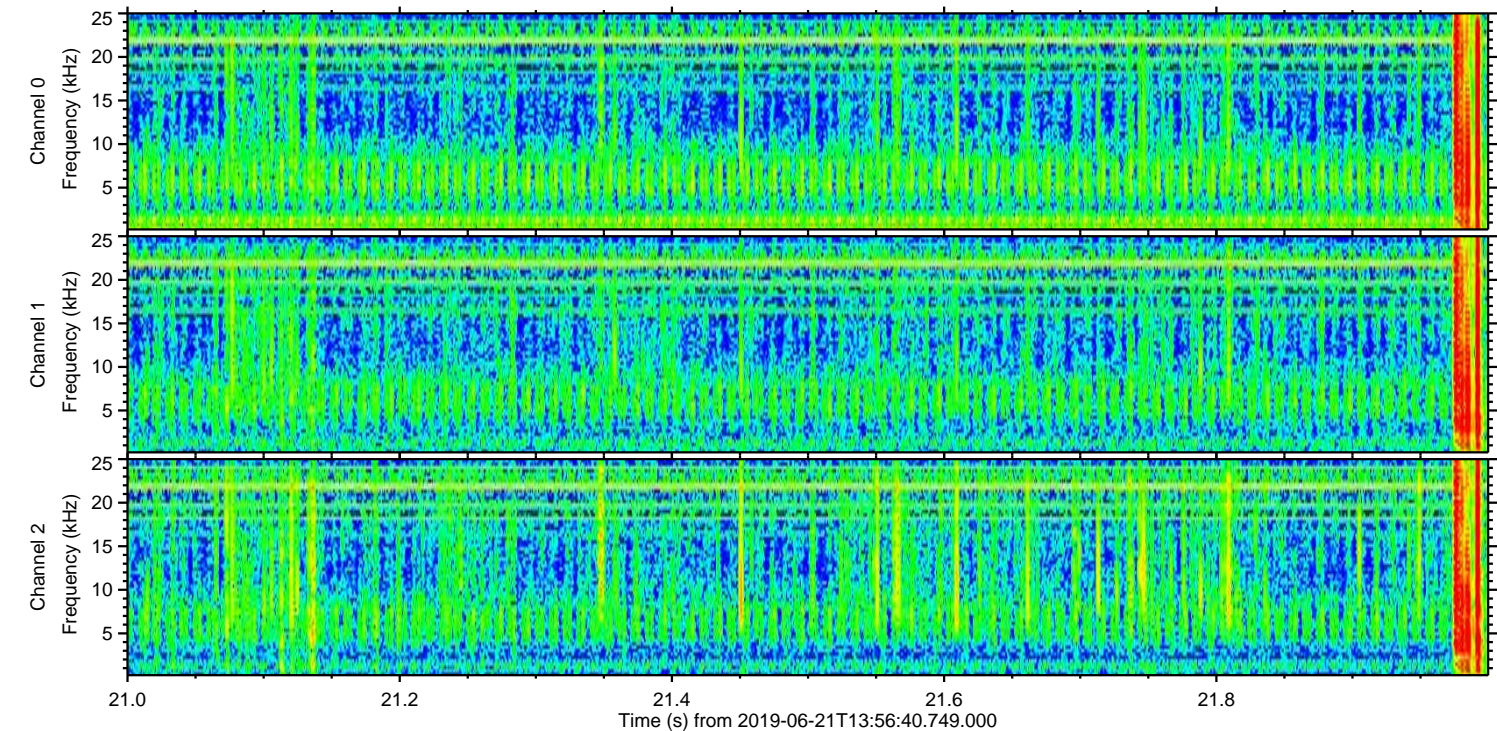
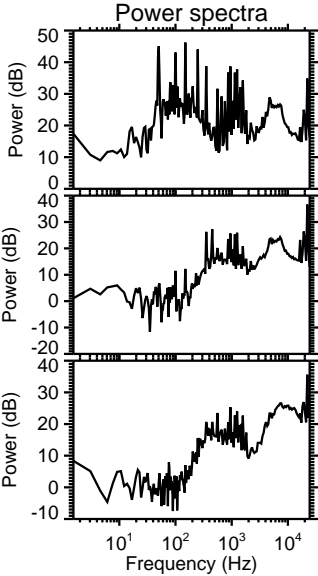
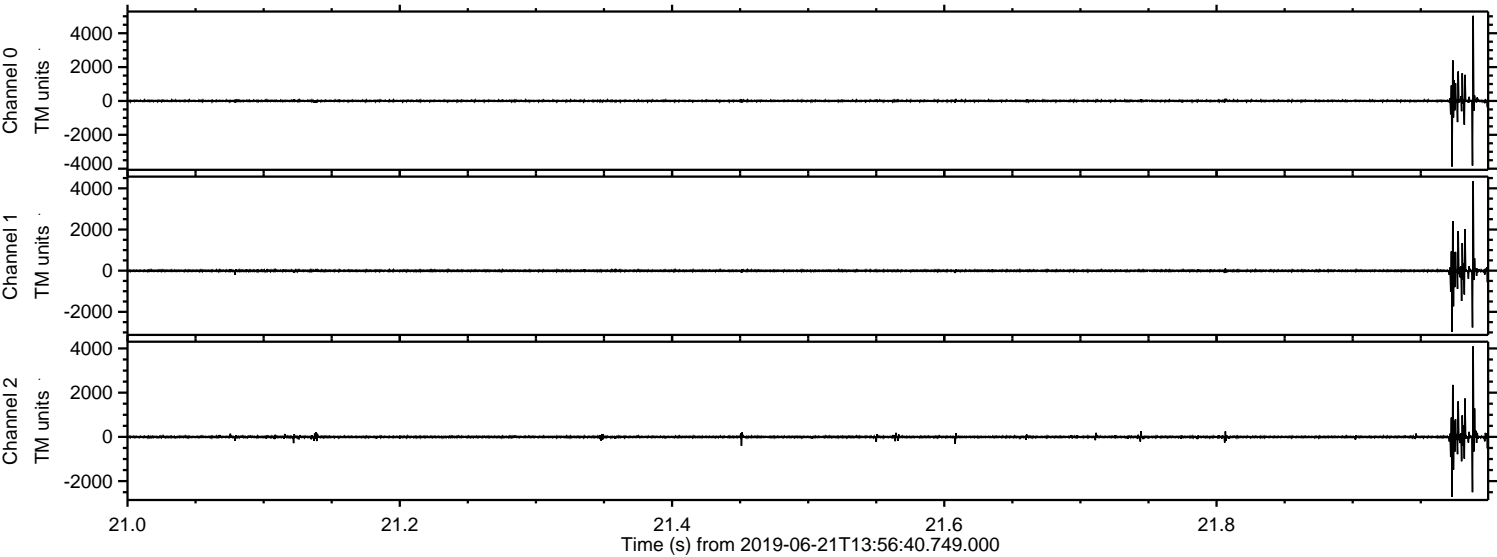
Processed Fri Jun 21 16:04:19 2019 by ELM ver.2012-10-06 from 001__elm20190621_135639__dat00.bin



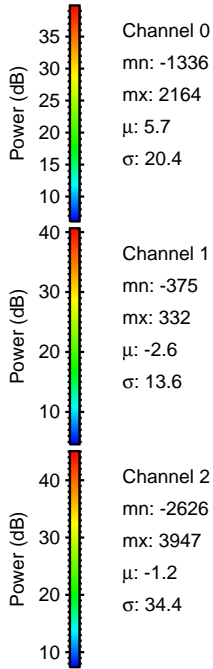
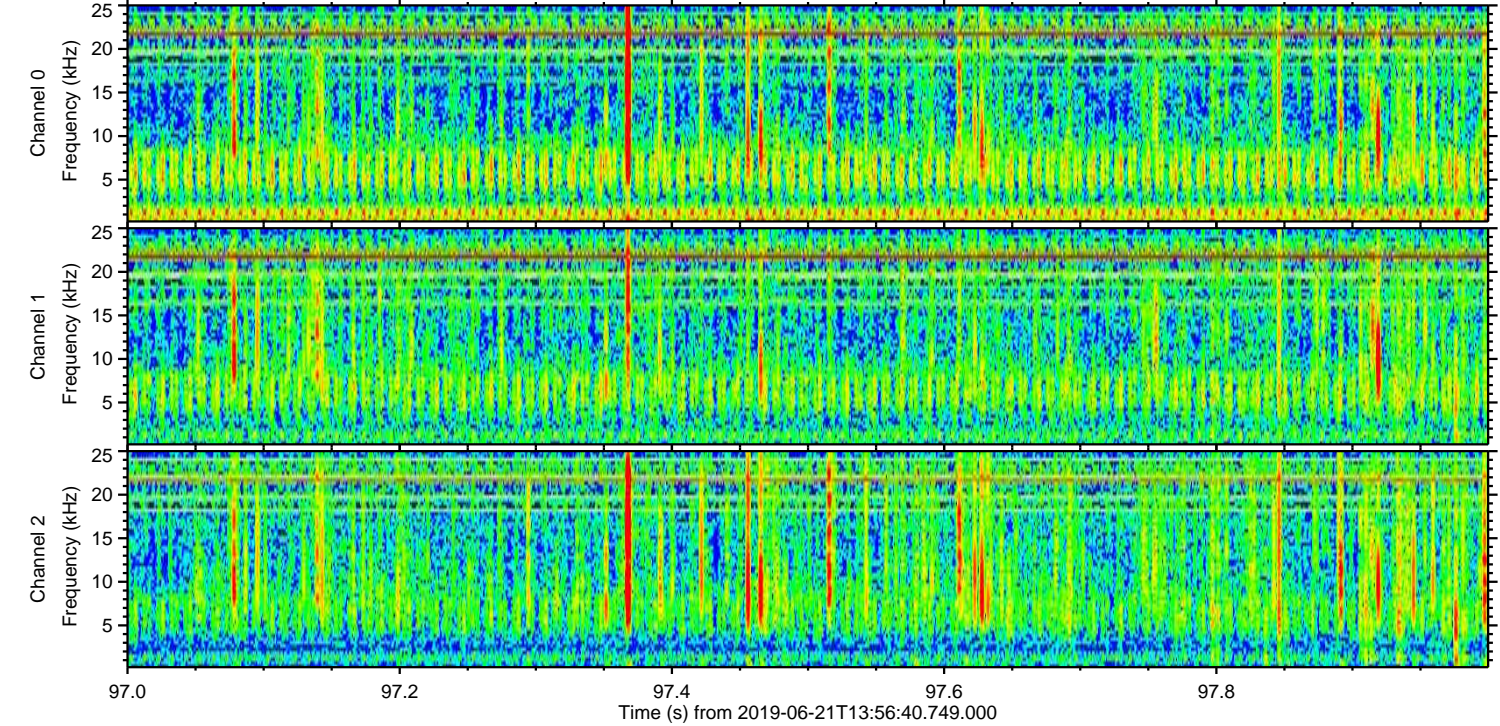
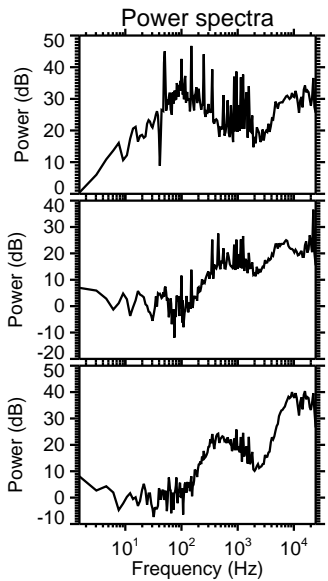
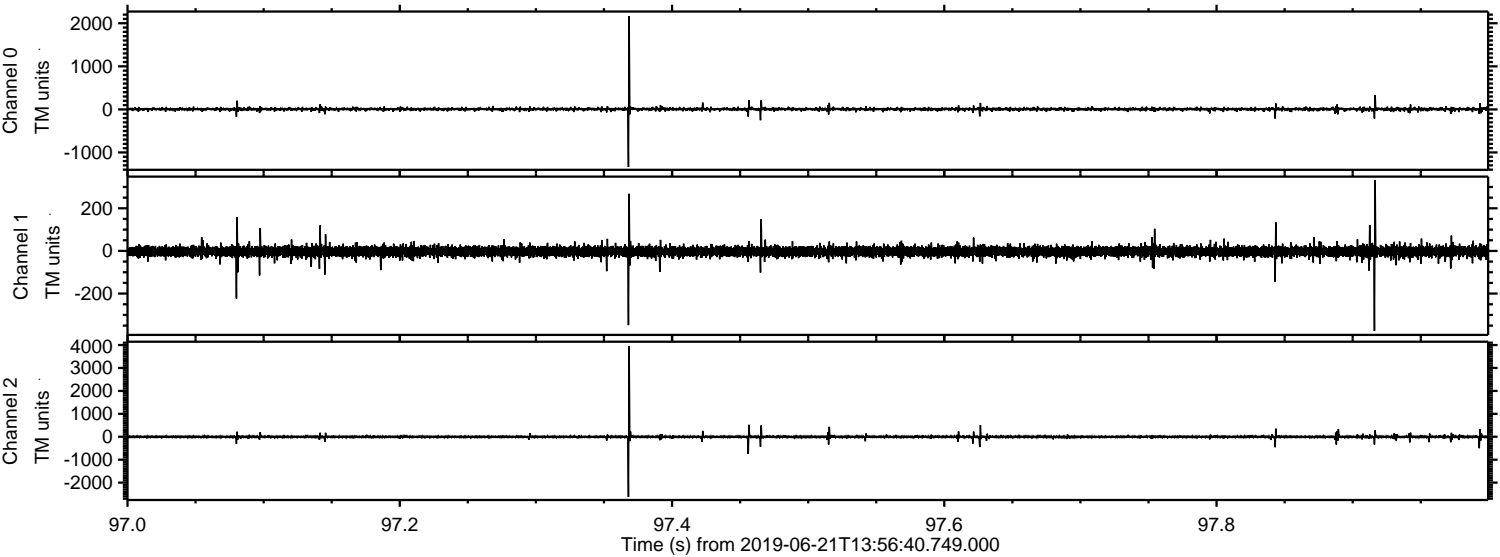
Processed Fri Jun 21 16:04:20 2019 by ELM ver.2012-10-06 from 001__elm20190621_135639__dat00.bin



Processed Fri Jun 21 16:04:20 2019 by ELM ver.2012-10-06 from 001__elm20190621_135639__dat00.bin



Processed Fri Jun 21 16:04:21 2019 by ELM ver.2012-10-06 from 001__elm20190621_135639__dat00.bin

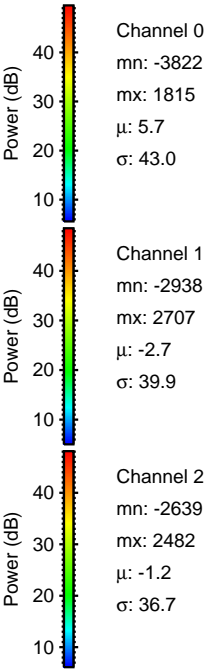
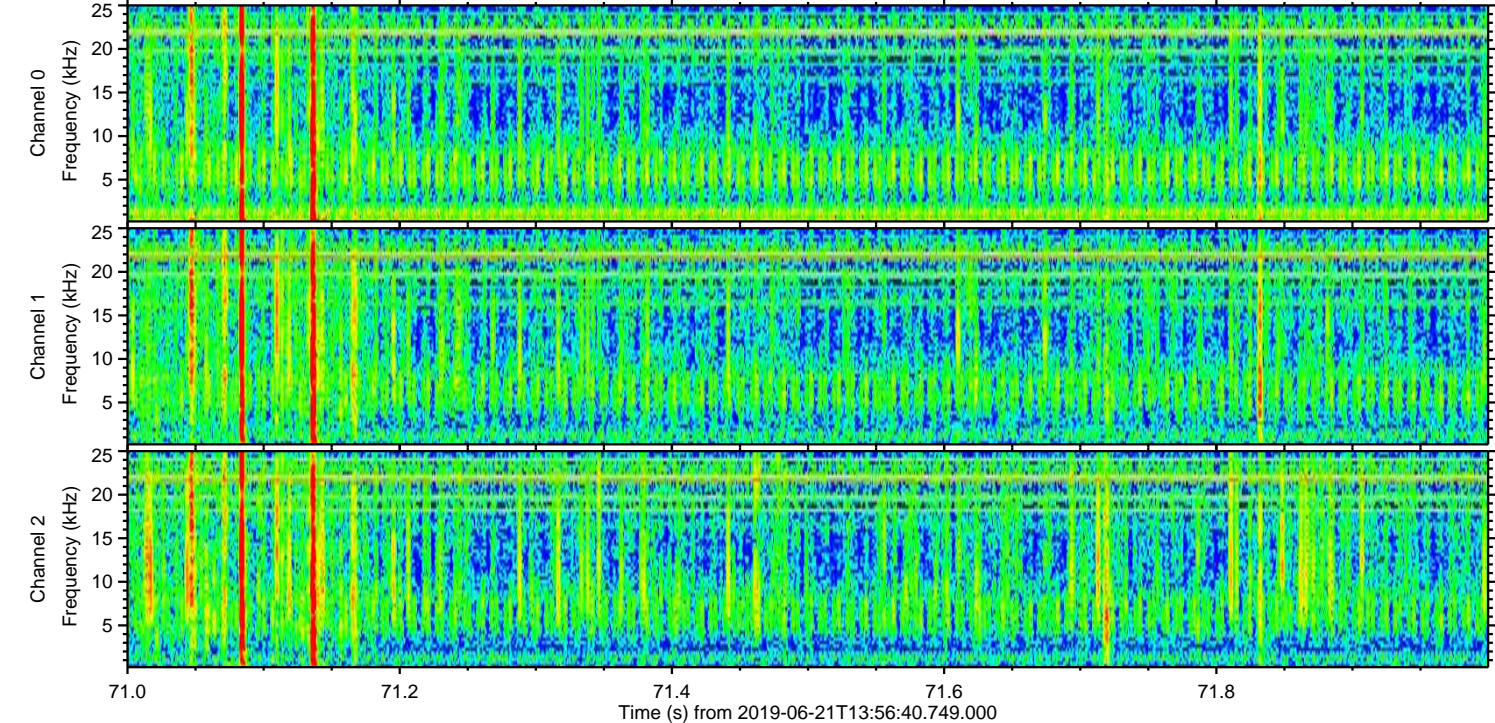
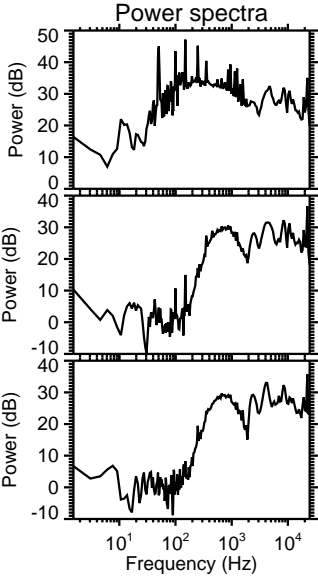
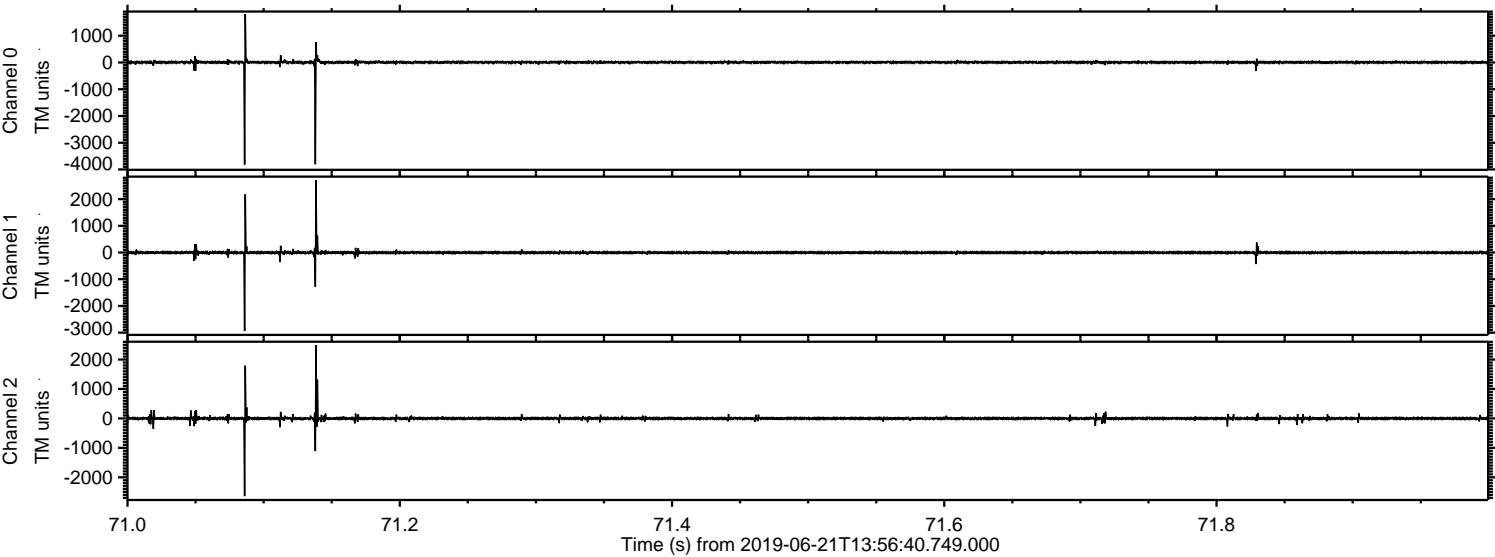


Channel 0
mn: -1336
mx: 2164
 μ : 5.7
 σ : 20.4

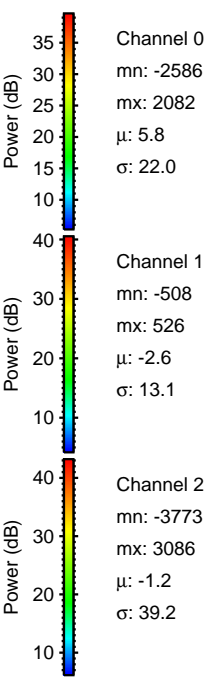
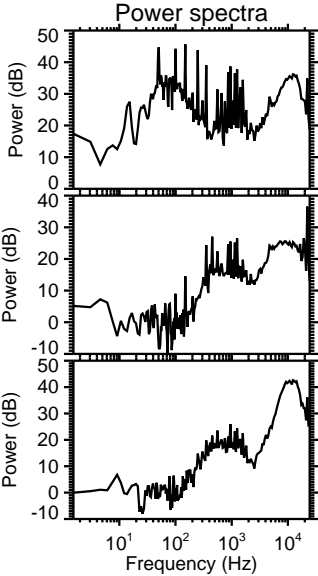
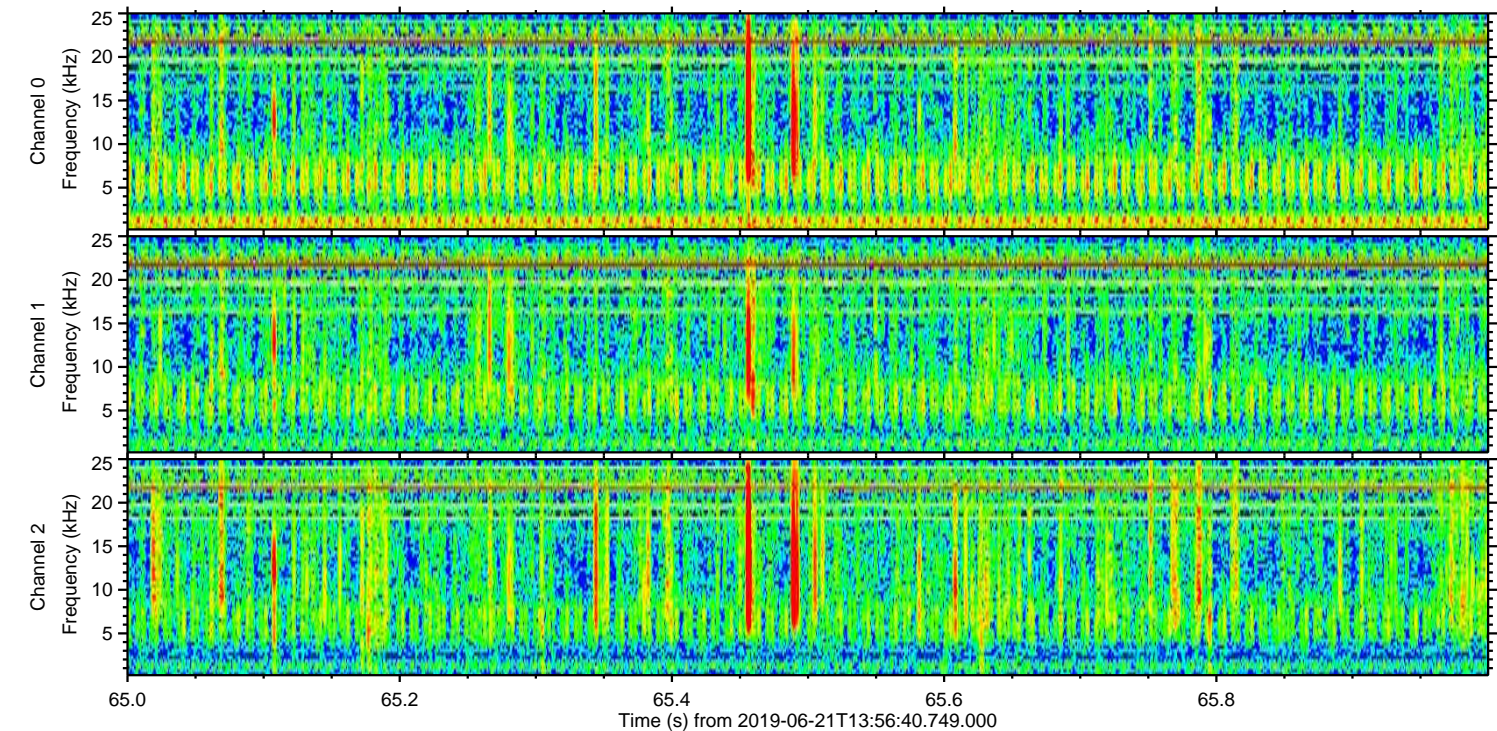
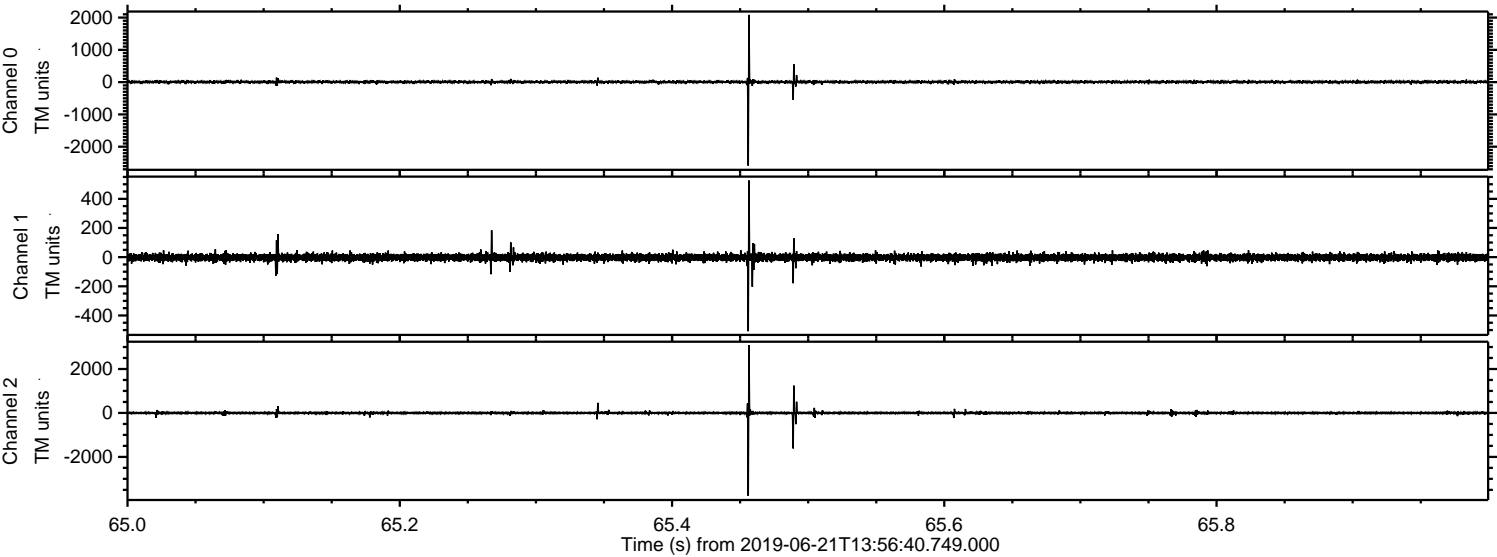
Channel 1
mn: -375
mx: 332
 μ : -2.6
 σ : 13.6

Channel 2
mn: -2626
mx: 3947
 μ : -1.2
 σ : 34.4

Processed Fri Jun 21 16:04:22 2019 by ELM ver.2012-10-06 from 001__elm20190621_135639__dat00.bin



Processed Fri Jun 21 16:04:23 2019 by ELM ver.2012-10-06 from 001__elm20190621_135639__dat00.bin



Processed Fri Jun 21 16:04:23 2019 by ELM ver.2012-10-06 from 001__elm20190621_135639__dat00.bin

