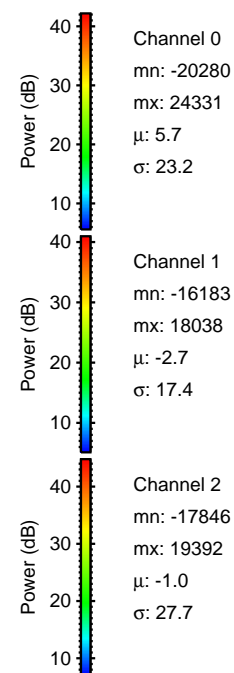
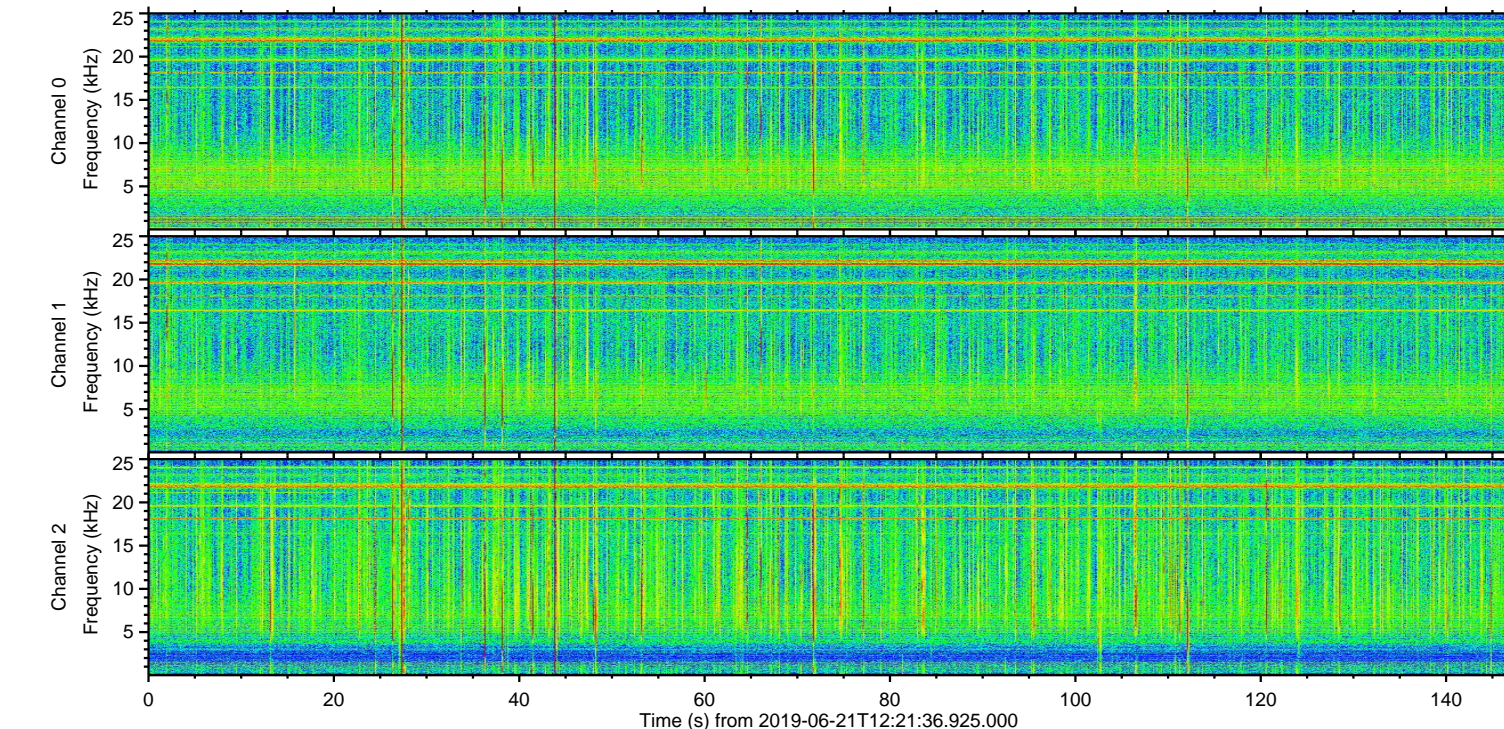
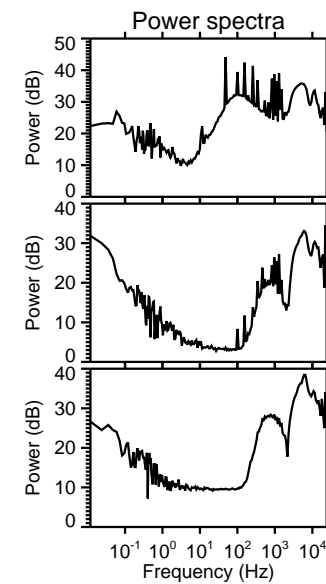
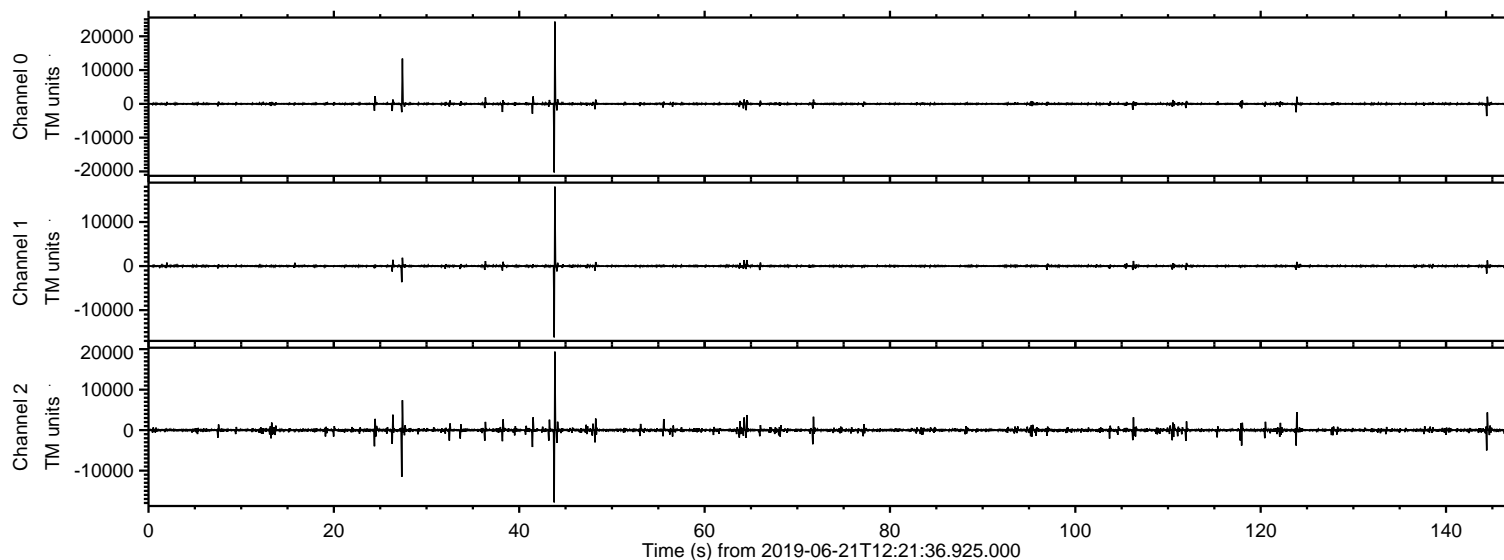
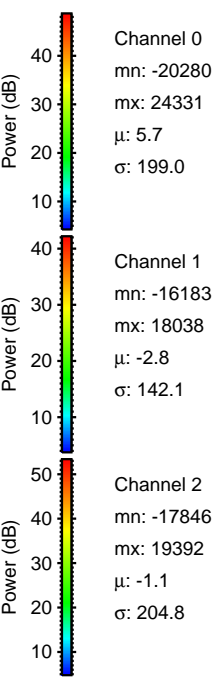
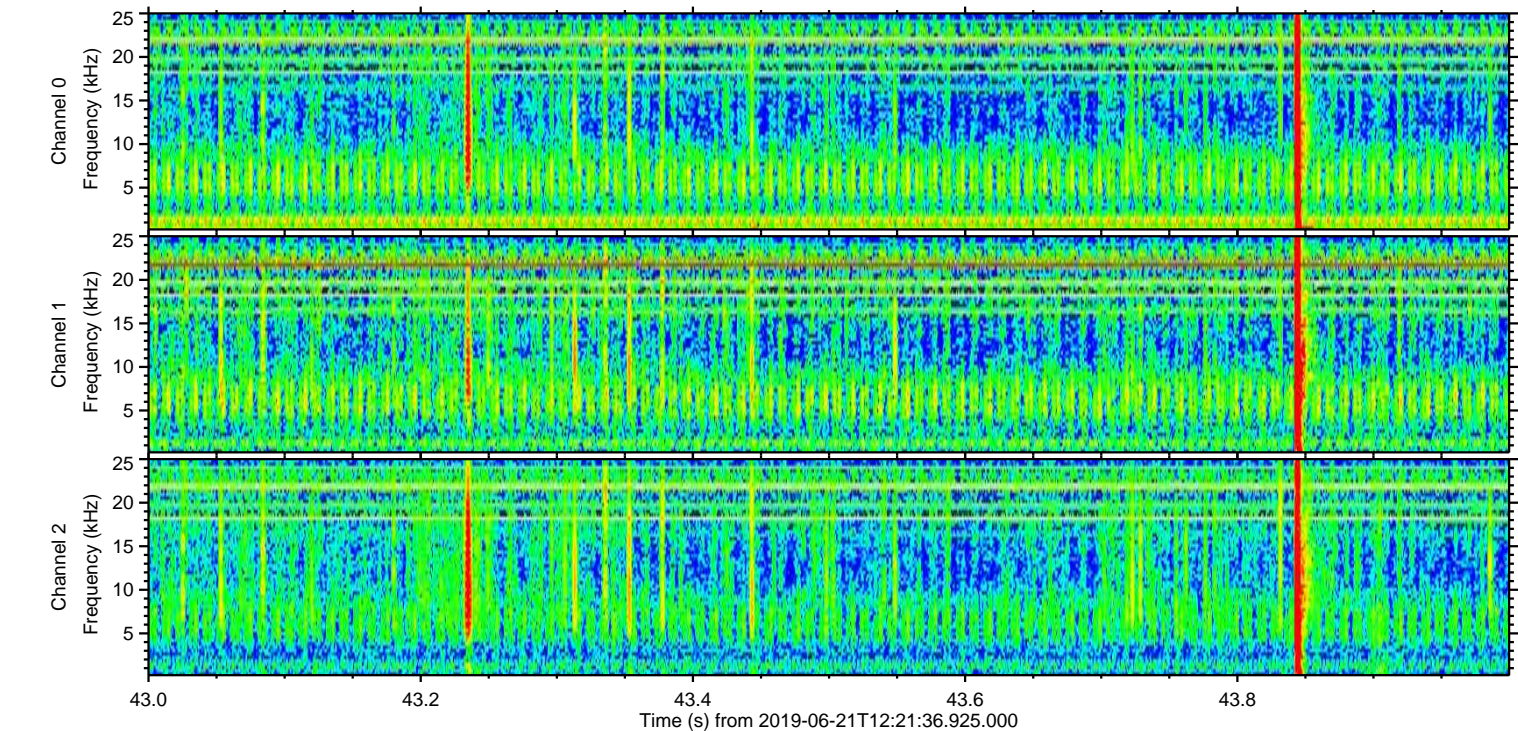
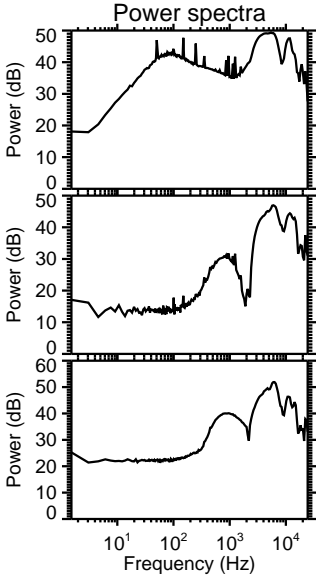
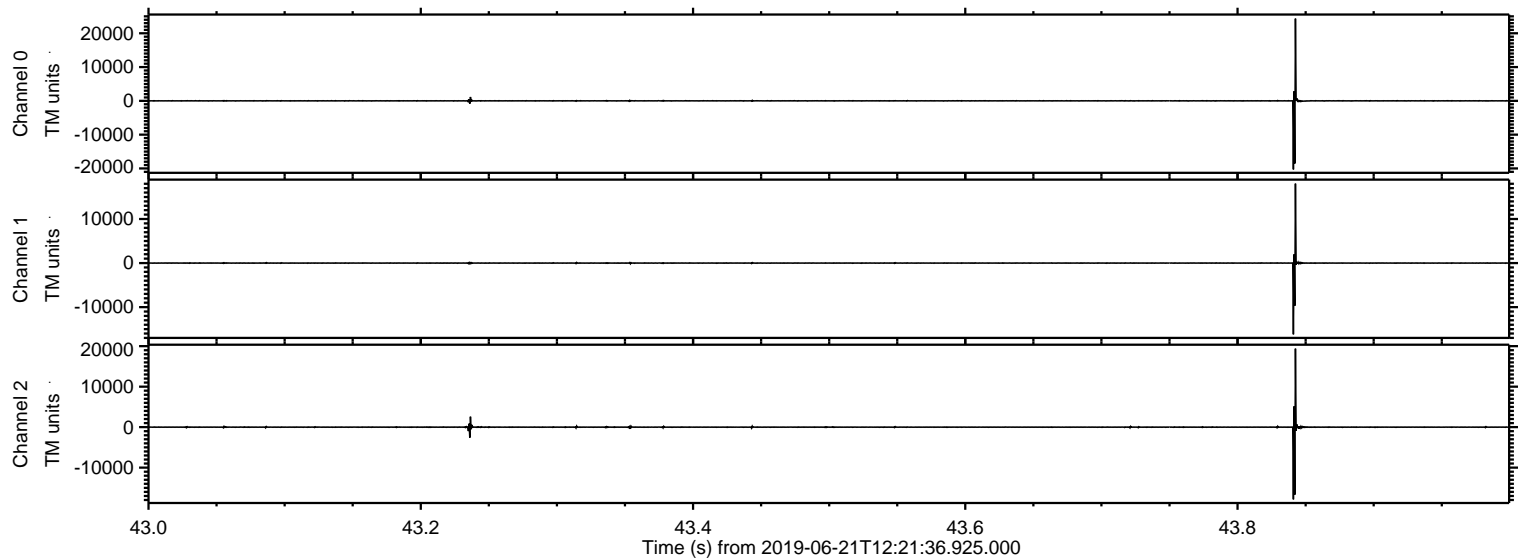


ELMAVAN 3D WAVEFORMS (Measured data sampled at 50 kHz) 51000 packets of 144 samples from 2019-06-21T12:21:36.925.000.

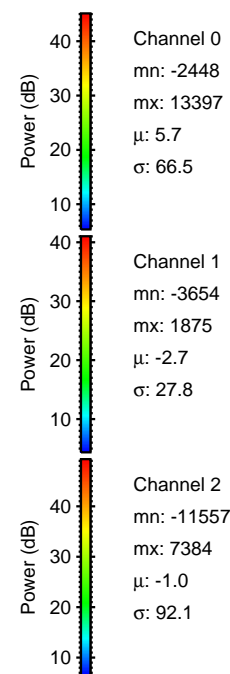
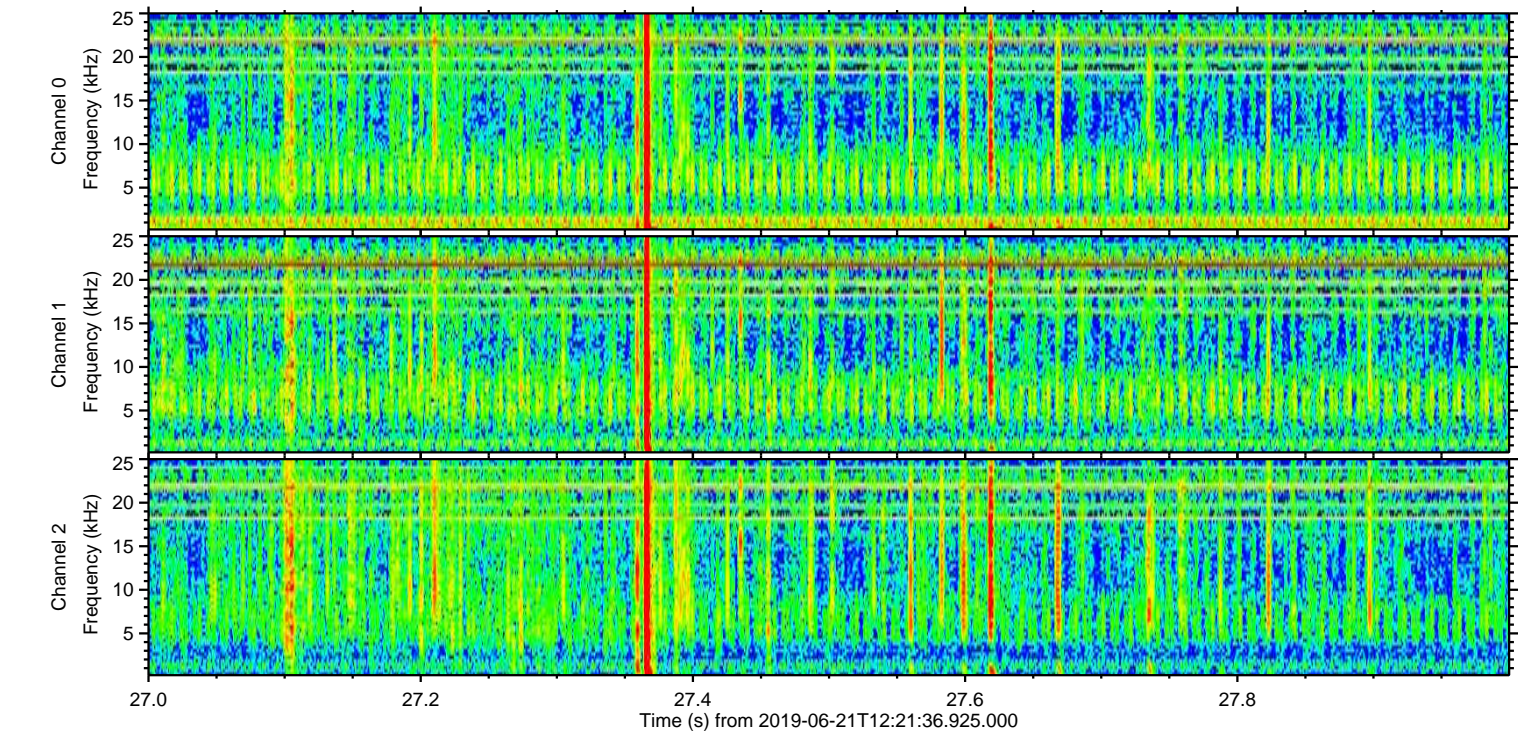
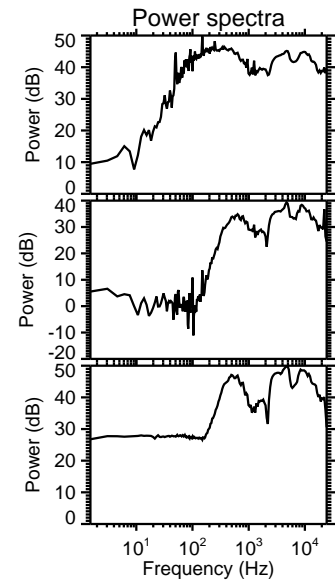
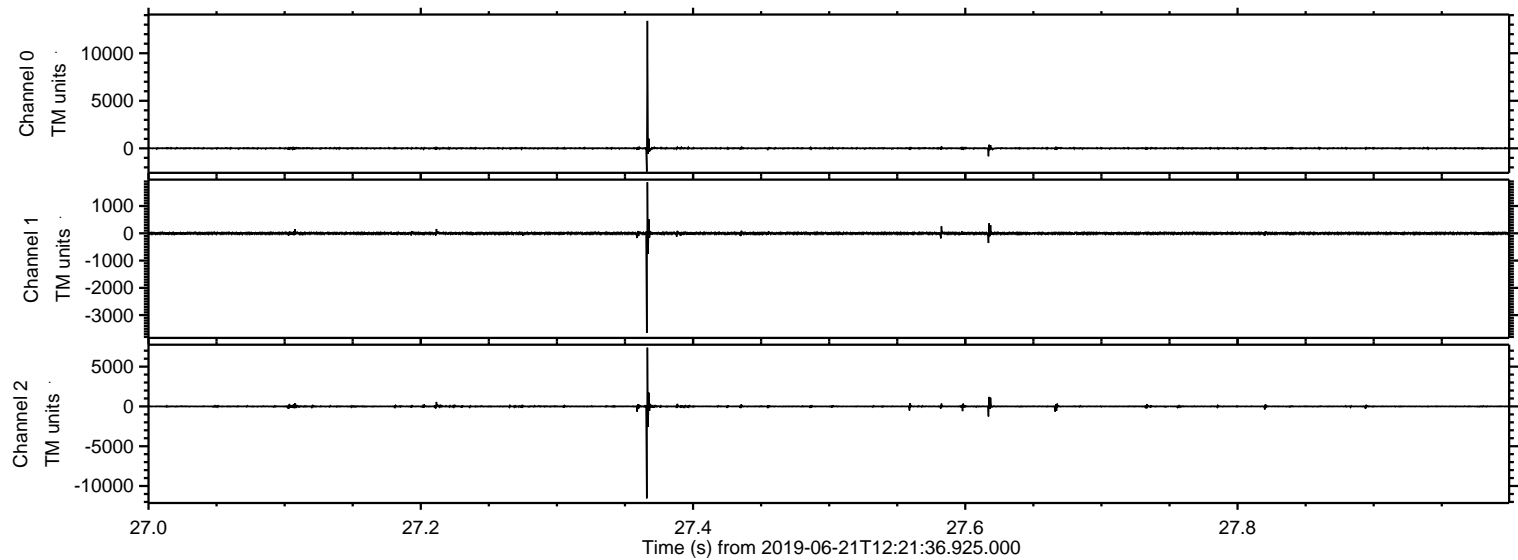
Processed Fri Jun 21 14:29:30 2019 by ELM ver.2012-10-06 from 001__elm20190621_122135__dat00.bin



Processed Fri Jun 21 14:29:40 2019 by ELM ver.2012-10-06 from 001__elm20190621_122135__dat00.bin

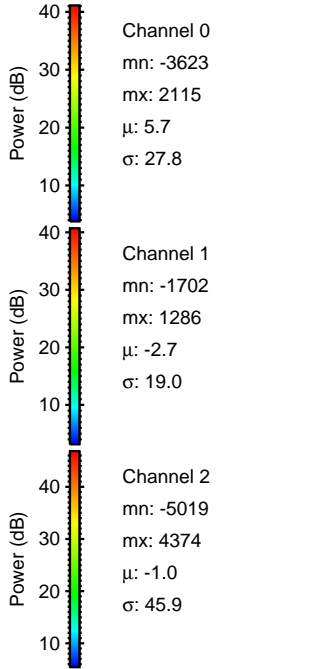
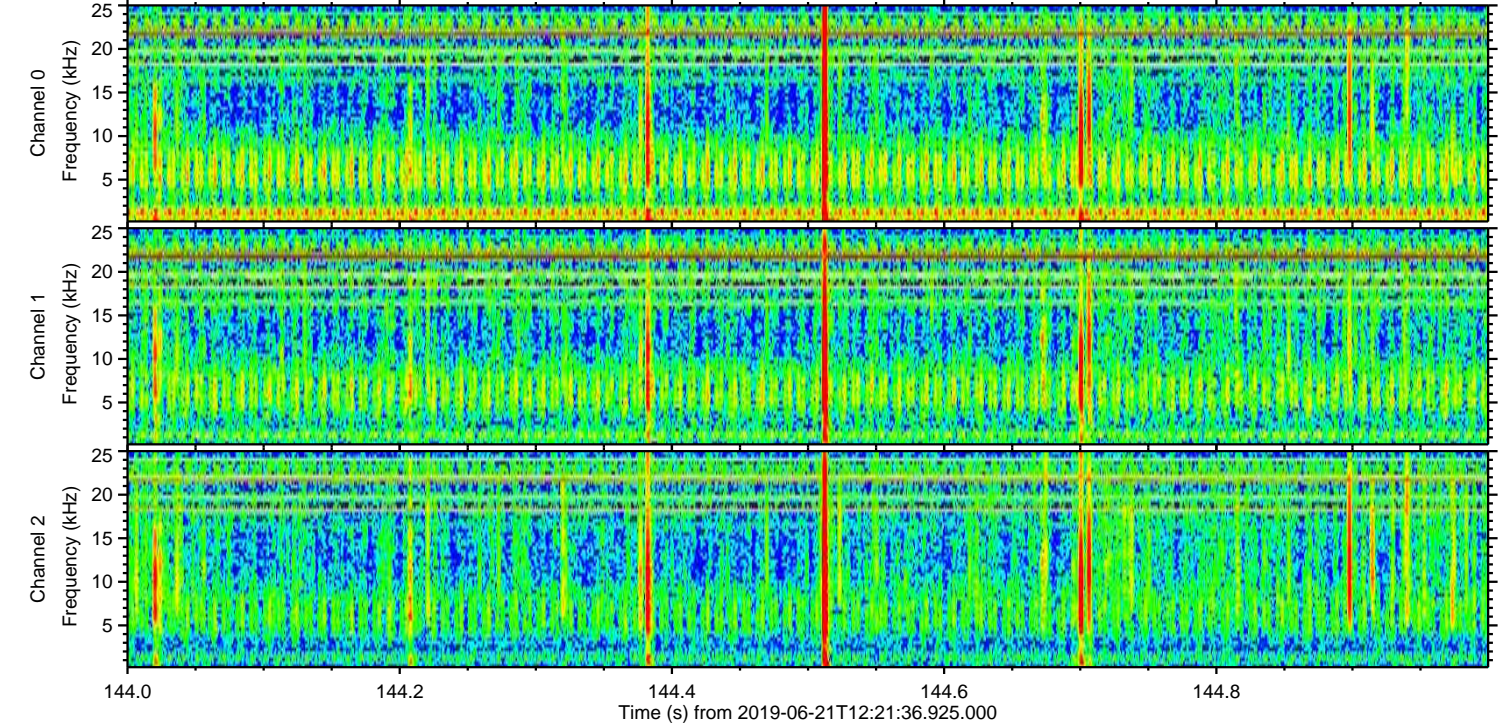
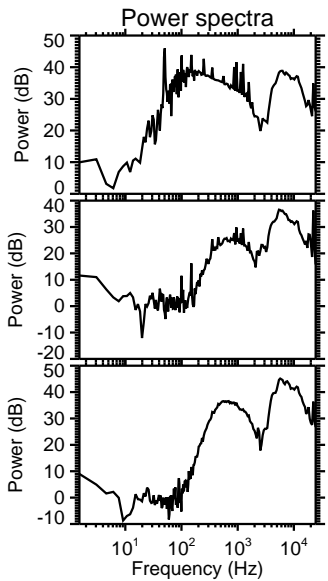
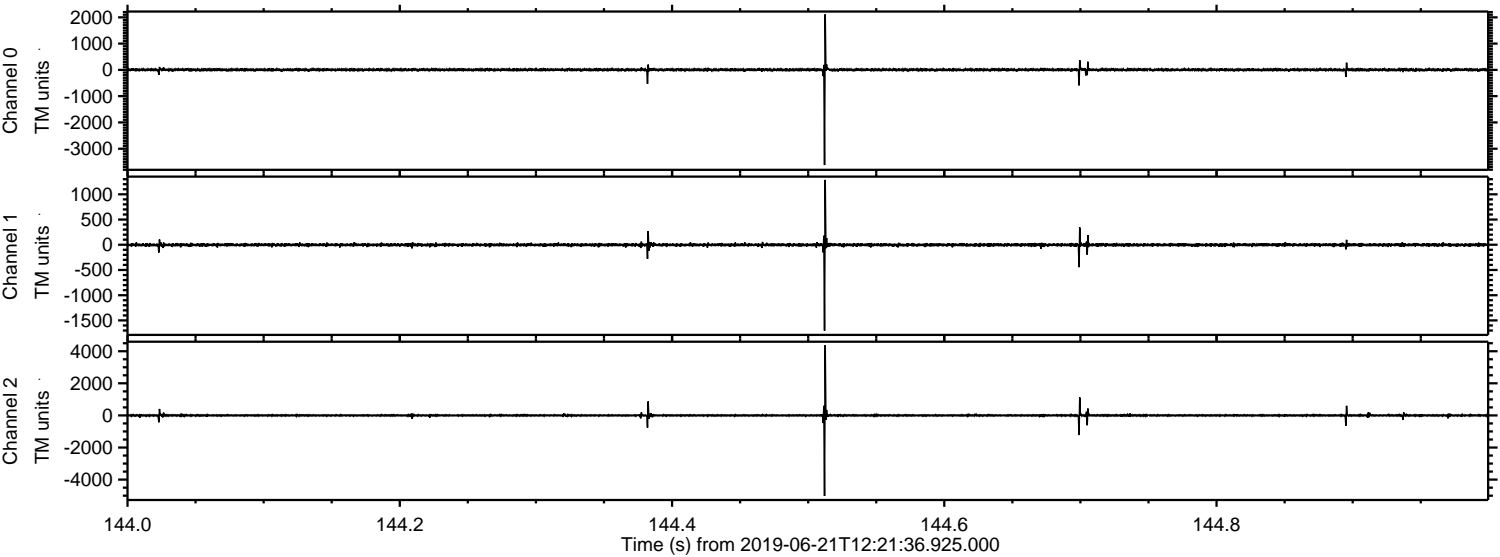


Processed Fri Jun 21 14:29:41 2019 by ELM ver.2012-10-06 from 001__elm20190621_122135__dat00.bin



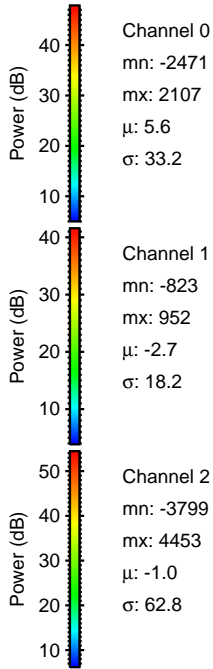
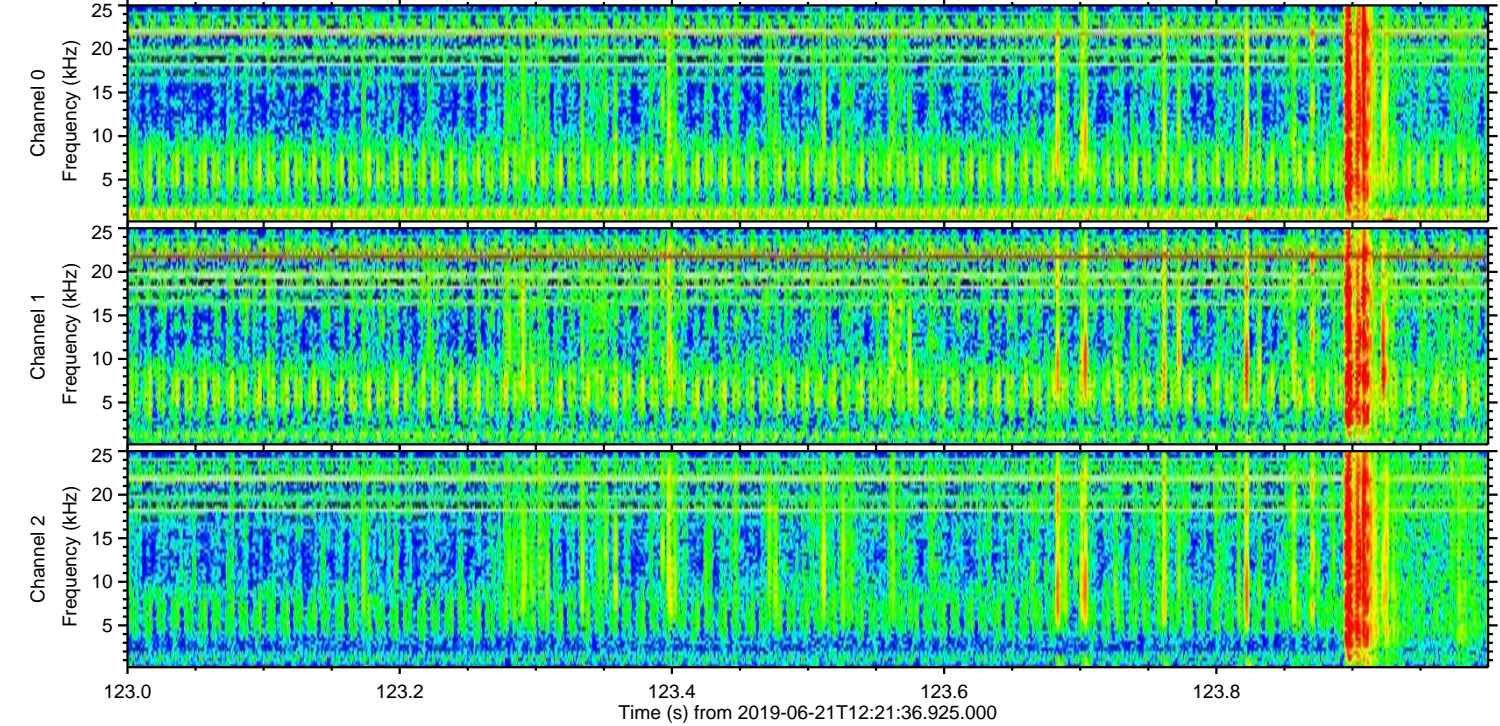
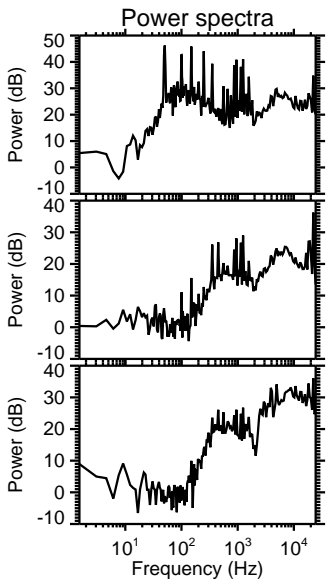
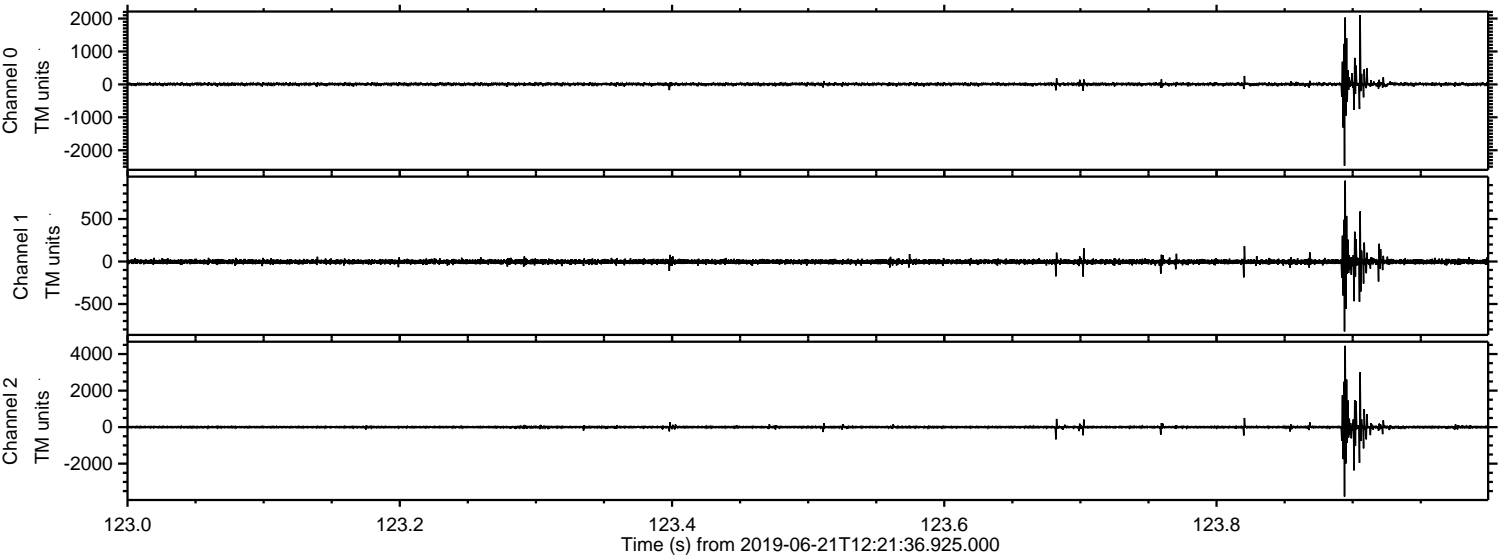
ELMAVAN 3D WAVEFORMS (Measured data sampled at 50 kHz) 51000 packets of 144 samples from 2019-06-21T12:21:36.925.000. Part 145/147

Processed Fri Jun 21 14:29:41 2019 by ELM ver.2012-10-06 from 001__elm20190621_122135__dat00.bin

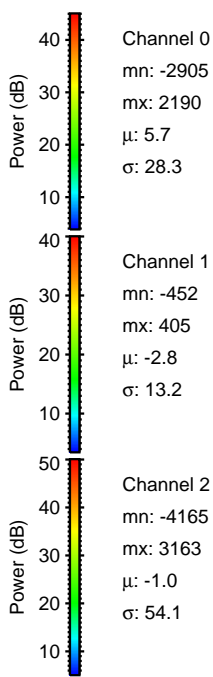
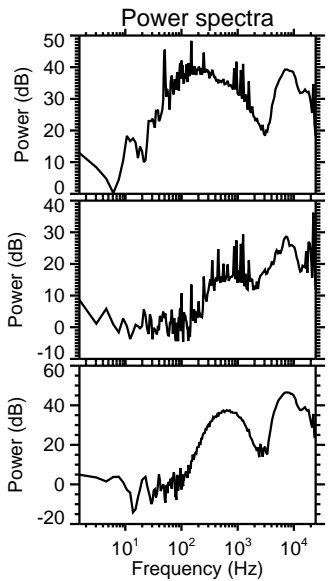
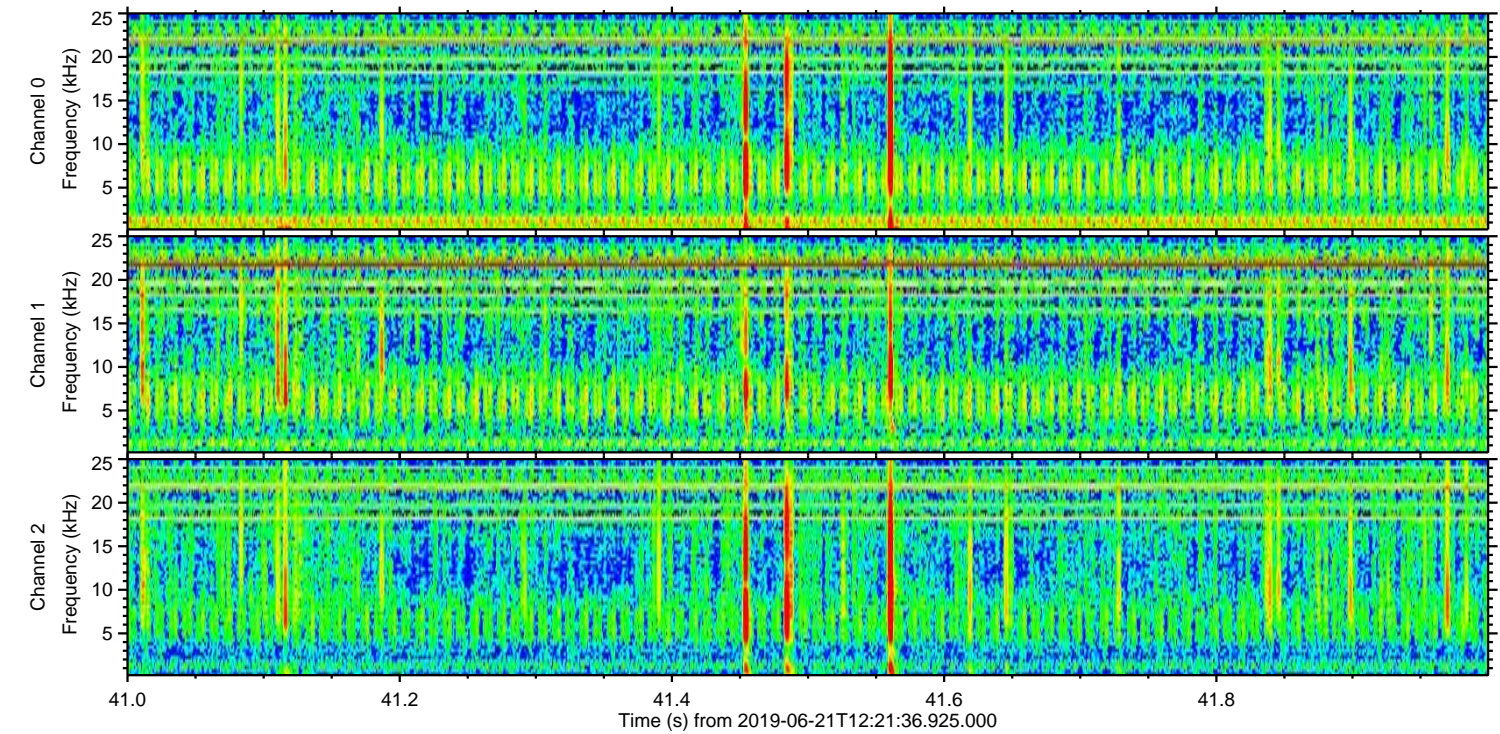
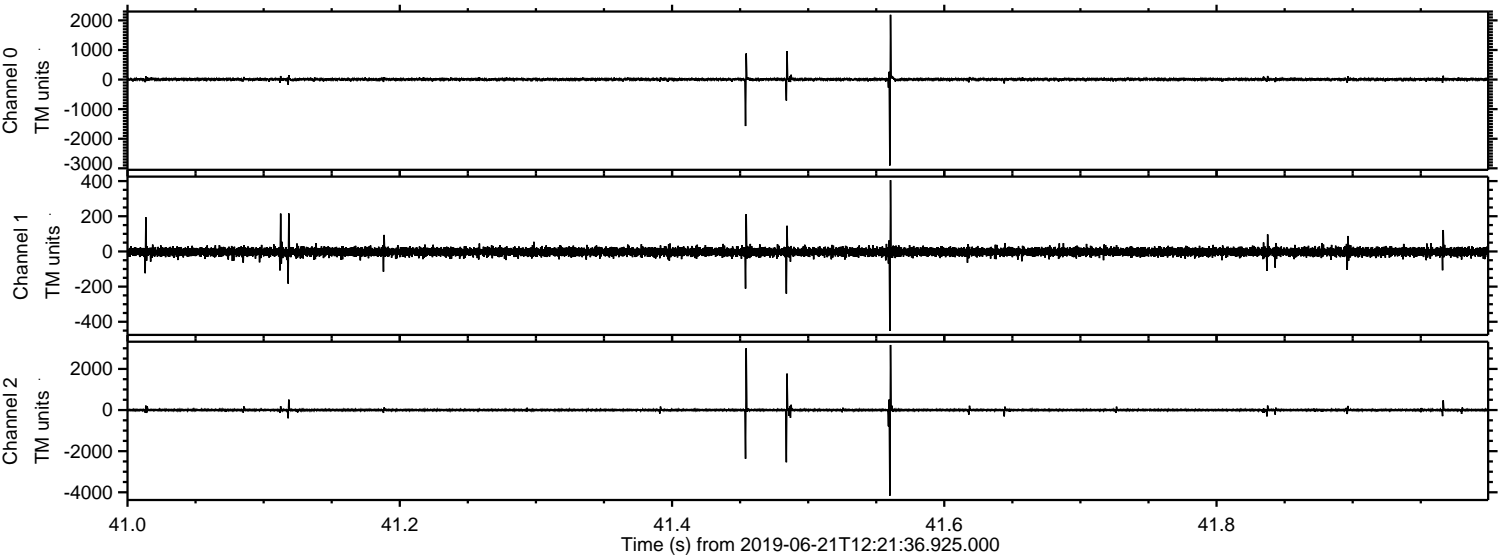


ELMAVAN 3D WAVEFORMS (Measured data sampled at 50 kHz) 51000 packets of 144 samples from 2019-06-21T12:21:36.925.000. Part 124/147

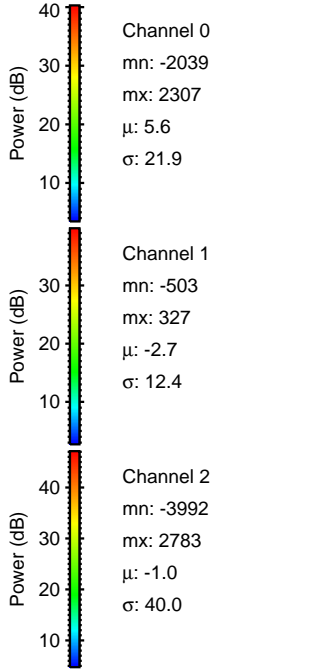
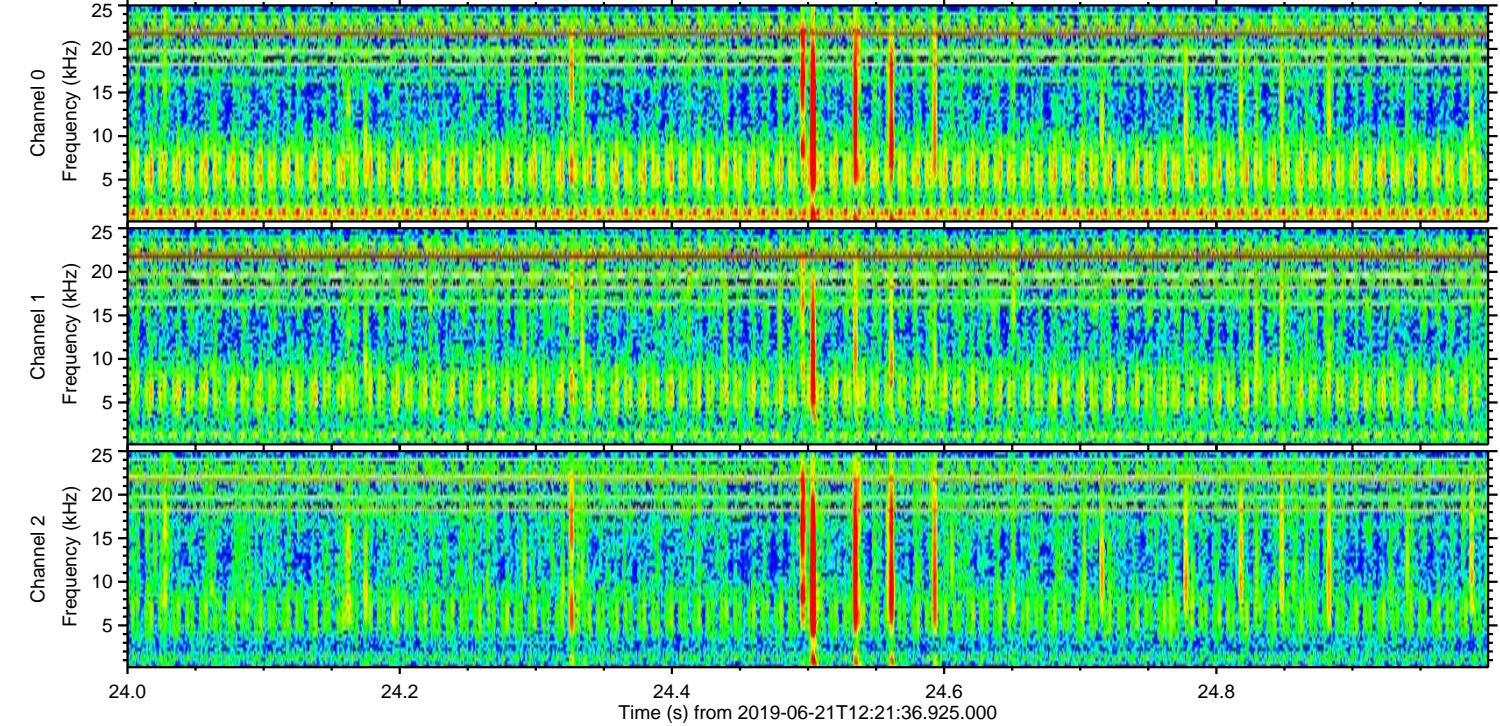
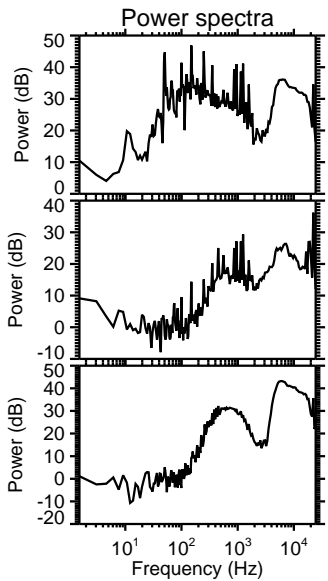
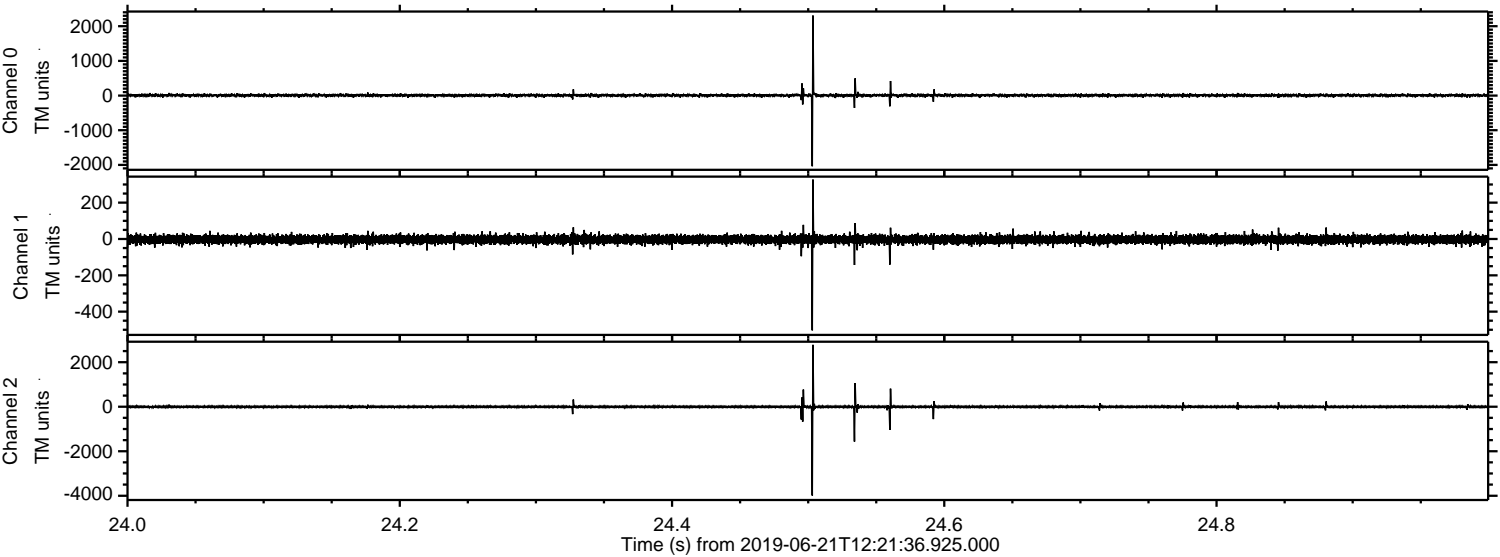
Processed Fri Jun 21 14:29:42 2019 by ELM ver.2012-10-06 from 001__elm20190621_122135__dat00.bin



Processed Fri Jun 21 14:29:43 2019 by ELM ver.2012-10-06 from 001__elm20190621_122135__dat00.bin

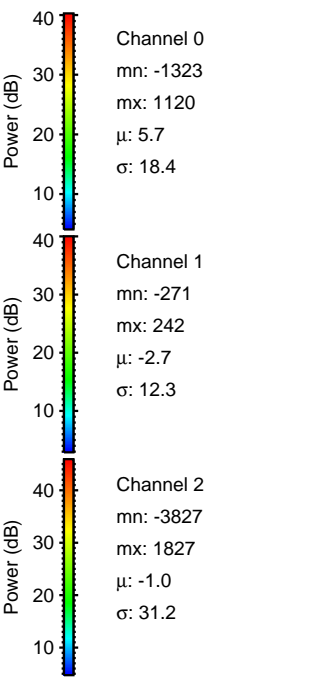
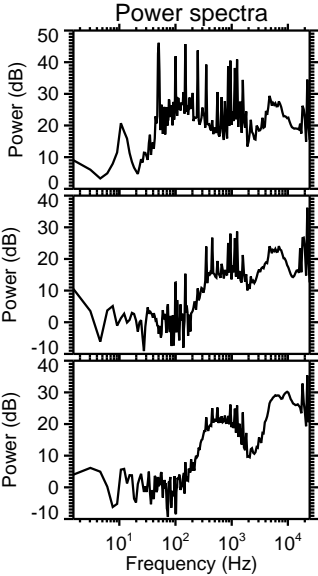
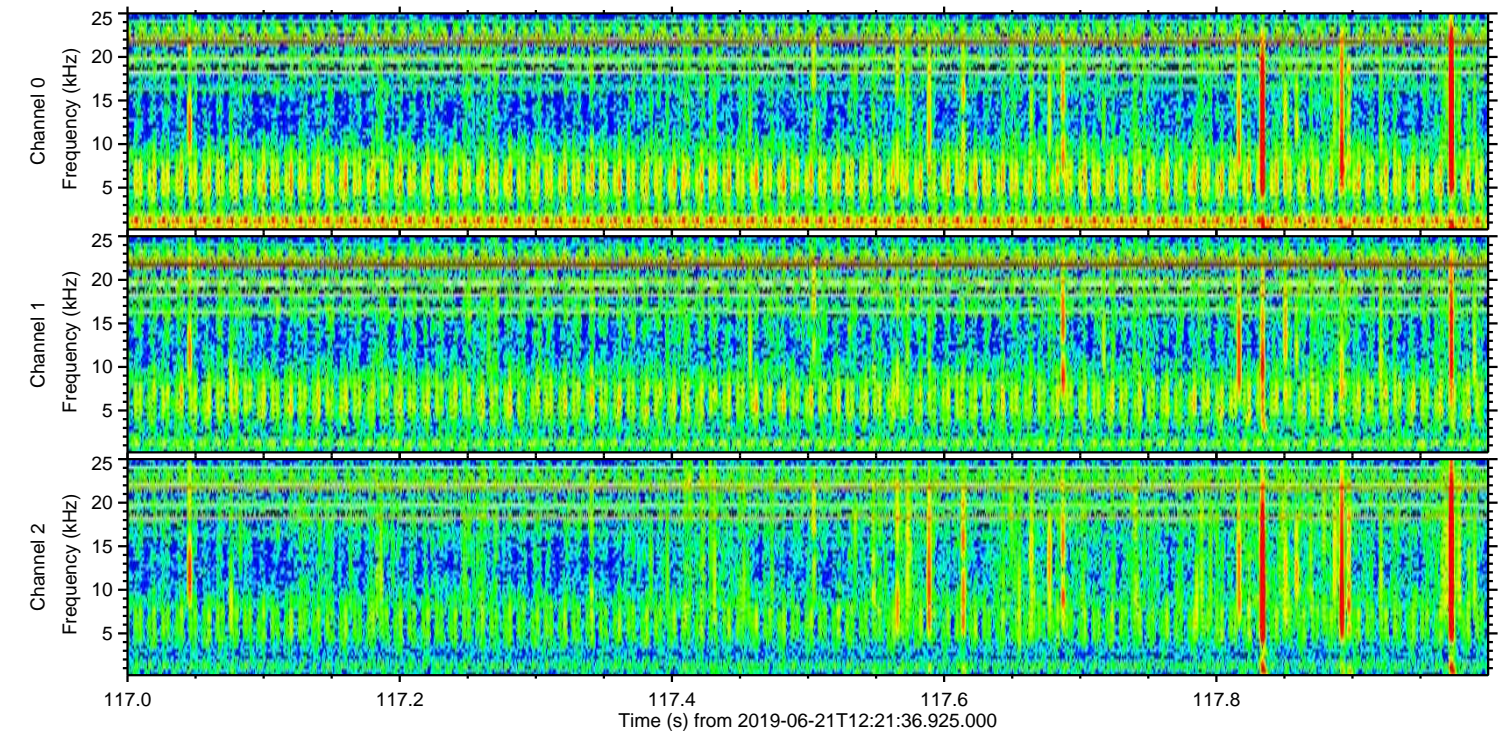
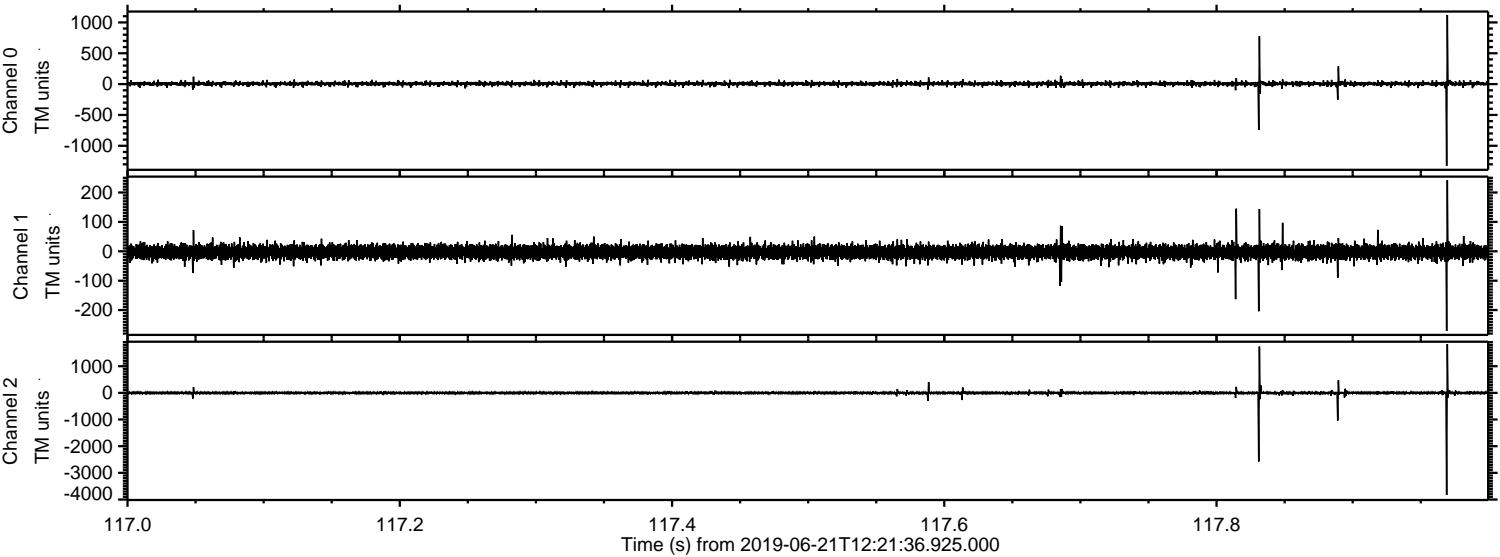


Processed Fri Jun 21 14:29:43 2019 by ELM ver.2012-10-06 from 001__elm20190621_122135__dat00.bin

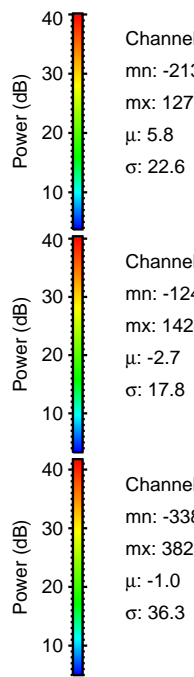
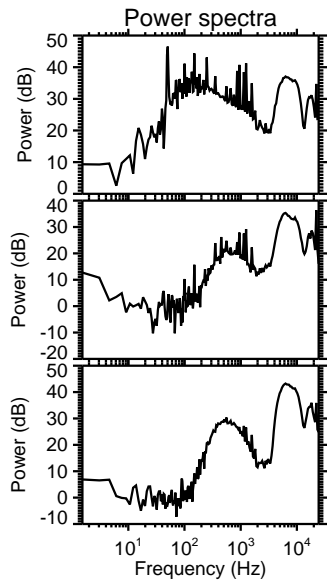
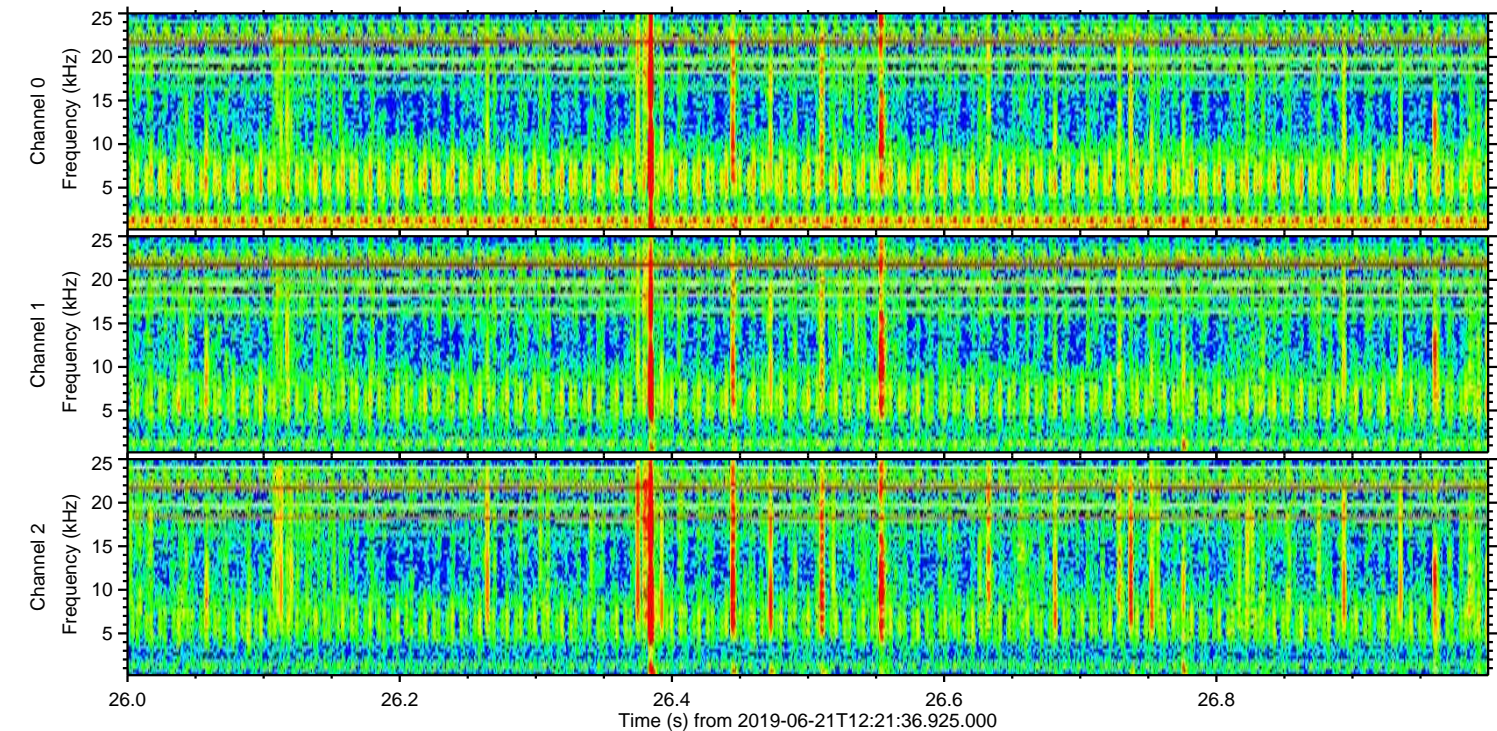
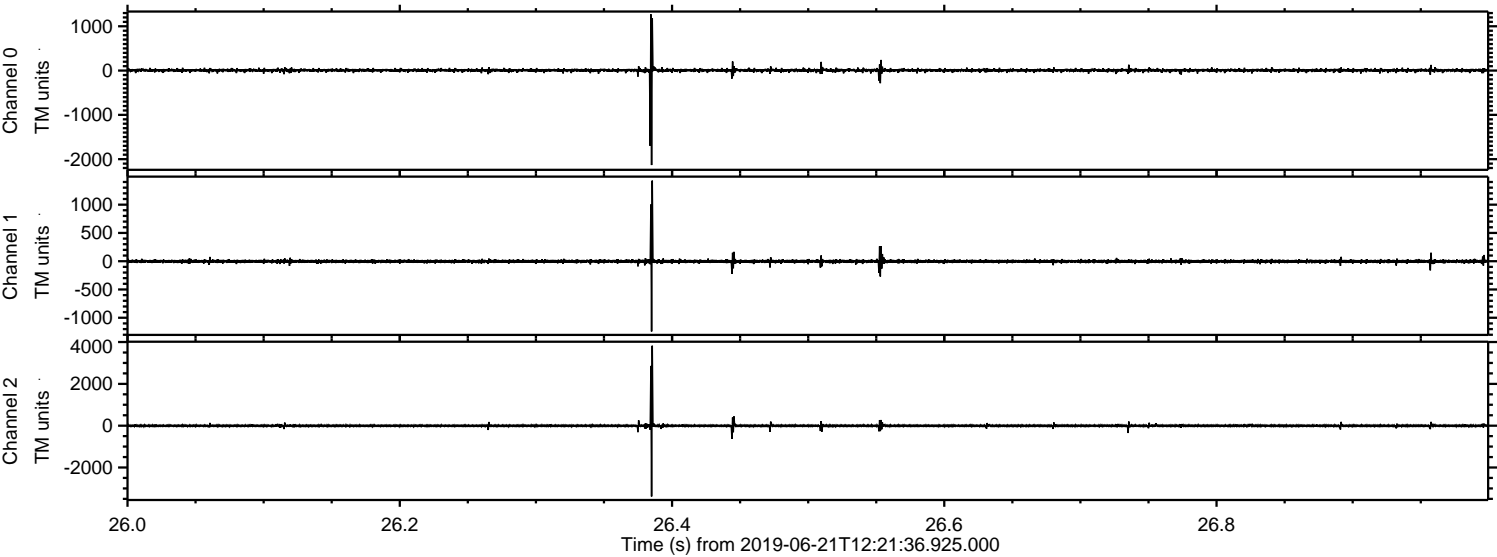


ELMAVAN 3D WAVEFORMS (Measured data sampled at 50 kHz) 51000 packets of 144 samples from 2019-06-21T12:21:36.925.000. Part 118/147

Processed Fri Jun 21 14:29:44 2019 by ELM ver.2012-10-06 from 001__elm20190621_122135__dat00.bin



Processed Fri Jun 21 14:29:45 2019 by ELM ver.2012-10-06 from 001__elm20190621_122135__dat00.bin



Channel 0
mn: -2134
mx: 1270
 μ : 5.8
 σ : 22.6

Channel 1
mn: -1241
mx: 1424
 μ : -2.7
 σ : 17.8

Channel 2
mn: -3385
mx: 3825
 μ : -1.0
 σ : 36.3

Processed Fri Jun 21 14:29:46 2019 by ELM ver.2012-10-06 from 001__elm20190621_122135__dat00.bin

