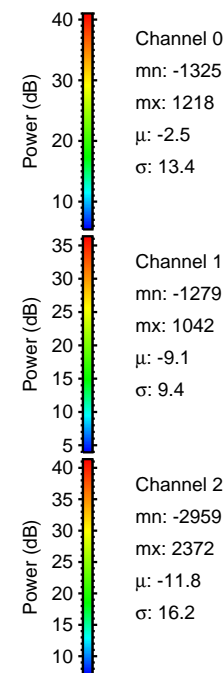
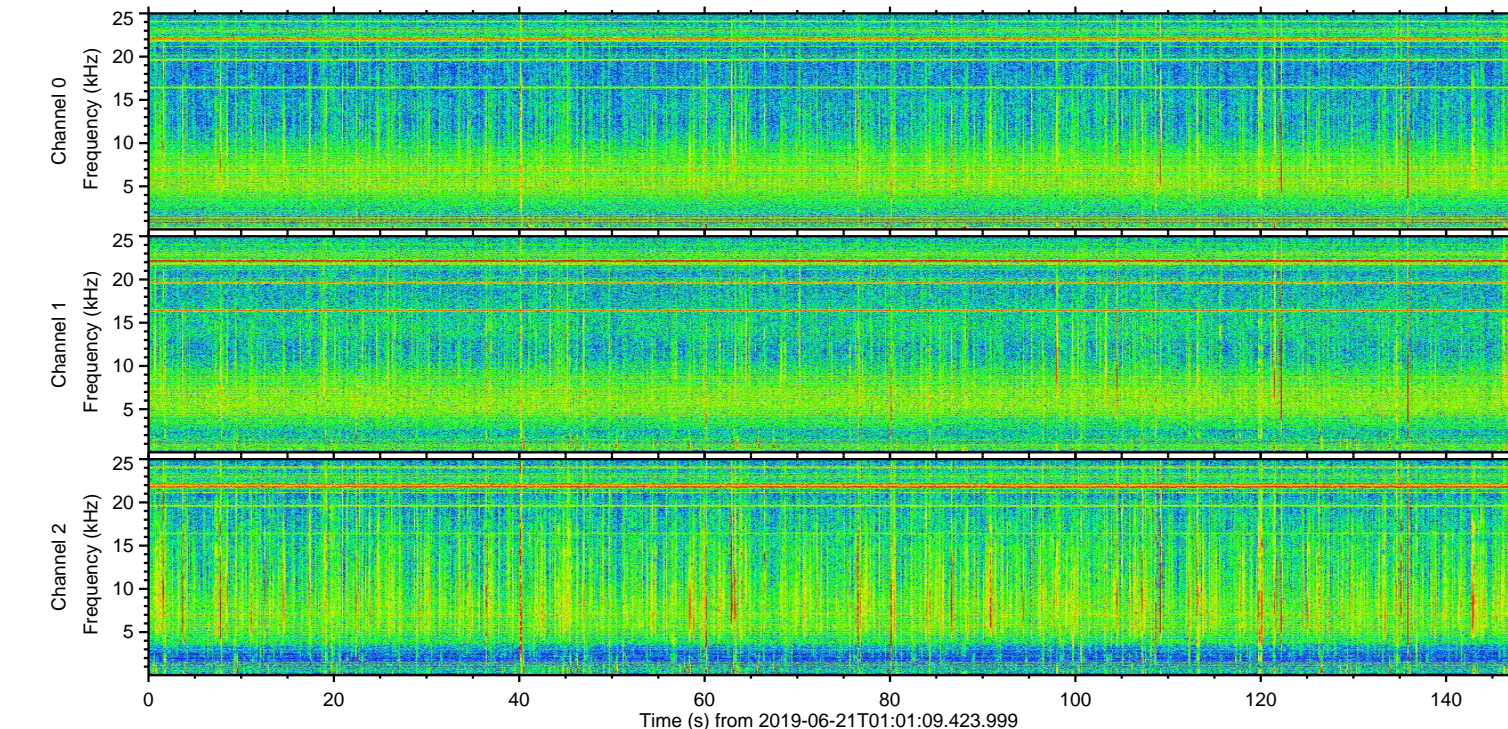
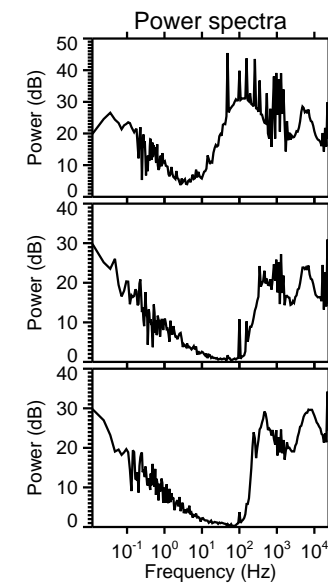
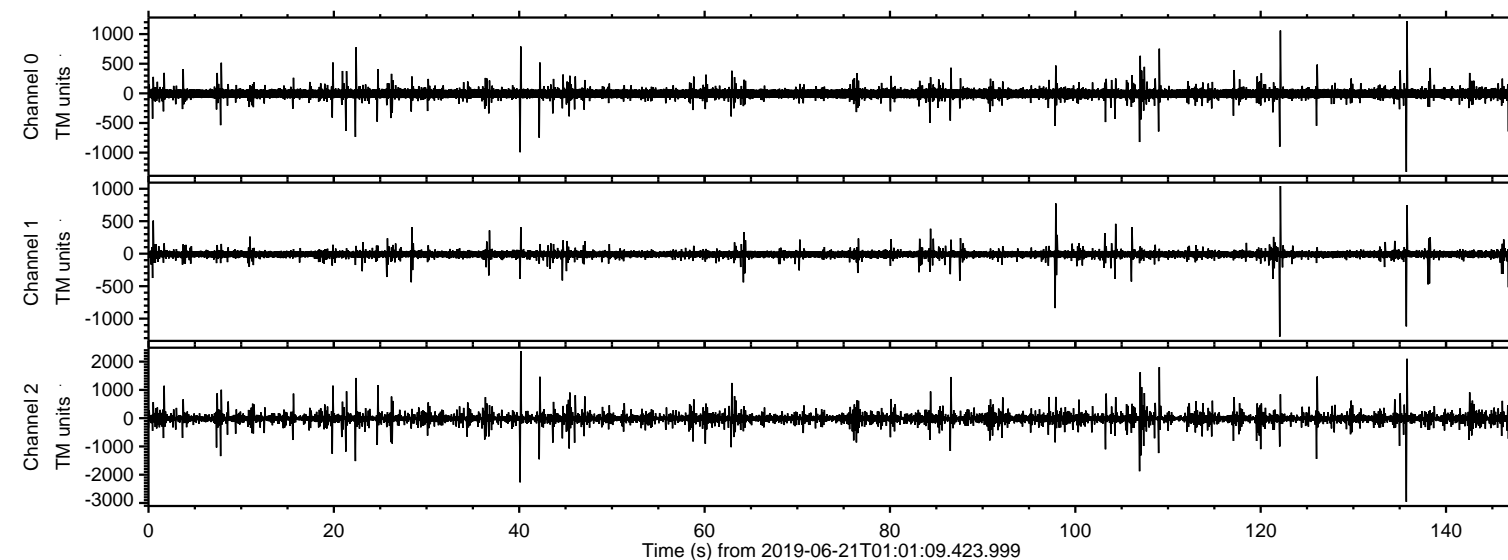


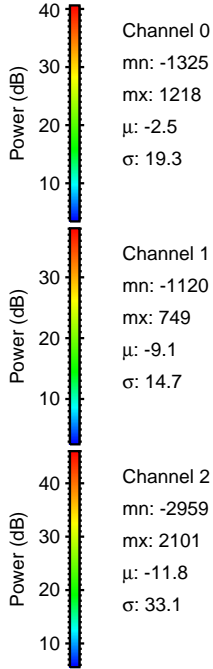
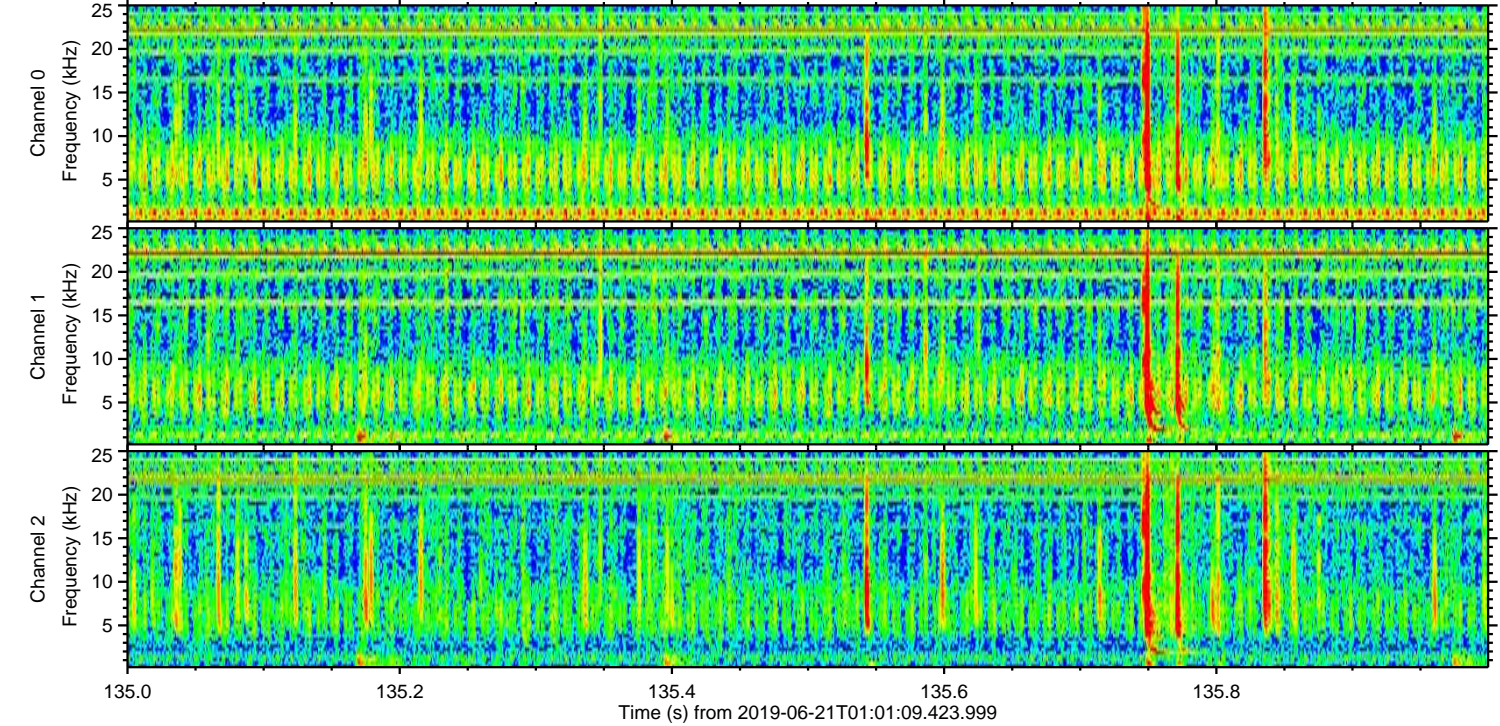
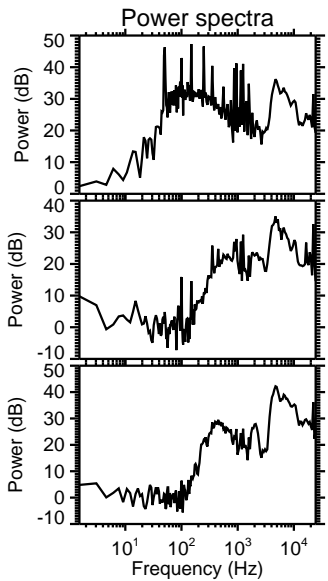
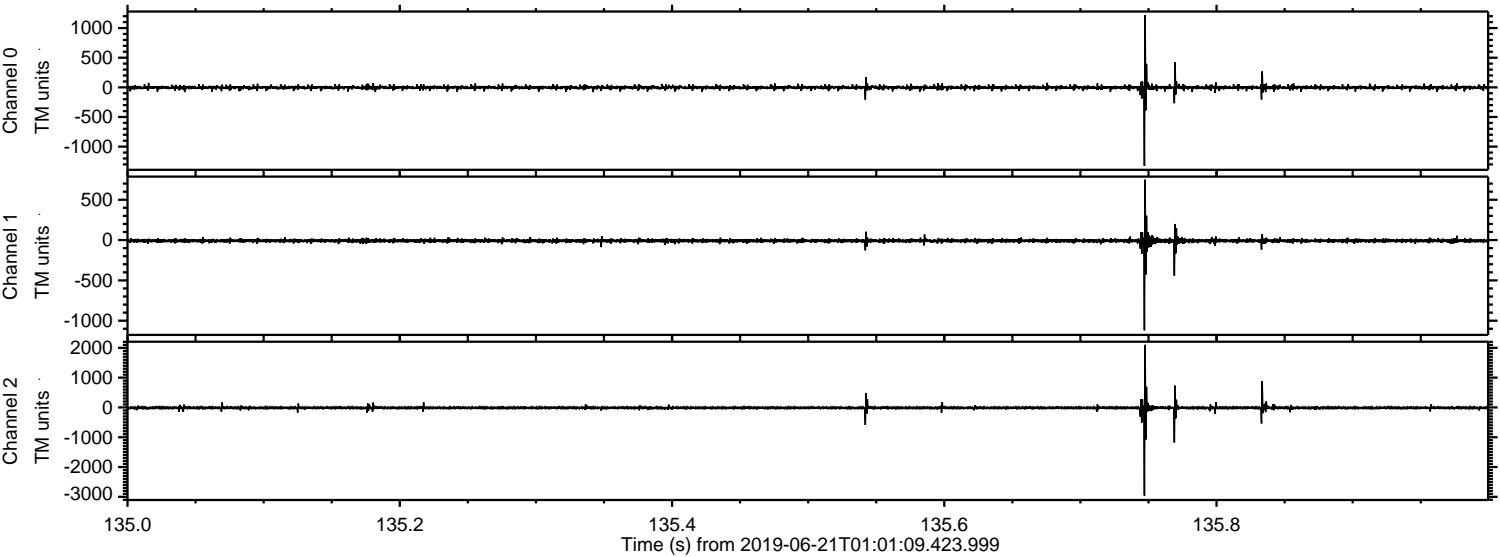
ELMAVAN 3D WAVEFORMS (Measured data sampled at 50 kHz) 51000 packets of 144 samples from 2019-06-21T01:01:09.423.999.

Processed Fri Jun 21 03:09:24 2019 by ELM ver.2012-10-06 from 001__elm20190621_010108__dat00.bin



ELMAVAN 3D WAVEFORMS (Measured data sampled at 50 kHz) 51000 packets of 144 samples from 2019-06-21T01:01:09.423.999. Part 136/147

Processed Fri Jun 21 03:09:30 2019 by ELM ver.2012-10-06 from 001__elm20190621_010108__dat00.bin

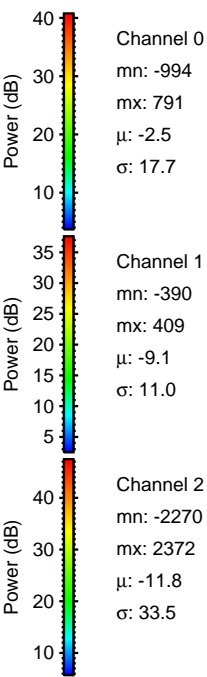
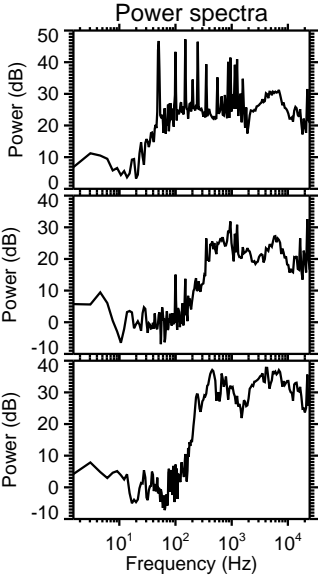
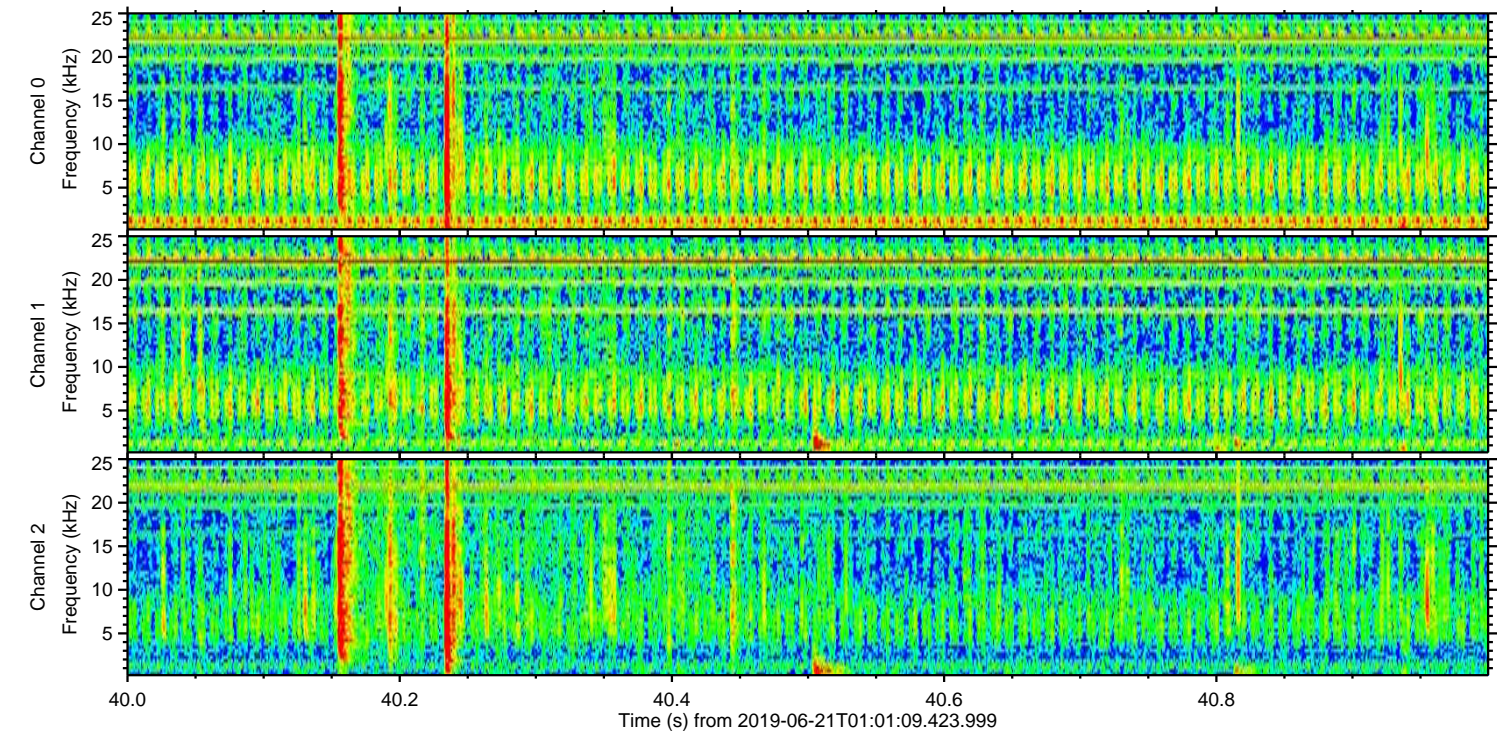
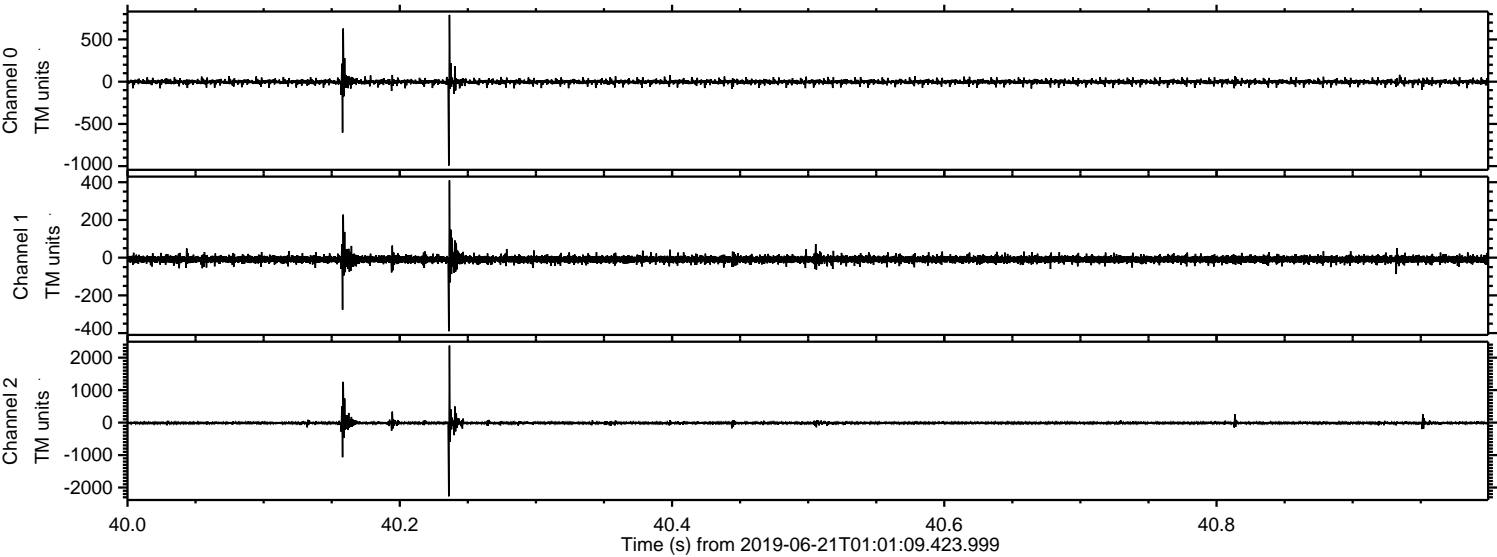


Channel 0
mn: -1325
mx: 1218
 μ : -2.5
 σ : 19.3

Channel 1
mn: -1120
mx: 749
 μ : -9.1
 σ : 14.7

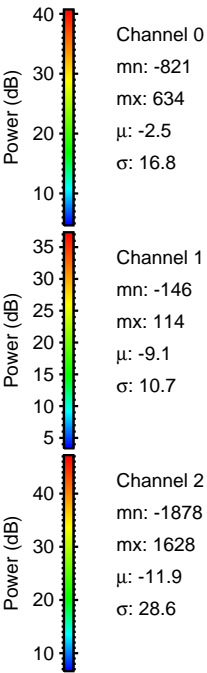
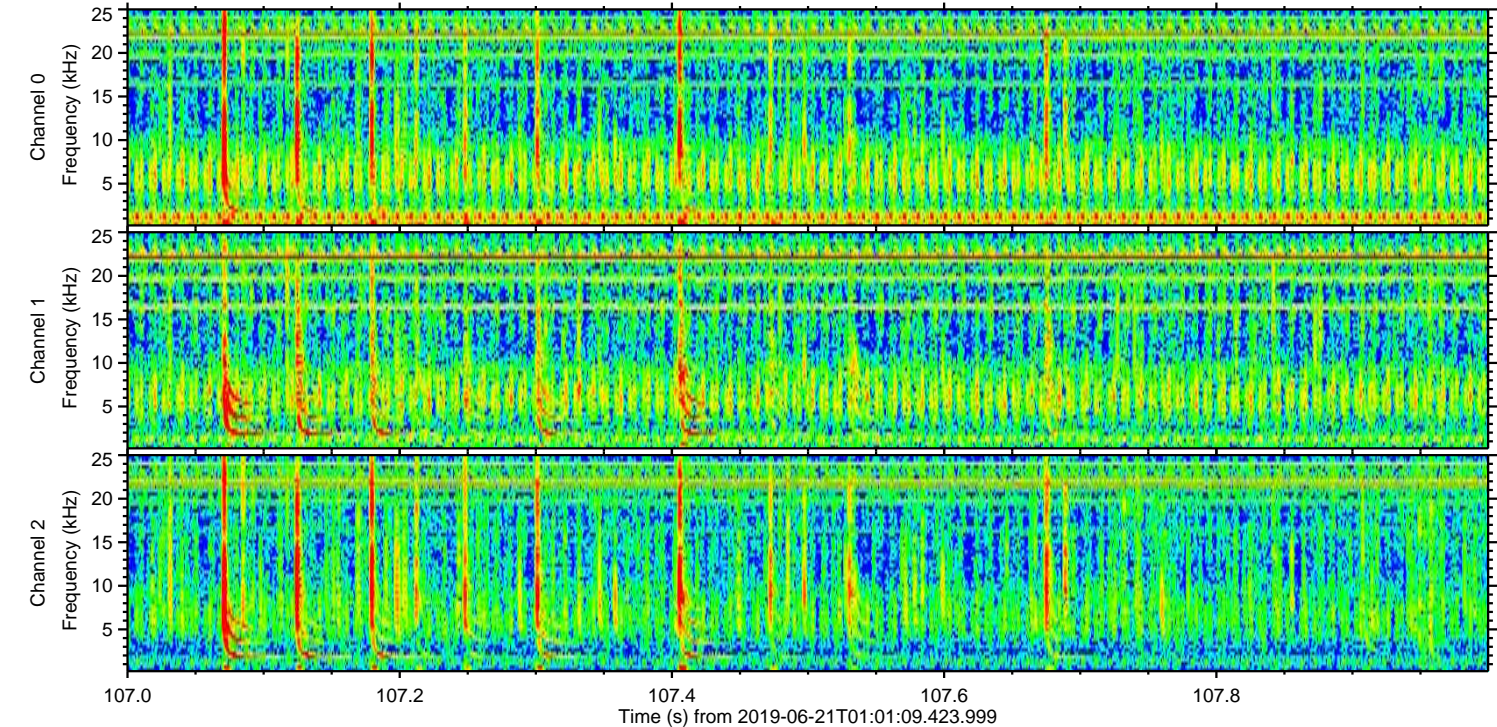
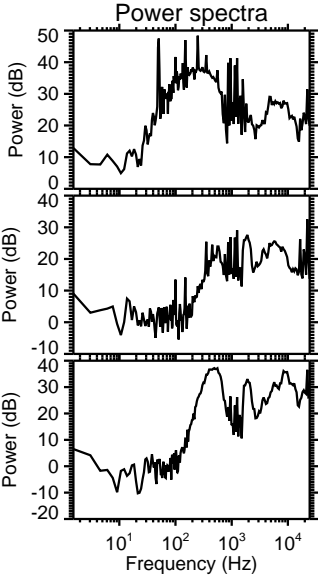
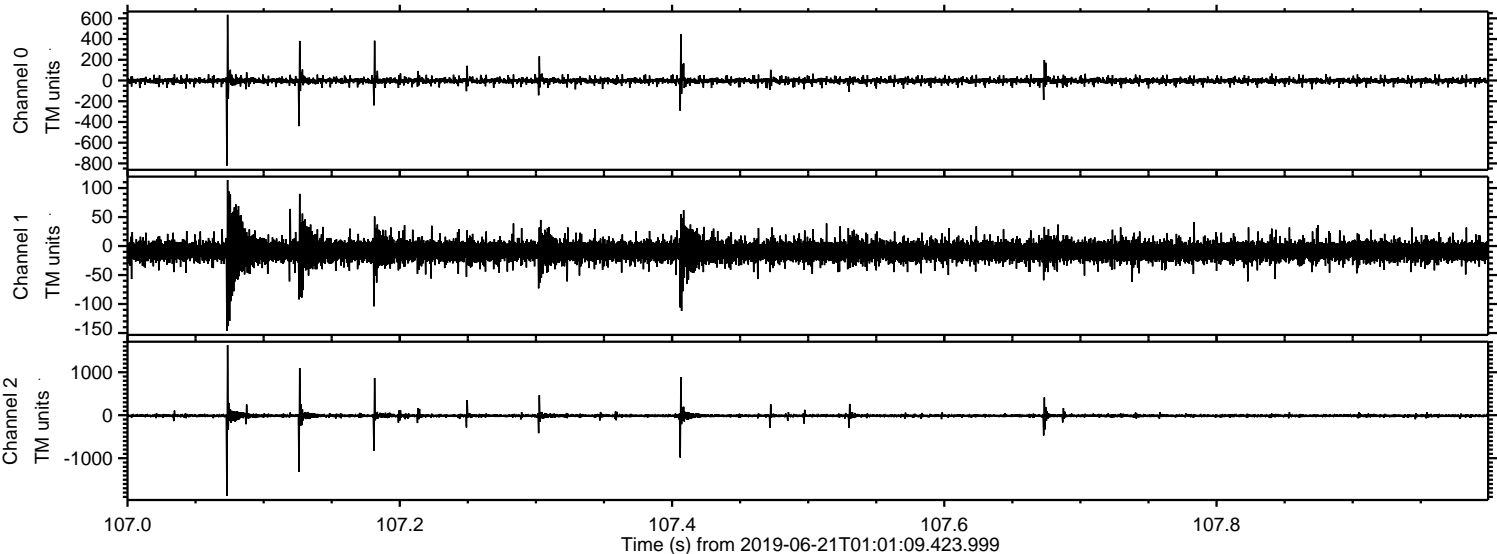
Channel 2
mn: -2959
mx: 2101
 μ : -11.8
 σ : 33.1

Processed Fri Jun 21 03:09:31 2019 by ELM ver.2012-10-06 from 001__elm20190621_010108__dat00.bin



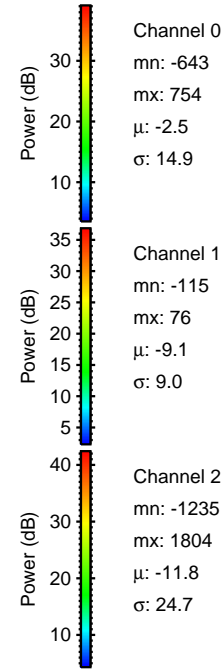
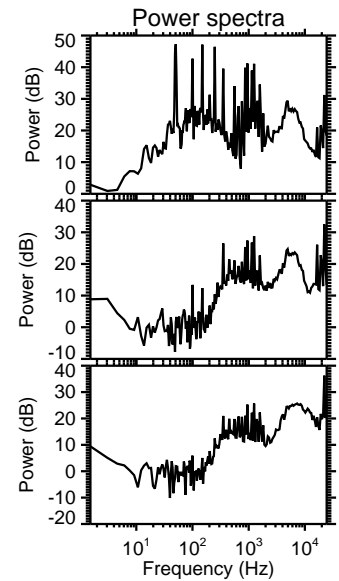
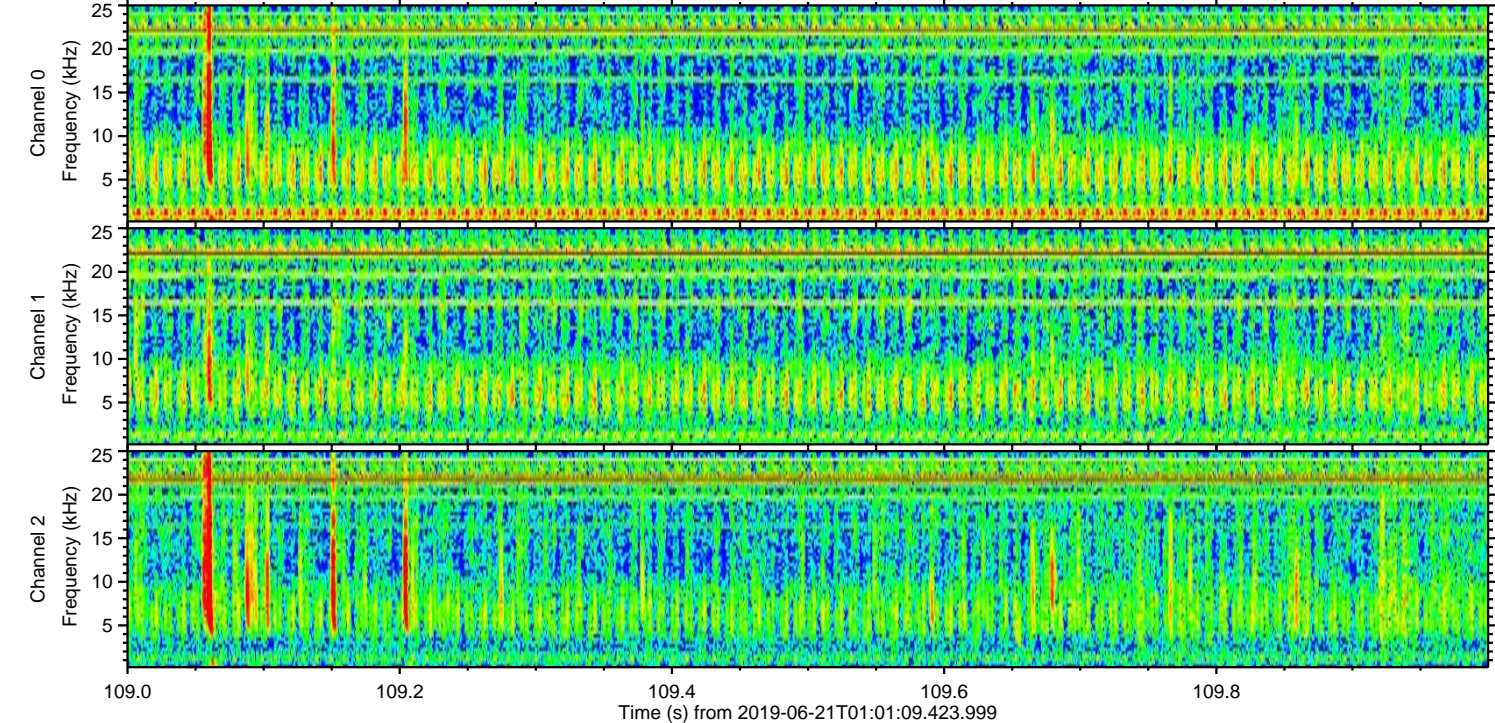
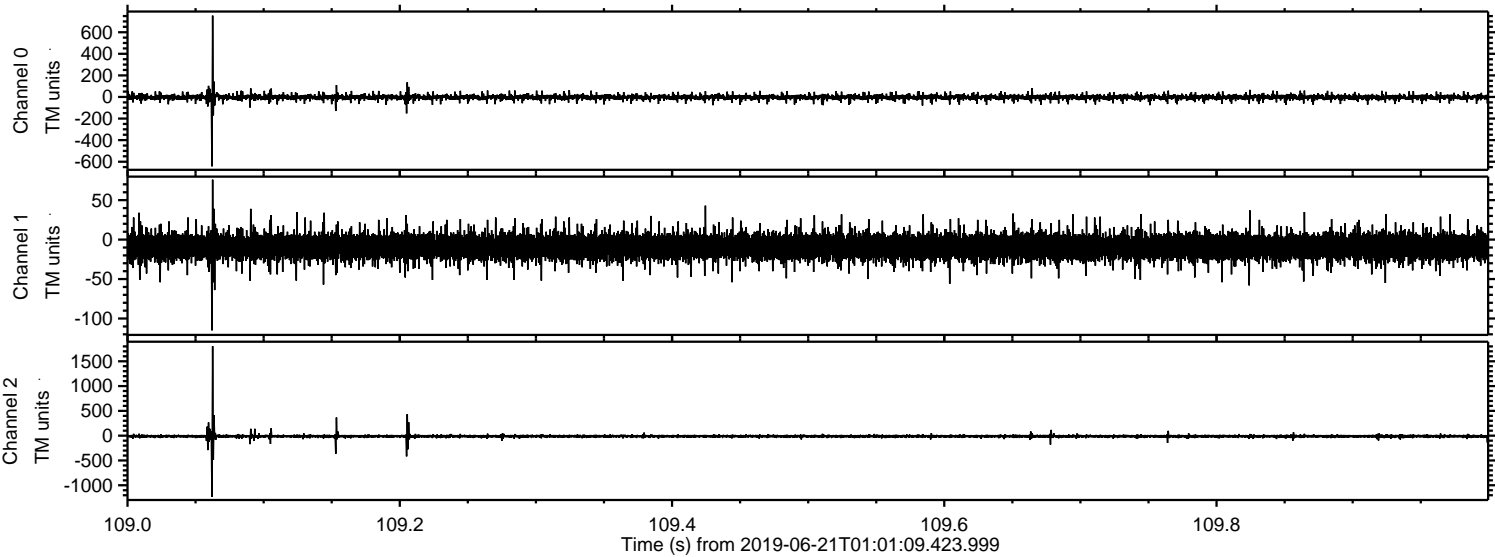
ELMAVAN 3D WAVEFORMS (Measured data sampled at 50 kHz) 51000 packets of 144 samples from 2019-06-21T01:01:09.423.999. Part 108/147

Processed Fri Jun 21 03:09:31 2019 by ELM ver.2012-10-06 from 001__elm20190621_010108__dat00.bin

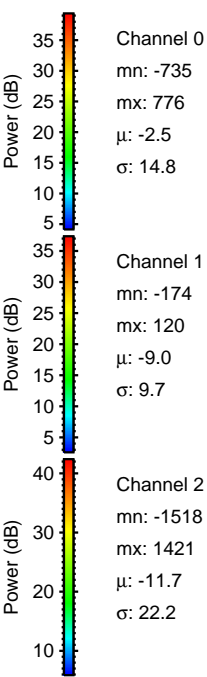
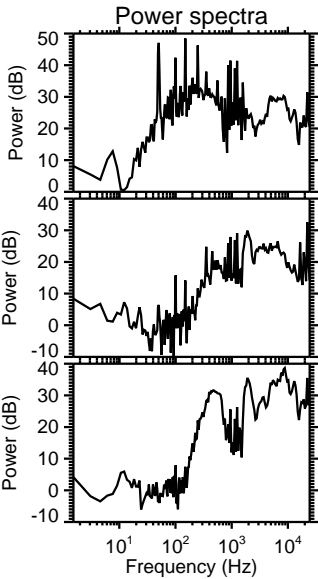
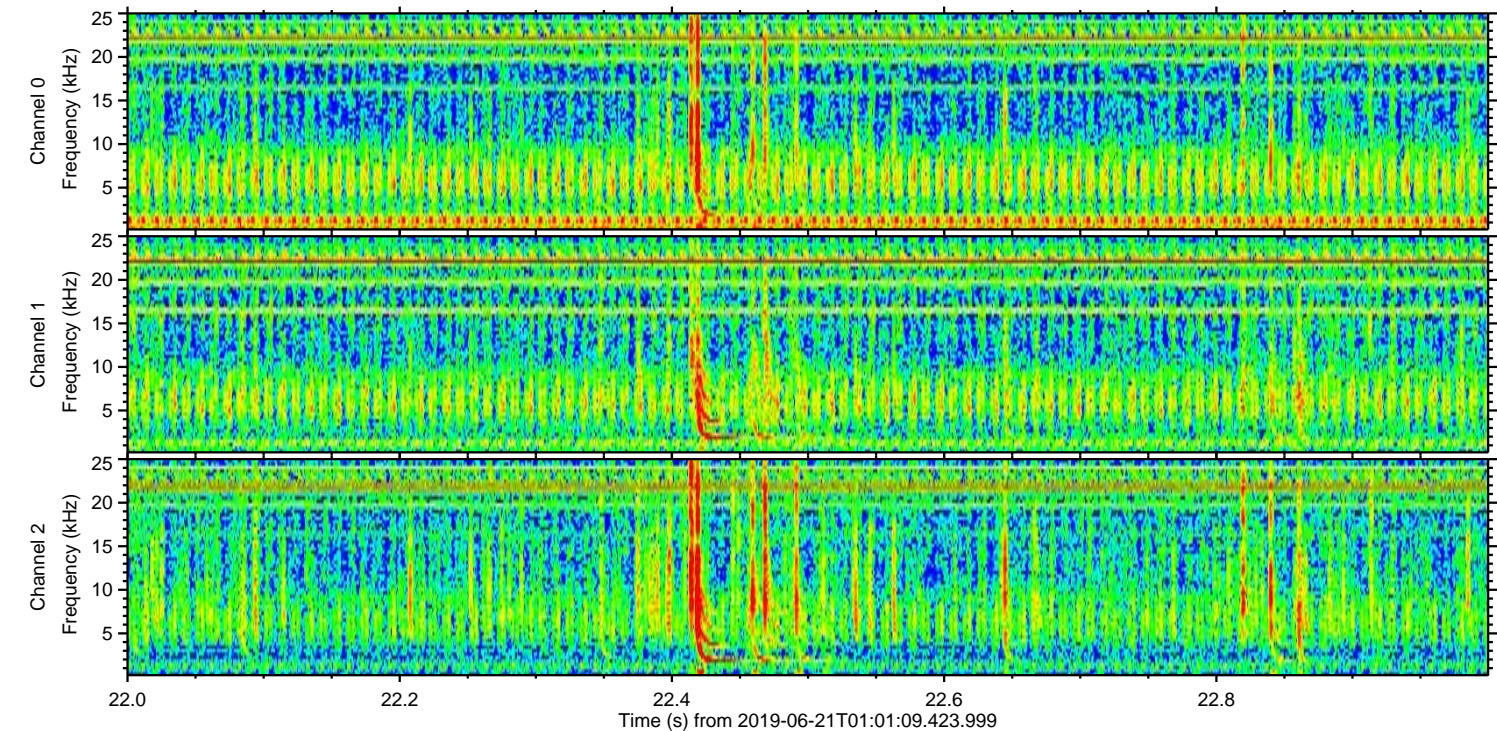
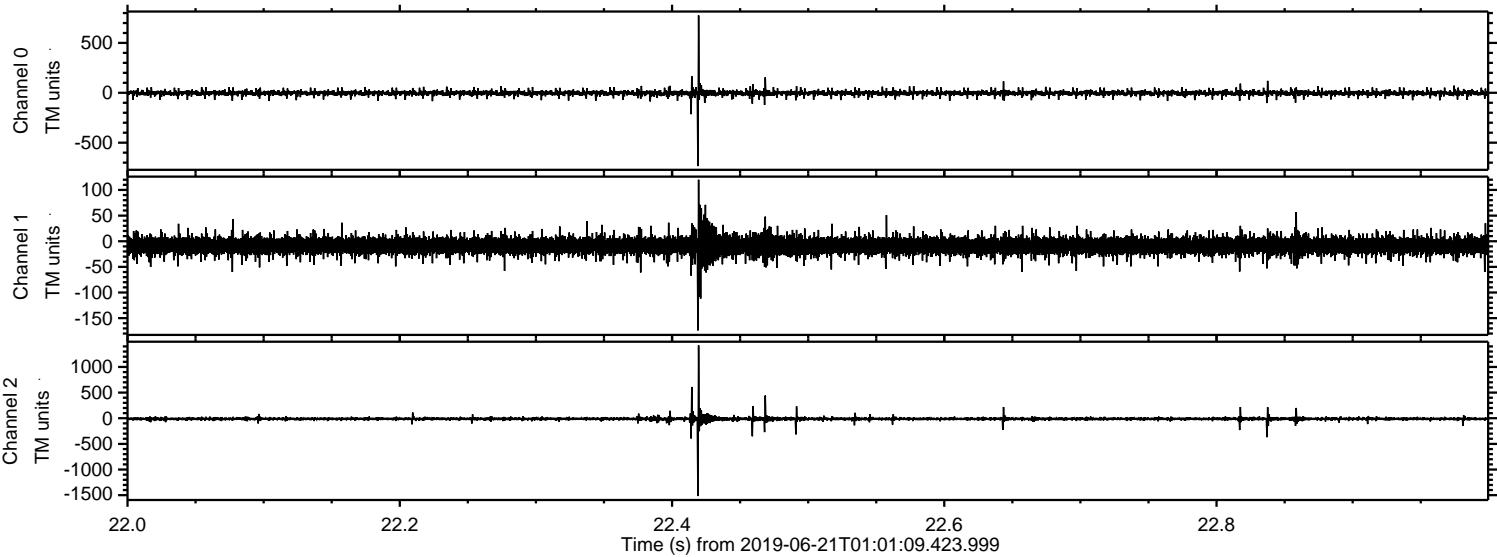


ELMAVAN 3D WAVEFORMS (Measured data sampled at 50 kHz) 51000 packets of 144 samples from 2019-06-21T01:01:09.423.999. Part 110/147

Processed Fri Jun 21 03:09:32 2019 by ELM ver.2012-10-06 from 001__elm20190621_010108__dat00.bin

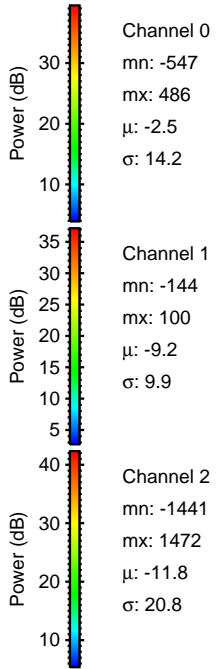
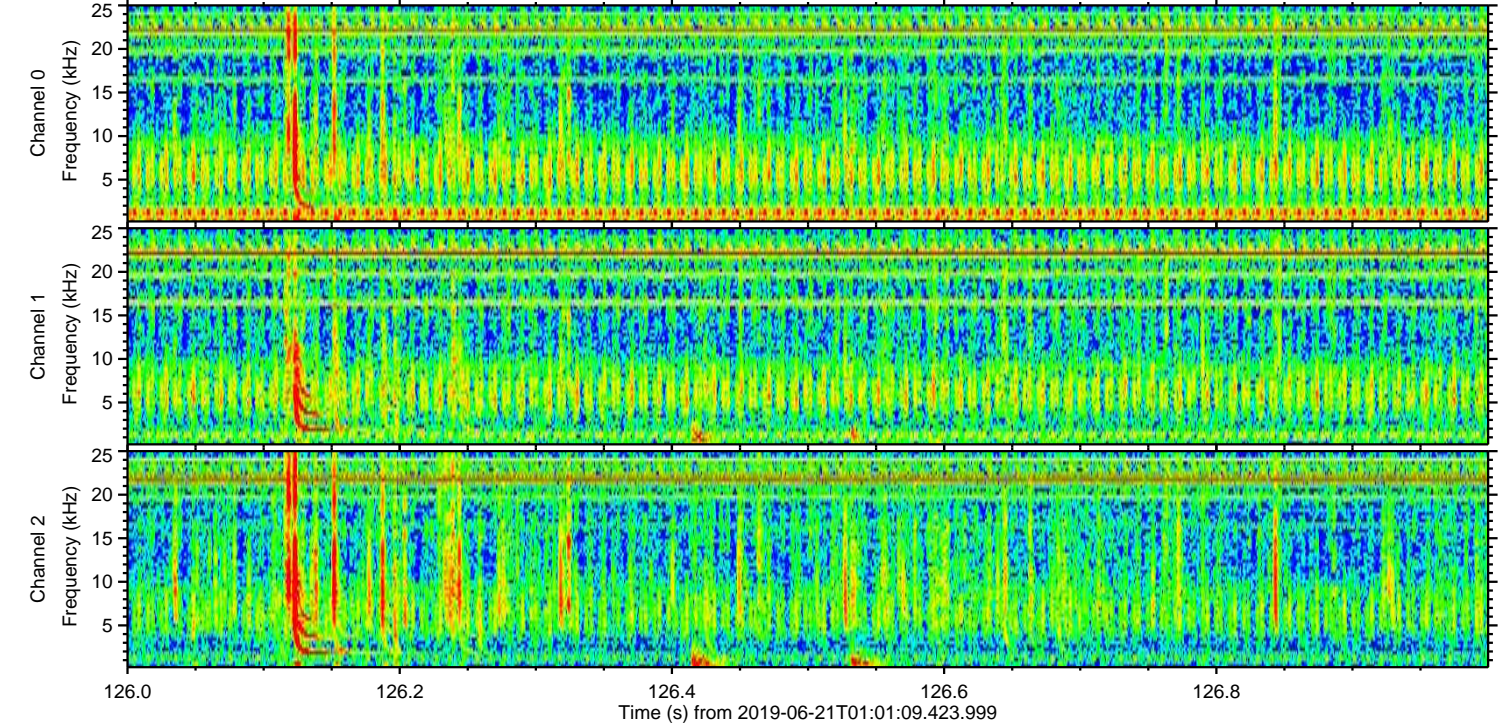
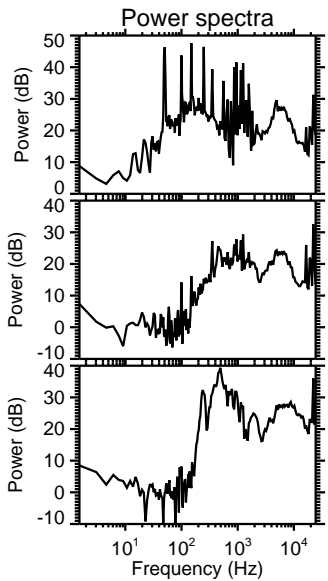
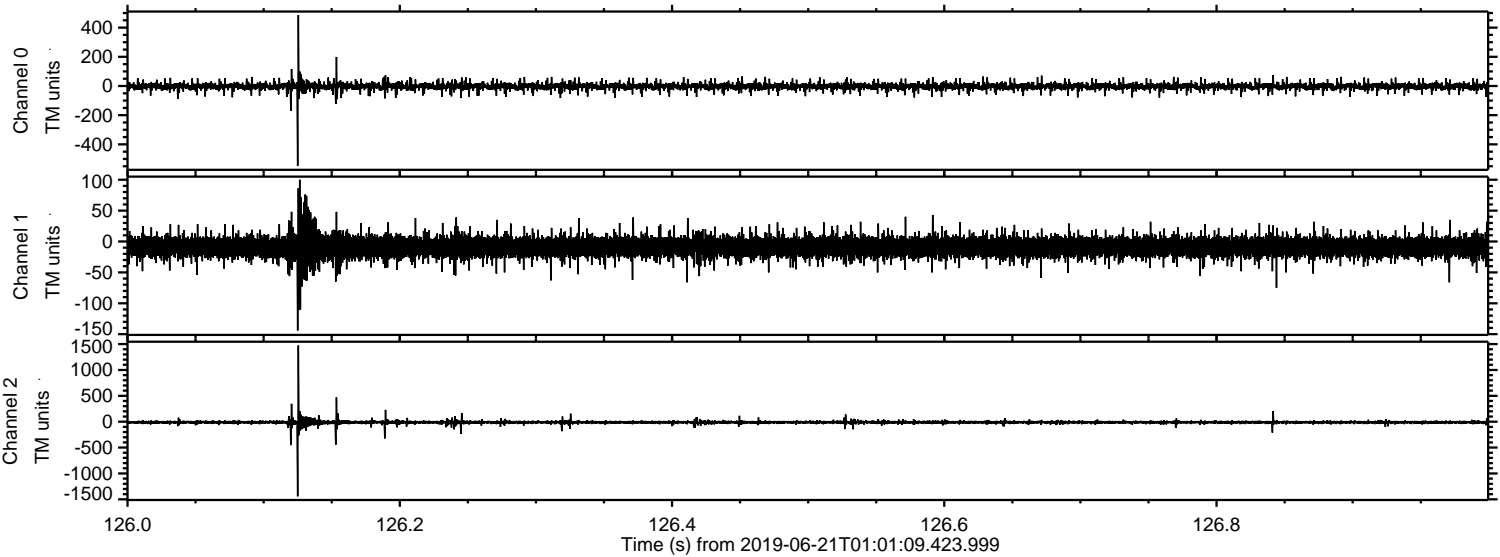


Processed Fri Jun 21 03:09:33 2019 by ELM ver.2012-10-06 from 001__elm20190621_010108__dat00.bin



ELMAVAN 3D WAVEFORMS (Measured data sampled at 50 kHz) 51000 packets of 144 samples from 2019-06-21T01:01:09.423.999. Part 127/147

Processed Fri Jun 21 03:09:33 2019 by ELM ver.2012-10-06 from 001__elm20190621_010108__dat00.bin

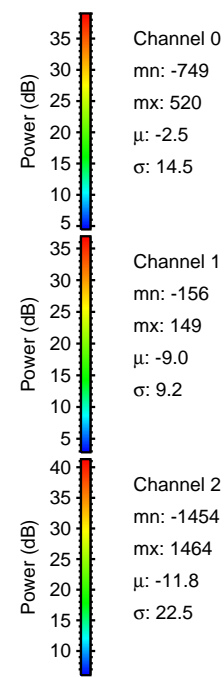
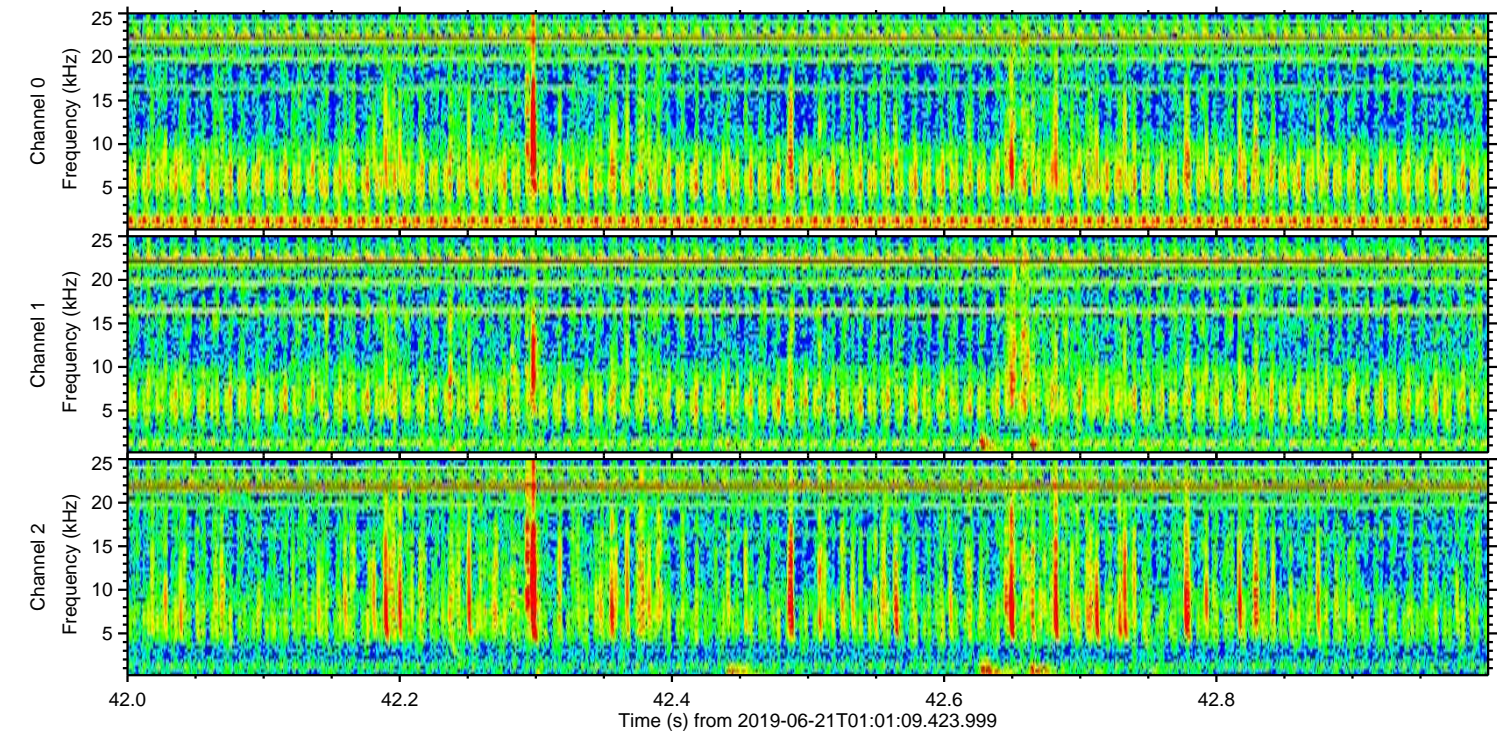
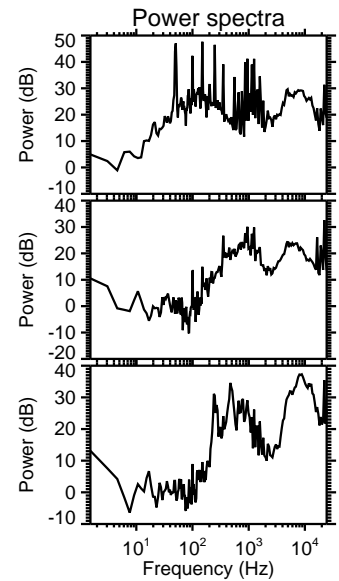
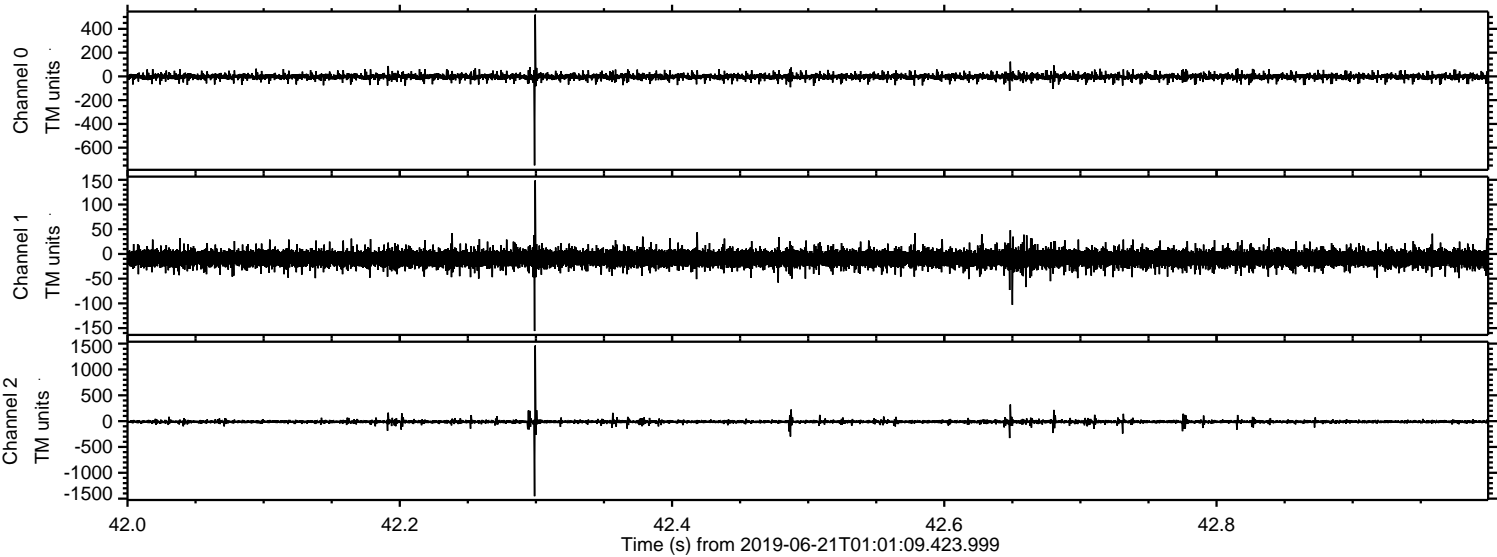


Channel 0
mn: -547
mx: 486
 μ : -2.5
 σ : 14.2

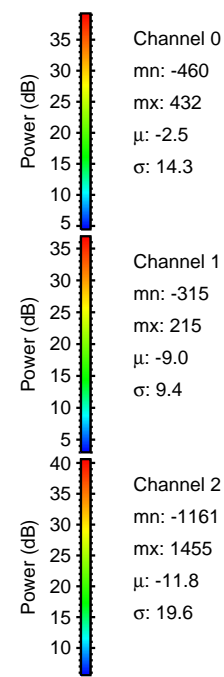
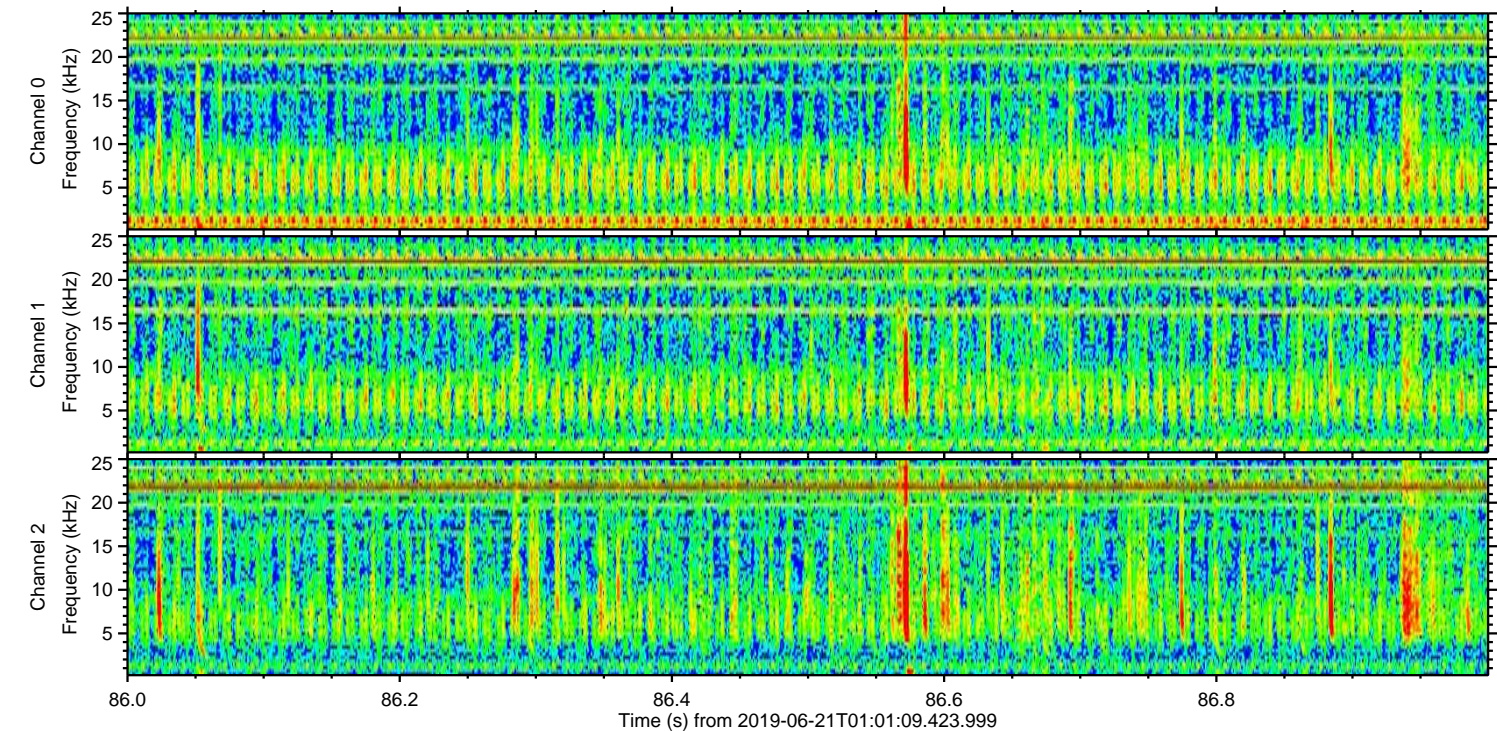
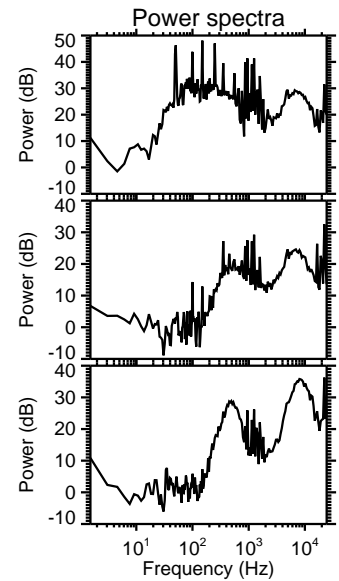
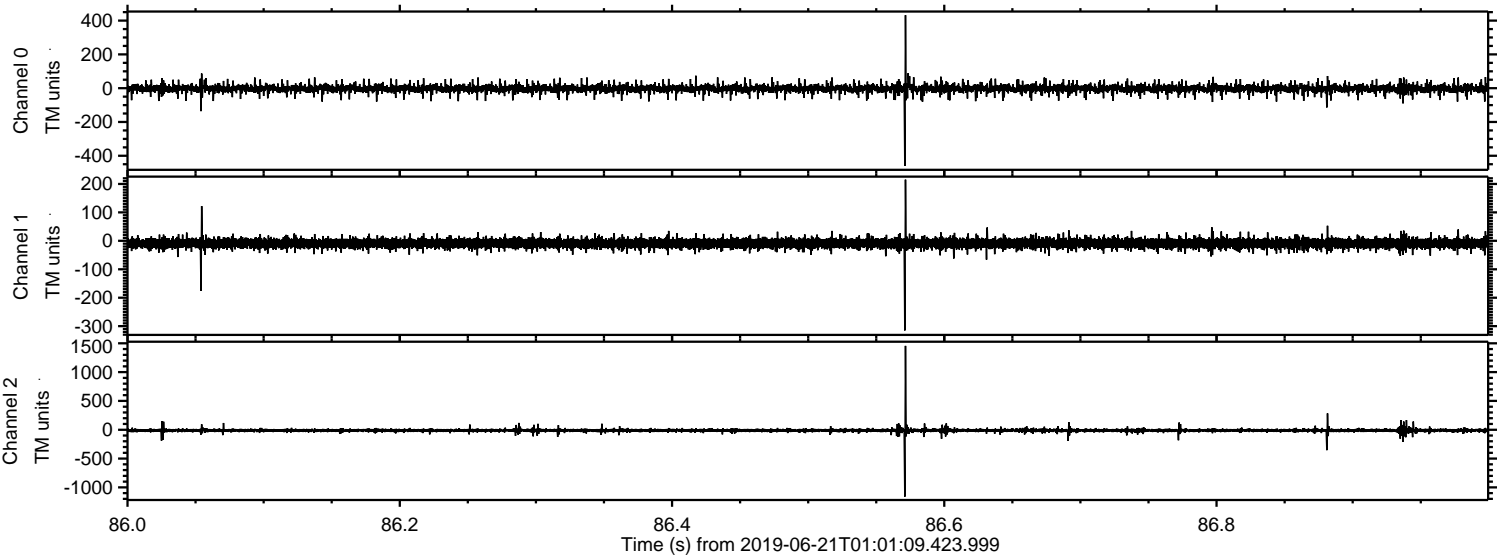
Channel 1
mn: -144
mx: 100
 μ : -9.2
 σ : 9.9

Channel 2
mn: -1441
mx: 1472
 μ : -11.8
 σ : 20.8

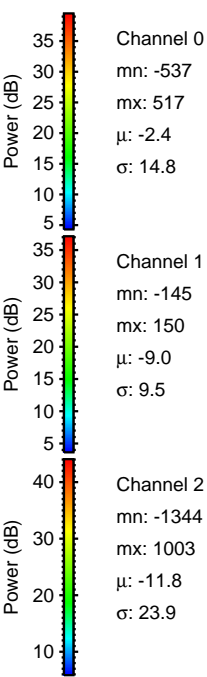
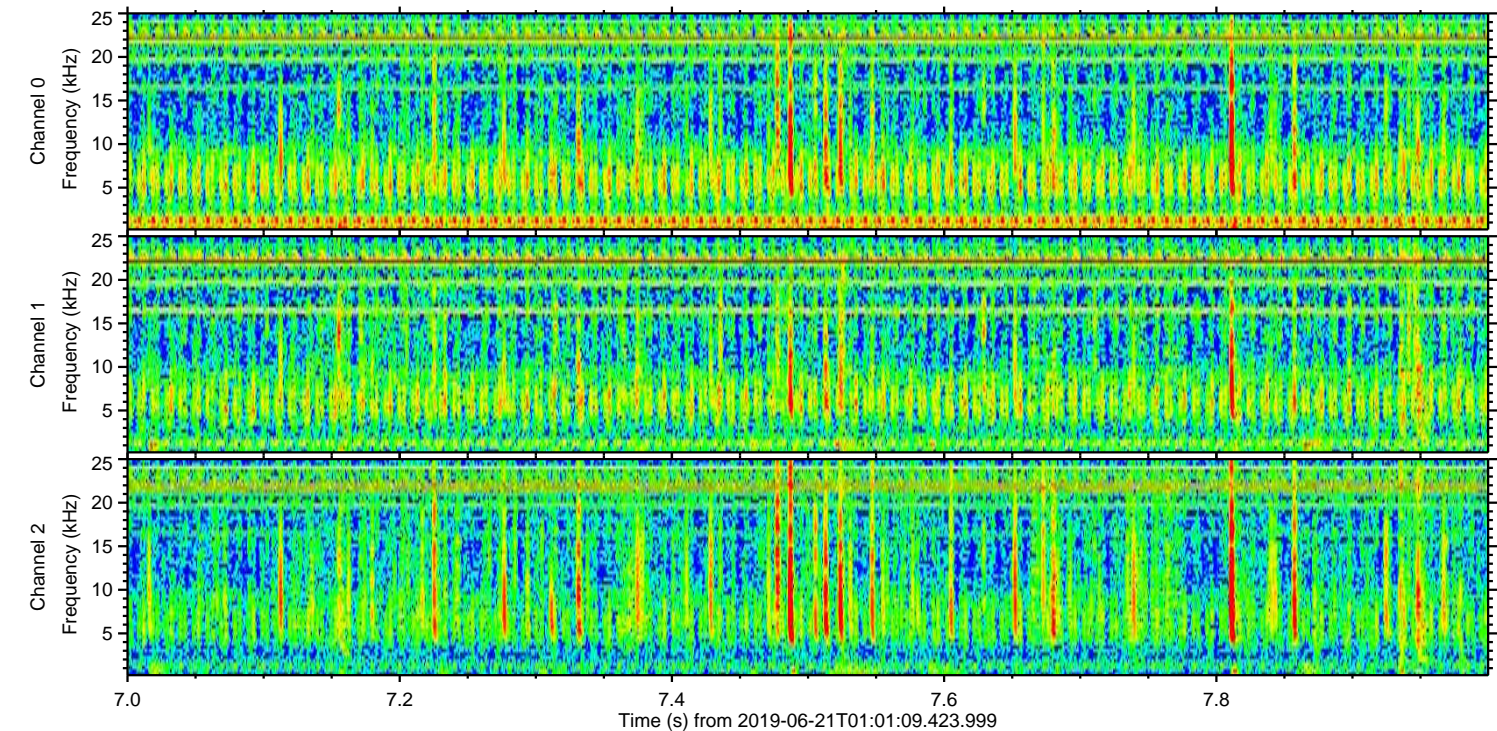
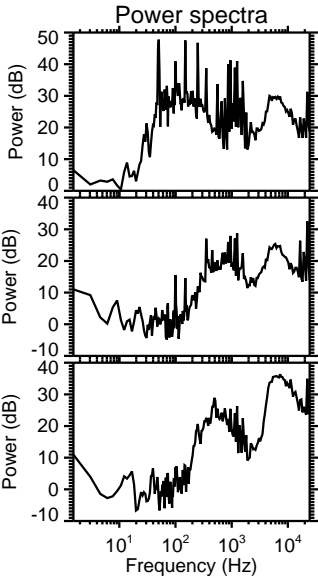
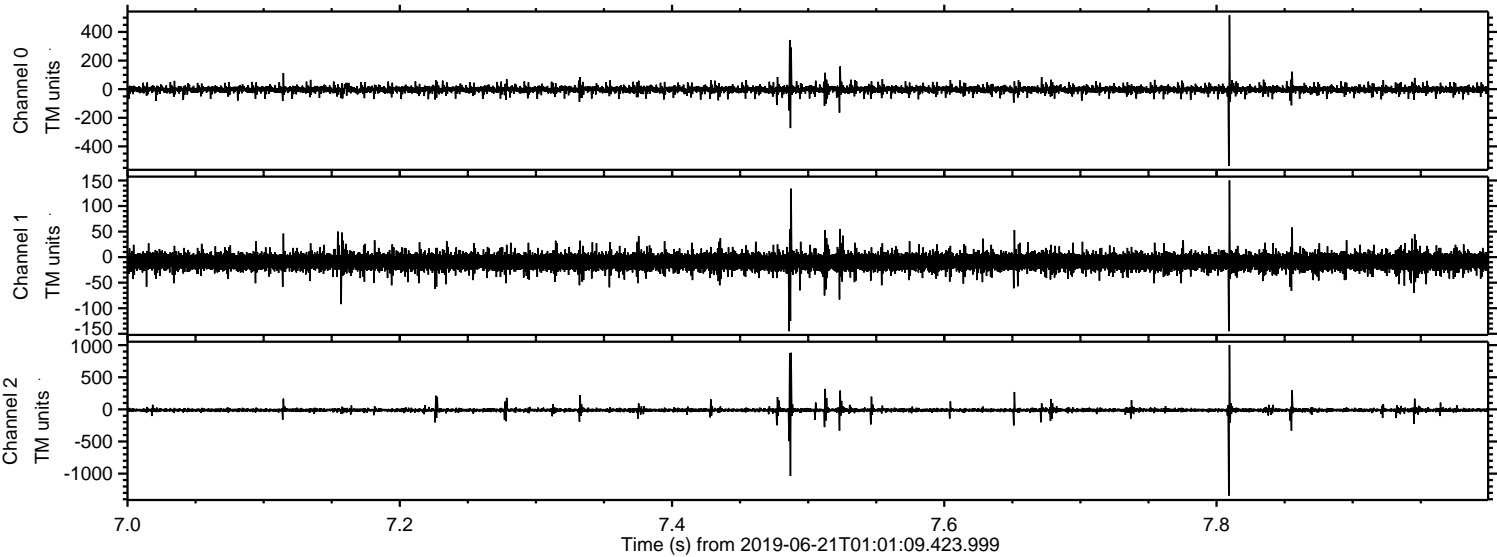
Processed Fri Jun 21 03:09:34 2019 by ELM ver.2012-10-06 from 001__elm20190621_010108__dat00.bin



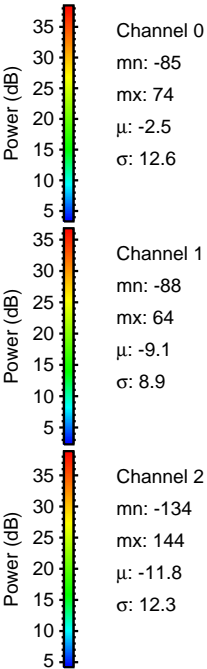
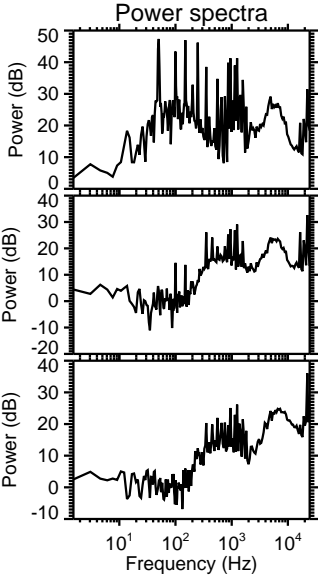
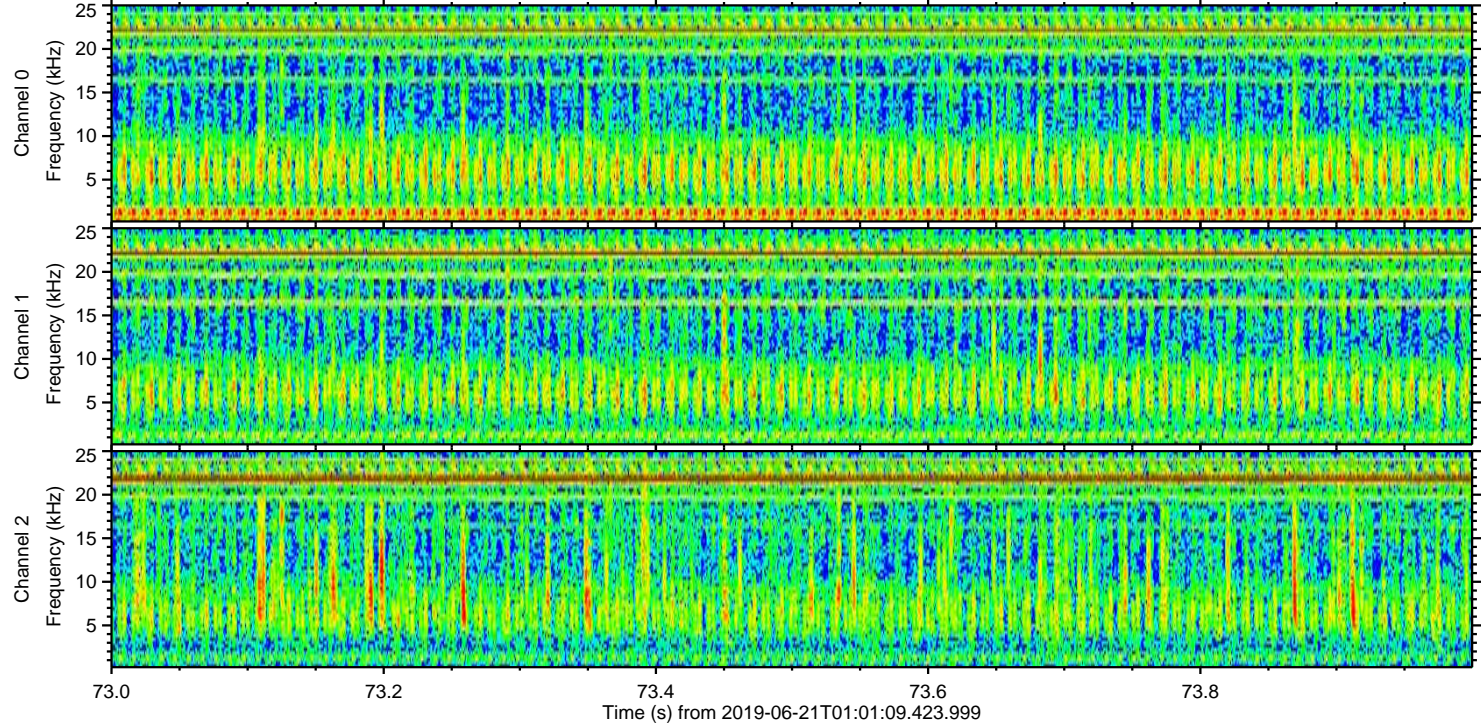
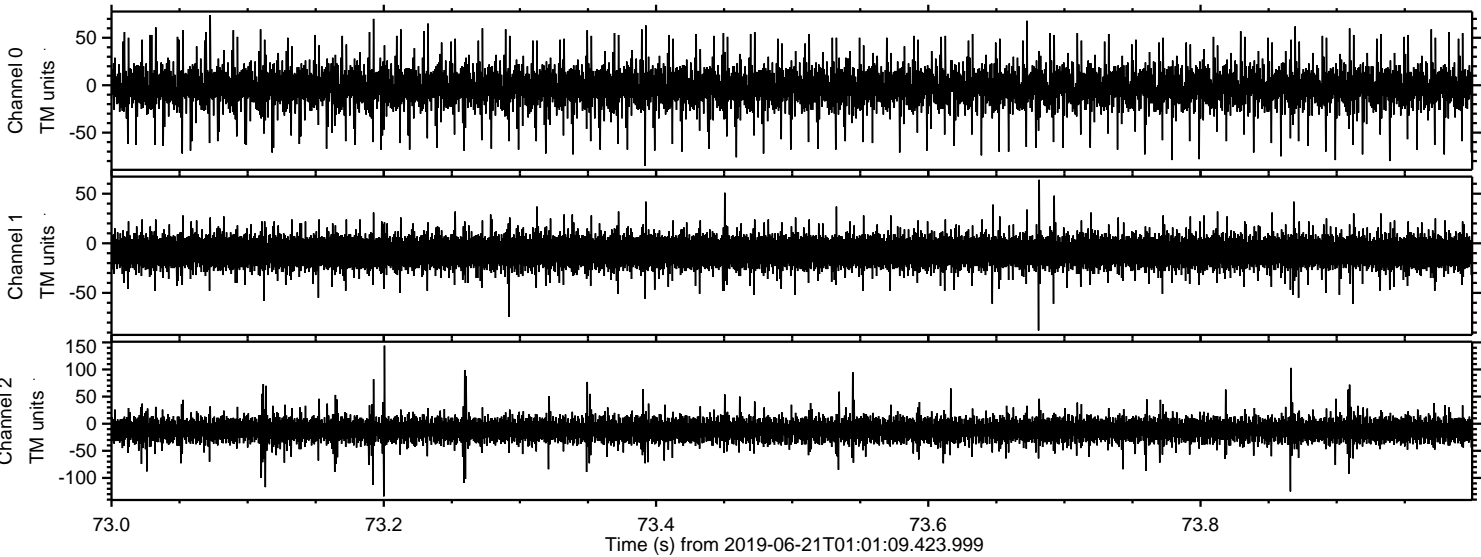
Processed Fri Jun 21 03:09:34 2019 by ELM ver.2012-10-06 from 001__elm20190621_010108__dat00.bin



Processed Fri Jun 21 03:09:35 2019 by ELM ver.2012-10-06 from 001__elm20190621_010108__dat00.bin



Processed Fri Jun 21 03:09:36 2019 by ELM ver.2012-10-06 from 001__elm20190621_010108__dat00.bin



Channel 0
mn: -85
mx: 74
 μ : -2.5
 σ : 12.6

Channel 1
mn: -88
mx: 64
 μ : -9.1
 σ : 8.9

Channel 2
mn: -134
mx: 144
 μ : -11.8
 σ : 12.3