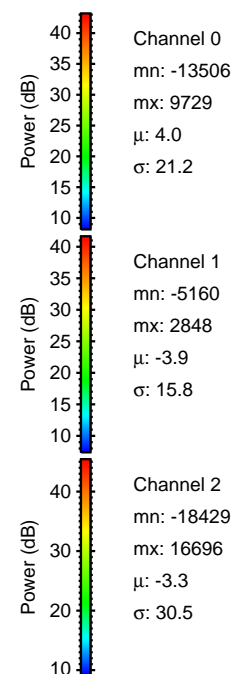
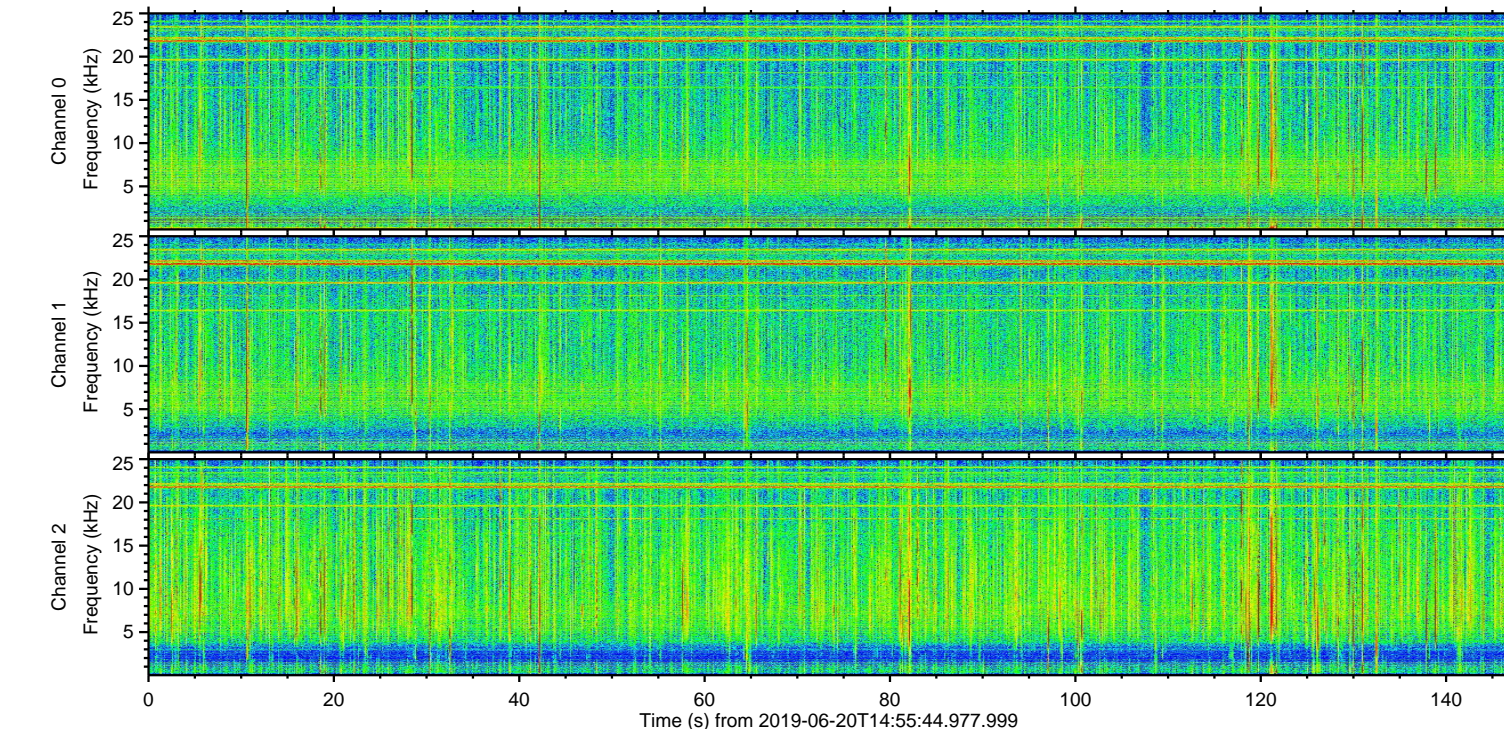
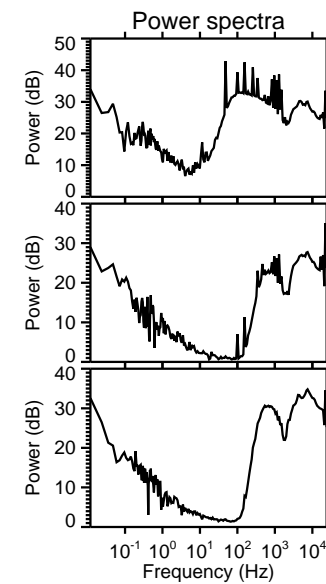
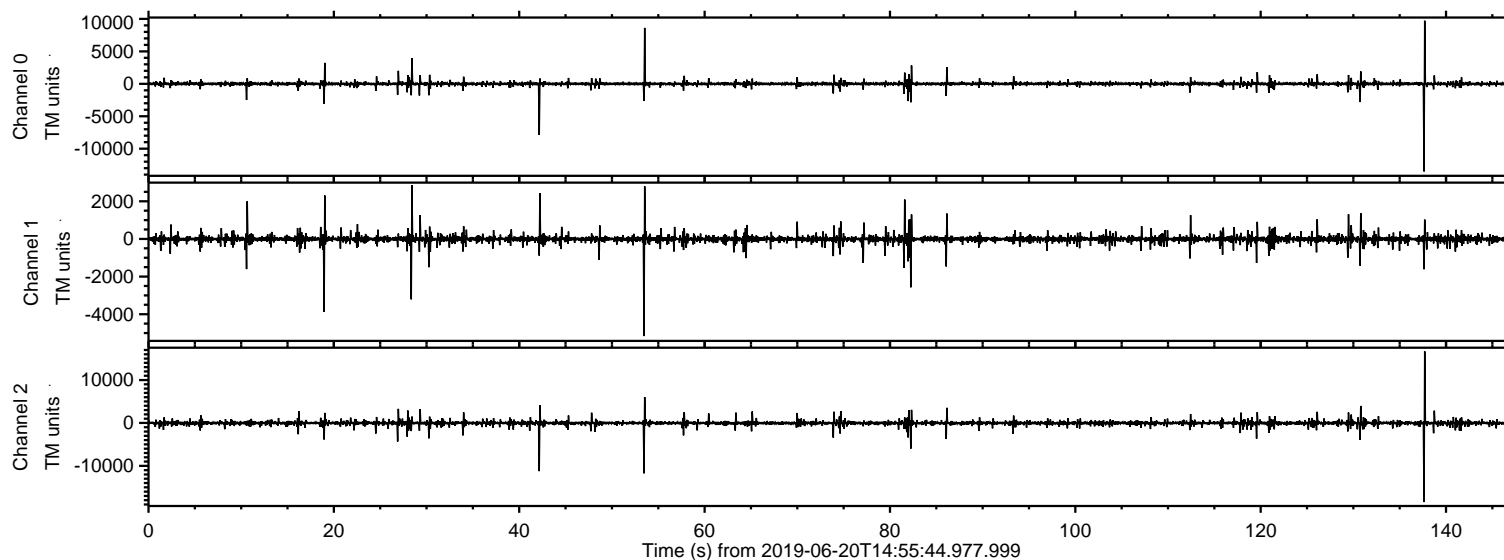


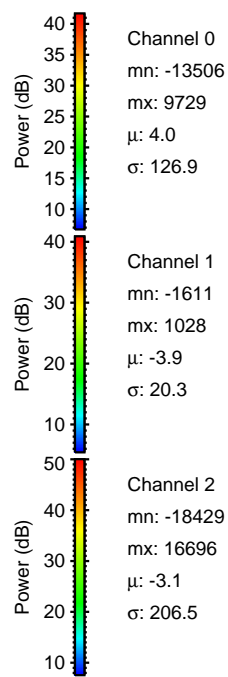
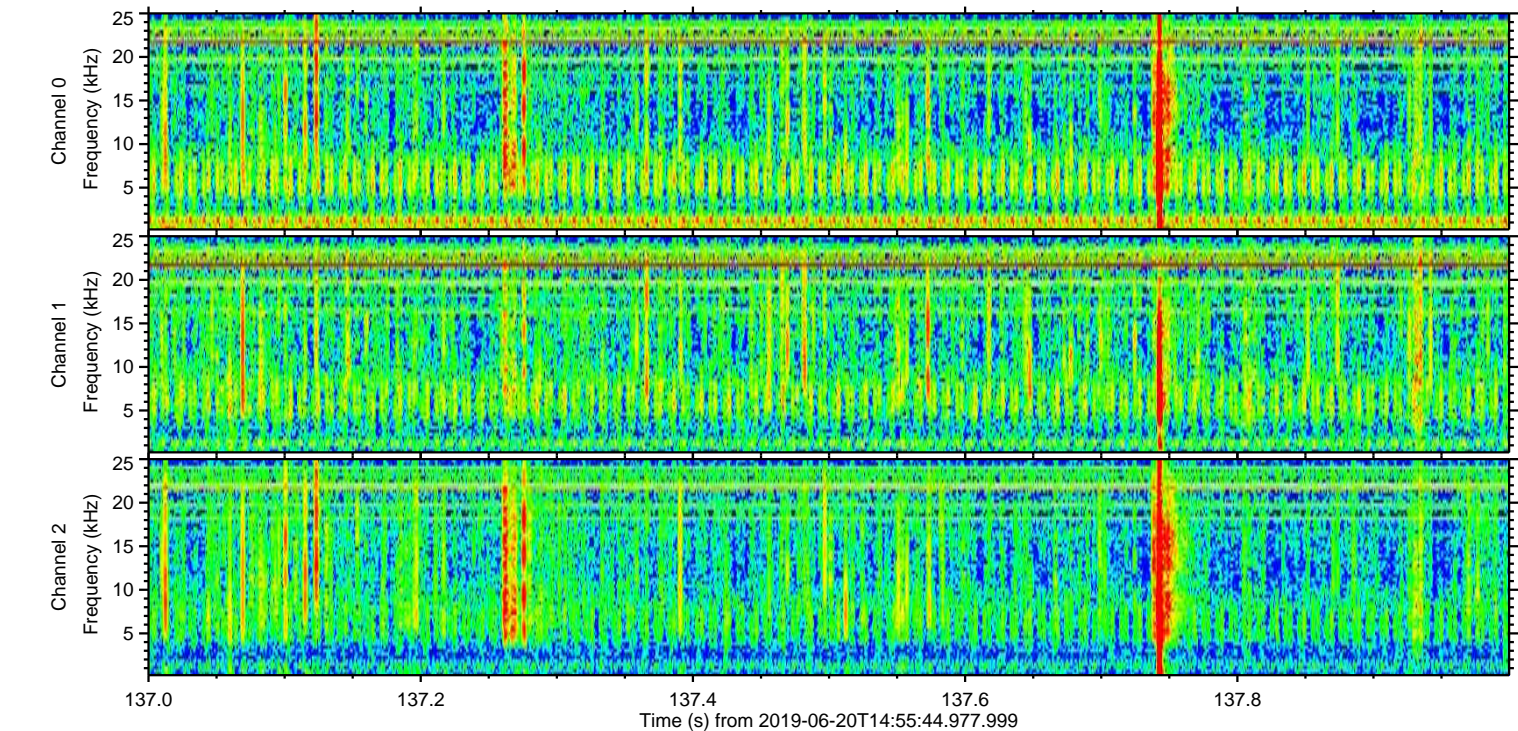
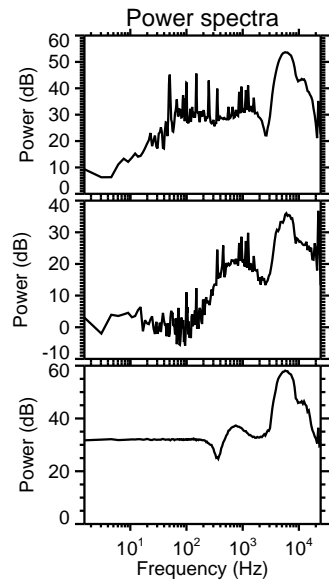
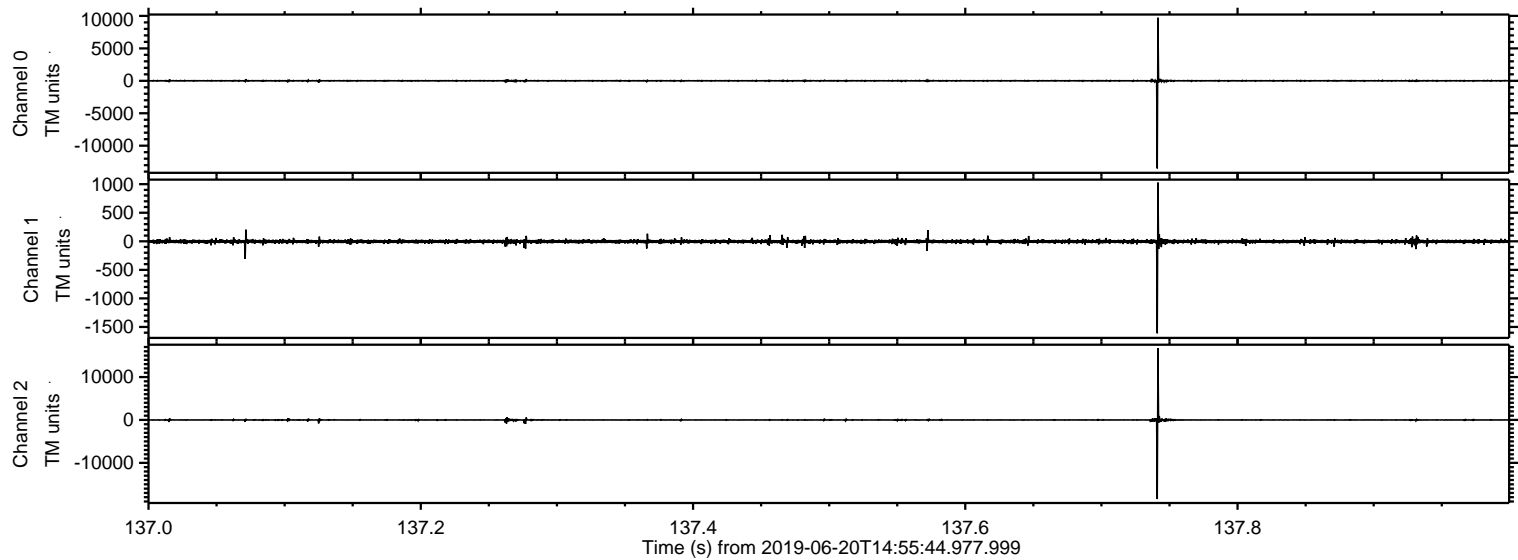
ELMAVAN 3D WAVEFORMS (Measured data sampled at 50 kHz) 51000 packets of 144 samples from 2019-06-20T14:55:44.977.999.

Processed Thu Jun 20 17:04:03 2019 by ELM ver.2012-10-06 from 001__elm20190620_145543__dat00.bin

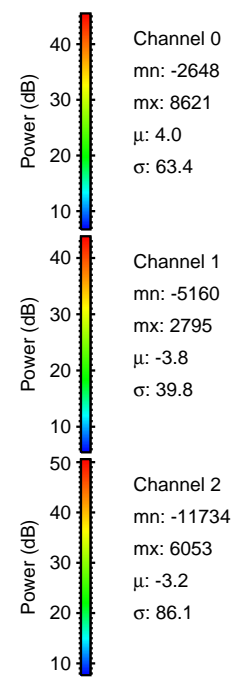
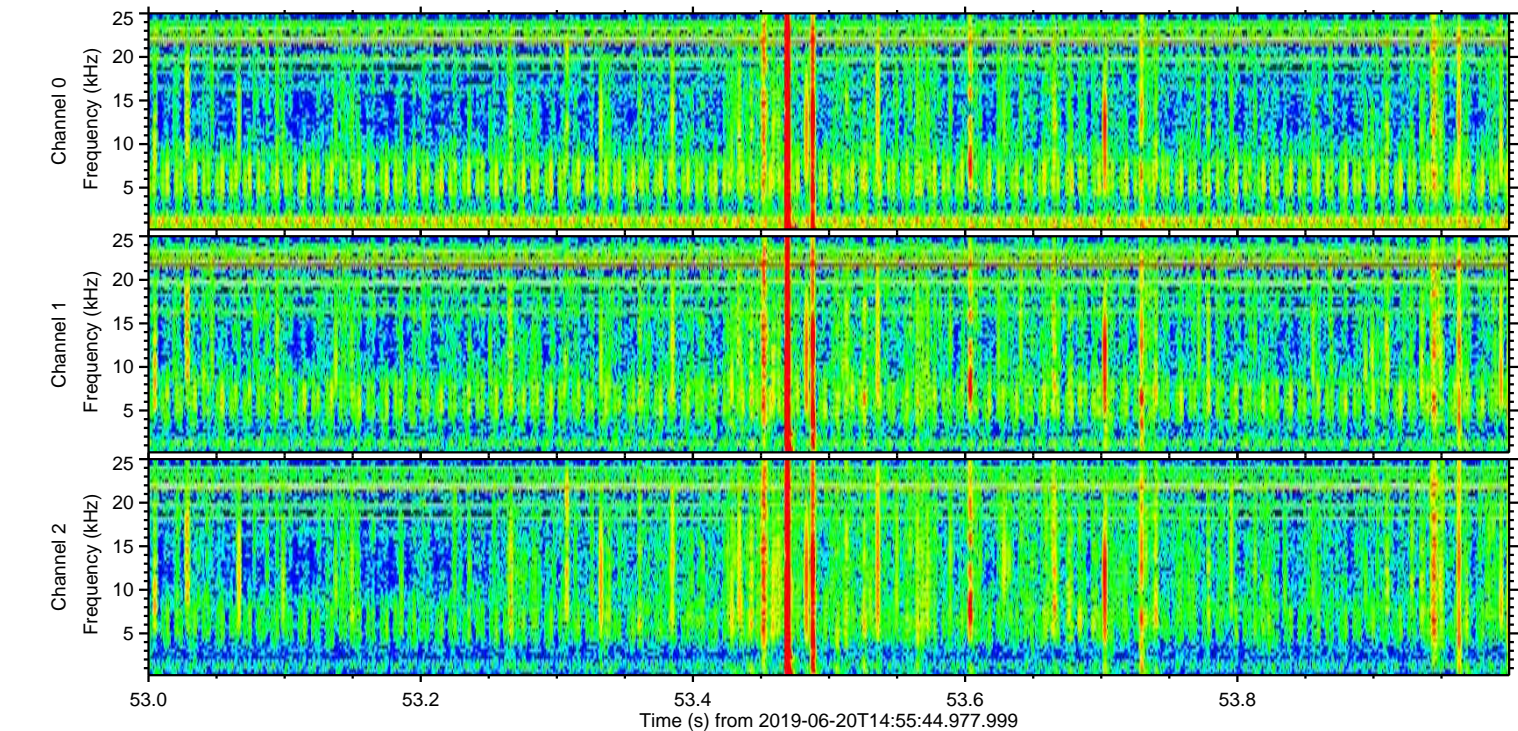
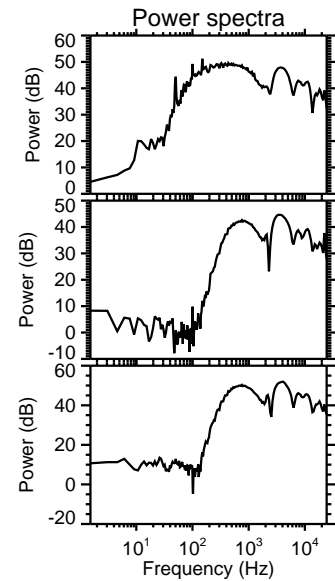
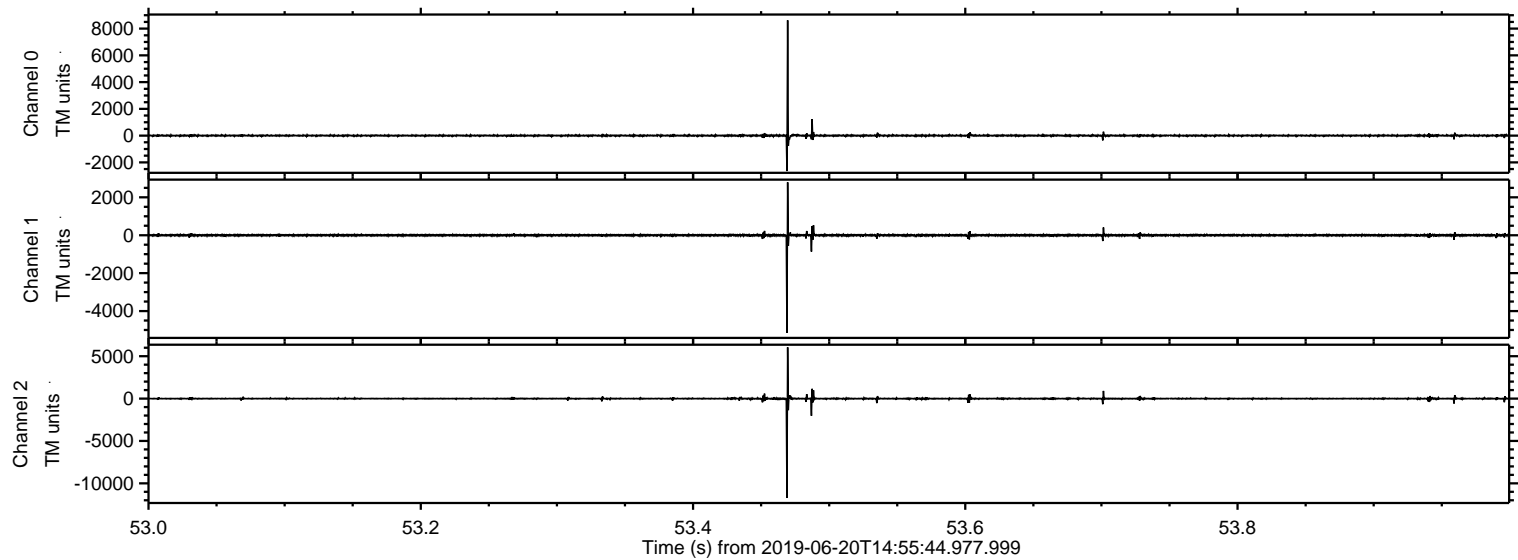


ELMAVAN 3D WAVEFORMS (Measured data sampled at 50 kHz) 51000 packets of 144 samples from 2019-06-20T14:55:44.977.999. Part 138/147

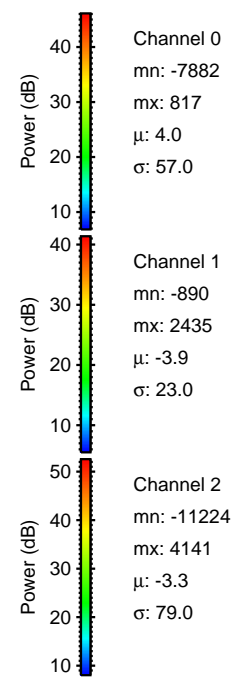
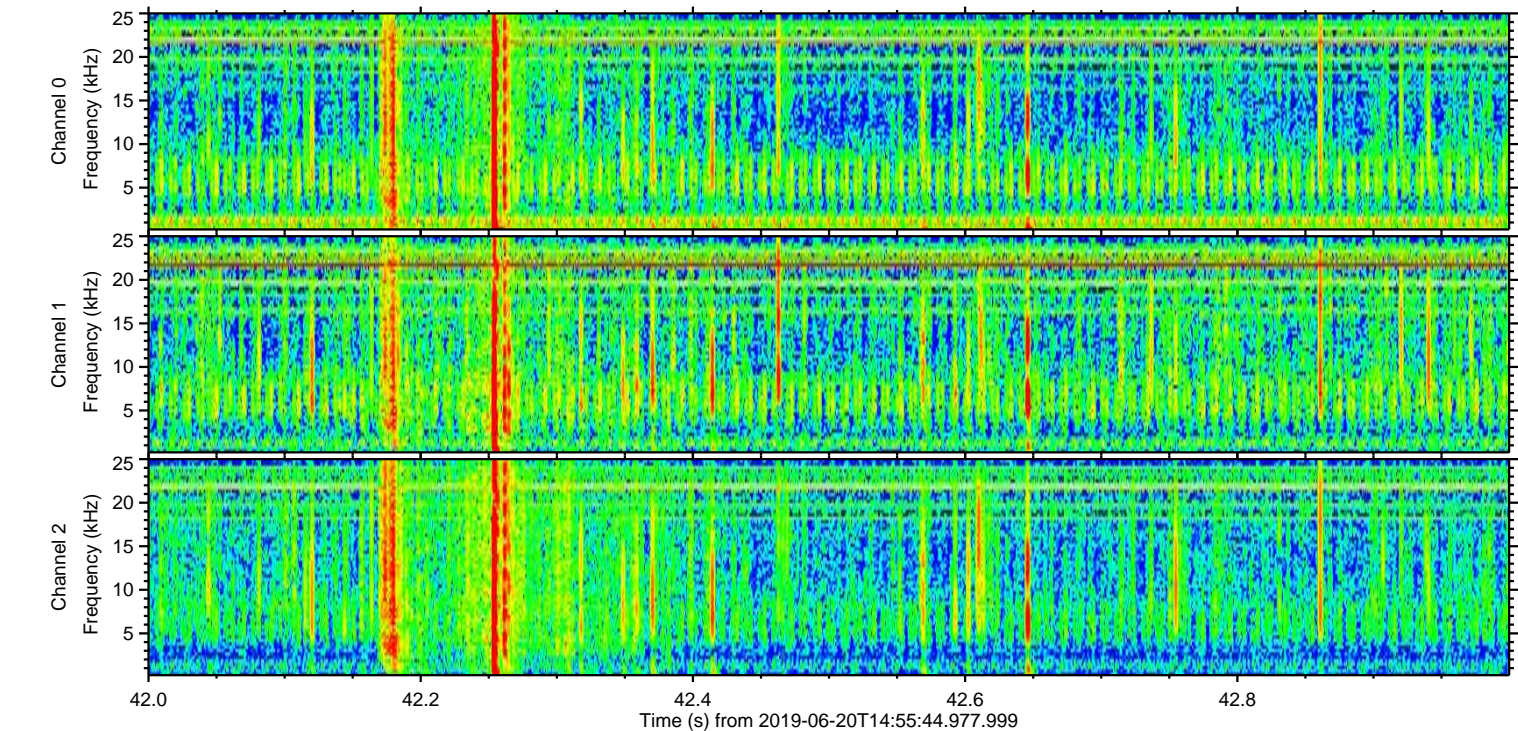
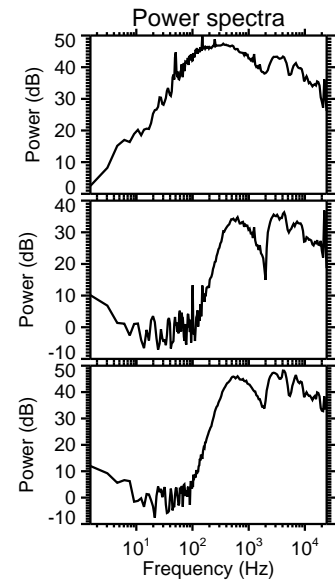
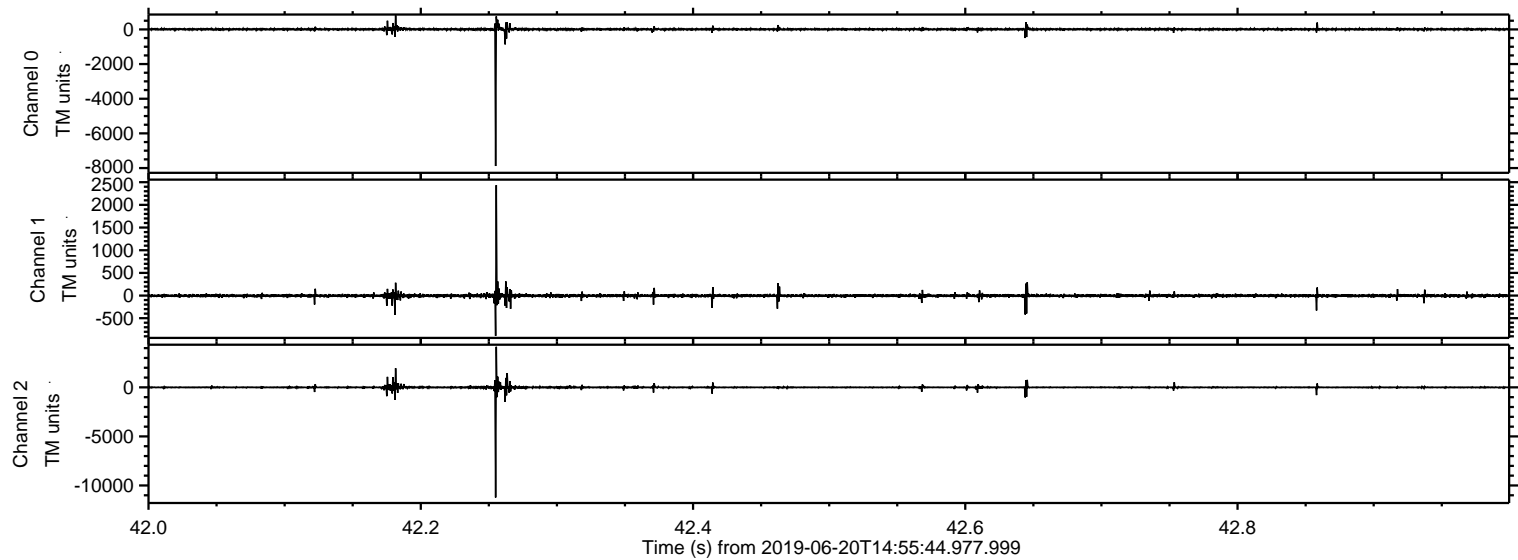
Processed Thu Jun 20 17:04:11 2019 by ELM ver.2012-10-06 from 001__elm20190620_145543__dat00.bin



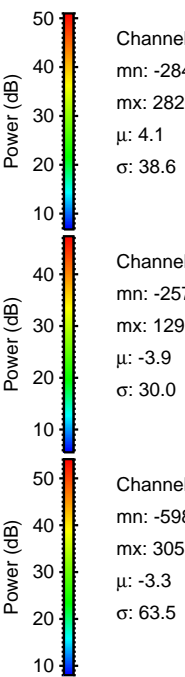
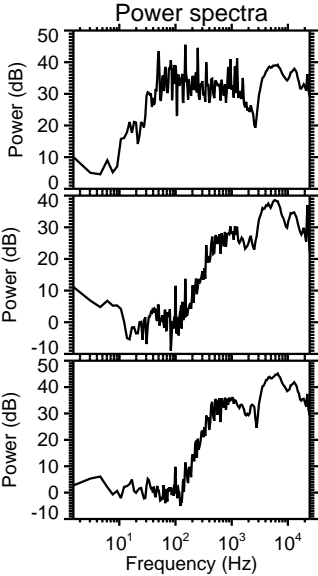
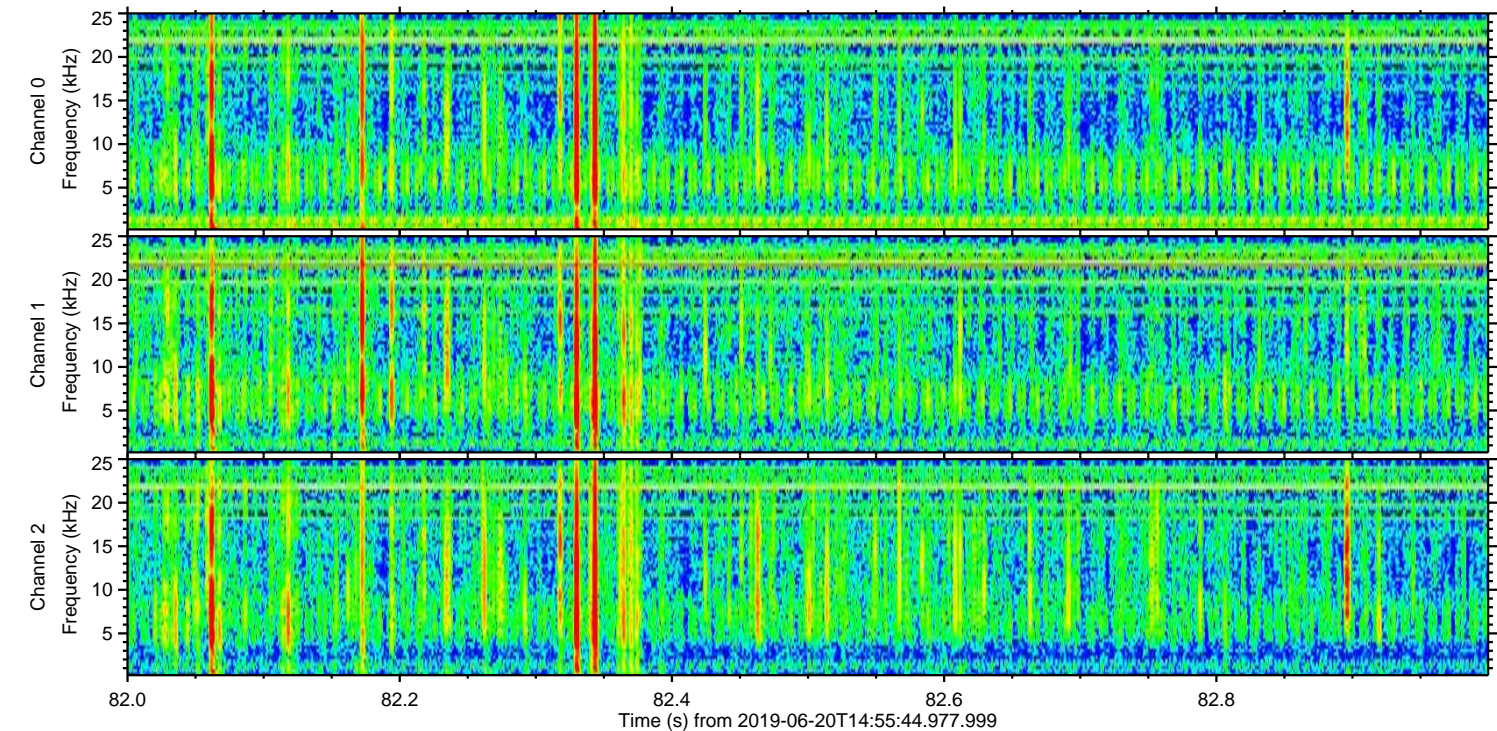
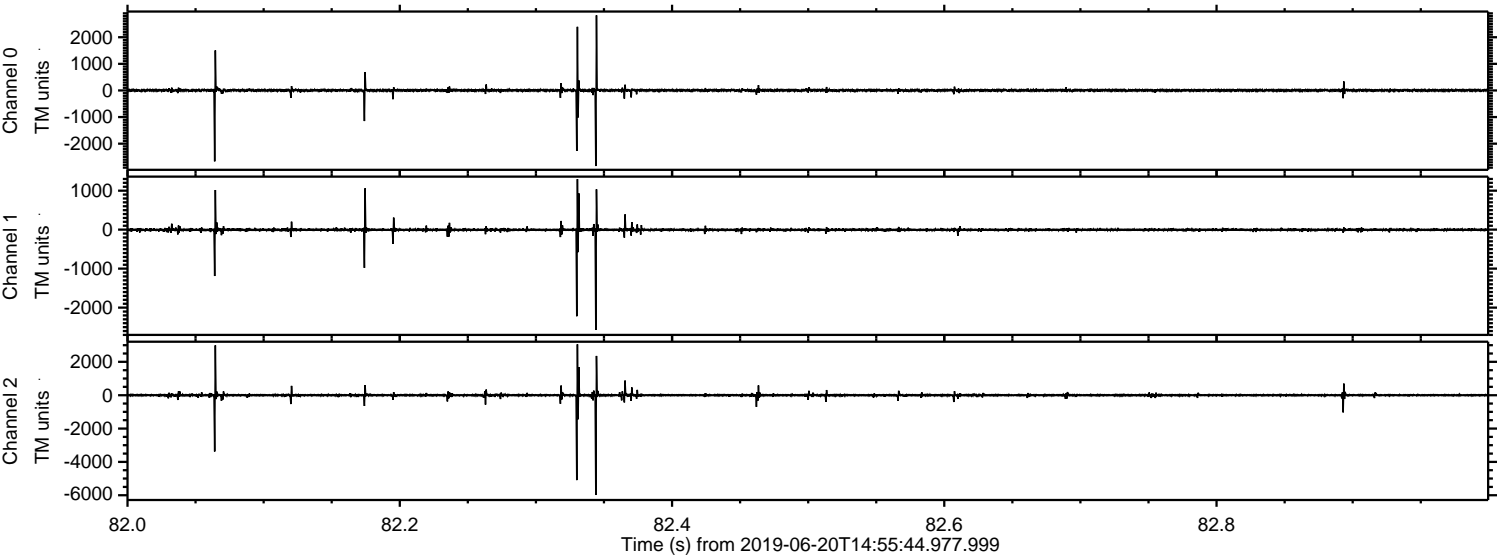
Processed Thu Jun 20 17:04:12 2019 by ELM ver.2012-10-06 from 001__elm20190620_145543__dat00.bin



Processed Thu Jun 20 17:04:13 2019 by ELM ver.2012-10-06 from 001__elm20190620_145543__dat00.bin

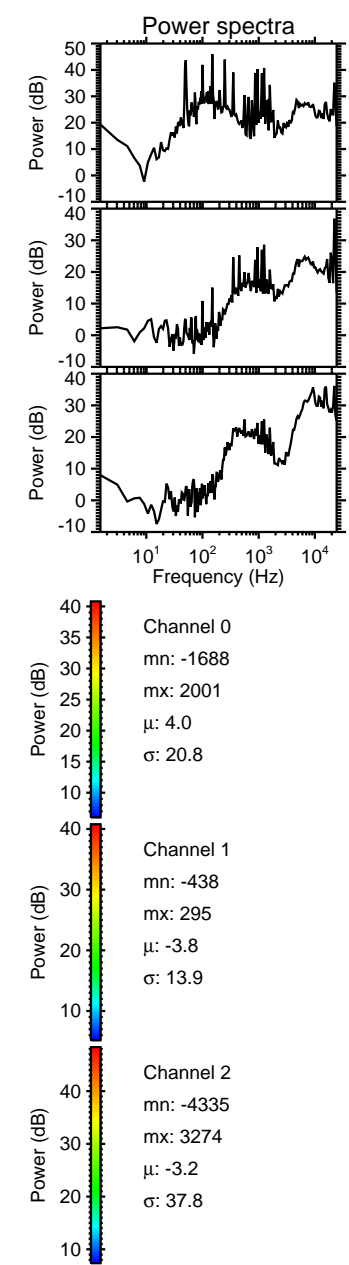
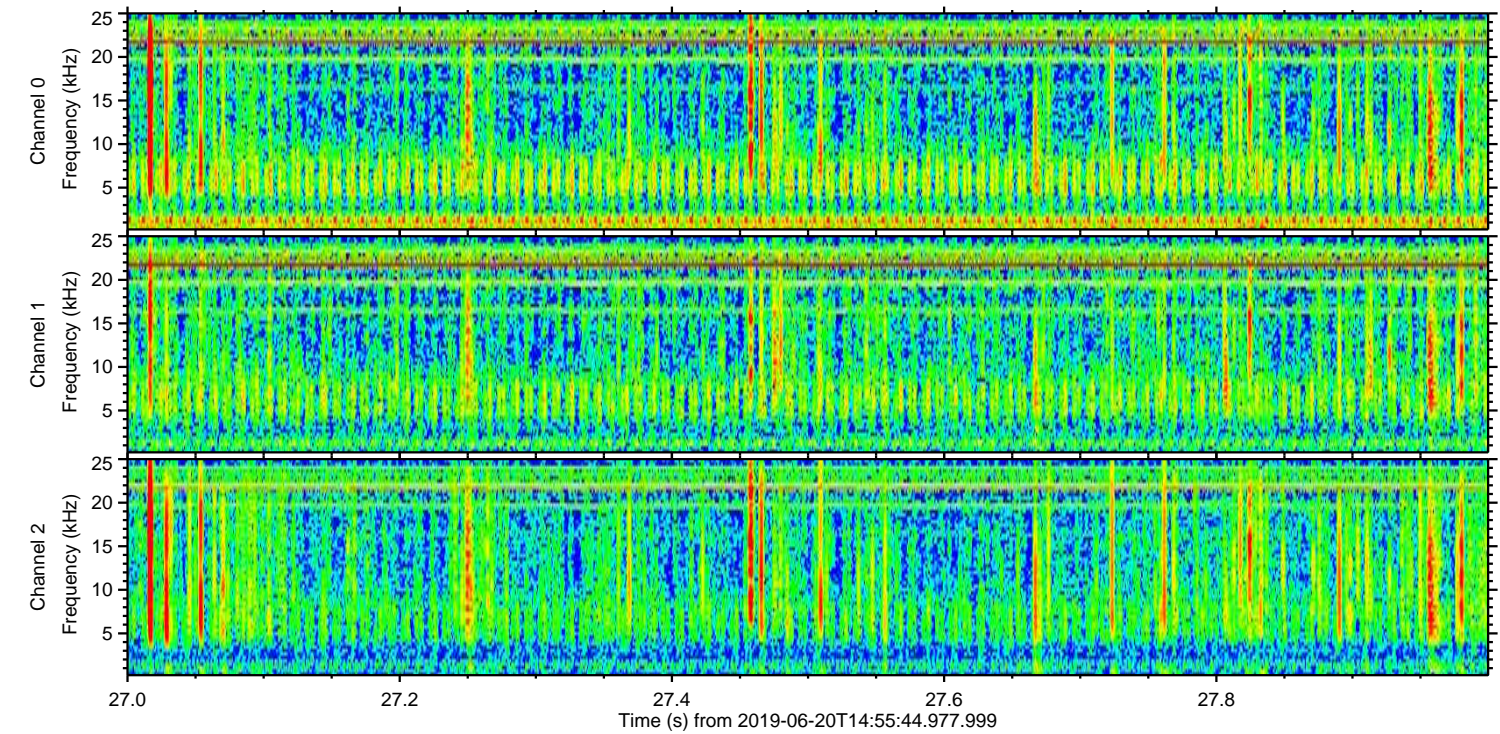
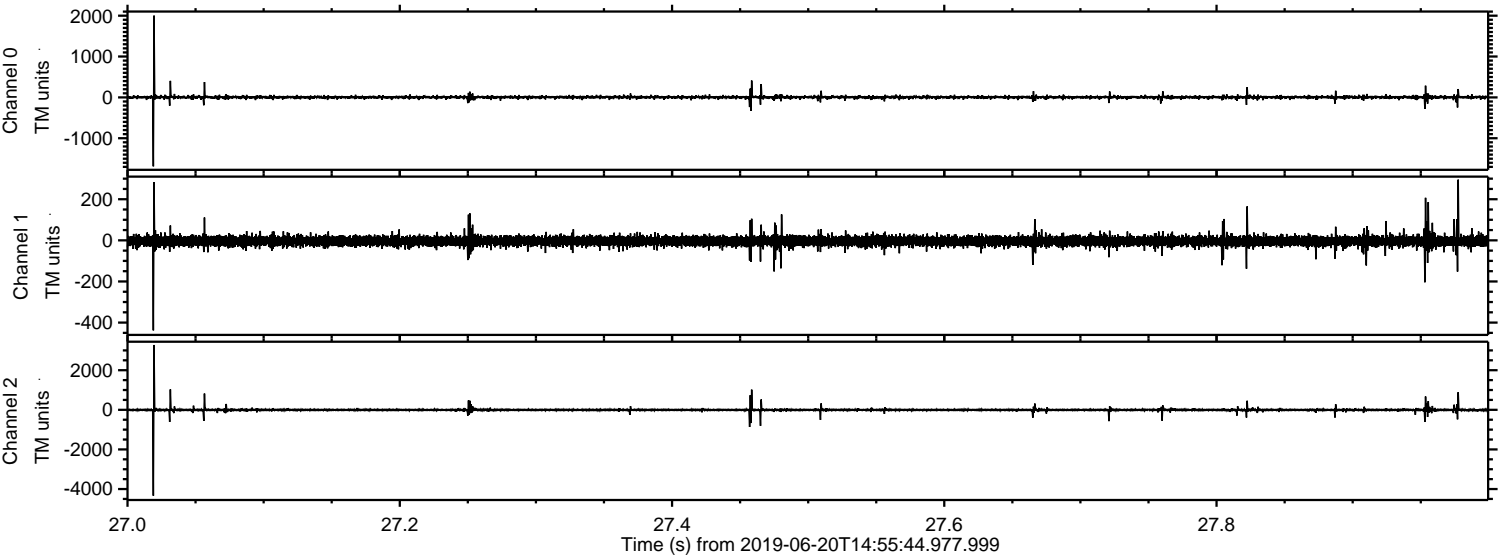


Processed Thu Jun 20 17:04:14 2019 by ELM ver.2012-10-06 from 001__elm20190620_145543__dat00.bin



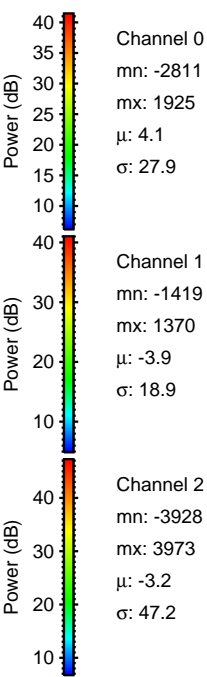
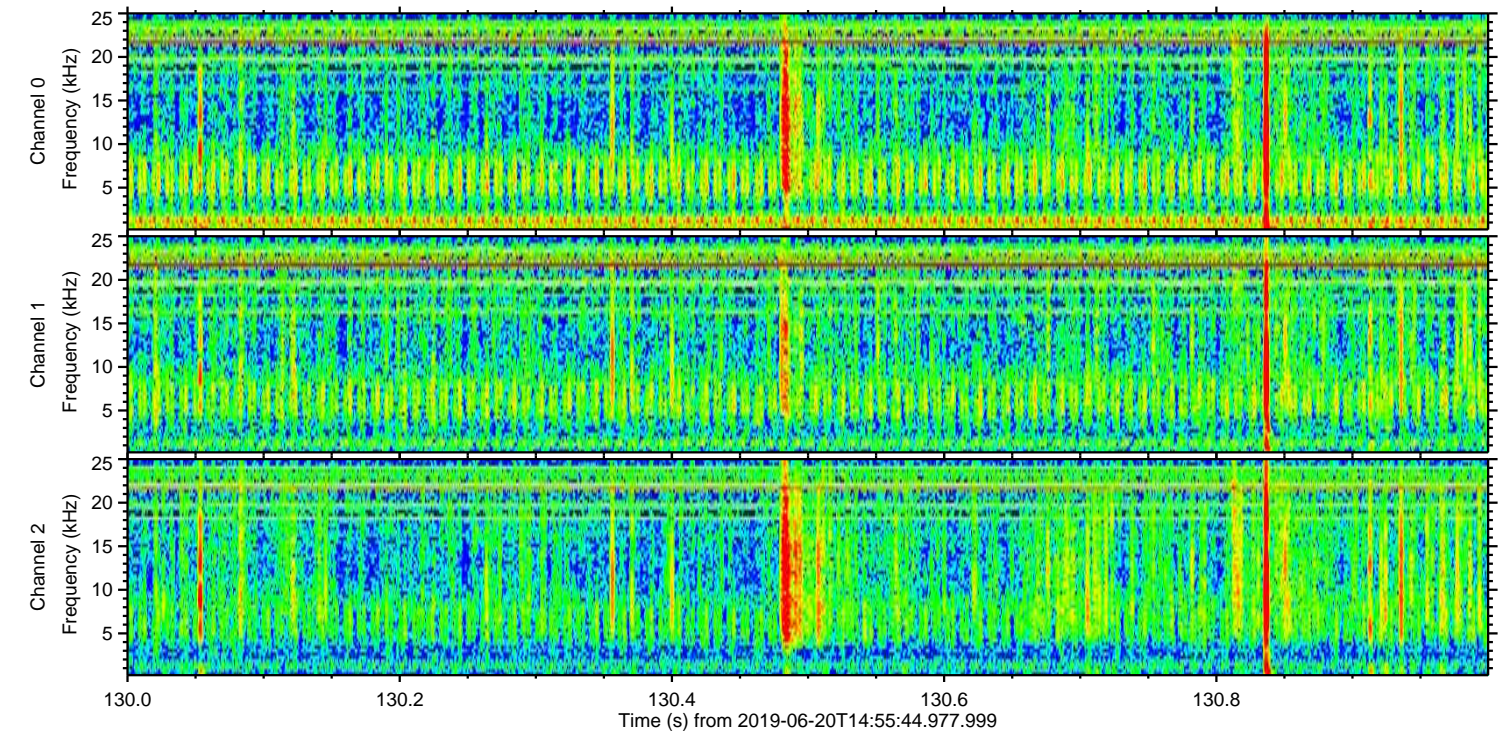
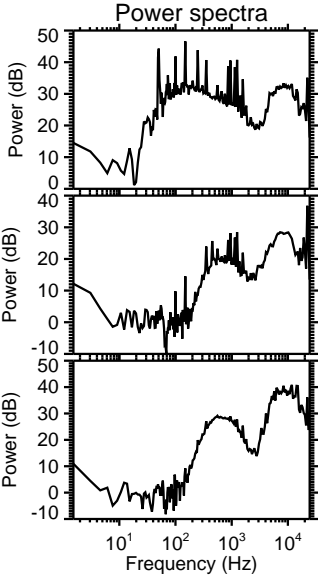
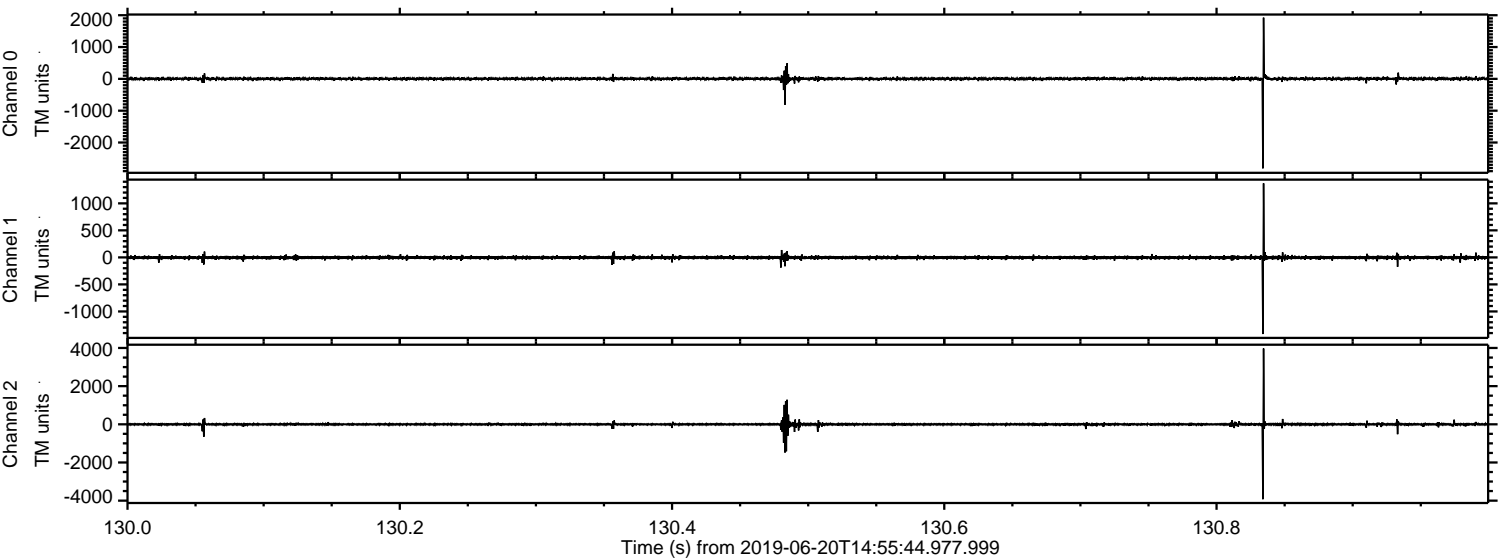
ELMAVAN 3D WAVEFORMS (Measured data sampled at 50 kHz) 51000 packets of 144 samples from 2019-06-20T14:55:44.977.999. Part 28/147

Processed Thu Jun 20 17:04:15 2019 by ELM ver.2012-10-06 from 001__elm20190620_145543__dat00.bin



ELMAVAN 3D WAVEFORMS (Measured data sampled at 50 kHz) 51000 packets of 144 samples from 2019-06-20T14:55:44.977.999. Part 131/147

Processed Thu Jun 20 17:04:15 2019 by ELM ver.2012-10-06 from 001__elm20190620_145543__dat00.bin

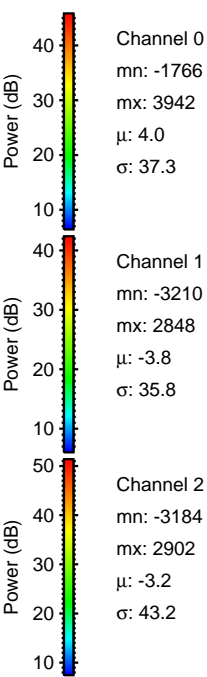
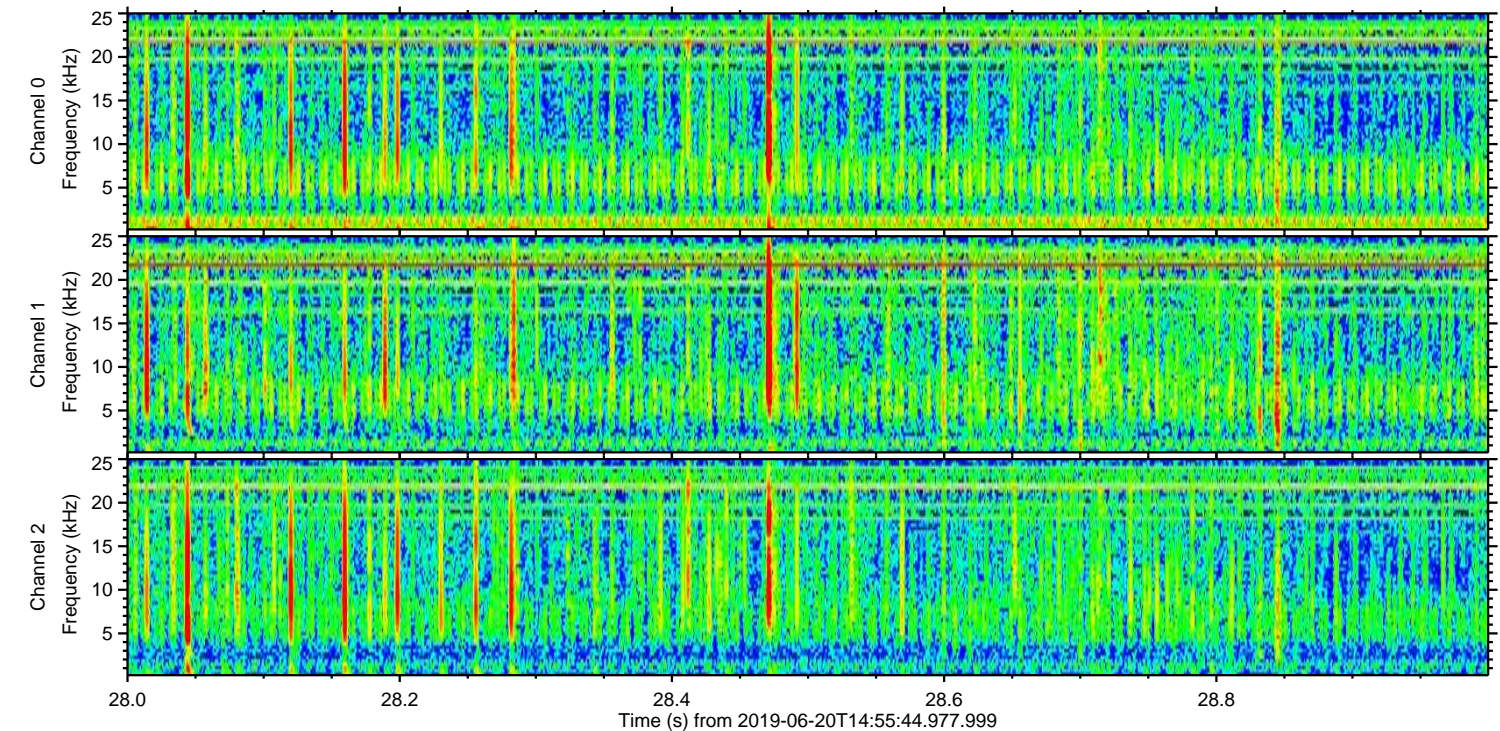
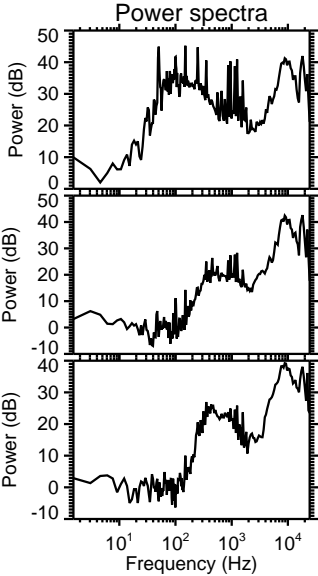
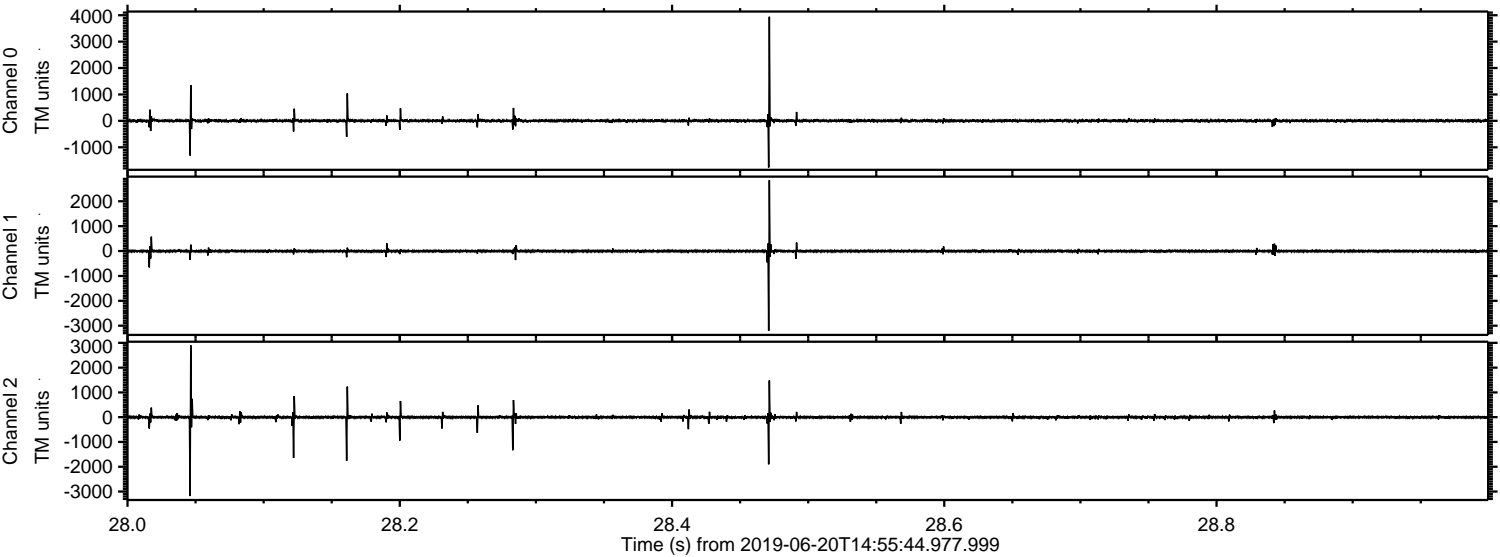


Channel 0
mn: -2811
mx: 1925
 μ : 4.1
 σ : 27.9

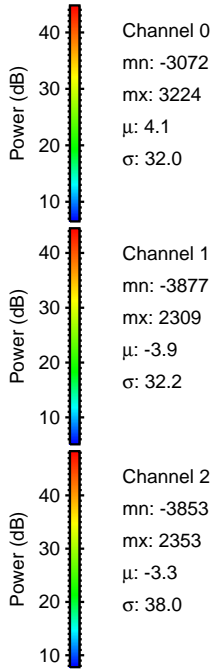
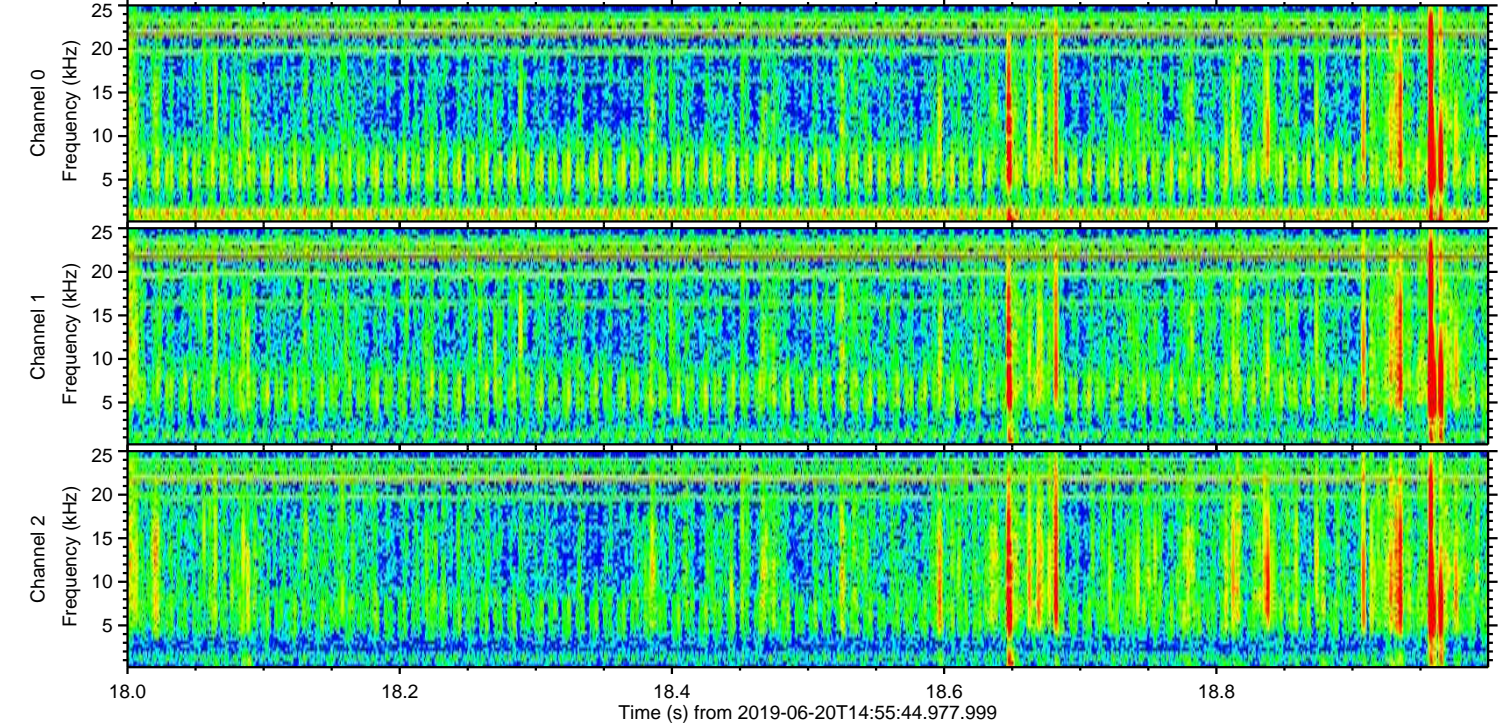
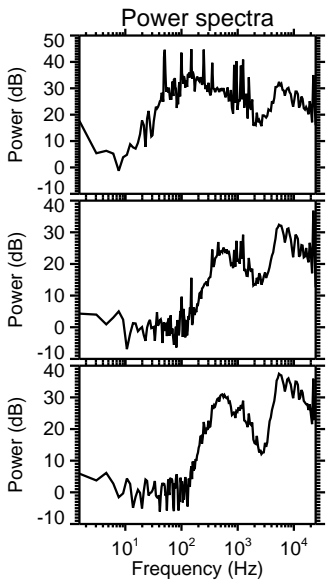
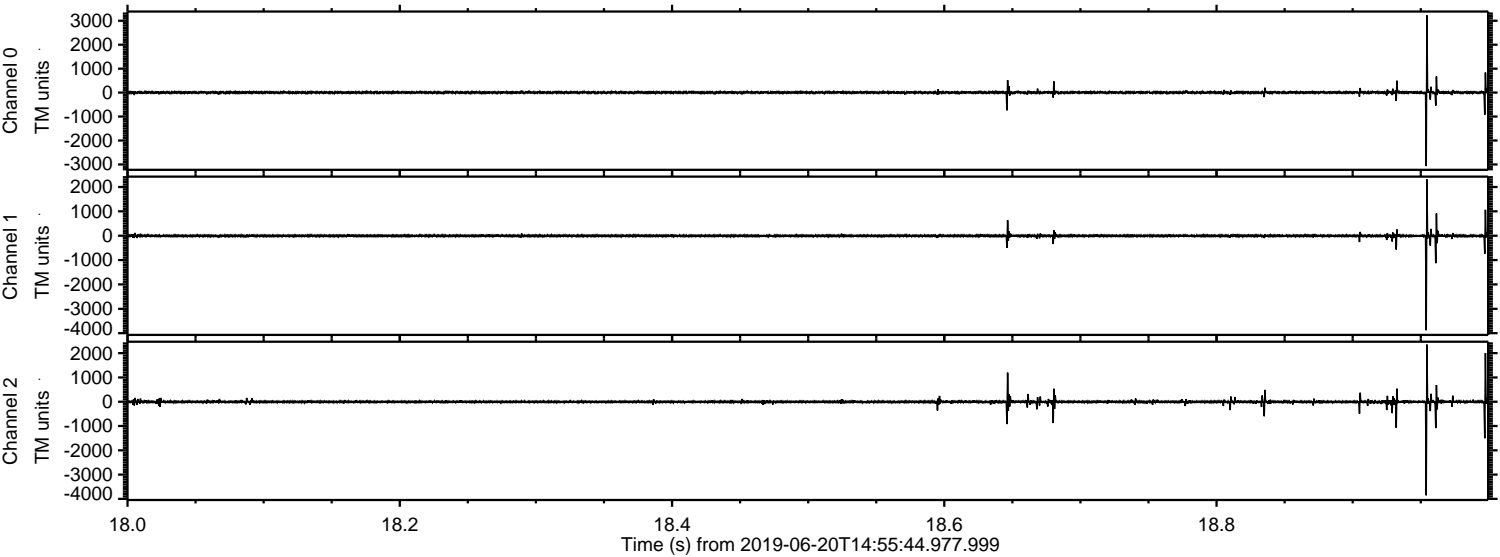
Channel 1
mn: -1419
mx: 1370
 μ : -3.9
 σ : 18.9

Channel 2
mn: -3928
mx: 3973
 μ : -3.2
 σ : 47.2

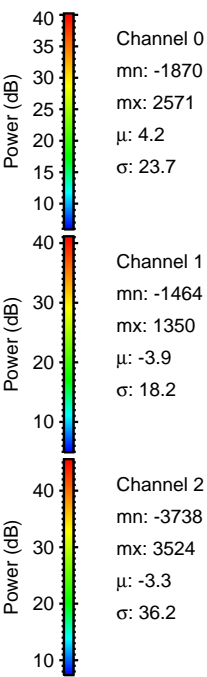
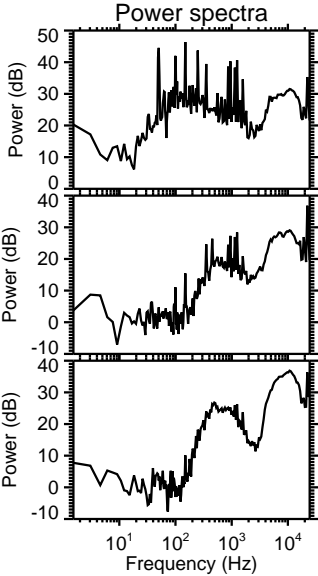
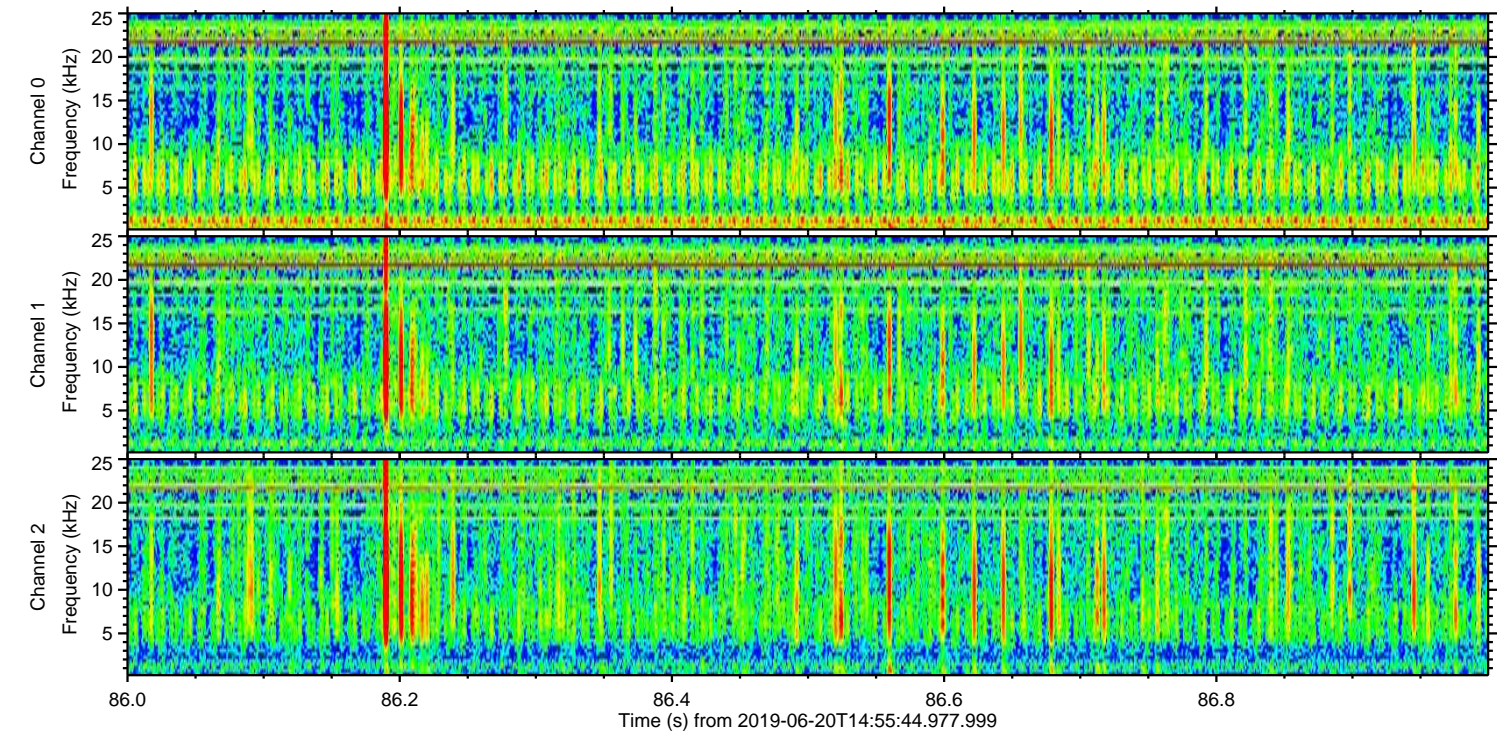
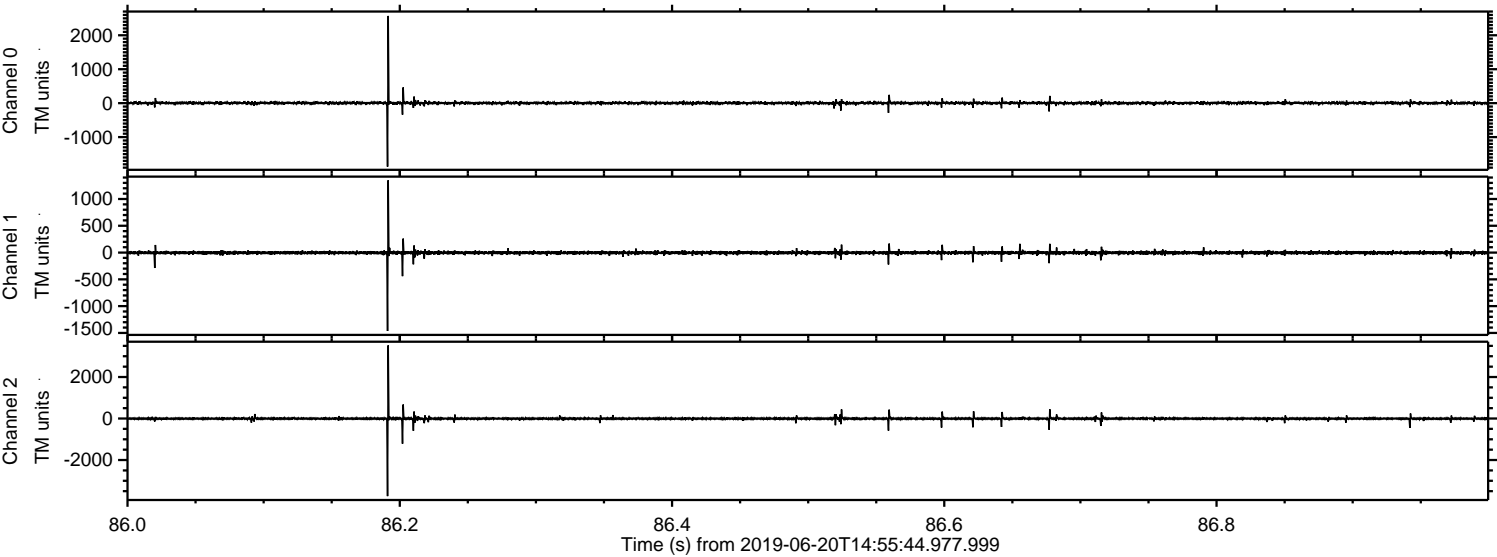
Processed Thu Jun 20 17:04:16 2019 by ELM ver.2012-10-06 from 001__elm20190620_145543__dat00.bin



Processed Thu Jun 20 17:04:17 2019 by ELM ver.2012-10-06 from 001__elm20190620_145543__dat00.bin



Processed Thu Jun 20 17:04:18 2019 by ELM ver.2012-10-06 from 001__elm20190620_145543__dat00.bin



Channel 0
mn: -1870
mx: 2571
 μ : 4.2
 σ : 23.7

Channel 1
mn: -1464
mx: 1350
 μ : -3.9
 σ : 18.2

Channel 2
mn: -3738
mx: 3524
 μ : -3.3
 σ : 36.2

Processed Thu Jun 20 17:04:18 2019 by ELM ver.2012-10-06 from 001__elm20190620_145543__dat00.bin

