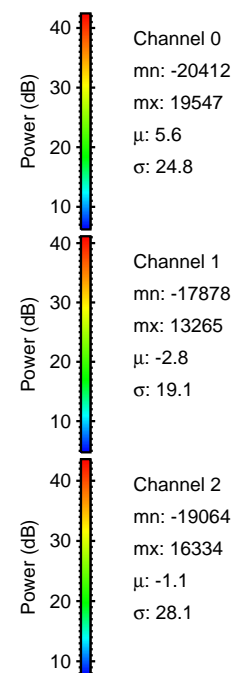
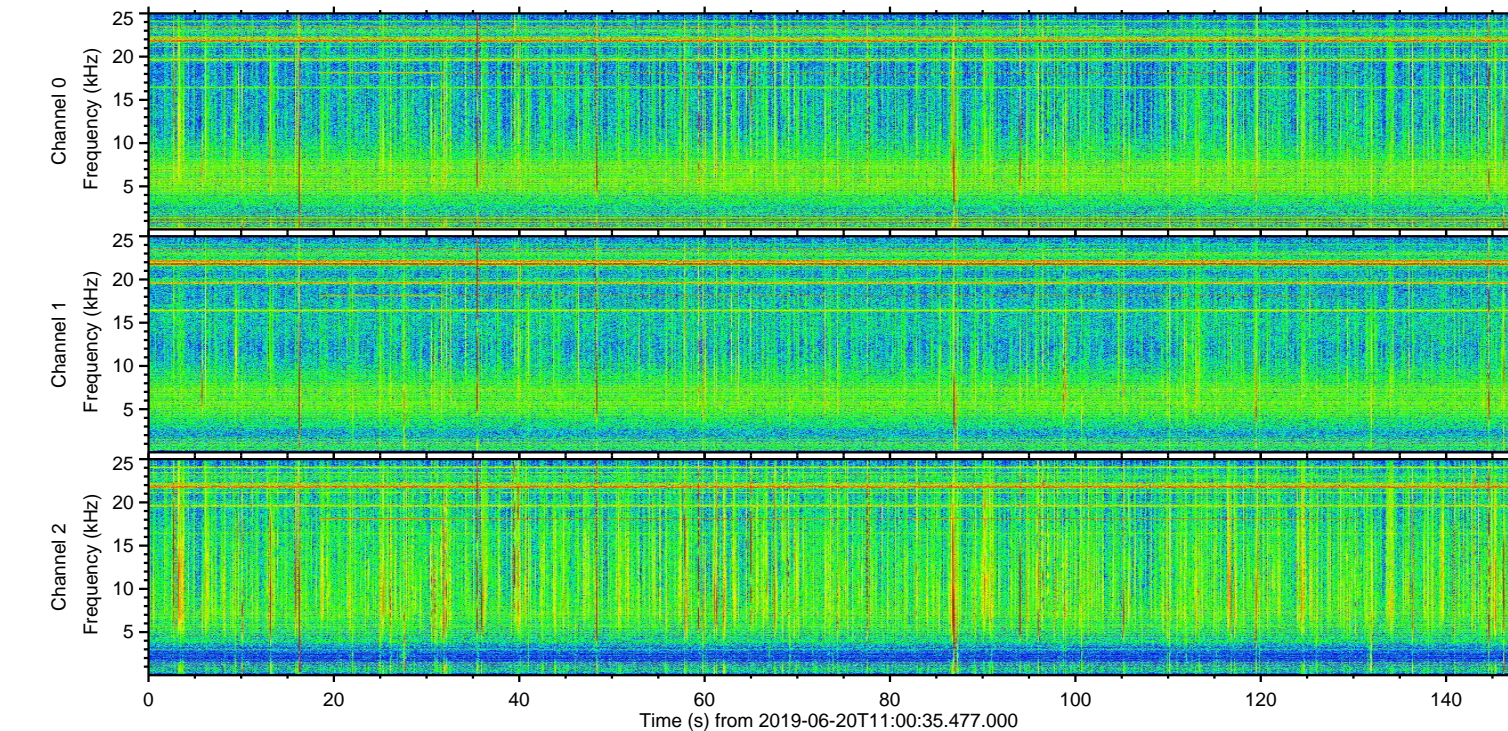
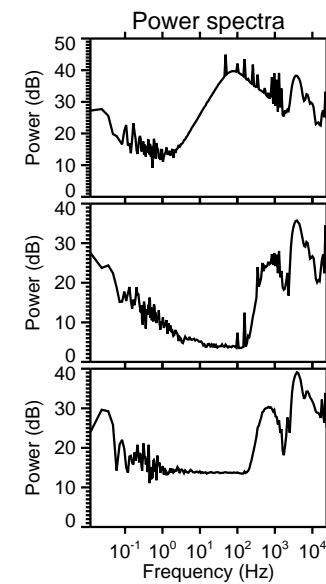
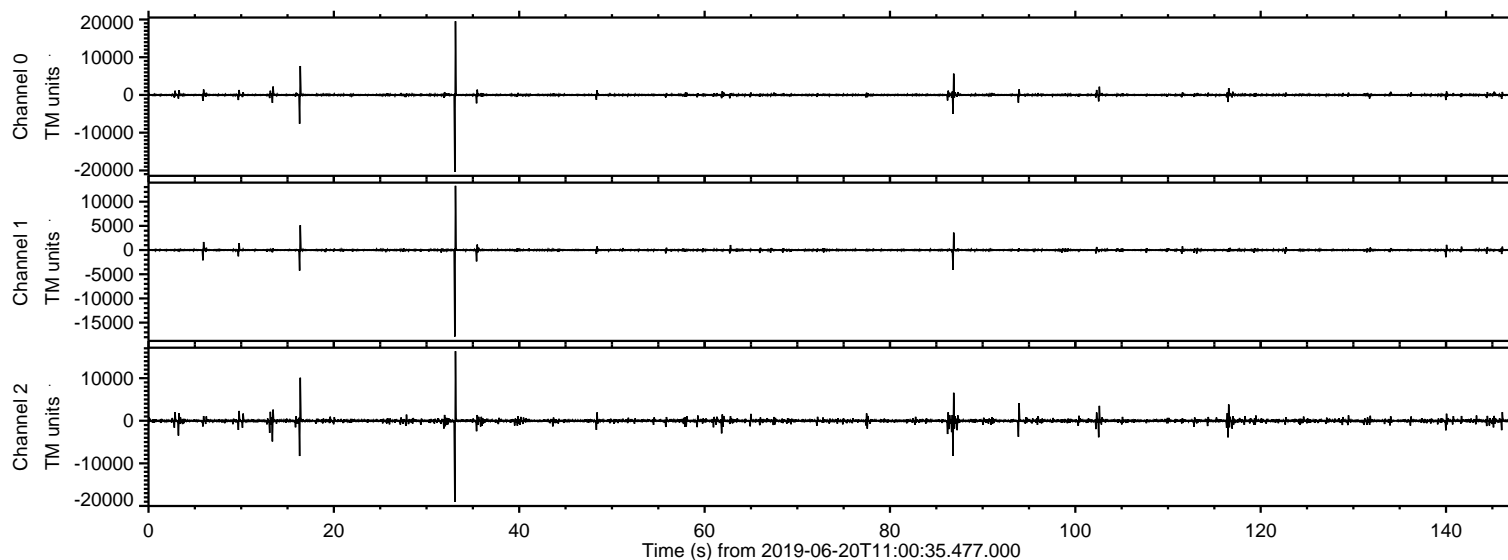
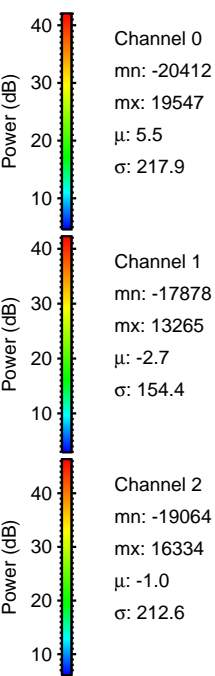
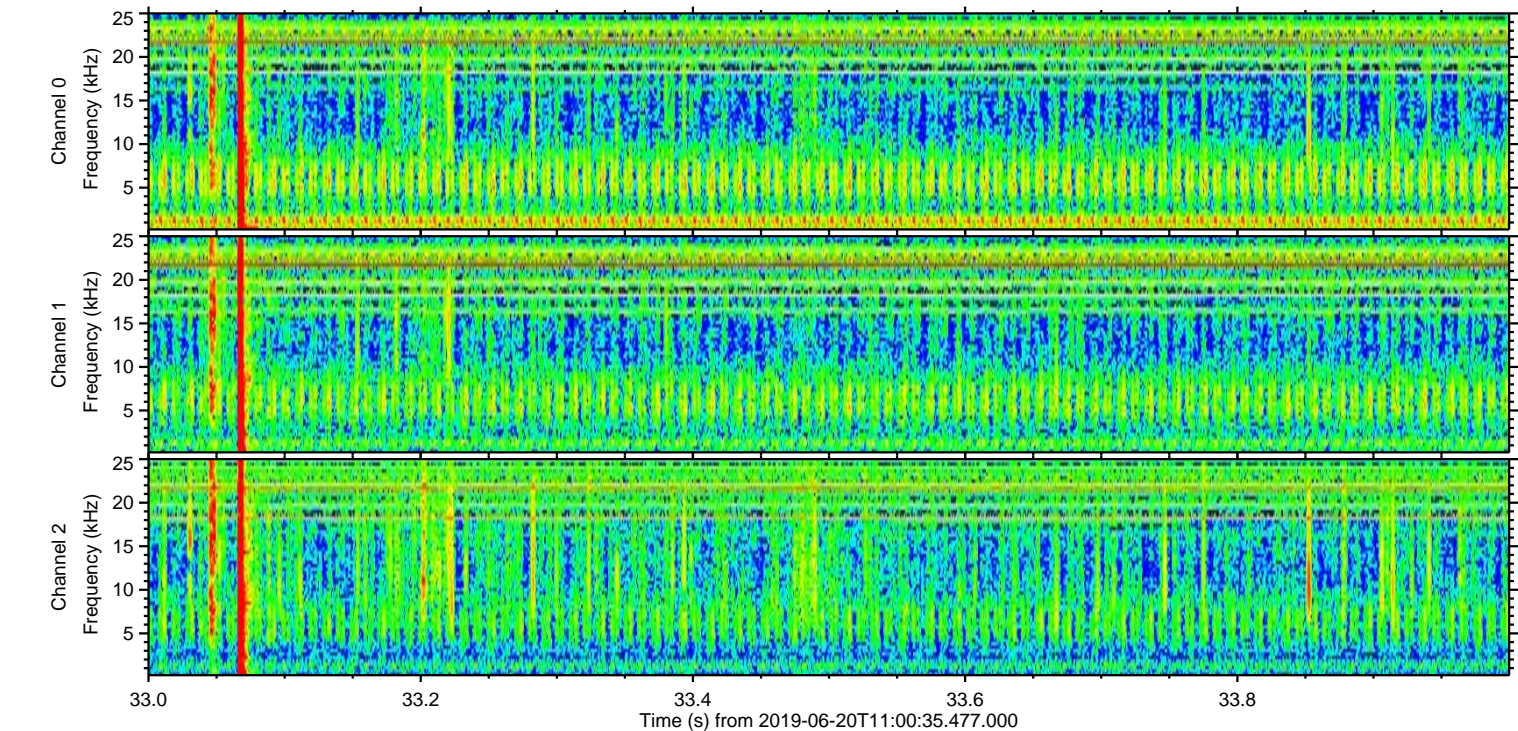
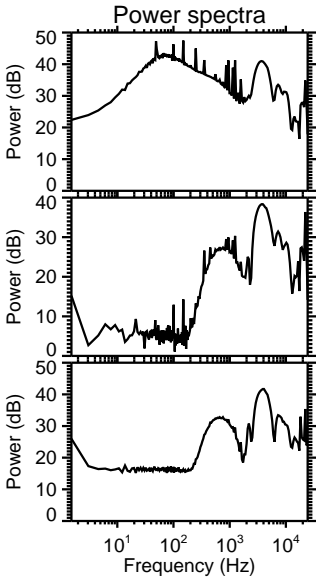
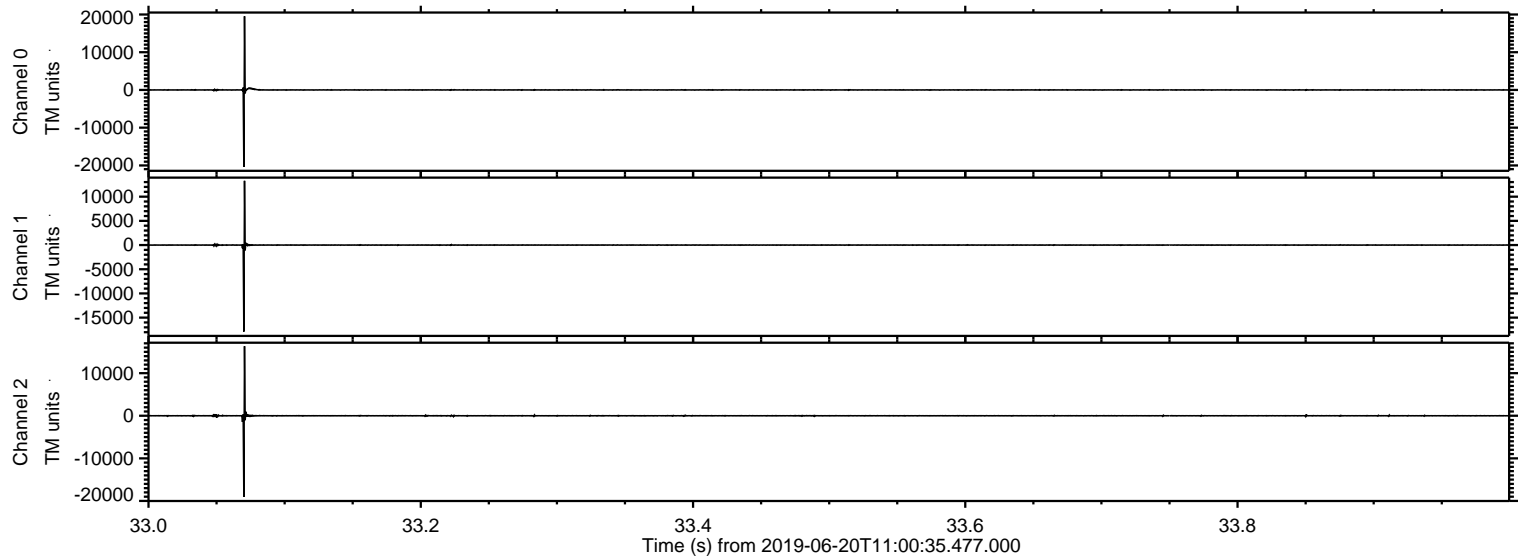


ELMAVAN 3D WAVEFORMS (Measured data sampled at 50 kHz) 51000 packets of 144 samples from 2019-06-20T11:00:35.477.000.

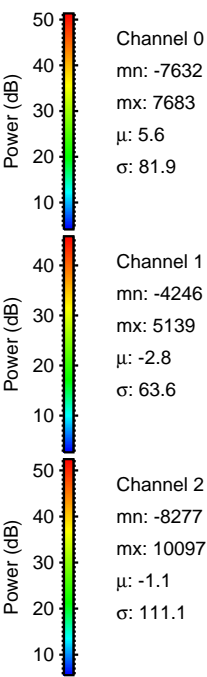
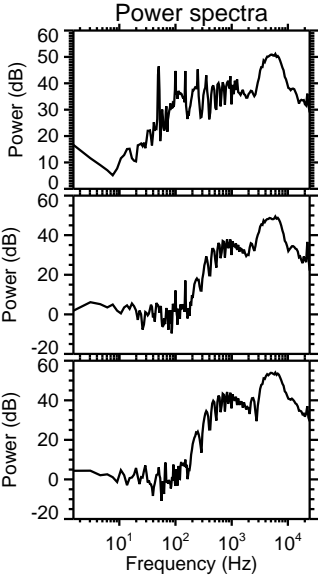
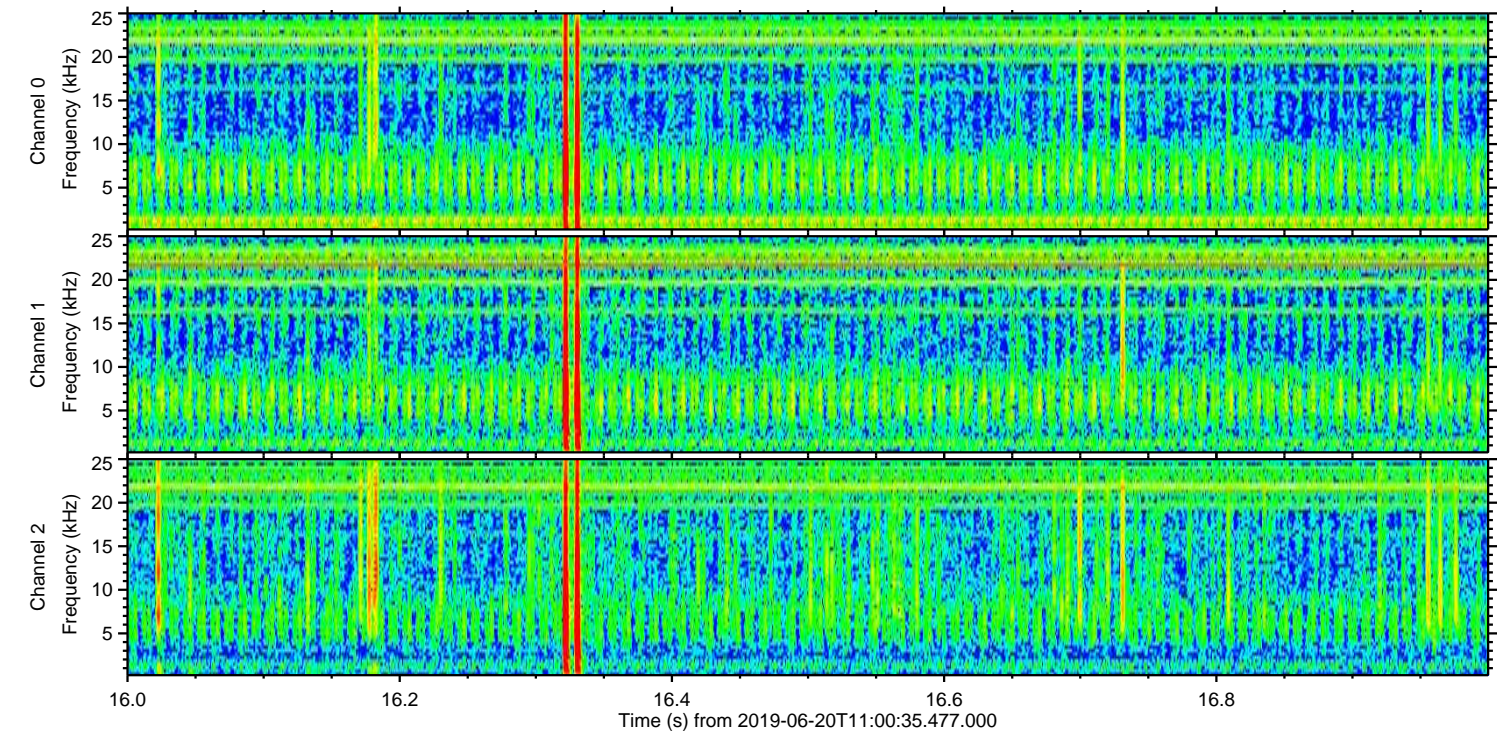
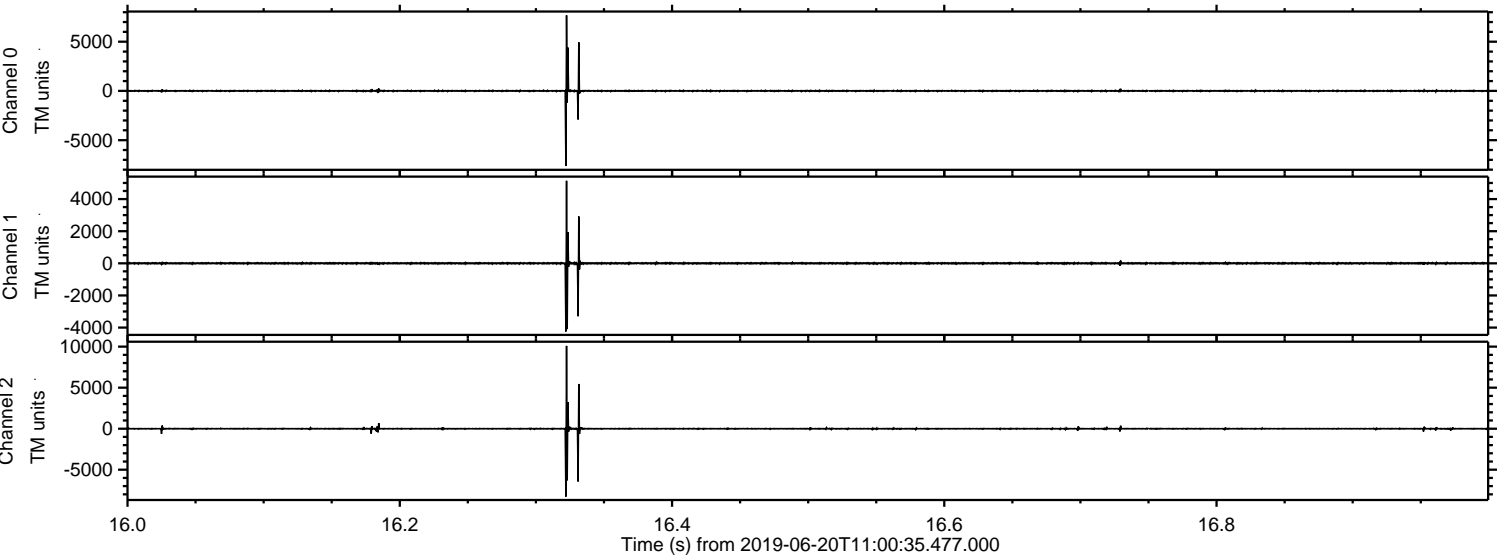
Processed Thu Jun 20 13:07:52 2019 by ELM ver.2012-10-06 from 001__elm20190620_110034__dat00.bin



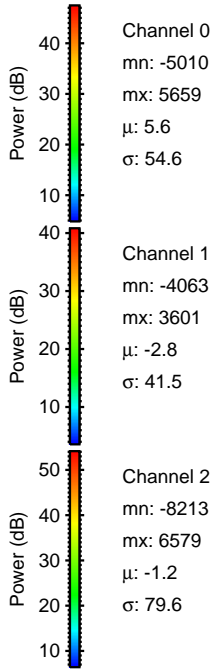
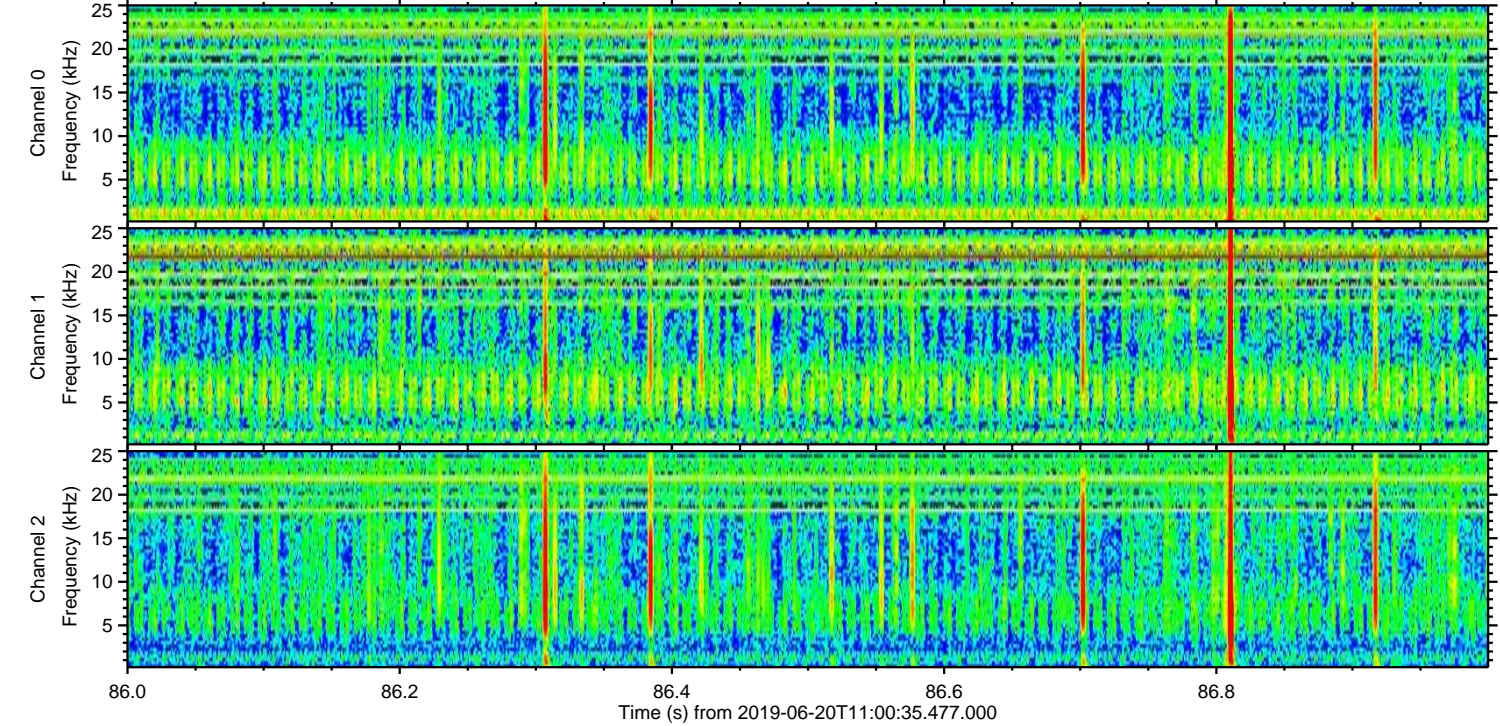
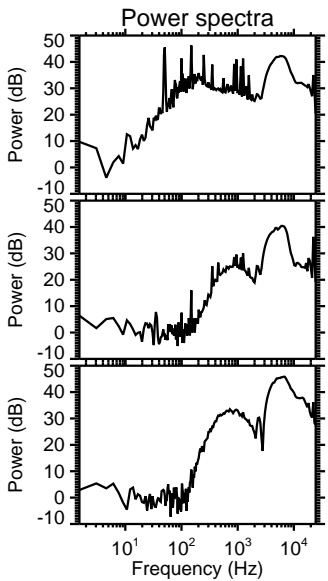
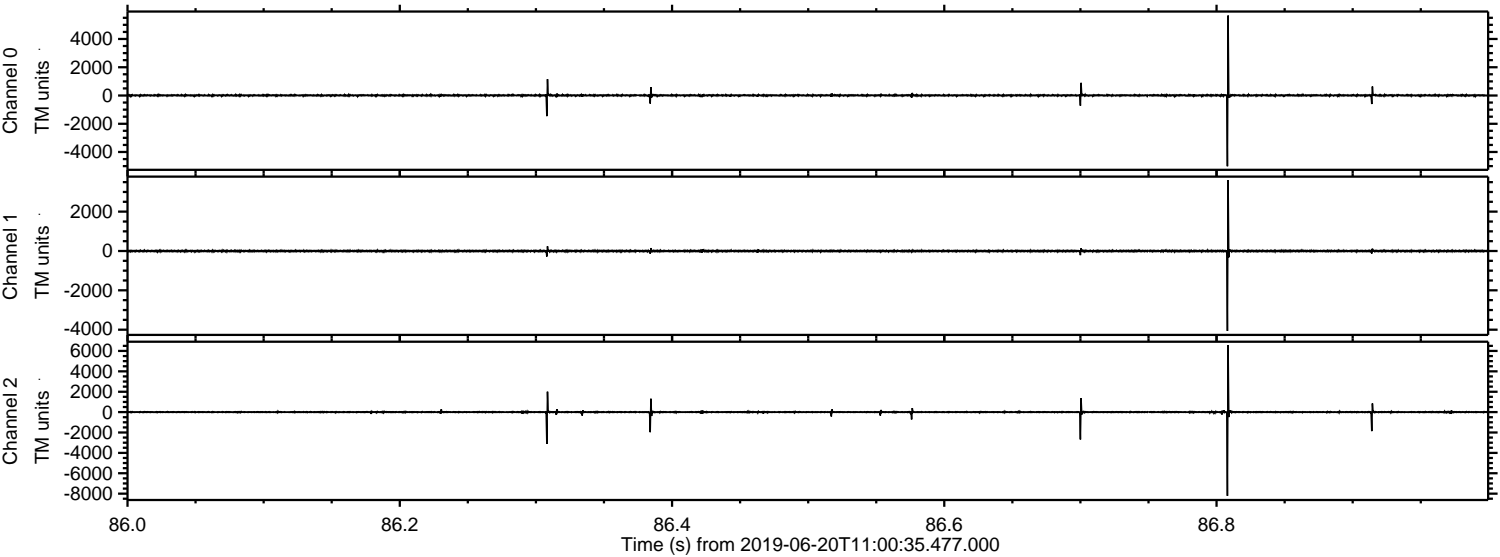
Processed Thu Jun 20 13:07:59 2019 by ELM ver.2012-10-06 from 001__elm20190620_110034__dat00.bin



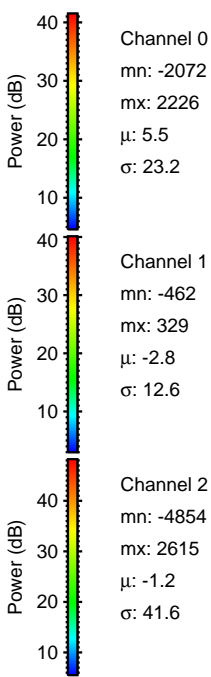
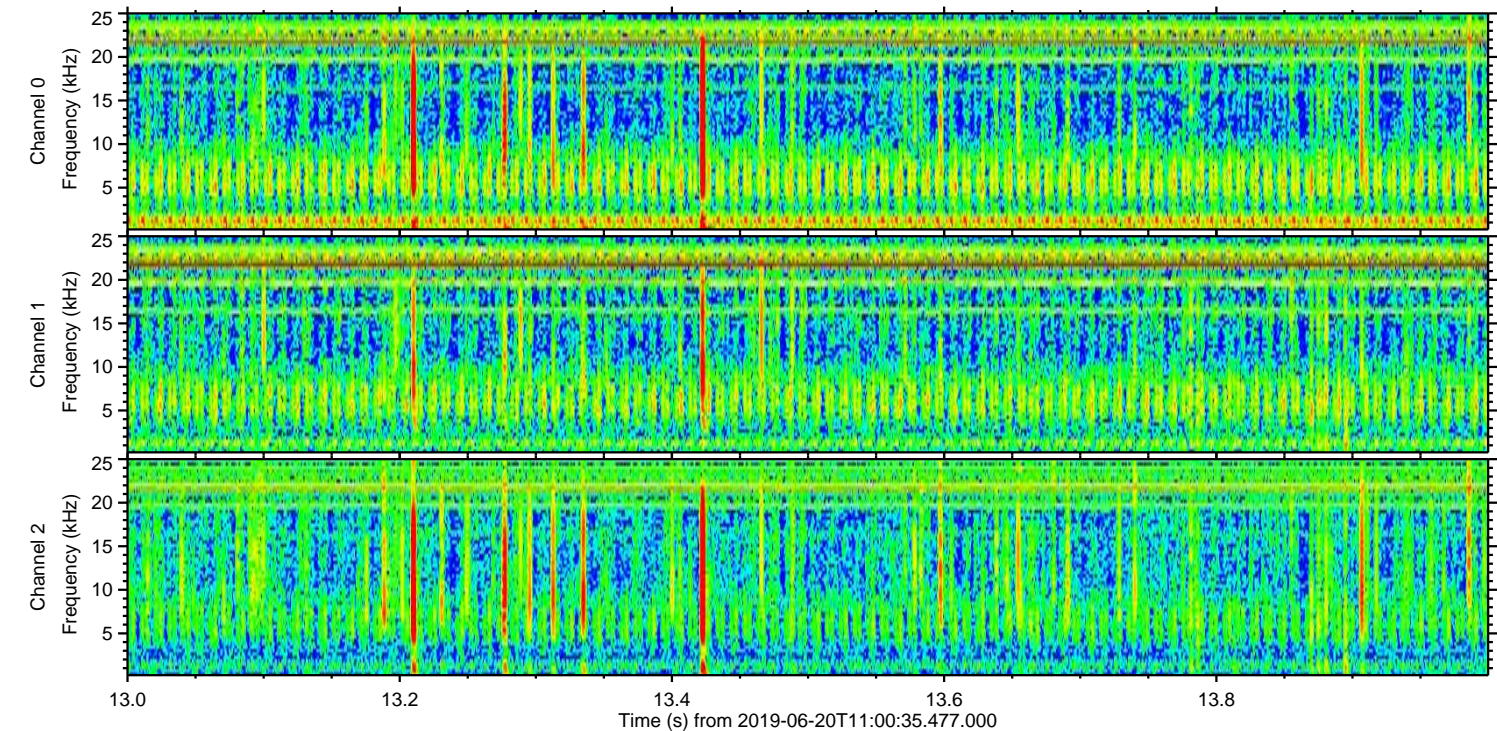
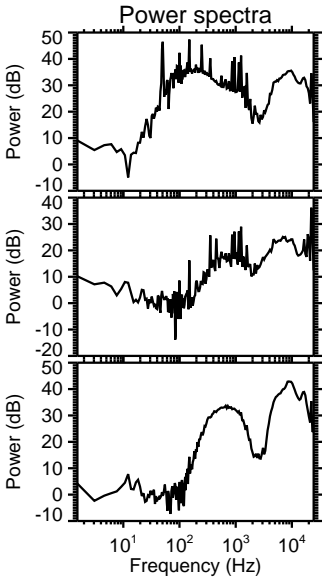
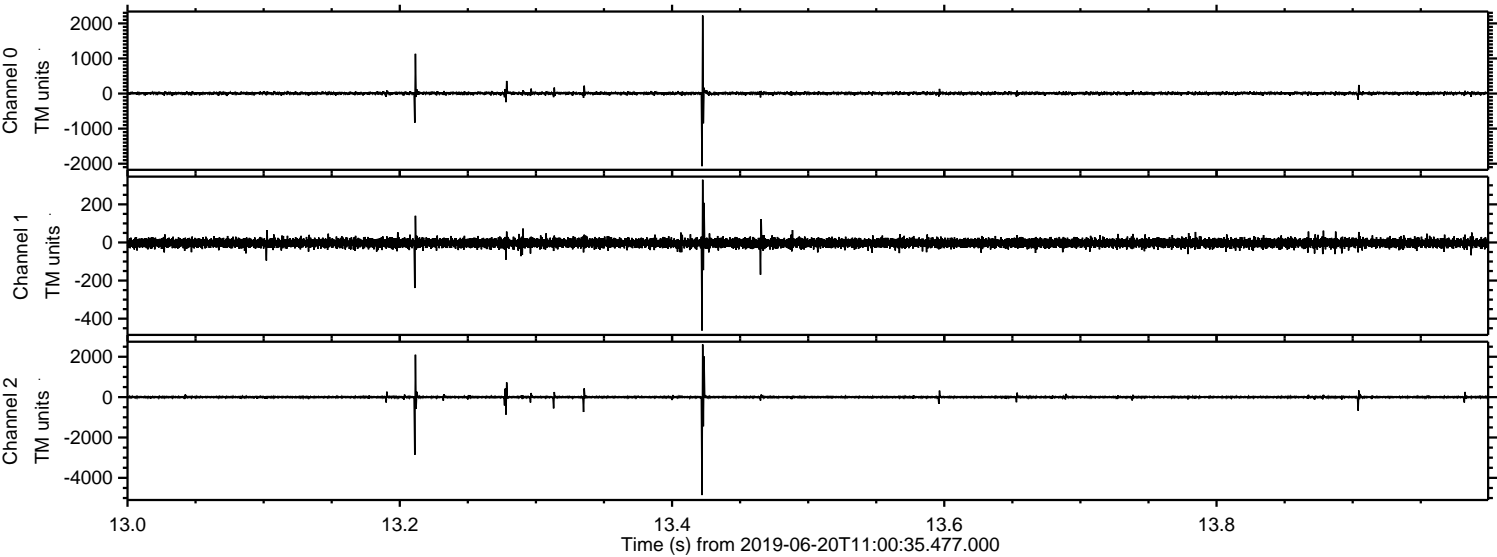
Processed Thu Jun 20 13:07:59 2019 by ELM ver.2012-10-06 from 001__elm20190620_110034__dat00.bin



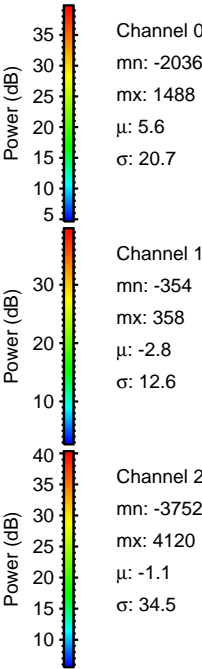
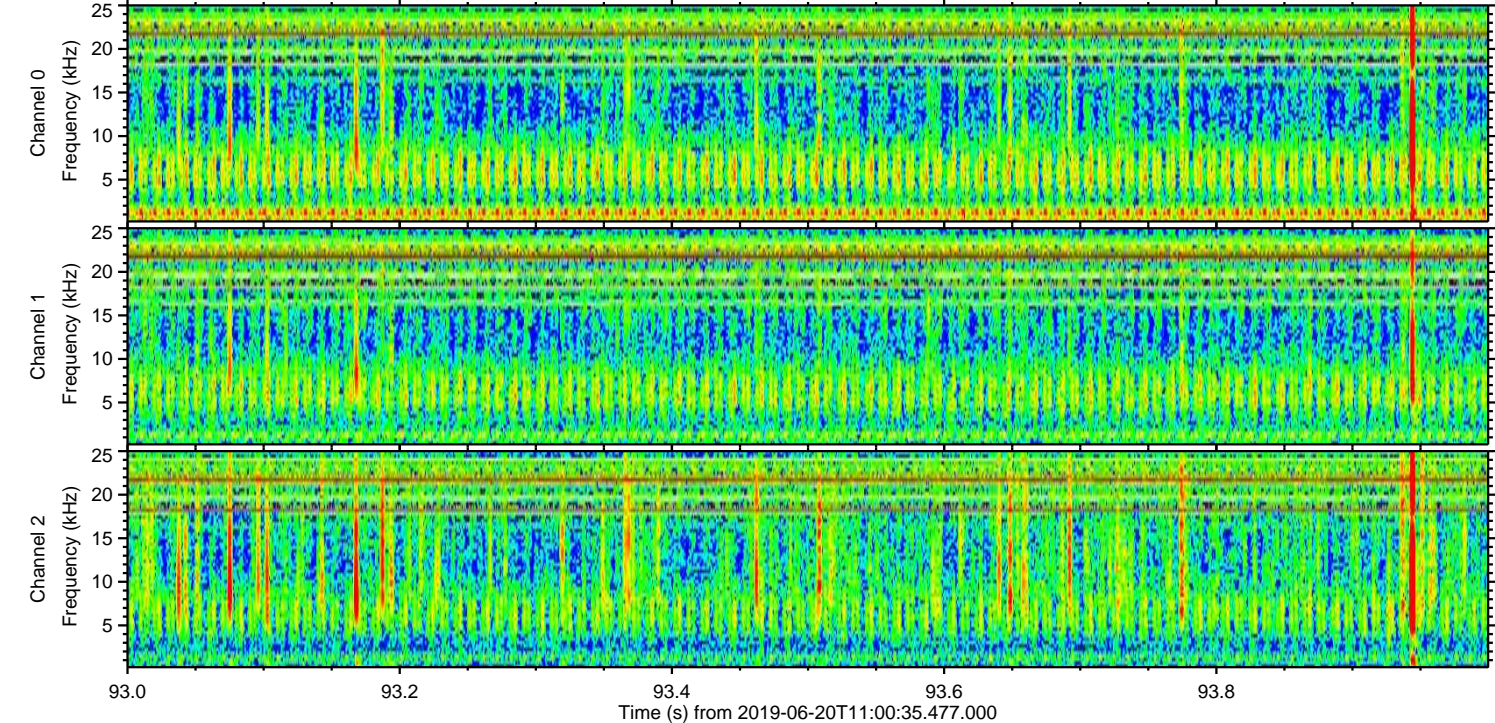
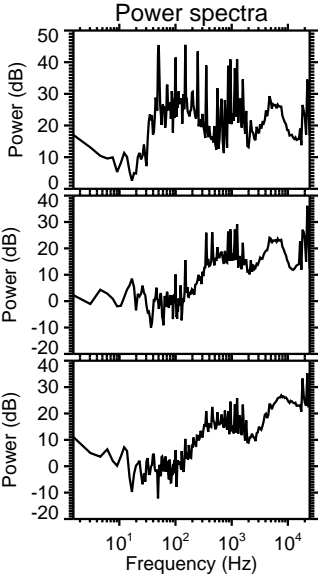
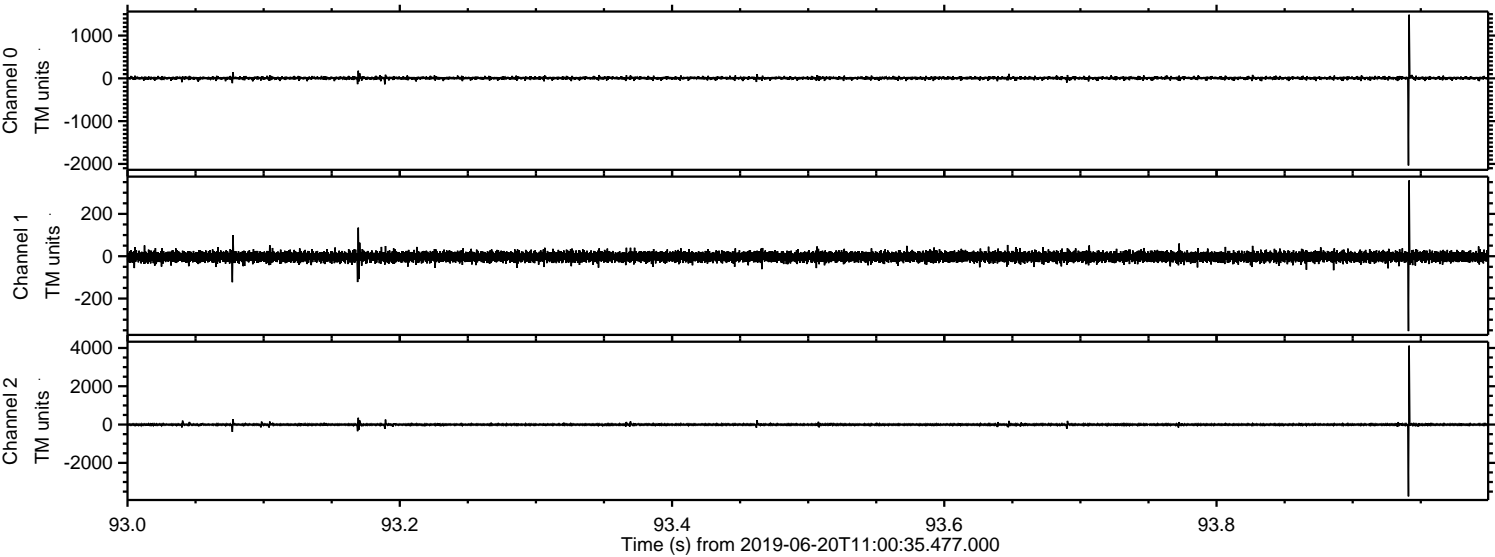
Processed Thu Jun 20 13:08:00 2019 by ELM ver.2012-10-06 from 001__elm20190620_110034__dat00.bin



Processed Thu Jun 20 13:08:01 2019 by ELM ver.2012-10-06 from 001__elm20190620_110034__dat00.bin



Processed Thu Jun 20 13:08:01 2019 by ELM ver.2012-10-06 from 001__elm20190620_110034__dat00.bin



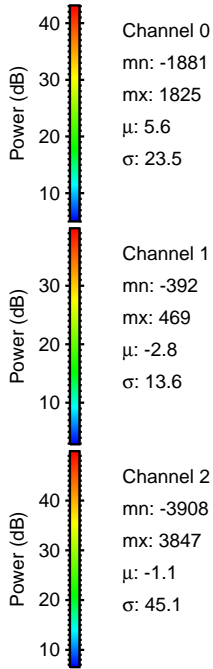
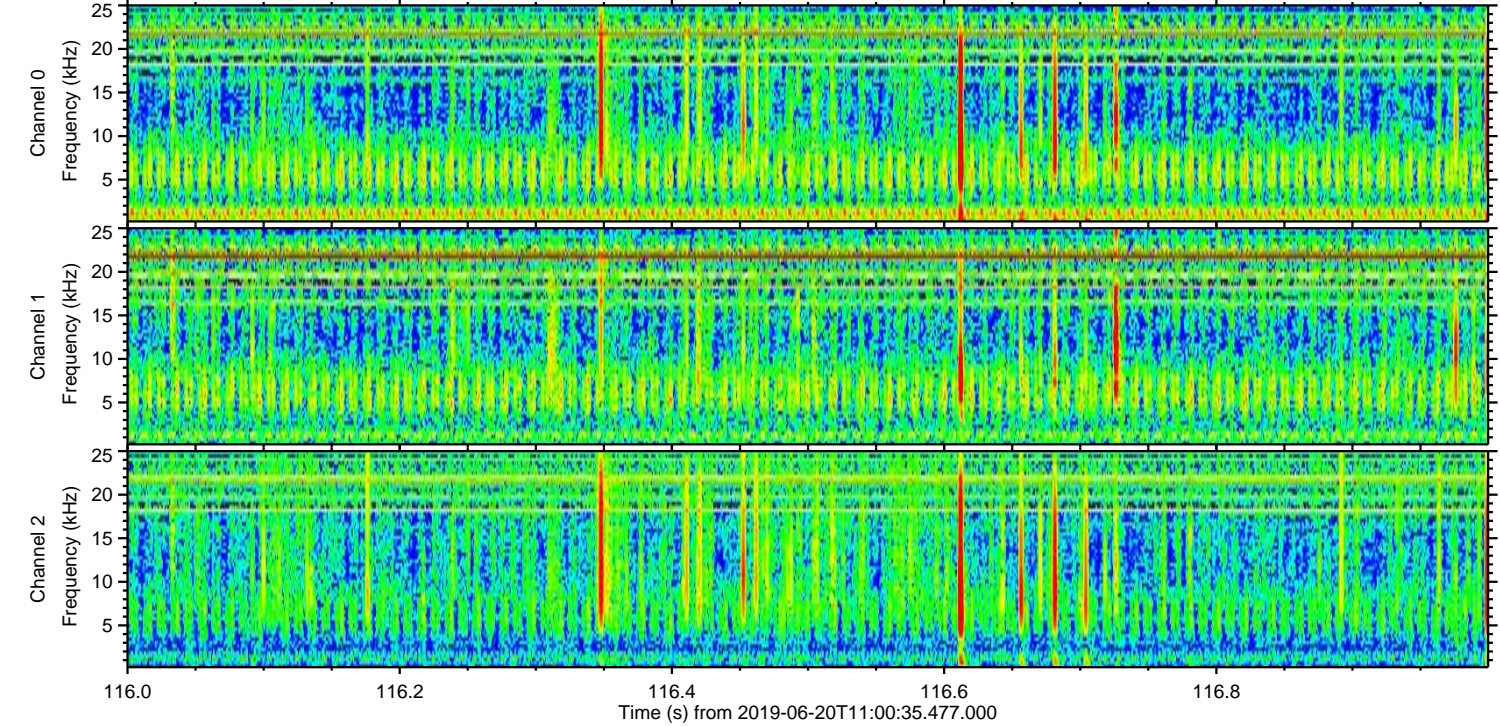
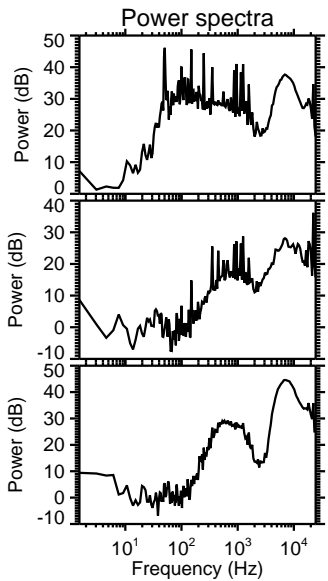
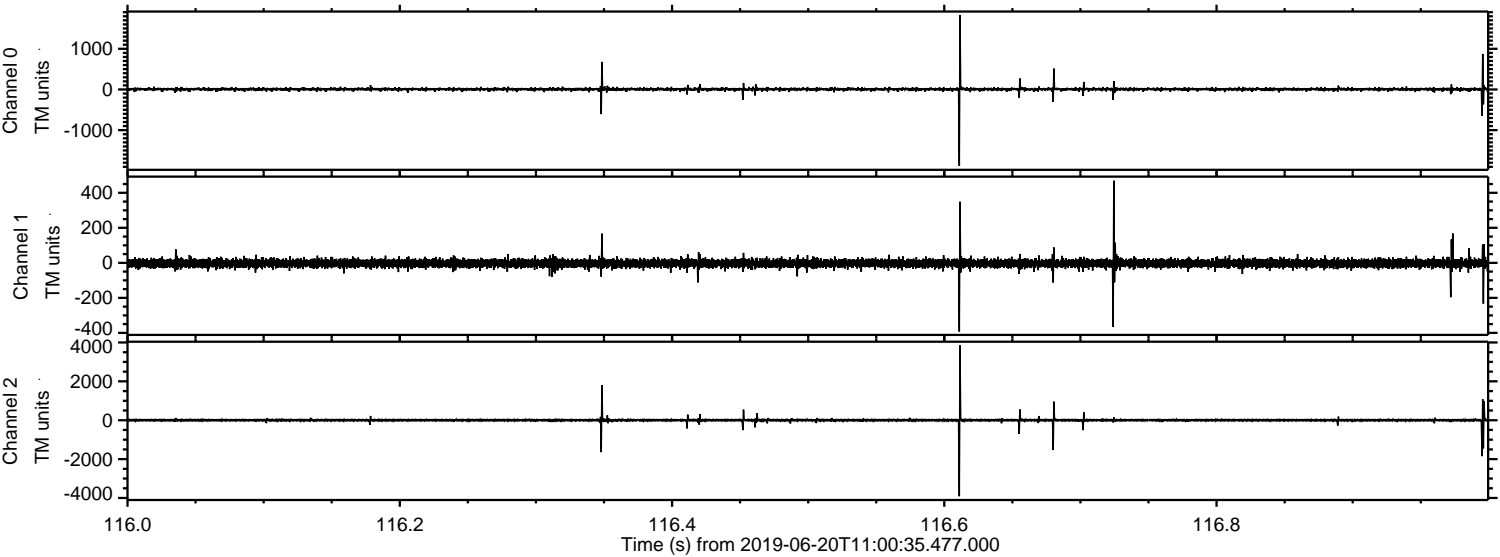
Channel 0
mn: -2036
mx: 1488
 μ : 5.6
 σ : 20.7

Channel 1
mn: -354
mx: 358
 μ : -2.8
 σ : 12.6

Channel 2
mn: -3752
mx: 4120
 μ : -1.1
 σ : 34.5

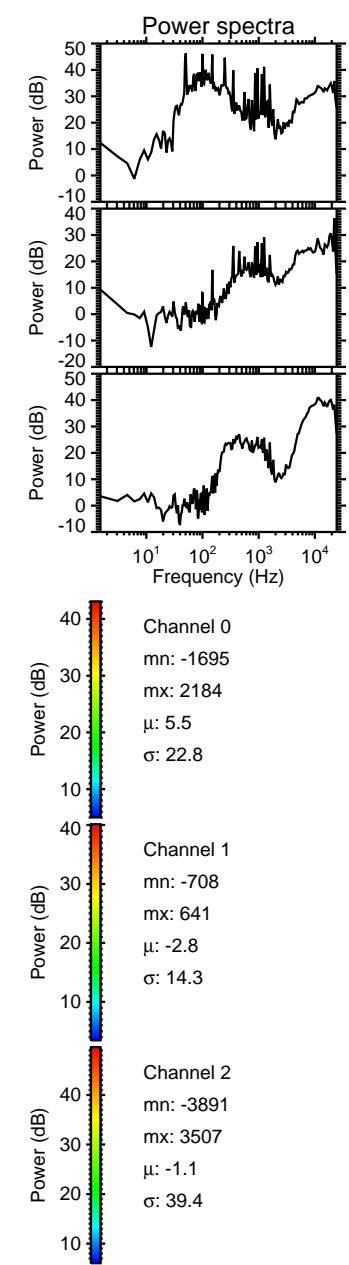
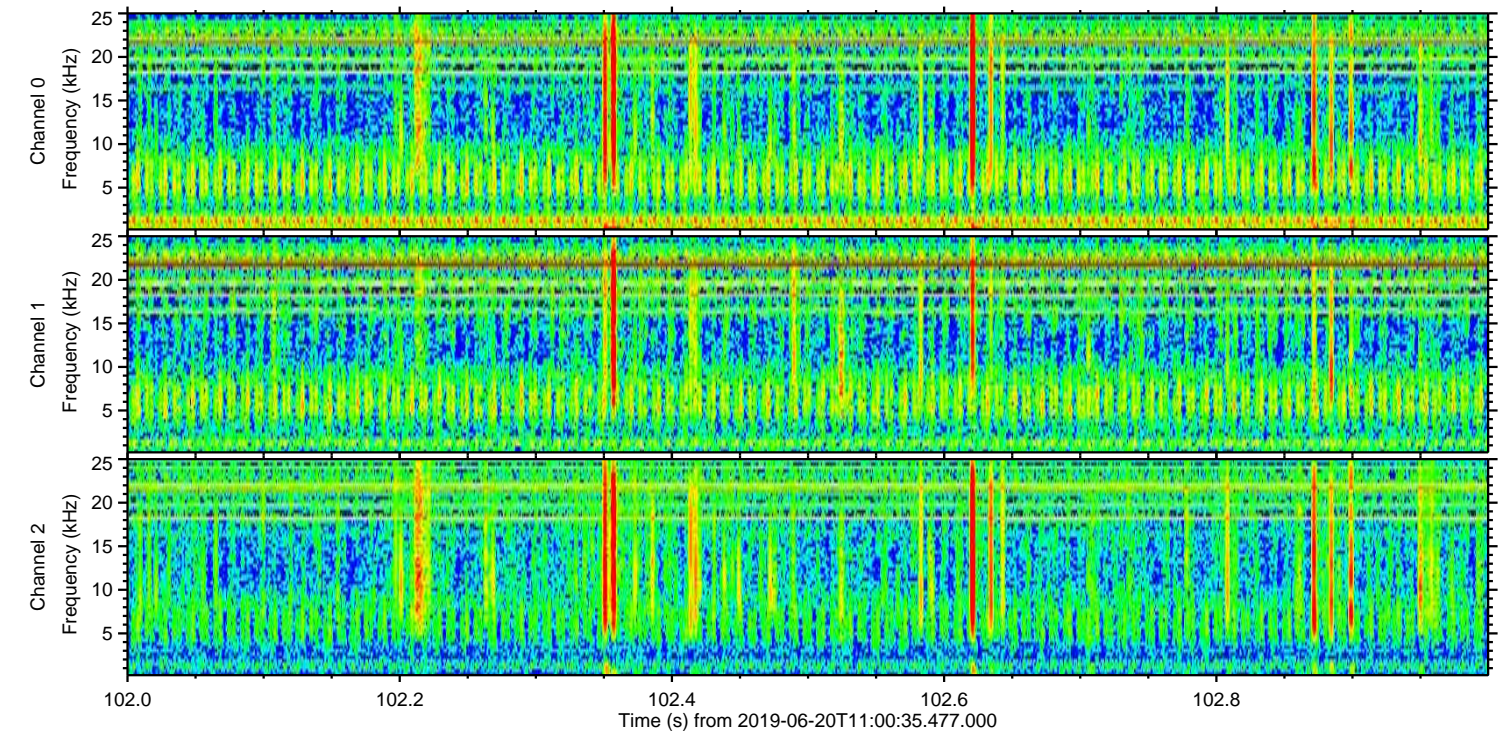
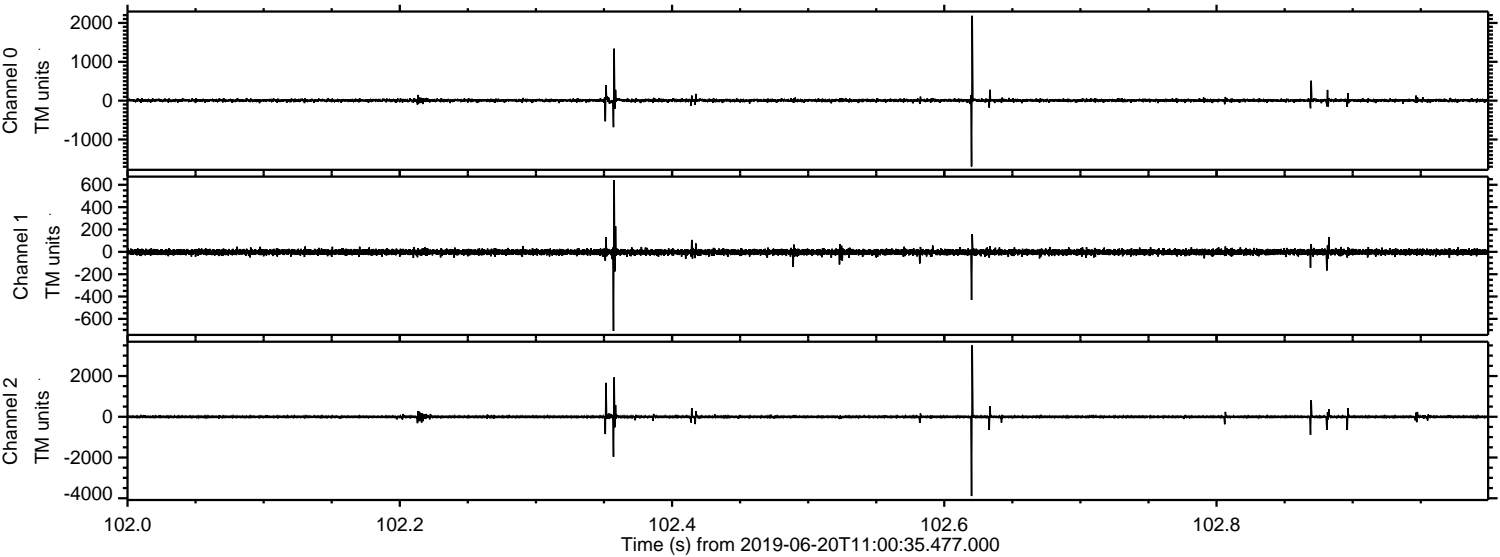
ELMAVAN 3D WAVEFORMS (Measured data sampled at 50 kHz) 51000 packets of 144 samples from 2019-06-20T11:00:35.477.000. Part 117/147

Processed Thu Jun 20 13:08:02 2019 by ELM ver.2012-10-06 from 001__elm20190620_110034__dat00.bin

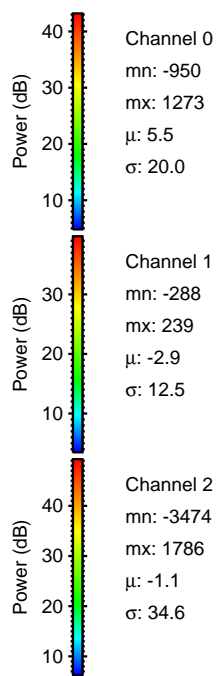
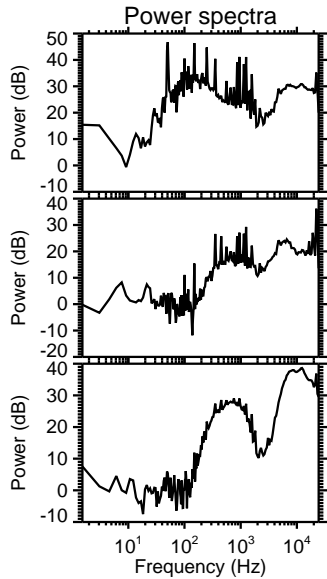
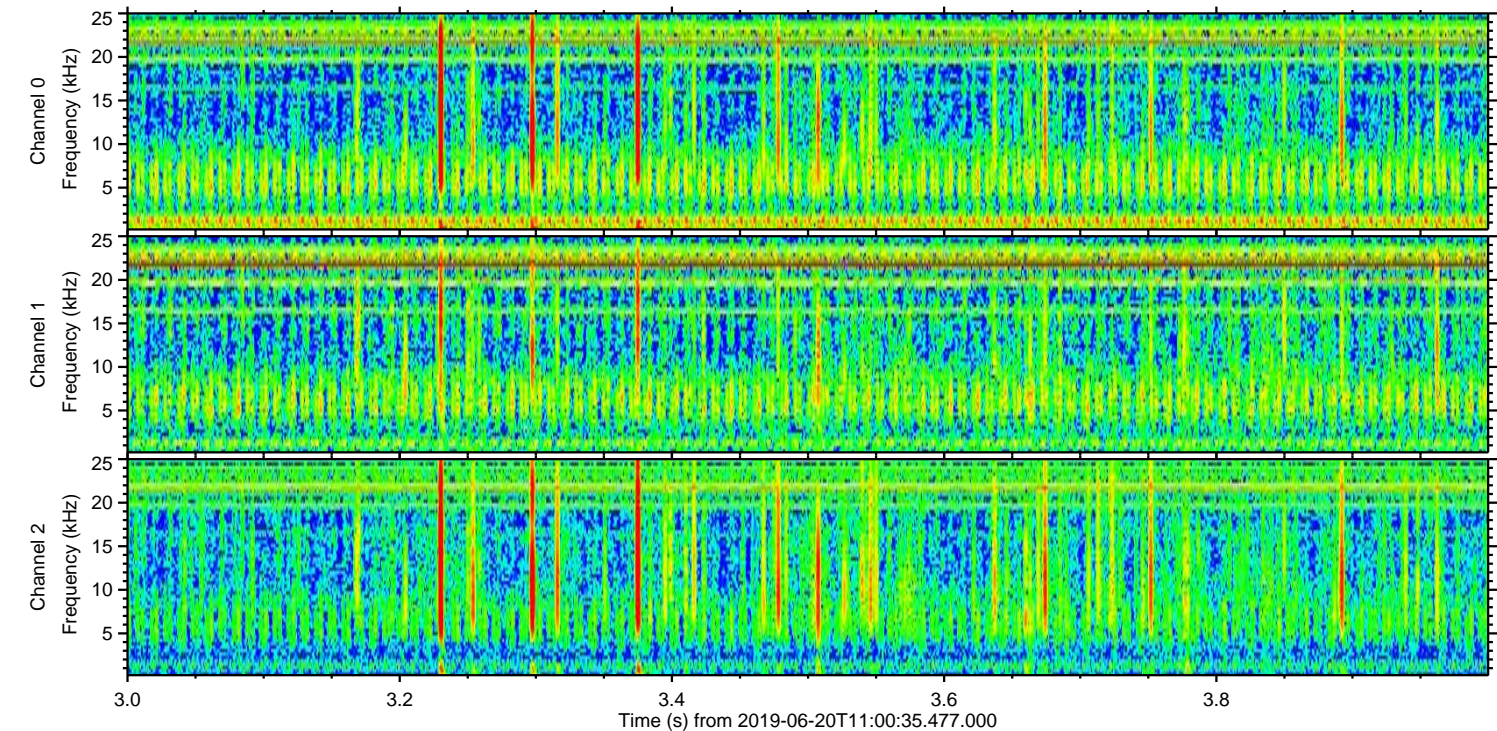
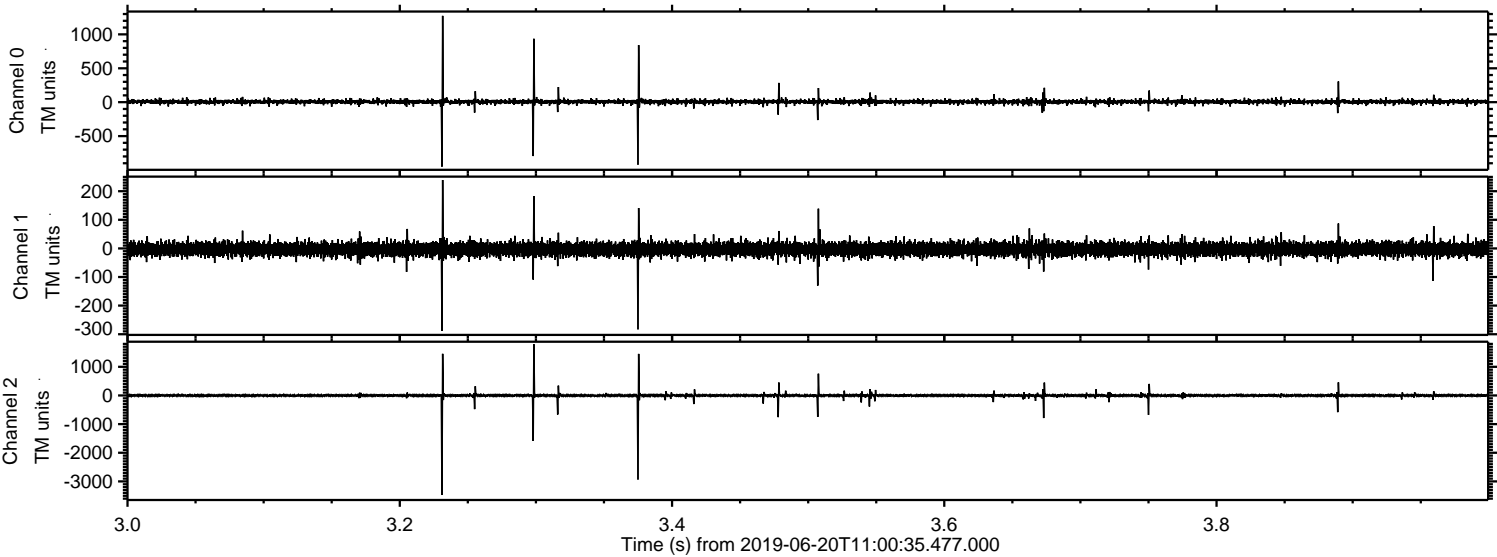


ELMAVAN 3D WAVEFORMS (Measured data sampled at 50 kHz) 51000 packets of 144 samples from 2019-06-20T11:00:35.477.000. Part 103/147

Processed Thu Jun 20 13:08:03 2019 by ELM ver.2012-10-06 from 001__elm20190620_110034__dat00.bin



Processed Thu Jun 20 13:08:03 2019 by ELM ver.2012-10-06 from 001__elm20190620_110034__dat00.bin



Channel 0
mn: -950
mx: 1273
 μ : 5.5
 σ : 20.0

Channel 1
mn: -288
mx: 239
 μ : -2.9
 σ : 12.5

Channel 2
mn: -3474
mx: 1786
 μ : -1.1
 σ : 34.6

Processed Thu Jun 20 13:08:04 2019 by ELM ver.2012-10-06 from 001__elm20190620_110034__dat00.bin

